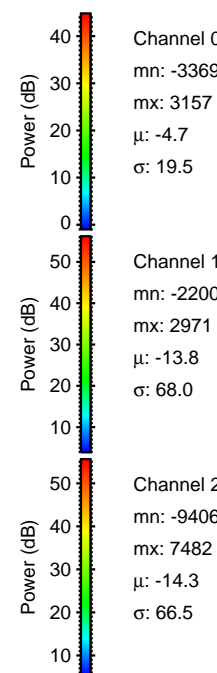
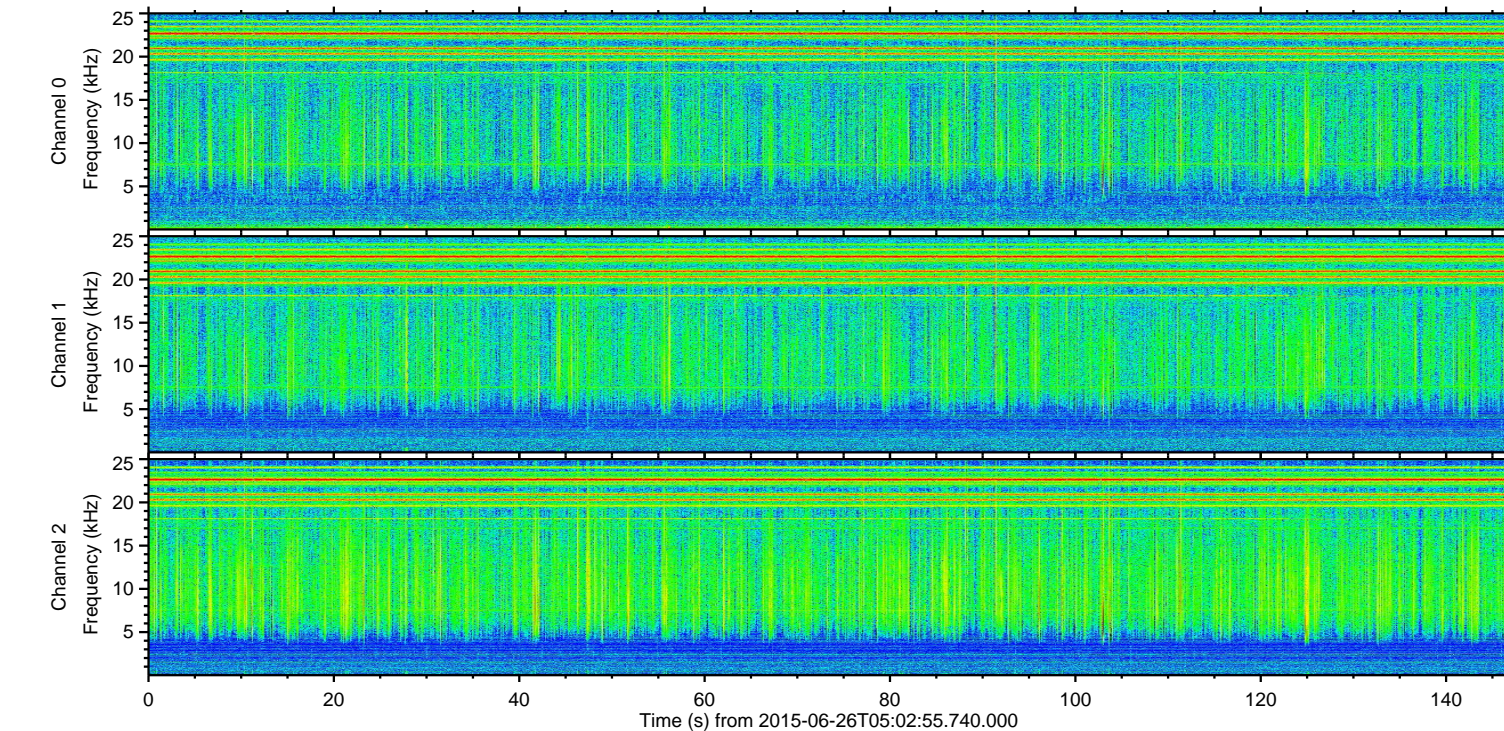
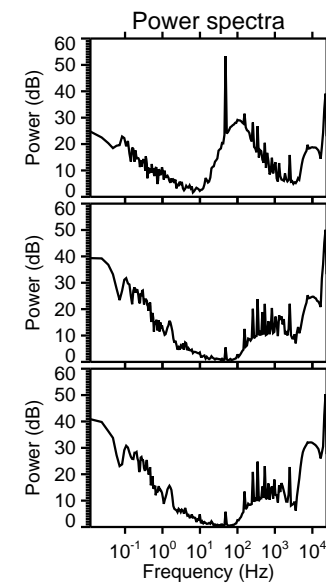
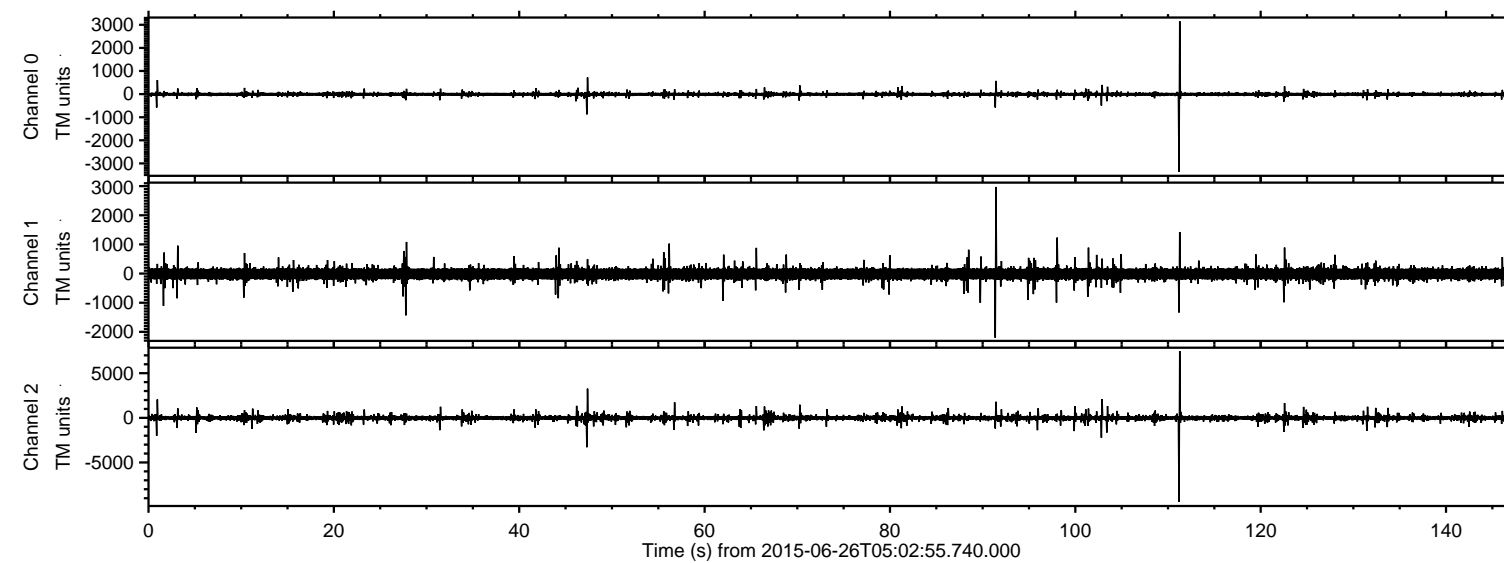


ELMAVAN 3D WAVEFORMS (Measured data sampled at 50 kHz) 51000 packets of 144 samples from 2015-06-26T05:02:55.740.000.

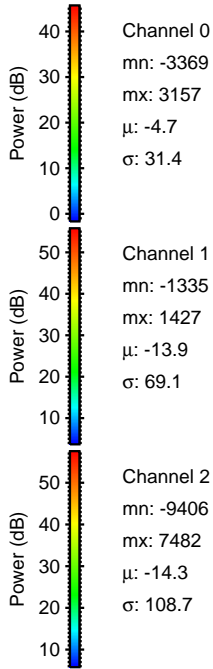
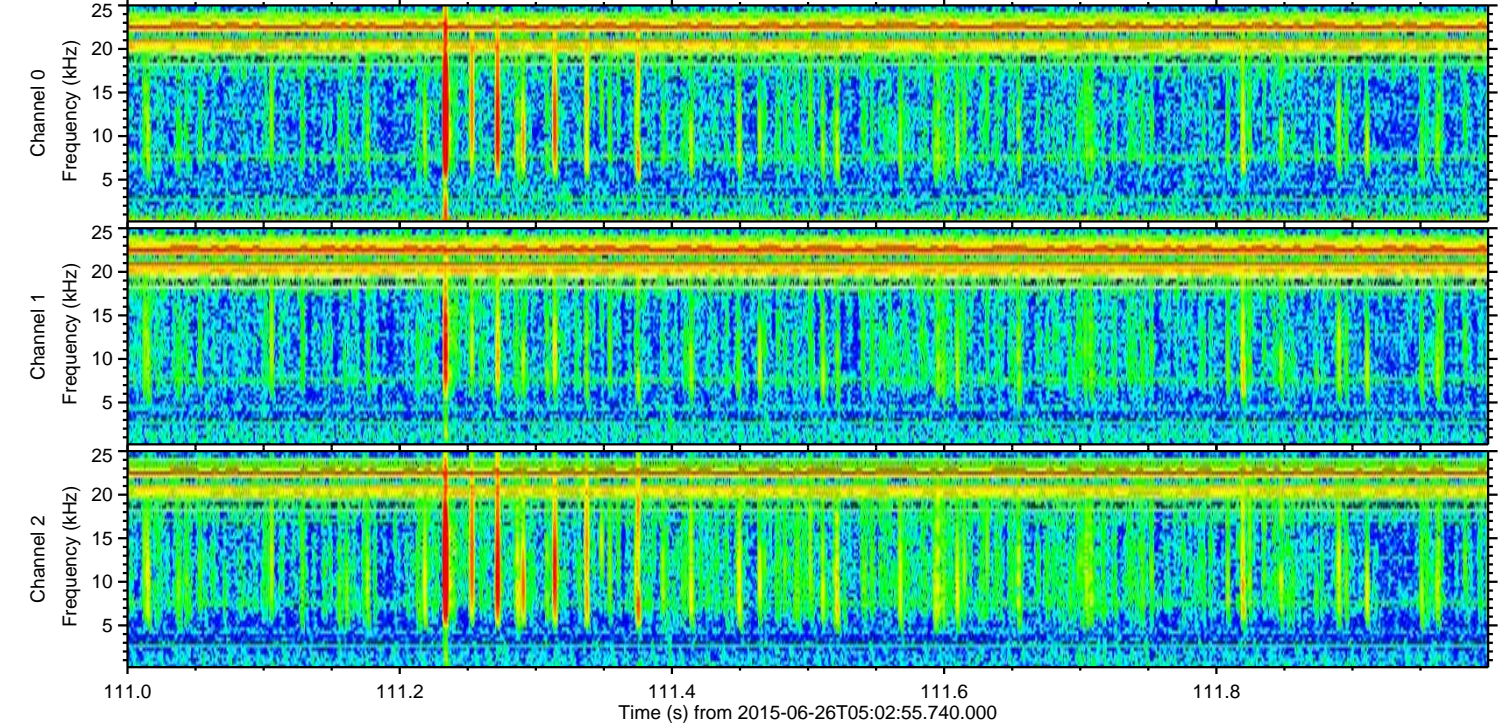
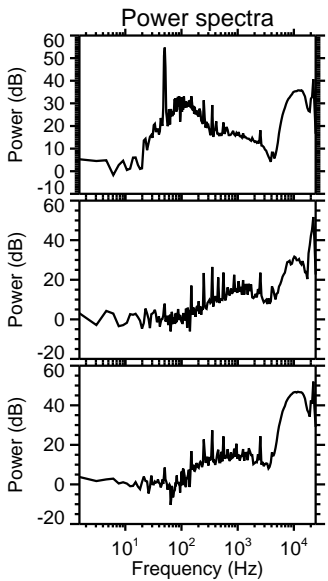
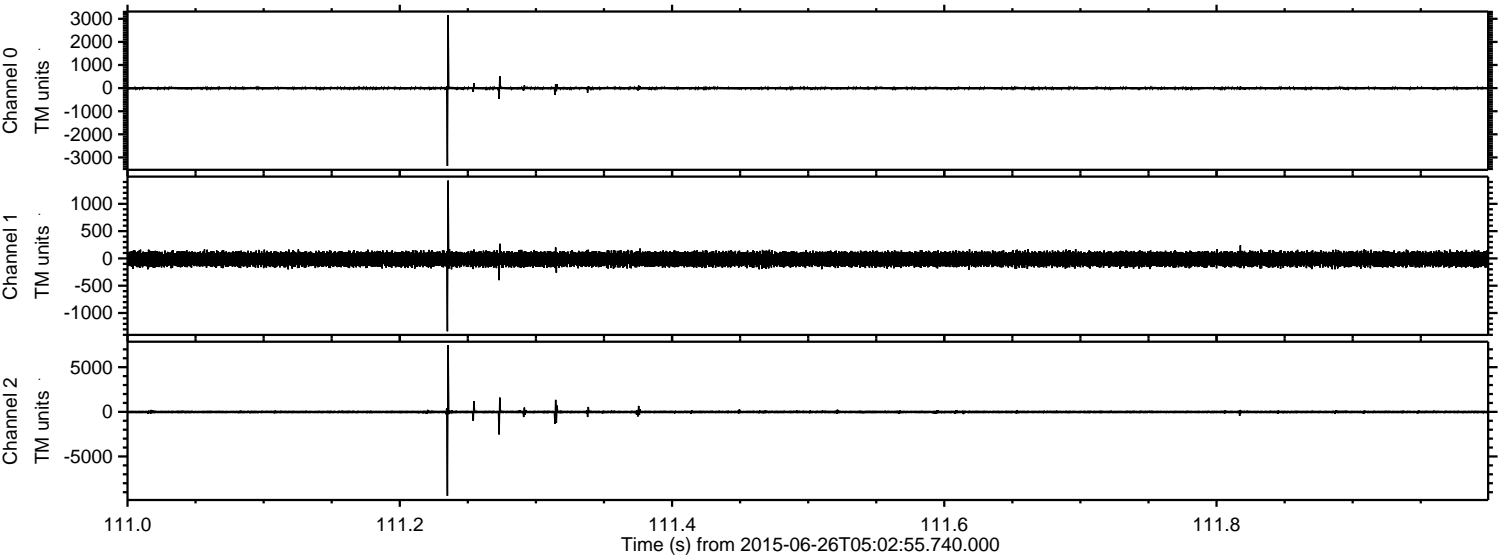
Processed Fri Jun 26 07:09:14 2015 by ELM ver.2012-10-06 from 001\_\_elm20150626\_050254\_\_dat00.bin





ELMAVAN 3D WAVEFORMS (Measured data sampled at 50 kHz) 51000 packets of 144 samples from 2015-06-26T05:02:55.740.000. Part 112/147

Processed Fri Jun 26 07:09:30 2015 by ELM ver.2012-10-06 from 001\_\_elm20150626\_050254\_\_dat00.bin



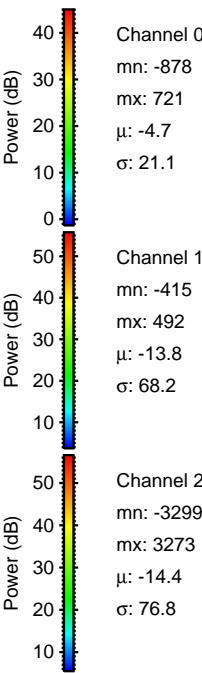
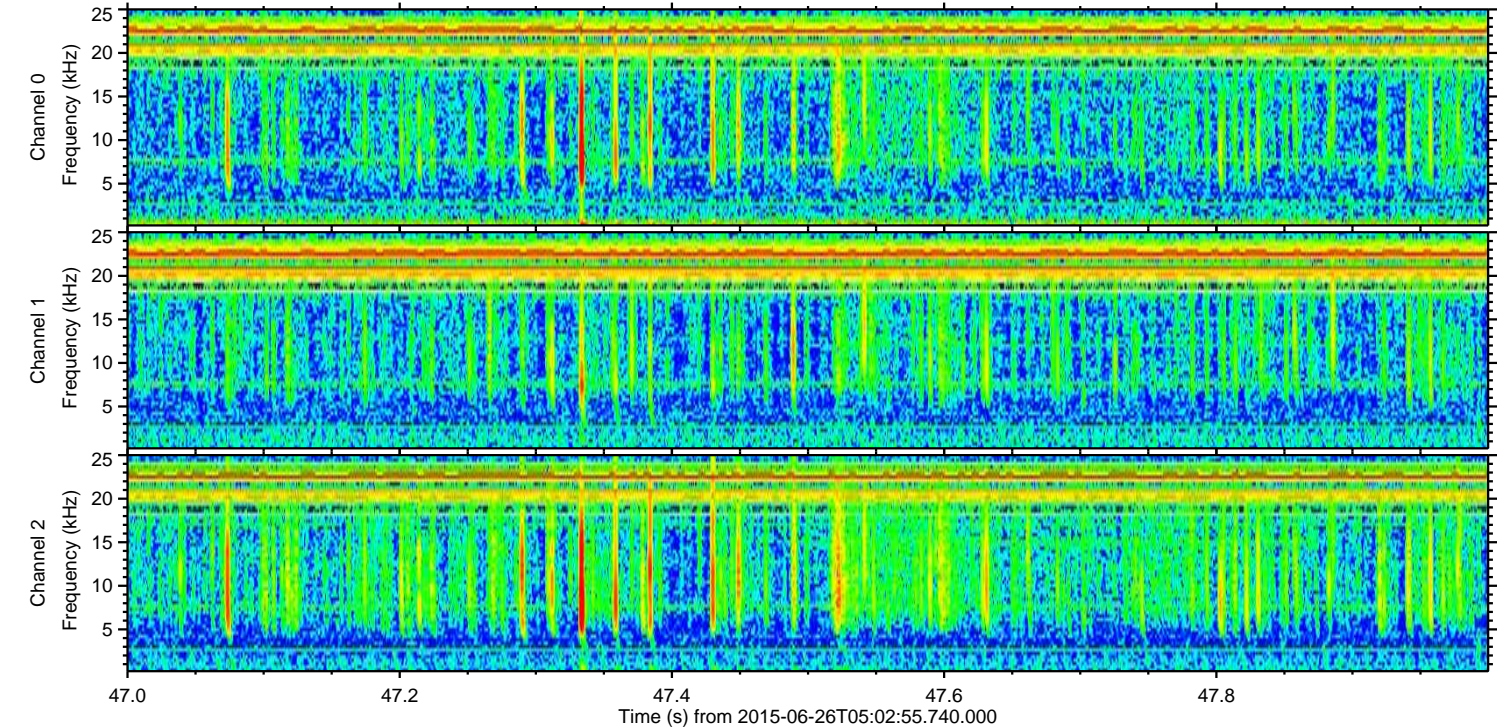
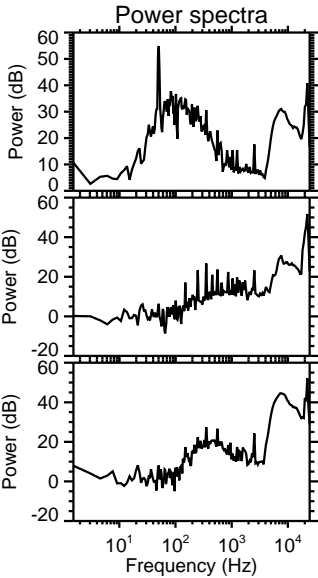
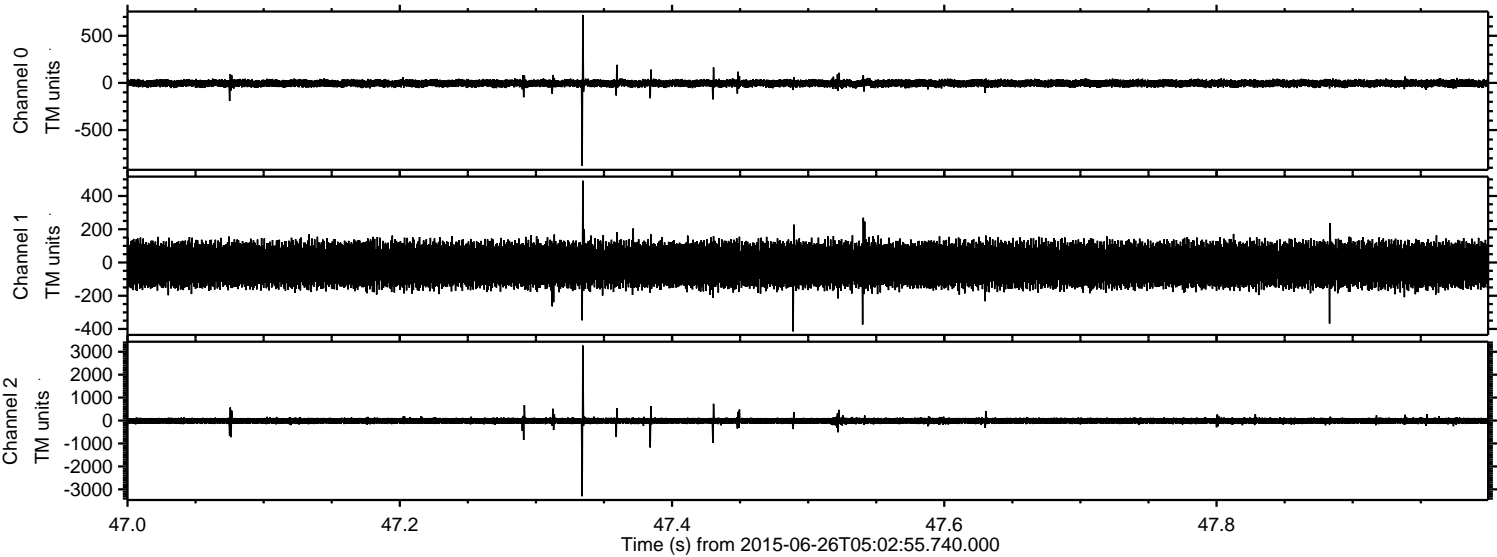
Channel 0  
mn: -3369  
mx: 3157  
 $\mu$ : -4.7  
 $\sigma$ : 31.4

Channel 1  
mn: -1335  
mx: 1427  
 $\mu$ : -13.9  
 $\sigma$ : 69.1

Channel 2  
mn: -9406  
mx: 7482  
 $\mu$ : -14.3  
 $\sigma$ : 108.7

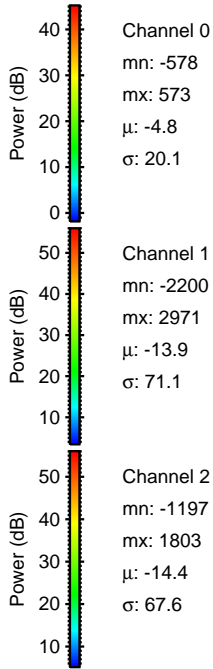
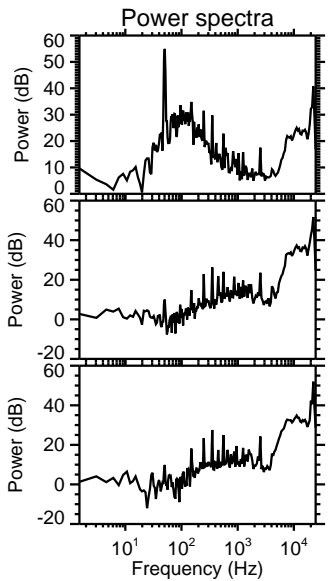
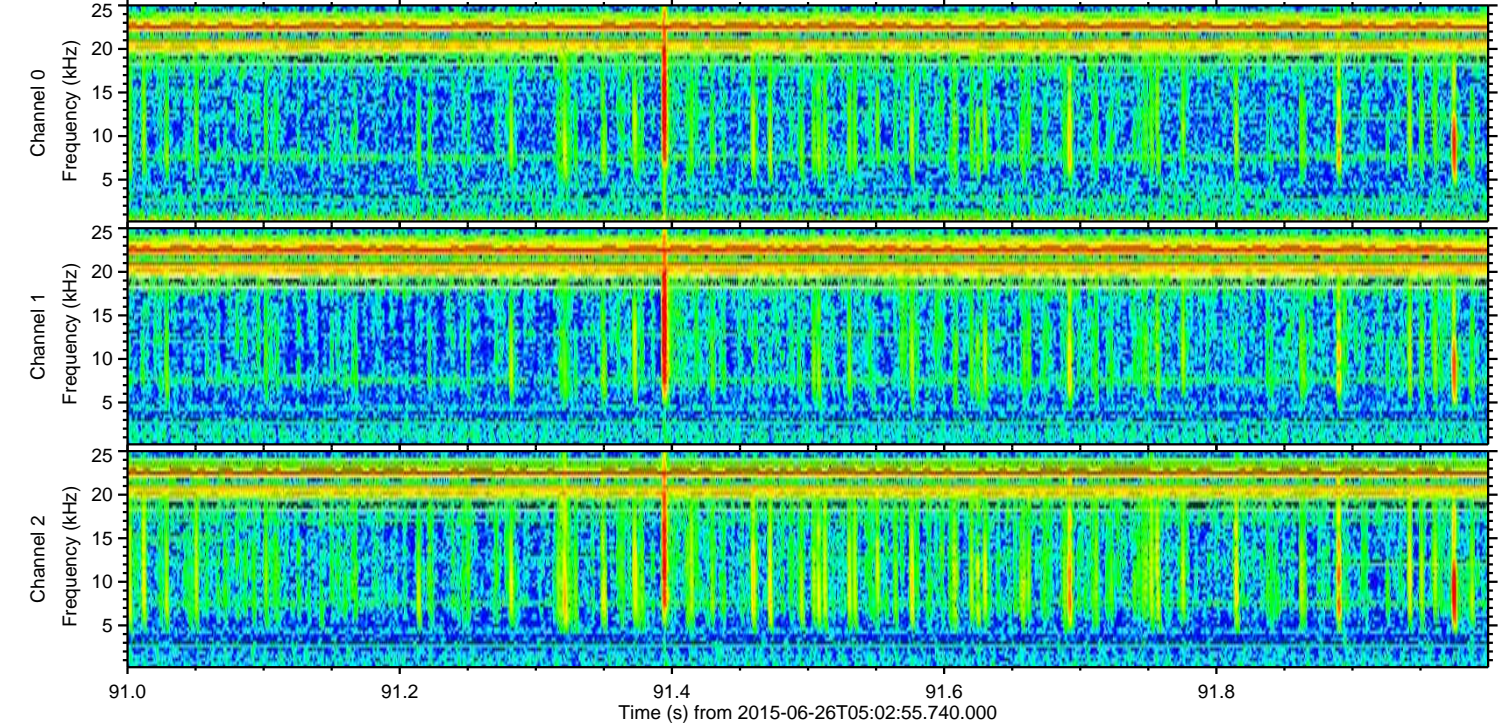
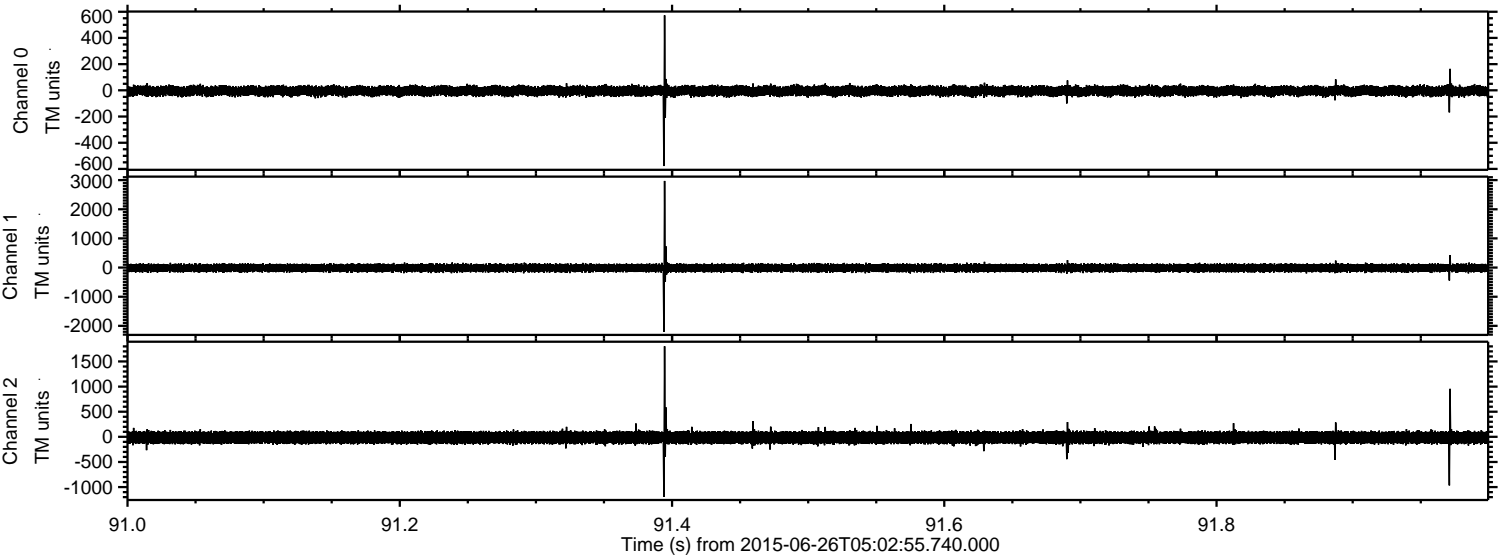


Processed Fri Jun 26 07:09:31 2015 by ELM ver.2012-10-06 from 001\_\_elm20150626\_050254\_\_dat00.bin





Processed Fri Jun 26 07:09:32 2015 by ELM ver.2012-10-06 from 001\_\_elm20150626\_050254\_\_dat00.bin



Channel 0  
mn: -578  
mx: 573  
 $\mu$ : -4.8  
 $\sigma$ : 20.1

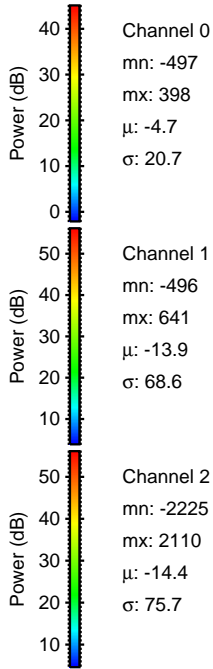
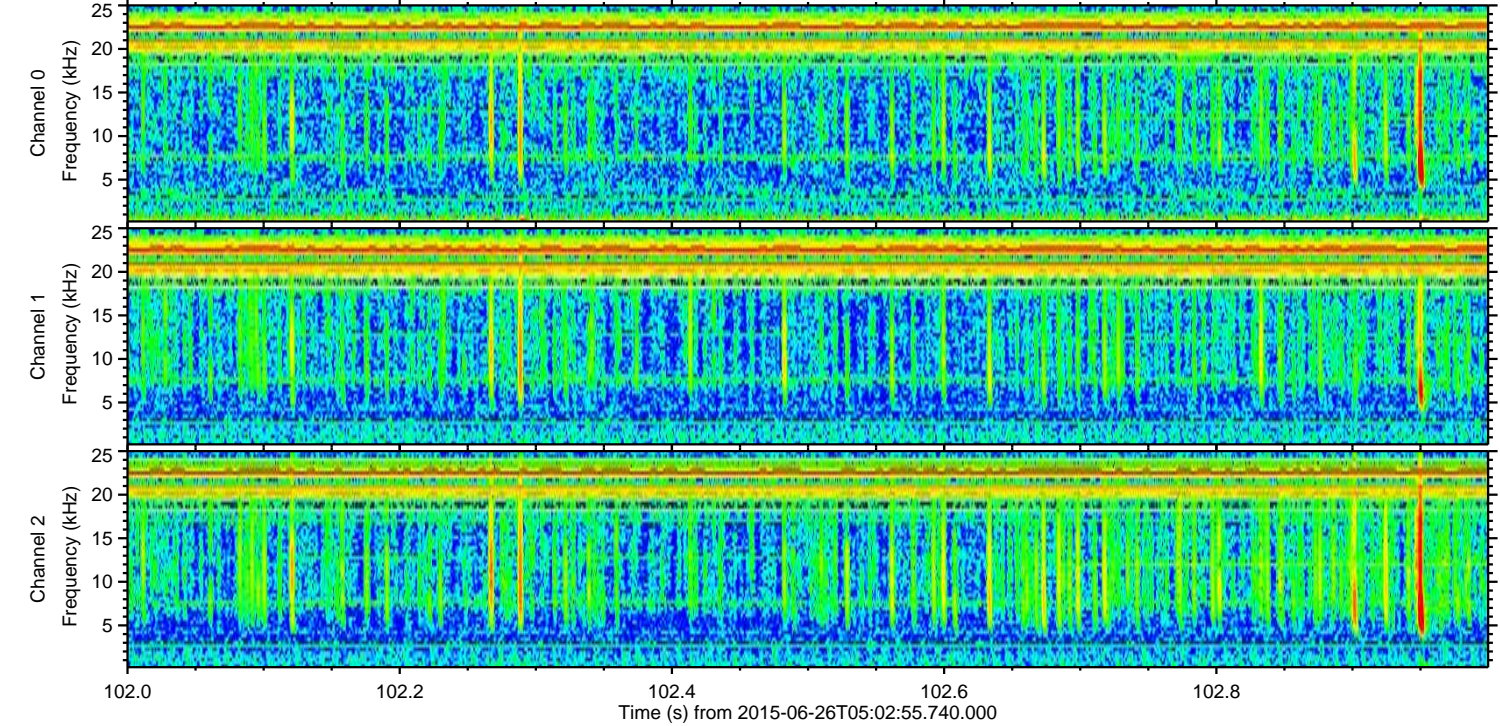
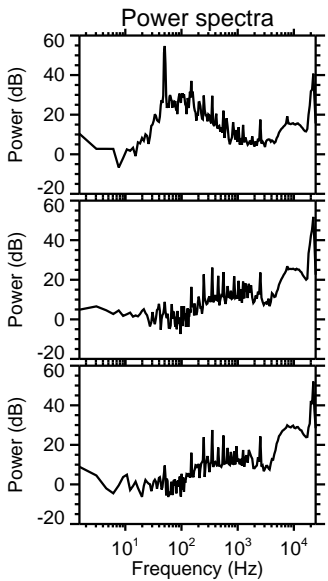
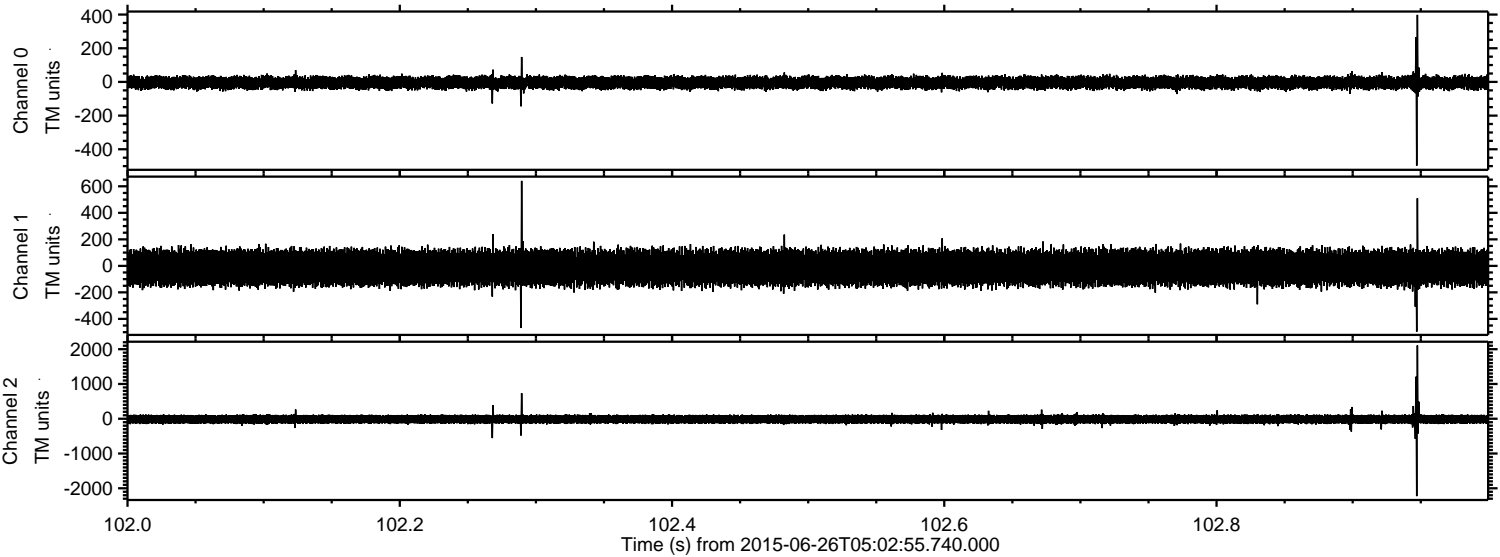
Channel 1  
mn: -2200  
mx: 2971  
 $\mu$ : -13.9  
 $\sigma$ : 71.1

Channel 2  
mn: -1197  
mx: 1803  
 $\mu$ : -14.4  
 $\sigma$ : 67.6



ELMAVAN 3D WAVEFORMS (Measured data sampled at 50 kHz) 51000 packets of 144 samples from 2015-06-26T05:02:55.740.000. Part 103/147

Processed Fri Jun 26 07:09:33 2015 by ELM ver.2012-10-06 from 001\_\_elm20150626\_050254\_\_dat00.bin



Channel 0  
mn: -497  
mx: 398  
 $\mu$ : -4.7  
 $\sigma$ : 20.7

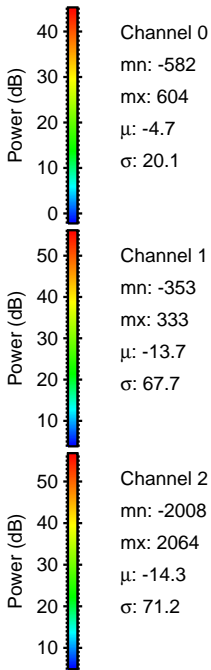
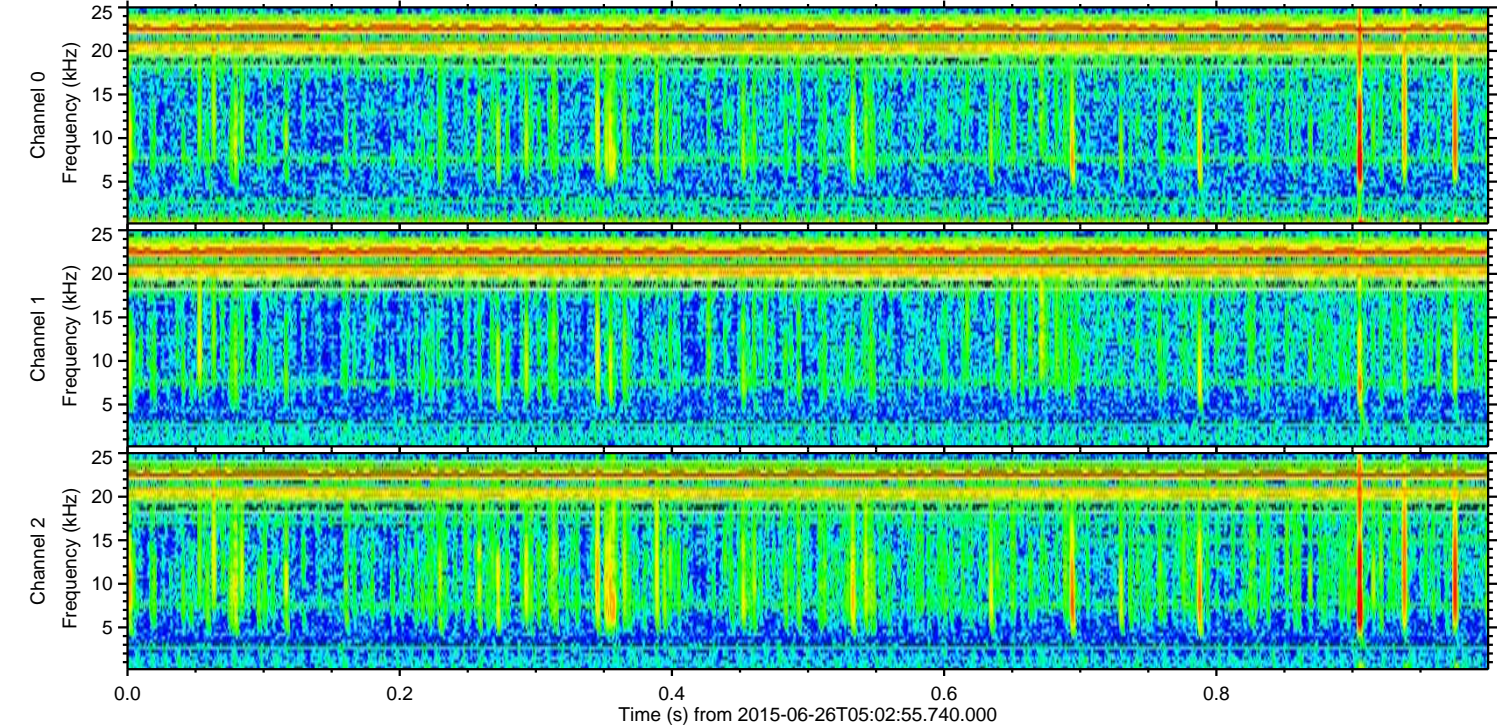
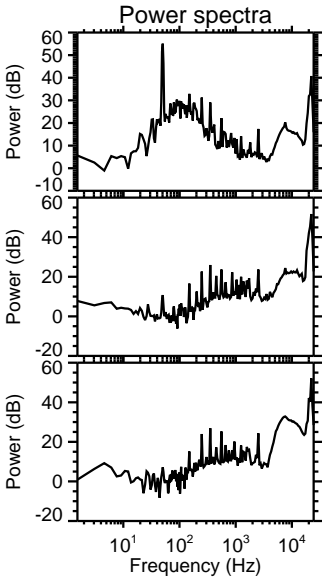
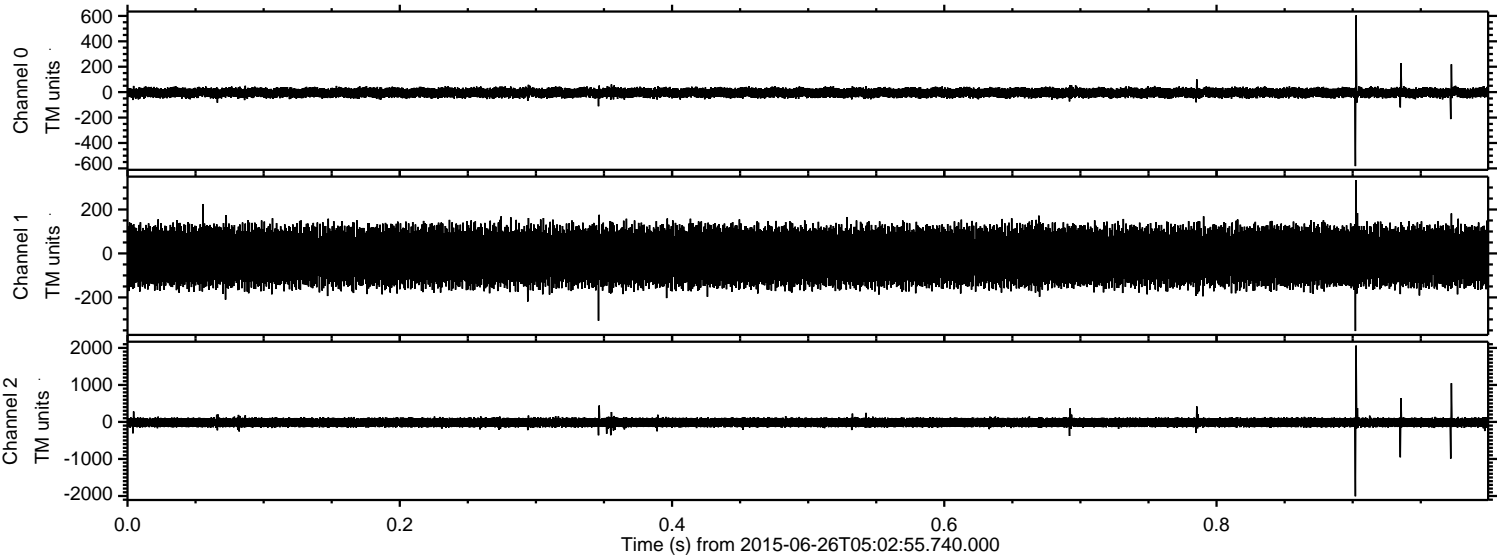
Channel 1  
mn: -496  
mx: 641  
 $\mu$ : -13.9  
 $\sigma$ : 68.6

Channel 2  
mn: -2225  
mx: 2110  
 $\mu$ : -14.4  
 $\sigma$ : 75.7



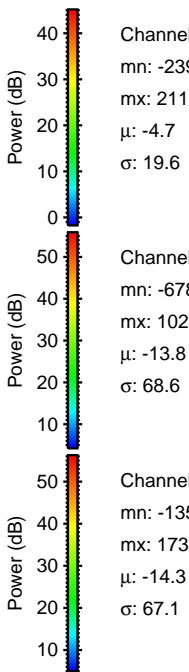
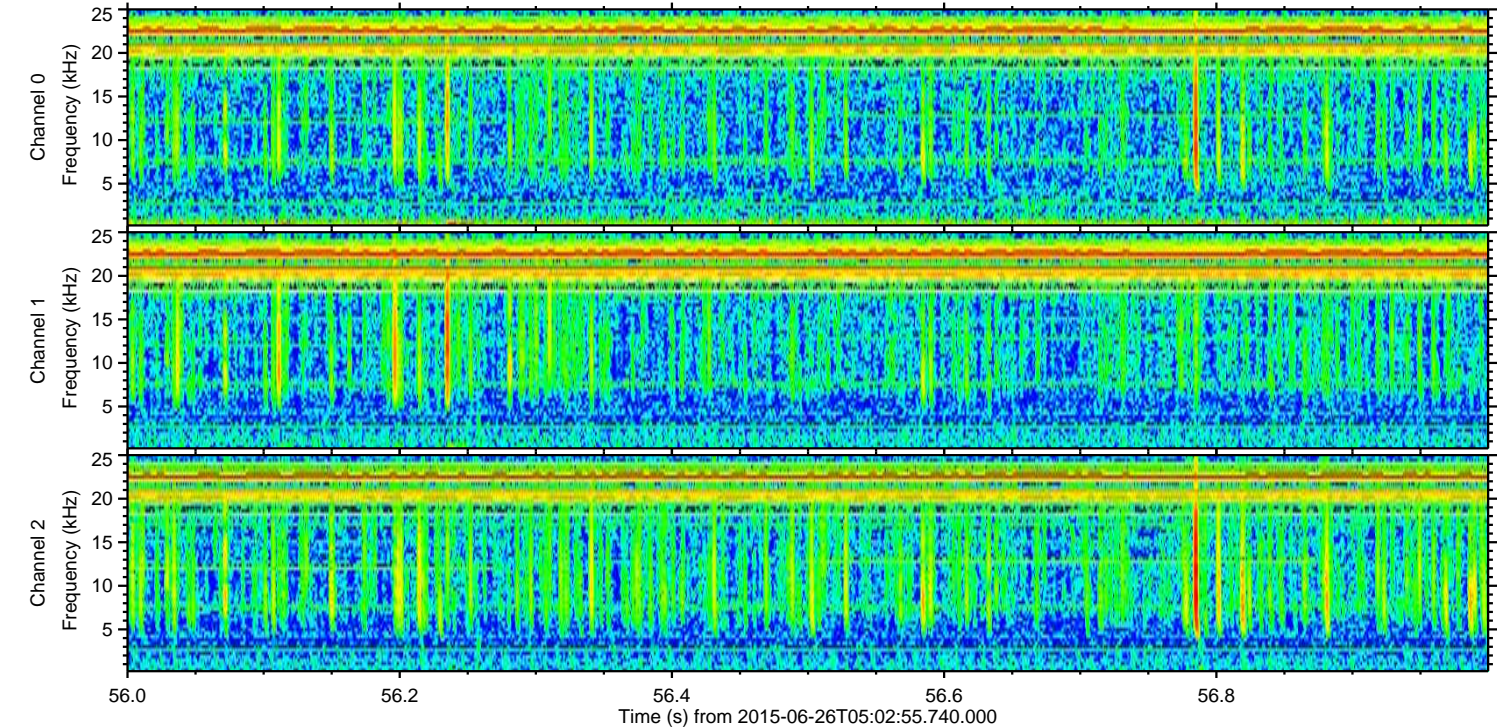
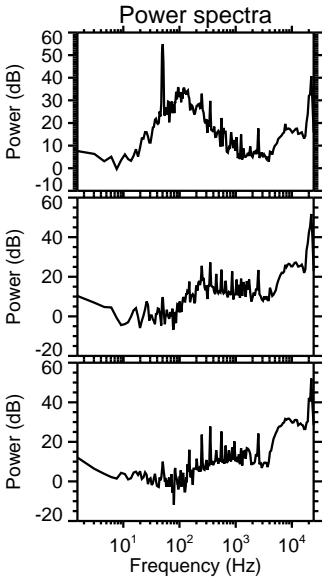
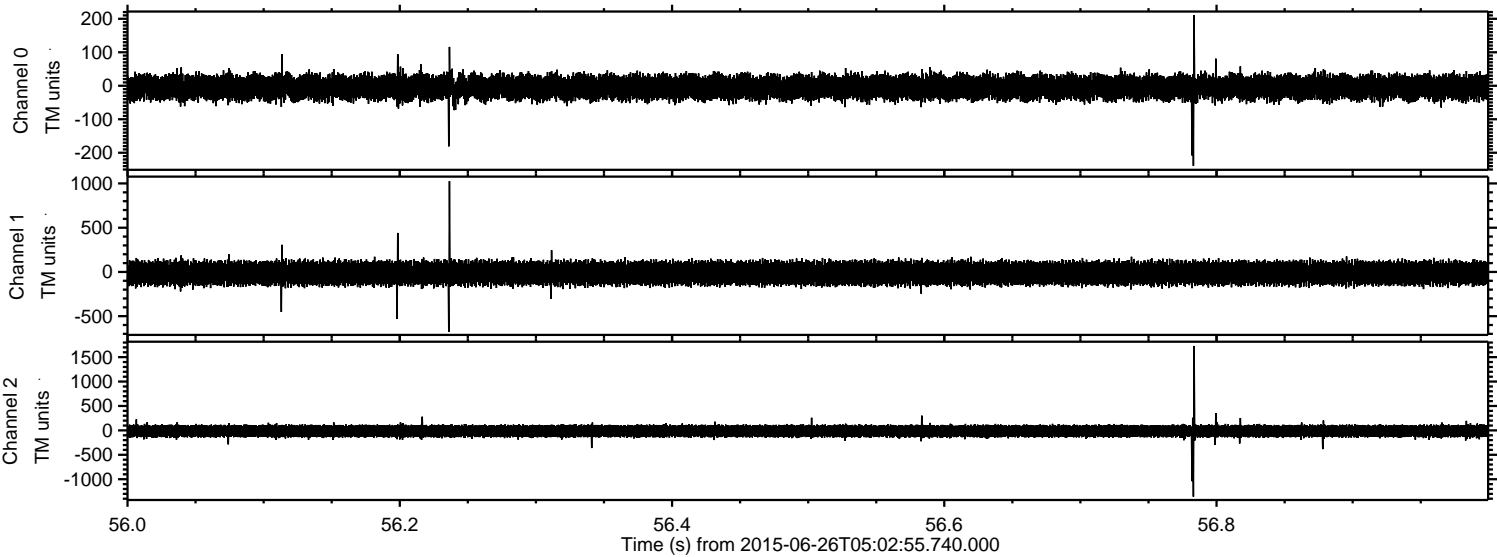
ELMAVAN 3D WAVEFORMS (Measured data sampled at 50 kHz) 51000 packets of 144 samples from 2015-06-26T05:02:55.740.000. Part 1/147

Processed Fri Jun 26 07:09:34 2015 by ELM ver.2012-10-06 from 001\_\_elm20150626\_050254\_\_dat00.bin





Processed Fri Jun 26 07:09:35 2015 by ELM ver.2012-10-06 from 001\_\_elm20150626\_050254\_\_dat00.bin



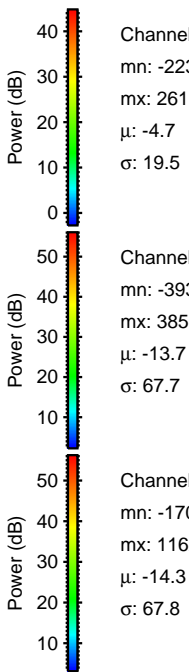
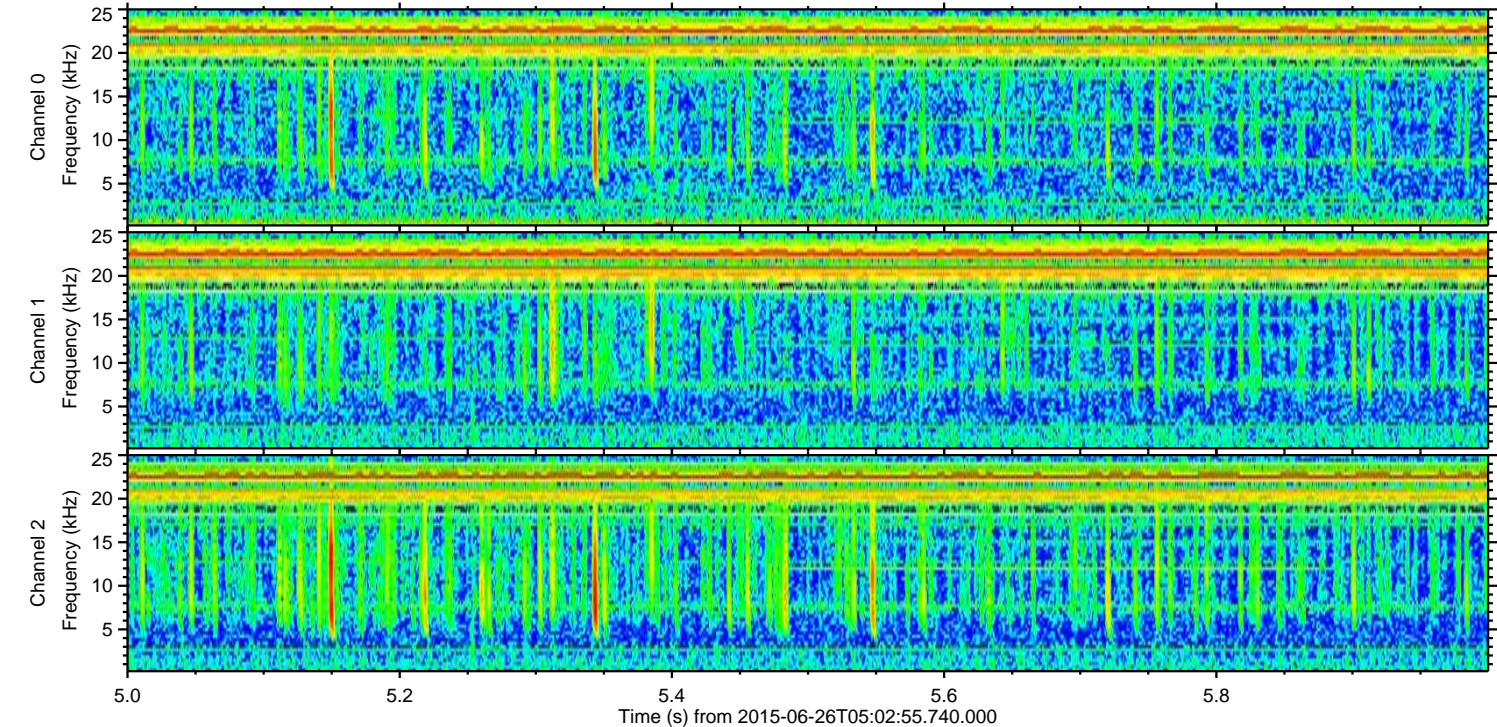
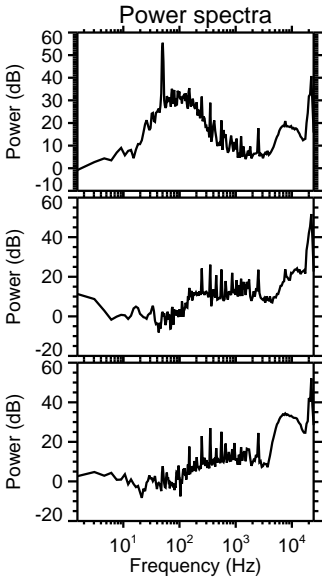
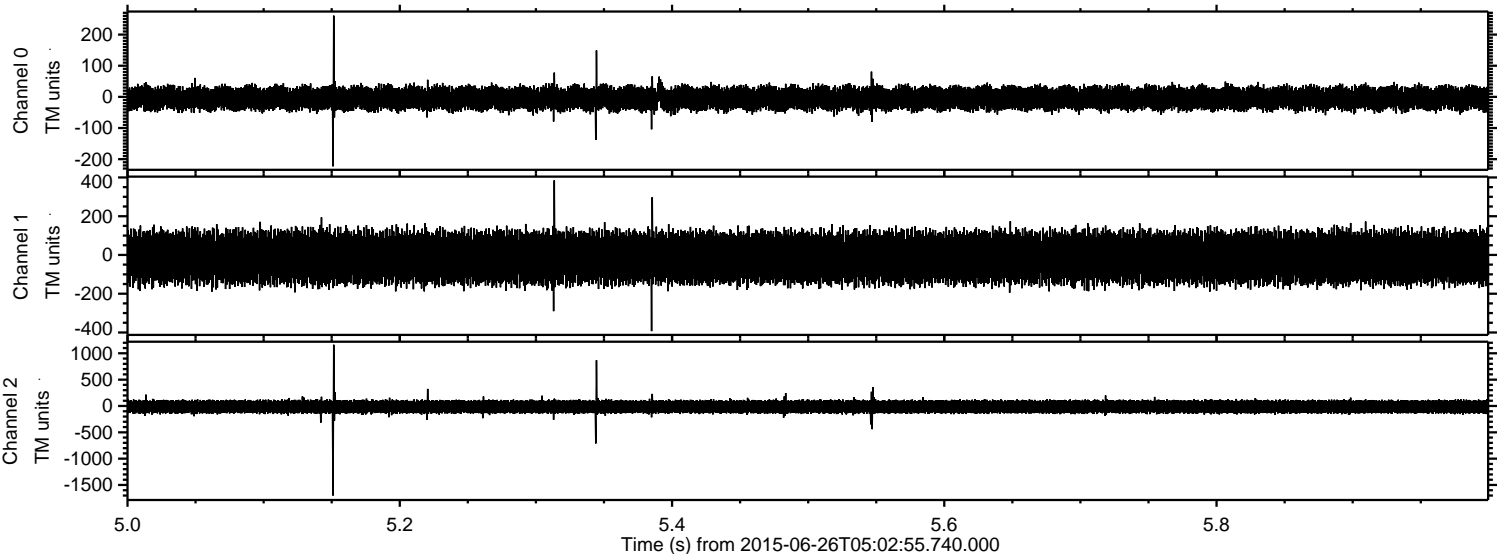
Channel 0  
mn: -239  
mx: 211  
 $\mu$ : -4.7  
 $\sigma$ : 19.6

Channel 1  
mn: -678  
mx: 1026  
 $\mu$ : -13.8  
 $\sigma$ : 68.6

Channel 2  
mn: -1358  
mx: 1730  
 $\mu$ : -14.3  
 $\sigma$ : 67.1



Processed Fri Jun 26 07:09:36 2015 by ELM ver.2012-10-06 from 001\_\_elm20150626\_050254\_\_dat00.bin



Channel 0  
mn: -223  
mx: 261  
 $\mu$ : -4.7  
 $\sigma$ : 19.5

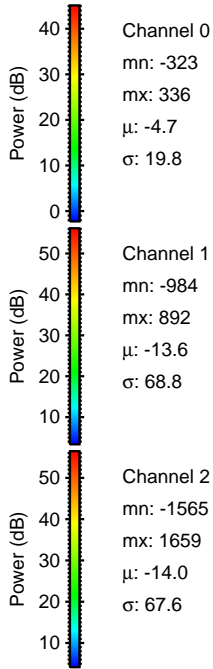
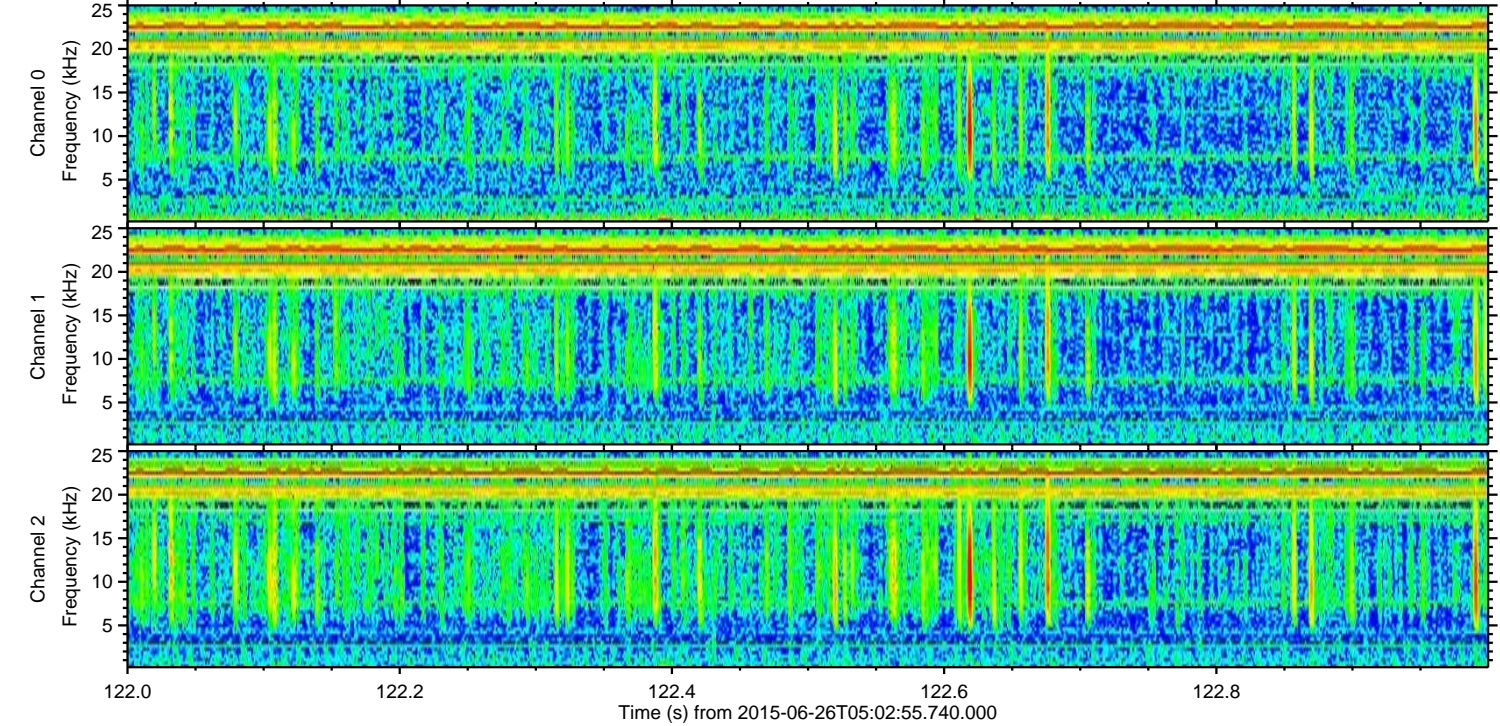
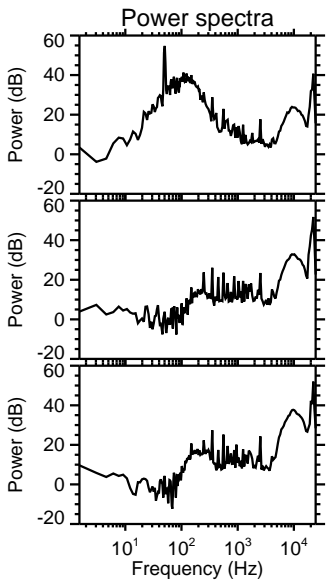
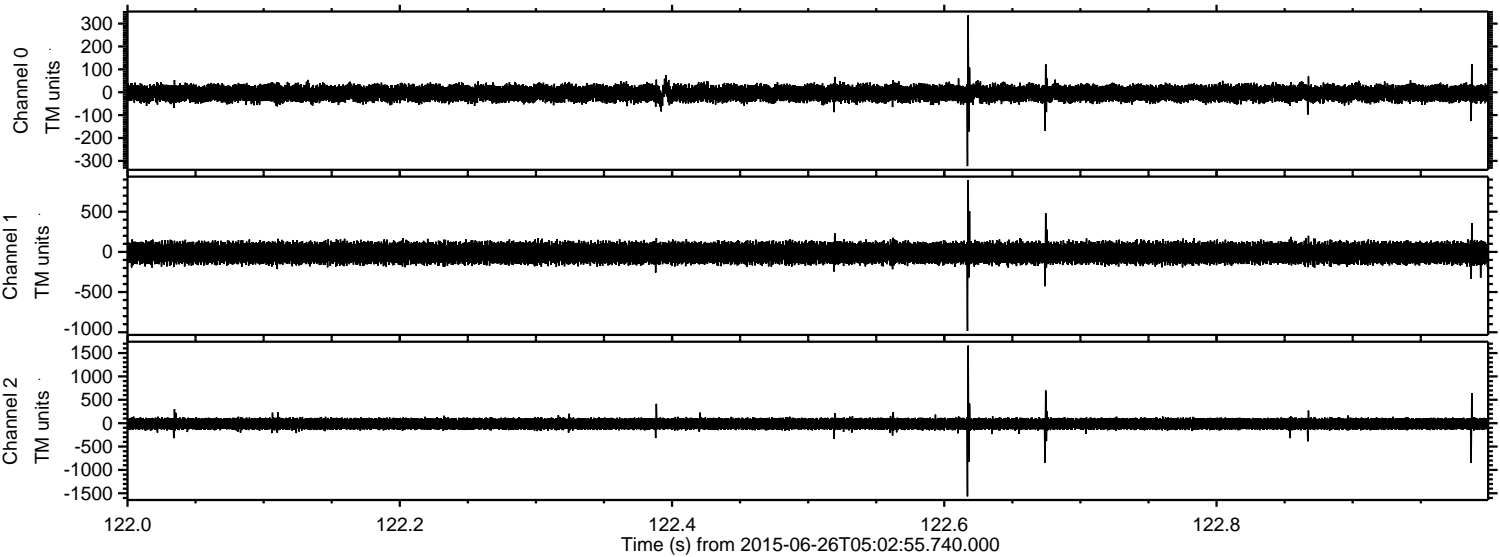
Channel 1  
mn: -393  
mx: 385  
 $\mu$ : -13.7  
 $\sigma$ : 67.7

Channel 2  
mn: -1700  
mx: 1162  
 $\mu$ : -14.3  
 $\sigma$ : 67.8



ELMAVAN 3D WAVEFORMS (Measured data sampled at 50 kHz) 51000 packets of 144 samples from 2015-06-26T05:02:55.740.000. Part 123/147

Processed Fri Jun 26 07:09:37 2015 by ELM ver.2012-10-06 from 001\_\_elm20150626\_050254\_\_dat00.bin



Channel 0  
mn: -323  
mx: 336  
 $\mu$ : -4.7  
 $\sigma$ : 19.8

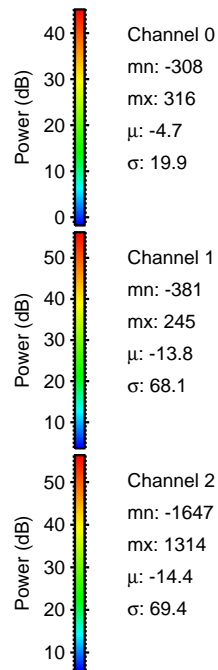
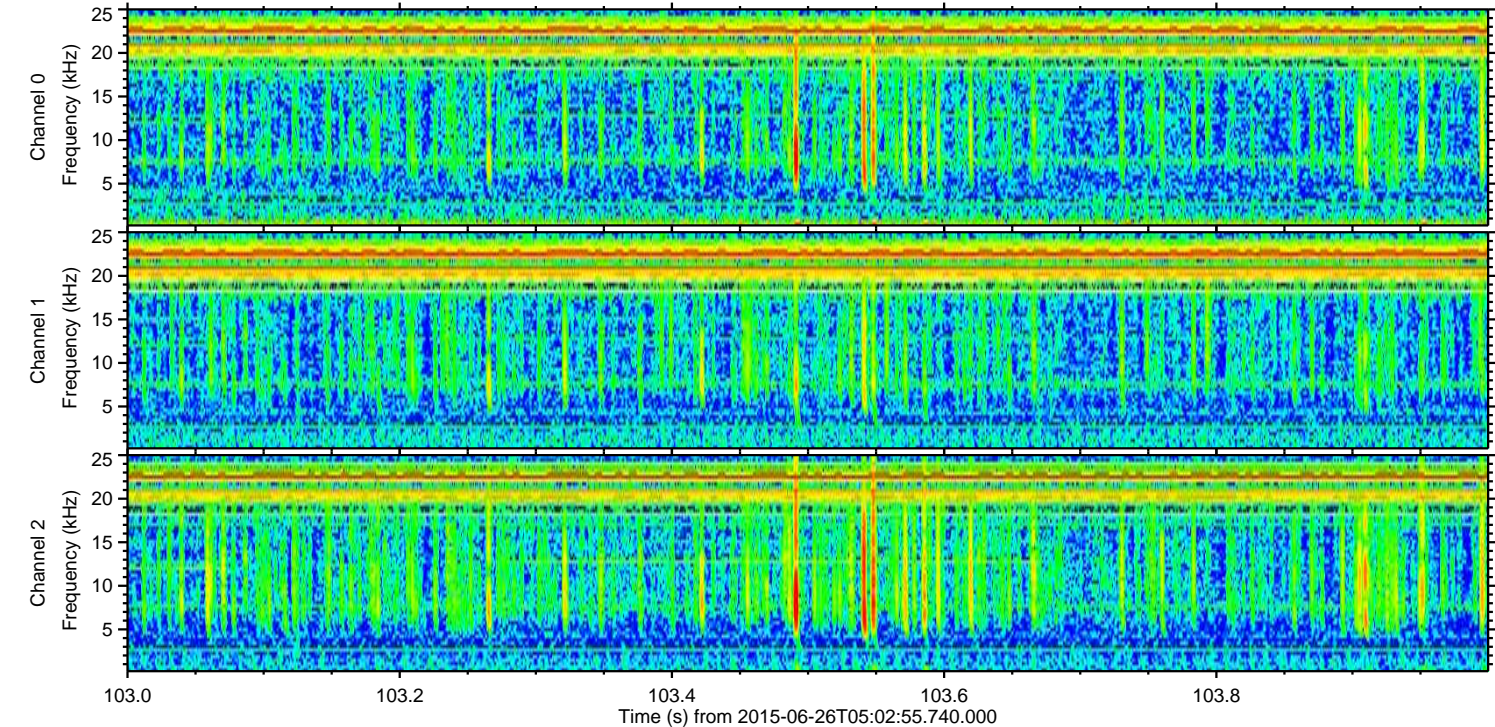
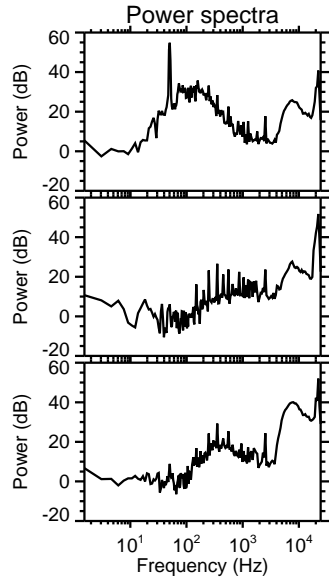
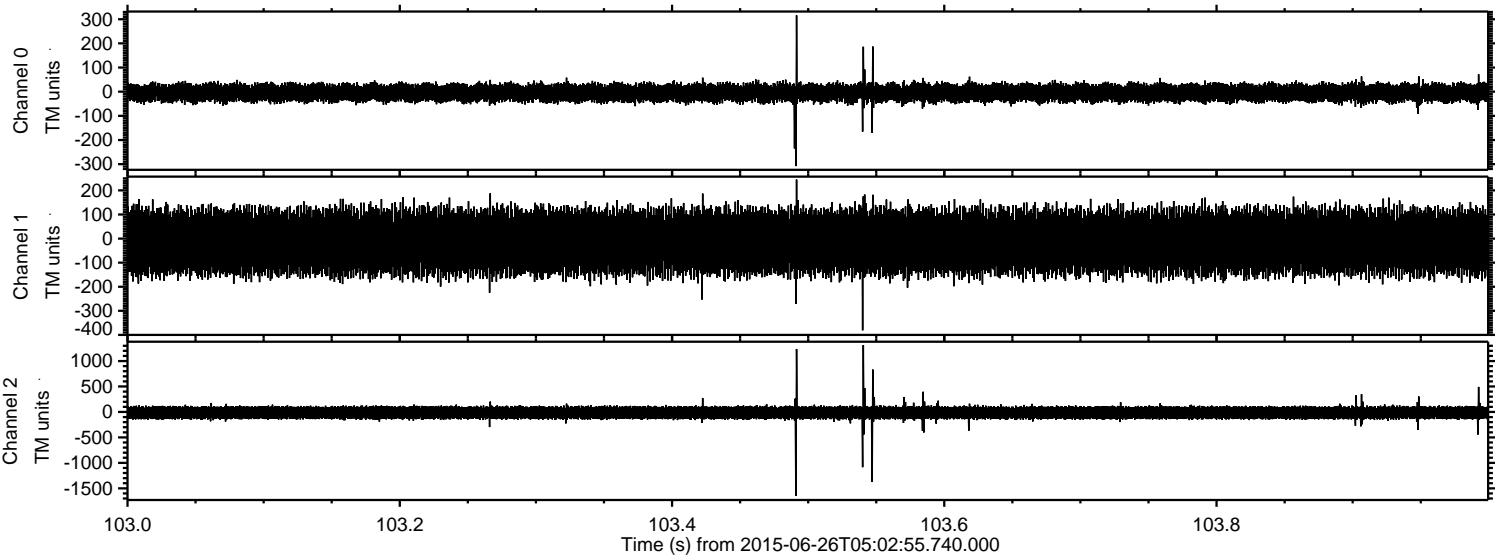
Channel 1  
mn: -984  
mx: 892  
 $\mu$ : -13.6  
 $\sigma$ : 68.8

Channel 2  
mn: -1565  
mx: 1659  
 $\mu$ : -14.0  
 $\sigma$ : 67.6



ELMAVAN 3D WAVEFORMS (Measured data sampled at 50 kHz) 51000 packets of 144 samples from 2015-06-26T05:02:55.740.000. Part 104/147

Processed Fri Jun 26 07:09:38 2015 by ELM ver.2012-10-06 from 001\_\_elm20150626\_050254\_\_dat00.bin





Processed Fri Jun 26 07:09:39 2015 by ELM ver.2012-10-06 from 001\_\_elm20150626\_050254\_\_dat00.bin

