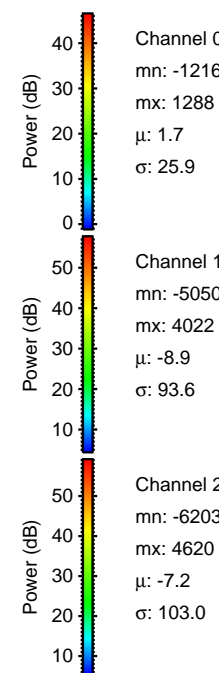
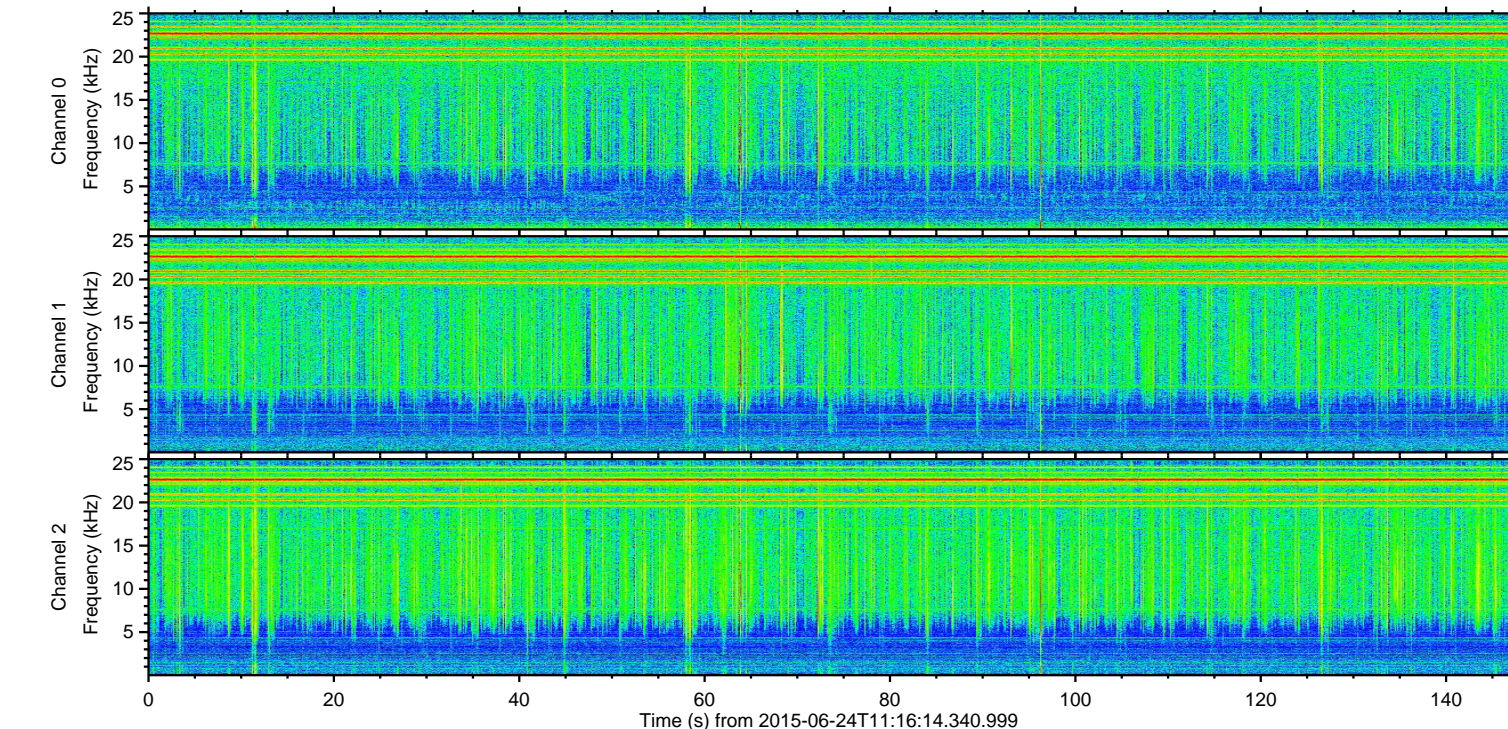
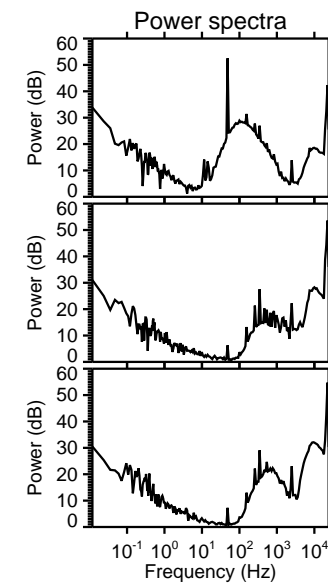
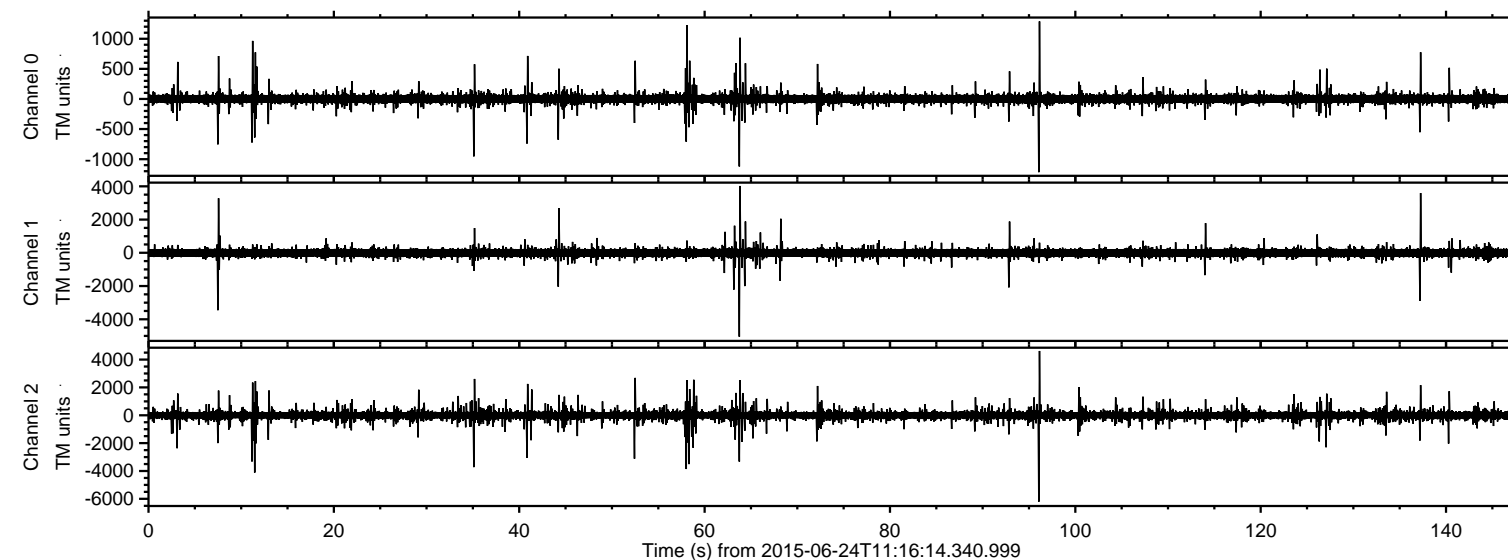


ELMAVAN 3D WAVEFORMS (Measured data sampled at 50 kHz) 51000 packets of 144 samples from 2015-06-24T11:16:14.340.999.

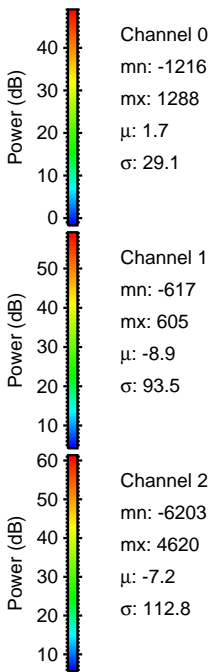
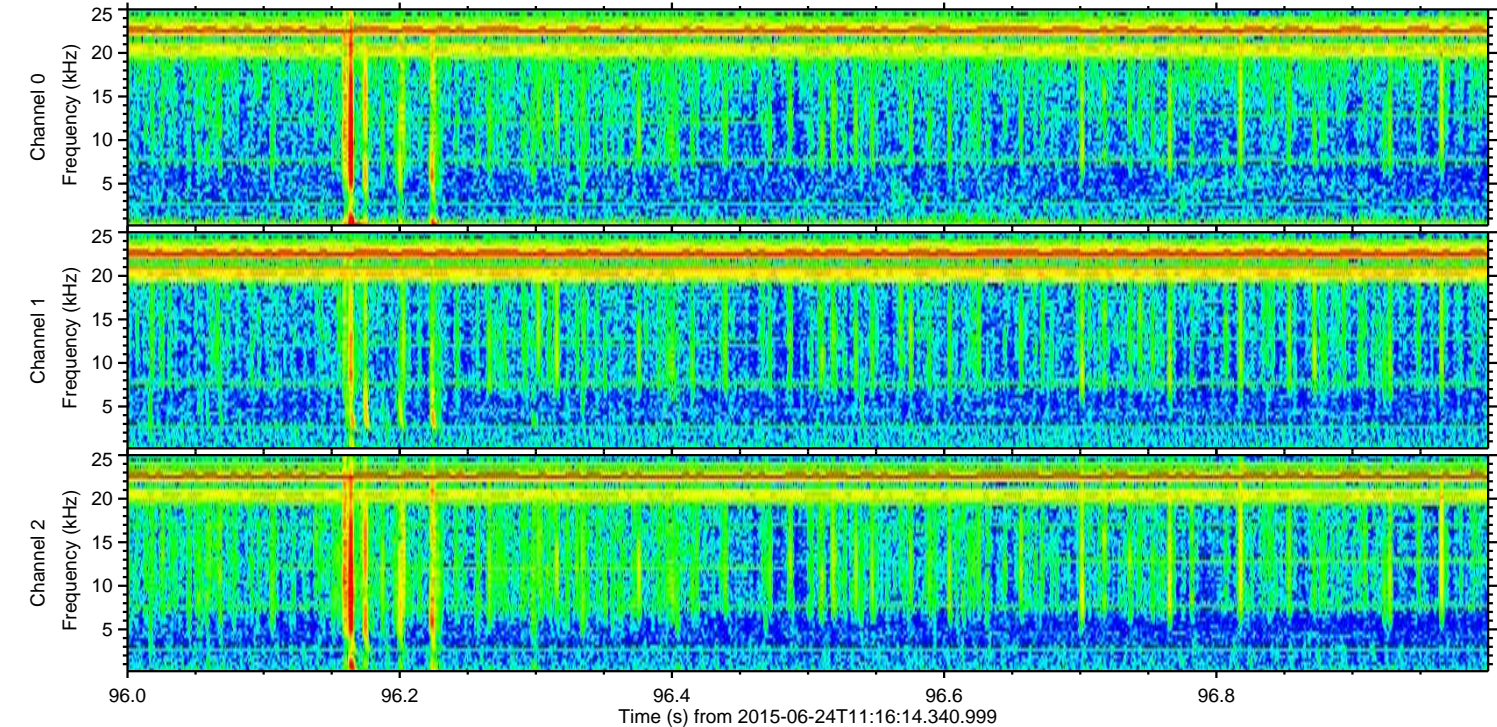
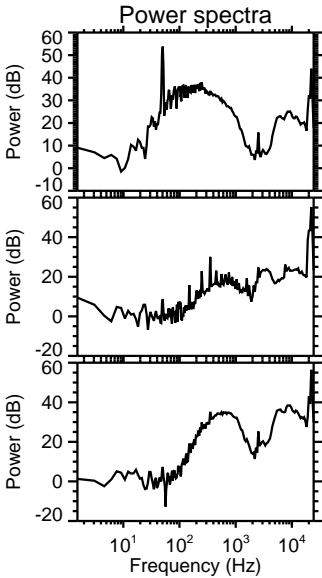
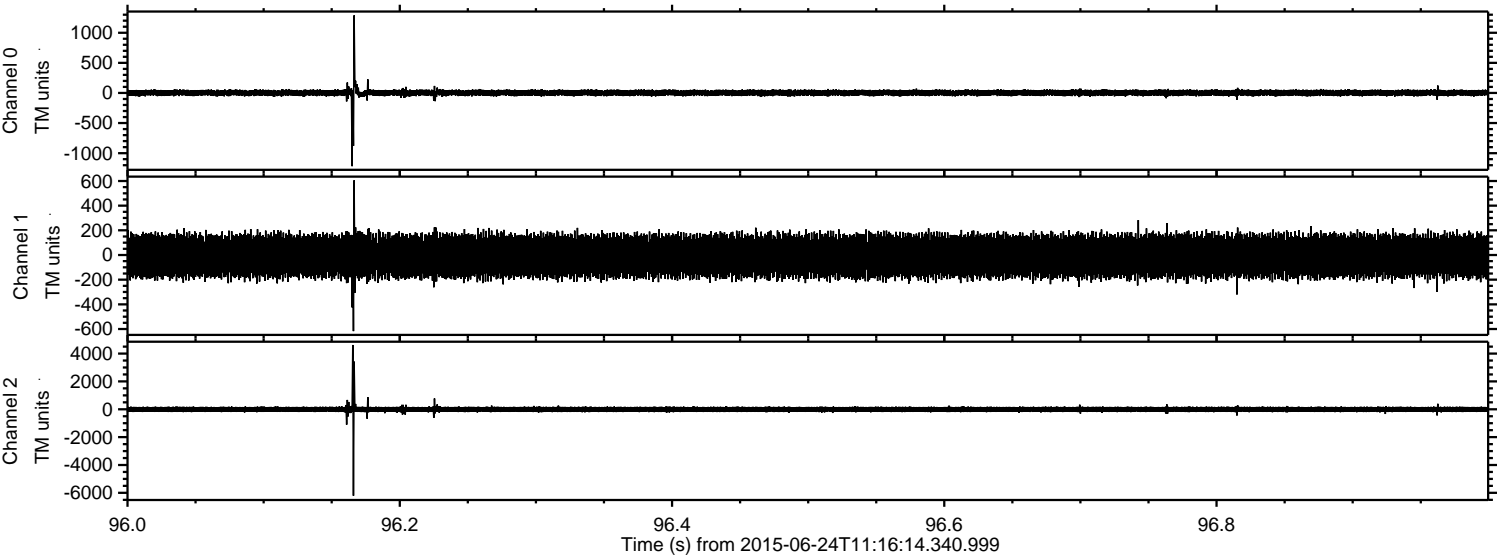
Processed Wed Jun 24 13:22:51 2015 by ELM ver.2012-10-06 from 001\_\_elm20150624\_111613\_\_dat00.bin





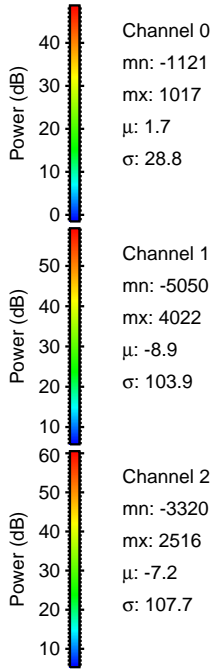
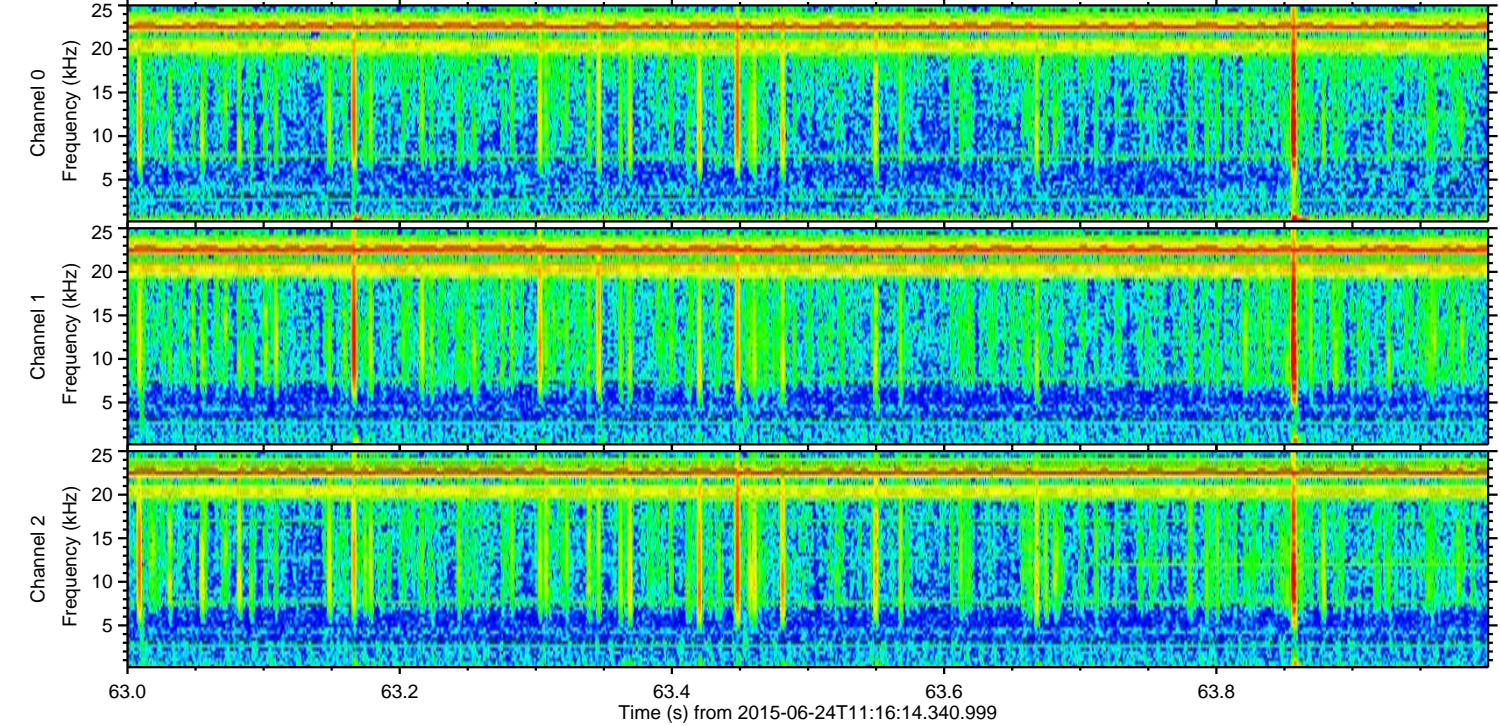
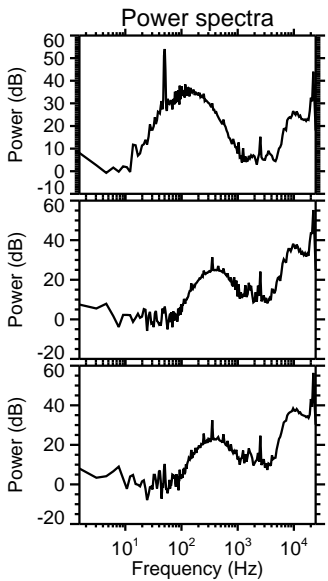
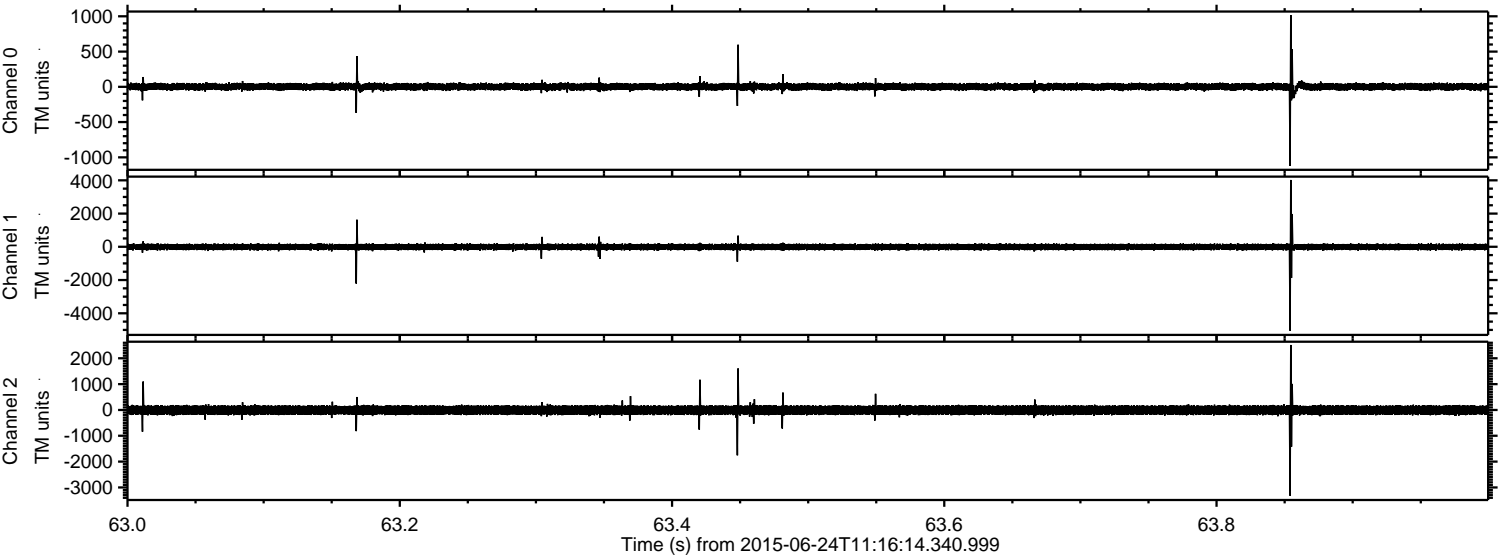
ELMAVAN 3D WAVEFORMS (Measured data sampled at 50 kHz) 51000 packets of 144 samples from 2015-06-24T11:16:14.340.999. Part 97/147

Processed Wed Jun 24 13:23:05 2015 by ELM ver.2012-10-06 from 001\_\_elm20150624\_111613\_\_dat00.bin





Processed Wed Jun 24 13:23:06 2015 by ELM ver.2012-10-06 from 001\_\_elm20150624\_111613\_\_dat00.bin



Channel 0  
mn: -1121  
mx: 1017  
 $\mu$ : 1.7  
 $\sigma$ : 28.8

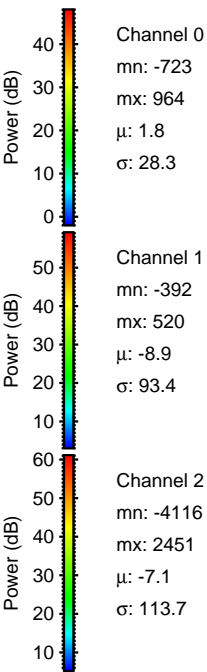
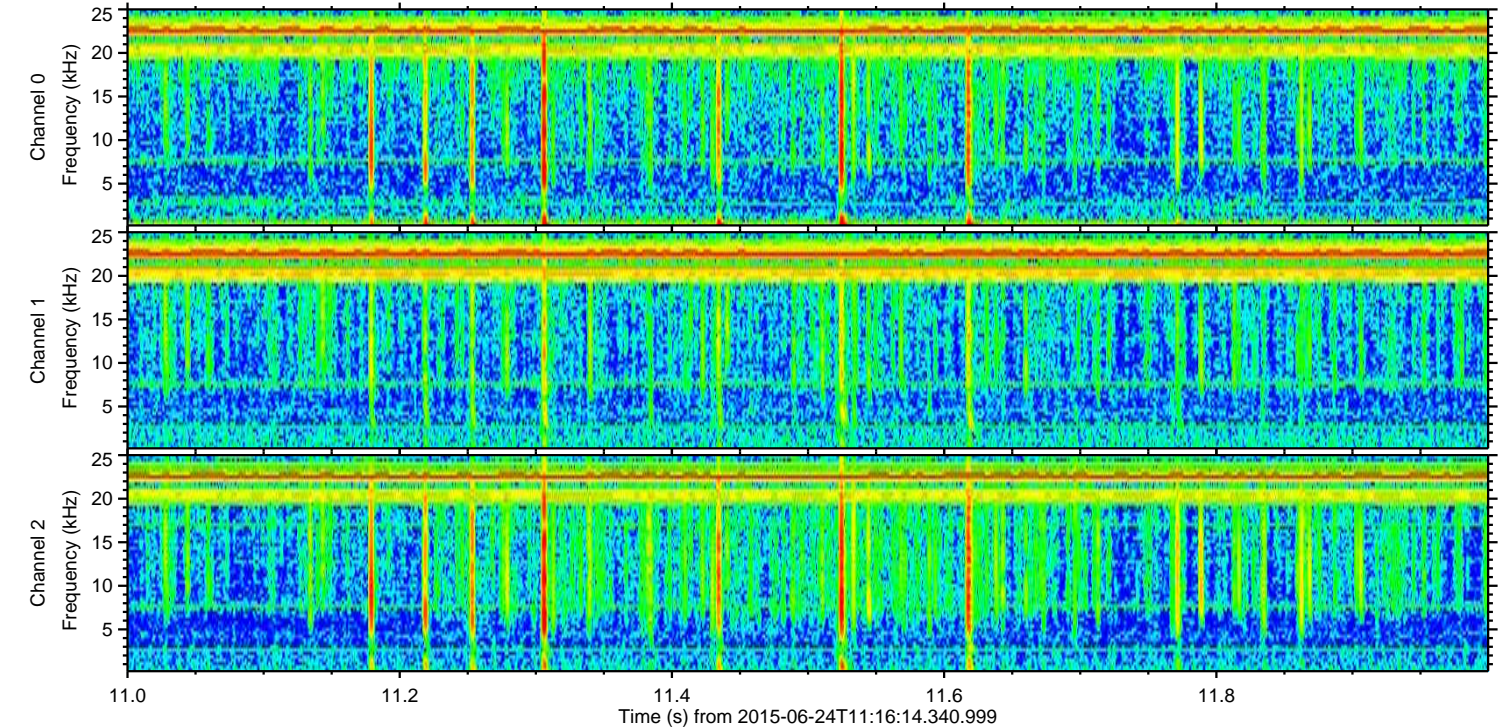
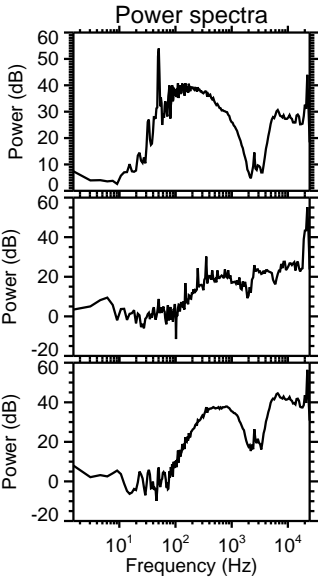
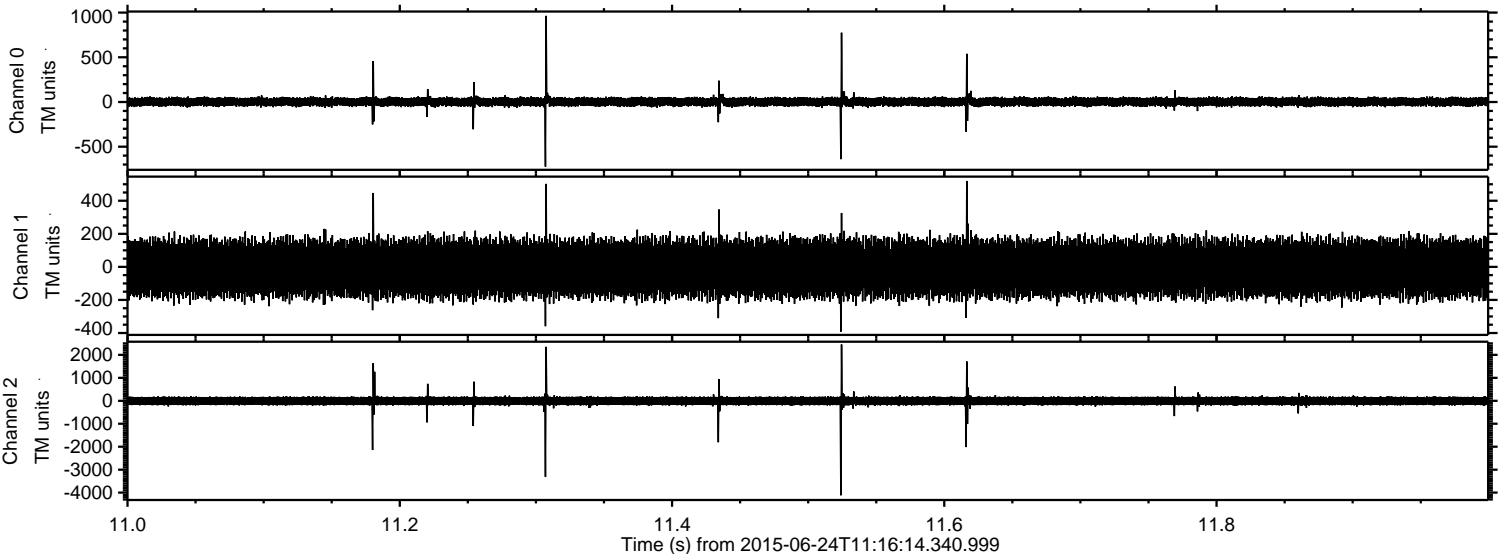
Channel 1  
mn: -5050  
mx: 4022  
 $\mu$ : -8.9  
 $\sigma$ : 103.9

Channel 2  
mn: -3320  
mx: 2516  
 $\mu$ : -7.2  
 $\sigma$ : 107.7



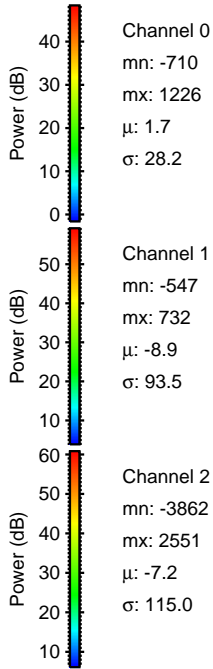
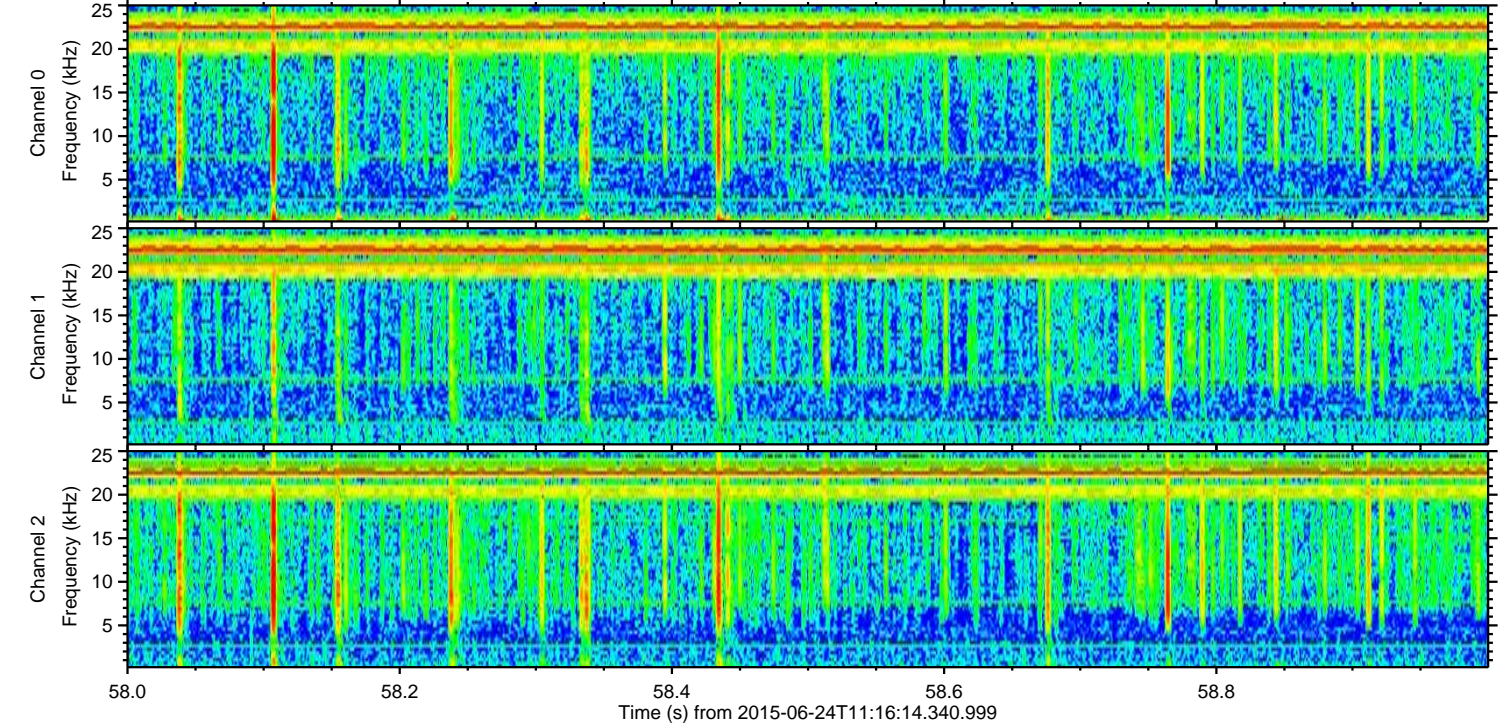
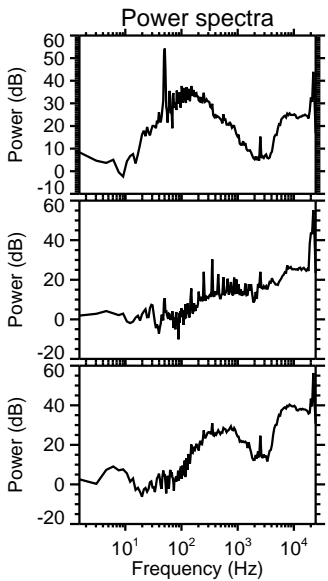
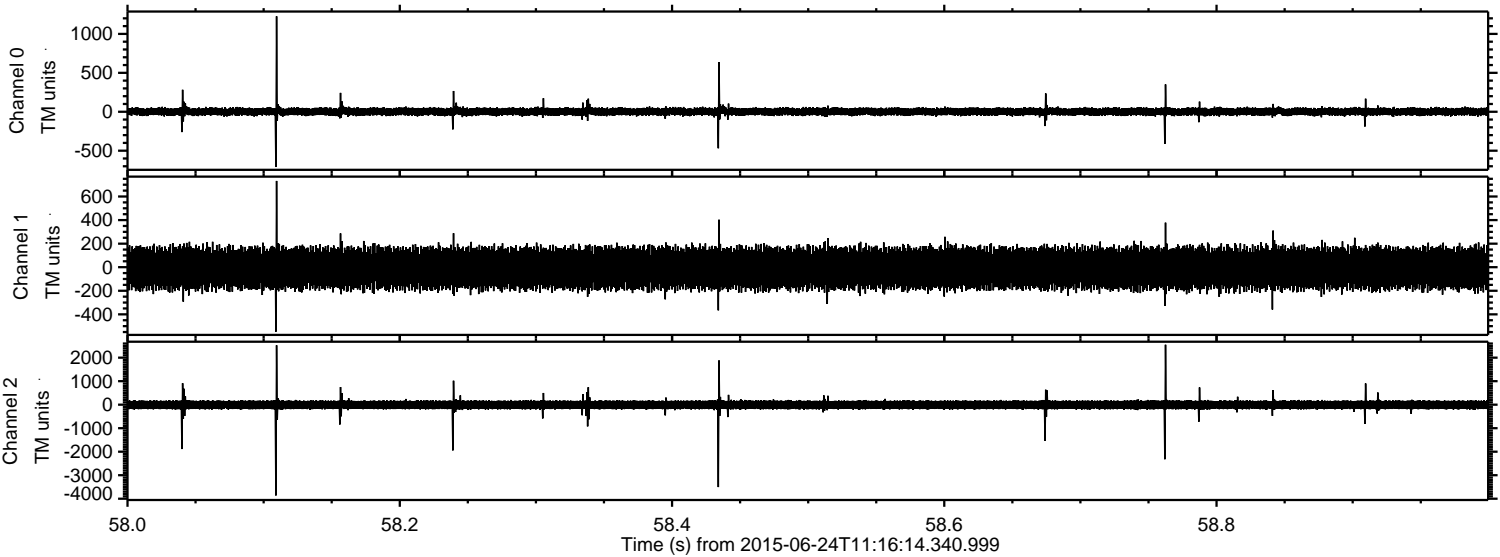
ELMAVAN 3D WAVEFORMS (Measured data sampled at 50 kHz) 51000 packets of 144 samples from 2015-06-24T11:16:14.340.999. Part 12/147

Processed Wed Jun 24 13:23:07 2015 by ELM ver.2012-10-06 from 001\_\_elm20150624\_111613\_\_dat00.bin



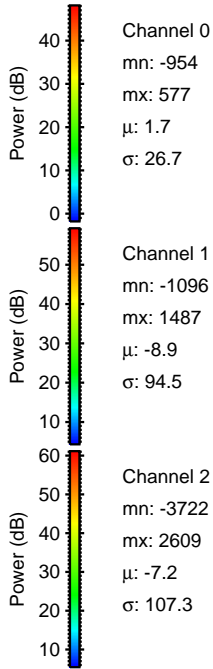
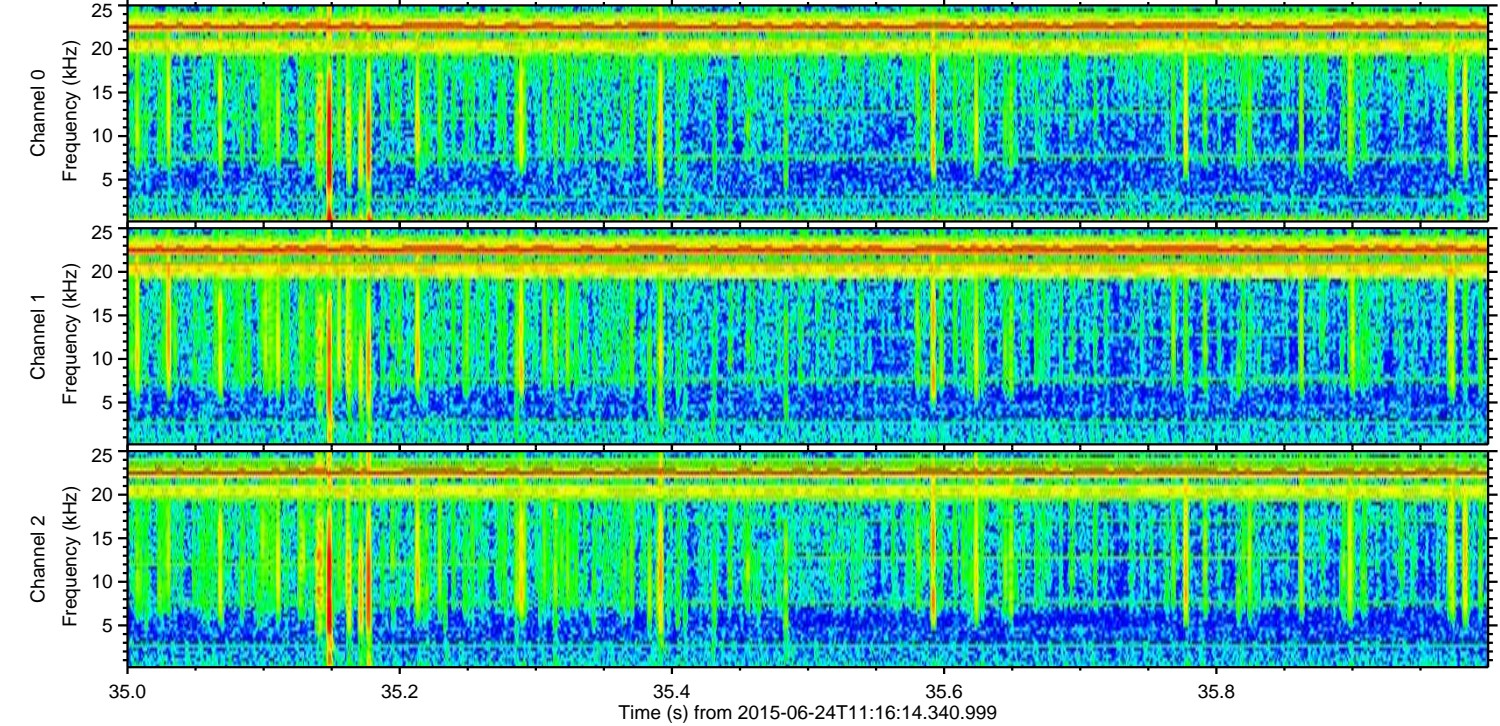
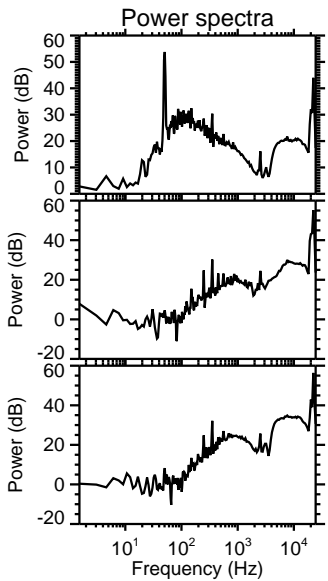
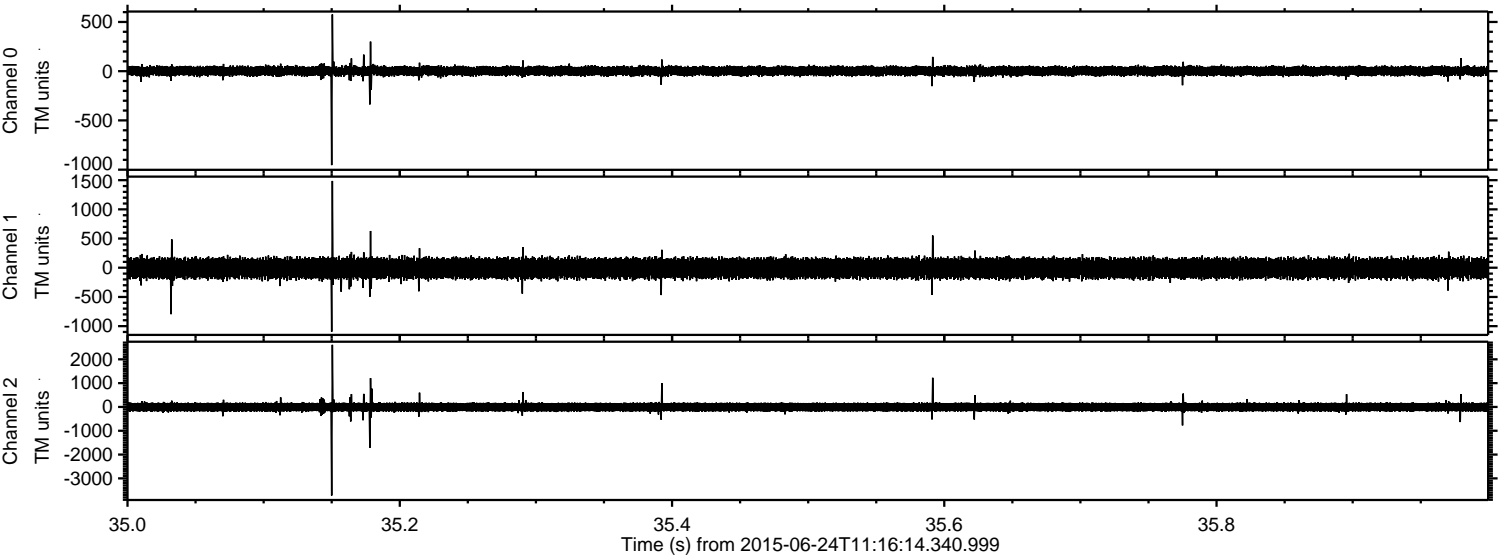


Processed Wed Jun 24 13:23:08 2015 by ELM ver.2012-10-06 from 001\_\_elm20150624\_111613\_\_dat00.bin





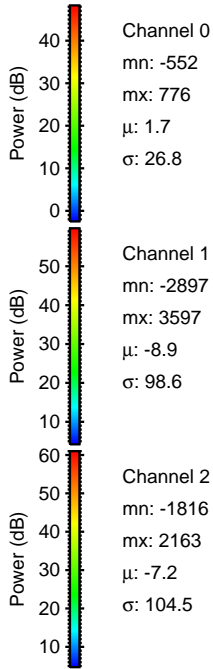
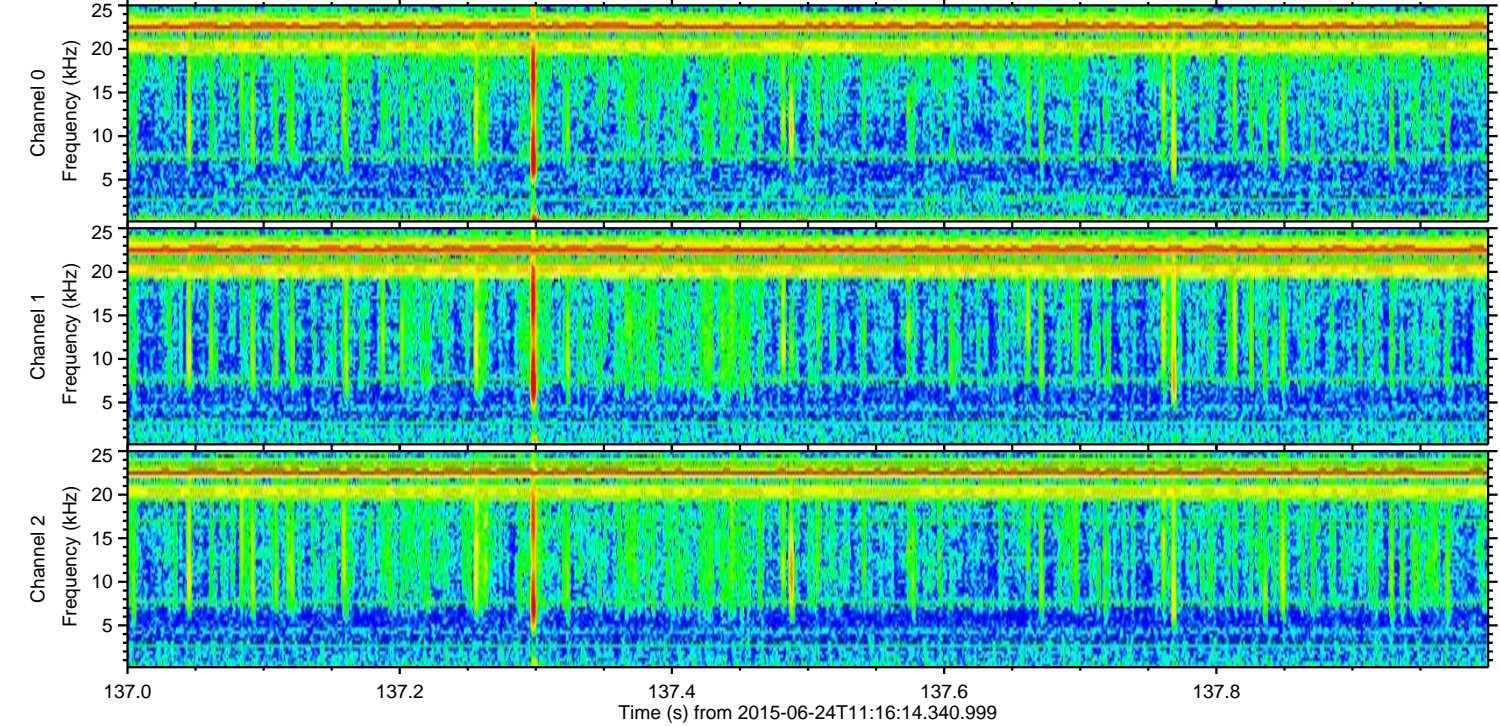
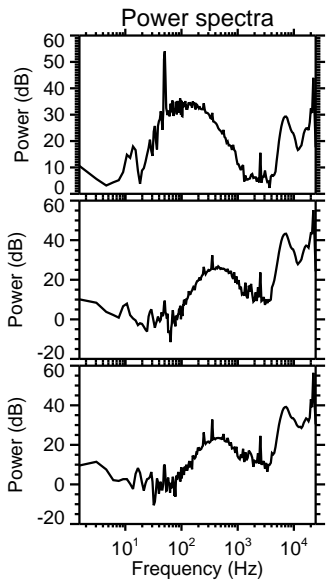
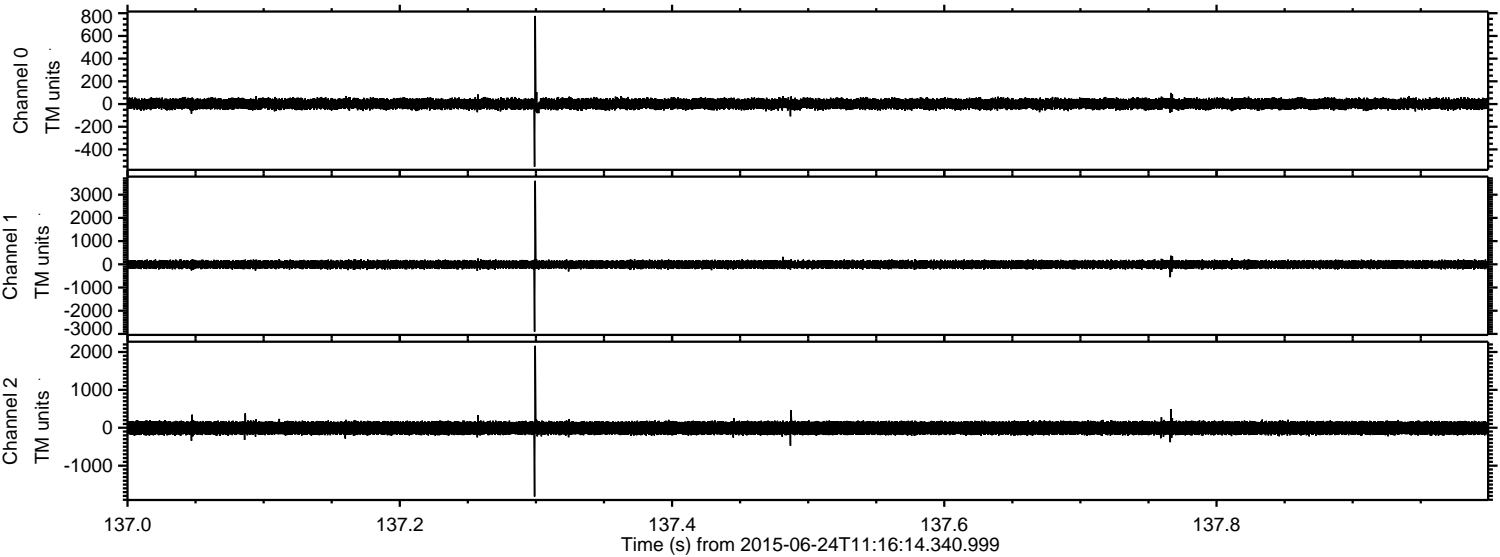
Processed Wed Jun 24 13:23:10 2015 by ELM ver.2012-10-06 from 001\_\_elm20150624\_111613\_\_dat00.bin





ELMAVAN 3D WAVEFORMS (Measured data sampled at 50 kHz) 51000 packets of 144 samples from 2015-06-24T11:16:14.340.999. Part 138/147

Processed Wed Jun 24 13:23:11 2015 by ELM ver.2012-10-06 from 001\_\_elm20150624\_111613\_\_dat00.bin



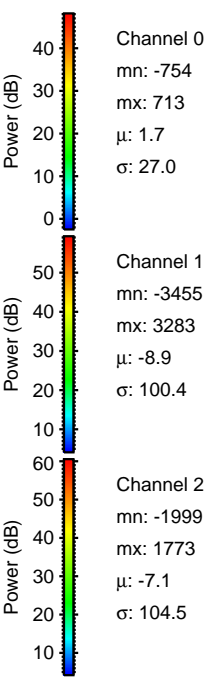
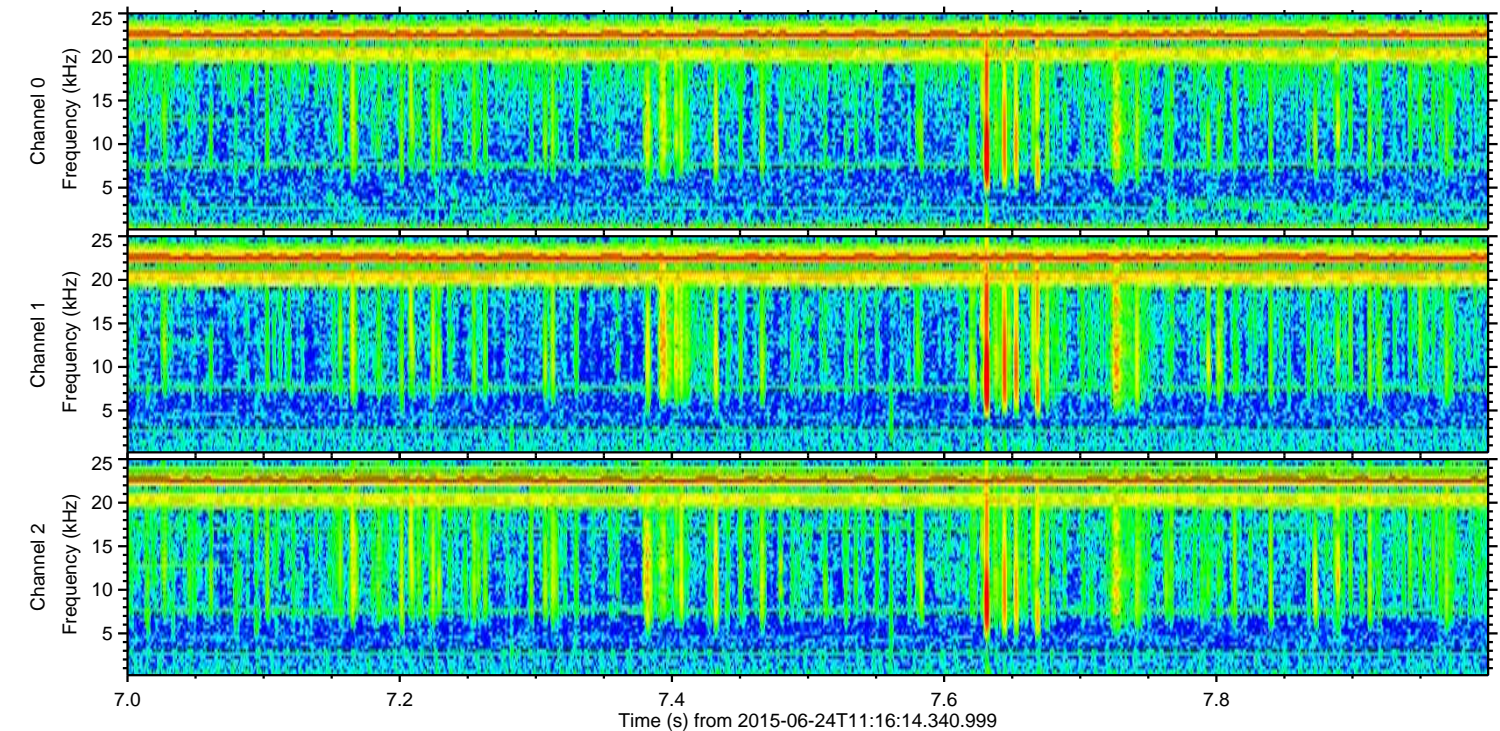
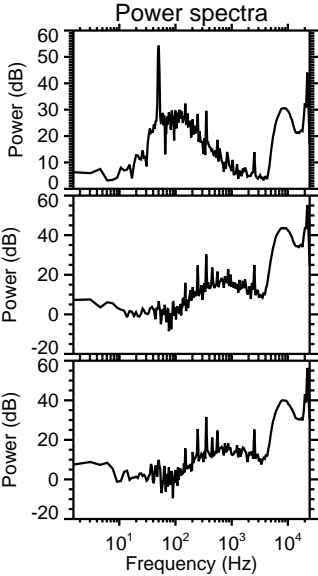
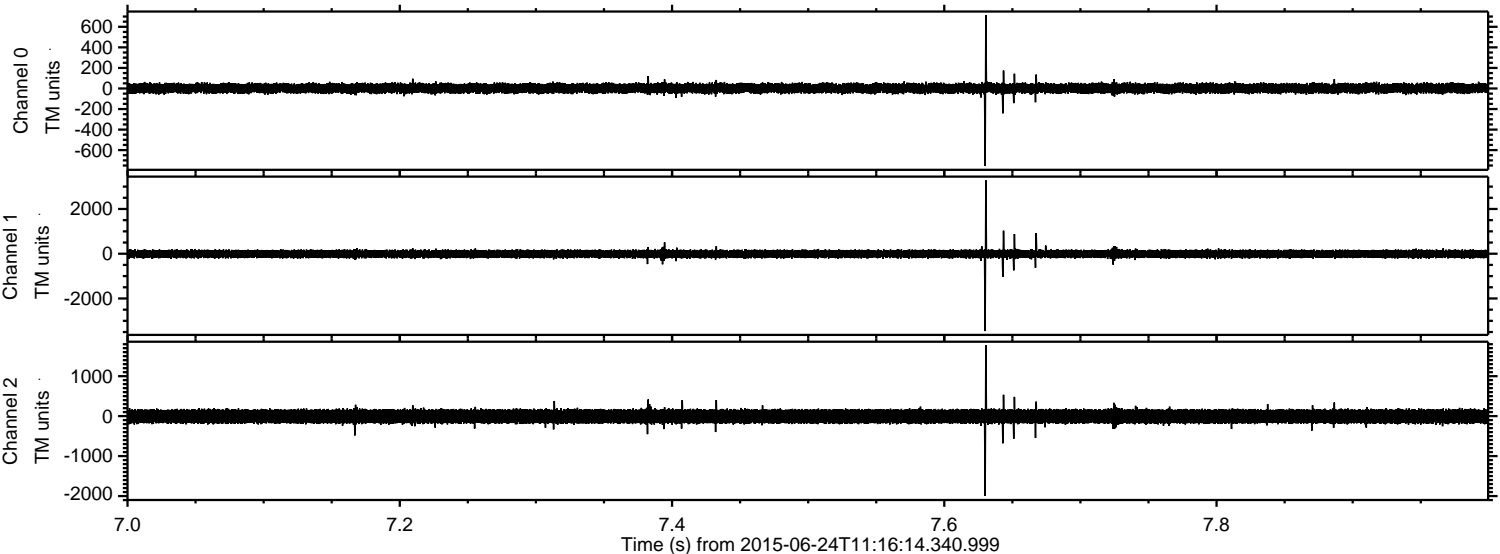
Channel 0  
mn: -552  
mx: 776  
 $\mu$ : 1.7  
 $\sigma$ : 26.8

Channel 1  
mn: -2897  
mx: 3597  
 $\mu$ : -8.9  
 $\sigma$ : 98.6

Channel 2  
mn: -1816  
mx: 2163  
 $\mu$ : -7.2  
 $\sigma$ : 104.5

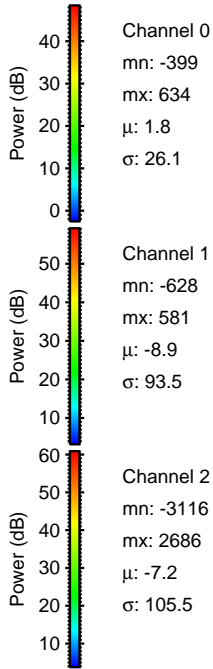
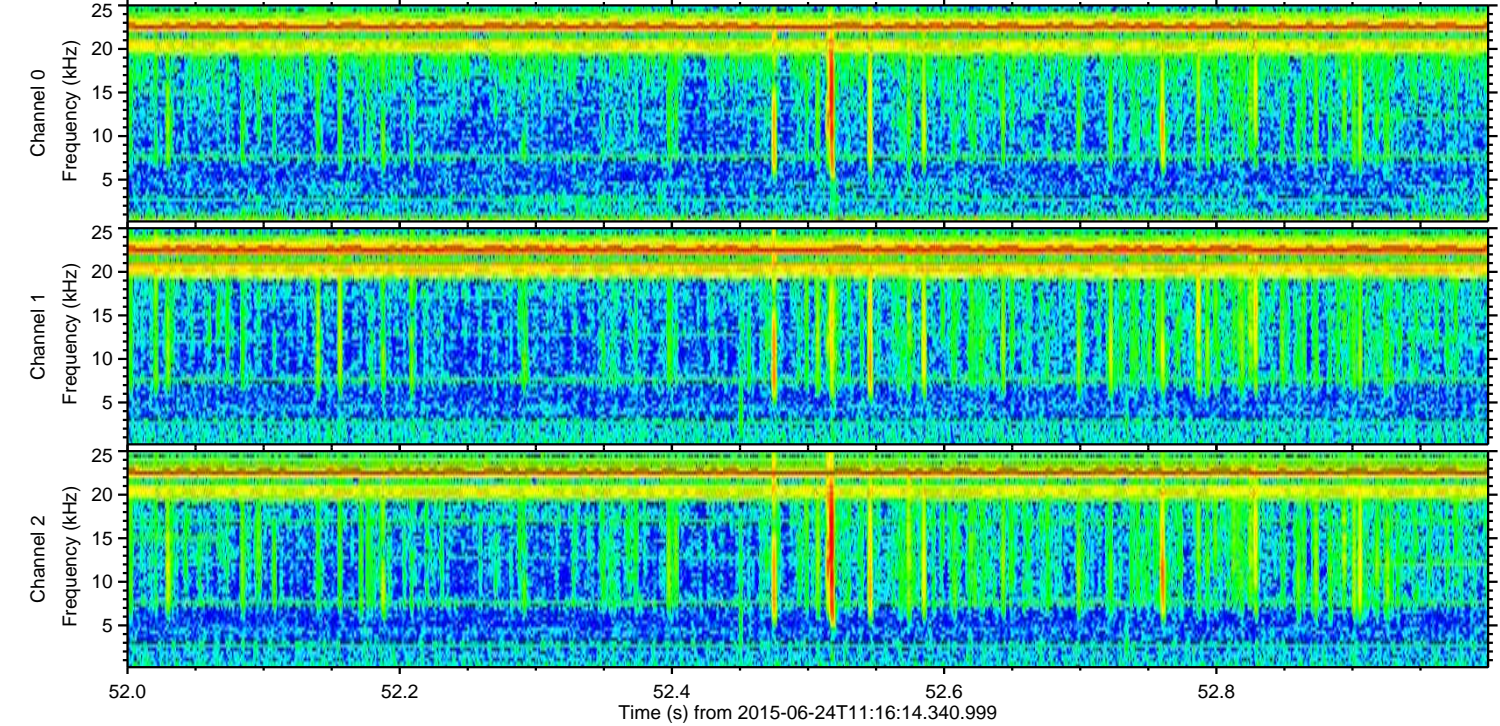
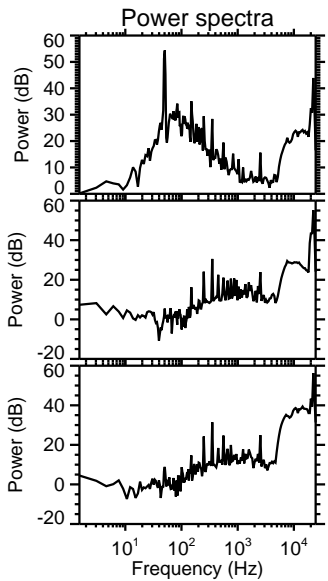
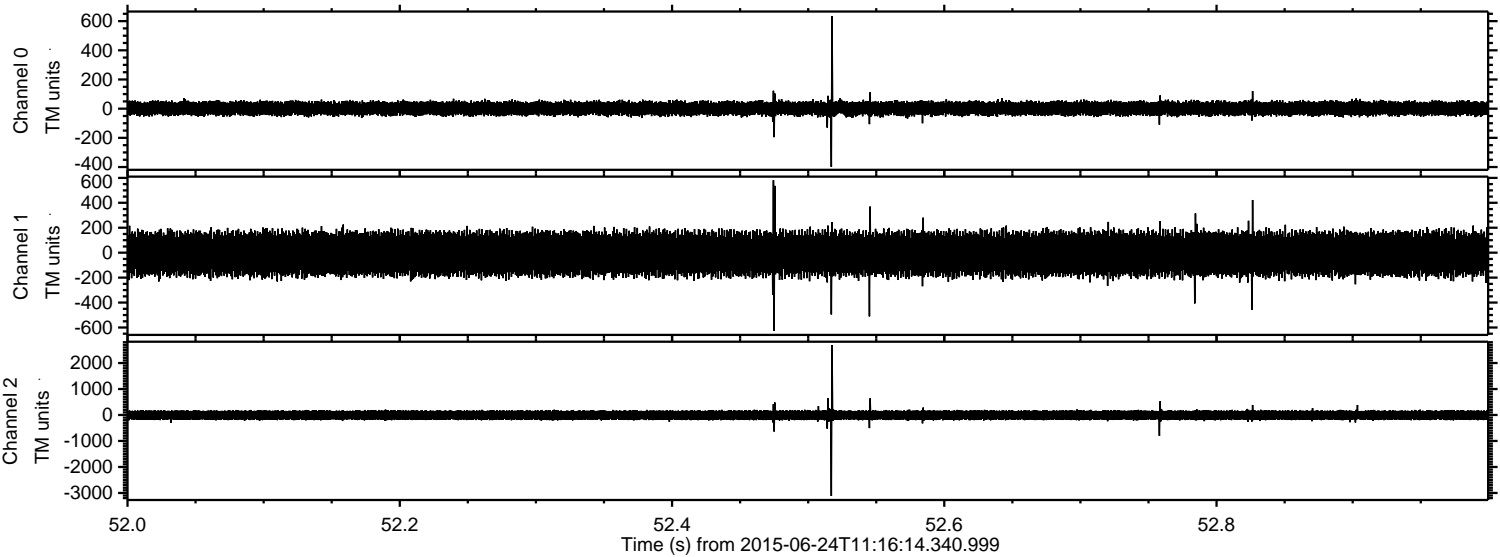


Processed Wed Jun 24 13:23:12 2015 by ELM ver.2012-10-06 from 001\_\_elm20150624\_111613\_\_dat00.bin



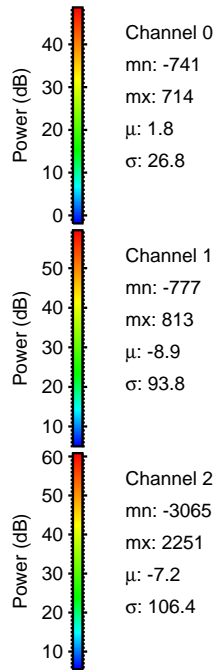
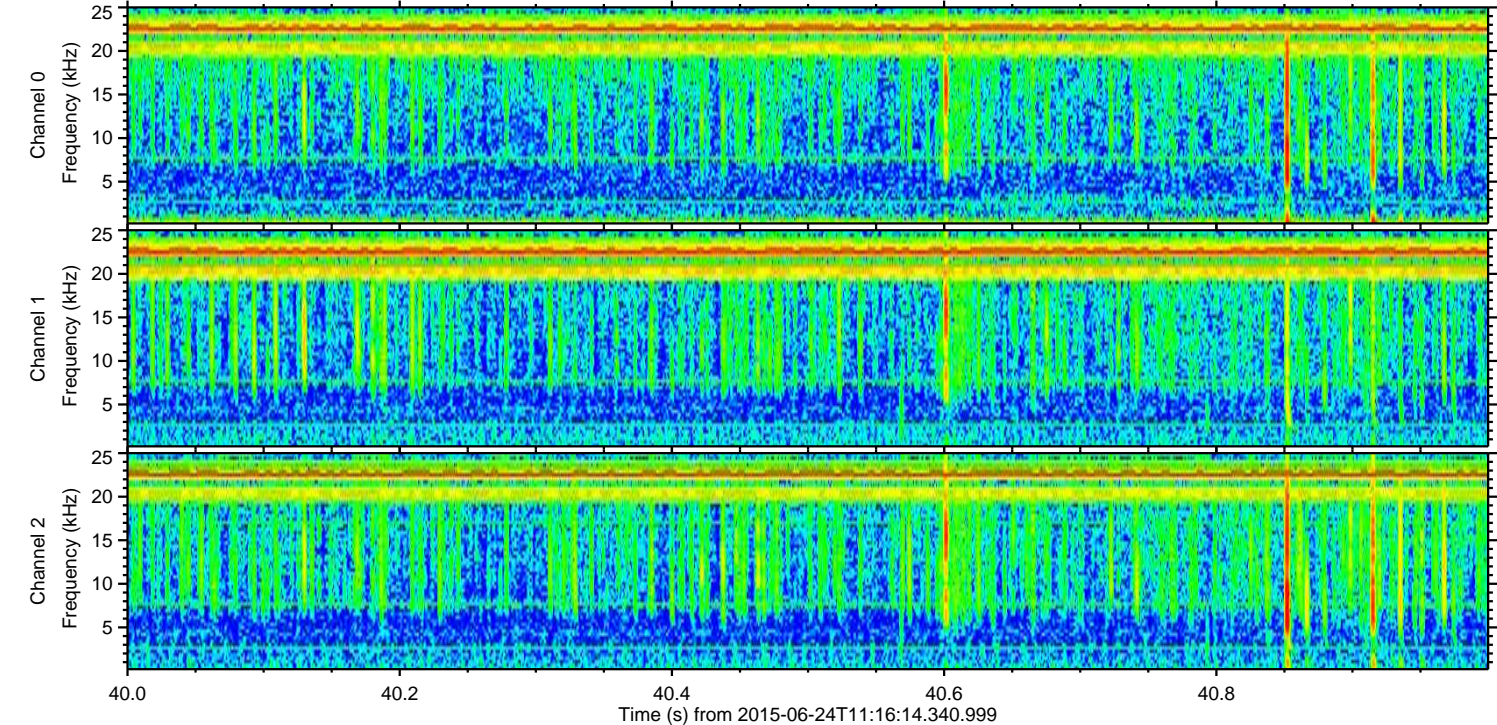
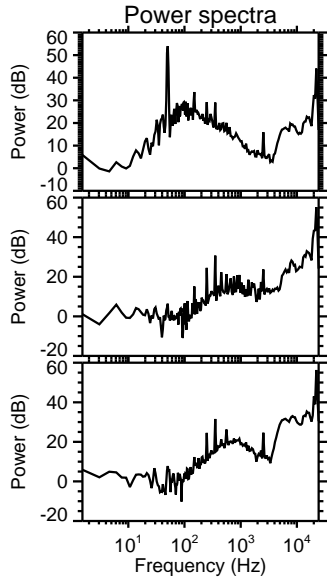
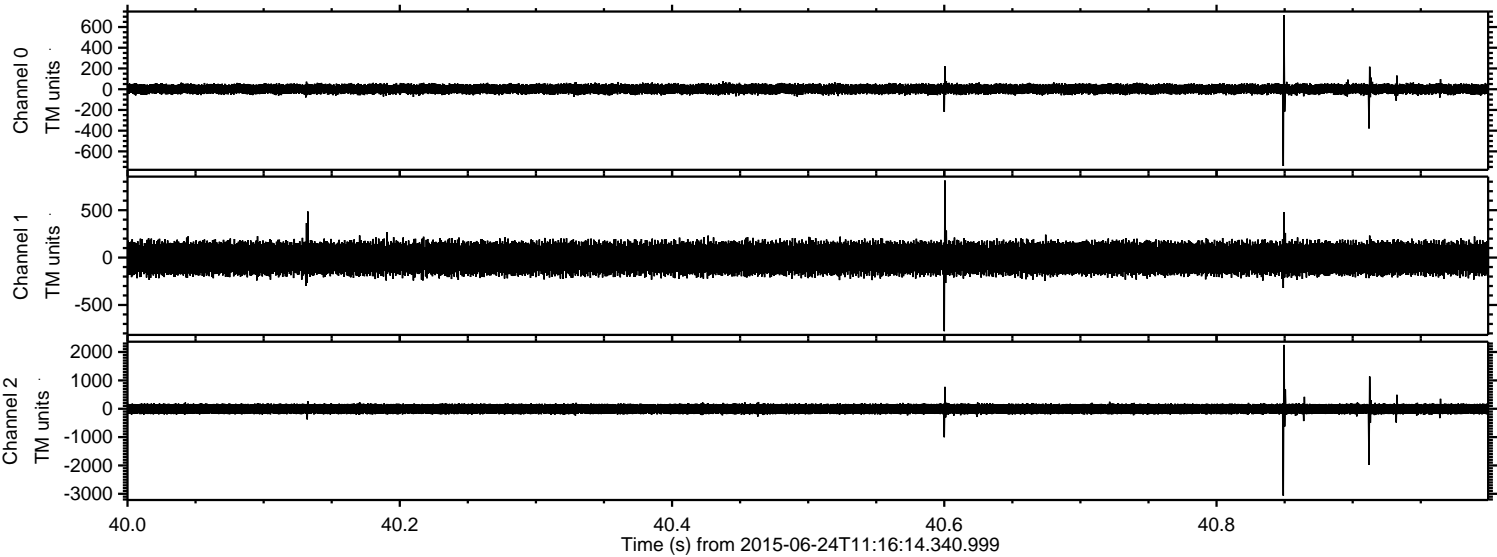


Processed Wed Jun 24 13:23:13 2015 by ELM ver.2012-10-06 from 001\_\_elm20150624\_111613\_\_dat00.bin





Processed Wed Jun 24 13:23:14 2015 by ELM ver.2012-10-06 from 001\_\_elm20150624\_111613\_\_dat00.bin





ELMAVAN 3D WAVEFORMS (Measured data sampled at 50 kHz) 51000 packets of 144 samples from 2015-06-24T11:16:14.340.999. Part 116/147

