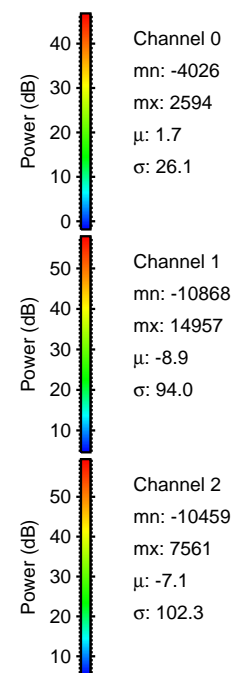
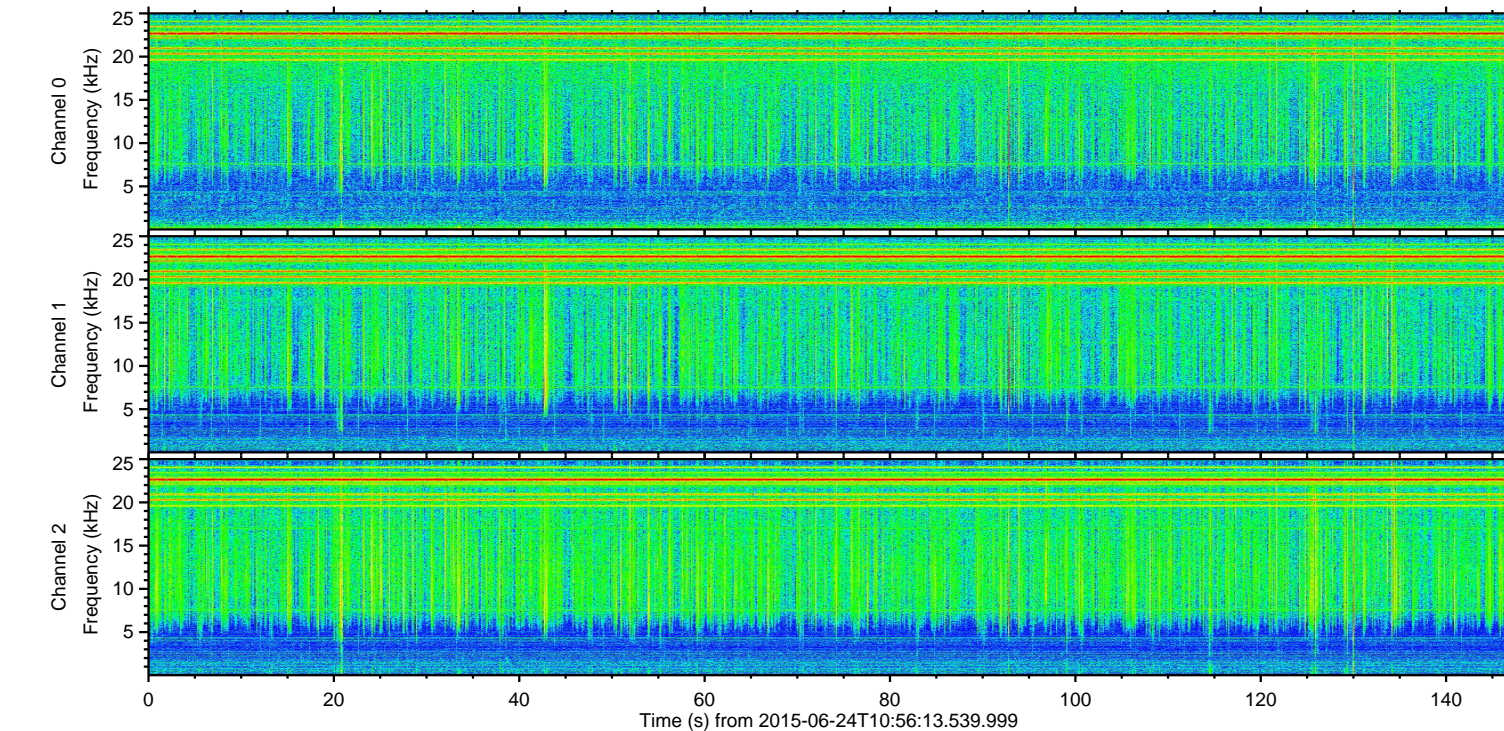
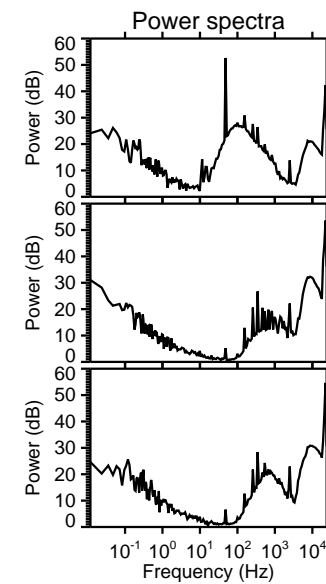
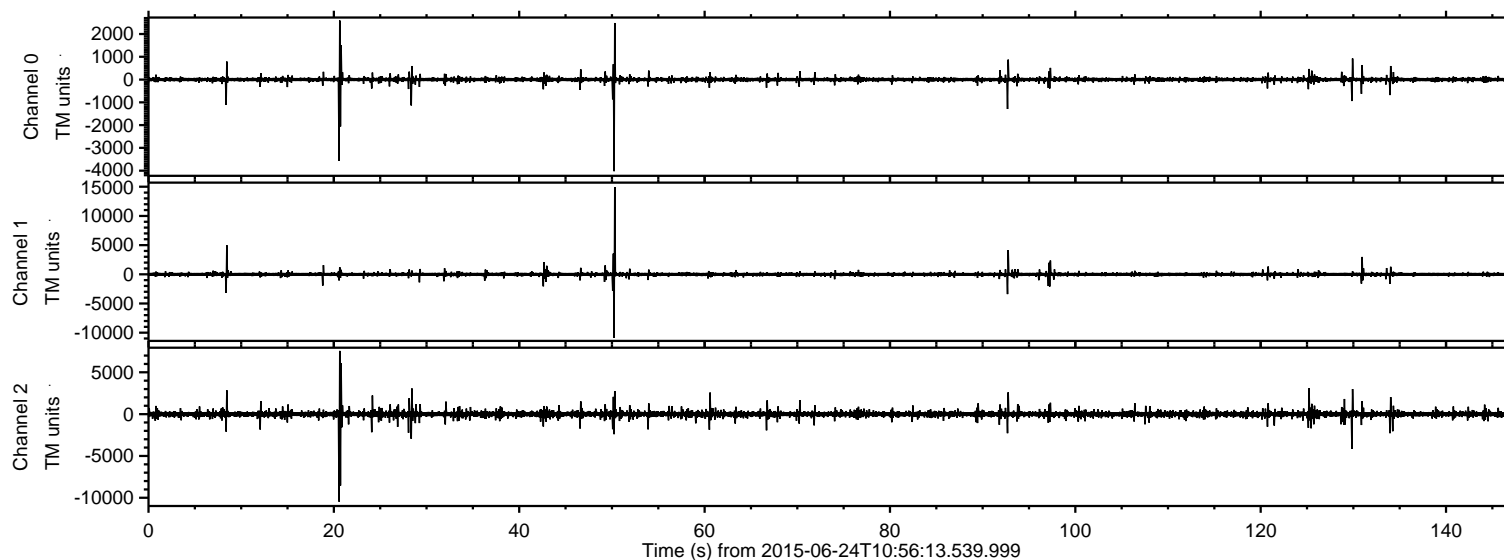


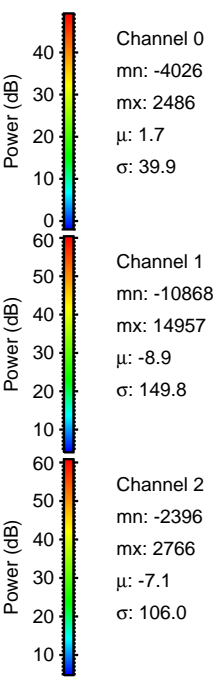
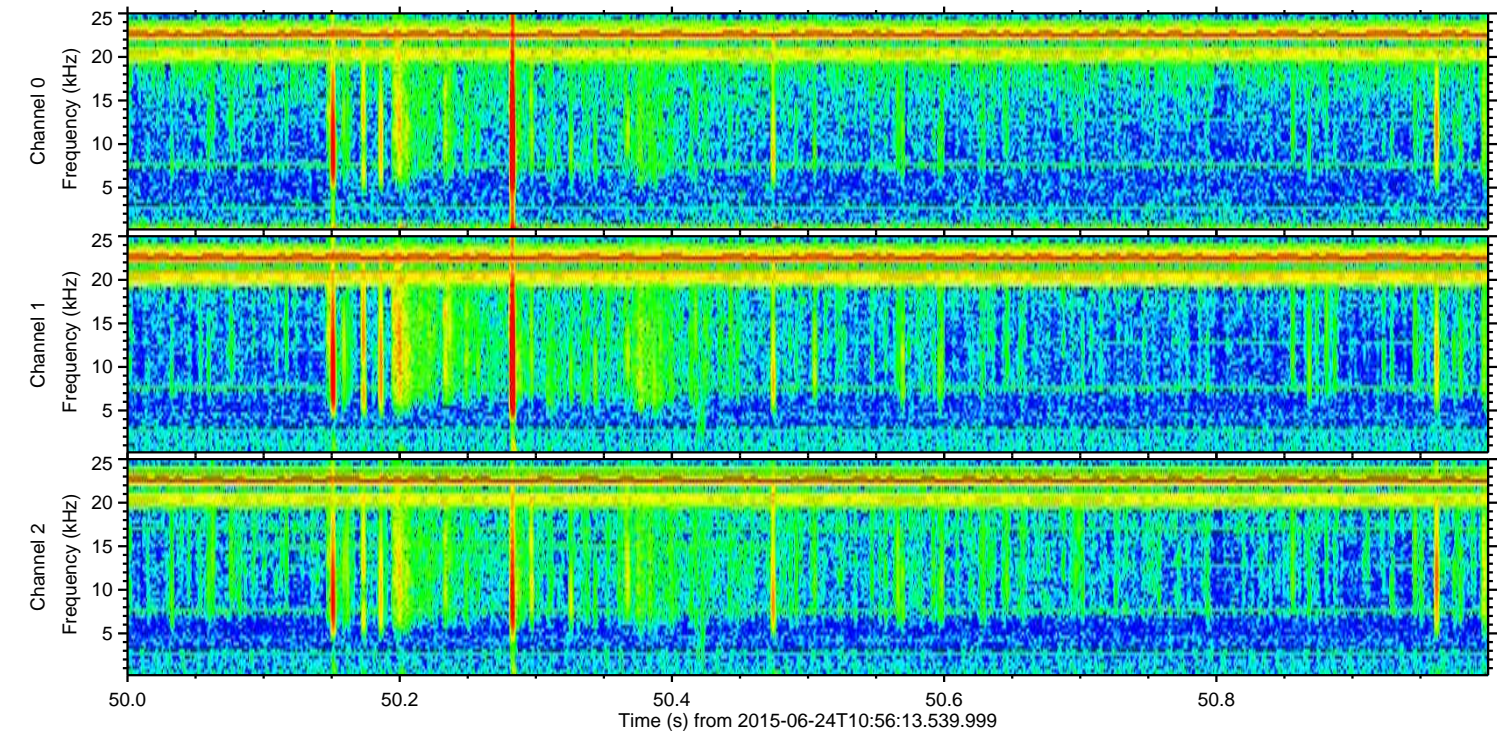
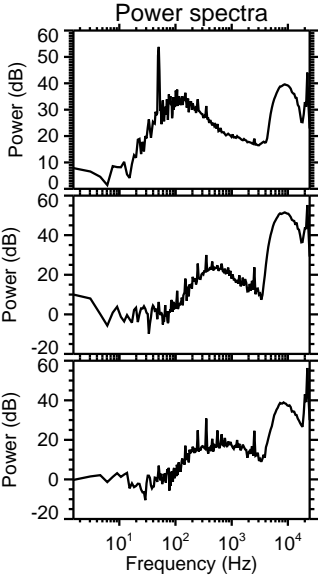
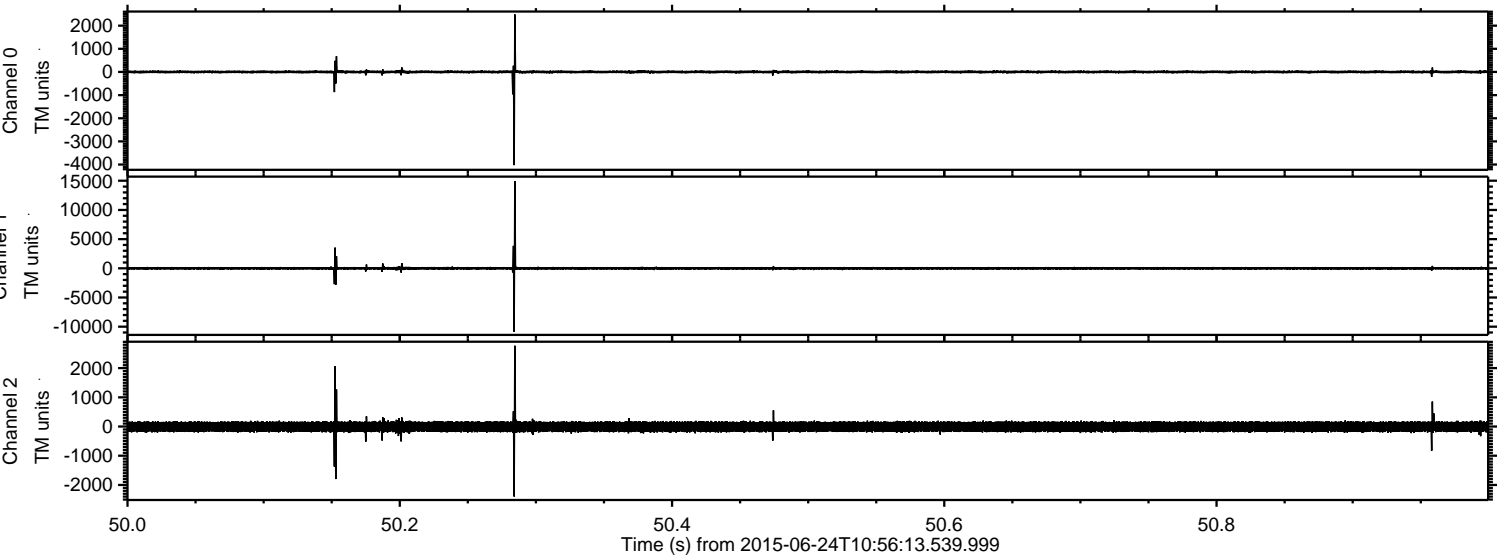
ELMAVAN 3D WAVEFORMS (Measured data sampled at 50 kHz) 51000 packets of 144 samples from 2015-06-24T10:56:13.539.999.

Processed Wed Jun 24 13:02:47 2015 by ELM ver.2012-10-06 from 001\_\_elm20150624\_105612\_\_dat00.bin





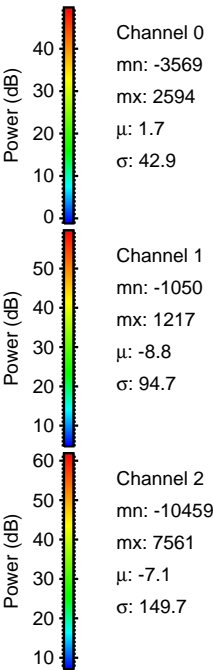
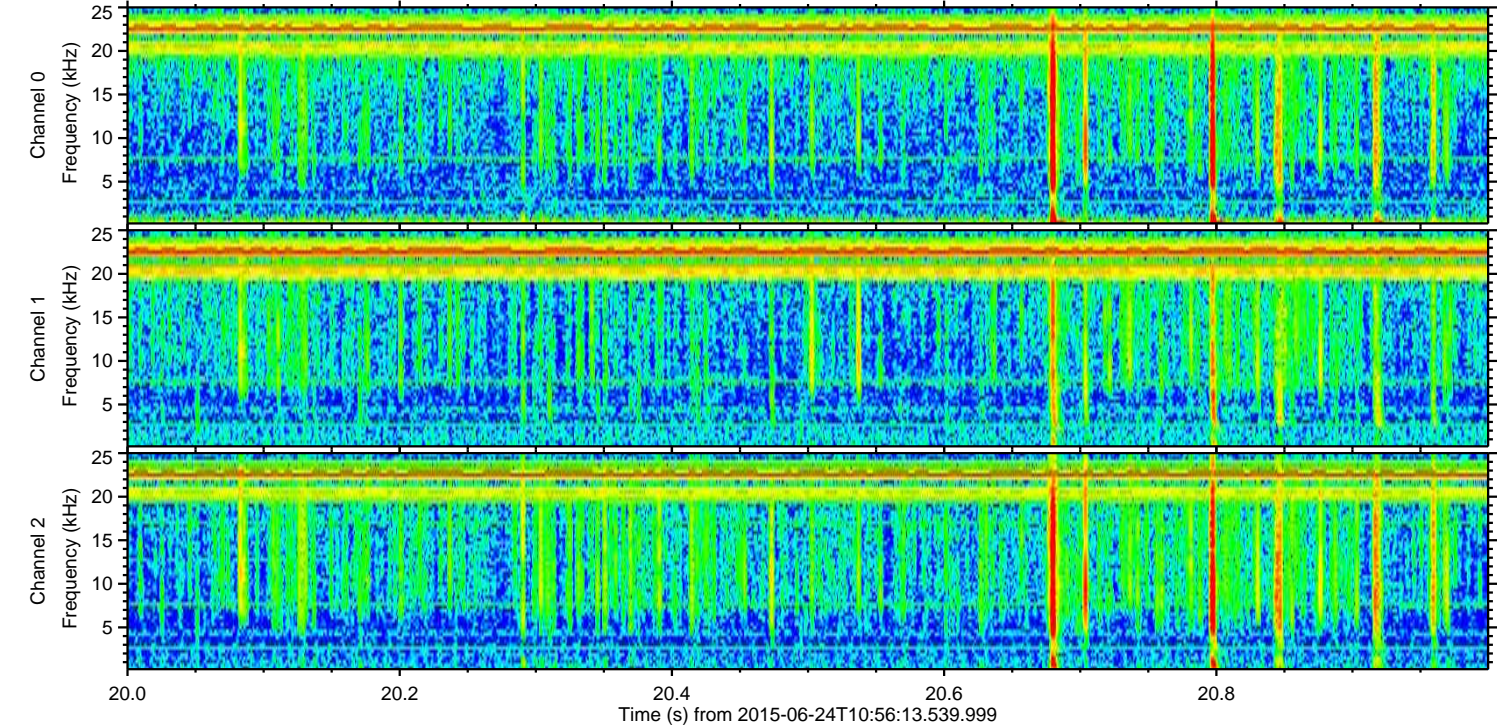
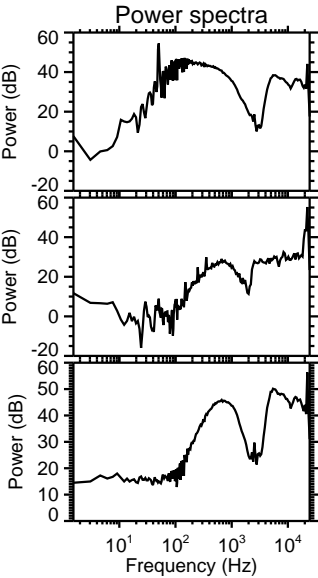
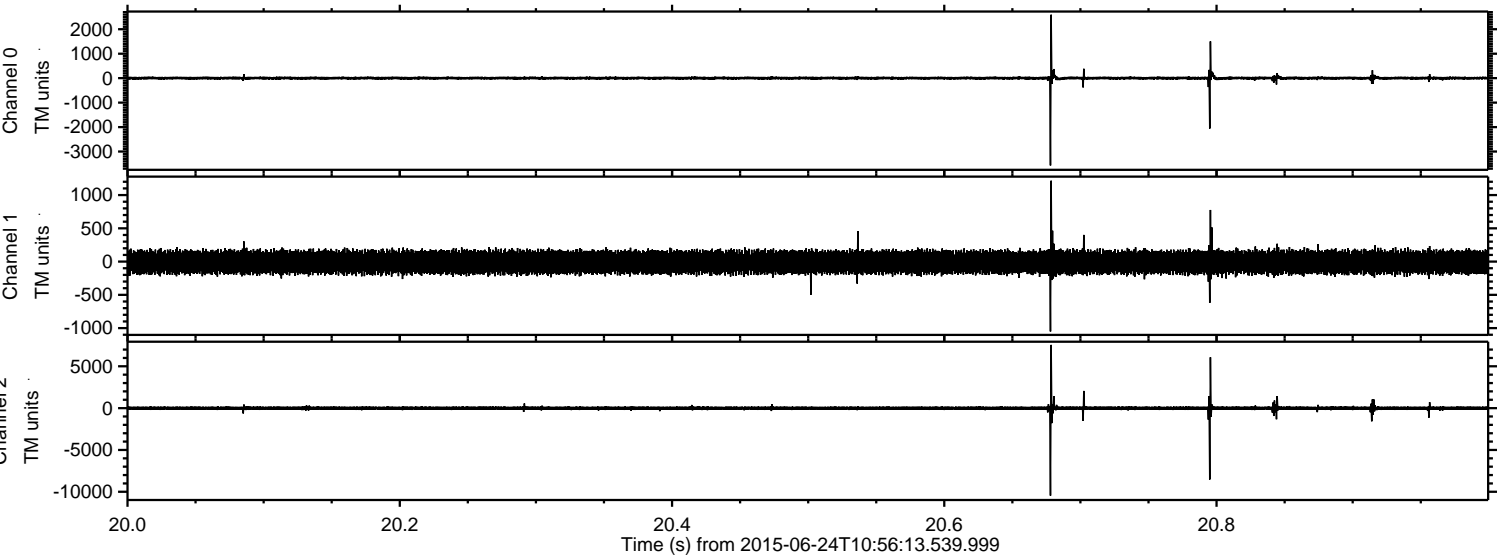
Processed Wed Jun 24 13:03:03 2015 by ELM ver.2012-10-06 from 001\_\_elm20150624\_105612\_\_dat00.bin





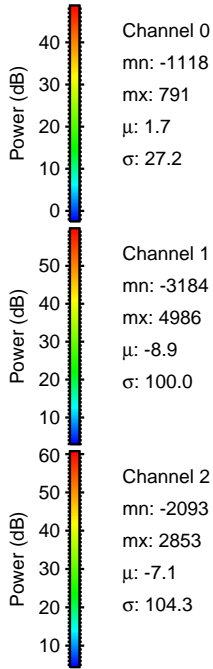
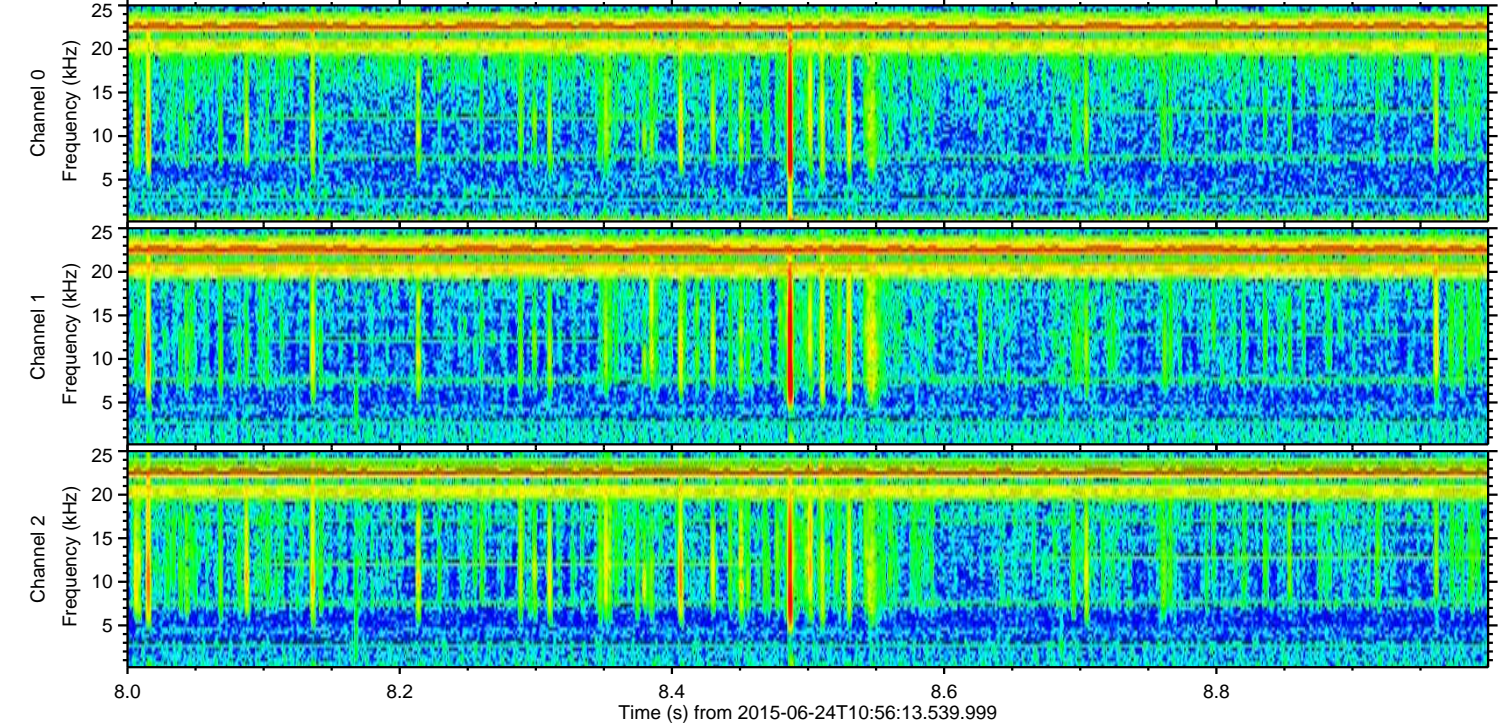
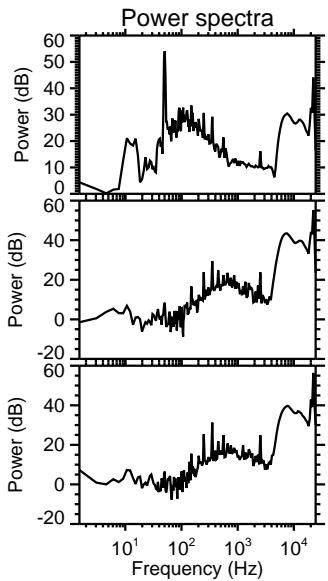
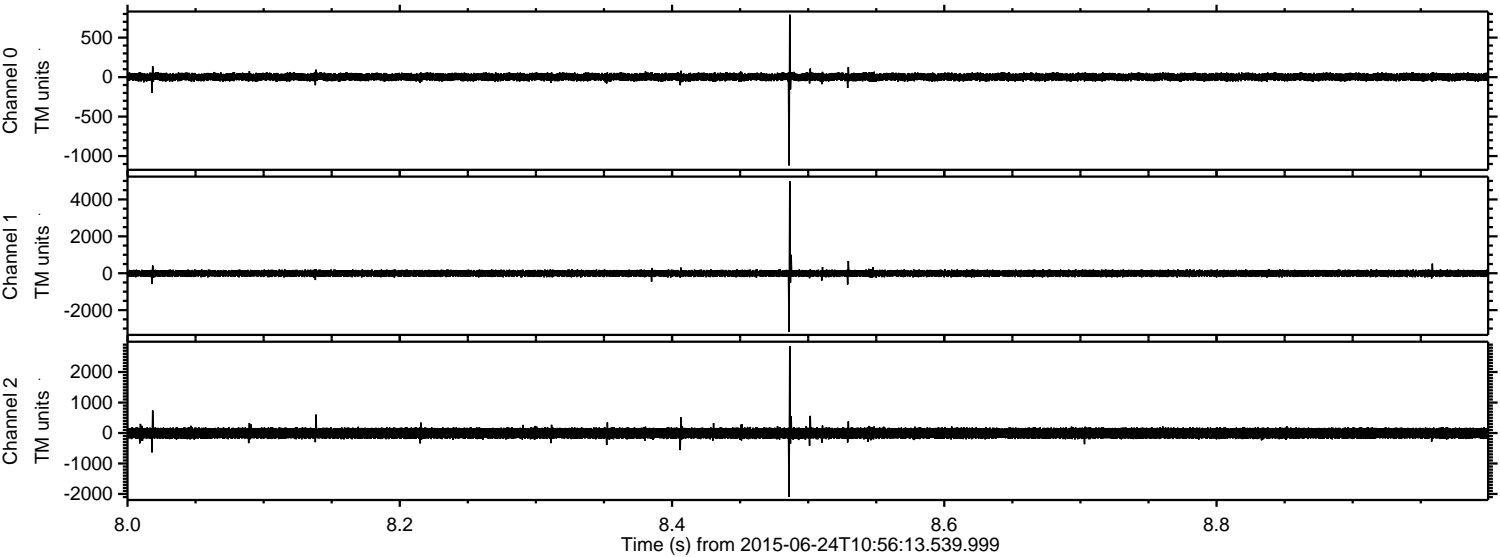
ELMAVAN 3D WAVEFORMS (Measured data sampled at 50 kHz) 51000 packets of 144 samples from 2015-06-24T10:56:13.539.999. Part 21/147

Processed Wed Jun 24 13:03:04 2015 by ELM ver.2012-10-06 from 001\_\_elm20150624\_105612\_\_dat00.bin





Processed Wed Jun 24 13:03:05 2015 by ELM ver.2012-10-06 from 001\_\_elm20150624\_105612\_\_dat00.bin

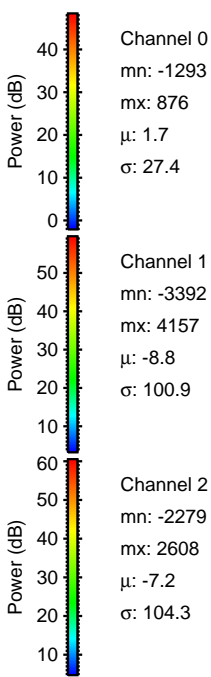
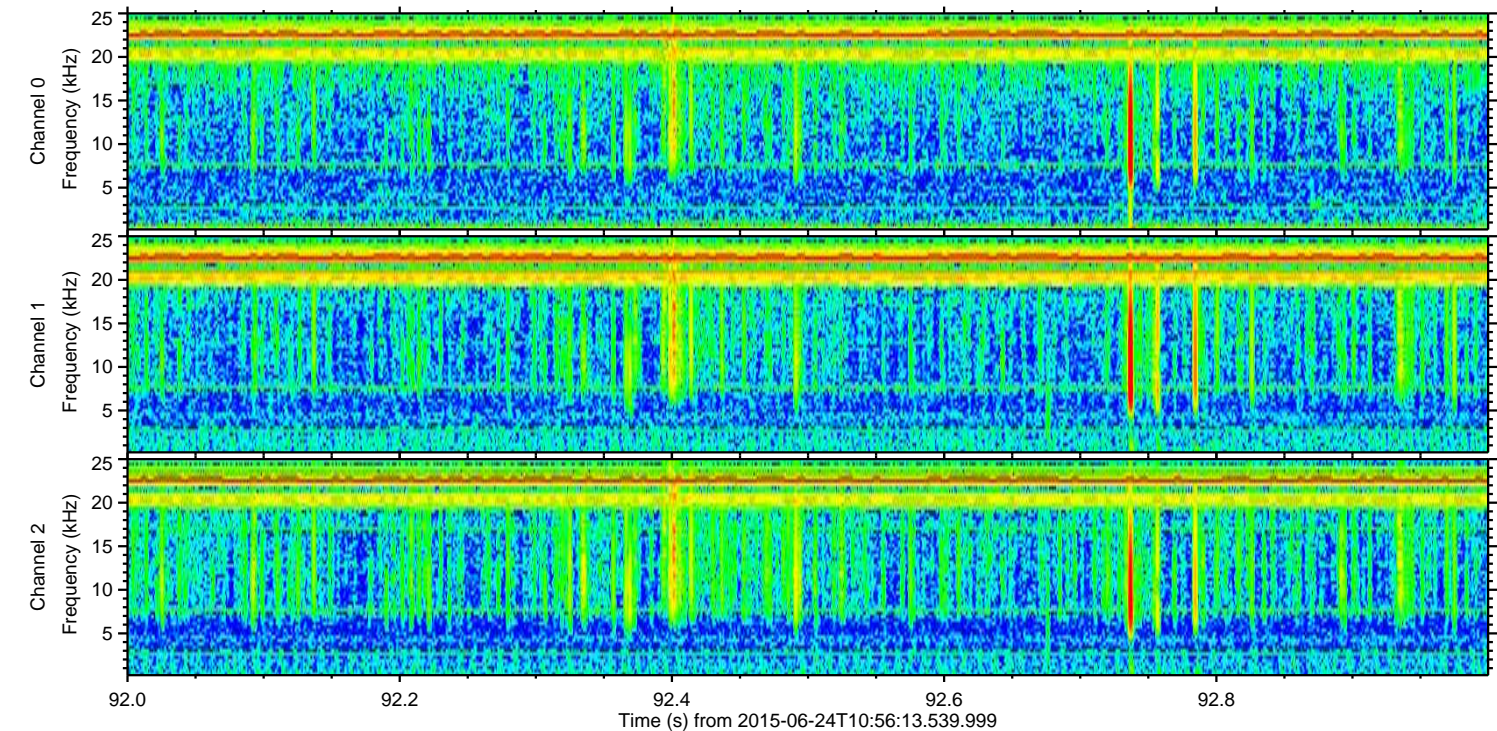
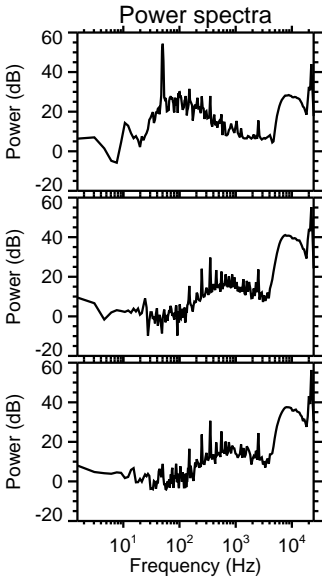
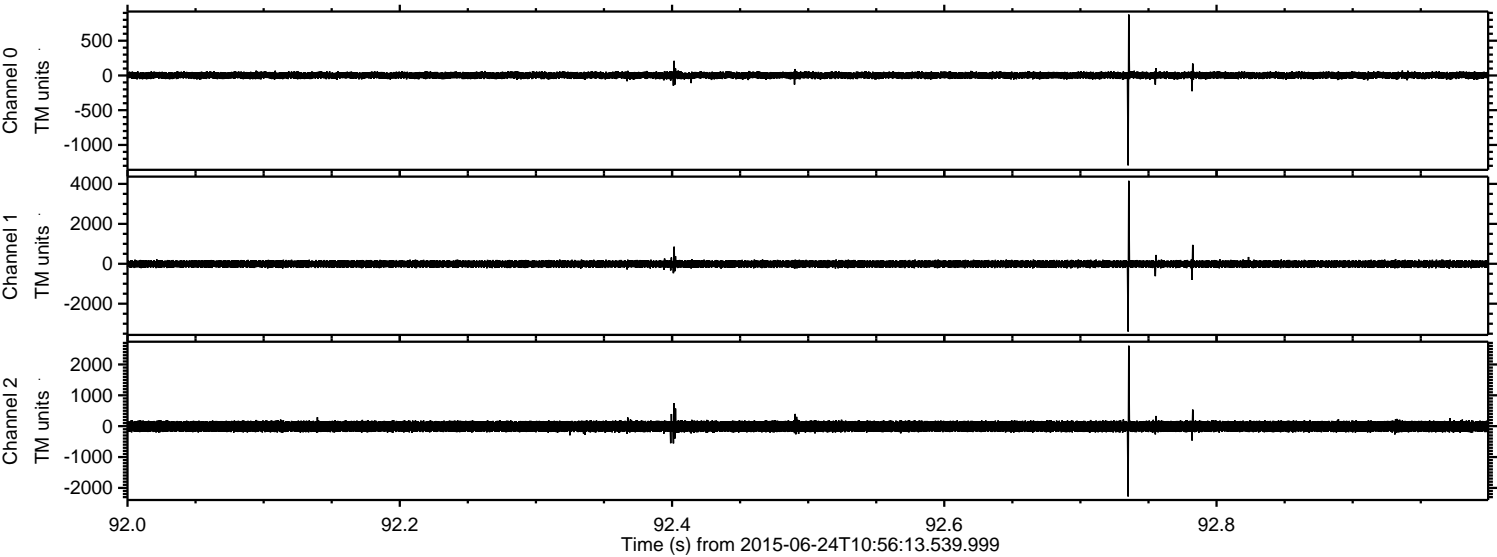


Channel 0  
mn: -1118  
mx: 791  
 $\mu$ : 1.7  
 $\sigma$ : 27.2

Channel 1  
mn: -3184  
mx: 4986  
 $\mu$ : -8.9  
 $\sigma$ : 100.0

Channel 2  
mn: -2093  
mx: 2853  
 $\mu$ : -7.1  
 $\sigma$ : 104.3

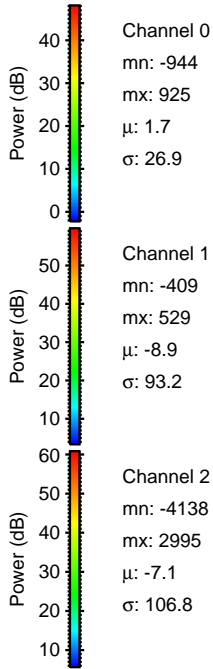
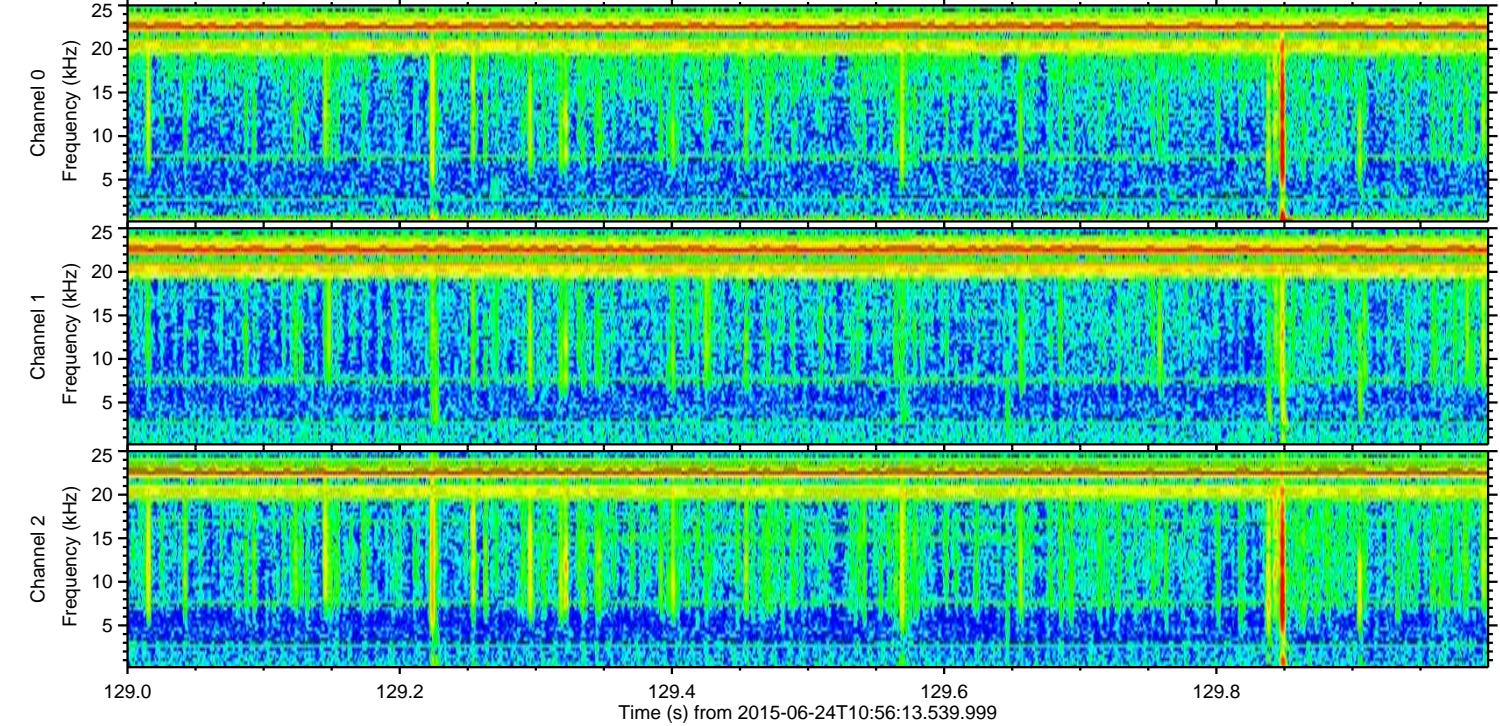
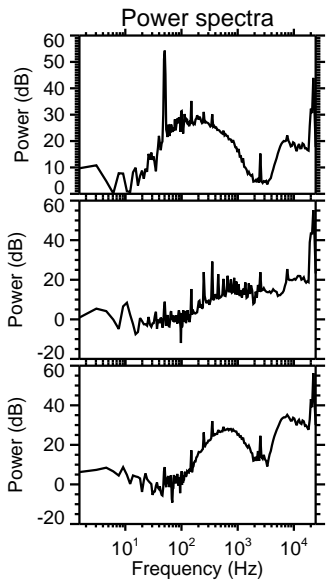
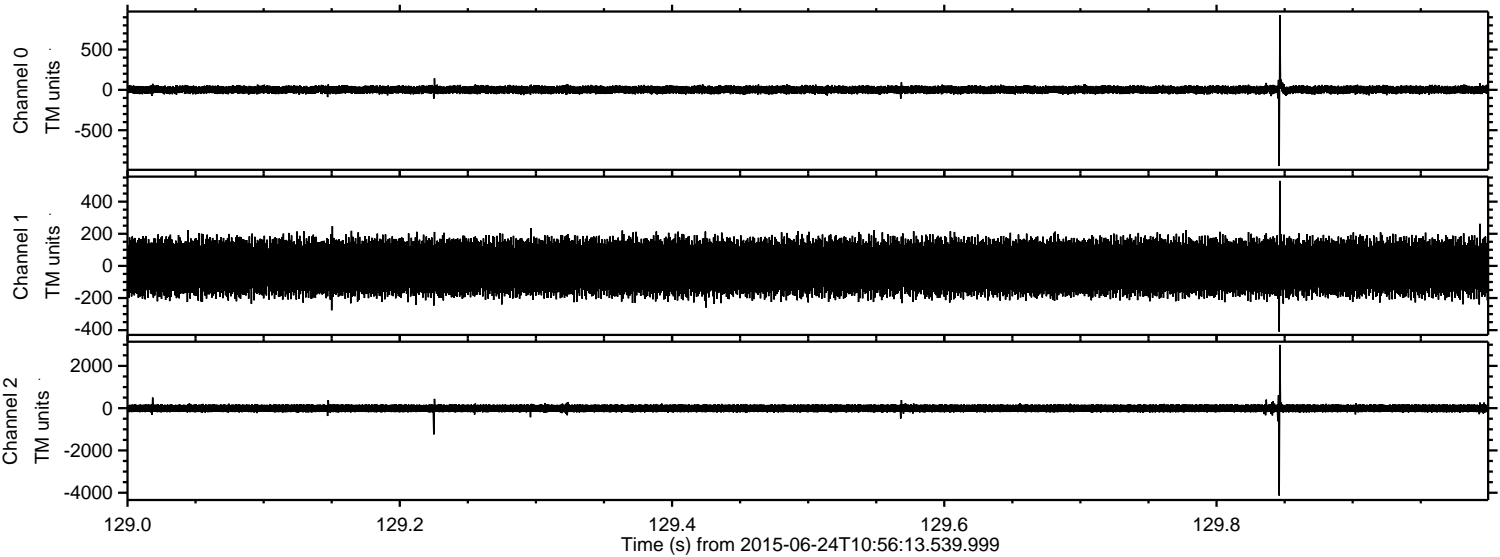
Processed Wed Jun 24 13:03:06 2015 by ELM ver.2012-10-06 from 001\_\_elm20150624\_105612\_\_dat00.bin





ELMAVAN 3D WAVEFORMS (Measured data sampled at 50 kHz) 51000 packets of 144 samples from 2015-06-24T10:56:13.539.999. Part 130/147

Processed Wed Jun 24 13:03:07 2015 by ELM ver.2012-10-06 from 001\_\_elm20150624\_105612\_\_dat00.bin



Channel 0  
mn: -944  
mx: 925  
 $\mu$ : 1.7  
 $\sigma$ : 26.9

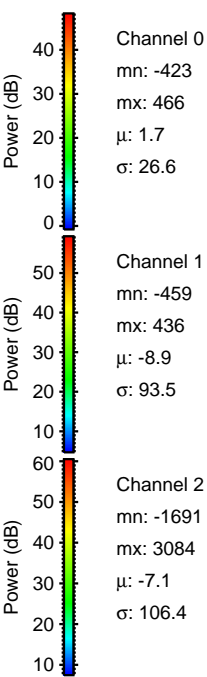
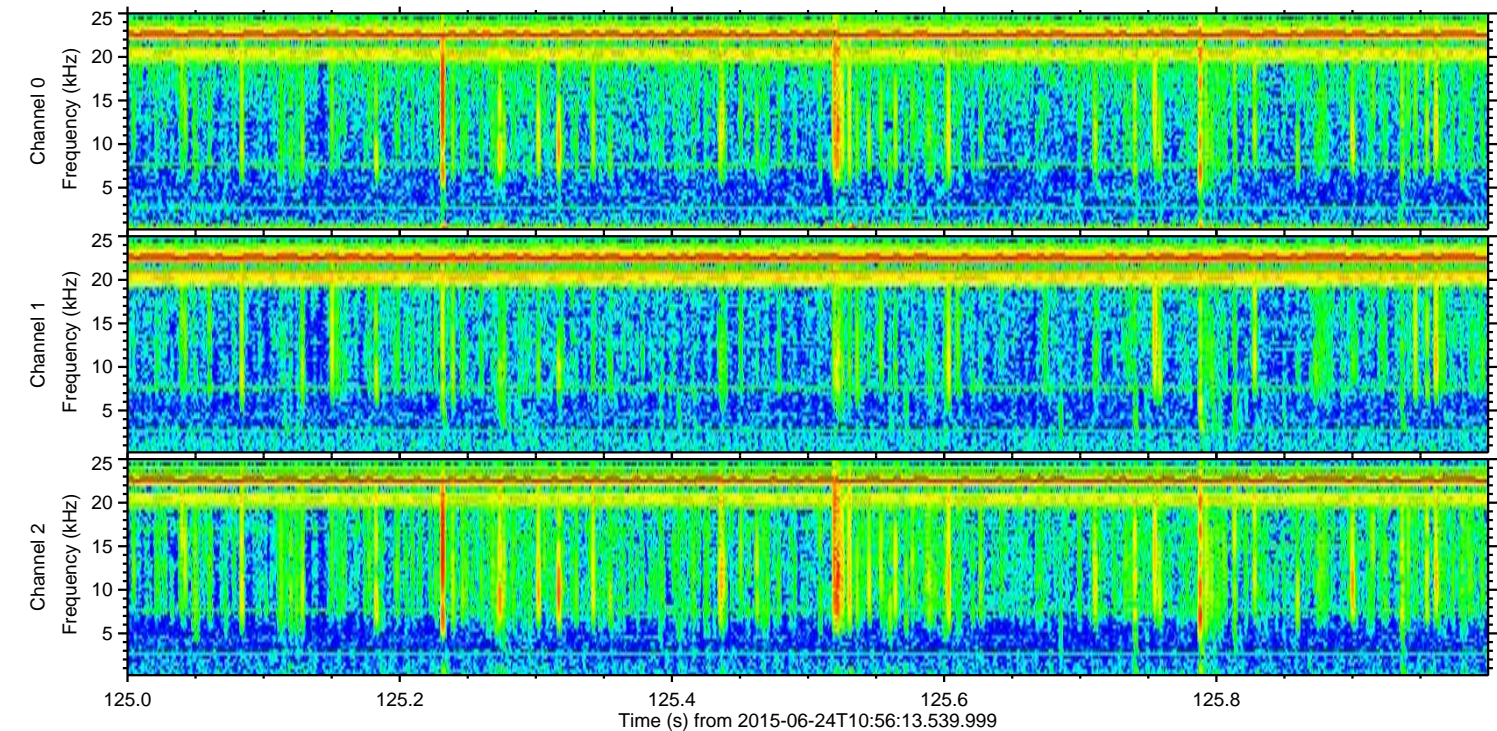
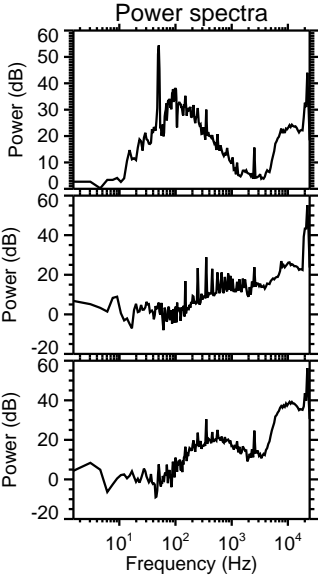
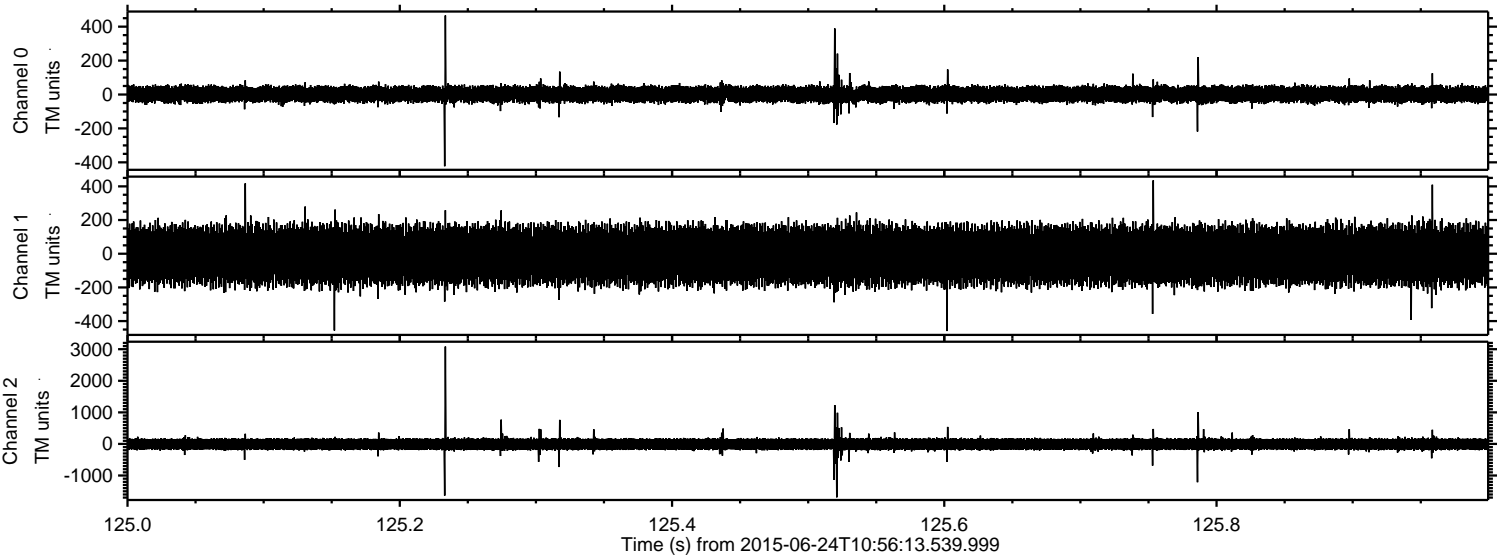
Channel 1  
mn: -409  
mx: 529  
 $\mu$ : -8.9  
 $\sigma$ : 93.2

Channel 2  
mn: -4138  
mx: 2995  
 $\mu$ : -7.1  
 $\sigma$ : 106.8



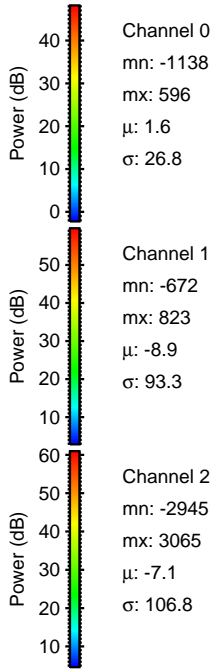
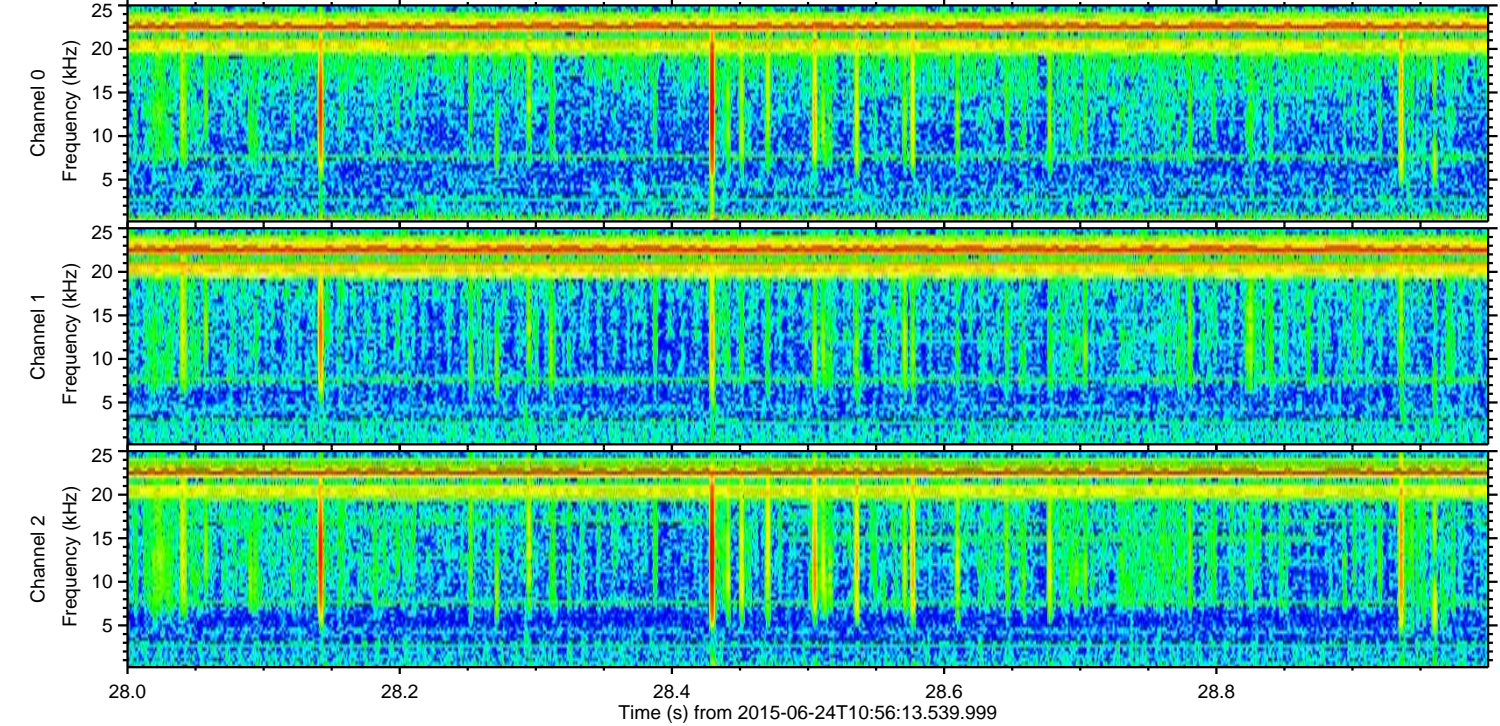
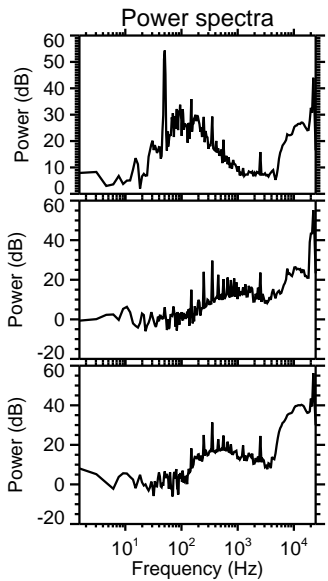
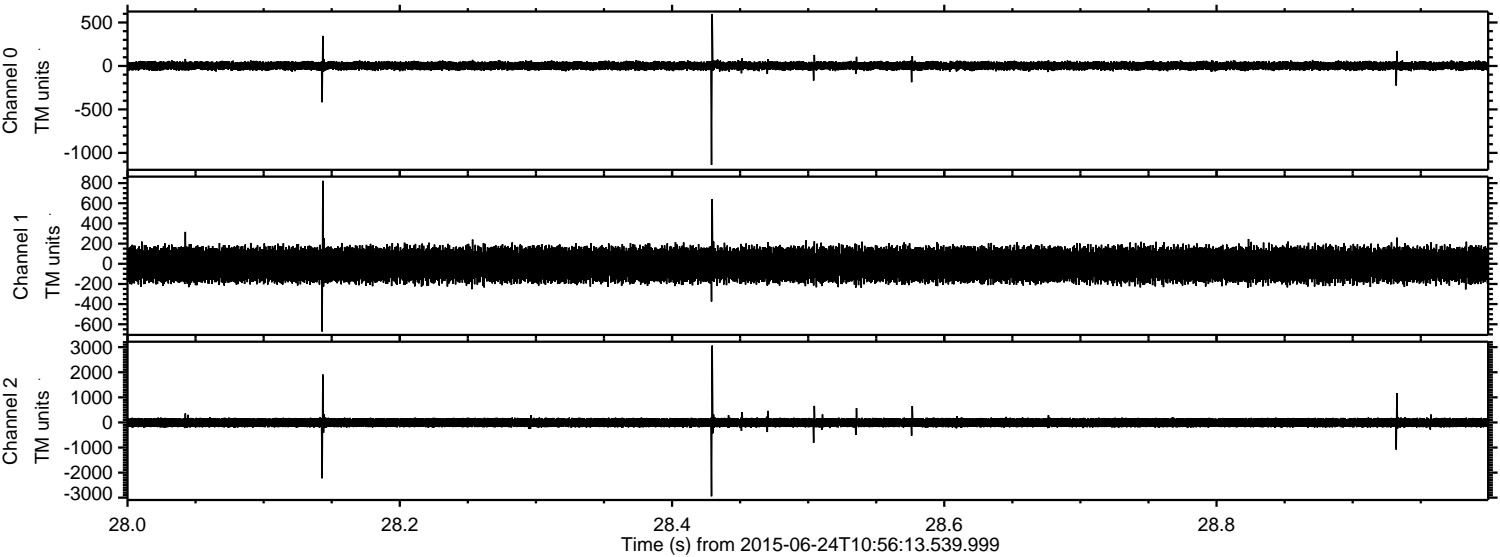
ELMAVAN 3D WAVEFORMS (Measured data sampled at 50 kHz) 51000 packets of 144 samples from 2015-06-24T10:56:13.539.999. Part 126/147

Processed Wed Jun 24 13:03:08 2015 by ELM ver.2012-10-06 from 001\_\_elm20150624\_105612\_\_dat00.bin





Processed Wed Jun 24 13:03:09 2015 by ELM ver.2012-10-06 from 001\_\_elm20150624\_105612\_\_dat00.bin



Channel 0  
mn: -1138  
mx: 596  
 $\mu$ : 1.6  
 $\sigma$ : 26.8

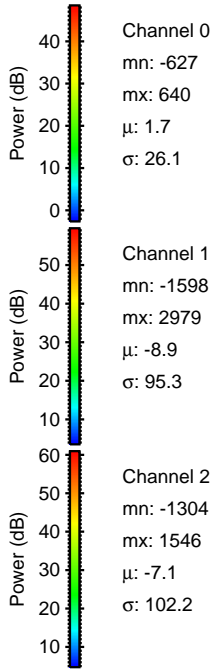
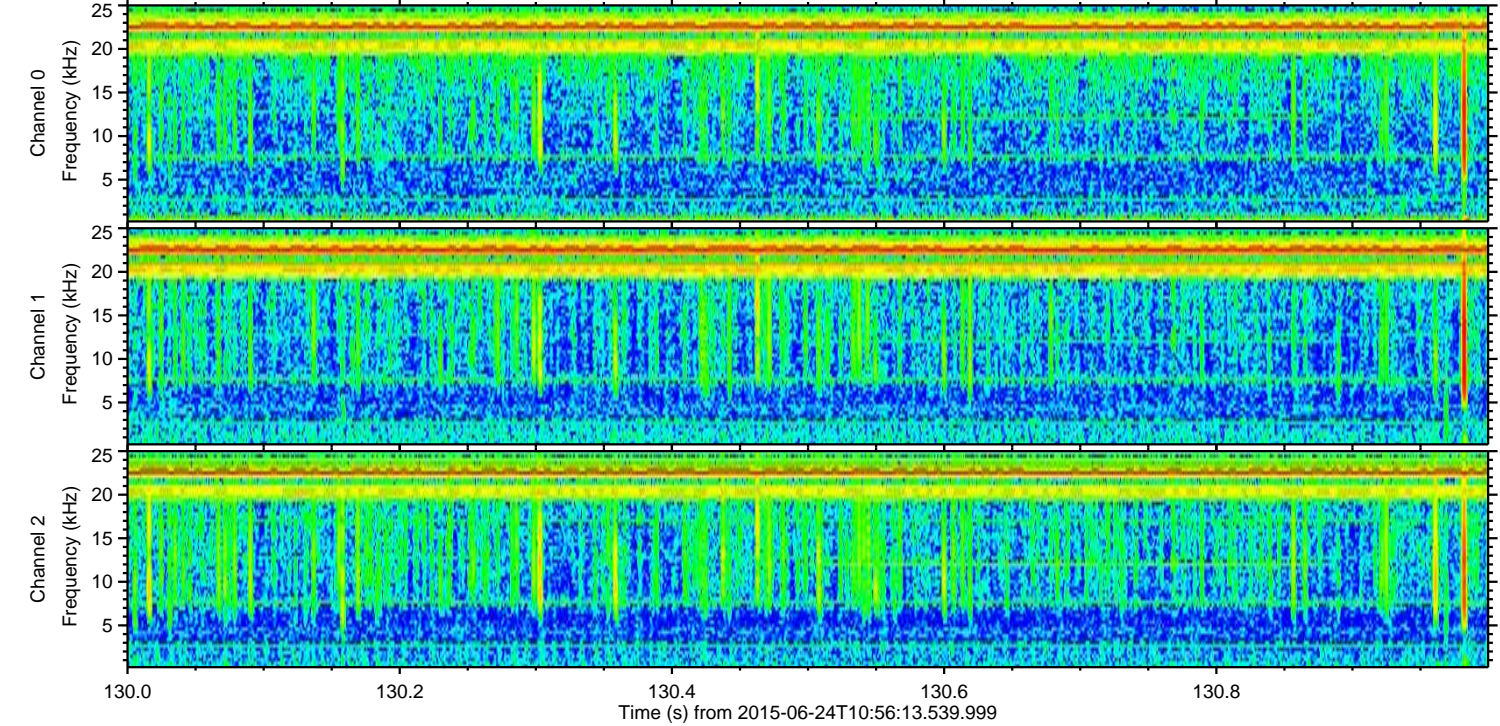
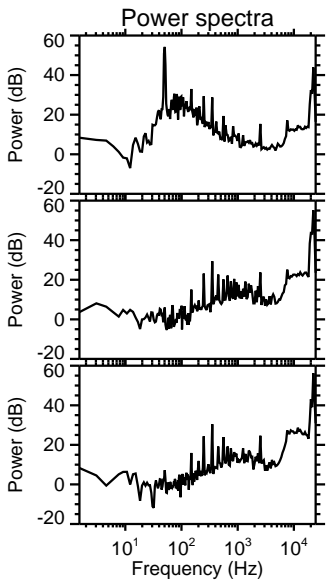
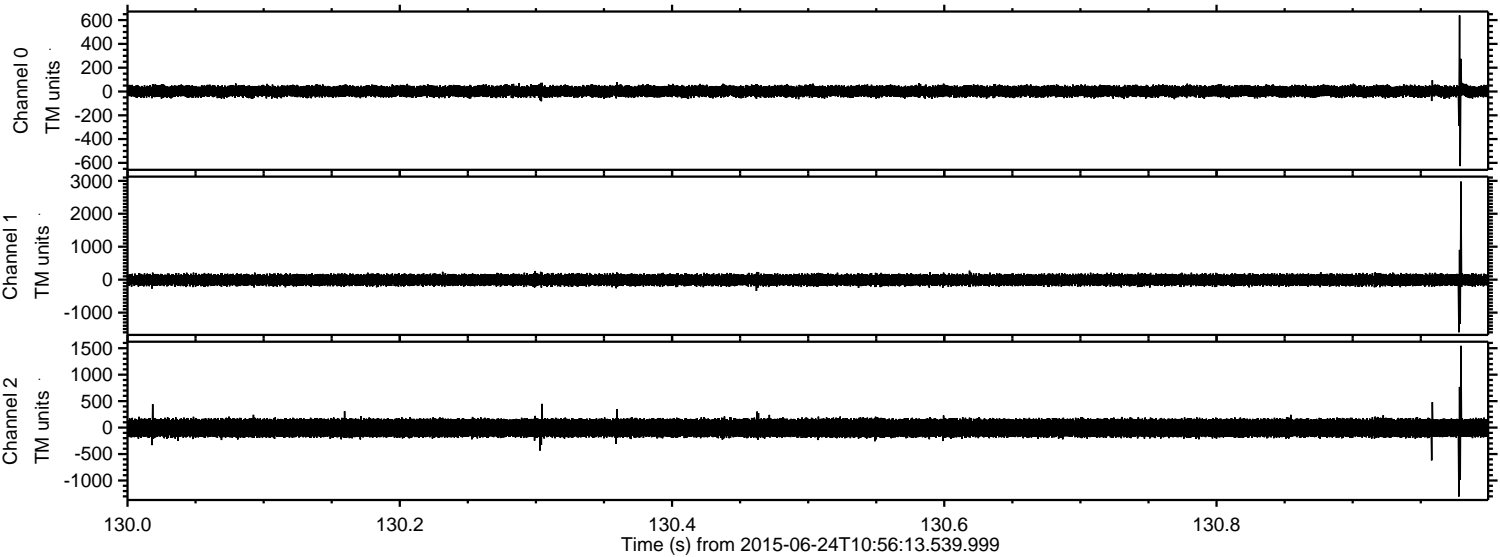
Channel 1  
mn: -672  
mx: 823  
 $\mu$ : -8.9  
 $\sigma$ : 93.3

Channel 2  
mn: -2945  
mx: 3065  
 $\mu$ : -7.1  
 $\sigma$ : 106.8



ELMAVAN 3D WAVEFORMS (Measured data sampled at 50 kHz) 51000 packets of 144 samples from 2015-06-24T10:56:13.539.999. Part 131/147

Processed Wed Jun 24 13:03:11 2015 by ELM ver.2012-10-06 from 001\_\_elm20150624\_105612\_\_dat00.bin



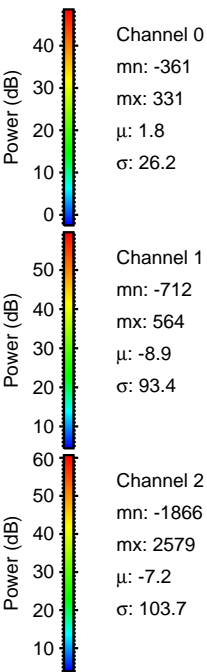
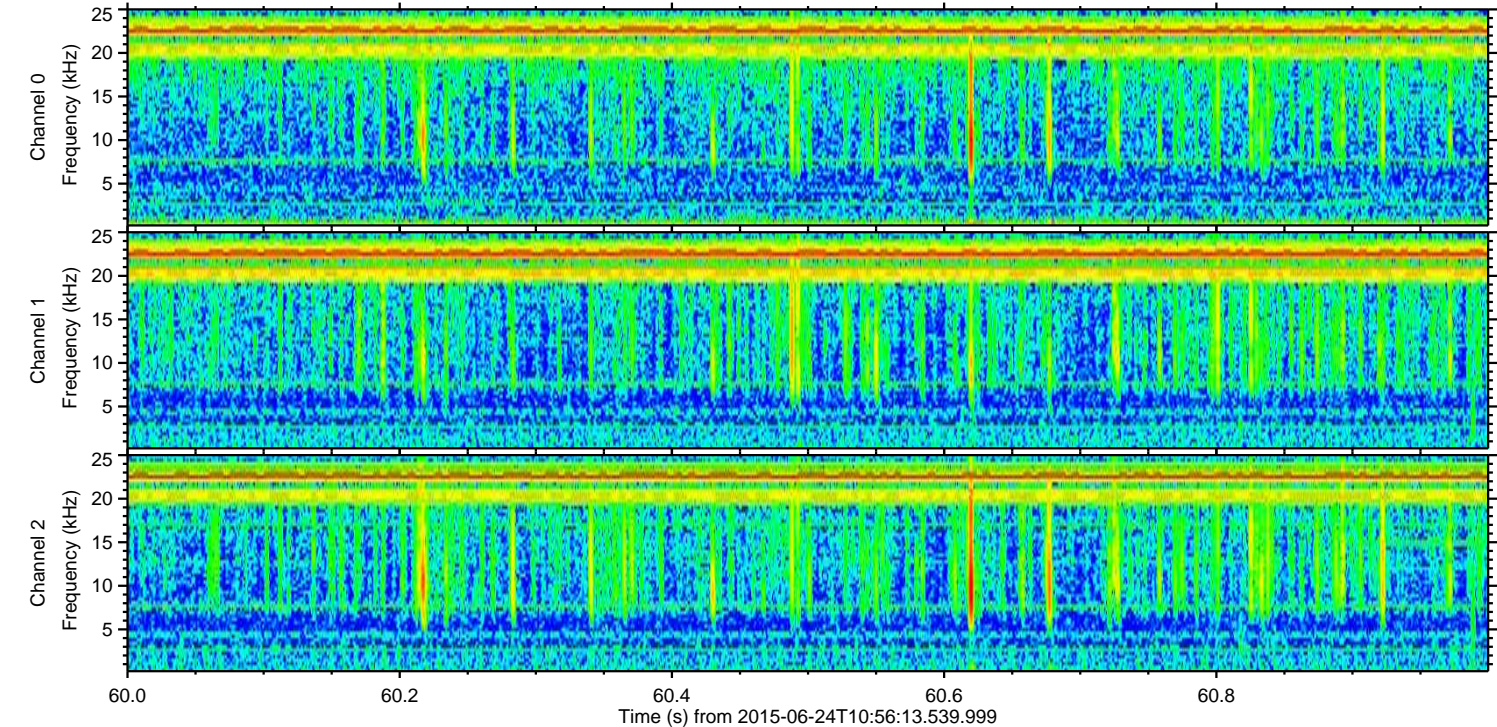
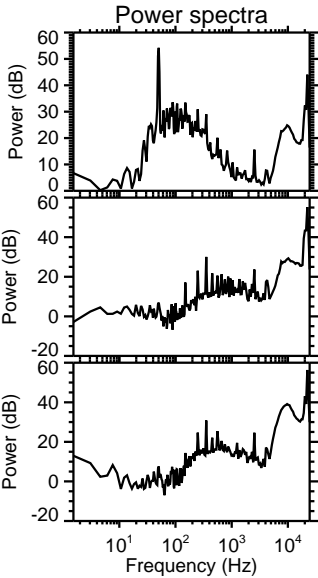
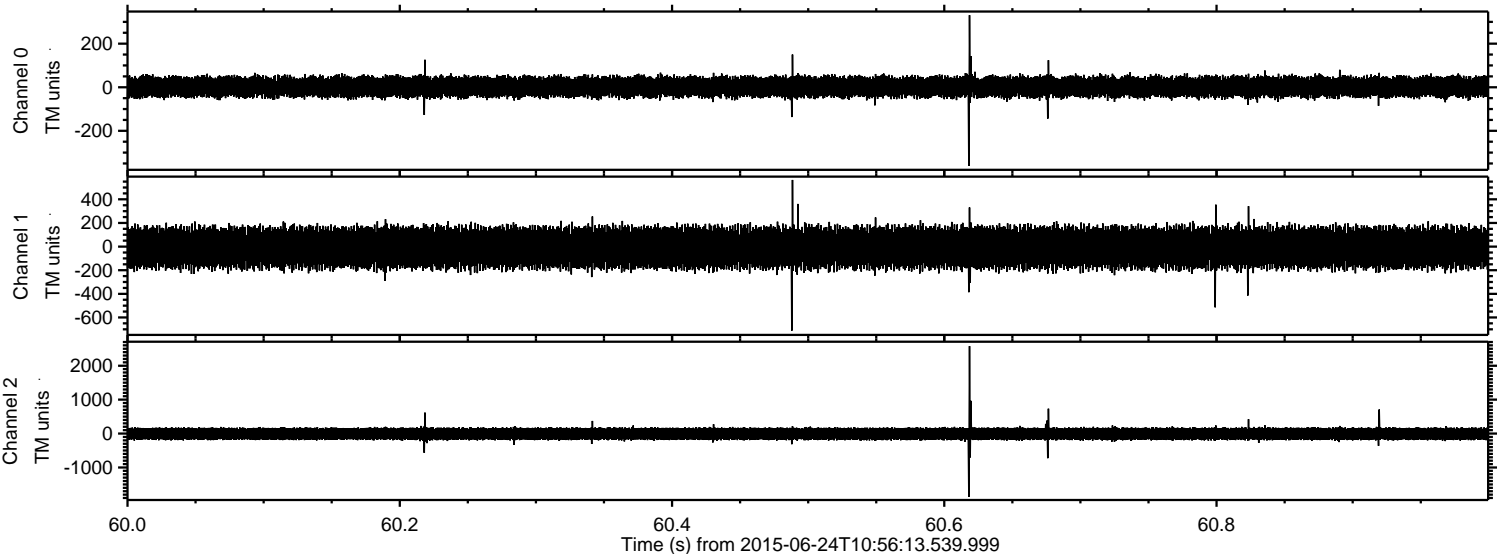
Channel 0  
mn: -627  
mx: 640  
 $\mu$ : 1.7  
 $\sigma$ : 26.1

Channel 1  
mn: -1598  
mx: 2979  
 $\mu$ : -8.9  
 $\sigma$ : 95.3

Channel 2  
mn: -1304  
mx: 1546  
 $\mu$ : -7.1  
 $\sigma$ : 102.2



Processed Wed Jun 24 13:03:12 2015 by ELM ver.2012-10-06 from 001\_\_elm20150624\_105612\_\_dat00.bin





Processed Wed Jun 24 13:03:13 2015 by ELM ver.2012-10-06 from 001\_\_elm20150624\_105612\_\_dat00.bin

