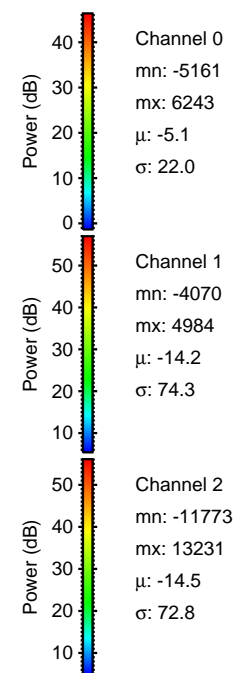
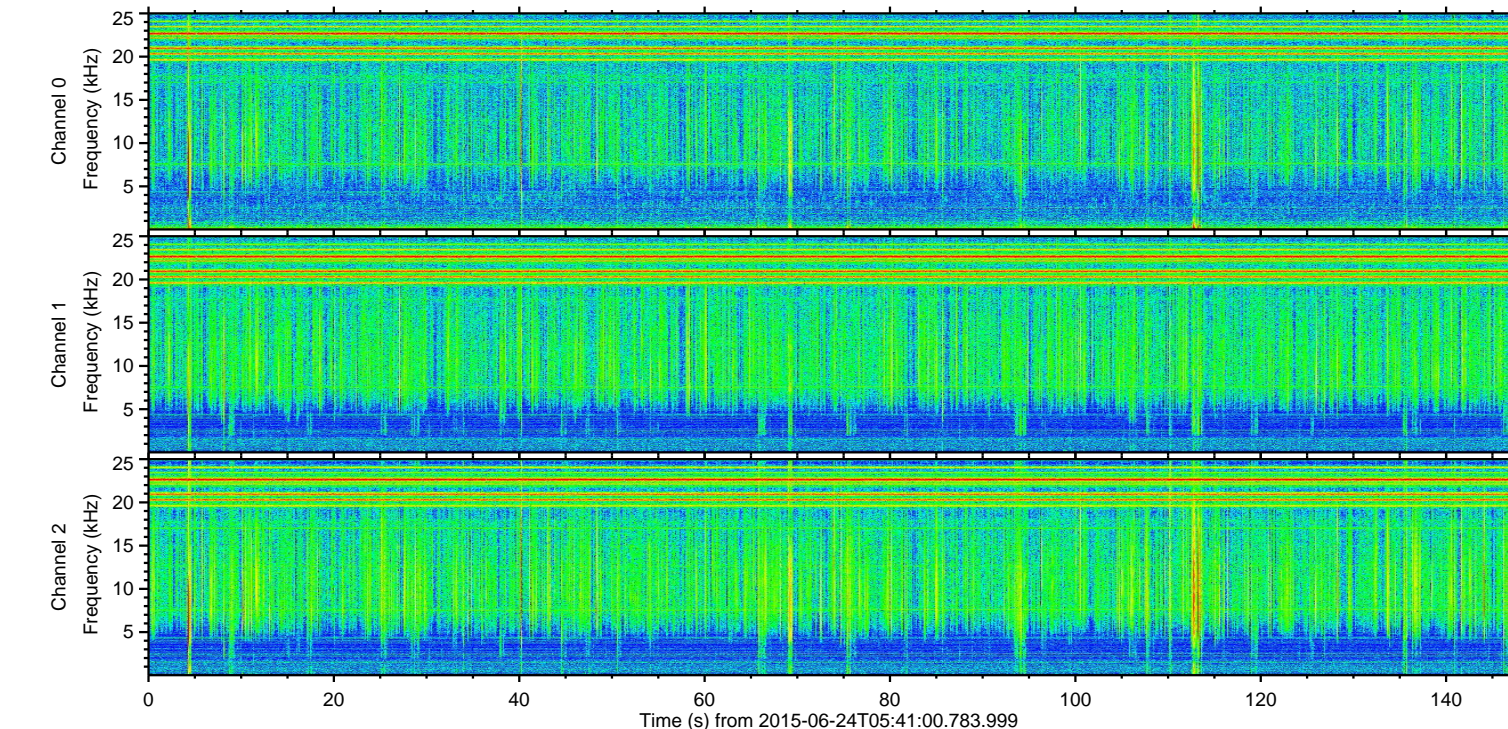
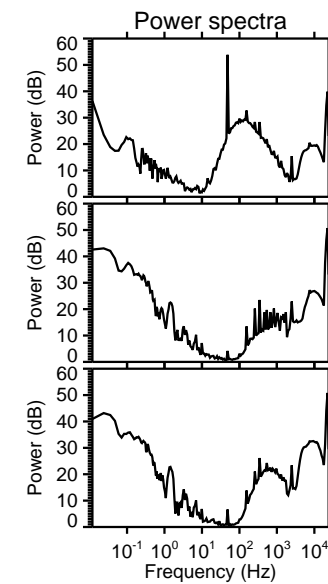
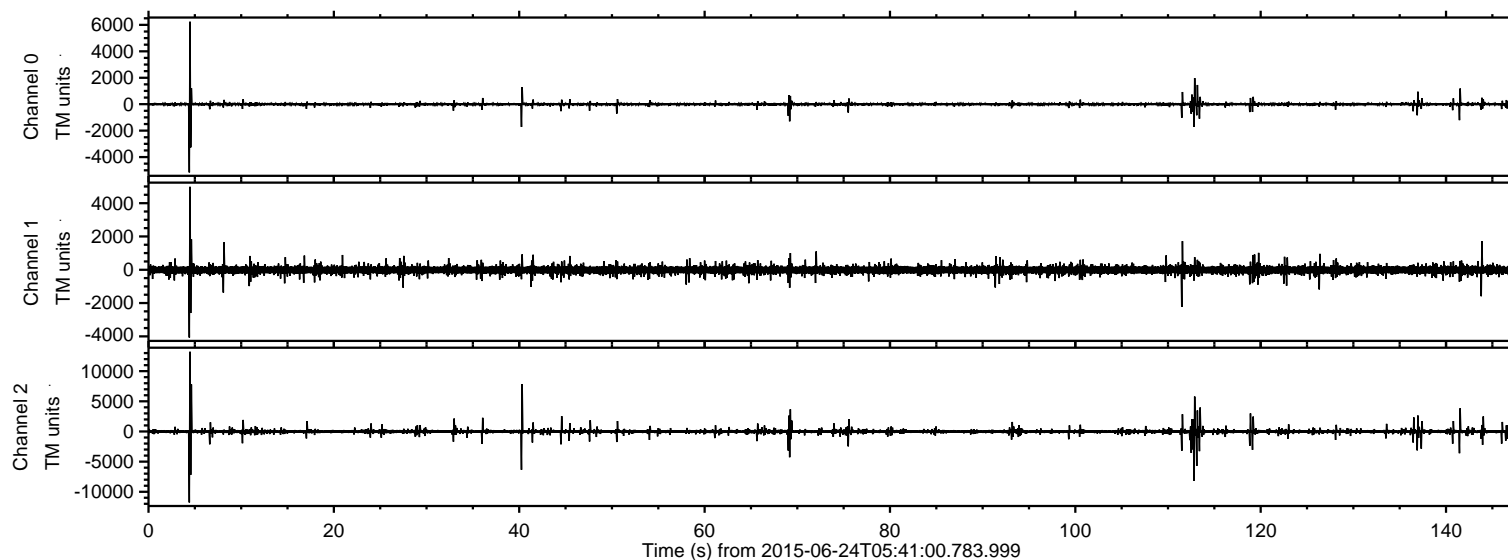
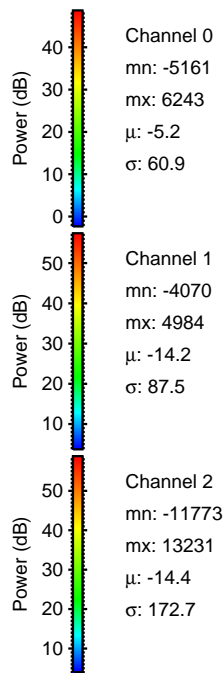
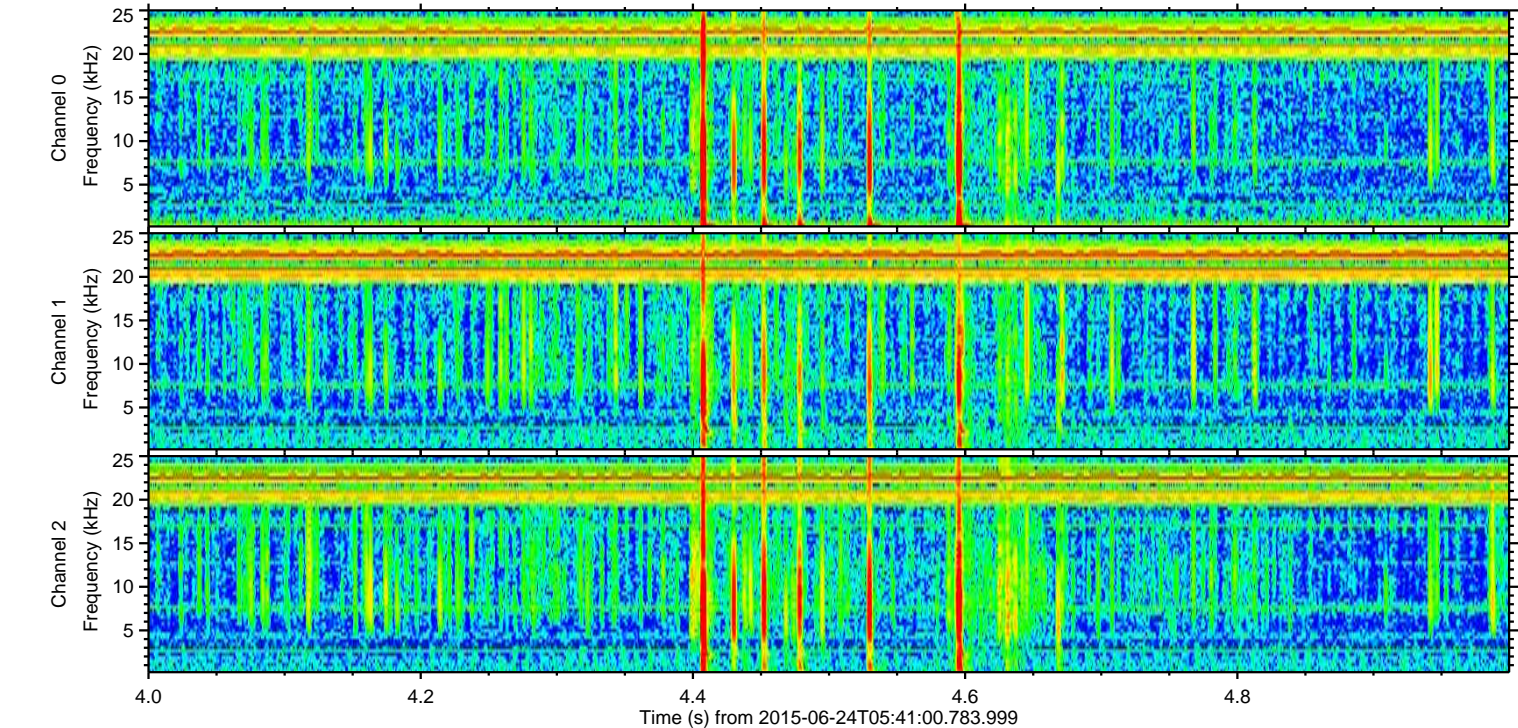
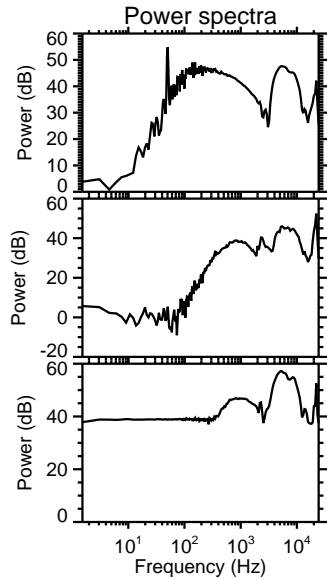
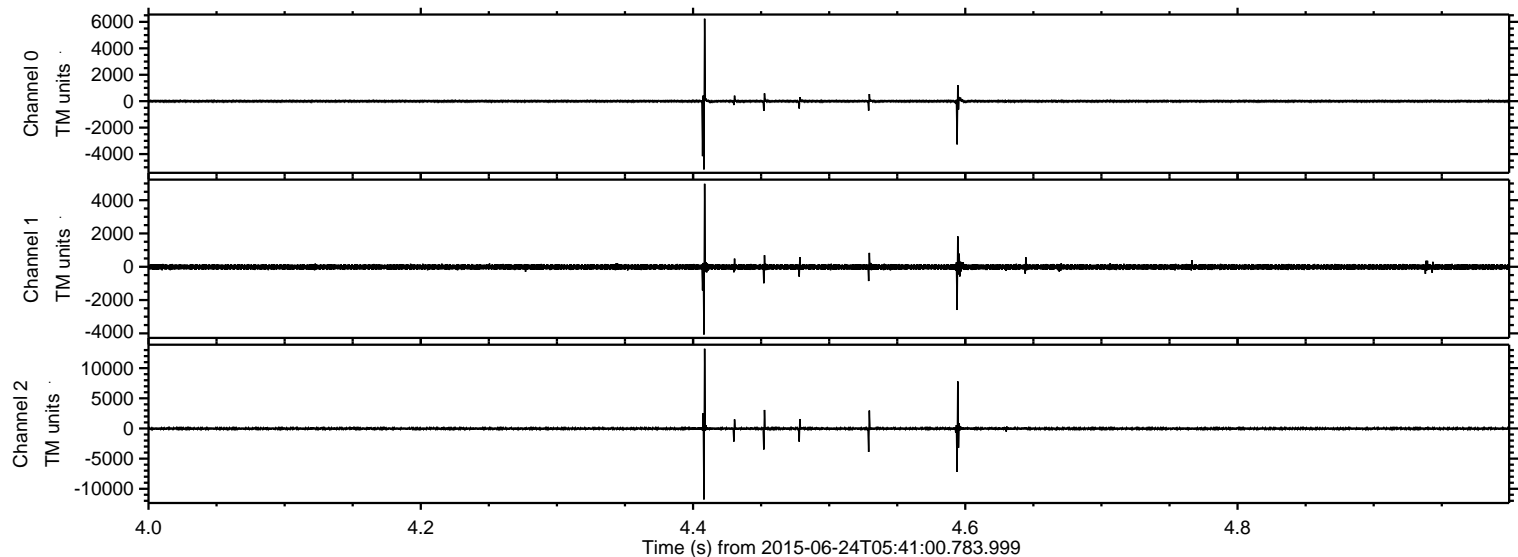


ELMAVAN 3D WAVEFORMS (Measured data sampled at 50 kHz) 51000 packets of 144 samples from 2015-06-24T05:41:00.783.999.

Processed Wed Jun 24 07:47:27 2015 by ELM ver.2012-10-06 from 001__elm20150624_054059__dat00.bin

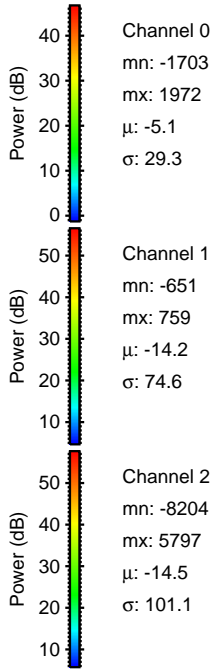
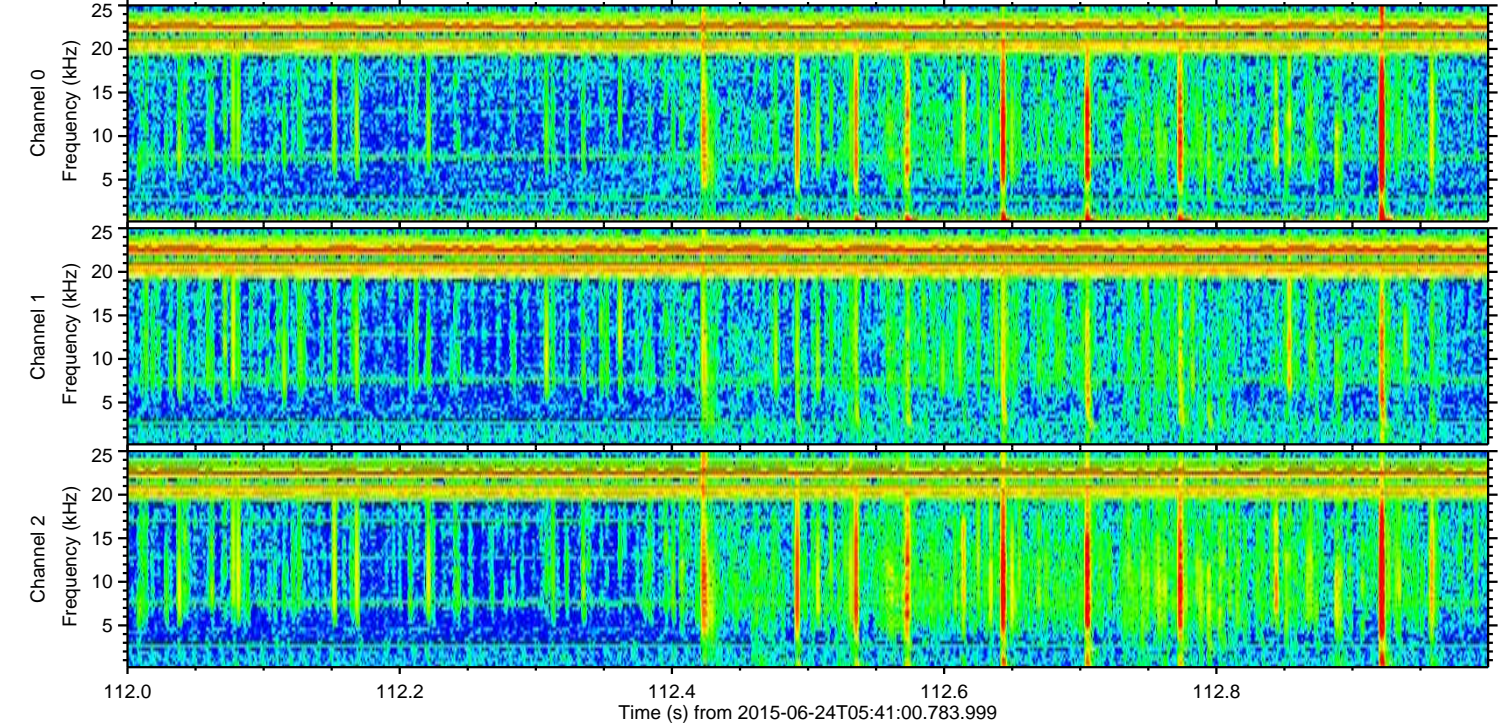
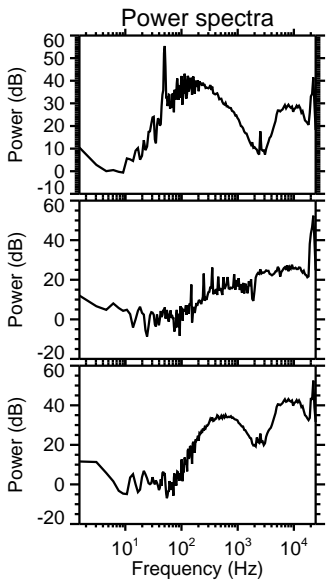
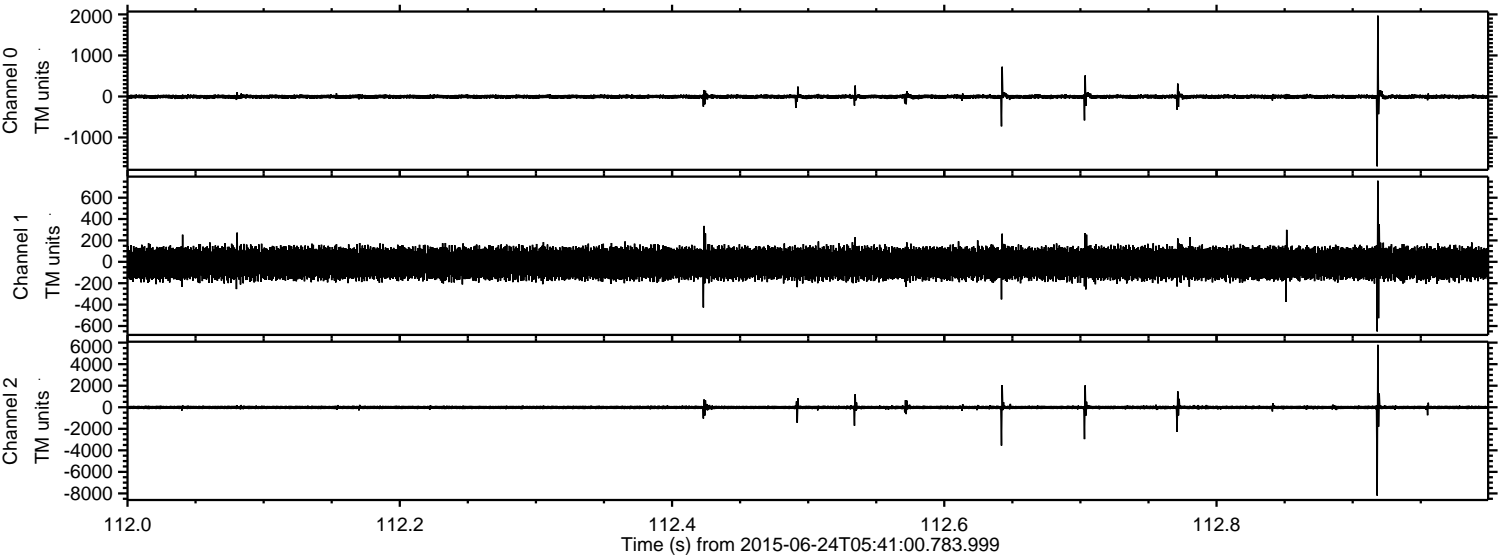


Processed Wed Jun 24 07:47:42 2015 by ELM ver.2012-10-06 from 001__elm20150624_054059__dat00.bin



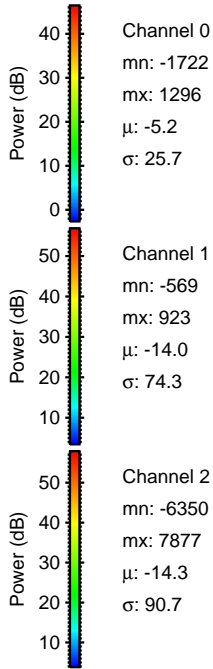
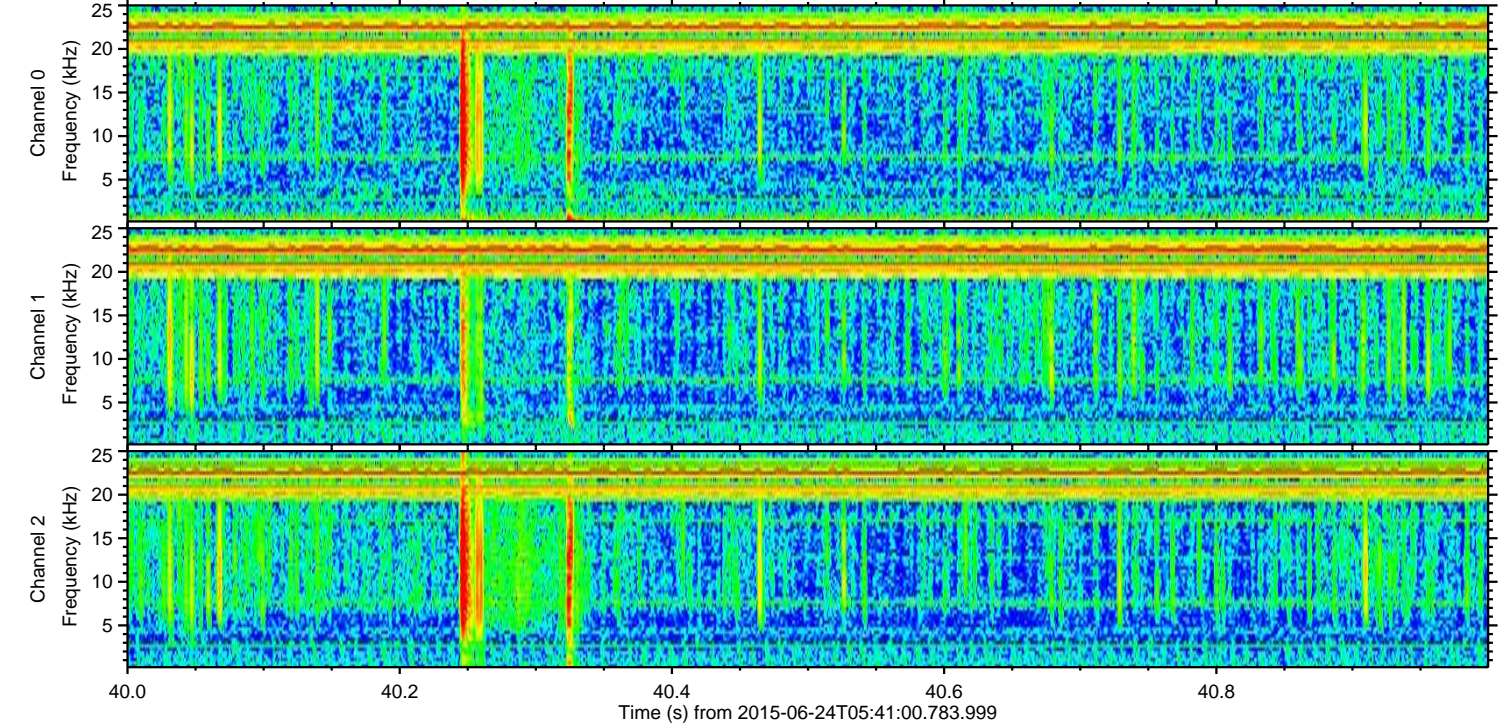
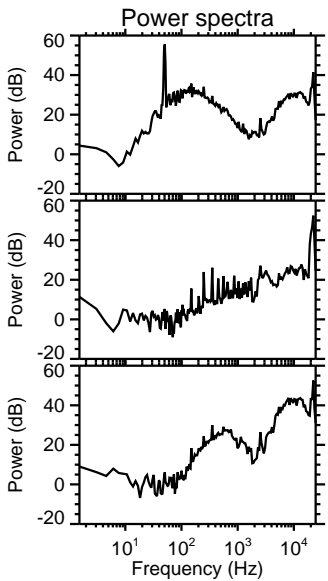
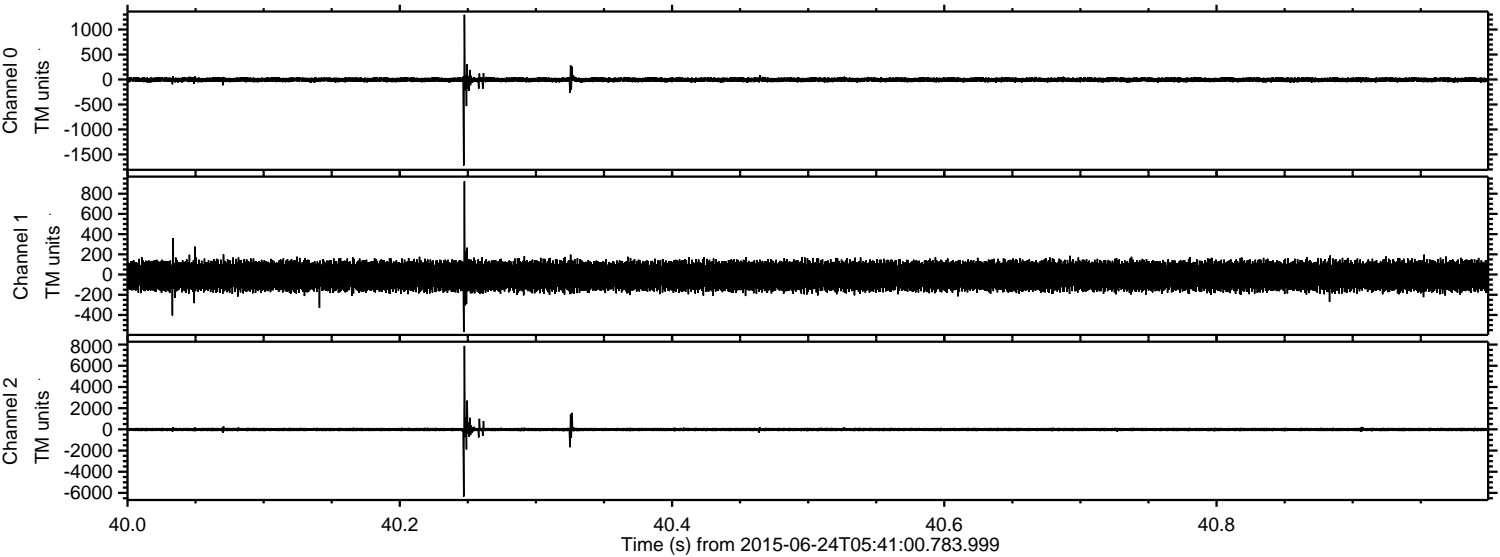
ELMAVAN 3D WAVEFORMS (Measured data sampled at 50 kHz) 51000 packets of 144 samples from 2015-06-24T05:41:00.783.999. Part 113/147

Processed Wed Jun 24 07:47:44 2015 by ELM ver.2012-10-06 from 001__elm20150624_054059__dat00.bin



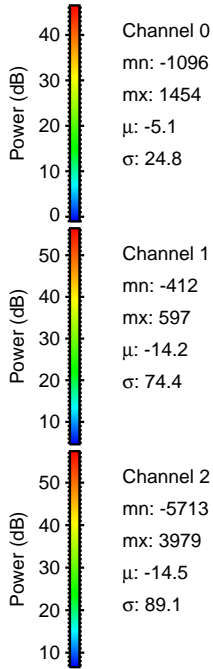
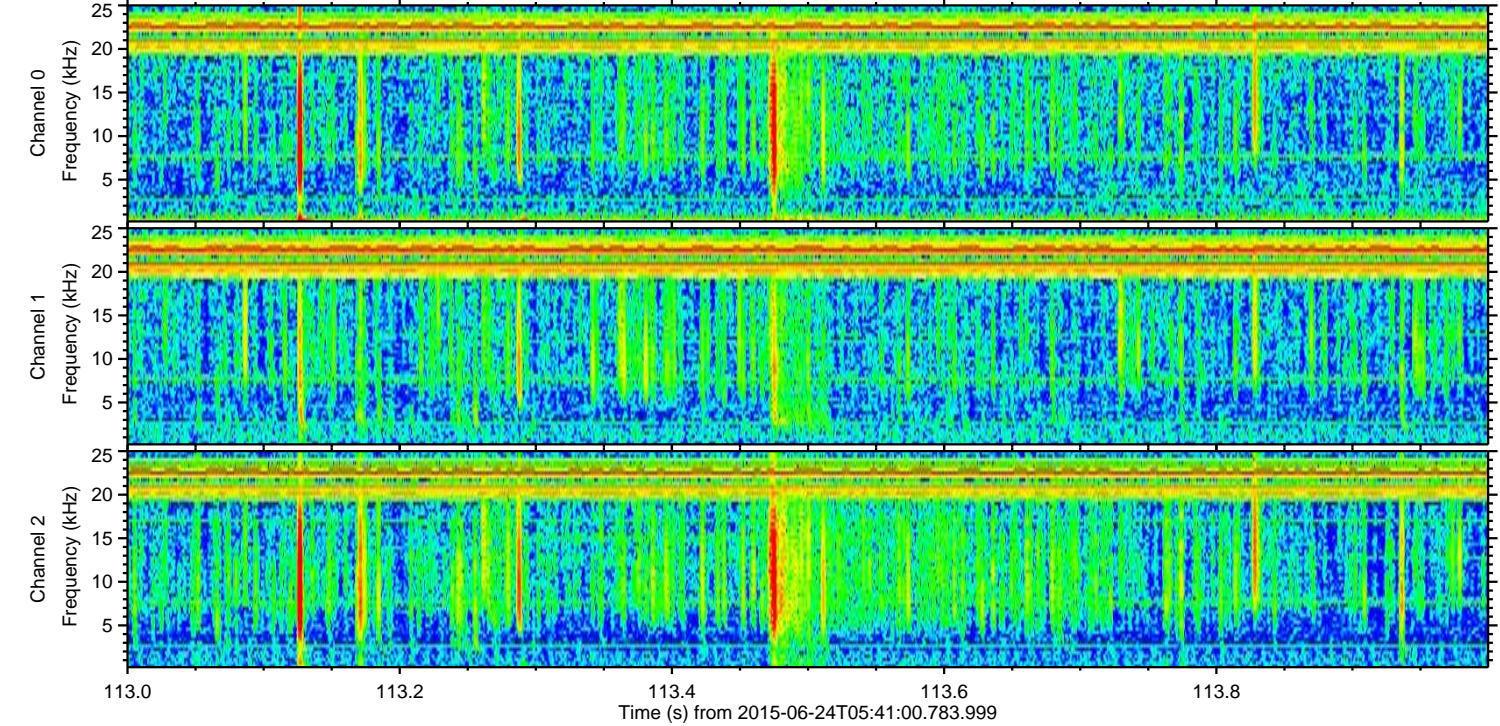
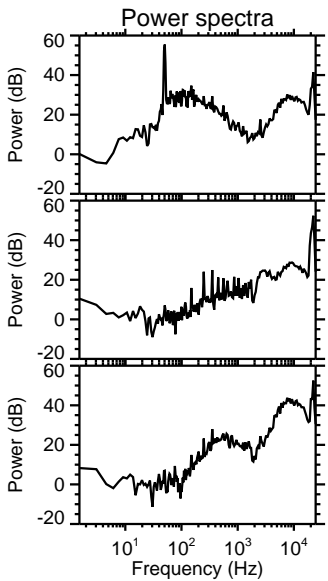
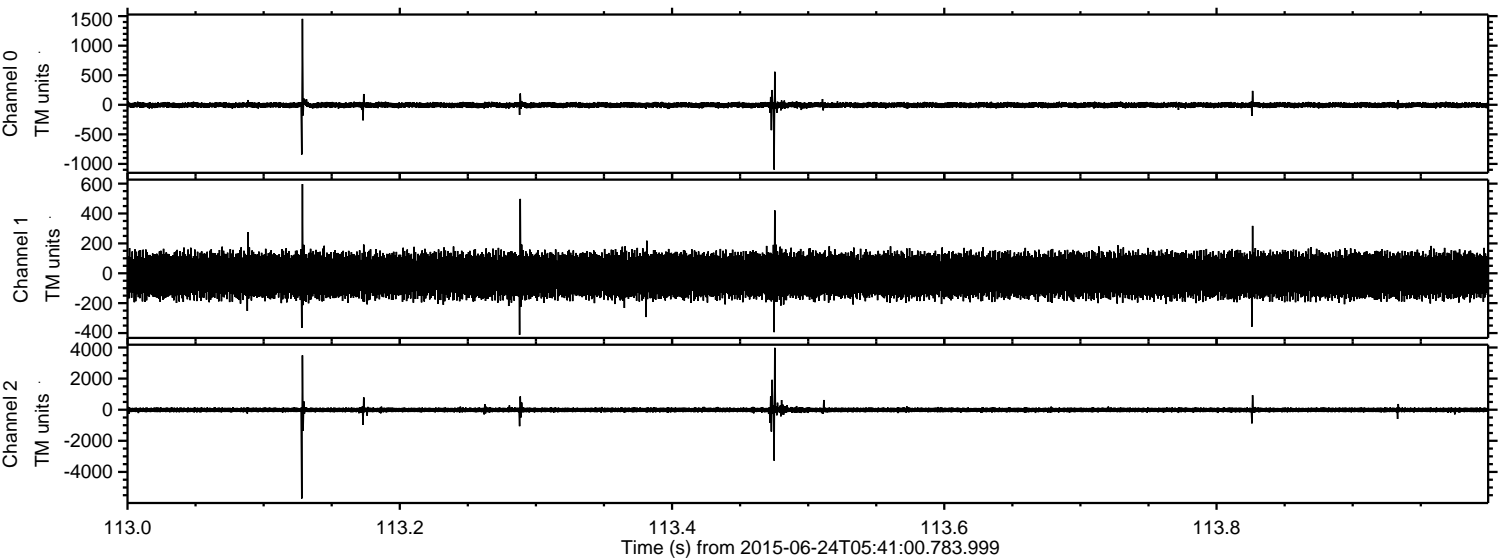
ELMAVAN 3D WAVEFORMS (Measured data sampled at 50 kHz) 51000 packets of 144 samples from 2015-06-24T05:41:00.783.999. Part 41/147

Processed Wed Jun 24 07:47:45 2015 by ELM ver.2012-10-06 from 001__elm20150624_054059__dat00.bin



ELMAVAN 3D WAVEFORMS (Measured data sampled at 50 kHz) 51000 packets of 144 samples from 2015-06-24T05:41:00.783.999. Part 114/147

Processed Wed Jun 24 07:47:46 2015 by ELM ver.2012-10-06 from 001__elm20150624_054059__dat00.bin

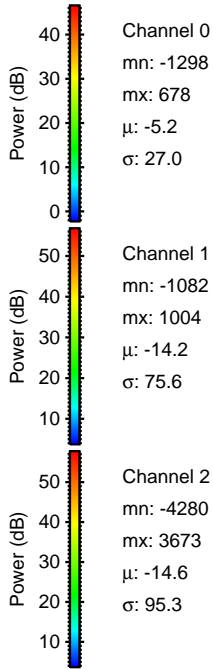
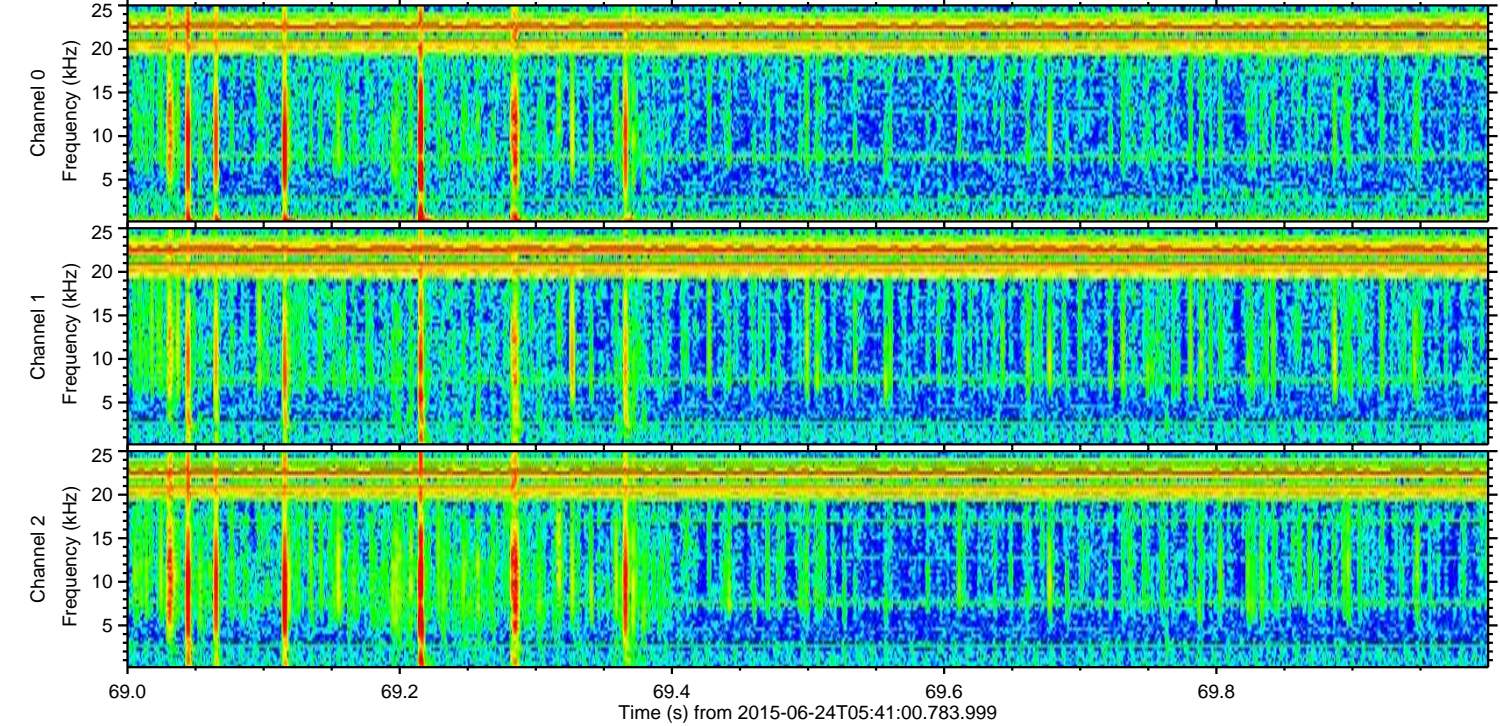
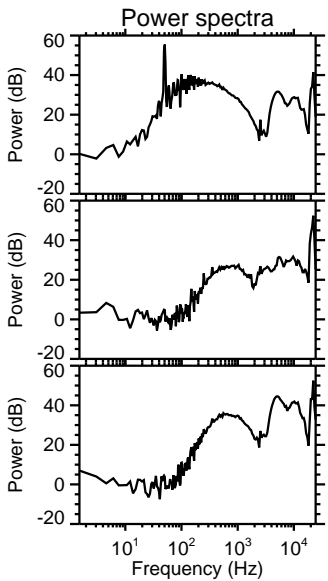
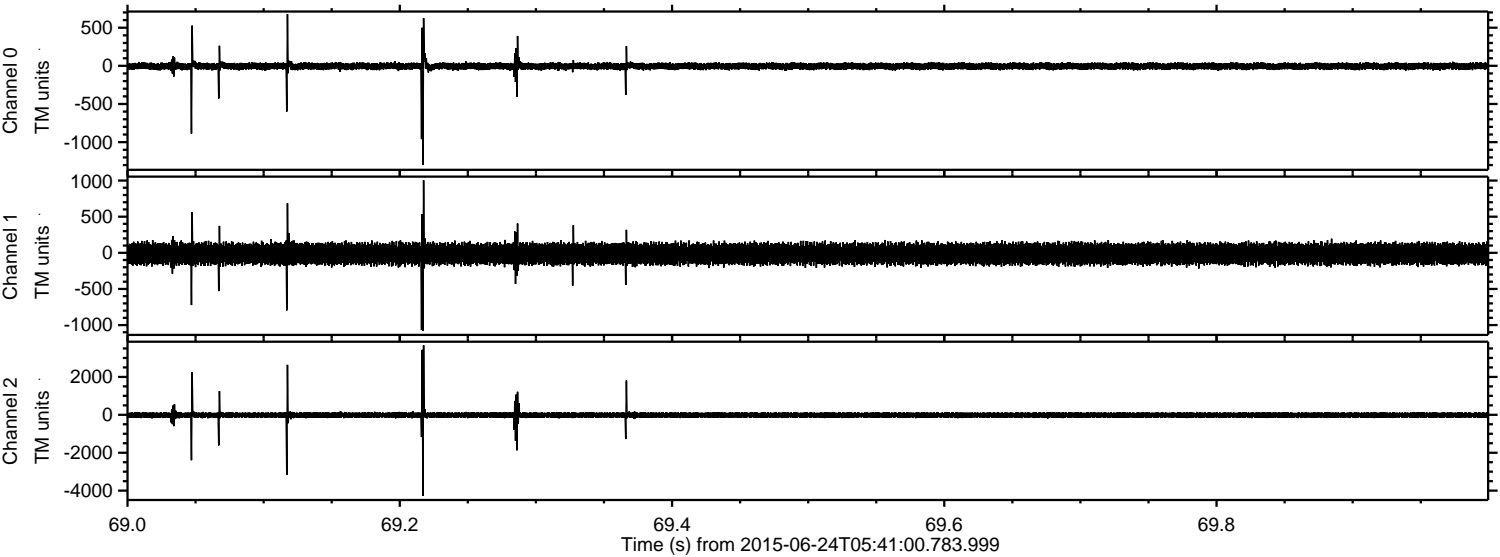


Channel 0
mn: -1096
mx: 1454
 μ : -5.1
 σ : 24.8

Channel 1
mn: -412
mx: 597
 μ : -14.2
 σ : 74.4

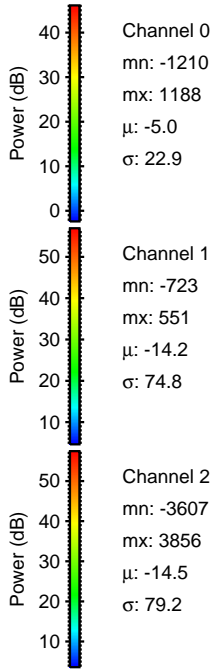
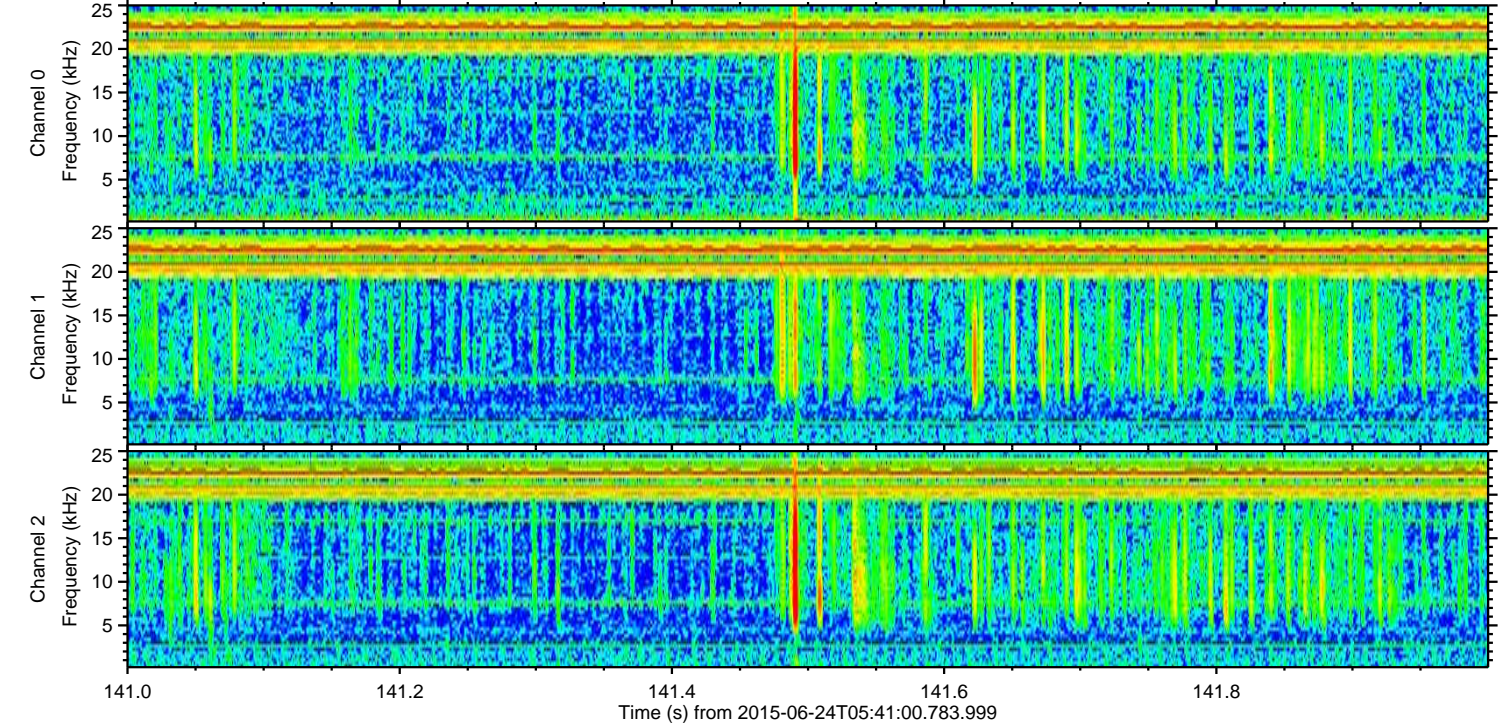
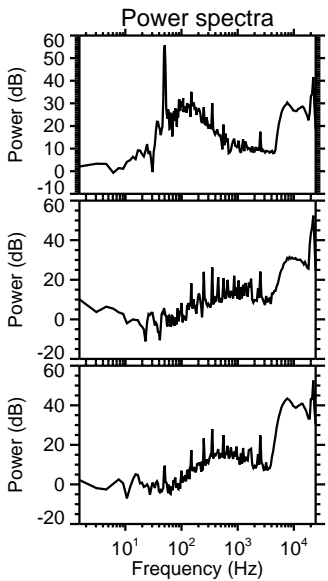
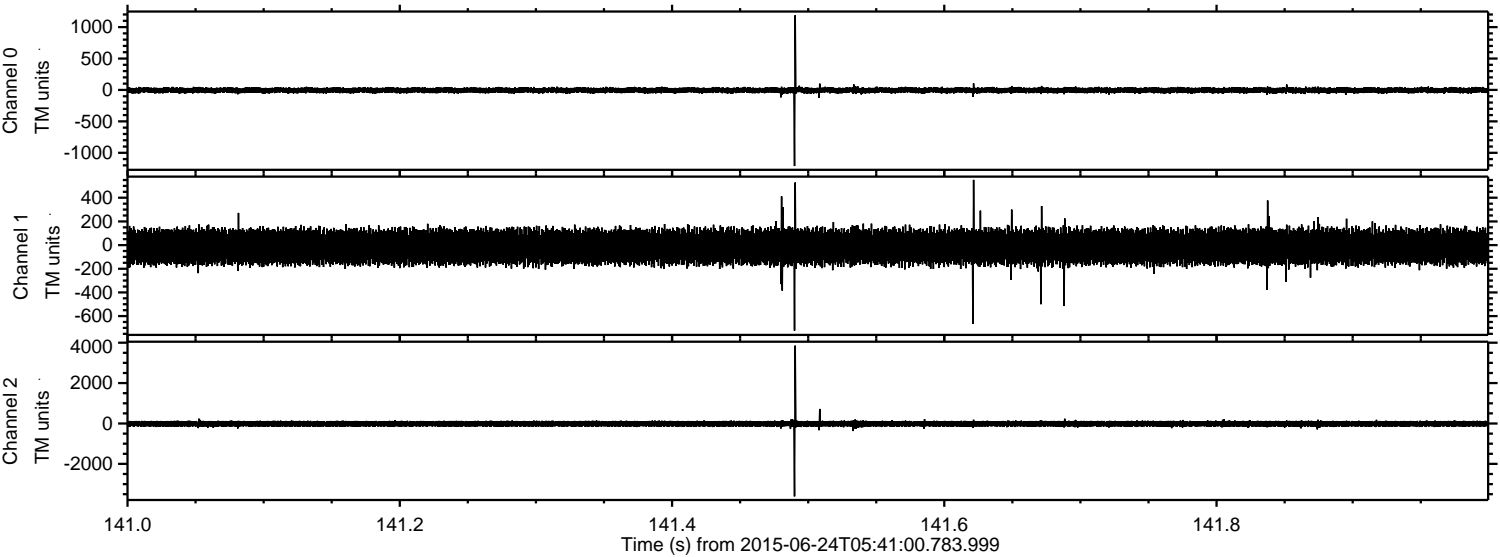
Channel 2
mn: -5713
mx: 3979
 μ : -14.5
 σ : 89.1

Processed Wed Jun 24 07:47:47 2015 by ELM ver.2012-10-06 from 001__elm20150624_054059__dat00.bin



ELMAVAN 3D WAVEFORMS (Measured data sampled at 50 kHz) 51000 packets of 144 samples from 2015-06-24T05:41:00.783.999. Part 142/147

Processed Wed Jun 24 07:47:48 2015 by ELM ver.2012-10-06 from 001__elm20150624_054059__dat00.bin



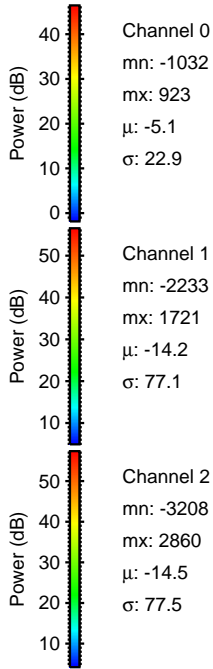
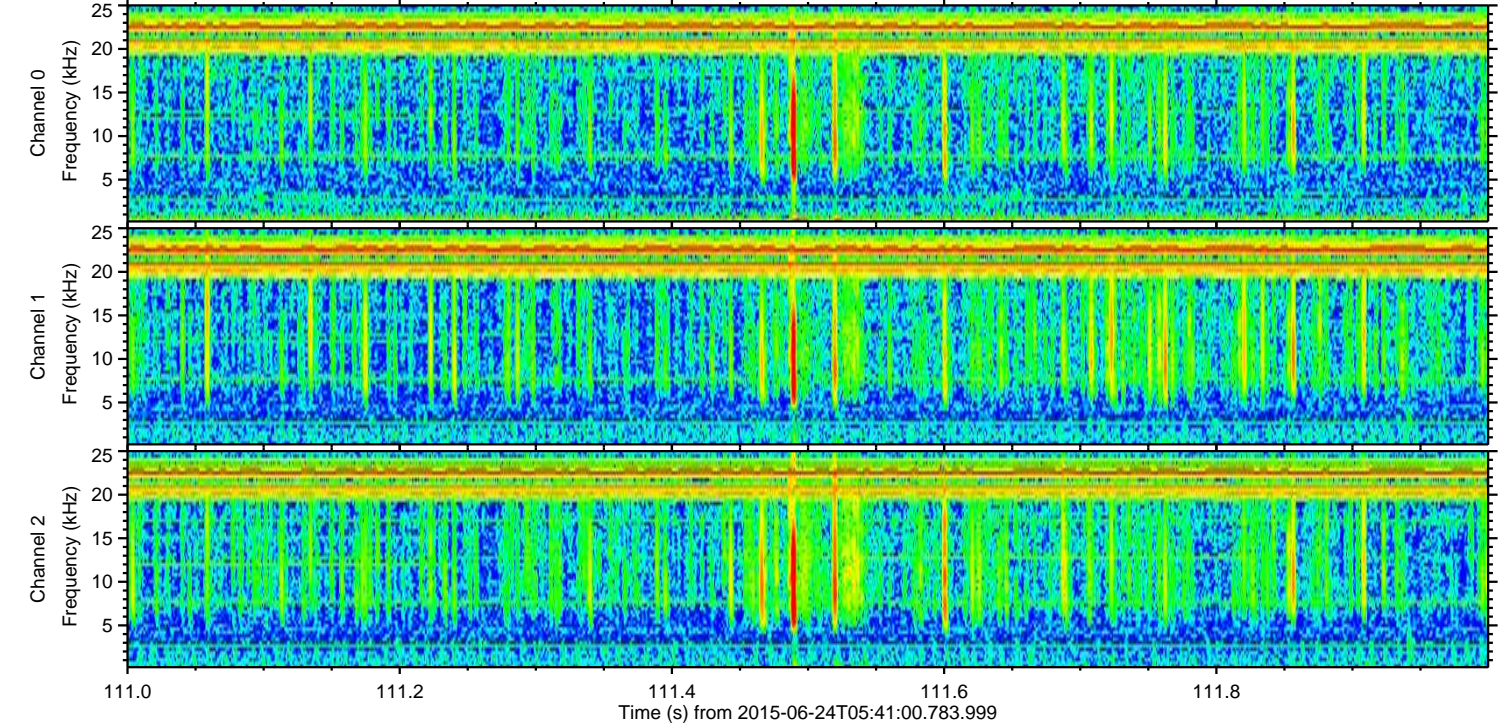
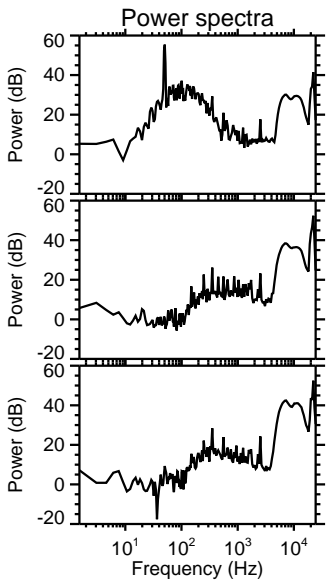
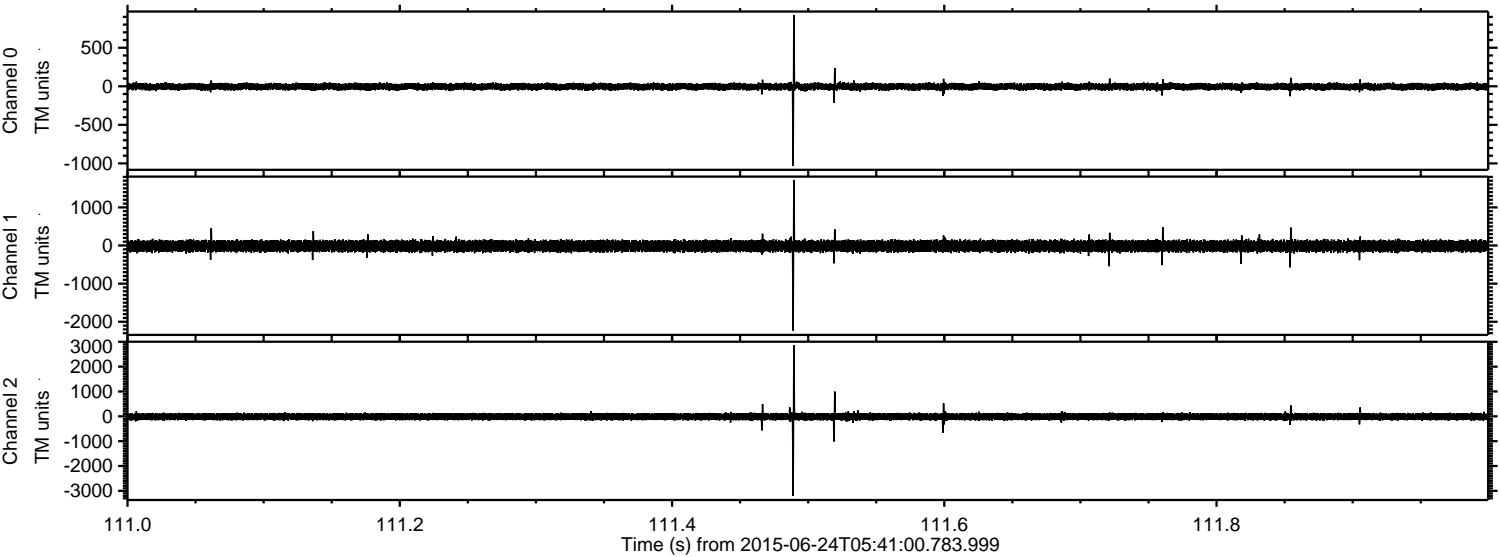
Channel 0
mn: -1210
mx: 1188
 μ : -5.0
 σ : 22.9

Channel 1
mn: -723
mx: 551
 μ : -14.2
 σ : 74.8

Channel 2
mn: -3607
mx: 3856
 μ : -14.5
 σ : 79.2

ELMAVAN 3D WAVEFORMS (Measured data sampled at 50 kHz) 51000 packets of 144 samples from 2015-06-24T05:41:00.783.999. Part 112/147

Processed Wed Jun 24 07:47:49 2015 by ELM ver.2012-10-06 from 001__elm20150624_054059__dat00.bin



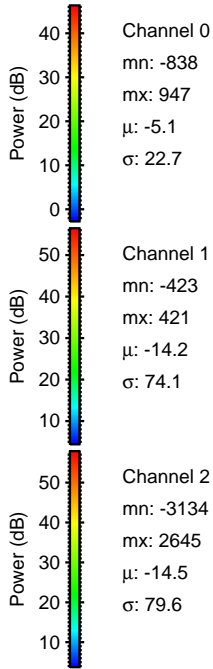
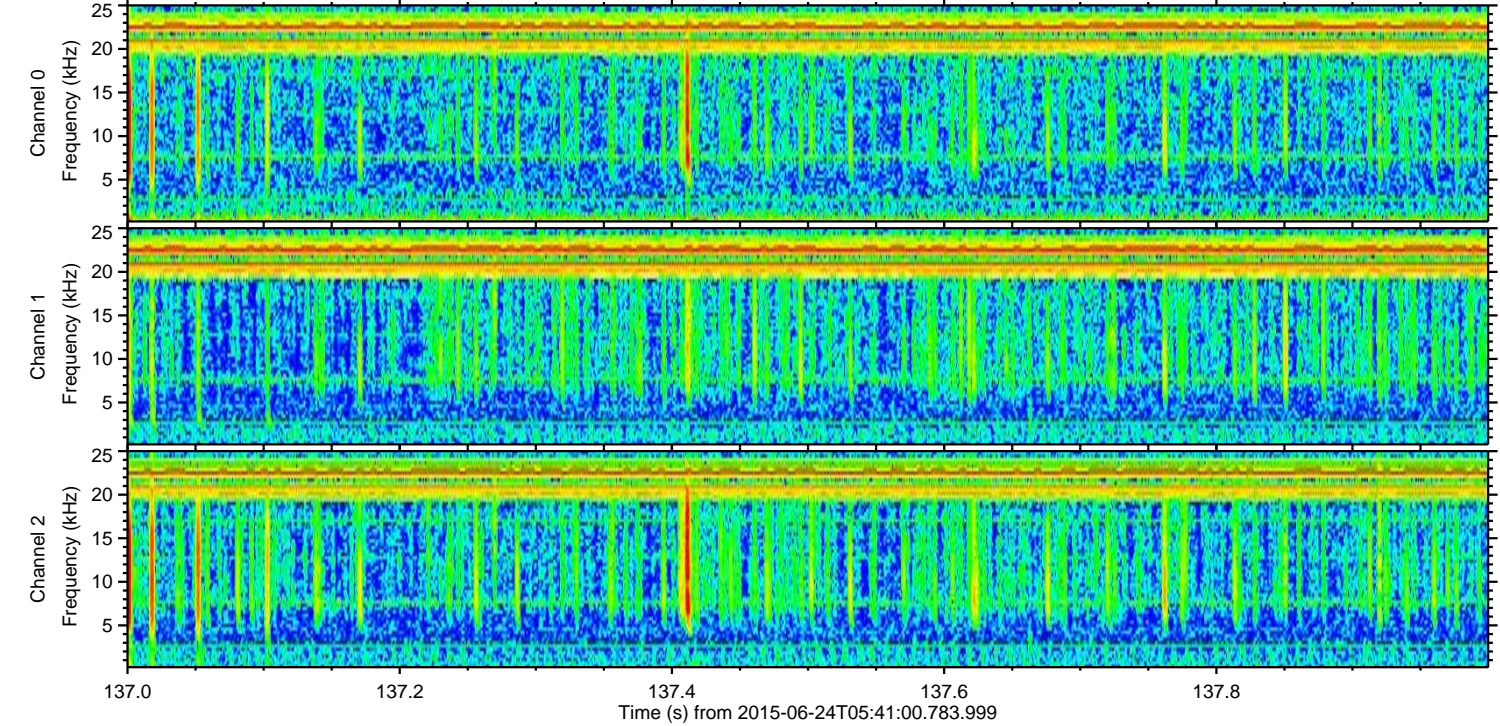
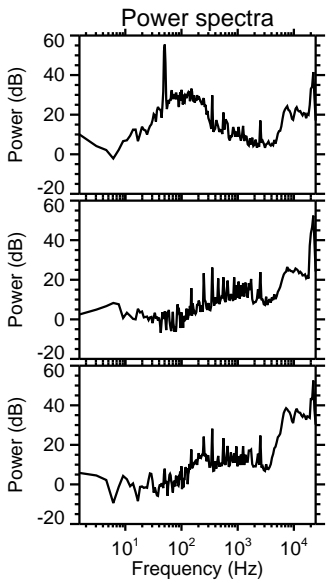
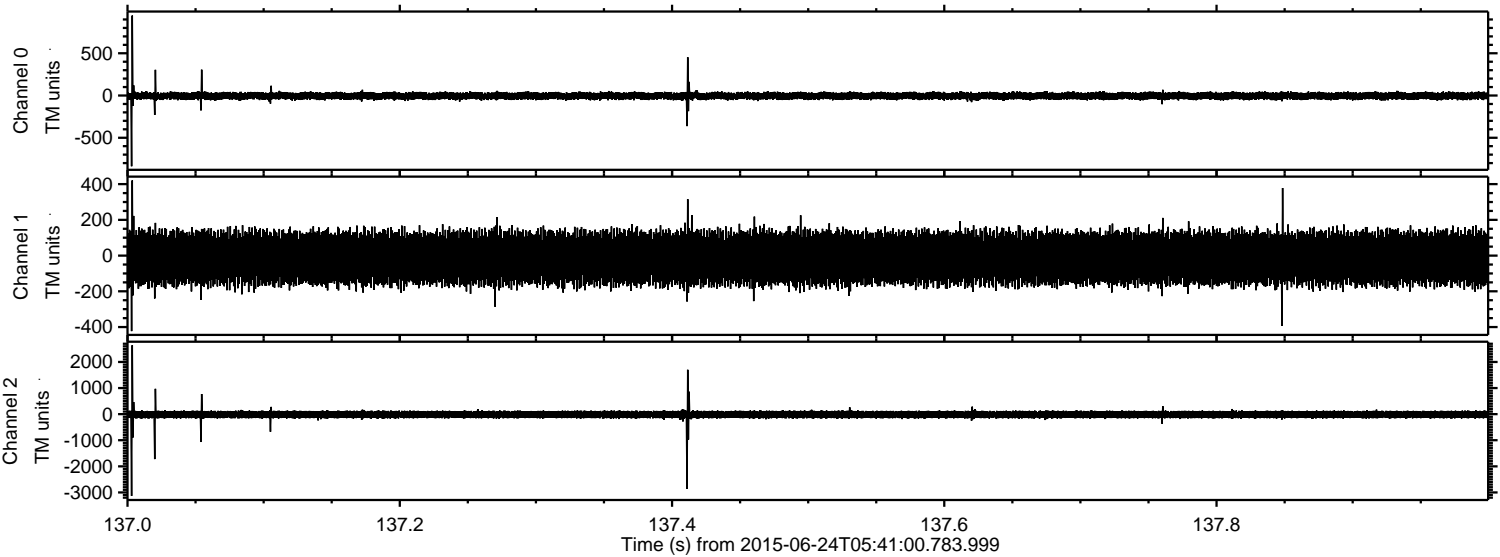
Channel 0
mn: -1032
mx: 923
 μ : -5.1
 σ : 22.9

Channel 1
mn: -2233
mx: 1721
 μ : -14.2
 σ : 77.1

Channel 2
mn: -3208
mx: 2860
 μ : -14.5
 σ : 77.5

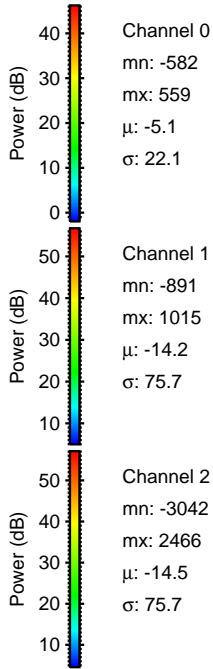
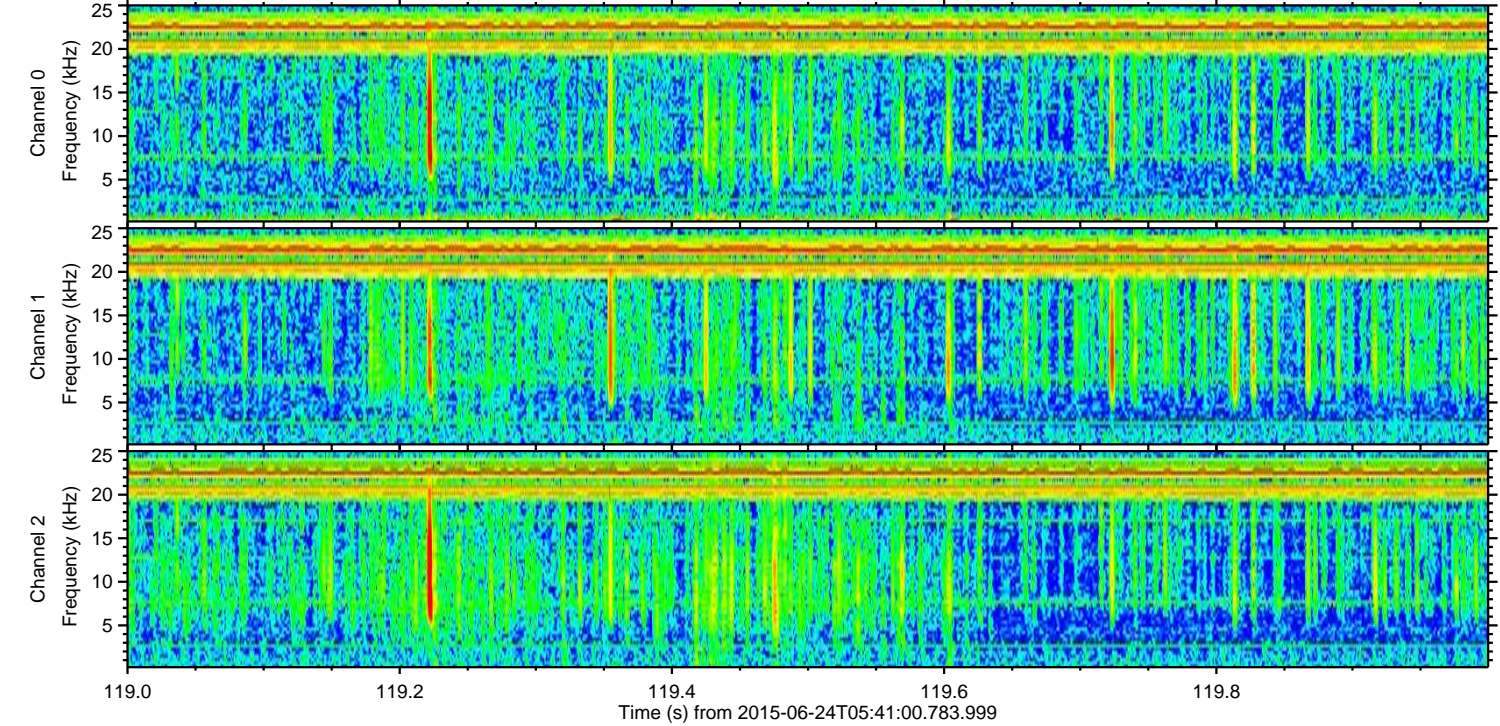
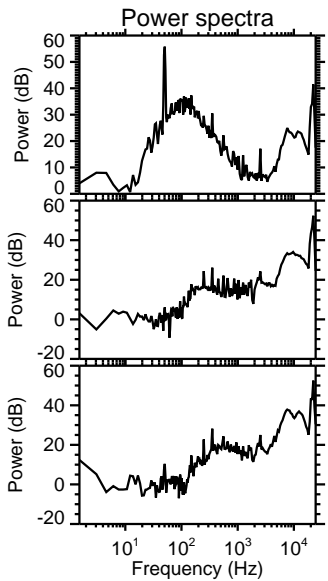
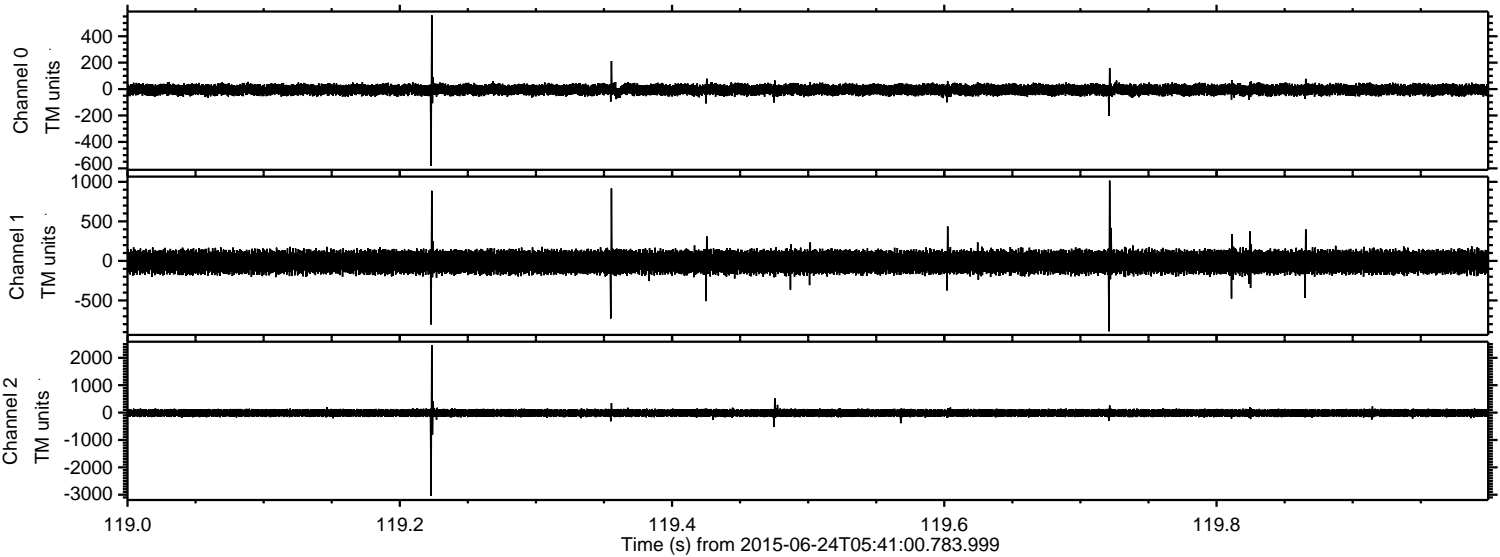
ELMAVAN 3D WAVEFORMS (Measured data sampled at 50 kHz) 51000 packets of 144 samples from 2015-06-24T05:41:00.783.999. Part 138/147

Processed Wed Jun 24 07:47:50 2015 by ELM ver.2012-10-06 from 001__elm20150624_054059__dat00.bin



ELMAVAN 3D WAVEFORMS (Measured data sampled at 50 kHz) 51000 packets of 144 samples from 2015-06-24T05:41:00.783.999. Part 120/147

Processed Wed Jun 24 07:47:51 2015 by ELM ver.2012-10-06 from 001__elm20150624_054059__dat00.bin



Channel 0
mn: -582
mx: 559
 μ : -5.1
 σ : 22.1

Channel 1
mn: -891
mx: 1015
 μ : -14.2
 σ : 75.7

Channel 2
mn: -3042
mx: 2466
 μ : -14.5
 σ : 75.7

Processed Wed Jun 24 07:47:52 2015 by ELM ver.2012-10-06 from 001__elm20150624_054059__dat00.bin

