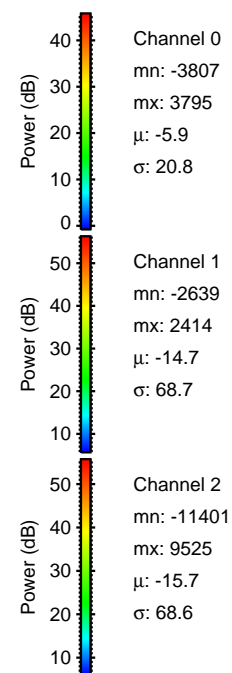
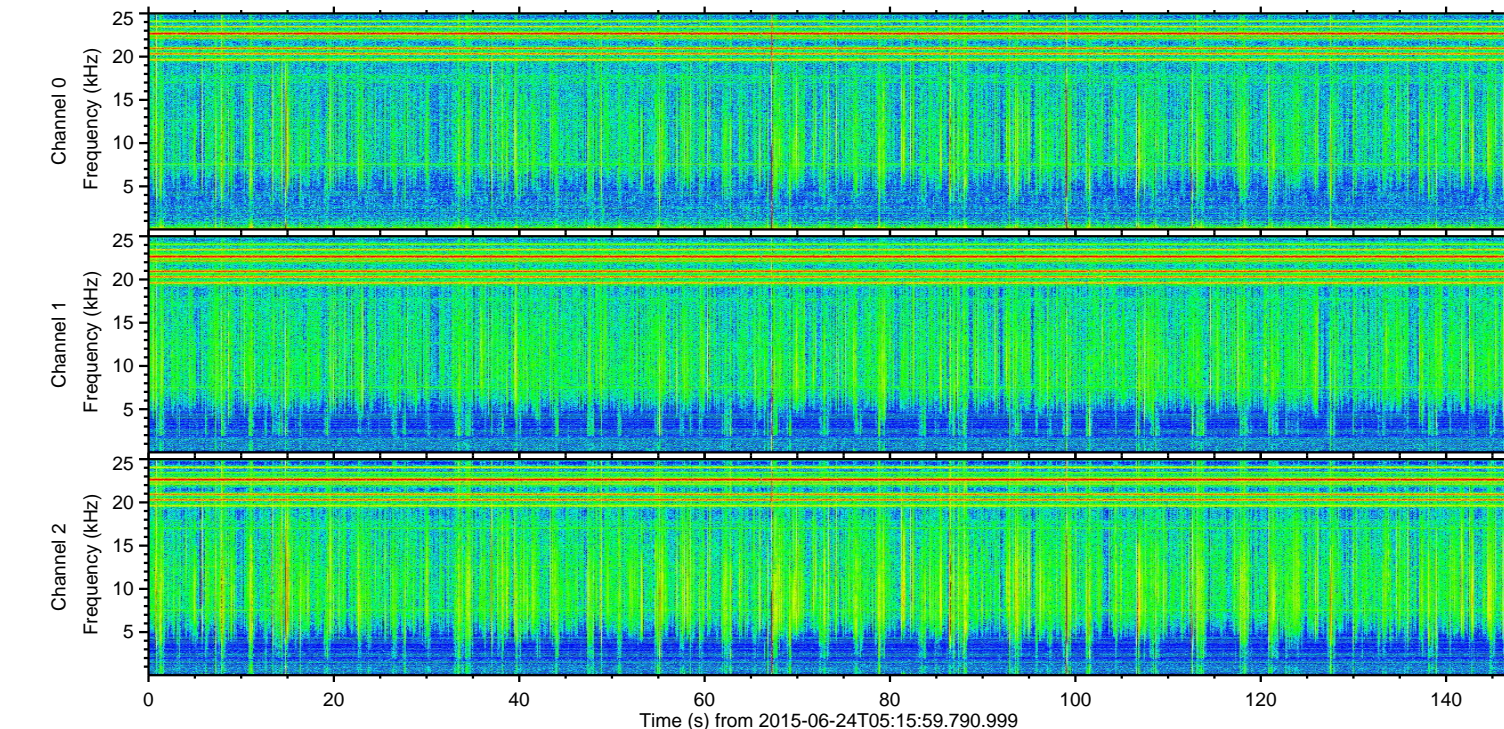
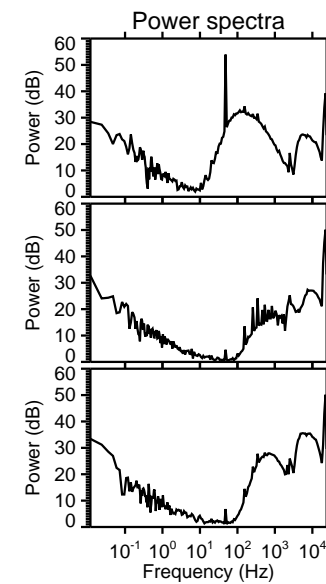
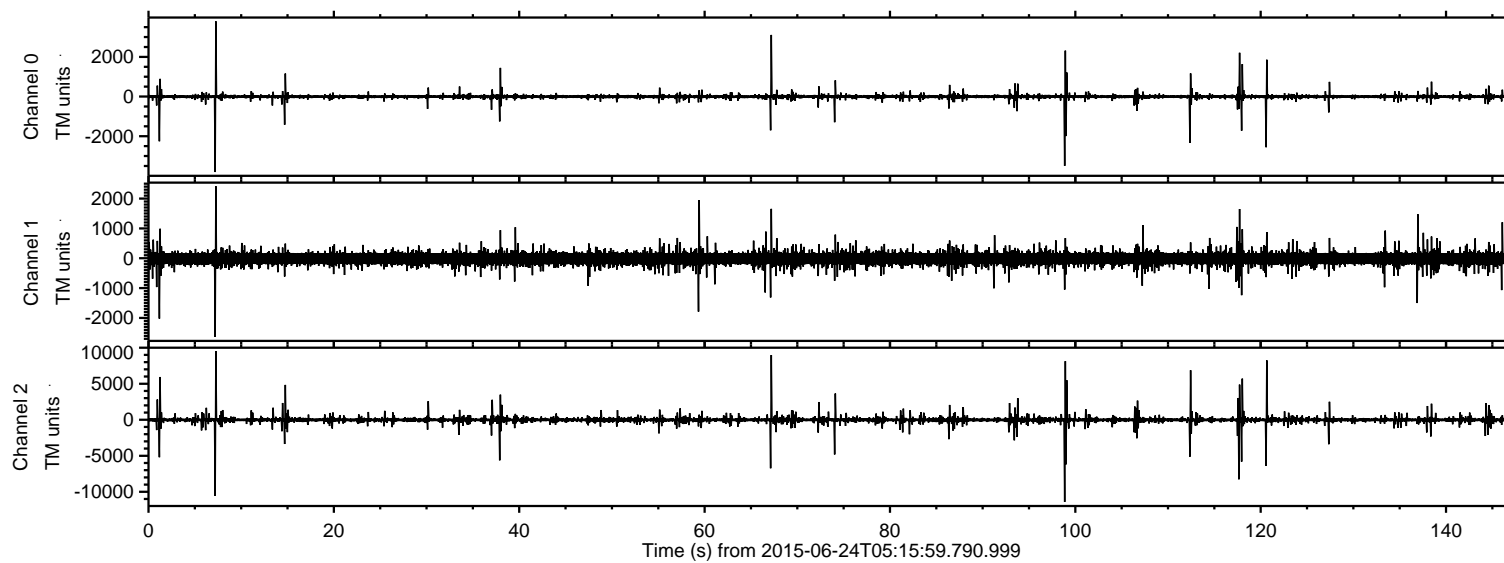


# ELMAVAN 3D WAVEFORMS (Measured data sampled at 50 kHz) 51000 packets of 144 samples from 2015-06-24T05:15:59.790.999.

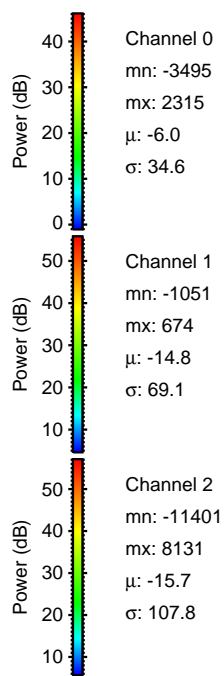
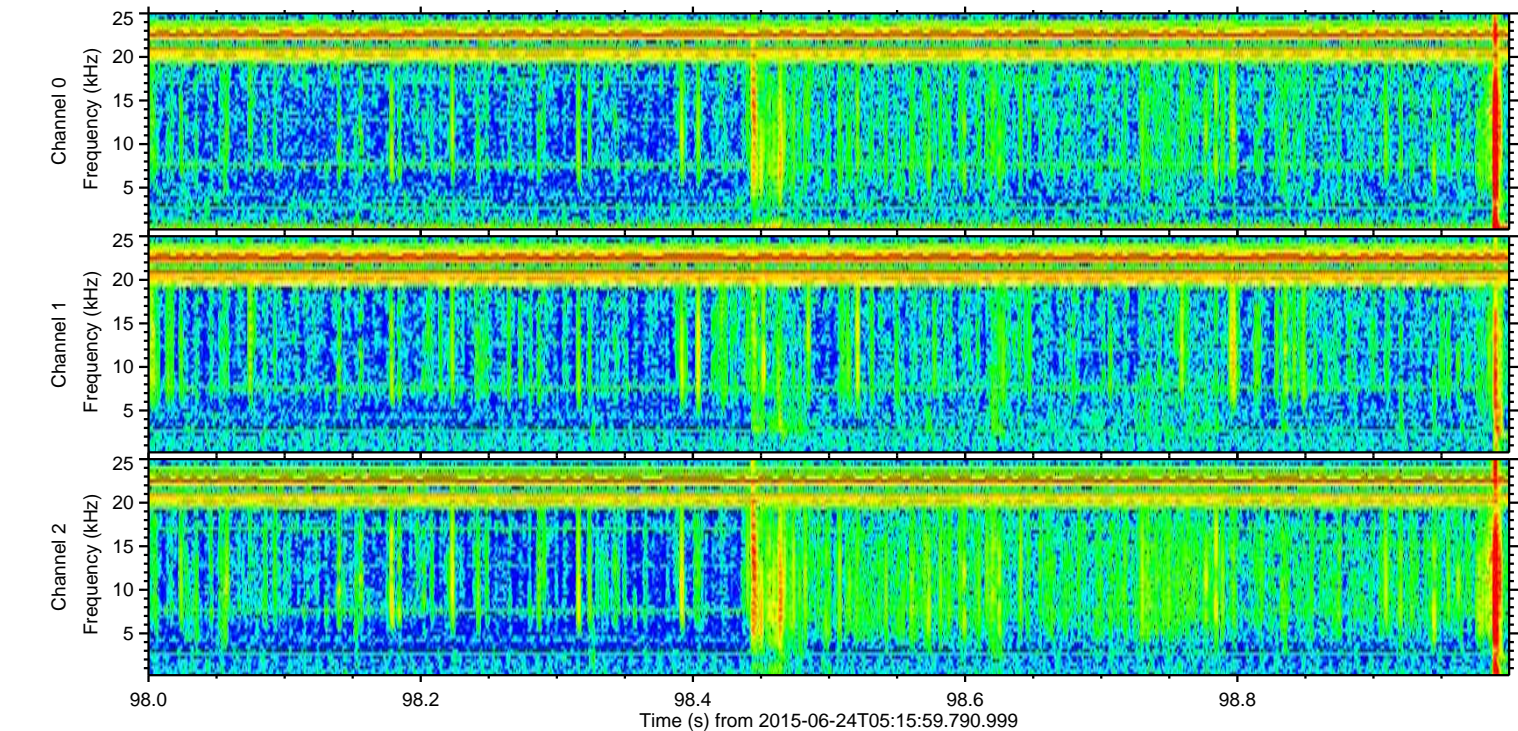
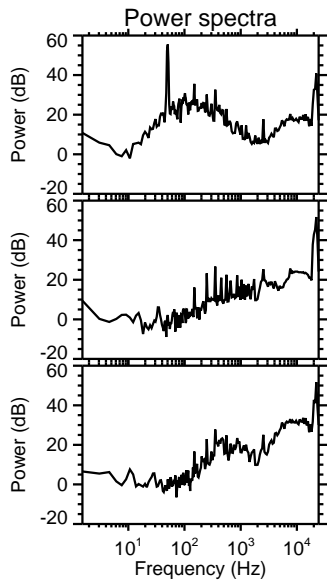
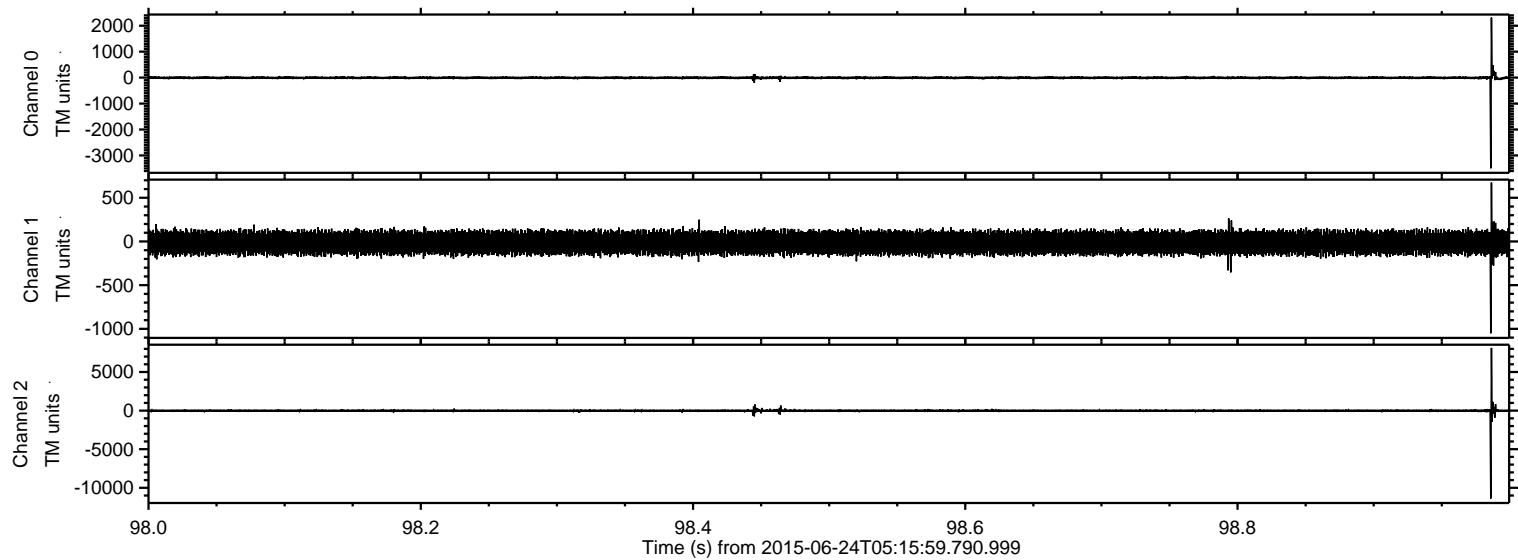
Processed Wed Jun 24 07:22:17 2015 by ELM ver.2012-10-06 from 001\_\_elm20150624\_051558\_\_dat00.bin





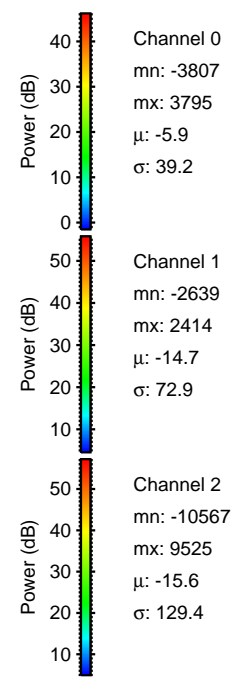
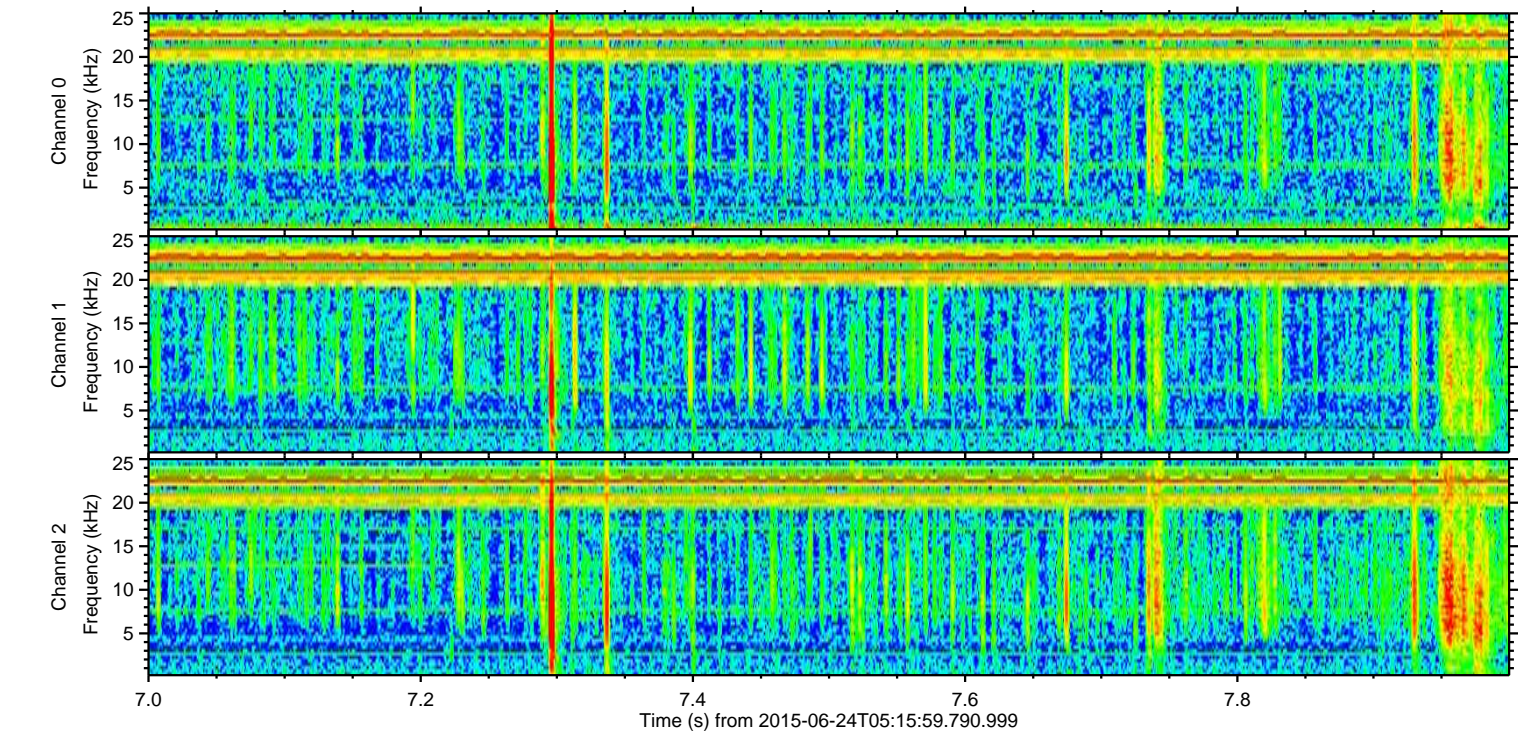
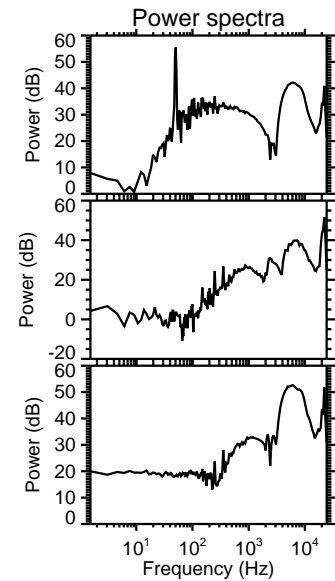
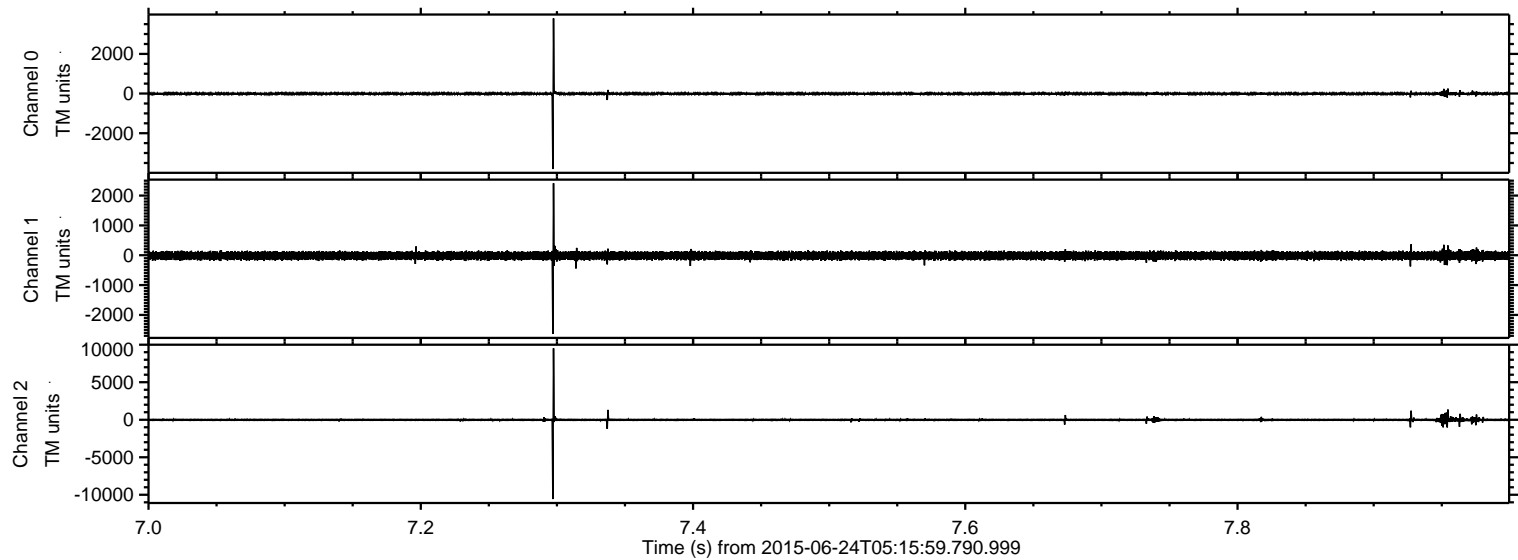
ELMAVAN 3D WAVEFORMS (Measured data sampled at 50 kHz) 51000 packets of 144 samples from 2015-06-24T05:15:59.790.999. Part 99/147

Processed Wed Jun 24 07:22:34 2015 by ELM ver.2012-10-06 from 001\_\_elm20150624\_051558\_\_dat00.bin



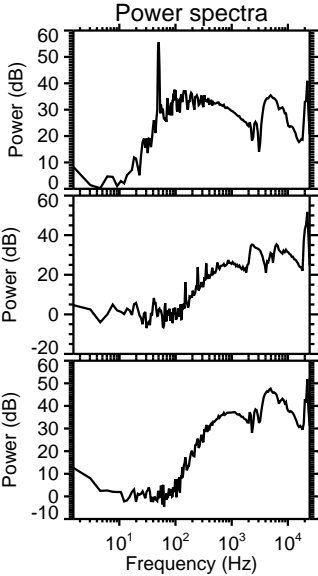
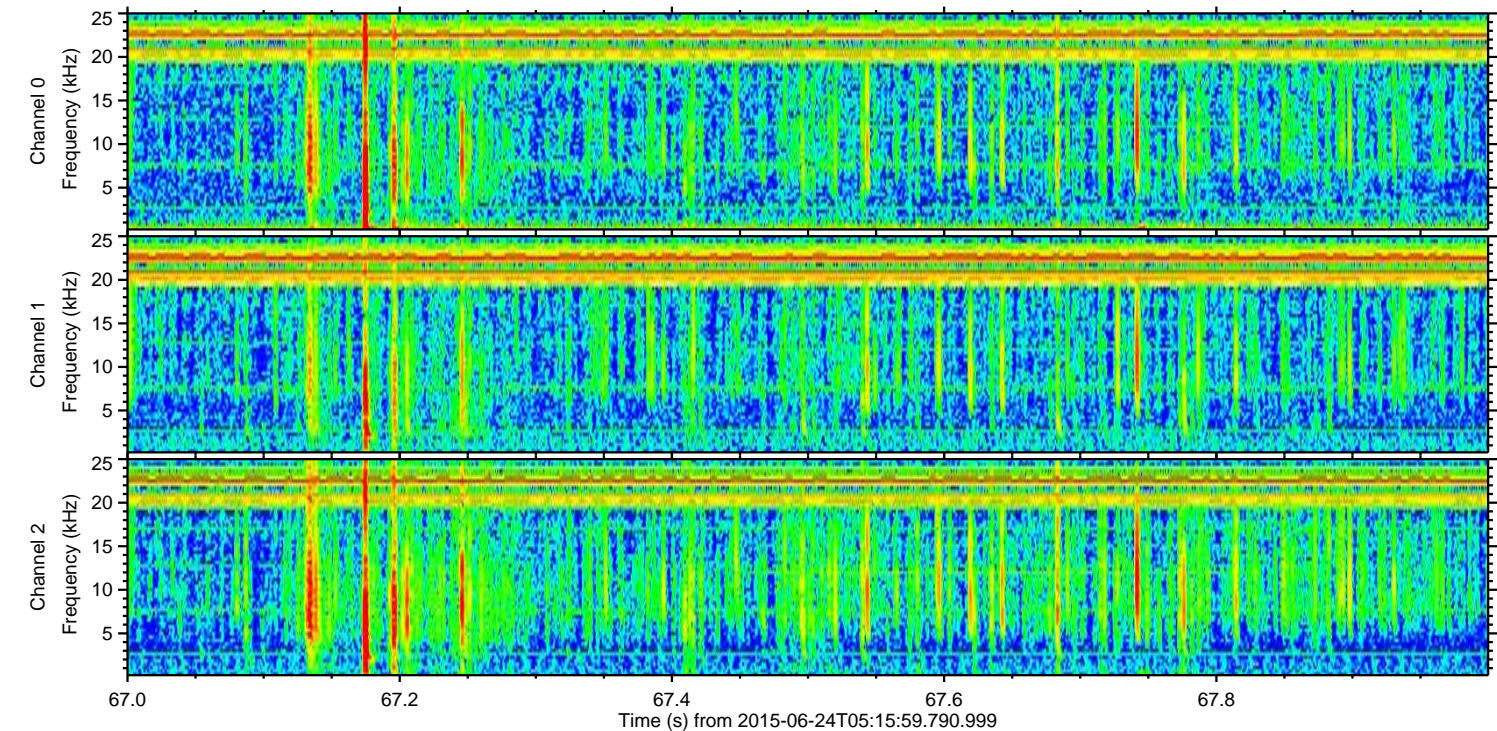
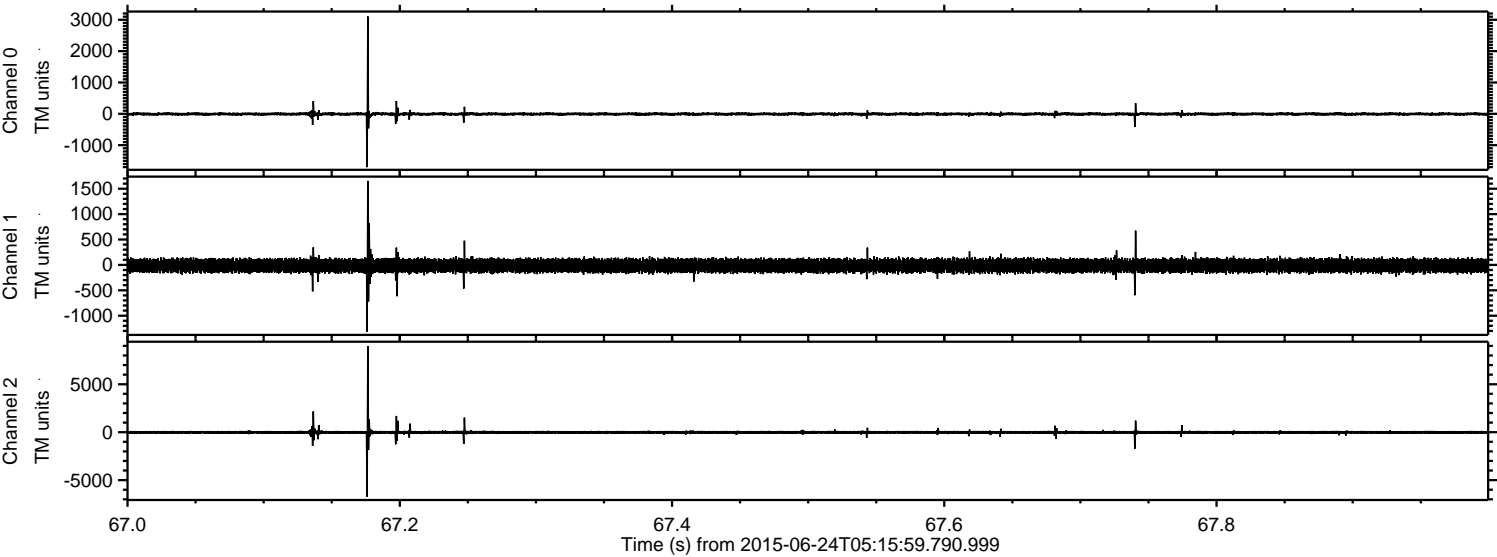


Processed Wed Jun 24 07:22:35 2015 by ELM ver.2012-10-06 from 001\_\_elm20150624\_051558\_\_dat00.bin





Processed Wed Jun 24 07:22:36 2015 by ELM ver.2012-10-06 from 001\_\_elm20150624\_051558\_\_dat00.bin



Channel 0  
mn: -1701  
mx: 3108  
 $\mu$ : -5.9  
 $\sigma$ : 32.2

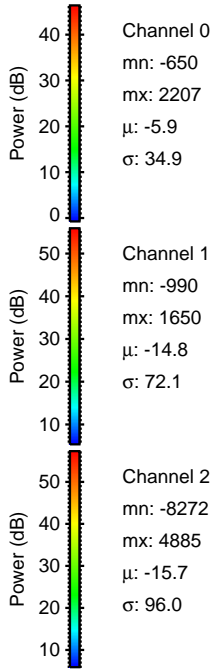
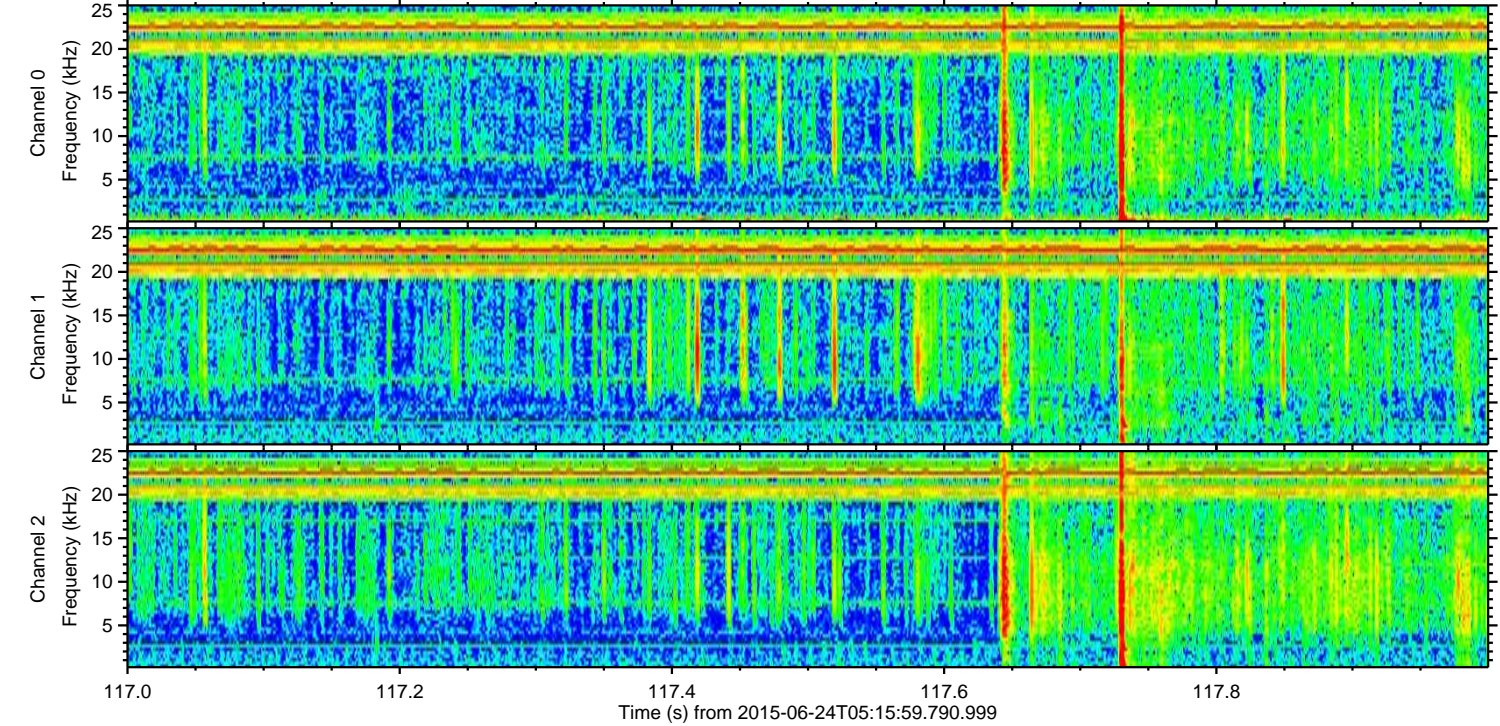
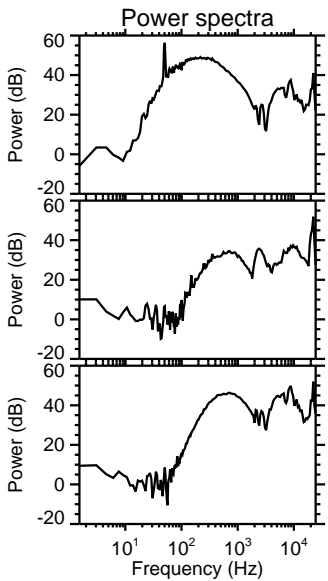
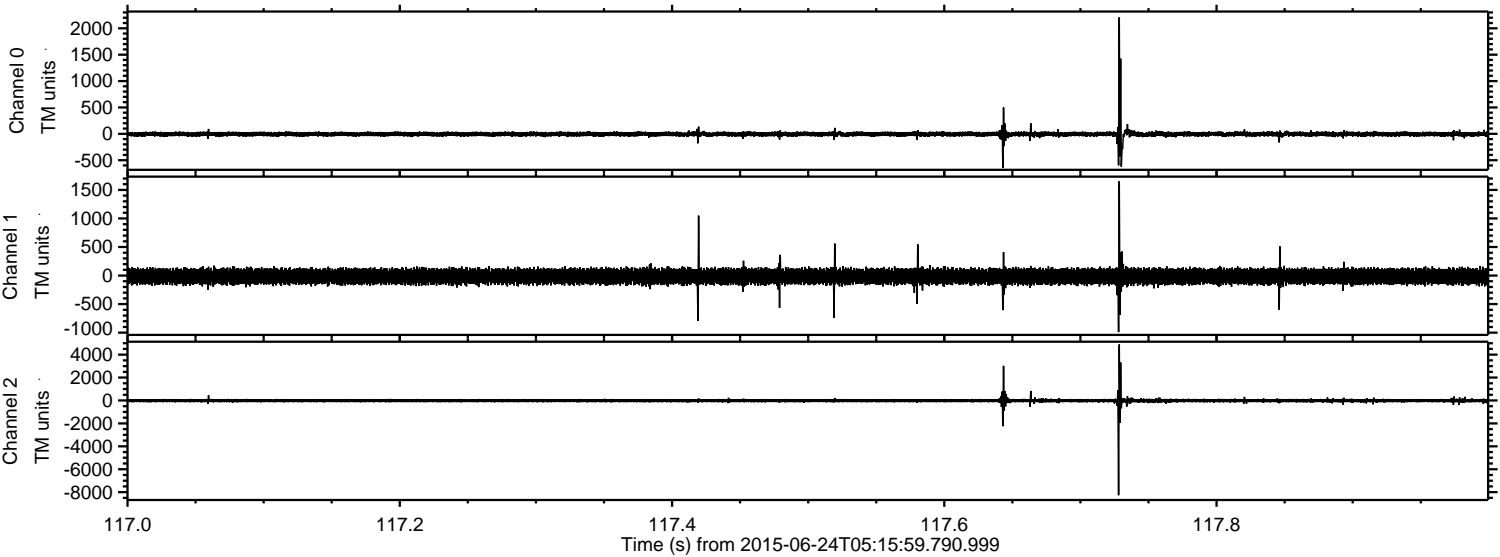
Channel 1  
mn: -1313  
mx: 1655  
 $\mu$ : -14.8  
 $\sigma$ : 72.3

Channel 2  
mn: -6735  
mx: 8985  
 $\mu$ : -15.7  
 $\sigma$ : 113.7



ELMAVAN 3D WAVEFORMS (Measured data sampled at 50 kHz) 51000 packets of 144 samples from 2015-06-24T05:15:59.790.999. Part 118/147

Processed Wed Jun 24 07:22:37 2015 by ELM ver.2012-10-06 from 001\_\_elm20150624\_051558\_\_dat00.bin



Channel 0  
mn: -650  
mx: 2207  
 $\mu$ : -5.9  
 $\sigma$ : 34.9

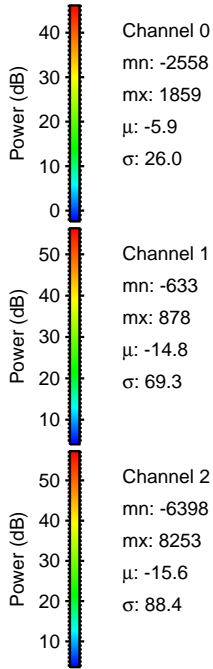
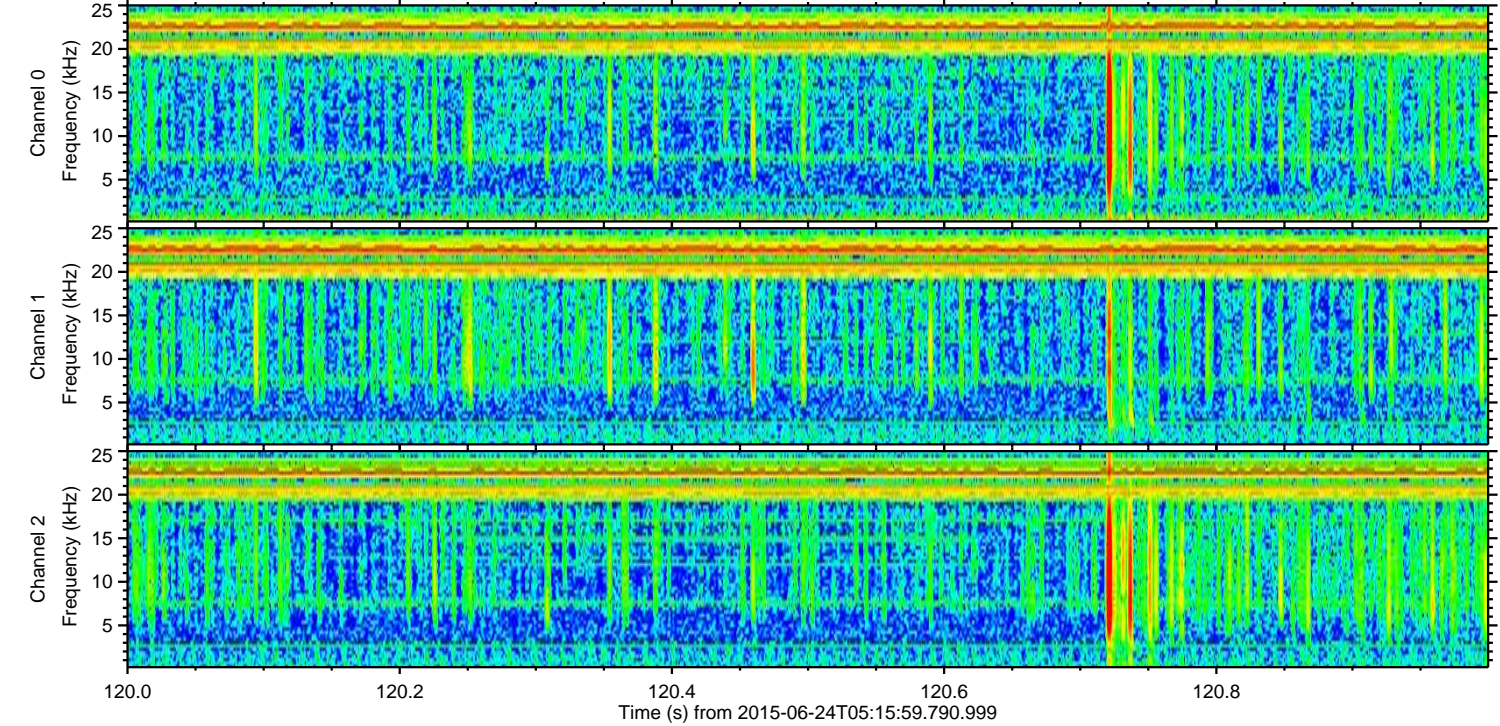
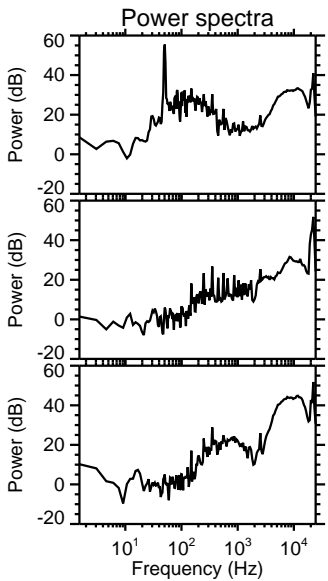
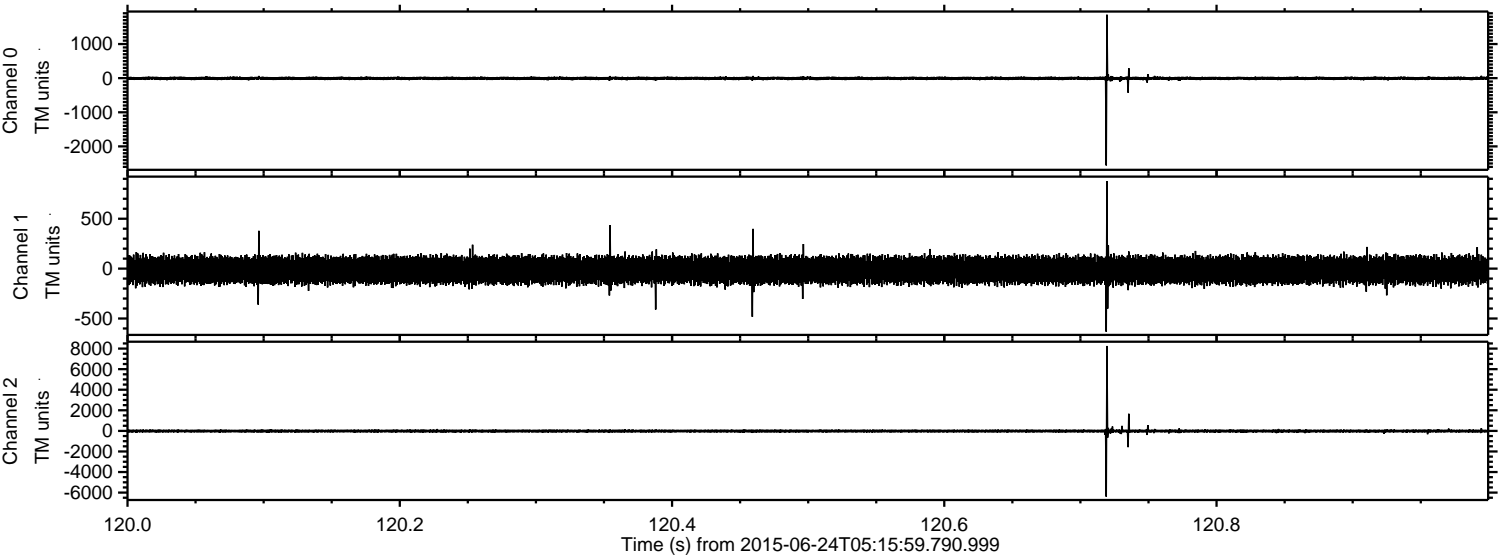
Channel 1  
mn: -990  
mx: 1650  
 $\mu$ : -14.8  
 $\sigma$ : 72.1

Channel 2  
mn: -8272  
mx: 4885  
 $\mu$ : -15.7  
 $\sigma$ : 96.0



ELMAVAN 3D WAVEFORMS (Measured data sampled at 50 kHz) 51000 packets of 144 samples from 2015-06-24T05:15:59.790.999. Part 121/147

Processed Wed Jun 24 07:22:38 2015 by ELM ver.2012-10-06 from 001\_\_elm20150624\_051558\_\_dat00.bin



Channel 0  
mn: -2558  
mx: 1859  
 $\mu$ : -5.9  
 $\sigma$ : 26.0

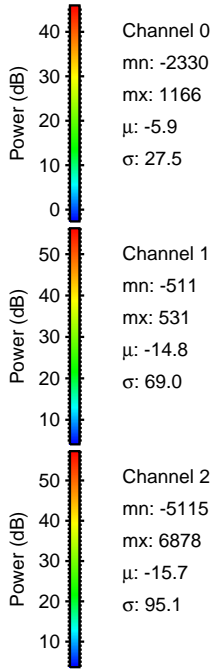
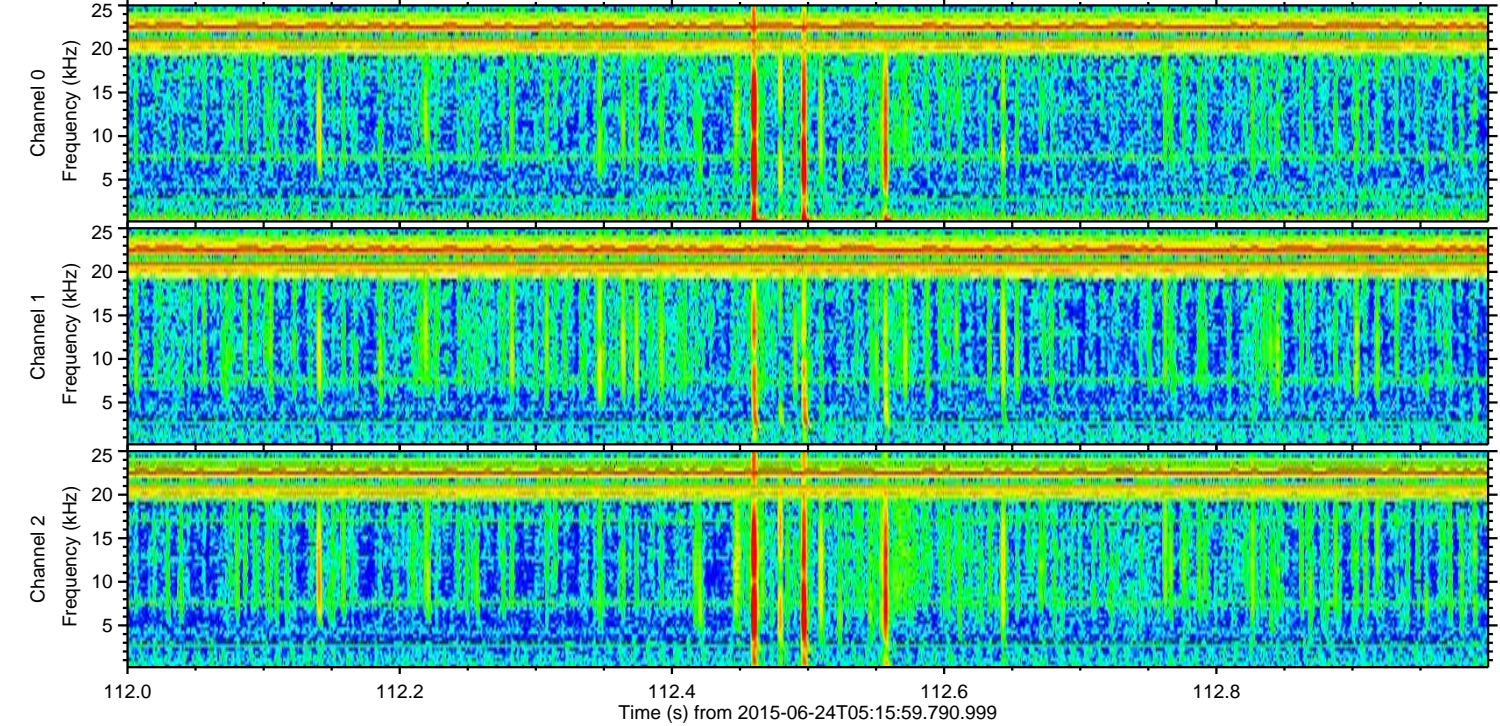
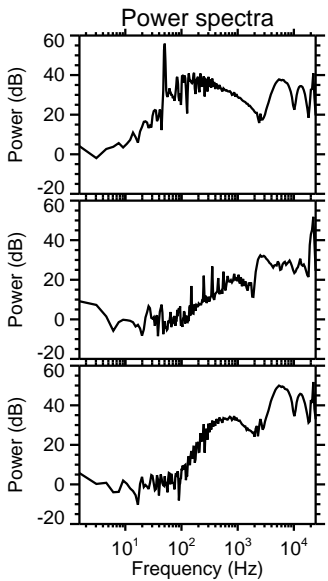
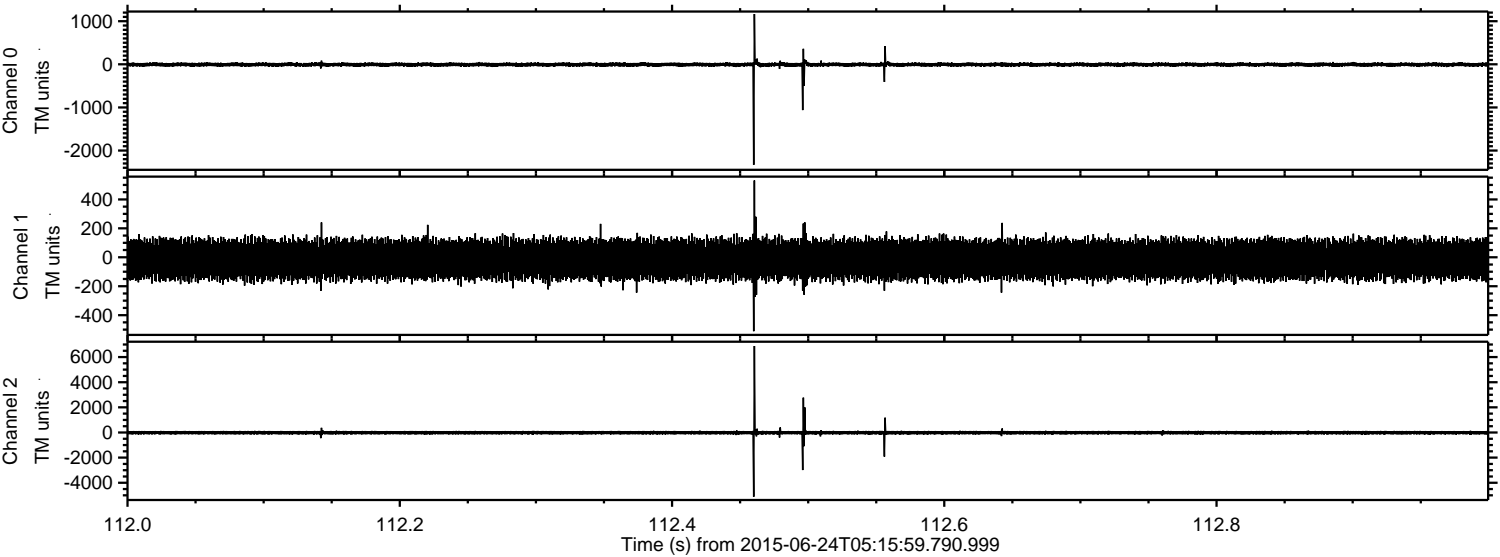
Channel 1  
mn: -633  
mx: 878  
 $\mu$ : -14.8  
 $\sigma$ : 69.3

Channel 2  
mn: -6398  
mx: 8253  
 $\mu$ : -15.6  
 $\sigma$ : 88.4



ELMAVAN 3D WAVEFORMS (Measured data sampled at 50 kHz) 51000 packets of 144 samples from 2015-06-24T05:15:59.790.999. Part 113/147

Processed Wed Jun 24 07:22:39 2015 by ELM ver.2012-10-06 from 001\_\_elm20150624\_051558\_\_dat00.bin



Channel 0  
mn: -2330  
mx: 1166  
 $\mu$ : -5.9  
 $\sigma$ : 27.5

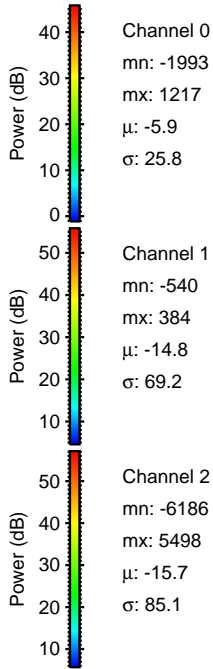
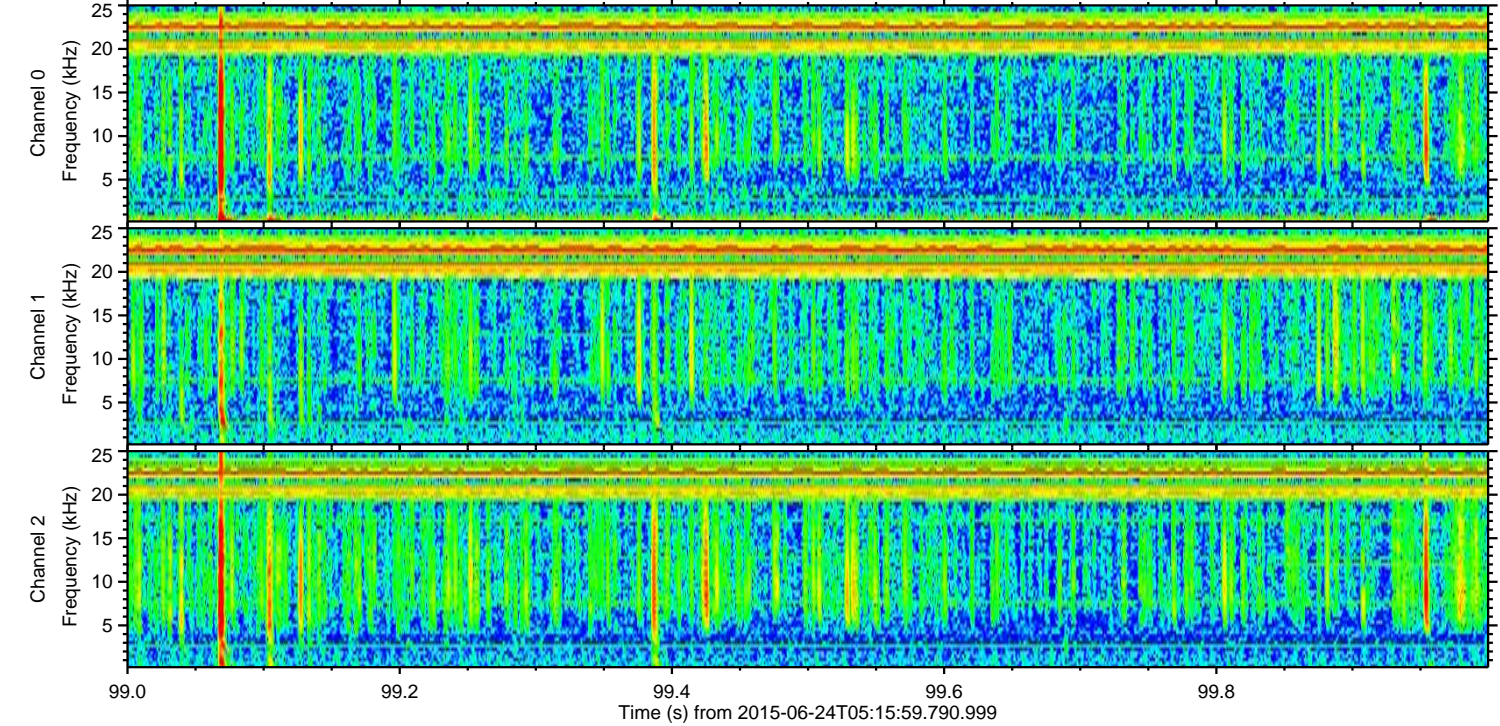
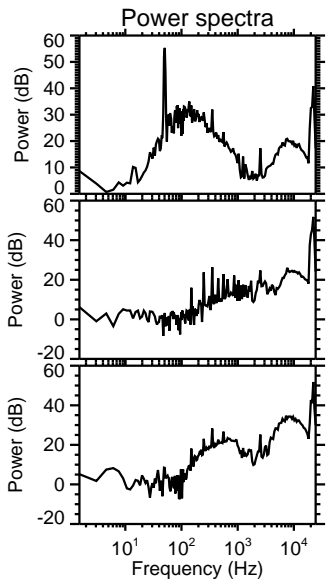
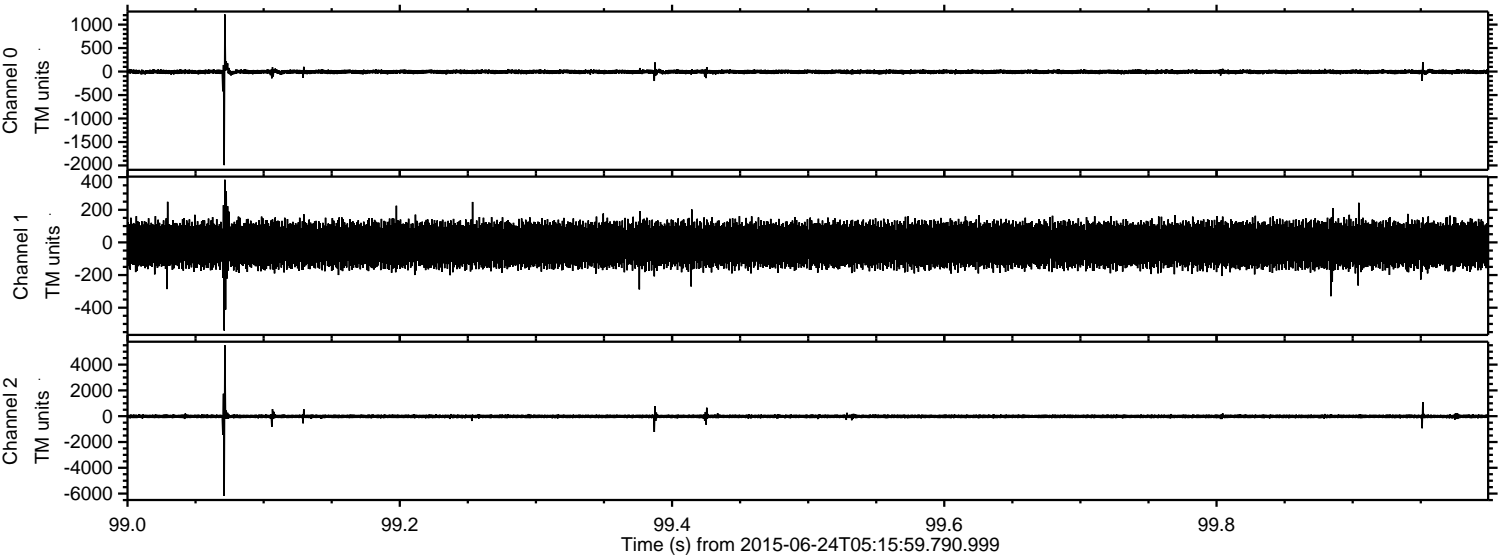
Channel 1  
mn: -511  
mx: 531  
 $\mu$ : -14.8  
 $\sigma$ : 69.0

Channel 2  
mn: -5115  
mx: 6878  
 $\mu$ : -15.7  
 $\sigma$ : 95.1



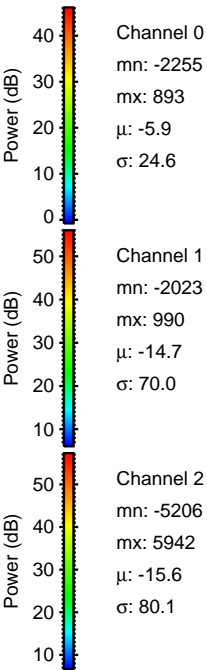
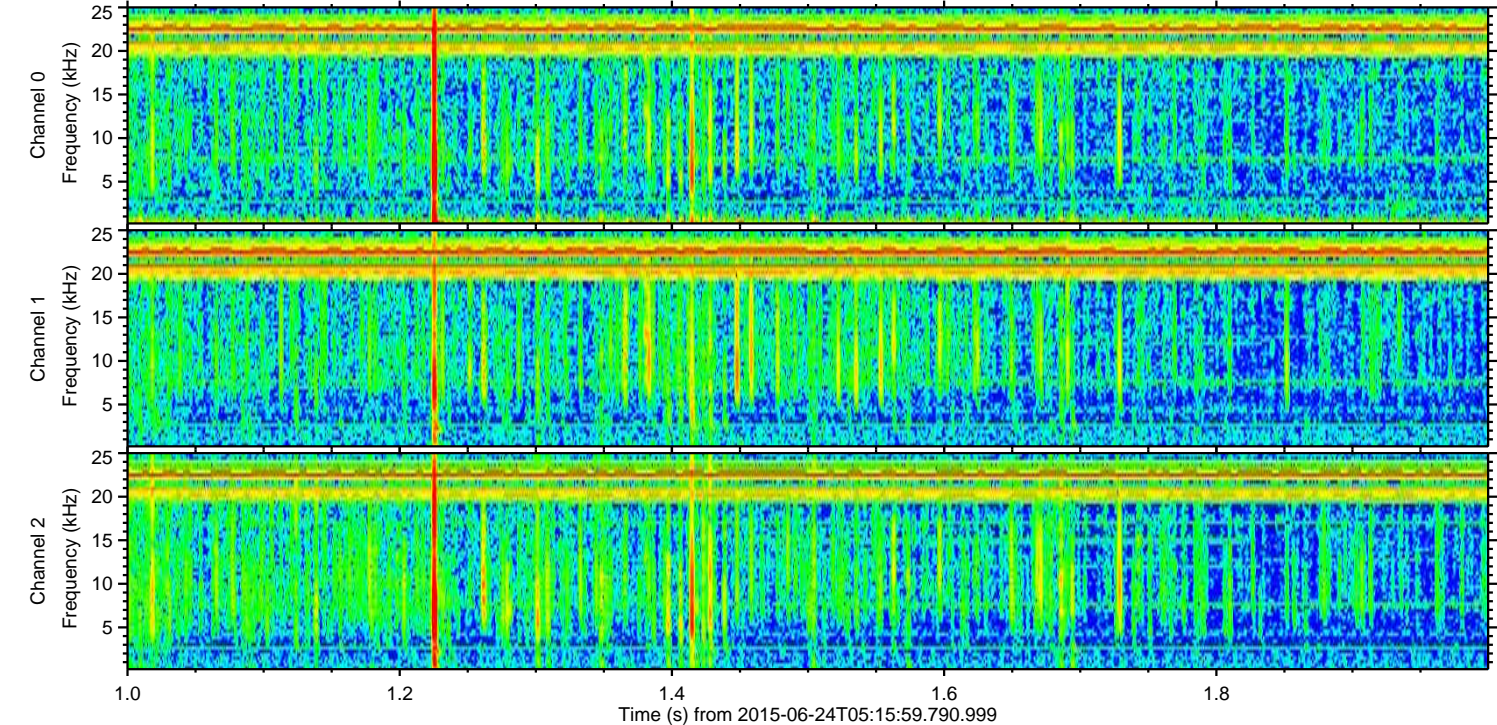
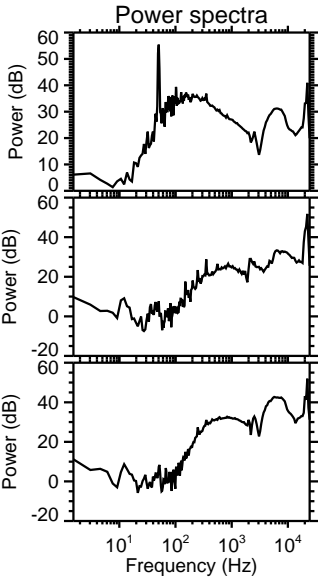
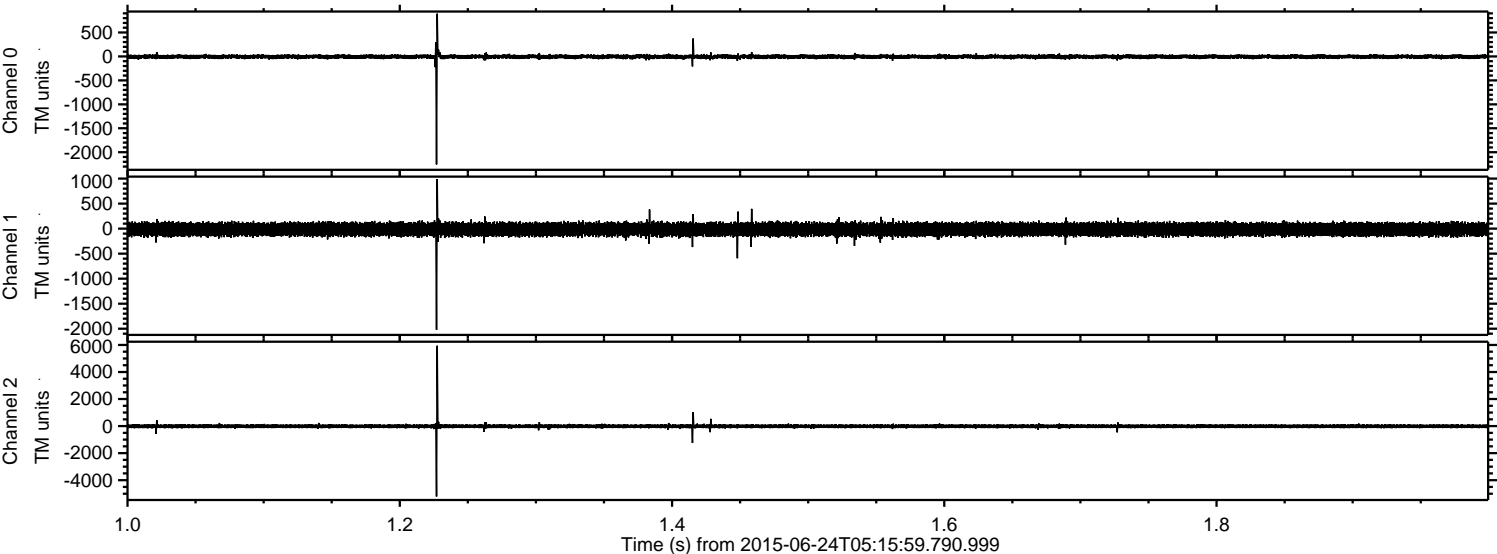
ELMAVAN 3D WAVEFORMS (Measured data sampled at 50 kHz) 51000 packets of 144 samples from 2015-06-24T05:15:59.790.999. Part 100/147

Processed Wed Jun 24 07:22:40 2015 by ELM ver.2012-10-06 from 001\_\_elm20150624\_051558\_\_dat00.bin





Processed Wed Jun 24 07:22:41 2015 by ELM ver.2012-10-06 from 001\_\_elm20150624\_051558\_\_dat00.bin





ELMAVAN 3D WAVEFORMS (Measured data sampled at 50 kHz) 51000 packets of 144 samples from 2015-06-24T05:15:59.790.999. Part 119/147

Processed Wed Jun 24 07:22:42 2015 by ELM ver.2012-10-06 from 001\_\_elm20150624\_051558\_\_dat00.bin

