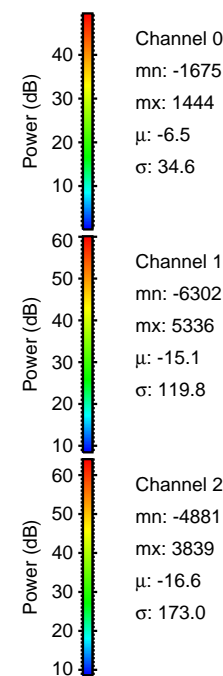
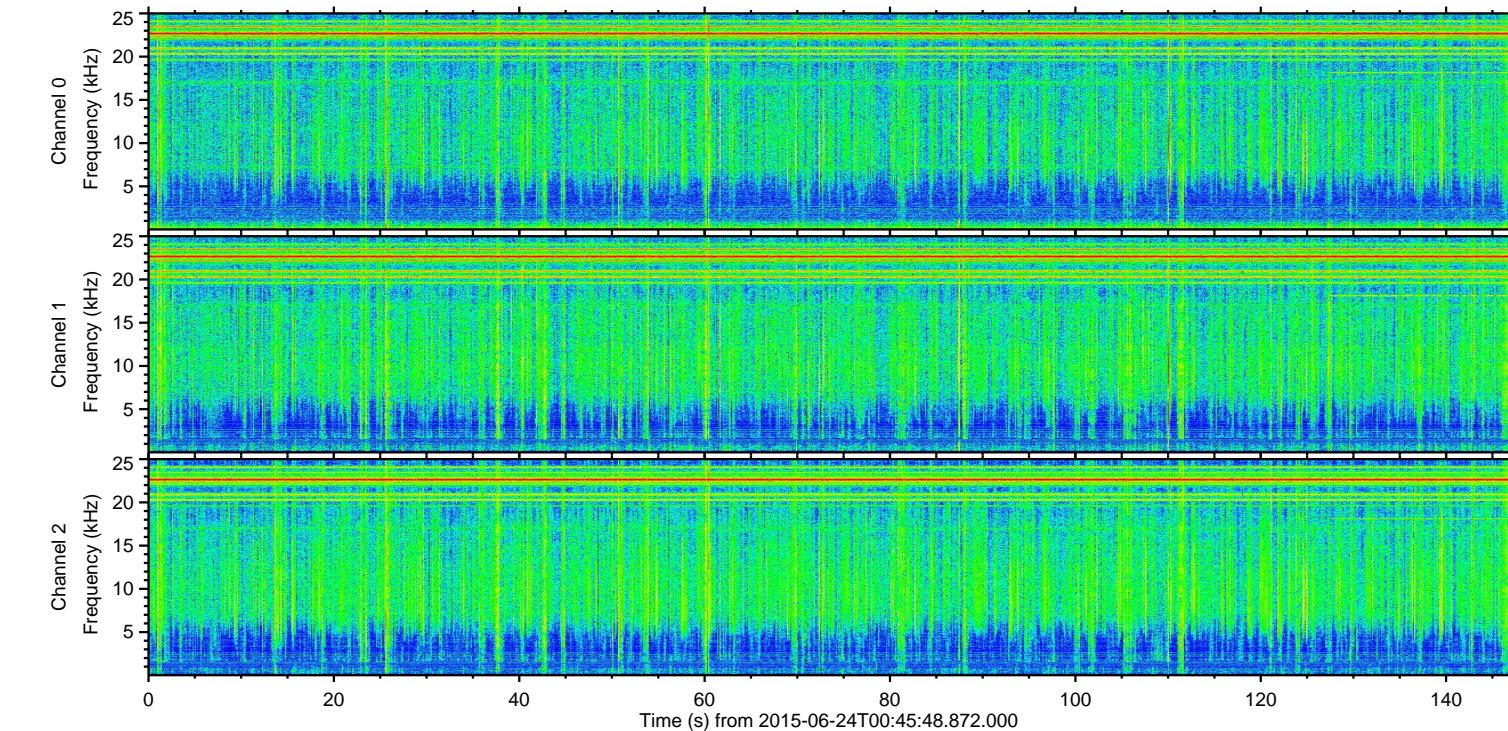
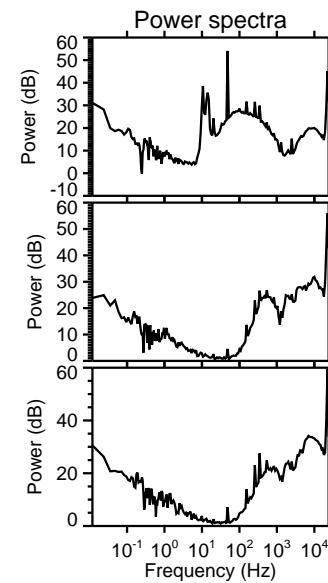
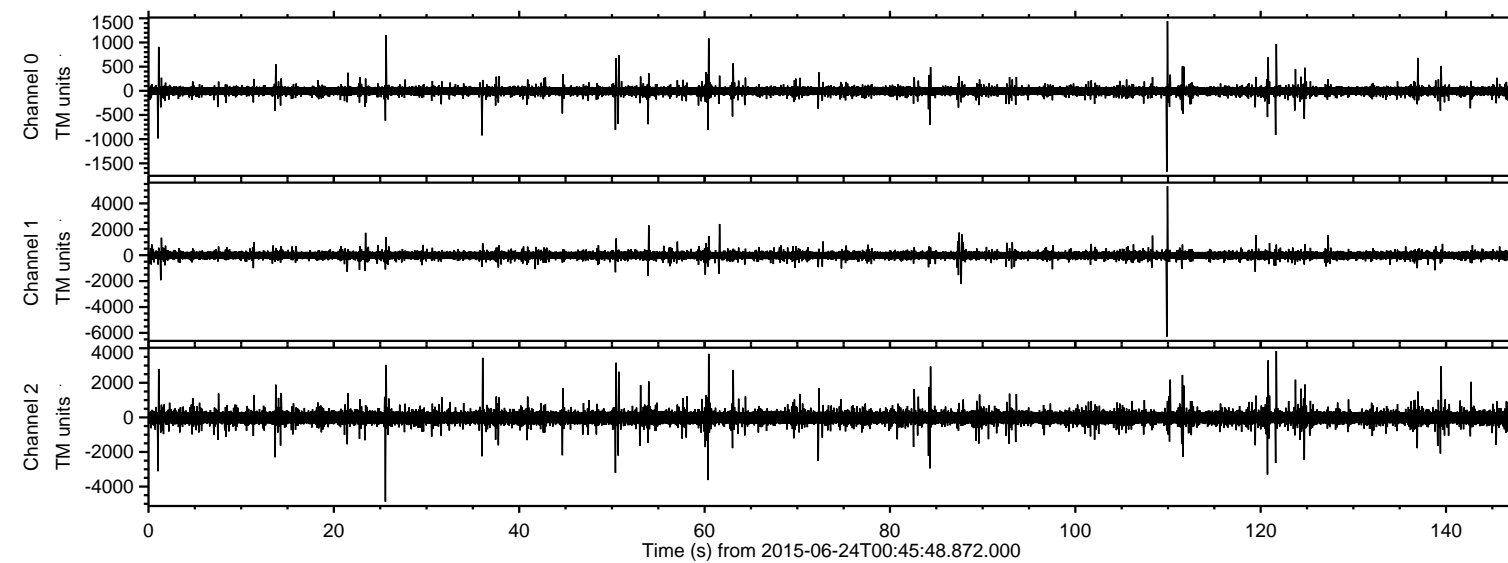


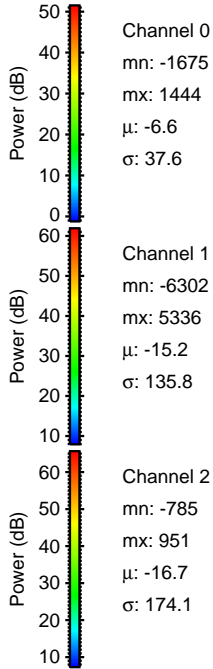
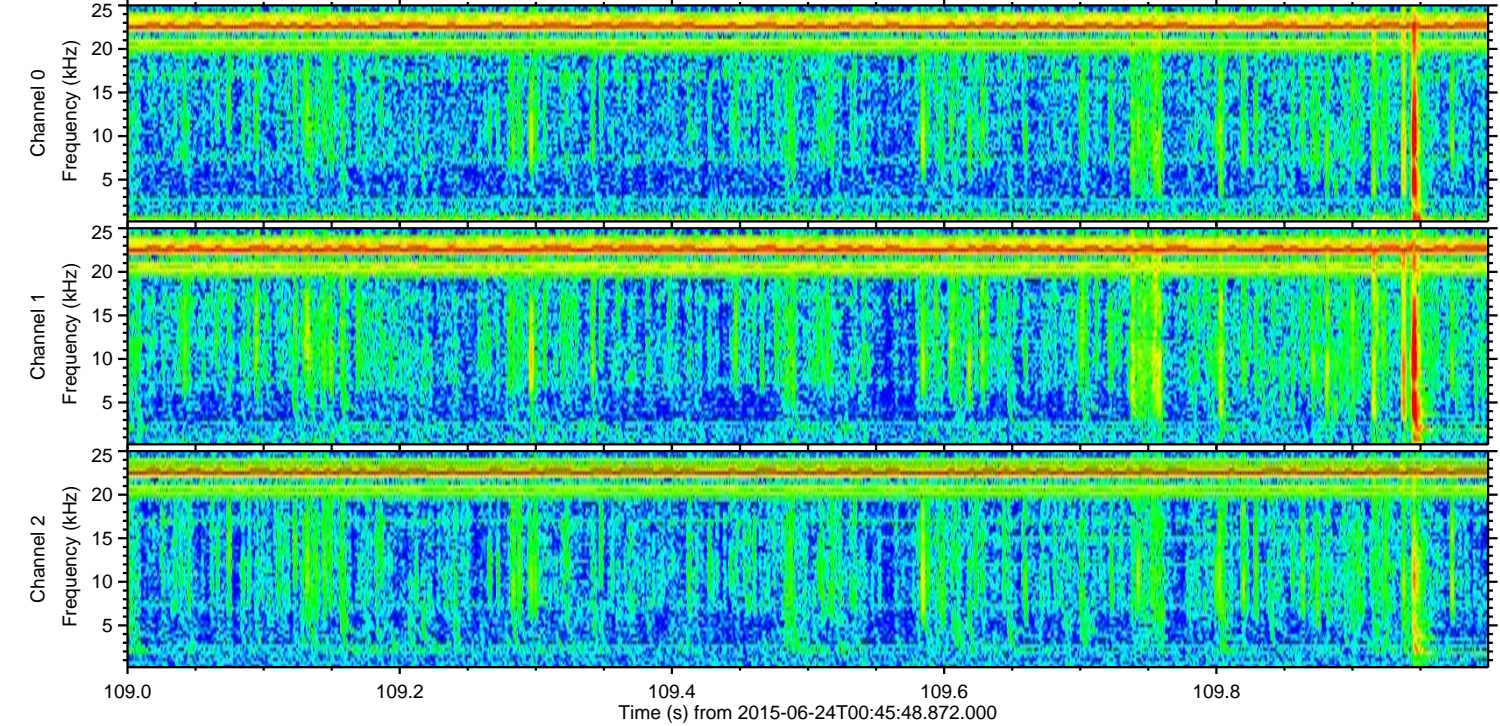
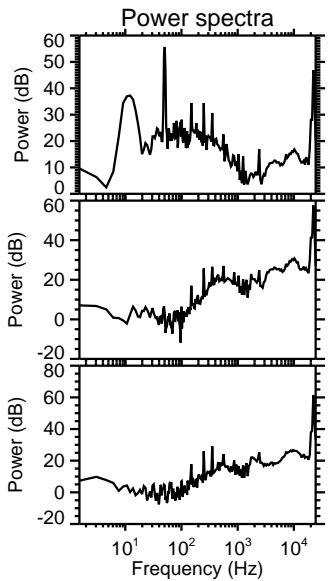
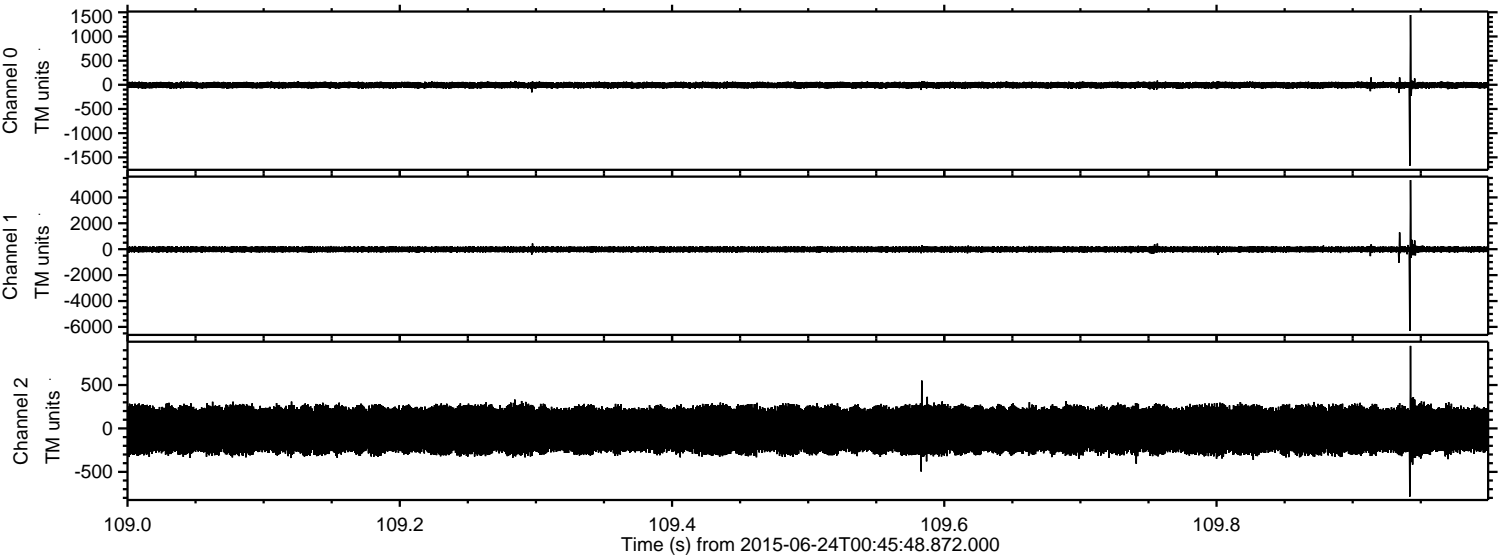
ELMAVAN 3D WAVEFORMS (Measured data sampled at 50 kHz) 51000 packets of 144 samples from 2015-06-24T00:45:48.872.000.

Processed Wed Jun 24 02:52:11 2015 by ELM ver.2012-10-06 from 001__elm20150624_004547__dat00.bin



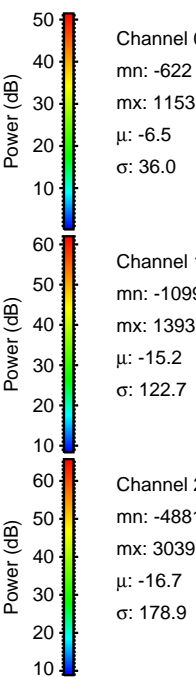
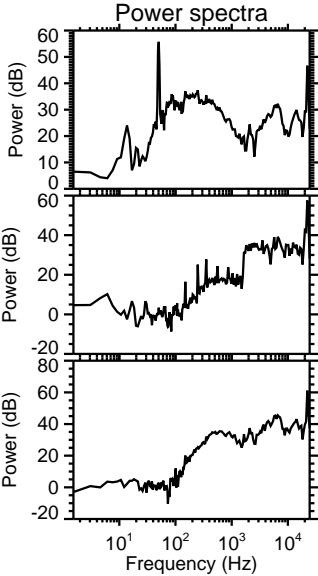
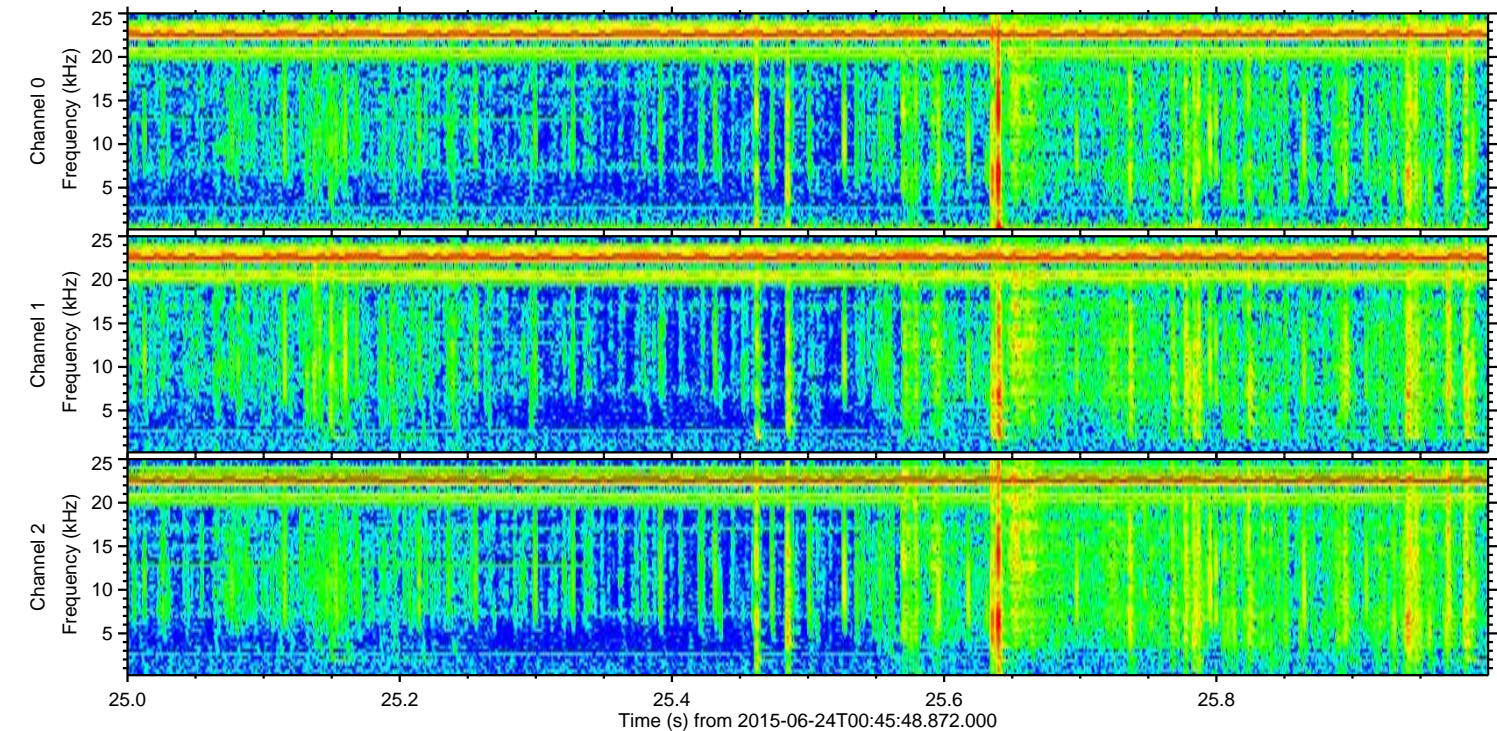
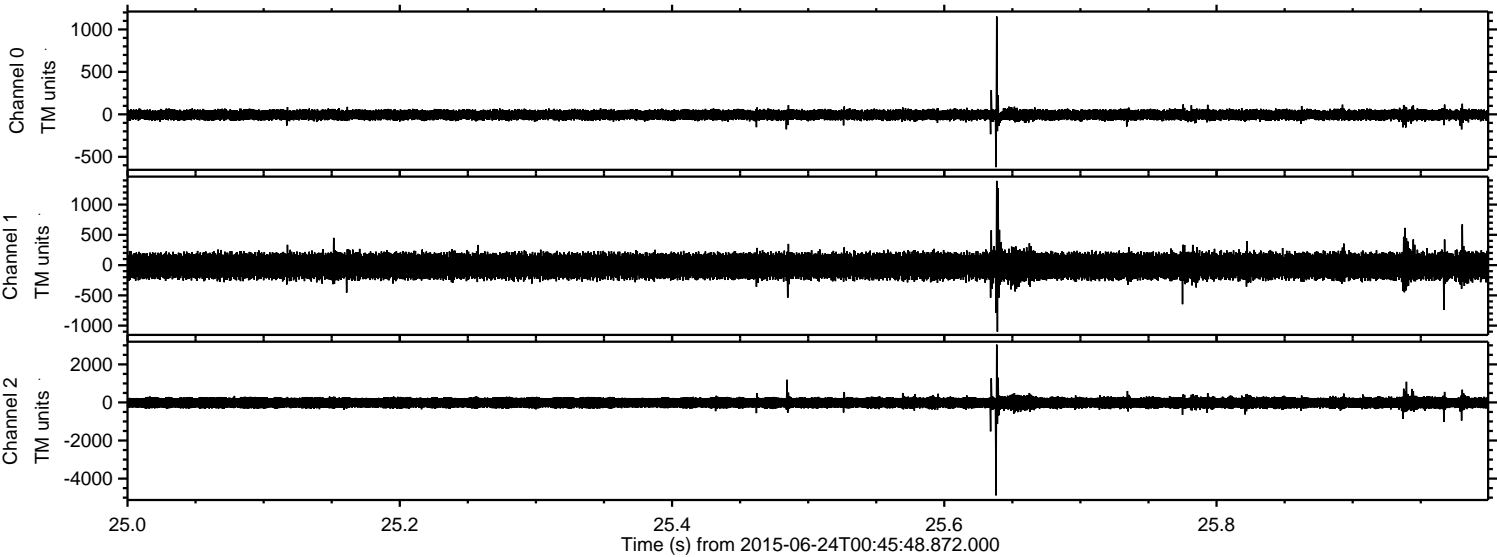
ELMAVAN 3D WAVEFORMS (Measured data sampled at 50 kHz) 51000 packets of 144 samples from 2015-06-24T00:45:48.872.000. Part 110/147

Processed Wed Jun 24 02:52:26 2015 by ELM ver.2012-10-06 from 001__elm20150624_004547__dat00.bin



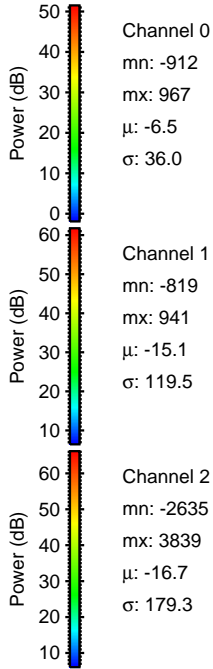
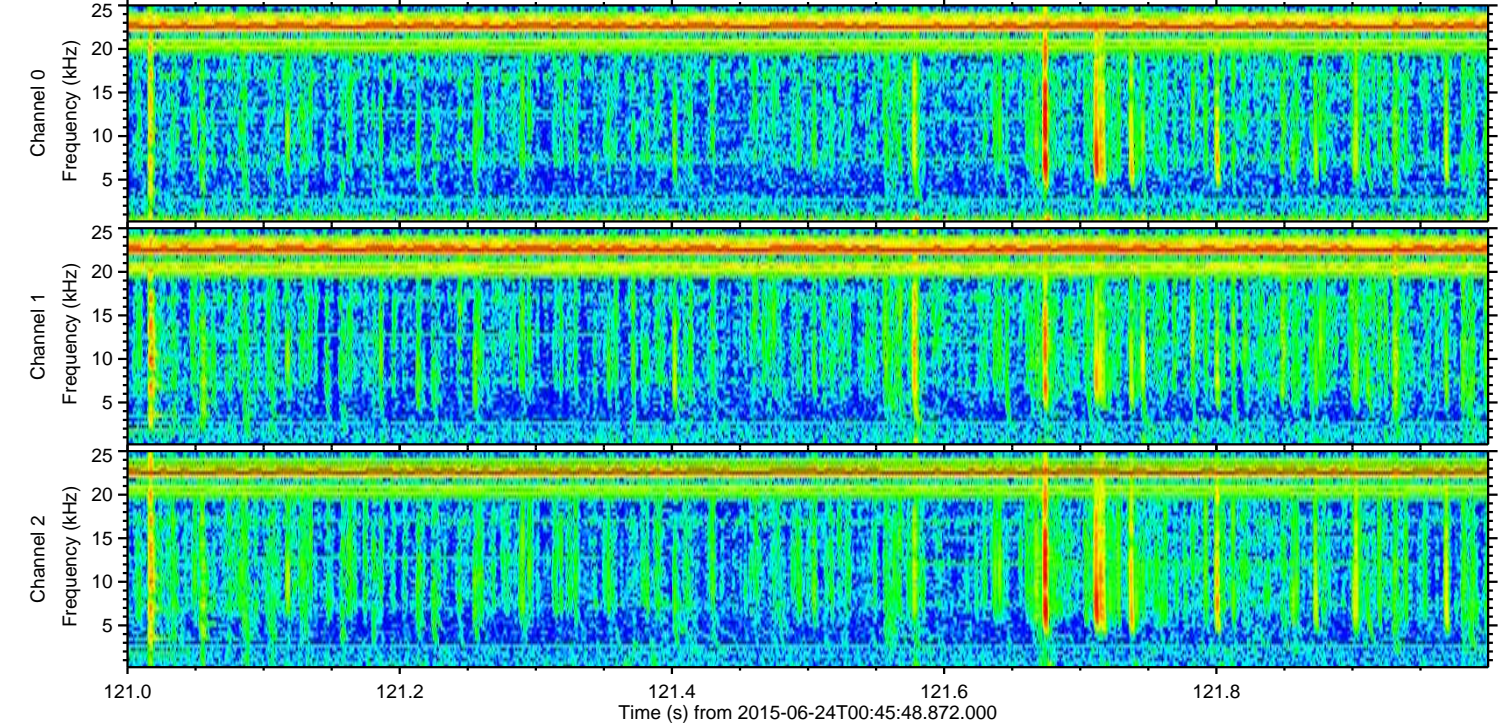
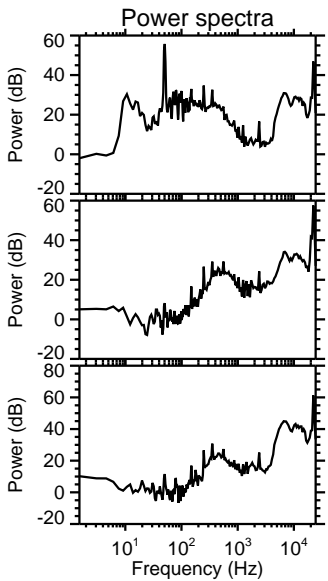
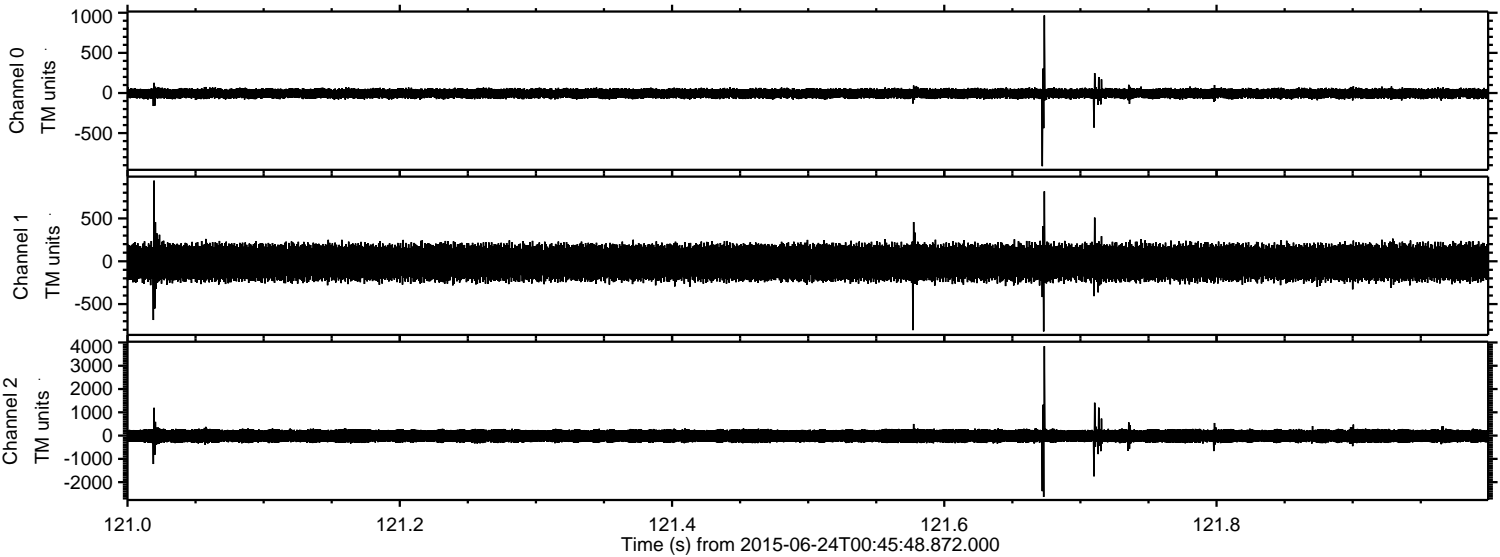
ELMAVAN 3D WAVEFORMS (Measured data sampled at 50 kHz) 51000 packets of 144 samples from 2015-06-24T00:45:48.872.000. Part 26/147

Processed Wed Jun 24 02:52:27 2015 by ELM ver.2012-10-06 from 001__elm20150624_004547__dat00.bin

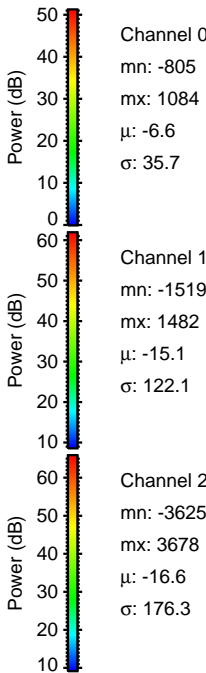
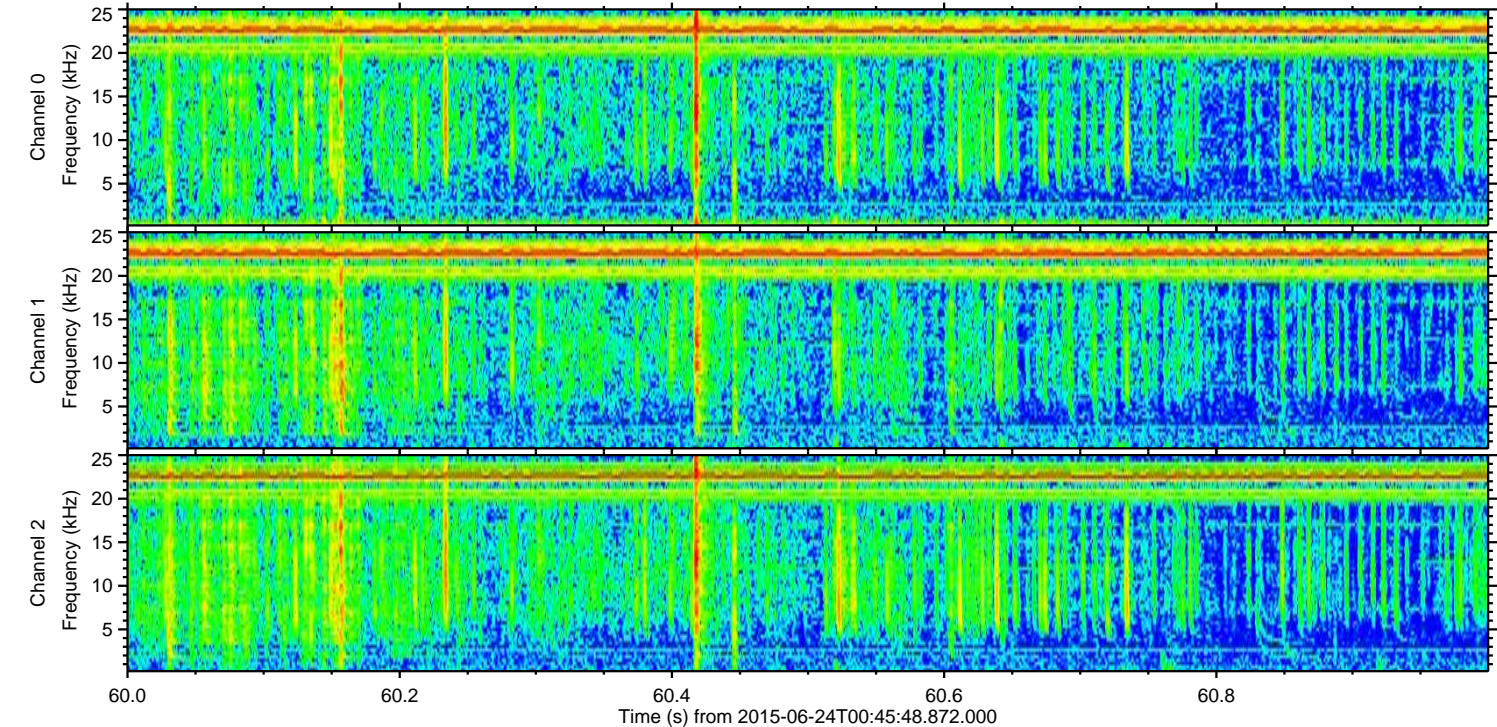
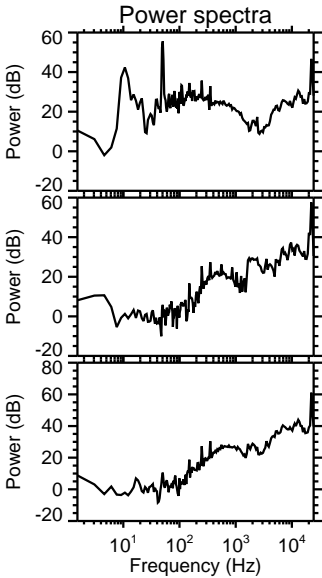
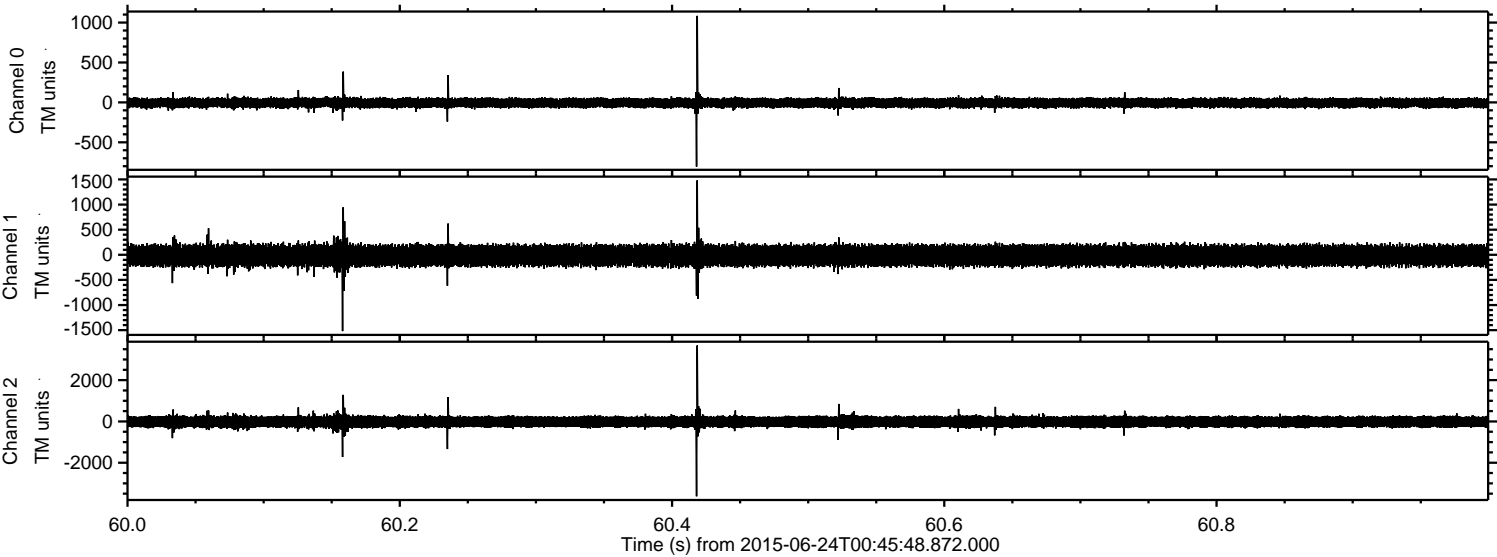


ELMAVAN 3D WAVEFORMS (Measured data sampled at 50 kHz) 51000 packets of 144 samples from 2015-06-24T00:45:48.872.000. Part 122/147

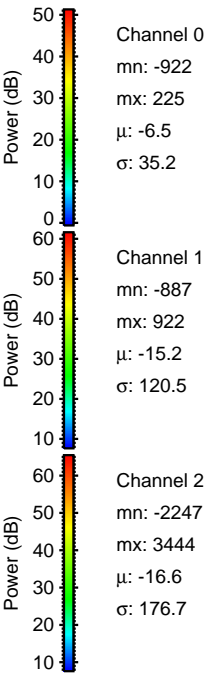
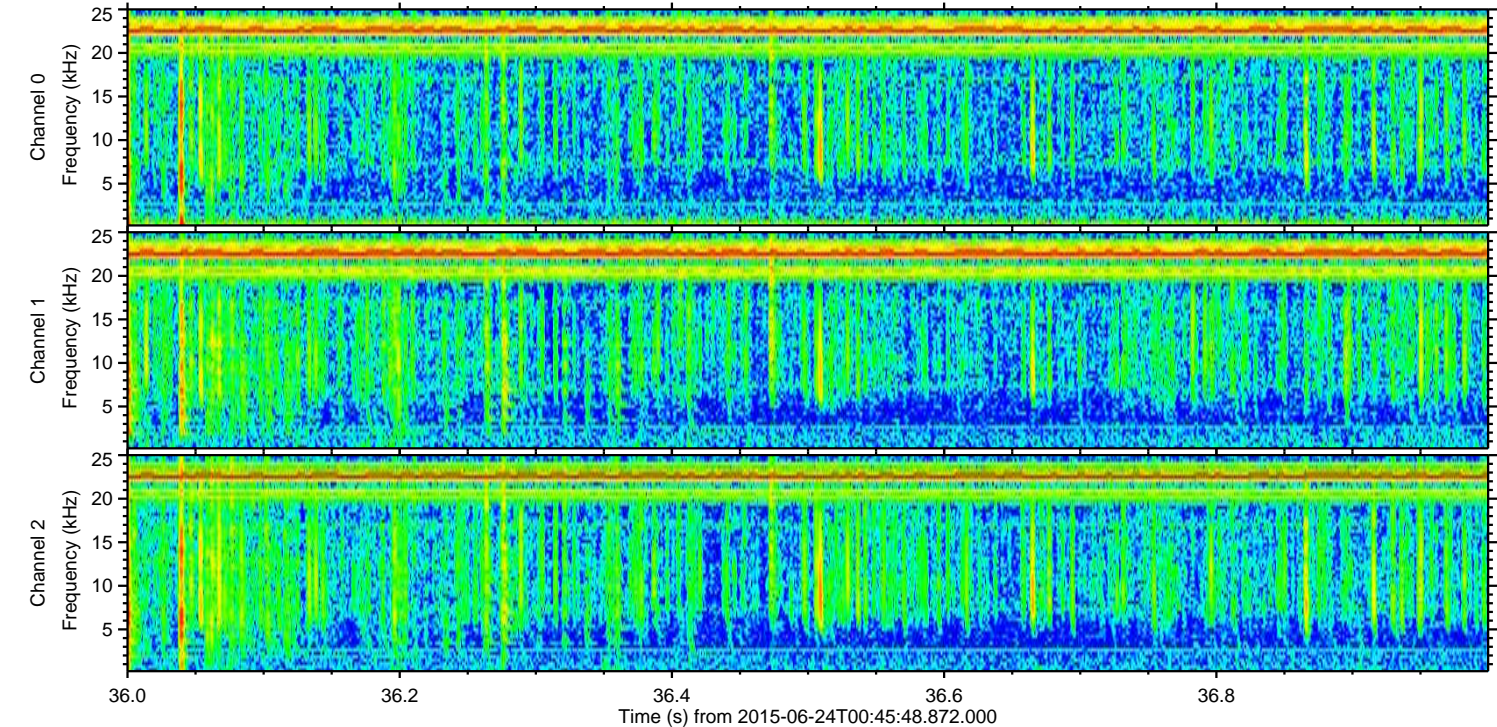
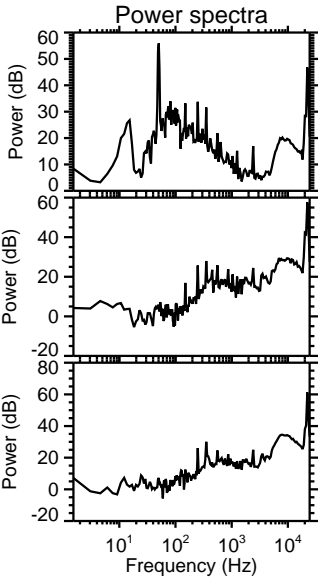
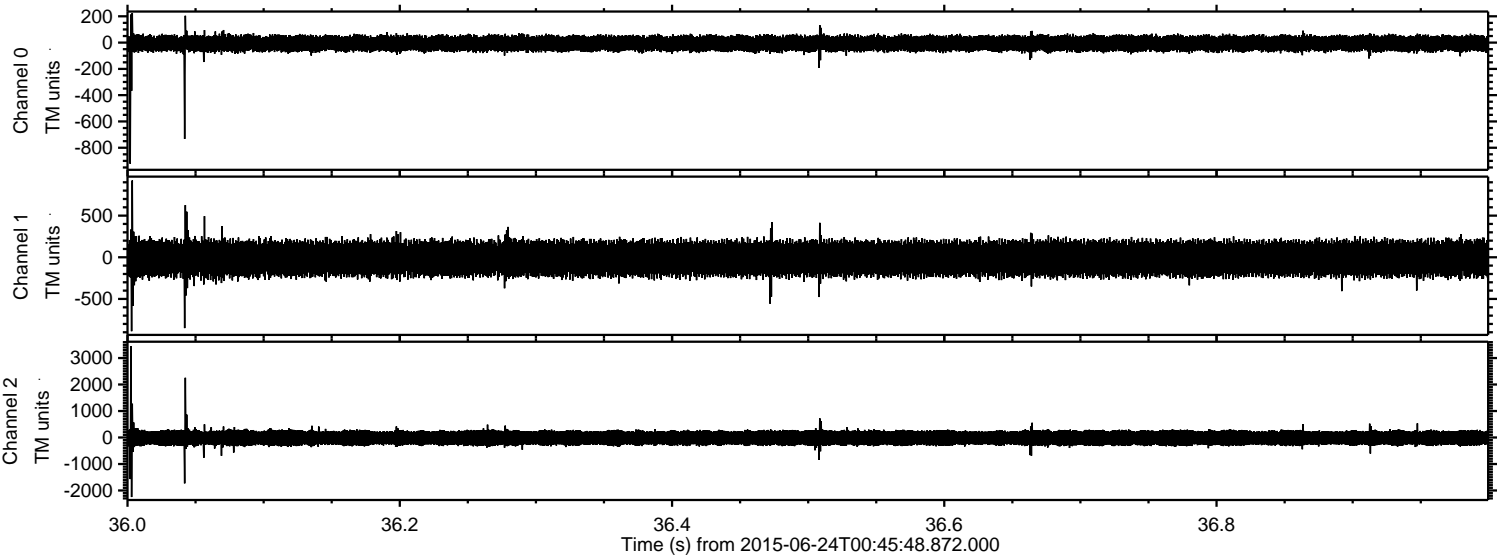
Processed Wed Jun 24 02:52:28 2015 by ELM ver.2012-10-06 from 001__elm20150624_004547__dat00.bin



Processed Wed Jun 24 02:52:29 2015 by ELM ver.2012-10-06 from 001__elm20150624_004547__dat00.bin

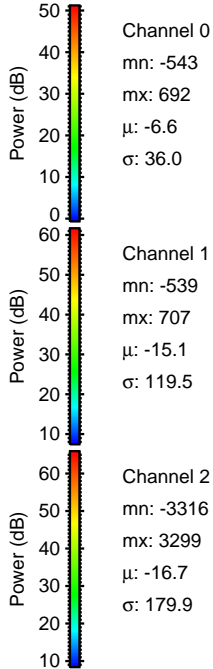
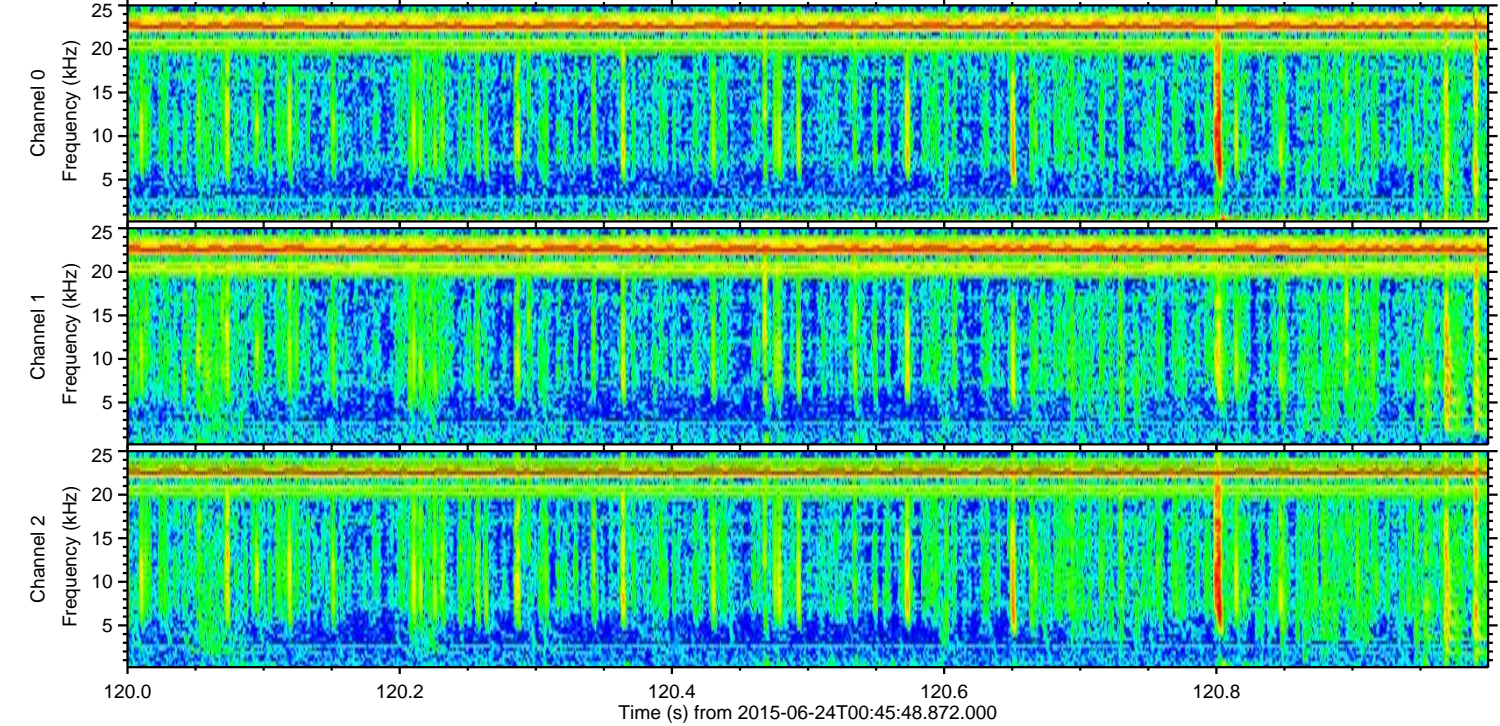
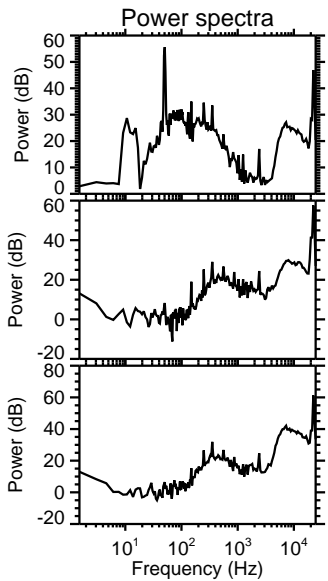
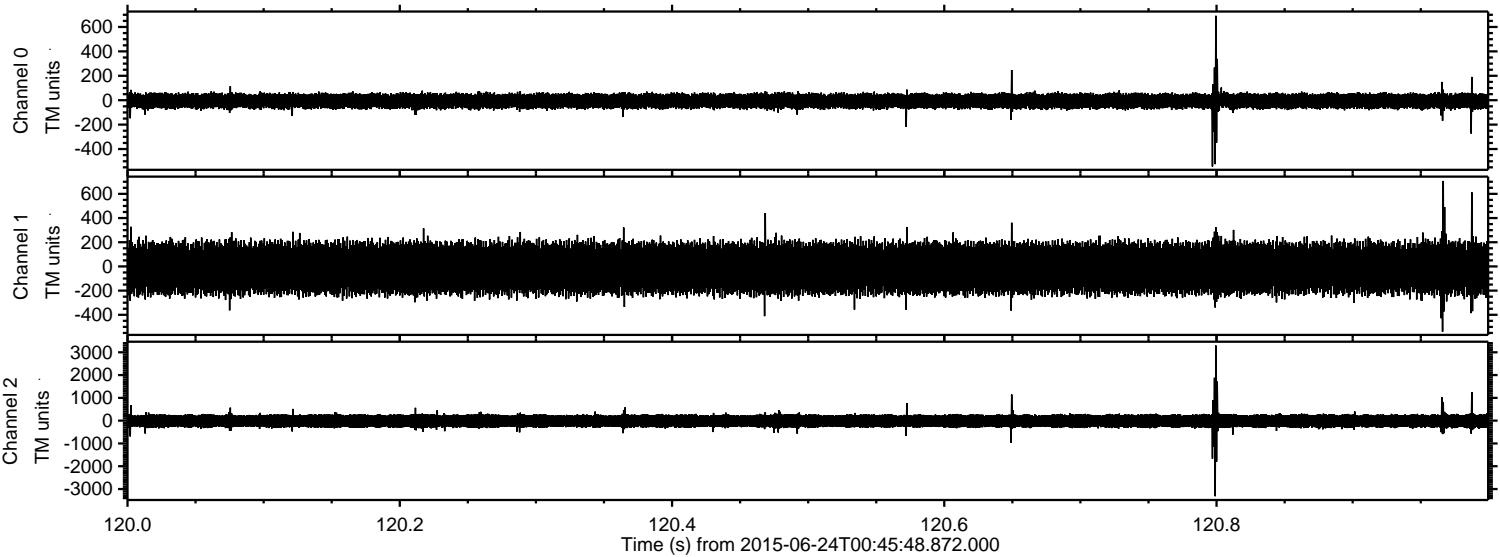


Processed Wed Jun 24 02:52:30 2015 by ELM ver.2012-10-06 from 001__elm20150624_004547__dat00.bin



ELMAVAN 3D WAVEFORMS (Measured data sampled at 50 kHz) 51000 packets of 144 samples from 2015-06-24T00:45:48.872.000. Part 121/147

Processed Wed Jun 24 02:52:32 2015 by ELM ver.2012-10-06 from 001__elm20150624_004547__dat00.bin

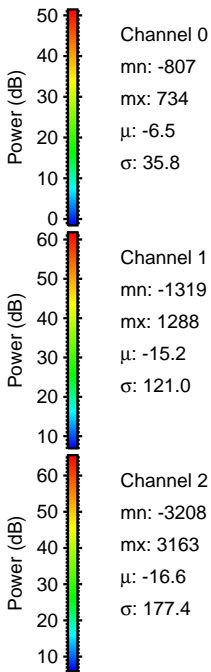
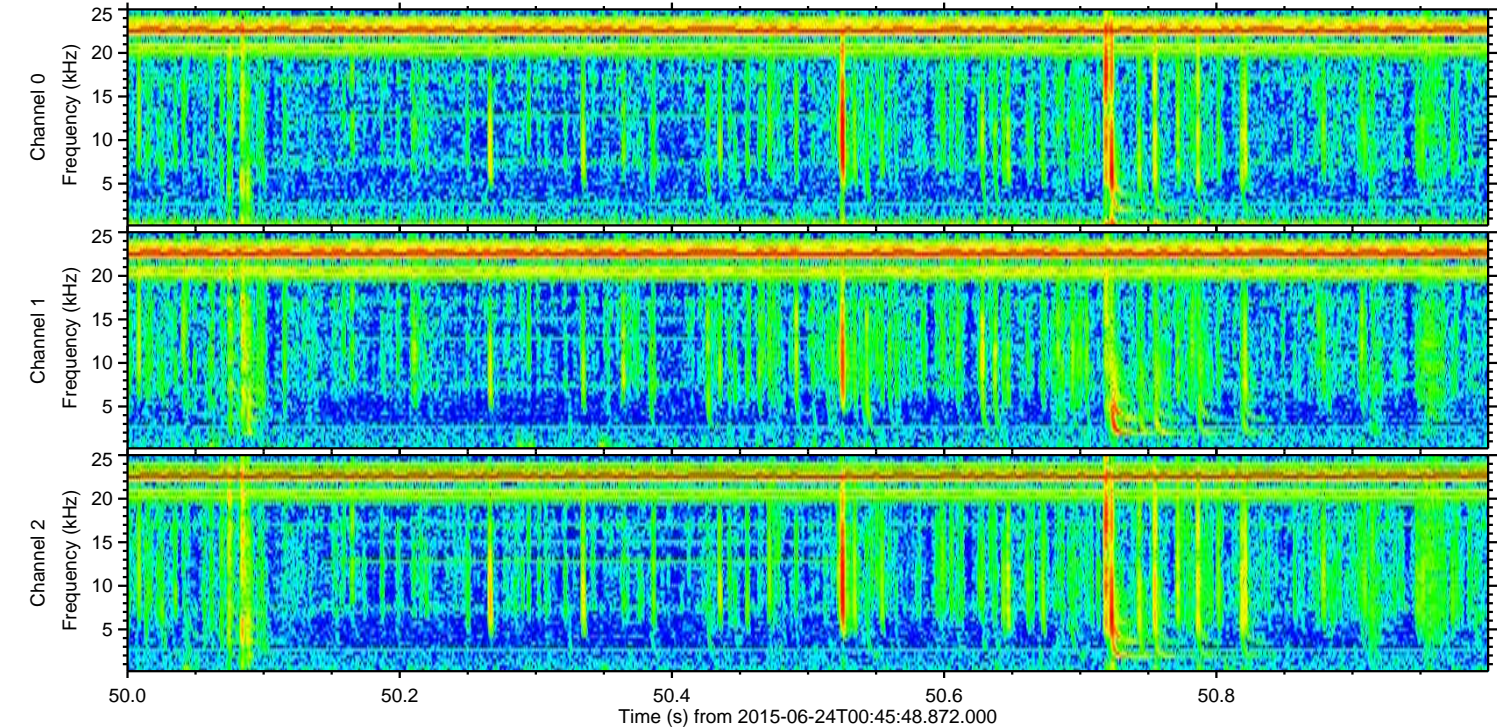
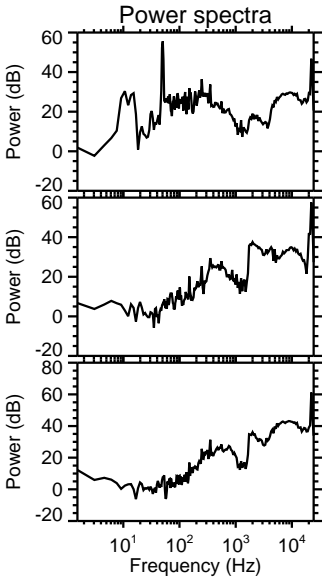
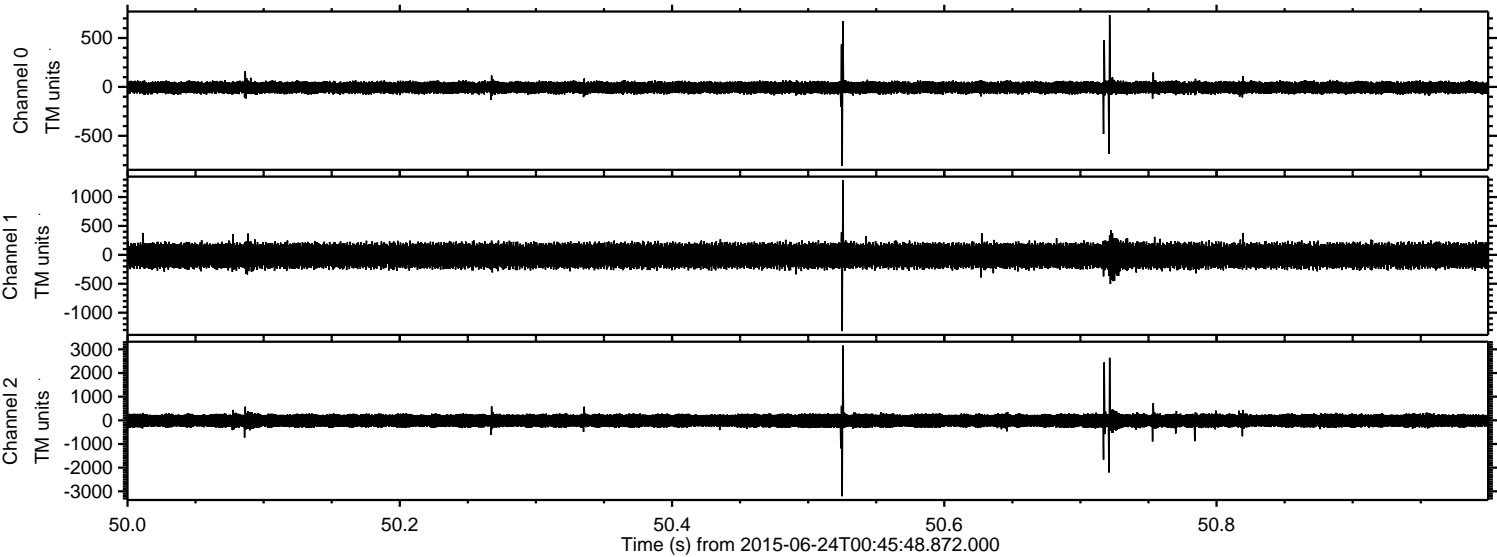


Channel 0
mn: -543
mx: 692
 μ : -6.6
 σ : 36.0

Channel 1
mn: -539
mx: 707
 μ : -15.1
 σ : 119.5

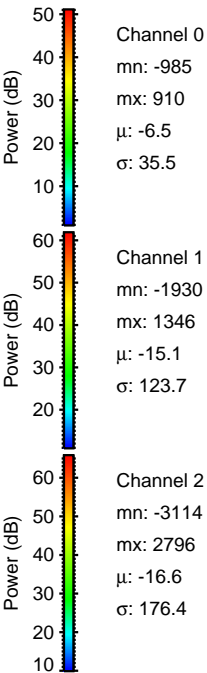
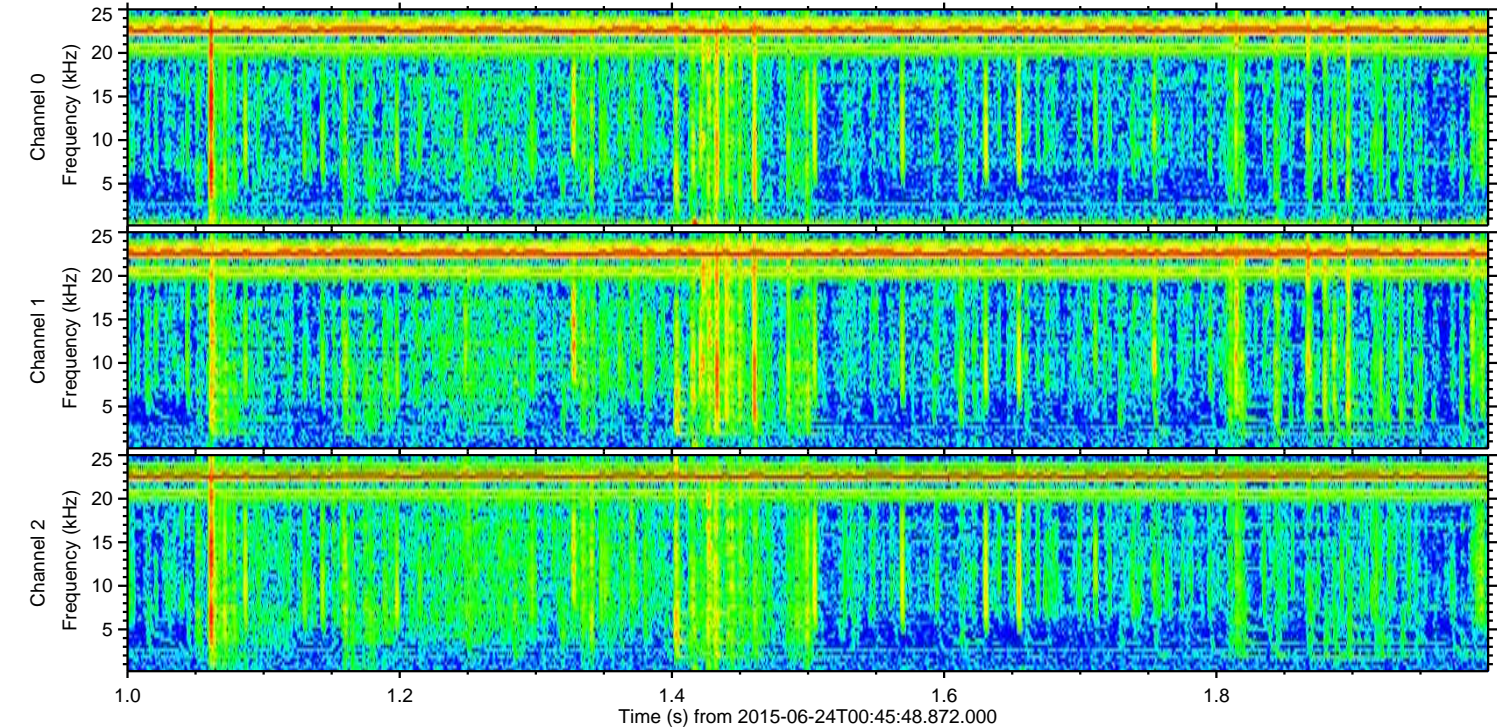
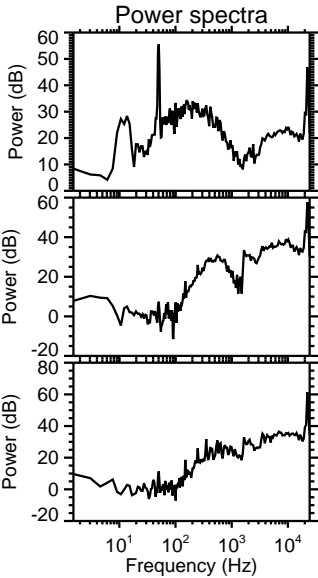
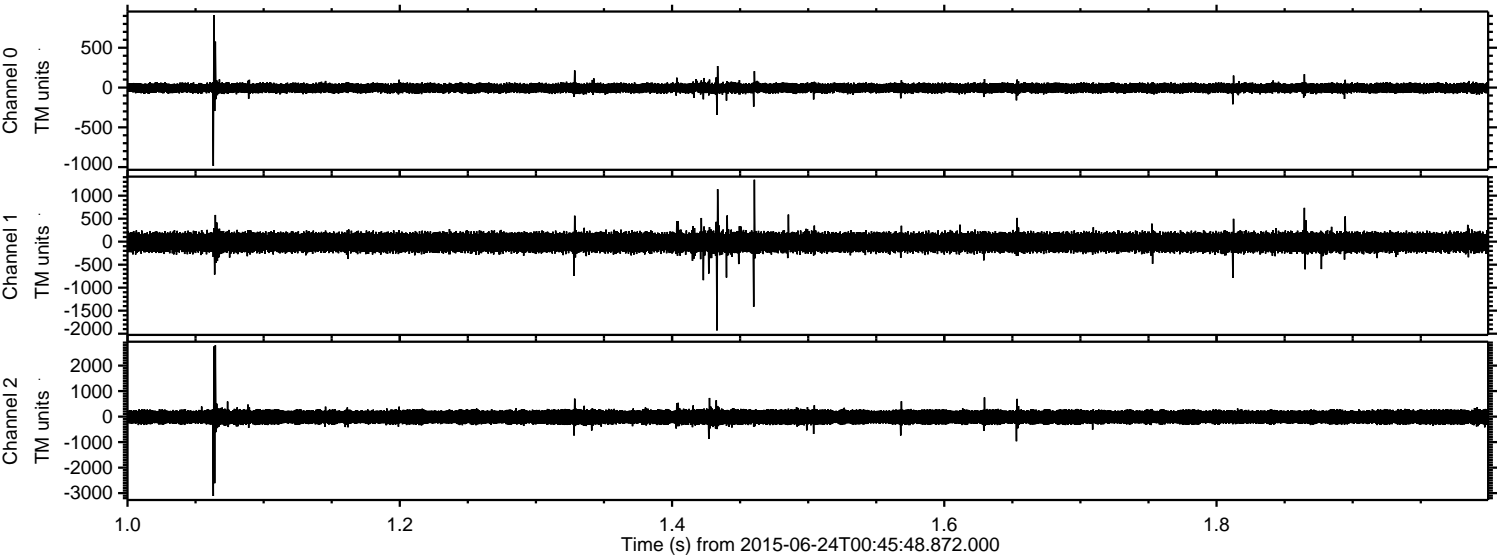
Channel 2
mn: -3316
mx: 3299
 μ : -16.7
 σ : 179.9

Processed Wed Jun 24 02:52:33 2015 by ELM ver.2012-10-06 from 001__elm20150624_004547__dat00.bin



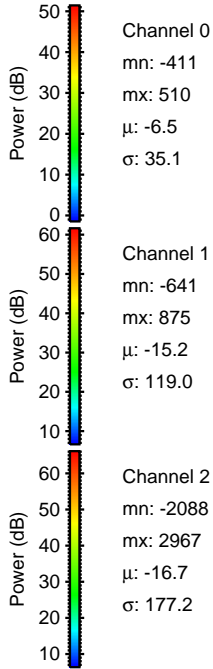
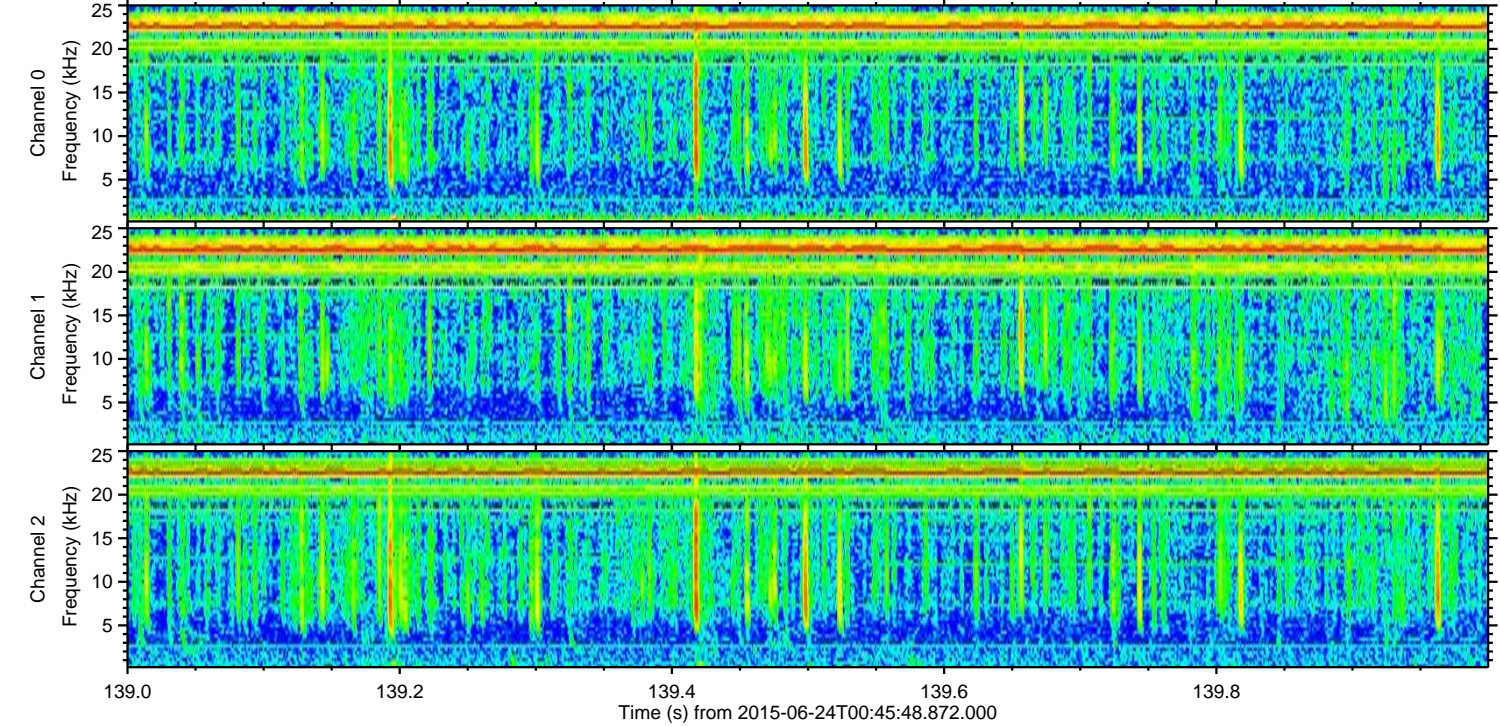
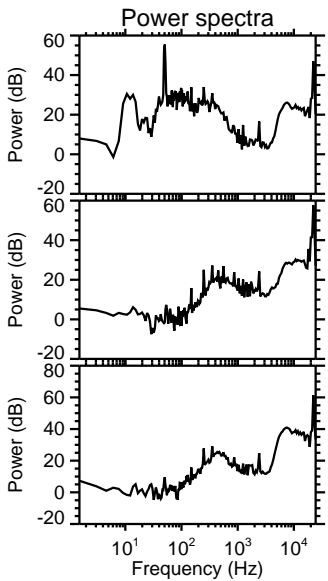
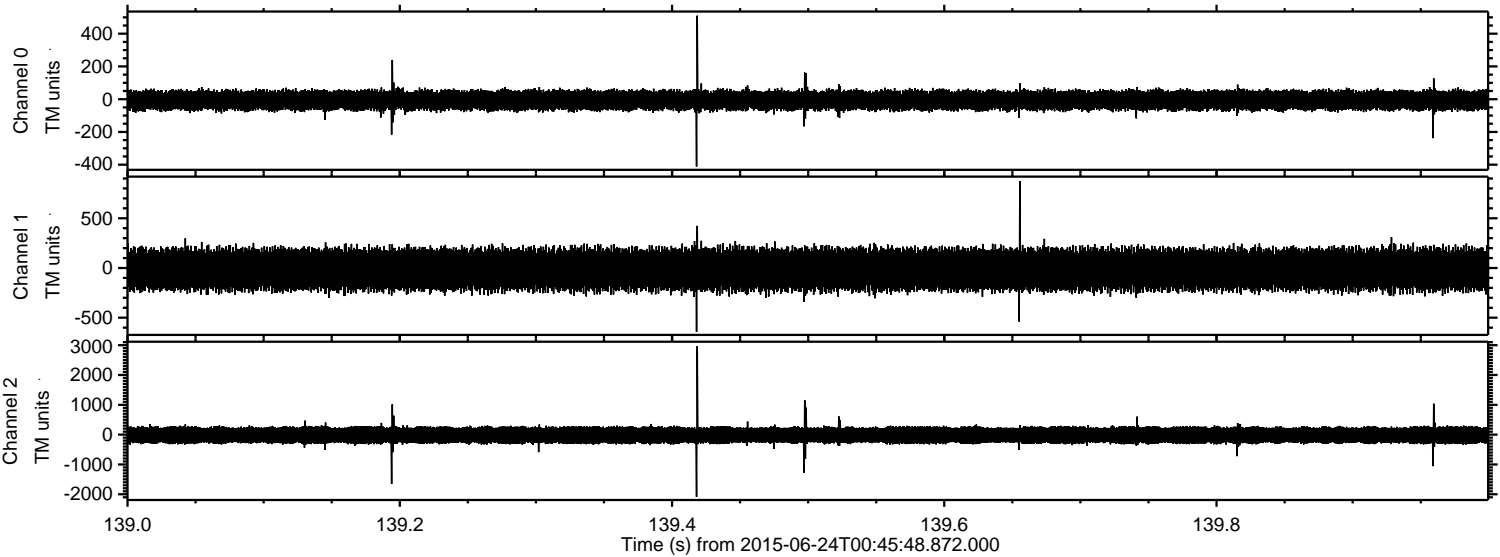
ELMAVAN 3D WAVEFORMS (Measured data sampled at 50 kHz) 51000 packets of 144 samples from 2015-06-24T00:45:48.872.000. Part 2/147

Processed Wed Jun 24 02:52:34 2015 by ELM ver.2012-10-06 from 001__elm20150624_004547__dat00.bin



ELMAVAN 3D WAVEFORMS (Measured data sampled at 50 kHz) 51000 packets of 144 samples from 2015-06-24T00:45:48.872.000. Part 140/147

Processed Wed Jun 24 02:52:35 2015 by ELM ver.2012-10-06 from 001__elm20150624_004547__dat00.bin

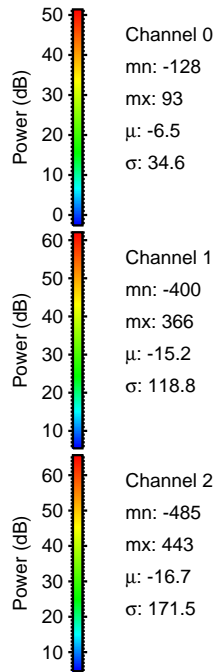
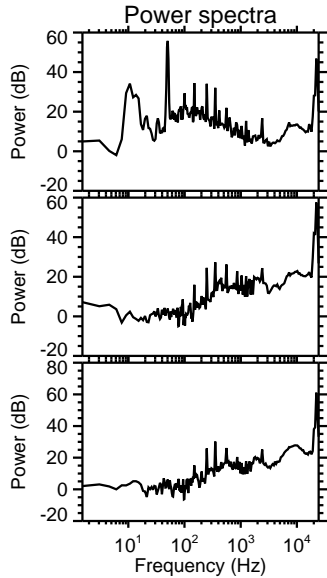
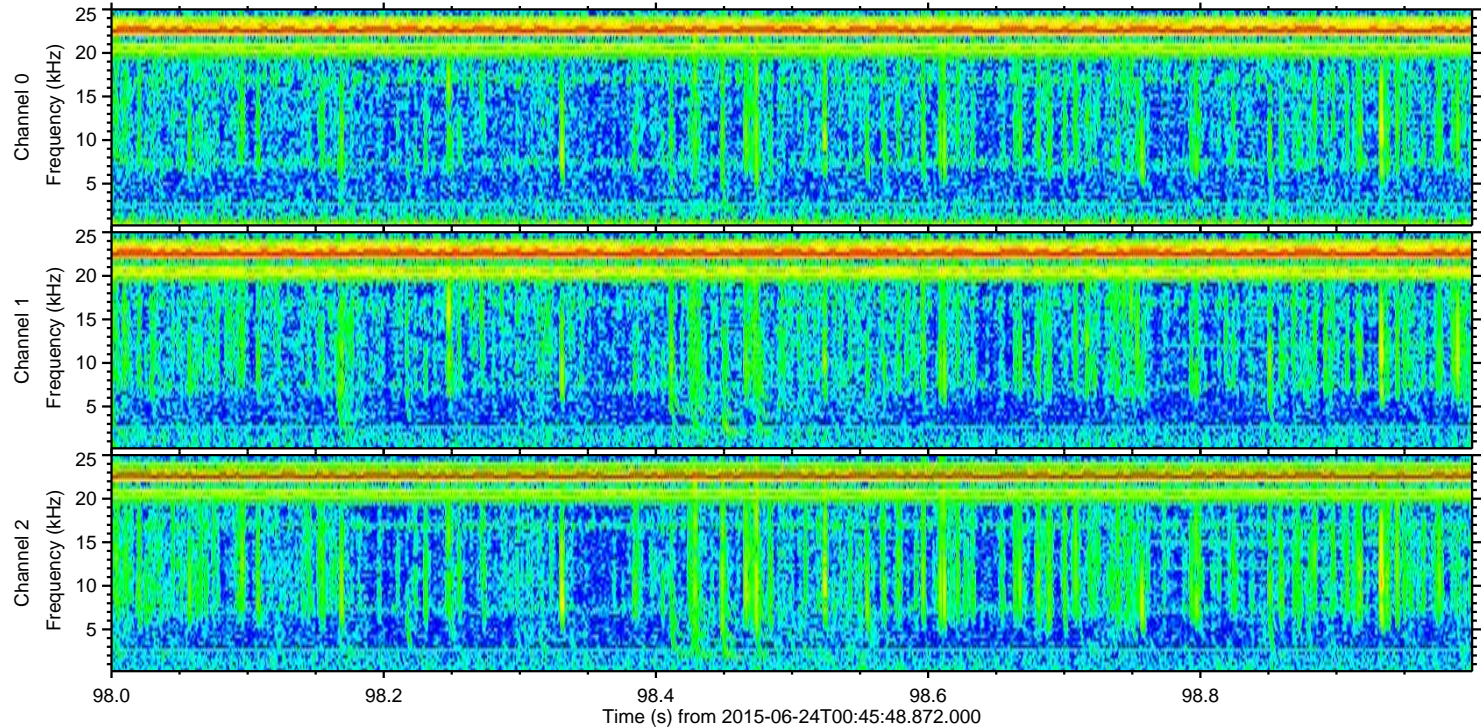
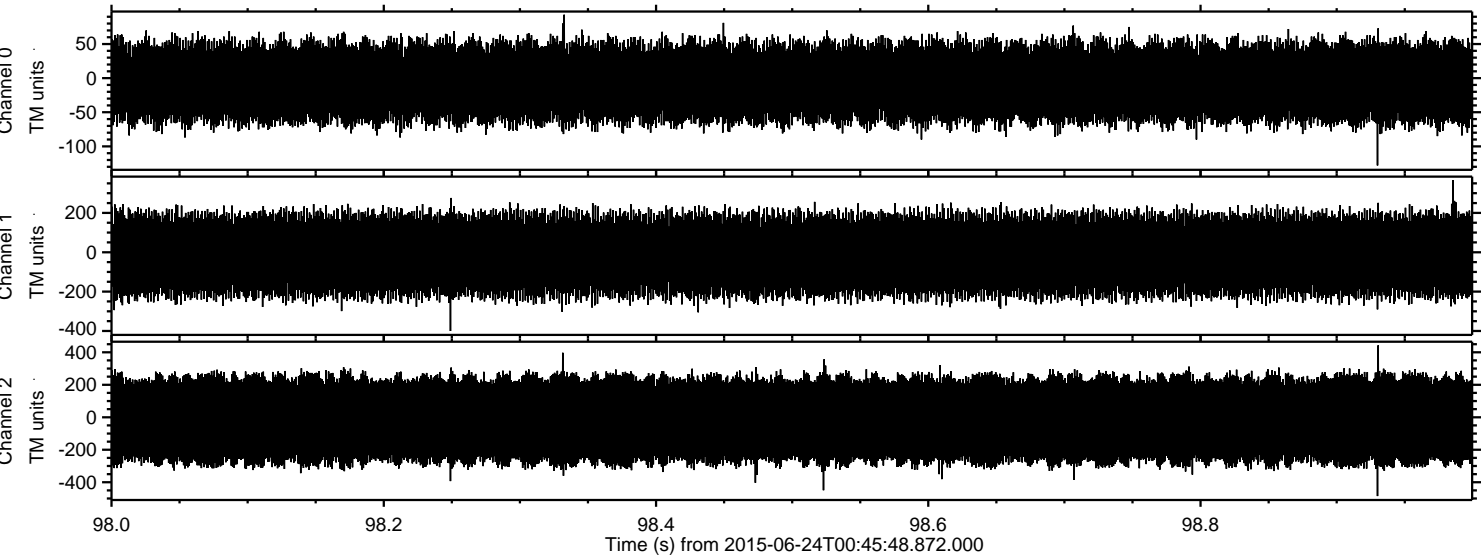


Channel 0
mn: -411
mx: 510
 μ : -6.5
 σ : 35.1

Channel 1
mn: -641
mx: 875
 μ : -15.2
 σ : 119.0

Channel 2
mn: -2088
mx: 2967
 μ : -16.7
 σ : 177.2

Processed Wed Jun 24 02:52:36 2015 by ELM ver.2012-10-06 from 001__elm20150624_004547__dat00.bin



Channel 0
mn: -128
mx: 93
 μ : -6.5
 σ : 34.6

Channel 1
mn: -400
mx: 366
 μ : -15.2
 σ : 118.8

Channel 2
mn: -485
mx: 443
 μ : -16.7
 σ : 171.5