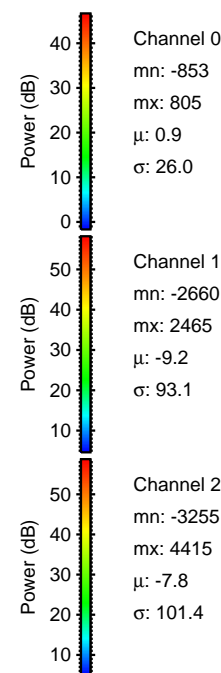
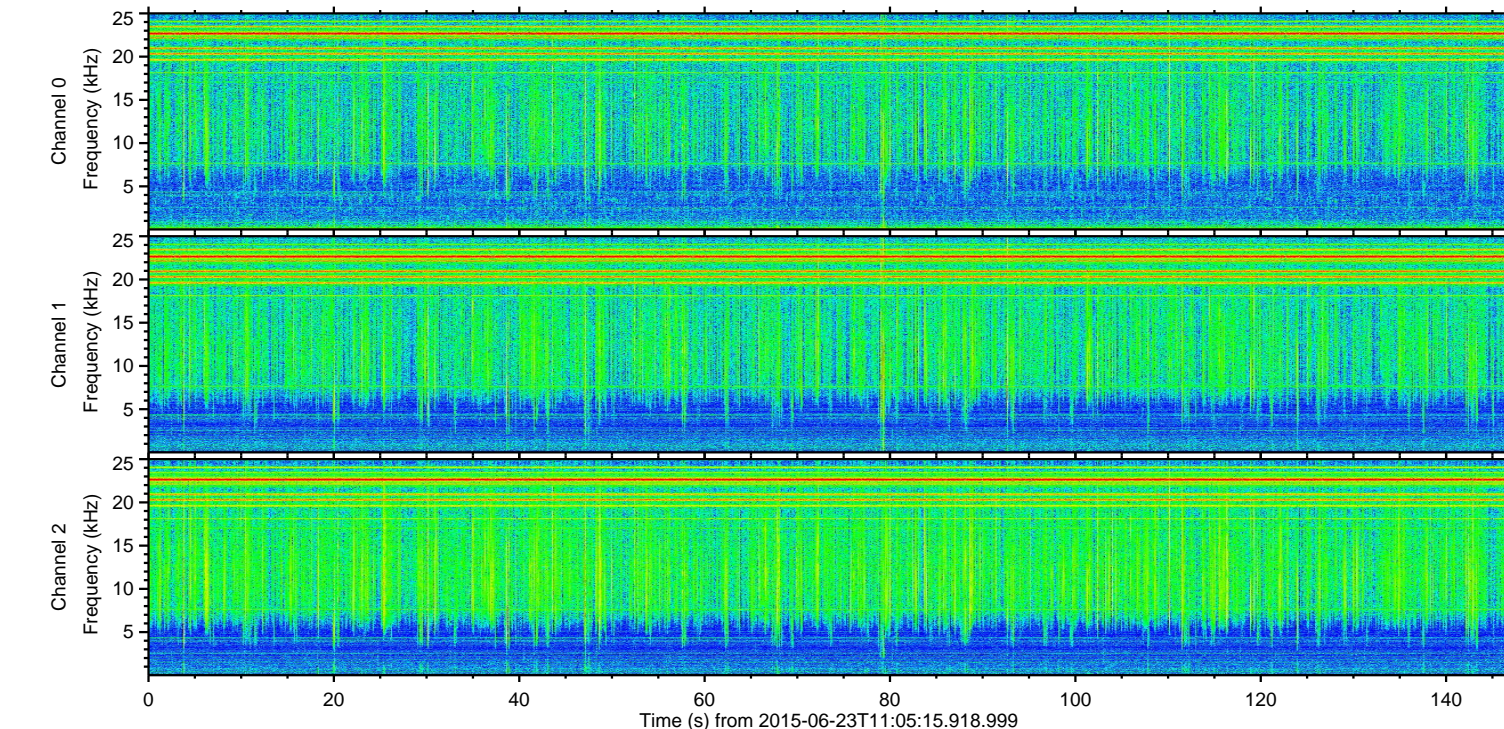
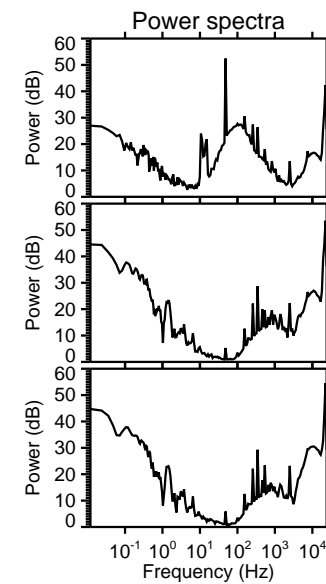
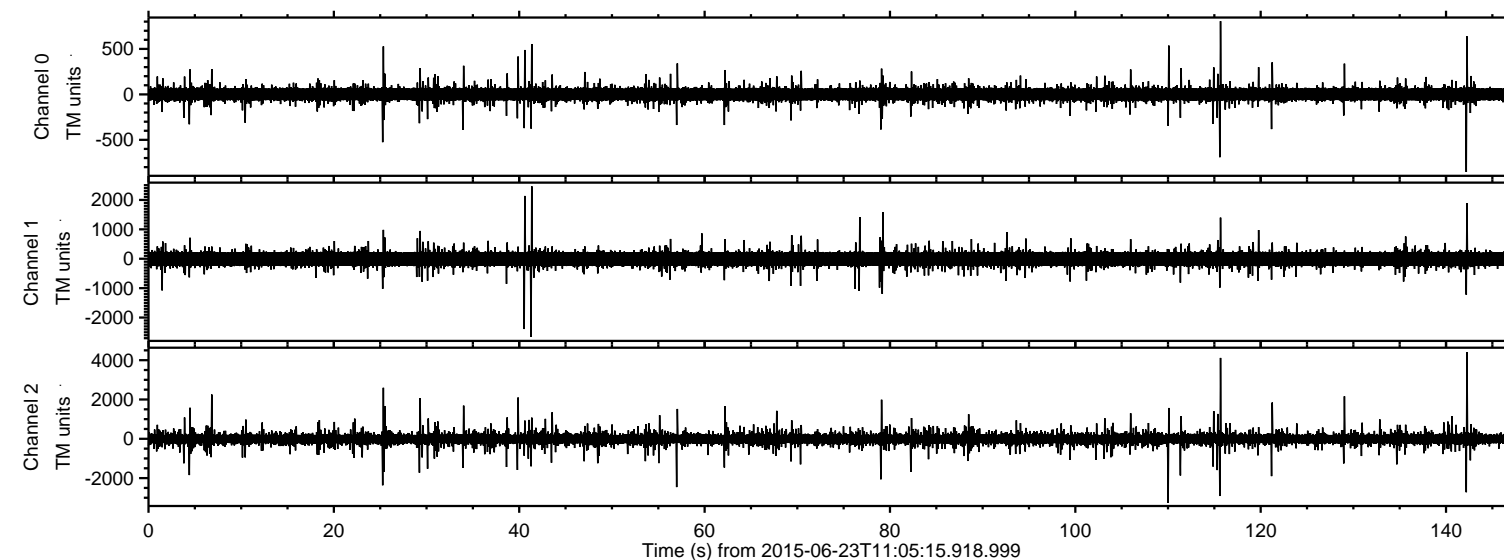


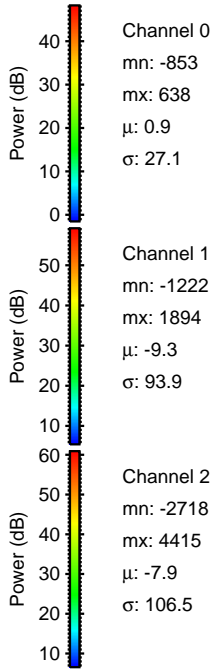
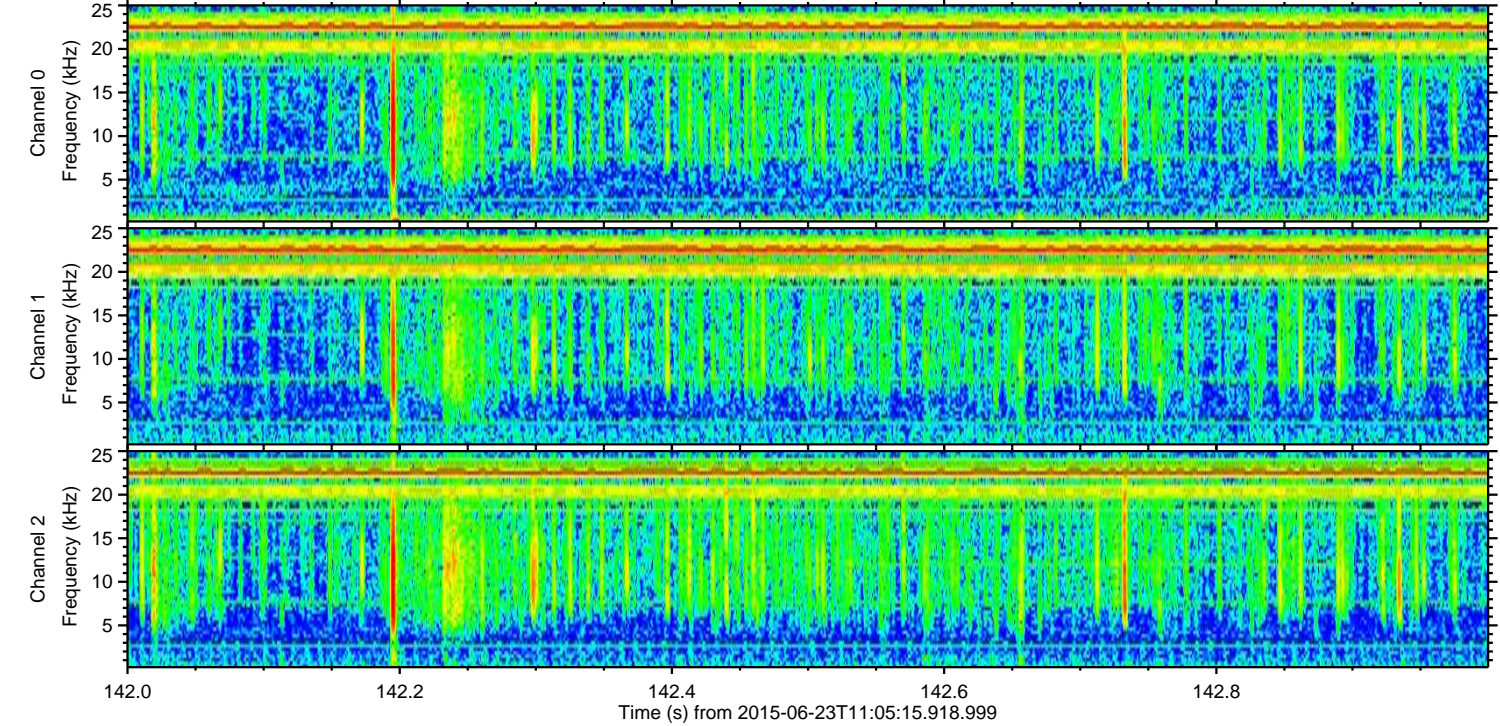
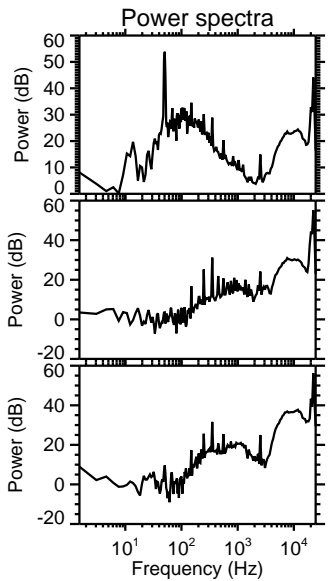
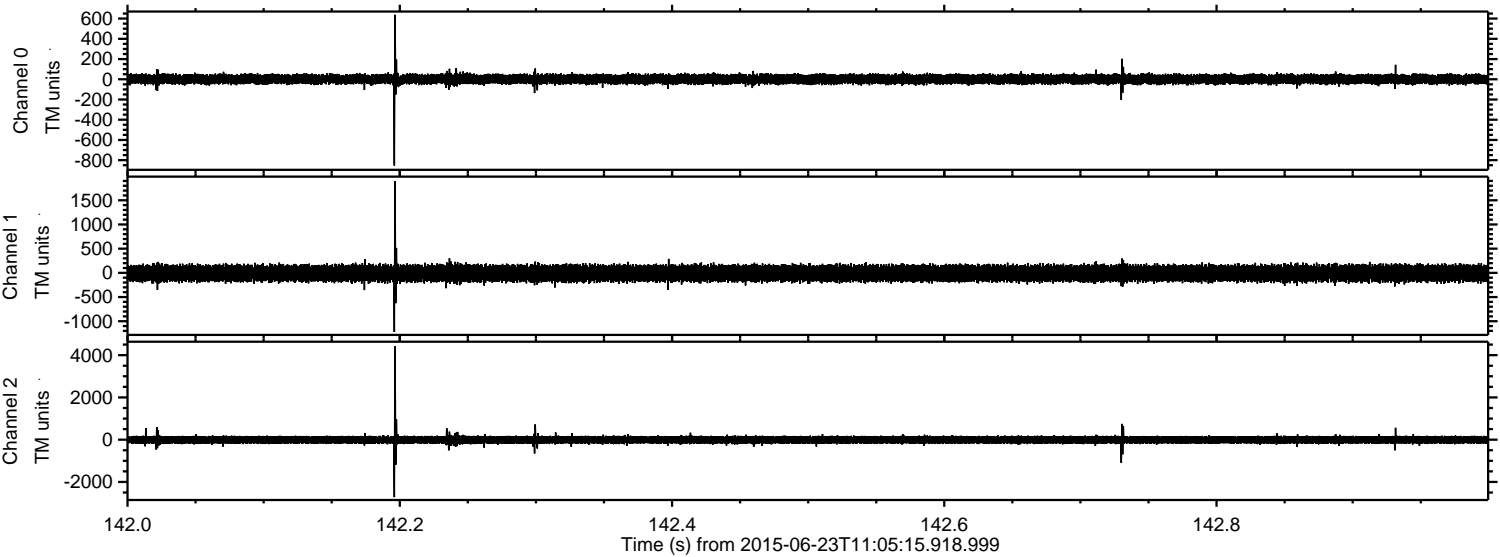
ELMAVAN 3D WAVEFORMS (Measured data sampled at 50 kHz) 51000 packets of 144 samples from 2015-06-23T11:05:15.918.999.

Processed Tue Jun 23 14:18:49 2015 by ELM ver.2012-10-06 from 001__elm20150623_110514__dat00.bin



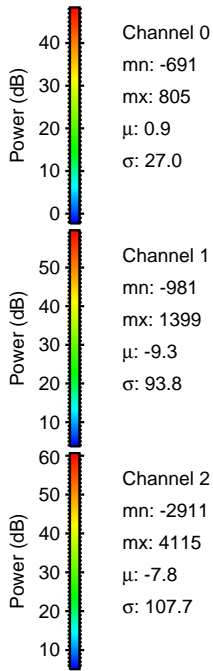
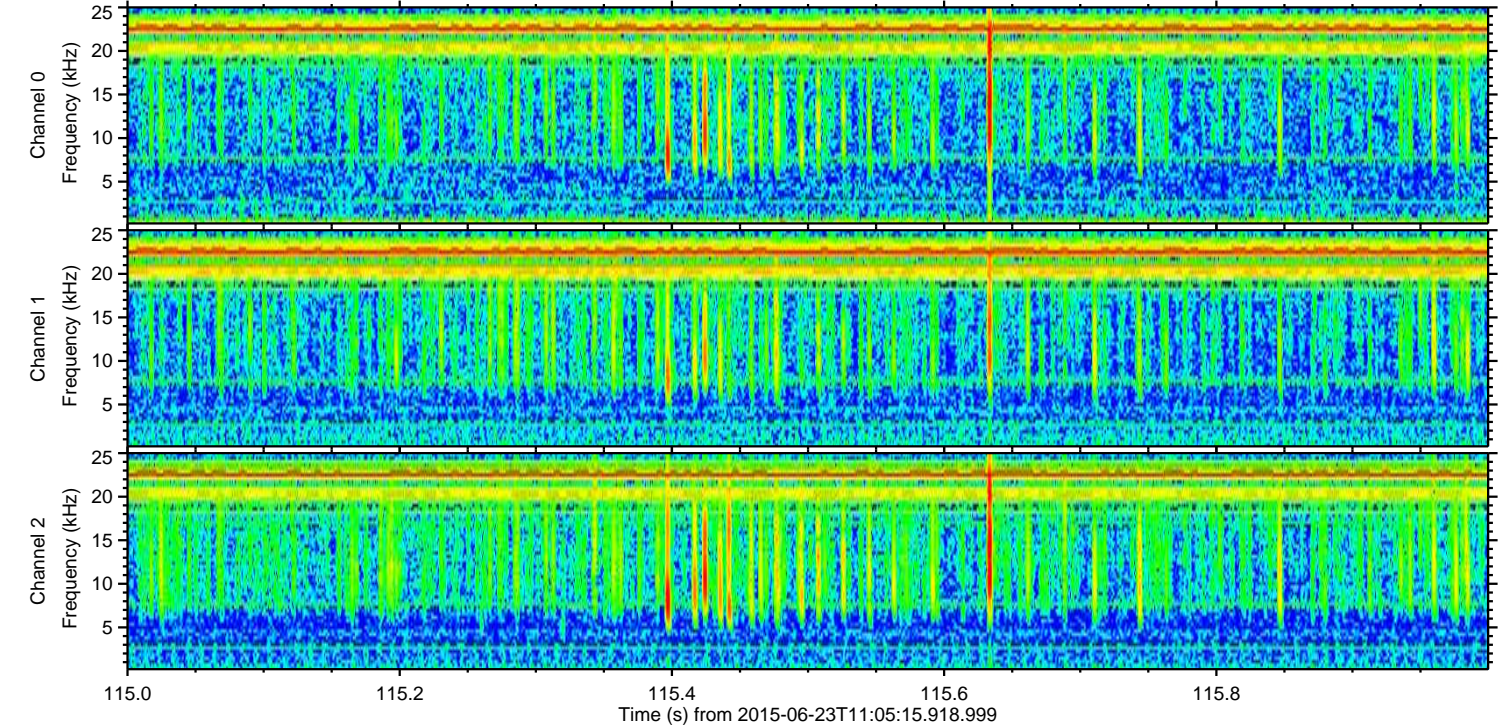
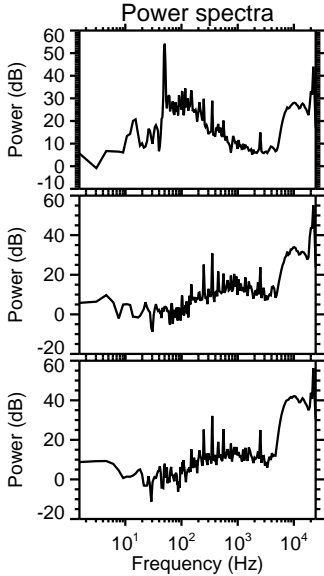
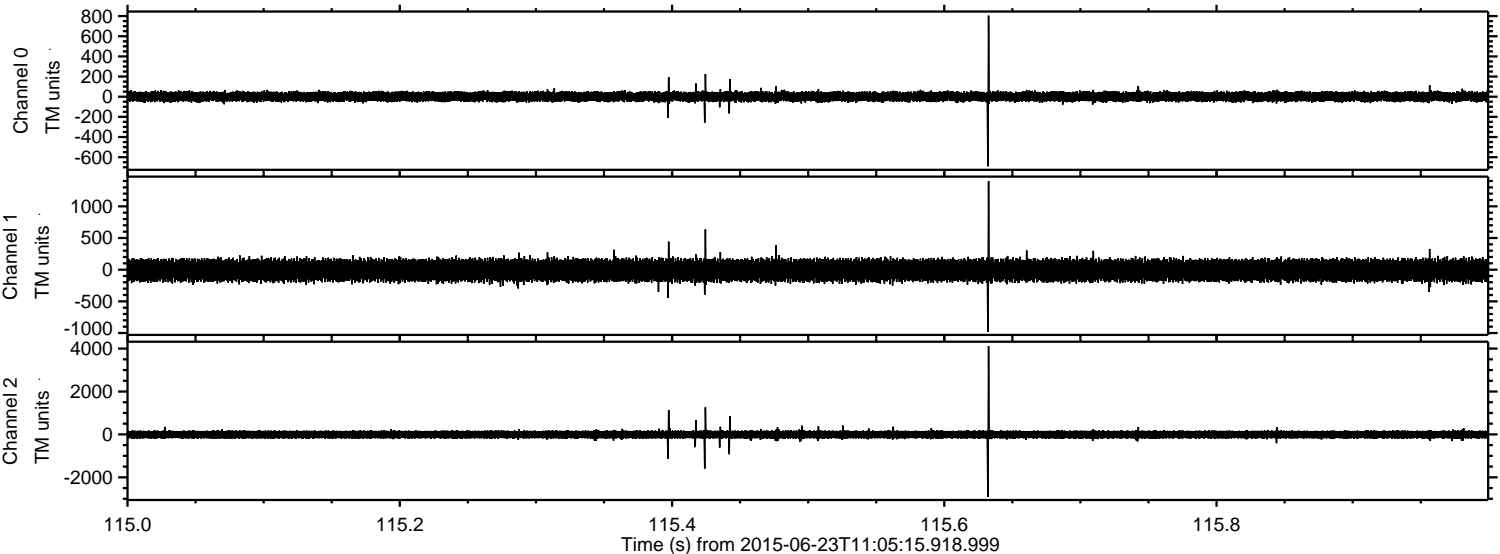
ELMAVAN 3D WAVEFORMS (Measured data sampled at 50 kHz) 51000 packets of 144 samples from 2015-06-23T11:05:15.918.999. Part 143/147

Processed Tue Jun 23 14:19:04 2015 by ELM ver.2012-10-06 from 001__elm20150623_110514__dat00.bin



ELMAVAN 3D WAVEFORMS (Measured data sampled at 50 kHz) 51000 packets of 144 samples from 2015-06-23T11:05:15.918.999. Part 116/147

Processed Tue Jun 23 14:19:05 2015 by ELM ver.2012-10-06 from 001__elm20150623_110514__dat00.bin



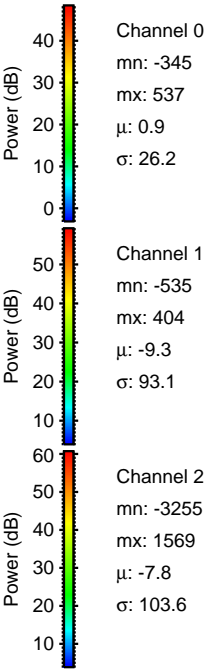
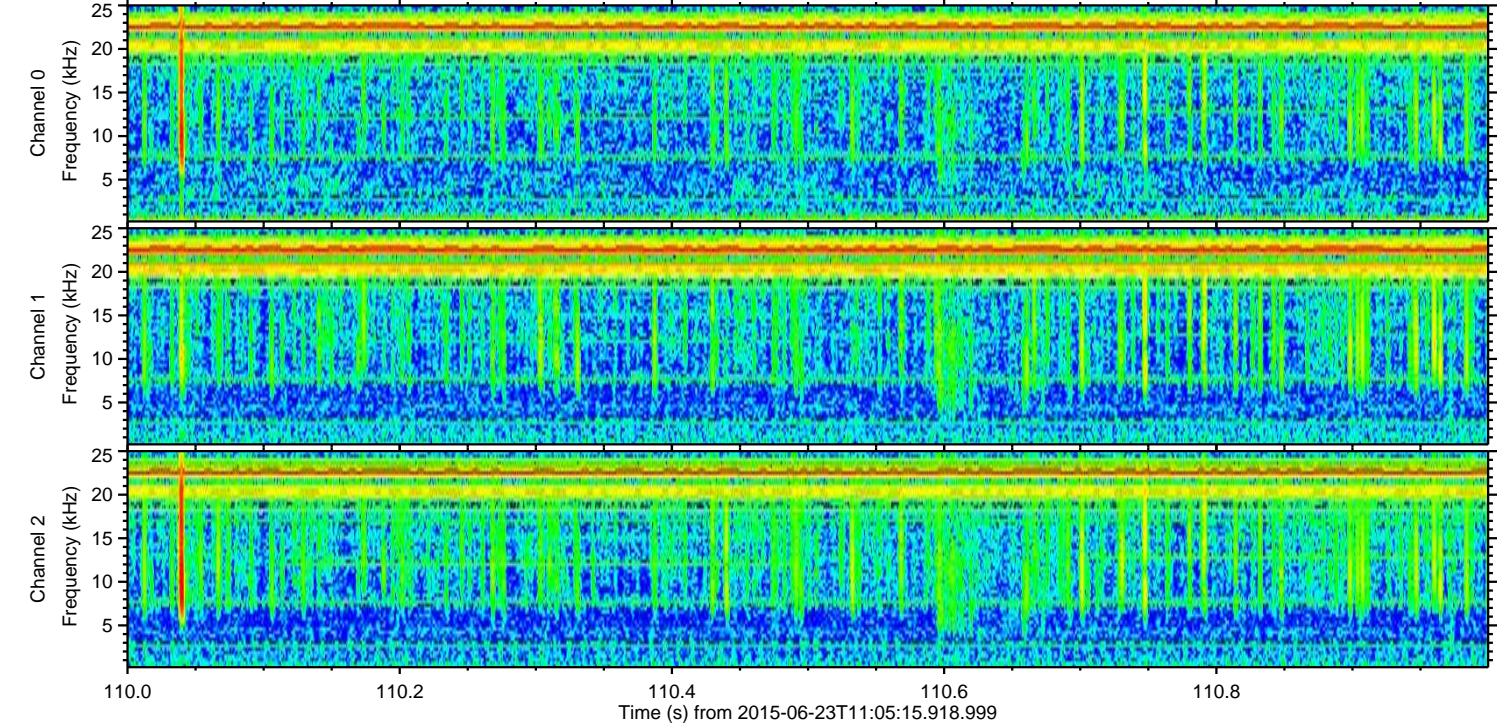
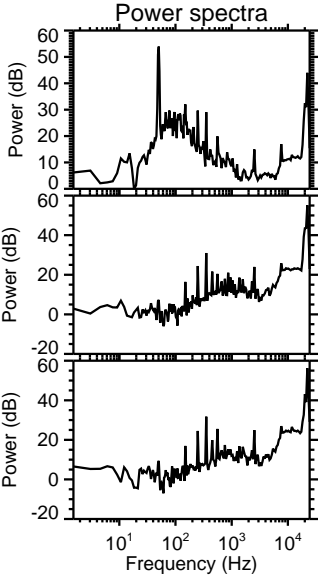
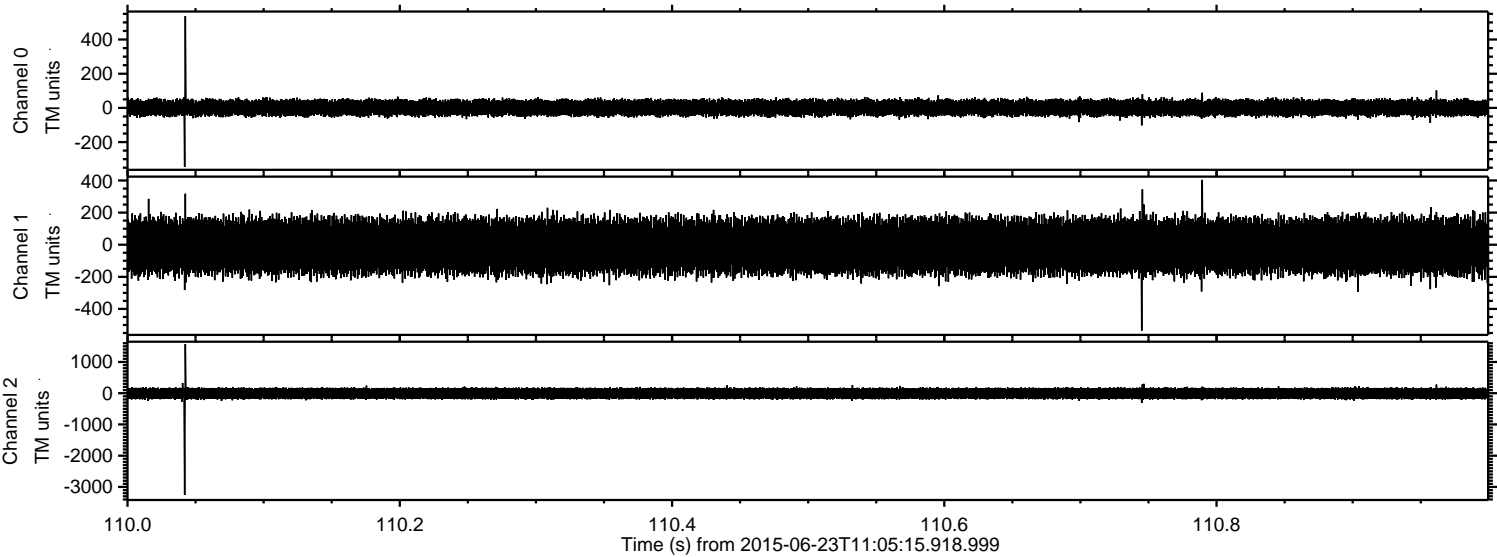
Channel 0
mn: -691
mx: 805
 μ : 0.9
 σ : 27.0

Channel 1
mn: -981
mx: 1399
 μ : -9.3
 σ : 93.8

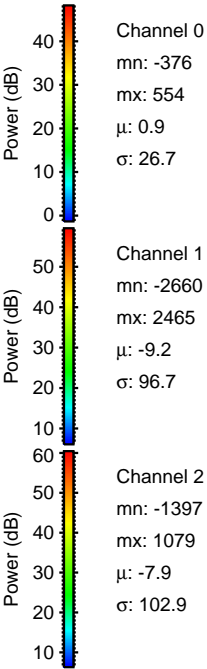
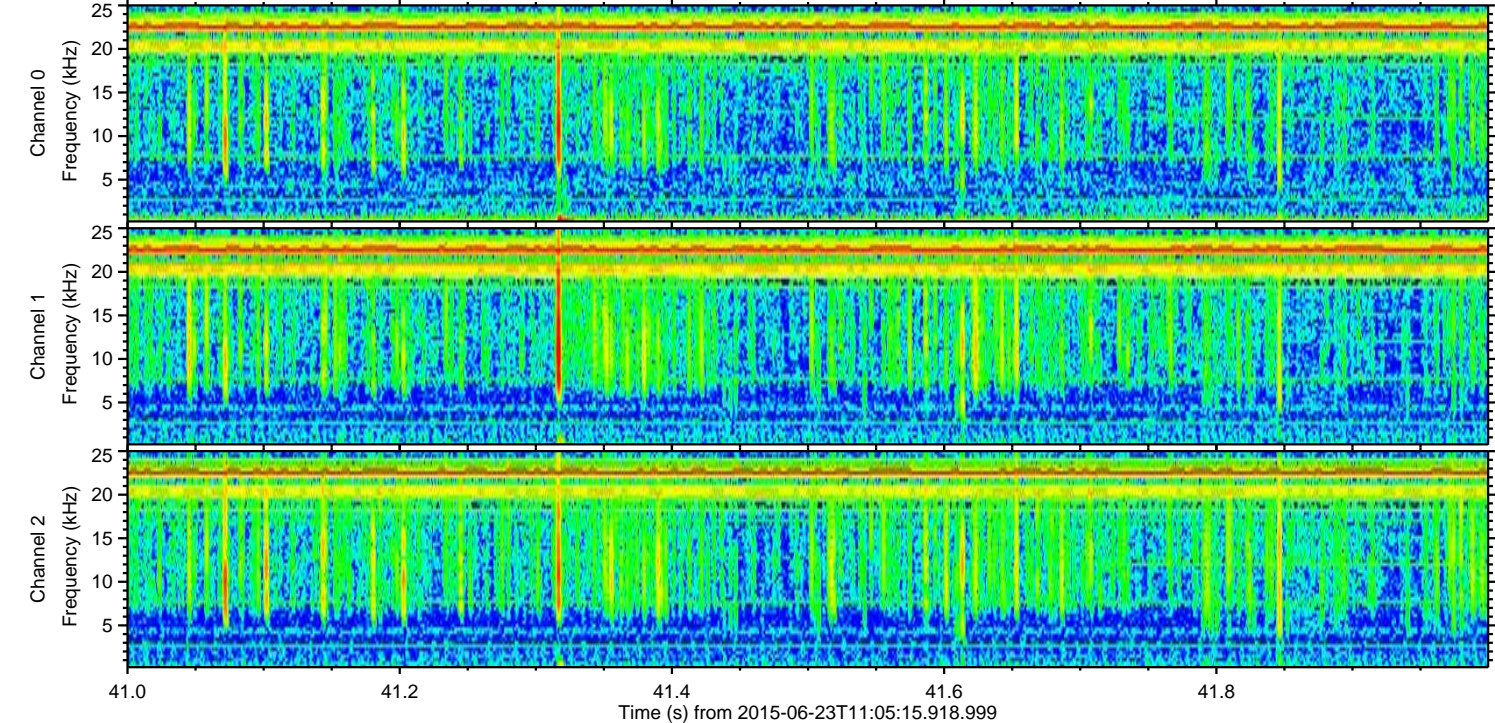
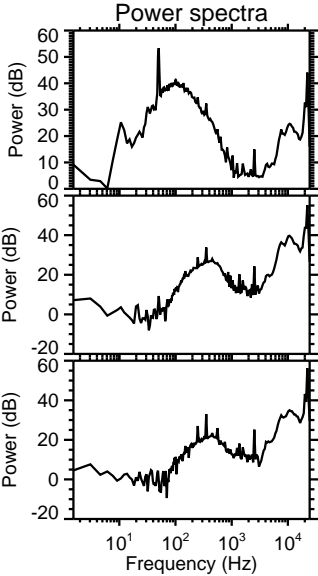
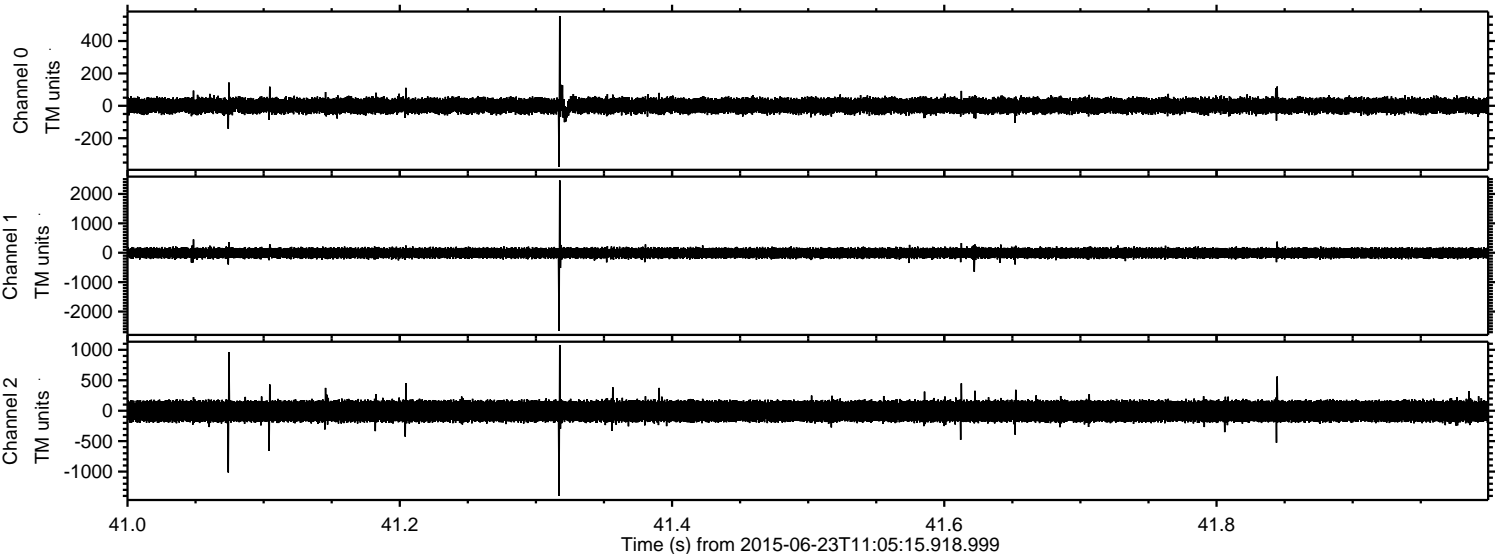
Channel 2
mn: -2911
mx: 4115
 μ : -7.8
 σ : 107.7

ELMAVAN 3D WAVEFORMS (Measured data sampled at 50 kHz) 51000 packets of 144 samples from 2015-06-23T11:05:15.918.999. Part 111/147

Processed Tue Jun 23 14:19:06 2015 by ELM ver.2012-10-06 from 001__elm20150623_110514__dat00.bin

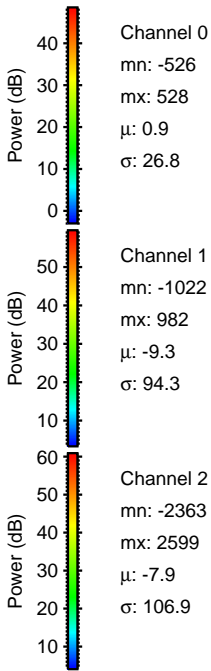
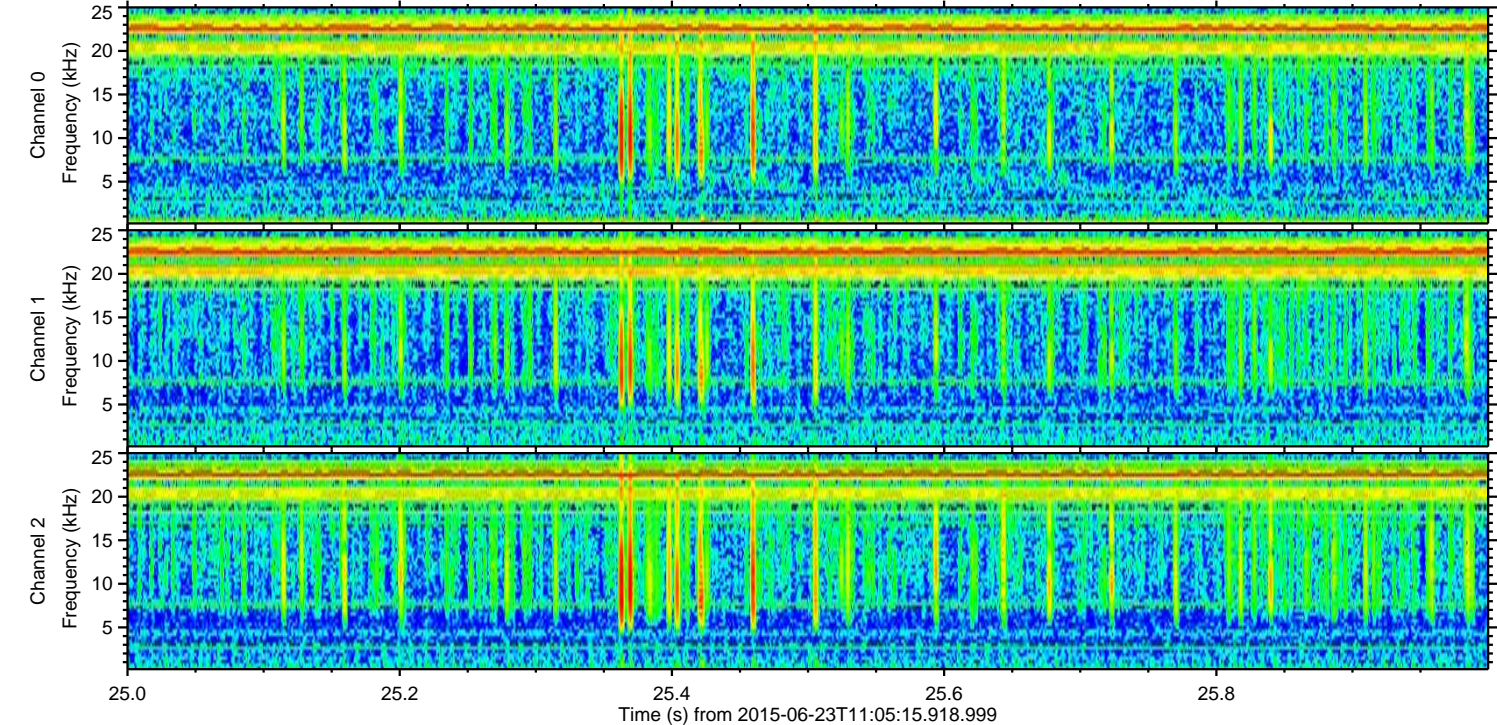
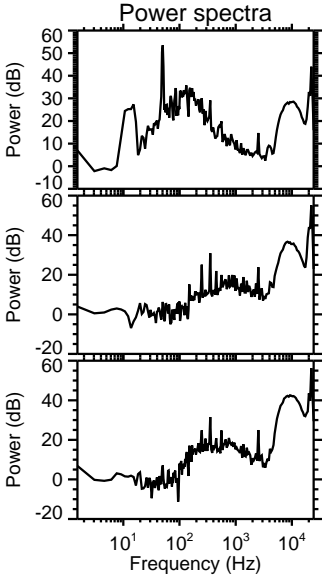
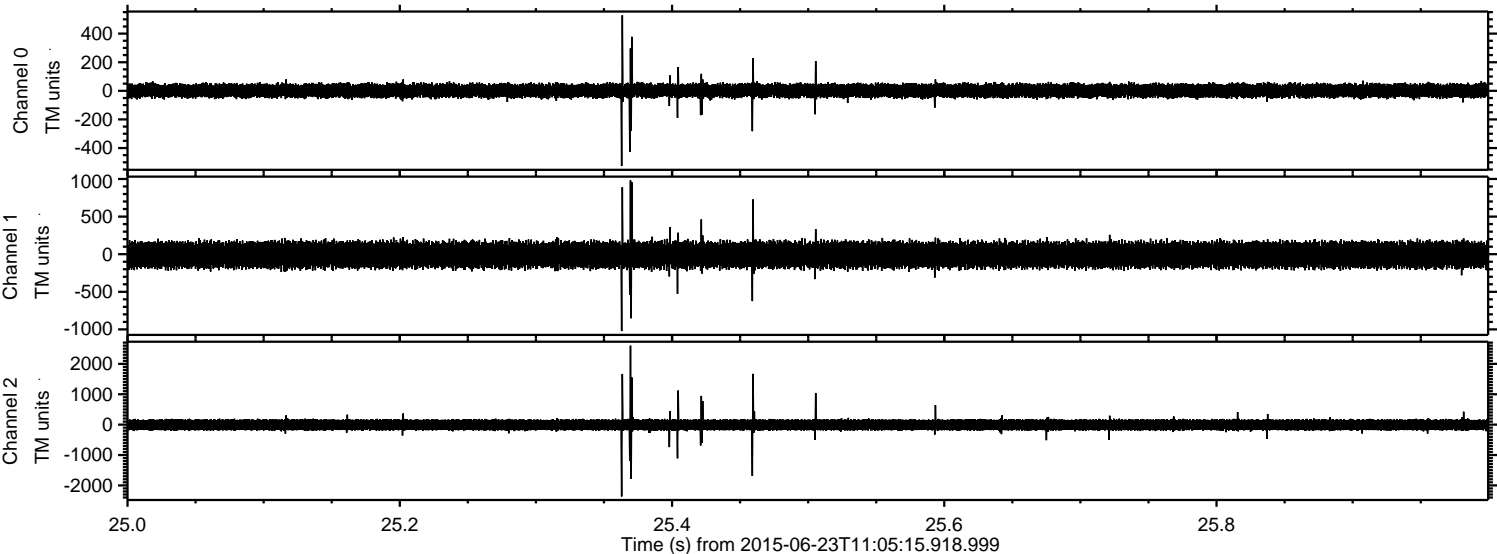


Processed Tue Jun 23 14:19:07 2015 by ELM ver.2012-10-06 from 001__elm20150623_110514__dat00.bin

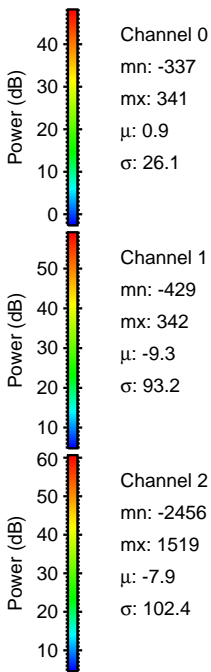
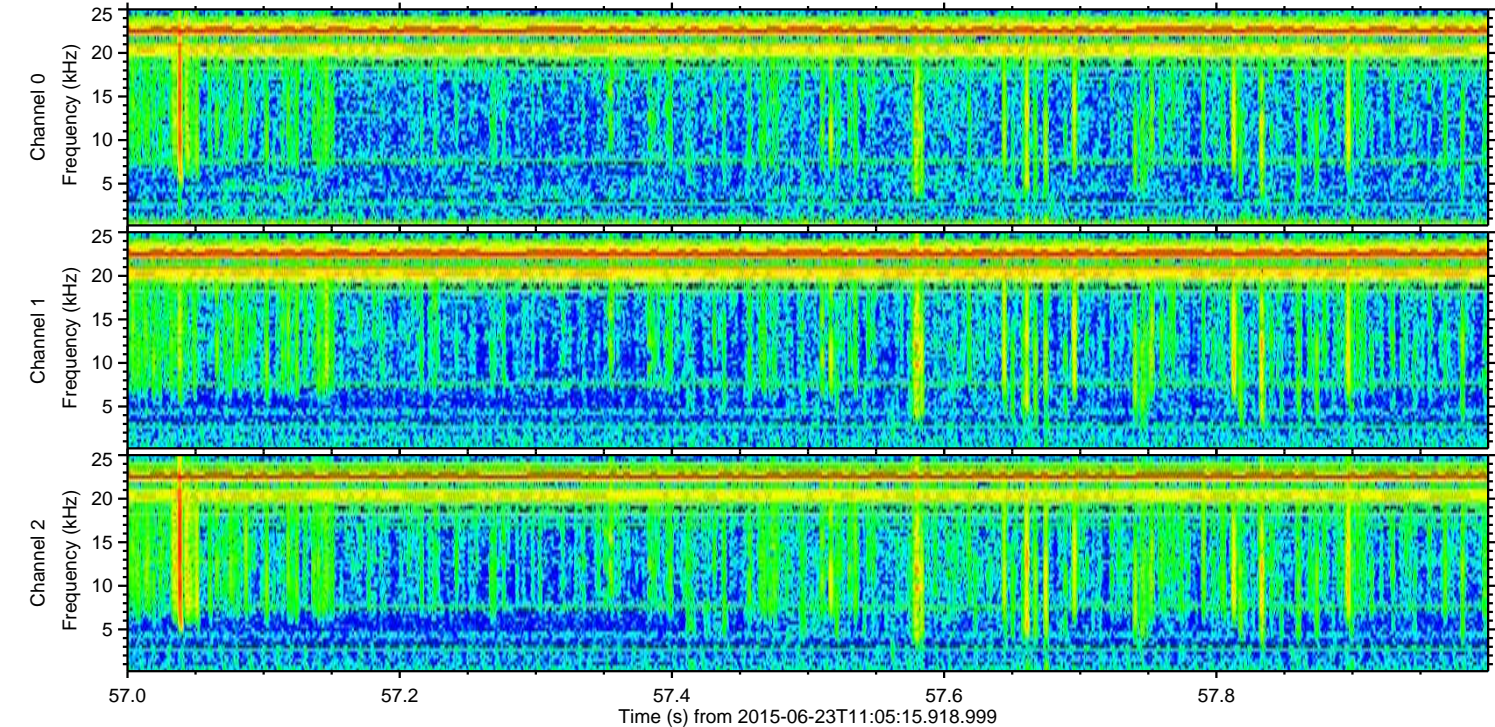
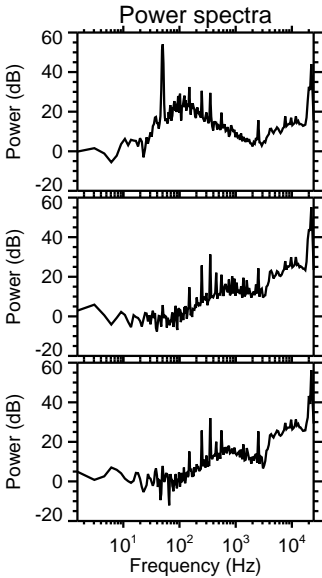
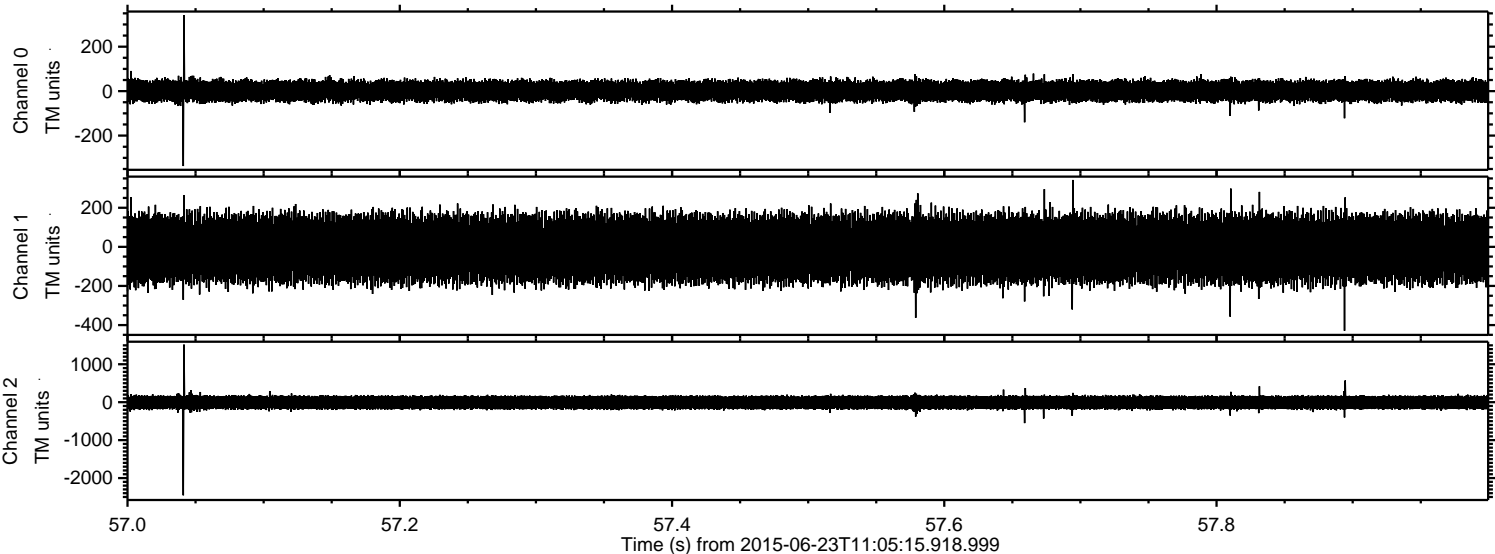


ELMAVAN 3D WAVEFORMS (Measured data sampled at 50 kHz) 51000 packets of 144 samples from 2015-06-23T11:05:15.918.999. Part 26/147

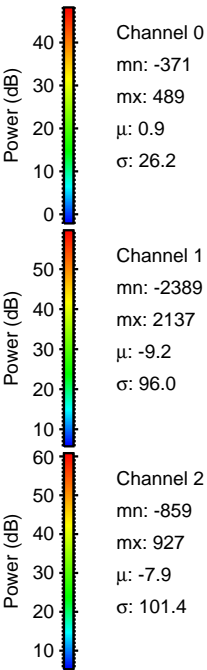
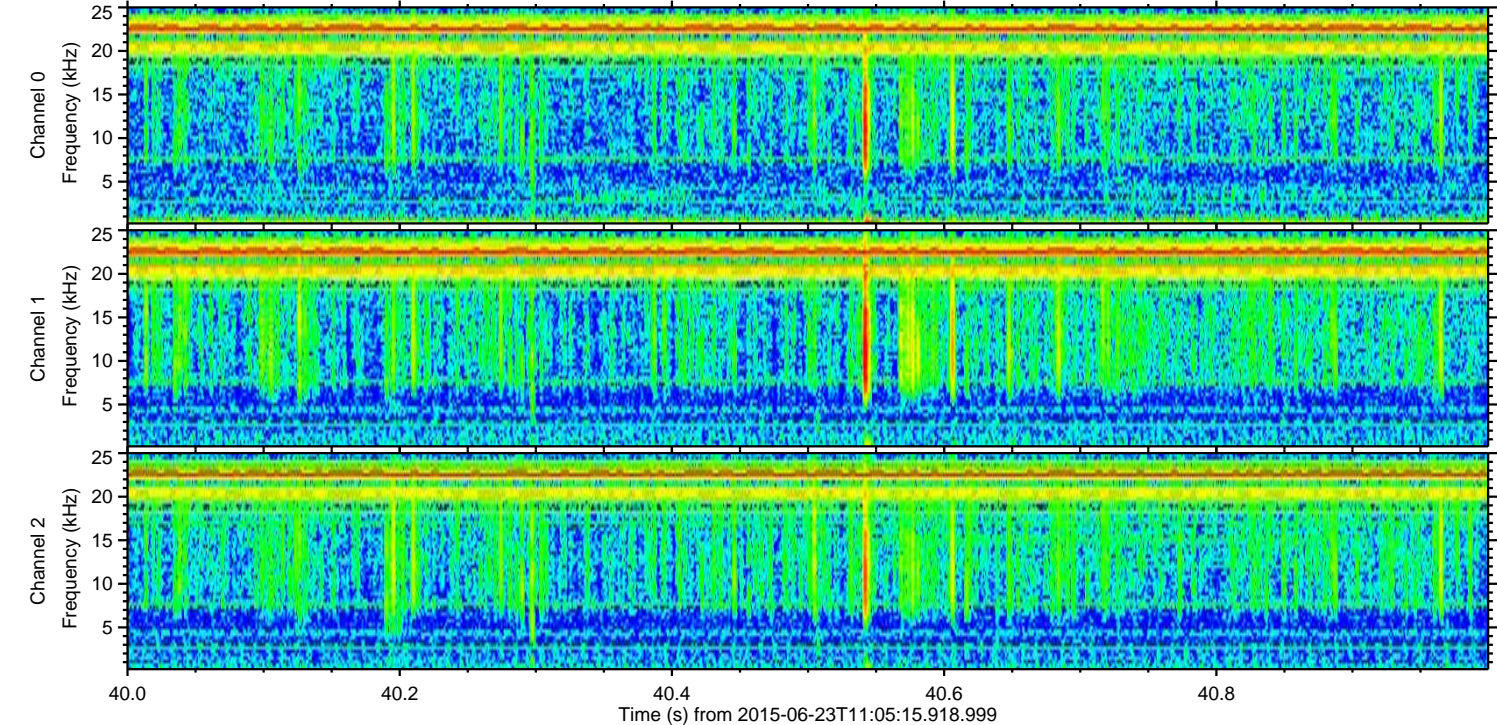
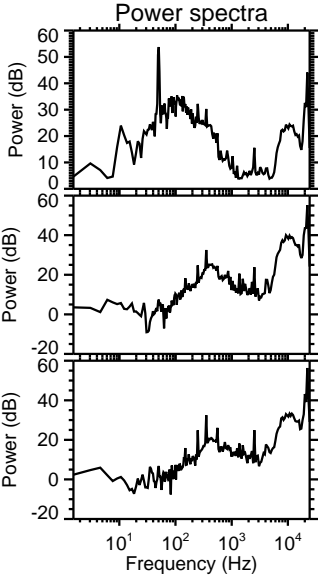
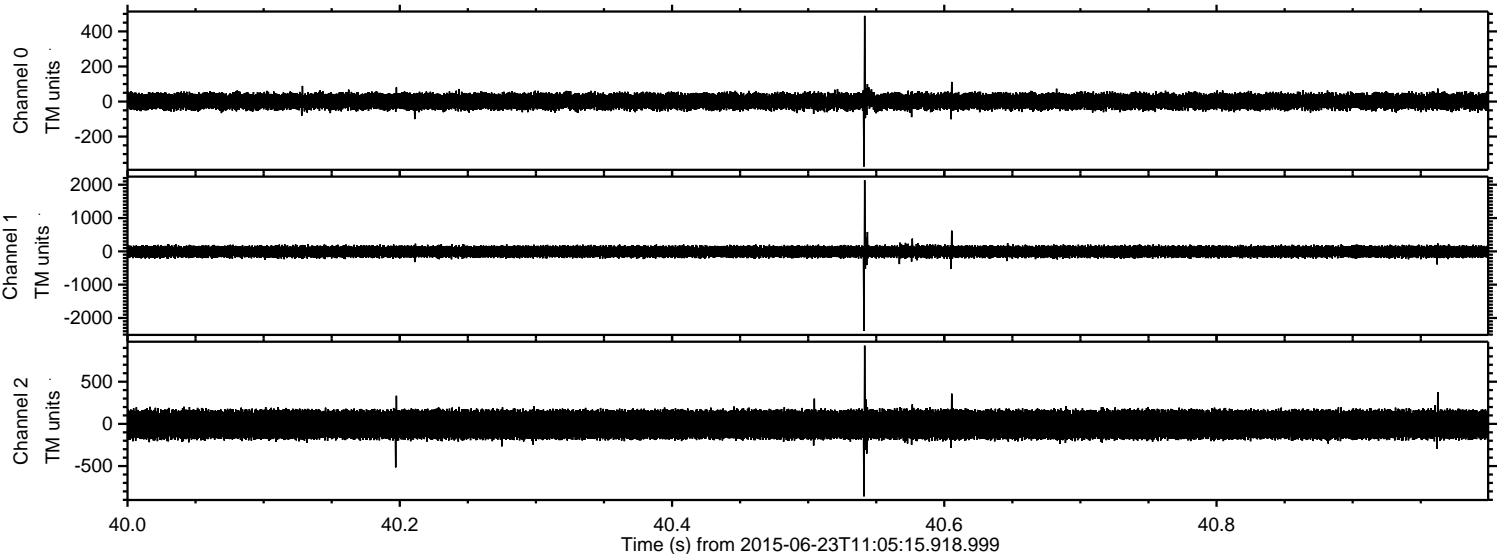
Processed Tue Jun 23 14:19:08 2015 by ELM ver.2012-10-06 from 001__elm20150623_110514__dat00.bin



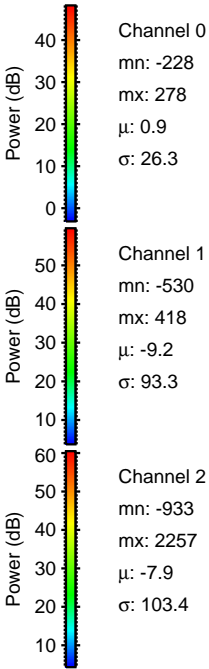
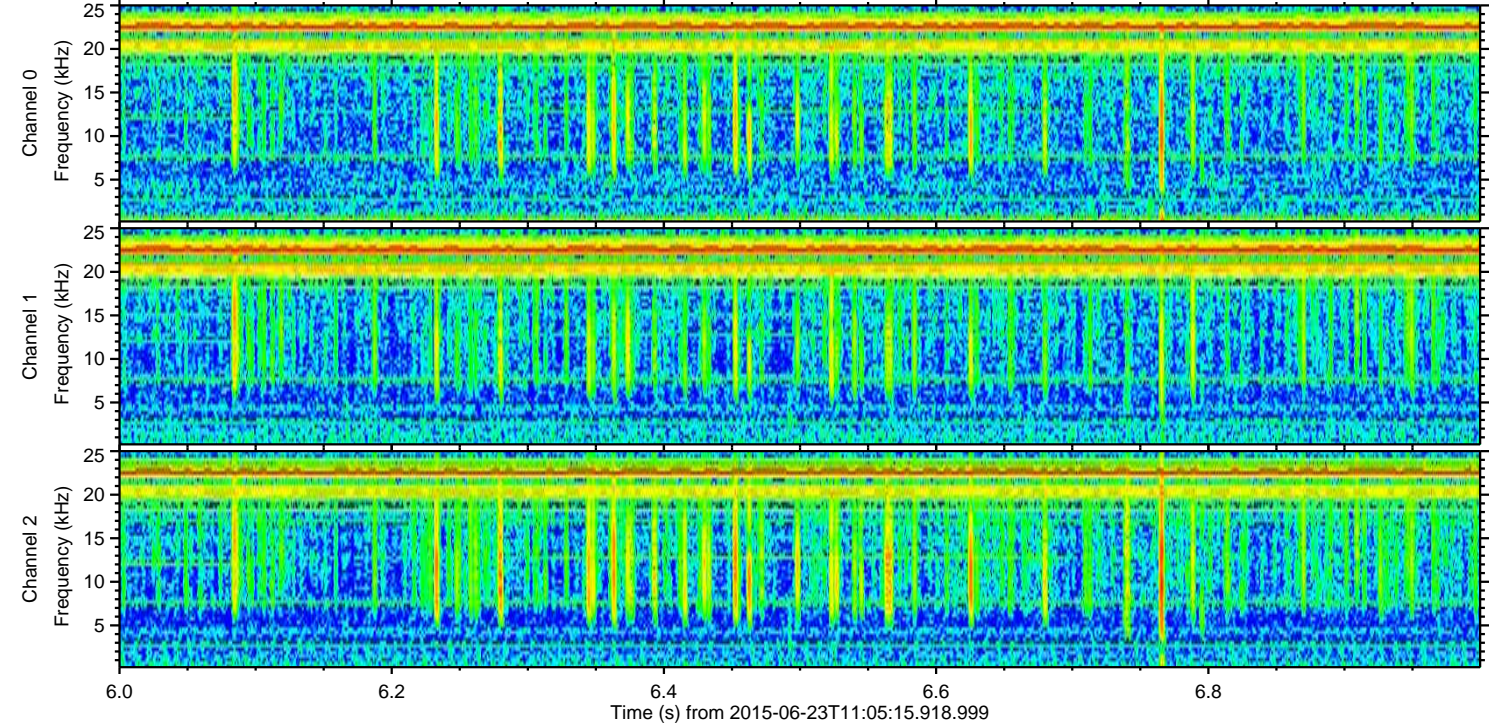
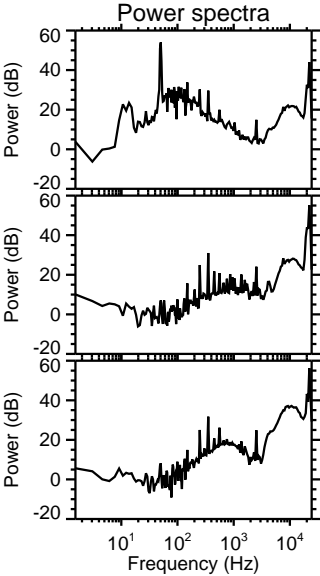
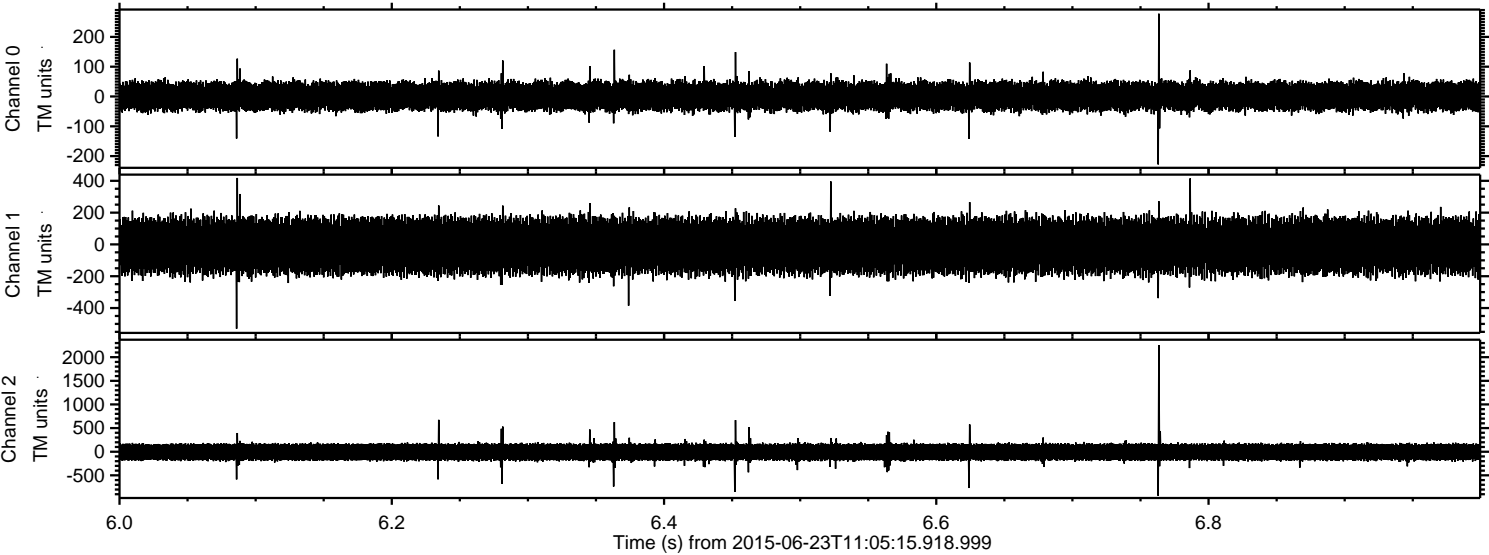
Processed Tue Jun 23 14:19:09 2015 by ELM ver.2012-10-06 from 001__elm20150623_110514__dat00.bin



Processed Tue Jun 23 14:19:10 2015 by ELM ver.2012-10-06 from 001__elm20150623_110514__dat00.bin

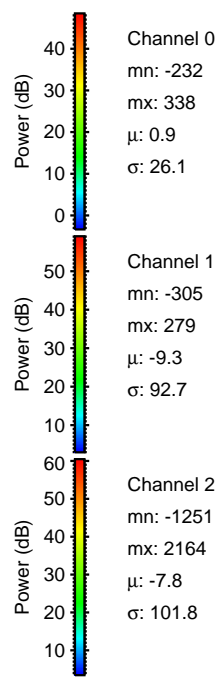
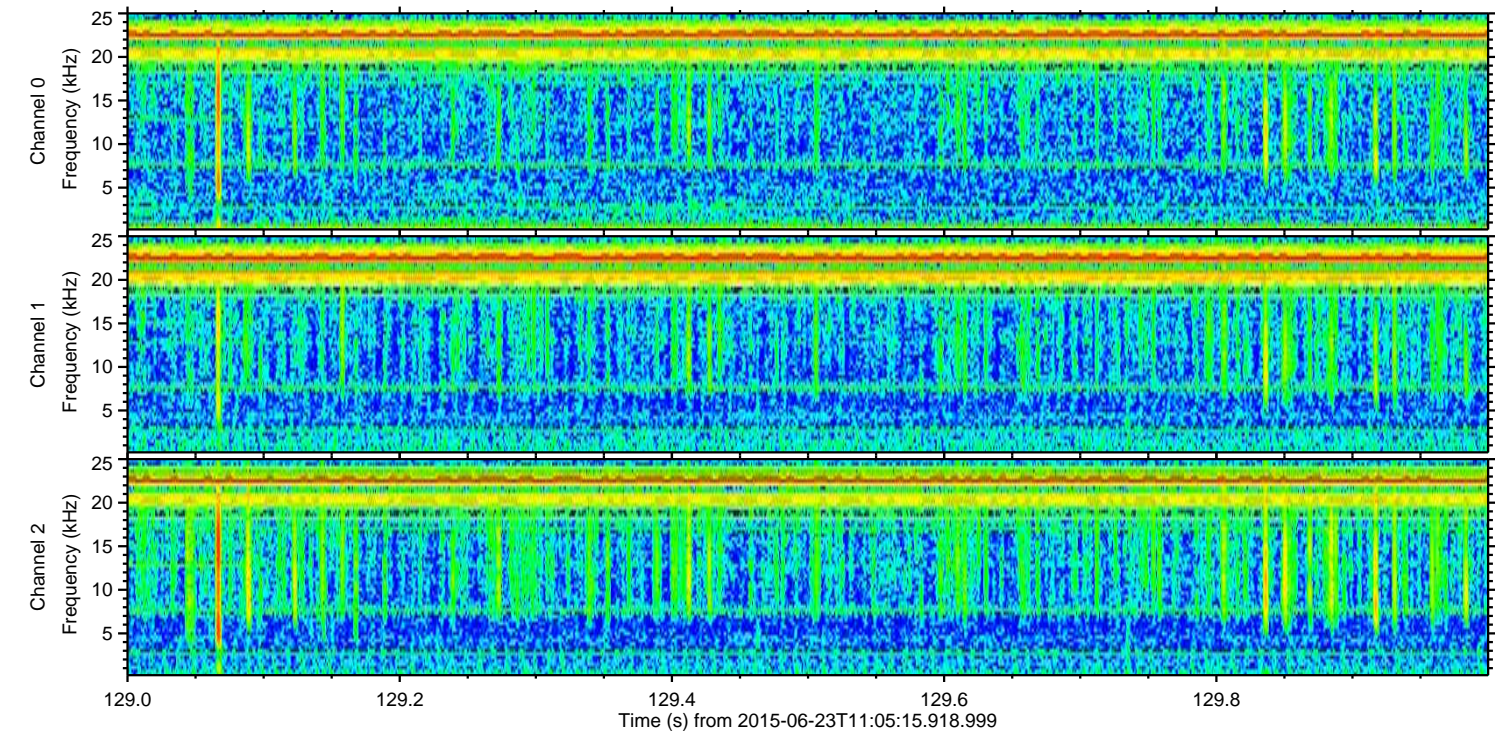
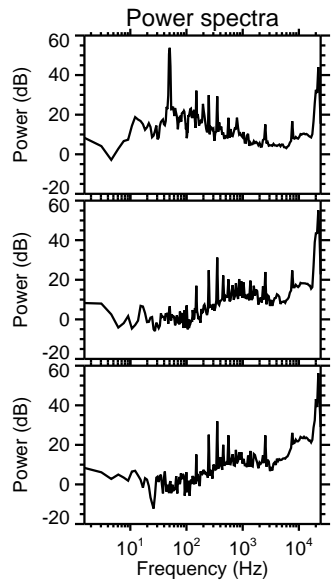
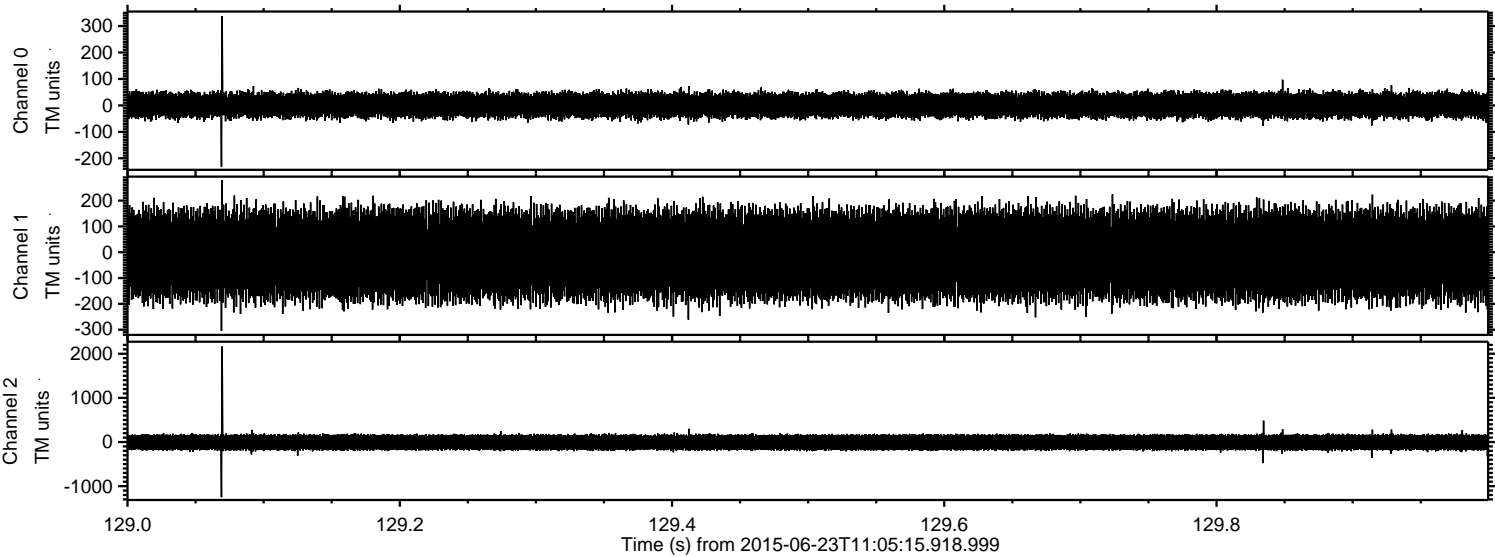


Processed Tue Jun 23 14:19:11 2015 by ELM ver.2012-10-06 from 001__elm20150623_110514__dat00.bin



ELMAVAN 3D WAVEFORMS (Measured data sampled at 50 kHz) 51000 packets of 144 samples from 2015-06-23T11:05:15.918.999. Part 130/147

Processed Tue Jun 23 14:19:12 2015 by ELM ver.2012-10-06 from 001__elm20150623_110514__dat00.bin



Channel 0
mn: -232
mx: 338
 μ : 0.9
 σ : 26.1

Channel 1
mn: -305
mx: 279
 μ : -9.3
 σ : 92.7

Channel 2
mn: -1251
mx: 2164
 μ : -7.8
 σ : 101.8

ELMAVAN 3D WAVEFORMS (Measured data sampled at 50 kHz) 51000 packets of 144 samples from 2015-06-23T11:05:15.918.999. Part 125/147

Processed Tue Jun 23 14:19:13 2015 by ELM ver.2012-10-06 from 001__elm20150623_110514__dat00.bin

