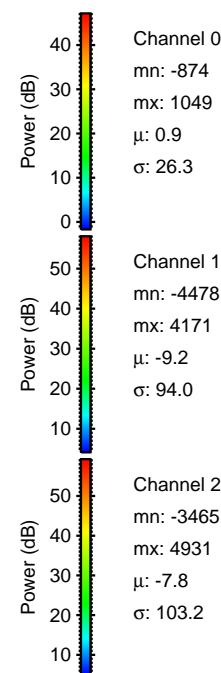
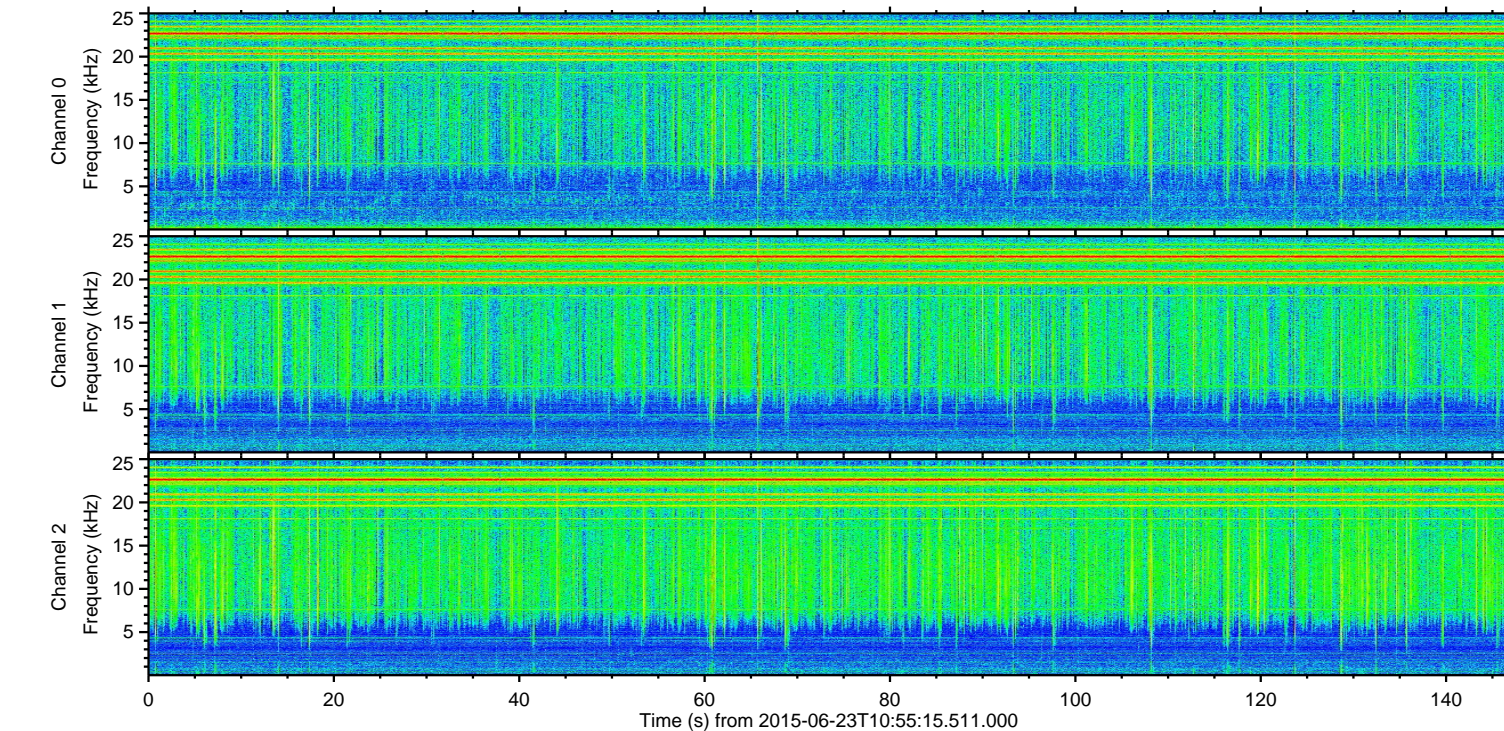
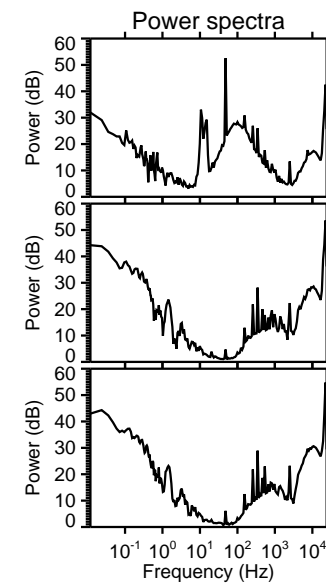
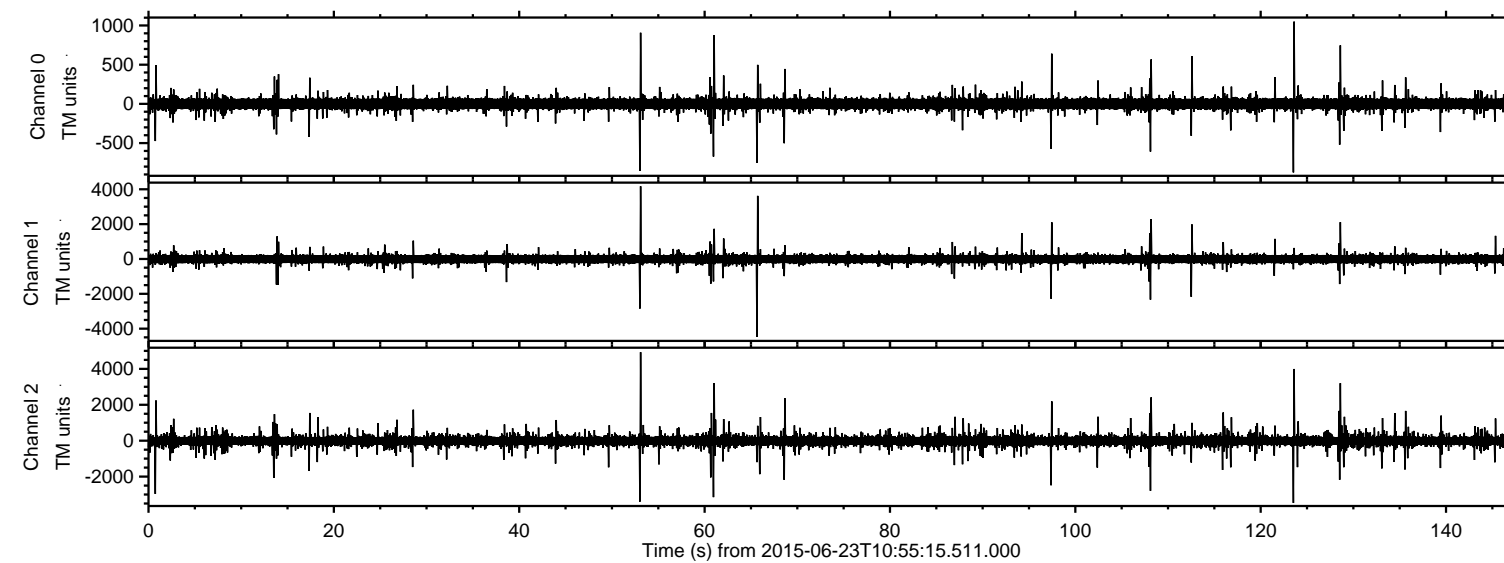
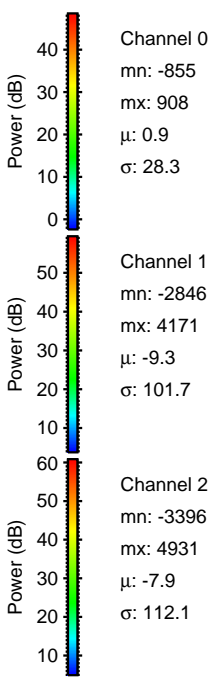
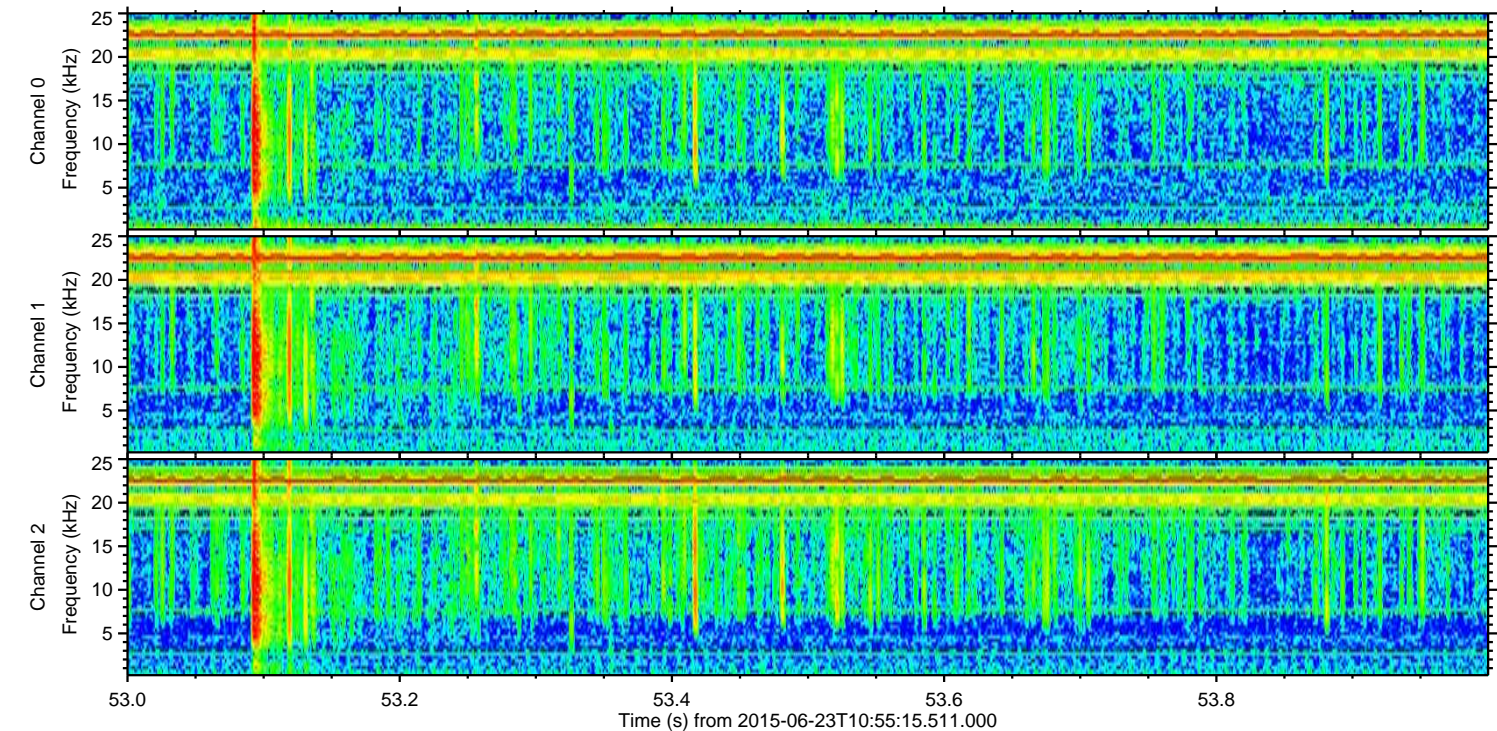
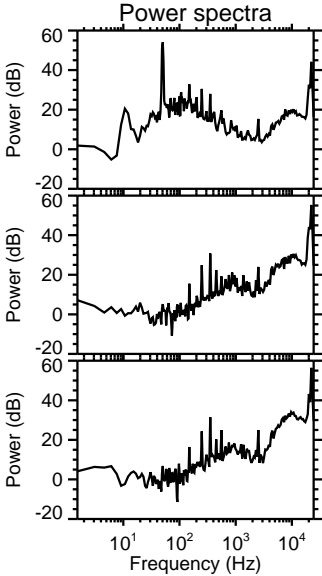
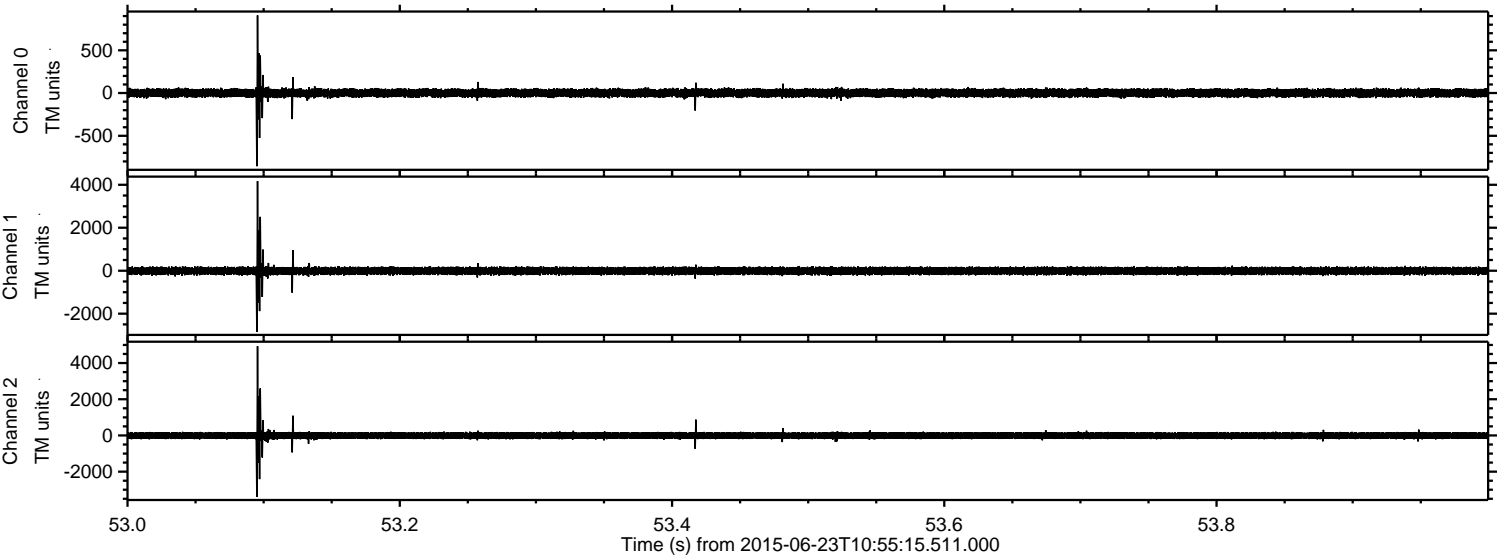


ELMAVAN 3D WAVEFORMS (Measured data sampled at 50 kHz) 51000 packets of 144 samples from 2015-06-23T10:55:15.511.000.

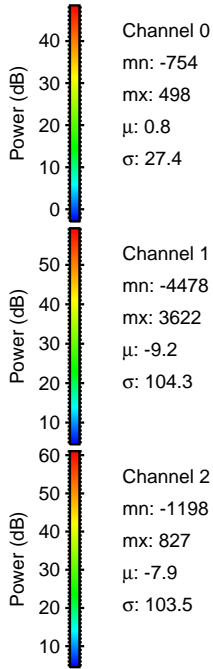
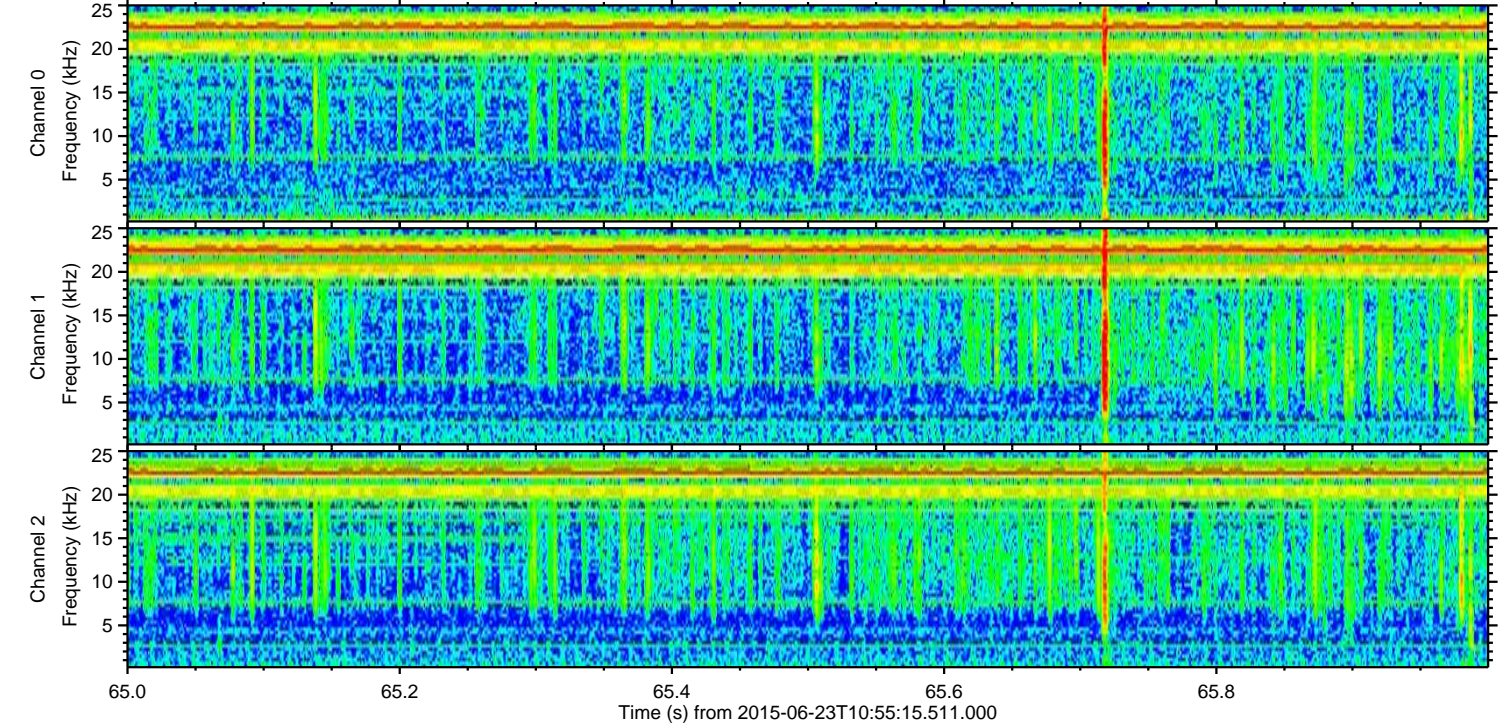
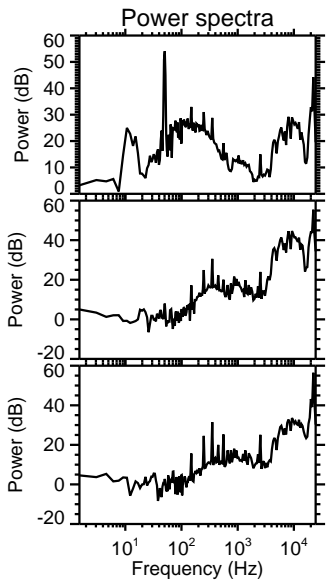
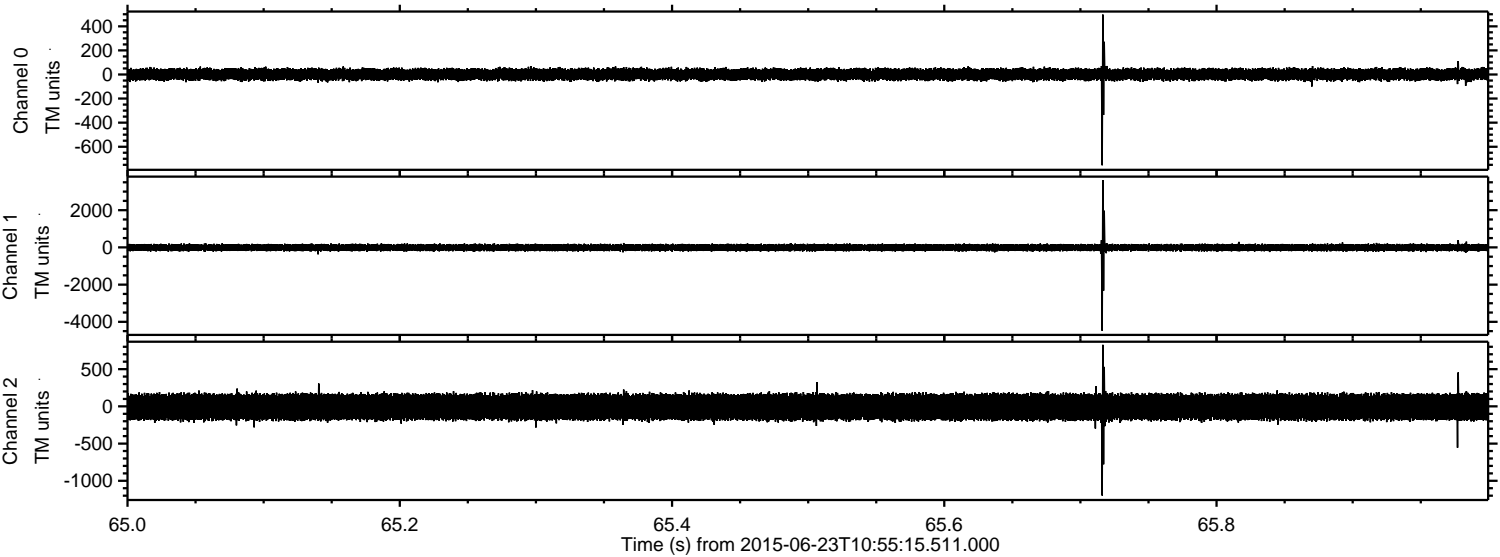
Processed Tue Jun 23 14:16:11 2015 by ELM ver.2012-10-06 from 001__elm20150623_105514__dat00.bin



Processed Tue Jun 23 14:16:25 2015 by ELM ver.2012-10-06 from 001__elm20150623_105514__dat00.bin

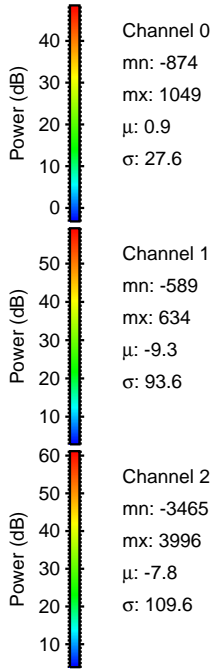
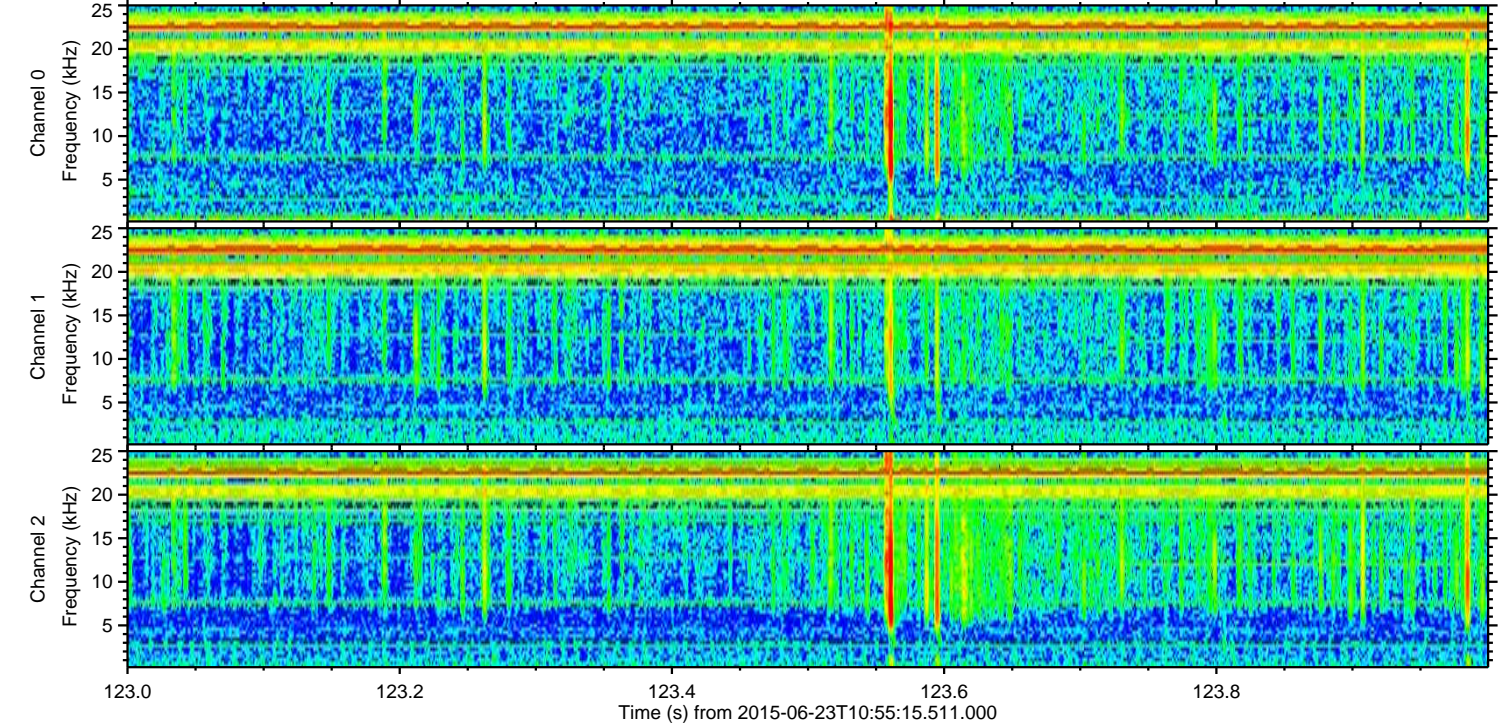
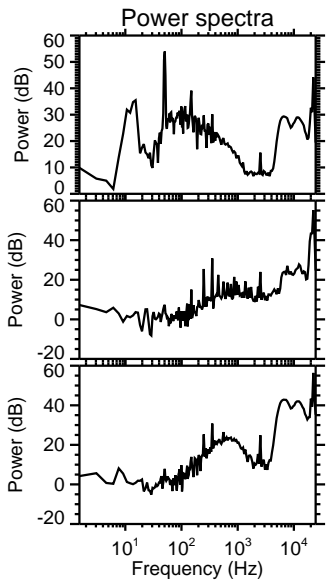
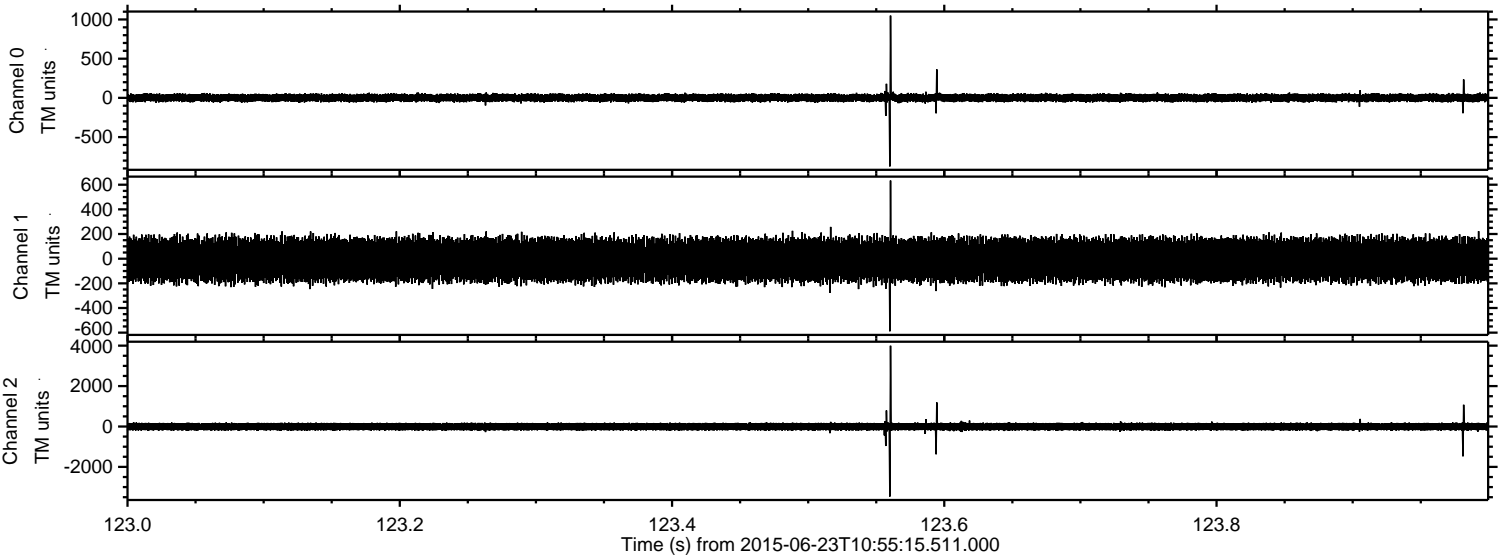


Processed Tue Jun 23 14:16:26 2015 by ELM ver.2012-10-06 from 001__elm20150623_105514__dat00.bin



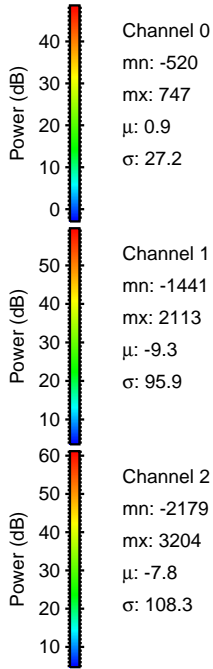
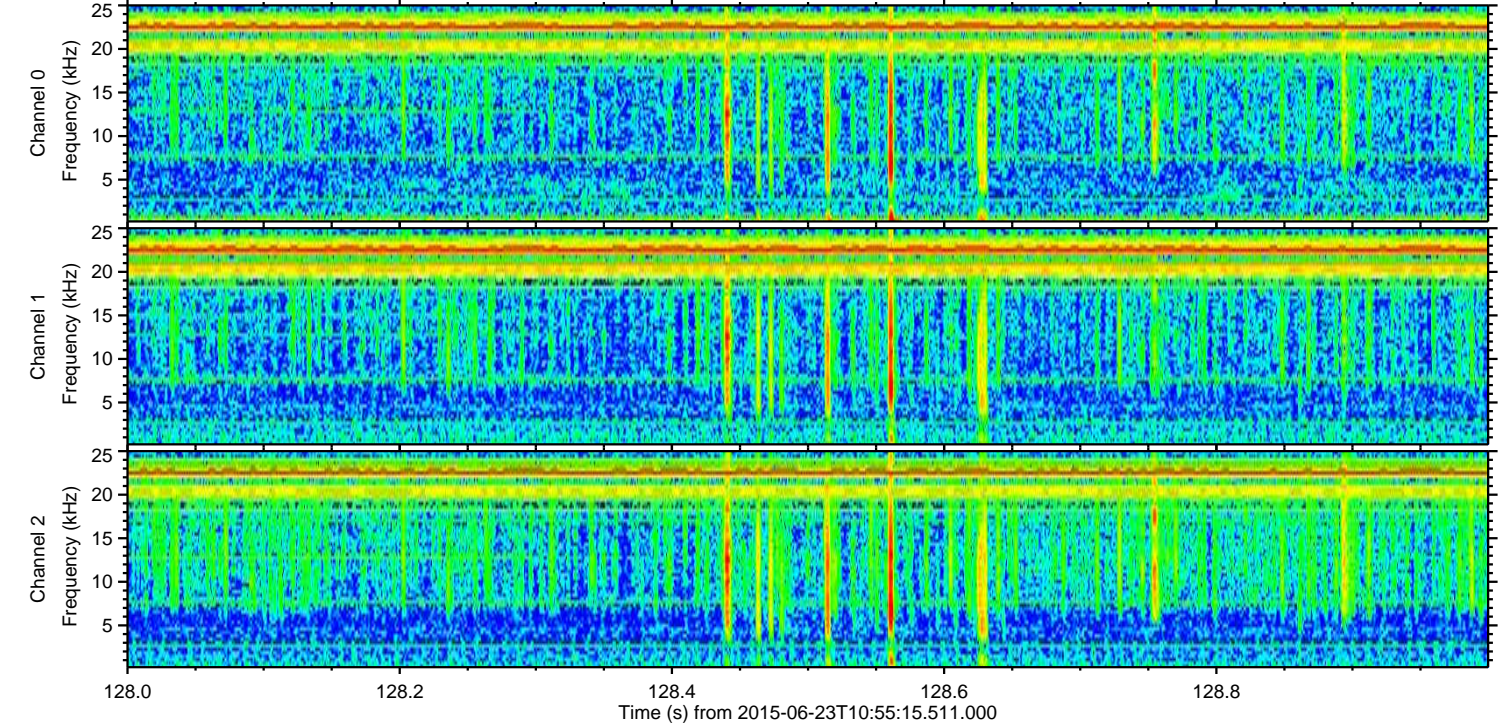
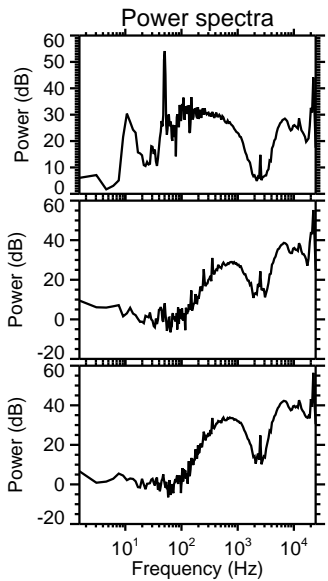
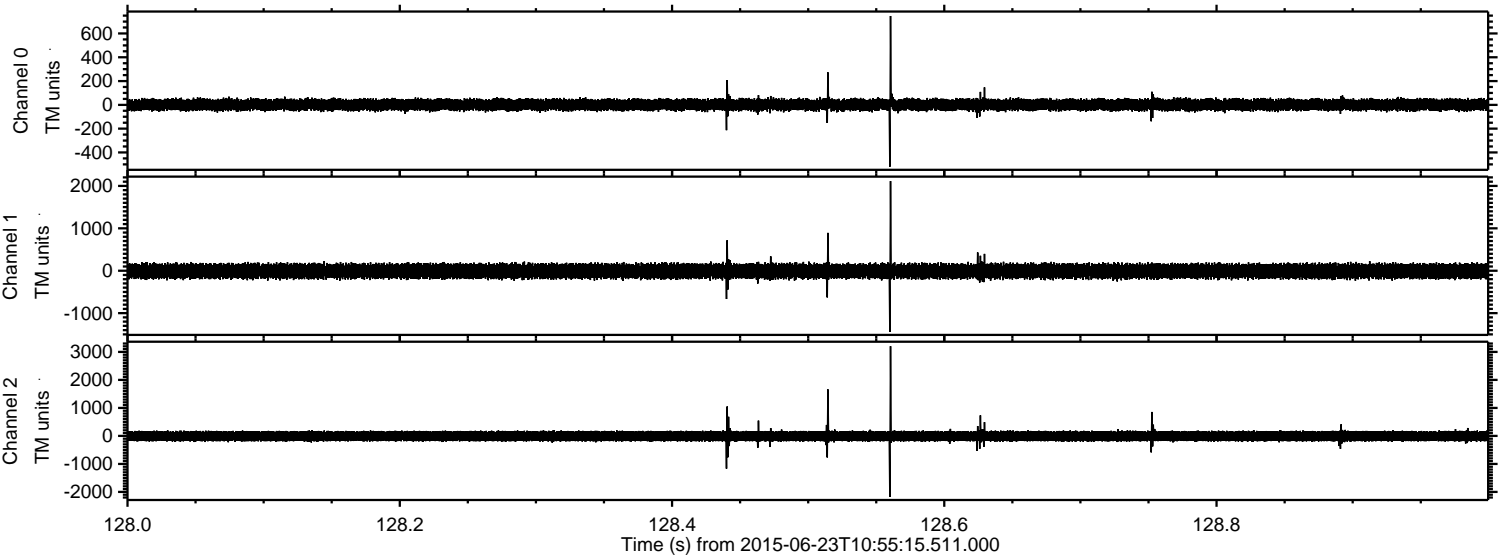
ELMAVAN 3D WAVEFORMS (Measured data sampled at 50 kHz) 51000 packets of 144 samples from 2015-06-23T10:55:15.511.000. Part 124/147

Processed Tue Jun 23 14:16:28 2015 by ELM ver.2012-10-06 from 001__elm20150623_105514__dat00.bin

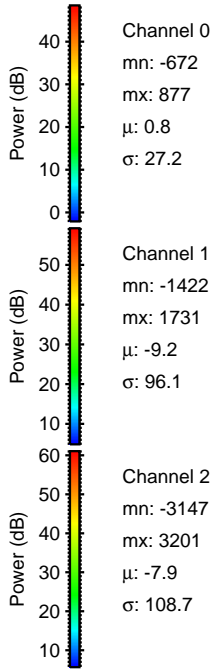
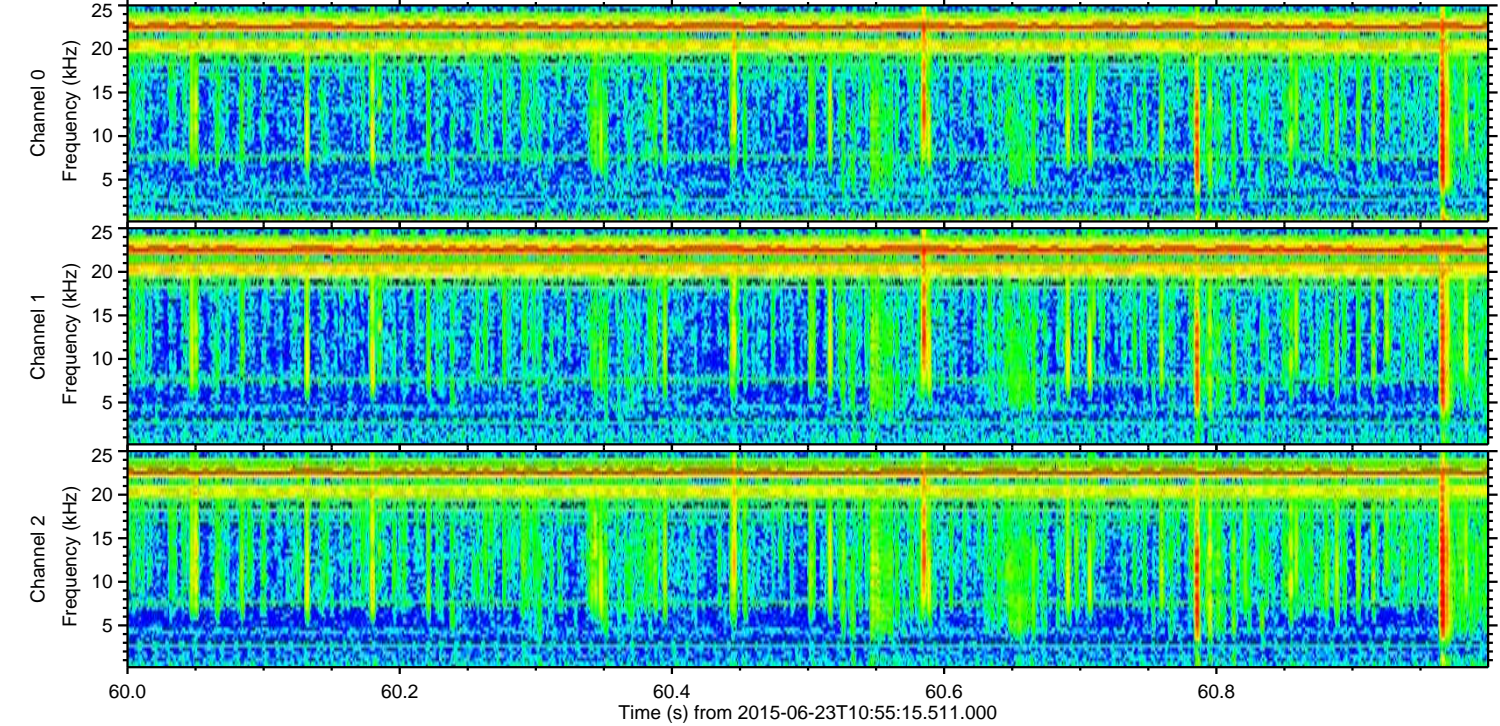
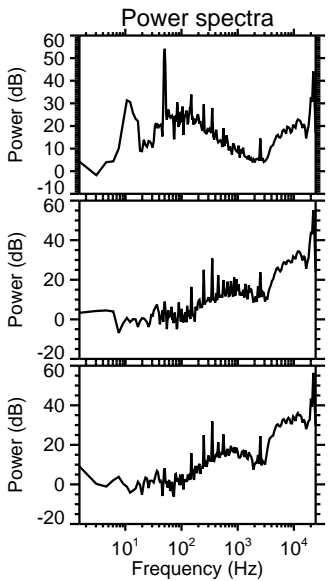
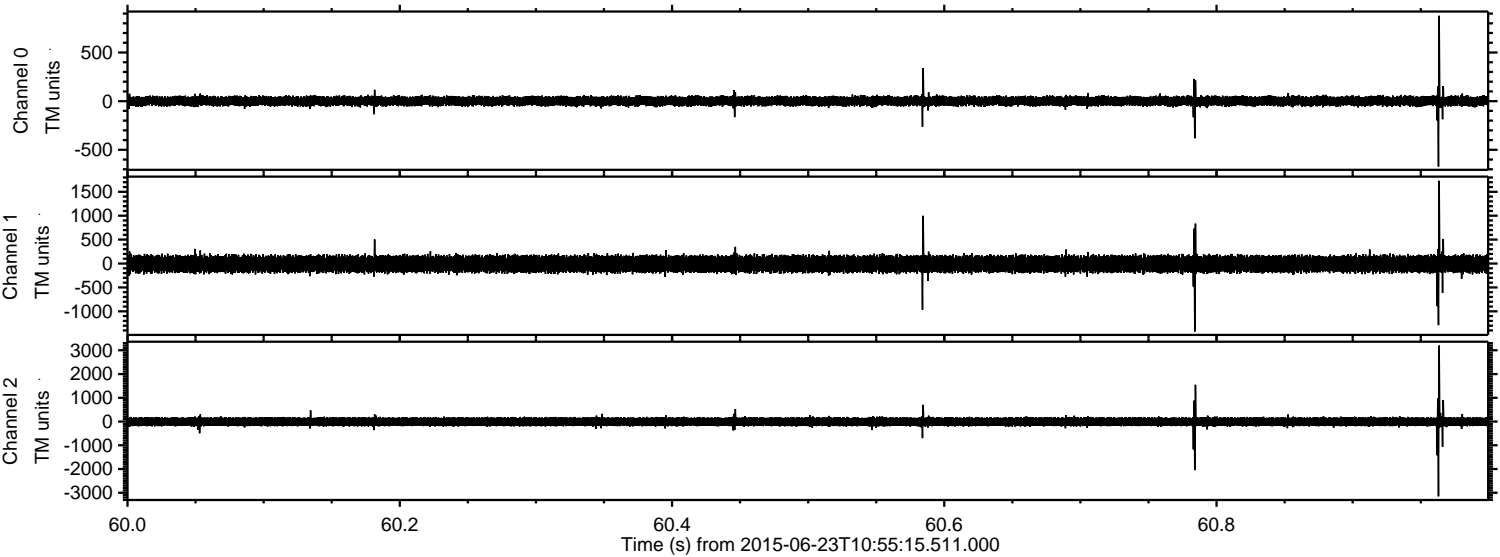


ELMAVAN 3D WAVEFORMS (Measured data sampled at 50 kHz) 51000 packets of 144 samples from 2015-06-23T10:55:15.511.000. Part 129/147

Processed Tue Jun 23 14:16:29 2015 by ELM ver.2012-10-06 from 001__elm20150623_105514__dat00.bin

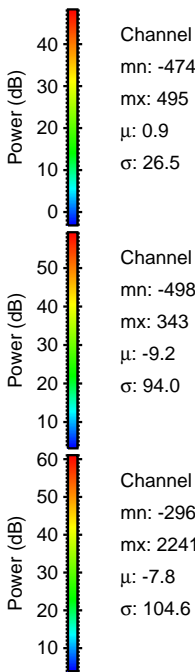
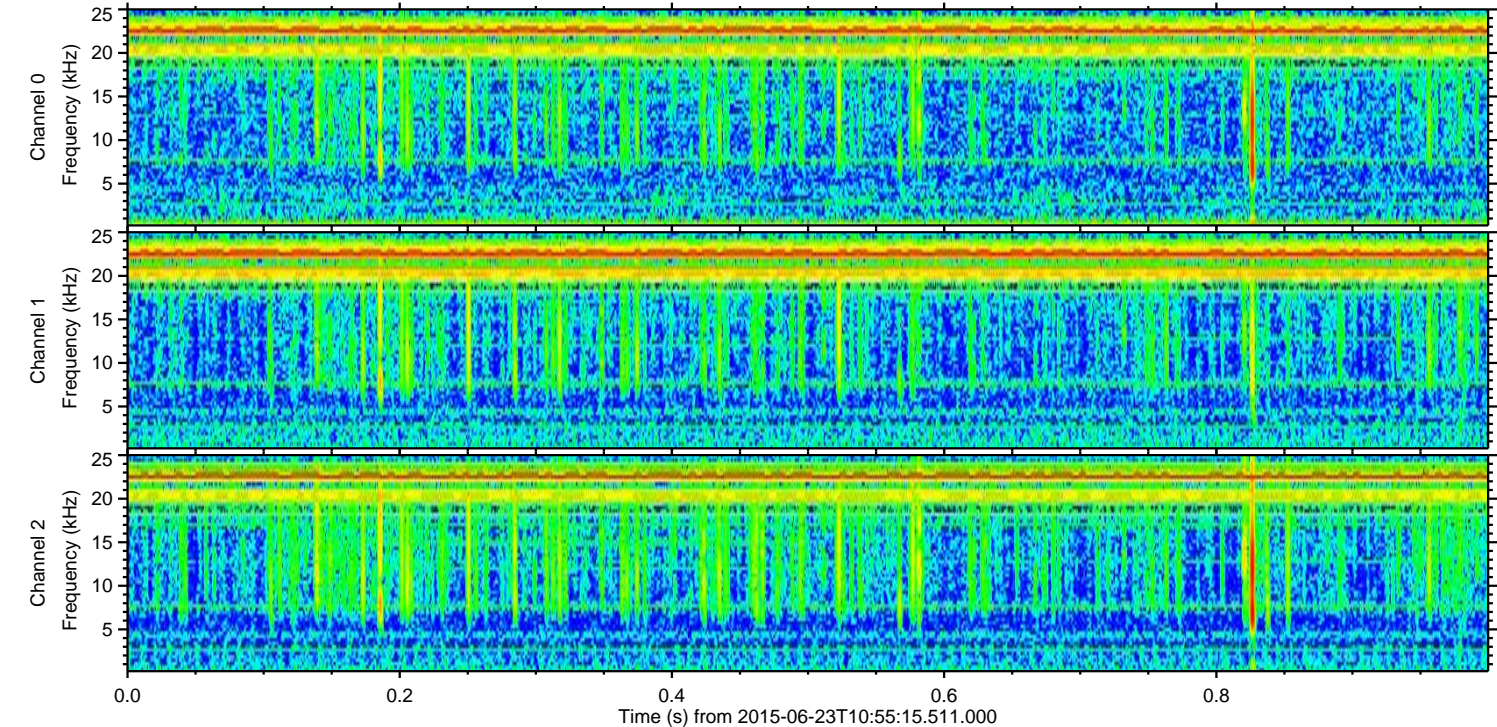
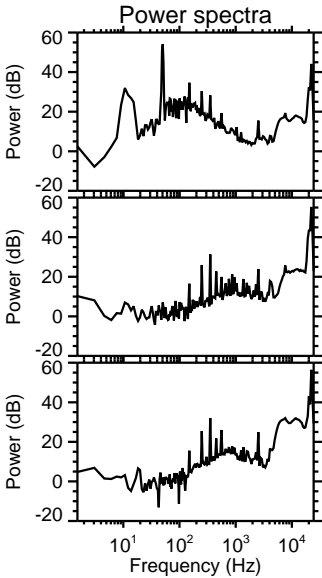
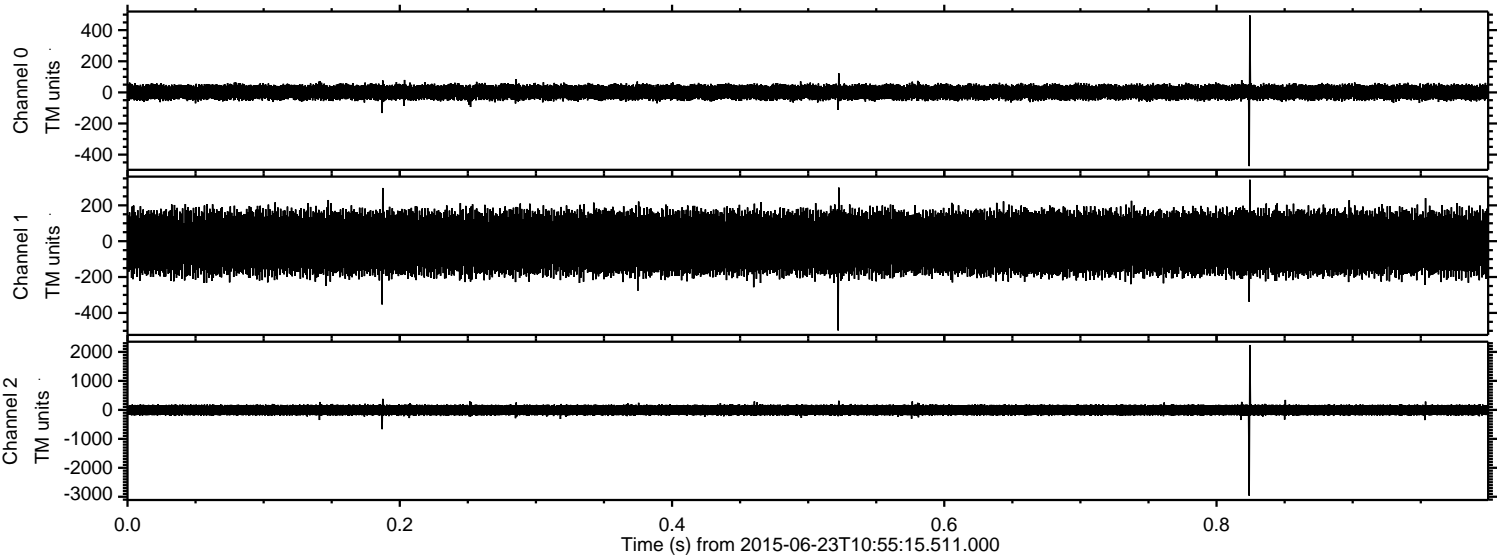


Processed Tue Jun 23 14:16:30 2015 by ELM ver.2012-10-06 from 001__elm20150623_105514__dat00.bin



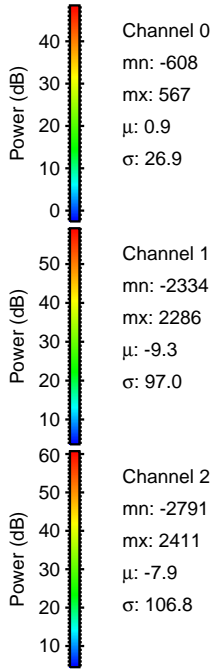
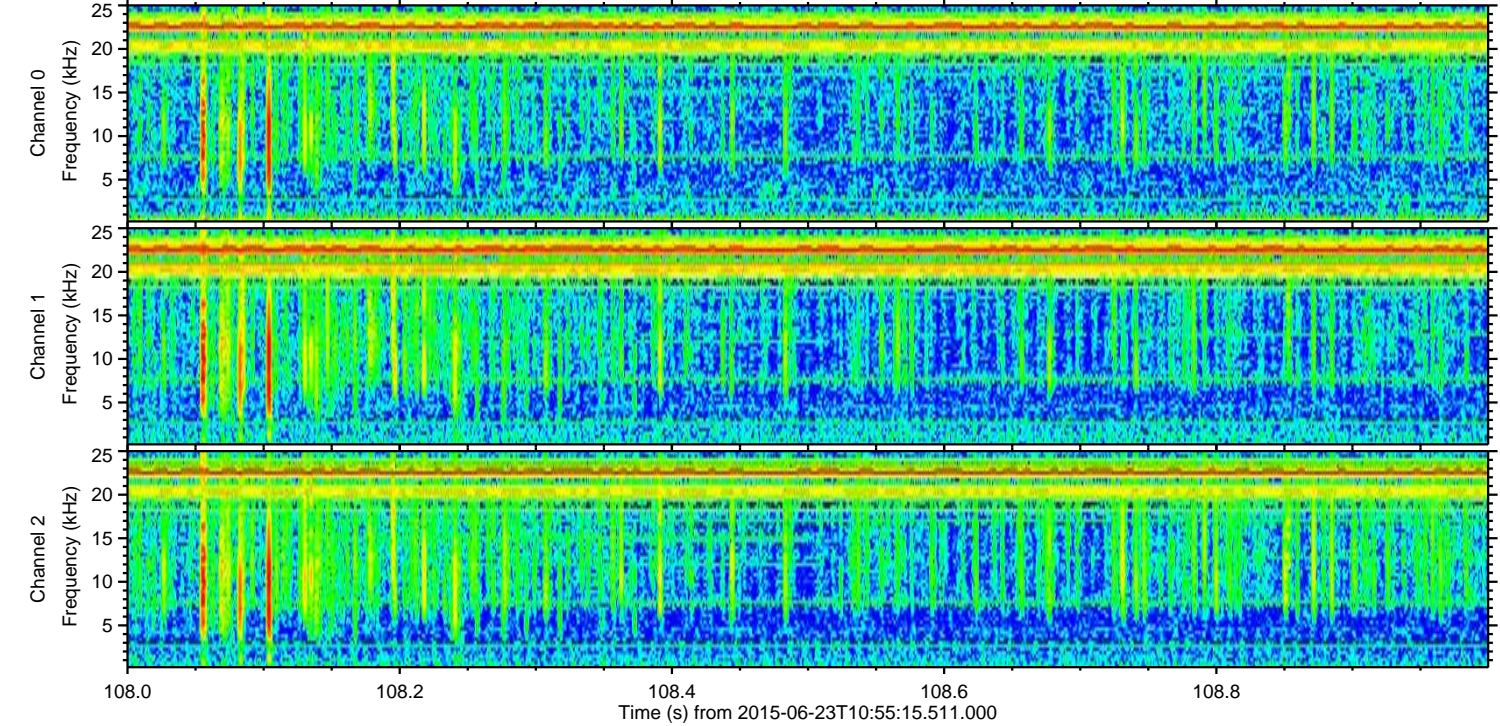
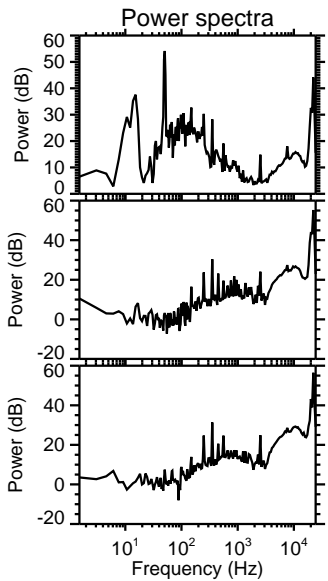
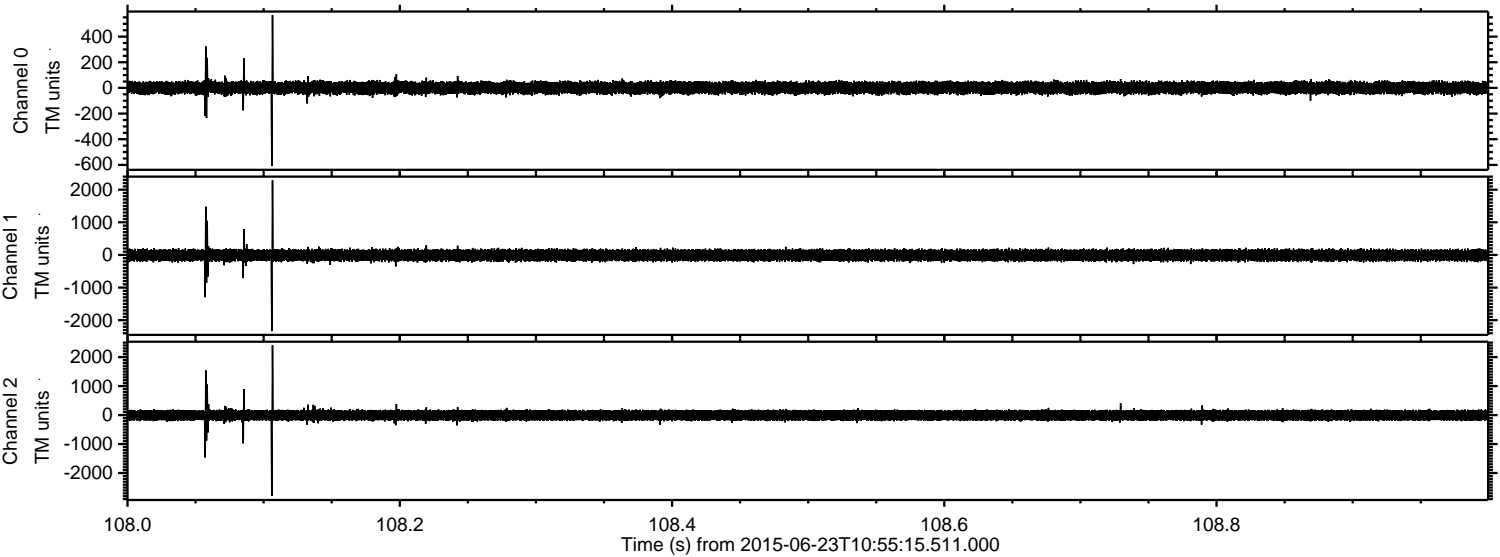
ELMAVAN 3D WAVEFORMS (Measured data sampled at 50 kHz) 51000 packets of 144 samples from 2015-06-23T10:55:15.511.000. Part 1/147

Processed Tue Jun 23 14:16:31 2015 by ELM ver.2012-10-06 from 001__elm20150623_105514__dat00.bin



ELMAVAN 3D WAVEFORMS (Measured data sampled at 50 kHz) 51000 packets of 144 samples from 2015-06-23T10:55:15.511.000. Part 109/147

Processed Tue Jun 23 14:16:32 2015 by ELM ver.2012-10-06 from 001__elm20150623_105514__dat00.bin

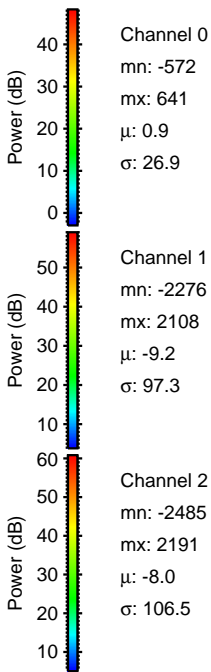
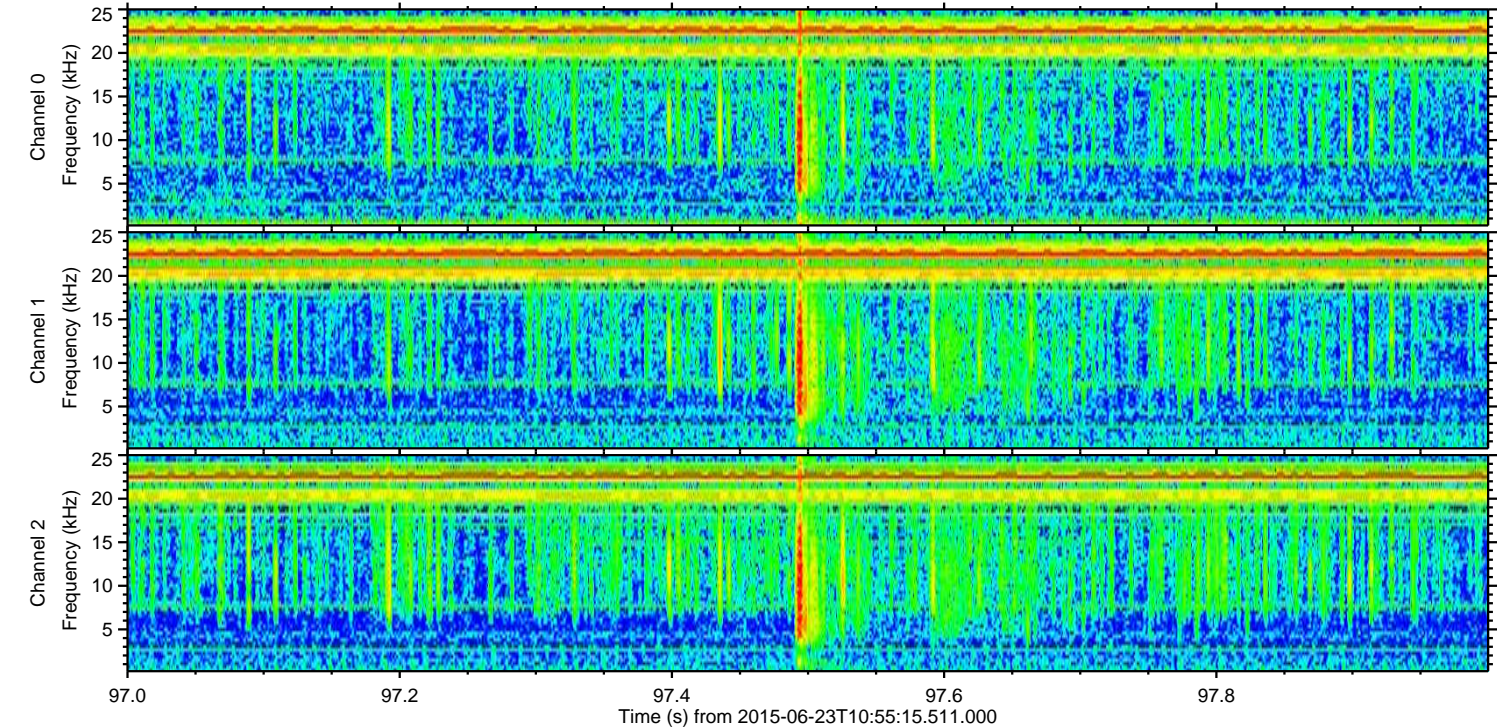
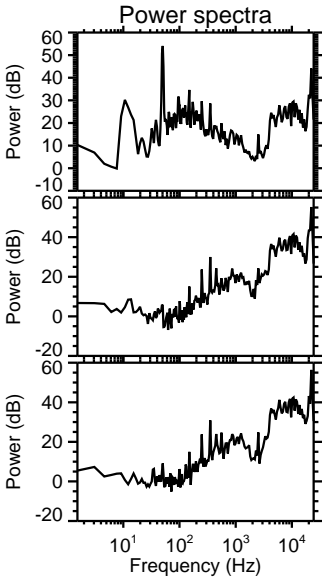
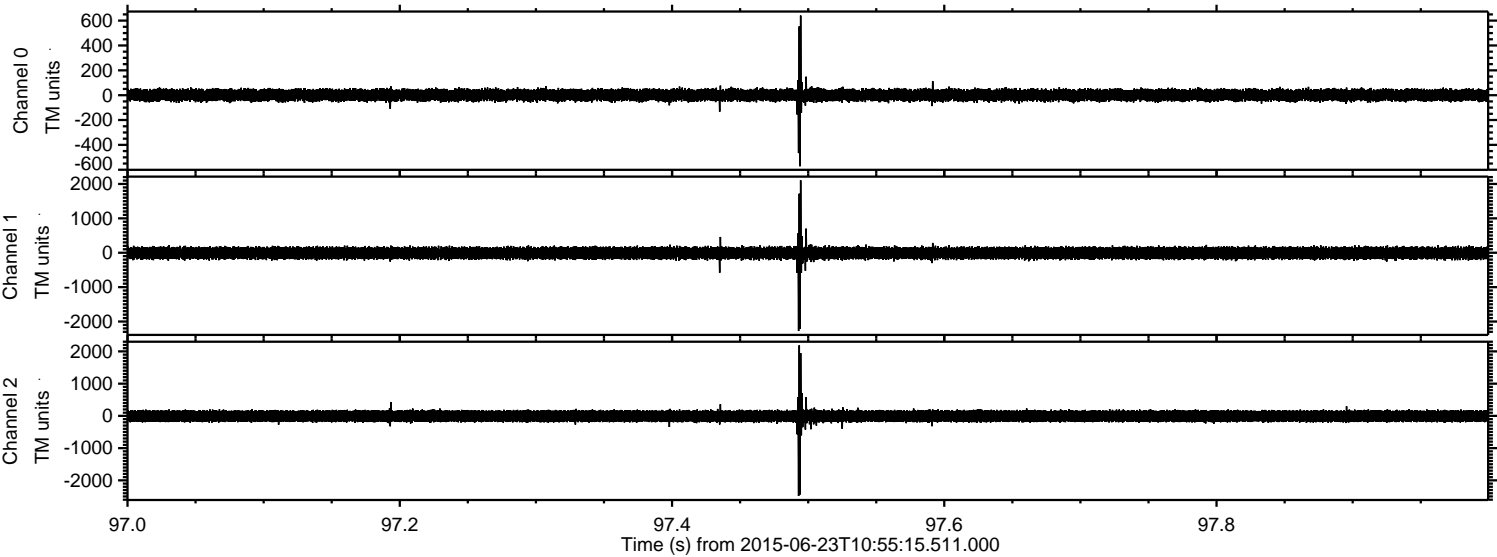


Channel 0
mn: -608
mx: 567
 μ : 0.9
 σ : 26.9

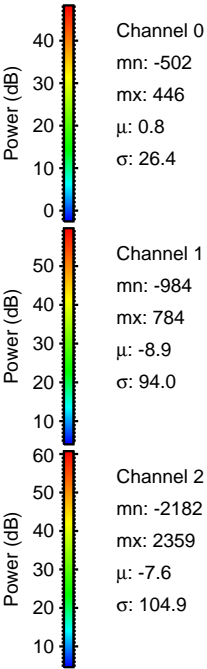
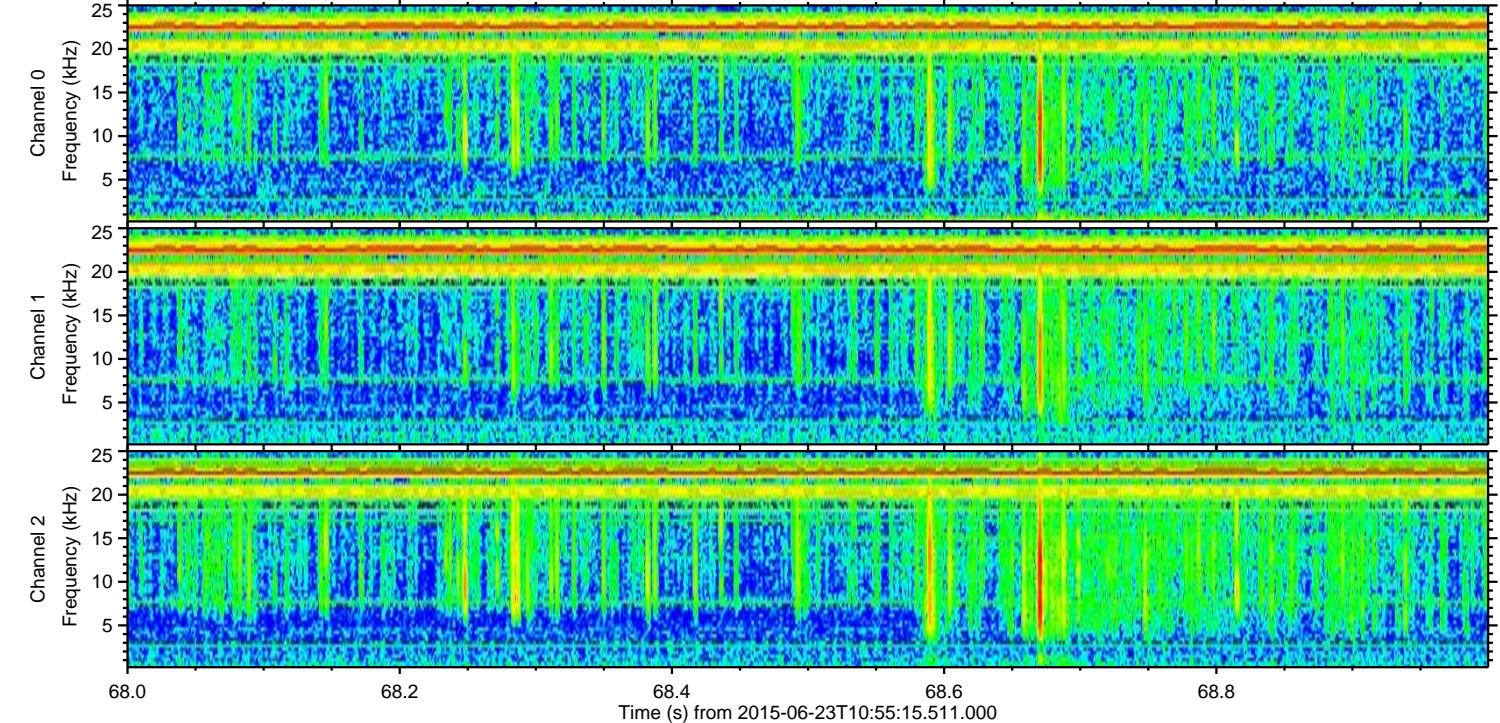
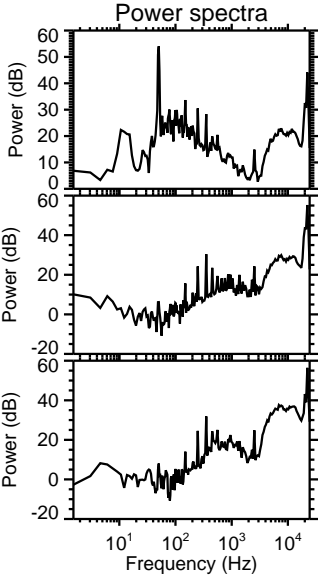
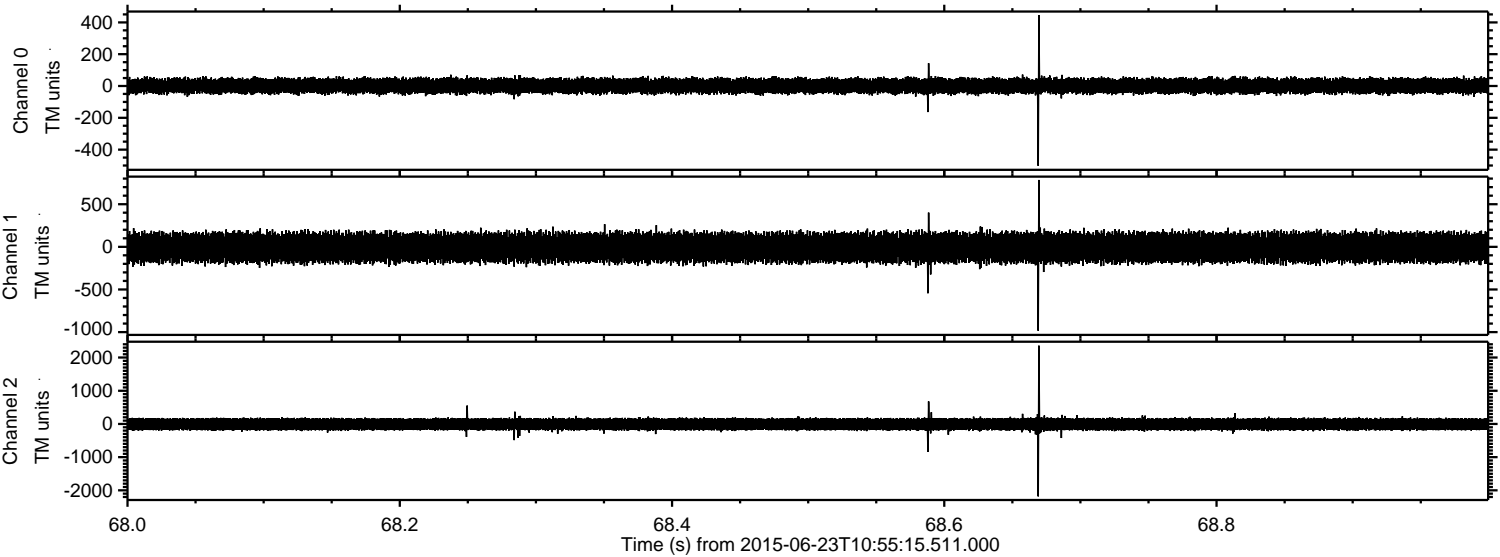
Channel 1
mn: -2334
mx: 2286
 μ : -9.3
 σ : 97.0

Channel 2
mn: -2791
mx: 2411
 μ : -7.9
 σ : 106.8

Processed Tue Jun 23 14:16:33 2015 by ELM ver.2012-10-06 from 001__elm20150623_105514__dat00.bin



Processed Tue Jun 23 14:16:34 2015 by ELM ver.2012-10-06 from 001__elm20150623_105514__dat00.bin



Channel 0
mn: -502
mx: 446
 μ : 0.8
 σ : 26.4

Channel 1
mn: -984
mx: 784
 μ : -8.9
 σ : 94.0

Channel 2
mn: -2182
mx: 2359
 μ : -7.6
 σ : 104.9

