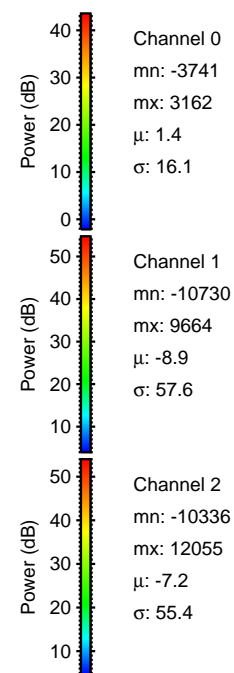
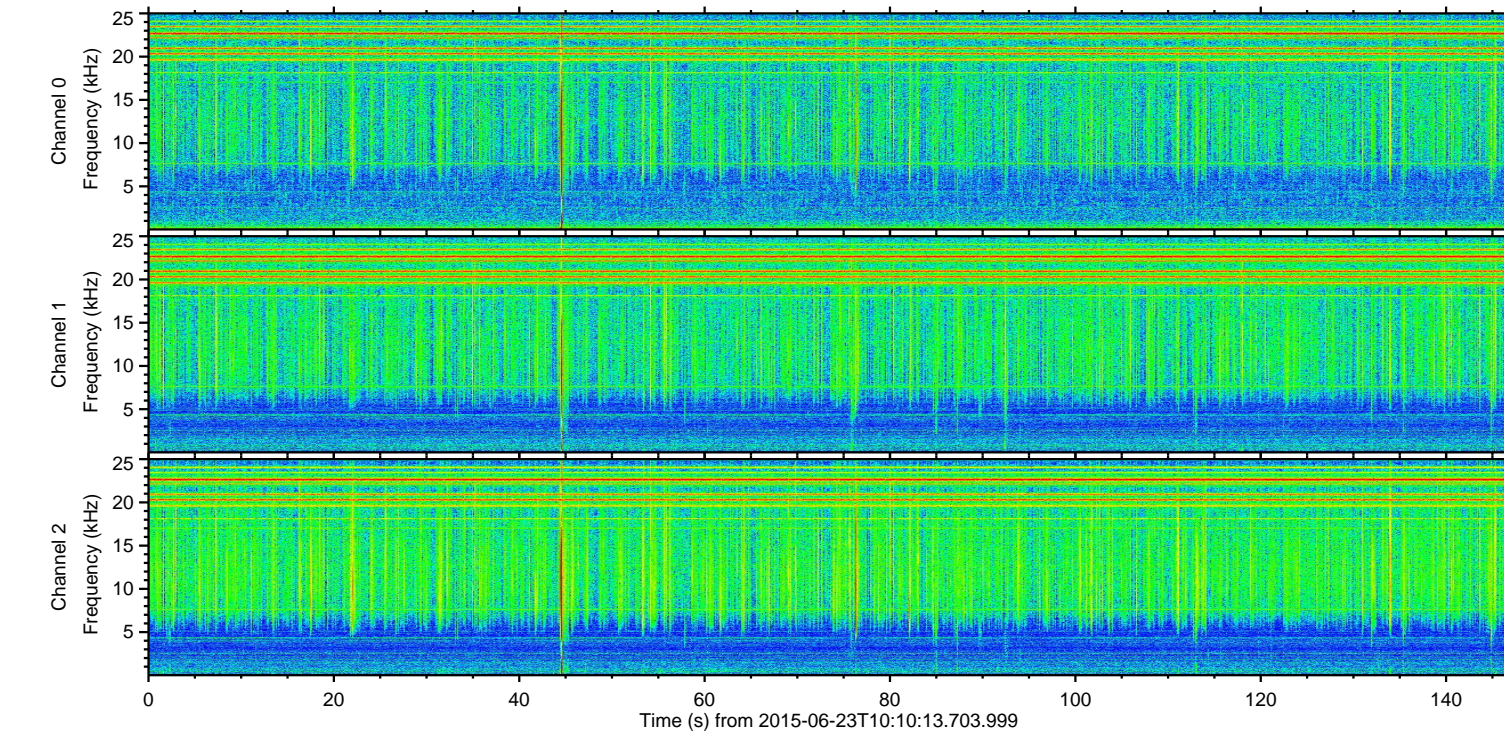
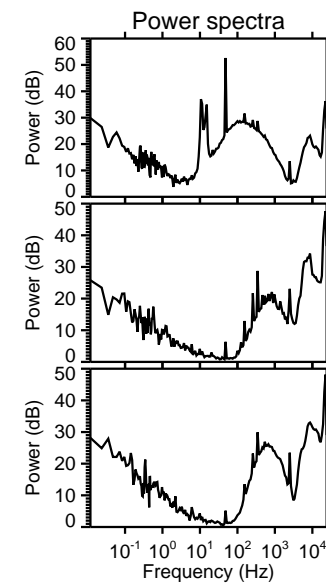
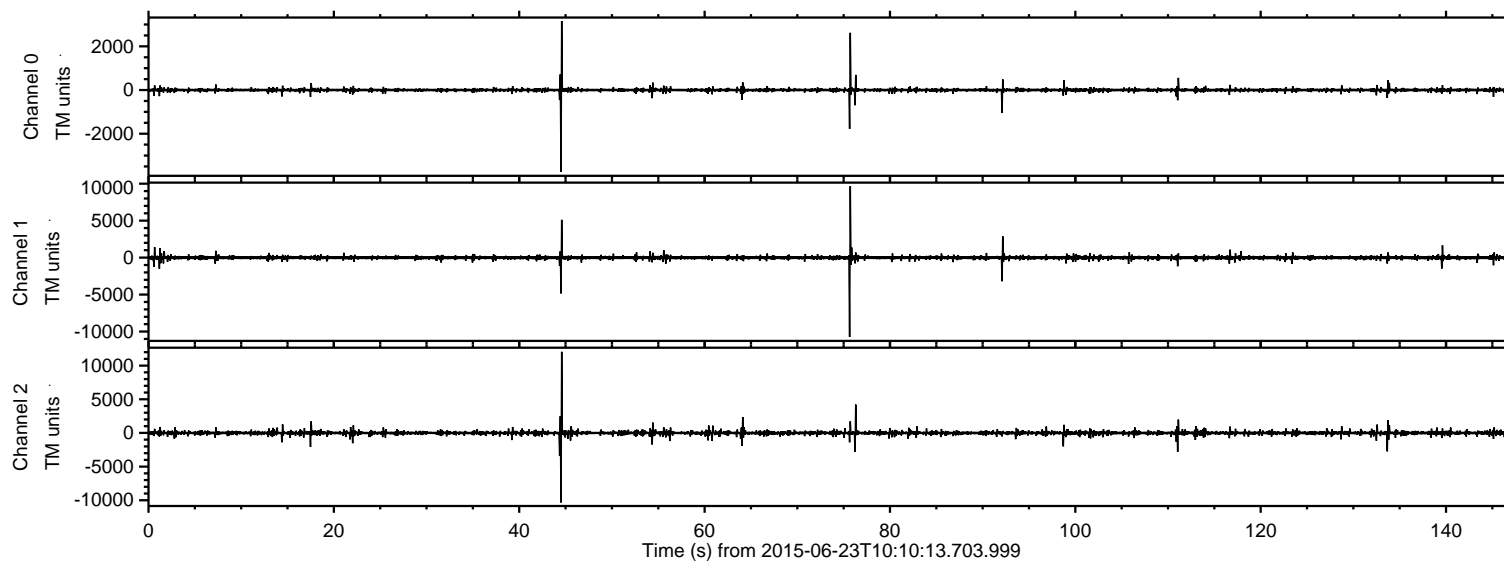


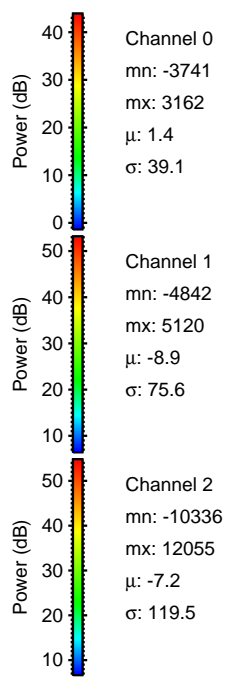
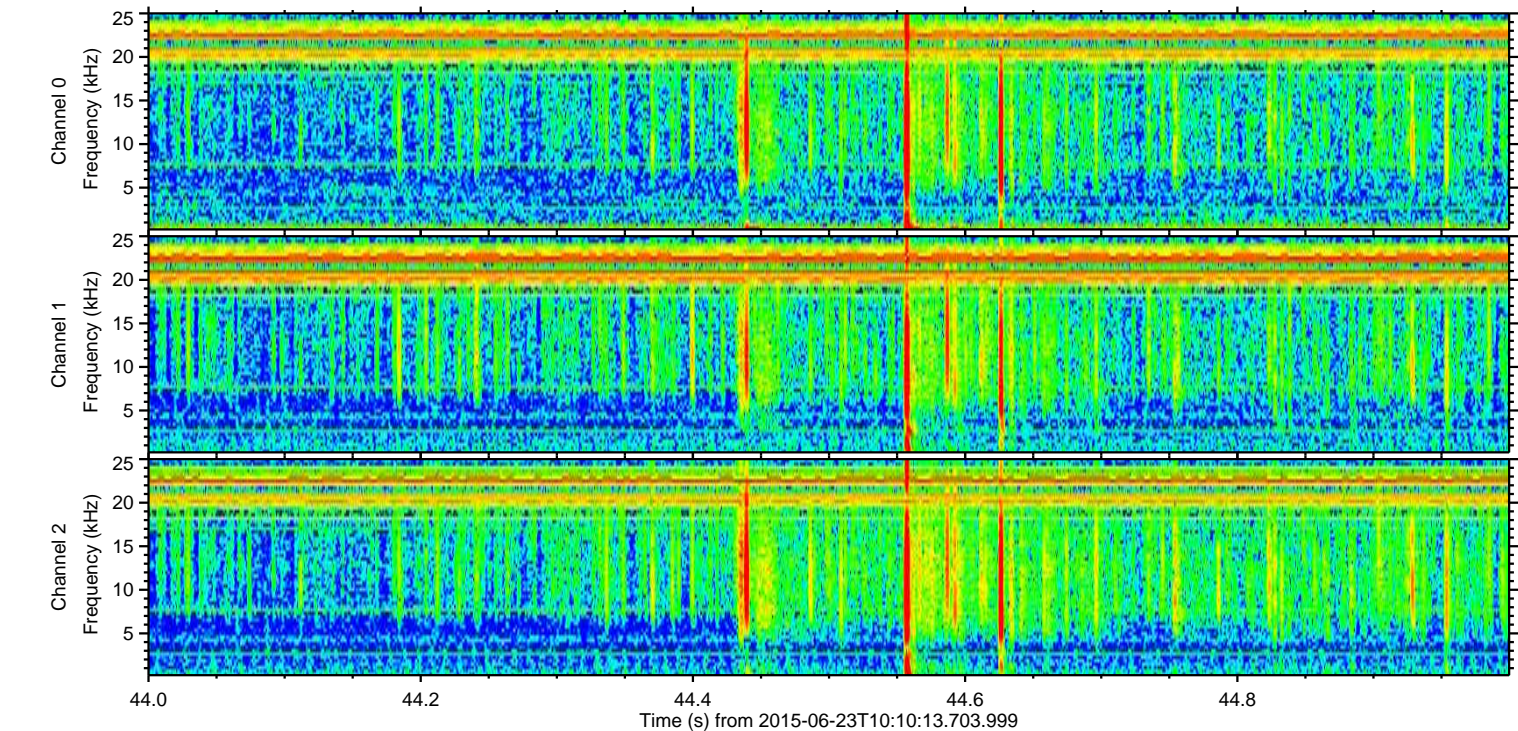
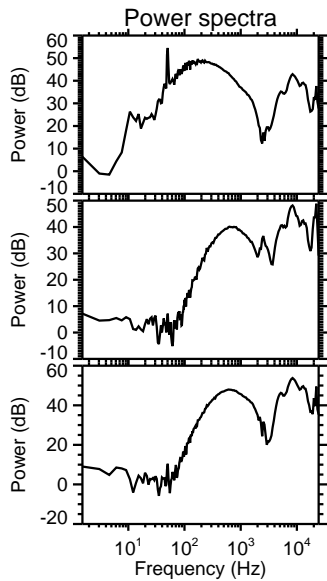
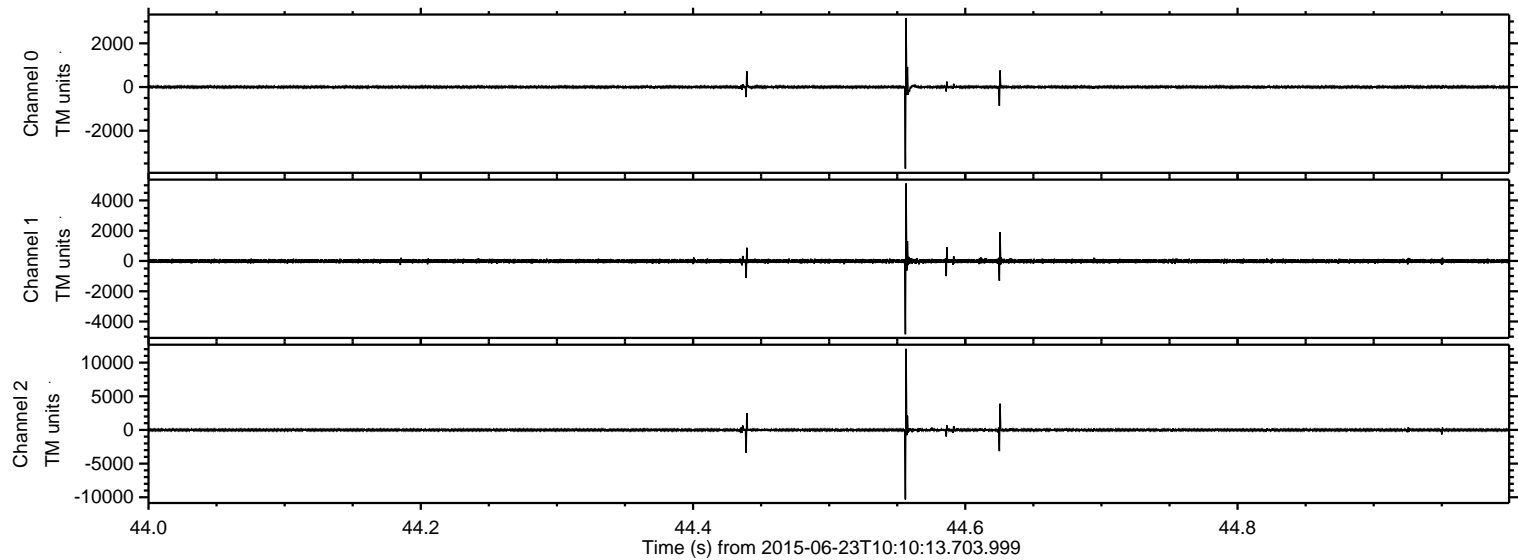
# ELMAVAN 3D WAVEFORMS (Measured data sampled at 50 kHz) 51000 packets of 144 samples from 2015-06-23T10:10:13.703.999.

Processed Tue Jun 23 14:04:08 2015 by ELM ver.2012-10-06 from 001\_\_elm20150623\_101012\_\_dat00.bin



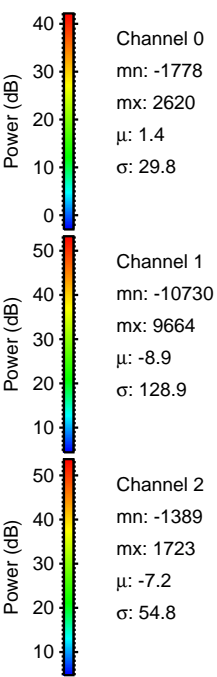
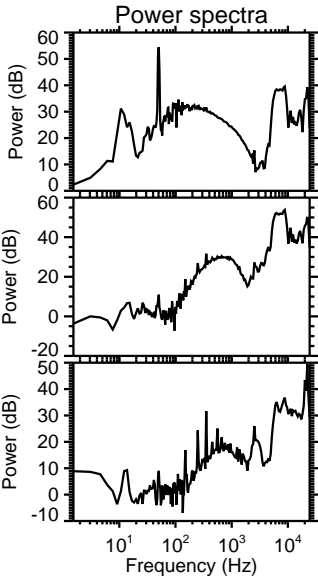
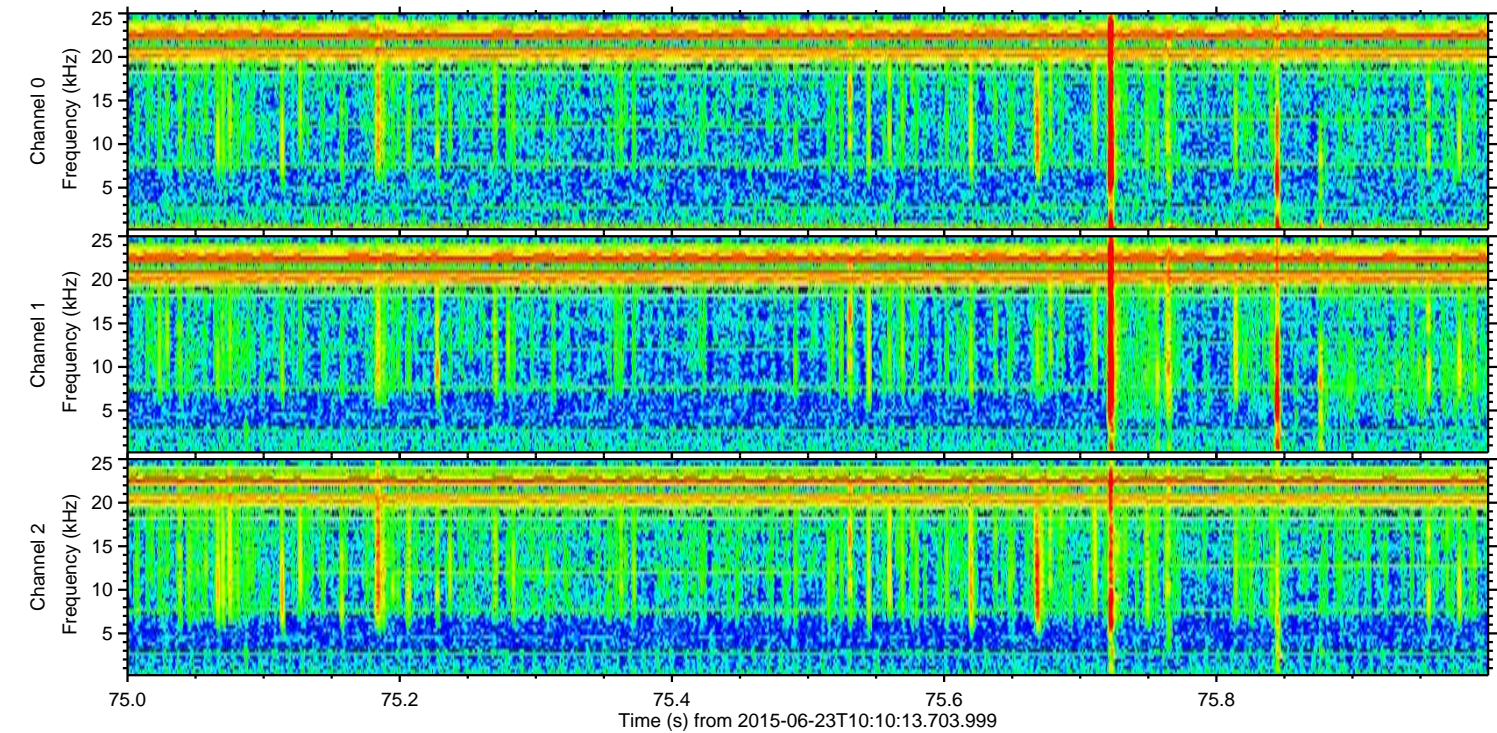
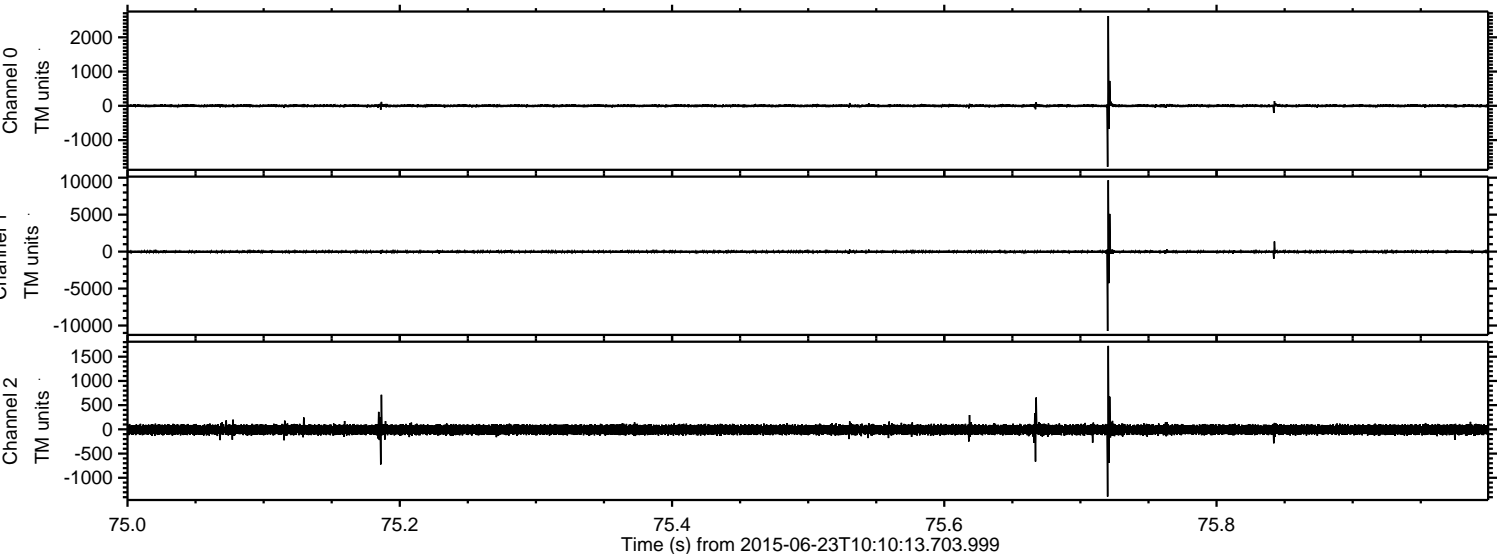


Processed Tue Jun 23 14:04:23 2015 by ELM ver.2012-10-06 from 001\_\_elm20150623\_101012\_\_dat00.bin





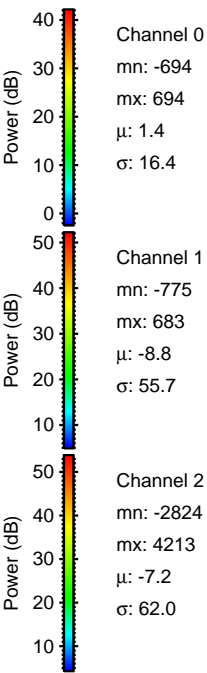
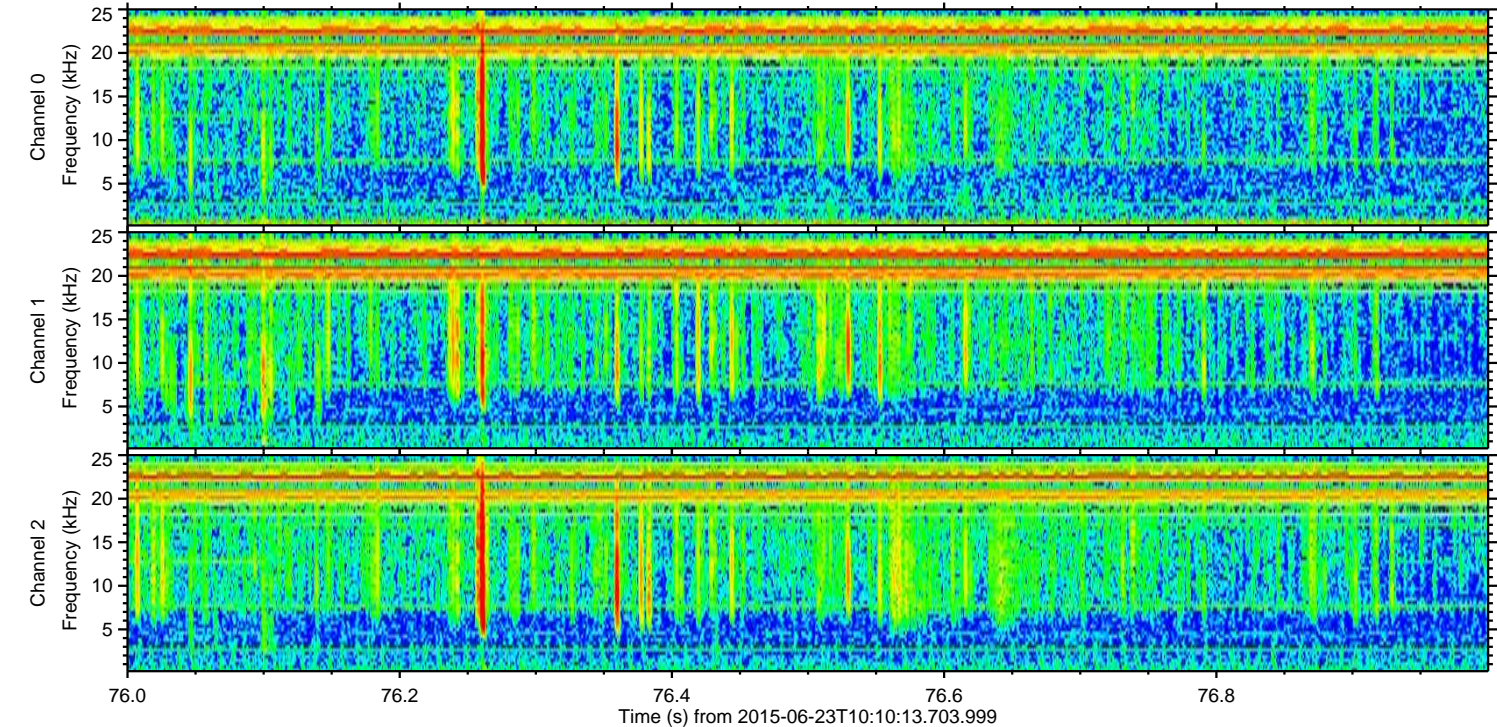
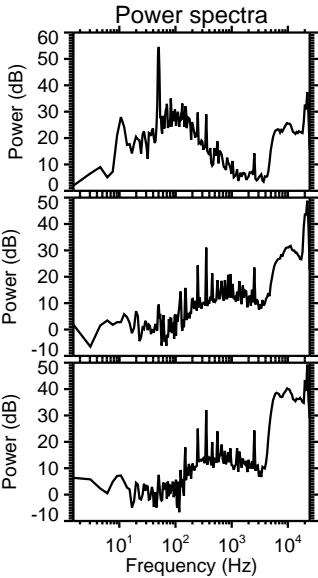
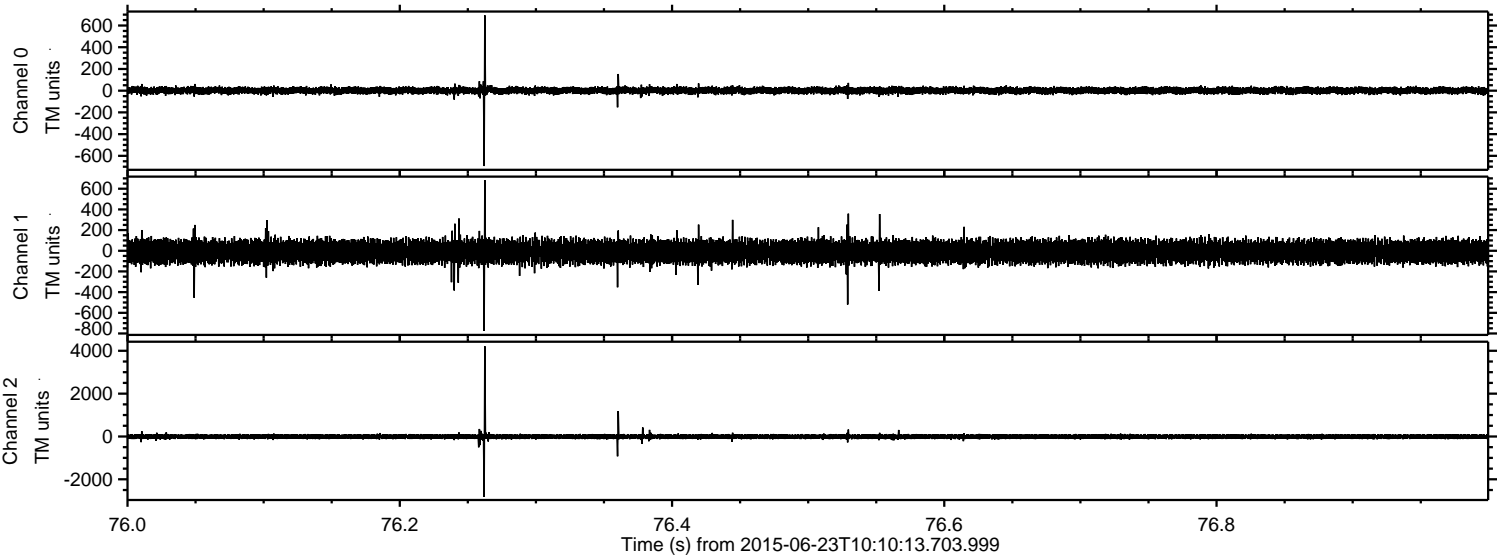
Processed Tue Jun 23 14:04:24 2015 by ELM ver.2012-10-06 from 001\_\_elm20150623\_101012\_\_dat00.bin





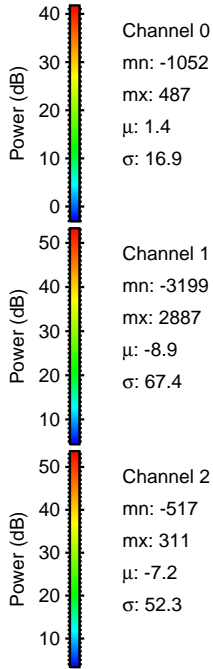
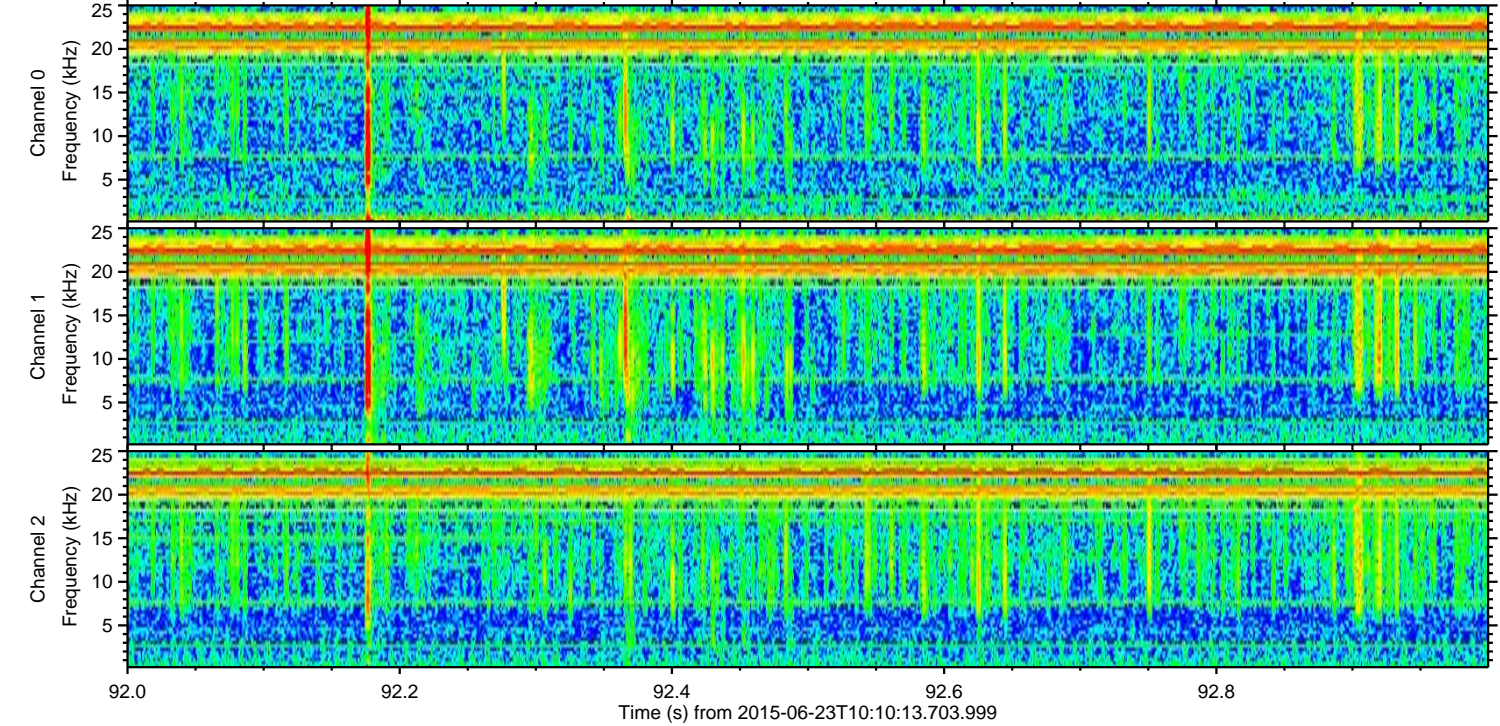
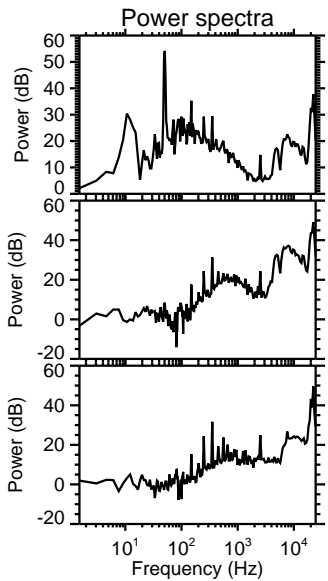
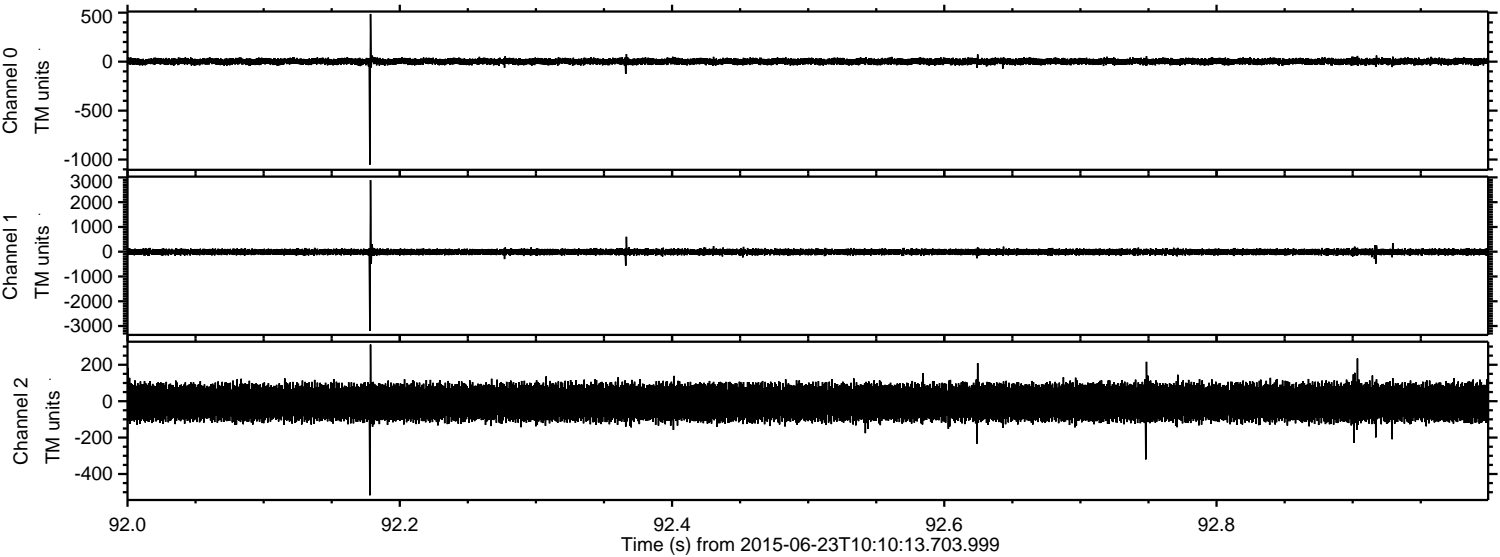
ELMAVAN 3D WAVEFORMS (Measured data sampled at 50 kHz) 51000 packets of 144 samples from 2015-06-23T10:10:13.703.999. Part 77/147

Processed Tue Jun 23 14:04:25 2015 by ELM ver.2012-10-06 from 001\_\_elm20150623\_101012\_\_dat00.bin





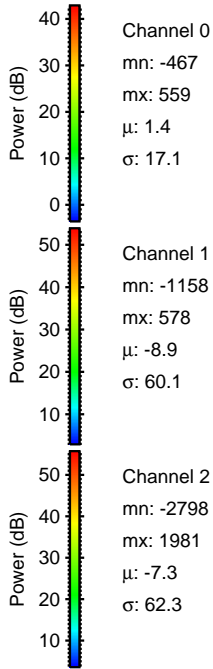
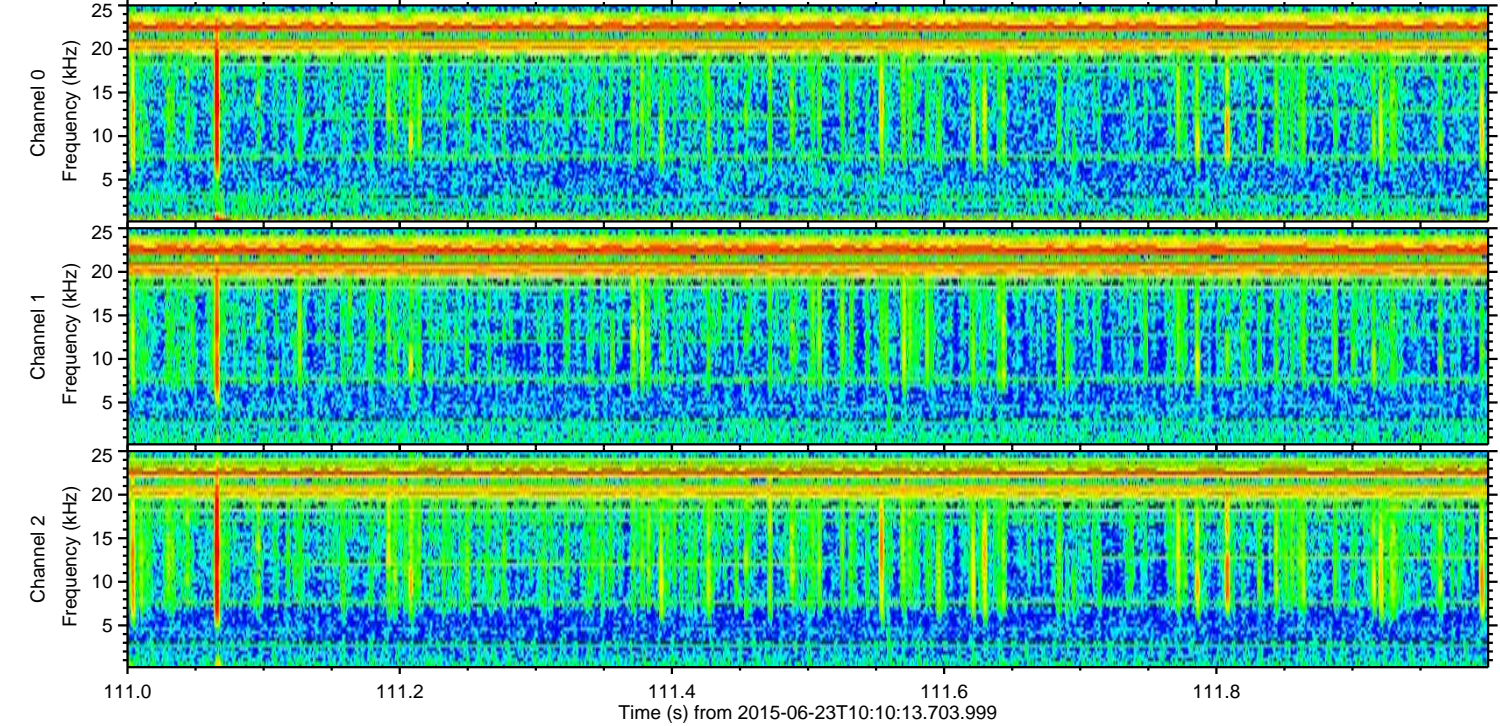
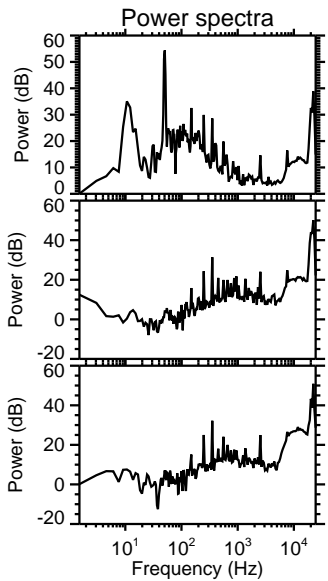
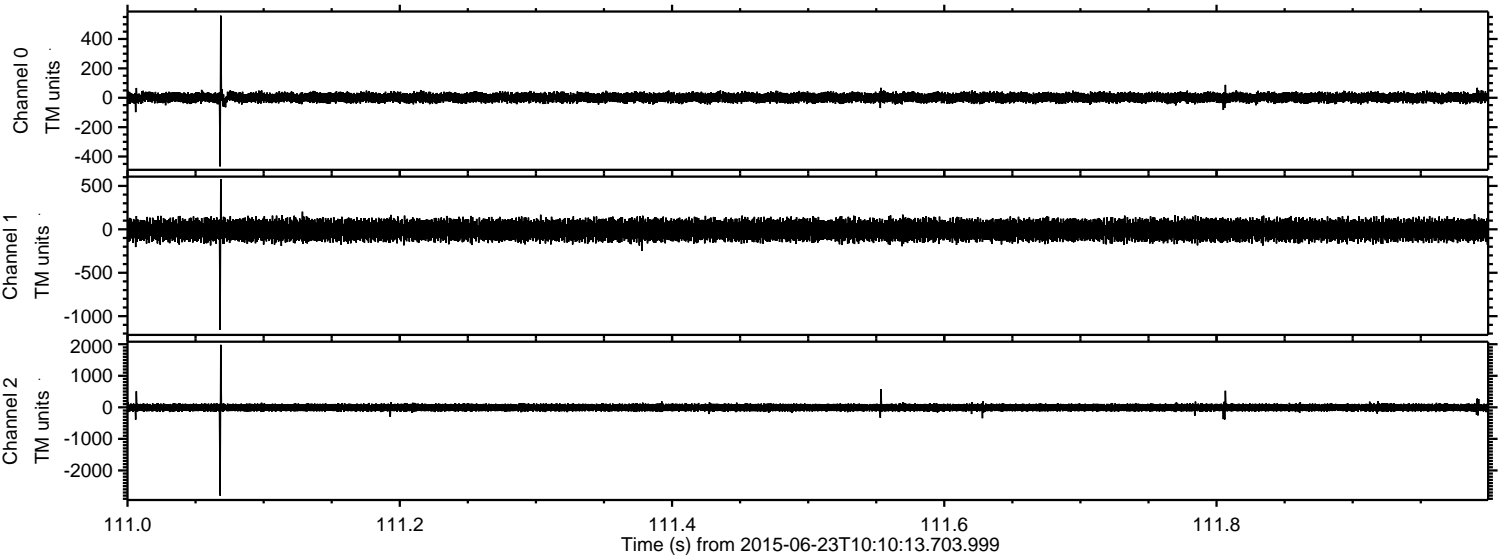
Processed Tue Jun 23 14:04:26 2015 by ELM ver.2012-10-06 from 001\_\_elm20150623\_101012\_\_dat00.bin





ELMAVAN 3D WAVEFORMS (Measured data sampled at 50 kHz) 51000 packets of 144 samples from 2015-06-23T10:10:13.703.999. Part 112/147

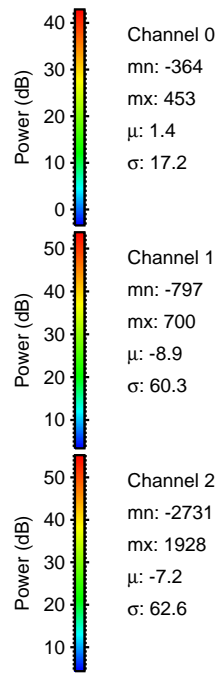
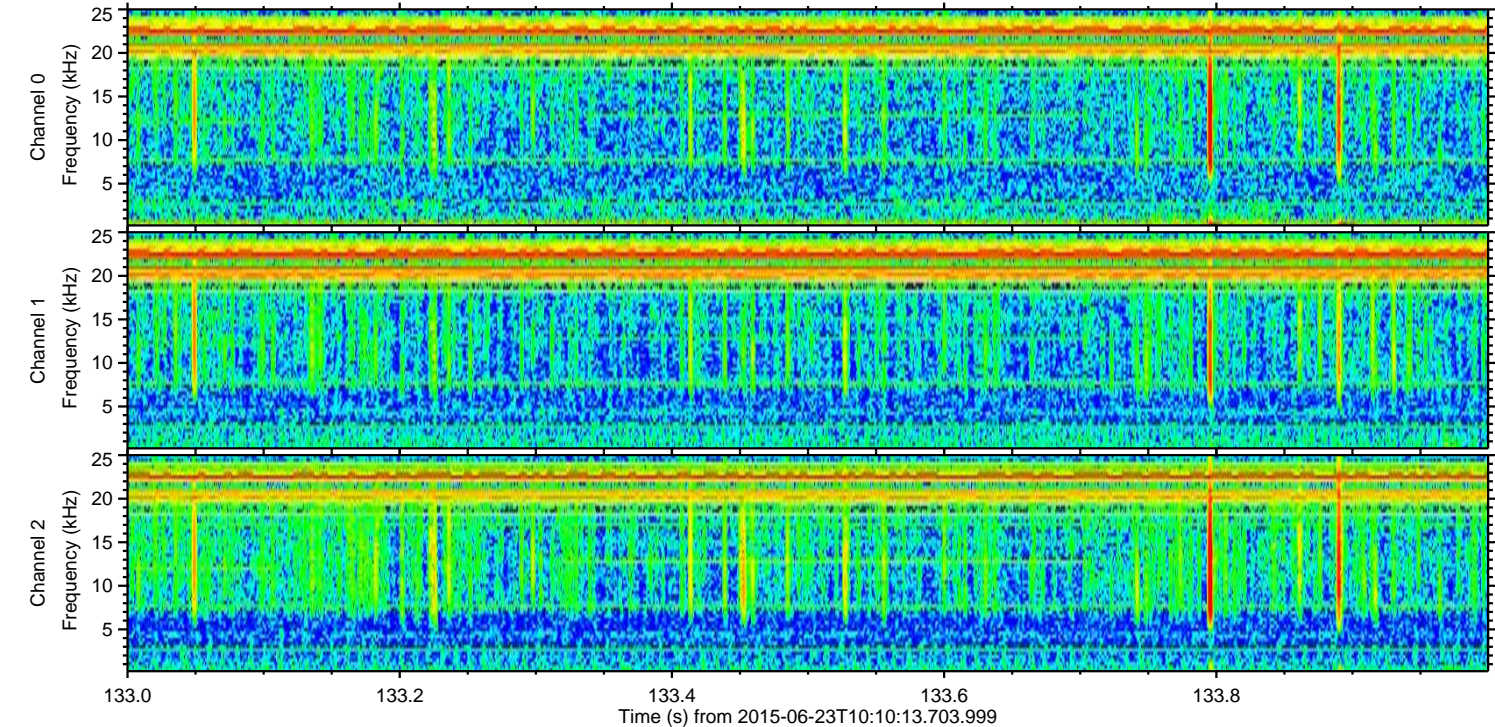
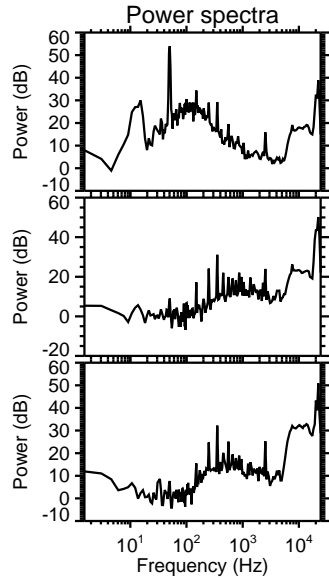
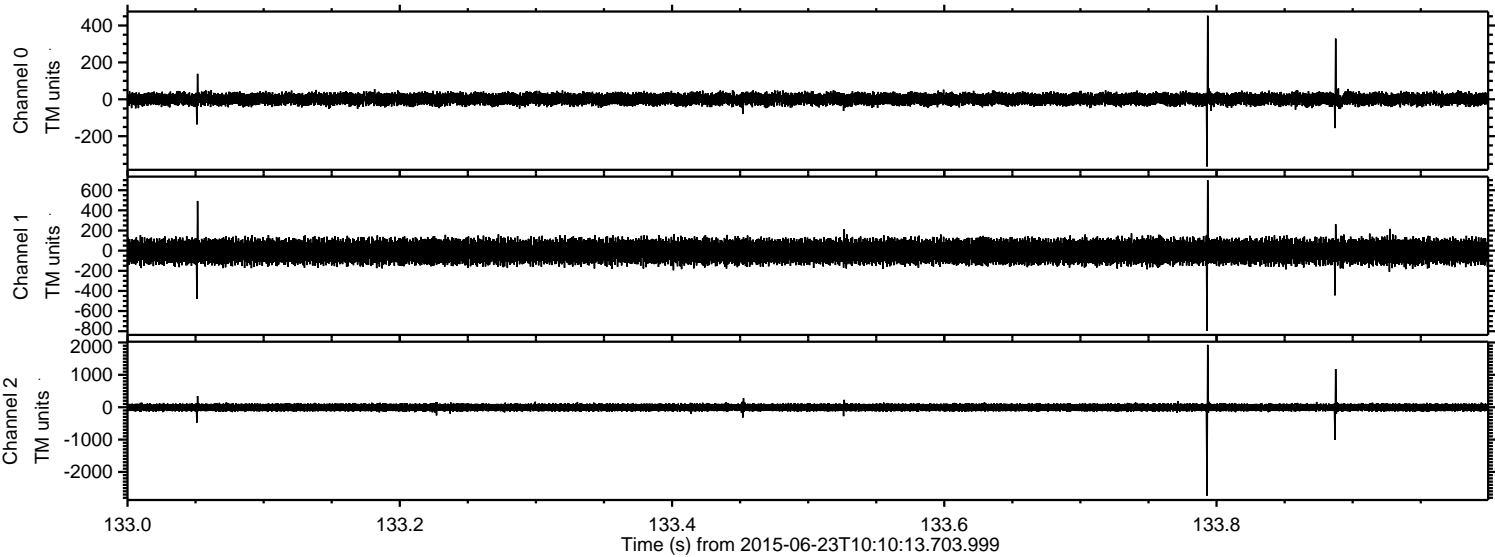
Processed Tue Jun 23 14:04:27 2015 by ELM ver.2012-10-06 from 001\_\_elm20150623\_101012\_\_dat00.bin





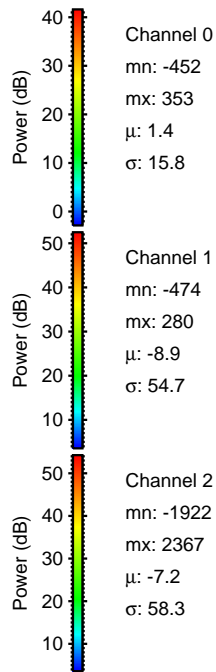
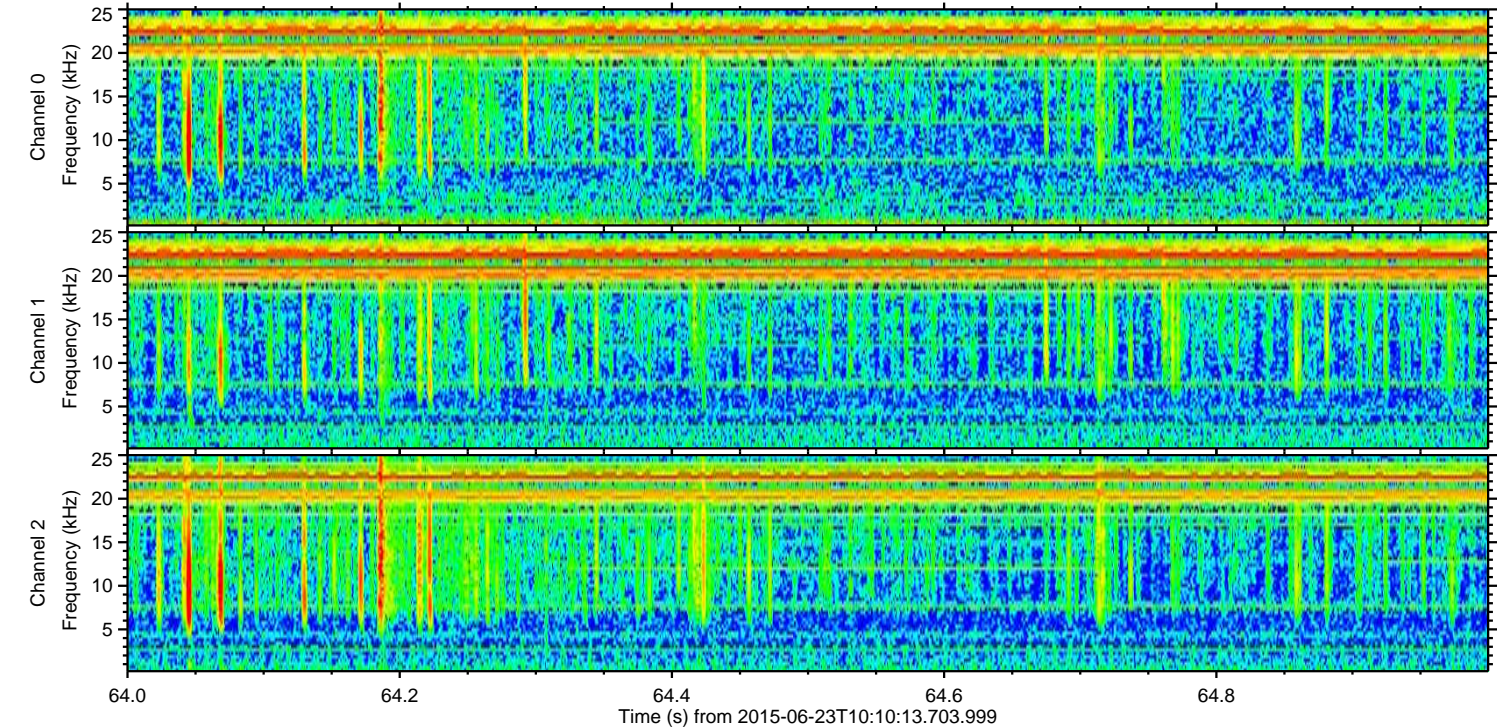
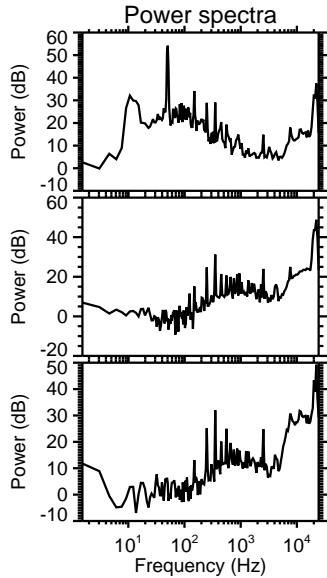
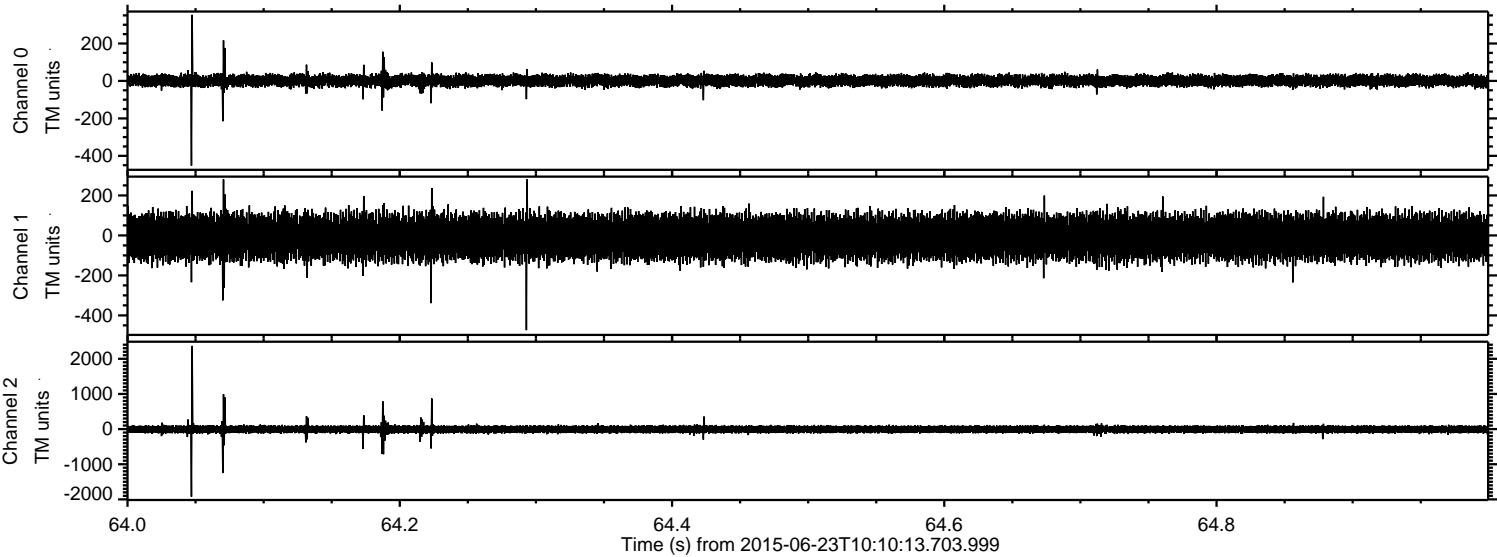
ELMAVAN 3D WAVEFORMS (Measured data sampled at 50 kHz) 51000 packets of 144 samples from 2015-06-23T10:10:13.703.999. Part 134/147

Processed Tue Jun 23 14:04:28 2015 by ELM ver.2012-10-06 from 001\_\_elm20150623\_101012\_\_dat00.bin





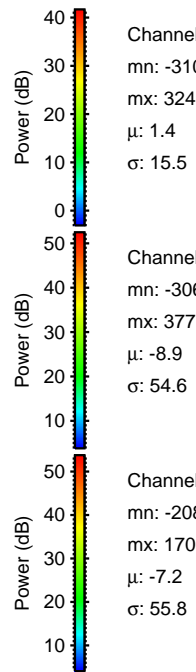
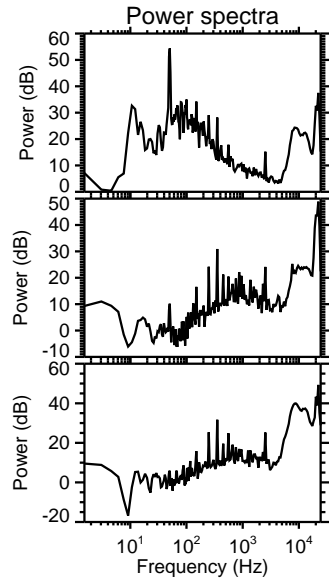
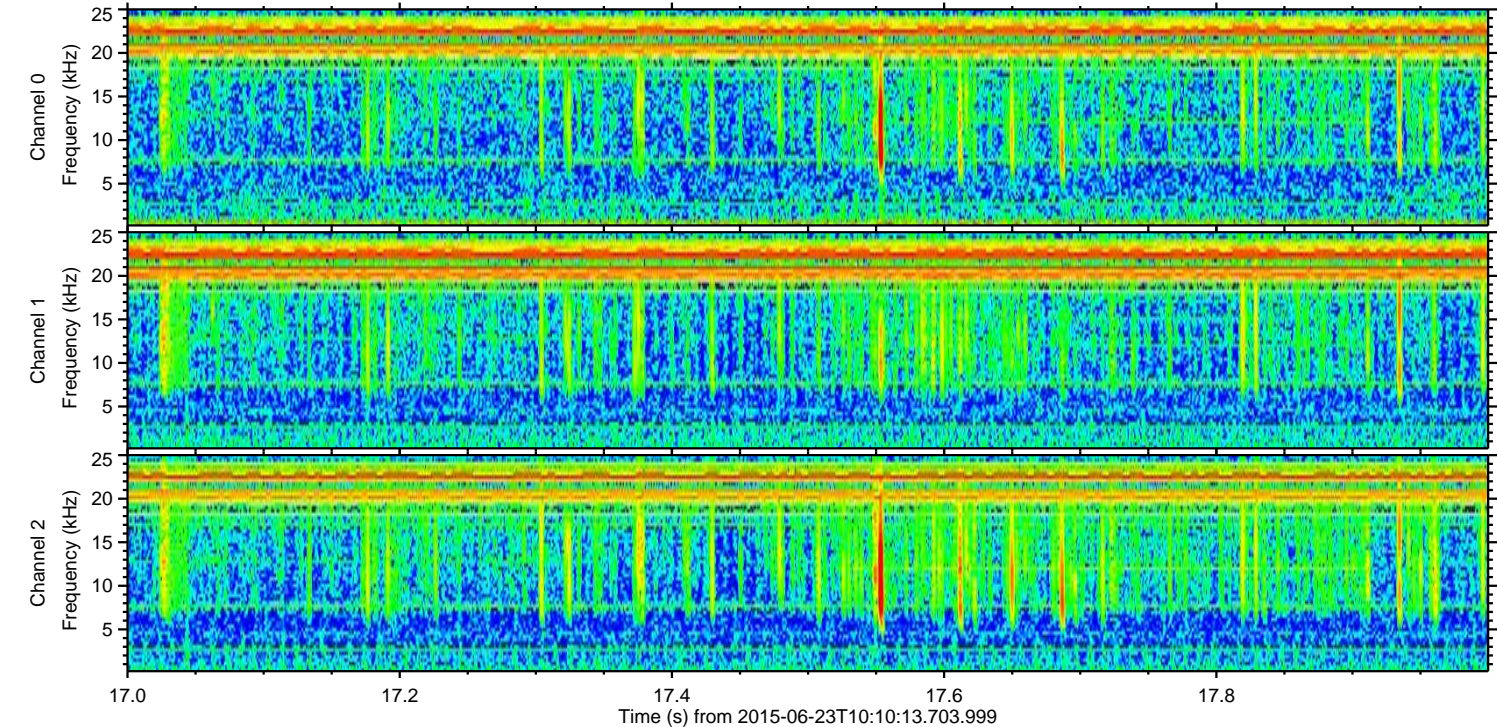
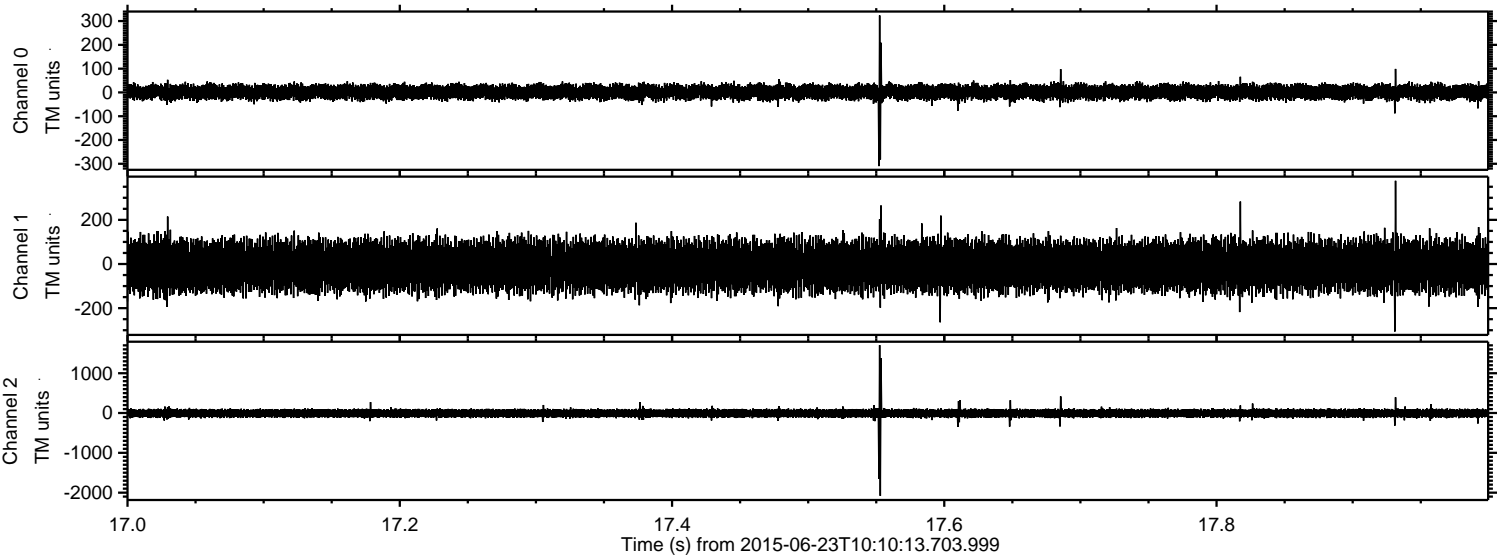
Processed Tue Jun 23 14:04:29 2015 by ELM ver.2012-10-06 from 001\_\_elm20150623\_101012\_\_dat00.bin





ELMAVAN 3D WAVEFORMS (Measured data sampled at 50 kHz) 51000 packets of 144 samples from 2015-06-23T10:10:13.703.999. Part 18/147

Processed Tue Jun 23 14:04:30 2015 by ELM ver.2012-10-06 from 001\_\_elm20150623\_101012\_\_dat00.bin



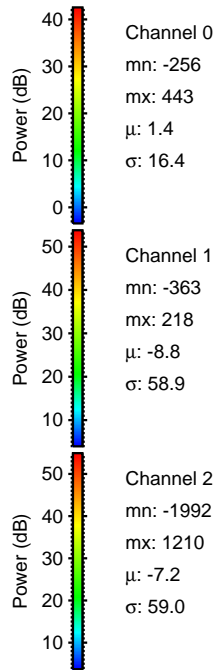
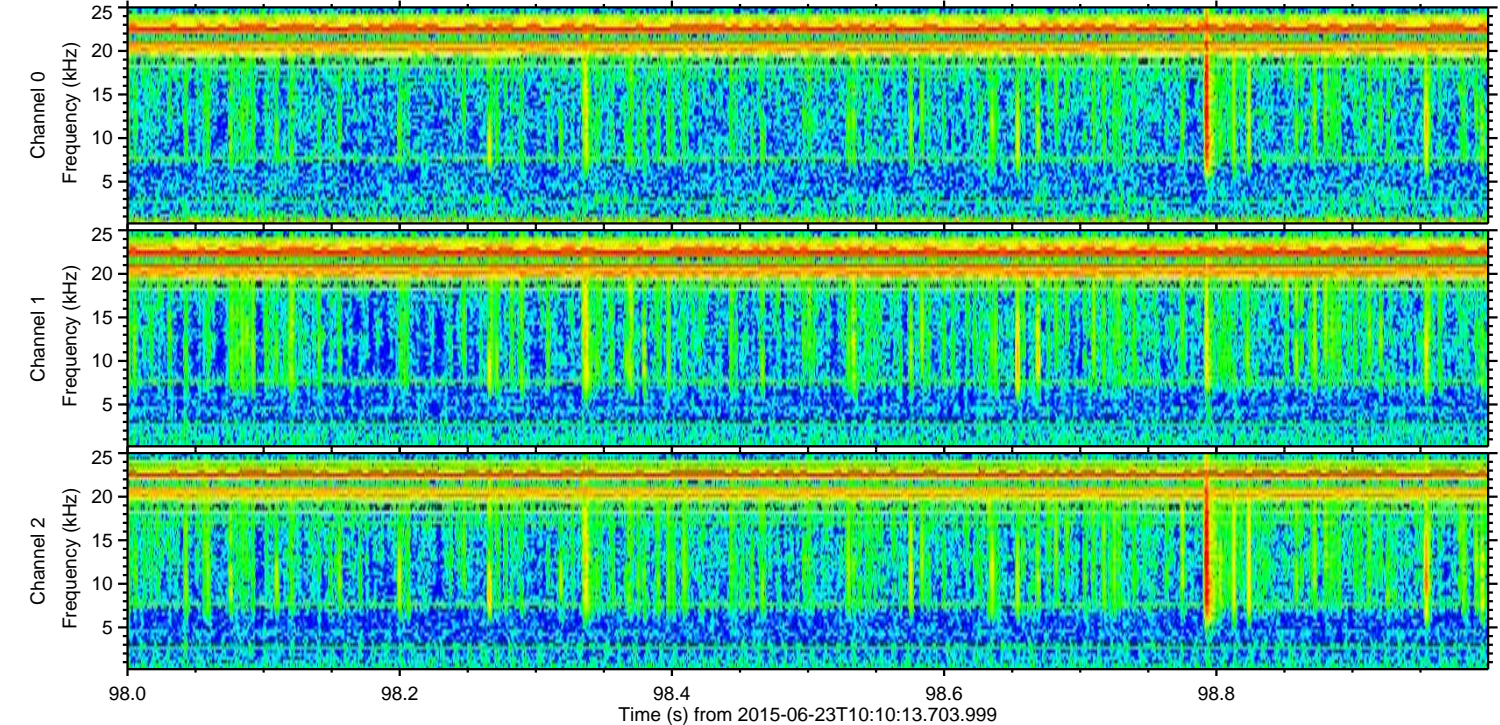
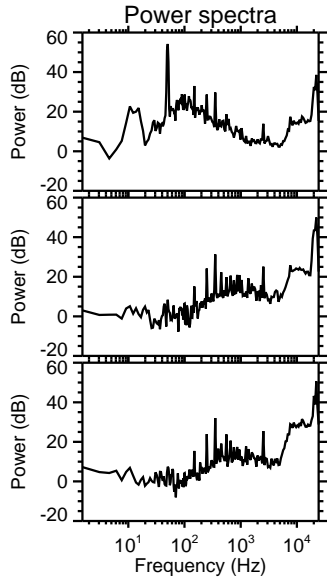
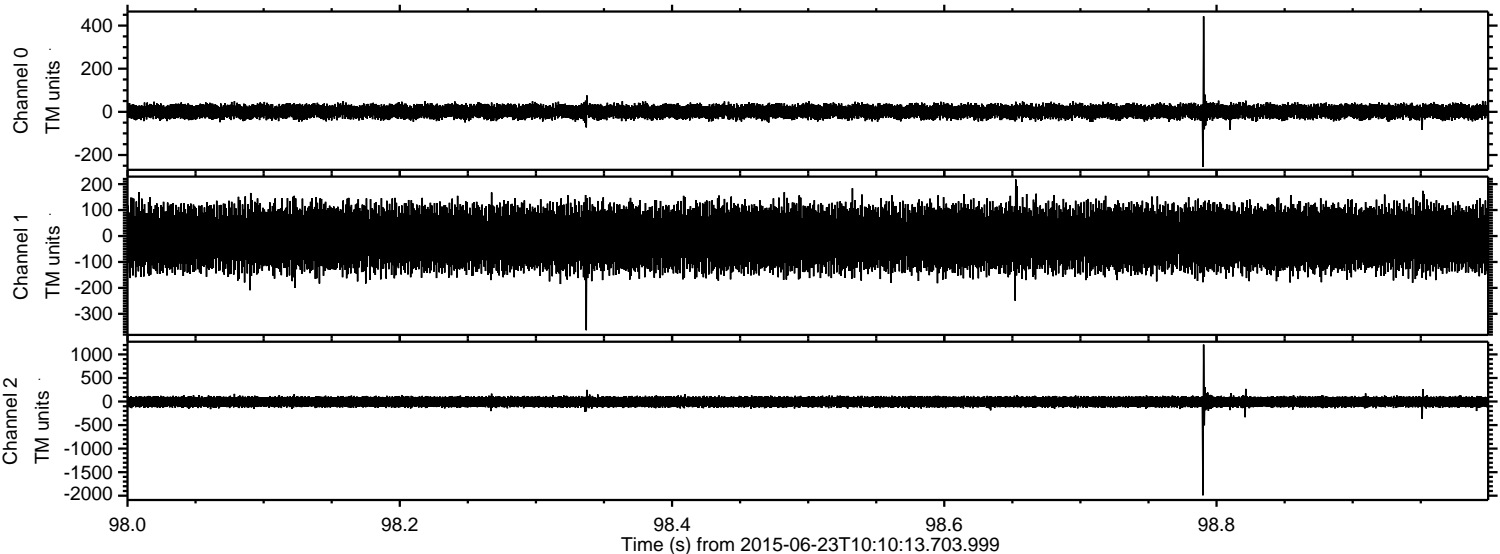
Channel 0  
mn: -310  
mx: 324  
 $\mu$ : 1.4  
 $\sigma$ : 15.5

Channel 1  
mn: -306  
mx: 377  
 $\mu$ : -8.9  
 $\sigma$ : 54.6

Channel 2  
mn: -2081  
mx: 1706  
 $\mu$ : -7.2  
 $\sigma$ : 55.8



Processed Tue Jun 23 14:04:31 2015 by ELM ver.2012-10-06 from 001\_\_elm20150623\_101012\_\_dat00.bin





Processed Tue Jun 23 14:04:33 2015 by ELM ver.2012-10-06 from 001\_\_elm20150623\_101012\_\_dat00.bin

