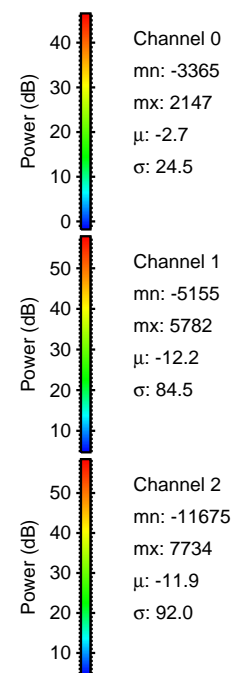
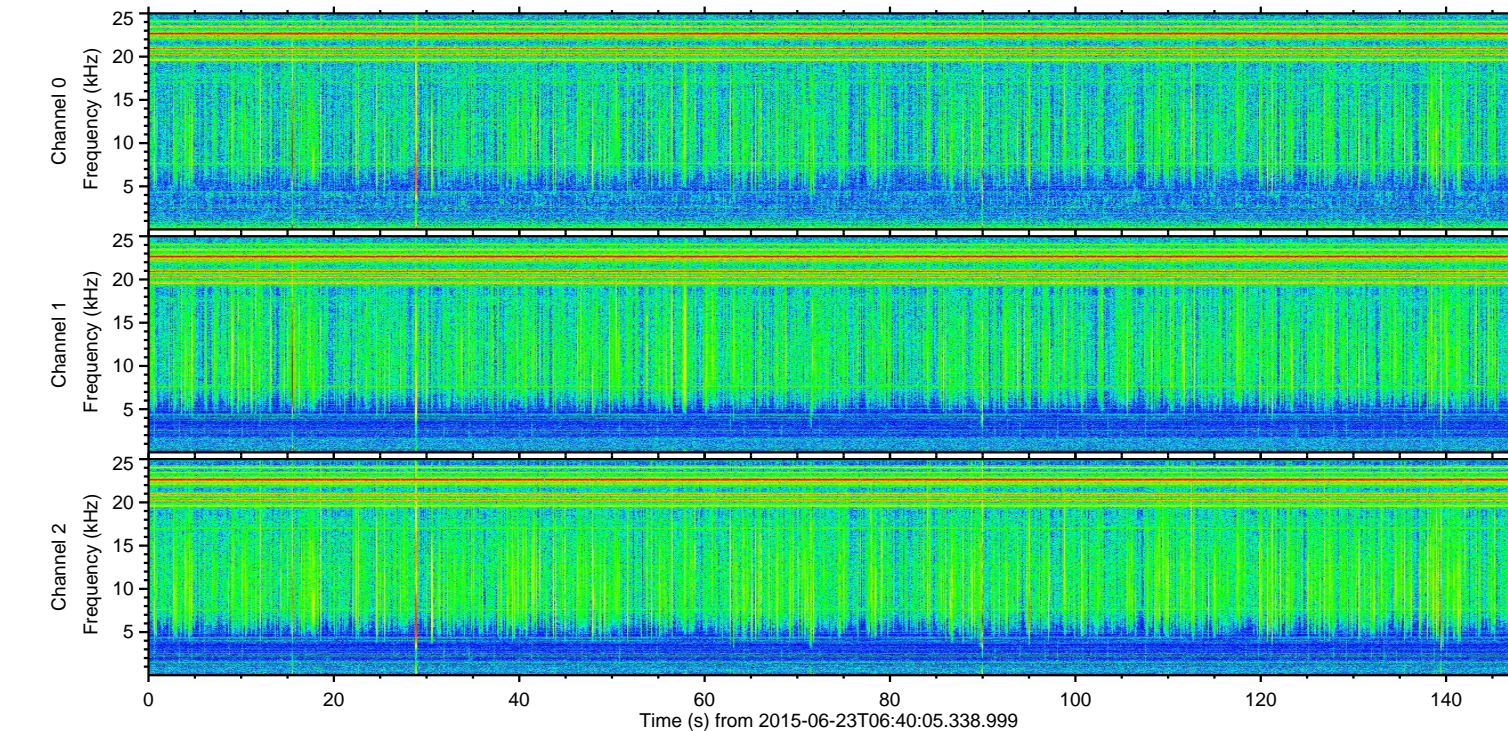
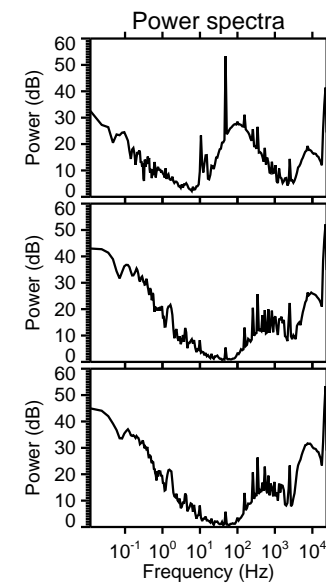
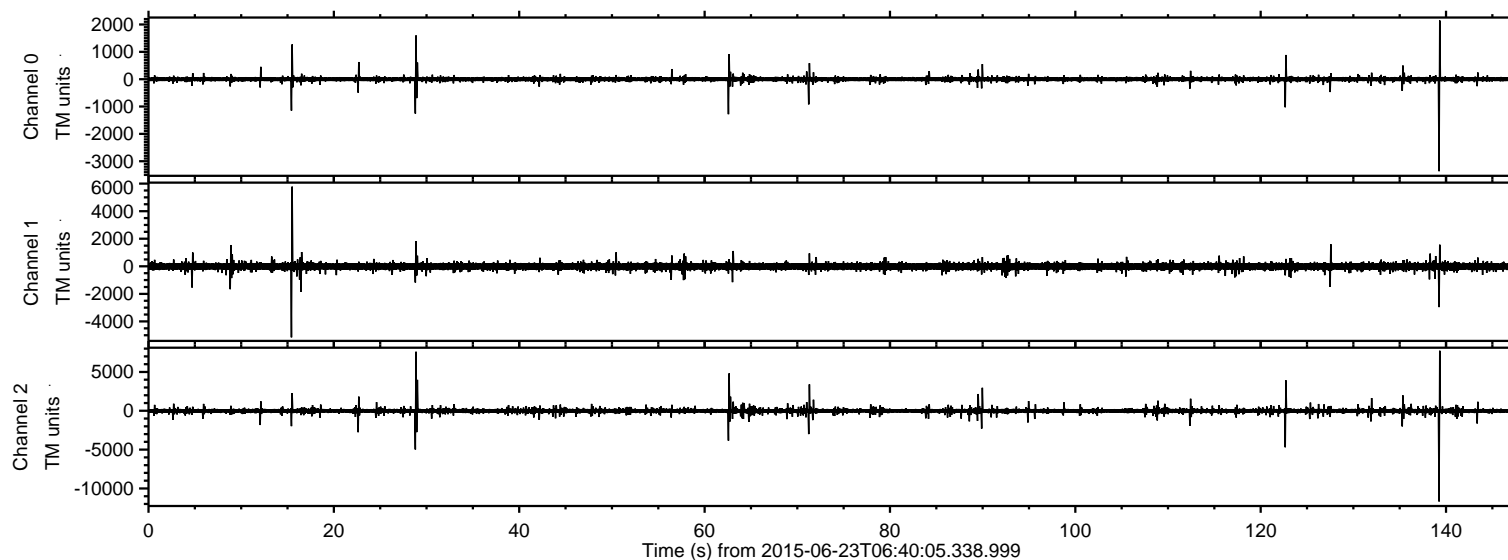


# ELMAVAN 3D WAVEFORMS (Measured data sampled at 50 kHz) 51000 packets of 144 samples from 2015-06-23T06:40:05.338.999.

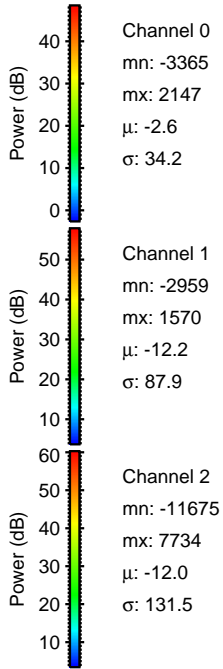
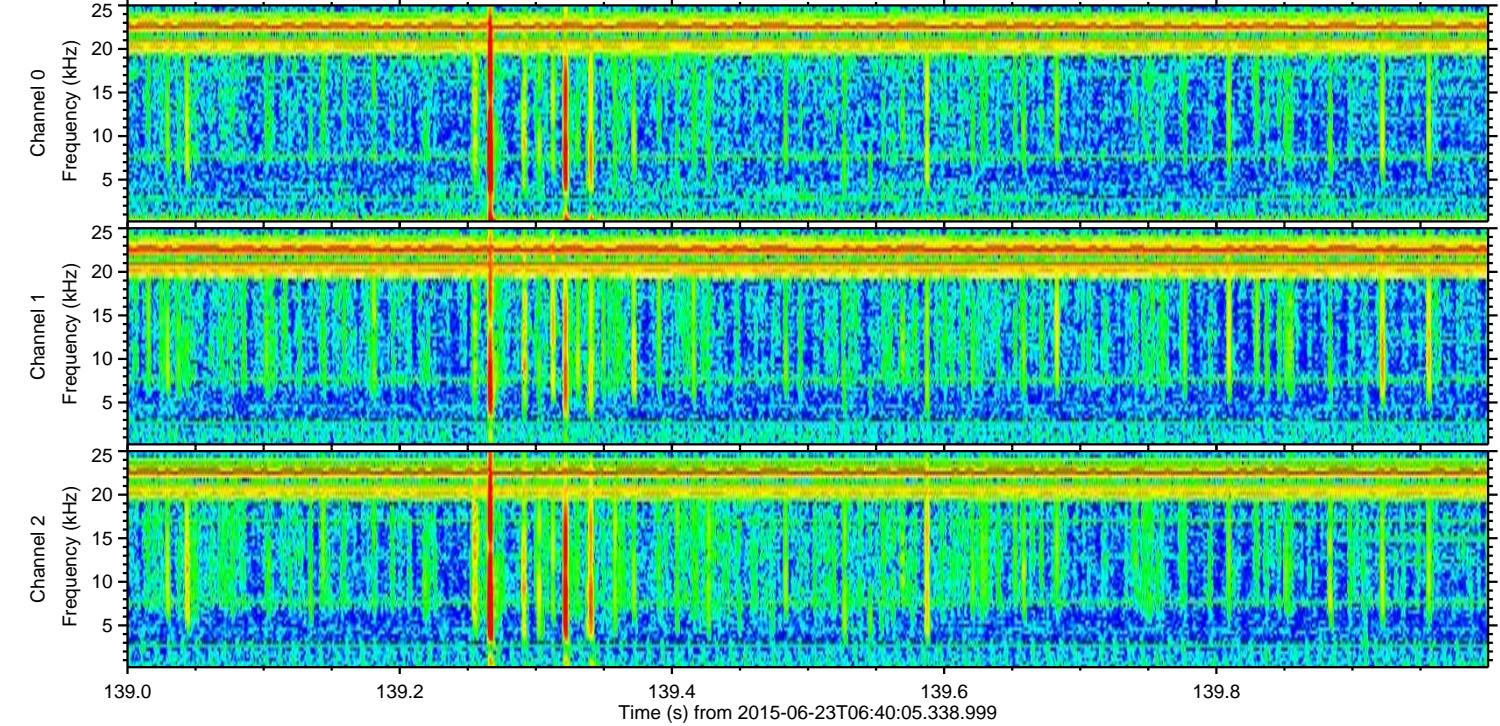
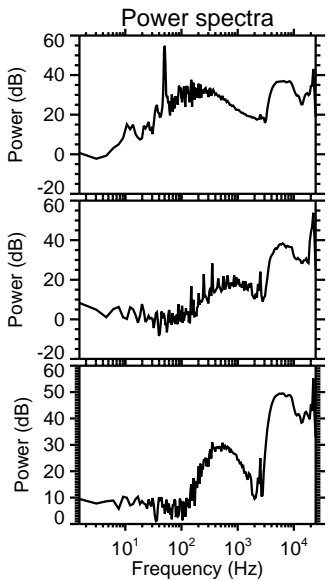
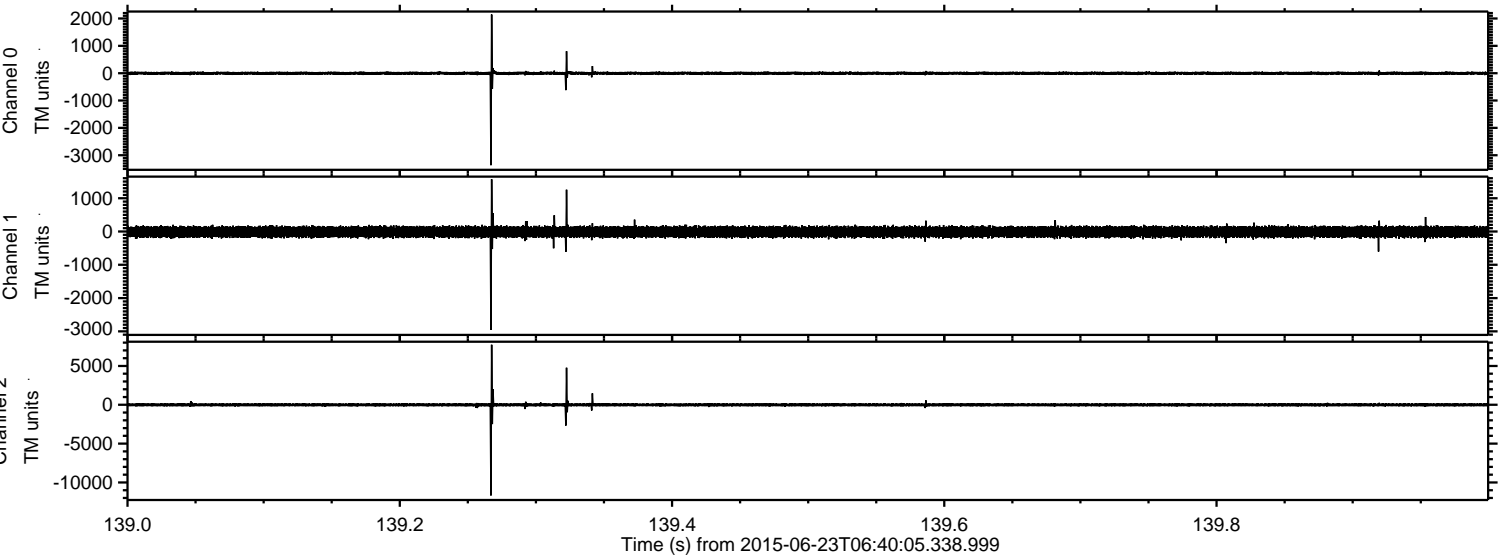
Processed Tue Jun 23 13:07:59 2015 by ELM ver.2012-10-06 from 001\_\_elm20150623\_064004\_\_dat00.bin





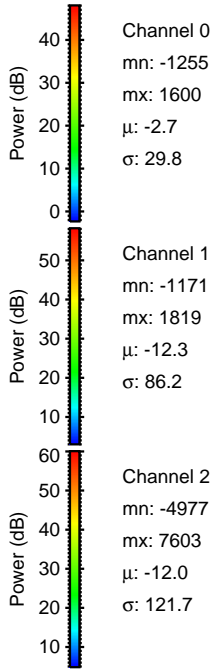
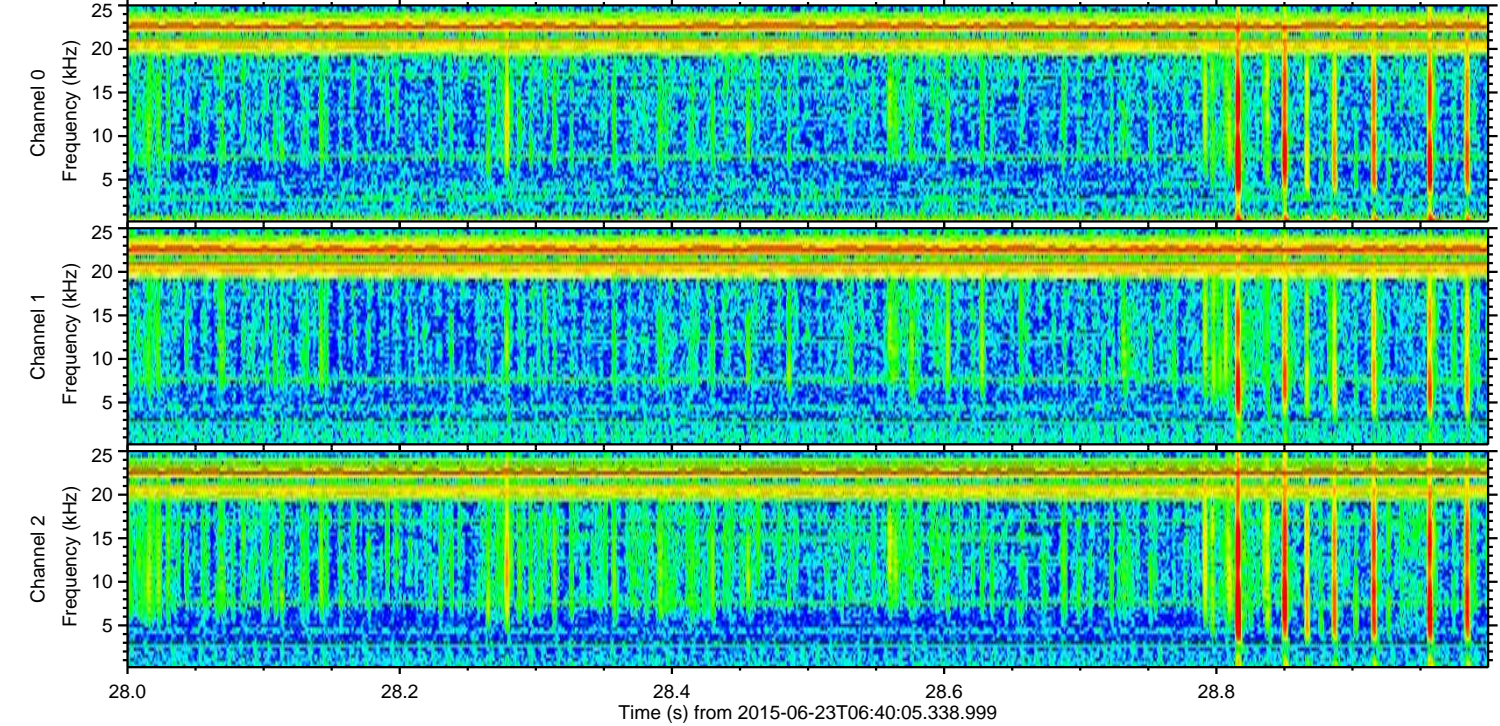
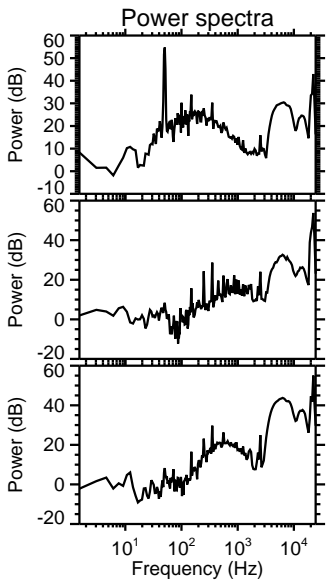
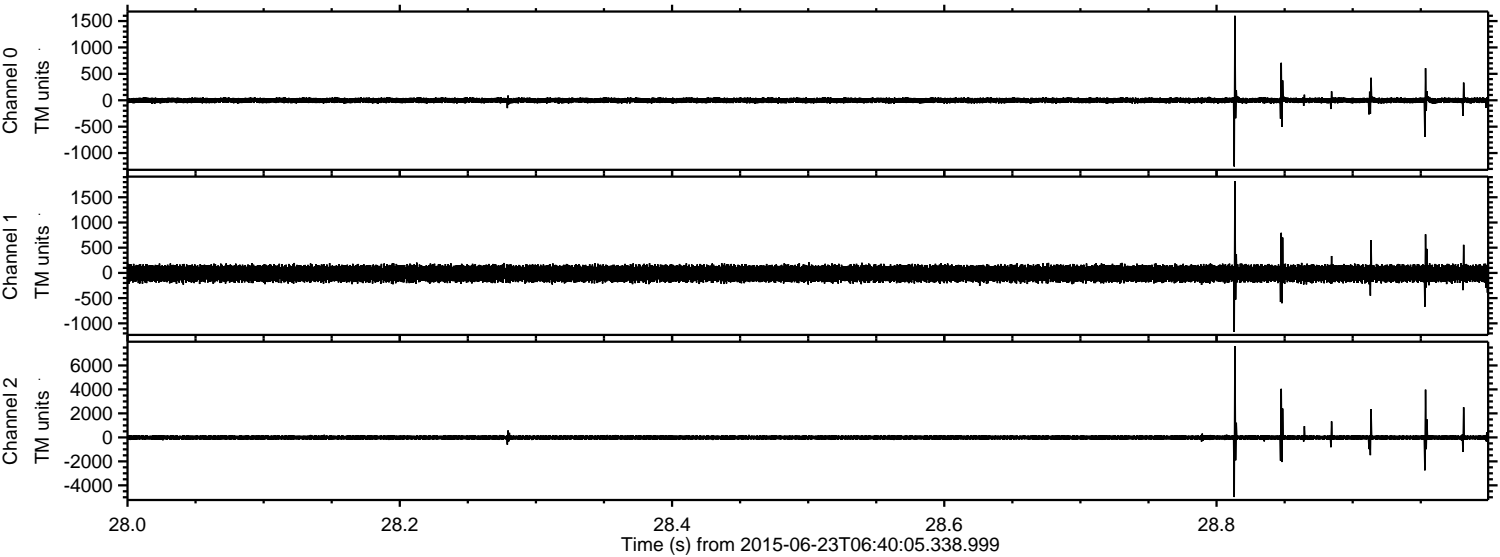
ELMAVAN 3D WAVEFORMS (Measured data sampled at 50 kHz) 51000 packets of 144 samples from 2015-06-23T06:40:05.338.999. Part 140/147

Processed Tue Jun 23 13:08:14 2015 by ELM ver.2012-10-06 from 001\_\_elm20150623\_064004\_\_dat00.bin





Processed Tue Jun 23 13:08:15 2015 by ELM ver.2012-10-06 from 001\_\_elm20150623\_064004\_\_dat00.bin



Channel 0  
mn: -1255  
mx: 1600  
 $\mu$ : -2.7  
 $\sigma$ : 29.8

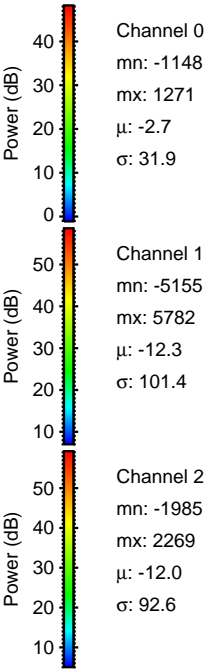
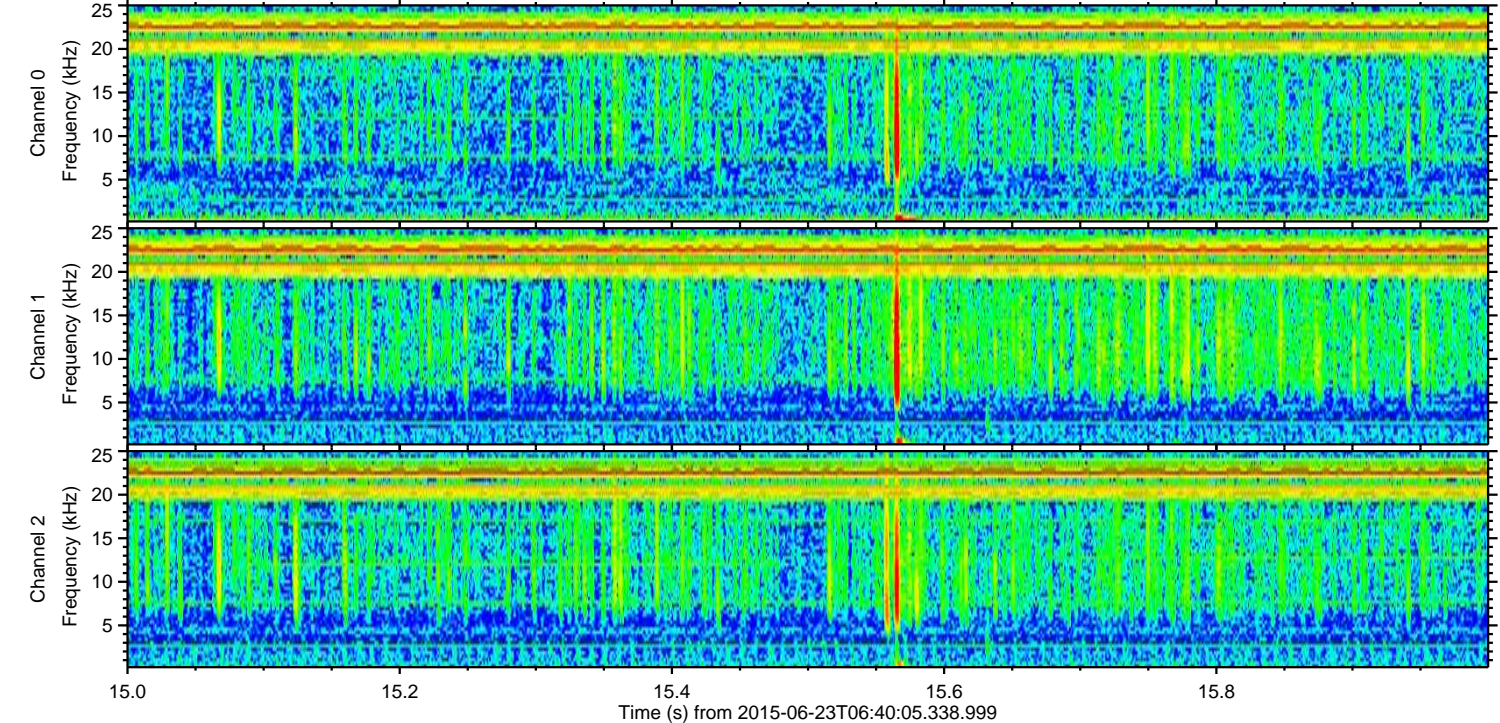
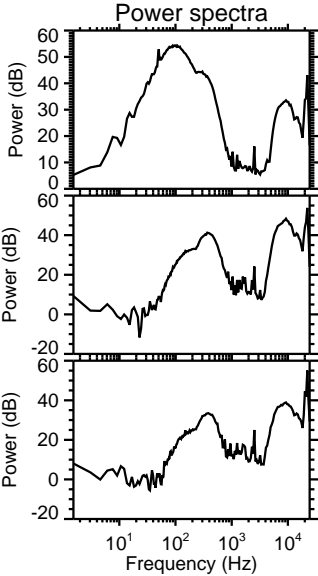
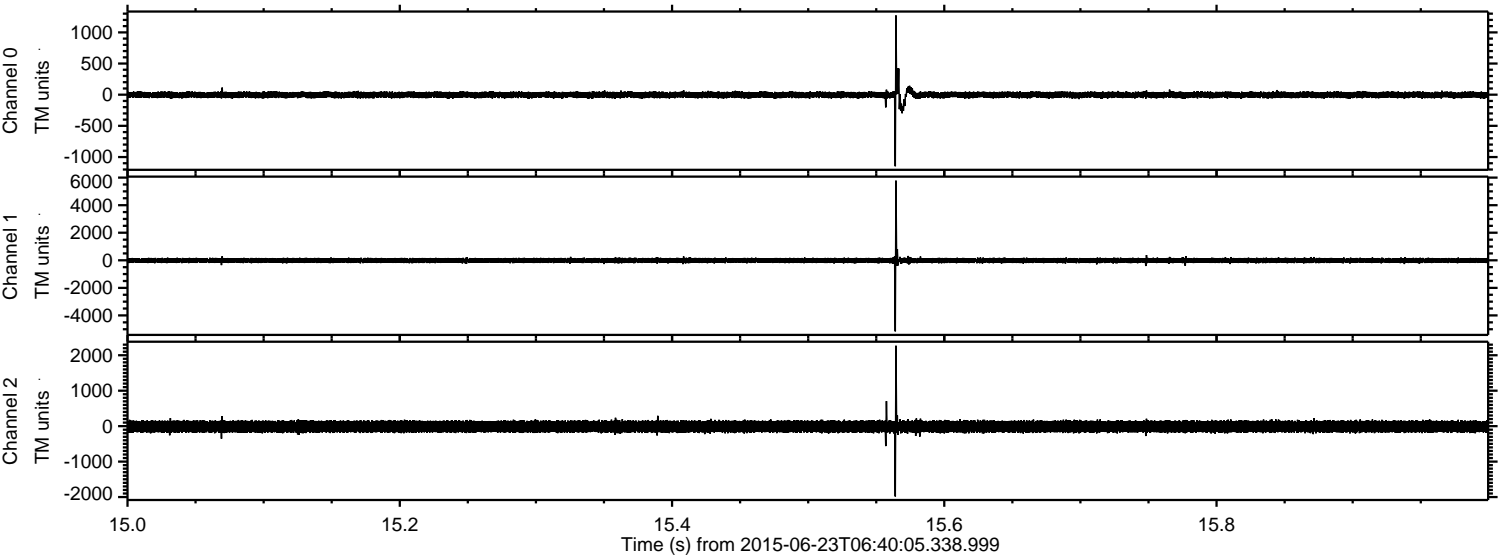
Channel 1  
mn: -1171  
mx: 1819  
 $\mu$ : -12.3  
 $\sigma$ : 86.2

Channel 2  
mn: -4977  
mx: 7603  
 $\mu$ : -12.0  
 $\sigma$ : 121.7



ELMAVAN 3D WAVEFORMS (Measured data sampled at 50 kHz) 51000 packets of 144 samples from 2015-06-23T06:40:05.338.999. Part 16/147

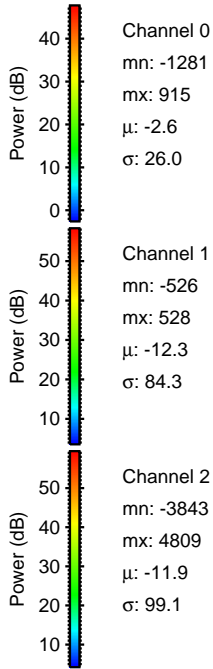
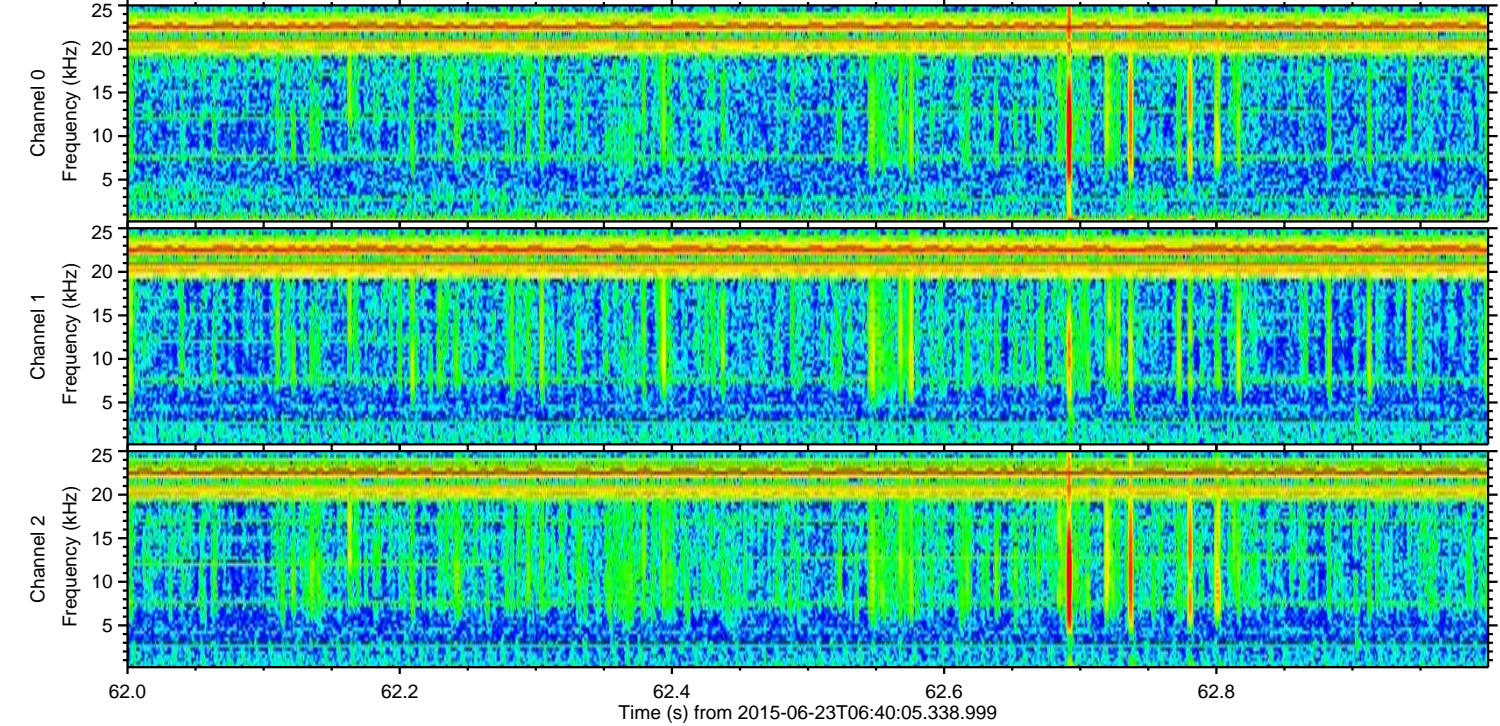
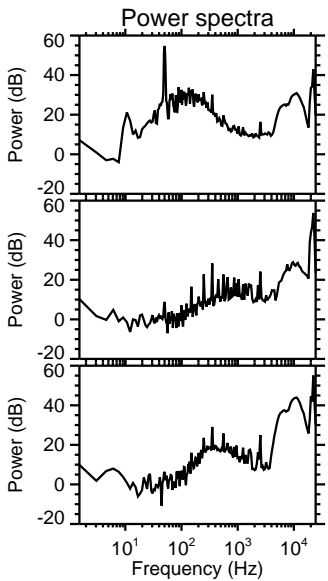
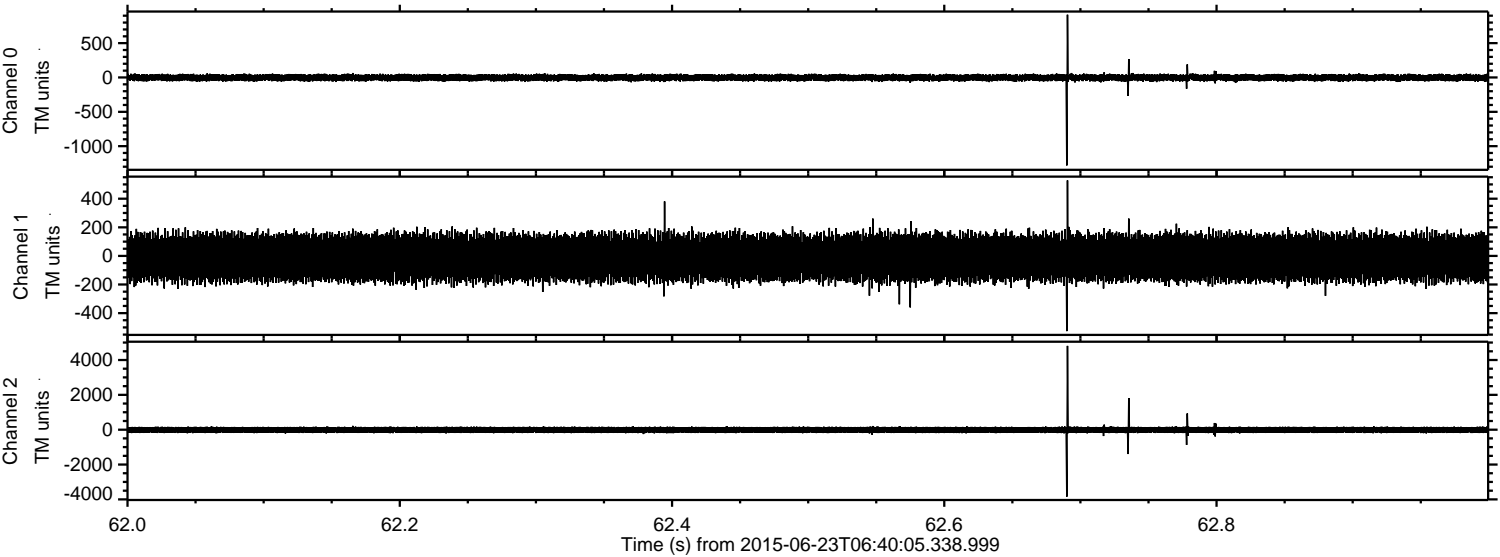
Processed Tue Jun 23 13:08:16 2015 by ELM ver.2012-10-06 from 001\_\_elm20150623\_064004\_\_dat00.bin





ELMAVAN 3D WAVEFORMS (Measured data sampled at 50 kHz) 51000 packets of 144 samples from 2015-06-23T06:40:05.338.999. Part 63/147

Processed Tue Jun 23 13:08:17 2015 by ELM ver.2012-10-06 from 001\_\_elm20150623\_064004\_\_dat00.bin



Channel 0  
mn: -1281  
mx: 915  
 $\mu$ : -2.6  
 $\sigma$ : 26.0

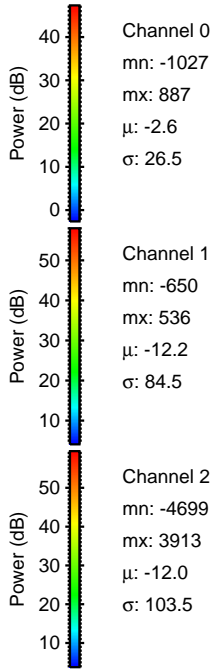
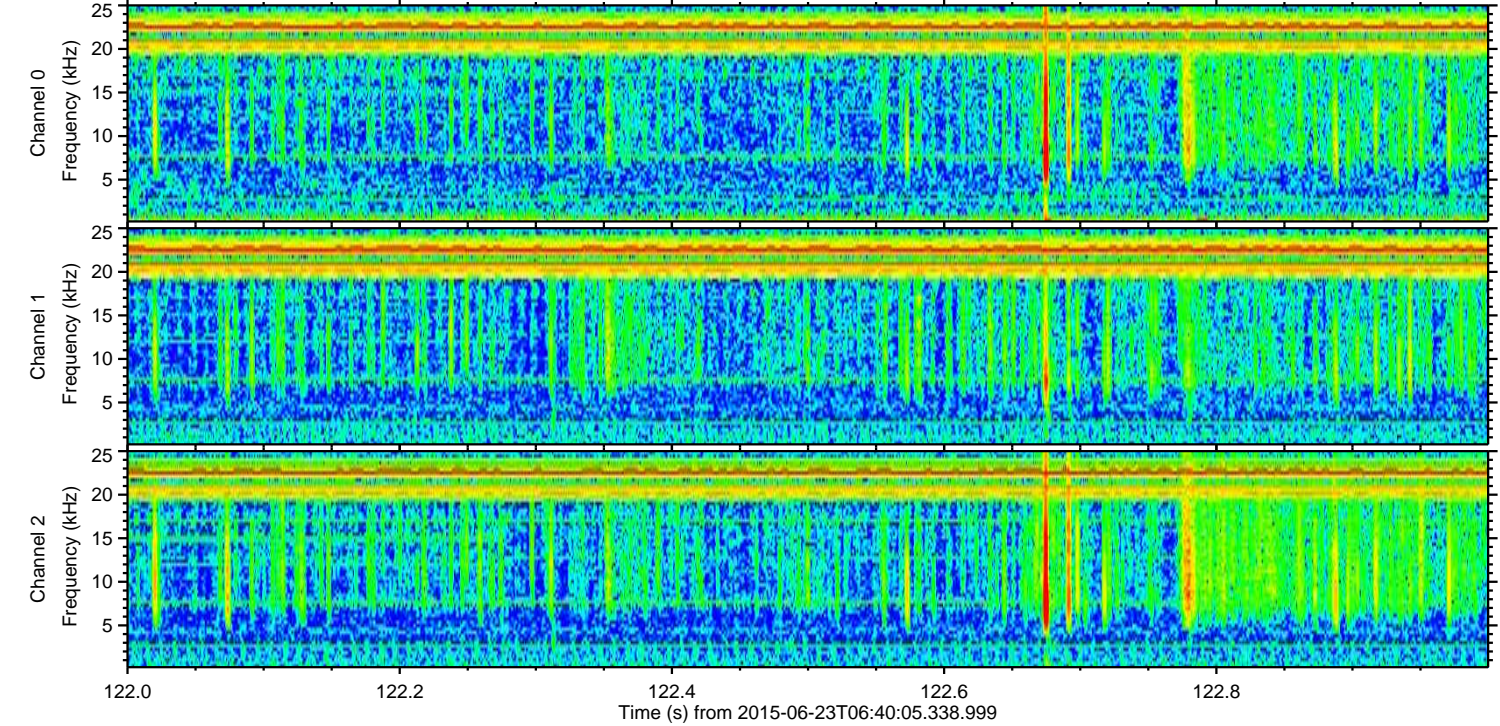
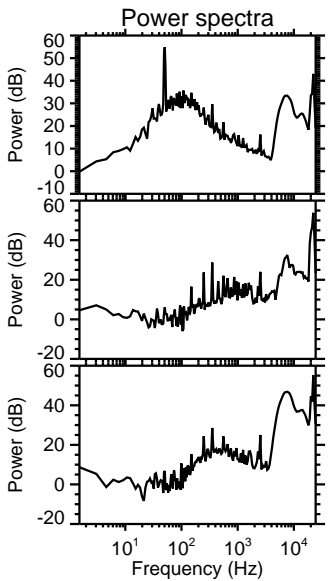
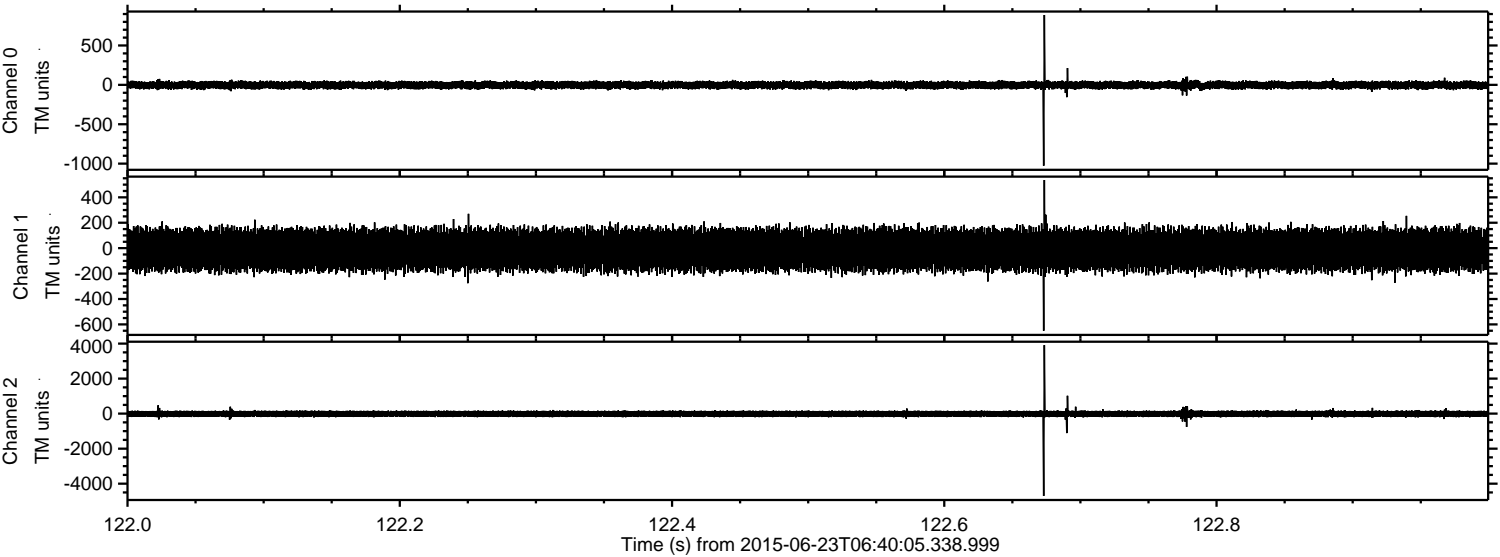
Channel 1  
mn: -526  
mx: 528  
 $\mu$ : -12.3  
 $\sigma$ : 84.3

Channel 2  
mn: -3843  
mx: 4809  
 $\mu$ : -11.9  
 $\sigma$ : 99.1



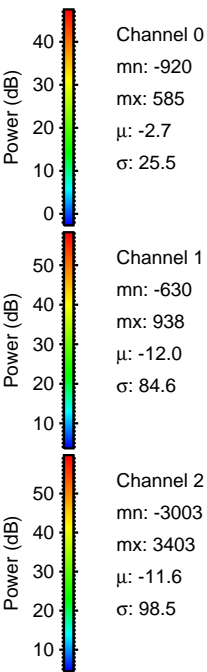
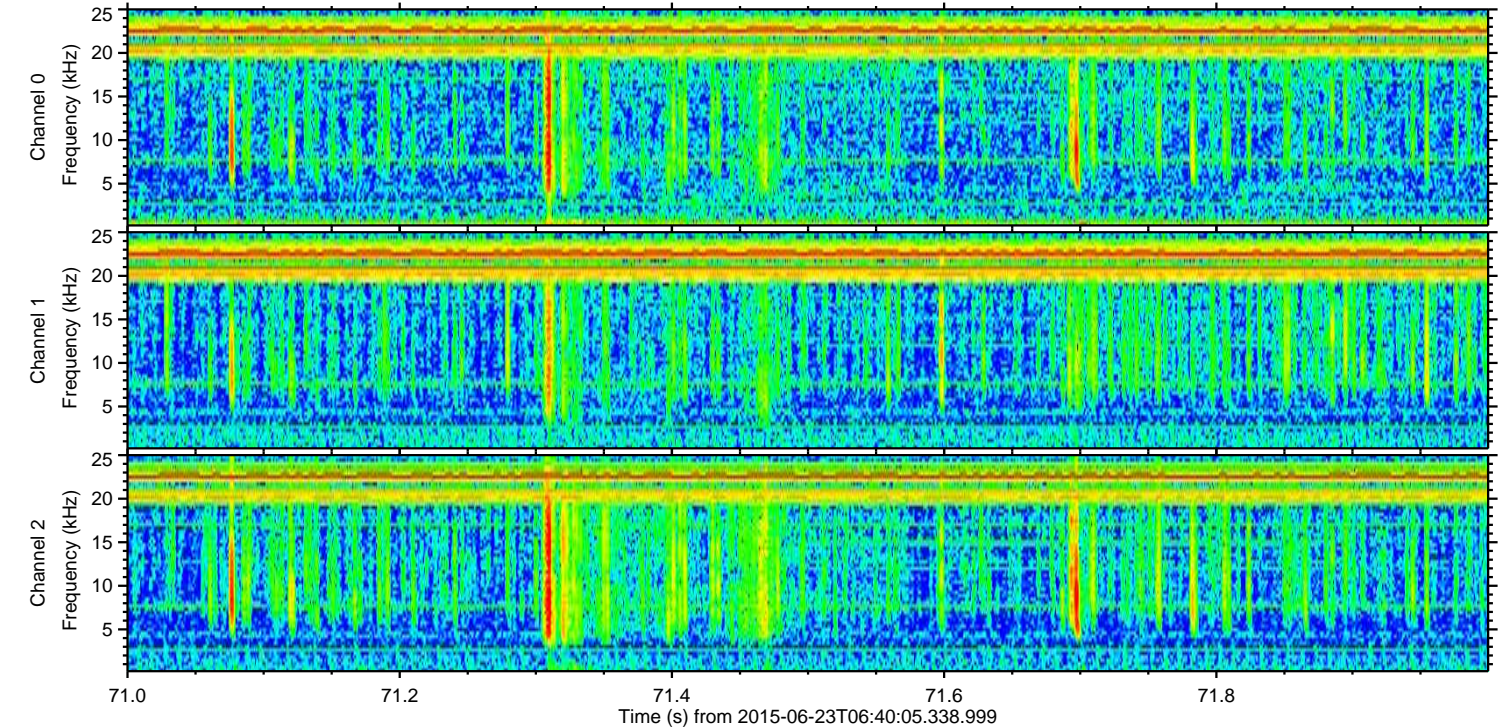
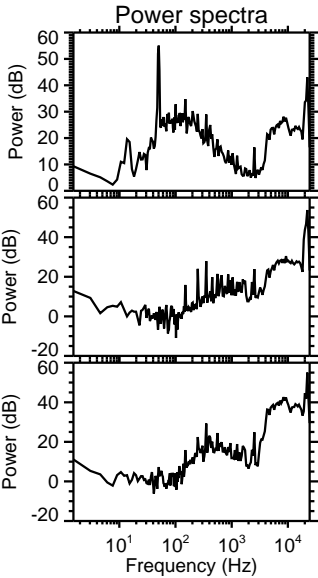
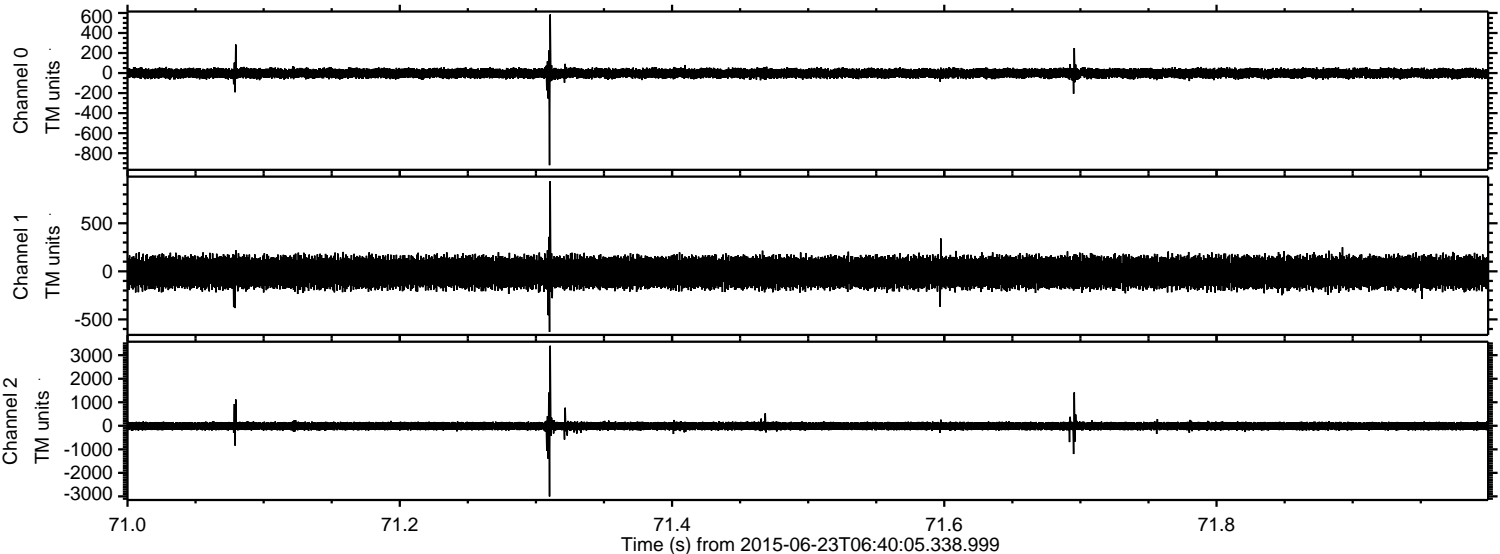
ELMAVAN 3D WAVEFORMS (Measured data sampled at 50 kHz) 51000 packets of 144 samples from 2015-06-23T06:40:05.338.999. Part 123/147

Processed Tue Jun 23 13:08:18 2015 by ELM ver.2012-10-06 from 001\_\_elm20150623\_064004\_\_dat00.bin





Processed Tue Jun 23 13:08:20 2015 by ELM ver.2012-10-06 from 001\_\_elm20150623\_064004\_\_dat00.bin



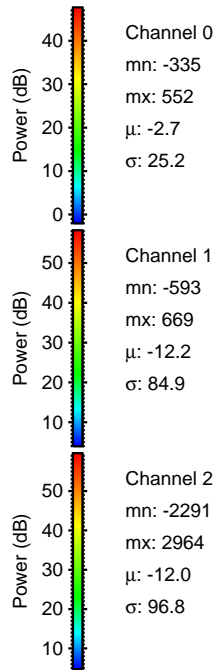
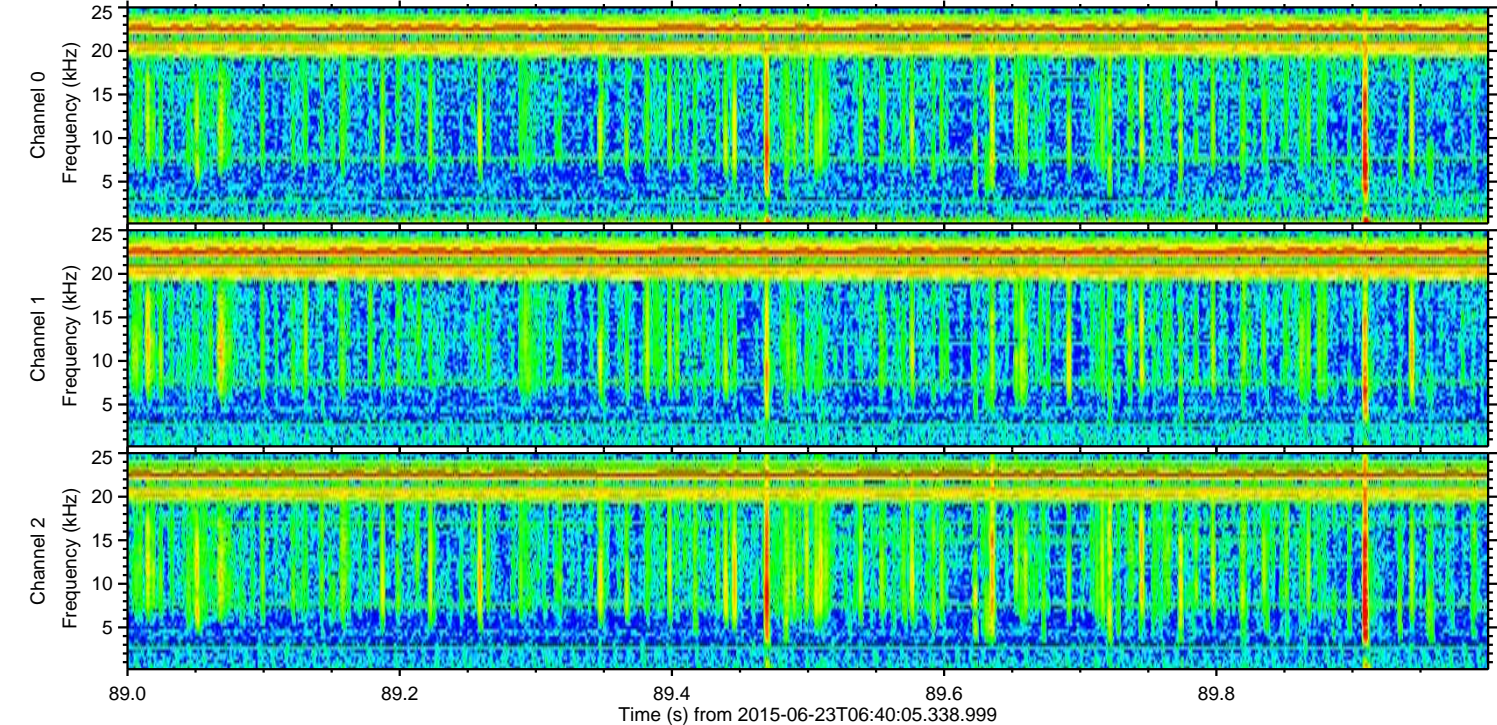
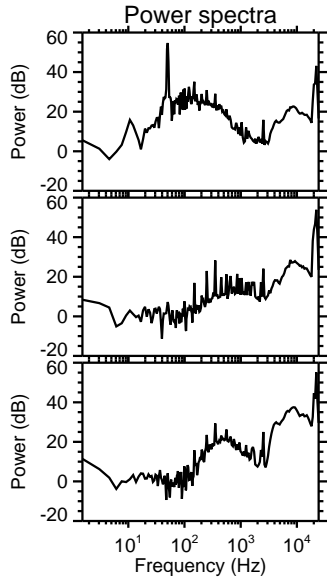
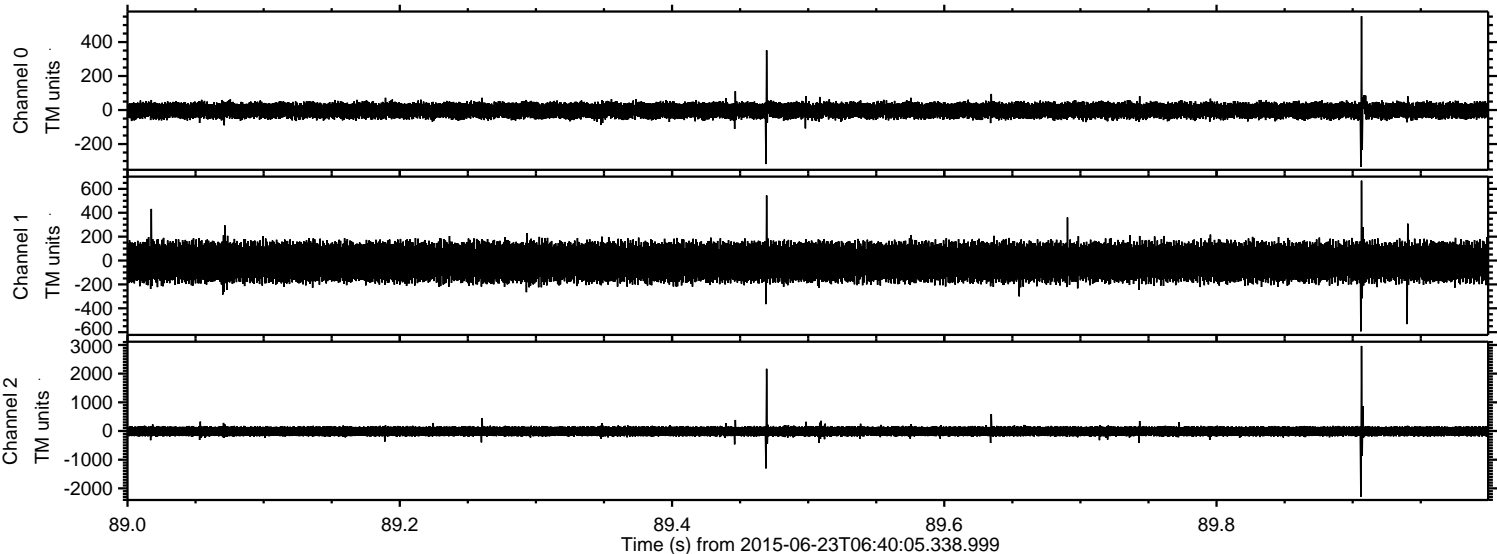
Channel 0  
mn: -920  
mx: 585  
 $\mu$ : -2.7  
 $\sigma$ : 25.5

Channel 1  
mn: -630  
mx: 938  
 $\mu$ : -12.0  
 $\sigma$ : 84.6

Channel 2  
mn: -3003  
mx: 3403  
 $\mu$ : -11.6  
 $\sigma$ : 98.5



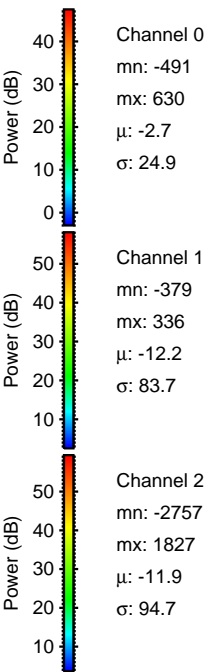
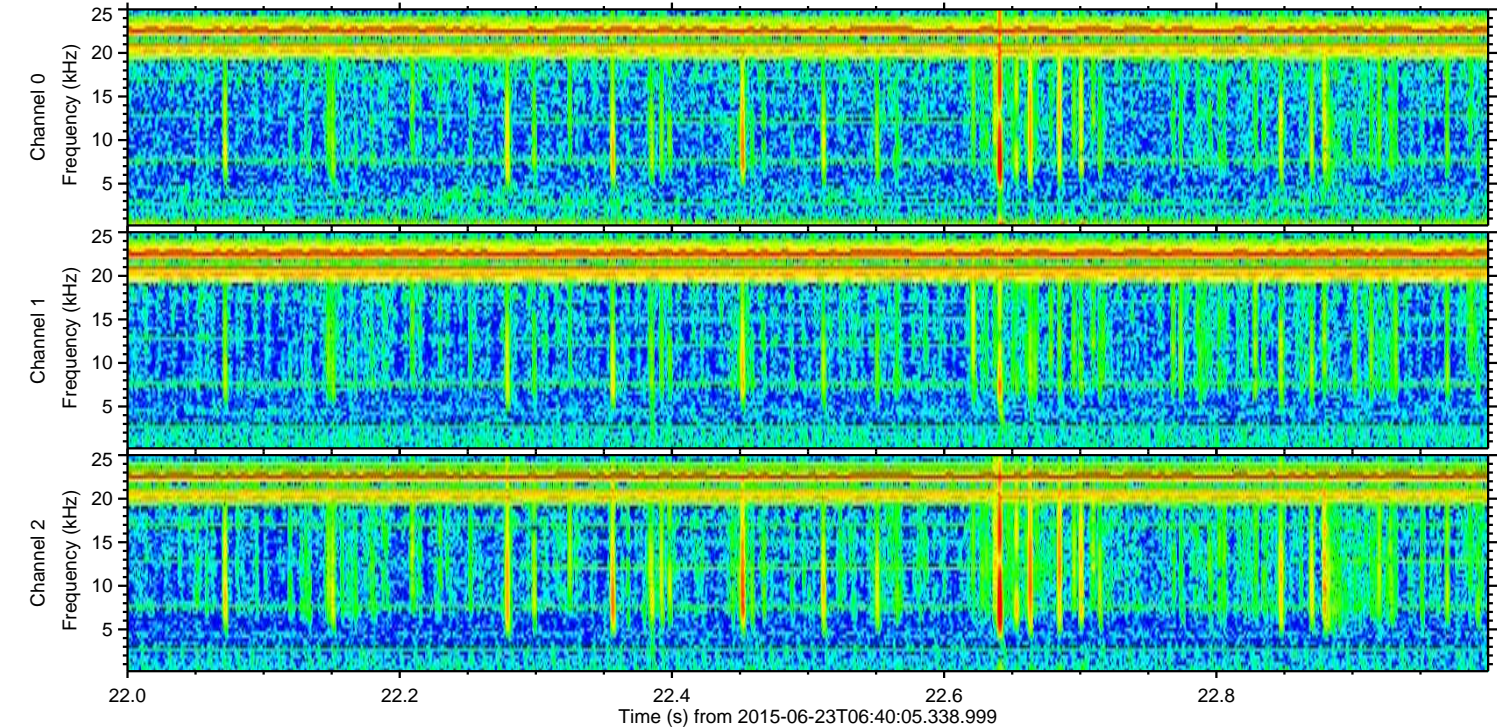
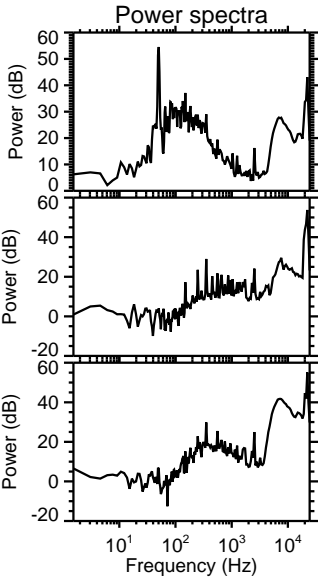
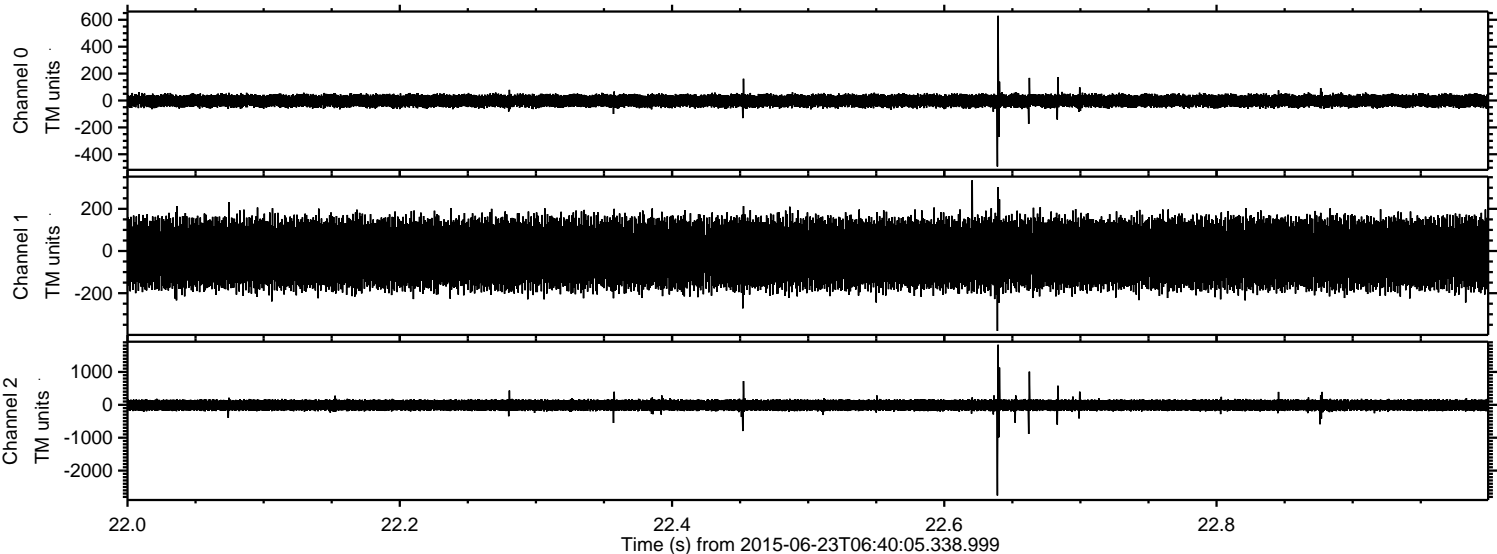
Processed Tue Jun 23 13:08:21 2015 by ELM ver.2012-10-06 from 001\_\_elm20150623\_064004\_\_dat00.bin





ELMAVAN 3D WAVEFORMS (Measured data sampled at 50 kHz) 51000 packets of 144 samples from 2015-06-23T06:40:05.338.999. Part 23/147

Processed Tue Jun 23 13:08:22 2015 by ELM ver.2012-10-06 from 001\_\_elm20150623\_064004\_\_dat00.bin





ELMAVAN 3D WAVEFORMS (Measured data sampled at 50 kHz) 51000 packets of 144 samples from 2015-06-23T06:40:05.338.999. Part 136/147

Processed Tue Jun 23 13:08:23 2015 by ELM ver.2012-10-06 from 001\_\_elm20150623\_064004\_\_dat00.bin

