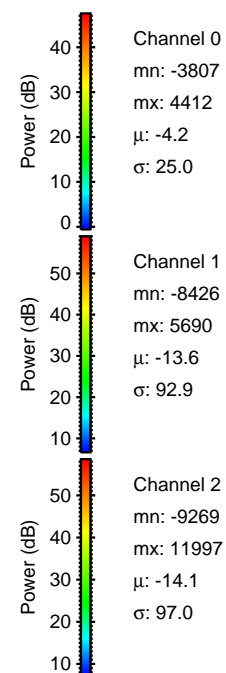
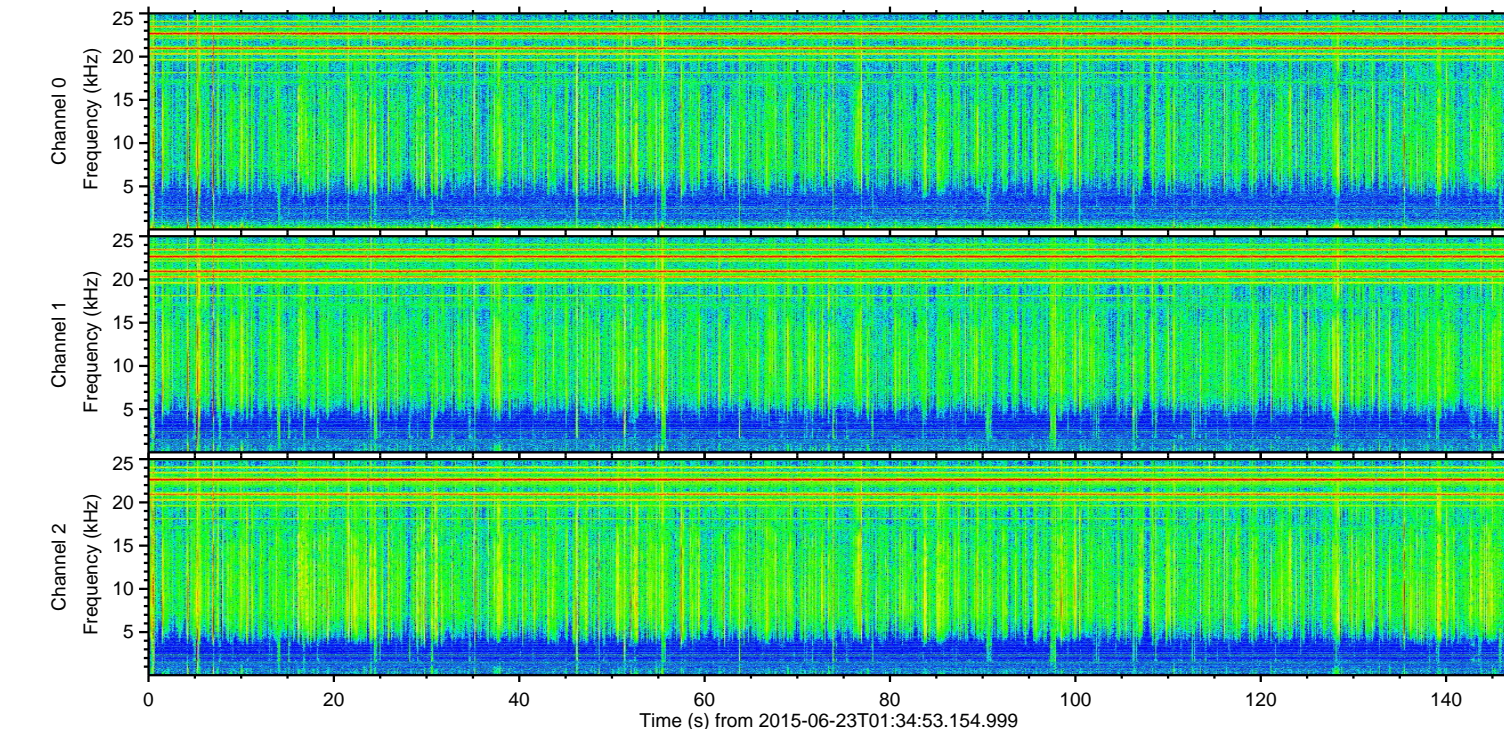
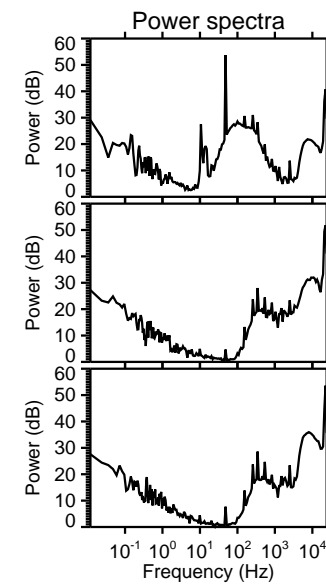
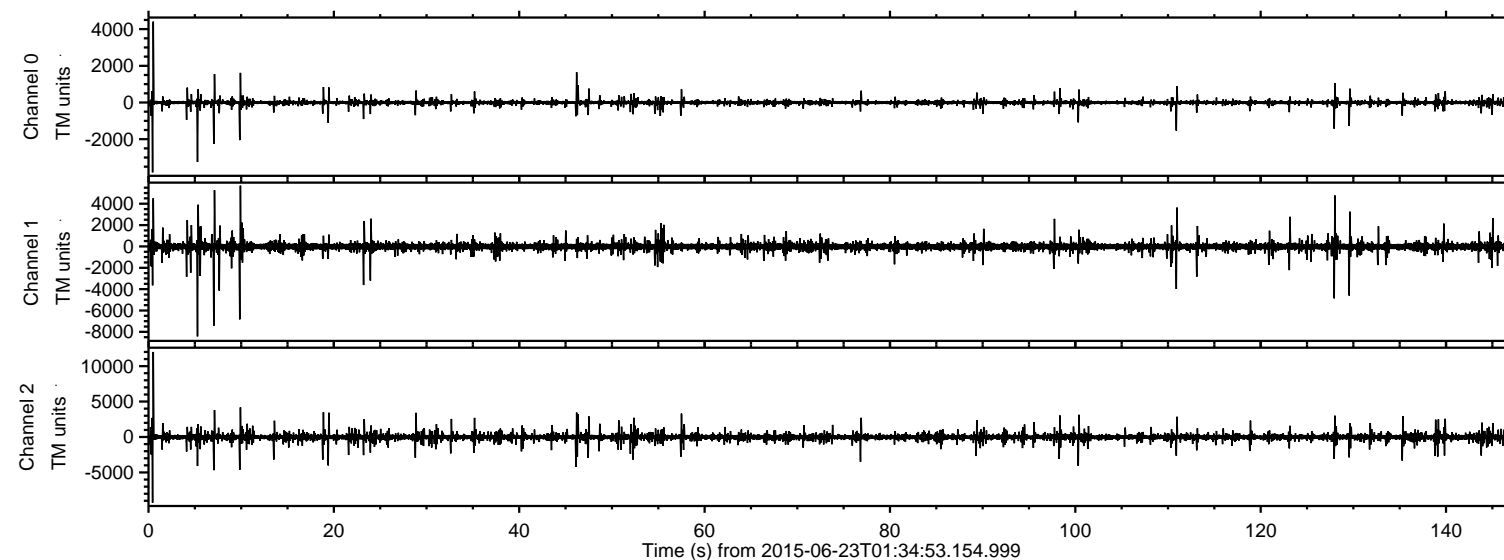


# ELMAVAN 3D WAVEFORMS (Measured data sampled at 50 kHz) 51000 packets of 144 samples from 2015-06-23T01:34:53.154.999.

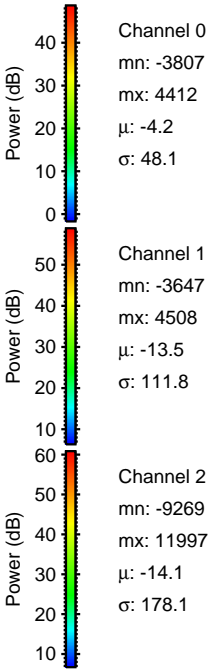
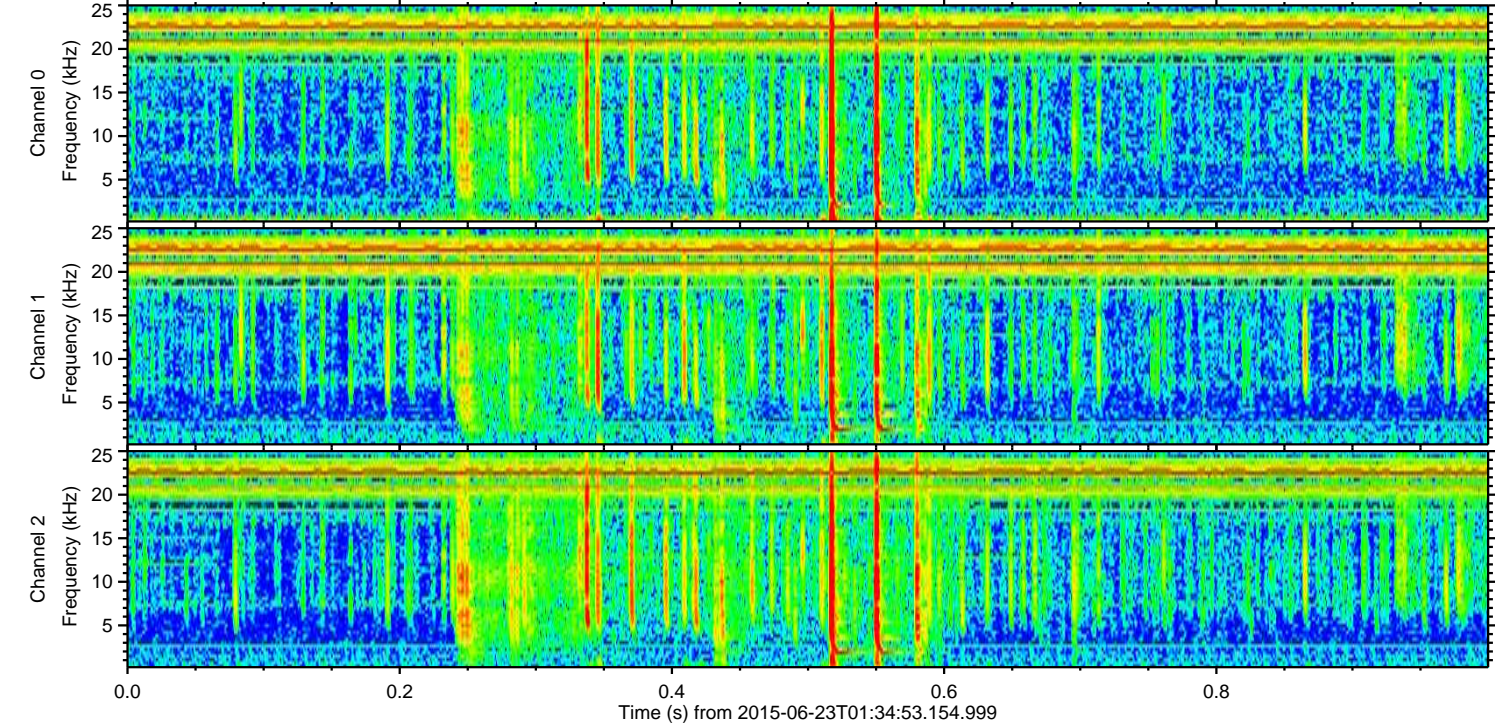
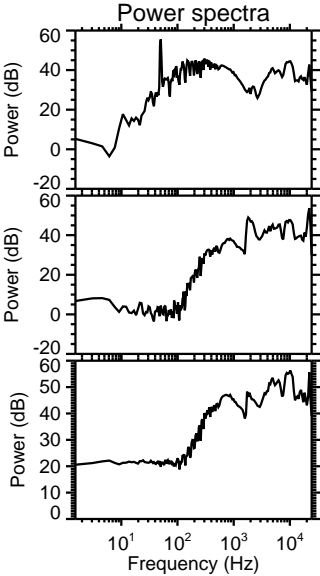
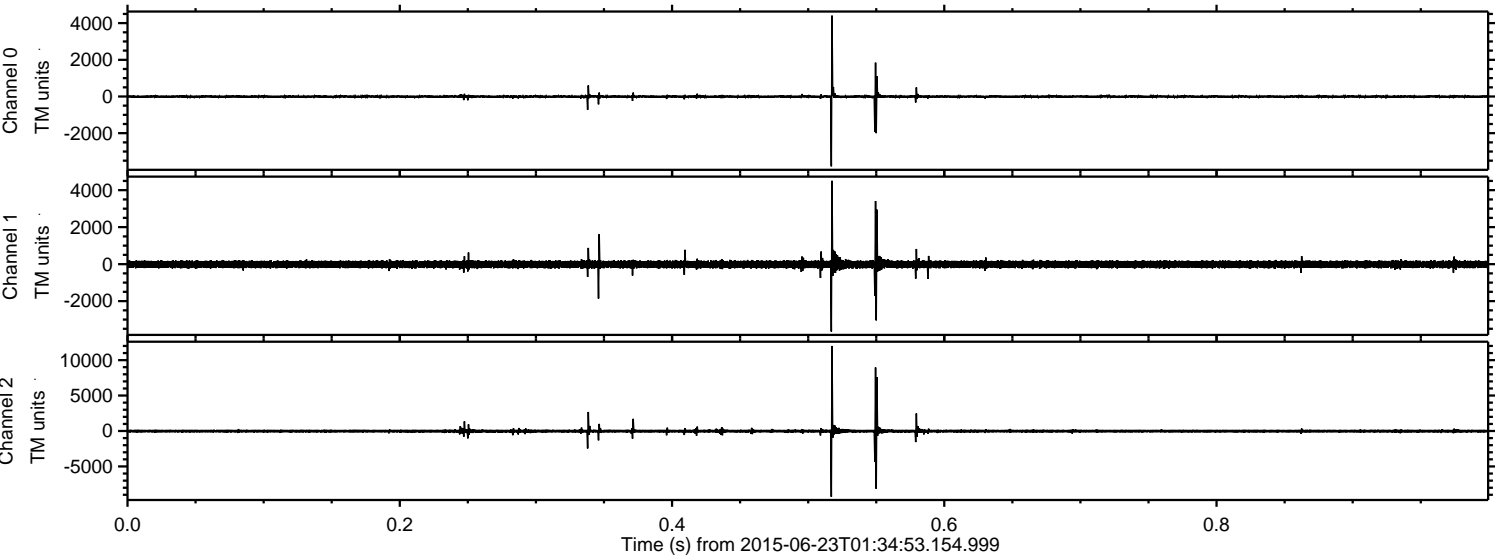
Processed Tue Jun 23 11:45:55 2015 by ELM ver.2012-10-06 from 001\_\_elm20150623\_013452\_\_dat00.bin



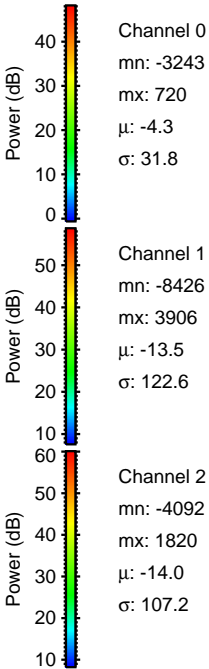
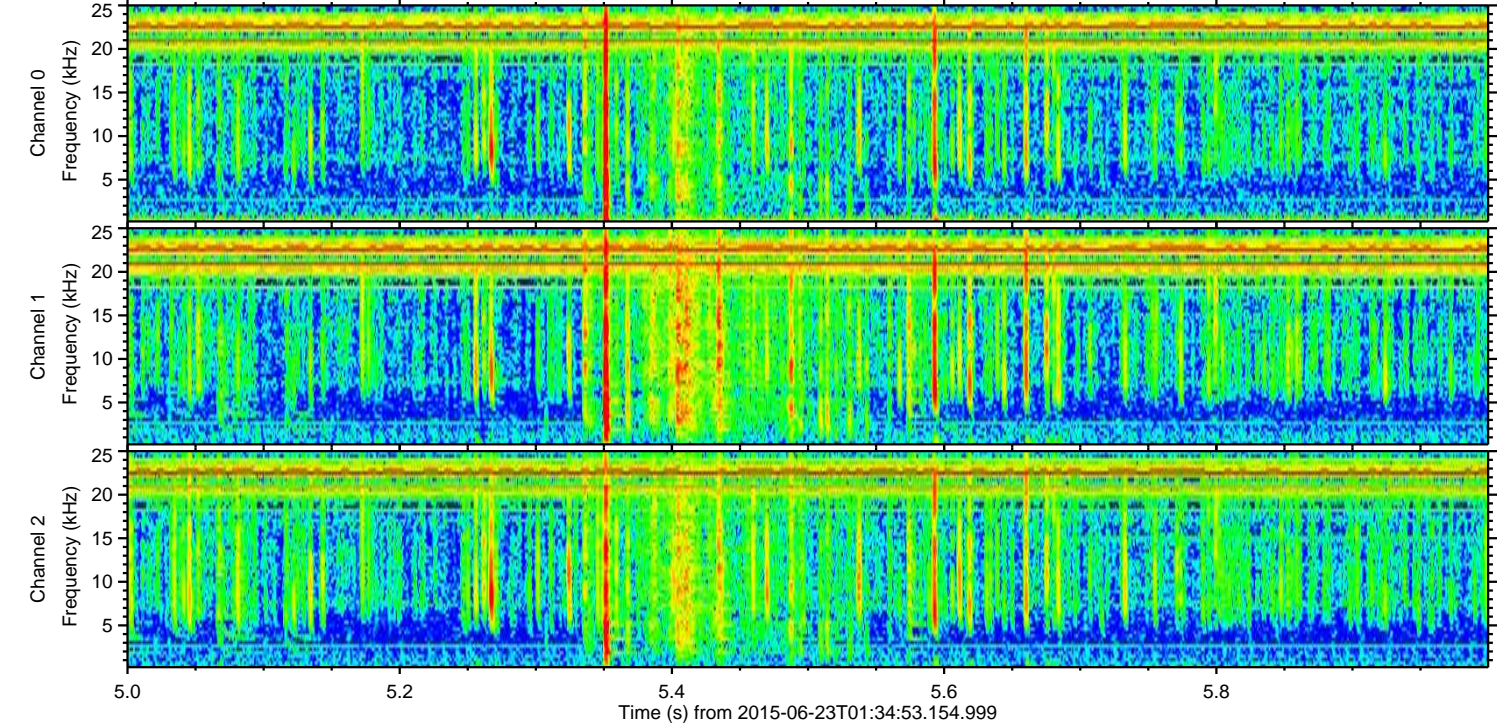
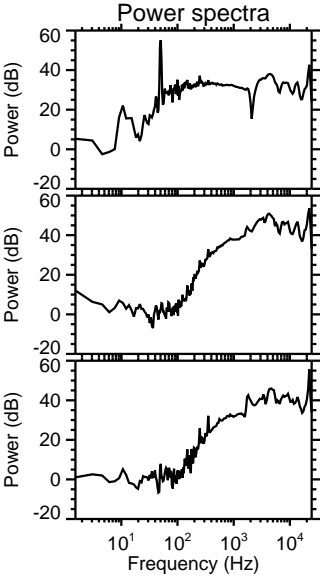
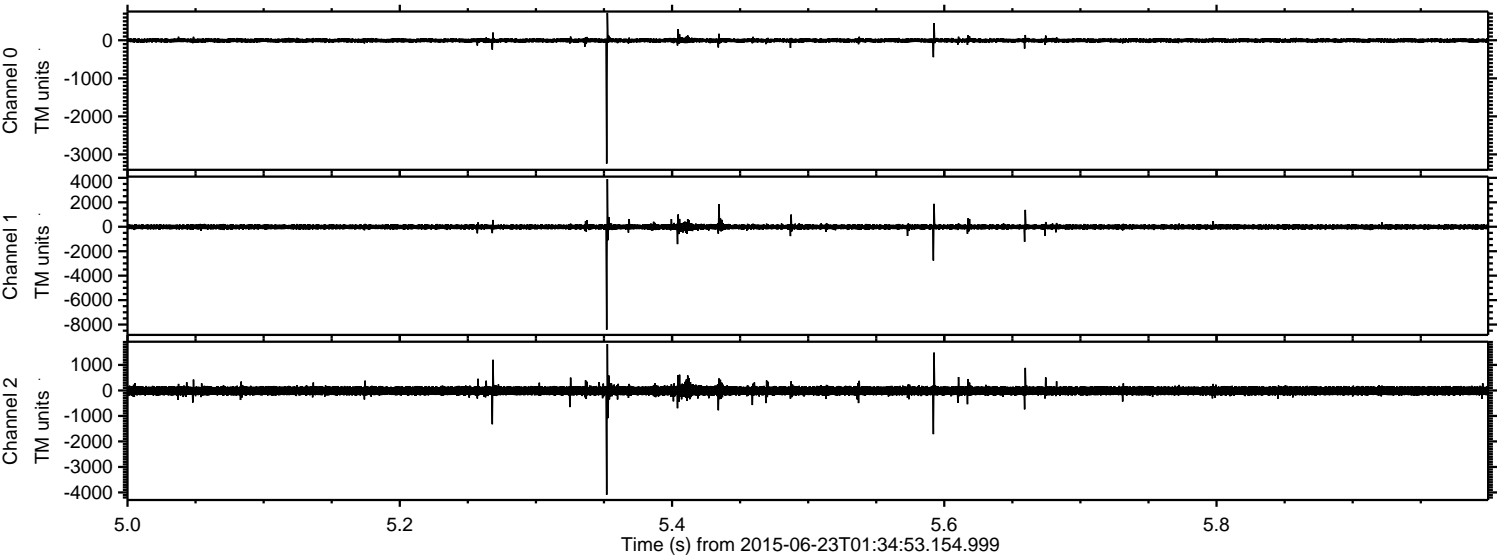


ELMAVAN 3D WAVEFORMS (Measured data sampled at 50 kHz) 51000 packets of 144 samples from 2015-06-23T01:34:53.154.999. Part 1/147

Processed Tue Jun 23 11:46:10 2015 by ELM ver.2012-10-06 from 001\_\_elm20150623\_013452\_\_dat00.bin

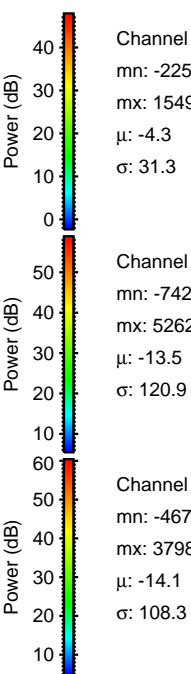
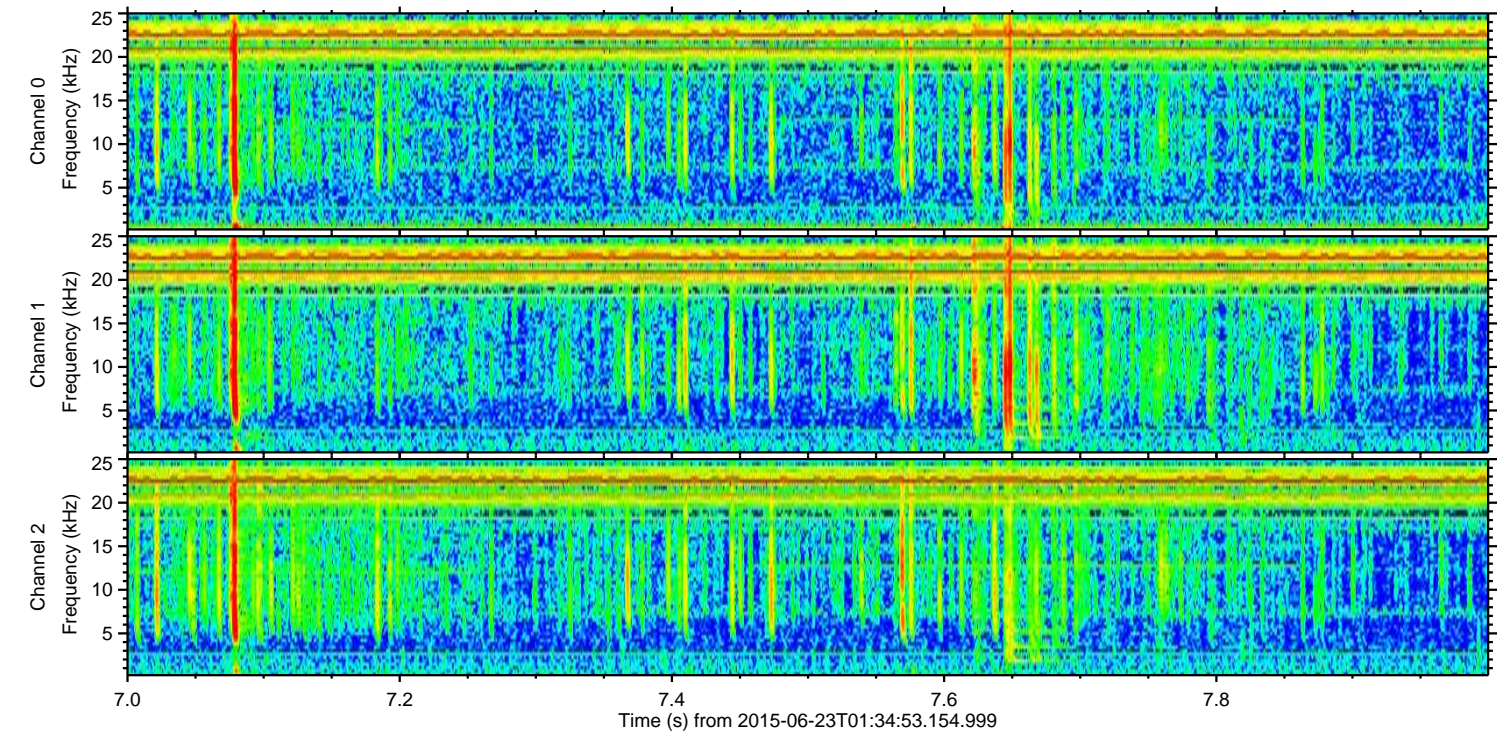
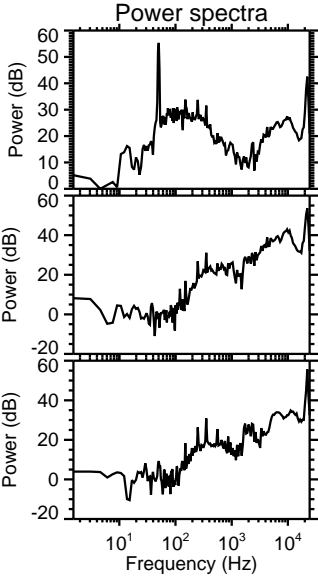
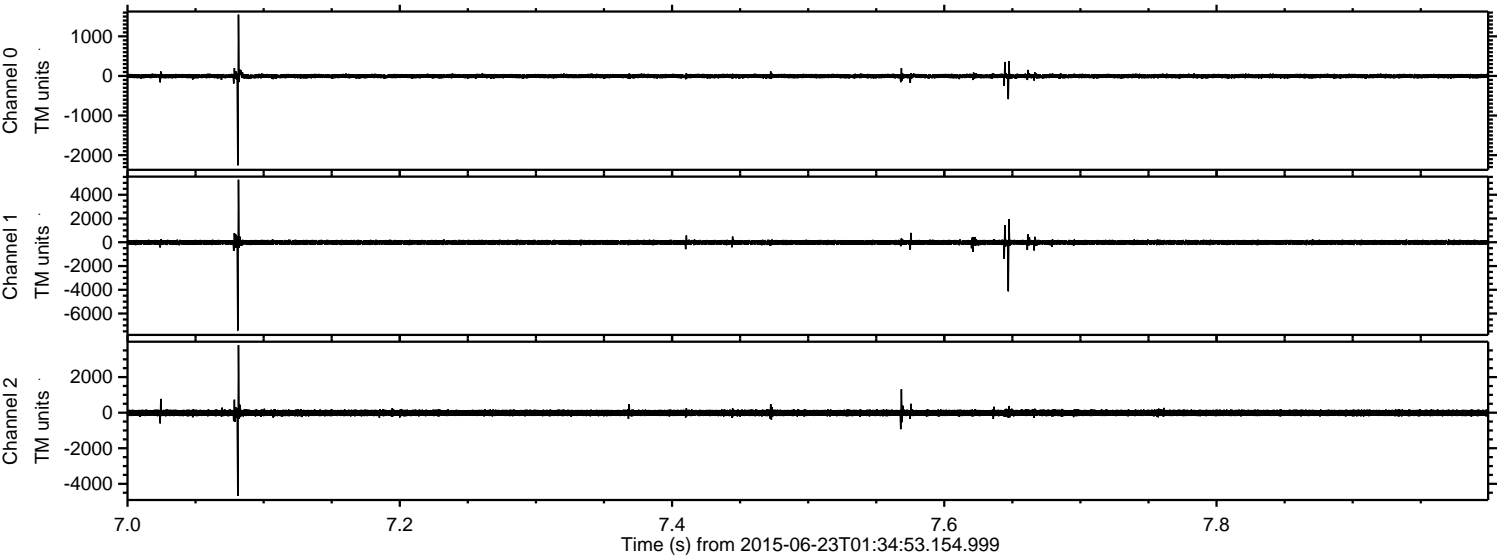


Processed Tue Jun 23 11:46:11 2015 by ELM ver.2012-10-06 from 001\_\_elm20150623\_013452\_\_dat00.bin



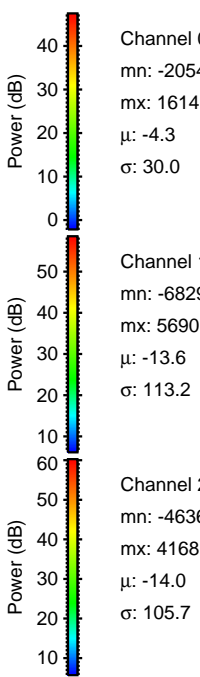
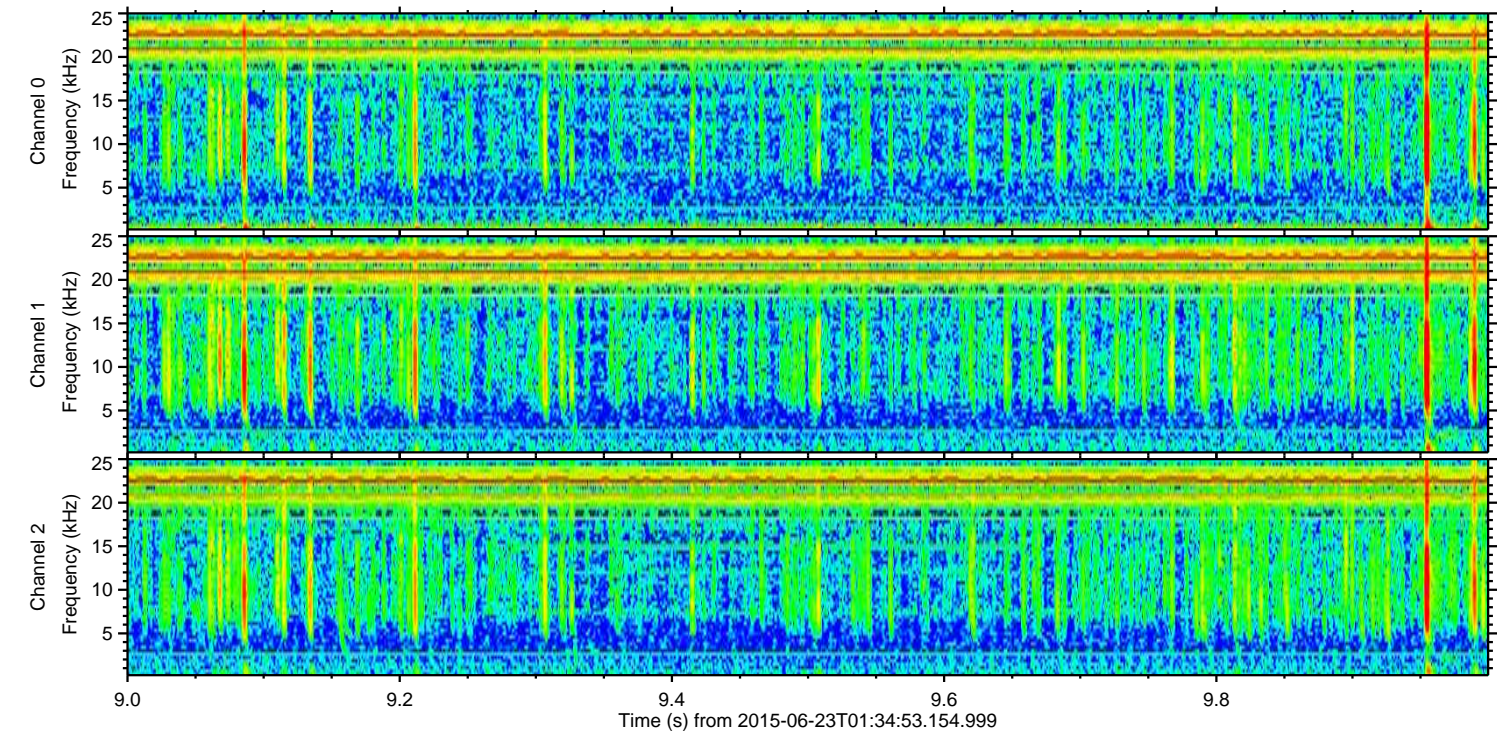
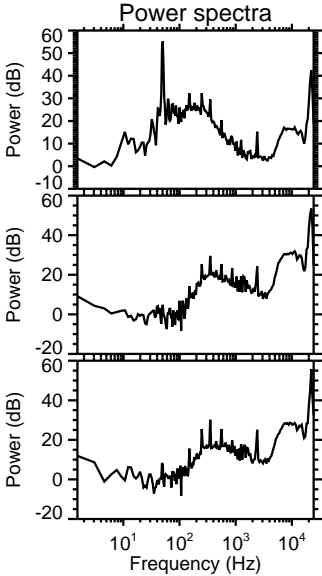
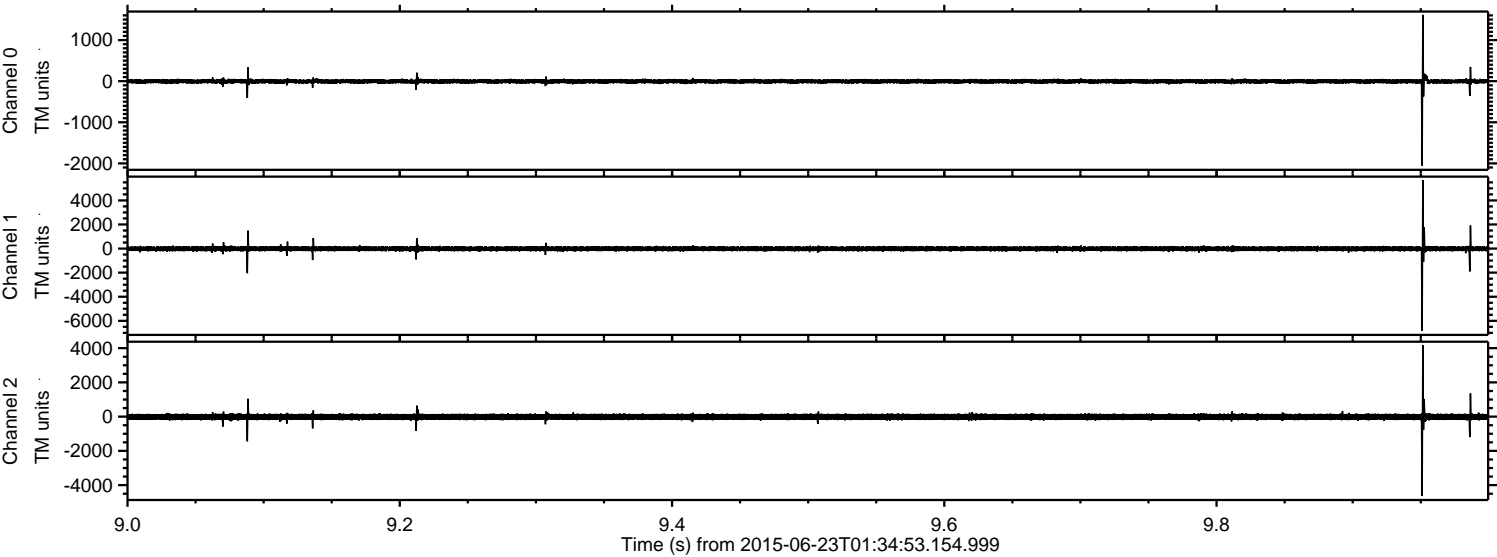


Processed Tue Jun 23 11:46:13 2015 by ELM ver.2012-10-06 from 001\_\_elm20150623\_013452\_\_dat00.bin





Processed Tue Jun 23 11:46:14 2015 by ELM ver.2012-10-06 from 001\_\_elm20150623\_013452\_\_dat00.bin



Channel 0  
mn: -2054  
mx: 1614  
 $\mu$ : -4.3  
 $\sigma$ : 30.0

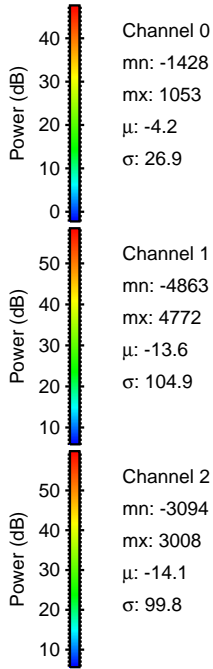
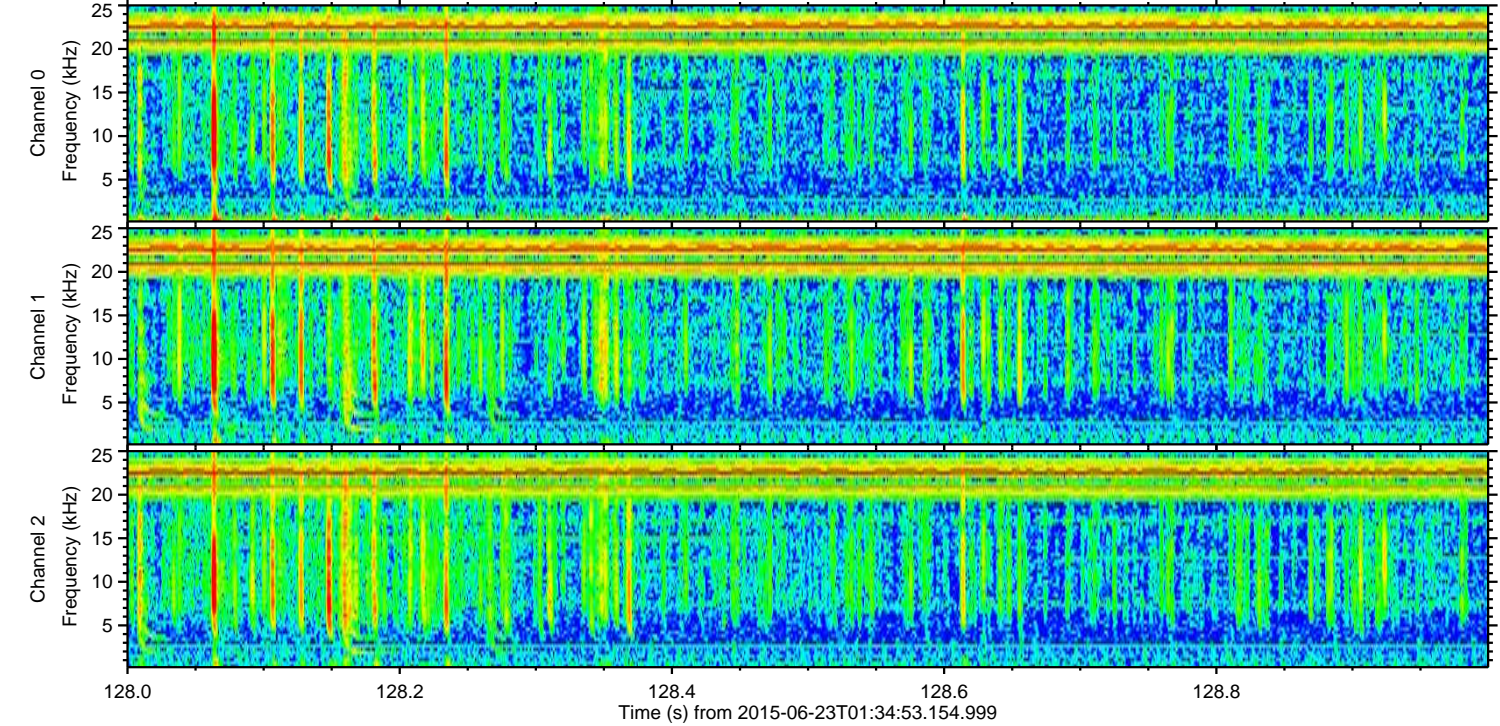
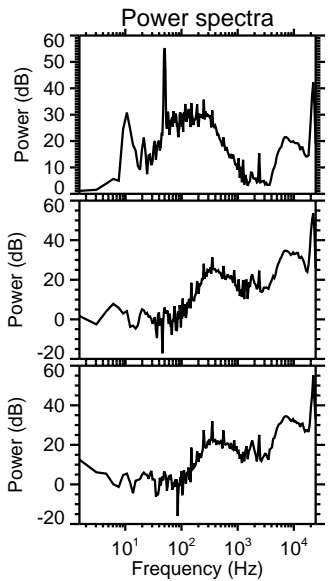
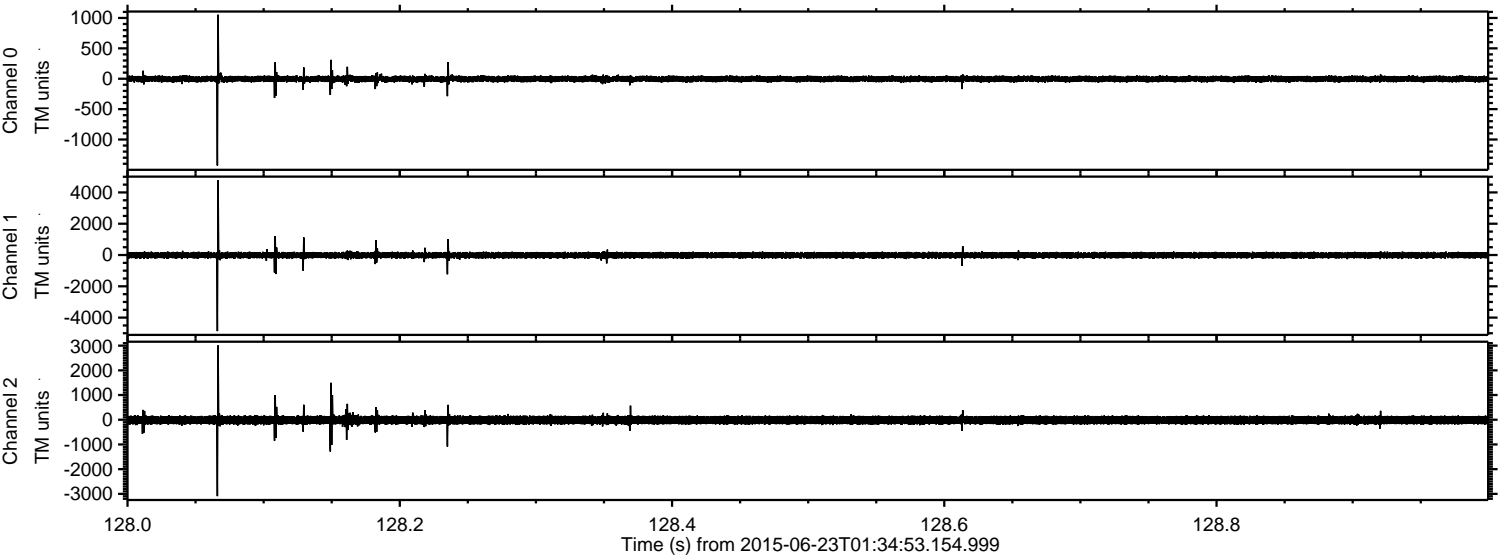
Channel 1  
mn: -6829  
mx: 5690  
 $\mu$ : -13.6  
 $\sigma$ : 113.2

Channel 2  
mn: -4636  
mx: 4168  
 $\mu$ : -14.0  
 $\sigma$ : 105.7



ELMAVAN 3D WAVEFORMS (Measured data sampled at 50 kHz) 51000 packets of 144 samples from 2015-06-23T01:34:53.154.999. Part 129/147

Processed Tue Jun 23 11:46:15 2015 by ELM ver.2012-10-06 from 001\_\_elm20150623\_013452\_\_dat00.bin



Channel 0  
mn: -1428  
mx: 1053  
 $\mu$ : -4.2  
 $\sigma$ : 26.9

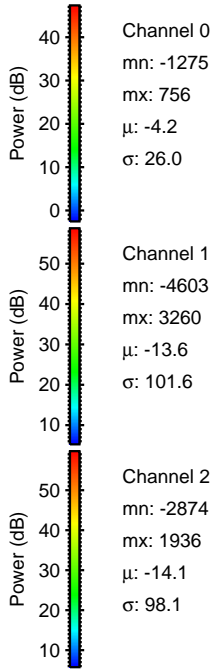
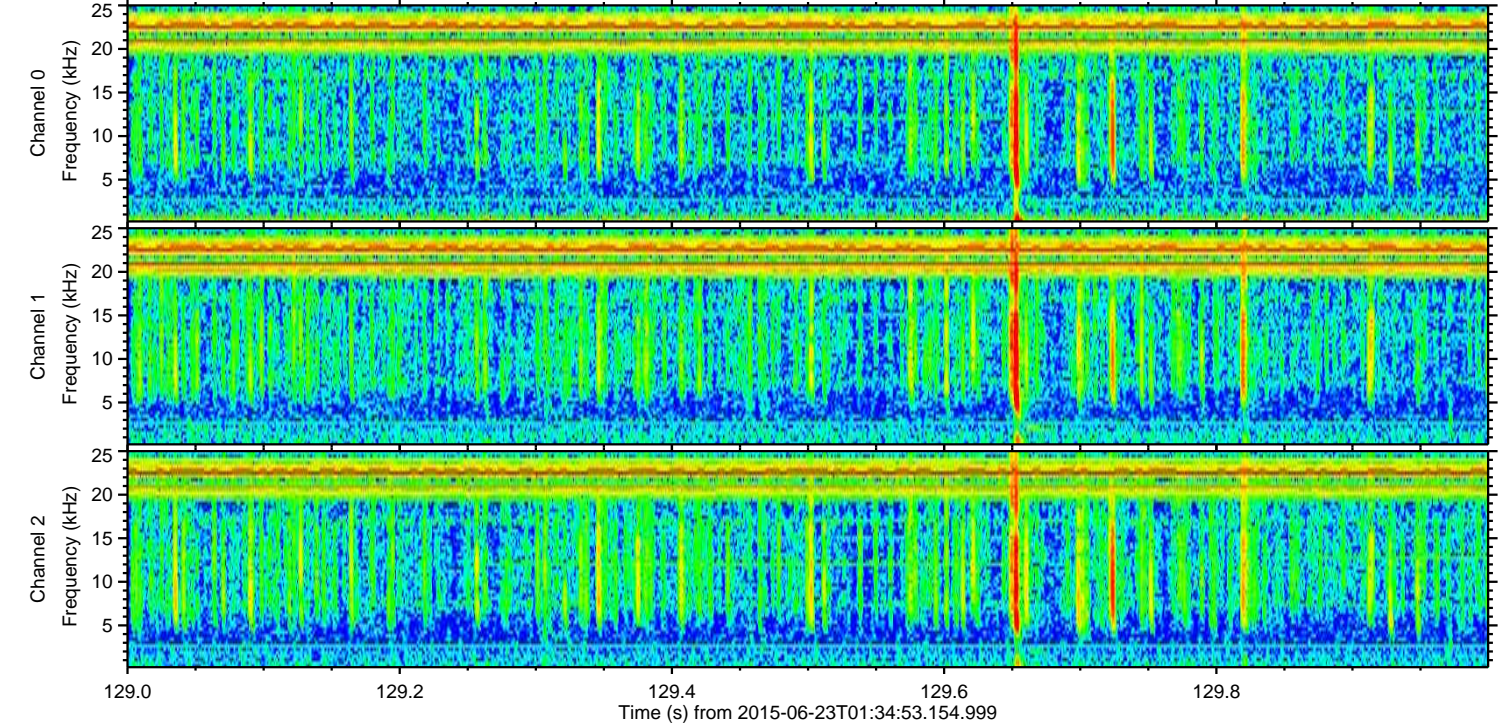
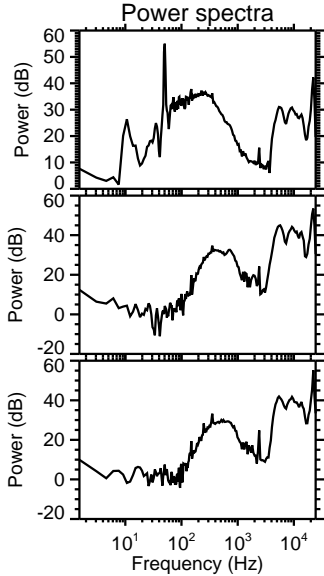
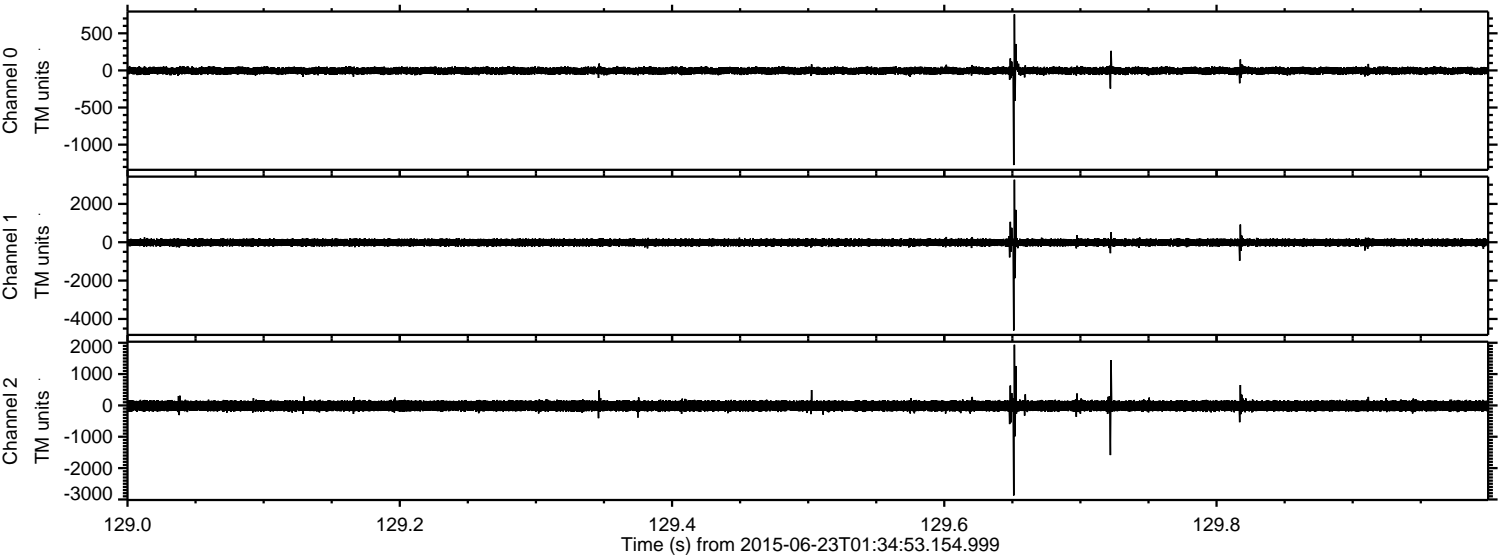
Channel 1  
mn: -4863  
mx: 4772  
 $\mu$ : -13.6  
 $\sigma$ : 104.9

Channel 2  
mn: -3094  
mx: 3008  
 $\mu$ : -14.1  
 $\sigma$ : 99.8



ELMAVAN 3D WAVEFORMS (Measured data sampled at 50 kHz) 51000 packets of 144 samples from 2015-06-23T01:34:53.154.999. Part 130/147

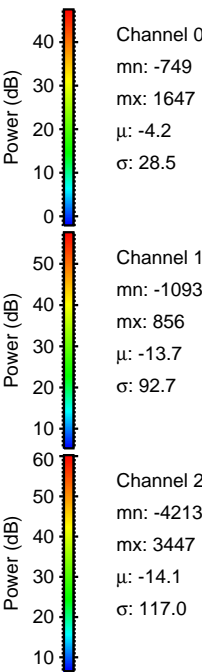
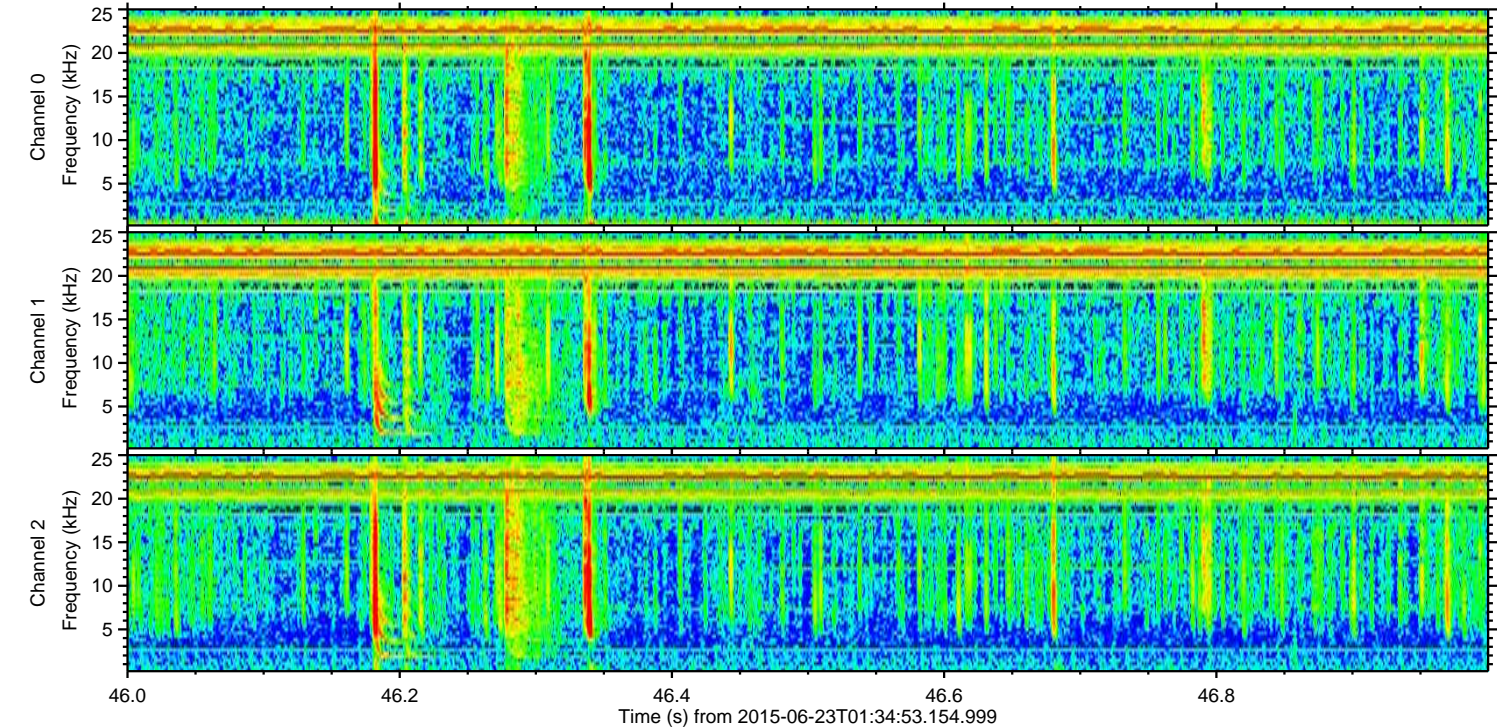
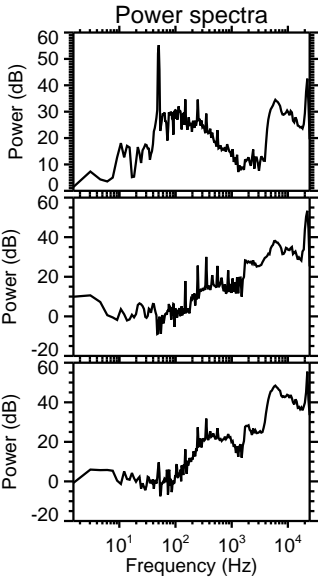
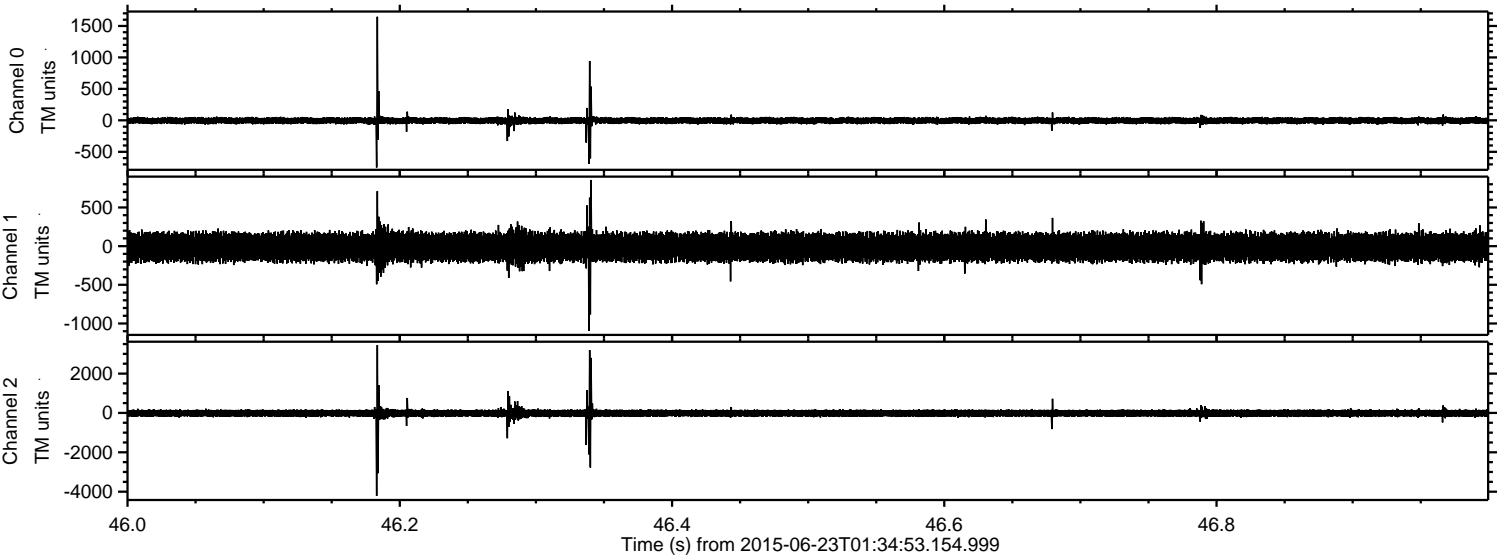
Processed Tue Jun 23 11:46:16 2015 by ELM ver.2012-10-06 from 001\_\_elm20150623\_013452\_\_dat00.bin





ELMAVAN 3D WAVEFORMS (Measured data sampled at 50 kHz) 51000 packets of 144 samples from 2015-06-23T01:34:53.154.999. Part 47/147

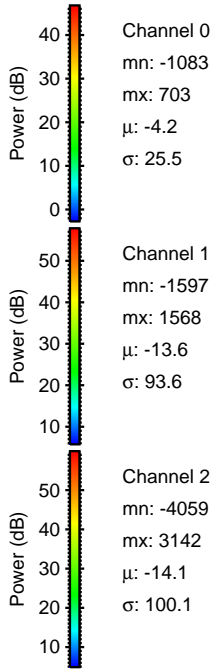
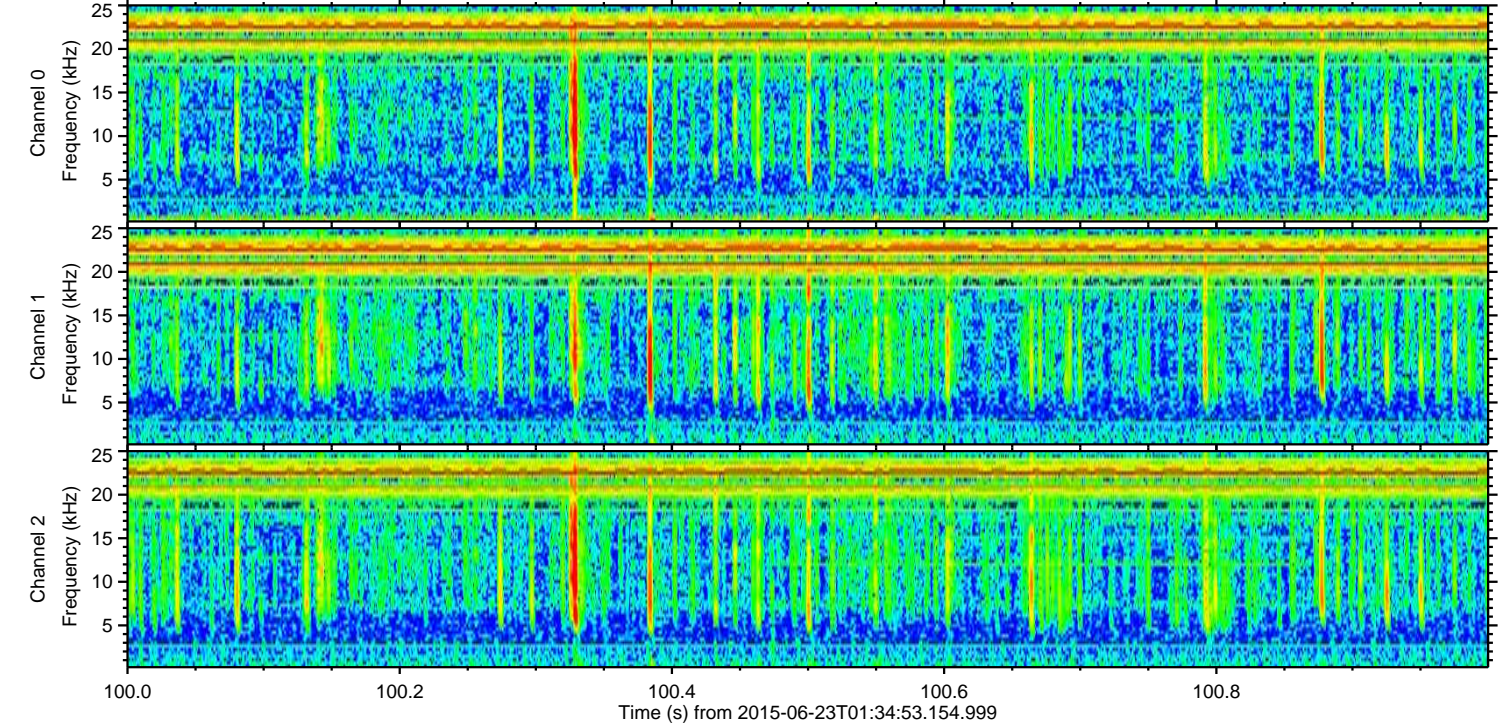
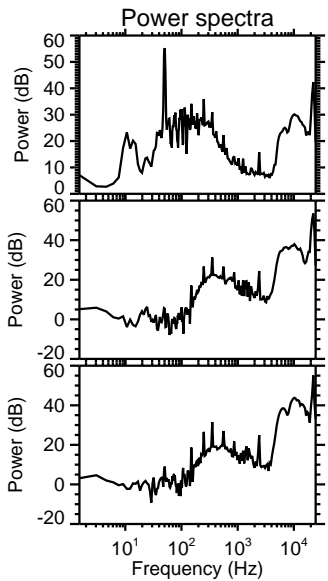
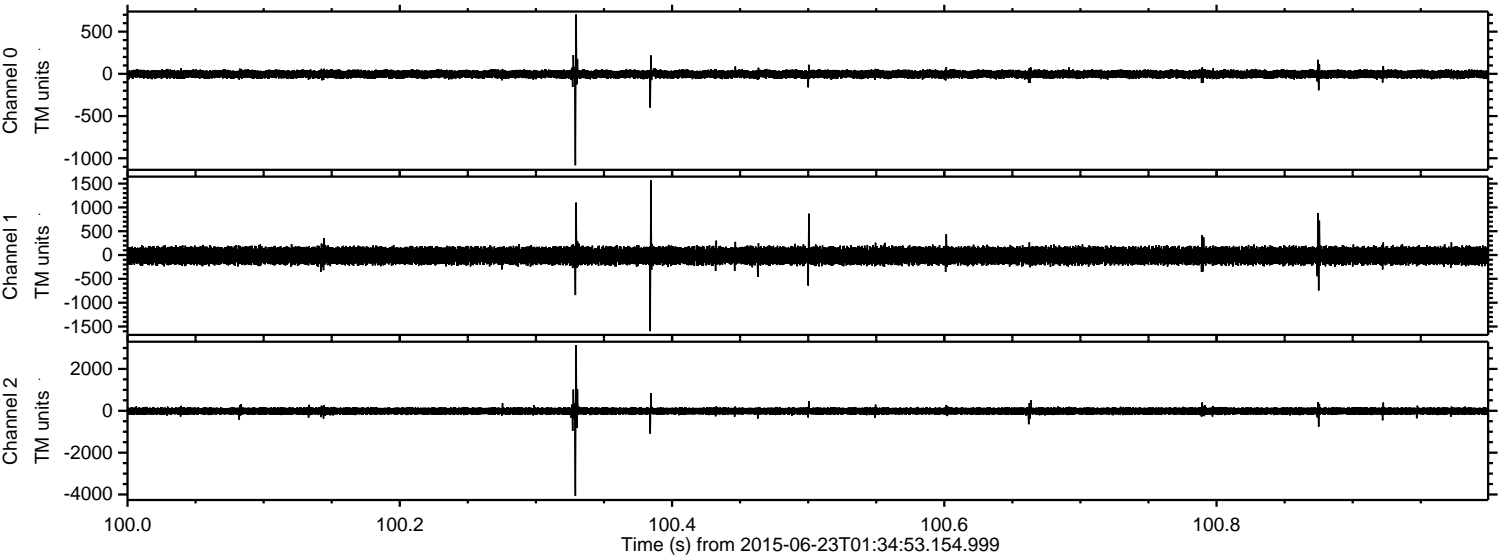
Processed Tue Jun 23 11:46:17 2015 by ELM ver.2012-10-06 from 001\_\_elm20150623\_013452\_\_dat00.bin





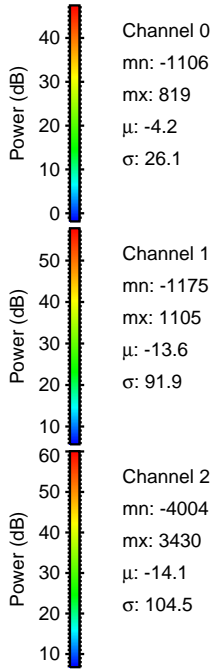
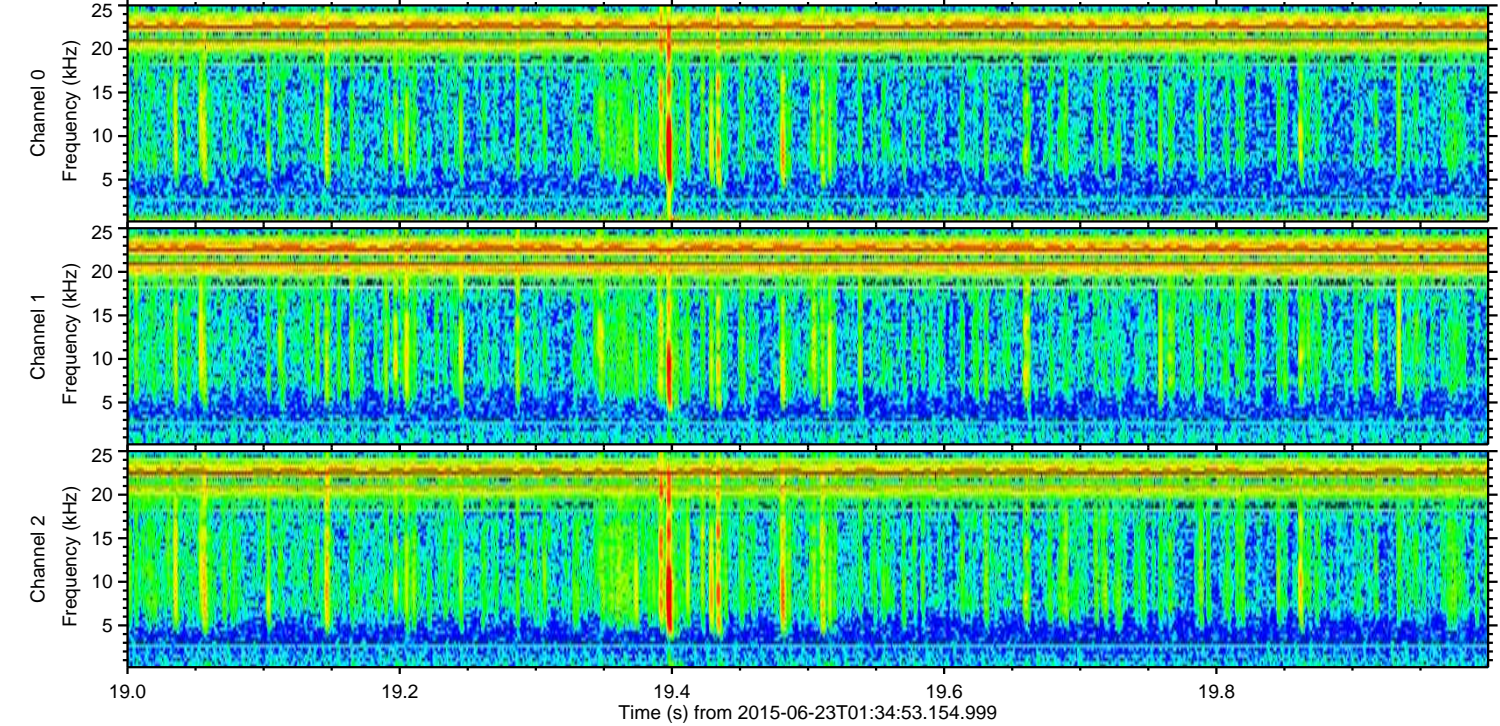
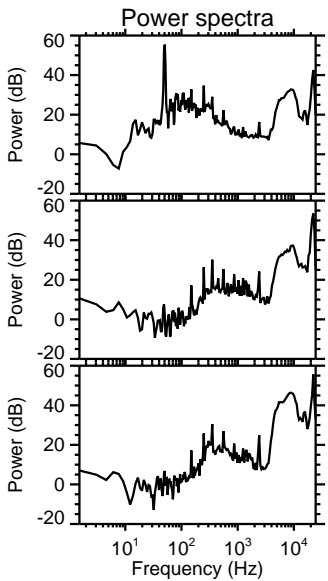
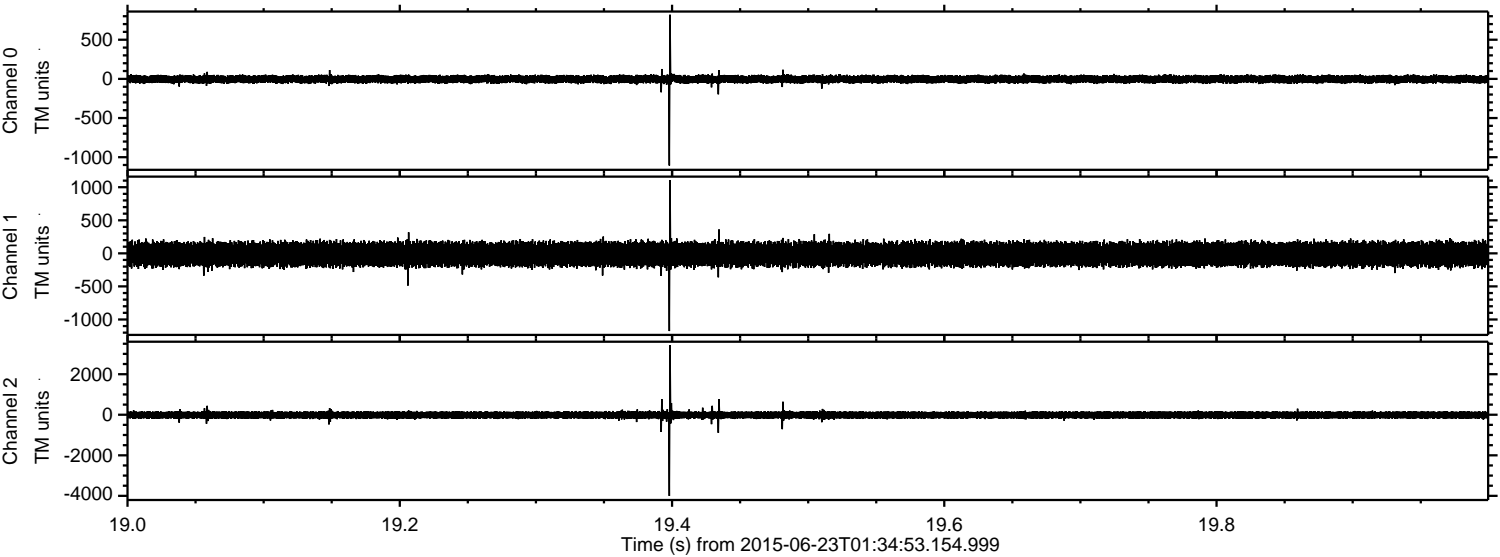
ELMAVAN 3D WAVEFORMS (Measured data sampled at 50 kHz) 51000 packets of 144 samples from 2015-06-23T01:34:53.154.999. Part 101/147

Processed Tue Jun 23 11:46:18 2015 by ELM ver.2012-10-06 from 001\_\_elm20150623\_013452\_\_dat00.bin





Processed Tue Jun 23 11:46:19 2015 by ELM ver.2012-10-06 from 001\_\_elm20150623\_013452\_\_dat00.bin



Channel 0  
mn: -1106  
mx: 819  
 $\mu$ : -4.2  
 $\sigma$ : 26.1

Channel 1  
mn: -1175  
mx: 1105  
 $\mu$ : -13.6  
 $\sigma$ : 91.9

Channel 2  
mn: -4004  
mx: 3430  
 $\mu$ : -14.1  
 $\sigma$ : 104.5



ELMAVAN 3D WAVEFORMS (Measured data sampled at 50 kHz) 51000 packets of 144 samples from 2015-06-23T01:34:53.154.999. Part 135/147

