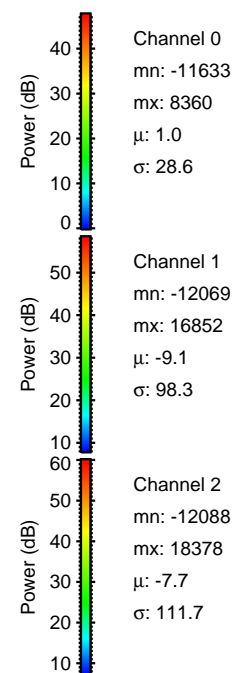
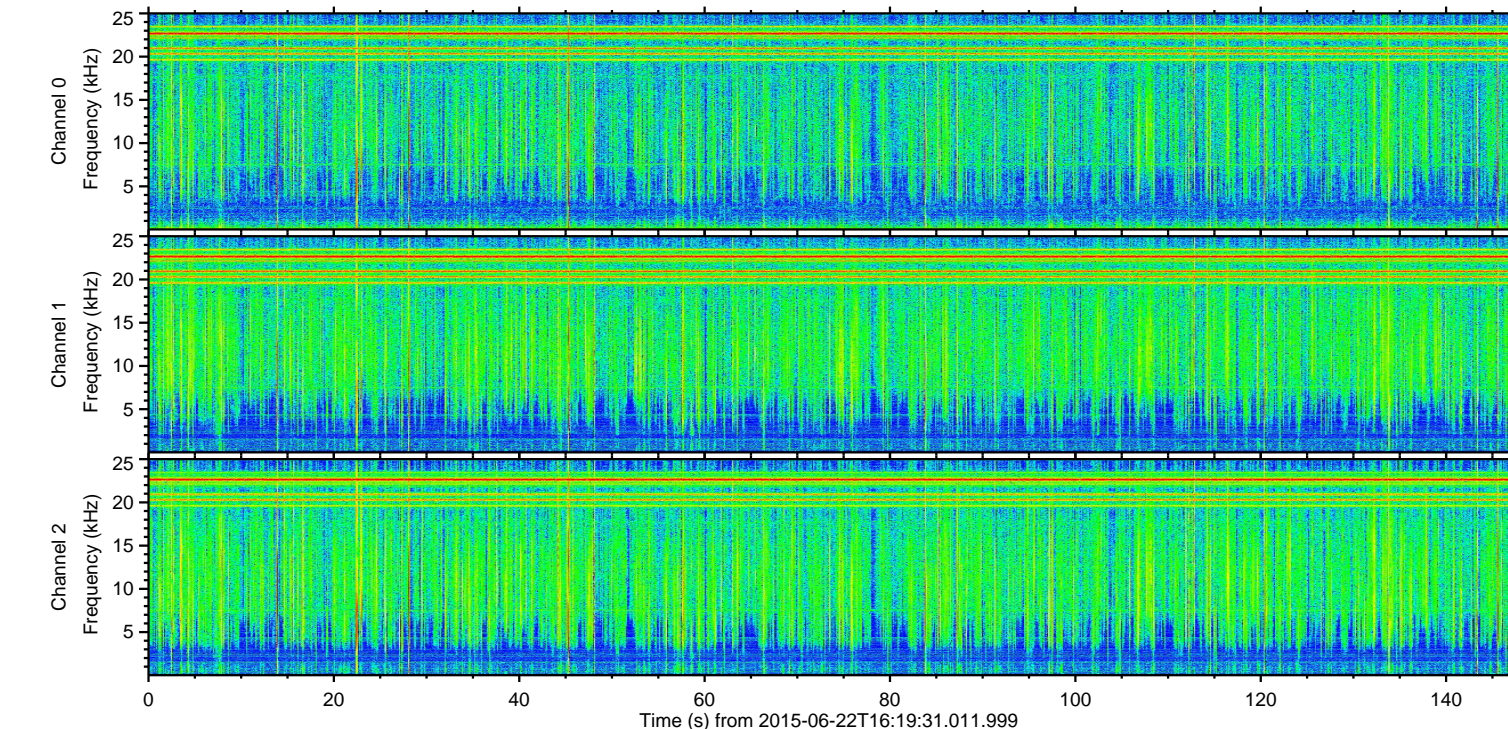
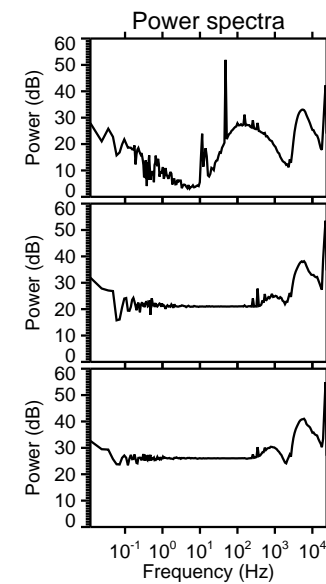
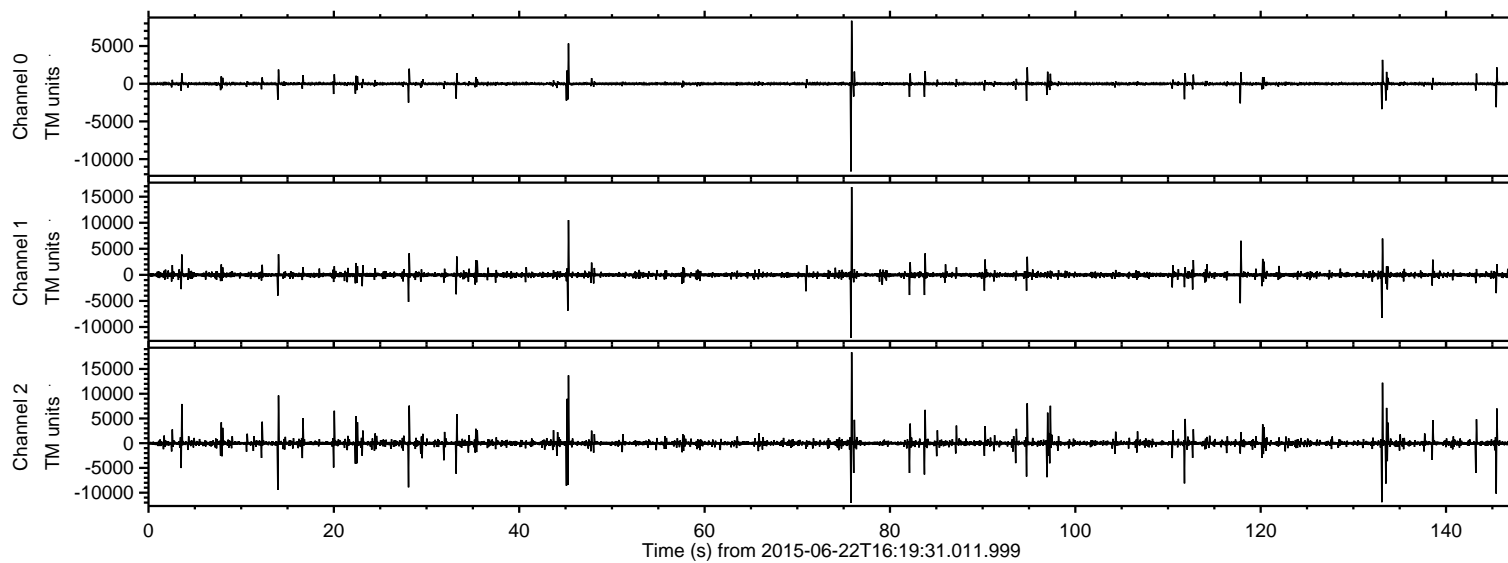
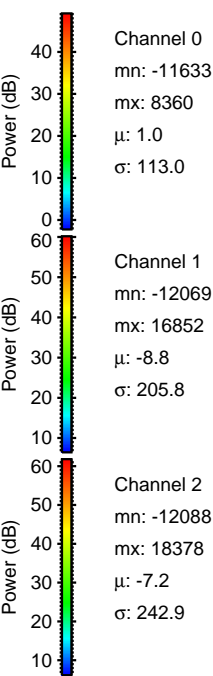
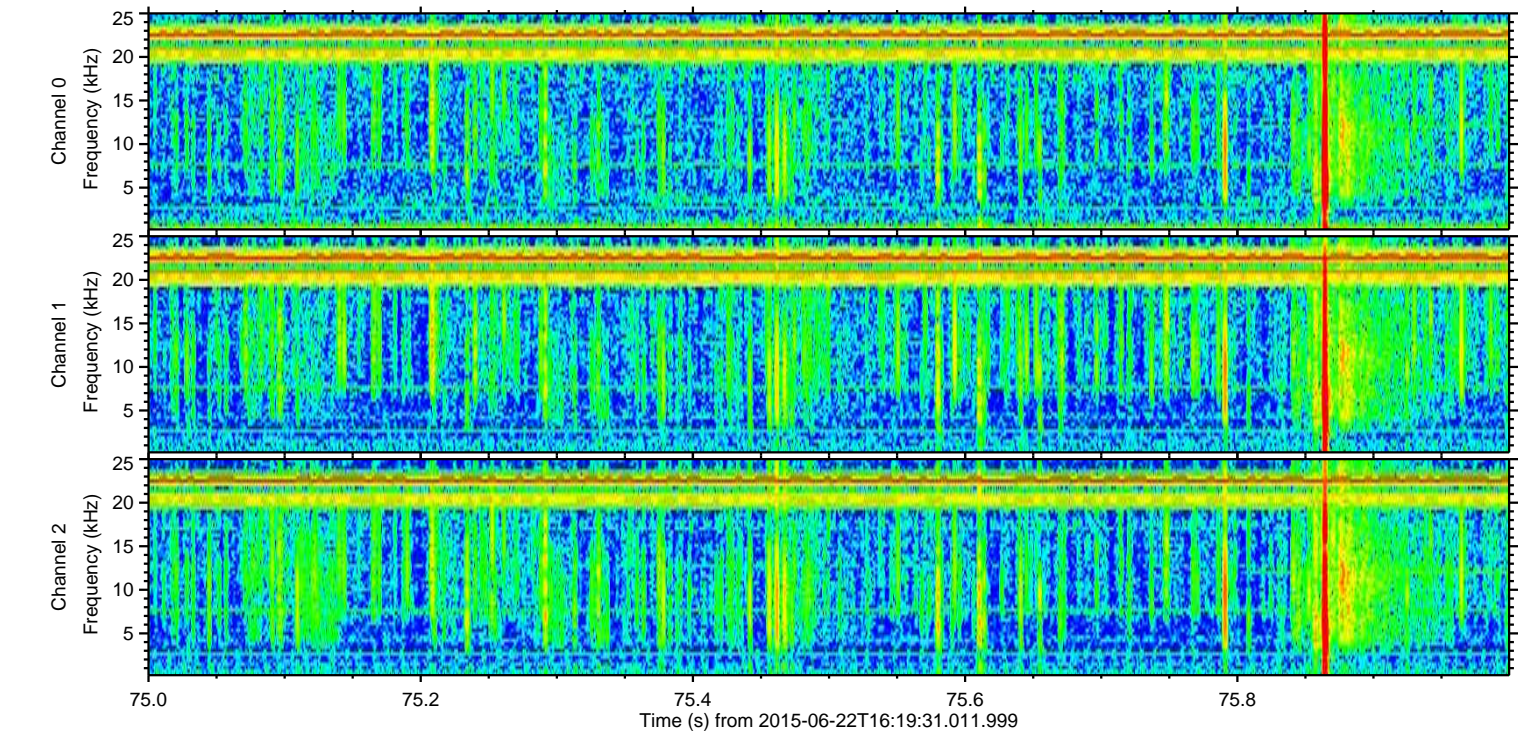
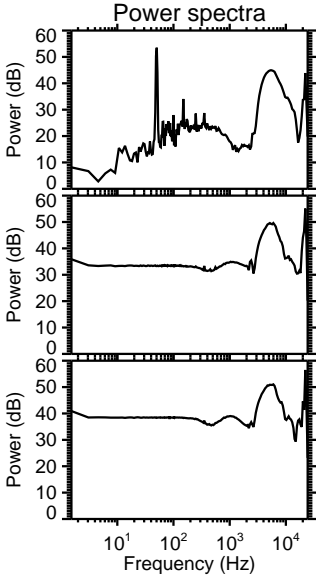
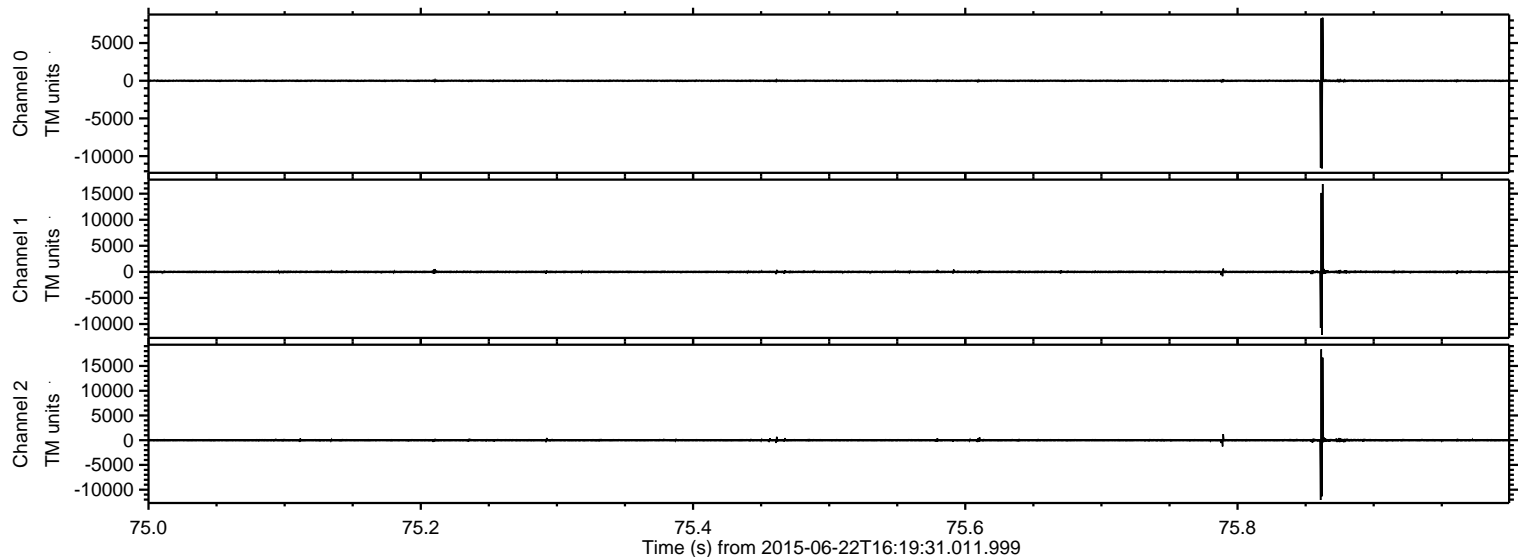


ELMAVAN 3D WAVEFORMS (Measured data sampled at 50 kHz) 51000 packets of 144 samples from 2015-06-22T16:19:31.011.999.

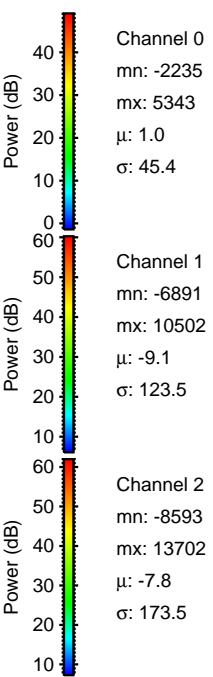
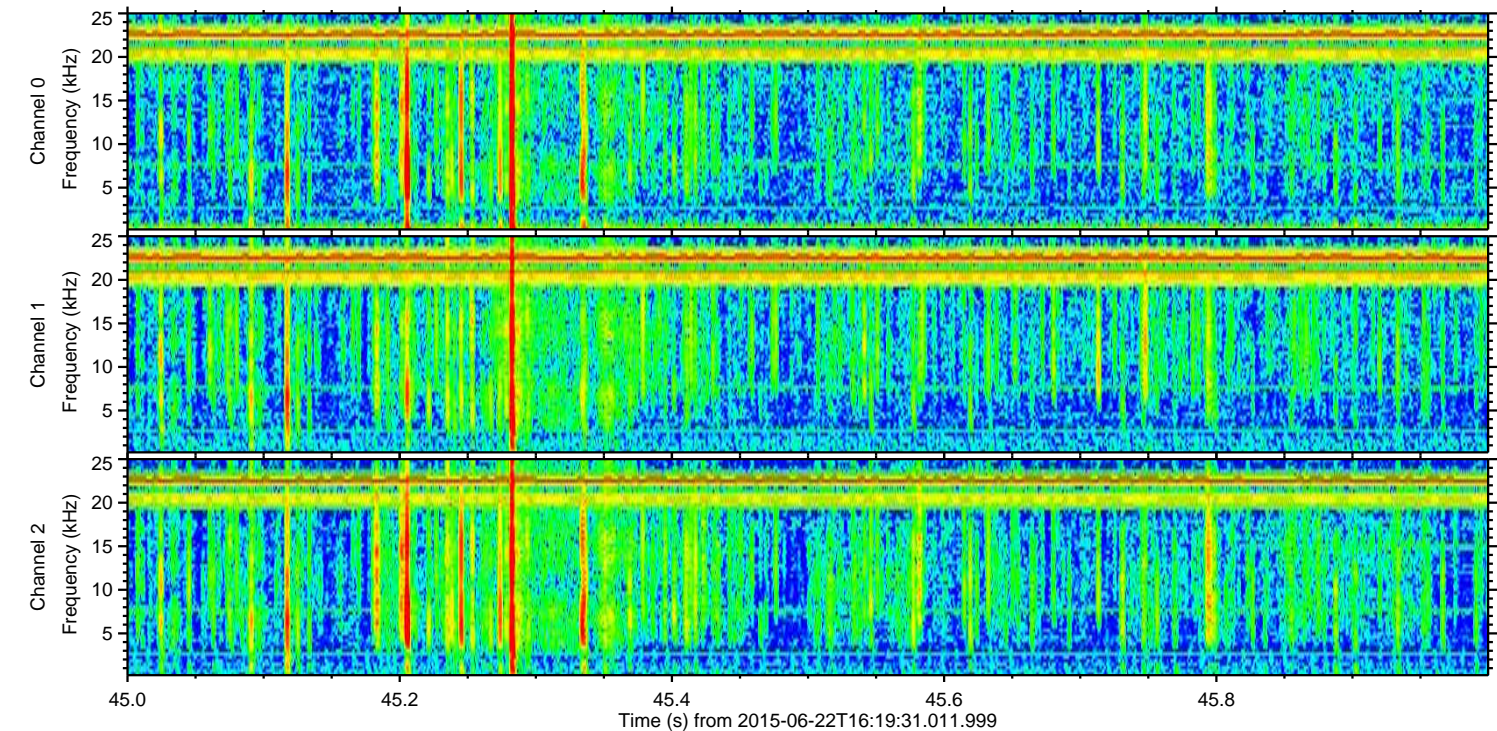
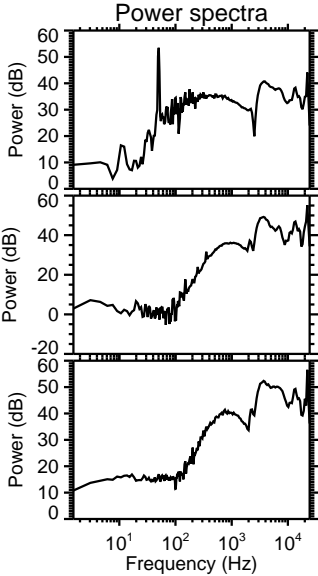
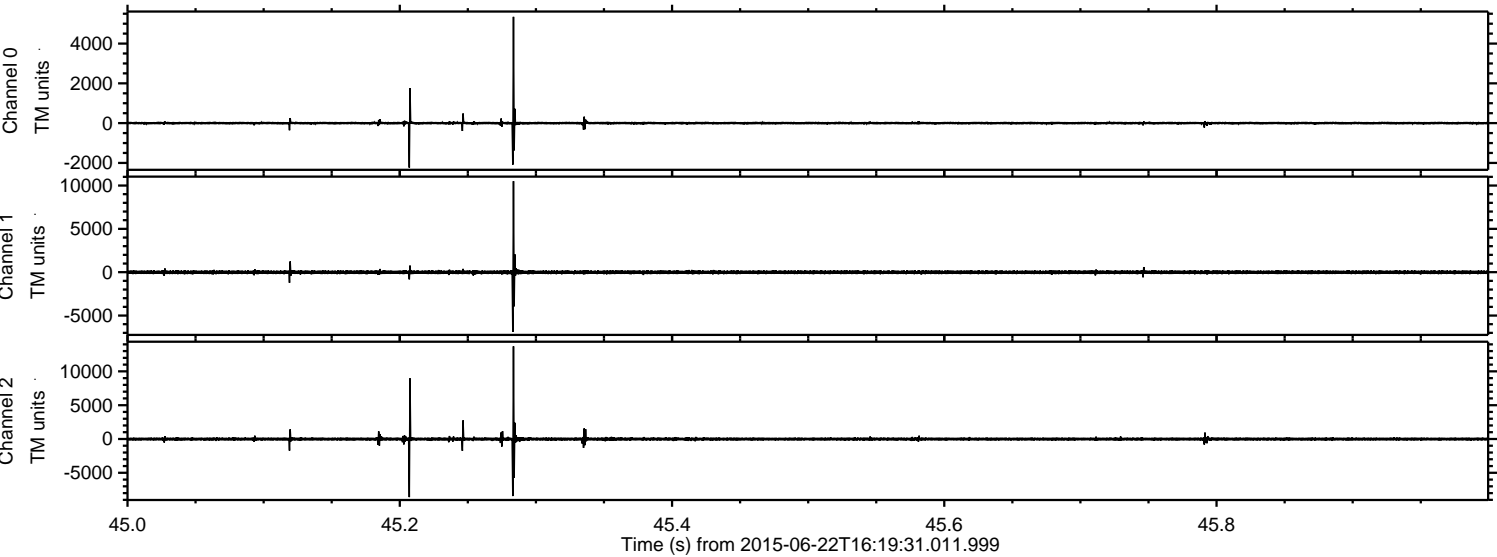
Processed Tue Jun 23 09:15:03 2015 by ELM ver.2012-10-06 from 001__elm20150622_161930__dat00.bin



Processed Tue Jun 23 09:15:18 2015 by ELM ver.2012-10-06 from 001__elm20150622_161930__dat00.bin

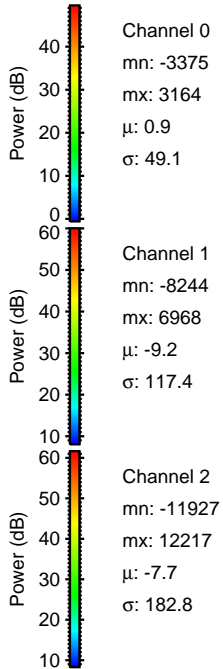
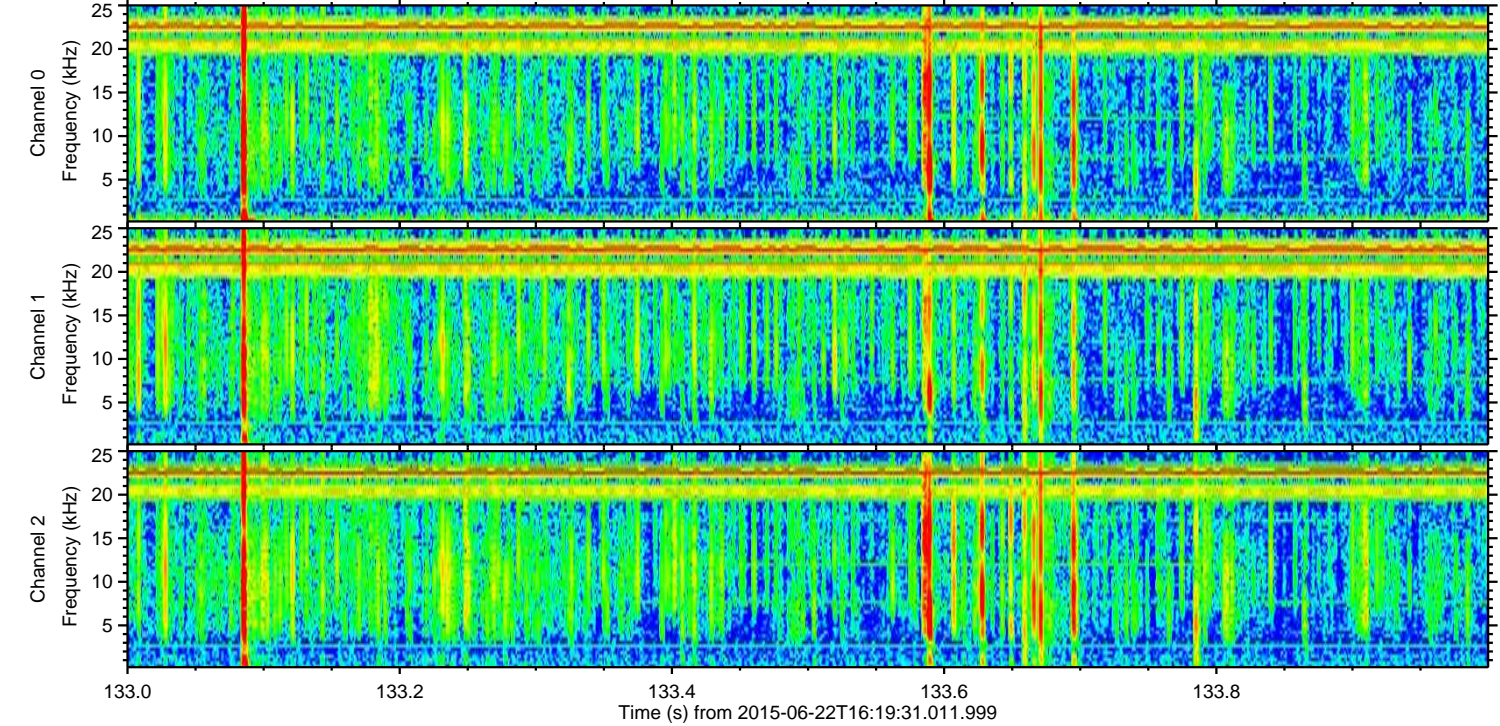
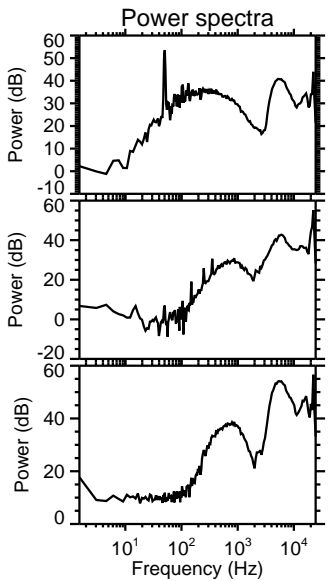
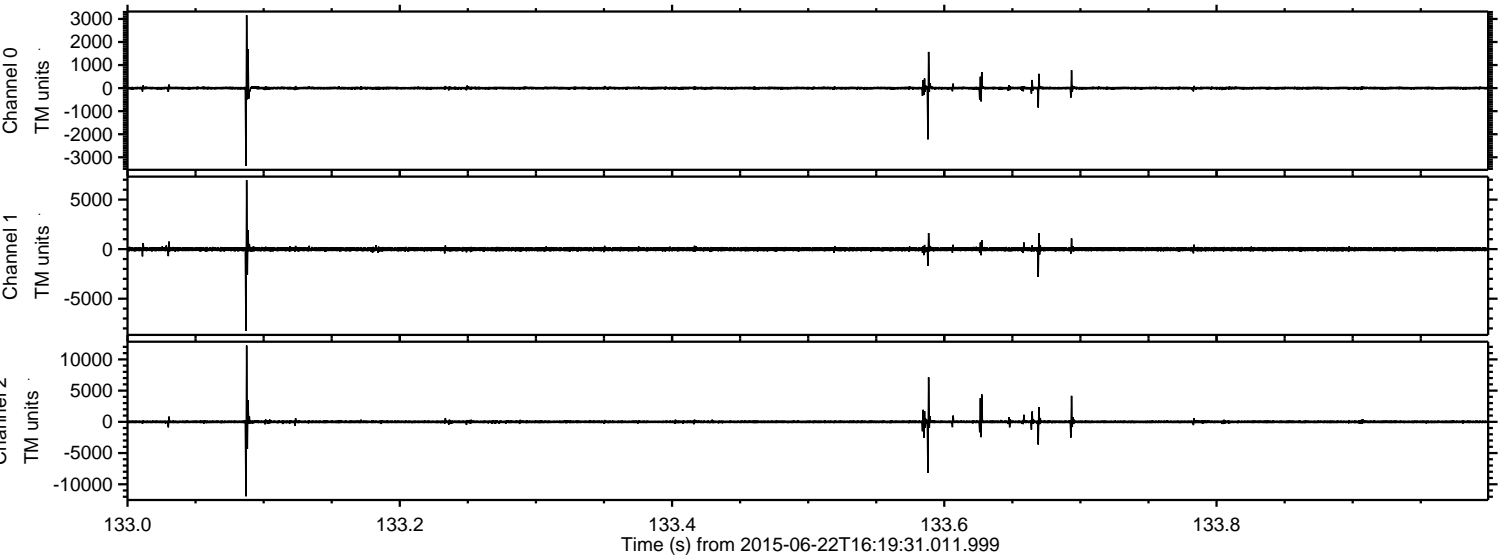


Processed Tue Jun 23 09:15:20 2015 by ELM ver.2012-10-06 from 001__elm20150622_161930__dat00.bin



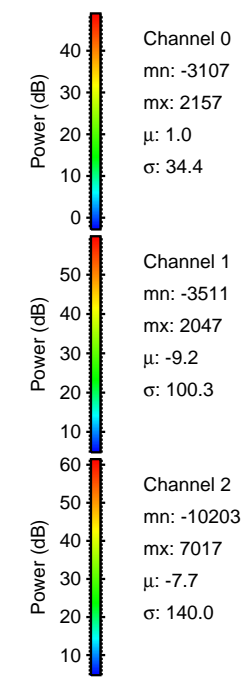
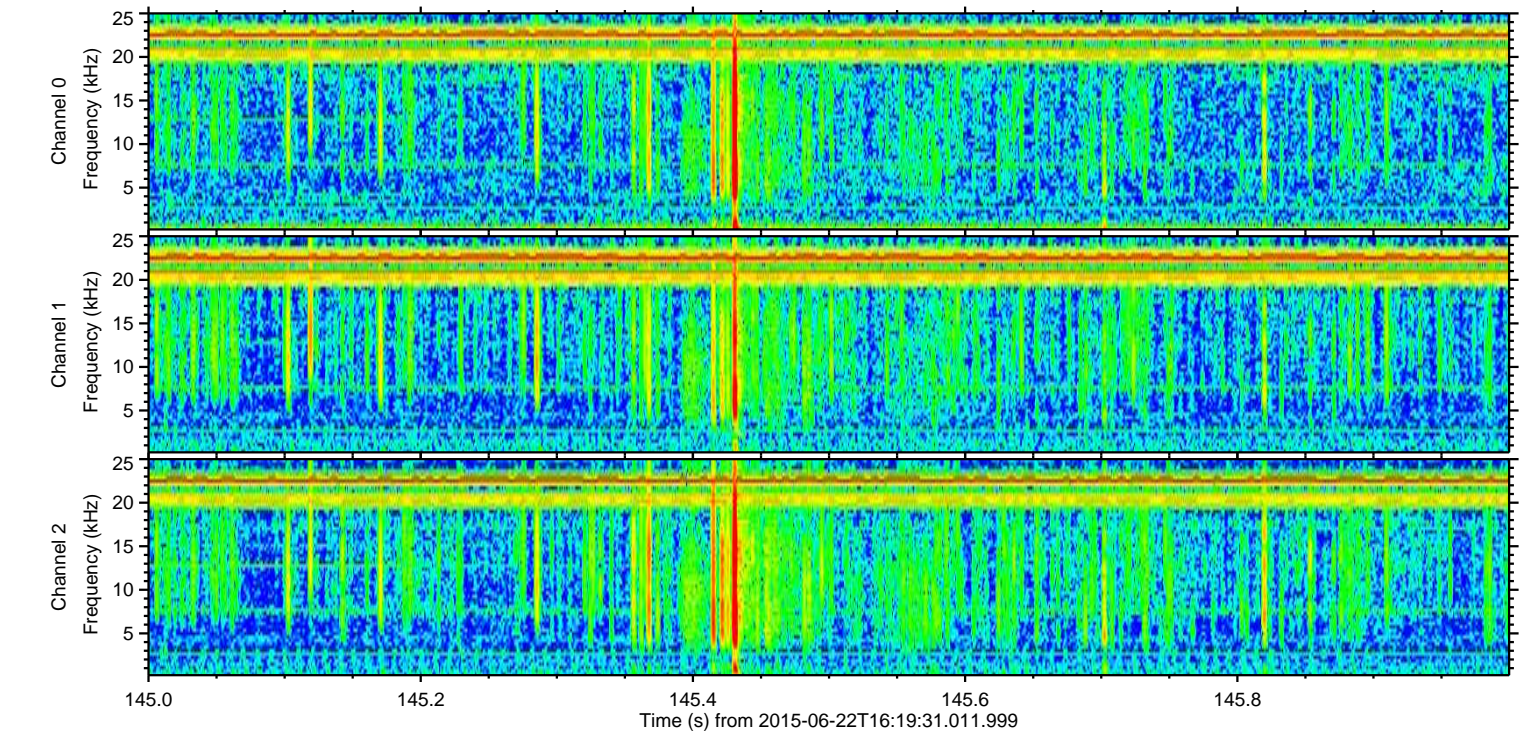
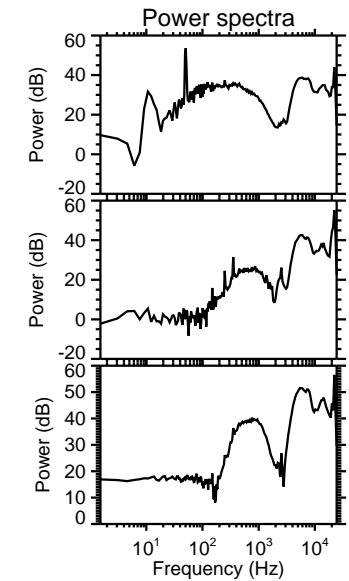
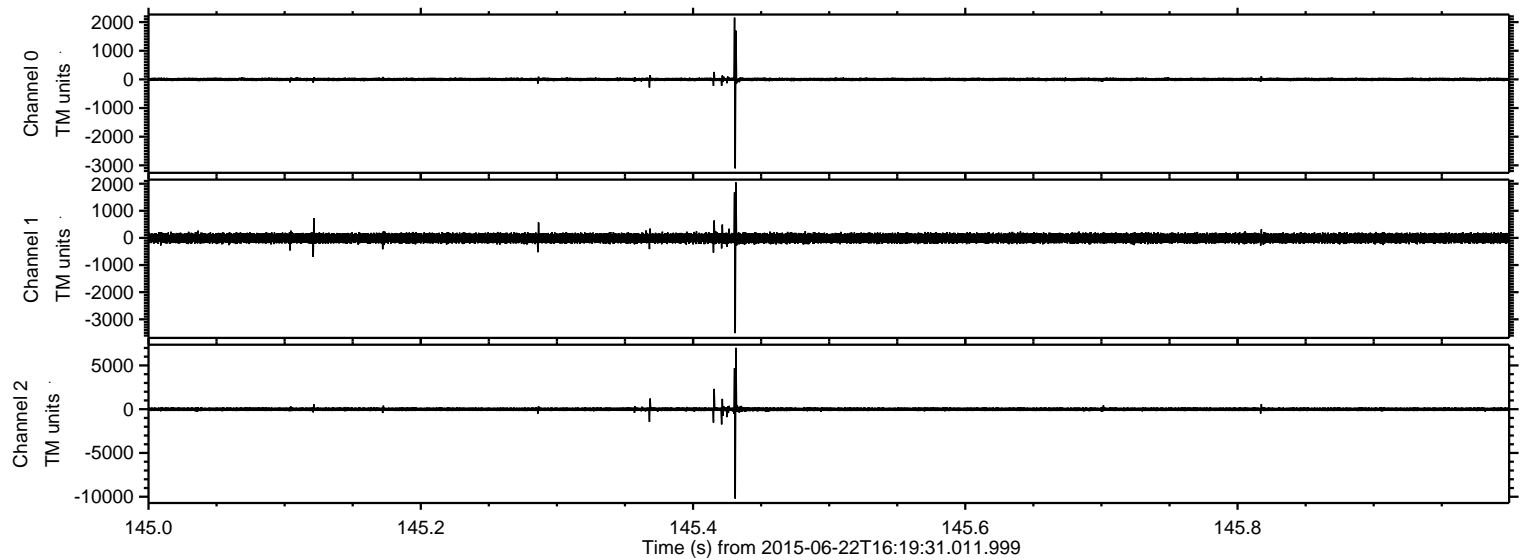
ELMAVAN 3D WAVEFORMS (Measured data sampled at 50 kHz) 51000 packets of 144 samples from 2015-06-22T16:19:31.011.999. Part 134/147

Processed Tue Jun 23 09:15:21 2015 by ELM ver.2012-10-06 from 001__elm20150622_161930__dat00.bin

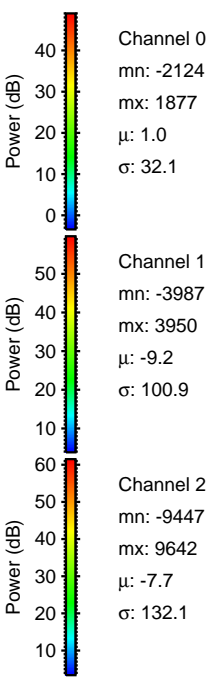
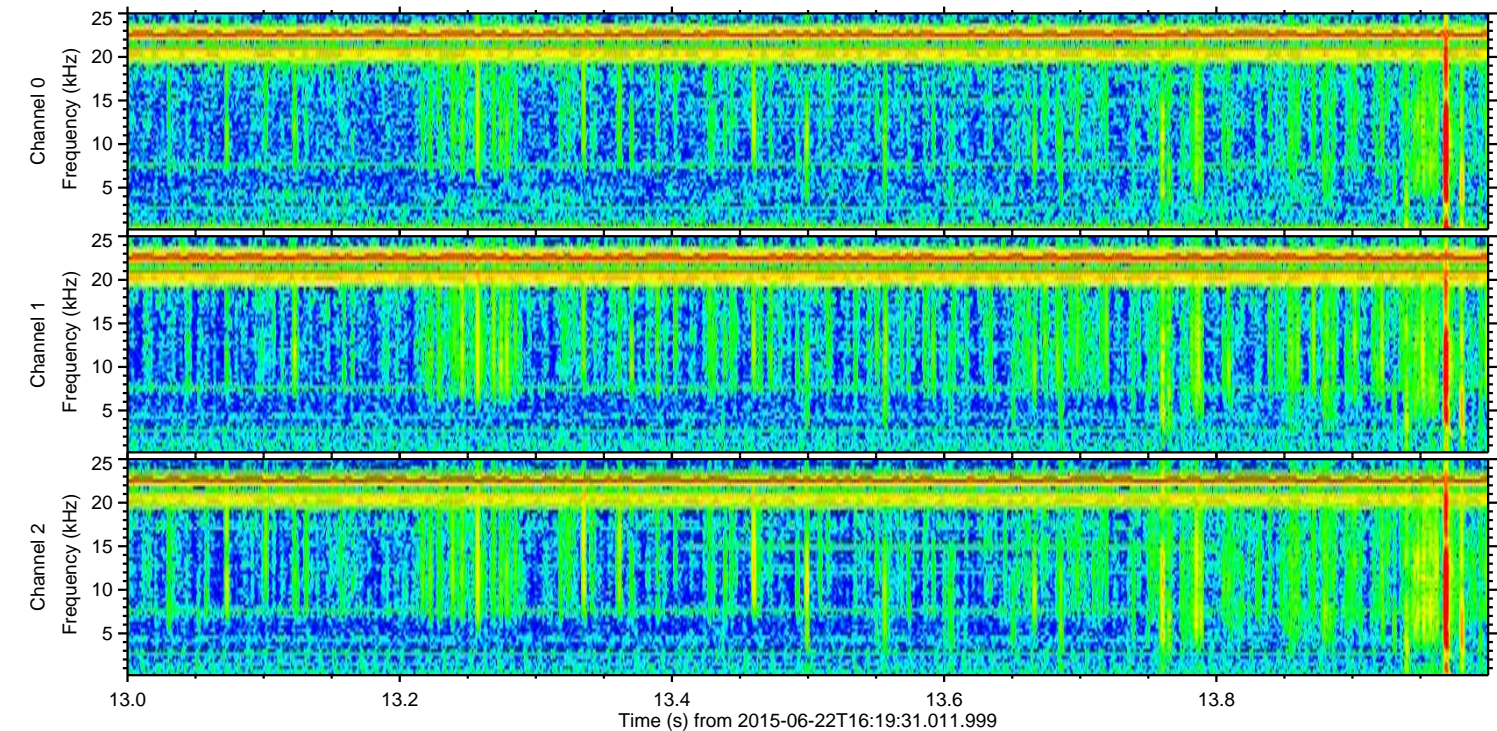
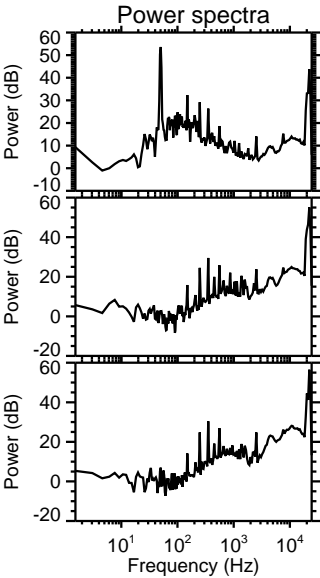
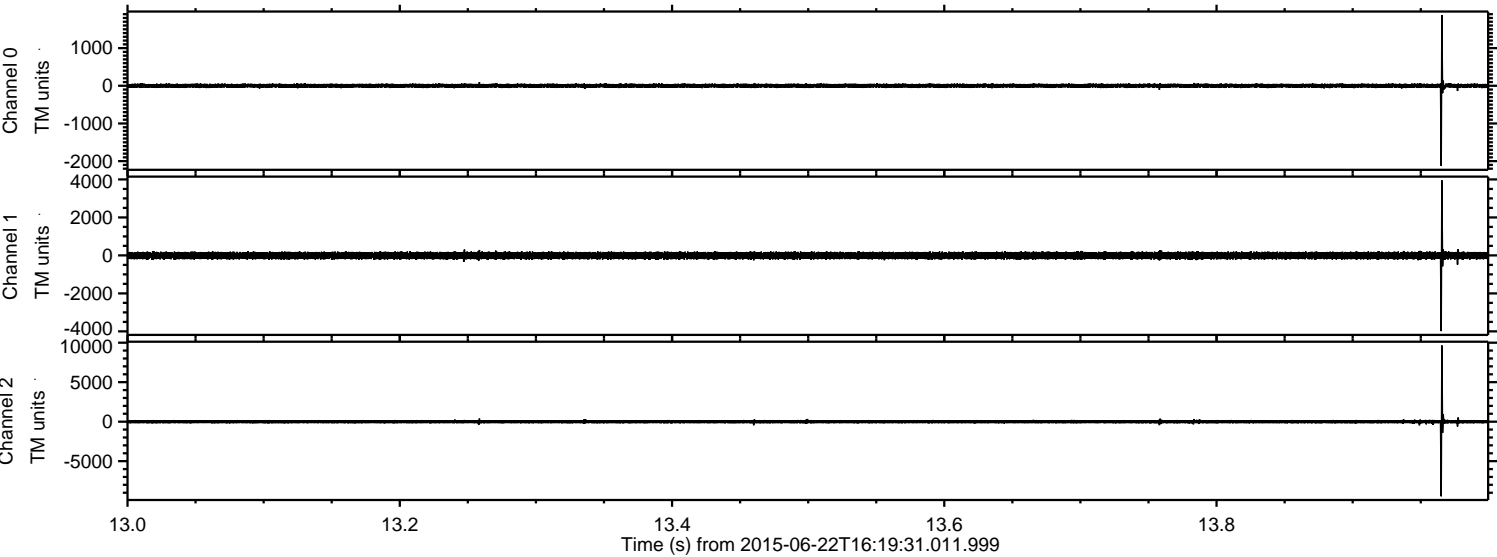


ELMAVAN 3D WAVEFORMS (Measured data sampled at 50 kHz) 51000 packets of 144 samples from 2015-06-22T16:19:31.011.999. Part 146/147

Processed Tue Jun 23 09:15:22 2015 by ELM ver.2012-10-06 from 001__elm20150622_161930__dat00.bin



Processed Tue Jun 23 09:15:23 2015 by ELM ver.2012-10-06 from 001__elm20150622_161930__dat00.bin

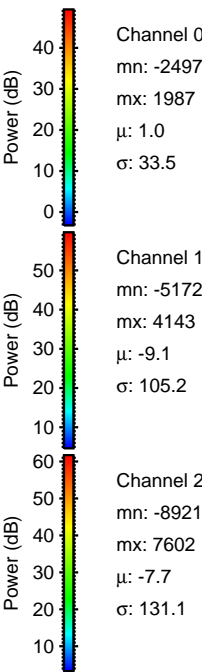
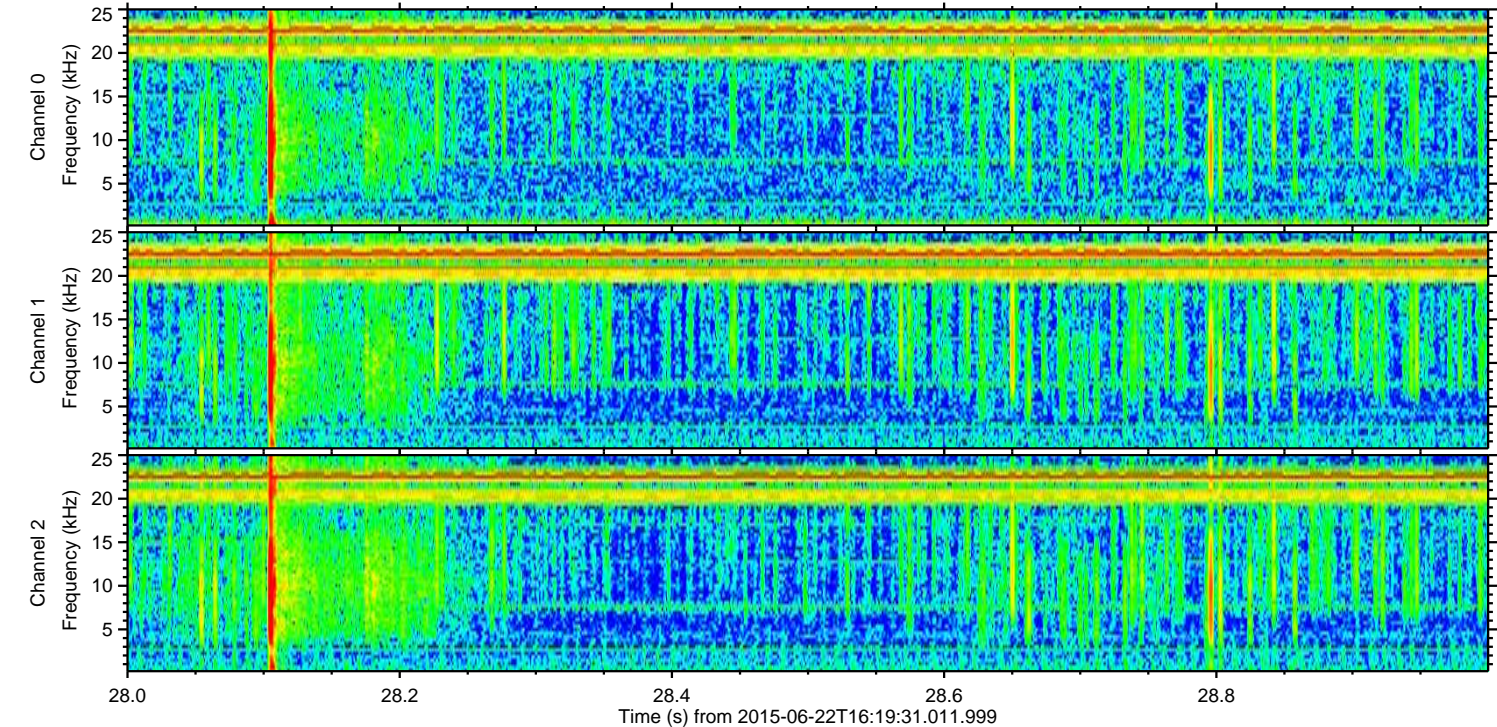
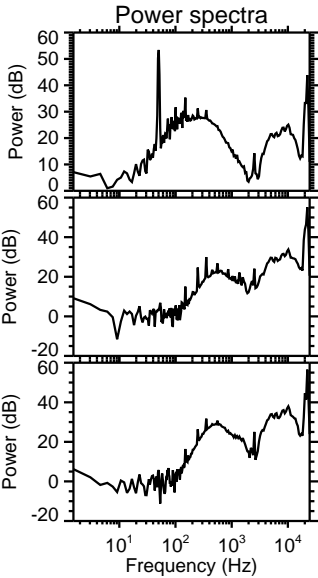
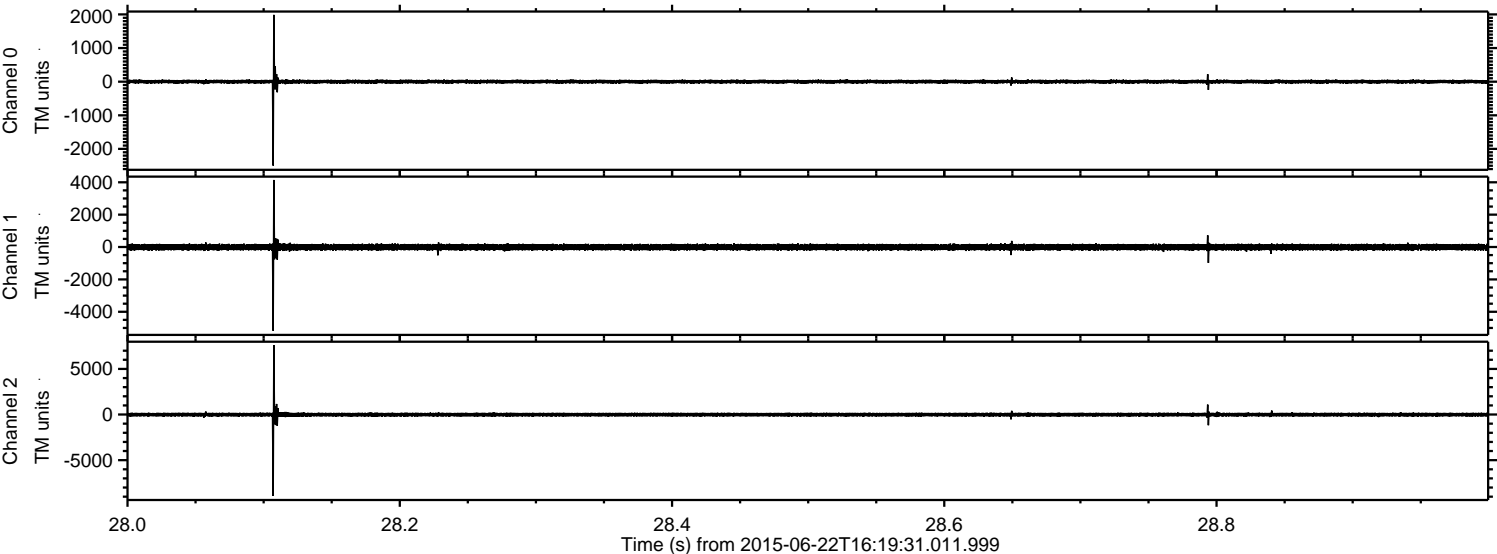


Channel 0
mn: -2124
mx: 1877
 μ : 1.0
 σ : 32.1

Channel 1
mn: -3987
mx: 3950
 μ : -9.2
 σ : 100.9

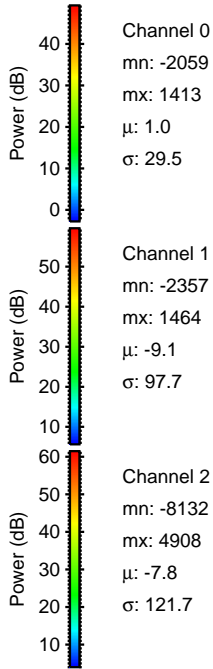
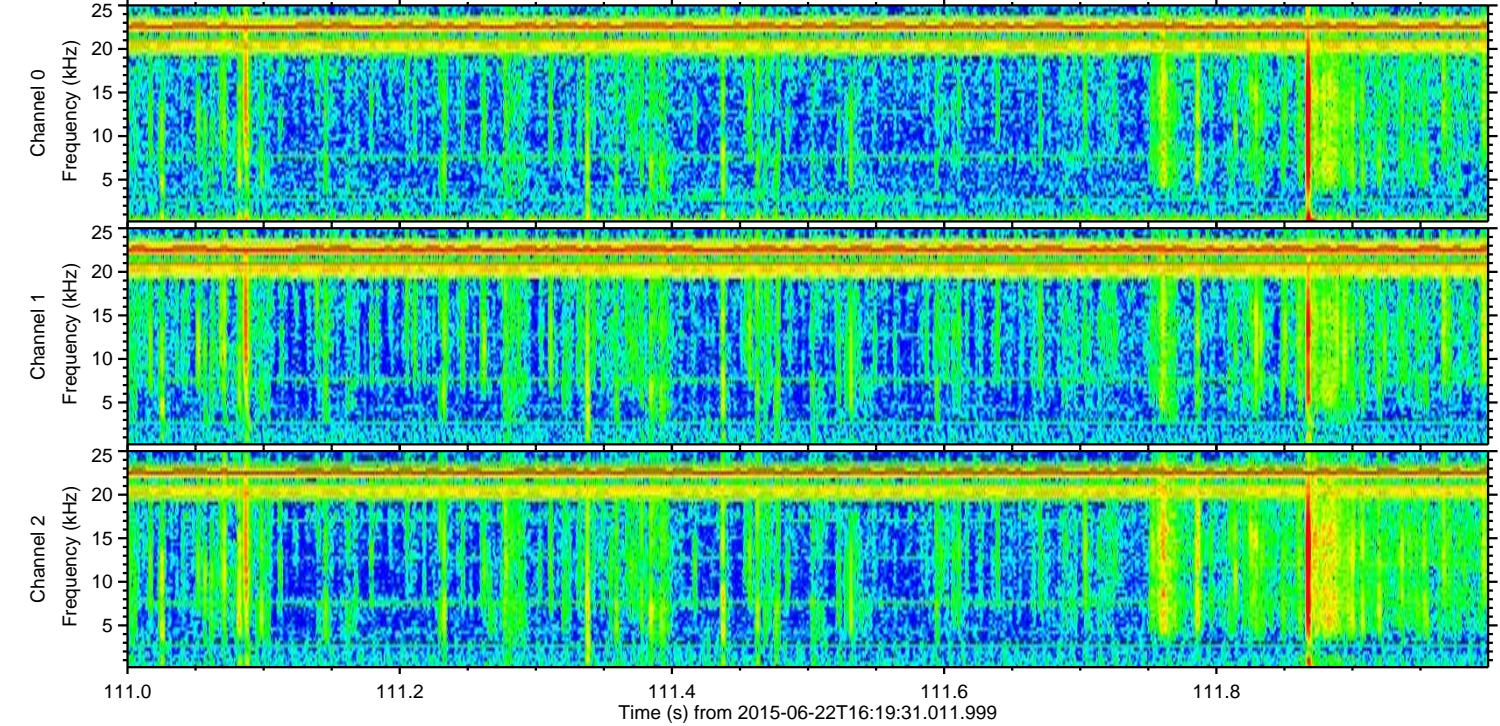
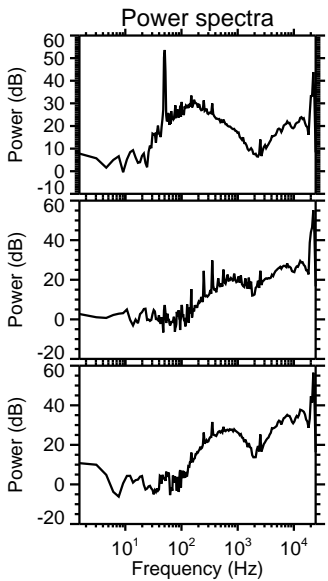
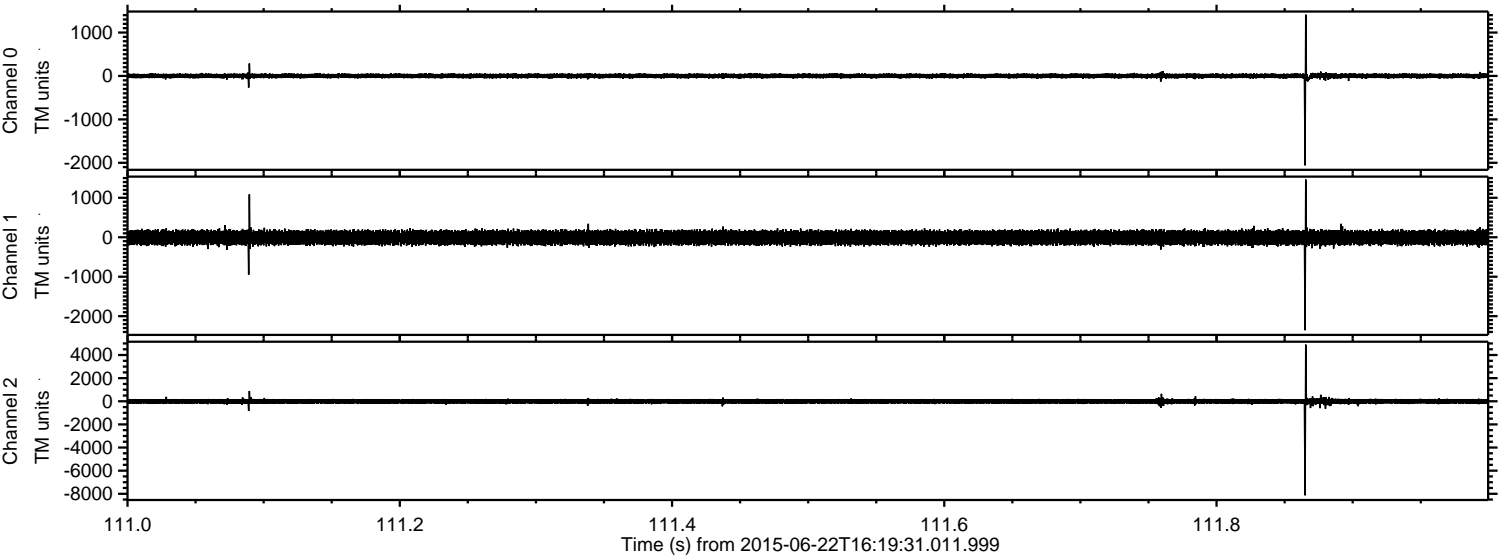
Channel 2
mn: -9447
mx: 9642
 μ : -7.7
 σ : 132.1

Processed Tue Jun 23 09:15:24 2015 by ELM ver.2012-10-06 from 001__elm20150622_161930__dat00.bin



ELMAVAN 3D WAVEFORMS (Measured data sampled at 50 kHz) 51000 packets of 144 samples from 2015-06-22T16:19:31.011.999. Part 112/147

Processed Tue Jun 23 09:15:25 2015 by ELM ver.2012-10-06 from 001__elm20150622_161930__dat00.bin

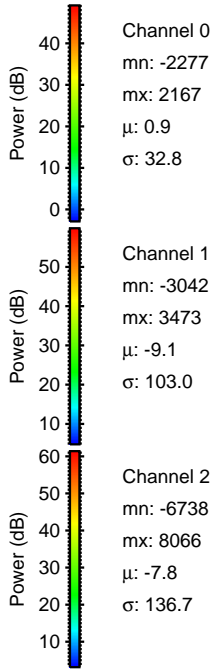
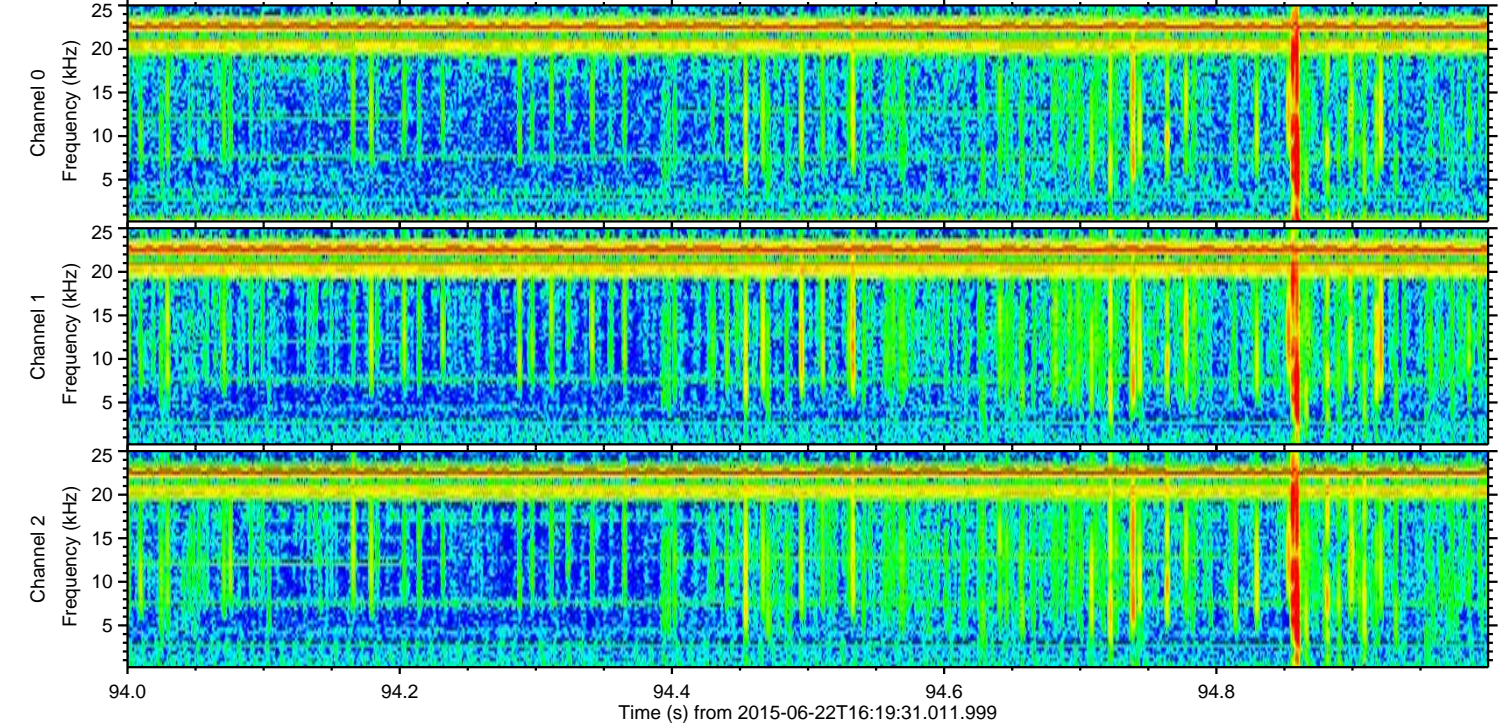
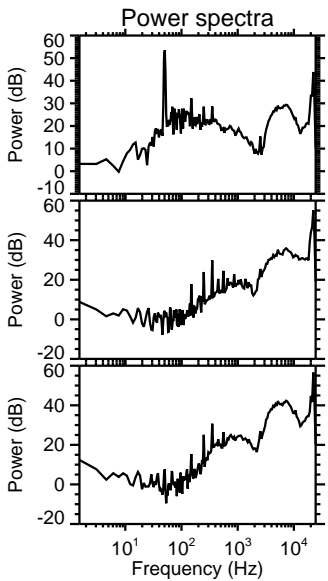
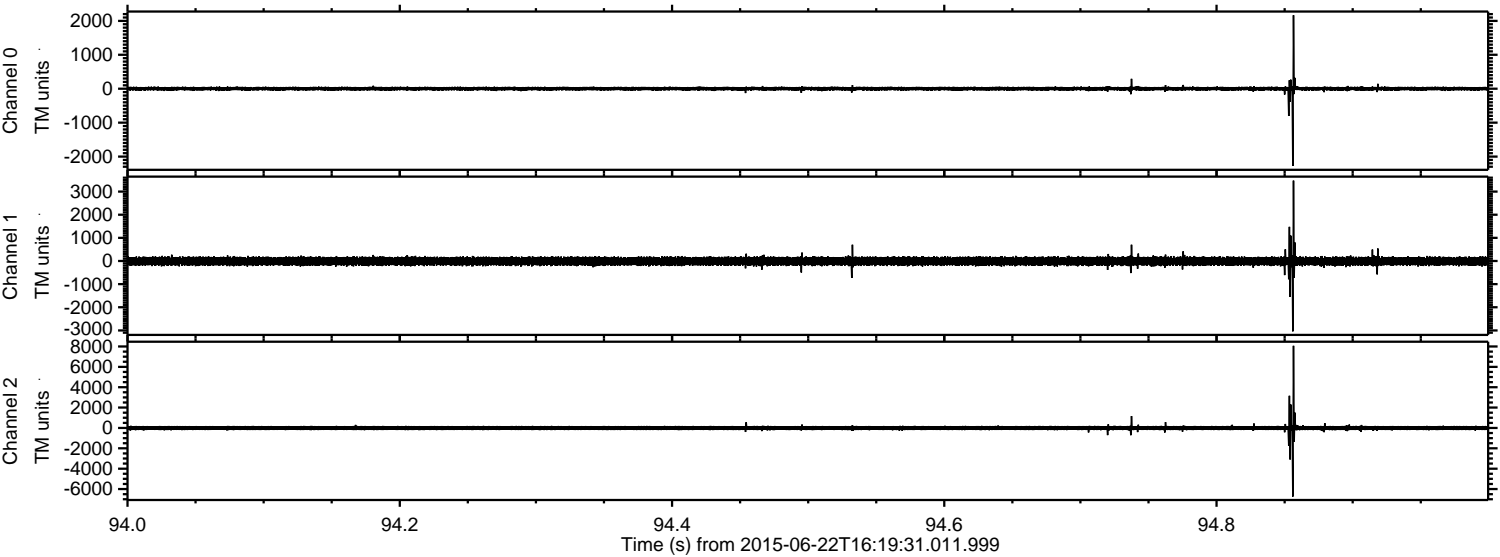


Channel 0
mn: -2059
mx: 1413
 μ : 1.0
 σ : 29.5

Channel 1
mn: -2357
mx: 1464
 μ : -9.1
 σ : 97.7

Channel 2
mn: -8132
mx: 4908
 μ : -7.8
 σ : 121.7

Processed Tue Jun 23 09:15:26 2015 by ELM ver.2012-10-06 from 001__elm20150622_161930__dat00.bin

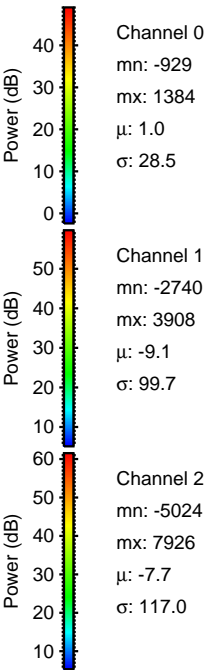
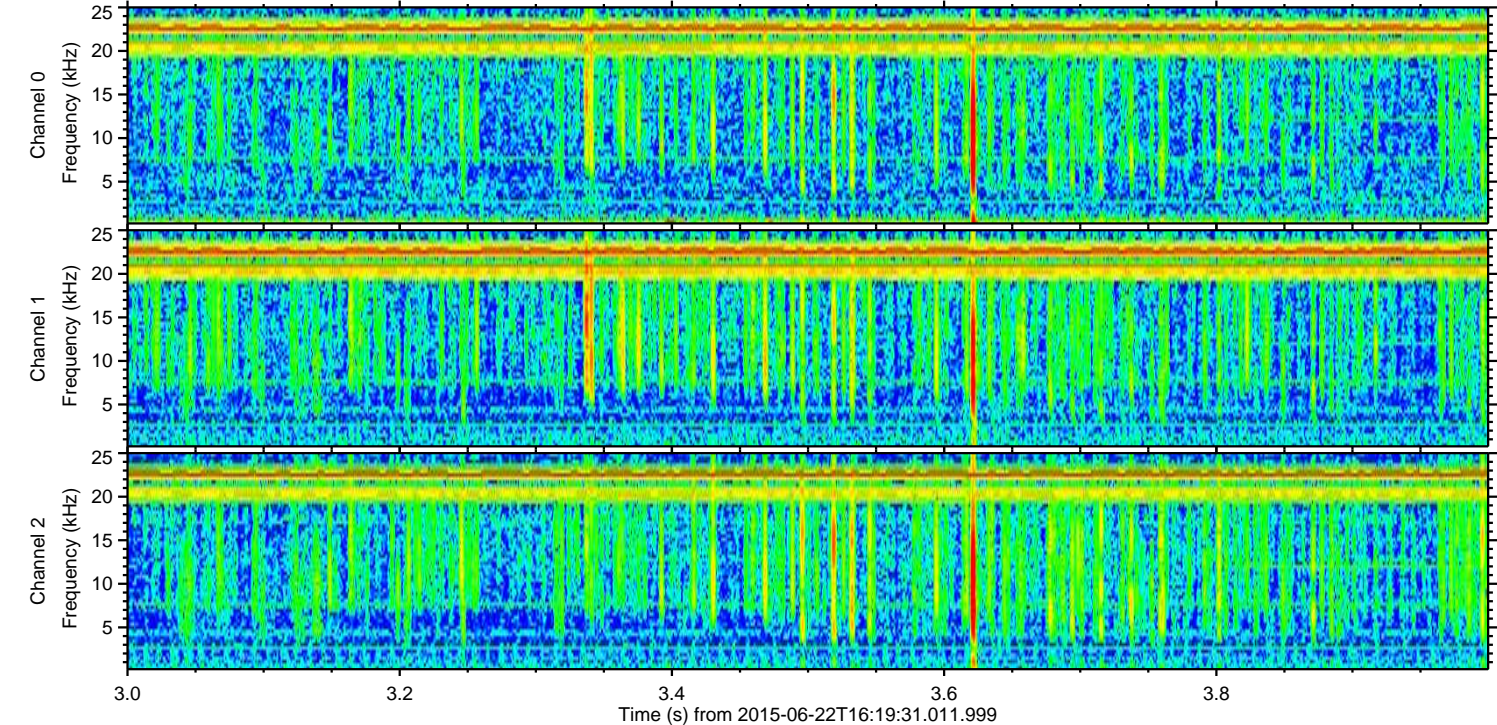
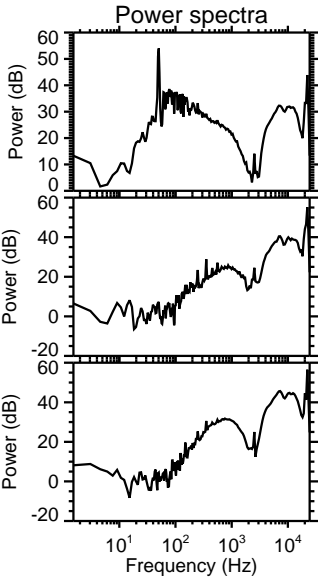
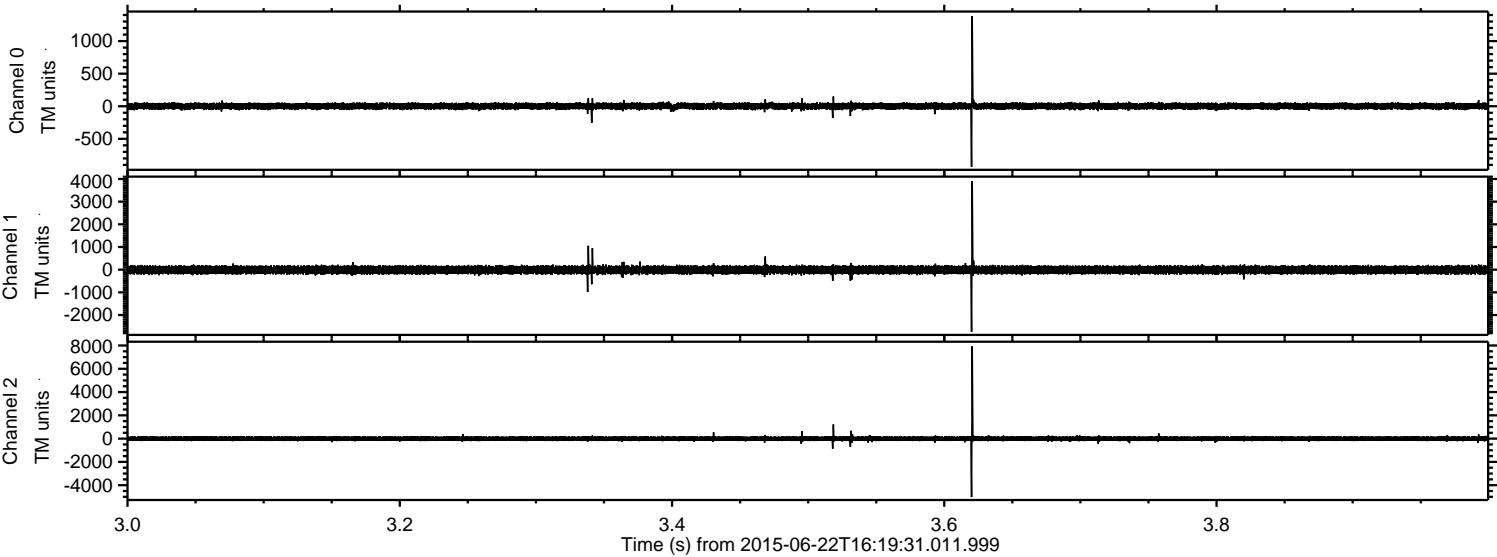


Channel 0
mn: -2277
mx: 2167
 μ : 0.9
 σ : 32.8

Channel 1
mn: -3042
mx: 3473
 μ : -9.1
 σ : 103.0

Channel 2
mn: -6738
mx: 8066
 μ : -7.8
 σ : 136.7

Processed Tue Jun 23 09:15:27 2015 by ELM ver.2012-10-06 from 001__elm20150622_161930__dat00.bin



Processed Tue Jun 23 09:15:29 2015 by ELM ver.2012-10-06 from 001__elm20150622_161930__dat00.bin

