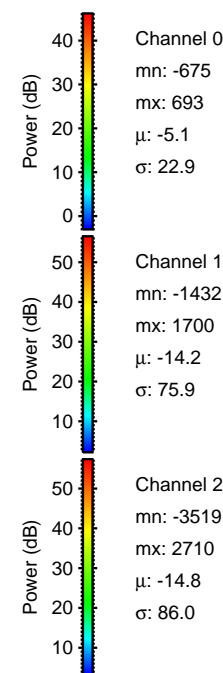
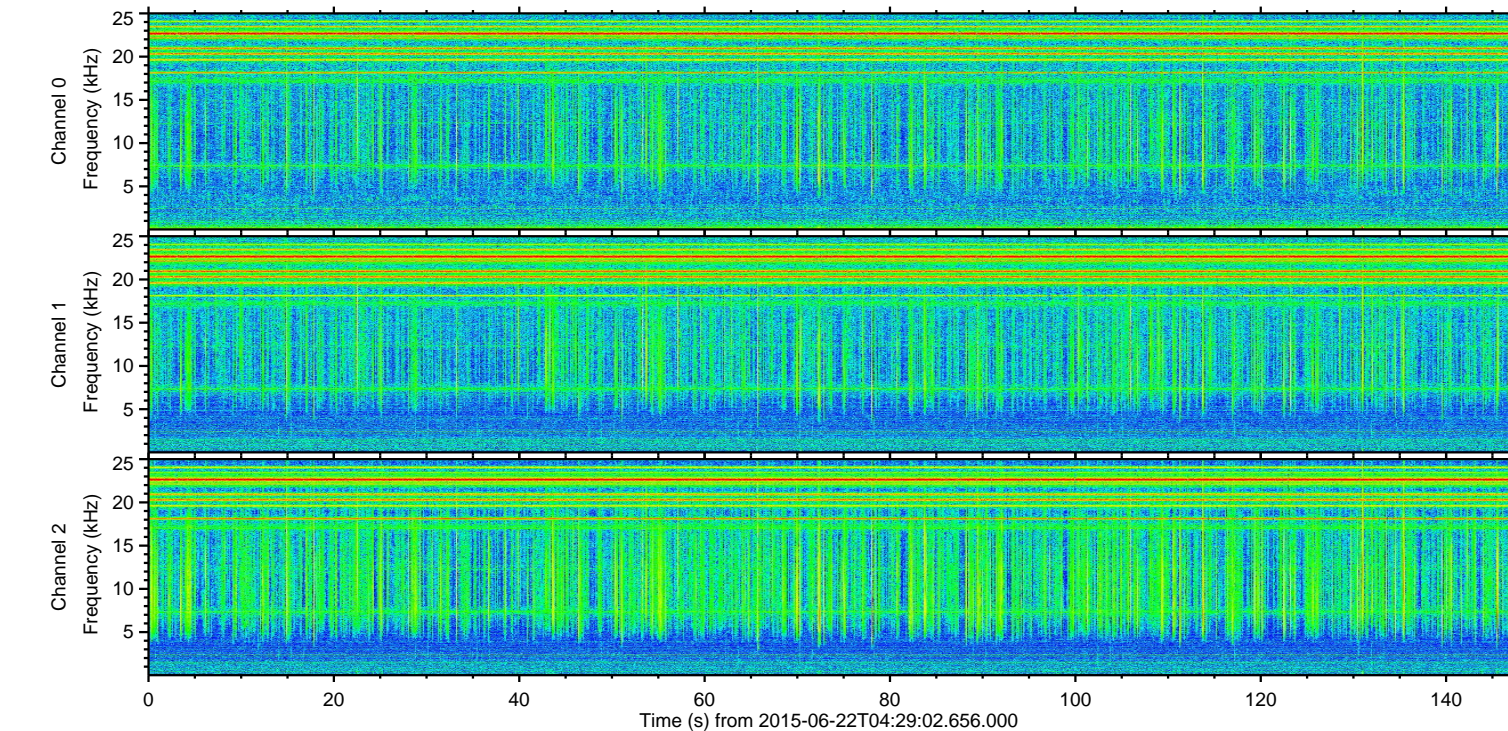
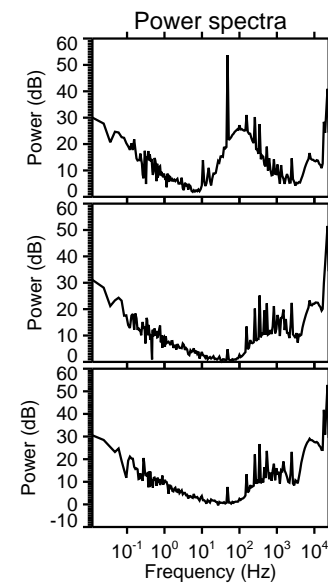
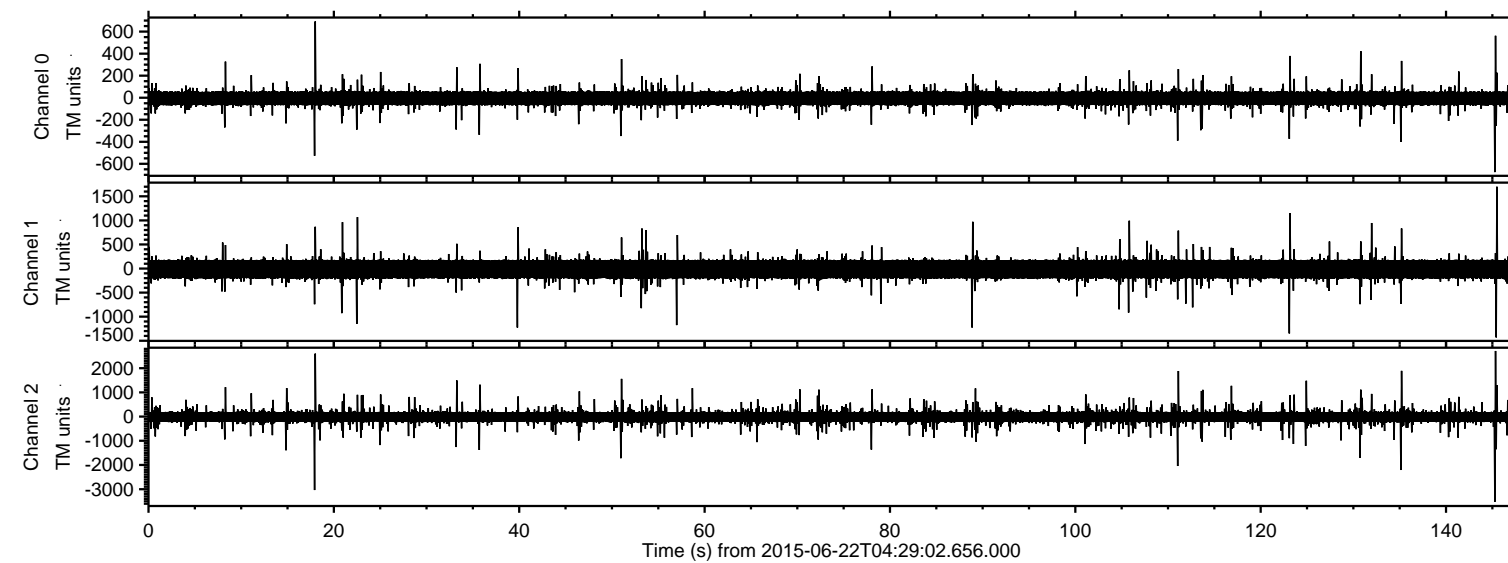


# ELMAVAN 3D WAVEFORMS (Measured data sampled at 50 kHz) 51000 packets of 144 samples from 2015-06-22T04:29:02.656.000.

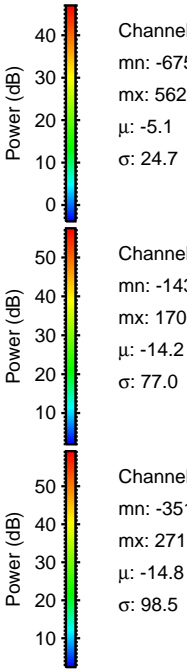
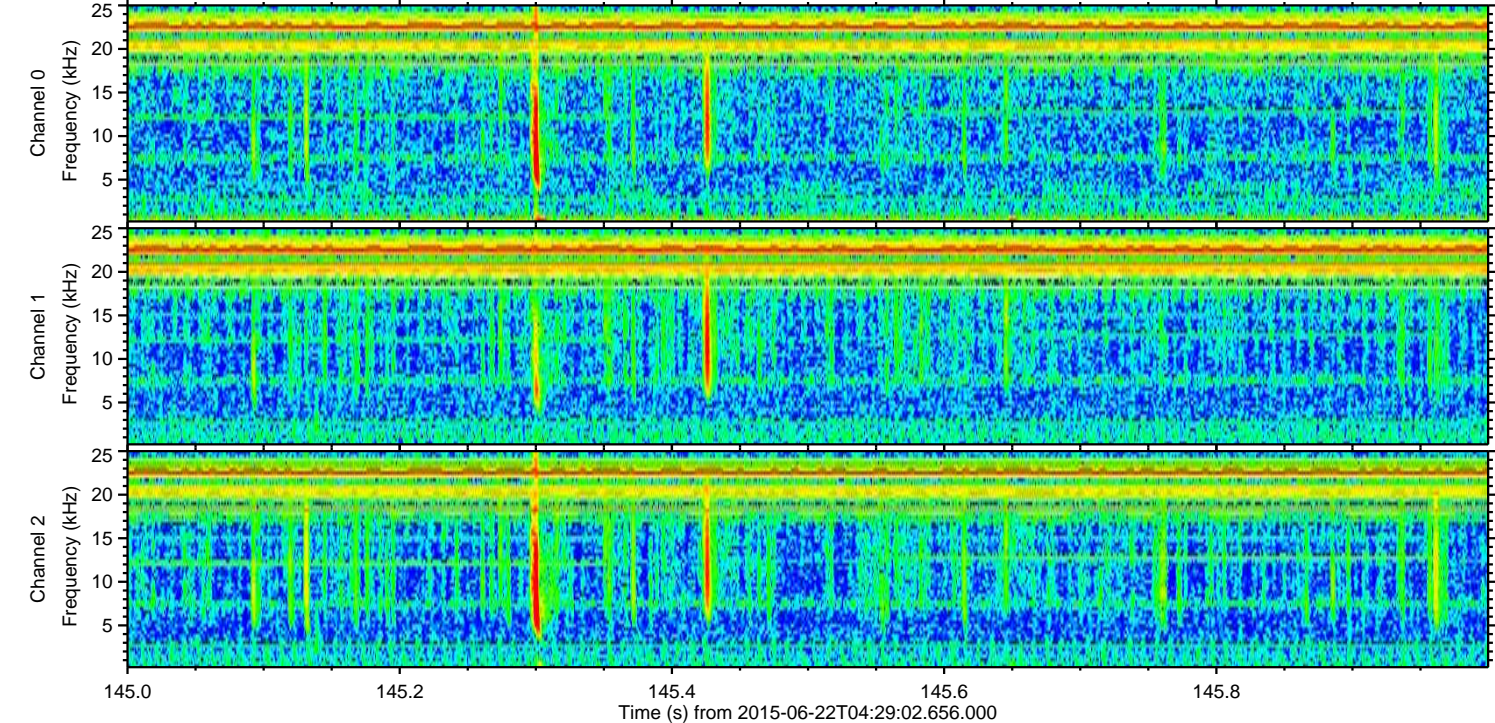
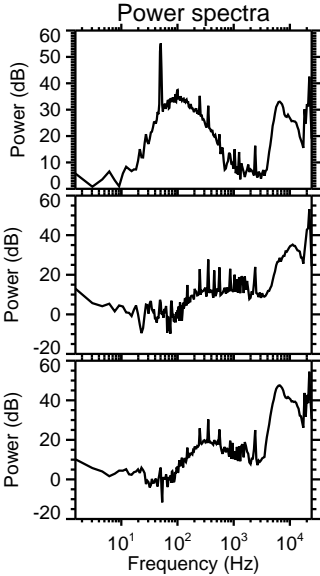
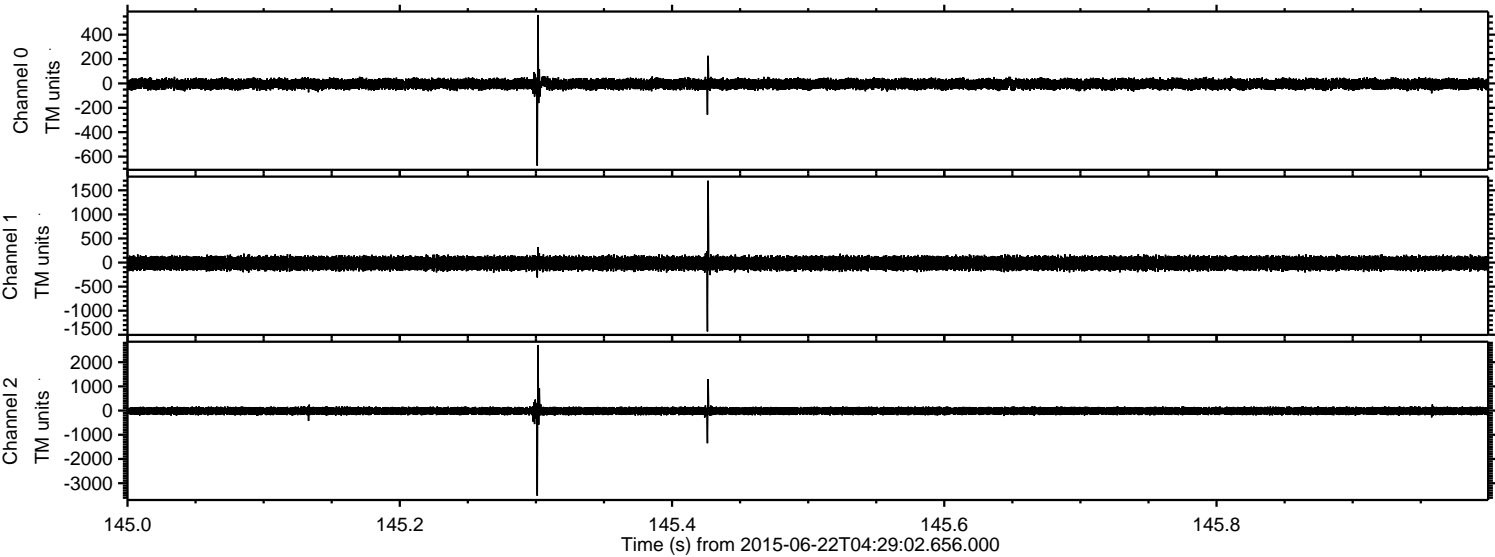
Processed Mon Jun 22 06:35:45 2015 by ELM ver.2012-10-06 from 001\_\_elm20150622\_042901\_\_dat00.bin





ELMAVAN 3D WAVEFORMS (Measured data sampled at 50 kHz) 51000 packets of 144 samples from 2015-06-22T04:29:02.656.000. Part 146/147

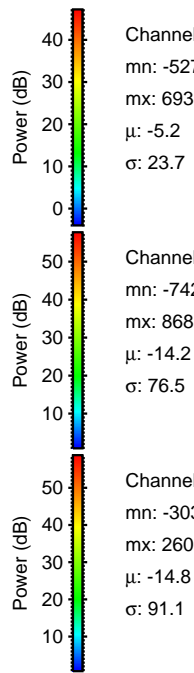
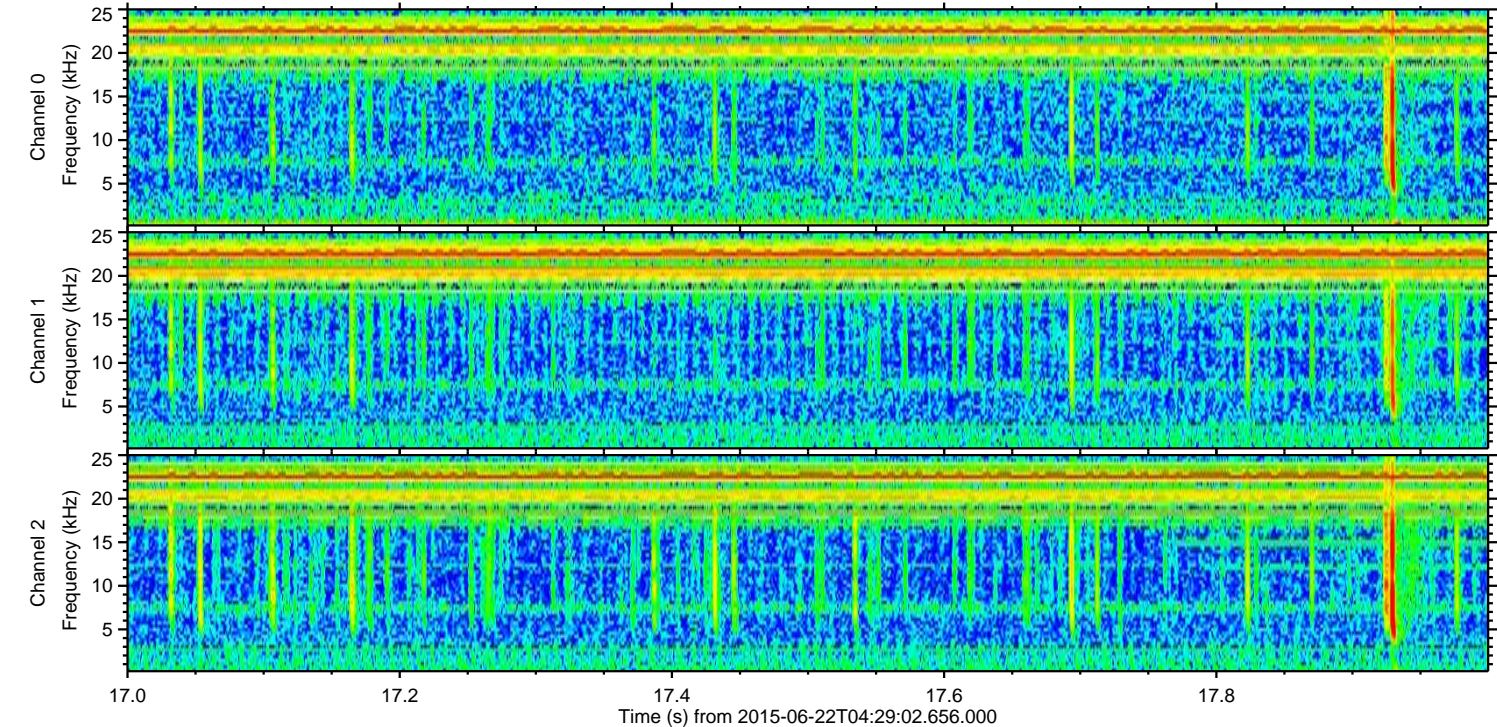
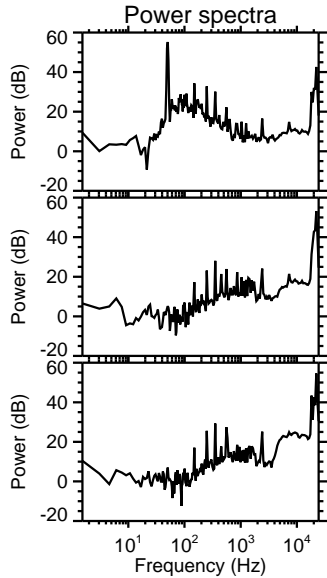
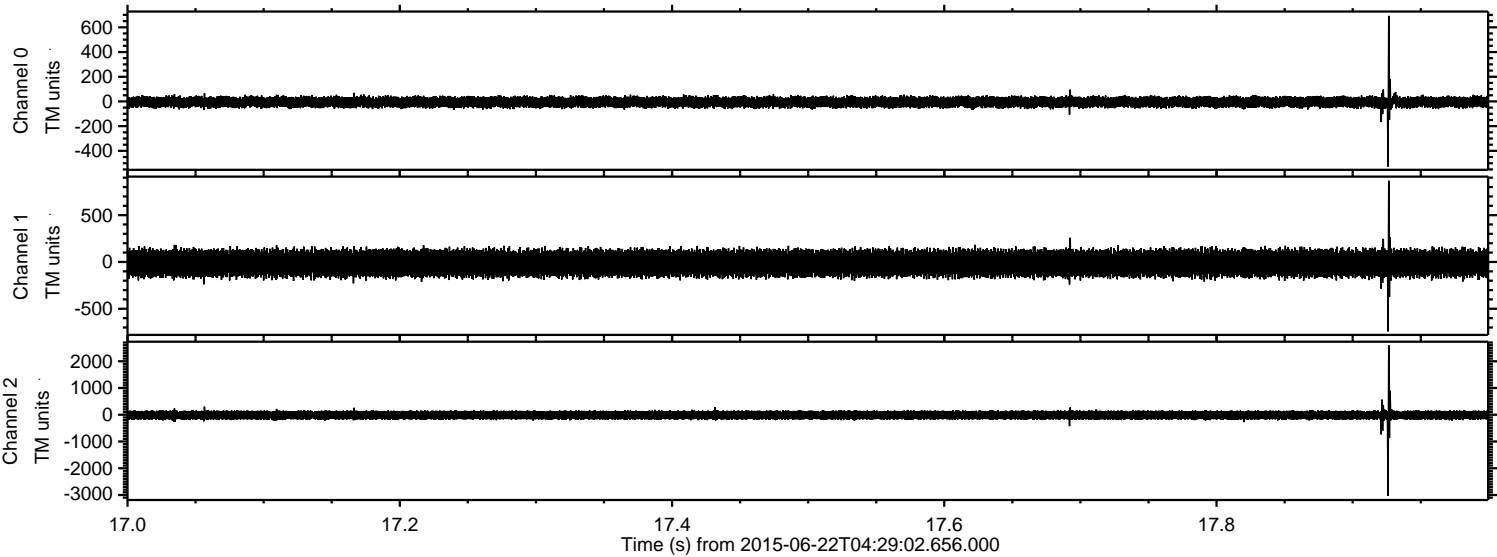
Processed Mon Jun 22 06:36:01 2015 by ELM ver.2012-10-06 from 001\_\_elm20150622\_042901\_\_dat00.bin





ELMAVAN 3D WAVEFORMS (Measured data sampled at 50 kHz) 51000 packets of 144 samples from 2015-06-22T04:29:02.656.000. Part 18/147

Processed Mon Jun 22 06:36:02 2015 by ELM ver.2012-10-06 from 001\_\_elm20150622\_042901\_\_dat00.bin



Channel 0  
mn: -527  
mx: 693  
 $\mu$ : -5.2  
 $\sigma$ : 23.7

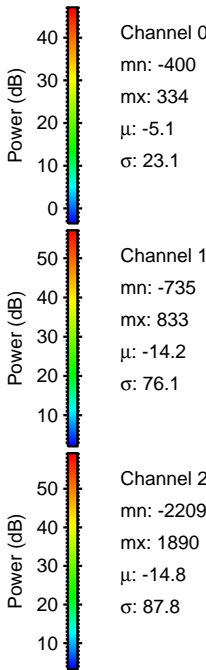
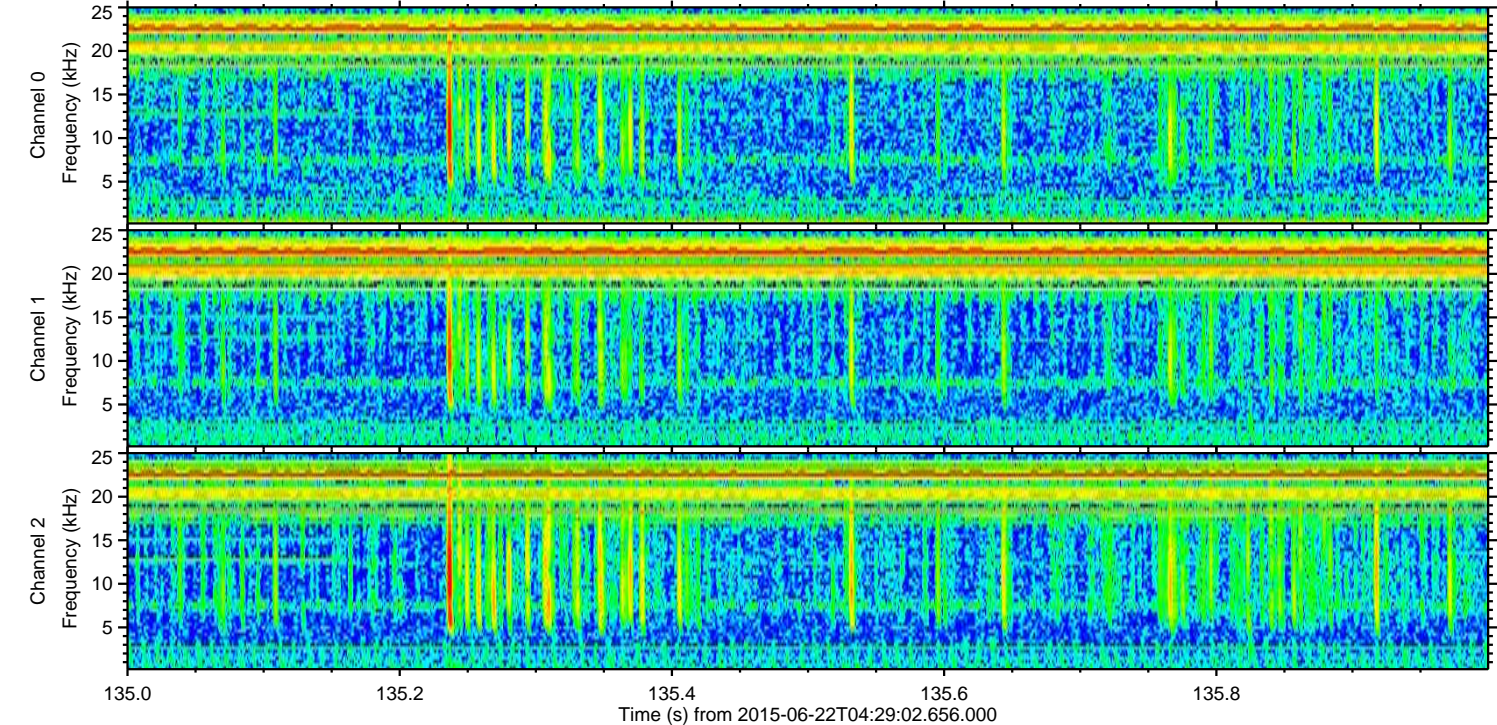
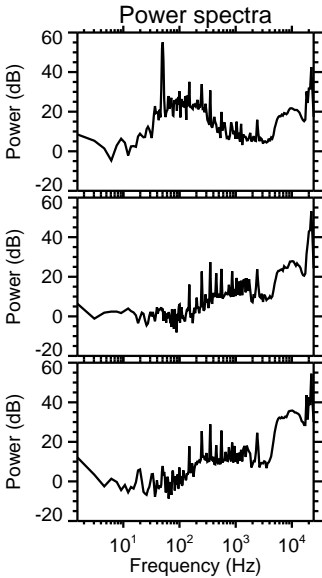
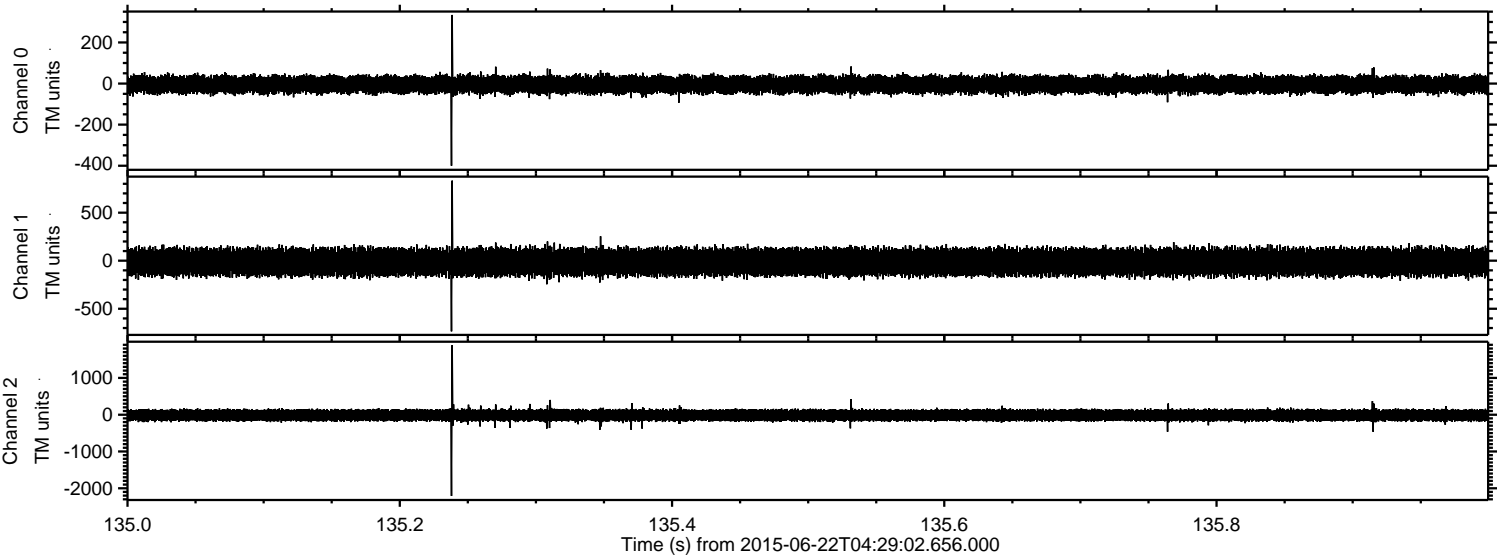
Channel 1  
mn: -742  
mx: 868  
 $\mu$ : -14.2  
 $\sigma$ : 76.5

Channel 2  
mn: -3036  
mx: 2601  
 $\mu$ : -14.8  
 $\sigma$ : 91.1



ELMAVAN 3D WAVEFORMS (Measured data sampled at 50 kHz) 51000 packets of 144 samples from 2015-06-22T04:29:02.656.000. Part 136/147

Processed Mon Jun 22 06:36:03 2015 by ELM ver.2012-10-06 from 001\_\_elm20150622\_042901\_\_dat00.bin



Channel 0  
mn: -400  
mx: 334  
 $\mu$ : -5.1  
 $\sigma$ : 23.1

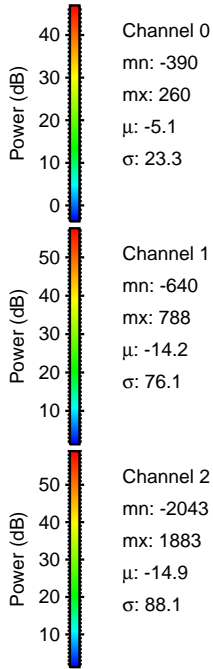
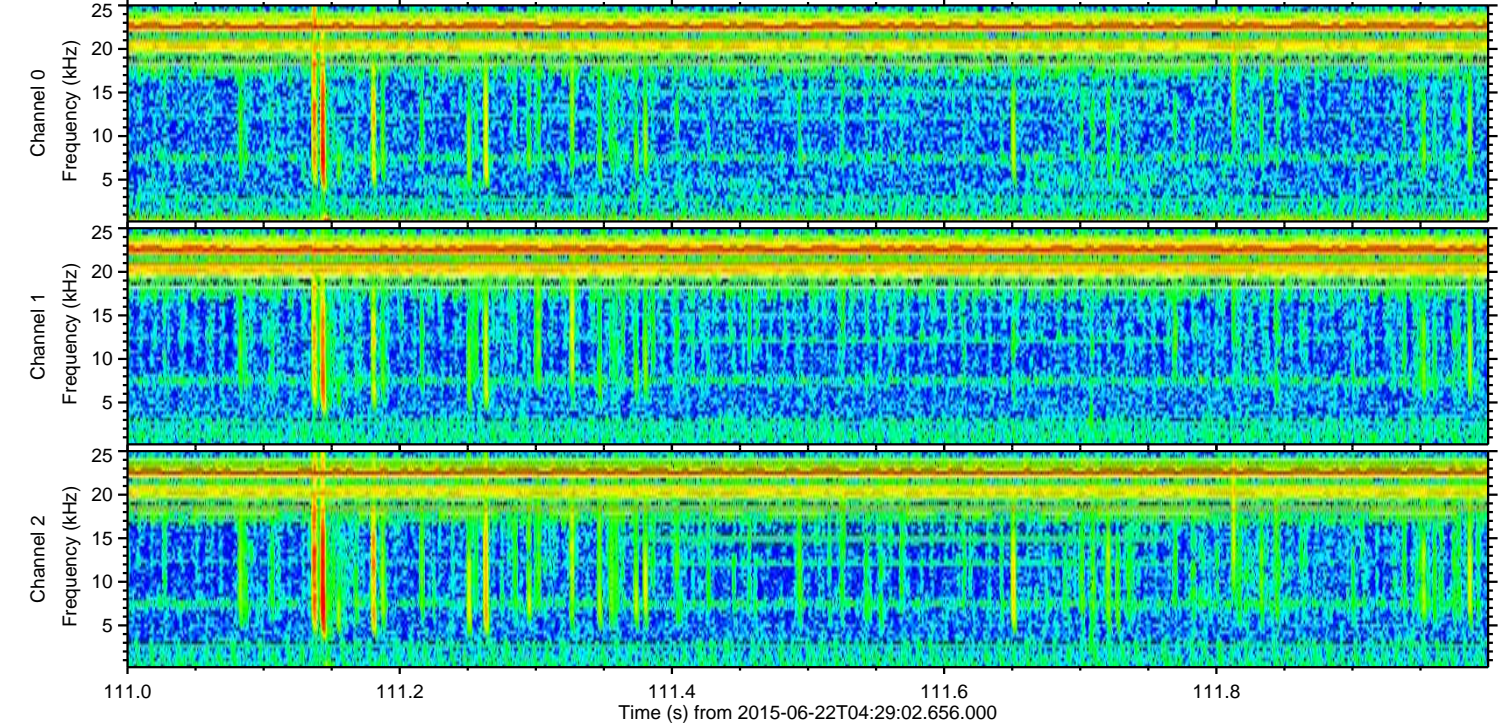
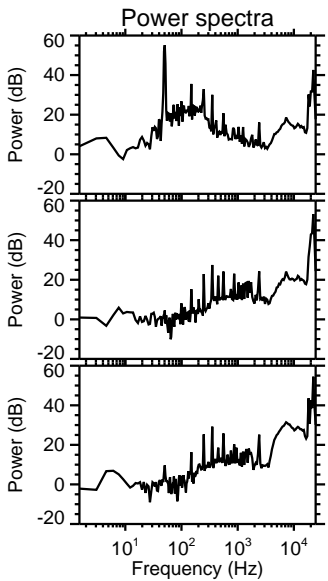
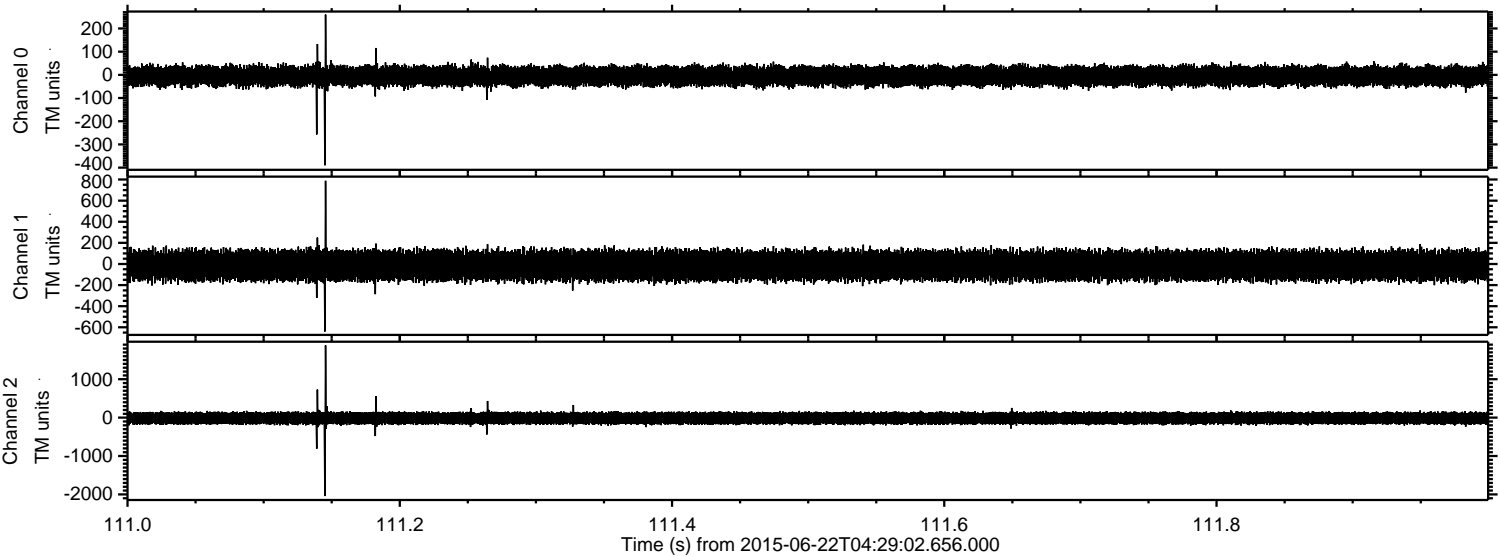
Channel 1  
mn: -735  
mx: 833  
 $\mu$ : -14.2  
 $\sigma$ : 76.1

Channel 2  
mn: -2209  
mx: 1890  
 $\mu$ : -14.8  
 $\sigma$ : 87.8



ELMAVAN 3D WAVEFORMS (Measured data sampled at 50 kHz) 51000 packets of 144 samples from 2015-06-22T04:29:02.656.000. Part 112/147

Processed Mon Jun 22 06:36:04 2015 by ELM ver.2012-10-06 from 001\_\_elm20150622\_042901\_\_dat00.bin



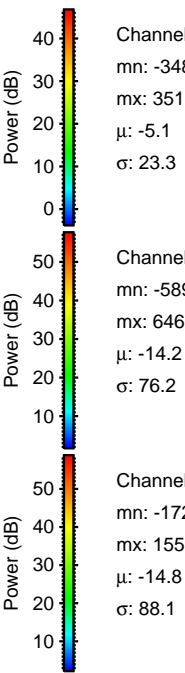
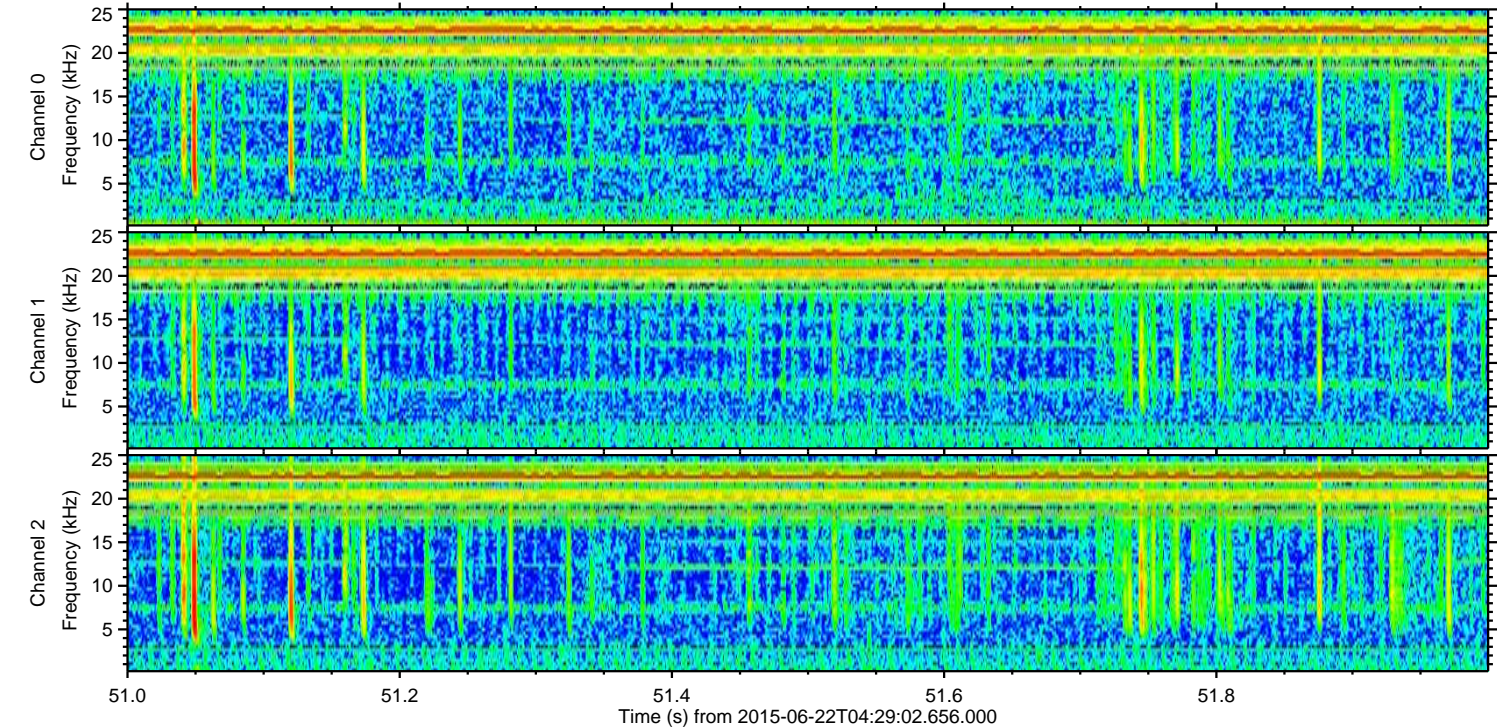
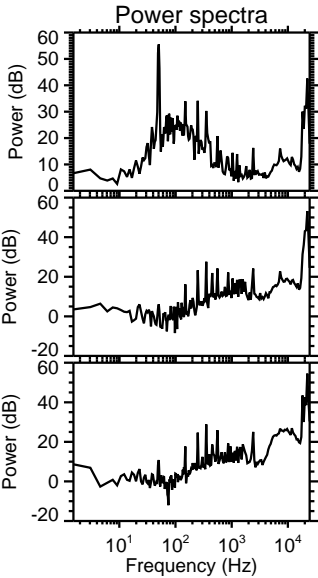
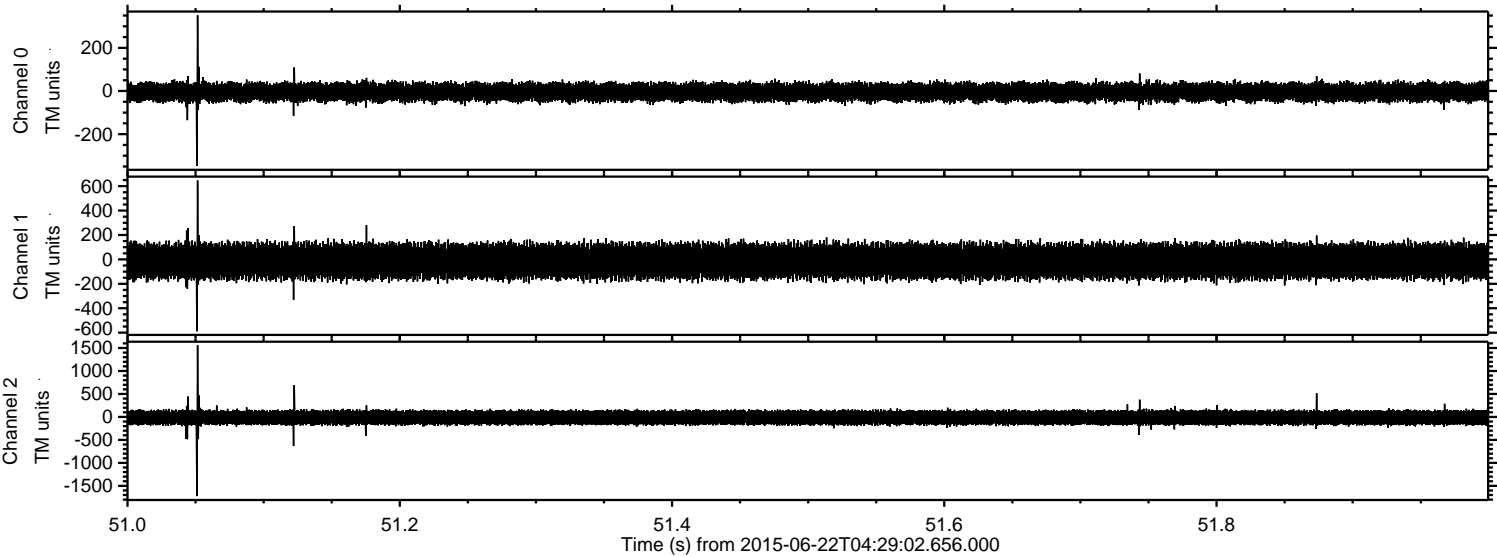
Channel 0  
mn: -390  
mx: 260  
 $\mu$ : -5.1  
 $\sigma$ : 23.3

Channel 1  
mn: -640  
mx: 788  
 $\mu$ : -14.2  
 $\sigma$ : 76.1

Channel 2  
mn: -2043  
mx: 1883  
 $\mu$ : -14.9  
 $\sigma$ : 88.1



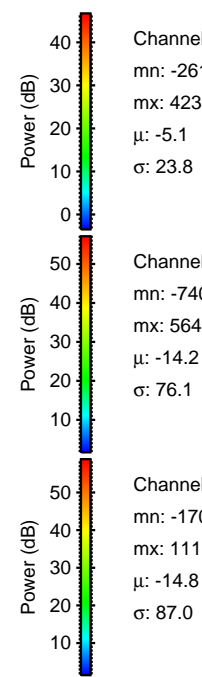
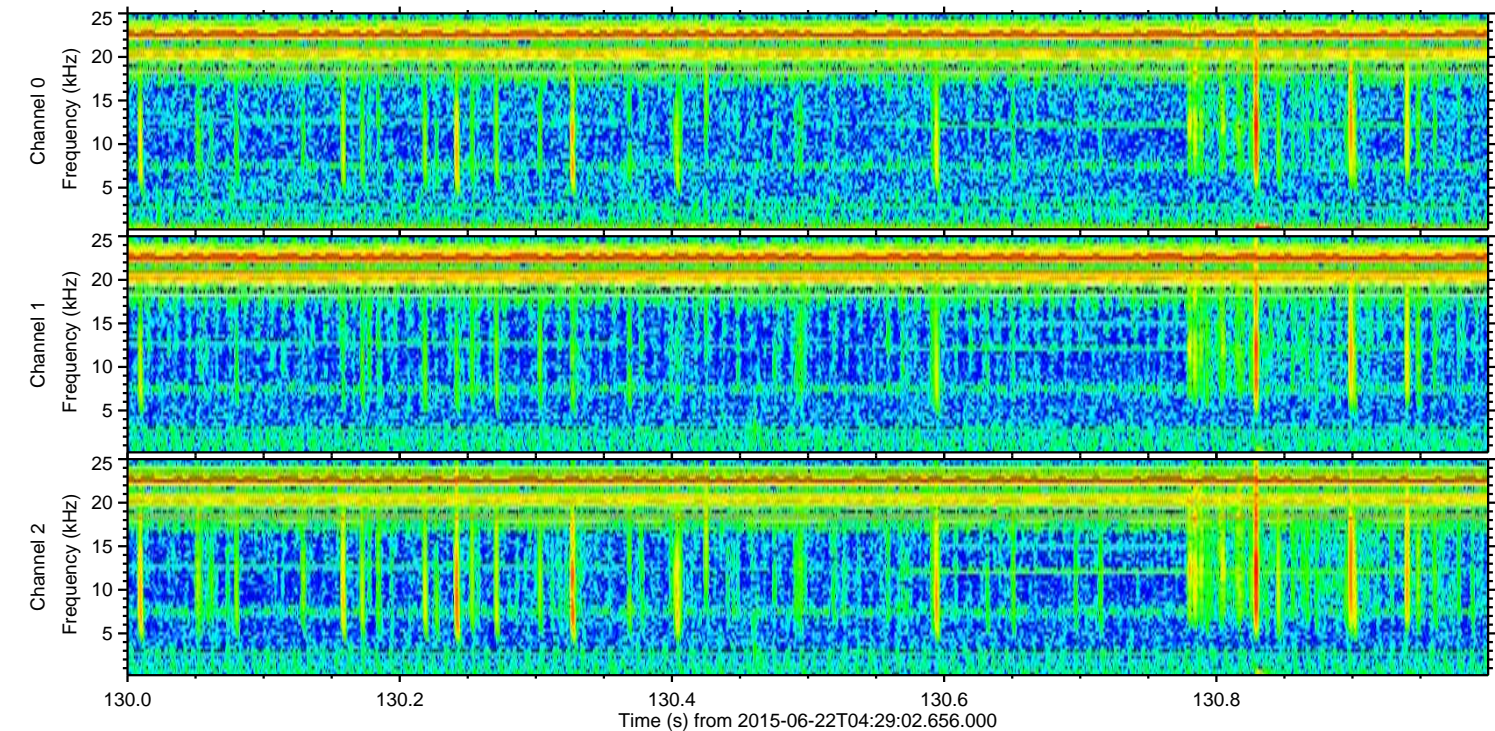
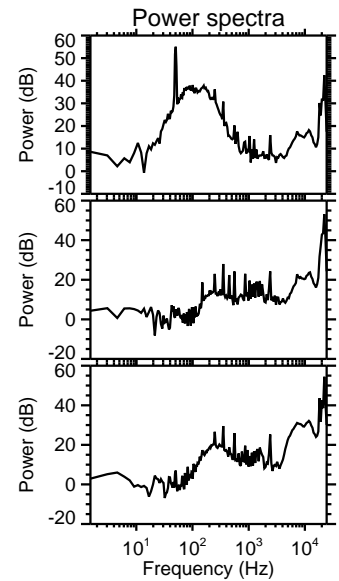
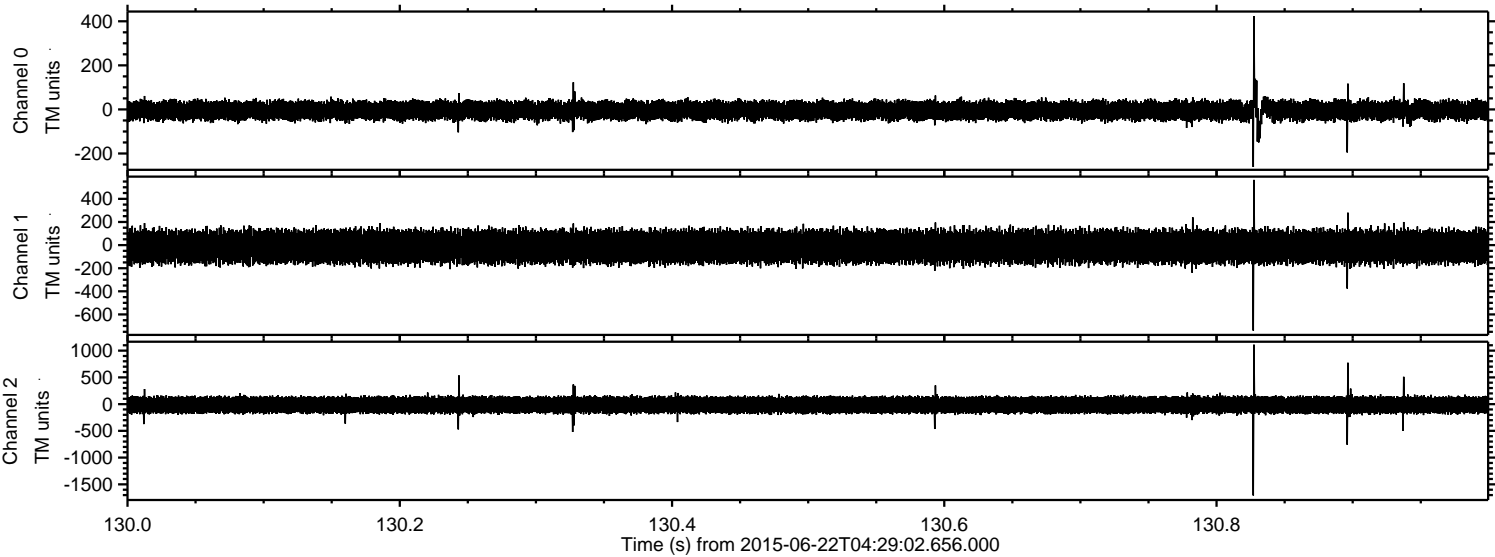
Processed Mon Jun 22 06:36:05 2015 by ELM ver.2012-10-06 from 001\_\_elm20150622\_042901\_\_dat00.bin





ELMAVAN 3D WAVEFORMS (Measured data sampled at 50 kHz) 51000 packets of 144 samples from 2015-06-22T04:29:02.656.000. Part 131/147

Processed Mon Jun 22 06:36:06 2015 by ELM ver.2012-10-06 from 001\_\_elm20150622\_042901\_\_dat00.bin



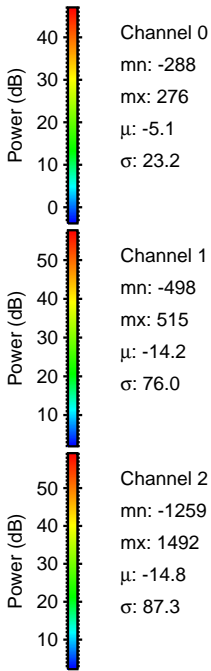
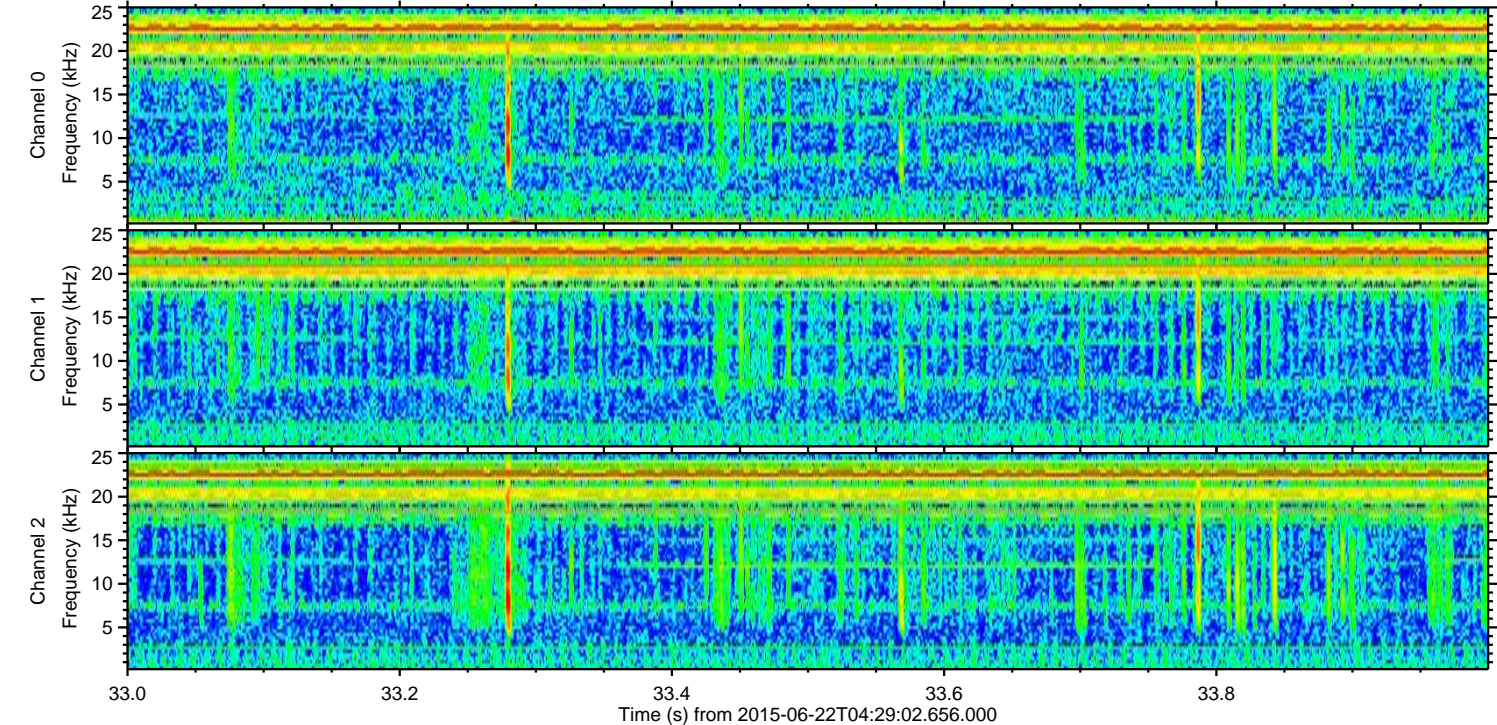
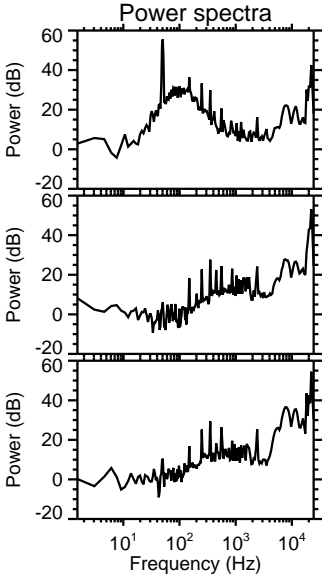
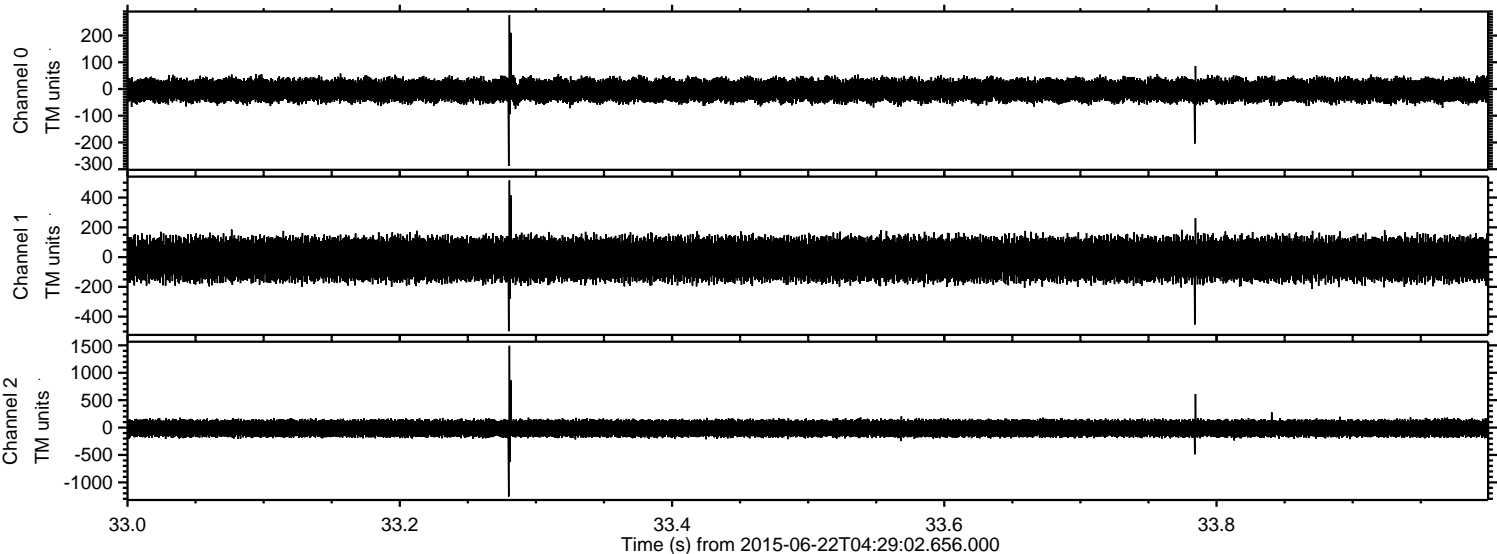
Channel 0  
mn: -261  
mx: 423  
 $\mu$ : -5.1  
 $\sigma$ : 23.8

Channel 1  
mn: -740  
mx: 564  
 $\mu$ : -14.2  
 $\sigma$ : 76.1

Channel 2  
mn: -1707  
mx: 1111  
 $\mu$ : -14.8  
 $\sigma$ : 87.0



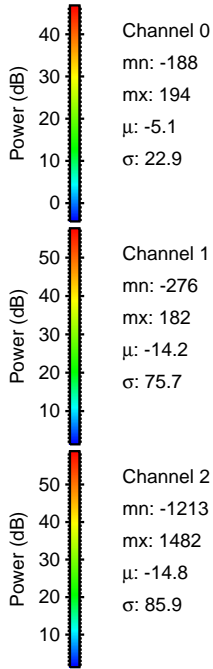
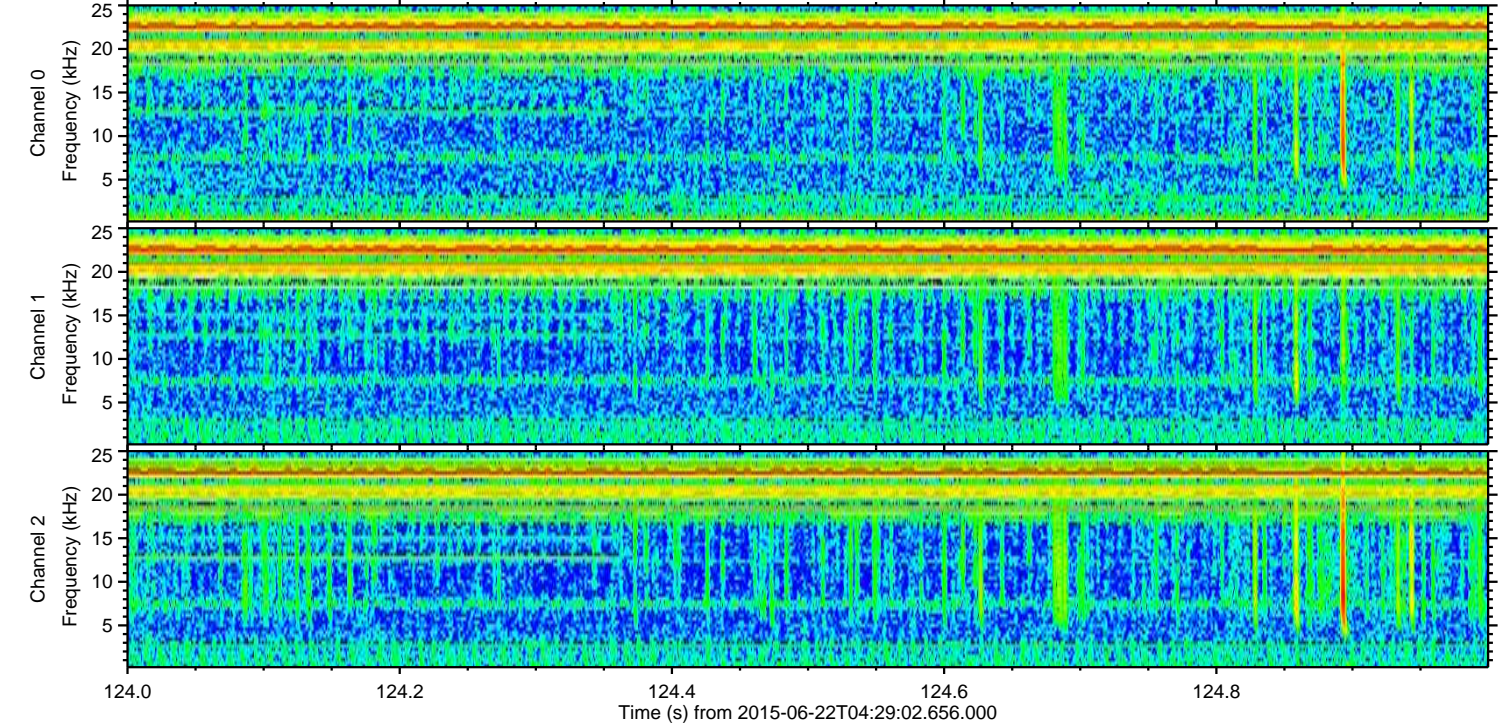
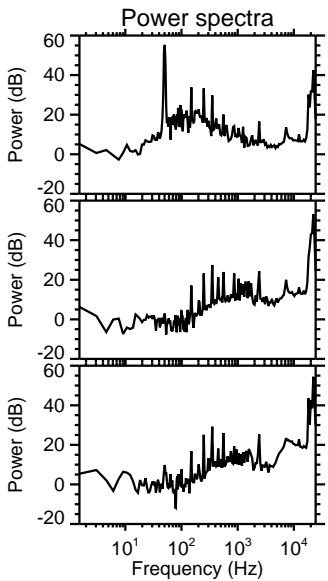
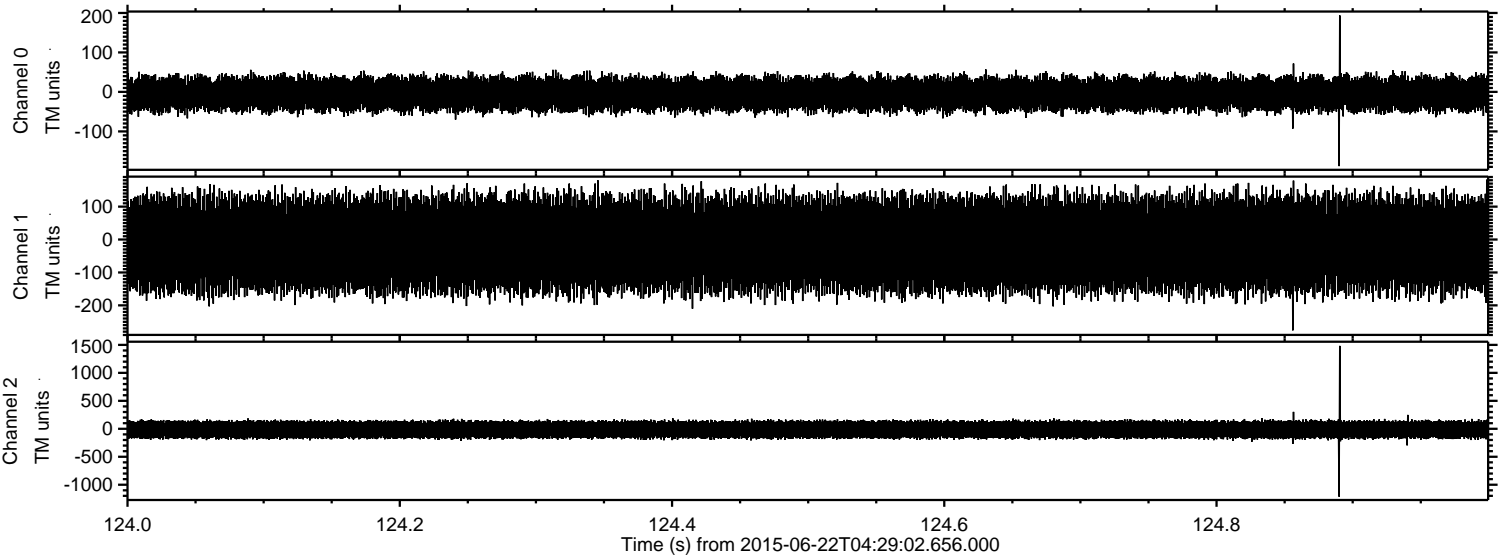
Processed Mon Jun 22 06:36:07 2015 by ELM ver.2012-10-06 from 001\_\_elm20150622\_042901\_\_dat00.bin





ELMAVAN 3D WAVEFORMS (Measured data sampled at 50 kHz) 51000 packets of 144 samples from 2015-06-22T04:29:02.656.000. Part 125/147

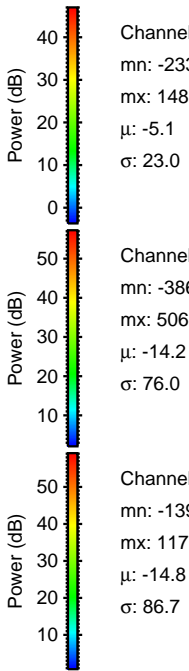
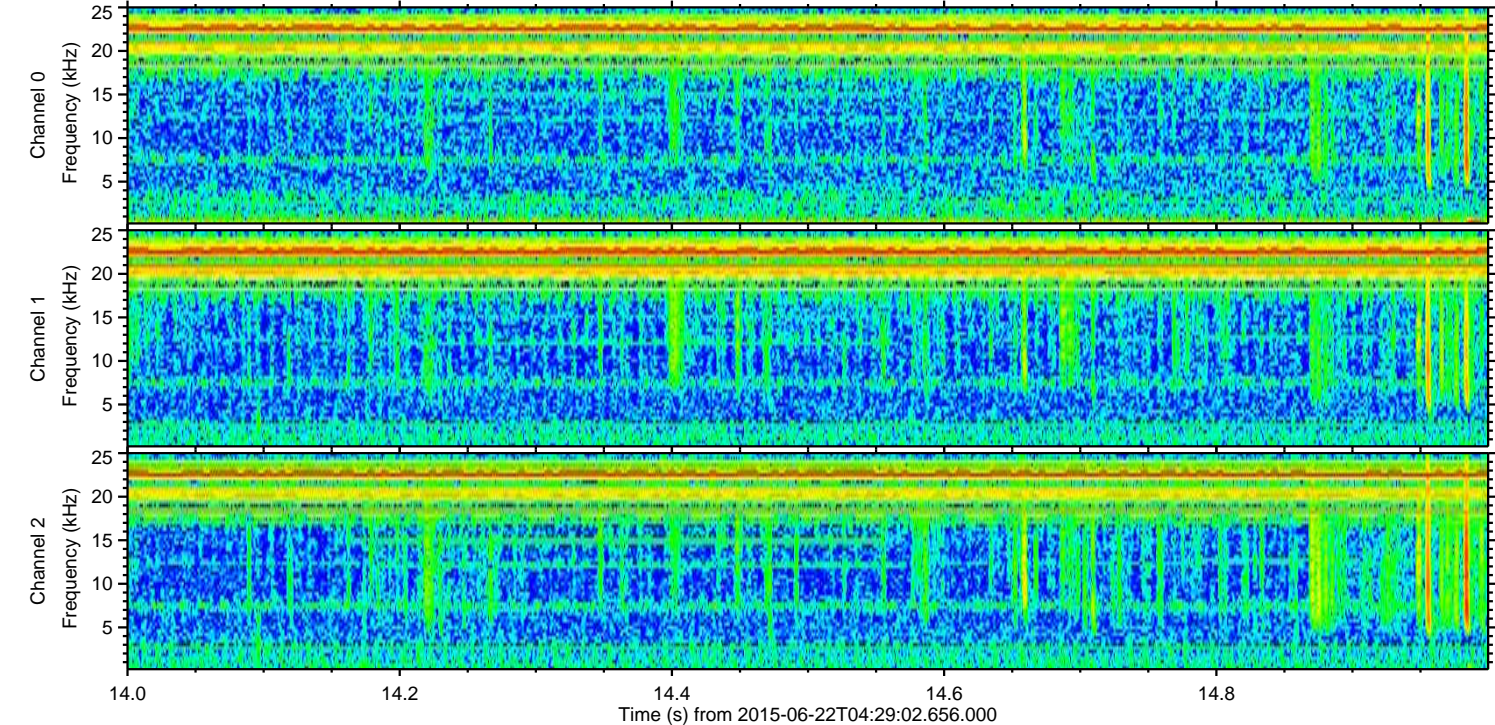
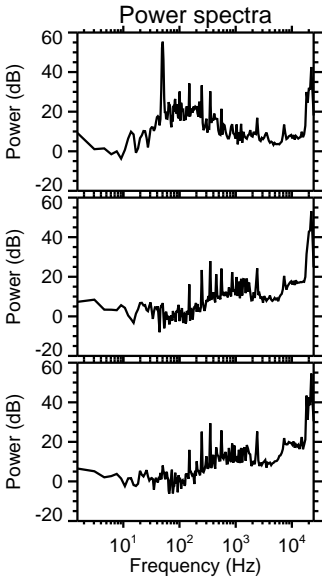
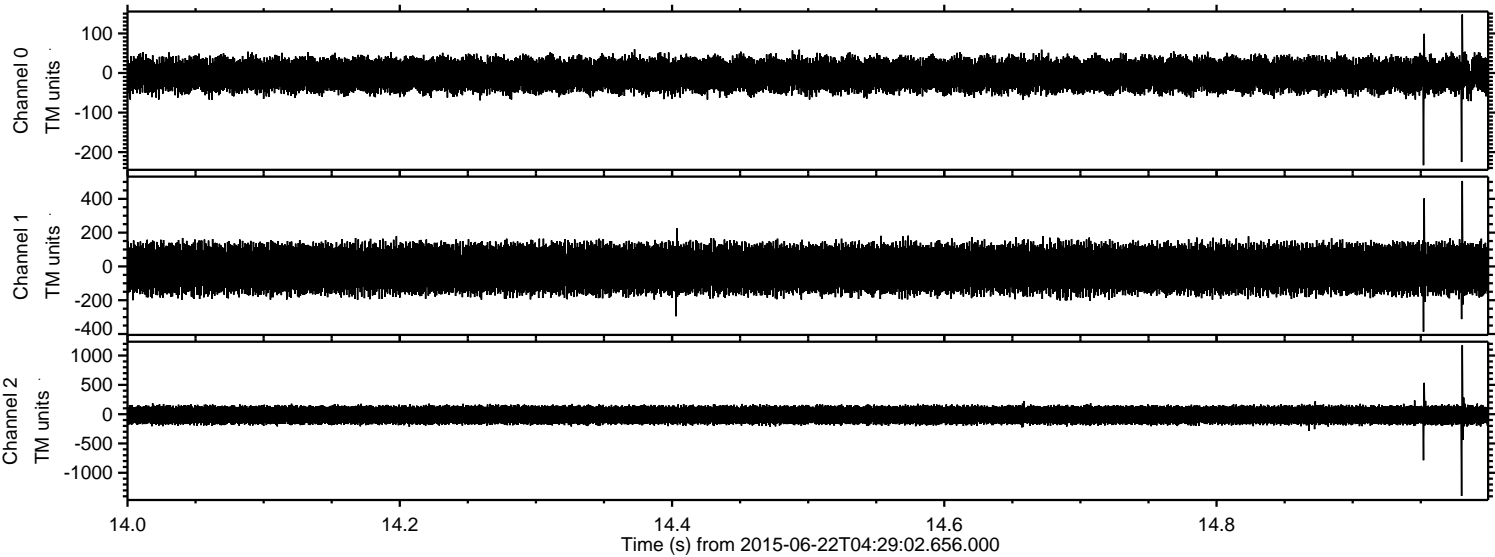
Processed Mon Jun 22 06:36:09 2015 by ELM ver.2012-10-06 from 001\_\_elm20150622\_042901\_\_dat00.bin





ELMAVAN 3D WAVEFORMS (Measured data sampled at 50 kHz) 51000 packets of 144 samples from 2015-06-22T04:29:02.656.000. Part 15/147

Processed Mon Jun 22 06:36:11 2015 by ELM ver.2012-10-06 from 001\_\_elm20150622\_042901\_\_dat00.bin



Channel 0  
mn: -233  
mx: 148  
 $\mu$ : -5.1  
 $\sigma$ : 23.0

Channel 1  
mn: -386  
mx: 506  
 $\mu$ : -14.2  
 $\sigma$ : 76.0

Channel 2  
mn: -1394  
mx: 1177  
 $\mu$ : -14.8  
 $\sigma$ : 86.7



ELMAVAN 3D WAVEFORMS (Measured data sampled at 50 kHz) 51000 packets of 144 samples from 2015-06-22T04:29:02.656.000. Part 122/147

