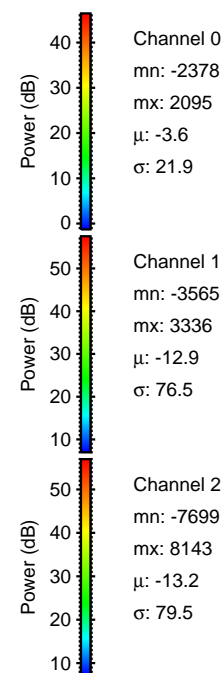
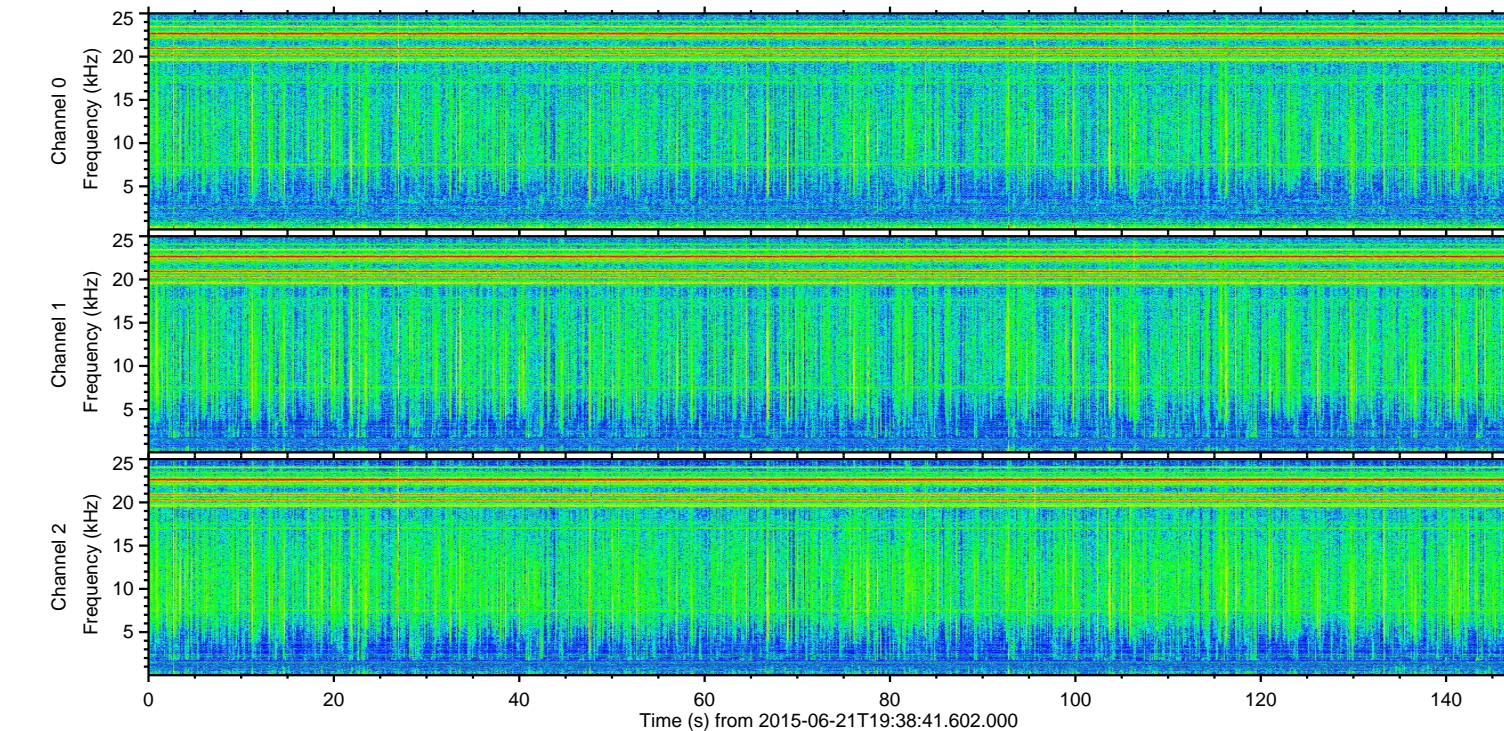
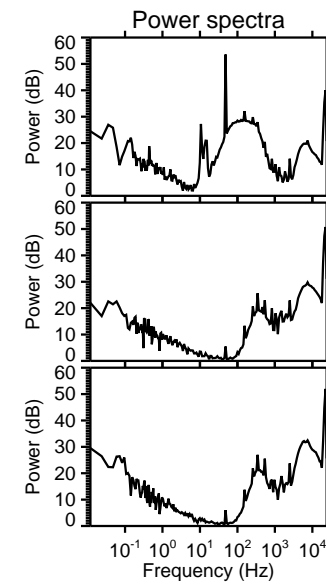
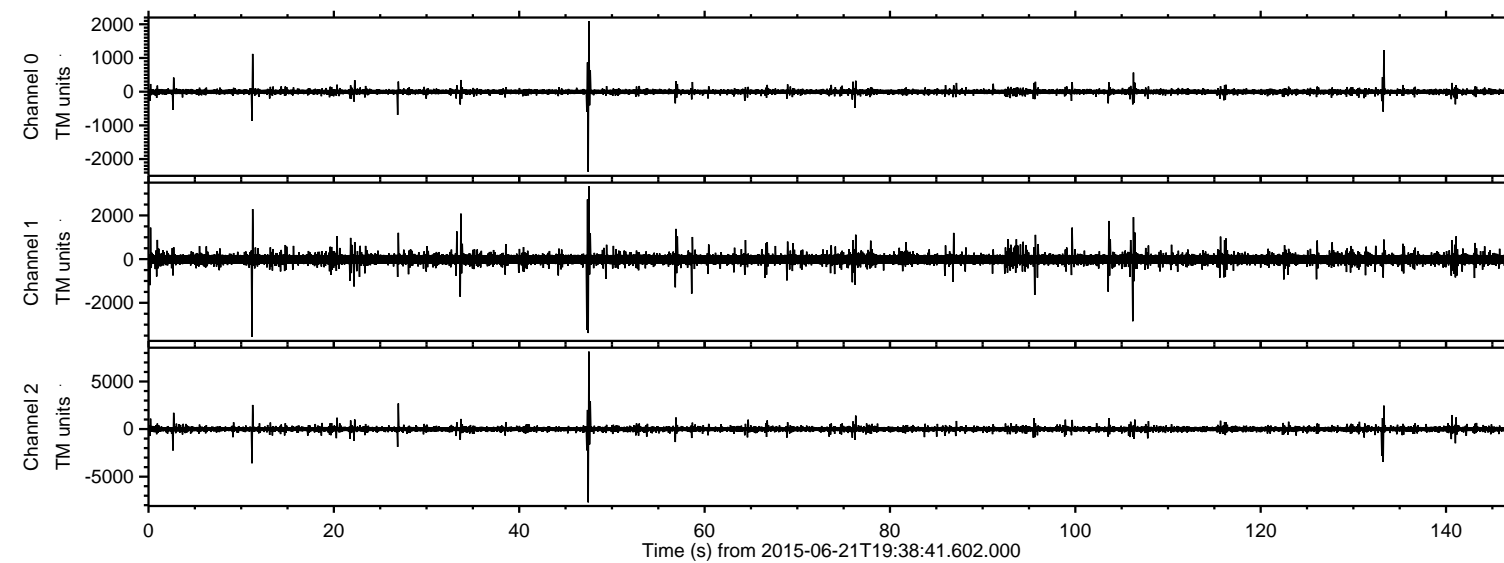
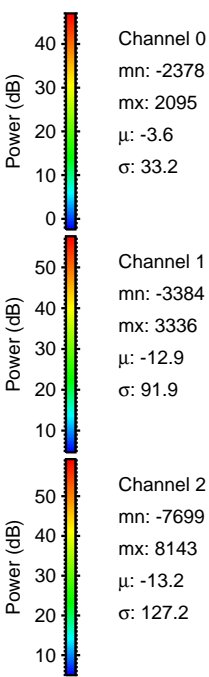
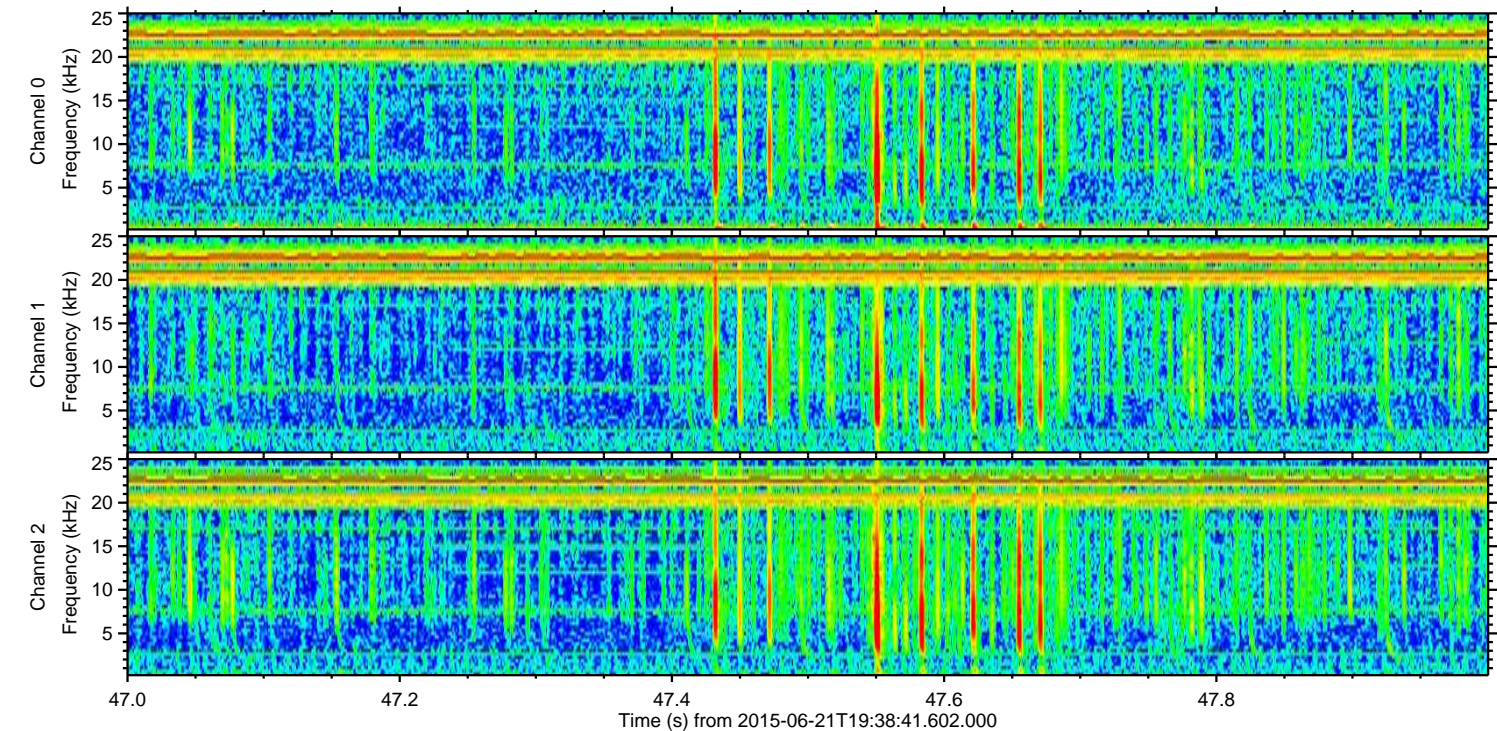
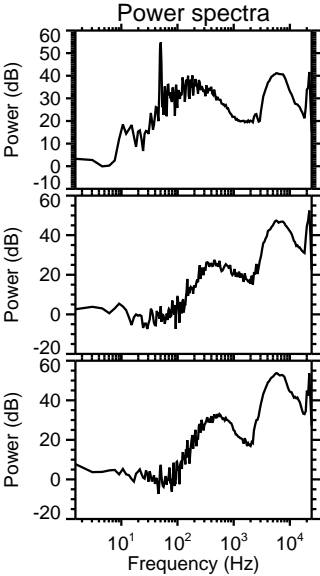
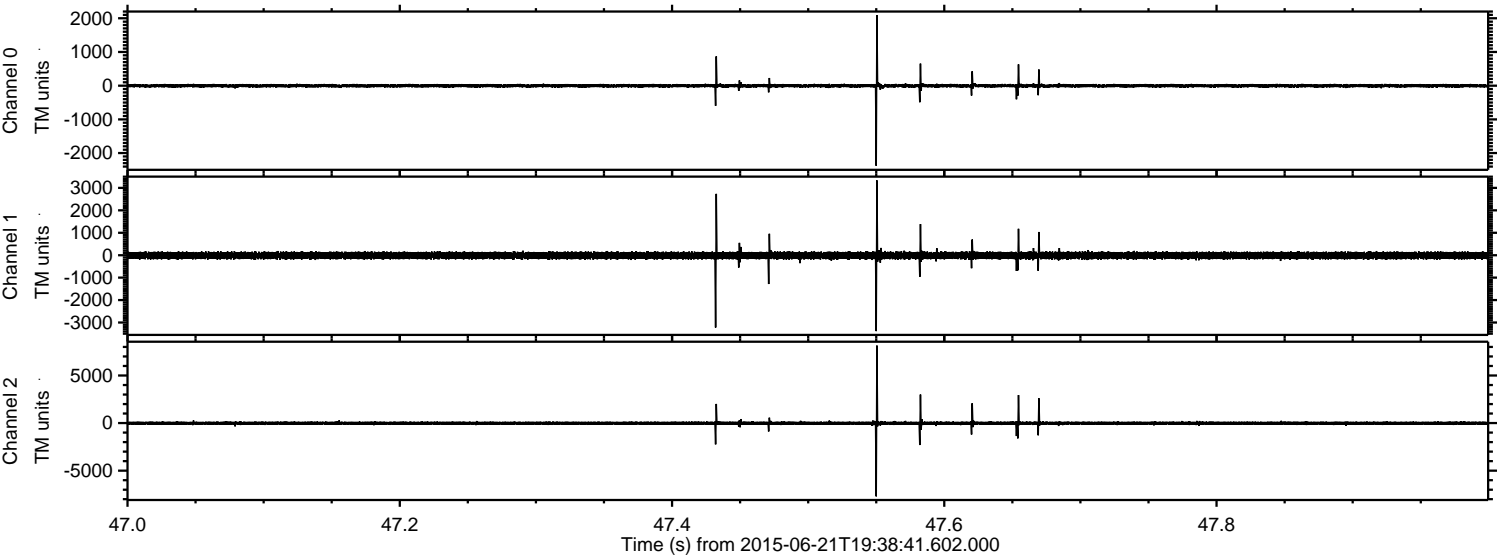


ELMAVAN 3D WAVEFORMS (Measured data sampled at 50 kHz) 51000 packets of 144 samples from 2015-06-21T19:38:41.602.000.

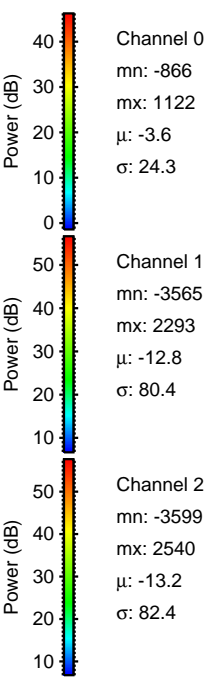
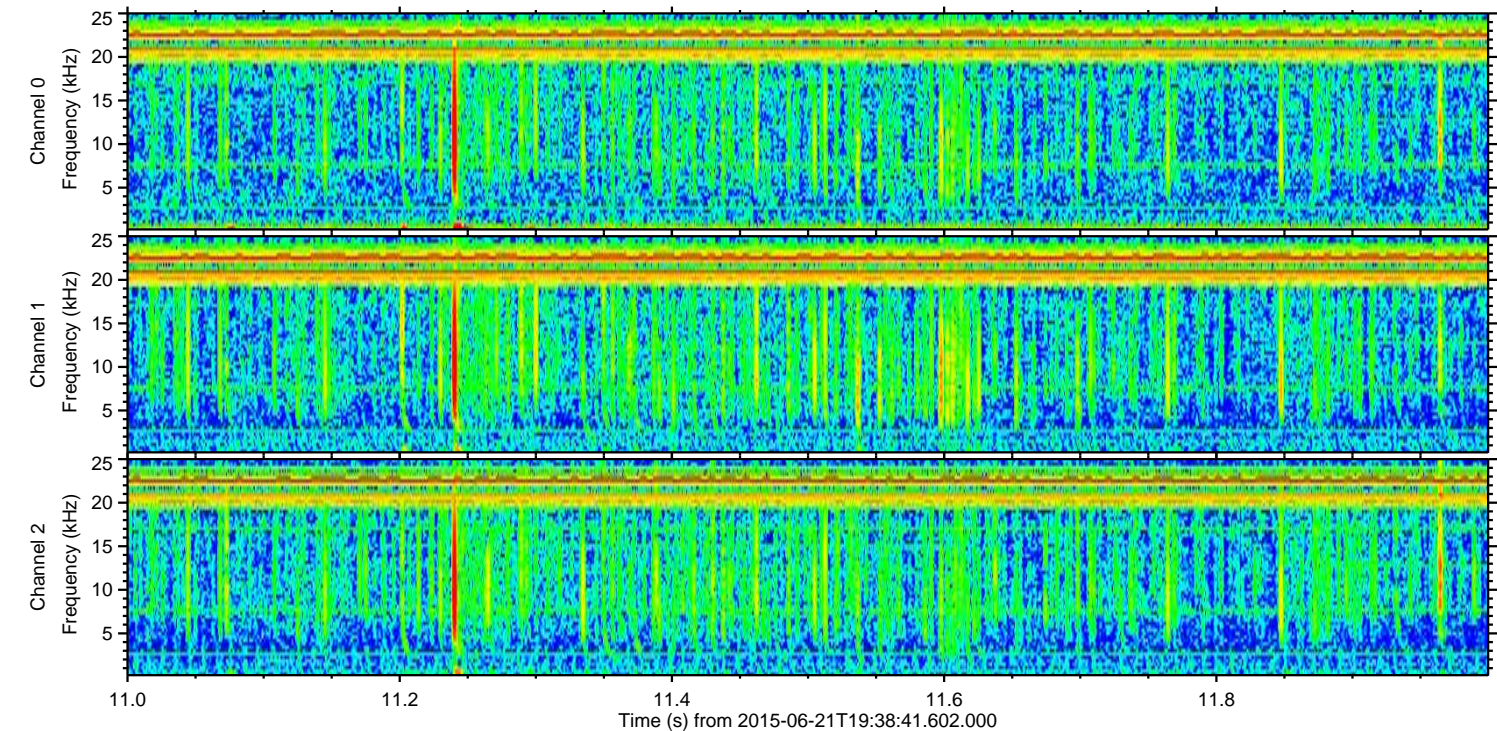
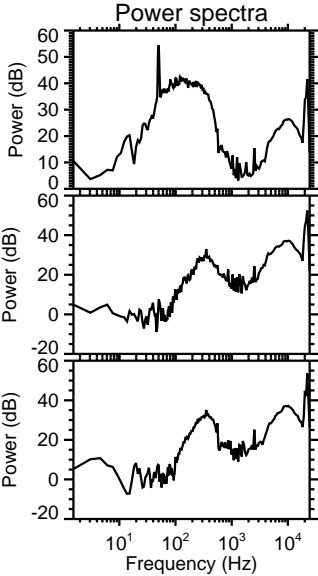
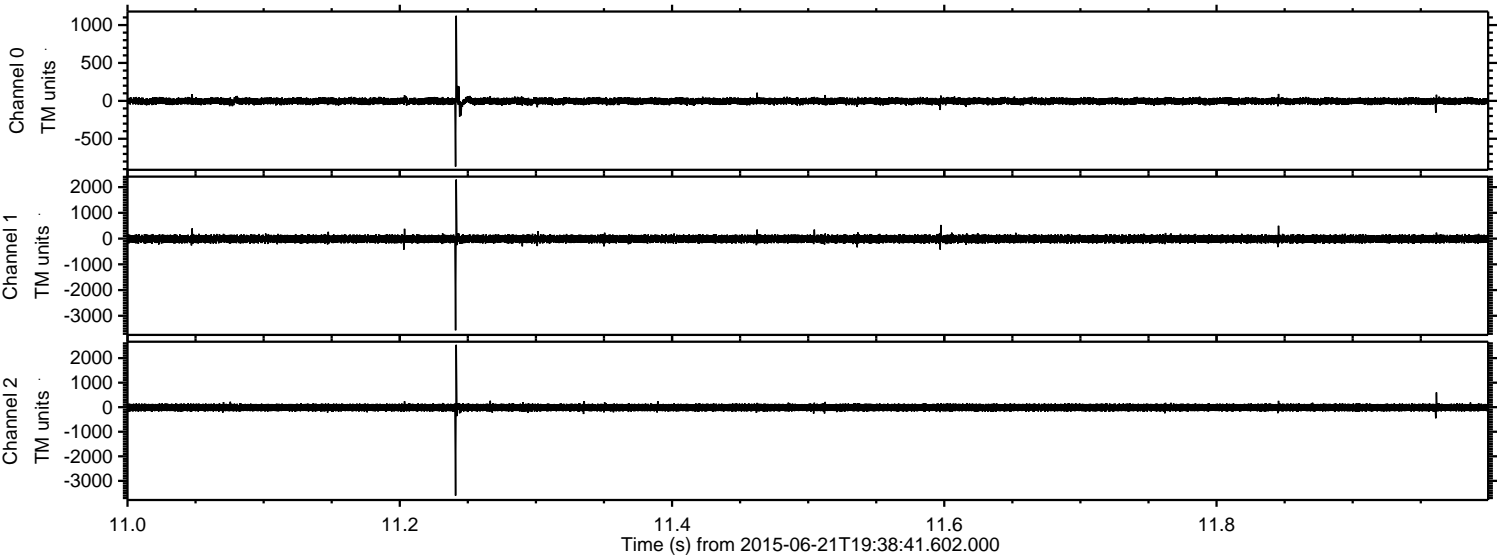
Processed Sun Jun 21 21:45:27 2015 by ELM ver.2012-10-06 from 001__elm20150621_193840__dat00.bin



Processed Sun Jun 21 21:45:42 2015 by ELM ver.2012-10-06 from 001__elm20150621_193840__dat00.bin

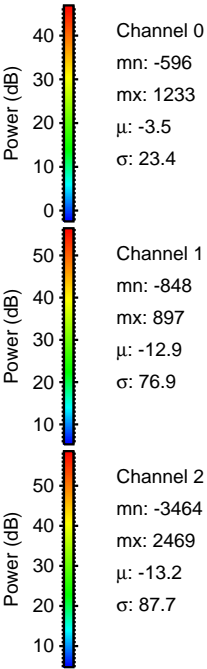
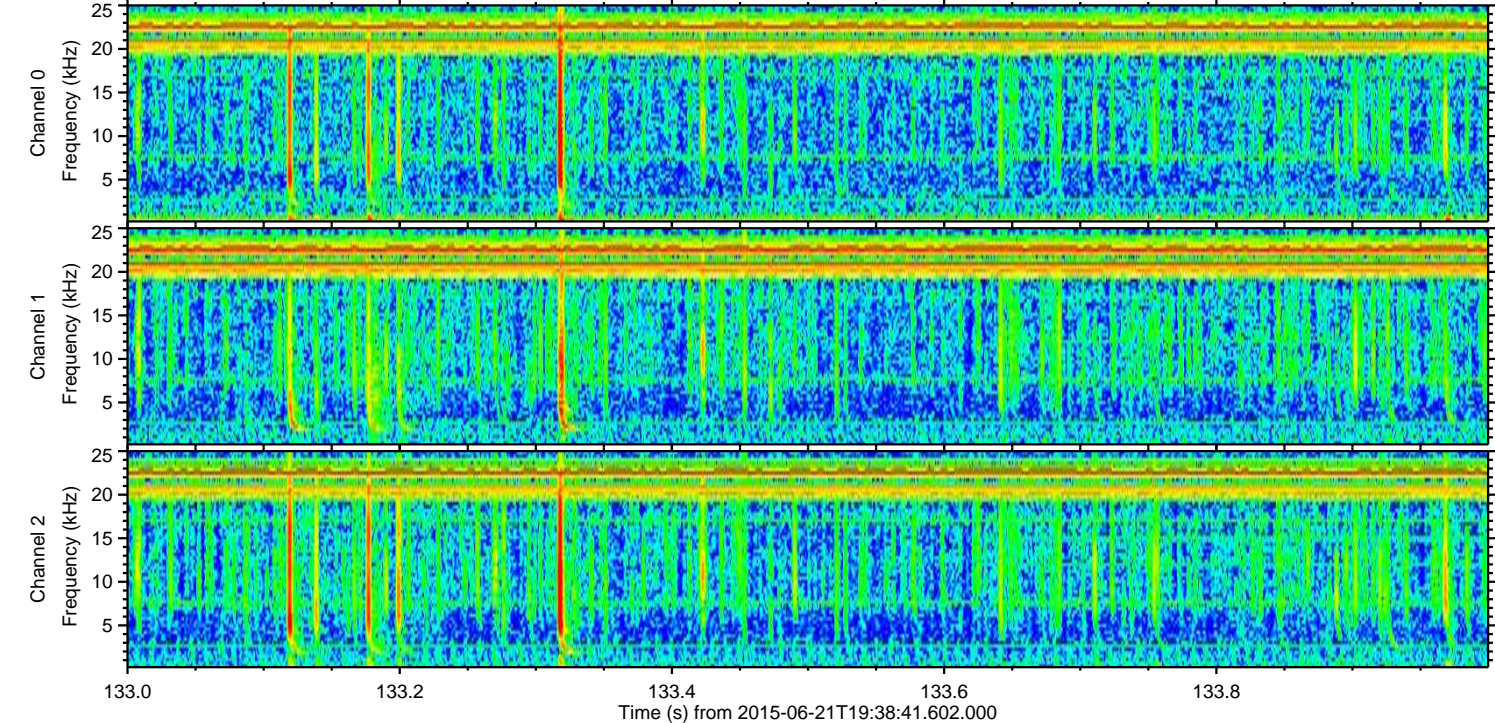
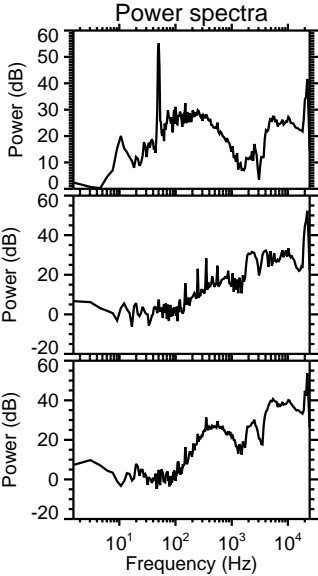
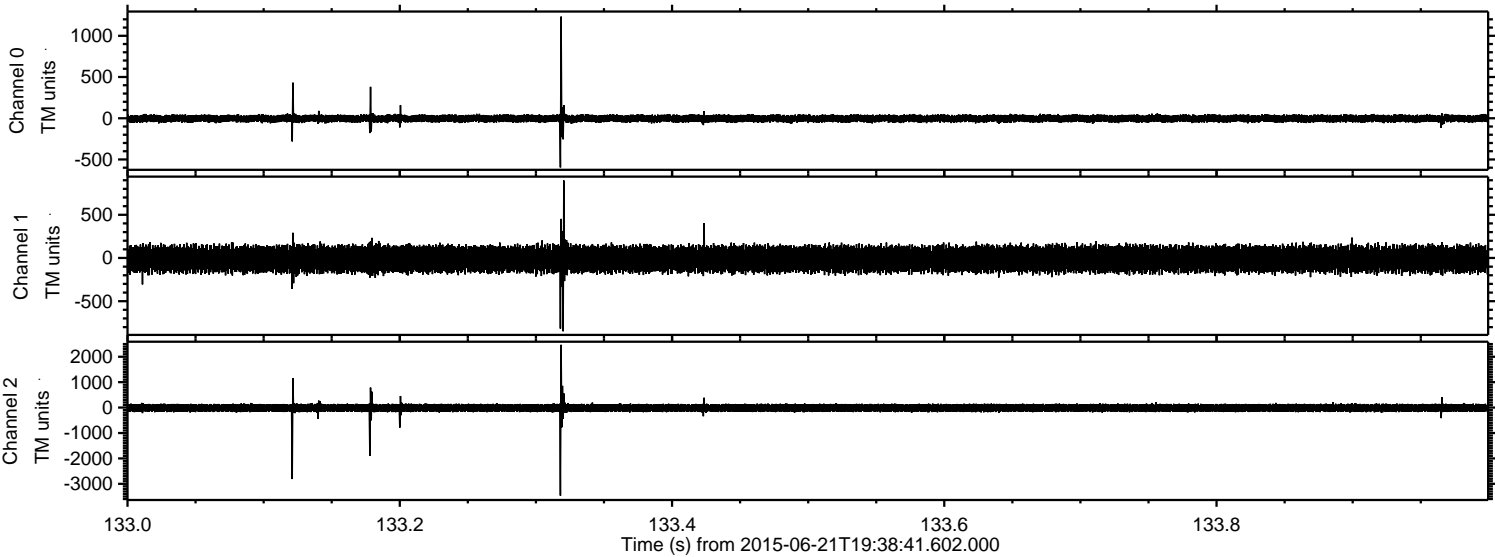


Processed Sun Jun 21 21:45:43 2015 by ELM ver.2012-10-06 from 001__elm20150621_193840__dat00.bin



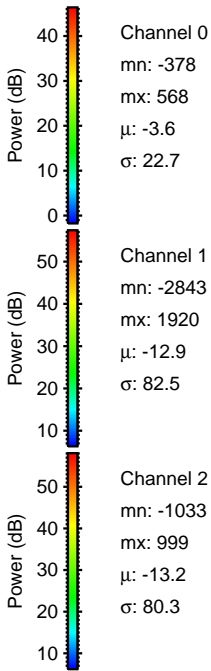
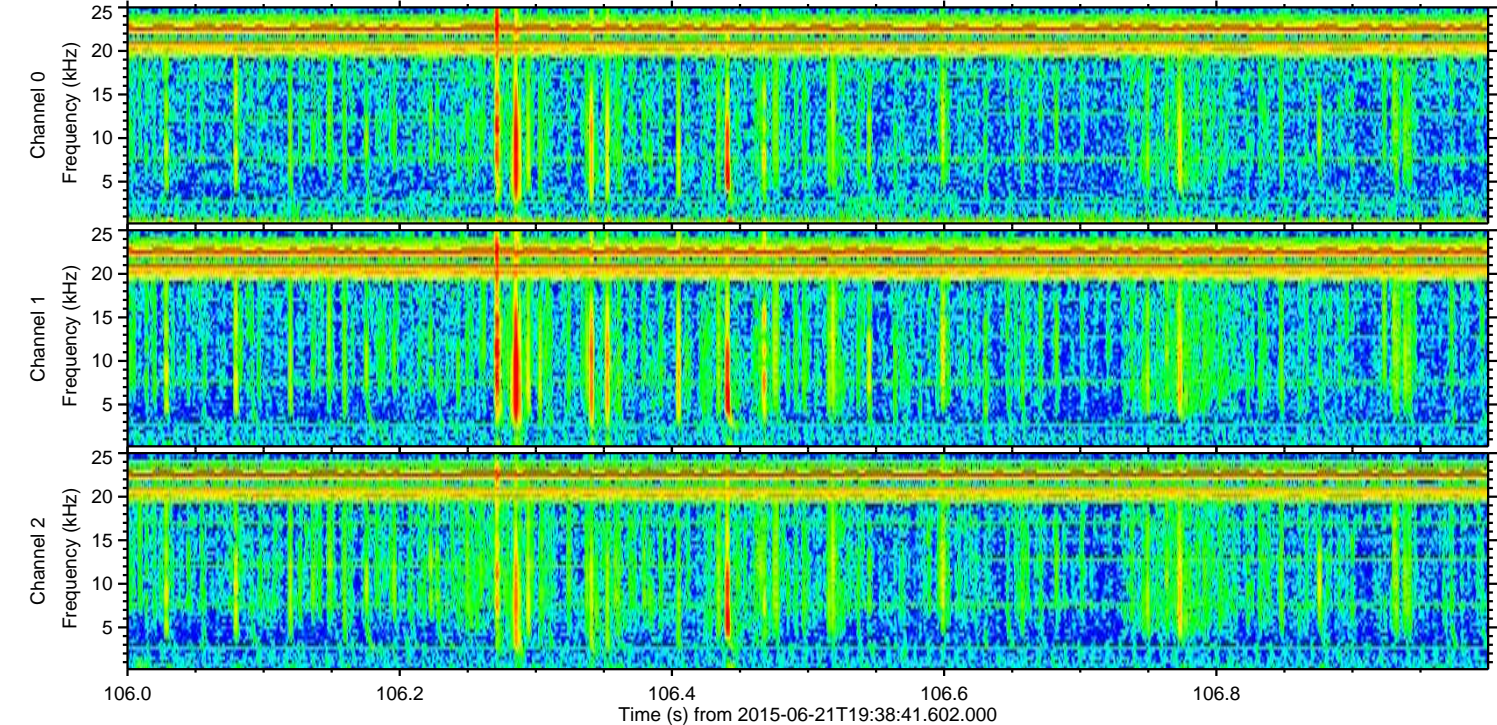
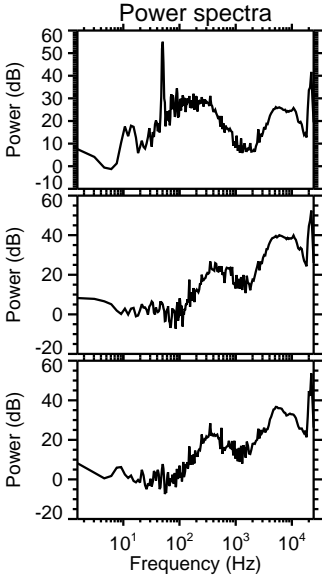
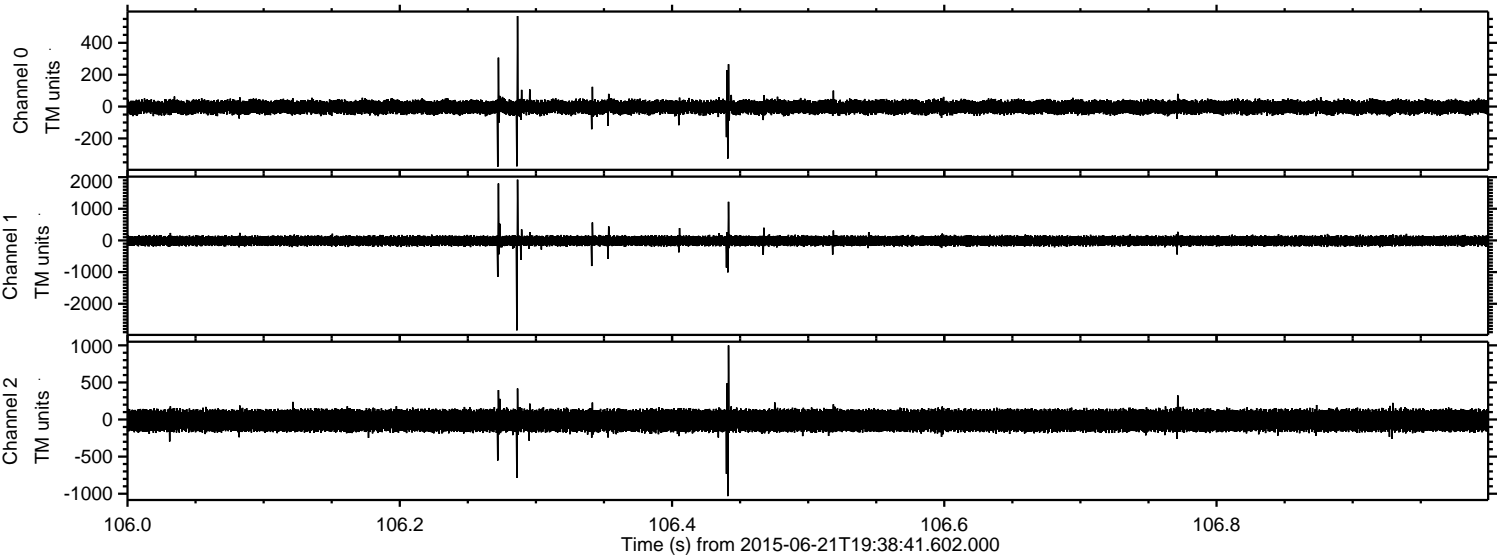
ELMAVAN 3D WAVEFORMS (Measured data sampled at 50 kHz) 51000 packets of 144 samples from 2015-06-21T19:38:41.602.000. Part 134/147

Processed Sun Jun 21 21:45:44 2015 by ELM ver.2012-10-06 from 001__elm20150621_193840__dat00.bin

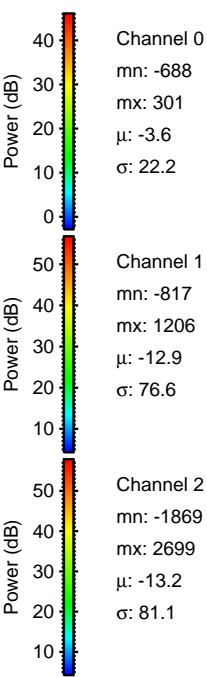
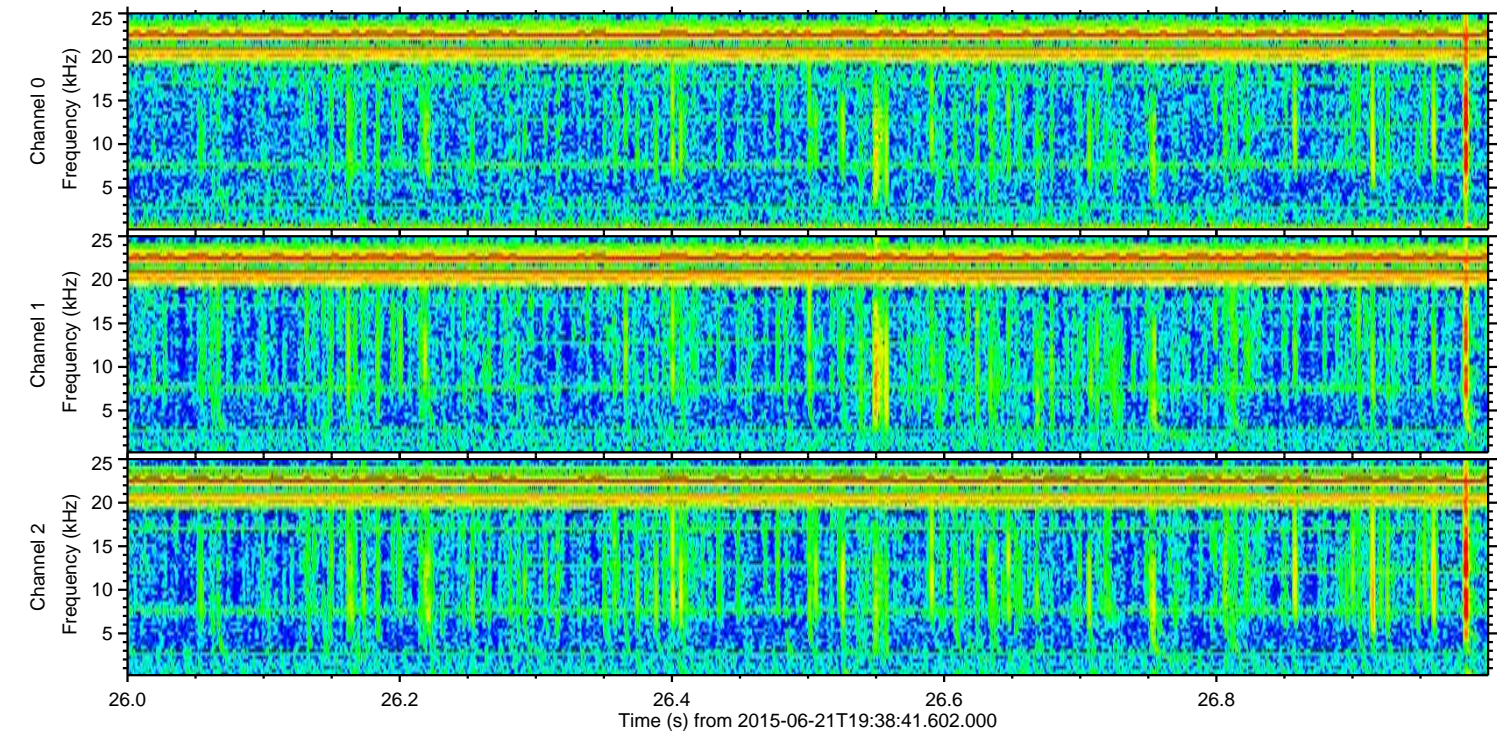
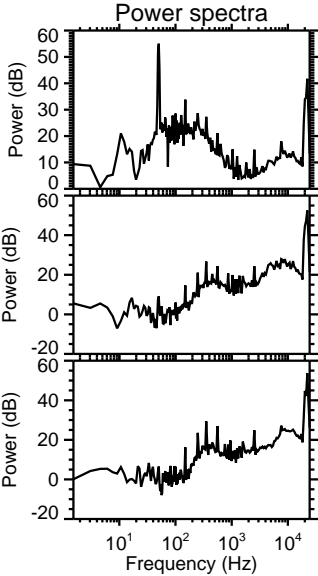
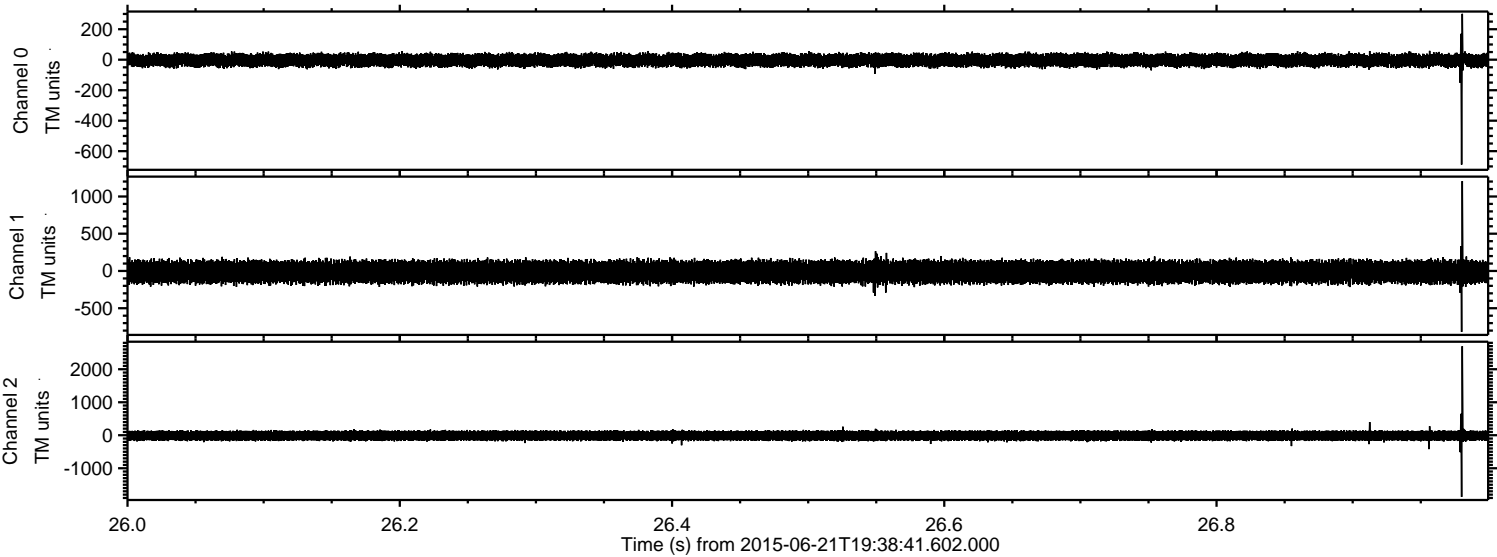


ELMAVAN 3D WAVEFORMS (Measured data sampled at 50 kHz) 51000 packets of 144 samples from 2015-06-21T19:38:41.602.000. Part 107/147

Processed Sun Jun 21 21:45:46 2015 by ELM ver.2012-10-06 from 001__elm20150621_193840__dat00.bin

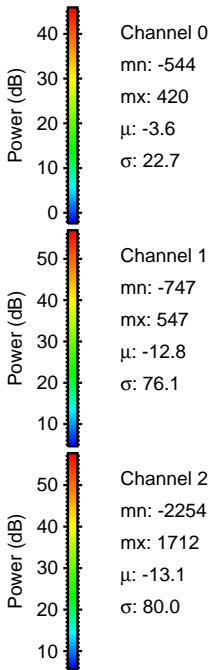
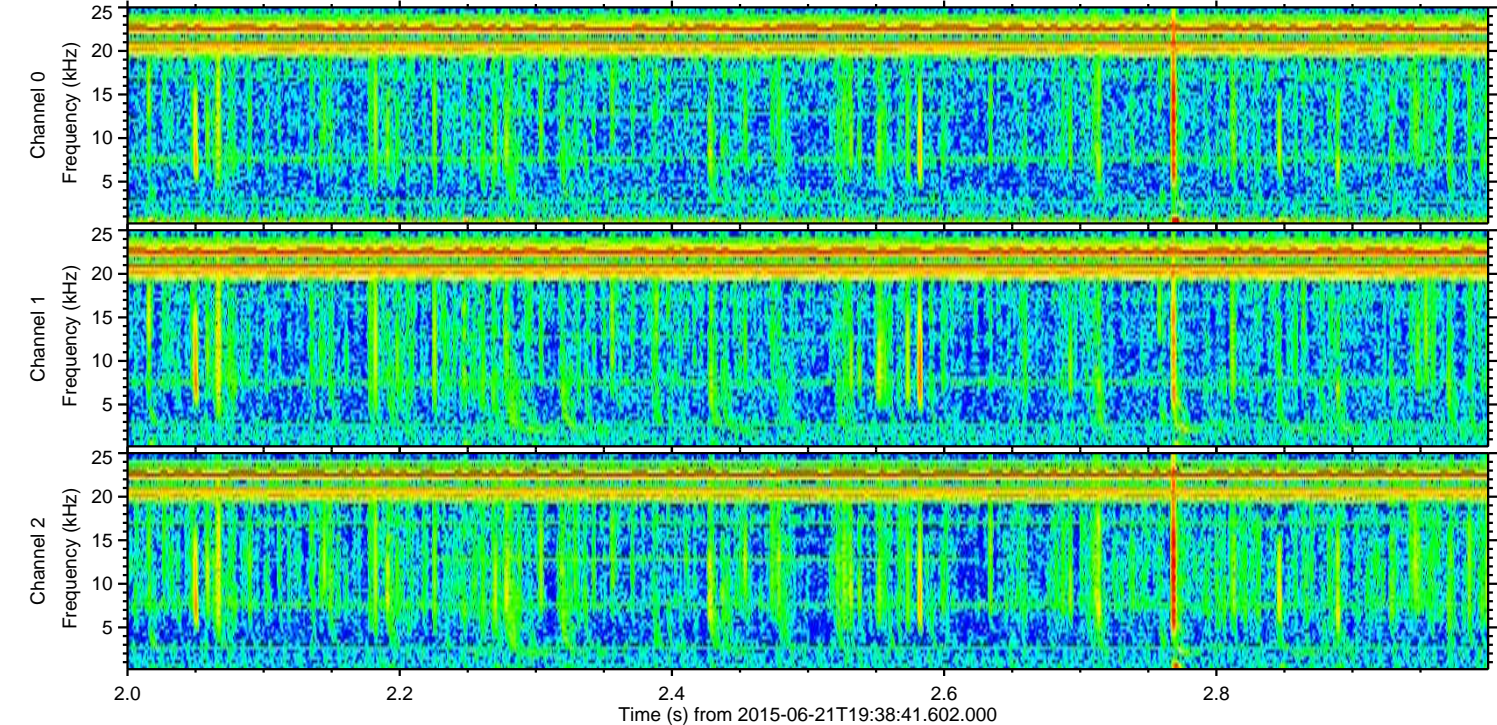
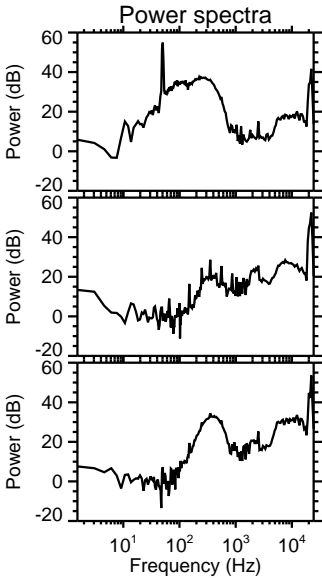
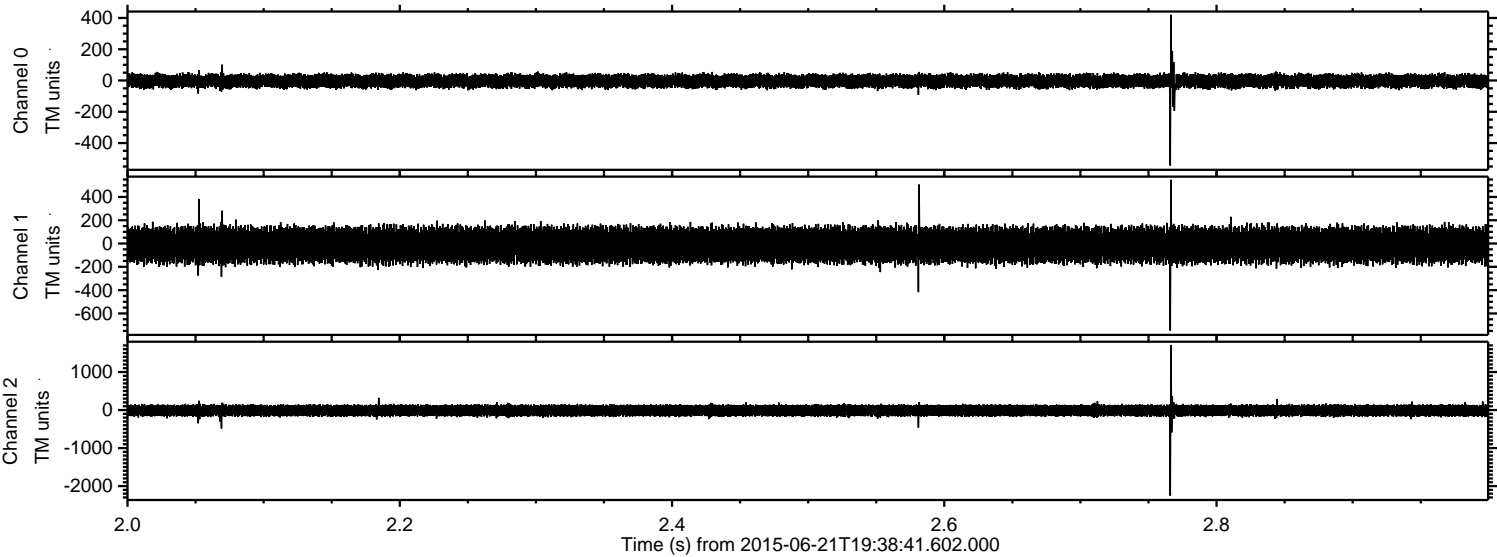


Processed Sun Jun 21 21:45:47 2015 by ELM ver.2012-10-06 from 001__elm20150621_193840__dat00.bin

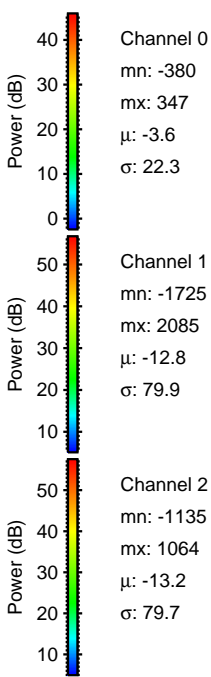
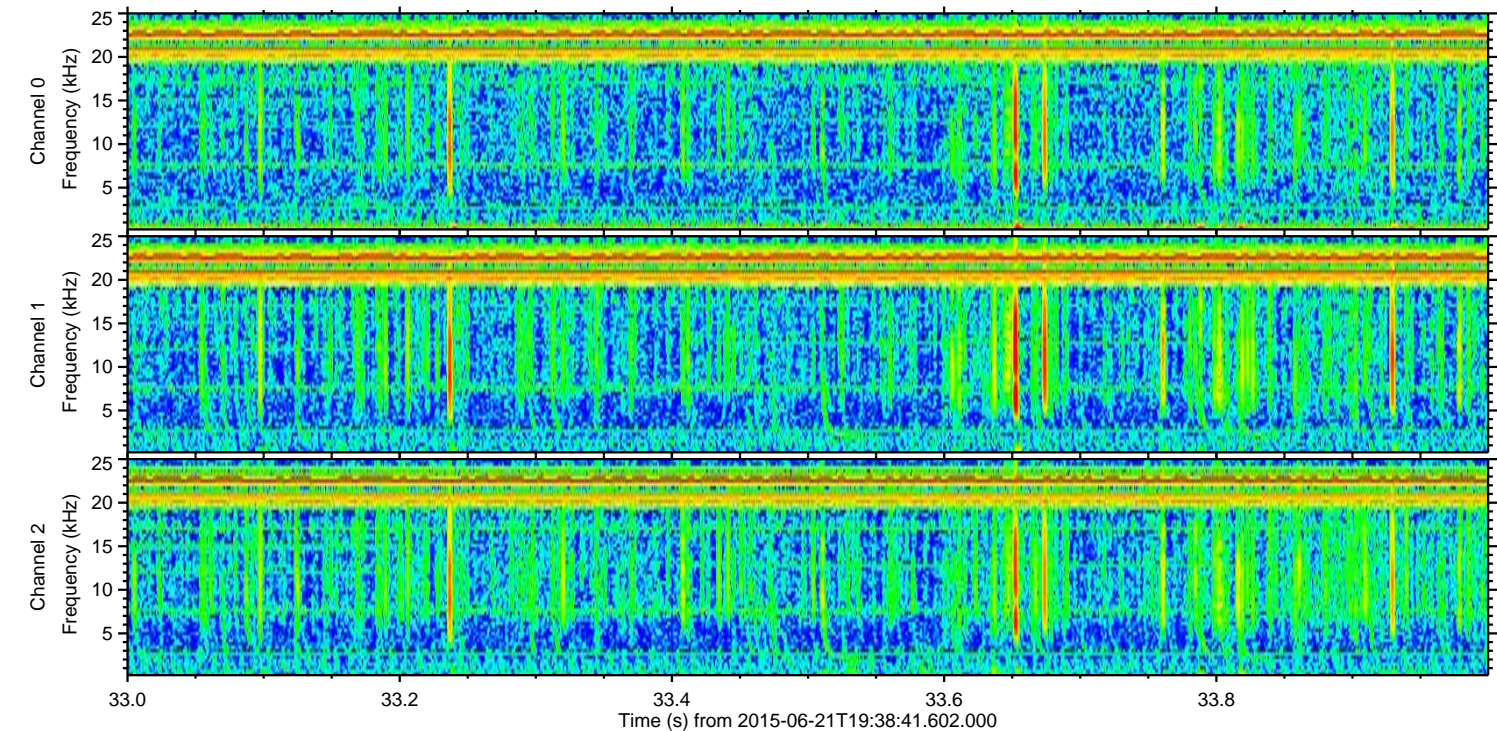
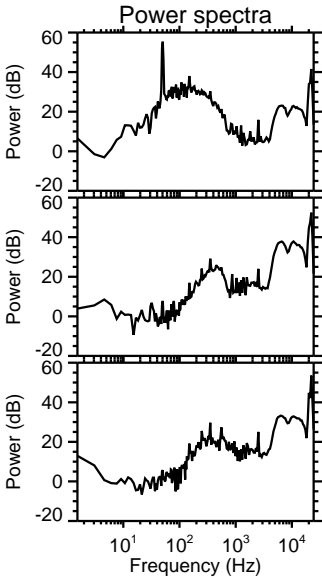
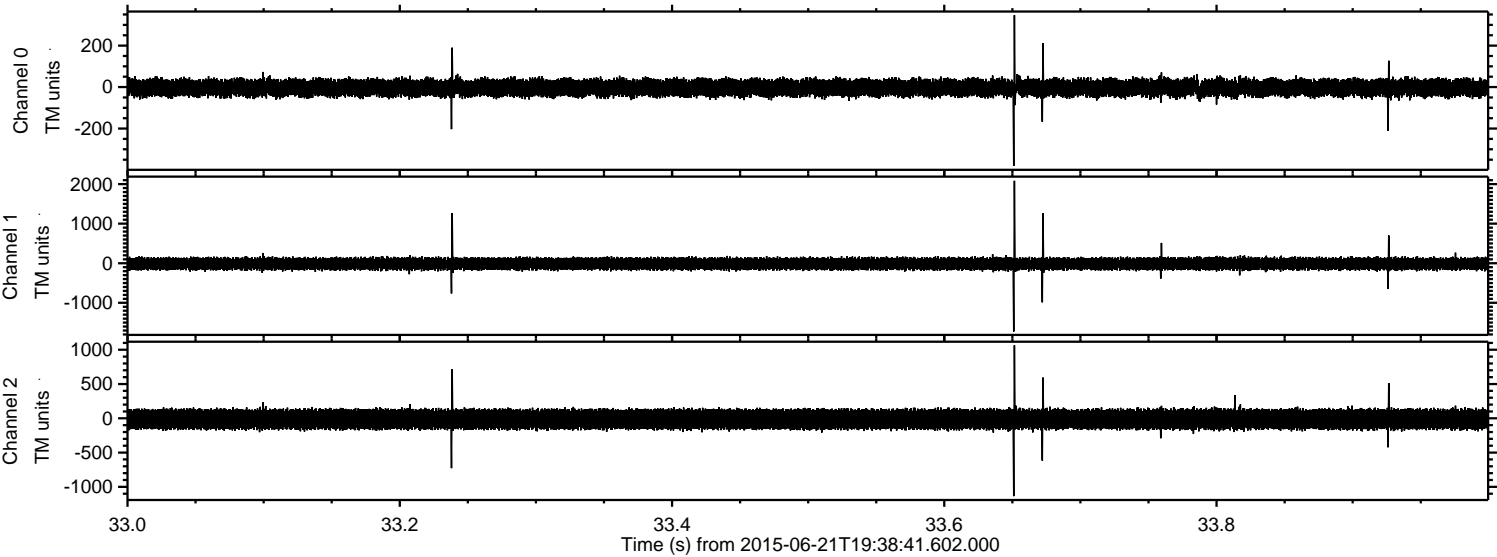


ELMAVAN 3D WAVEFORMS (Measured data sampled at 50 kHz) 51000 packets of 144 samples from 2015-06-21T19:38:41.602.000. Part 3/147

Processed Sun Jun 21 21:45:48 2015 by ELM ver.2012-10-06 from 001__elm20150621_193840__dat00.bin

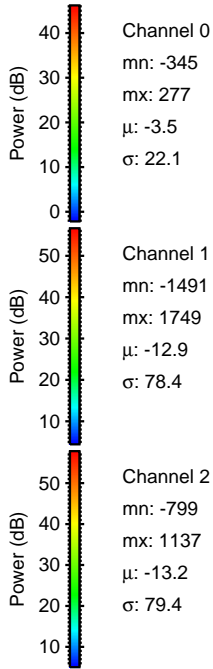
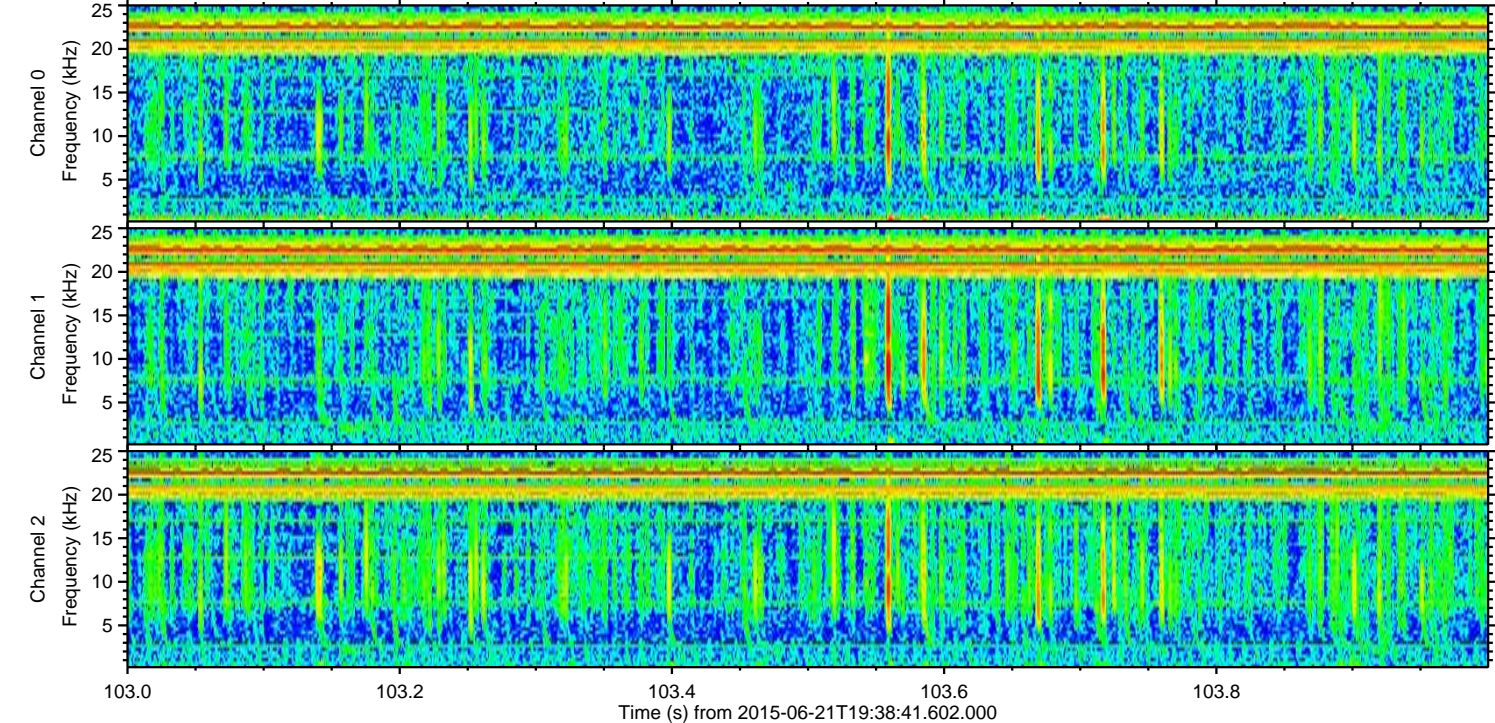
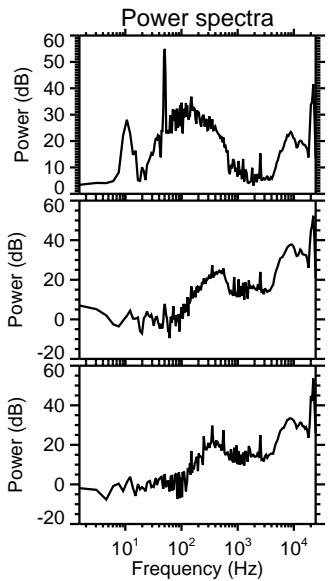
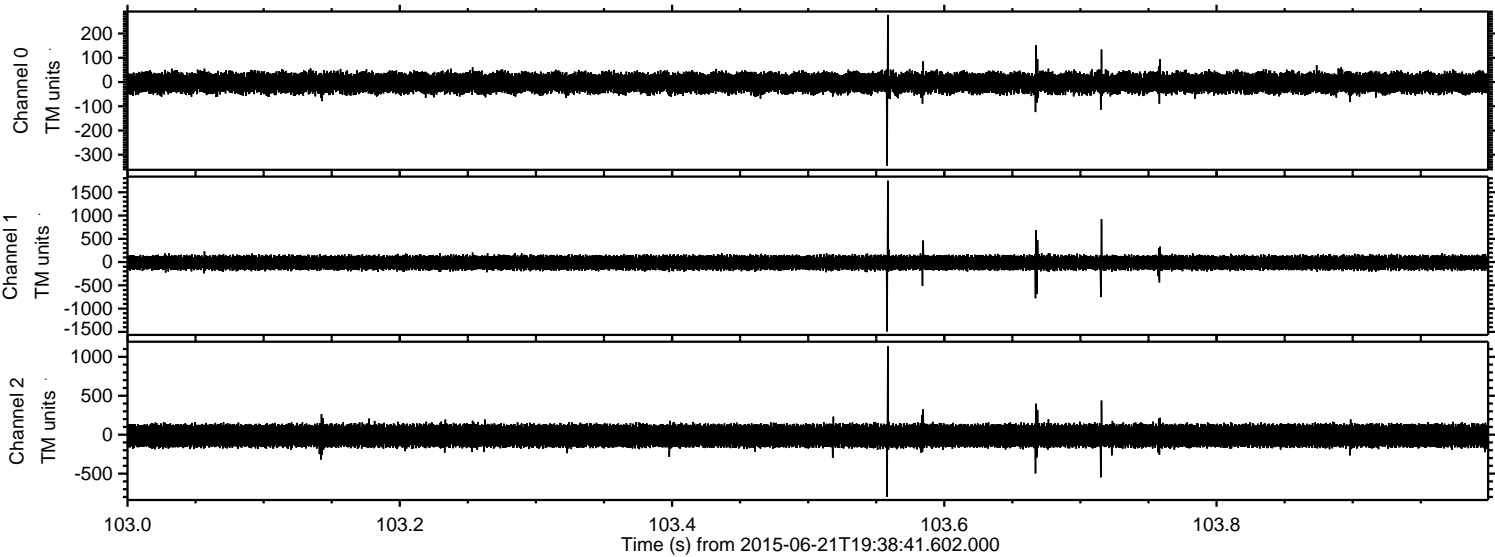


Processed Sun Jun 21 21:45:49 2015 by ELM ver.2012-10-06 from 001__elm20150621_193840__dat00.bin

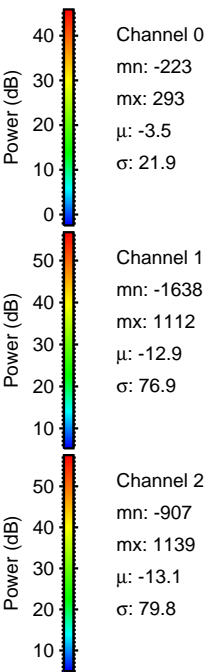
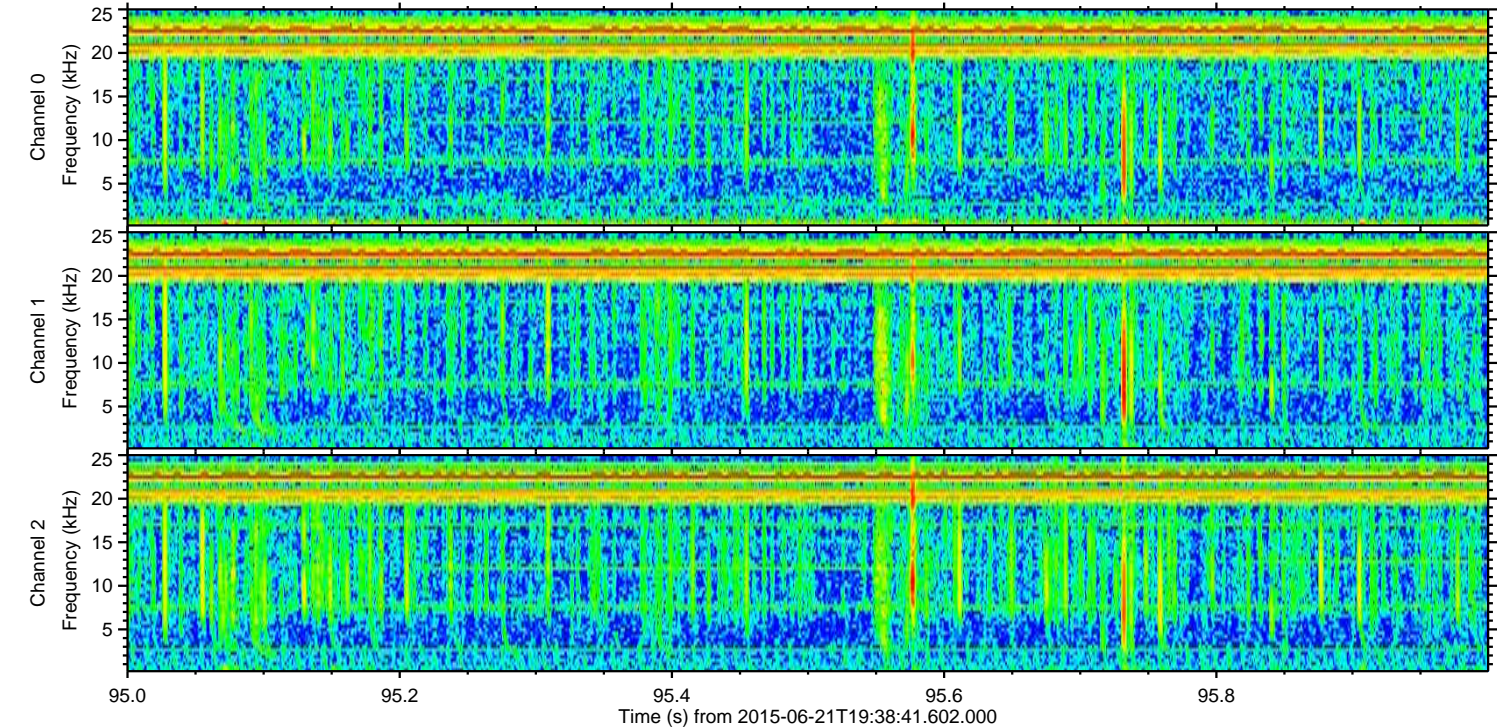
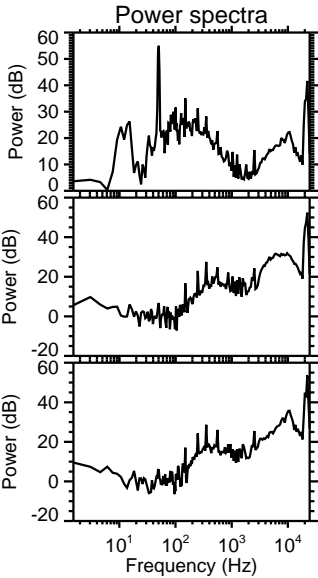
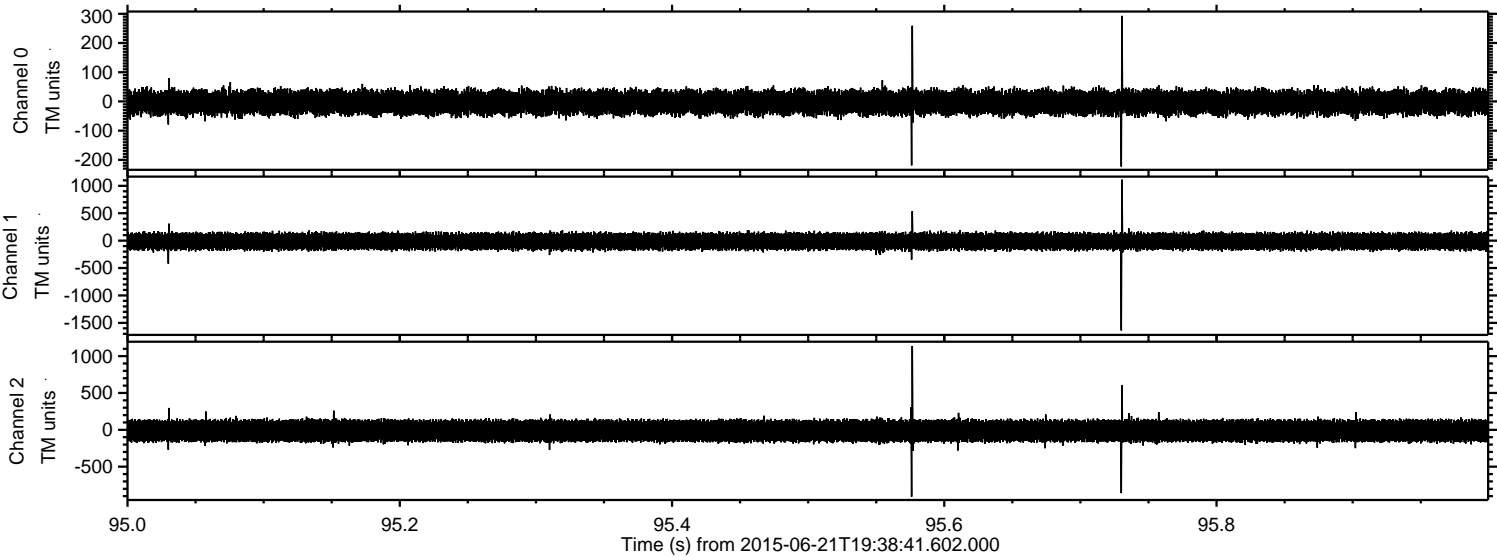


ELMAVAN 3D WAVEFORMS (Measured data sampled at 50 kHz) 51000 packets of 144 samples from 2015-06-21T19:38:41.602.000. Part 104/147

Processed Sun Jun 21 21:45:50 2015 by ELM ver.2012-10-06 from 001__elm20150621_193840__dat00.bin



Processed Sun Jun 21 21:45:51 2015 by ELM ver.2012-10-06 from 001__elm20150621_193840__dat00.bin



Channel 0
mn: -223
mx: 293
 μ : -3.5
 σ : 21.9

Channel 1
mn: -1638
mx: 1112
 μ : -12.9
 σ : 76.9

Channel 2
mn: -907
mx: 1139
 μ : -13.1
 σ : 79.8

Processed Sun Jun 21 21:45:52 2015 by ELM ver.2012-10-06 from 001__elm20150621_193840__dat00.bin

