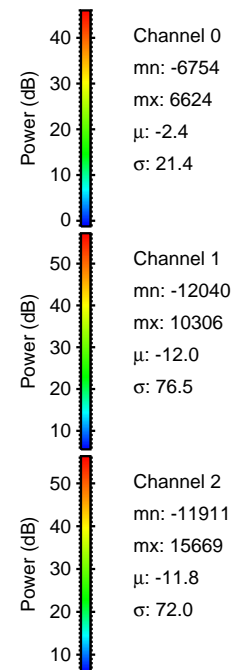
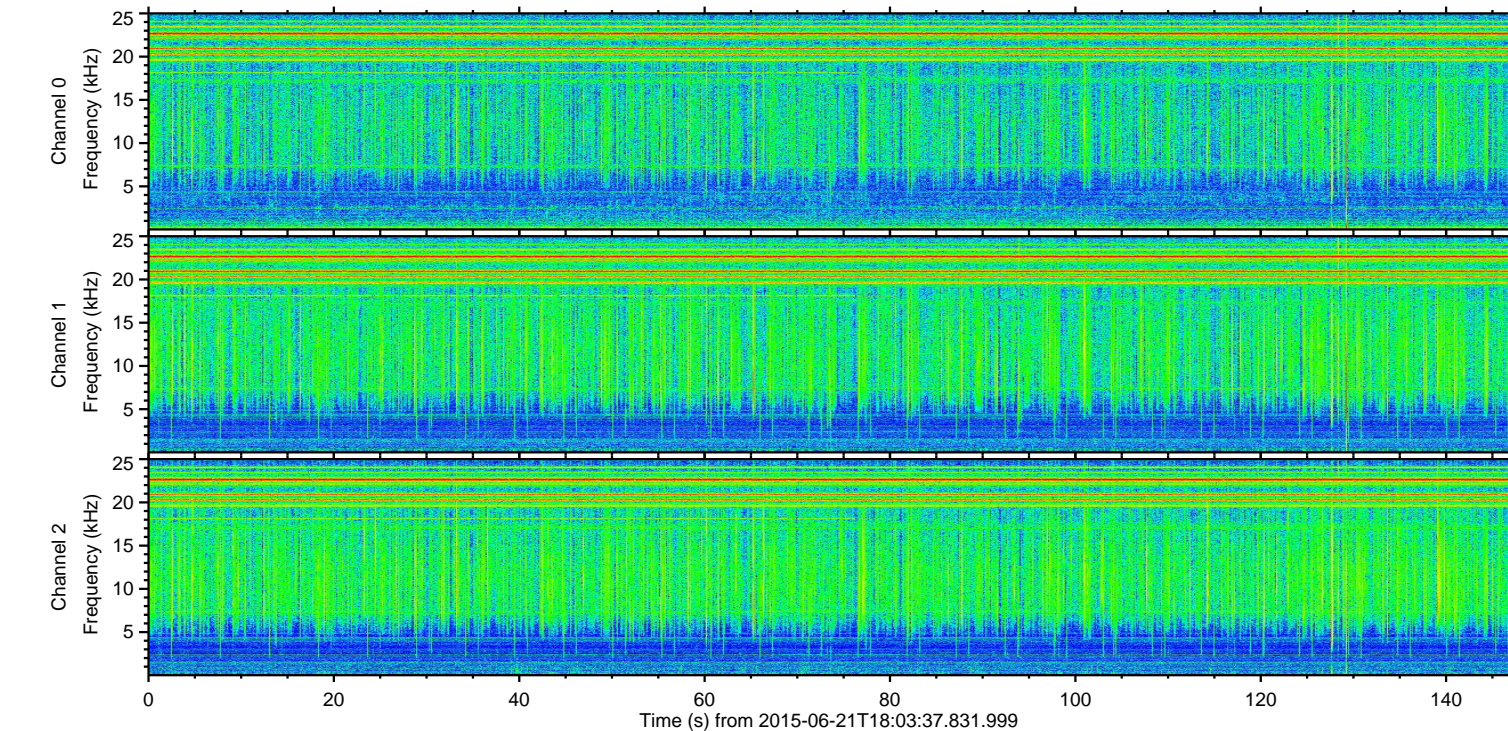
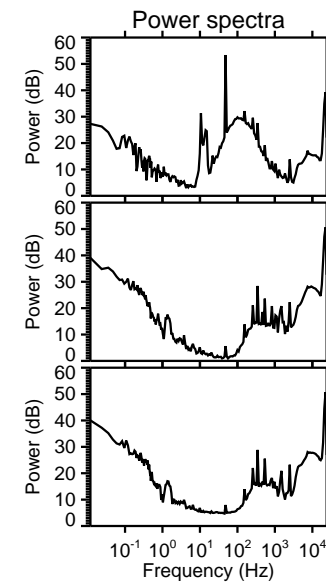
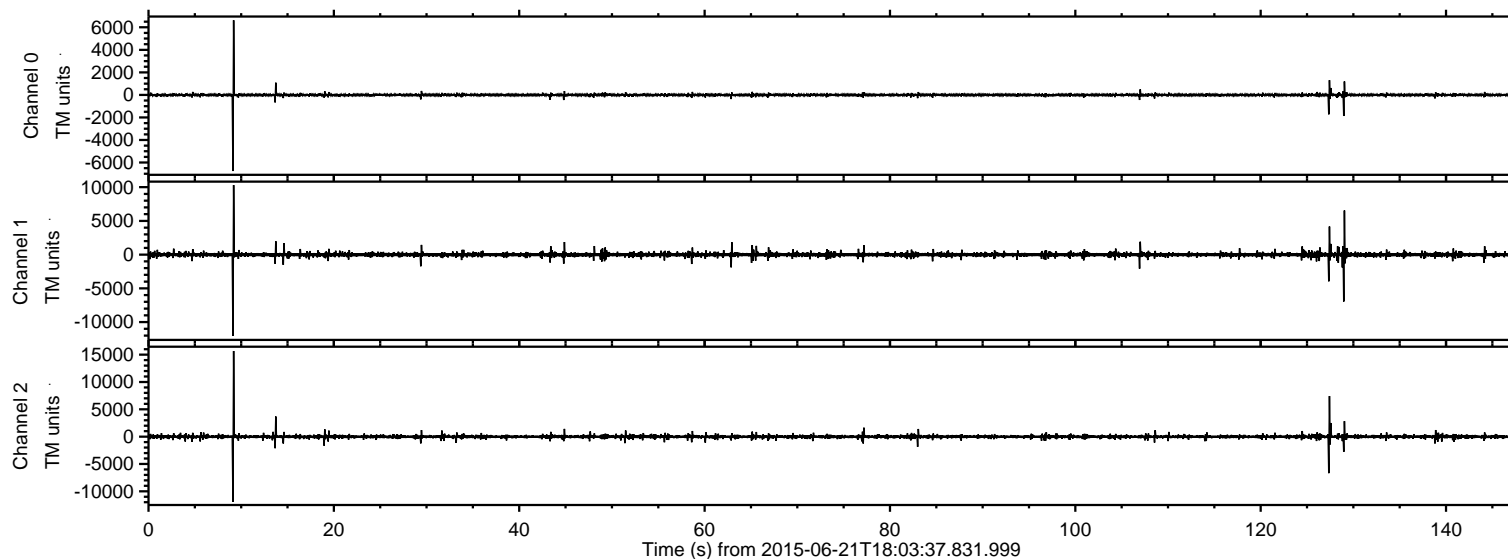
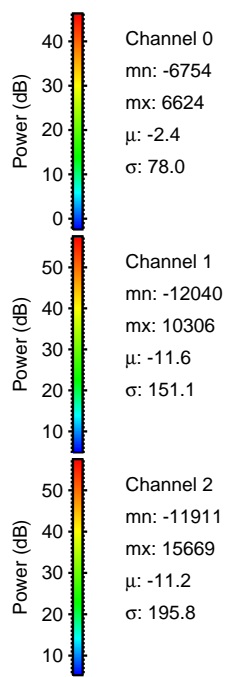
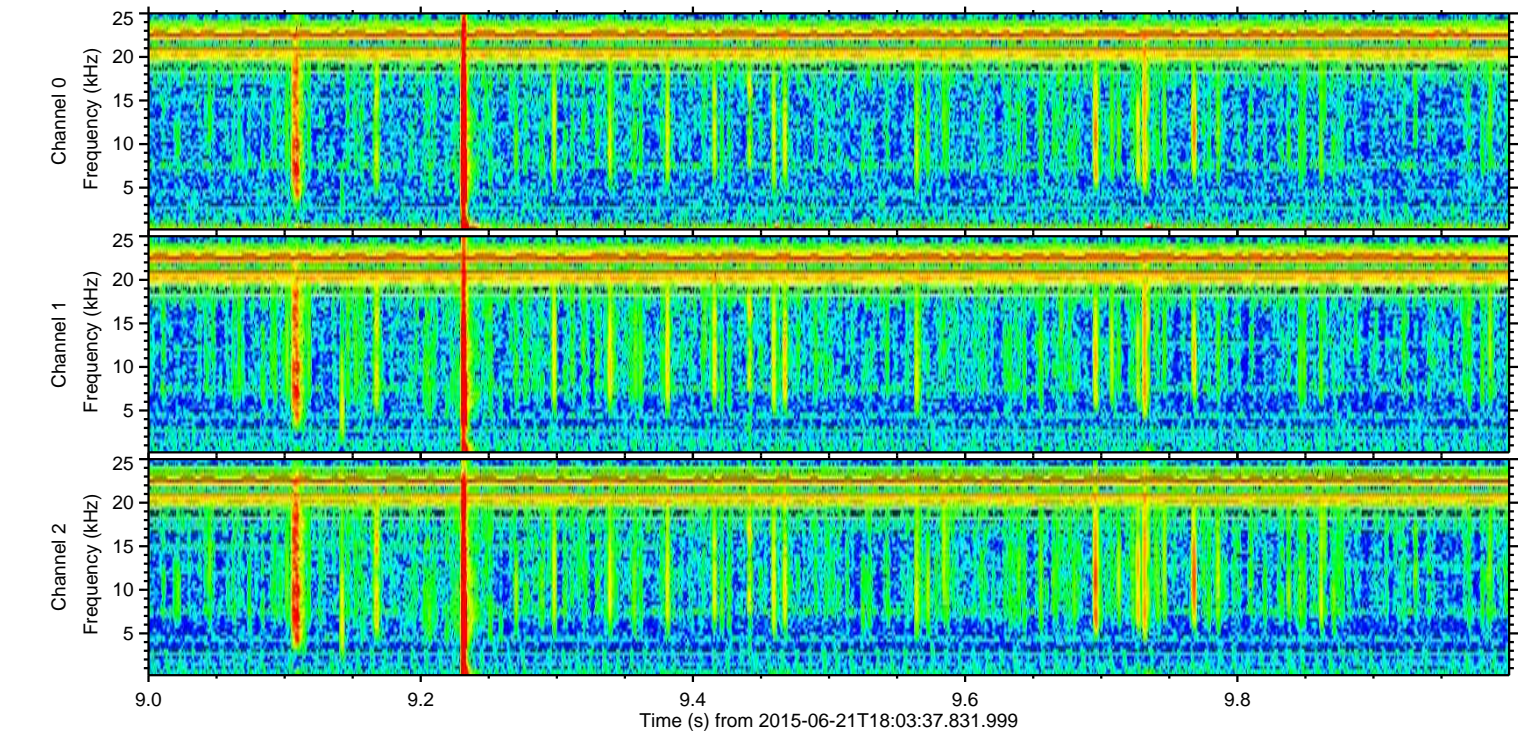
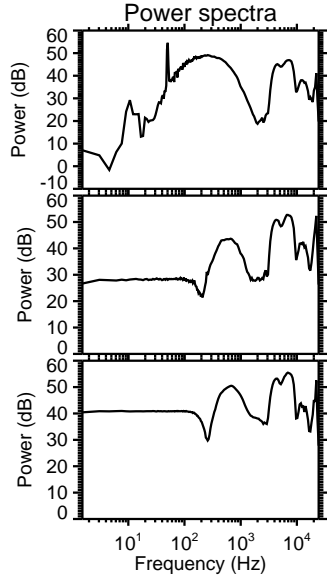
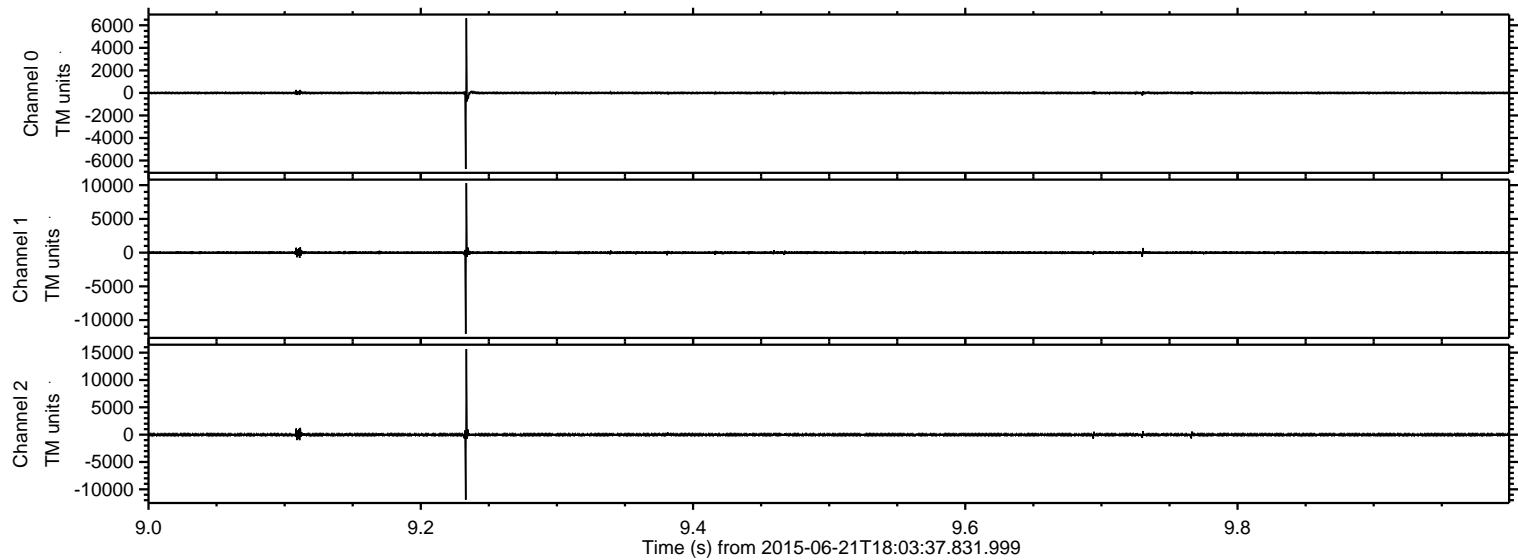


ELMAVAN 3D WAVEFORMS (Measured data sampled at 50 kHz) 51000 packets of 144 samples from 2015-06-21T18:03:37.831.999.

Processed Sun Jun 21 20:09:33 2015 by ELM ver.2012-10-06 from 001__elm20150621_180336__dat00.bin

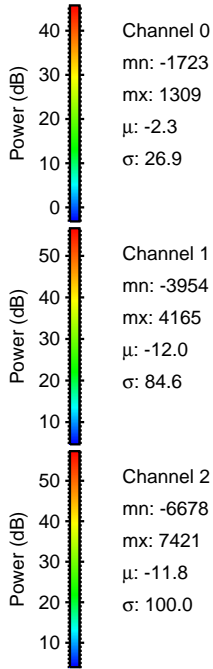
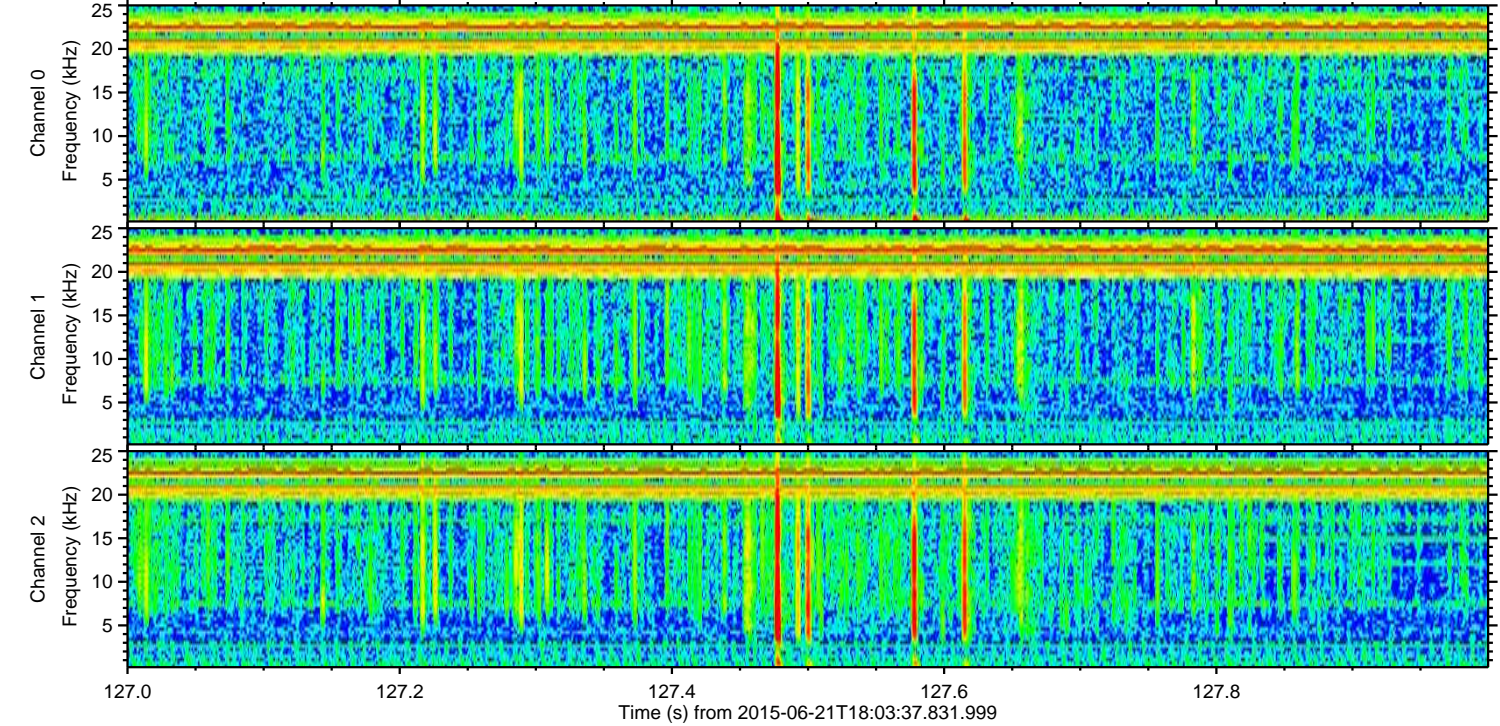
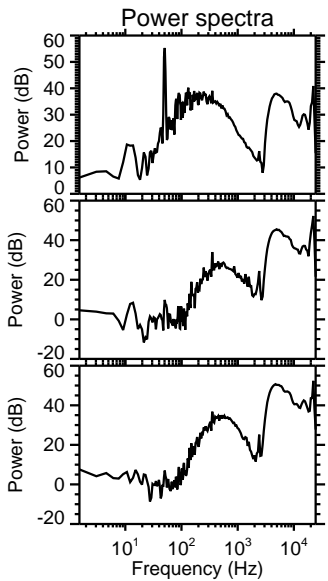
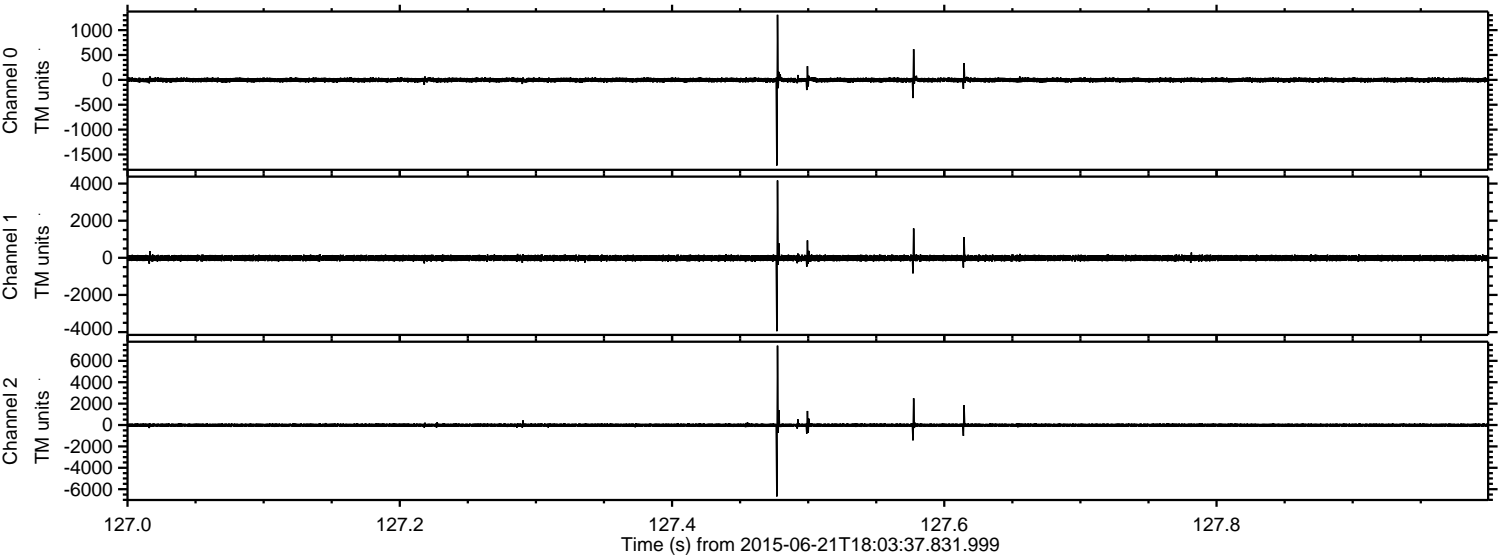


Processed Sun Jun 21 20:09:48 2015 by ELM ver.2012-10-06 from 001__elm20150621_180336__dat00.bin



ELMAVAN 3D WAVEFORMS (Measured data sampled at 50 kHz) 51000 packets of 144 samples from 2015-06-21T18:03:37.831.999. Part 128/147

Processed Sun Jun 21 20:09:49 2015 by ELM ver.2012-10-06 from 001__elm20150621_180336__dat00.bin



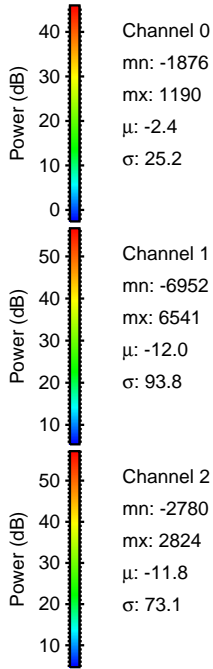
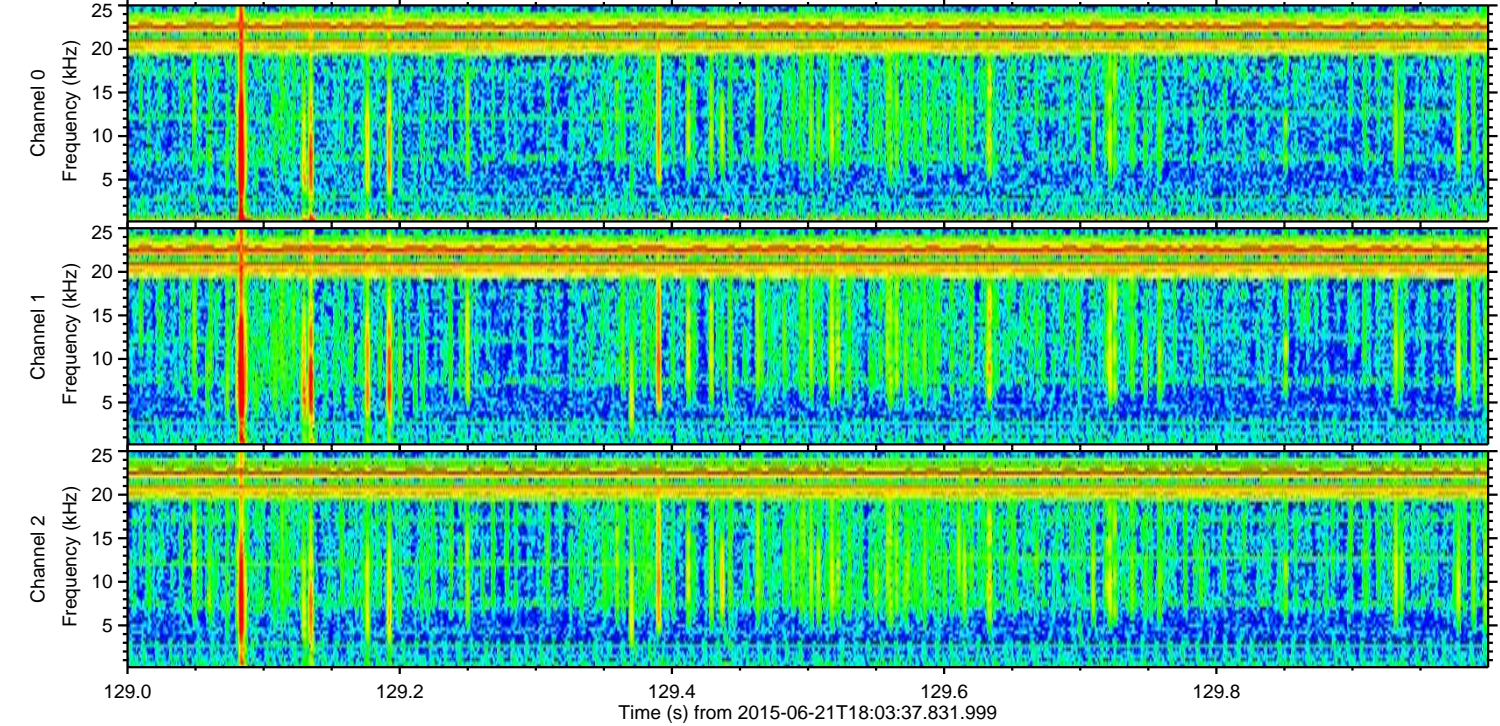
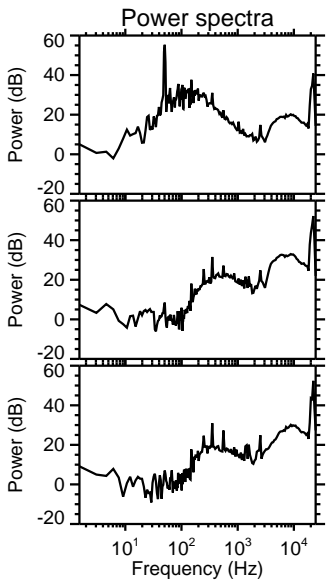
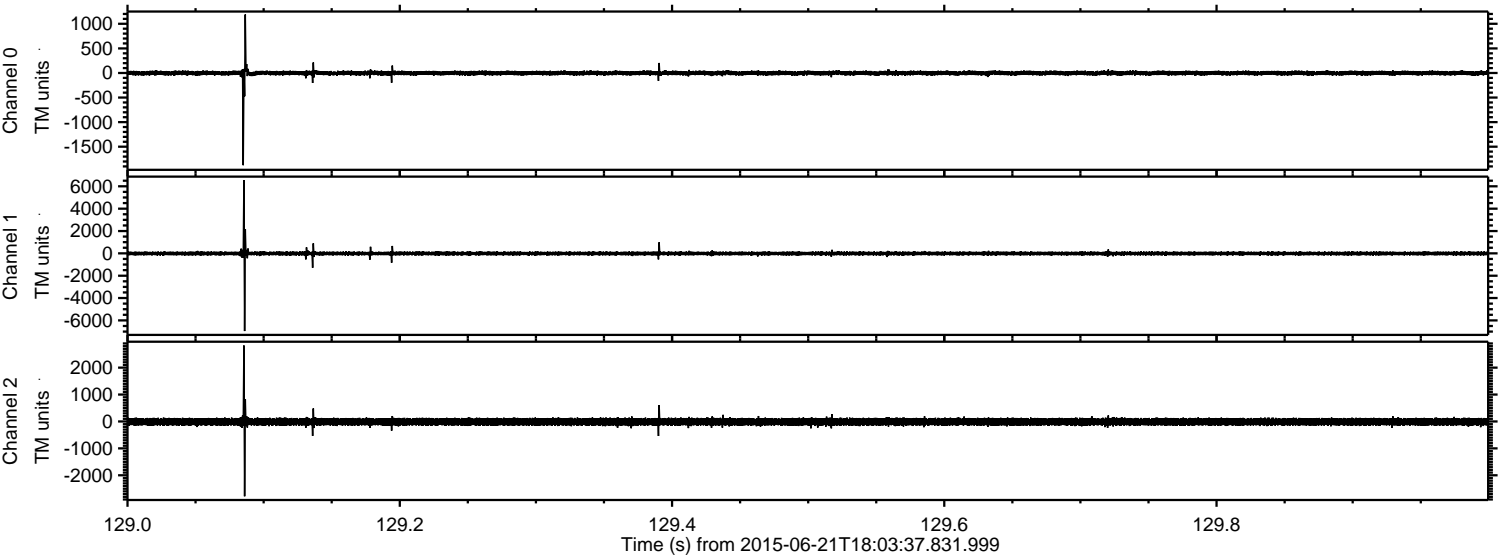
Channel 0
mn: -1723
mx: 1309
 μ : -2.3
 σ : 26.9

Channel 1
mn: -3954
mx: 4165
 μ : -12.0
 σ : 84.6

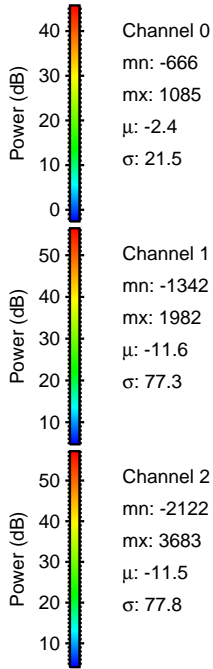
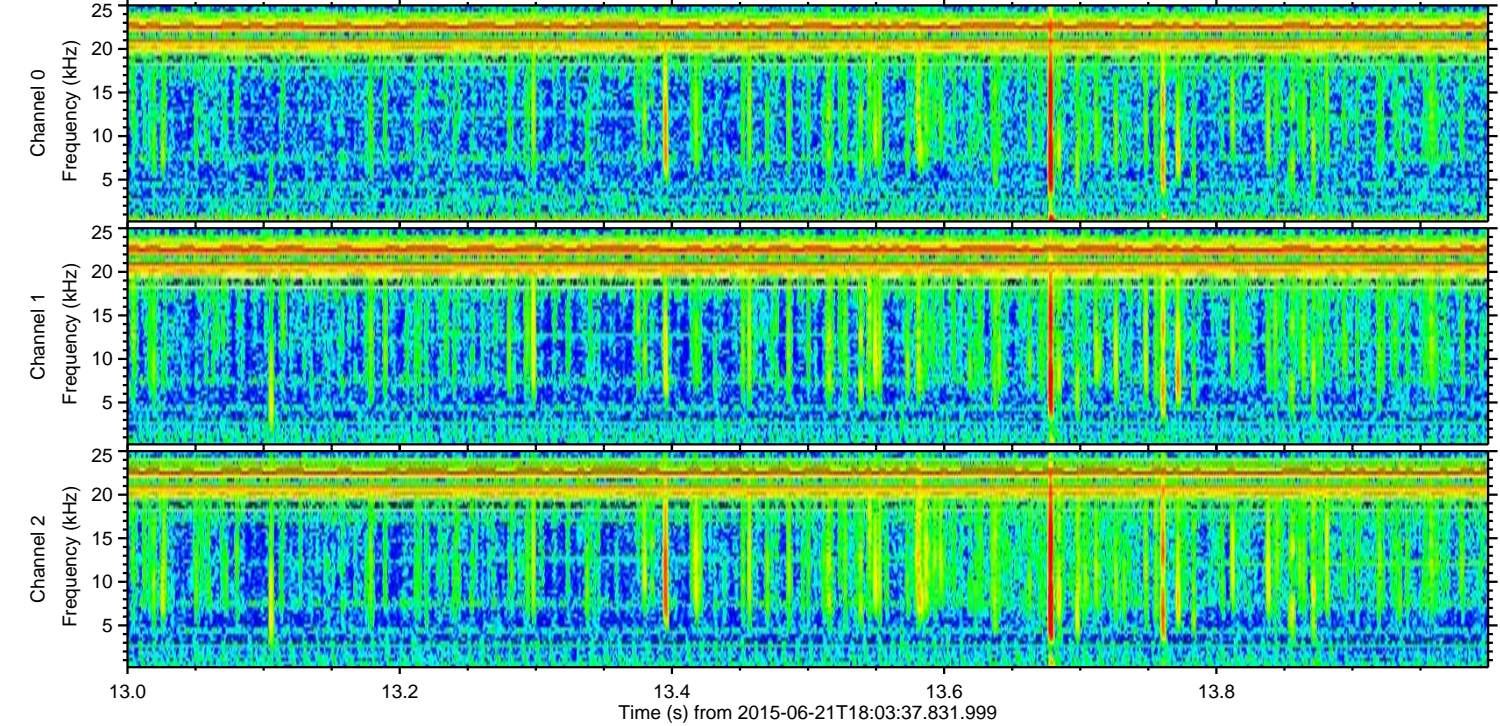
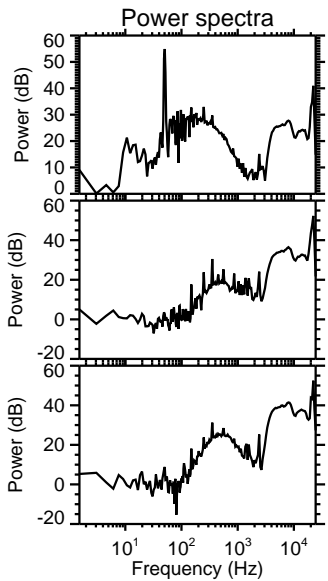
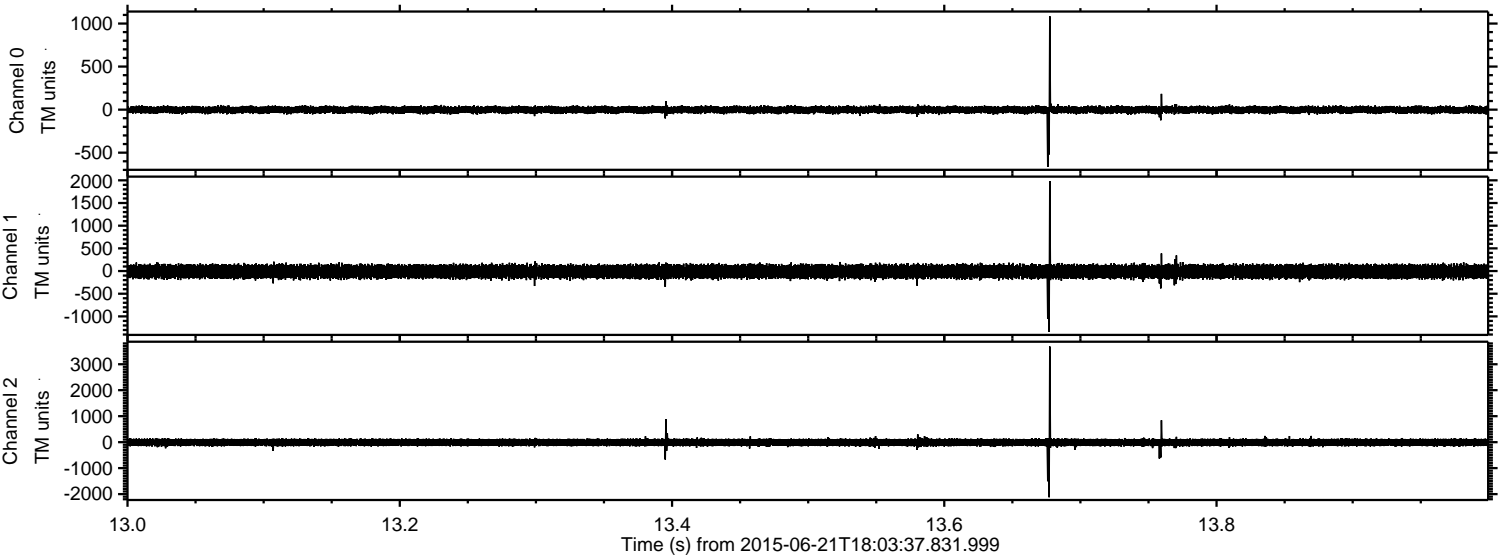
Channel 2
mn: -6678
mx: 7421
 μ : -11.8
 σ : 100.0

ELMAVAN 3D WAVEFORMS (Measured data sampled at 50 kHz) 51000 packets of 144 samples from 2015-06-21T18:03:37.831.999. Part 130/147

Processed Sun Jun 21 20:09:50 2015 by ELM ver.2012-10-06 from 001__elm20150621_180336__dat00.bin

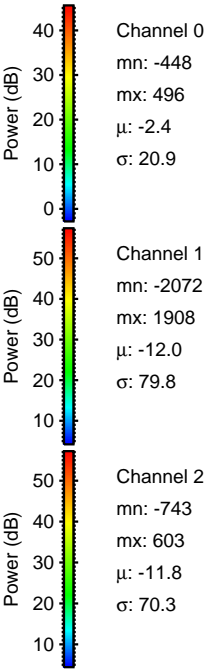
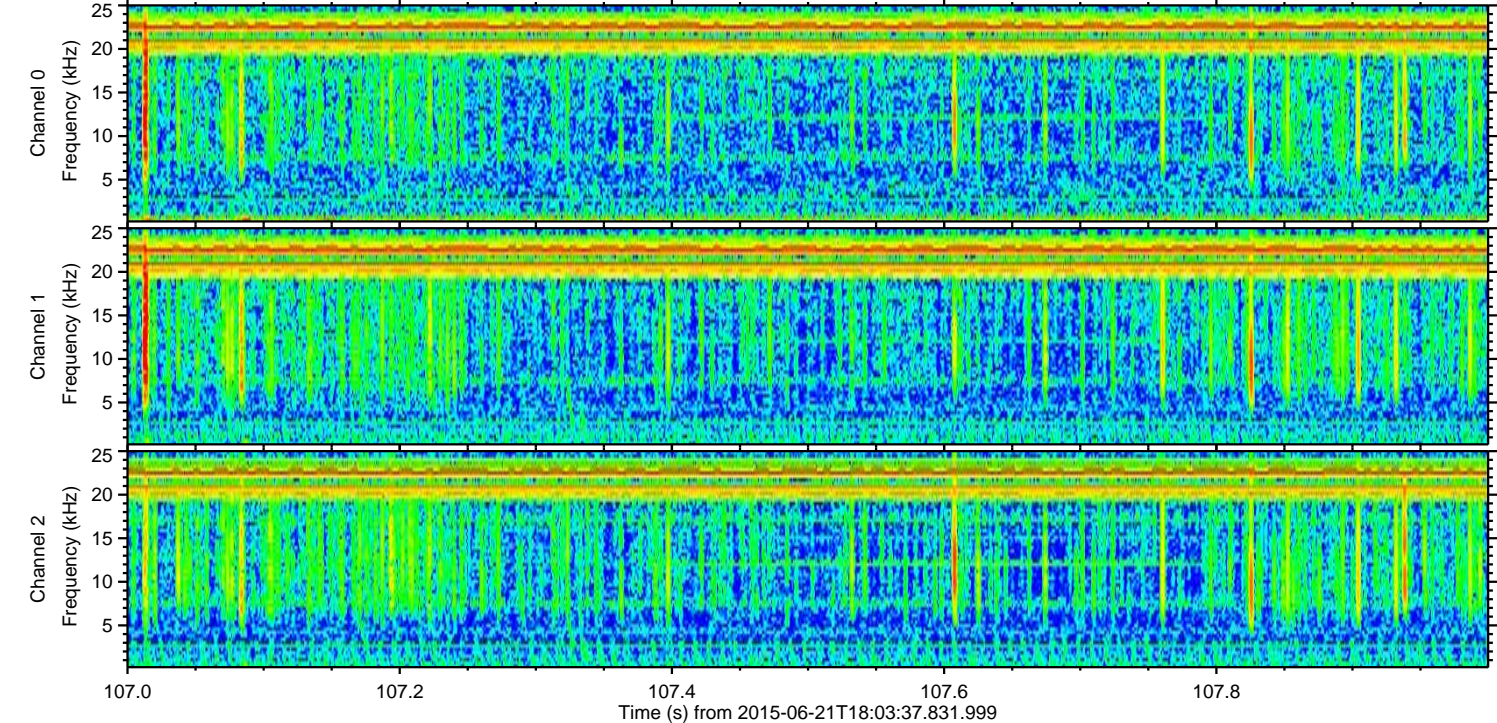
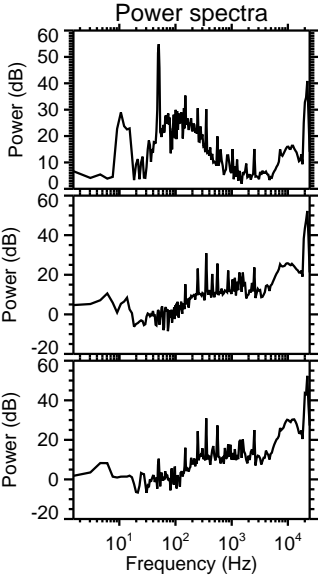
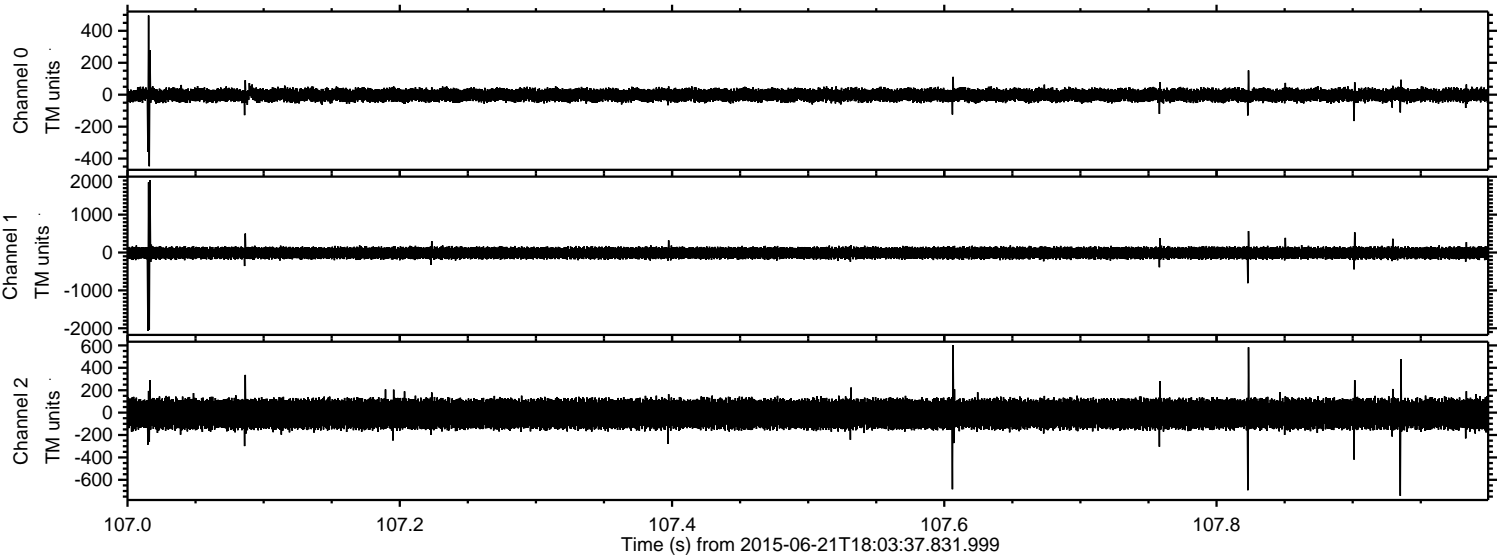


Processed Sun Jun 21 20:09:51 2015 by ELM ver.2012-10-06 from 001__elm20150621_180336__dat00.bin



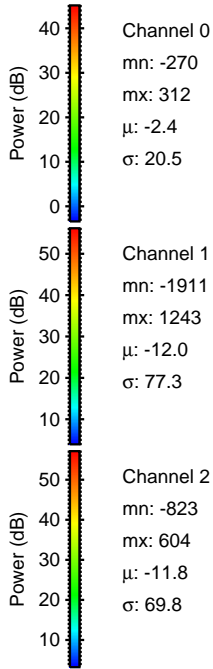
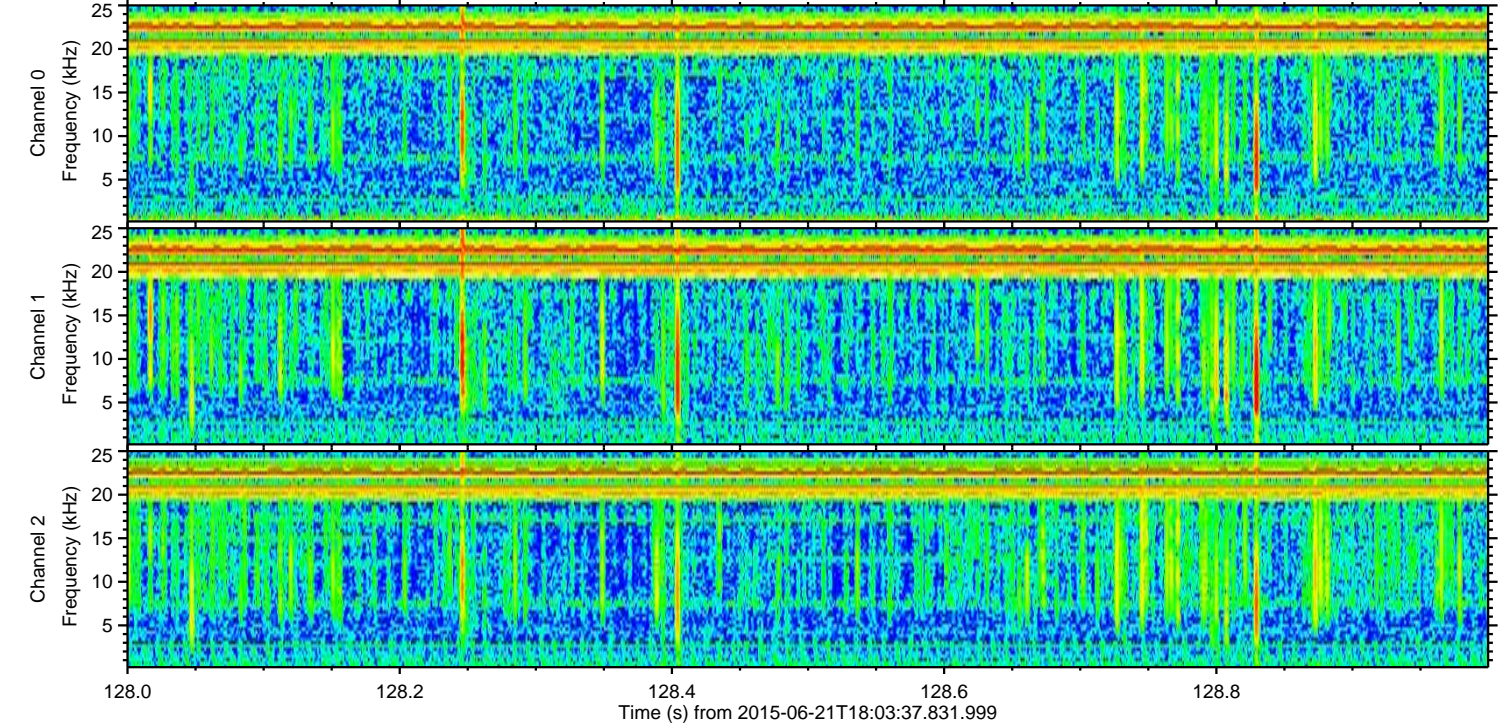
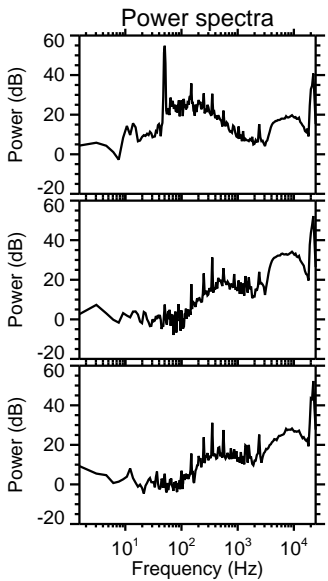
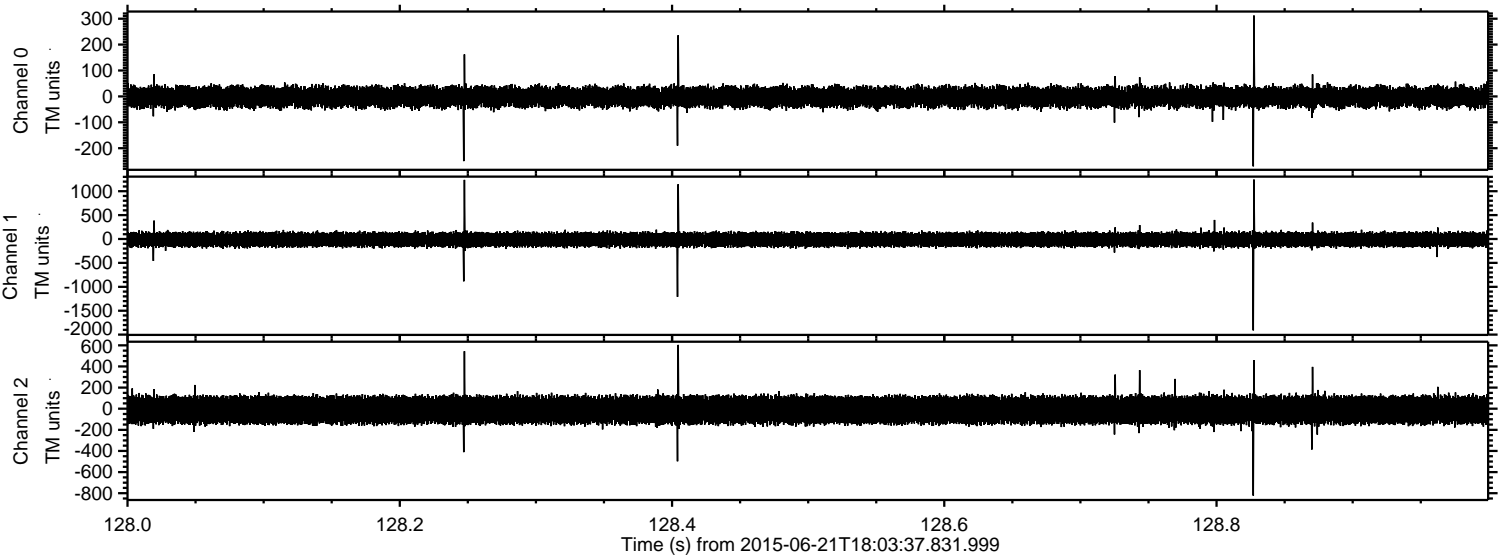
ELMAVAN 3D WAVEFORMS (Measured data sampled at 50 kHz) 51000 packets of 144 samples from 2015-06-21T18:03:37.831.999. Part 108/147

Processed Sun Jun 21 20:09:52 2015 by ELM ver.2012-10-06 from 001__elm20150621_180336__dat00.bin

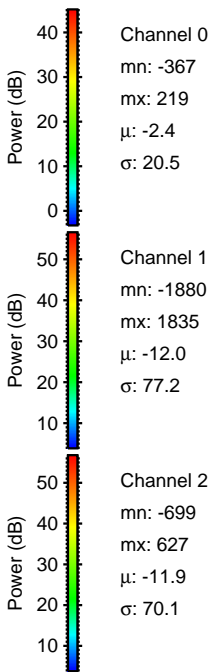
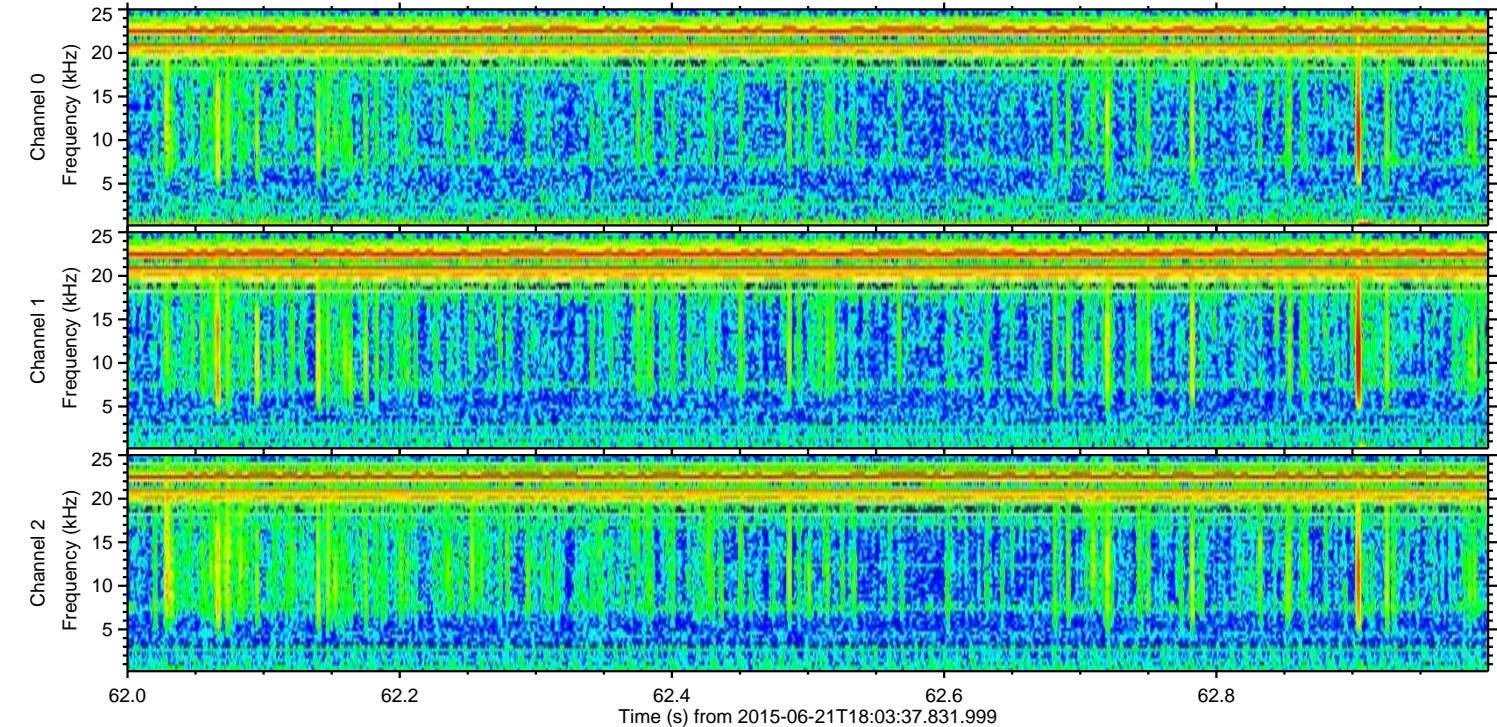
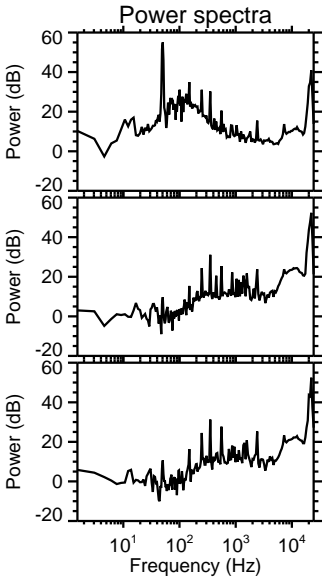
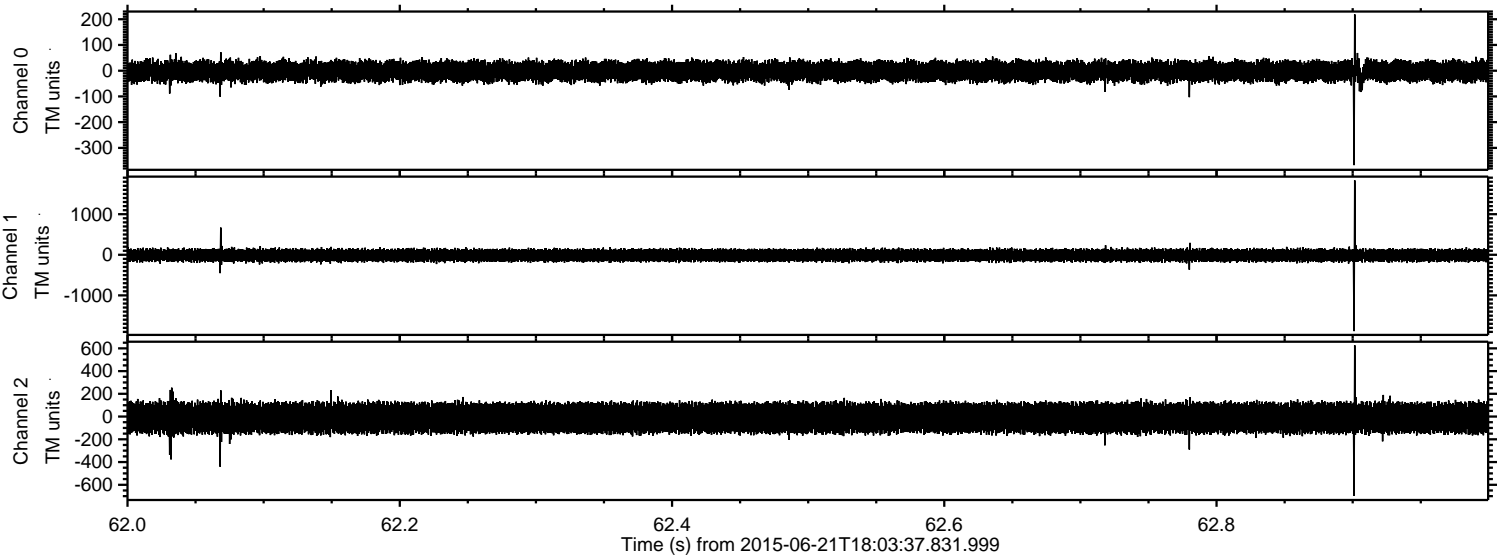


ELMAVAN 3D WAVEFORMS (Measured data sampled at 50 kHz) 51000 packets of 144 samples from 2015-06-21T18:03:37.831.999. Part 129/147

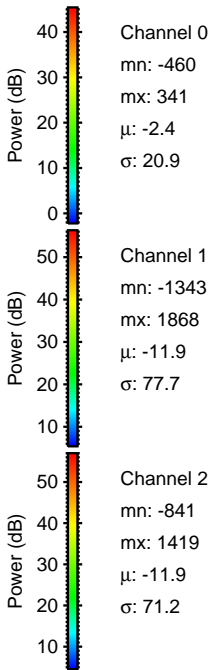
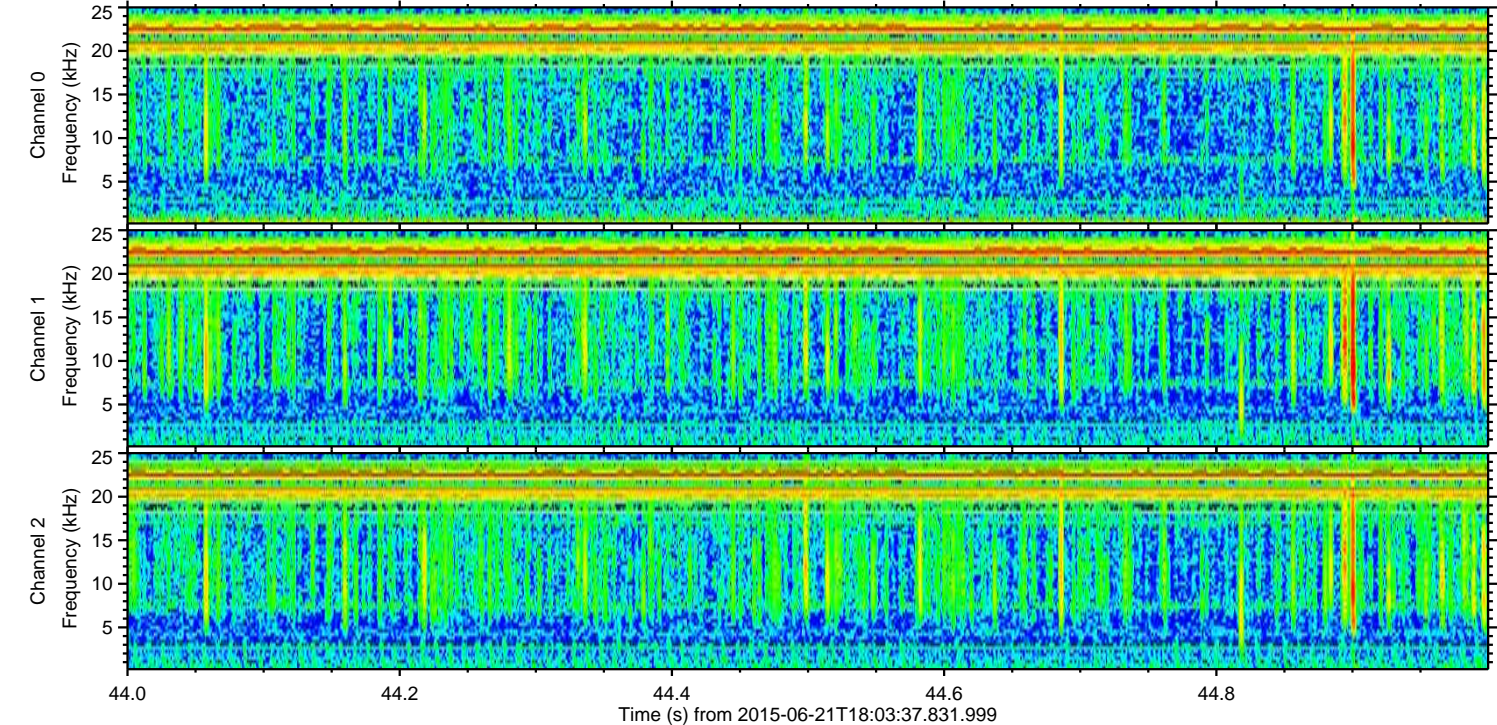
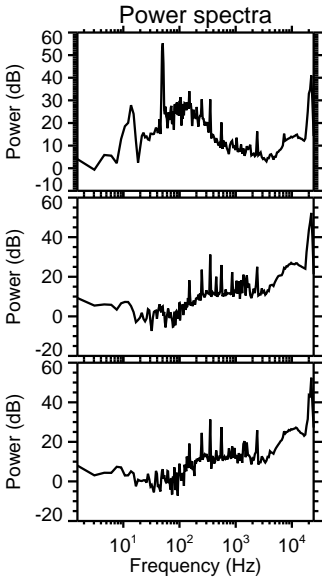
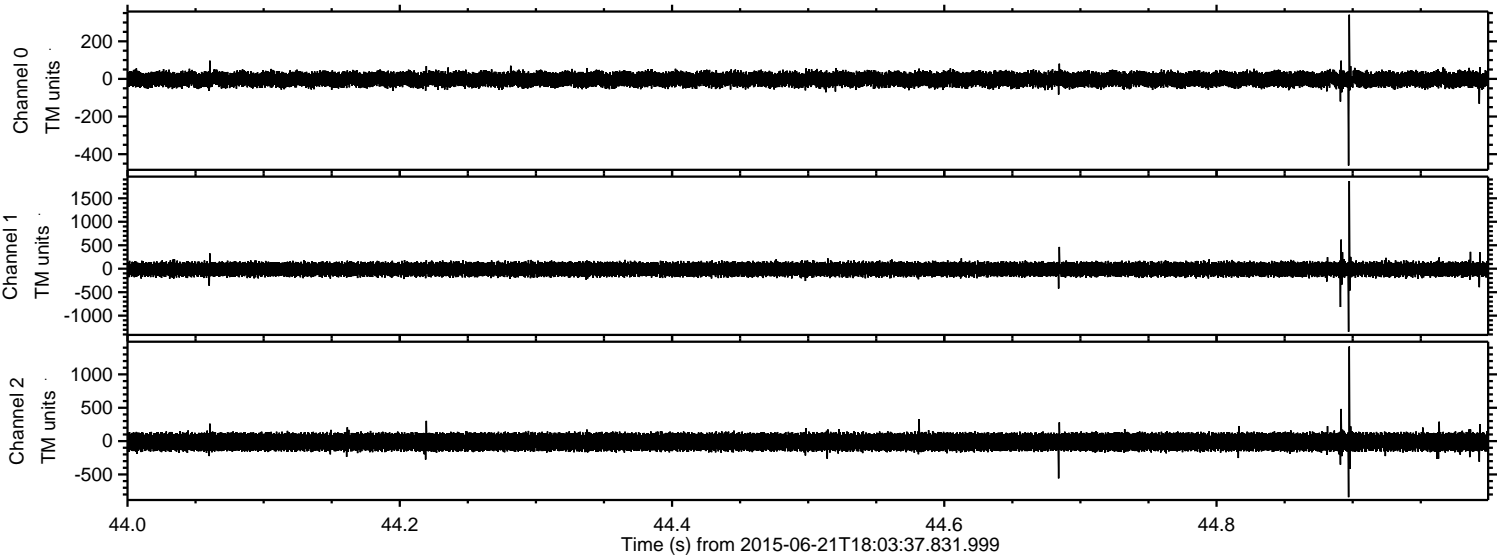
Processed Sun Jun 21 20:09:53 2015 by ELM ver.2012-10-06 from 001__elm20150621_180336__dat00.bin



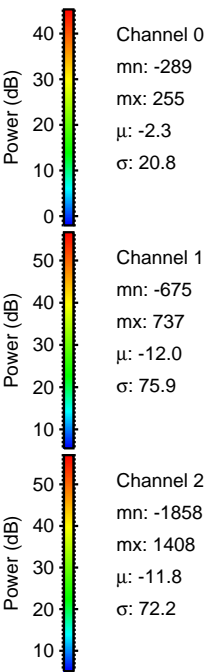
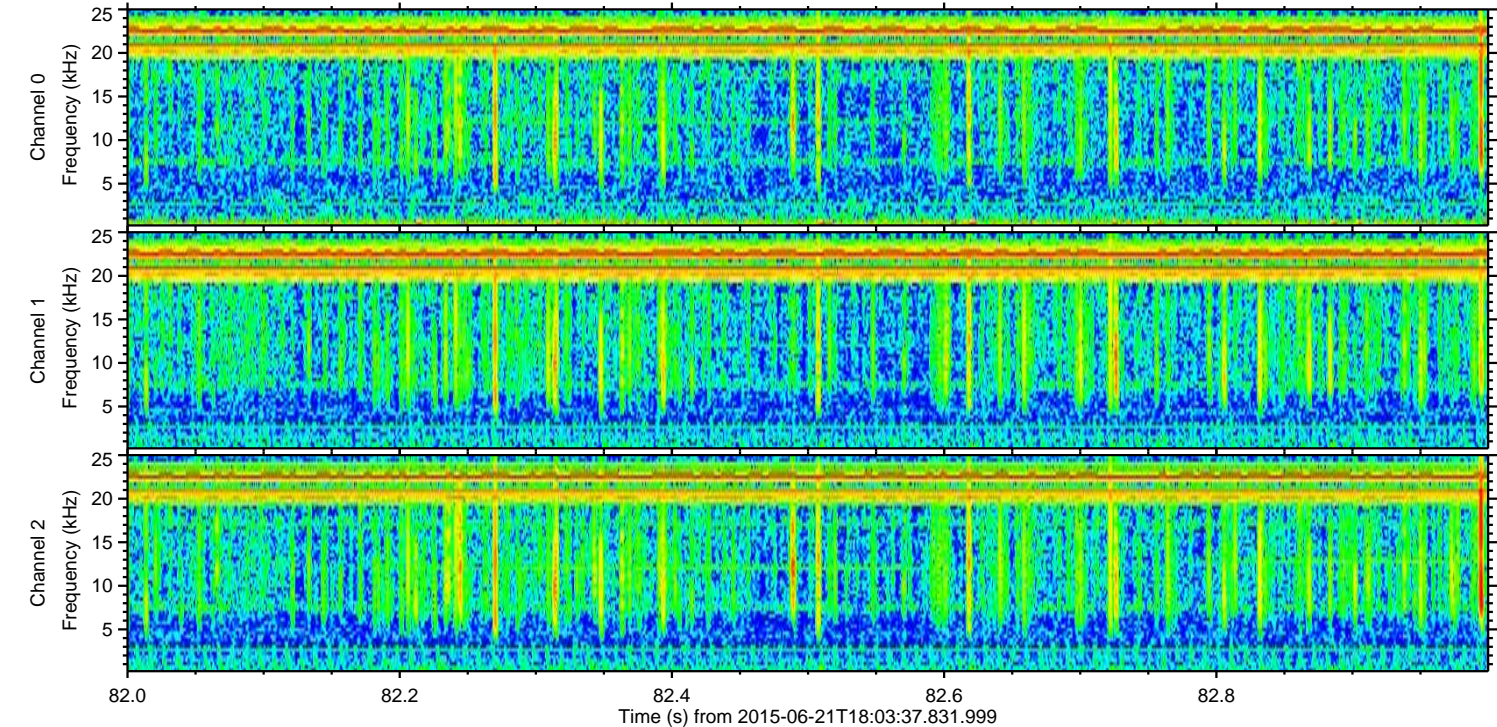
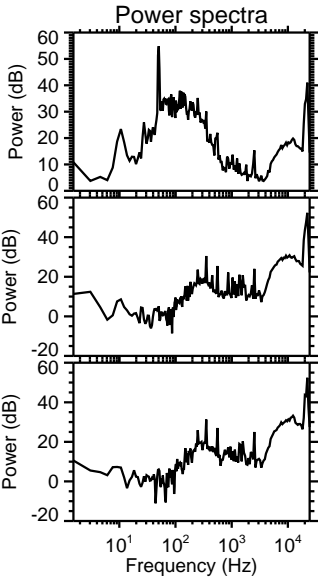
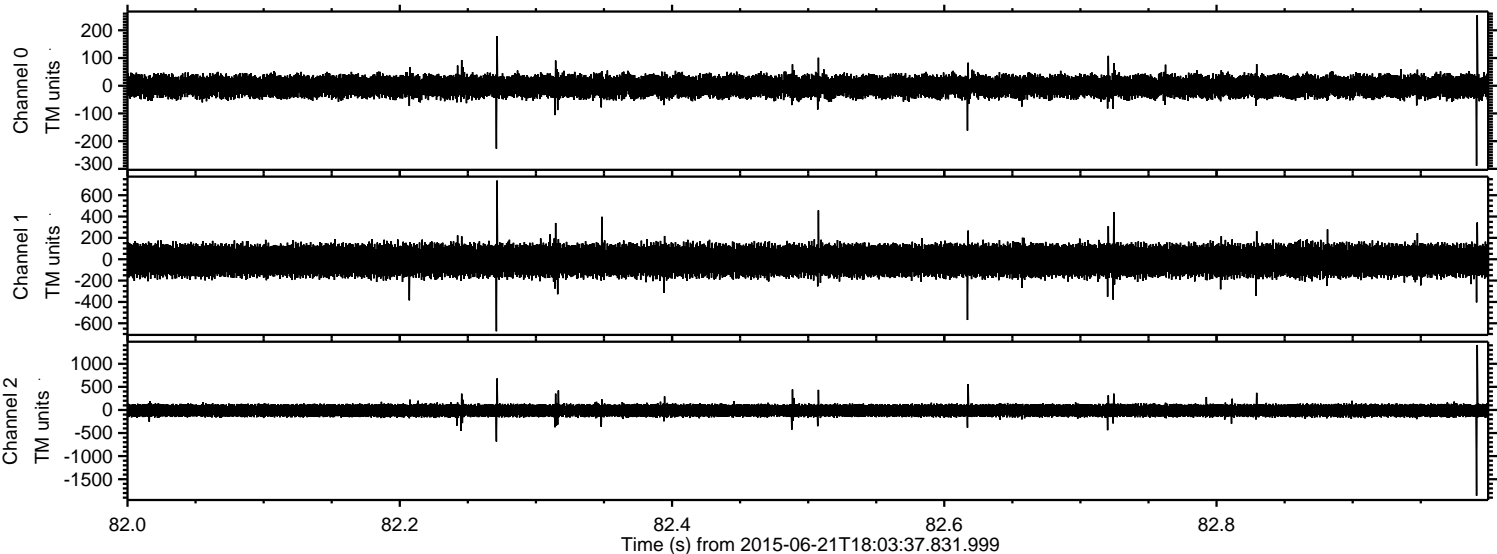
Processed Sun Jun 21 20:09:54 2015 by ELM ver.2012-10-06 from 001__elm20150621_180336__dat00.bin



Processed Sun Jun 21 20:09:55 2015 by ELM ver.2012-10-06 from 001__elm20150621_180336__dat00.bin



Processed Sun Jun 21 20:09:56 2015 by ELM ver.2012-10-06 from 001__elm20150621_180336__dat00.bin



Processed Sun Jun 21 20:09:57 2015 by ELM ver.2012-10-06 from 001__elm20150621_180336__dat00.bin

