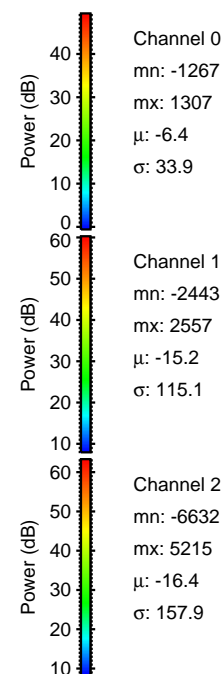
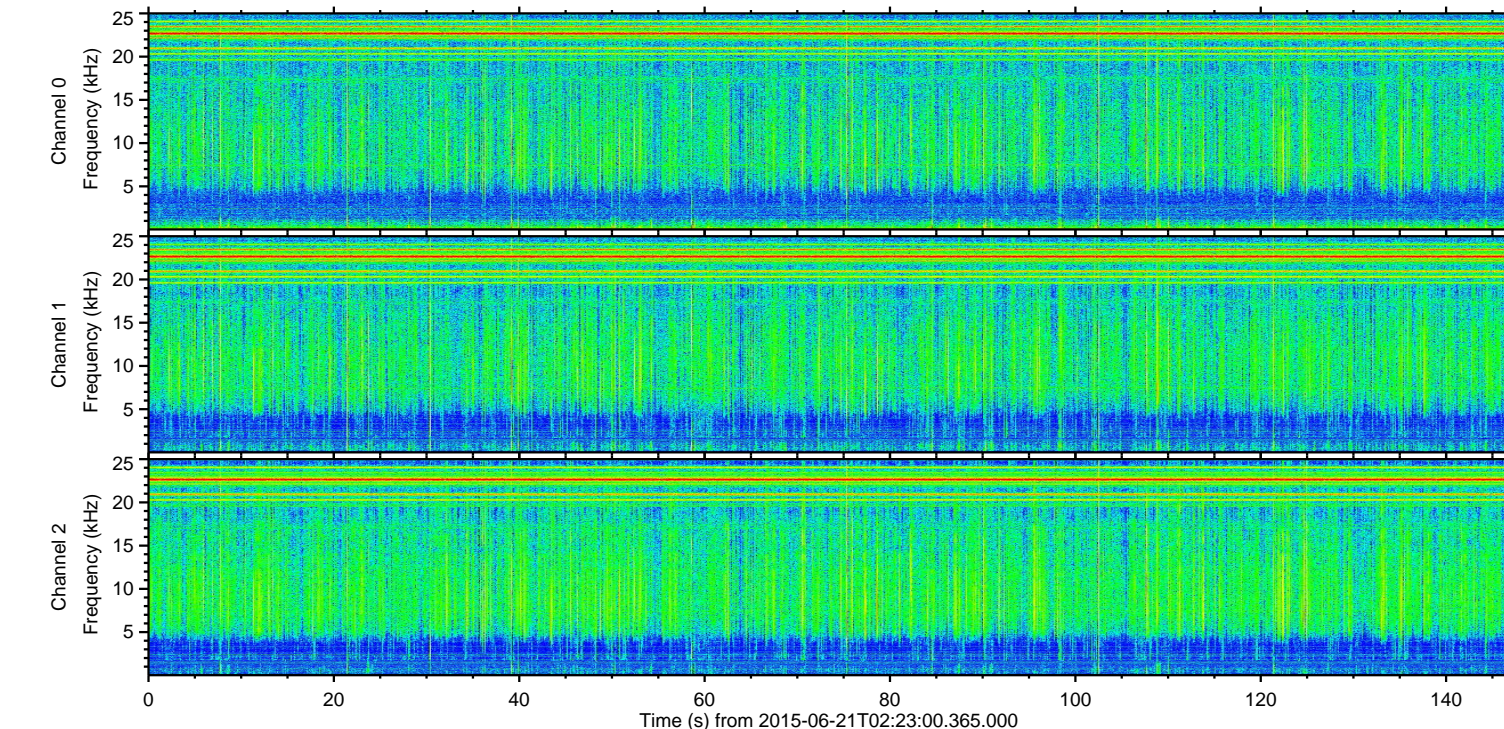
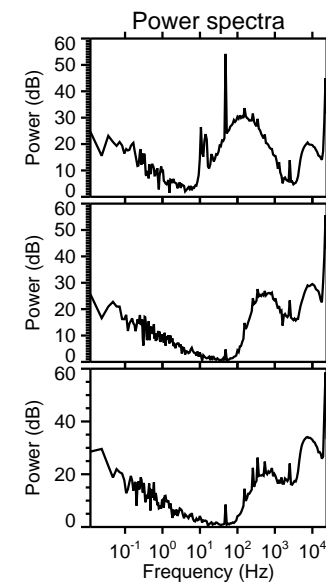
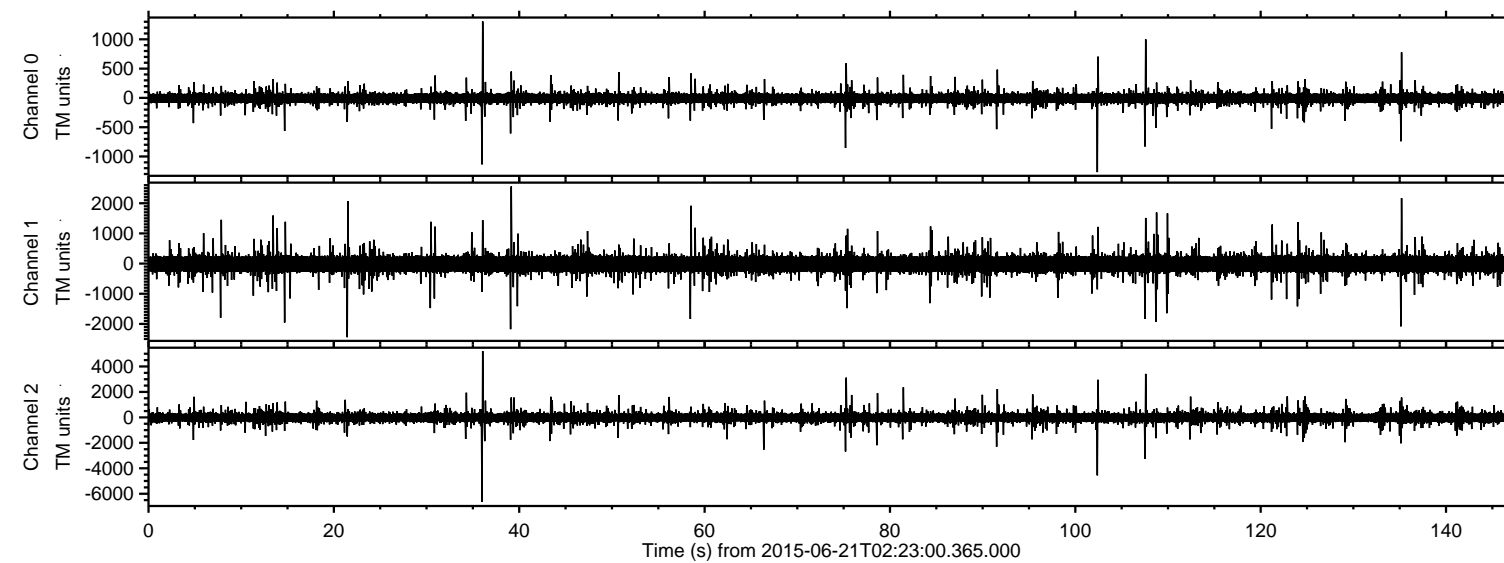
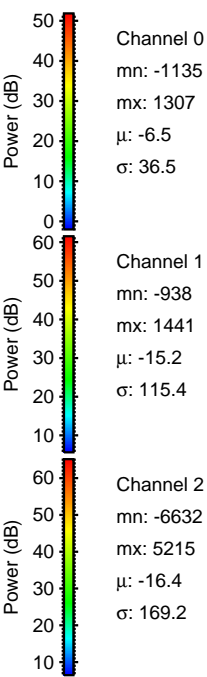
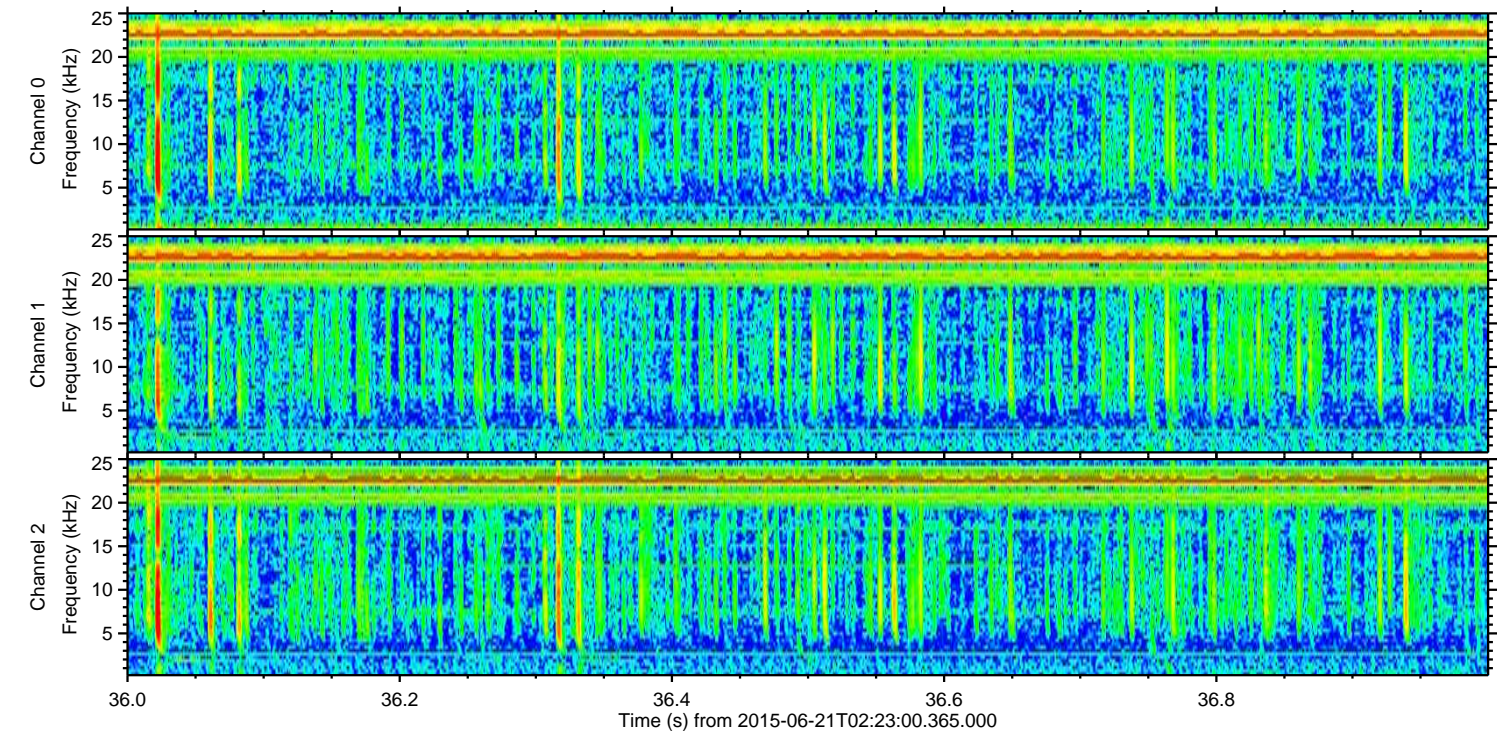
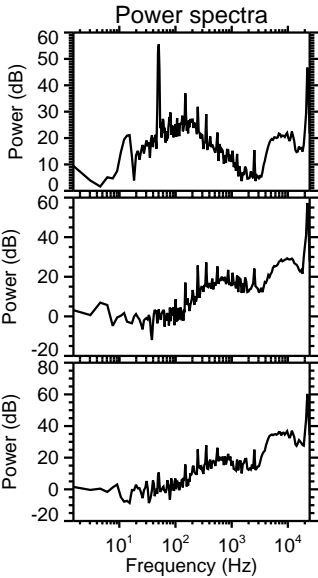
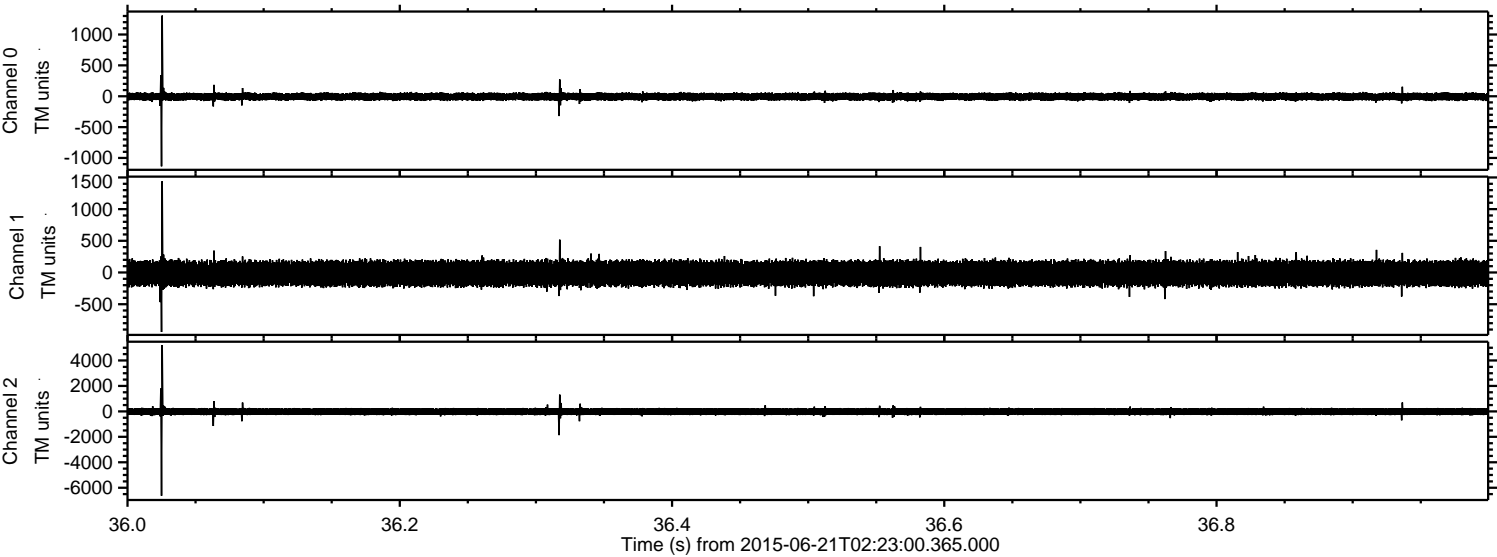


ELMAVAN 3D WAVEFORMS (Measured data sampled at 50 kHz) 51000 packets of 144 samples from 2015-06-21T02:23:00.365.000.

Processed Sun Jun 21 04:31:22 2015 by ELM ver.2012-10-06 from 001__elm20150621_022259__dat00.bin

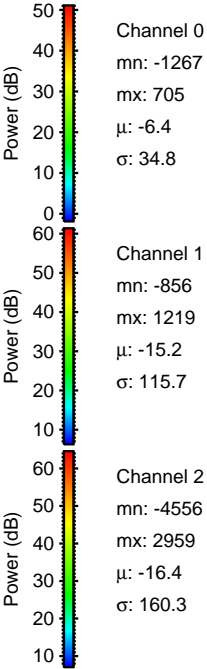
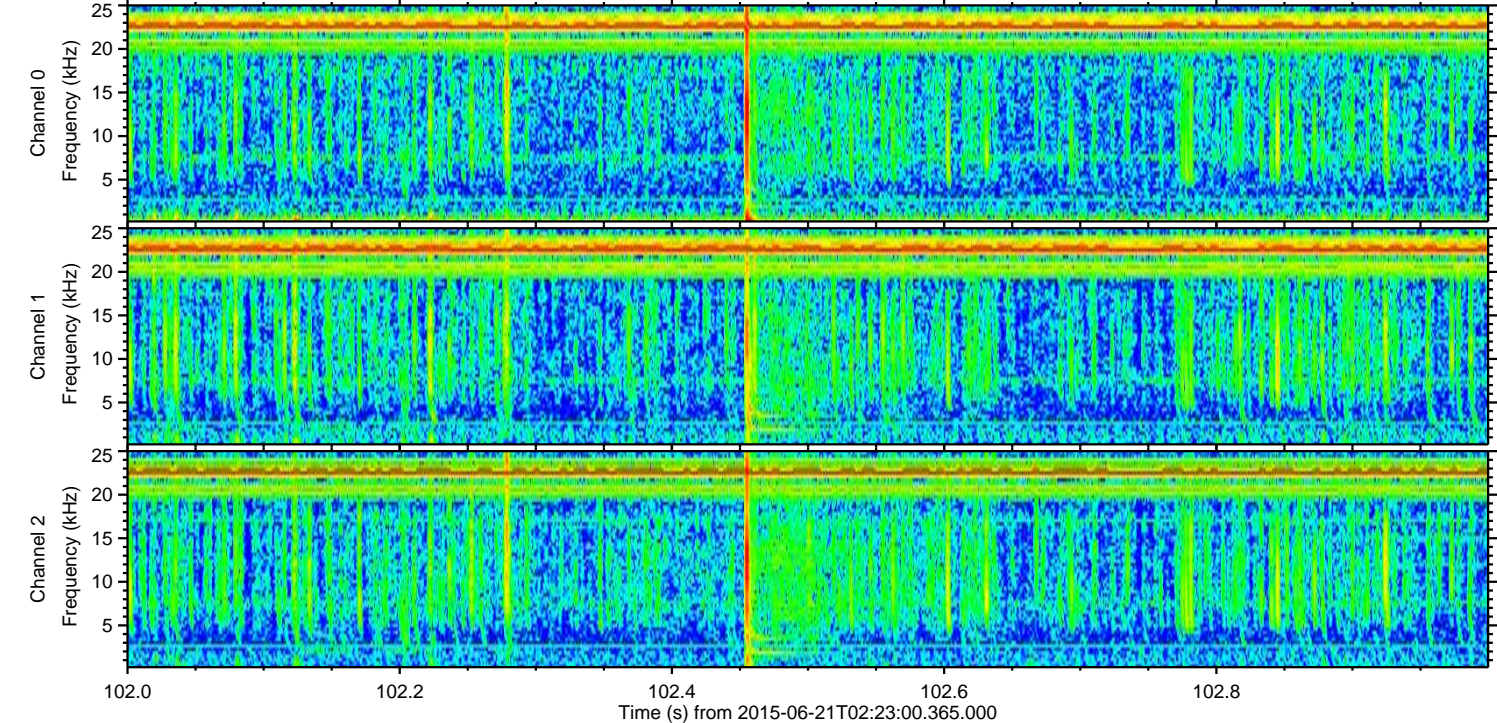
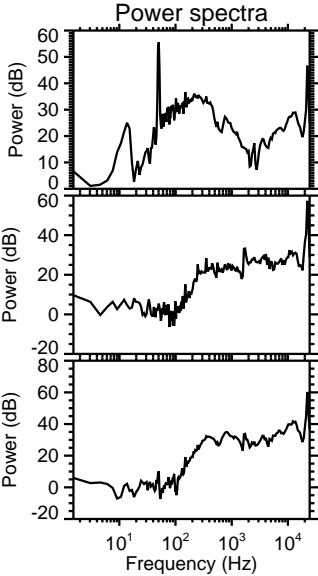
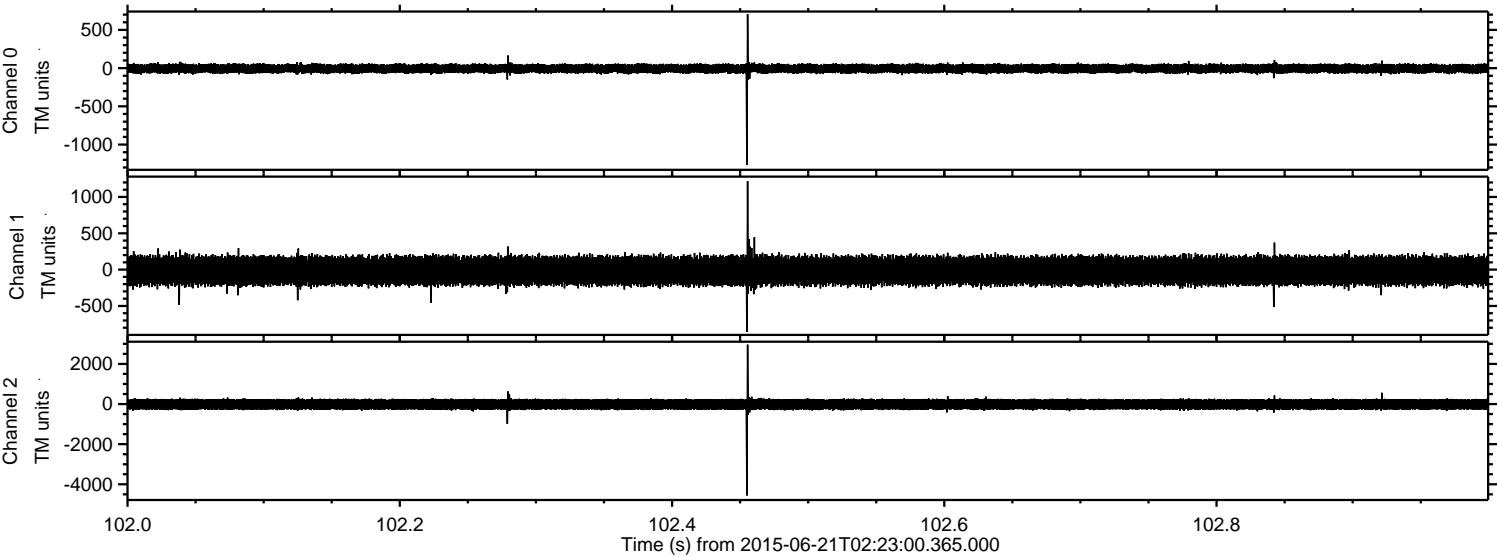


Processed Sun Jun 21 04:31:42 2015 by ELM ver.2012-10-06 from 001__elm20150621_022259__dat00.bin



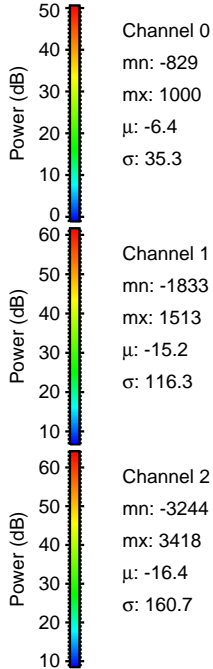
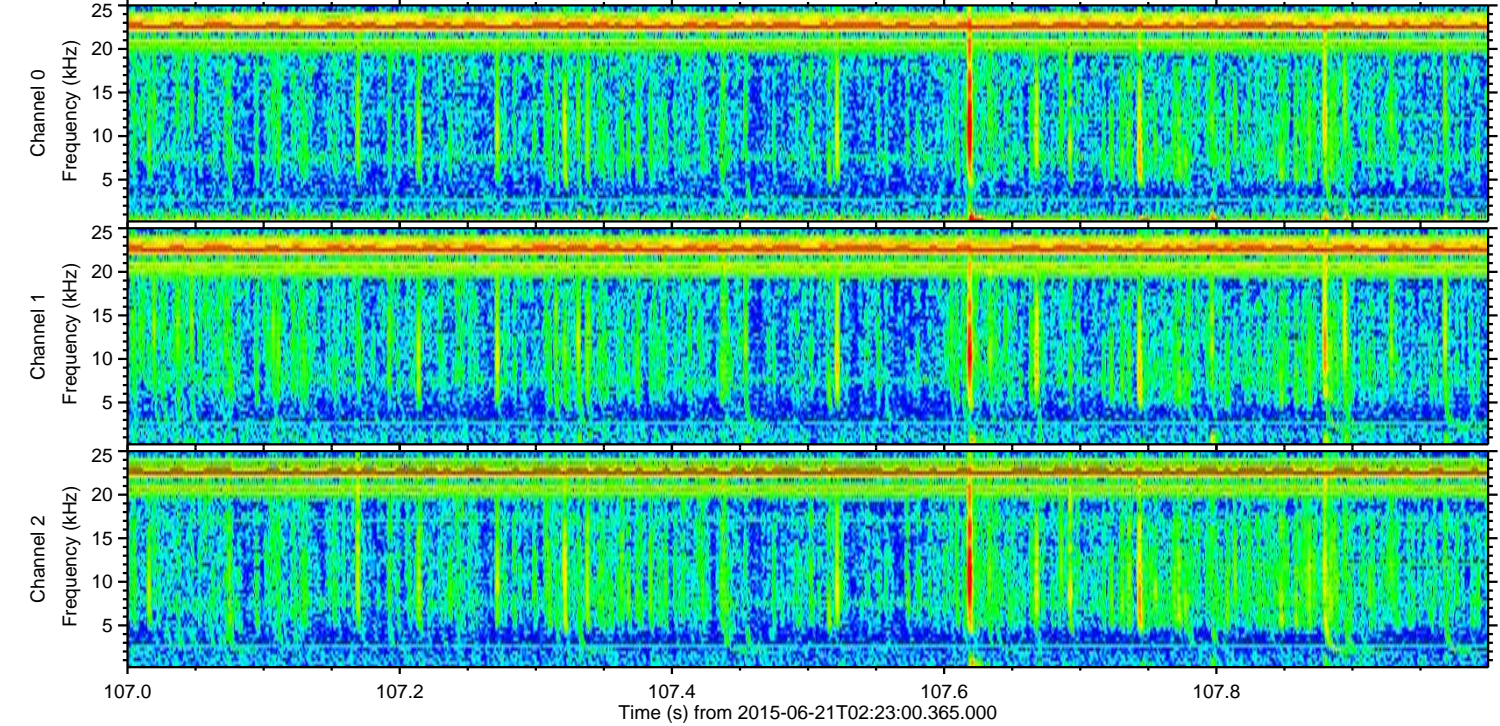
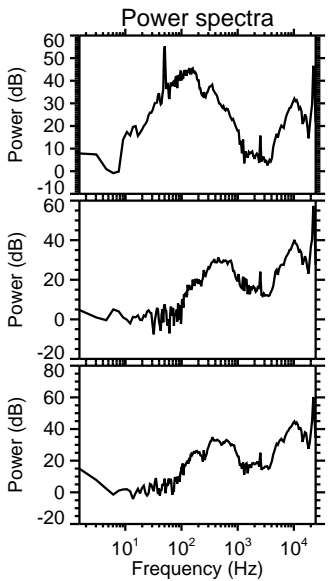
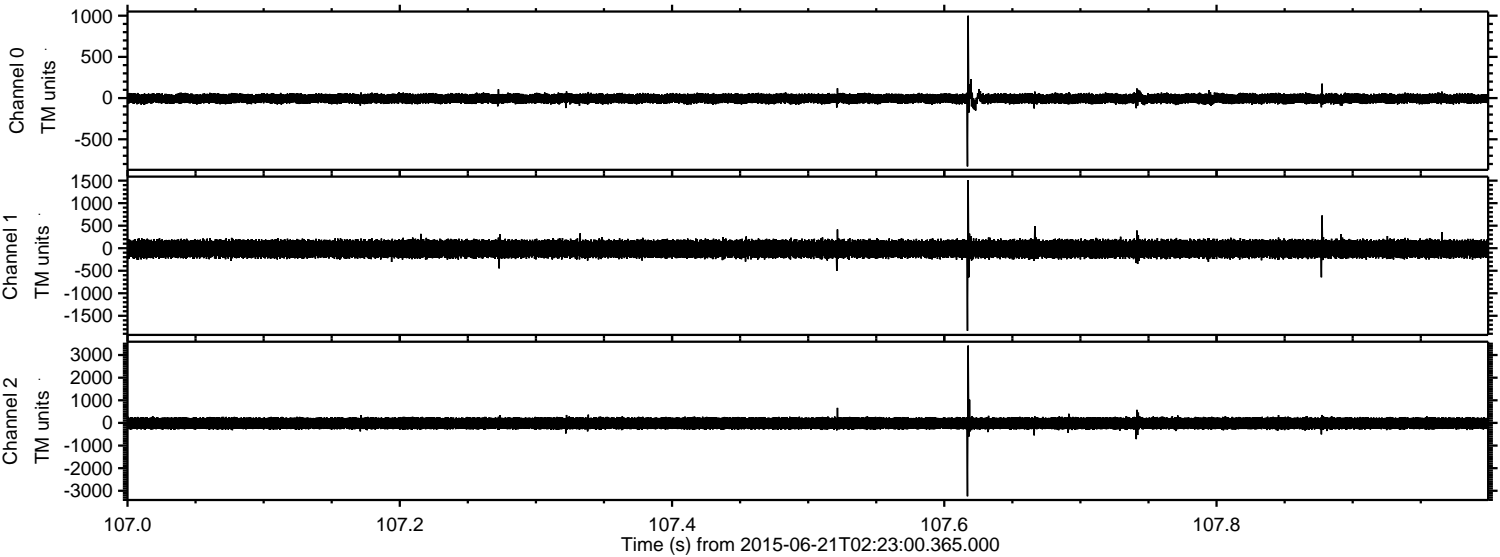
ELMAVAN 3D WAVEFORMS (Measured data sampled at 50 kHz) 51000 packets of 144 samples from 2015-06-21T02:23:00.365.000. Part 103/147

Processed Sun Jun 21 04:31:44 2015 by ELM ver.2012-10-06 from 001__elm20150621_022259__dat00.bin



ELMAVAN 3D WAVEFORMS (Measured data sampled at 50 kHz) 51000 packets of 144 samples from 2015-06-21T02:23:00.365.000. Part 108/147

Processed Sun Jun 21 04:31:45 2015 by ELM ver.2012-10-06 from 001__elm20150621_022259__dat00.bin

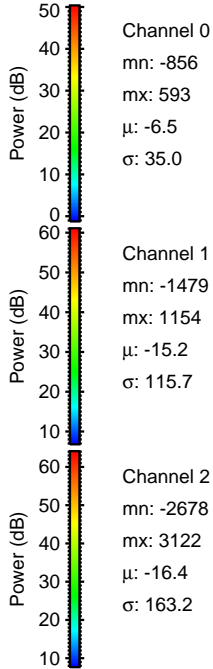
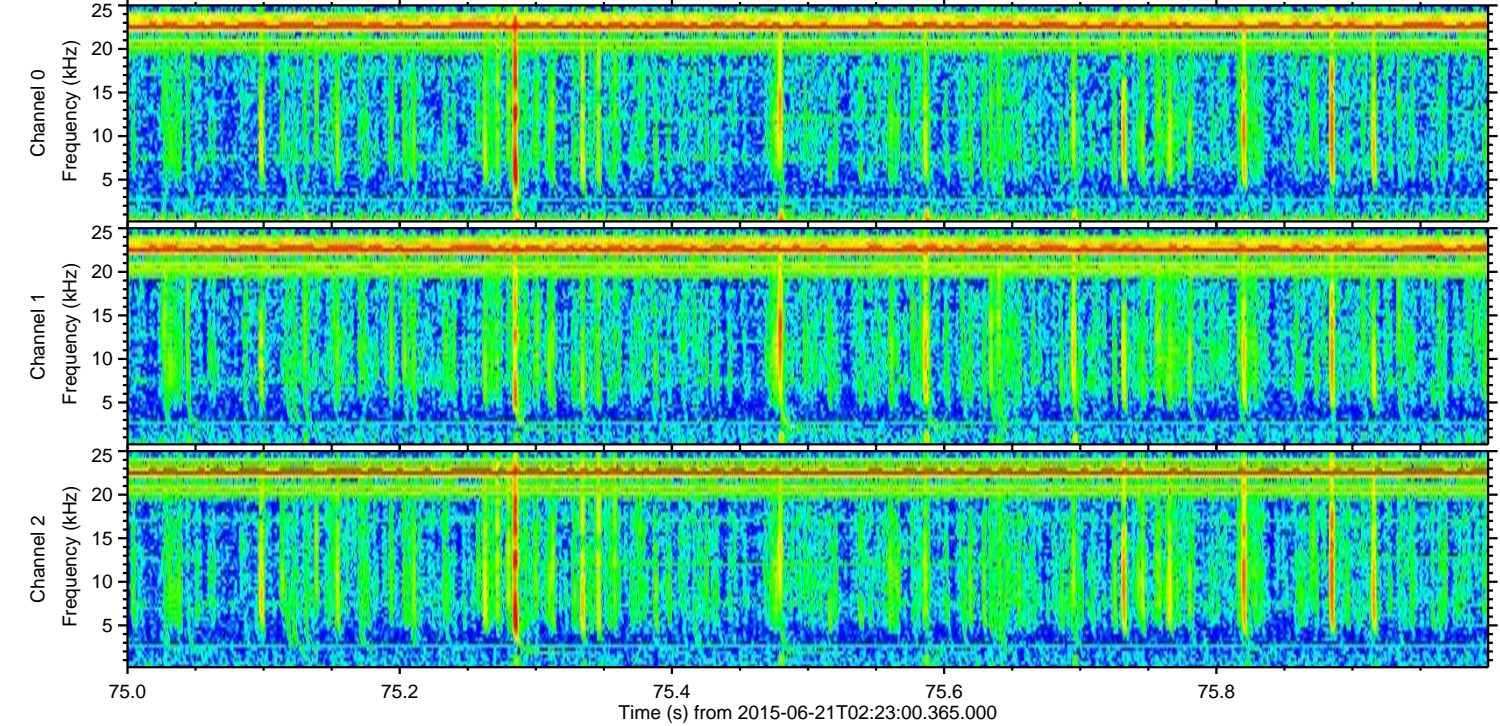
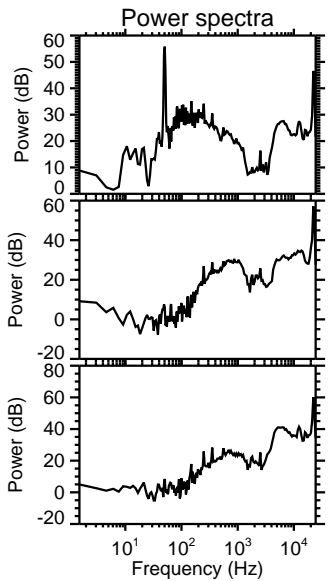
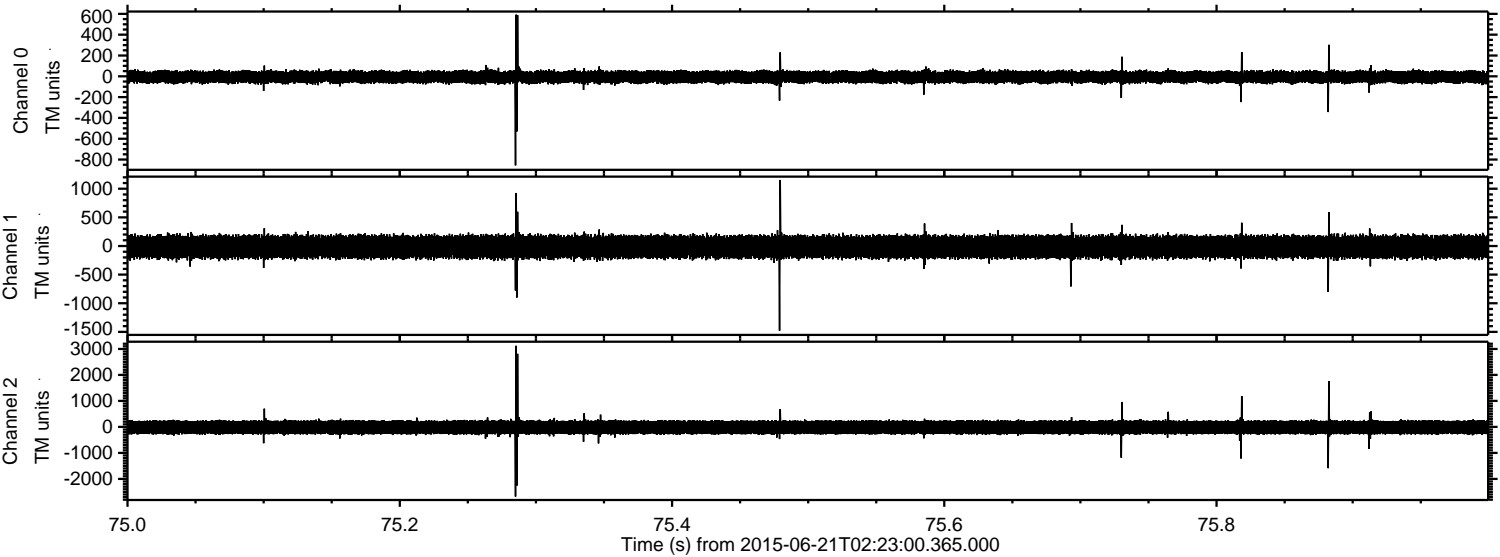


Channel 0
mn: -829
mx: 1000
 μ : -6.4
 σ : 35.3

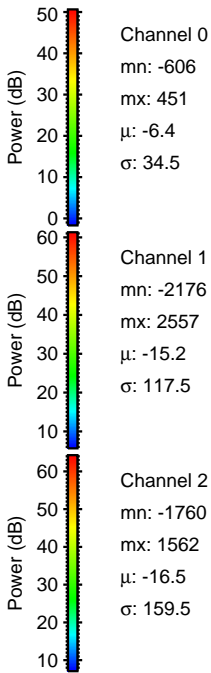
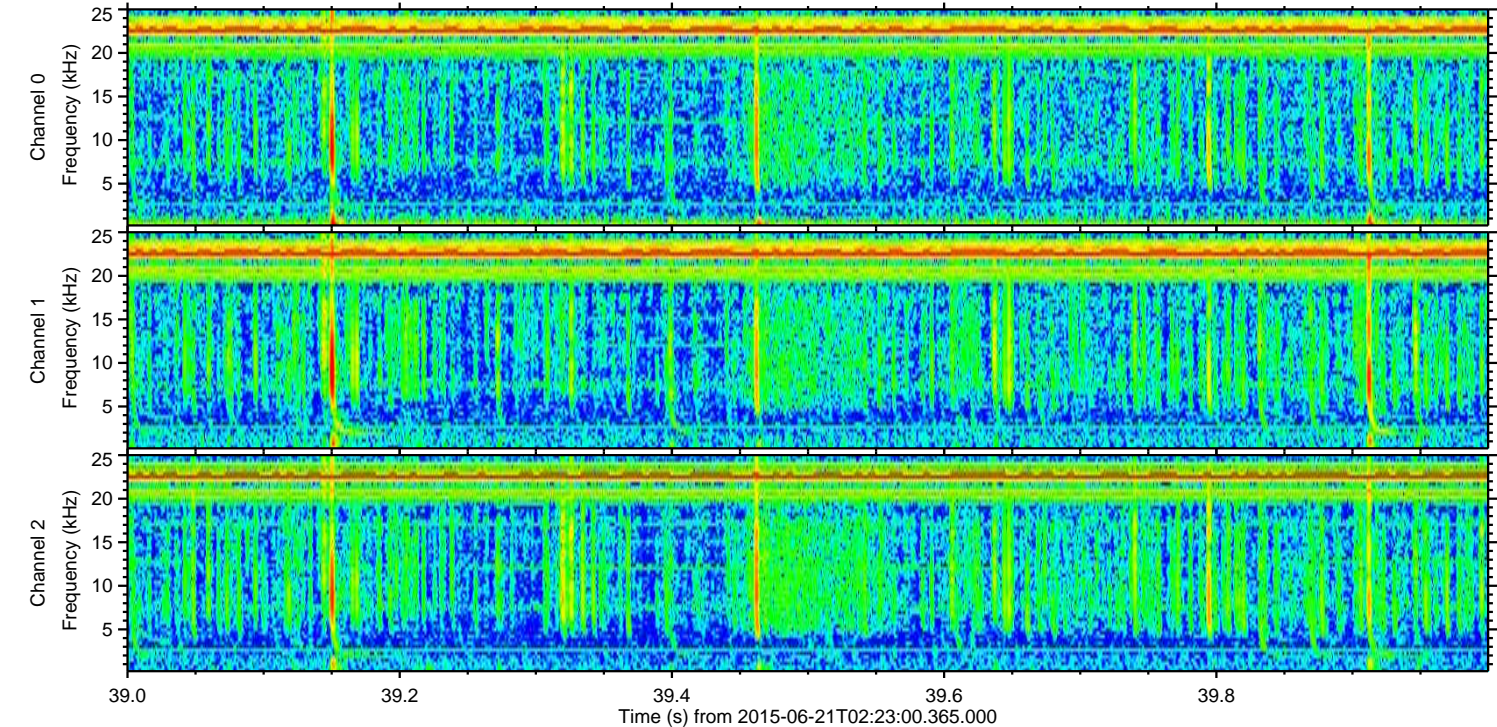
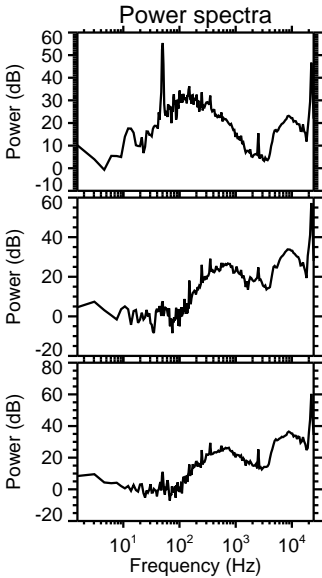
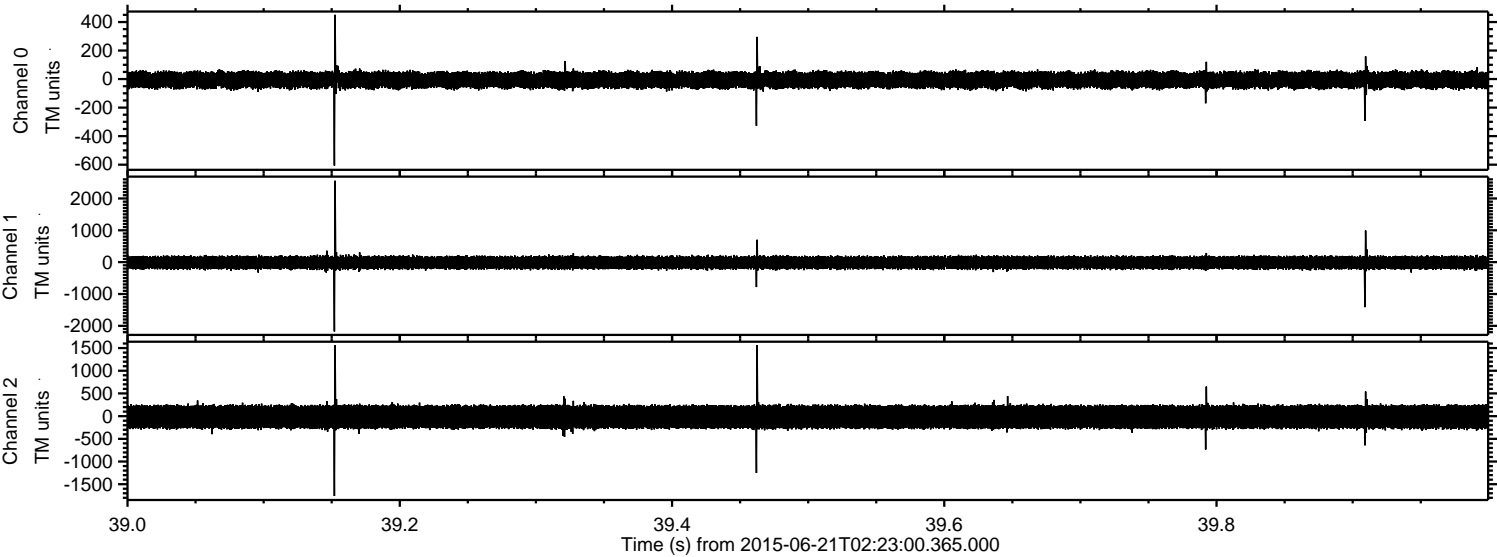
Channel 1
mn: -1833
mx: 1513
 μ : -15.2
 σ : 116.3

Channel 2
mn: -3244
mx: 3418
 μ : -16.4
 σ : 160.7

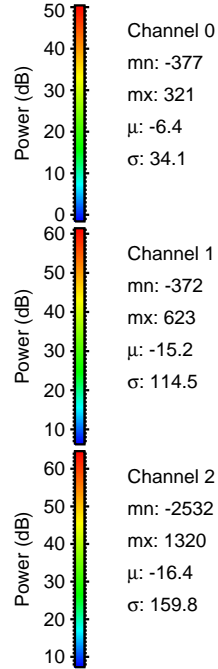
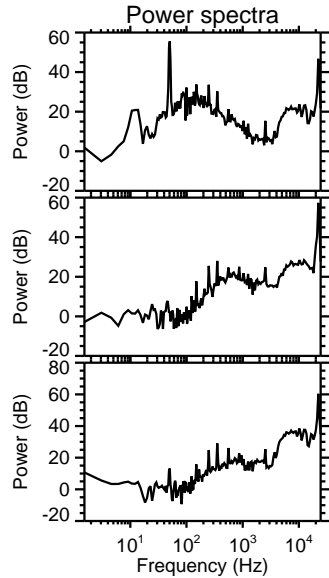
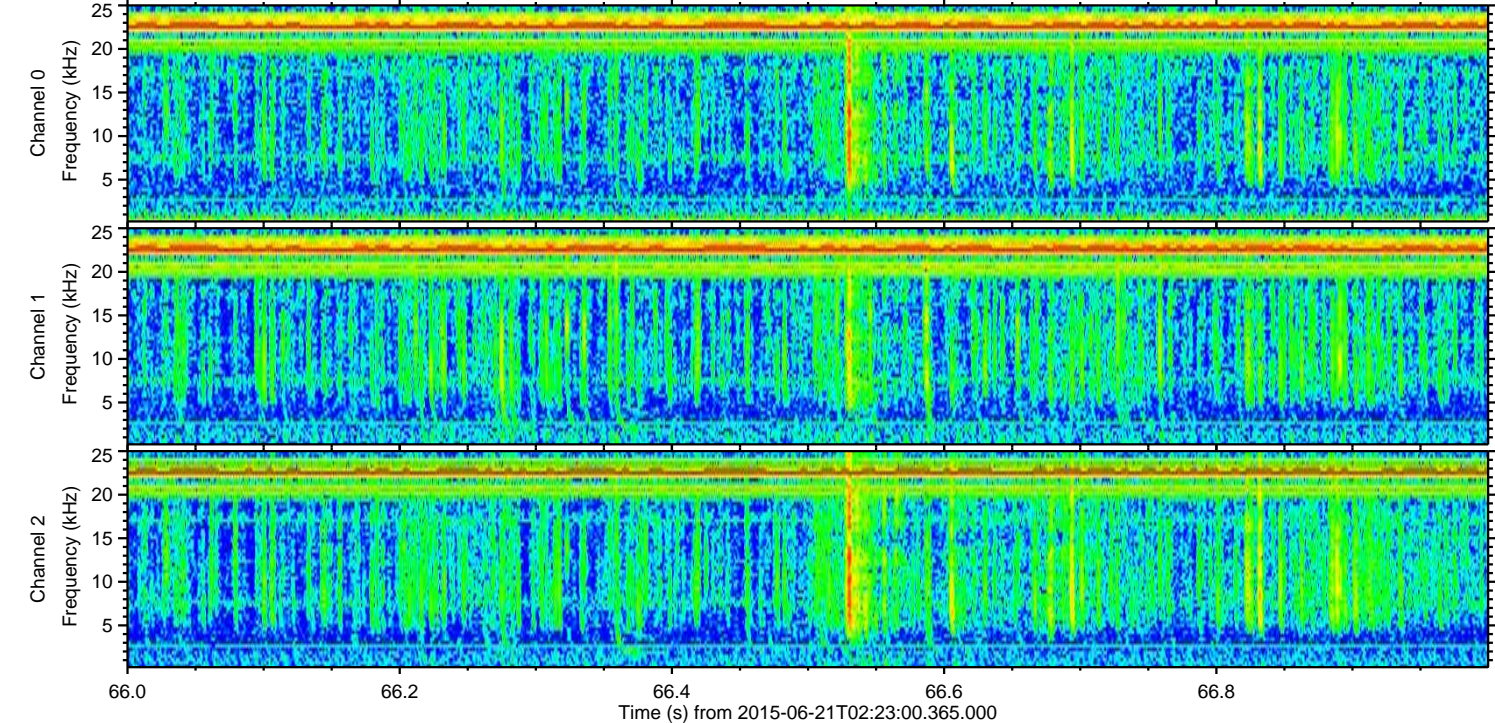
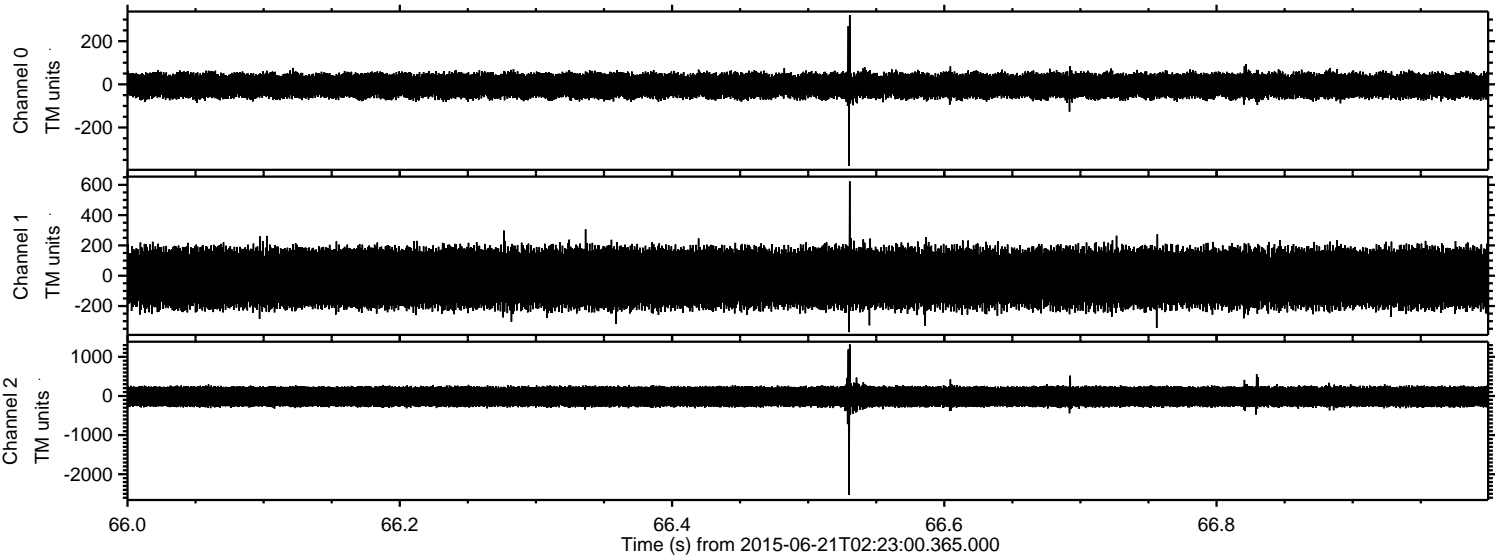
Processed Sun Jun 21 04:31:46 2015 by ELM ver.2012-10-06 from 001__elm20150621_022259__dat00.bin



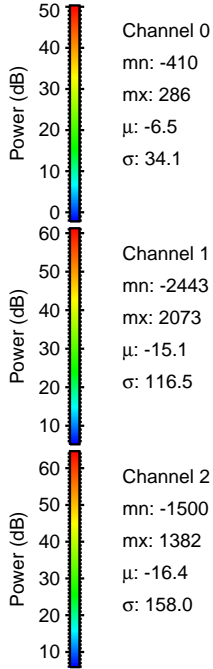
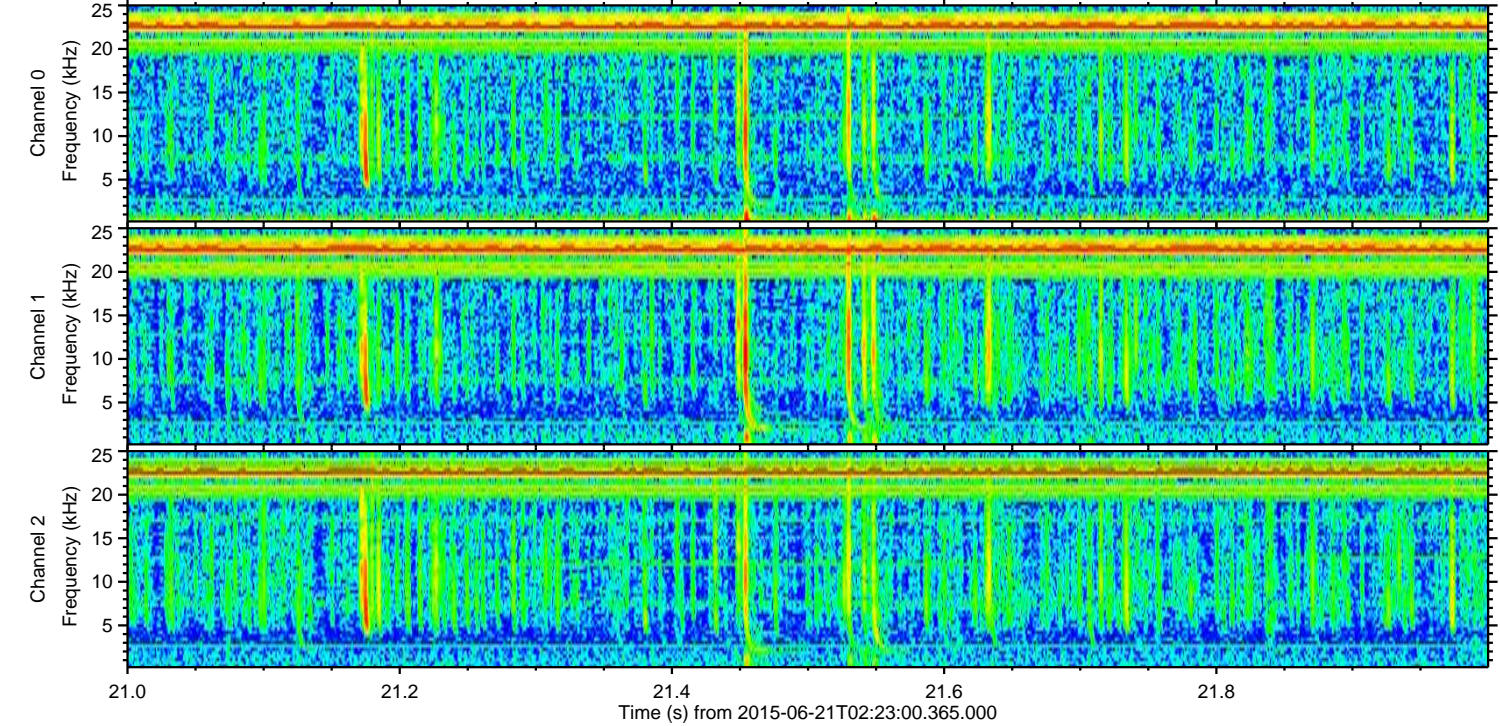
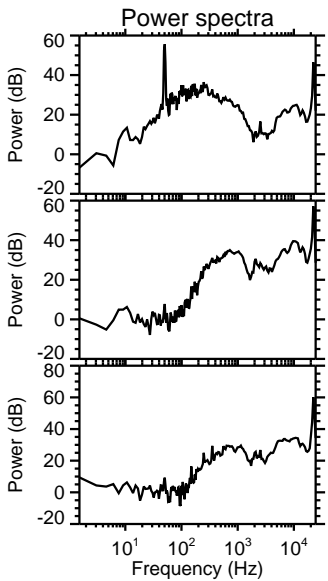
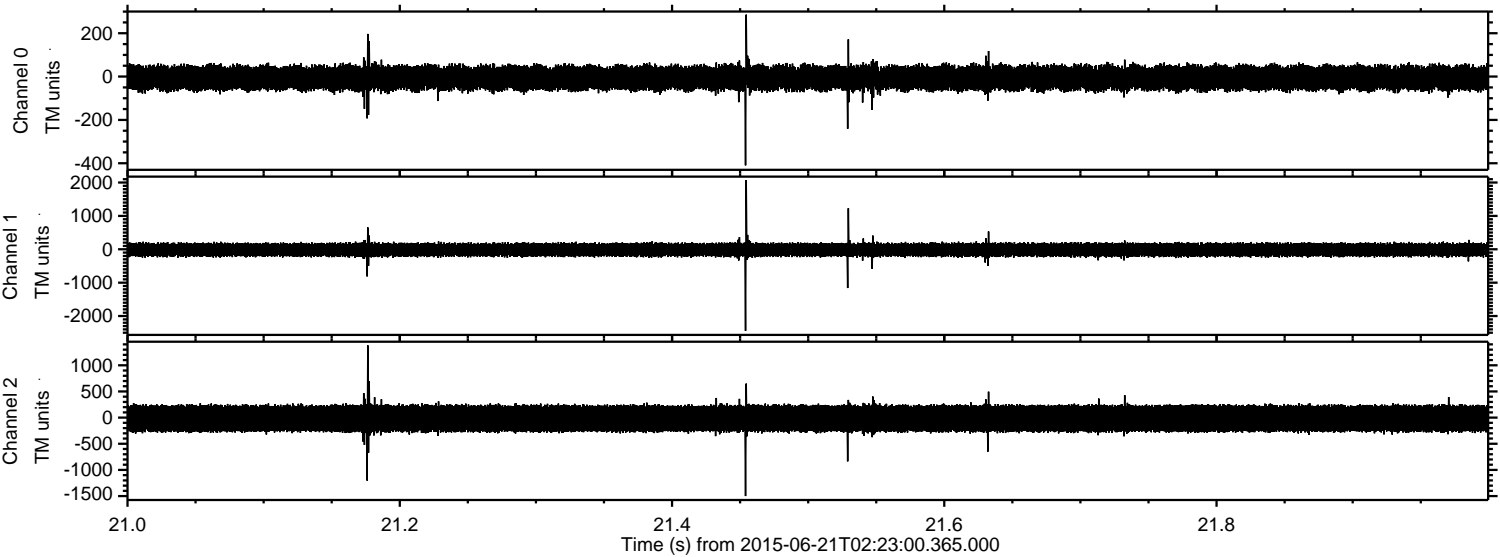
Processed Sun Jun 21 04:31:47 2015 by ELM ver.2012-10-06 from 001__elm20150621_022259__dat00.bin



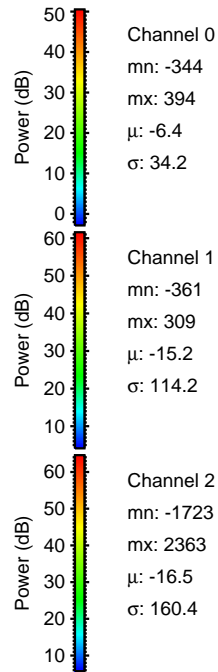
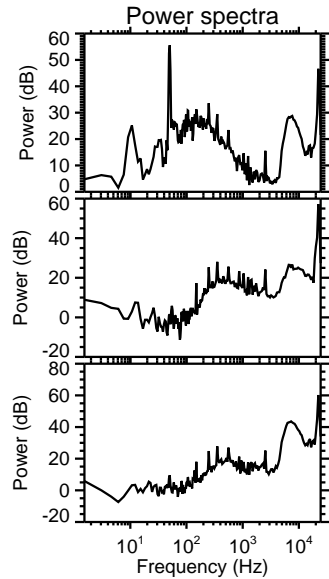
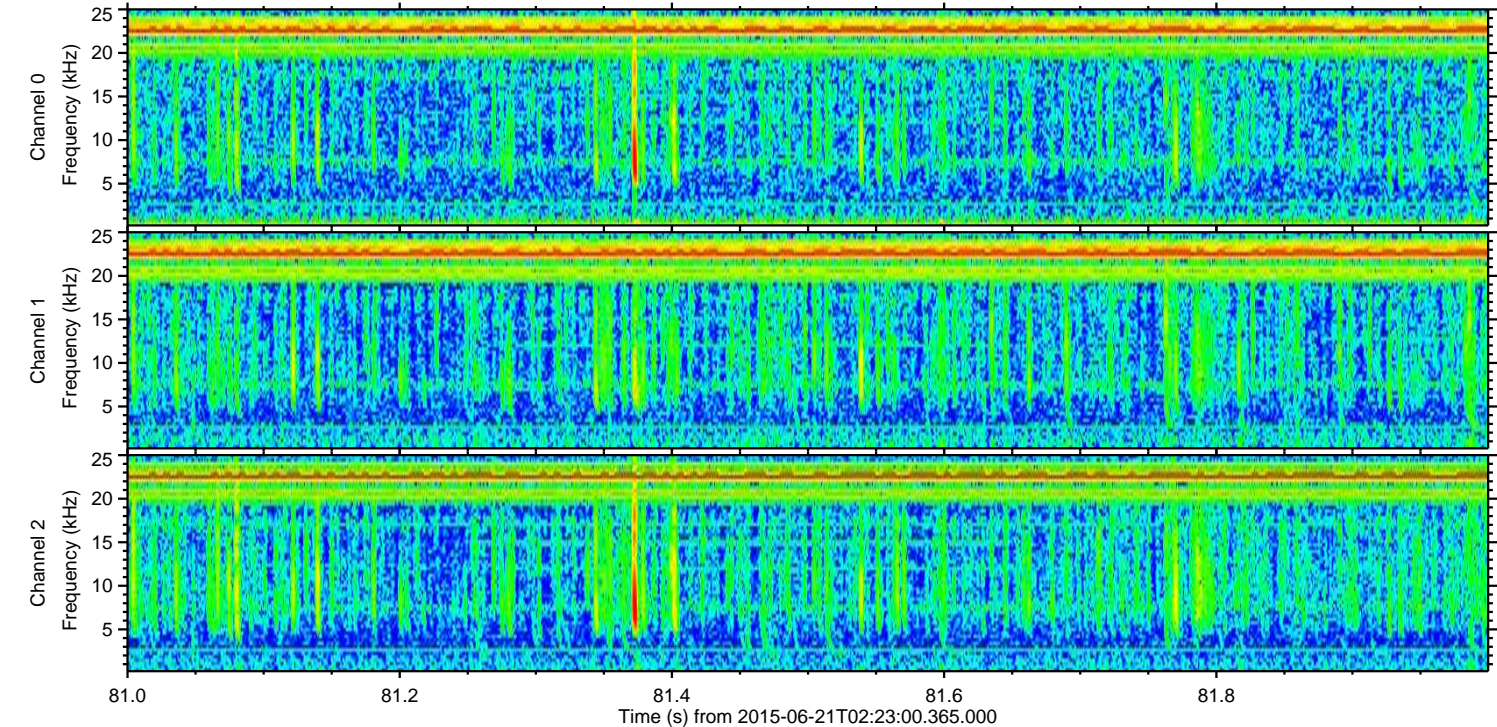
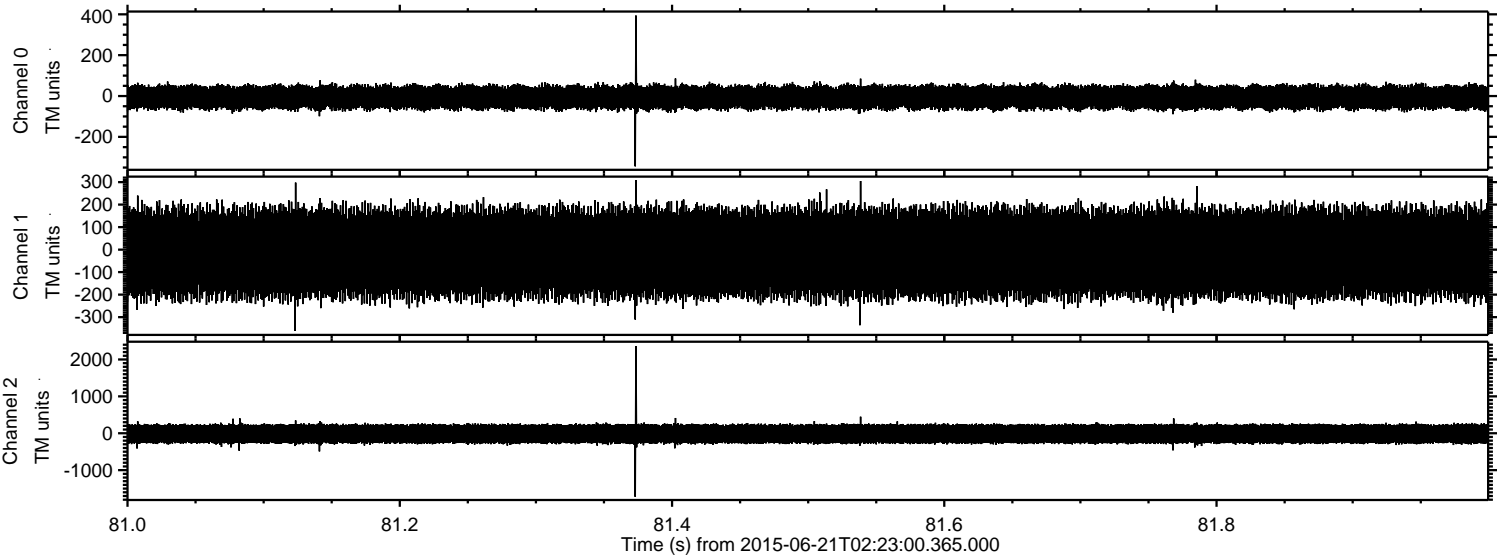
Processed Sun Jun 21 04:31:49 2015 by ELM ver.2012-10-06 from 001__elm20150621_022259__dat00.bin



Processed Sun Jun 21 04:31:51 2015 by ELM ver.2012-10-06 from 001__elm20150621_022259__dat00.bin



Processed Sun Jun 21 04:31:53 2015 by ELM ver.2012-10-06 from 001__elm20150621_022259__dat00.bin



Channel 0
mn: -344
mx: 394
 μ : -6.4
 σ : 34.2

Channel 1
mn: -361
mx: 309
 μ : -15.2
 σ : 114.2

Channel 2
mn: -1723
mx: 2363
 μ : -16.5
 σ : 160.4

Processed Sun Jun 21 04:31:55 2015 by ELM ver.2012-10-06 from 001__elm20150621_022259__dat00.bin

