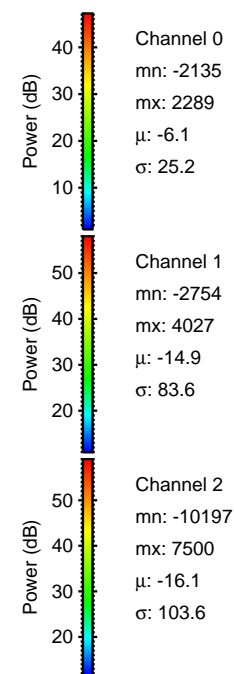
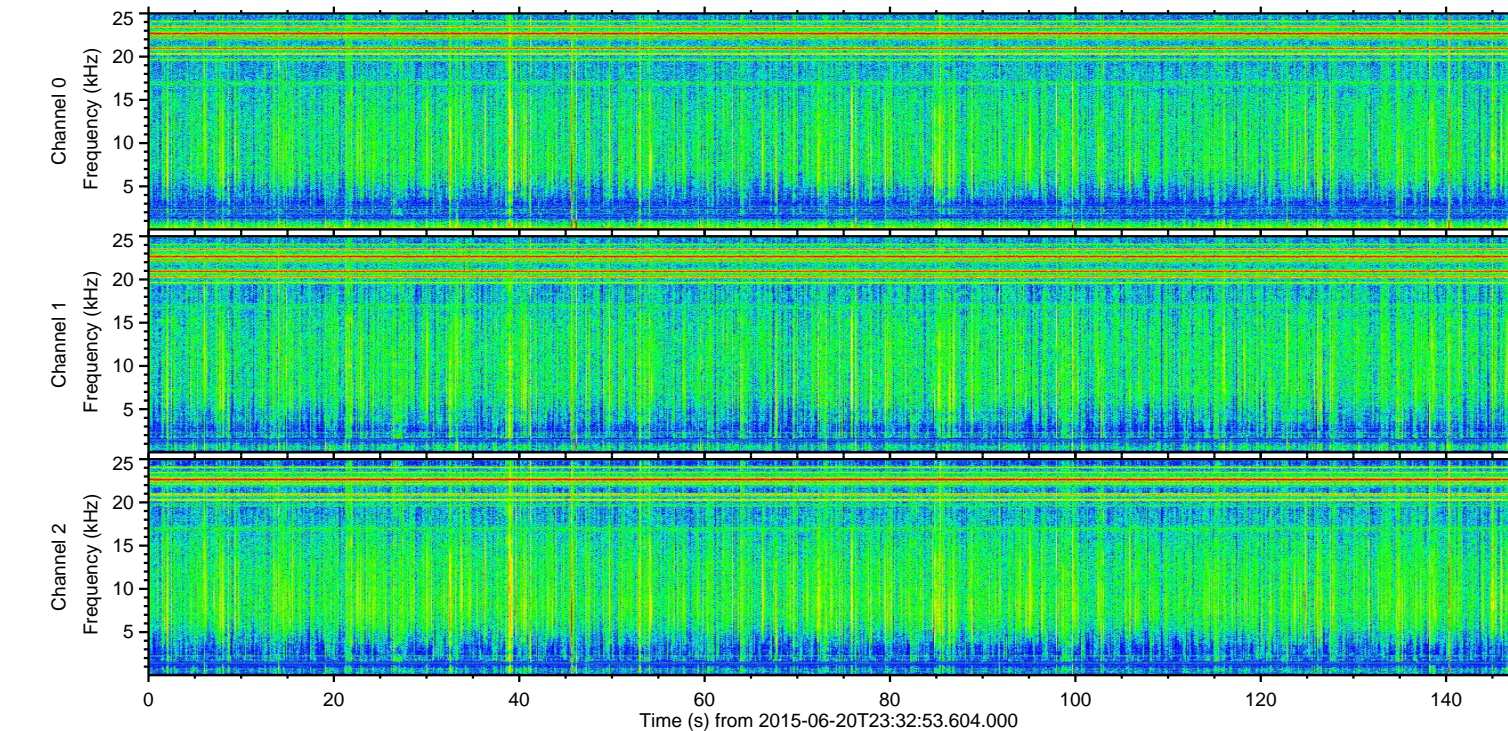
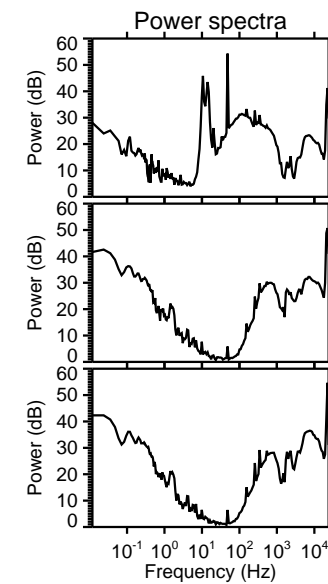
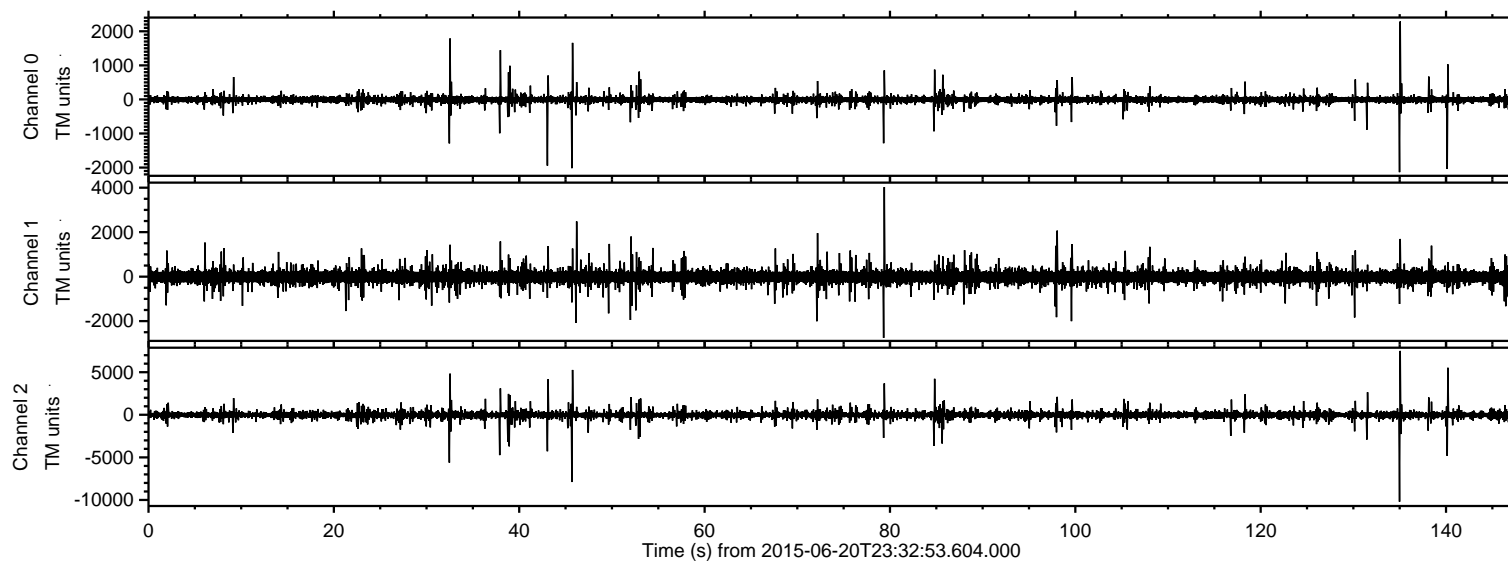


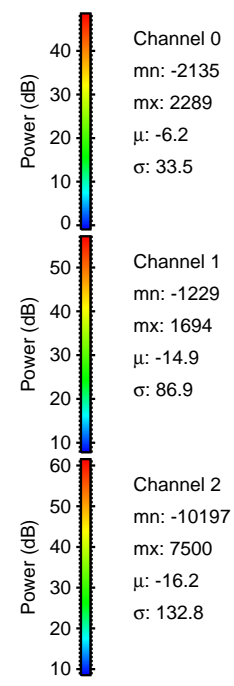
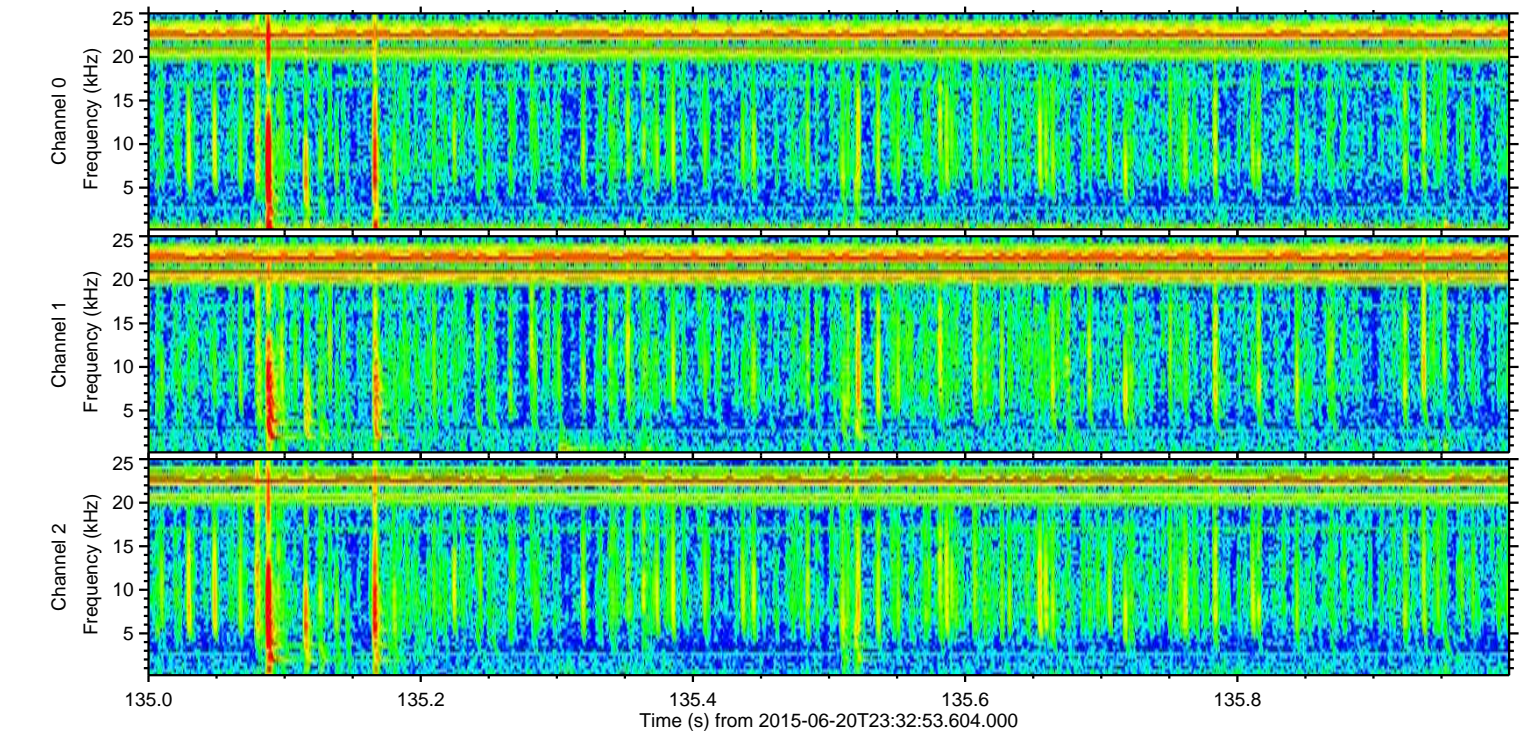
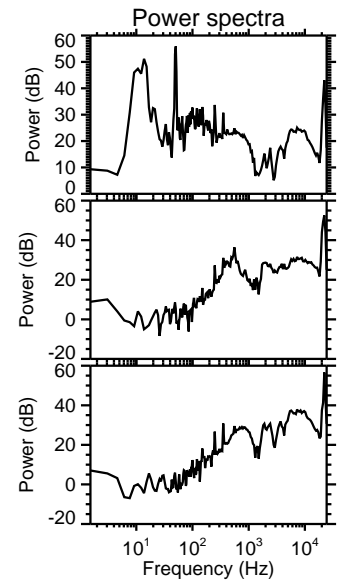
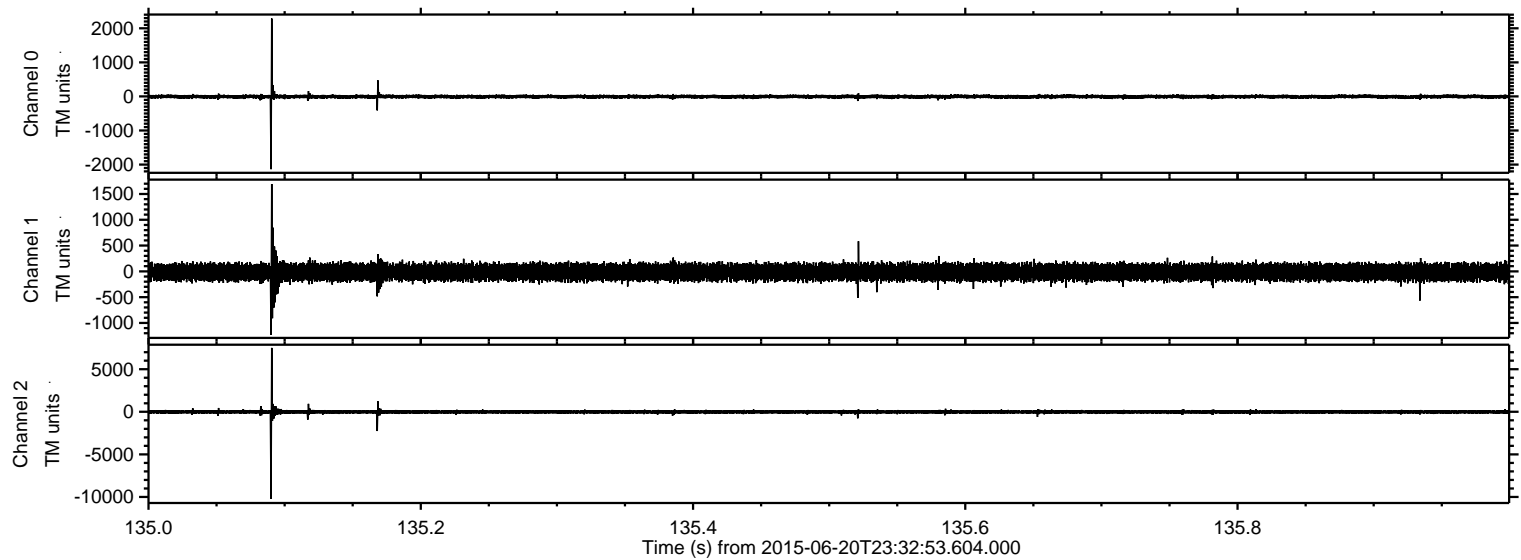
ELMAVAN 3D WAVEFORMS (Measured data sampled at 50 kHz) 51000 packets of 144 samples from 2015-06-20T23:32:53.604.000.

Processed Sun Jun 21 01:39:00 2015 by ELM ver.2012-10-06 from 001__elm20150620_233252__dat00.bin



ELMAVAN 3D WAVEFORMS (Measured data sampled at 50 kHz) 51000 packets of 144 samples from 2015-06-20T23:32:53.604.000. Part 136/147

Processed Sun Jun 21 01:39:17 2015 by ELM ver.2012-10-06 from 001__elm20150620_233252__dat00.bin

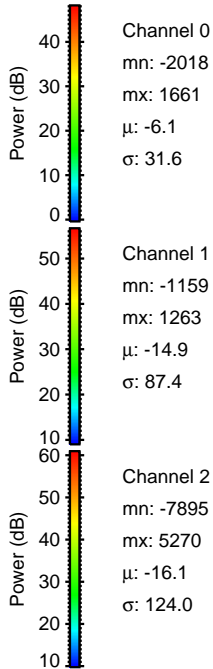
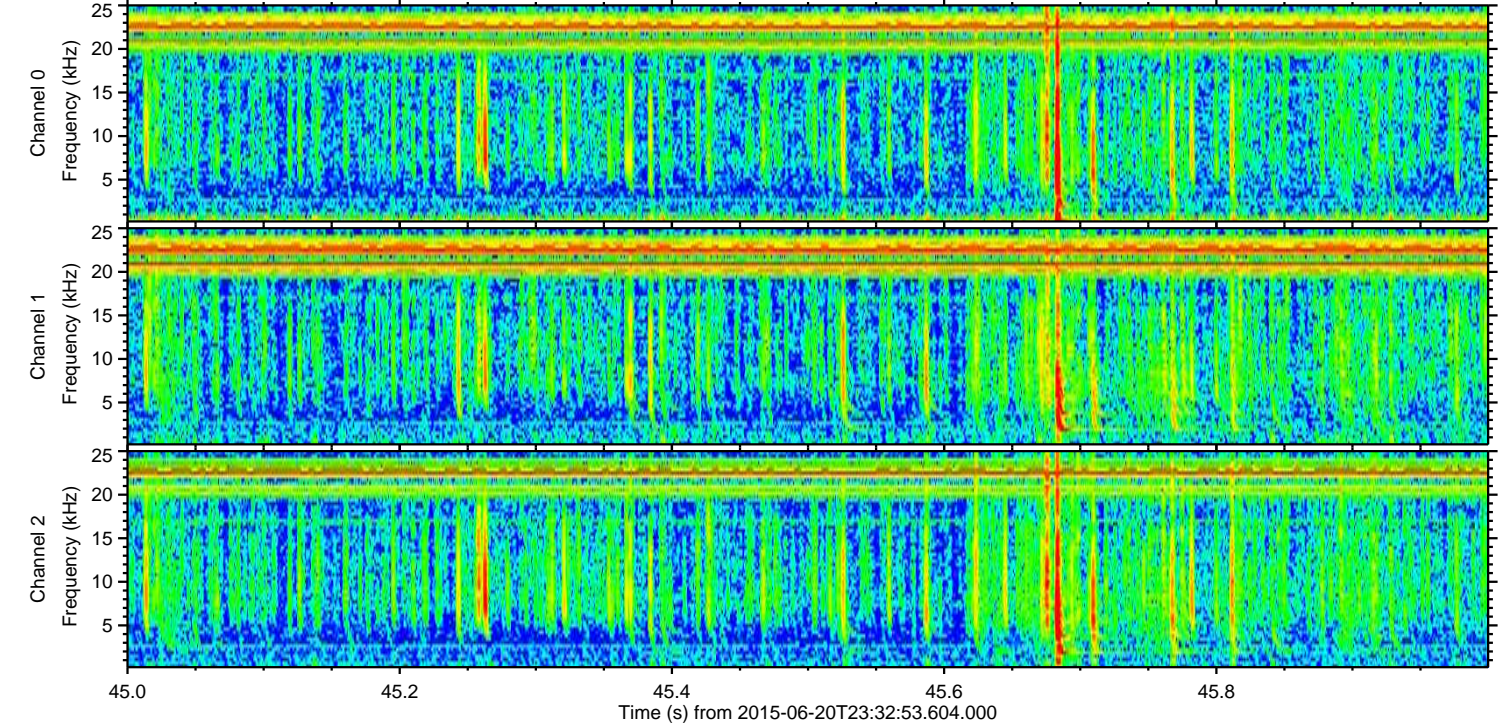
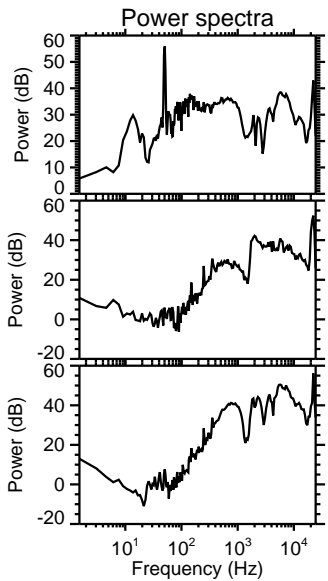
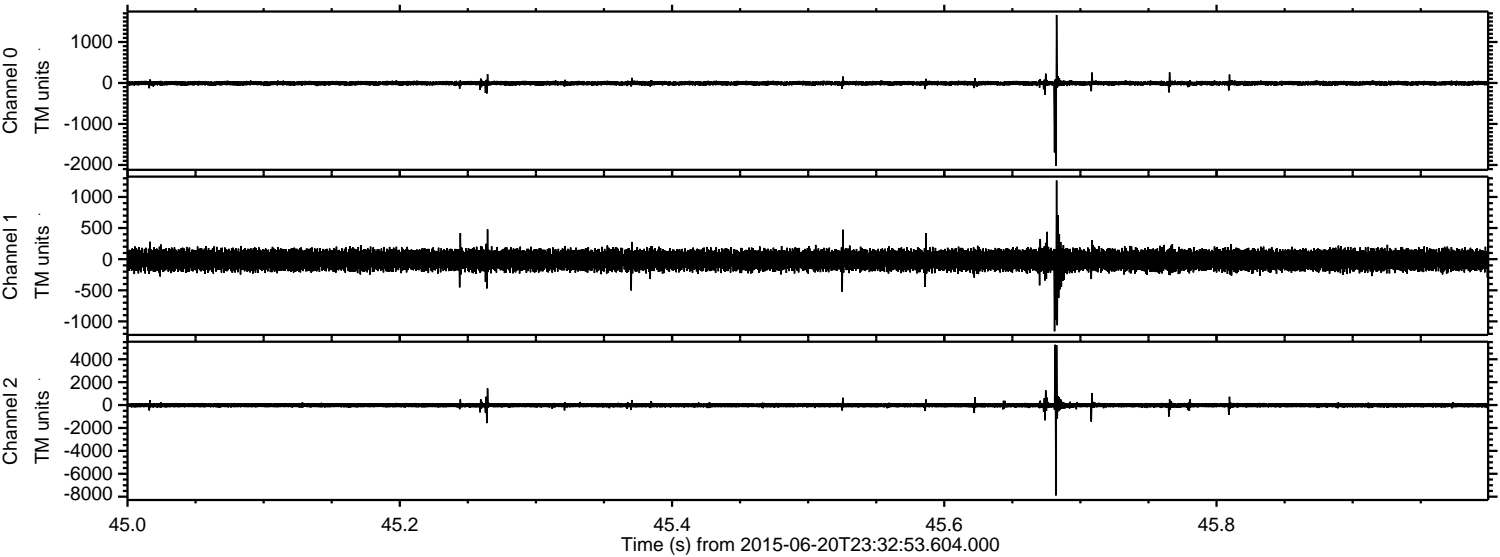


Channel 0
mn: -2135
mx: 2289
 μ : -6.2
 σ : 33.5

Channel 1
mn: -1229
mx: 1694
 μ : -14.9
 σ : 86.9

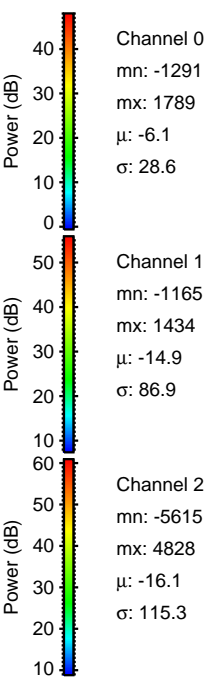
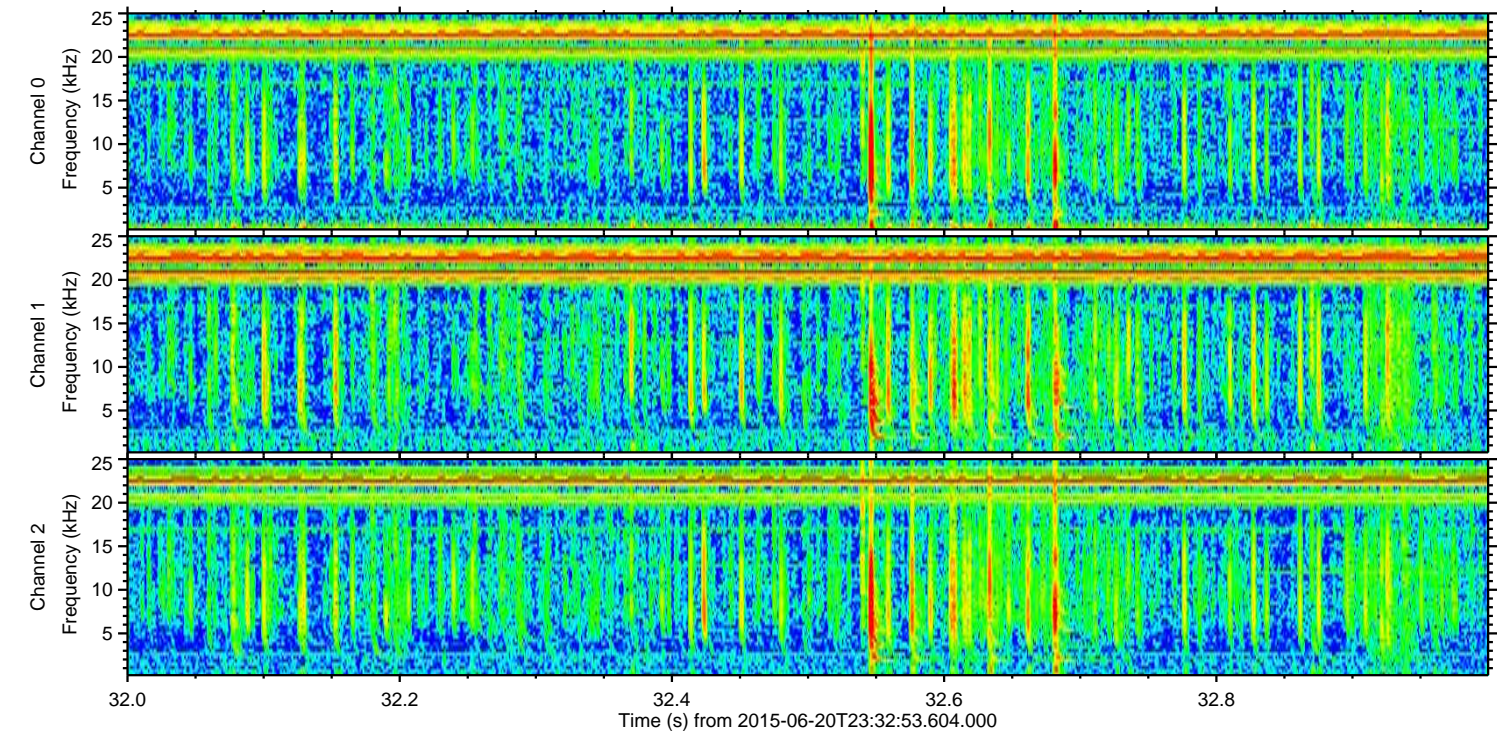
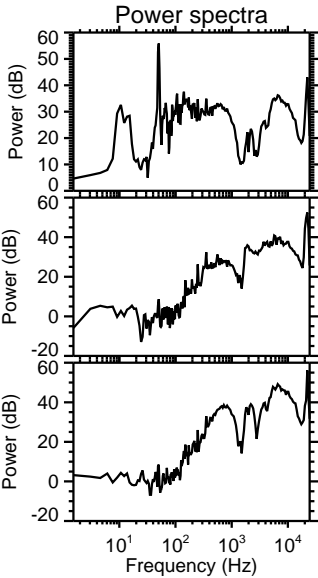
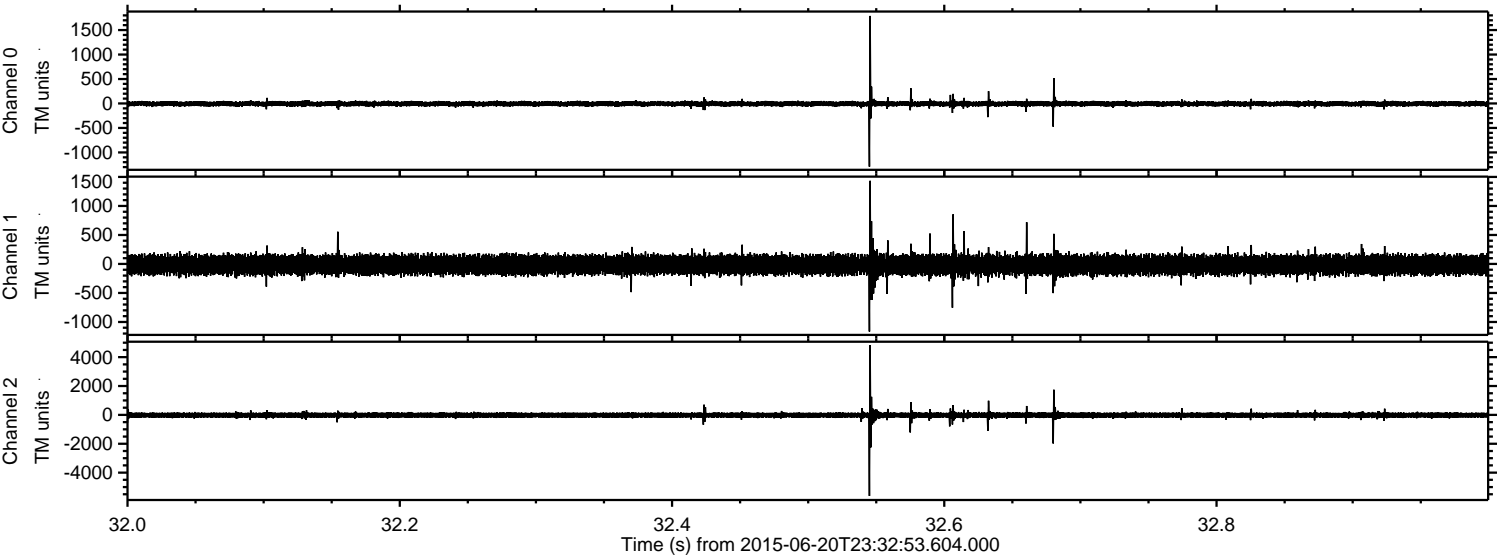
Channel 2
mn: -10197
mx: 7500
 μ : -16.2
 σ : 132.8

Processed Sun Jun 21 01:39:18 2015 by ELM ver.2012-10-06 from 001__elm20150620_233252__dat00.bin



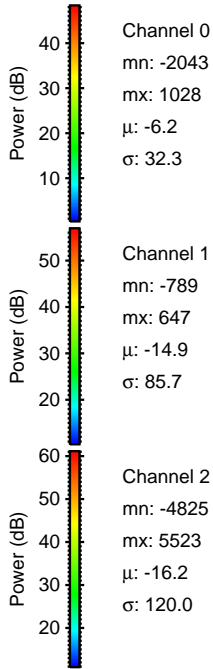
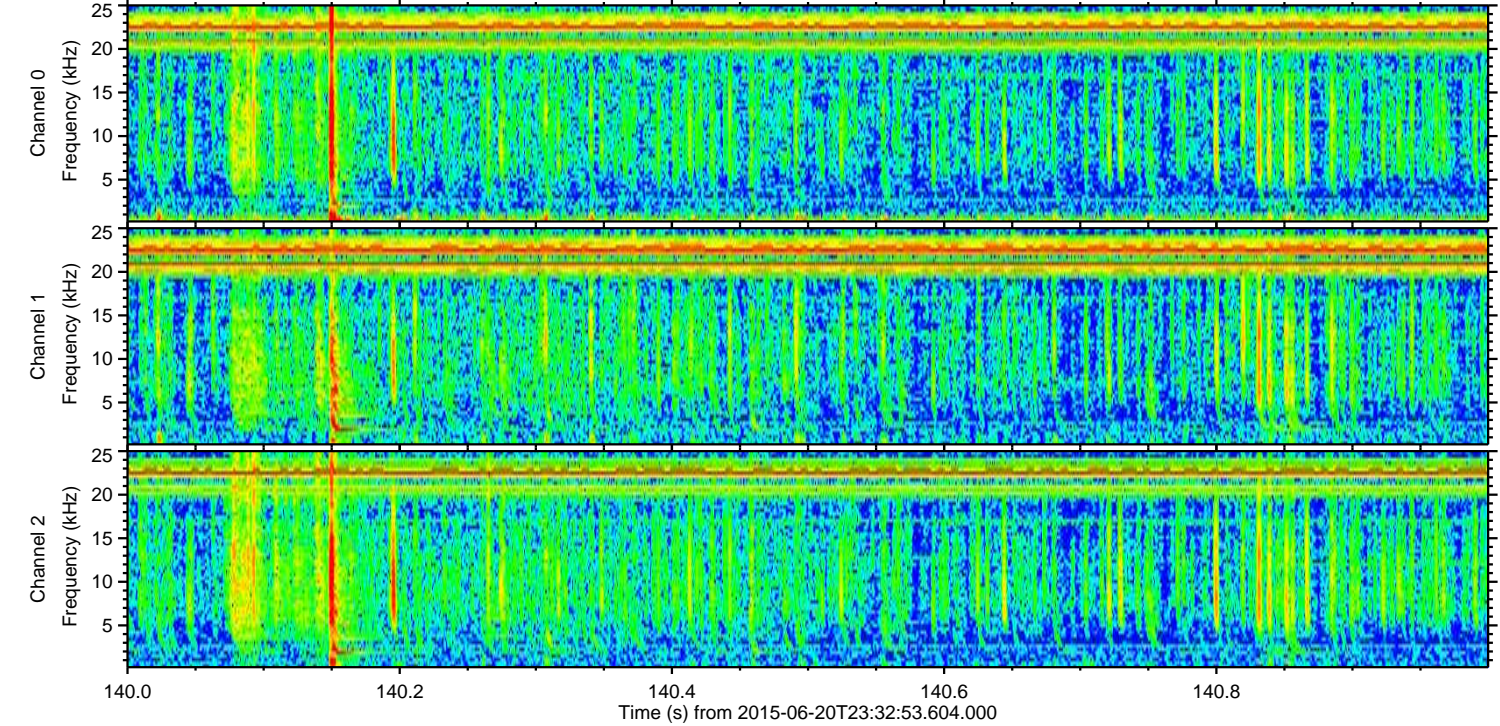
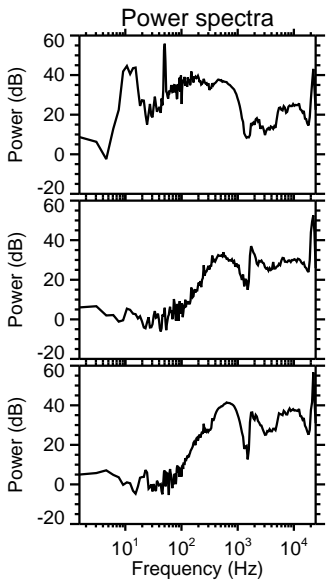
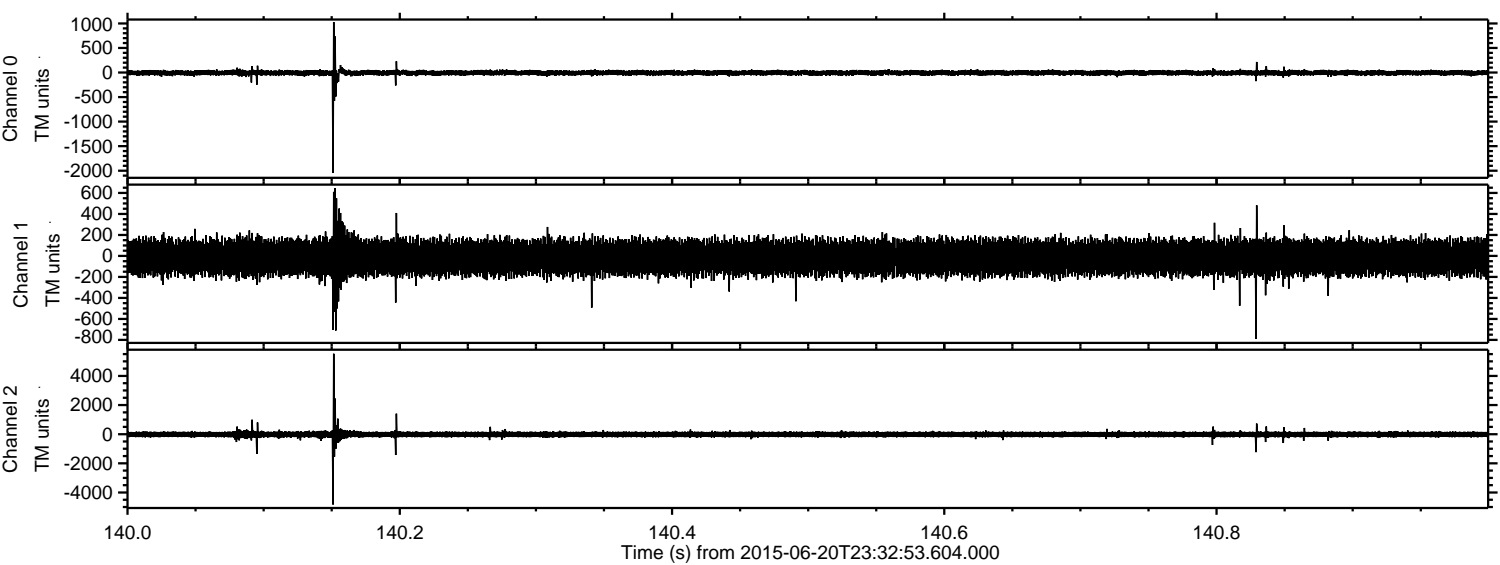
ELMAVAN 3D WAVEFORMS (Measured data sampled at 50 kHz) 51000 packets of 144 samples from 2015-06-20T23:32:53.604.000. Part 33/147

Processed Sun Jun 21 01:39:20 2015 by ELM ver.2012-10-06 from 001__elm20150620_233252__dat00.bin

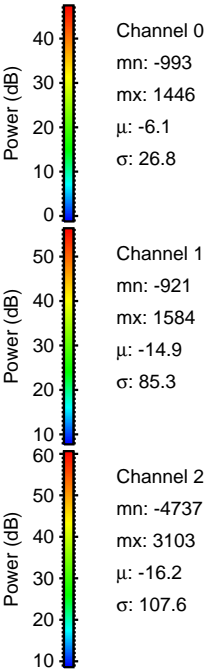
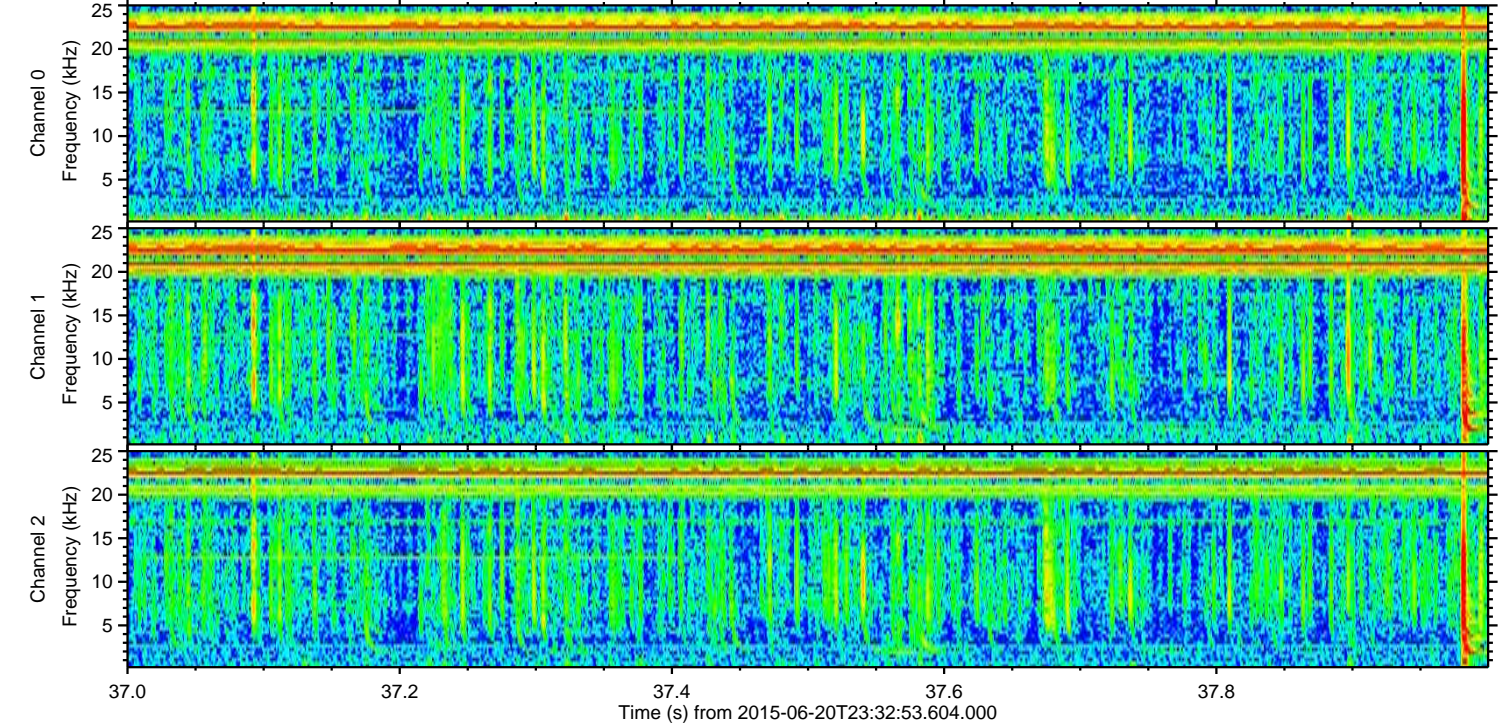
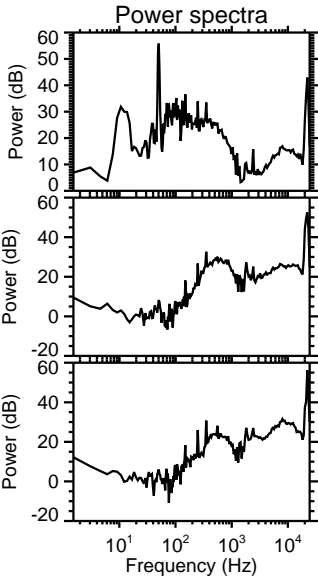
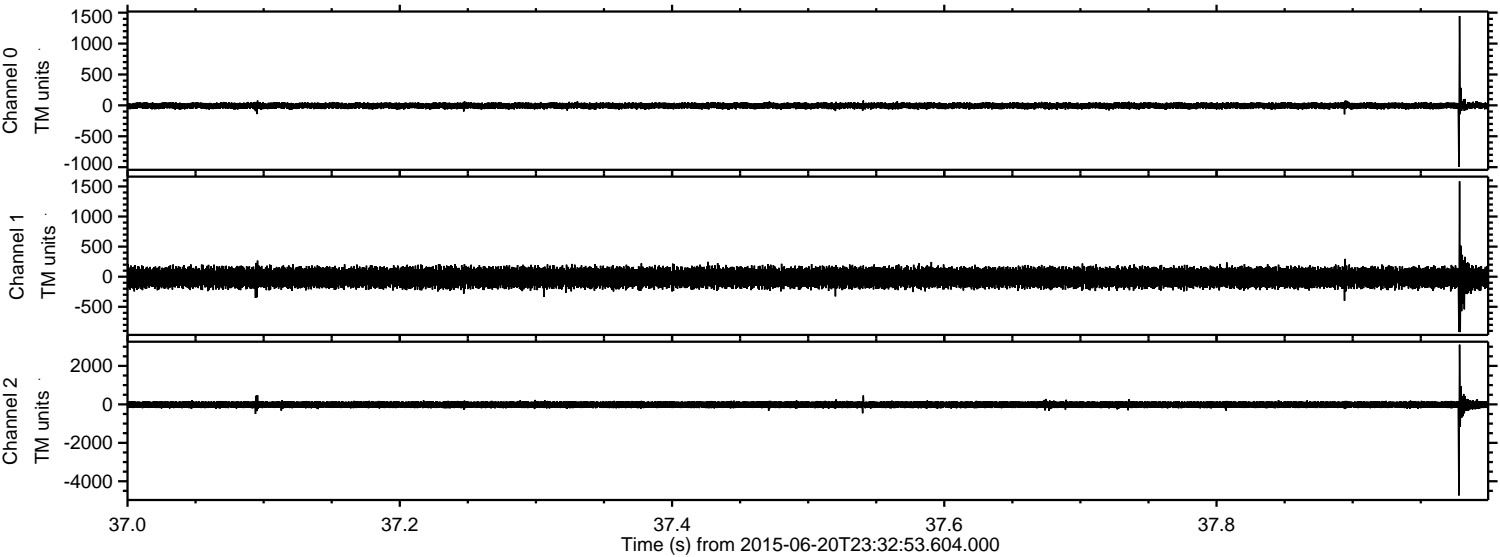


ELMAVAN 3D WAVEFORMS (Measured data sampled at 50 kHz) 51000 packets of 144 samples from 2015-06-20T23:32:53.604.000. Part 141/147

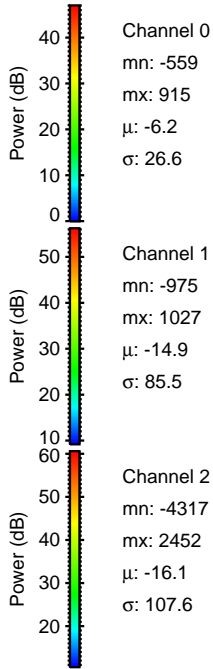
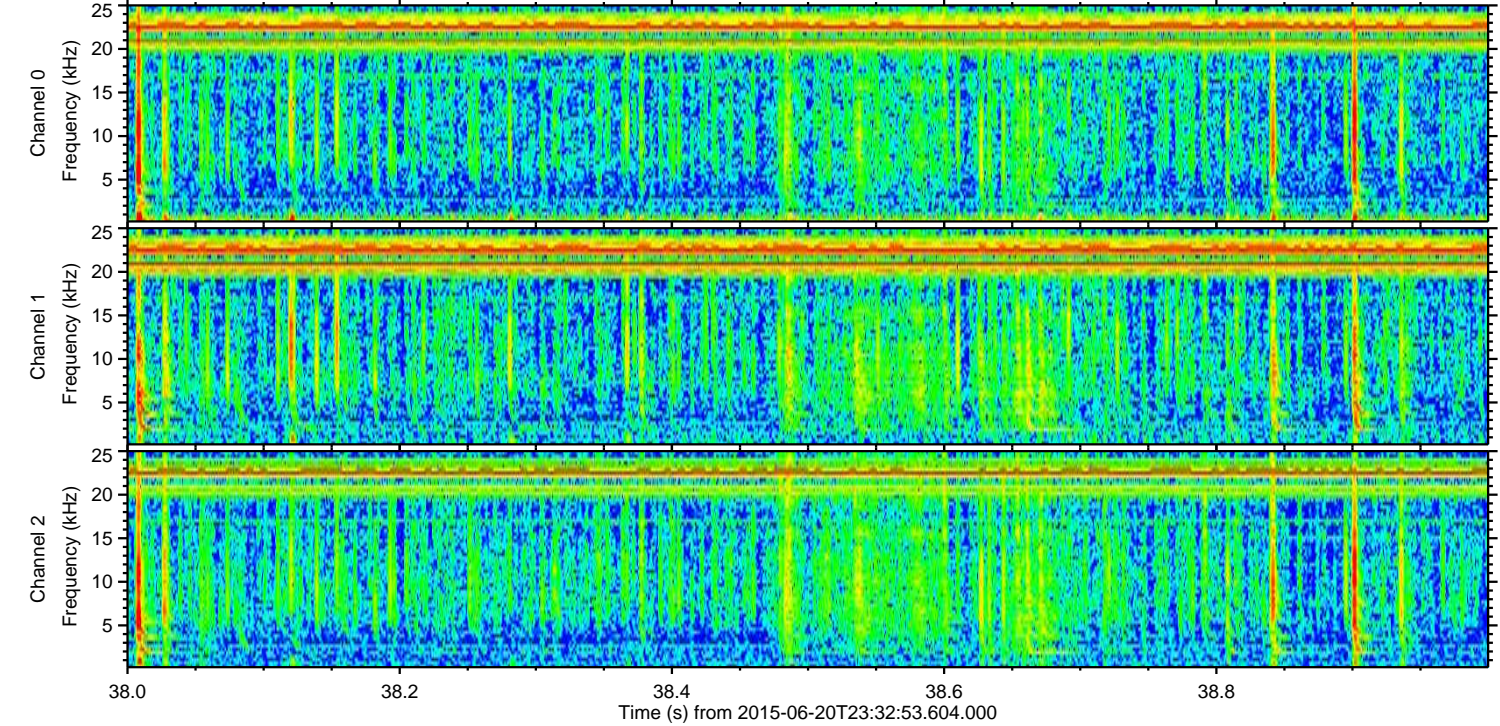
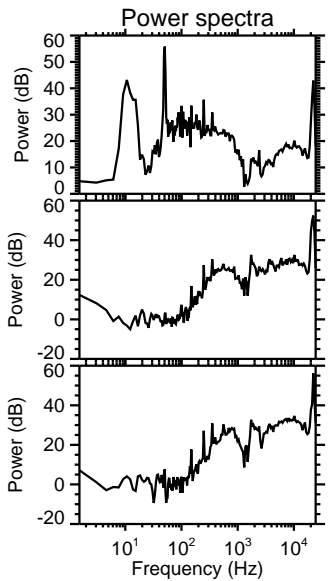
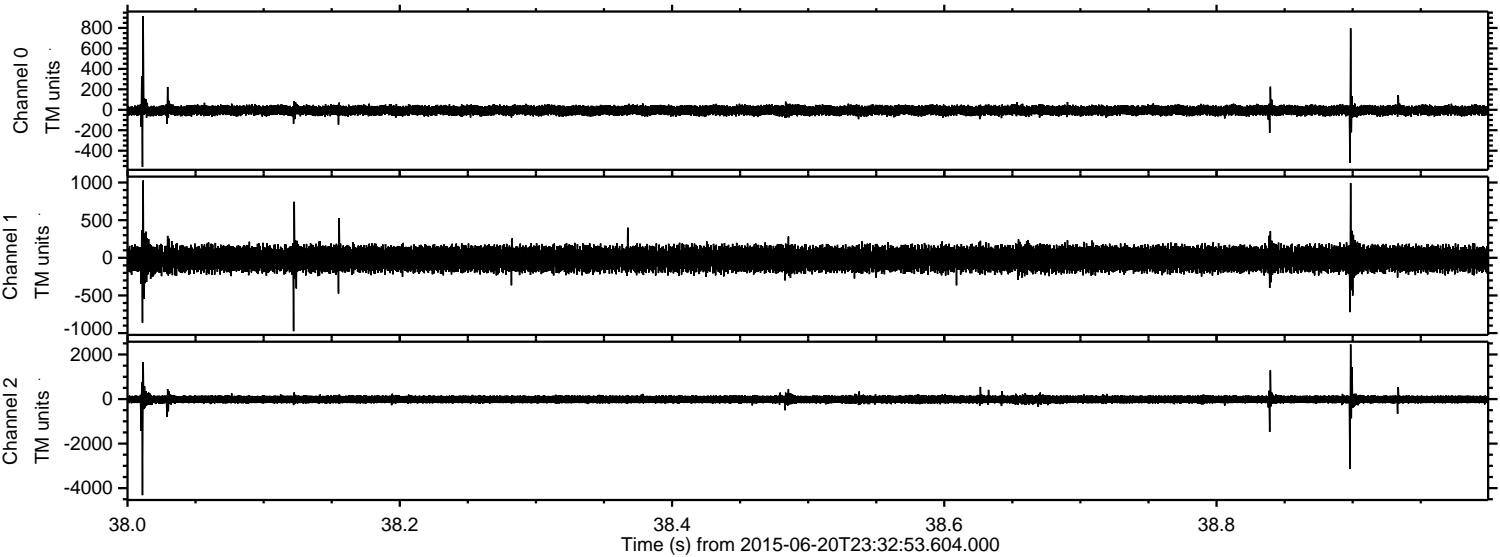
Processed Sun Jun 21 01:39:22 2015 by ELM ver.2012-10-06 from 001__elm20150620_233252__dat00.bin



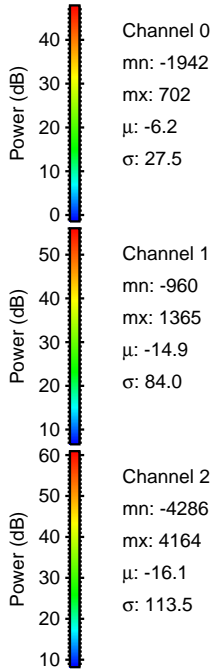
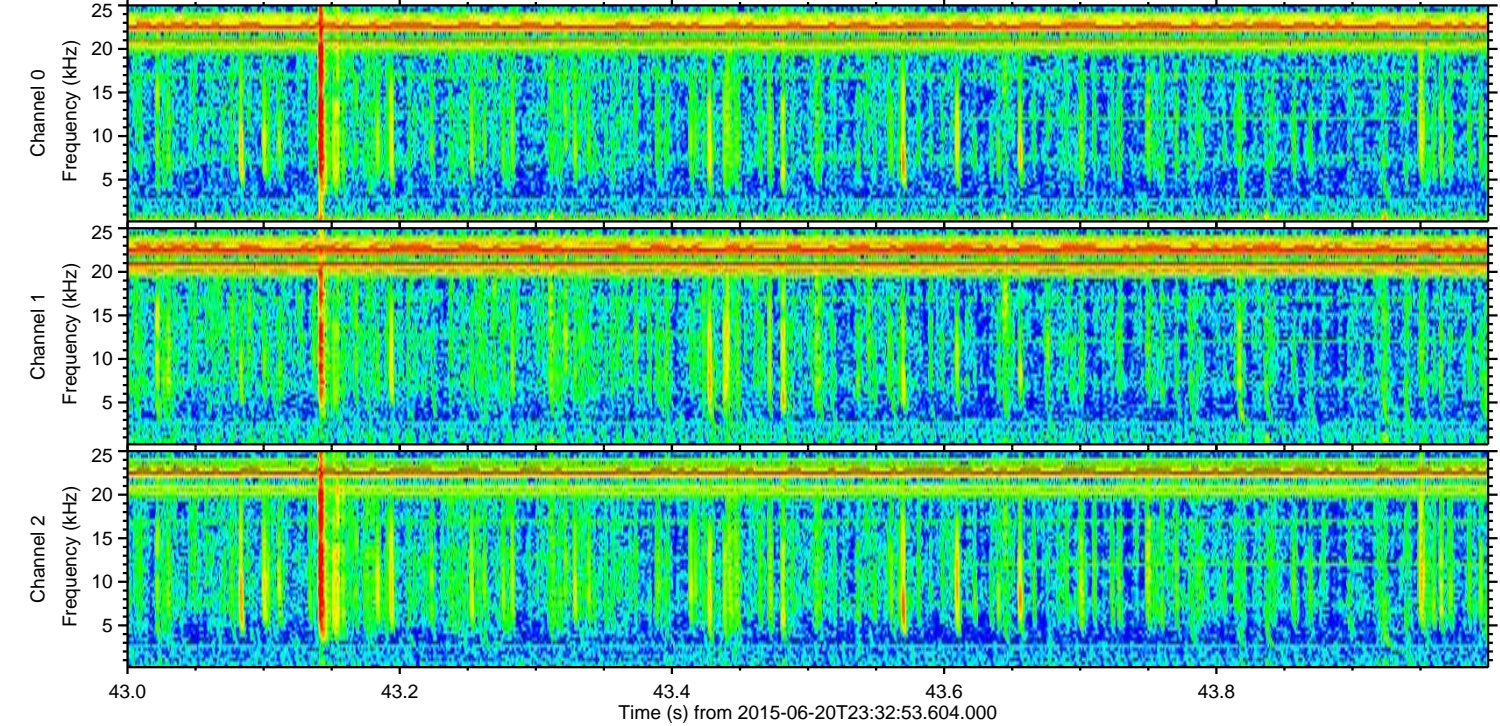
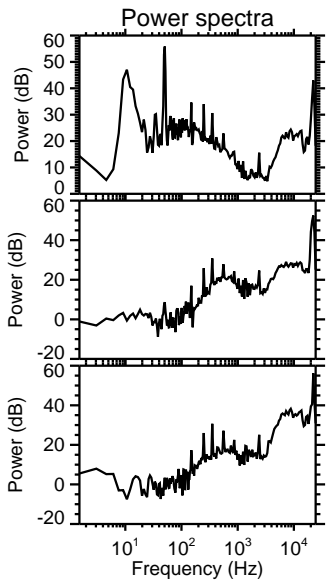
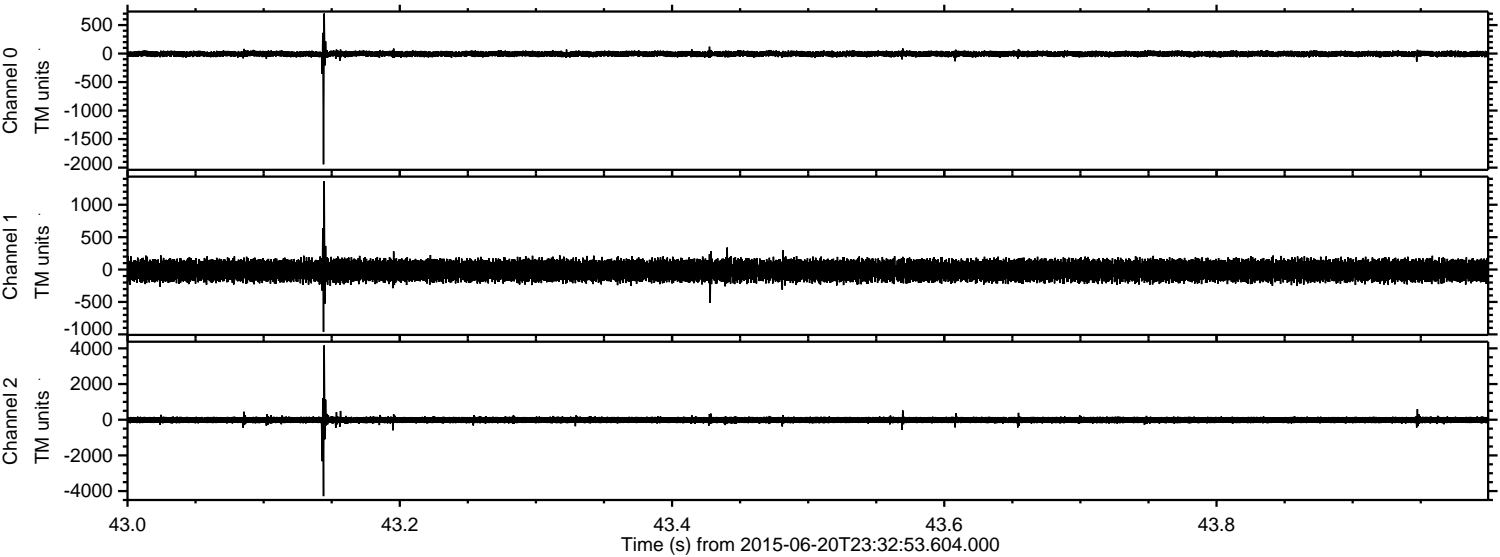
Processed Sun Jun 21 01:39:23 2015 by ELM ver.2012-10-06 from 001__elm20150620_233252__dat00.bin



Processed Sun Jun 21 01:39:25 2015 by ELM ver.2012-10-06 from 001__elm20150620_233252__dat00.bin



Processed Sun Jun 21 01:39:26 2015 by ELM ver.2012-10-06 from 001__elm20150620_233252__dat00.bin

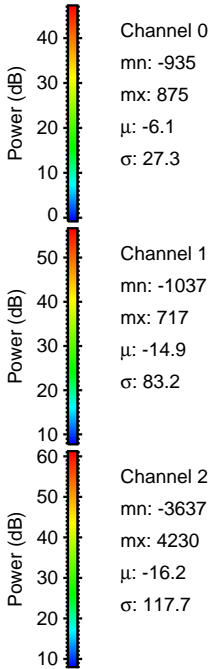
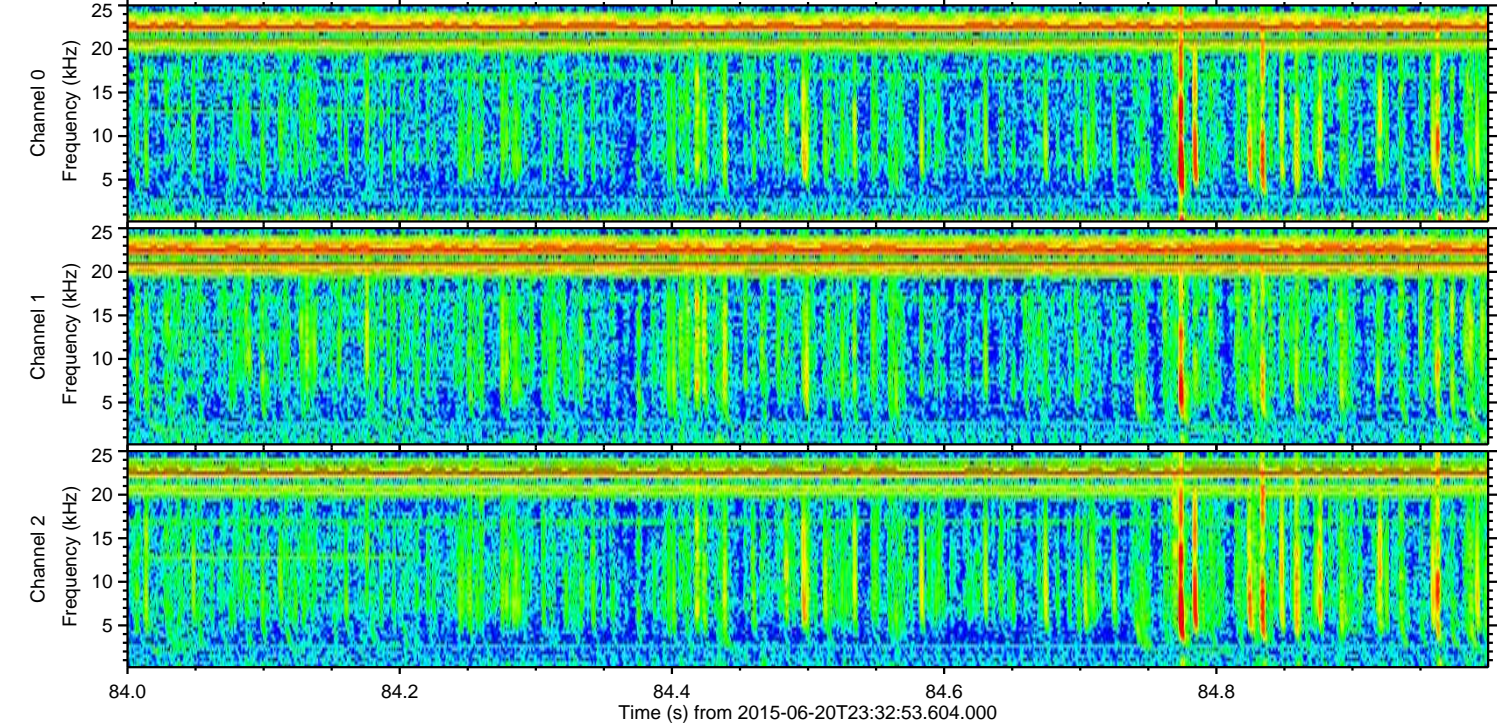
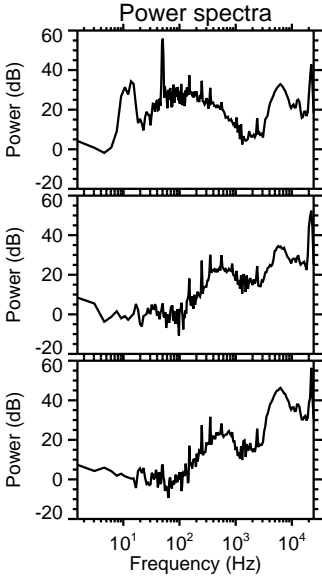
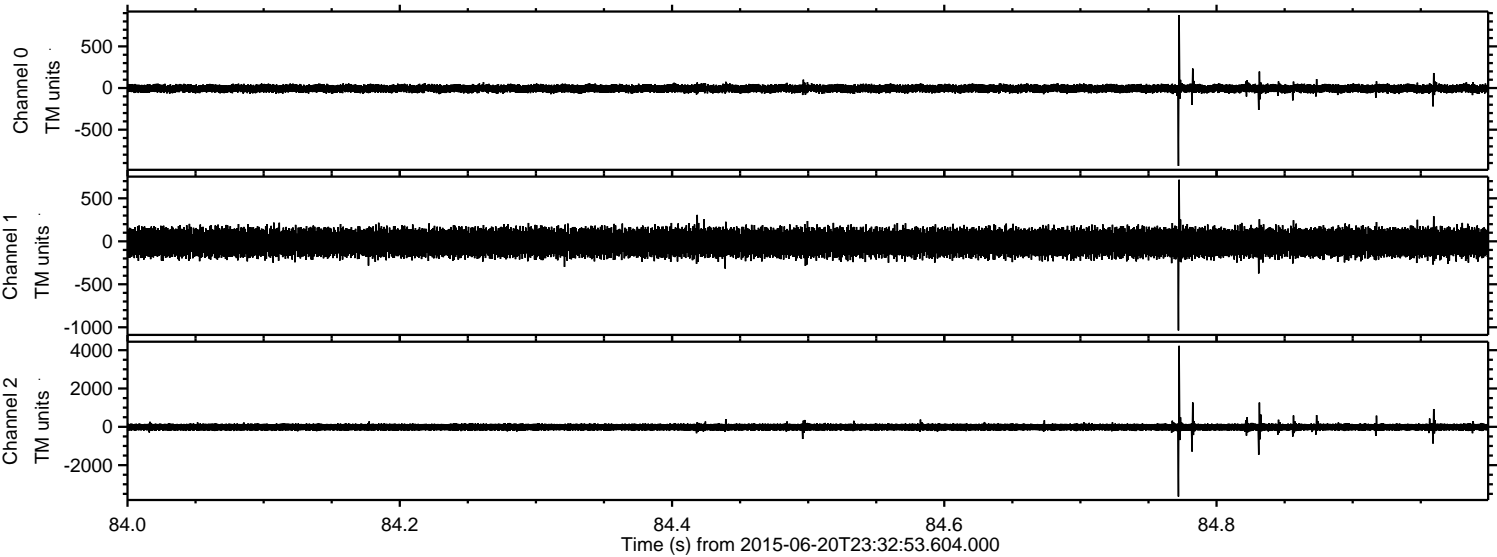


Channel 0
mn: -1942
mx: 702
 μ : -6.2
 σ : 27.5

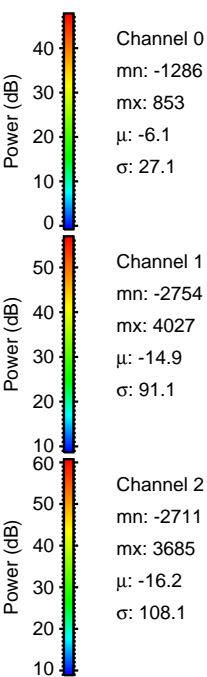
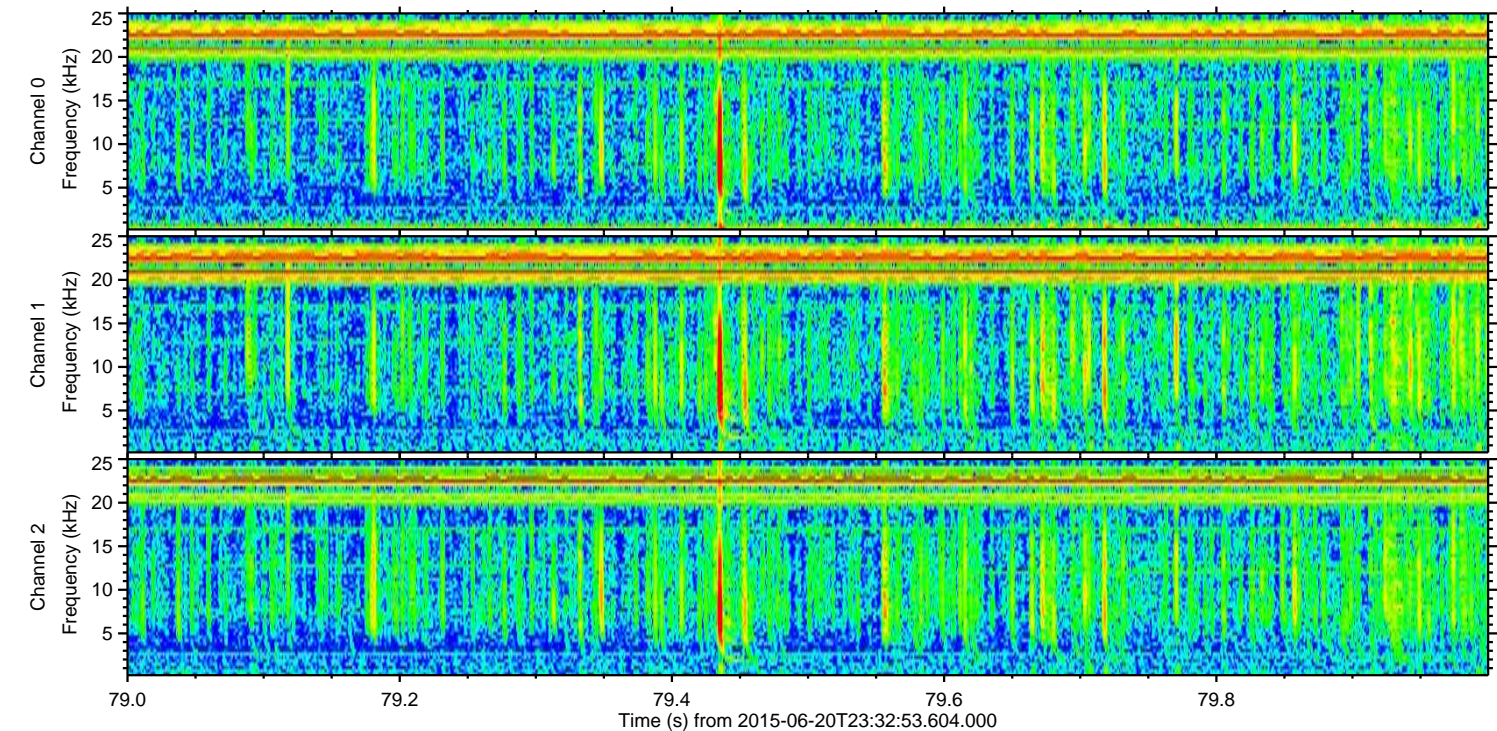
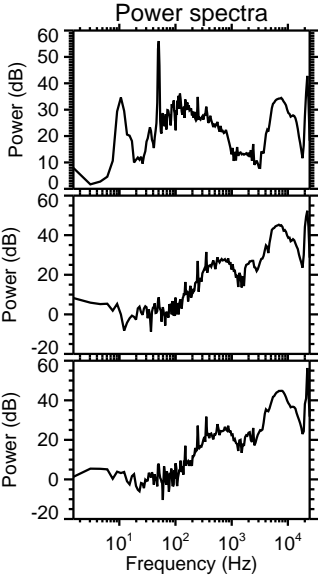
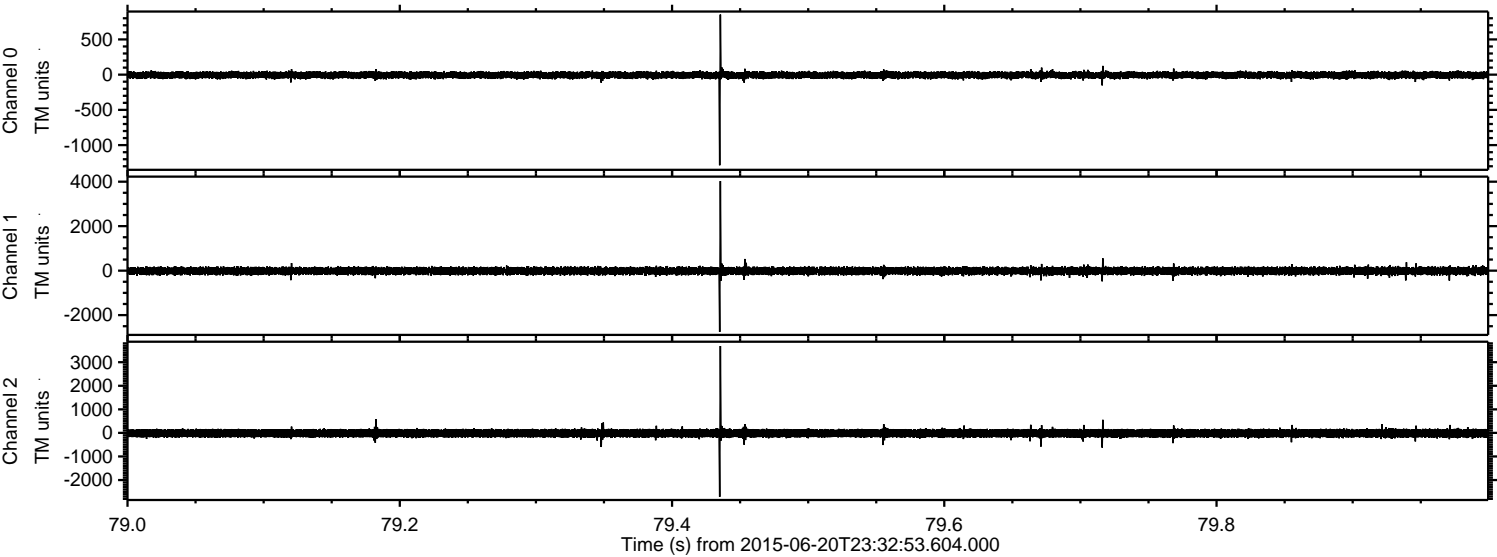
Channel 1
mn: -960
mx: 1365
 μ : -14.9
 σ : 84.0

Channel 2
mn: -4286
mx: 4164
 μ : -16.1
 σ : 113.5

Processed Sun Jun 21 01:39:28 2015 by ELM ver.2012-10-06 from 001__elm20150620_233252__dat00.bin



Processed Sun Jun 21 01:39:29 2015 by ELM ver.2012-10-06 from 001__elm20150620_233252__dat00.bin



Processed Sun Jun 21 01:39:31 2015 by ELM ver.2012-10-06 from 001__elm20150620_233252__dat00.bin

