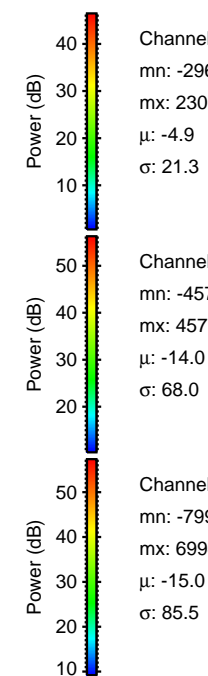
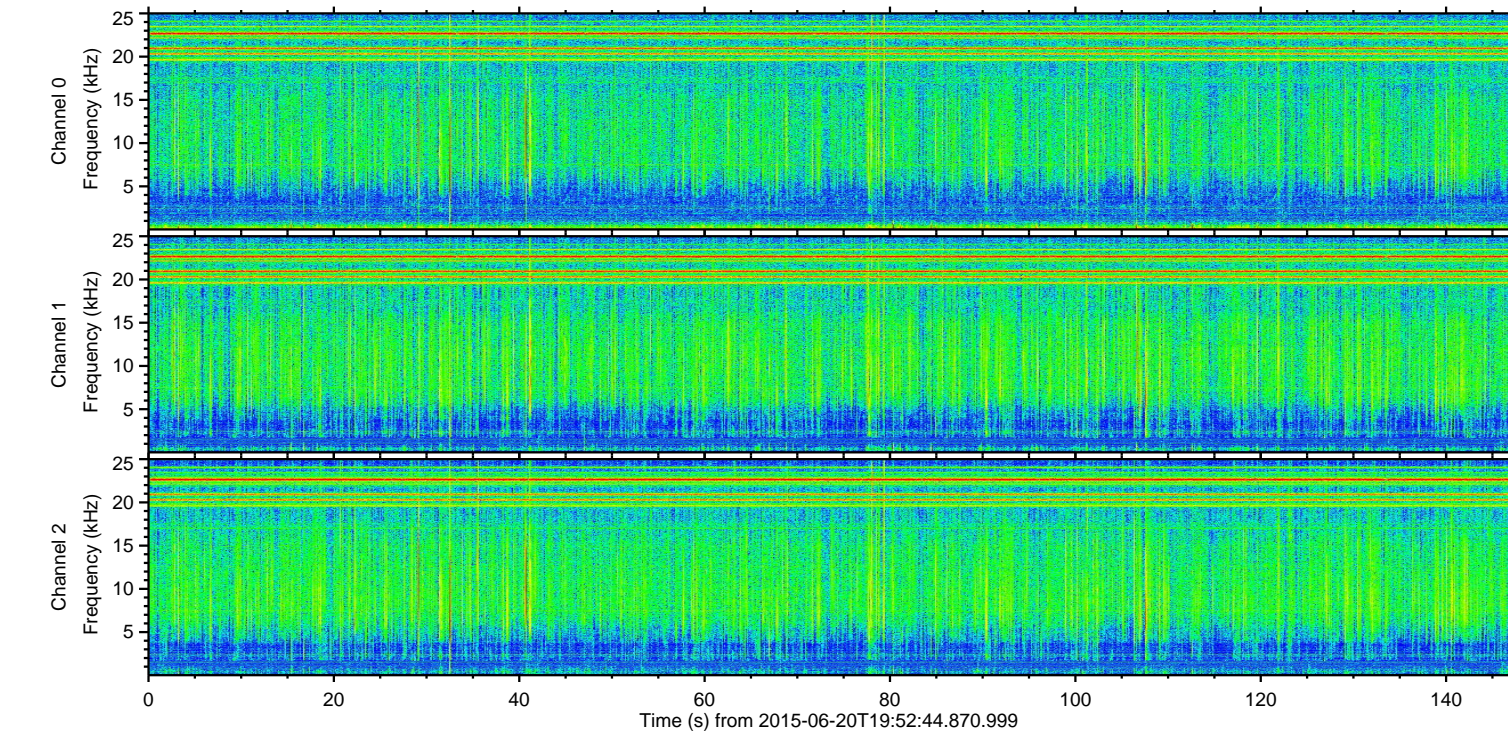
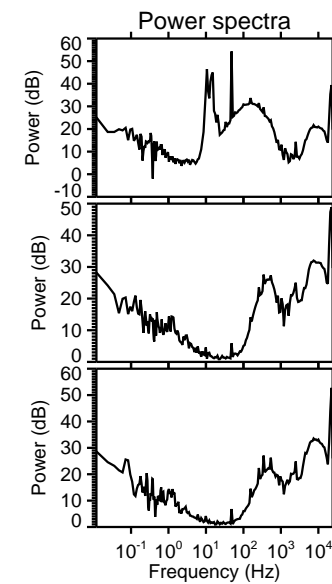
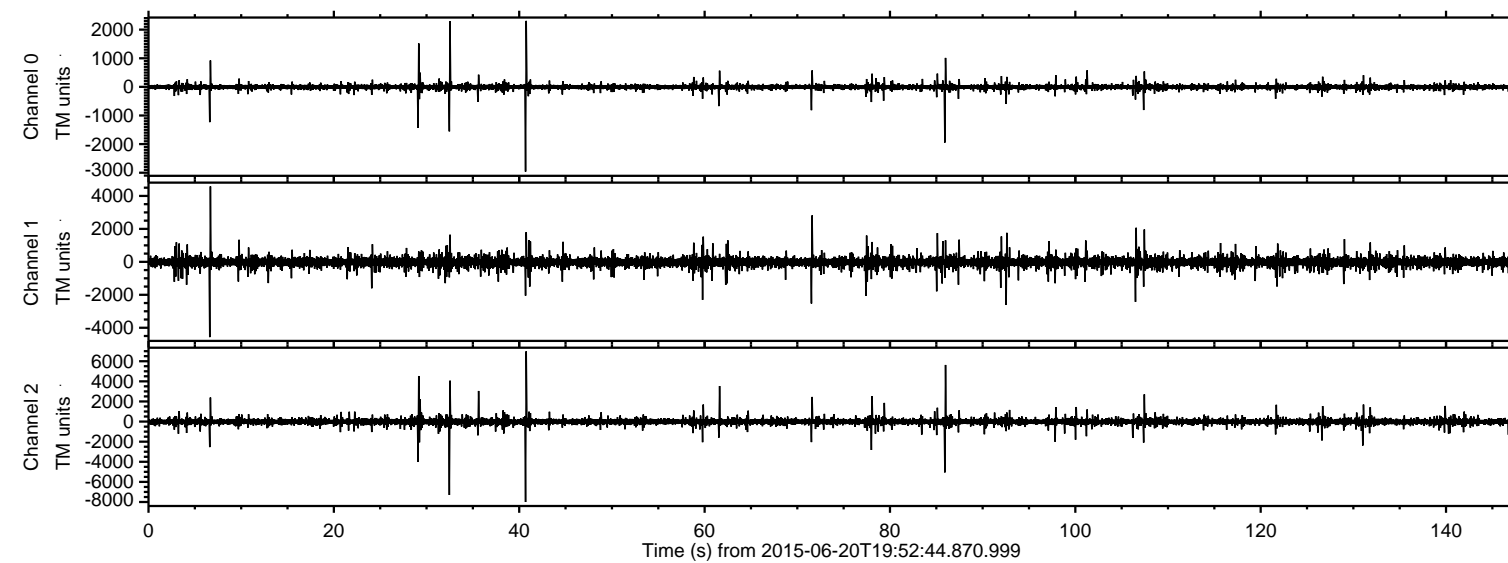
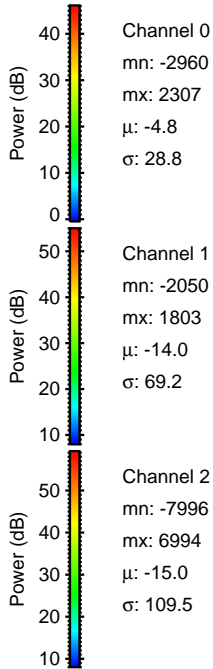
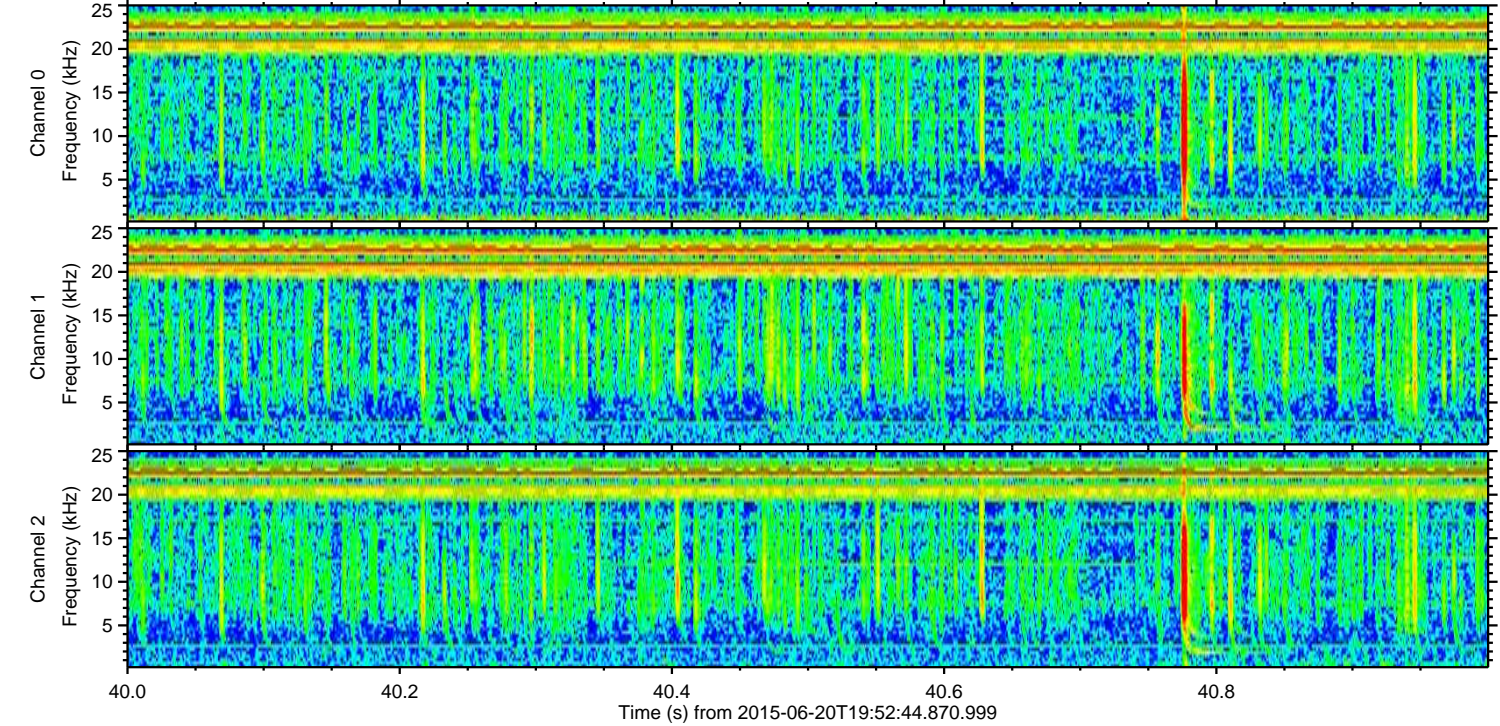
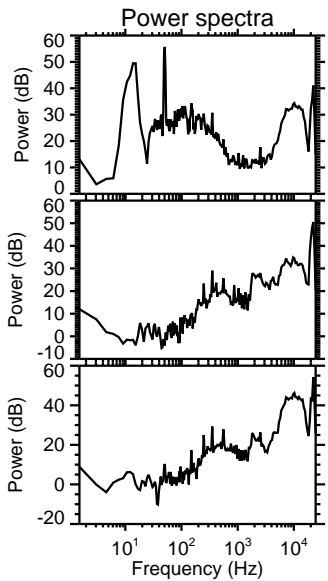
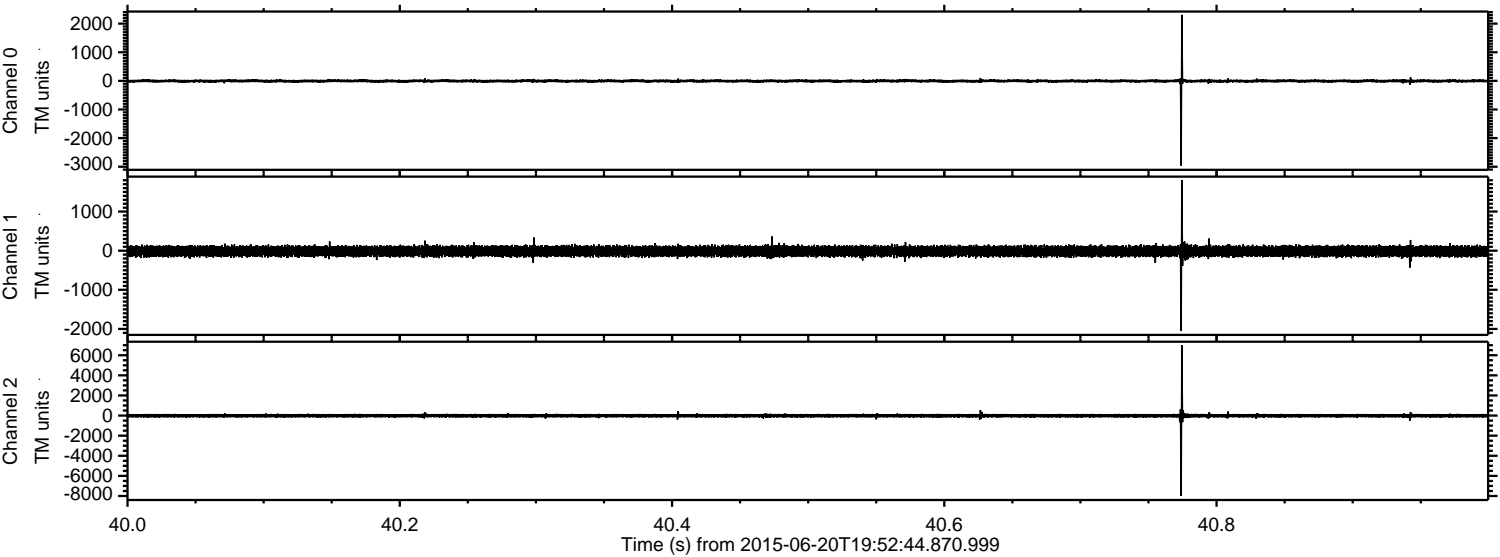


ELMAVAN 3D WAVEFORMS (Measured data sampled at 50 kHz) 51000 packets of 144 samples from 2015-06-20T19:52:44.870.999.

Processed Sat Jun 20 21:59:00 2015 by ELM ver.2012-10-06 from 001__elm20150620_195243__dat00.bin

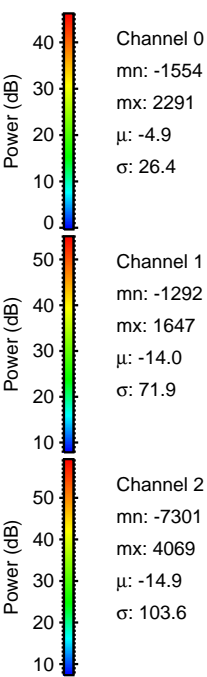
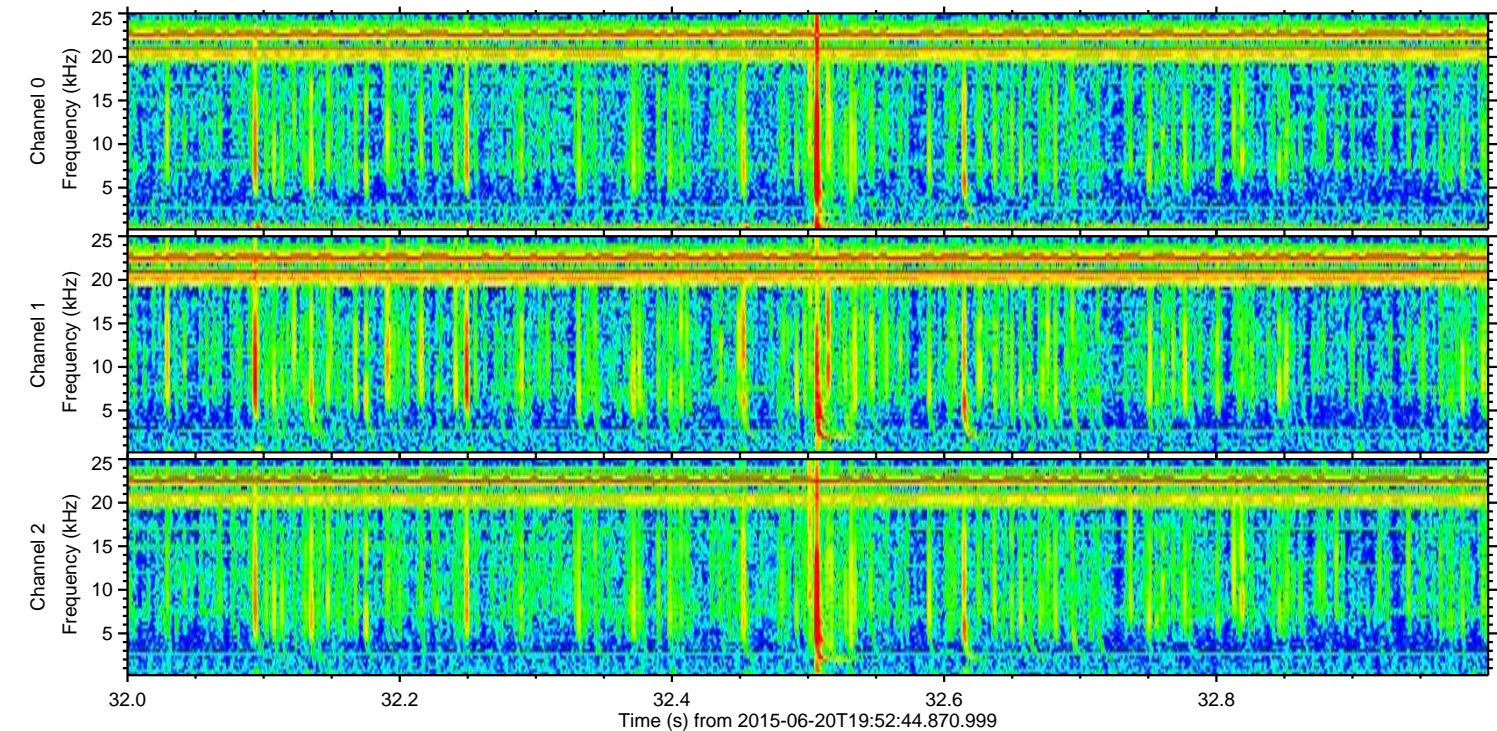
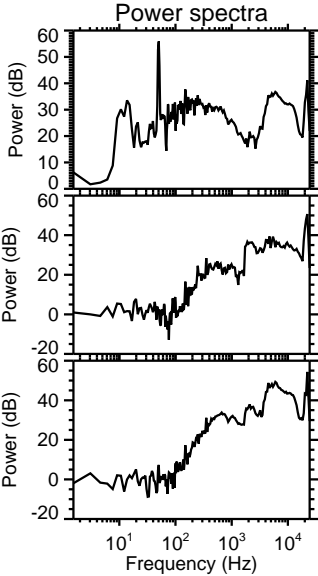
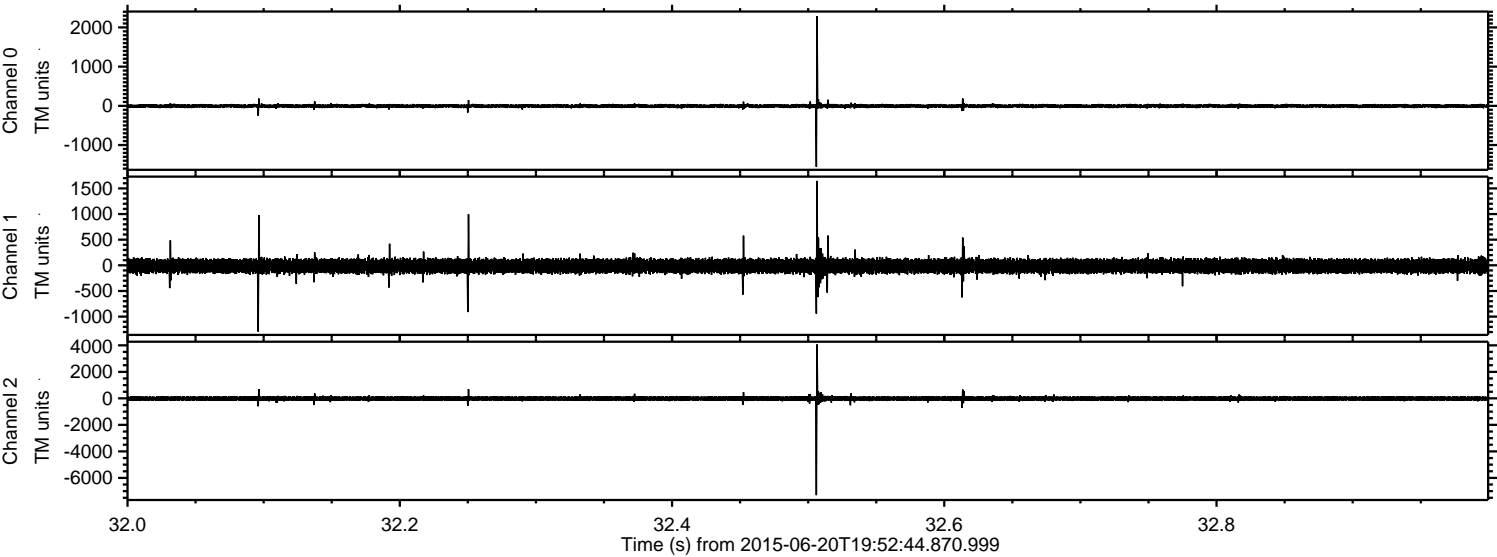


Processed Sat Jun 20 21:59:21 2015 by ELM ver.2012-10-06 from 001__elm20150620_195243__dat00.bin



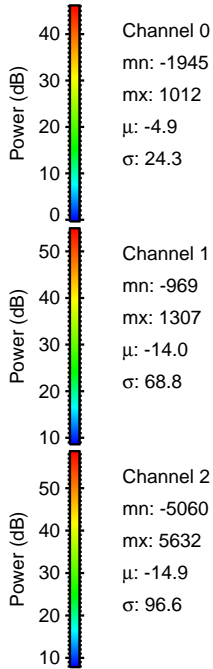
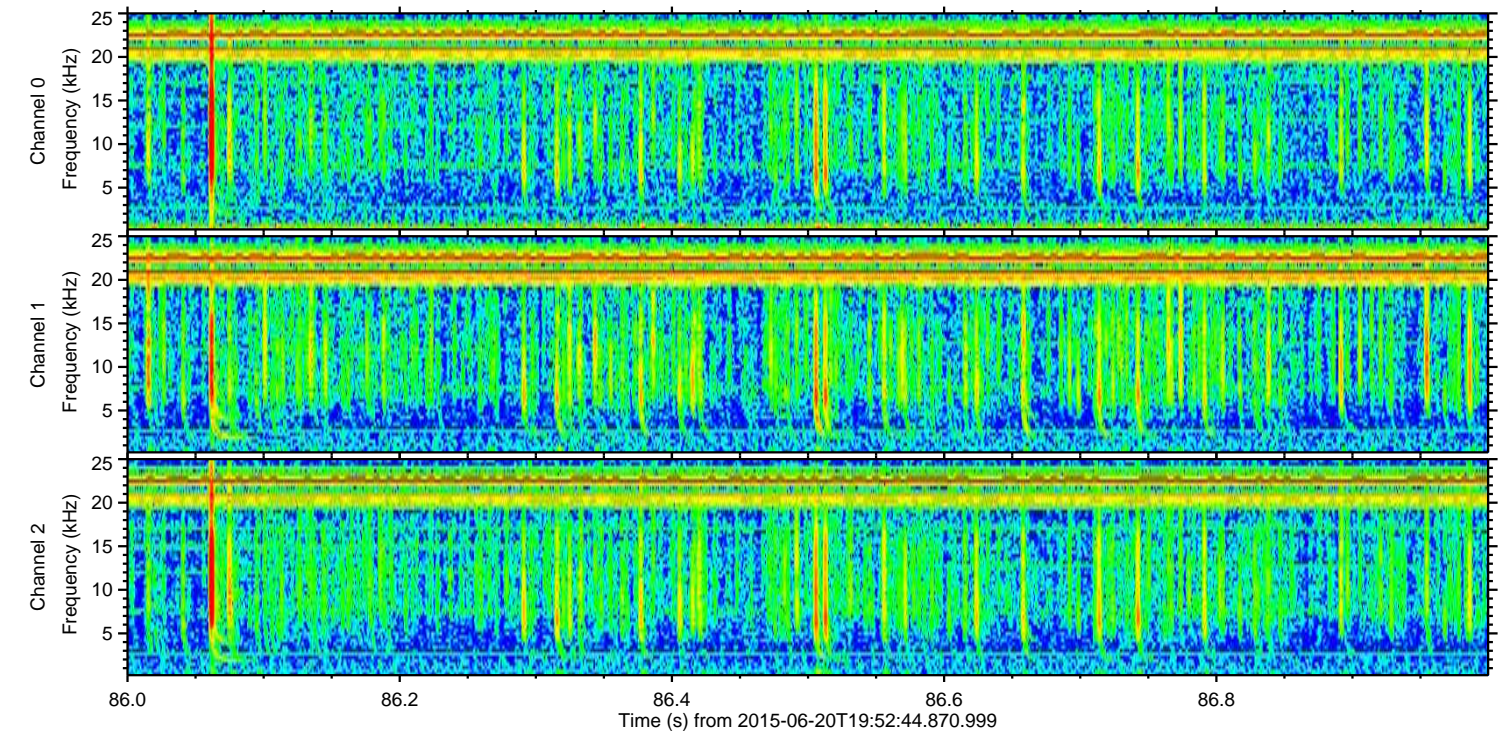
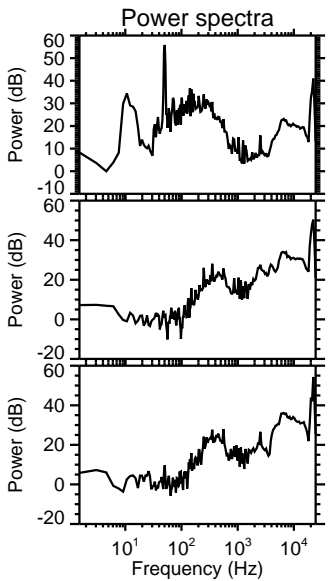
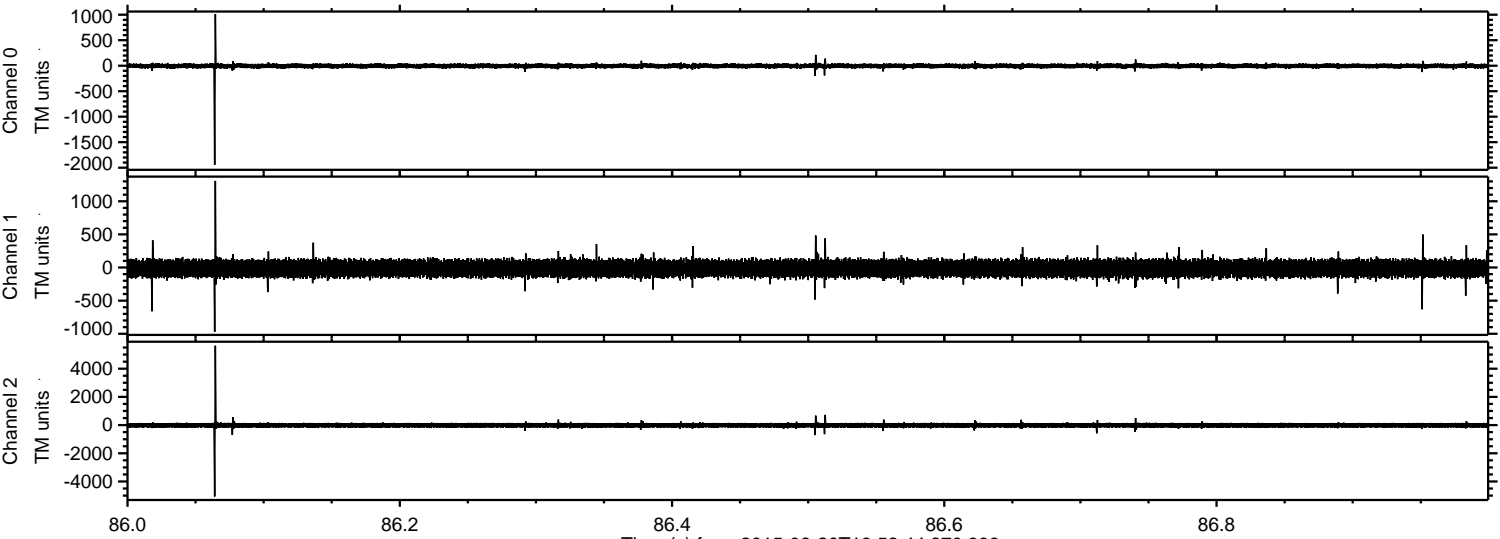
ELMAVAN 3D WAVEFORMS (Measured data sampled at 50 kHz) 51000 packets of 144 samples from 2015-06-20T19:52:44.870.999. Part 33/147

Processed Sat Jun 20 21:59:22 2015 by ELM ver.2012-10-06 from 001__elm20150620_195243__dat00.bin

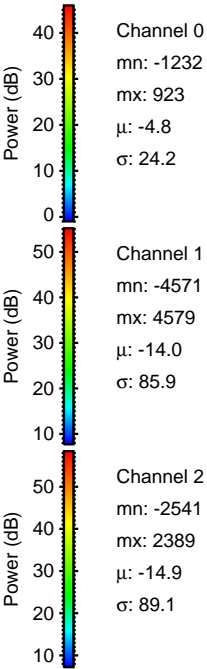
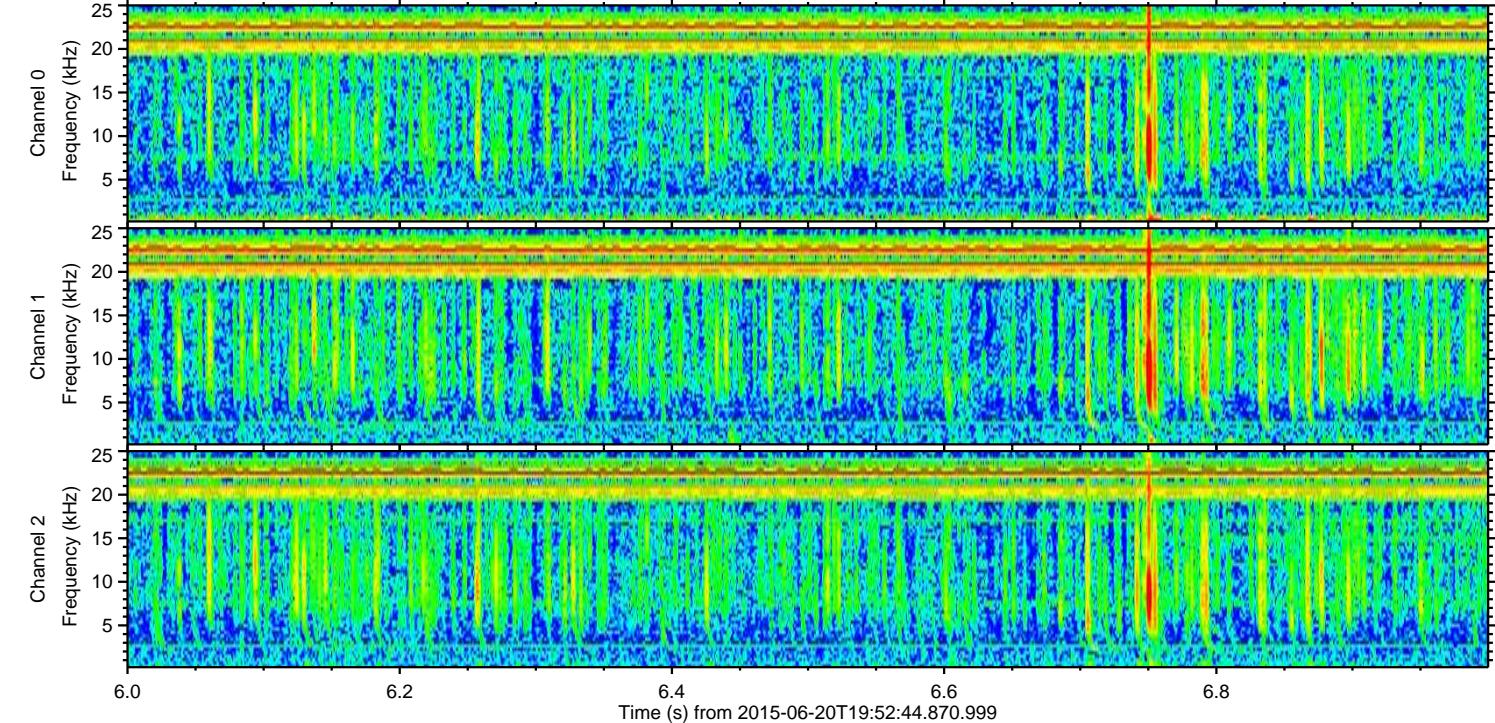
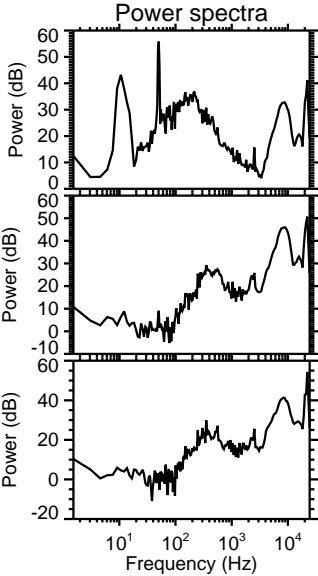
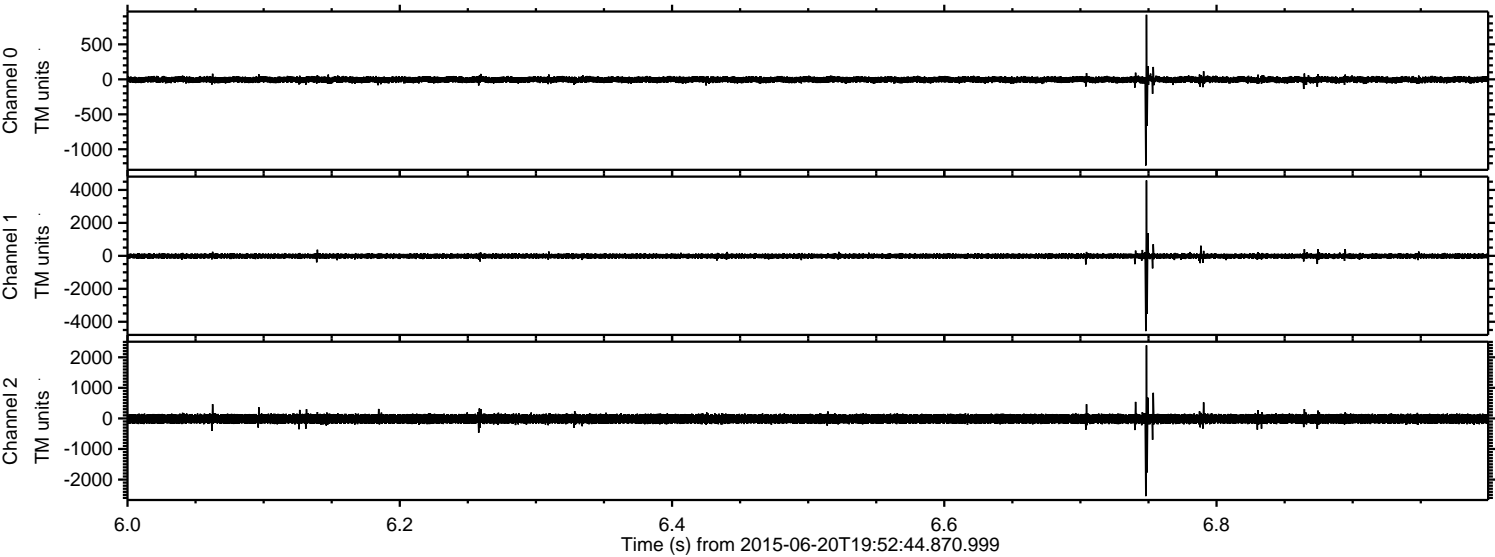


ELMAVAN 3D WAVEFORMS (Measured data sampled at 50 kHz) 51000 packets of 144 samples from 2015-06-20T19:52:44.870.999. Part 87/147

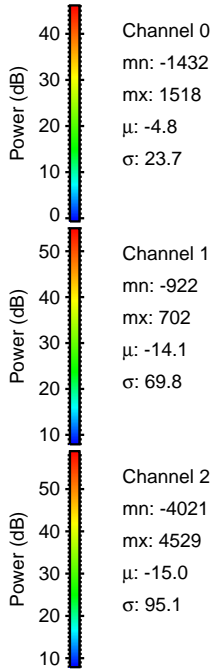
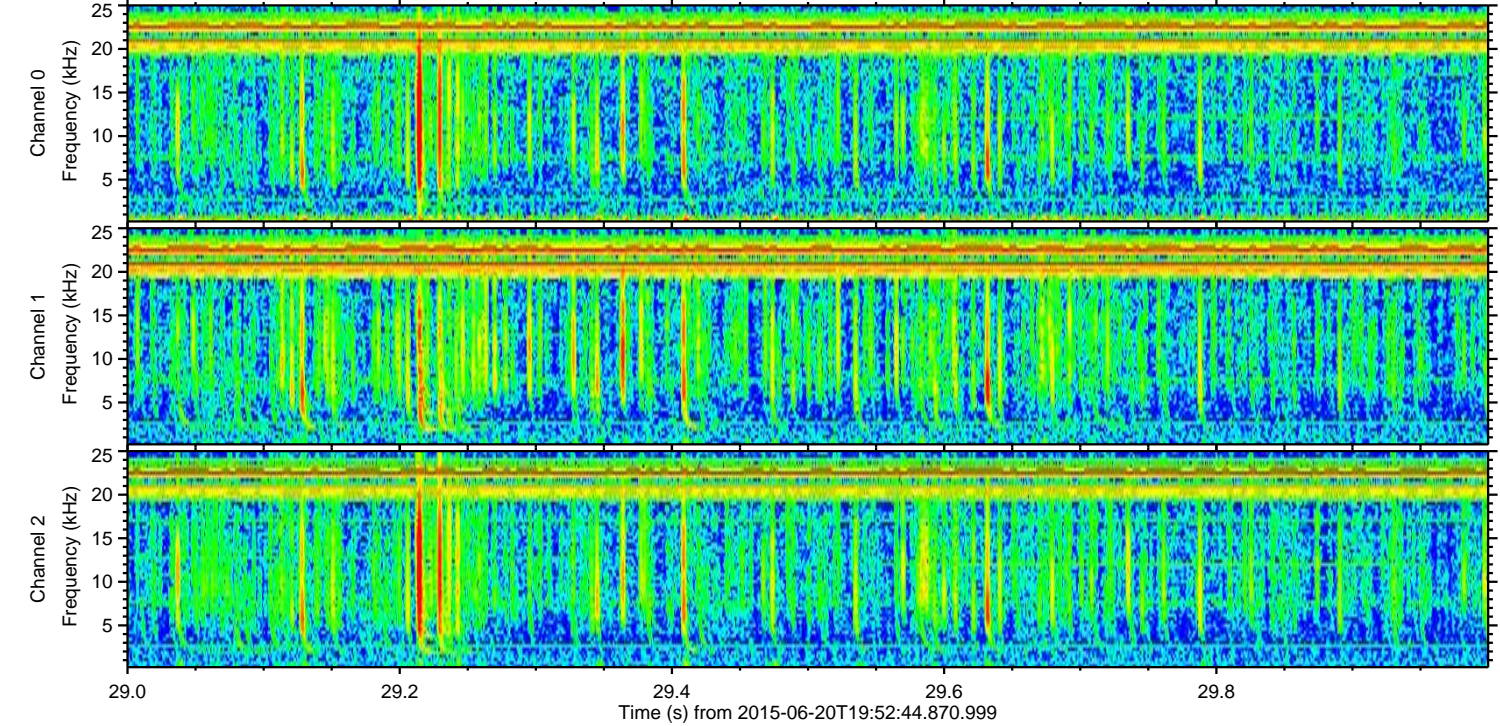
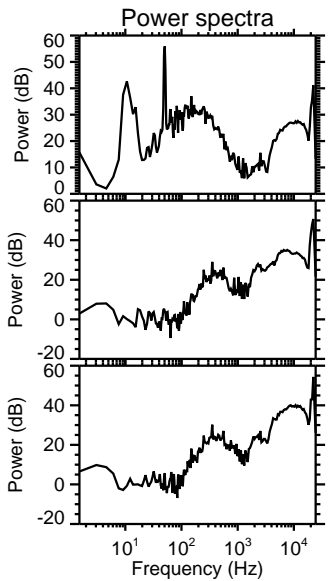
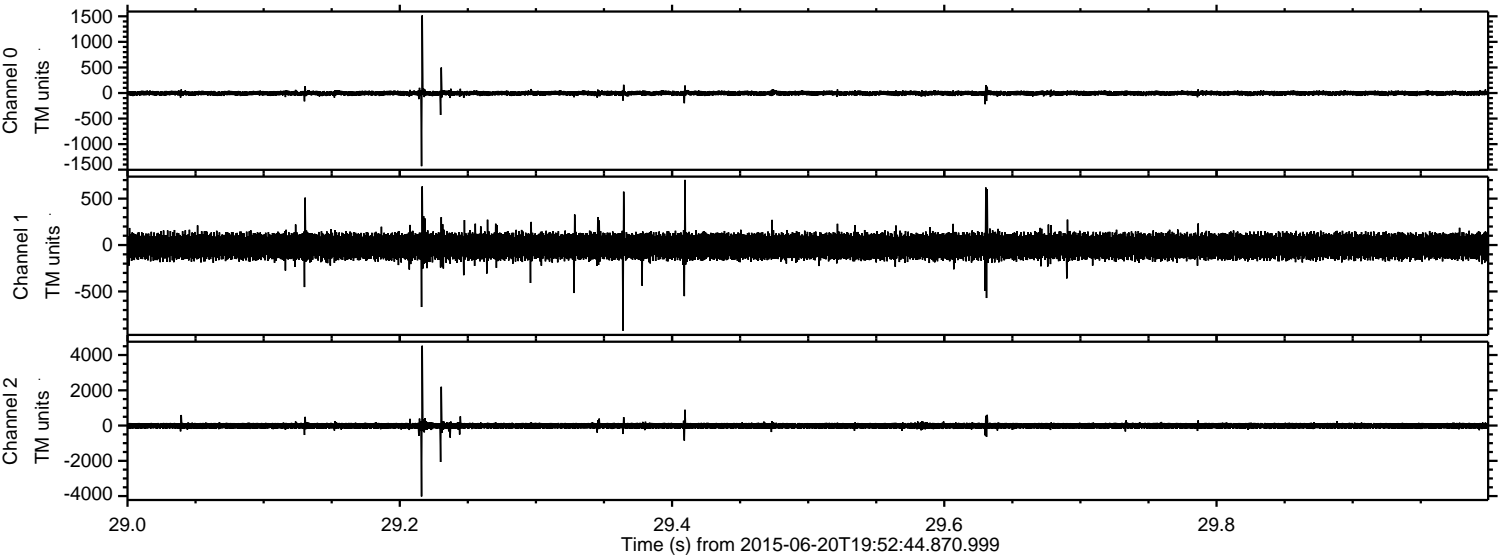
Processed Sat Jun 20 21:59:24 2015 by ELM ver.2012-10-06 from 001__elm20150620_195243__dat00.bin



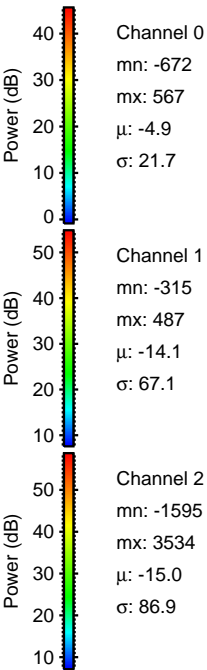
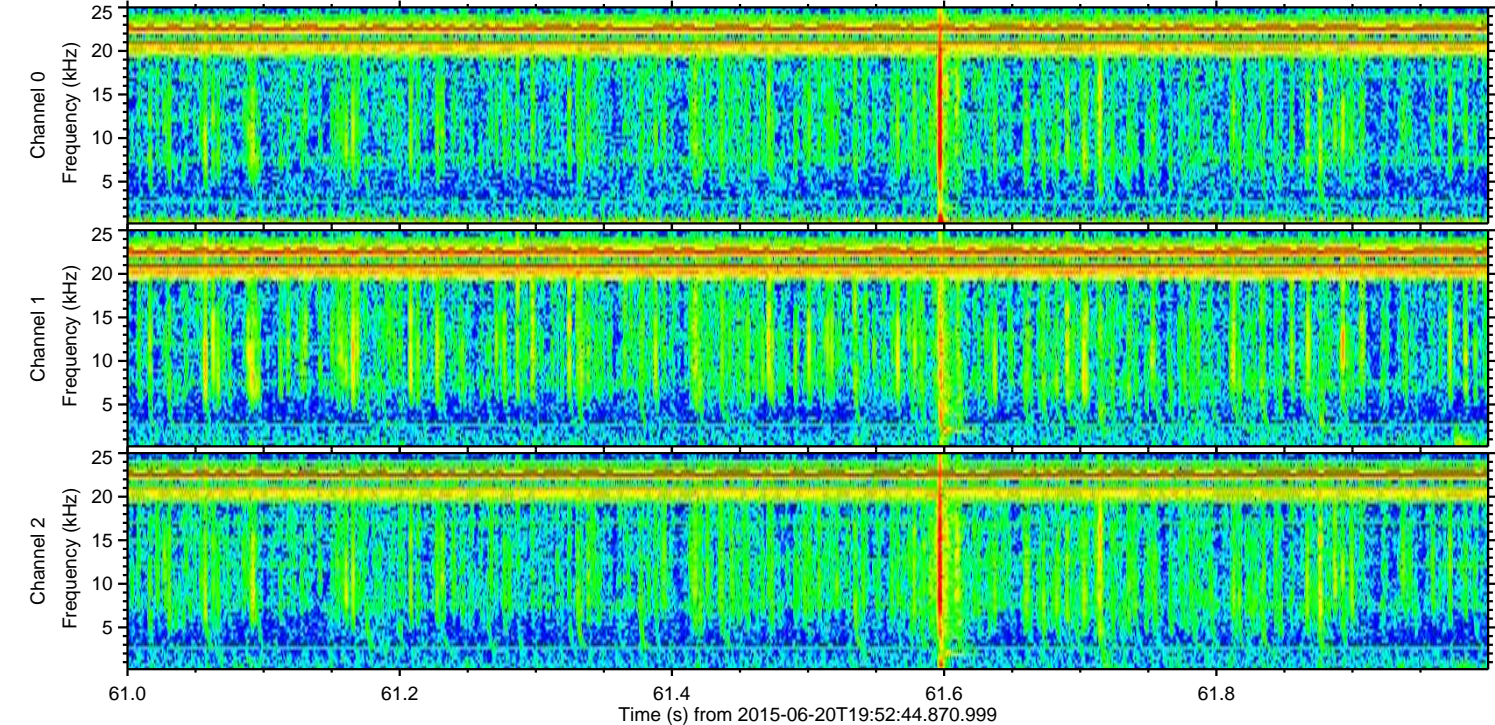
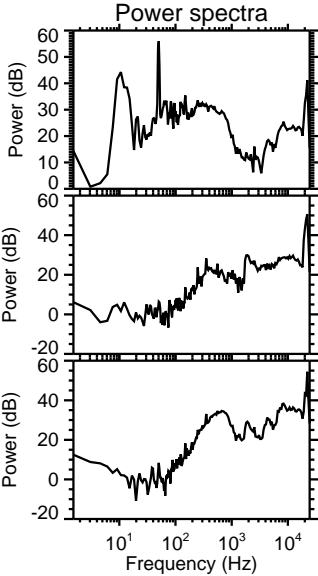
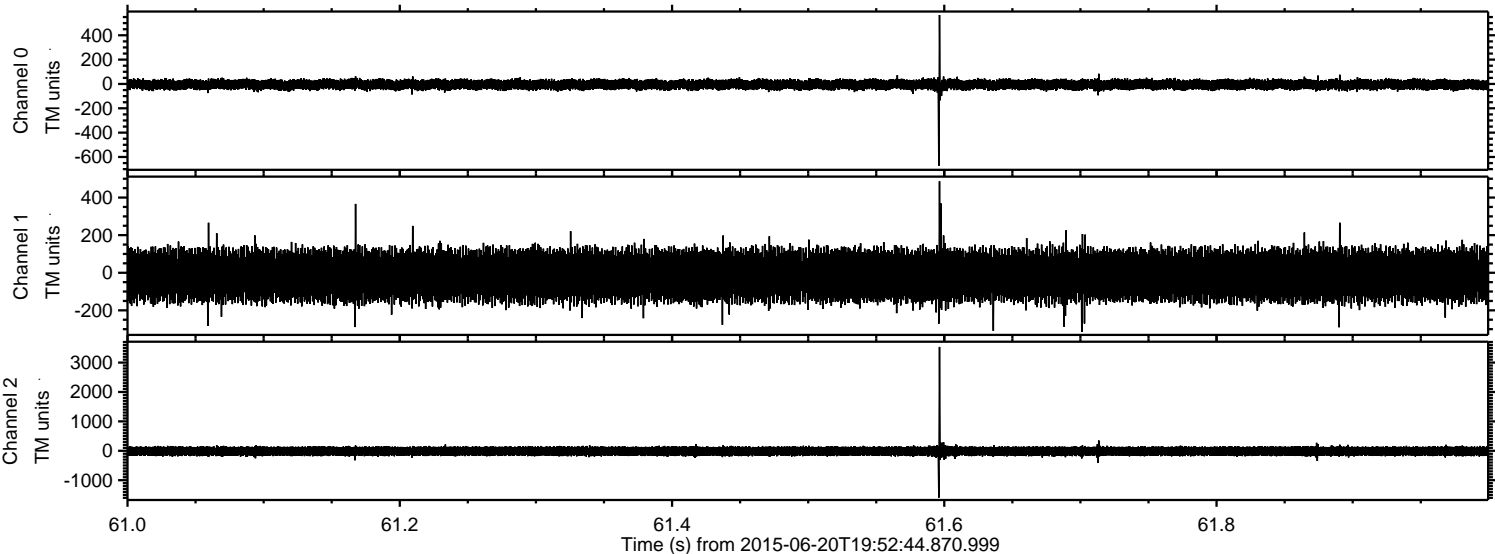
Processed Sat Jun 20 21:59:25 2015 by ELM ver.2012-10-06 from 001__elm20150620_195243__dat00.bin



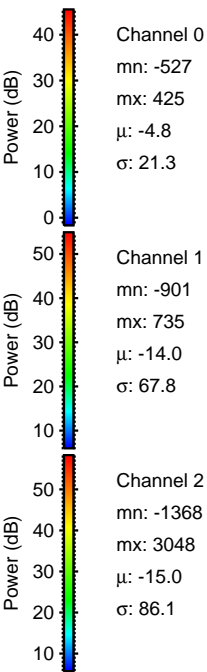
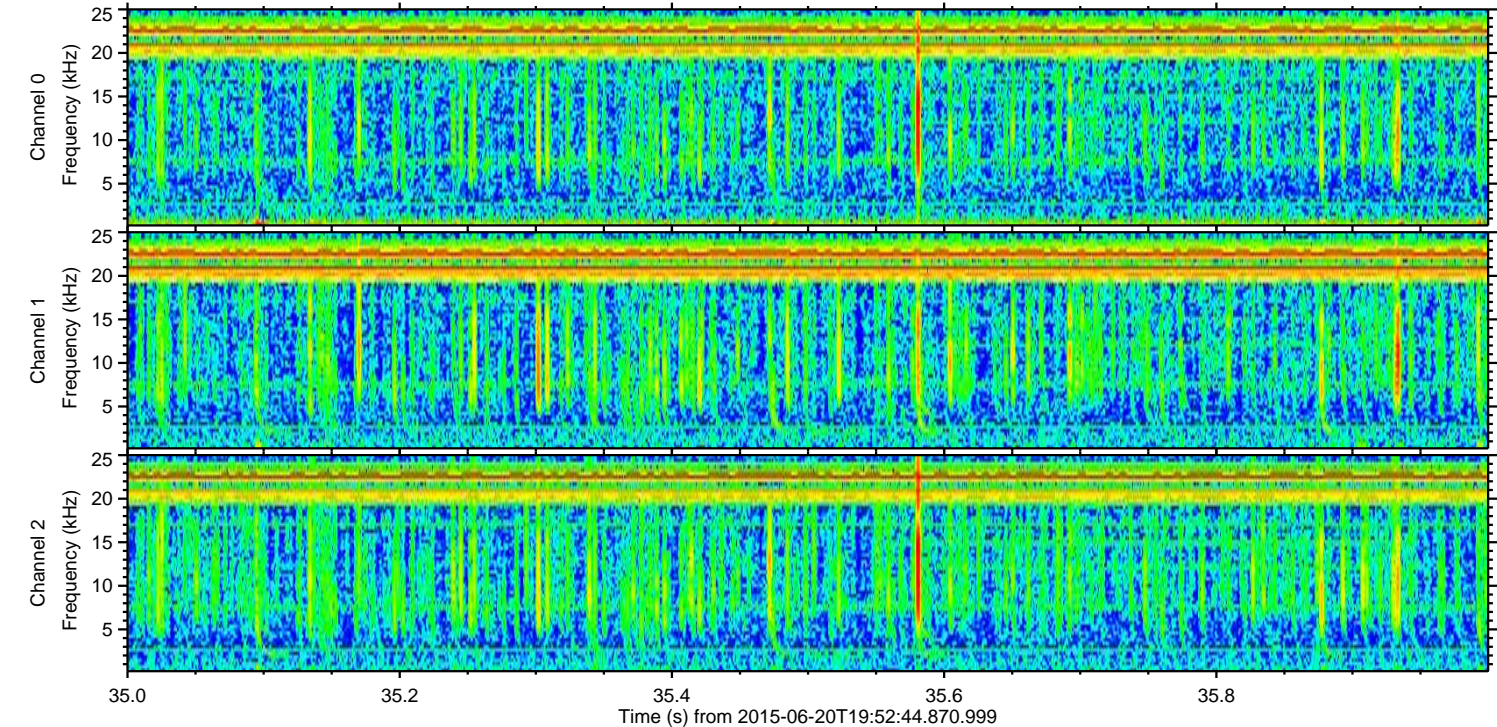
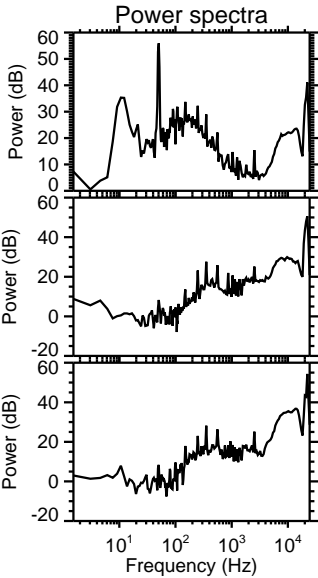
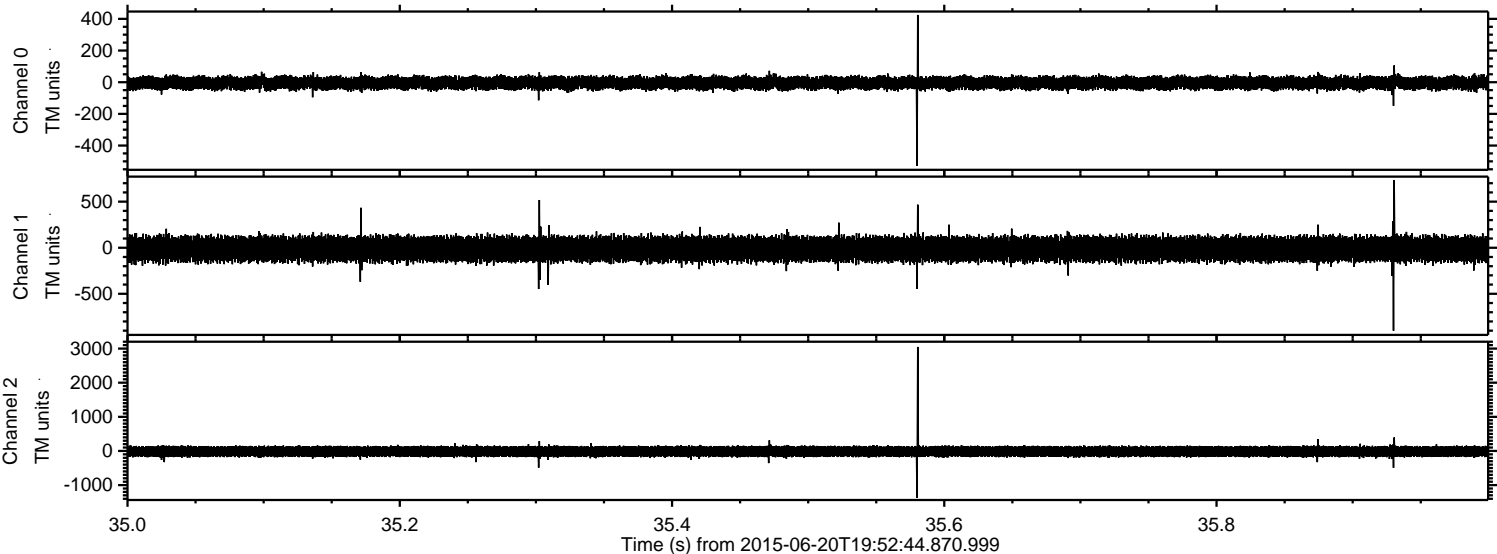
Processed Sat Jun 20 21:59:27 2015 by ELM ver.2012-10-06 from 001__elm20150620_195243__dat00.bin



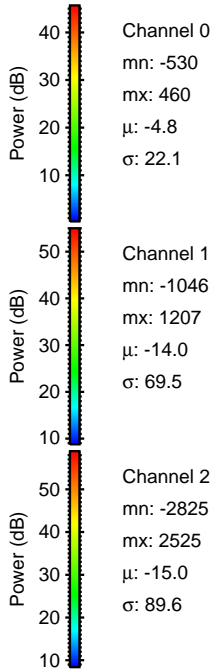
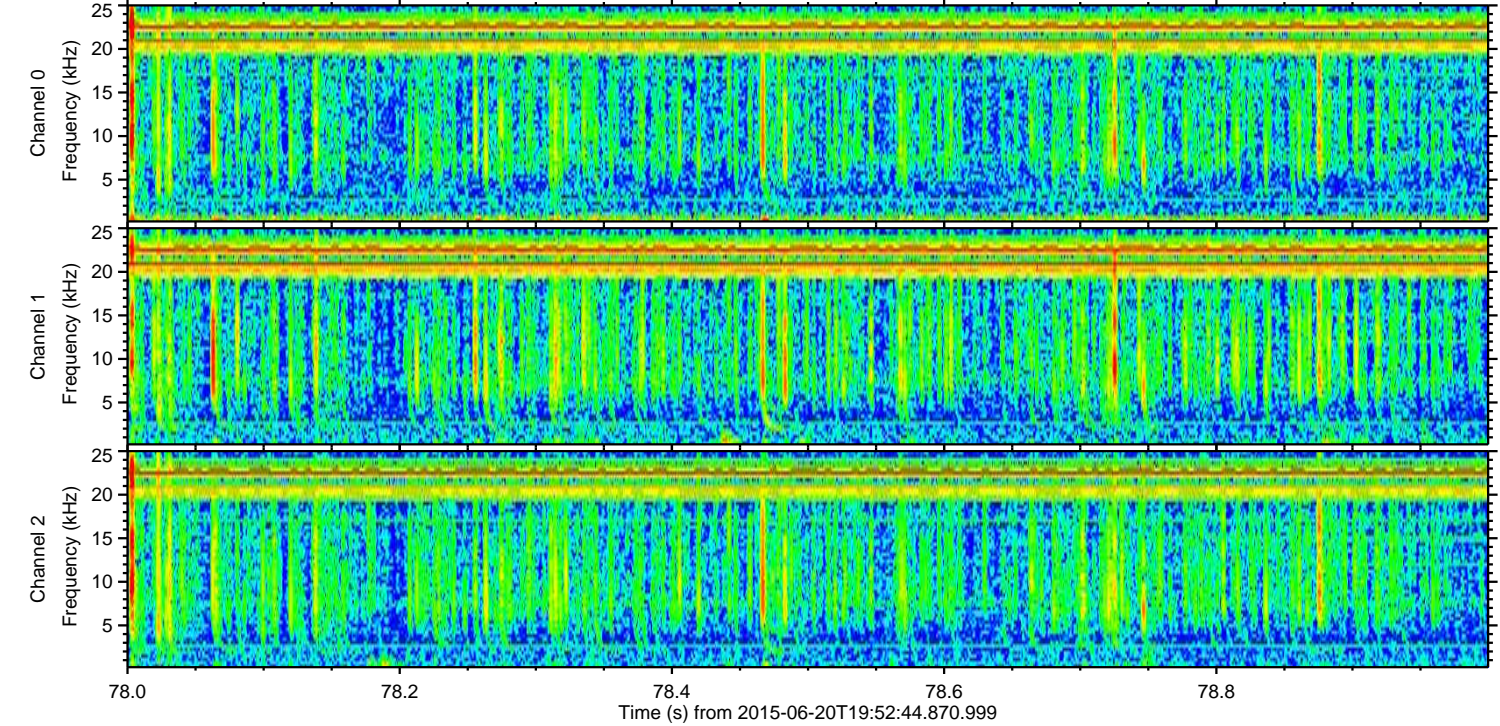
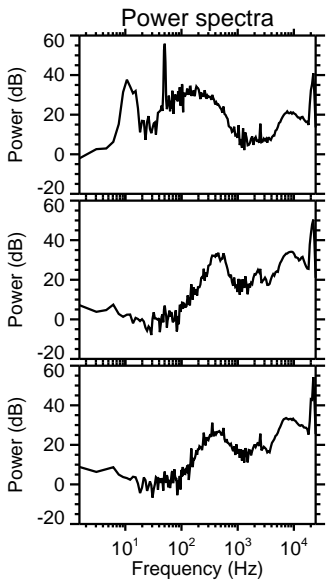
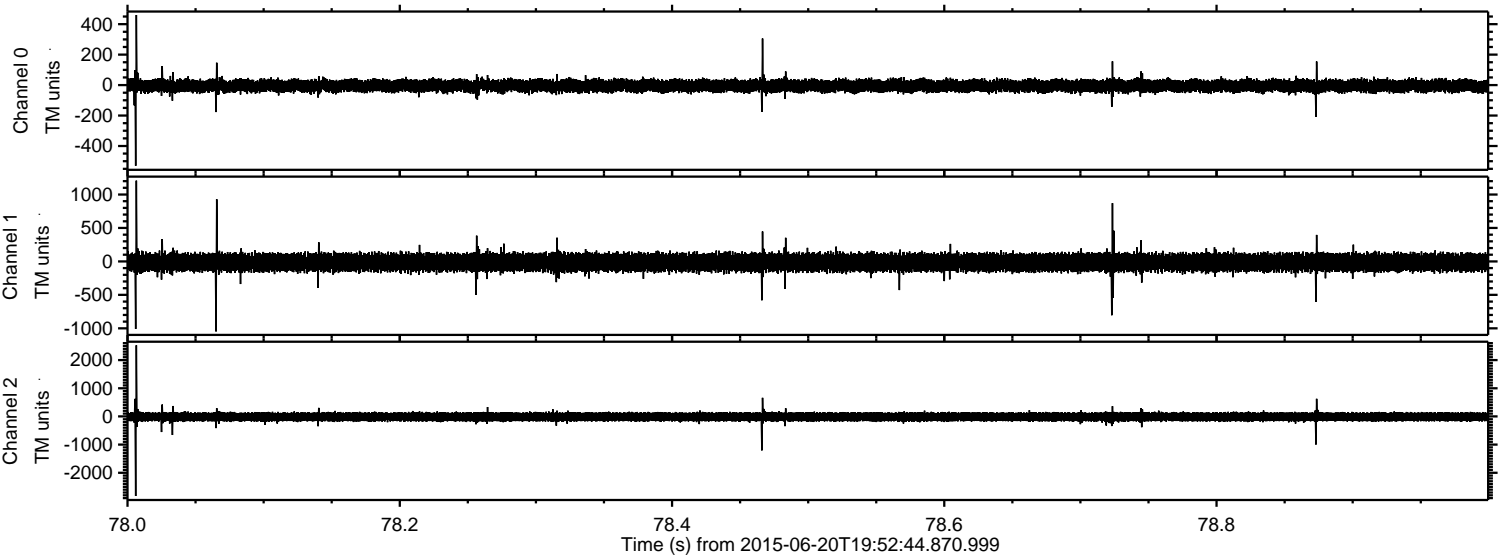
Processed Sat Jun 20 21:59:28 2015 by ELM ver.2012-10-06 from 001__elm20150620_195243__dat00.bin



Processed Sat Jun 20 21:59:30 2015 by ELM ver.2012-10-06 from 001__elm20150620_195243__dat00.bin



Processed Sat Jun 20 21:59:31 2015 by ELM ver.2012-10-06 from 001__elm20150620_195243__dat00.bin

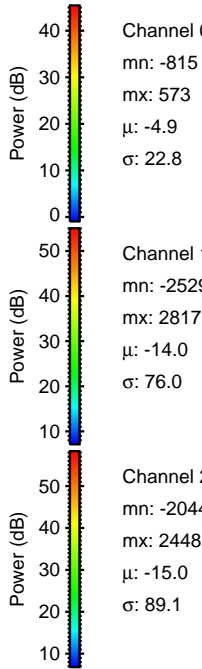
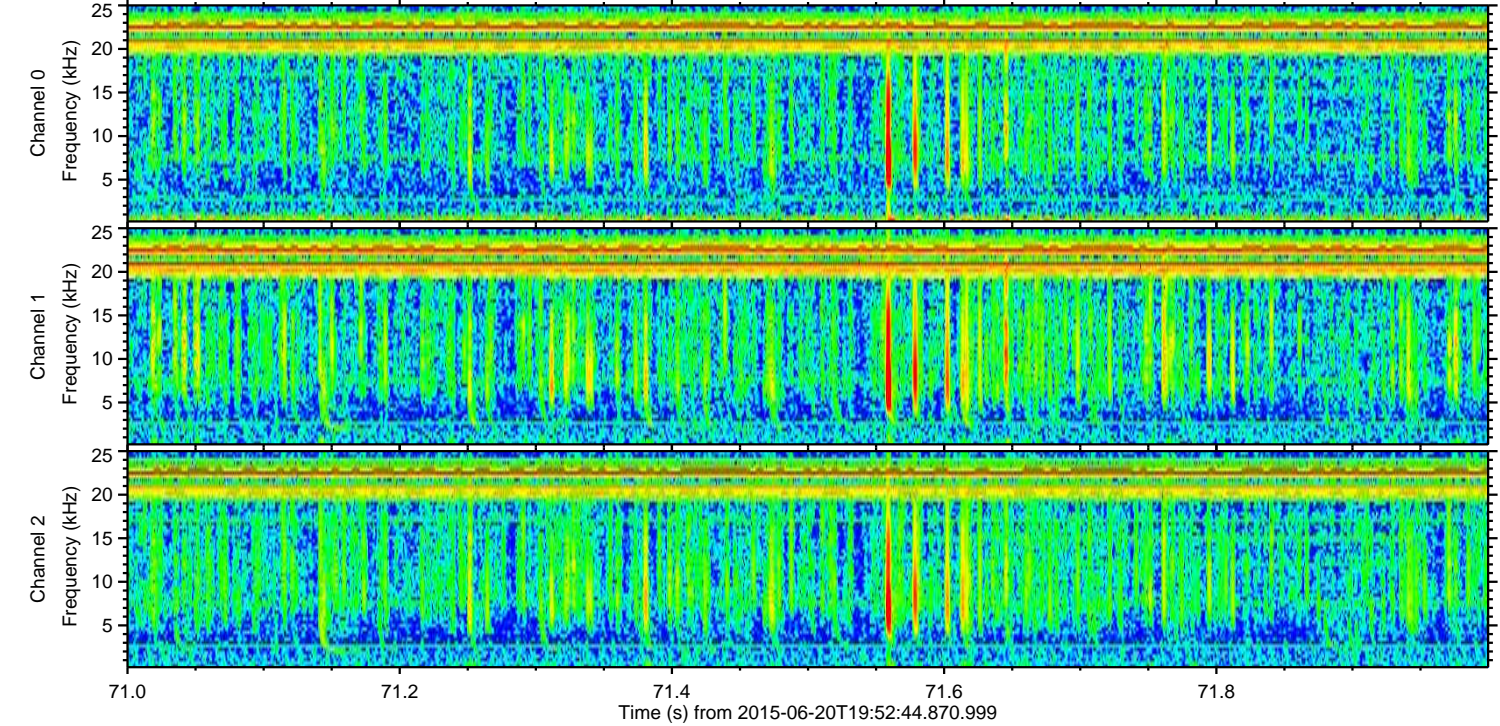
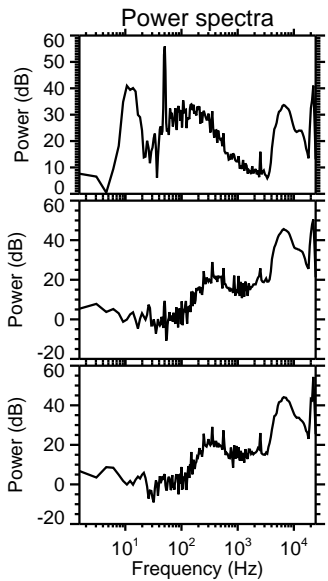
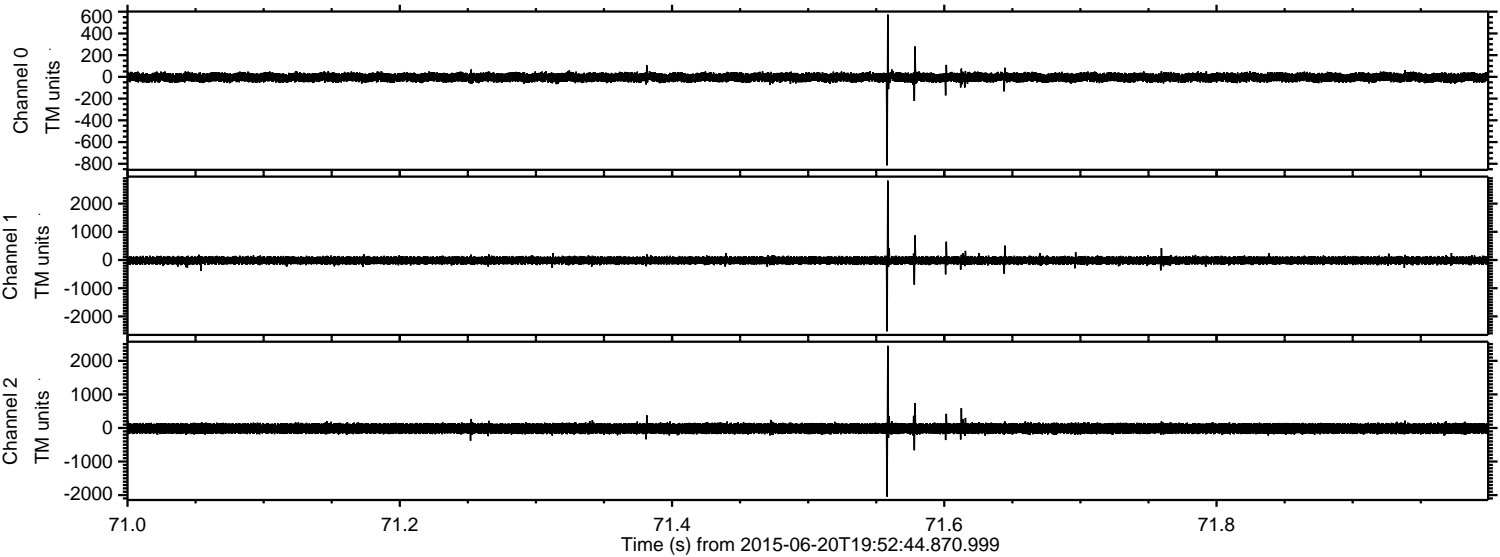


Channel 0
mn: -530
mx: 460
 μ : -4.8
 σ : 22.1

Channel 1
mn: -1046
mx: 1207
 μ : -14.0
 σ : 69.5

Channel 2
mn: -2825
mx: 2525
 μ : -15.0
 σ : 89.6

Processed Sat Jun 20 21:59:33 2015 by ELM ver.2012-10-06 from 001__elm20150620_195243__dat00.bin



Channel 0
mn: -815
mx: 573
 μ : -4.9
 σ : 22.8

Channel 1
mn: -2529
mx: 2817
 μ : -14.0
 σ : 76.0

Channel 2
mn: -2044
mx: 2448
 μ : -15.0
 σ : 89.1

Processed Sat Jun 20 21:59:34 2015 by ELM ver.2012-10-06 from 001__elm20150620_195243__dat00.bin

