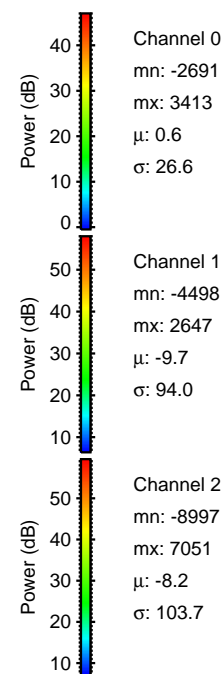
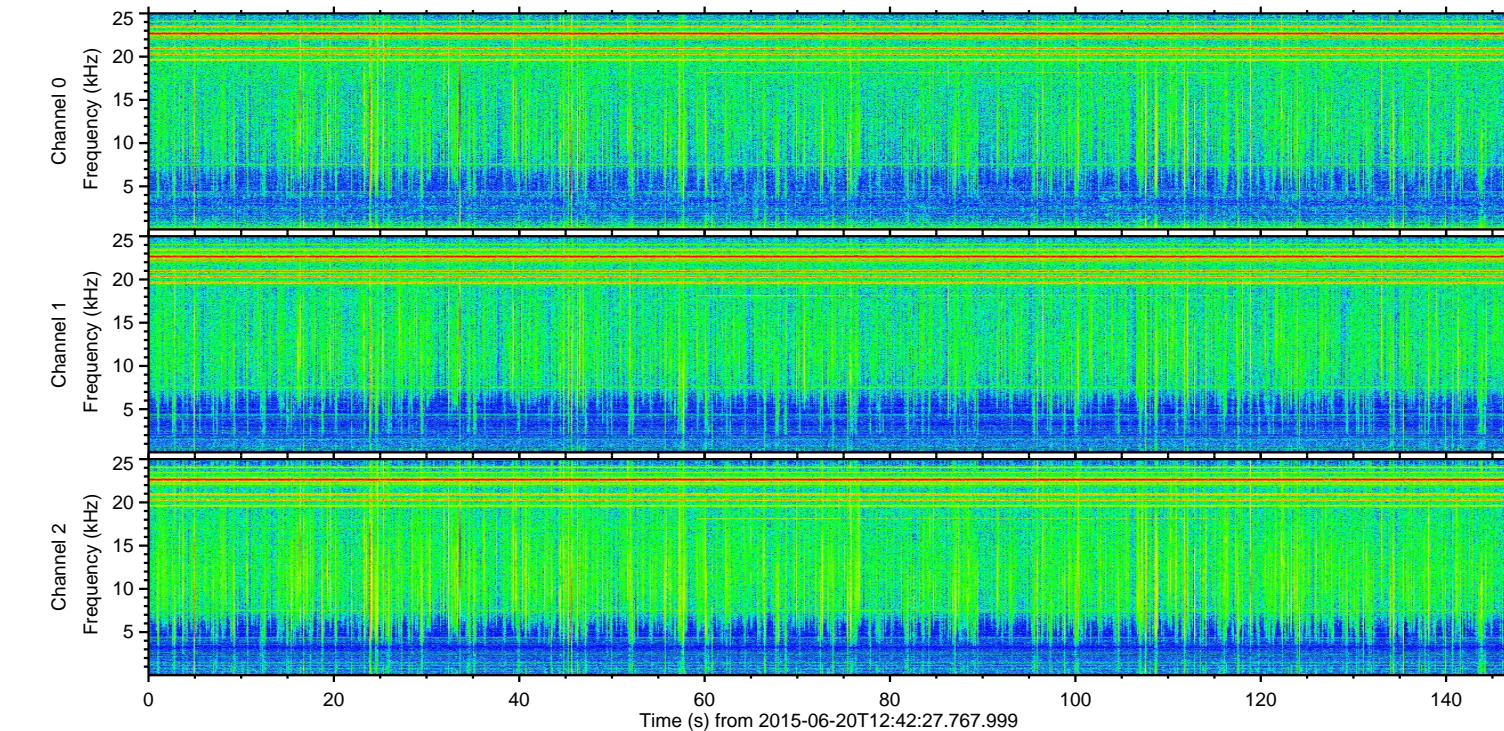
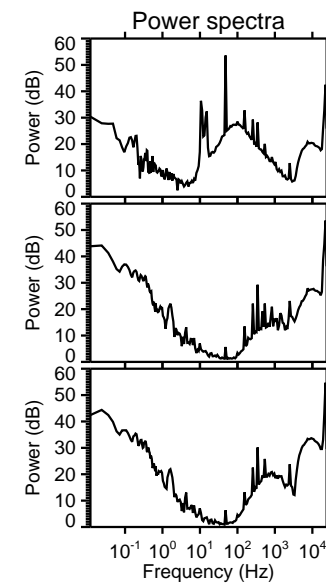
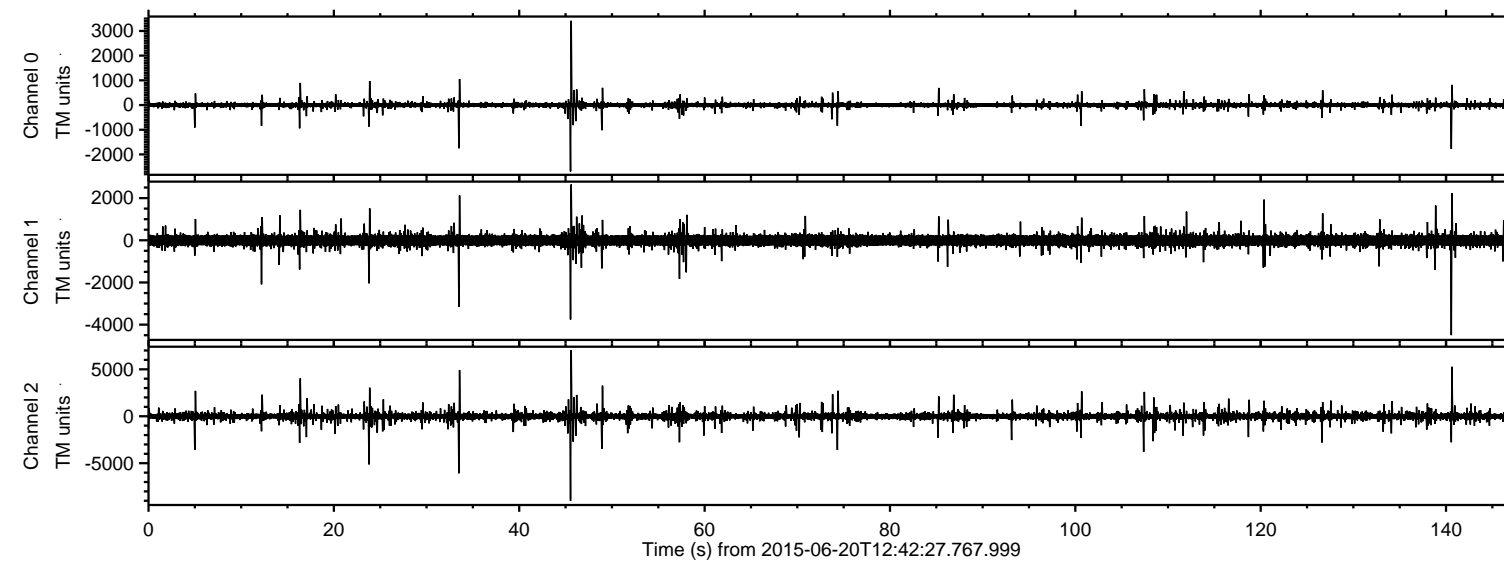


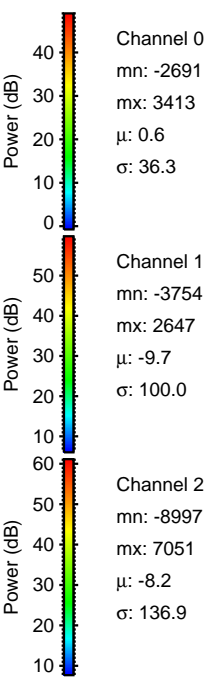
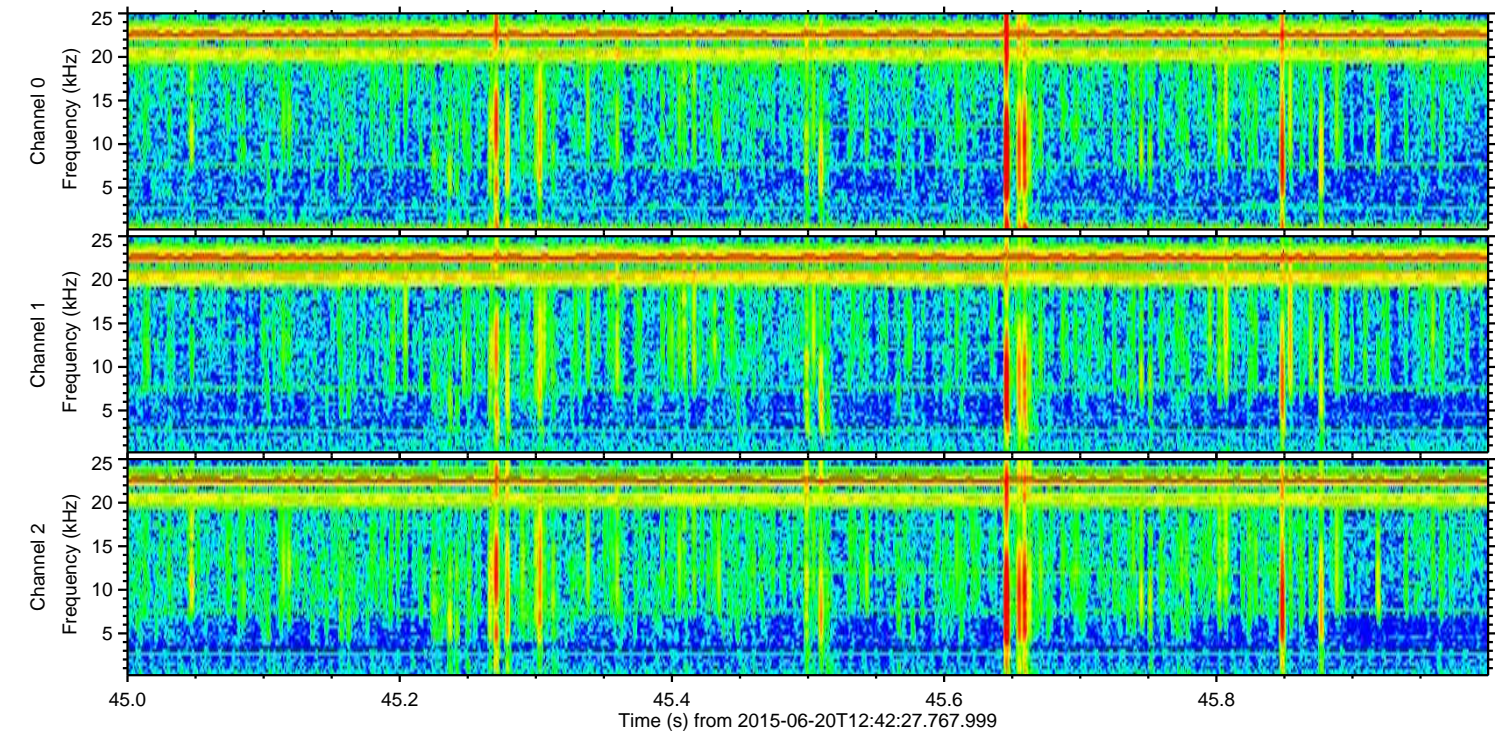
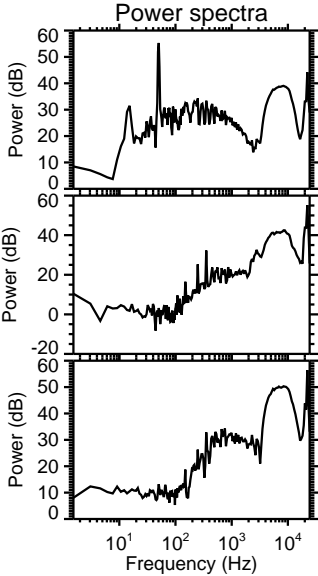
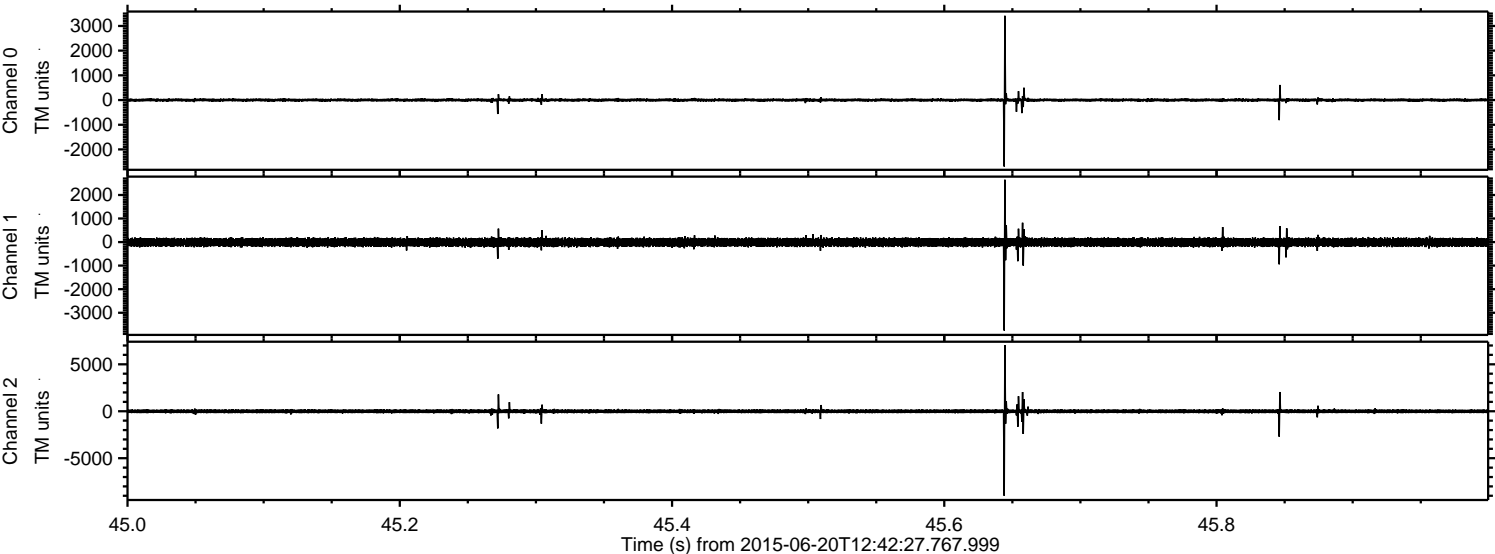
# ELMAVAN 3D WAVEFORMS (Measured data sampled at 50 kHz) 51000 packets of 144 samples from 2015-06-20T12:42:27.767.999.

Processed Sat Jun 20 14:49:09 2015 by ELM ver.2012-10-06 from 001\_\_elm20150620\_124226\_\_dat00.bin



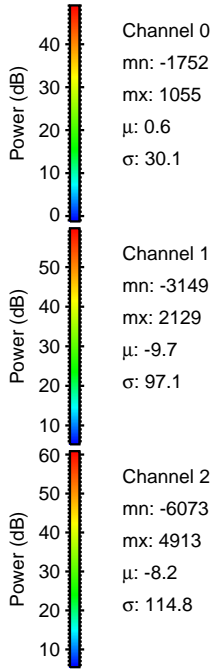
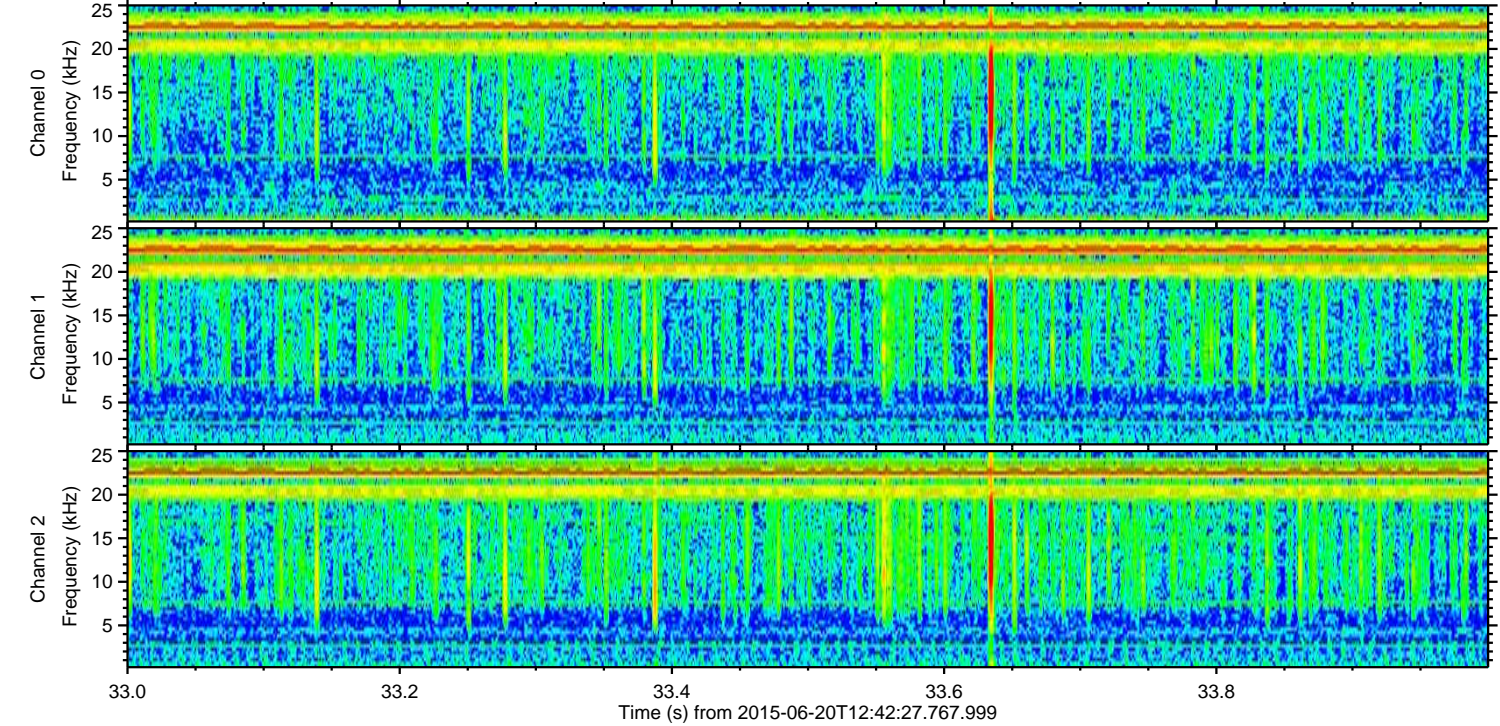
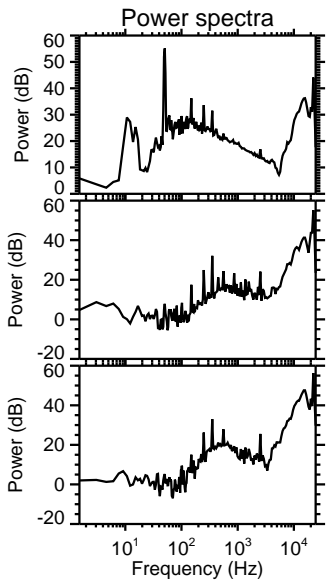
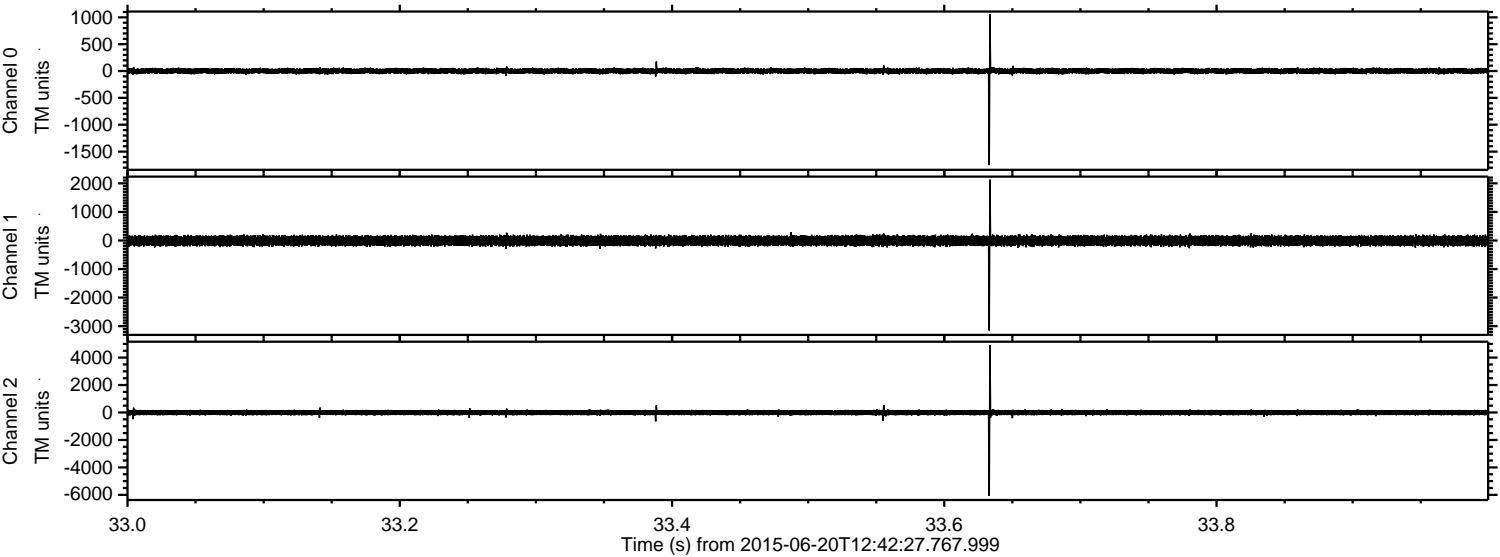


Processed Sat Jun 20 14:49:31 2015 by ELM ver.2012-10-06 from 001\_\_elm20150620\_124226\_\_dat00.bin





Processed Sat Jun 20 14:49:32 2015 by ELM ver.2012-10-06 from 001\_\_elm20150620\_124226\_\_dat00.bin



Channel 0  
mn: -1752  
mx: 1055  
 $\mu$ : 0.6  
 $\sigma$ : 30.1

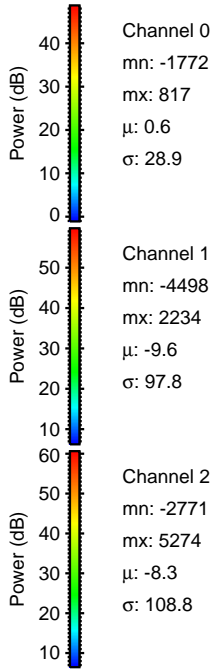
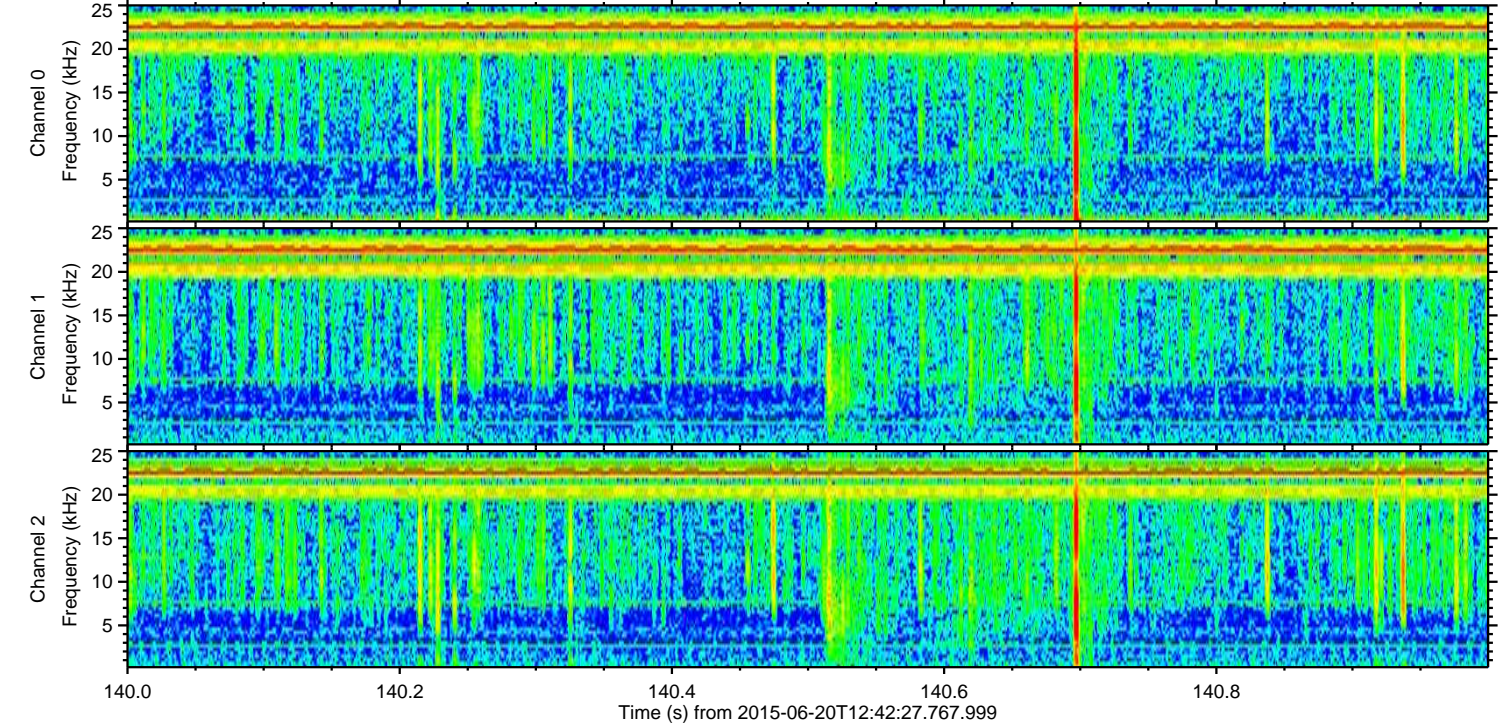
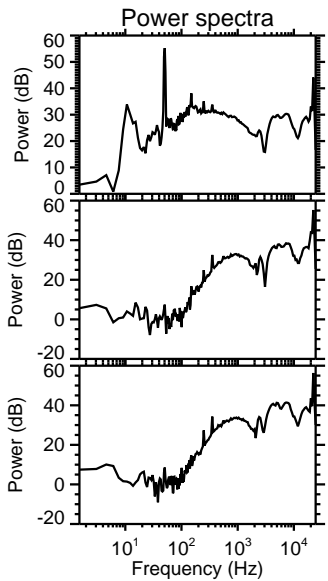
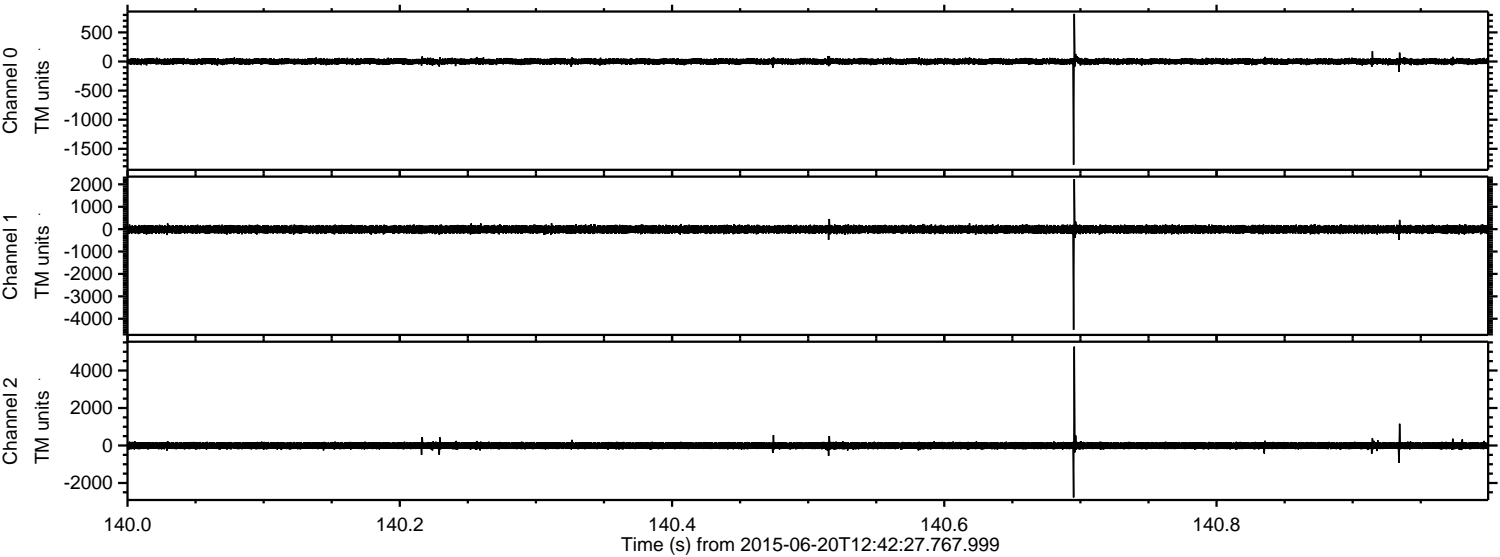
Channel 1  
mn: -3149  
mx: 2129  
 $\mu$ : -9.7  
 $\sigma$ : 97.1

Channel 2  
mn: -6073  
mx: 4913  
 $\mu$ : -8.2  
 $\sigma$ : 114.8

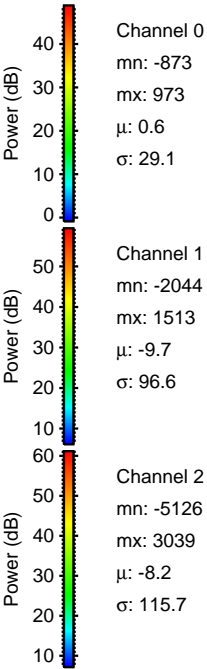
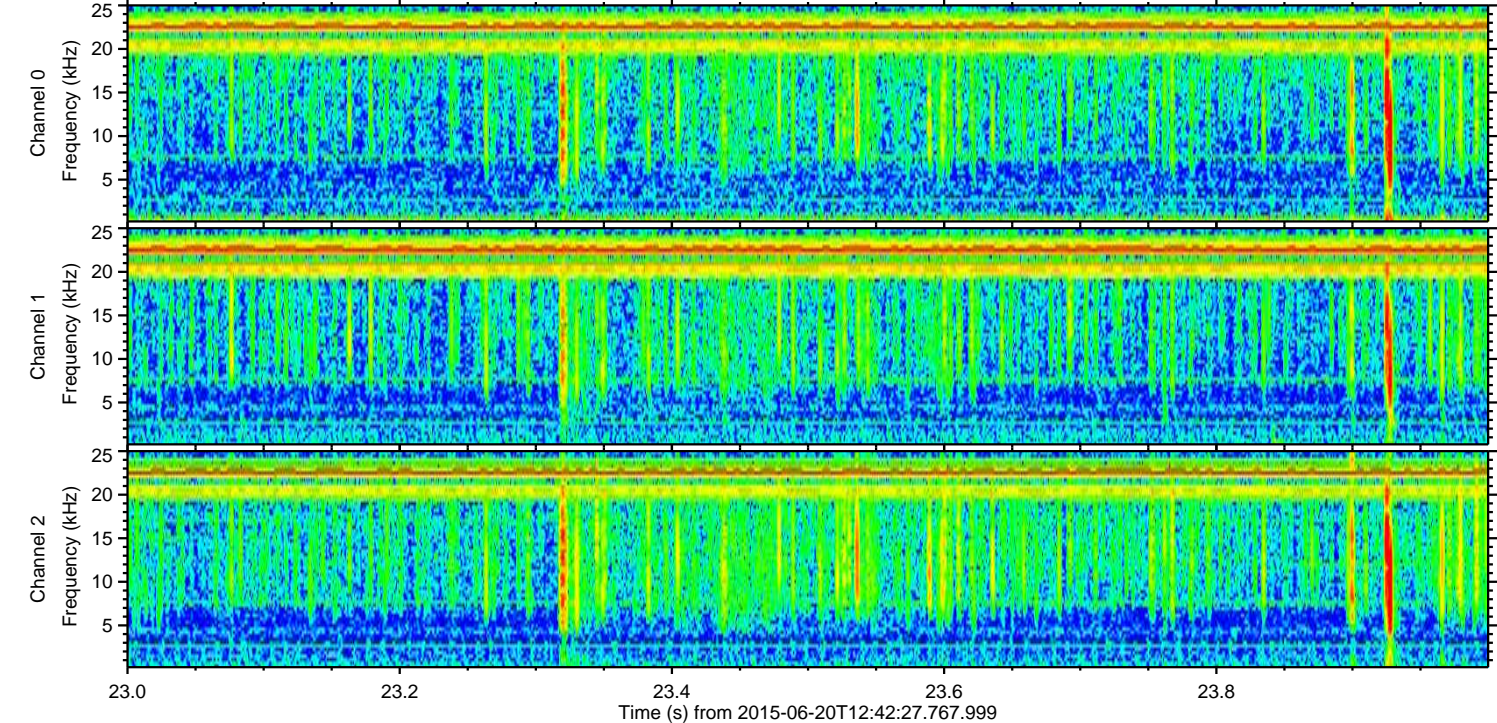
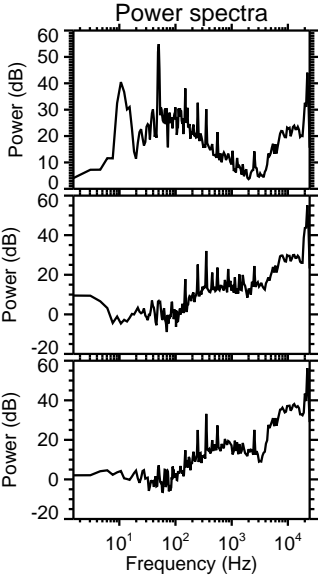
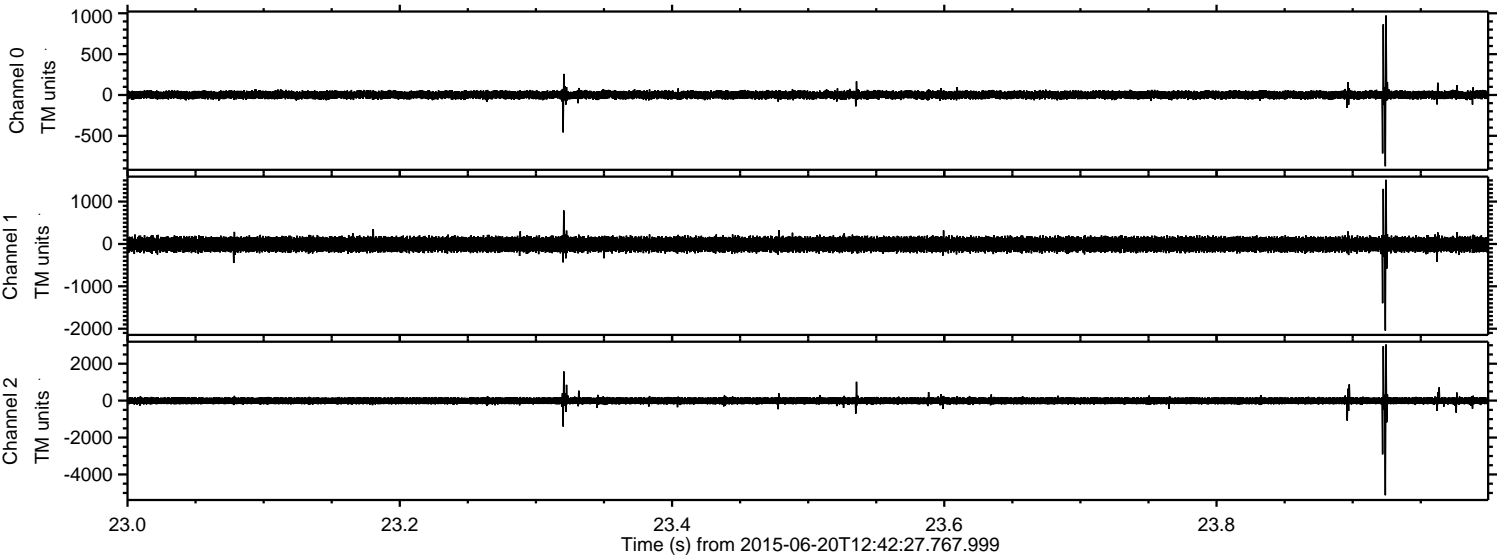


ELMAVAN 3D WAVEFORMS (Measured data sampled at 50 kHz) 51000 packets of 144 samples from 2015-06-20T12:42:27.767.999. Part 141/147

Processed Sat Jun 20 14:49:33 2015 by ELM ver.2012-10-06 from 001\_\_elm20150620\_124226\_\_dat00.bin

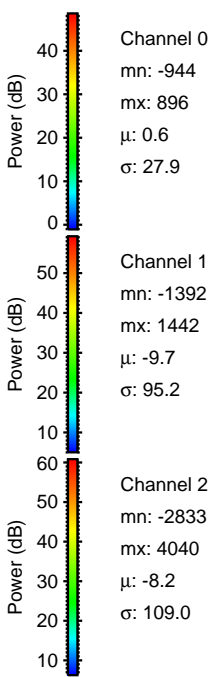
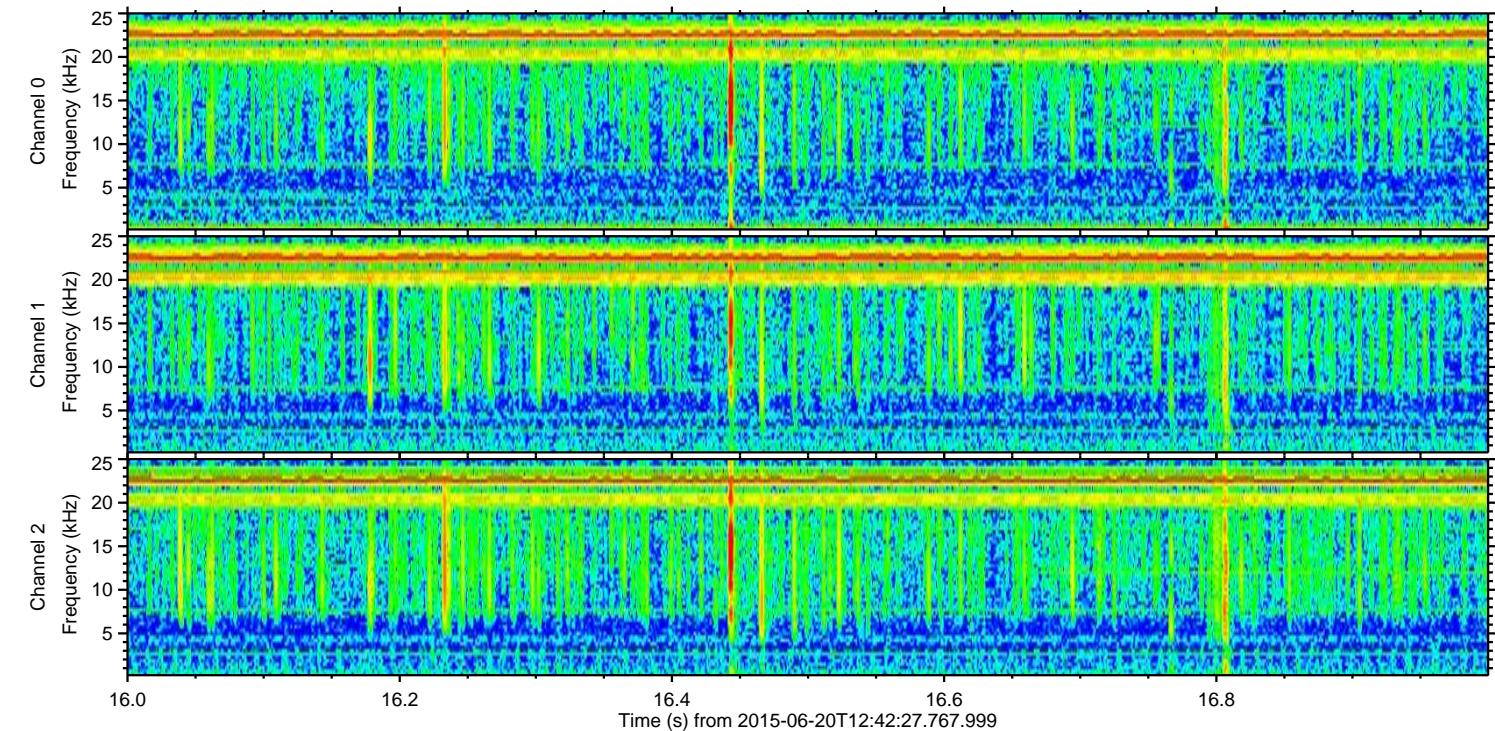
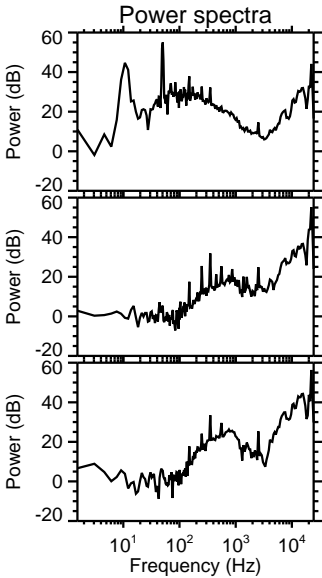
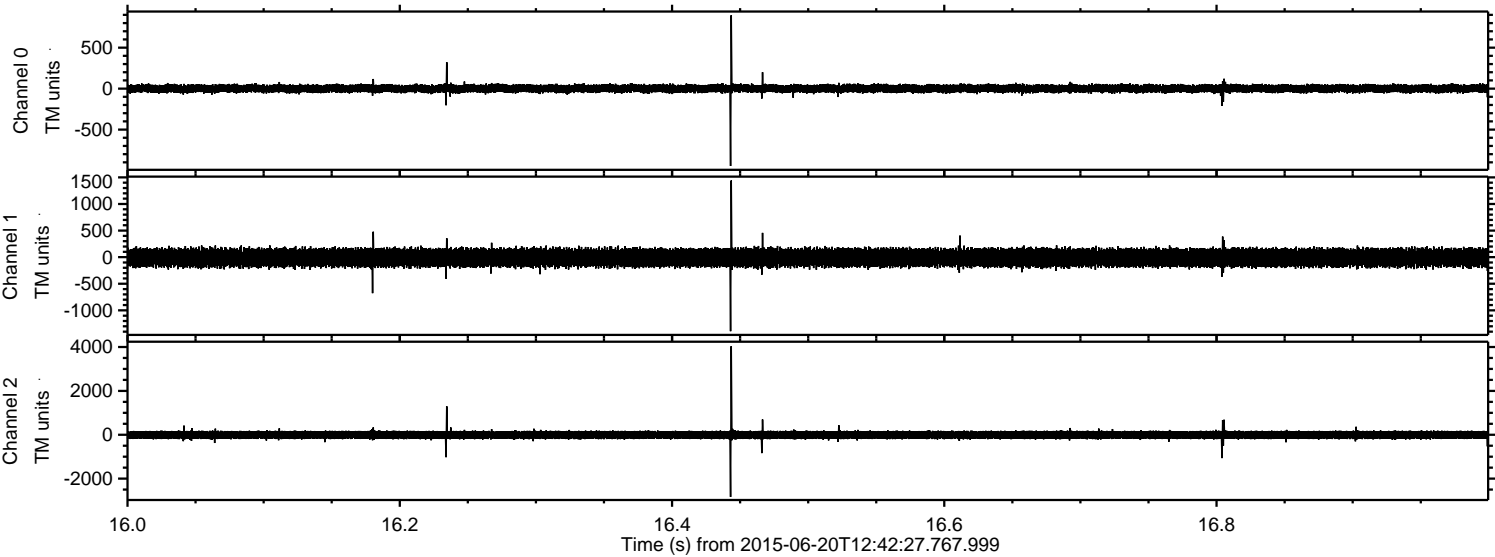


Processed Sat Jun 20 14:49:35 2015 by ELM ver.2012-10-06 from 001\_\_elm20150620\_124226\_\_dat00.bin





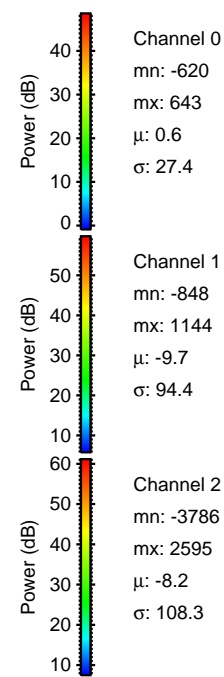
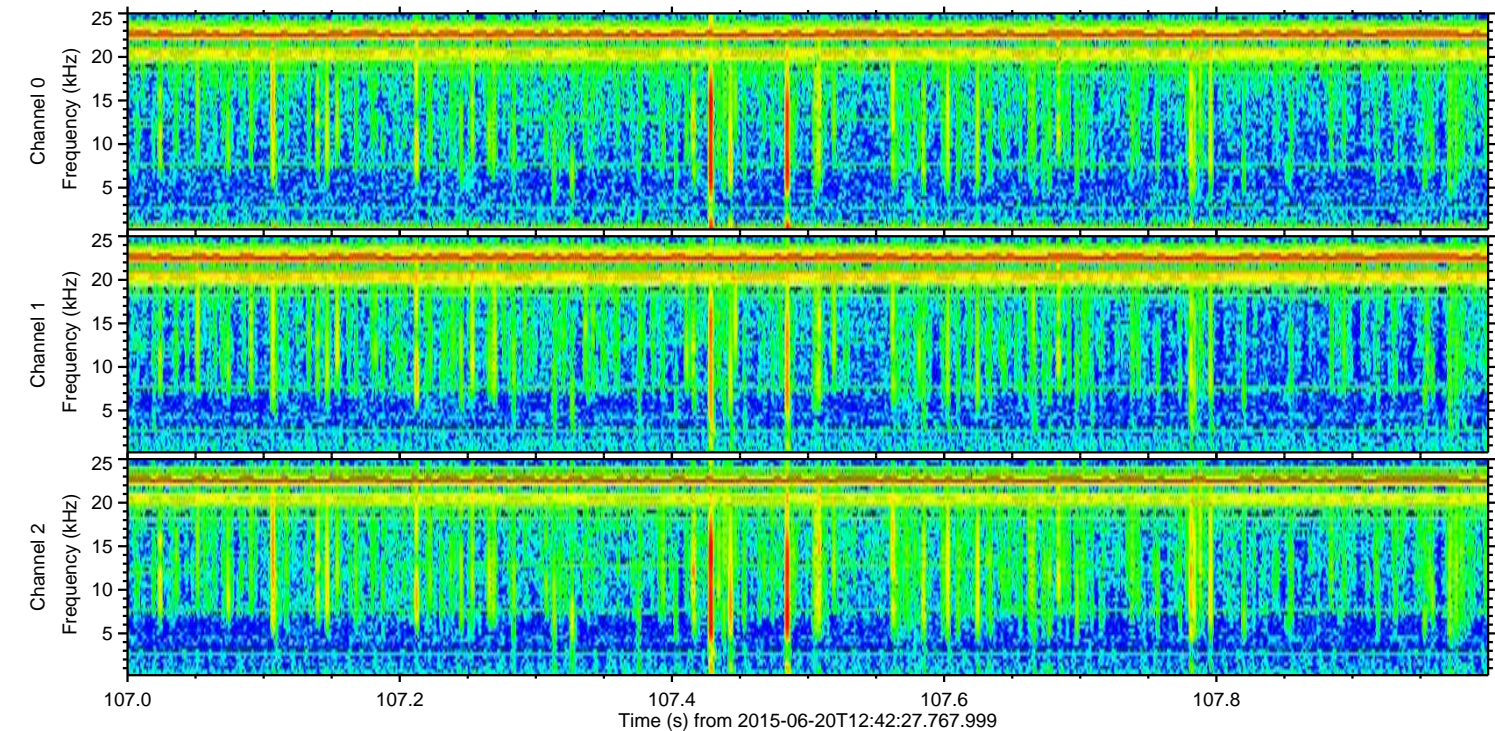
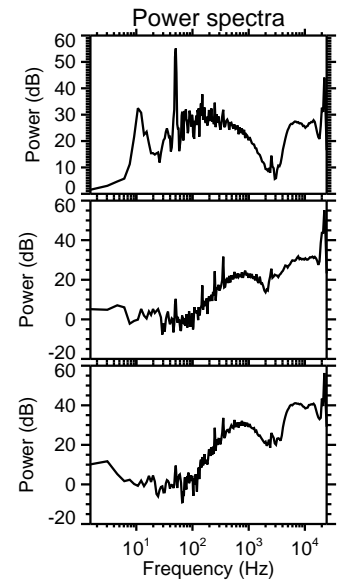
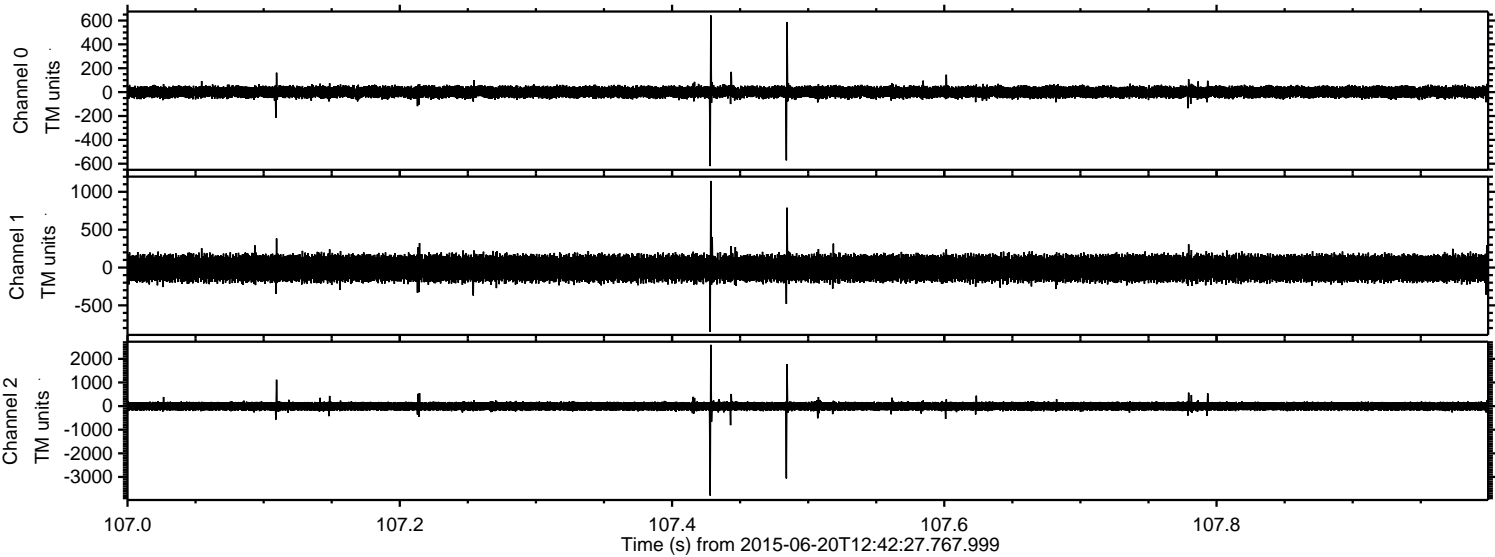
Processed Sat Jun 20 14:49:36 2015 by ELM ver.2012-10-06 from 001\_\_elm20150620\_124226\_\_dat00.bin





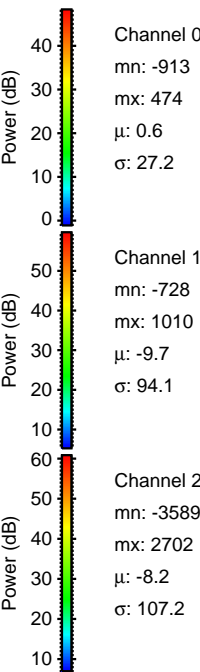
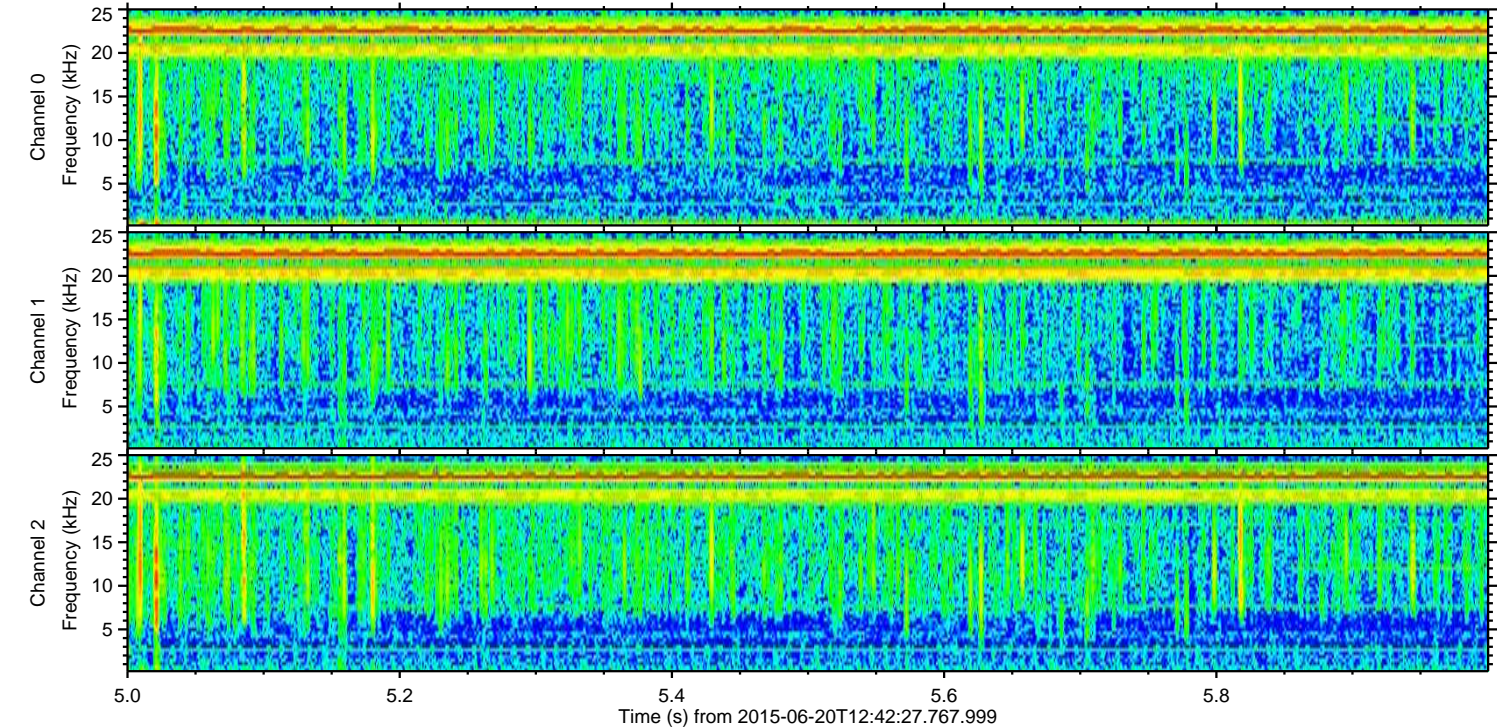
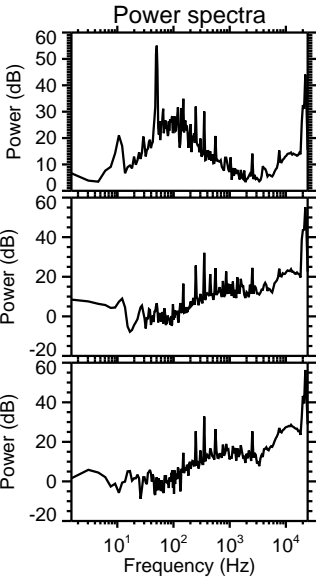
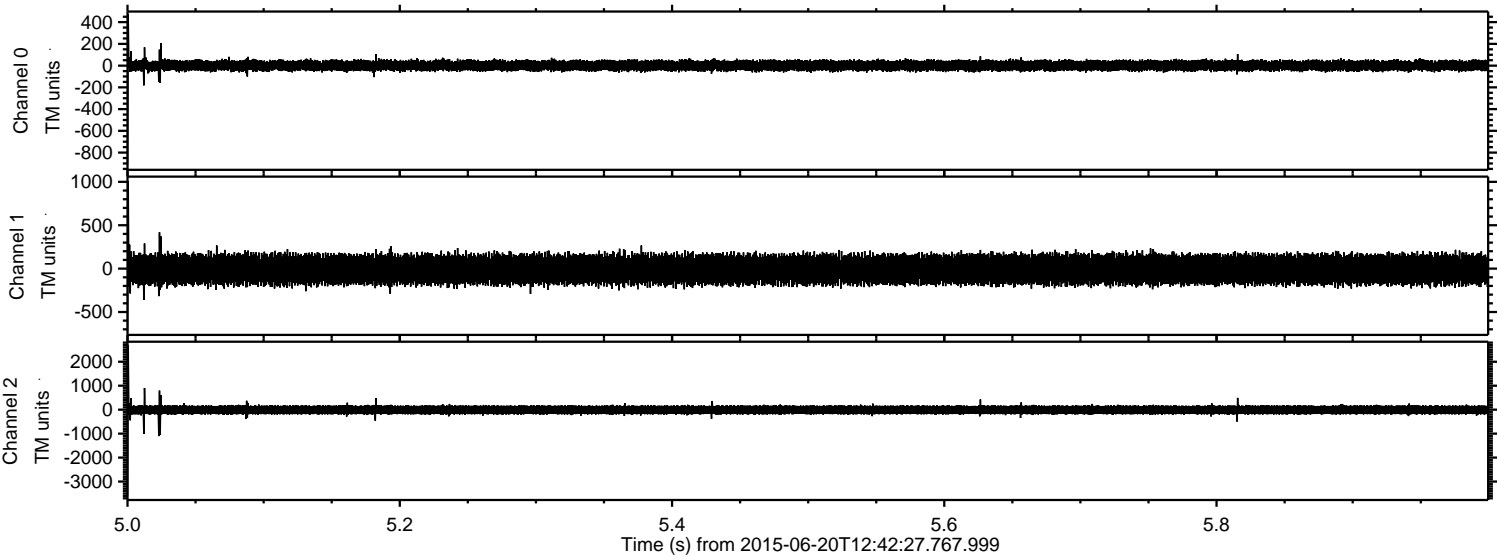
ELMAVAN 3D WAVEFORMS (Measured data sampled at 50 kHz) 51000 packets of 144 samples from 2015-06-20T12:42:27.767.999. Part 108/147

Processed Sat Jun 20 14:49:38 2015 by ELM ver.2012-10-06 from 001\_\_elm20150620\_124226\_\_dat00.bin



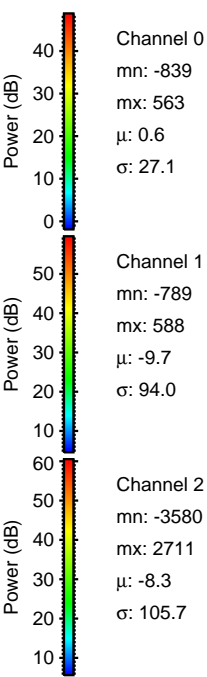
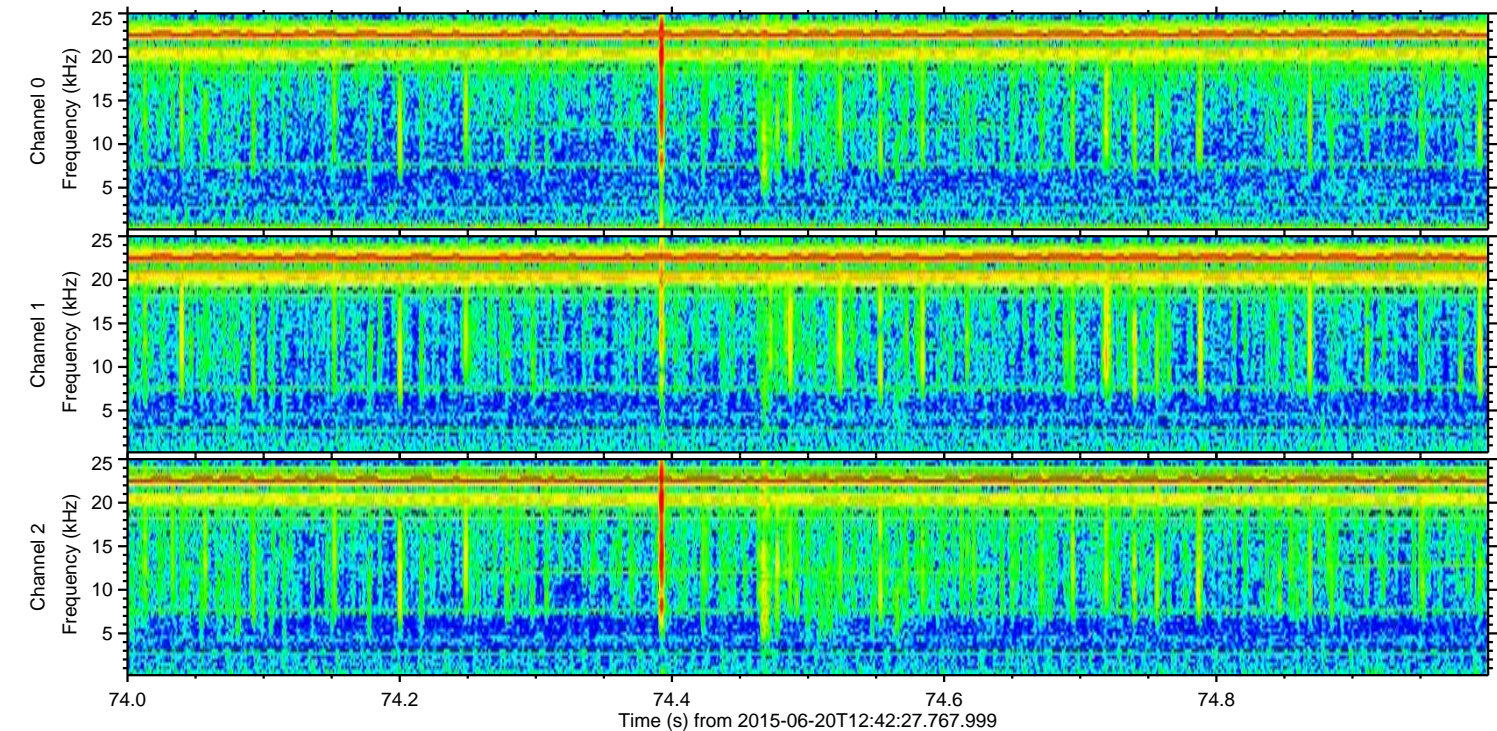
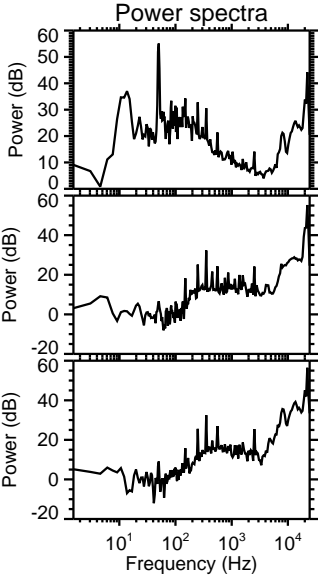
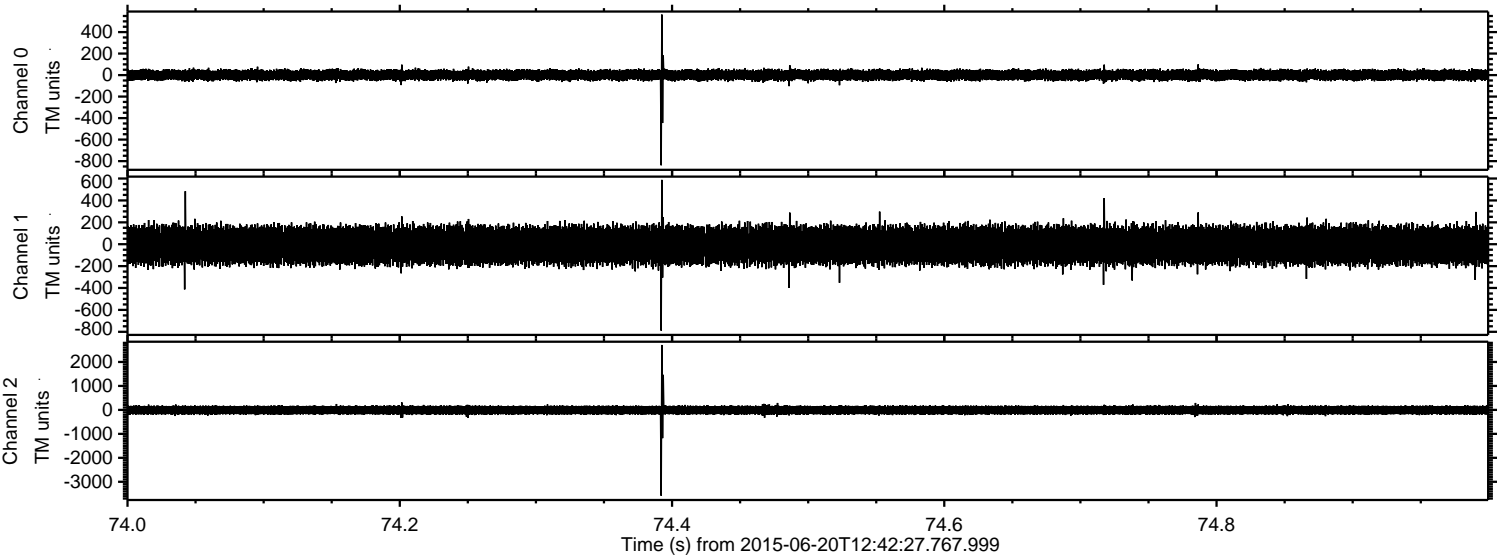


Processed Sat Jun 20 14:49:39 2015 by ELM ver.2012-10-06 from 001\_\_elm20150620\_124226\_\_dat00.bin



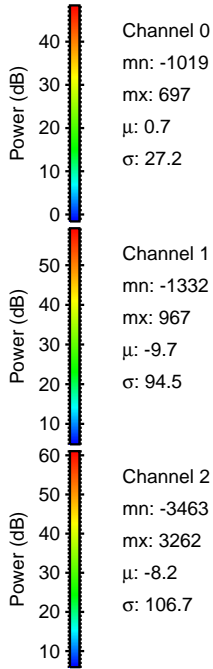
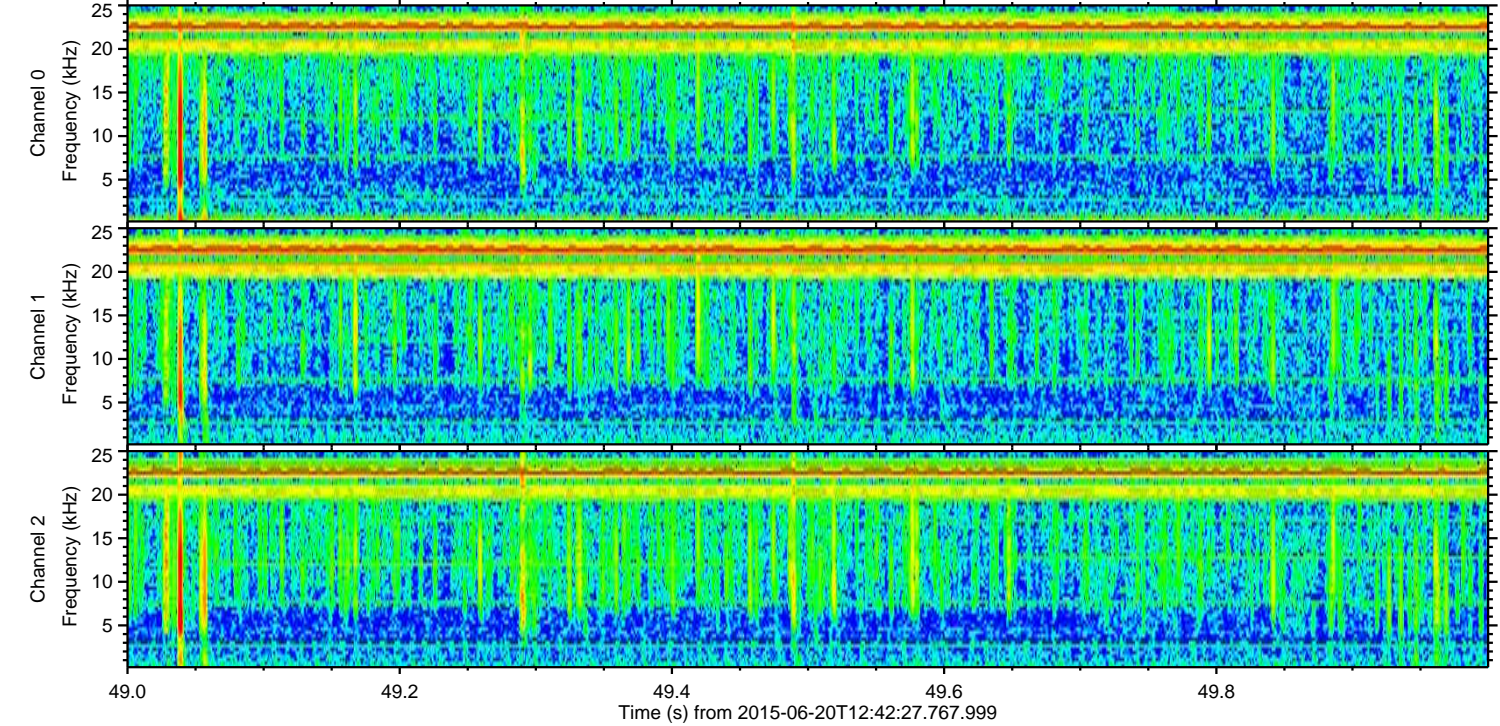
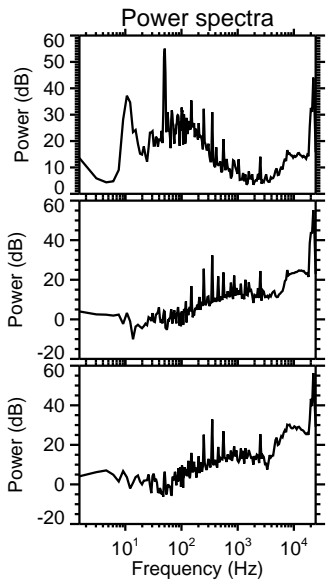
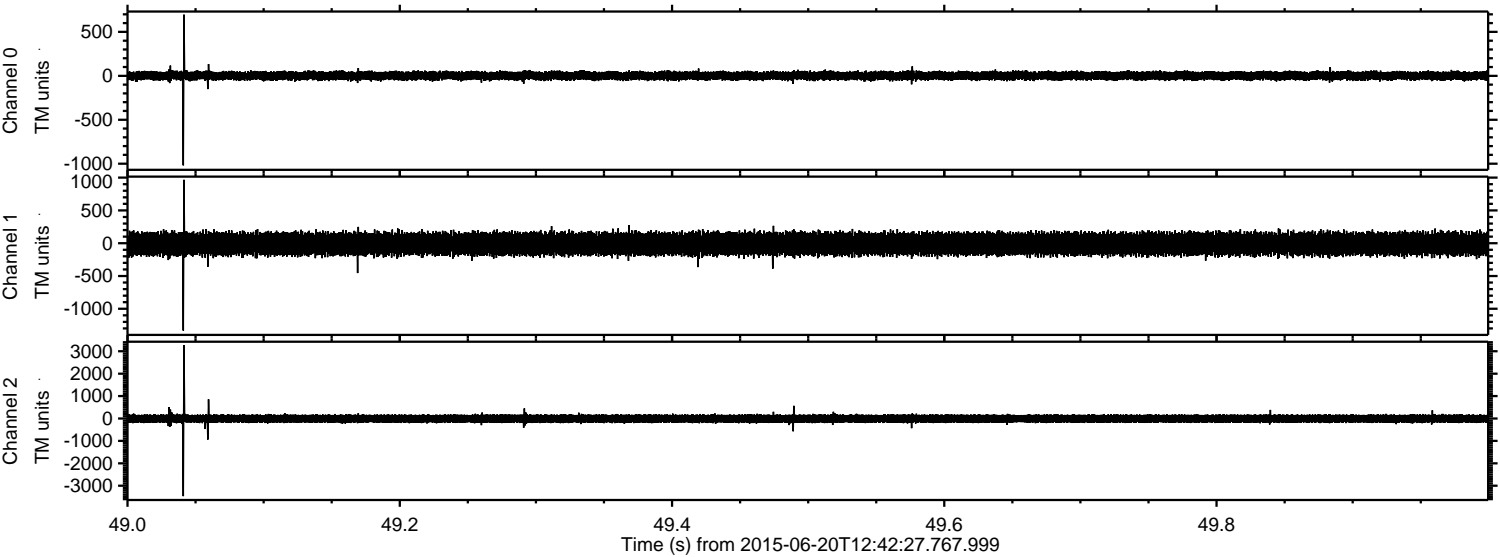


Processed Sat Jun 20 14:49:41 2015 by ELM ver.2012-10-06 from 001\_\_elm20150620\_124226\_\_dat00.bin





Processed Sat Jun 20 14:49:43 2015 by ELM ver.2012-10-06 from 001\_\_elm20150620\_124226\_\_dat00.bin





Processed Sat Jun 20 14:49:44 2015 by ELM ver.2012-10-06 from 001\_\_elm20150620\_124226\_\_dat00.bin

