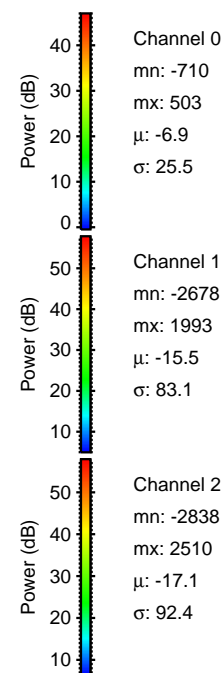
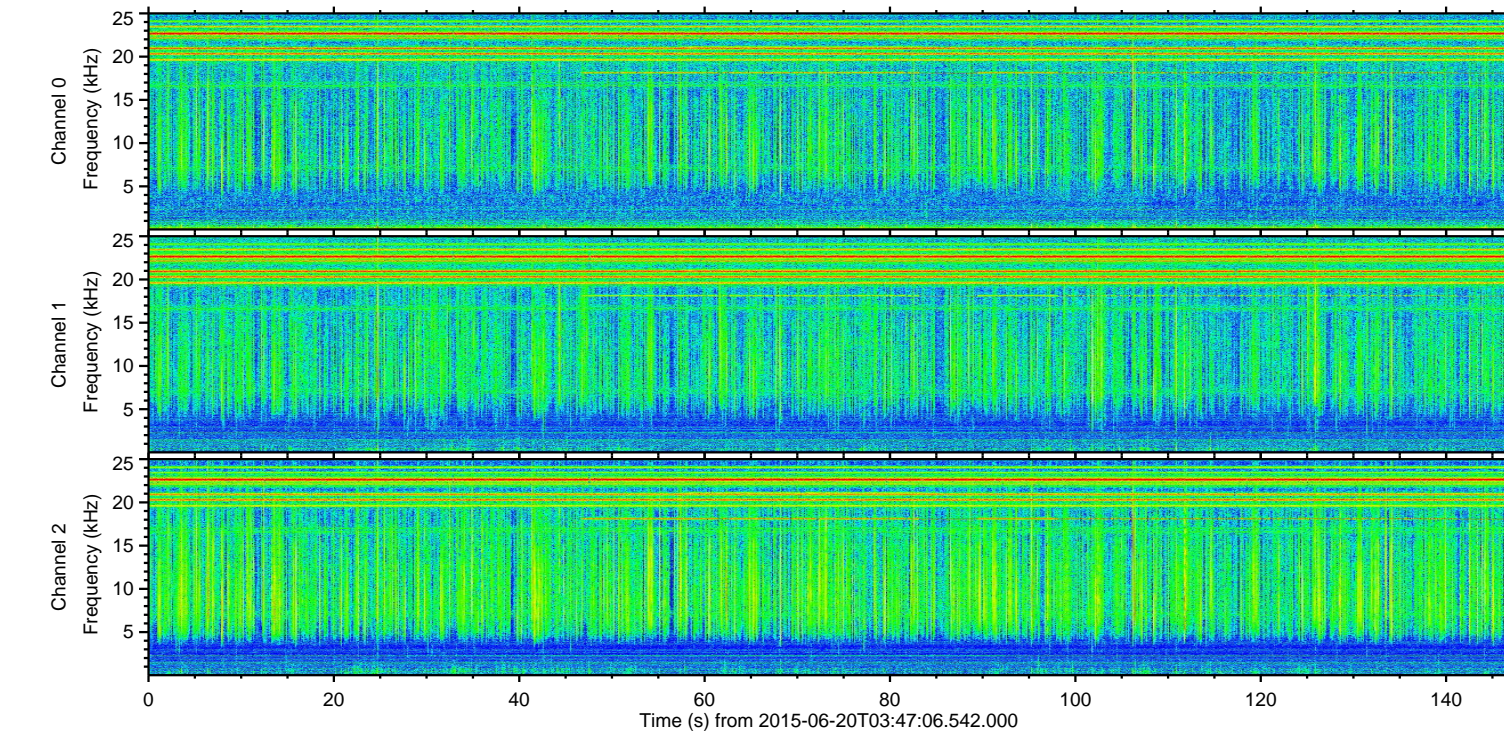
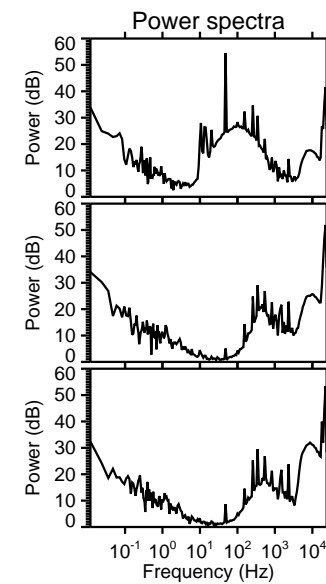
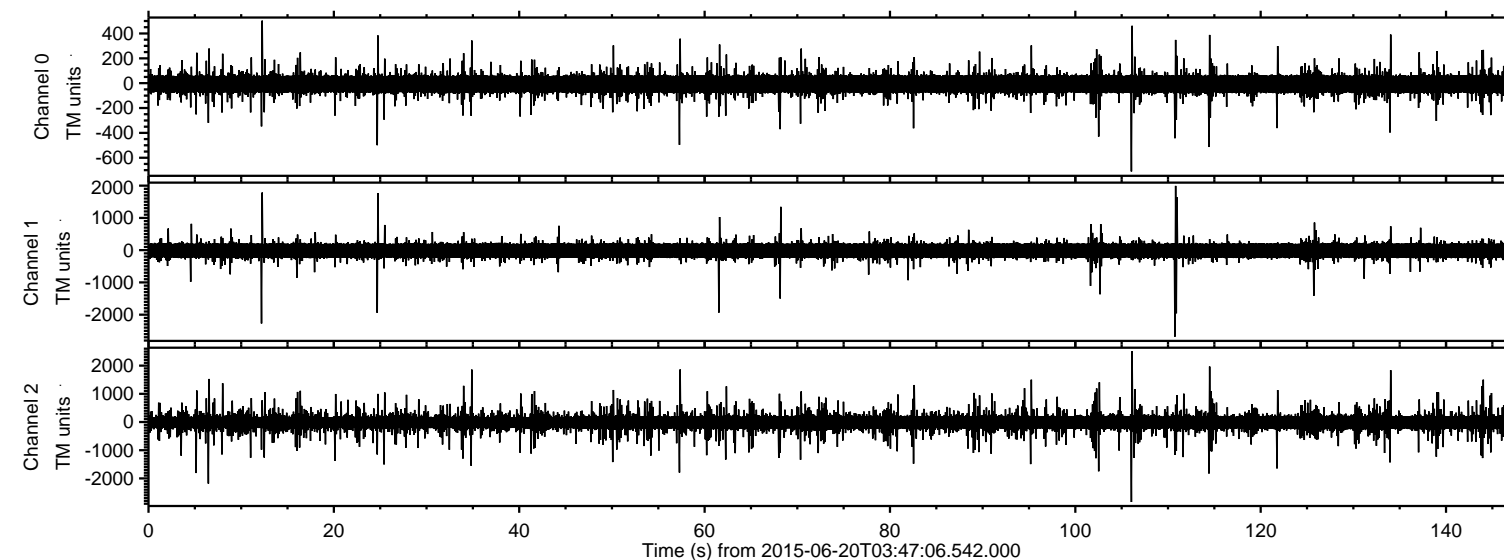


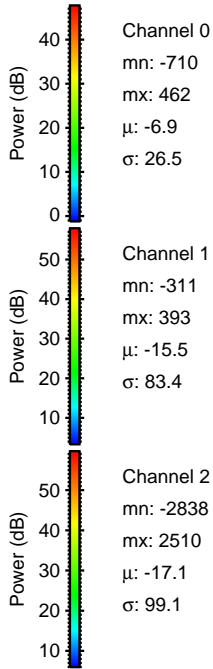
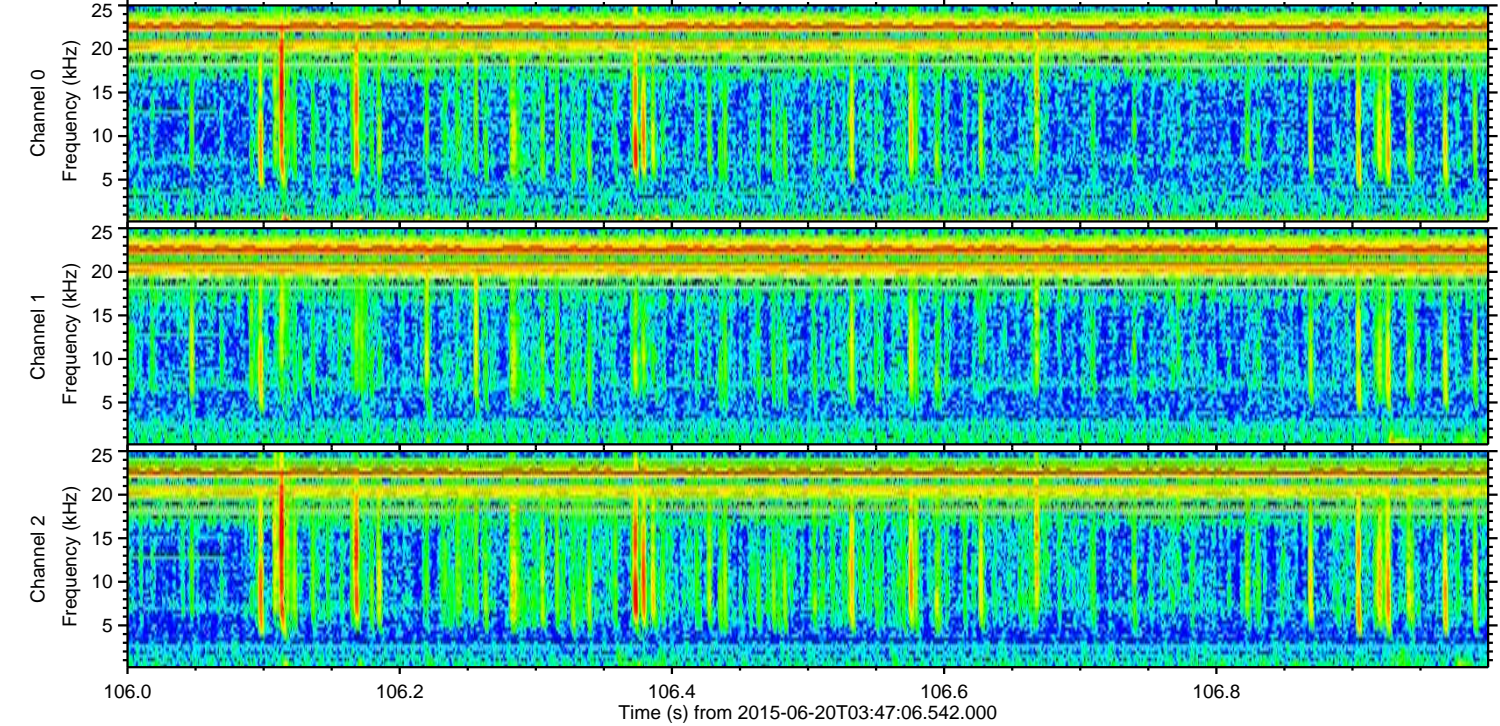
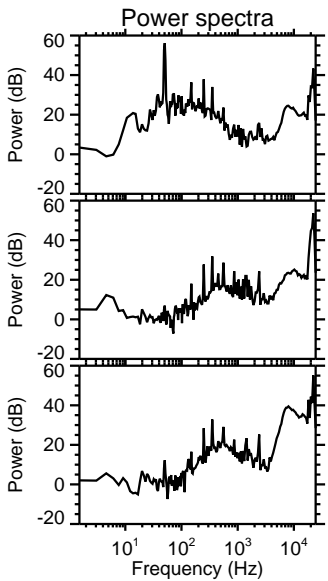
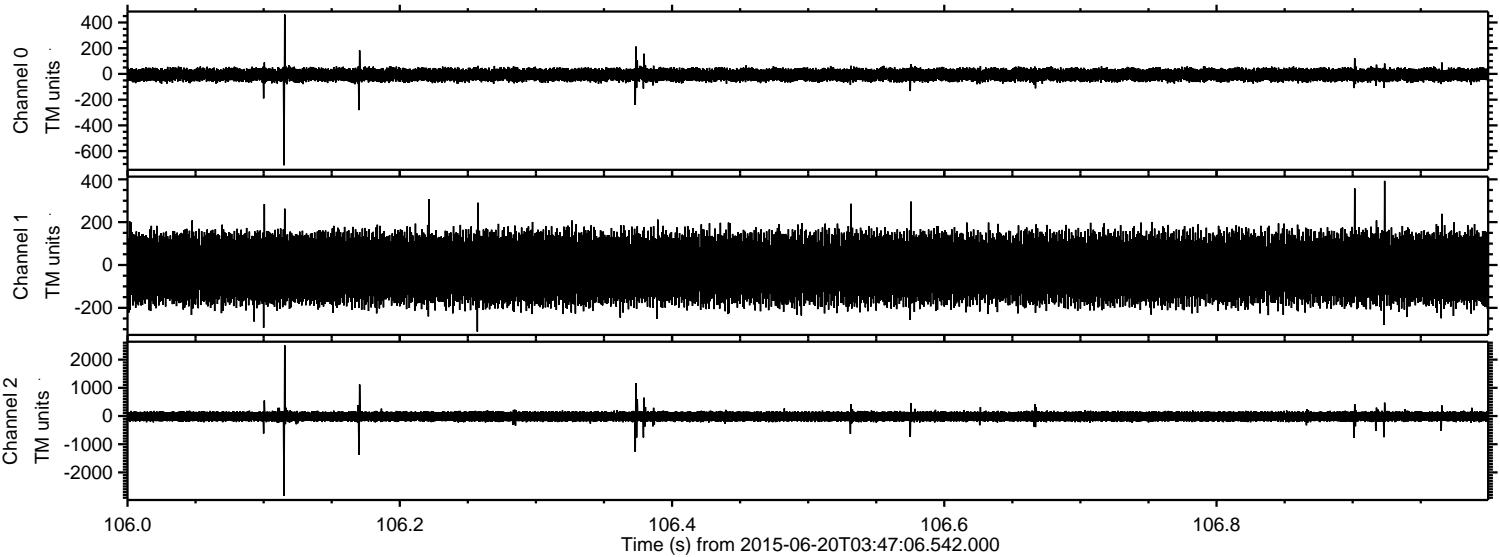
ELMAVAN 3D WAVEFORMS (Measured data sampled at 50 kHz) 51000 packets of 144 samples from 2015-06-20T03:47:06.542.000.

Processed Sat Jun 20 05:53:29 2015 by ELM ver.2012-10-06 from 001__elm20150620_034705__dat00.bin



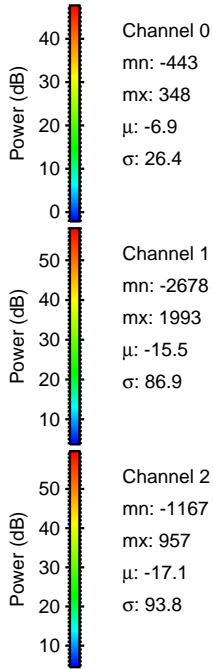
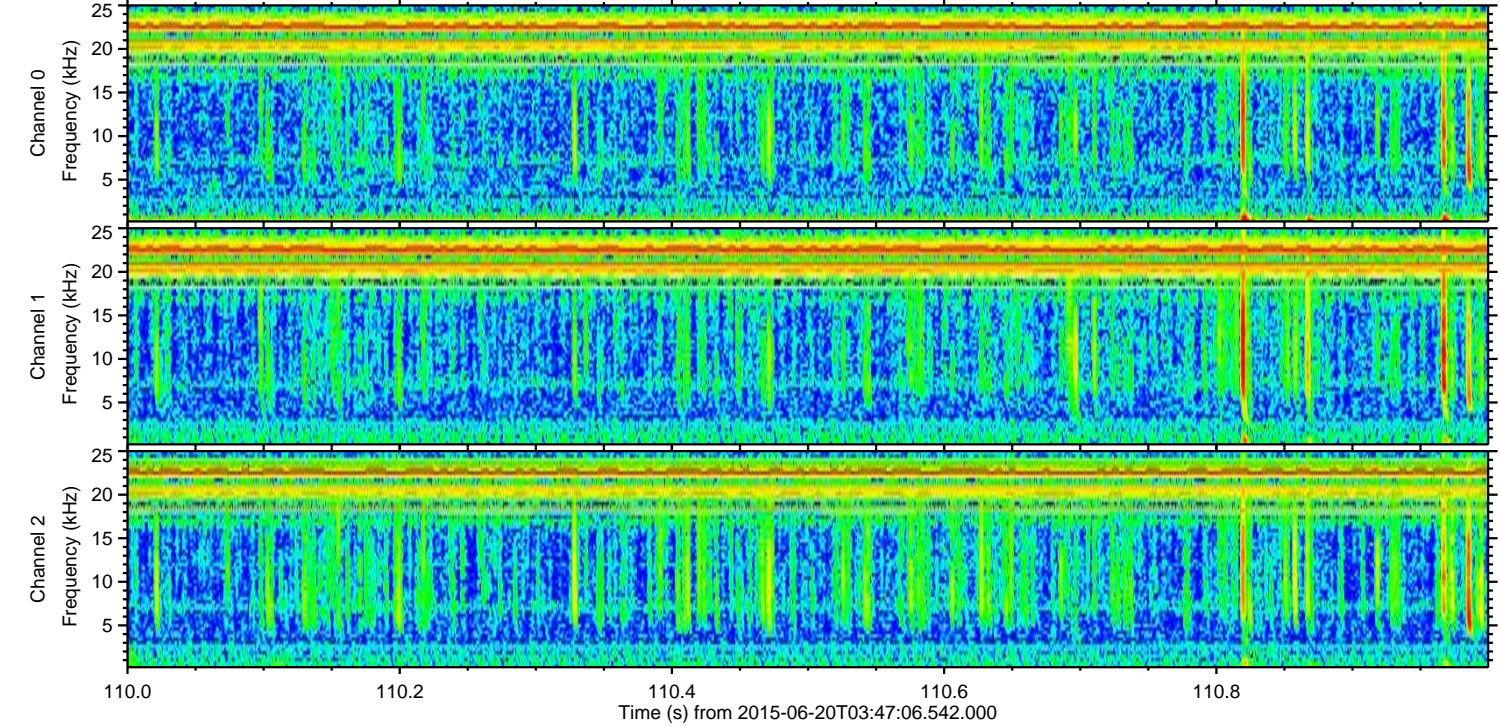
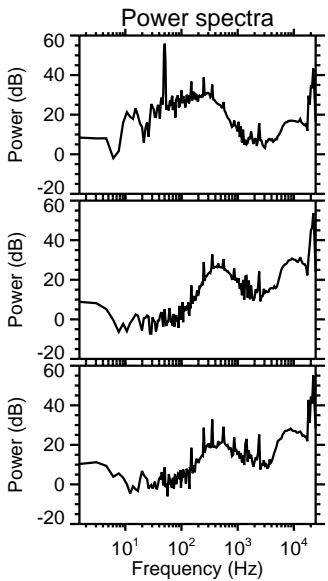
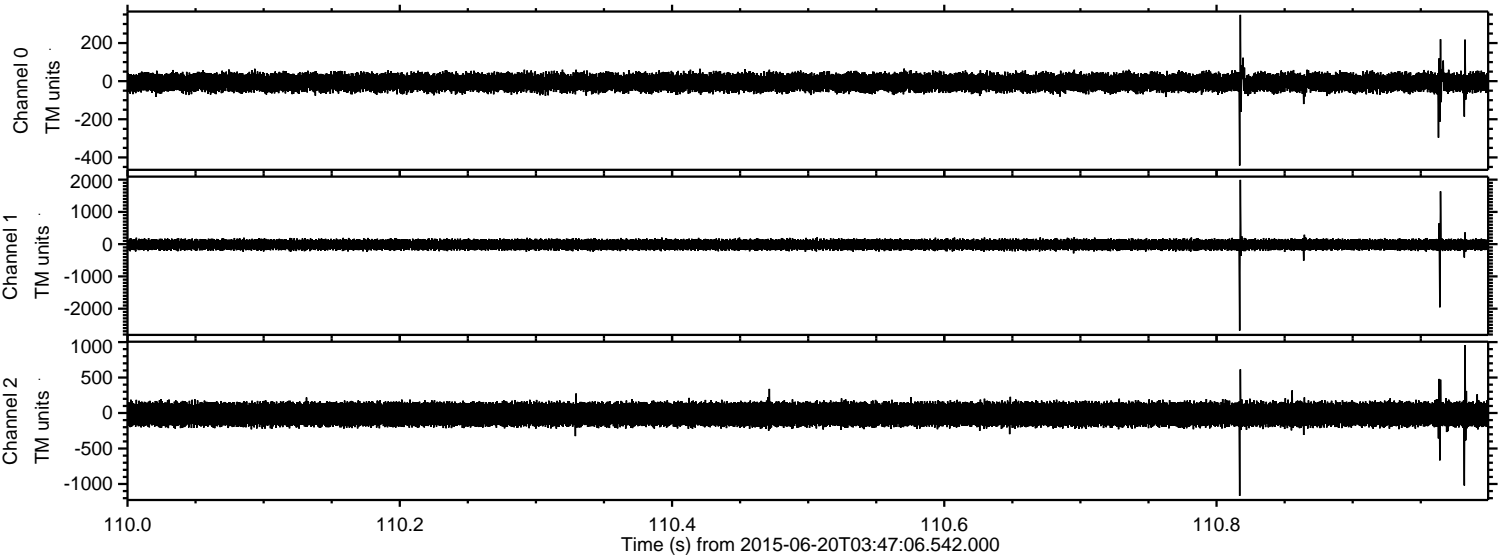
ELMAVAN 3D WAVEFORMS (Measured data sampled at 50 kHz) 51000 packets of 144 samples from 2015-06-20T03:47:06.542.000. Part 107/147

Processed Sat Jun 20 05:53:50 2015 by ELM ver.2012-10-06 from 001__elm20150620_034705__dat00.bin



ELMAVAN 3D WAVEFORMS (Measured data sampled at 50 kHz) 51000 packets of 144 samples from 2015-06-20T03:47:06.542.000. Part 111/147

Processed Sat Jun 20 05:53:51 2015 by ELM ver.2012-10-06 from 001__elm20150620_034705__dat00.bin



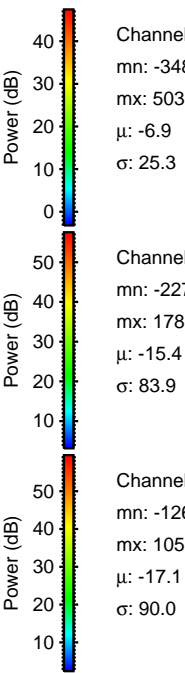
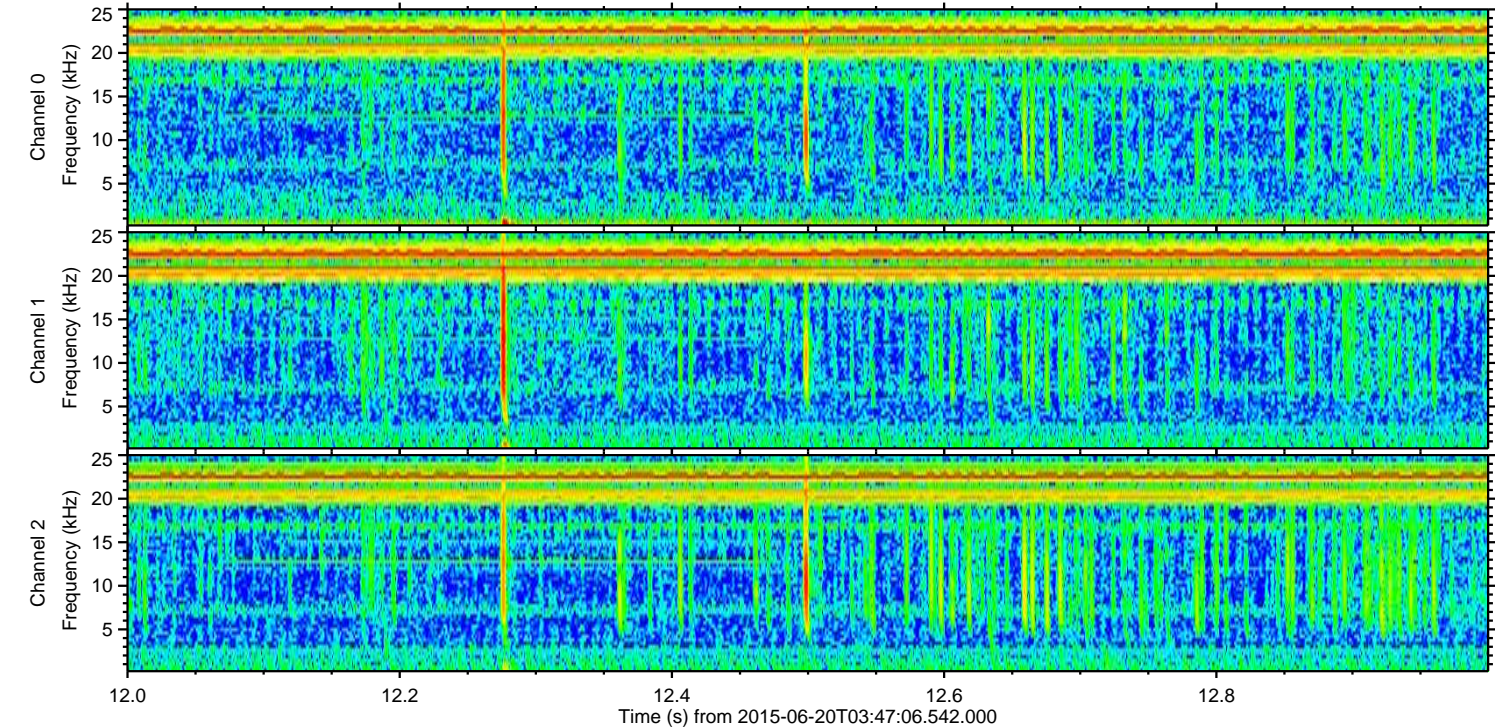
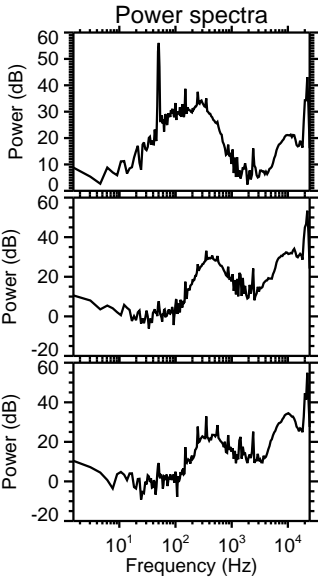
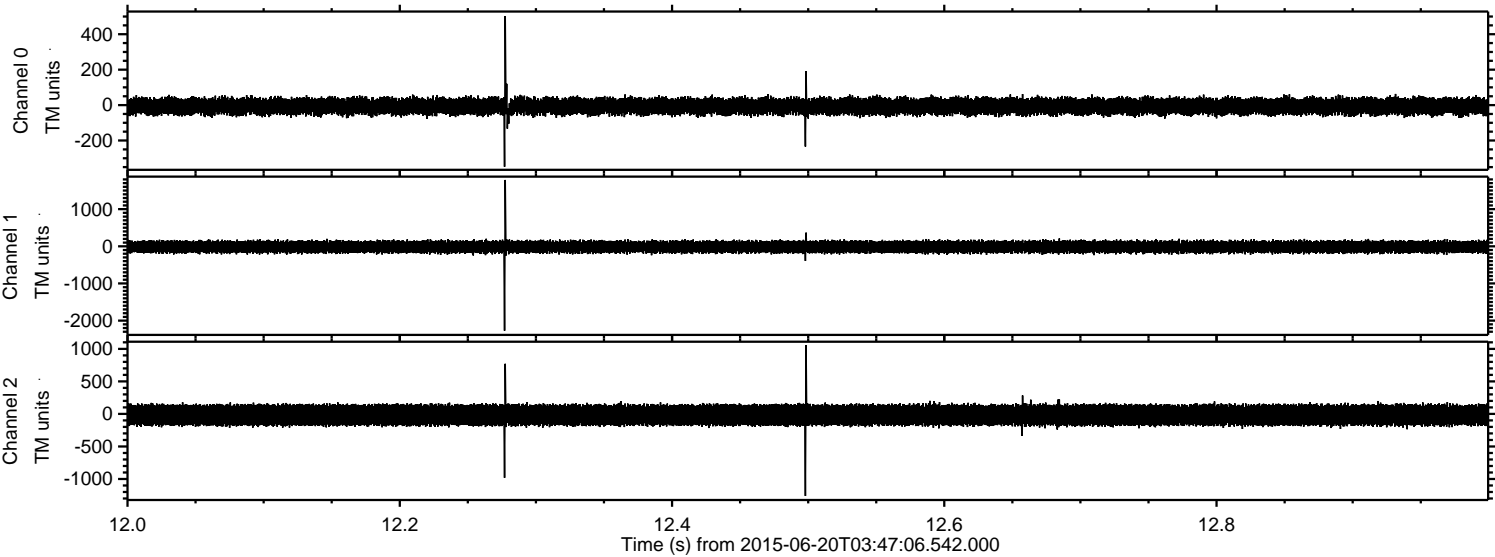
Channel 0
mn: -443
mx: 348
 μ : -6.9
 σ : 26.4

Channel 1
mn: -2678
mx: 1993
 μ : -15.5
 σ : 86.9

Channel 2
mn: -1167
mx: 957
 μ : -17.1
 σ : 93.8

ELMAVAN 3D WAVEFORMS (Measured data sampled at 50 kHz) 51000 packets of 144 samples from 2015-06-20T03:47:06.542.000. Part 13/147

Processed Sat Jun 20 05:53:52 2015 by ELM ver.2012-10-06 from 001__elm20150620_034705__dat00.bin

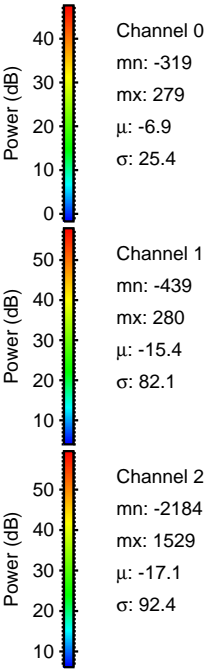
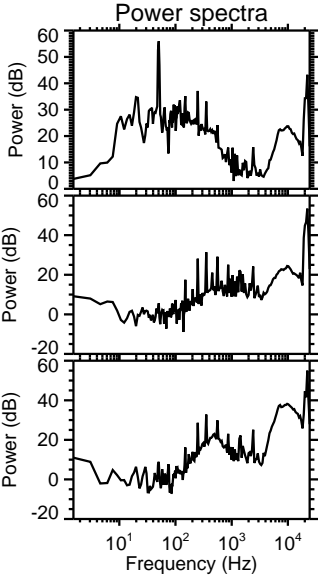
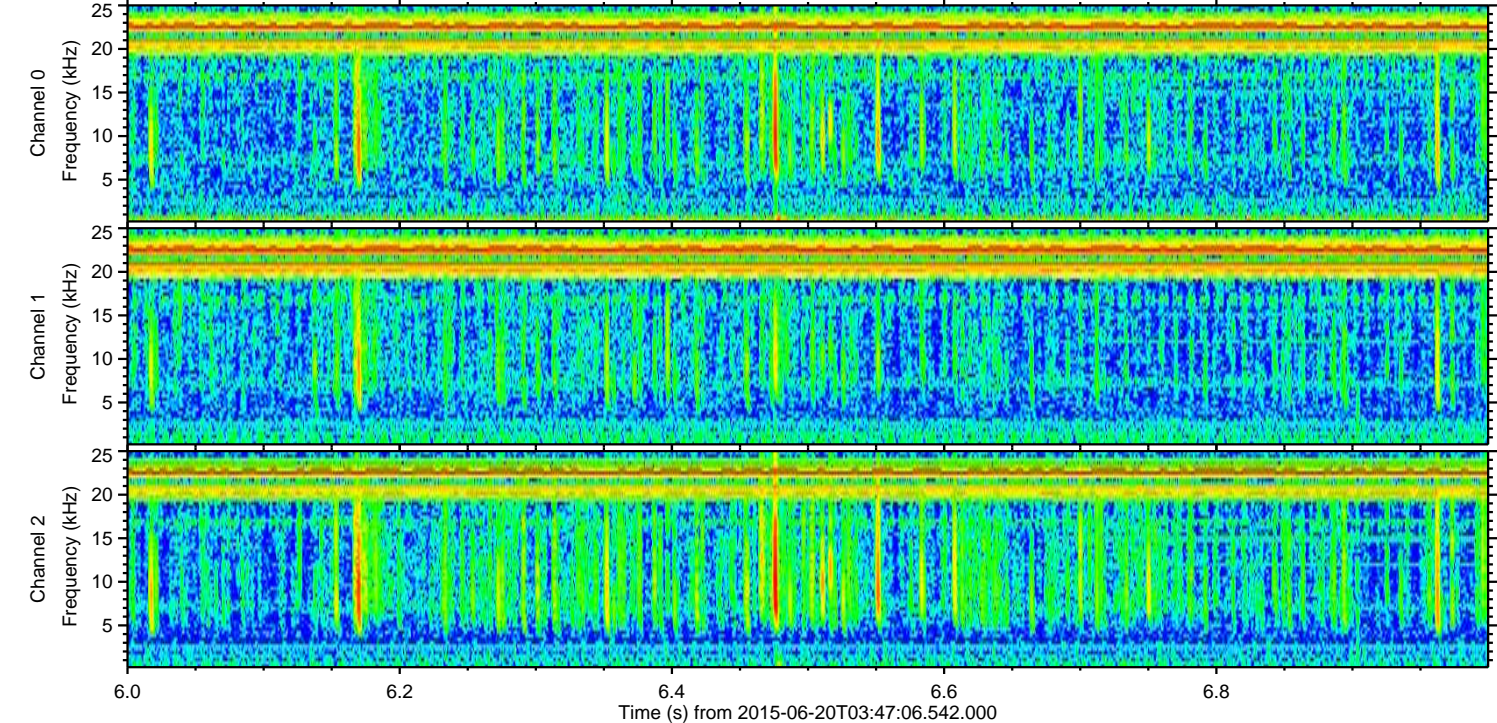
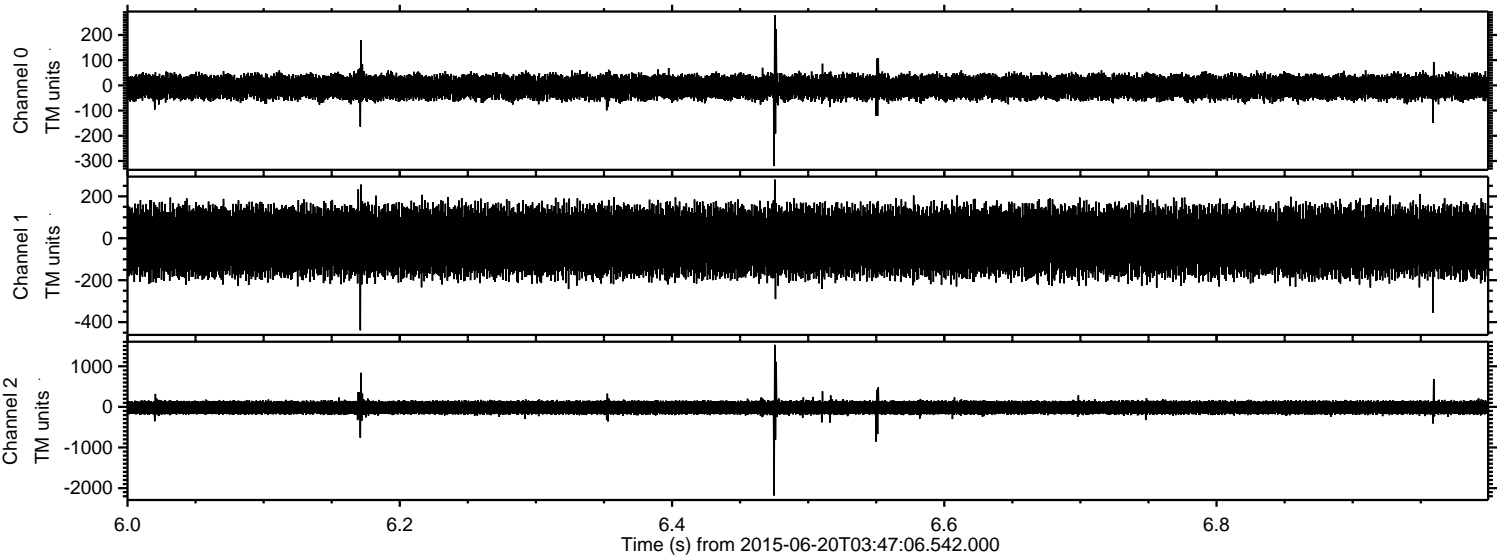


Channel 0
mn: -348
mx: 503
 μ : -6.9
 σ : 25.3

Channel 1
mn: -2271
mx: 1786
 μ : -15.4
 σ : 83.9

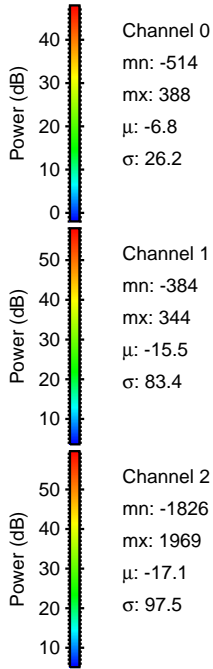
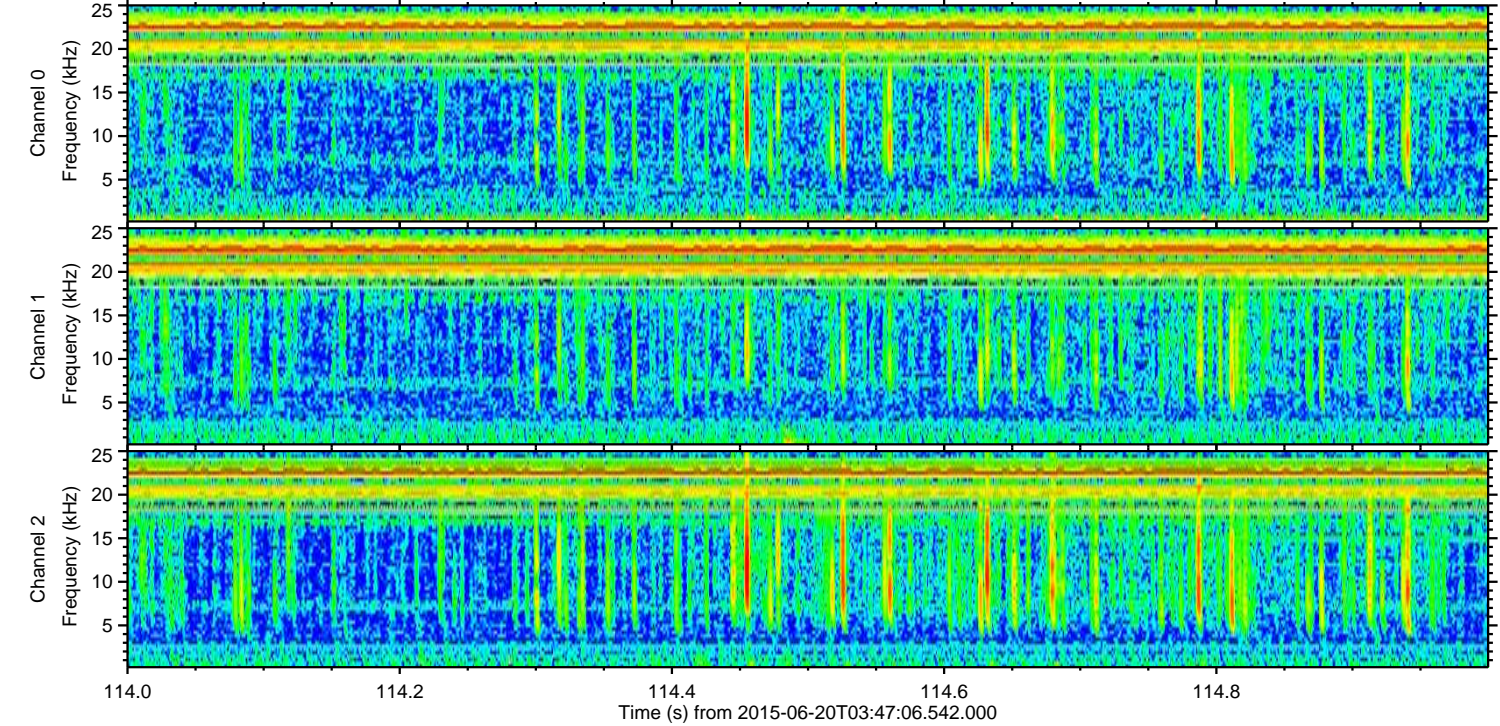
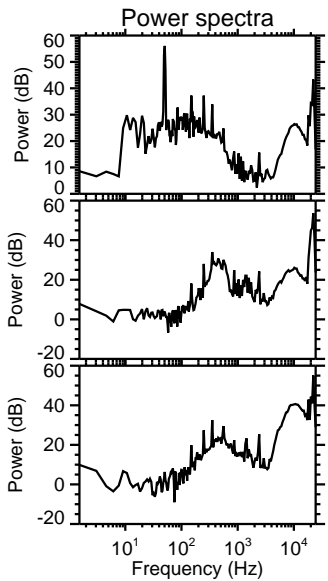
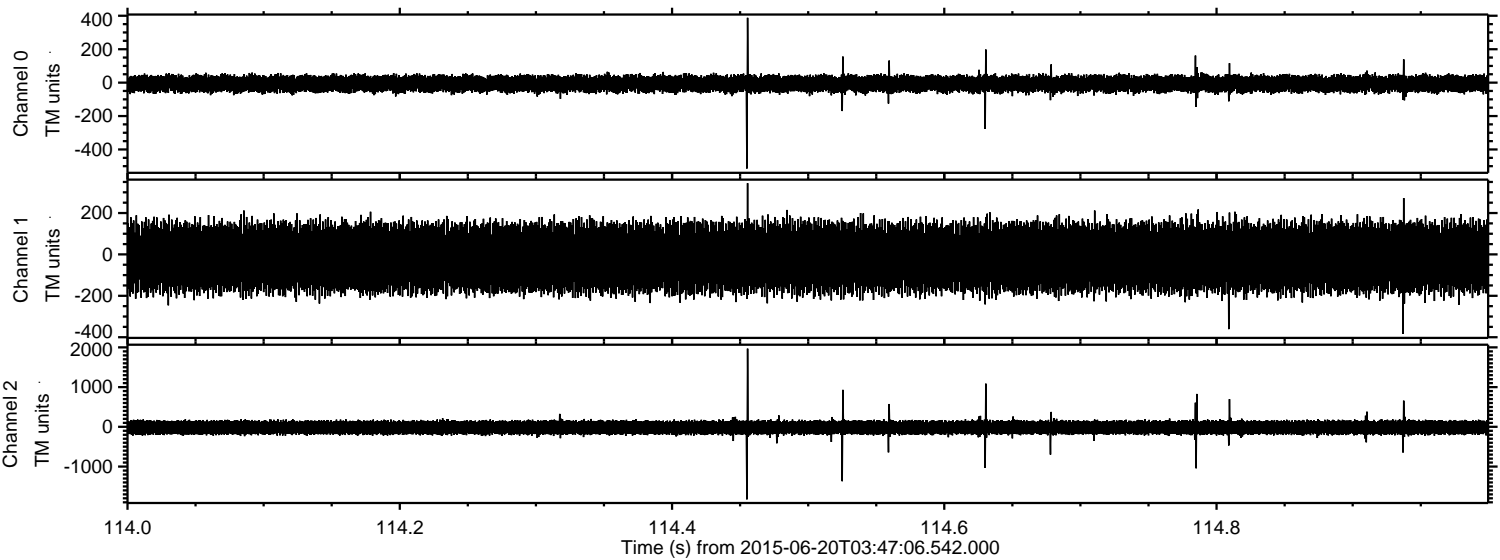
Channel 2
mn: -1260
mx: 1057
 μ : -17.1
 σ : 90.0

Processed Sat Jun 20 05:53:53 2015 by ELM ver.2012-10-06 from 001__elm20150620_034705__dat00.bin



ELMAVAN 3D WAVEFORMS (Measured data sampled at 50 kHz) 51000 packets of 144 samples from 2015-06-20T03:47:06.542.000. Part 115/147

Processed Sat Jun 20 05:53:55 2015 by ELM ver.2012-10-06 from 001__elm20150620_034705__dat00.bin

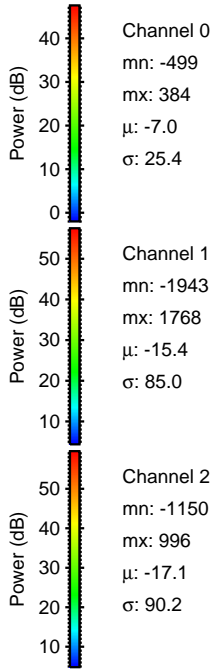
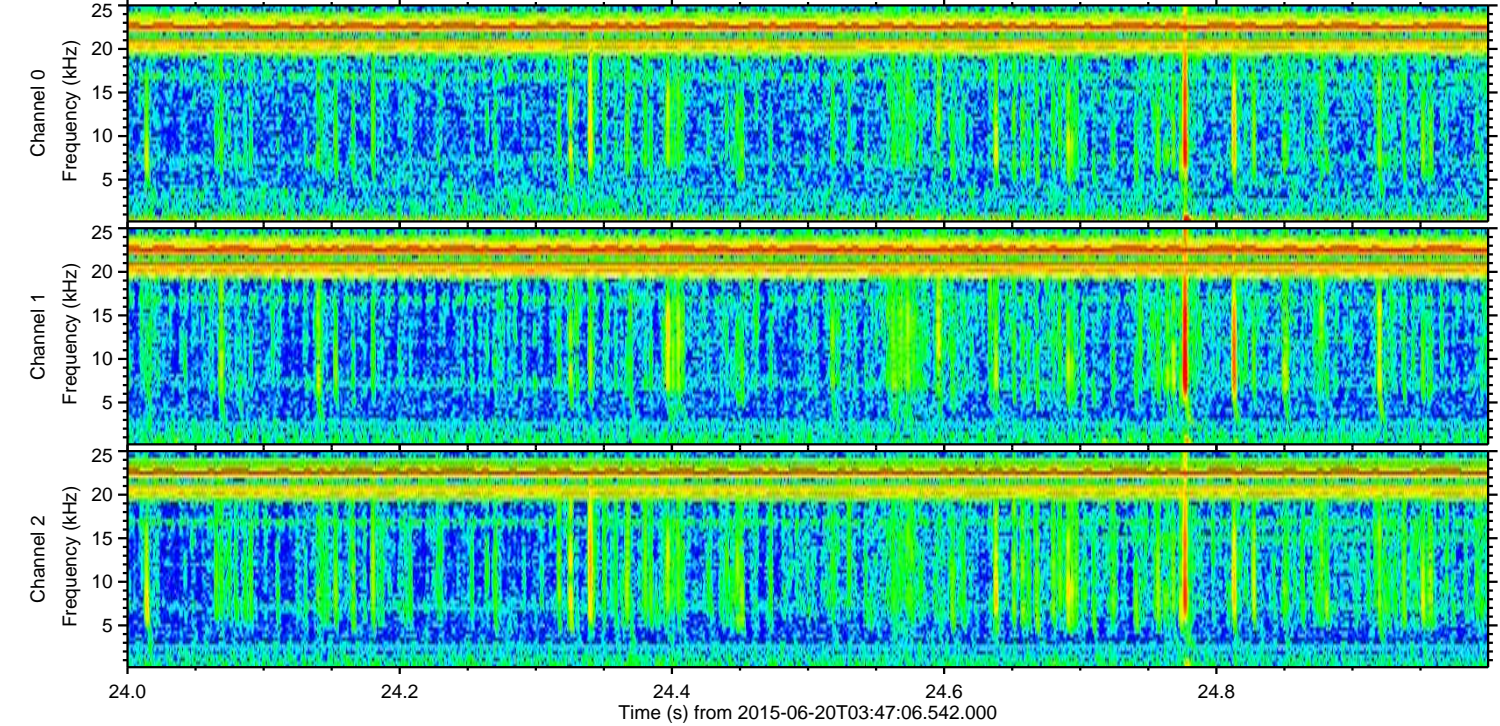
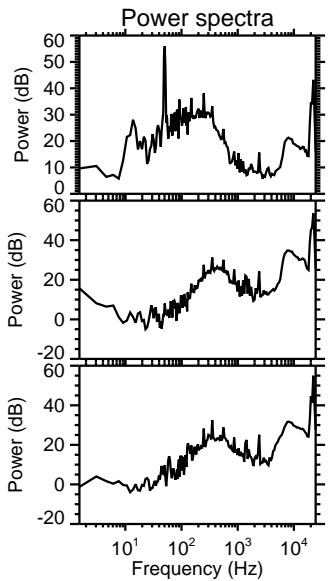
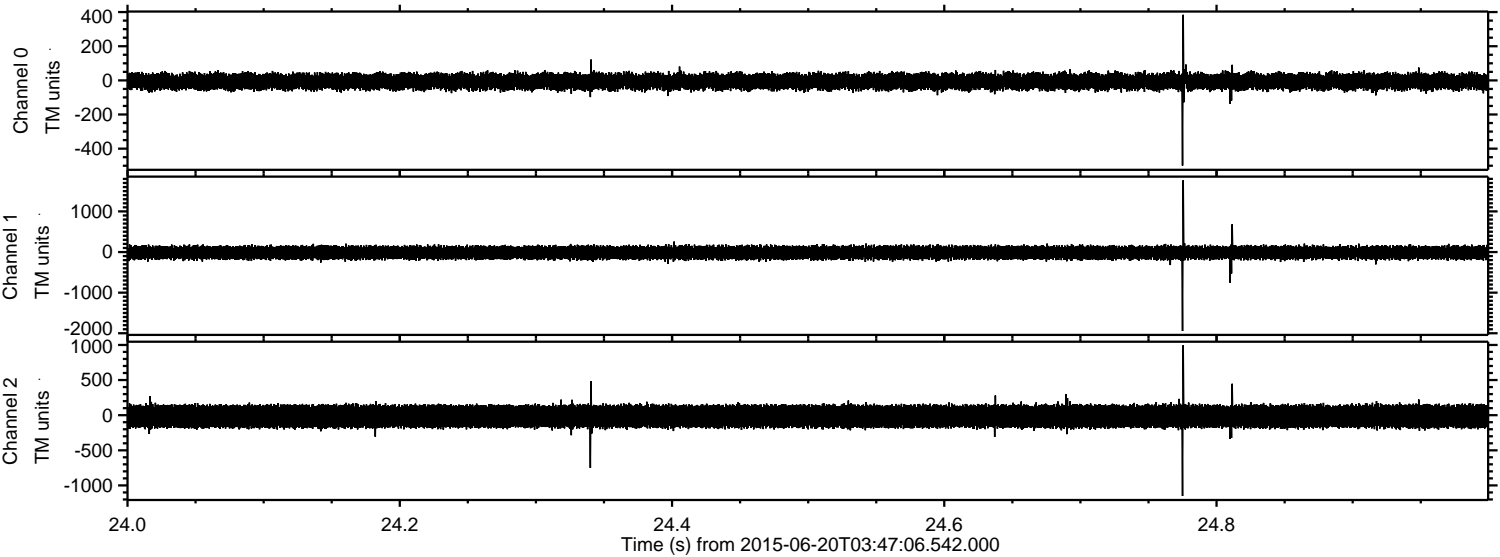


Channel 0
mn: -514
mx: 388
 μ : -6.8
 σ : 26.2

Channel 1
mn: -384
mx: 344
 μ : -15.5
 σ : 83.4

Channel 2
mn: -1826
mx: 1969
 μ : -17.1
 σ : 97.5

Processed Sat Jun 20 05:53:57 2015 by ELM ver.2012-10-06 from 001__elm20150620_034705__dat00.bin

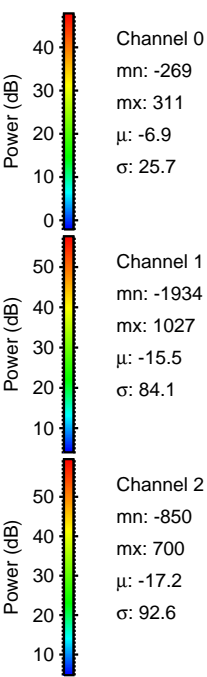
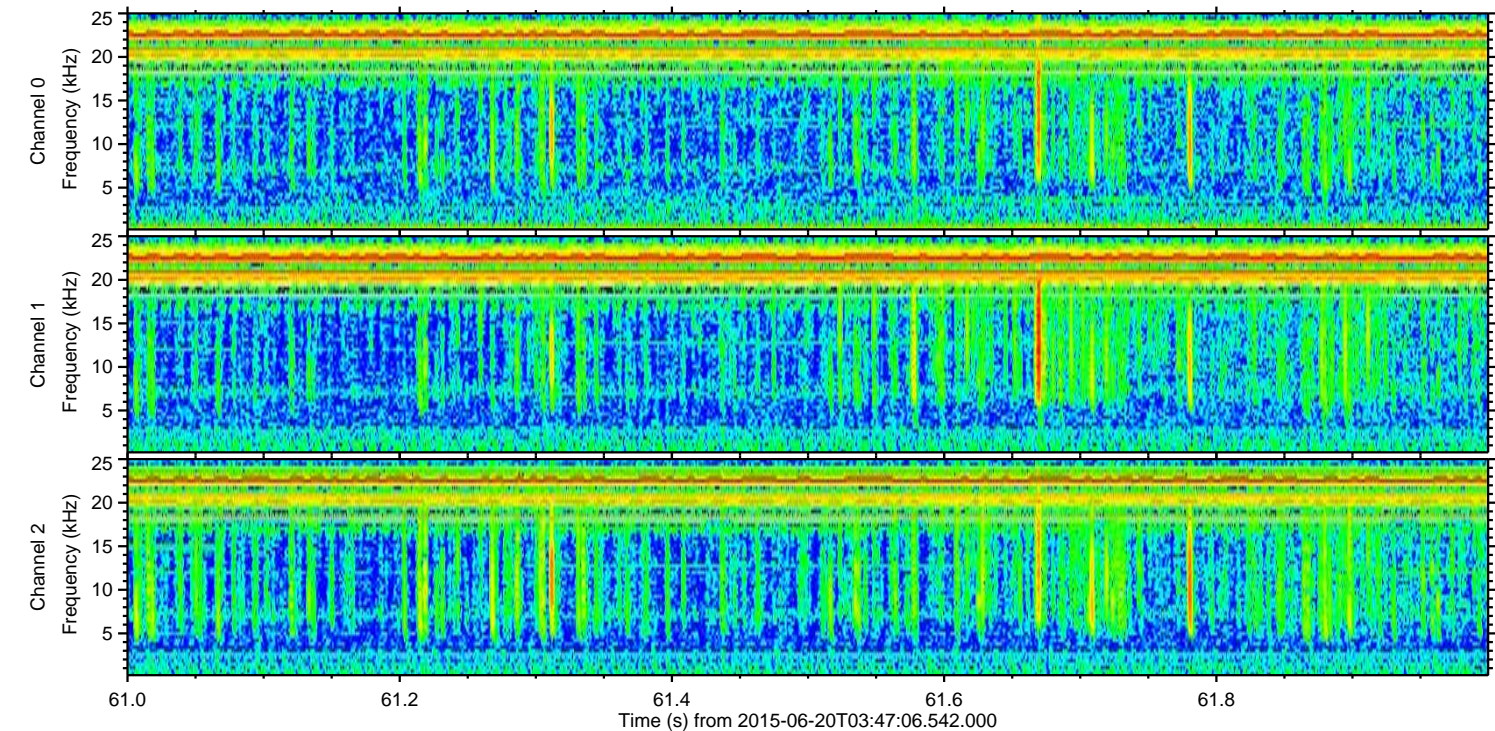
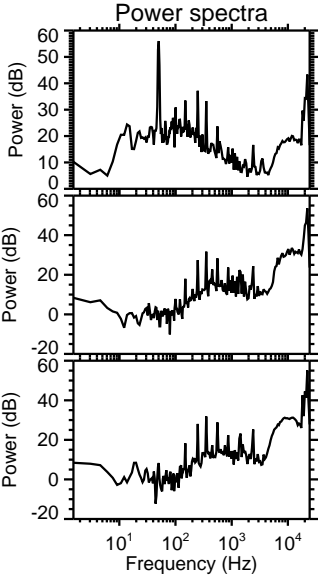
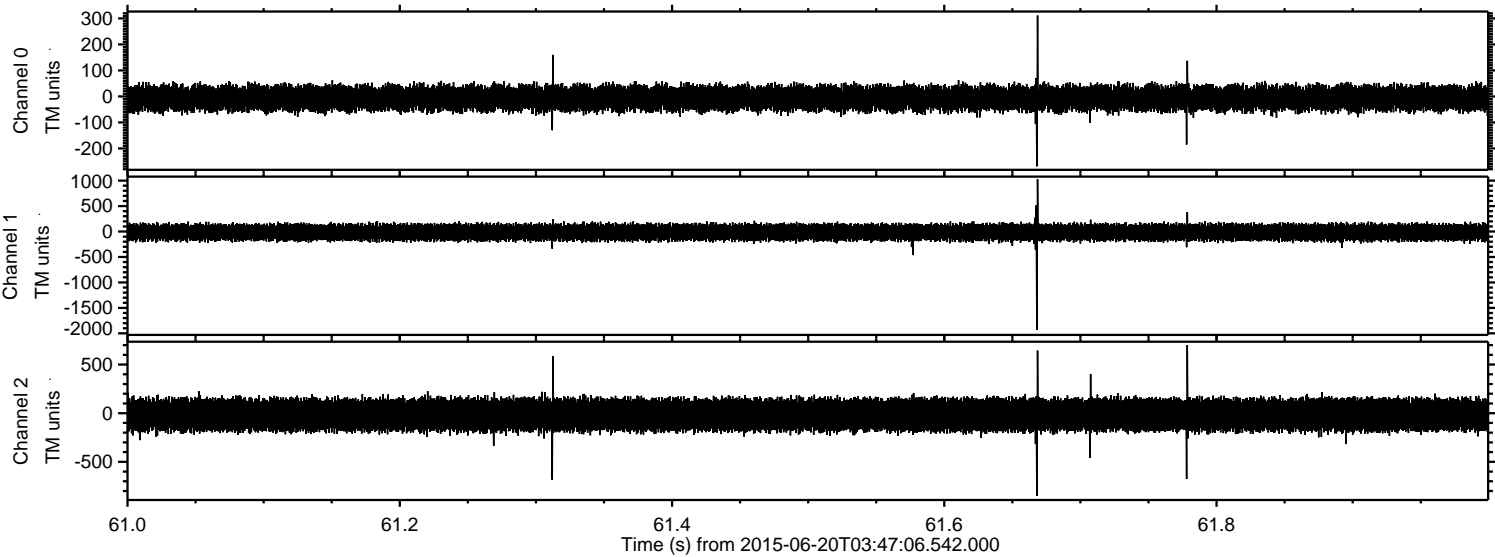


Channel 0
mn: -499
mx: 384
 μ : -7.0
 σ : 25.4

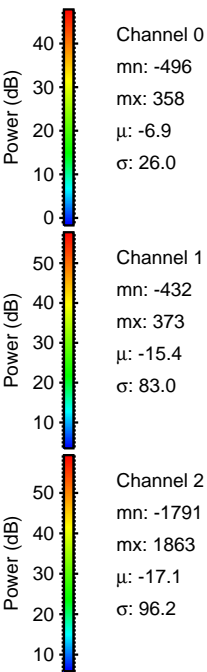
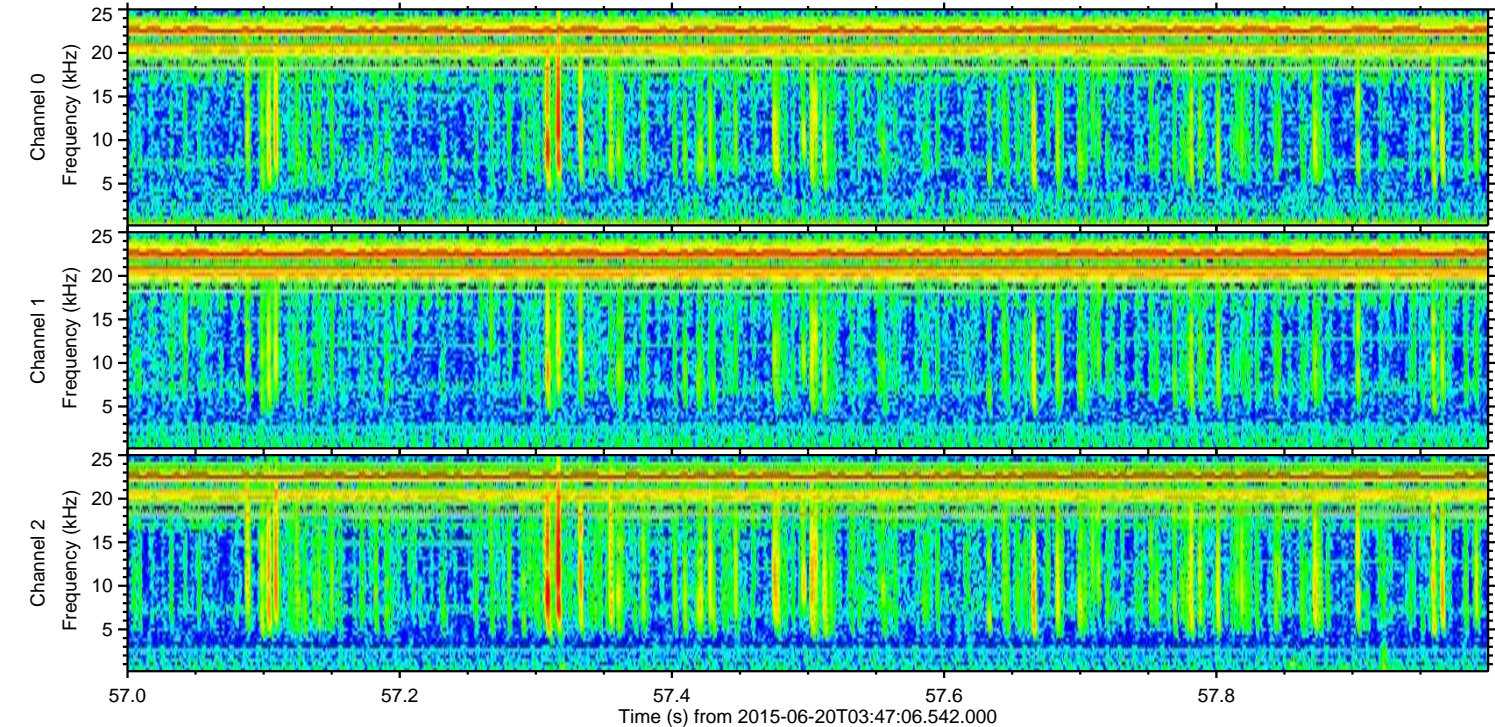
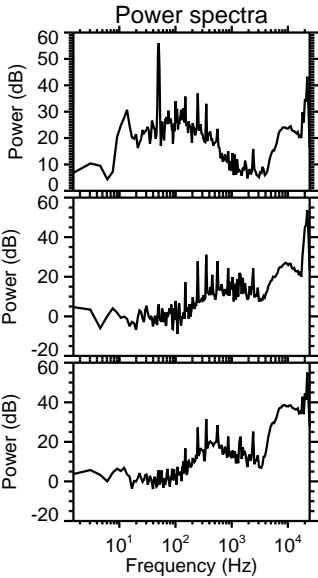
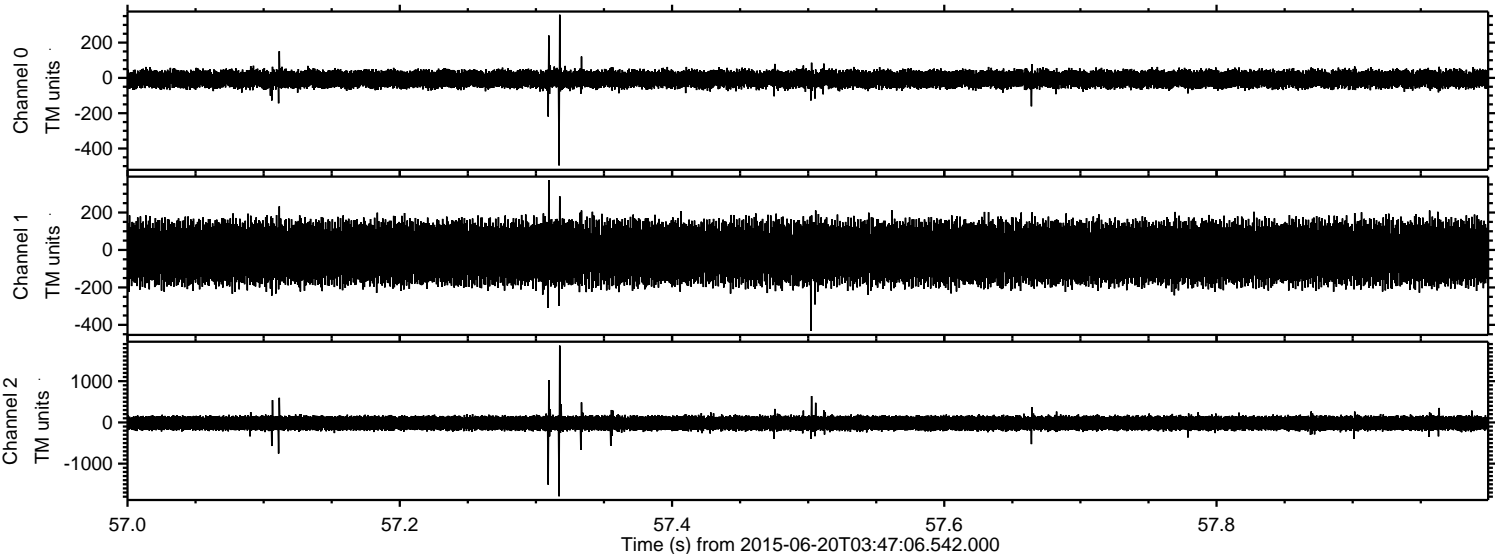
Channel 1
mn: -1943
mx: 1768
 μ : -15.4
 σ : 85.0

Channel 2
mn: -1150
mx: 996
 μ : -17.1
 σ : 90.2

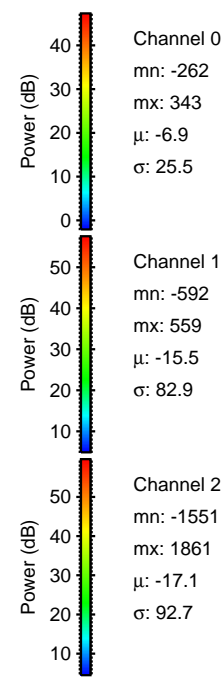
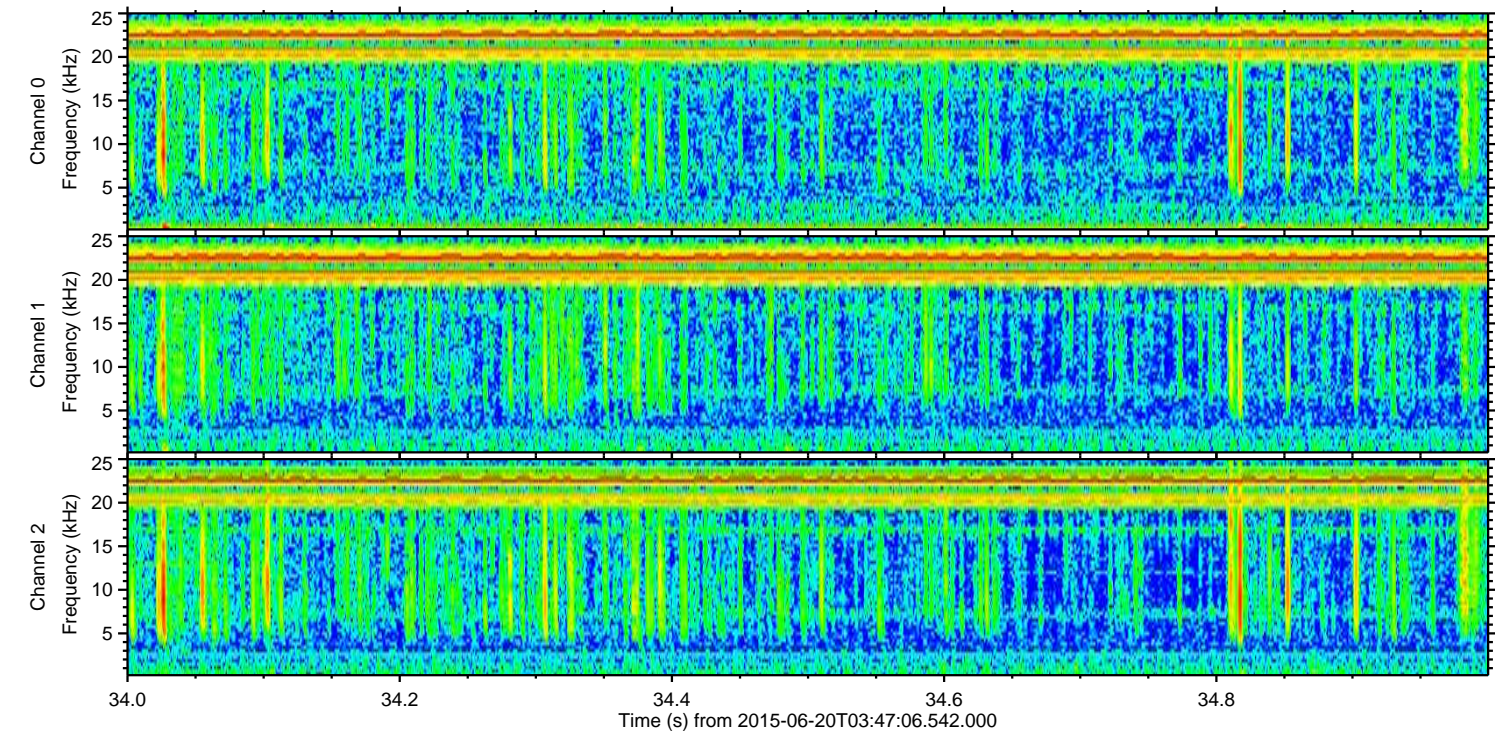
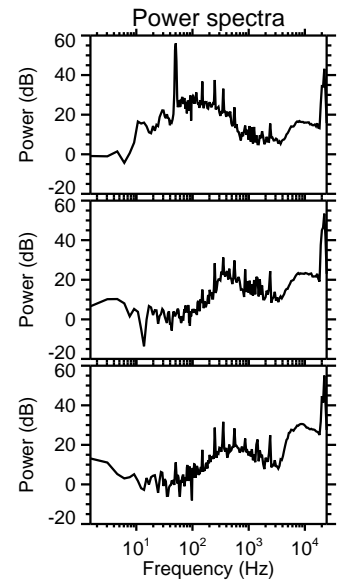
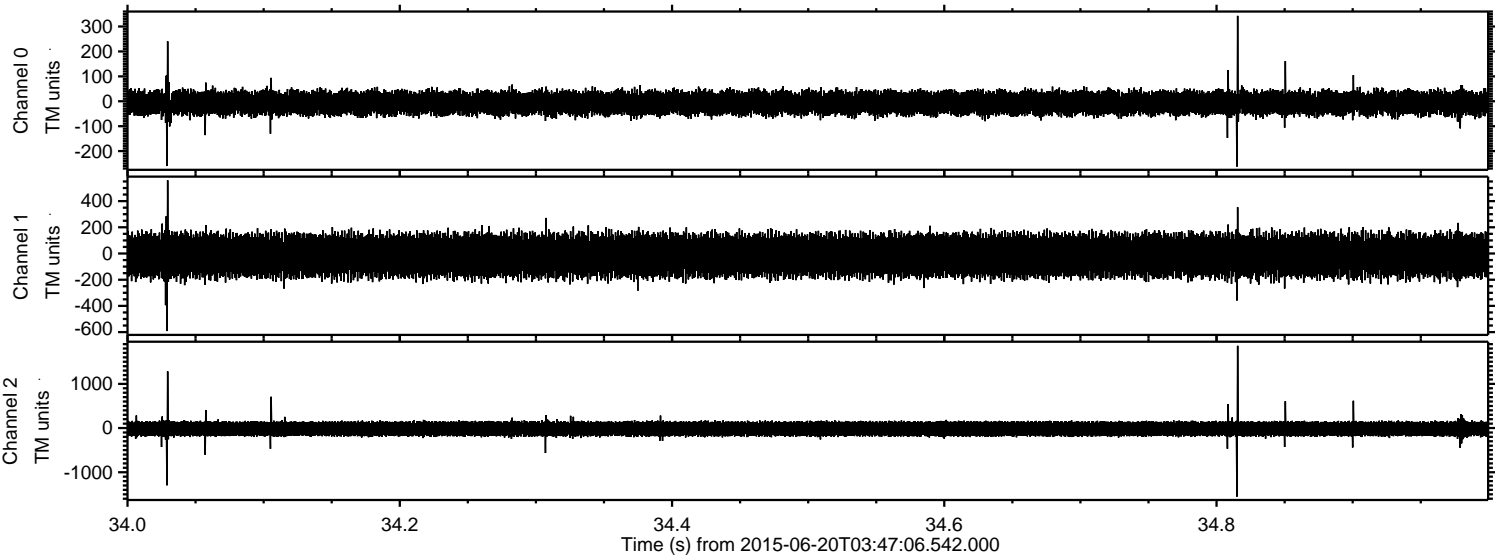
Processed Sat Jun 20 05:53:58 2015 by ELM ver.2012-10-06 from 001__elm20150620_034705__dat00.bin



Processed Sat Jun 20 05:54:00 2015 by ELM ver.2012-10-06 from 001__elm20150620_034705__dat00.bin



Processed Sat Jun 20 05:54:01 2015 by ELM ver.2012-10-06 from 001__elm20150620_034705__dat00.bin



ELMAVAN 3D WAVEFORMS (Measured data sampled at 50 kHz) 51000 packets of 144 samples from 2015-06-20T03:47:06.542.000. Part 124/147

Processed Sat Jun 20 05:54:02 2015 by ELM ver.2012-10-06 from 001__elm20150620_034705__dat00.bin

