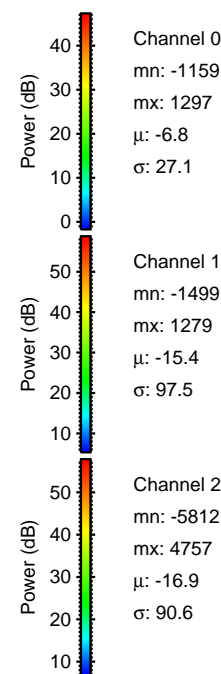
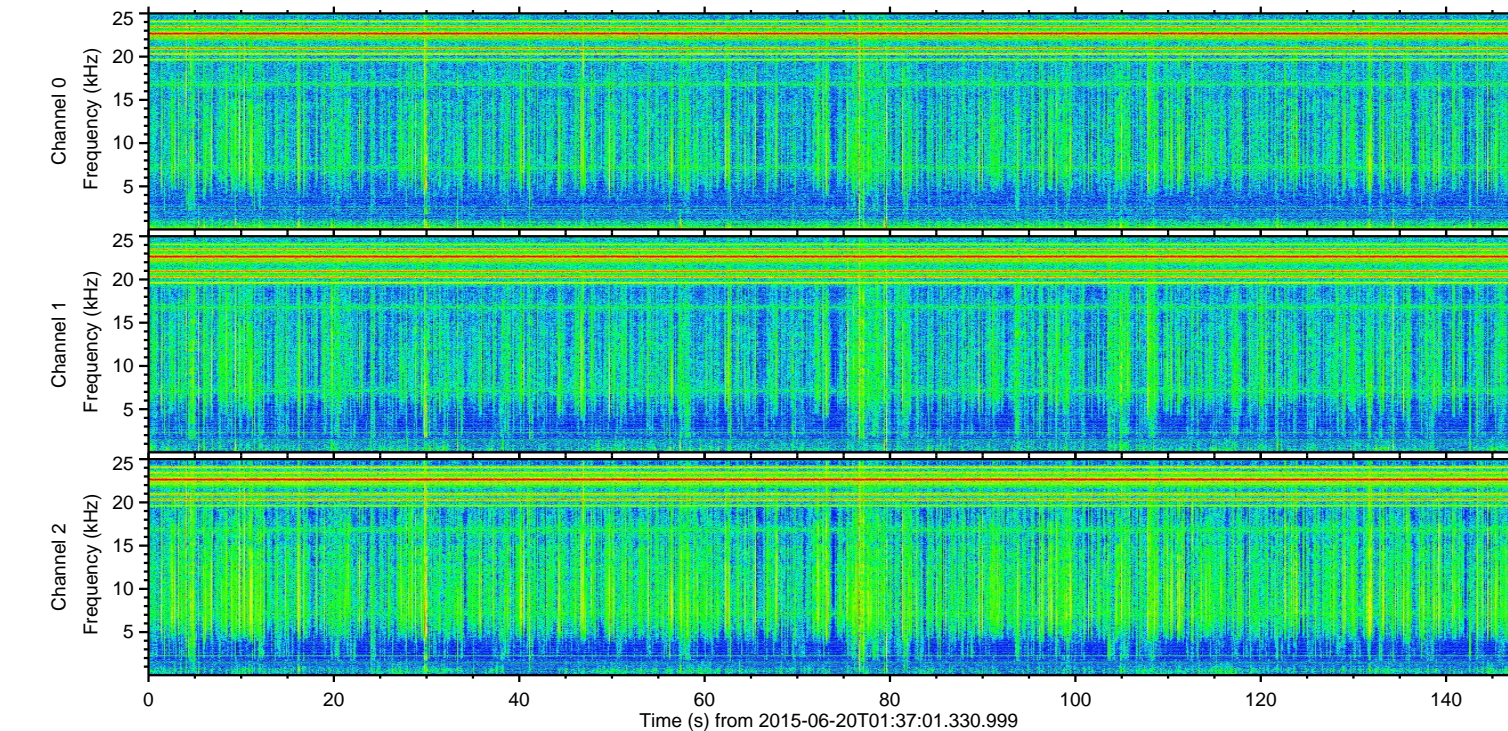
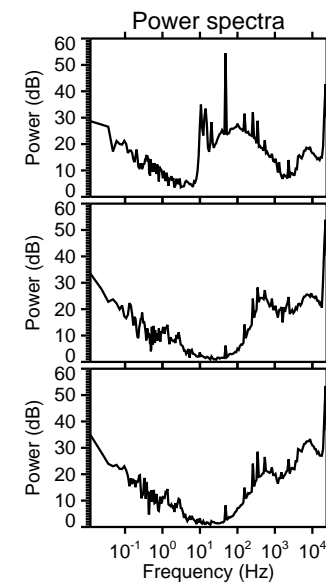
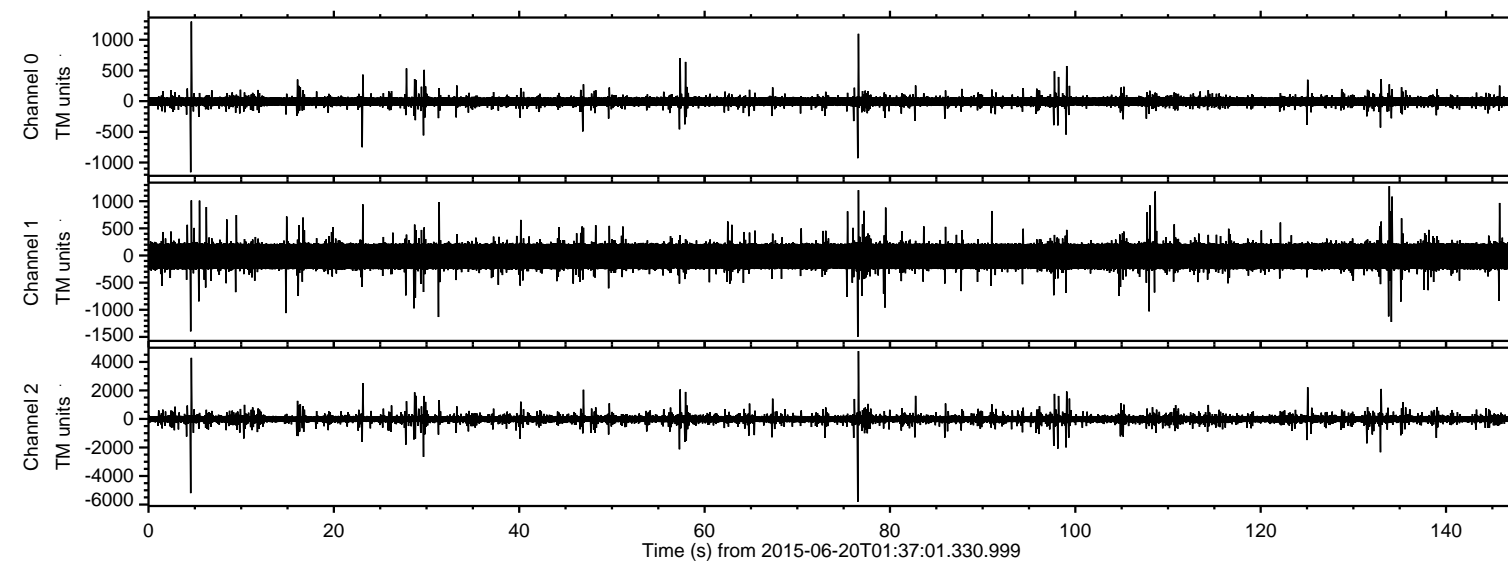
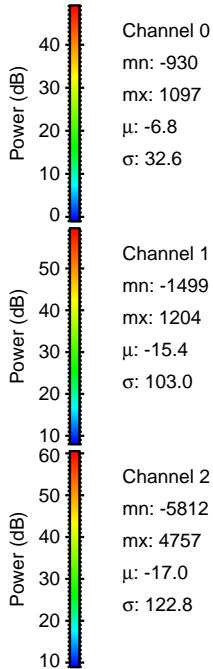
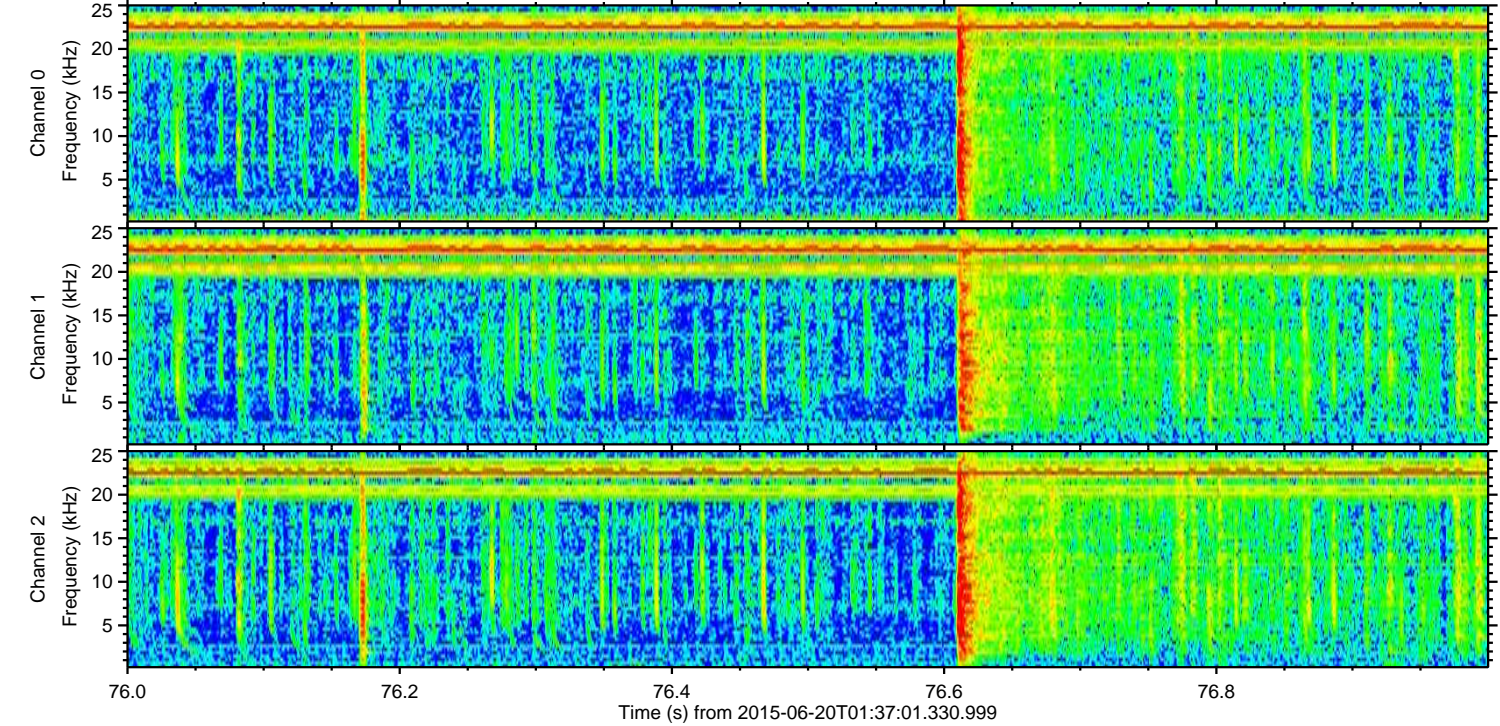
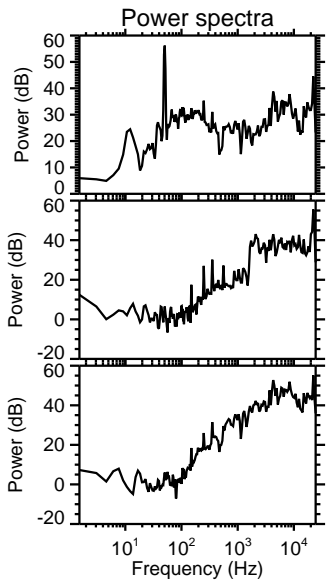
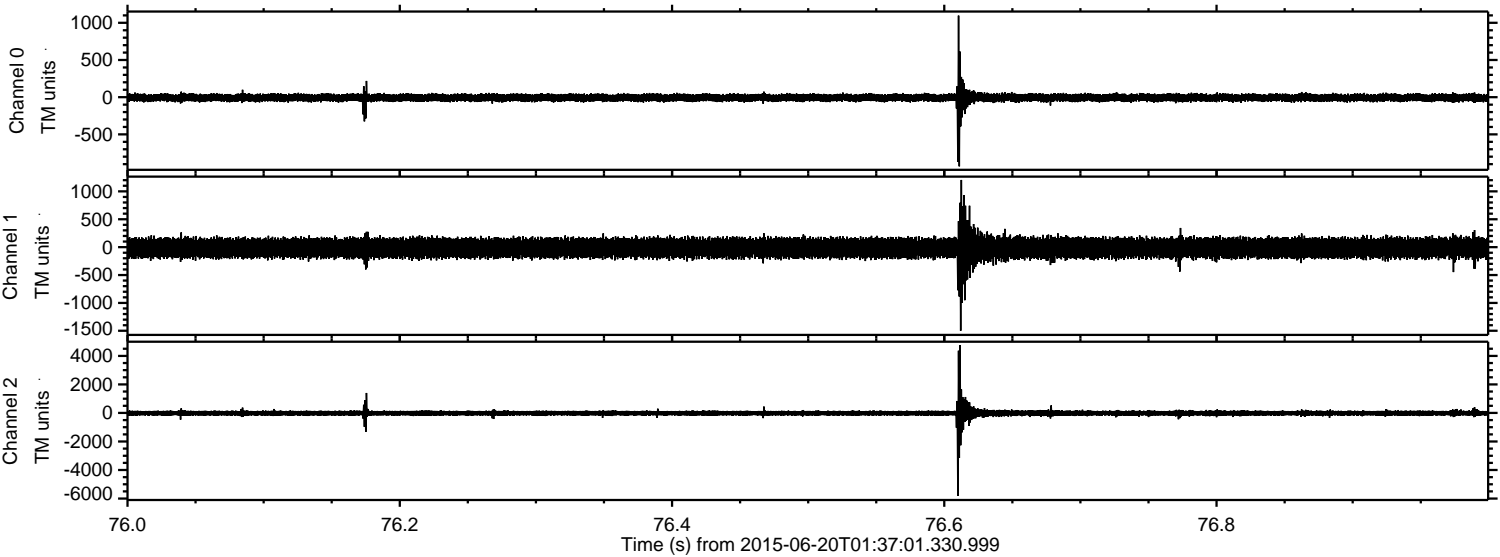


ELMAVAN 3D WAVEFORMS (Measured data sampled at 50 kHz) 51000 packets of 144 samples from 2015-06-20T01:37:01.330.999.

Processed Sat Jun 20 03:43:55 2015 by ELM ver.2012-10-06 from 001__elm20150620_013700__dat00.bin



Processed Sat Jun 20 03:44:16 2015 by ELM ver.2012-10-06 from 001__elm20150620_013700__dat00.bin

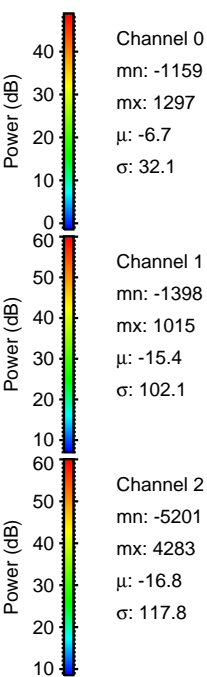
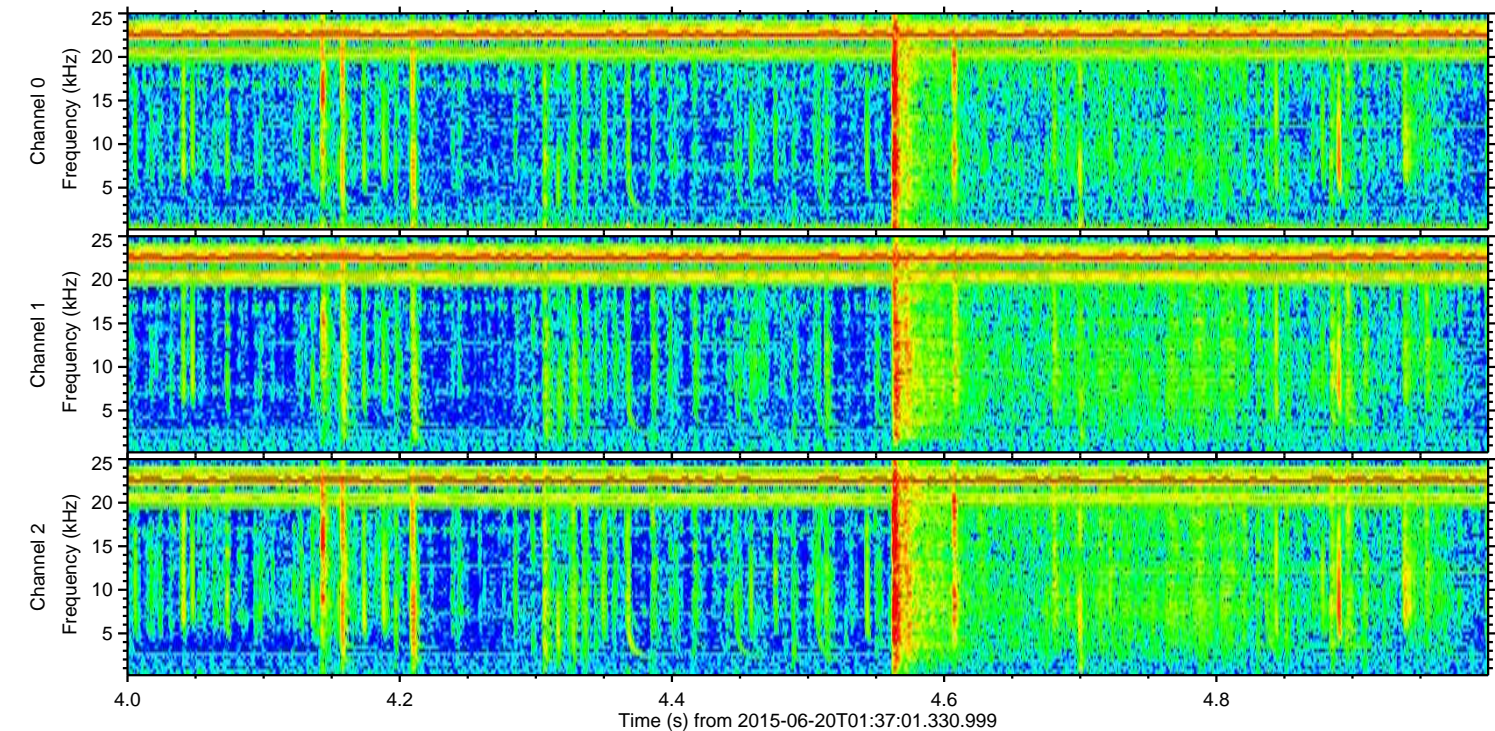
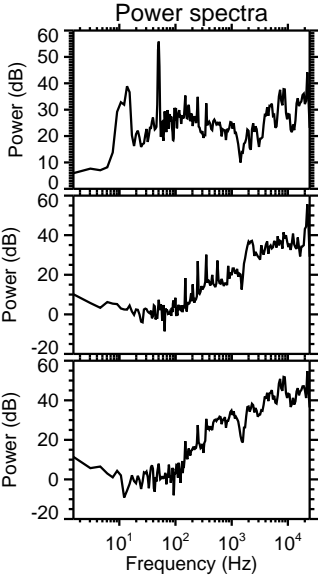
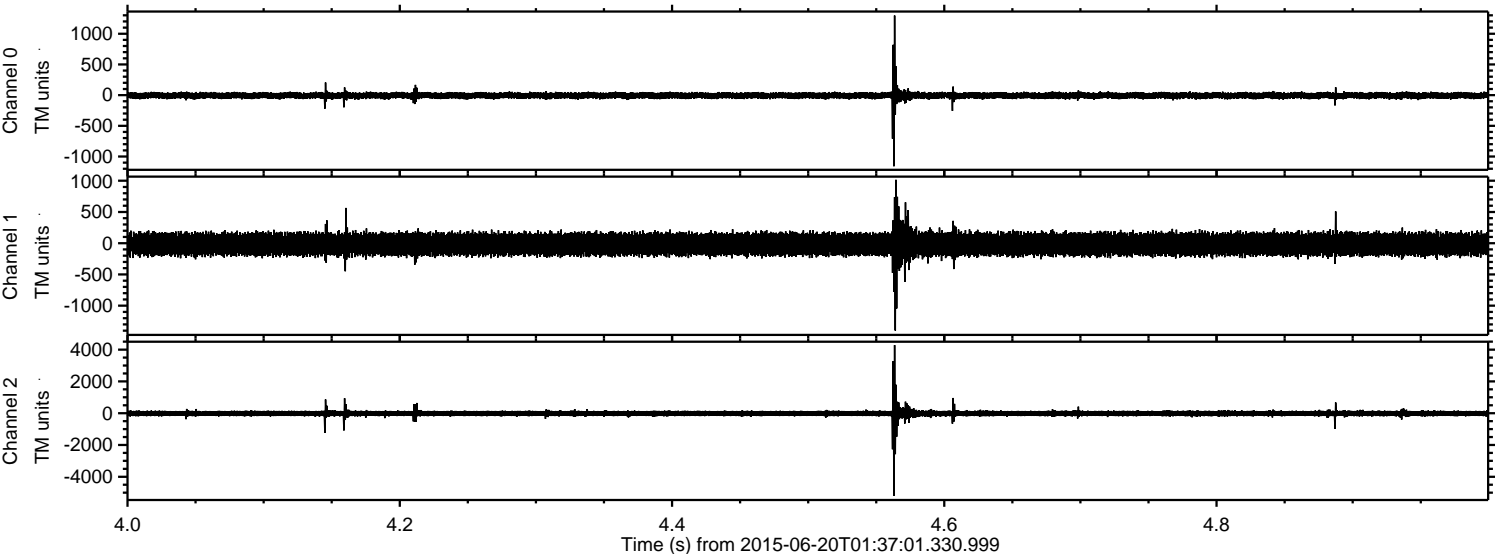


Channel 0
mn: -930
mx: 1097
 μ : -6.8
 σ : 32.6

Channel 1
mn: -1499
mx: 1204
 μ : -15.4
 σ : 103.0

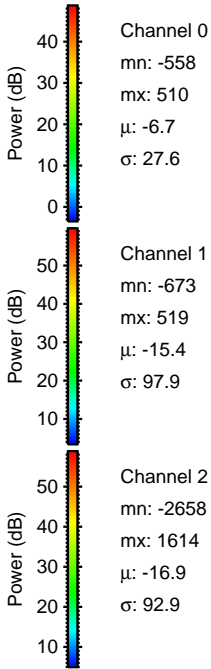
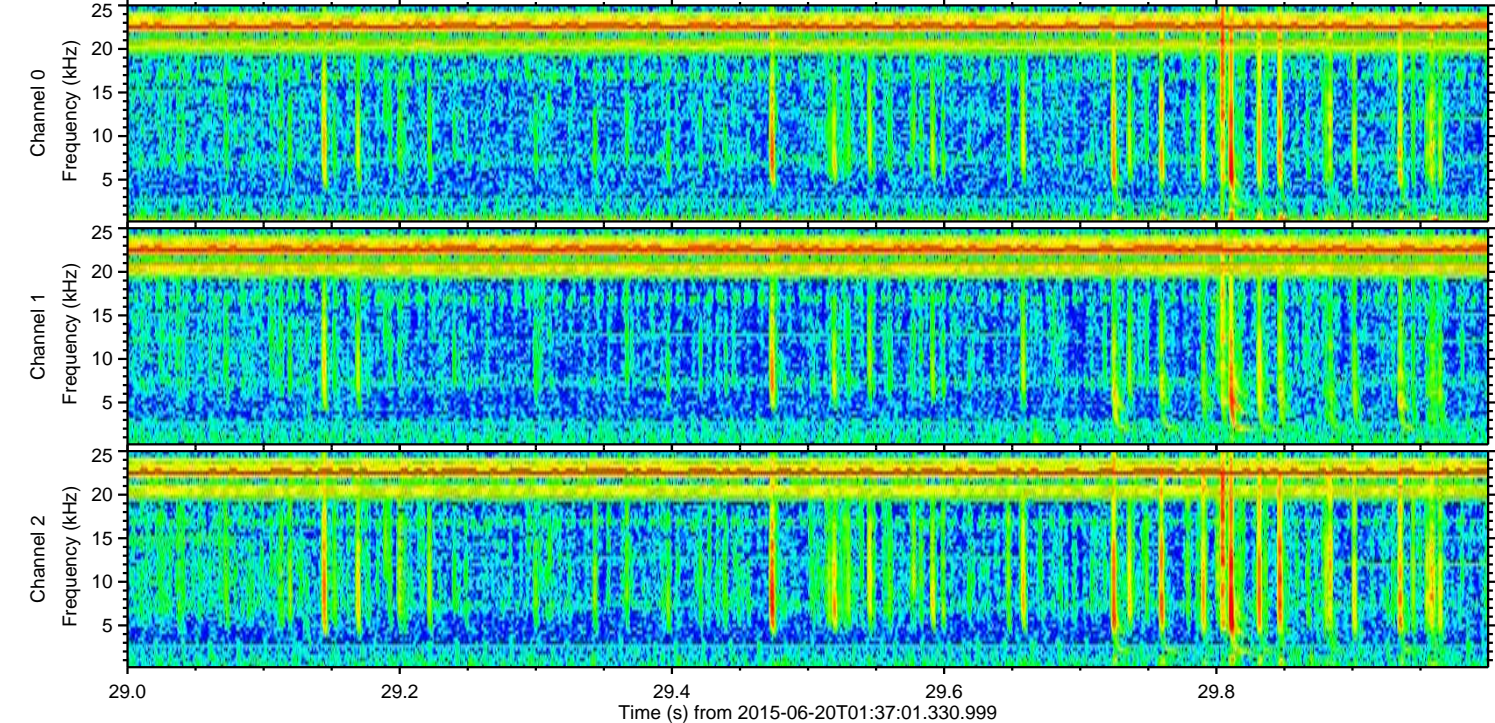
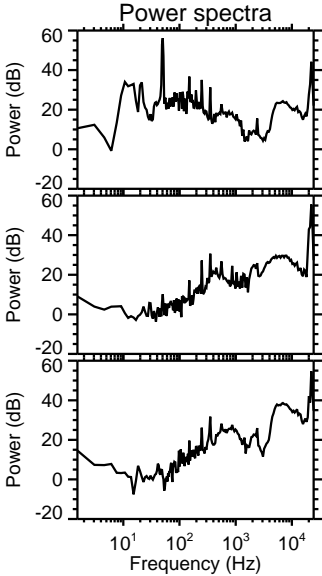
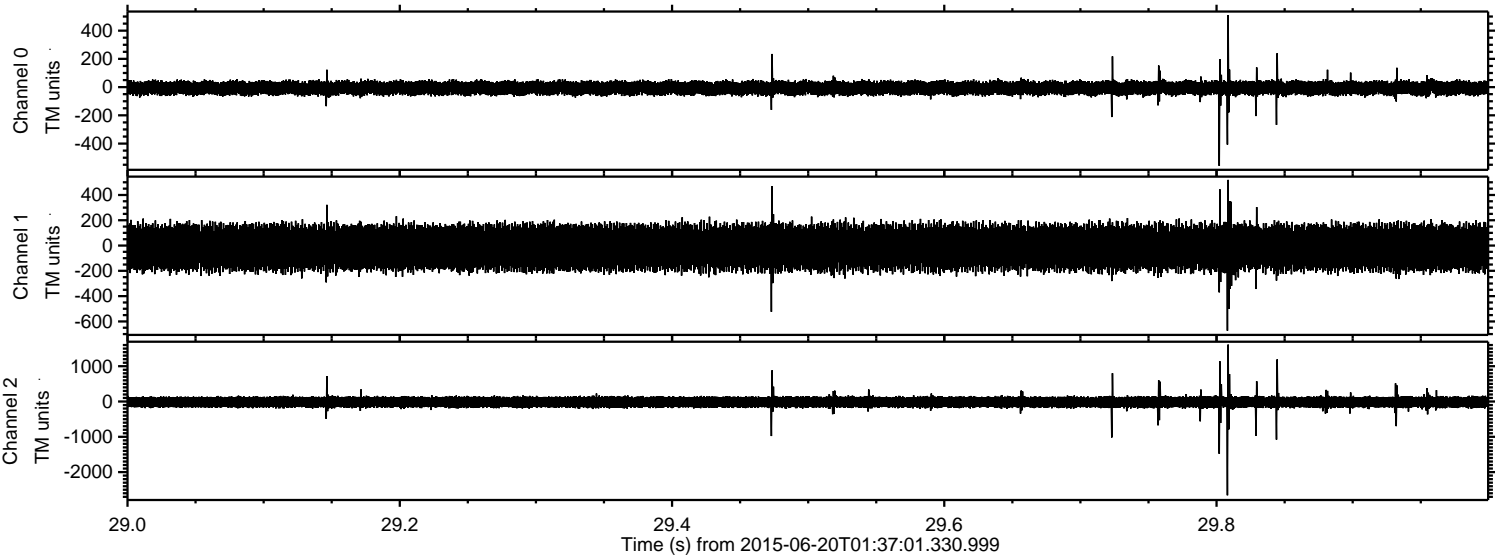
Channel 2
mn: -5812
mx: 4757
 μ : -17.0
 σ : 122.8

Processed Sat Jun 20 03:44:18 2015 by ELM ver.2012-10-06 from 001__elm20150620_013700__dat00.bin

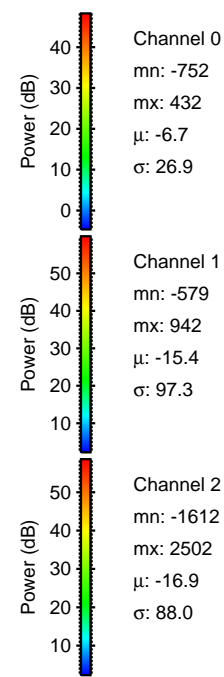
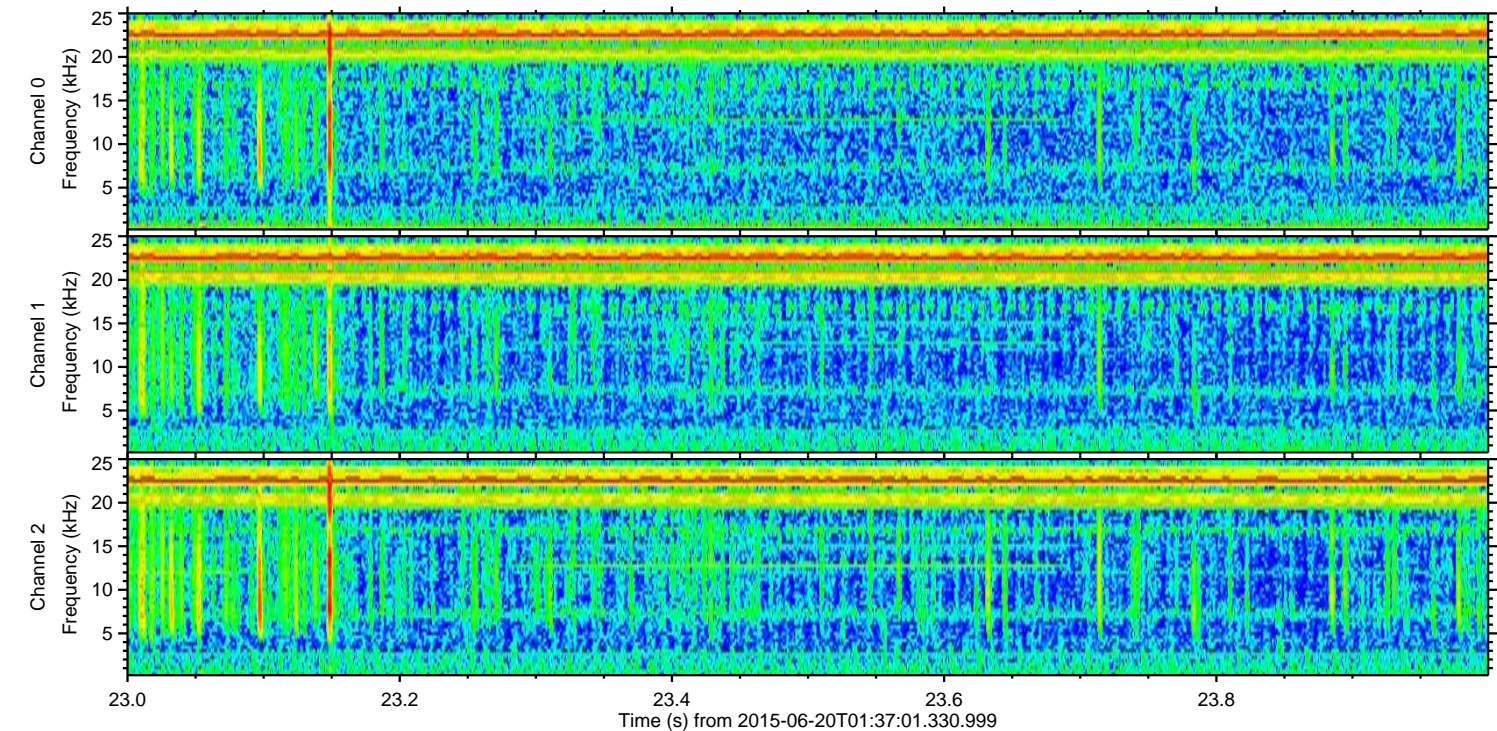
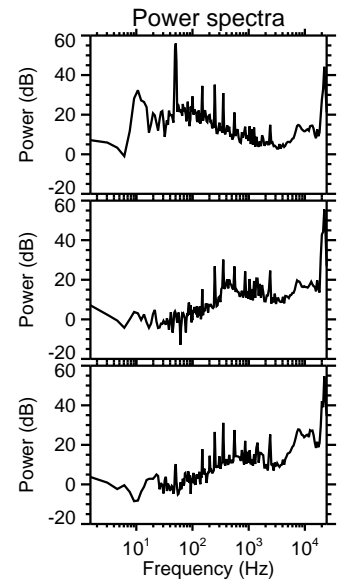
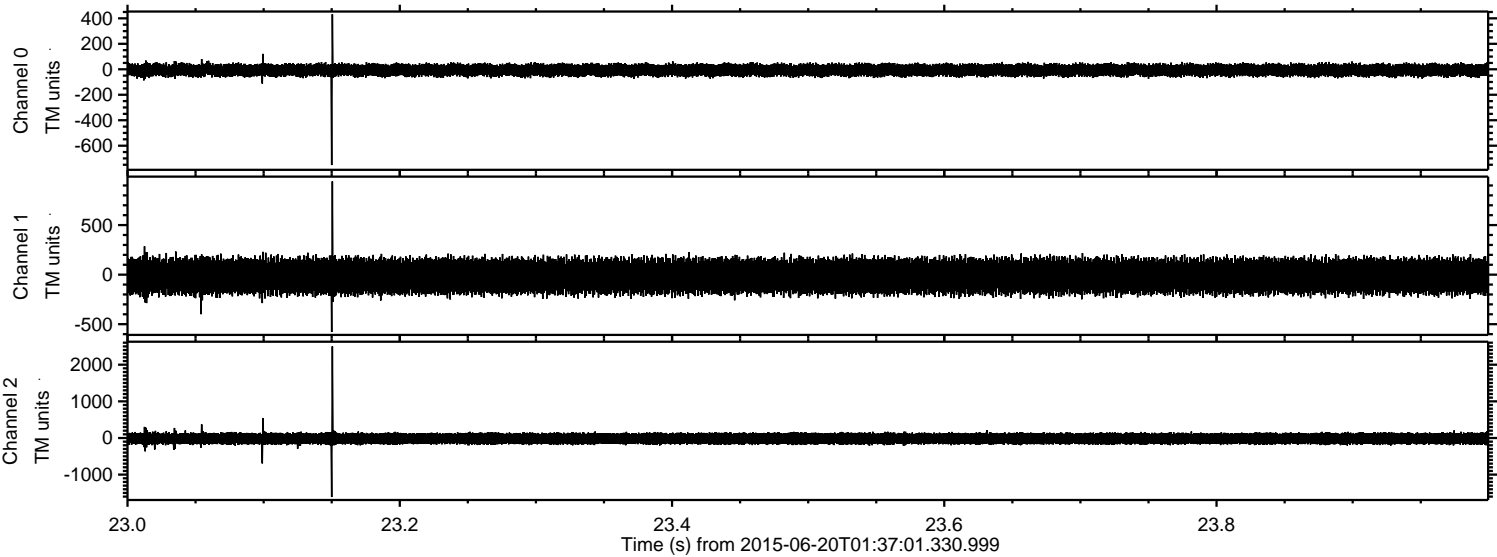


ELMAVAN 3D WAVEFORMS (Measured data sampled at 50 kHz) 51000 packets of 144 samples from 2015-06-20T01:37:01.330.999. Part 30/147

Processed Sat Jun 20 03:44:21 2015 by ELM ver.2012-10-06 from 001__elm20150620_013700__dat00.bin

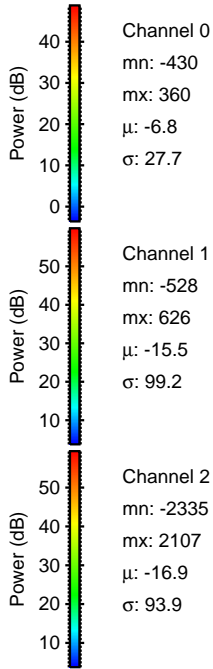
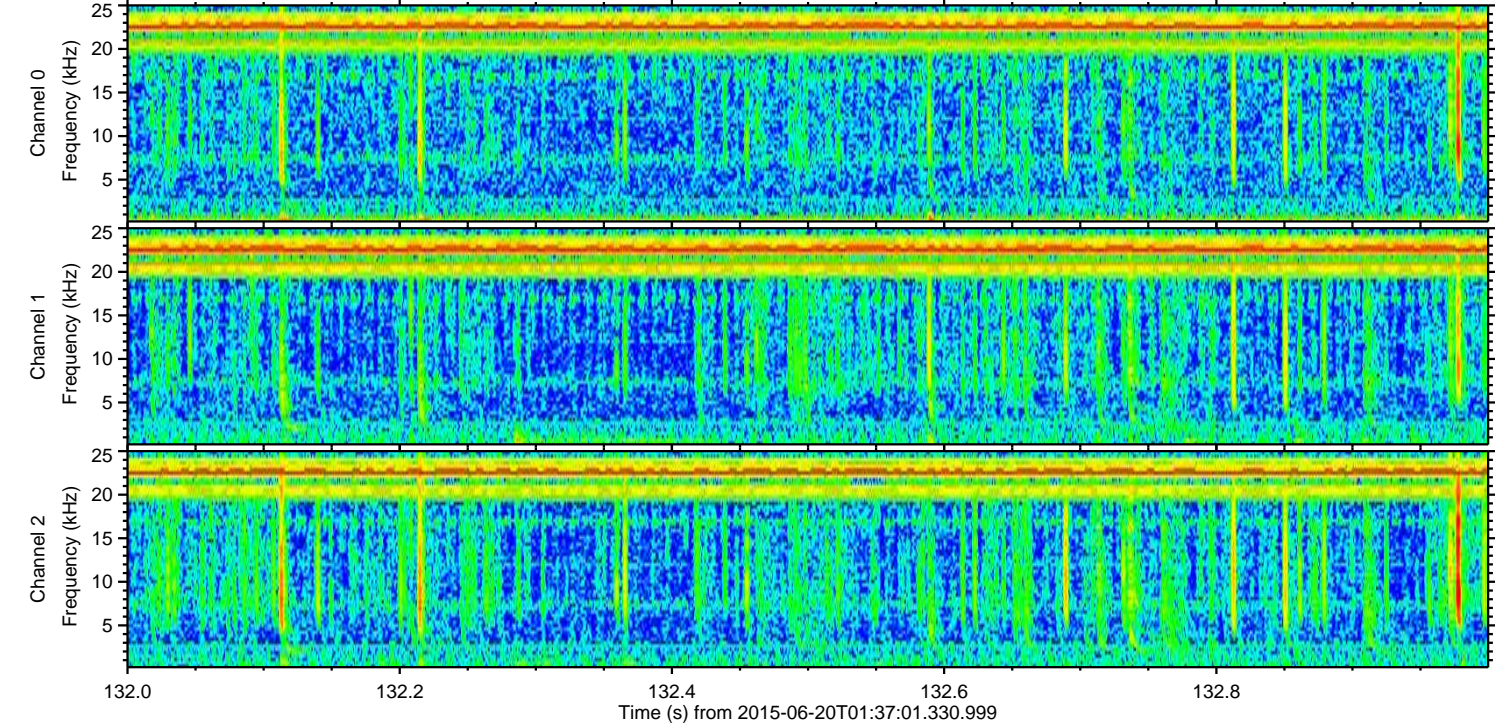
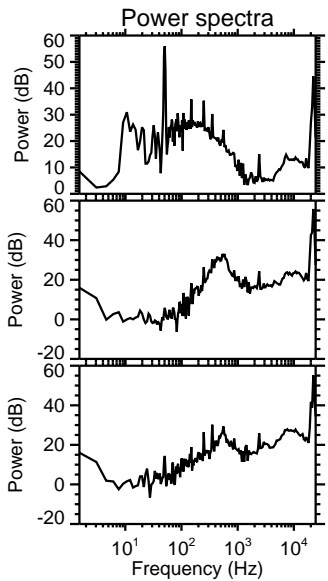
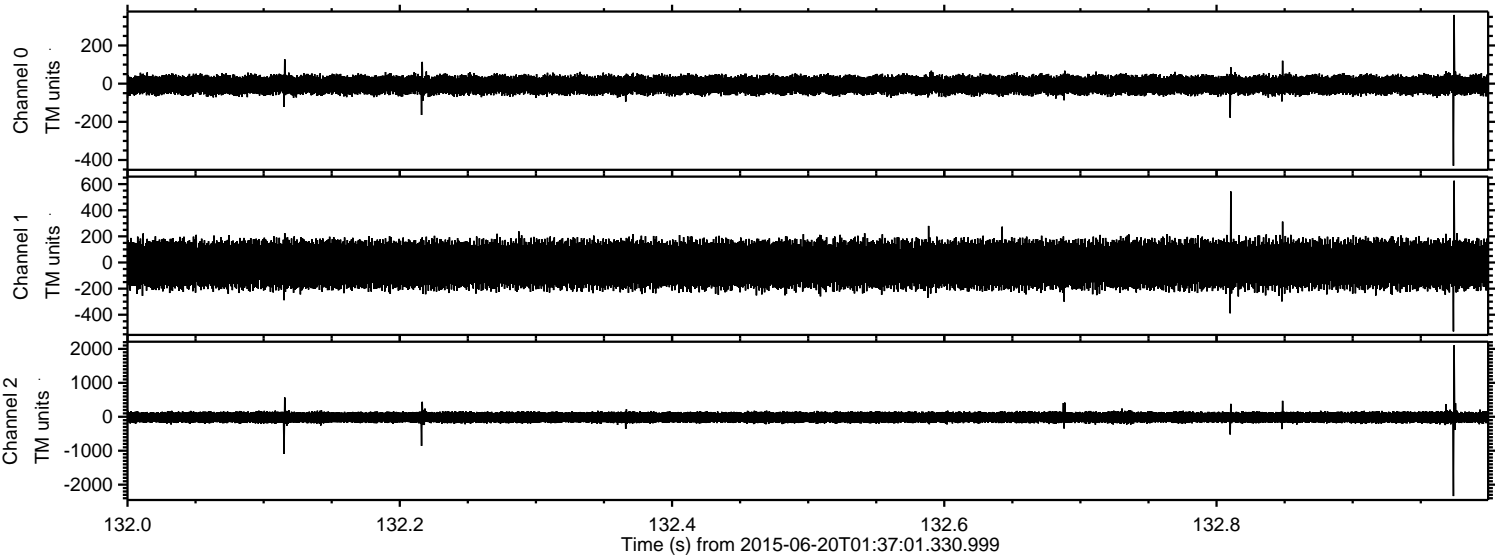


Processed Sat Jun 20 03:44:23 2015 by ELM ver.2012-10-06 from 001__elm20150620_013700__dat00.bin



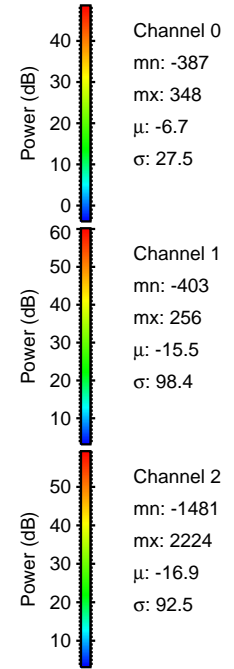
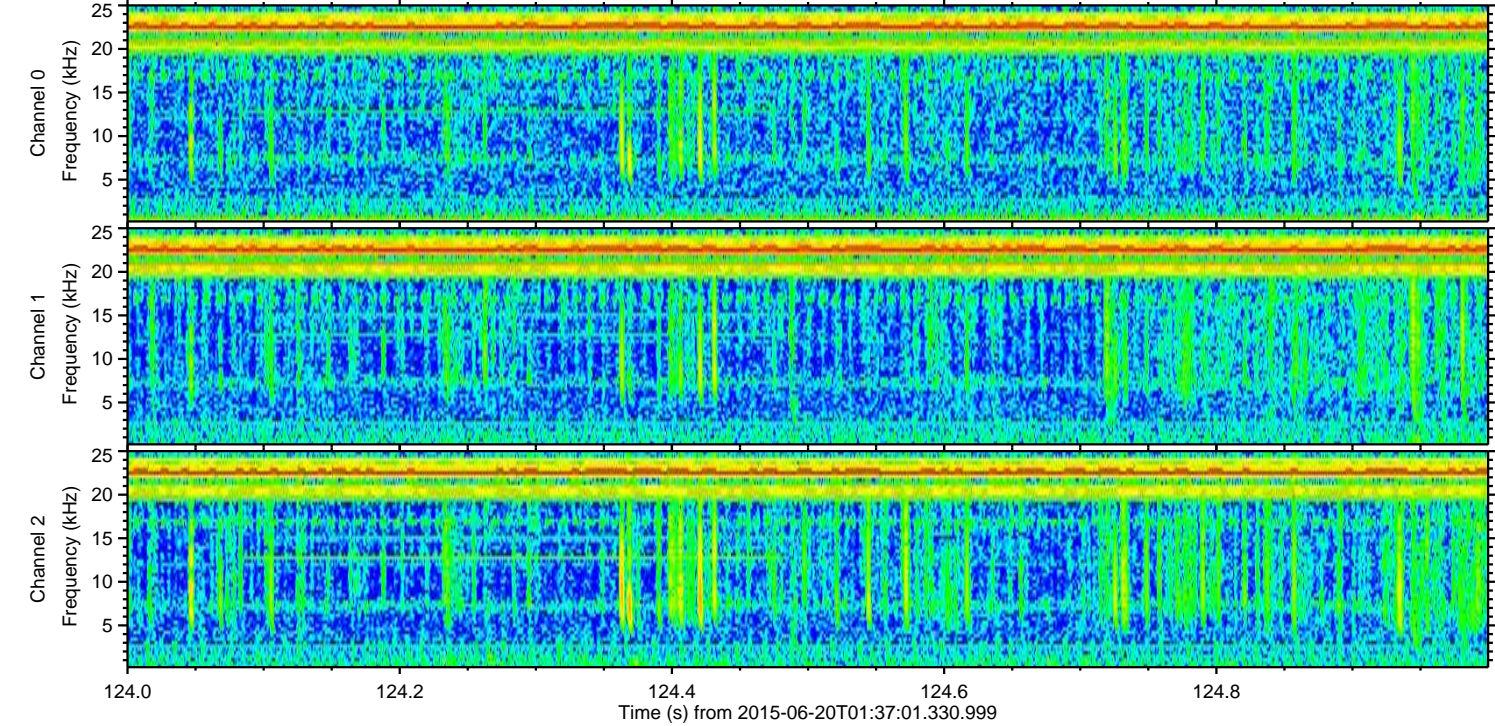
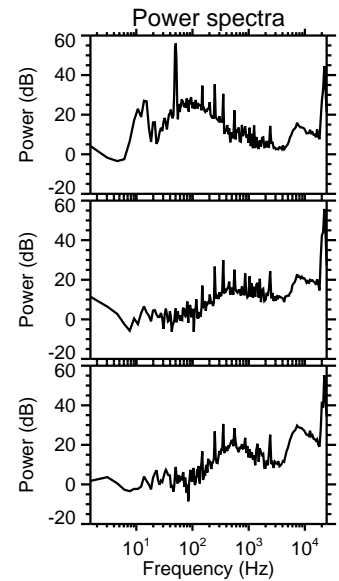
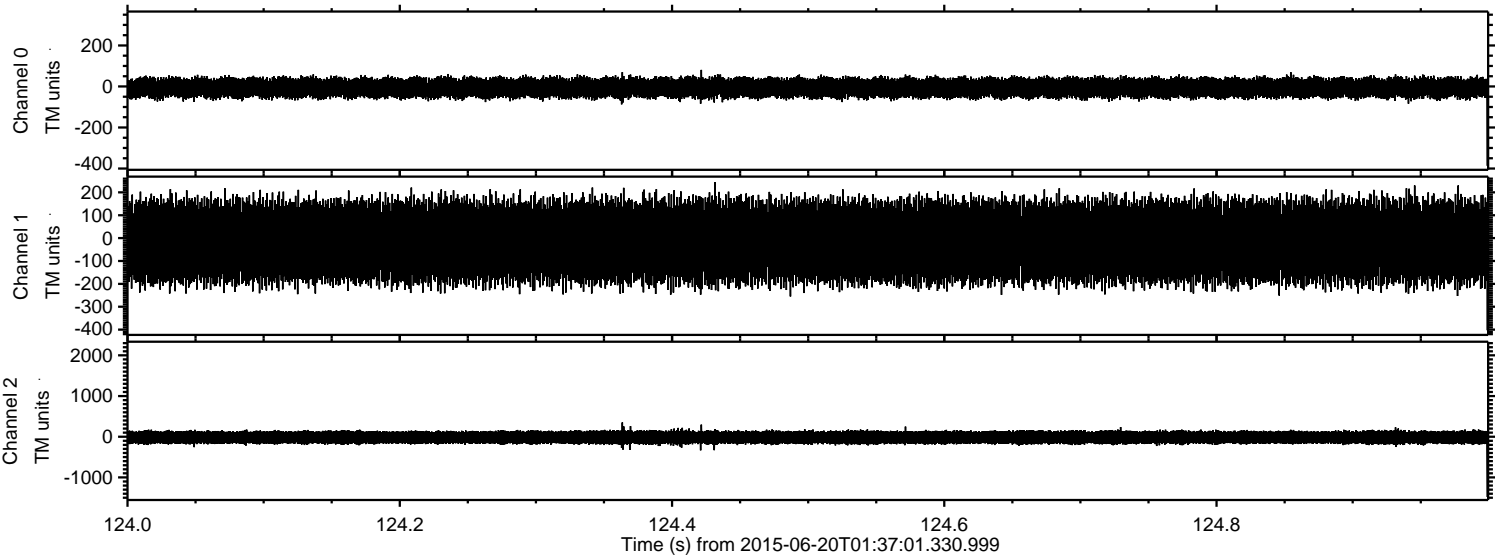
ELMAVAN 3D WAVEFORMS (Measured data sampled at 50 kHz) 51000 packets of 144 samples from 2015-06-20T01:37:01.330.999. Part 133/147

Processed Sat Jun 20 03:44:25 2015 by ELM ver.2012-10-06 from 001__elm20150620_013700__dat00.bin

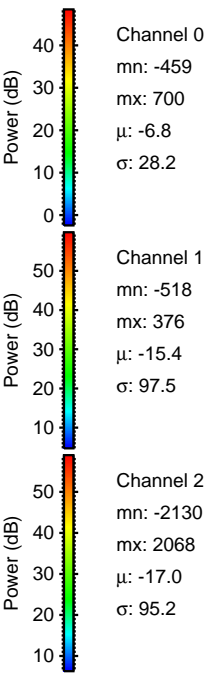
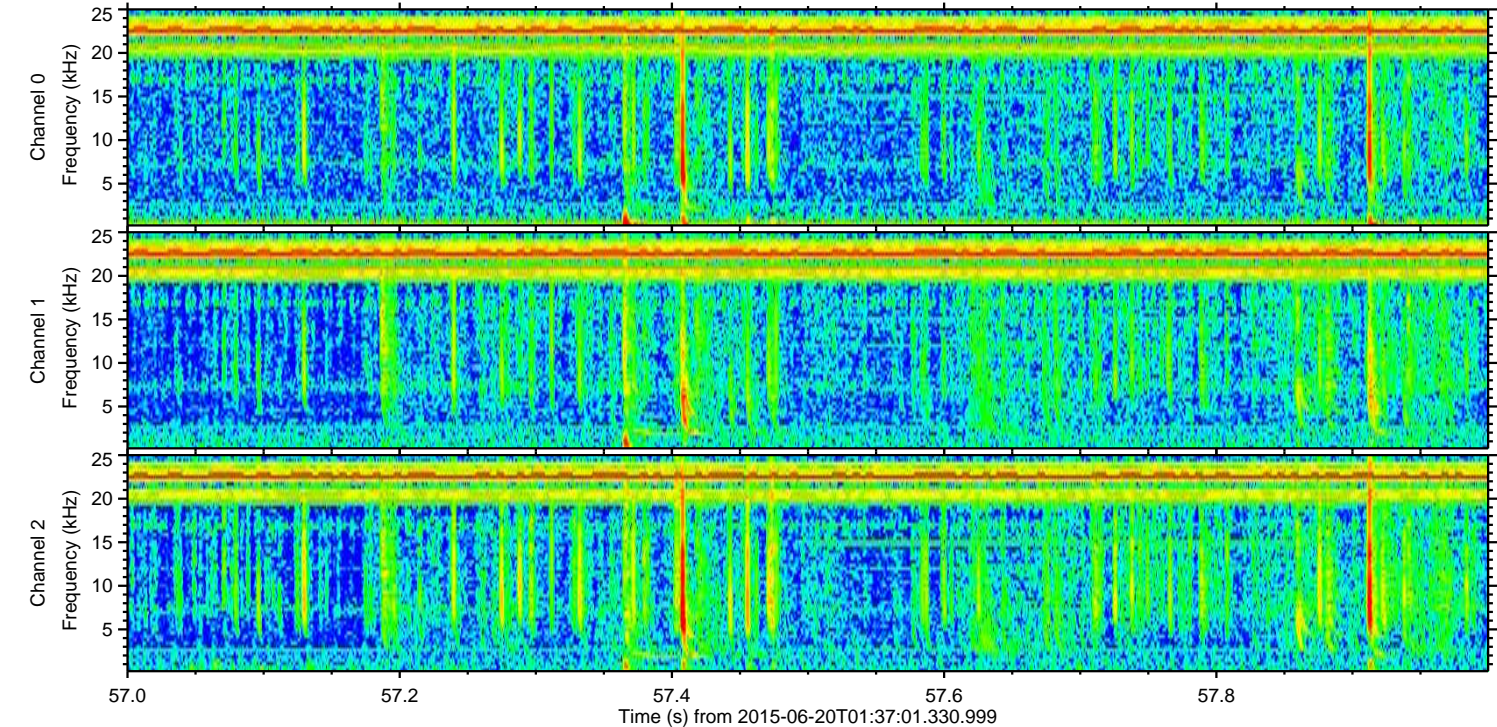
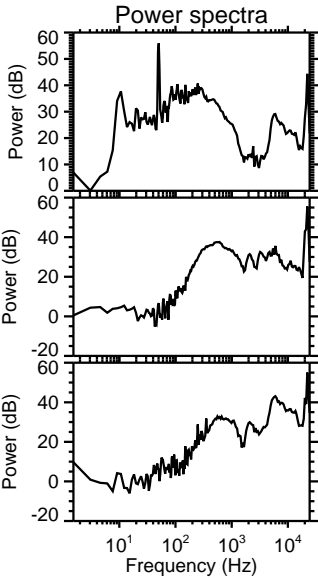
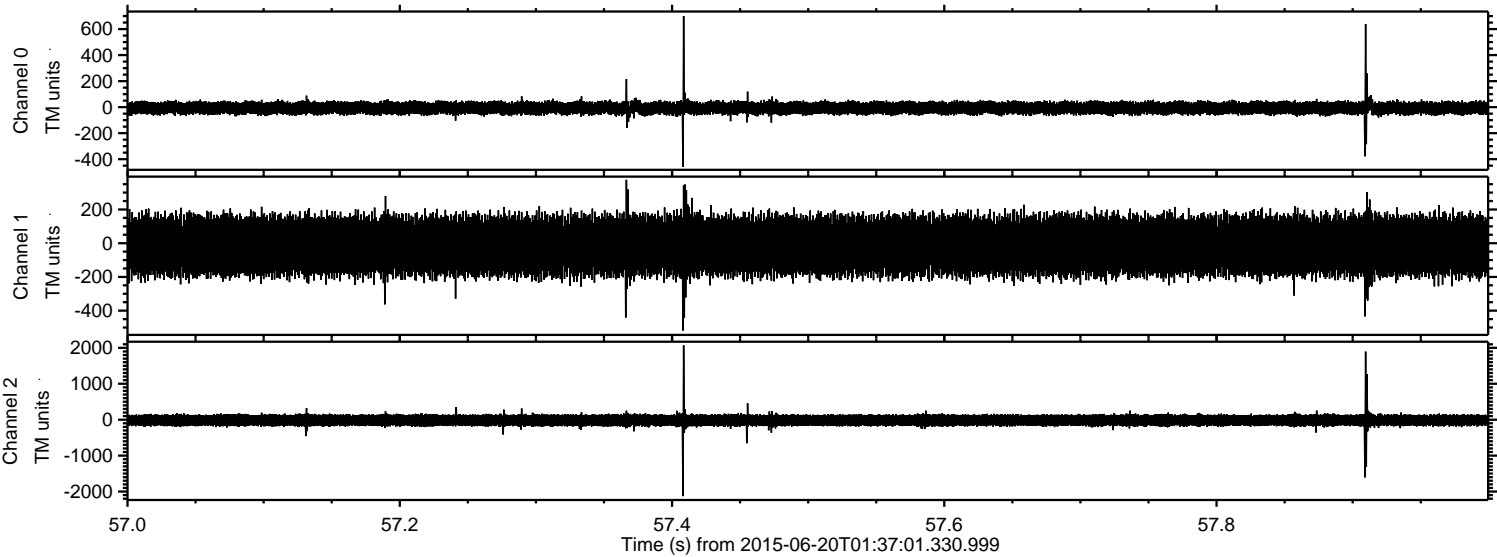


ELMAVAN 3D WAVEFORMS (Measured data sampled at 50 kHz) 51000 packets of 144 samples from 2015-06-20T01:37:01.330.999. Part 125/147

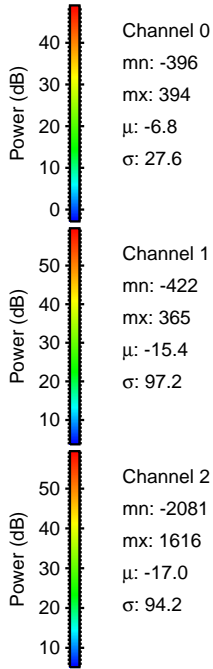
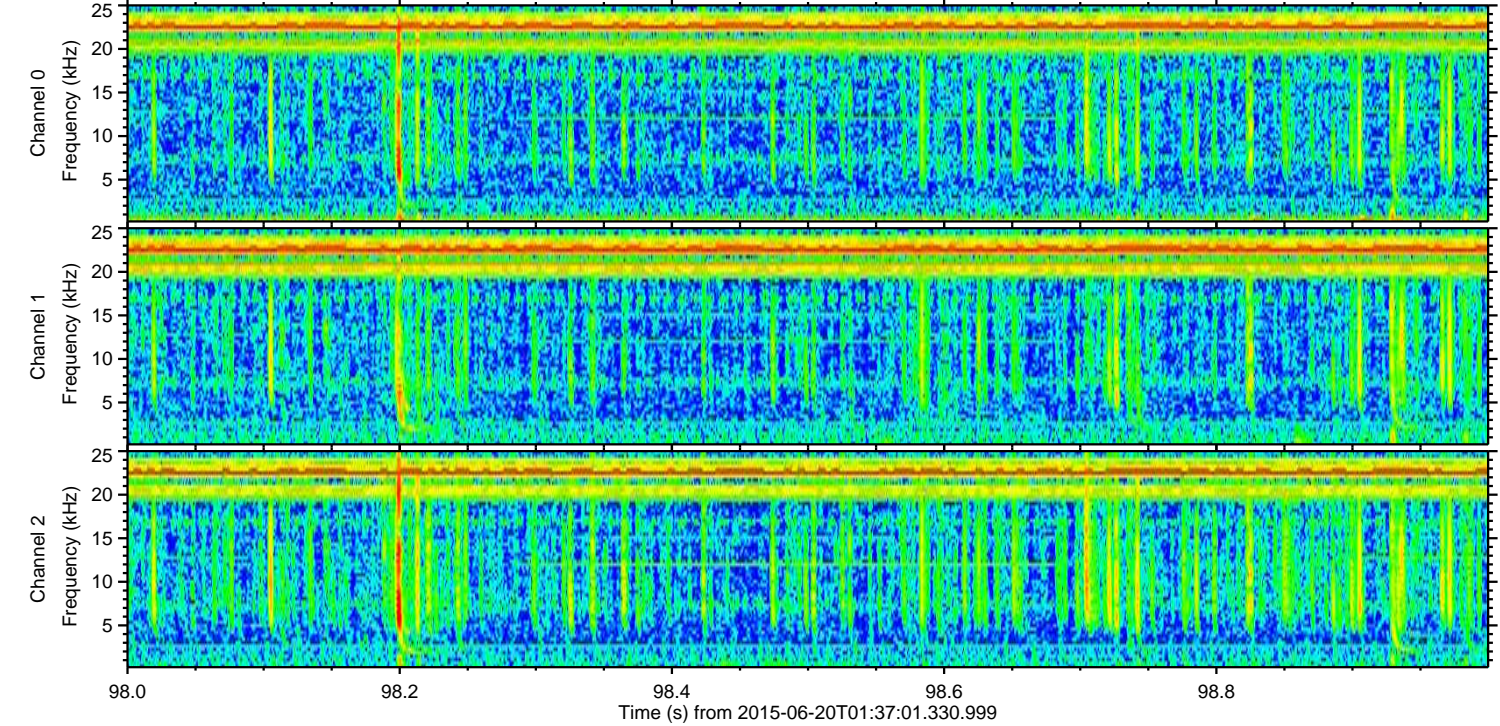
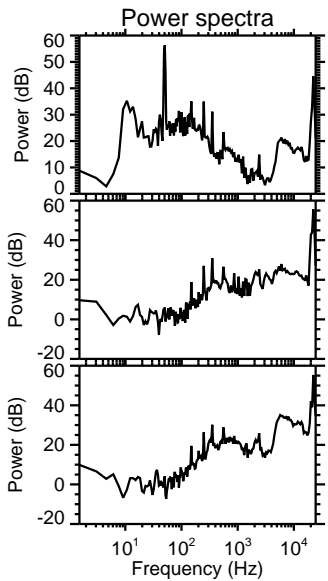
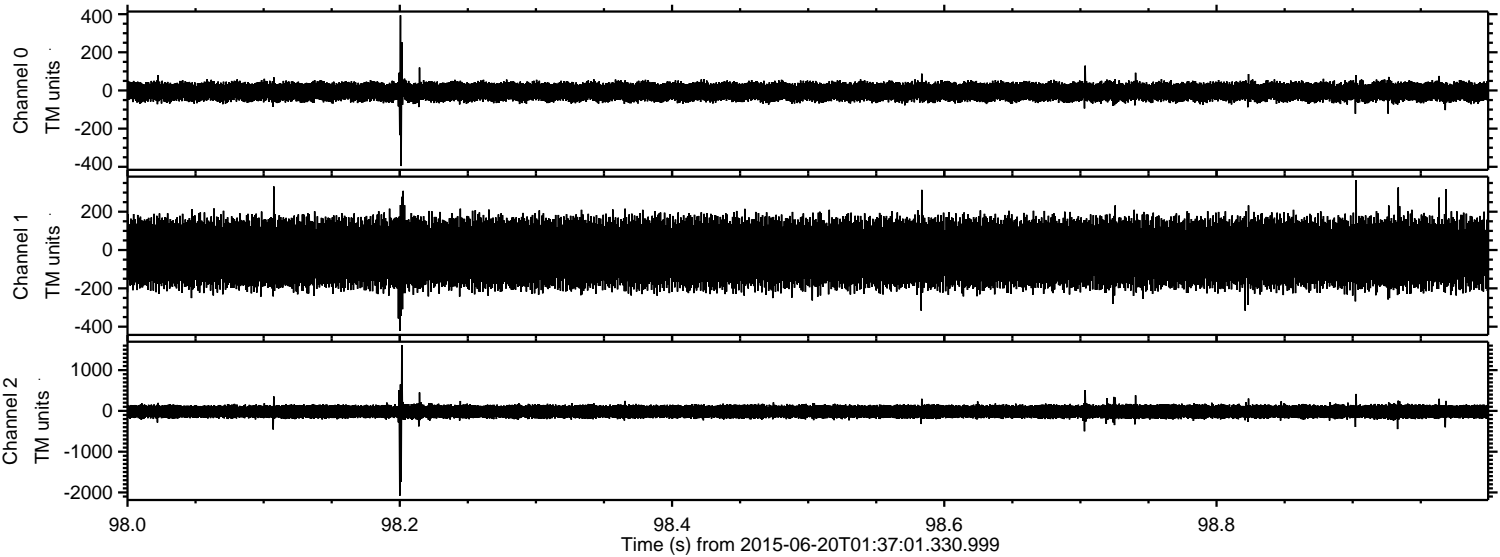
Processed Sat Jun 20 03:44:27 2015 by ELM ver.2012-10-06 from 001__elm20150620_013700__dat00.bin



Processed Sat Jun 20 03:44:28 2015 by ELM ver.2012-10-06 from 001__elm20150620_013700__dat00.bin



Processed Sat Jun 20 03:44:30 2015 by ELM ver.2012-10-06 from 001__elm20150620_013700__dat00.bin



Channel 0
mn: -396
mx: 394
 μ : -6.8
 σ : 27.6

Channel 1
mn: -422
mx: 365
 μ : -15.4
 σ : 97.2

Channel 2
mn: -2081
mx: 1616
 μ : -17.0
 σ : 94.2

Processed Sat Jun 20 03:44:31 2015 by ELM ver.2012-10-06 from 001__elm20150620_013700__dat00.bin

