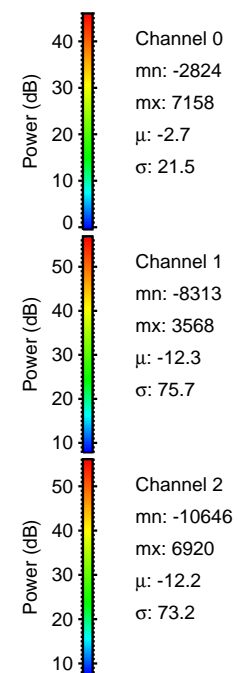
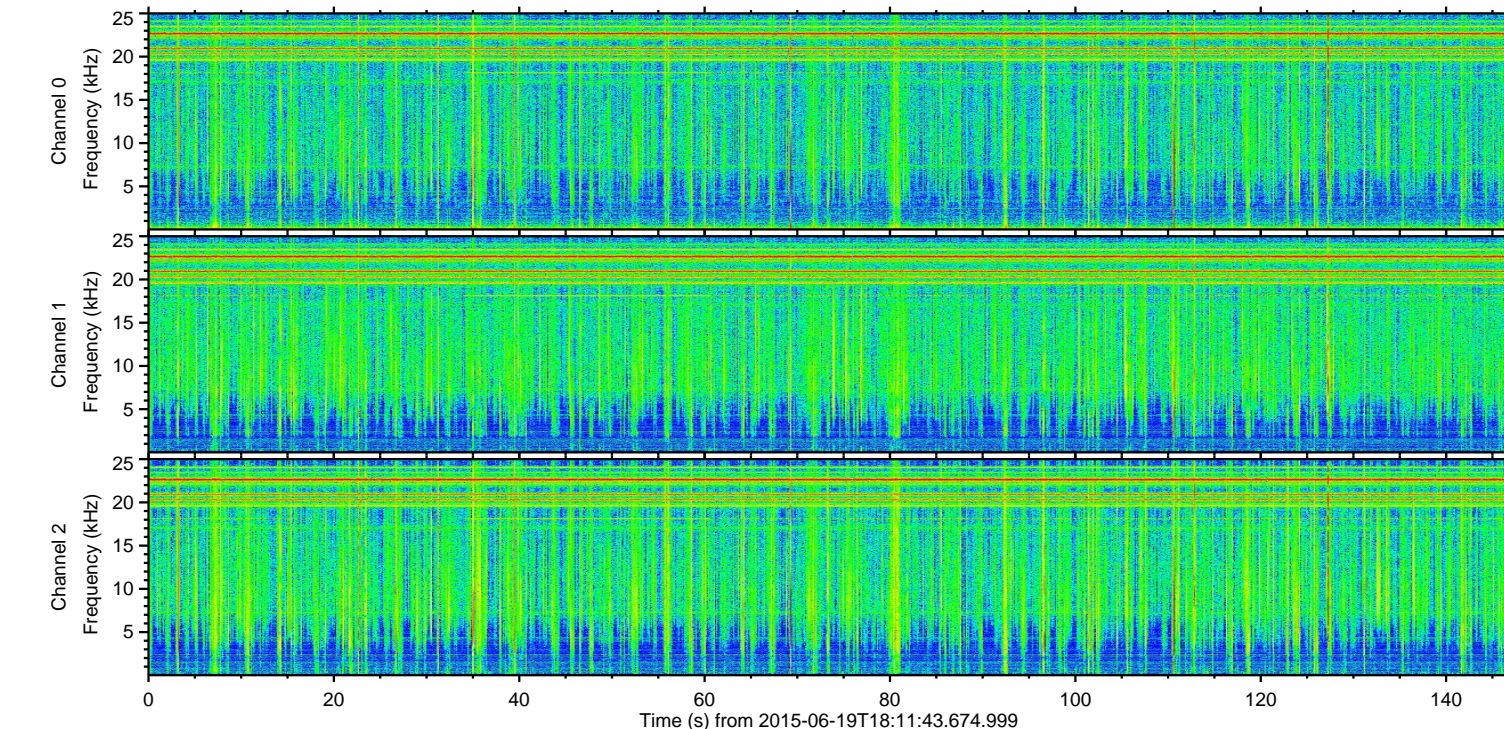
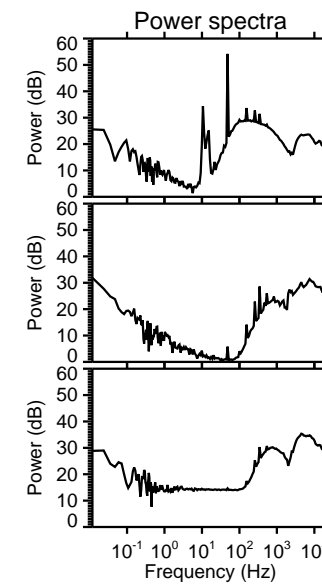
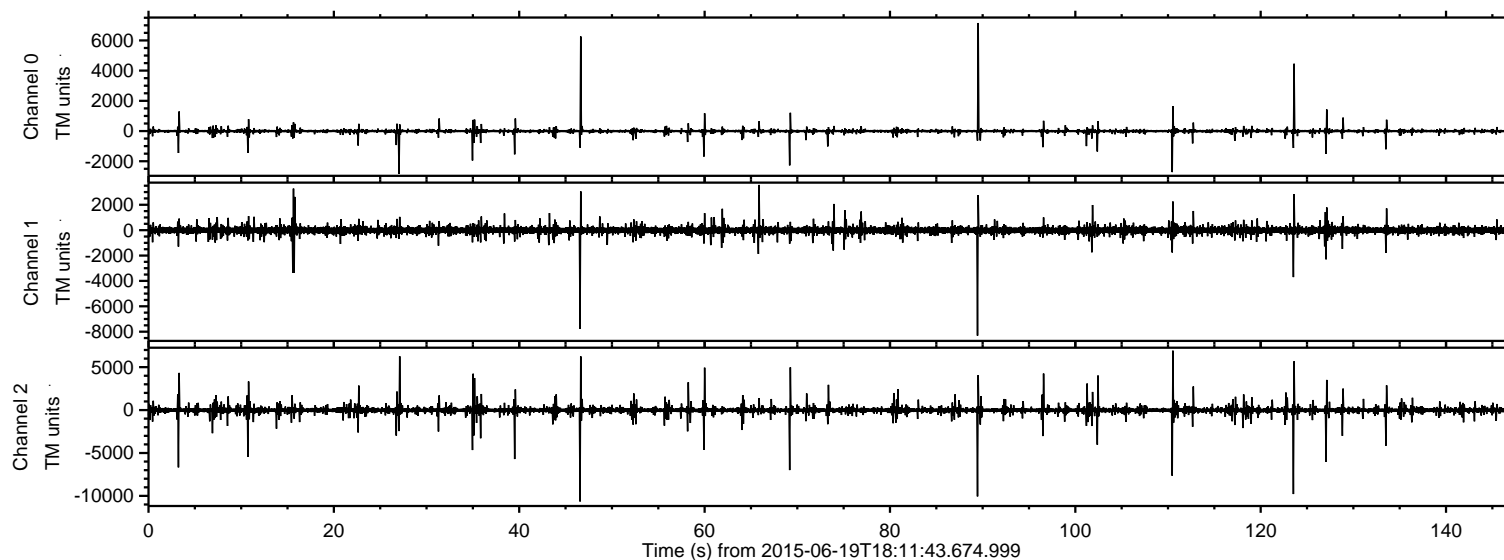
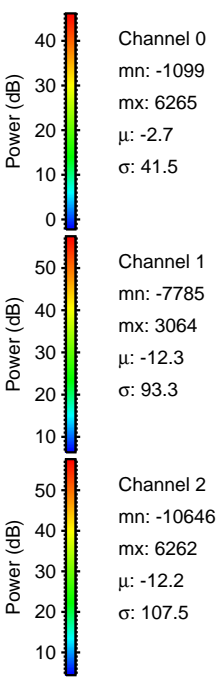
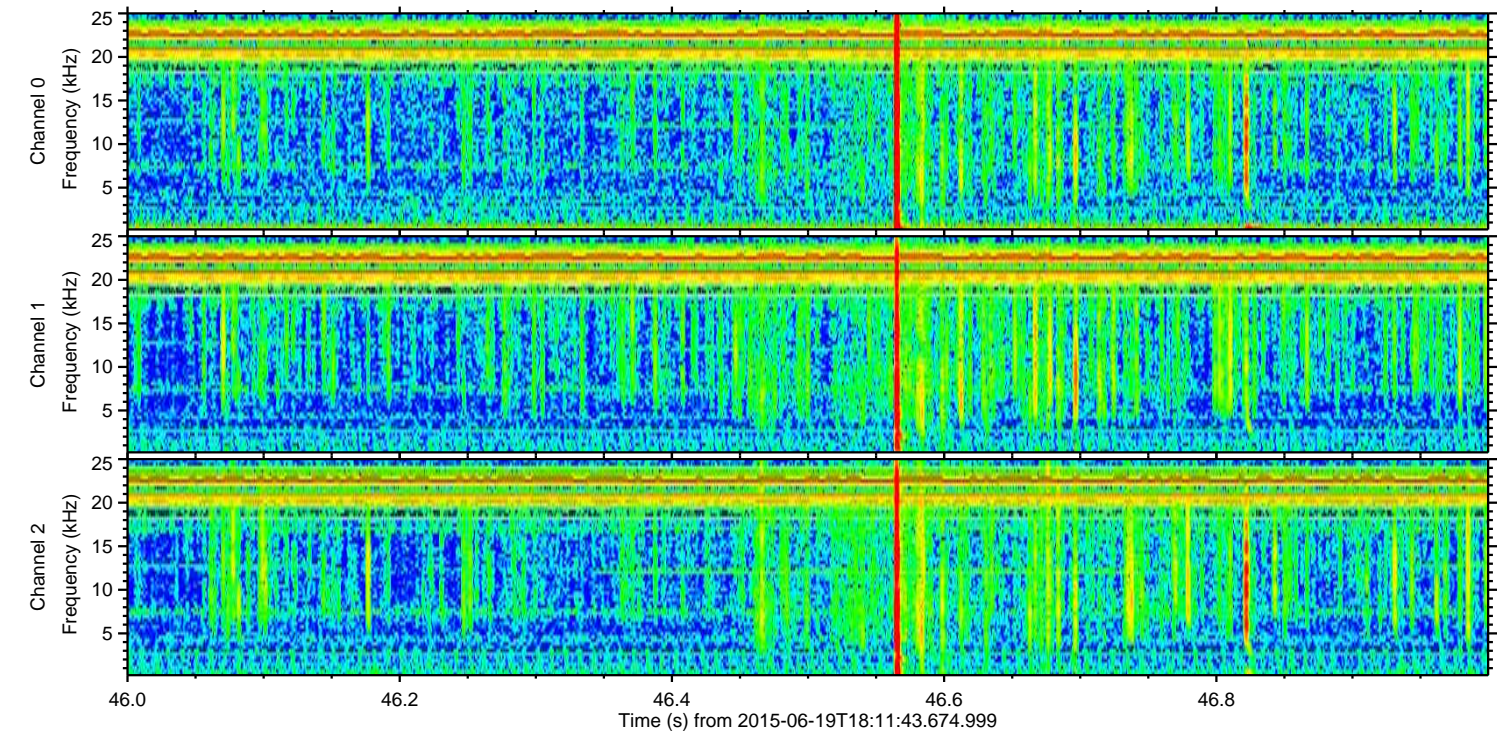
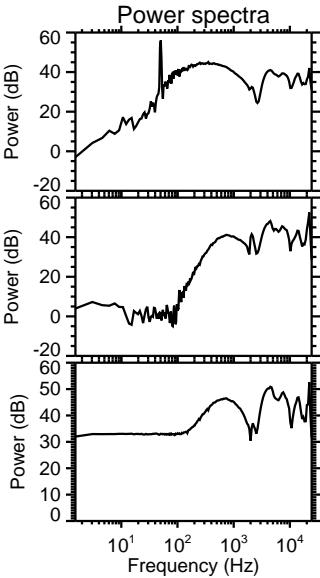
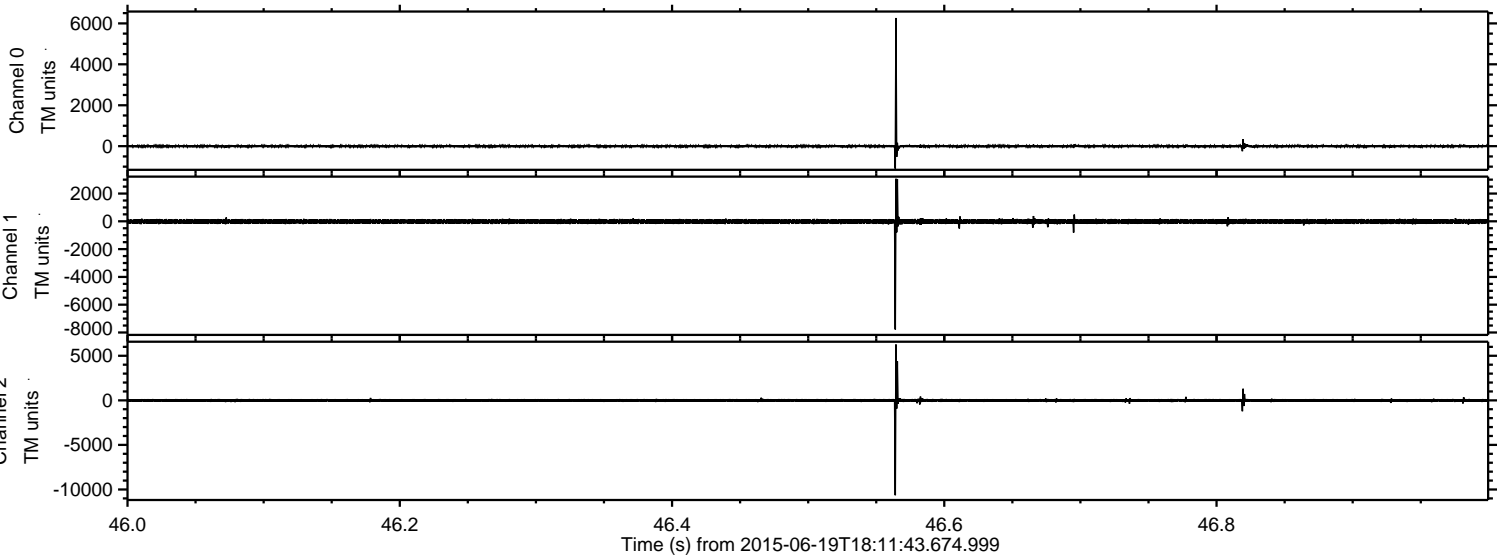


ELMAVAN 3D WAVEFORMS (Measured data sampled at 50 kHz) 51000 packets of 144 samples from 2015-06-19T18:11:43.674.999.

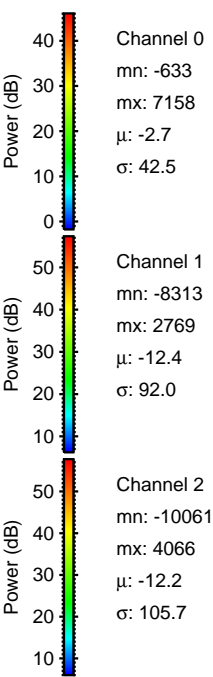
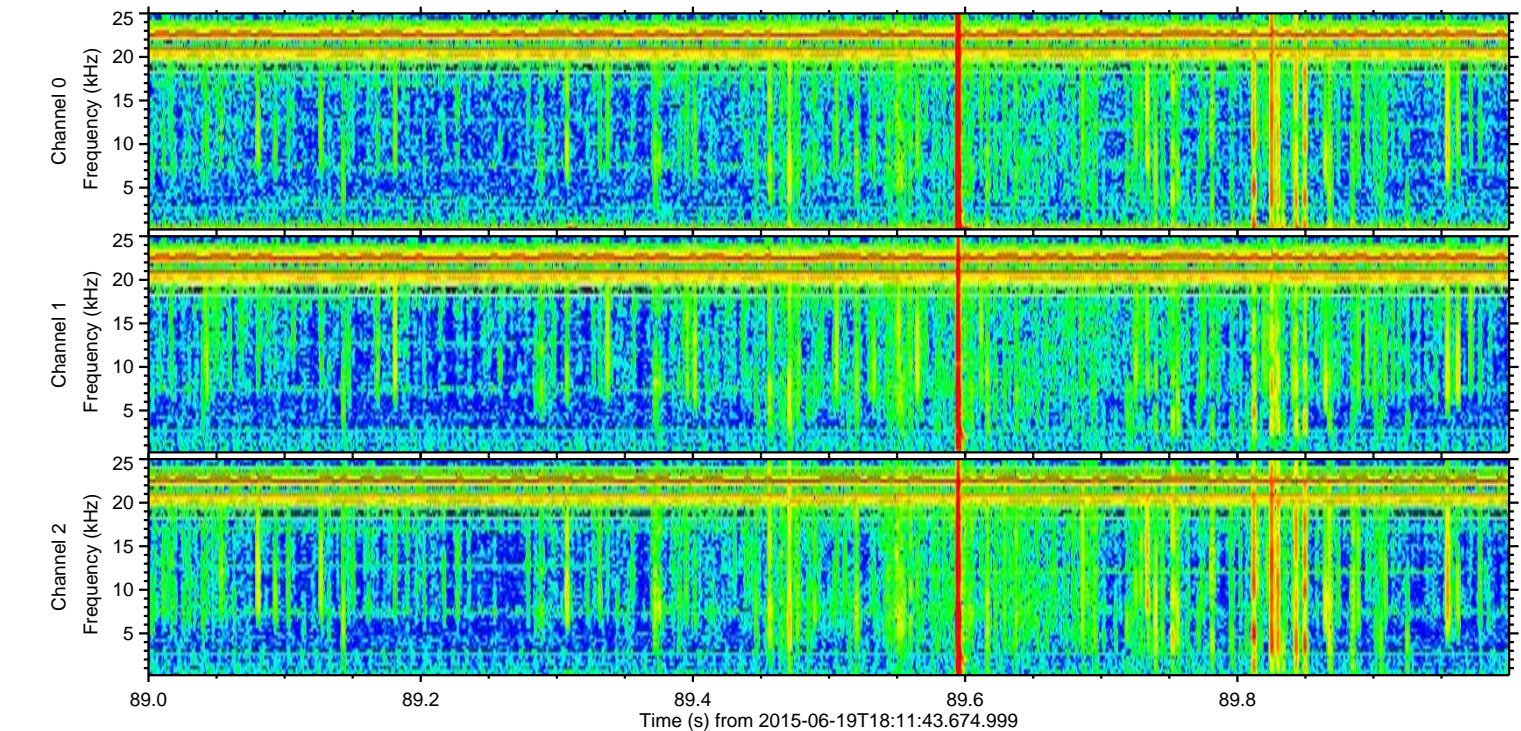
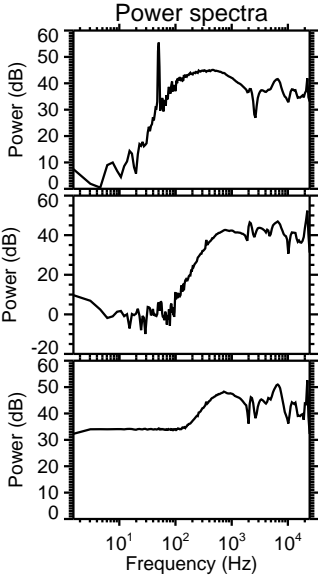
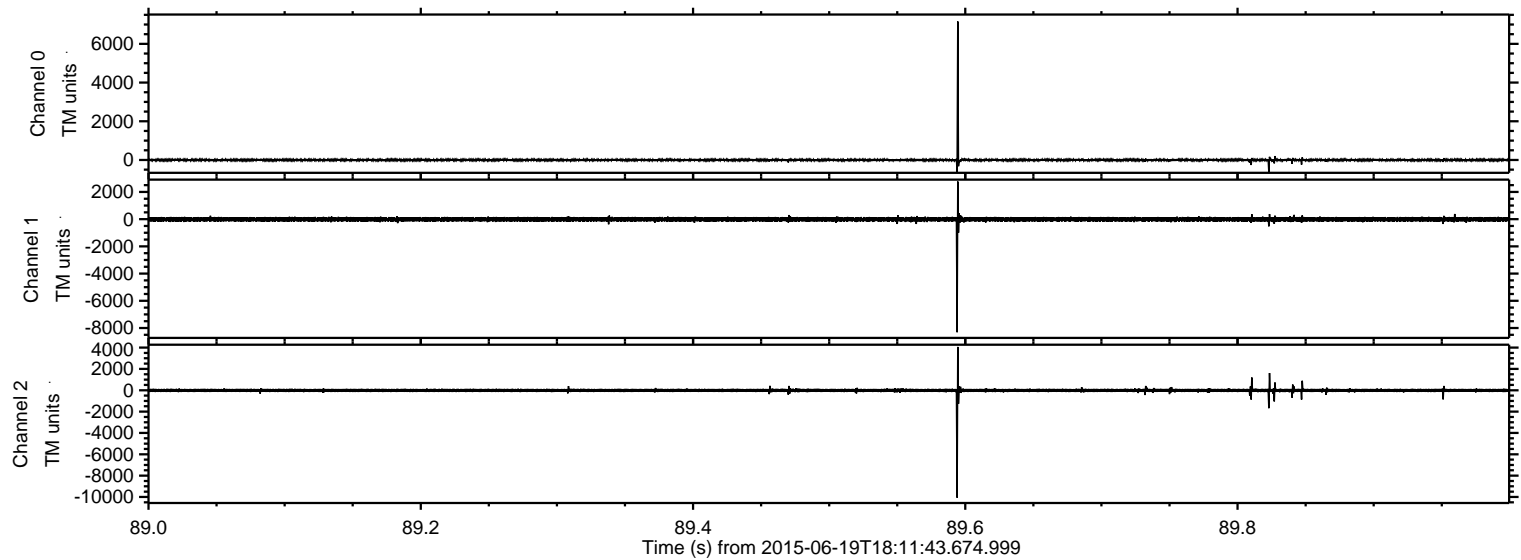
Processed Fri Jun 19 20:18:16 2015 by ELM ver.2012-10-06 from 001__elm20150619_181142__dat00.bin



Processed Fri Jun 19 20:18:36 2015 by ELM ver.2012-10-06 from 001__elm20150619_181142__dat00.bin

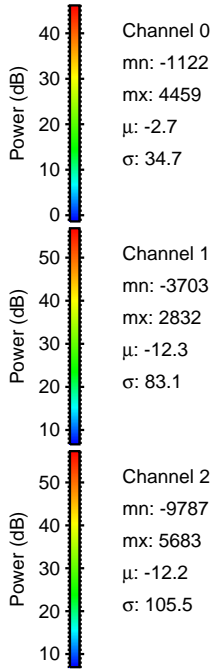
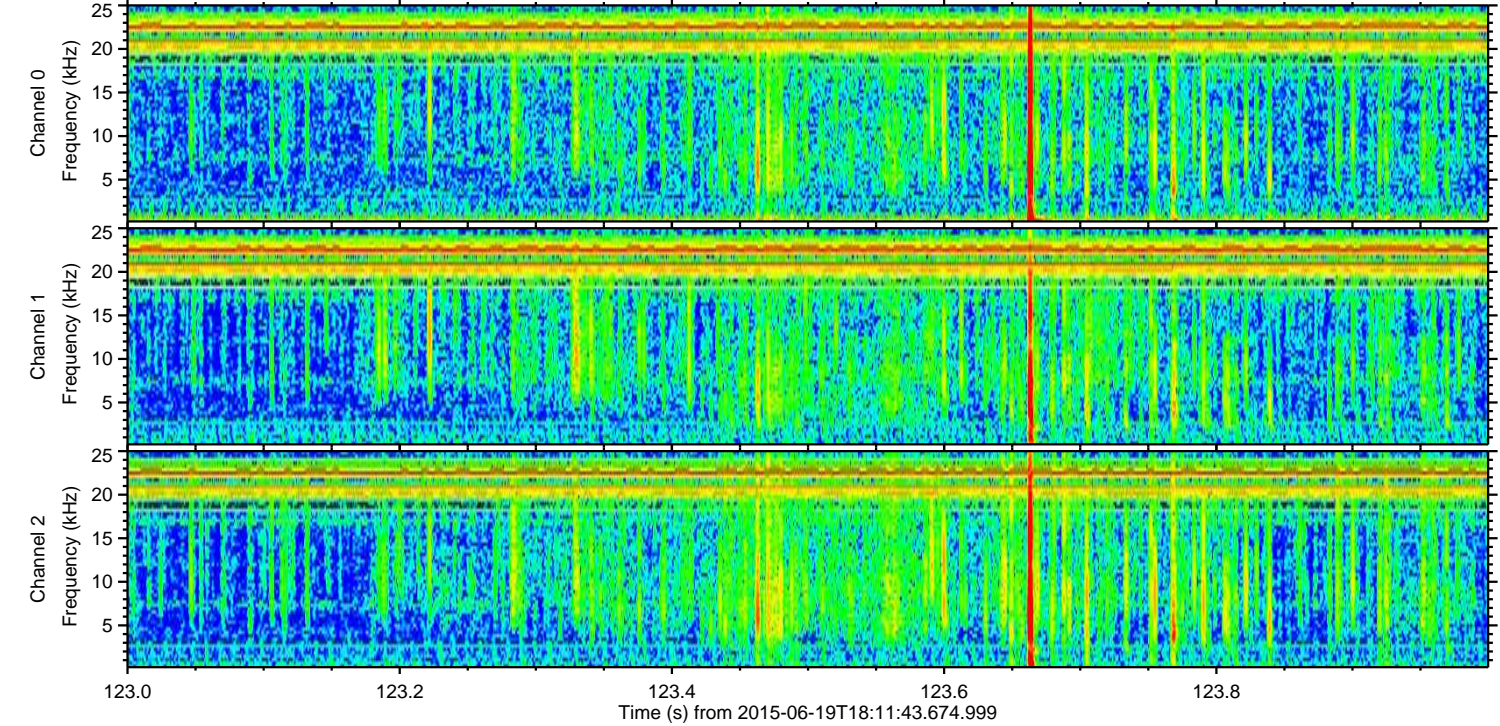
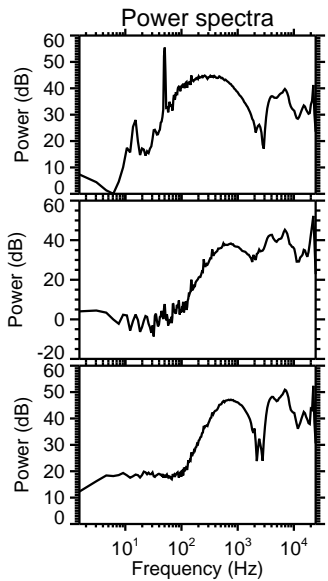
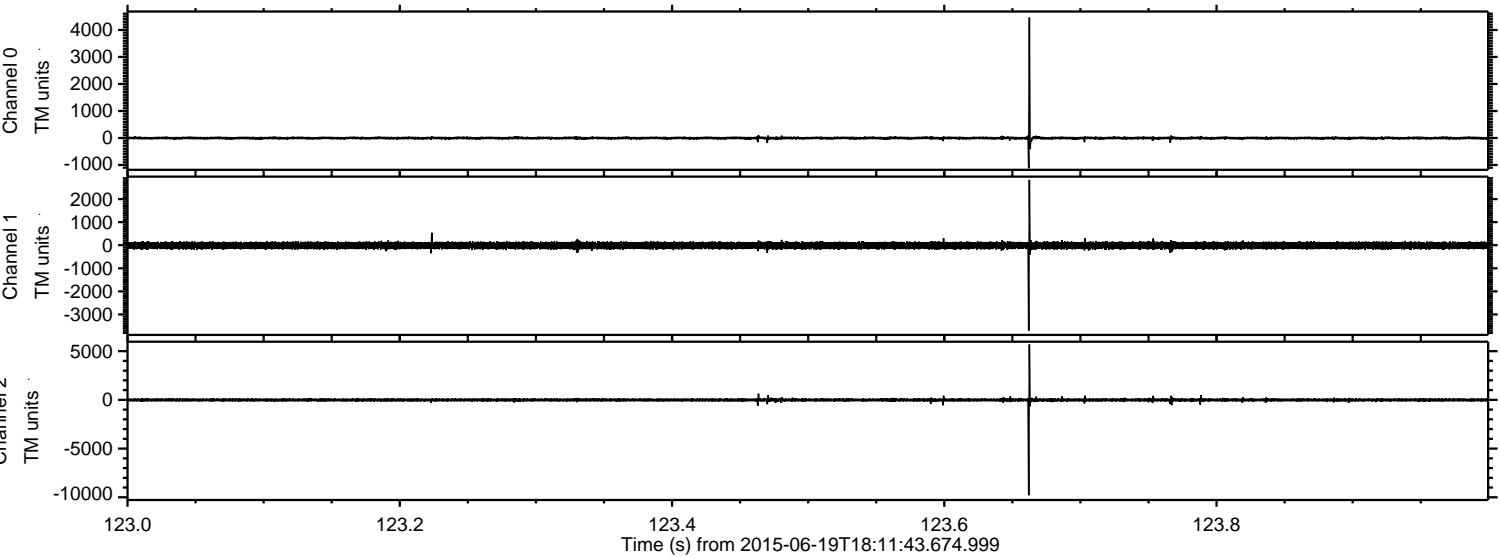


Processed Fri Jun 19 20:18:38 2015 by ELM ver.2012-10-06 from 001__elm20150619_181142__dat00.bin



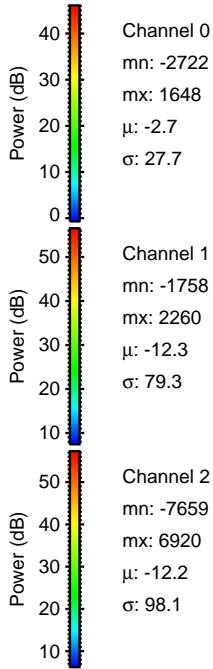
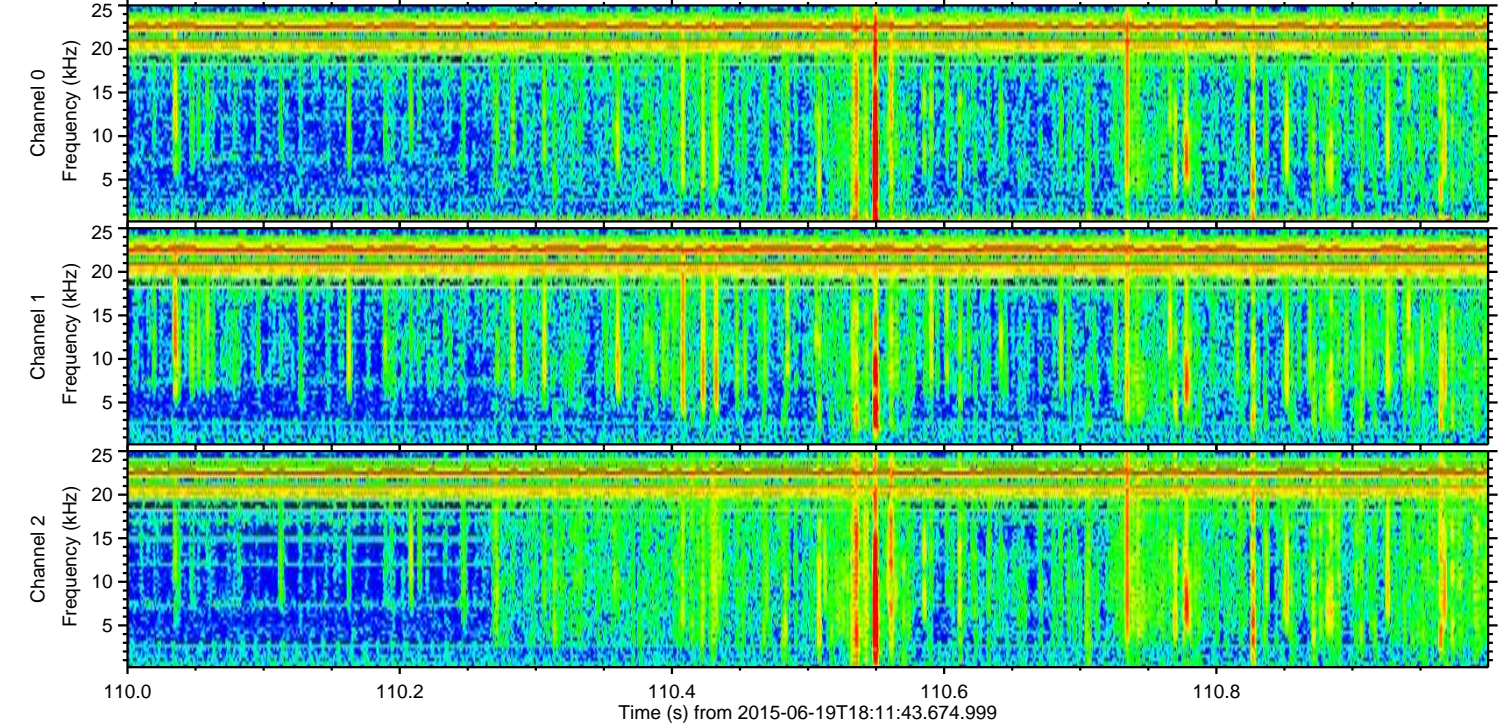
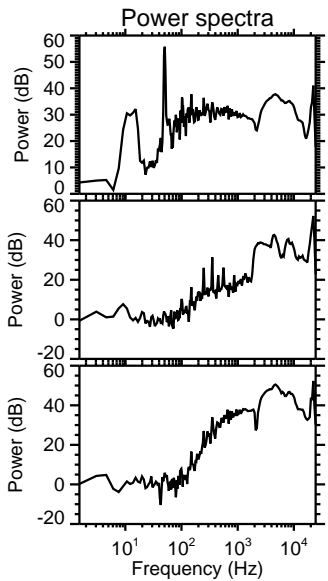
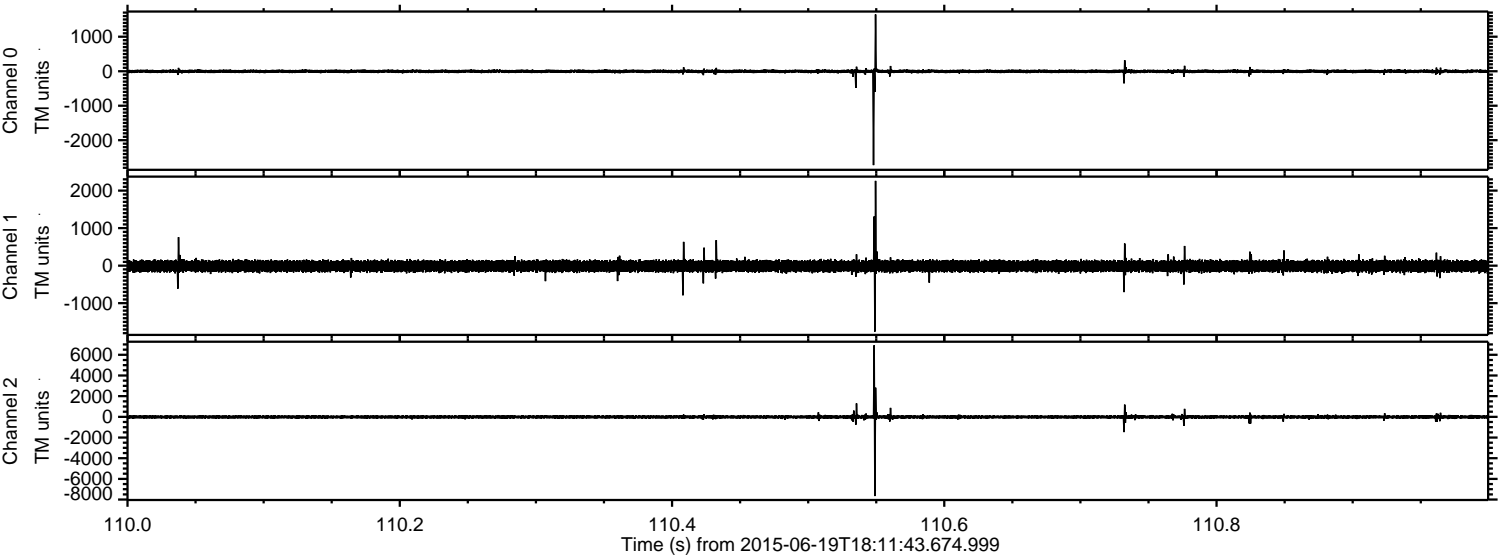
ELMAVAN 3D WAVEFORMS (Measured data sampled at 50 kHz) 51000 packets of 144 samples from 2015-06-19T18:11:43.674.999. Part 124/147

Processed Fri Jun 19 20:18:40 2015 by ELM ver.2012-10-06 from 001__elm20150619_181142__dat00.bin

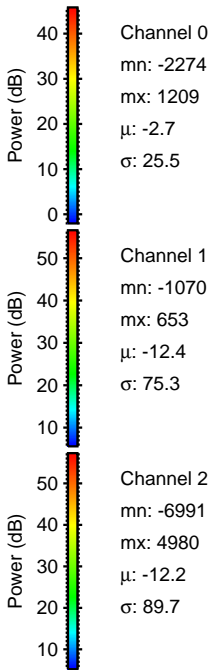
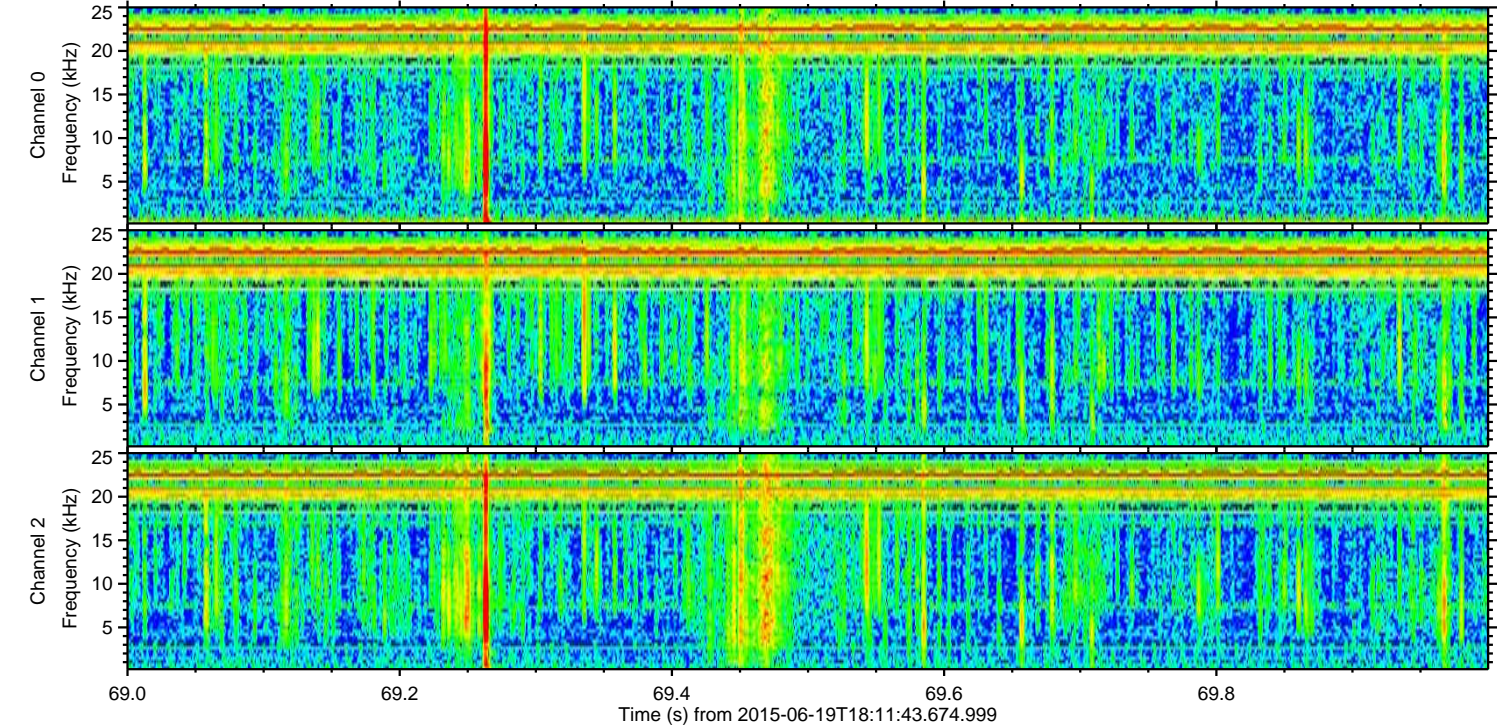
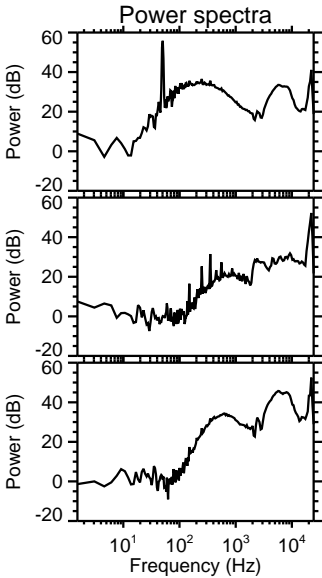
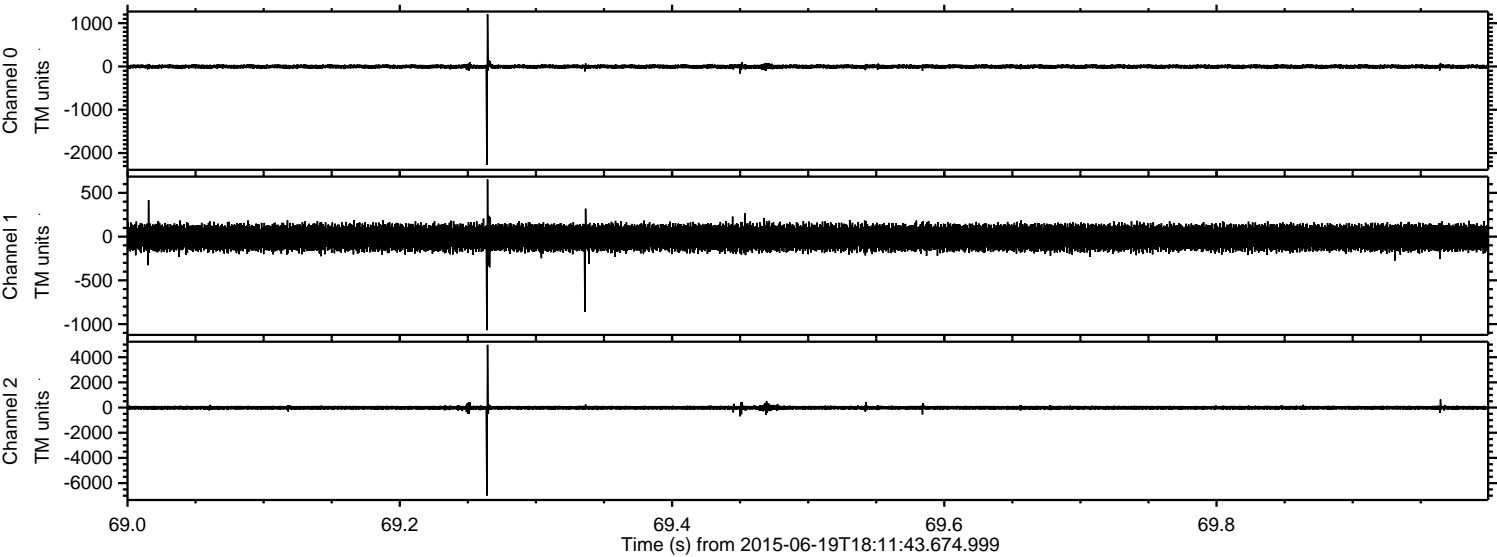


ELMAVAN 3D WAVEFORMS (Measured data sampled at 50 kHz) 51000 packets of 144 samples from 2015-06-19T18:11:43.674.999. Part 111/147

Processed Fri Jun 19 20:18:42 2015 by ELM ver.2012-10-06 from 001__elm20150619_181142__dat00.bin

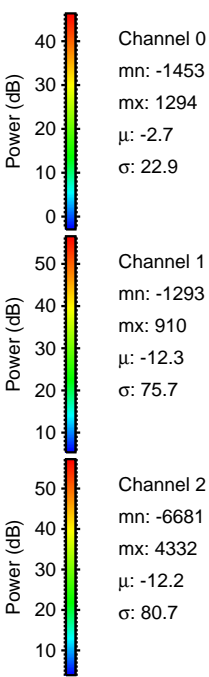
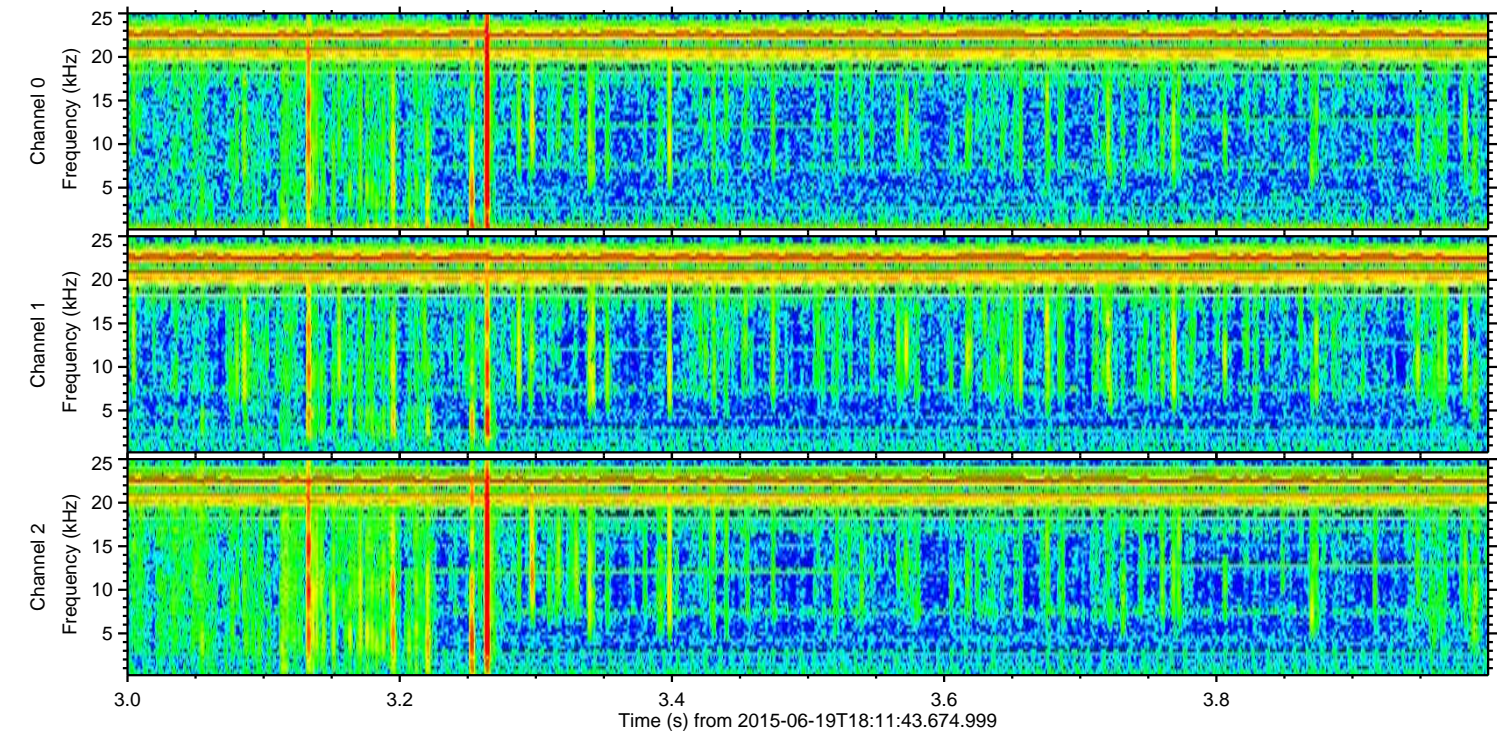
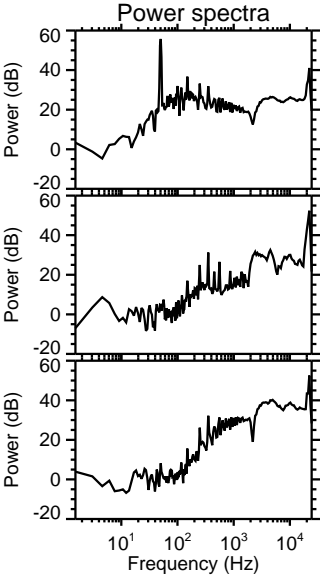
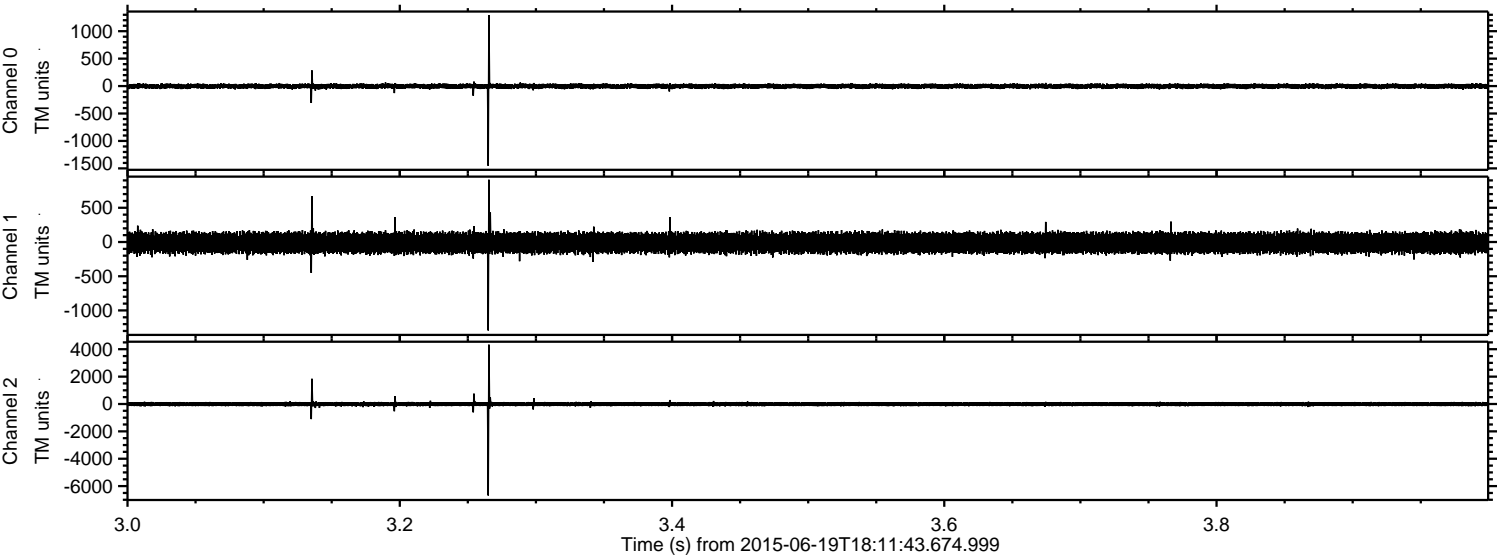


Processed Fri Jun 19 20:18:43 2015 by ELM ver.2012-10-06 from 001__elm20150619_181142__dat00.bin

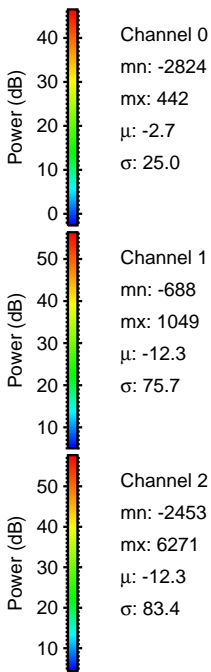
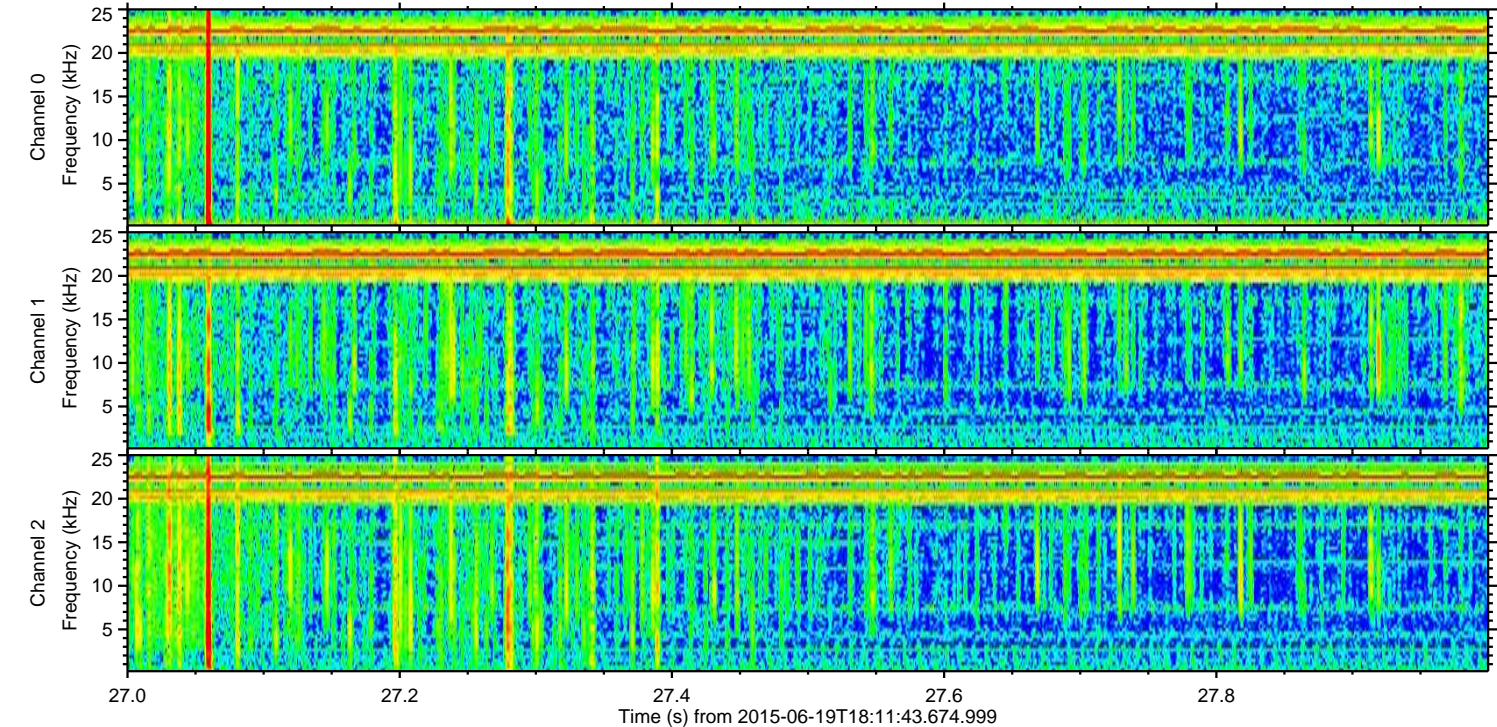
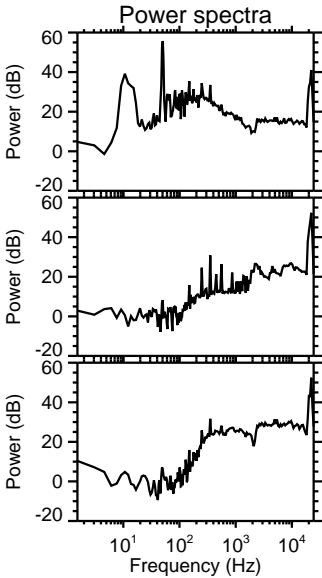
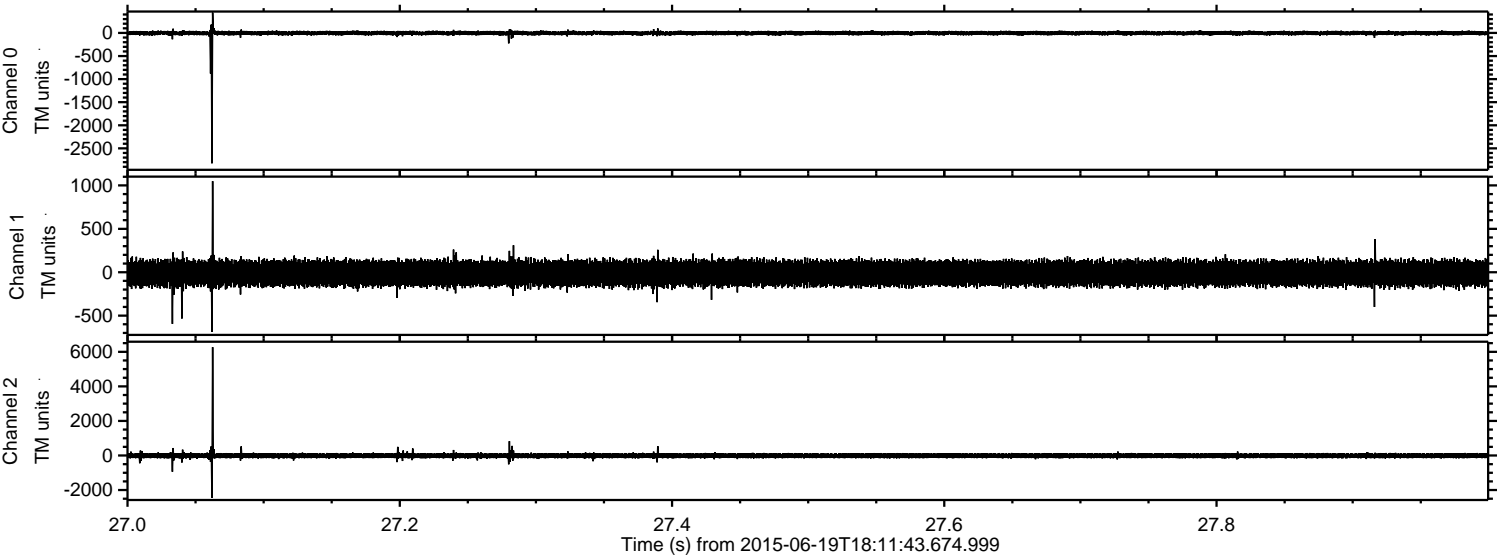


ELMAVAN 3D WAVEFORMS (Measured data sampled at 50 kHz) 51000 packets of 144 samples from 2015-06-19T18:11:43.674.999. Part 4/147

Processed Fri Jun 19 20:18:45 2015 by ELM ver.2012-10-06 from 001__elm20150619_181142__dat00.bin

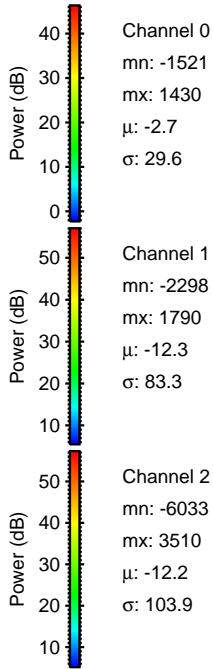
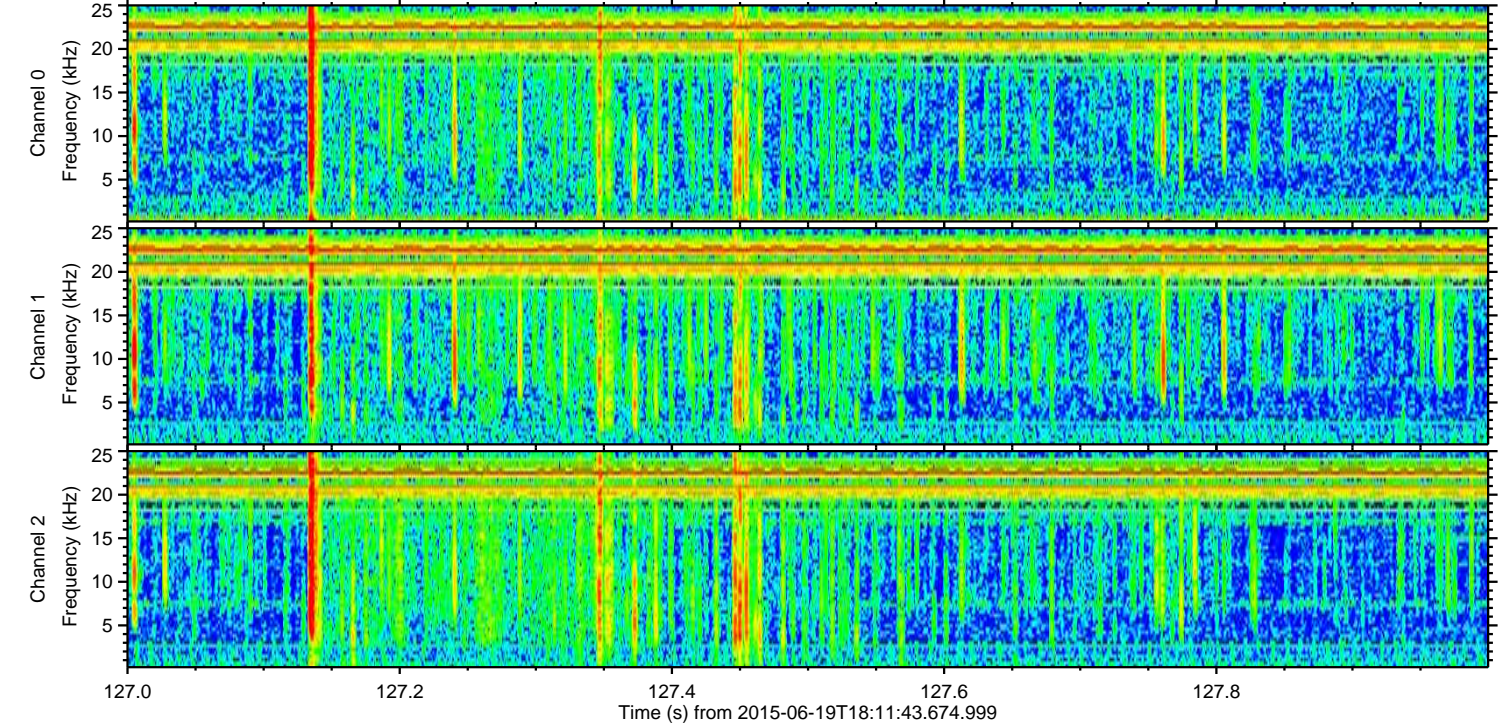
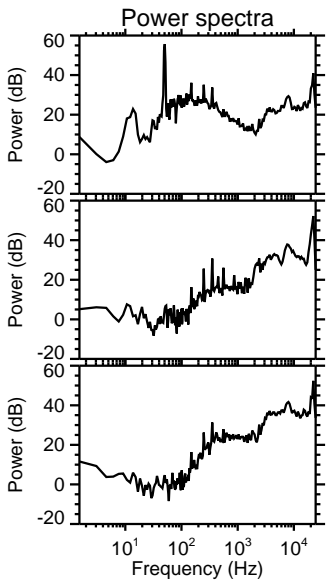
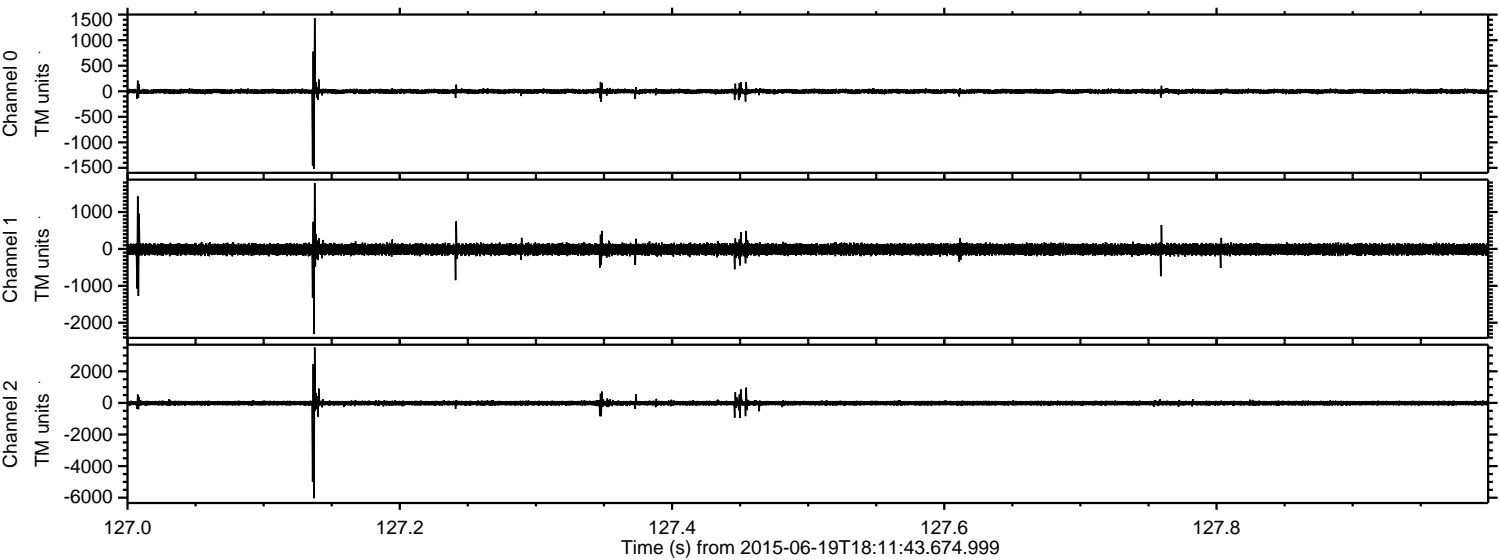


Processed Fri Jun 19 20:18:46 2015 by ELM ver.2012-10-06 from 001__elm20150619_181142__dat00.bin



ELMAVAN 3D WAVEFORMS (Measured data sampled at 50 kHz) 51000 packets of 144 samples from 2015-06-19T18:11:43.674.999. Part 128/147

Processed Fri Jun 19 20:18:47 2015 by ELM ver.2012-10-06 from 001__elm20150619_181142__dat00.bin

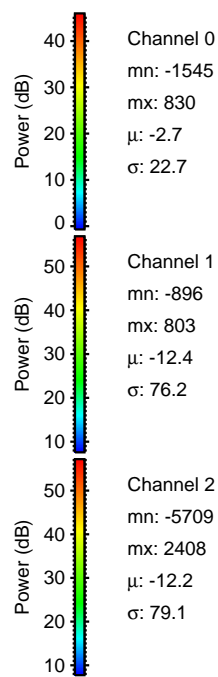
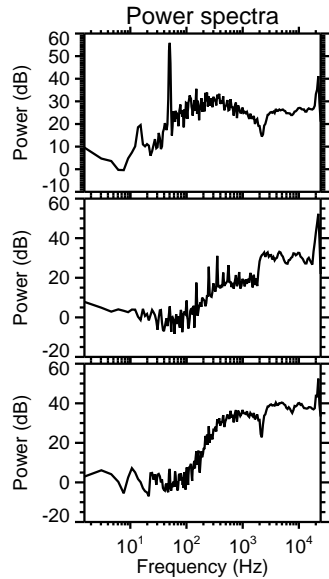
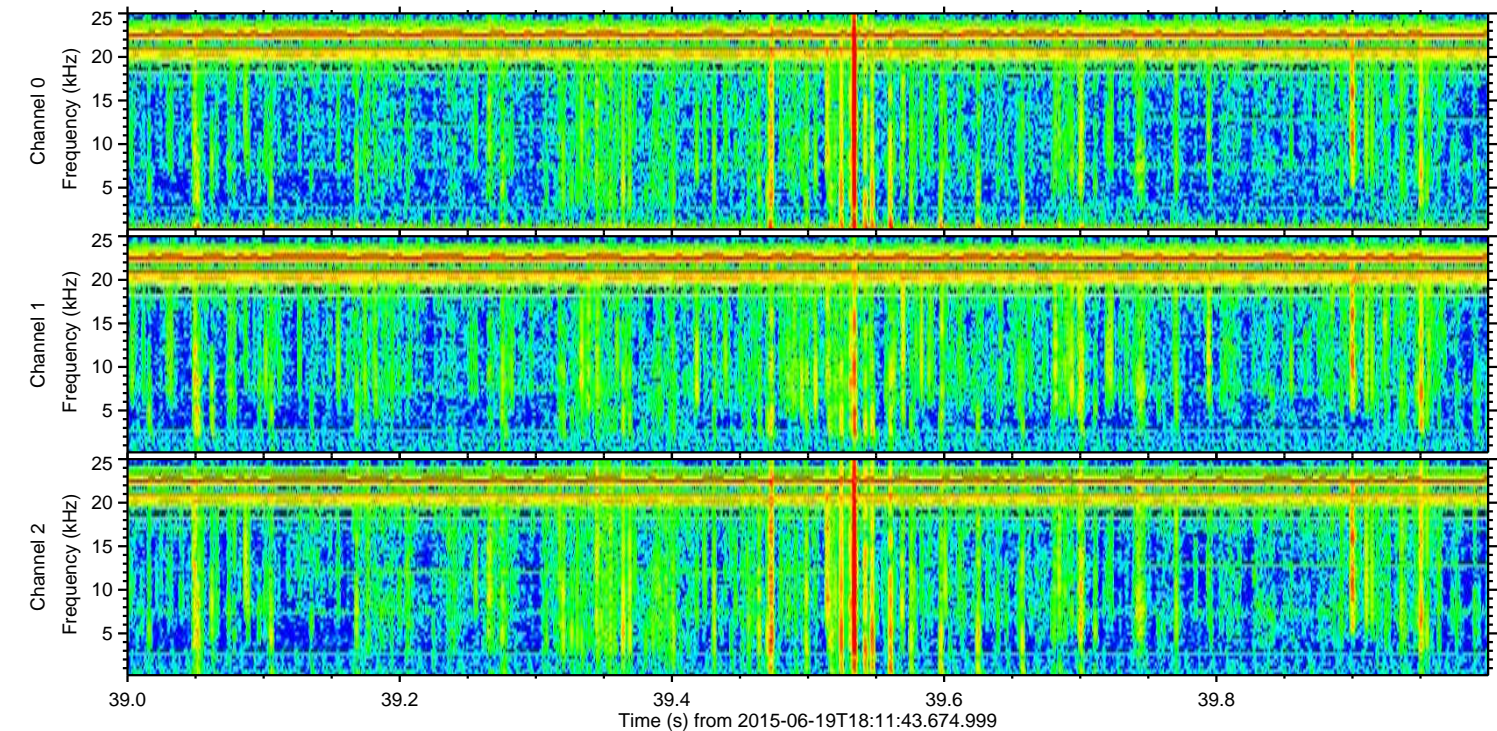
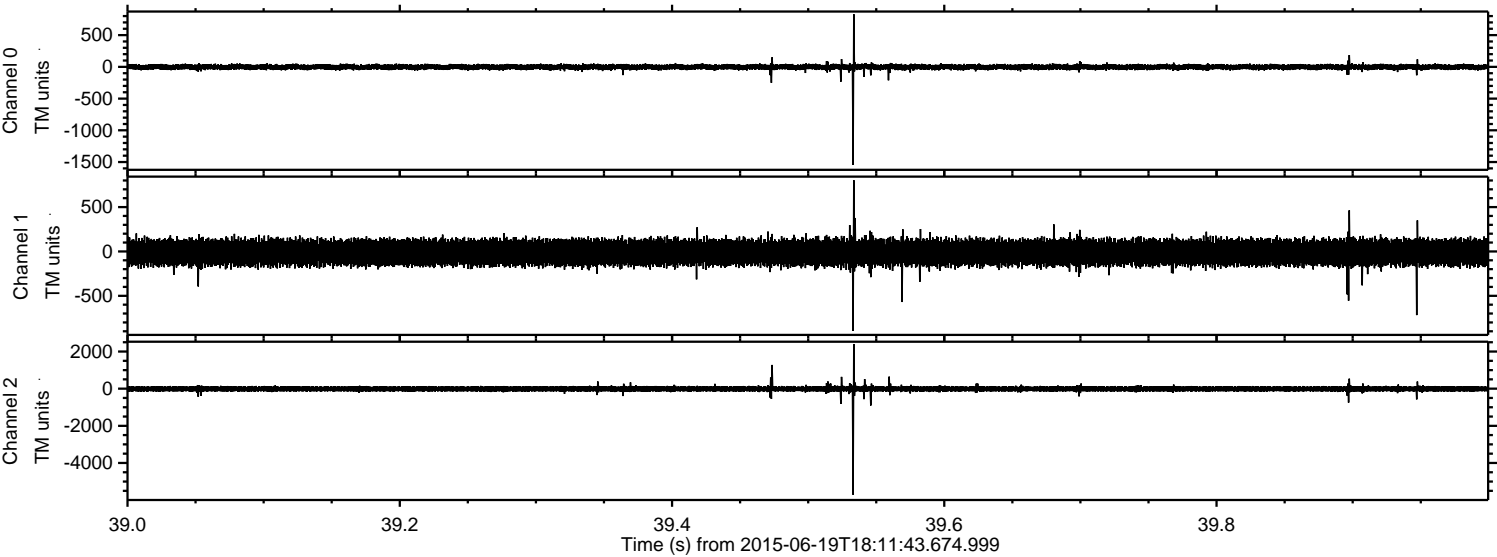


Channel 0
mn: -1521
mx: 1430
 μ : -2.7
 σ : 29.6

Channel 1
mn: -2298
mx: 1790
 μ : -12.3
 σ : 83.3

Channel 2
mn: -6033
mx: 3510
 μ : -12.2
 σ : 103.9

Processed Fri Jun 19 20:18:49 2015 by ELM ver.2012-10-06 from 001__elm20150619_181142__dat00.bin



Processed Fri Jun 19 20:18:50 2015 by ELM ver.2012-10-06 from 001__elm20150619_181142__dat00.bin

