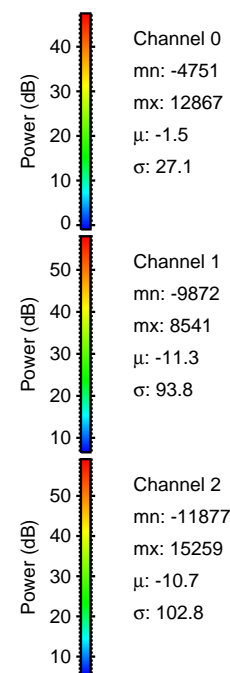
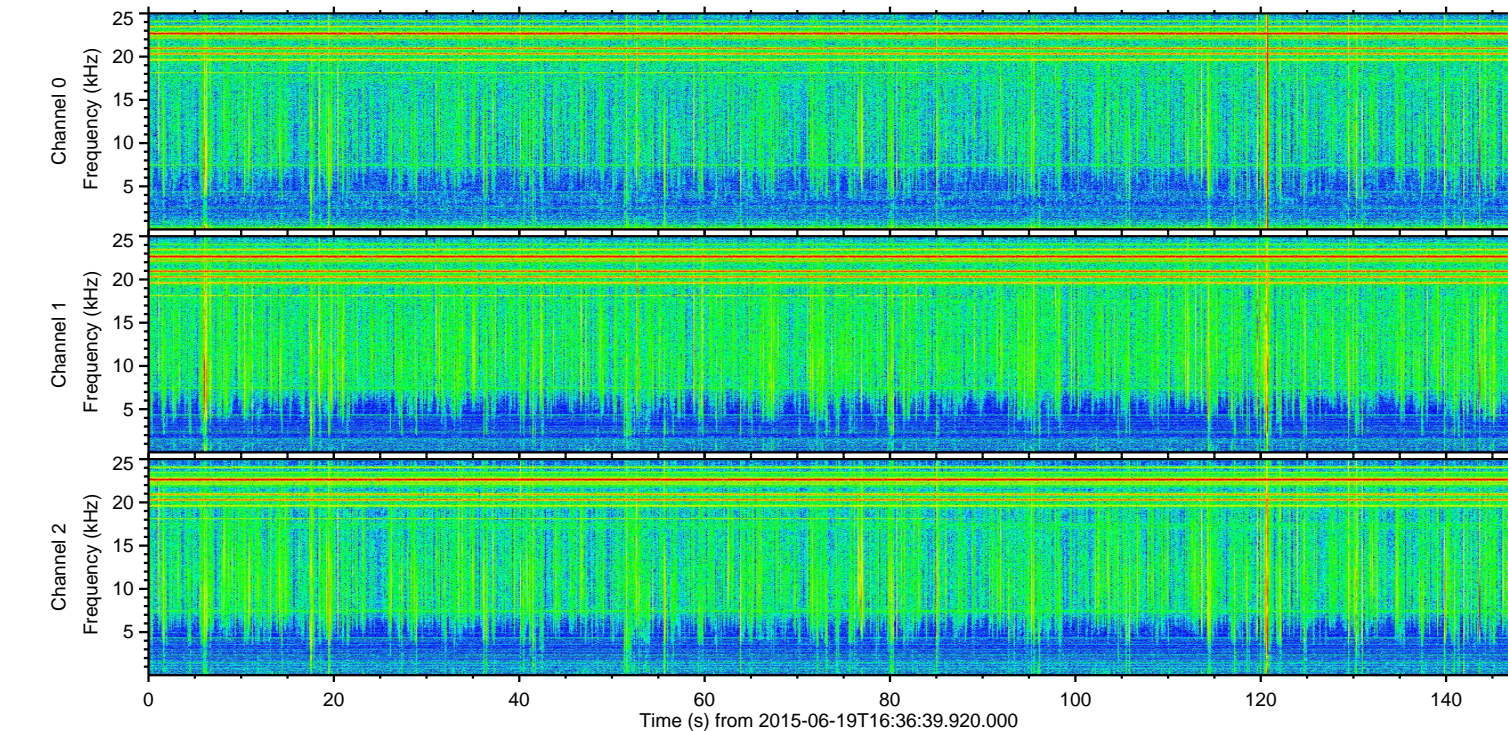
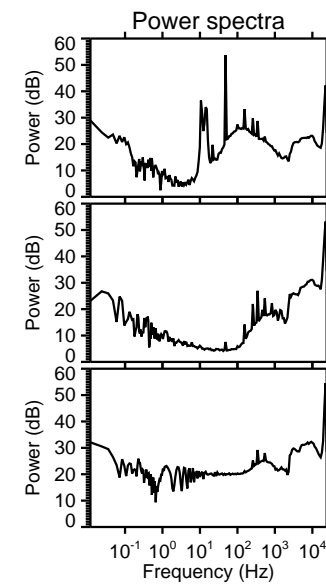
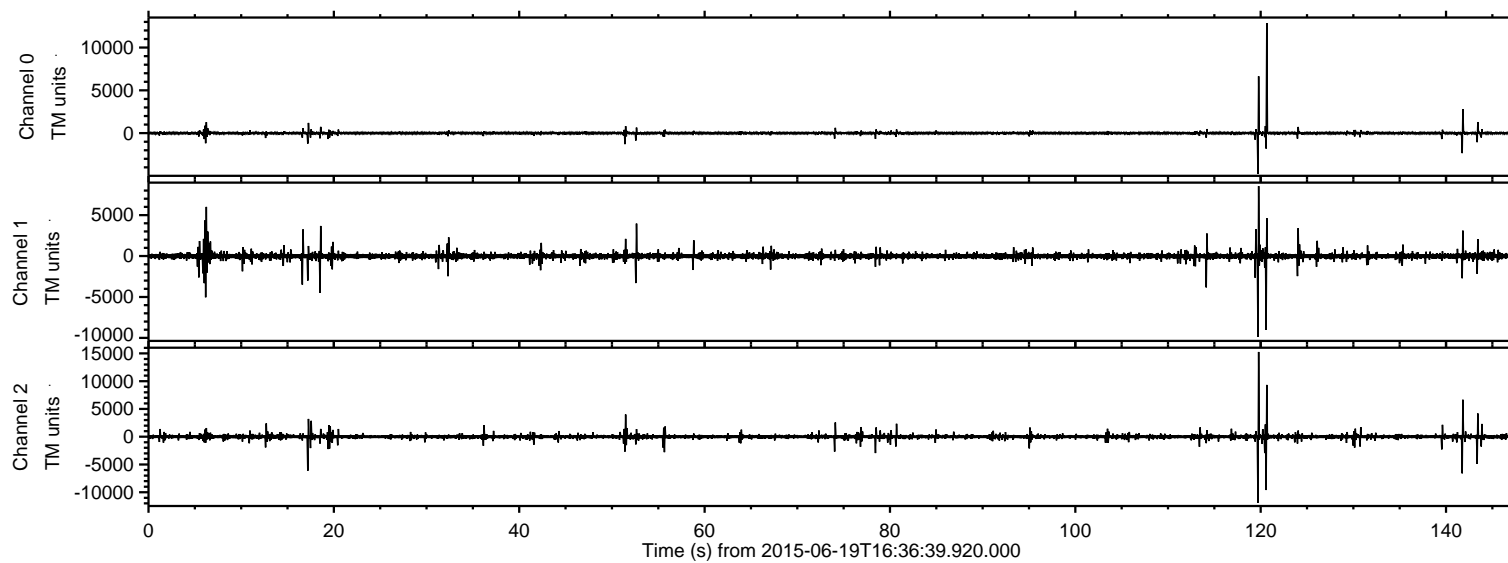


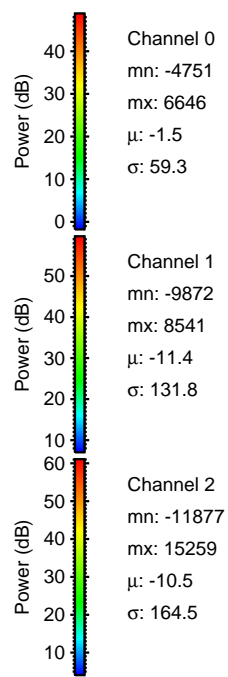
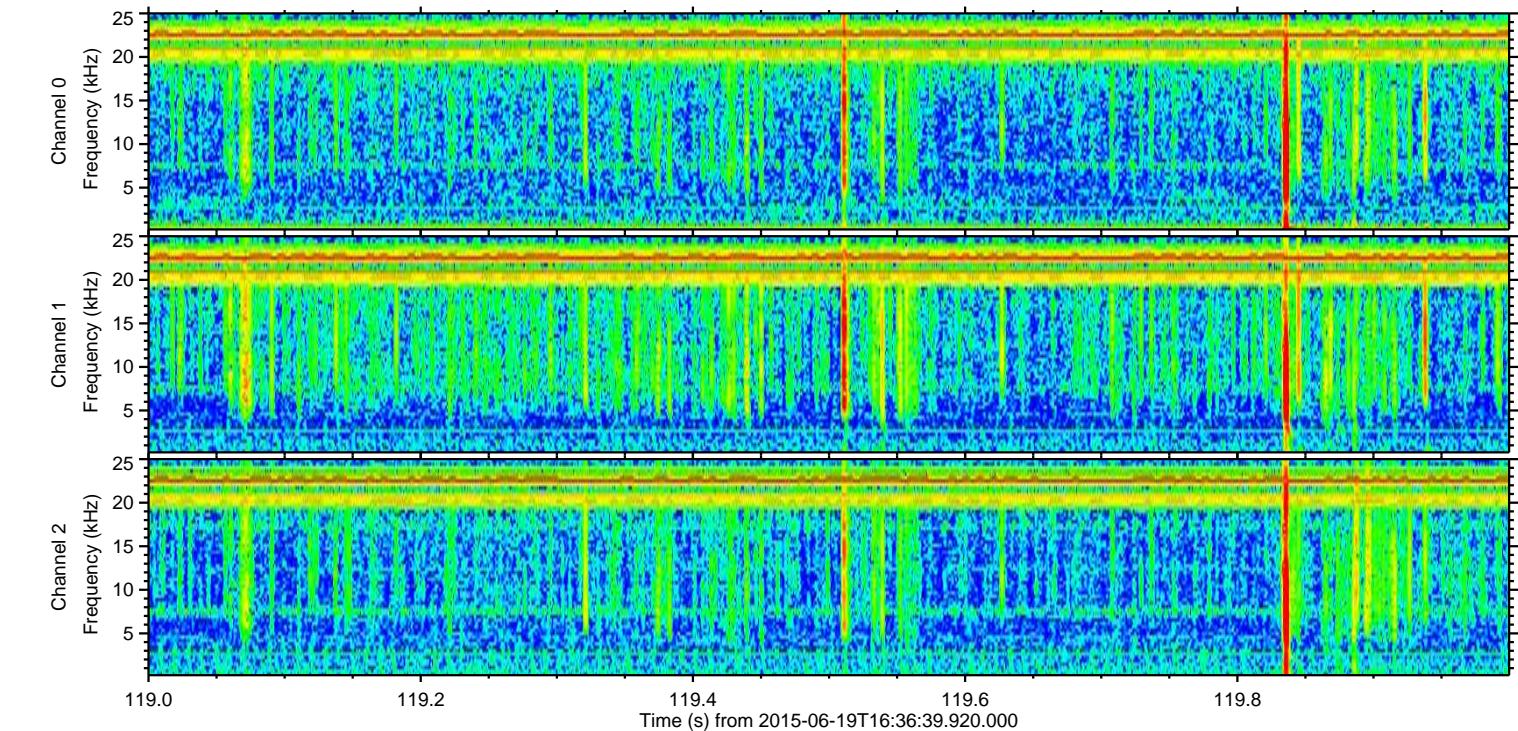
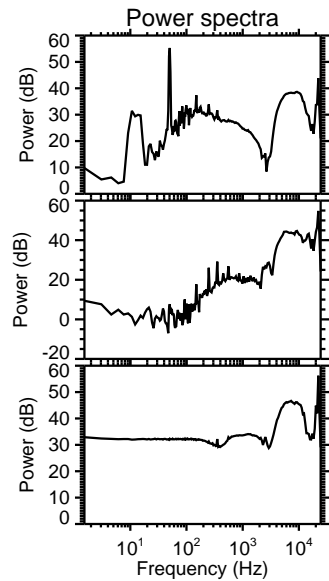
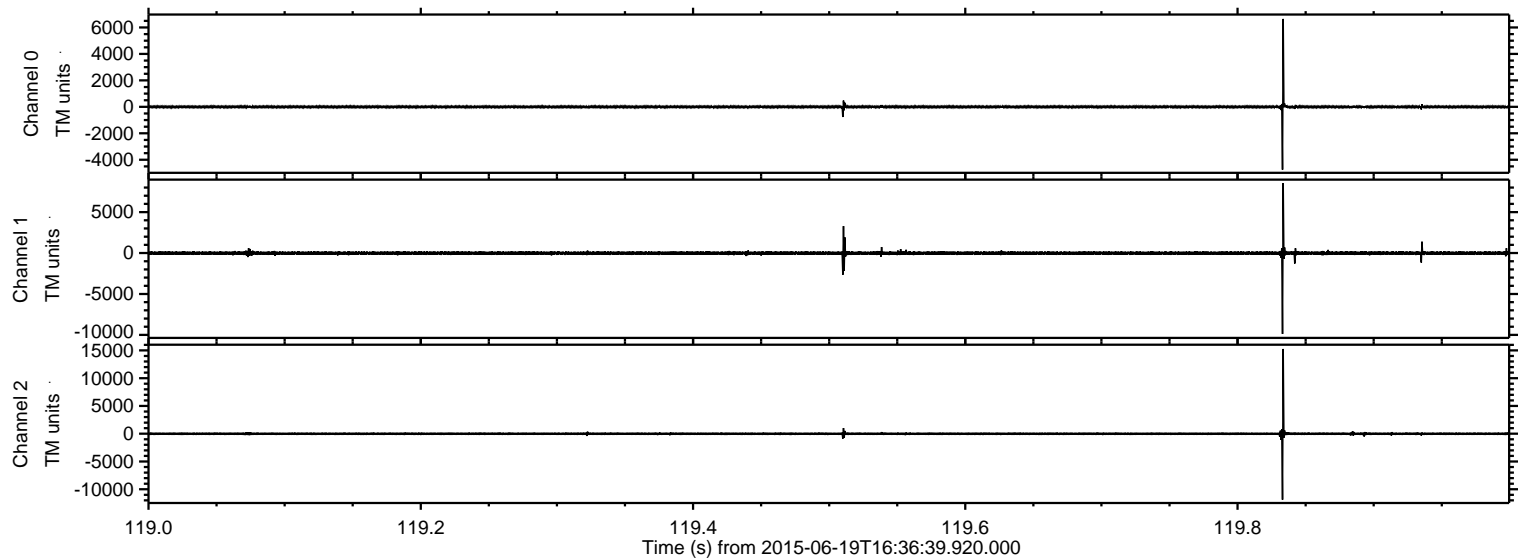
ELMAVAN 3D WAVEFORMS (Measured data sampled at 50 kHz) 51000 packets of 144 samples from 2015-06-19T16:36:39.920.000.

Processed Fri Jun 19 18:43:22 2015 by ELM ver.2012-10-06 from 001__elm20150619_163638__dat00.bin

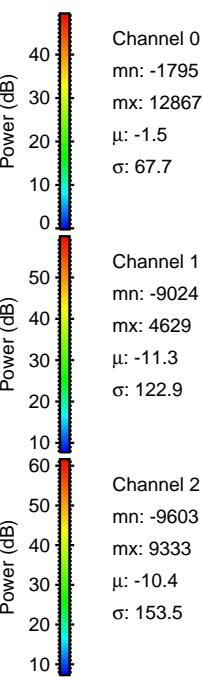
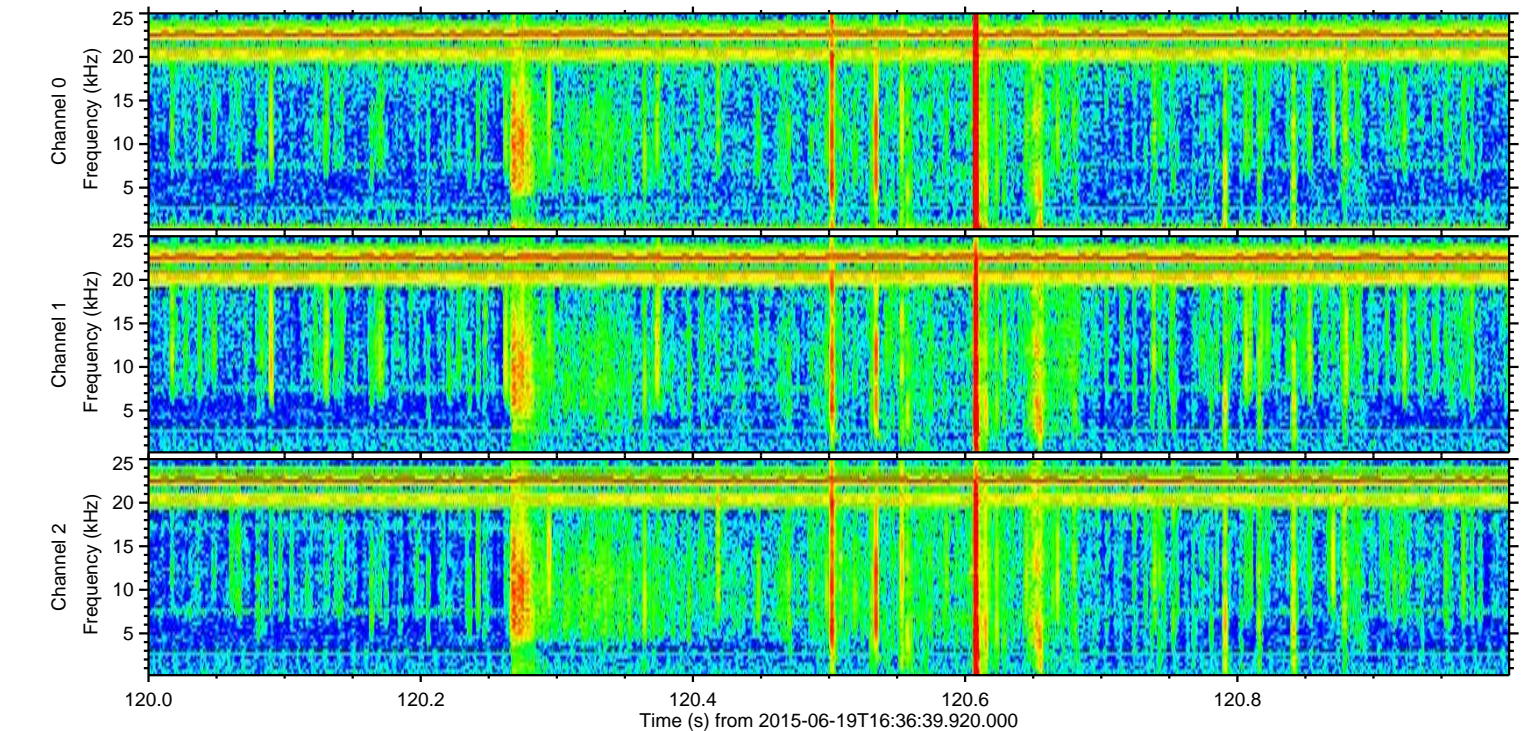
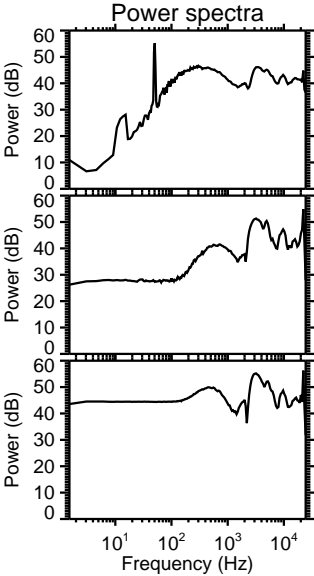
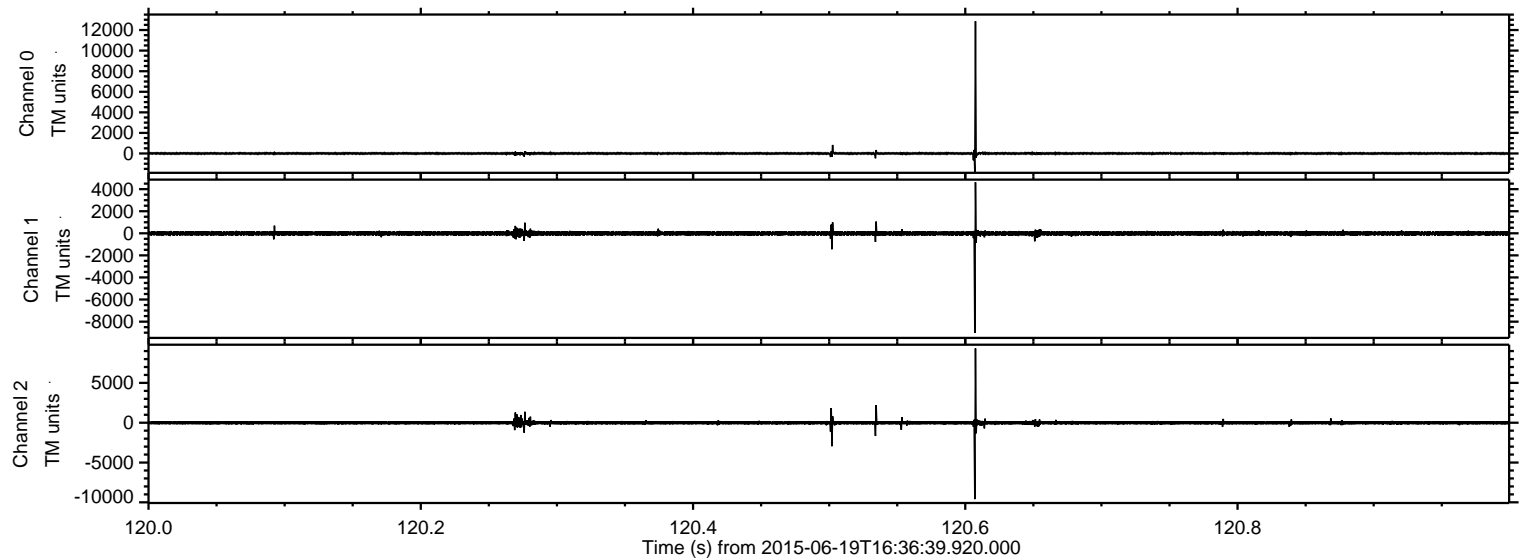


ELMAVAN 3D WAVEFORMS (Measured data sampled at 50 kHz) 51000 packets of 144 samples from 2015-06-19T16:36:39.920.000. Part 120/147

Processed Fri Jun 19 18:43:43 2015 by ELM ver.2012-10-06 from 001__elm20150619_163638__dat00.bin

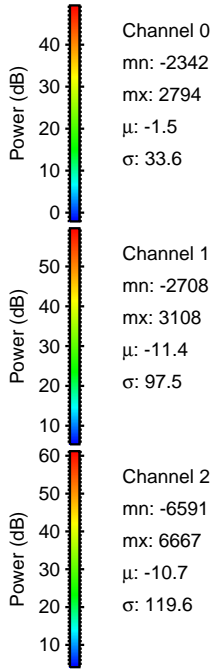
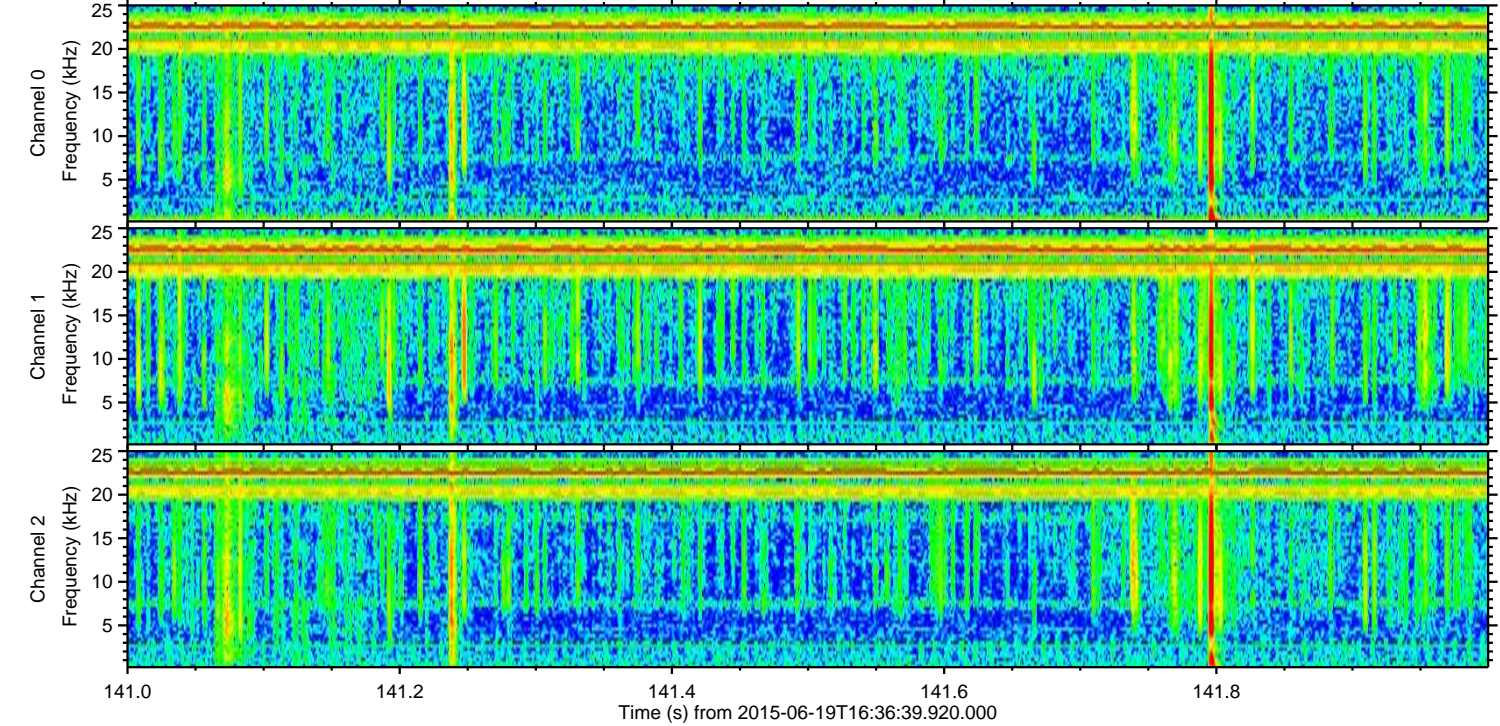
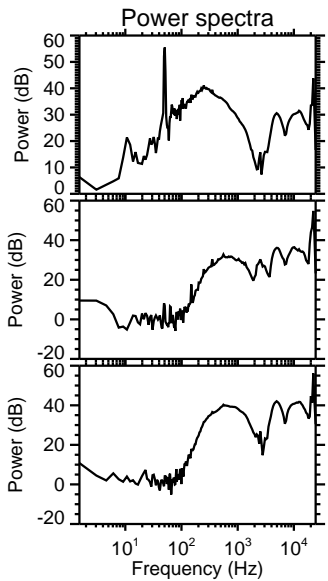
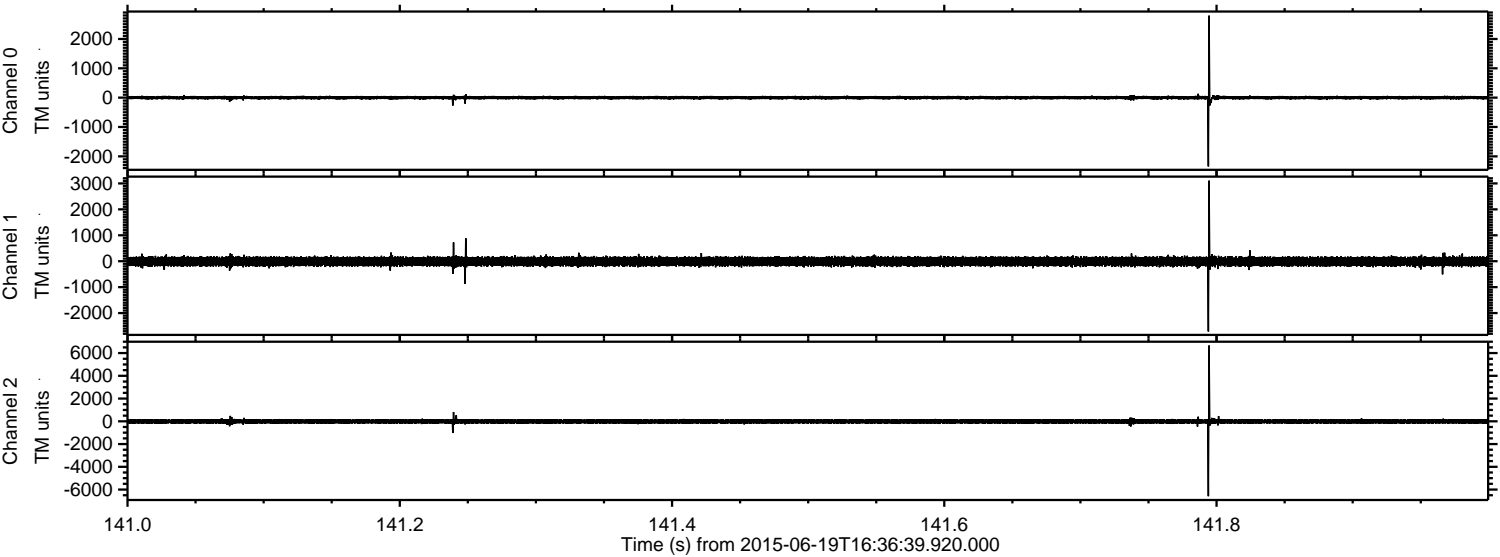


Processed Fri Jun 19 18:43:44 2015 by ELM ver.2012-10-06 from 001__elm20150619_163638__dat00.bin

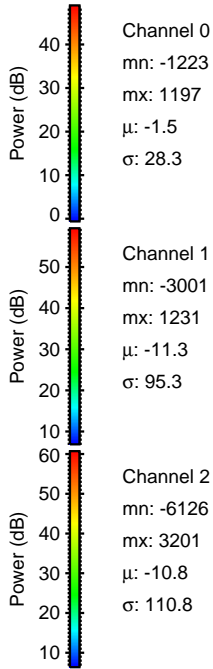
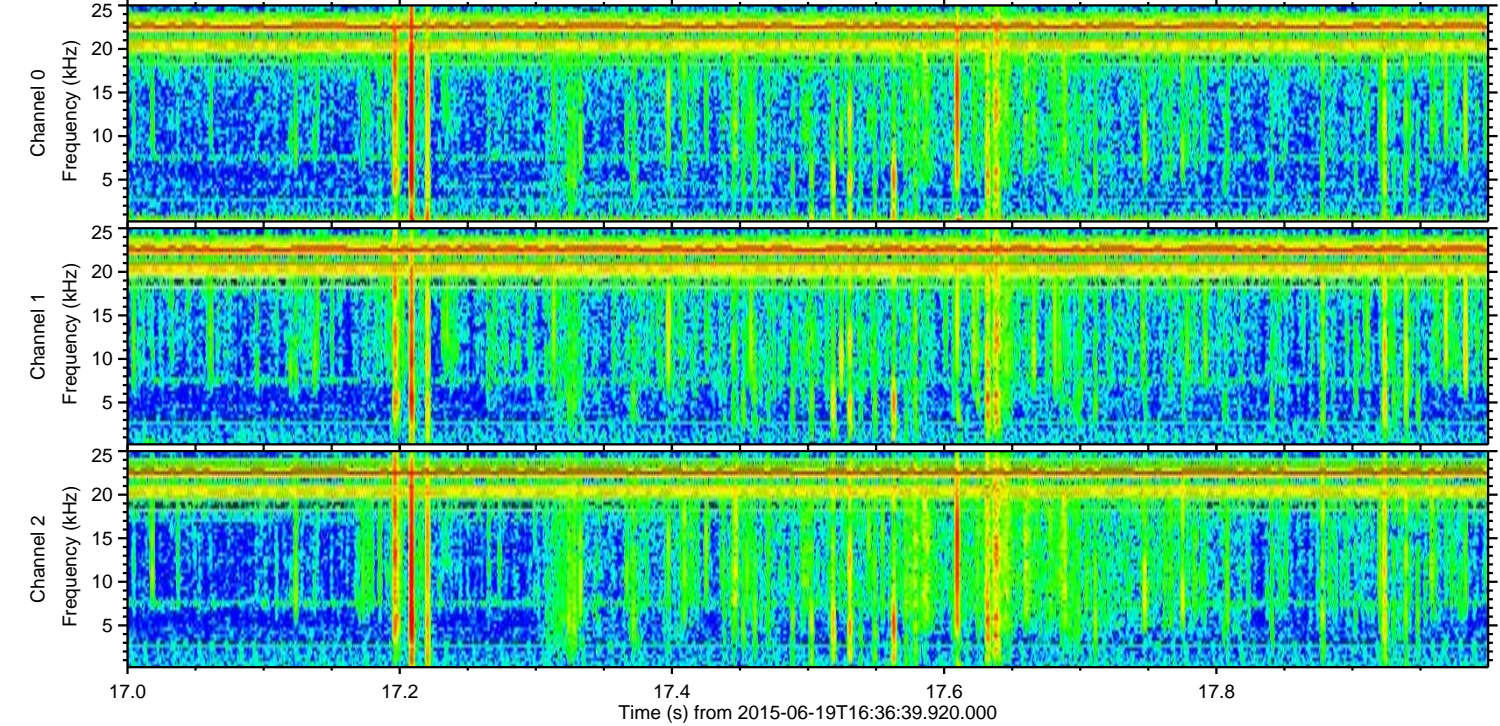
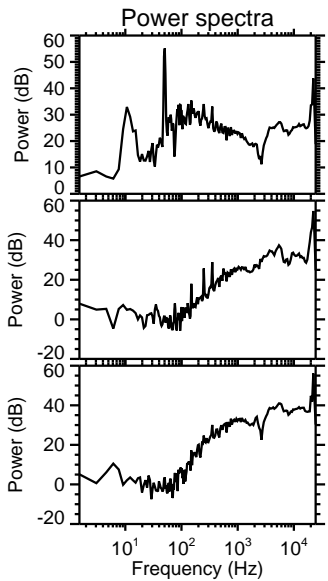
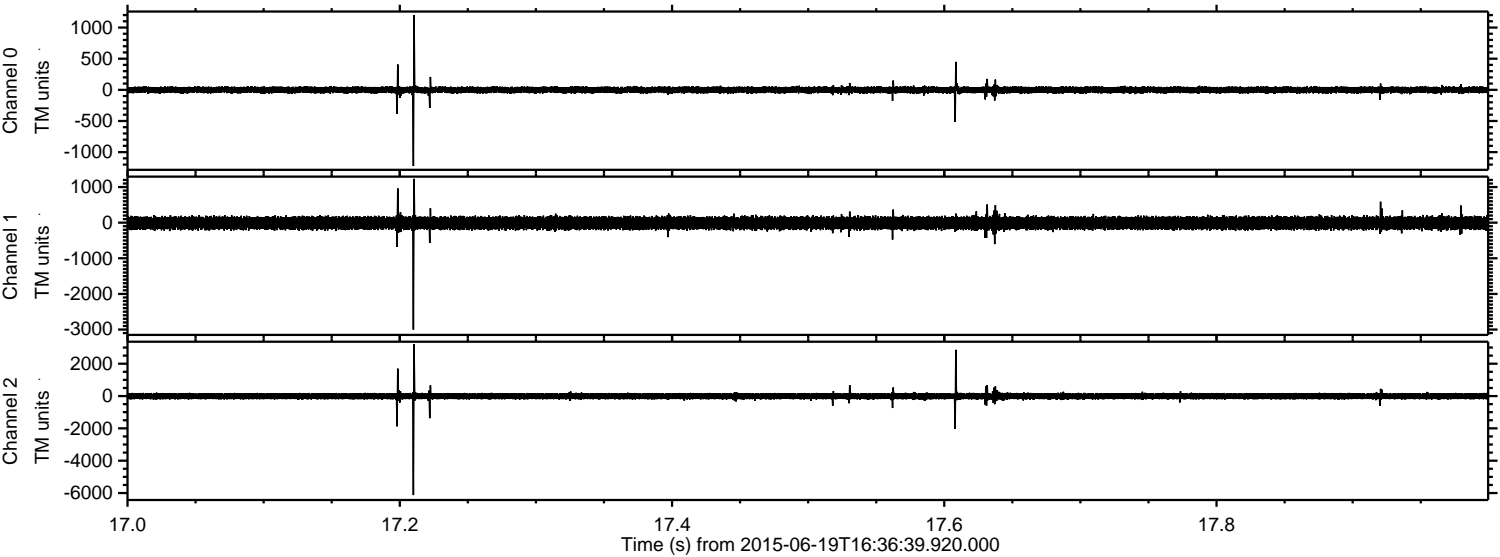


ELMAVAN 3D WAVEFORMS (Measured data sampled at 50 kHz) 51000 packets of 144 samples from 2015-06-19T16:36:39.920.000. Part 142/147

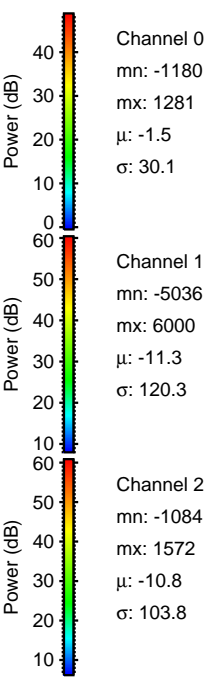
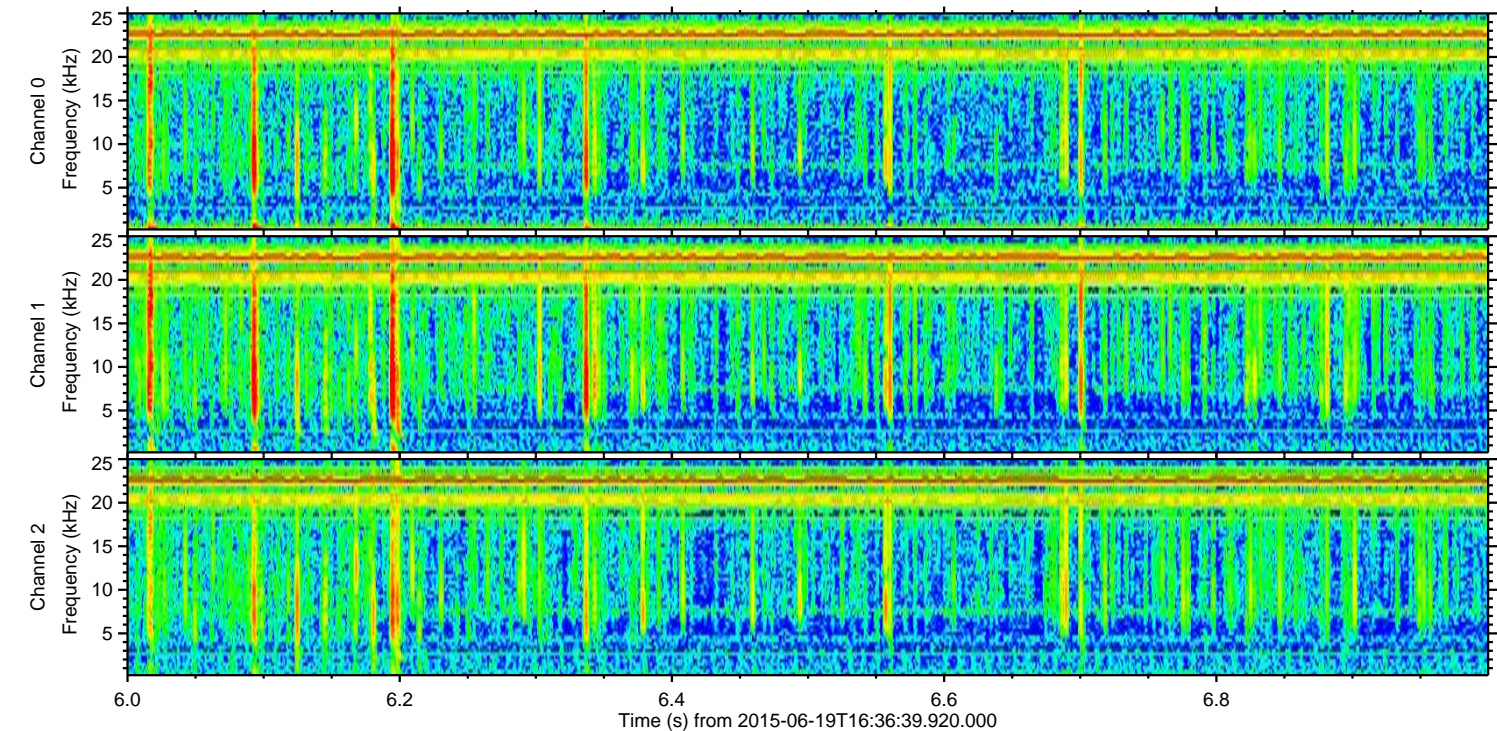
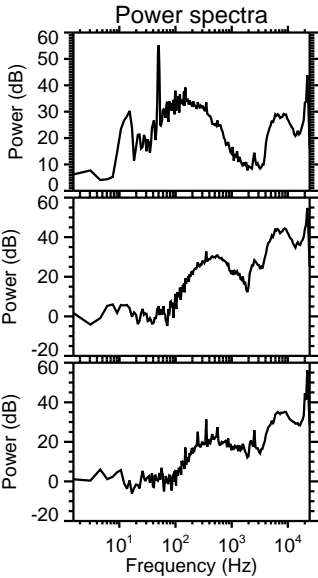
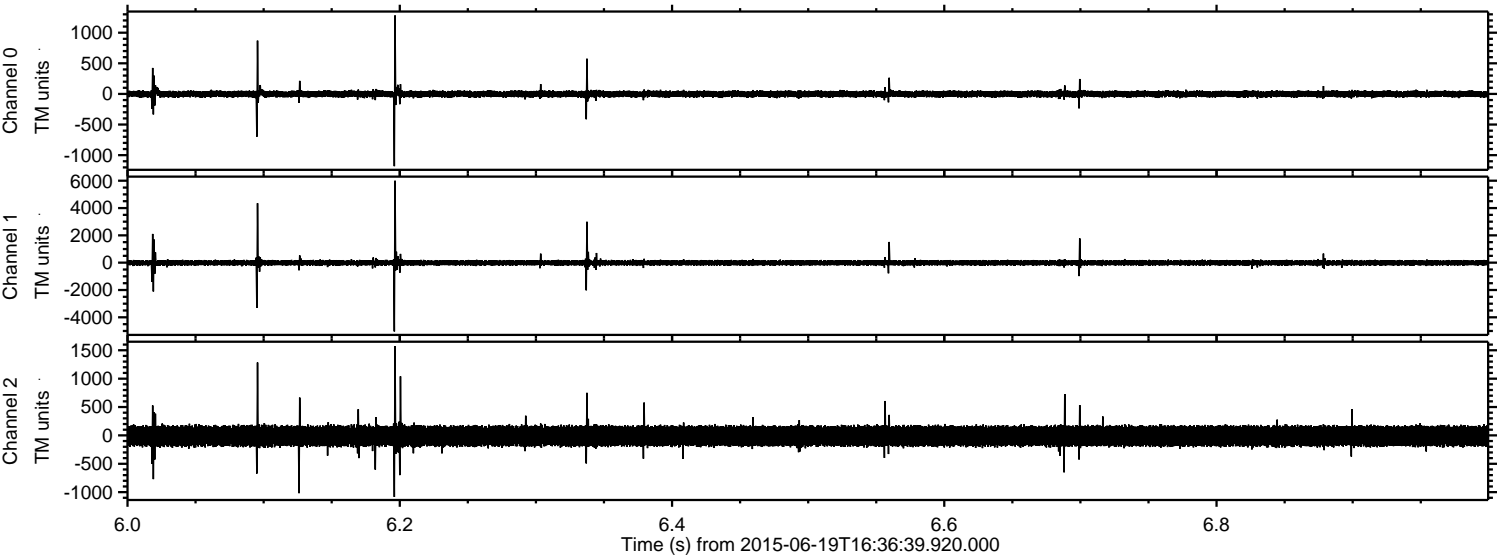
Processed Fri Jun 19 18:43:45 2015 by ELM ver.2012-10-06 from 001__elm20150619_163638__dat00.bin



Processed Fri Jun 19 18:43:46 2015 by ELM ver.2012-10-06 from 001__elm20150619_163638__dat00.bin

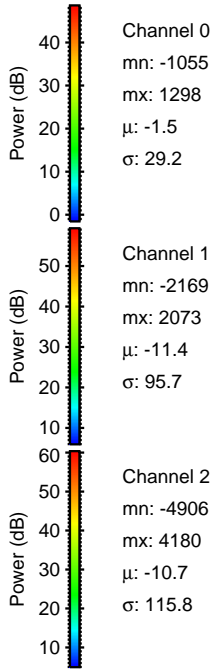
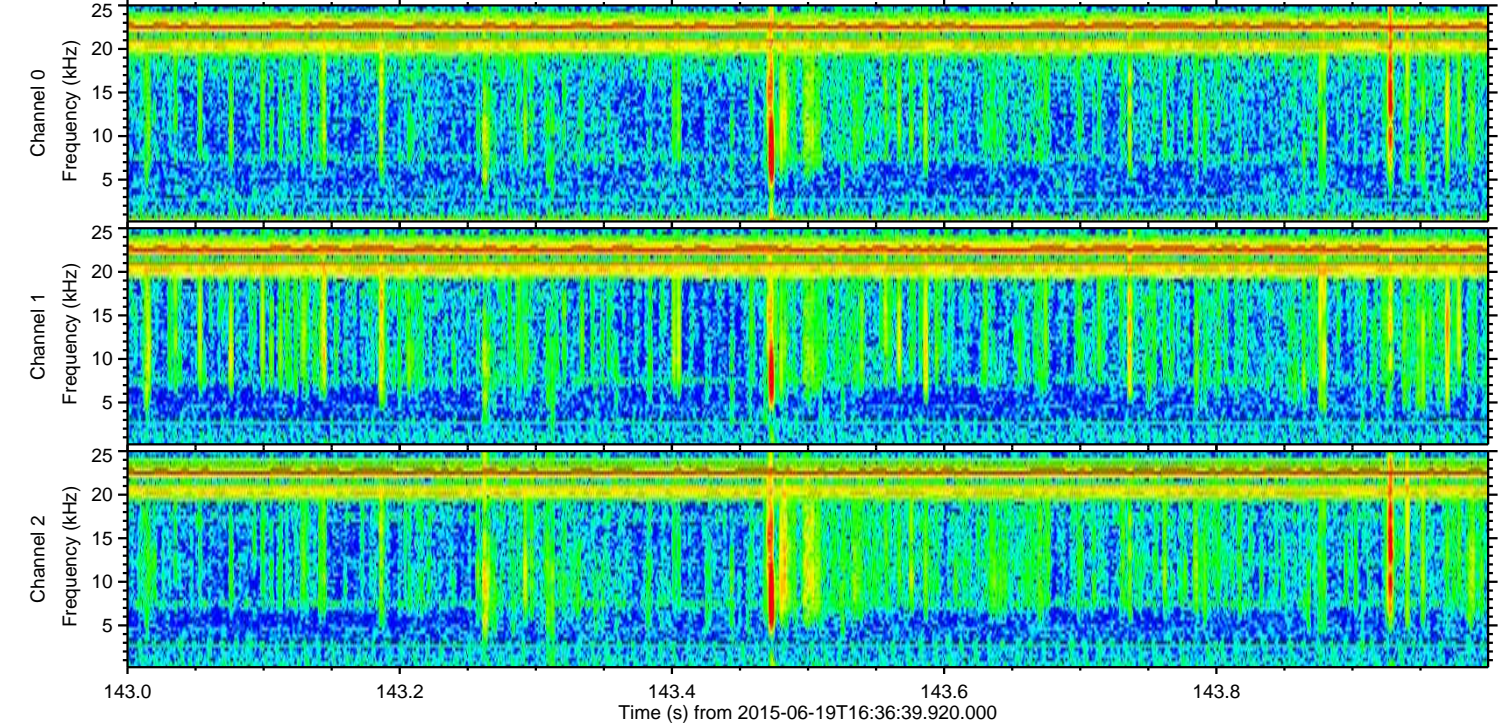
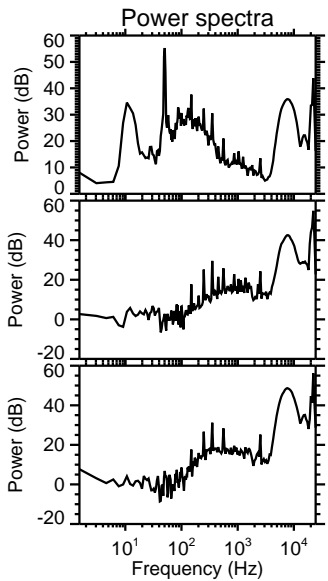
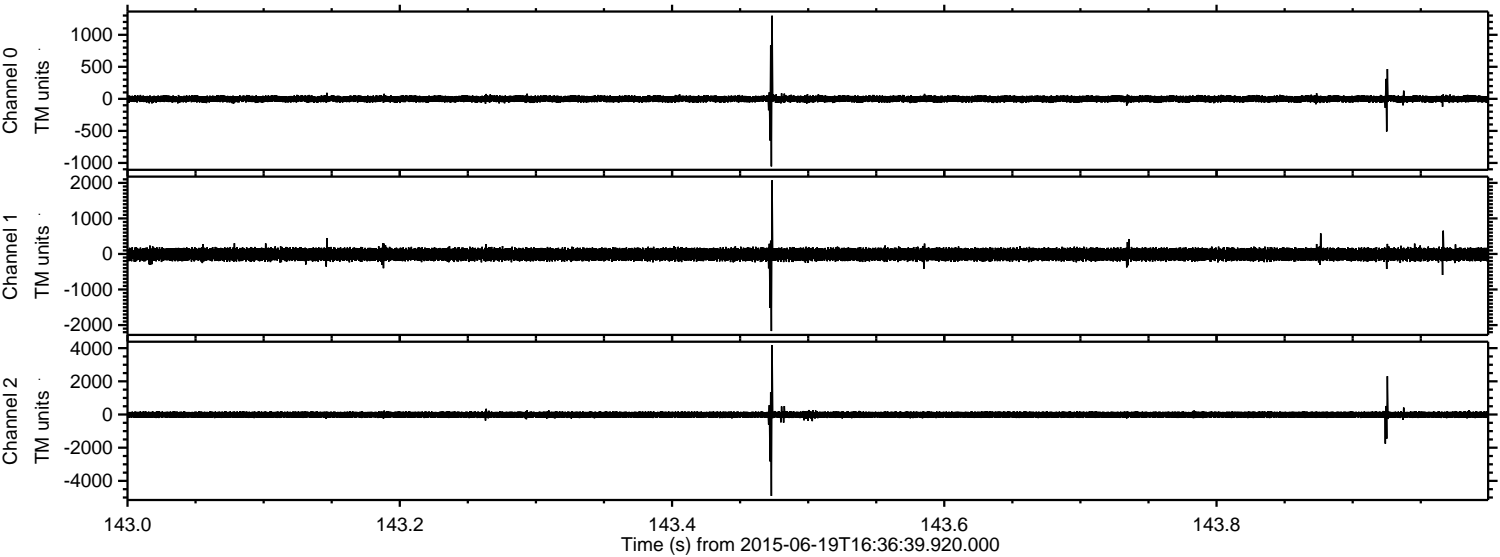


Processed Fri Jun 19 18:43:48 2015 by ELM ver.2012-10-06 from 001__elm20150619_163638__dat00.bin

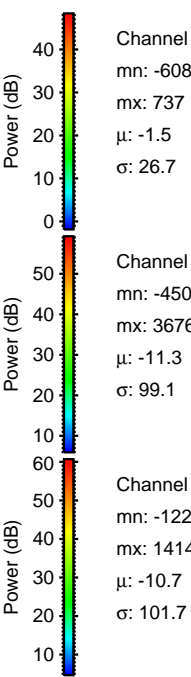
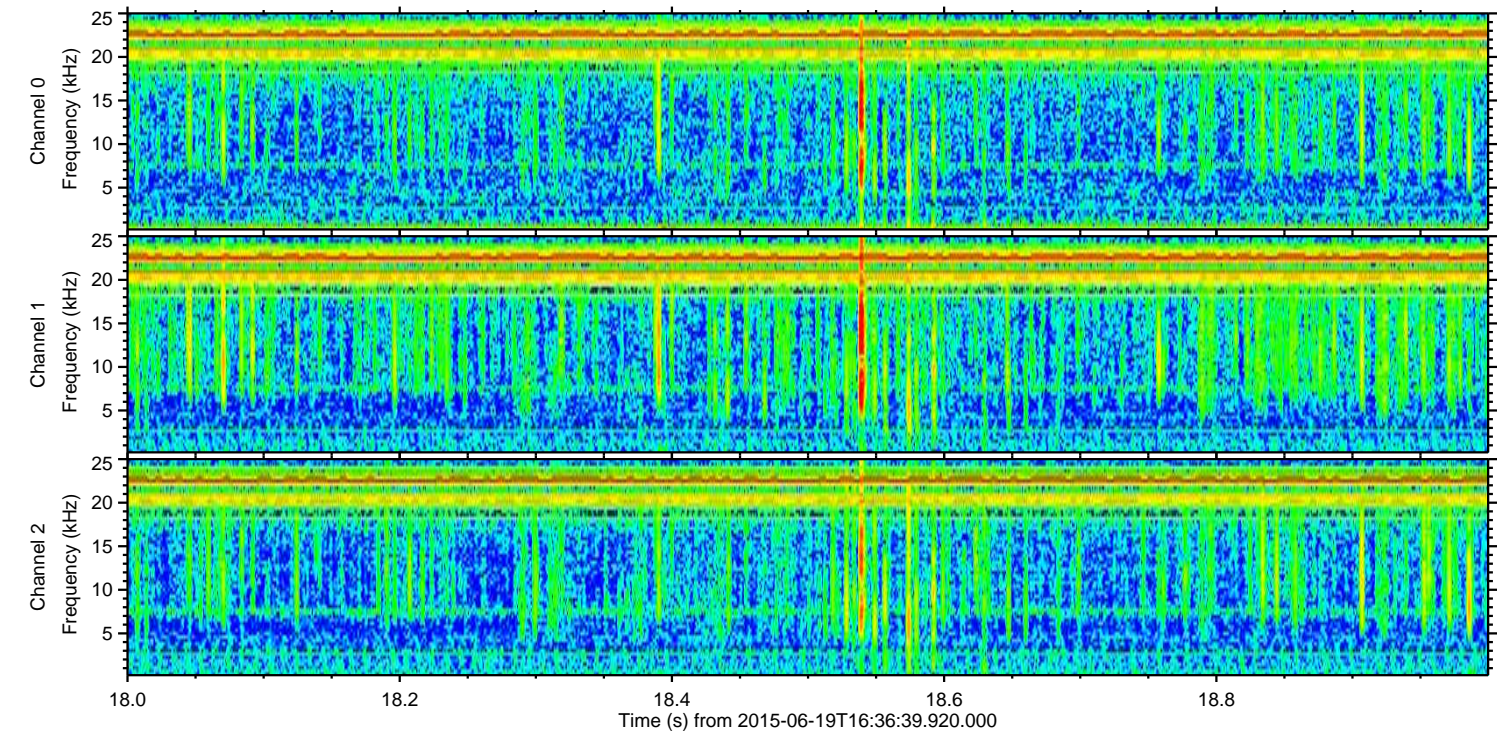
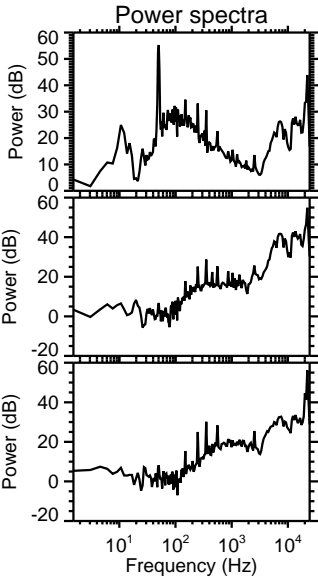
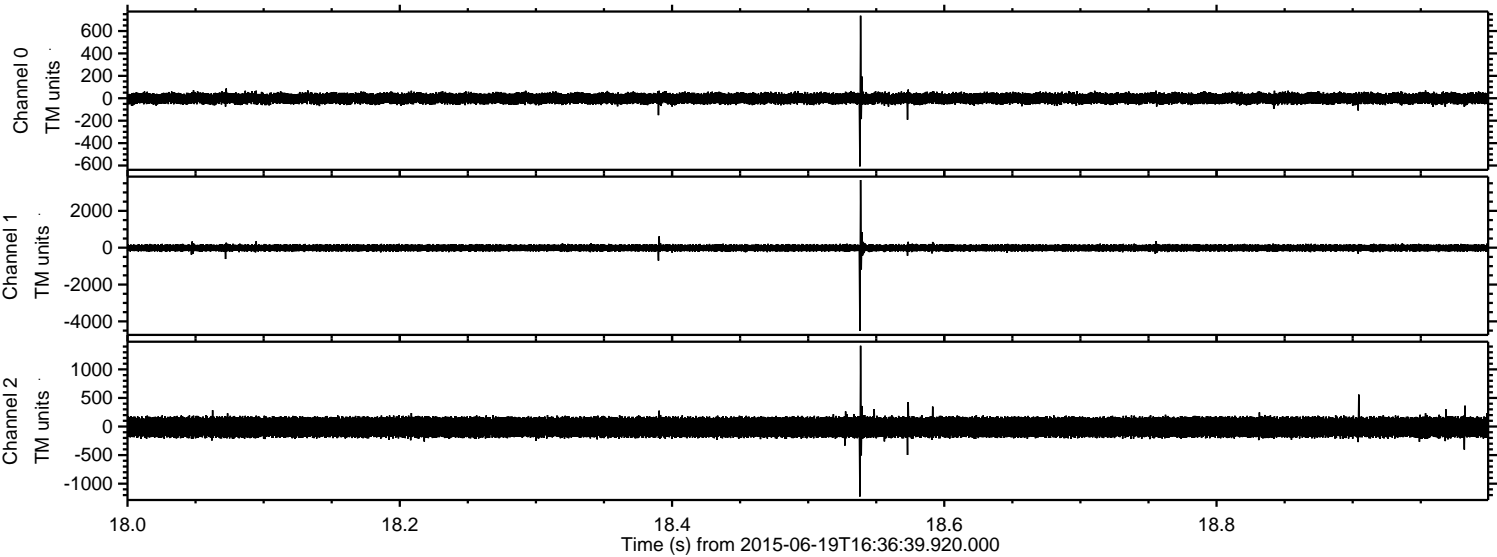


ELMAVAN 3D WAVEFORMS (Measured data sampled at 50 kHz) 51000 packets of 144 samples from 2015-06-19T16:36:39.920.000. Part 144/147

Processed Fri Jun 19 18:43:49 2015 by ELM ver.2012-10-06 from 001__elm20150619_163638__dat00.bin



Processed Fri Jun 19 18:43:51 2015 by ELM ver.2012-10-06 from 001__elm20150619_163638__dat00.bin

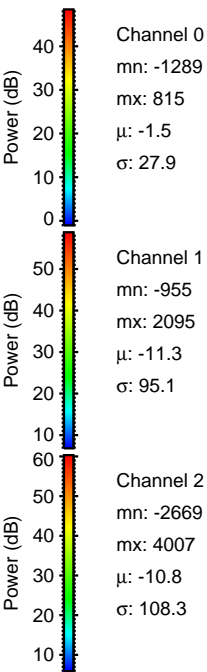
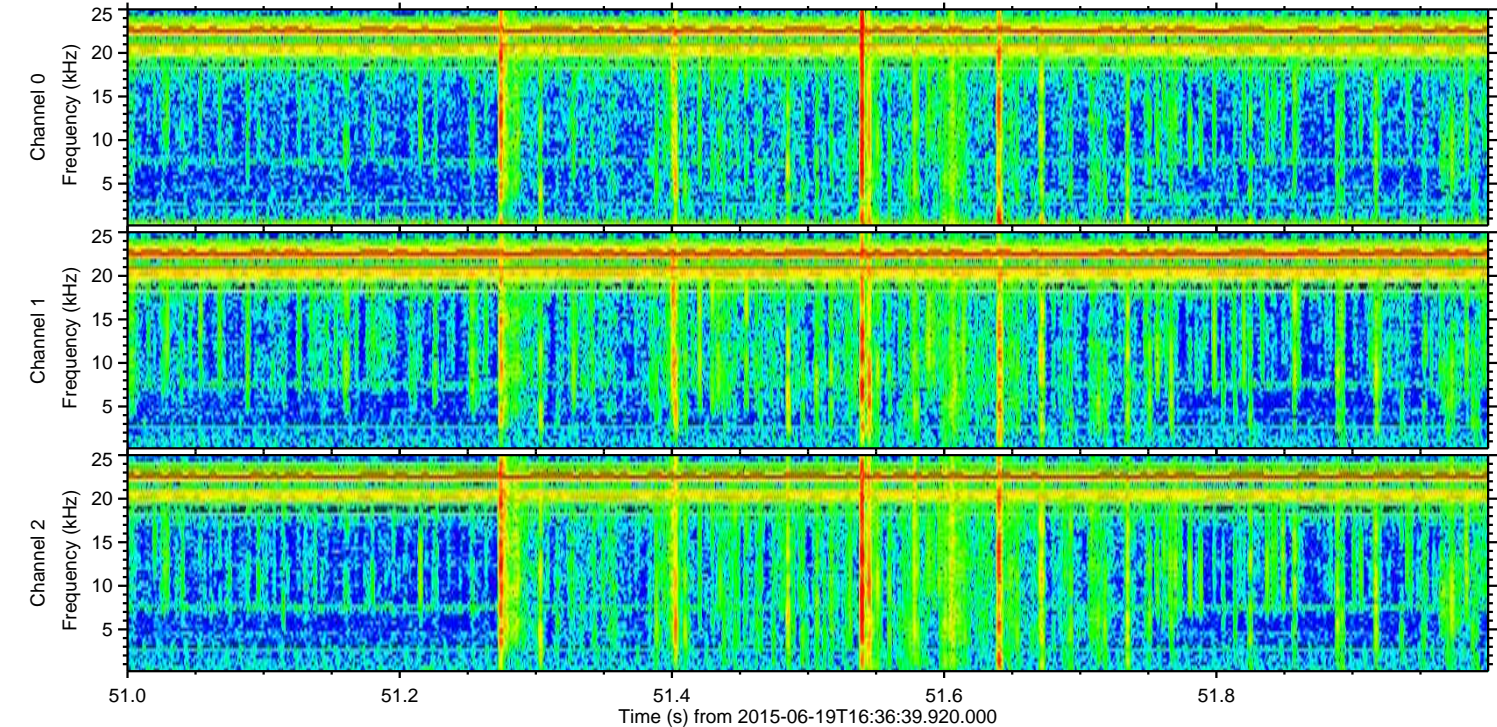
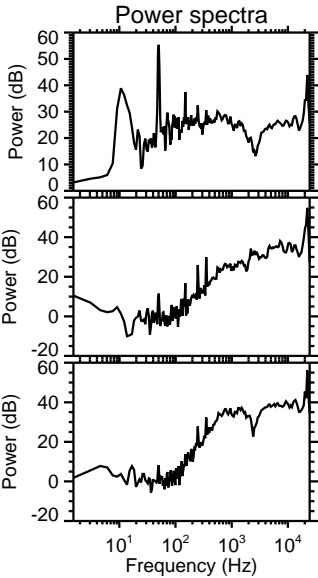
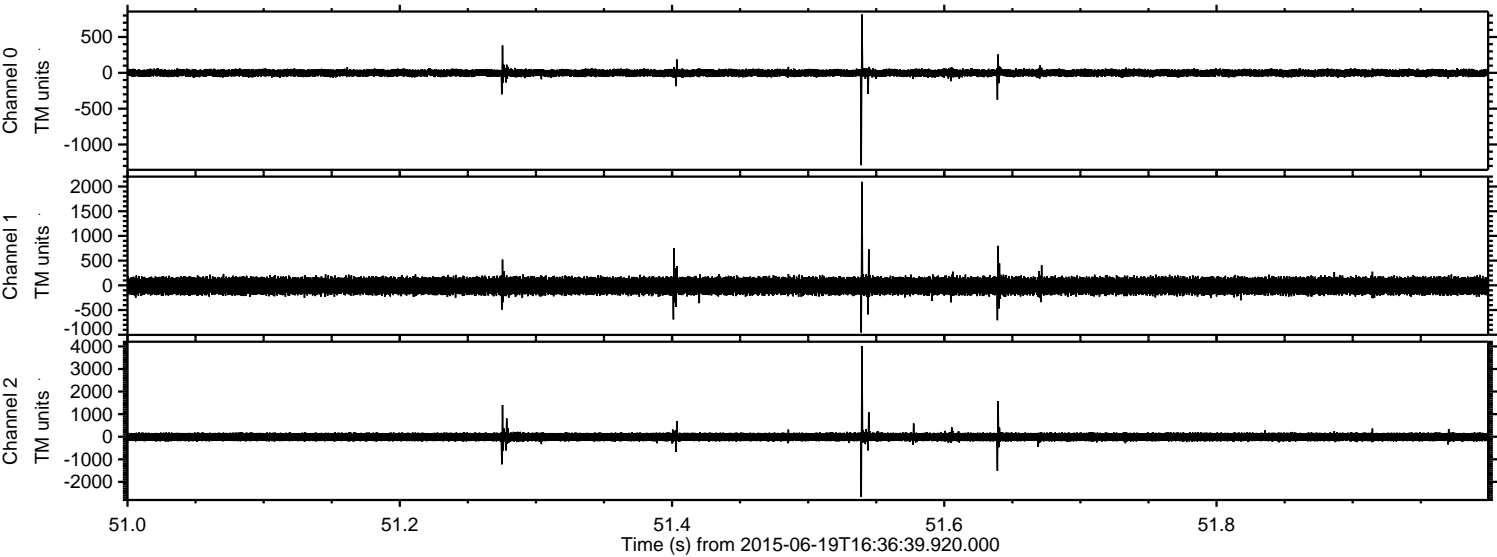


Channel 0
mn: -608
mx: 737
 μ : -1.5
 σ : 26.7

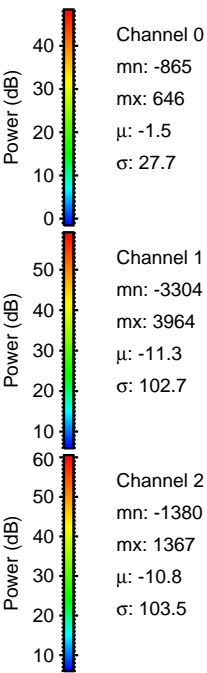
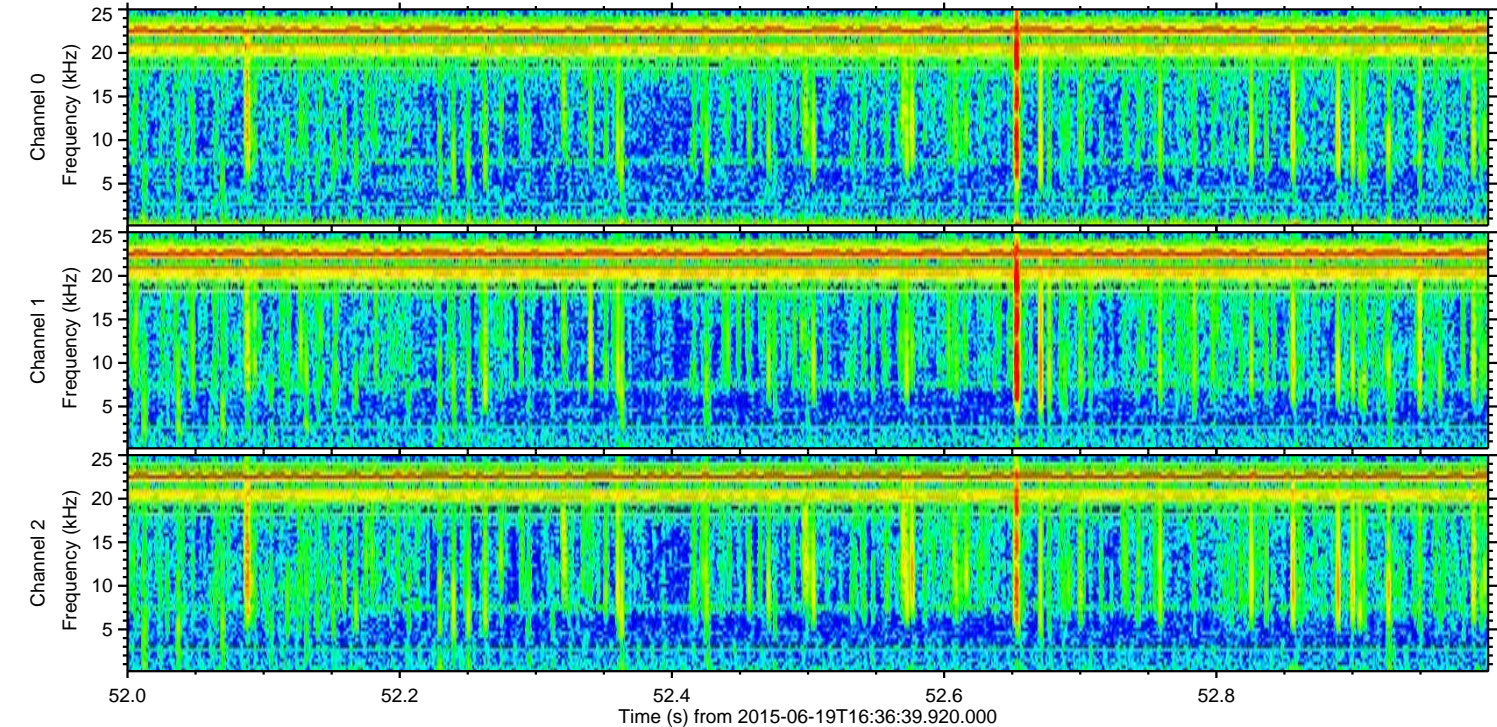
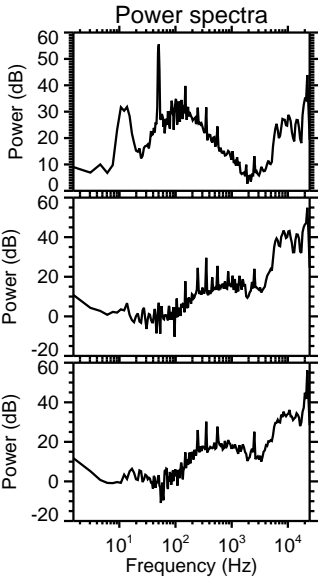
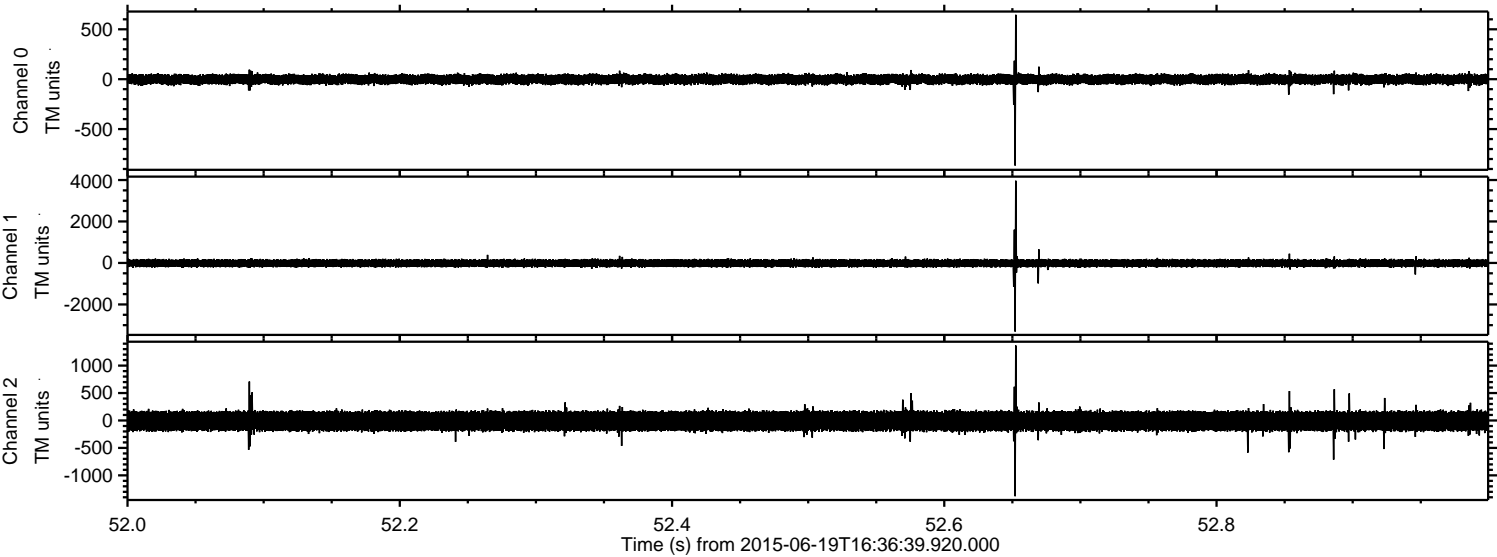
Channel 1
mn: -4509
mx: 3676
 μ : -11.3
 σ : 99.1

Channel 2
mn: -1225
mx: 1414
 μ : -10.7
 σ : 101.7

Processed Fri Jun 19 18:43:53 2015 by ELM ver.2012-10-06 from 001__elm20150619_163638__dat00.bin



Processed Fri Jun 19 18:43:54 2015 by ELM ver.2012-10-06 from 001__elm20150619_163638__dat00.bin



Processed Fri Jun 19 18:43:56 2015 by ELM ver.2012-10-06 from 001__elm20150619_163638__dat00.bin

