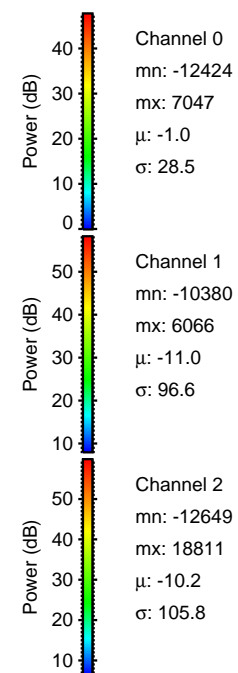
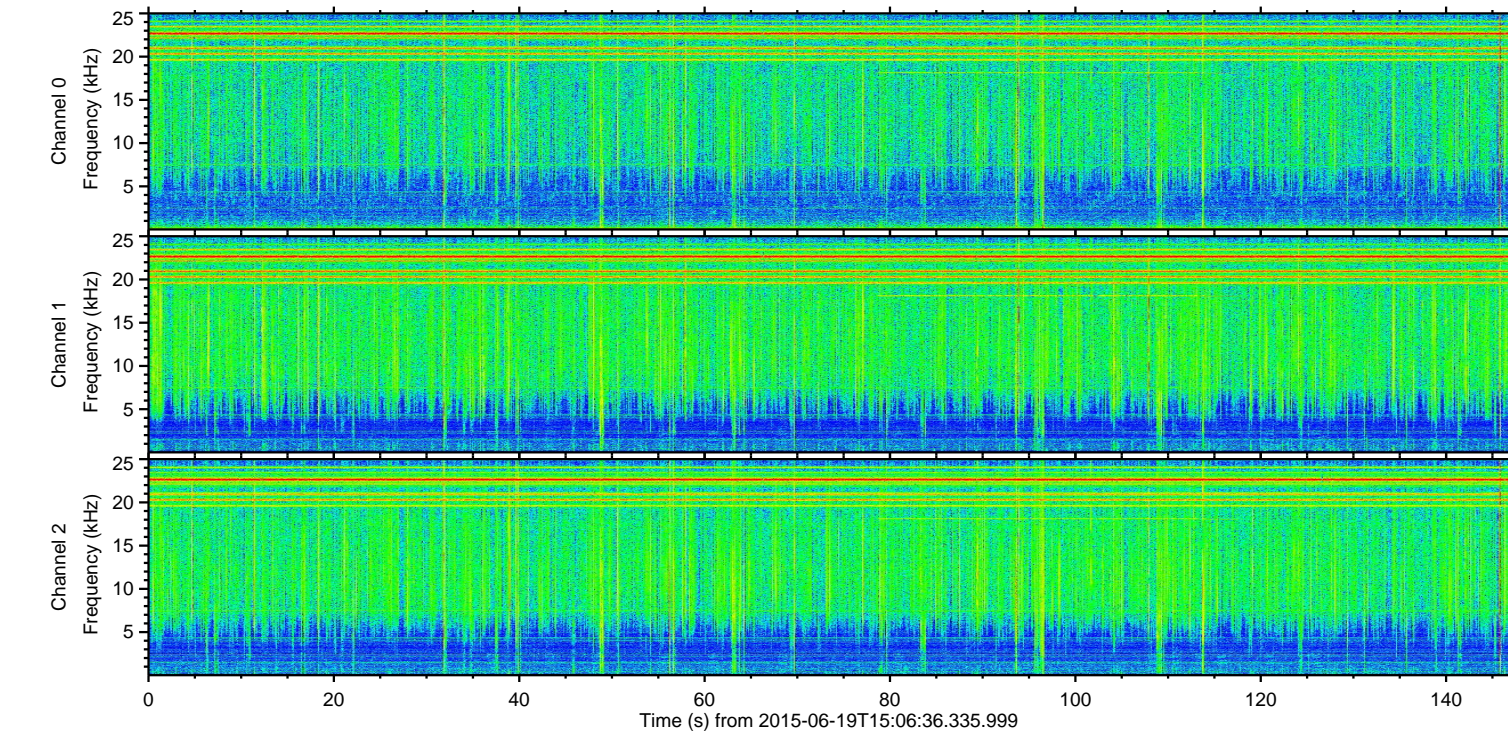
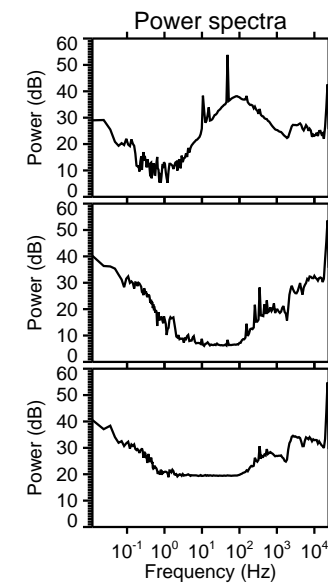
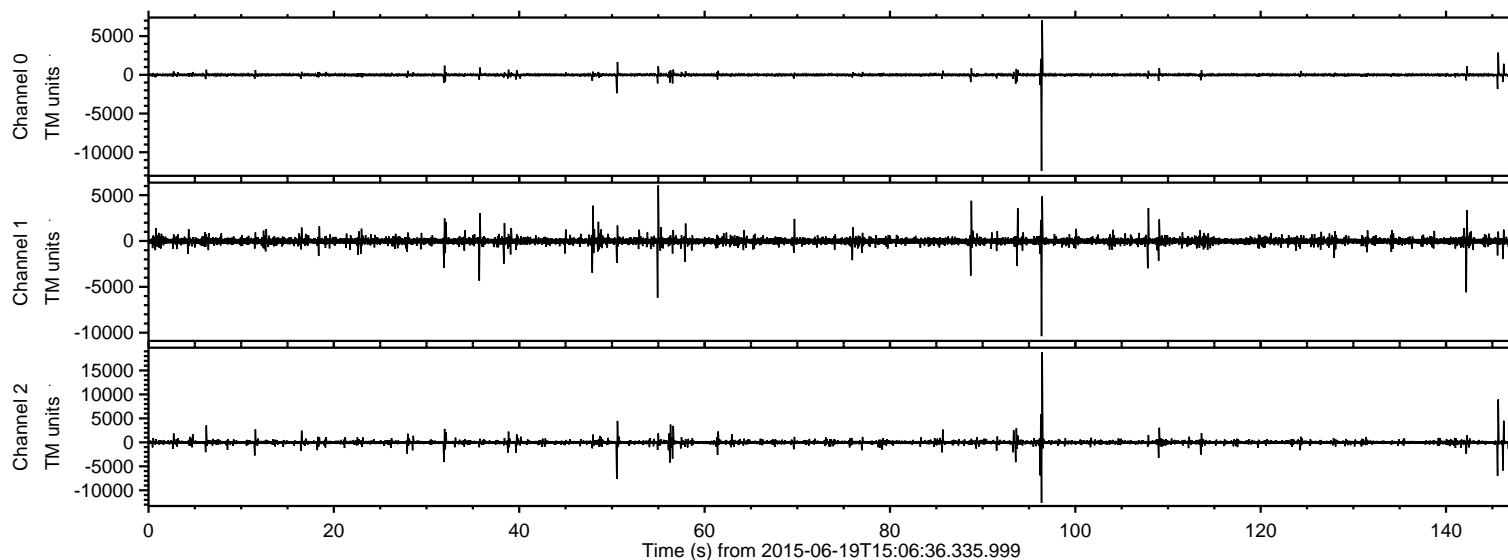


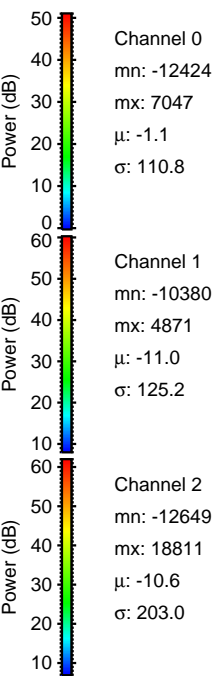
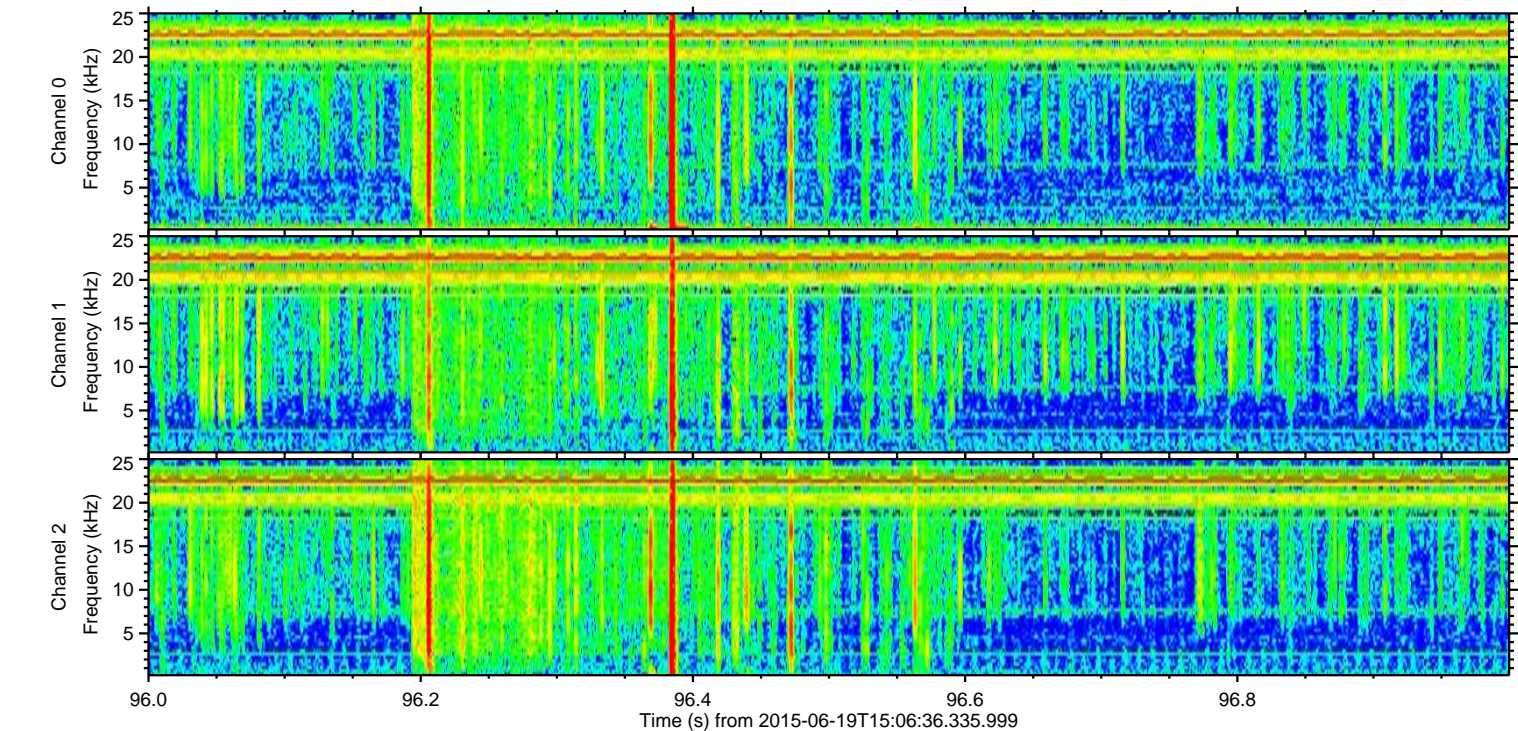
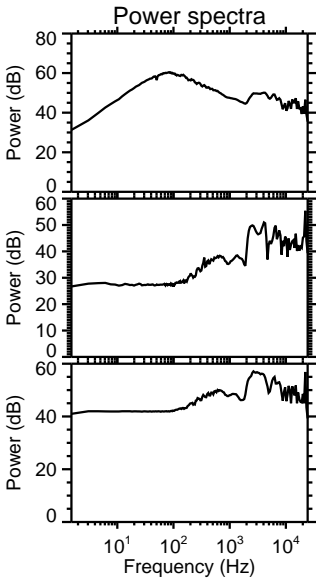
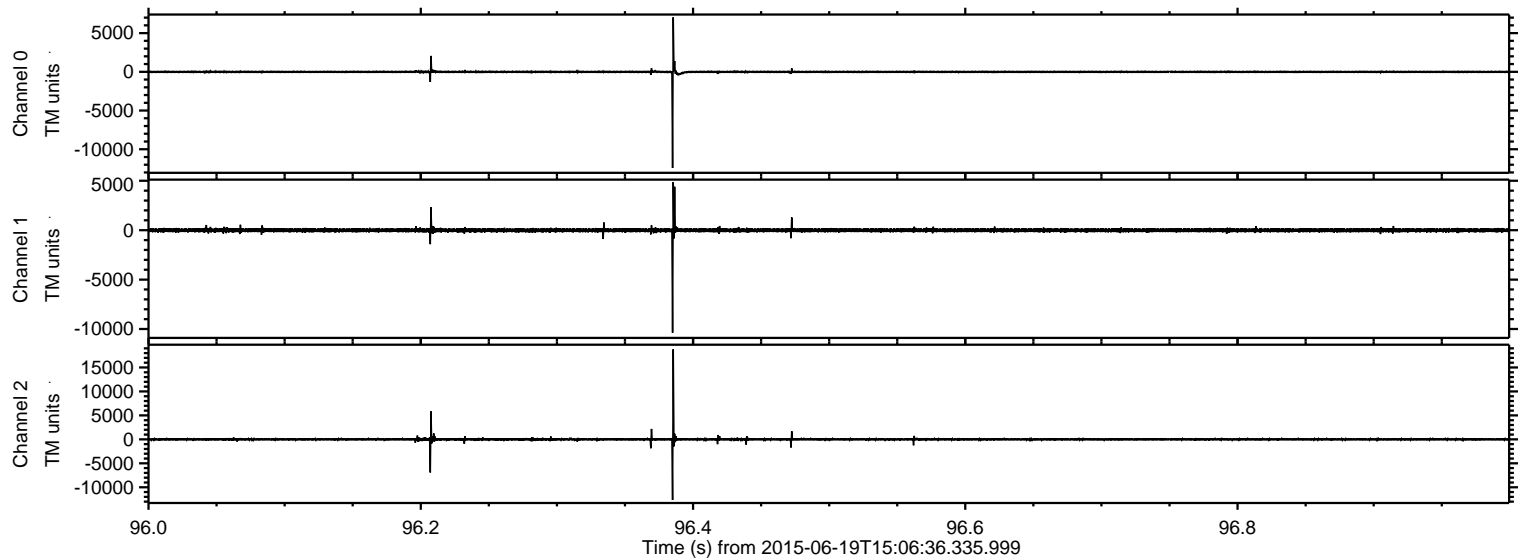
# ELMAVAN 3D WAVEFORMS (Measured data sampled at 50 kHz) 51000 packets of 144 samples from 2015-06-19T15:06:36.335.999.

Processed Fri Jun 19 17:12:34 2015 by ELM ver.2012-10-06 from 001\_\_elm20150619\_150635\_\_dat00.bin



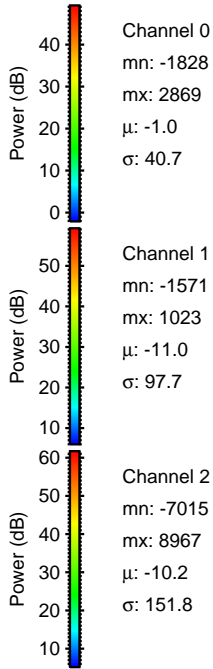
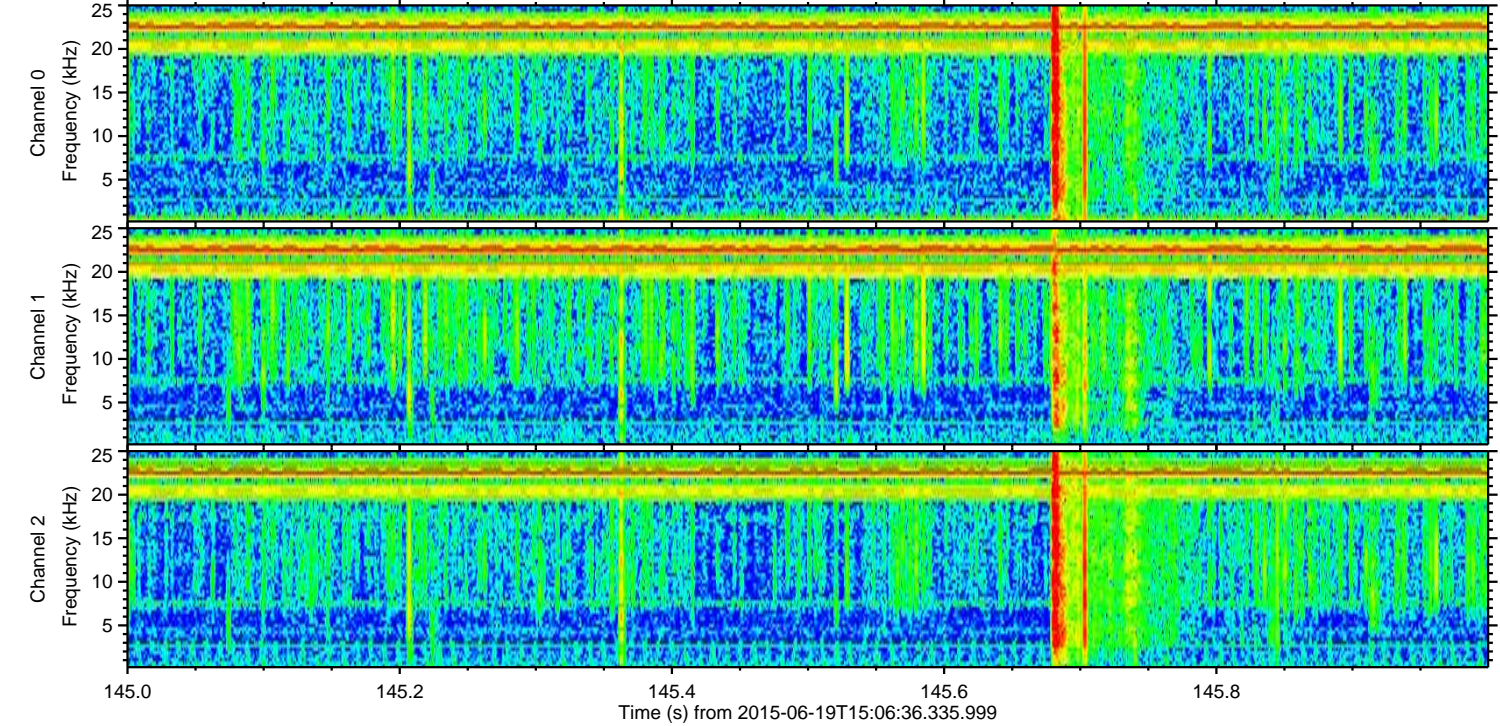
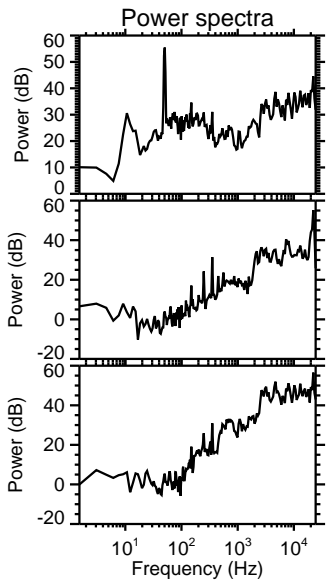
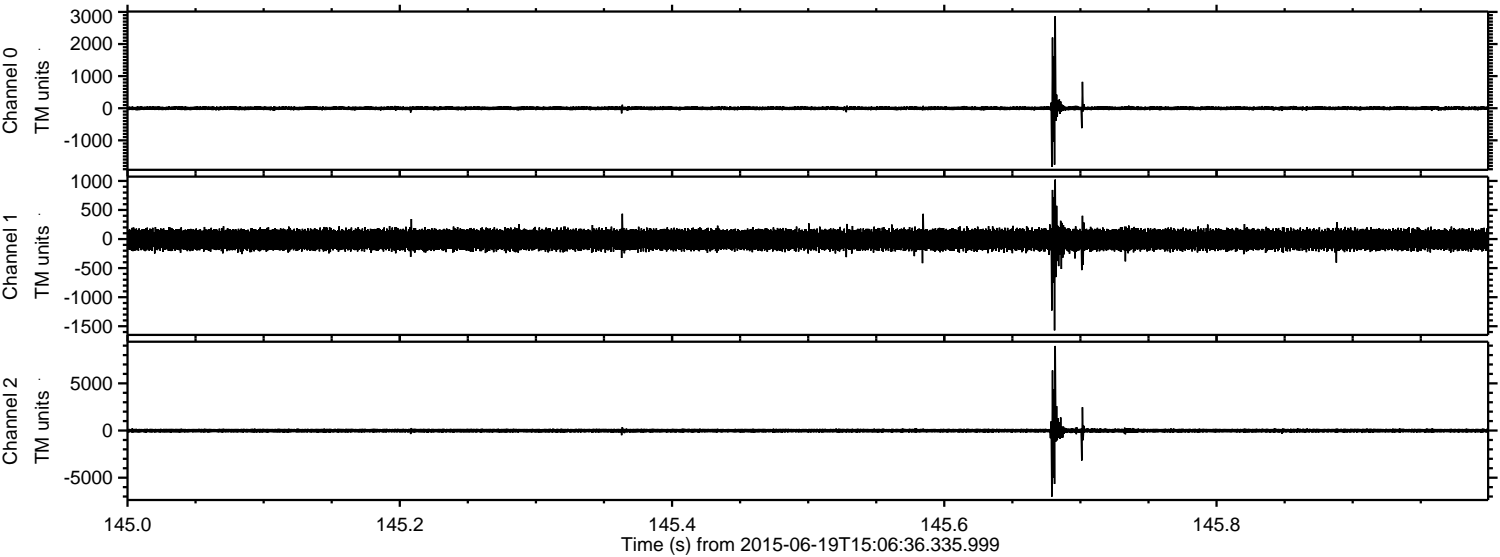


Processed Fri Jun 19 17:12:55 2015 by ELM ver.2012-10-06 from 001\_\_elm20150619\_150635\_\_dat00.bin



ELMAVAN 3D WAVEFORMS (Measured data sampled at 50 kHz) 51000 packets of 144 samples from 2015-06-19T15:06:36.335.999. Part 146/147

Processed Fri Jun 19 17:12:56 2015 by ELM ver.2012-10-06 from 001\_\_elm20150619\_150635\_\_dat00.bin



Channel 0  
mn: -1828  
mx: 2869  
 $\mu$ : -1.0  
 $\sigma$ : 40.7

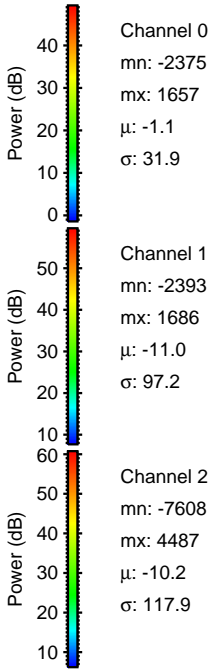
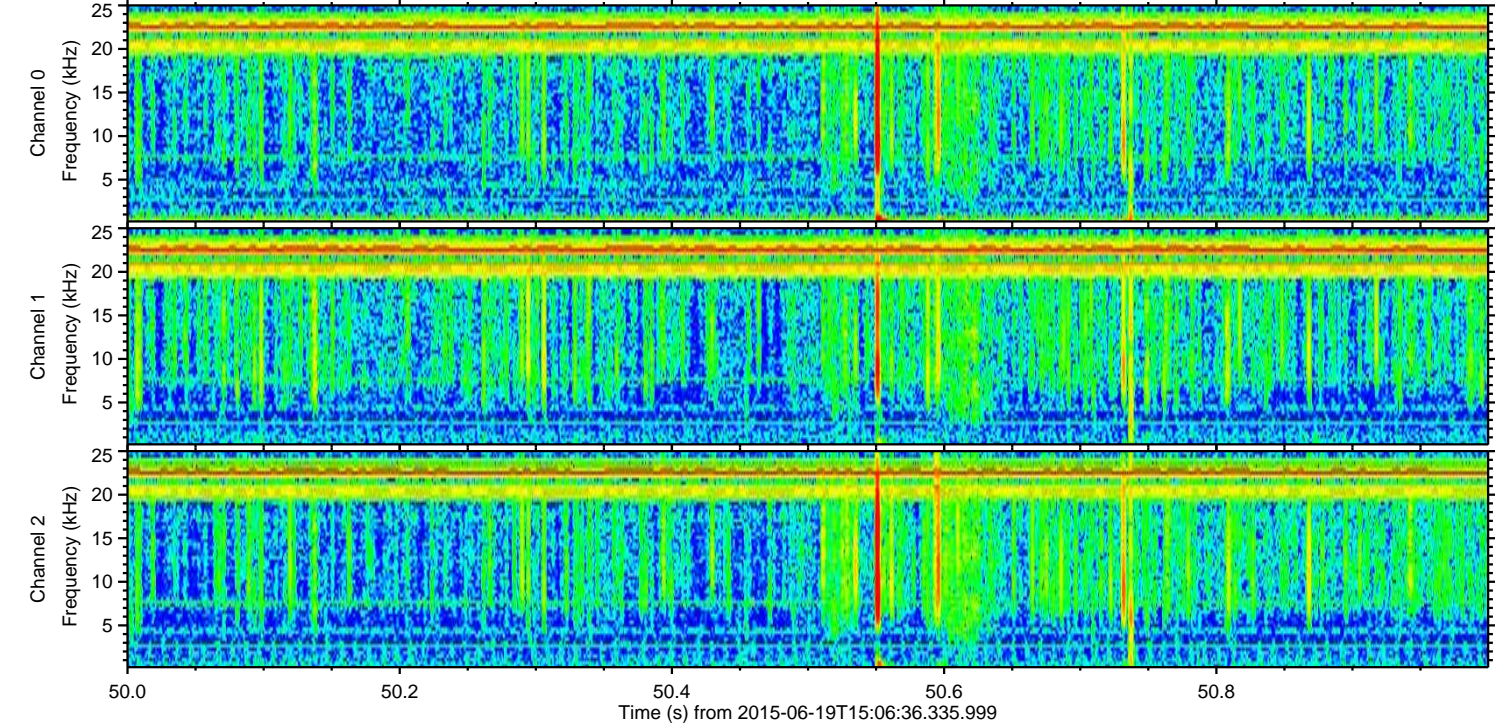
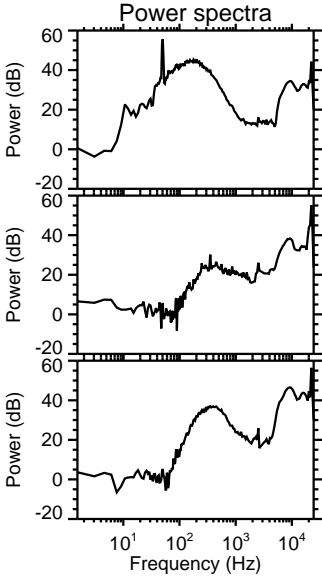
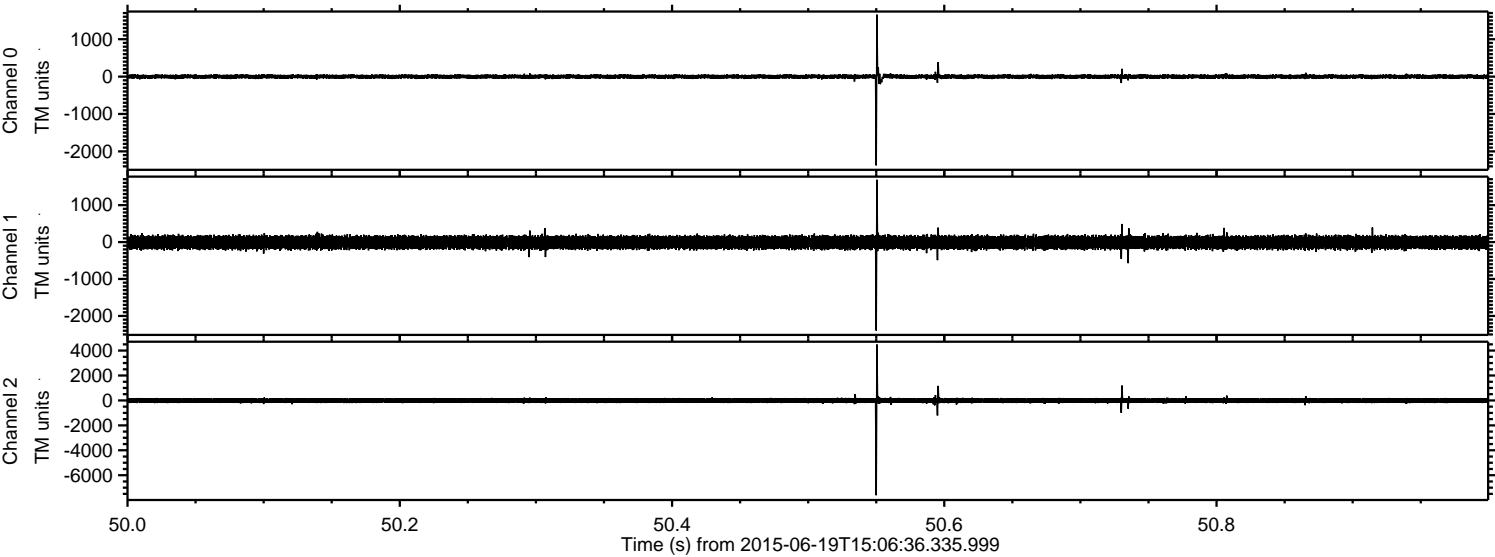
Channel 1  
mn: -1571  
mx: 1023  
 $\mu$ : -11.0  
 $\sigma$ : 97.7

Channel 2  
mn: -7015  
mx: 8967  
 $\mu$ : -10.2  
 $\sigma$ : 151.8



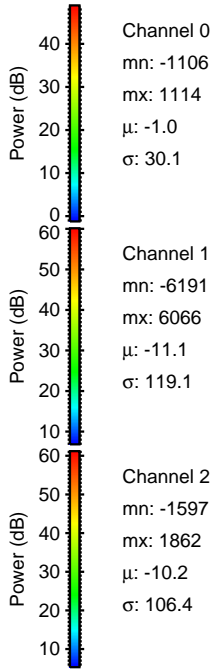
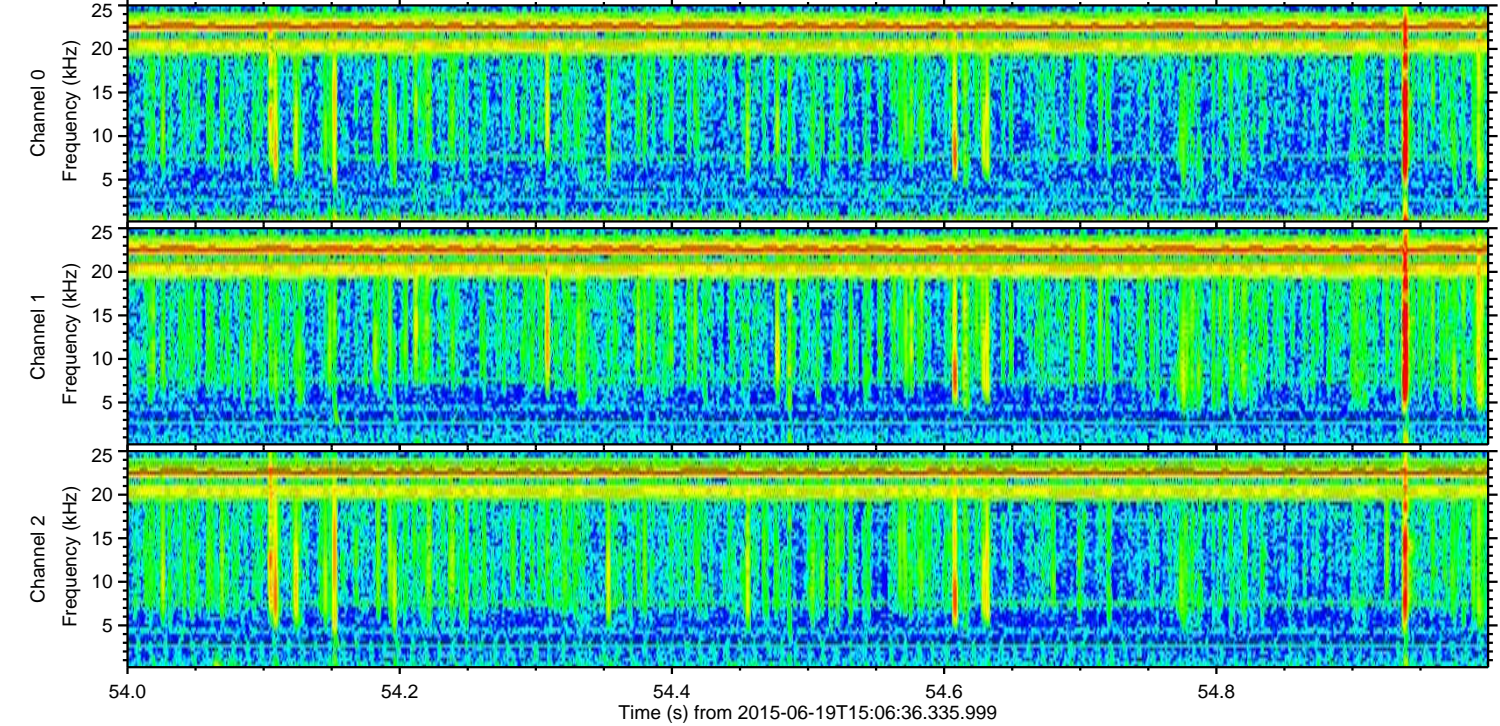
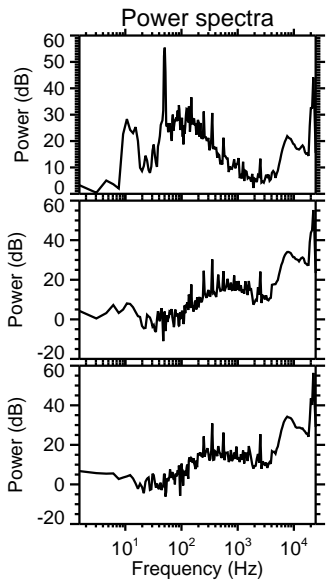
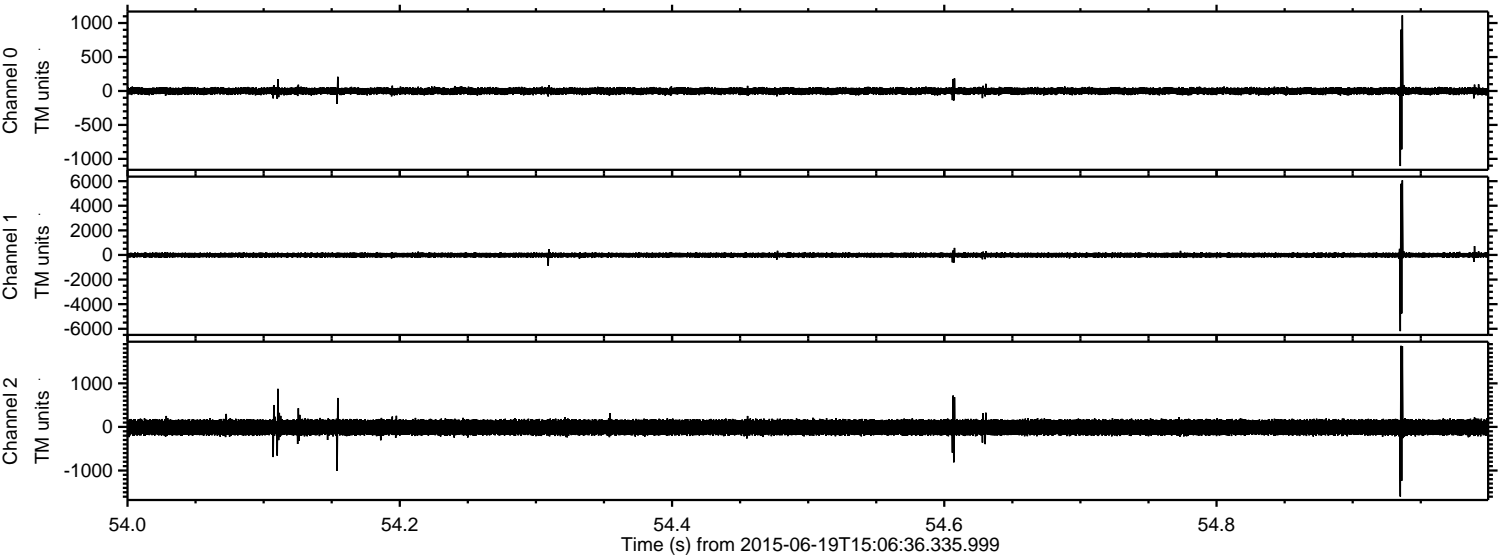
ELMAVAN 3D WAVEFORMS (Measured data sampled at 50 kHz) 51000 packets of 144 samples from 2015-06-19T15:06:36.335.999. Part 51/147

Processed Fri Jun 19 17:12:58 2015 by ELM ver.2012-10-06 from 001\_\_elm20150619\_150635\_\_dat00.bin





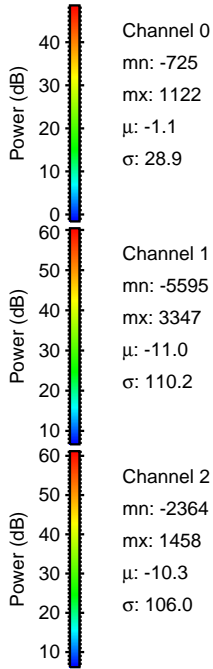
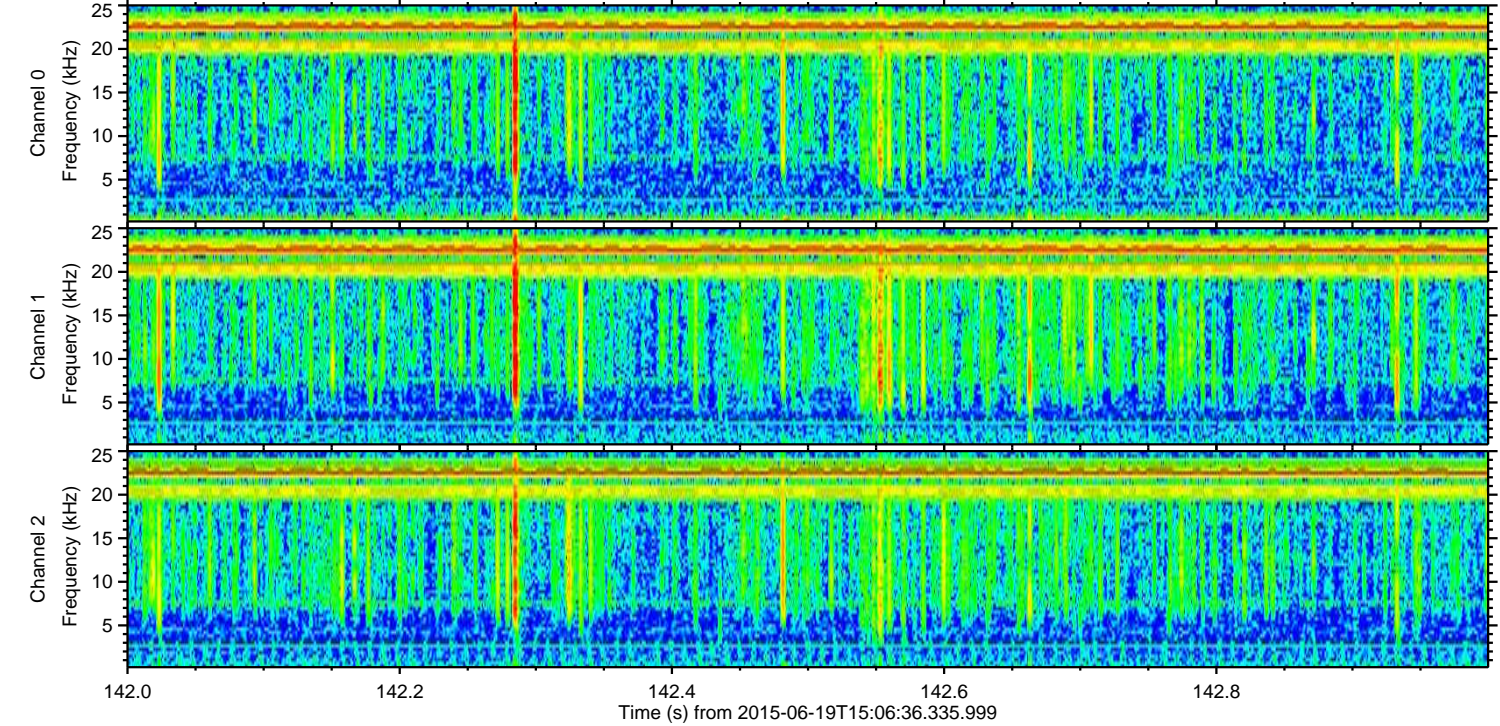
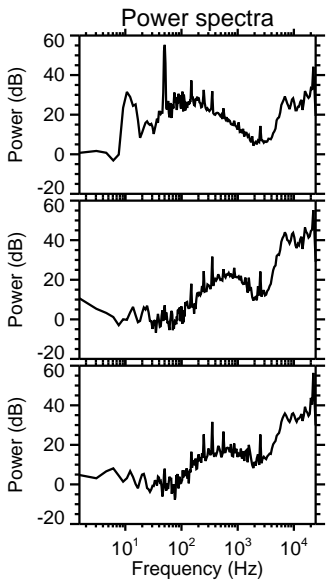
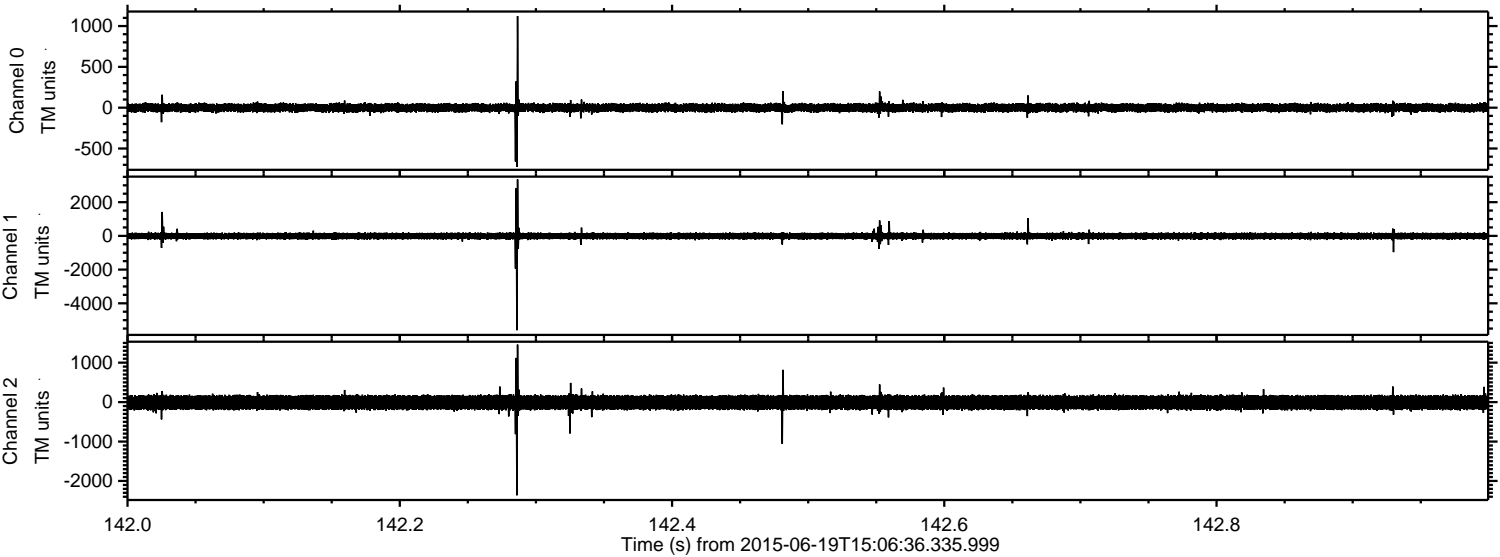
Processed Fri Jun 19 17:12:59 2015 by ELM ver.2012-10-06 from 001\_\_elm20150619\_150635\_\_dat00.bin





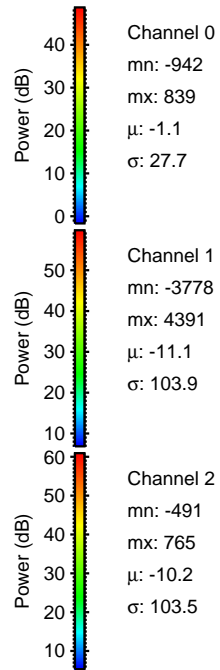
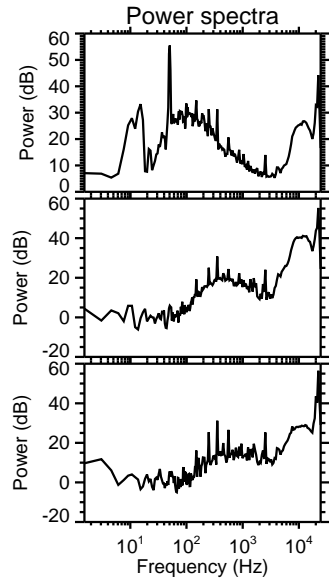
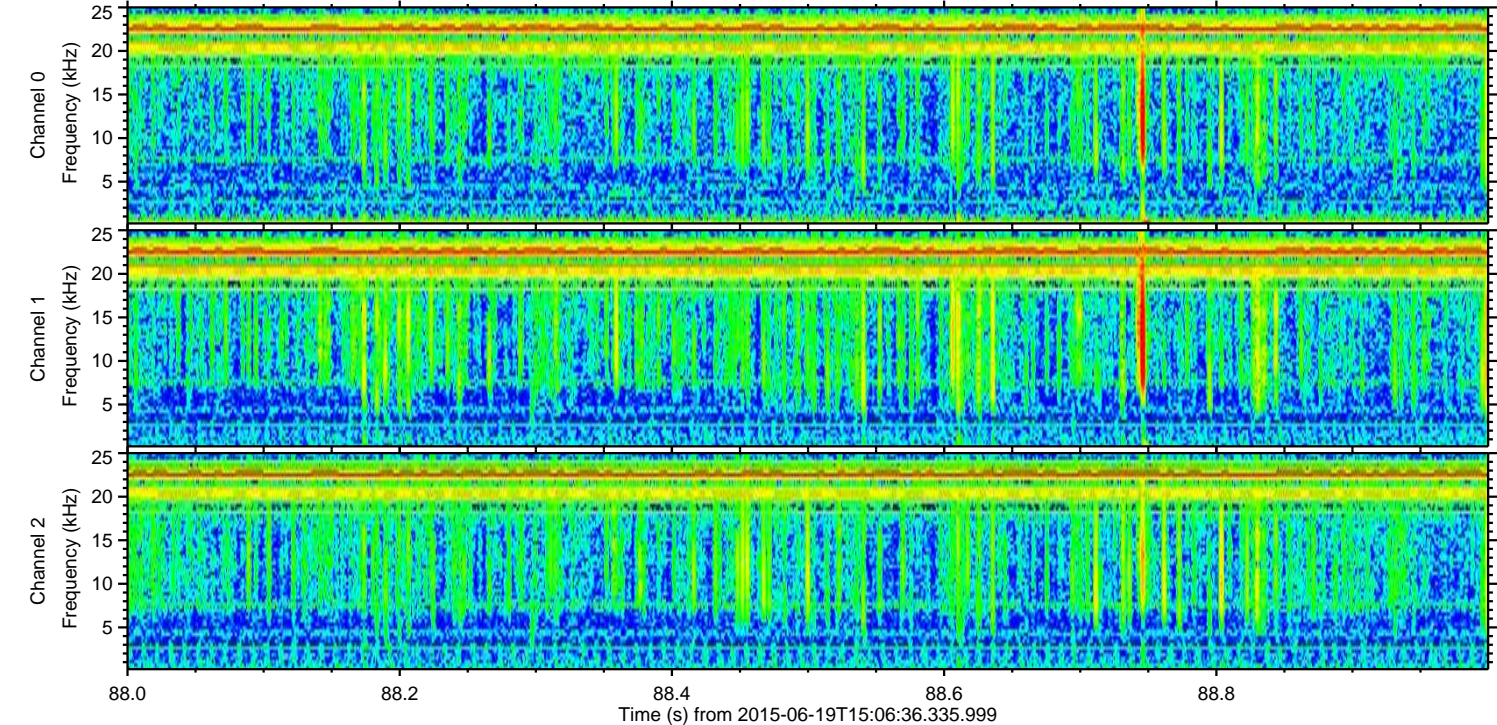
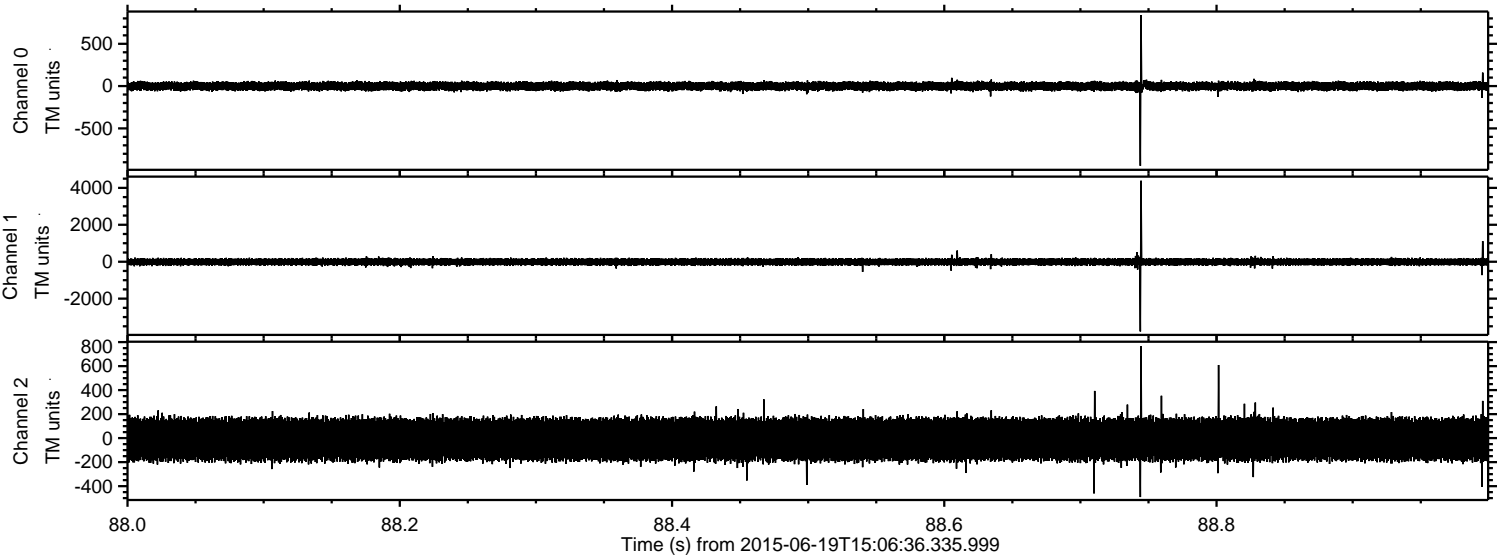
ELMAVAN 3D WAVEFORMS (Measured data sampled at 50 kHz) 51000 packets of 144 samples from 2015-06-19T15:06:36.335.999. Part 143/147

Processed Fri Jun 19 17:13:00 2015 by ELM ver.2012-10-06 from 001\_\_elm20150619\_150635\_\_dat00.bin



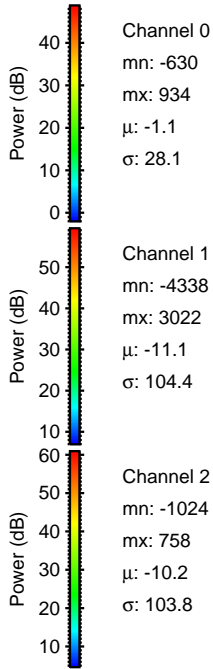
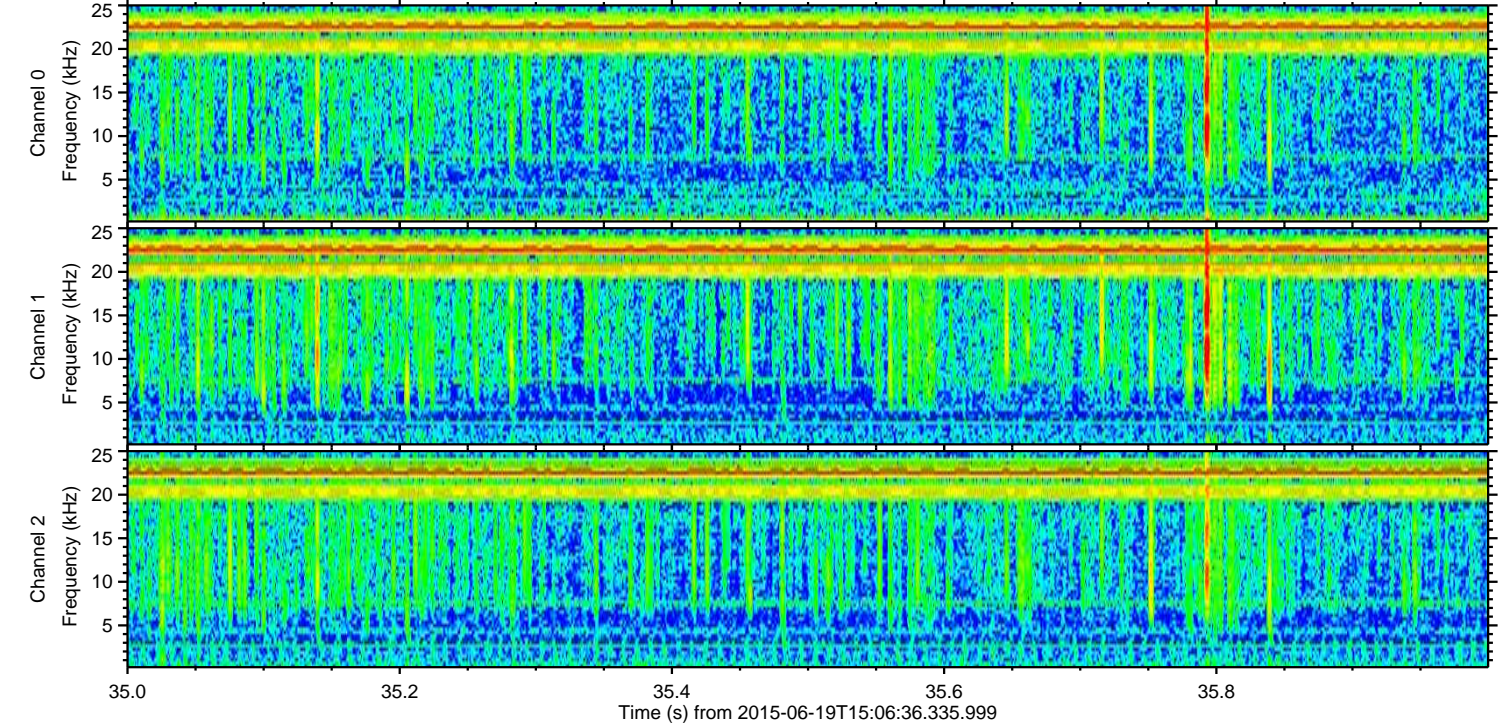
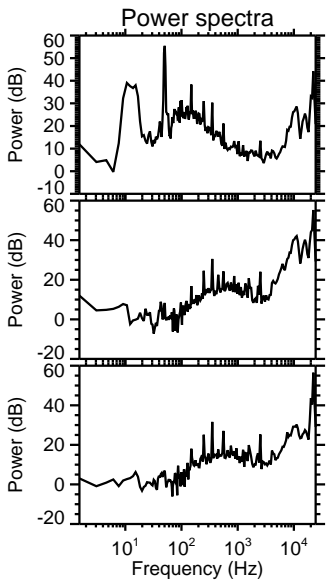
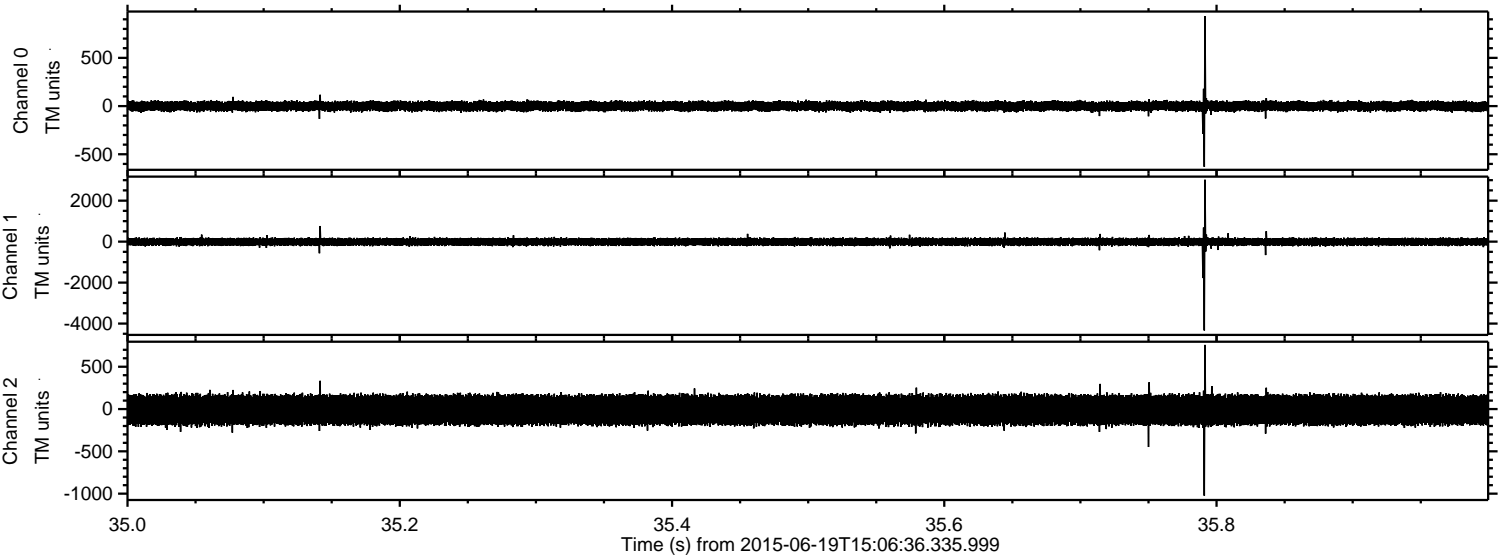


Processed Fri Jun 19 17:13:01 2015 by ELM ver.2012-10-06 from 001\_\_elm20150619\_150635\_\_dat00.bin



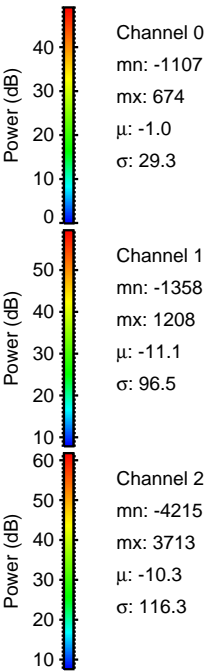
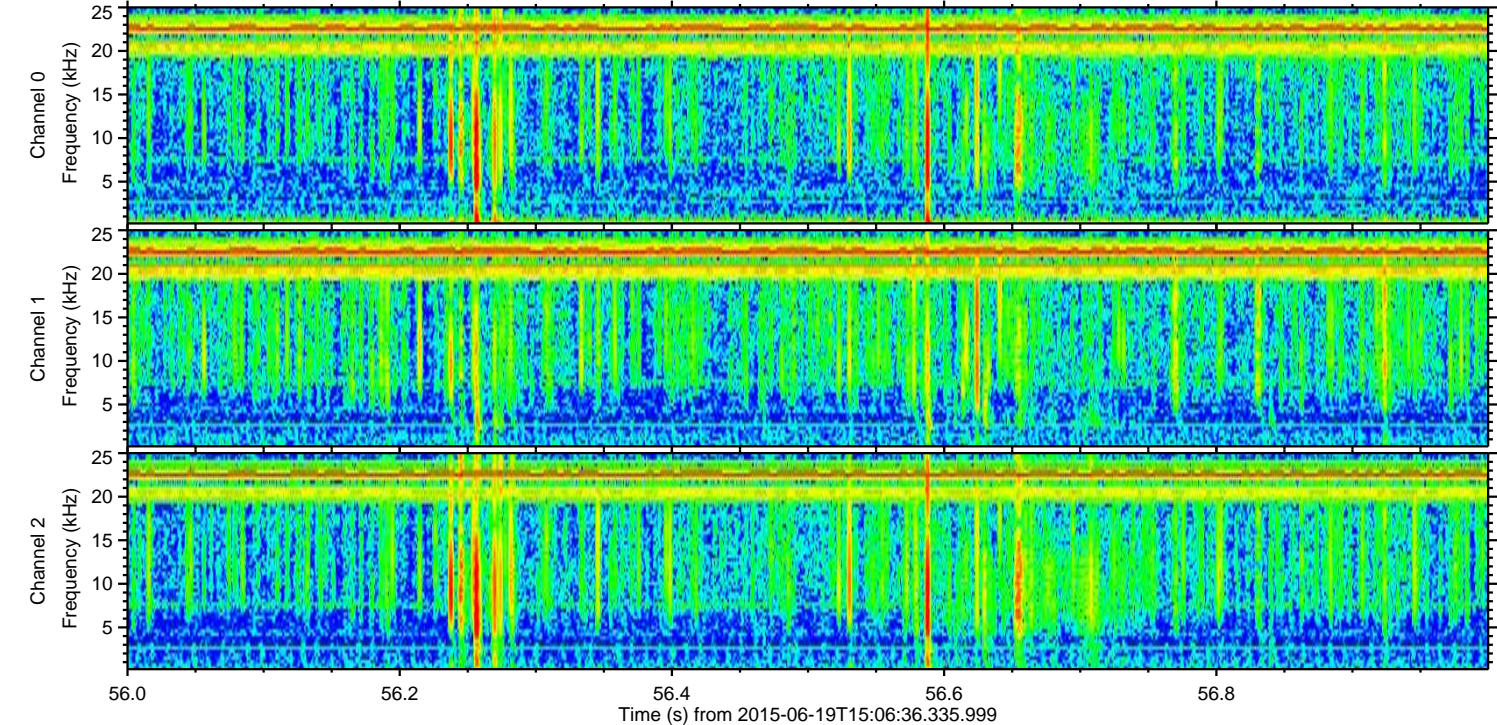
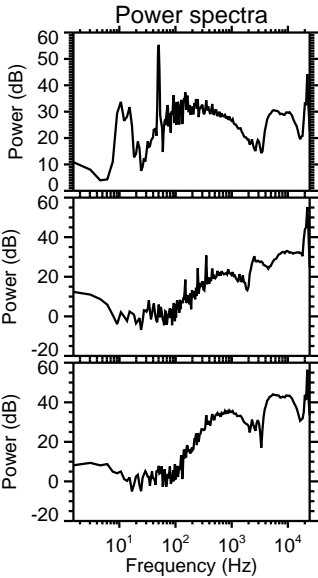
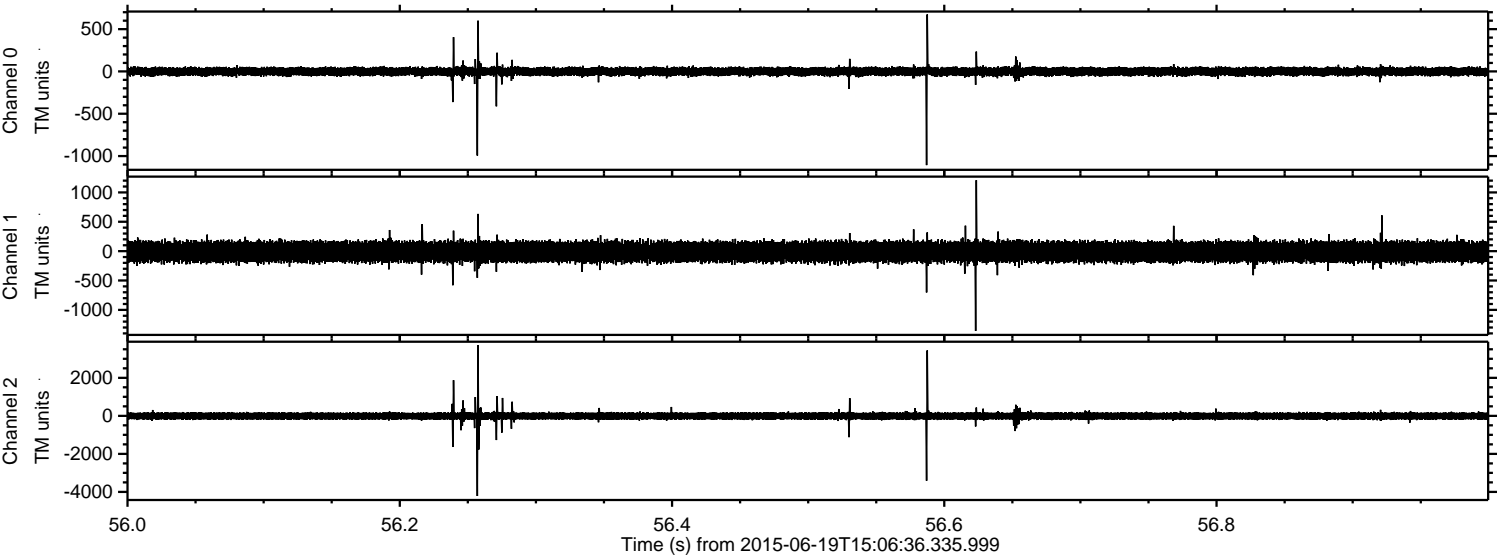


Processed Fri Jun 19 17:13:03 2015 by ELM ver.2012-10-06 from 001\_\_elm20150619\_150635\_\_dat00.bin



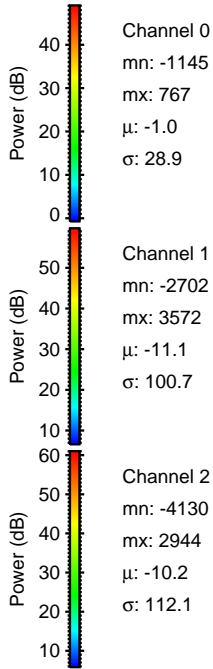
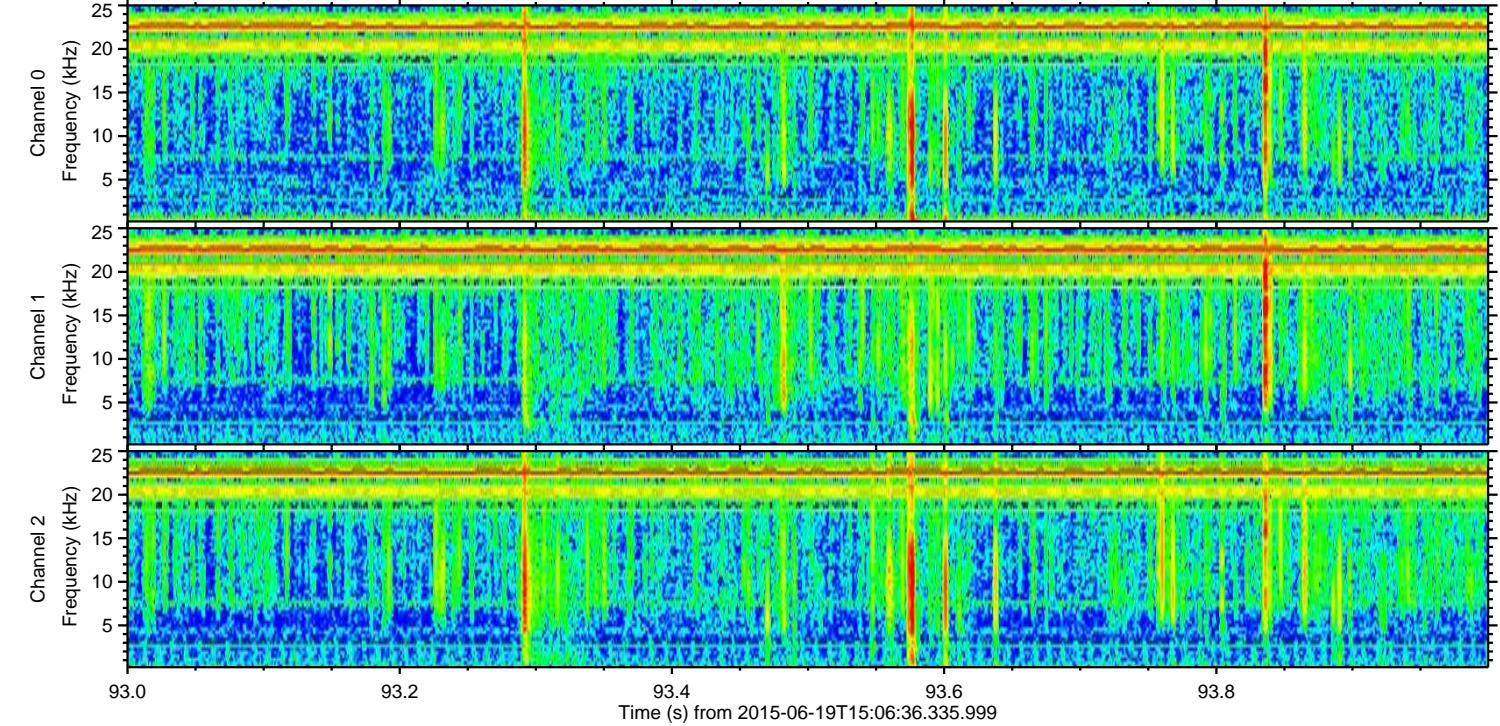
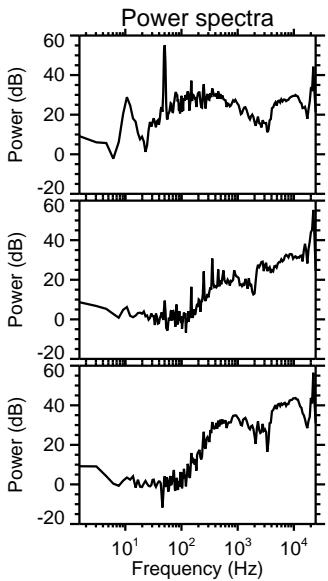
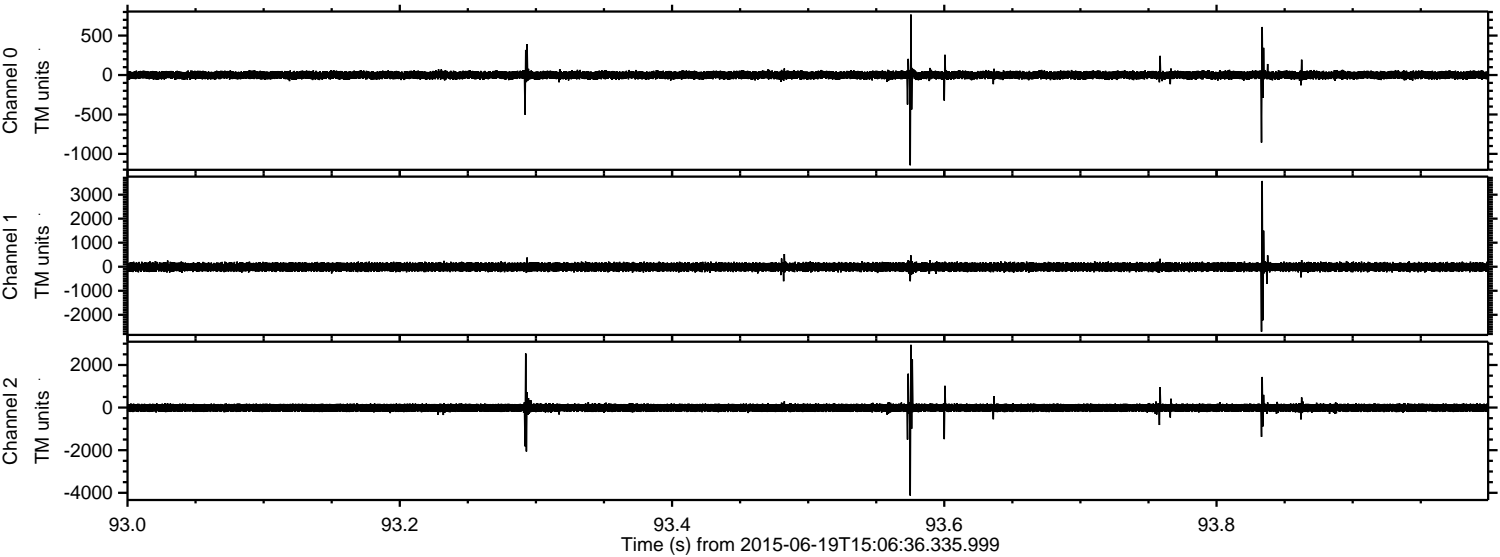


Processed Fri Jun 19 17:13:04 2015 by ELM ver.2012-10-06 from 001\_\_elm20150619\_150635\_\_dat00.bin



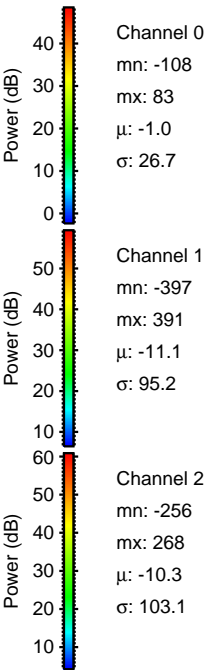
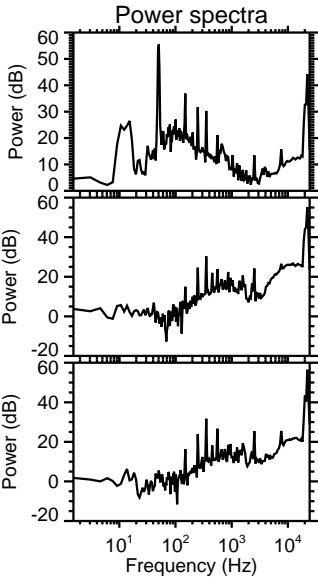
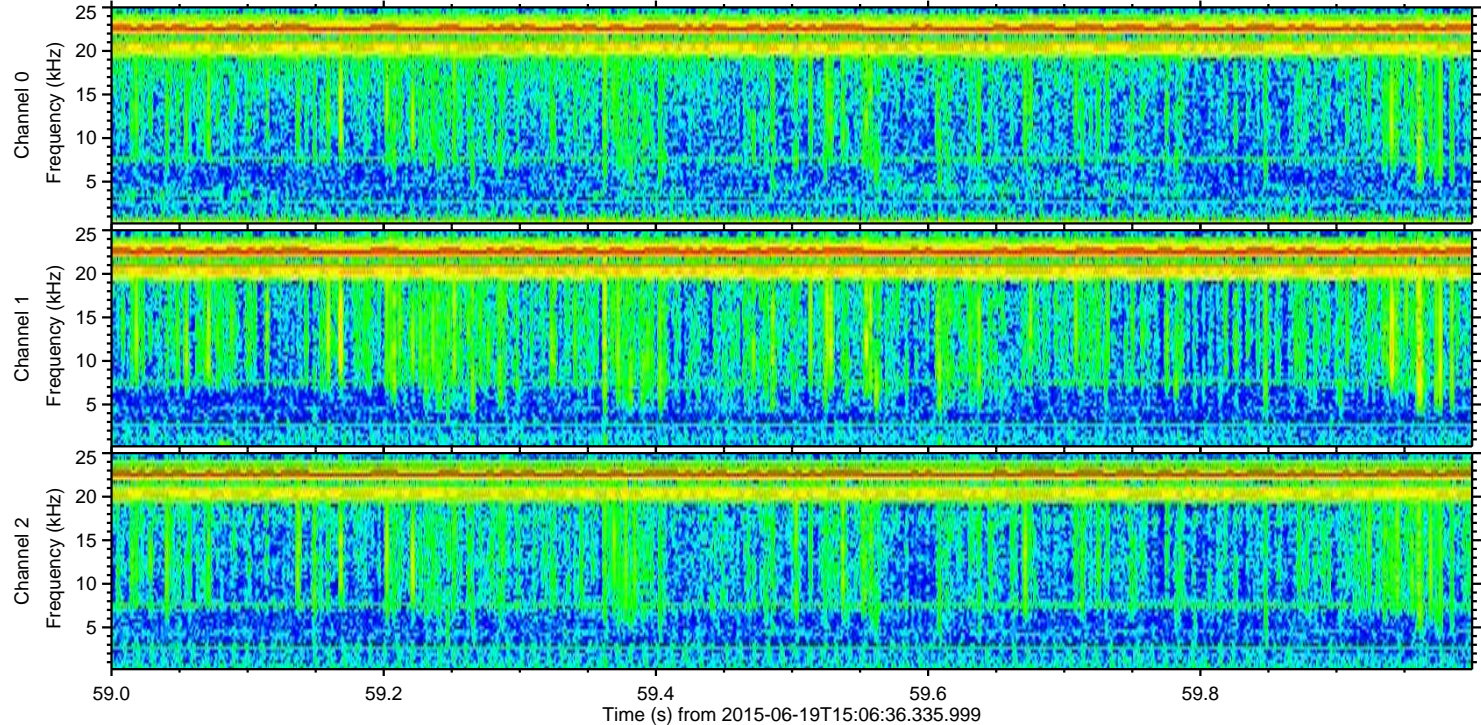
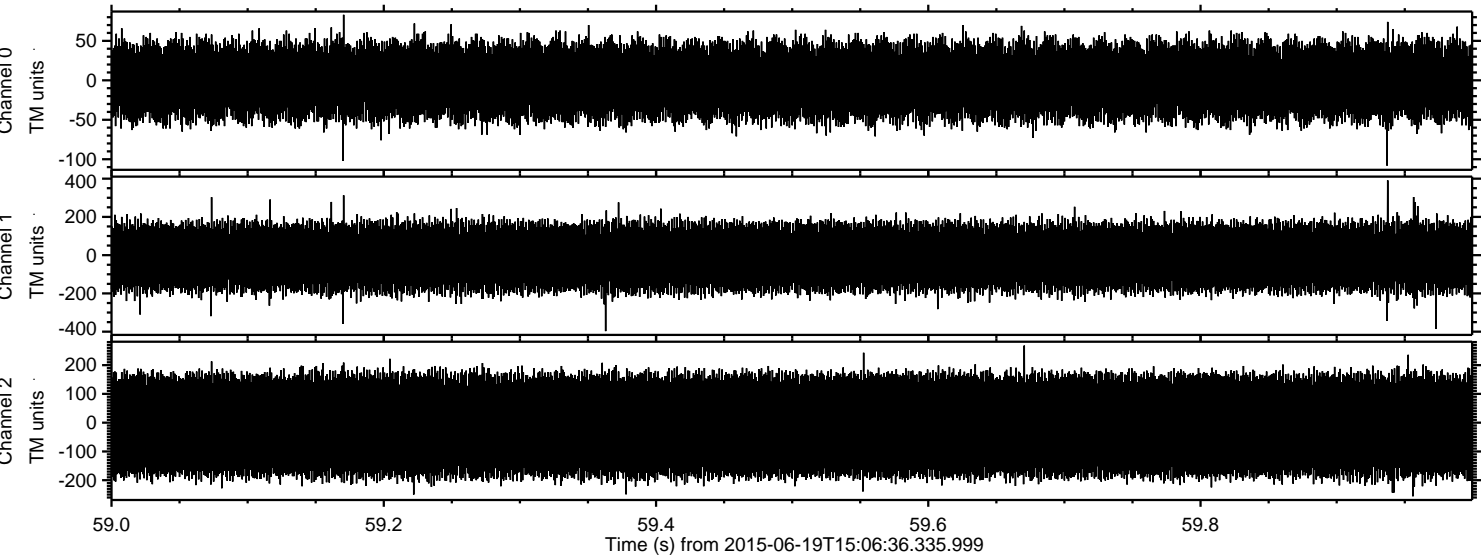


Processed Fri Jun 19 17:13:05 2015 by ELM ver.2012-10-06 from 001\_\_elm20150619\_150635\_\_dat00.bin





Processed Fri Jun 19 17:13:06 2015 by ELM ver.2012-10-06 from 001\_\_elm20150619\_150635\_\_dat00.bin



Channel 0  
mn: -108  
mx: 83  
 $\mu$ : -1.0  
 $\sigma$ : 26.7

Channel 1  
mn: -397  
mx: 391  
 $\mu$ : -11.1  
 $\sigma$ : 95.2

Channel 2  
mn: -256  
mx: 268  
 $\mu$ : -10.3  
 $\sigma$ : 103.1