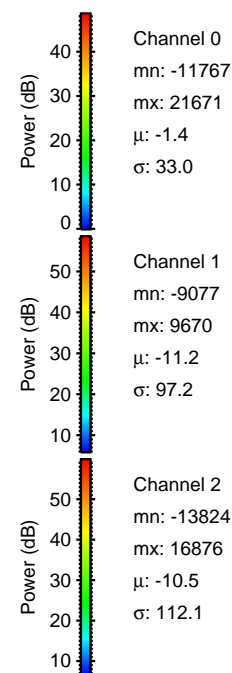
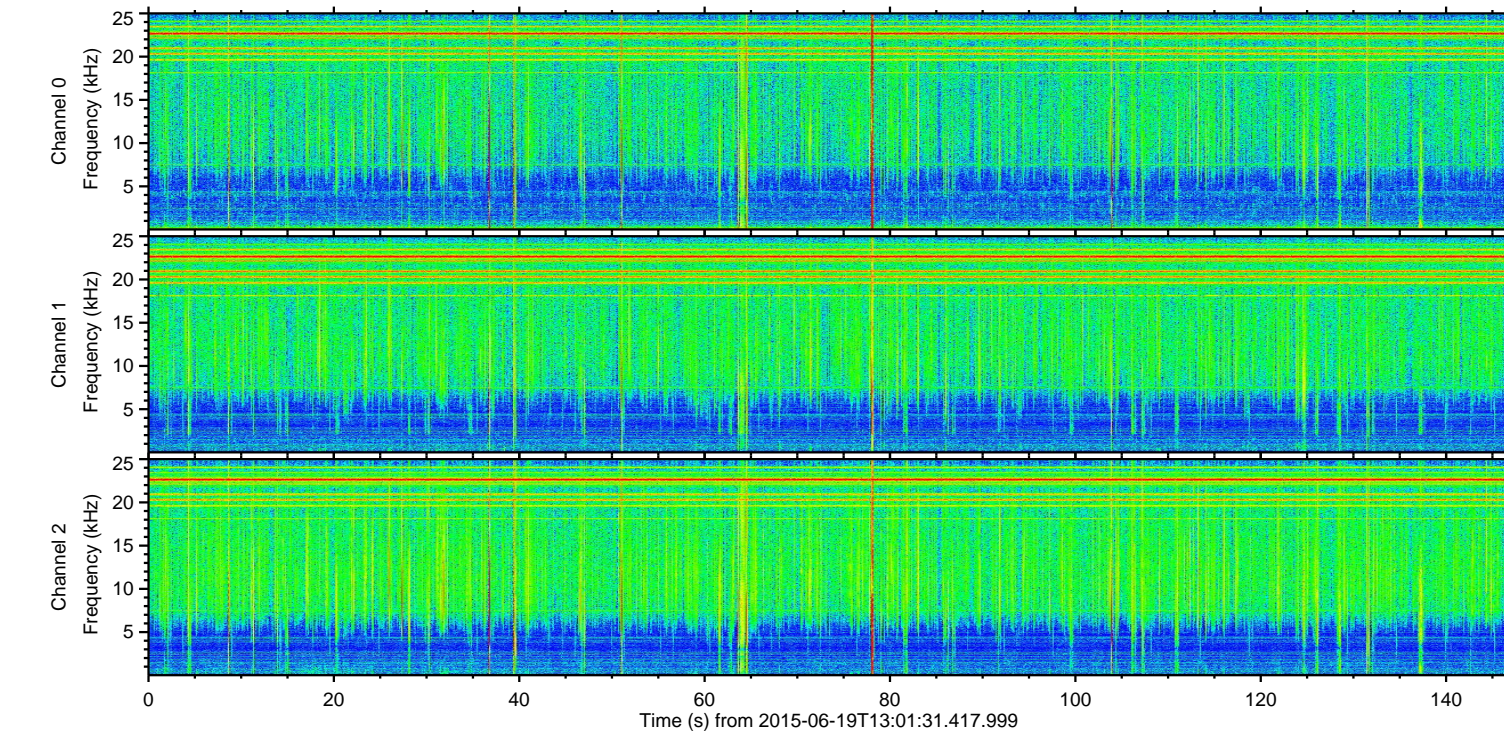
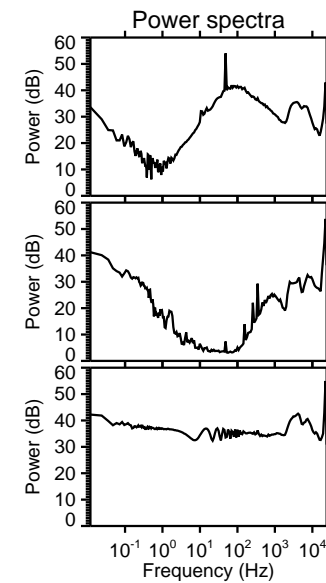
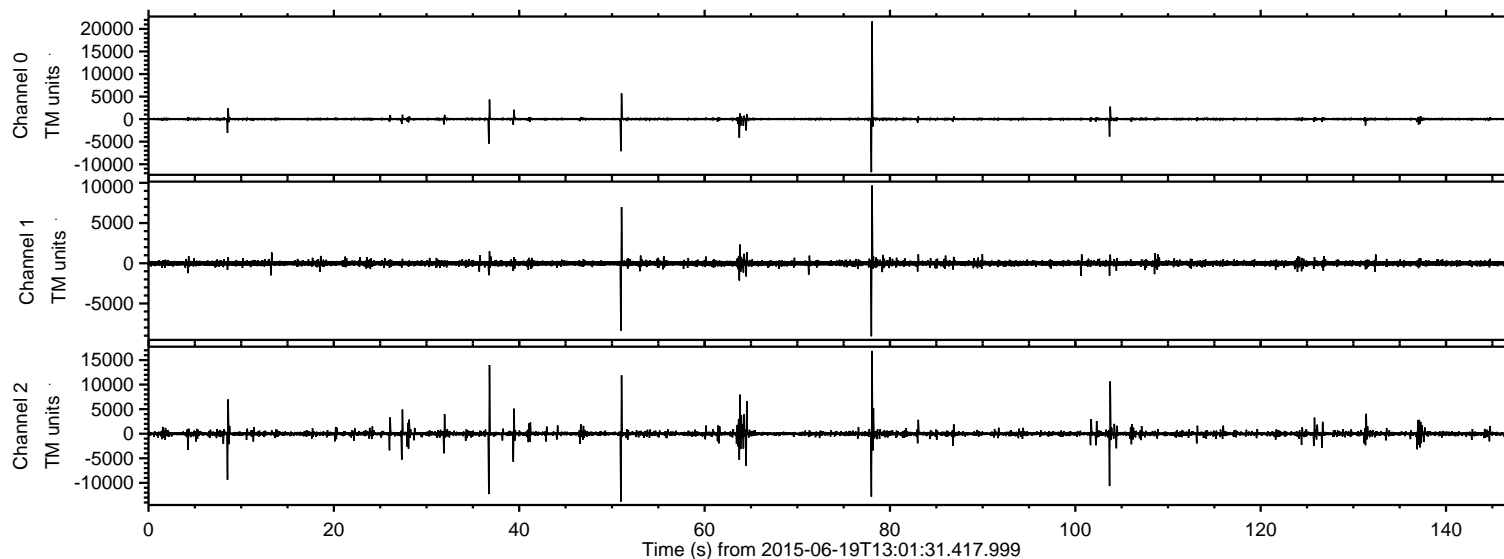


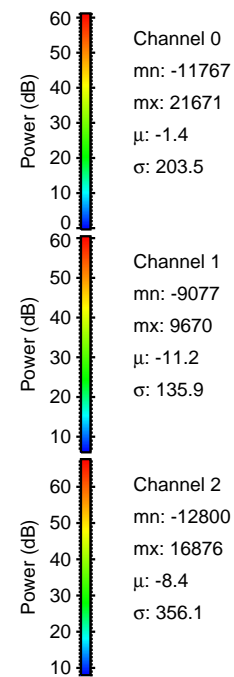
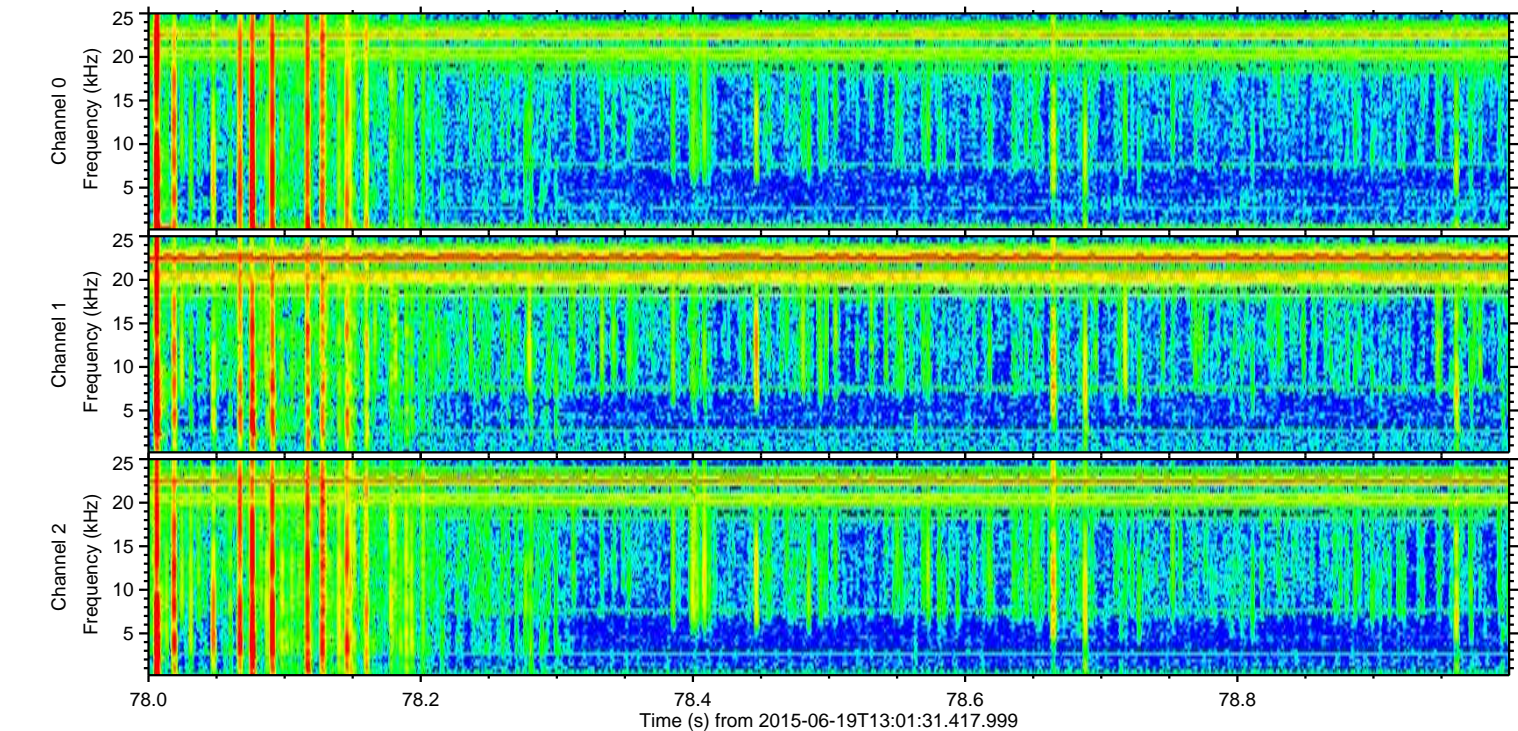
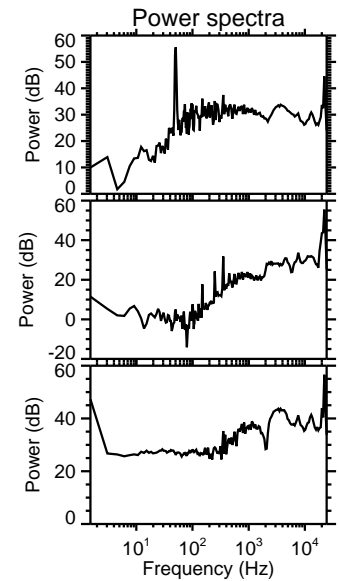
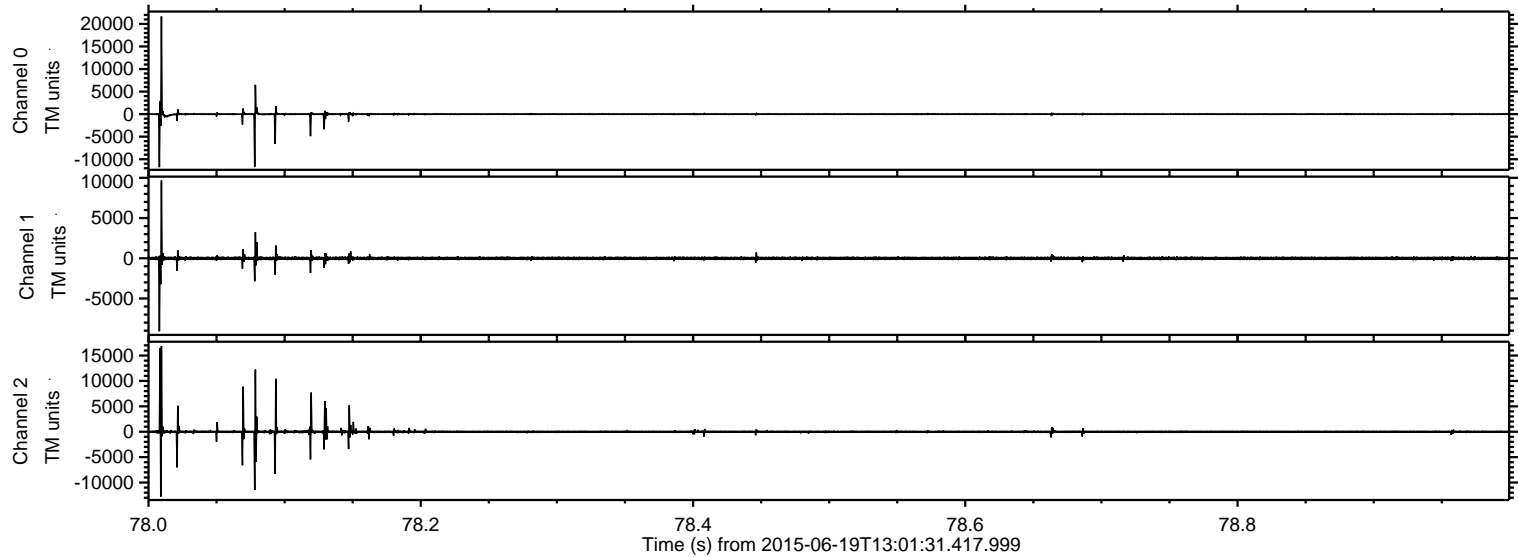
# ELMAVAN 3D WAVEFORMS (Measured data sampled at 50 kHz) 51000 packets of 144 samples from 2015-06-19T13:01:31.417.999.

Processed Fri Jun 19 15:08:24 2015 by ELM ver.2012-10-06 from 001\_\_elm20150619\_130130\_\_dat00.bin

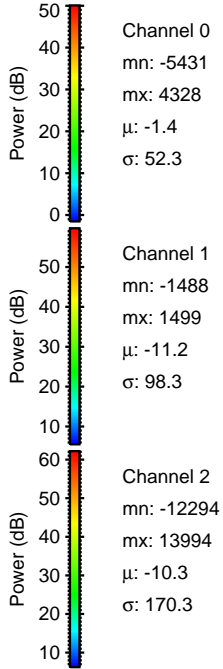
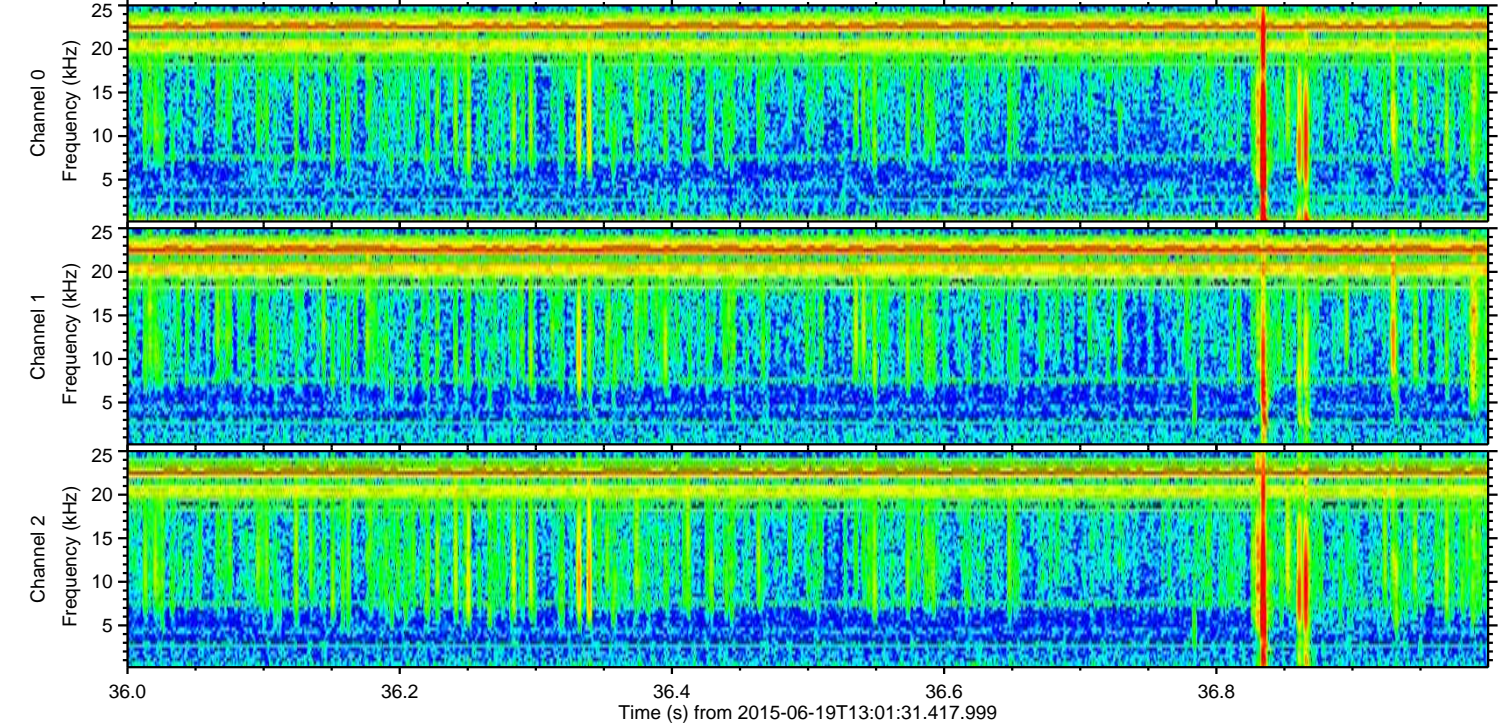
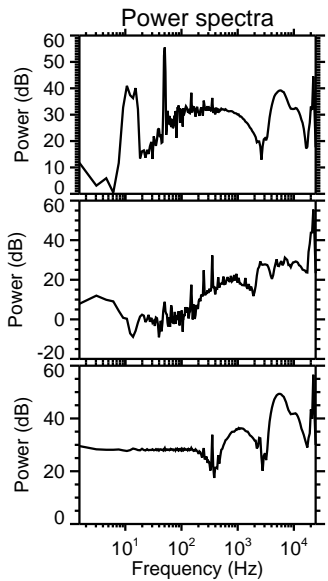
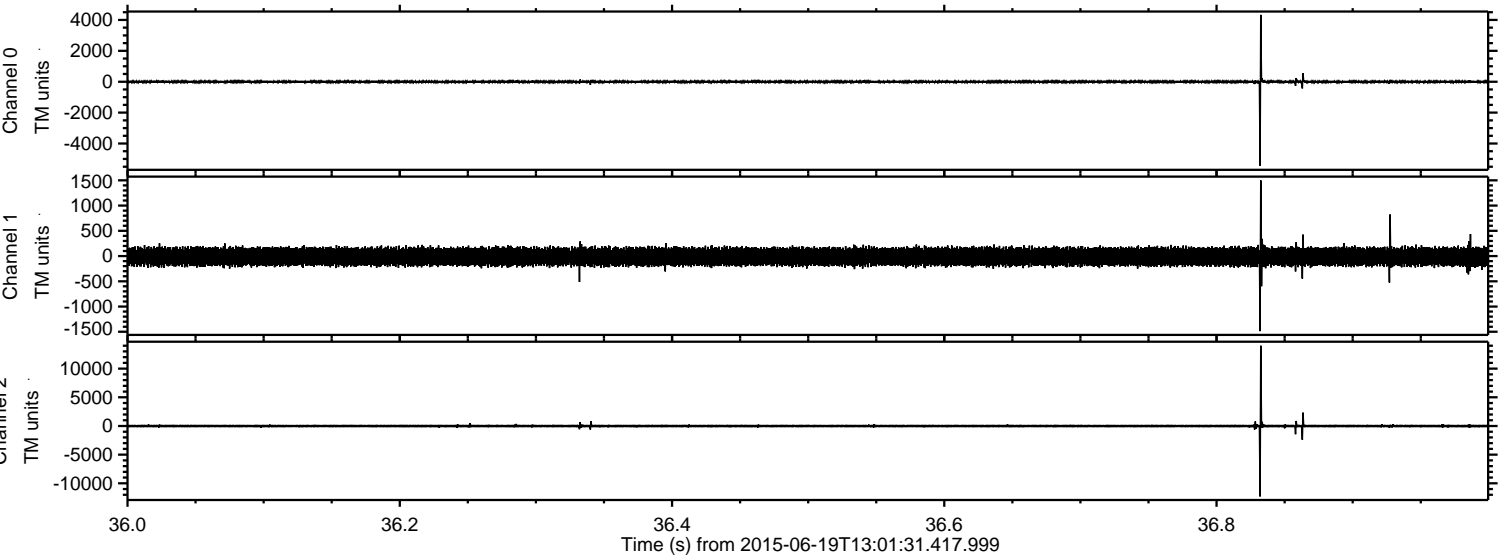




Processed Fri Jun 19 15:08:43 2015 by ELM ver.2012-10-06 from 001\_\_elm20150619\_130130\_\_dat00.bin

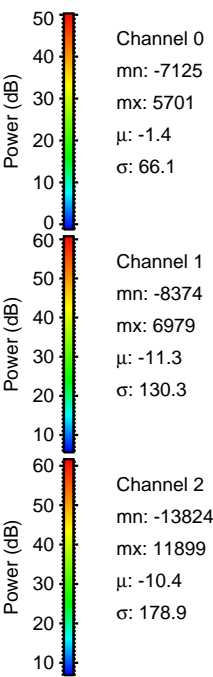
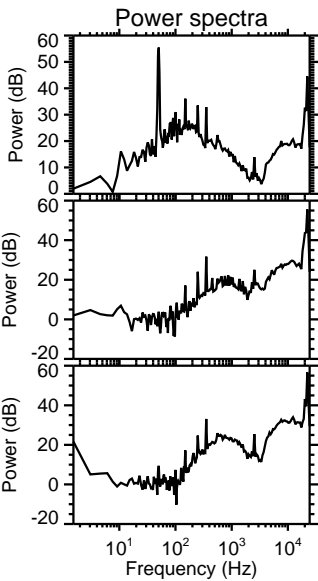
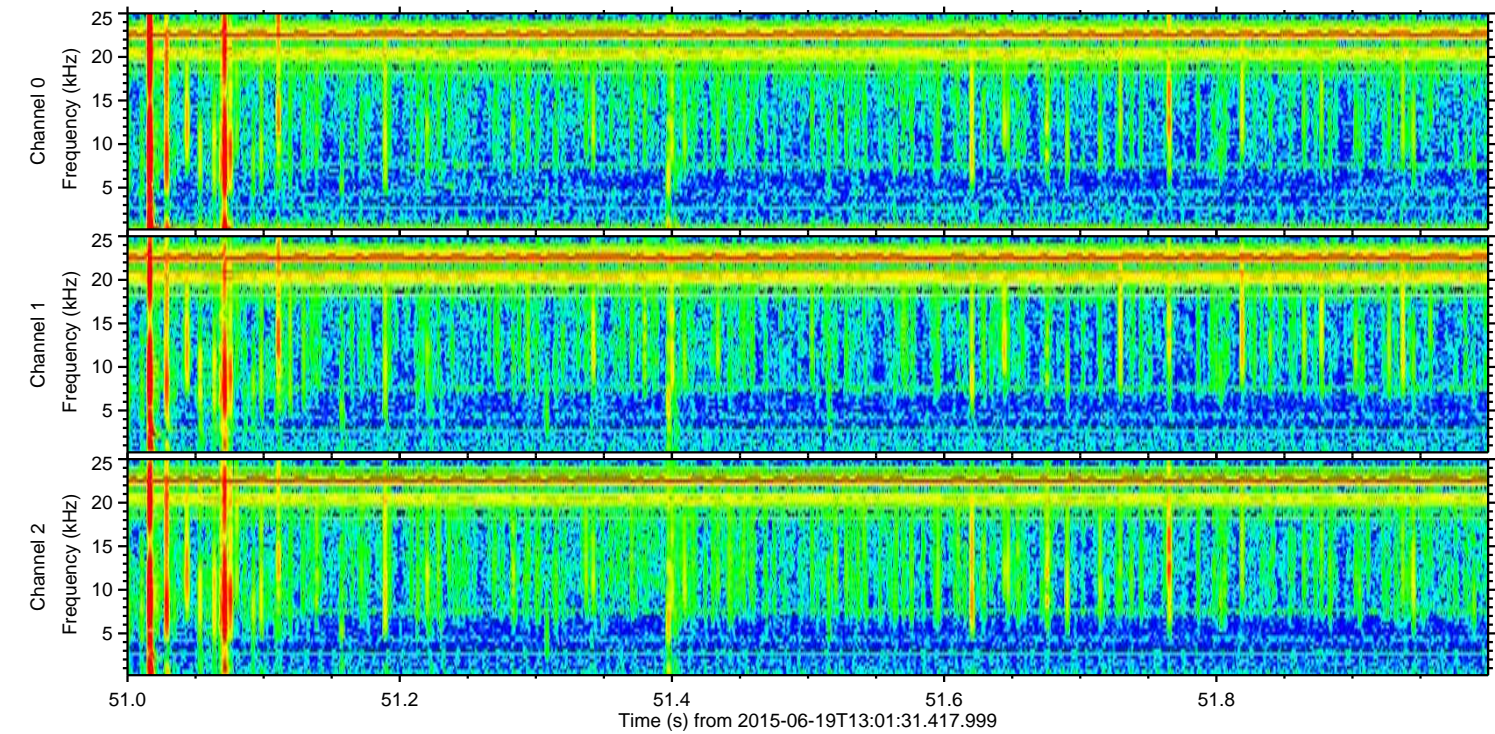
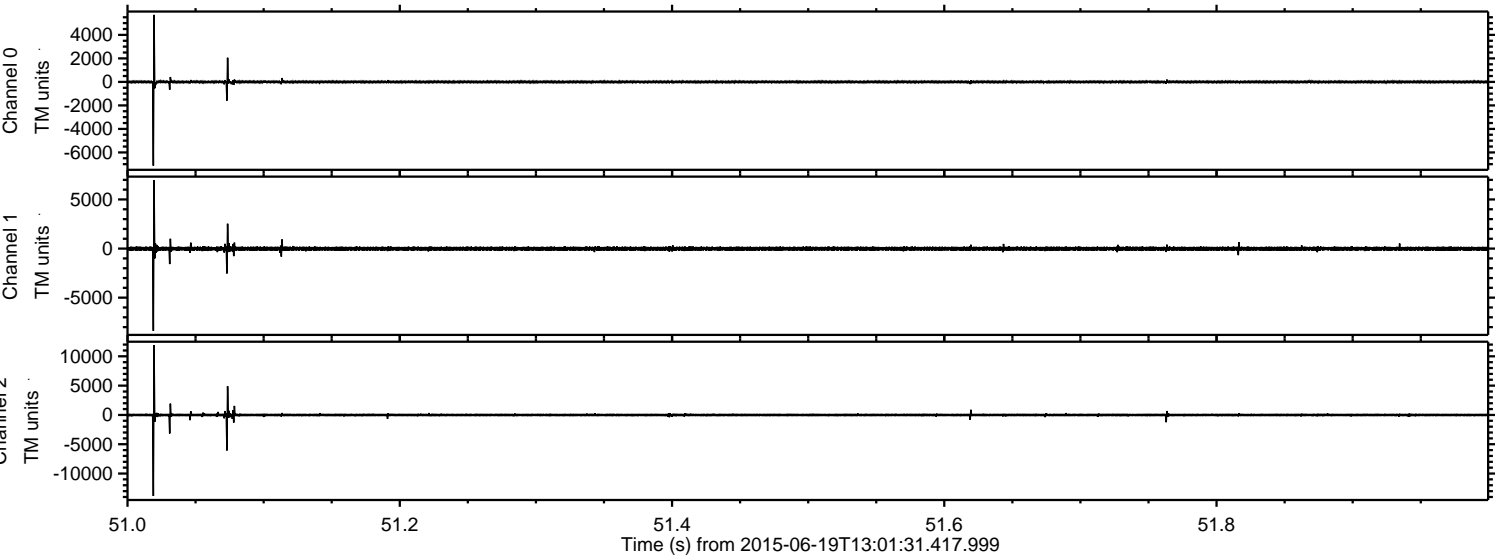


Processed Fri Jun 19 15:08:44 2015 by ELM ver.2012-10-06 from 001\_\_elm20150619\_130130\_\_dat00.bin



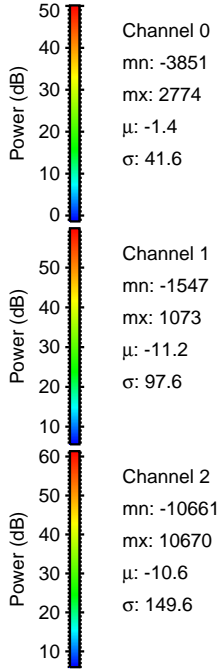
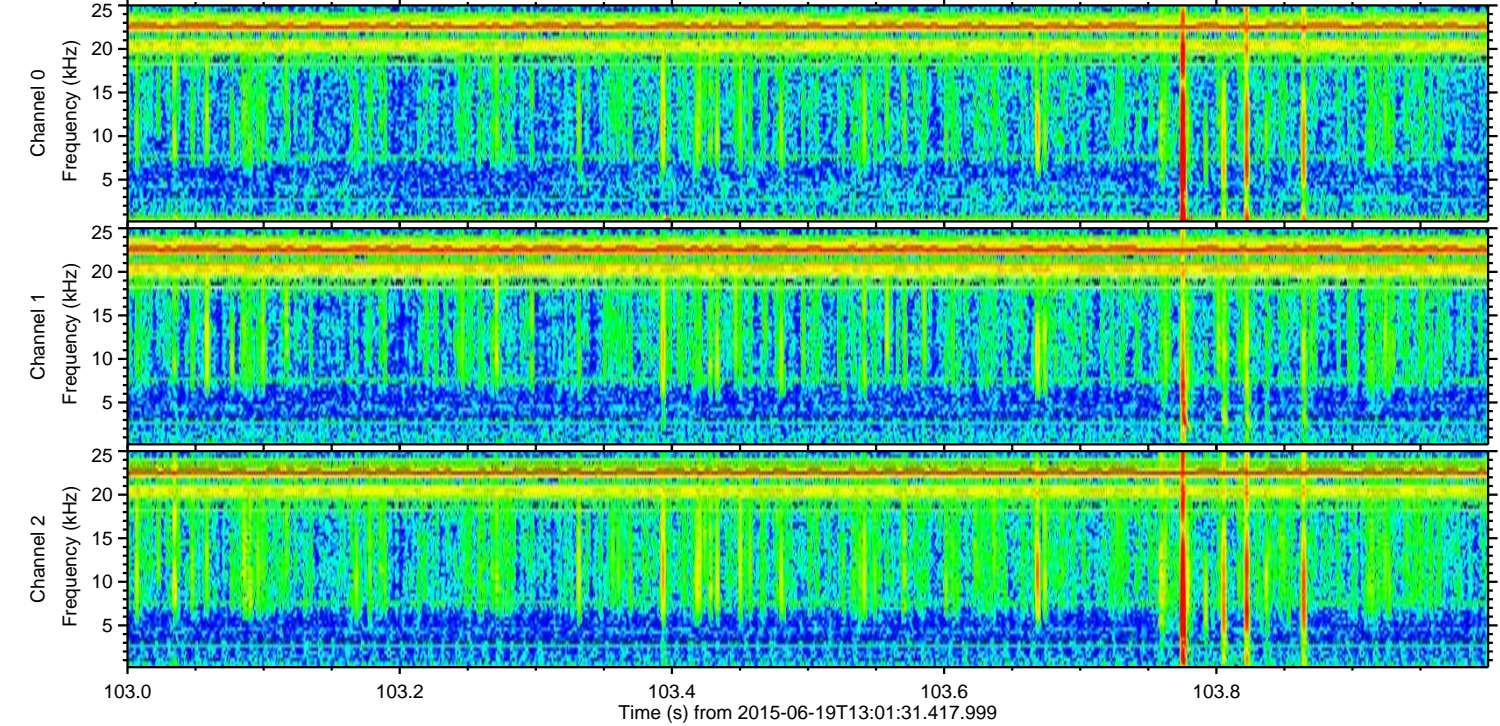
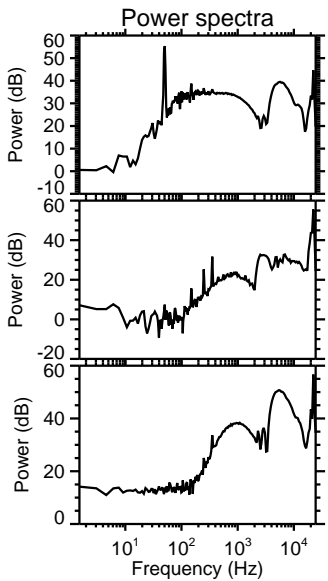
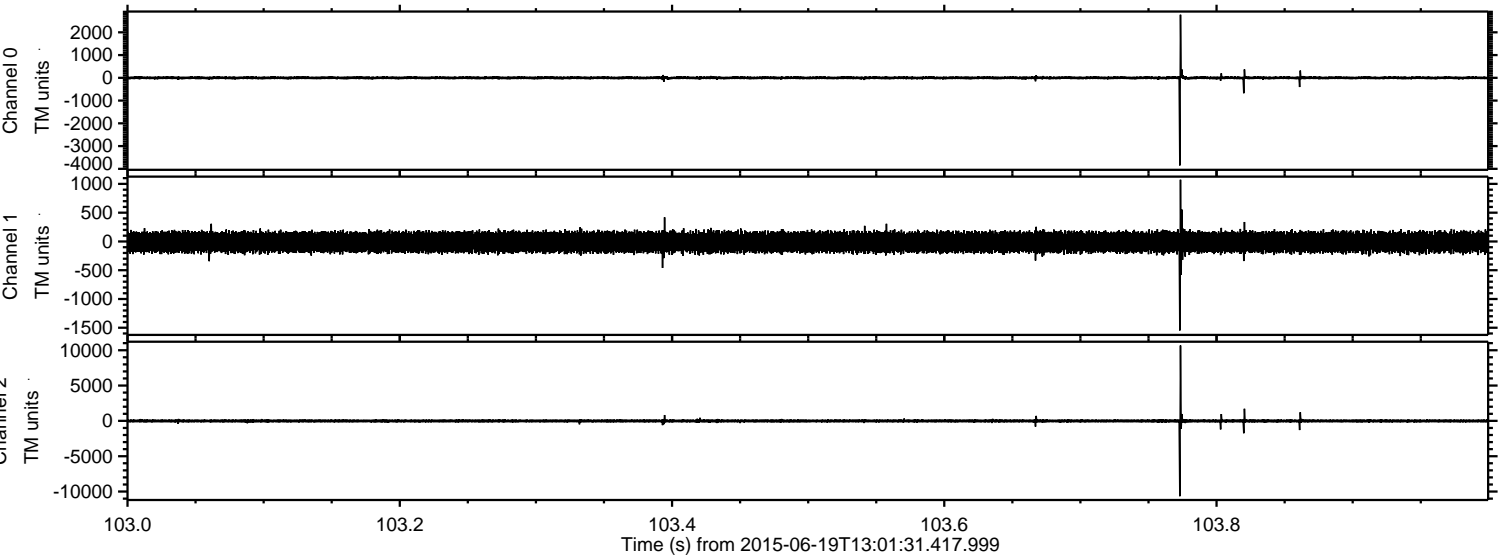


Processed Fri Jun 19 15:08:45 2015 by ELM ver.2012-10-06 from 001\_\_elm20150619\_130130\_\_dat00.bin



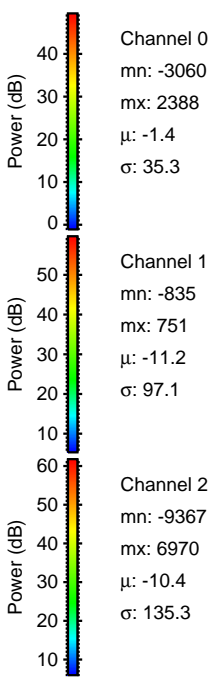
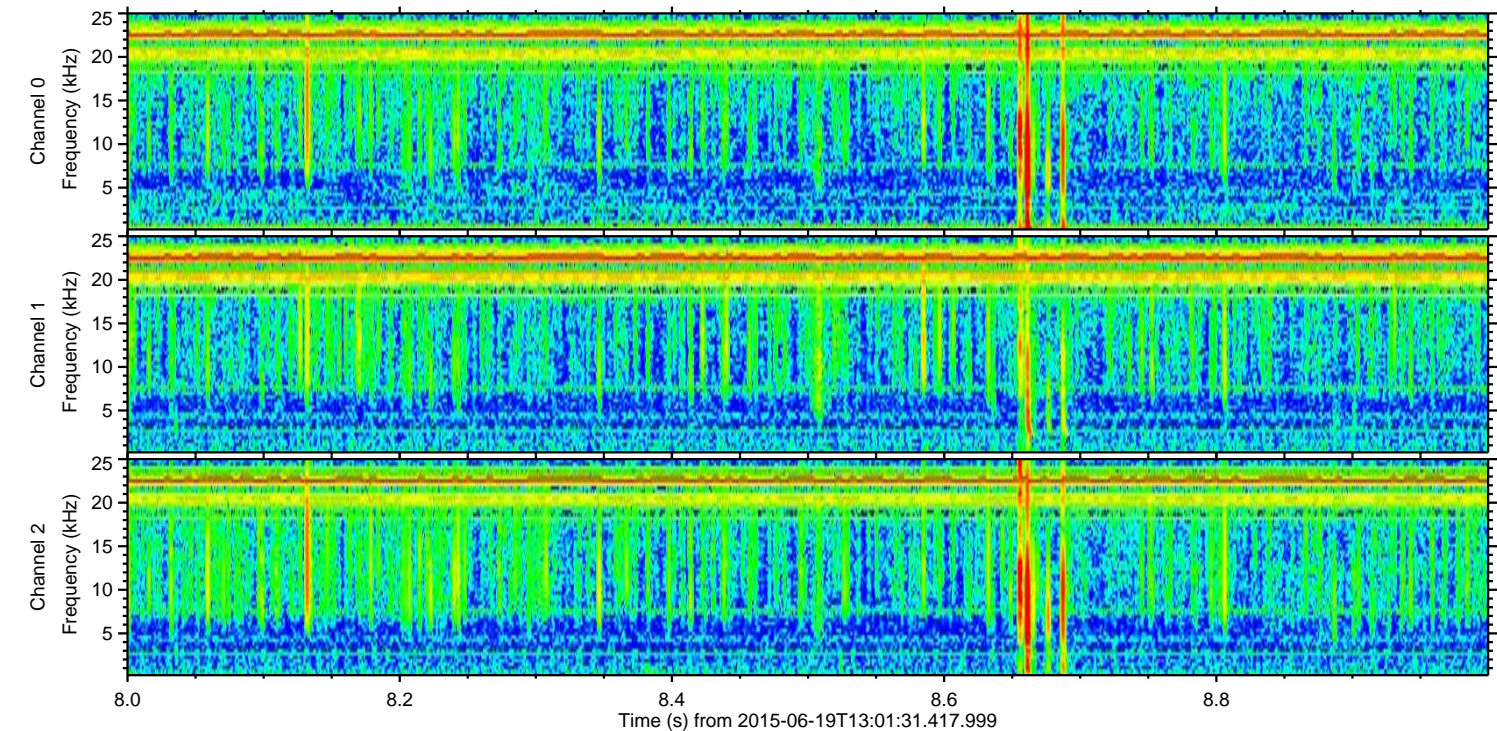
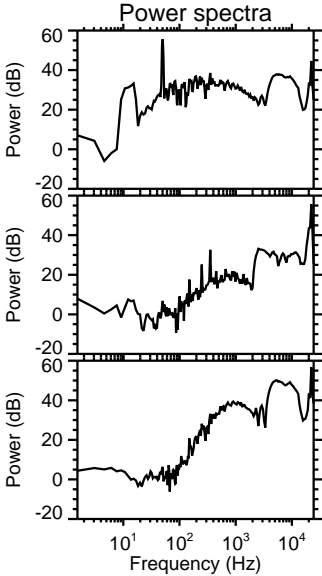
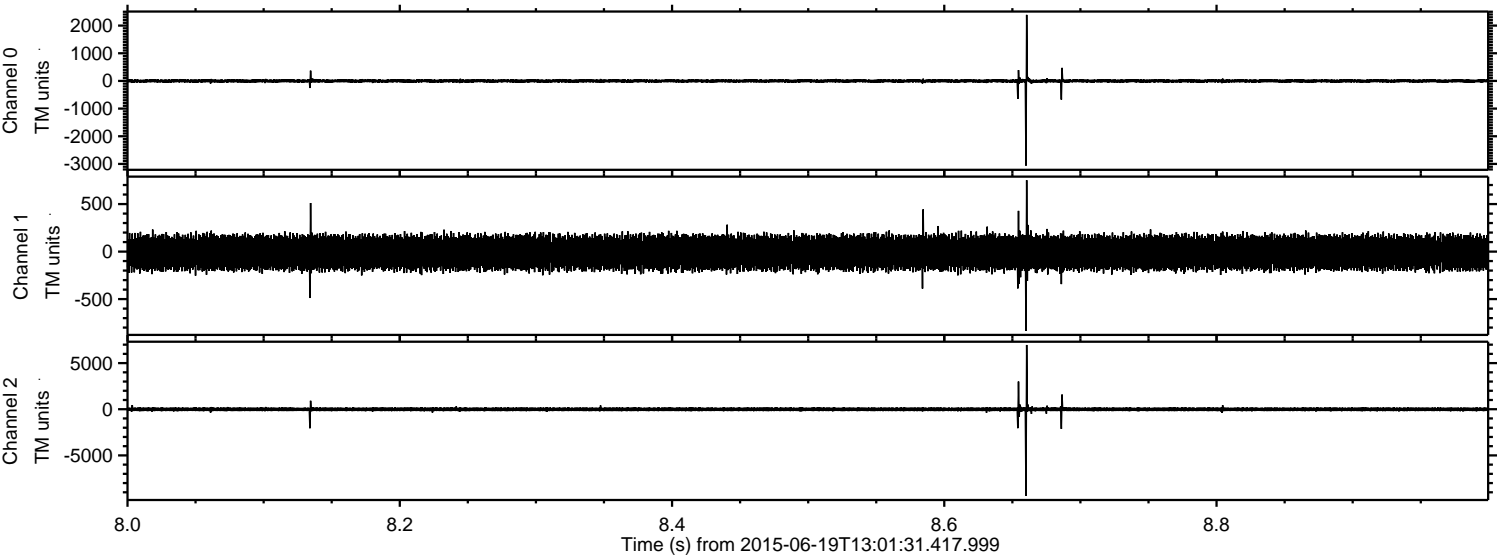
ELMAVAN 3D WAVEFORMS (Measured data sampled at 50 kHz) 51000 packets of 144 samples from 2015-06-19T13:01:31.417.999. Part 104/147

Processed Fri Jun 19 15:08:46 2015 by ELM ver.2012-10-06 from 001\_\_elm20150619\_130130\_\_dat00.bin



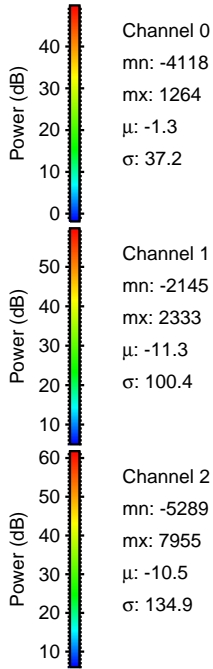
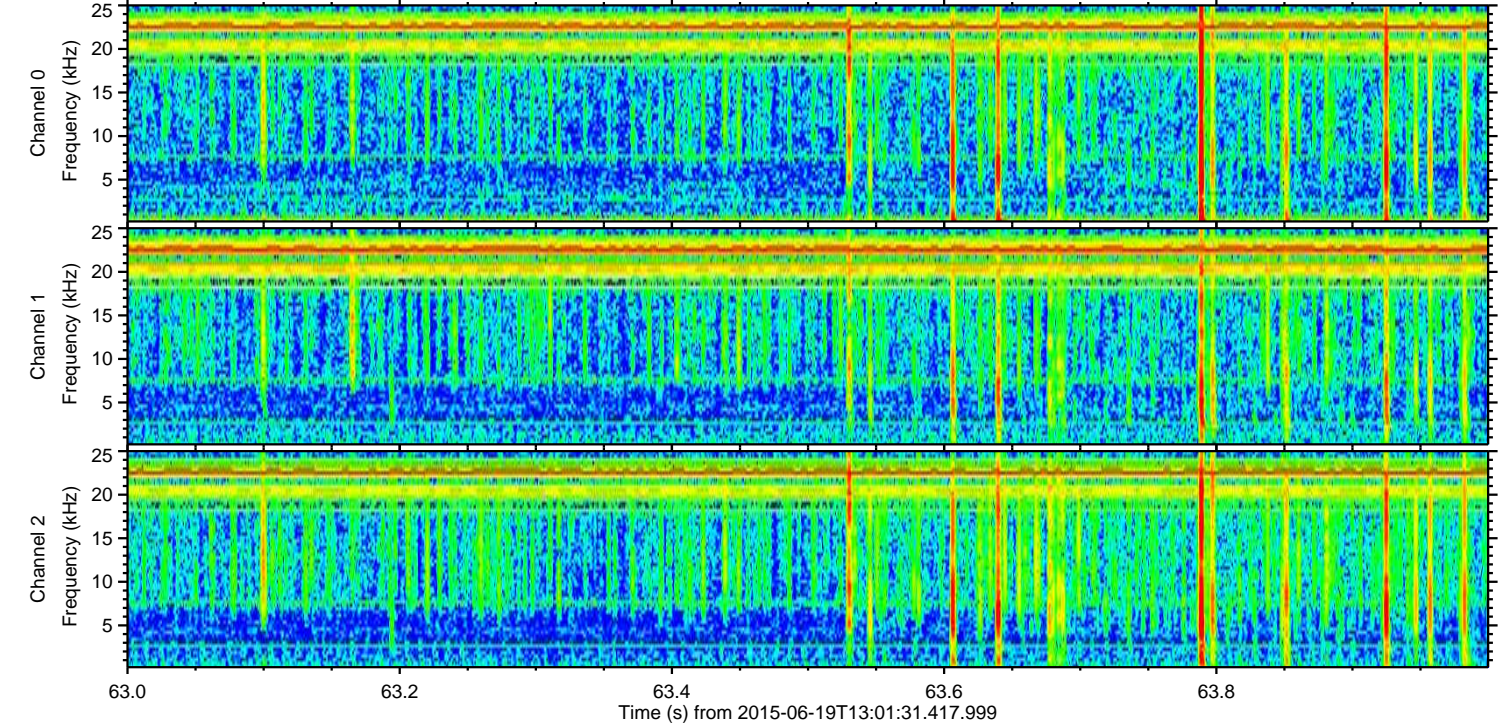
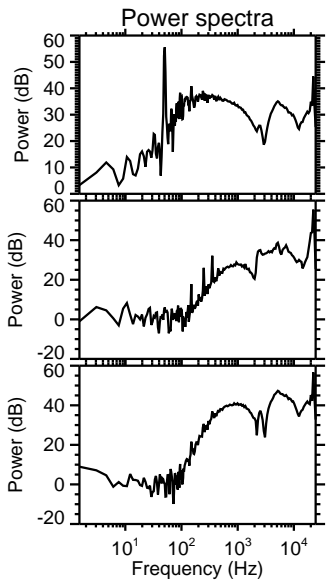
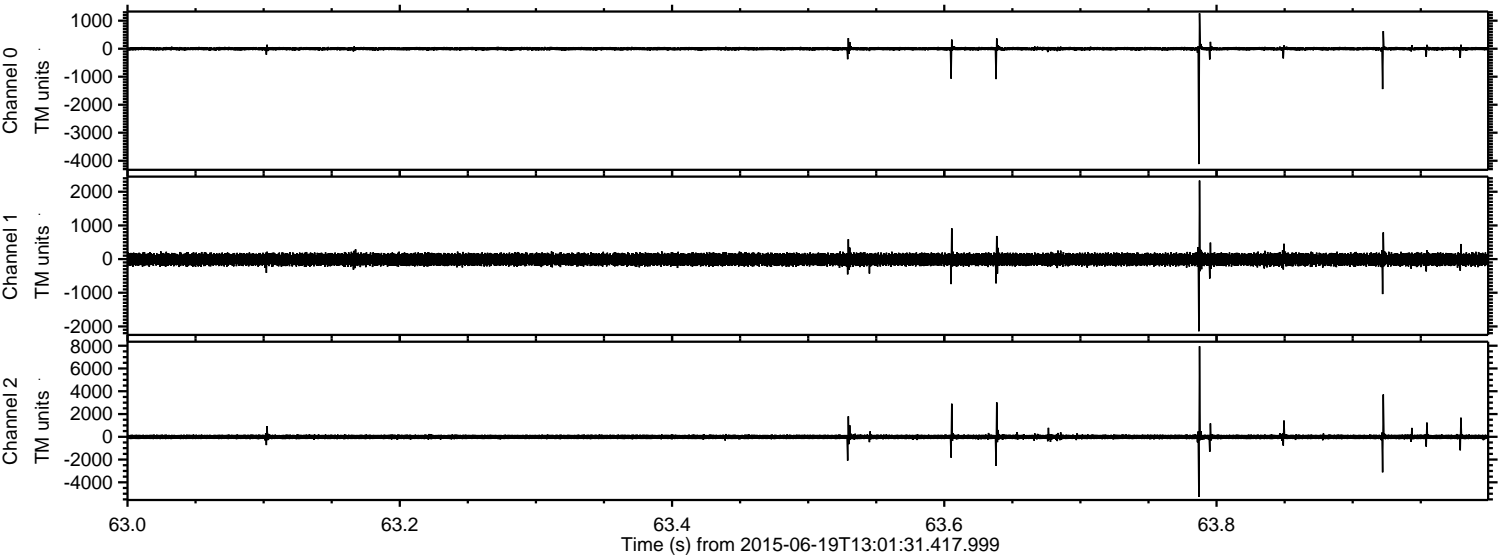


Processed Fri Jun 19 15:08:47 2015 by ELM ver.2012-10-06 from 001\_\_elm20150619\_130130\_\_dat00.bin



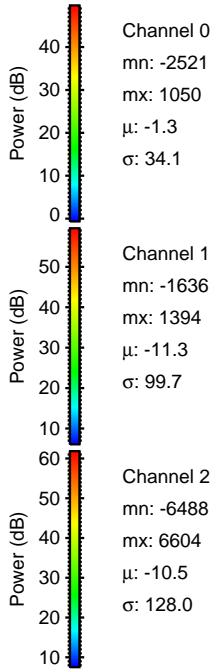
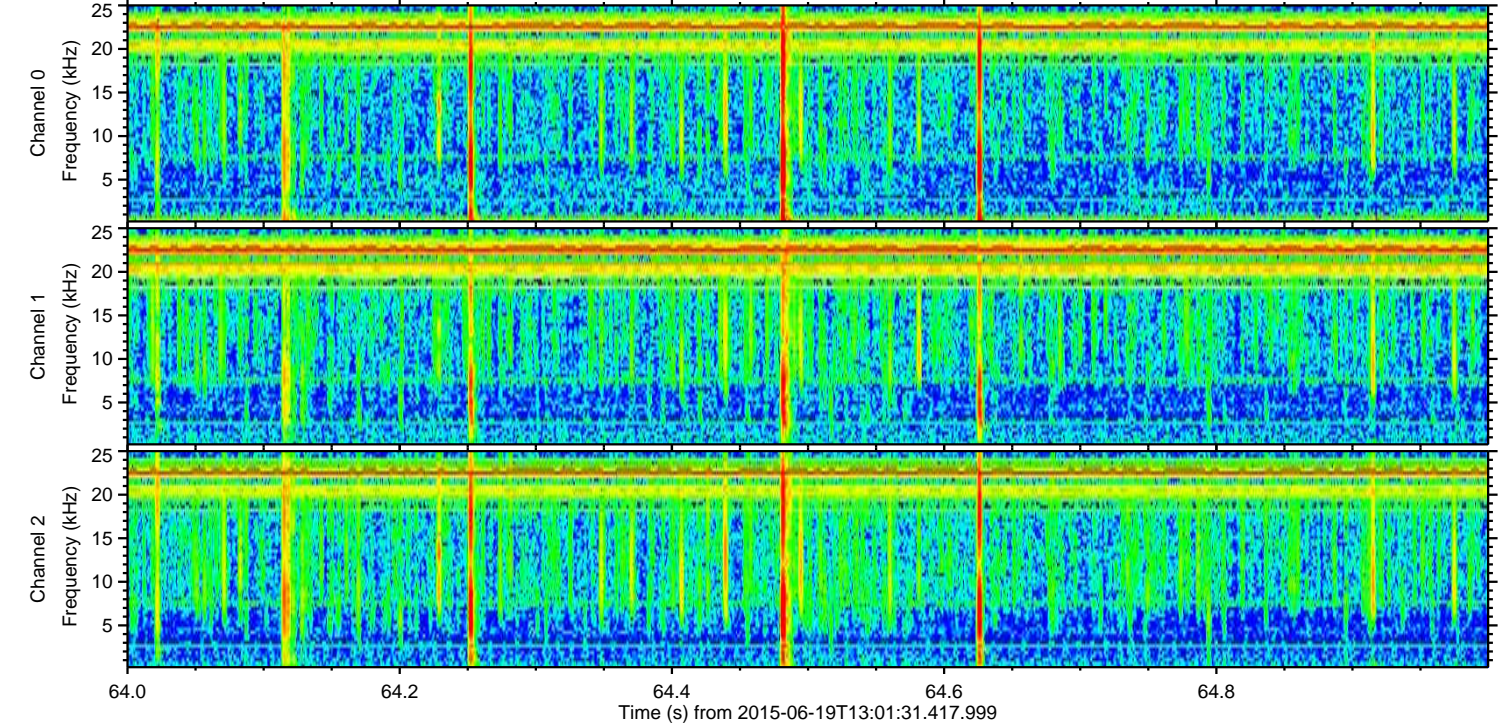
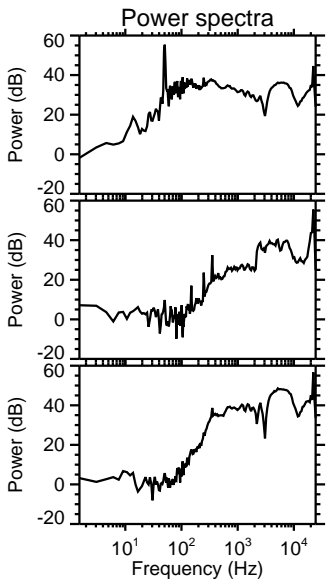
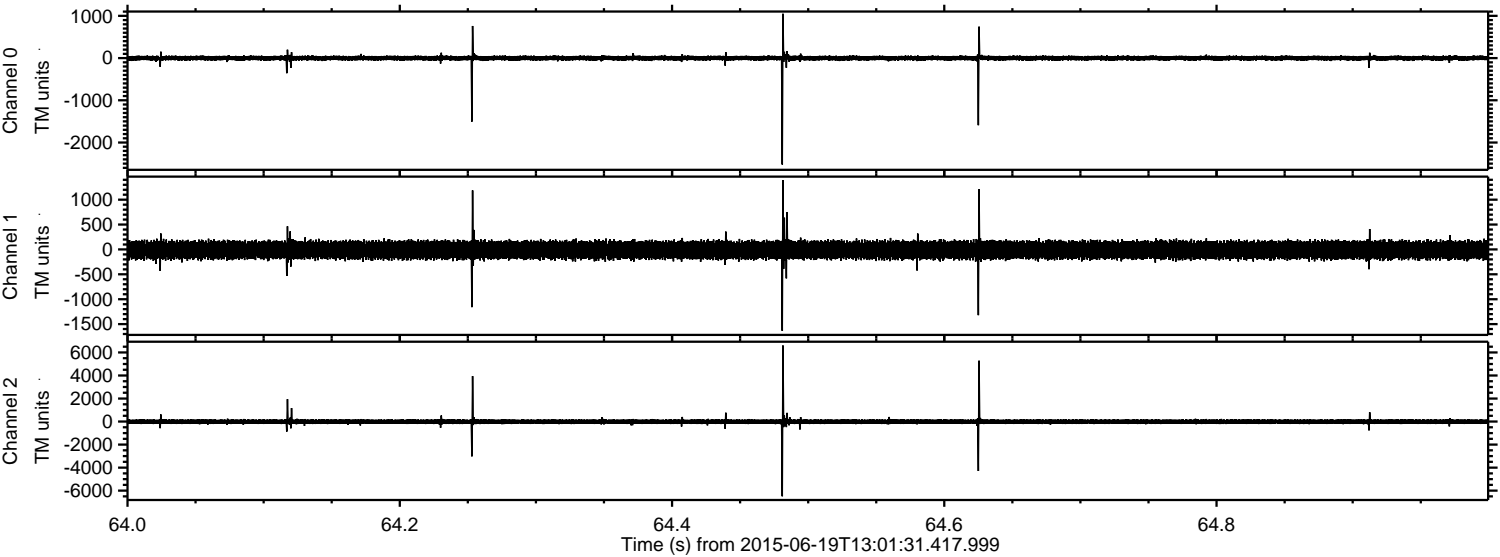


Processed Fri Jun 19 15:08:48 2015 by ELM ver.2012-10-06 from 001\_\_elm20150619\_130130\_\_dat00.bin



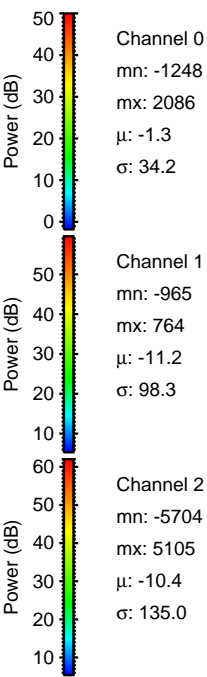
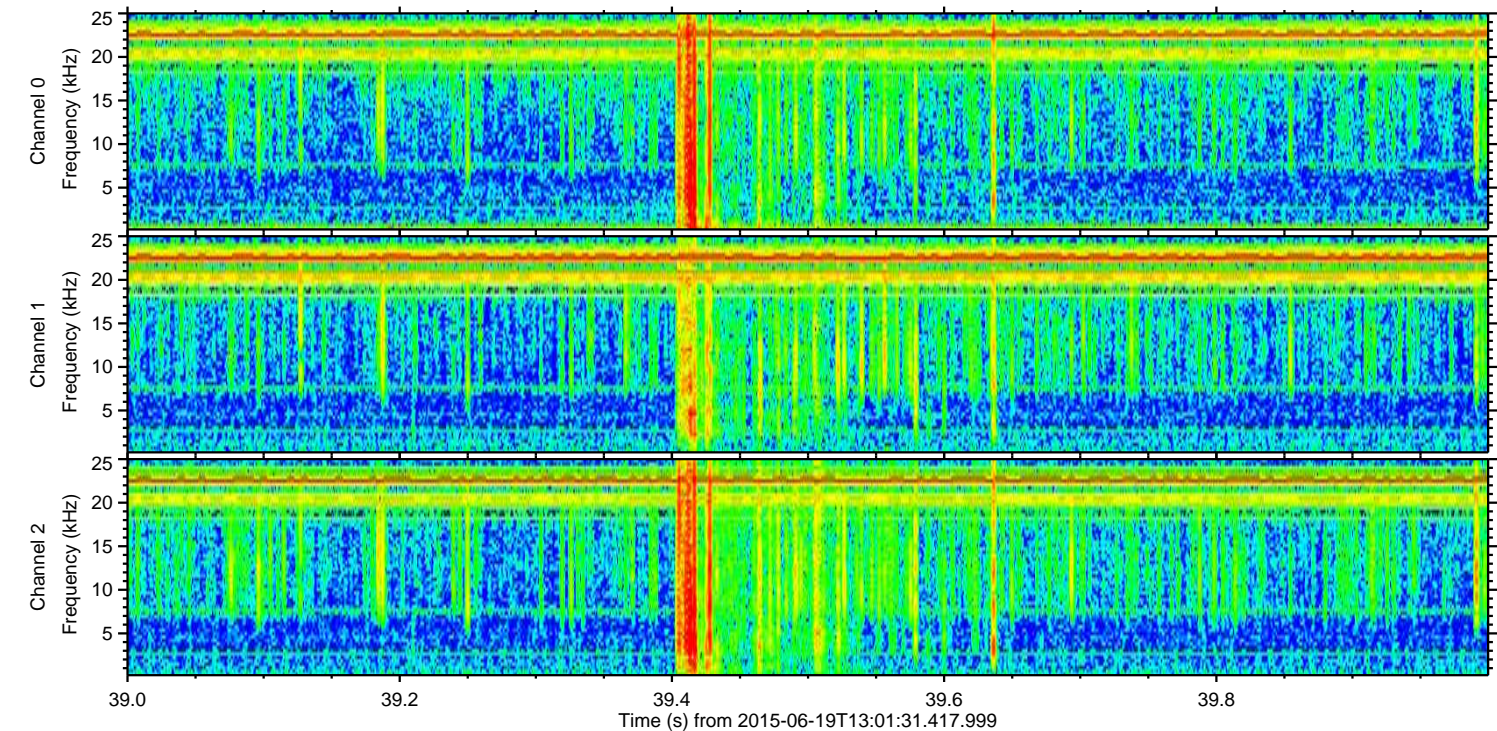
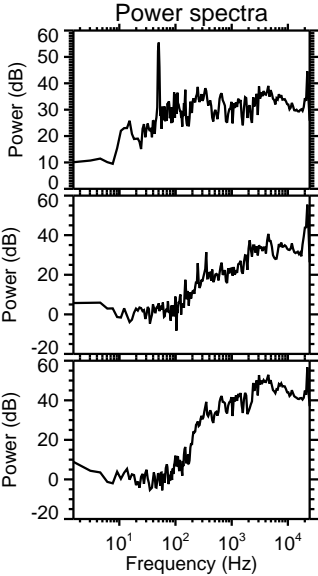
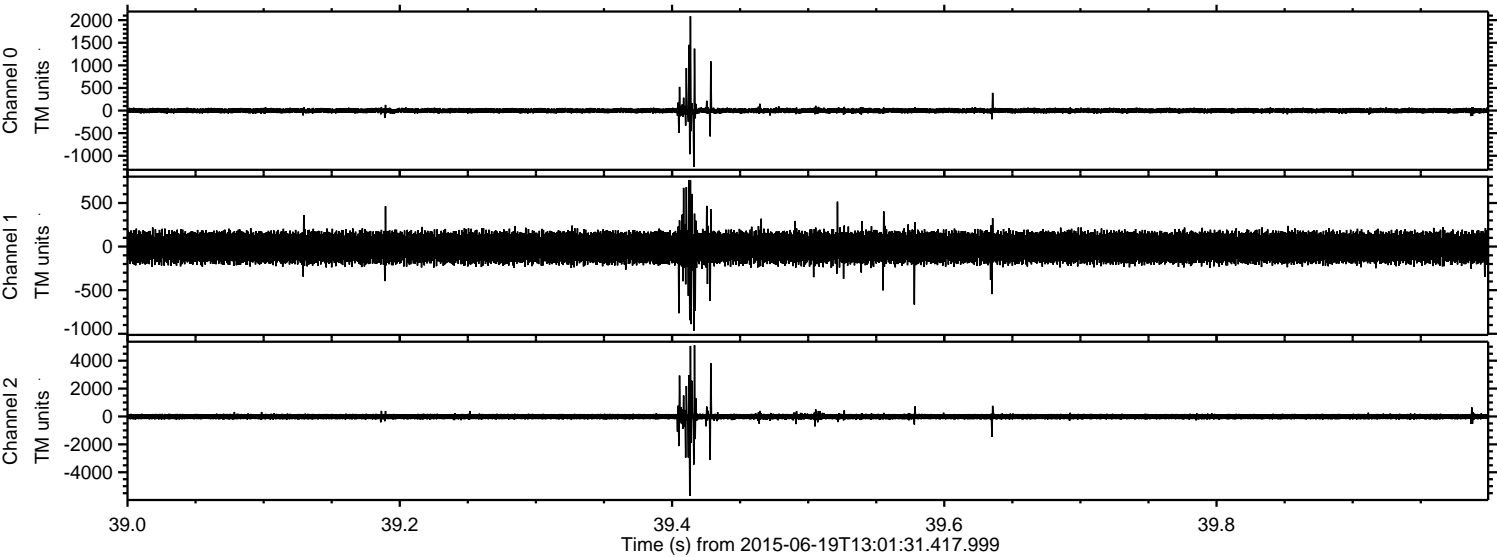


Processed Fri Jun 19 15:08:49 2015 by ELM ver.2012-10-06 from 001\_\_elm20150619\_130130\_\_dat00.bin



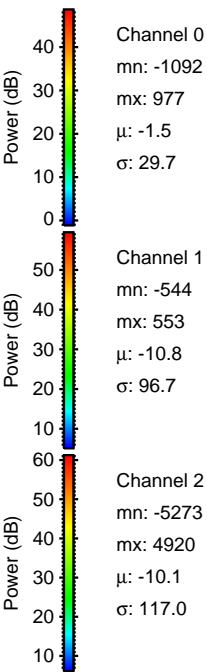
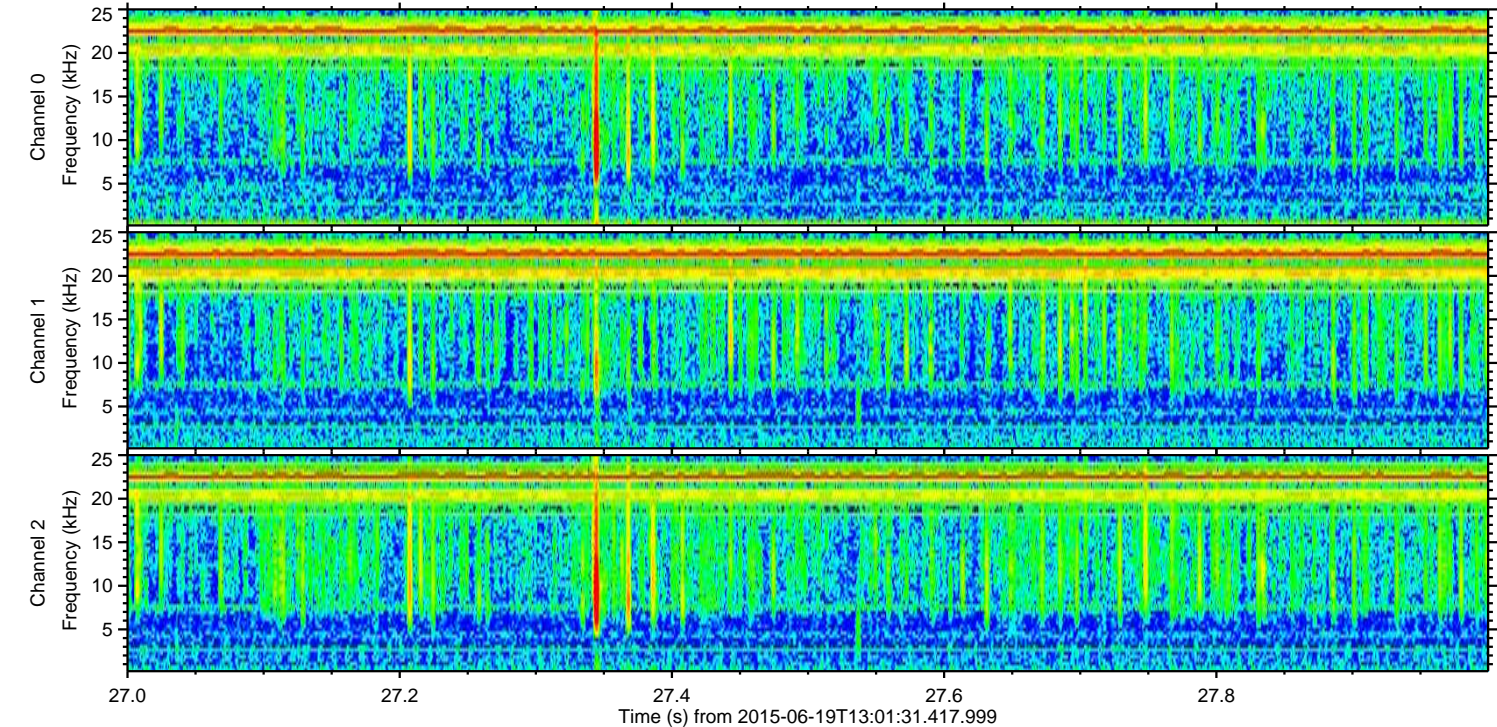
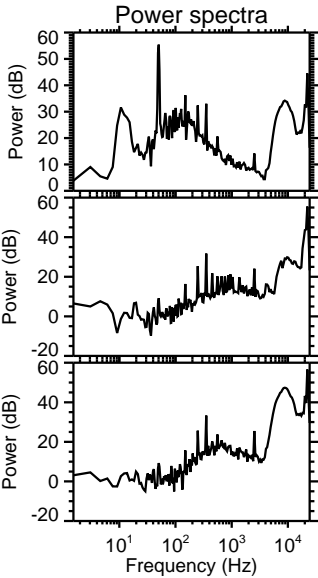
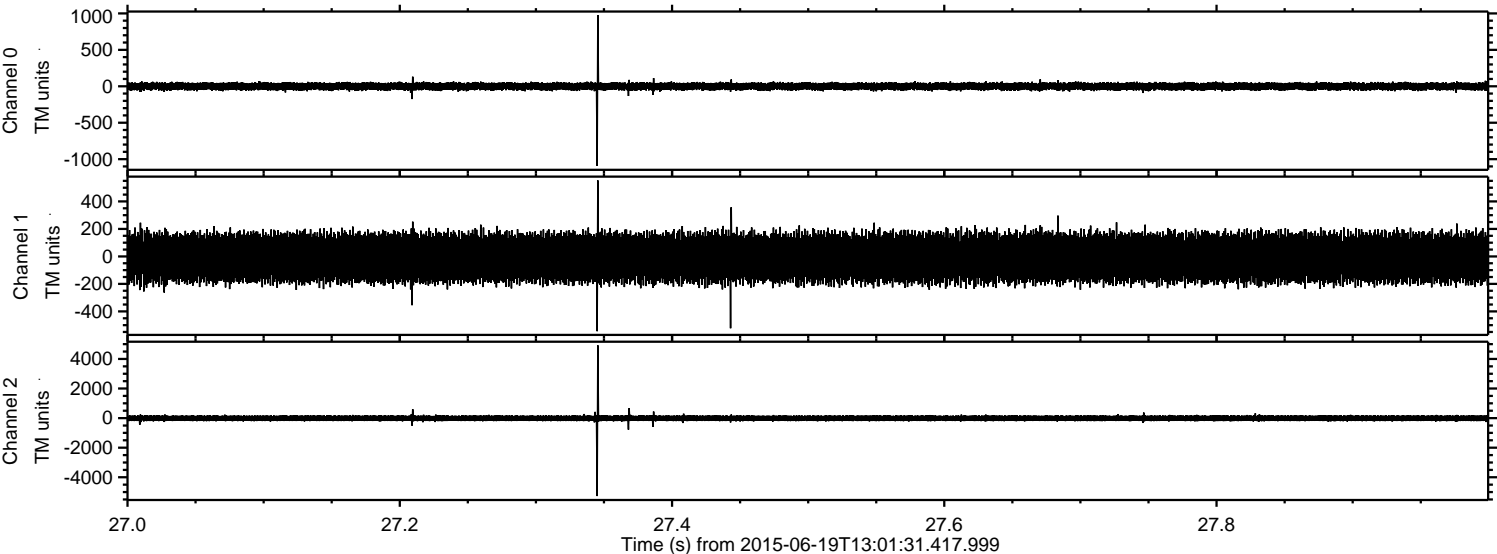


Processed Fri Jun 19 15:08:51 2015 by ELM ver.2012-10-06 from 001\_\_elm20150619\_130130\_\_dat00.bin





Processed Fri Jun 19 15:08:53 2015 by ELM ver.2012-10-06 from 001\_\_elm20150619\_130130\_\_dat00.bin



Channel 0  
mn: -1092  
mx: 977  
 $\mu$ : -1.5  
 $\sigma$ : 29.7

Channel 1  
mn: -544  
mx: 553  
 $\mu$ : -10.8  
 $\sigma$ : 96.7

Channel 2  
mn: -5273  
mx: 4920  
 $\mu$ : -10.1  
 $\sigma$ : 117.0



Processed Fri Jun 19 15:08:54 2015 by ELM ver.2012-10-06 from 001\_\_elm20150619\_130130\_\_dat00.bin

