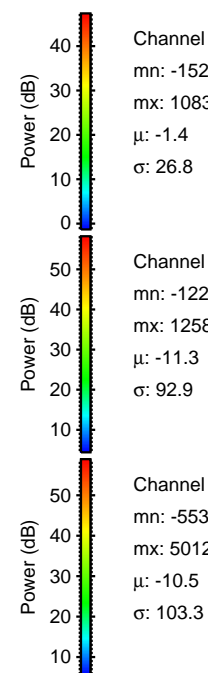
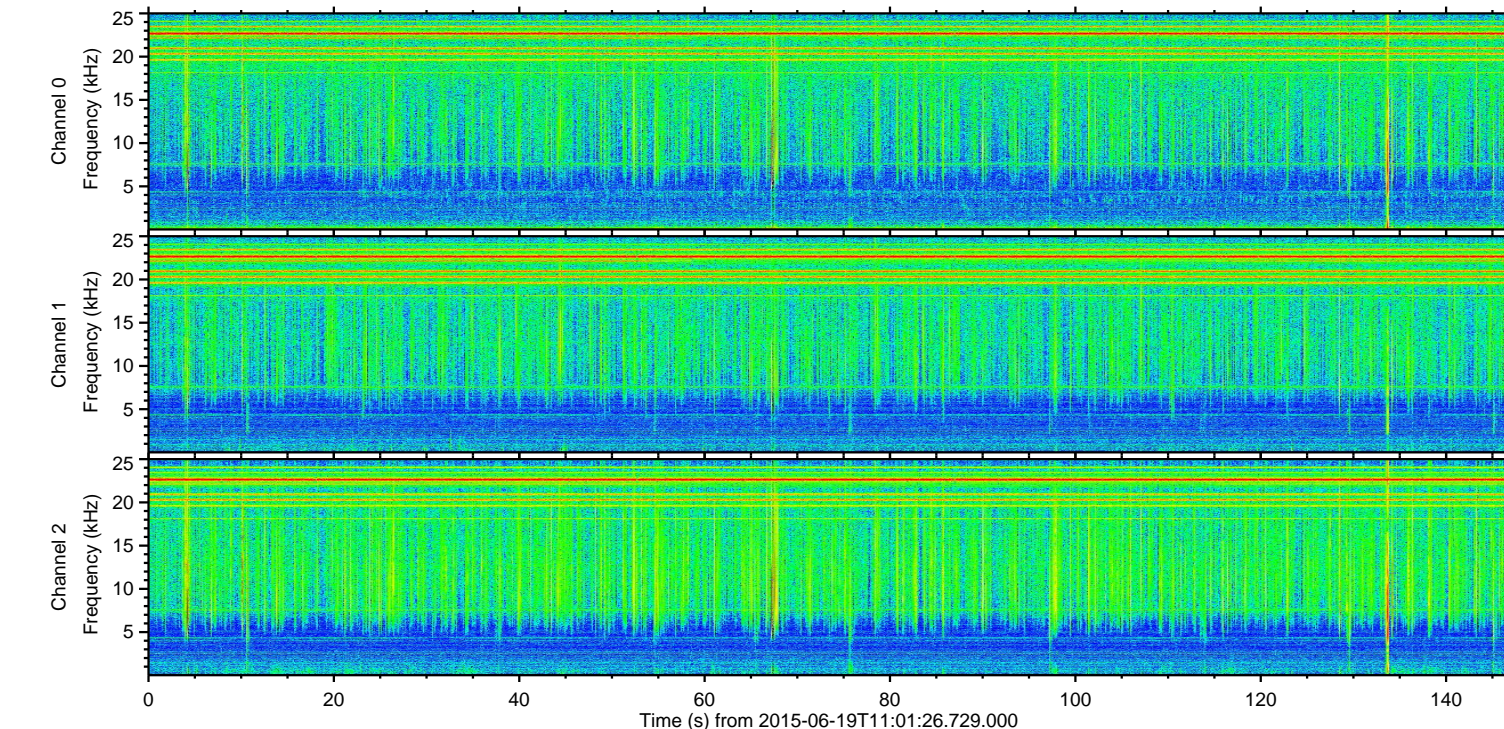
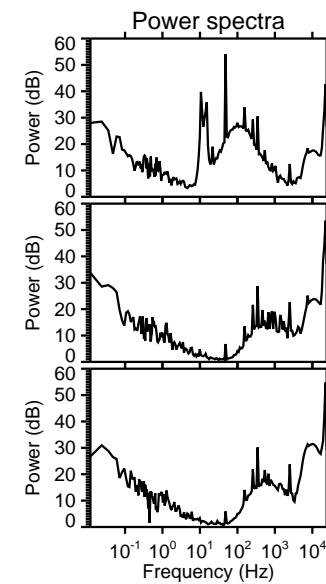
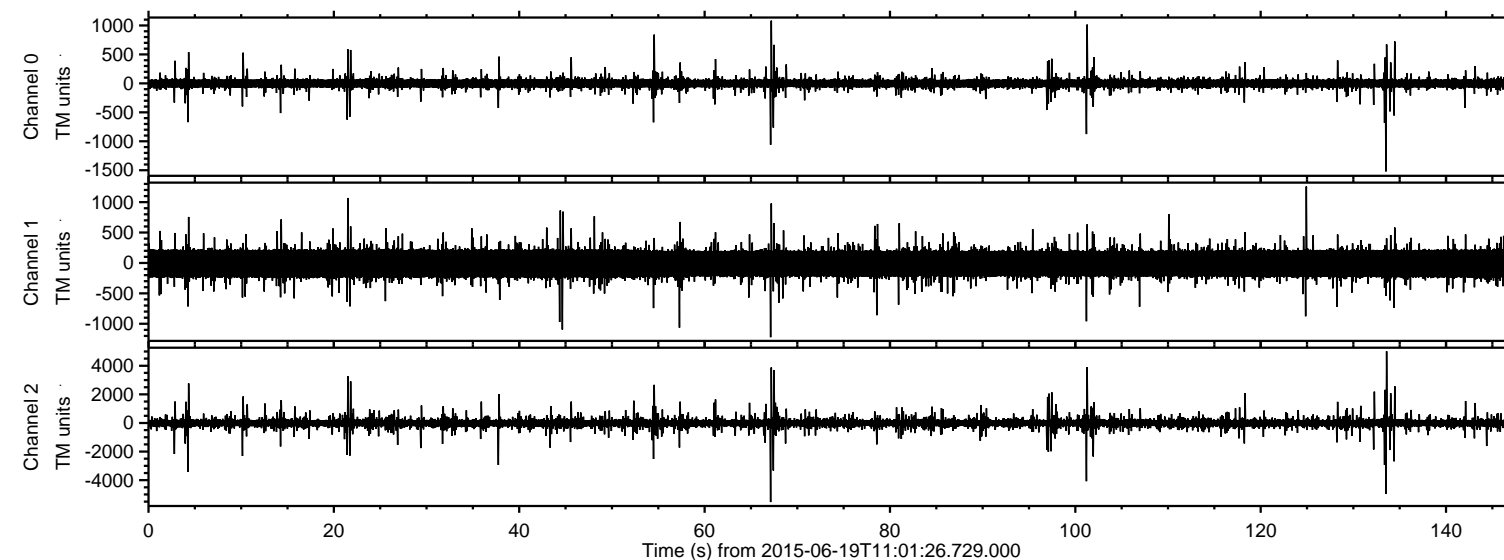


ELMAVAN 3D WAVEFORMS (Measured data sampled at 50 kHz) 51000 packets of 144 samples from 2015-06-19T11:01:26.729.000.

Processed Fri Jun 19 13:08:17 2015 by ELM ver.2012-10-06 from 001__elm20150619_110125__dat00.bin

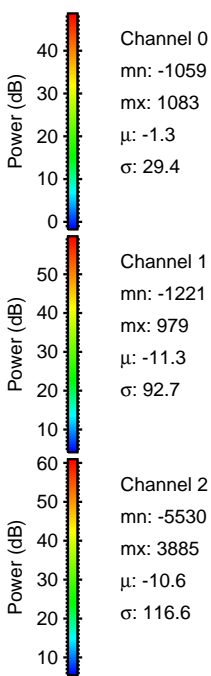
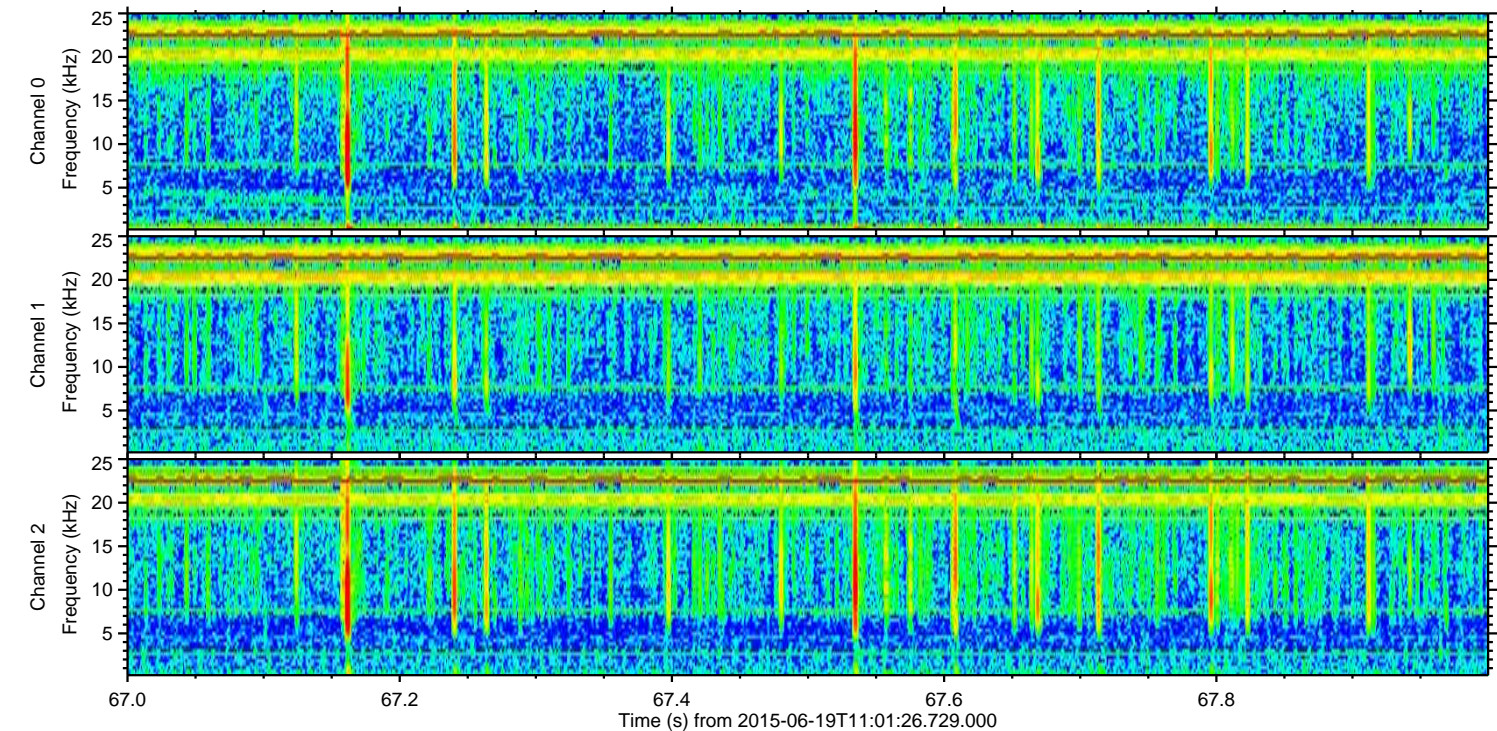
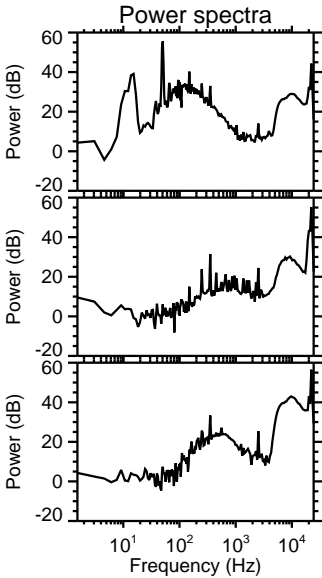
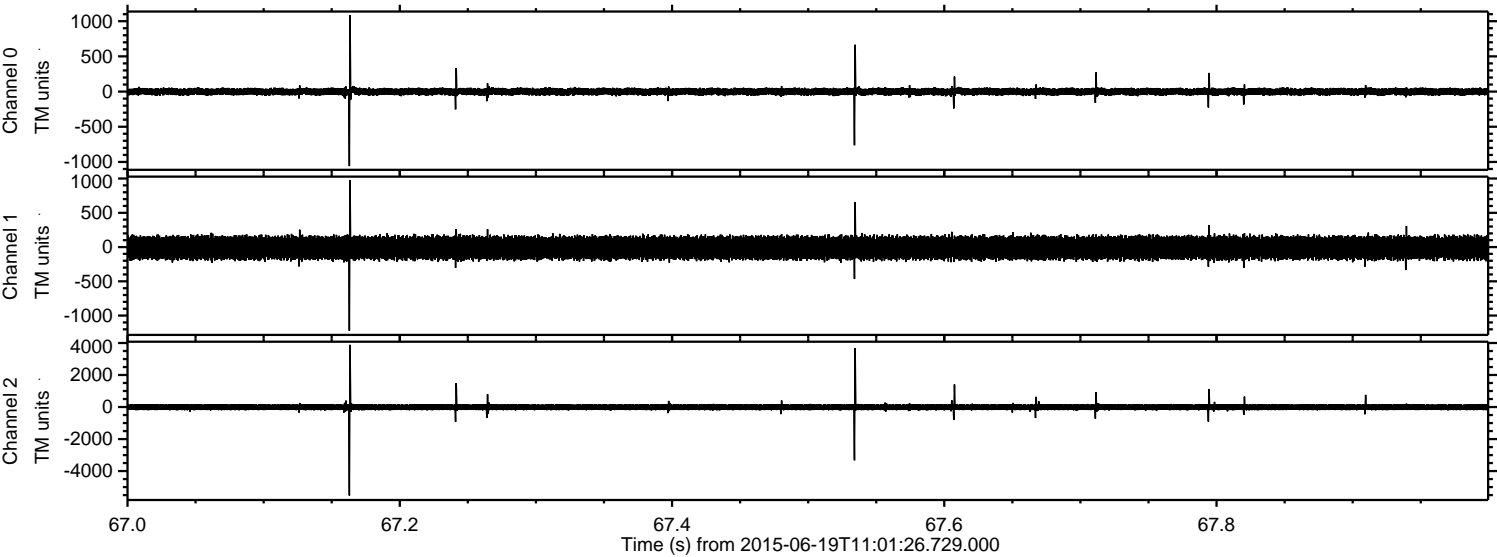


Channel 0
mn: -1520
mx: 1083
 μ : -1.4
 σ : 26.8

Channel 1
mn: -1221
mx: 1258
 μ : -11.3
 σ : 92.9

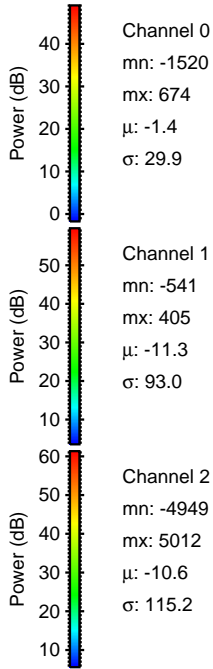
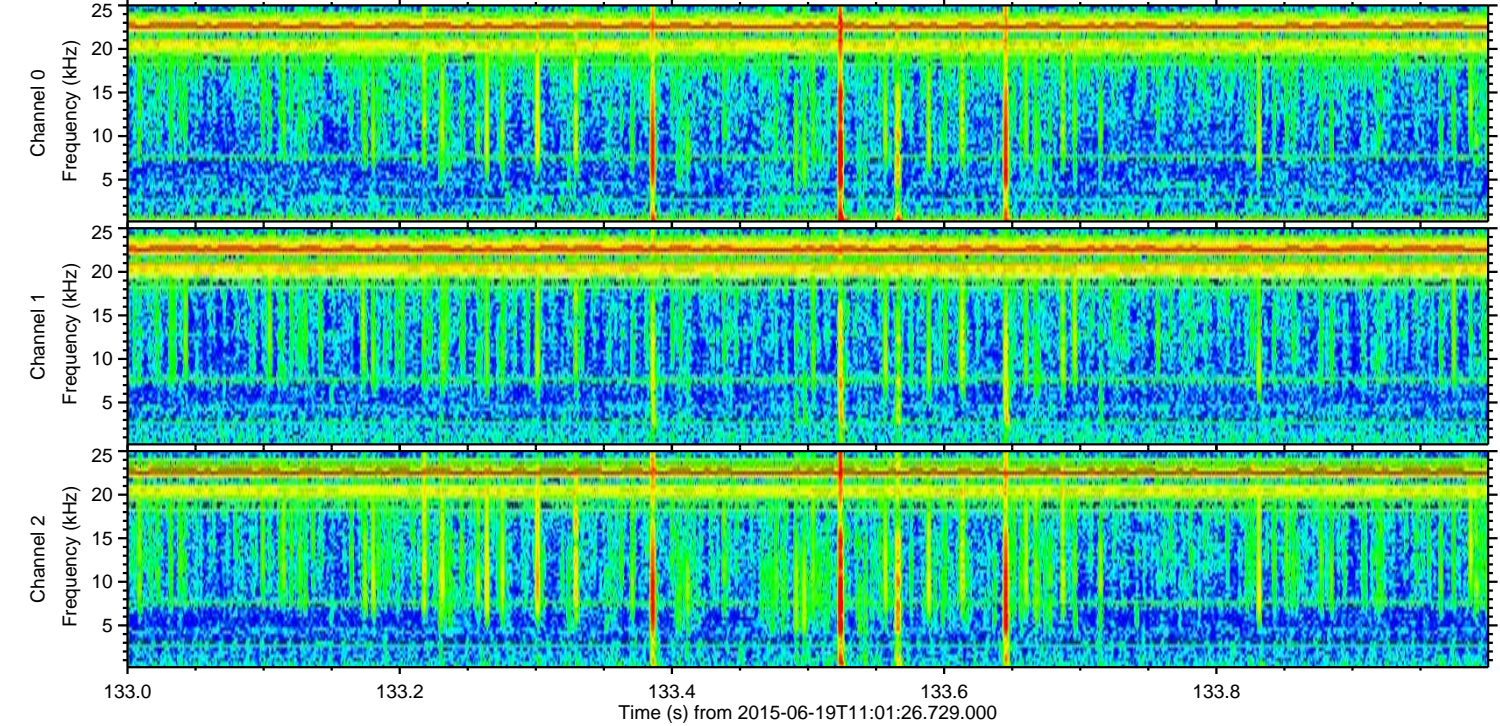
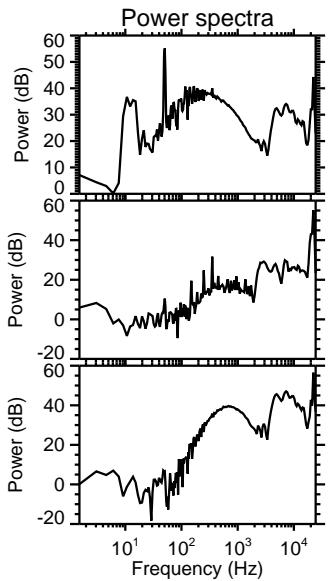
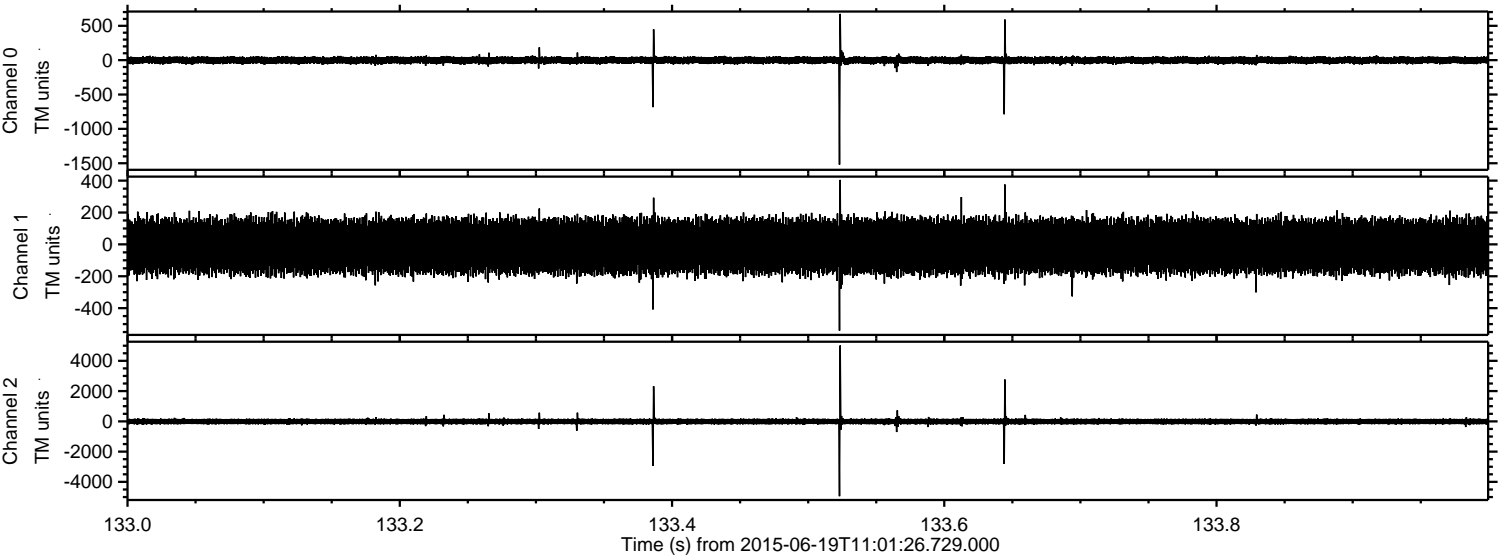
Channel 2
mn: -5530
mx: 5012
 μ : -10.5
 σ : 103.3

Processed Fri Jun 19 13:08:38 2015 by ELM ver.2012-10-06 from 001__elm20150619_110125__dat00.bin



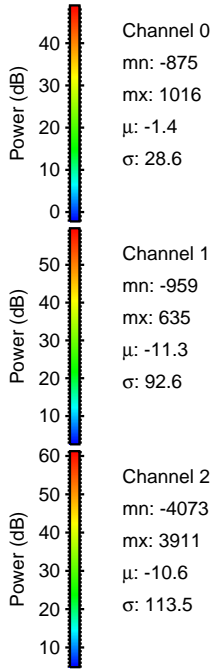
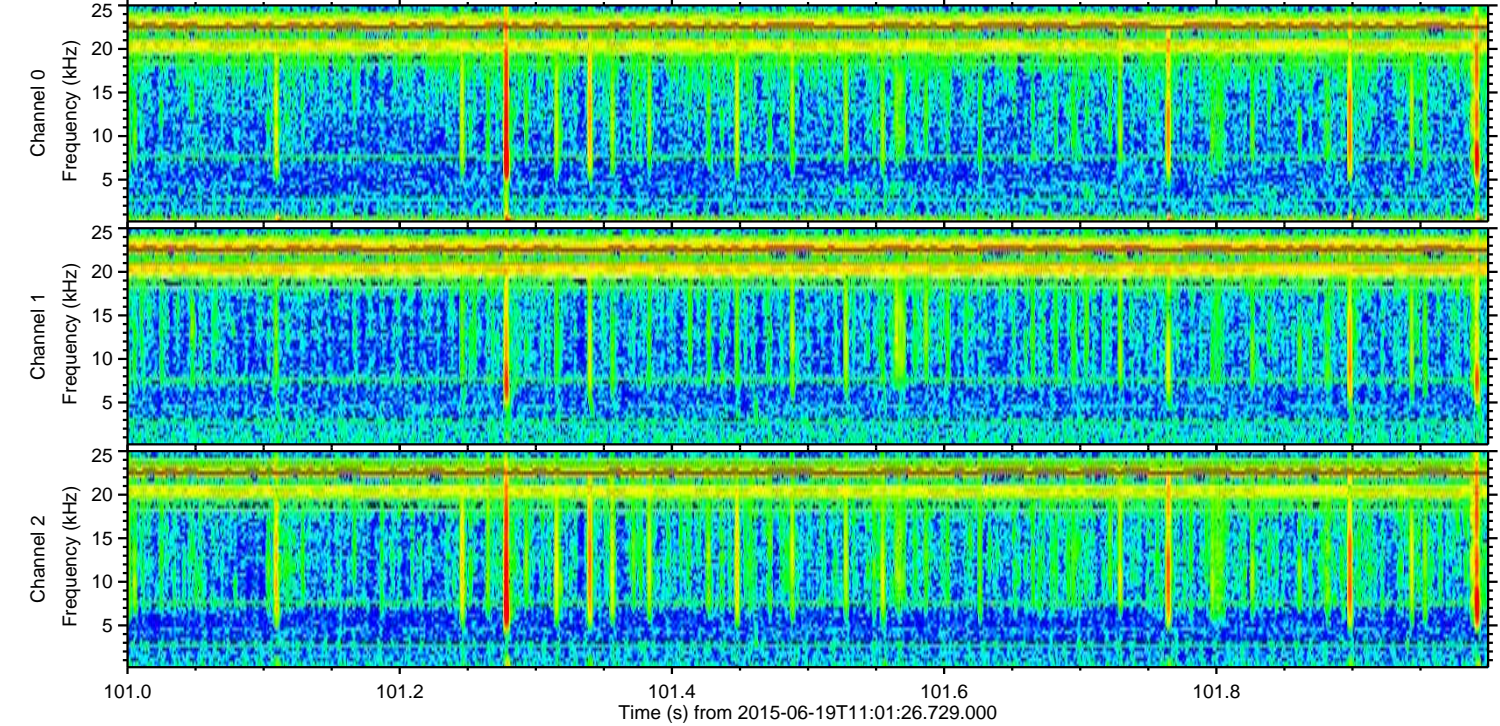
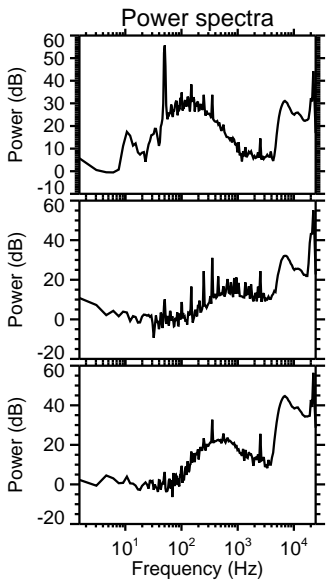
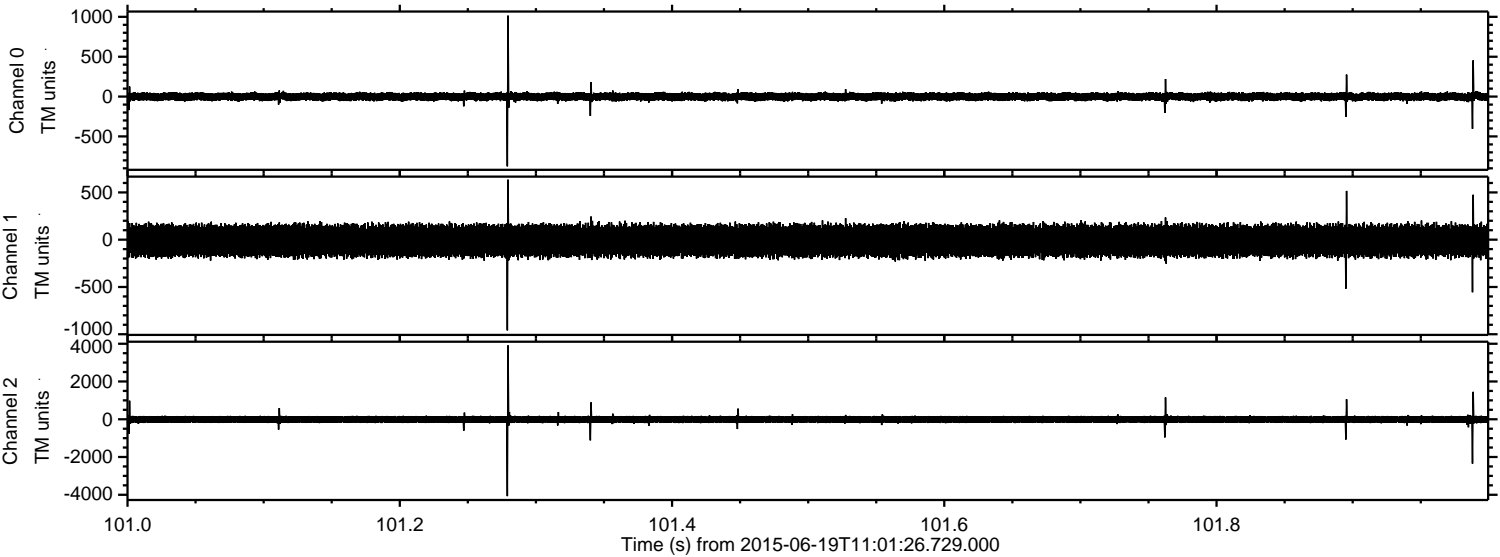
ELMAVAN 3D WAVEFORMS (Measured data sampled at 50 kHz) 51000 packets of 144 samples from 2015-06-19T11:01:26.729.000. Part 134/147

Processed Fri Jun 19 13:08:40 2015 by ELM ver.2012-10-06 from 001__elm20150619_110125__dat00.bin

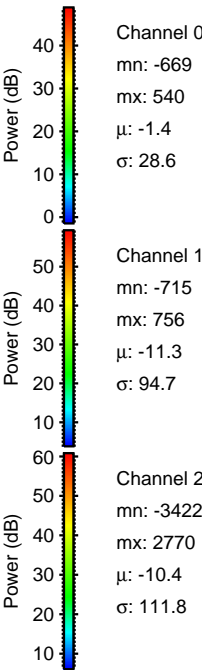
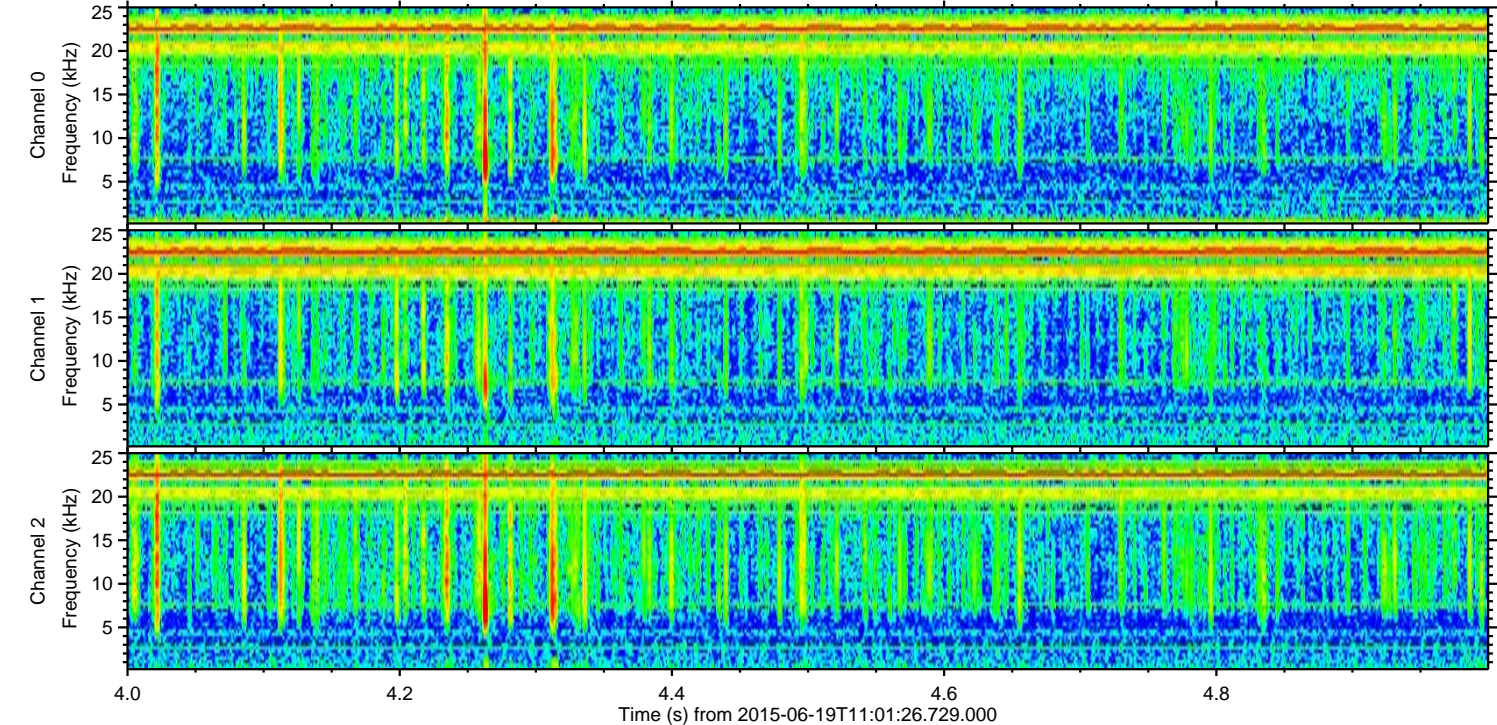
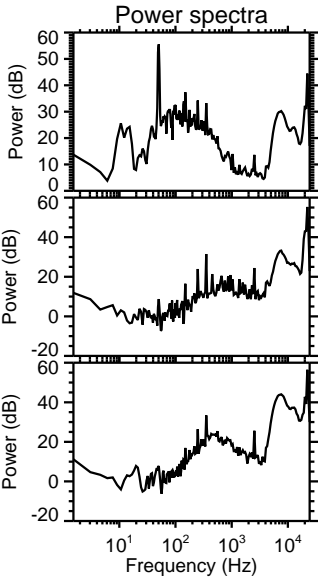
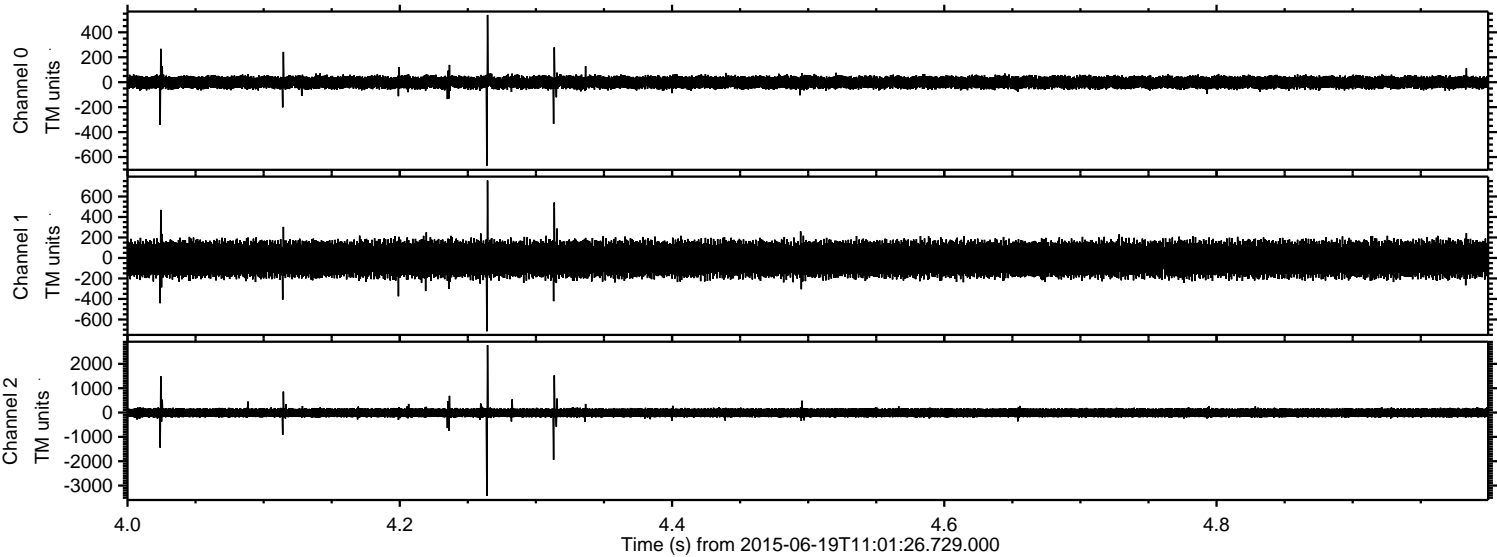


ELMAVAN 3D WAVEFORMS (Measured data sampled at 50 kHz) 51000 packets of 144 samples from 2015-06-19T11:01:26.729.000. Part 102/147

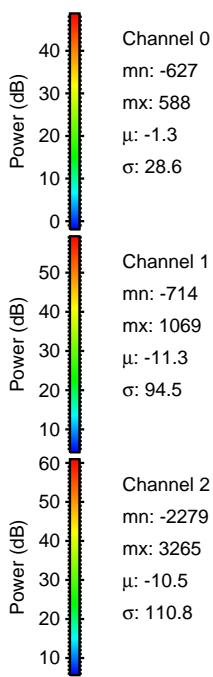
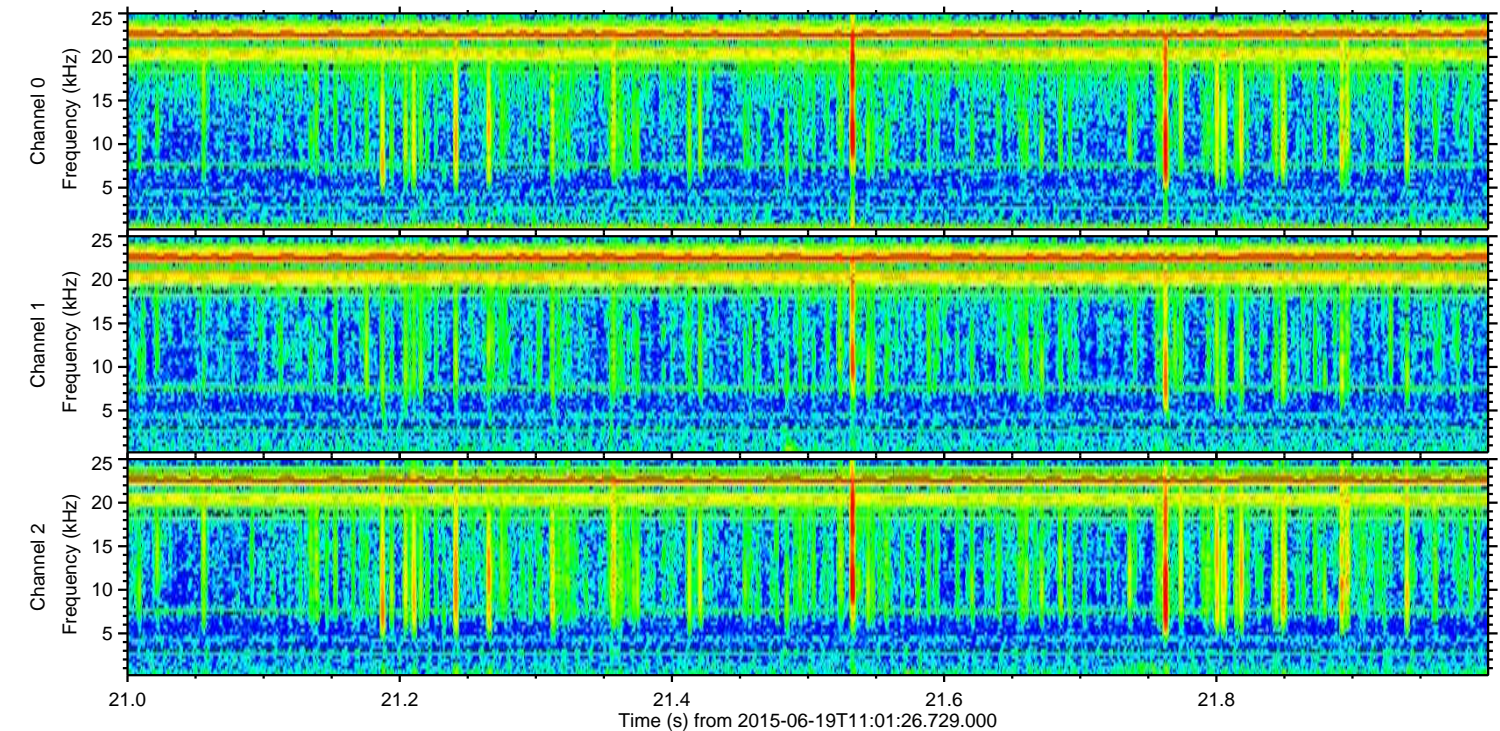
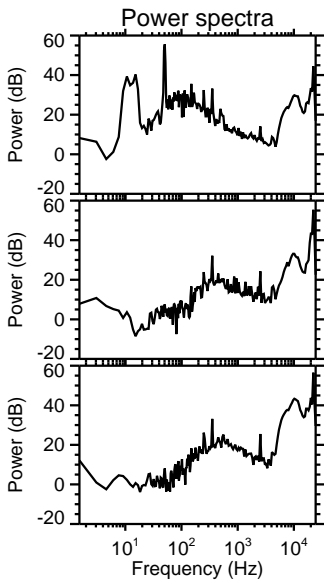
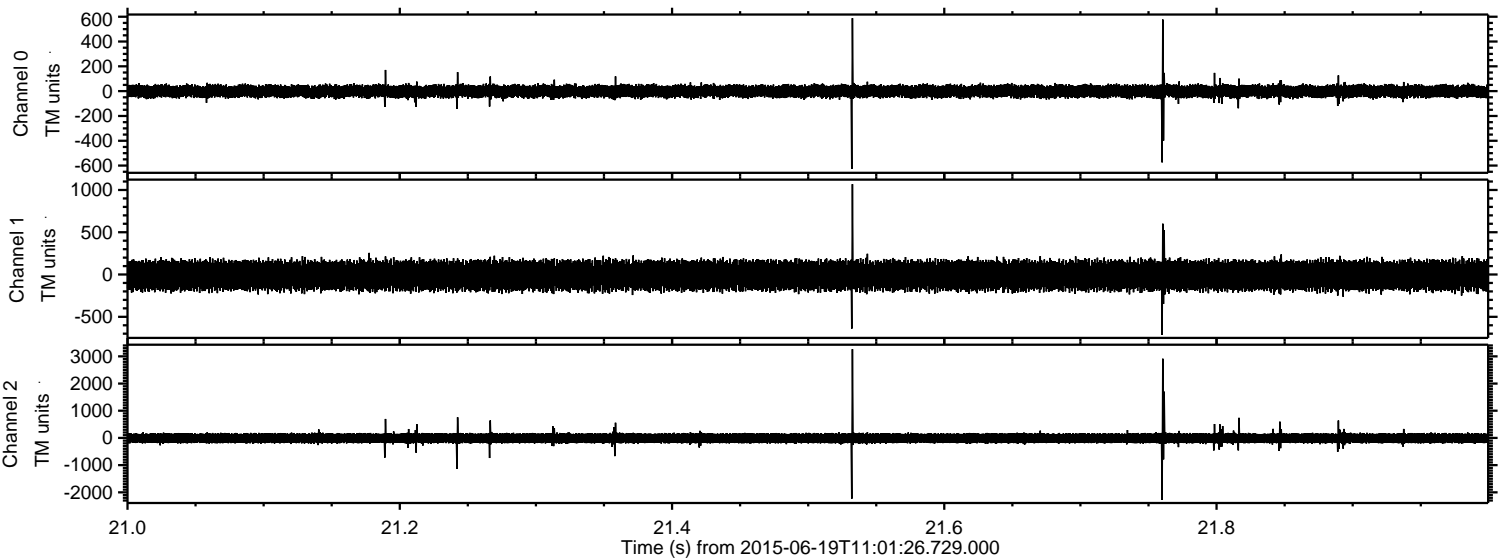
Processed Fri Jun 19 13:08:42 2015 by ELM ver.2012-10-06 from 001__elm20150619_110125__dat00.bin



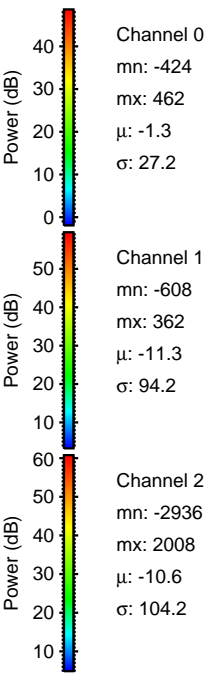
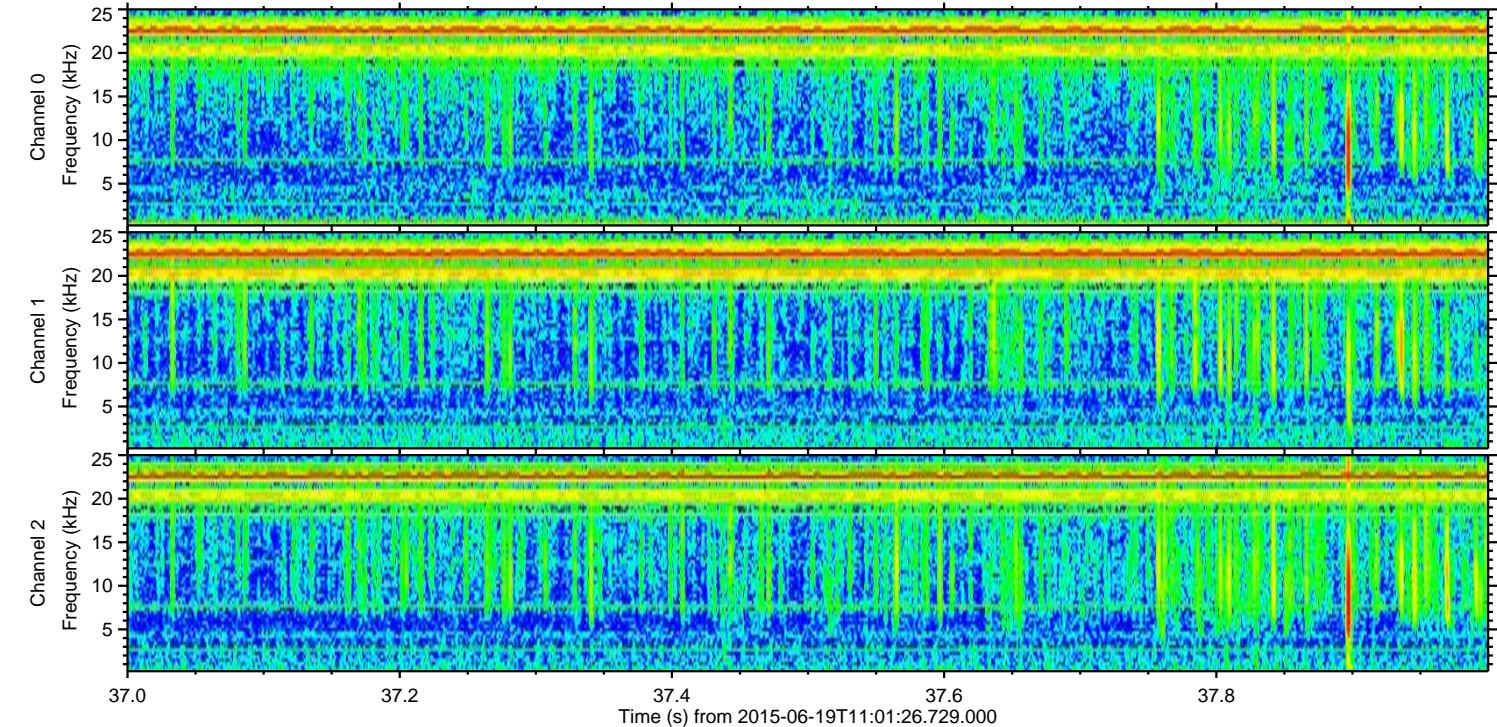
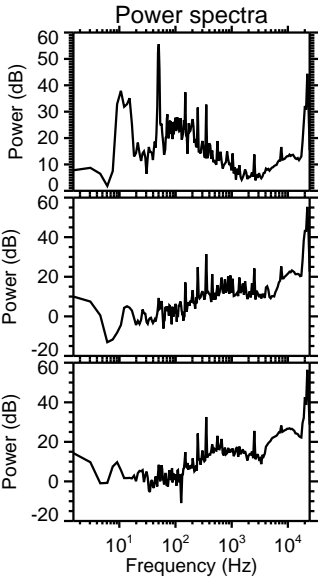
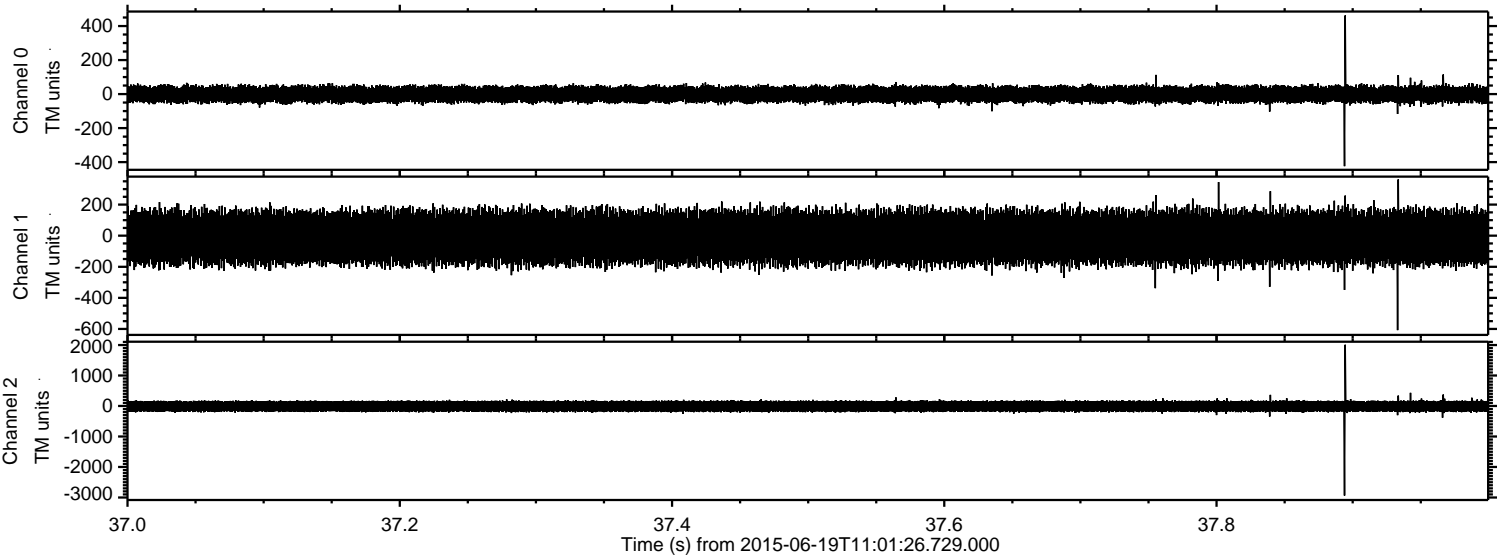
Processed Fri Jun 19 13:08:43 2015 by ELM ver.2012-10-06 from 001__elm20150619_110125__dat00.bin



Processed Fri Jun 19 13:08:45 2015 by ELM ver.2012-10-06 from 001__elm20150619_110125__dat00.bin

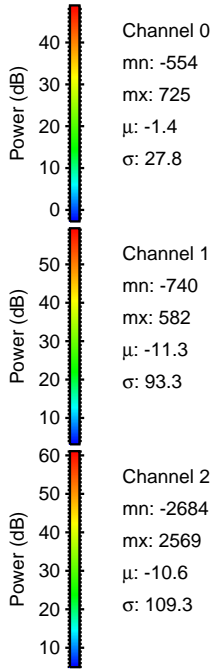
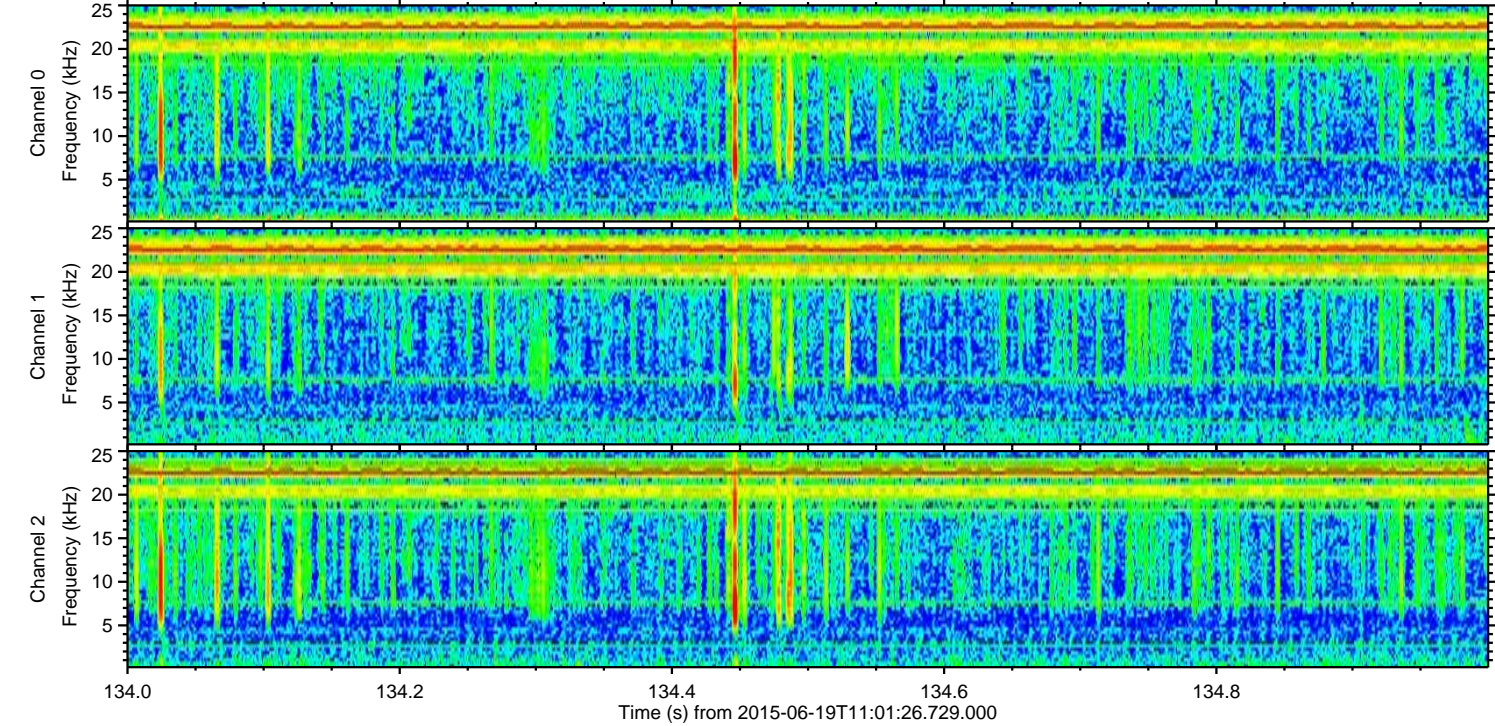
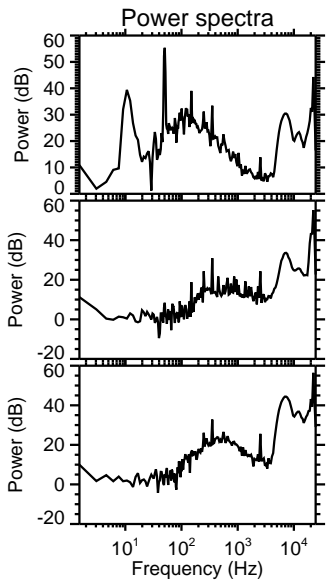
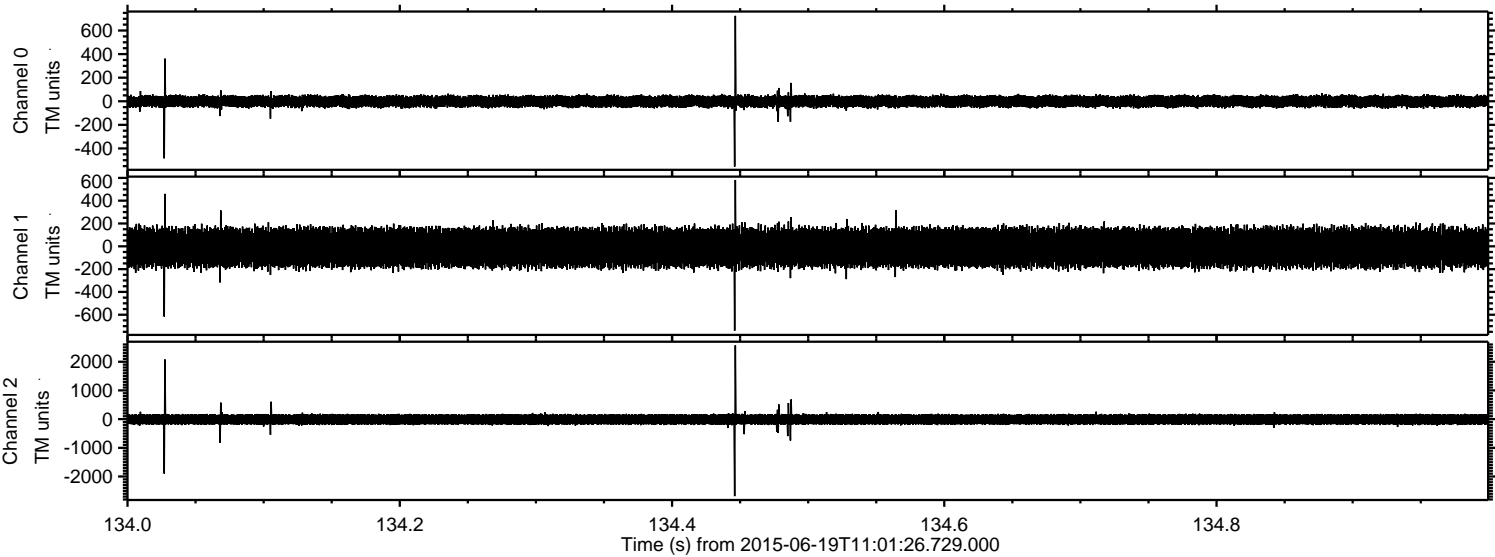


Processed Fri Jun 19 13:08:47 2015 by ELM ver.2012-10-06 from 001__elm20150619_110125__dat00.bin



ELMAVAN 3D WAVEFORMS (Measured data sampled at 50 kHz) 51000 packets of 144 samples from 2015-06-19T11:01:26.729.000. Part 135/147

Processed Fri Jun 19 13:08:48 2015 by ELM ver.2012-10-06 from 001__elm20150619_110125__dat00.bin

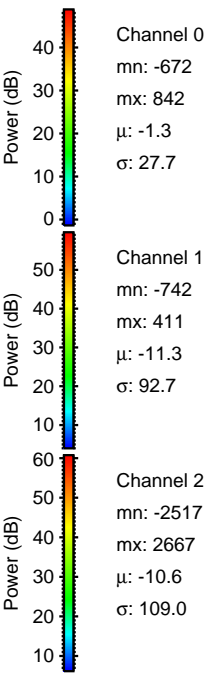
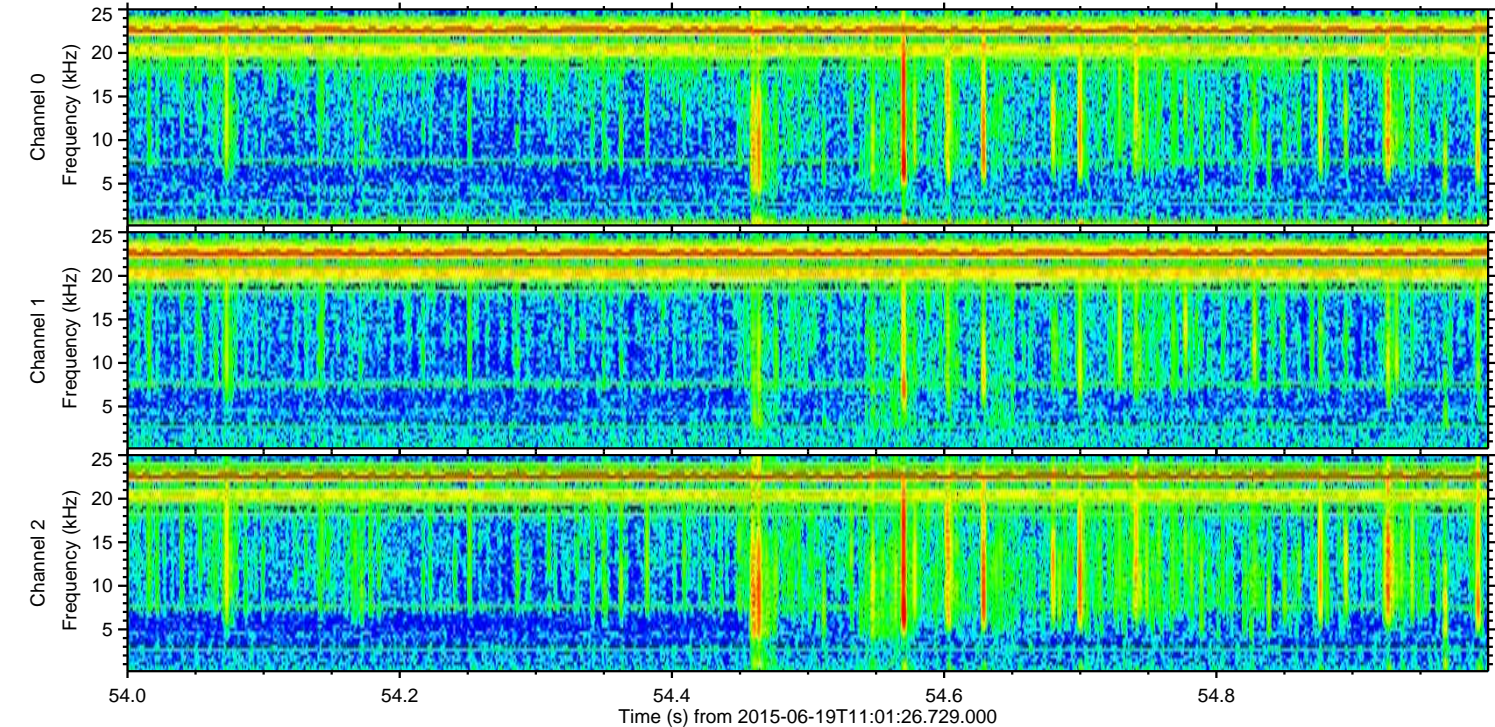
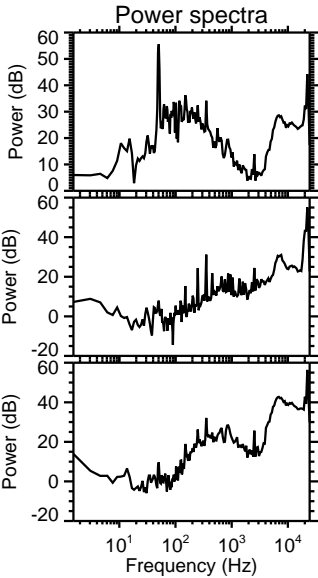
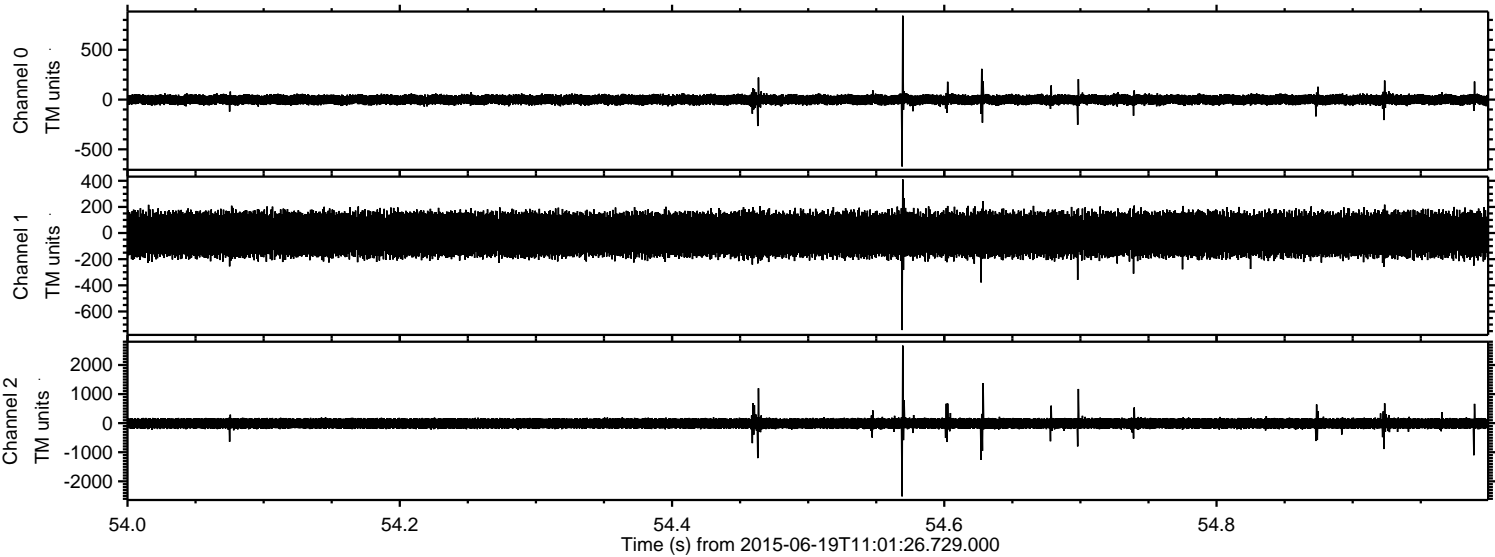


Channel 0
mn: -554
mx: 725
 μ : -1.4
 σ : 27.8

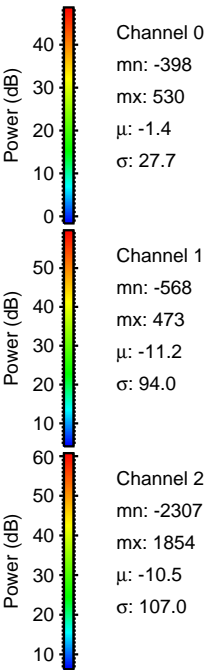
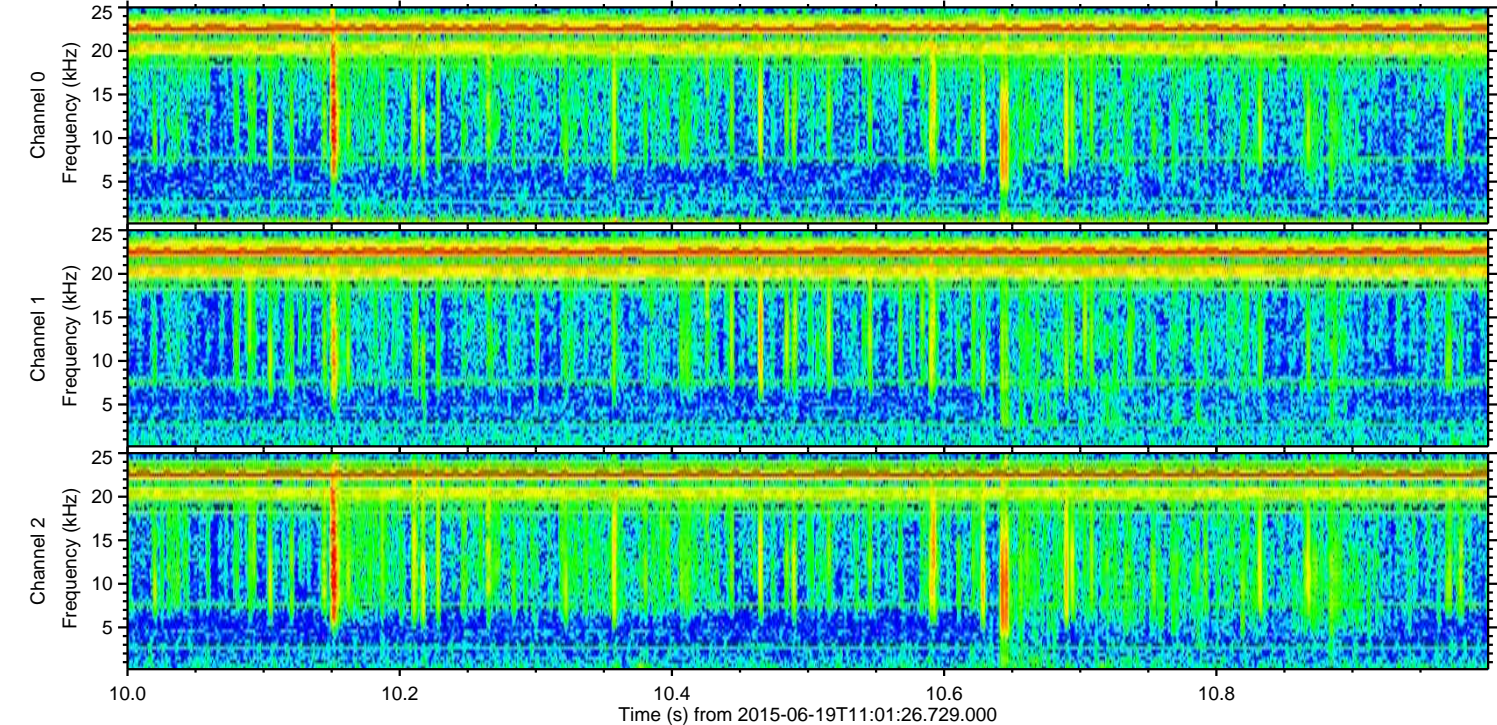
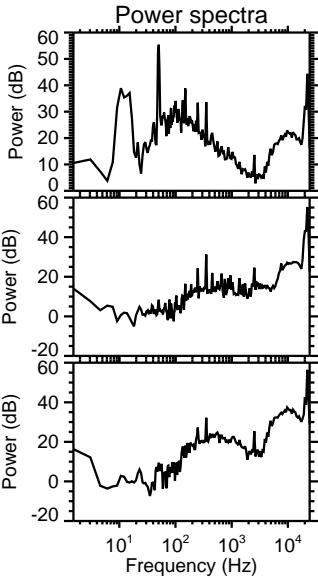
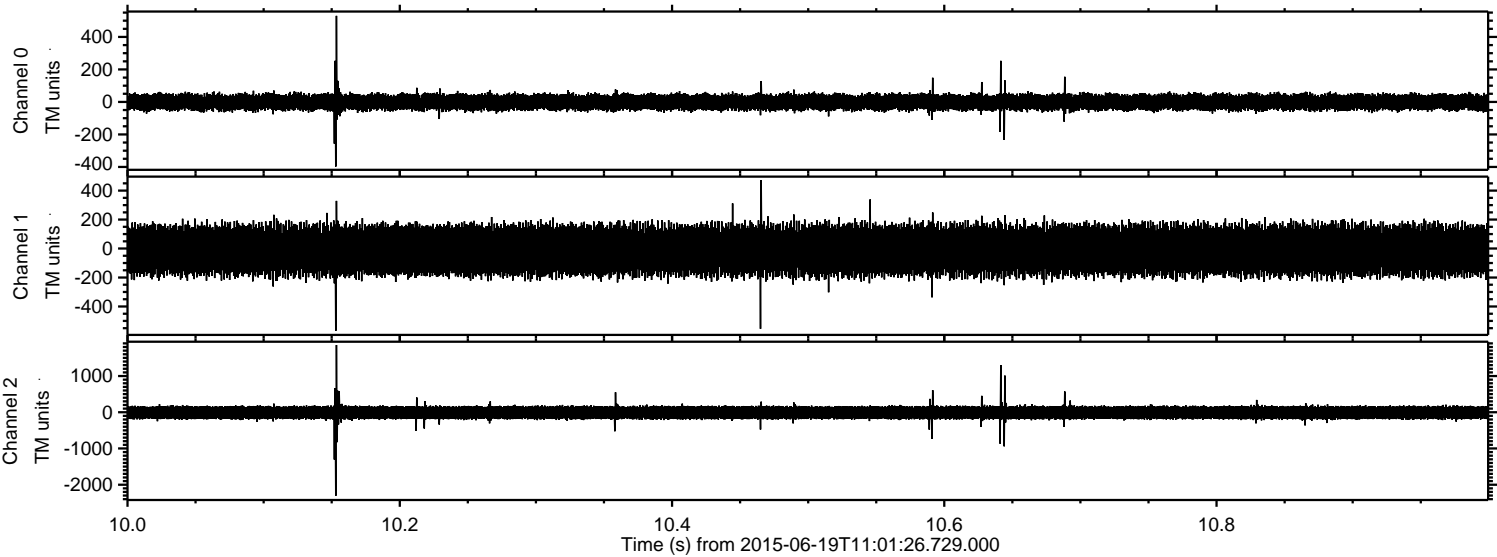
Channel 1
mn: -740
mx: 582
 μ : -11.3
 σ : 93.3

Channel 2
mn: -2684
mx: 2569
 μ : -10.6
 σ : 109.3

Processed Fri Jun 19 13:08:50 2015 by ELM ver.2012-10-06 from 001__elm20150619_110125__dat00.bin



Processed Fri Jun 19 13:08:51 2015 by ELM ver.2012-10-06 from 001__elm20150619_110125__dat00.bin



Processed Fri Jun 19 13:08:53 2015 by ELM ver.2012-10-06 from 001__elm20150619_110125__dat00.bin

