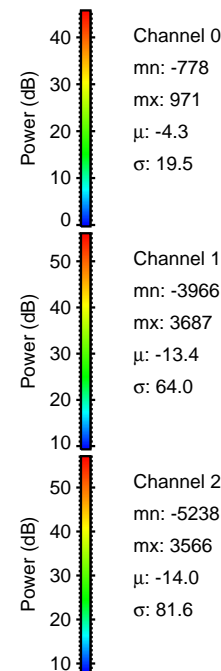
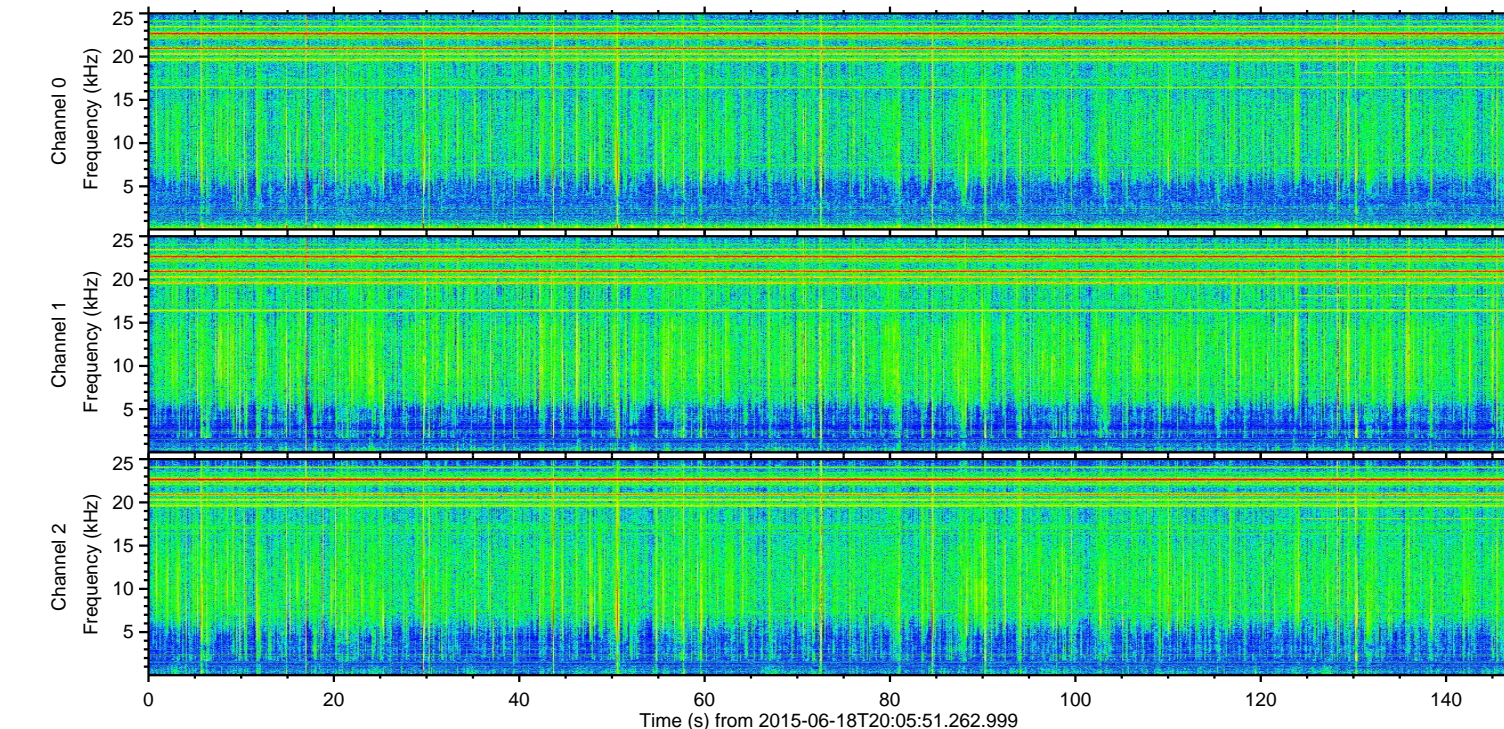
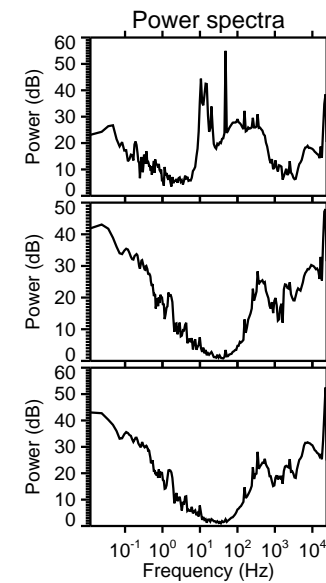
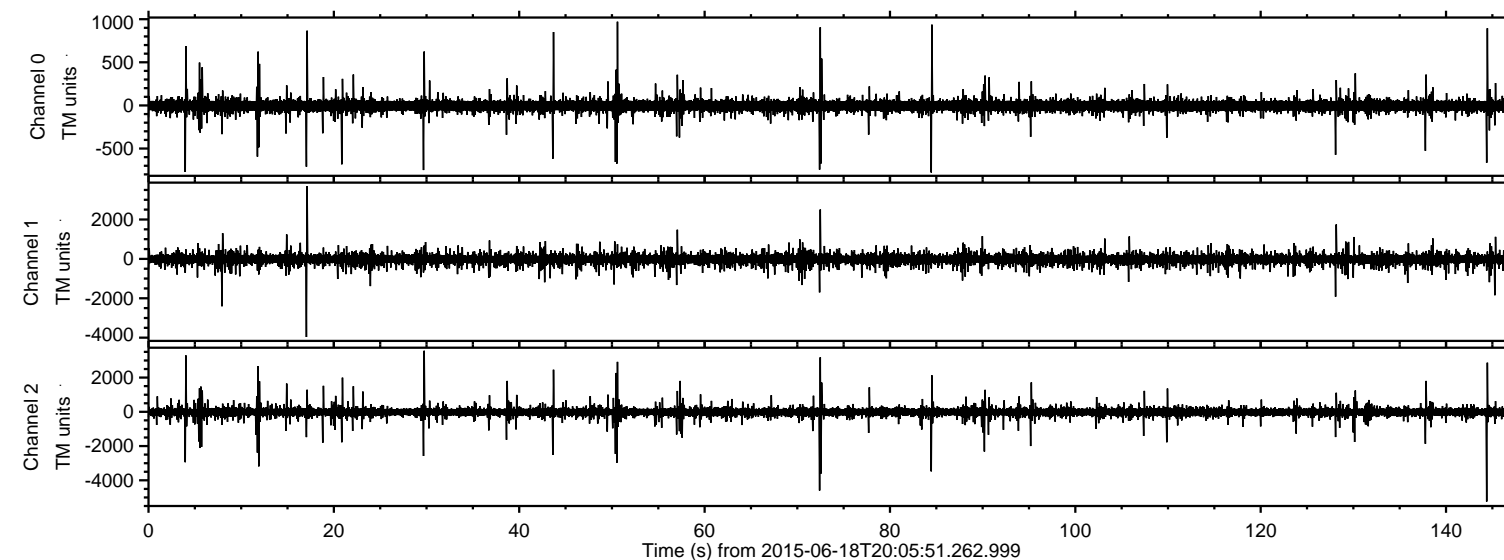


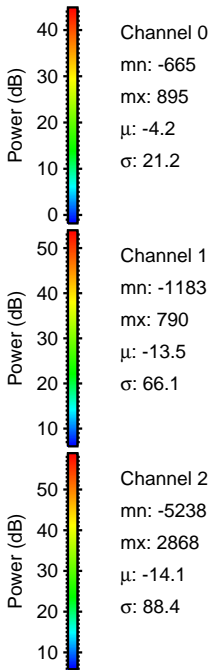
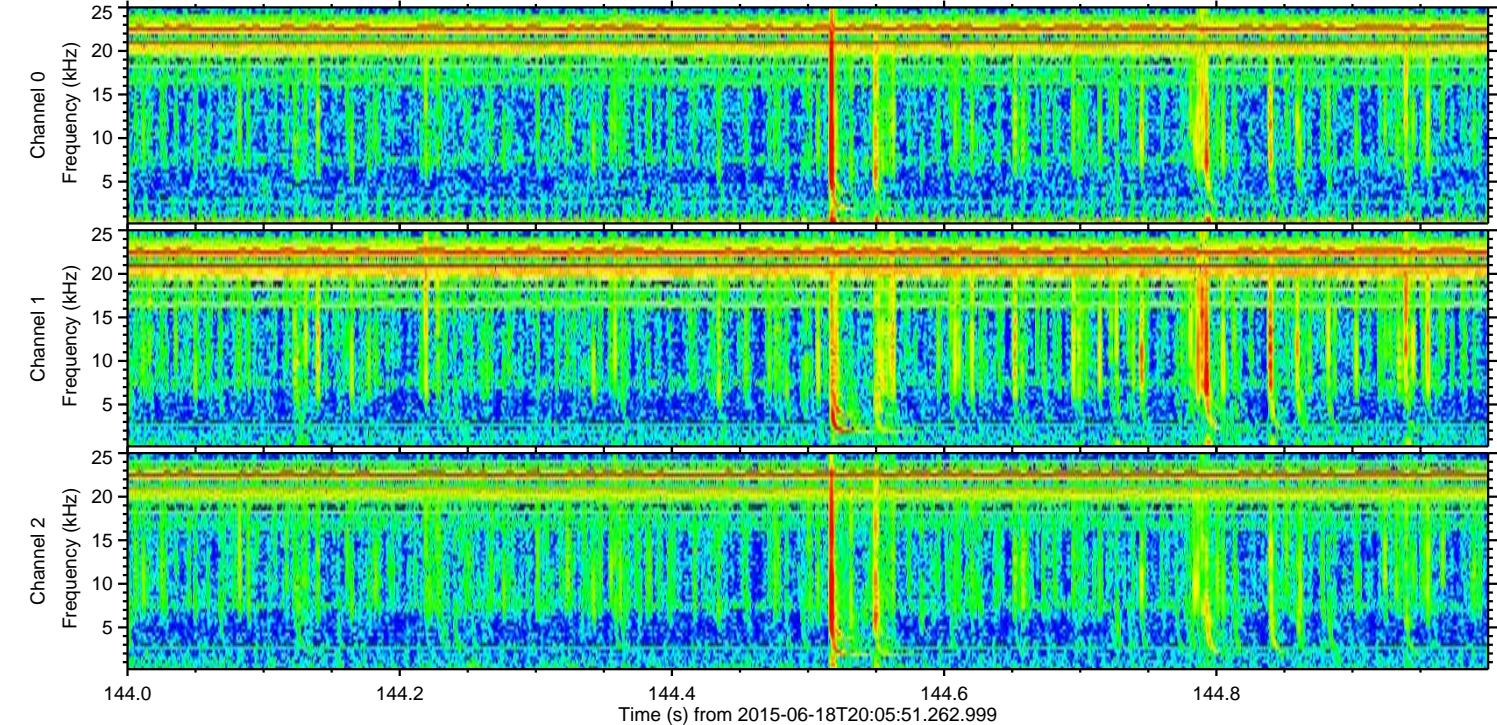
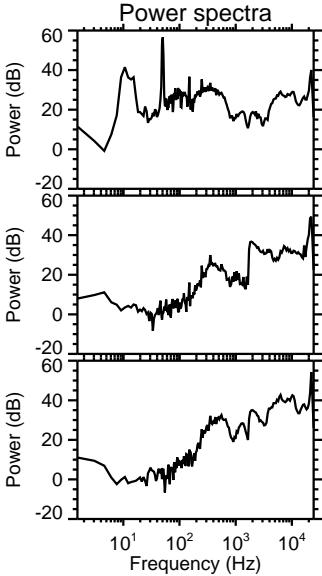
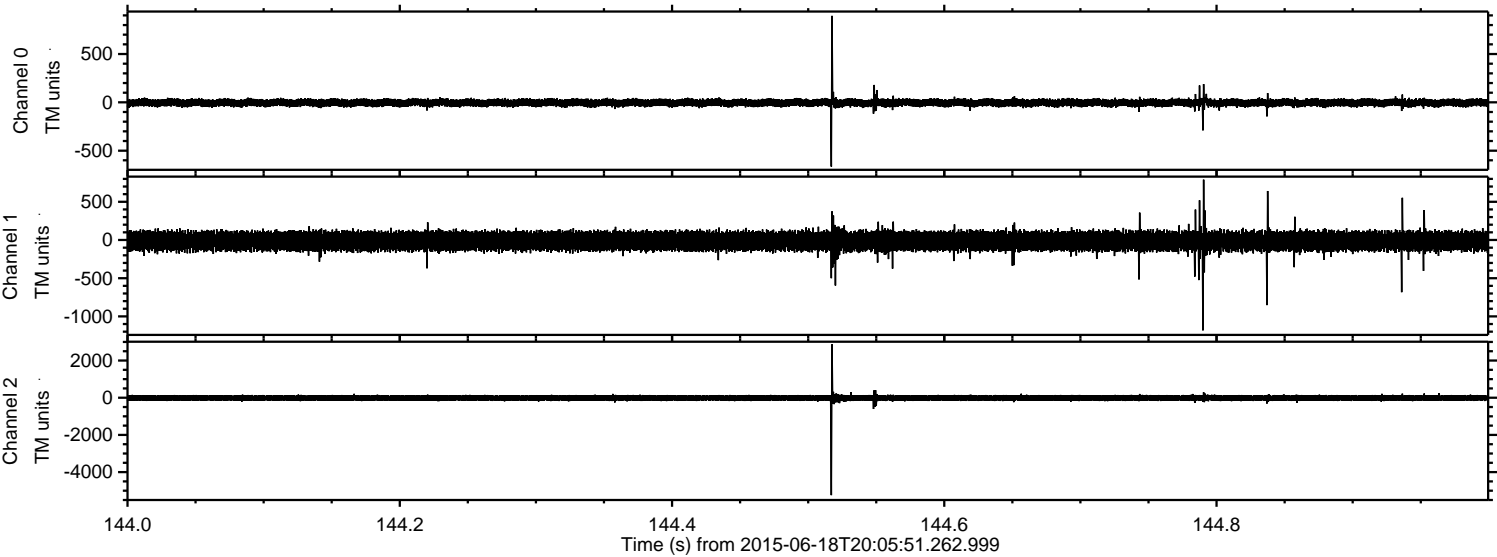
ELMAVAN 3D WAVEFORMS (Measured data sampled at 50 kHz) 51000 packets of 144 samples from 2015-06-18T20:05:51.262.999.

Processed Thu Jun 18 22:12:29 2015 by ELM ver.2012-10-06 from 001__elm20150618_200550__dat00.bin

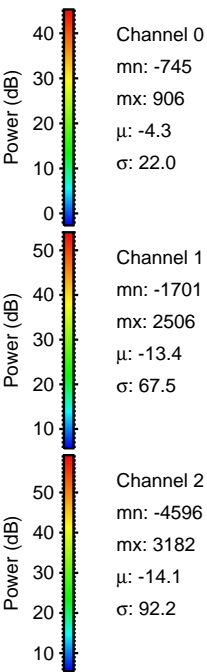
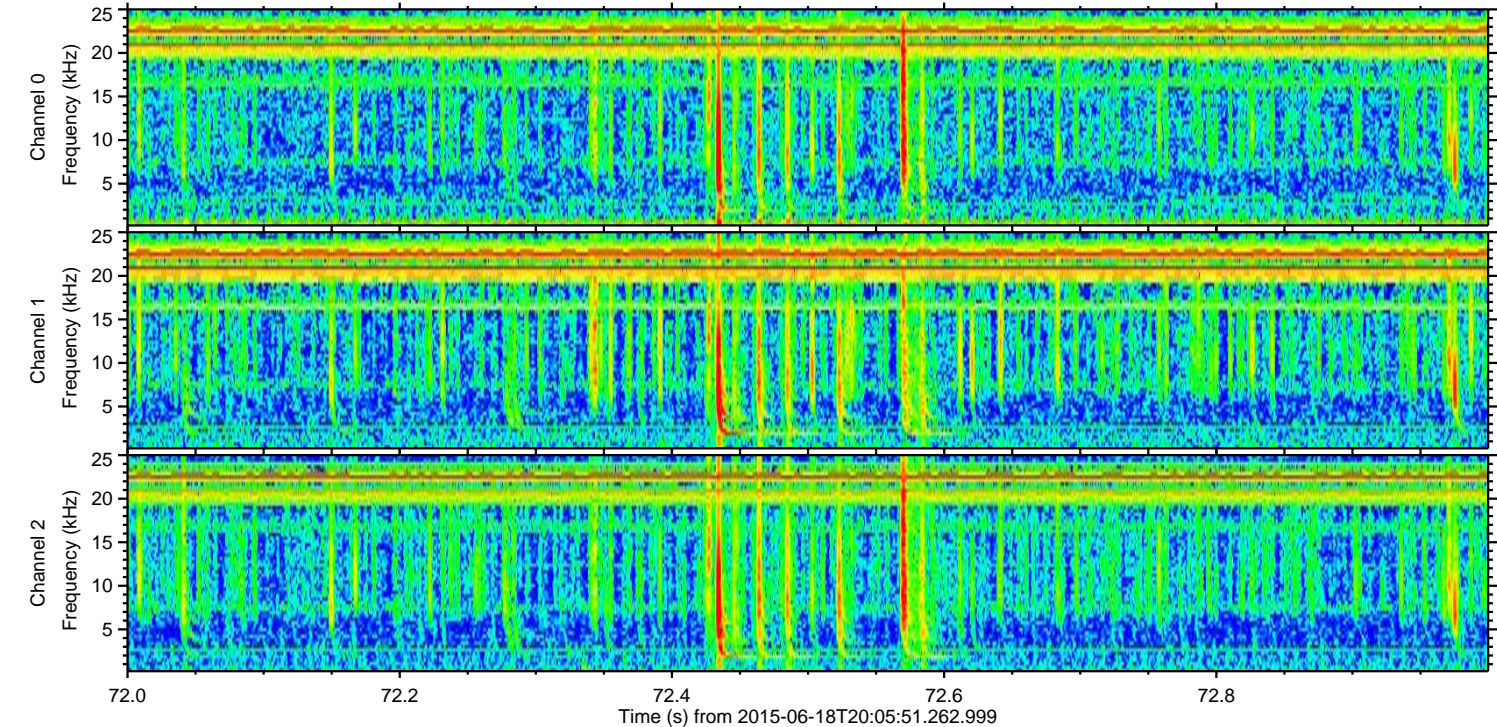
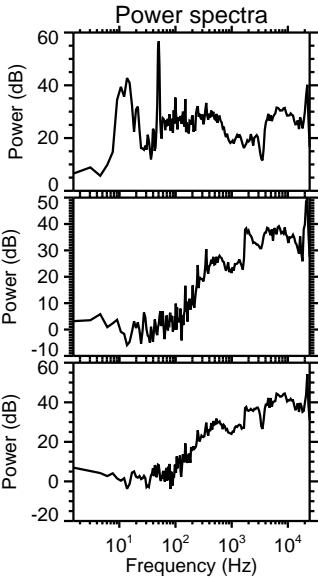
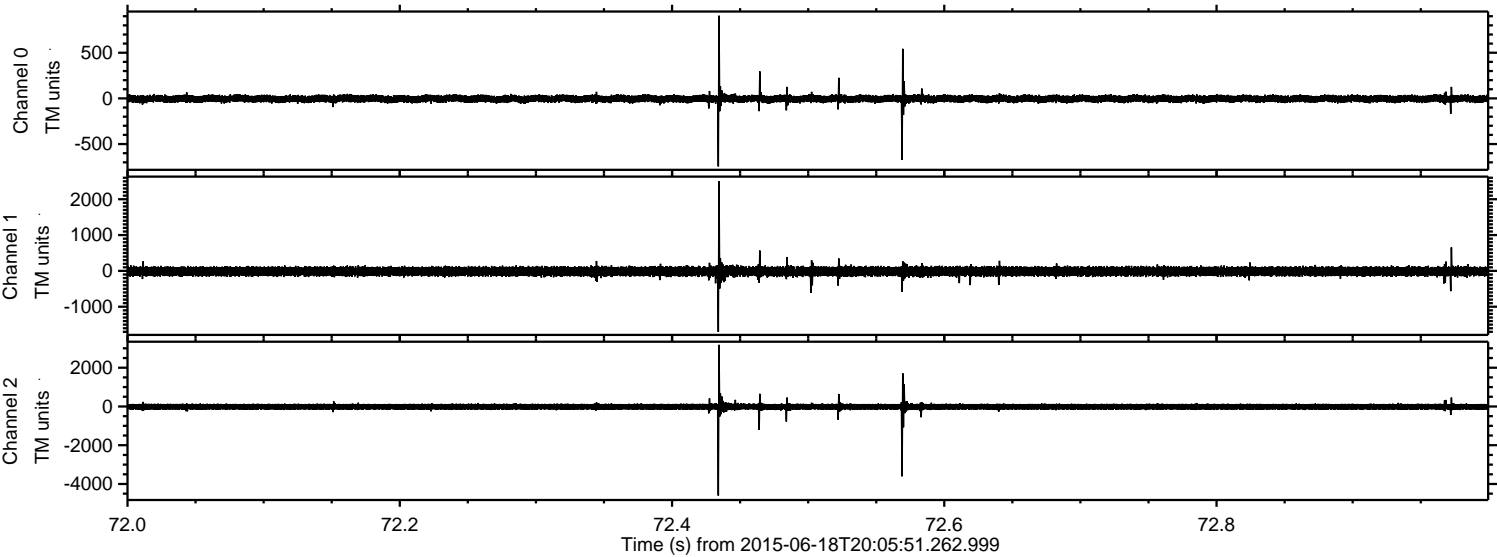


ELMAVAN 3D WAVEFORMS (Measured data sampled at 50 kHz) 51000 packets of 144 samples from 2015-06-18T20:05:51.262.999. Part 145/147

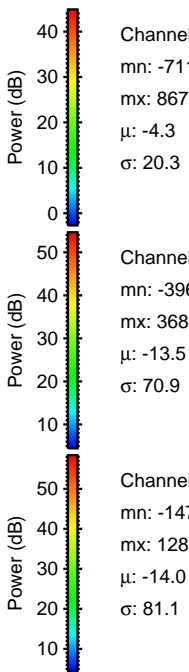
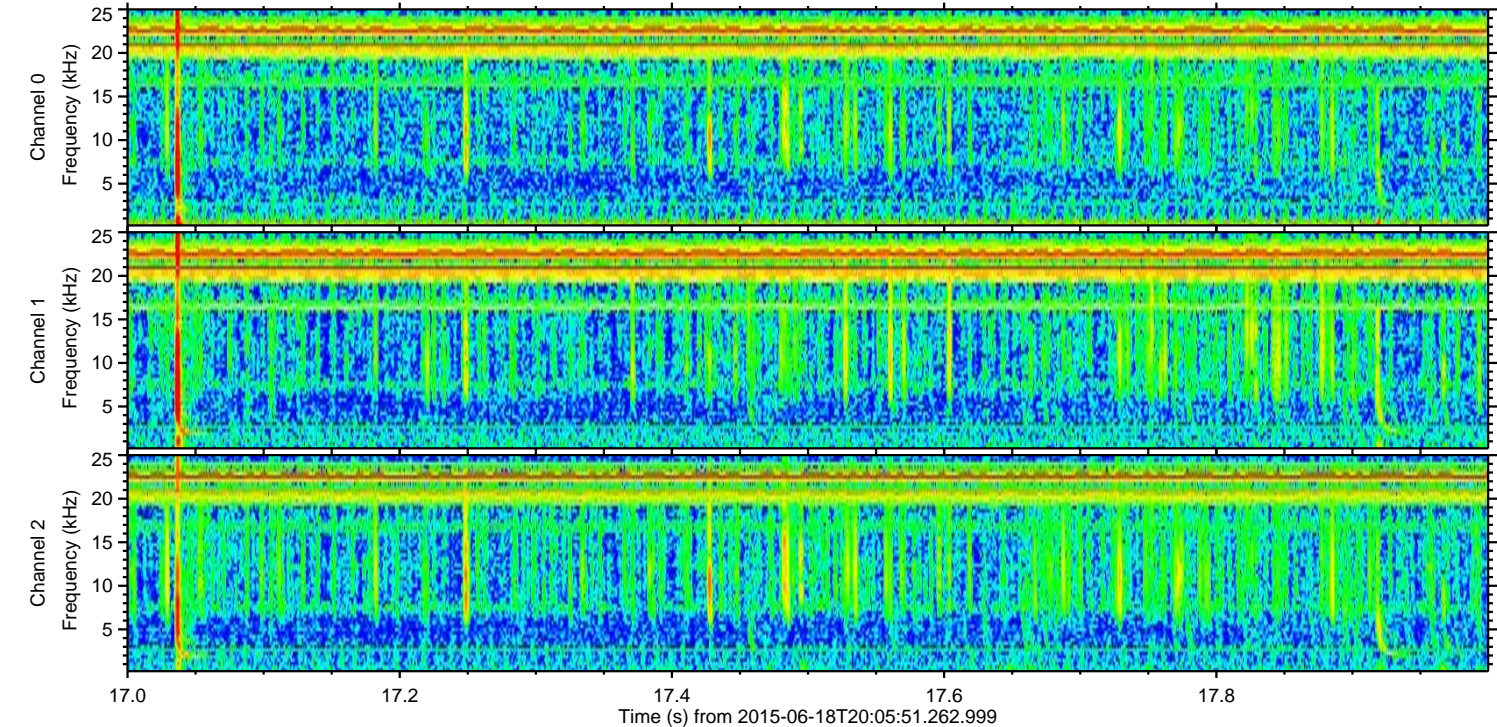
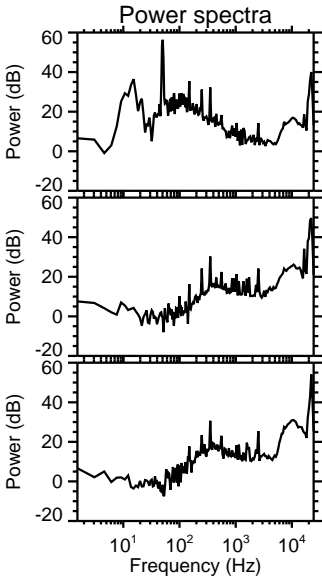
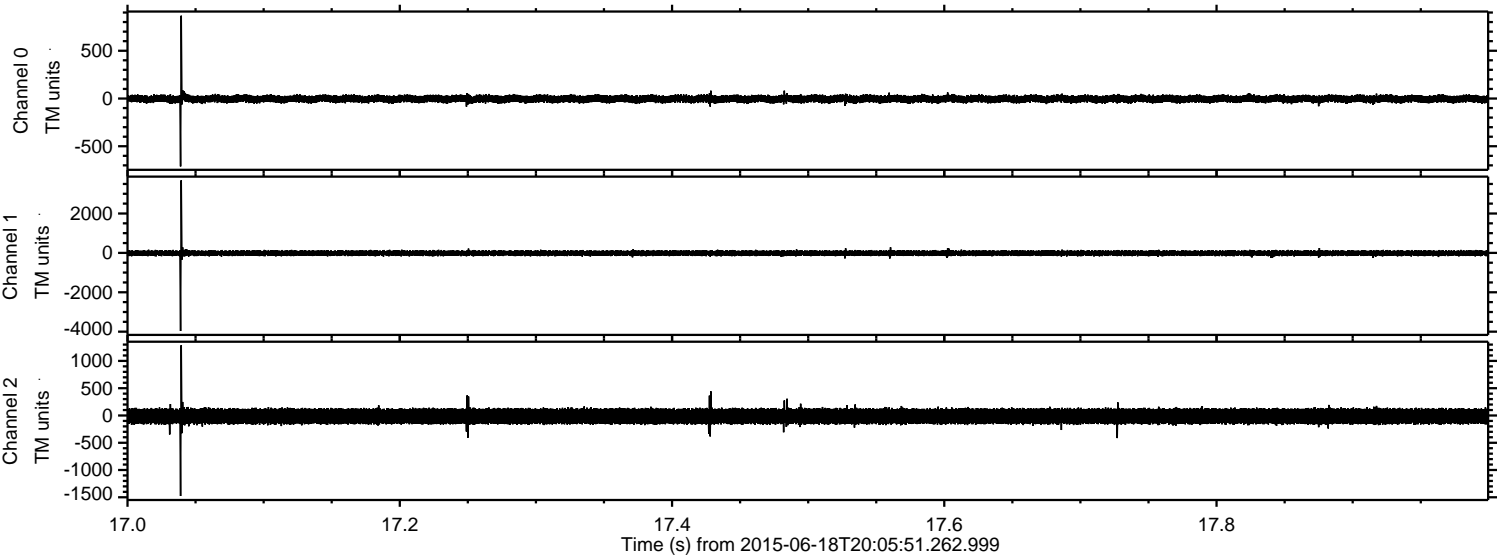
Processed Thu Jun 18 22:12:52 2015 by ELM ver.2012-10-06 from 001__elm20150618_200550__dat00.bin



Processed Thu Jun 18 22:12:53 2015 by ELM ver.2012-10-06 from 001__elm20150618_200550__dat00.bin



Processed Thu Jun 18 22:12:55 2015 by ELM ver.2012-10-06 from 001__elm20150618_200550__dat00.bin



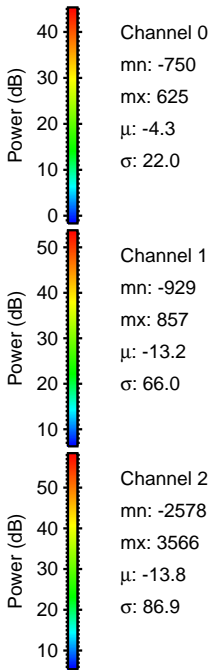
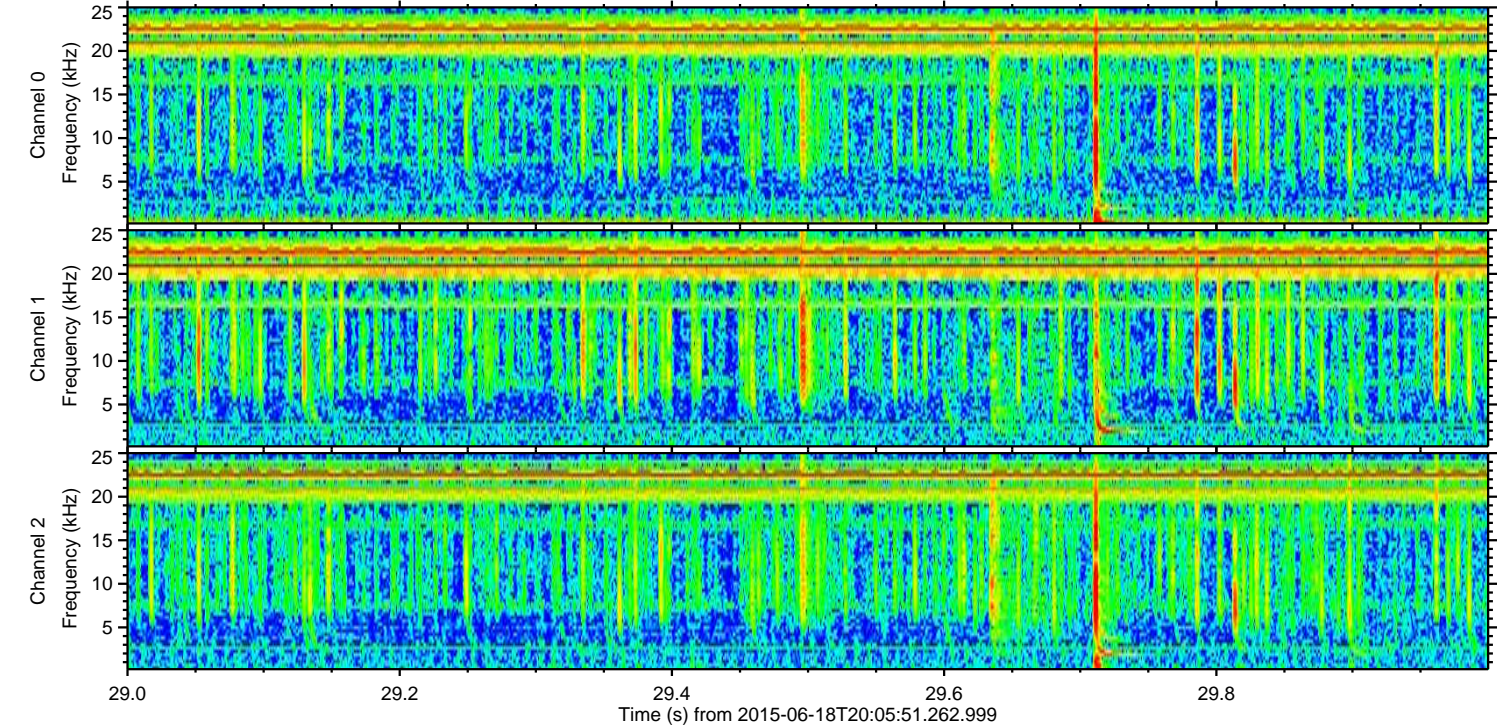
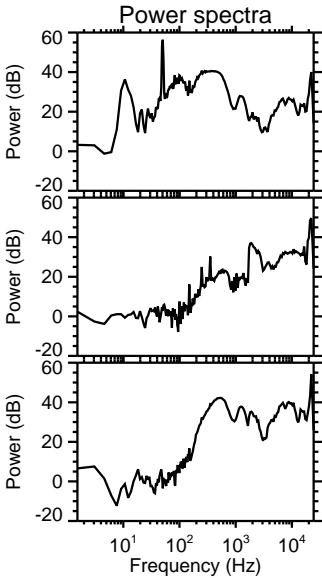
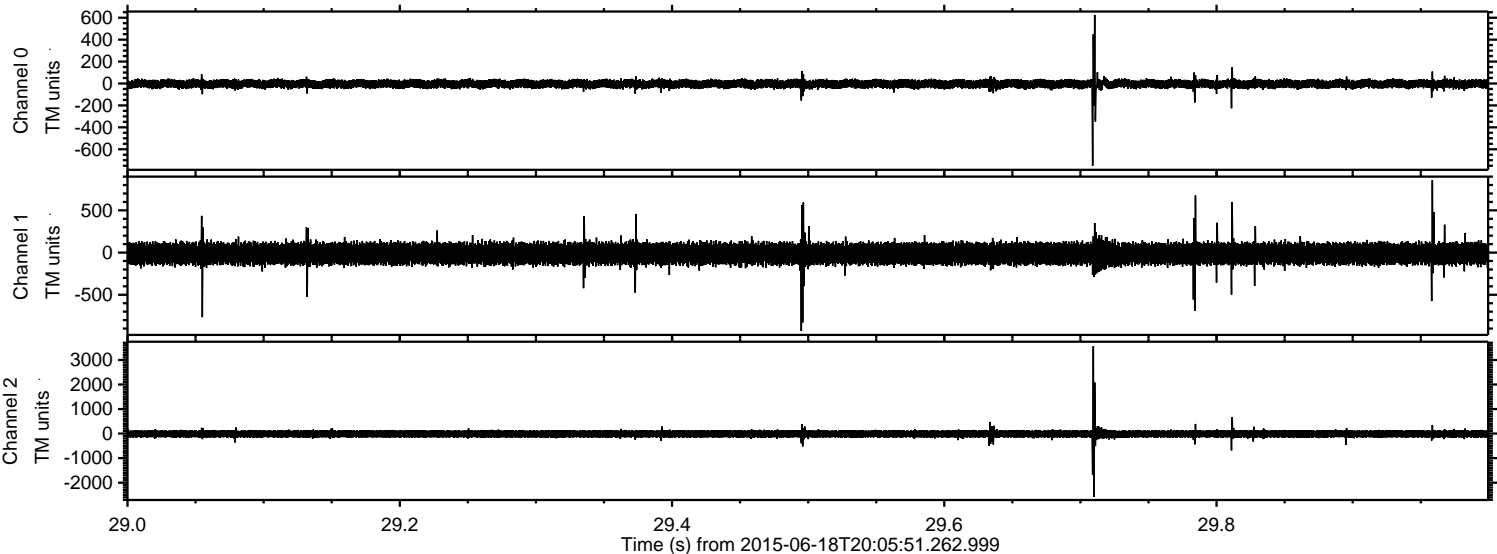
Channel 0
mn: -711
mx: 867
 μ : -4.3
 σ : 20.3

Channel 1
mn: -3966
mx: 3687
 μ : -13.5
 σ : 70.9

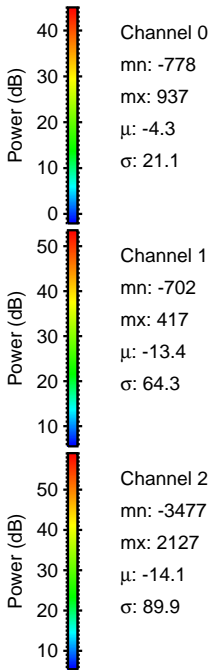
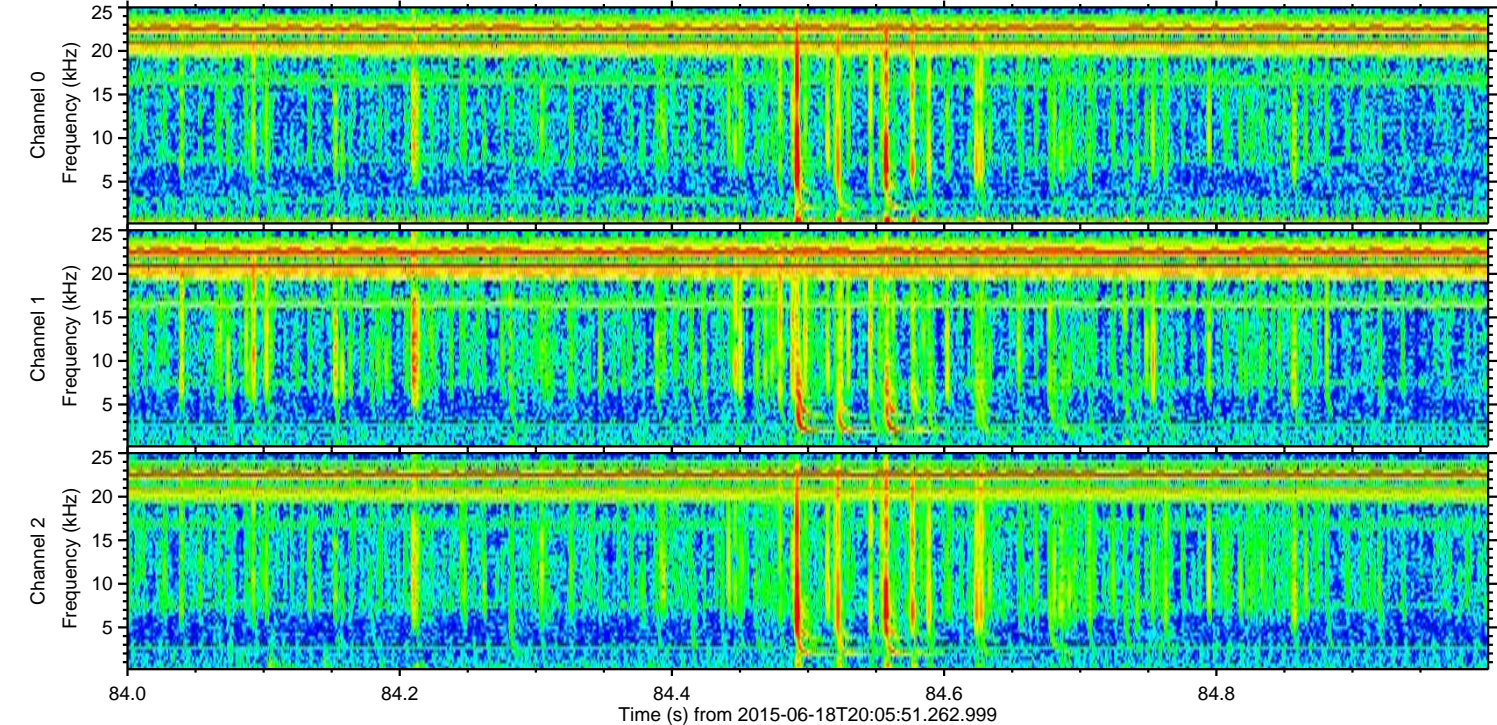
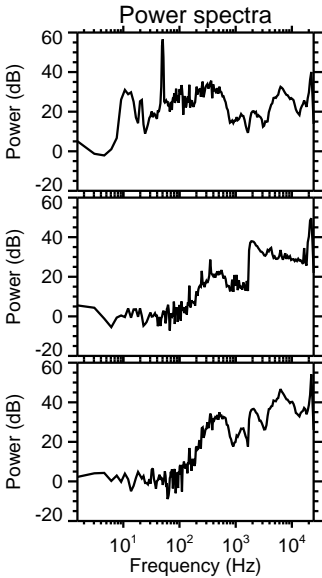
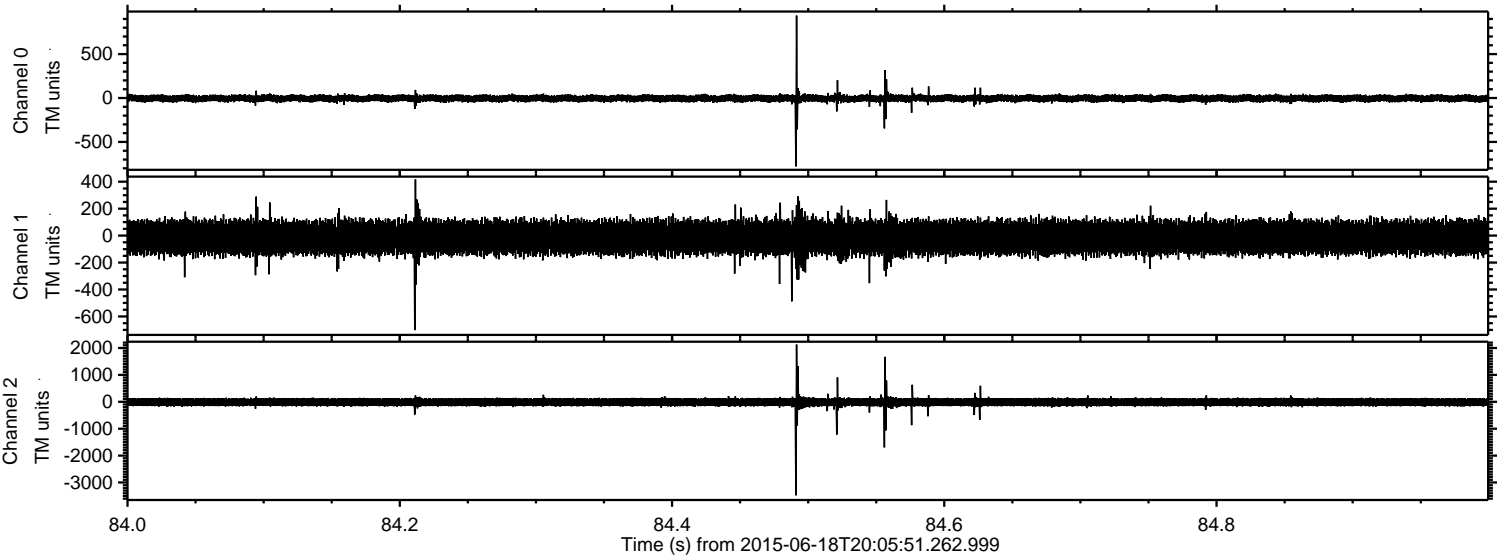
Channel 2
mn: -1476
mx: 1288
 μ : -14.0
 σ : 81.1

ELMAVAN 3D WAVEFORMS (Measured data sampled at 50 kHz) 51000 packets of 144 samples from 2015-06-18T20:05:51.262.999. Part 30/147

Processed Thu Jun 18 22:12:56 2015 by ELM ver.2012-10-06 from 001__elm20150618_200550__dat00.bin



Processed Thu Jun 18 22:12:58 2015 by ELM ver.2012-10-06 from 001__elm20150618_200550__dat00.bin

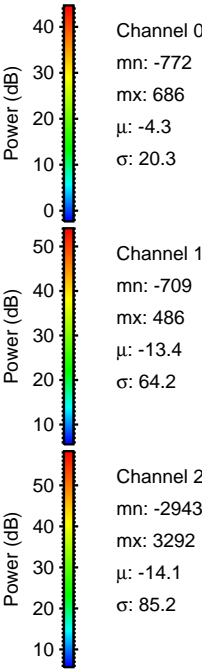
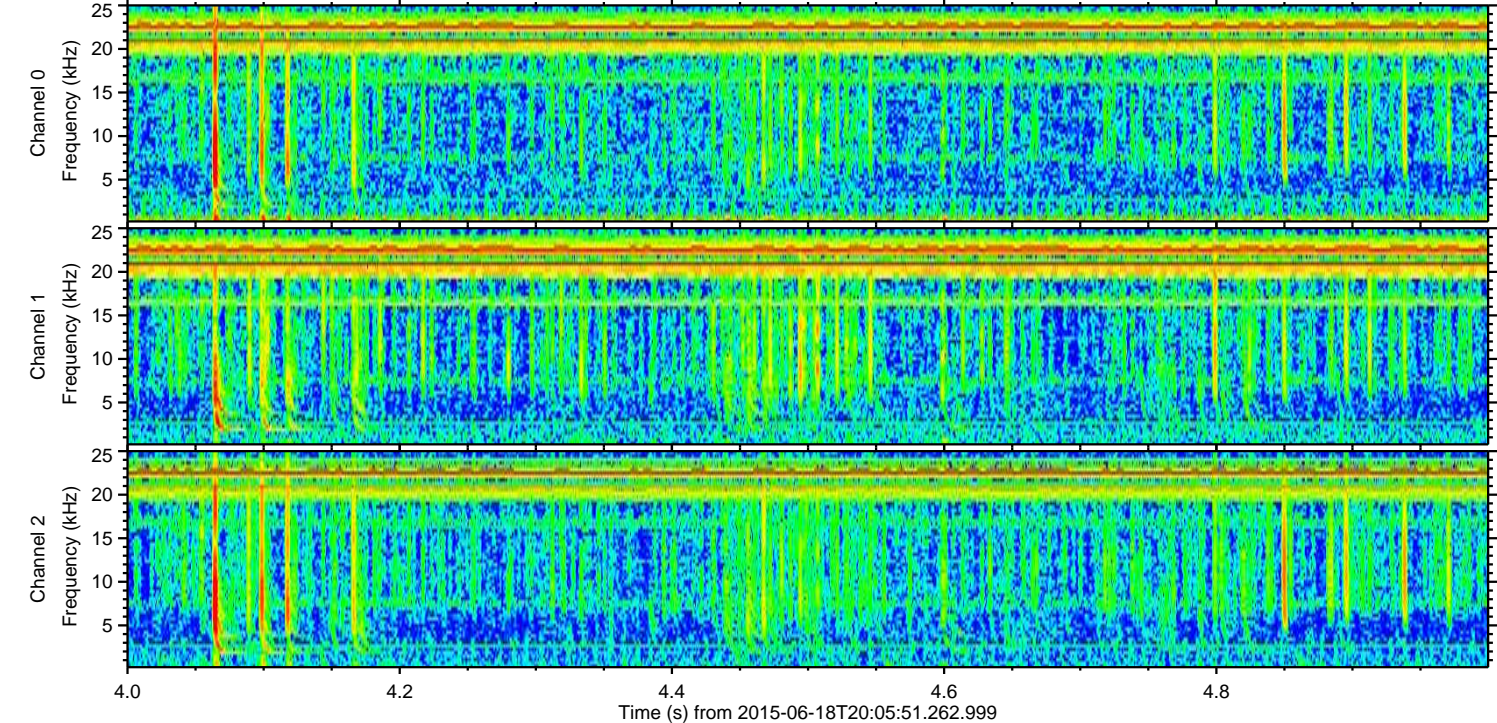
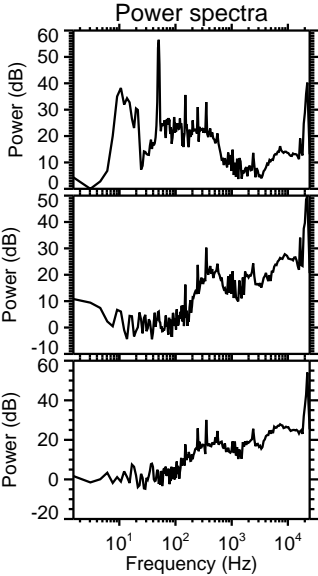
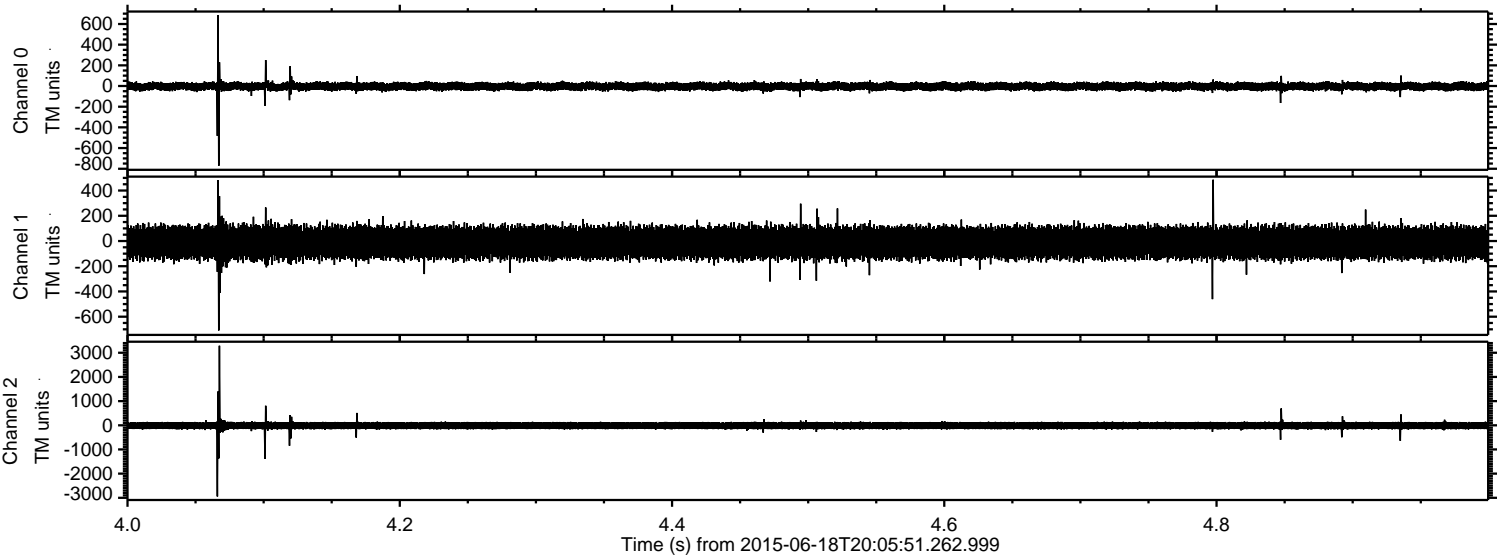


Channel 0
mn: -778
mx: 937
 μ : -4.3
 σ : 21.1

Channel 1
mn: -702
mx: 417
 μ : -13.4
 σ : 64.3

Channel 2
mn: -3477
mx: 2127
 μ : -14.1
 σ : 89.9

Processed Thu Jun 18 22:12:59 2015 by ELM ver.2012-10-06 from 001__elm20150618_200550__dat00.bin

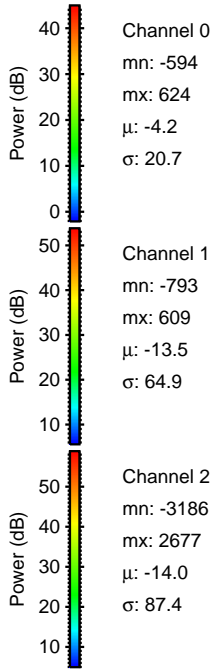
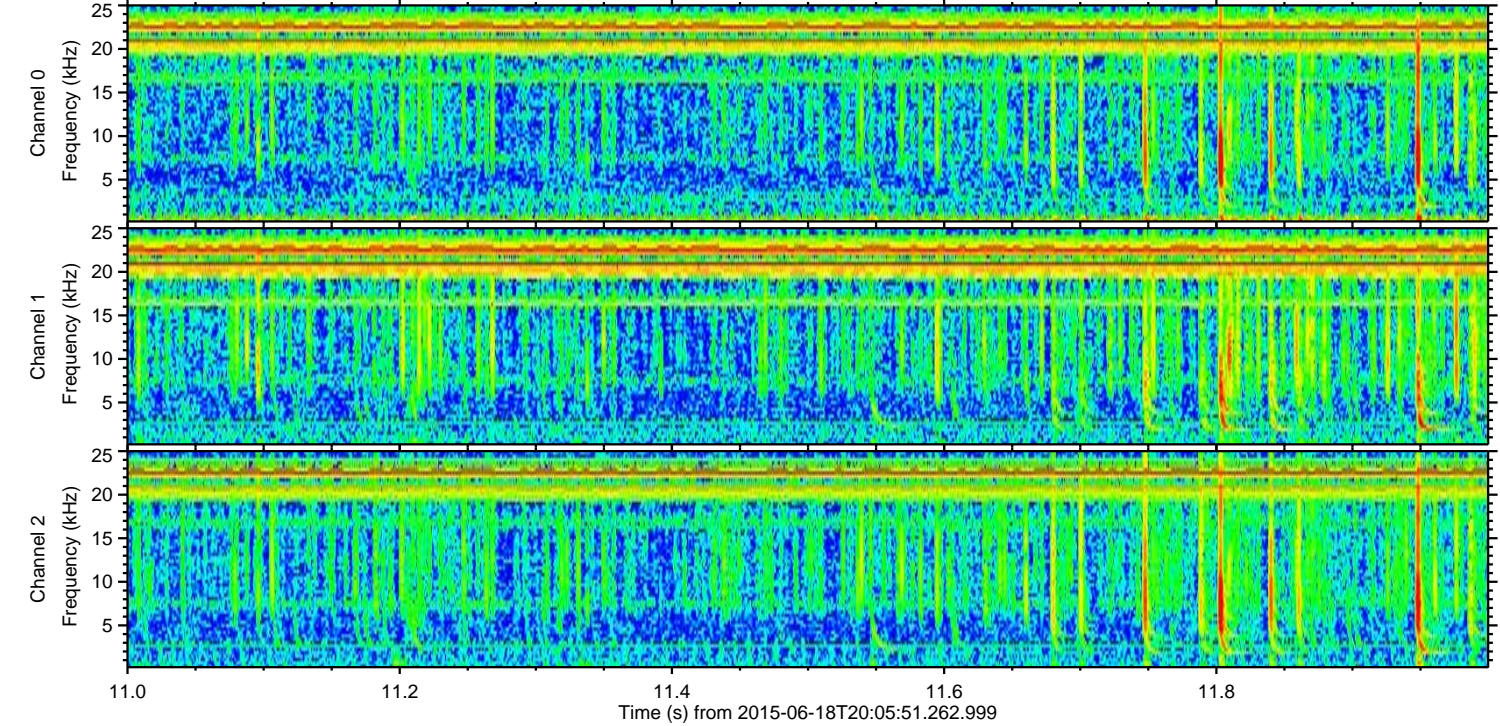
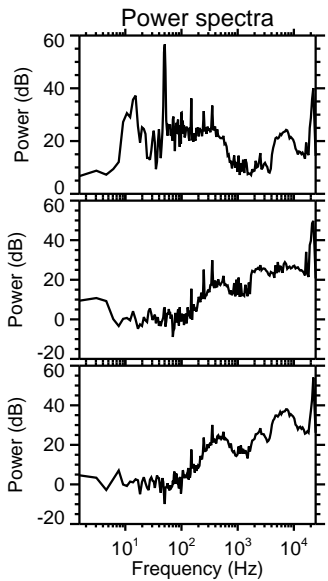
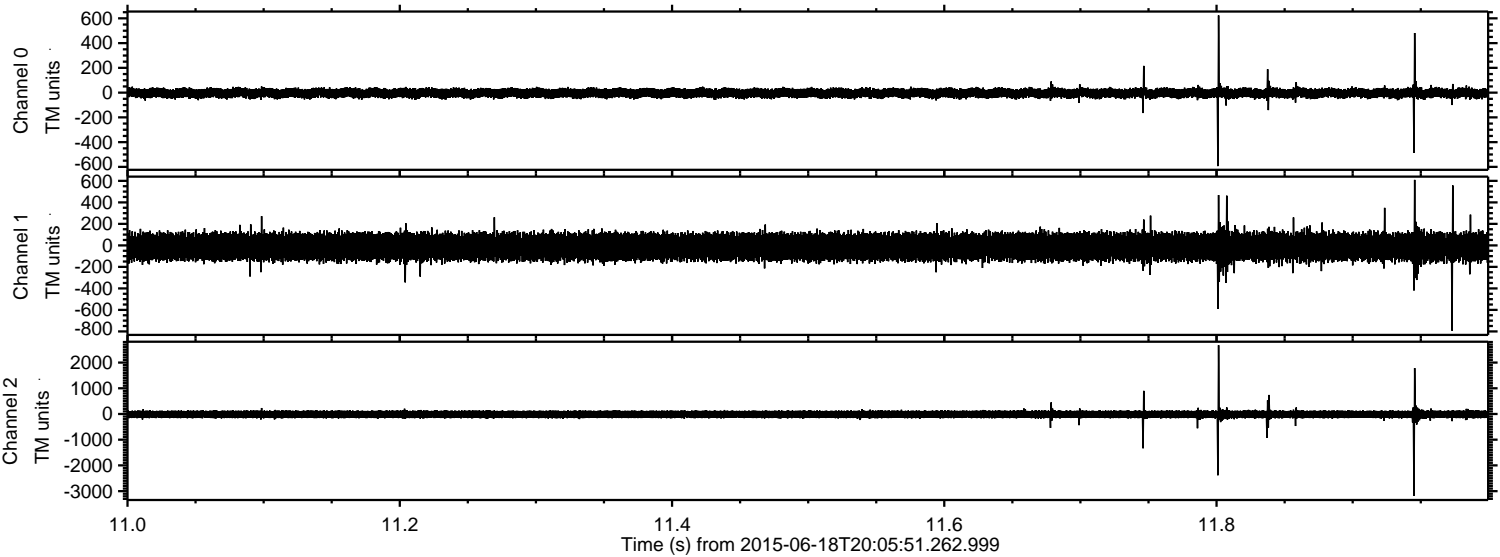


Channel 0
mn: -772
mx: 686
 μ : -4.3
 σ : 20.3

Channel 1
mn: -709
mx: 486
 μ : -13.4
 σ : 64.2

Channel 2
mn: -2943
mx: 3292
 μ : -14.1
 σ : 85.2

Processed Thu Jun 18 22:13:01 2015 by ELM ver.2012-10-06 from 001__elm20150618_200550__dat00.bin

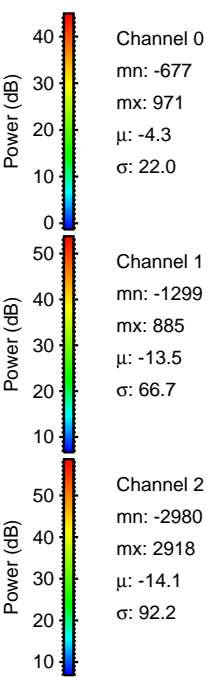
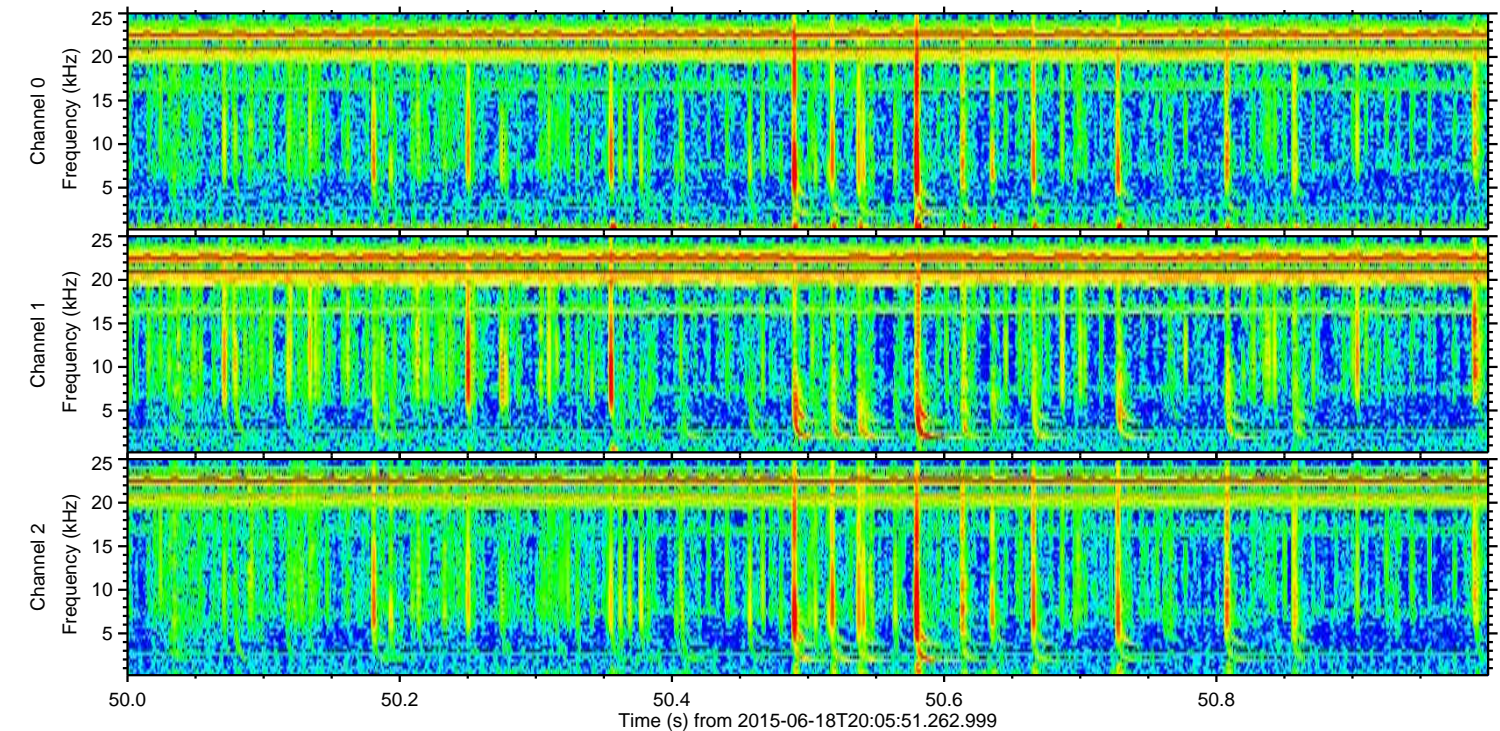
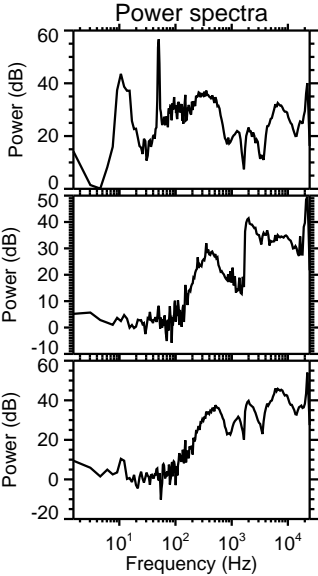
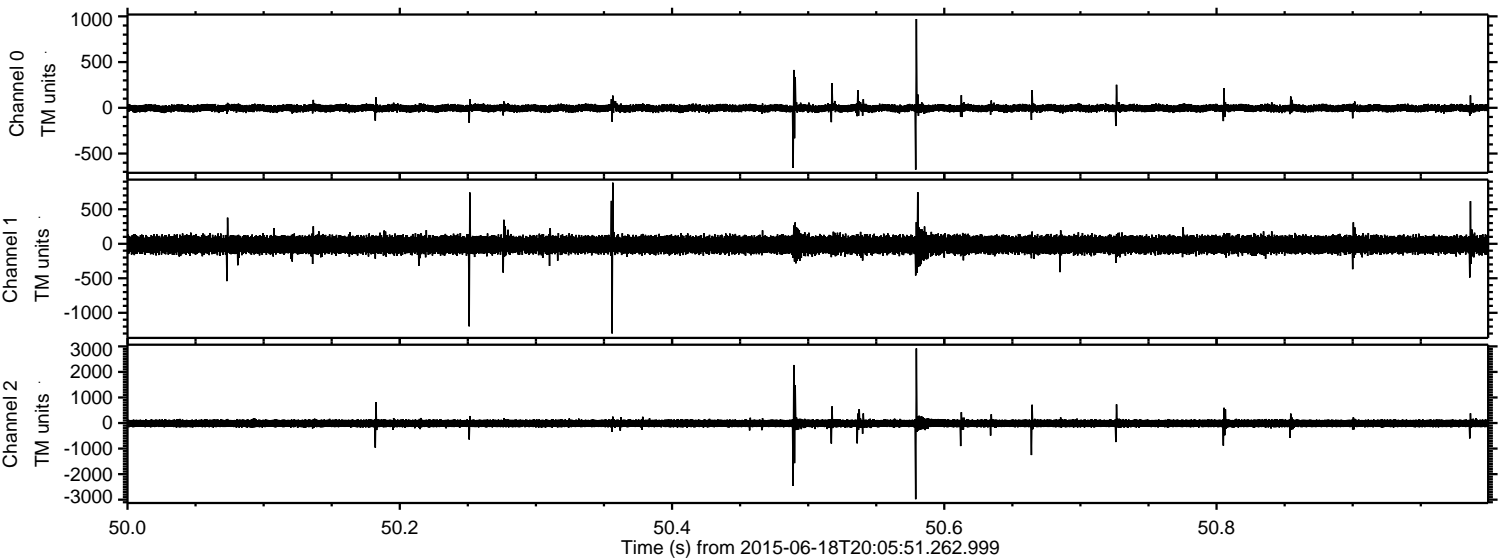


Channel 0
mn: -594
mx: 624
 μ : -4.2
 σ : 20.7

Channel 1
mn: -793
mx: 609
 μ : -13.5
 σ : 64.9

Channel 2
mn: -3186
mx: 2677
 μ : -14.0
 σ : 87.4

Processed Thu Jun 18 22:13:03 2015 by ELM ver.2012-10-06 from 001__elm20150618_200550__dat00.bin

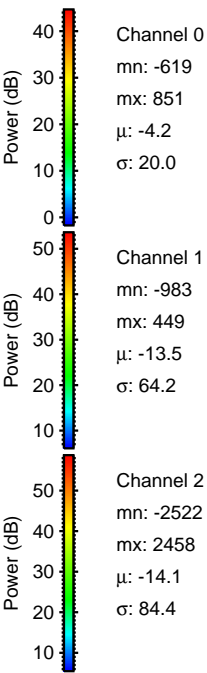
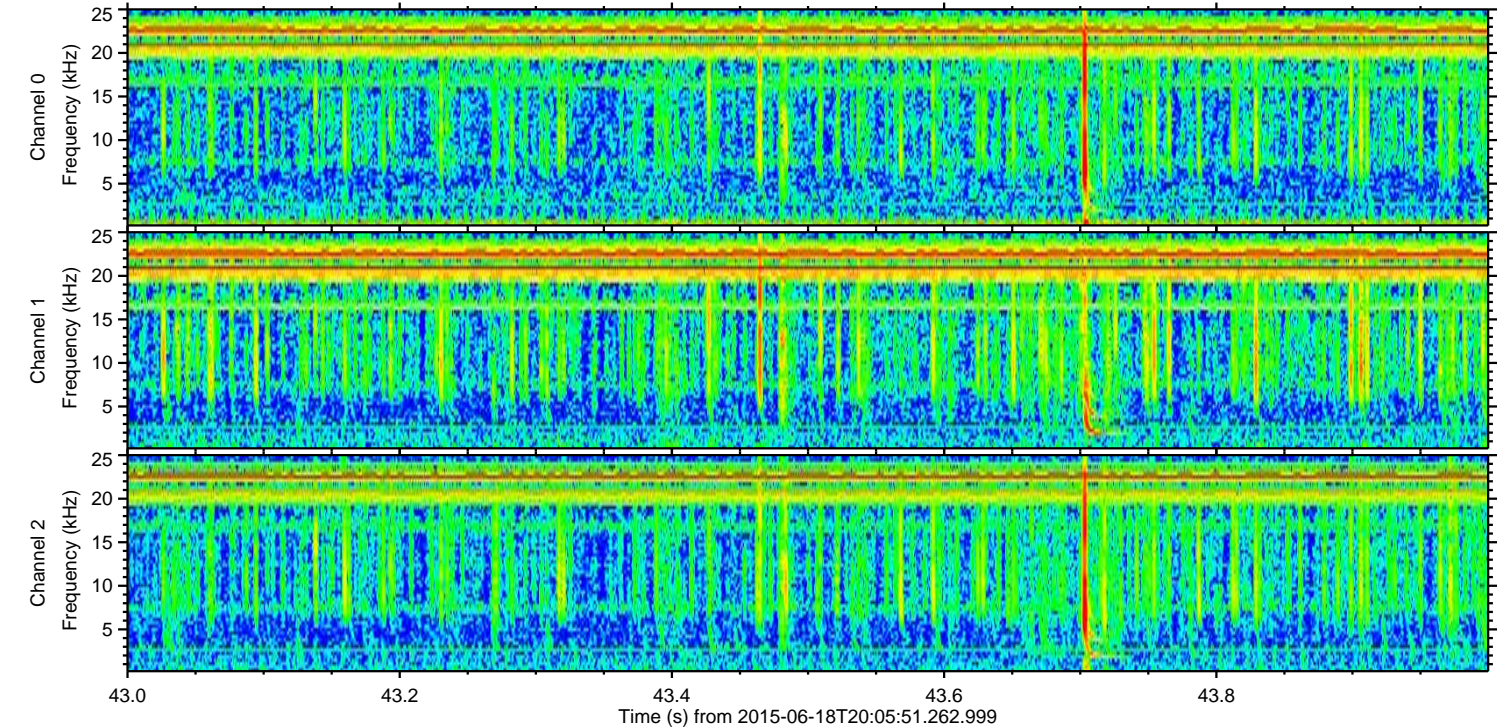
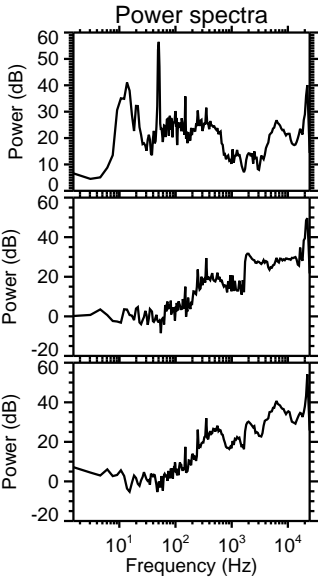
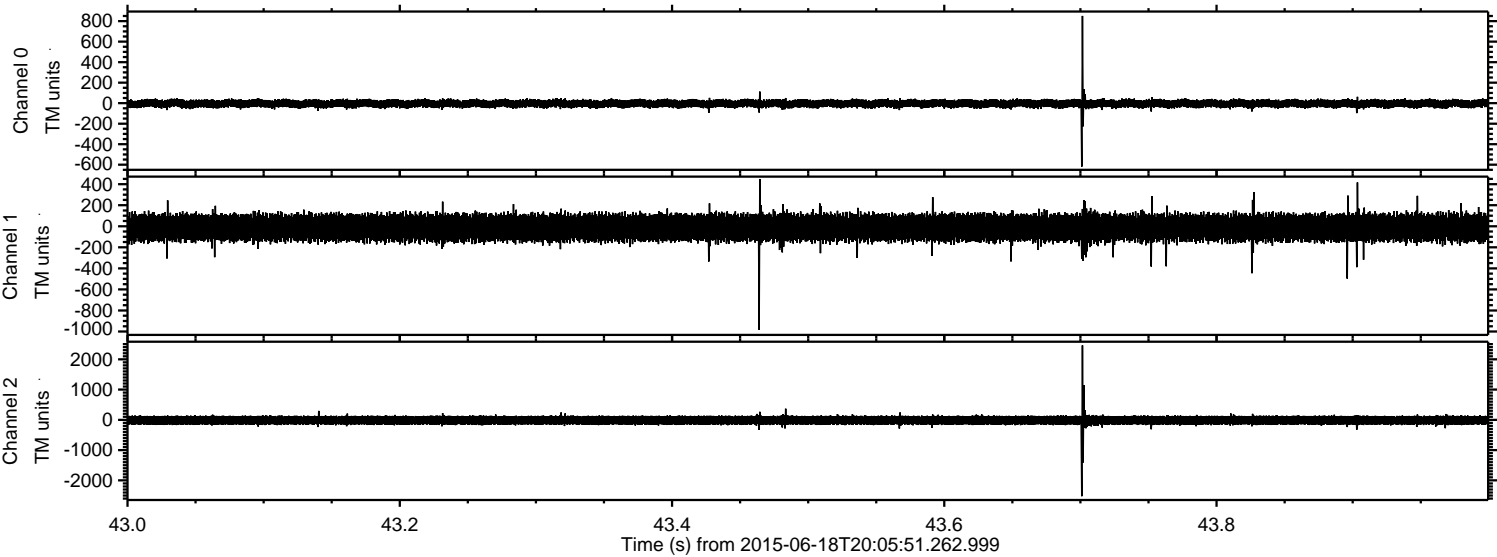


Channel 0
mn: -677
mx: 971
 μ : -4.3
 σ : 22.0

Channel 1
mn: -1299
mx: 885
 μ : -13.5
 σ : 66.7

Channel 2
mn: -2980
mx: 2918
 μ : -14.1
 σ : 92.2

Processed Thu Jun 18 22:13:04 2015 by ELM ver.2012-10-06 from 001__elm20150618_200550__dat00.bin



Processed Thu Jun 18 22:13:06 2015 by ELM ver.2012-10-06 from 001__elm20150618_200550__dat00.bin

