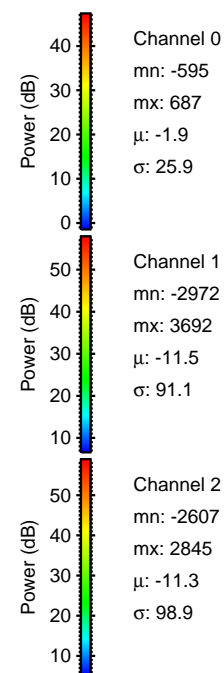
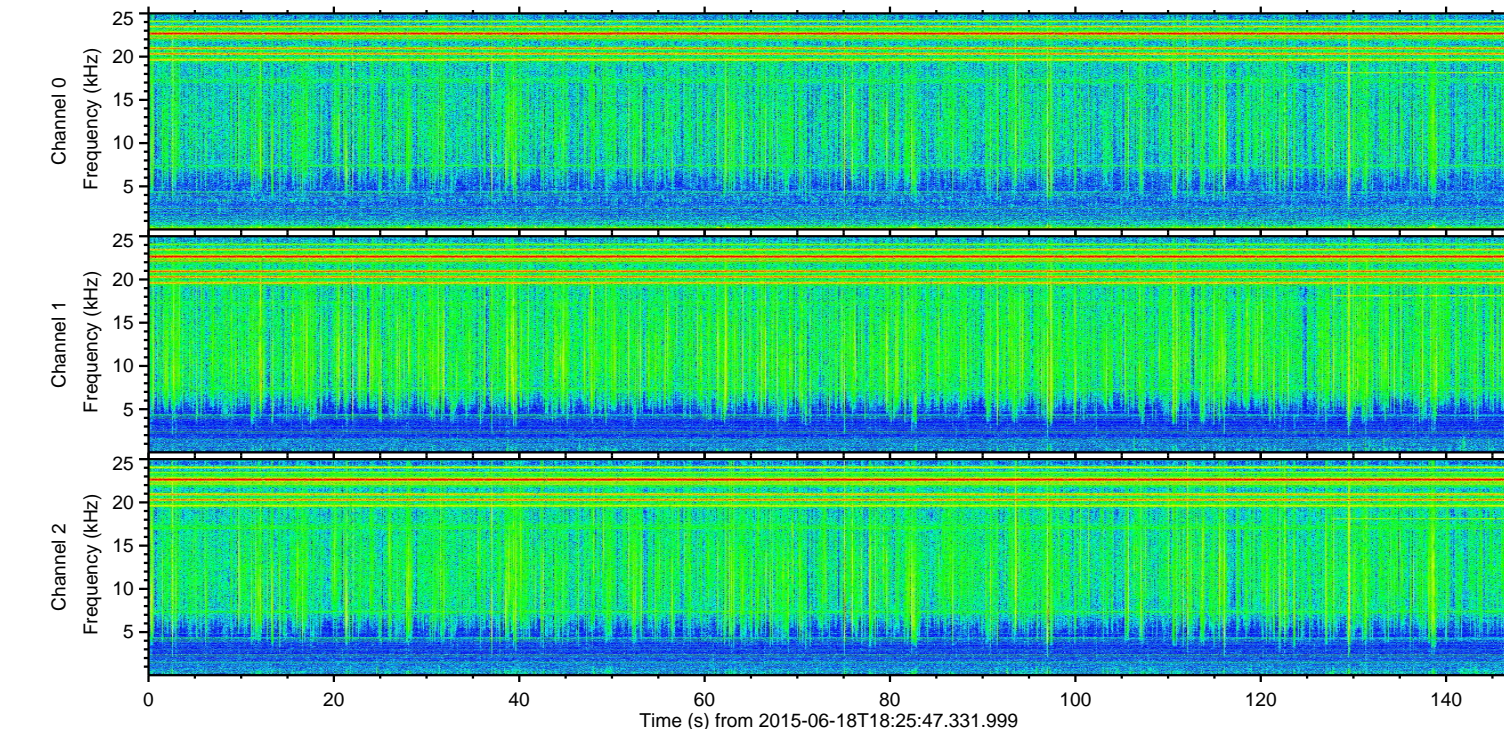
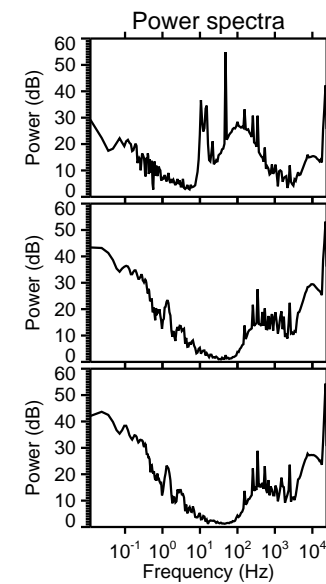
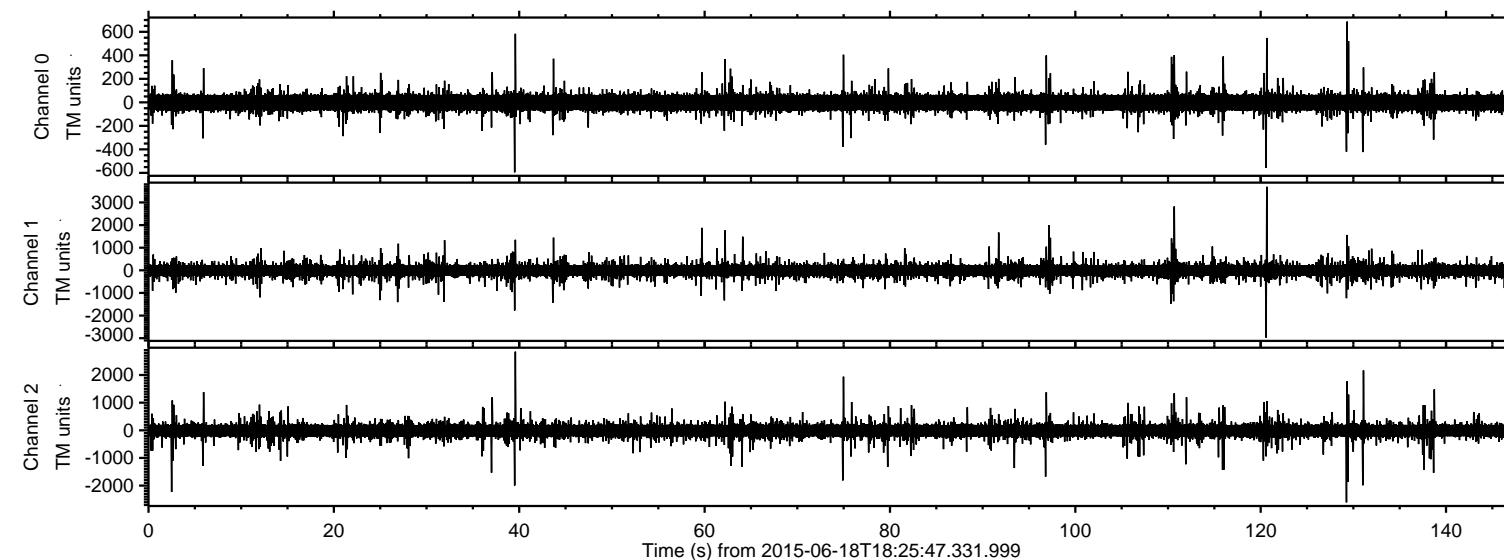


ELMAVAN 3D WAVEFORMS (Measured data sampled at 50 kHz) 51000 packets of 144 samples from 2015-06-18T18:25:47.331.999.

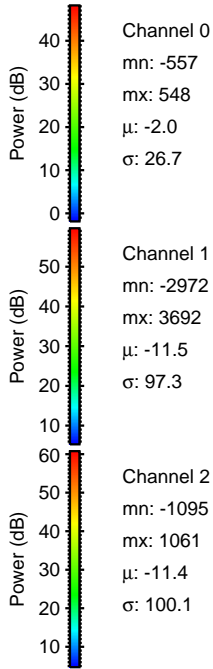
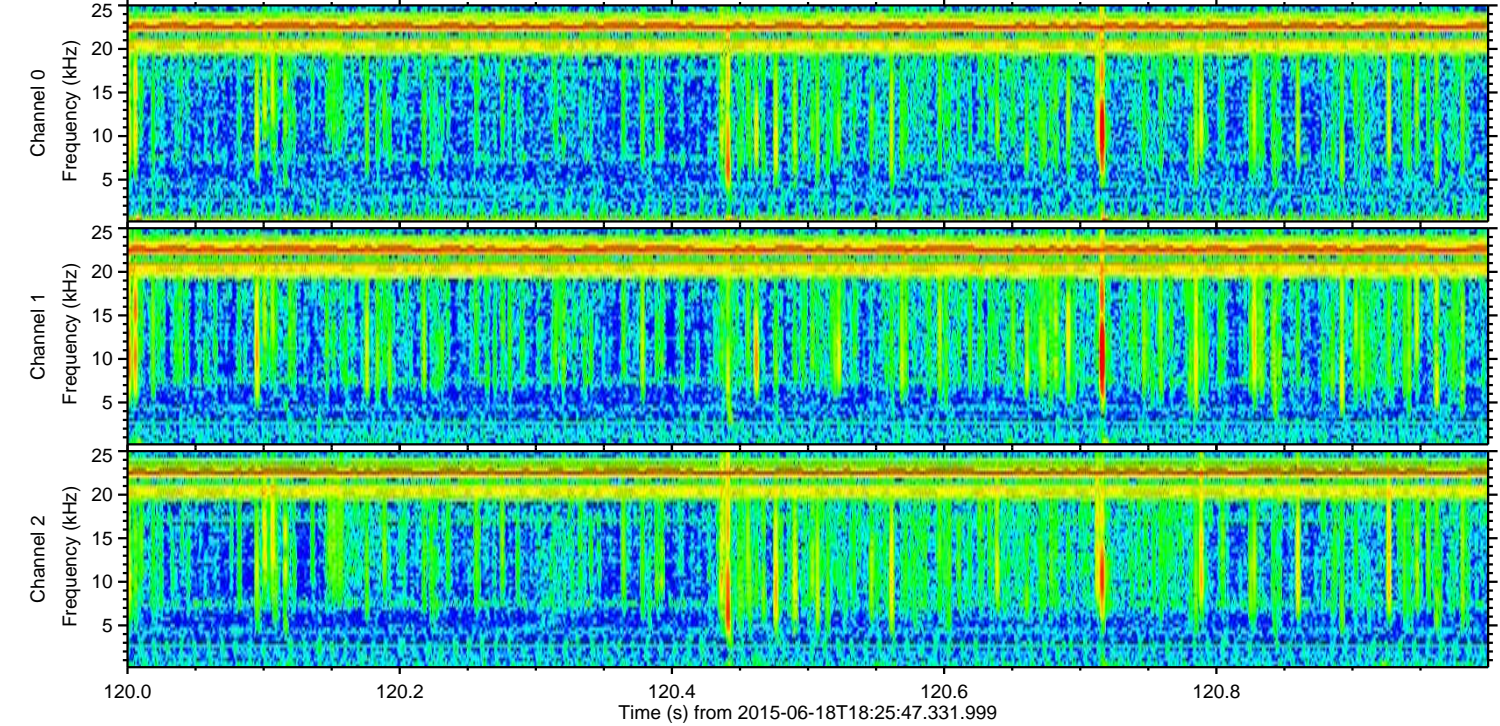
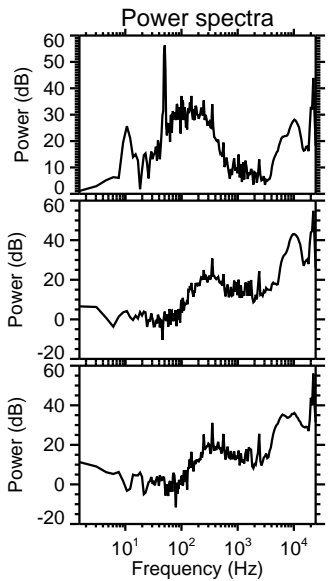
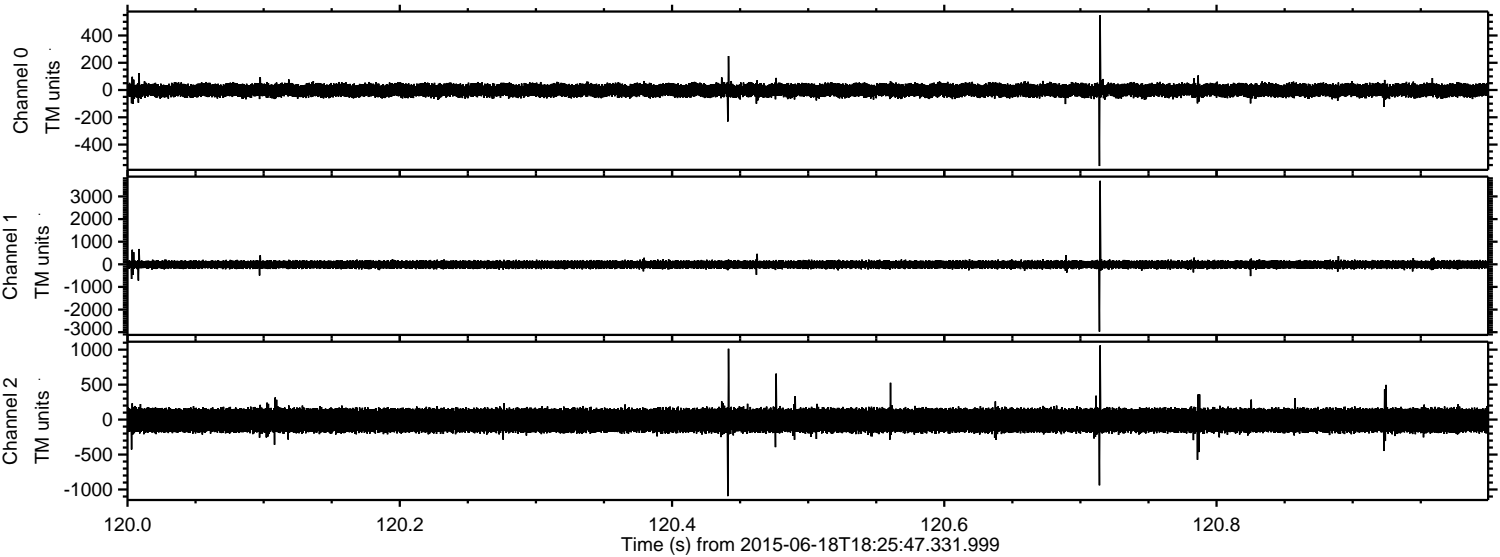
Processed Thu Jun 18 20:32:09 2015 by ELM ver.2012-10-06 from 001\_\_elm20150618\_182546\_\_dat00.bin





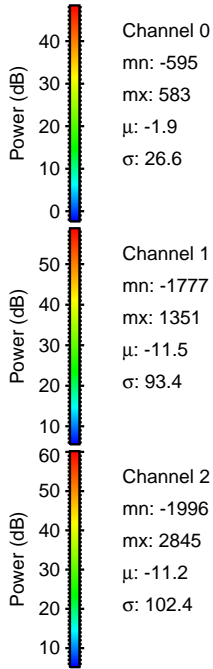
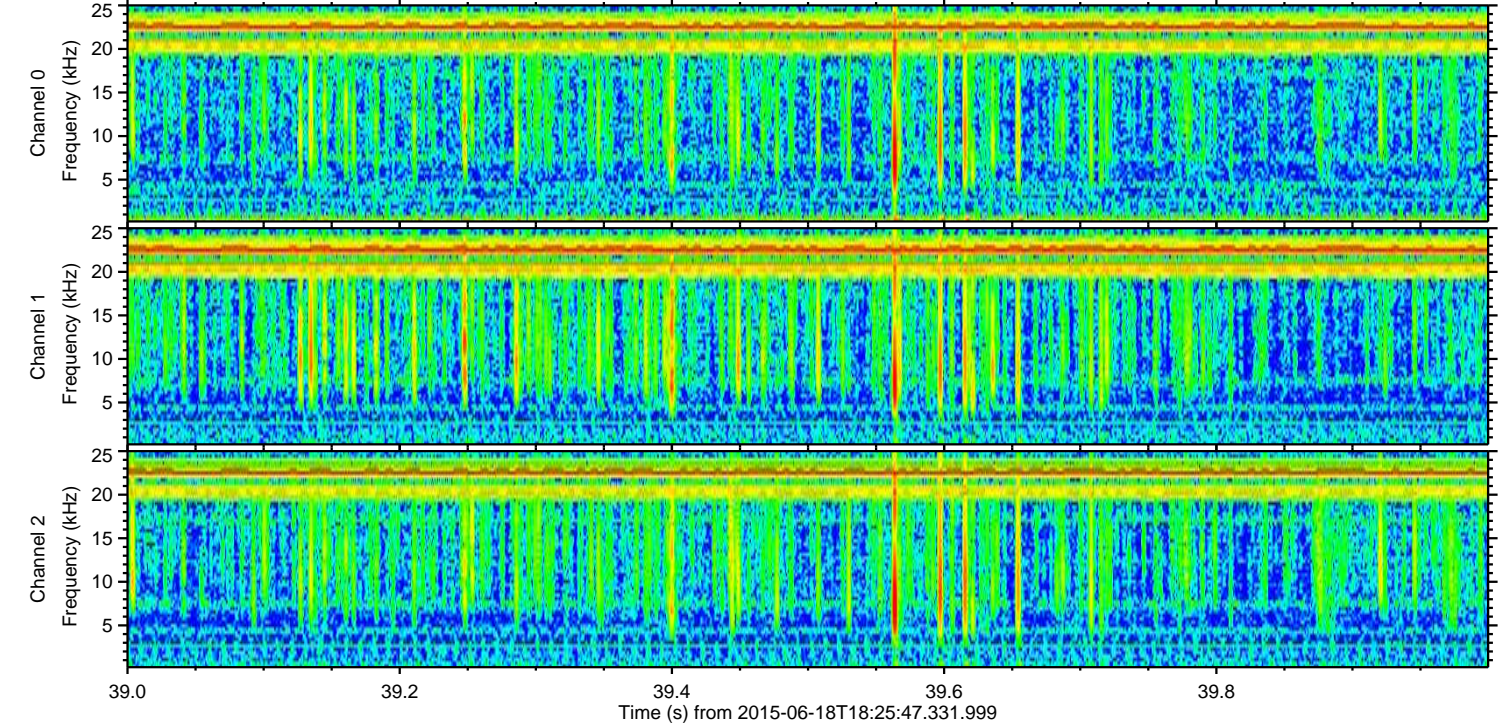
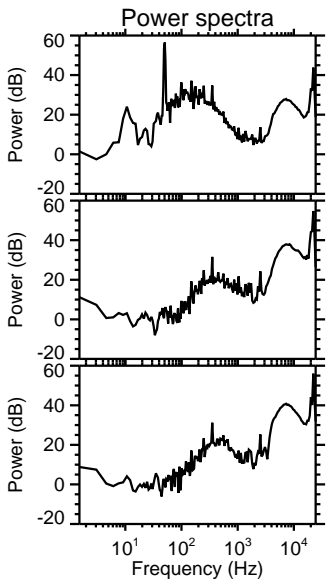
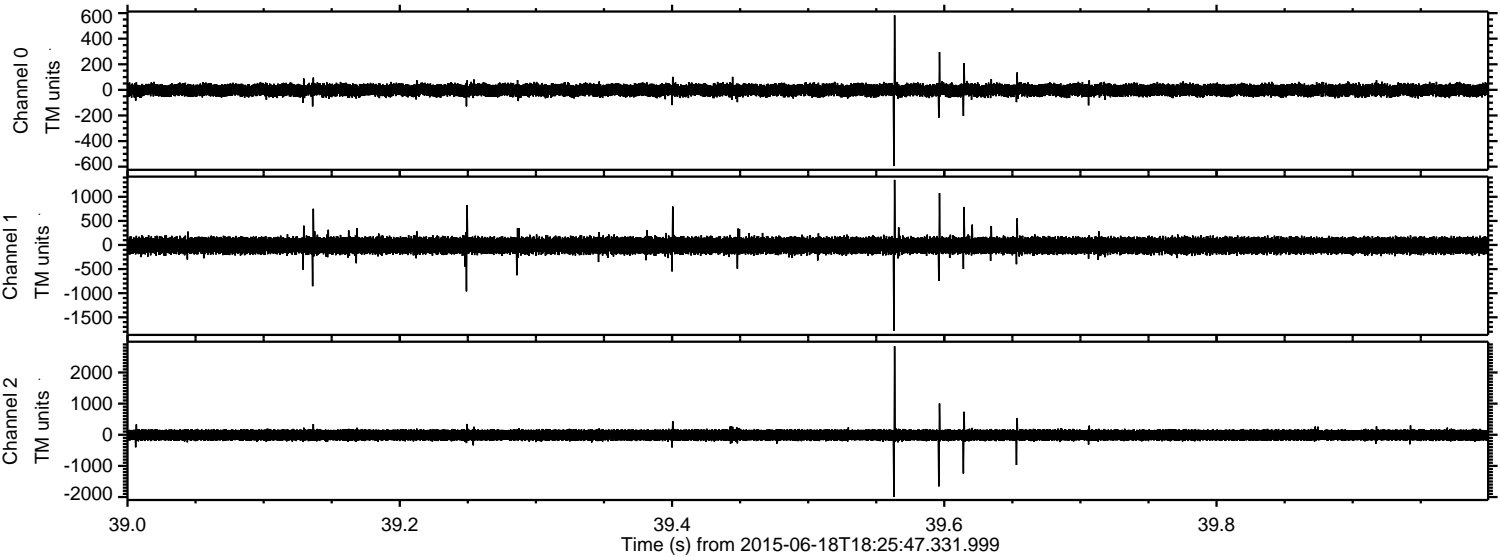
ELMAVAN 3D WAVEFORMS (Measured data sampled at 50 kHz) 51000 packets of 144 samples from 2015-06-18T18:25:47.331.999. Part 121/147

Processed Thu Jun 18 20:32:30 2015 by ELM ver.2012-10-06 from 001\_\_elm20150618\_182546\_\_dat00.bin





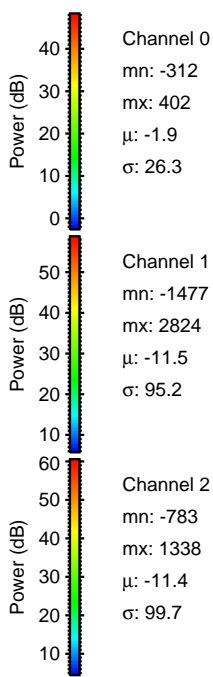
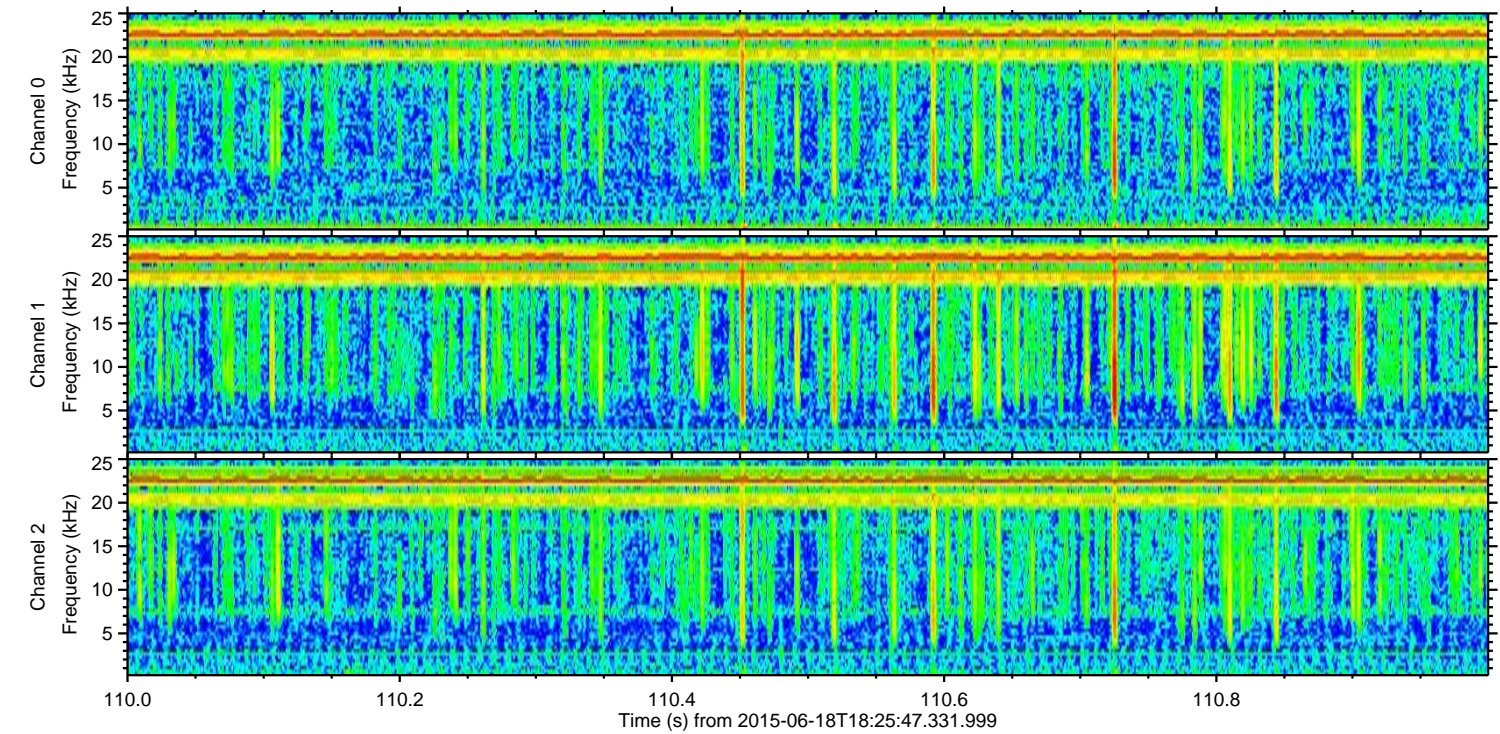
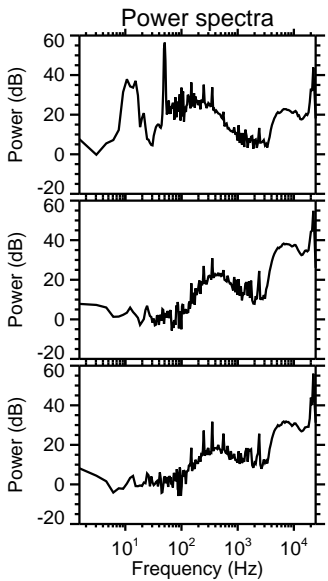
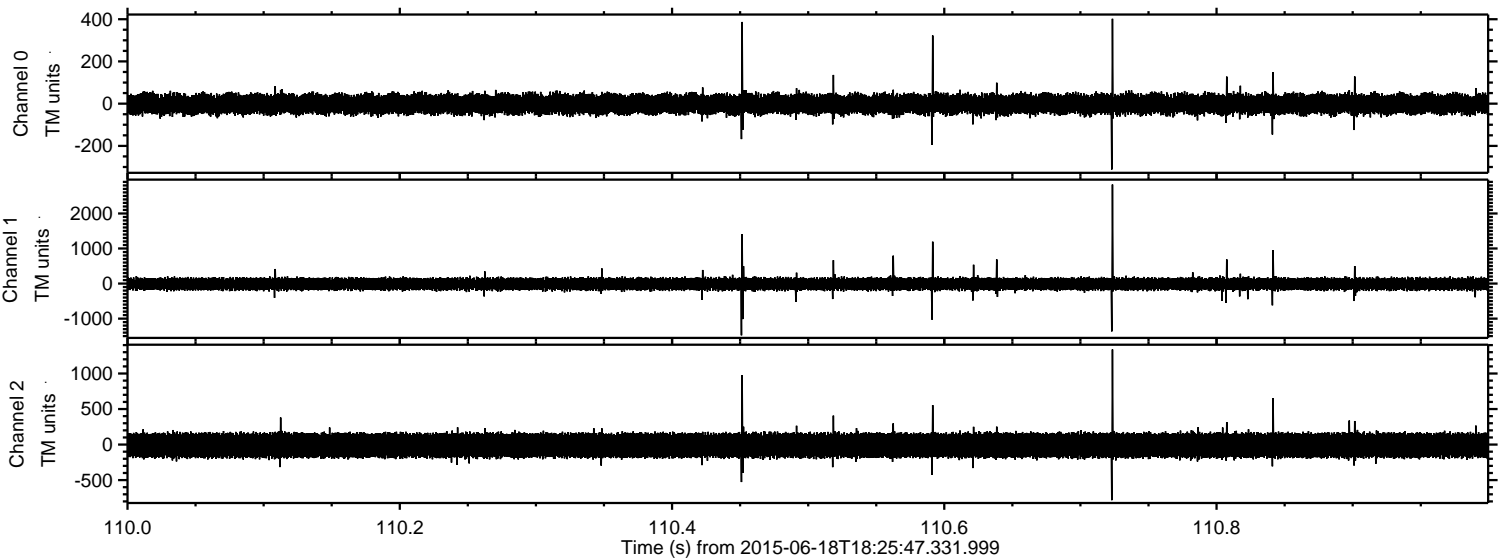
Processed Thu Jun 18 20:32:32 2015 by ELM ver.2012-10-06 from 001\_\_elm20150618\_182546\_\_dat00.bin





ELMAVAN 3D WAVEFORMS (Measured data sampled at 50 kHz) 51000 packets of 144 samples from 2015-06-18T18:25:47.331.999. Part 111/147

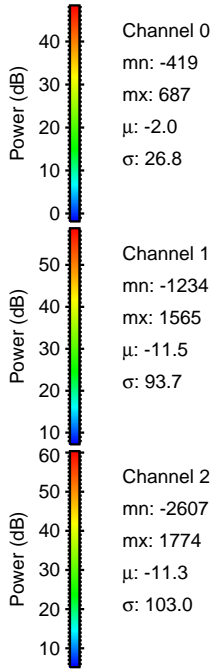
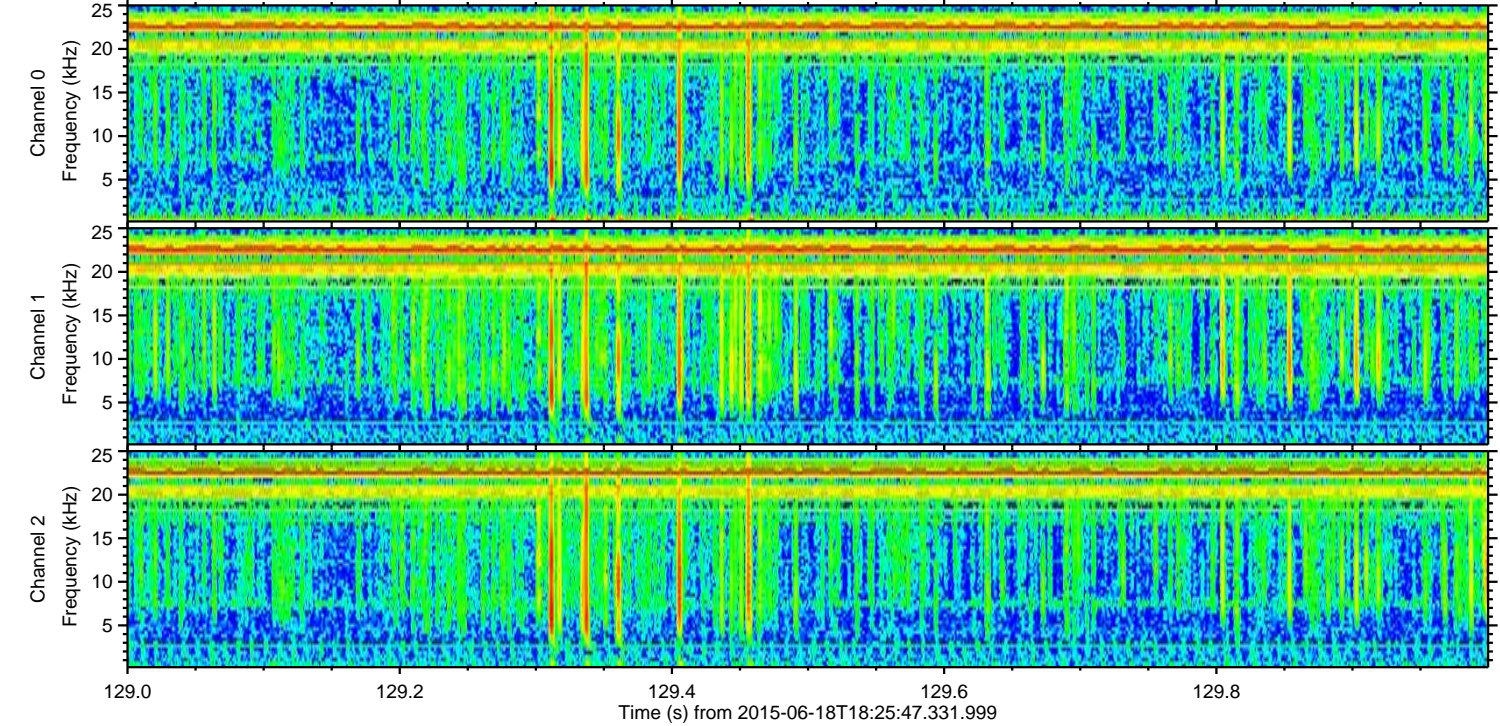
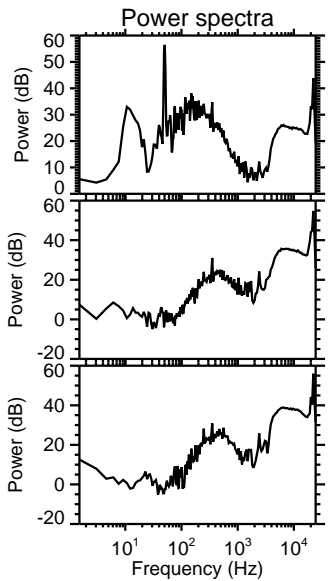
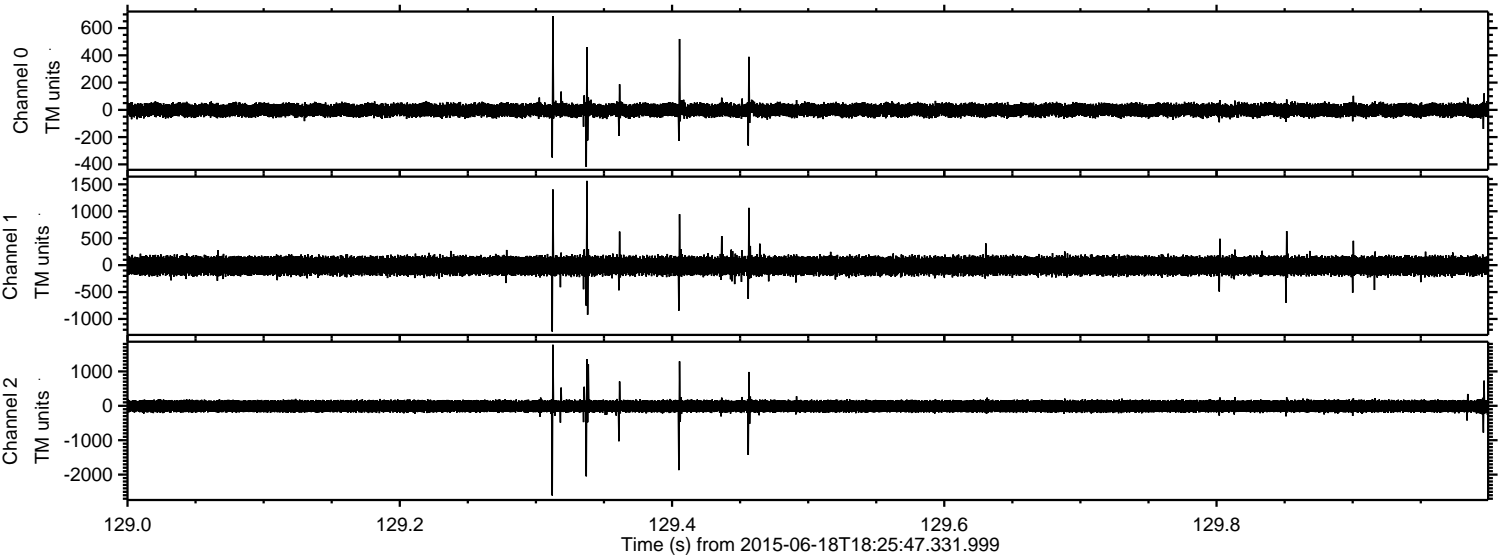
Processed Thu Jun 18 20:32:33 2015 by ELM ver.2012-10-06 from 001\_\_elm20150618\_182546\_\_dat00.bin





ELMAVAN 3D WAVEFORMS (Measured data sampled at 50 kHz) 51000 packets of 144 samples from 2015-06-18T18:25:47.331.999. Part 130/147

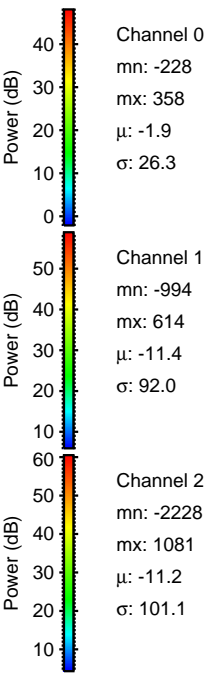
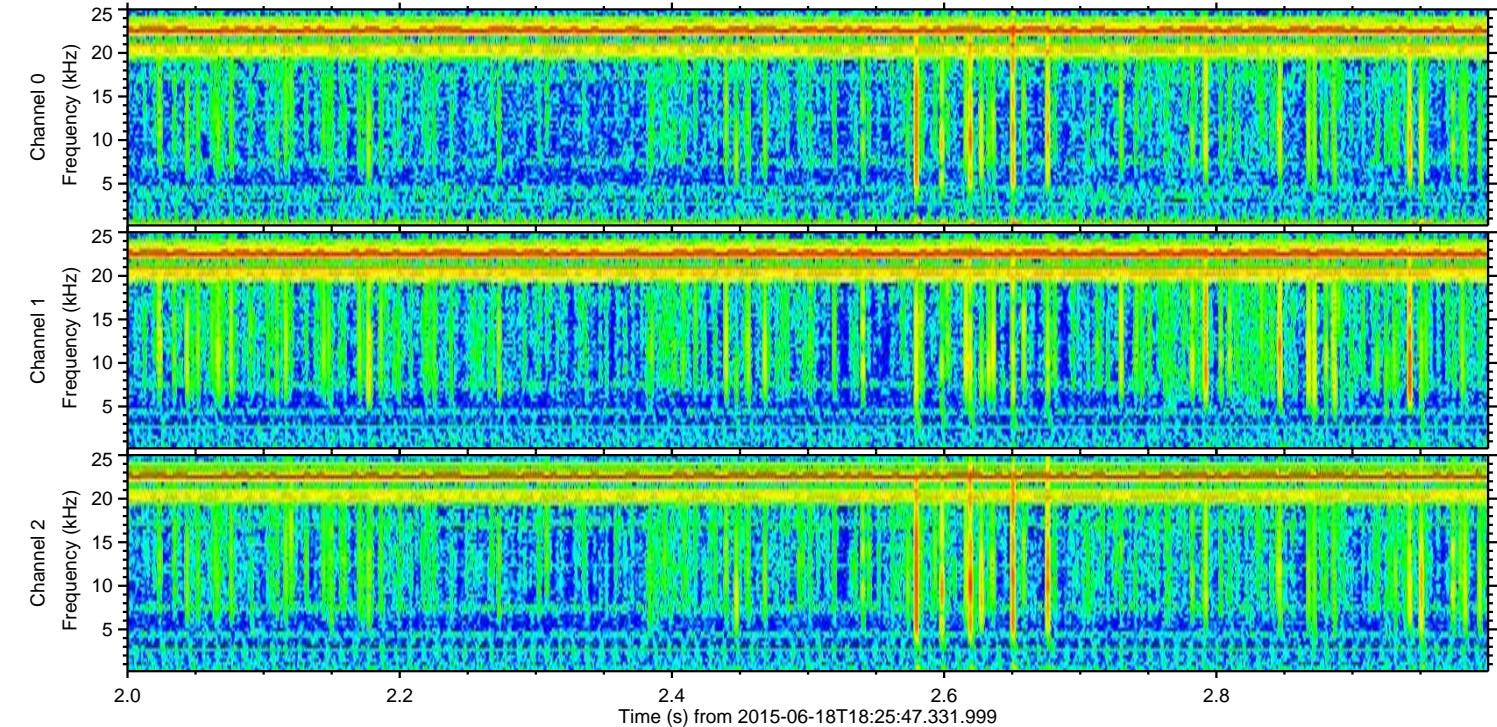
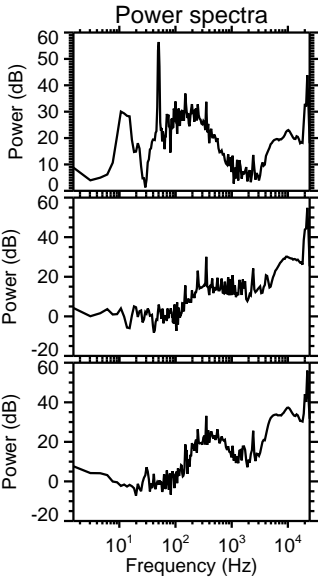
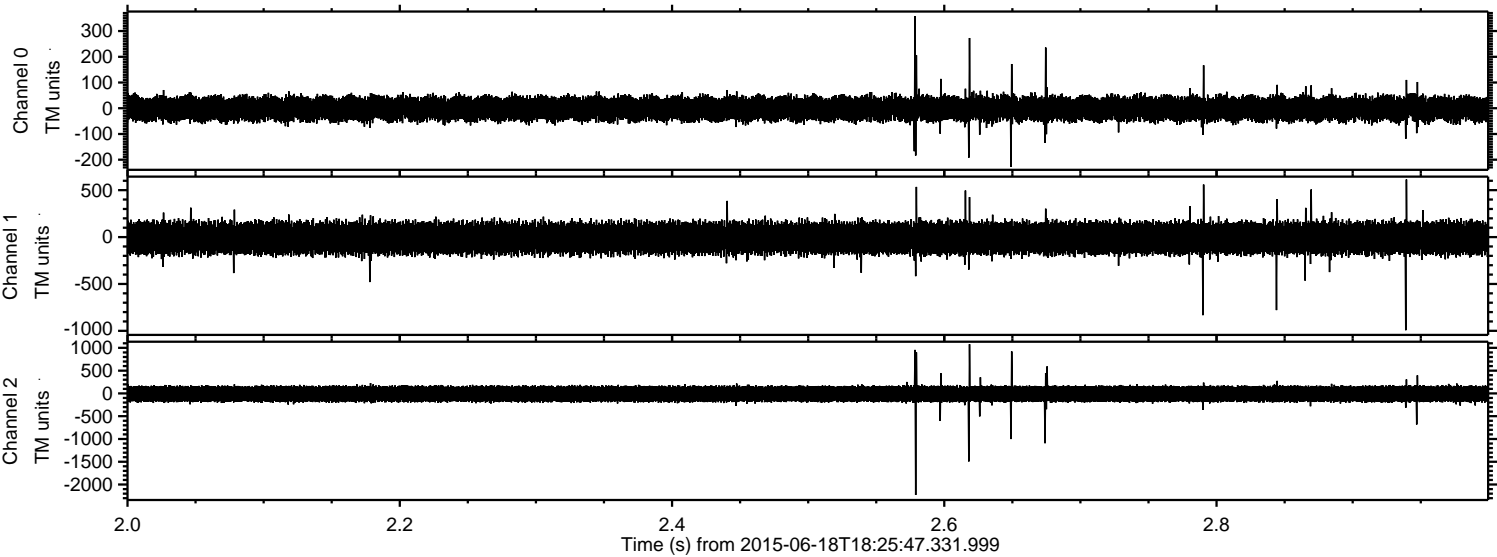
Processed Thu Jun 18 20:32:34 2015 by ELM ver.2012-10-06 from 001\_\_elm20150618\_182546\_\_dat00.bin





ELMAVAN 3D WAVEFORMS (Measured data sampled at 50 kHz) 51000 packets of 144 samples from 2015-06-18T18:25:47.331.999. Part 3/147

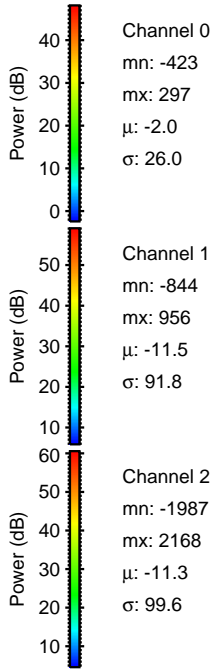
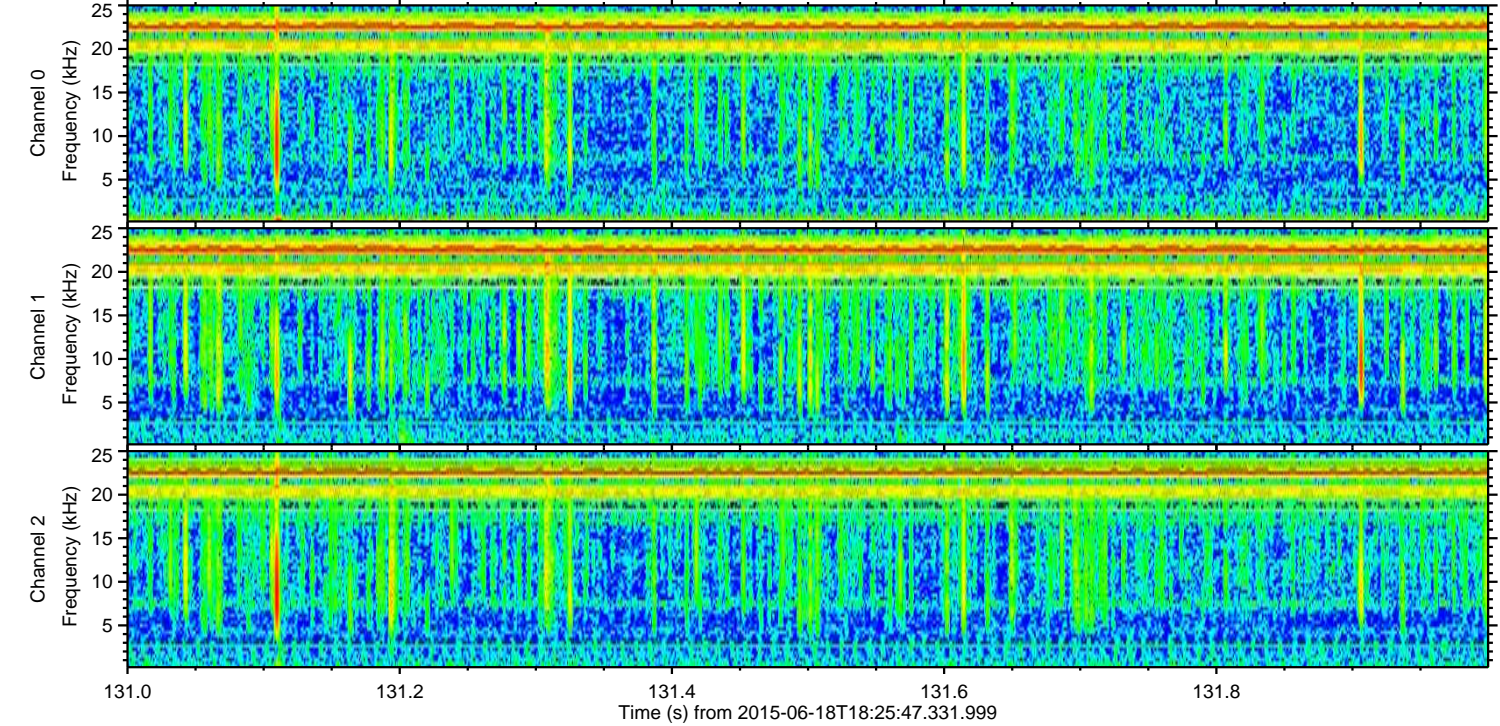
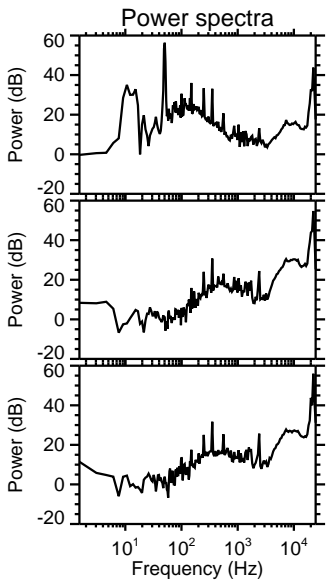
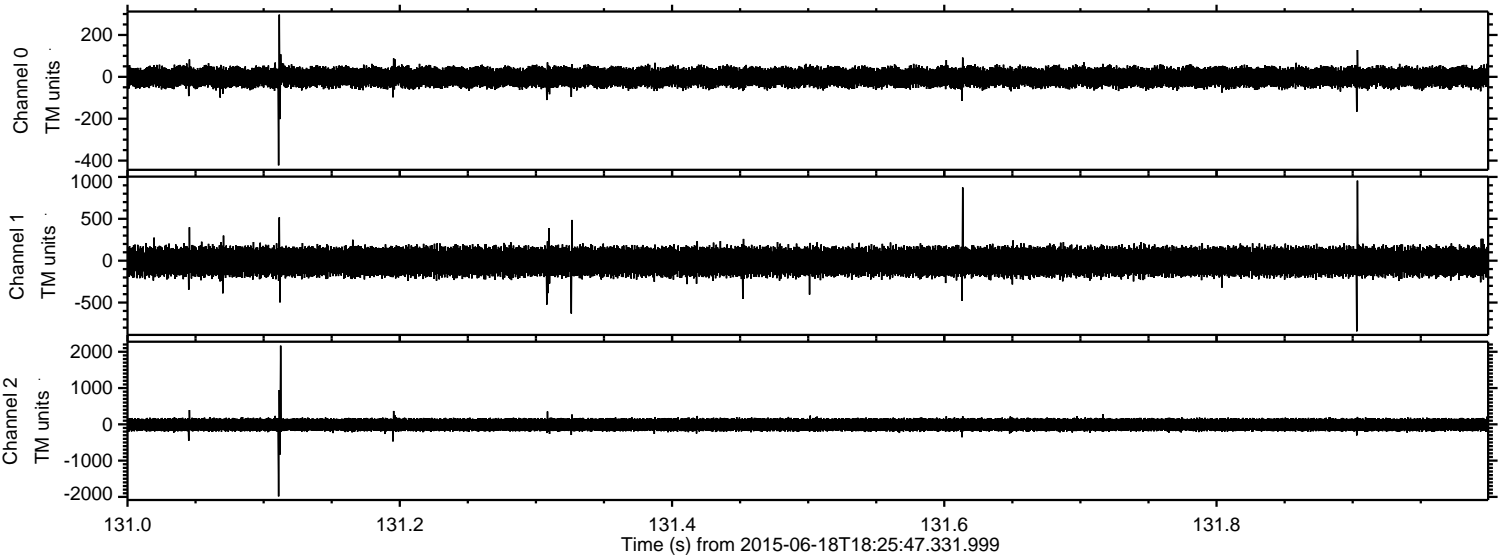
Processed Thu Jun 18 20:32:35 2015 by ELM ver.2012-10-06 from 001\_\_elm20150618\_182546\_\_dat00.bin





ELMAVAN 3D WAVEFORMS (Measured data sampled at 50 kHz) 51000 packets of 144 samples from 2015-06-18T18:25:47.331.999. Part 132/147

Processed Thu Jun 18 20:32:36 2015 by ELM ver.2012-10-06 from 001\_\_elm20150618\_182546\_\_dat00.bin



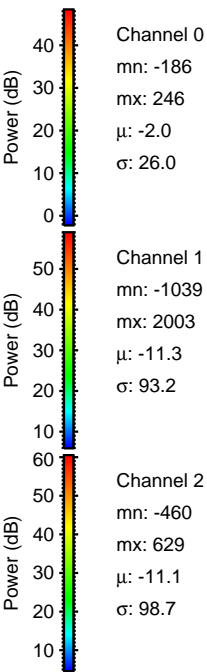
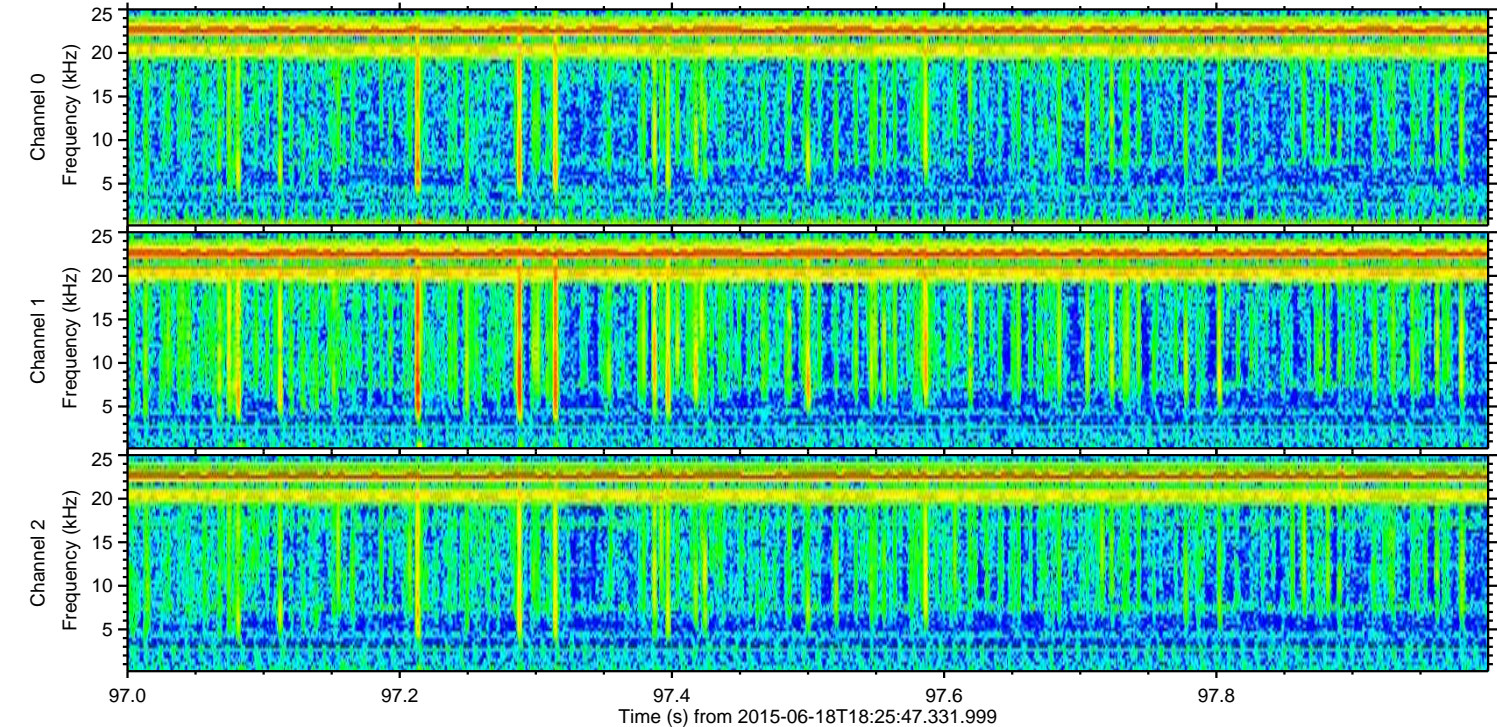
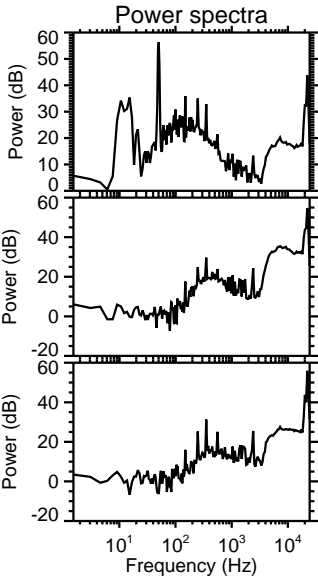
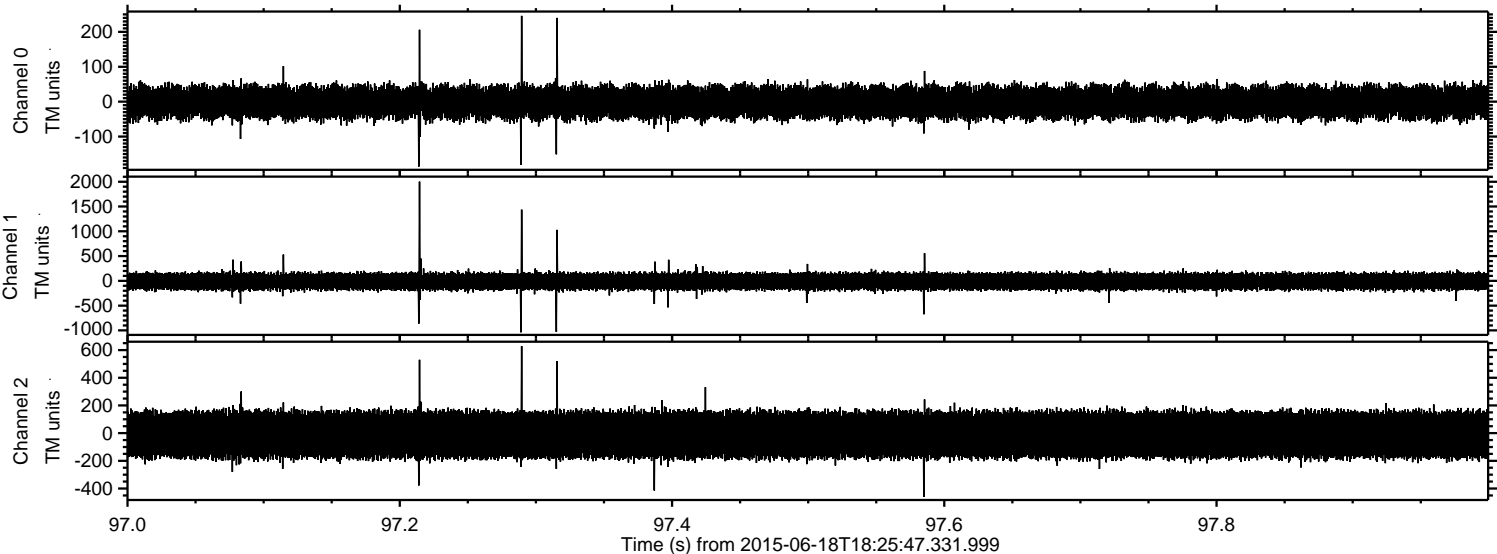
Channel 0  
mn: -423  
mx: 297  
 $\mu$ : -2.0  
 $\sigma$ : 26.0

Channel 1  
mn: -844  
mx: 956  
 $\mu$ : -11.5  
 $\sigma$ : 91.8

Channel 2  
mn: -1987  
mx: 2168  
 $\mu$ : -11.3  
 $\sigma$ : 99.6

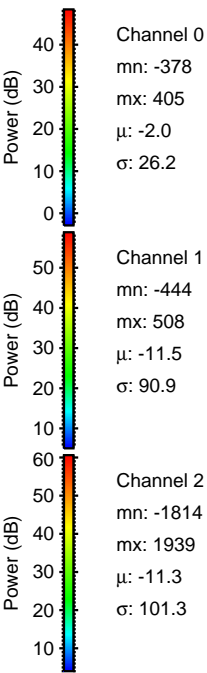
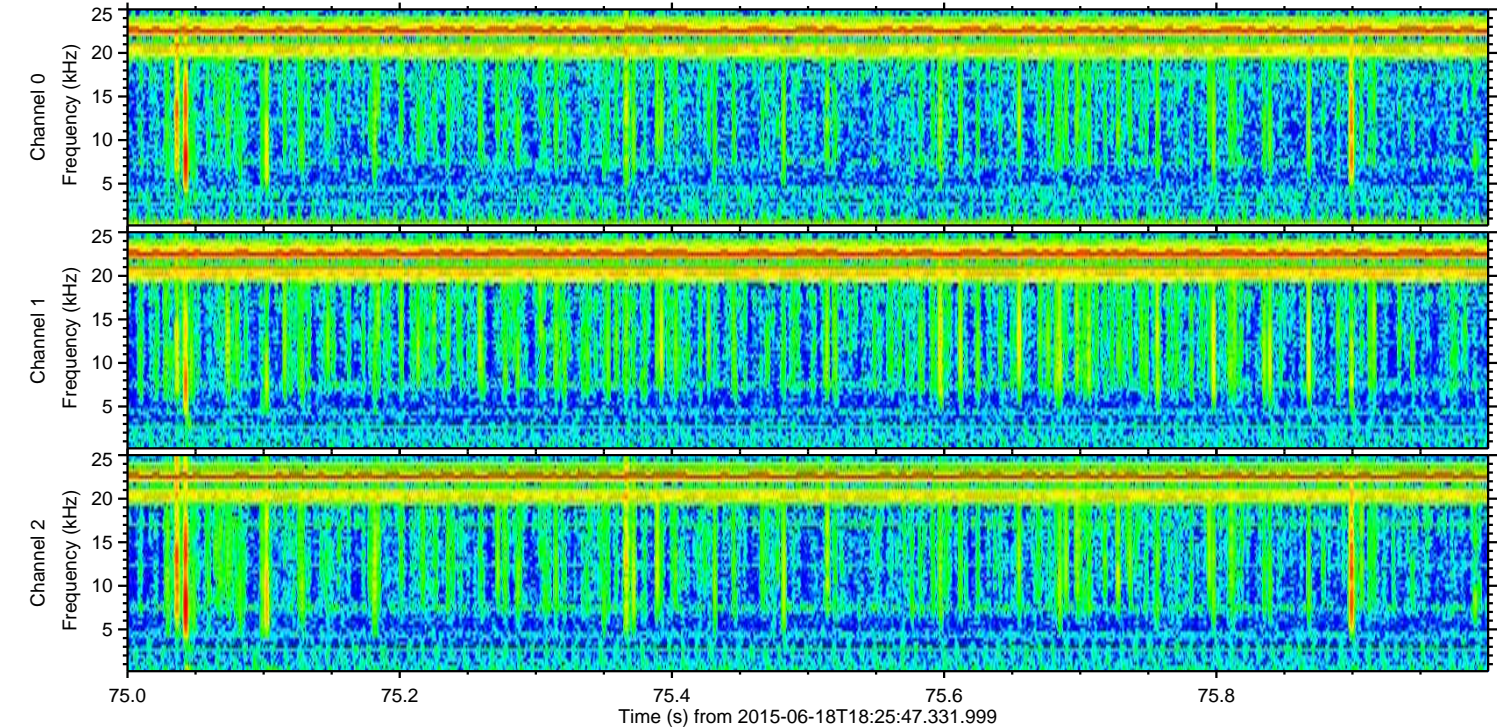
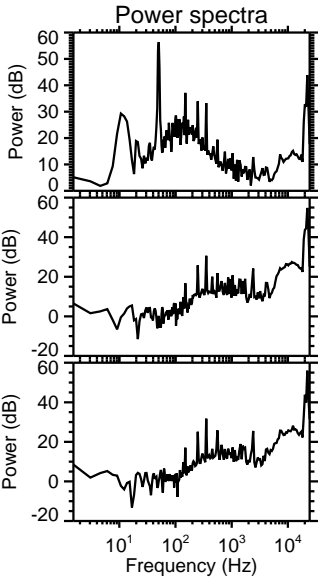
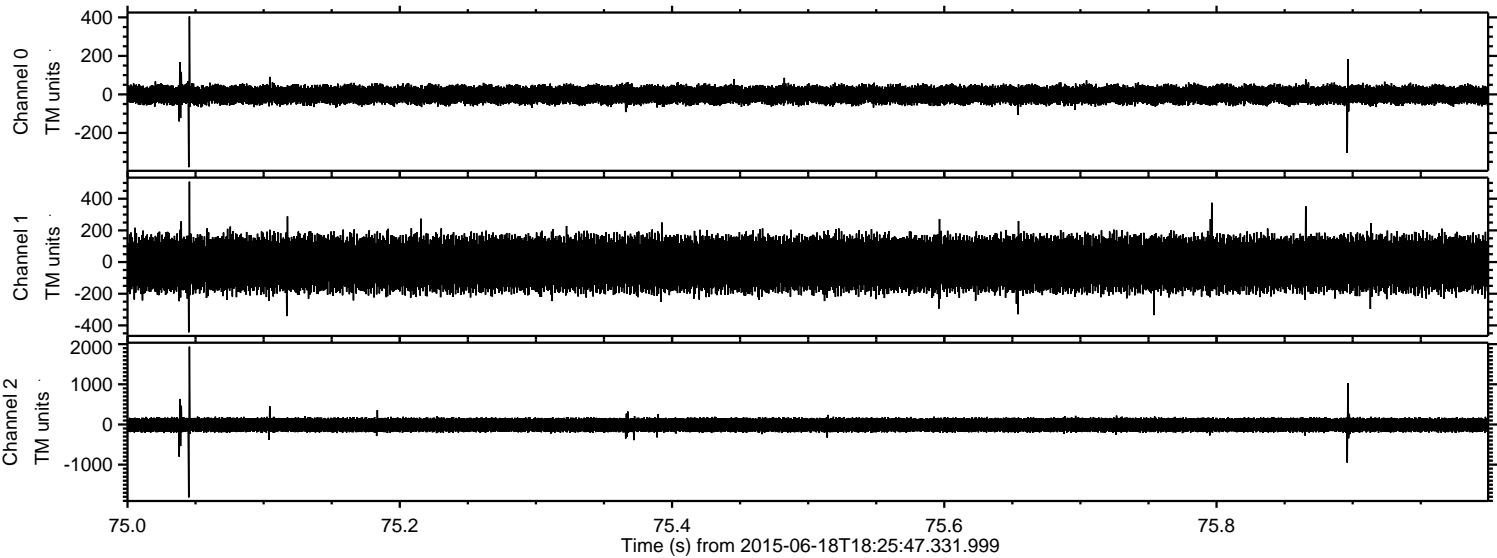


Processed Thu Jun 18 20:32:38 2015 by ELM ver.2012-10-06 from 001\_\_elm20150618\_182546\_\_dat00.bin



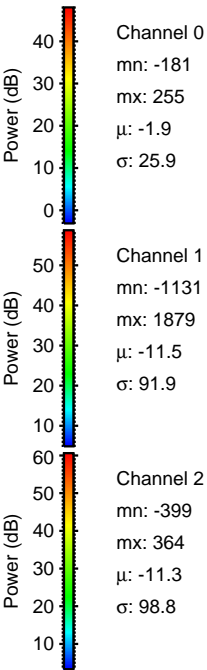
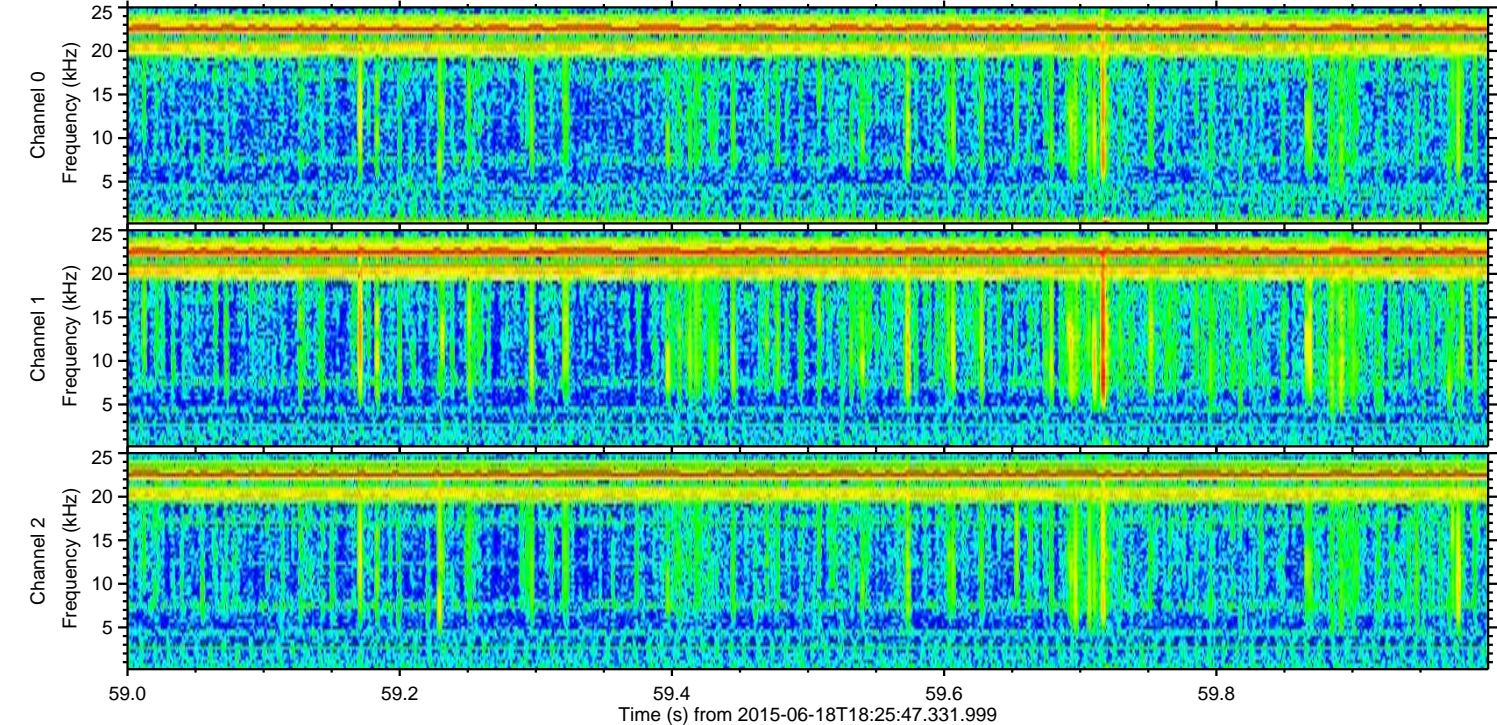
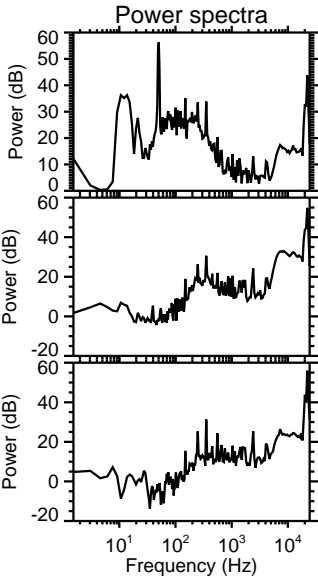
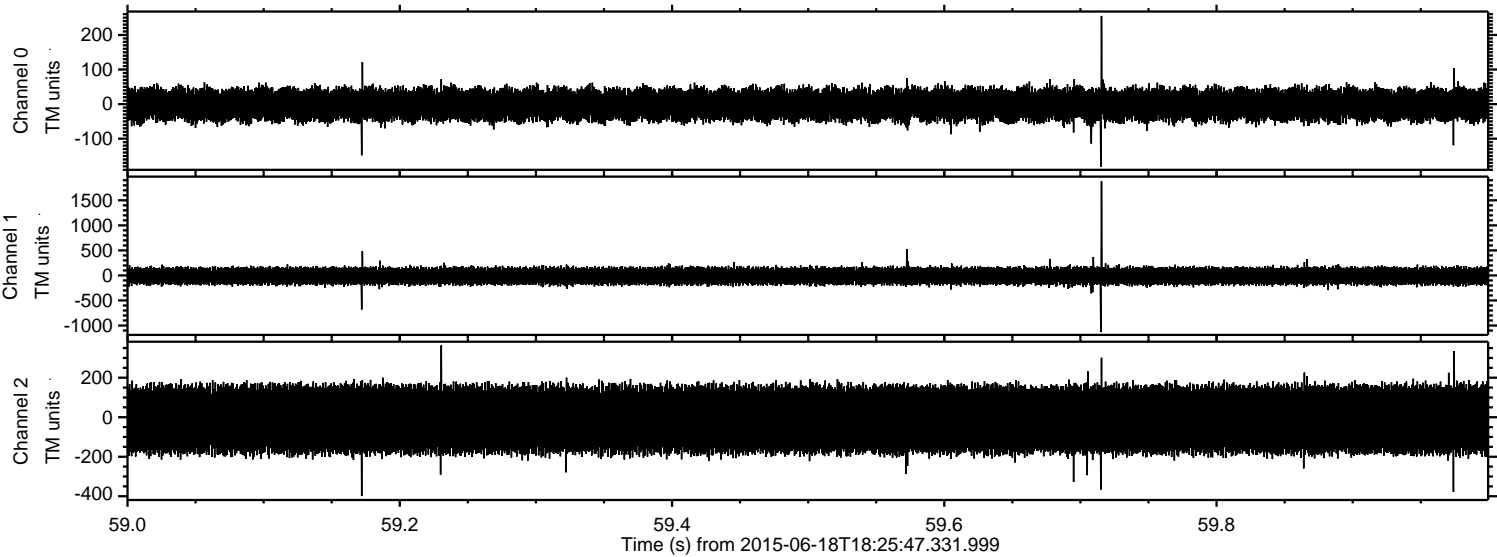


Processed Thu Jun 18 20:32:40 2015 by ELM ver.2012-10-06 from 001\_\_elm20150618\_182546\_\_dat00.bin





Processed Thu Jun 18 20:32:42 2015 by ELM ver.2012-10-06 from 001\_\_elm20150618\_182546\_\_dat00.bin





Processed Thu Jun 18 20:32:43 2015 by ELM ver.2012-10-06 from 001\_\_elm20150618\_182546\_\_dat00.bin

