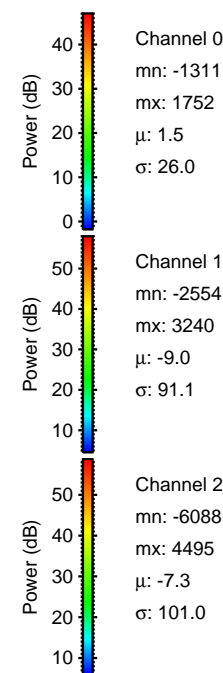
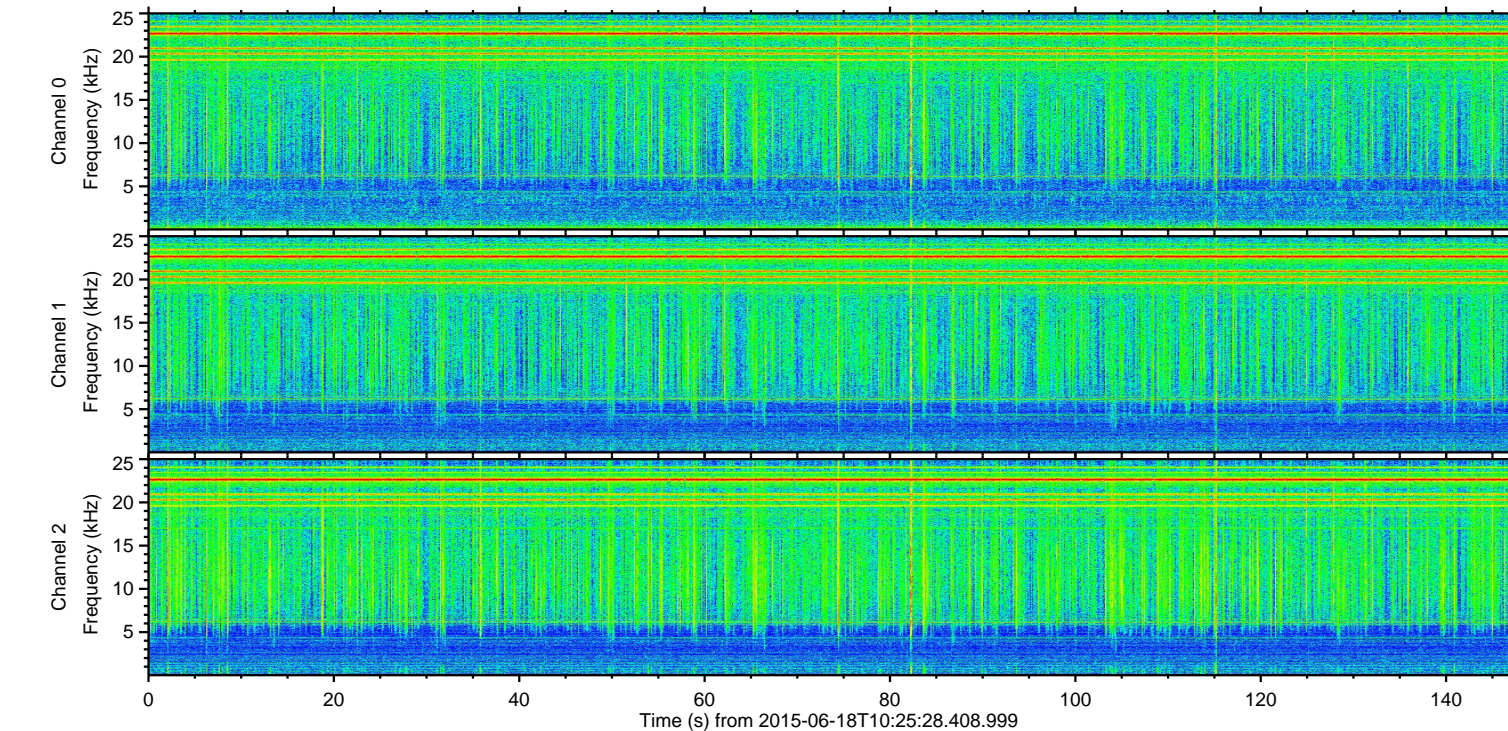
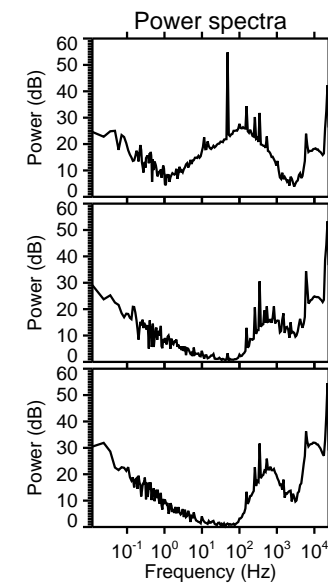
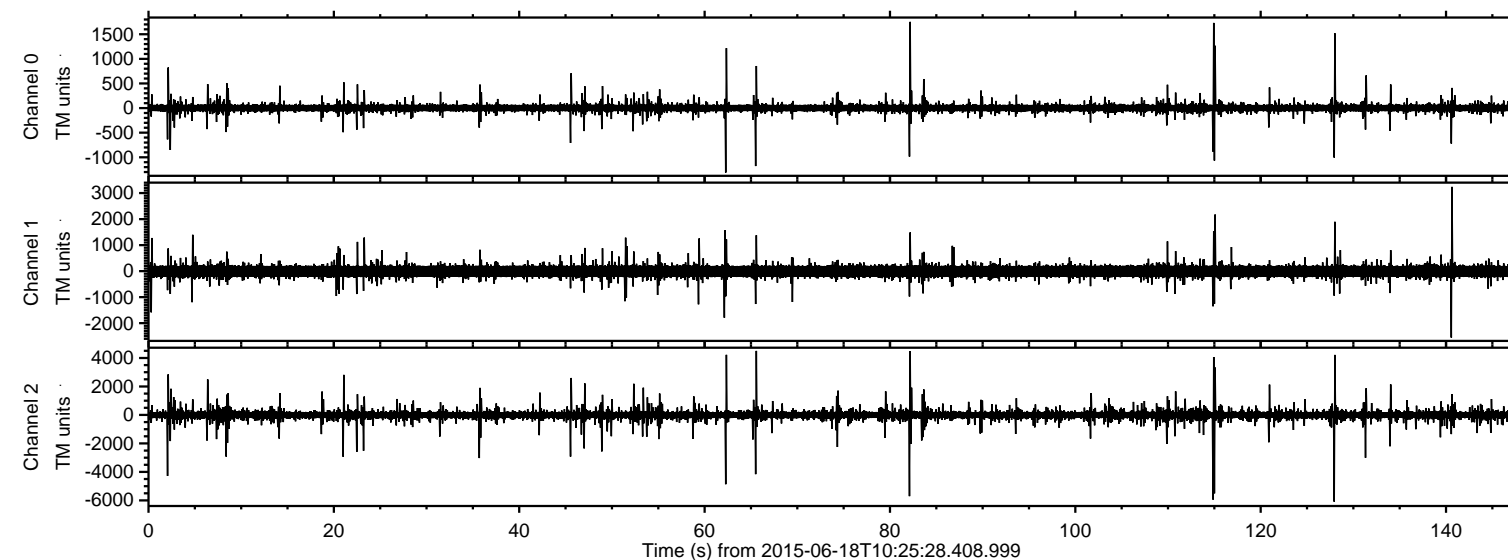


ELMAVAN 3D WAVEFORMS (Measured data sampled at 50 kHz) 51000 packets of 144 samples from 2015-06-18T10:25:28.408.999.

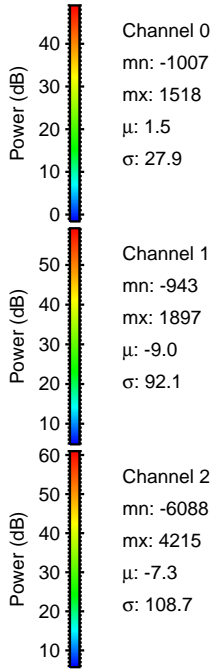
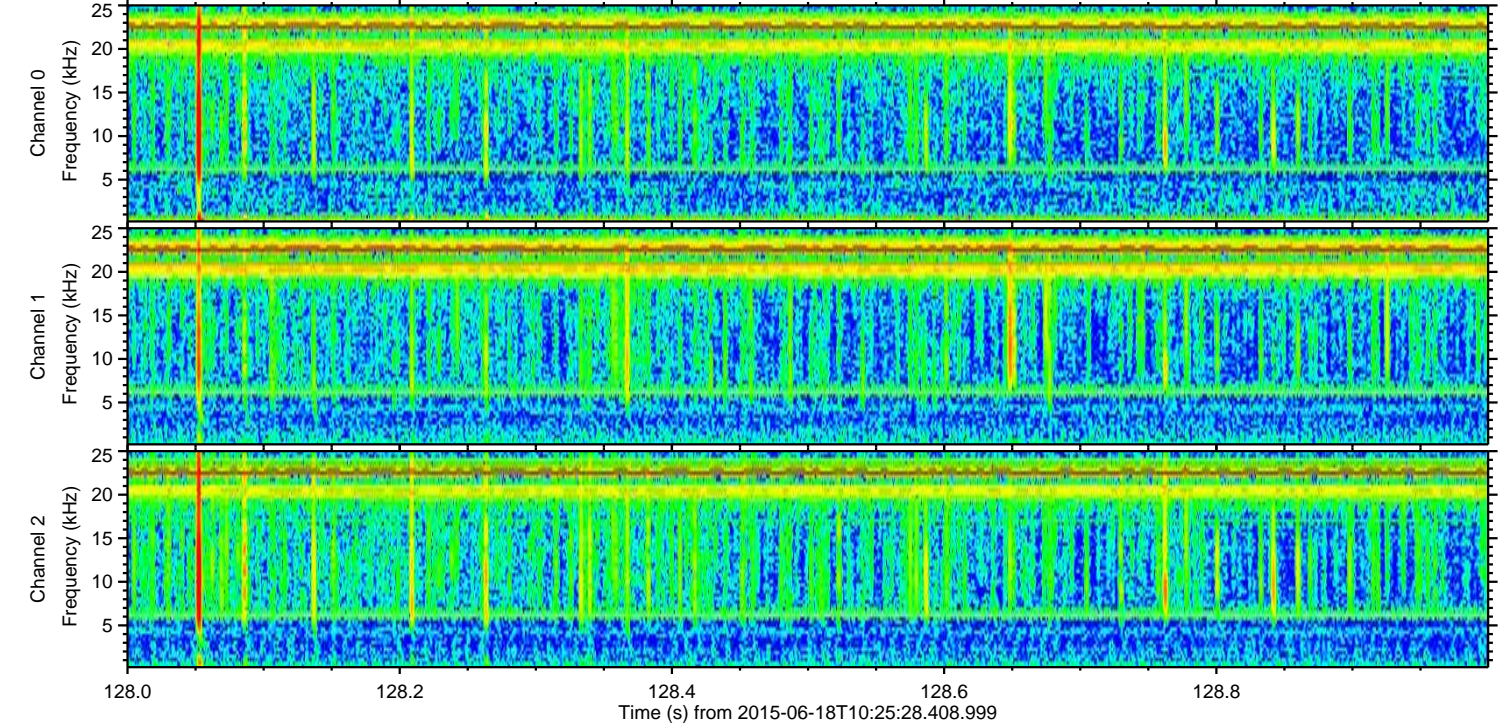
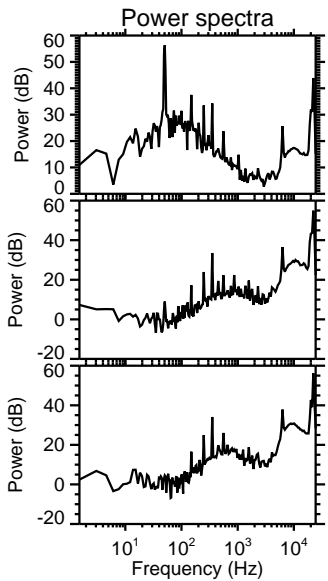
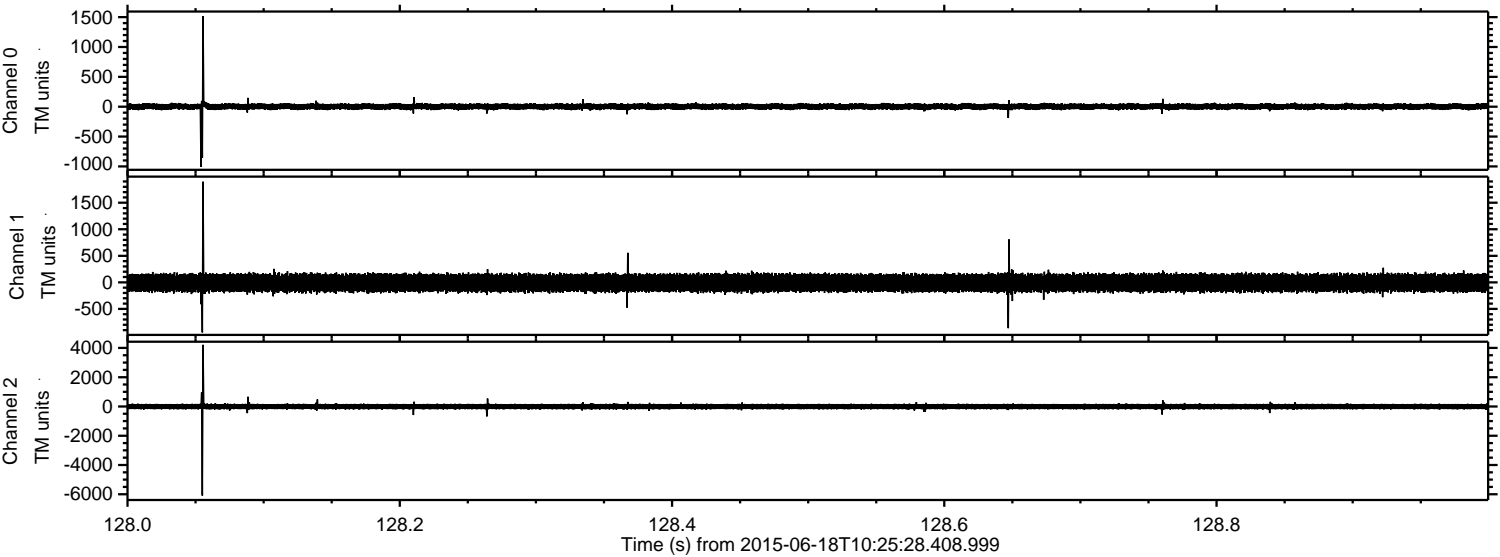
Processed Thu Jun 18 12:31:35 2015 by ELM ver.2012-10-06 from 001\_\_elm20150618\_102527\_\_dat00.bin





ELMAVAN 3D WAVEFORMS (Measured data sampled at 50 kHz) 51000 packets of 144 samples from 2015-06-18T10:25:28.408.999. Part 129/147

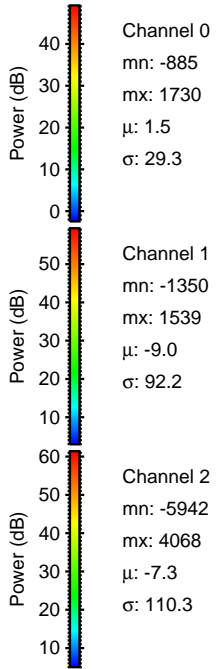
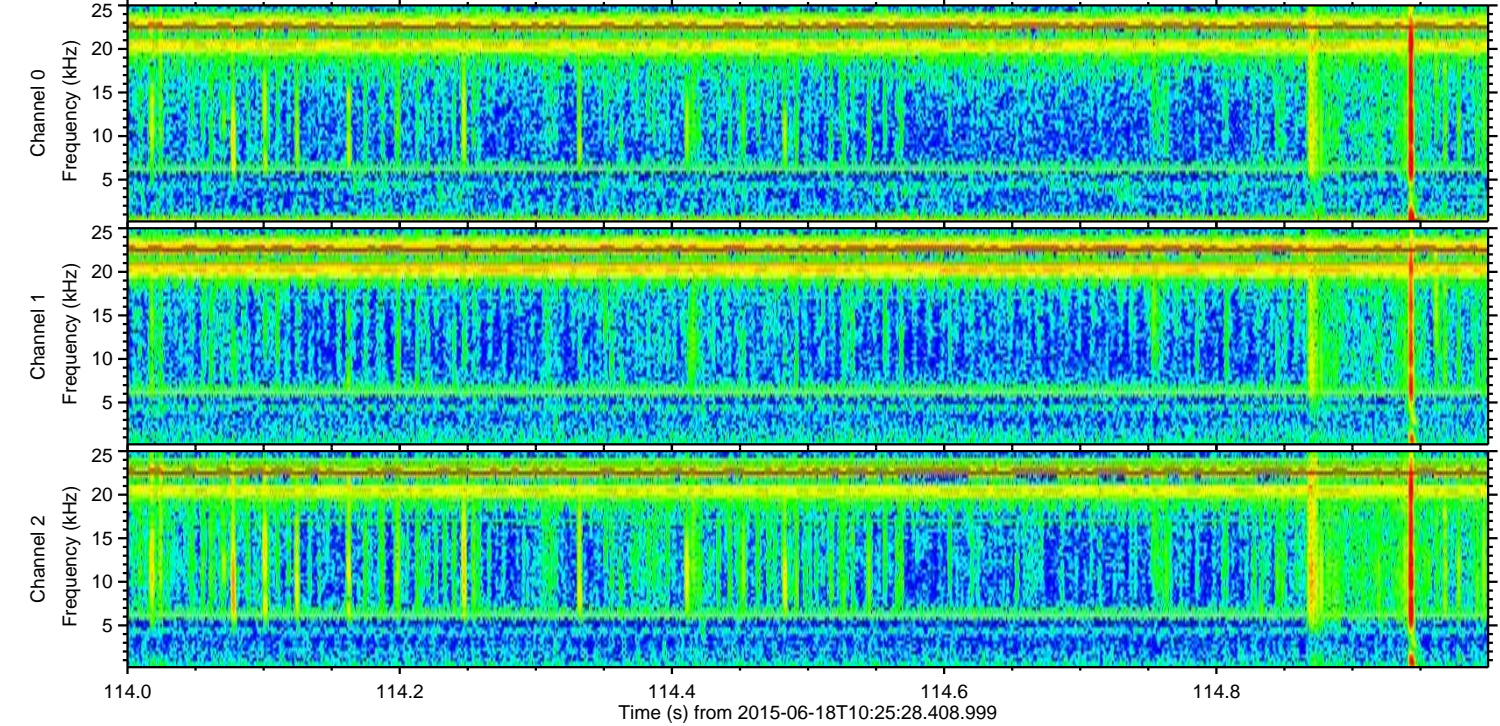
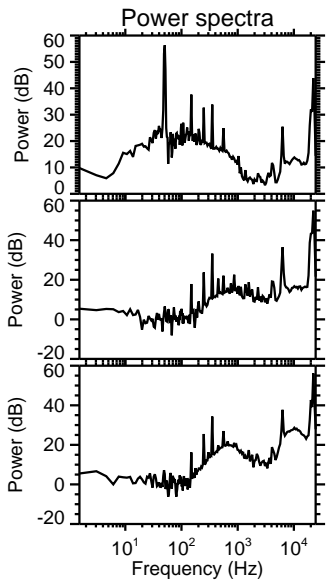
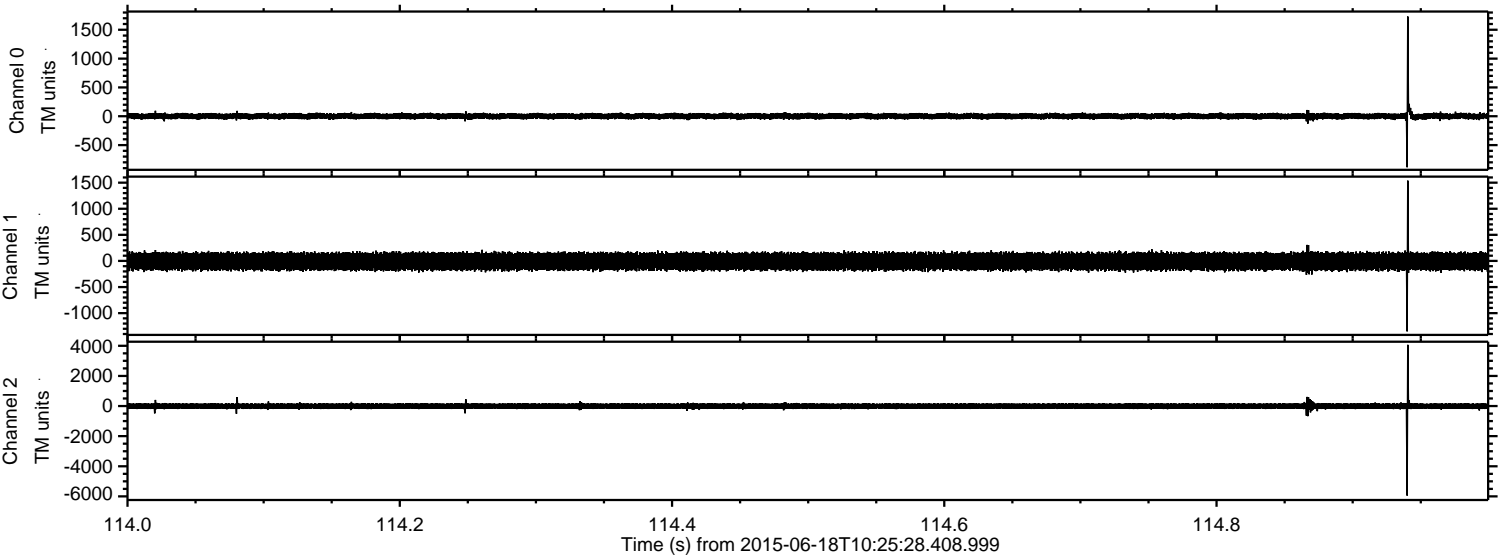
Processed Thu Jun 18 12:31:58 2015 by ELM ver.2012-10-06 from 001\_\_elm20150618\_102527\_\_dat00.bin





ELMAVAN 3D WAVEFORMS (Measured data sampled at 50 kHz) 51000 packets of 144 samples from 2015-06-18T10:25:28.408.999. Part 115/147

Processed Thu Jun 18 12:31:59 2015 by ELM ver.2012-10-06 from 001\_\_elm20150618\_102527\_\_dat00.bin



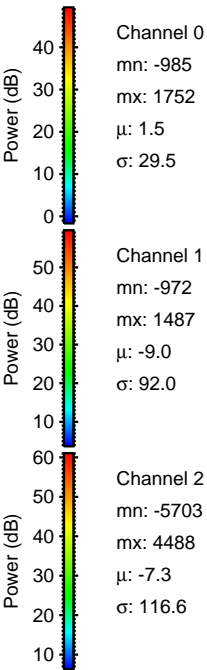
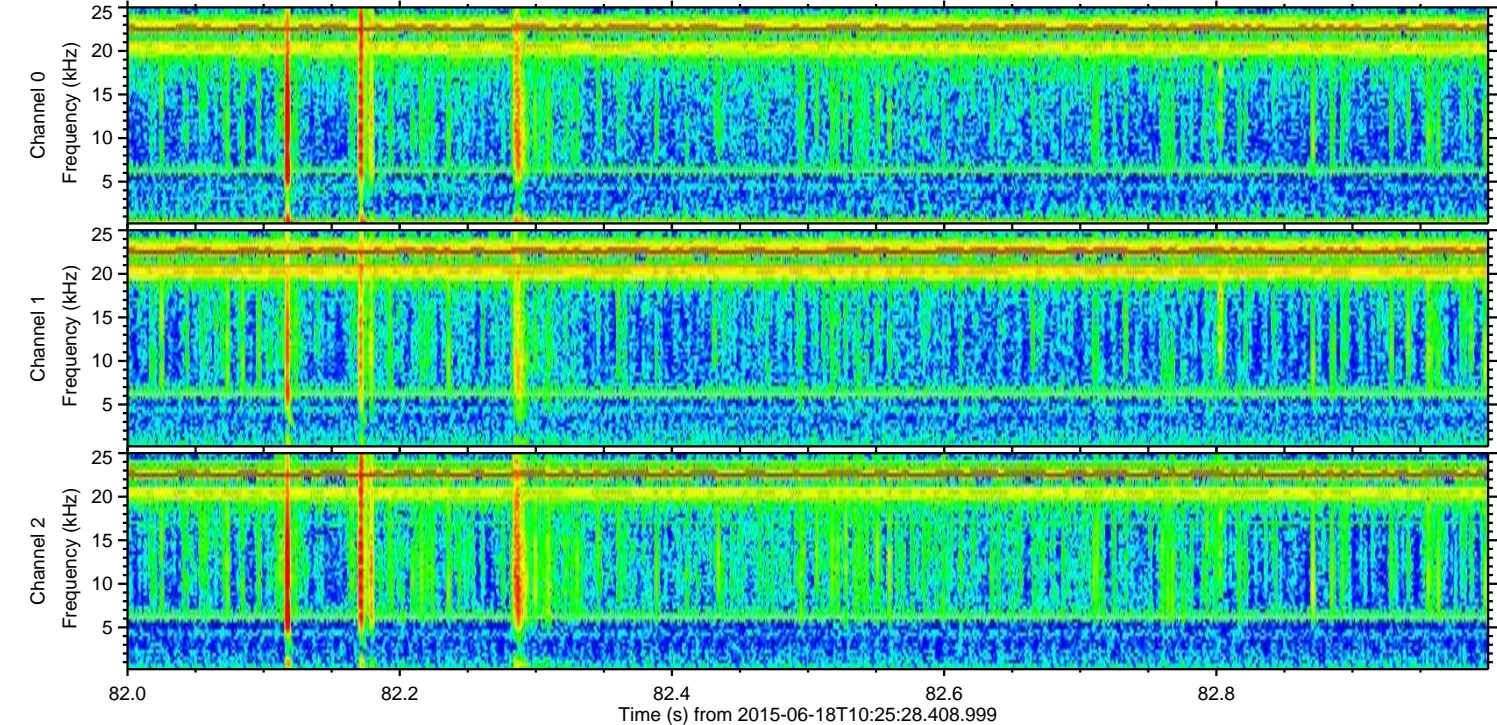
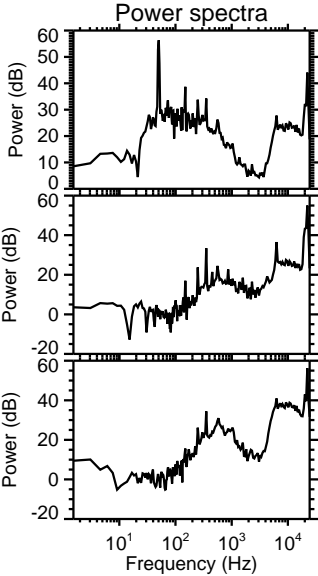
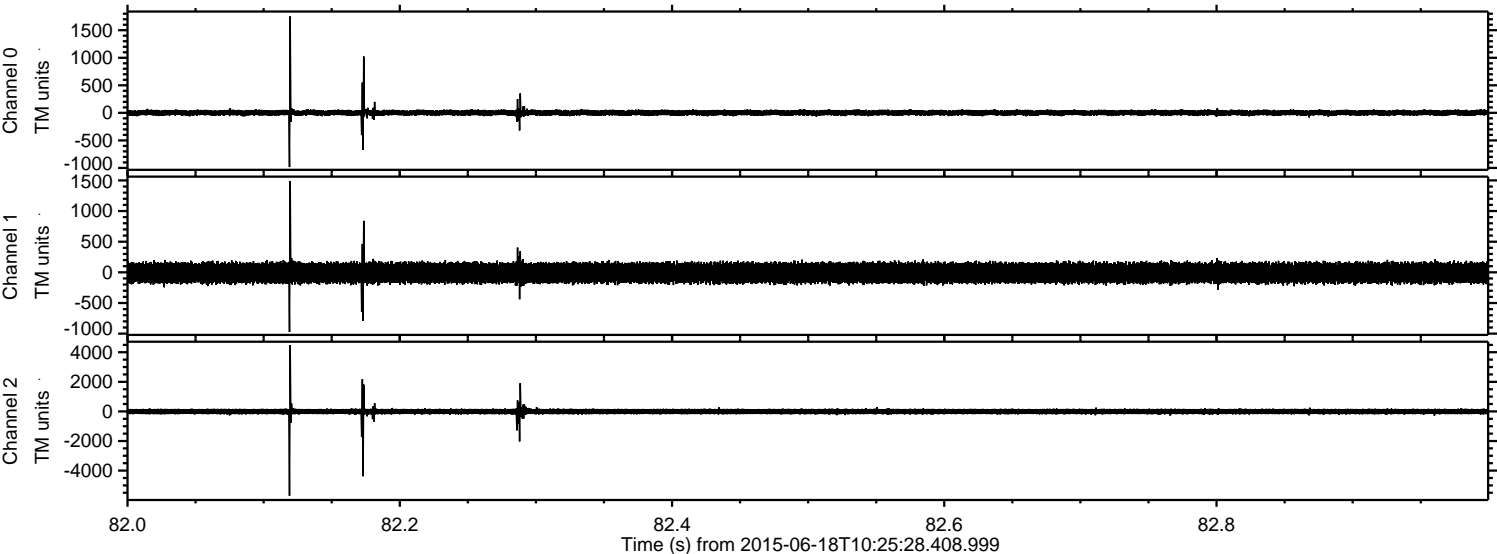
Channel 0  
mn: -885  
mx: 1730  
 $\mu$ : 1.5  
 $\sigma$ : 29.3

Channel 1  
mn: -1350  
mx: 1539  
 $\mu$ : -9.0  
 $\sigma$ : 92.2

Channel 2  
mn: -5942  
mx: 4068  
 $\mu$ : -7.3  
 $\sigma$ : 110.3



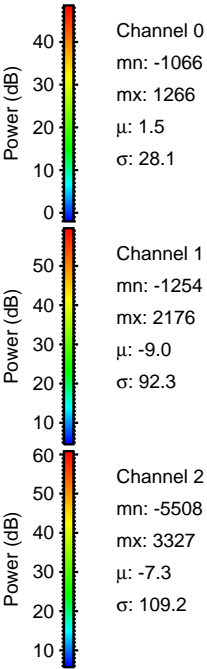
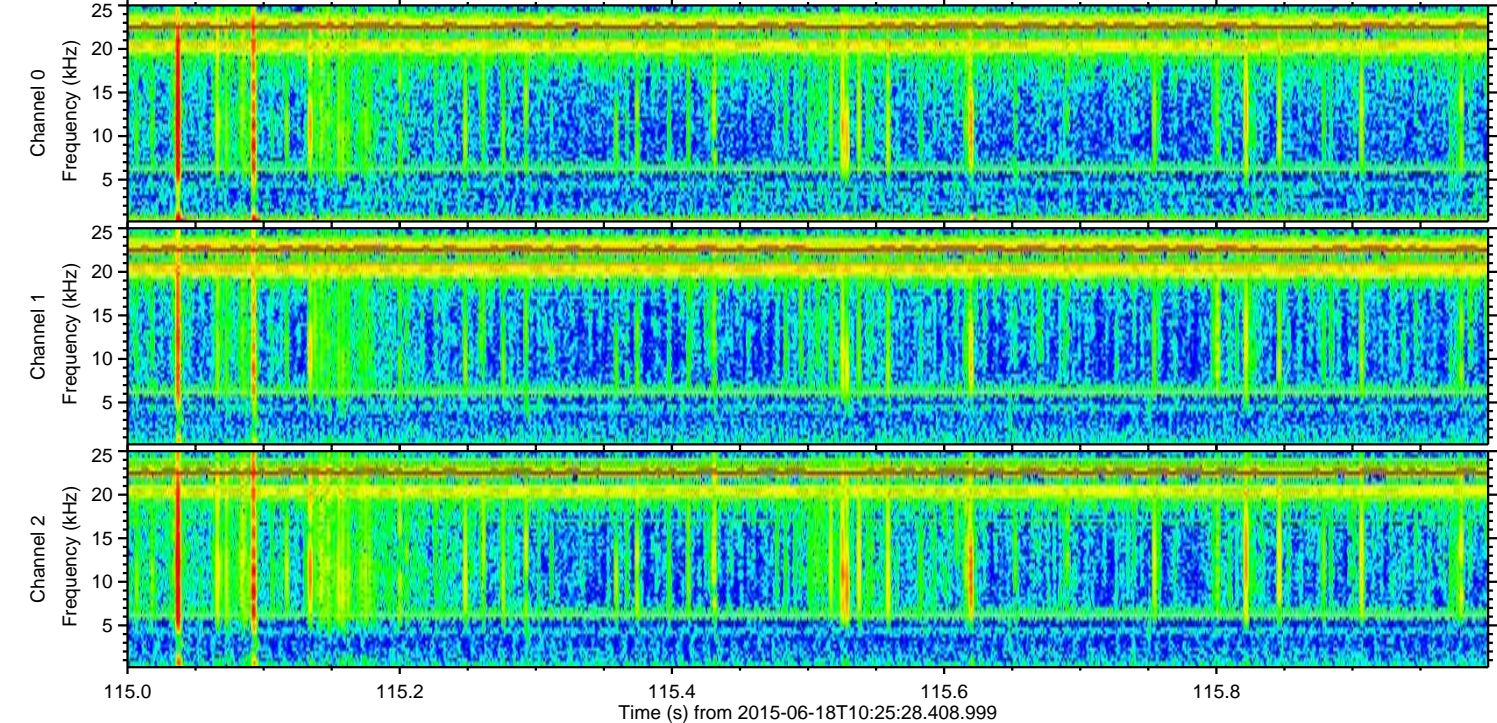
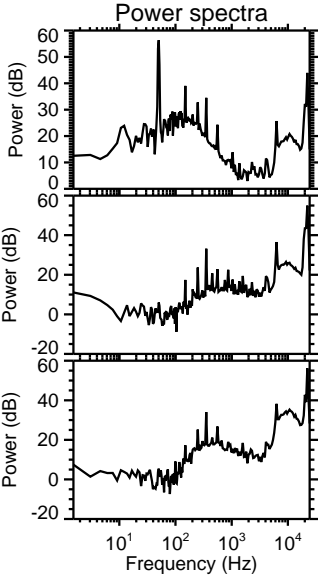
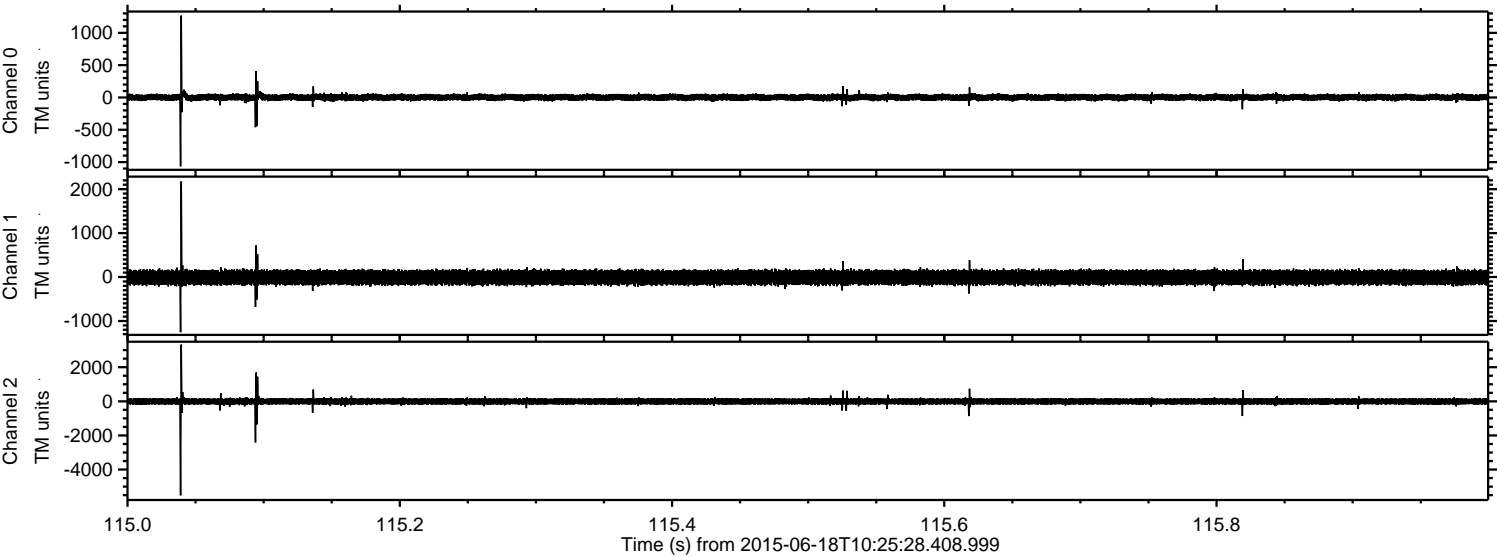
Processed Thu Jun 18 12:32:01 2015 by ELM ver.2012-10-06 from 001\_\_elm20150618\_102527\_\_dat00.bin





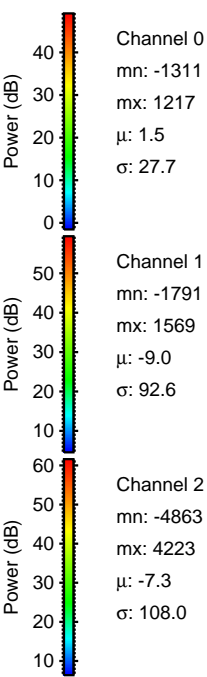
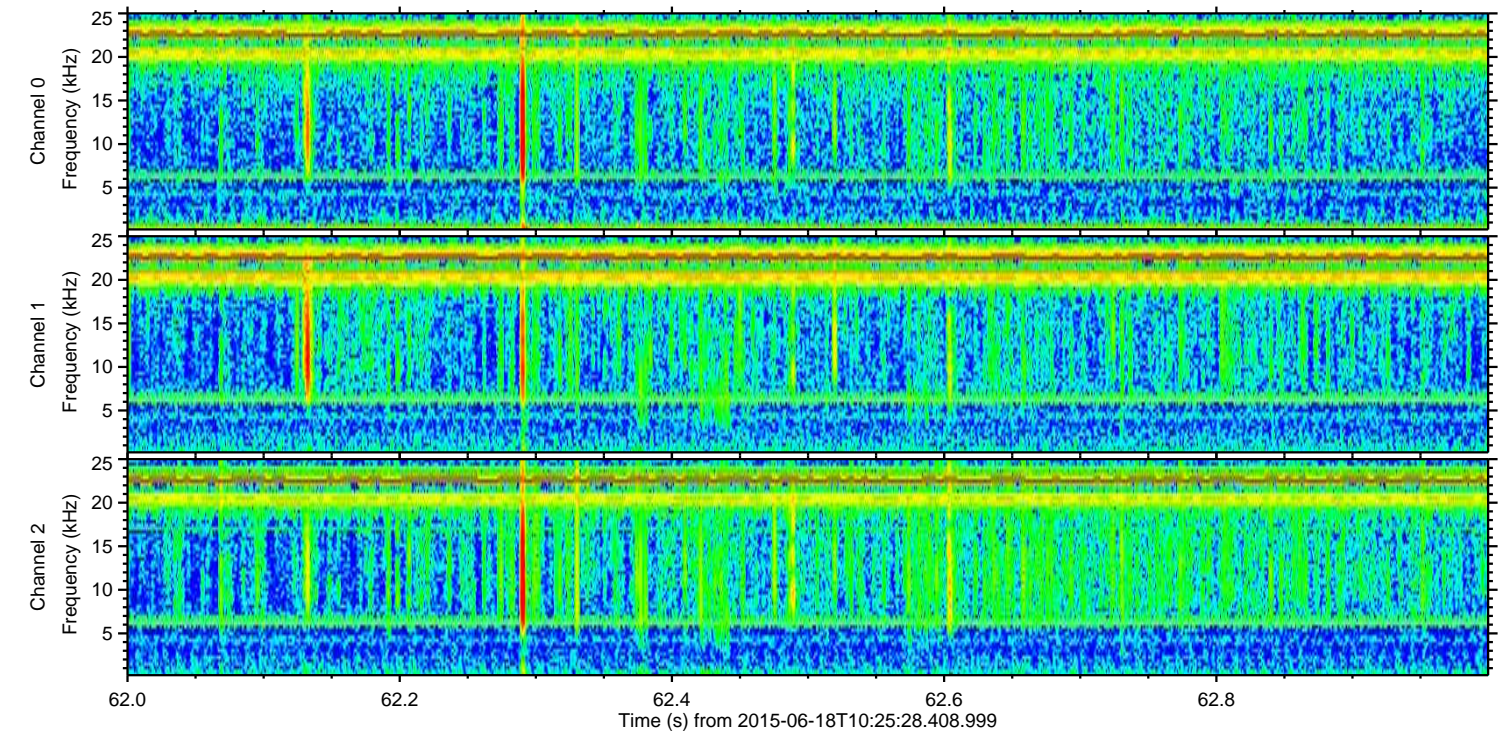
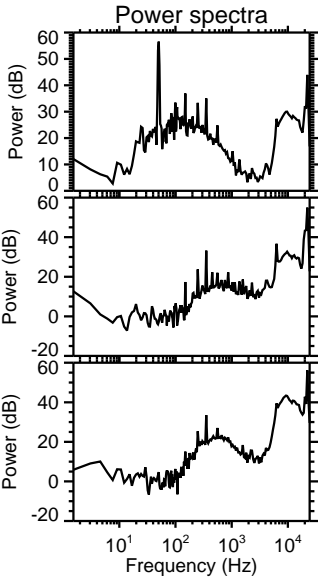
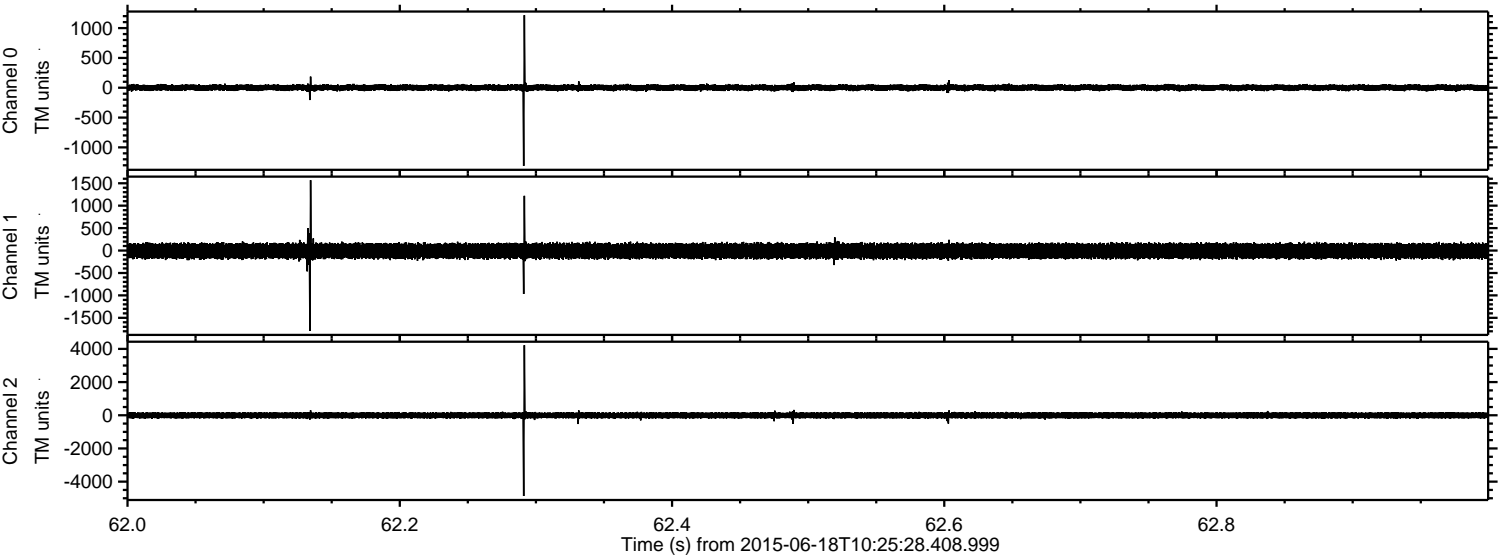
ELMAVAN 3D WAVEFORMS (Measured data sampled at 50 kHz) 51000 packets of 144 samples from 2015-06-18T10:25:28.408.999. Part 116/147

Processed Thu Jun 18 12:32:02 2015 by ELM ver.2012-10-06 from 001\_\_elm20150618\_102527\_\_dat00.bin



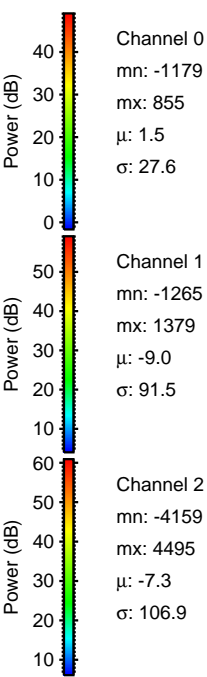
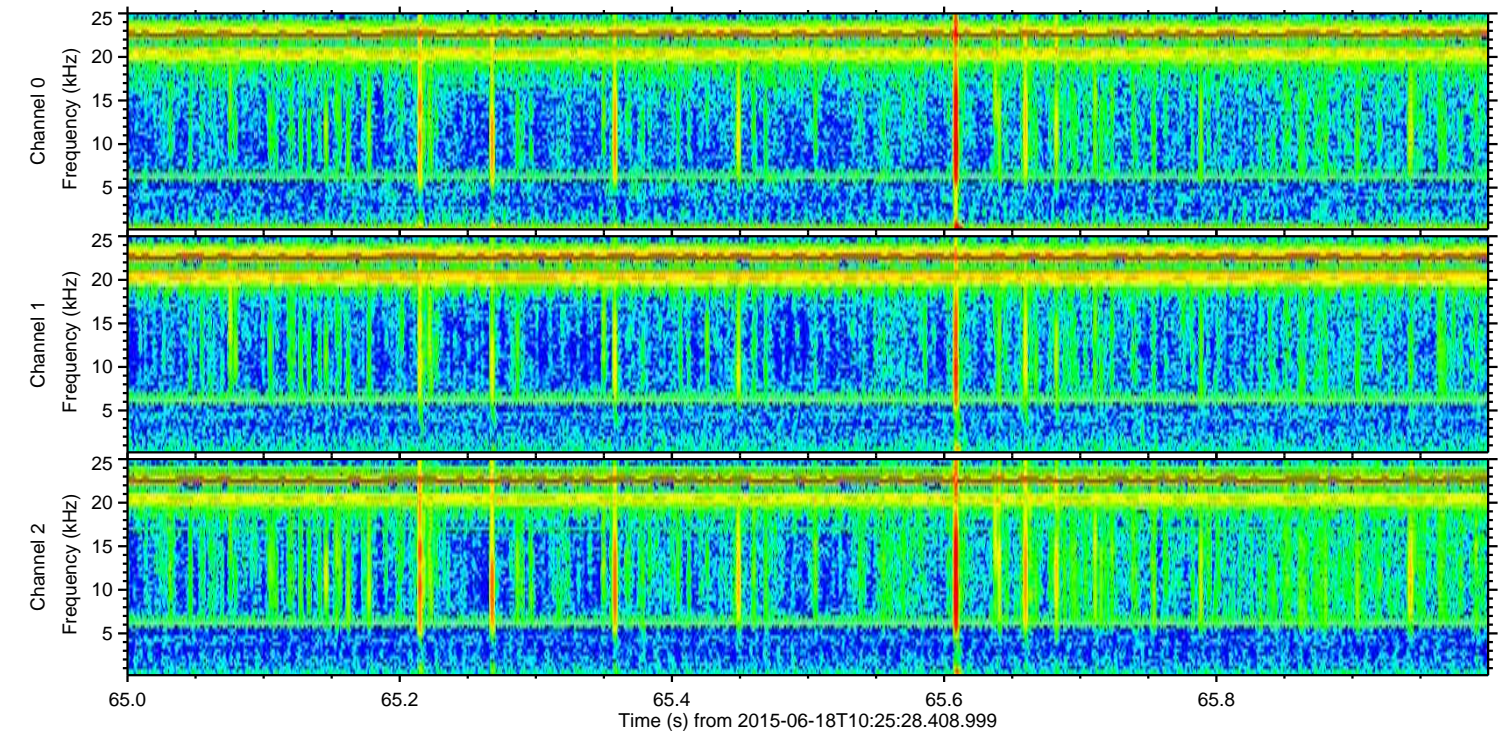
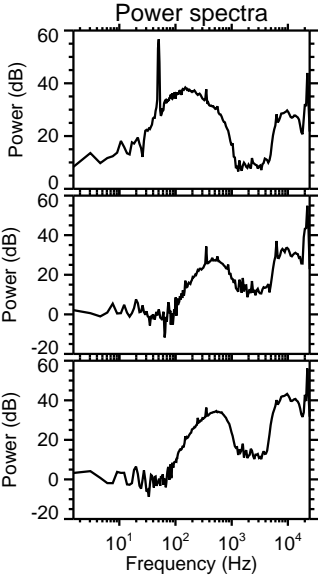
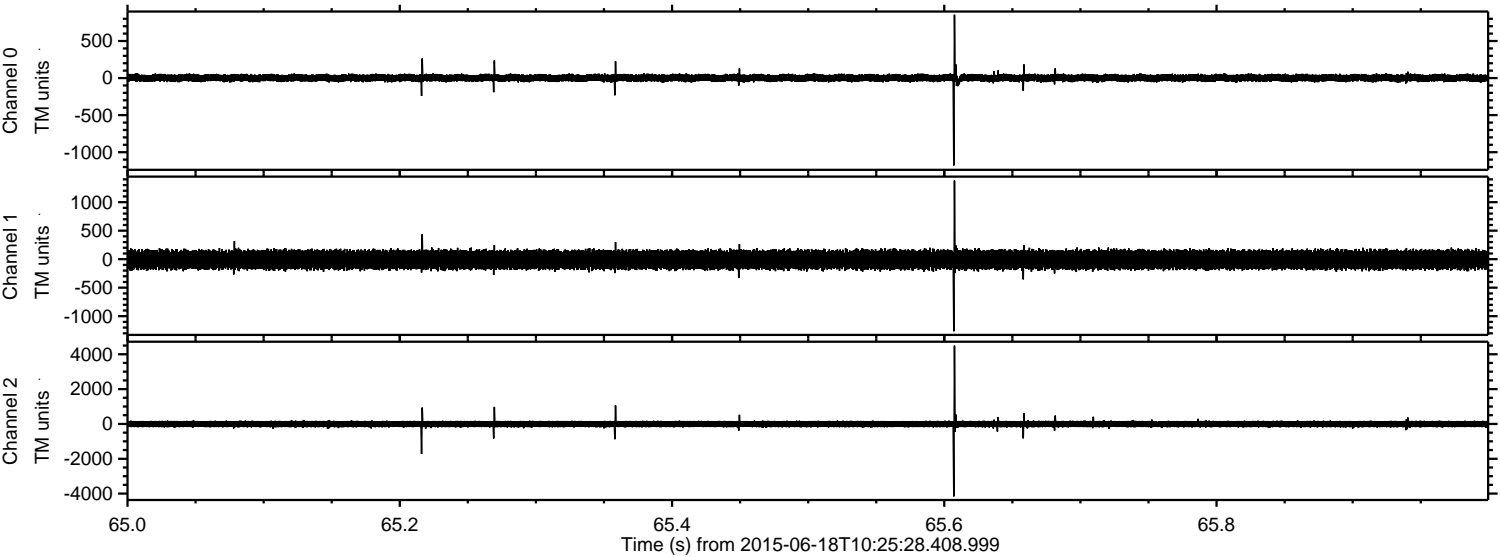


Processed Thu Jun 18 12:32:04 2015 by ELM ver.2012-10-06 from 001\_\_elm20150618\_102527\_\_dat00.bin





Processed Thu Jun 18 12:32:06 2015 by ELM ver.2012-10-06 from 001\_\_elm20150618\_102527\_\_dat00.bin



Channel 0  
mn: -1179  
mx: 855  
 $\mu$ : 1.5  
 $\sigma$ : 27.6

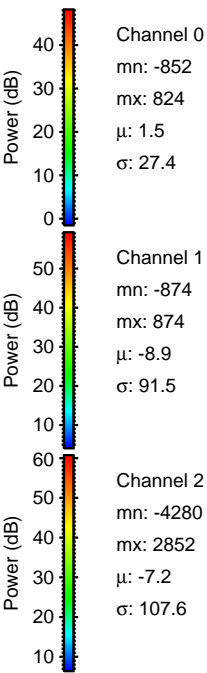
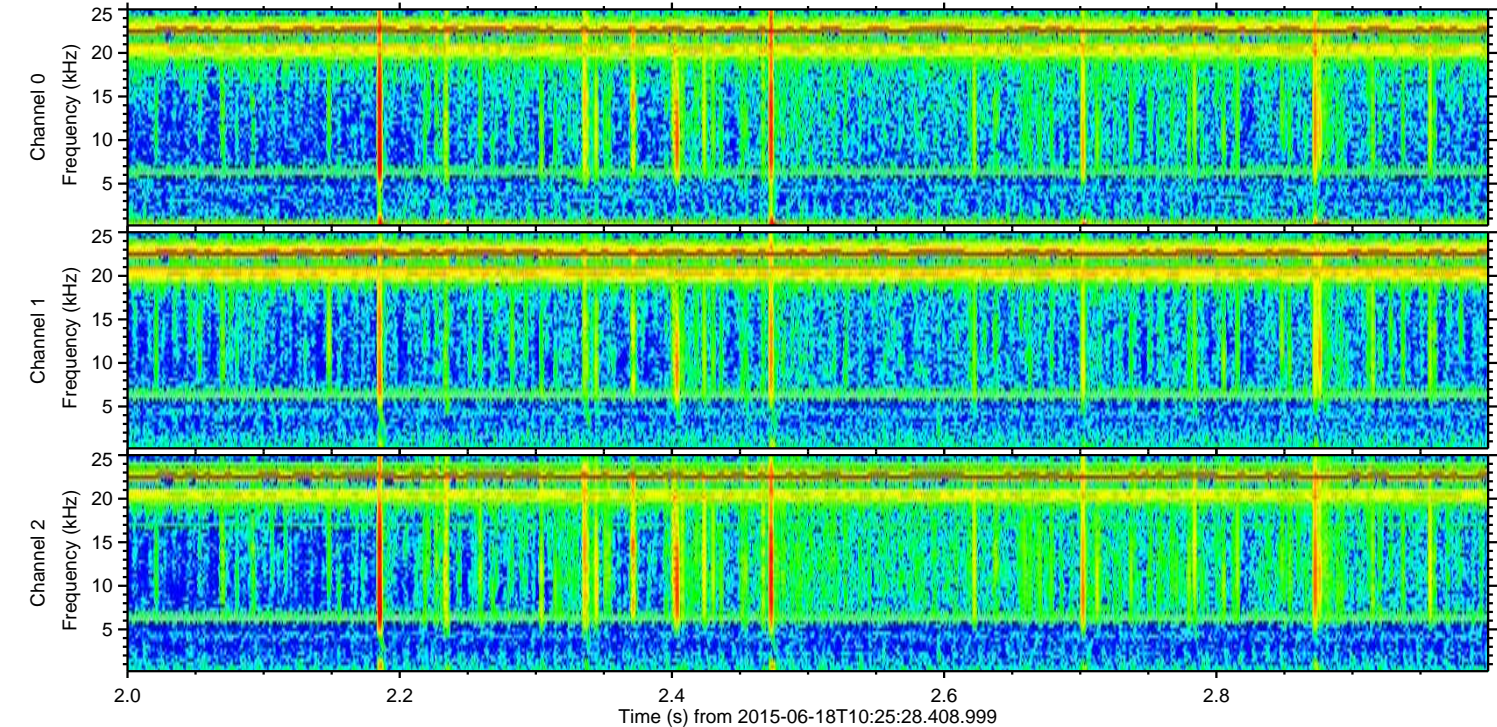
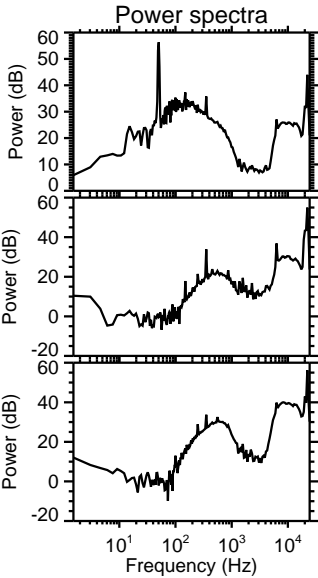
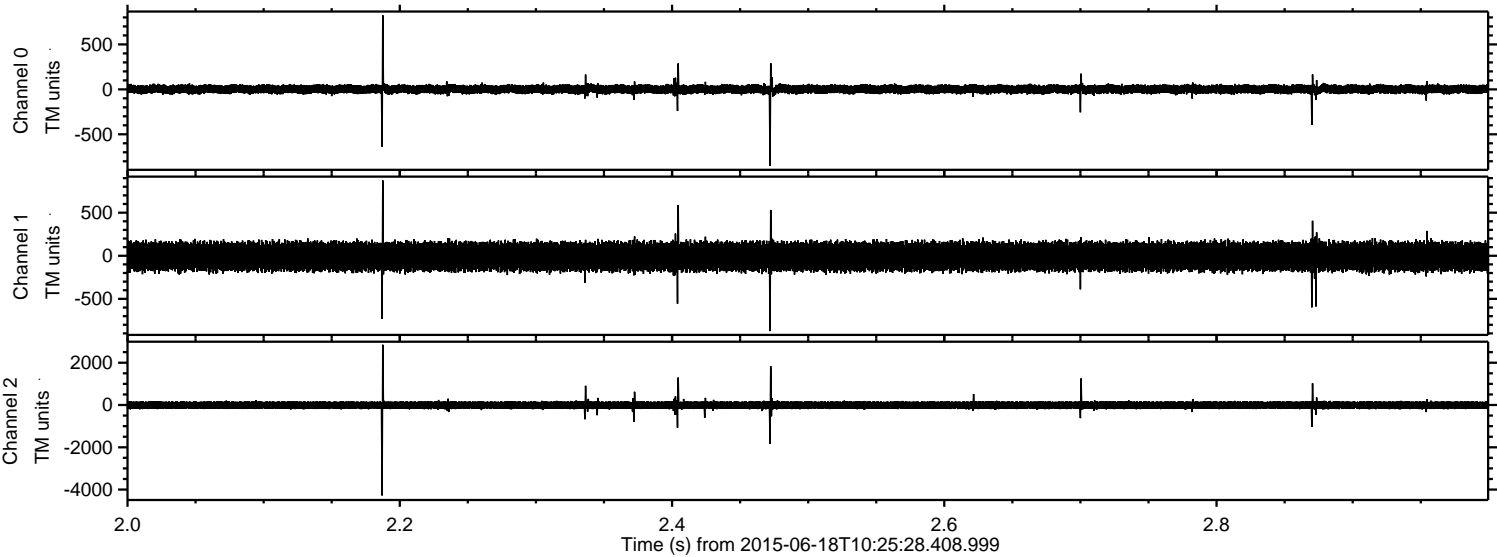
Channel 1  
mn: -1265  
mx: 1379  
 $\mu$ : -9.0  
 $\sigma$ : 91.5

Channel 2  
mn: -4159  
mx: 4495  
 $\mu$ : -7.3  
 $\sigma$ : 106.9



ELMAVAN 3D WAVEFORMS (Measured data sampled at 50 kHz) 51000 packets of 144 samples from 2015-06-18T10:25:28.408.999. Part 3/147

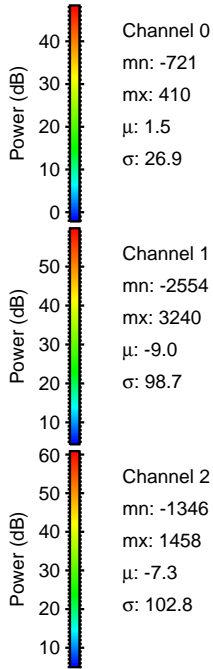
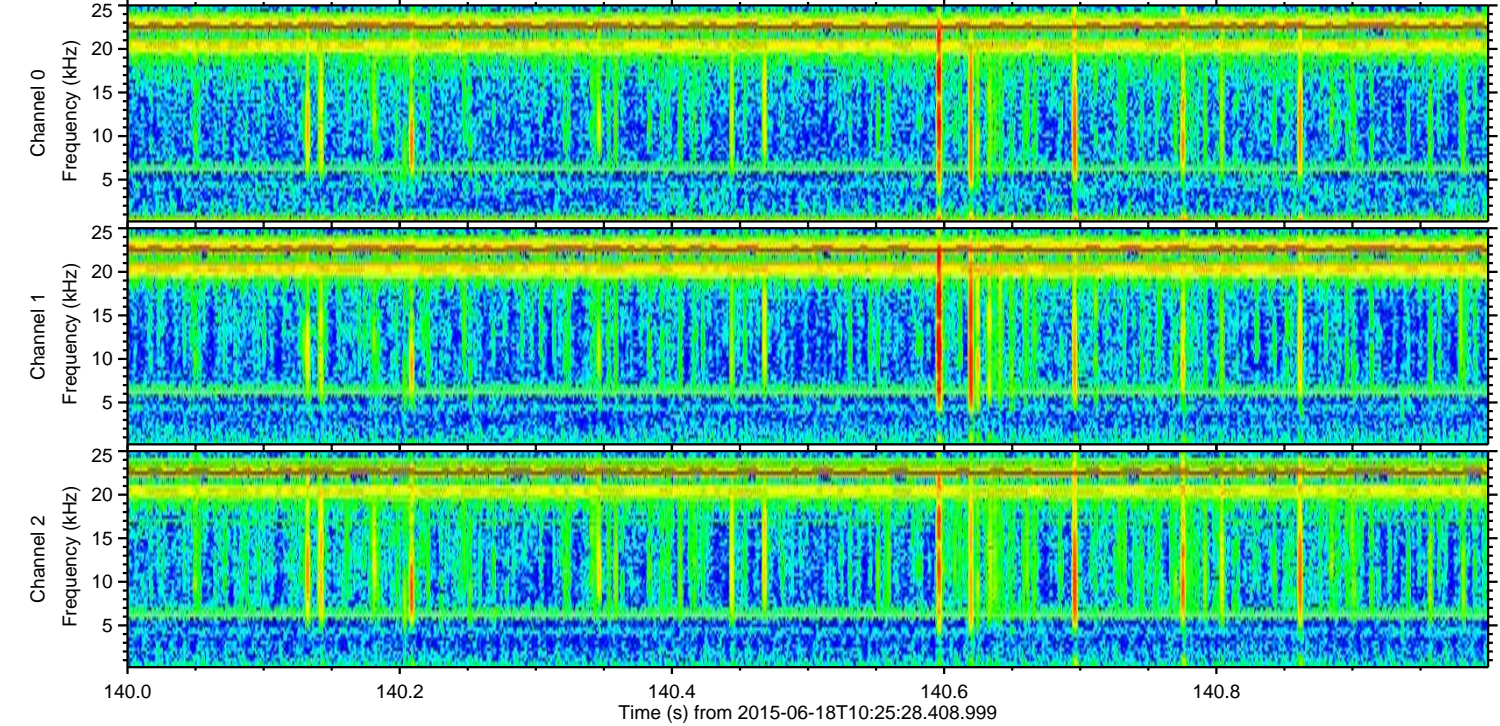
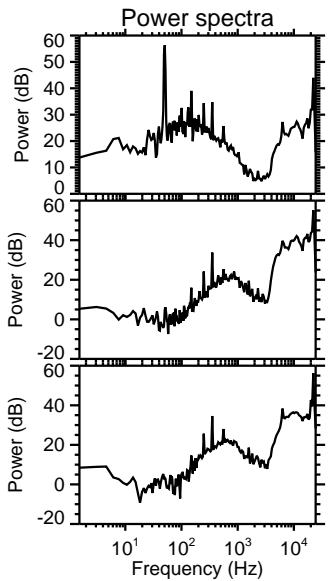
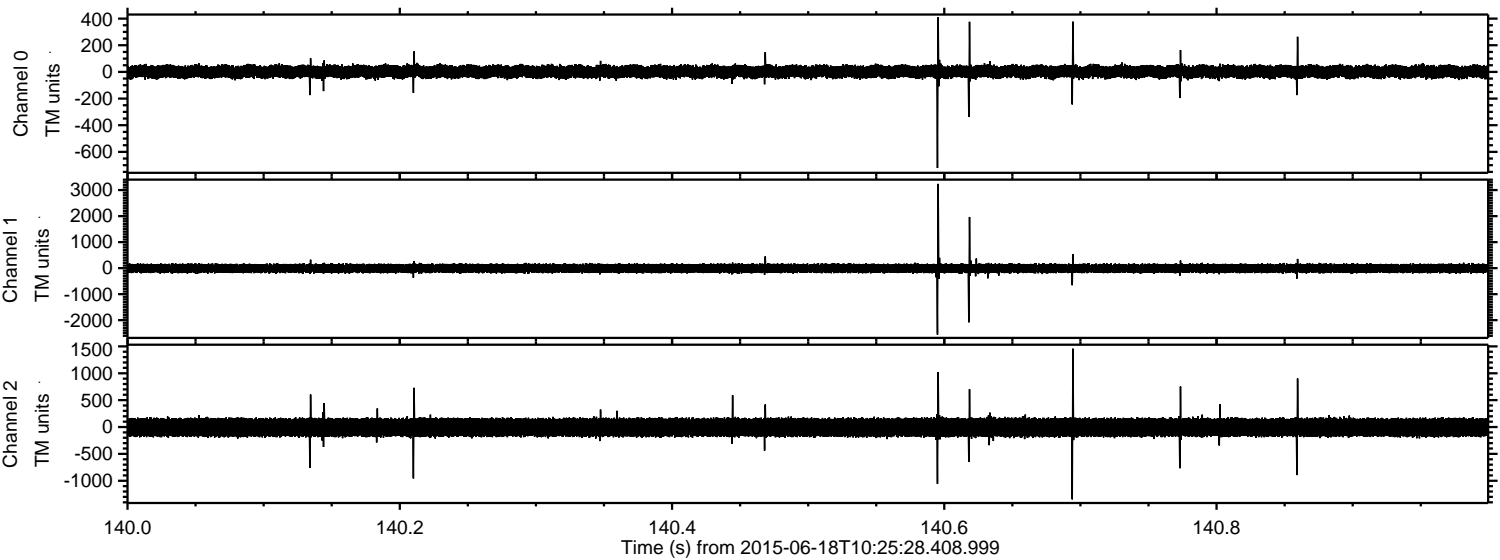
Processed Thu Jun 18 12:32:07 2015 by ELM ver.2012-10-06 from 001\_\_elm20150618\_102527\_\_dat00.bin





ELMAVAN 3D WAVEFORMS (Measured data sampled at 50 kHz) 51000 packets of 144 samples from 2015-06-18T10:25:28.408.999. Part 141/147

Processed Thu Jun 18 12:32:09 2015 by ELM ver.2012-10-06 from 001\_\_elm20150618\_102527\_\_dat00.bin



Channel 0  
mn: -721  
mx: 410  
 $\mu$ : 1.5  
 $\sigma$ : 26.9

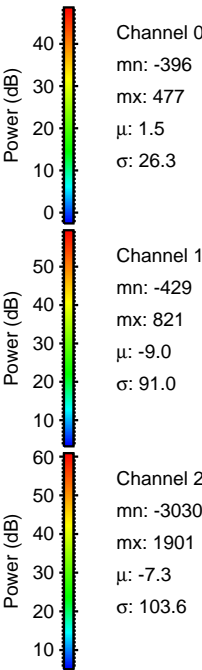
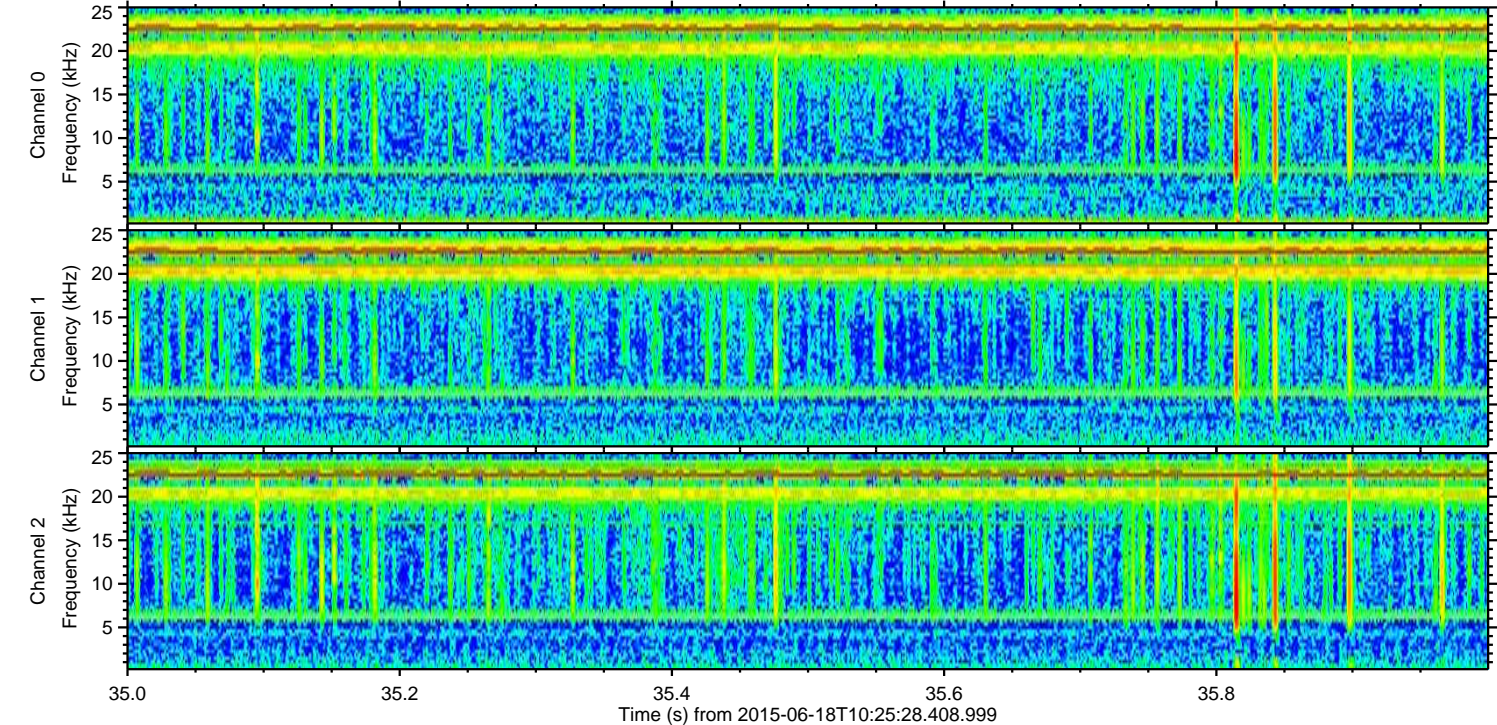
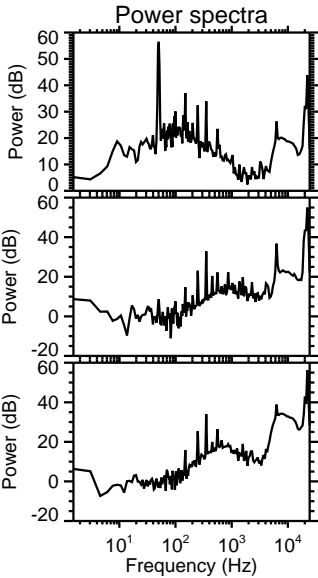
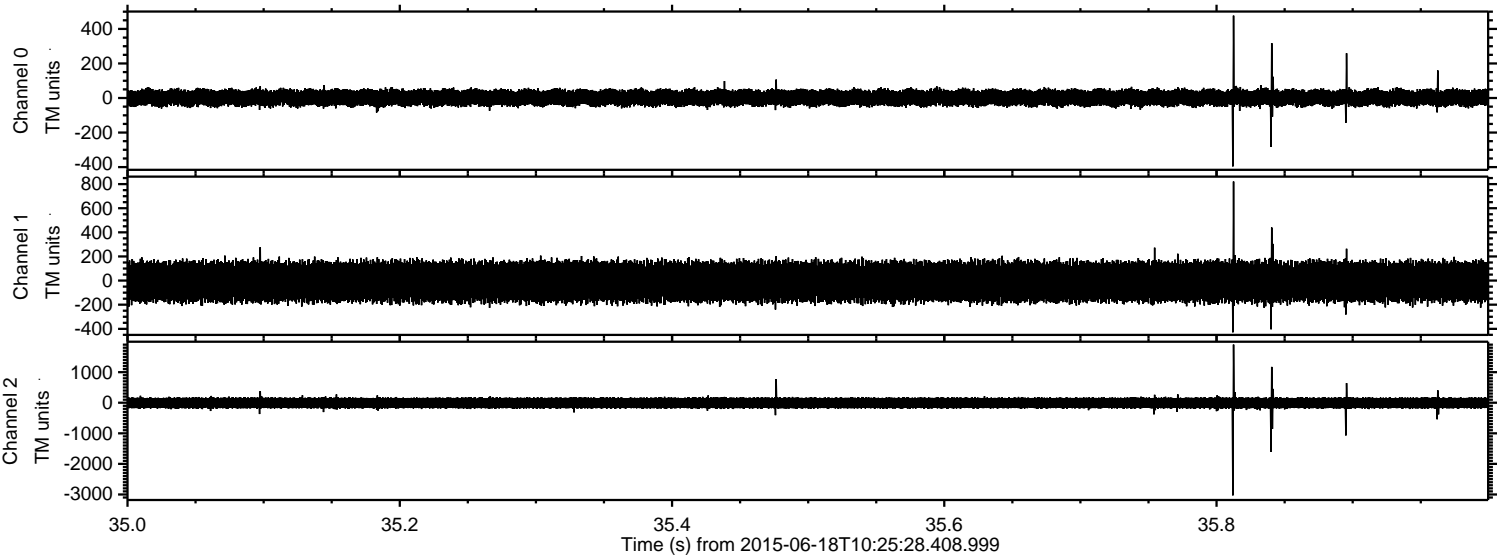
Channel 1  
mn: -2554  
mx: 3240  
 $\mu$ : -9.0  
 $\sigma$ : 98.7

Channel 2  
mn: -1346  
mx: 1458  
 $\mu$ : -7.3  
 $\sigma$ : 102.8



ELMAVAN 3D WAVEFORMS (Measured data sampled at 50 kHz) 51000 packets of 144 samples from 2015-06-18T10:25:28.408.999. Part 36/147

Processed Thu Jun 18 12:32:10 2015 by ELM ver.2012-10-06 from 001\_\_elm20150618\_102527\_\_dat00.bin



Channel 0  
mn: -396  
mx: 477  
 $\mu$ : 1.5  
 $\sigma$ : 26.3

Channel 1  
mn: -429  
mx: 821  
 $\mu$ : -9.0  
 $\sigma$ : 91.0

Channel 2  
mn: -3030  
mx: 1901  
 $\mu$ : -7.3  
 $\sigma$ : 103.6



Processed Thu Jun 18 12:32:13 2015 by ELM ver.2012-10-06 from 001\_\_elm20150618\_102527\_\_dat00.bin

