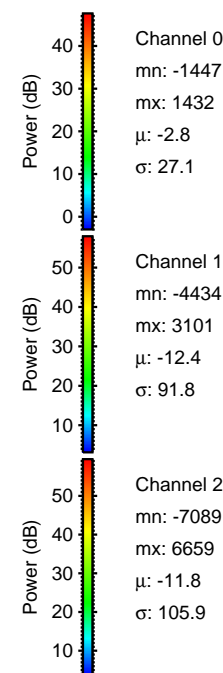
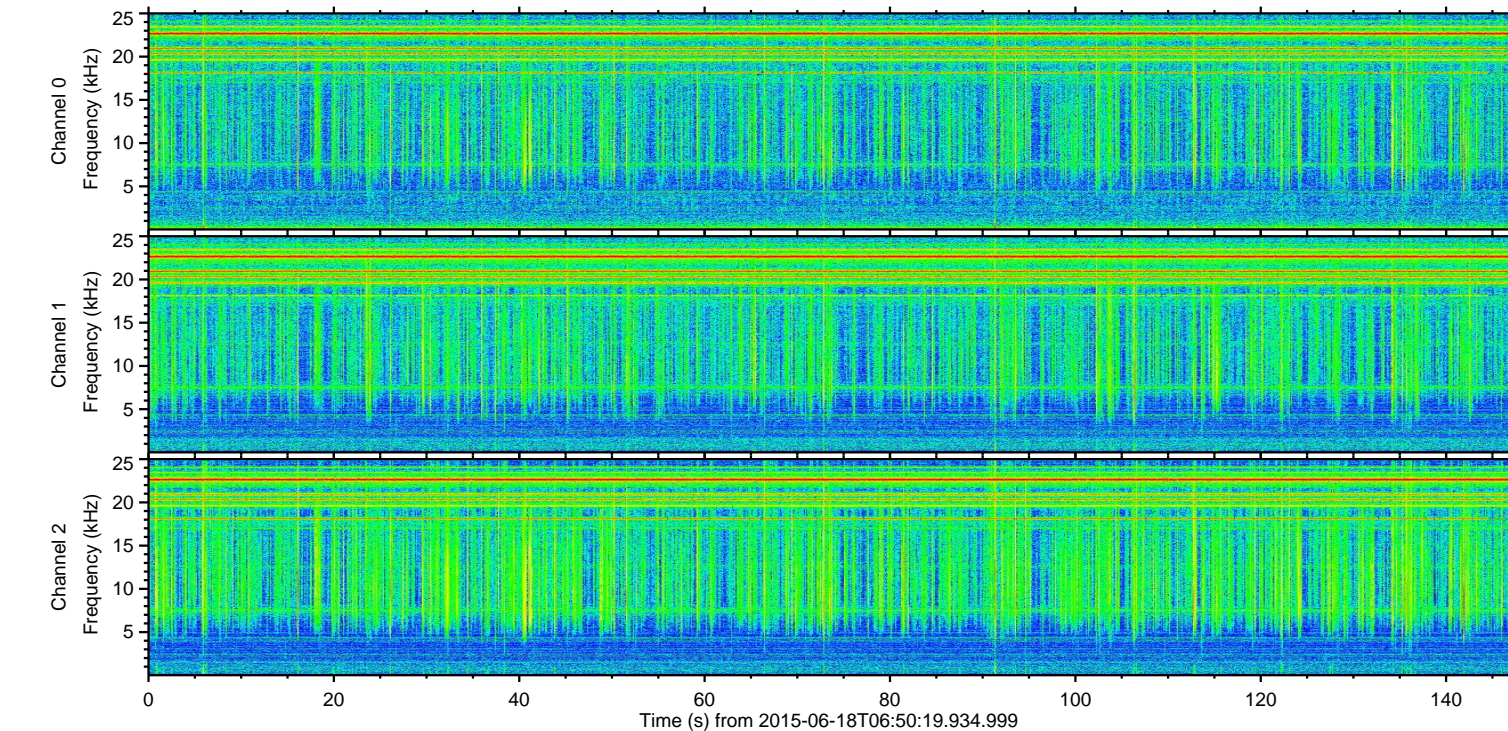
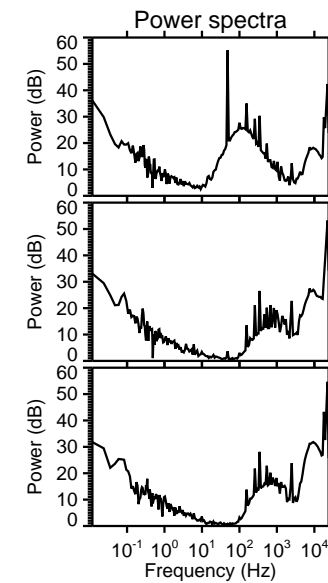
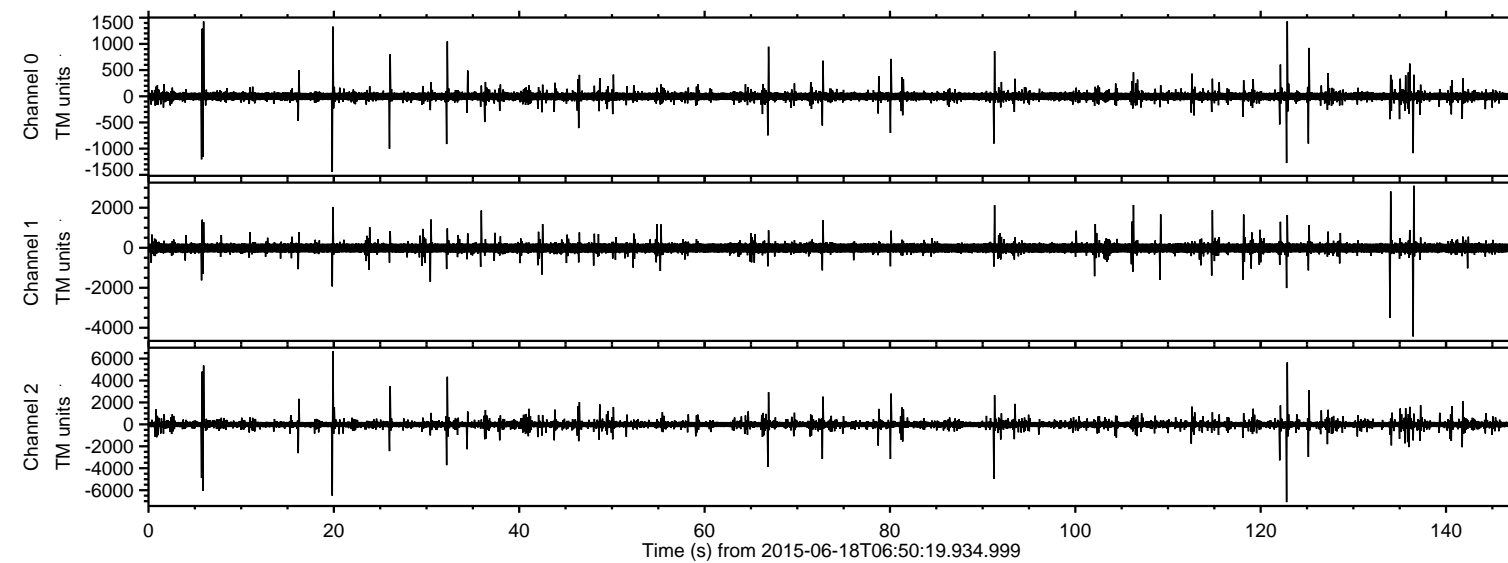


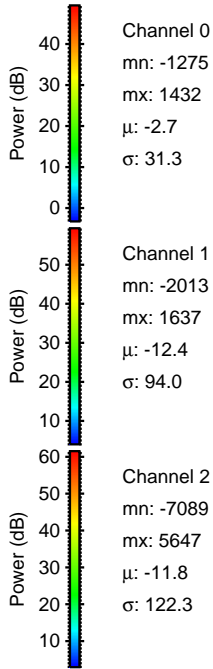
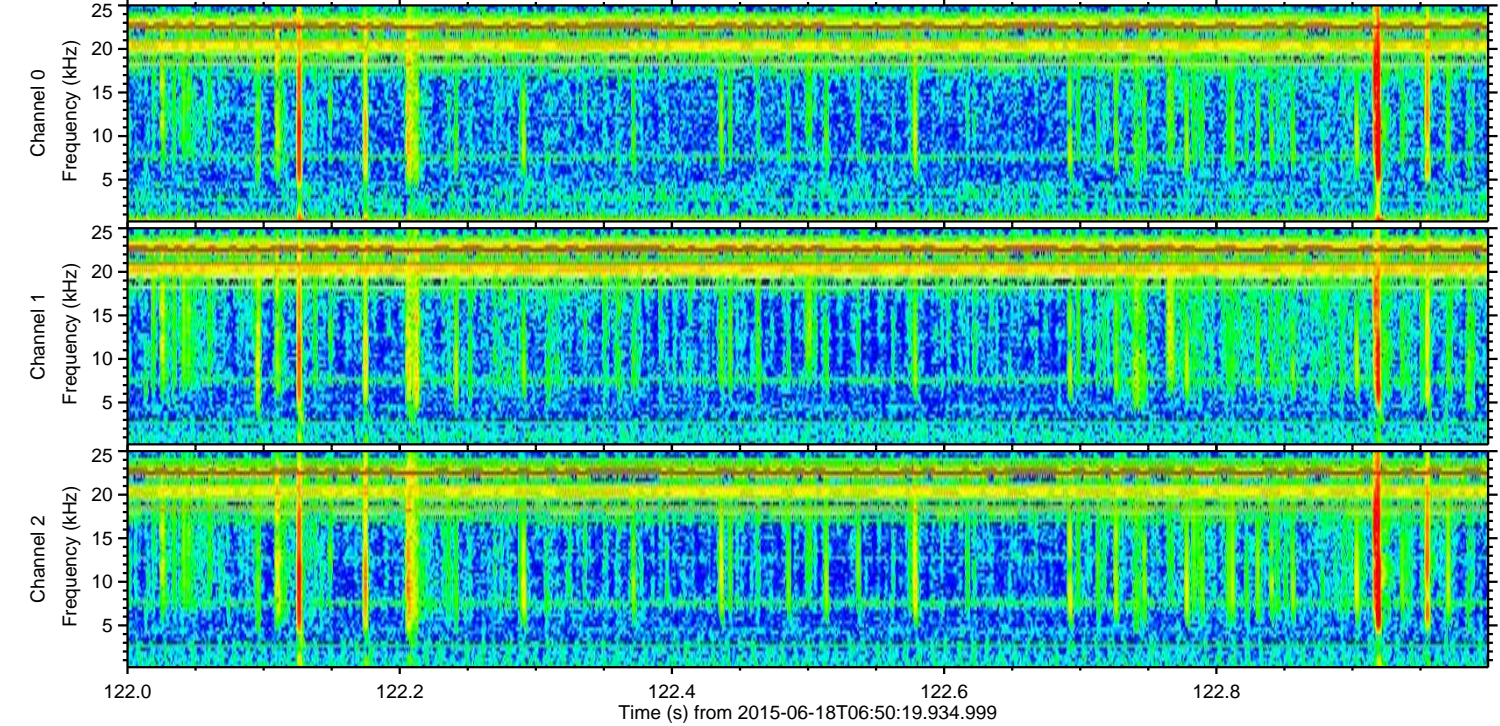
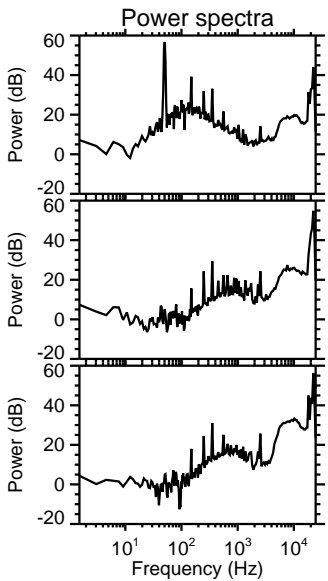
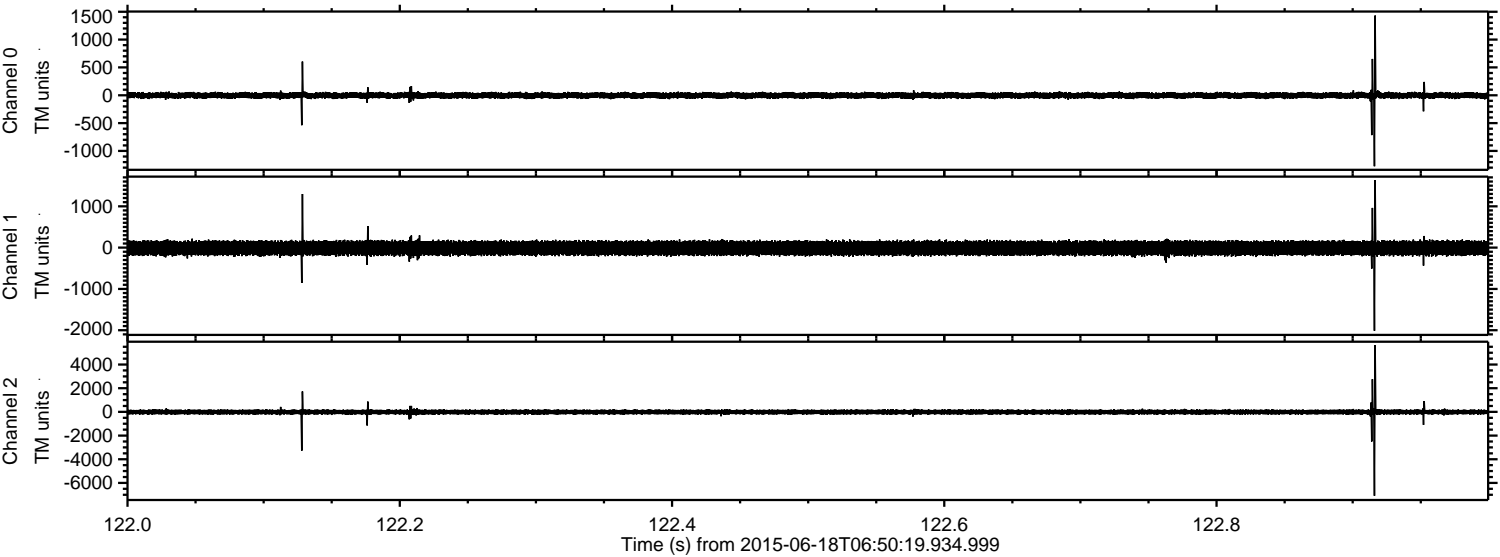
ELMAVAN 3D WAVEFORMS (Measured data sampled at 50 kHz) 51000 packets of 144 samples from 2015-06-18T06:50:19.934.999.

Processed Thu Jun 18 08:56:20 2015 by ELM ver.2012-10-06 from 001__elm20150618_065018__dat00.bin



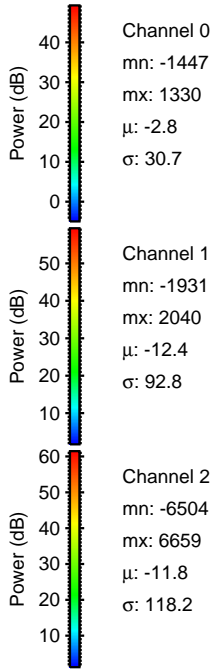
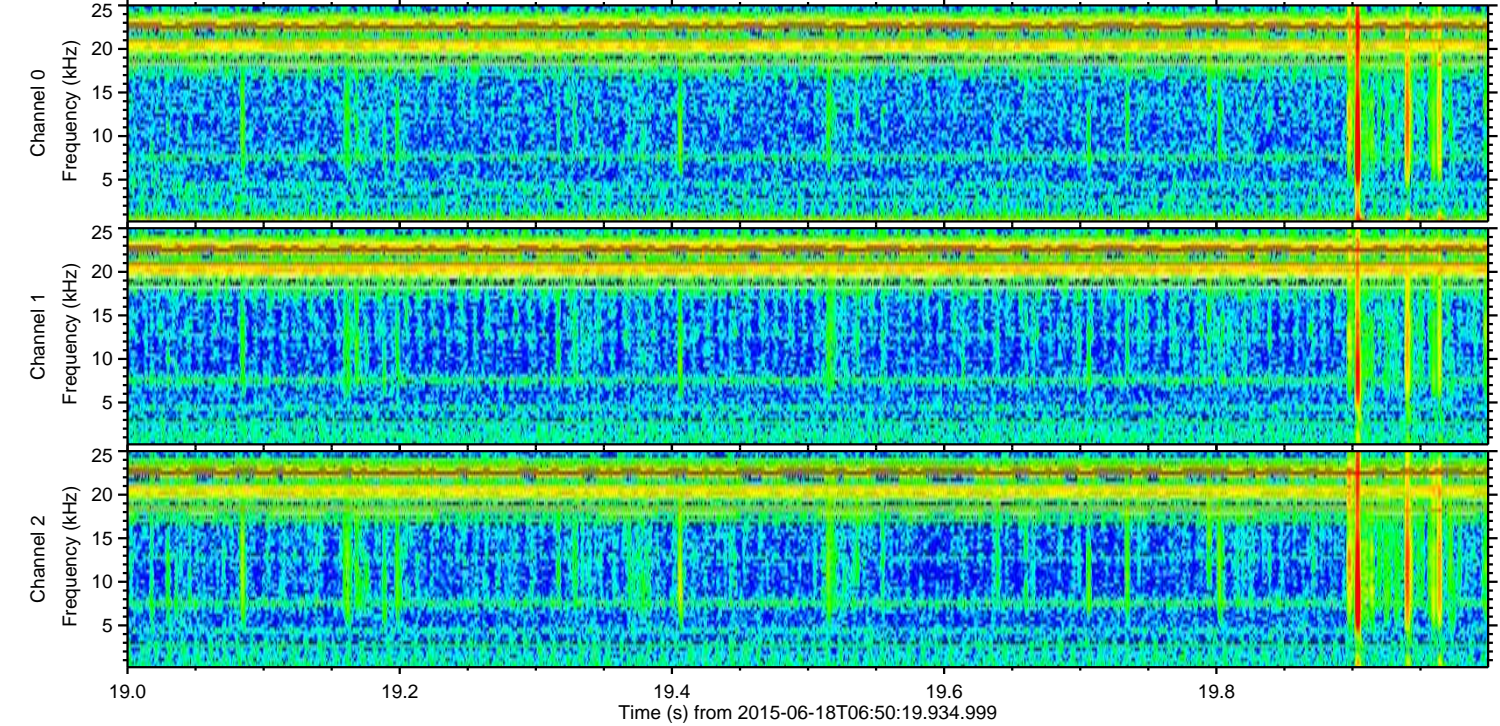
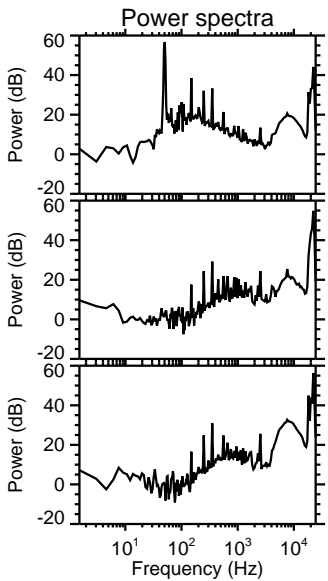
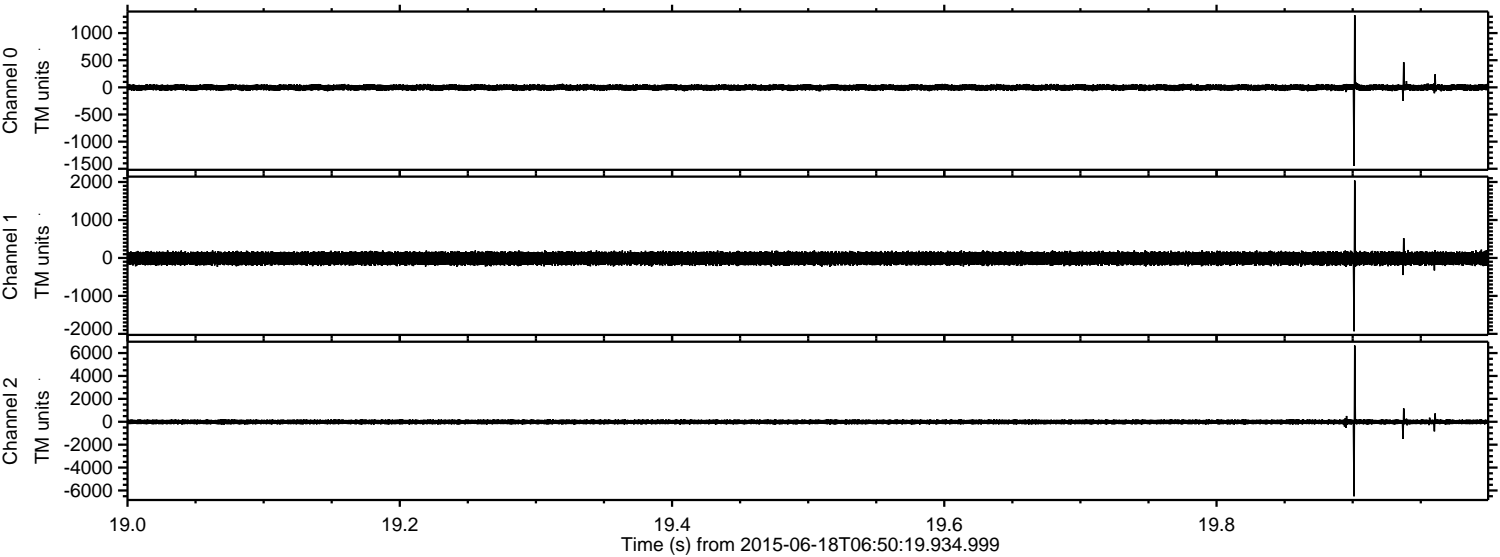
ELMAVAN 3D WAVEFORMS (Measured data sampled at 50 kHz) 51000 packets of 144 samples from 2015-06-18T06:50:19.934.999. Part 123/147

Processed Thu Jun 18 08:56:40 2015 by ELM ver.2012-10-06 from 001__elm20150618_065018__dat00.bin



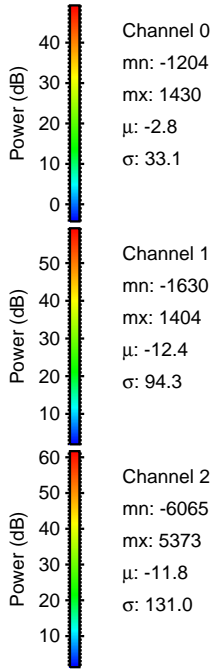
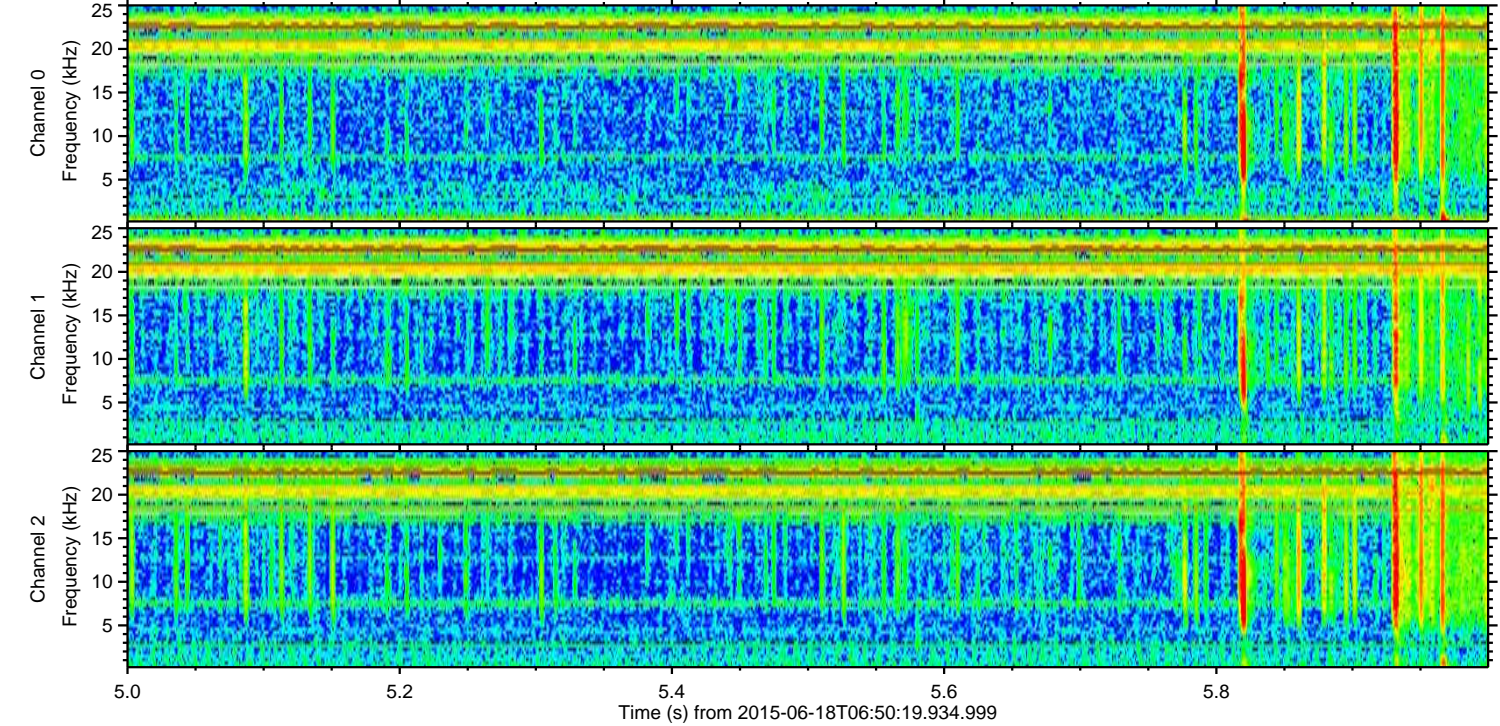
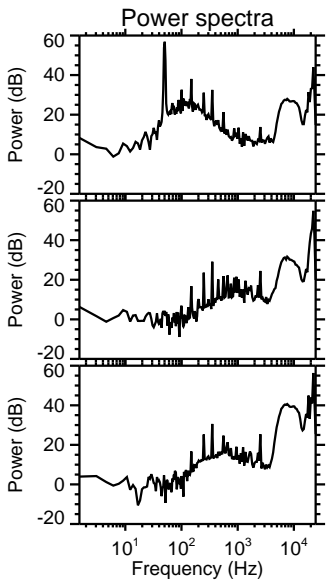
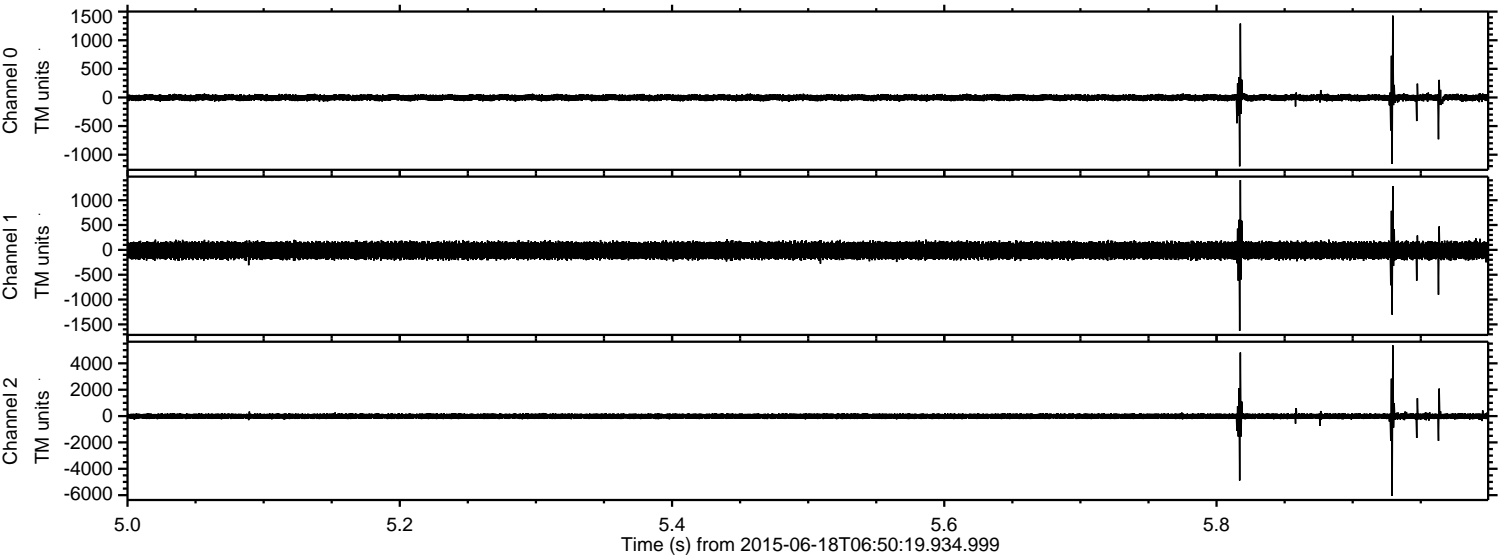
ELMAVAN 3D WAVEFORMS (Measured data sampled at 50 kHz) 51000 packets of 144 samples from 2015-06-18T06:50:19.934.999. Part 20/147

Processed Thu Jun 18 08:56:42 2015 by ELM ver.2012-10-06 from 001__elm20150618_065018__dat00.bin

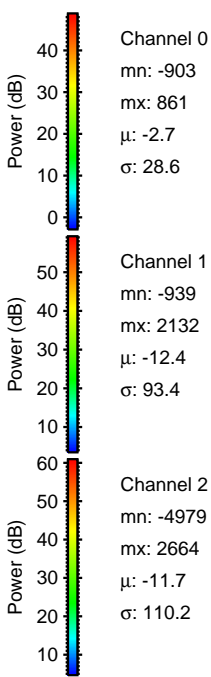
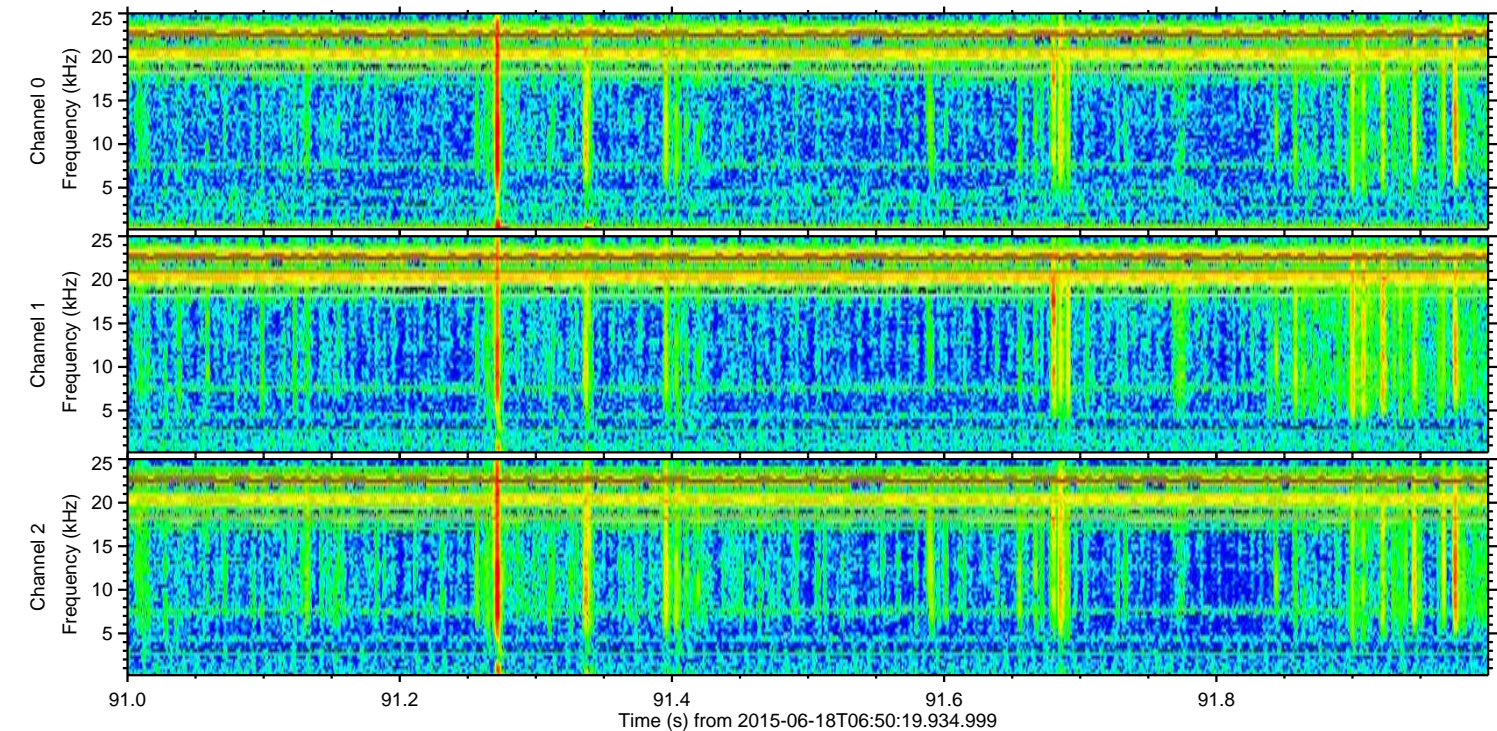
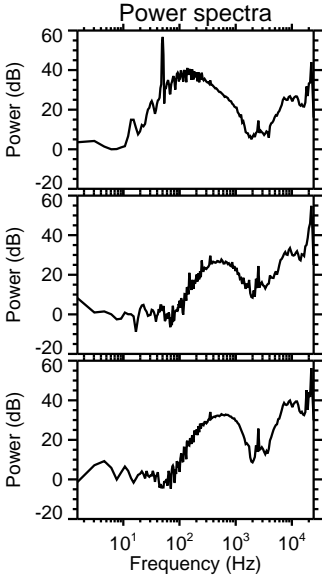
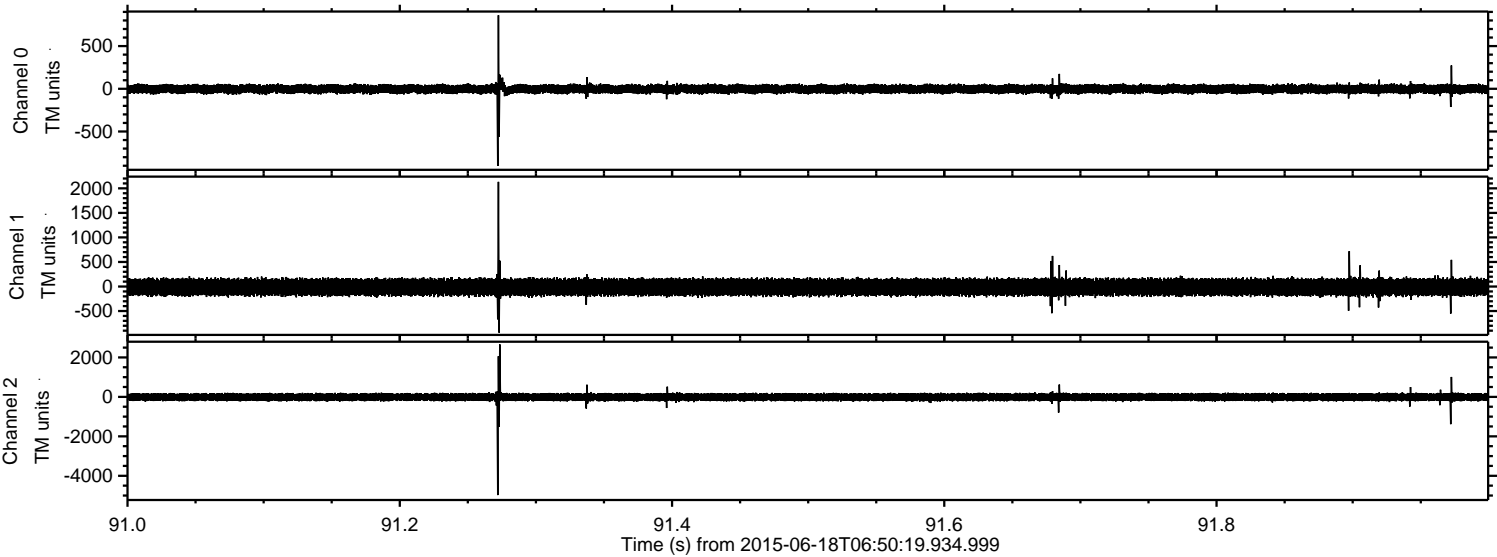


ELMAVAN 3D WAVEFORMS (Measured data sampled at 50 kHz) 51000 packets of 144 samples from 2015-06-18T06:50:19.934.999. Part 6/147

Processed Thu Jun 18 08:56:43 2015 by ELM ver.2012-10-06 from 001__elm20150618_065018__dat00.bin

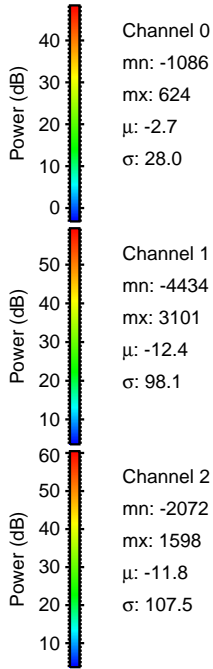
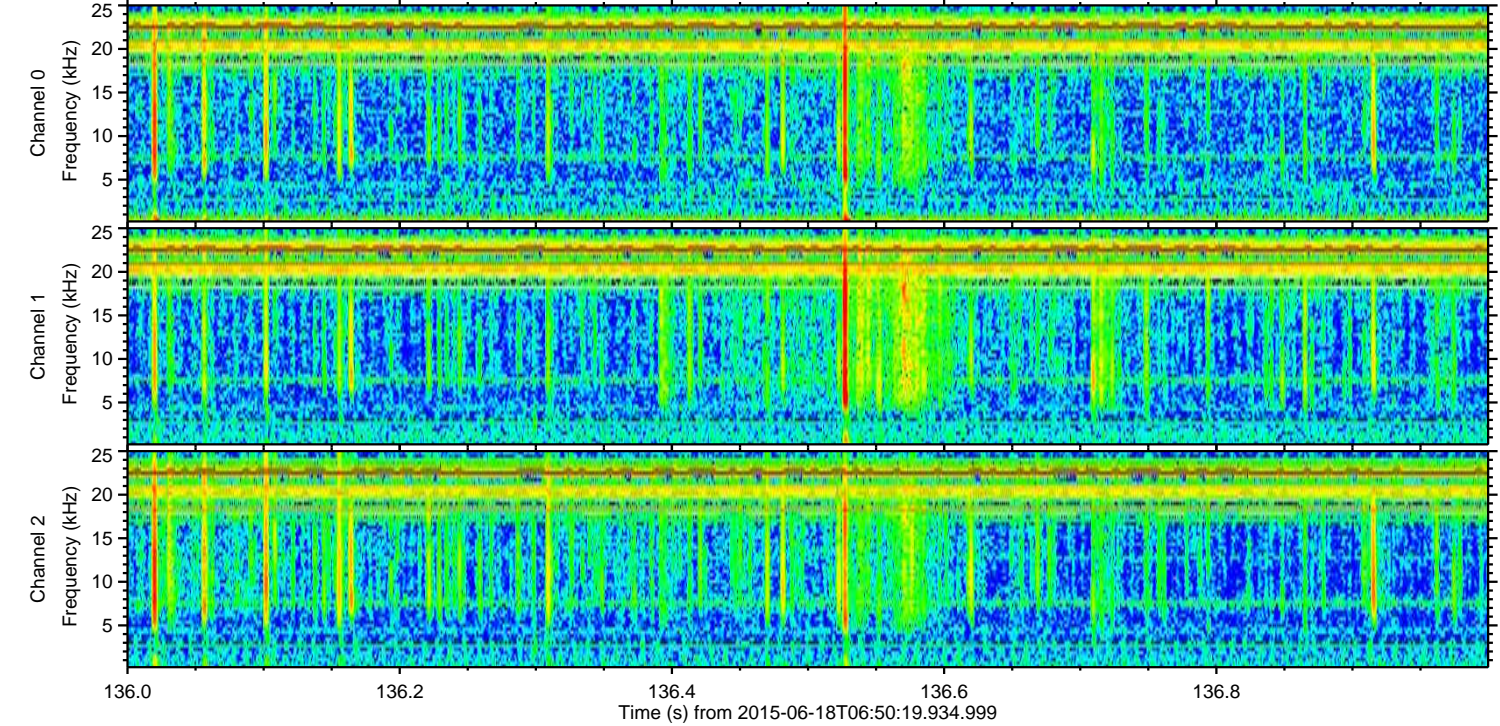
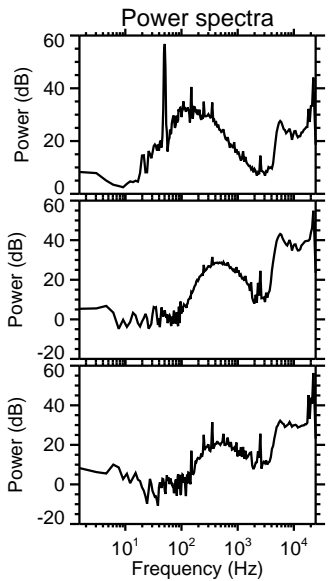
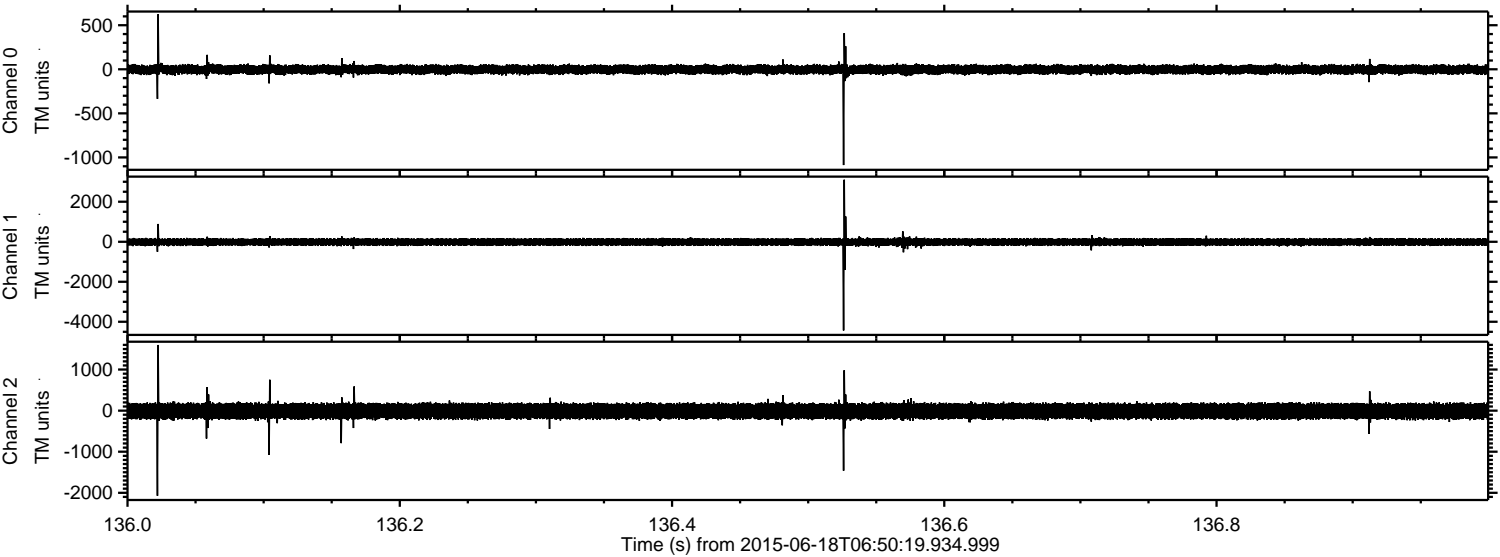


Processed Thu Jun 18 08:56:44 2015 by ELM ver.2012-10-06 from 001__elm20150618_065018__dat00.bin



ELMAVAN 3D WAVEFORMS (Measured data sampled at 50 kHz) 51000 packets of 144 samples from 2015-06-18T06:50:19.934.999. Part 137/147

Processed Thu Jun 18 08:56:46 2015 by ELM ver.2012-10-06 from 001__elm20150618_065018__dat00.bin



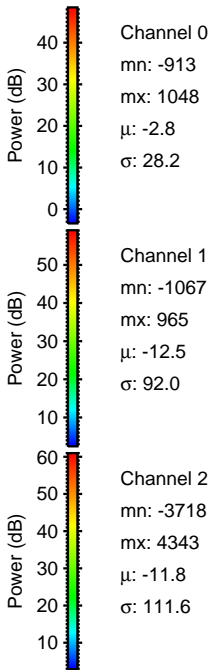
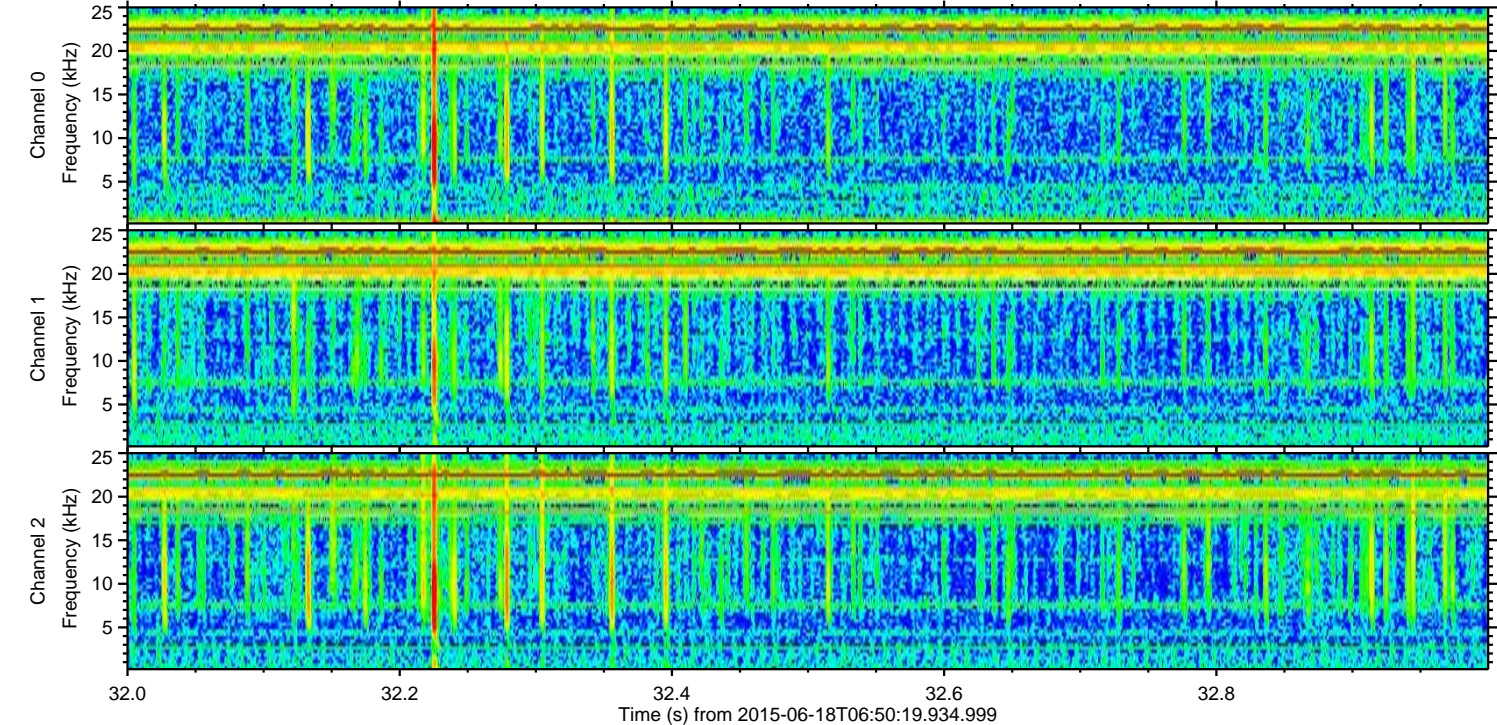
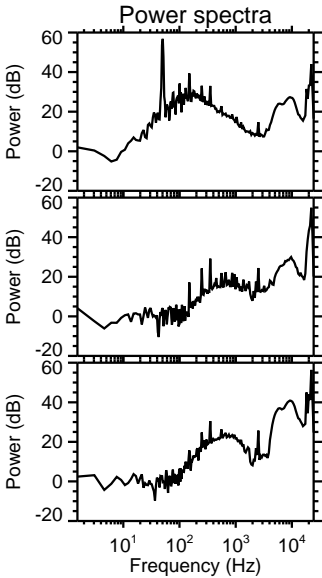
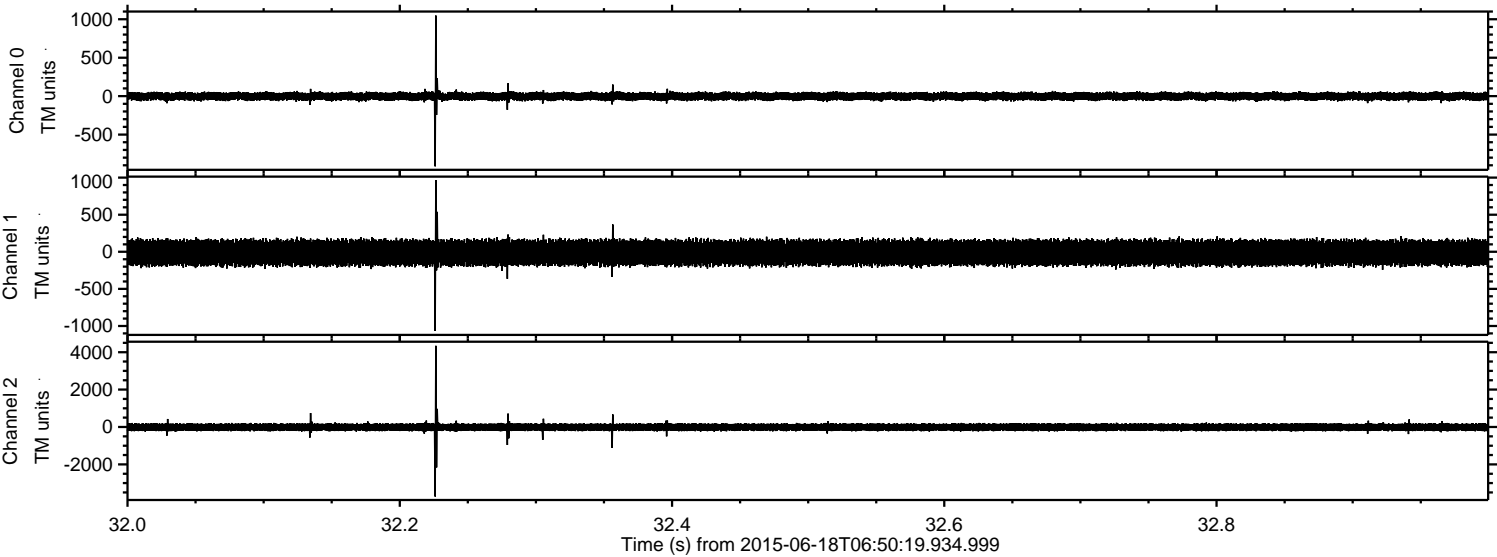
Channel 0
mn: -1086
mx: 624
 μ : -2.7
 σ : 28.0

Channel 1
mn: -4434
mx: 3101
 μ : -12.4
 σ : 98.1

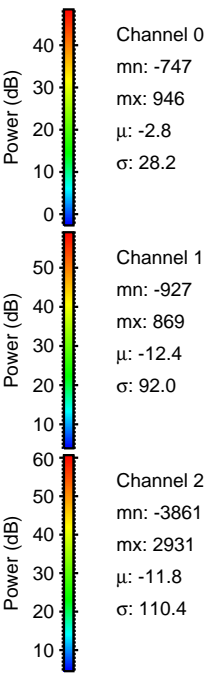
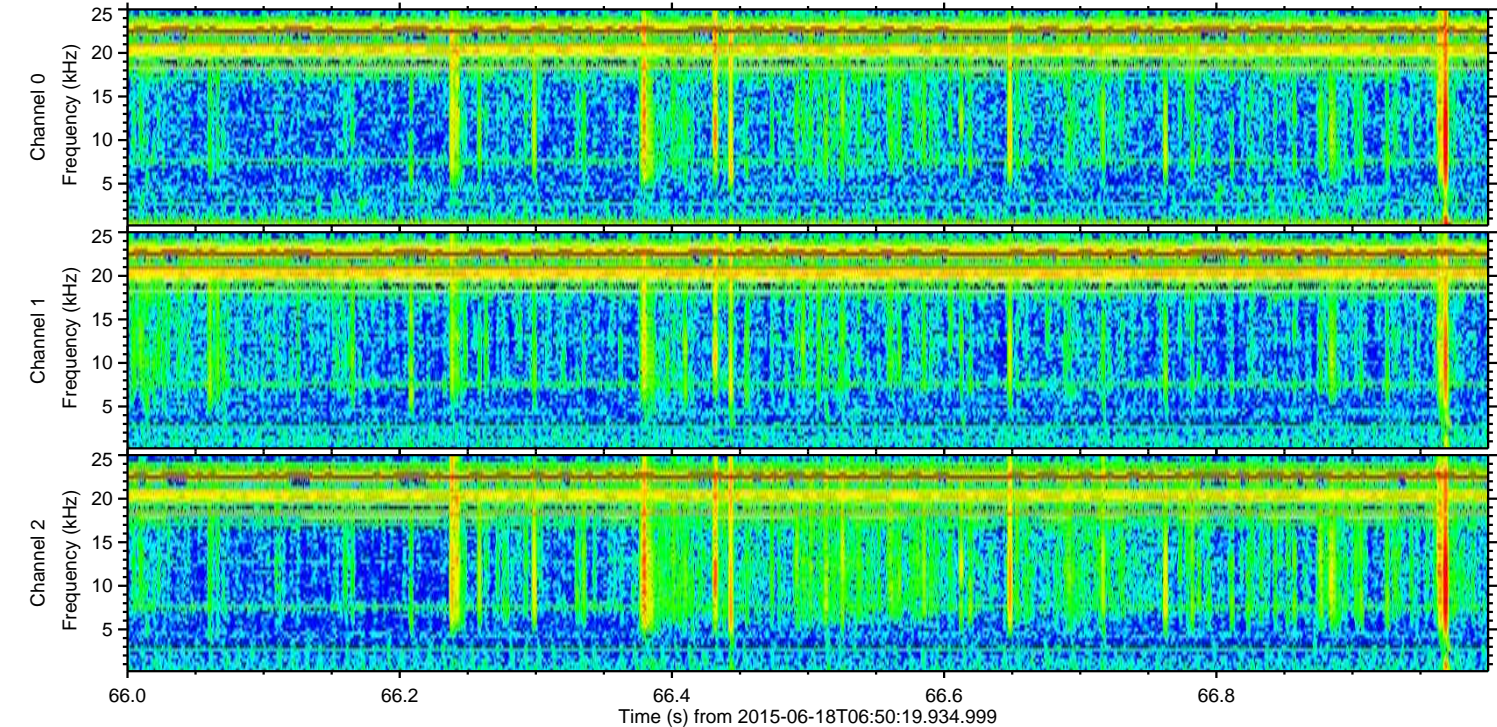
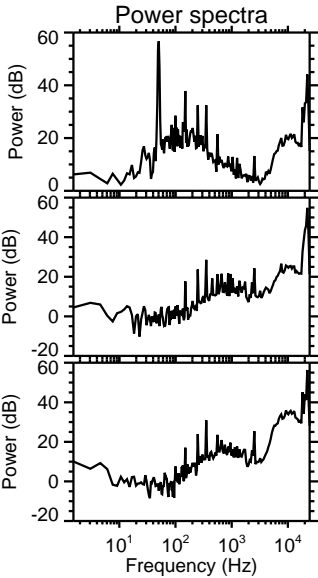
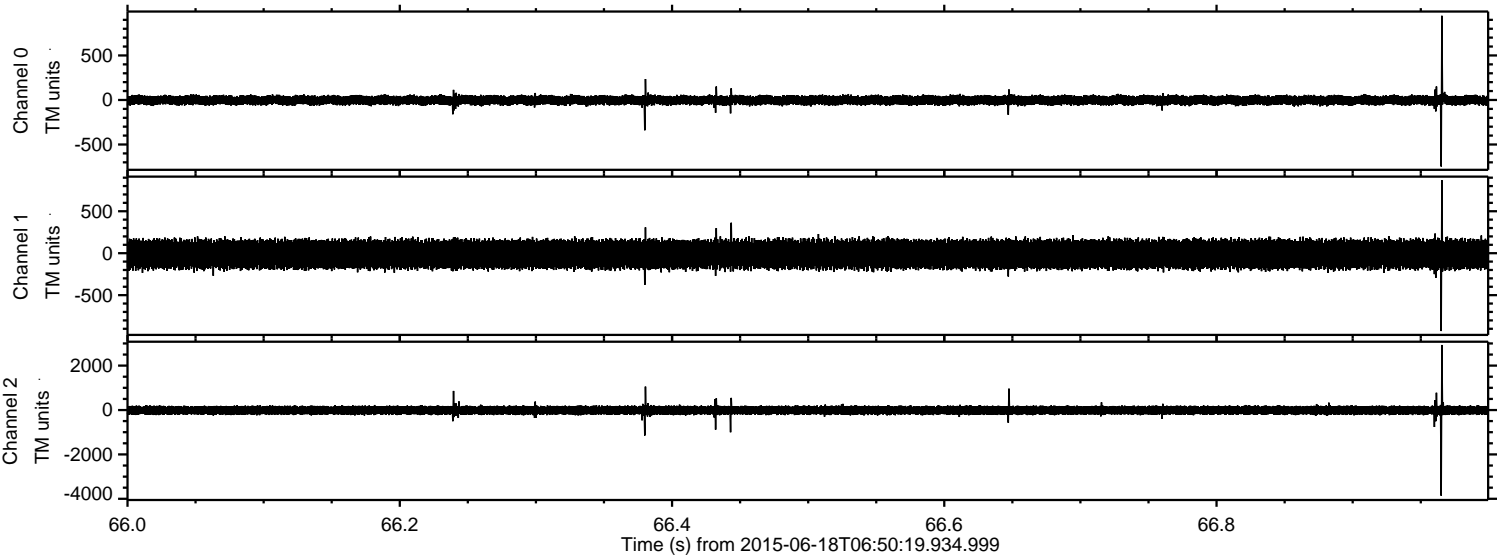
Channel 2
mn: -2072
mx: 1598
 μ : -11.8
 σ : 107.5

ELMAVAN 3D WAVEFORMS (Measured data sampled at 50 kHz) 51000 packets of 144 samples from 2015-06-18T06:50:19.934.999. Part 33/147

Processed Thu Jun 18 08:56:47 2015 by ELM ver.2012-10-06 from 001__elm20150618_065018__dat00.bin

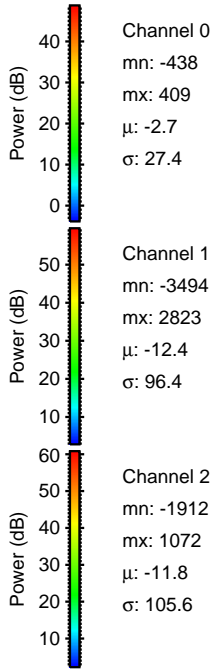
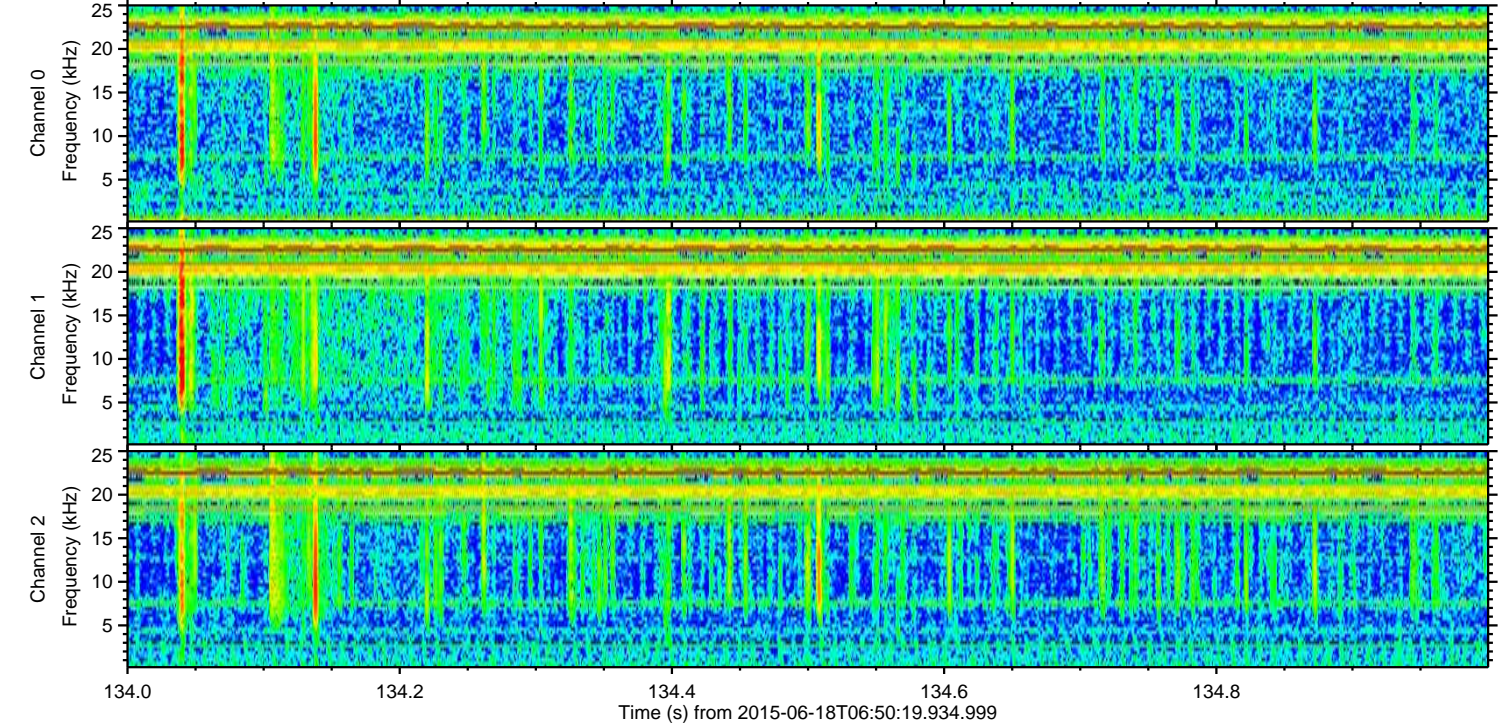
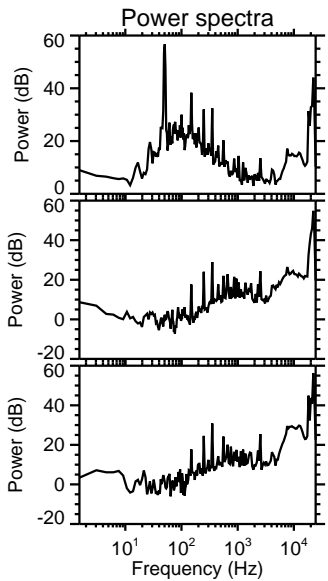
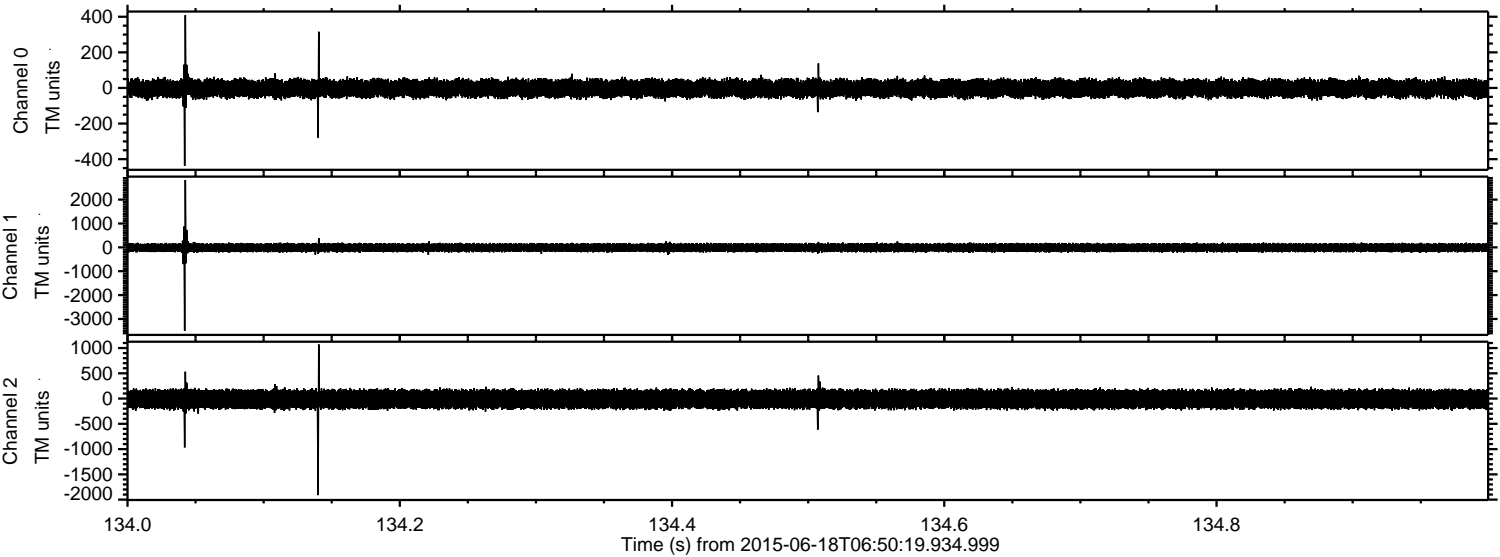


Processed Thu Jun 18 08:56:48 2015 by ELM ver.2012-10-06 from 001__elm20150618_065018__dat00.bin



ELMAVAN 3D WAVEFORMS (Measured data sampled at 50 kHz) 51000 packets of 144 samples from 2015-06-18T06:50:19.934.999. Part 135/147

Processed Thu Jun 18 08:56:49 2015 by ELM ver.2012-10-06 from 001__elm20150618_065018__dat00.bin



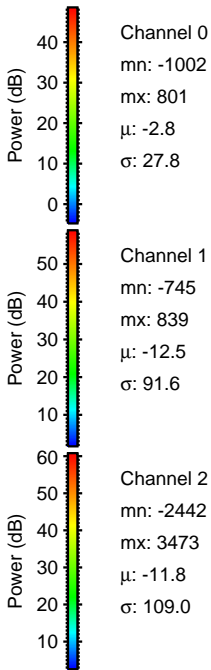
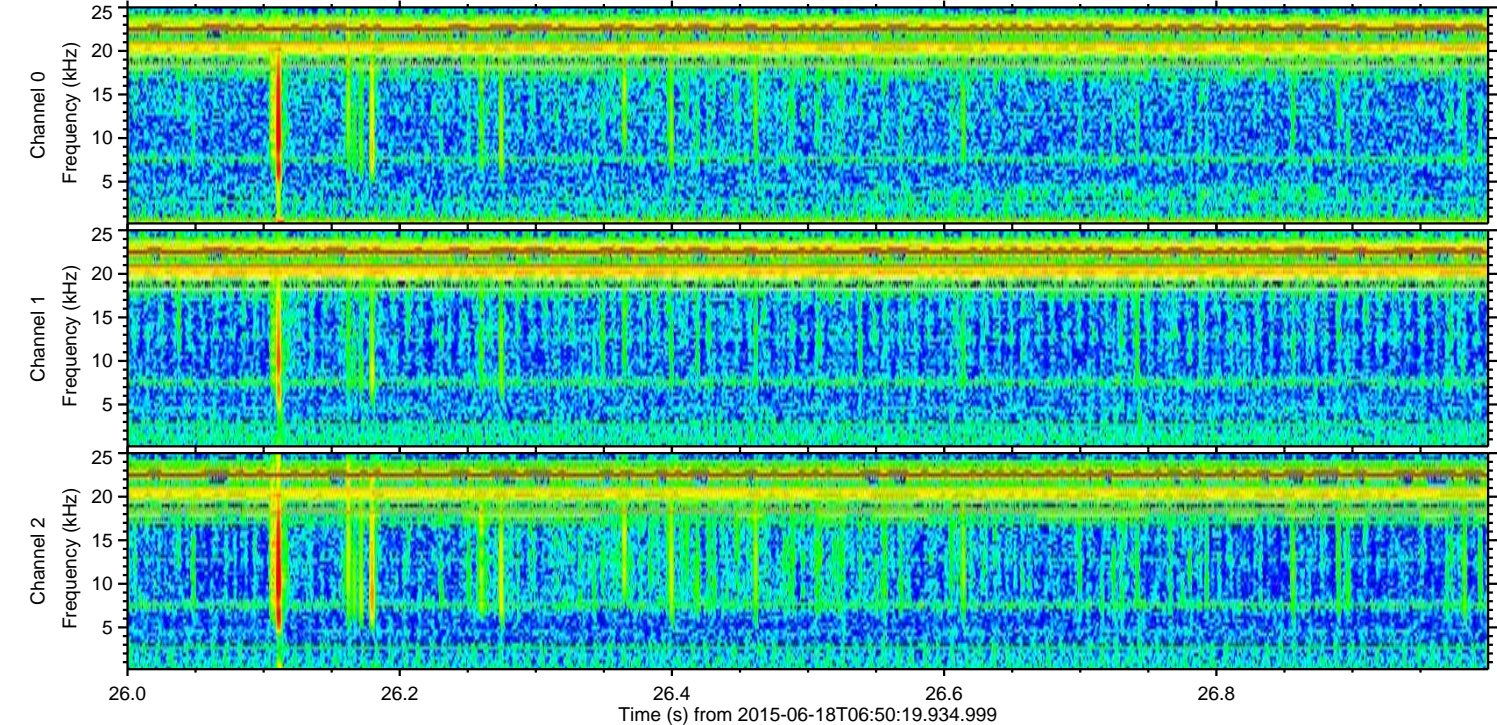
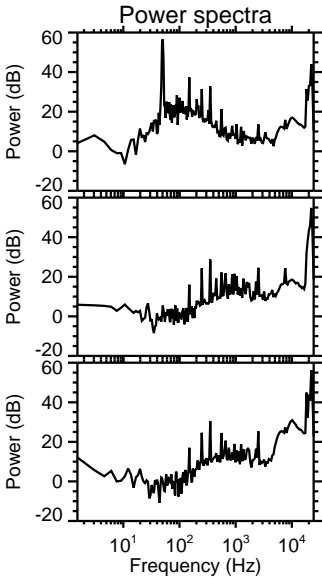
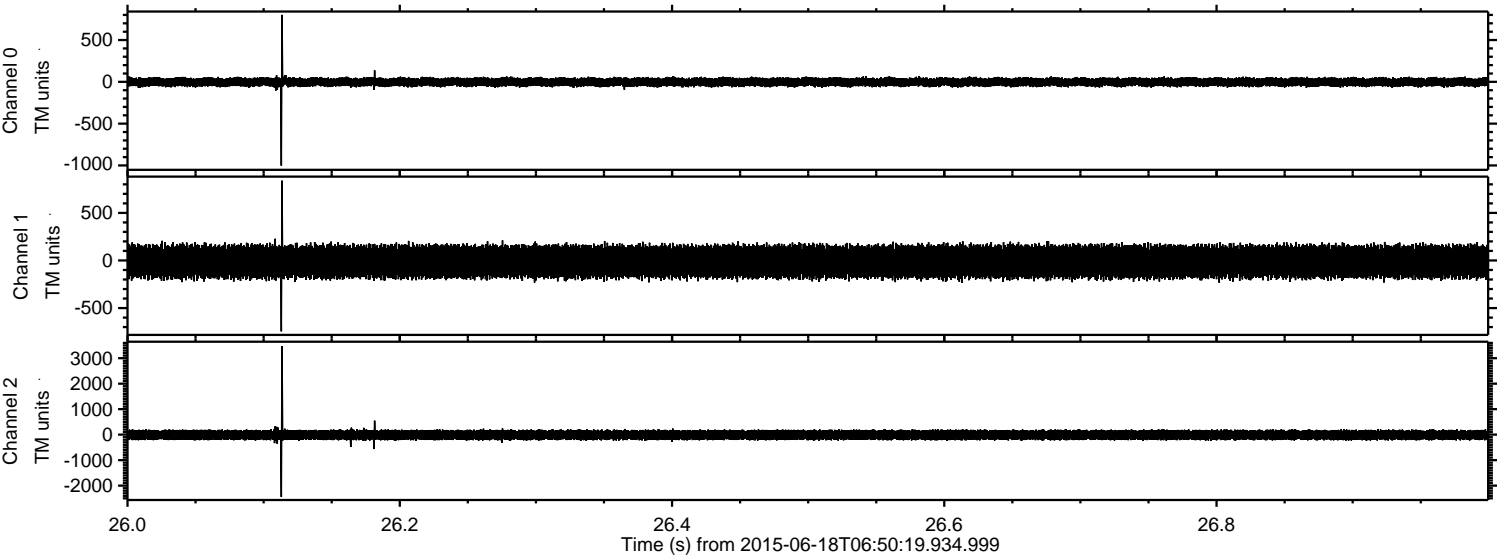
Channel 0
mn: -438
mx: 409
 μ : -2.7
 σ : 27.4

Channel 1
mn: -3494
mx: 2823
 μ : -12.4
 σ : 96.4

Channel 2
mn: -1912
mx: 1072
 μ : -11.8
 σ : 105.6

ELMAVAN 3D WAVEFORMS (Measured data sampled at 50 kHz) 51000 packets of 144 samples from 2015-06-18T06:50:19.934.999. Part 27/147

Processed Thu Jun 18 08:56:51 2015 by ELM ver.2012-10-06 from 001__elm20150618_065018__dat00.bin



Processed Thu Jun 18 08:56:53 2015 by ELM ver.2012-10-06 from 001__elm20150618_065018__dat00.bin

