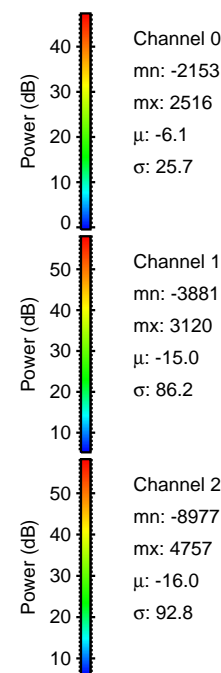
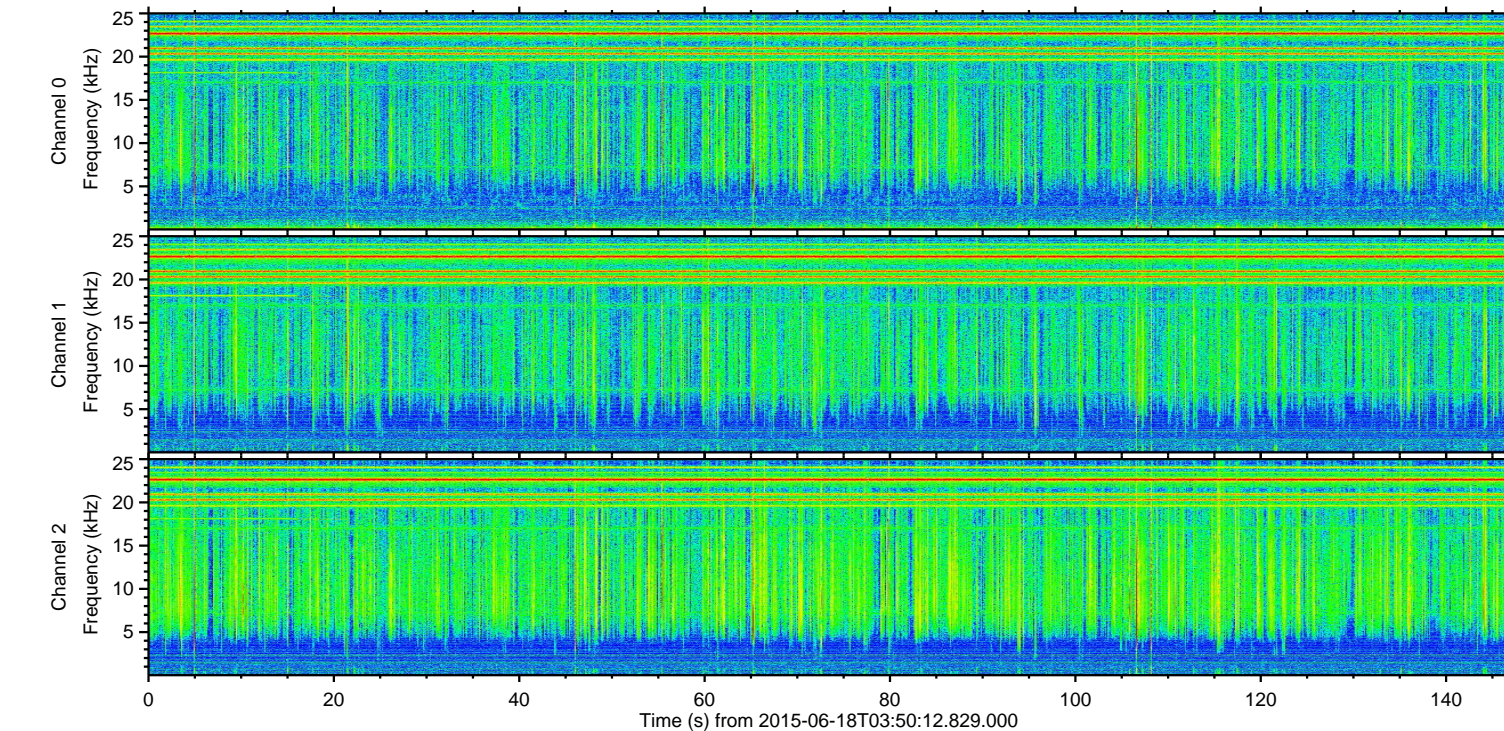
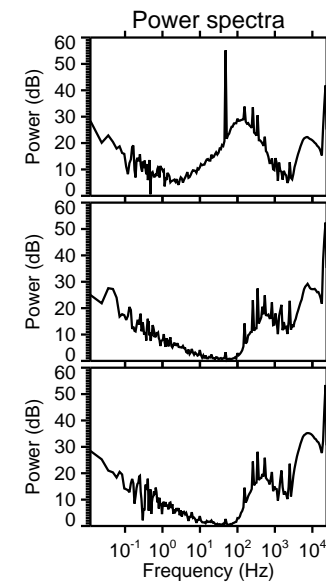
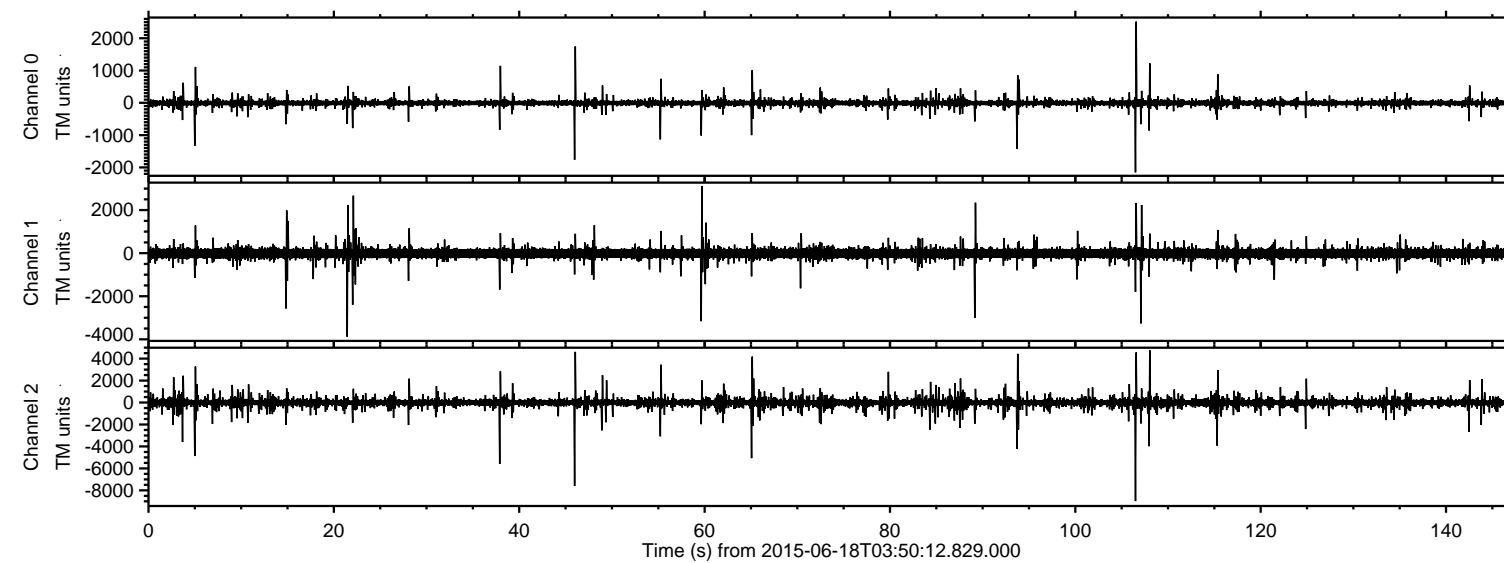


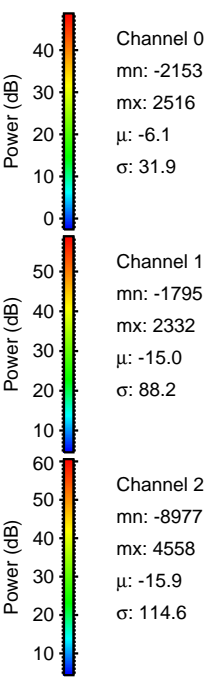
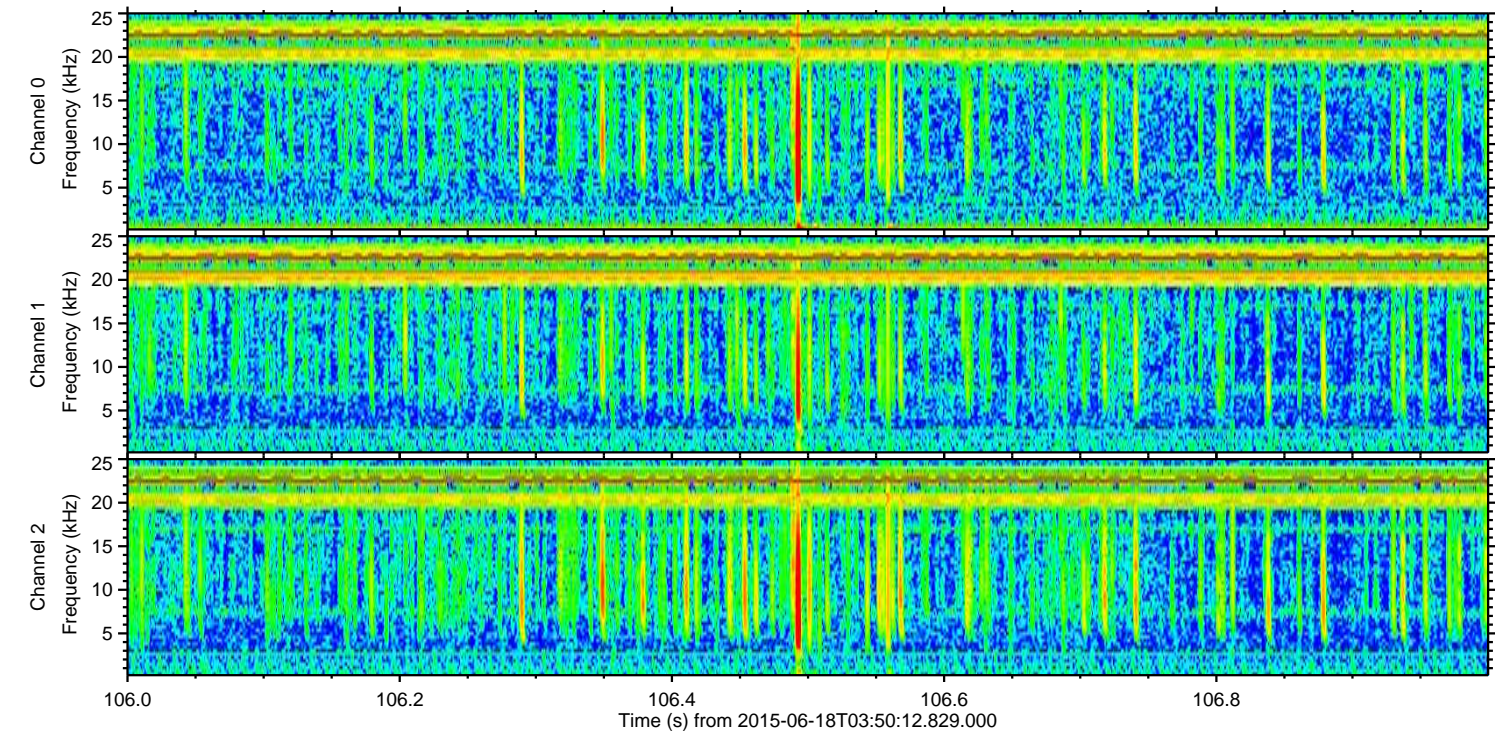
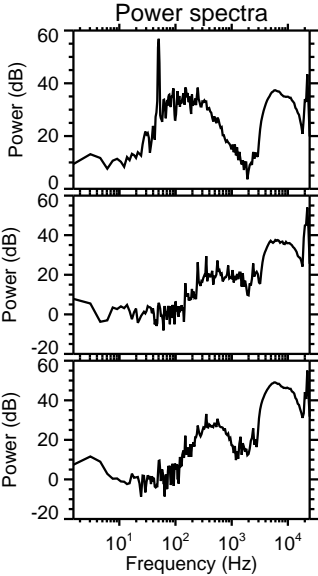
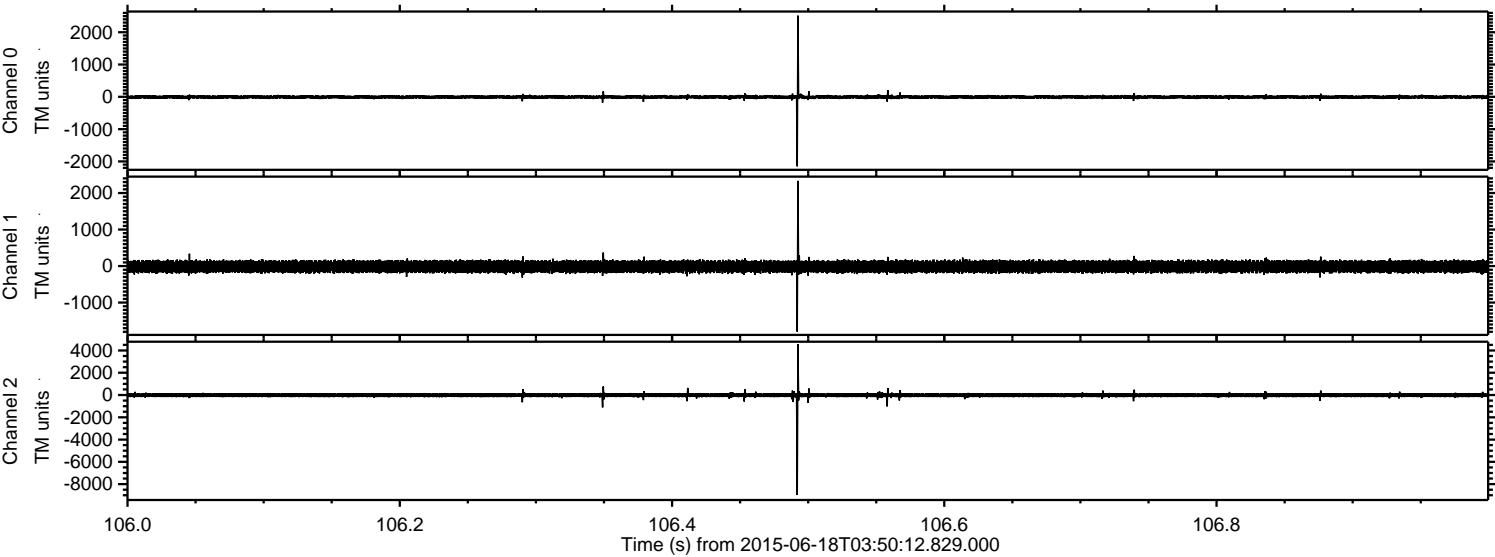
ELMAVAN 3D WAVEFORMS (Measured data sampled at 50 kHz) 51000 packets of 144 samples from 2015-06-18T03:50:12.829.000.

Processed Thu Jun 18 05:56:48 2015 by ELM ver.2012-10-06 from 001__elm20150618_035011__dat00.bin



ELMAVAN 3D WAVEFORMS (Measured data sampled at 50 kHz) 51000 packets of 144 samples from 2015-06-18T03:50:12.829.000. Part 107/147

Processed Thu Jun 18 05:57:06 2015 by ELM ver.2012-10-06 from 001__elm20150618_035011__dat00.bin

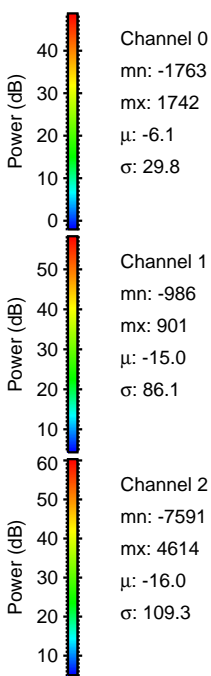
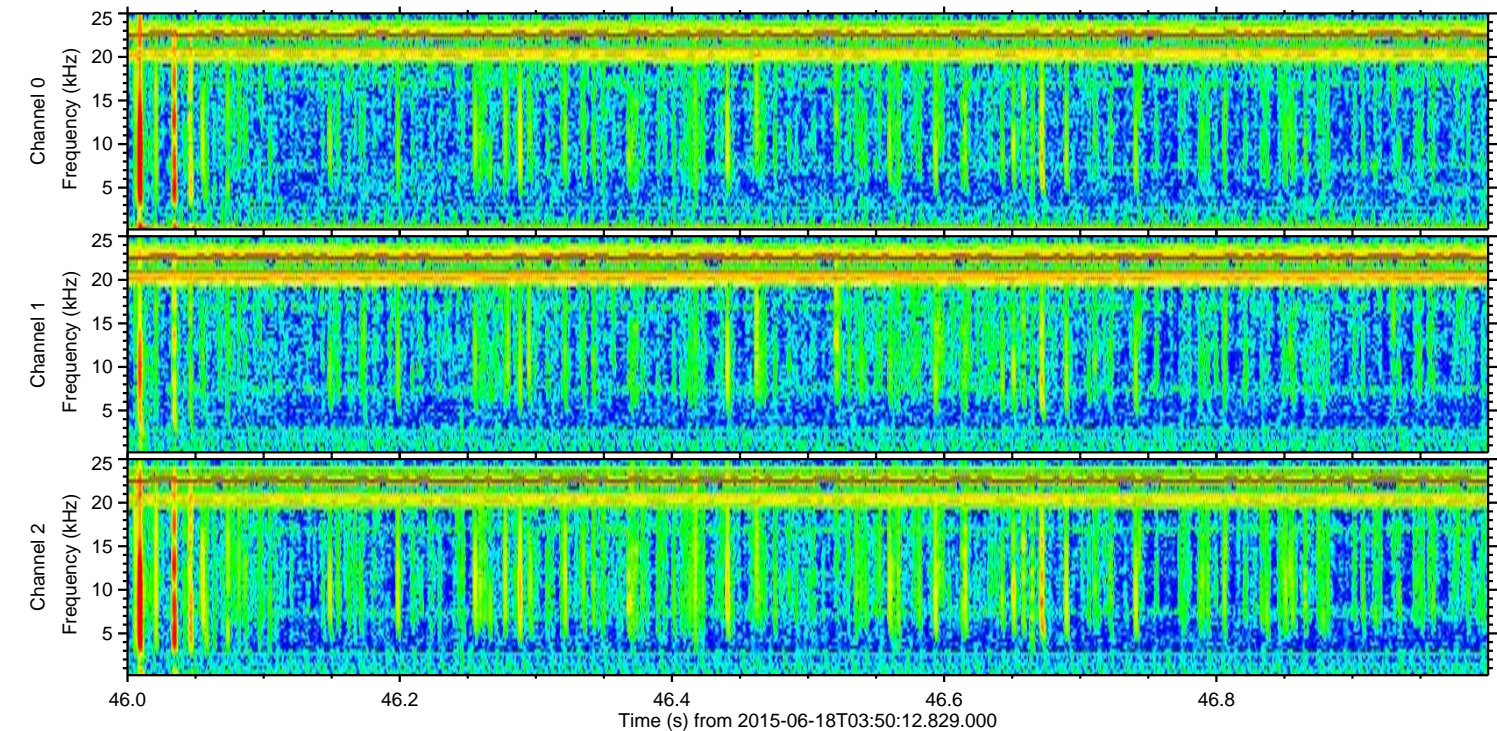
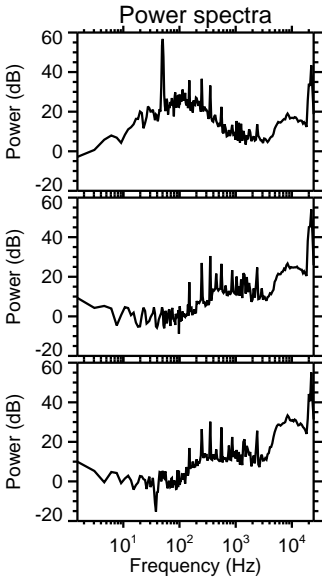
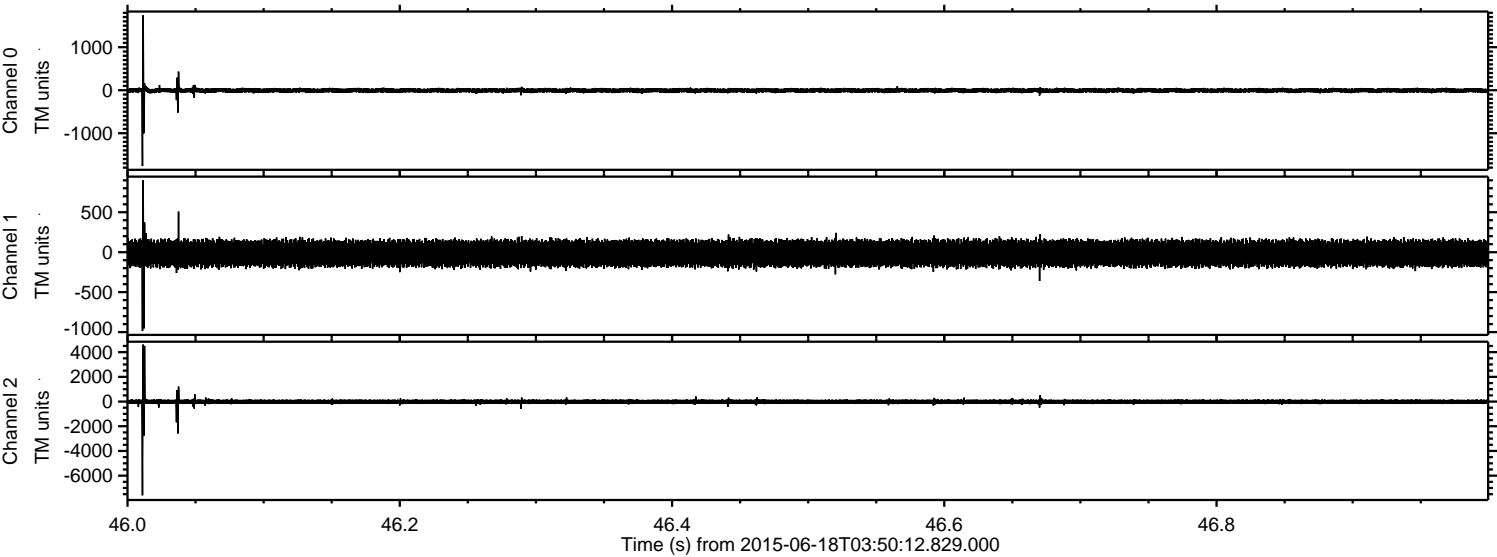


Channel 0
mn: -2153
mx: 2516
 μ : -6.1
 σ : 31.9

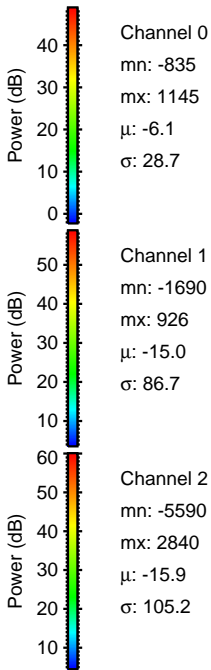
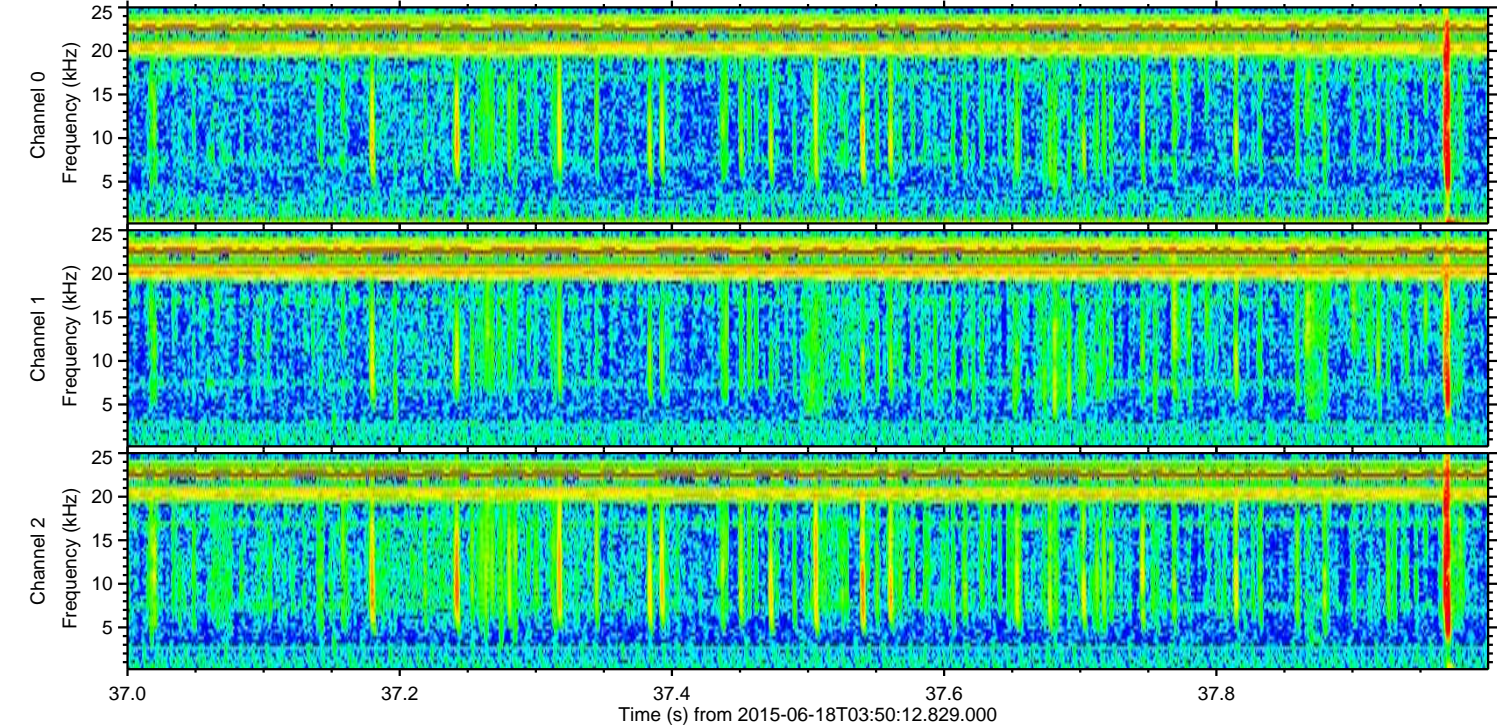
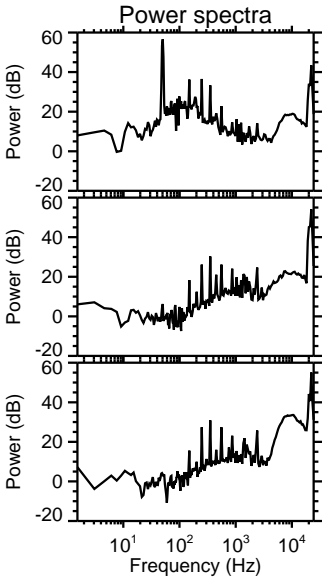
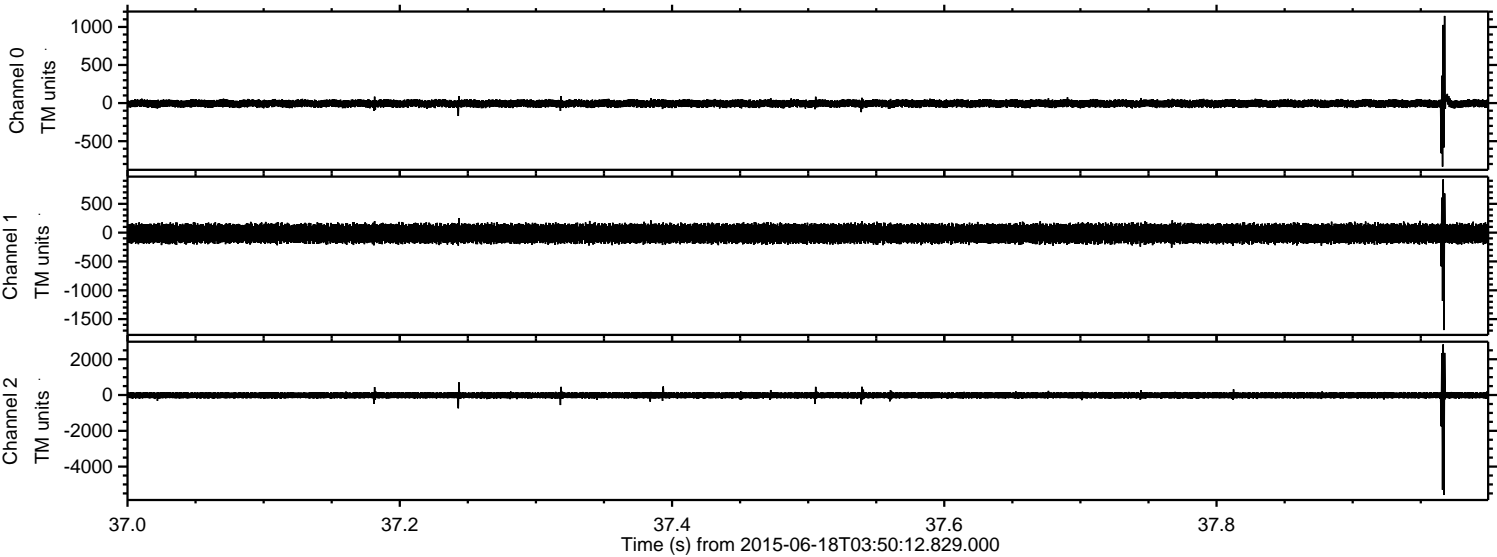
Channel 1
mn: -1795
mx: 2332
 μ : -15.0
 σ : 88.2

Channel 2
mn: -8977
mx: 4558
 μ : -15.9
 σ : 114.6

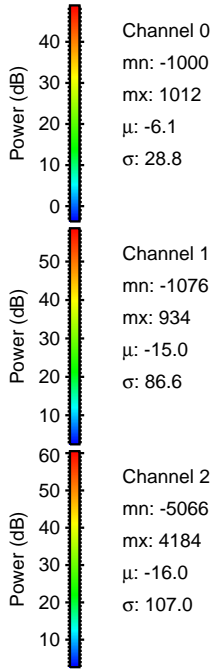
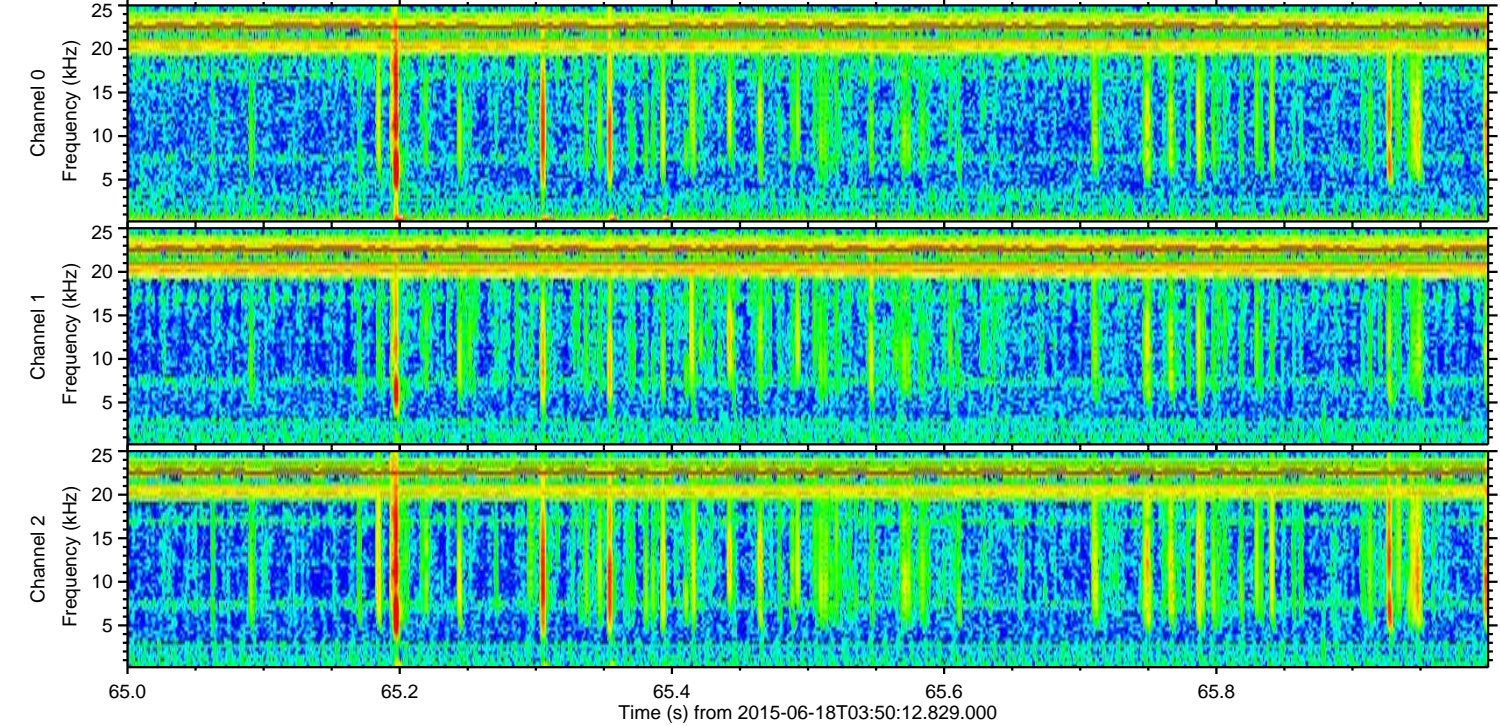
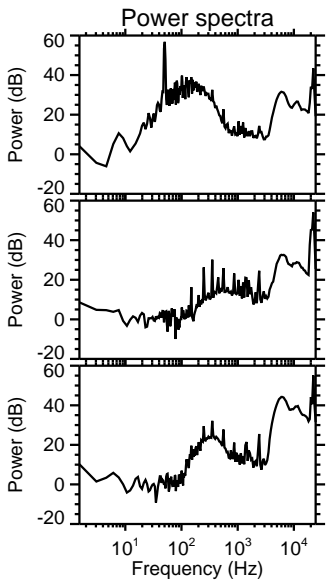
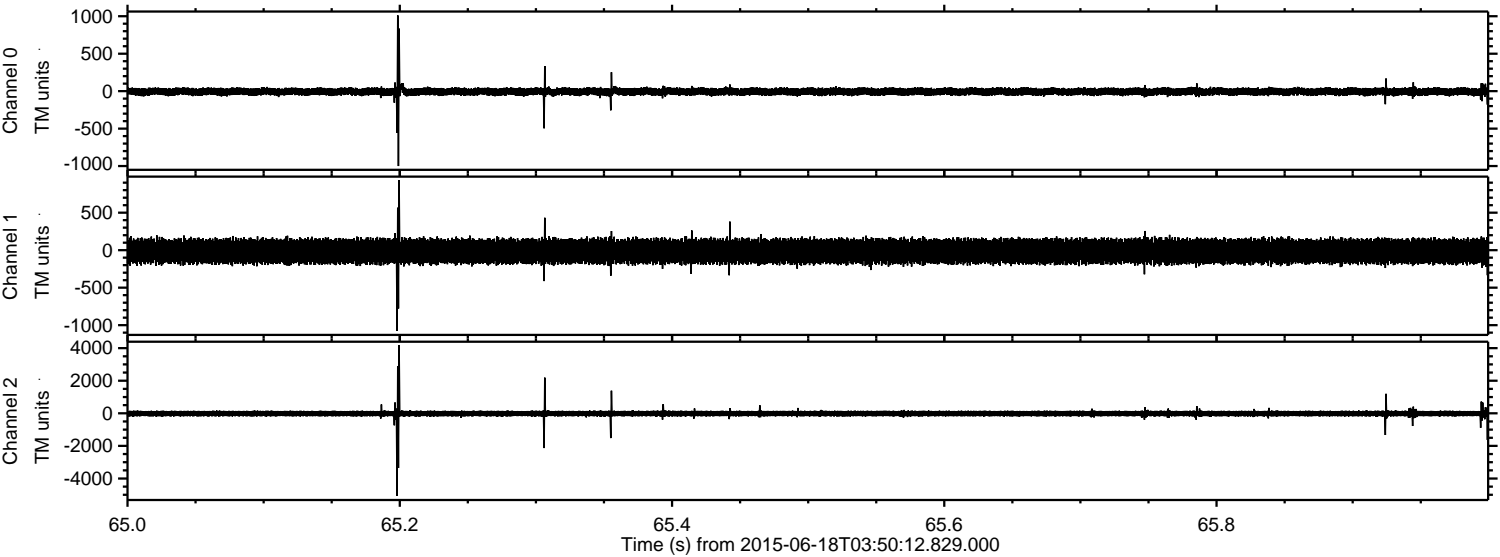
Processed Thu Jun 18 05:57:08 2015 by ELM ver.2012-10-06 from 001__elm20150618_035011__dat00.bin



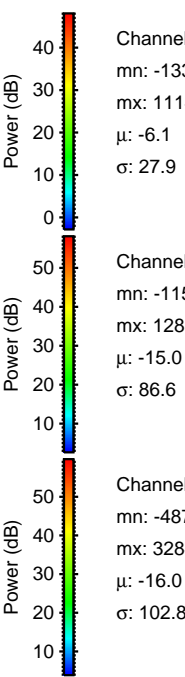
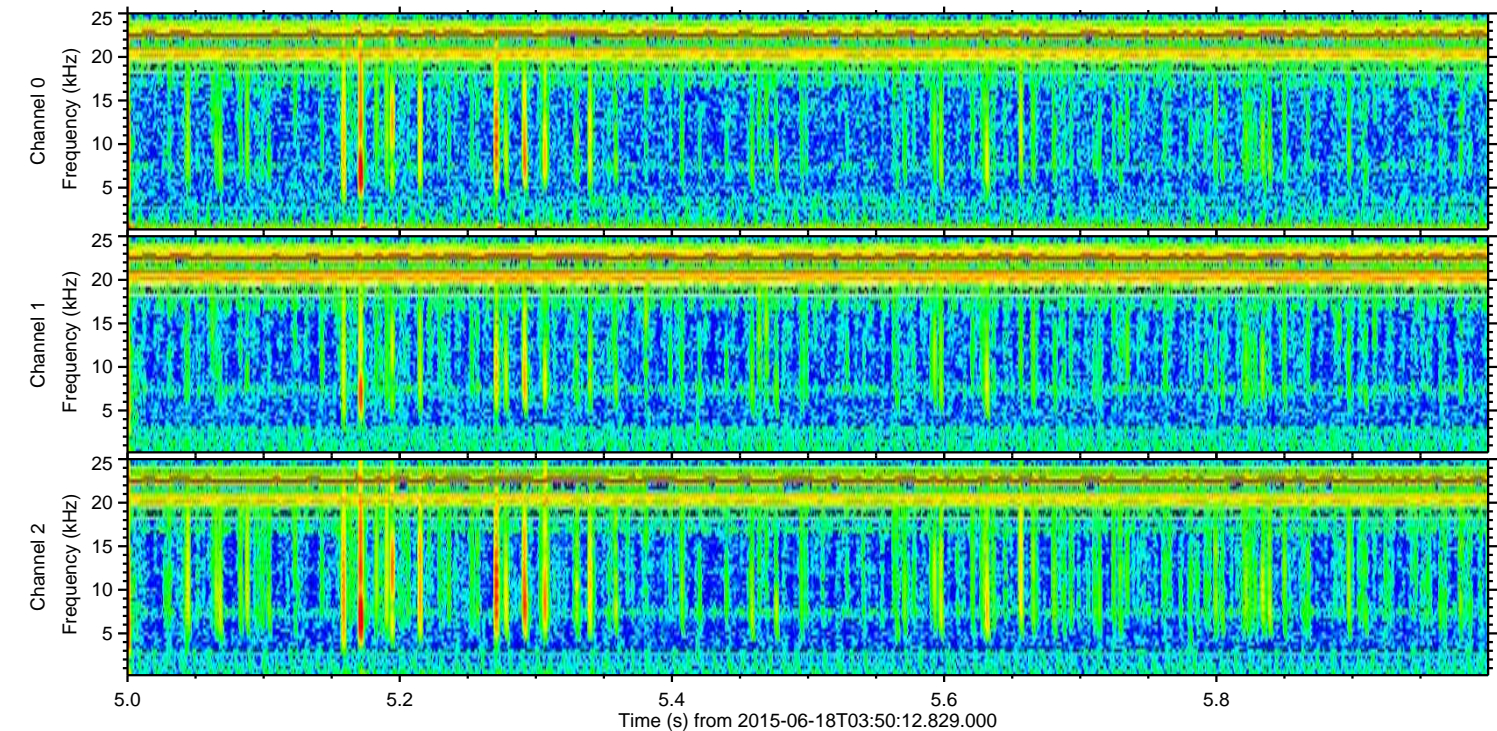
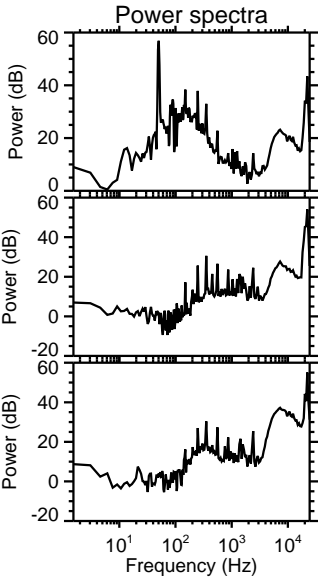
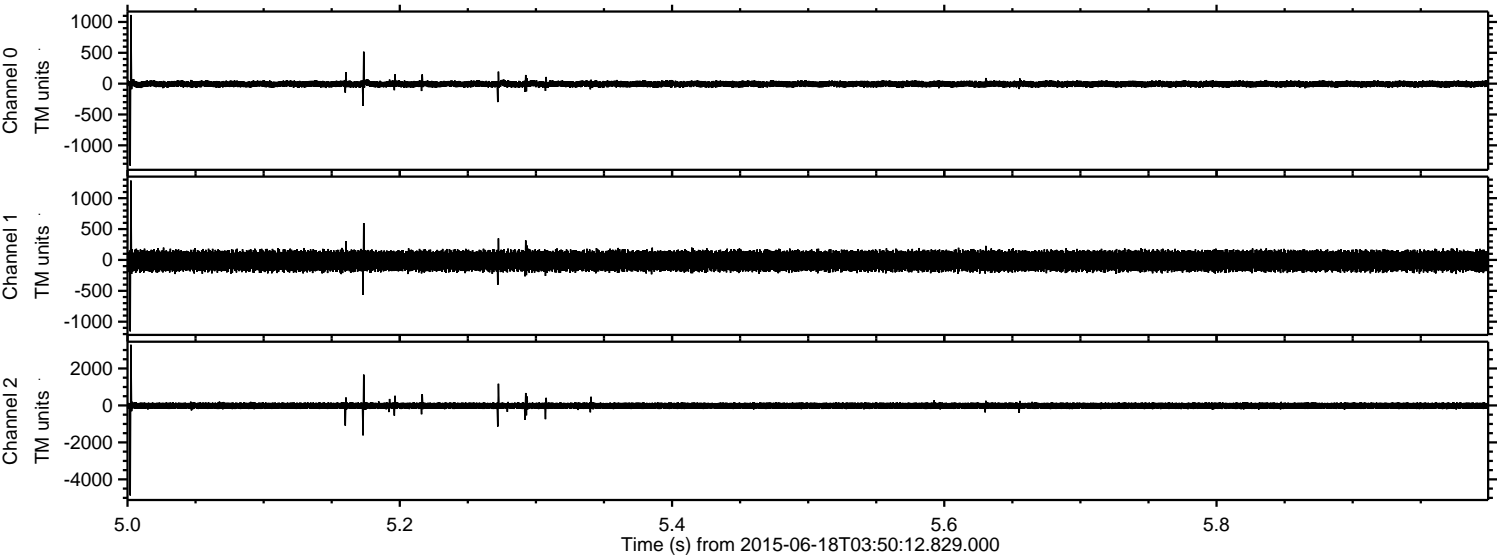
Processed Thu Jun 18 05:57:09 2015 by ELM ver.2012-10-06 from 001__elm20150618_035011__dat00.bin



Processed Thu Jun 18 05:57:10 2015 by ELM ver.2012-10-06 from 001__elm20150618_035011__dat00.bin



Processed Thu Jun 18 05:57:12 2015 by ELM ver.2012-10-06 from 001__elm20150618_035011__dat00.bin

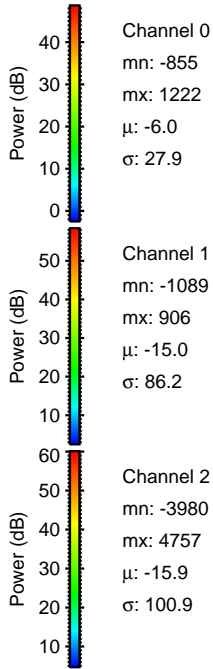
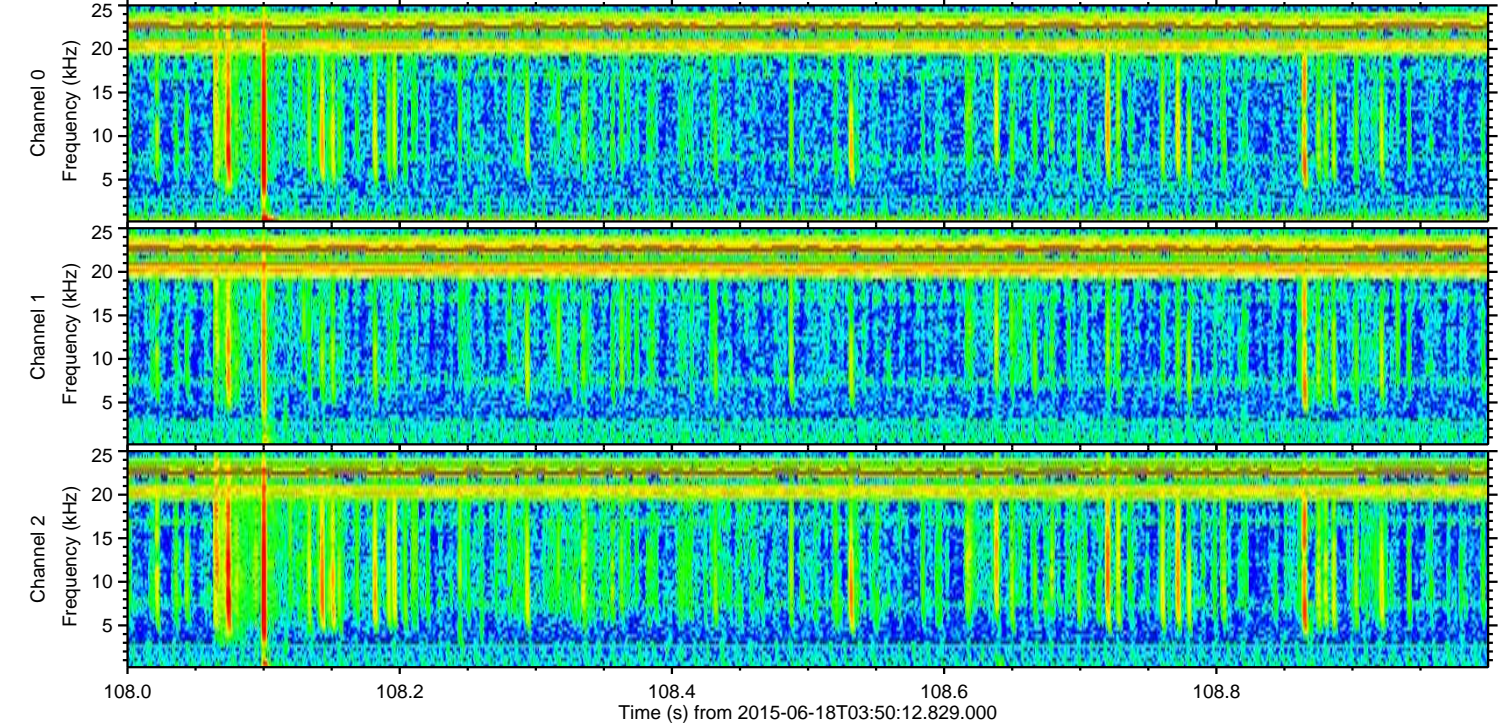
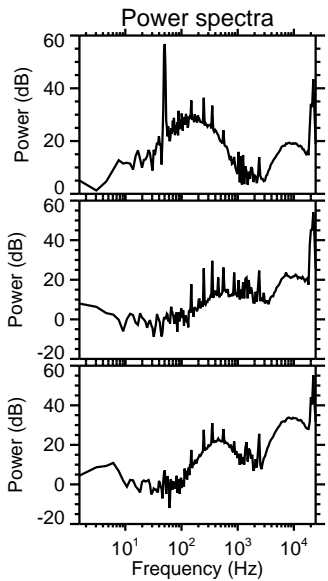
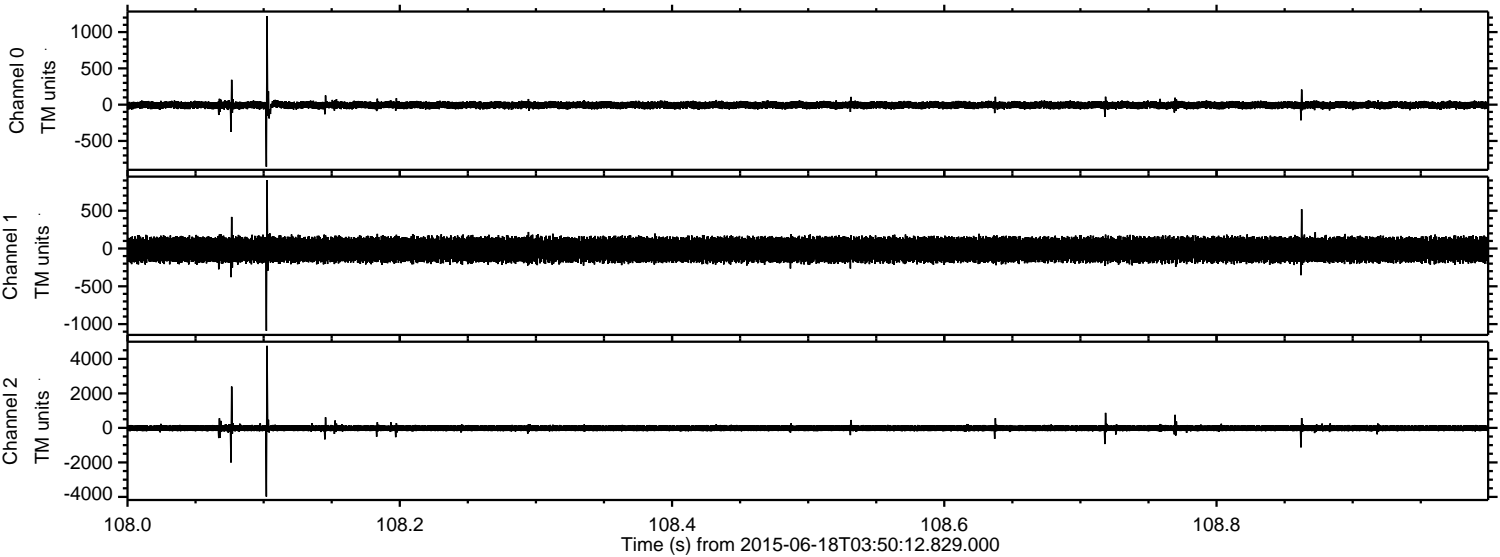


Channel 0
mn: -1331
mx: 1114
 μ : -6.1
 σ : 27.9

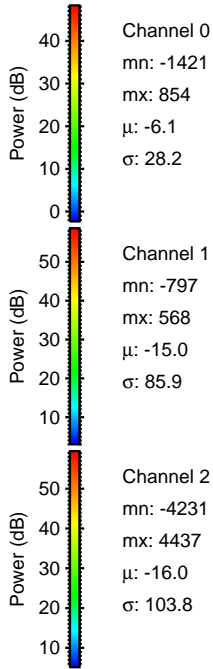
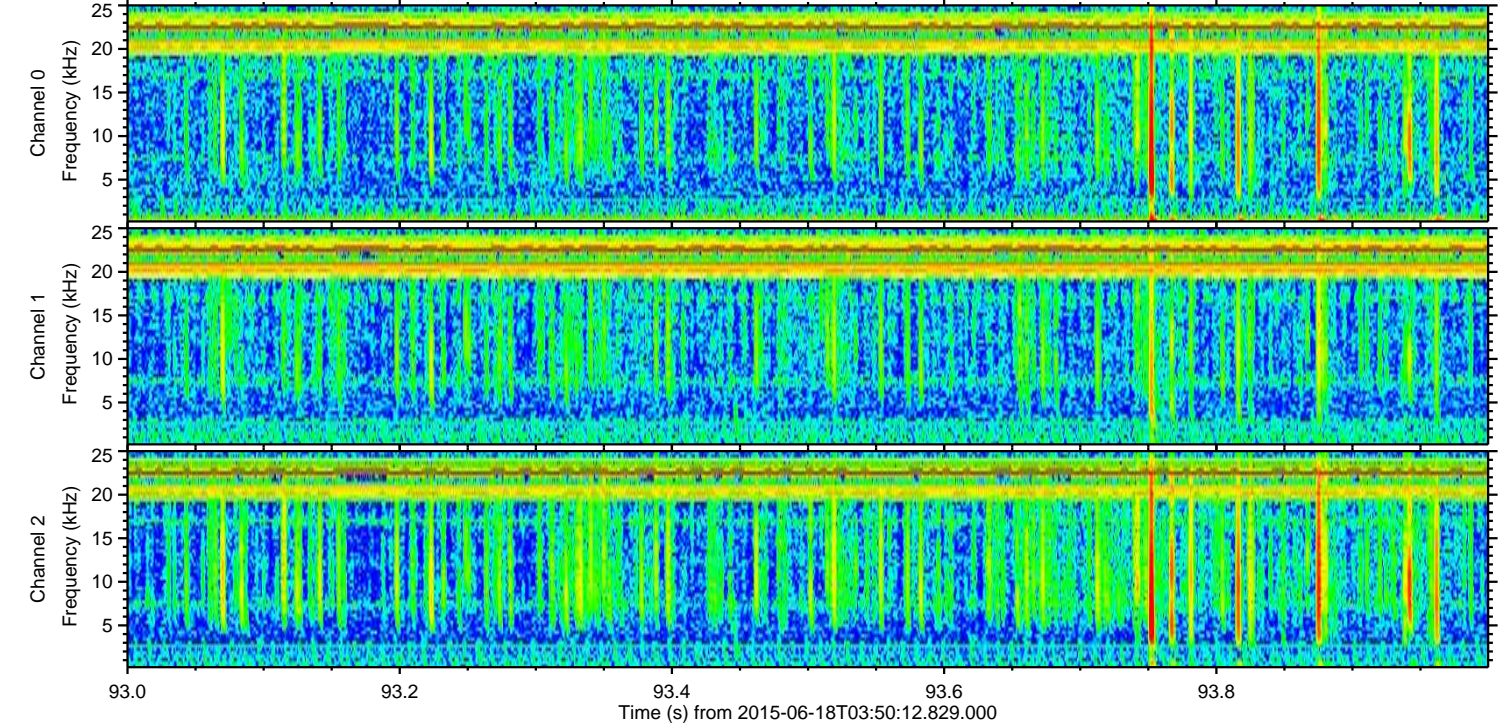
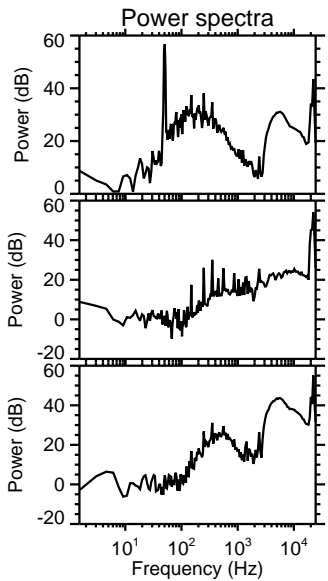
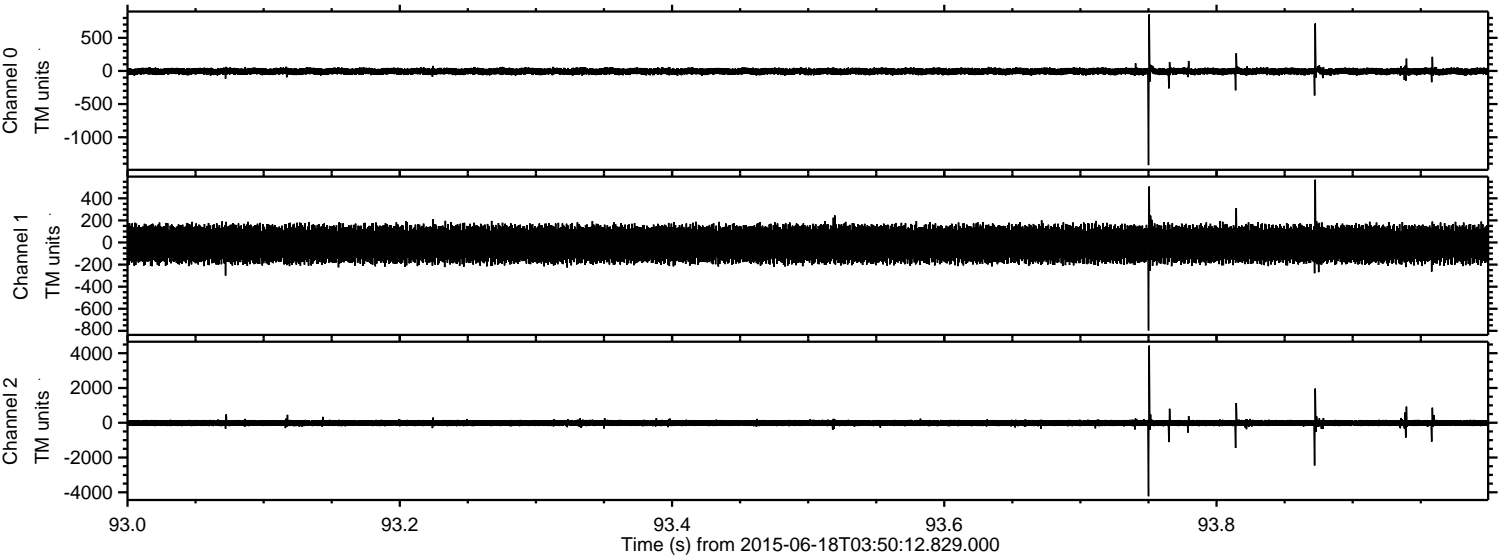
Channel 1
mn: -1156
mx: 1285
 μ : -15.0
 σ : 86.6

Channel 2
mn: -4872
mx: 3284
 μ : -16.0
 σ : 102.8

Processed Thu Jun 18 05:57:14 2015 by ELM ver.2012-10-06 from 001__elm20150618_035011__dat00.bin

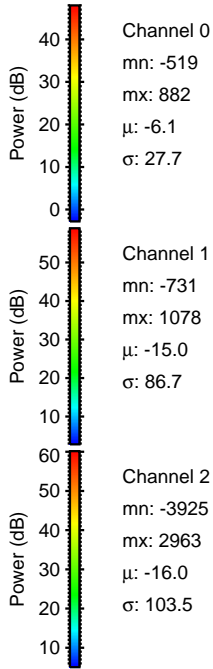
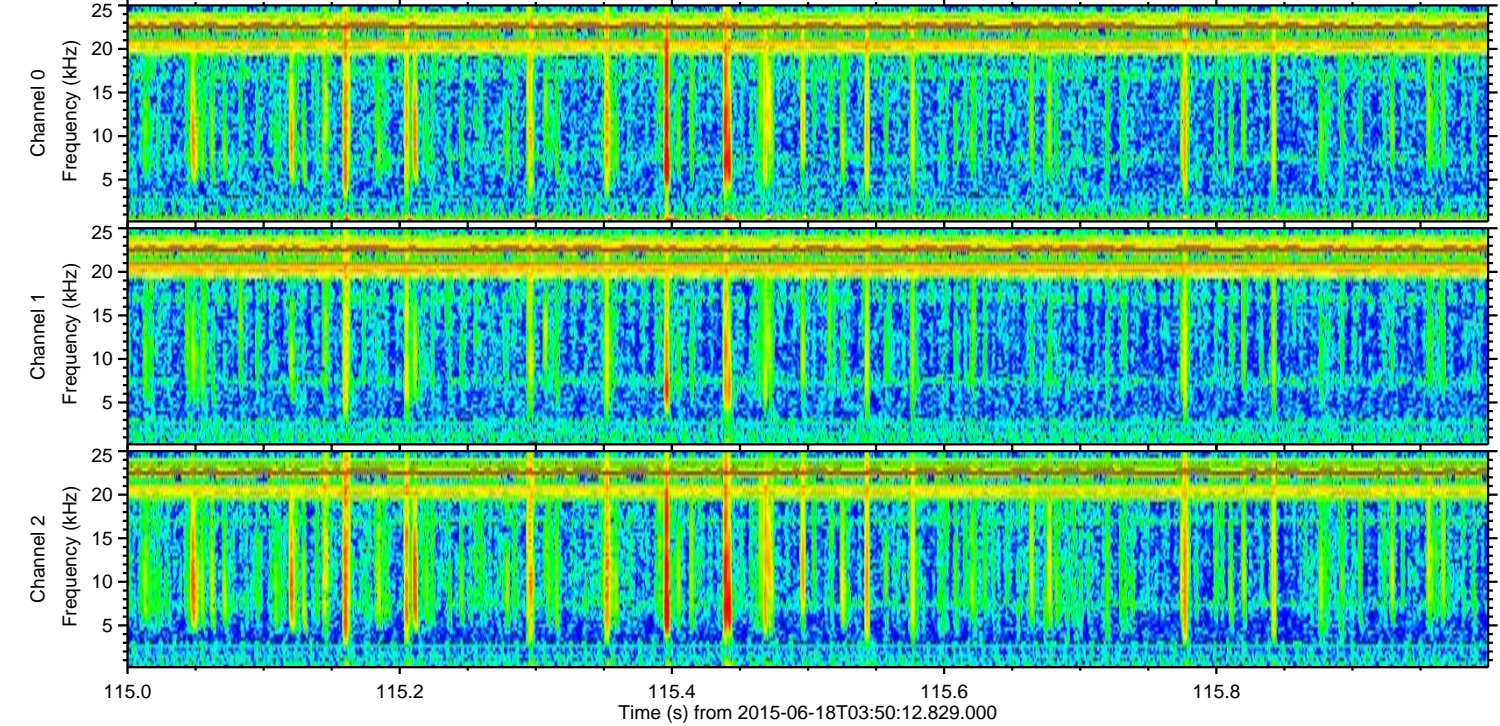
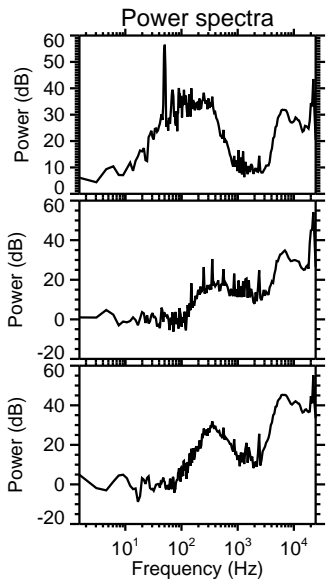
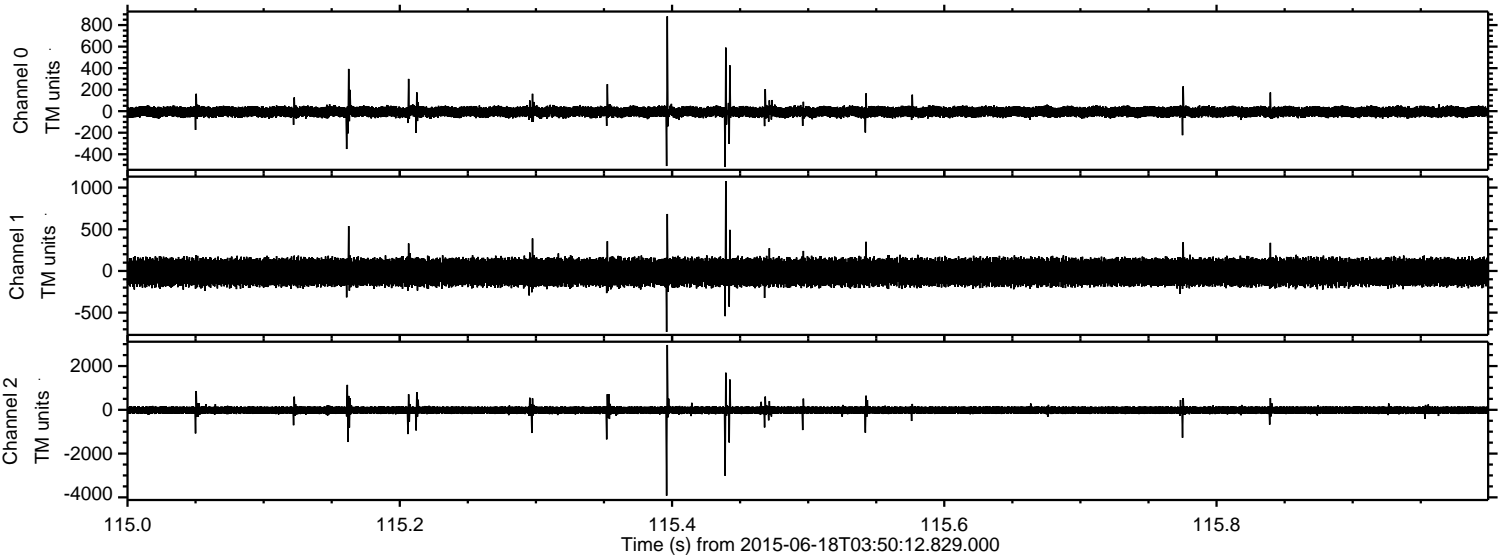


Processed Thu Jun 18 05:57:15 2015 by ELM ver.2012-10-06 from 001__elm20150618_035011__dat00.bin



ELMAVAN 3D WAVEFORMS (Measured data sampled at 50 kHz) 51000 packets of 144 samples from 2015-06-18T03:50:12.829.000. Part 116/147

Processed Thu Jun 18 05:57:18 2015 by ELM ver.2012-10-06 from 001__elm20150618_035011__dat00.bin

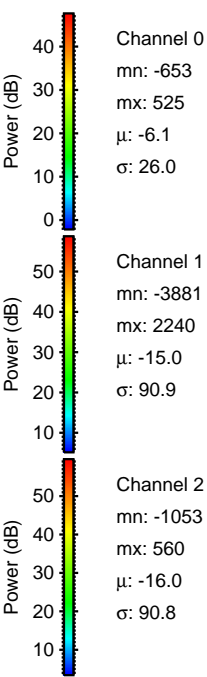
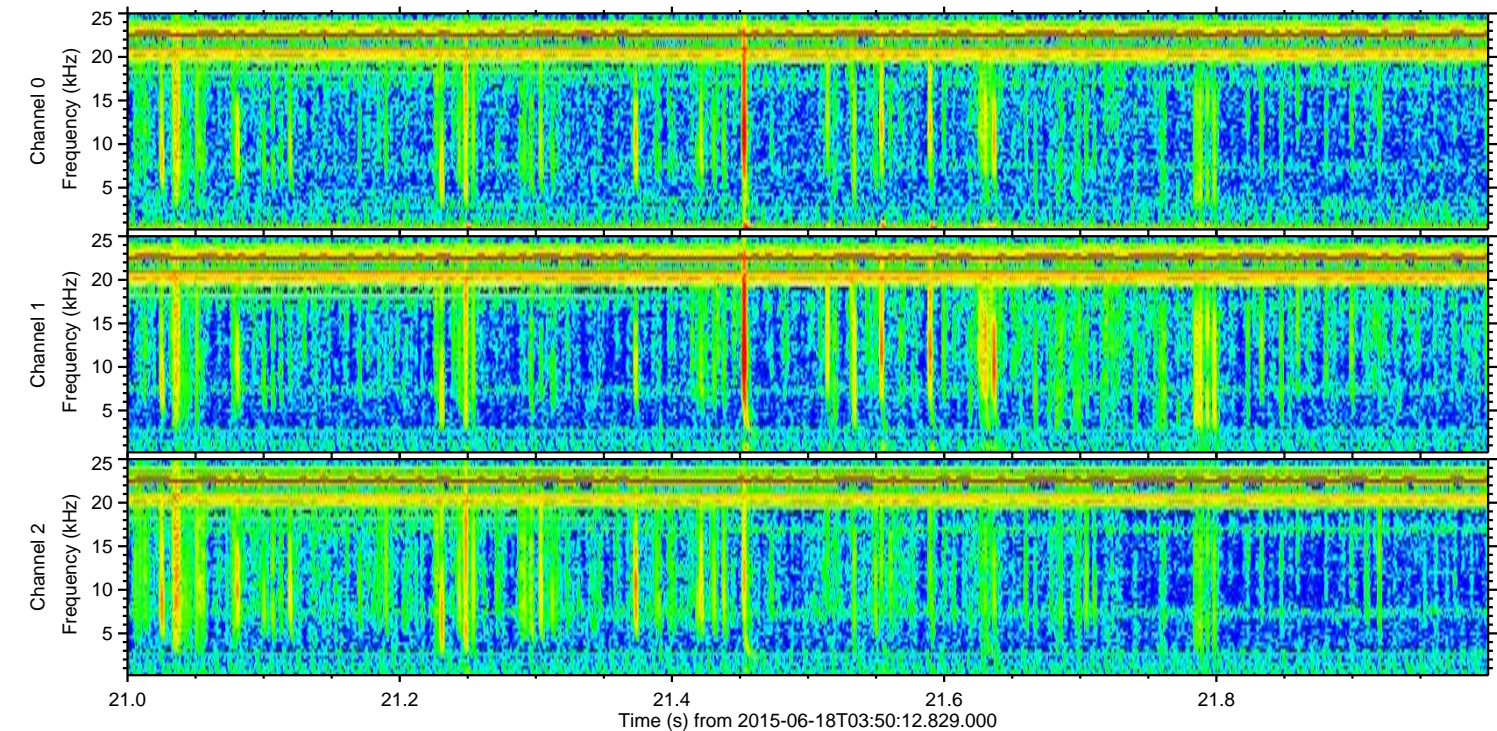
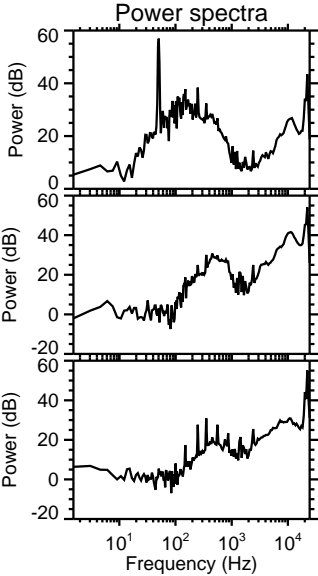
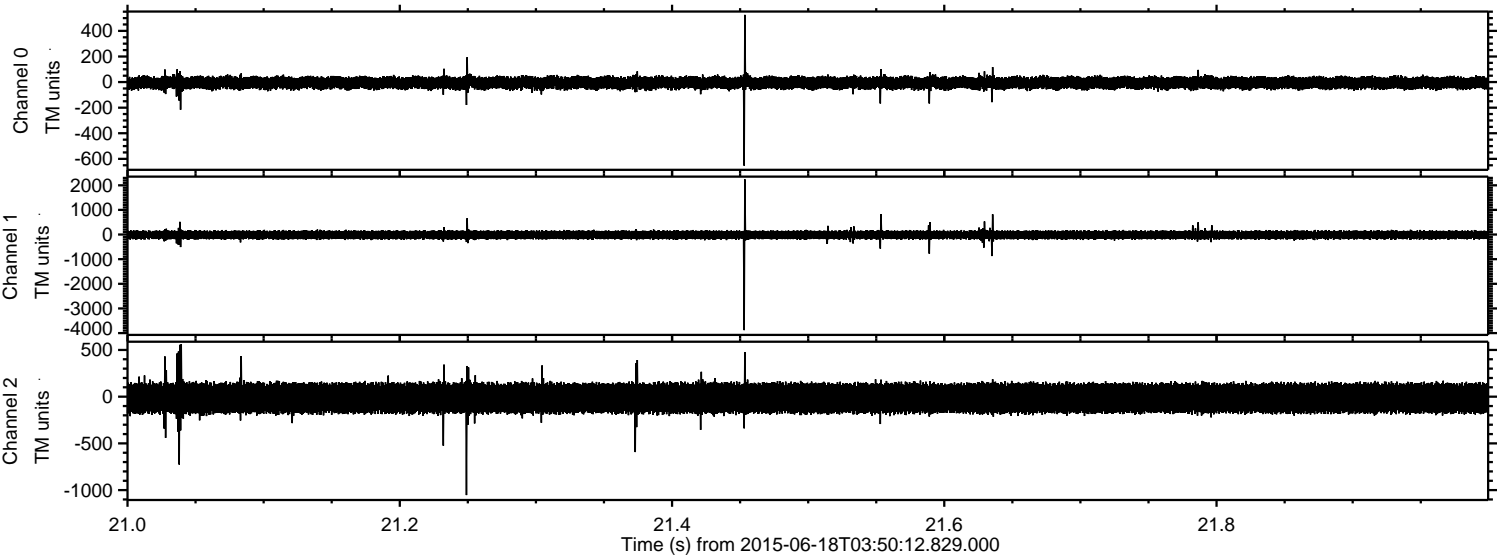


Channel 0
mn: -519
mx: 882
 μ : -6.1
 σ : 27.7

Channel 1
mn: -731
mx: 1078
 μ : -15.0
 σ : 86.7

Channel 2
mn: -3925
mx: 2963
 μ : -16.0
 σ : 103.5

Processed Thu Jun 18 05:57:19 2015 by ELM ver.2012-10-06 from 001__elm20150618_035011__dat00.bin



Channel 0
mn: -653
mx: 525
 μ : -6.1
 σ : 26.0

Channel 1
mn: -3881
mx: 2240
 μ : -15.0
 σ : 90.9

Channel 2
mn: -1053
mx: 560
 μ : -16.0
 σ : 90.8

Processed Thu Jun 18 05:57:21 2015 by ELM ver.2012-10-06 from 001__elm20150618_035011__dat00.bin

