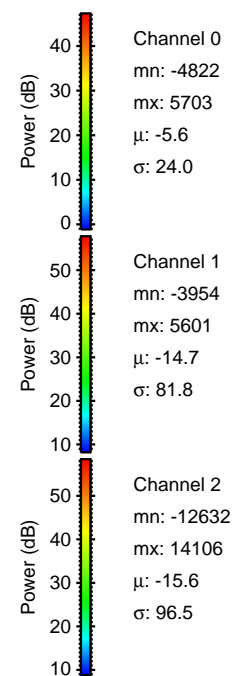
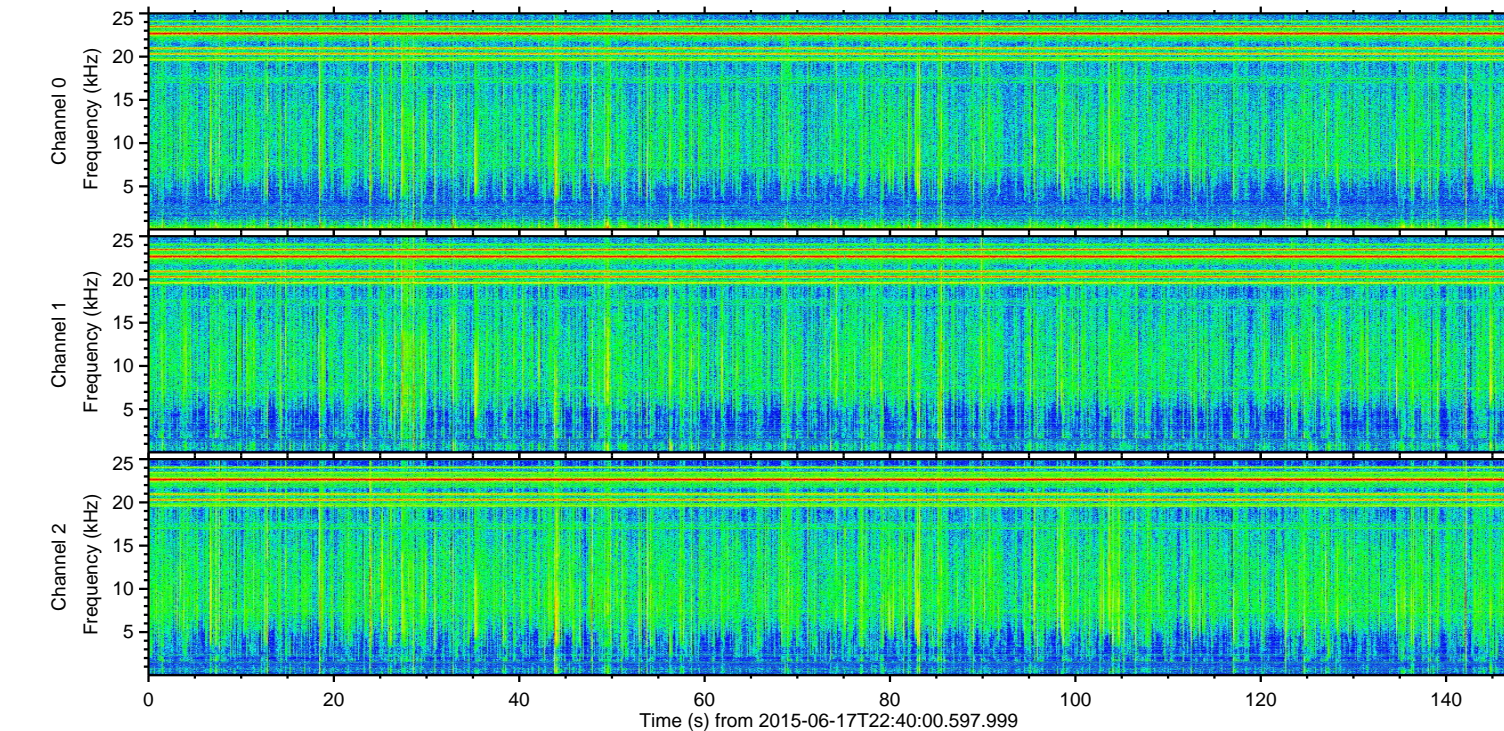
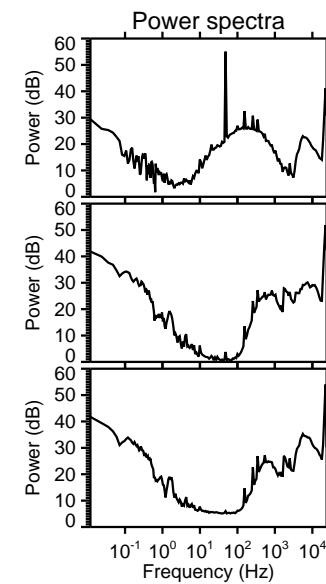
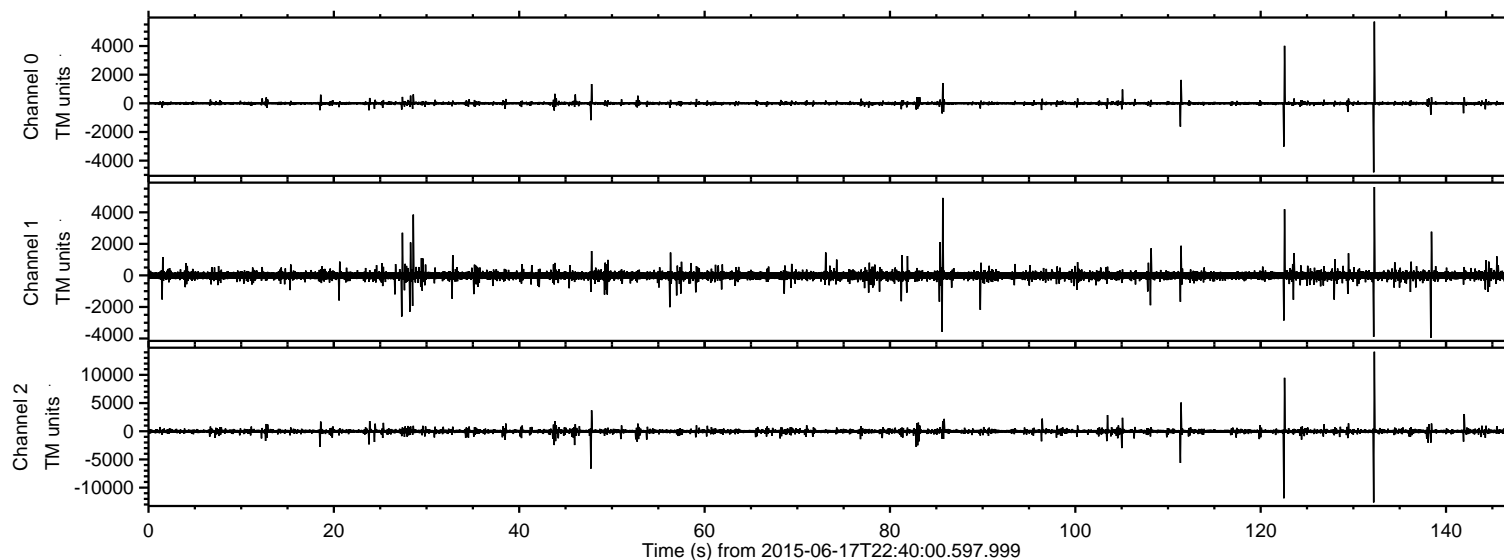


# ELMAVAN 3D WAVEFORMS (Measured data sampled at 50 kHz) 51000 packets of 144 samples from 2015-06-17T22:40:00.597.999.

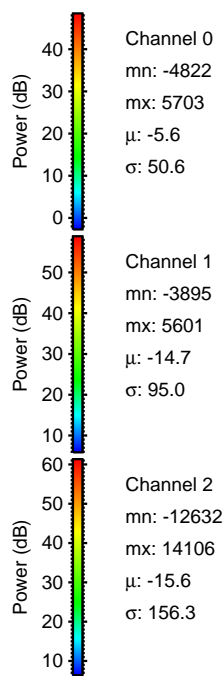
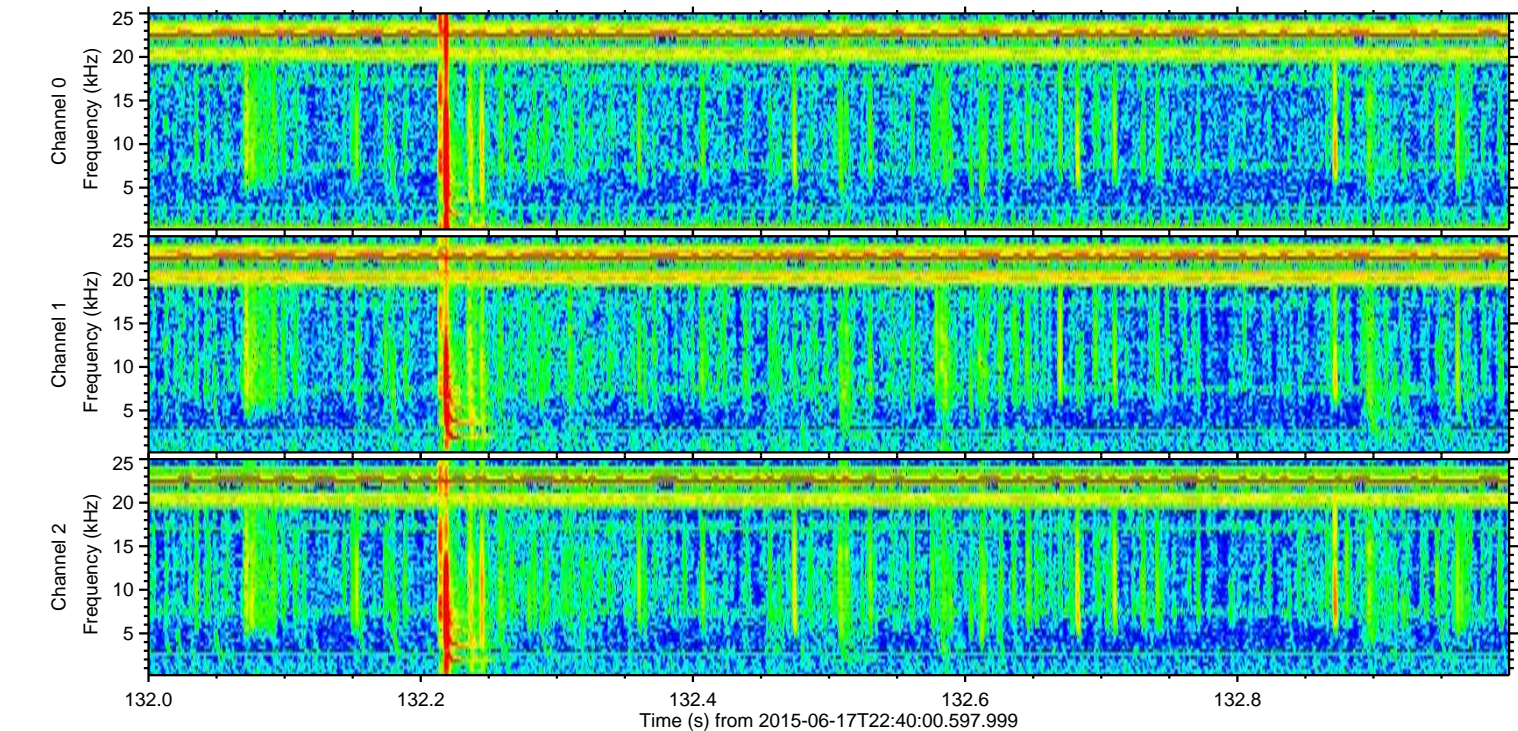
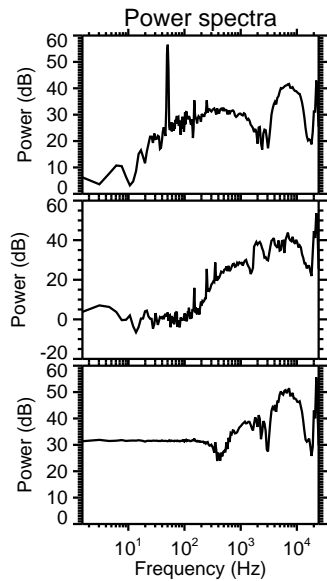
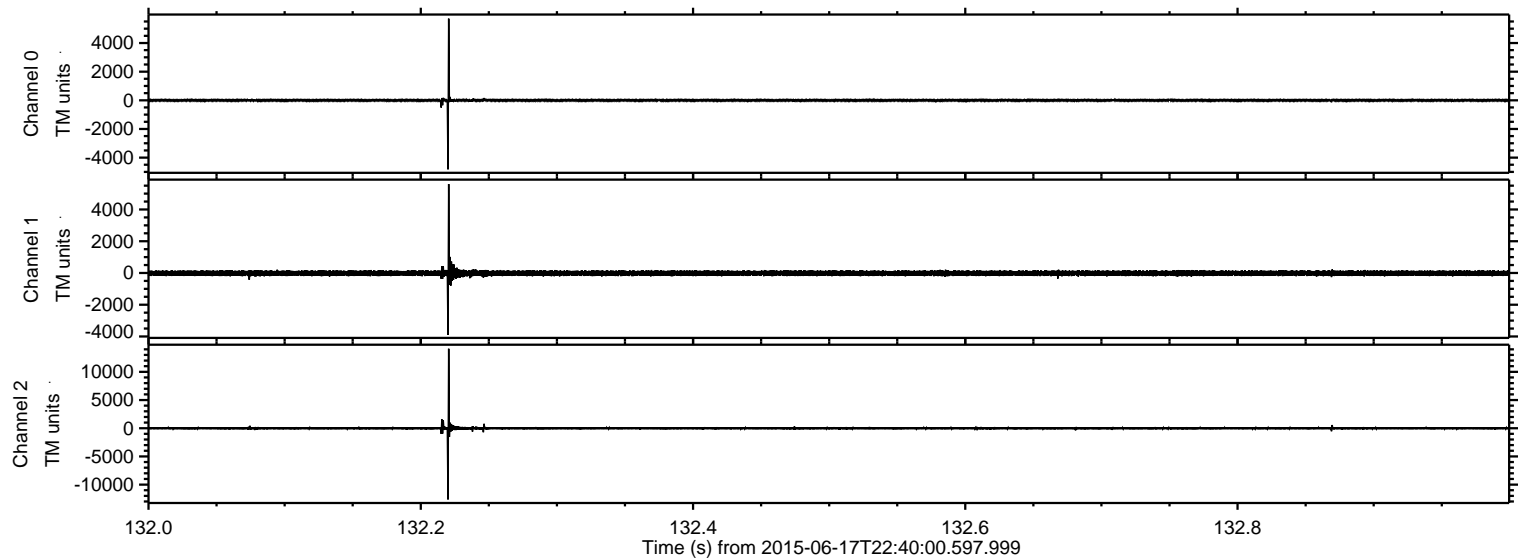
Processed Thu Jun 18 00:45:54 2015 by ELM ver.2012-10-06 from 001\_\_elm20150617\_223959\_\_dat00.bin





ELMAVAN 3D WAVEFORMS (Measured data sampled at 50 kHz) 51000 packets of 144 samples from 2015-06-17T22:40:00.597.999. Part 133/147

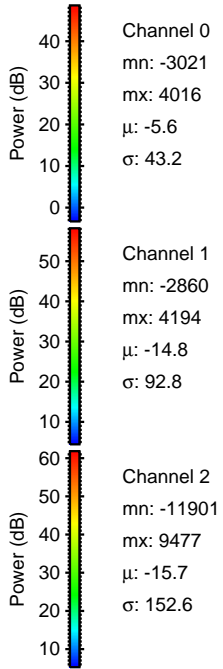
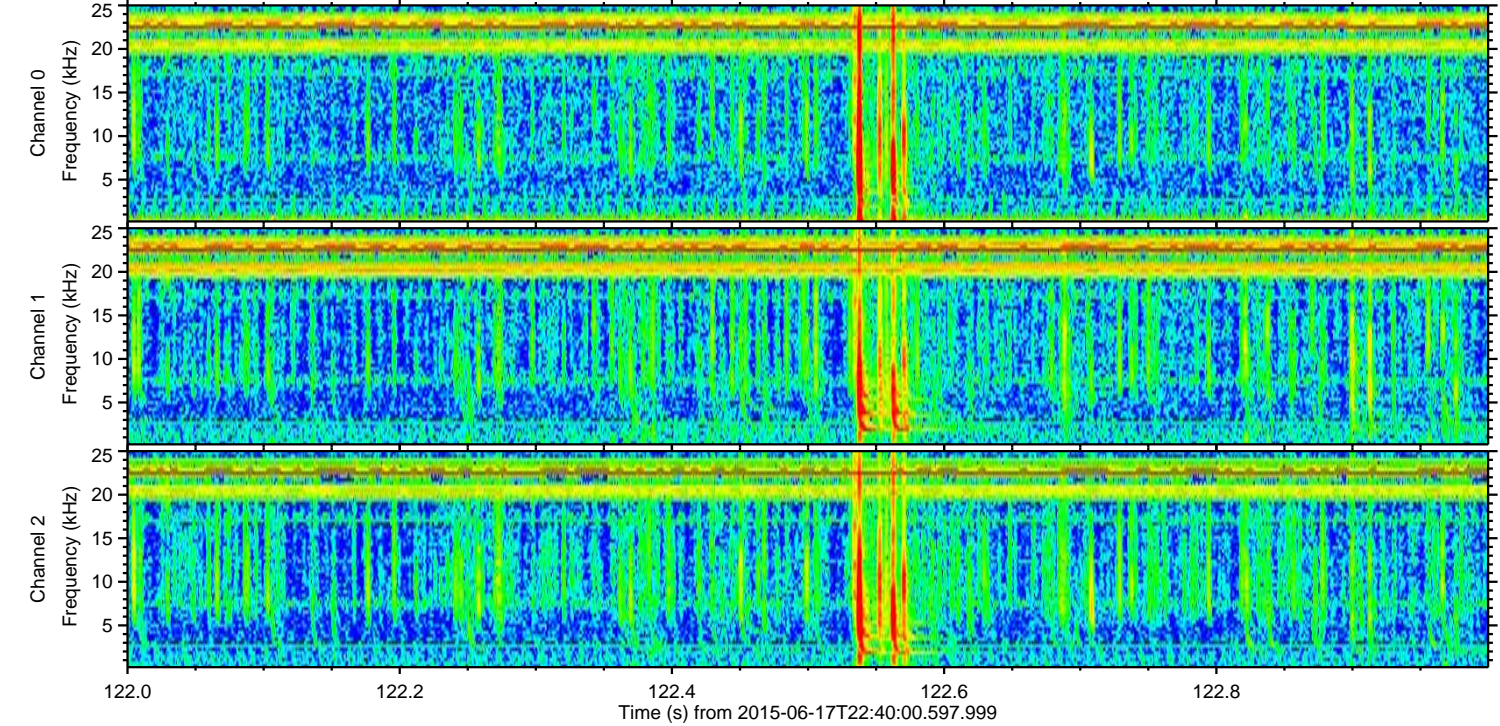
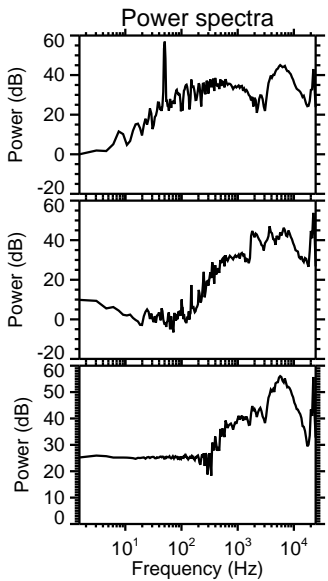
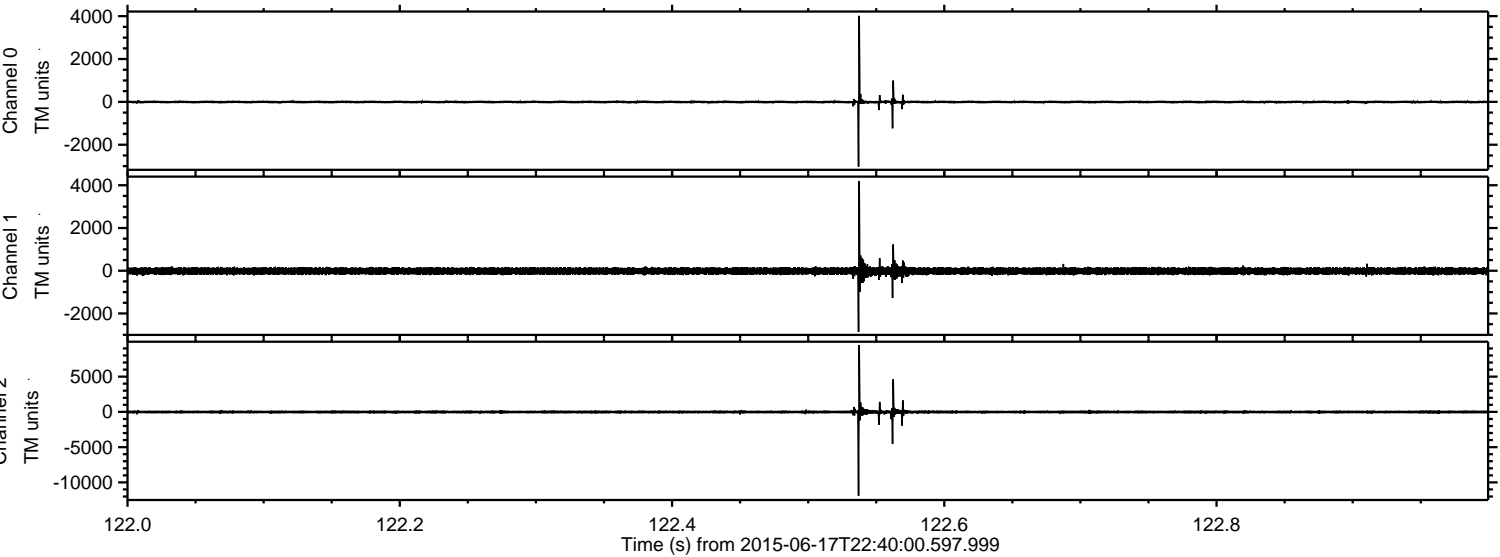
Processed Thu Jun 18 00:46:18 2015 by ELM ver.2012-10-06 from 001\_\_elm20150617\_223959\_\_dat00.bin





ELMAVAN 3D WAVEFORMS (Measured data sampled at 50 kHz) 51000 packets of 144 samples from 2015-06-17T22:40:00.597.999. Part 123/147

Processed Thu Jun 18 00:46:19 2015 by ELM ver.2012-10-06 from 001\_\_elm20150617\_223959\_\_dat00.bin



Channel 0  
mn: -3021  
mx: 4016  
 $\mu$ : -5.6  
 $\sigma$ : 43.2

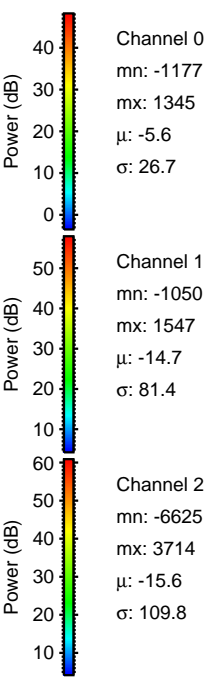
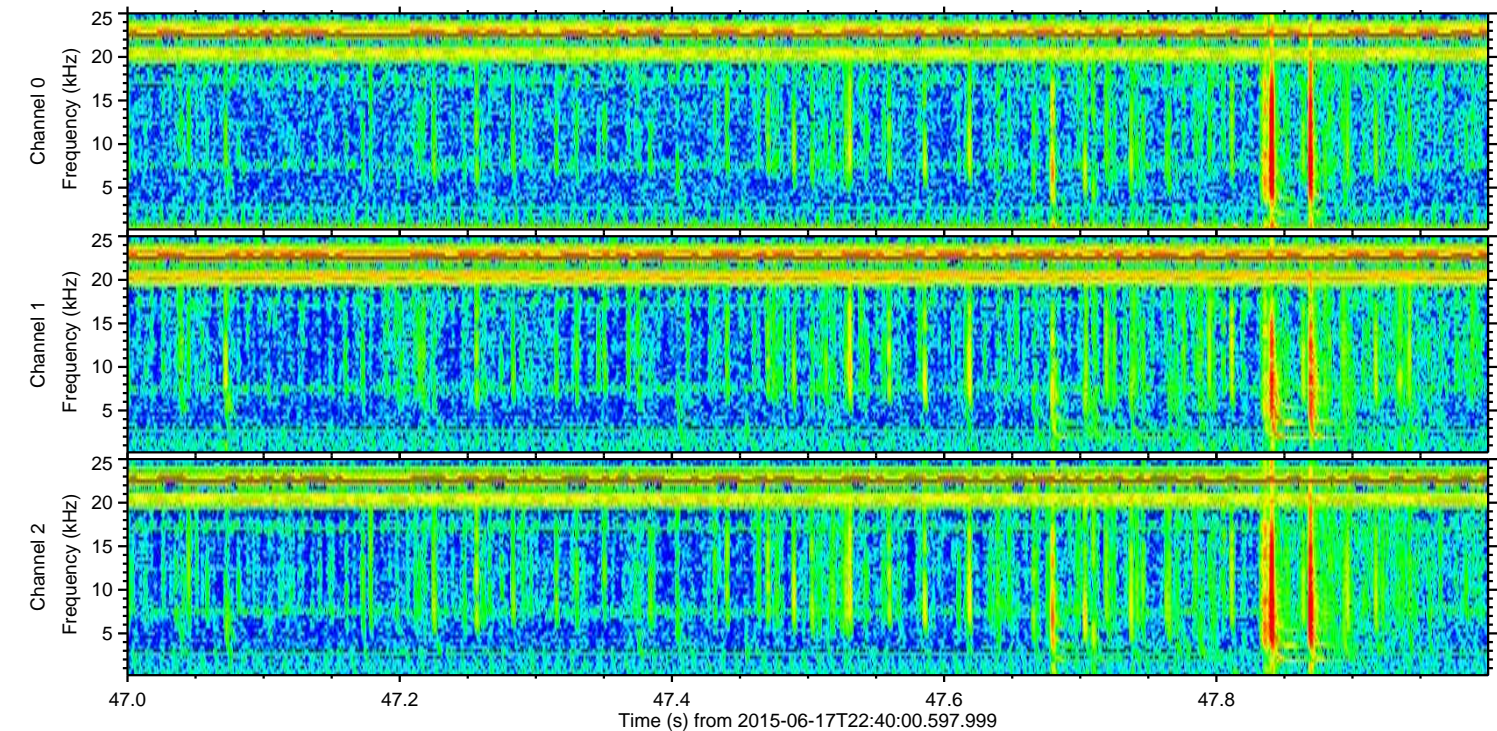
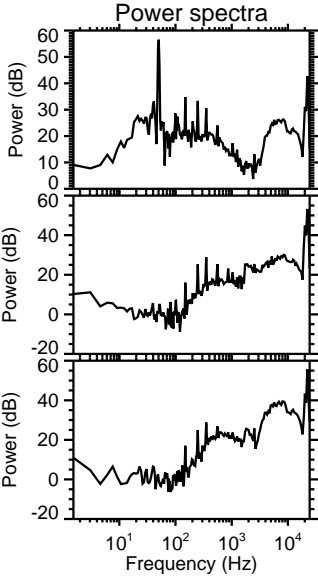
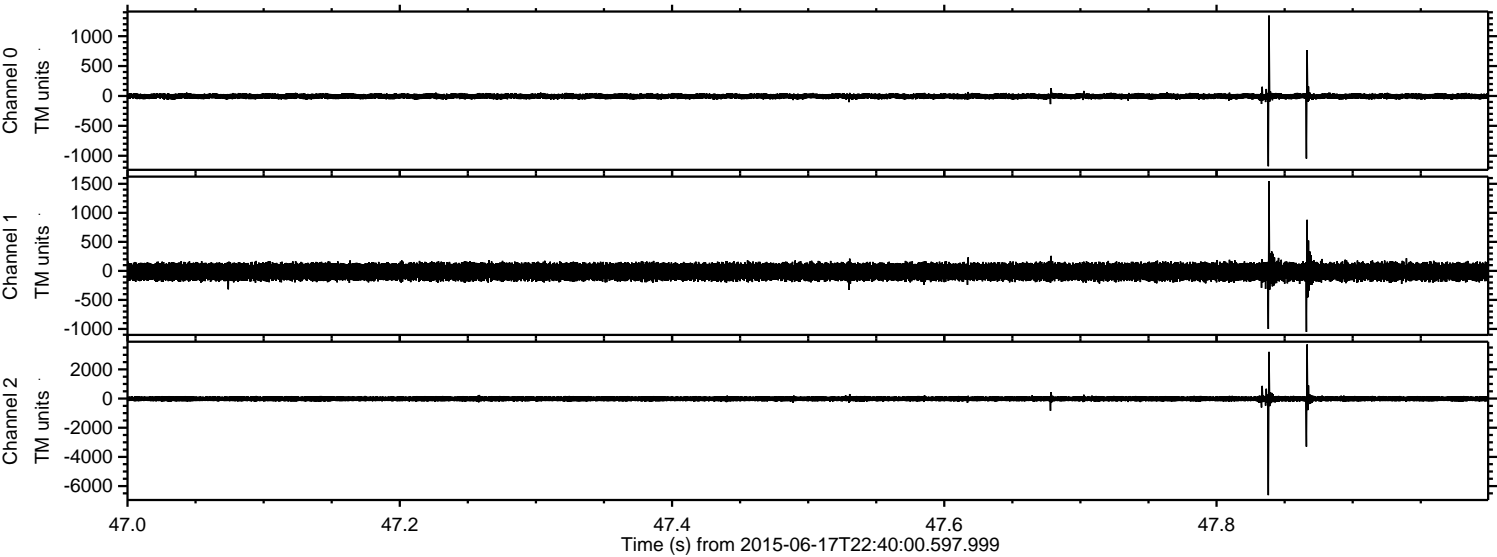
Channel 1  
mn: -2860  
mx: 4194  
 $\mu$ : -14.8  
 $\sigma$ : 92.8

Channel 2  
mn: -11901  
mx: 9477  
 $\mu$ : -15.7  
 $\sigma$ : 152.6



ELMAVAN 3D WAVEFORMS (Measured data sampled at 50 kHz) 51000 packets of 144 samples from 2015-06-17T22:40:00.597.999. Part 48/147

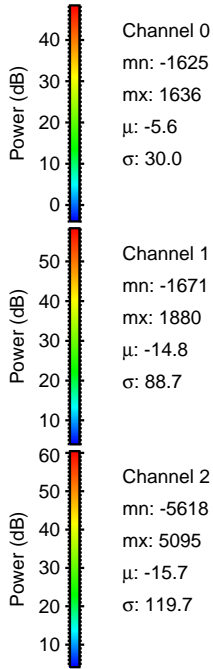
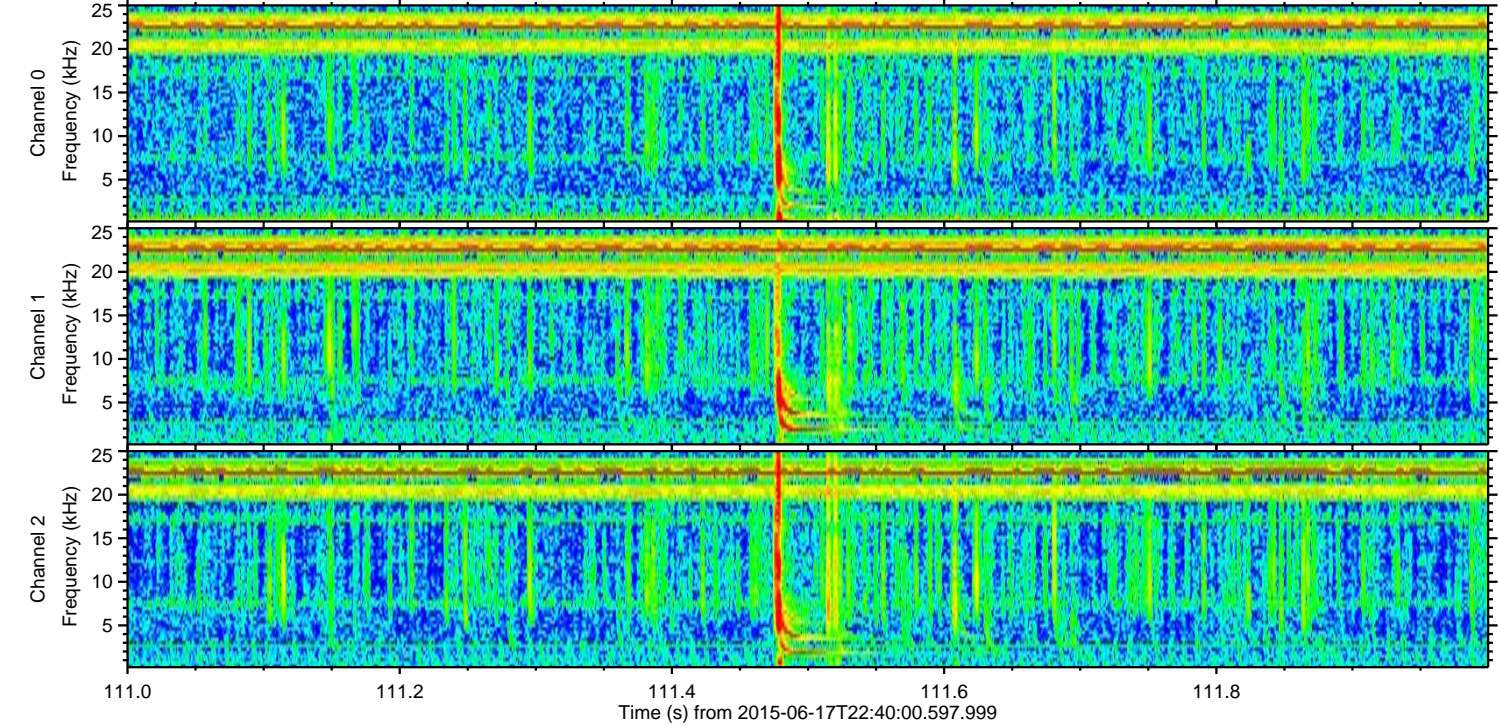
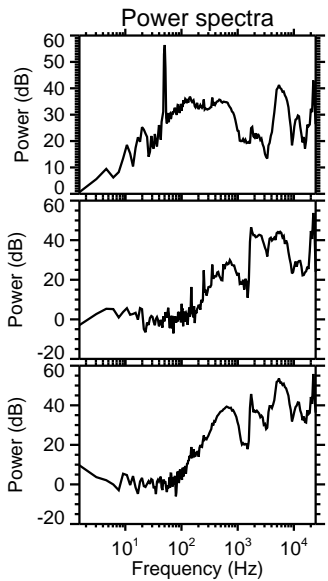
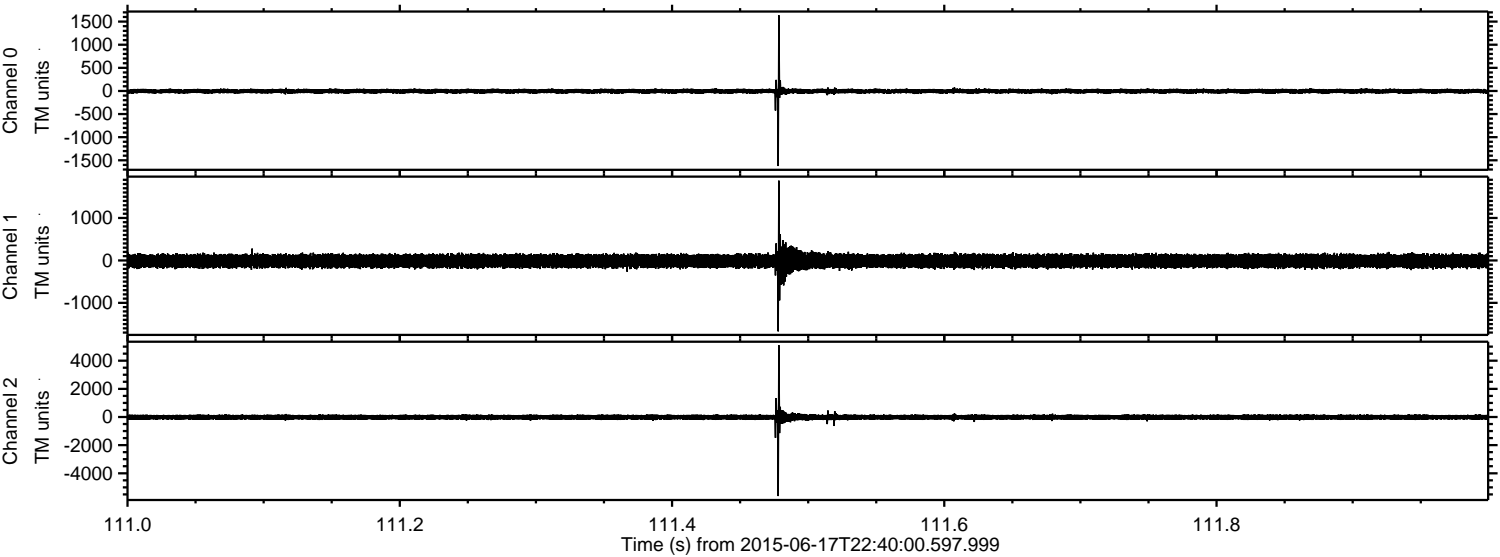
Processed Thu Jun 18 00:46:20 2015 by ELM ver.2012-10-06 from 001\_\_elm20150617\_223959\_\_dat00.bin





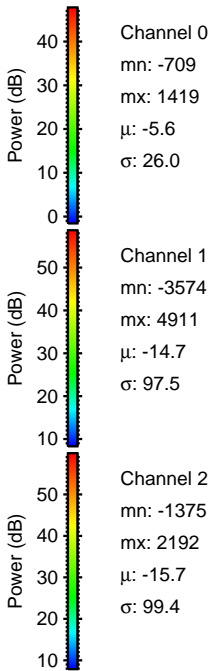
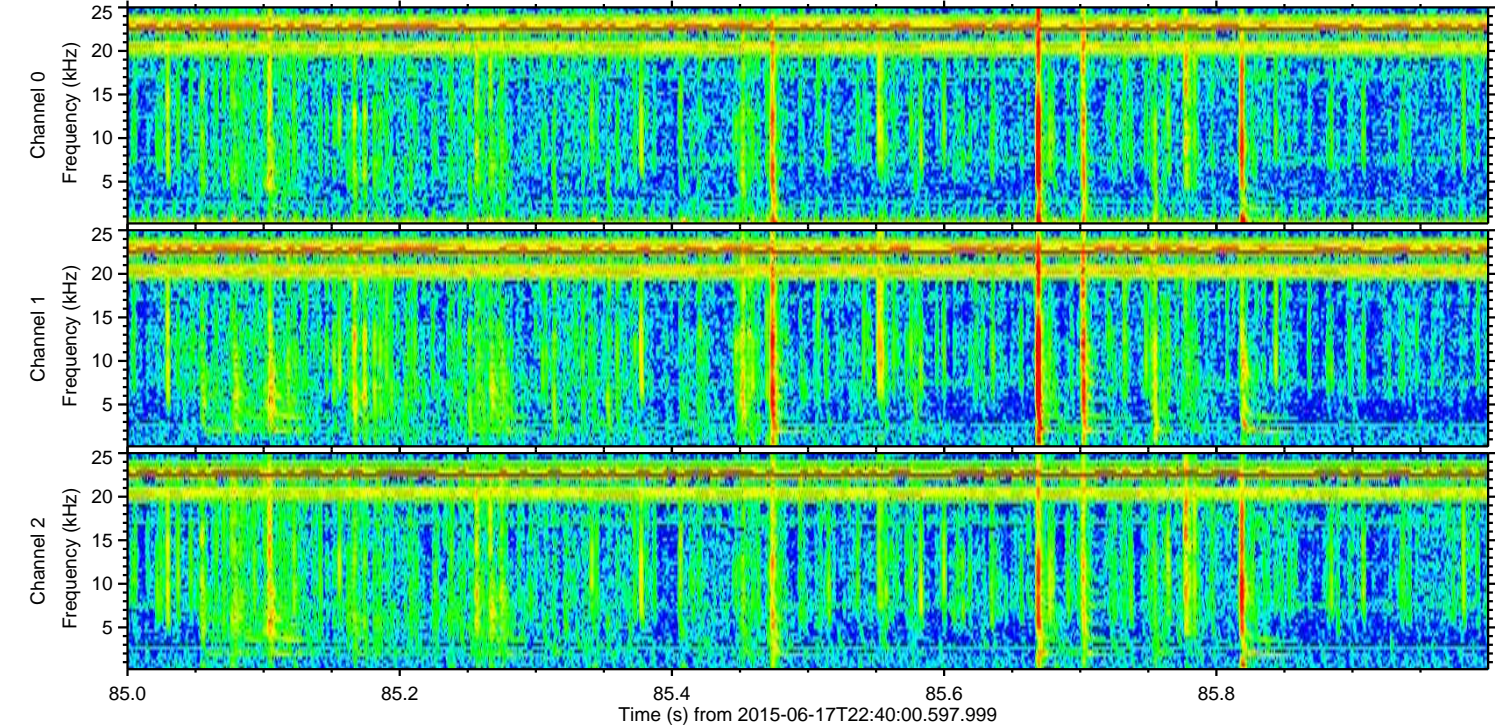
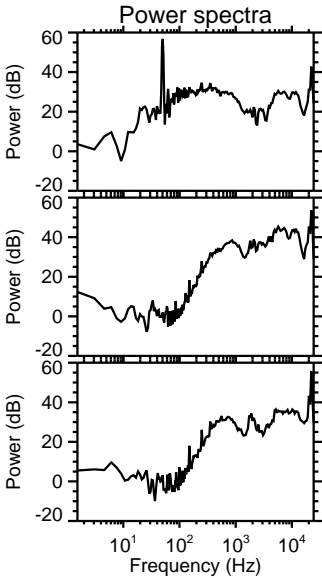
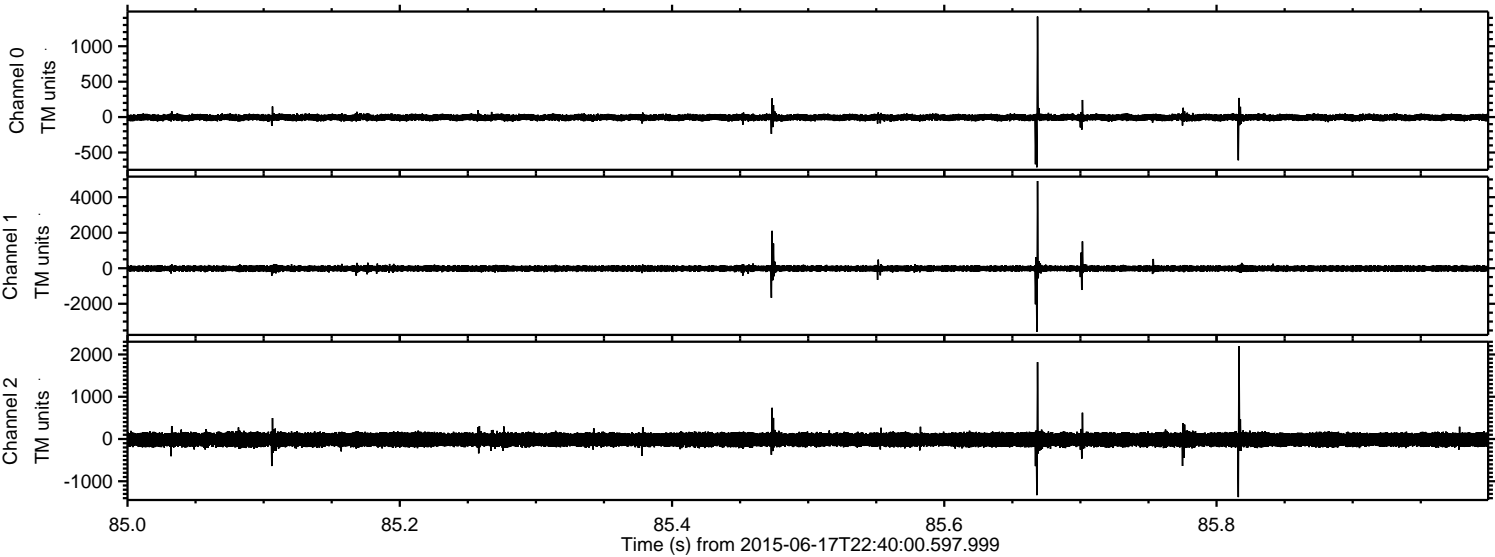
ELMAVAN 3D WAVEFORMS (Measured data sampled at 50 kHz) 51000 packets of 144 samples from 2015-06-17T22:40:00.597.999. Part 112/147

Processed Thu Jun 18 00:46:21 2015 by ELM ver.2012-10-06 from 001\_\_elm20150617\_223959\_\_dat00.bin





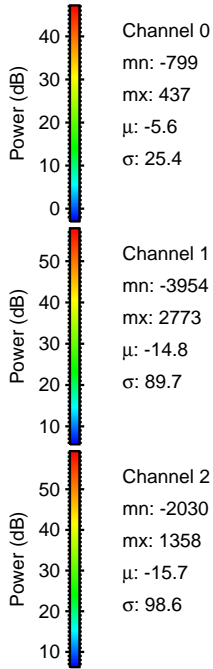
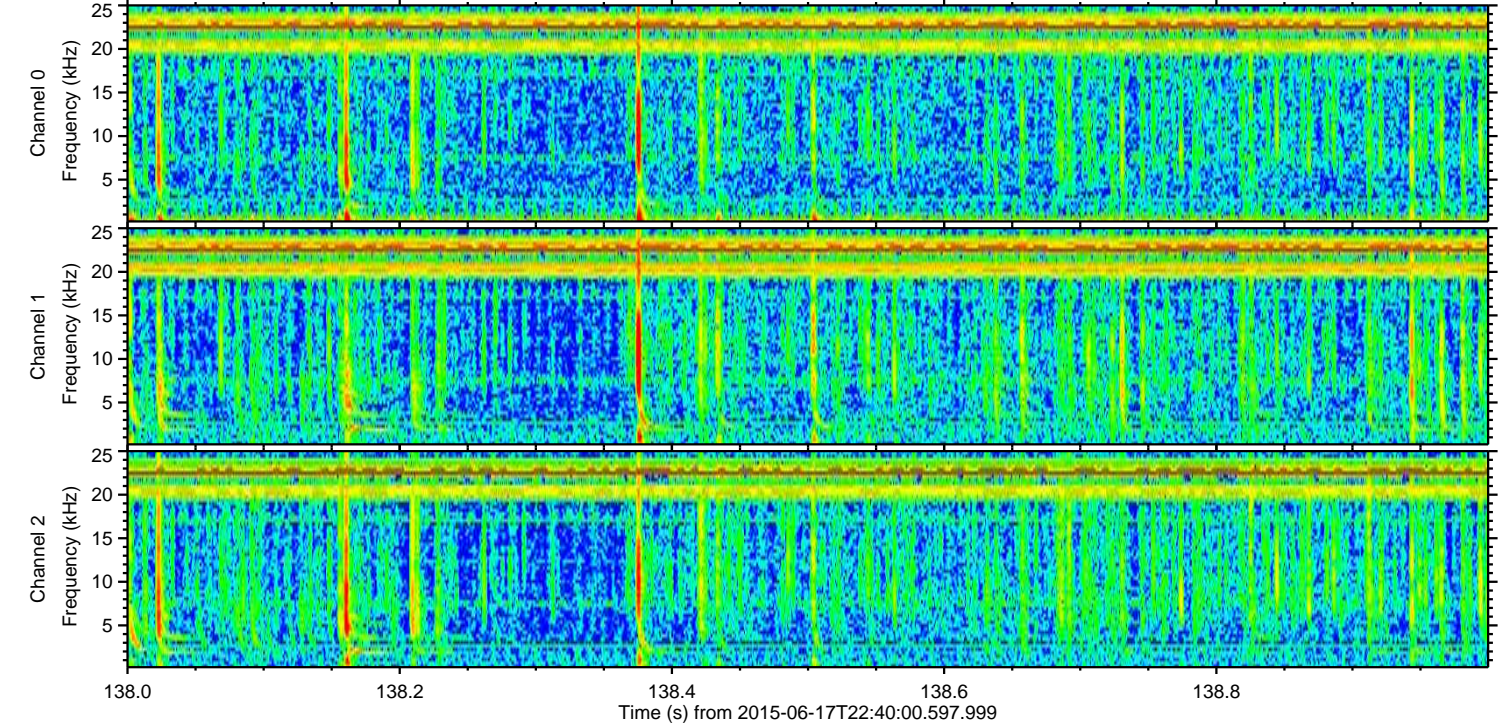
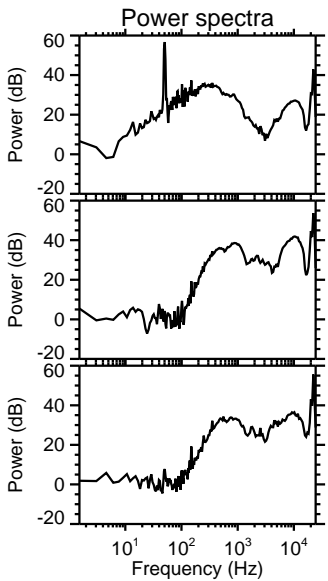
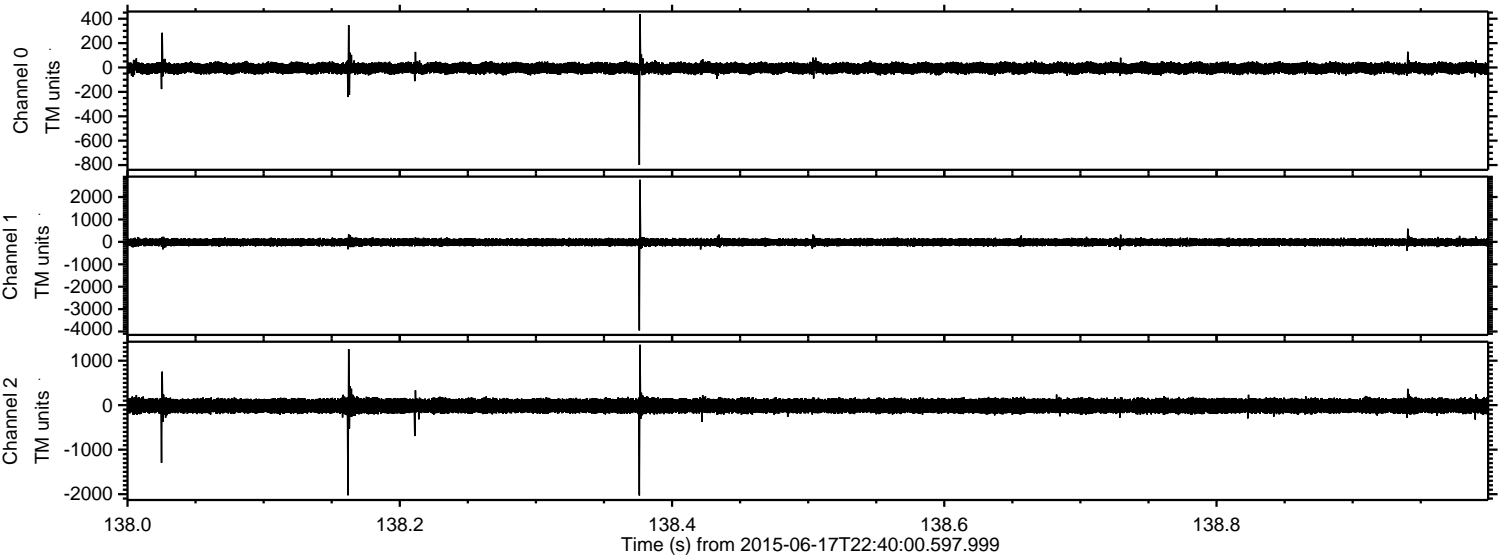
Processed Thu Jun 18 00:46:23 2015 by ELM ver.2012-10-06 from 001\_\_elm20150617\_223959\_\_dat00.bin





ELMAVAN 3D WAVEFORMS (Measured data sampled at 50 kHz) 51000 packets of 144 samples from 2015-06-17T22:40:00.597.999. Part 139/147

Processed Thu Jun 18 00:46:24 2015 by ELM ver.2012-10-06 from 001\_\_elm20150617\_223959\_\_dat00.bin



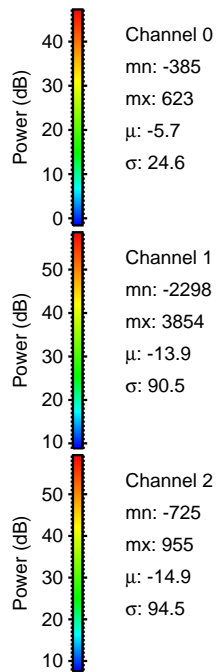
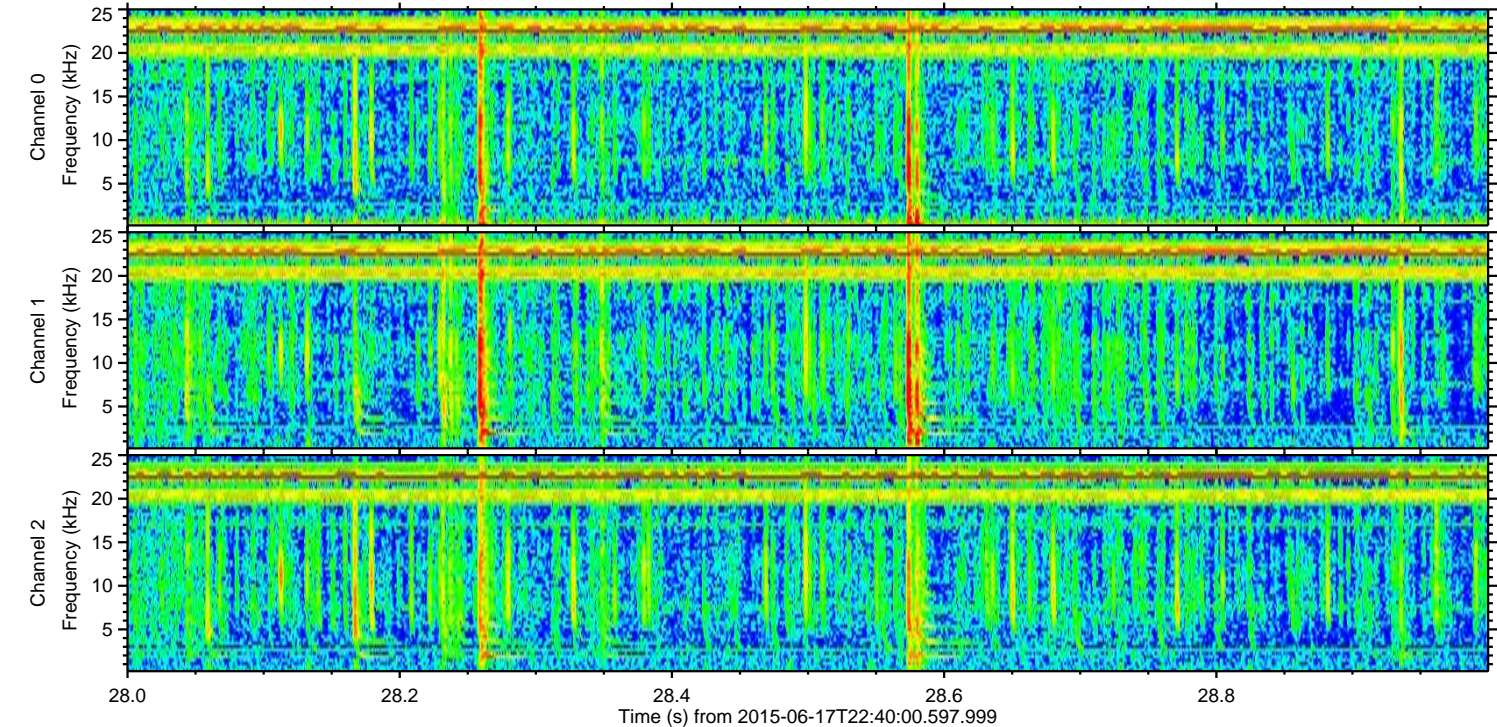
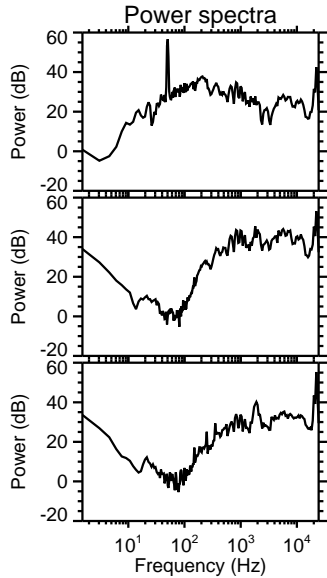
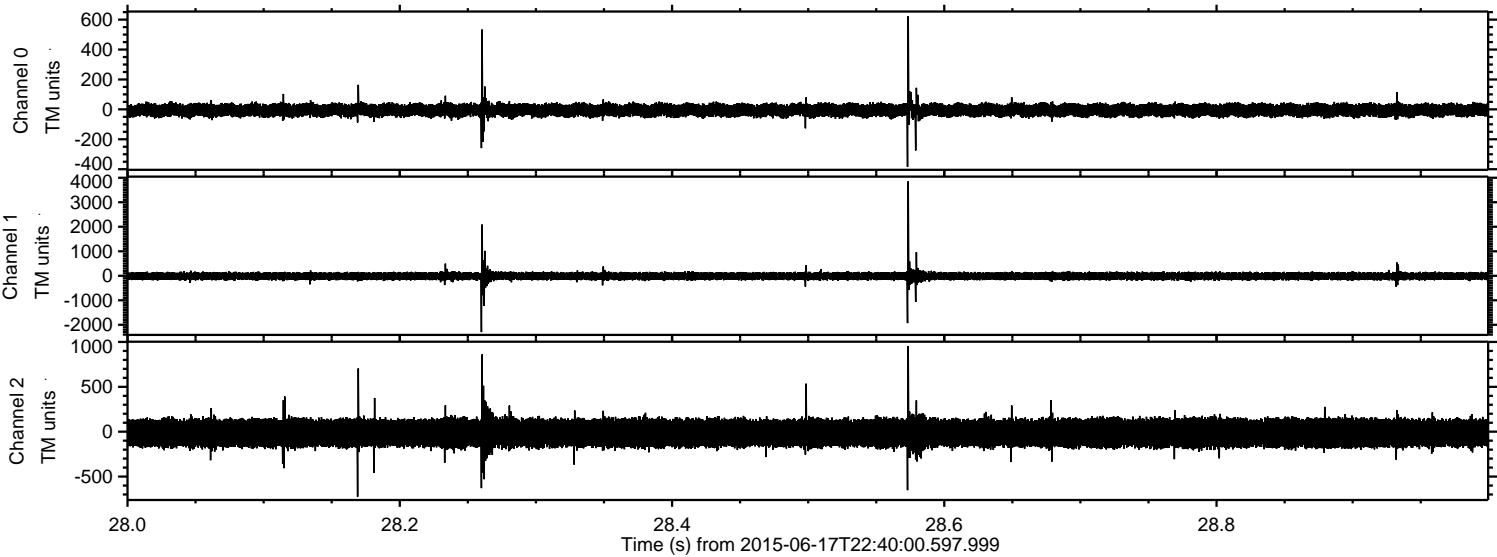
Channel 0  
mn: -799  
mx: 437  
 $\mu$ : -5.6  
 $\sigma$ : 25.4

Channel 1  
mn: -3954  
mx: 2773  
 $\mu$ : -14.8  
 $\sigma$ : 89.7

Channel 2  
mn: -2030  
mx: 1358  
 $\mu$ : -15.7  
 $\sigma$ : 98.6



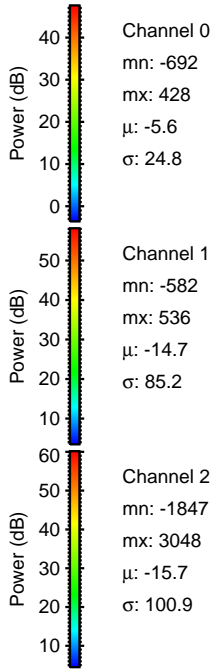
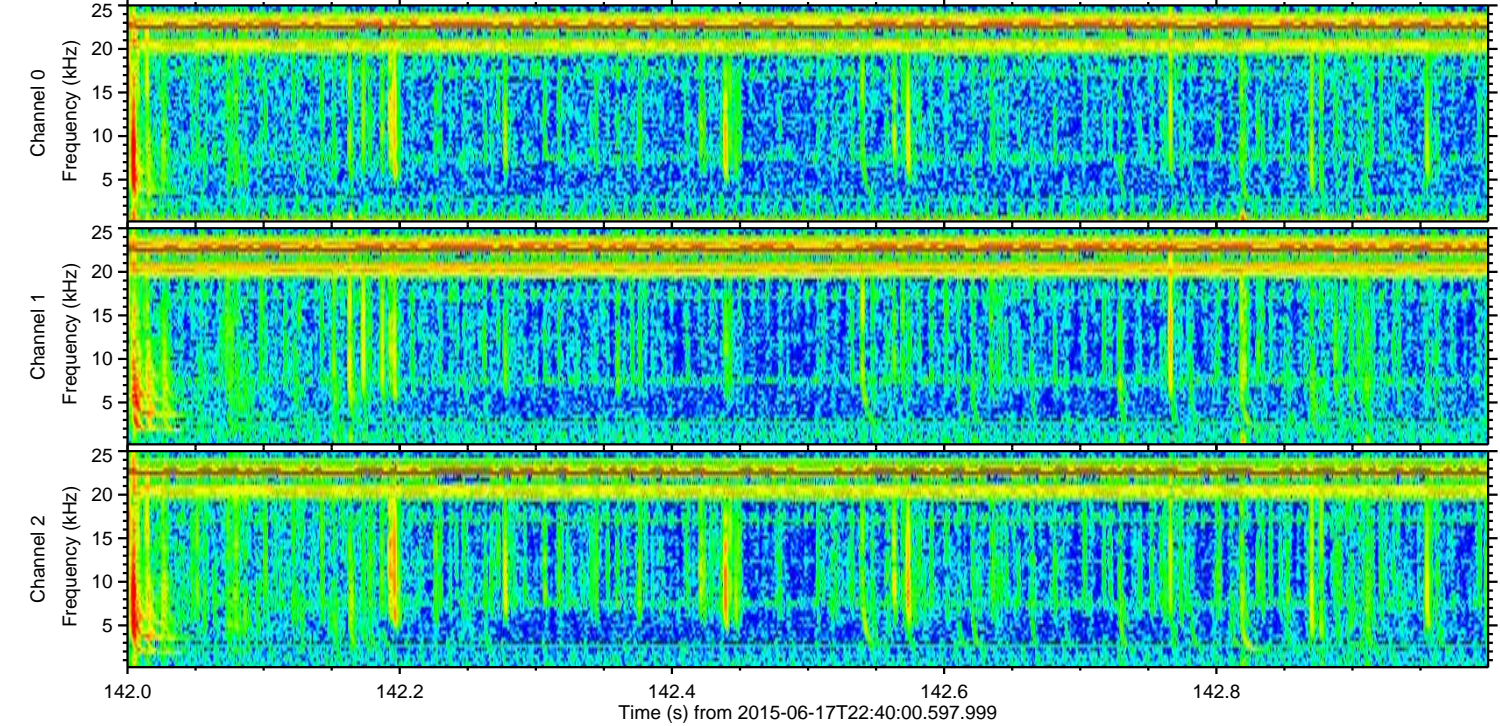
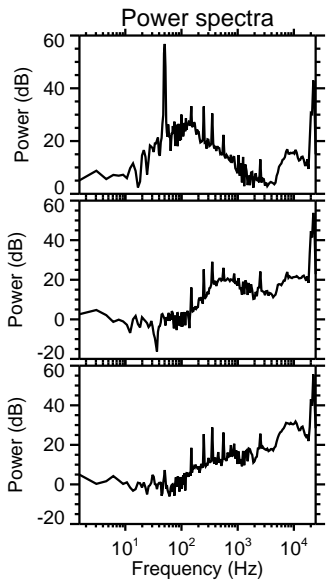
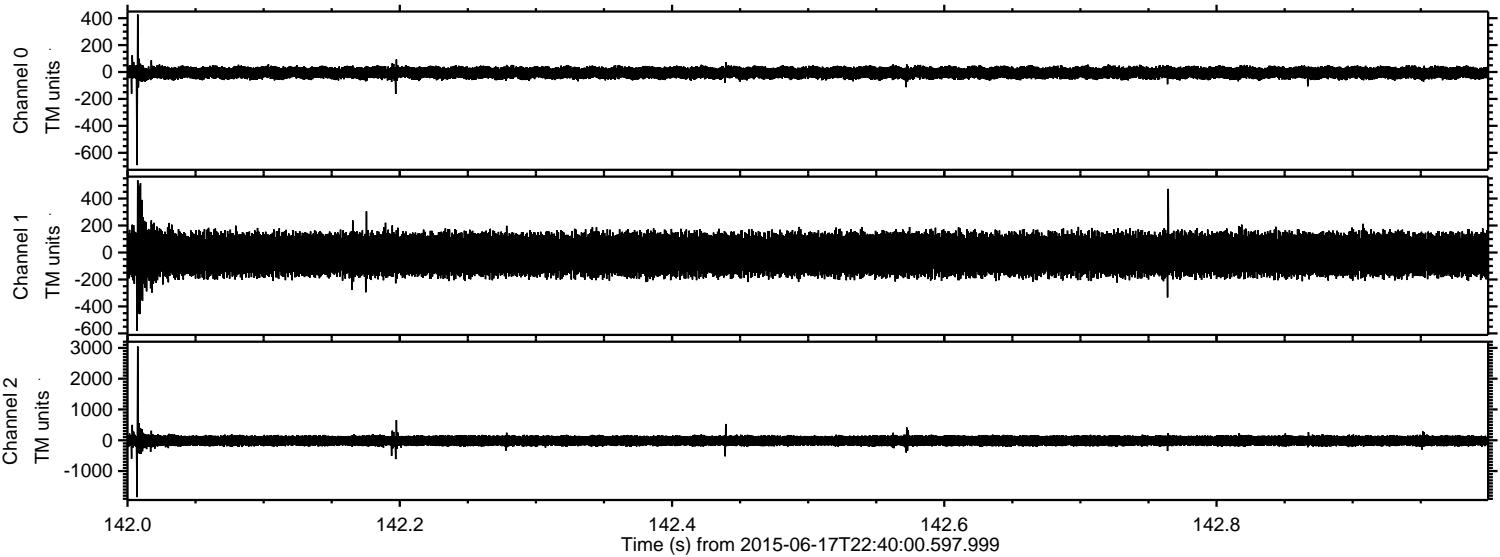
Processed Thu Jun 18 00:46:26 2015 by ELM ver.2012-10-06 from 001\_\_elm20150617\_223959\_\_dat00.bin





ELMAVAN 3D WAVEFORMS (Measured data sampled at 50 kHz) 51000 packets of 144 samples from 2015-06-17T22:40:00.597.999. Part 143/147

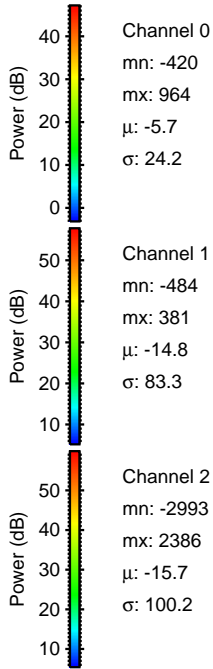
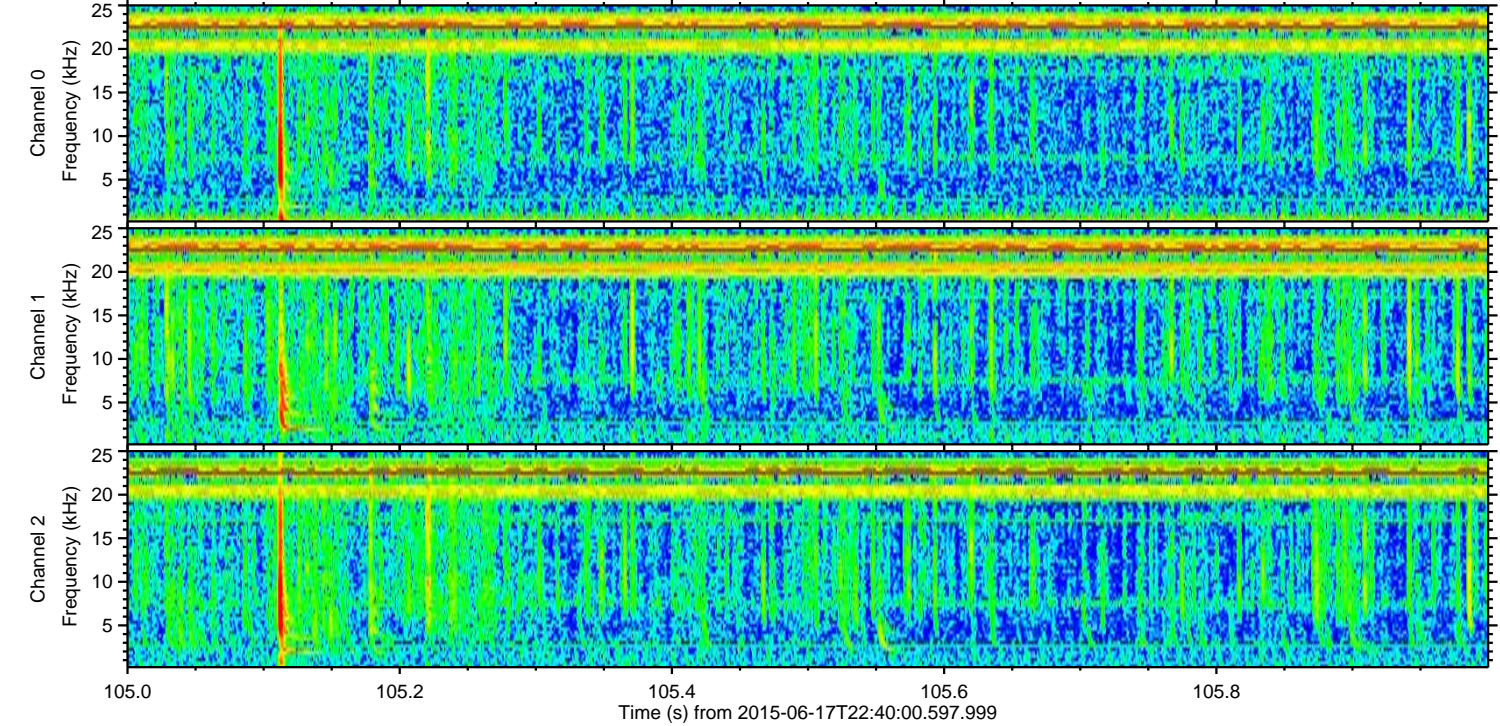
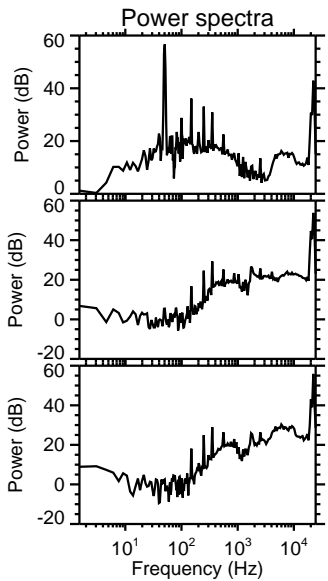
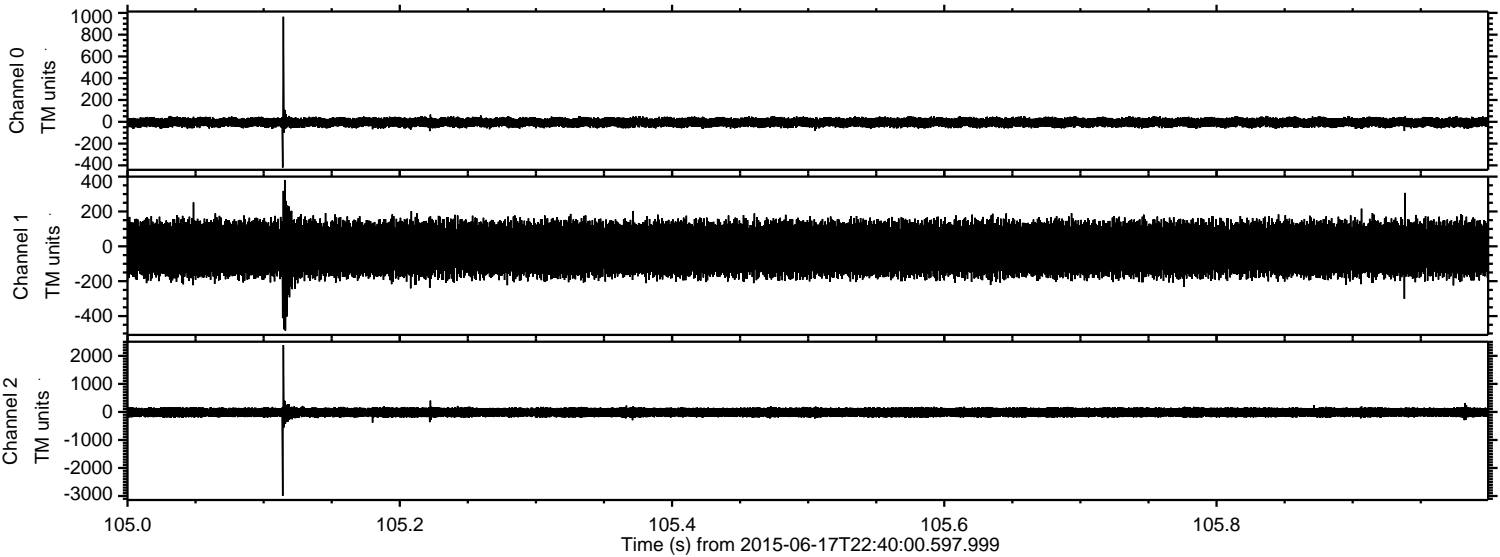
Processed Thu Jun 18 00:46:27 2015 by ELM ver.2012-10-06 from 001\_\_elm20150617\_223959\_\_dat00.bin





ELMAVAN 3D WAVEFORMS (Measured data sampled at 50 kHz) 51000 packets of 144 samples from 2015-06-17T22:40:00.597.999. Part 106/147

Processed Thu Jun 18 00:46:28 2015 by ELM ver.2012-10-06 from 001\_\_elm20150617\_223959\_\_dat00.bin





ELMAVAN 3D WAVEFORMS (Measured data sampled at 50 kHz) 51000 packets of 144 samples from 2015-06-17T22:40:00.597.999. Part 93/147

Processed Thu Jun 18 00:46:29 2015 by ELM ver.2012-10-06 from 001\_\_elm20150617\_223959\_\_dat00.bin

