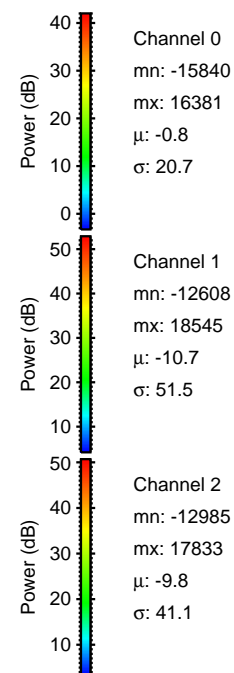
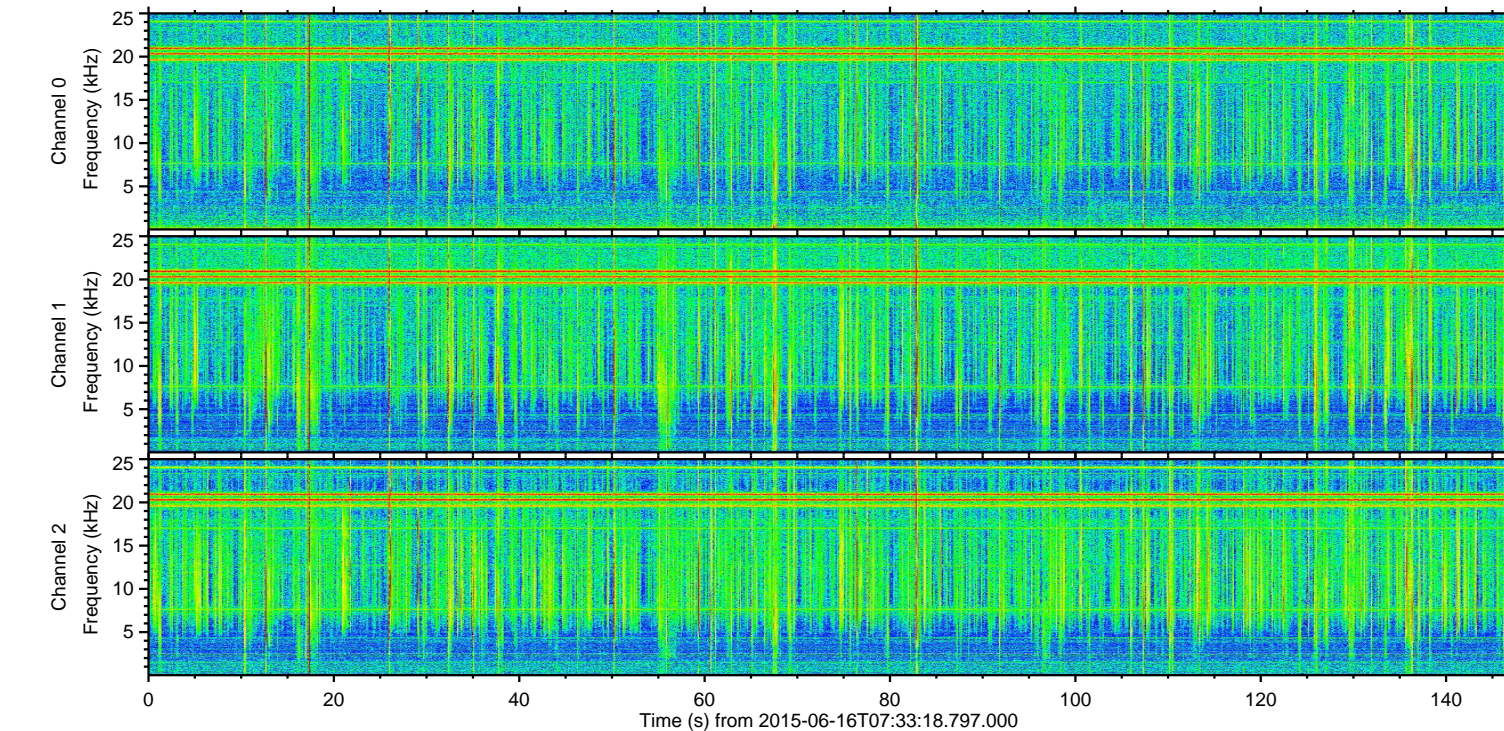
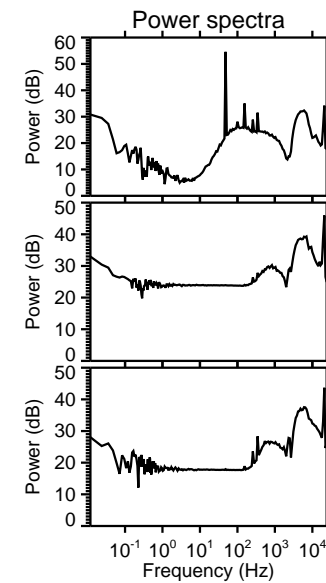
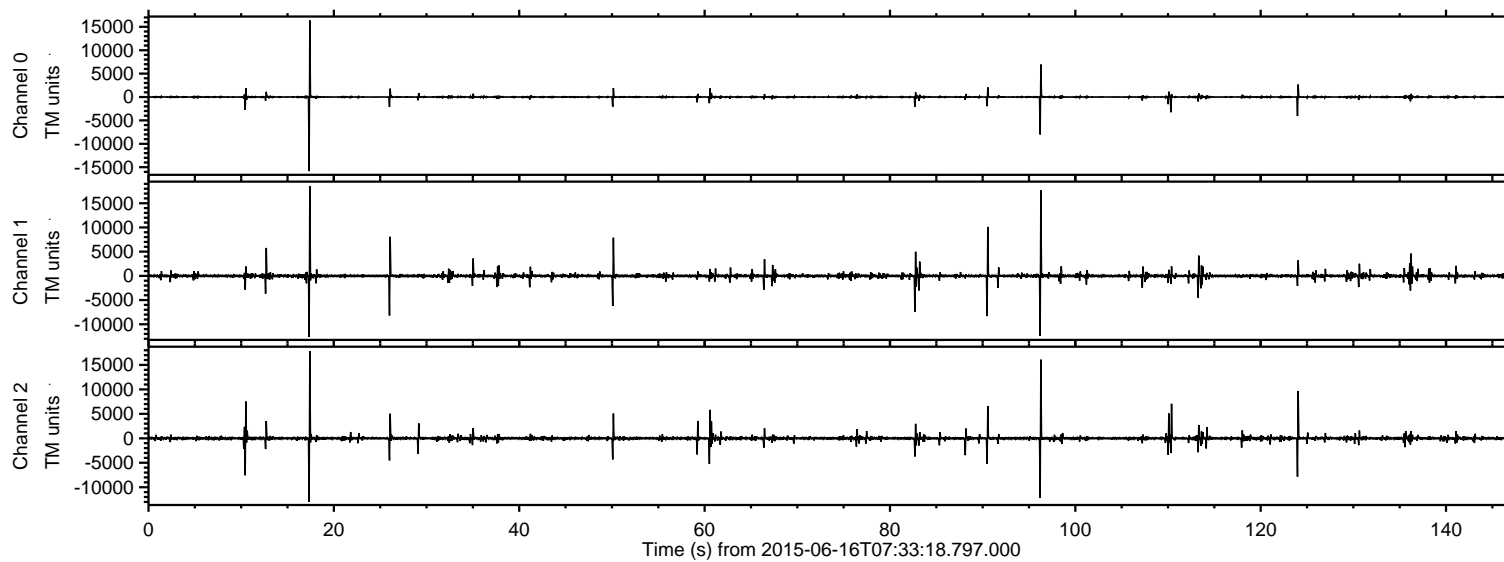
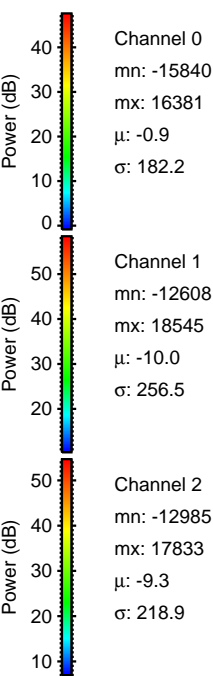
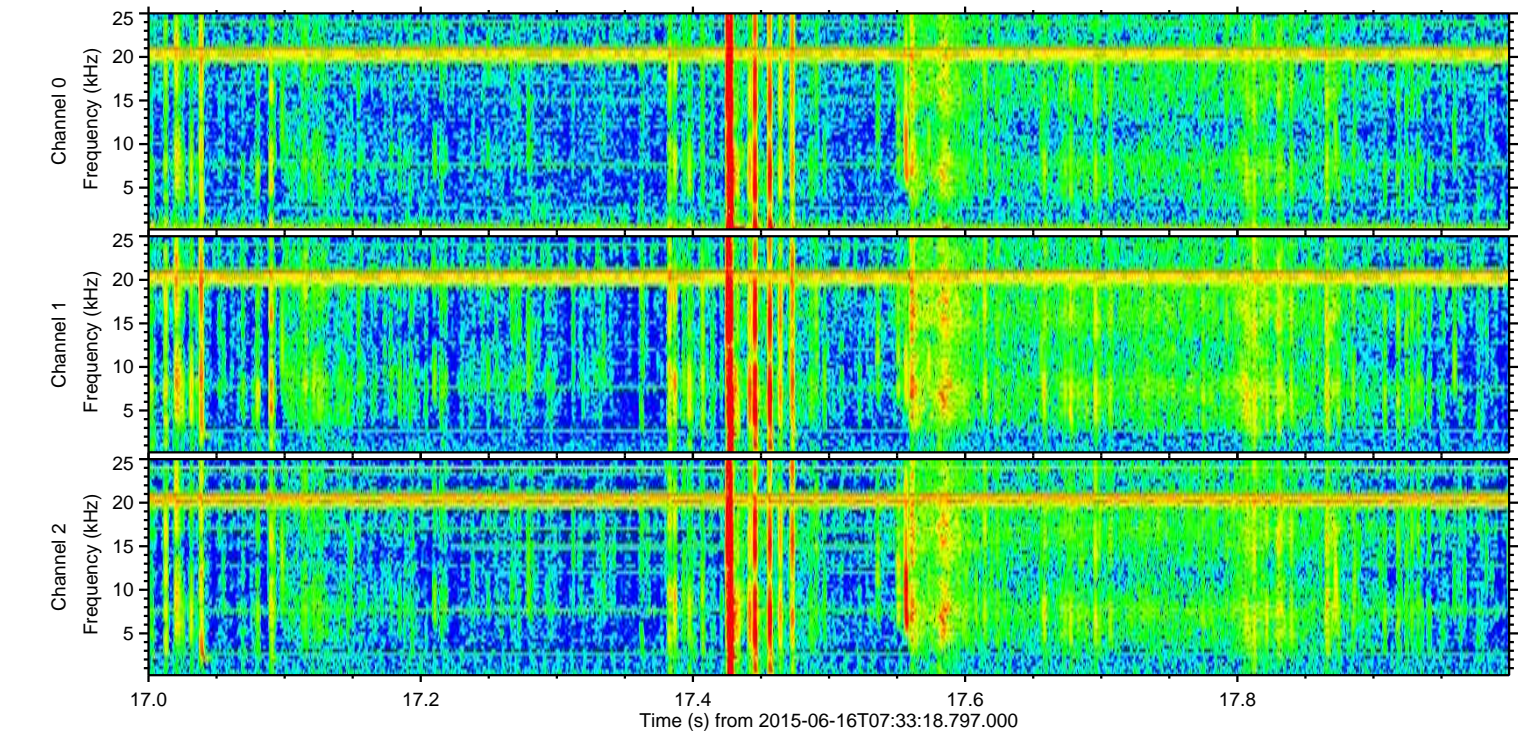
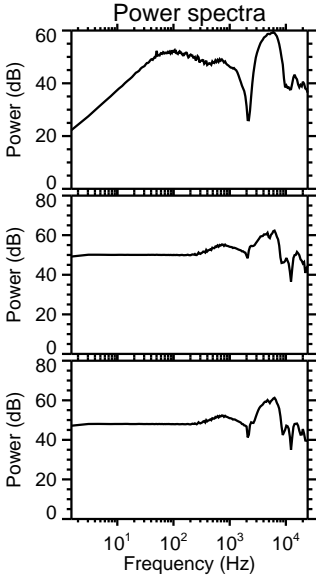
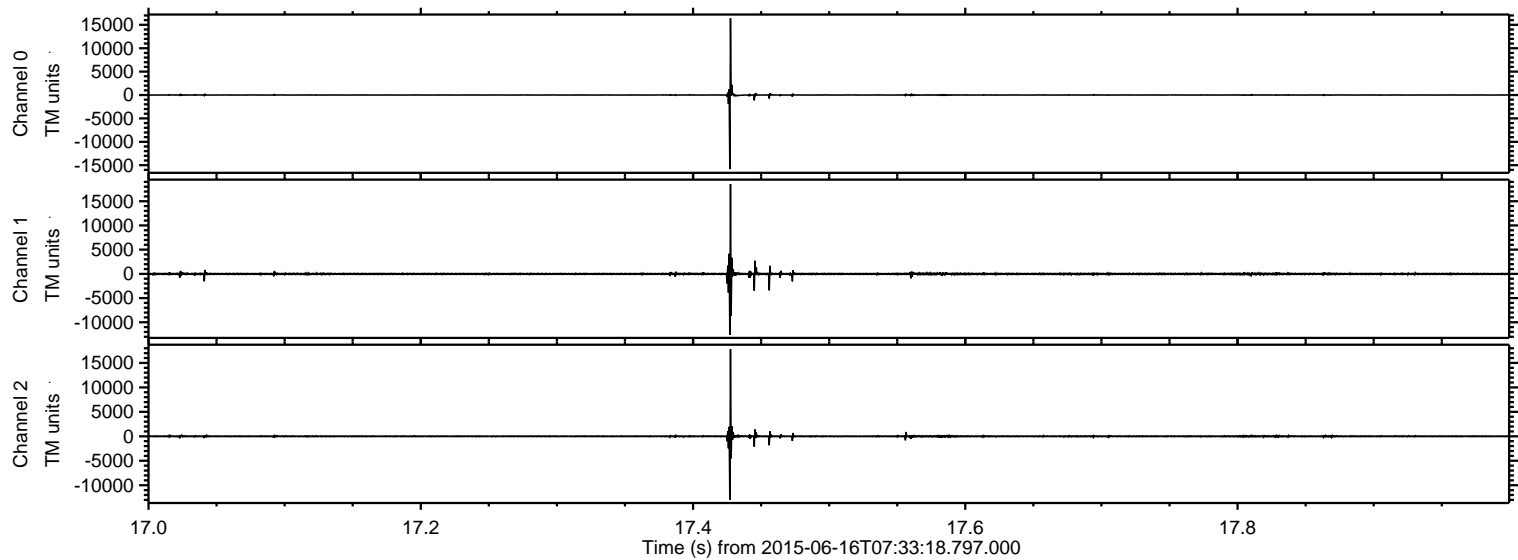


ELMAVAN 3D WAVEFORMS (Measured data sampled at 50 kHz) 51000 packets of 144 samples from 2015-06-16T07:33:18.797.000.

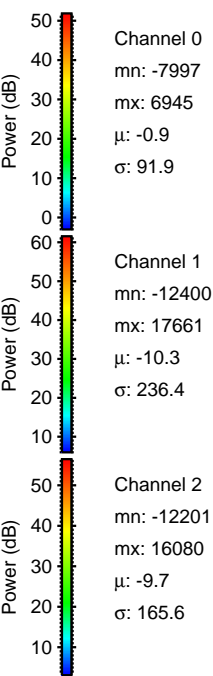
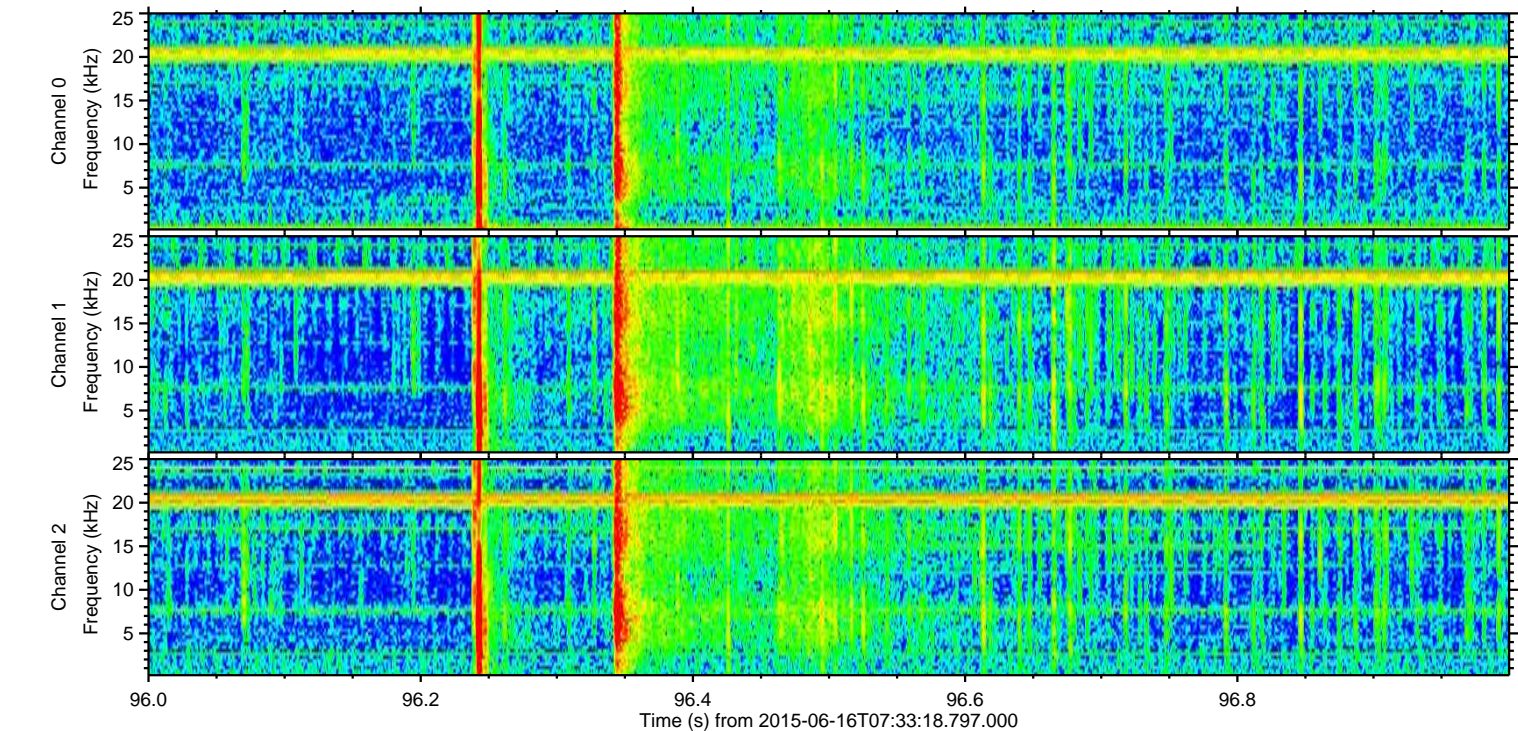
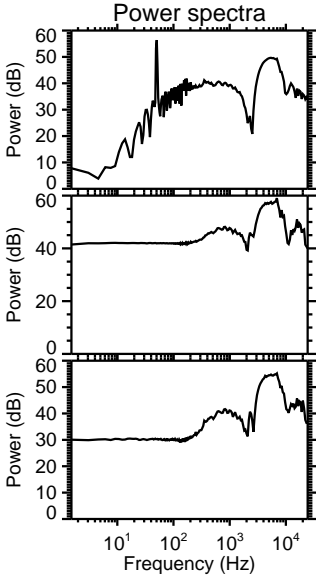
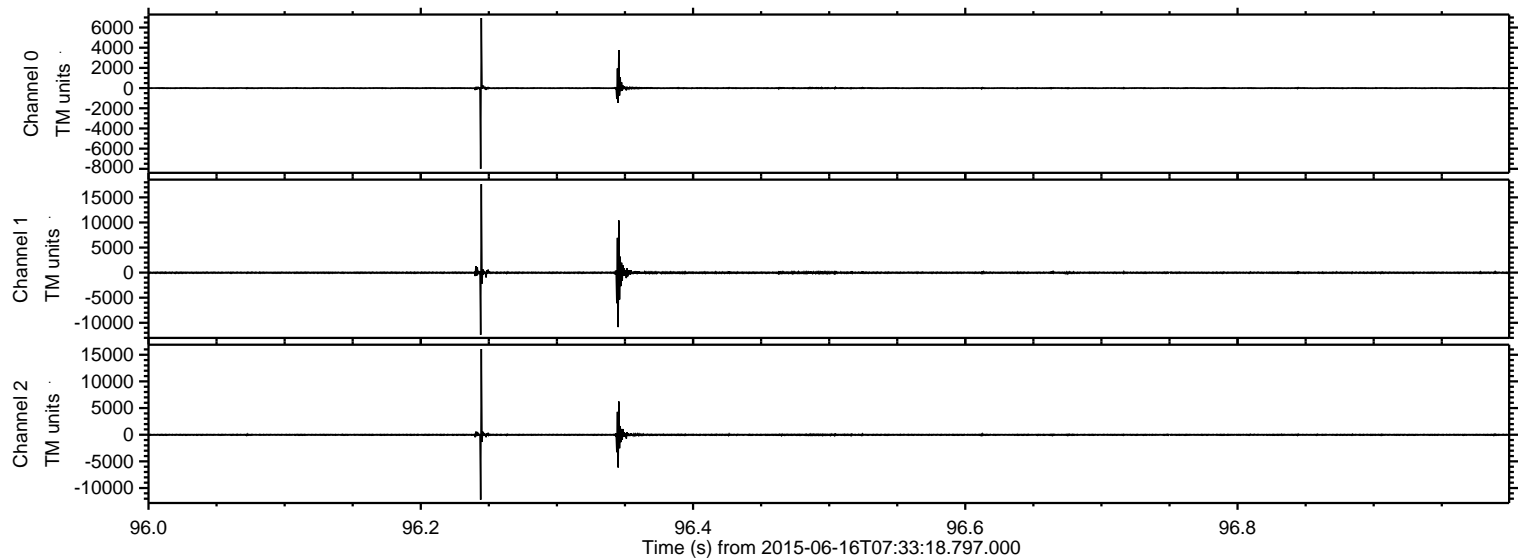
Processed Tue Jun 16 09:39:49 2015 by ELM ver.2012-10-06 from 001__elm20150616_073317__dat00.bin



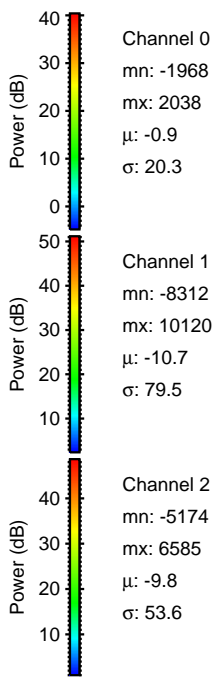
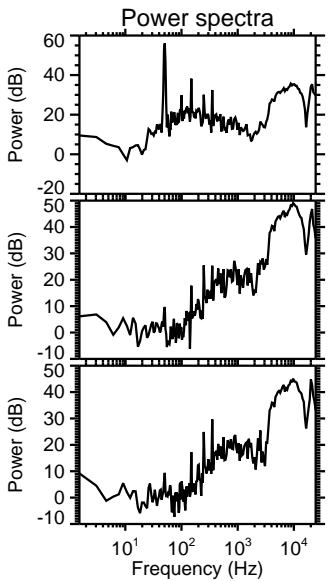
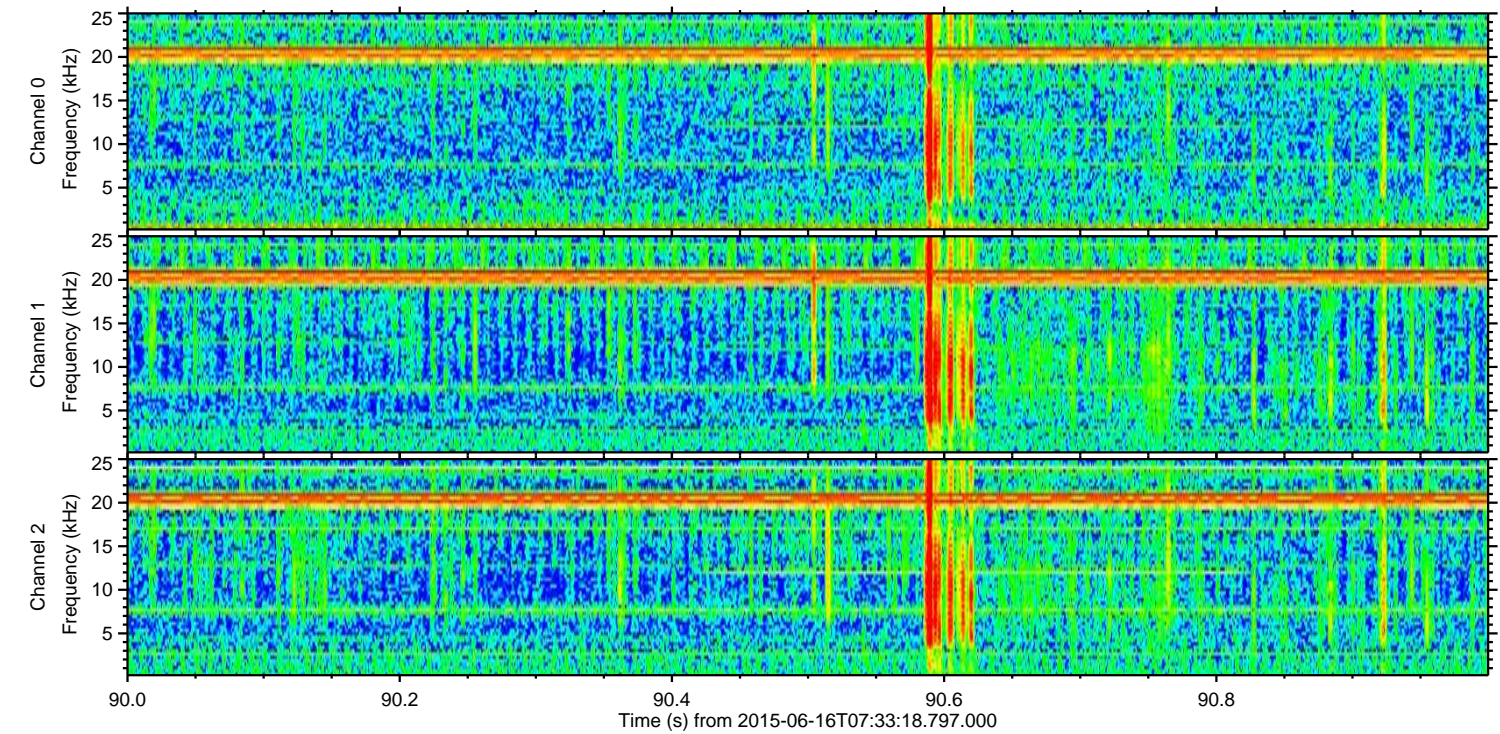
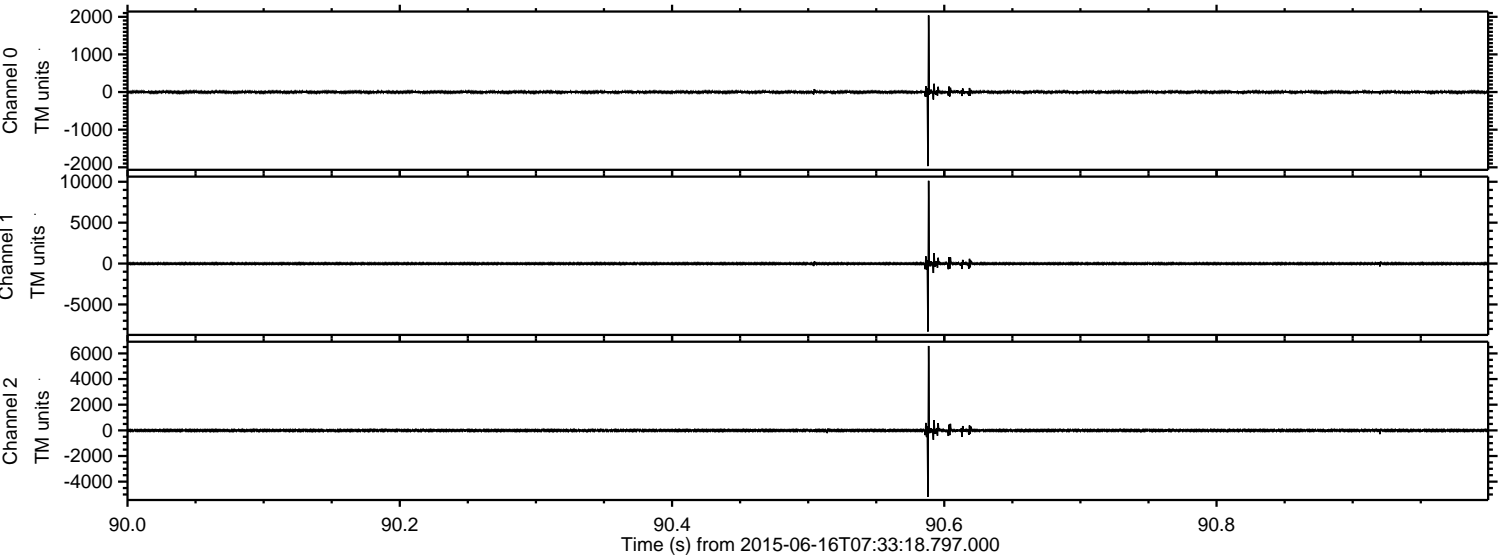
Processed Tue Jun 16 09:40:07 2015 by ELM ver.2012-10-06 from 001__elm20150616_073317__dat00.bin



Processed Tue Jun 16 09:40:08 2015 by ELM ver.2012-10-06 from 001__elm20150616_073317__dat00.bin

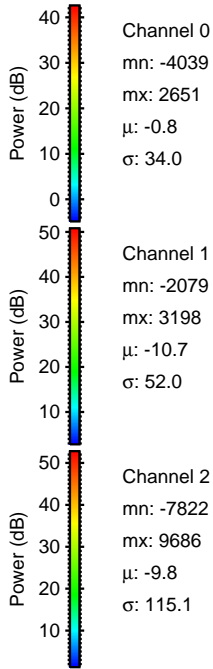
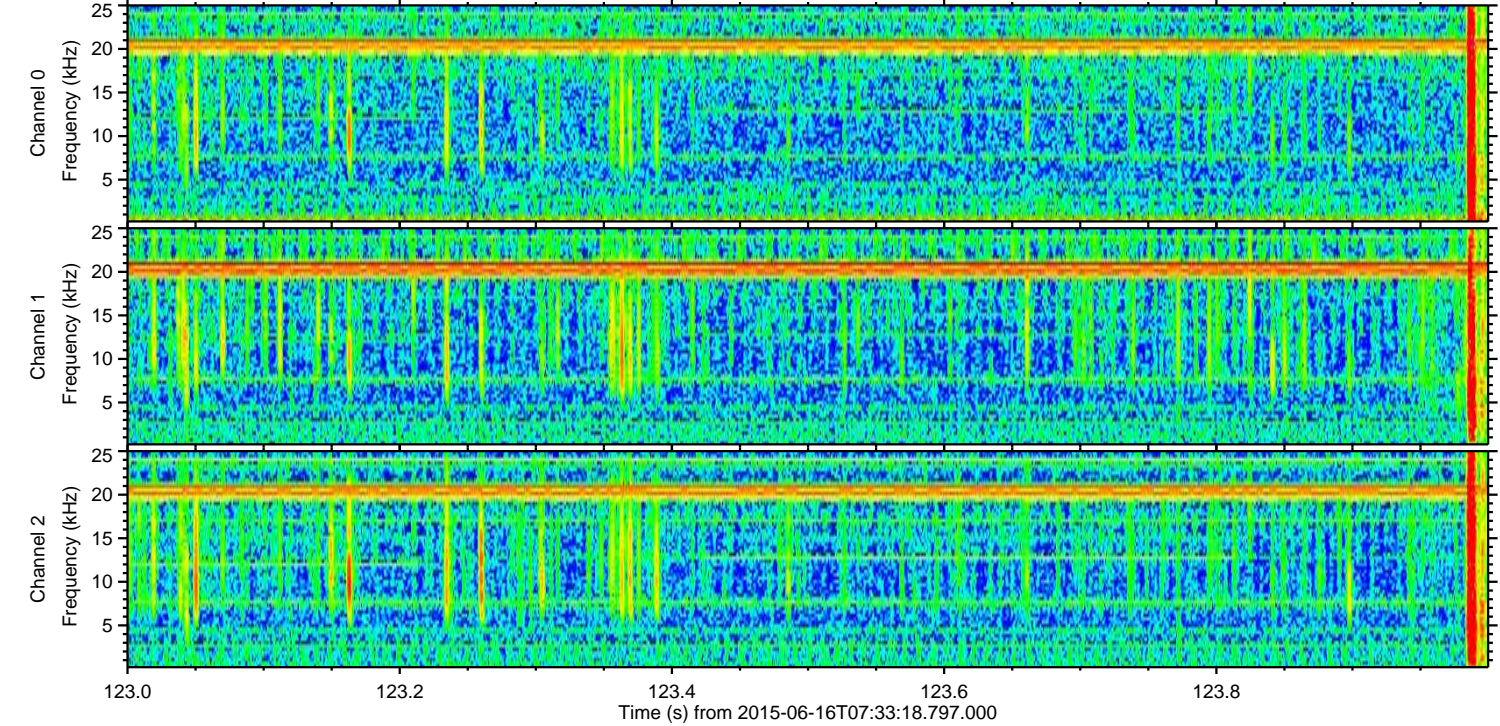
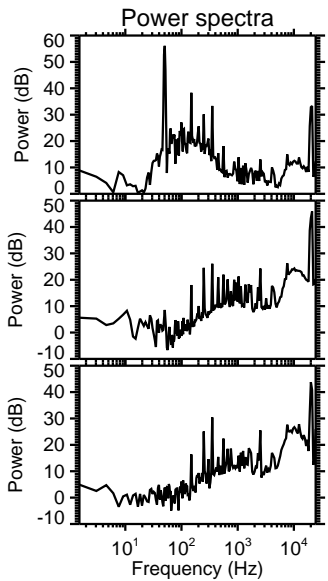
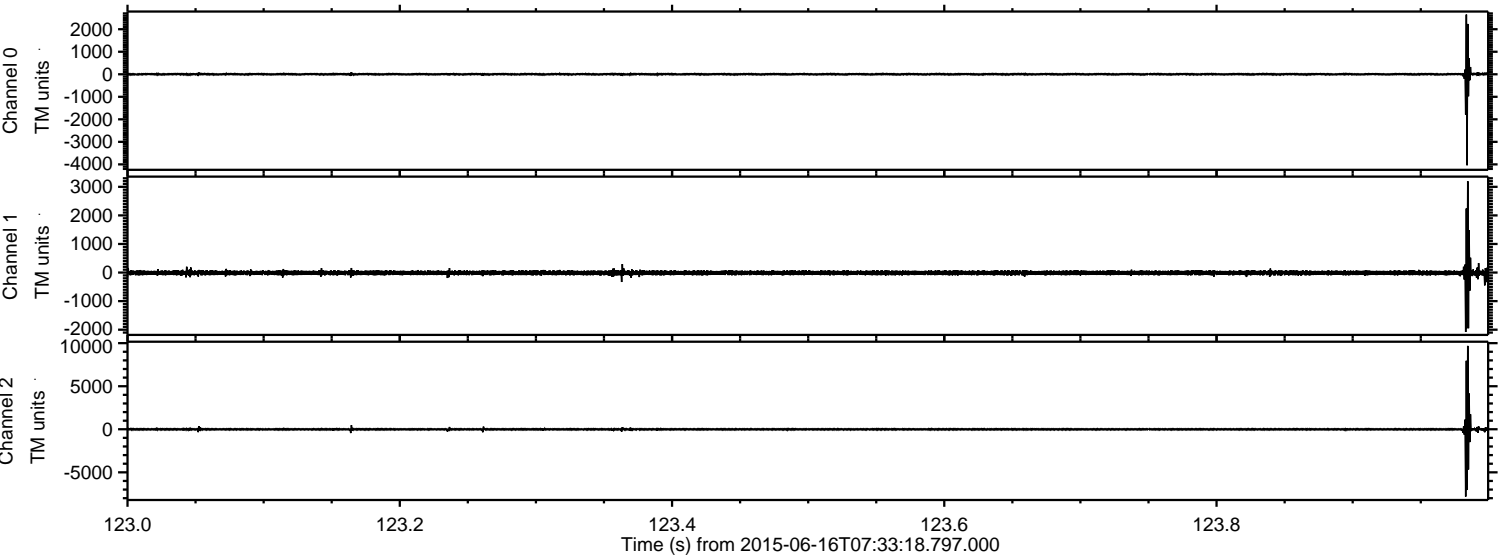


Processed Tue Jun 16 09:40:10 2015 by ELM ver.2012-10-06 from 001__elm20150616_073317__dat00.bin

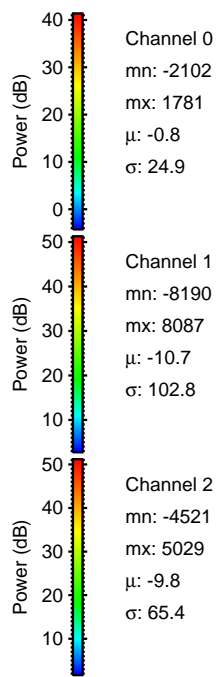
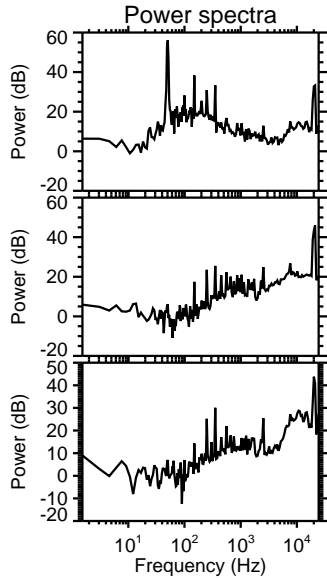
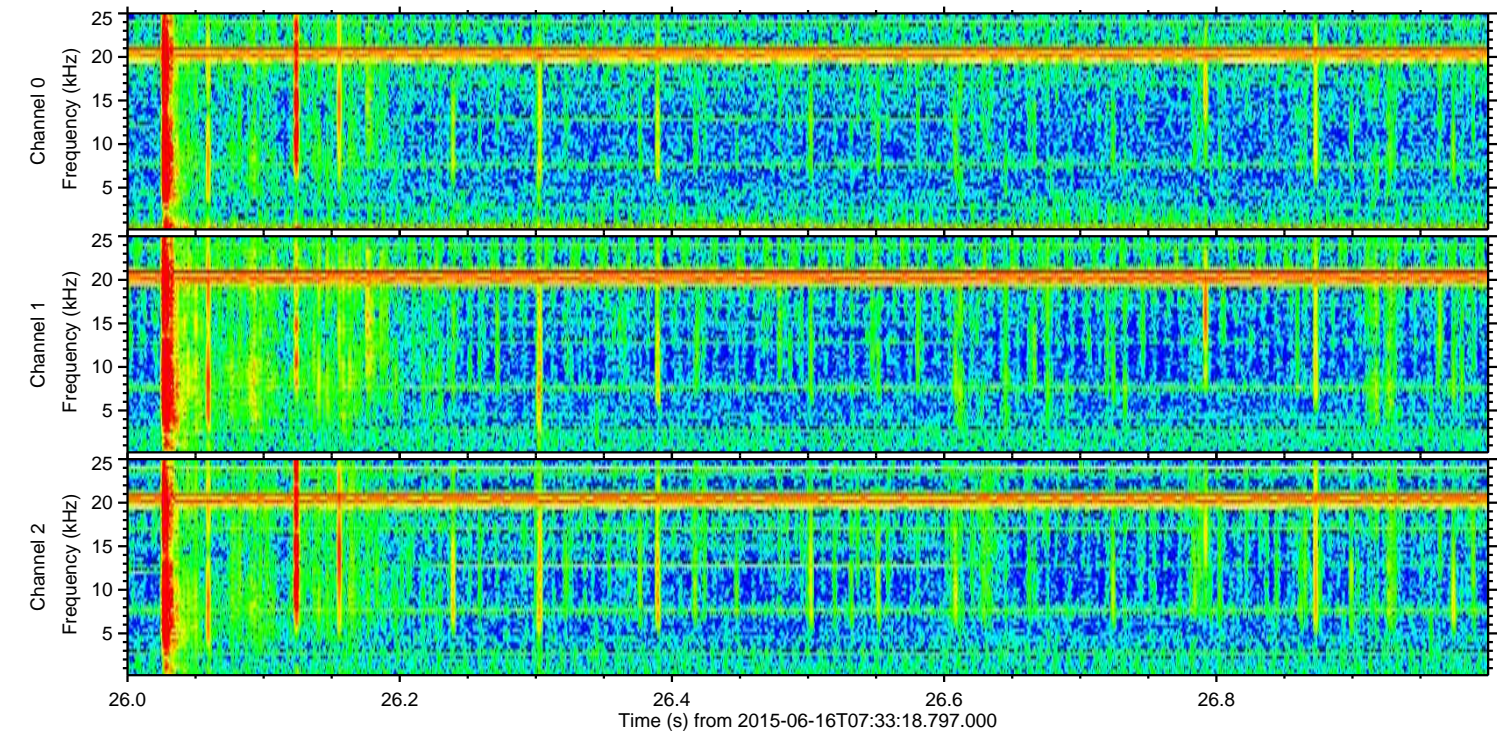
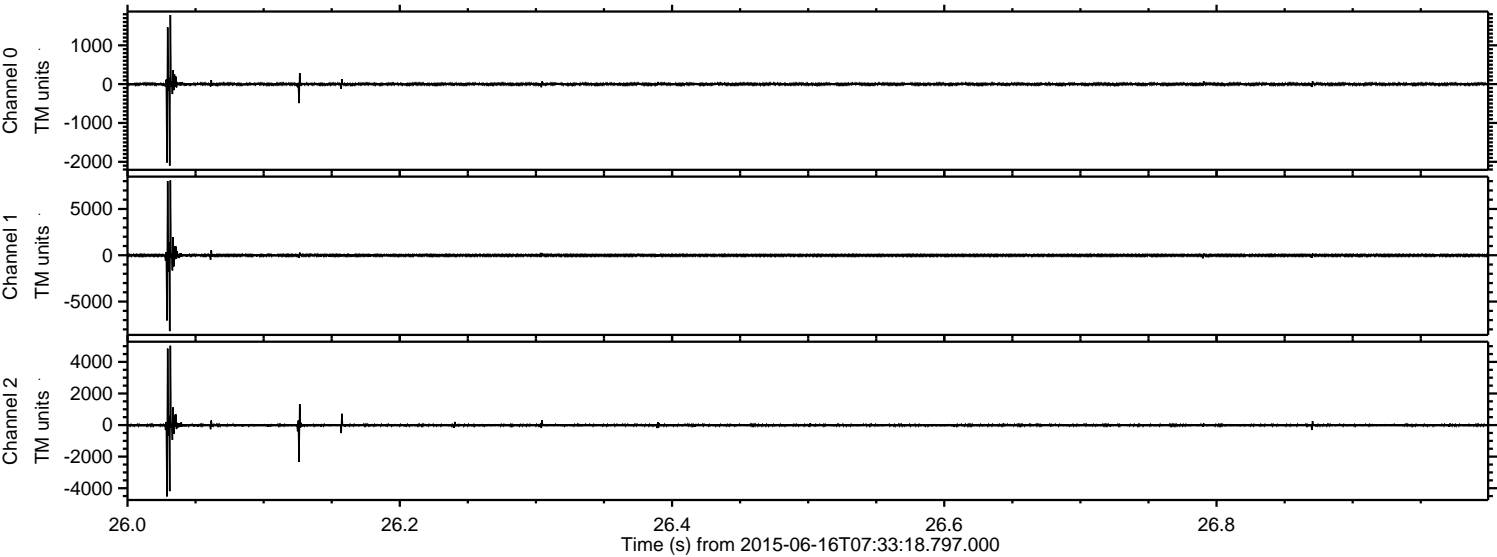


ELMAVAN 3D WAVEFORMS (Measured data sampled at 50 kHz) 51000 packets of 144 samples from 2015-06-16T07:33:18.797.000. Part 124/147

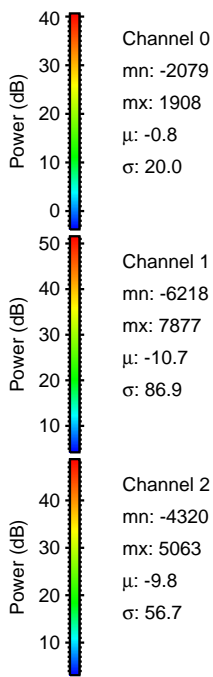
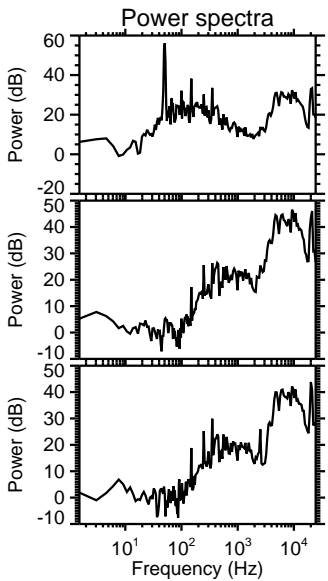
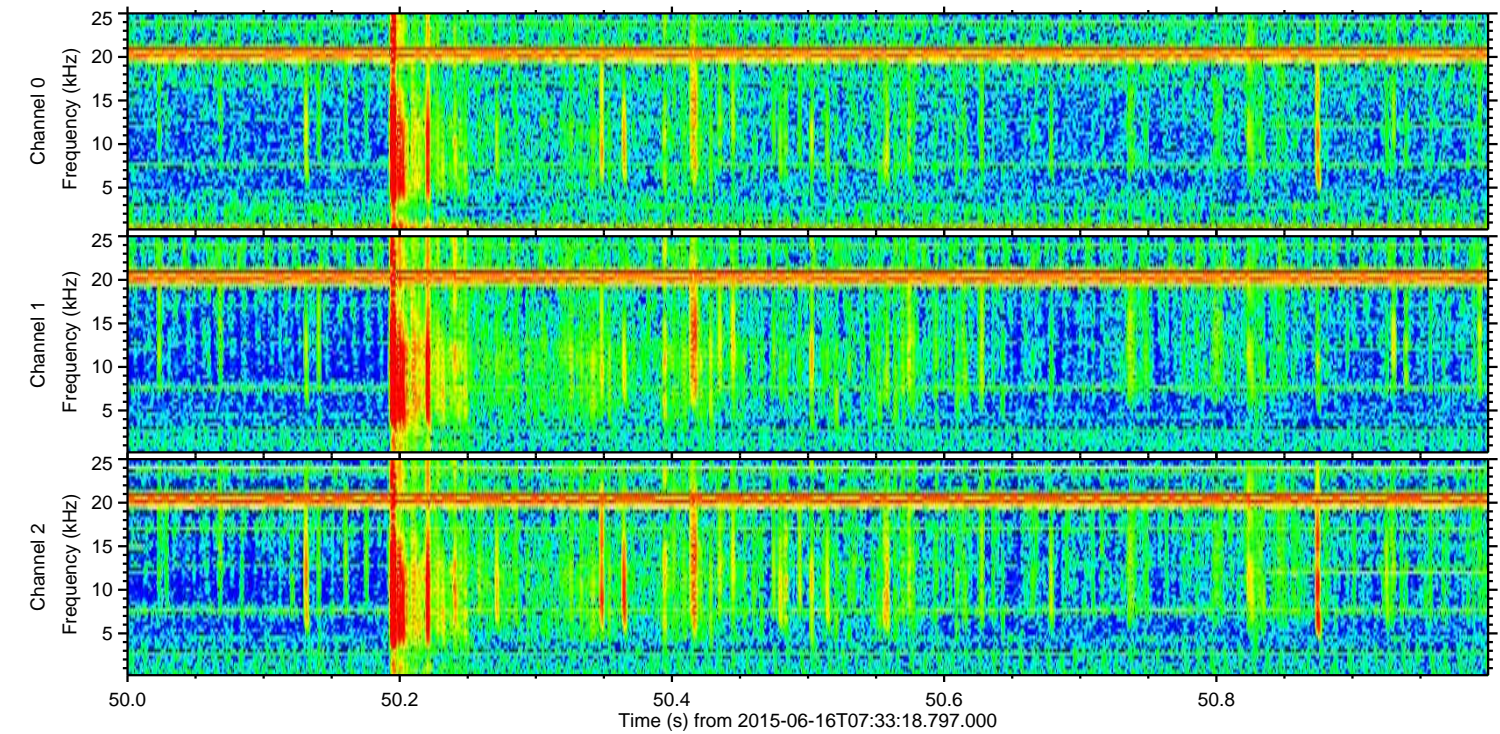
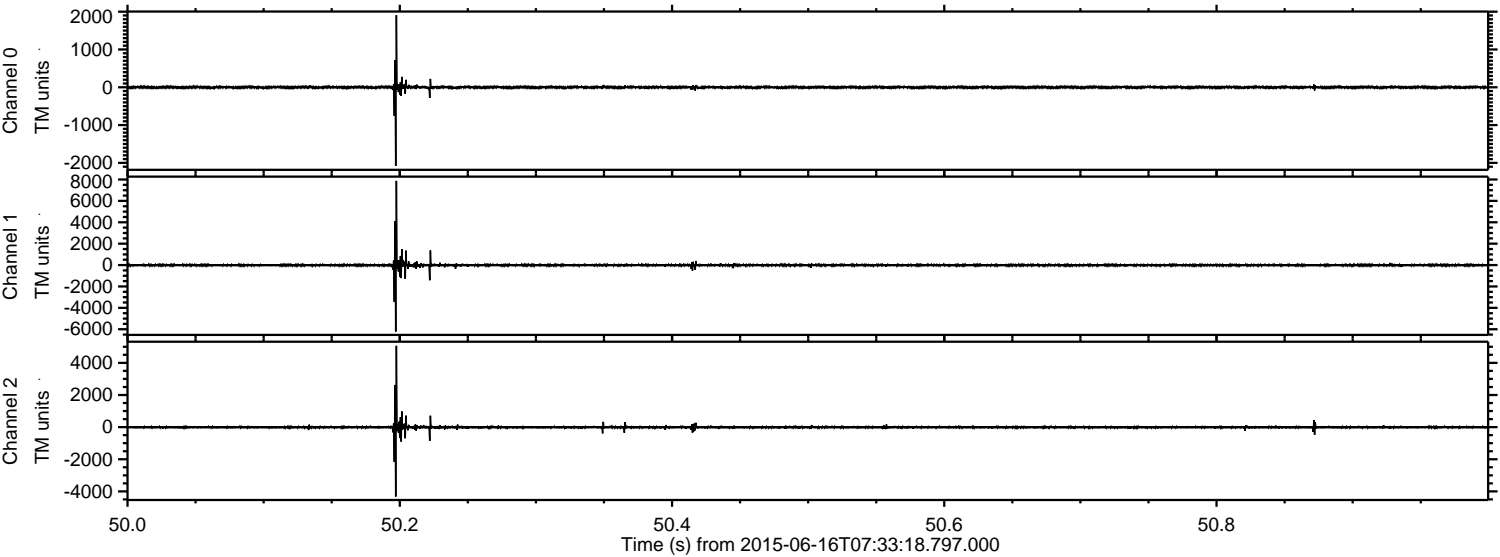
Processed Tue Jun 16 09:40:12 2015 by ELM ver.2012-10-06 from 001__elm20150616_073317__dat00.bin



Processed Tue Jun 16 09:40:14 2015 by ELM ver.2012-10-06 from 001__elm20150616_073317__dat00.bin

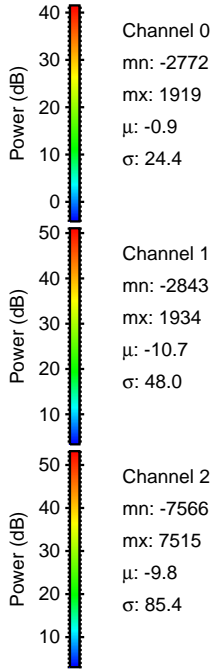
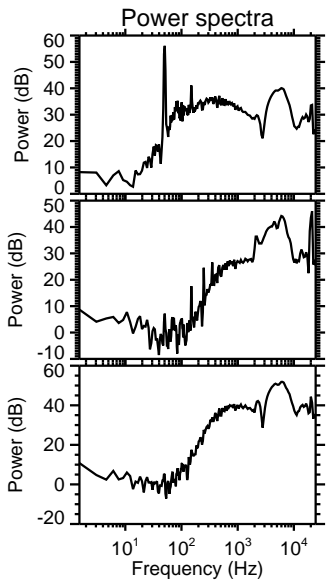
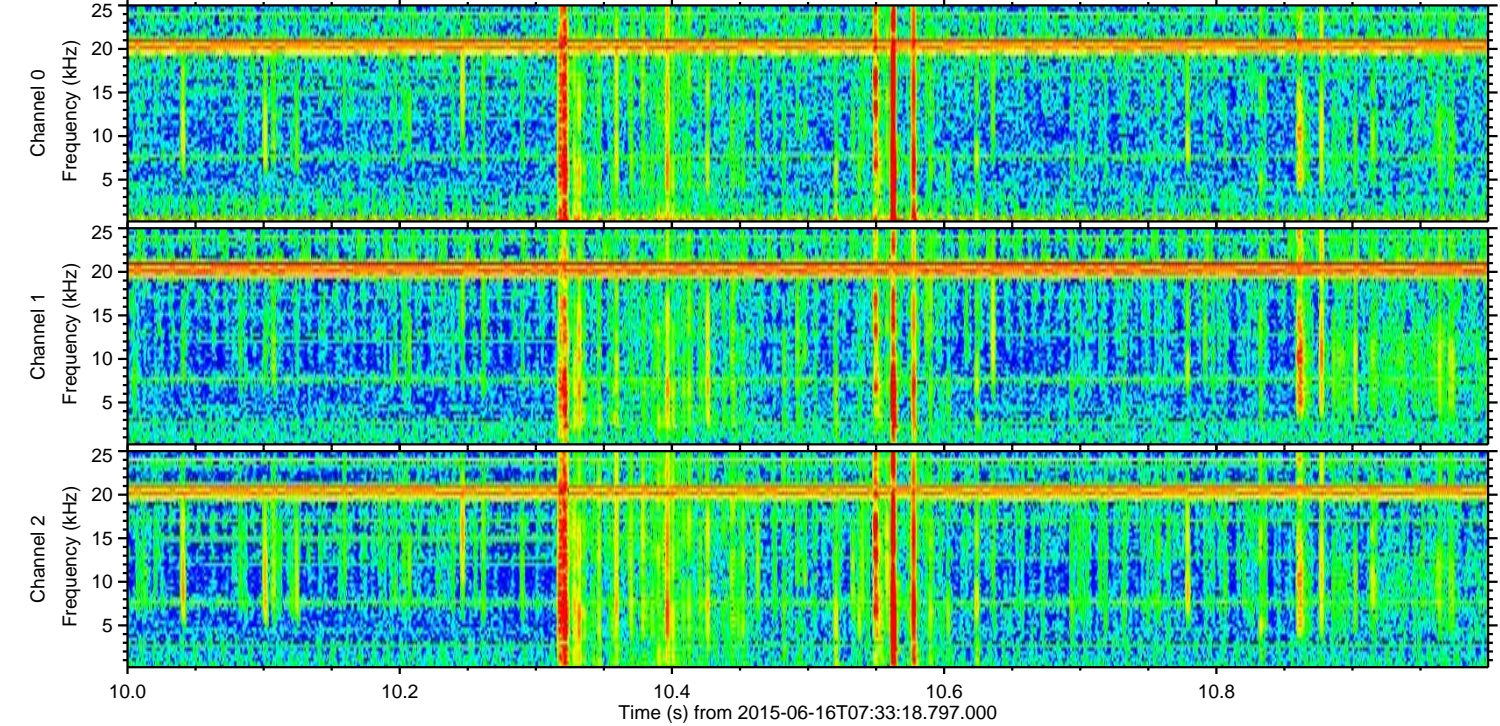
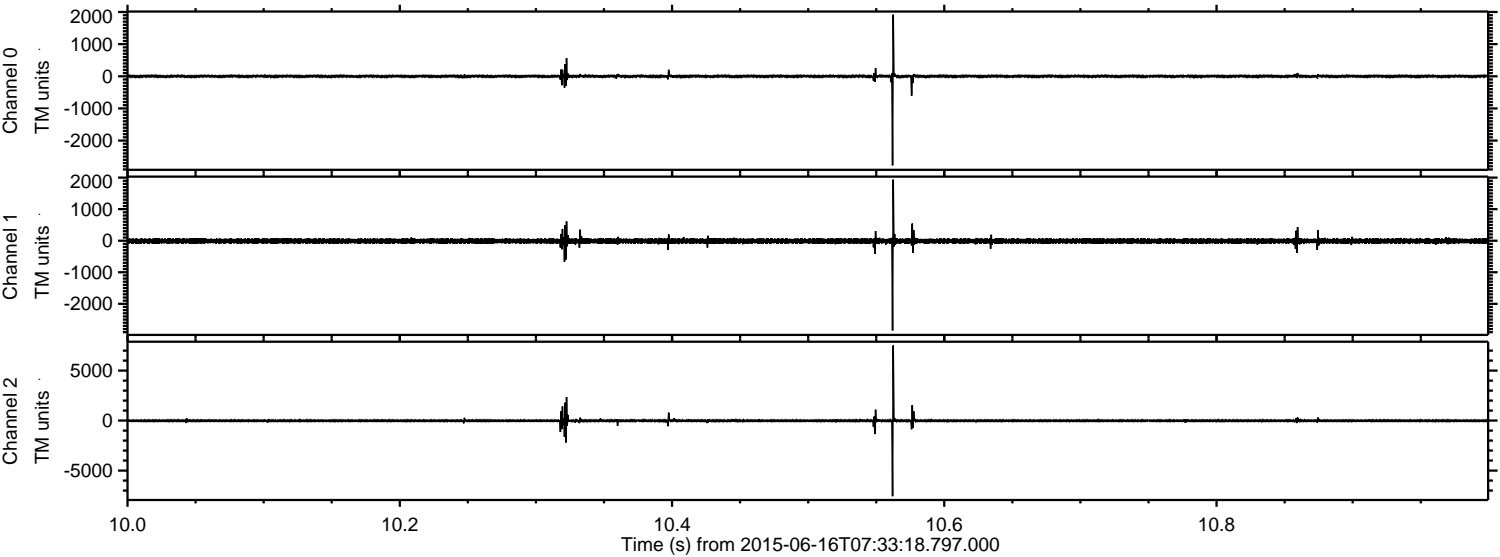


Processed Tue Jun 16 09:40:15 2015 by ELM ver.2012-10-06 from 001__elm20150616_073317__dat00.bin

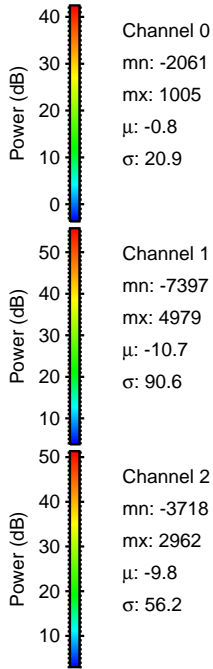
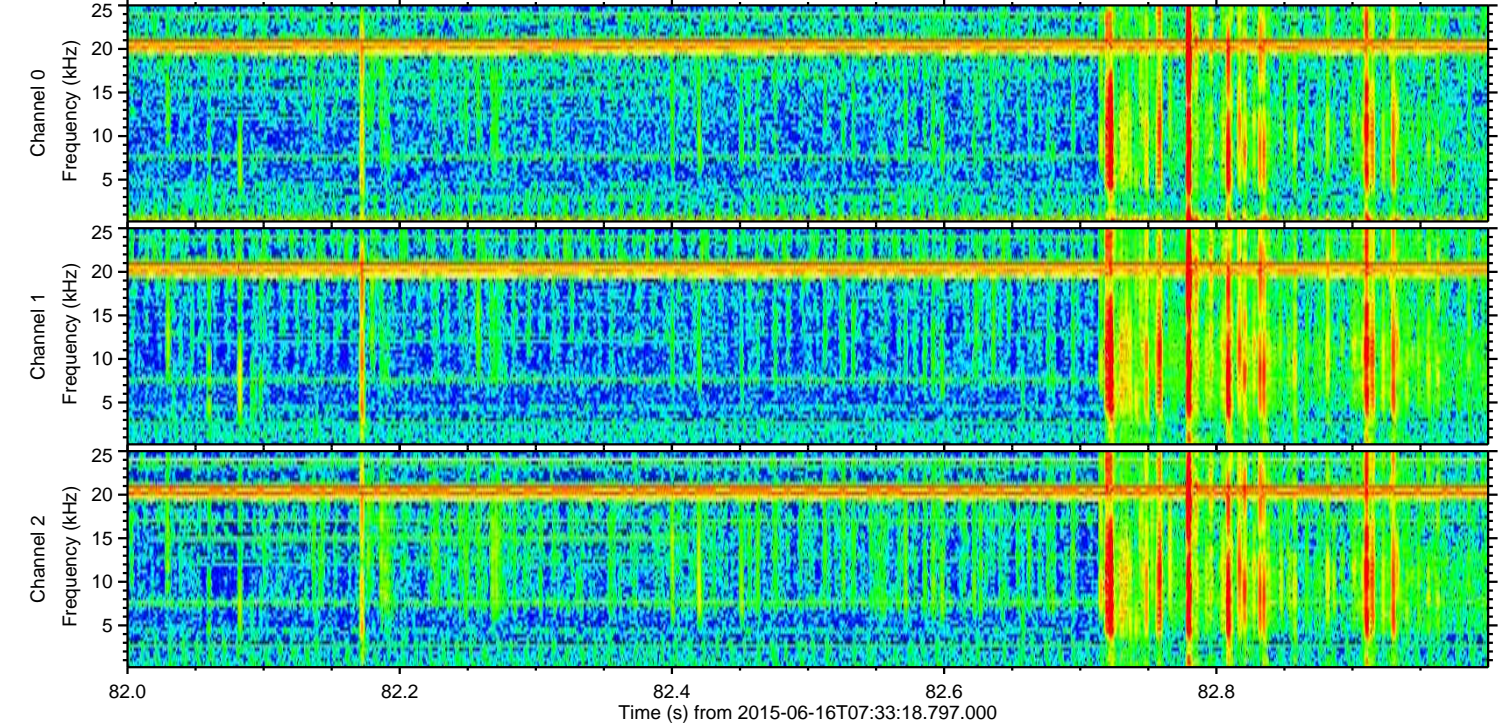
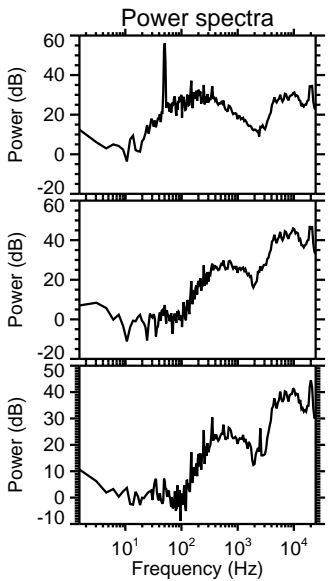
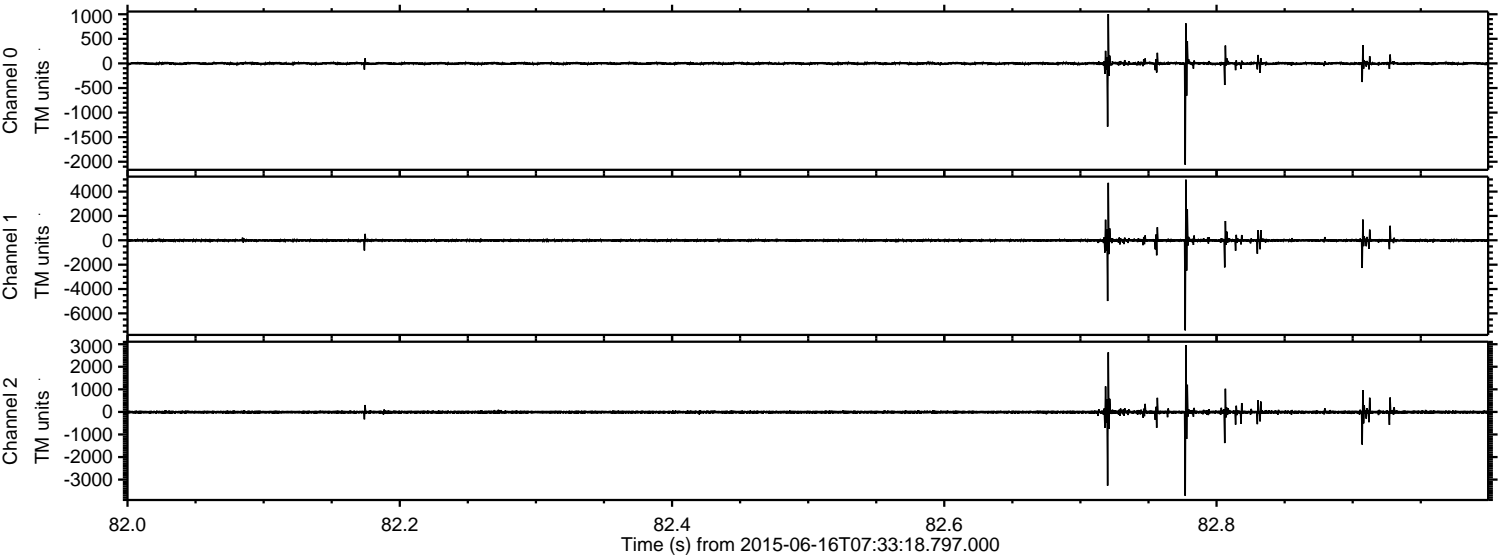


ELMAVAN 3D WAVEFORMS (Measured data sampled at 50 kHz) 51000 packets of 144 samples from 2015-06-16T07:33:18.797.000. Part 11/147

Processed Tue Jun 16 09:40:16 2015 by ELM ver.2012-10-06 from 001__elm20150616_073317__dat00.bin

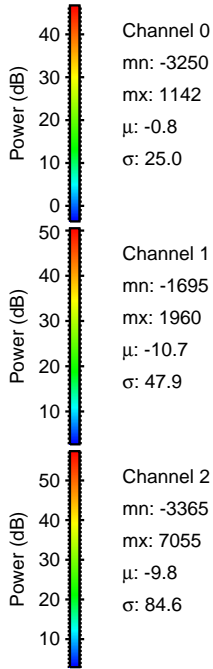
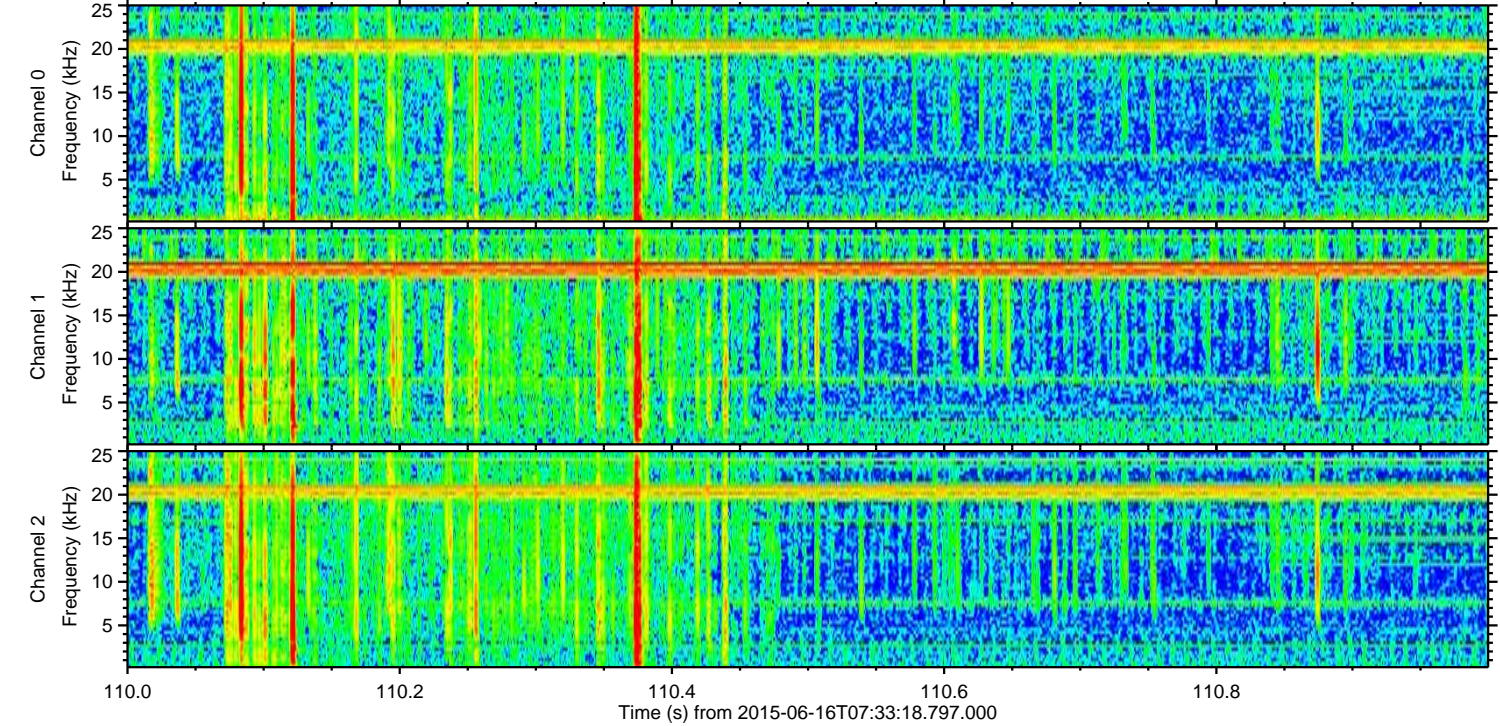
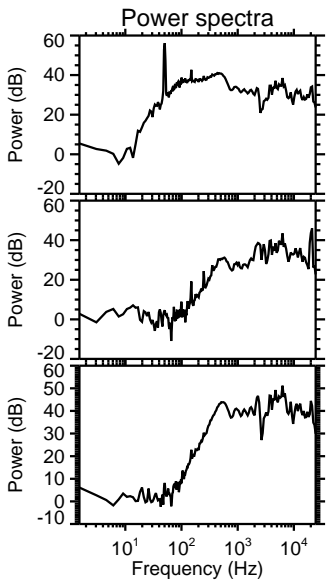
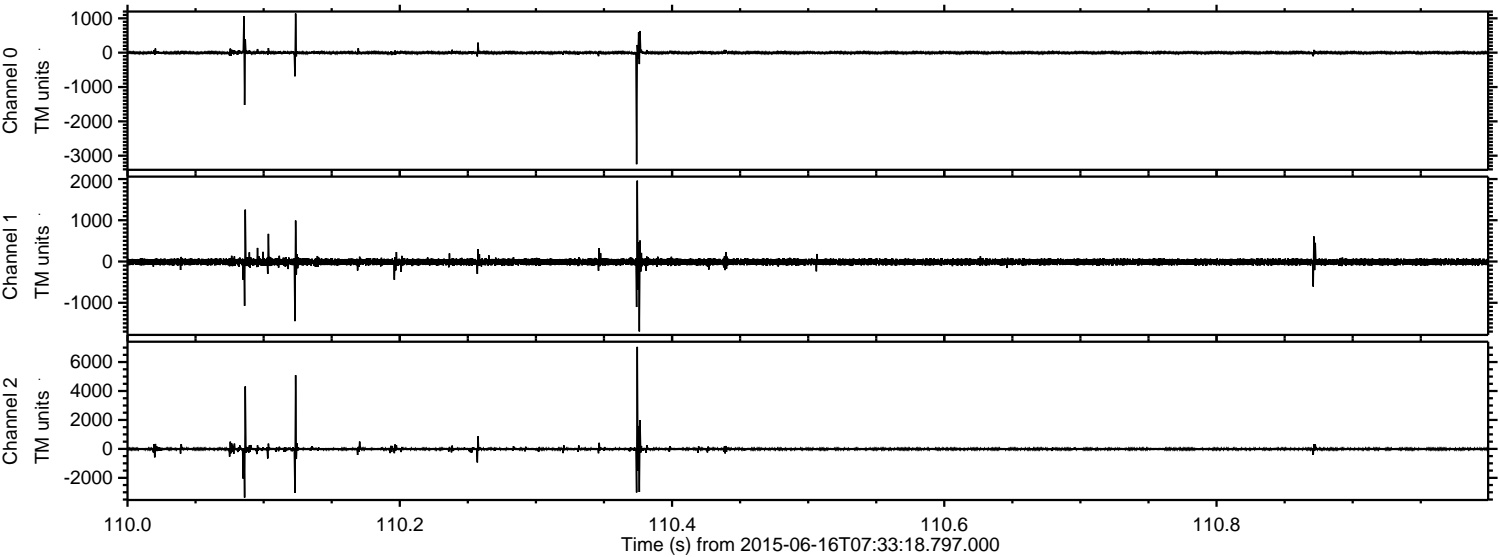


Processed Tue Jun 16 09:40:18 2015 by ELM ver.2012-10-06 from 001__elm20150616_073317__dat00.bin



ELMAVAN 3D WAVEFORMS (Measured data sampled at 50 kHz) 51000 packets of 144 samples from 2015-06-16T07:33:18.797.000. Part 111/147

Processed Tue Jun 16 09:40:20 2015 by ELM ver.2012-10-06 from 001__elm20150616_073317__dat00.bin



Channel 0
mn: -3250
mx: 1142
 μ : -0.8
 σ : 25.0

Channel 1
mn: -1695
mx: 1960
 μ : -10.7
 σ : 47.9

Channel 2
mn: -3365
mx: 7055
 μ : -9.8
 σ : 84.6

