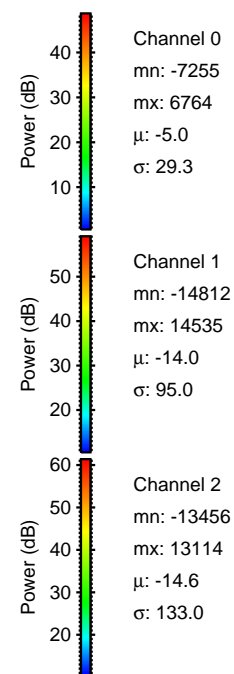
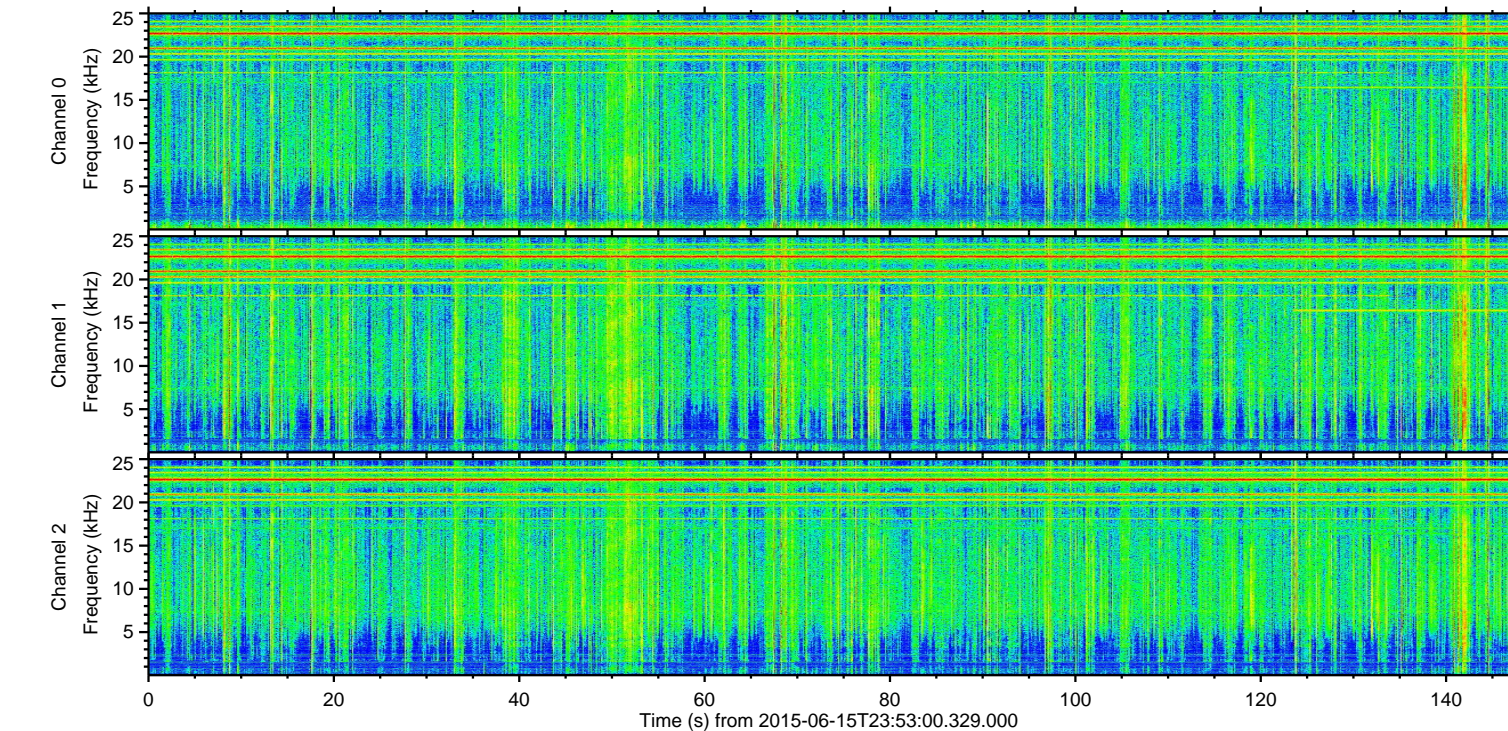
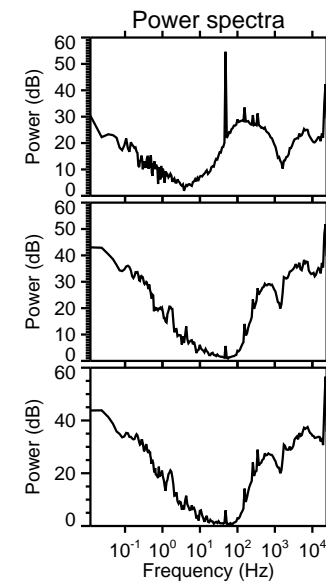
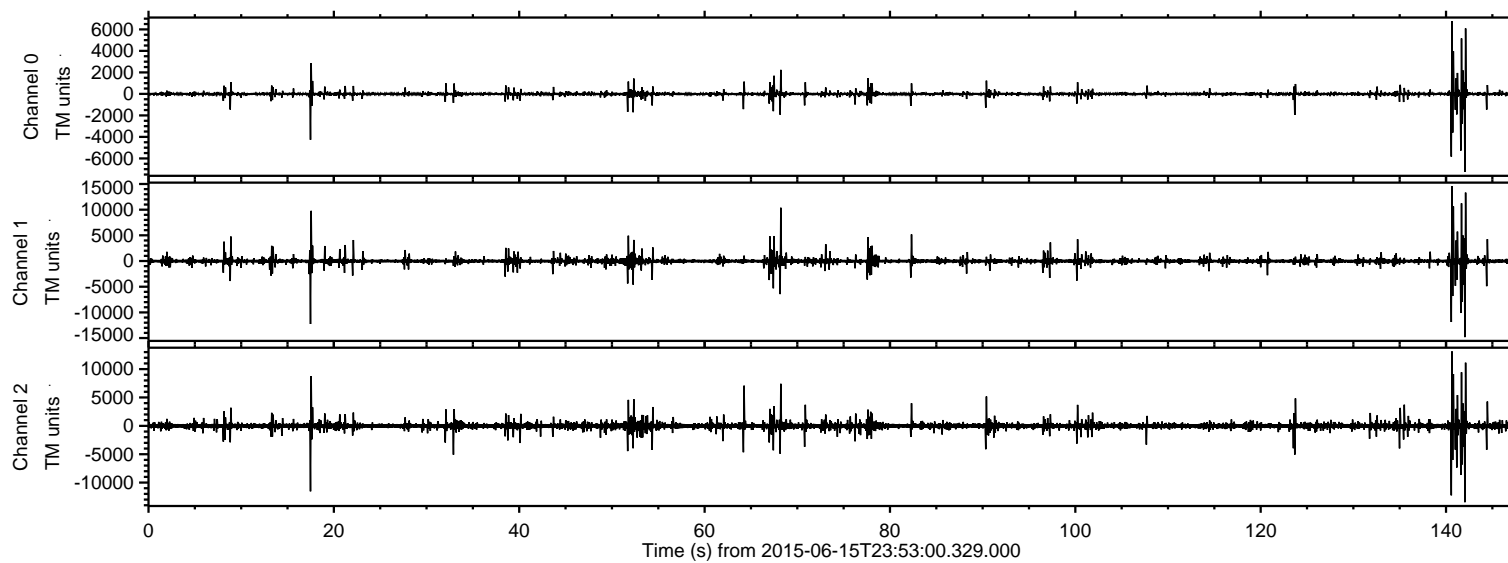


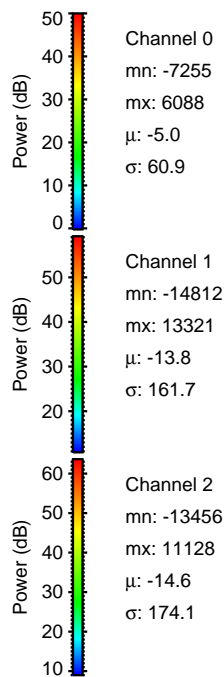
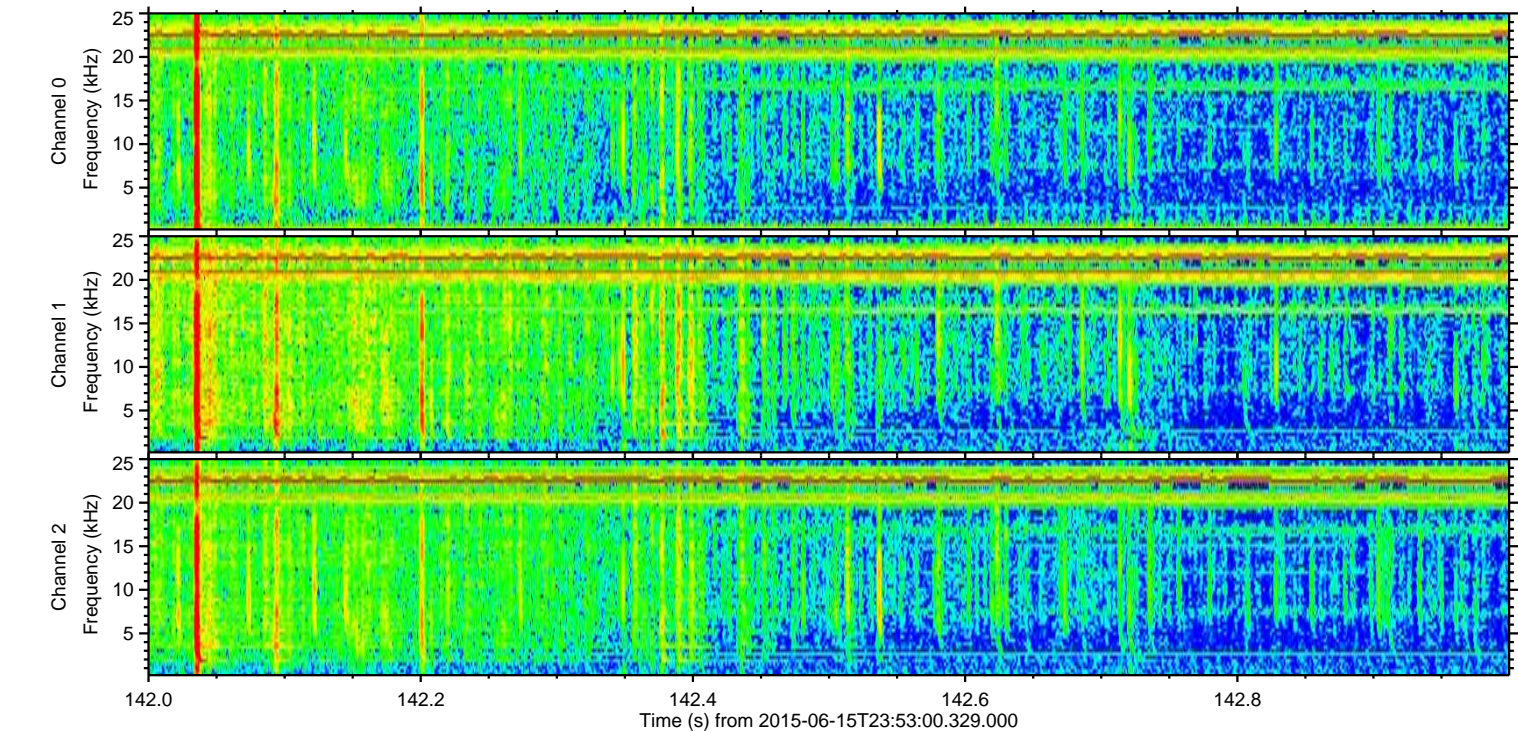
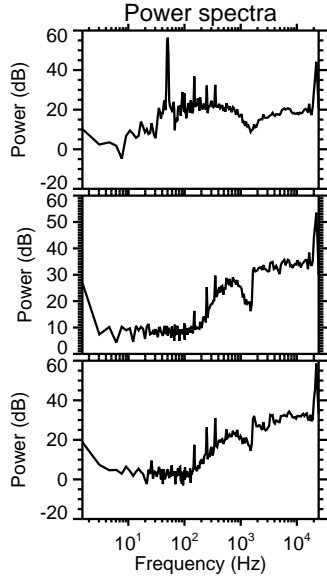
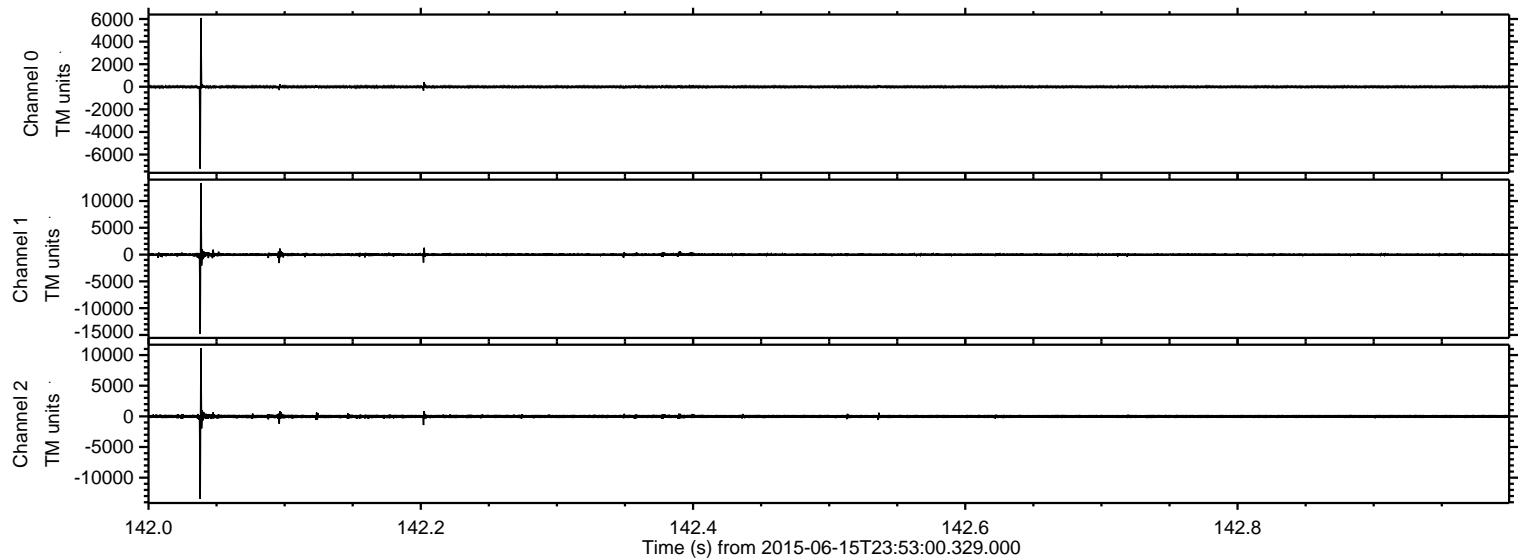
# ELMAVAN 3D WAVEFORMS (Measured data sampled at 50 kHz) 51000 packets of 144 samples from 2015-06-15T23:53:00.329.000.

Processed Tue Jun 16 01:58:57 2015 by ELM ver.2012-10-06 from 001\_\_elm20150615\_235259\_\_dat00.bin



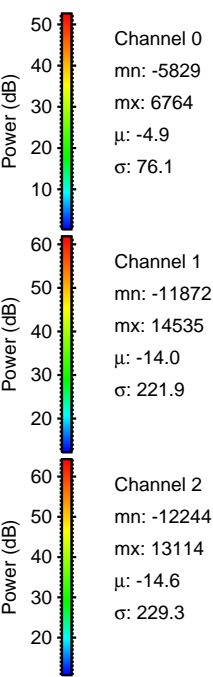
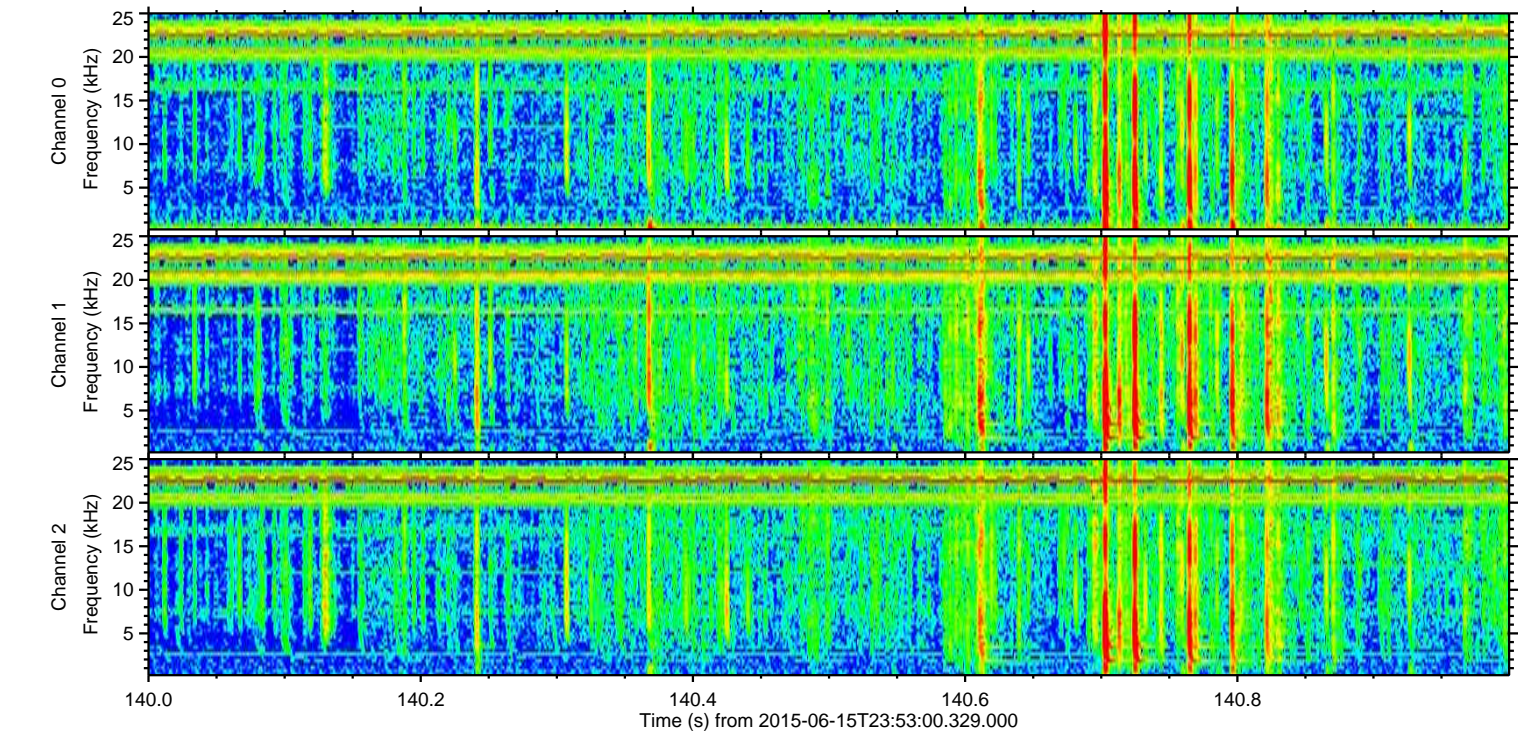
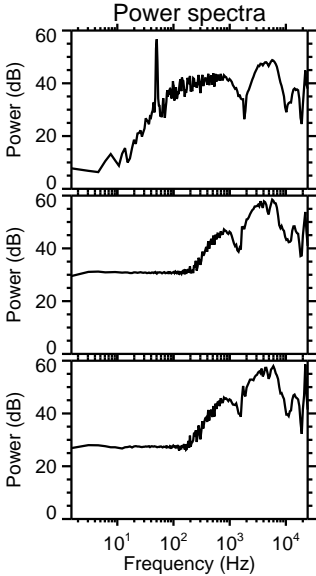
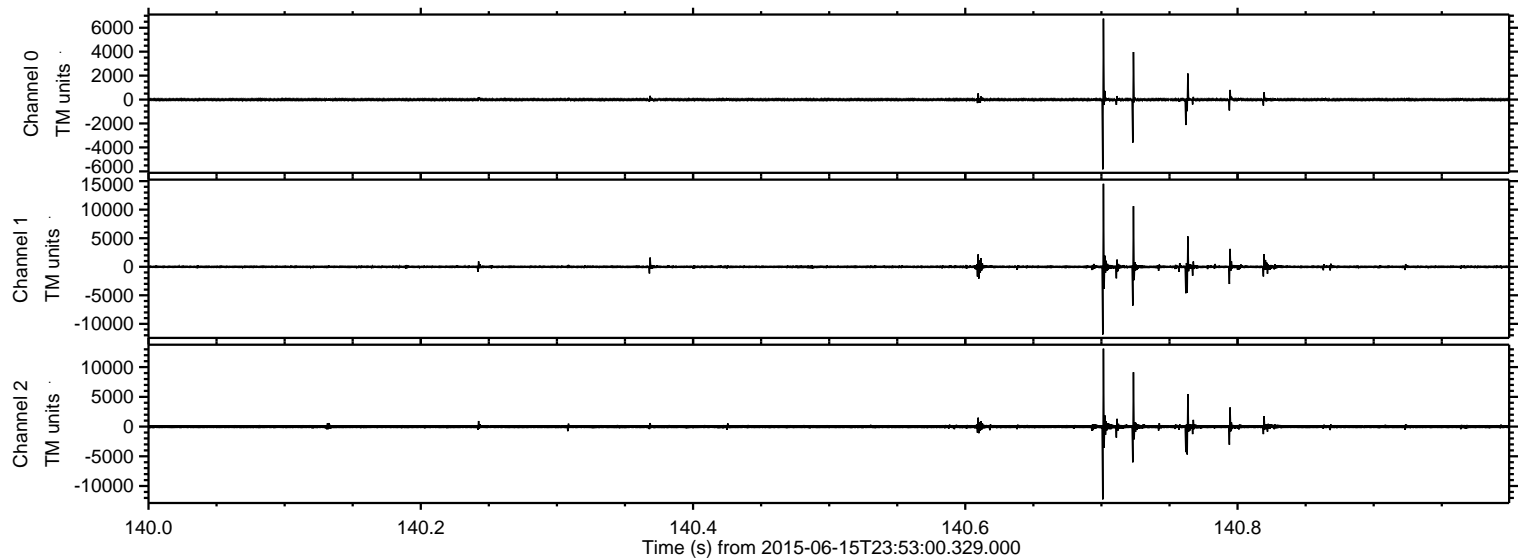
ELMAVAN 3D WAVEFORMS (Measured data sampled at 50 kHz) 51000 packets of 144 samples from 2015-06-15T23:53:00.329.000. Part 143/147

Processed Tue Jun 16 01:59:11 2015 by ELM ver.2012-10-06 from 001\_\_elm20150615\_235259\_\_dat00.bin



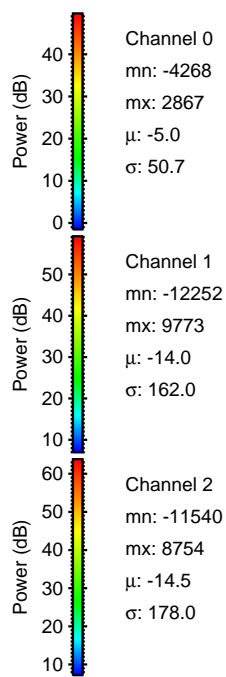
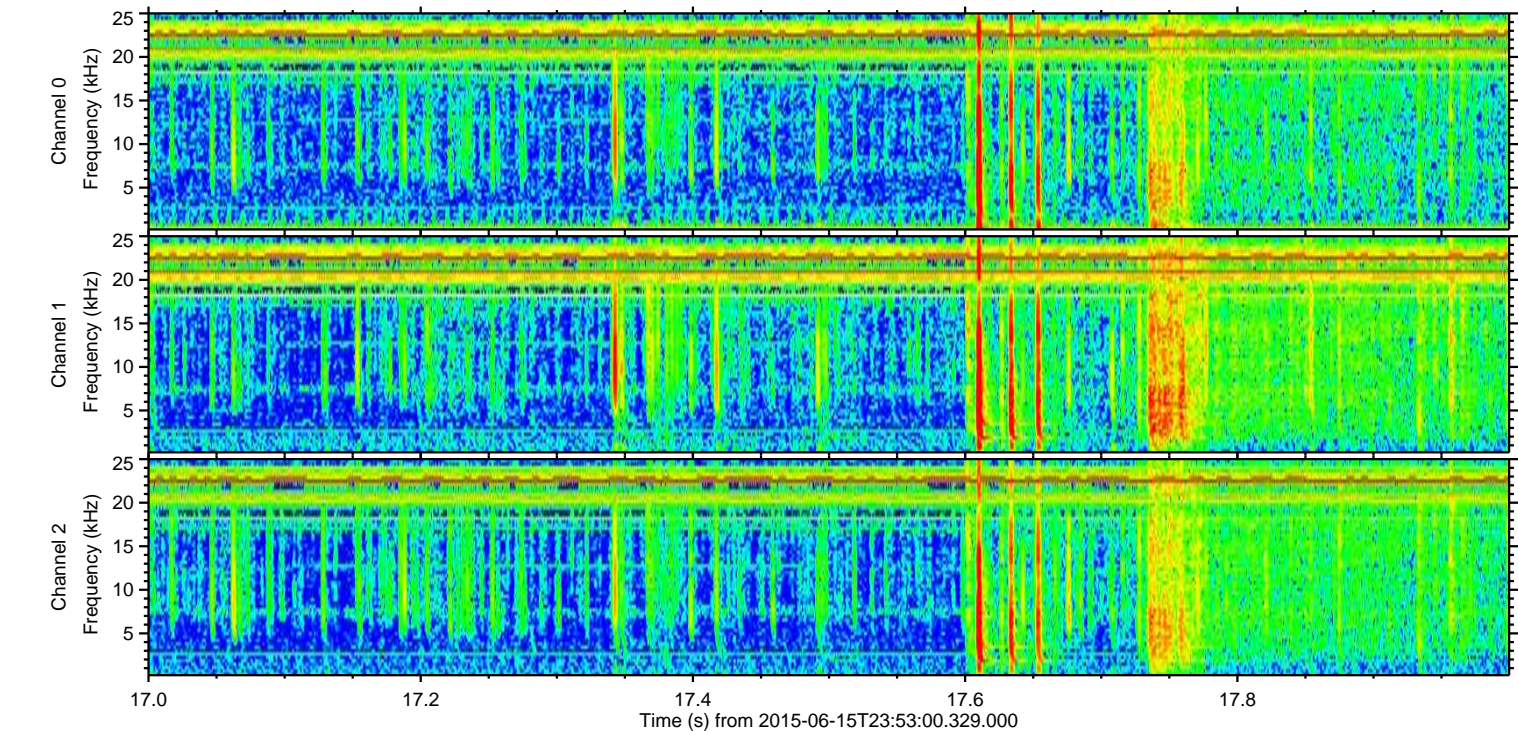
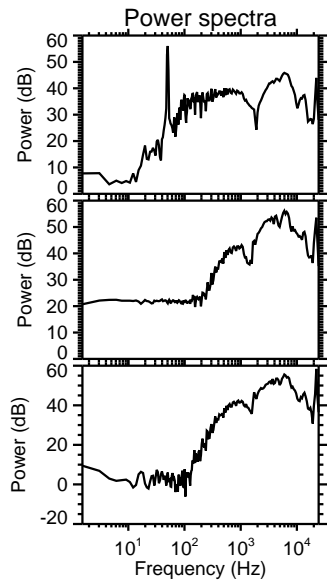
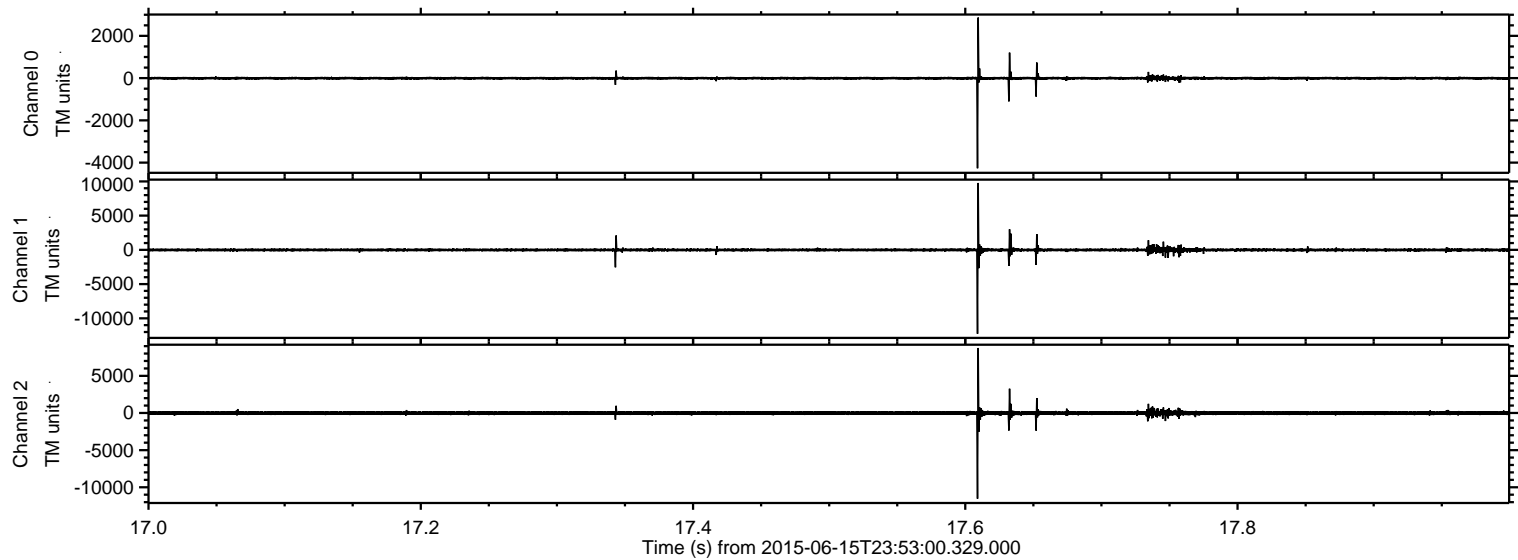
ELMAVAN 3D WAVEFORMS (Measured data sampled at 50 kHz) 51000 packets of 144 samples from 2015-06-15T23:53:00.329.000. Part 141/147

Processed Tue Jun 16 01:59:12 2015 by ELM ver.2012-10-06 from 001\_\_elm20150615\_235259\_\_dat00.bin



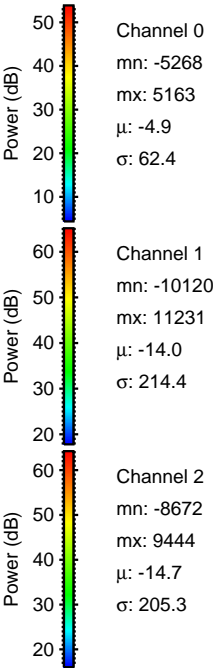
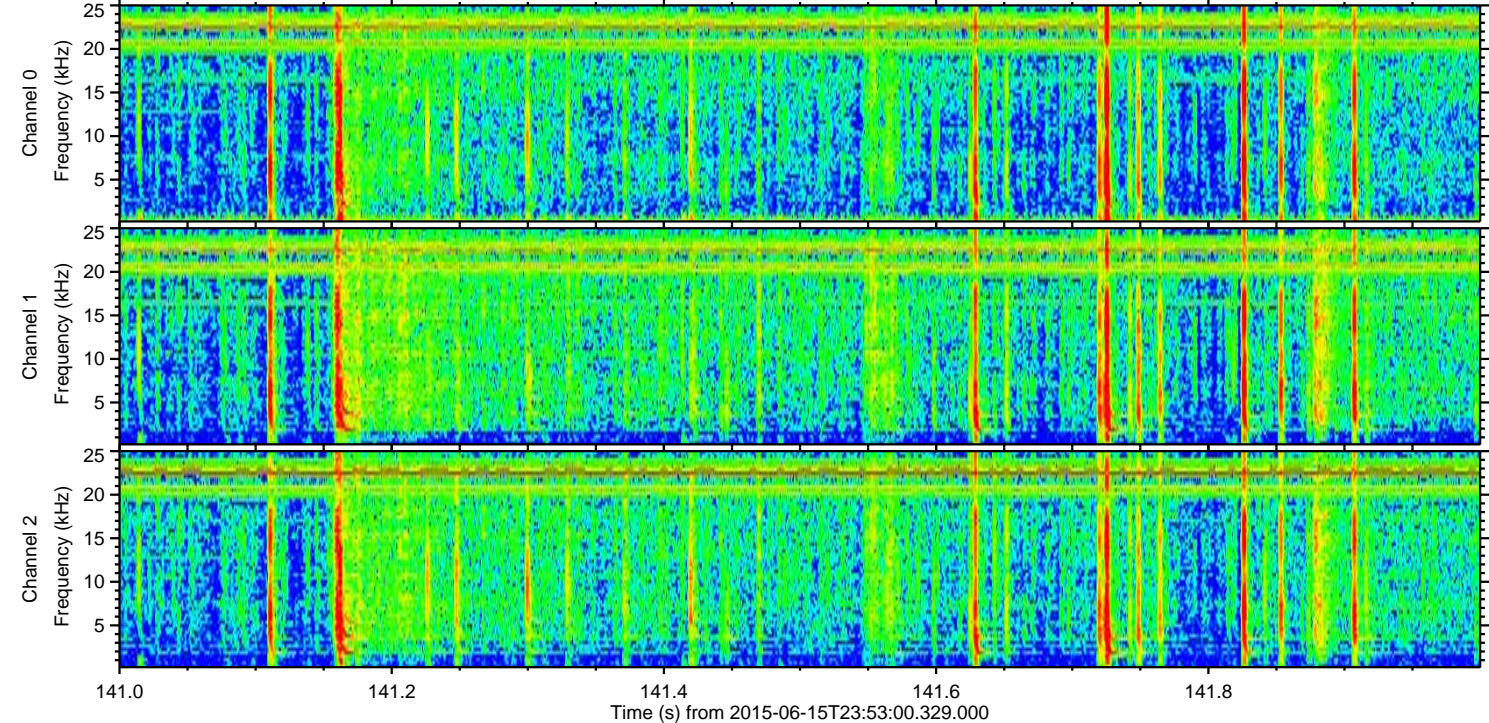
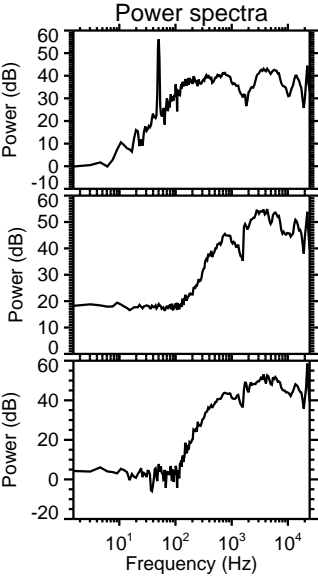
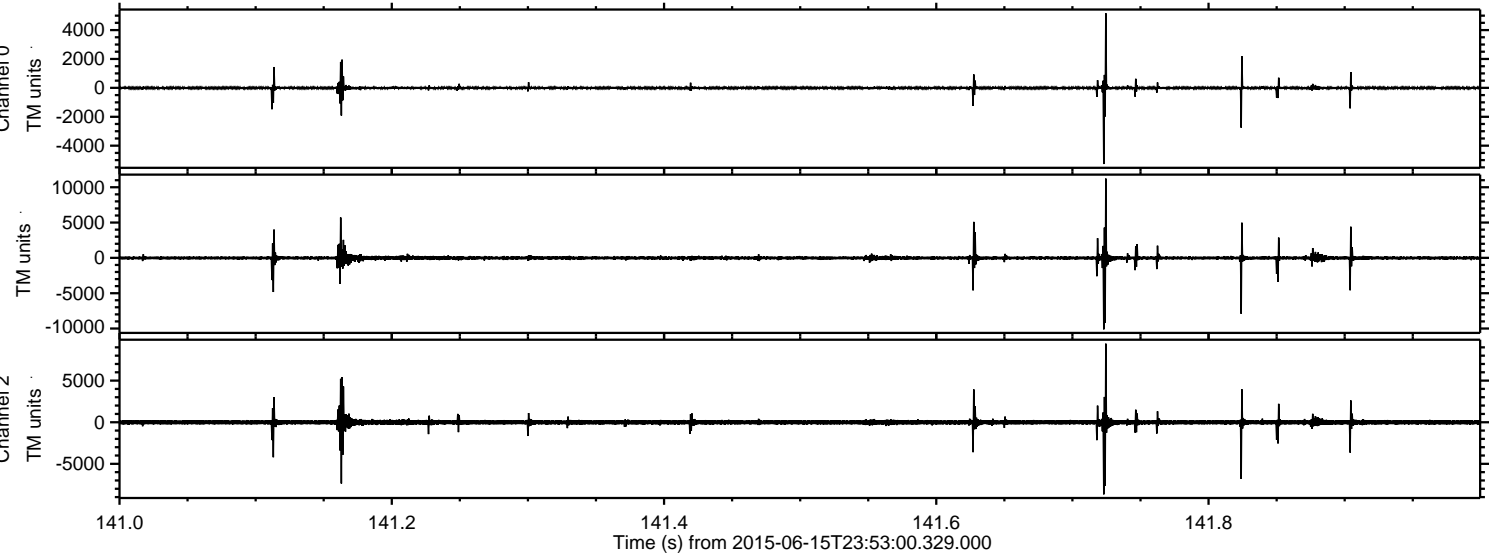
ELMAVAN 3D WAVEFORMS (Measured data sampled at 50 kHz) 51000 packets of 144 samples from 2015-06-15T23:53:00.329.000. Part 18/147

Processed Tue Jun 16 01:59:14 2015 by ELM ver.2012-10-06 from 001\_\_elm20150615\_235259\_\_dat00.bin

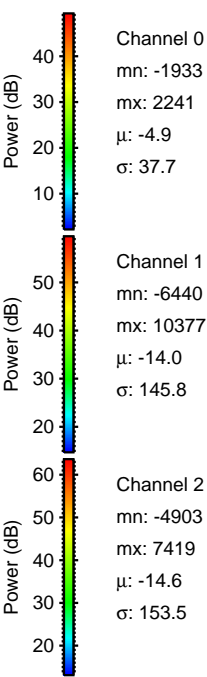
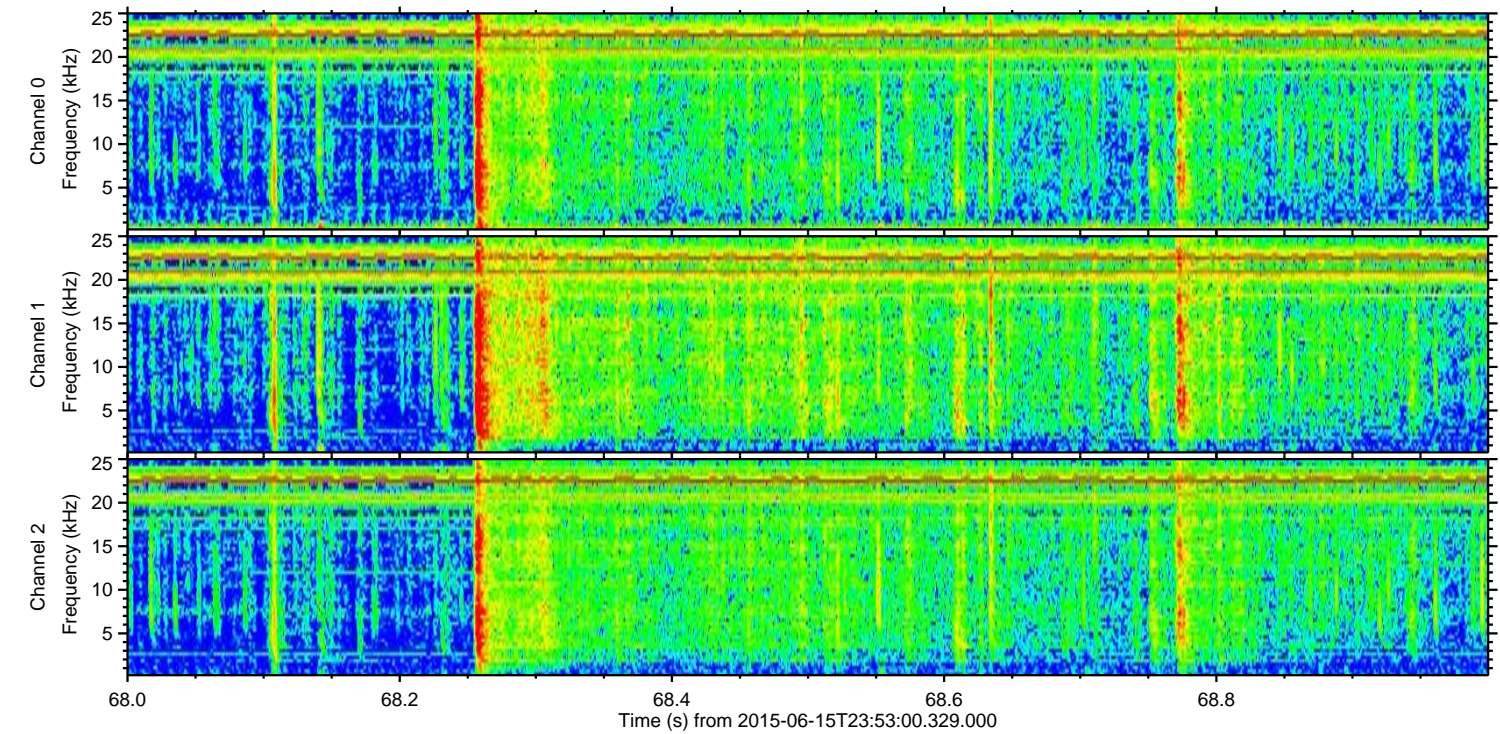
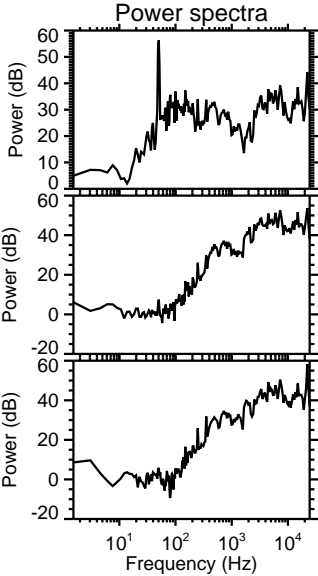
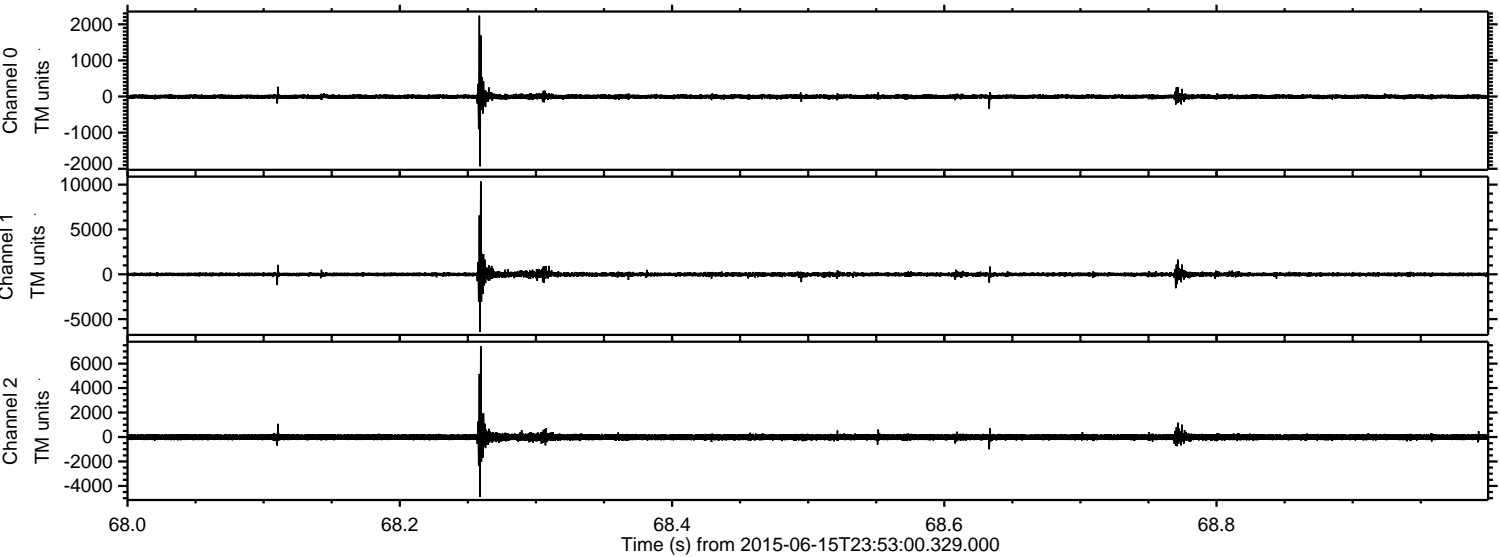


ELMAVAN 3D WAVEFORMS (Measured data sampled at 50 kHz) 51000 packets of 144 samples from 2015-06-15T23:53:00.329.000. Part 142/147

Processed Tue Jun 16 01:59:15 2015 by ELM ver.2012-10-06 from 001\_\_elm20150615\_235259\_\_dat00.bin

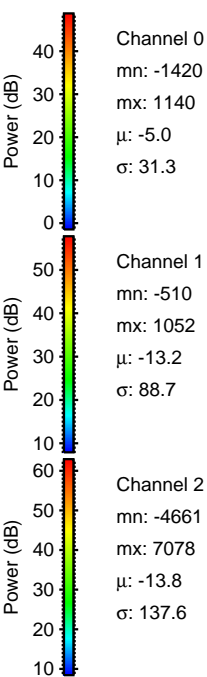
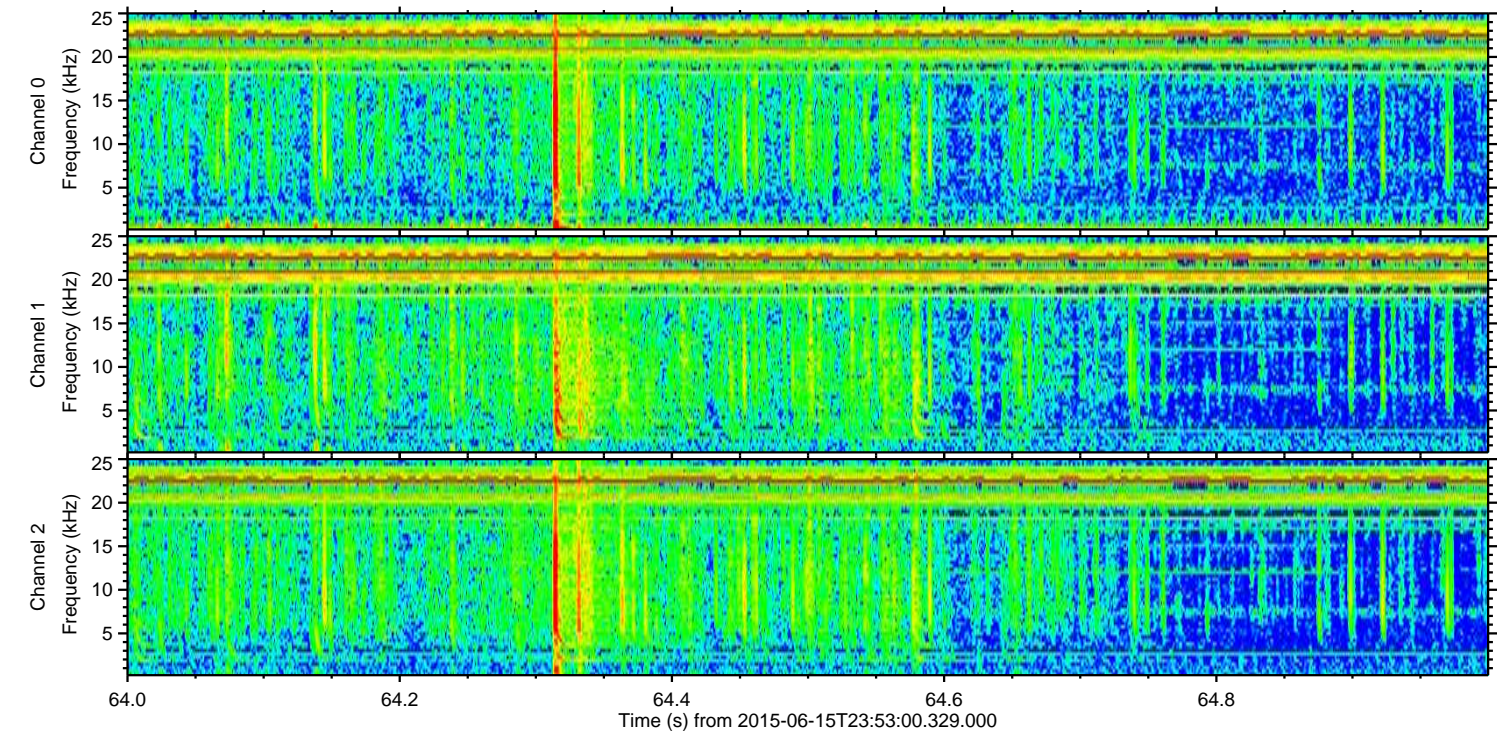
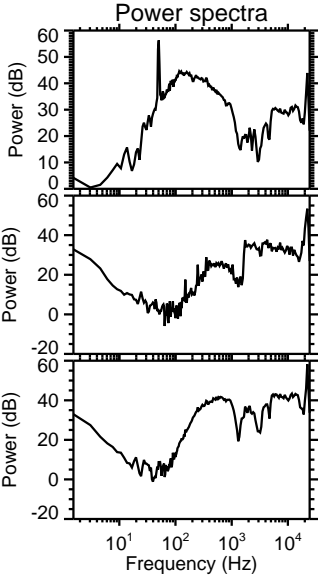
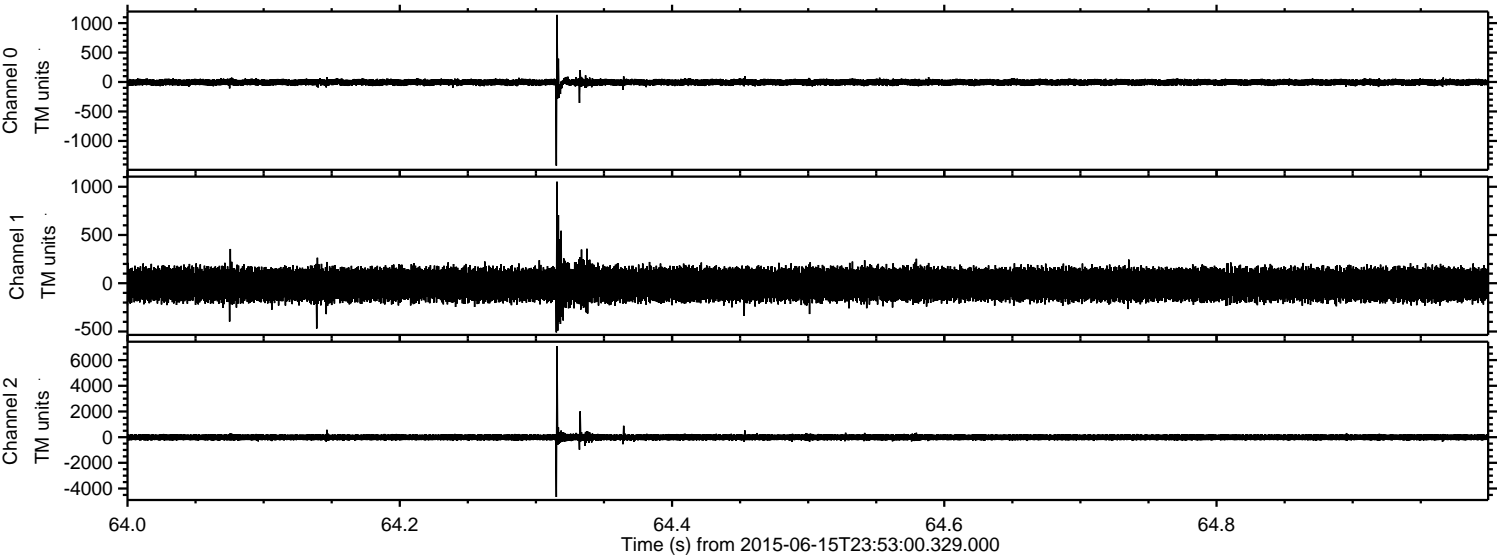


Processed Tue Jun 16 01:59:16 2015 by ELM ver.2012-10-06 from 001\_\_elm20150615\_235259\_\_dat00.bin

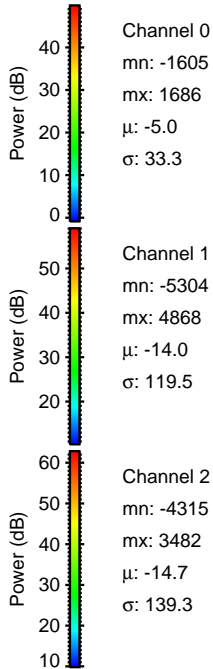
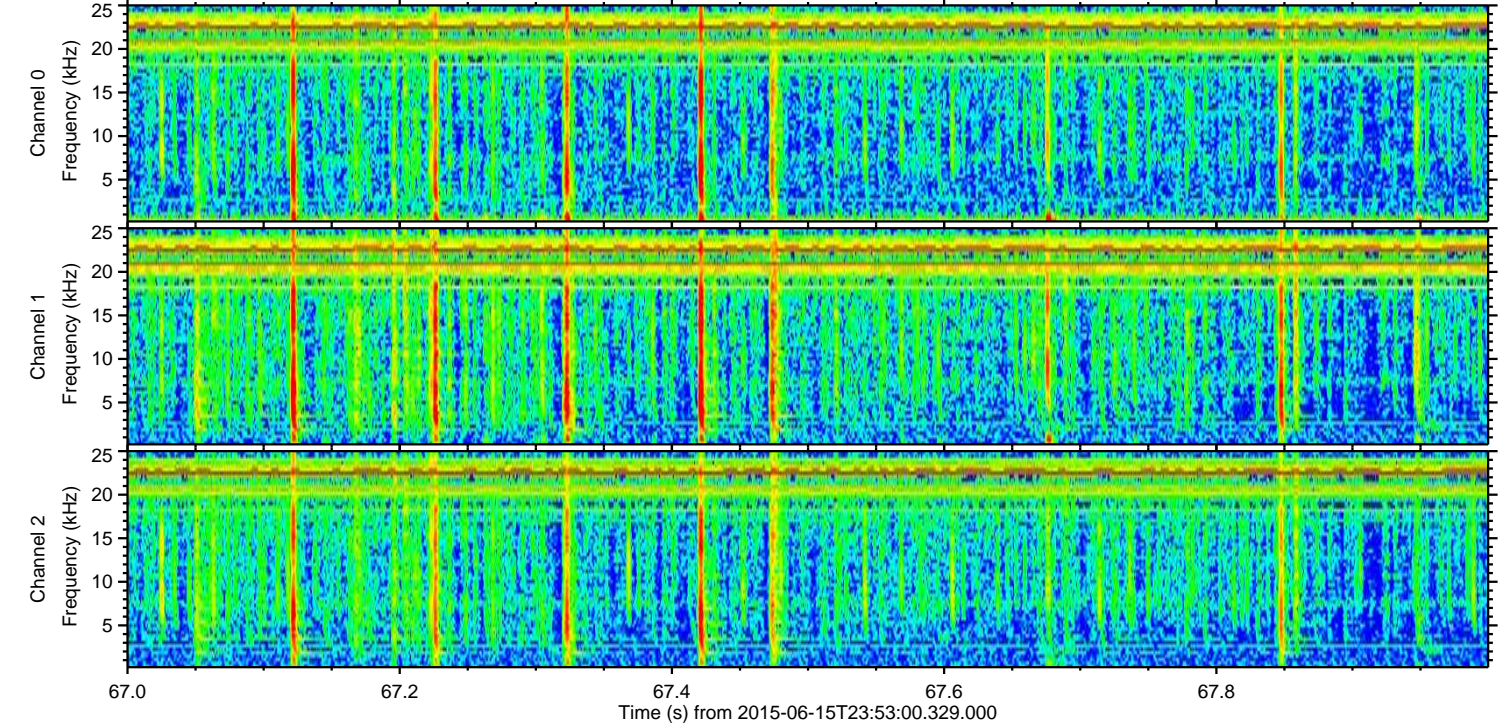
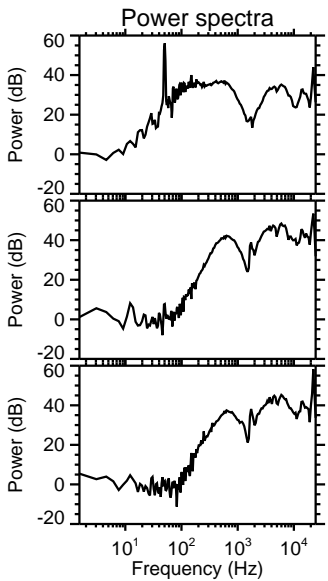
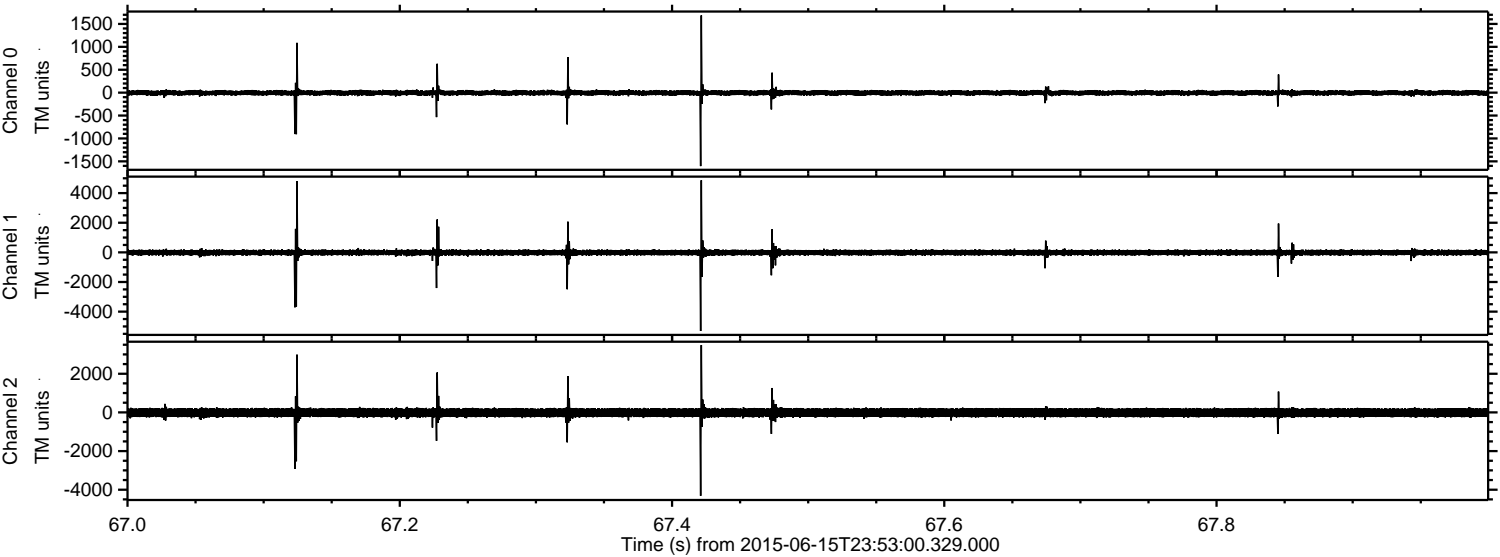


ELMAVAN 3D WAVEFORMS (Measured data sampled at 50 kHz) 51000 packets of 144 samples from 2015-06-15T23:53:00.329.000. Part 65/147

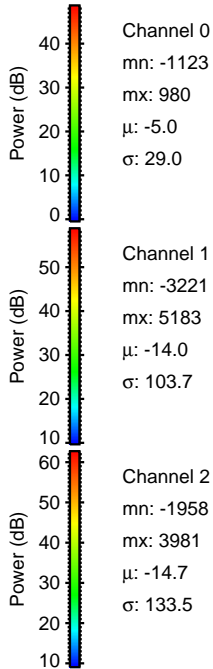
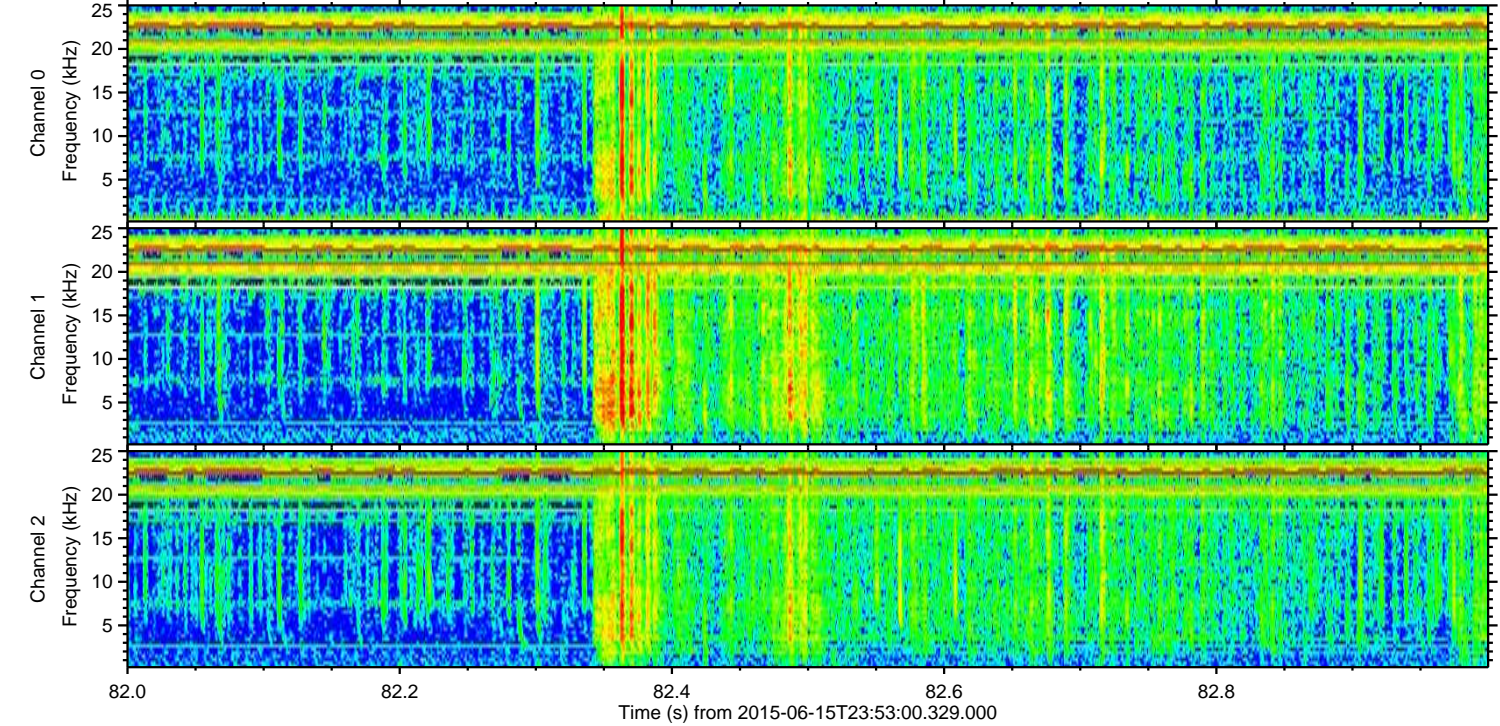
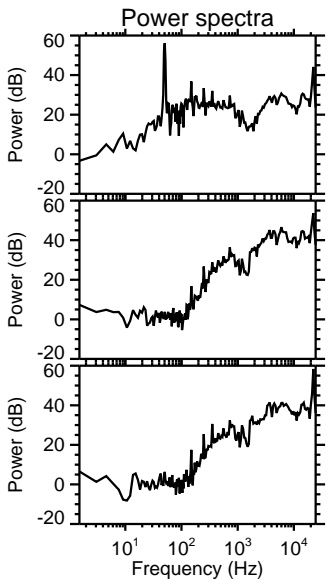
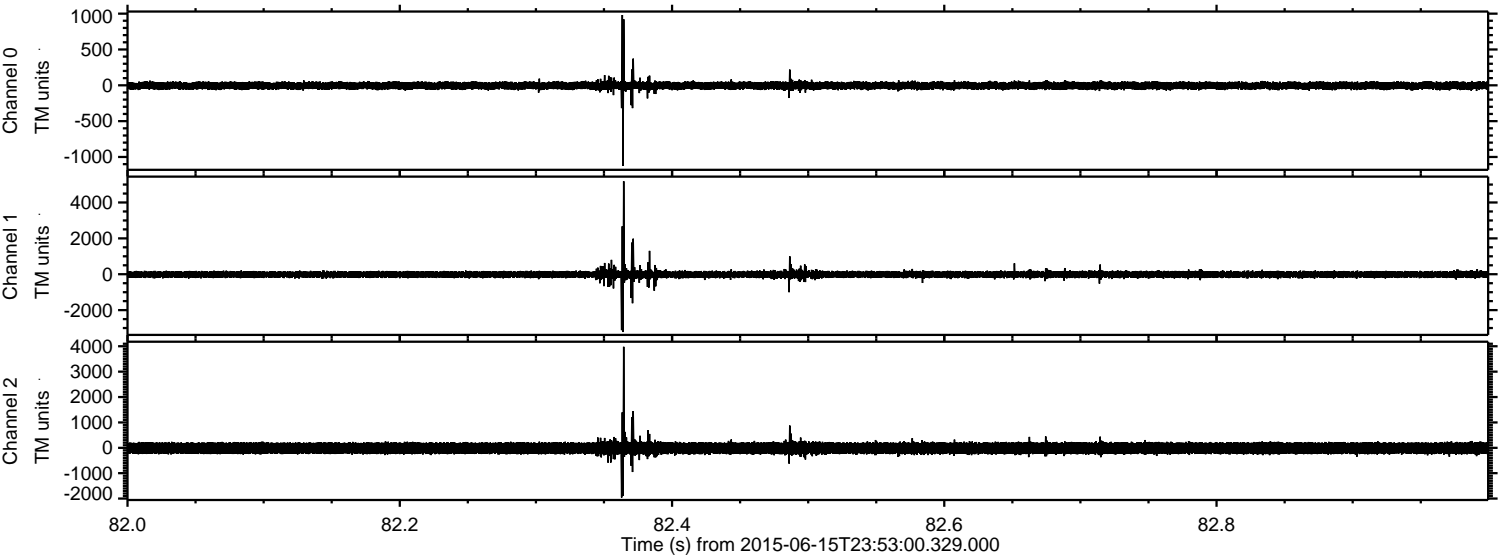
Processed Tue Jun 16 01:59:17 2015 by ELM ver.2012-10-06 from 001\_\_elm20150615\_235259\_\_dat00.bin



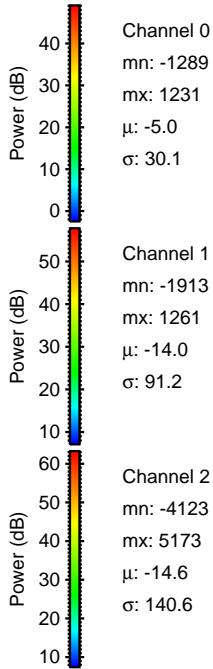
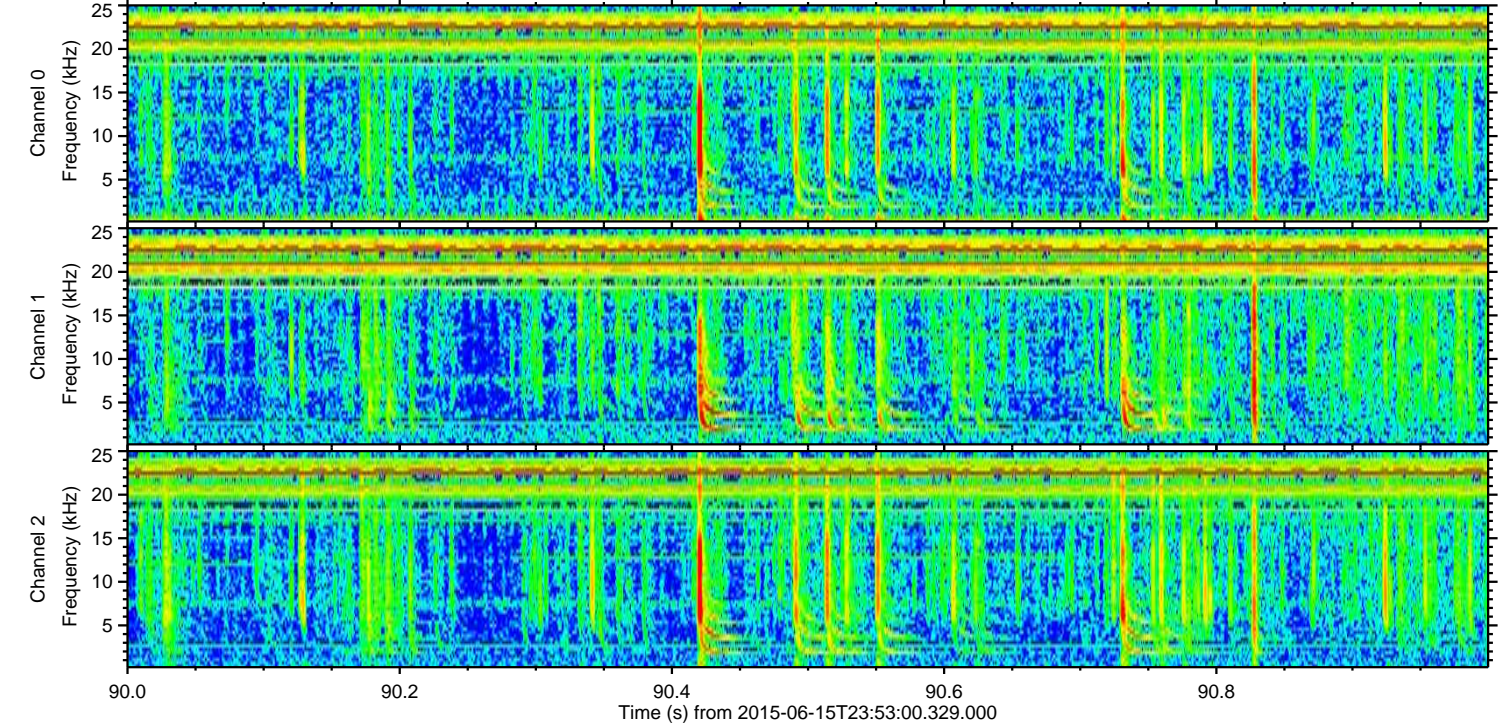
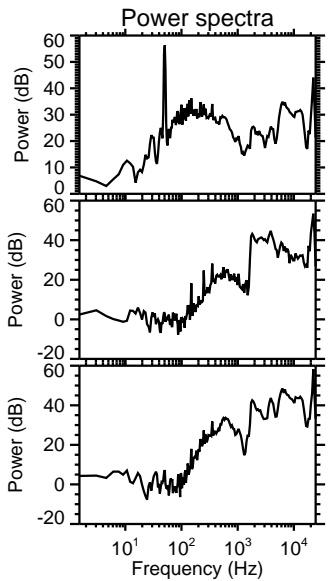
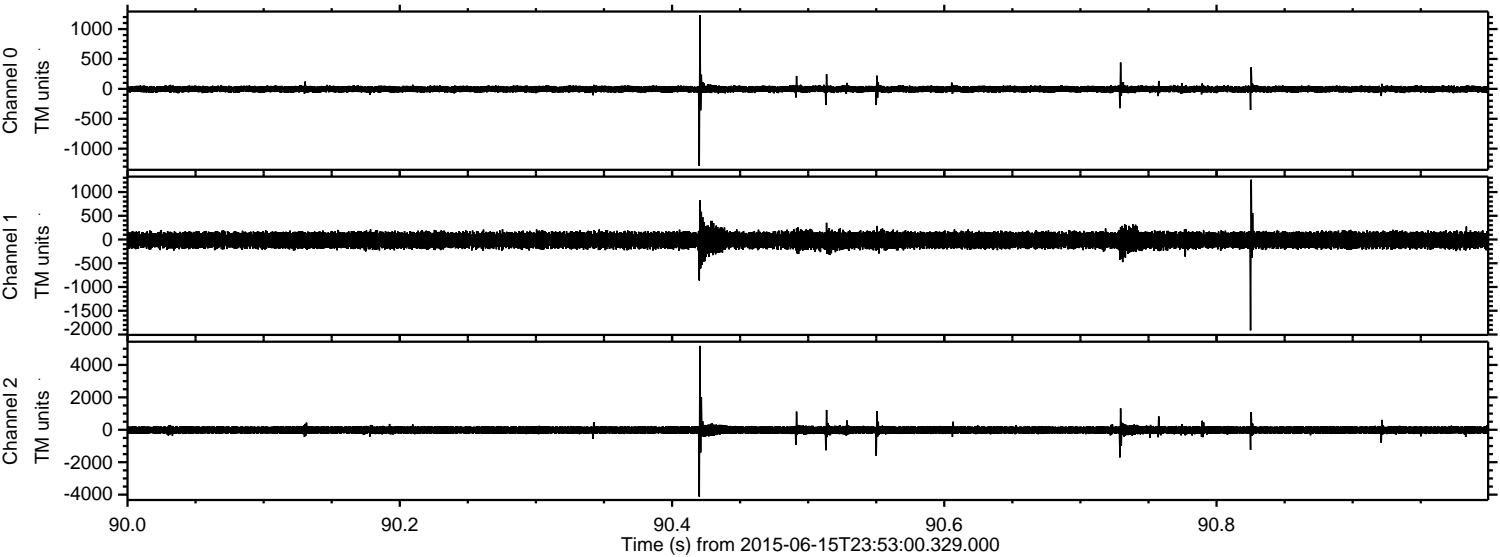
Processed Tue Jun 16 01:59:18 2015 by ELM ver.2012-10-06 from 001\_\_elm20150615\_235259\_\_dat00.bin



Processed Tue Jun 16 01:59:19 2015 by ELM ver.2012-10-06 from 001\_\_elm20150615\_235259\_\_dat00.bin



Processed Tue Jun 16 01:59:20 2015 by ELM ver.2012-10-06 from 001\_\_elm20150615\_235259\_\_dat00.bin



Channel 0  
mn: -1289  
mx: 1231  
 $\mu$ : -5.0  
 $\sigma$ : 30.1

Channel 1  
mn: -1913  
mx: 1261  
 $\mu$ : -14.0  
 $\sigma$ : 91.2

Channel 2  
mn: -4123  
mx: 5173  
 $\mu$ : -14.6  
 $\sigma$ : 140.6

Processed Tue Jun 16 01:59:21 2015 by ELM ver.2012-10-06 from 001\_\_elm20150615\_235259\_\_dat00.bin

