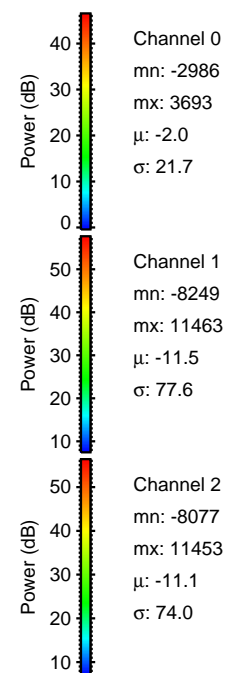
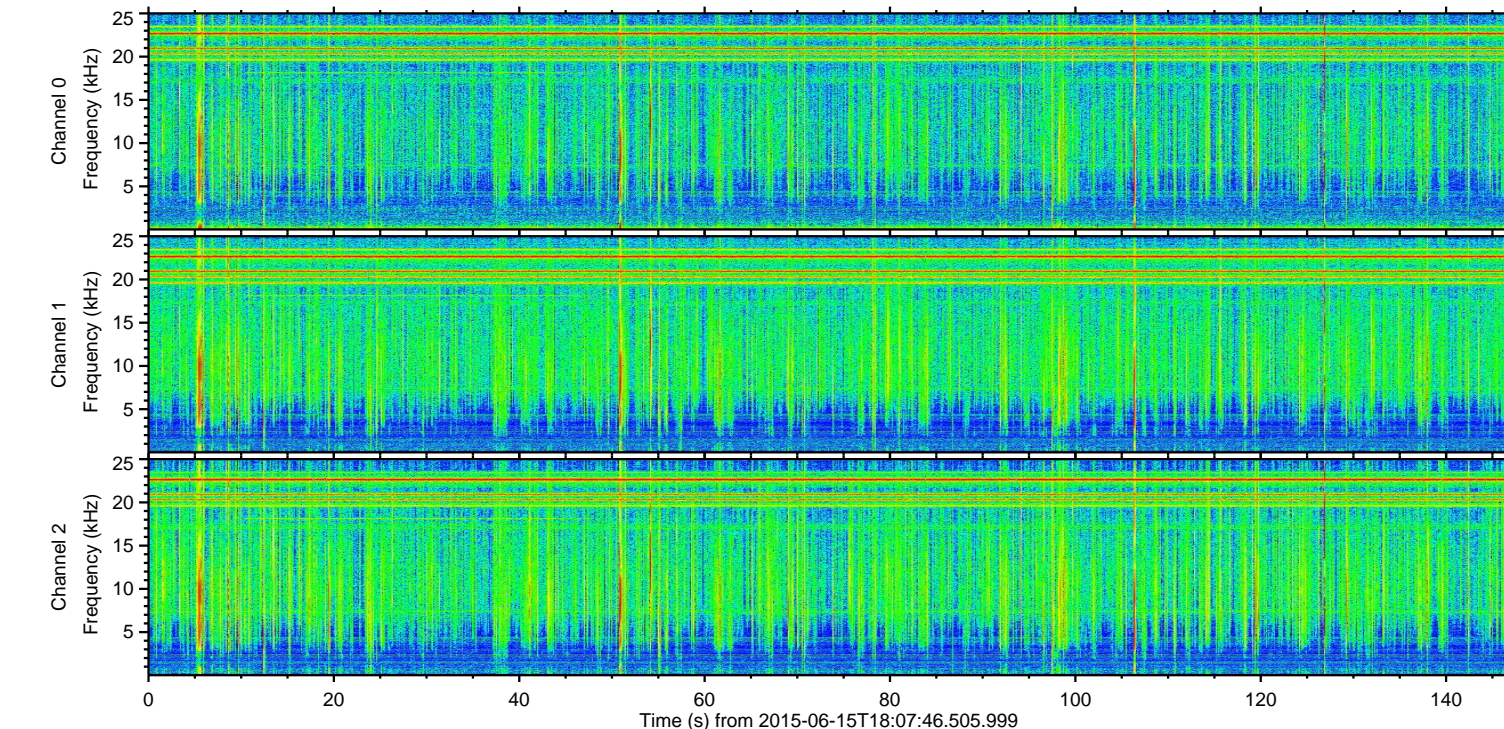
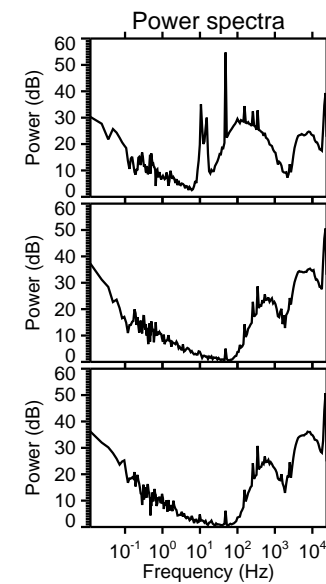
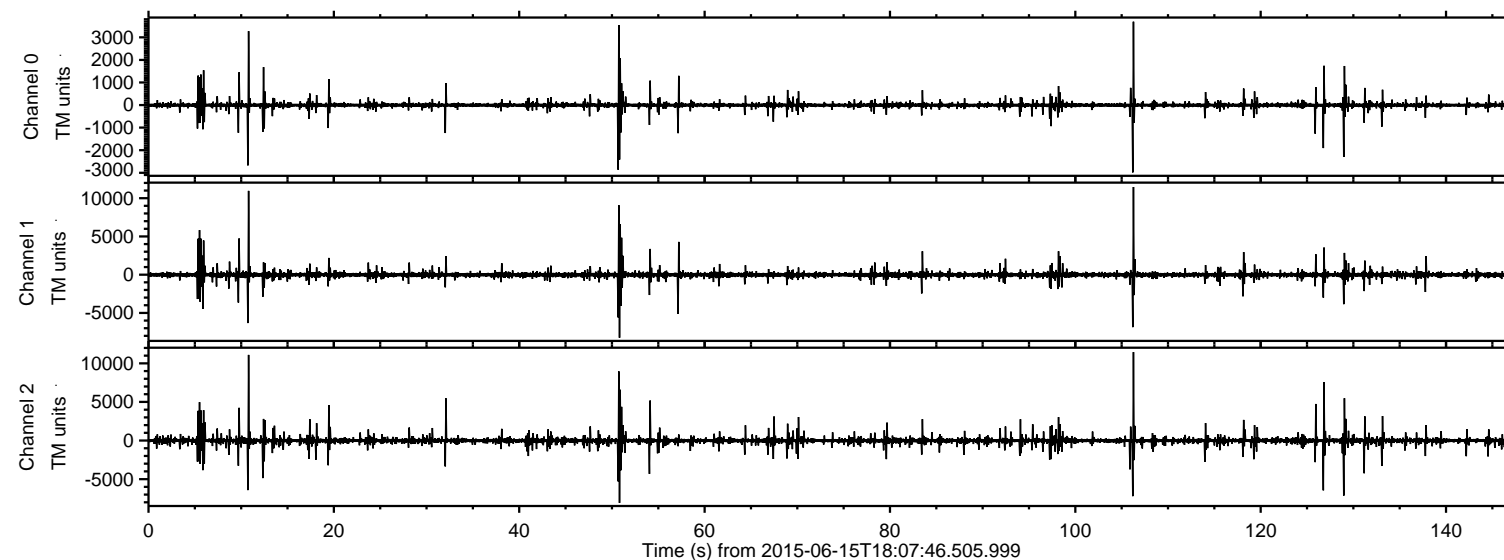


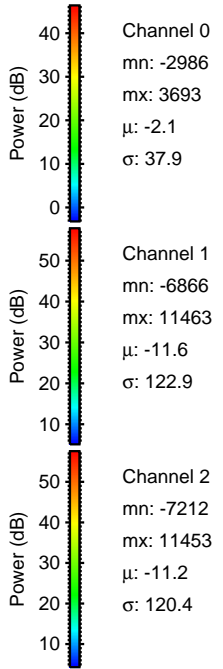
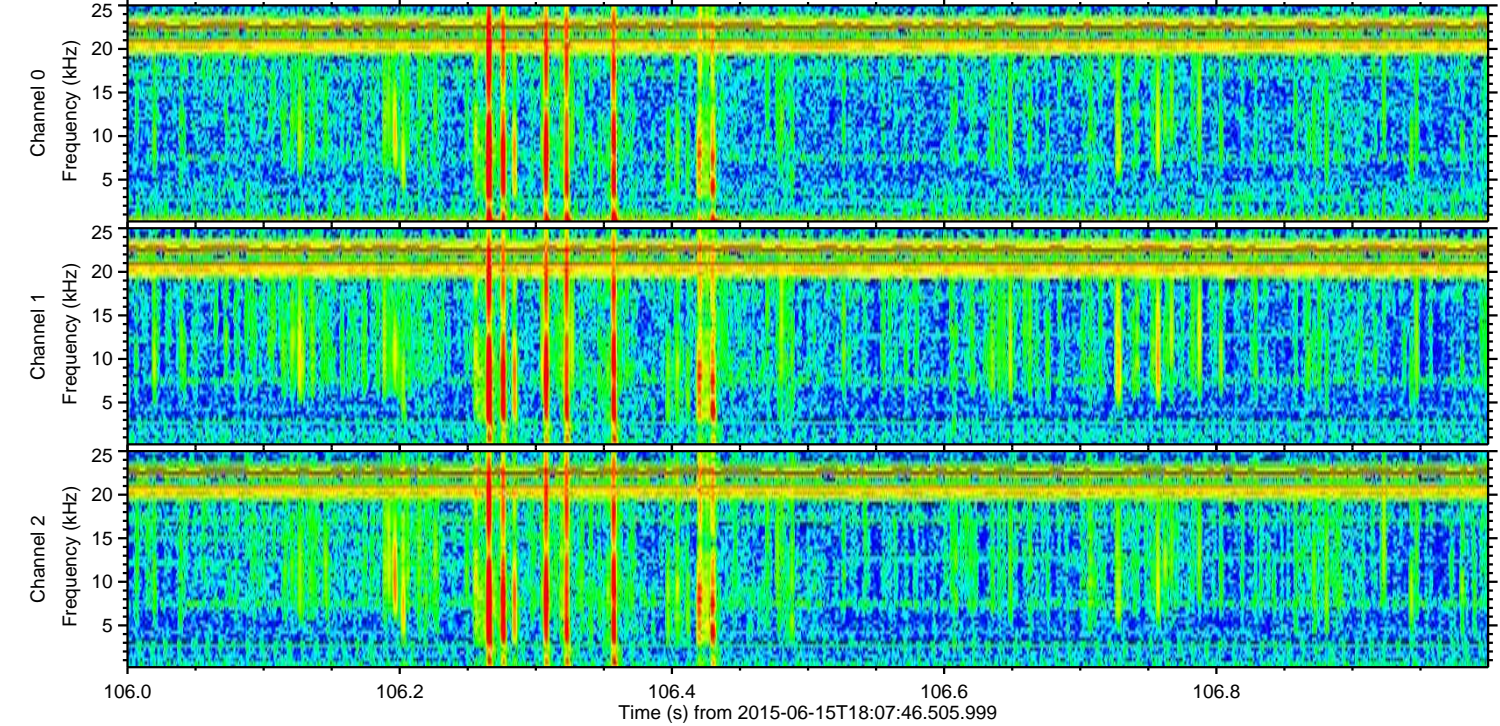
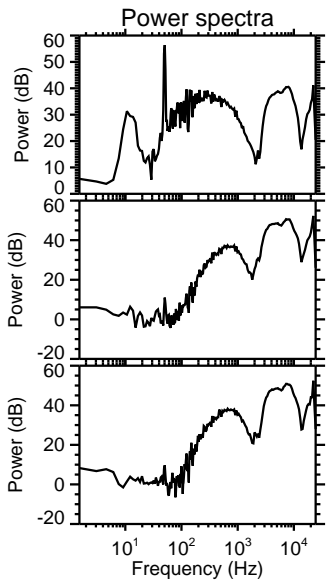
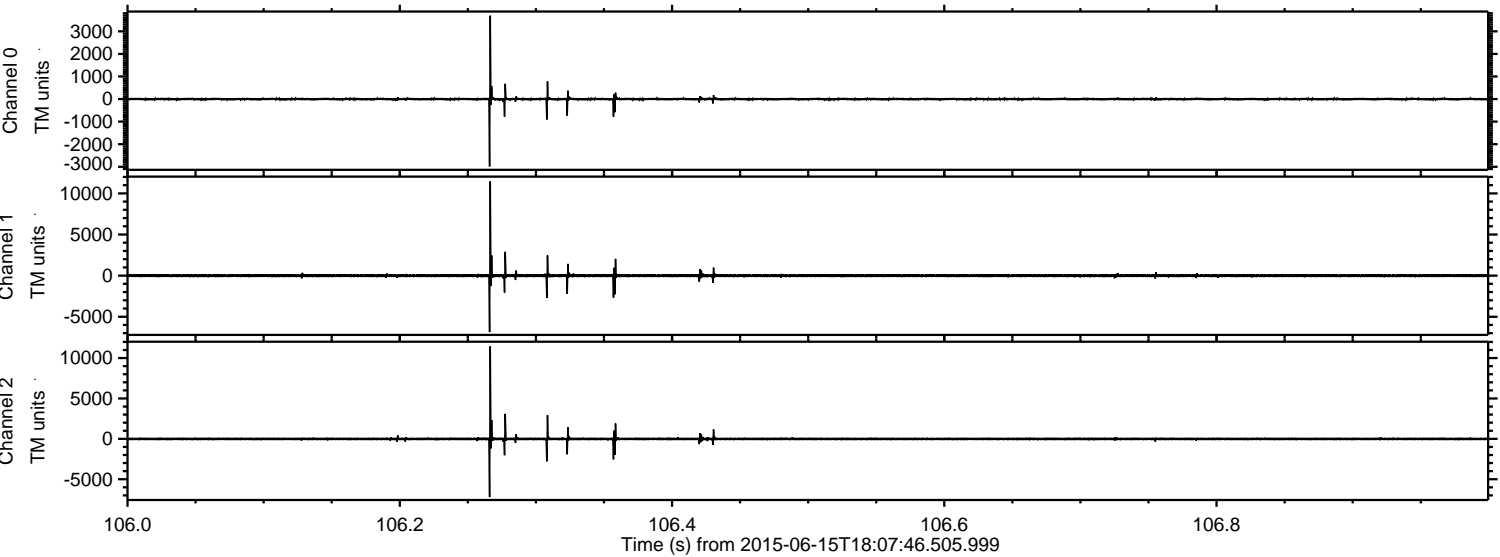
ELMAVAN 3D WAVEFORMS (Measured data sampled at 50 kHz) 51000 packets of 144 samples from 2015-06-15T18:07:46.505.999.

Processed Mon Jun 15 20:14:22 2015 by ELM ver.2012-10-06 from 001__elm20150615_180745__dat00.bin



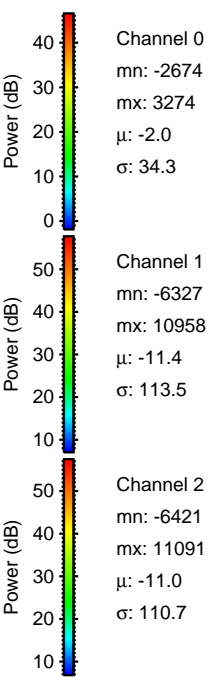
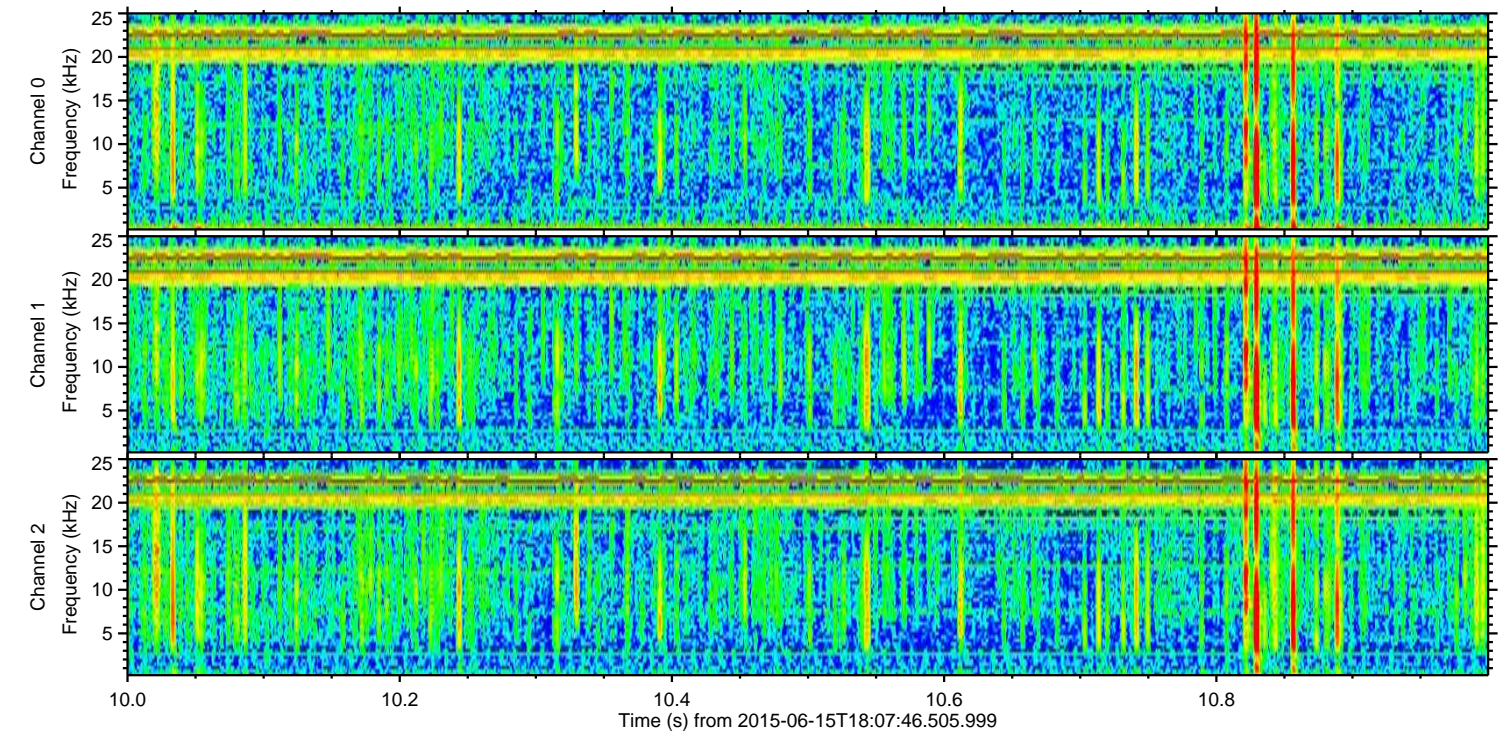
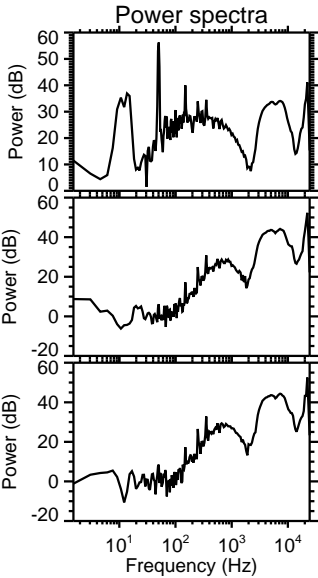
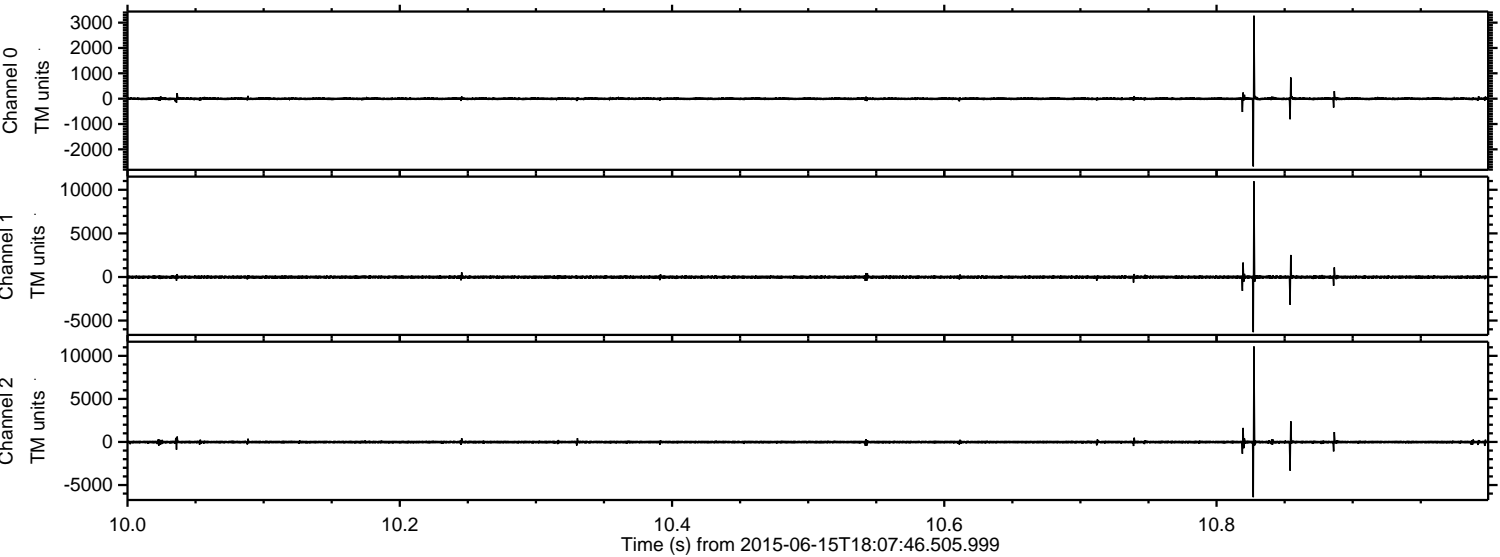
ELMAVAN 3D WAVEFORMS (Measured data sampled at 50 kHz) 51000 packets of 144 samples from 2015-06-15T18:07:46.505.999. Part 107/147

Processed Mon Jun 15 20:14:43 2015 by ELM ver.2012-10-06 from 001__elm20150615_180745__dat00.bin



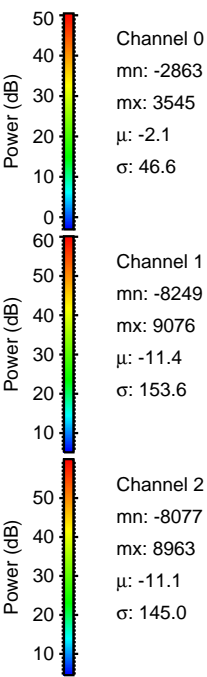
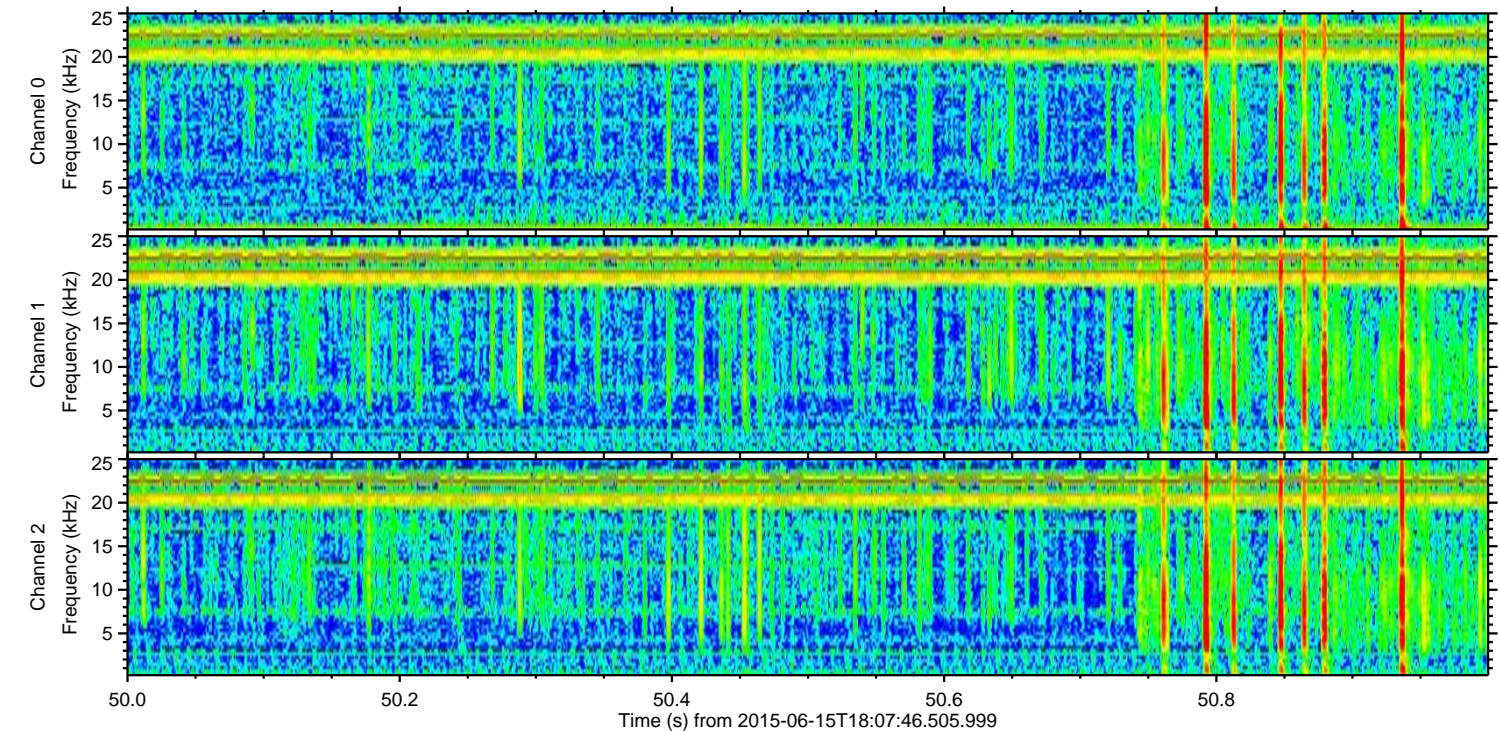
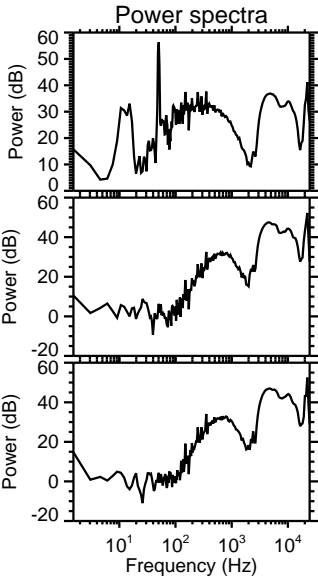
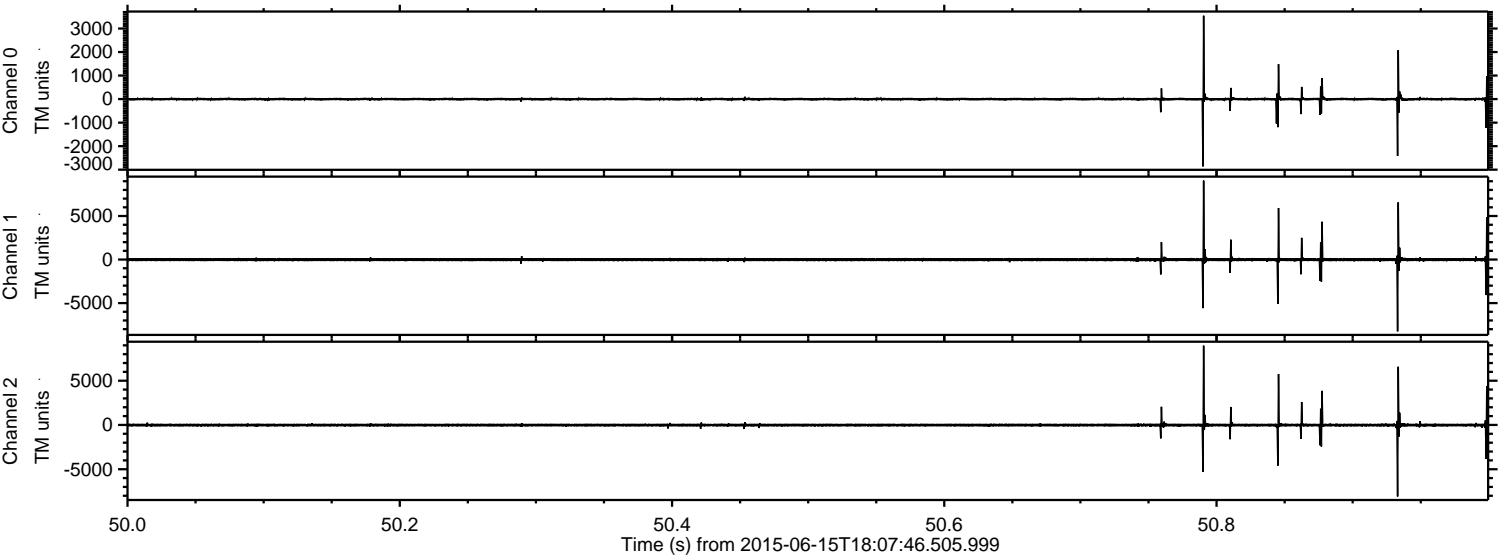
ELMAVAN 3D WAVEFORMS (Measured data sampled at 50 kHz) 51000 packets of 144 samples from 2015-06-15T18:07:46.505.999. Part 11/147

Processed Mon Jun 15 20:14:45 2015 by ELM ver.2012-10-06 from 001__elm20150615_180745__dat00.bin



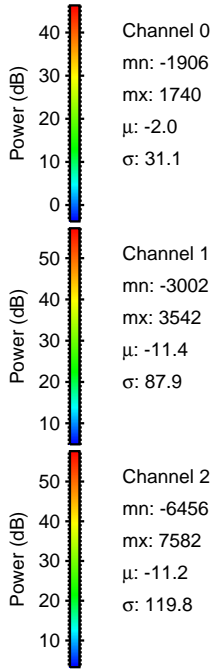
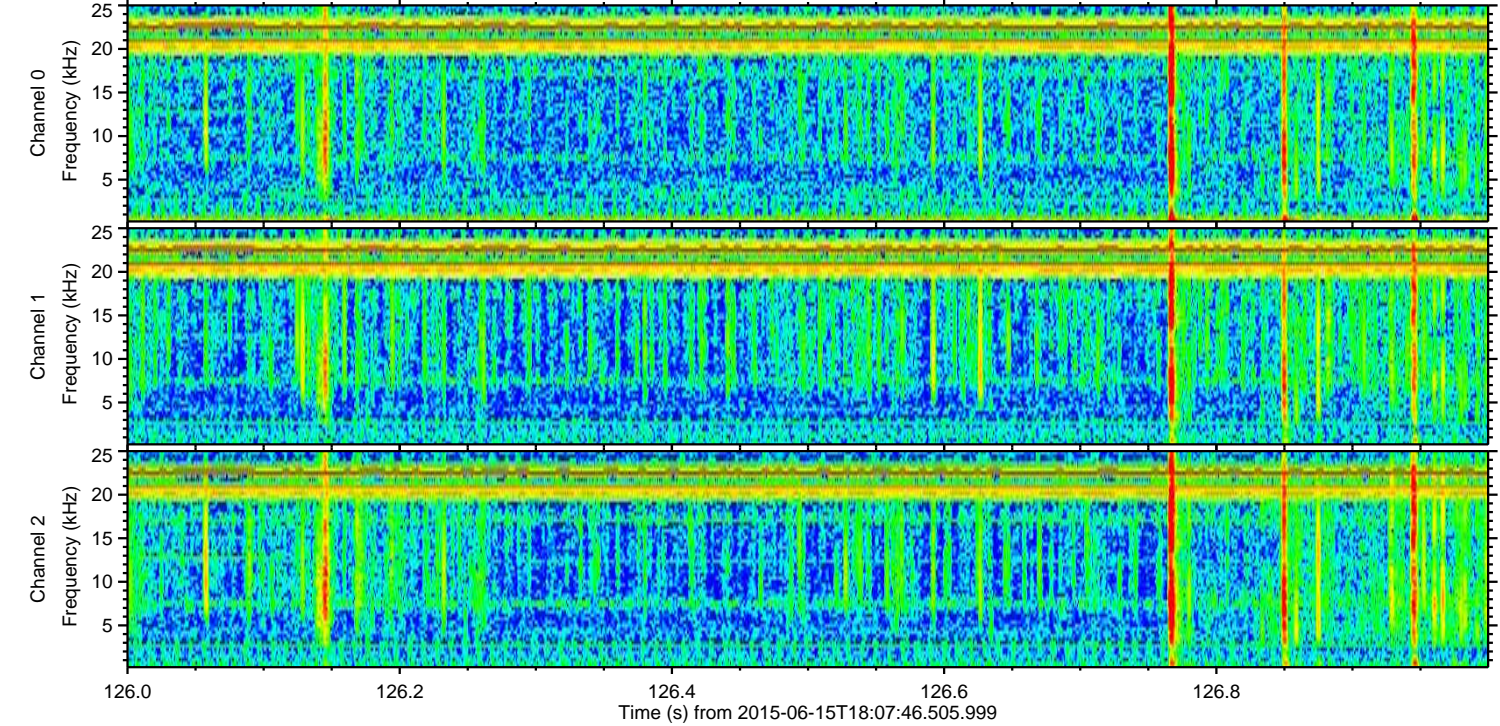
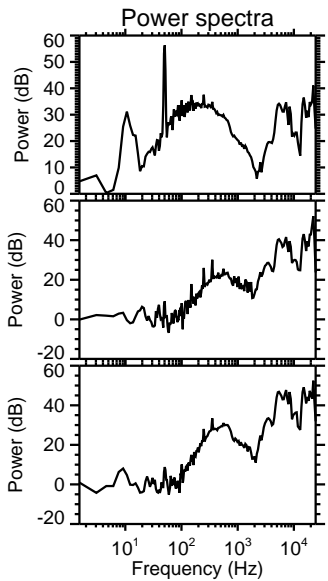
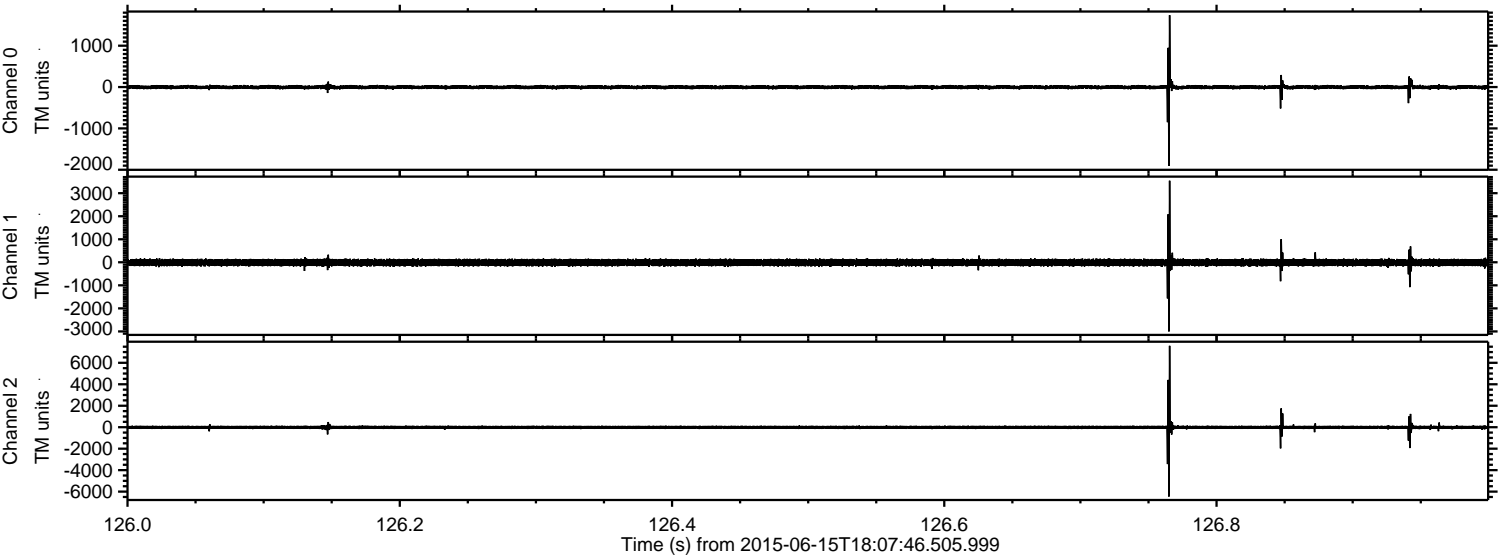
ELMAVAN 3D WAVEFORMS (Measured data sampled at 50 kHz) 51000 packets of 144 samples from 2015-06-15T18:07:46.505.999. Part 51/147

Processed Mon Jun 15 20:14:46 2015 by ELM ver.2012-10-06 from 001__elm20150615_180745__dat00.bin



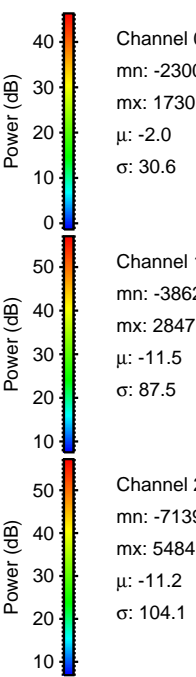
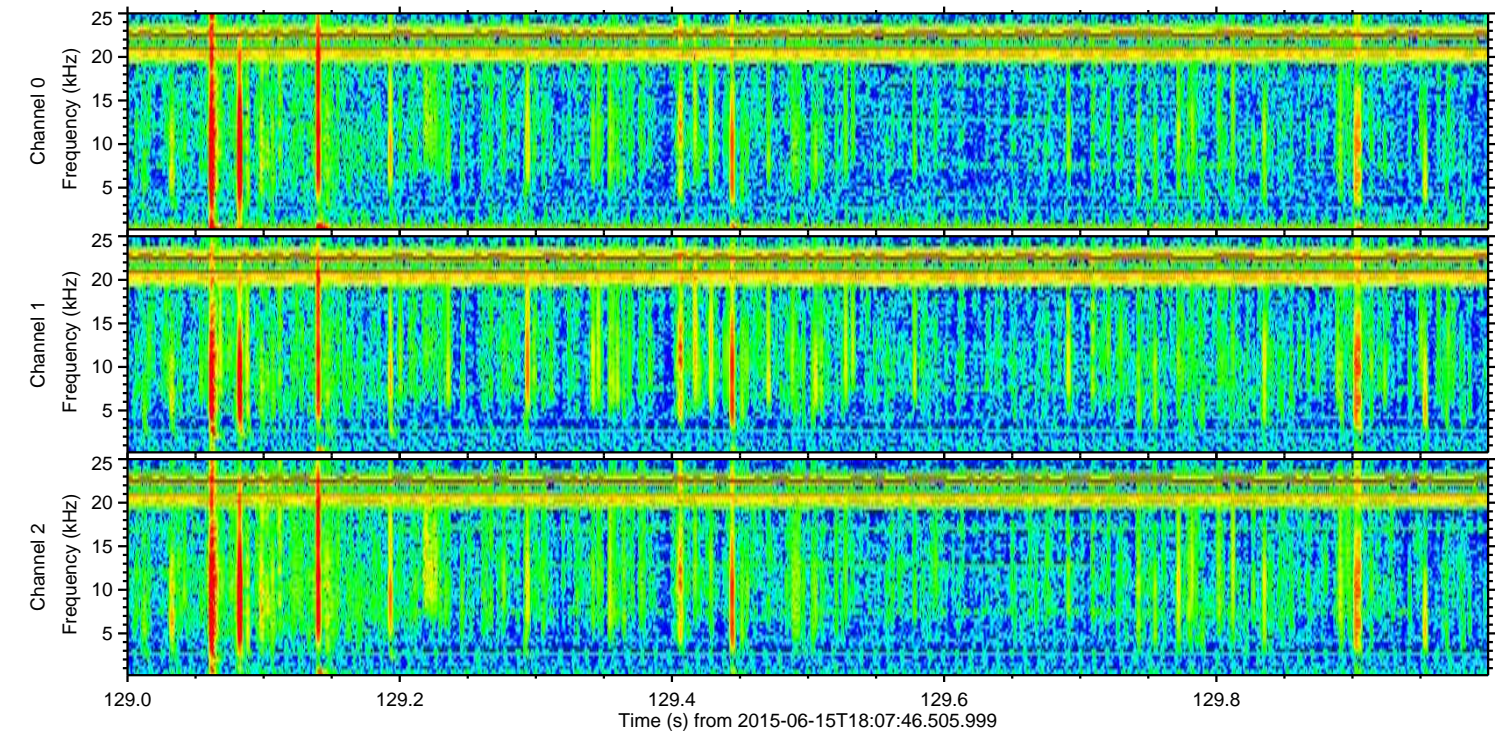
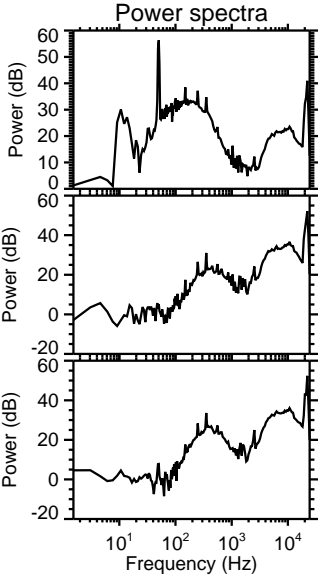
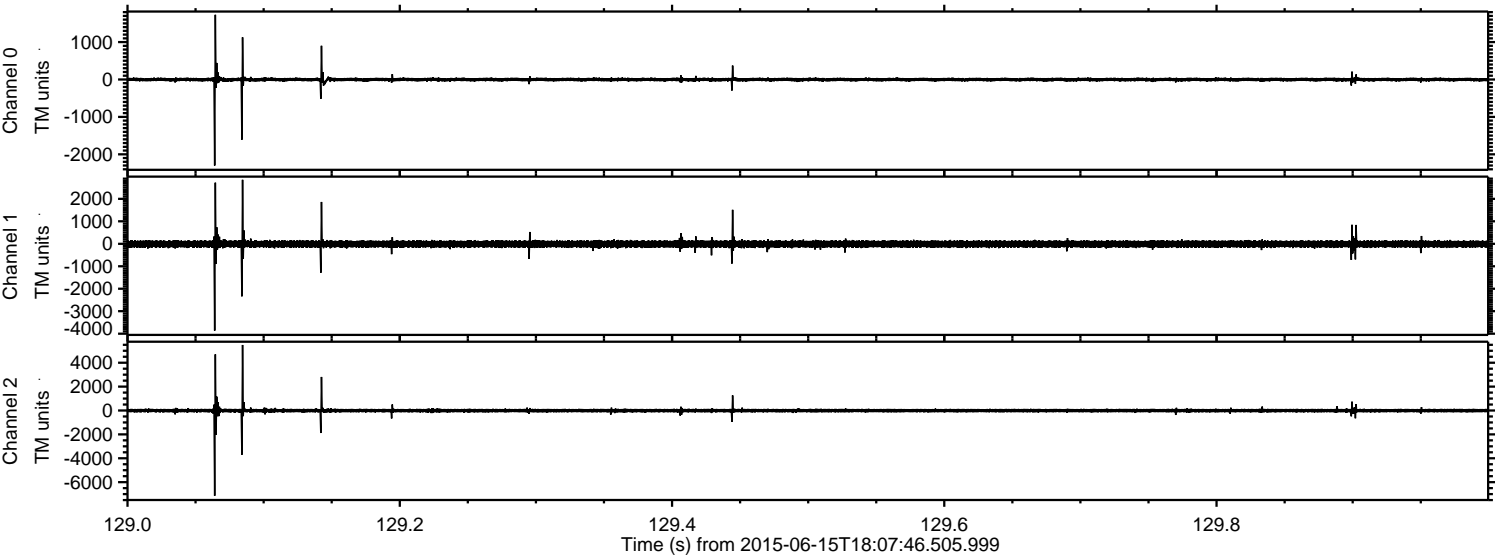
ELMAVAN 3D WAVEFORMS (Measured data sampled at 50 kHz) 51000 packets of 144 samples from 2015-06-15T18:07:46.505.999. Part 127/147

Processed Mon Jun 15 20:14:48 2015 by ELM ver.2012-10-06 from 001__elm20150615_180745__dat00.bin



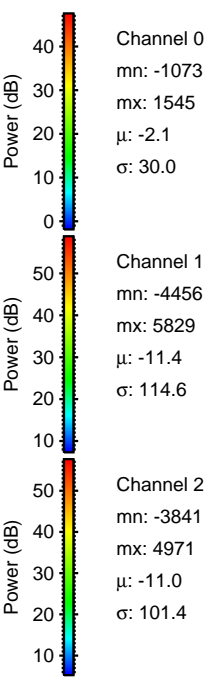
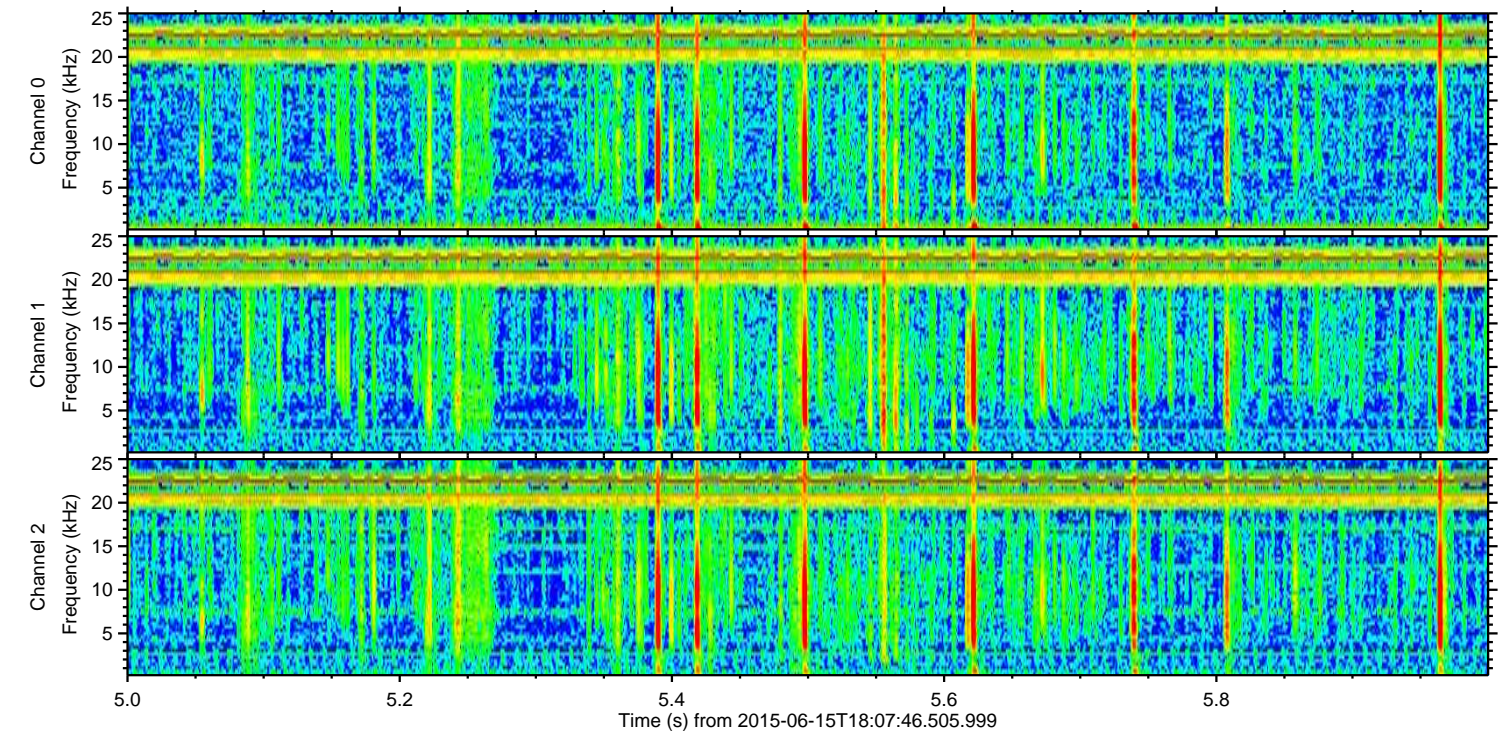
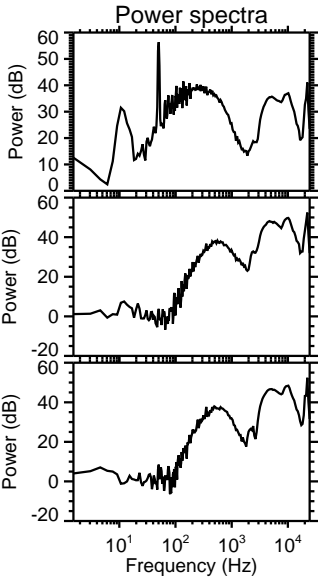
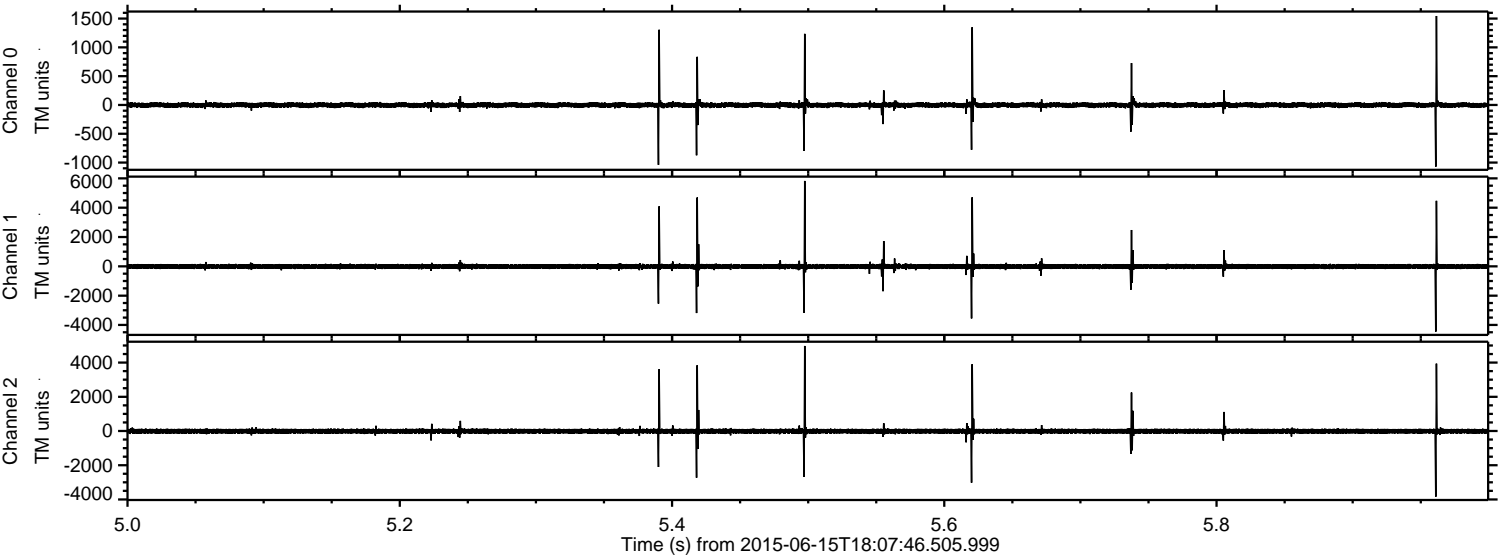
ELMAVAN 3D WAVEFORMS (Measured data sampled at 50 kHz) 51000 packets of 144 samples from 2015-06-15T18:07:46.505.999. Part 130/147

Processed Mon Jun 15 20:14:50 2015 by ELM ver.2012-10-06 from 001__elm20150615_180745__dat00.bin



ELMAVAN 3D WAVEFORMS (Measured data sampled at 50 kHz) 51000 packets of 144 samples from 2015-06-15T18:07:46.505.999. Part 6/147

Processed Mon Jun 15 20:14:51 2015 by ELM ver.2012-10-06 from 001__elm20150615_180745__dat00.bin

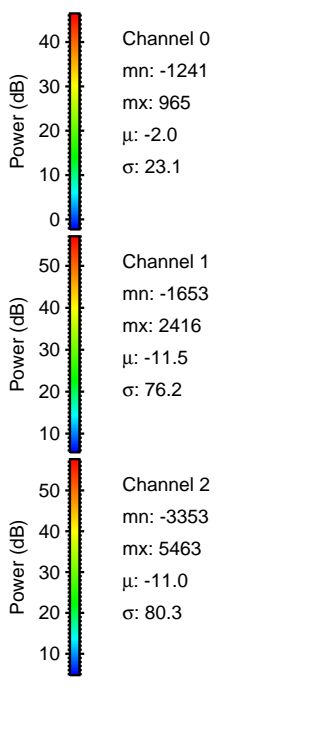
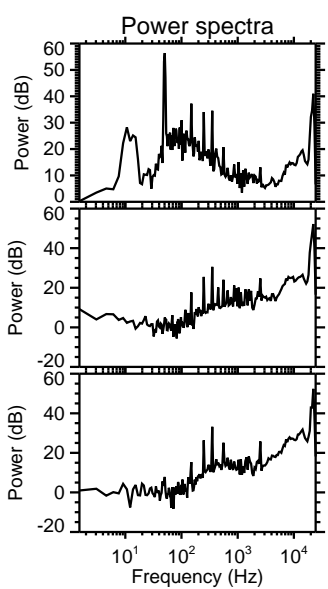
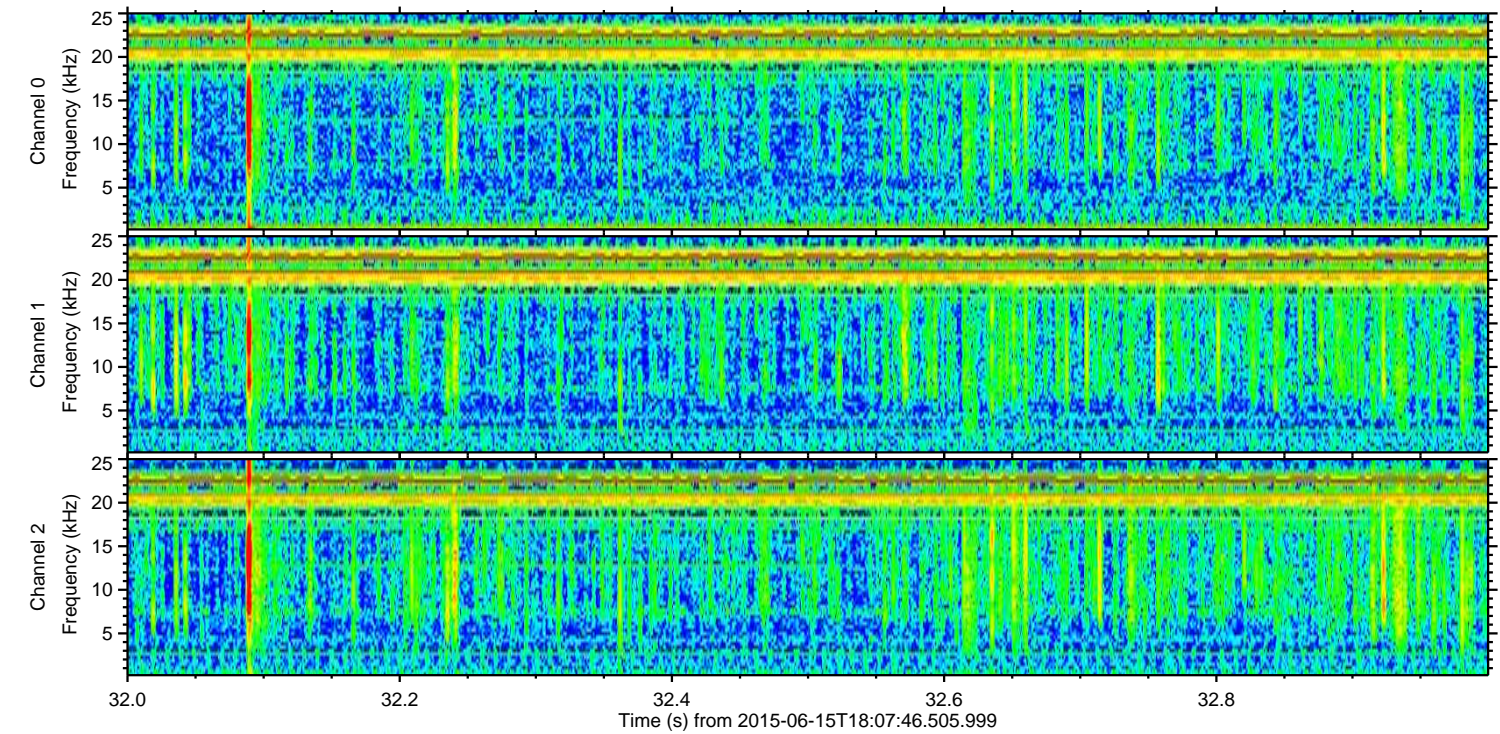
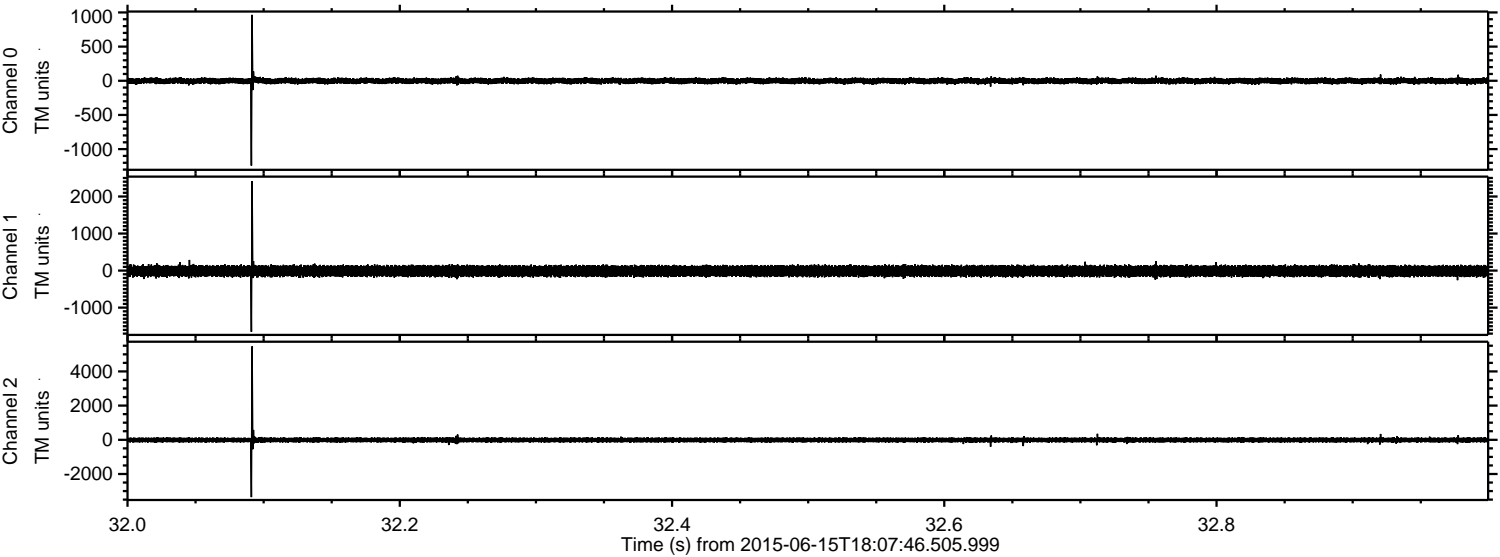


Channel 0
mn: -1073
mx: 1545
 μ : -2.1
 σ : 30.0

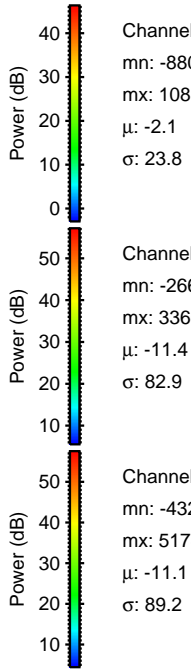
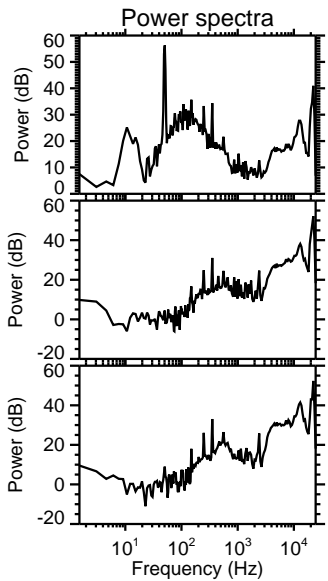
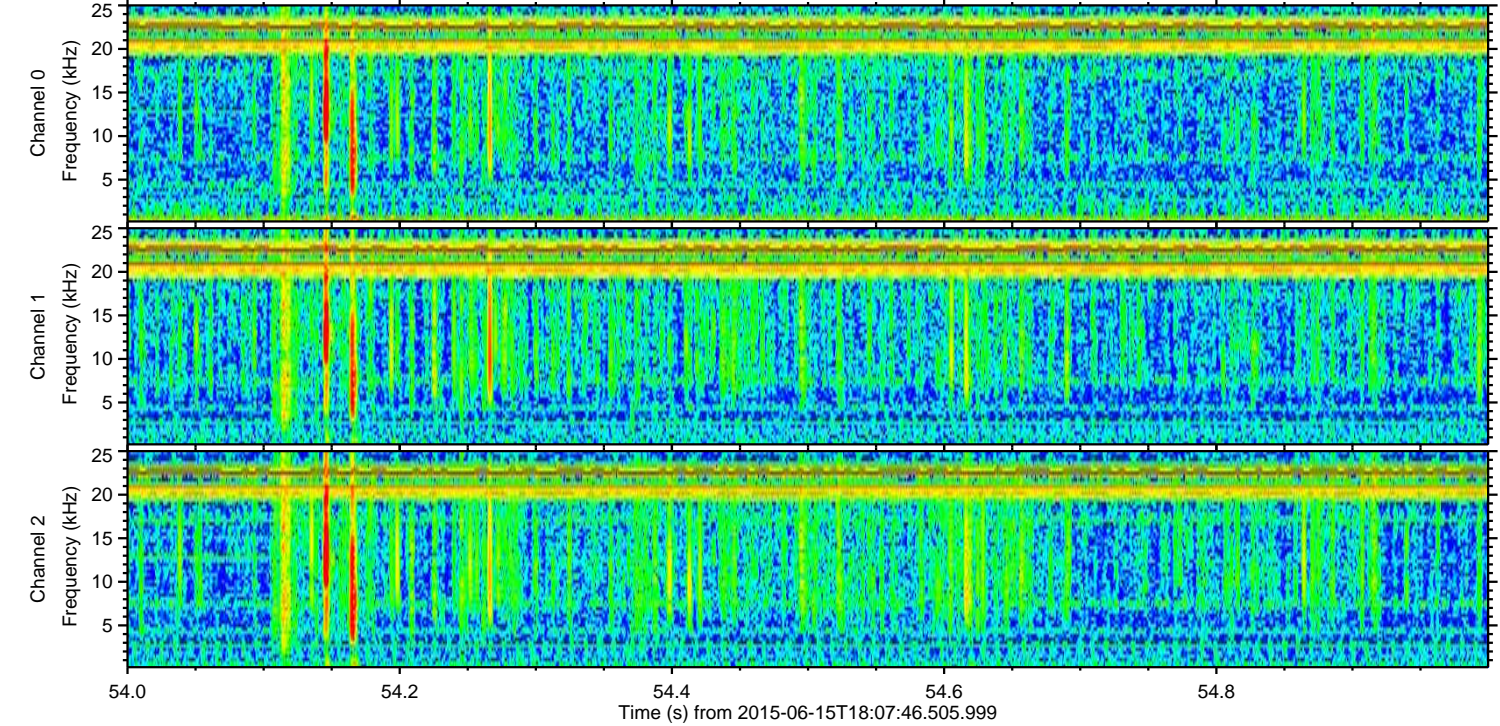
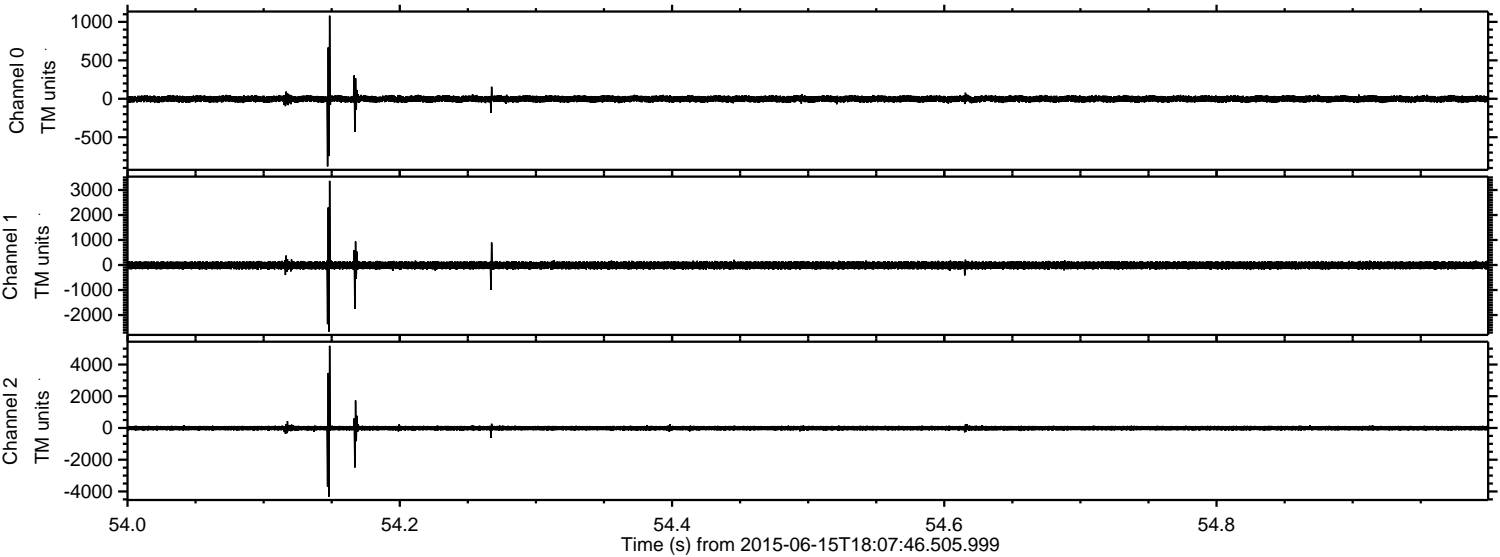
Channel 1
mn: -4456
mx: 5829
 μ : -11.4
 σ : 114.6

Channel 2
mn: -3841
mx: 4971
 μ : -11.0
 σ : 101.4

Processed Mon Jun 15 20:14:53 2015 by ELM ver.2012-10-06 from 001__elm20150615_180745__dat00.bin



Processed Mon Jun 15 20:14:54 2015 by ELM ver.2012-10-06 from 001__elm20150615_180745__dat00.bin

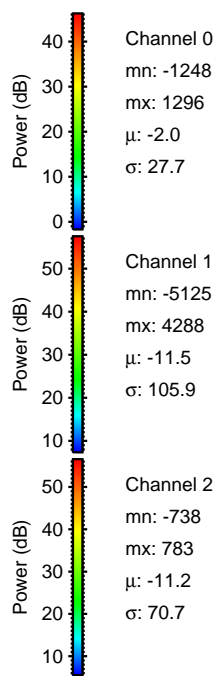
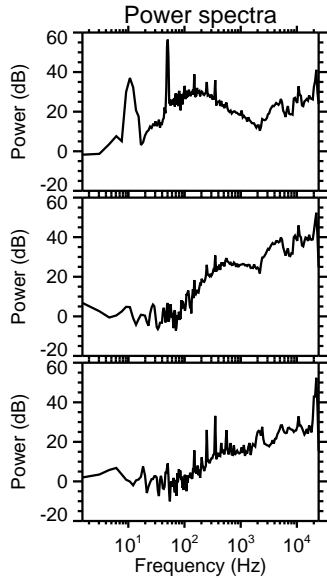
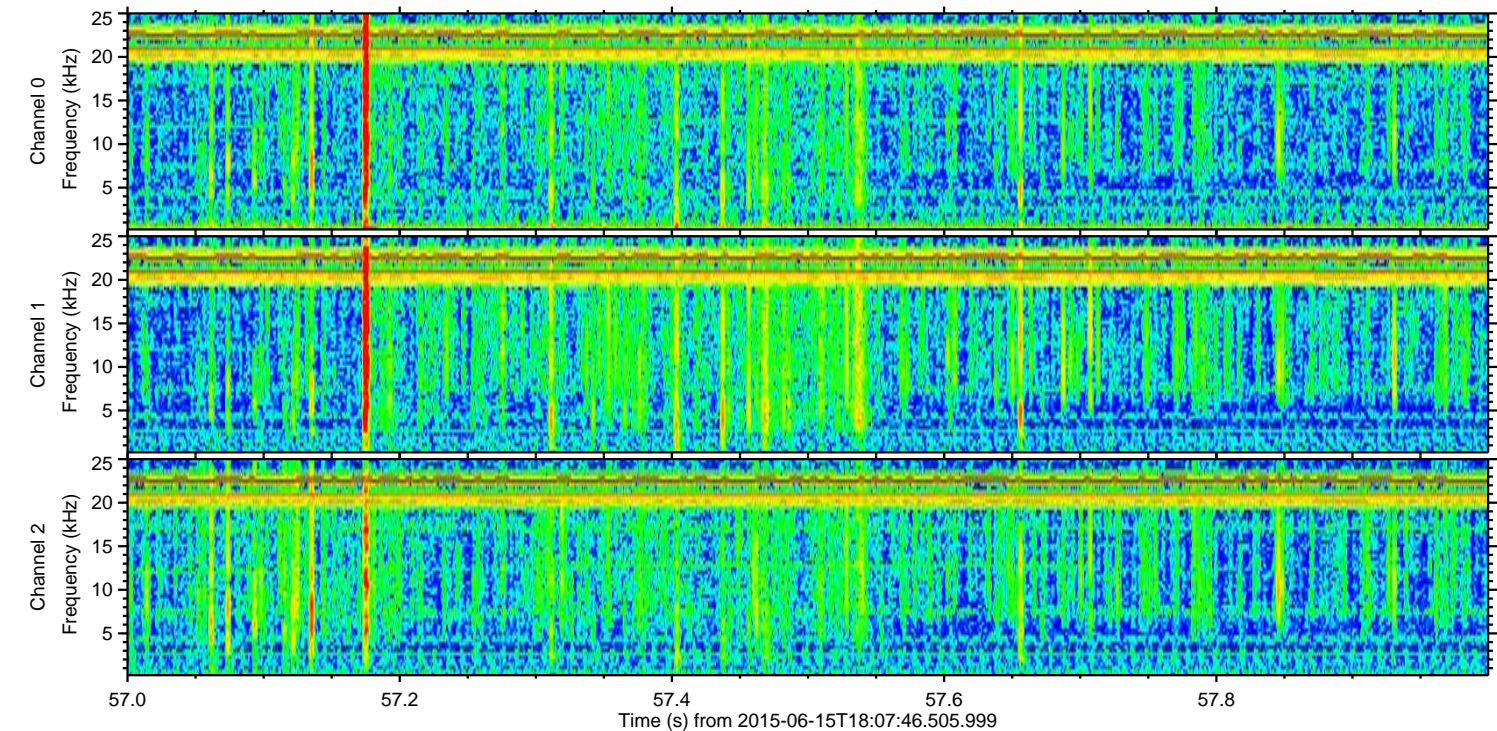
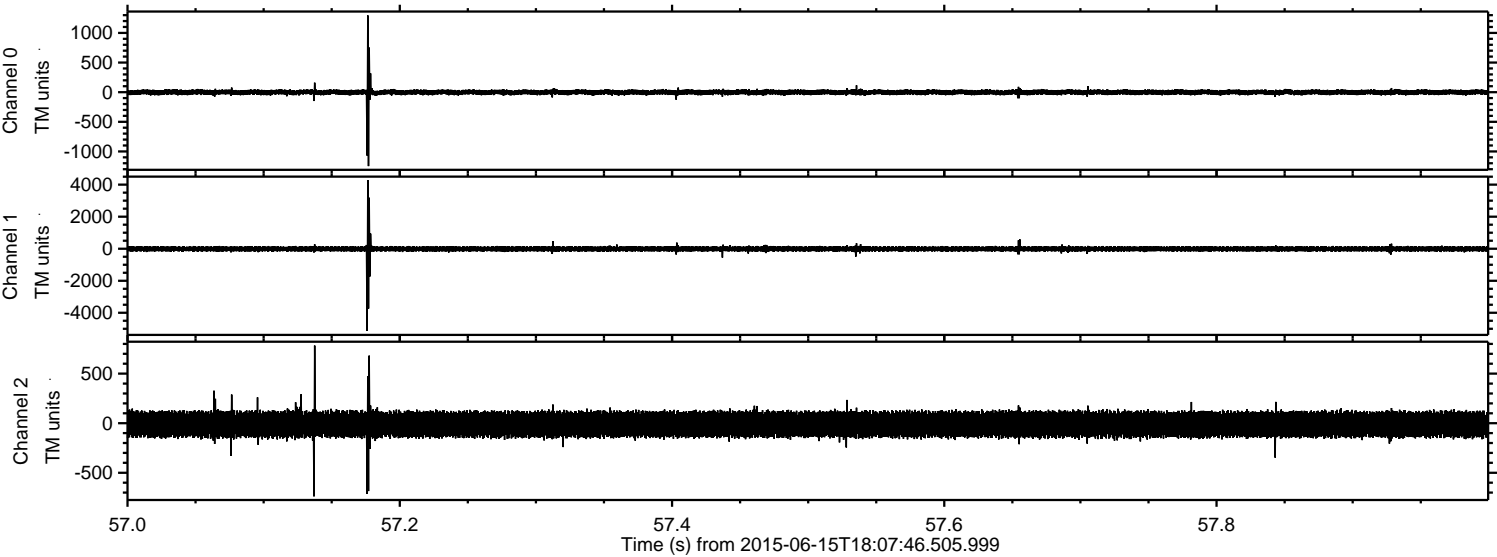


Channel 0
mn: -880
mx: 1081
 μ : -2.1
 σ : 23.8

Channel 1
mn: -2662
mx: 3366
 μ : -11.4
 σ : 82.9

Channel 2
mn: -4323
mx: 5178
 μ : -11.1
 σ : 89.2

Processed Mon Jun 15 20:14:56 2015 by ELM ver.2012-10-06 from 001__elm20150615_180745__dat00.bin



Channel 0
mn: -1248
mx: 1296
 μ : -2.0
 σ : 27.7

Channel 1
mn: -5125
mx: 4288
 μ : -11.5
 σ : 105.9

Channel 2
mn: -738
mx: 783
 μ : -11.2
 σ : 70.7

Processed Mon Jun 15 20:14:57 2015 by ELM ver.2012-10-06 from 001__elm20150615_180745__dat00.bin

