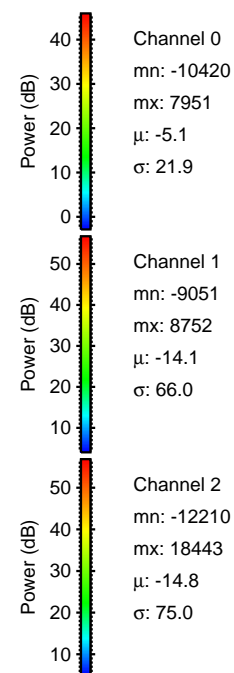
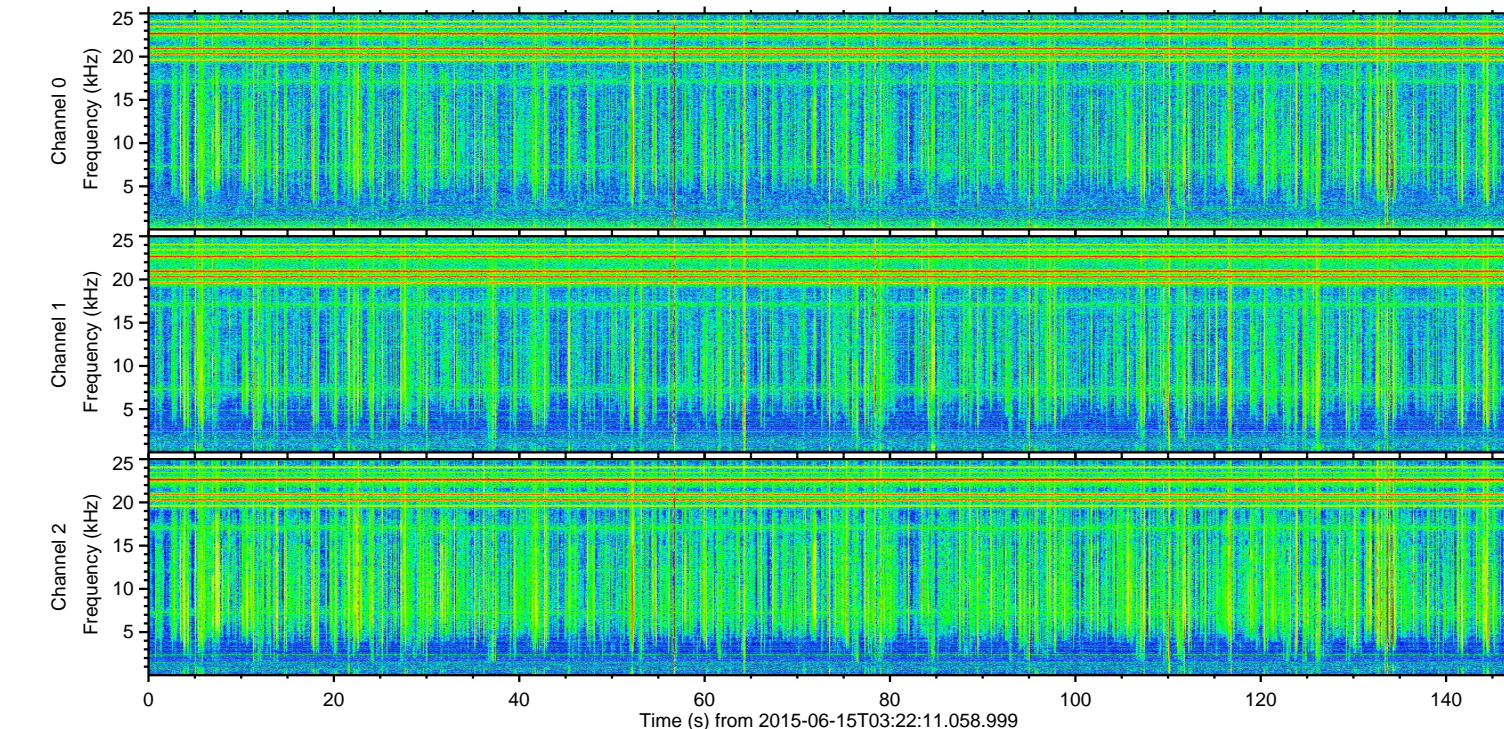
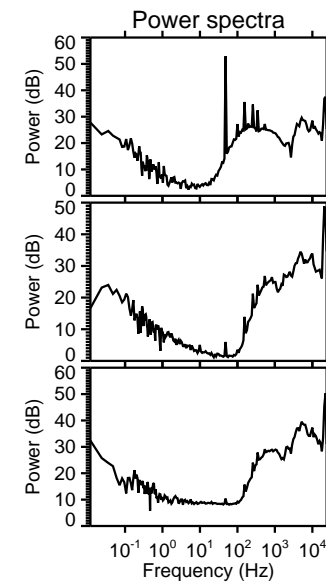
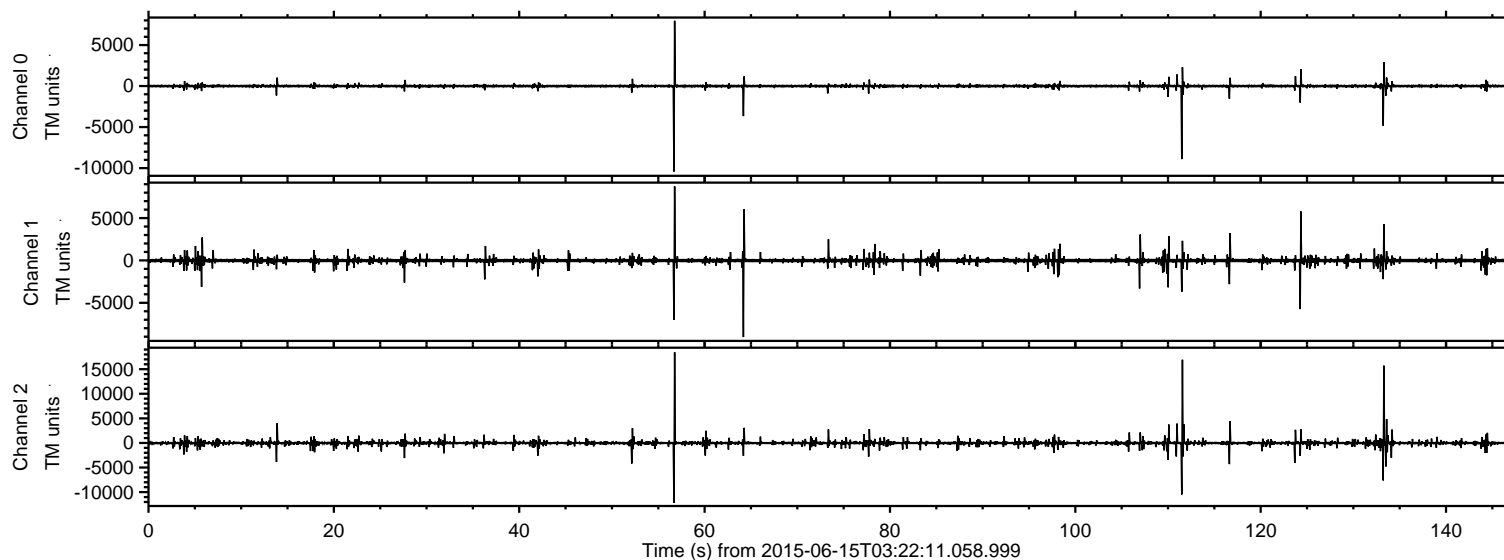


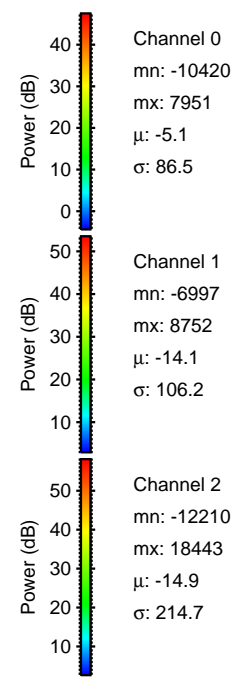
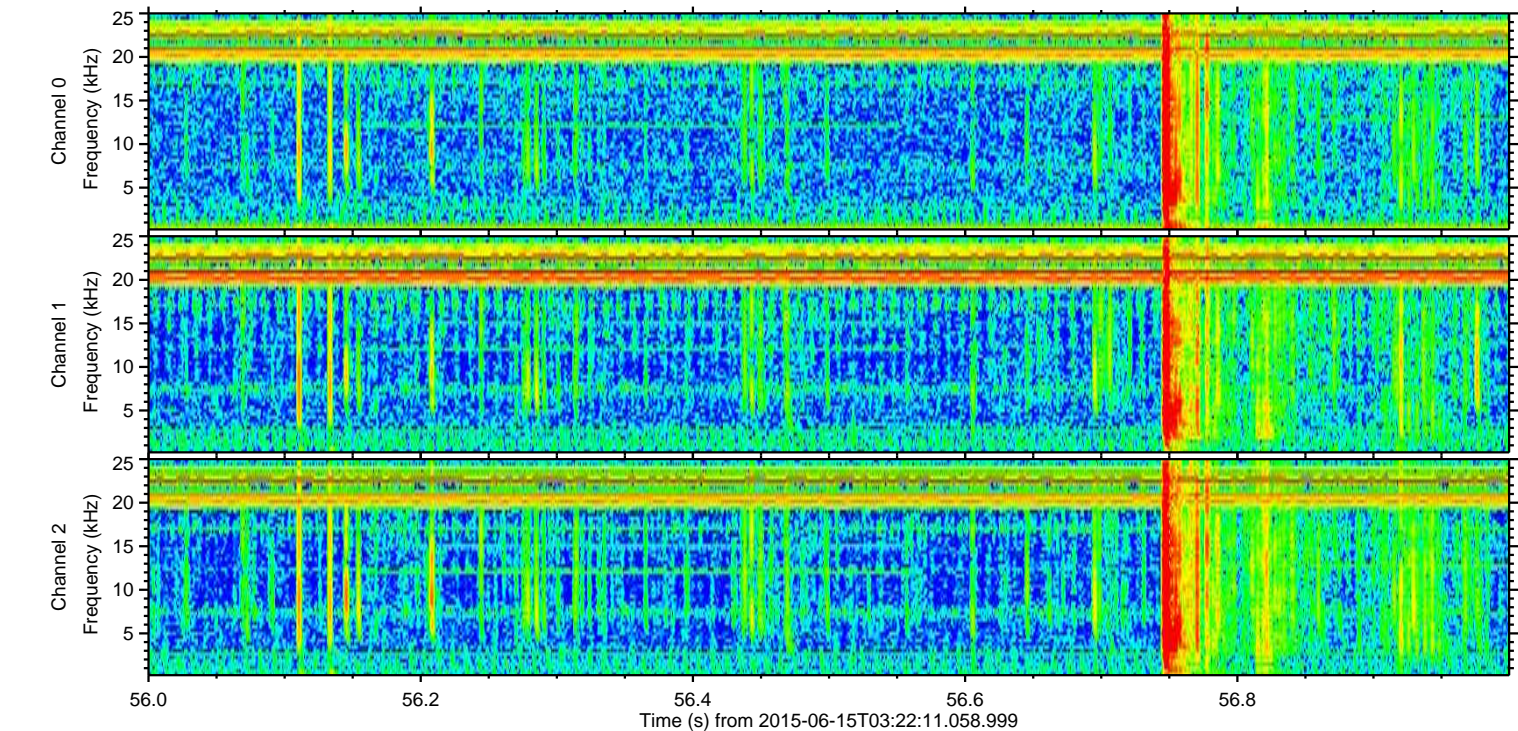
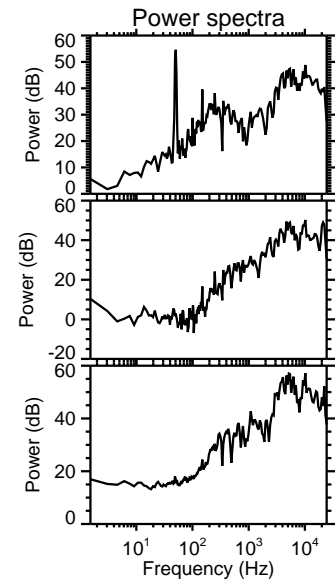
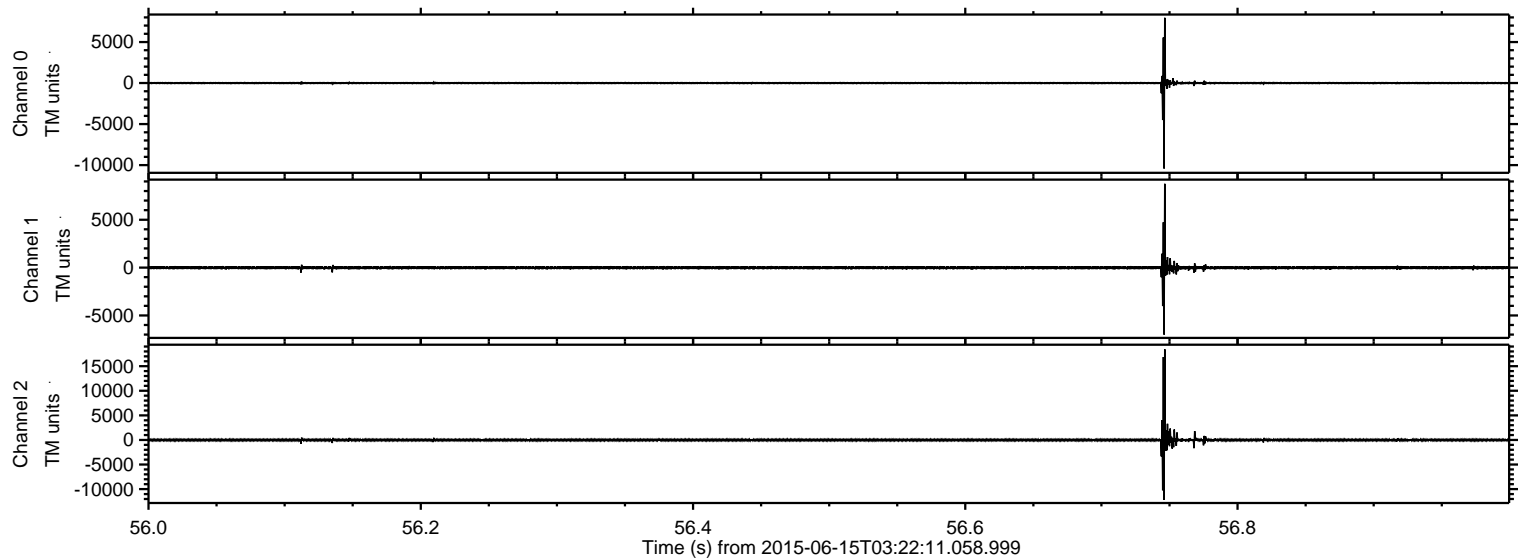
ELMAVAN 3D WAVEFORMS (Measured data sampled at 50 kHz) 51000 packets of 144 samples from 2015-06-15T03:22:11.058.999.

Processed Mon Jun 15 05:28:44 2015 by ELM ver.2012-10-06 from 001__elm20150615_032210__dat00.bin



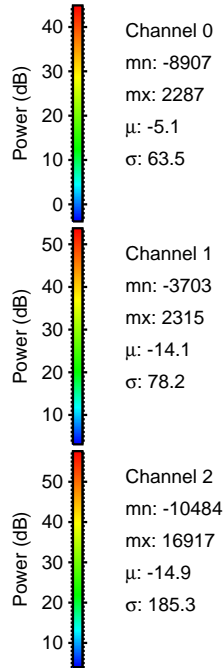
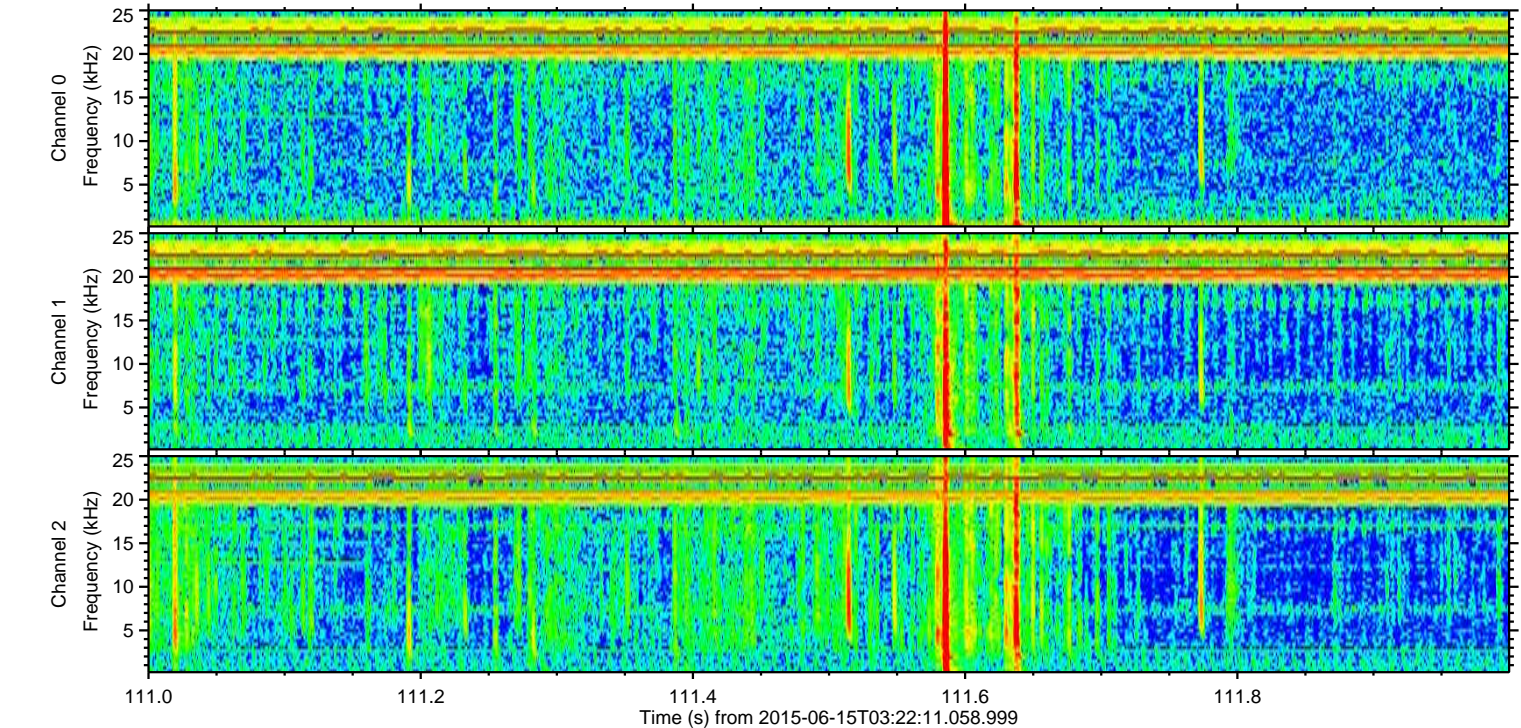
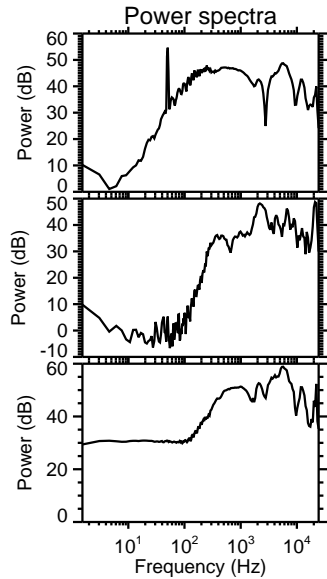
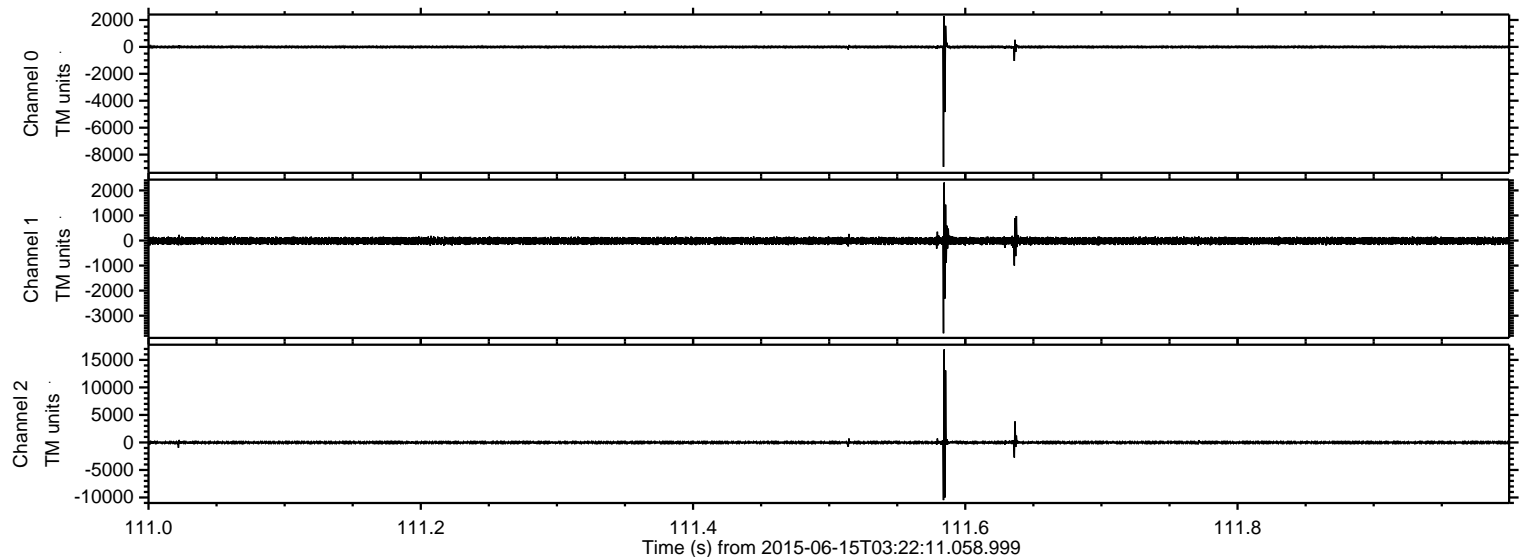
ELMAVAN 3D WAVEFORMS (Measured data sampled at 50 kHz) 51000 packets of 144 samples from 2015-06-15T03:22:11.058.999. Part 57/147

Processed Mon Jun 15 05:29:05 2015 by ELM ver.2012-10-06 from 001__elm20150615_032210__dat00.bin



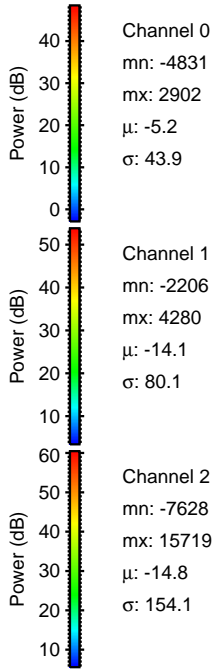
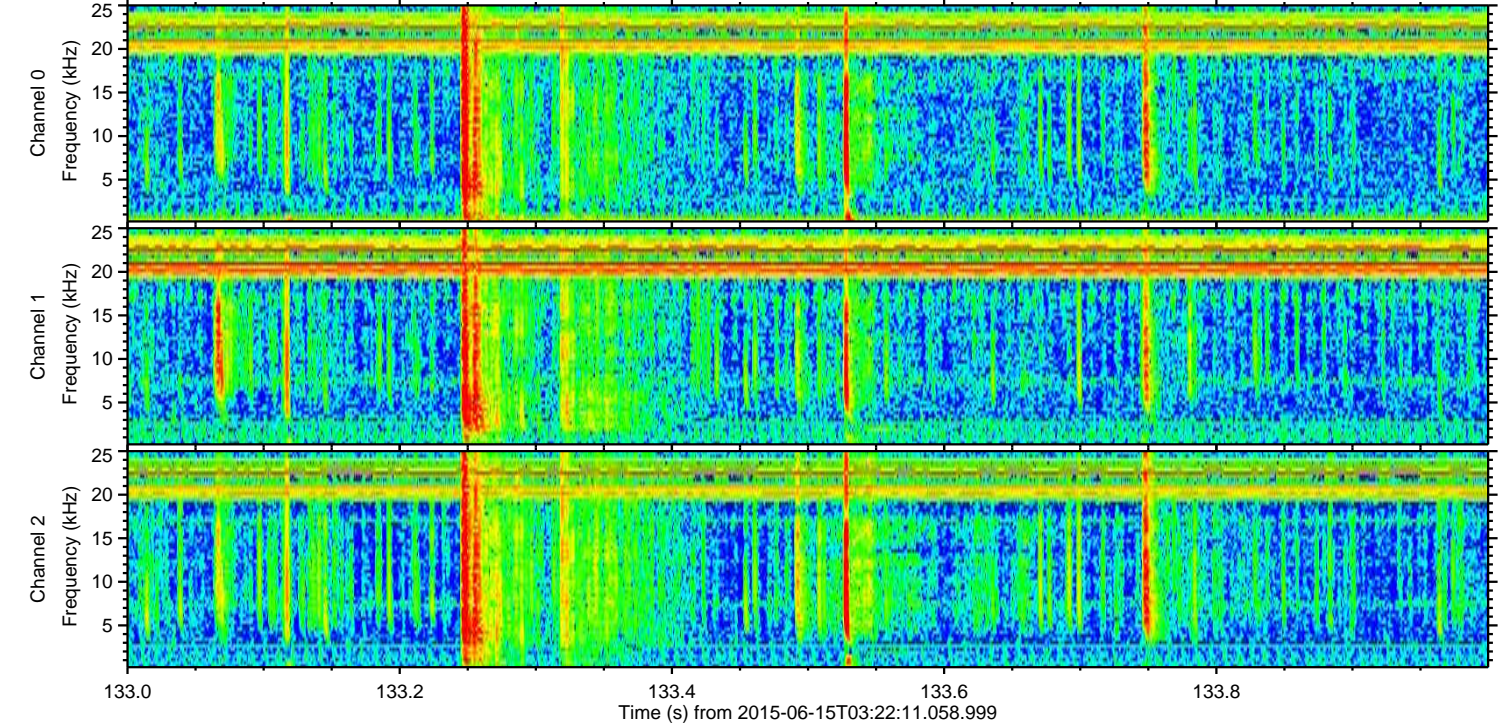
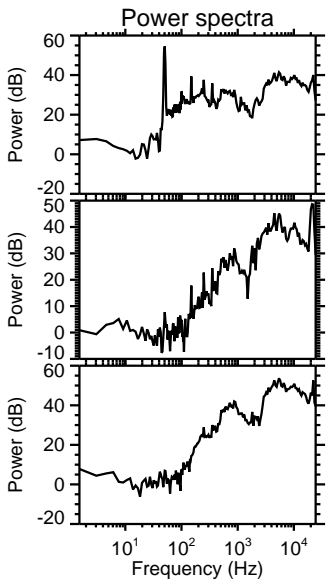
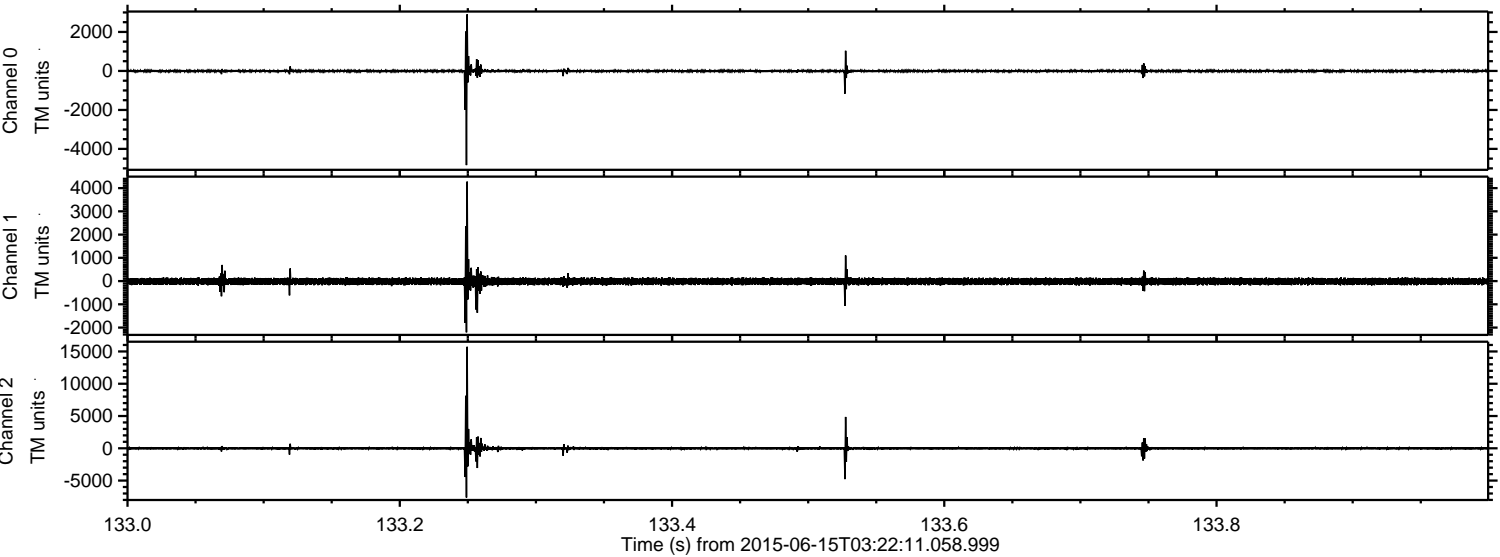
ELMAVAN 3D WAVEFORMS (Measured data sampled at 50 kHz) 51000 packets of 144 samples from 2015-06-15T03:22:11.058.999. Part 112/147

Processed Mon Jun 15 05:29:08 2015 by ELM ver.2012-10-06 from 001__elm20150615_032210__dat00.bin



ELMAVAN 3D WAVEFORMS (Measured data sampled at 50 kHz) 51000 packets of 144 samples from 2015-06-15T03:22:11.058.999. Part 134/147

Processed Mon Jun 15 05:29:10 2015 by ELM ver.2012-10-06 from 001__elm20150615_032210__dat00.bin

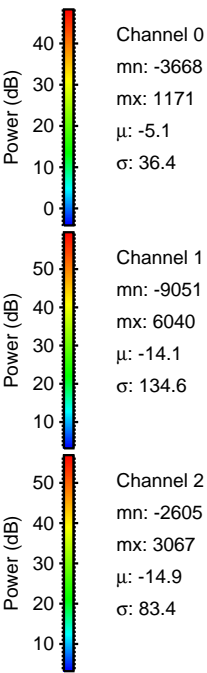
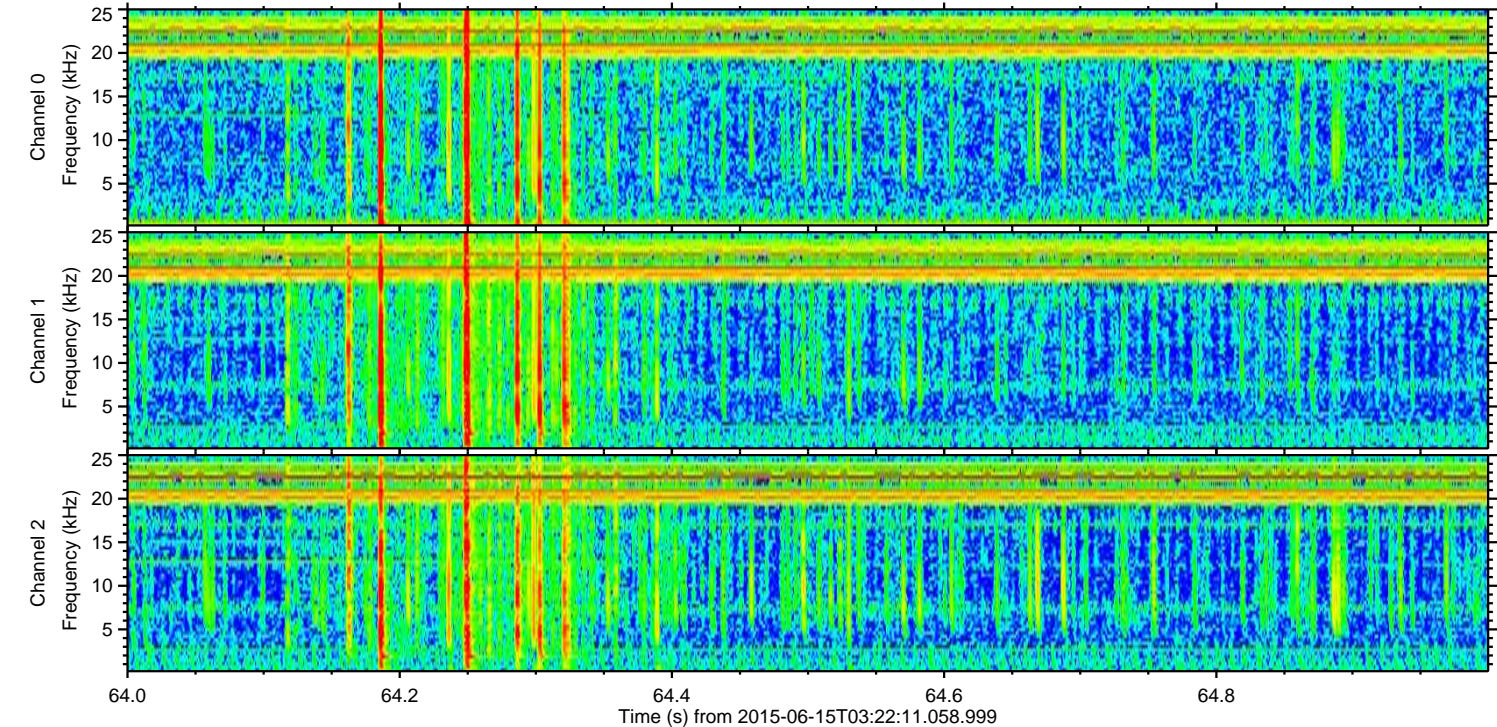
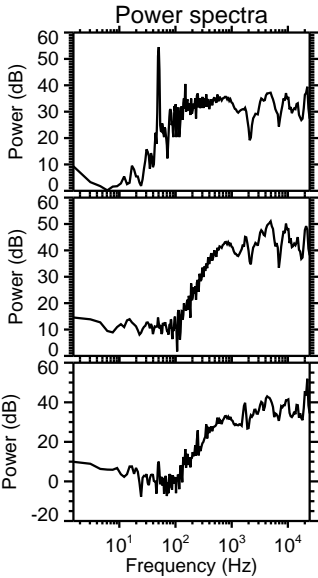
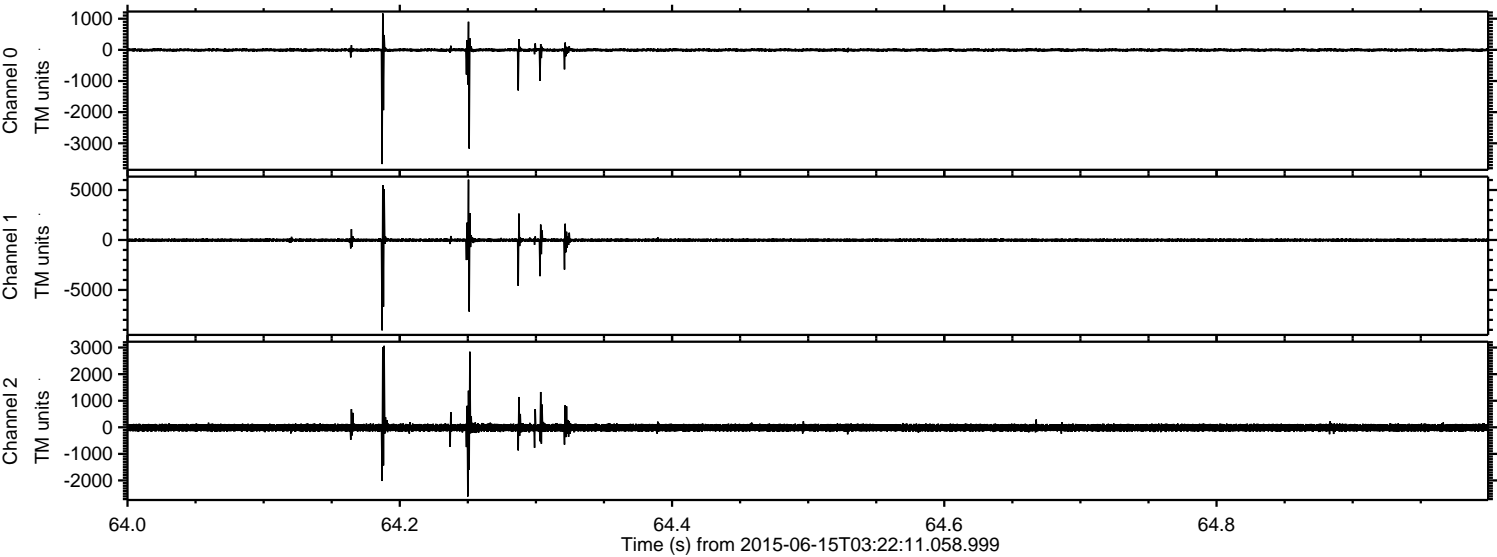


Channel 0
mn: -4831
mx: 2902
 μ : -5.2
 σ : 43.9

Channel 1
mn: -2206
mx: 4280
 μ : -14.1
 σ : 80.1

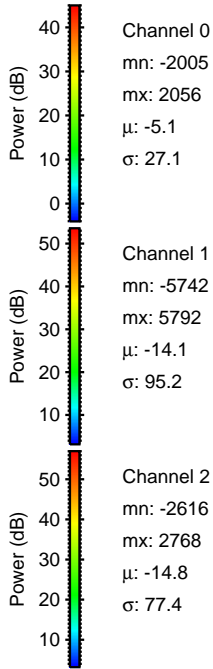
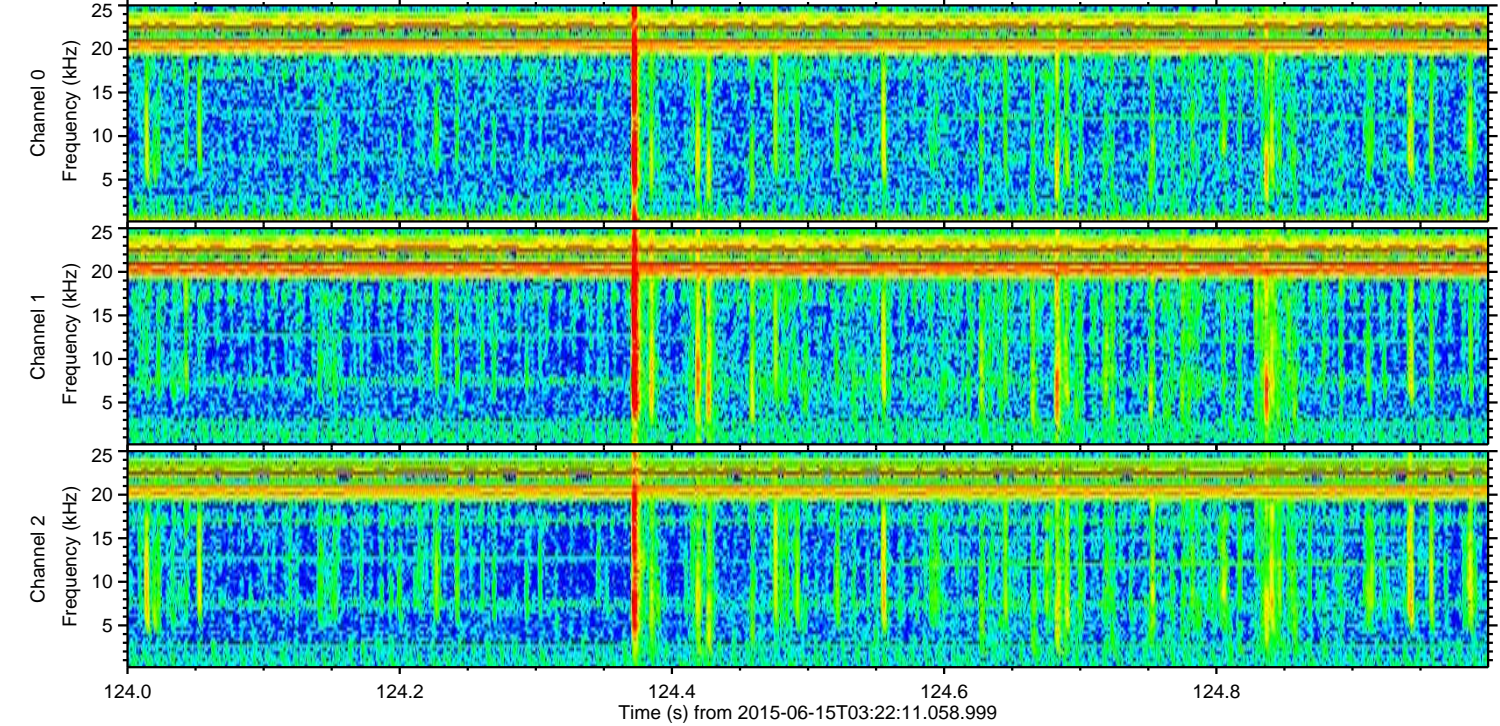
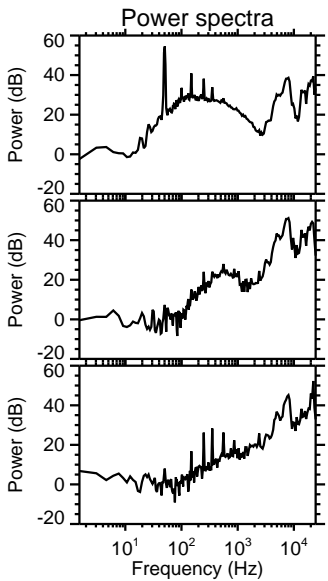
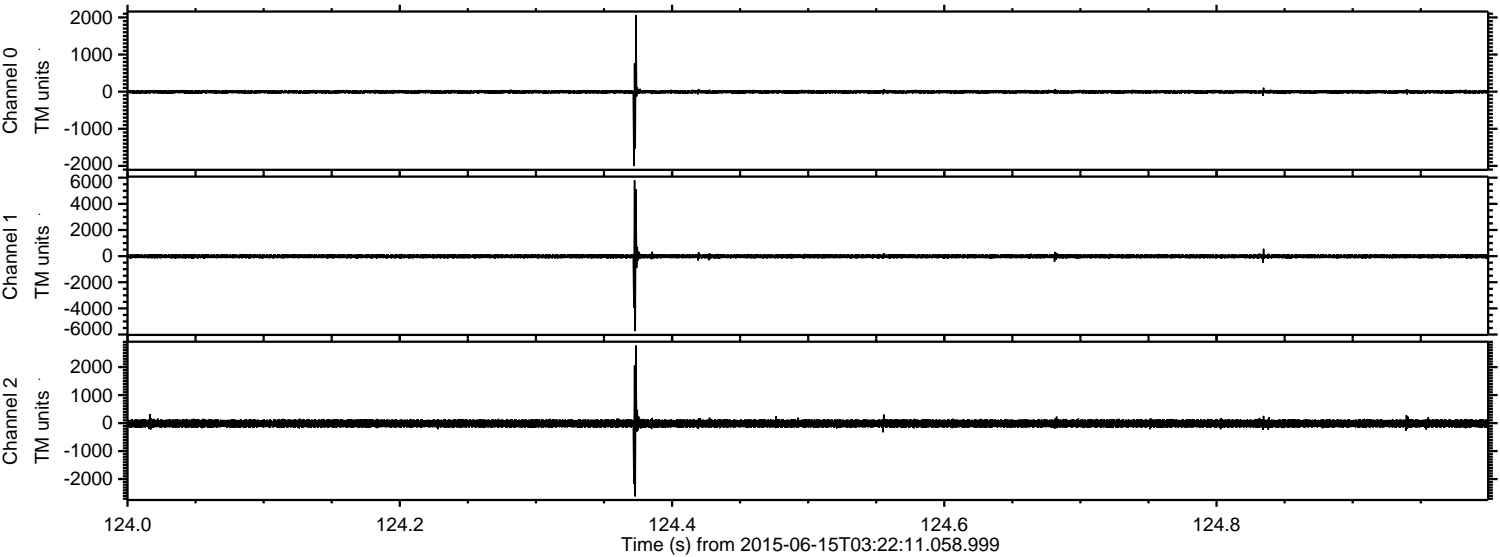
Channel 2
mn: -7628
mx: 15719
 μ : -14.8
 σ : 154.1

Processed Mon Jun 15 05:29:11 2015 by ELM ver.2012-10-06 from 001__elm20150615_032210__dat00.bin



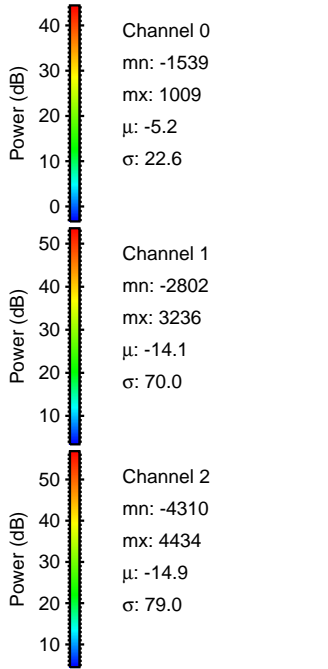
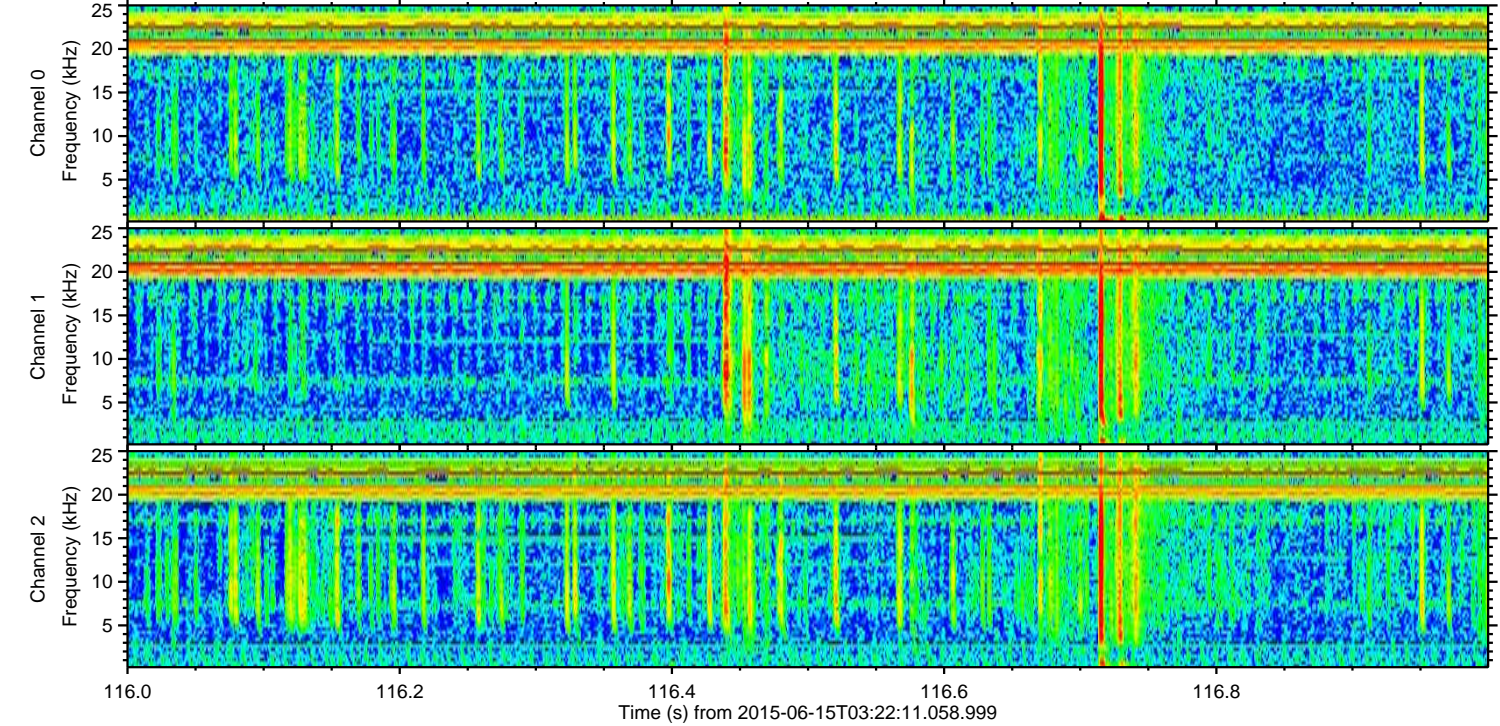
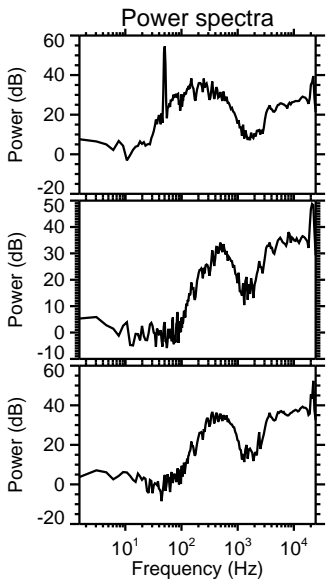
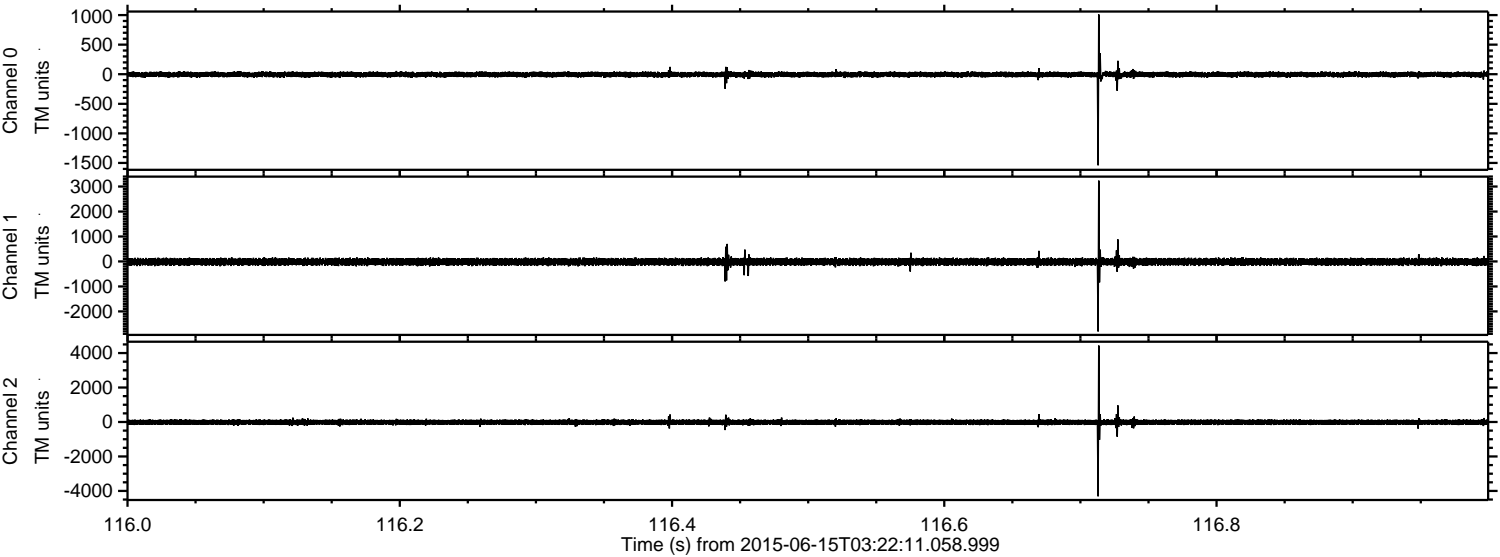
ELMAVAN 3D WAVEFORMS (Measured data sampled at 50 kHz) 51000 packets of 144 samples from 2015-06-15T03:22:11.058.999. Part 125/147

Processed Mon Jun 15 05:29:13 2015 by ELM ver.2012-10-06 from 001__elm20150615_032210__dat00.bin

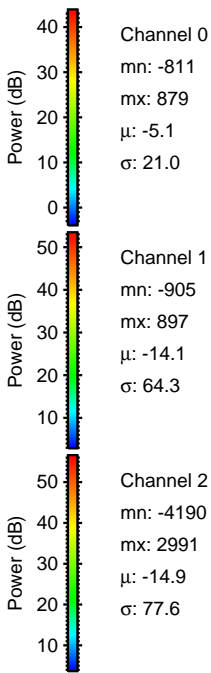
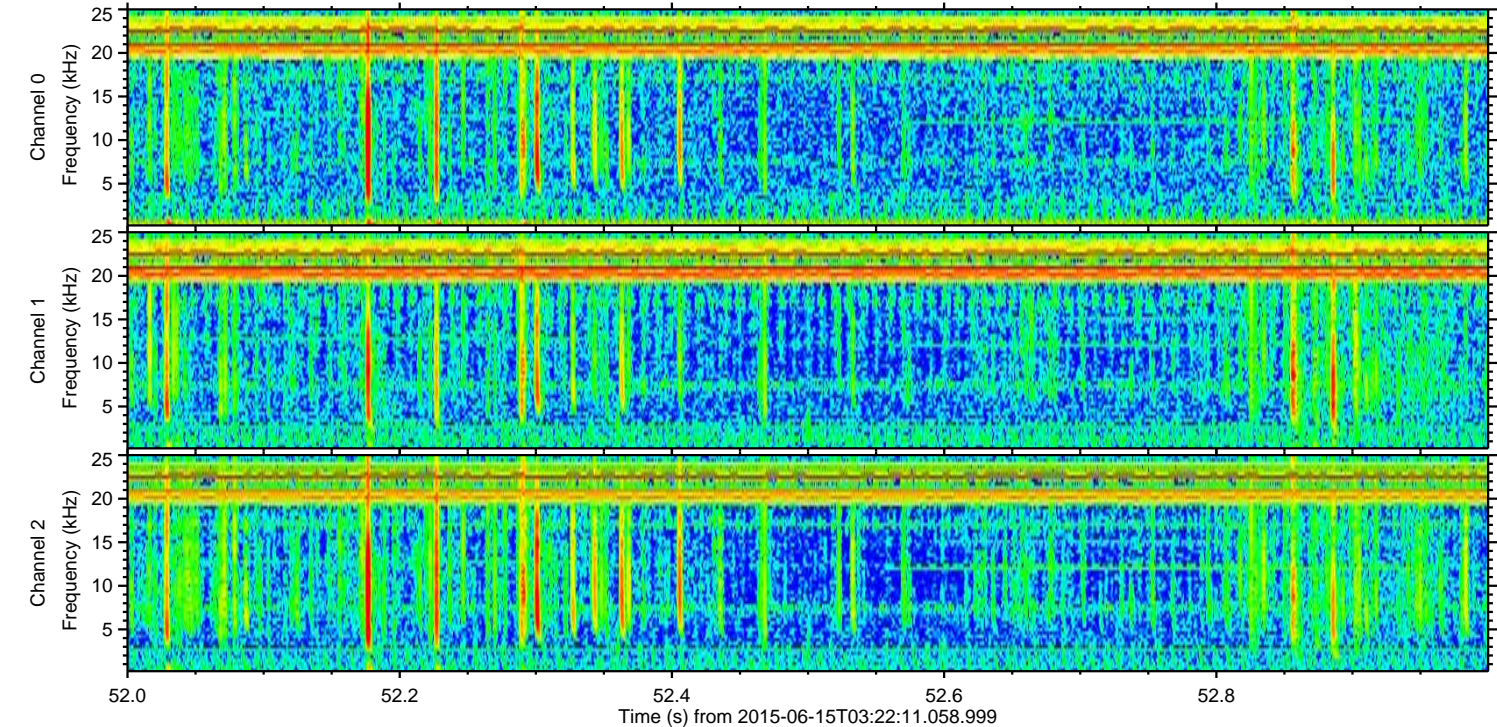
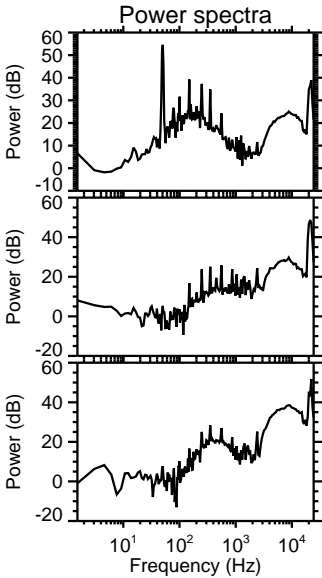
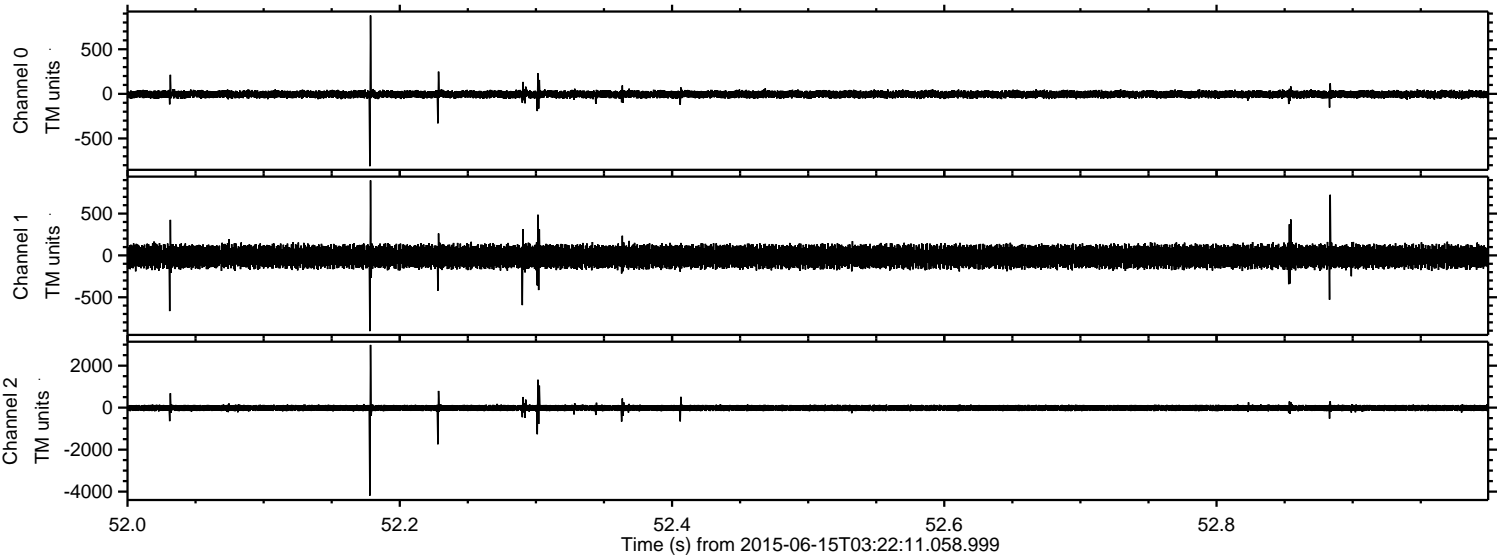


ELMAVAN 3D WAVEFORMS (Measured data sampled at 50 kHz) 51000 packets of 144 samples from 2015-06-15T03:22:11.058.999. Part 117/147

Processed Mon Jun 15 05:29:14 2015 by ELM ver.2012-10-06 from 001__elm20150615_032210__dat00.bin

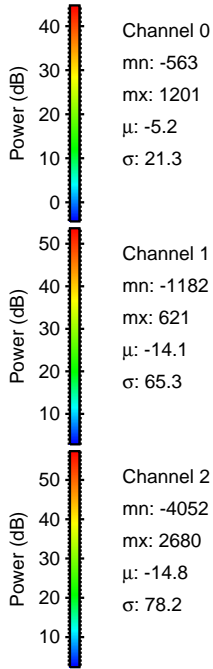
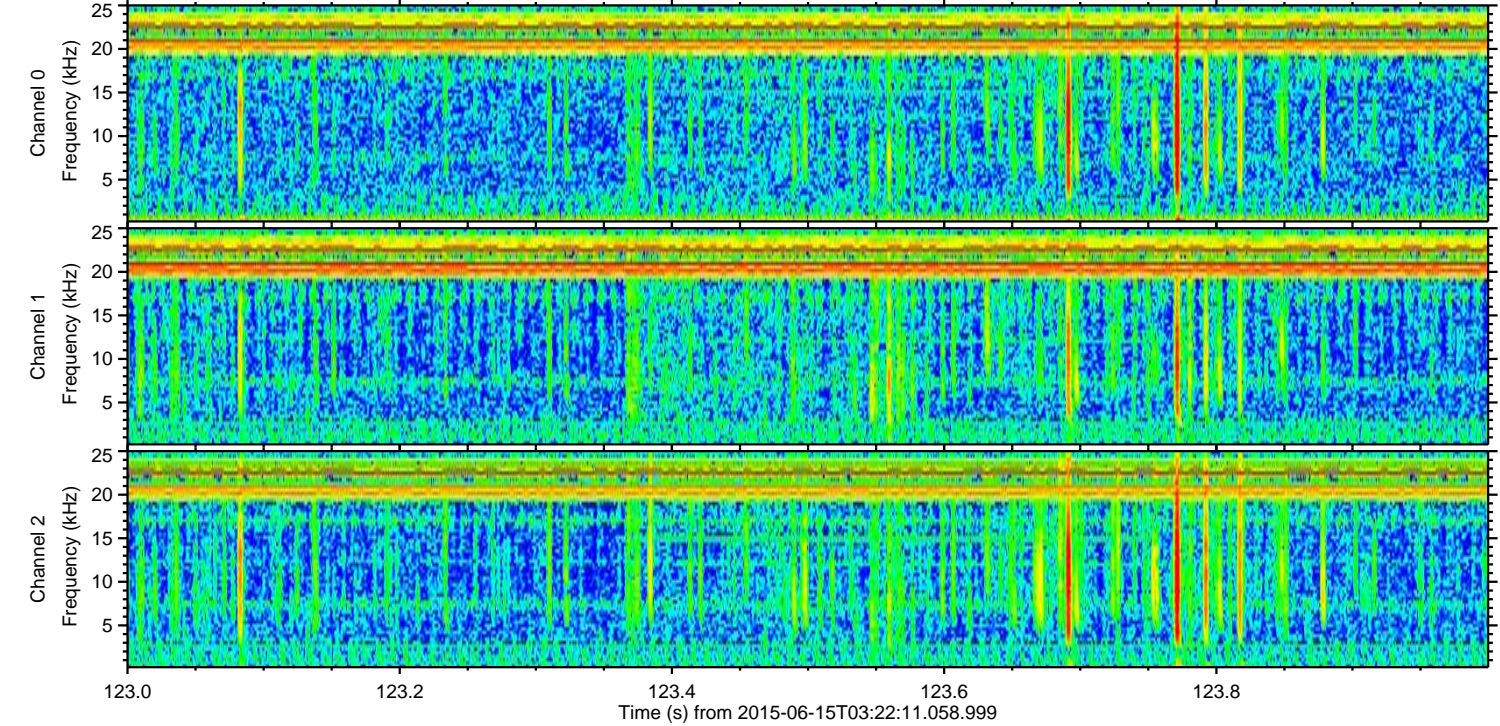
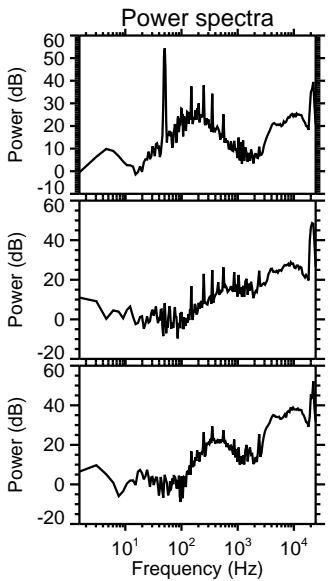
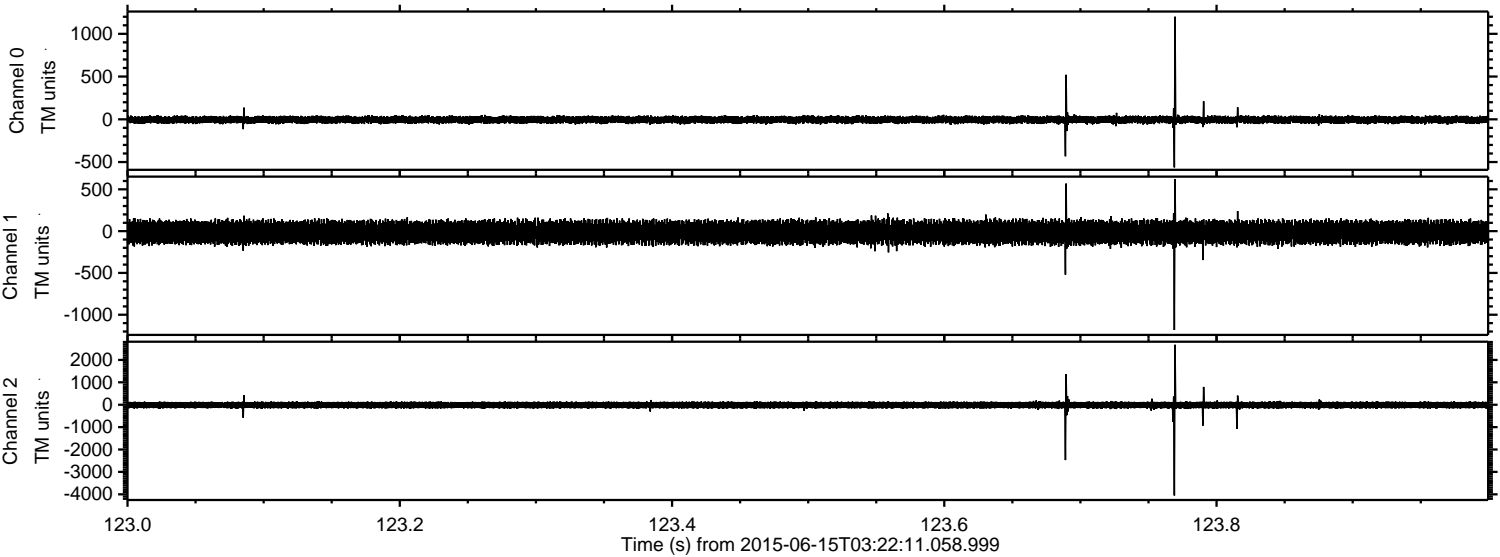


Processed Mon Jun 15 05:29:16 2015 by ELM ver.2012-10-06 from 001__elm20150615_032210__dat00.bin



ELMAVAN 3D WAVEFORMS (Measured data sampled at 50 kHz) 51000 packets of 144 samples from 2015-06-15T03:22:11.058.999. Part 124/147

Processed Mon Jun 15 05:29:17 2015 by ELM ver.2012-10-06 from 001__elm20150615_032210__dat00.bin



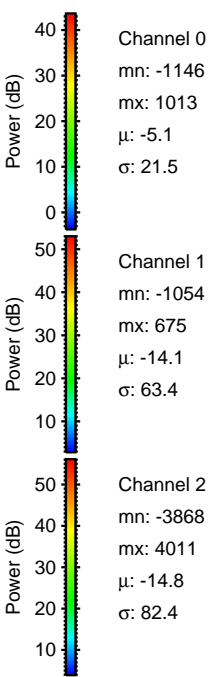
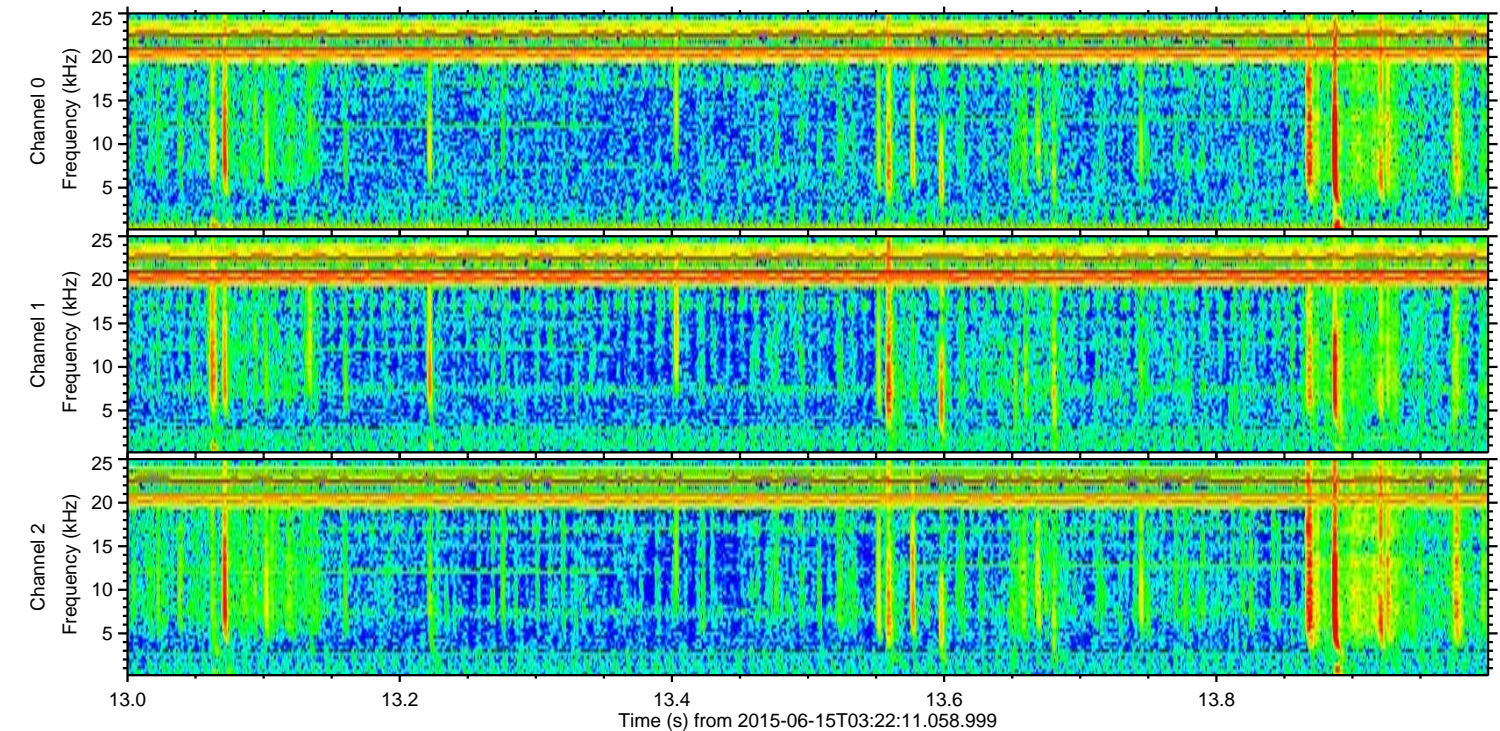
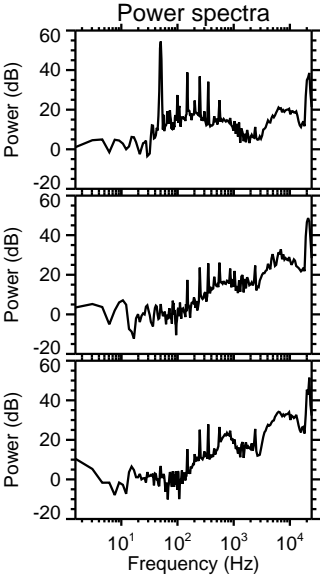
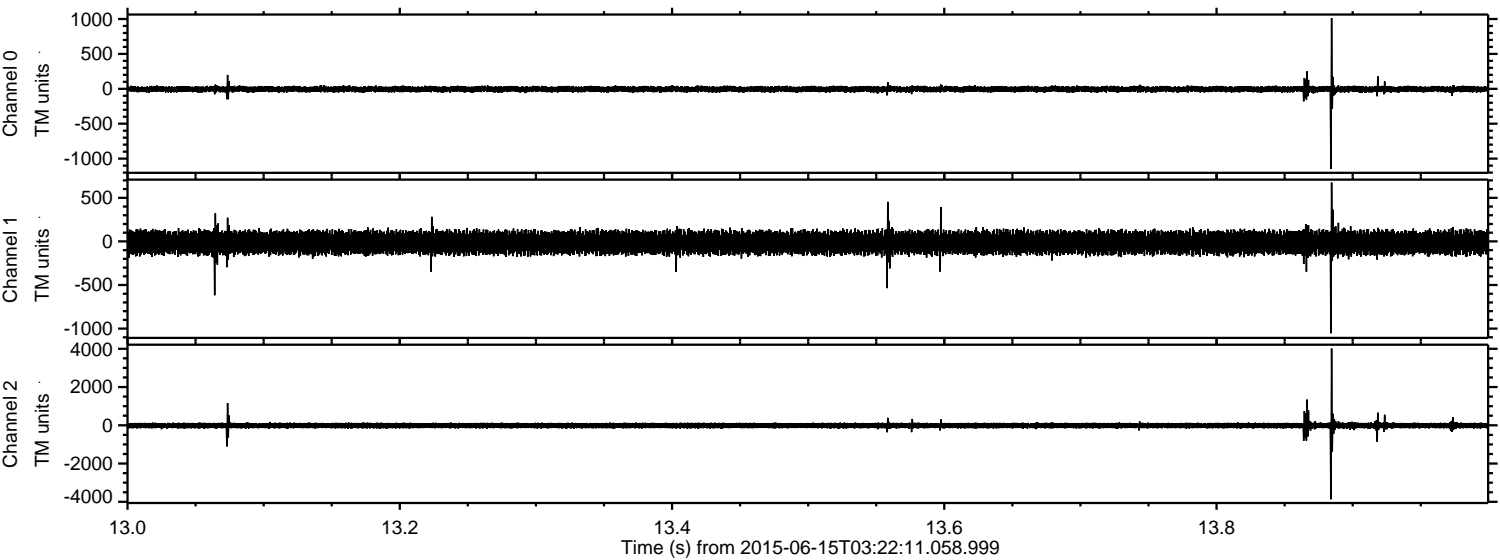
Channel 0
mn: -563
mx: 1201
 μ : -5.2
 σ : 21.3

Channel 1
mn: -1182
mx: 621
 μ : -14.1
 σ : 65.3

Channel 2
mn: -4052
mx: 2680
 μ : -14.8
 σ : 78.2

ELMAVAN 3D WAVEFORMS (Measured data sampled at 50 kHz) 51000 packets of 144 samples from 2015-06-15T03:22:11.058.999. Part 14/147

Processed Mon Jun 15 05:29:18 2015 by ELM ver.2012-10-06 from 001__elm20150615_032210__dat00.bin



Channel 0
mn: -1146
mx: 1013
 μ : -5.1
 σ : 21.5

Channel 1
mn: -1054
mx: 675
 μ : -14.1
 σ : 63.4

Channel 2
mn: -3868
mx: 4011
 μ : -14.8
 σ : 82.4

ELMAVAN 3D WAVEFORMS (Measured data sampled at 50 kHz) 51000 packets of 144 samples from 2015-06-15T03:22:11.058.999. Part 44/147

Processed Mon Jun 15 05:29:19 2015 by ELM ver.2012-10-06 from 001__elm20150615_032210__dat00.bin

