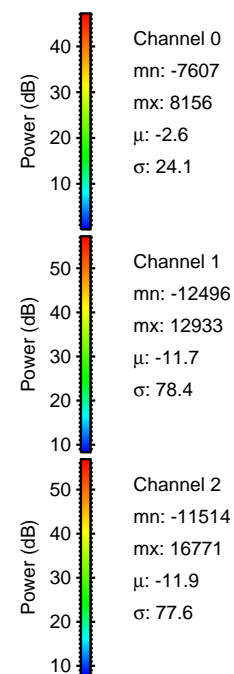
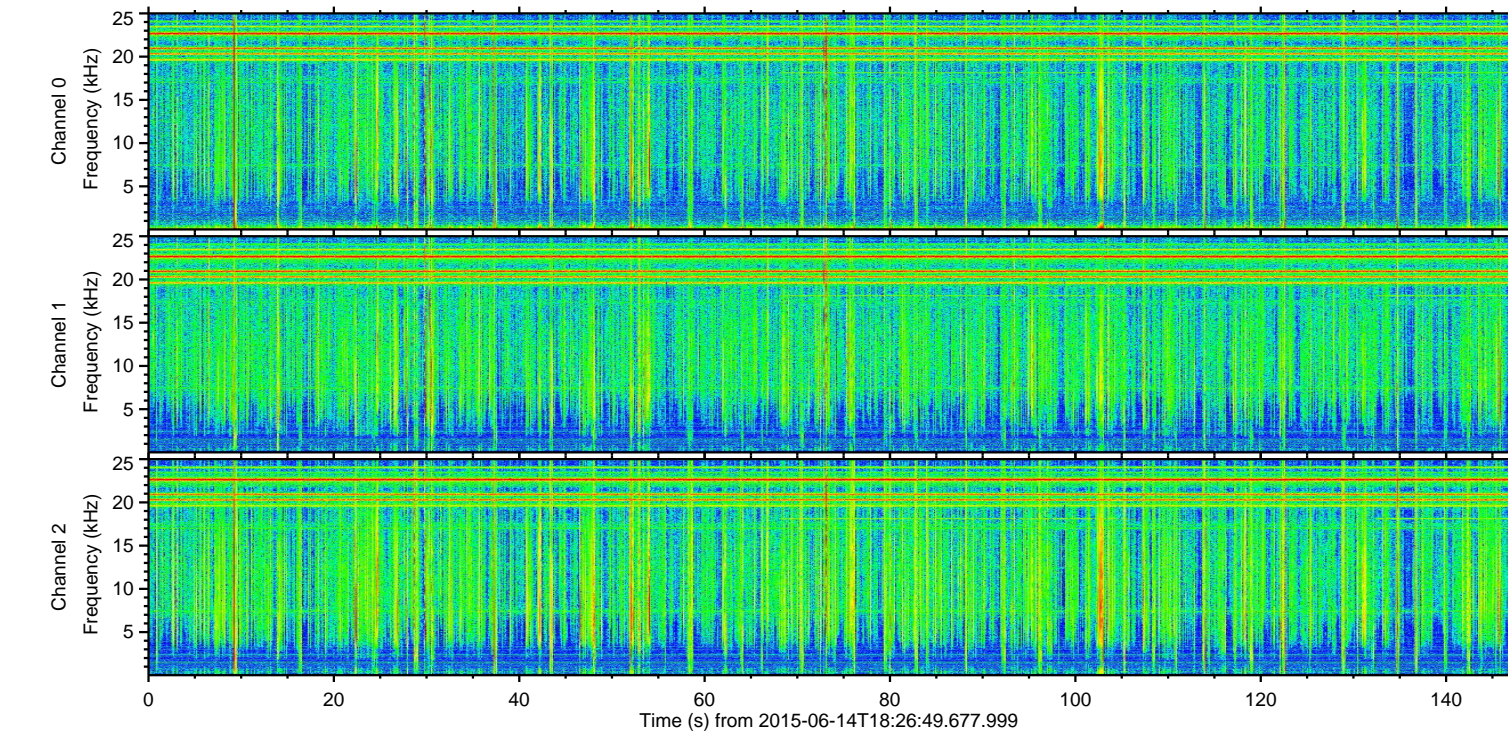
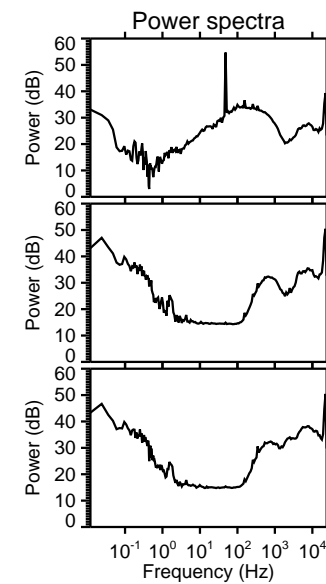
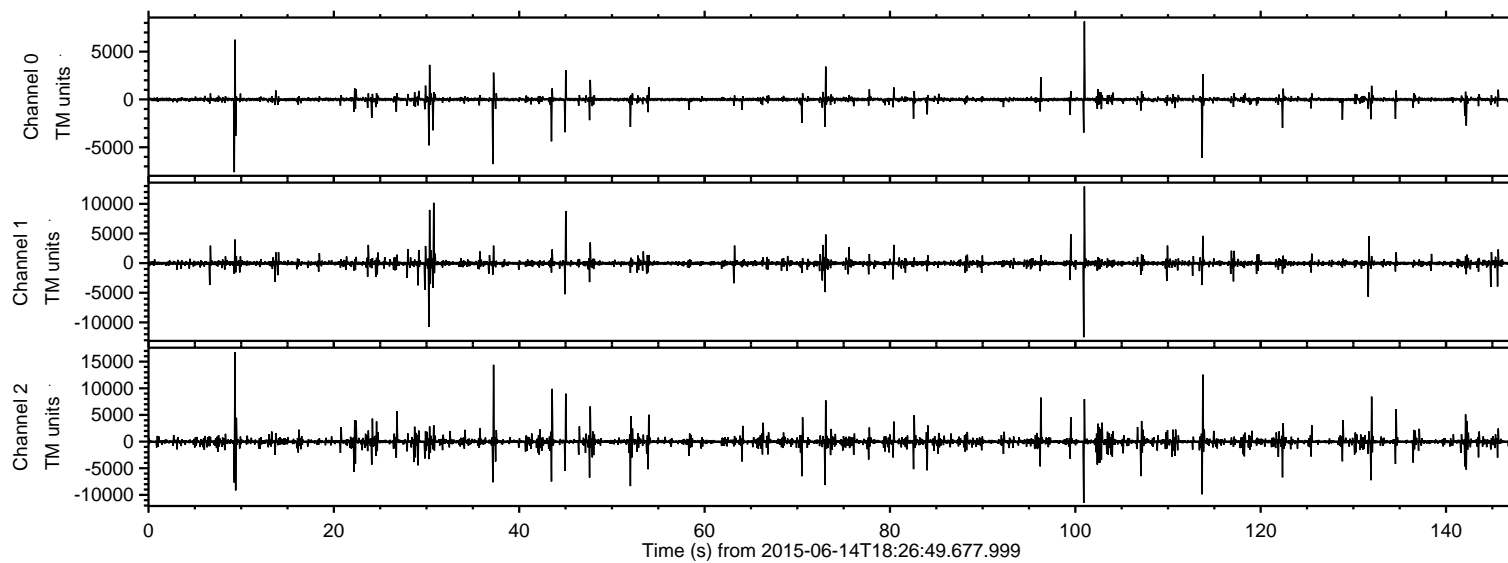


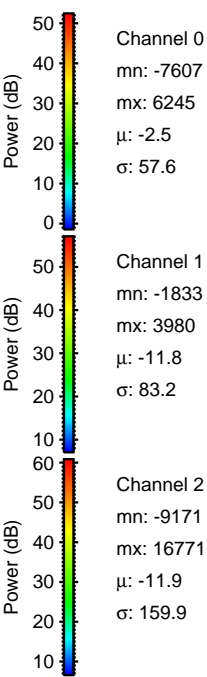
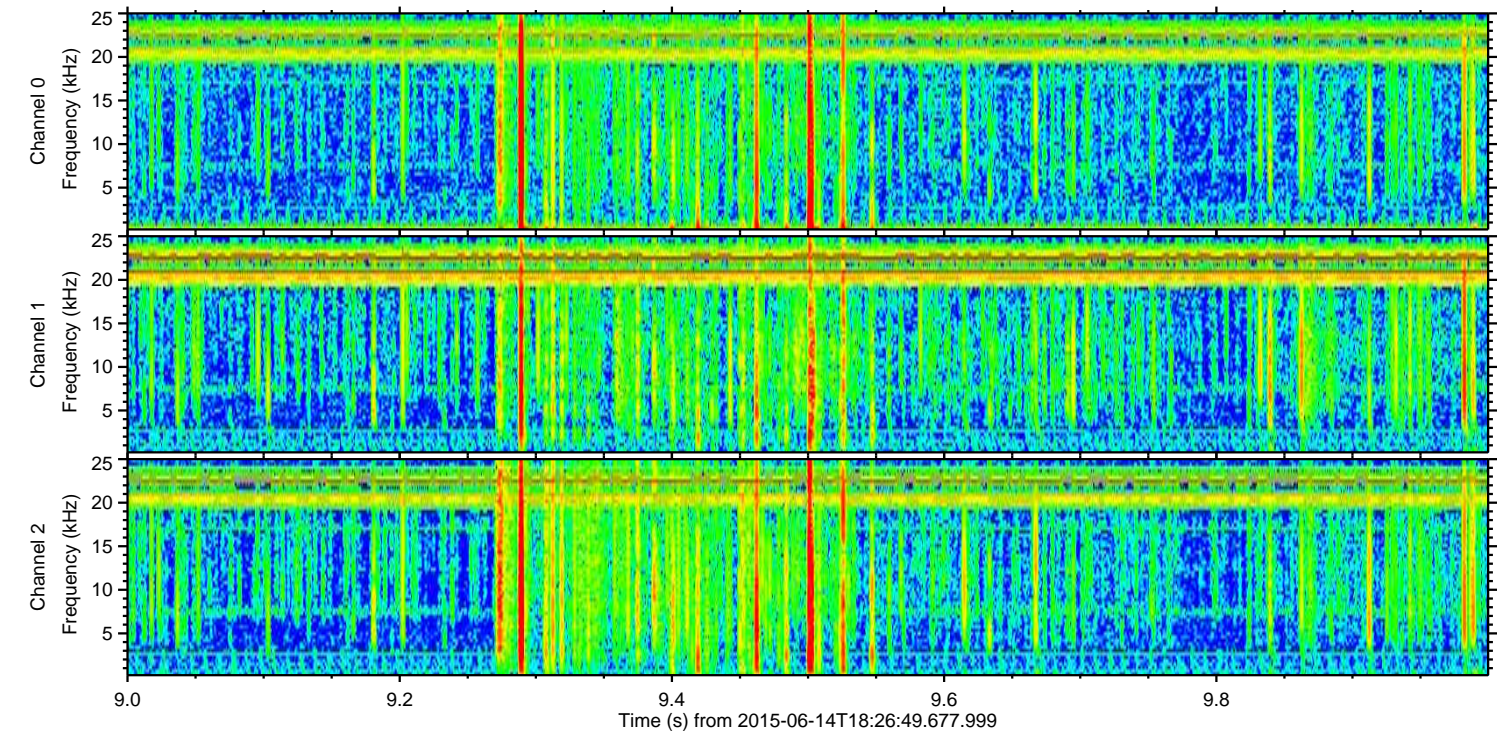
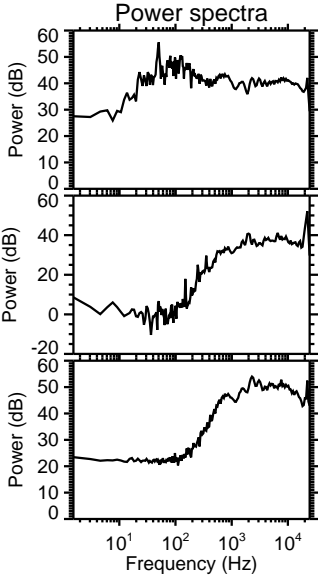
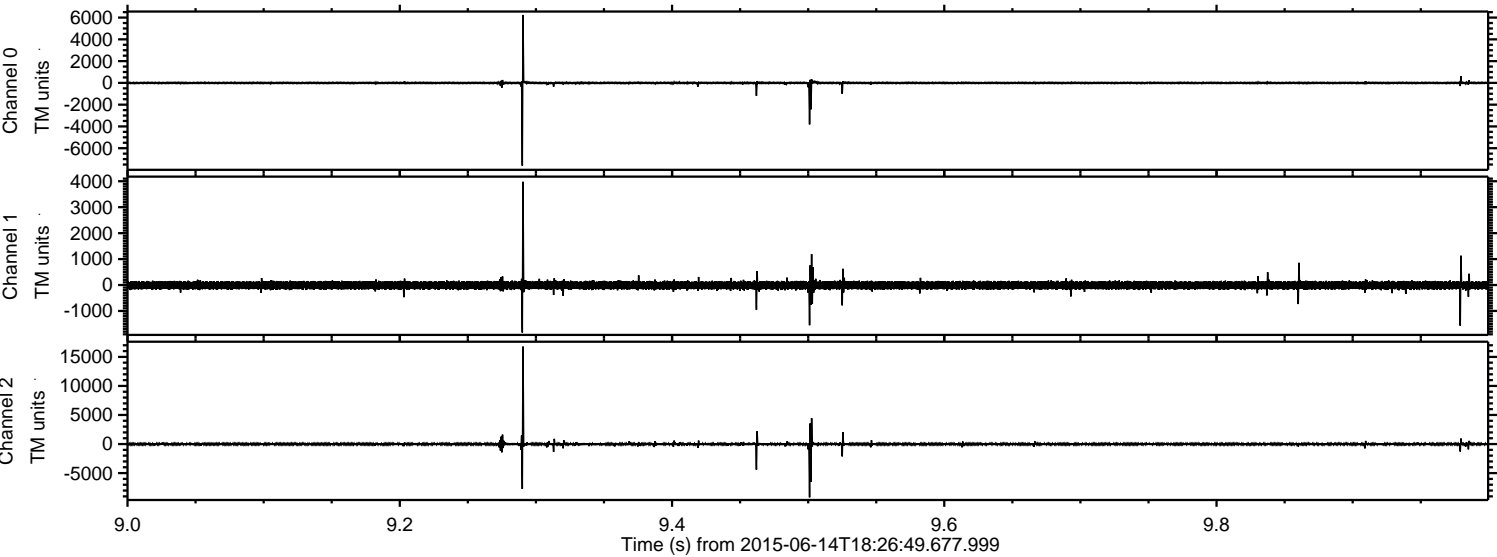
ELMAVAN 3D WAVEFORMS (Measured data sampled at 50 kHz) 51000 packets of 144 samples from 2015-06-14T18:26:49.677.999.

Processed Sun Jun 14 20:33:05 2015 by ELM ver.2012-10-06 from 001__elm20150614_182648__dat00.bin

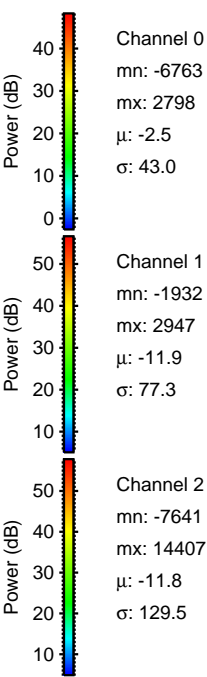
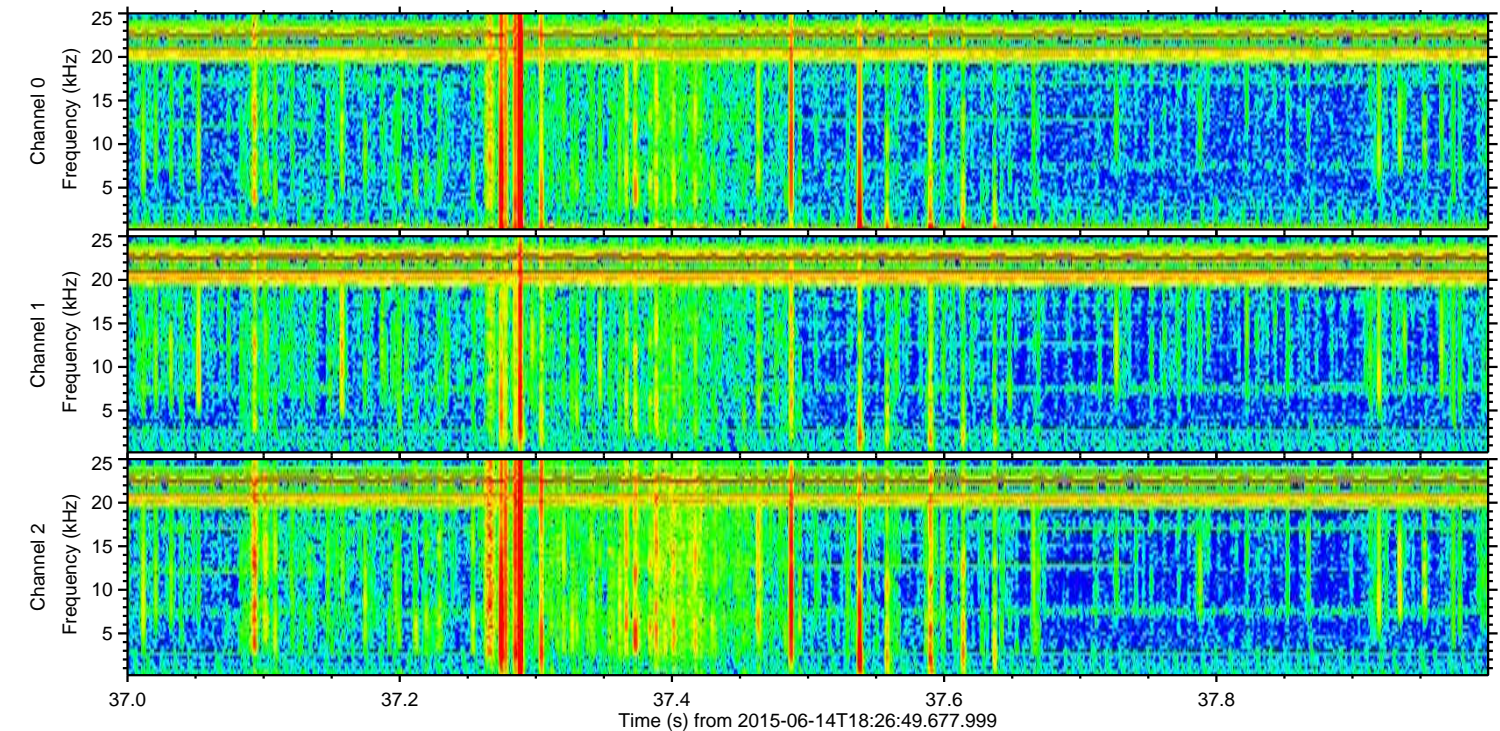
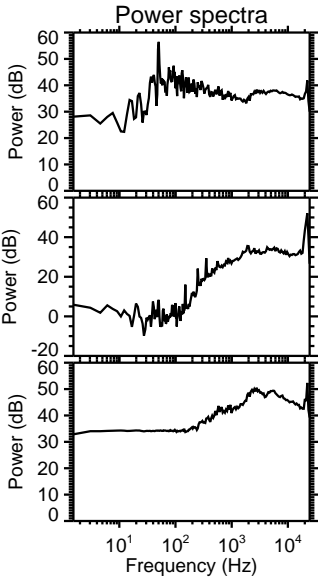
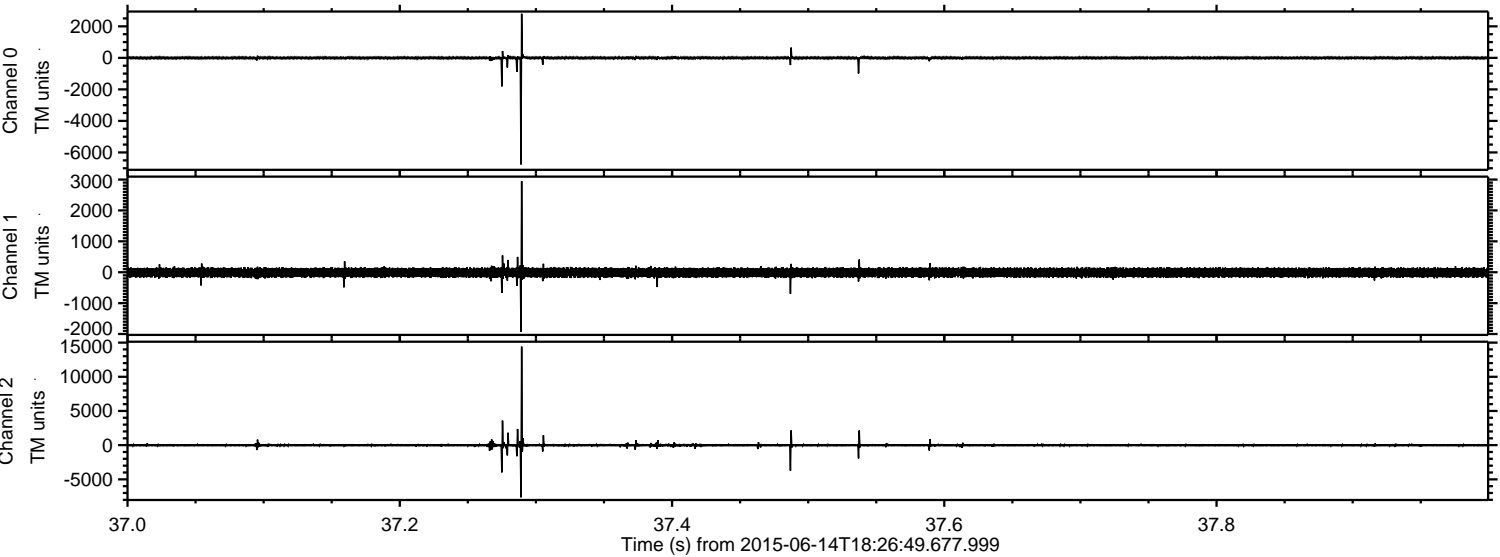


ELMAVAN 3D WAVEFORMS (Measured data sampled at 50 kHz) 51000 packets of 144 samples from 2015-06-14T18:26:49.677.999. Part 10/147

Processed Sun Jun 14 20:33:26 2015 by ELM ver.2012-10-06 from 001__elm20150614_182648__dat00.bin

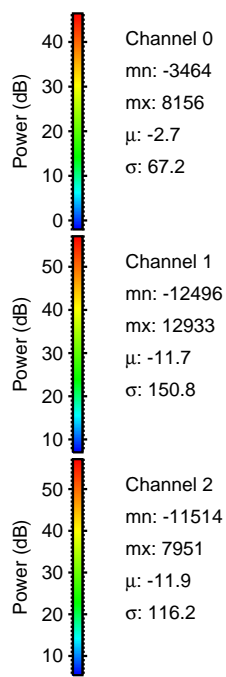
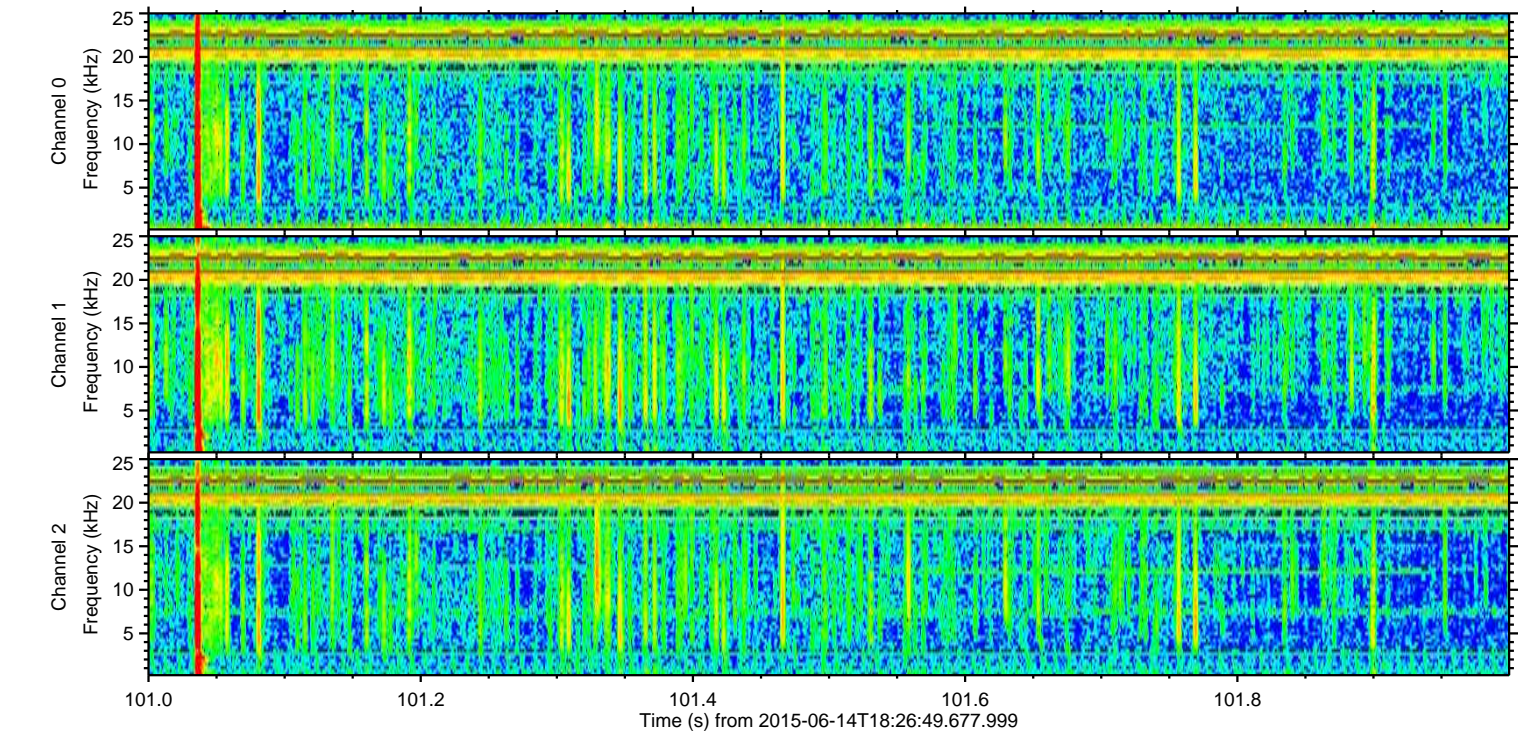
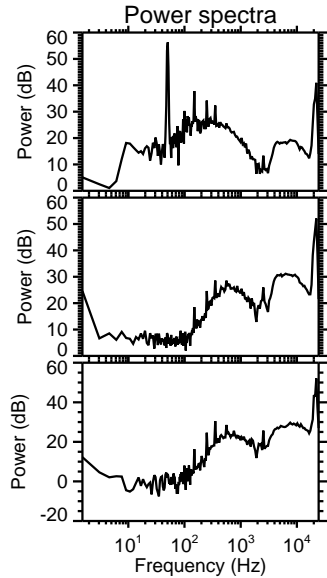
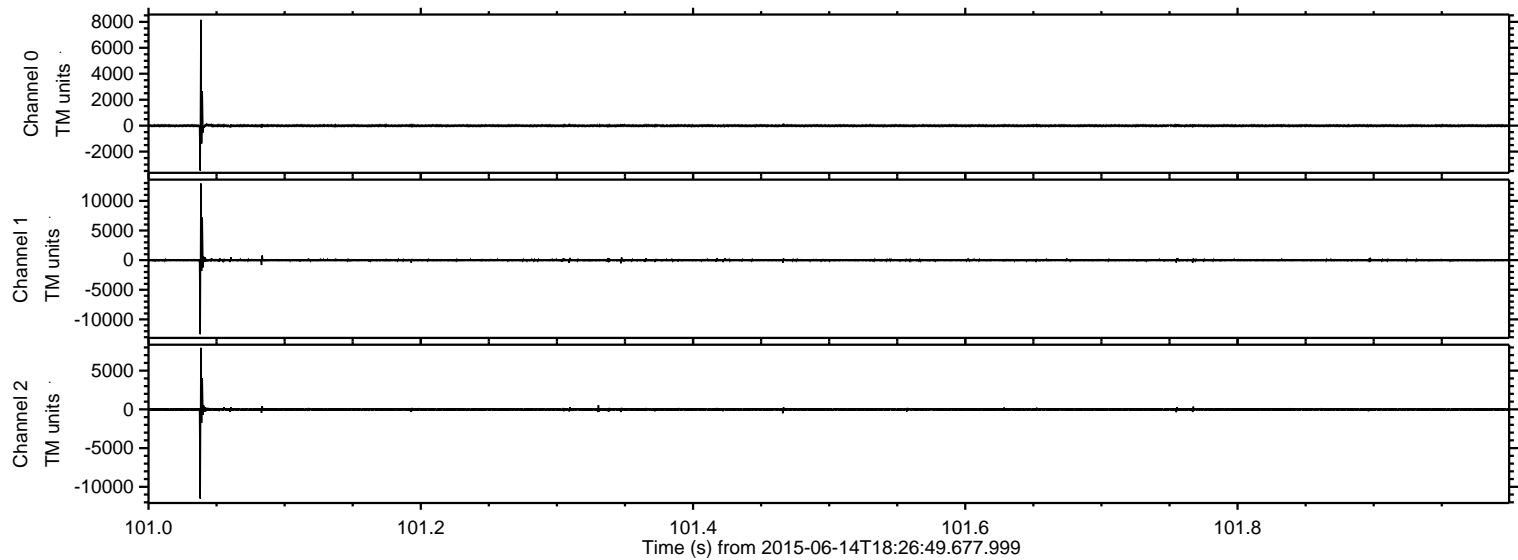


Processed Sun Jun 14 20:33:28 2015 by ELM ver.2012-10-06 from 001__elm20150614_182648__dat00.bin



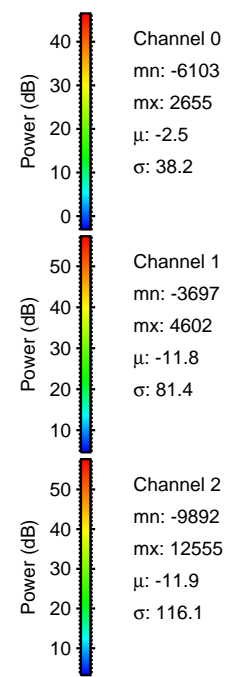
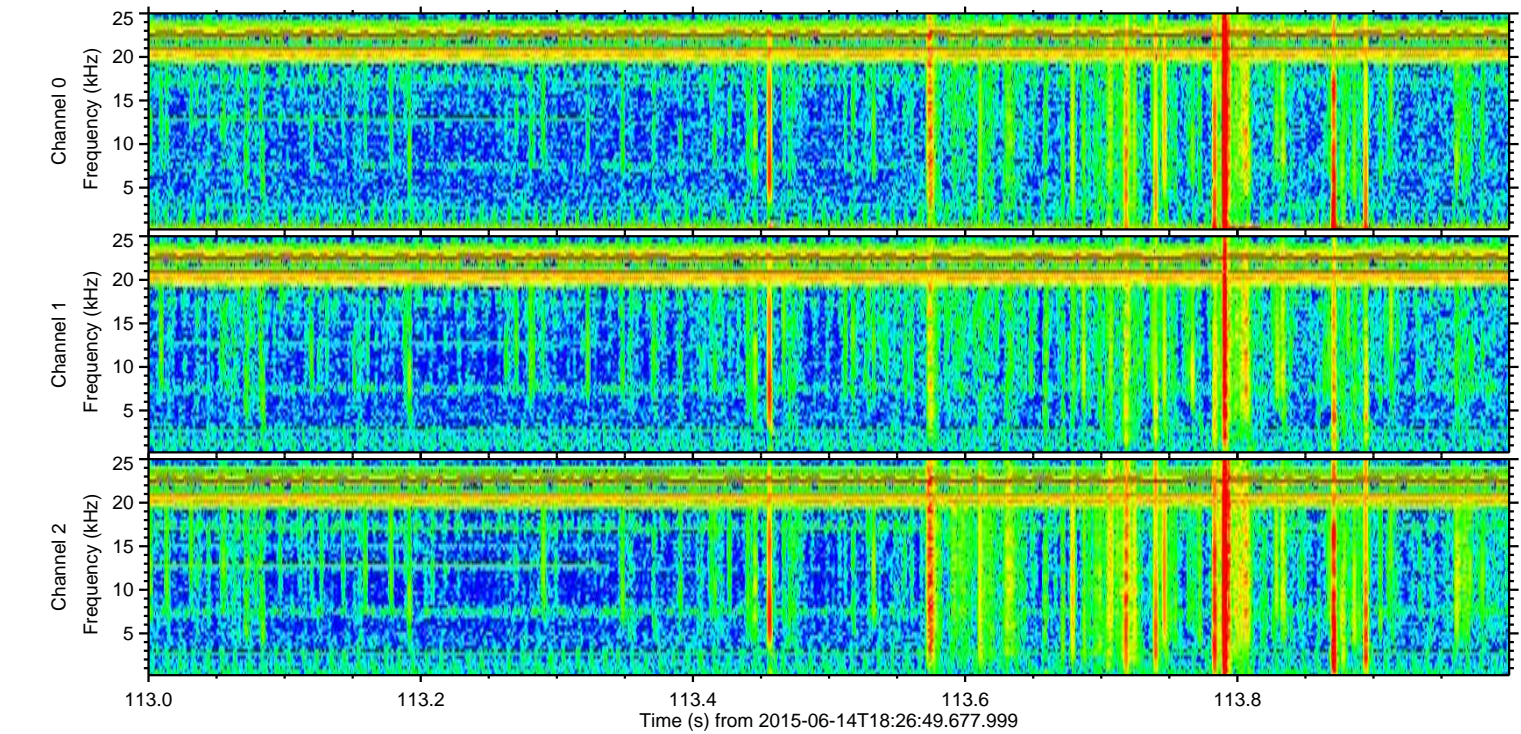
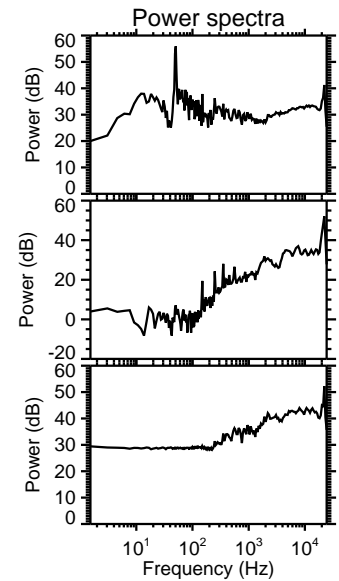
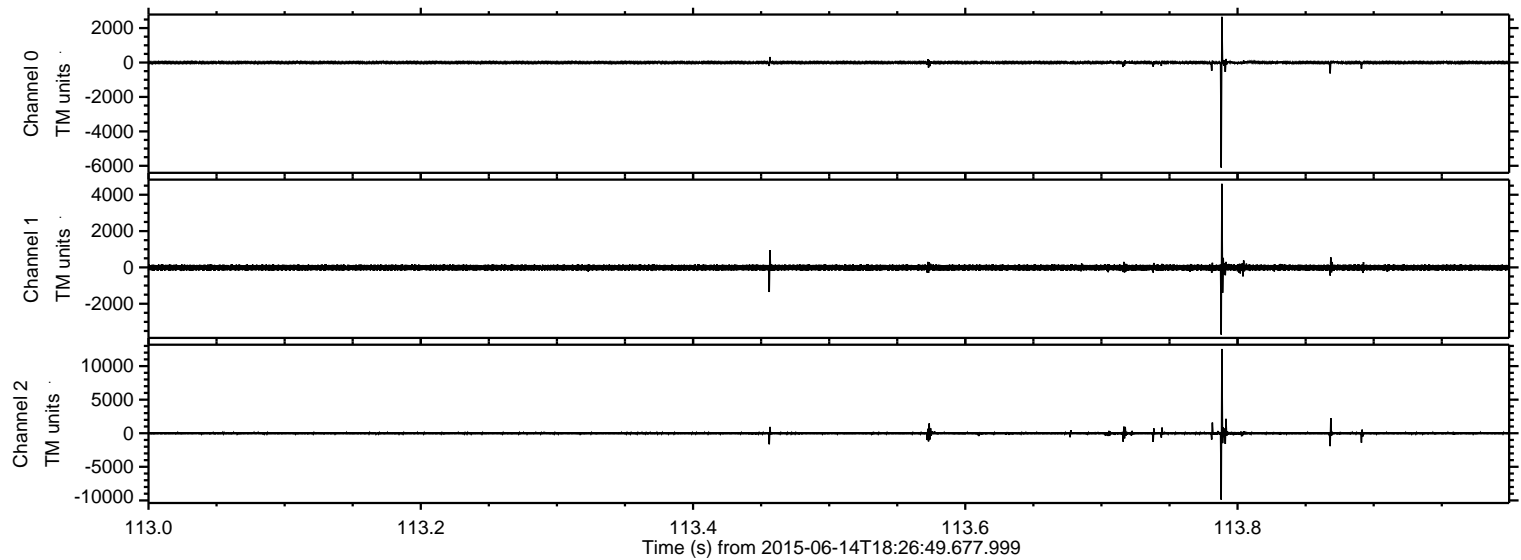
ELMAVAN 3D WAVEFORMS (Measured data sampled at 50 kHz) 51000 packets of 144 samples from 2015-06-14T18:26:49.677.999. Part 102/147

Processed Sun Jun 14 20:33:29 2015 by ELM ver.2012-10-06 from 001__elm20150614_182648__dat00.bin



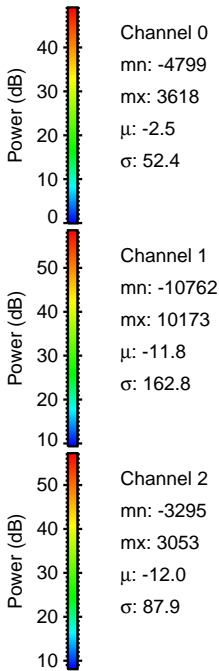
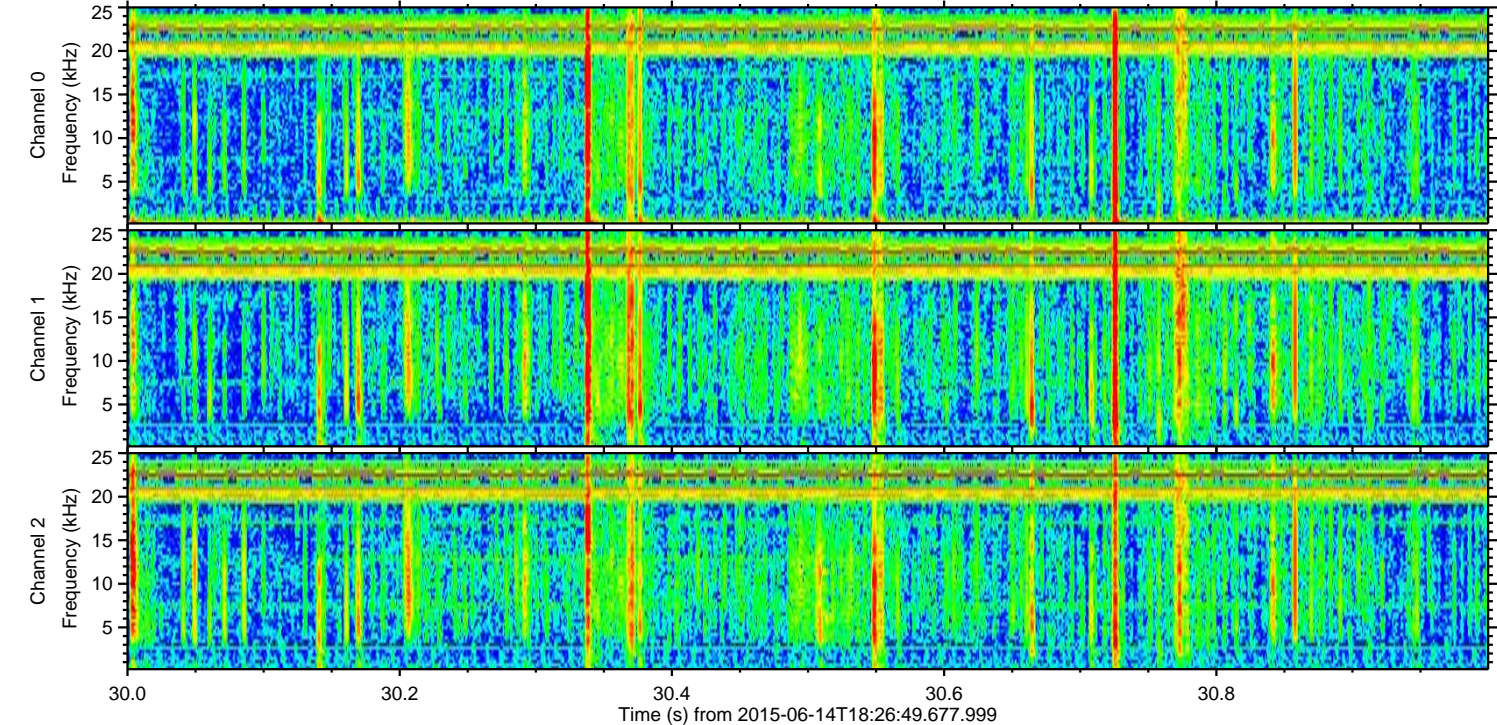
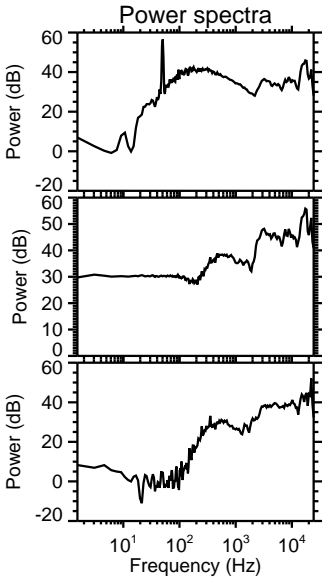
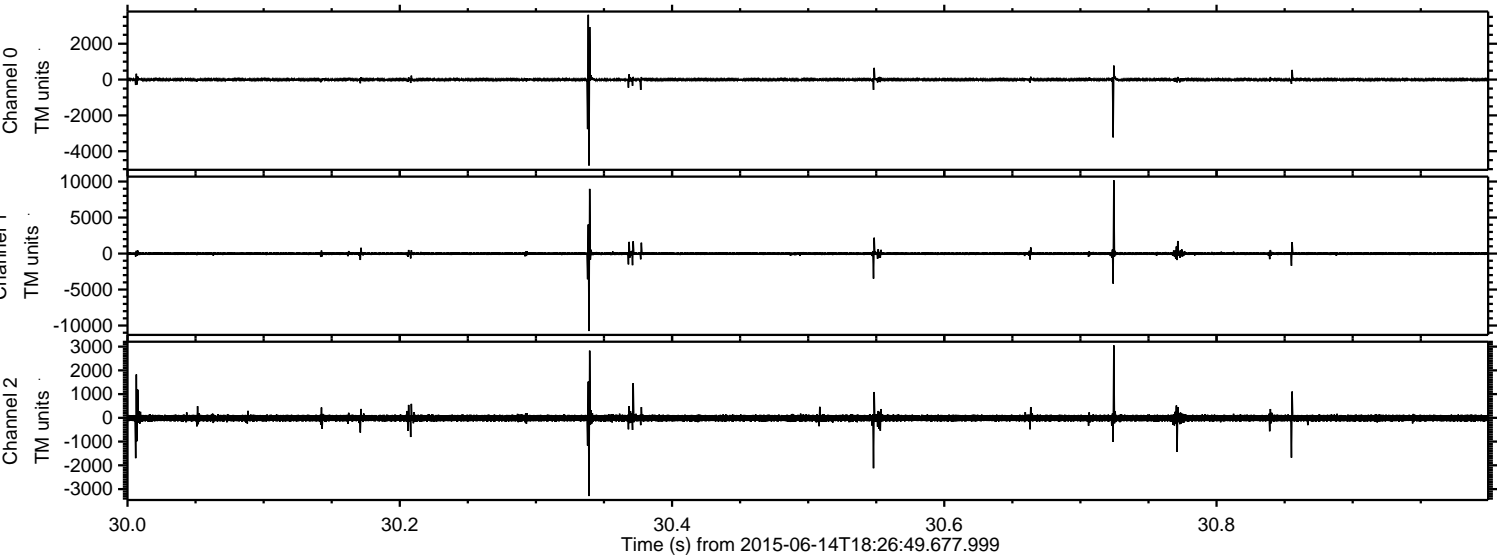
ELMAVAN 3D WAVEFORMS (Measured data sampled at 50 kHz) 51000 packets of 144 samples from 2015-06-14T18:26:49.677.999. Part 114/147

Processed Sun Jun 14 20:33:31 2015 by ELM ver.2012-10-06 from 001__elm20150614_182648__dat00.bin



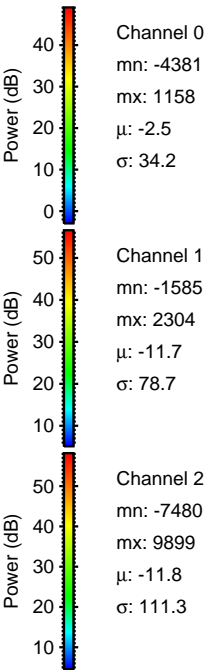
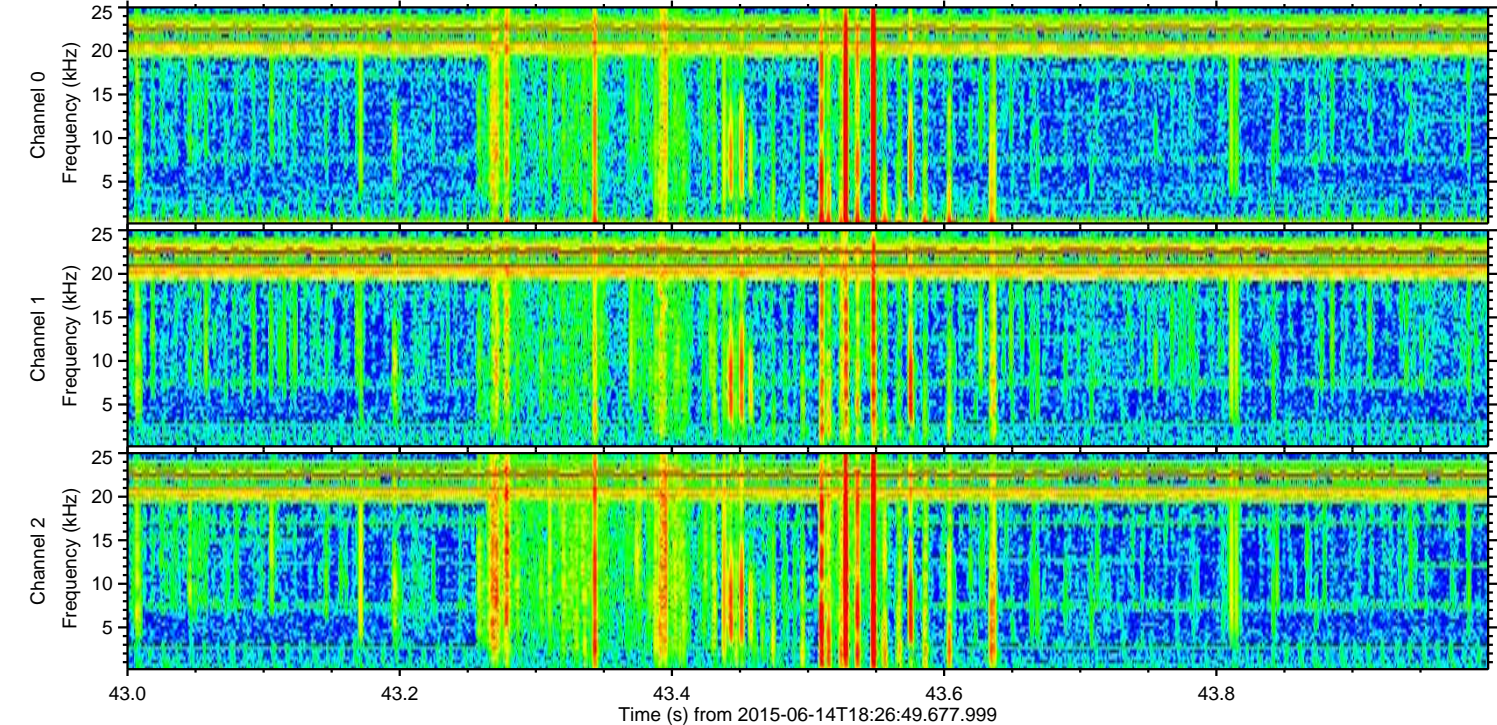
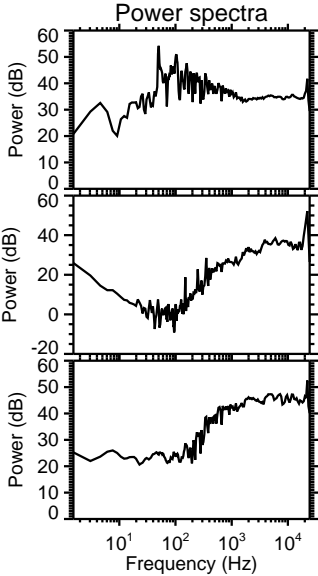
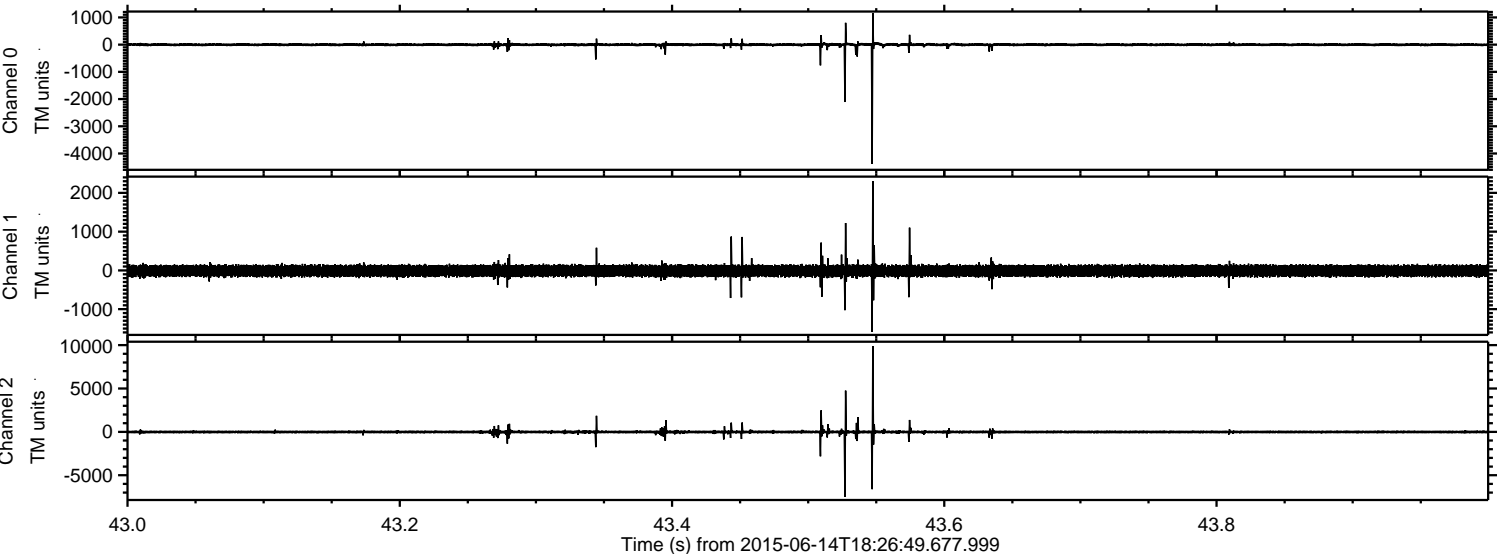
ELMAVAN 3D WAVEFORMS (Measured data sampled at 50 kHz) 51000 packets of 144 samples from 2015-06-14T18:26:49.677.999. Part 31/147

Processed Sun Jun 14 20:33:32 2015 by ELM ver.2012-10-06 from 001__elm20150614_182648__dat00.bin

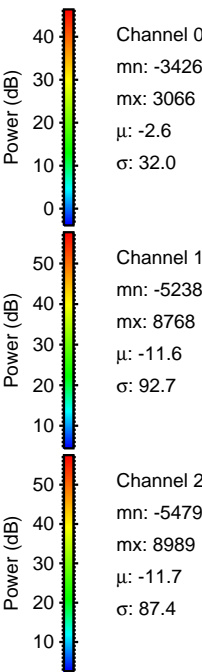
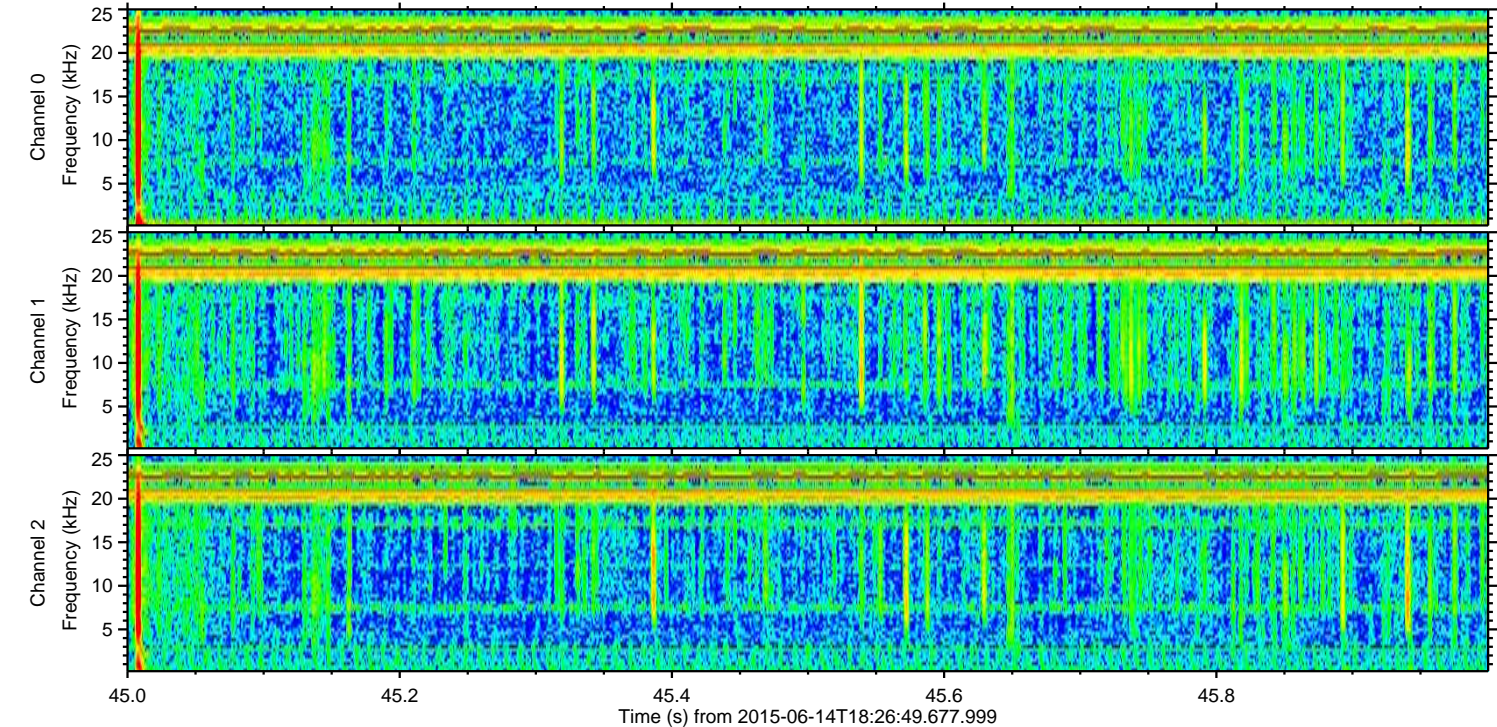
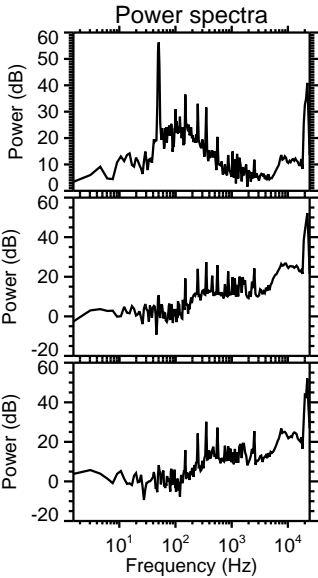
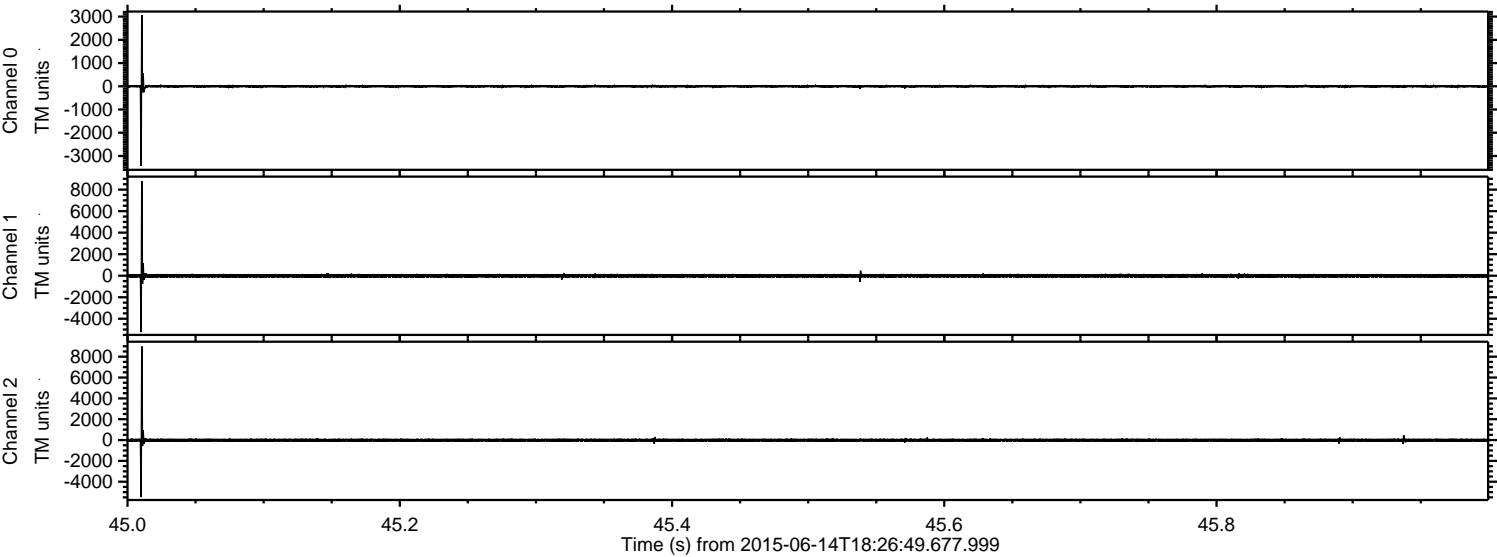


ELMAVAN 3D WAVEFORMS (Measured data sampled at 50 kHz) 51000 packets of 144 samples from 2015-06-14T18:26:49.677.999. Part 44/147

Processed Sun Jun 14 20:33:34 2015 by ELM ver.2012-10-06 from 001__elm20150614_182648__dat00.bin



Processed Sun Jun 14 20:33:35 2015 by ELM ver.2012-10-06 from 001__elm20150614_182648__dat00.bin



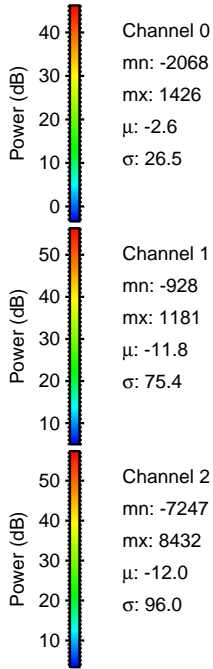
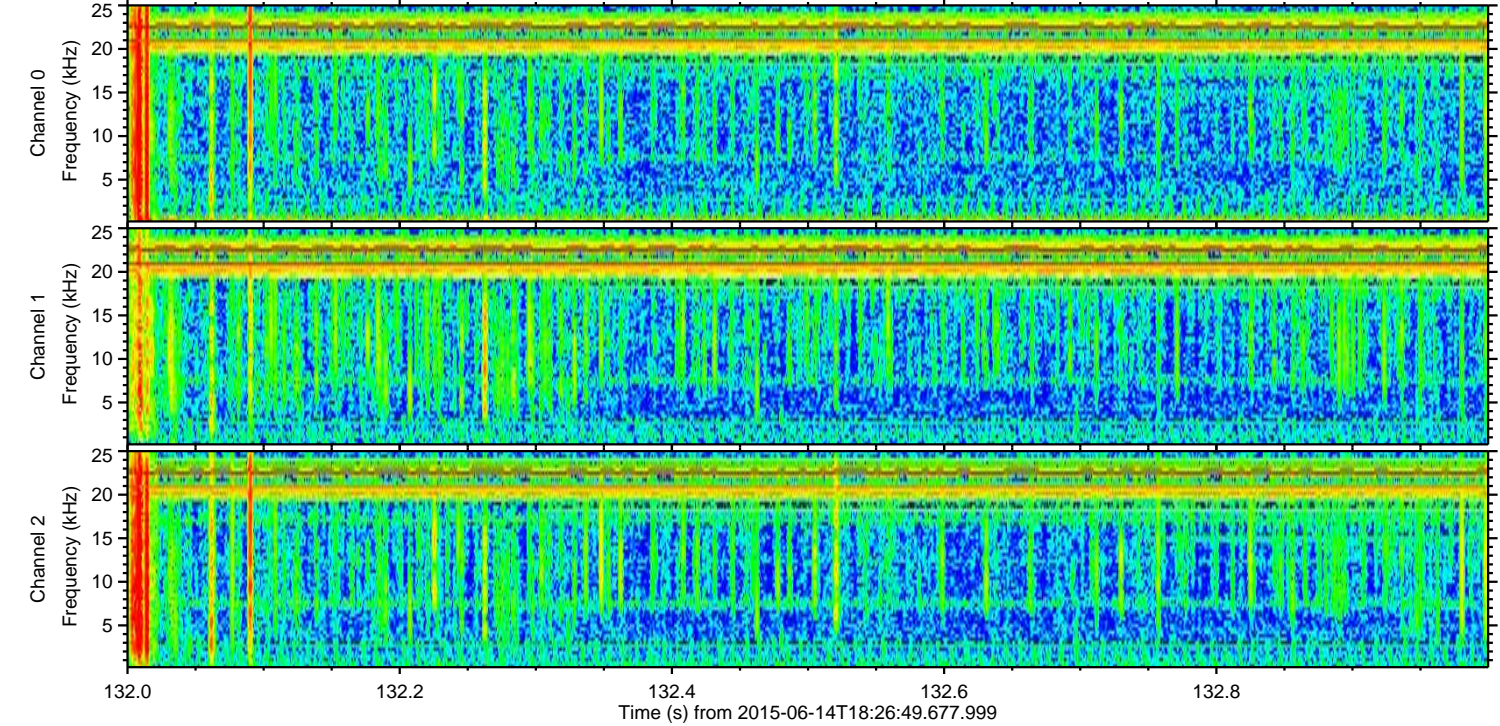
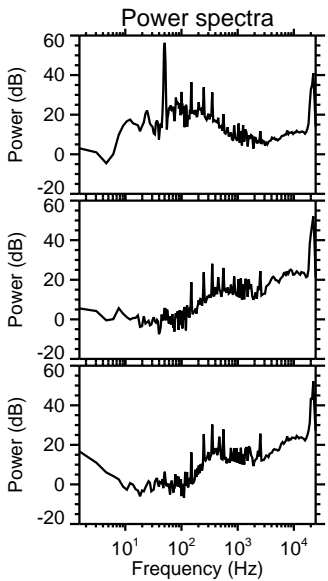
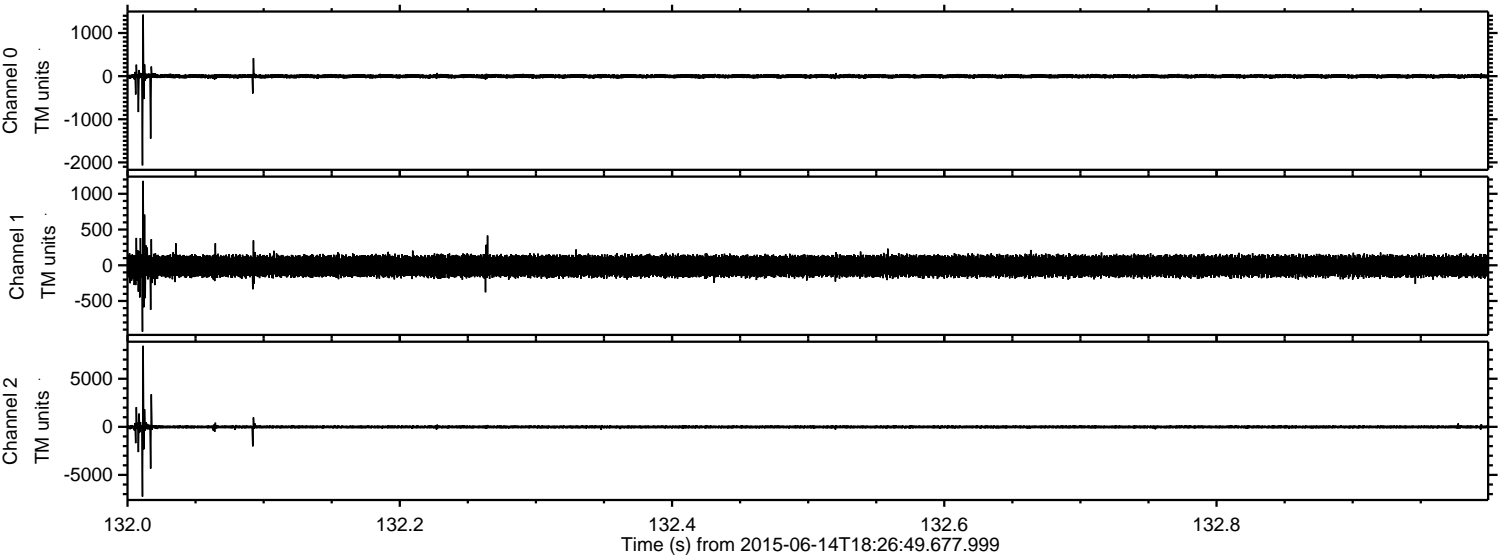
Channel 0
mn: -3426
mx: 3066
 μ : -2.6
 σ : 32.0

Channel 1
mn: -5238
mx: 8768
 μ : -11.6
 σ : 92.7

Channel 2
mn: -5479
mx: 8989
 μ : -11.7
 σ : 87.4

ELMAVAN 3D WAVEFORMS (Measured data sampled at 50 kHz) 51000 packets of 144 samples from 2015-06-14T18:26:49.677.999. Part 133/147

Processed Sun Jun 14 20:33:37 2015 by ELM ver.2012-10-06 from 001__elm20150614_182648__dat00.bin

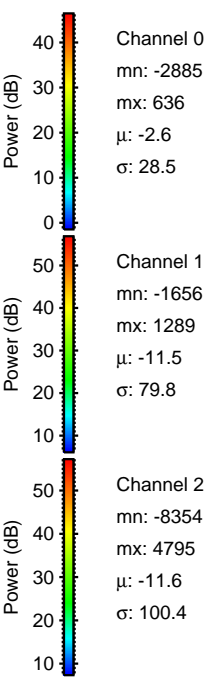
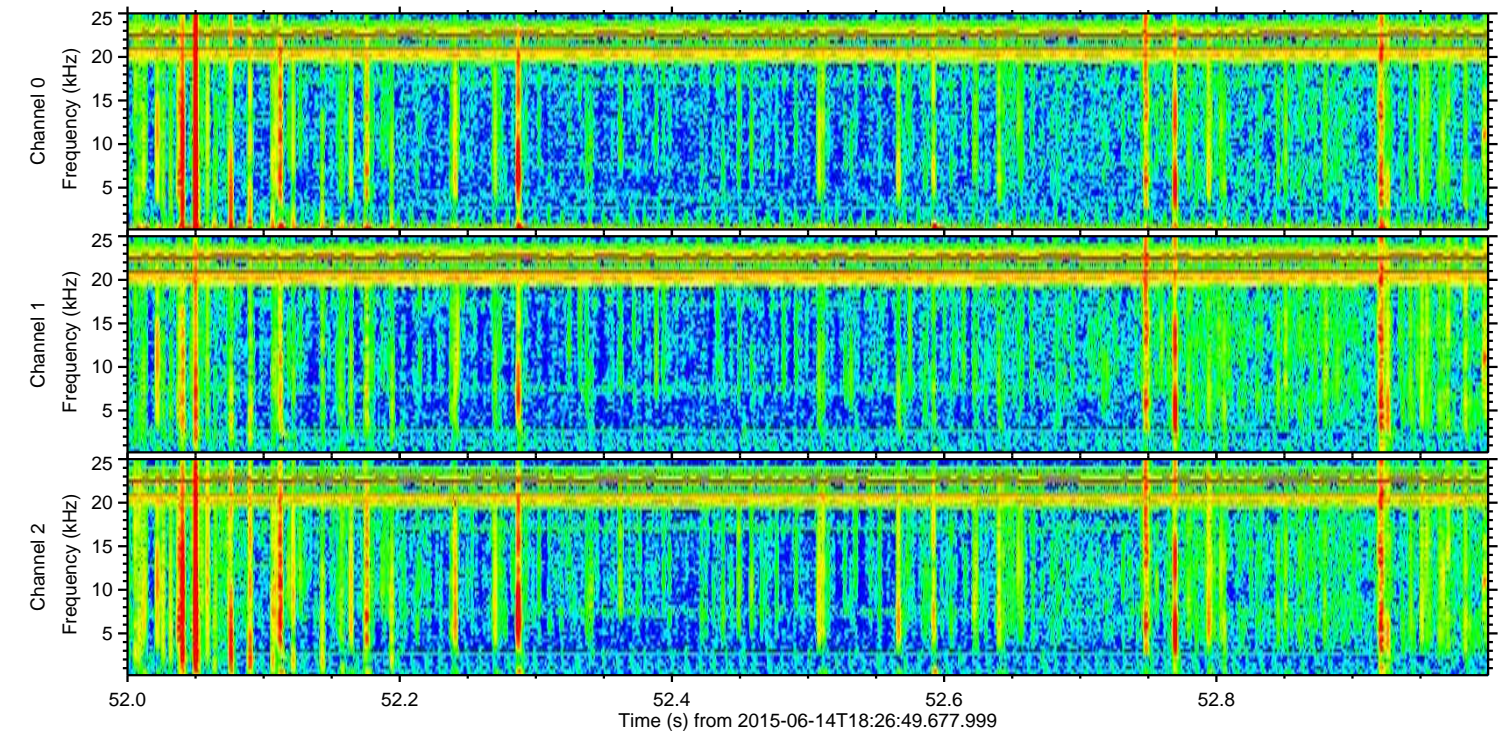
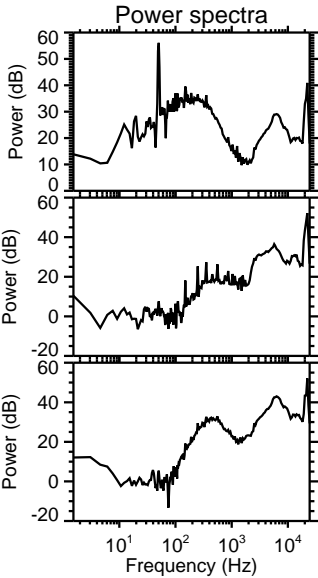
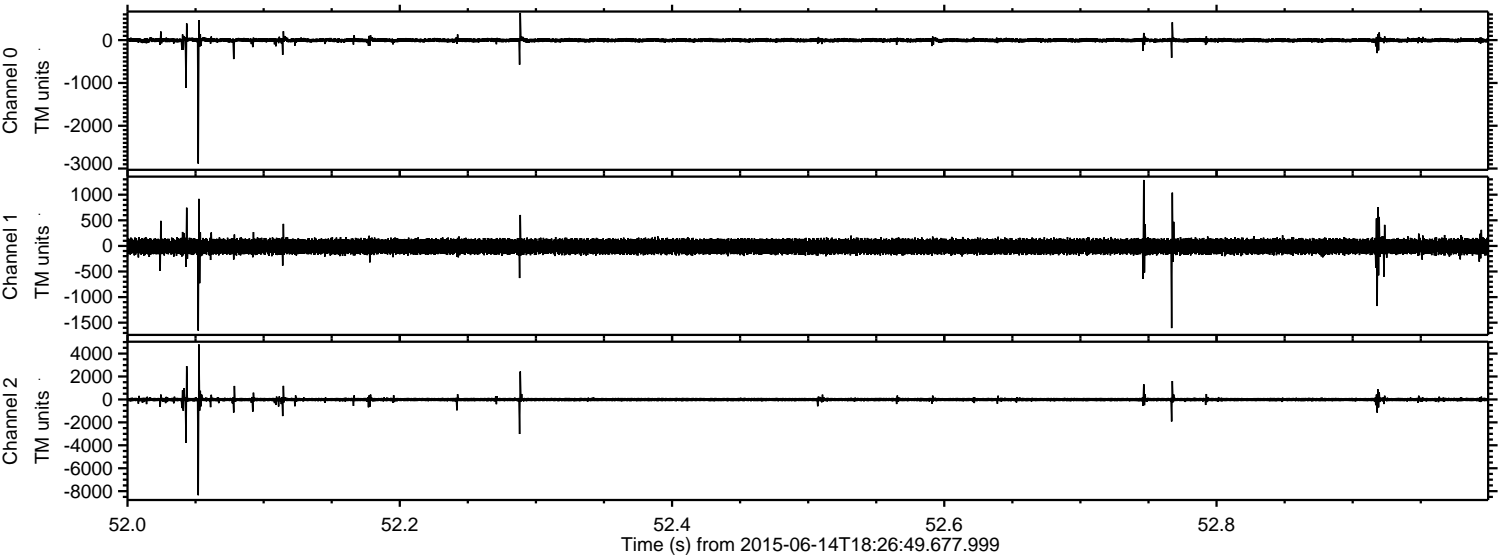


Channel 0
mn: -2068
mx: 1426
 μ : -2.6
 σ : 26.5

Channel 1
mn: -928
mx: 1181
 μ : -11.8
 σ : 75.4

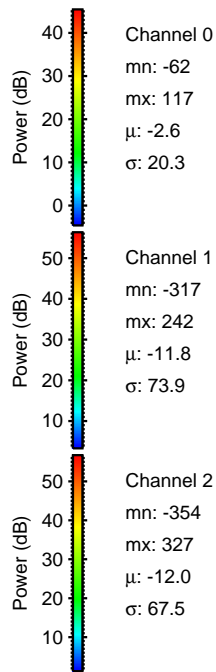
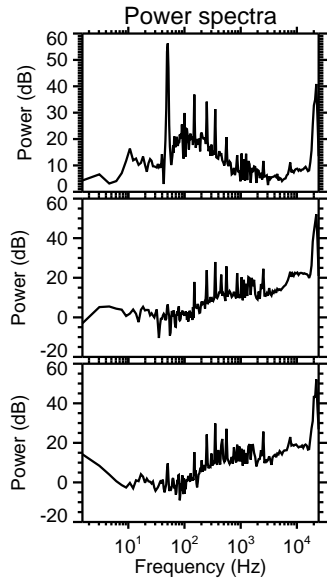
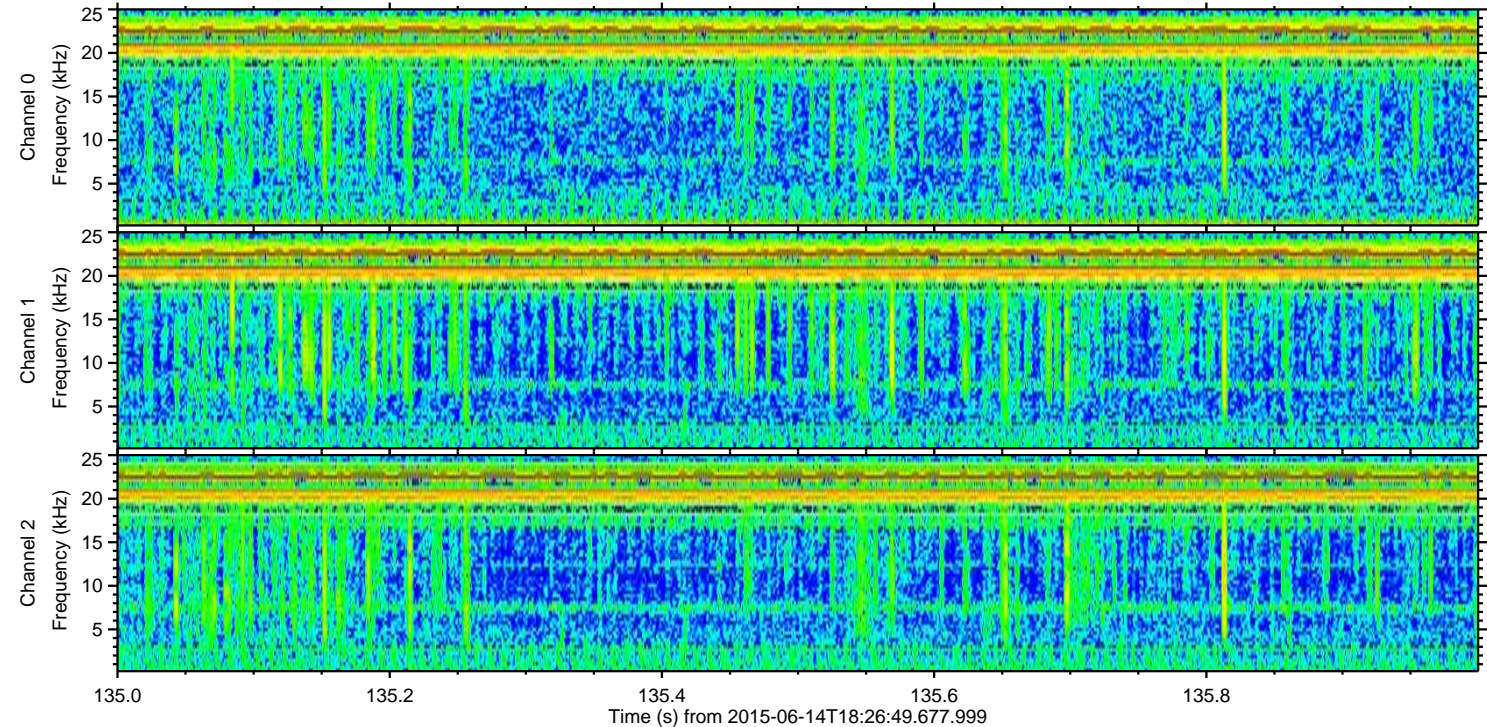
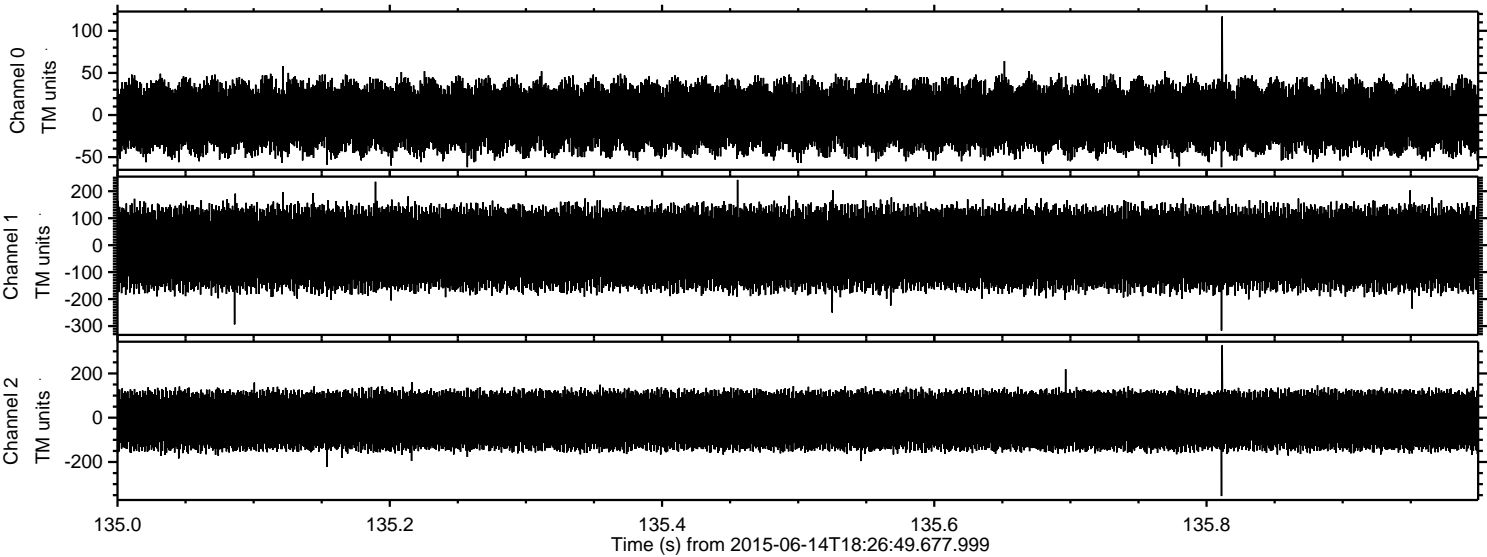
Channel 2
mn: -7247
mx: 8432
 μ : -12.0
 σ : 96.0

Processed Sun Jun 14 20:33:39 2015 by ELM ver.2012-10-06 from 001__elm20150614_182648__dat00.bin



ELMAVAN 3D WAVEFORMS (Measured data sampled at 50 kHz) 51000 packets of 144 samples from 2015-06-14T18:26:49.677.999. Part 136/147

Processed Sun Jun 14 20:33:40 2015 by ELM ver.2012-10-06 from 001__elm20150614_182648__dat00.bin



Power spectra

Channel 0

mn: -62
mx: 117
 μ : -2.6
 σ : 20.3

Channel 1

mn: -317
mx: 242
 μ : -11.8
 σ : 73.9

Channel 2

mn: -354
mx: 327
 μ : -12.0
 σ : 67.5