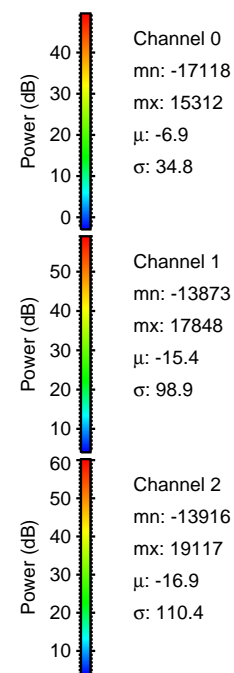
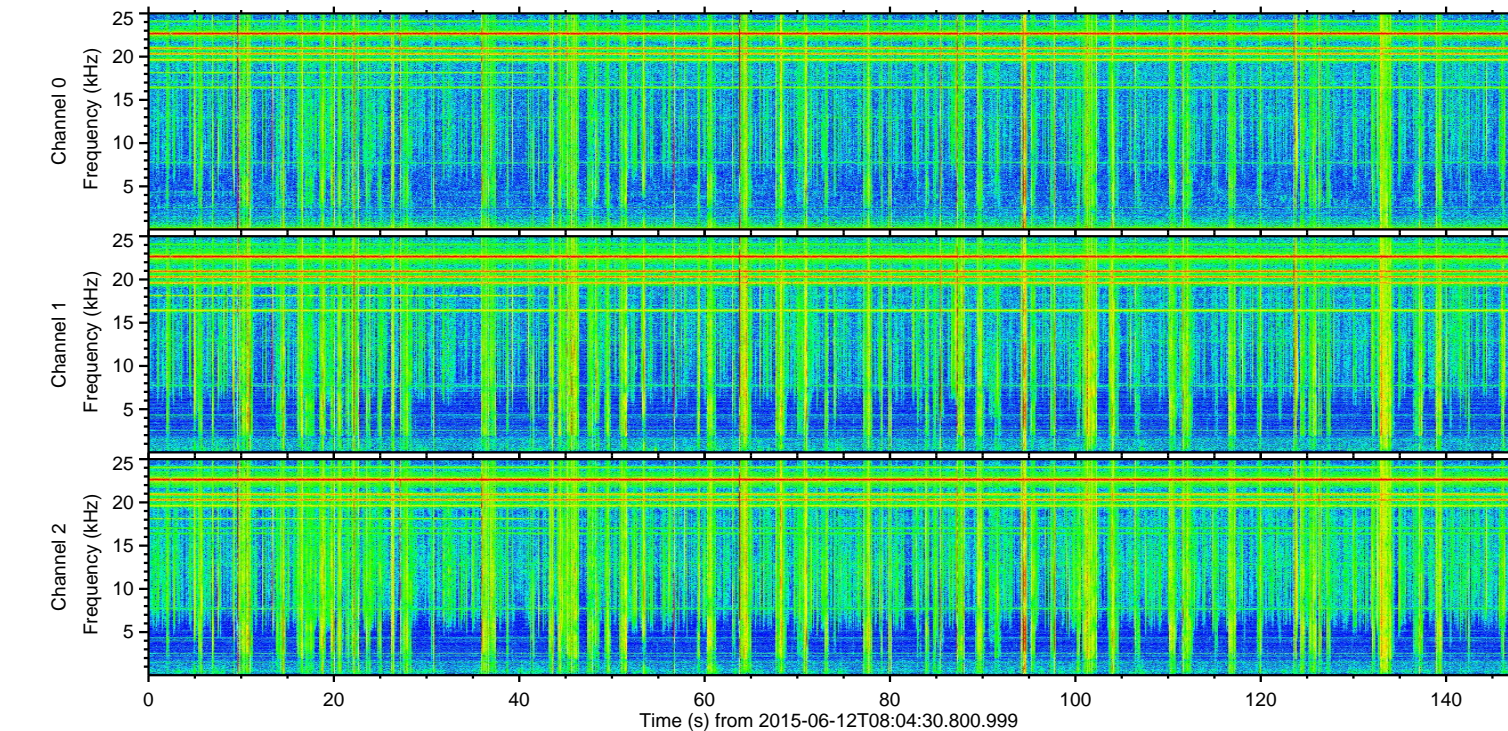
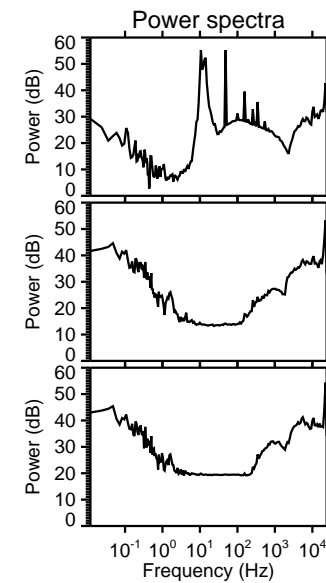
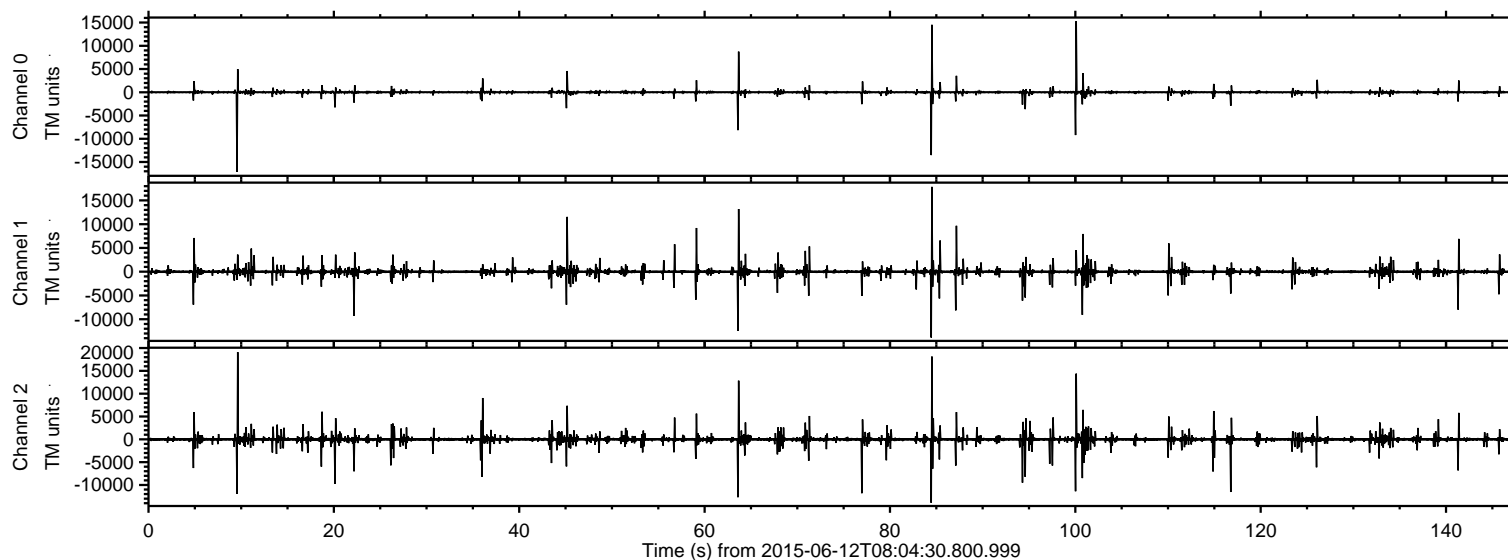


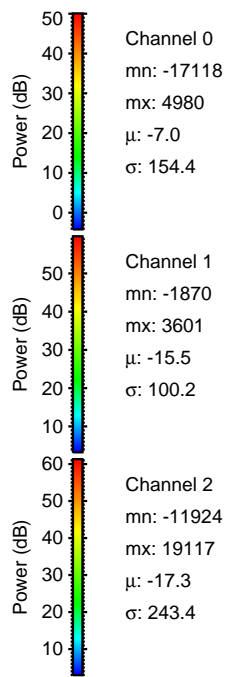
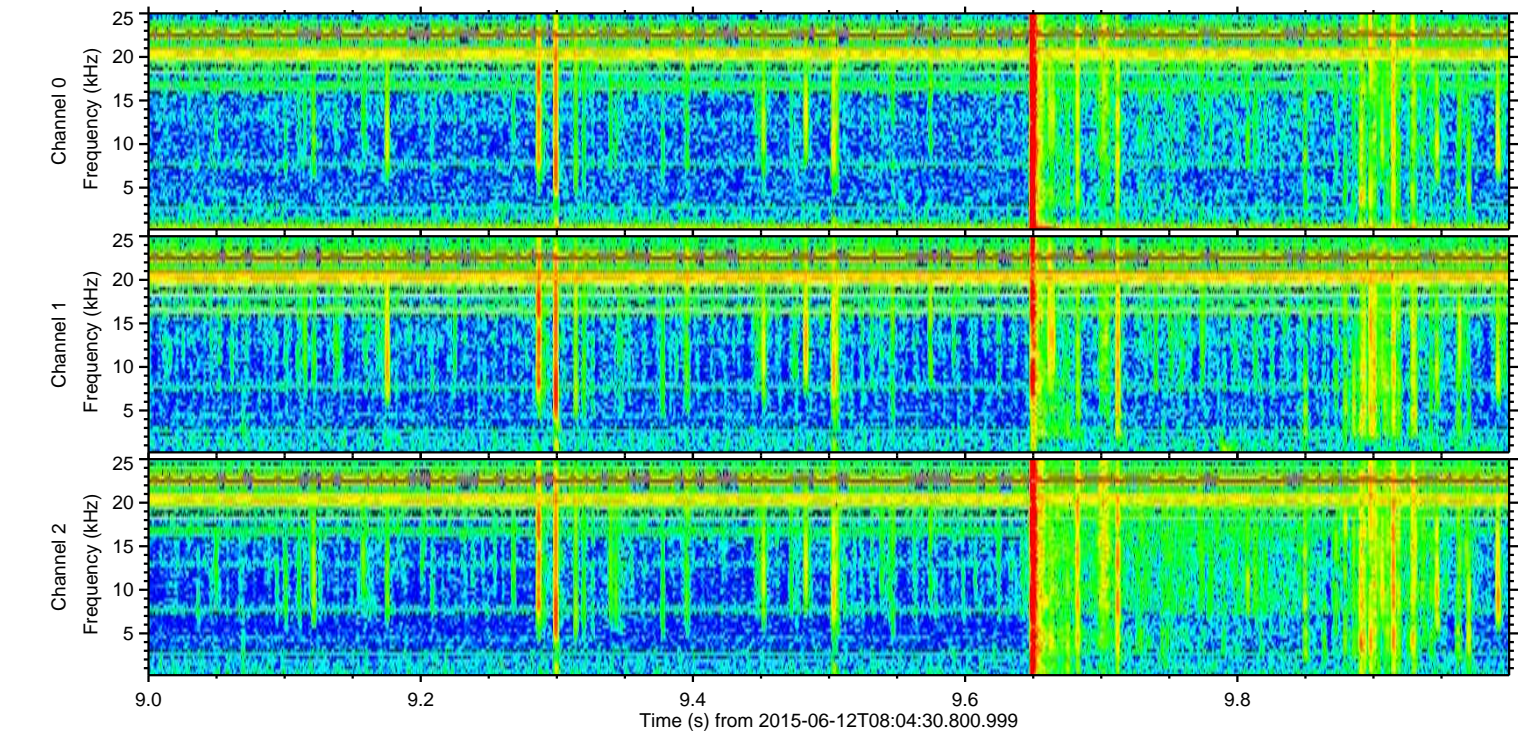
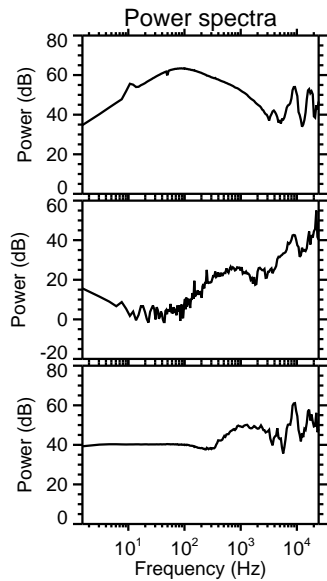
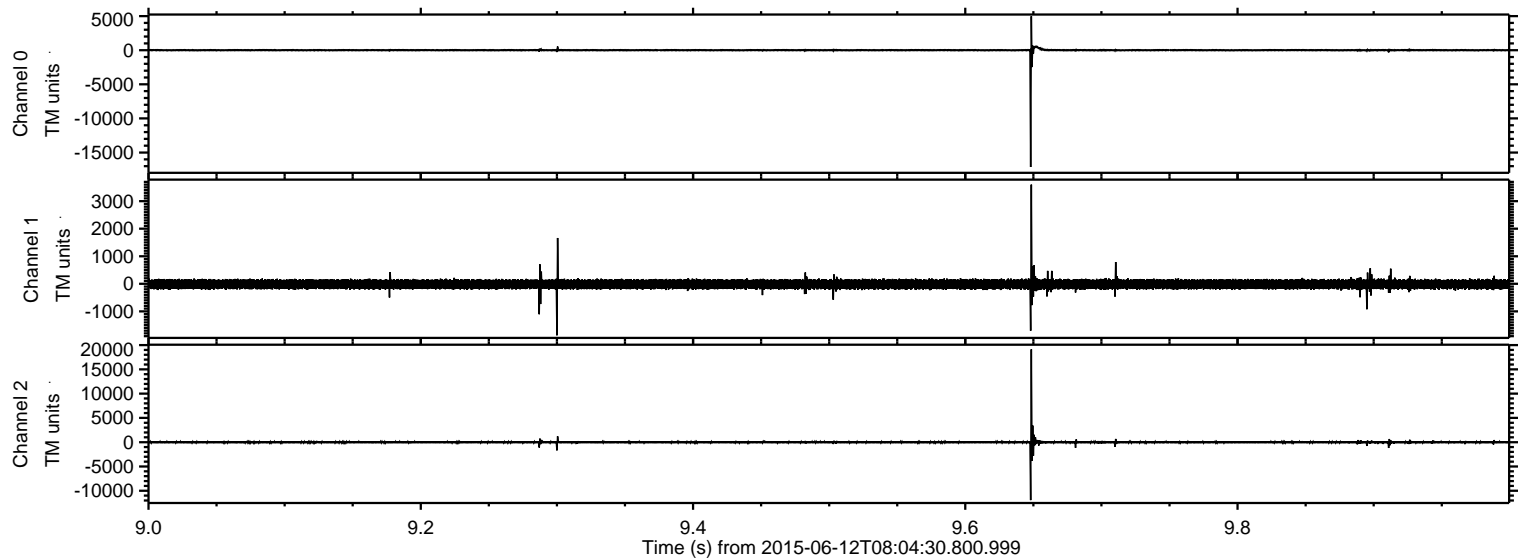
# ELMAVAN 3D WAVEFORMS (Measured data sampled at 50 kHz) 51000 packets of 144 samples from 2015-06-12T08:04:30.800.999.

Processed Fri Jun 12 10:11:12 2015 by ELM ver.2012-10-06 from 001\_\_elm20150612\_080429\_\_dat00.bin



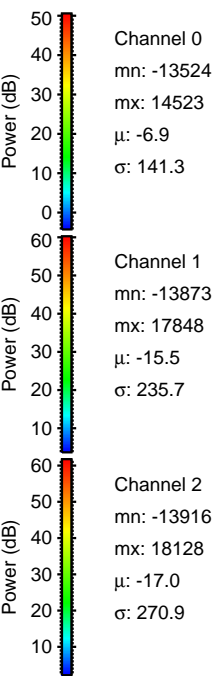
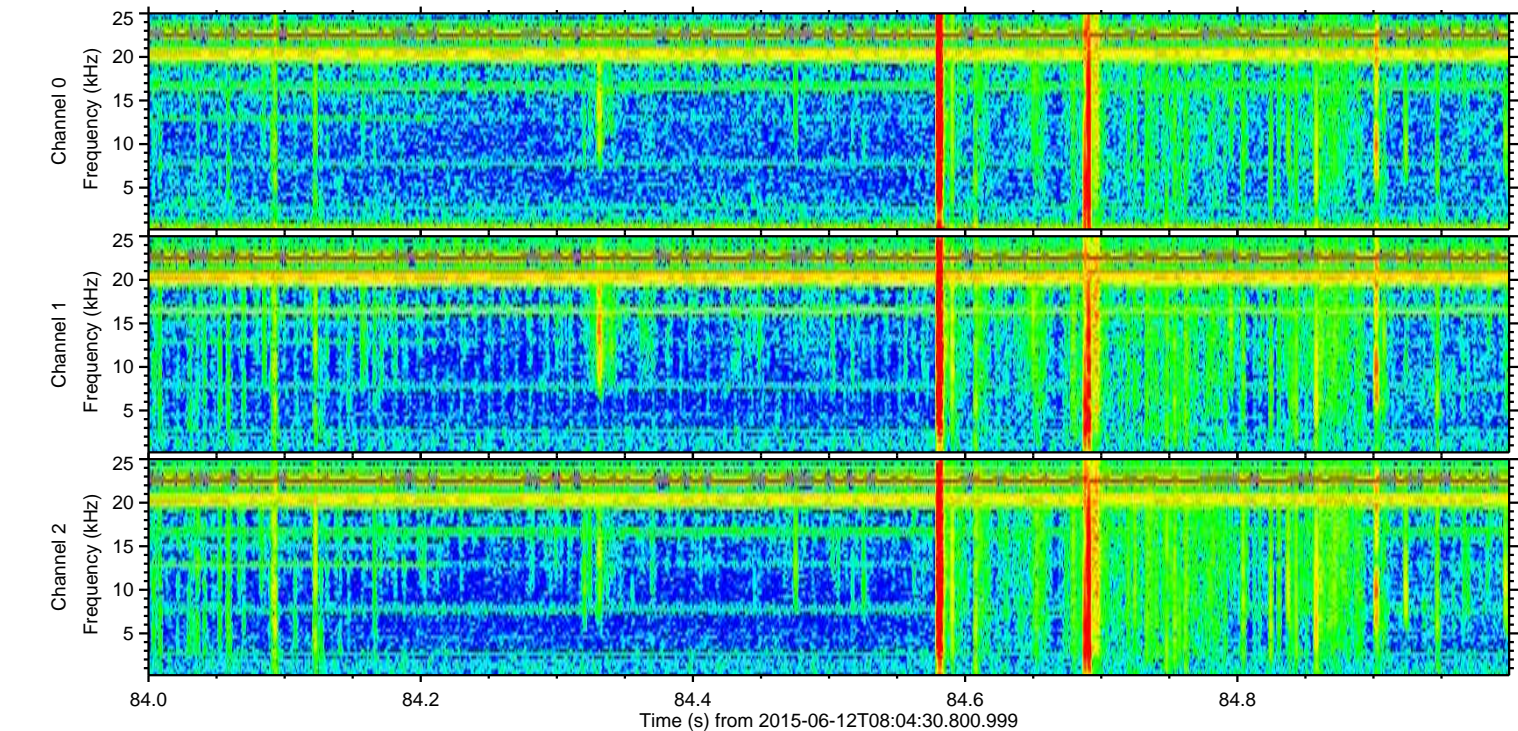
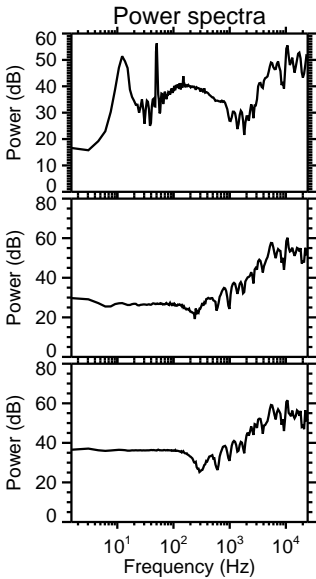
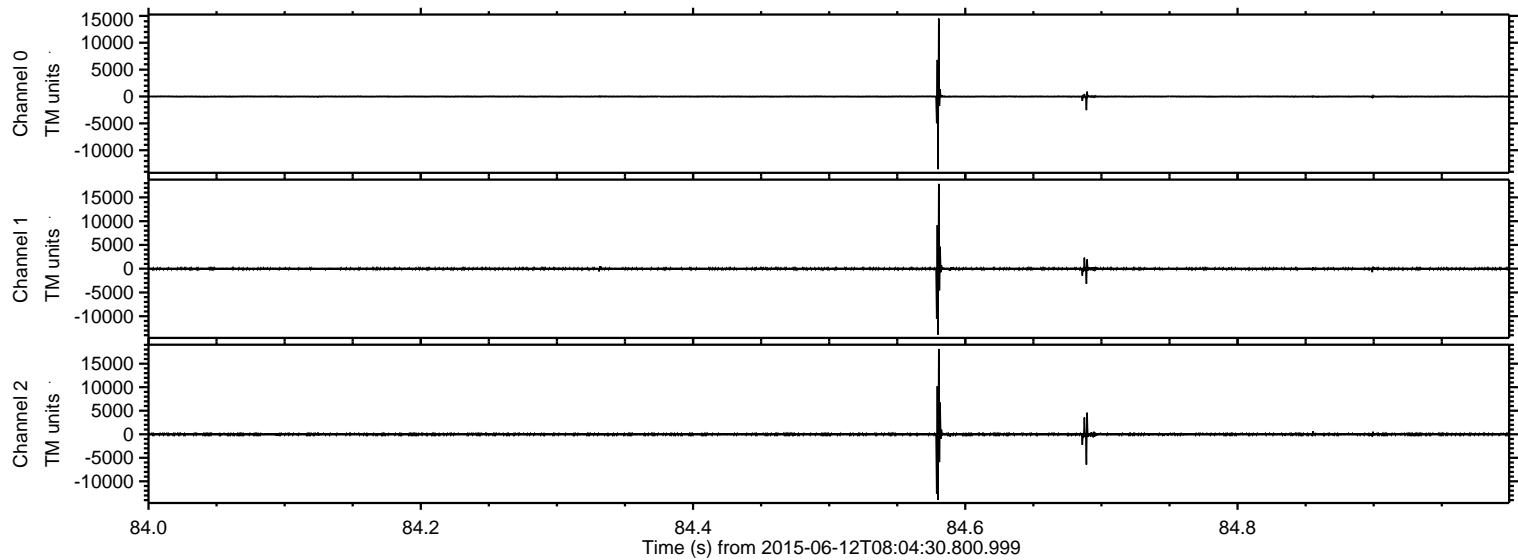


Processed Fri Jun 12 10:11:29 2015 by ELM ver.2012-10-06 from 001\_\_elm20150612\_080429\_\_dat00.bin



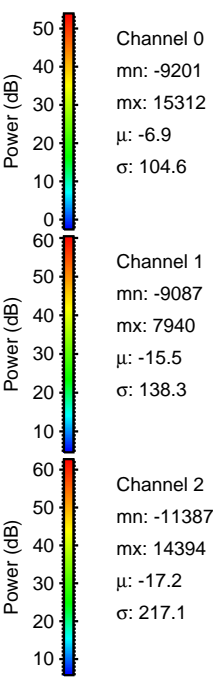
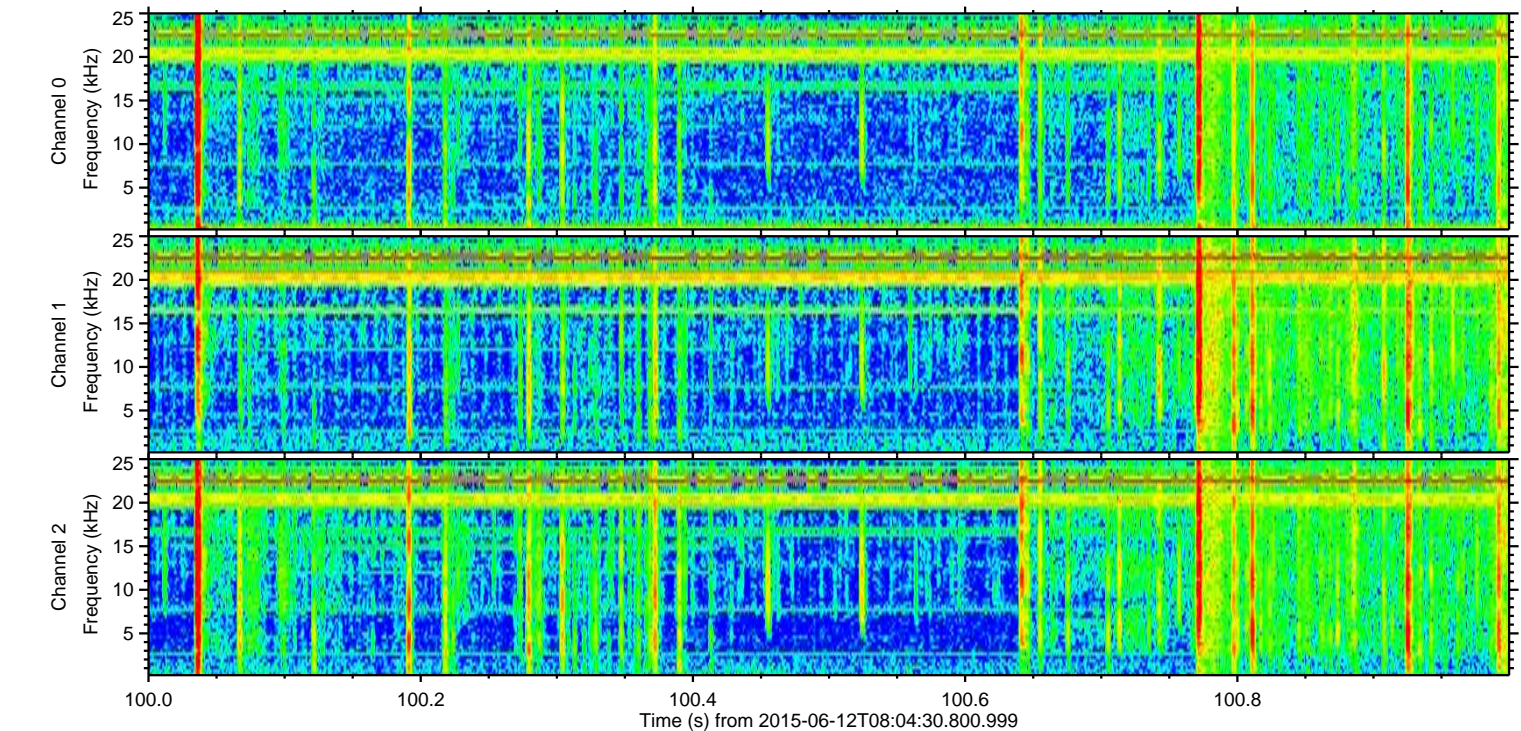
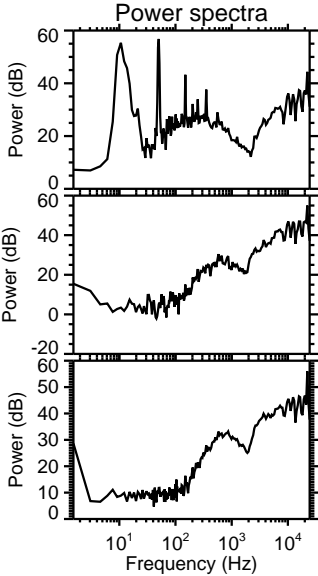
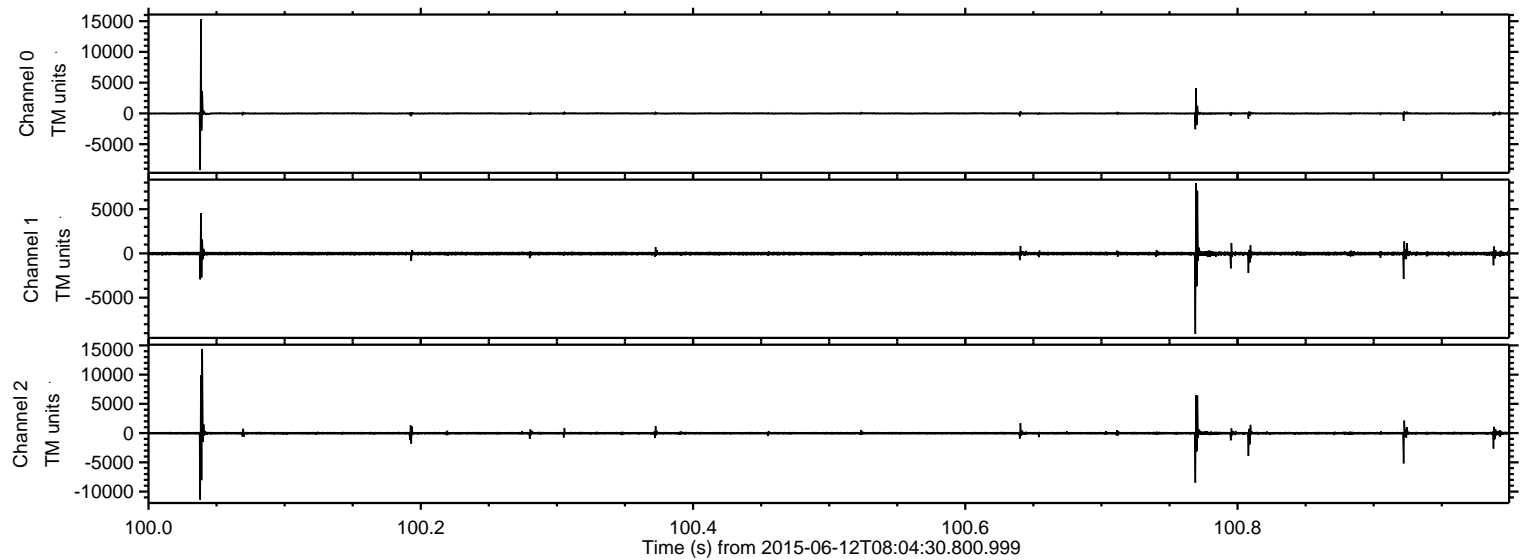


Processed Fri Jun 12 10:11:30 2015 by ELM ver.2012-10-06 from 001\_\_elm20150612\_080429\_\_dat00.bin



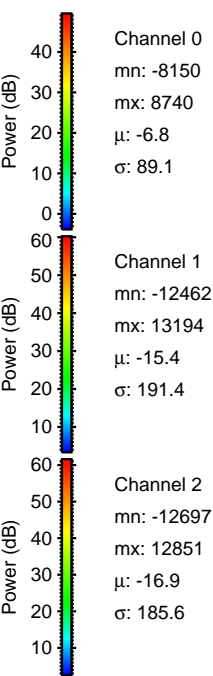
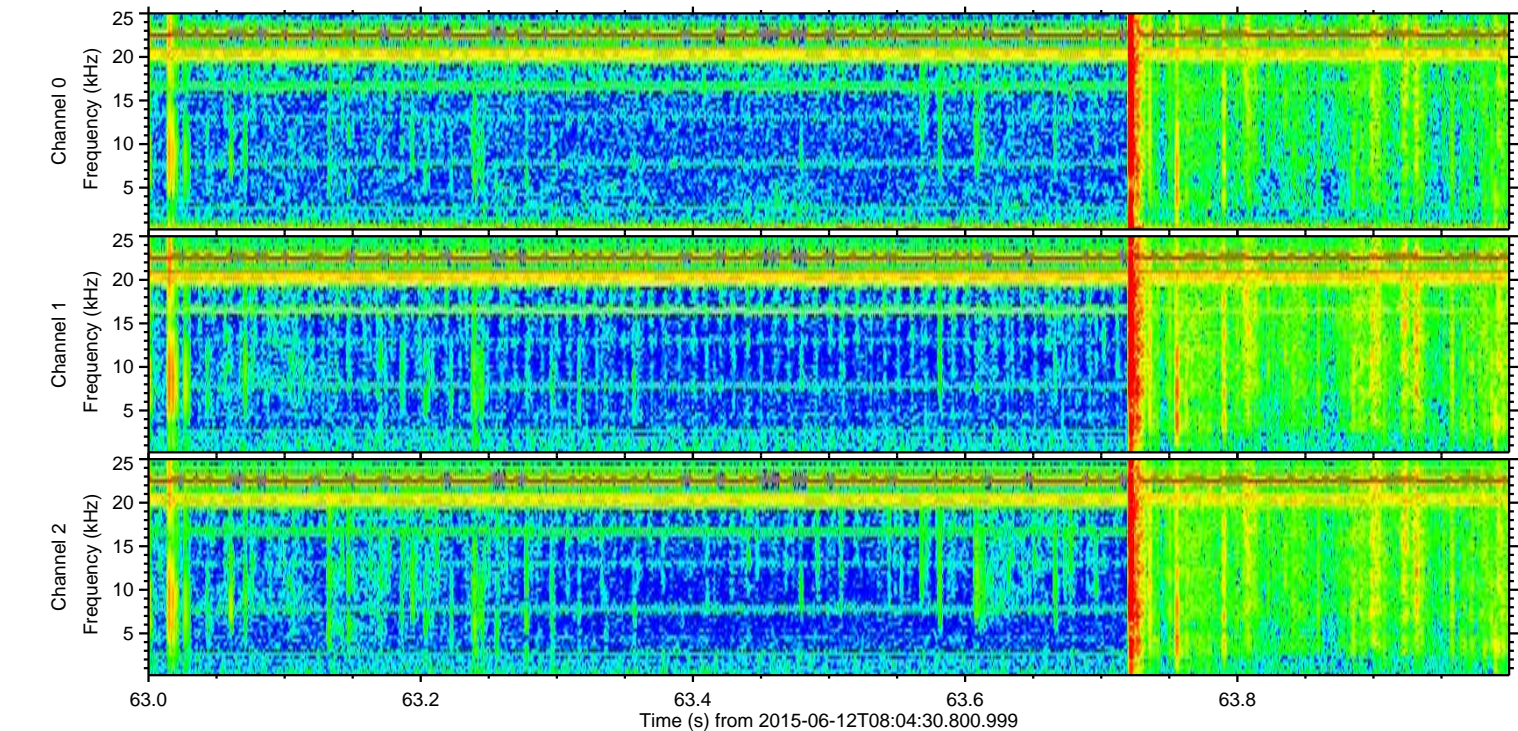
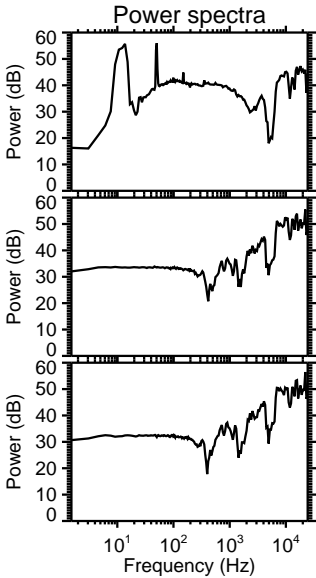
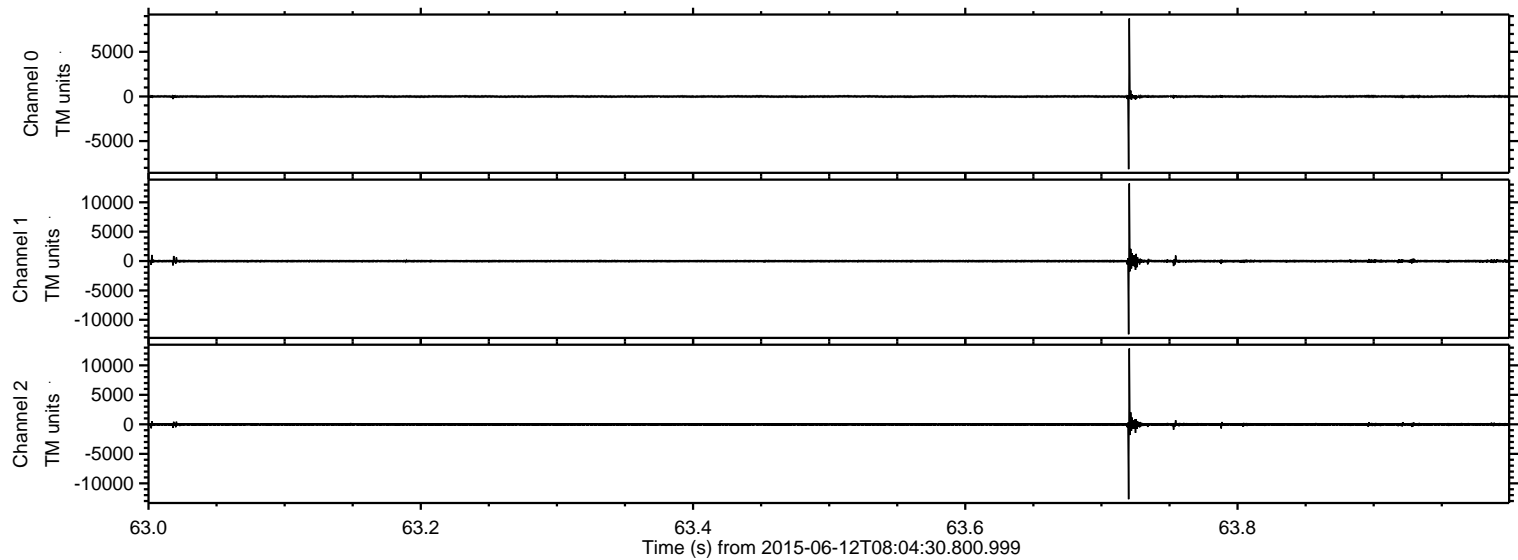
ELMAVAN 3D WAVEFORMS (Measured data sampled at 50 kHz) 51000 packets of 144 samples from 2015-06-12T08:04:30.800.999. Part 101/147

Processed Fri Jun 12 10:11:31 2015 by ELM ver.2012-10-06 from 001\_\_elm20150612\_080429\_\_dat00.bin

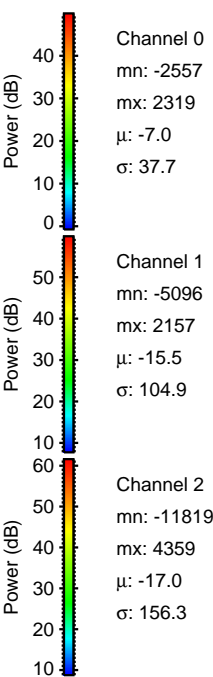
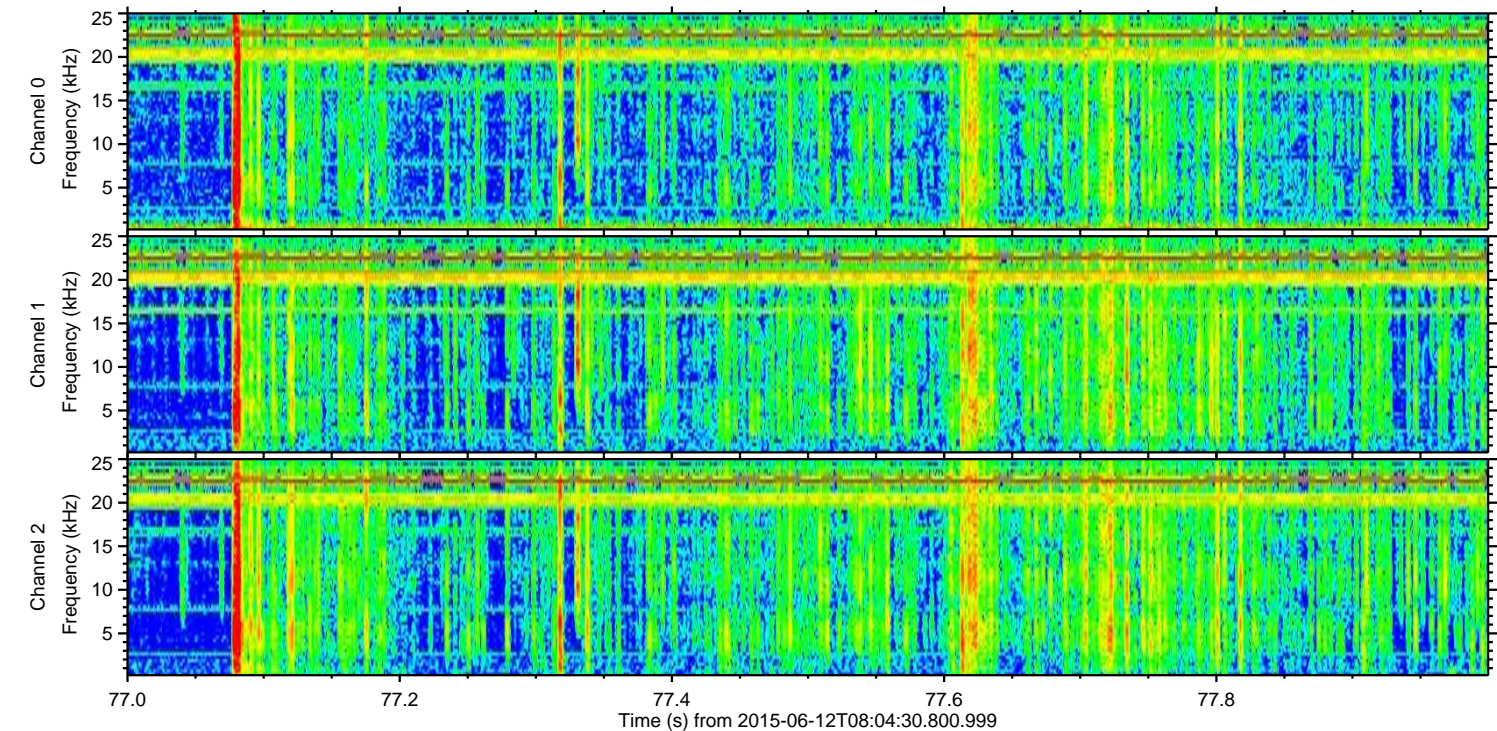
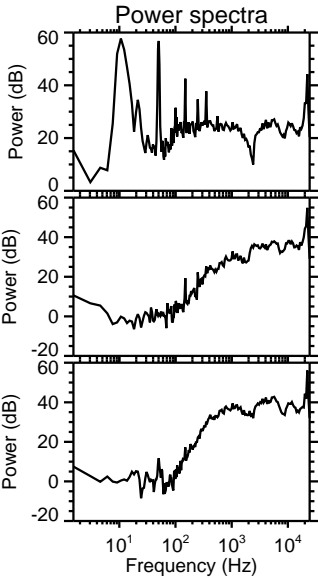
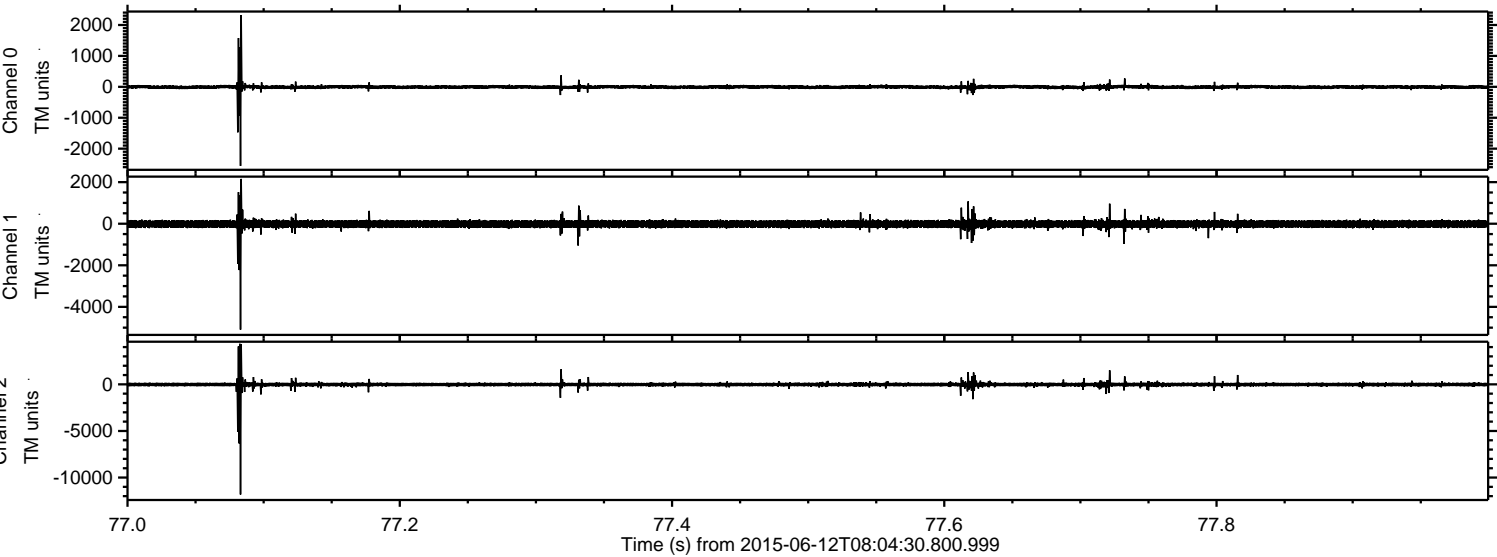




Processed Fri Jun 12 10:11:32 2015 by ELM ver.2012-10-06 from 001\_\_elm20150612\_080429\_\_dat00.bin



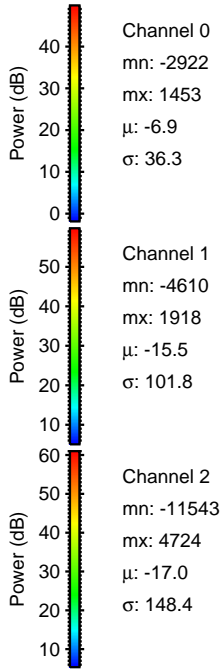
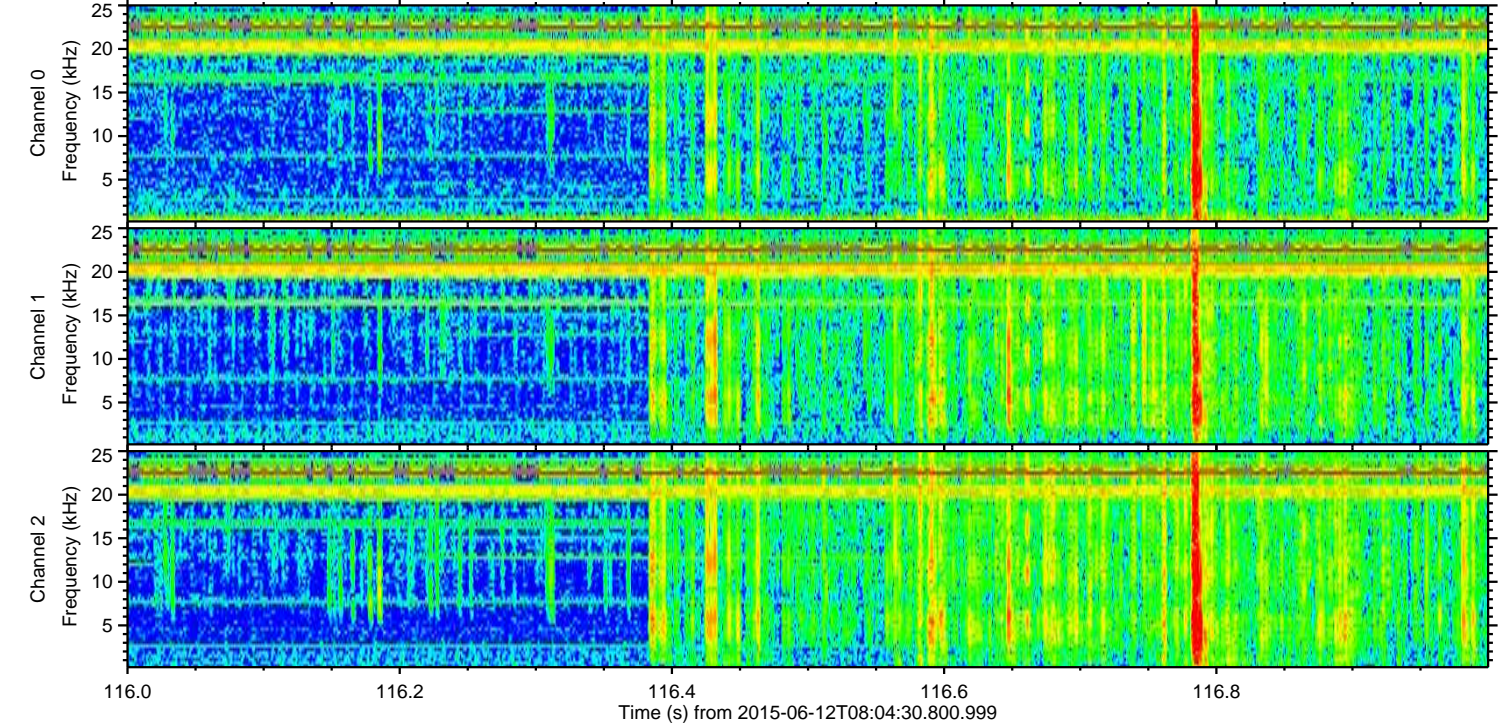
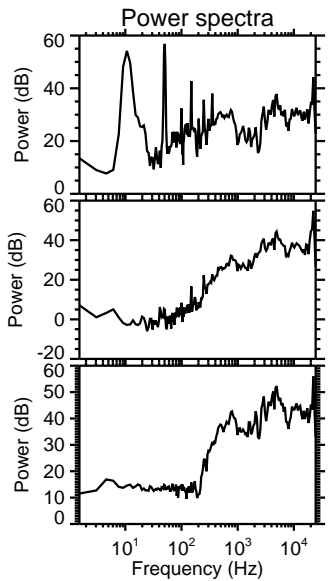
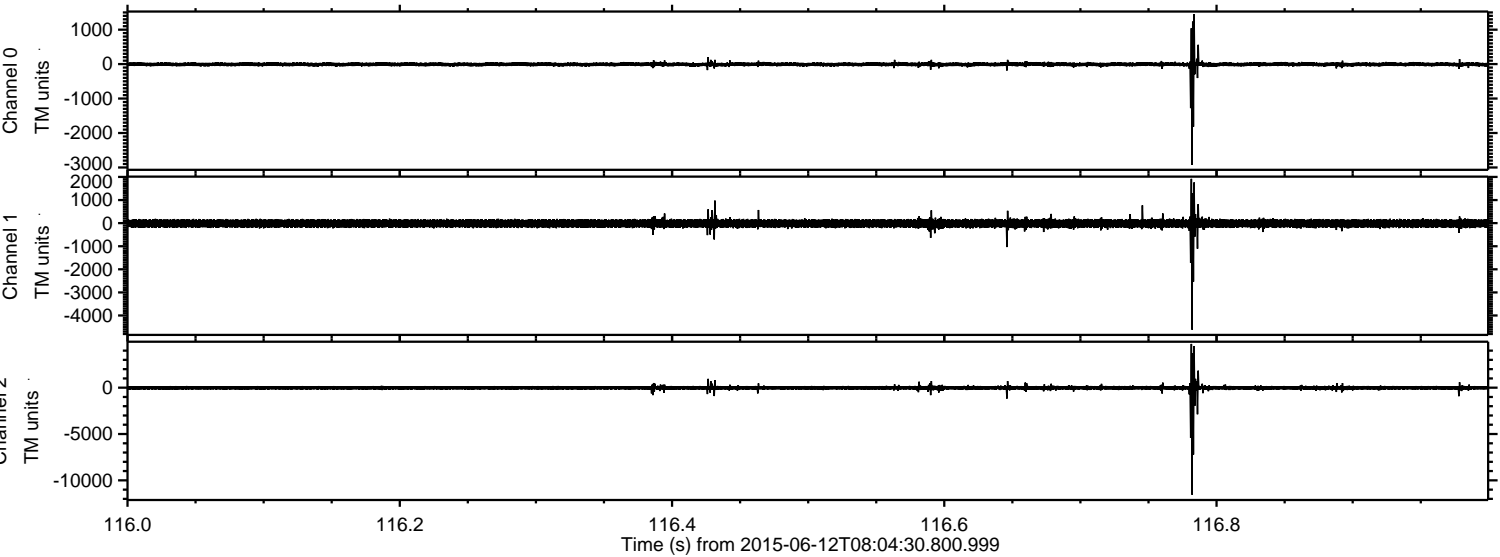
Processed Fri Jun 12 10:11:33 2015 by ELM ver.2012-10-06 from 001\_\_elm20150612\_080429\_\_dat00.bin



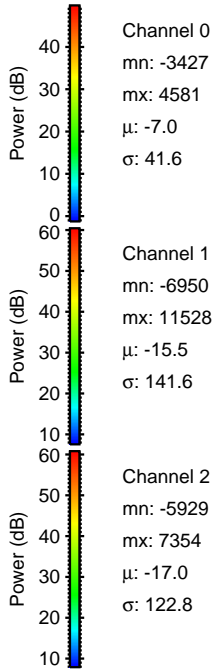
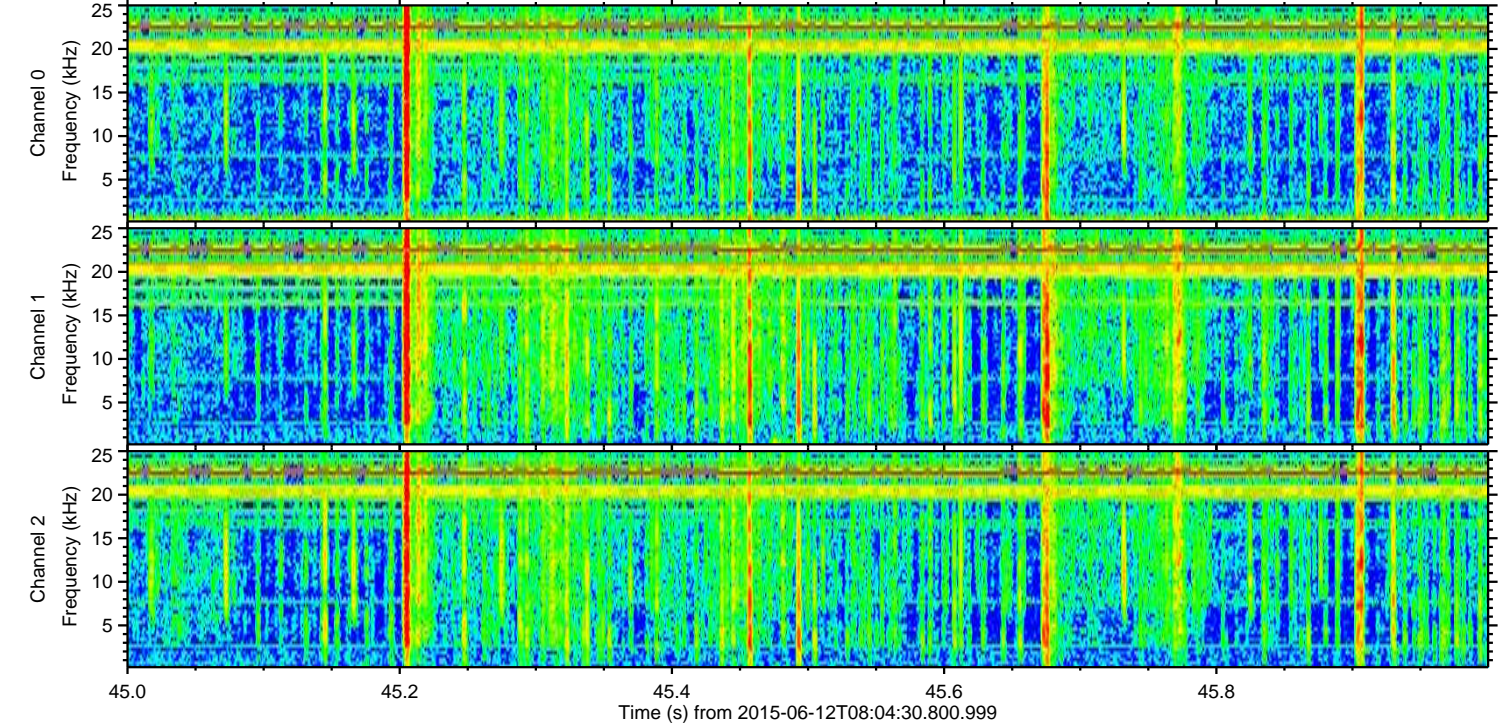
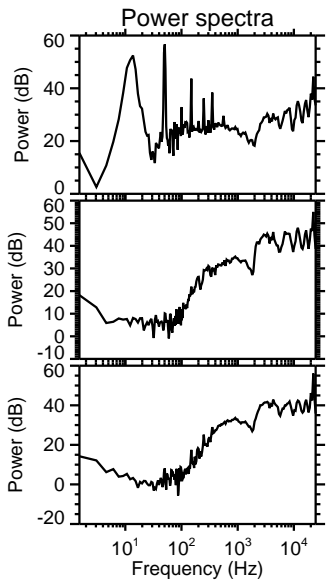
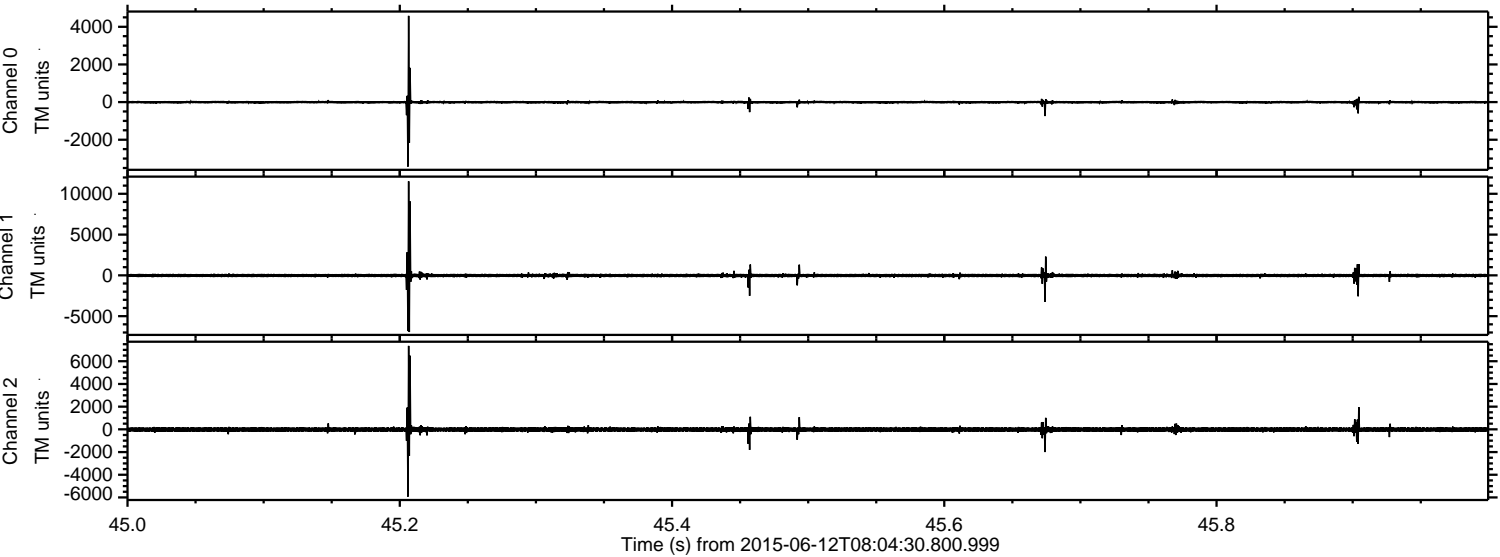


ELMAVAN 3D WAVEFORMS (Measured data sampled at 50 kHz) 51000 packets of 144 samples from 2015-06-12T08:04:30.800.999. Part 117/147

Processed Fri Jun 12 10:11:34 2015 by ELM ver.2012-10-06 from 001\_\_elm20150612\_080429\_\_dat00.bin

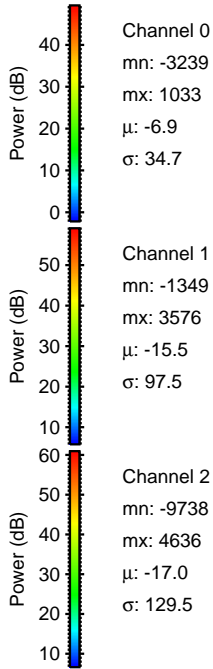
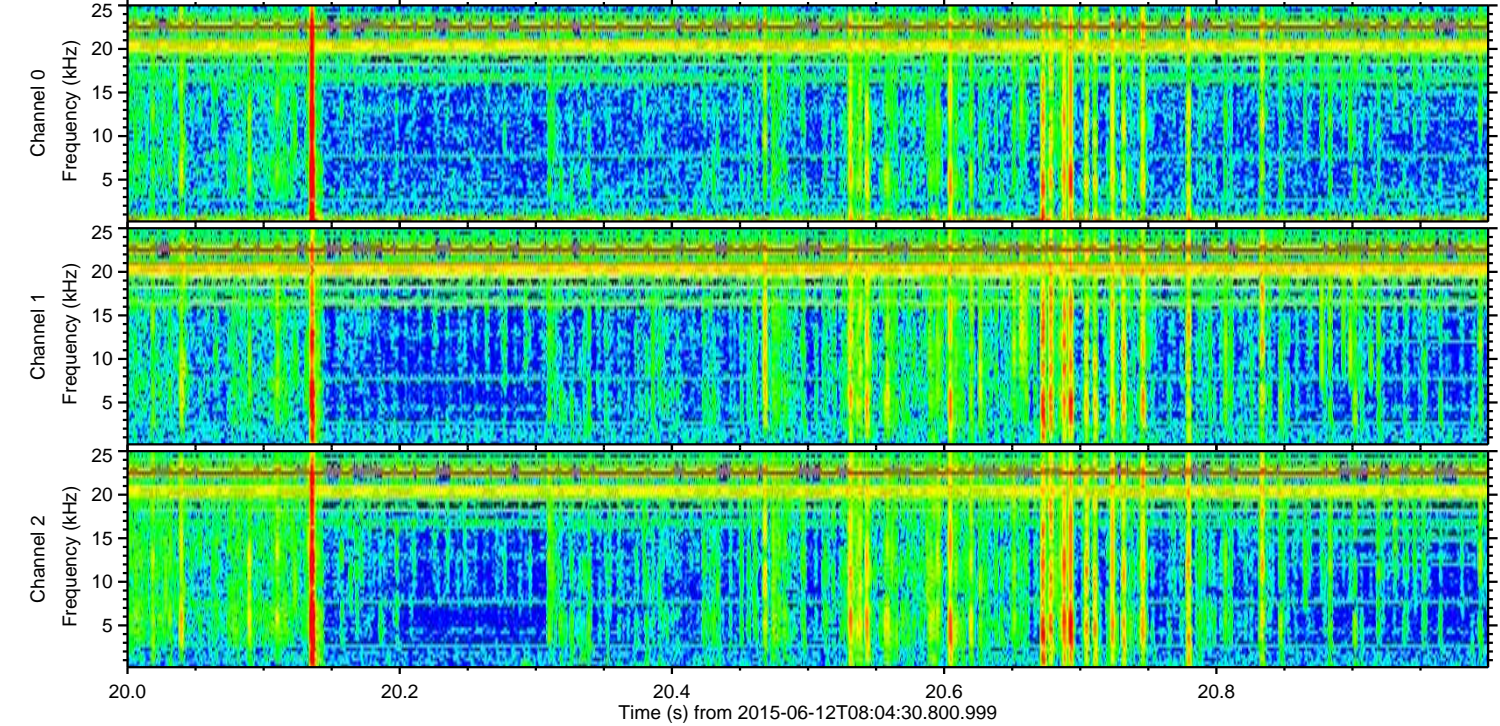
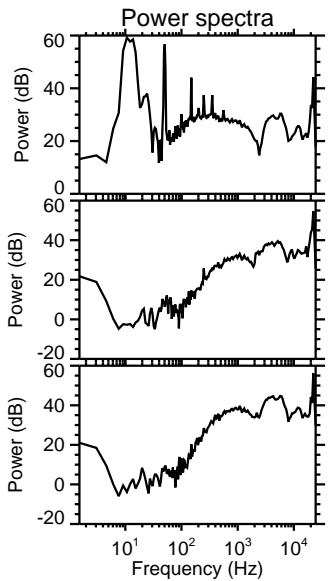
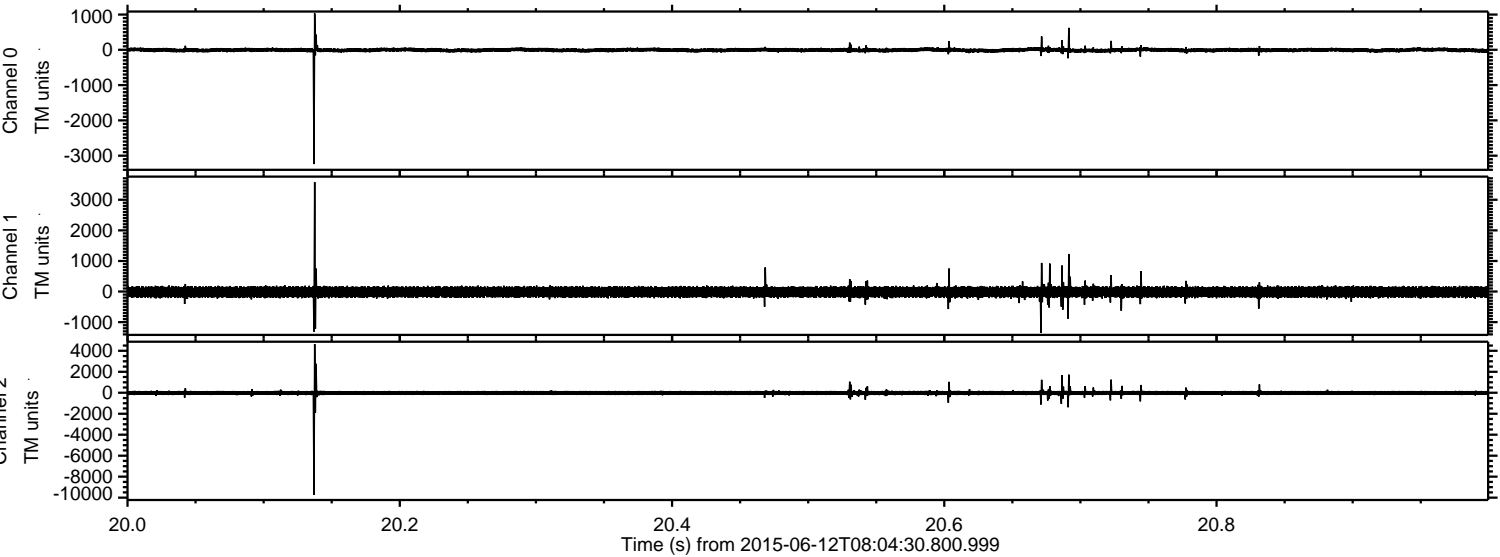


Processed Fri Jun 12 10:11:35 2015 by ELM ver.2012-10-06 from 001\_\_elm20150612\_080429\_\_dat00.bin





Processed Fri Jun 12 10:11:36 2015 by ELM ver.2012-10-06 from 001\_\_elm20150612\_080429\_\_dat00.bin



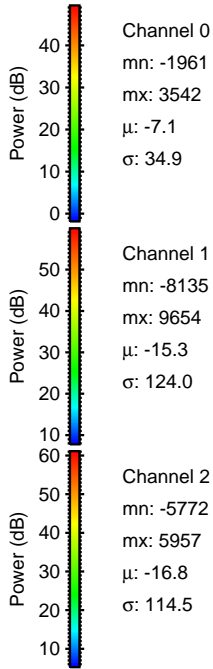
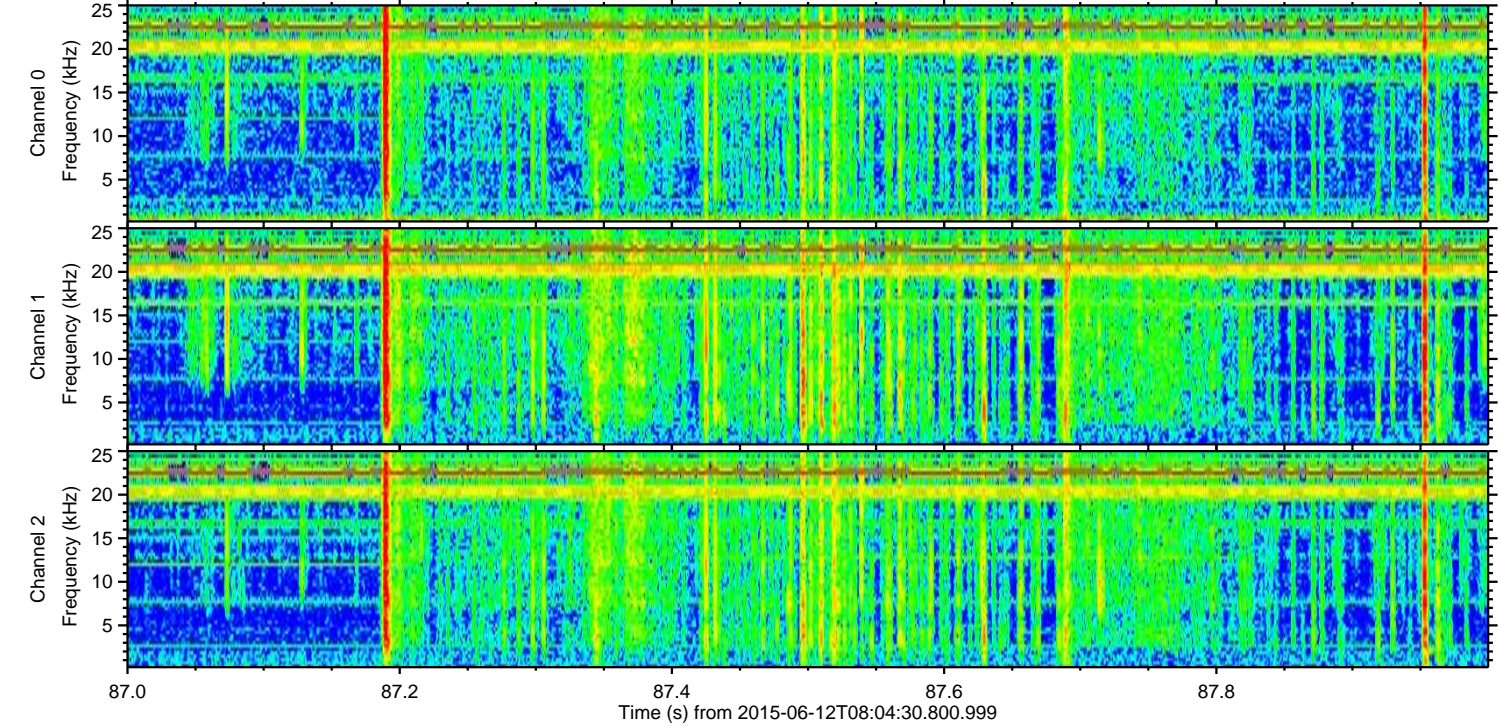
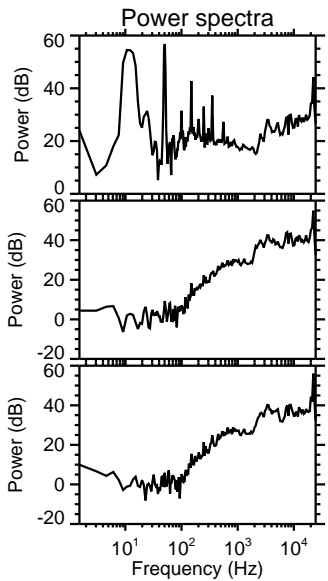
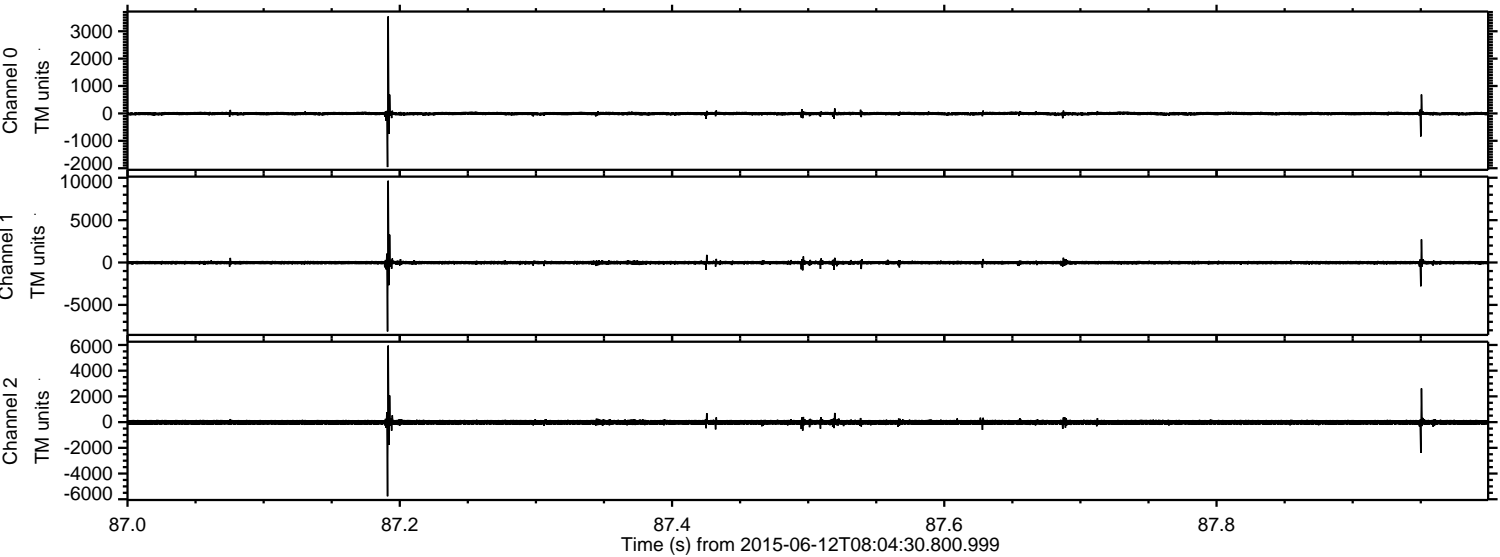
Channel 0  
mn: -3239  
mx: 1033  
 $\mu$ : -6.9  
 $\sigma$ : 34.7

Channel 1  
mn: -1349  
mx: 3576  
 $\mu$ : -15.5  
 $\sigma$ : 97.5

Channel 2  
mn: -9738  
mx: 4636  
 $\mu$ : -17.0  
 $\sigma$ : 129.5



Processed Fri Jun 12 10:11:37 2015 by ELM ver.2012-10-06 from 001\_\_elm20150612\_080429\_\_dat00.bin



Channel 0  
mn: -1961  
mx: 3542  
 $\mu$ : -7.1  
 $\sigma$ : 34.9

Channel 1  
mn: -8135  
mx: 9654  
 $\mu$ : -15.3  
 $\sigma$ : 124.0

Channel 2  
mn: -5772  
mx: 5957  
 $\mu$ : -16.8  
 $\sigma$ : 114.5



