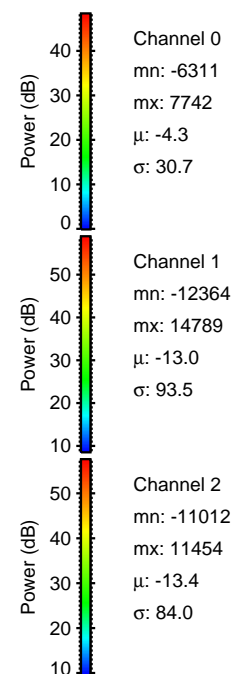
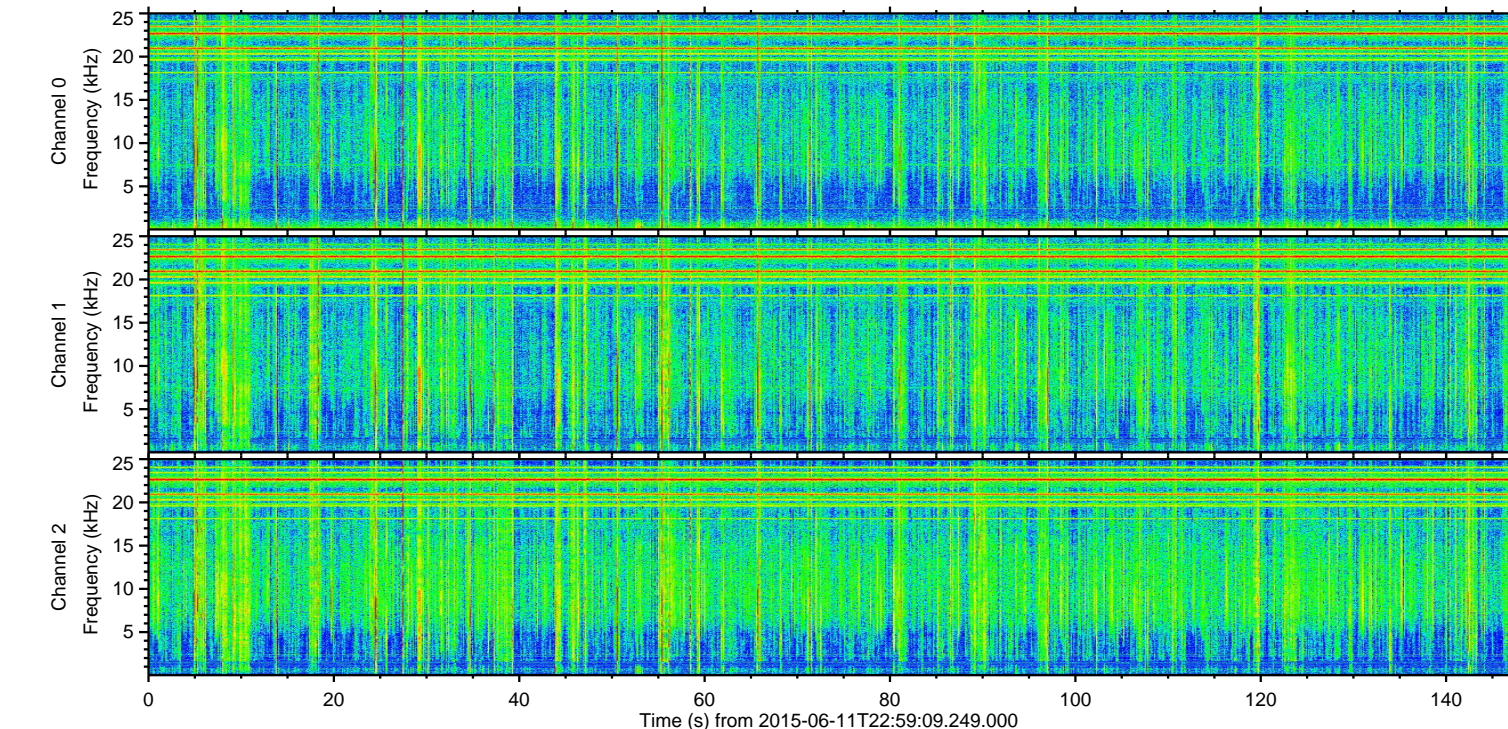
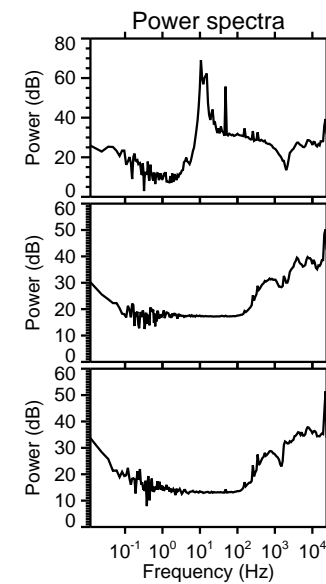
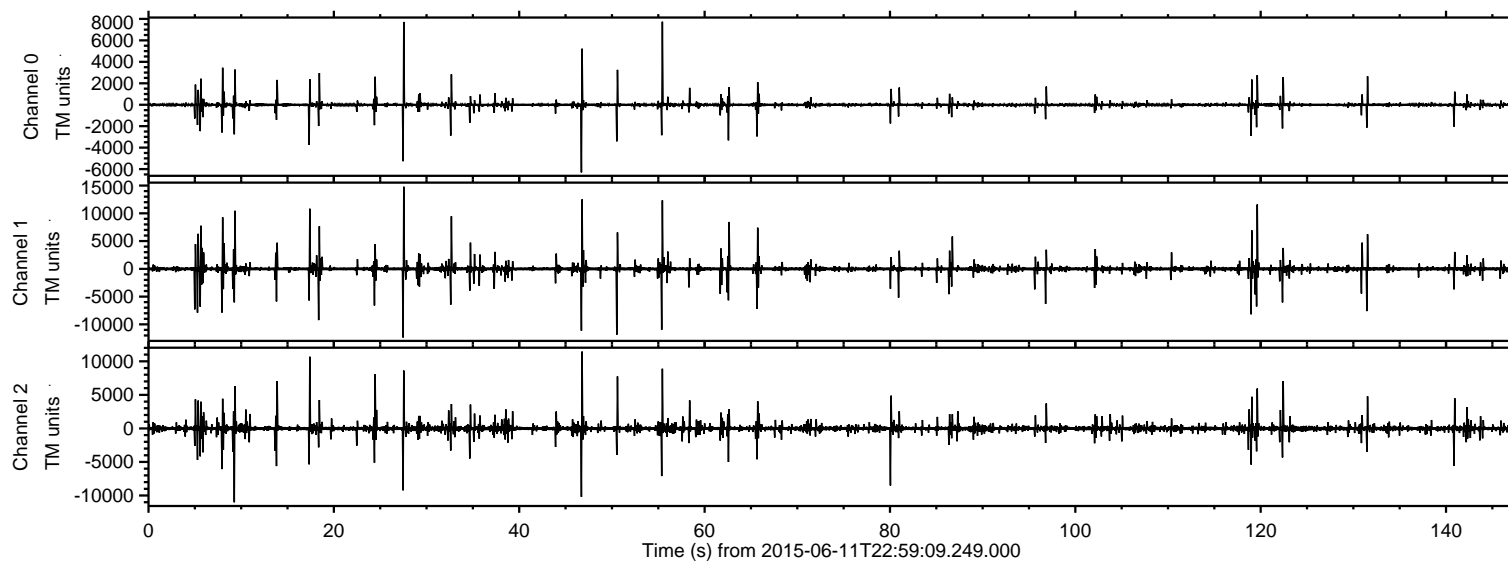
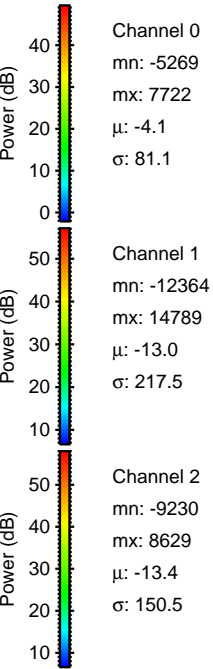
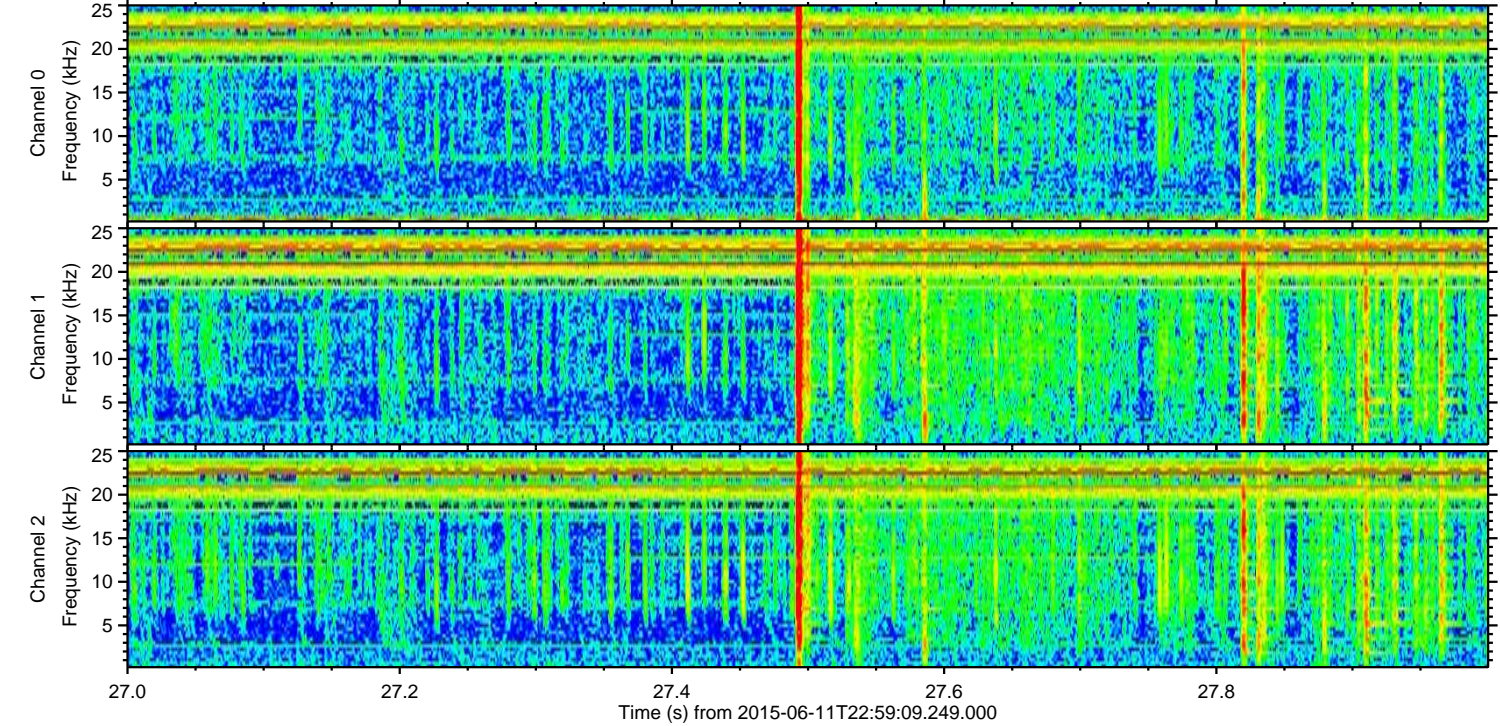
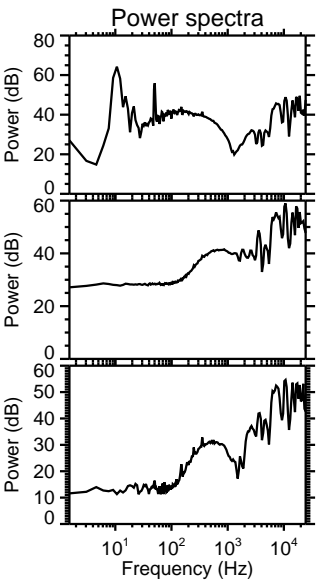
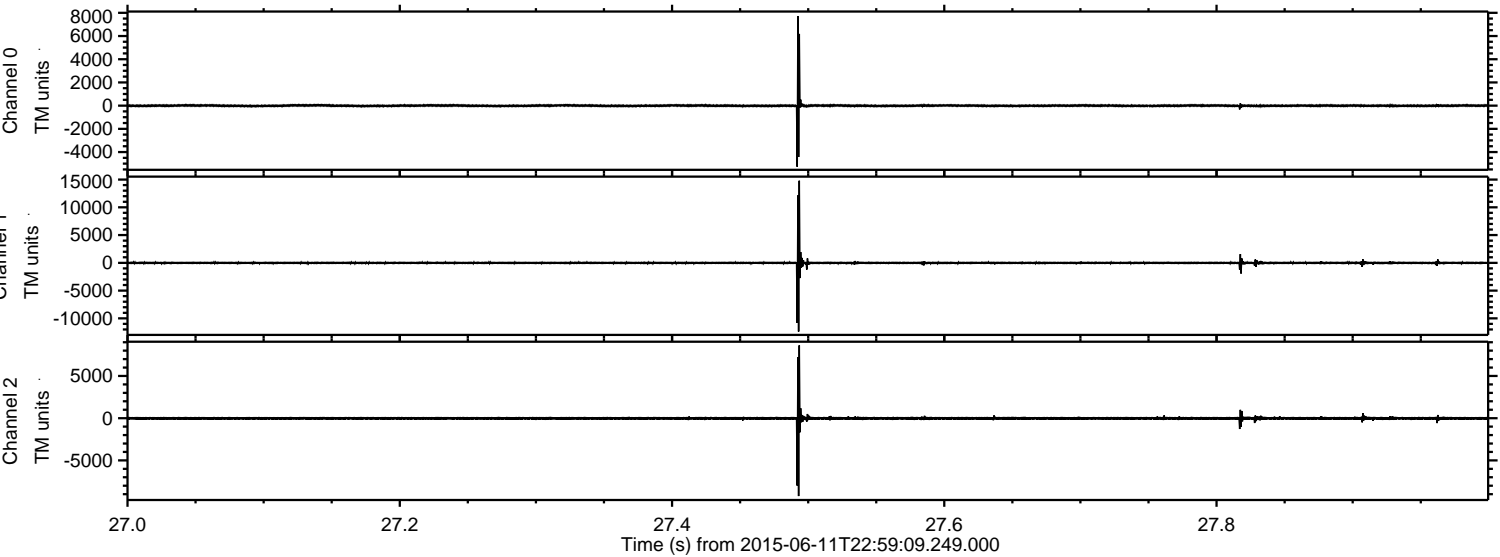


ELMAVAN 3D WAVEFORMS (Measured data sampled at 50 kHz) 51000 packets of 144 samples from 2015-06-11T22:59:09.249.000.

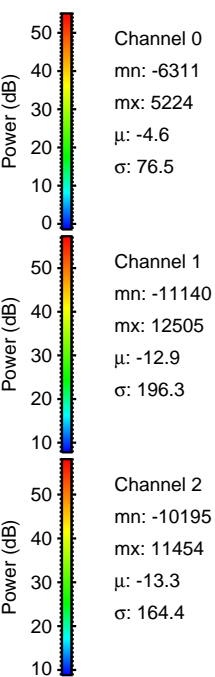
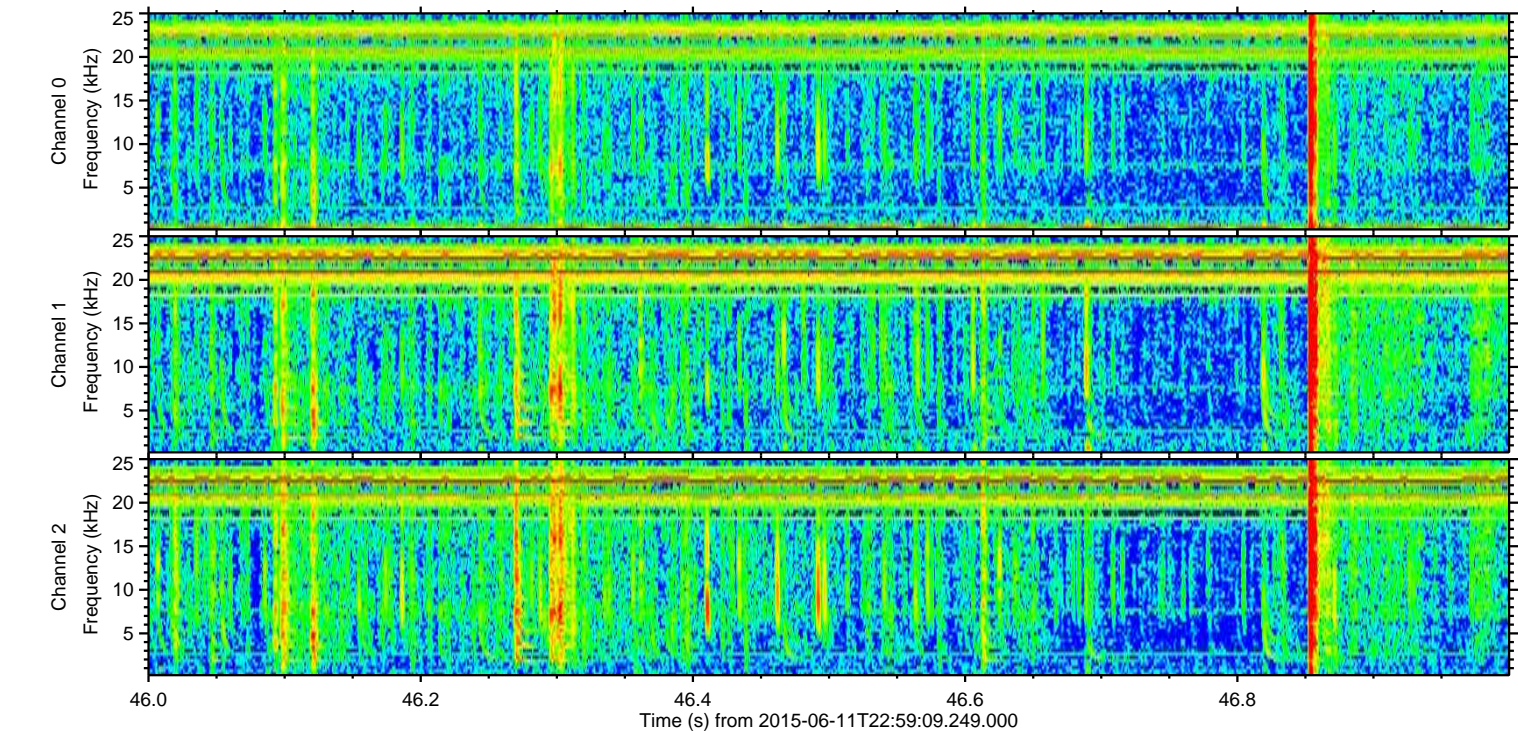
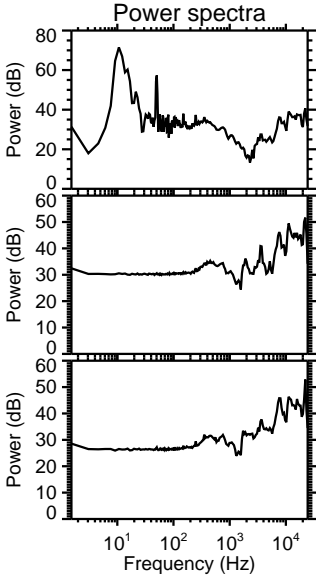
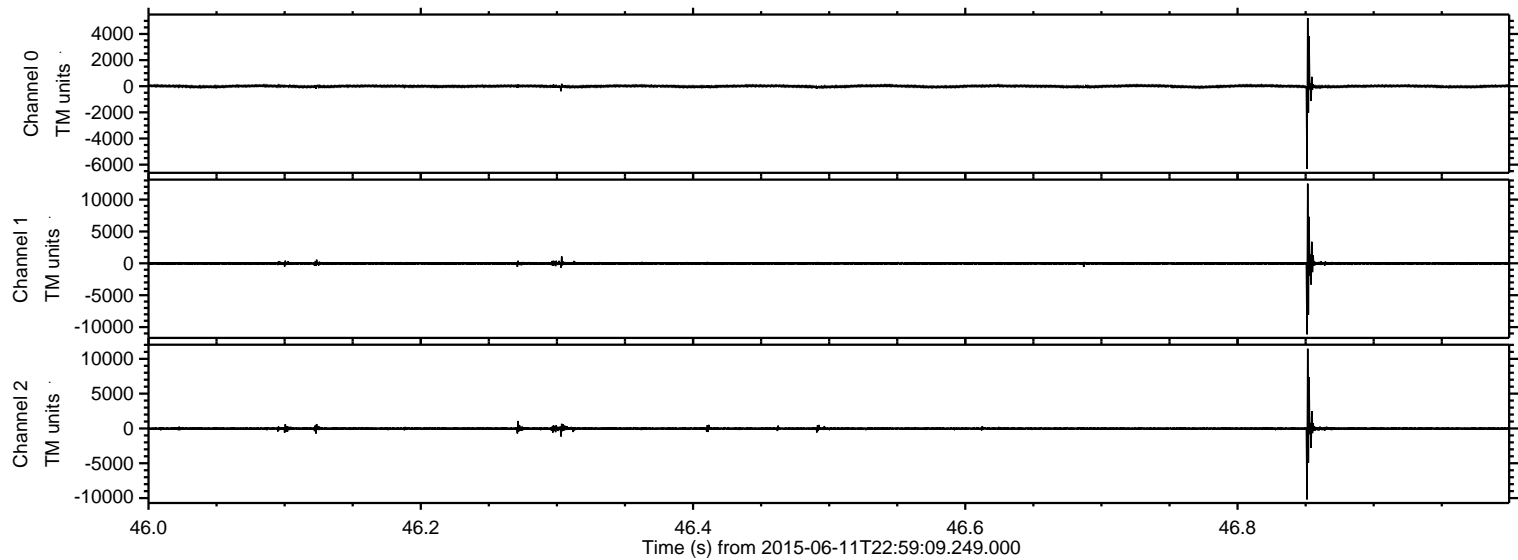
Processed Fri Jun 12 01:05:36 2015 by ELM ver.2012-10-06 from 001__elm20150611_225908__dat00.bin



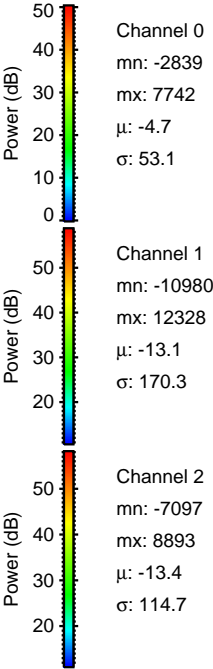
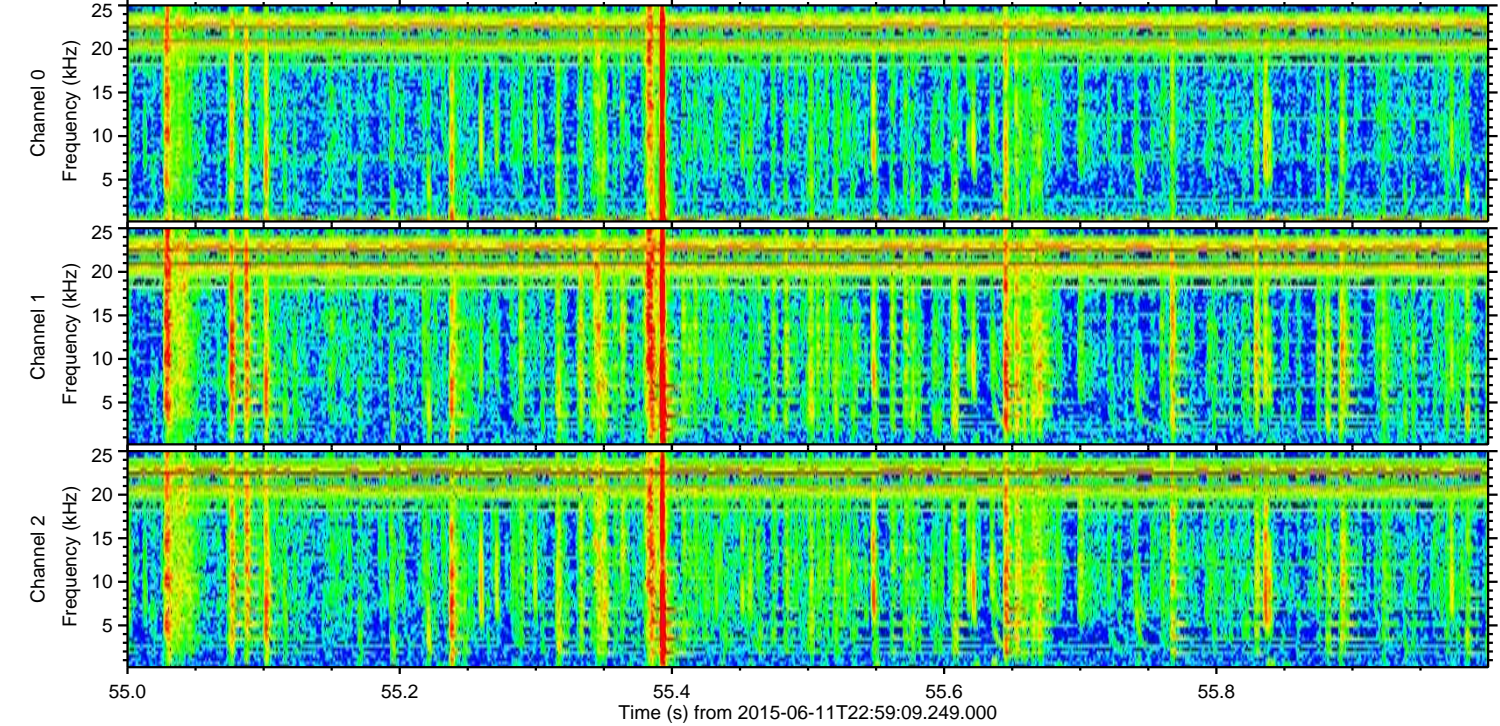
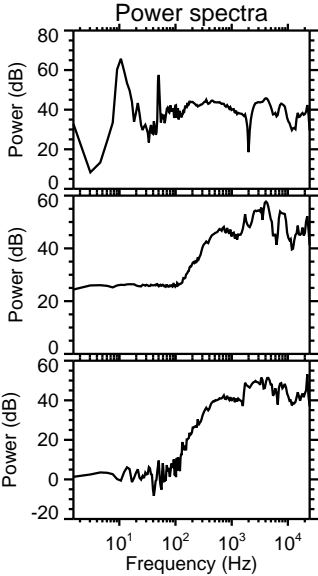
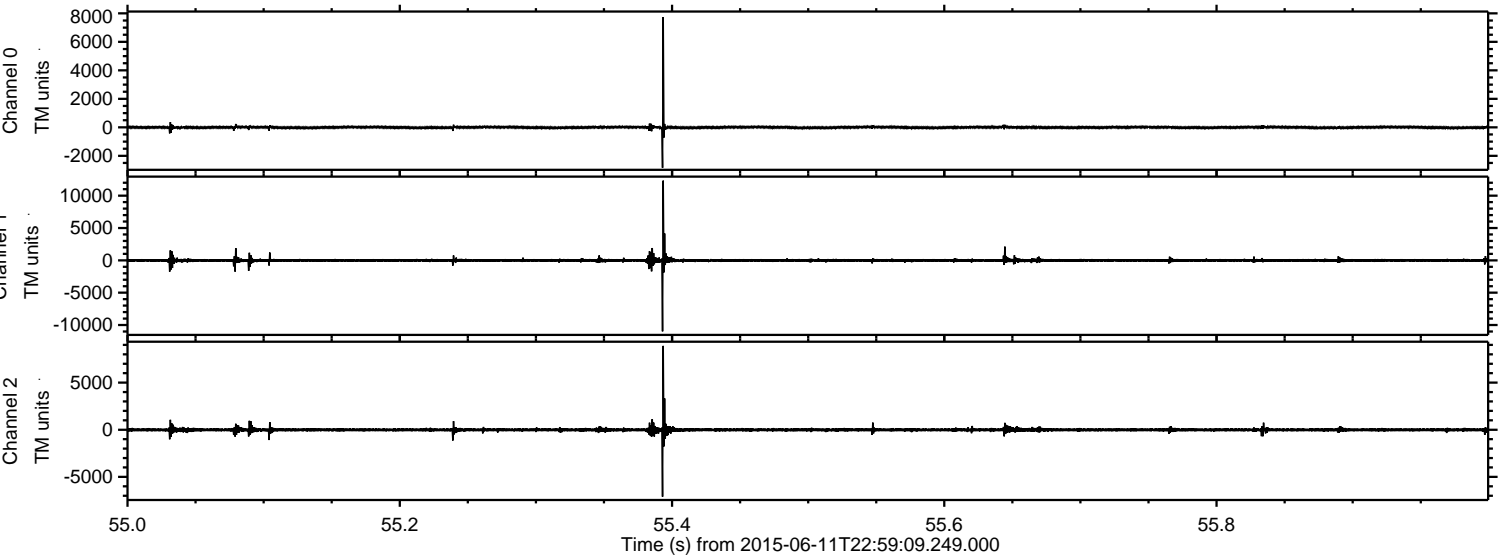
Processed Fri Jun 12 01:05:51 2015 by ELM ver.2012-10-06 from 001__elm20150611_225908__dat00.bin



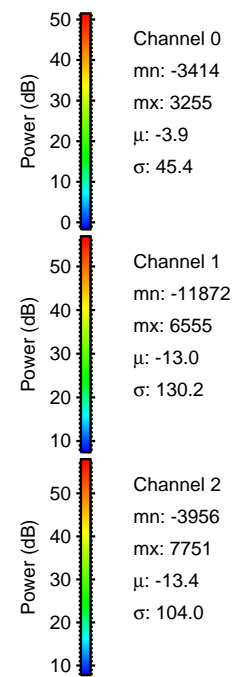
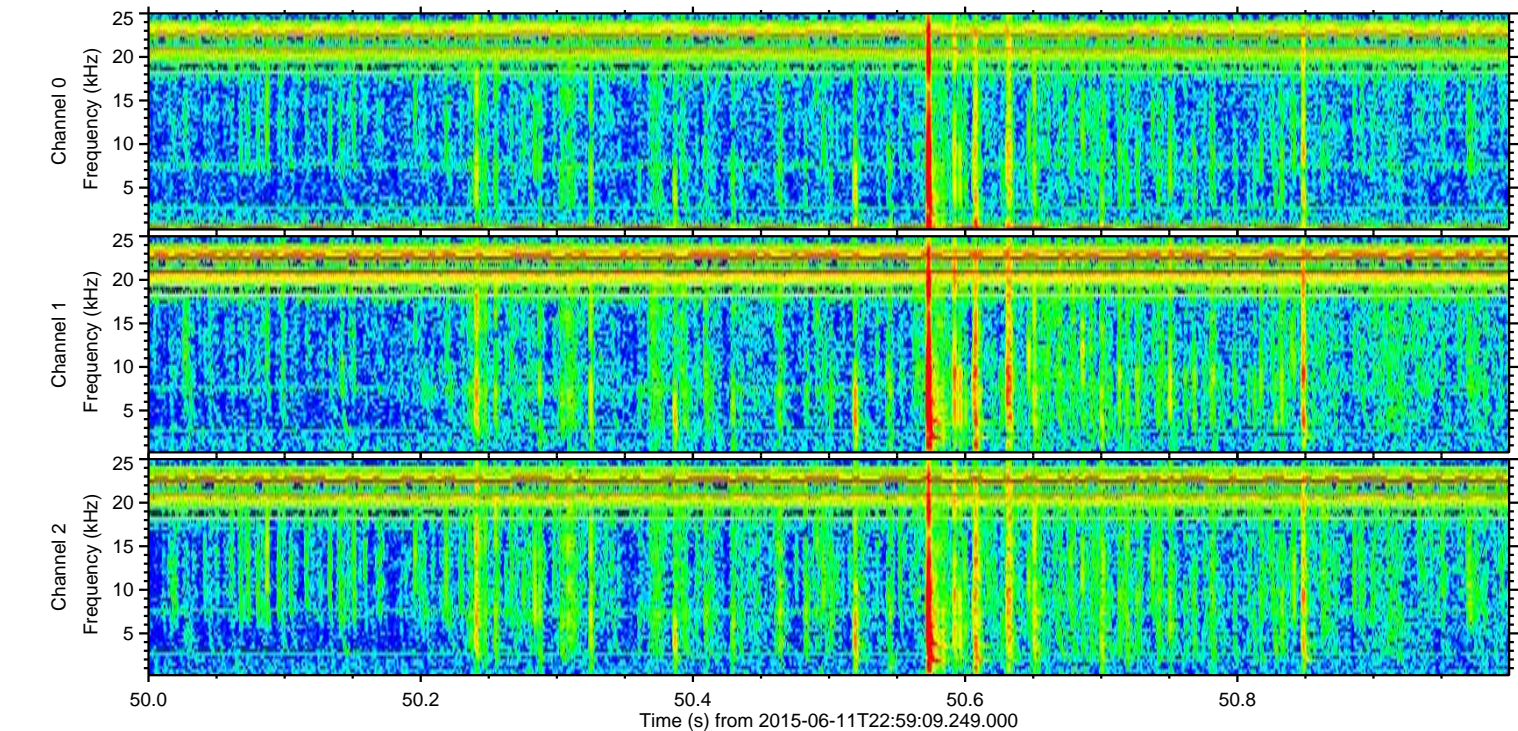
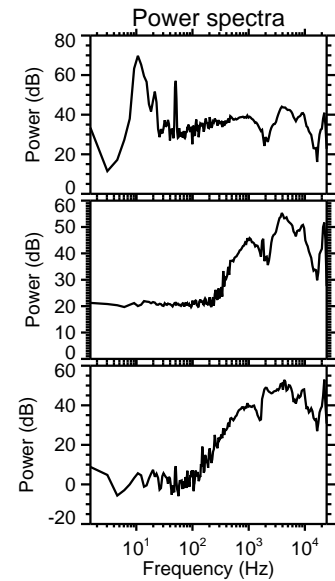
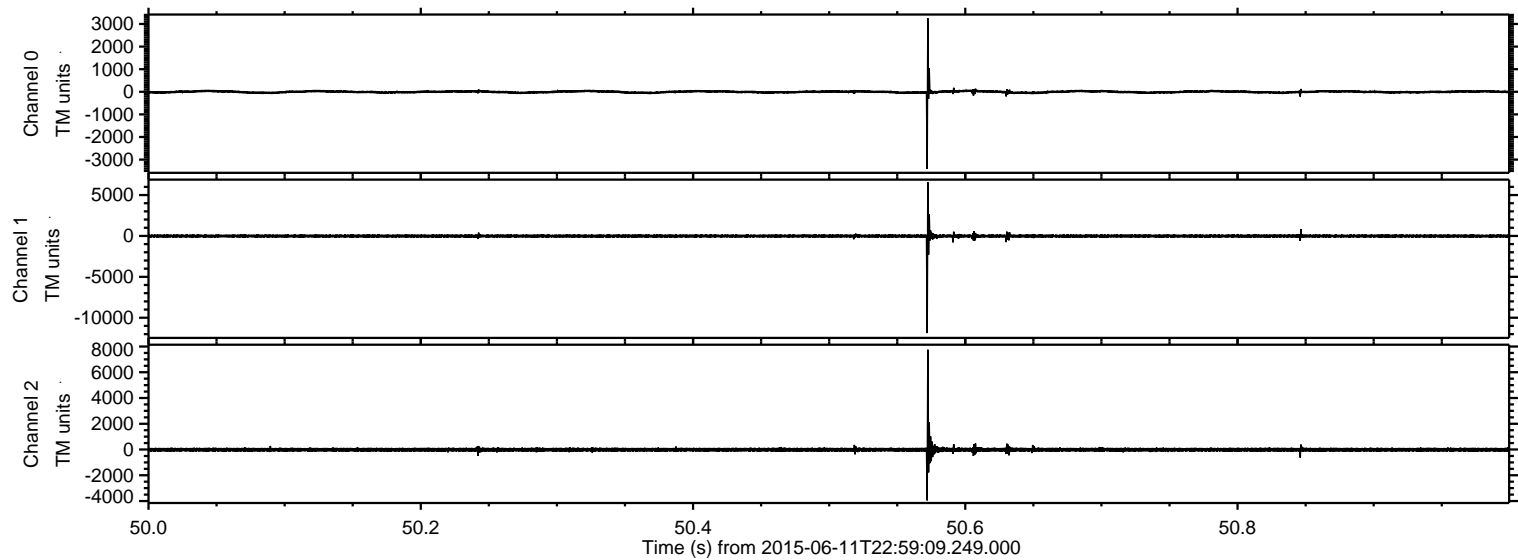
Processed Fri Jun 12 01:05:52 2015 by ELM ver.2012-10-06 from 001__elm20150611_225908__dat00.bin



Processed Fri Jun 12 01:05:53 2015 by ELM ver.2012-10-06 from 001__elm20150611_225908__dat00.bin

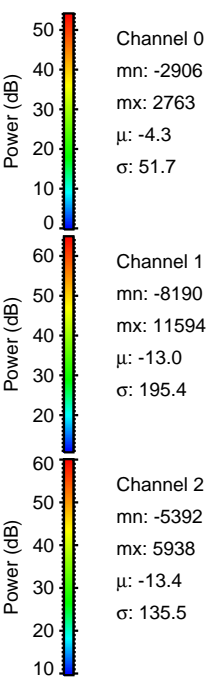
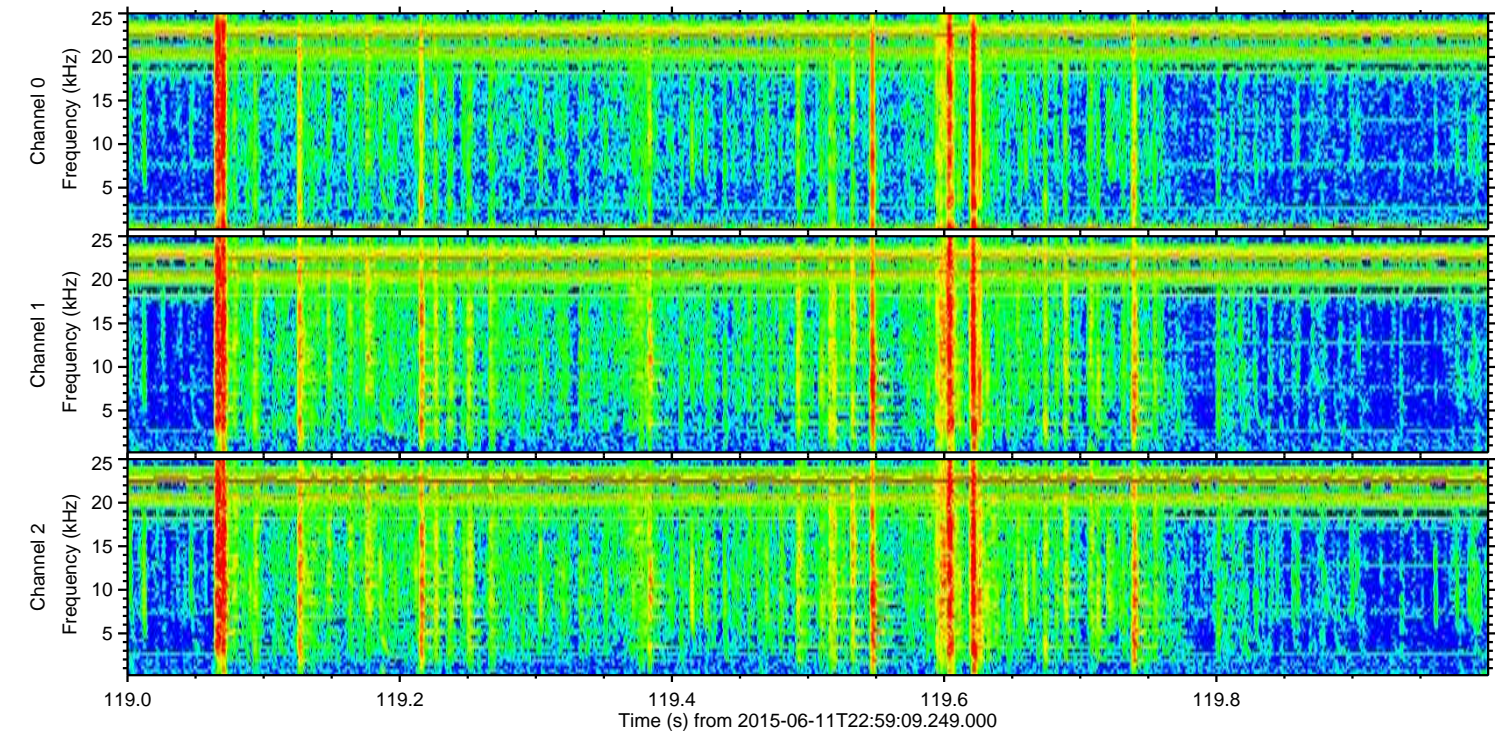
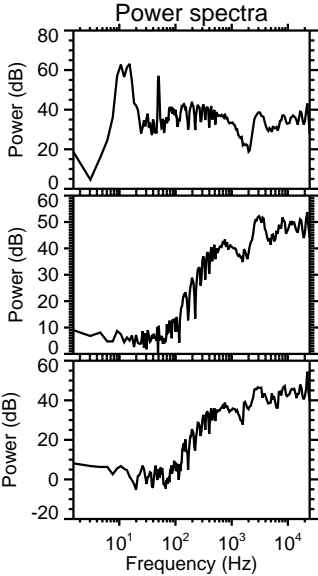
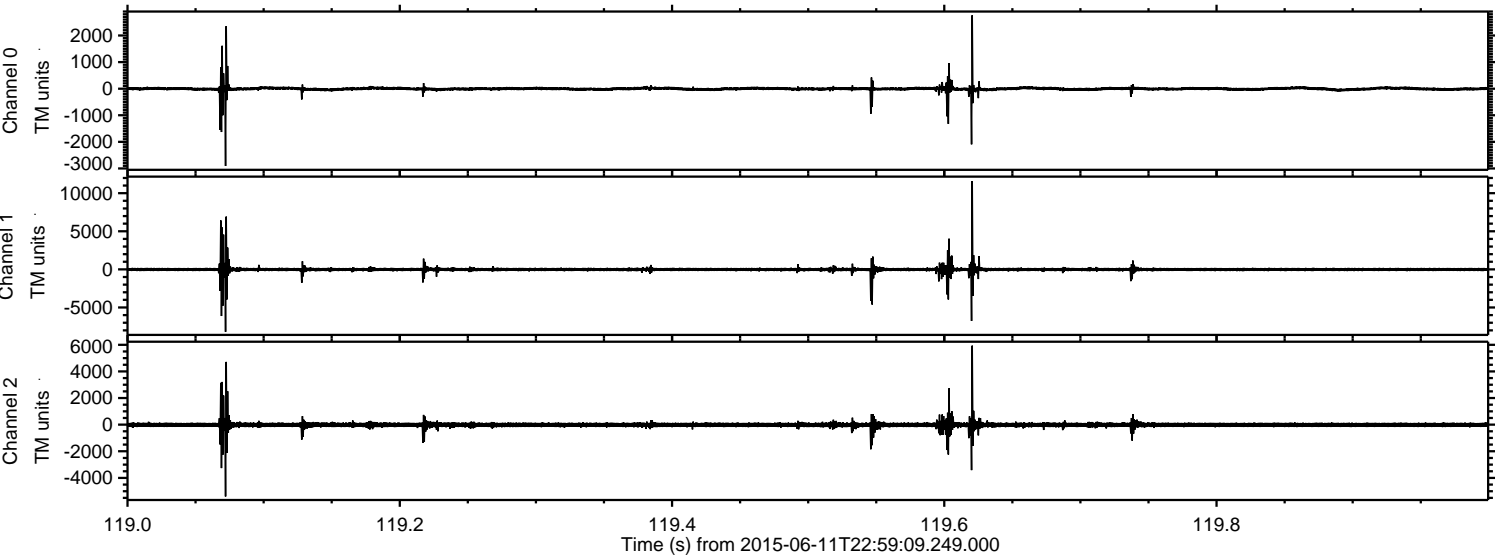


Processed Fri Jun 12 01:05:55 2015 by ELM ver.2012-10-06 from 001__elm20150611_225908__dat00.bin

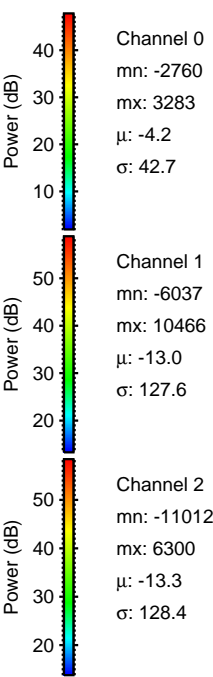
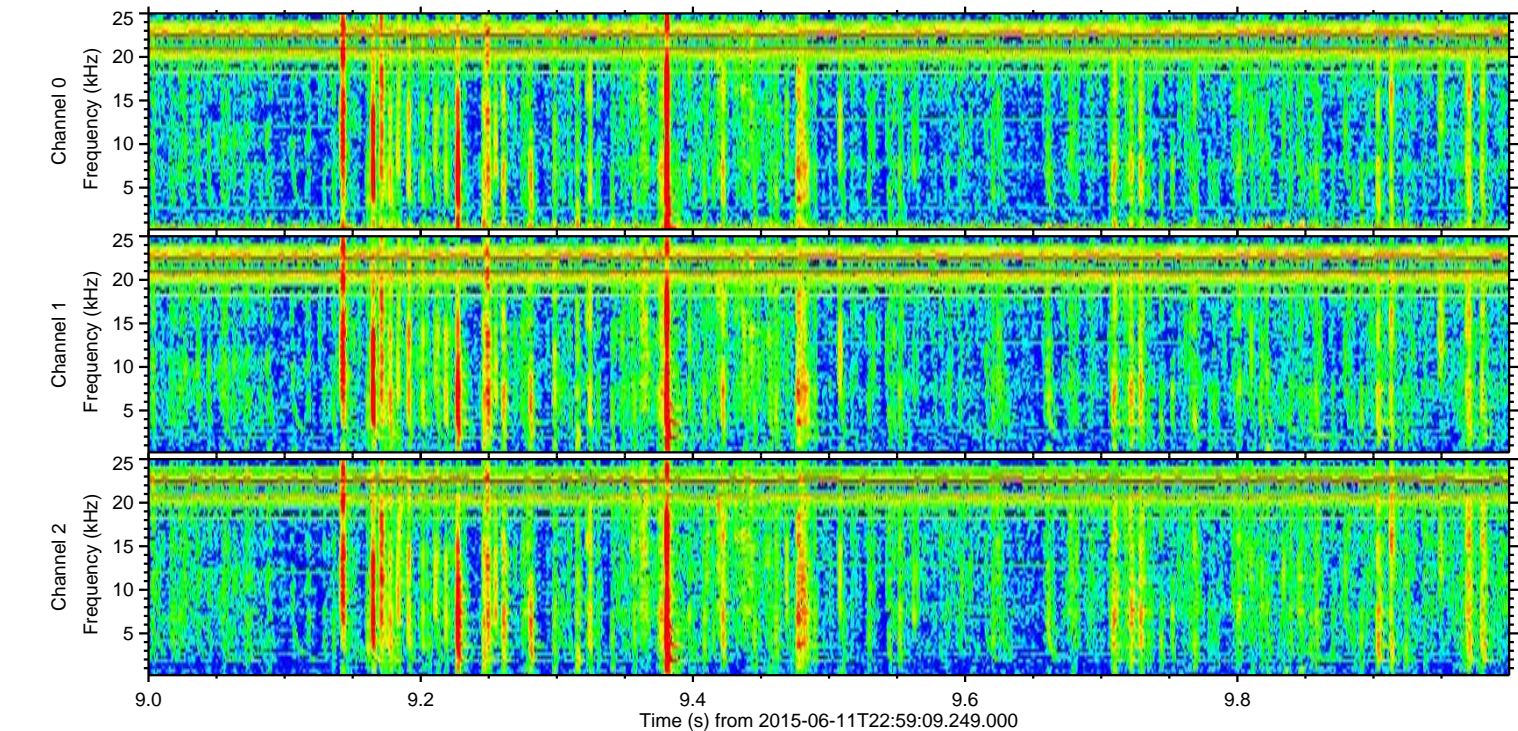
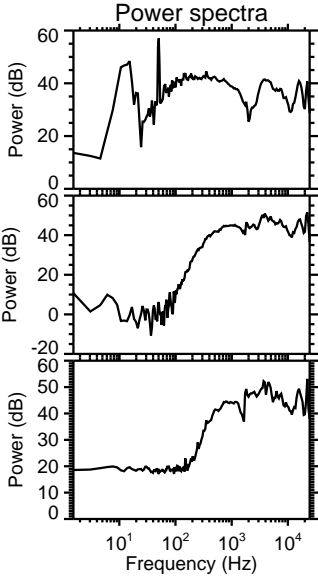
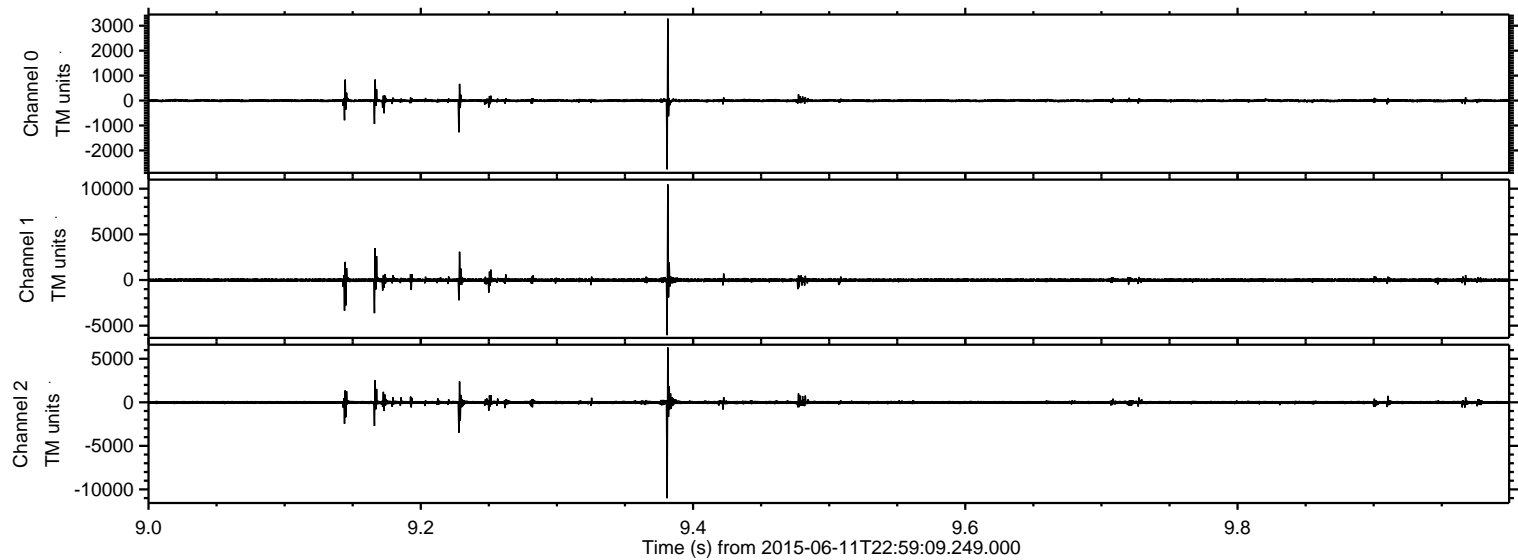


ELMAVAN 3D WAVEFORMS (Measured data sampled at 50 kHz) 51000 packets of 144 samples from 2015-06-11T22:59:09.249.000. Part 120/147

Processed Fri Jun 12 01:05:56 2015 by ELM ver.2012-10-06 from 001__elm20150611_225908__dat00.bin

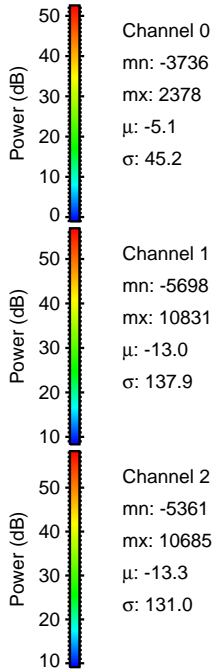
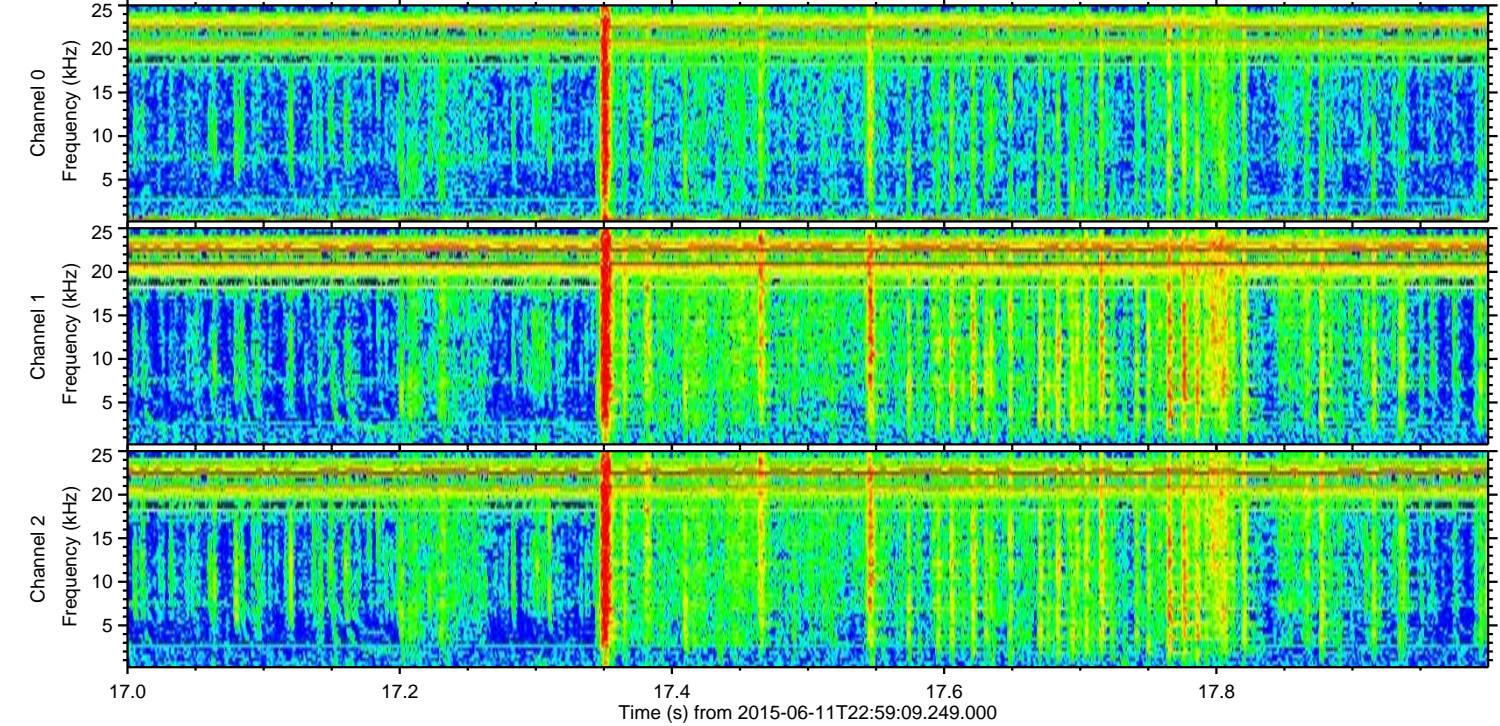
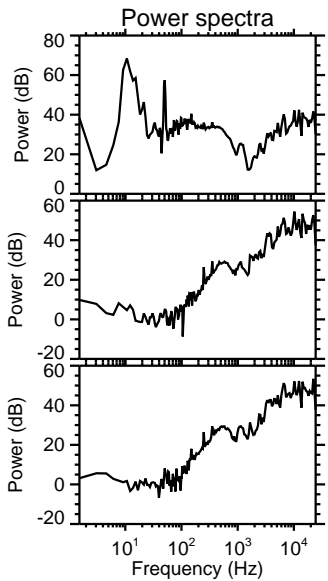
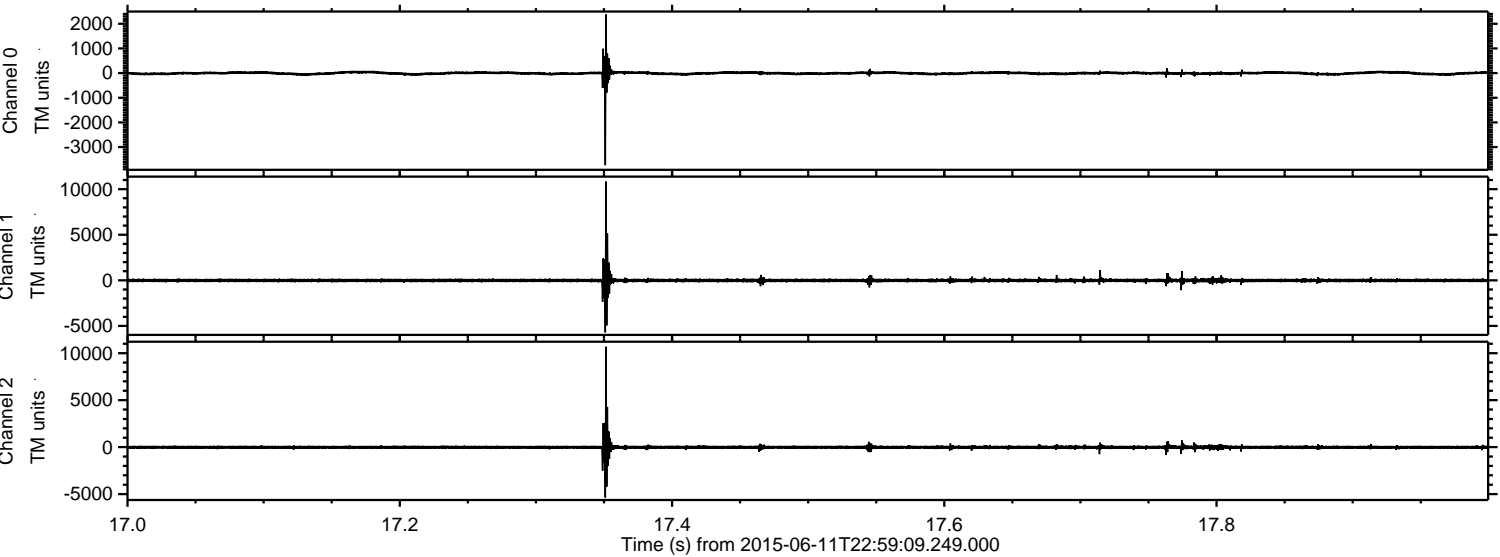


Processed Fri Jun 12 01:05:57 2015 by ELM ver.2012-10-06 from 001__elm20150611_225908__dat00.bin

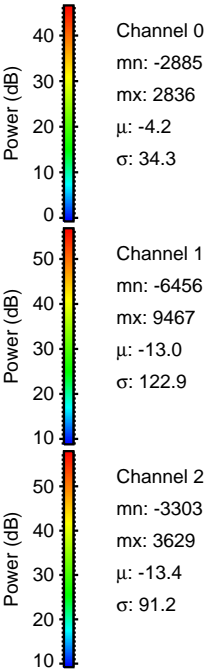
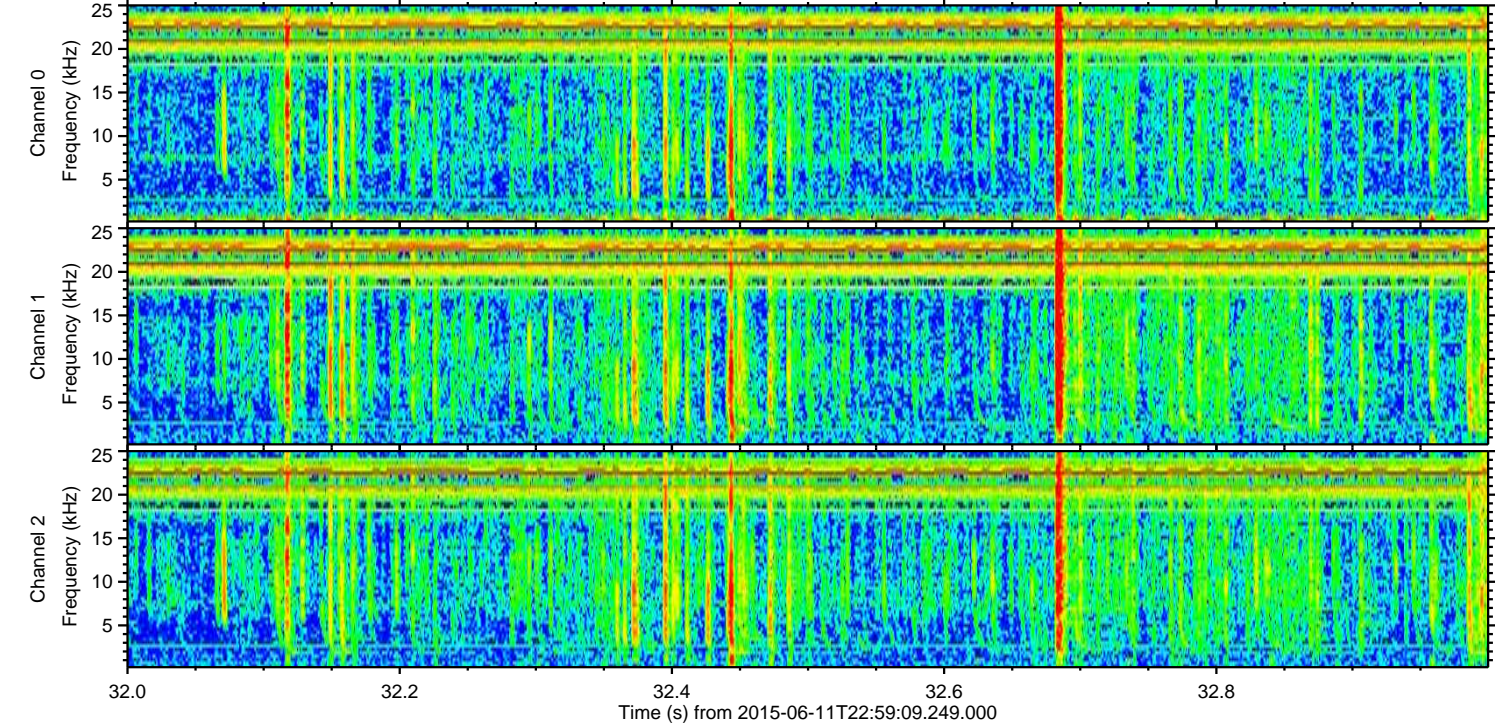
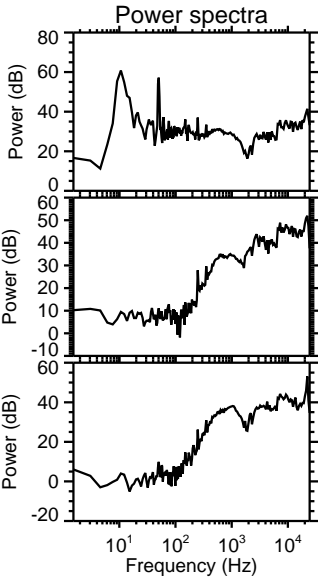
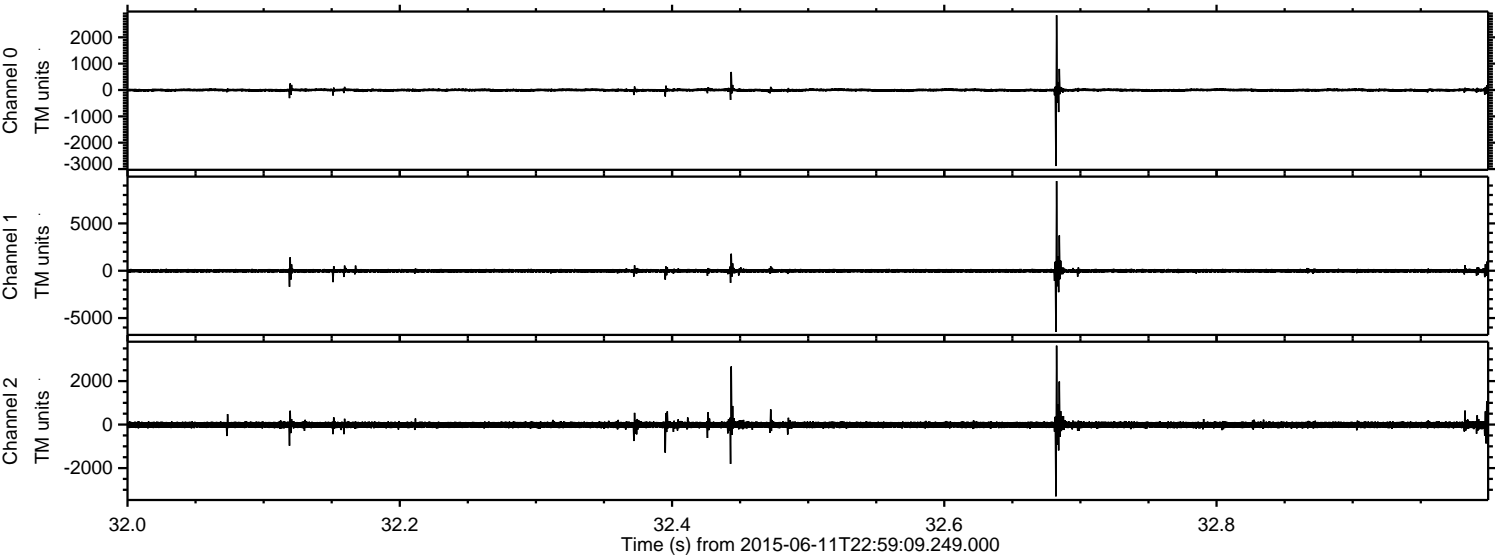


ELMAVAN 3D WAVEFORMS (Measured data sampled at 50 kHz) 51000 packets of 144 samples from 2015-06-11T22:59:09.249.000. Part 18/147

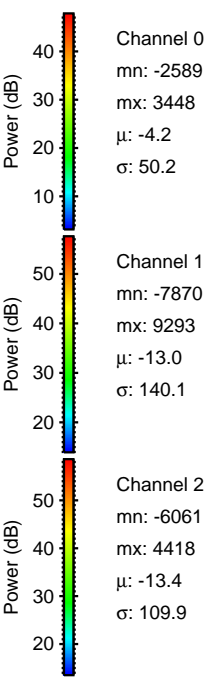
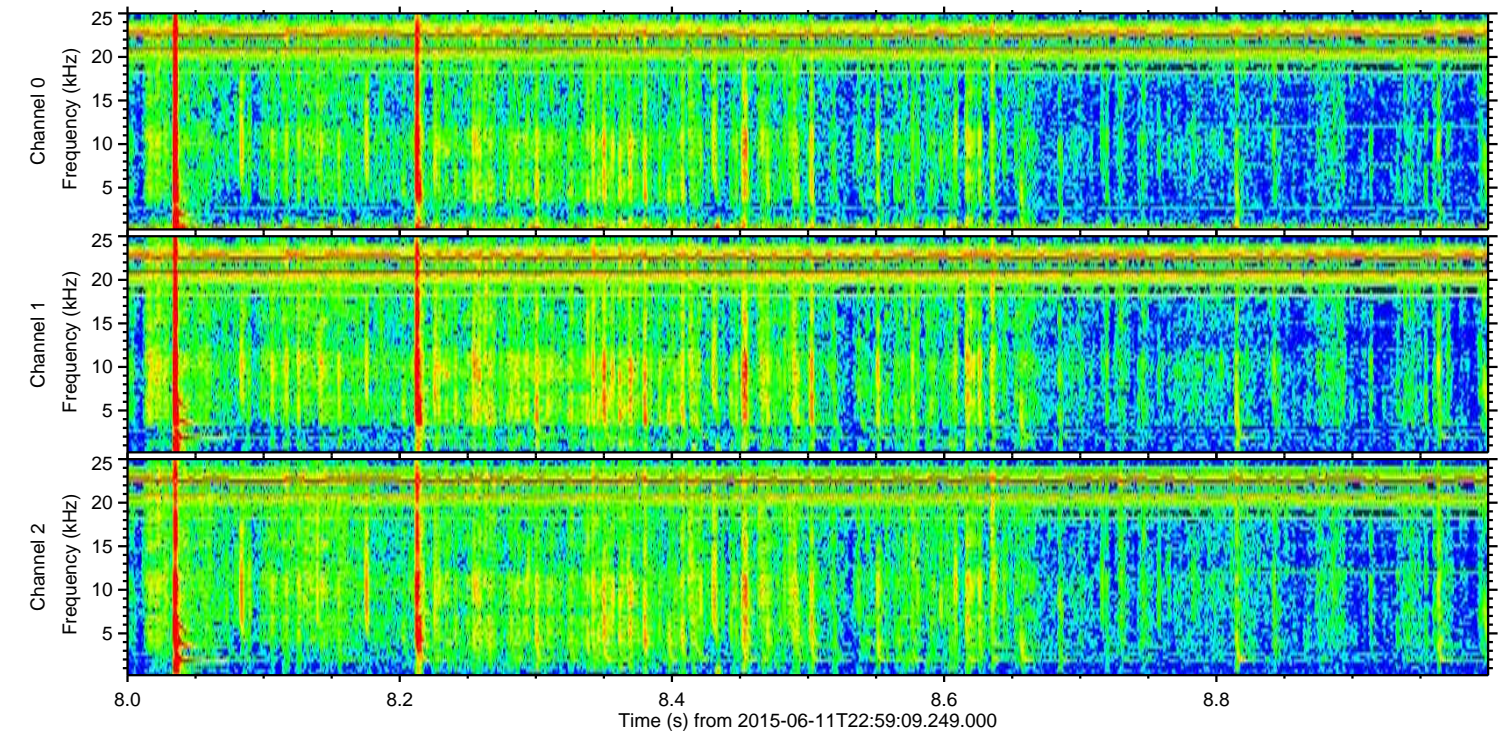
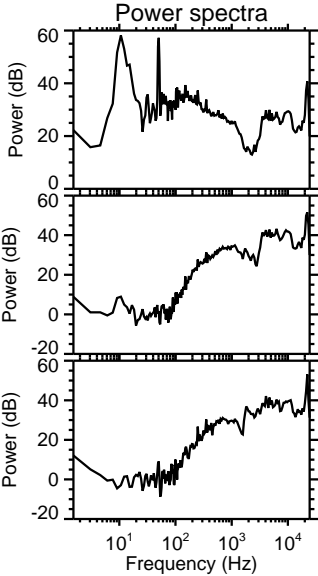
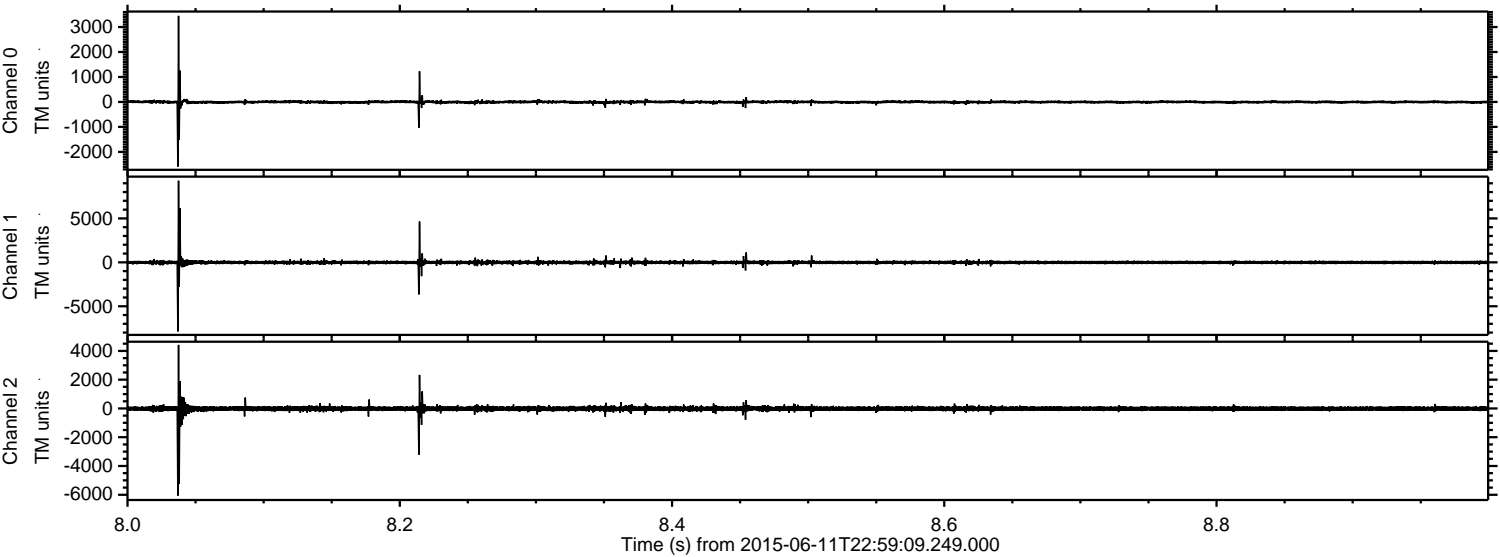
Processed Fri Jun 12 01:05:58 2015 by ELM ver.2012-10-06 from 001__elm20150611_225908__dat00.bin



Processed Fri Jun 12 01:06:00 2015 by ELM ver.2012-10-06 from 001__elm20150611_225908__dat00.bin



Processed Fri Jun 12 01:06:01 2015 by ELM ver.2012-10-06 from 001__elm20150611_225908__dat00.bin



Channel 0
mn: -2589
mx: 3448
 μ : -4.2
 σ : 50.2

Channel 1
mn: -7870
mx: 9293
 μ : -13.0
 σ : 140.1

Channel 2
mn: -6061
mx: 4418
 μ : -13.4
 σ : 109.9

Processed Fri Jun 12 01:06:02 2015 by ELM ver.2012-10-06 from 001__elm20150611_225908__dat00.bin

