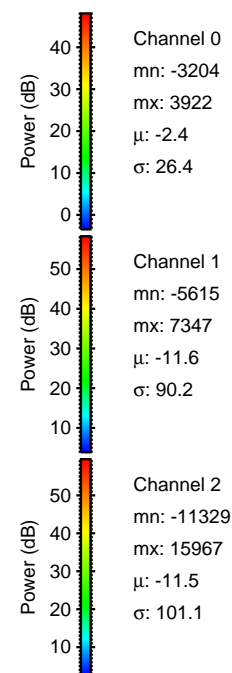
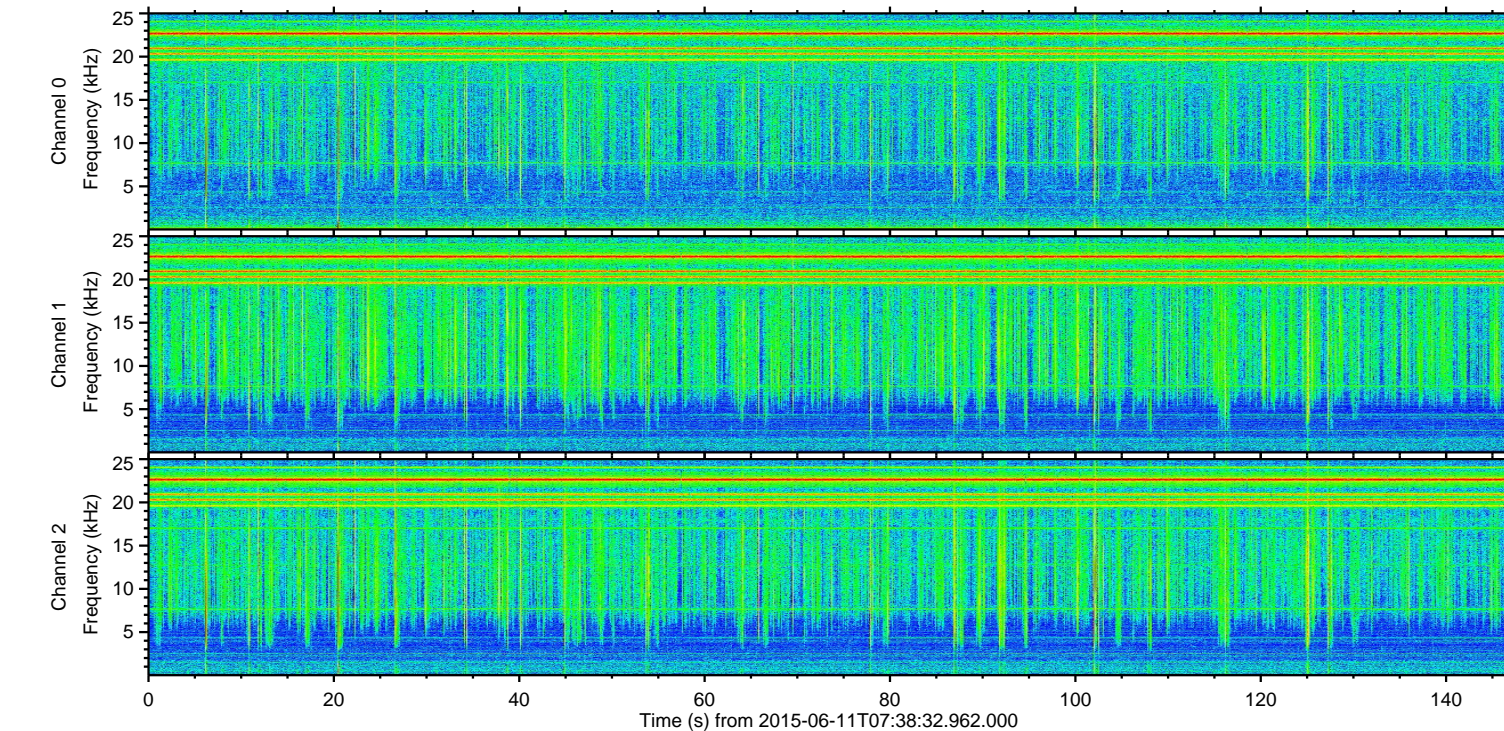
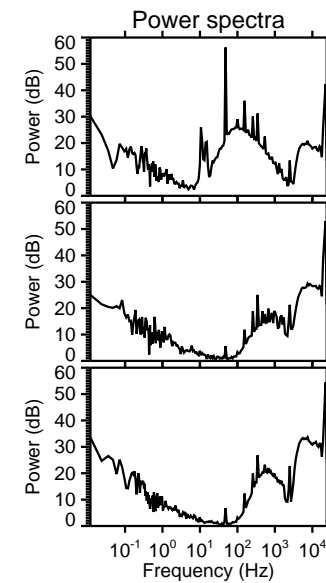
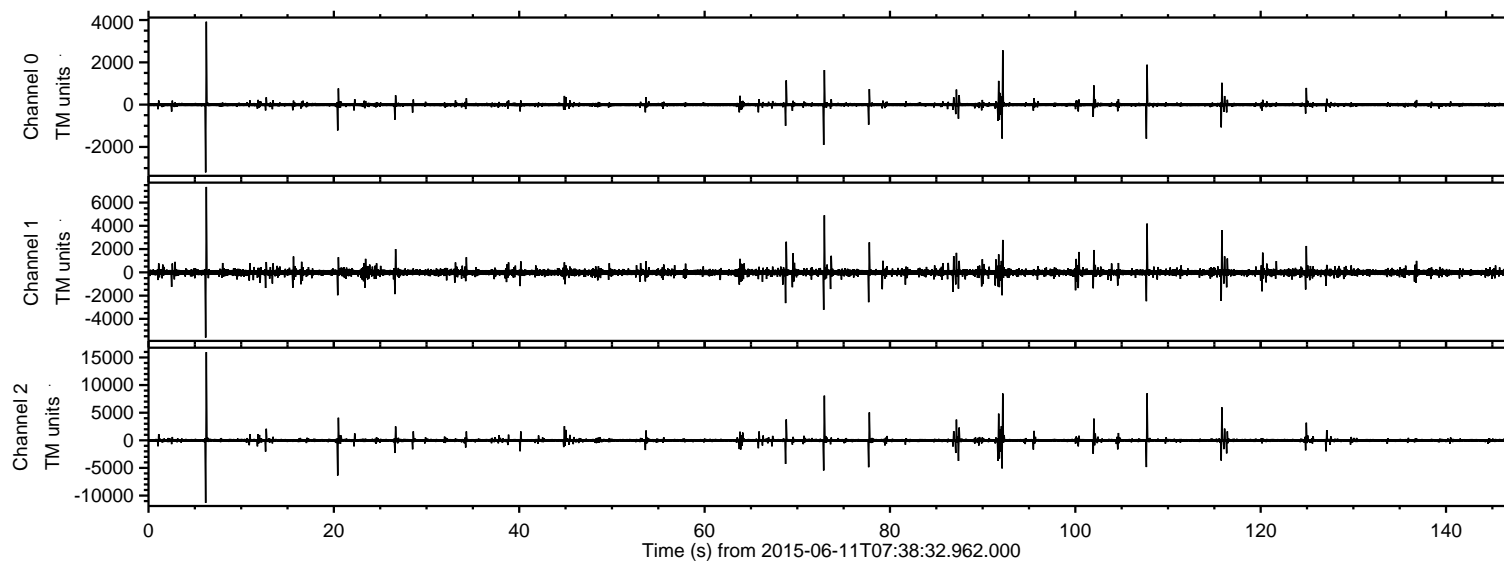


# ELMAVAN 3D WAVEFORMS (Measured data sampled at 50 kHz) 51000 packets of 144 samples from 2015-06-11T07:38:32.962.000.

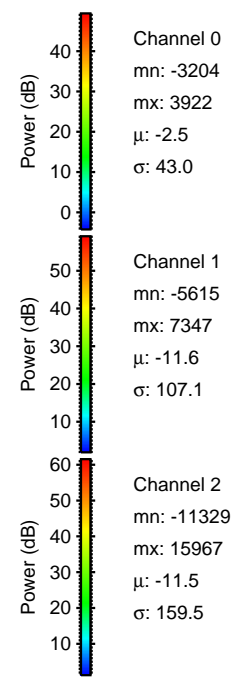
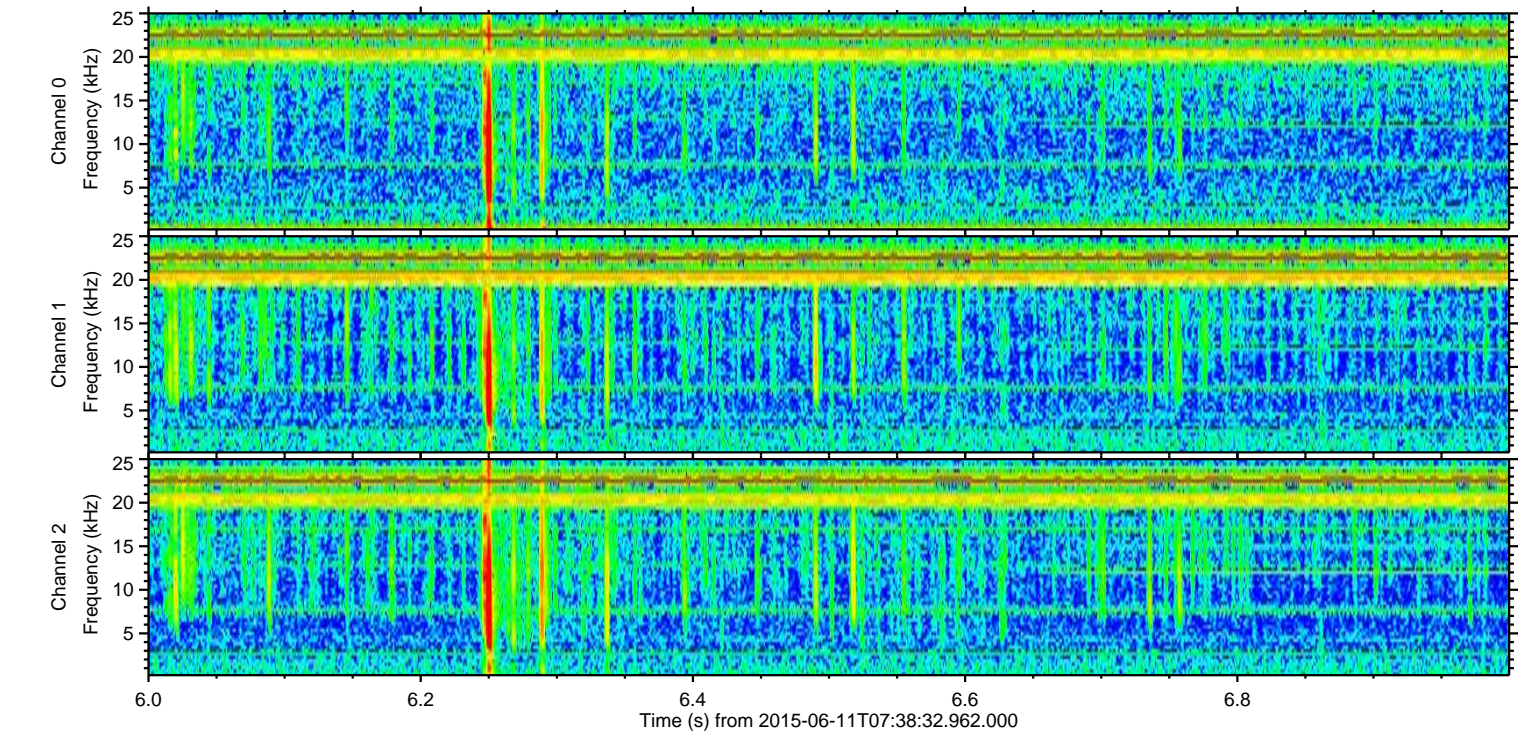
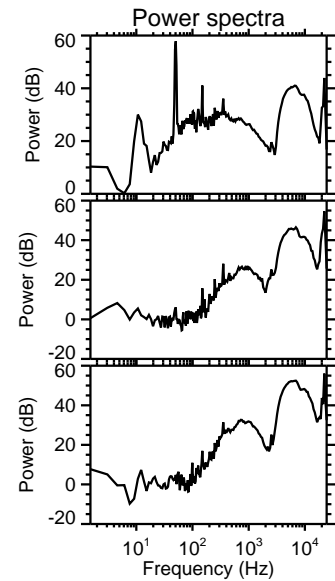
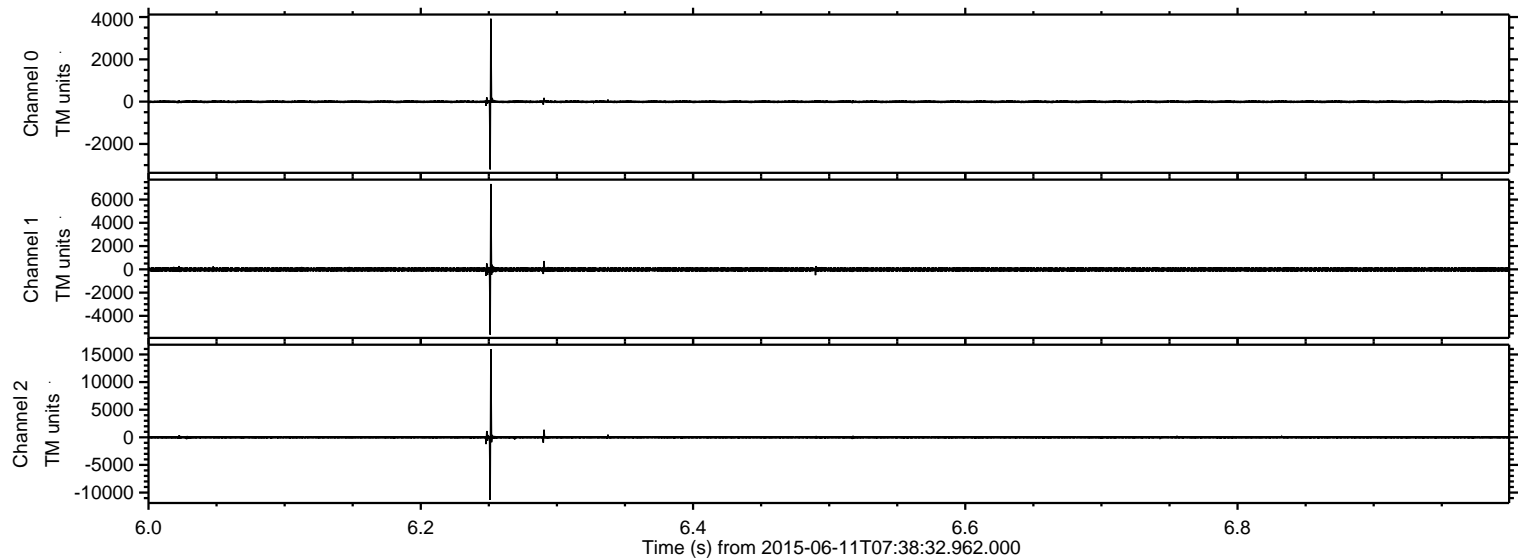
Processed Thu Jun 11 09:45:11 2015 by ELM ver.2012-10-06 from 001\_\_elm20150611\_073831\_\_dat00.bin





ELMAVAN 3D WAVEFORMS (Measured data sampled at 50 kHz) 51000 packets of 144 samples from 2015-06-11T07:38:32.962.000. Part 7/147

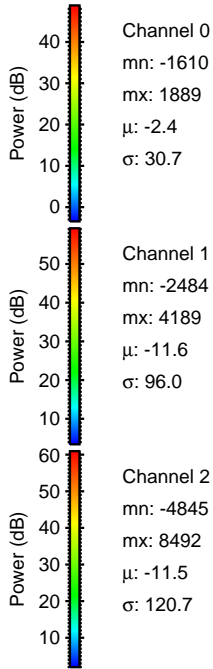
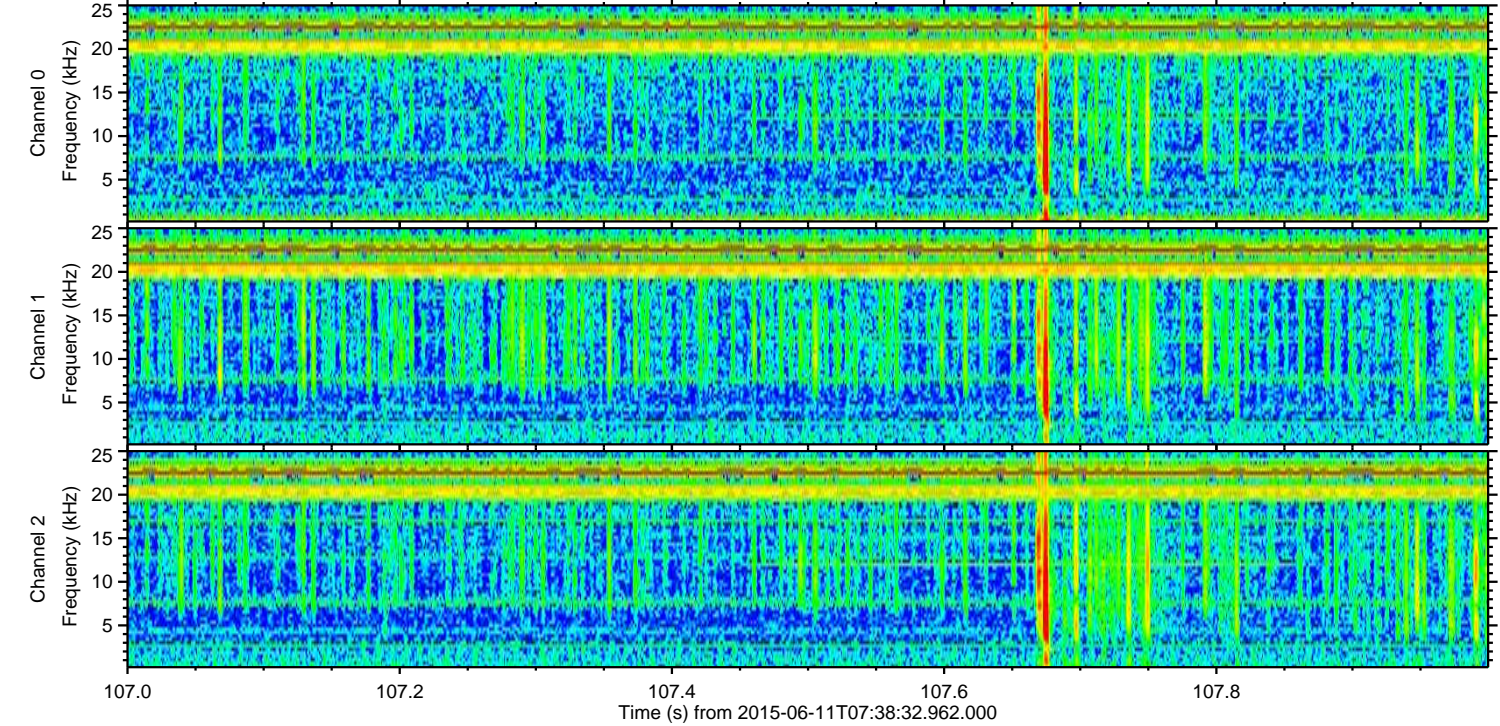
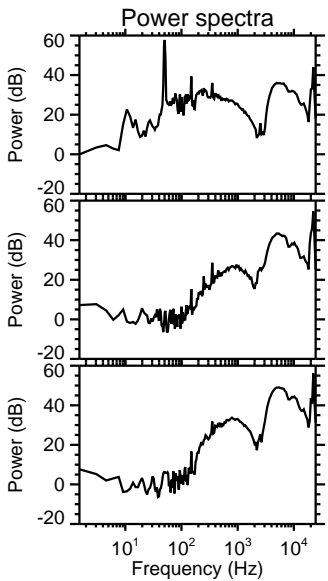
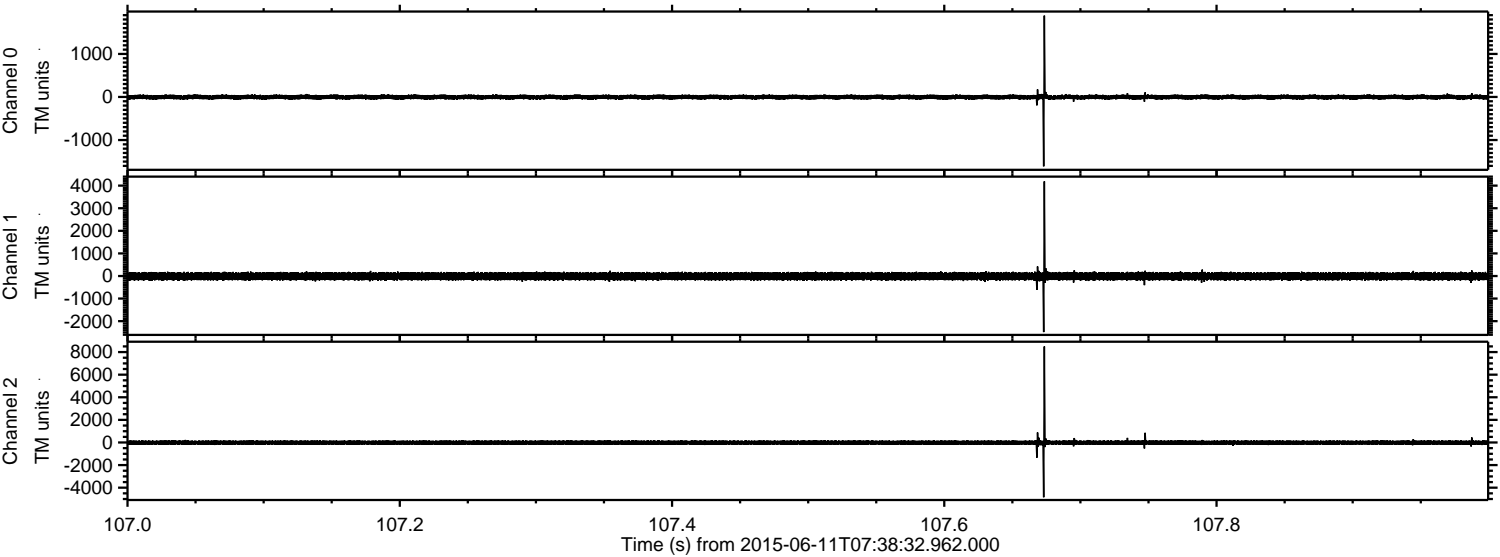
Processed Thu Jun 11 09:45:26 2015 by ELM ver.2012-10-06 from 001\_\_elm20150611\_073831\_\_dat00.bin





ELMAVAN 3D WAVEFORMS (Measured data sampled at 50 kHz) 51000 packets of 144 samples from 2015-06-11T07:38:32.962.000. Part 108/147

Processed Thu Jun 11 09:45:27 2015 by ELM ver.2012-10-06 from 001\_\_elm20150611\_073831\_\_dat00.bin



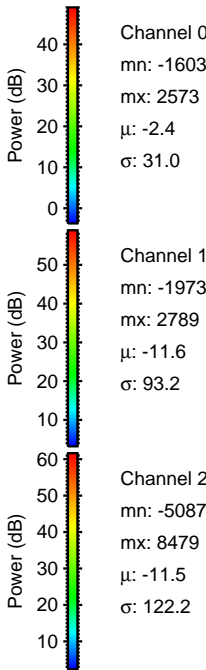
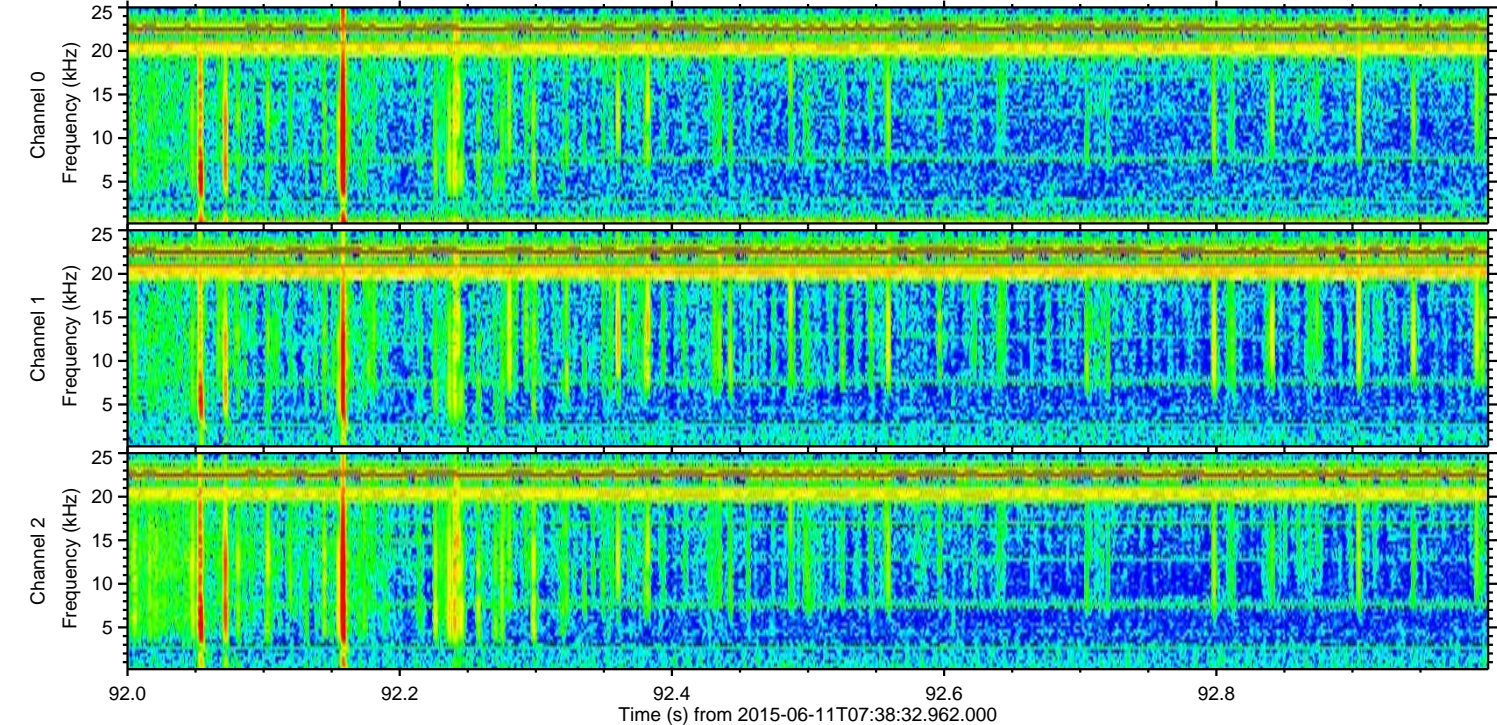
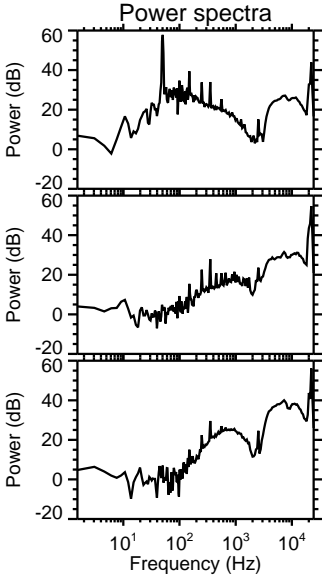
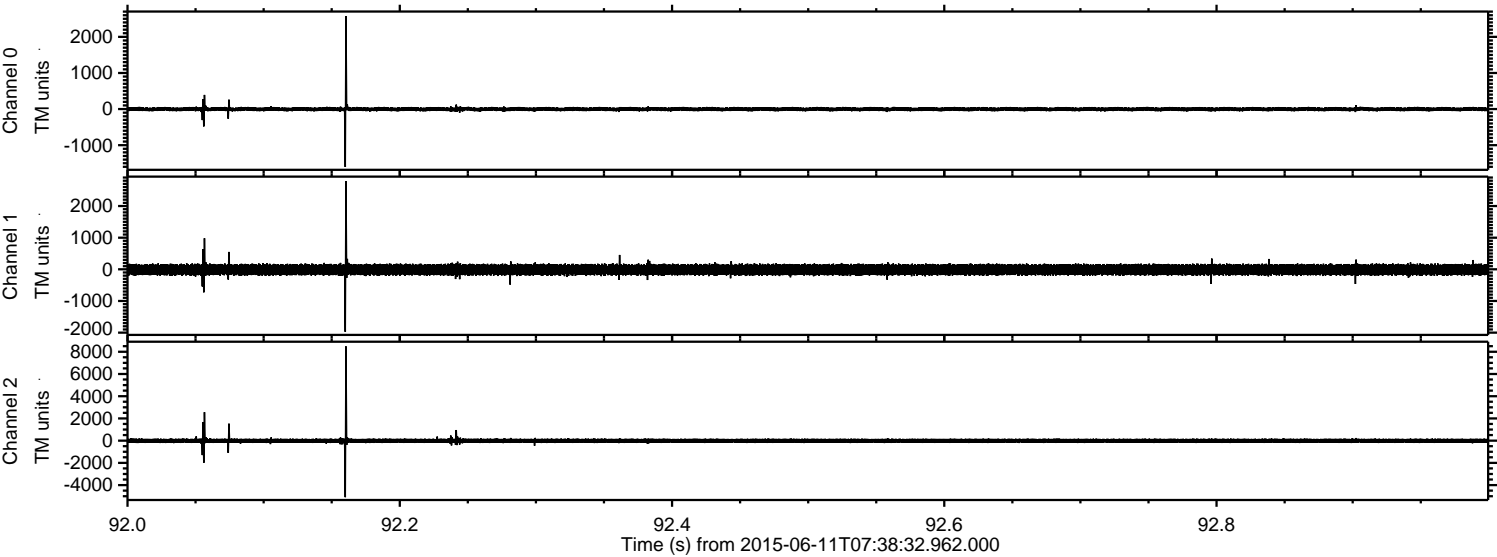
Channel 0  
mn: -1610  
mx: 1889  
 $\mu$ : -2.4  
 $\sigma$ : 30.7

Channel 1  
mn: -2484  
mx: 4189  
 $\mu$ : -11.6  
 $\sigma$ : 96.0

Channel 2  
mn: -4845  
mx: 8492  
 $\mu$ : -11.5  
 $\sigma$ : 120.7

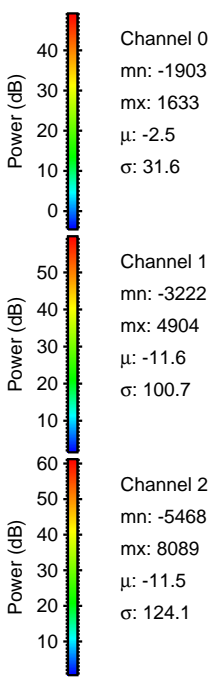
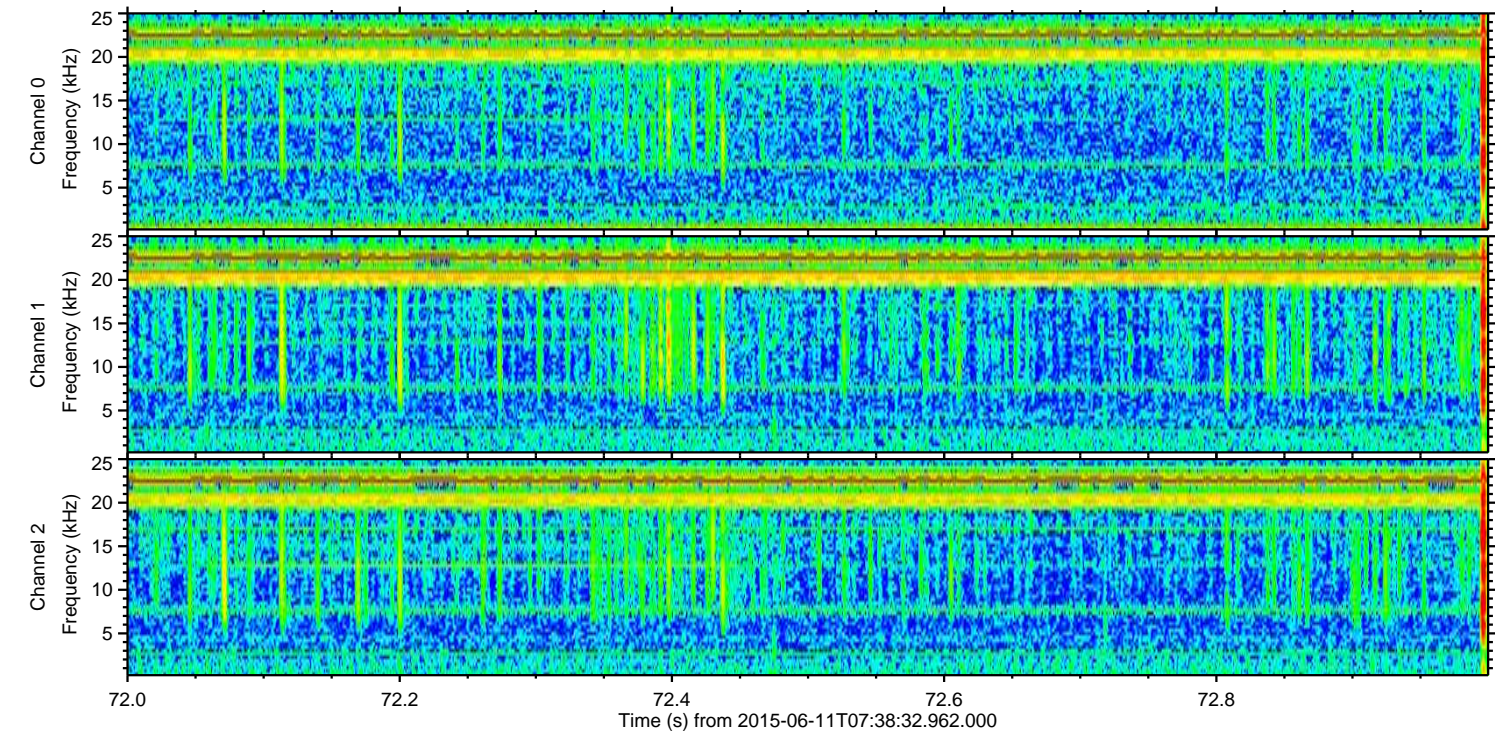
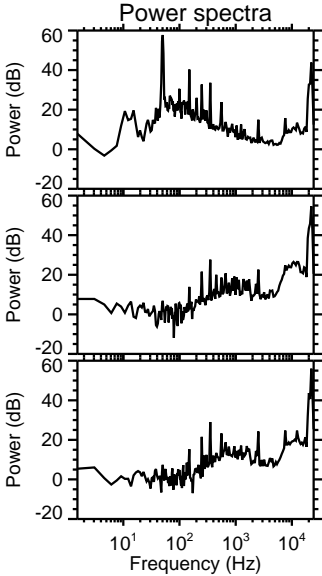
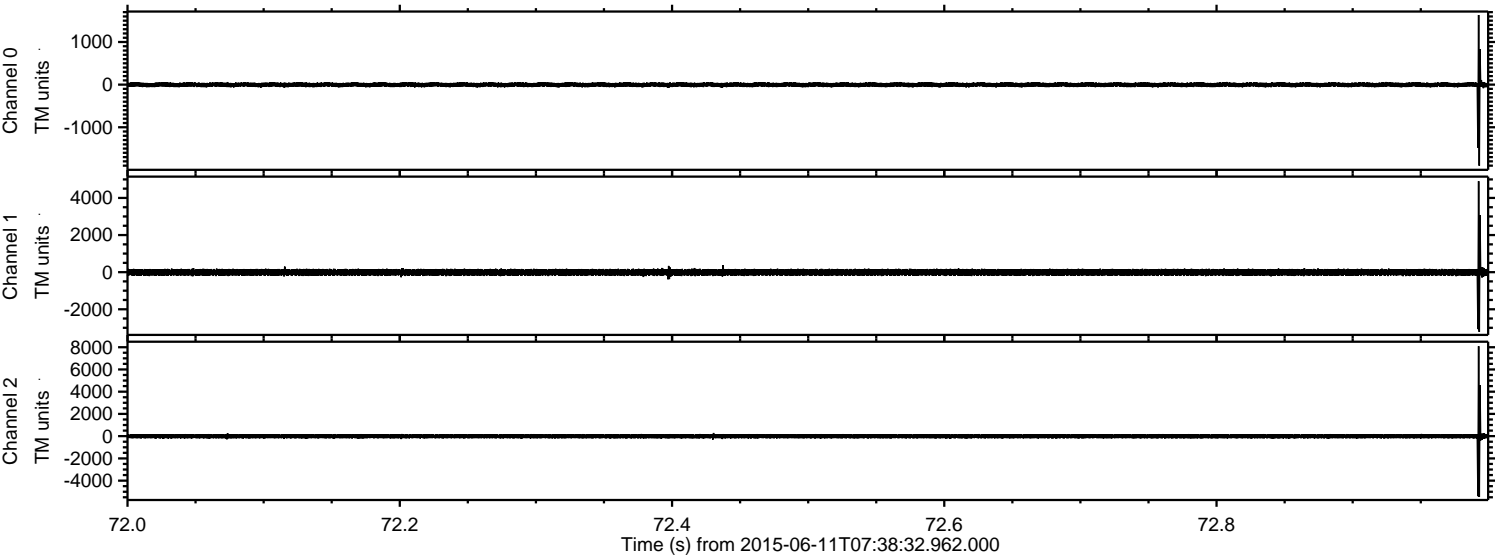


Processed Thu Jun 11 09:45:28 2015 by ELM ver.2012-10-06 from 001\_\_elm20150611\_073831\_\_dat00.bin



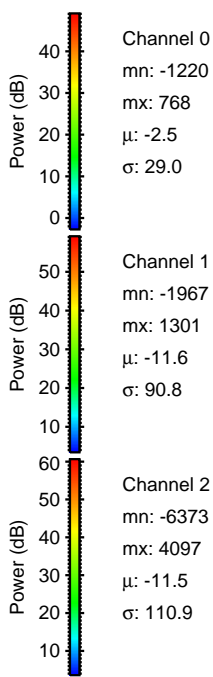
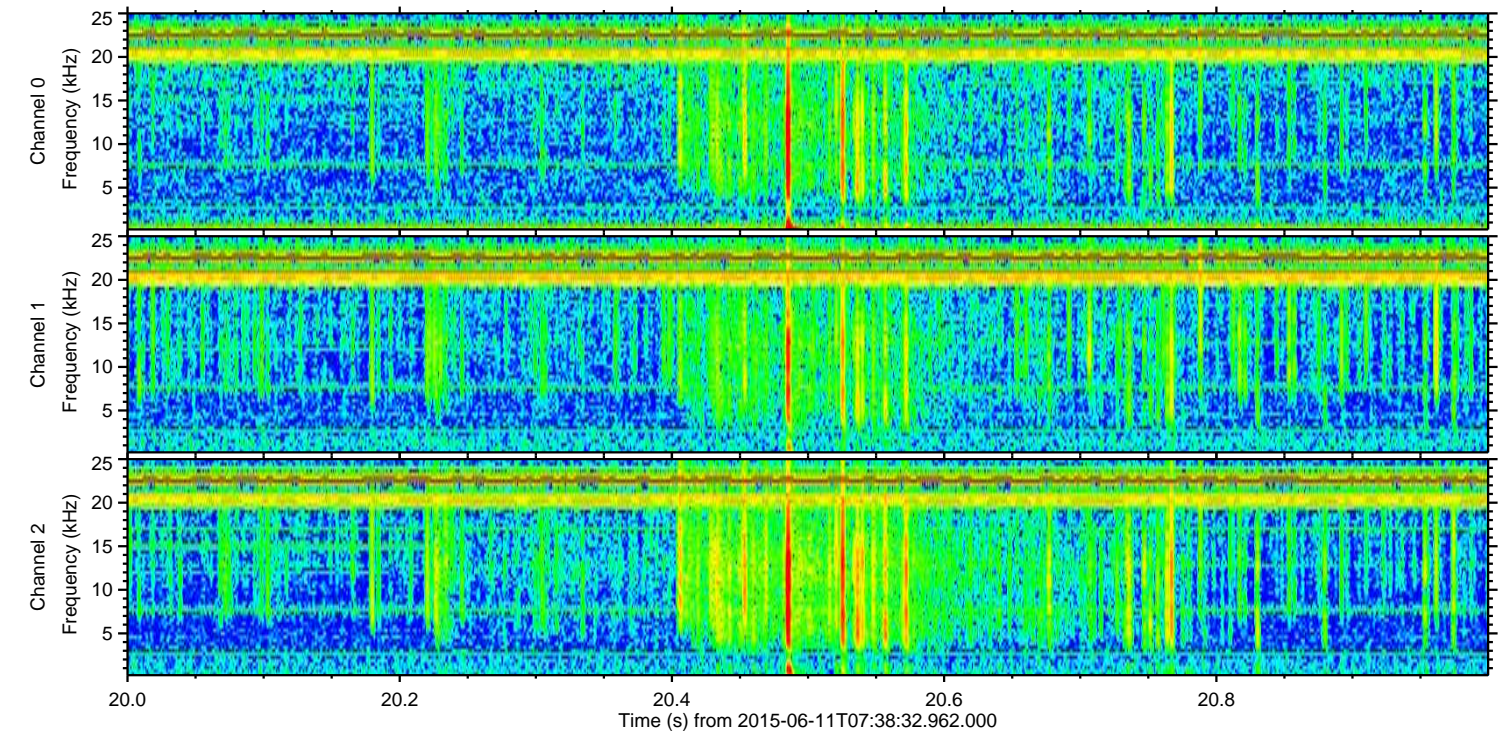
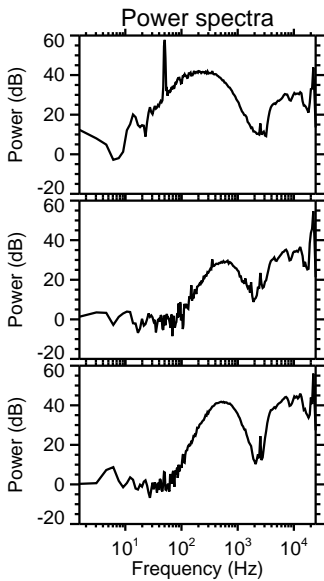
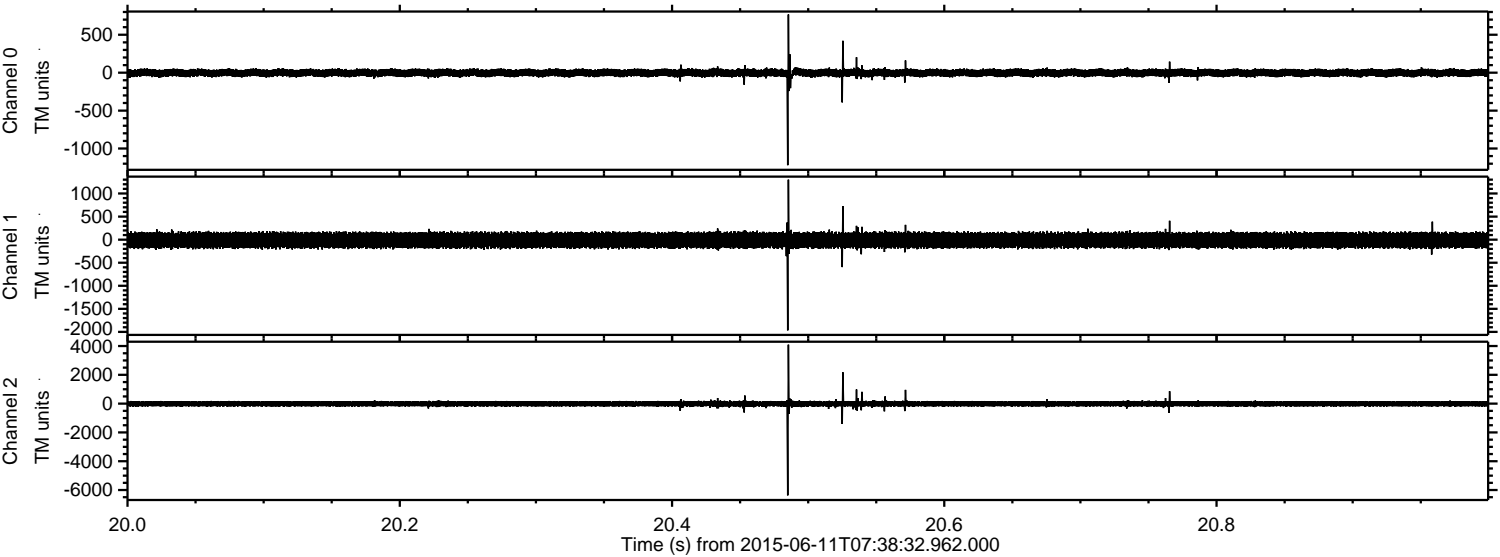


Processed Thu Jun 11 09:45:30 2015 by ELM ver.2012-10-06 from 001\_\_elm20150611\_073831\_\_dat00.bin





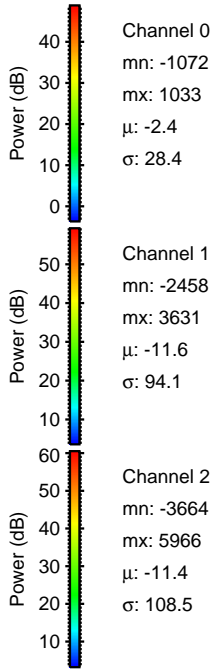
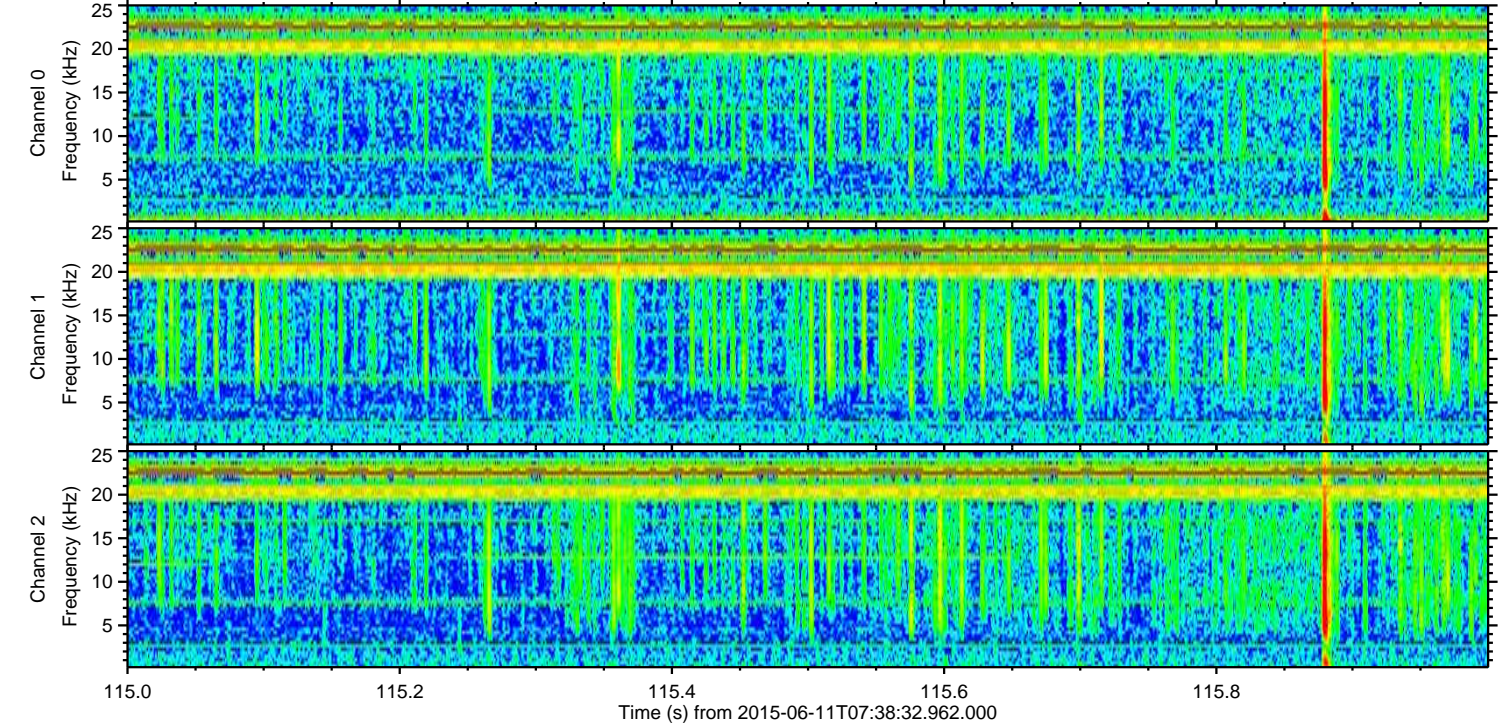
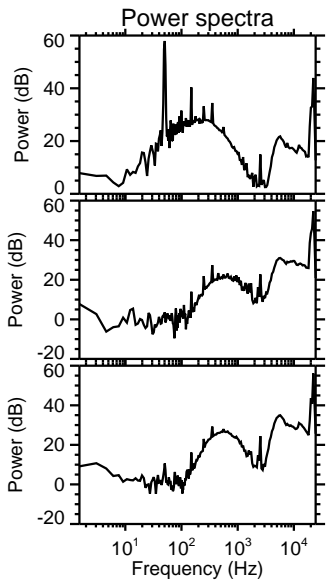
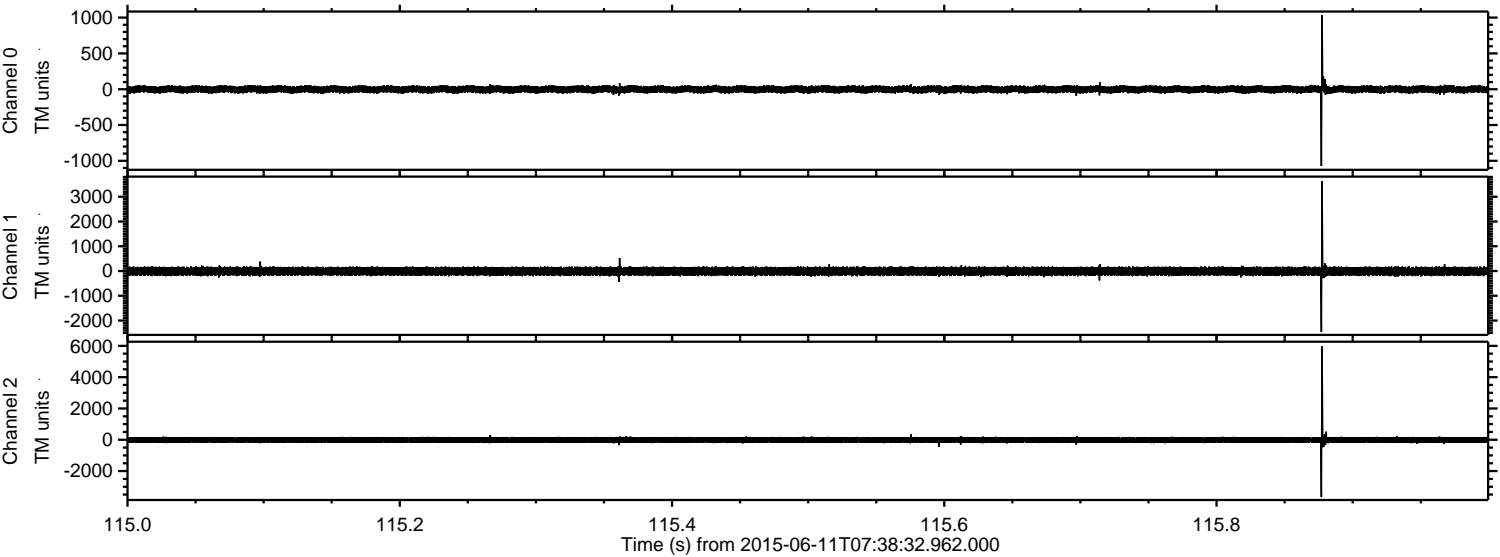
Processed Thu Jun 11 09:45:31 2015 by ELM ver.2012-10-06 from 001\_\_elm20150611\_073831\_\_dat00.bin





ELMAVAN 3D WAVEFORMS (Measured data sampled at 50 kHz) 51000 packets of 144 samples from 2015-06-11T07:38:32.962.000. Part 116/147

Processed Thu Jun 11 09:45:32 2015 by ELM ver.2012-10-06 from 001\_\_elm20150611\_073831\_\_dat00.bin



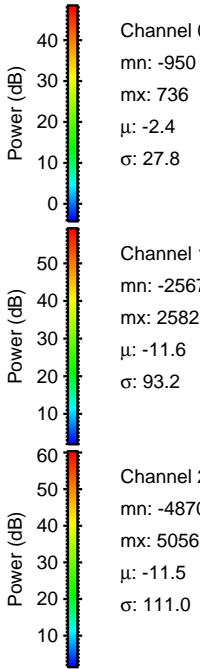
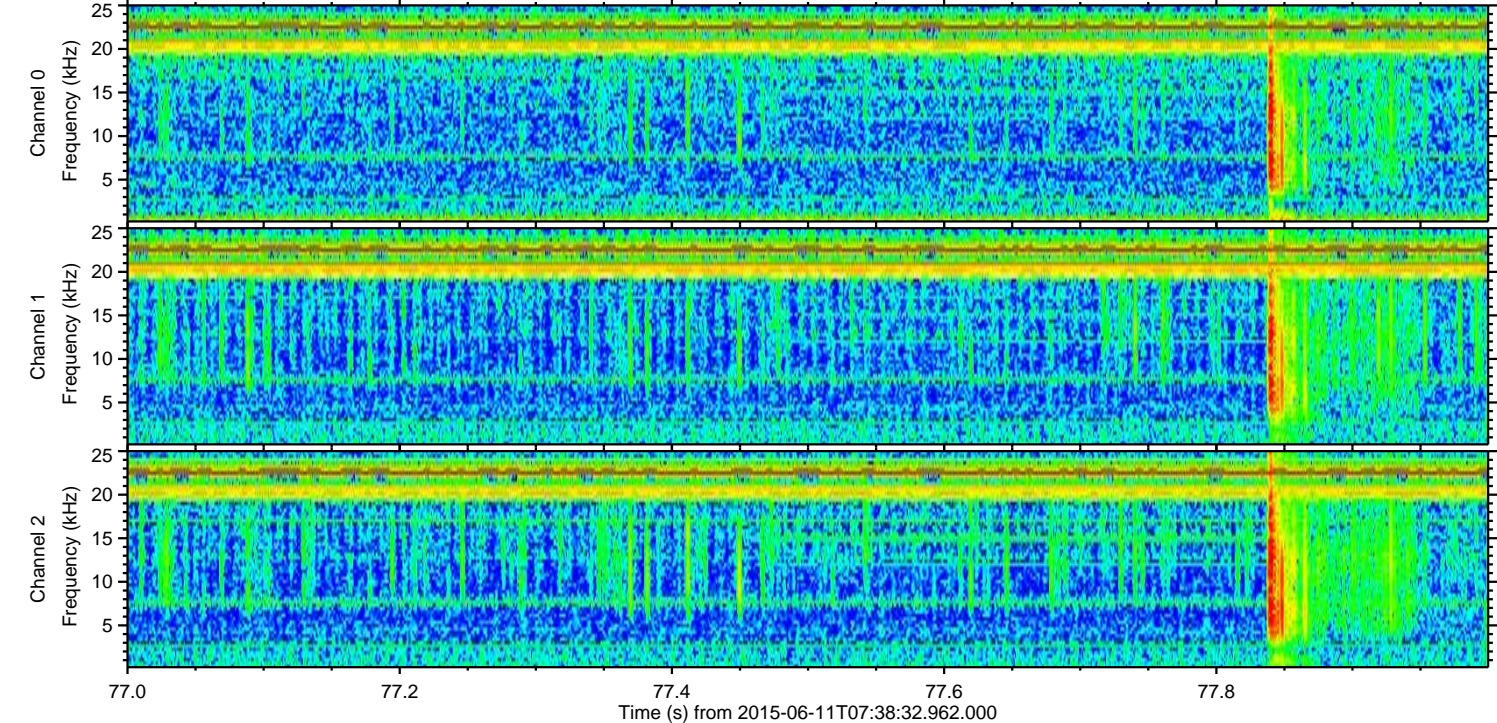
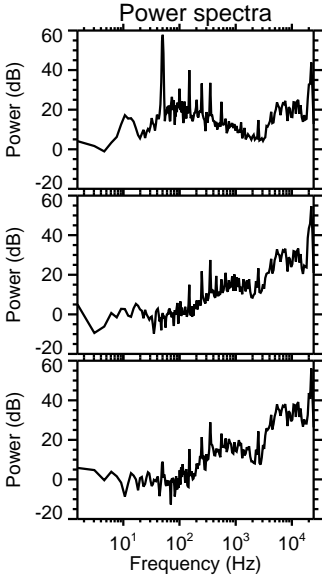
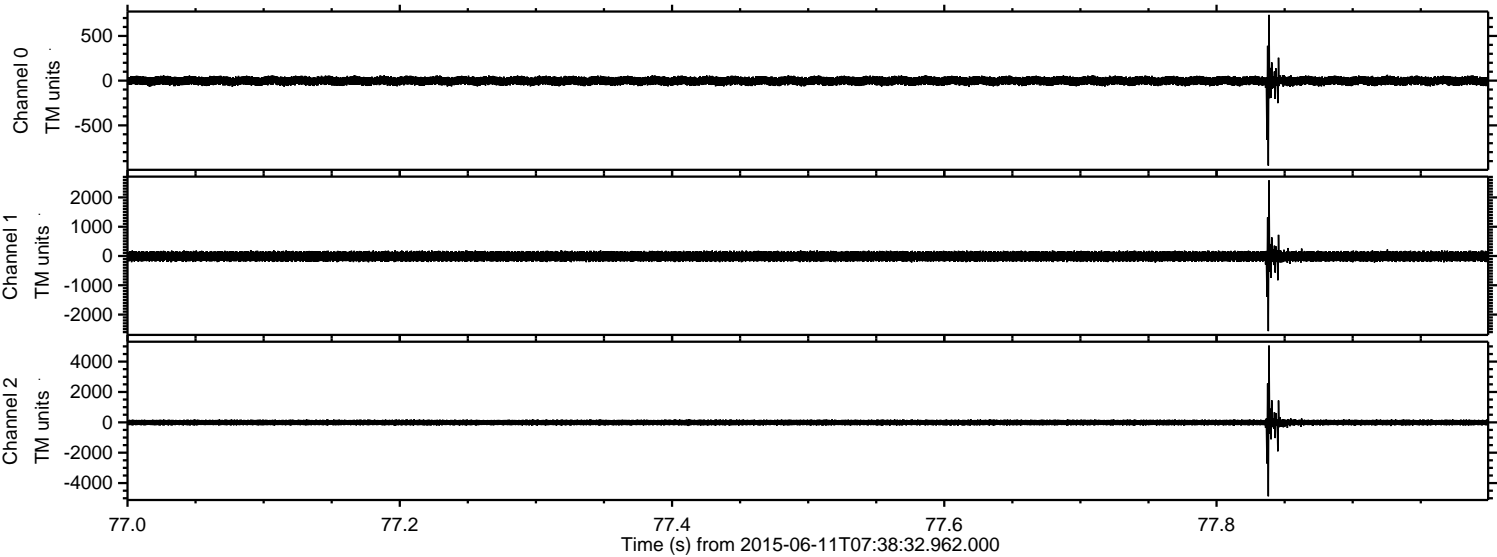
Channel 0  
mn: -1072  
mx: 1033  
 $\mu$ : -2.4  
 $\sigma$ : 28.4

Channel 1  
mn: -2458  
mx: 3631  
 $\mu$ : -11.6  
 $\sigma$ : 94.1

Channel 2  
mn: -3664  
mx: 5966  
 $\mu$ : -11.4  
 $\sigma$ : 108.5

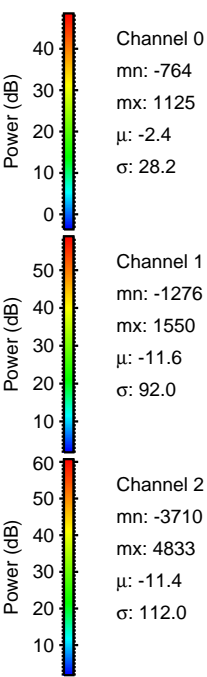
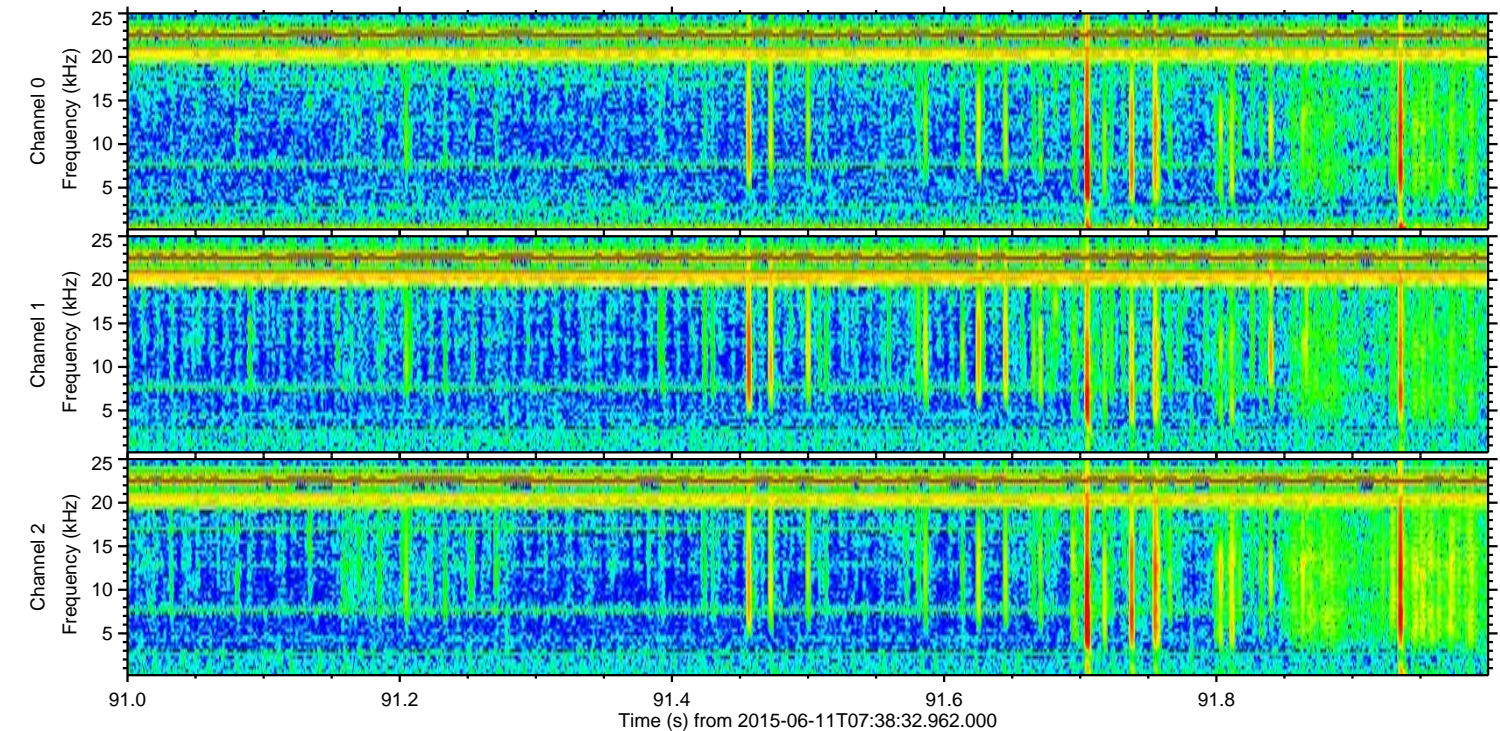
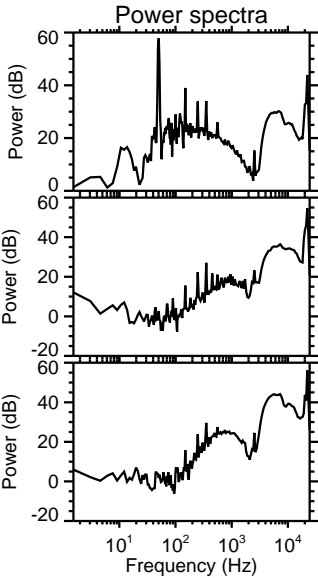
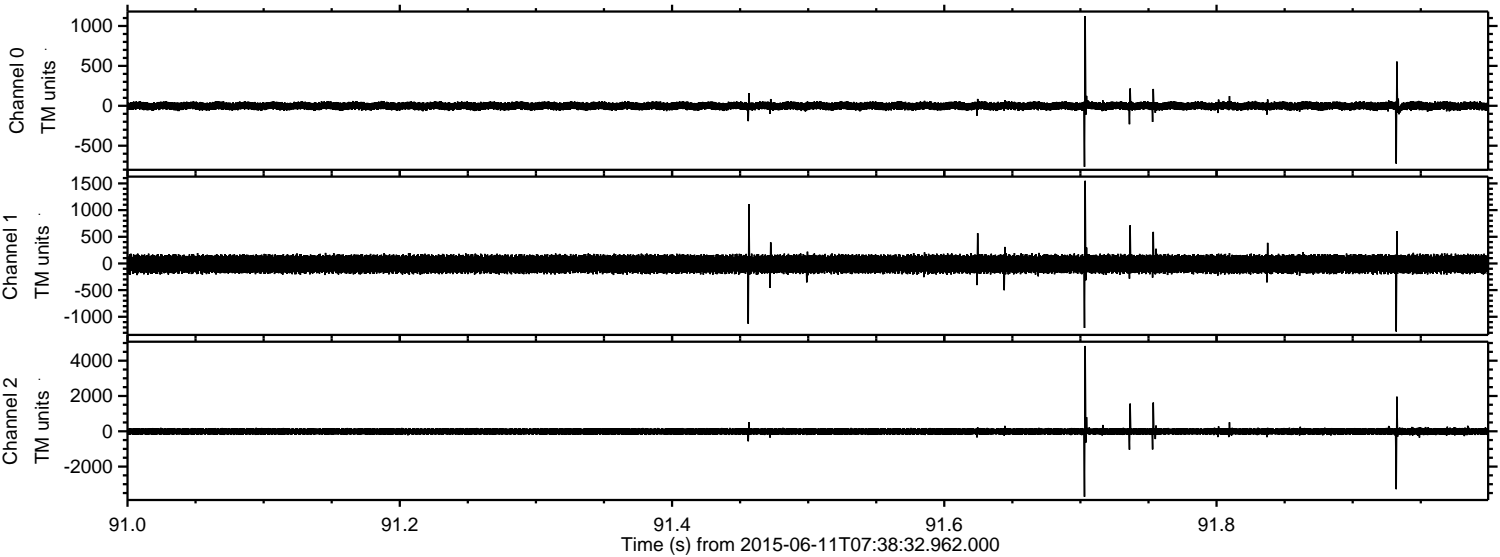


Processed Thu Jun 11 09:45:33 2015 by ELM ver.2012-10-06 from 001\_\_elm20150611\_073831\_\_dat00.bin





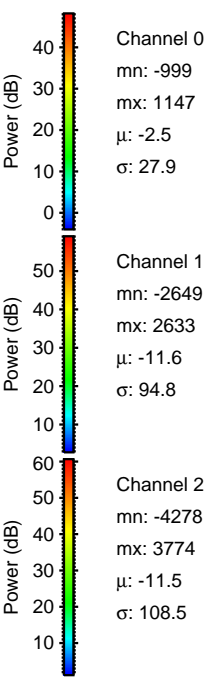
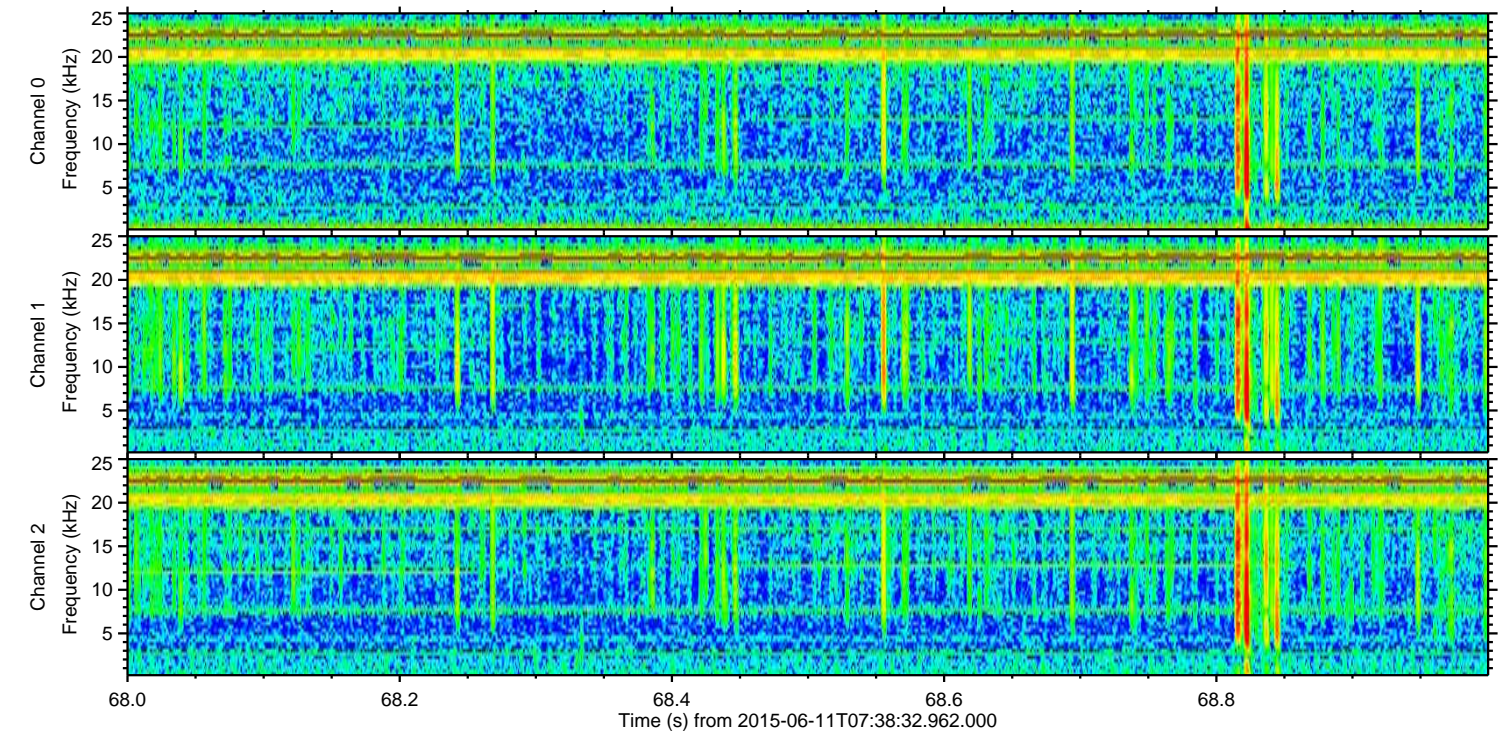
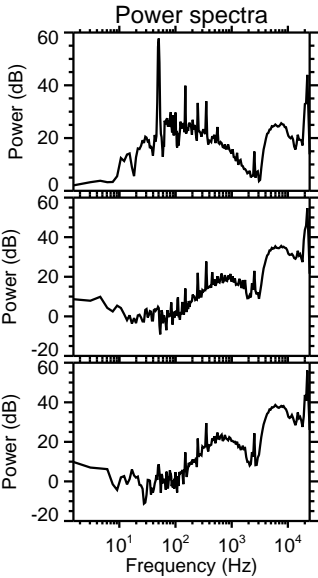
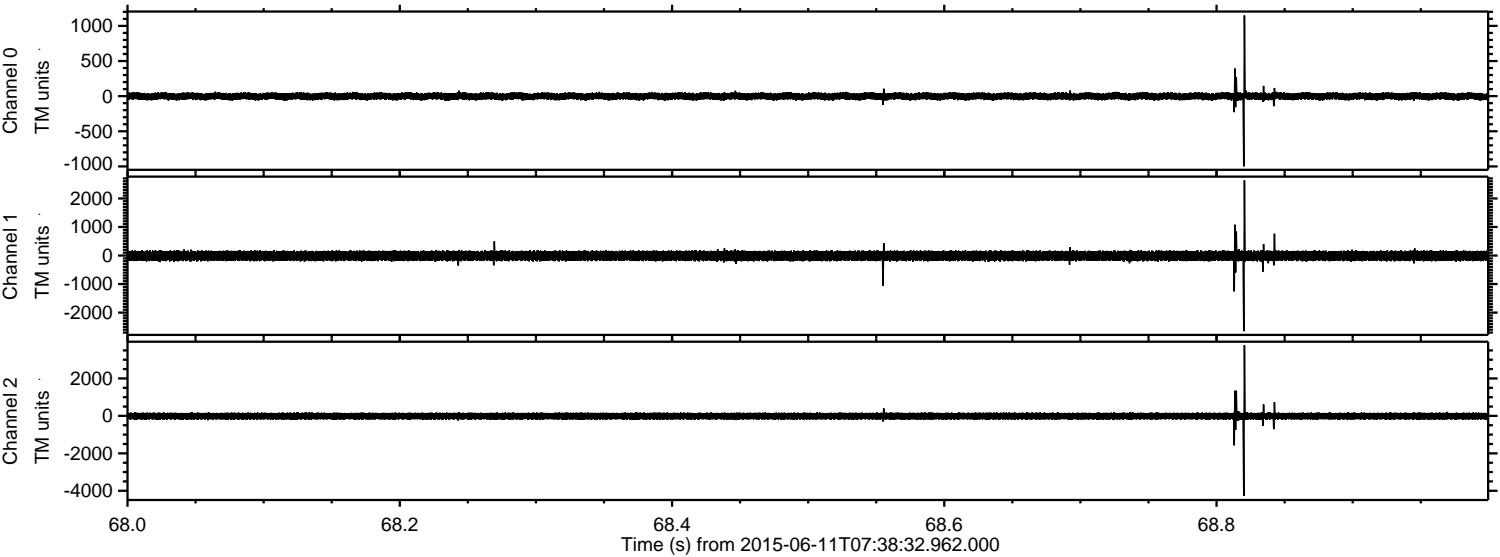
Processed Thu Jun 11 09:45:34 2015 by ELM ver.2012-10-06 from 001\_\_elm20150611\_073831\_\_dat00.bin





ELMAVAN 3D WAVEFORMS (Measured data sampled at 50 kHz) 51000 packets of 144 samples from 2015-06-11T07:38:32.962.000. Part 69/147

Processed Thu Jun 11 09:45:35 2015 by ELM ver.2012-10-06 from 001\_\_elm20150611\_073831\_\_dat00.bin





ELMAVAN 3D WAVEFORMS (Measured data sampled at 50 kHz) 51000 packets of 144 samples from 2015-06-11T07:38:32.962.000. Part 106/147

