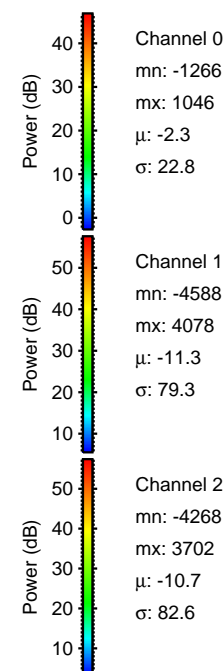
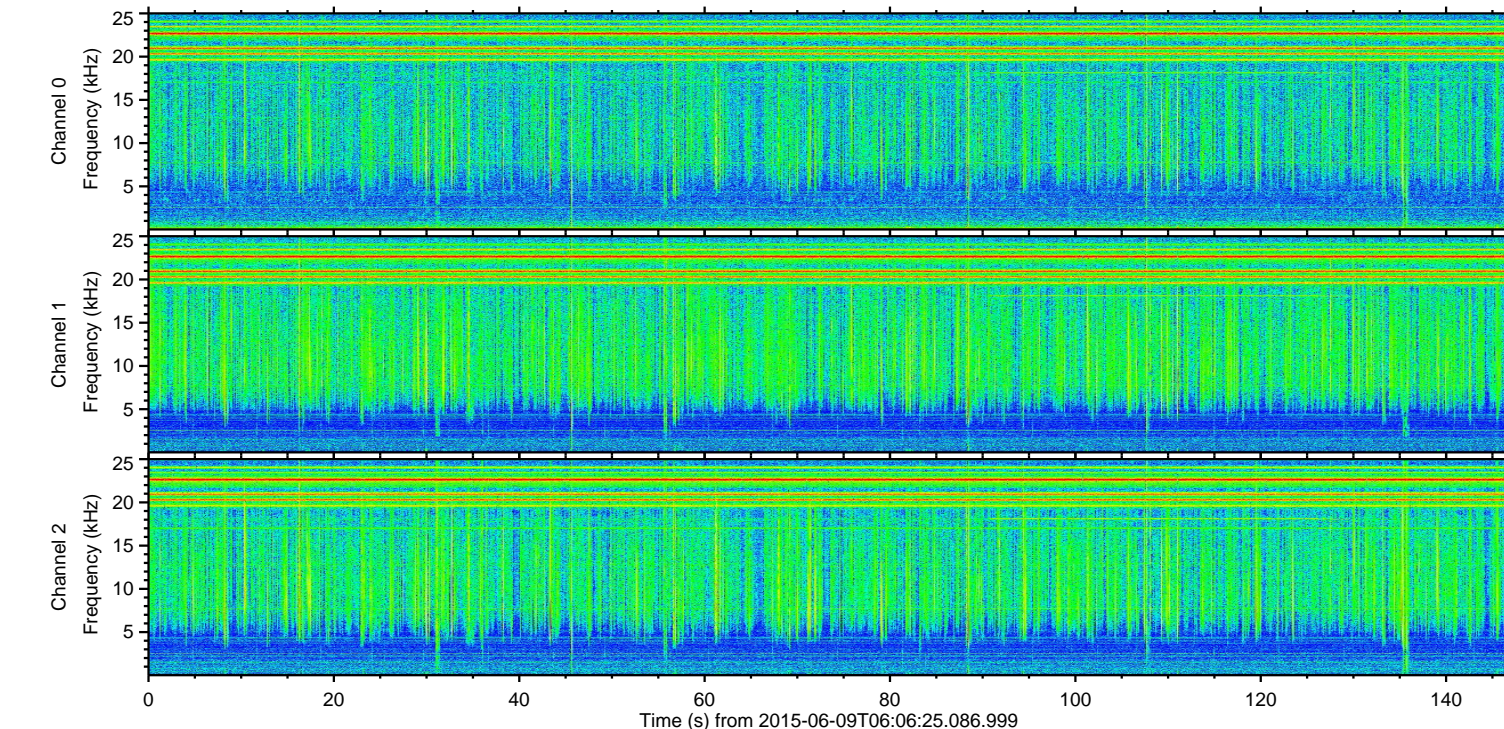
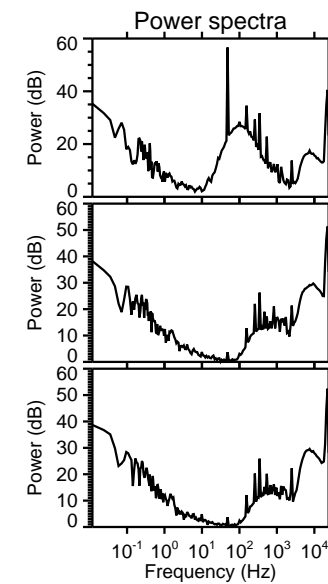
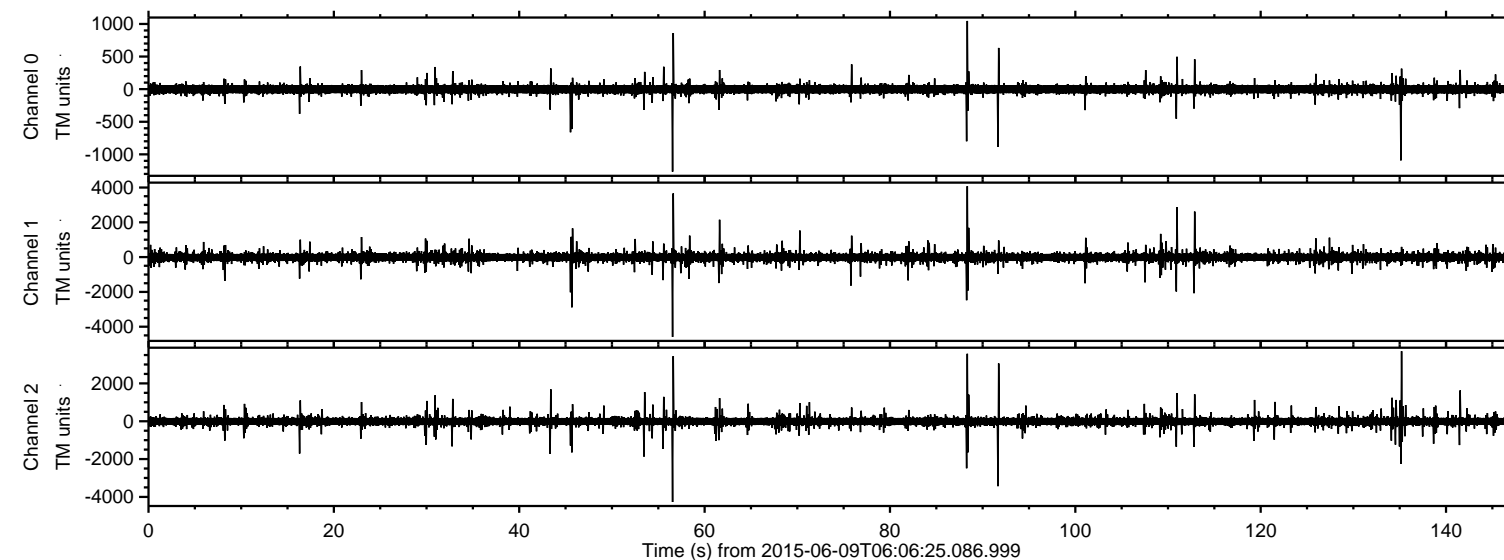


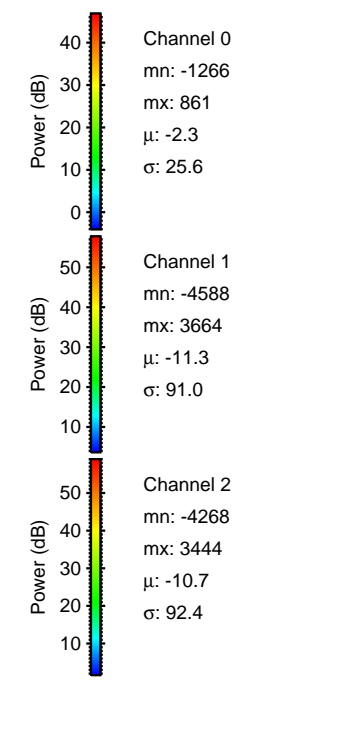
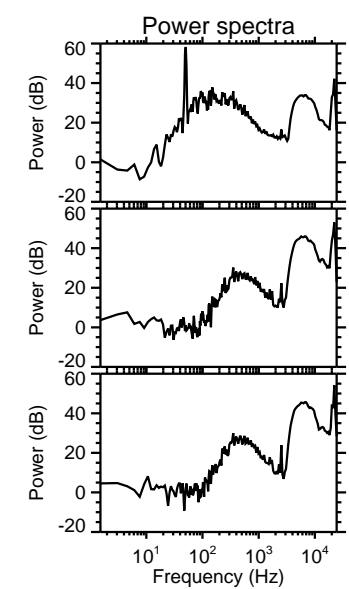
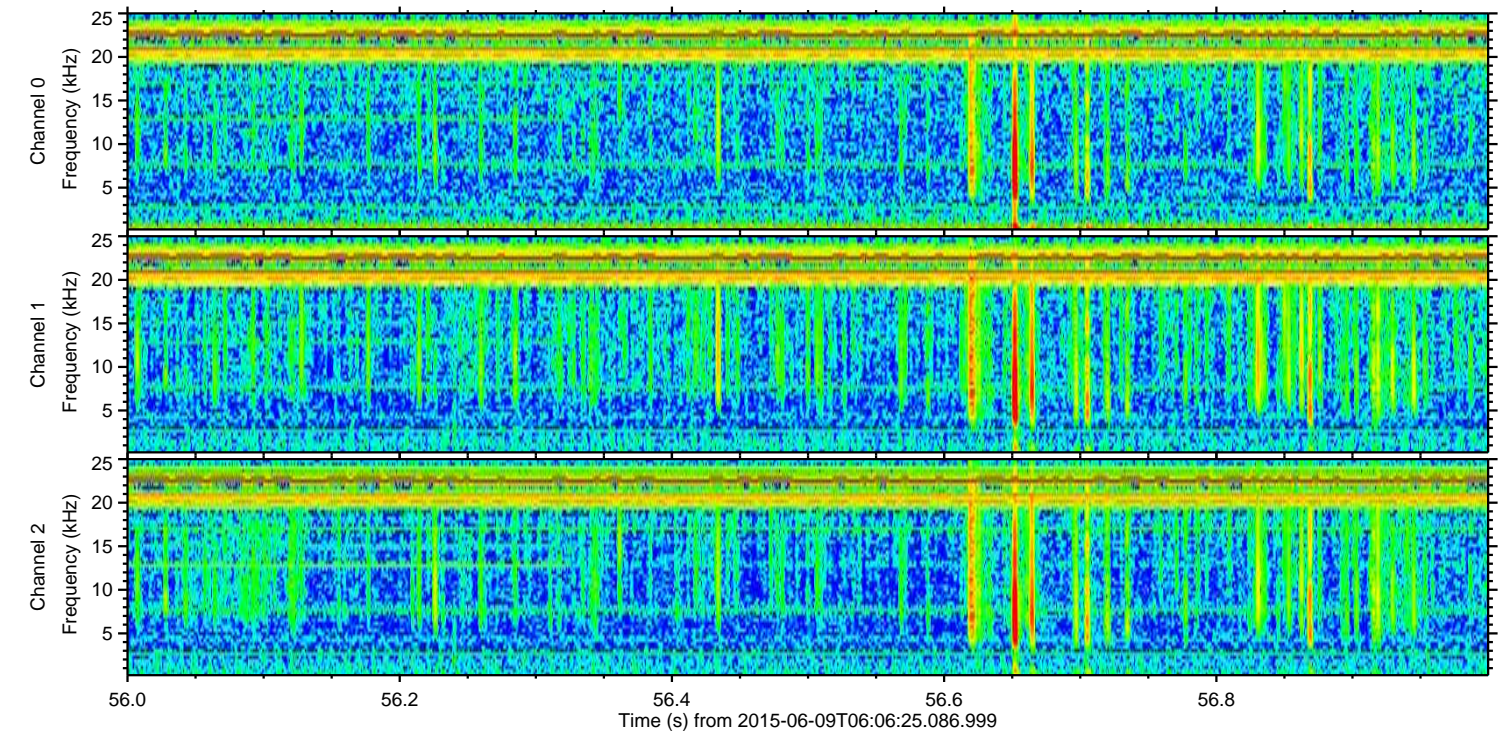
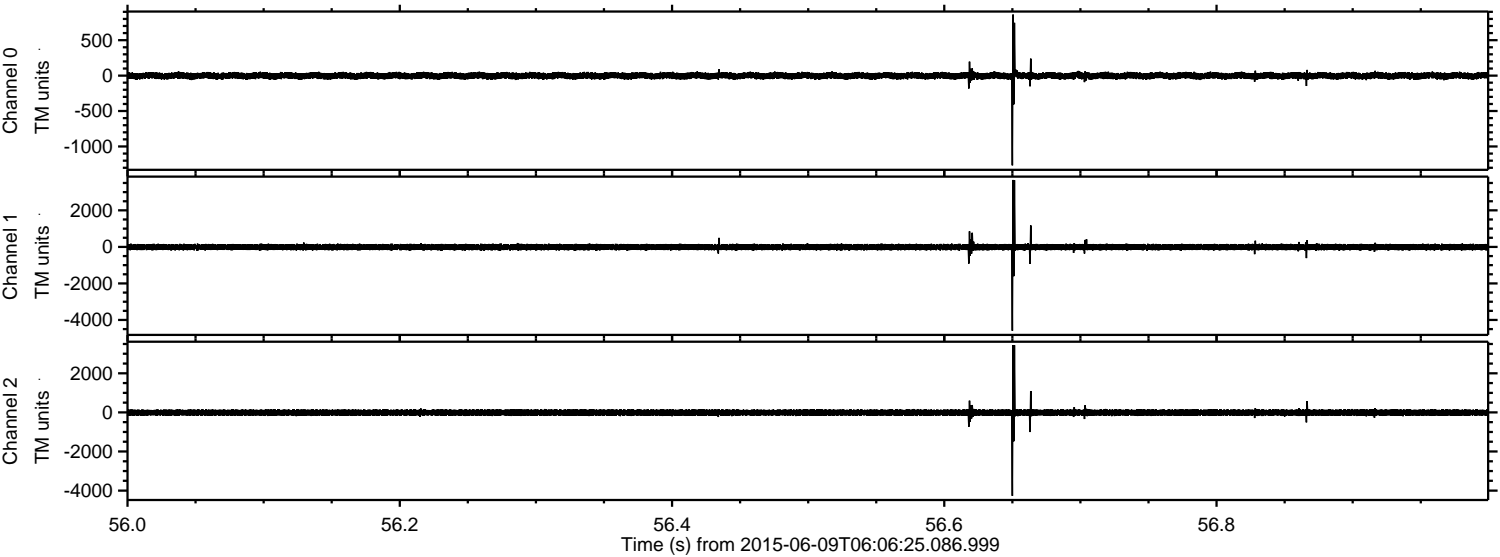
ELMAVAN 3D WAVEFORMS (Measured data sampled at 50 kHz) 51000 packets of 144 samples from 2015-06-09T06:06:25.086.999.

Processed Tue Jun 9 08:12:21 2015 by ELM ver.2012-10-06 from 001__elm20150609_060624__dat00.bin

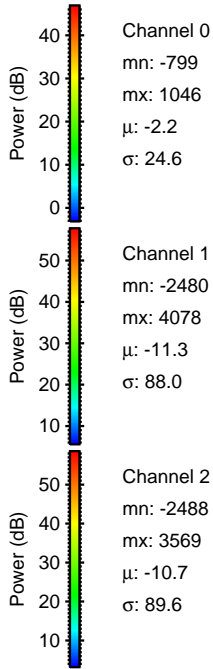
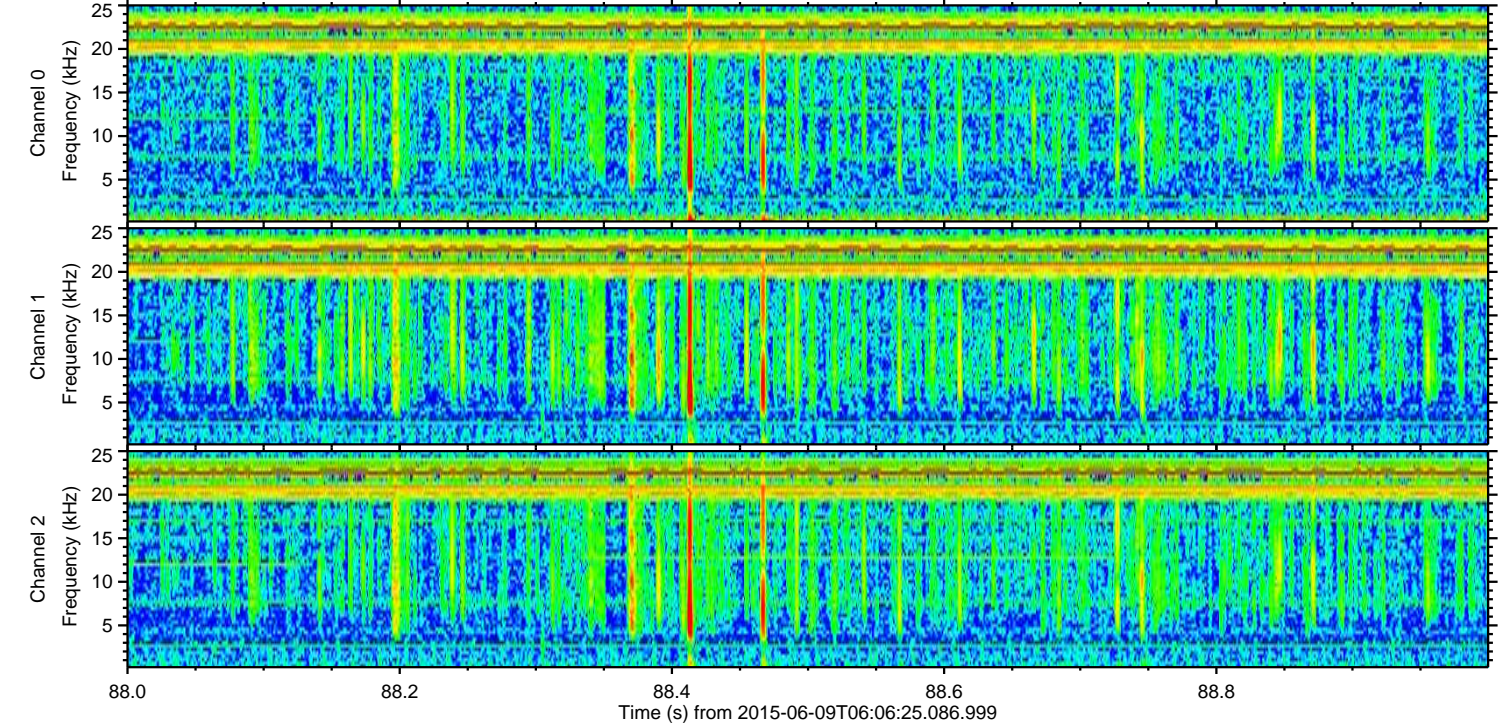
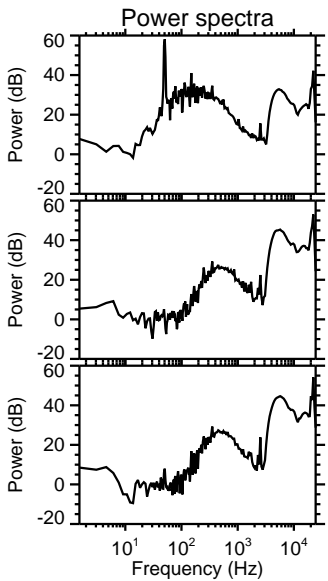
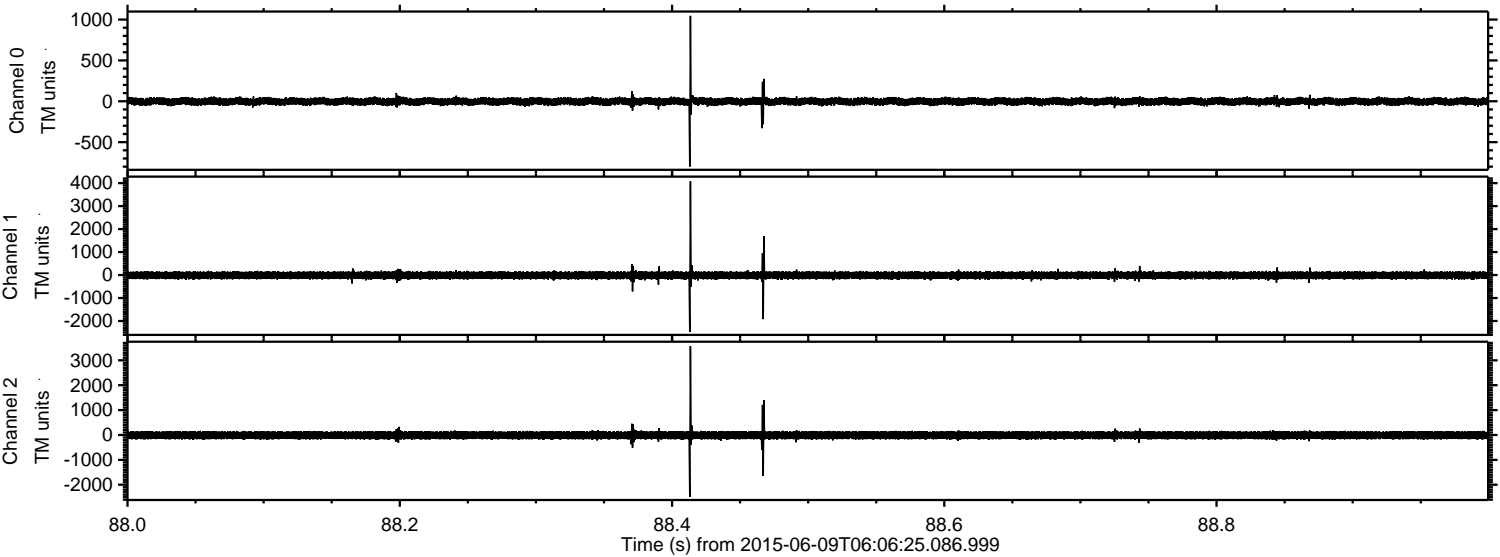


ELMAVAN 3D WAVEFORMS (Measured data sampled at 50 kHz) 51000 packets of 144 samples from 2015-06-09T06:06:25.086.999. Part 57/147

Processed Tue Jun 9 08:12:36 2015 by ELM ver.2012-10-06 from 001__elm20150609_060624__dat00.bin



Processed Tue Jun 9 08:12:37 2015 by ELM ver.2012-10-06 from 001__elm20150609_060624__dat00.bin



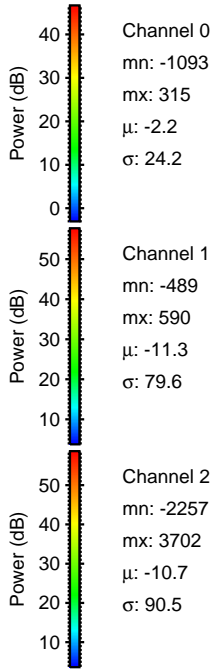
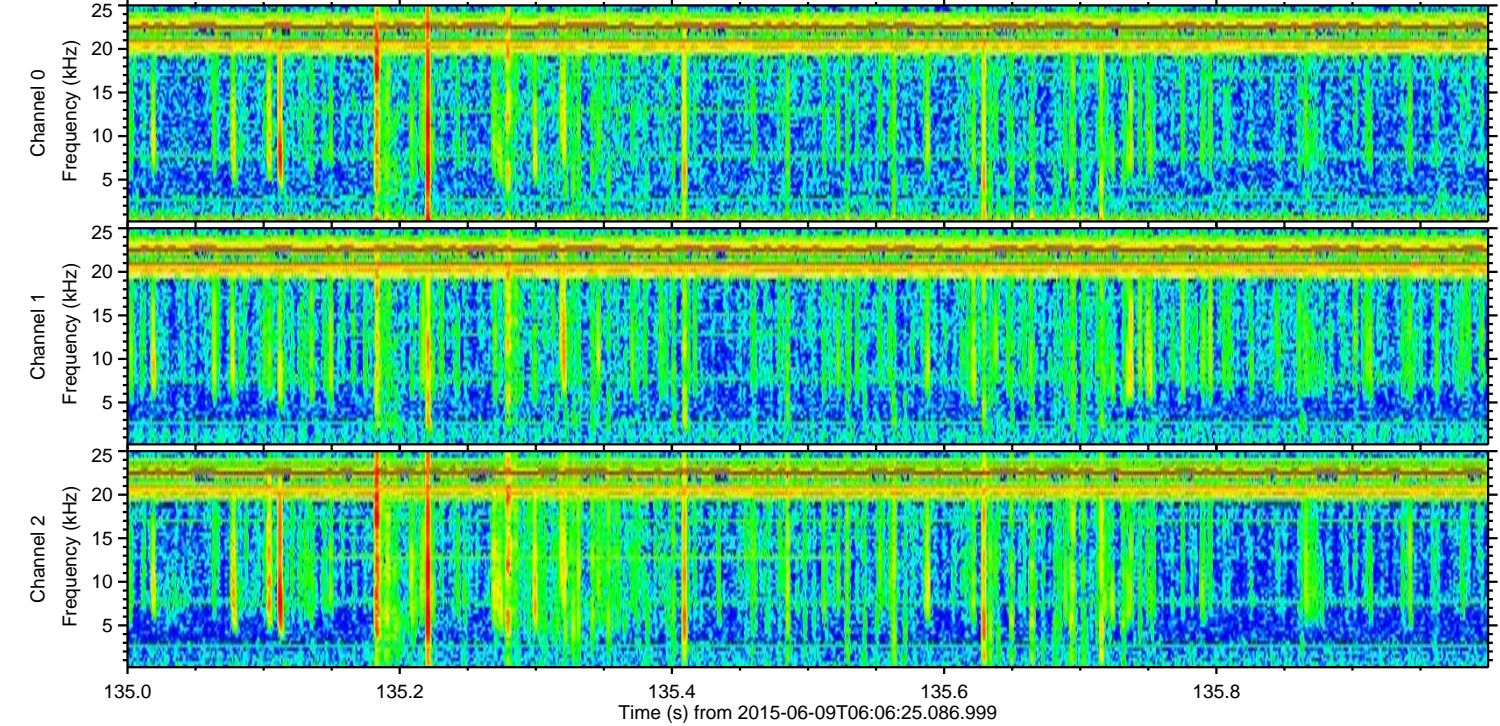
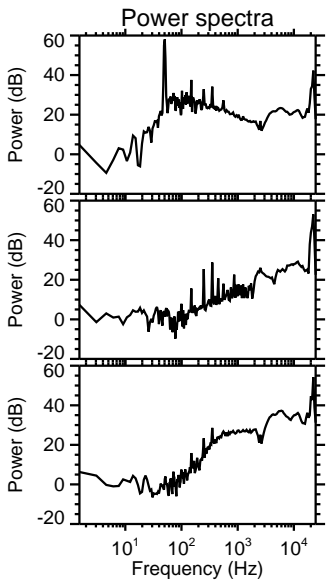
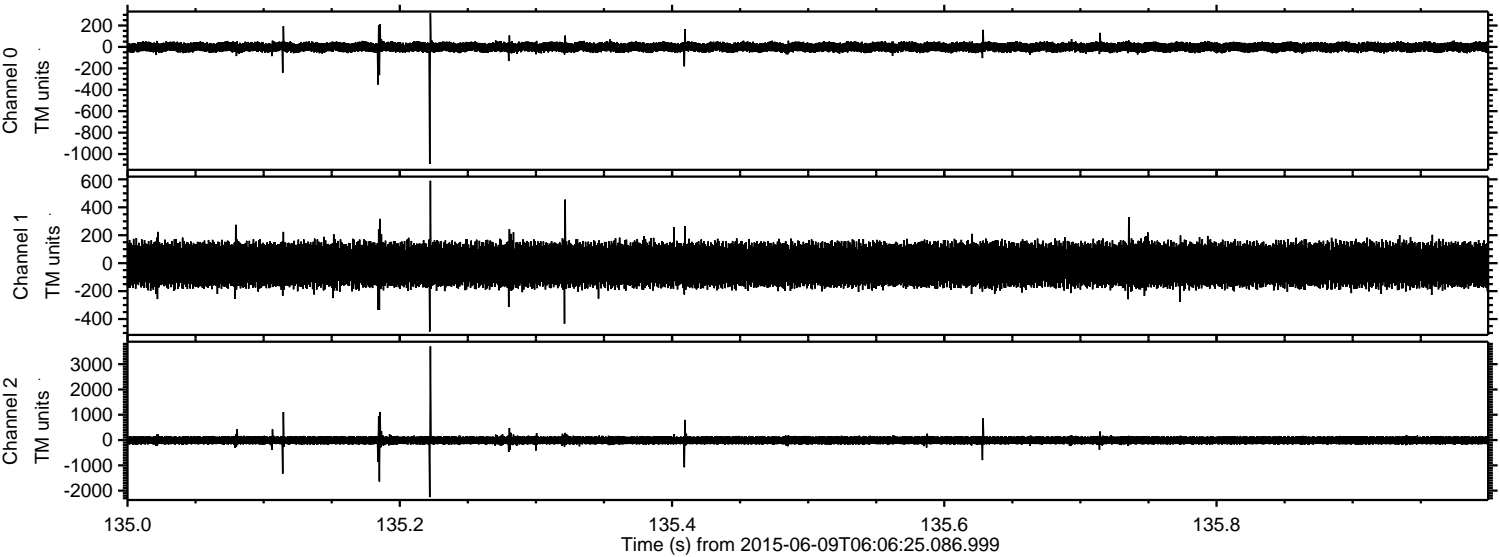
Channel 0
mn: -799
mx: 1046
 μ : -2.2
 σ : 24.6

Channel 1
mn: -2480
mx: 4078
 μ : -11.3
 σ : 88.0

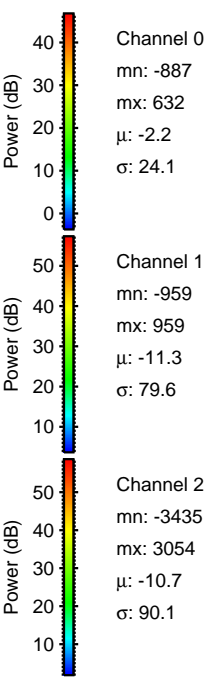
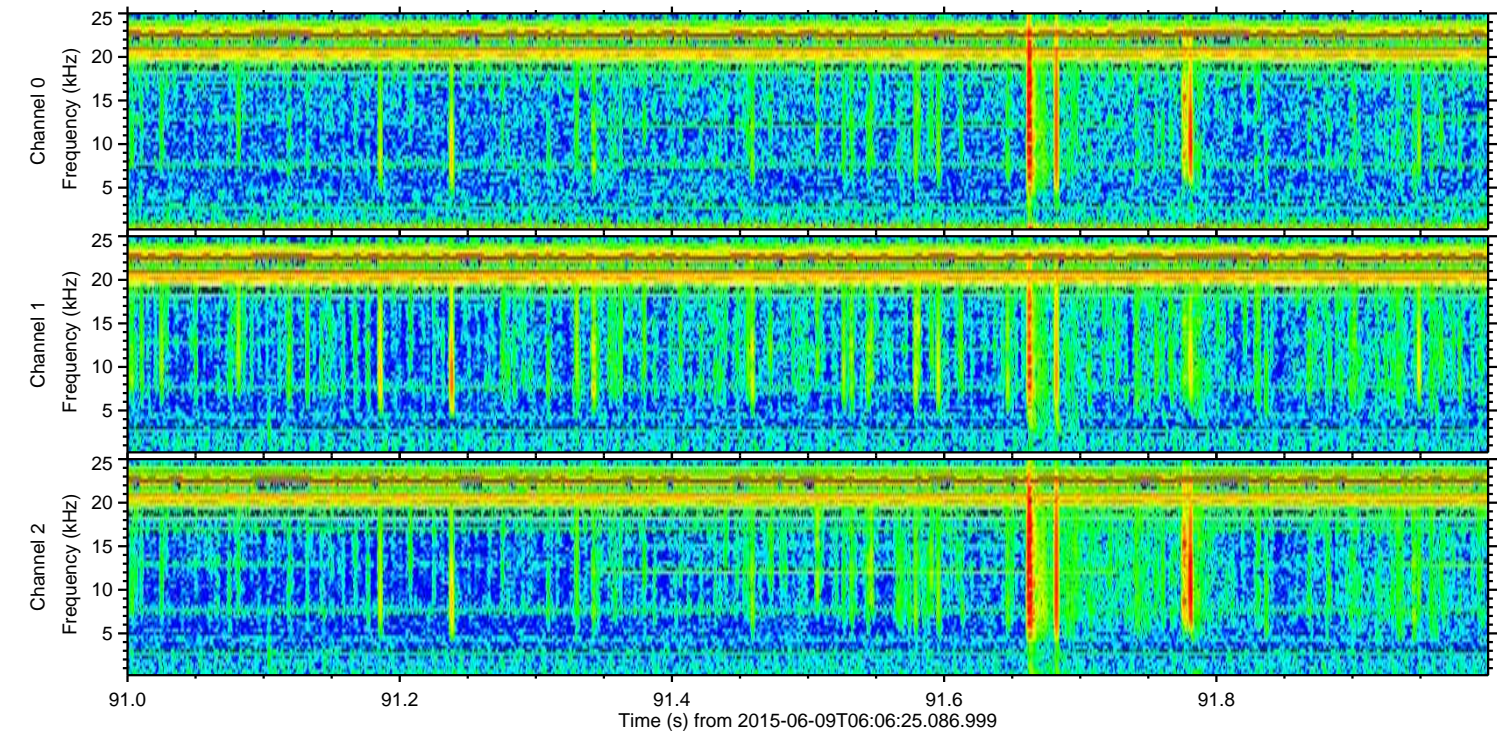
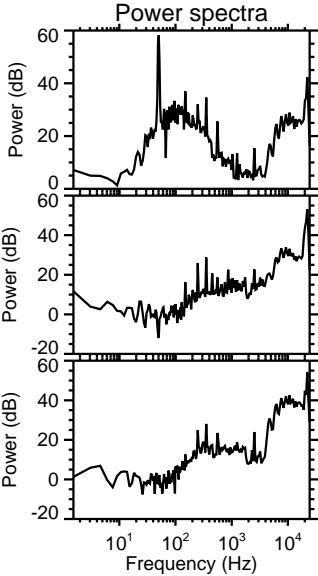
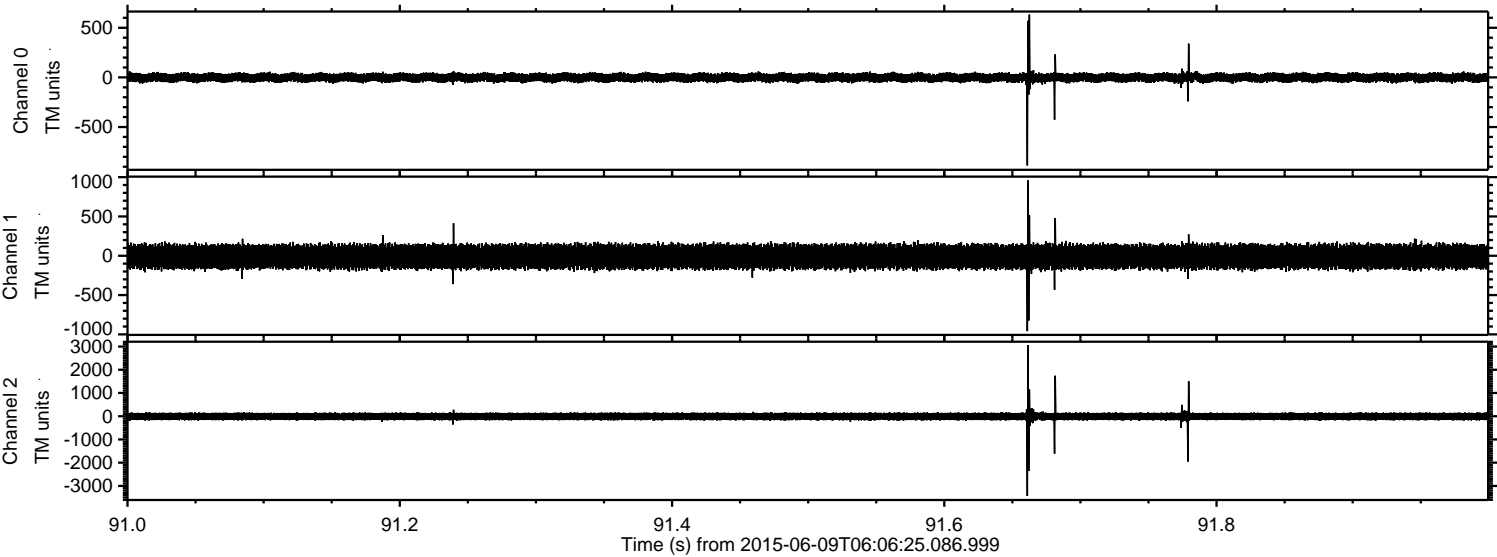
Channel 2
mn: -2488
mx: 3569
 μ : -10.7
 σ : 89.6

ELMAVAN 3D WAVEFORMS (Measured data sampled at 50 kHz) 51000 packets of 144 samples from 2015-06-09T06:06:25.086.999. Part 136/147

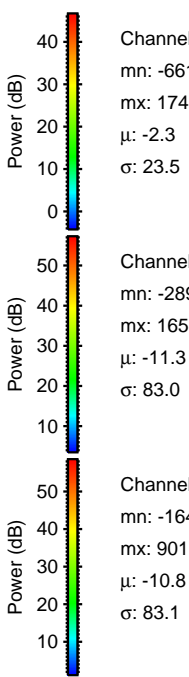
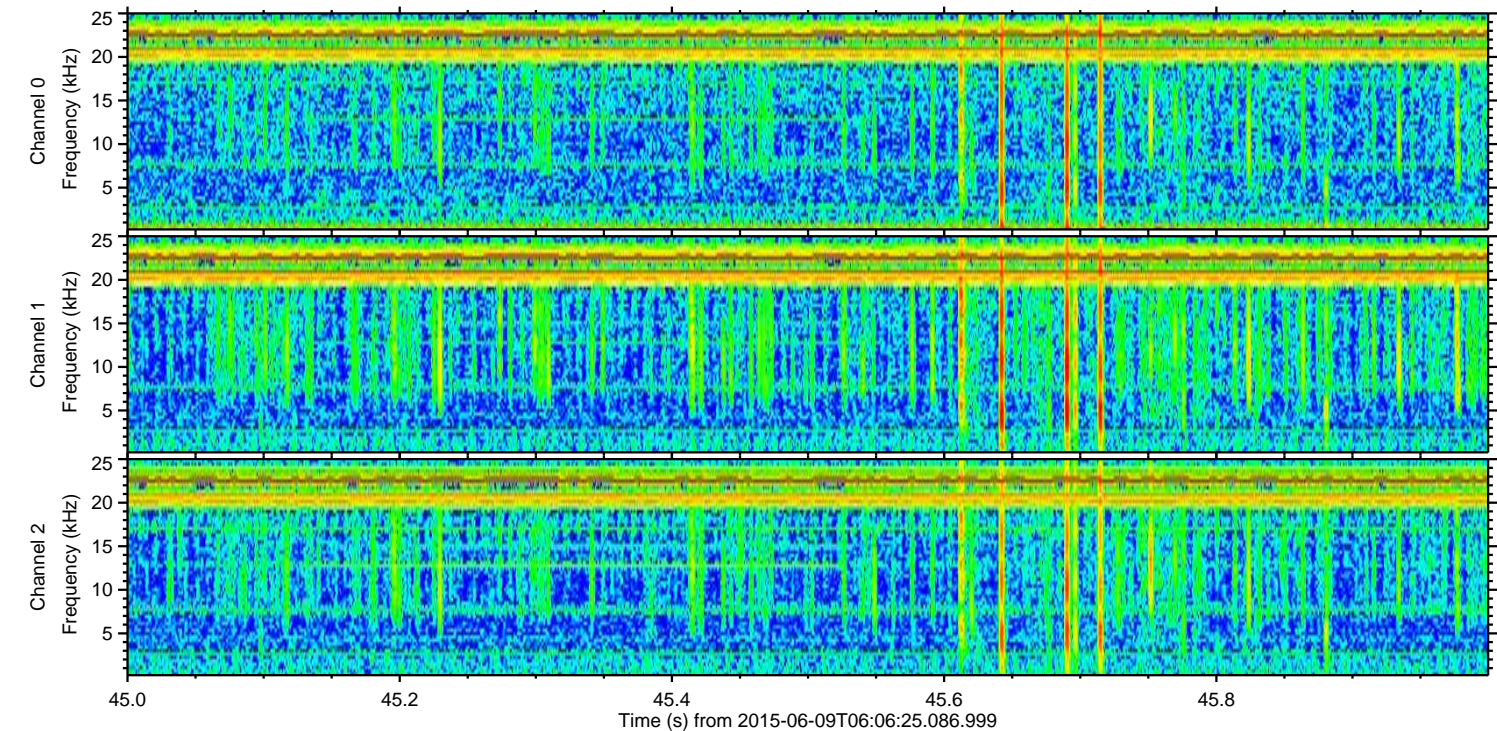
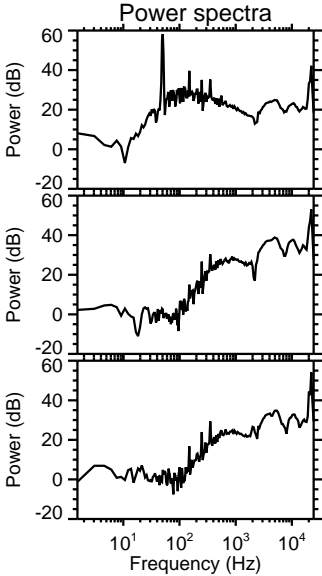
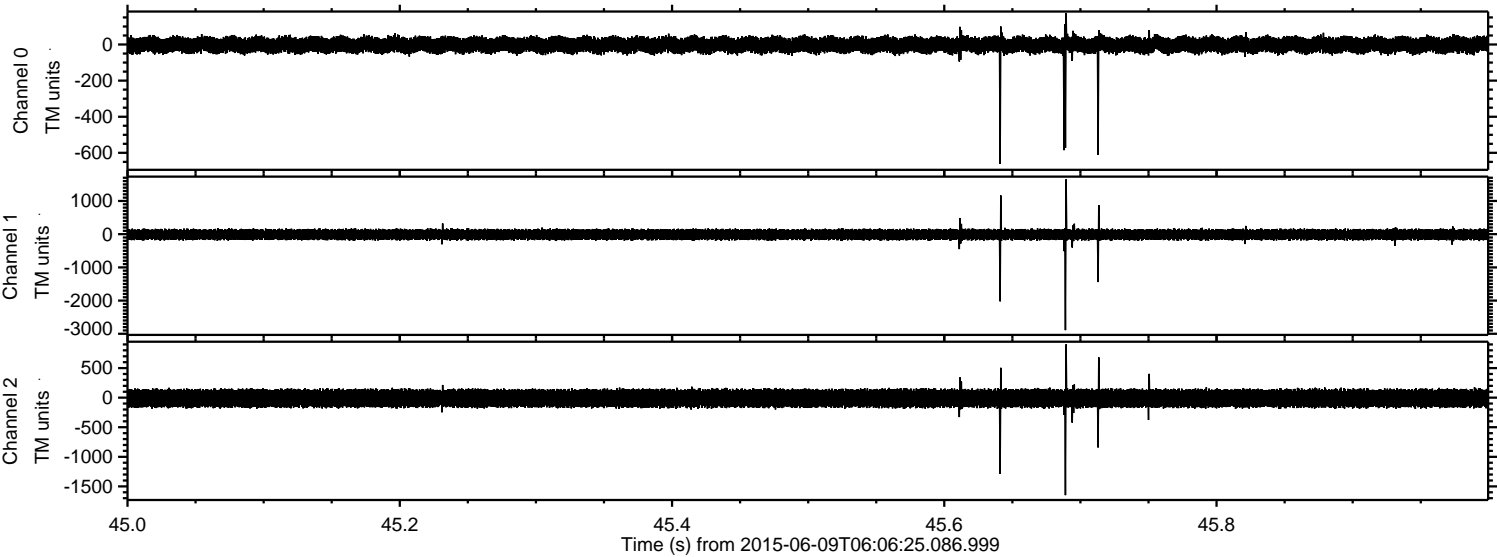
Processed Tue Jun 9 08:12:38 2015 by ELM ver.2012-10-06 from 001__elm20150609_060624__dat00.bin



Processed Tue Jun 9 08:12:39 2015 by ELM ver.2012-10-06 from 001__elm20150609_060624__dat00.bin



Processed Tue Jun 9 08:12:40 2015 by ELM ver.2012-10-06 from 001__elm20150609_060624__dat00.bin



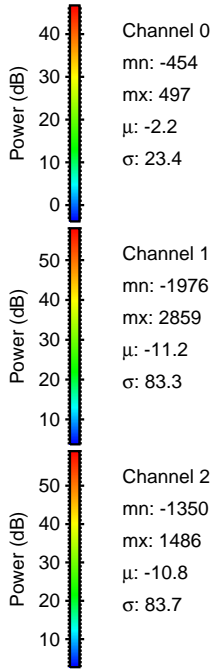
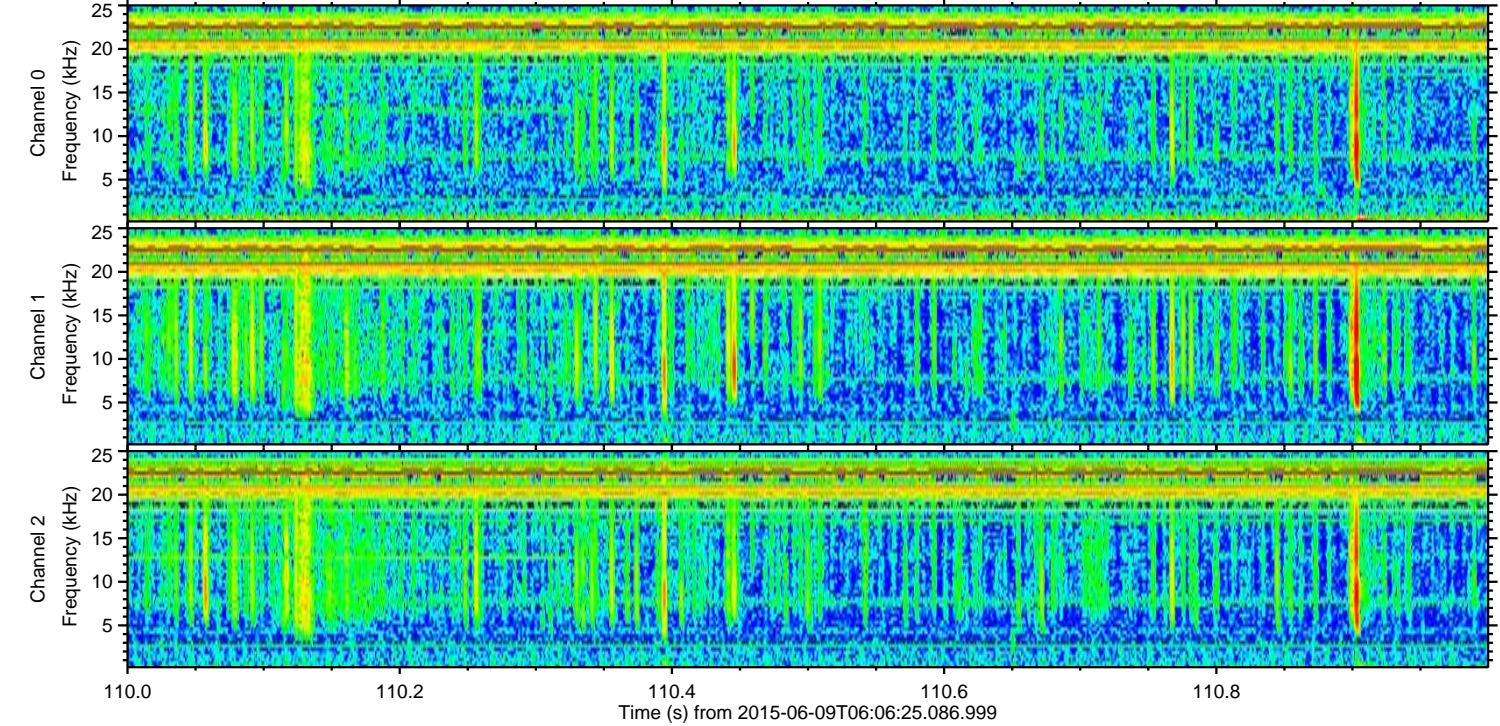
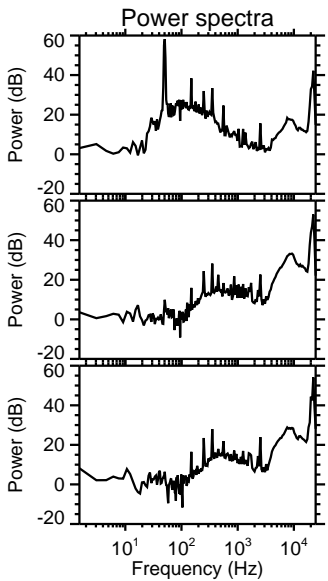
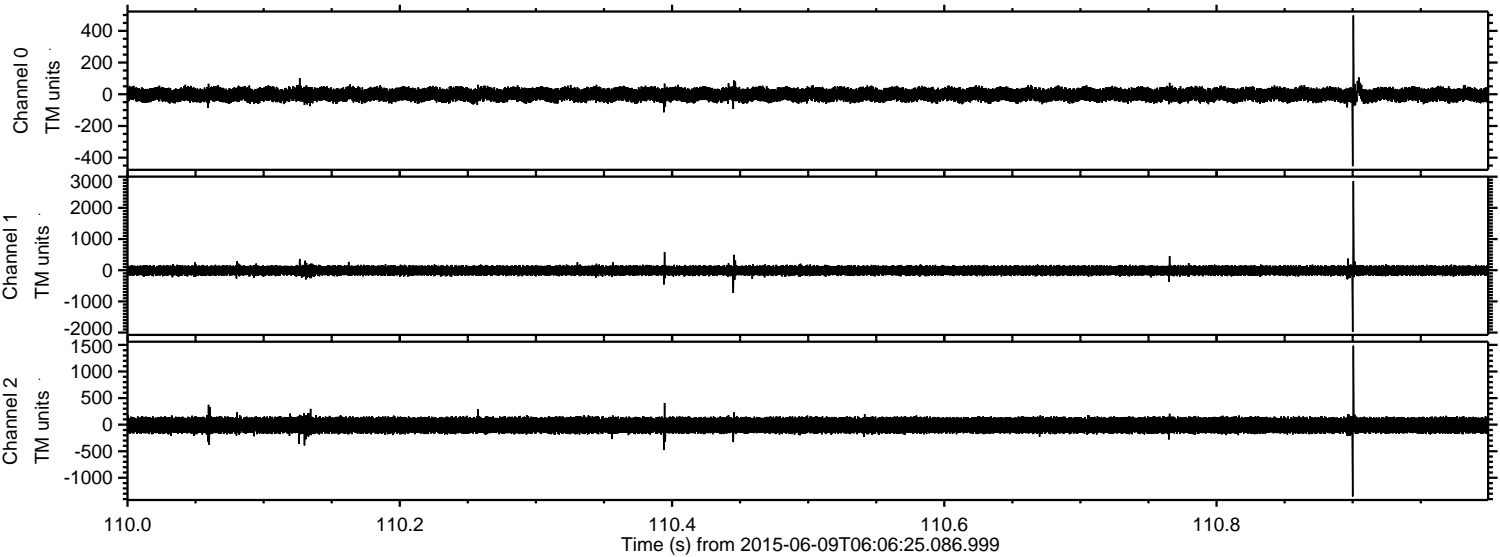
Channel 0
mn: -661
mx: 174
 μ : -2.3
 σ : 23.5

Channel 1
mn: -2890
mx: 1651
 μ : -11.3
 σ : 83.0

Channel 2
mn: -1648
mx: 901
 μ : -10.8
 σ : 83.1

ELMAVAN 3D WAVEFORMS (Measured data sampled at 50 kHz) 51000 packets of 144 samples from 2015-06-09T06:06:25.086.999. Part 111/147

Processed Tue Jun 9 08:12:41 2015 by ELM ver.2012-10-06 from 001__elm20150609_060624__dat00.bin



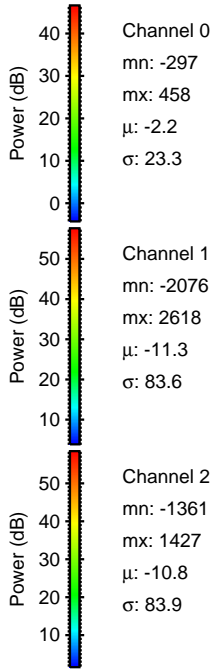
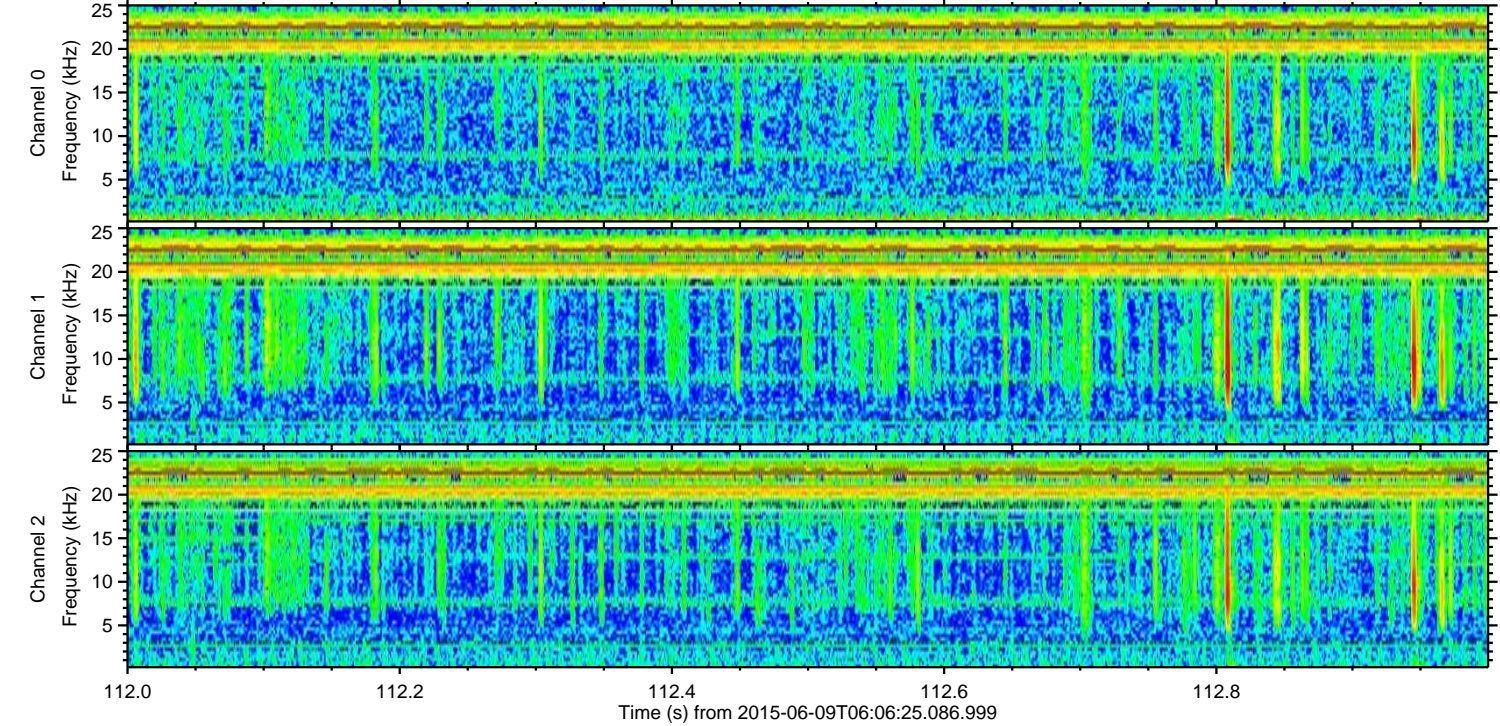
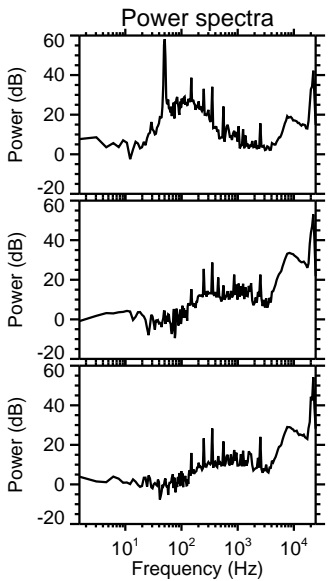
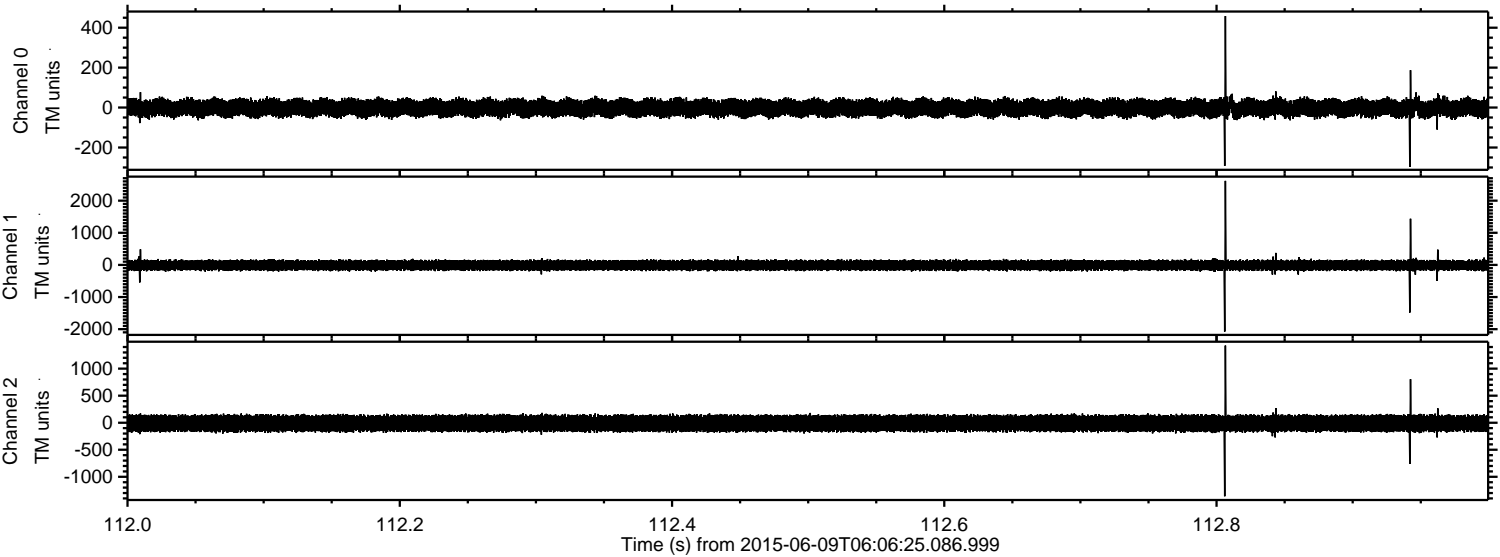
Channel 0
mn: -454
mx: 497
 μ : -2.2
 σ : 23.4

Channel 1
mn: -1976
mx: 2859
 μ : -11.2
 σ : 83.3

Channel 2
mn: -1350
mx: 1486
 μ : -10.8
 σ : 83.7

ELMAVAN 3D WAVEFORMS (Measured data sampled at 50 kHz) 51000 packets of 144 samples from 2015-06-09T06:06:25.086.999. Part 113/147

Processed Tue Jun 9 08:12:42 2015 by ELM ver.2012-10-06 from 001__elm20150609_060624__dat00.bin



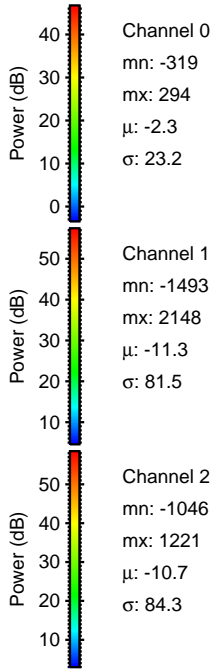
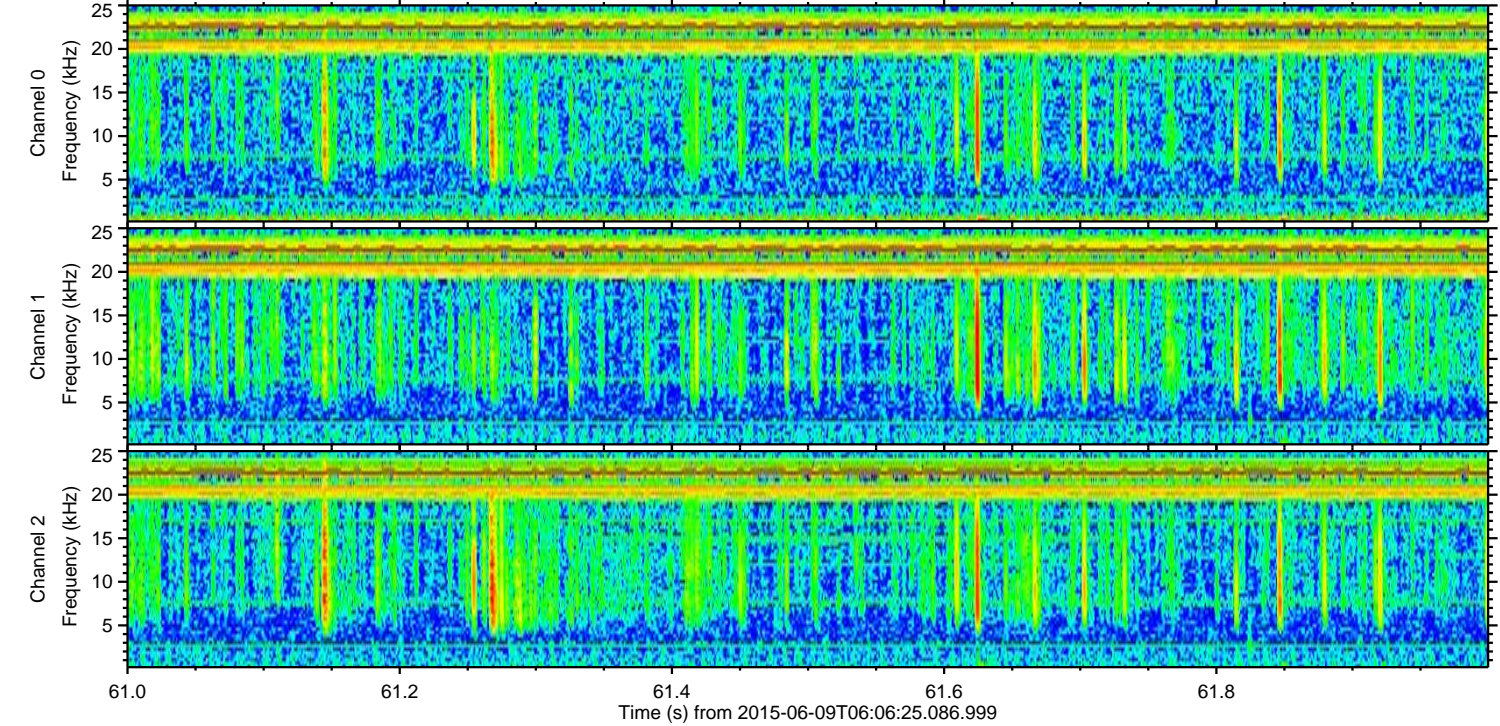
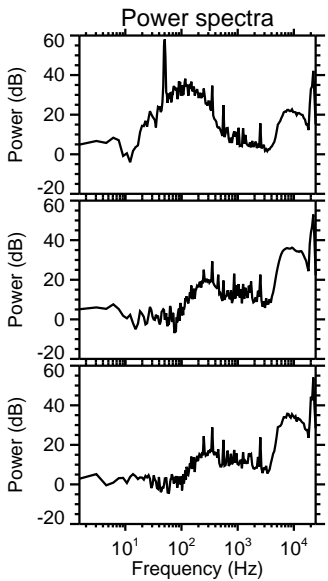
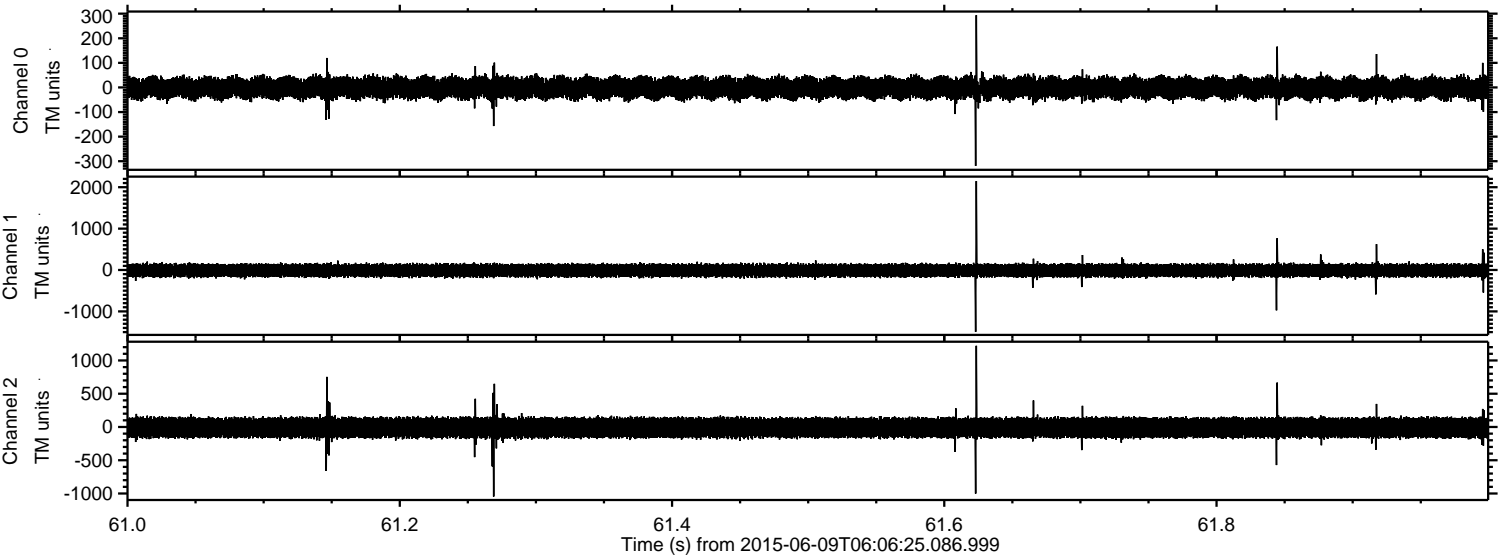
Channel 0
mn: -297
mx: 458
 μ : -2.2
 σ : 23.3

Channel 1
mn: -2076
mx: 2618
 μ : -11.3
 σ : 83.6

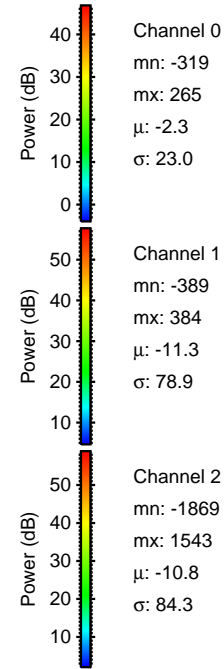
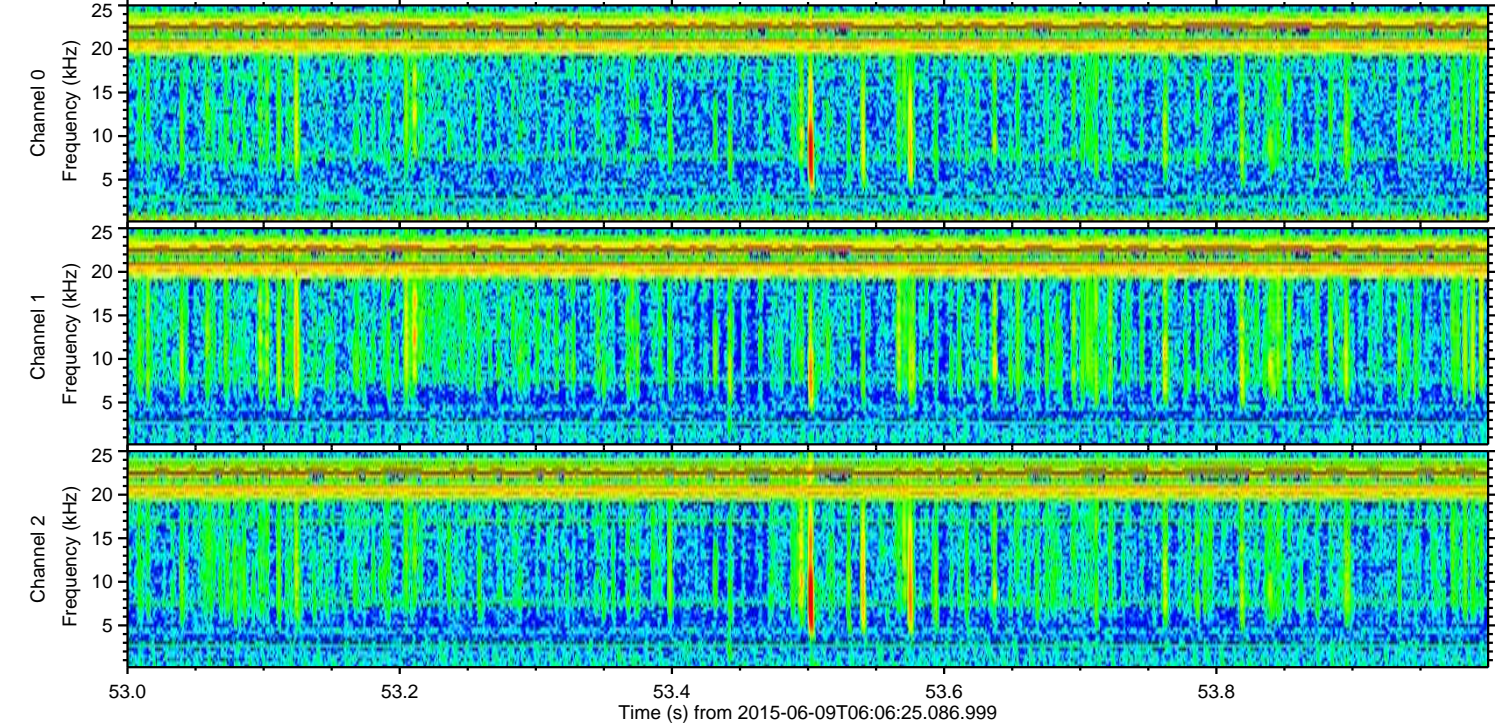
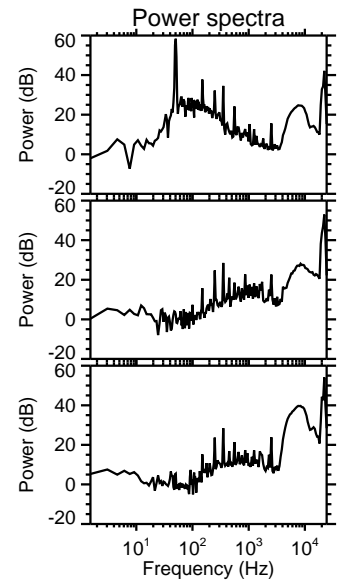
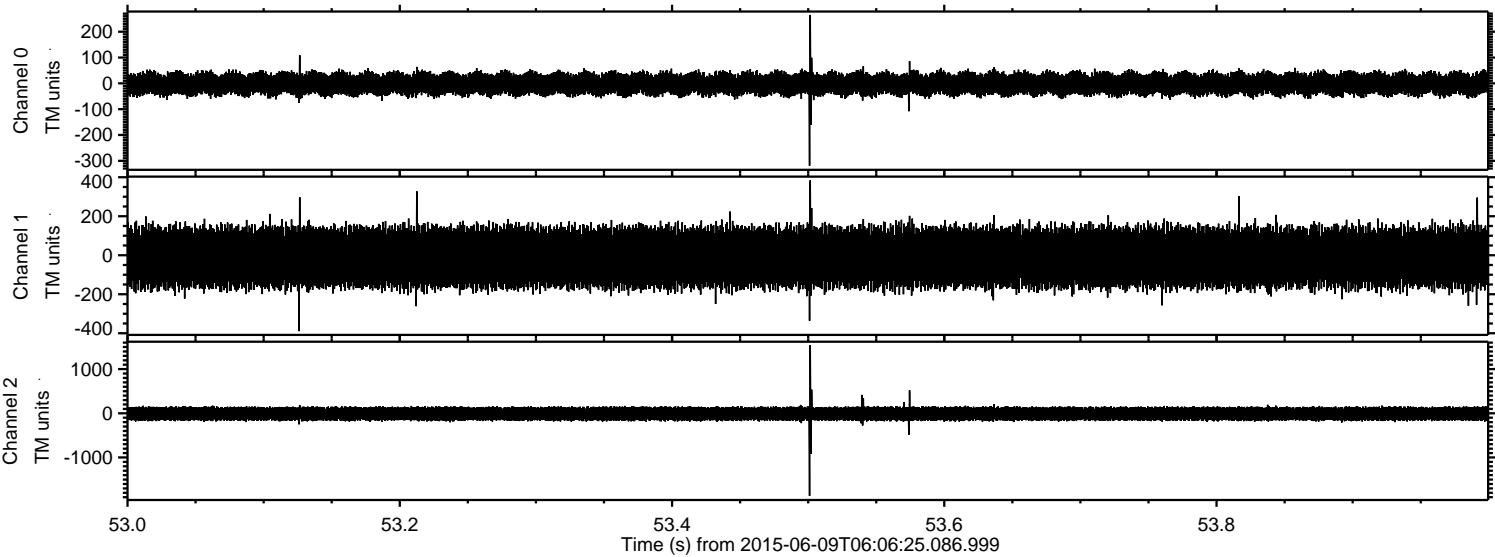
Channel 2
mn: -1361
mx: 1427
 μ : -10.8
 σ : 83.9

ELMAVAN 3D WAVEFORMS (Measured data sampled at 50 kHz) 51000 packets of 144 samples from 2015-06-09T06:06:25.086.999. Part 62/147

Processed Tue Jun 9 08:12:43 2015 by ELM ver.2012-10-06 from 001__elm20150609_060624__dat00.bin



Processed Tue Jun 9 08:12:45 2015 by ELM ver.2012-10-06 from 001__elm20150609_060624__dat00.bin



ELMAVAN 3D WAVEFORMS (Measured data sampled at 50 kHz) 51000 packets of 144 samples from 2015-06-09T06:06:25.086.999. Part 38/147

Processed Tue Jun 9 08:12:46 2015 by ELM ver.2012-10-06 from 001__elm20150609_060624__dat00.bin

