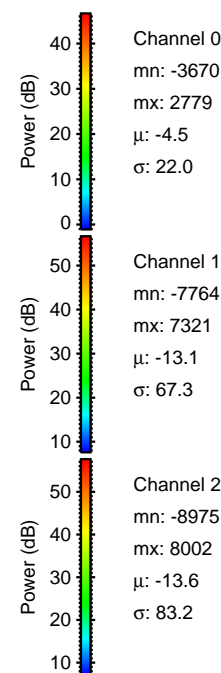
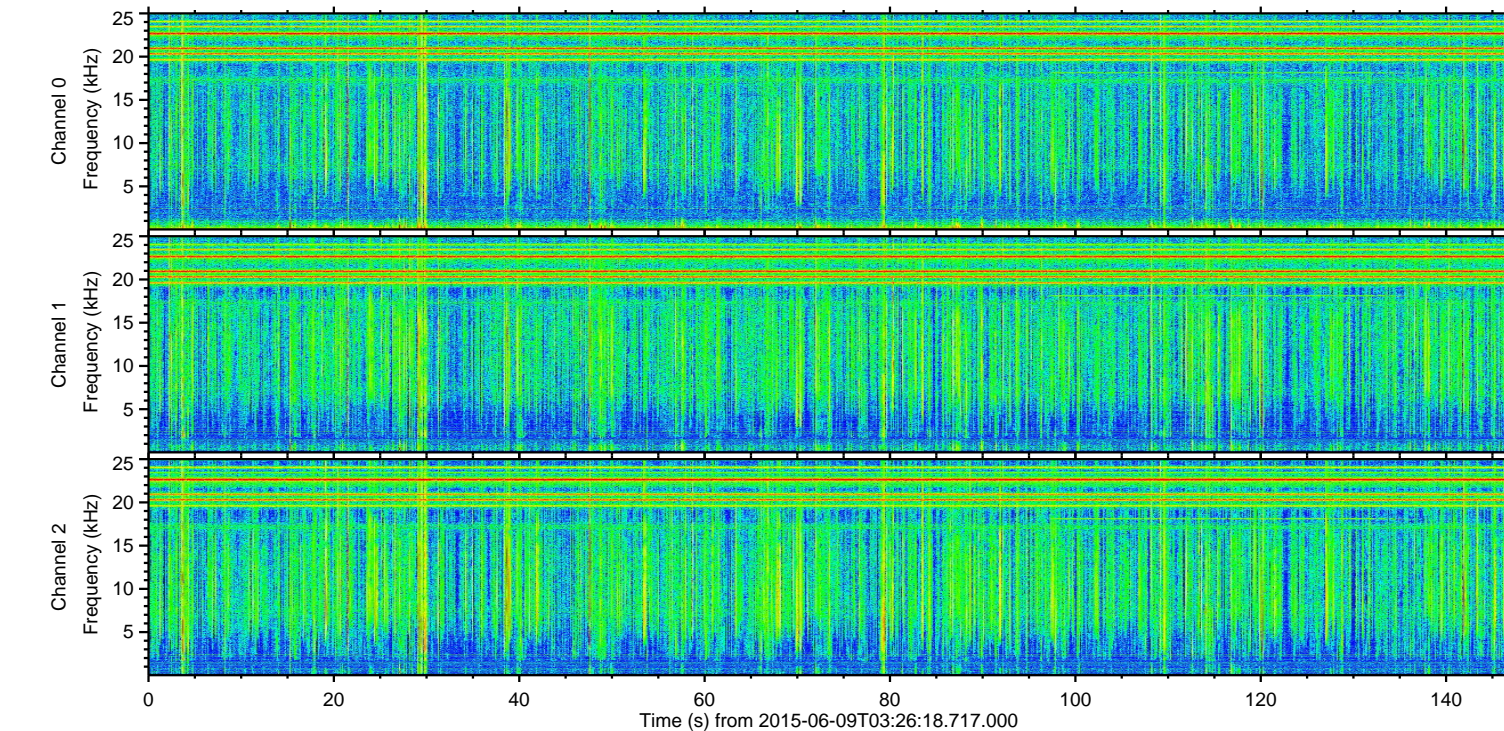
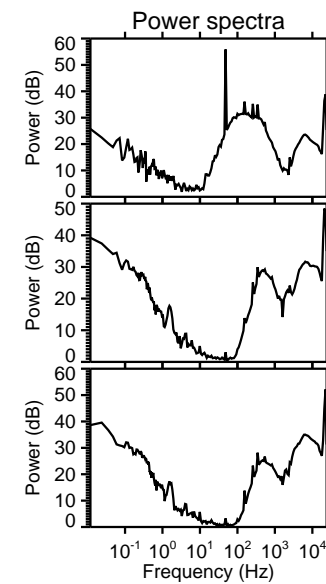
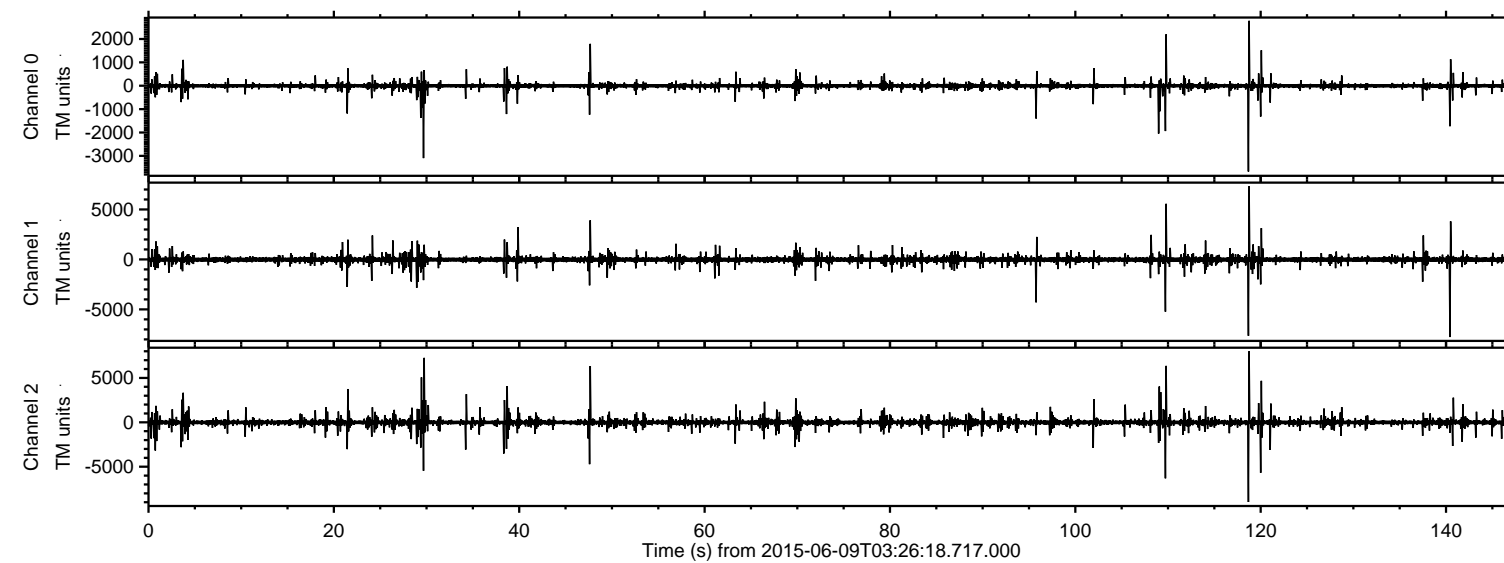


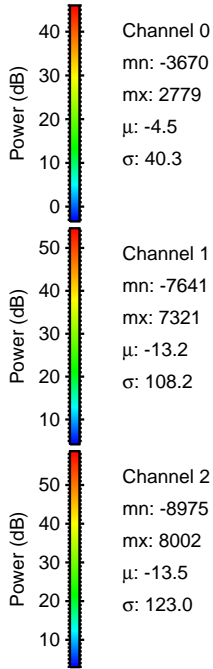
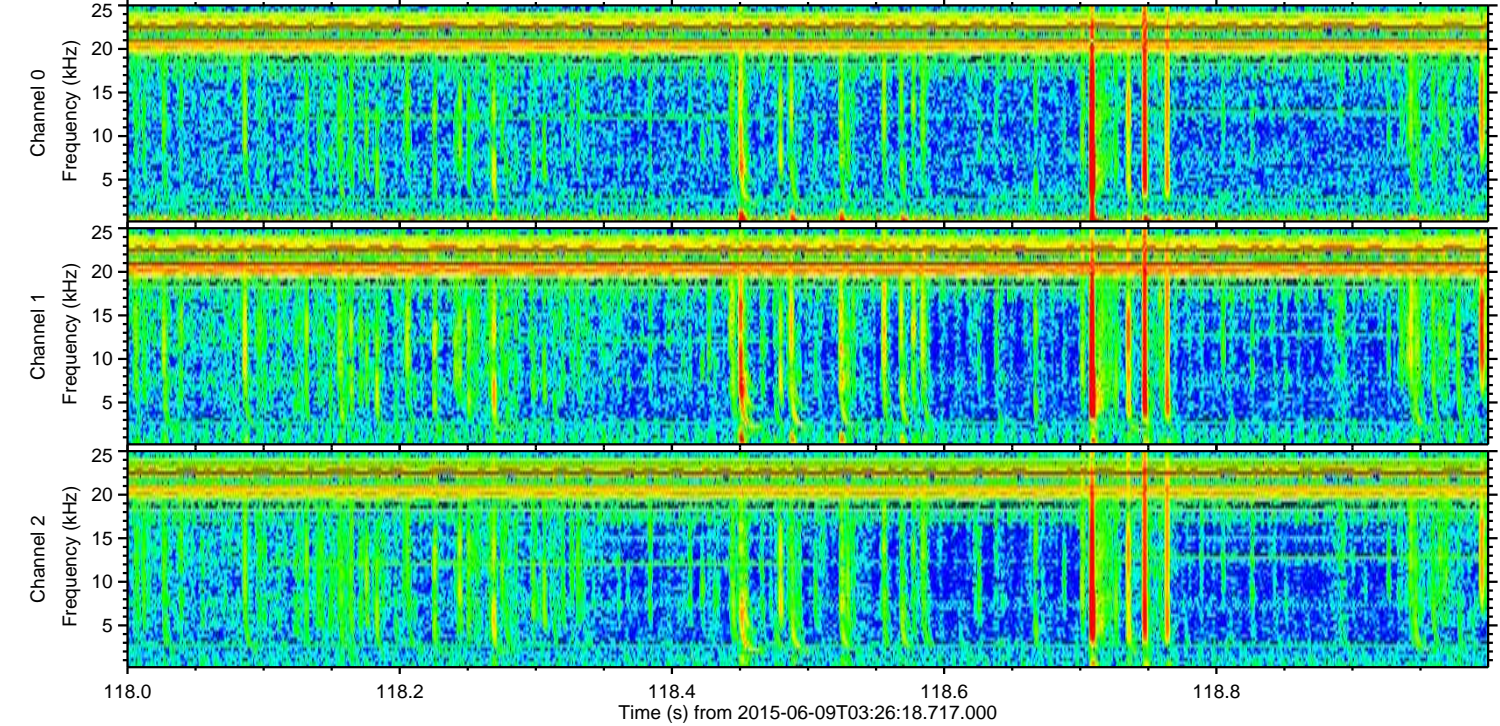
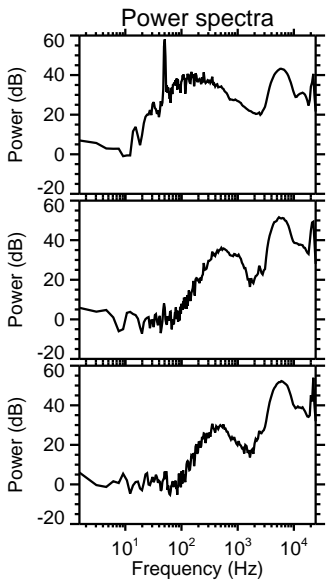
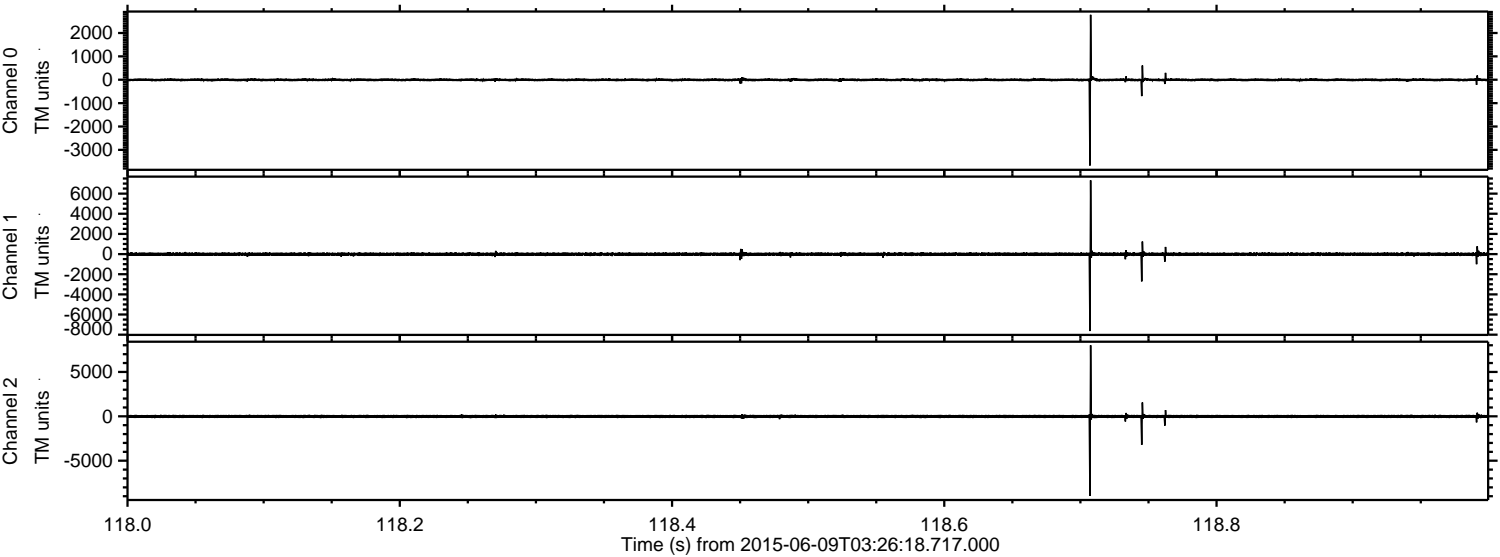
ELMAVAN 3D WAVEFORMS (Measured data sampled at 50 kHz) 51000 packets of 144 samples from 2015-06-09T03:26:18.717.000.

Processed Tue Jun 9 05:32:20 2015 by ELM ver.2012-10-06 from 001__elm20150609_032617__dat00.bin



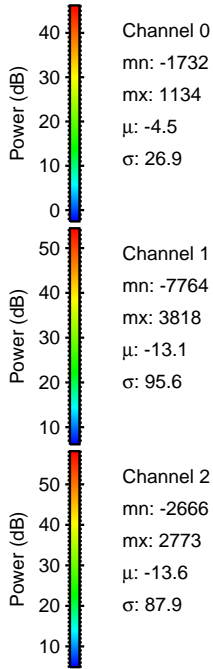
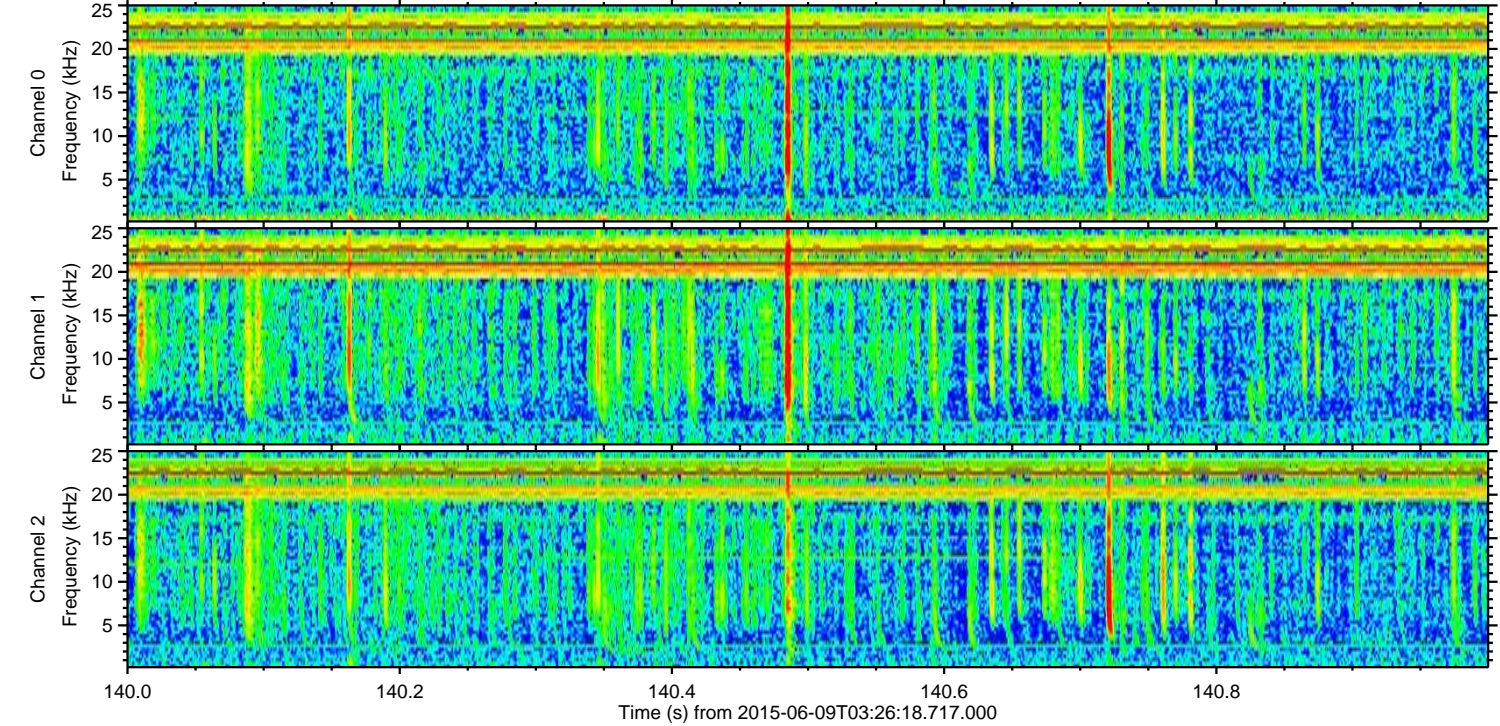
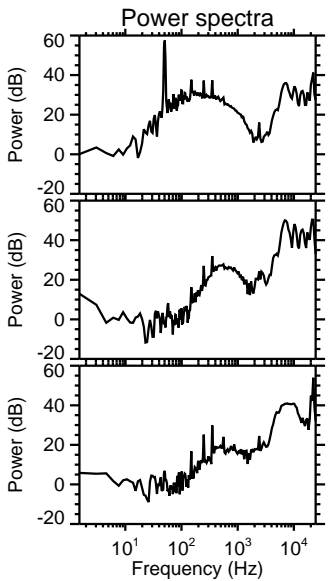
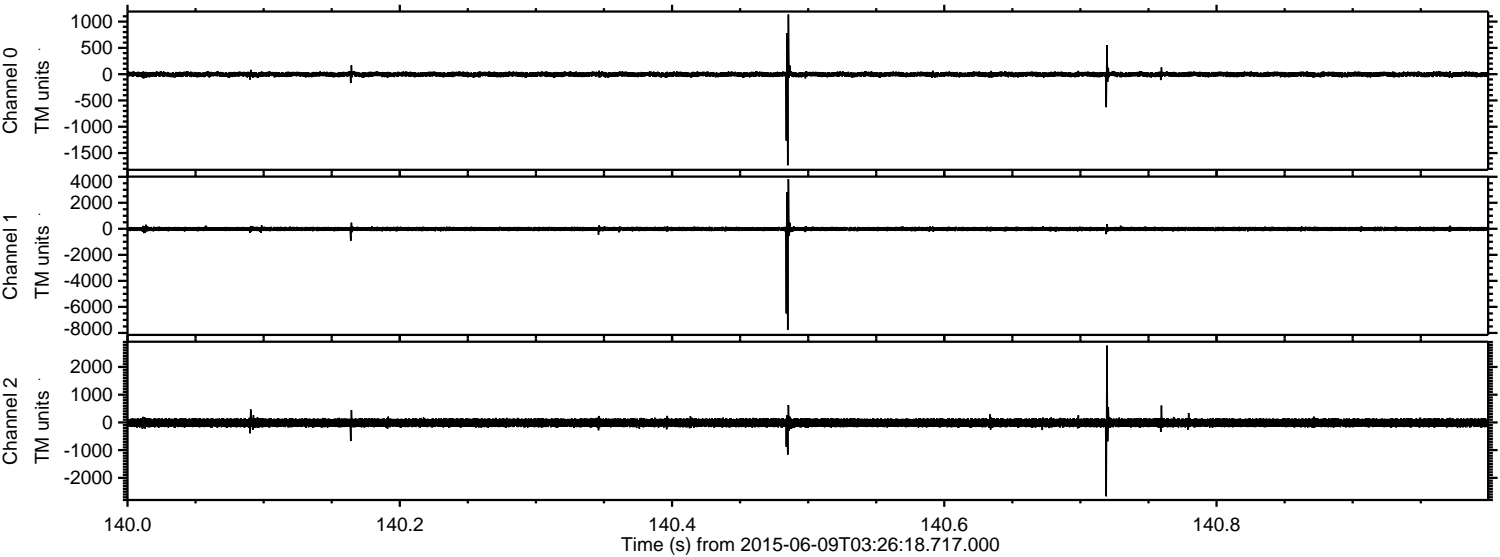
ELMAVAN 3D WAVEFORMS (Measured data sampled at 50 kHz) 51000 packets of 144 samples from 2015-06-09T03:26:18.717.000. Part 119/147

Processed Tue Jun 9 05:32:31 2015 by ELM ver.2012-10-06 from 001__elm20150609_032617__dat00.bin



ELMAVAN 3D WAVEFORMS (Measured data sampled at 50 kHz) 51000 packets of 144 samples from 2015-06-09T03:26:18.717.000. Part 141/147

Processed Tue Jun 9 05:32:32 2015 by ELM ver.2012-10-06 from 001__elm20150609_032617__dat00.bin

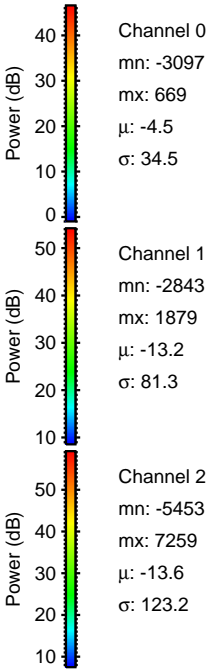
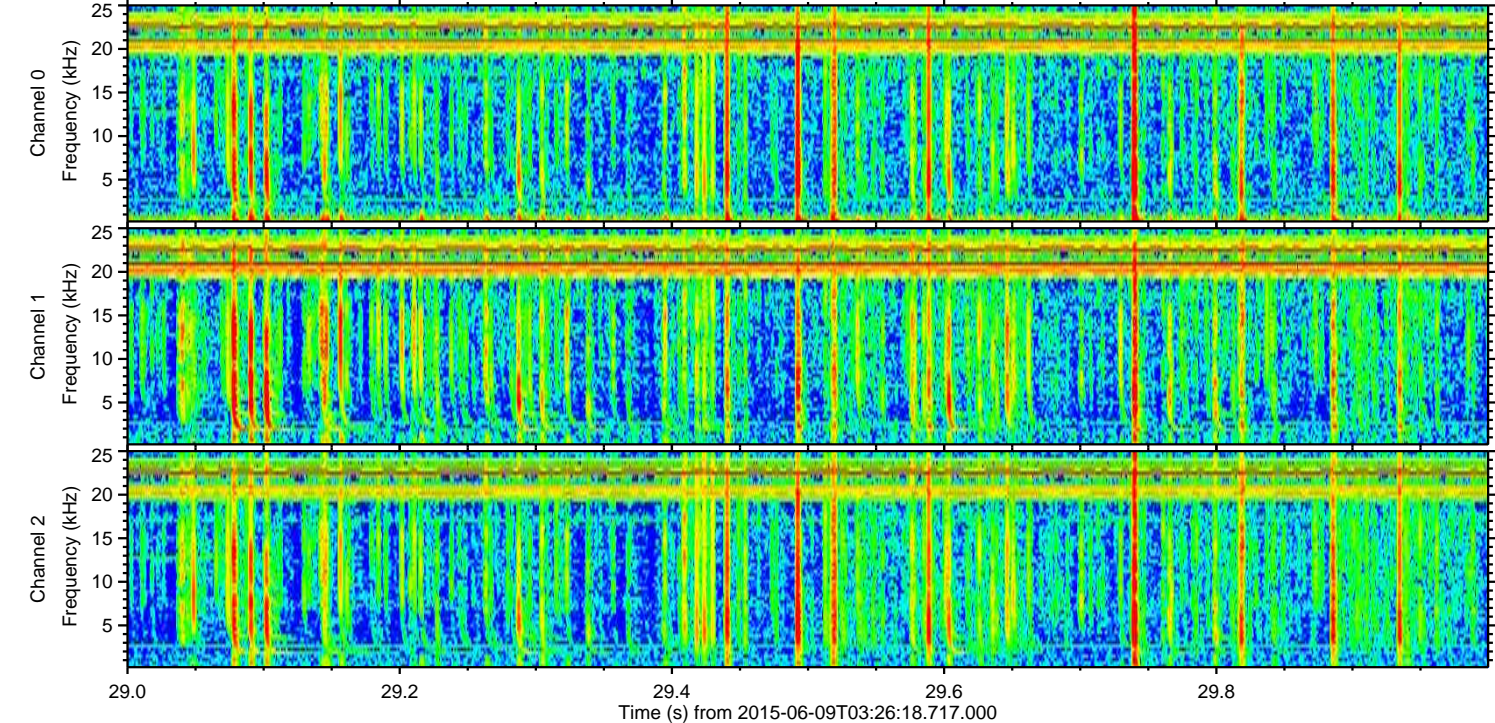
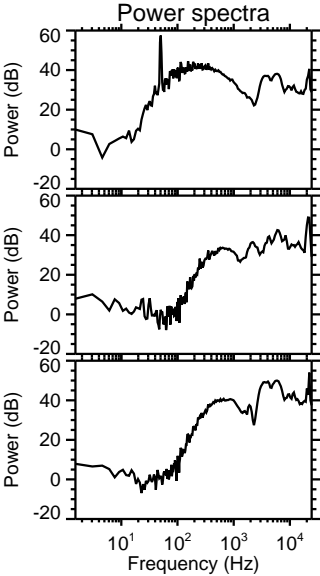
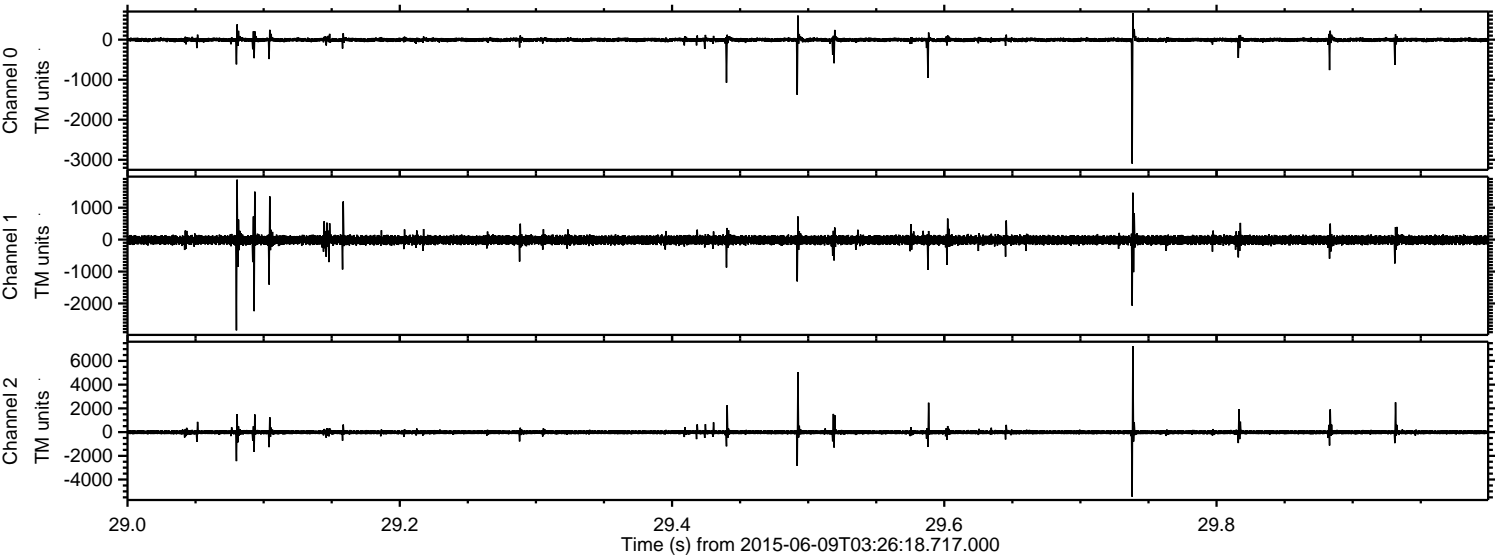


Channel 0
mn: -1732
mx: 1134
 μ : -4.5
 σ : 26.9

Channel 1
mn: -7764
mx: 3818
 μ : -13.1
 σ : 95.6

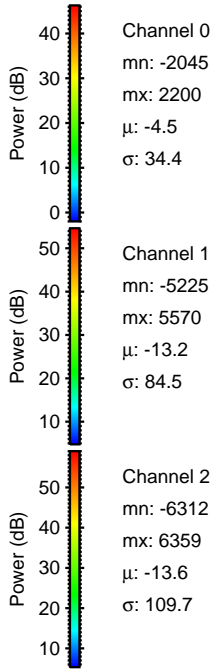
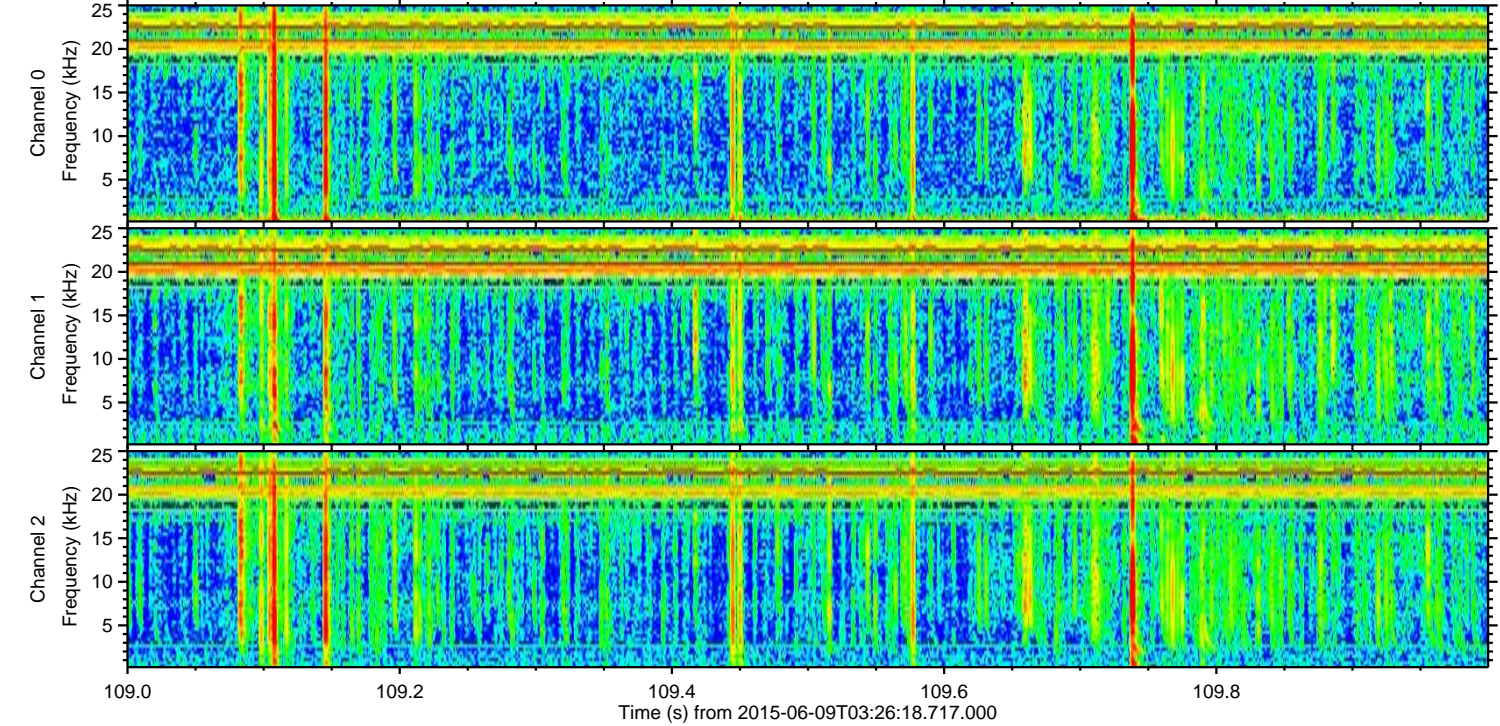
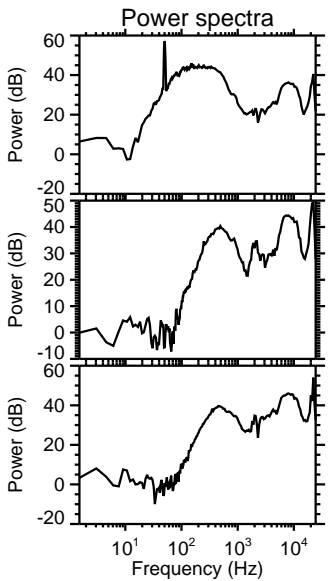
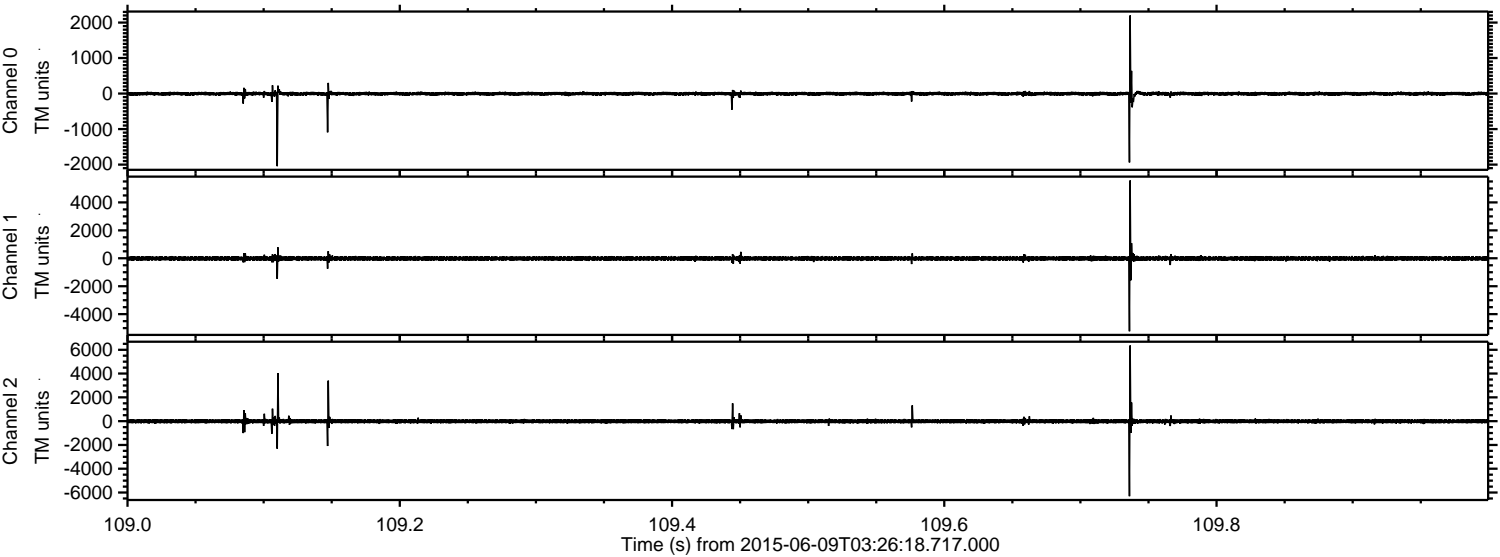
Channel 2
mn: -2666
mx: 2773
 μ : -13.6
 σ : 87.9

Processed Tue Jun 9 05:32:33 2015 by ELM ver.2012-10-06 from 001__elm20150609_032617__dat00.bin

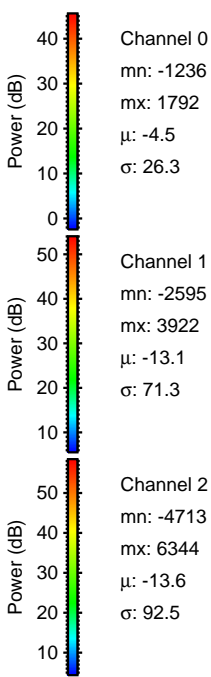
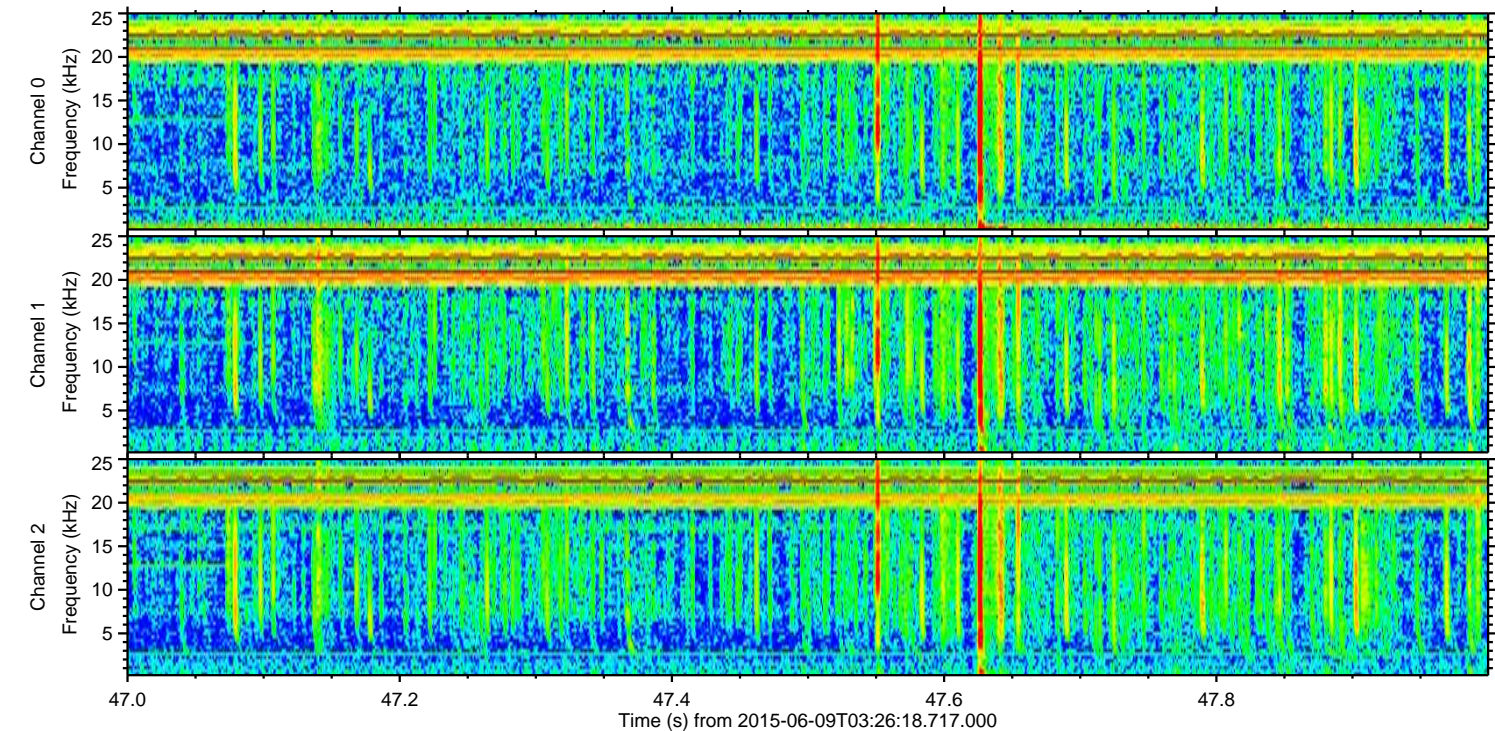
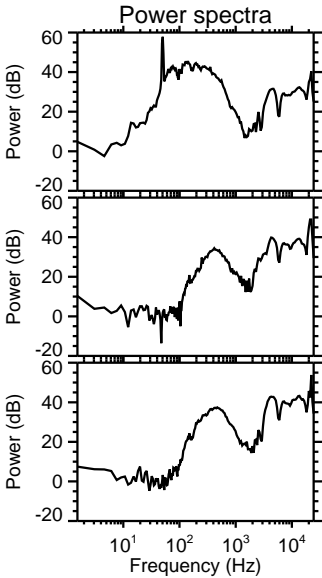
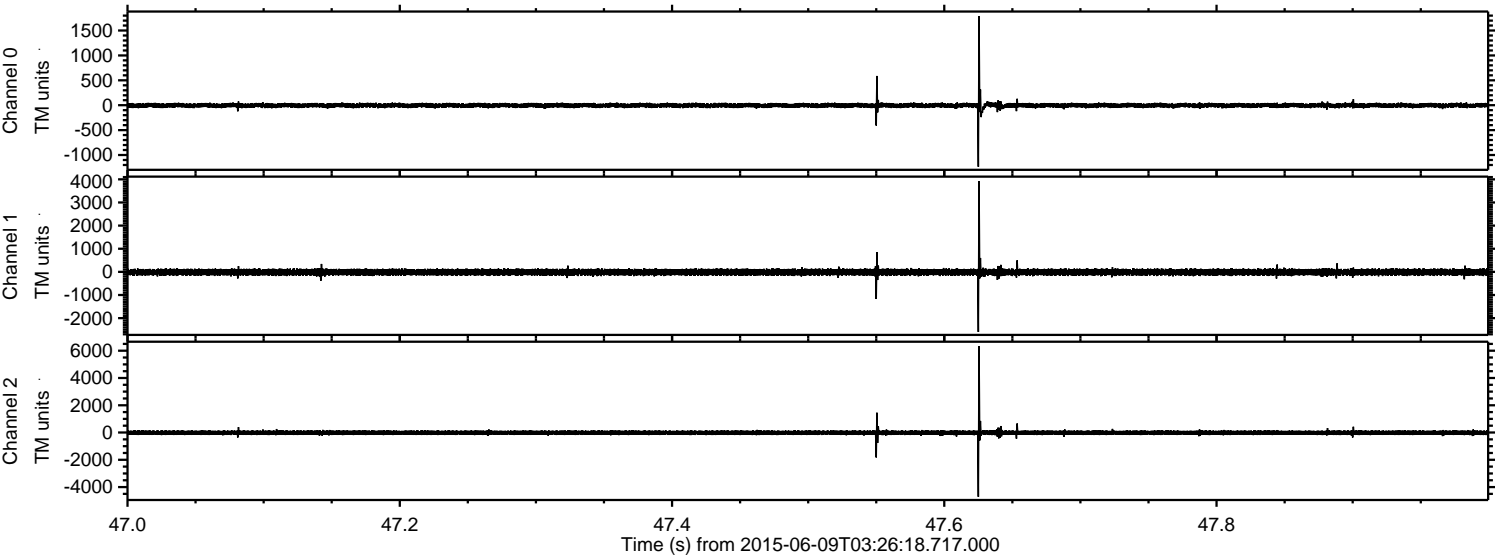


ELMAVAN 3D WAVEFORMS (Measured data sampled at 50 kHz) 51000 packets of 144 samples from 2015-06-09T03:26:18.717.000. Part 110/147

Processed Tue Jun 9 05:32:34 2015 by ELM ver.2012-10-06 from 001__elm20150609_032617__dat00.bin

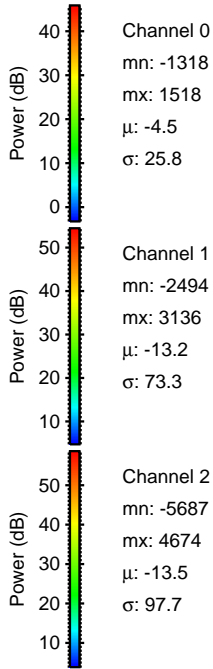
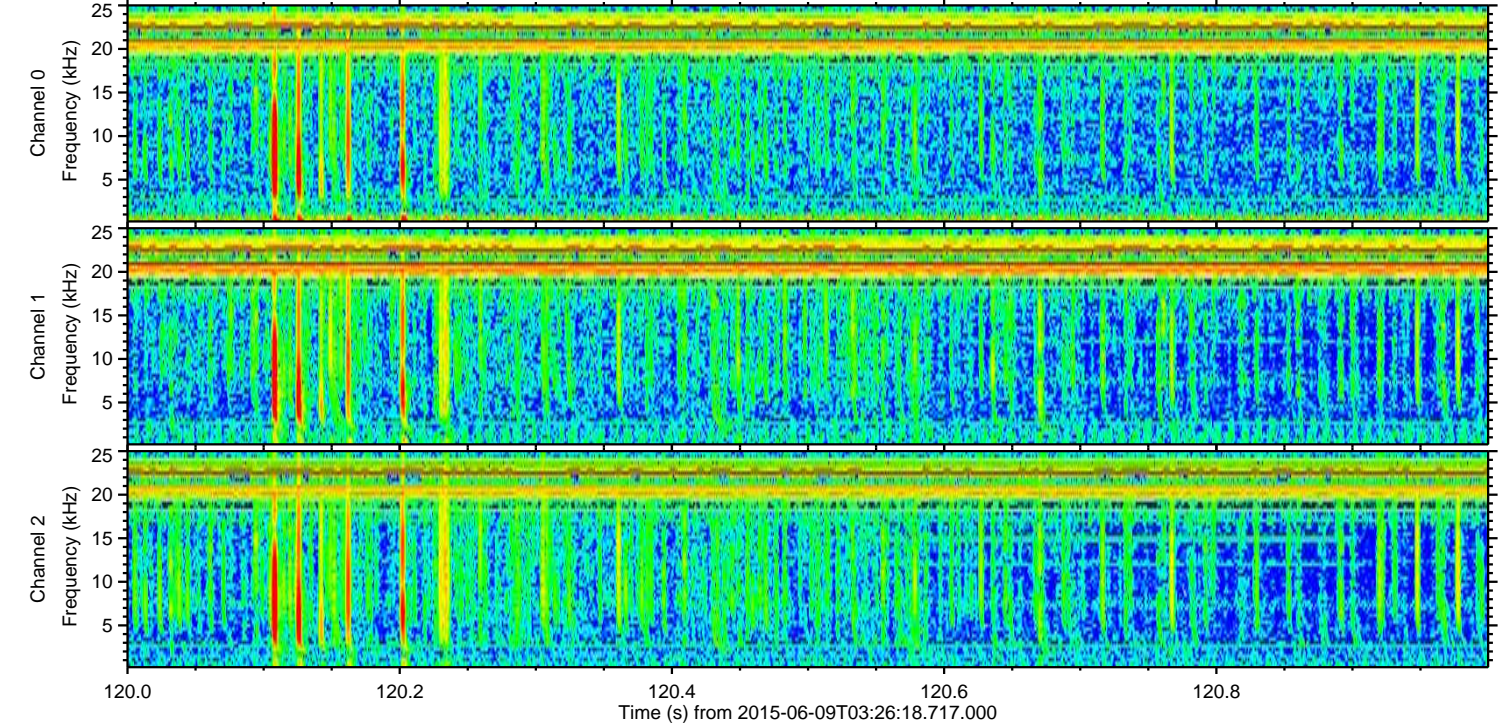
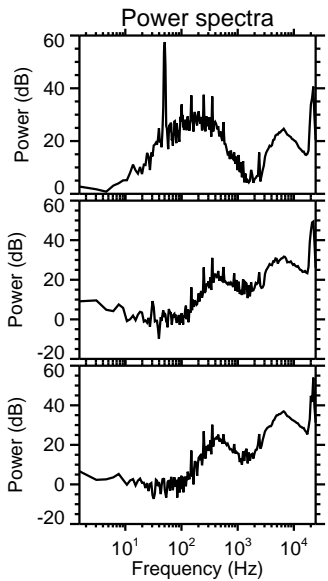
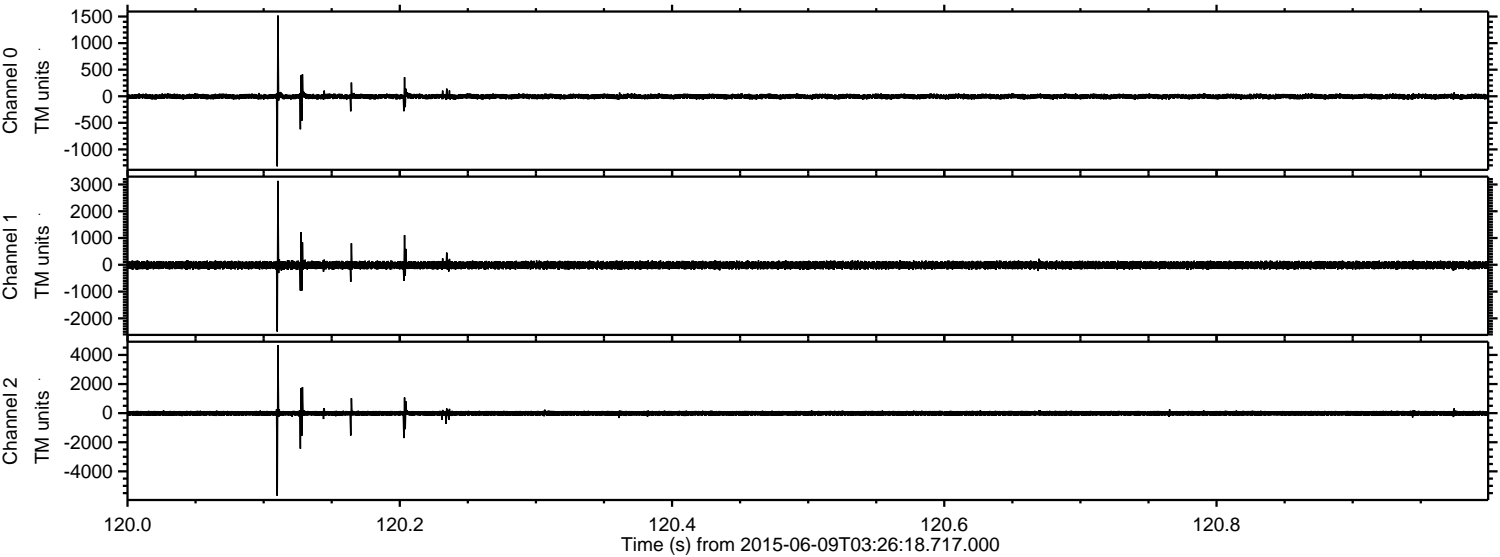


Processed Tue Jun 9 05:32:35 2015 by ELM ver.2012-10-06 from 001__elm20150609_032617__dat00.bin



ELMAVAN 3D WAVEFORMS (Measured data sampled at 50 kHz) 51000 packets of 144 samples from 2015-06-09T03:26:18.717.000. Part 121/147

Processed Tue Jun 9 05:32:36 2015 by ELM ver.2012-10-06 from 001__elm20150609_032617__dat00.bin

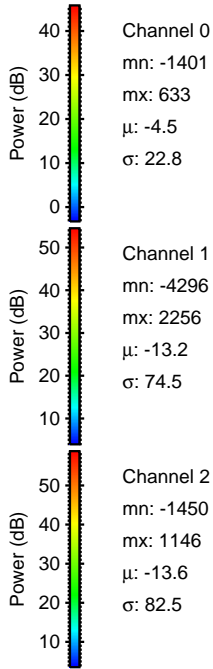
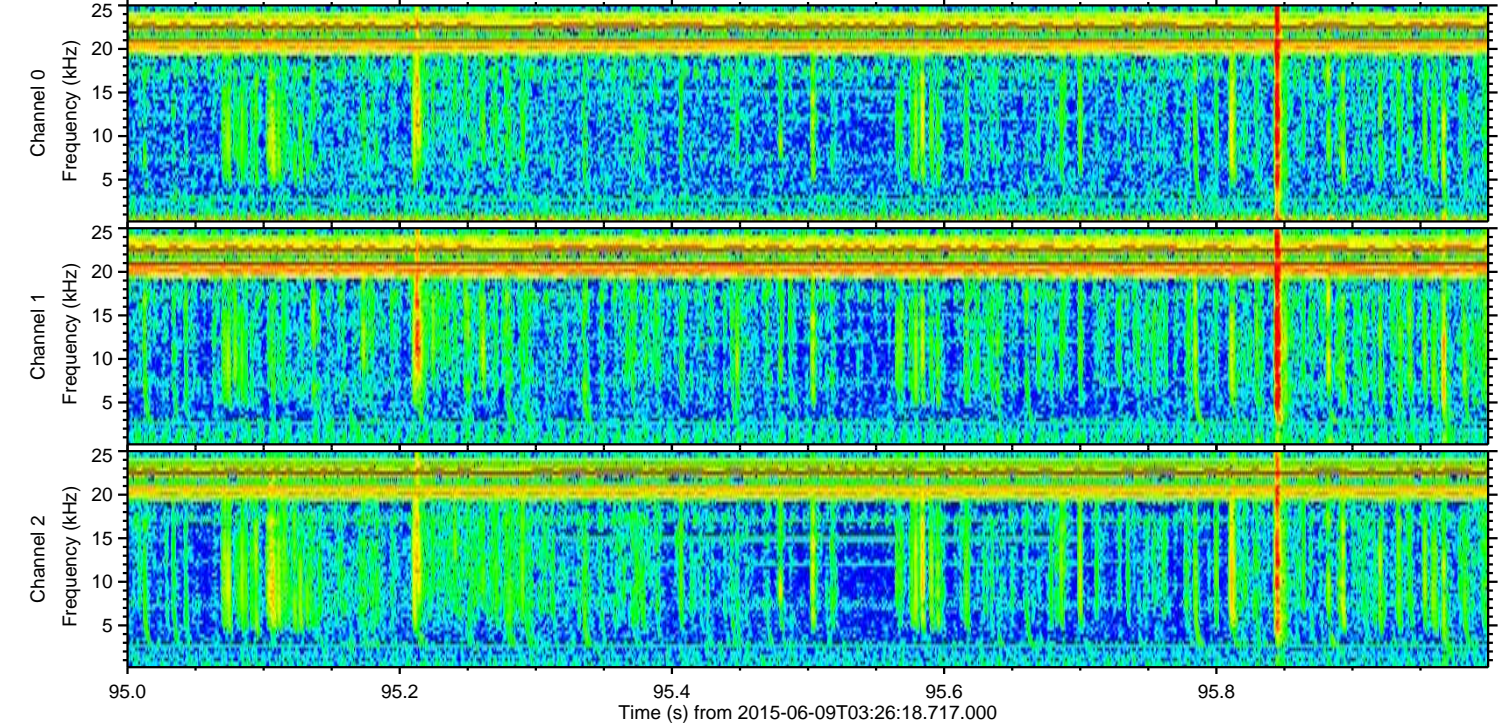
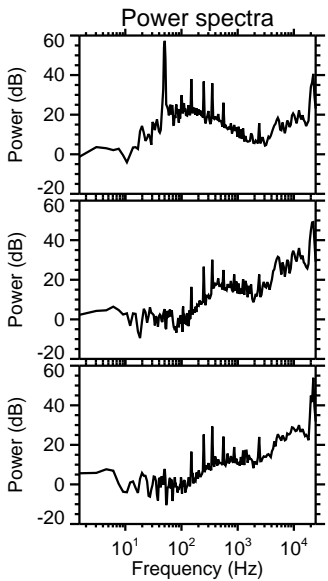
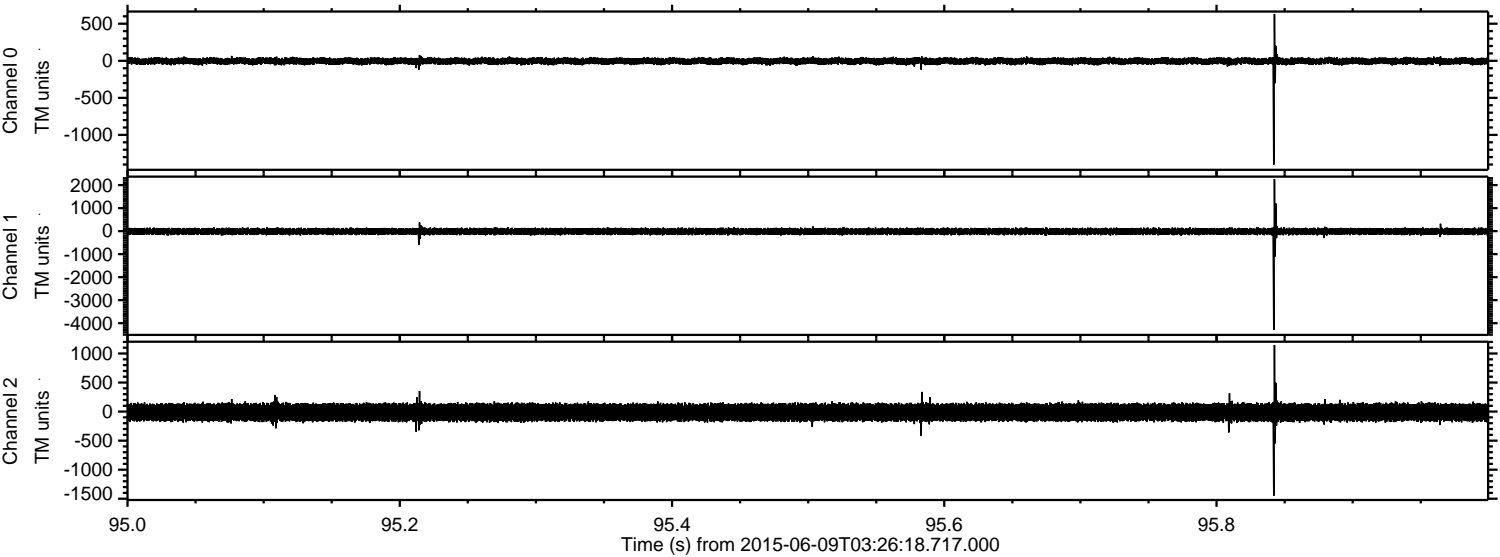


Channel 0
mn: -1318
mx: 1518
 μ : -4.5
 σ : 25.8

Channel 1
mn: -2494
mx: 3136
 μ : -13.2
 σ : 73.3

Channel 2
mn: -5687
mx: 4674
 μ : -13.5
 σ : 97.7

Processed Tue Jun 9 05:32:37 2015 by ELM ver.2012-10-06 from 001__elm20150609_032617__dat00.bin

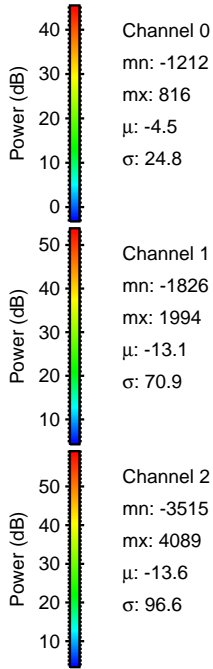
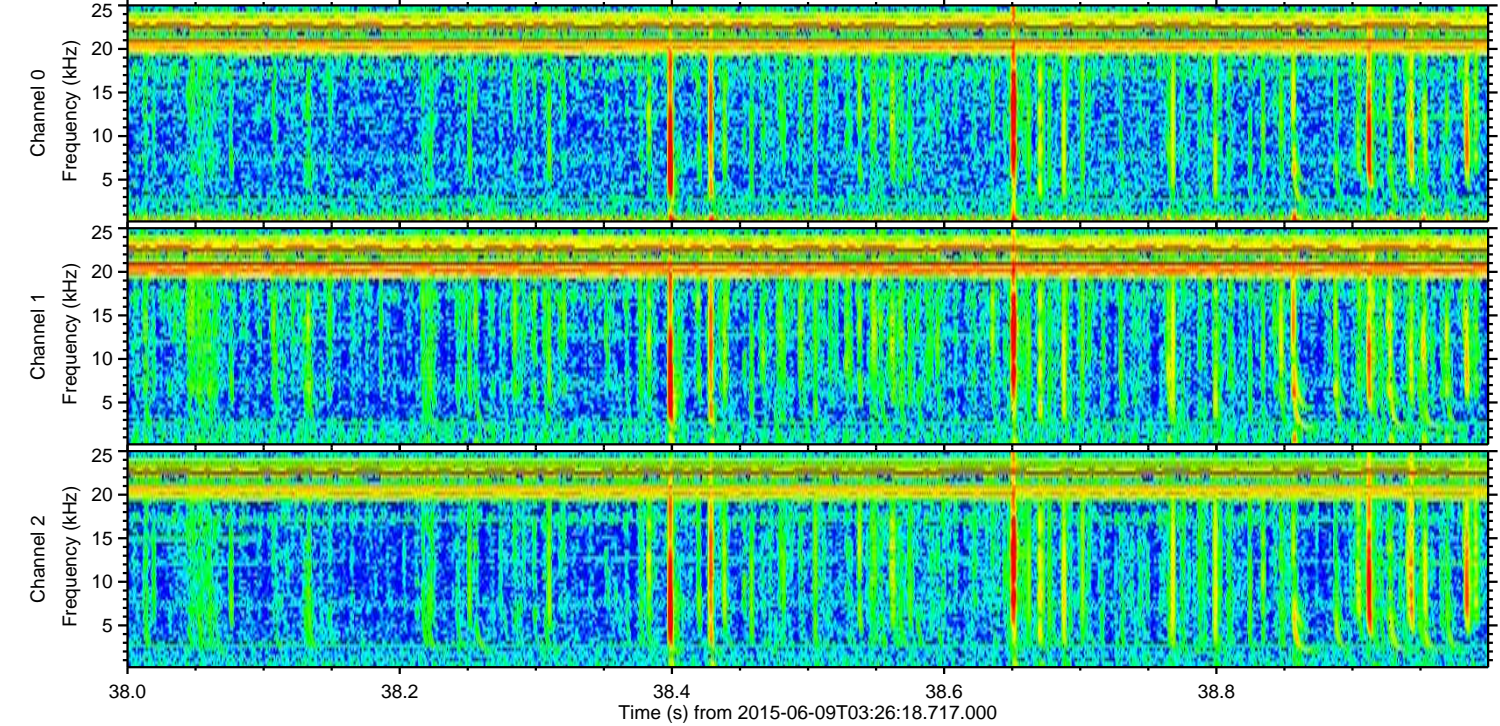
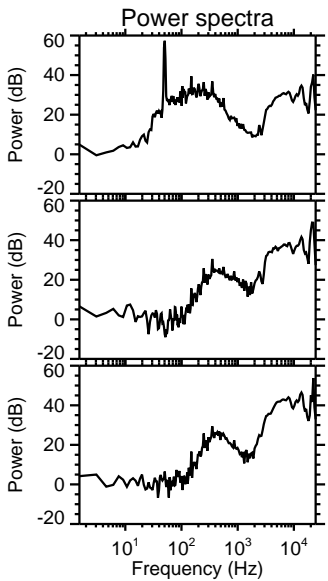
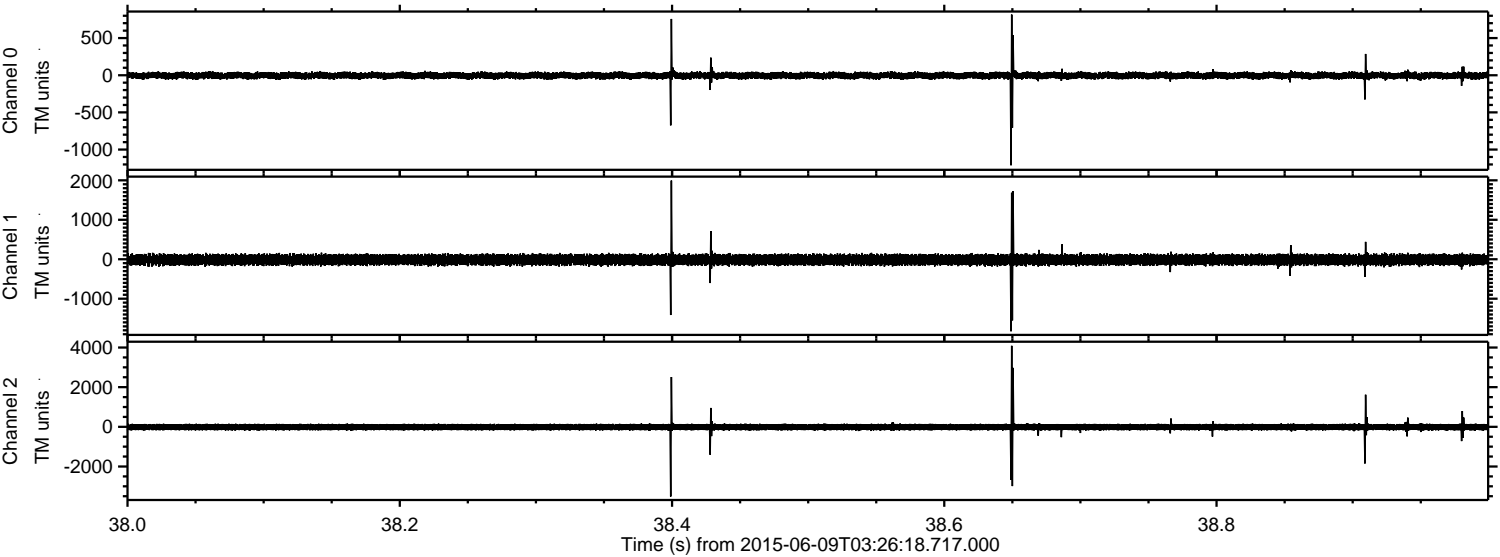


Channel 0
mn: -1401
mx: 633
 μ : -4.5
 σ : 22.8

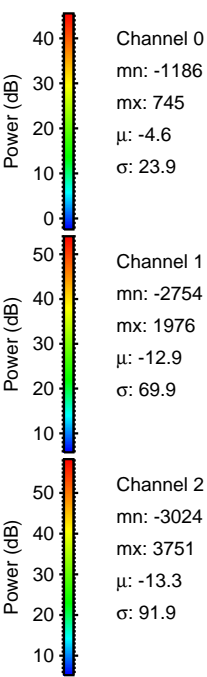
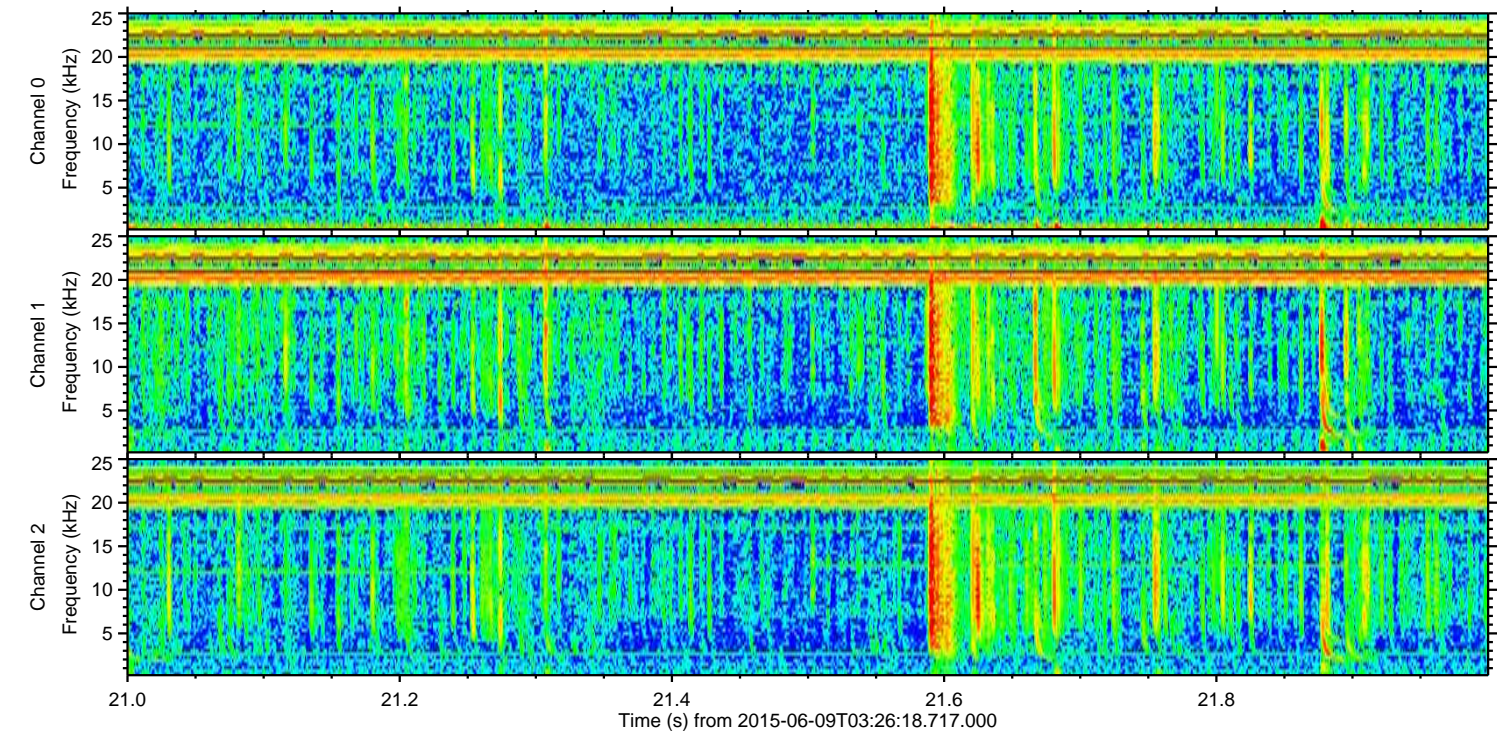
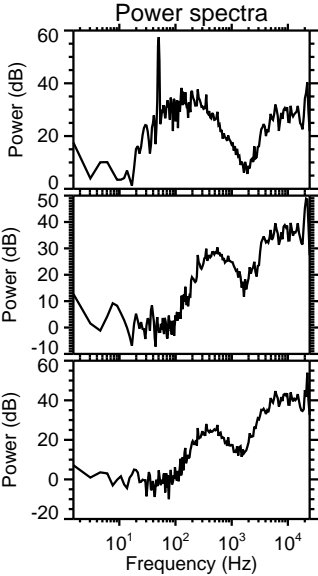
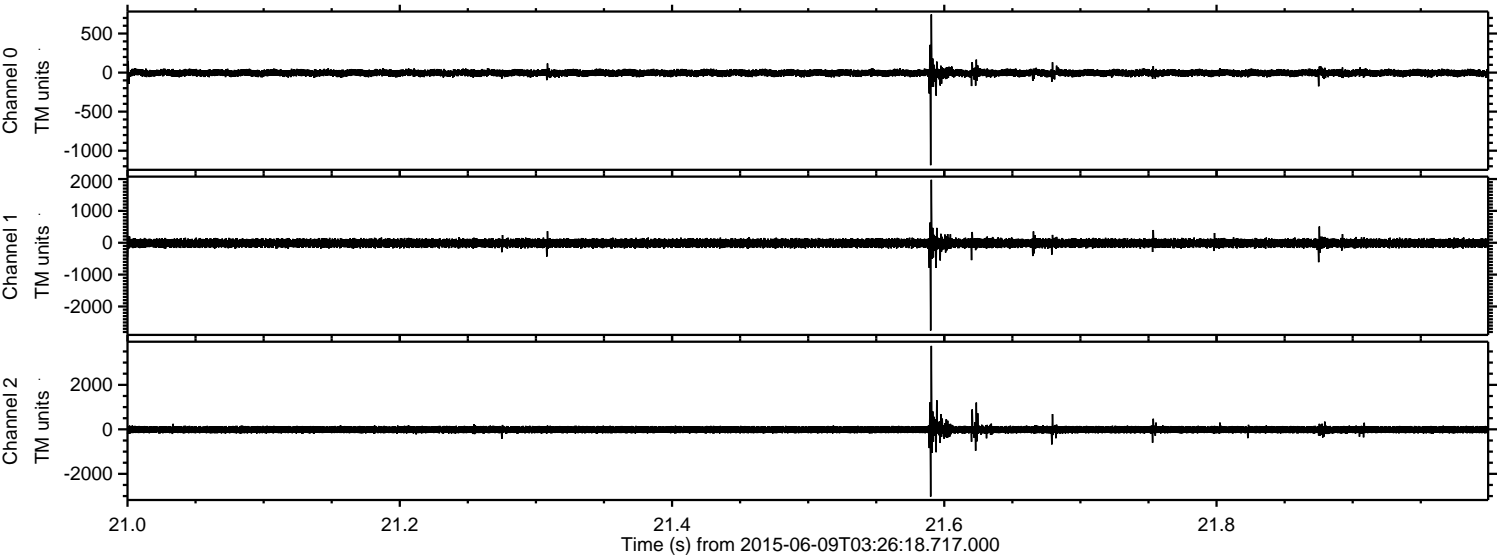
Channel 1
mn: -4296
mx: 2256
 μ : -13.2
 σ : 74.5

Channel 2
mn: -1450
mx: 1146
 μ : -13.6
 σ : 82.5

Processed Tue Jun 9 05:32:38 2015 by ELM ver.2012-10-06 from 001__elm20150609_032617__dat00.bin



Processed Tue Jun 9 05:32:39 2015 by ELM ver.2012-10-06 from 001__elm20150609_032617__dat00.bin

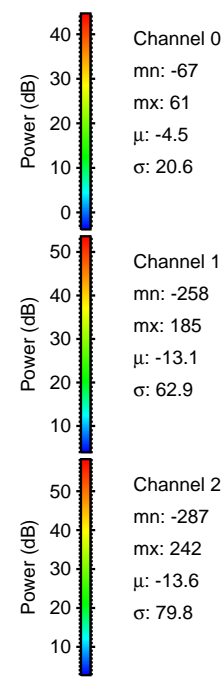
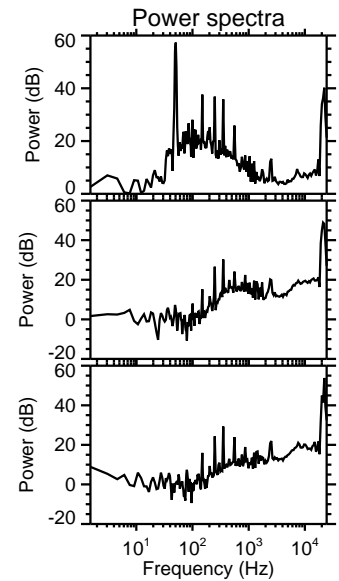
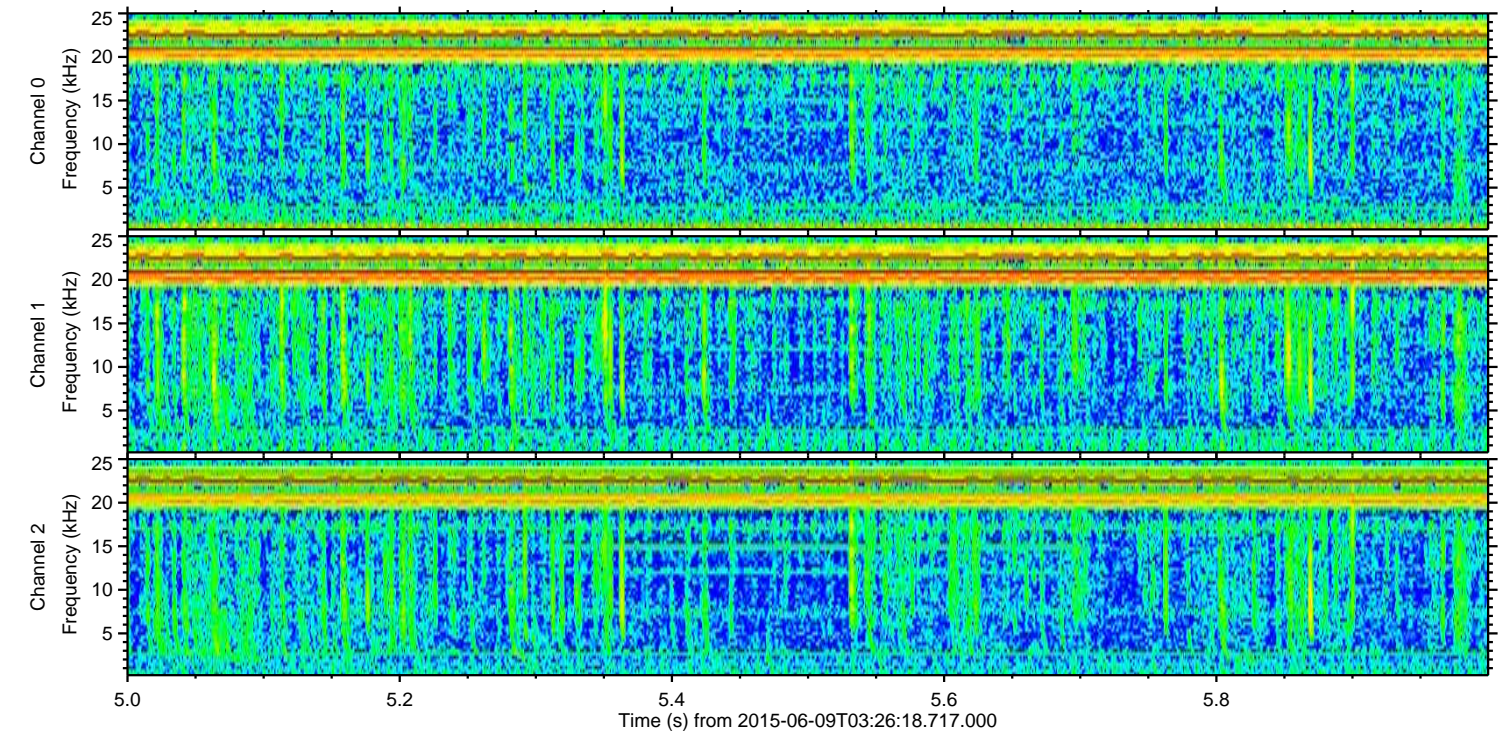
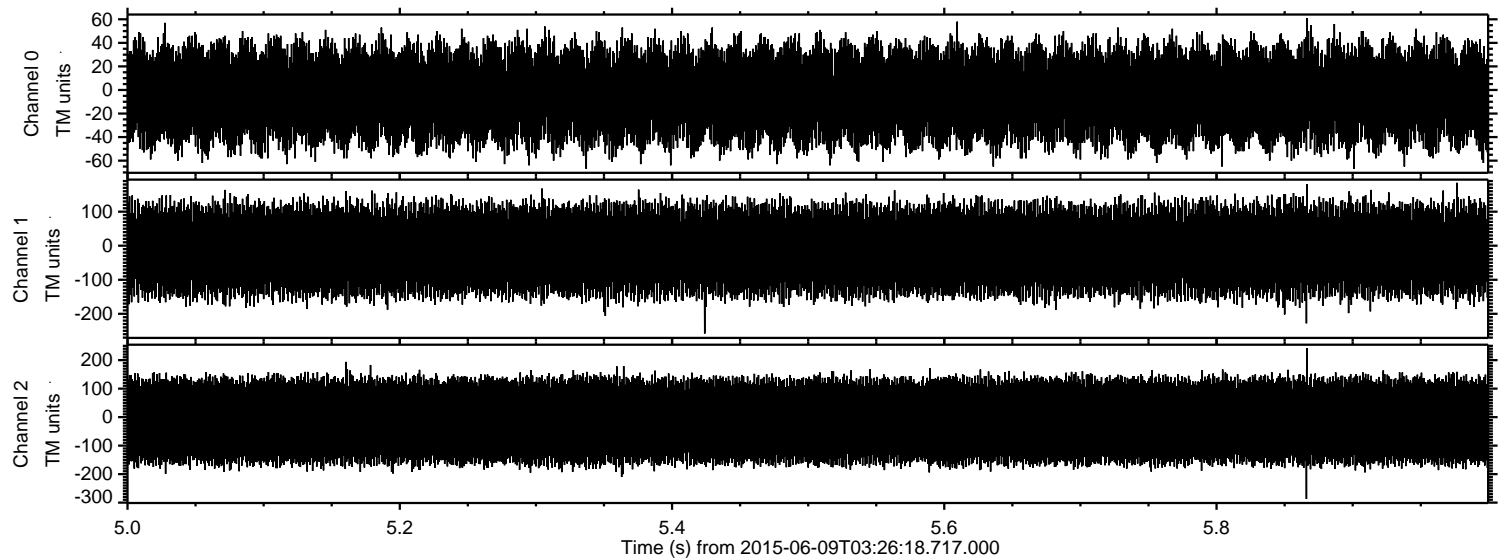


Channel 0
mn: -1186
mx: 745
 μ : -4.6
 σ : 23.9

Channel 1
mn: -2754
mx: 1976
 μ : -12.9
 σ : 69.9

Channel 2
mn: -3024
mx: 3751
 μ : -13.3
 σ : 91.9

Processed Tue Jun 9 05:32:40 2015 by ELM ver.2012-10-06 from 001__elm20150609_032617__dat00.bin



Channel 0
mn: -67
mx: 61
 μ : -4.5
 σ : 20.6

Channel 1
mn: -258
mx: 185
 μ : -13.1
 σ : 62.9

Channel 2
mn: -287
mx: 242
 μ : -13.6
 σ : 79.8