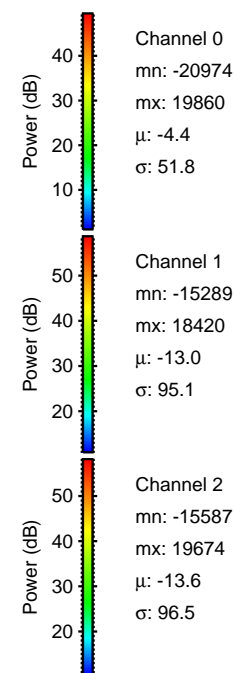
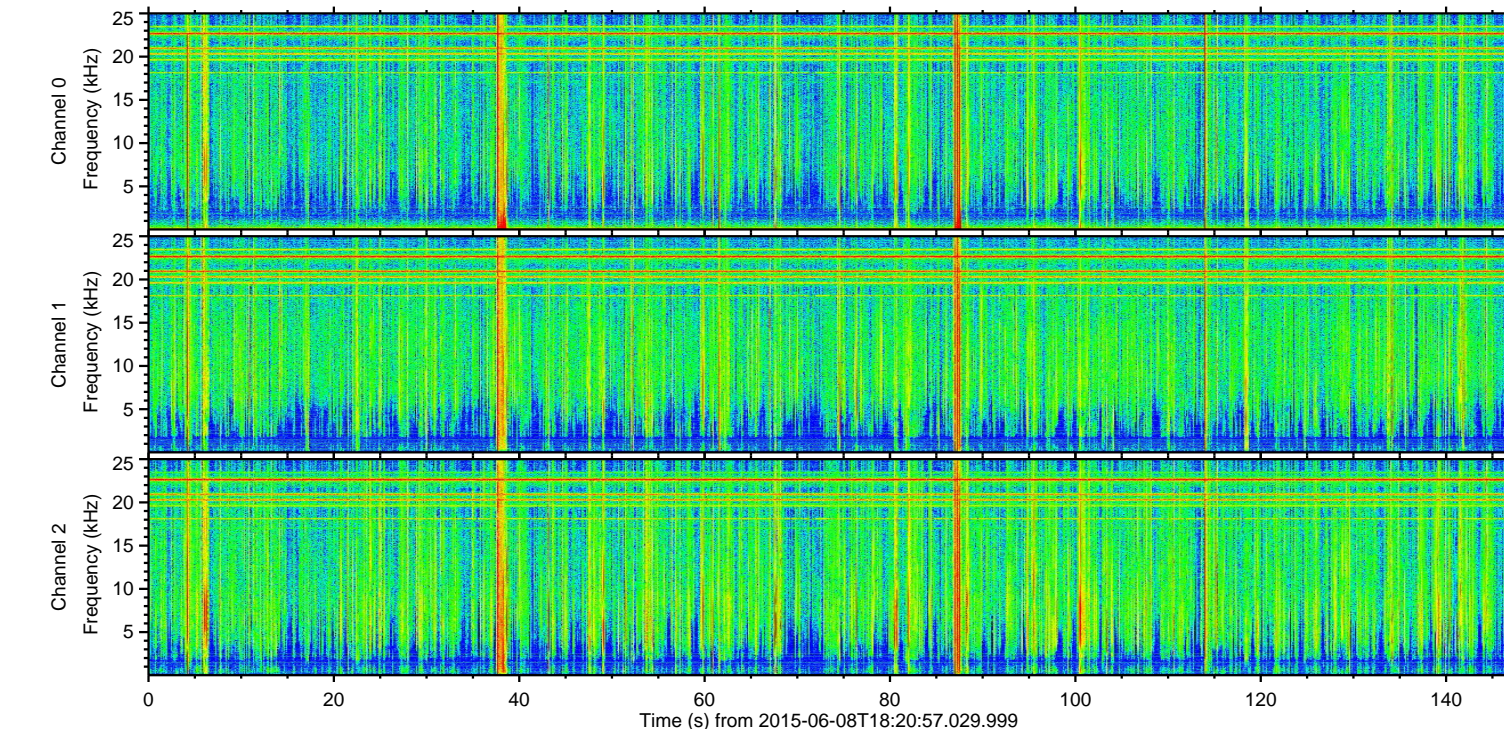
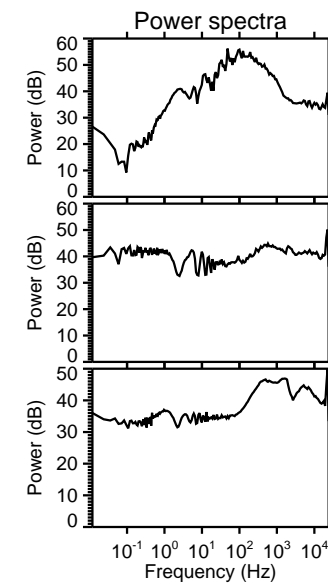
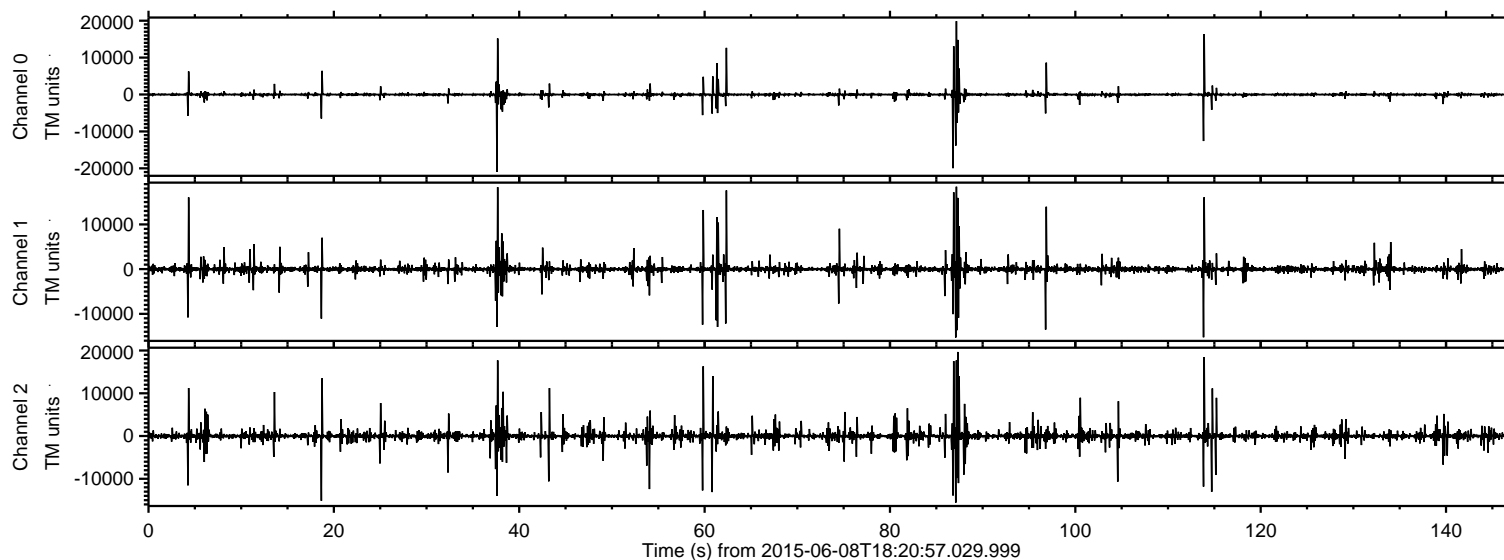


ELMAVAN 3D WAVEFORMS (Measured data sampled at 50 kHz) 51000 packets of 144 samples from 2015-06-08T18:20:57.029.999.

Processed Mon Jun 8 20:27:35 2015 by ELM ver.2012-10-06 from 001__elm20150608_182056__dat00.bin

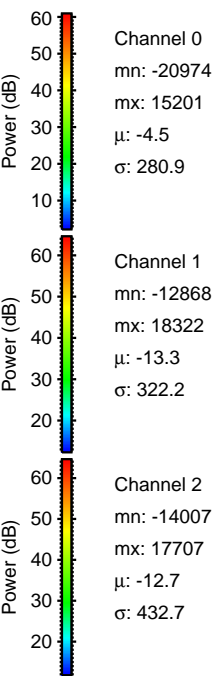
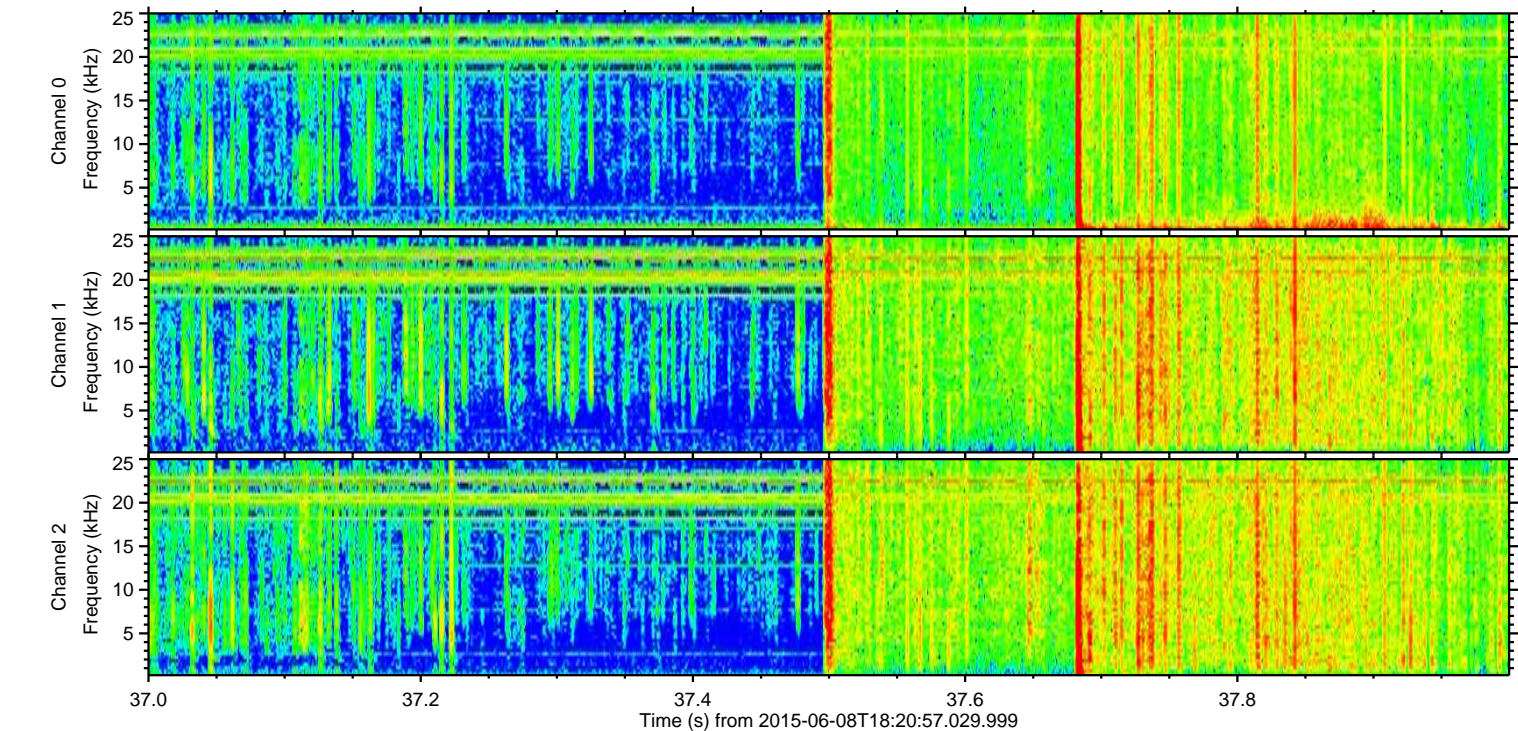
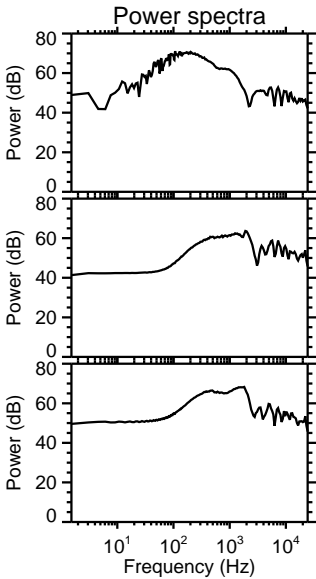
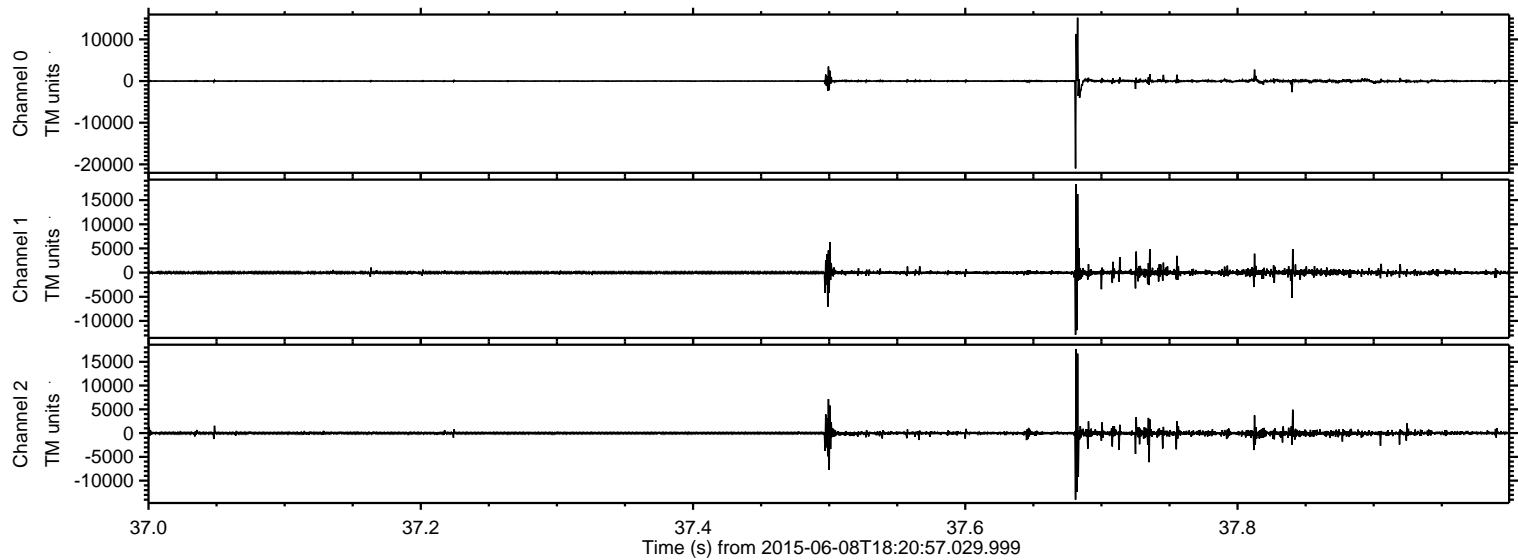


Channel 0
mn: -20974
mx: 19860
 μ : -4.4
 σ : 51.8

Channel 1
mn: -15289
mx: 18420
 μ : -13.0
 σ : 95.1

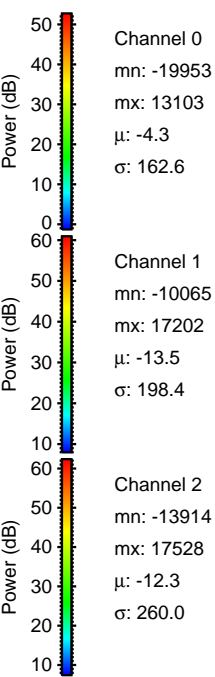
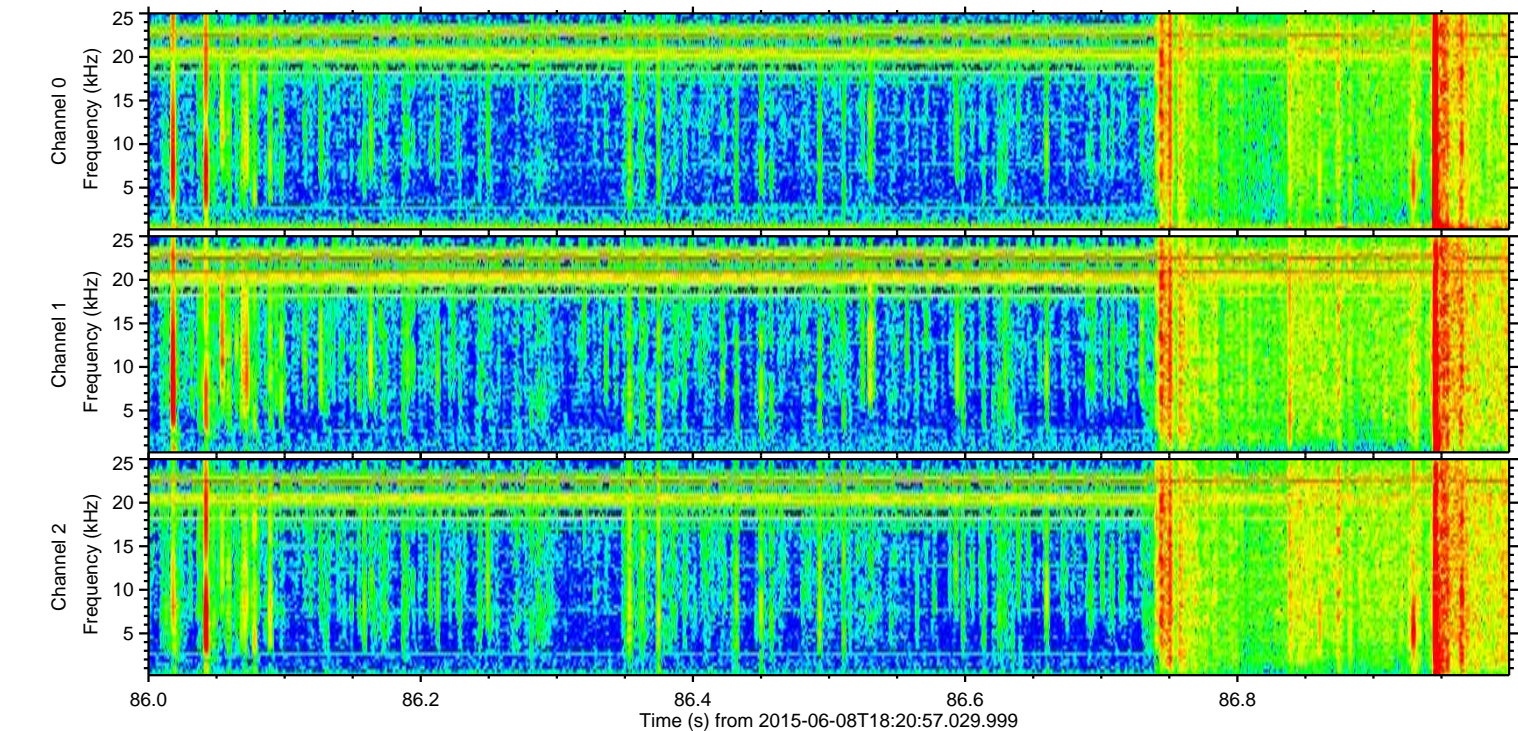
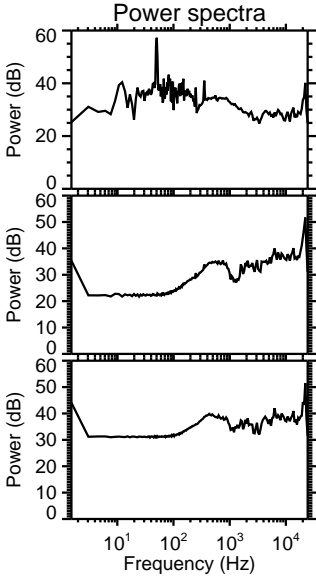
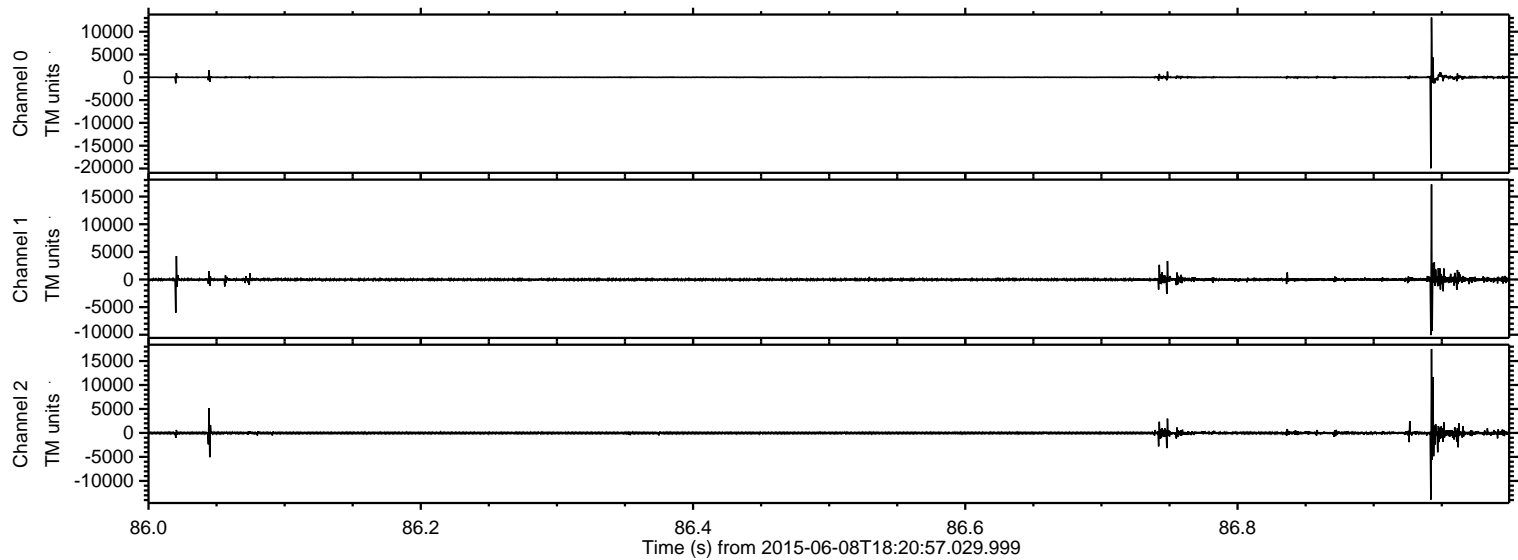
Channel 2
mn: -15587
mx: 19674
 μ : -13.6
 σ : 96.5

Processed Mon Jun 8 20:27:47 2015 by ELM ver.2012-10-06 from 001__elm20150608_182056__dat00.bin

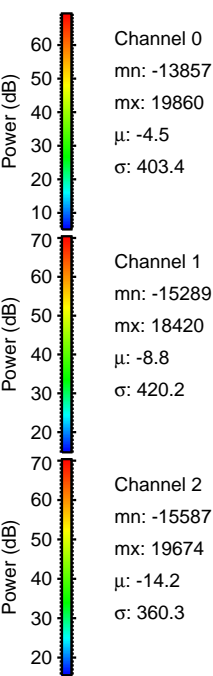
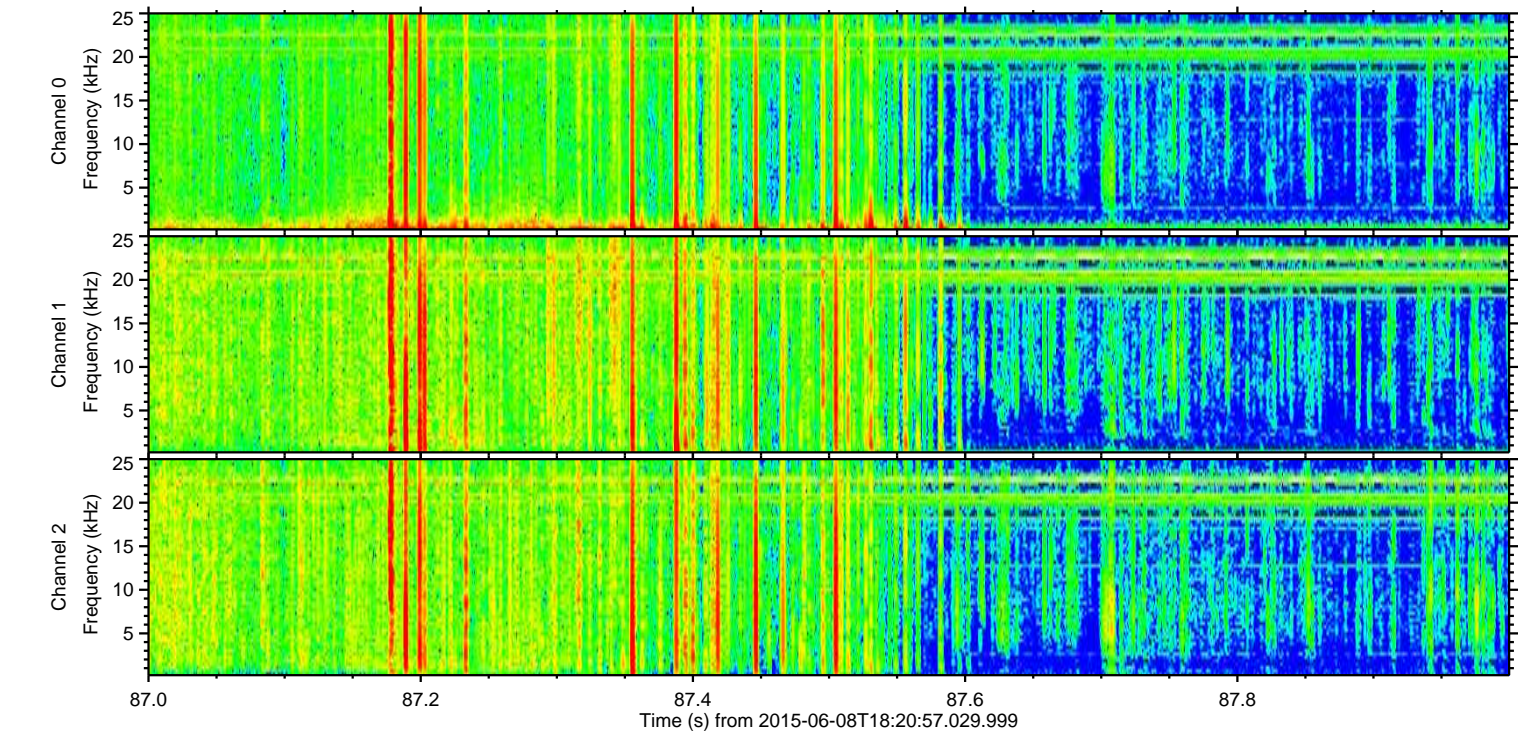
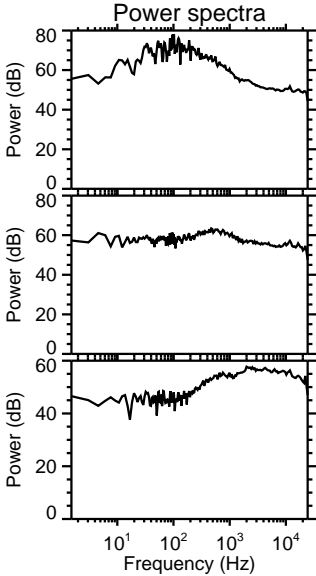
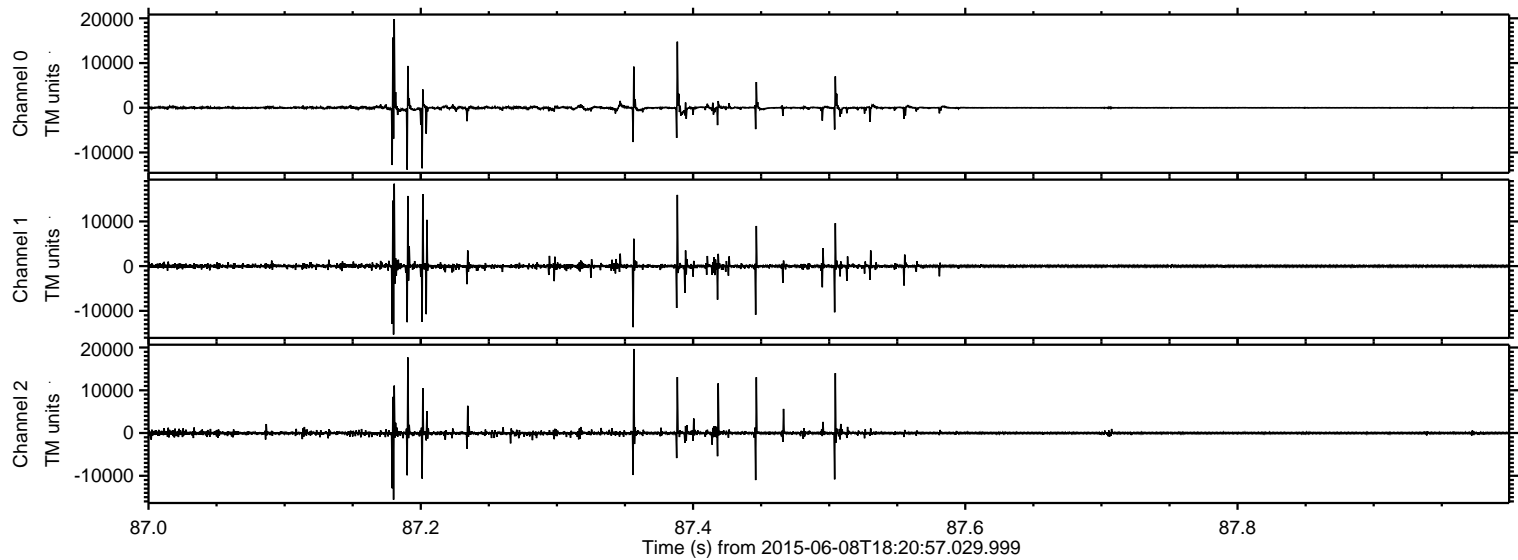


ELMAVAN 3D WAVEFORMS (Measured data sampled at 50 kHz) 51000 packets of 144 samples from 2015-06-08T18:20:57.029.999. Part 87/147

Processed Mon Jun 8 20:27:47 2015 by ELM ver.2012-10-06 from 001__elm20150608_182056__dat00.bin

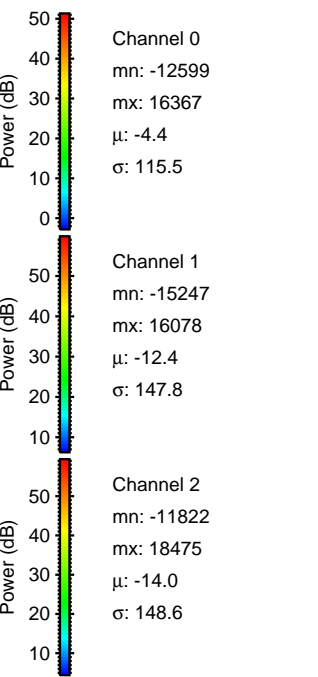
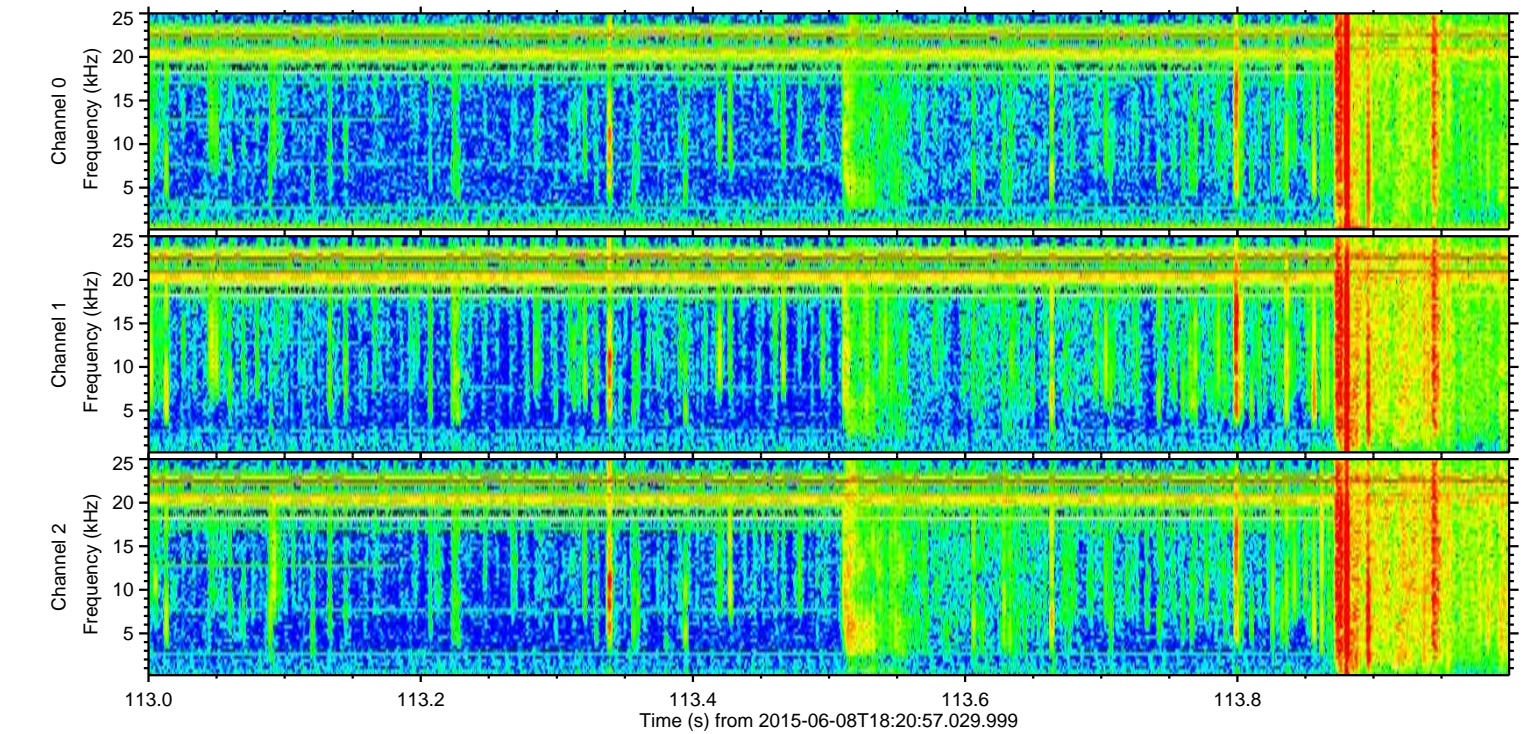
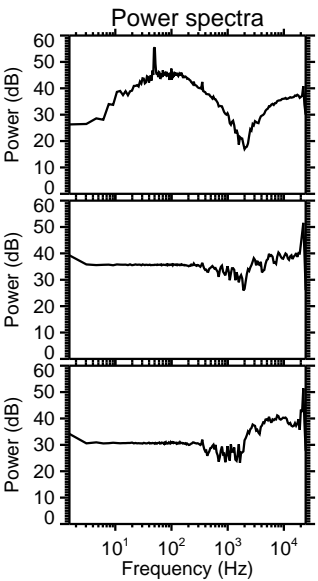
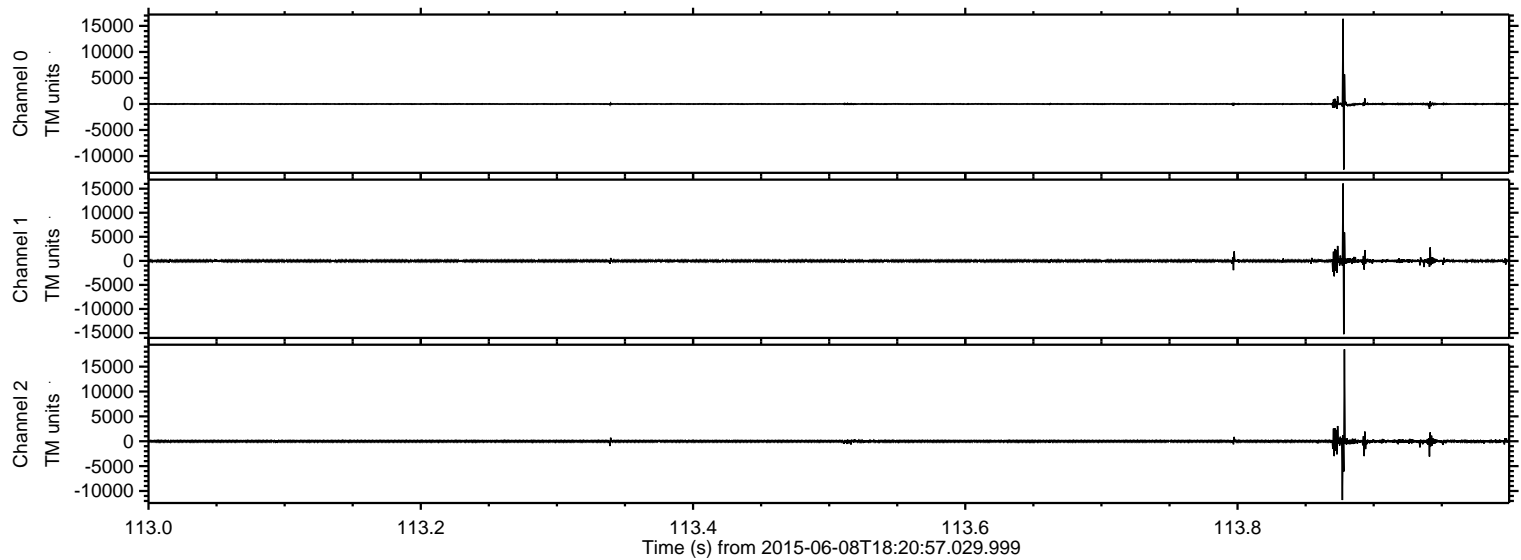


Processed Mon Jun 8 20:27:48 2015 by ELM ver.2012-10-06 from 001__elm20150608_182056__dat00.bin



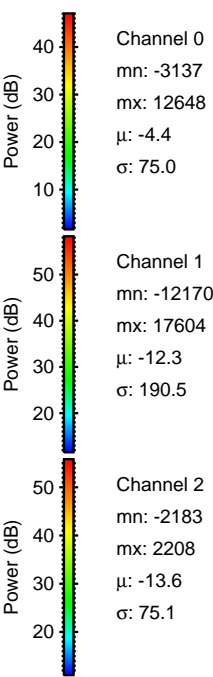
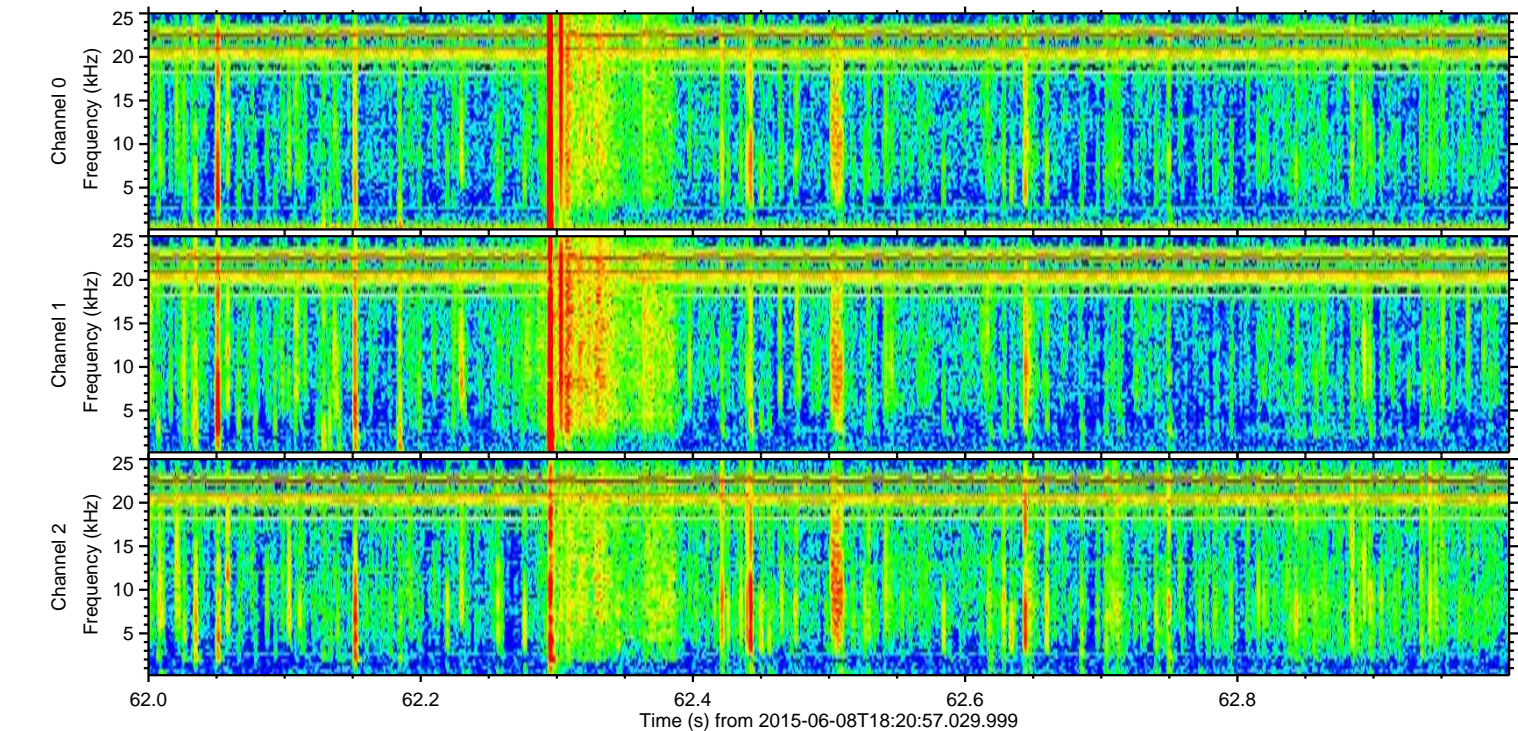
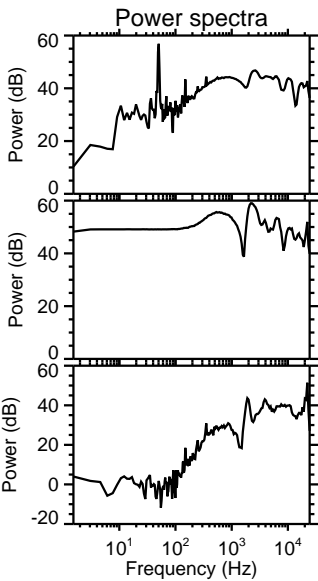
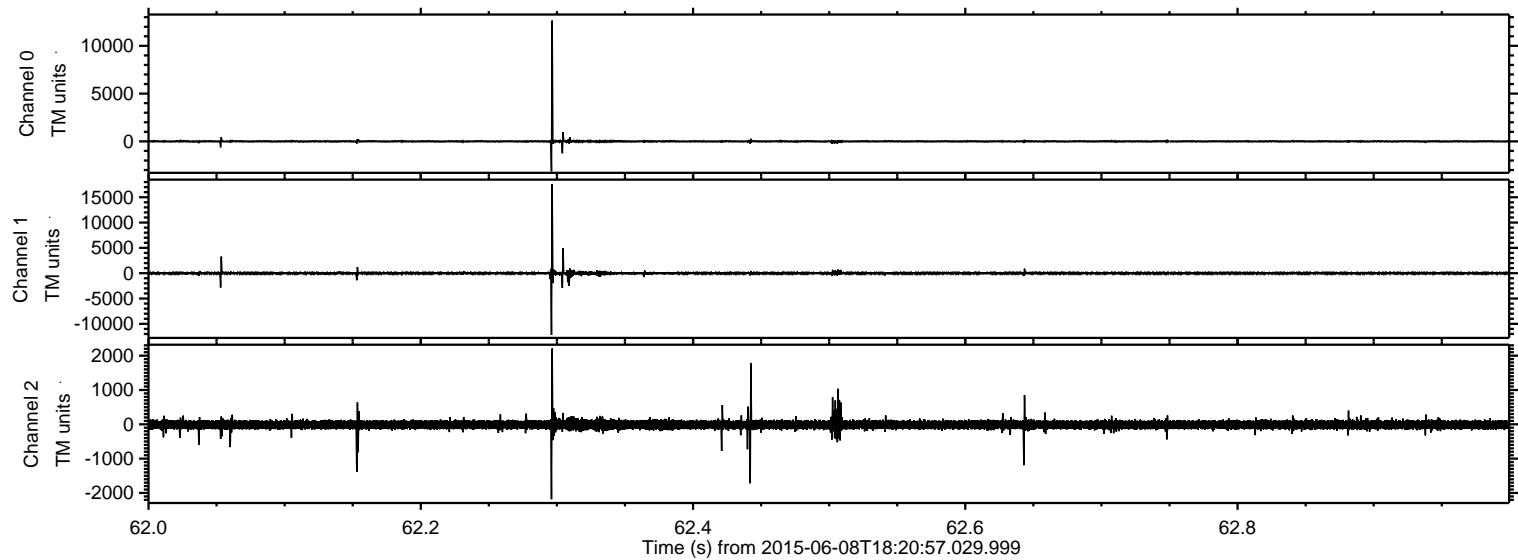
ELMAVAN 3D WAVEFORMS (Measured data sampled at 50 kHz) 51000 packets of 144 samples from 2015-06-08T18:20:57.029.999. Part 114/147

Processed Mon Jun 8 20:27:49 2015 by ELM ver.2012-10-06 from 001__elm20150608_182056__dat00.bin

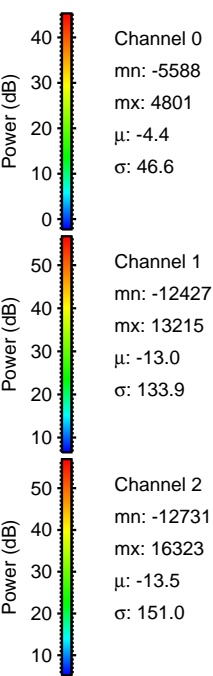
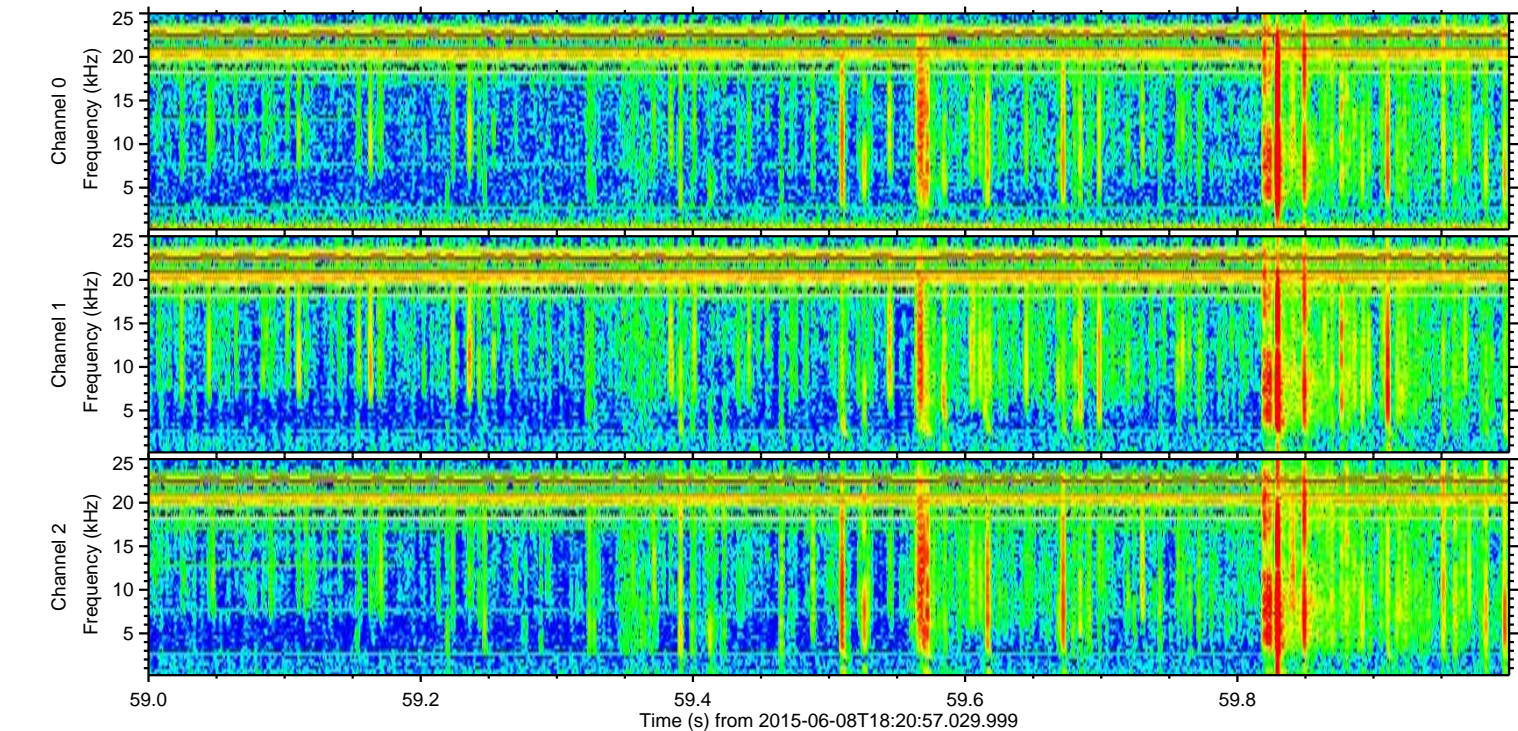
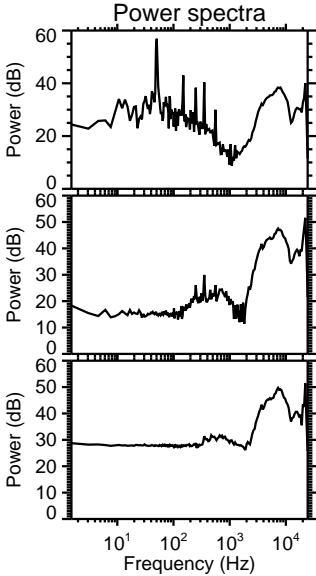
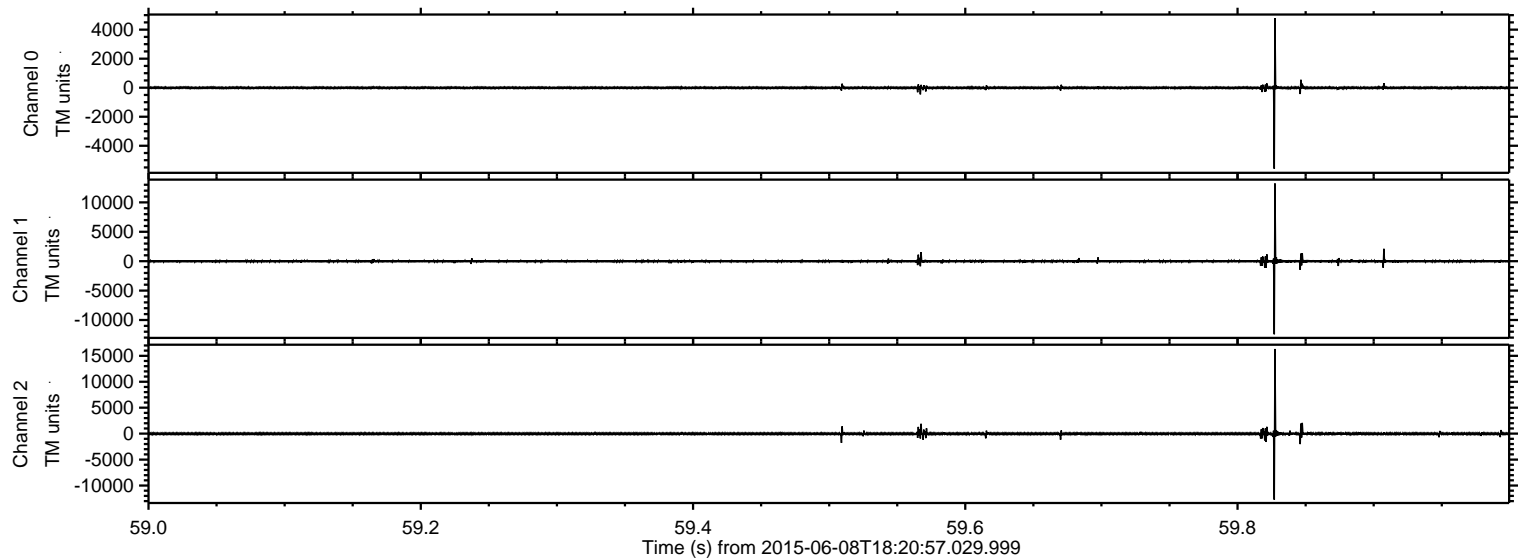


ELMAVAN 3D WAVEFORMS (Measured data sampled at 50 kHz) 51000 packets of 144 samples from 2015-06-08T18:20:57.029.999. Part 63/147

Processed Mon Jun 8 20:27:50 2015 by ELM ver.2012-10-06 from 001__elm20150608_182056__dat00.bin

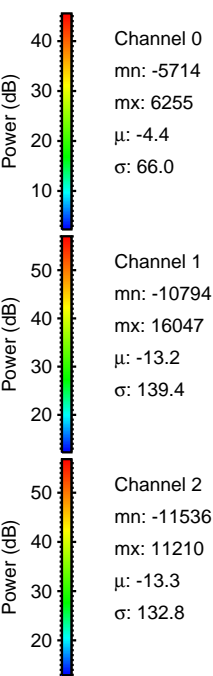
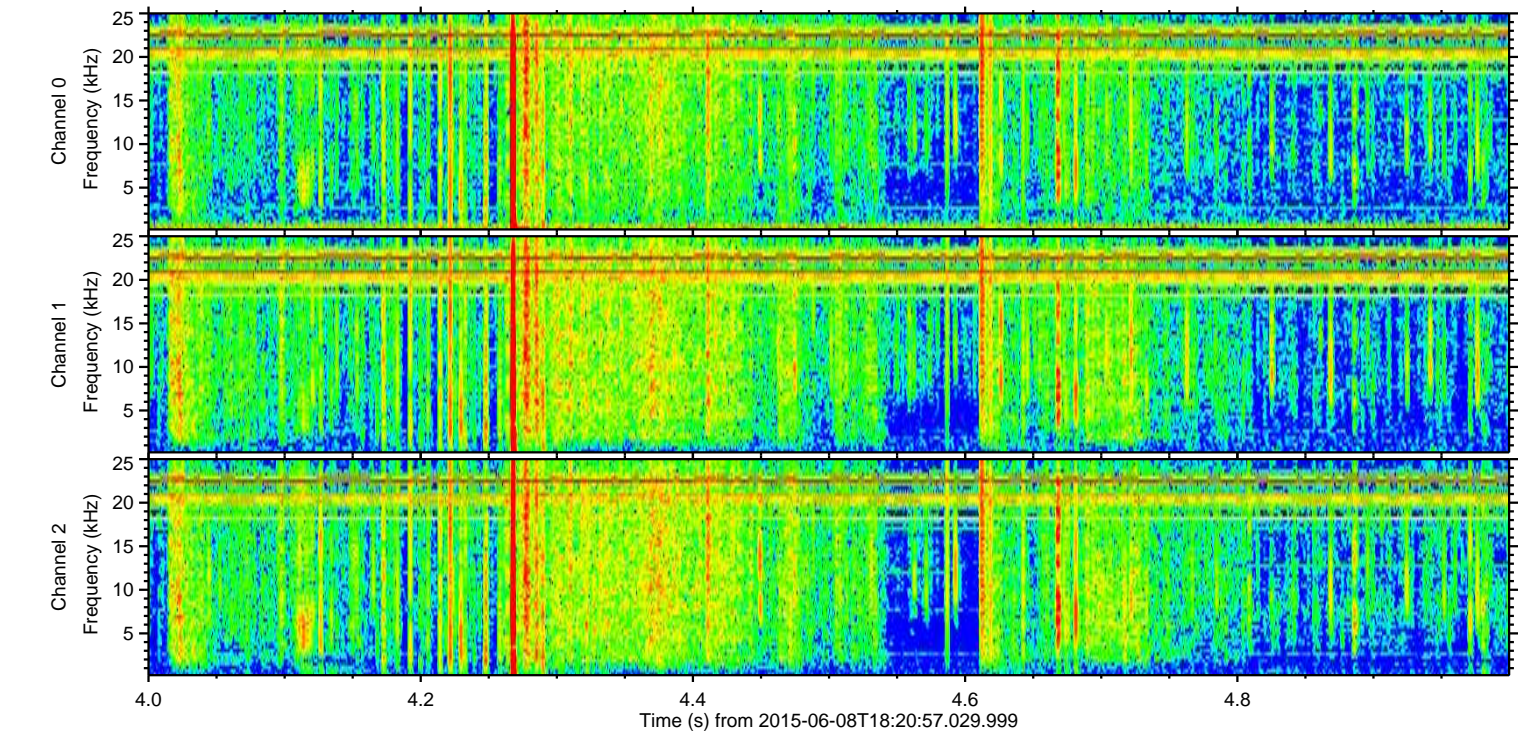
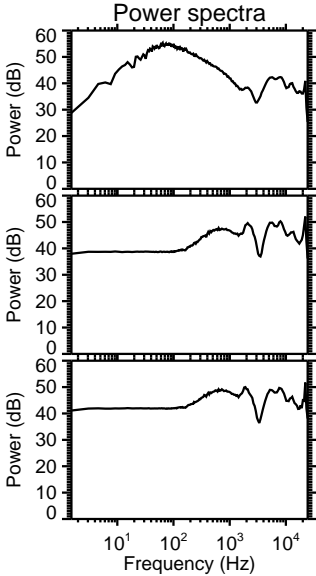
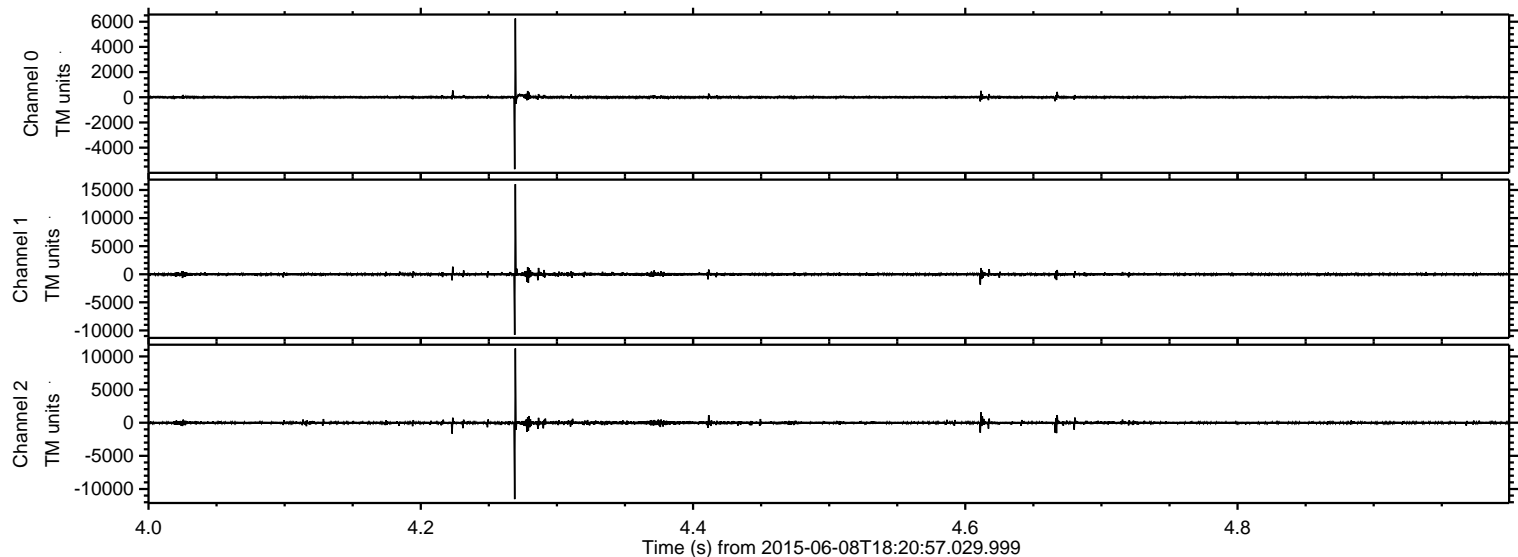


Processed Mon Jun 8 20:27:51 2015 by ELM ver.2012-10-06 from 001__elm20150608_182056__dat00.bin

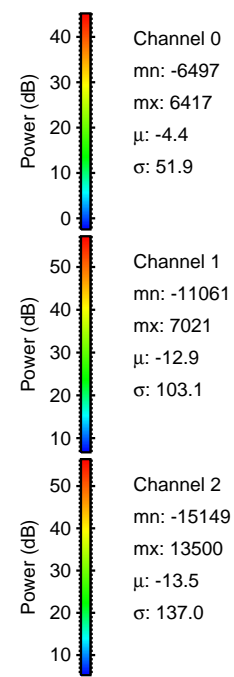
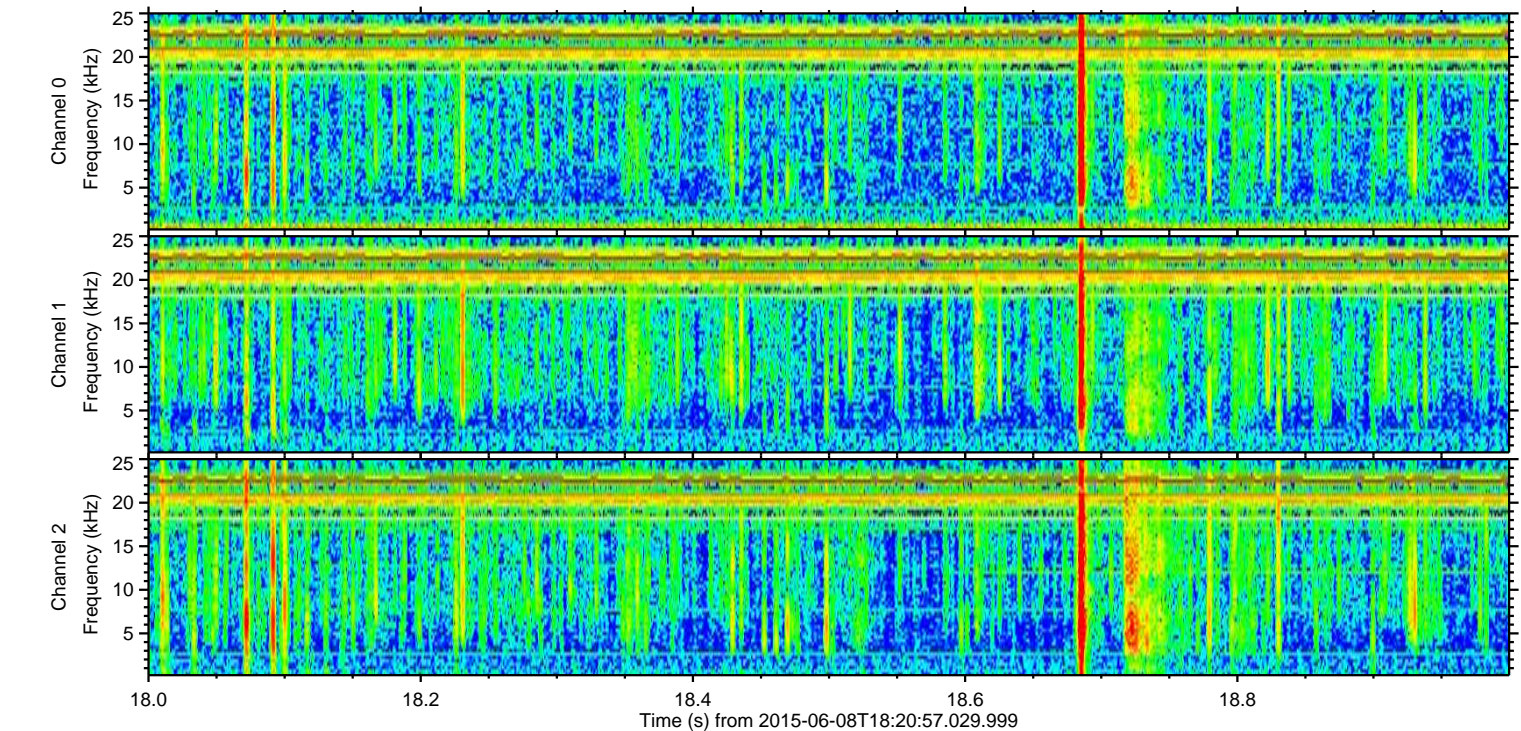
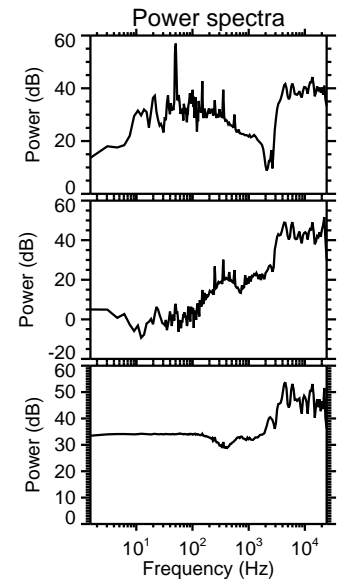
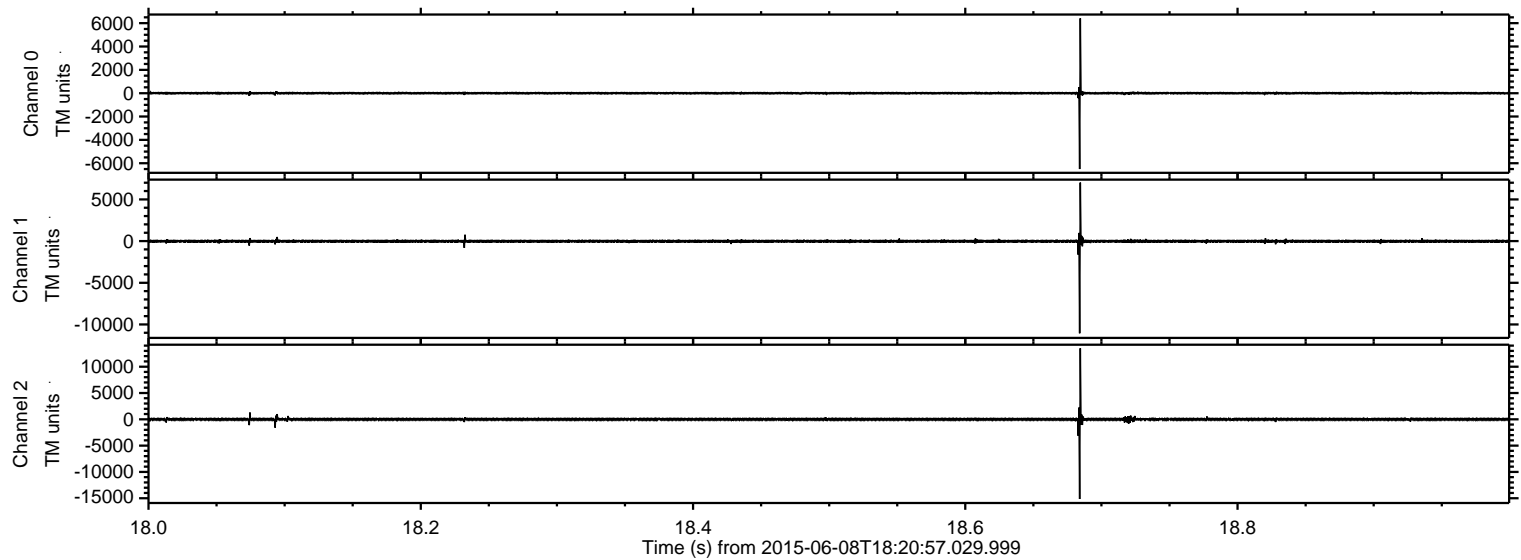


ELMAVAN 3D WAVEFORMS (Measured data sampled at 50 kHz) 51000 packets of 144 samples from 2015-06-08T18:20:57.029.999. Part 5/147

Processed Mon Jun 8 20:27:52 2015 by ELM ver.2012-10-06 from 001__elm20150608_182056__dat00.bin



Processed Mon Jun 8 20:27:53 2015 by ELM ver.2012-10-06 from 001__elm20150608_182056__dat00.bin

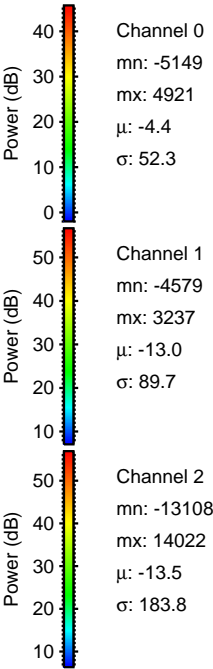
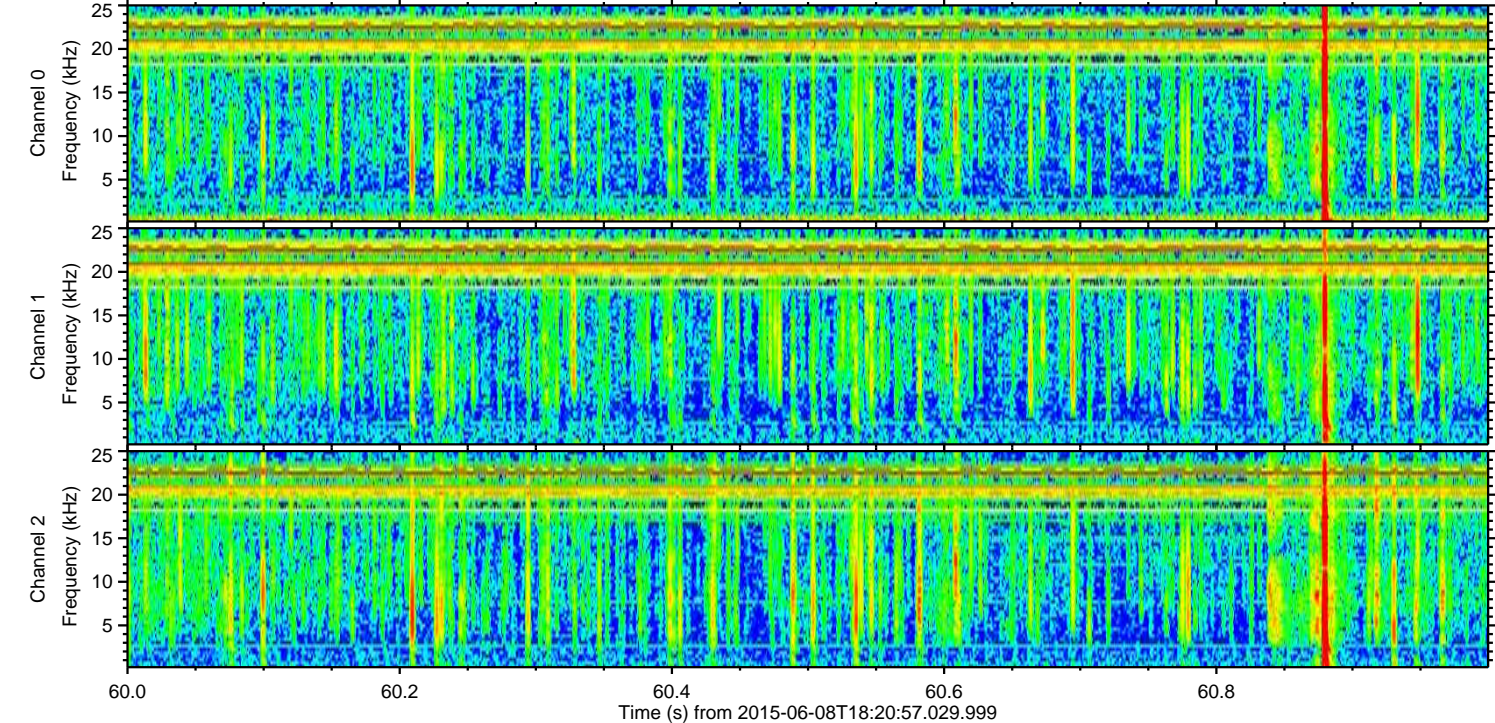
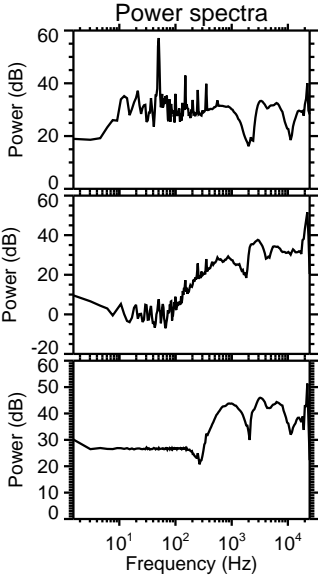
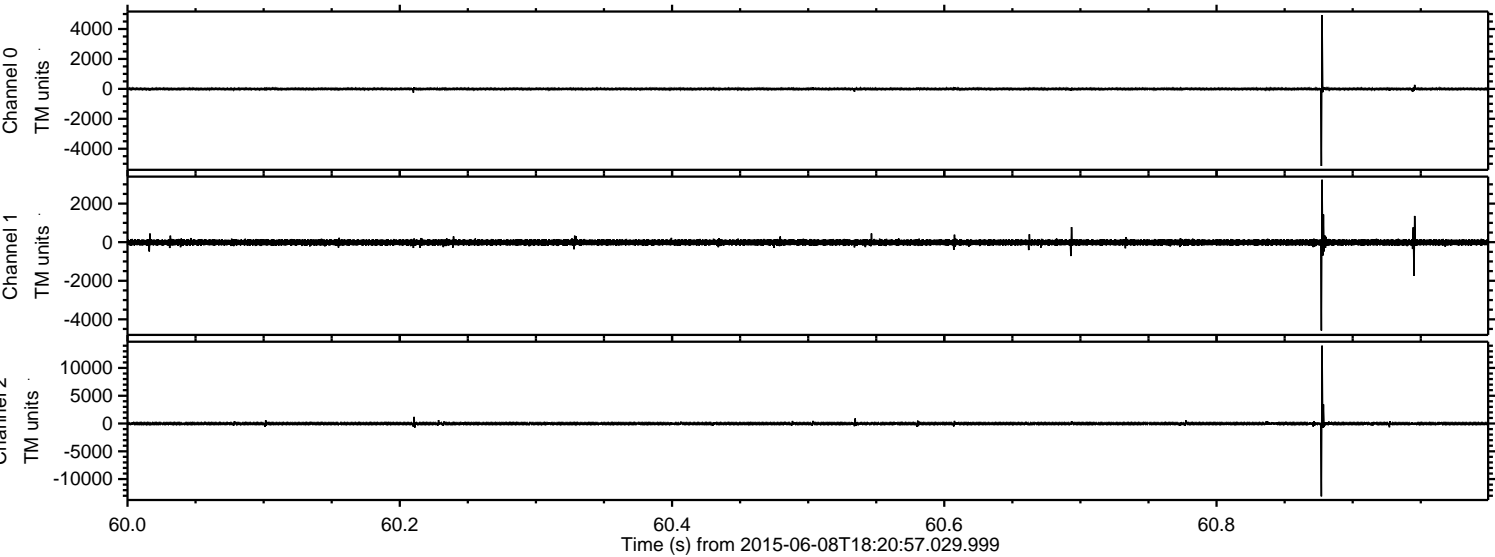


Channel 0
mn: -6497
mx: 6417
 μ : -4.4
 σ : 51.9

Channel 1
mn: -11061
mx: 7021
 μ : -12.9
 σ : 103.1

Channel 2
mn: -15149
mx: 13500
 μ : -13.5
 σ : 137.0

Processed Mon Jun 8 20:27:54 2015 by ELM ver.2012-10-06 from 001__elm20150608_182056__dat00.bin



Channel 0
mn: -5149
mx: 4921
 μ : -4.4
 σ : 52.3

Channel 1
mn: -4579
mx: 3237
 μ : -13.0
 σ : 89.7

Channel 2
mn: -13108
mx: 14022
 μ : -13.5
 σ : 183.8

Processed Mon Jun 8 20:27:55 2015 by ELM ver.2012-10-06 from 001__elm20150608_182056__dat00.bin

