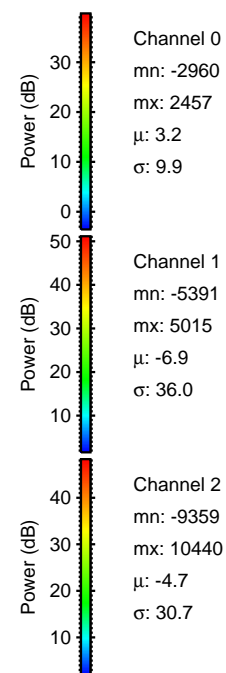
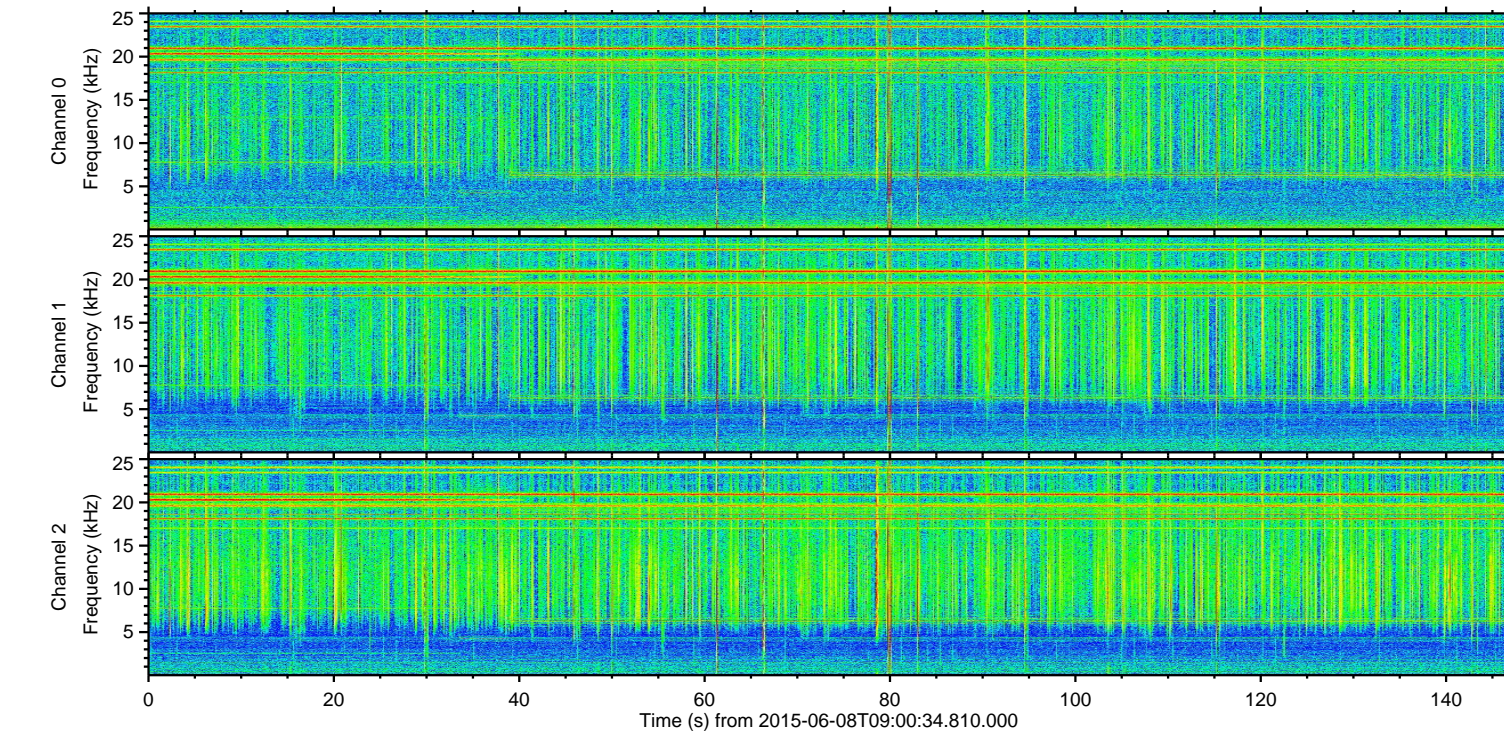
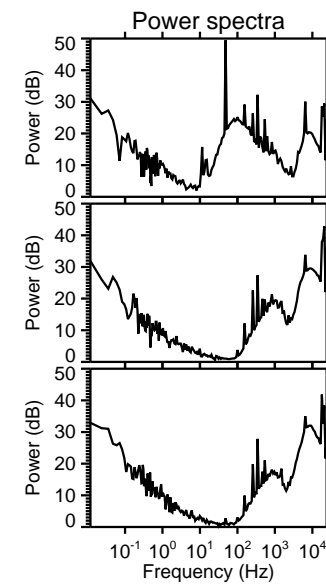
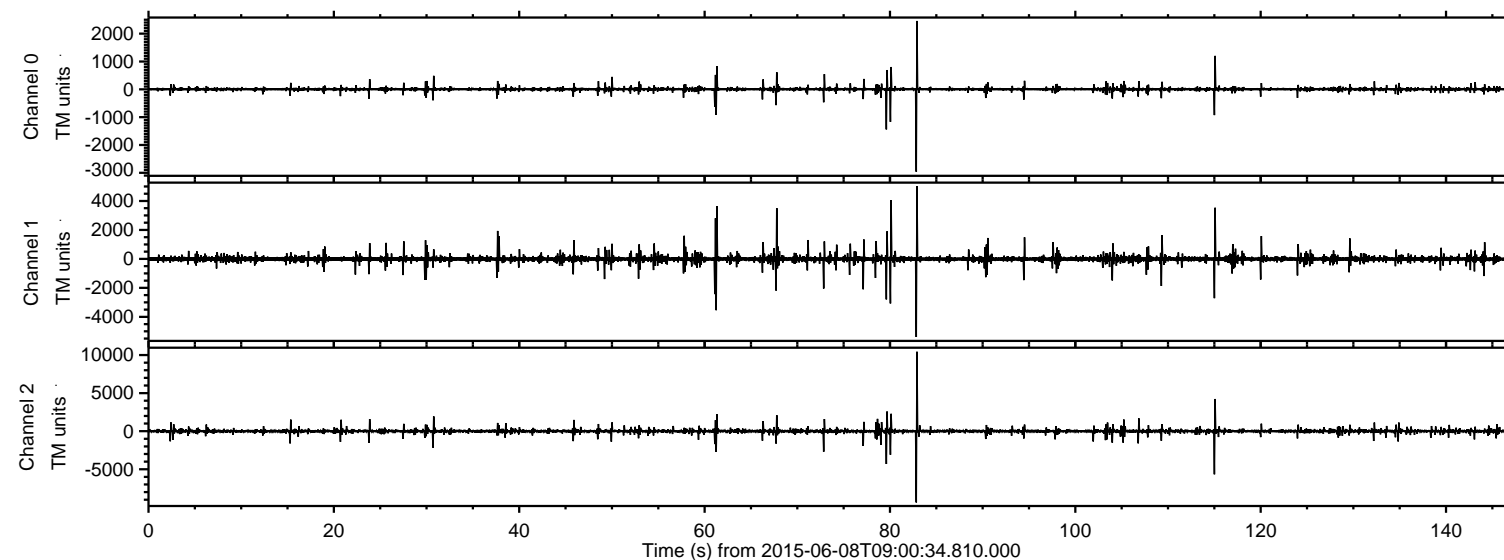
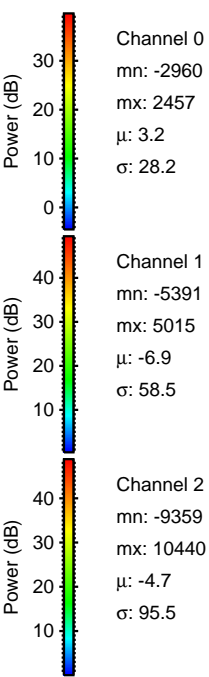
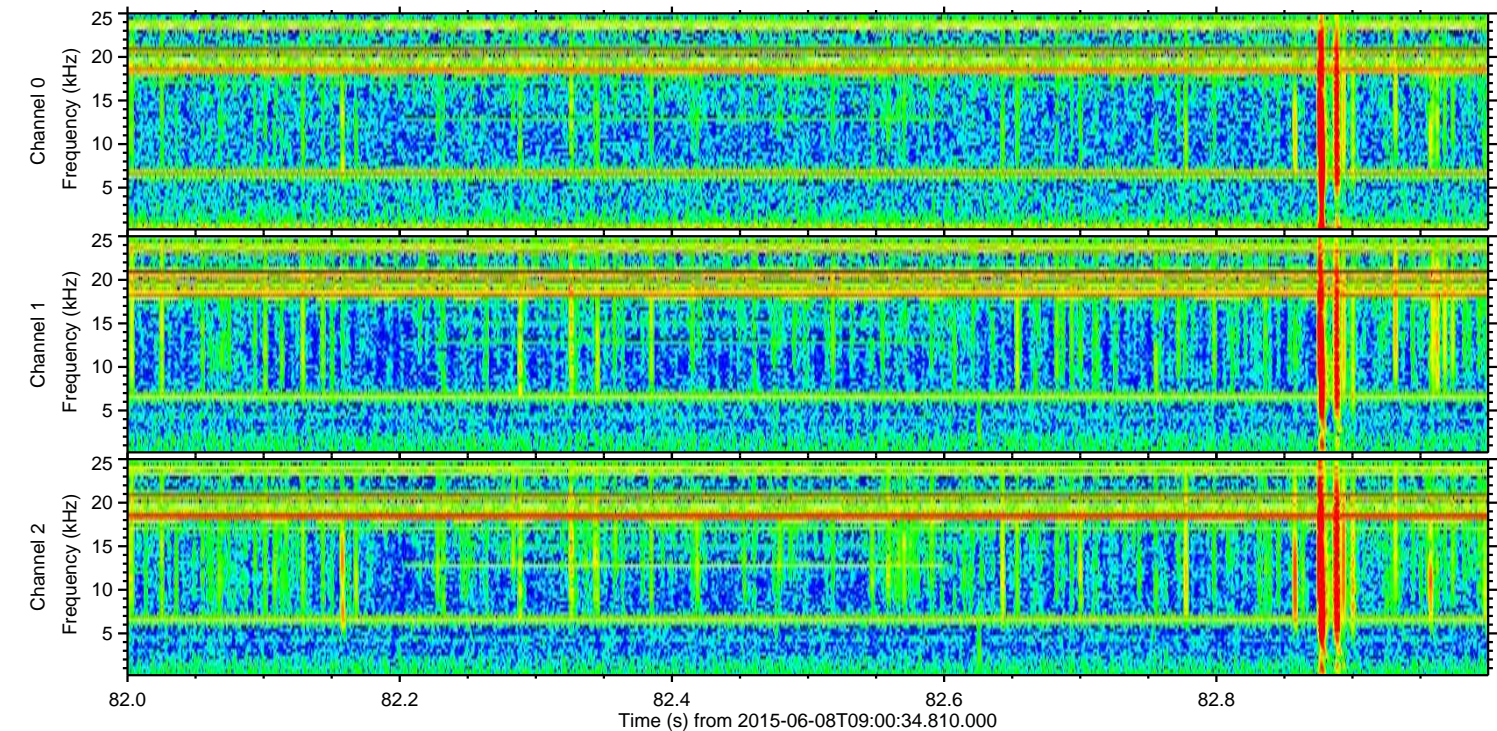
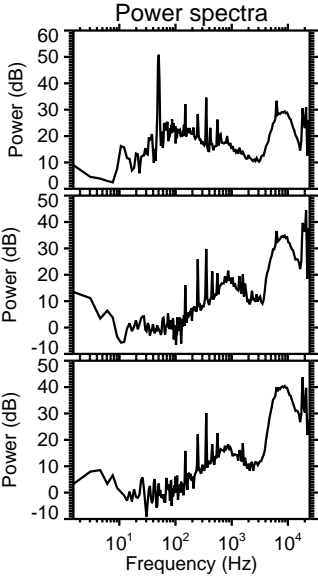
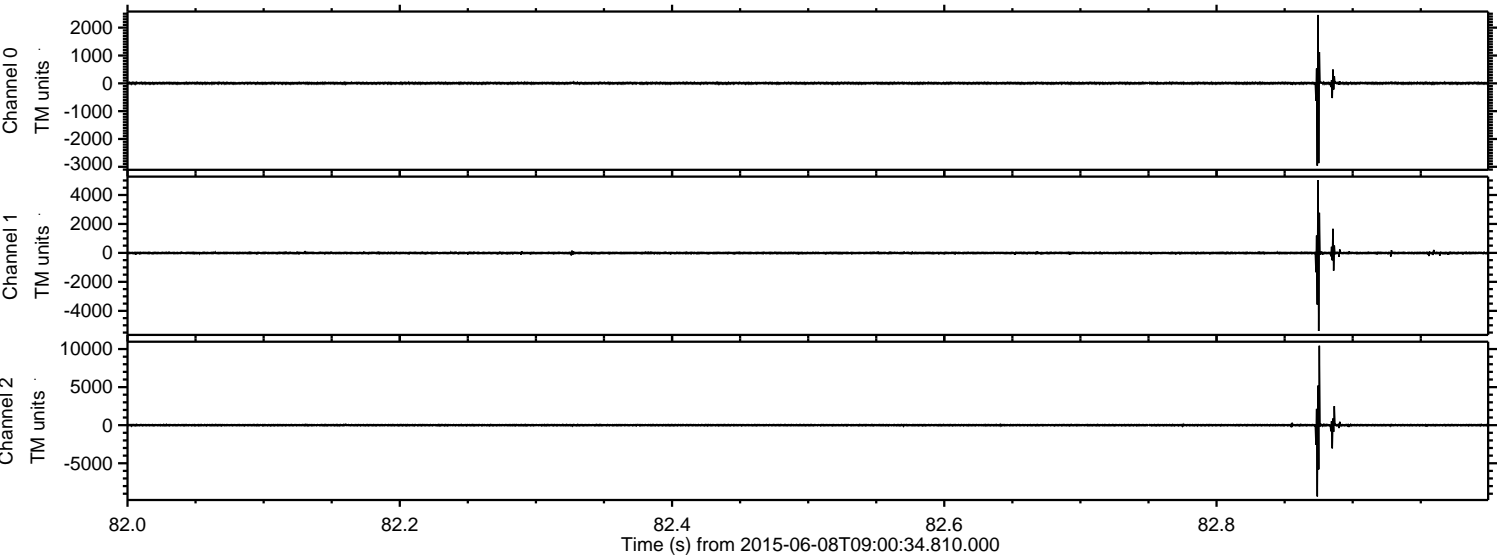


ELMAVAN 3D WAVEFORMS (Measured data sampled at 50 kHz) 51000 packets of 144 samples from 2015-06-08T09:00:34.810.000.

Processed Mon Jun 8 11:06:25 2015 by ELM ver.2012-10-06 from 001__elm20150608_090033__dat00.bin

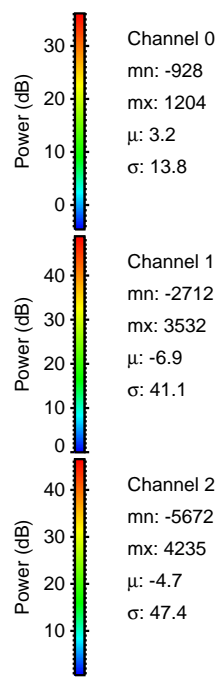
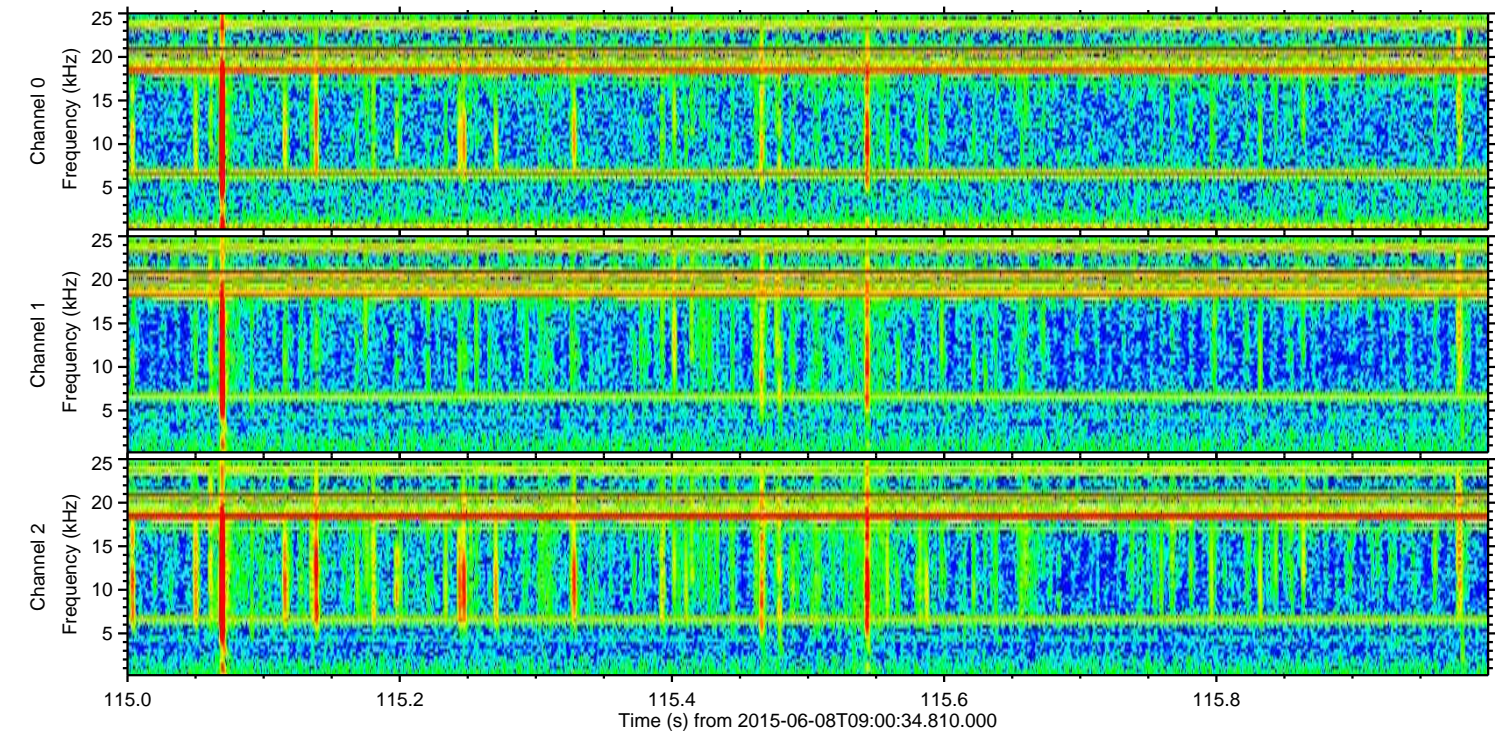
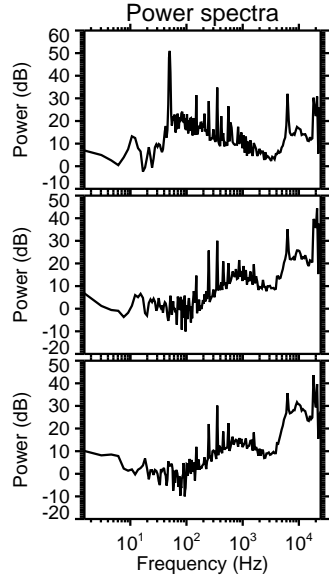
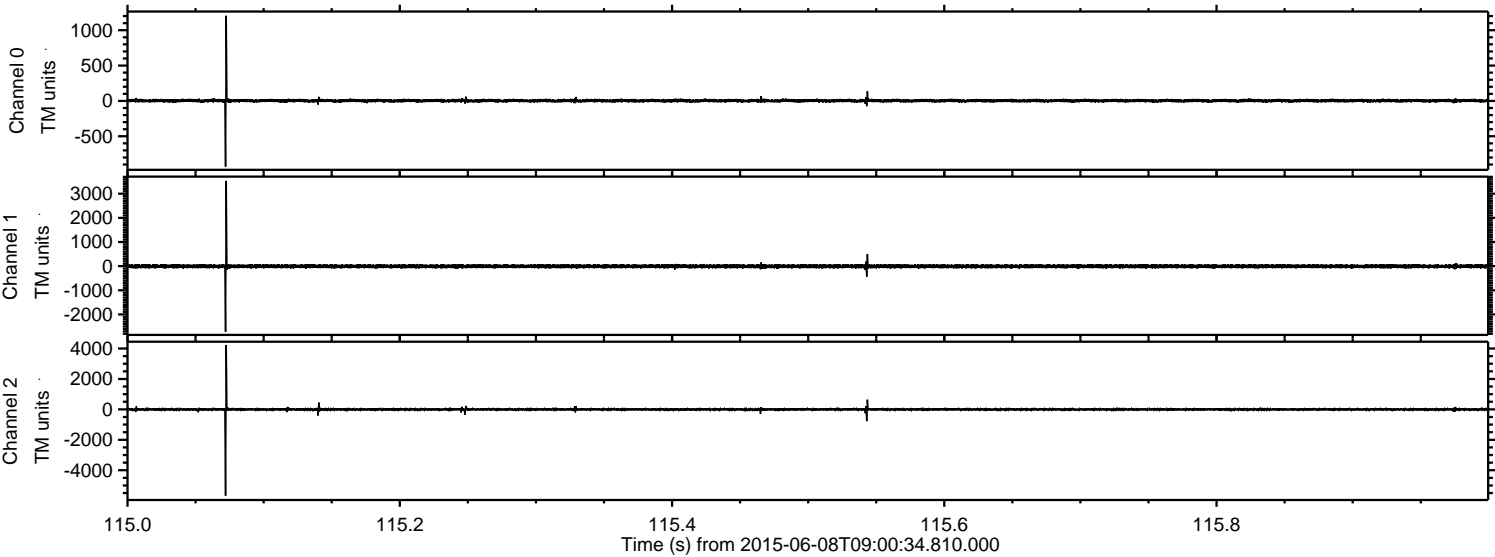


Processed Mon Jun 8 11:06:37 2015 by ELM ver.2012-10-06 from 001__elm20150608_090033__dat00.bin



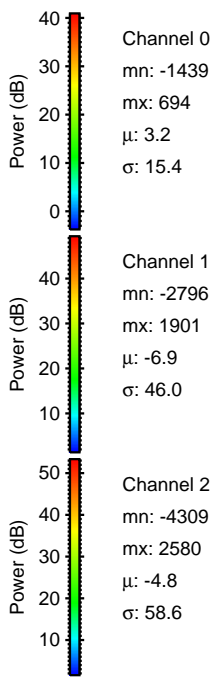
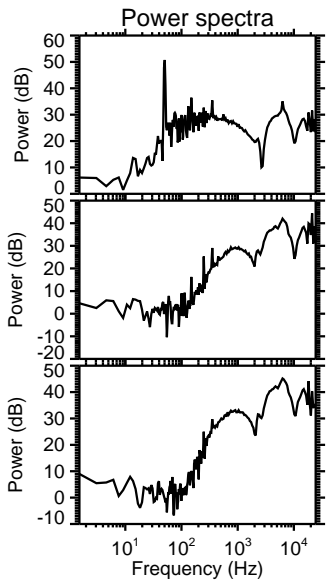
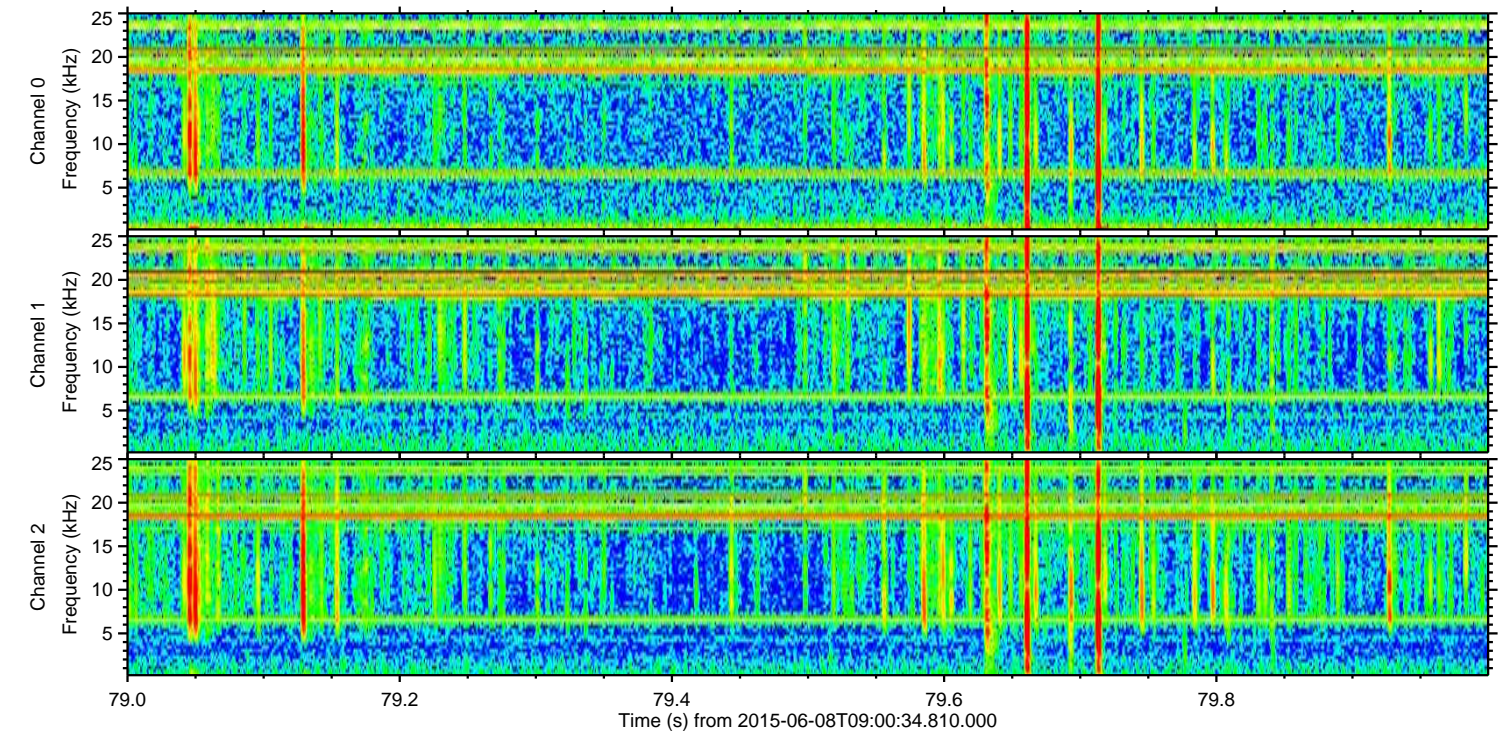
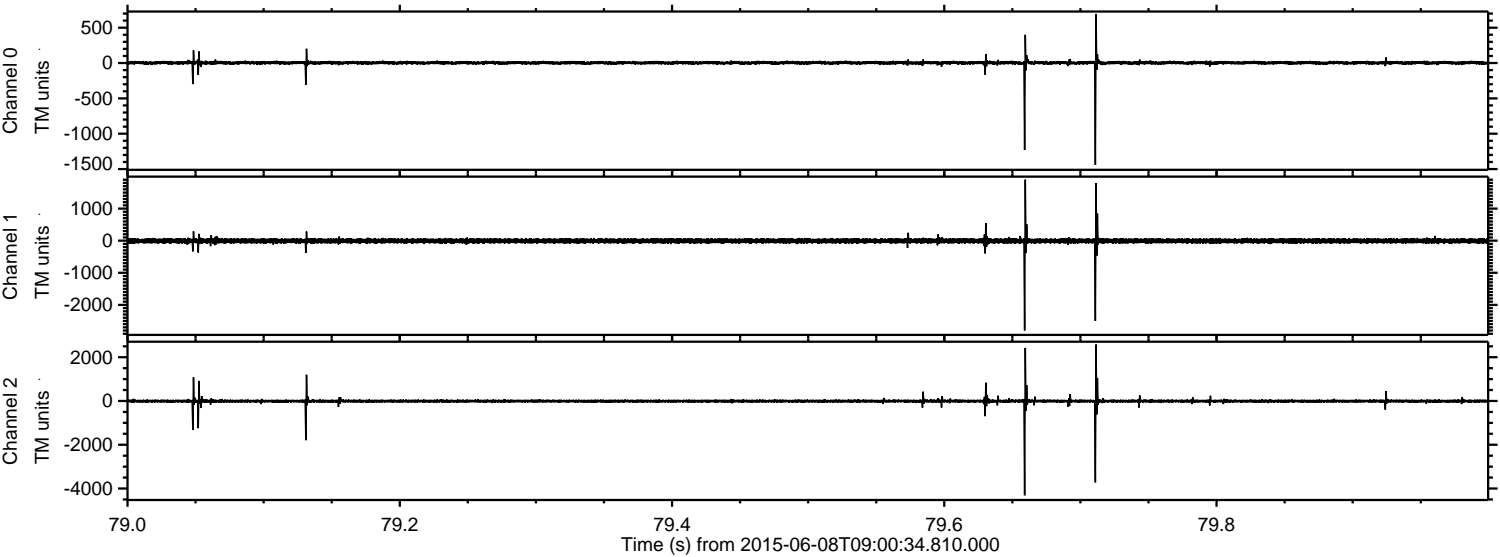
ELMAVAN 3D WAVEFORMS (Measured data sampled at 50 kHz) 51000 packets of 144 samples from 2015-06-08T09:00:34.810.000. Part 116/147

Processed Mon Jun 8 11:06:38 2015 by ELM ver.2012-10-06 from 001__elm20150608_090033__dat00.bin



ELMAVAN 3D WAVEFORMS (Measured data sampled at 50 kHz) 51000 packets of 144 samples from 2015-06-08T09:00:34.810.000. Part 80/147

Processed Mon Jun 8 11:06:39 2015 by ELM ver.2012-10-06 from 001__elm20150608_090033__dat00.bin



Channel 0

mn: -1439
mx: 694
 μ : 3.2
 σ : 15.4

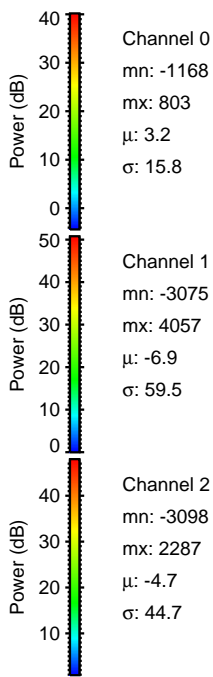
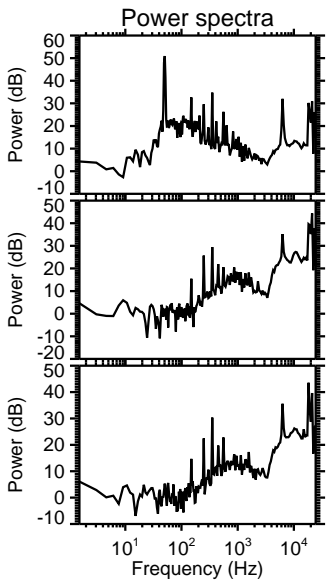
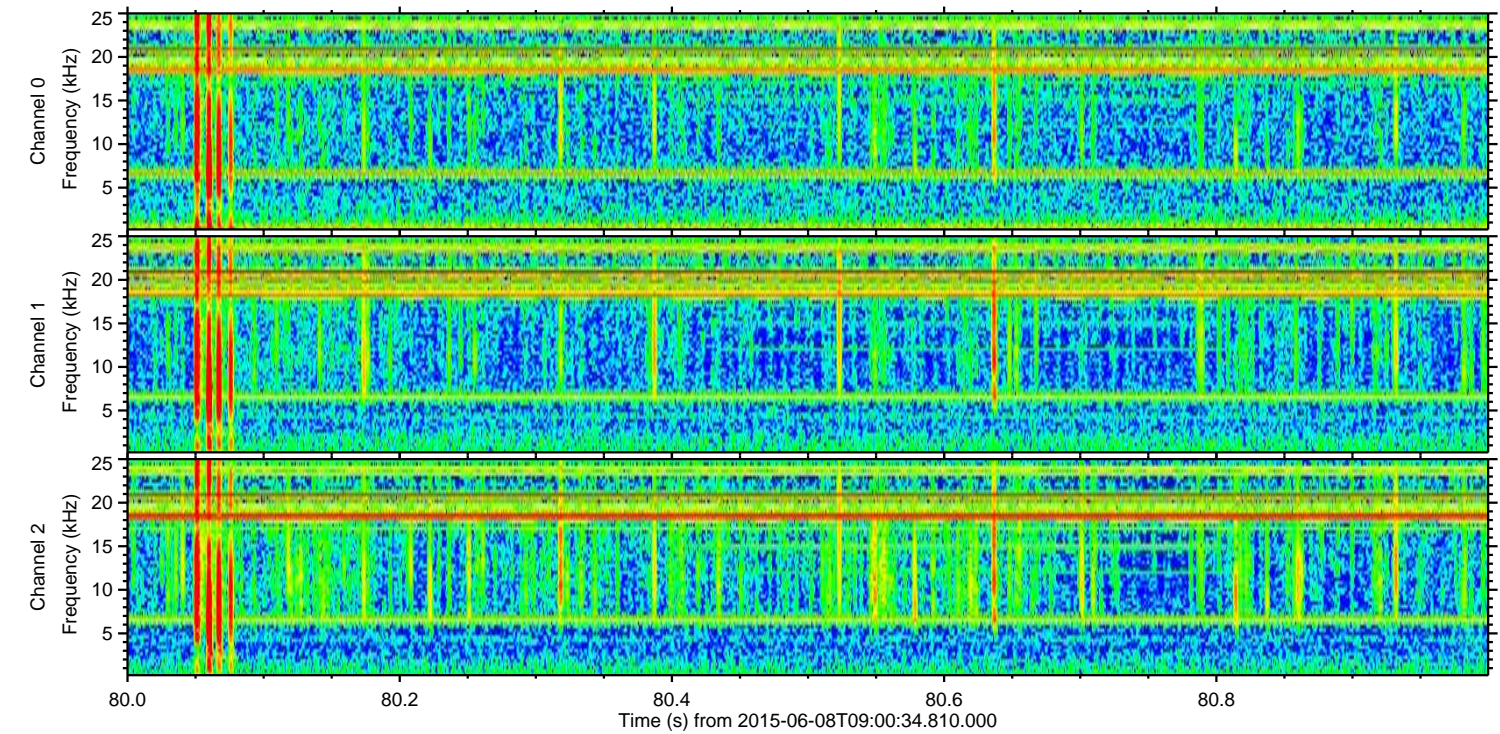
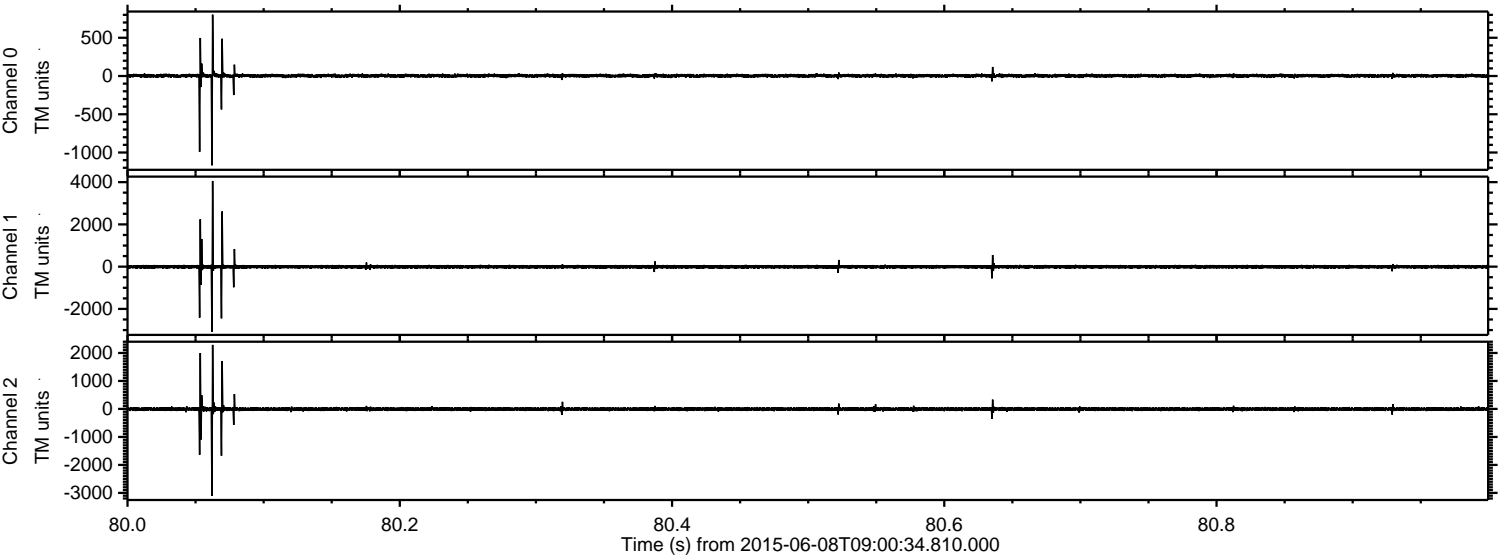
Channel 1

mn: -2796
mx: 1901
 μ : -6.9
 σ : 46.0

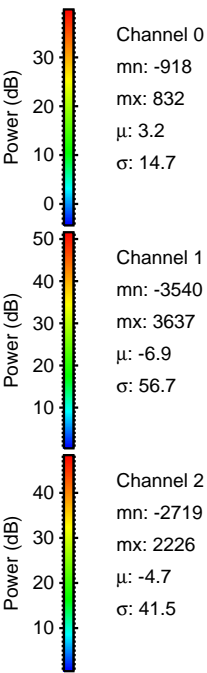
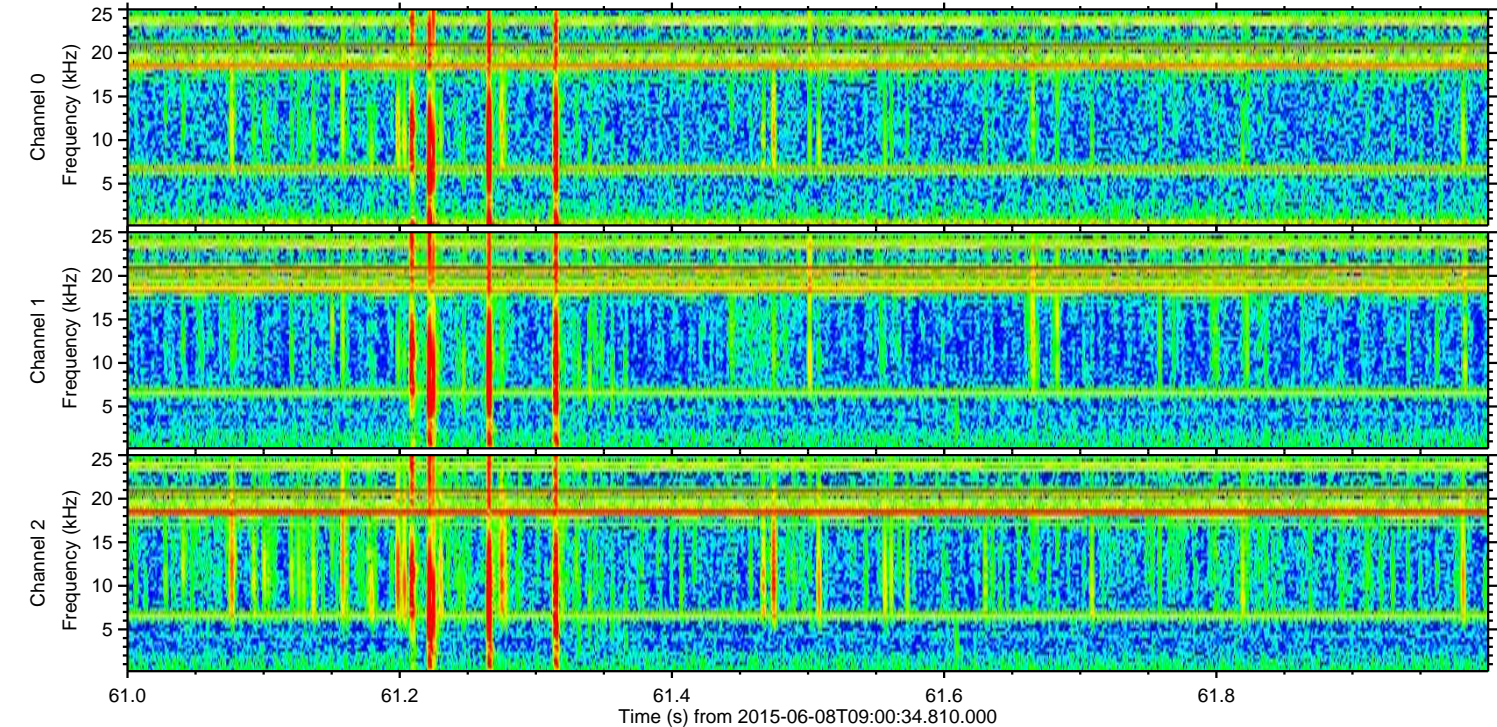
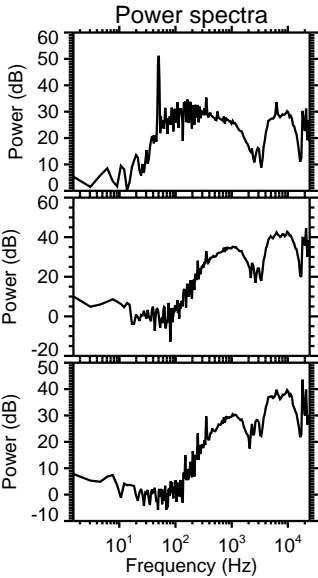
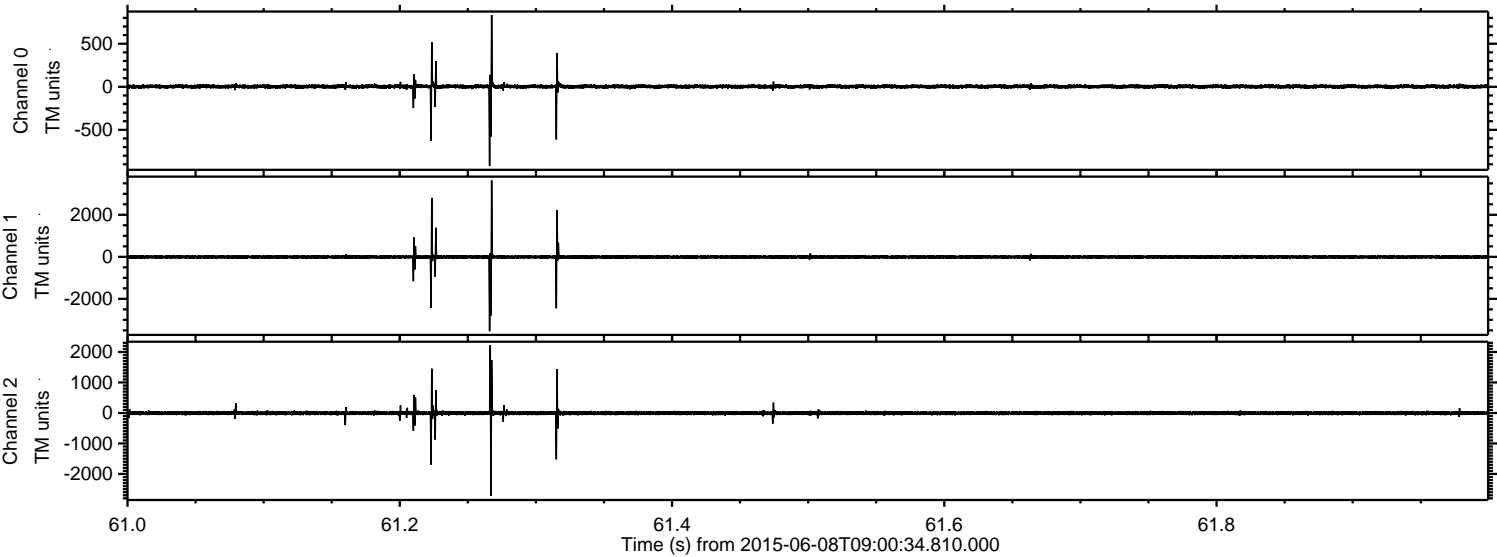
Channel 2

mn: -4309
mx: 2580
 μ : -4.8
 σ : 58.6

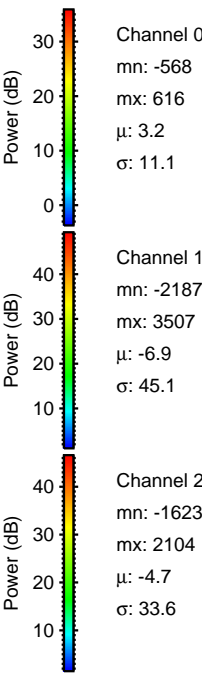
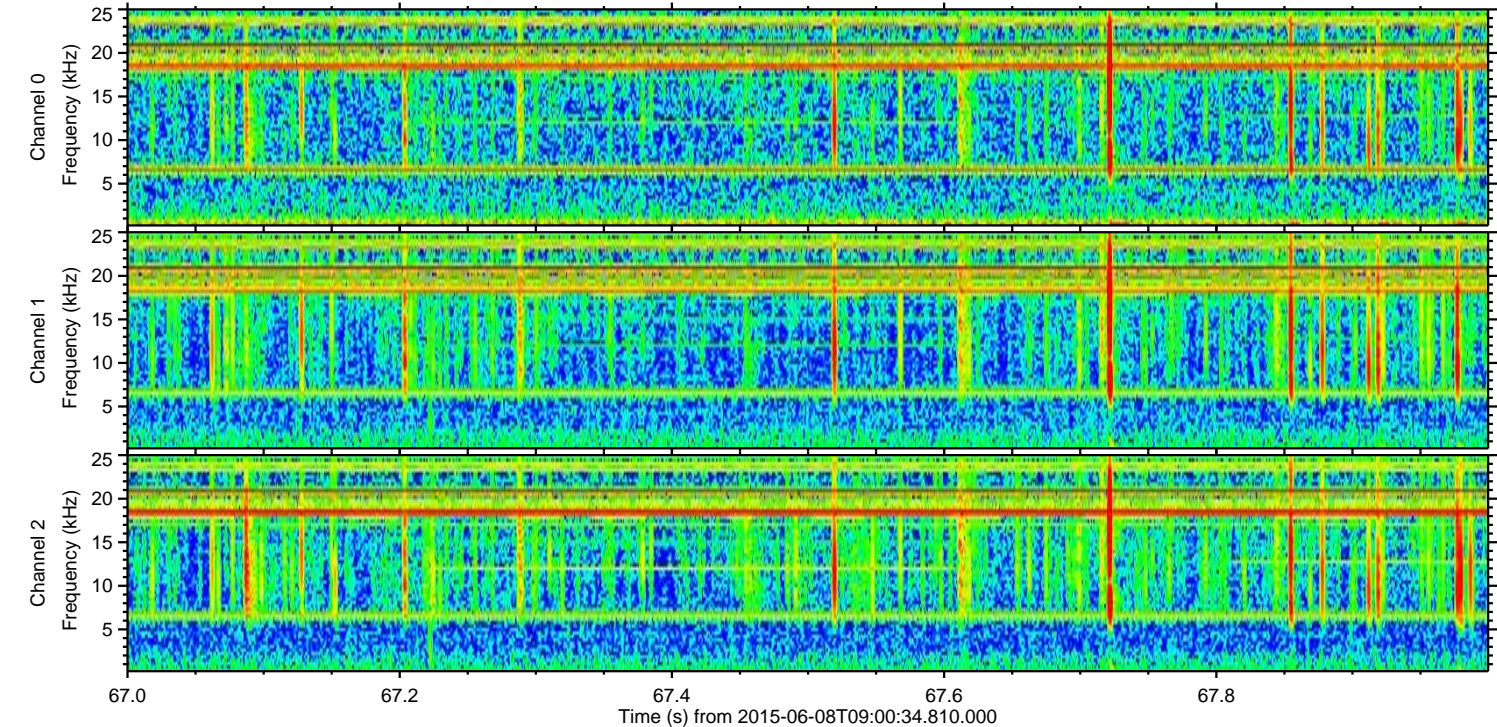
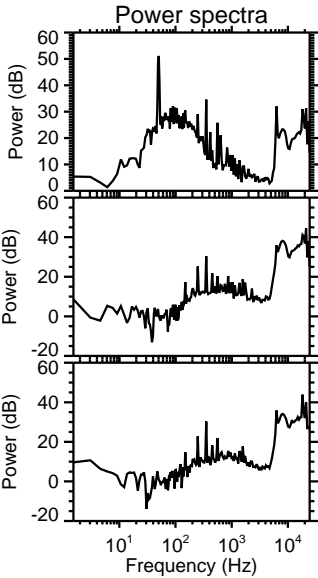
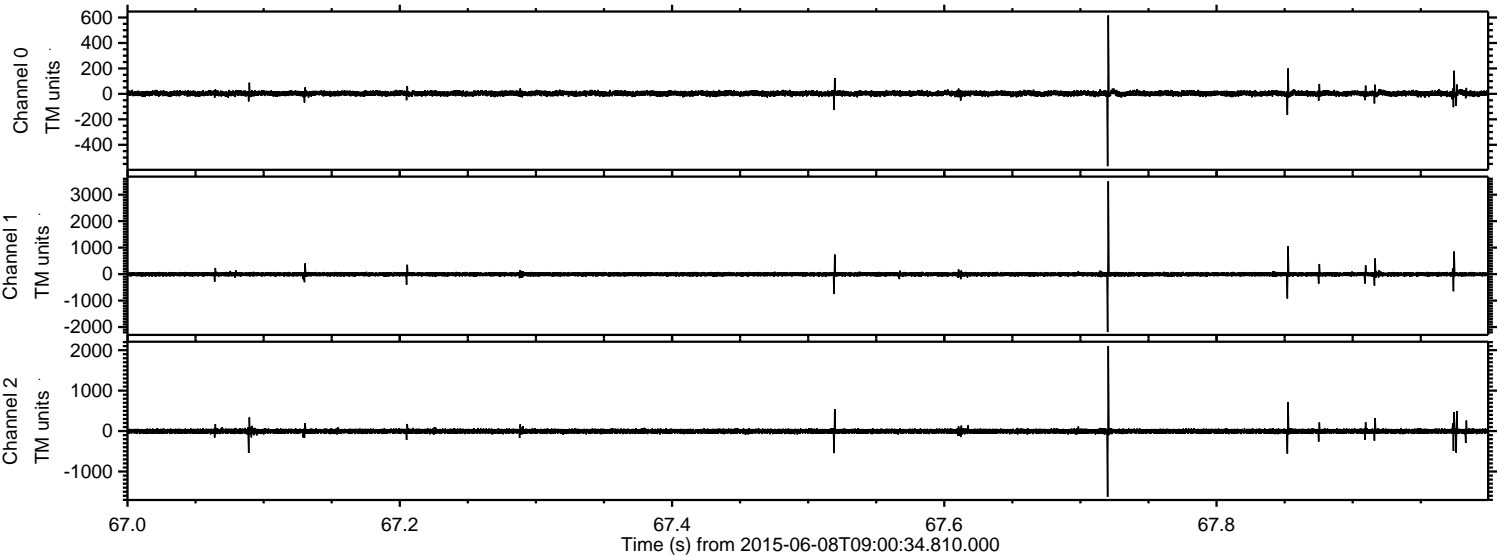
Processed Mon Jun 8 11:06:40 2015 by ELM ver.2012-10-06 from 001__elm20150608_090033__dat00.bin



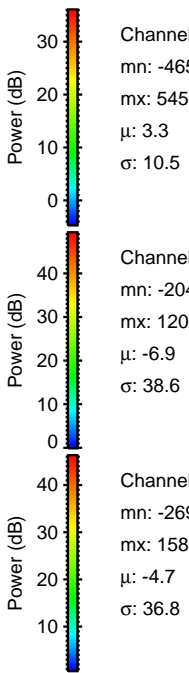
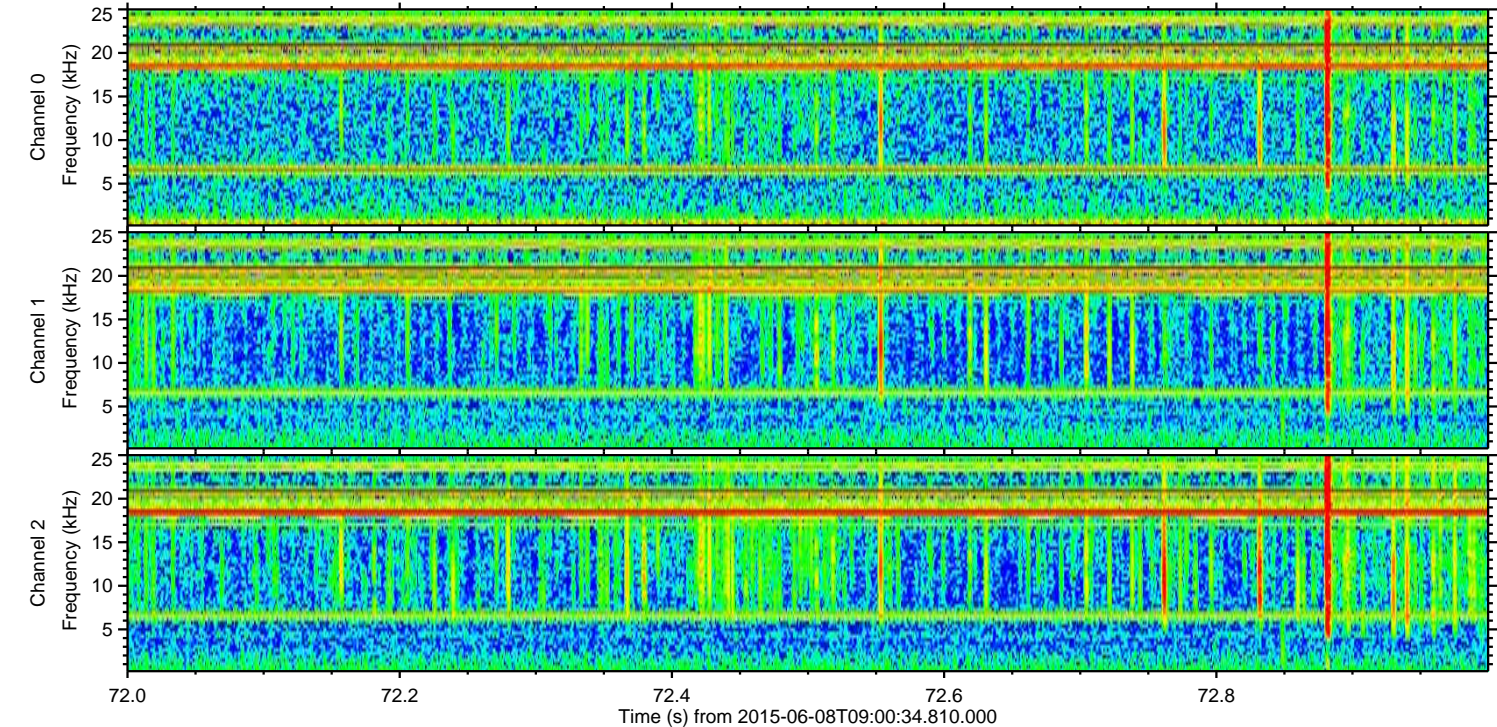
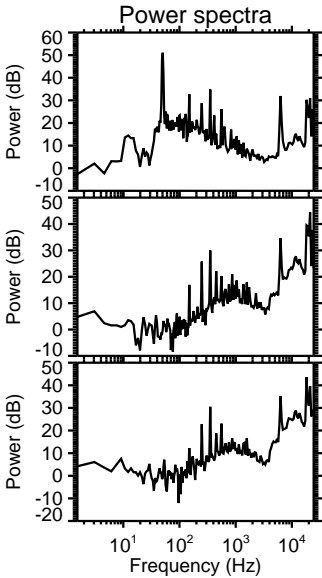
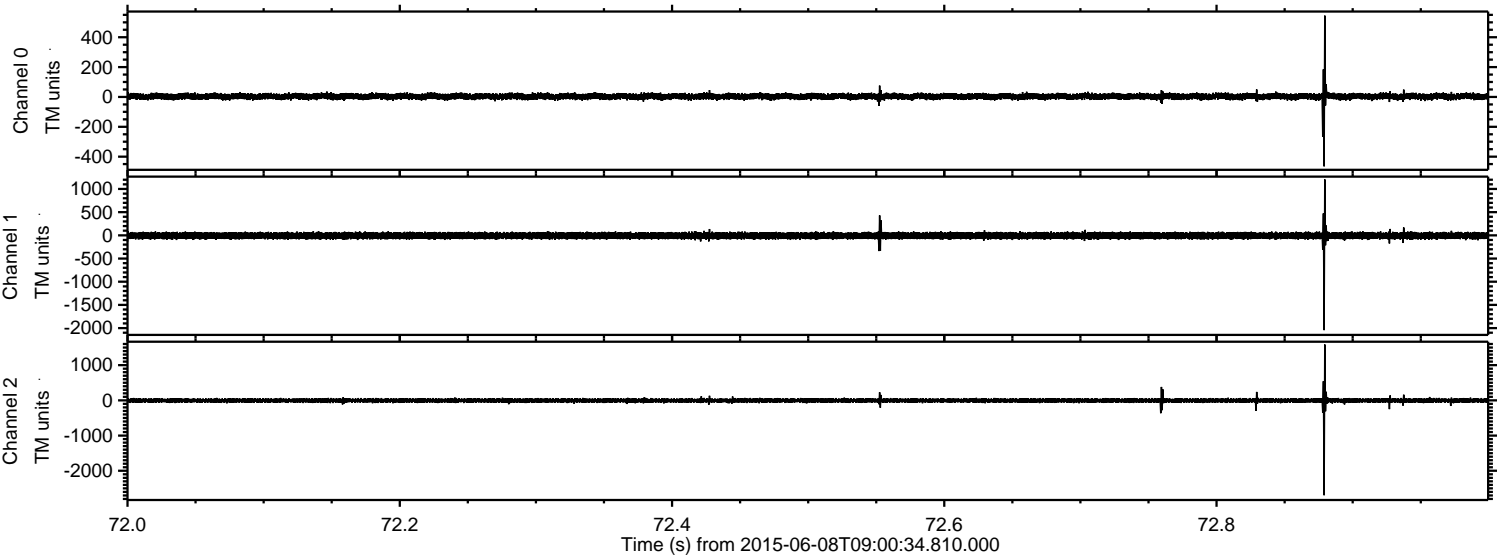
Processed Mon Jun 8 11:06:41 2015 by ELM ver.2012-10-06 from 001__elm20150608_090033__dat00.bin



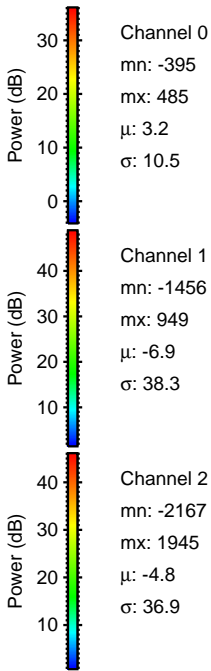
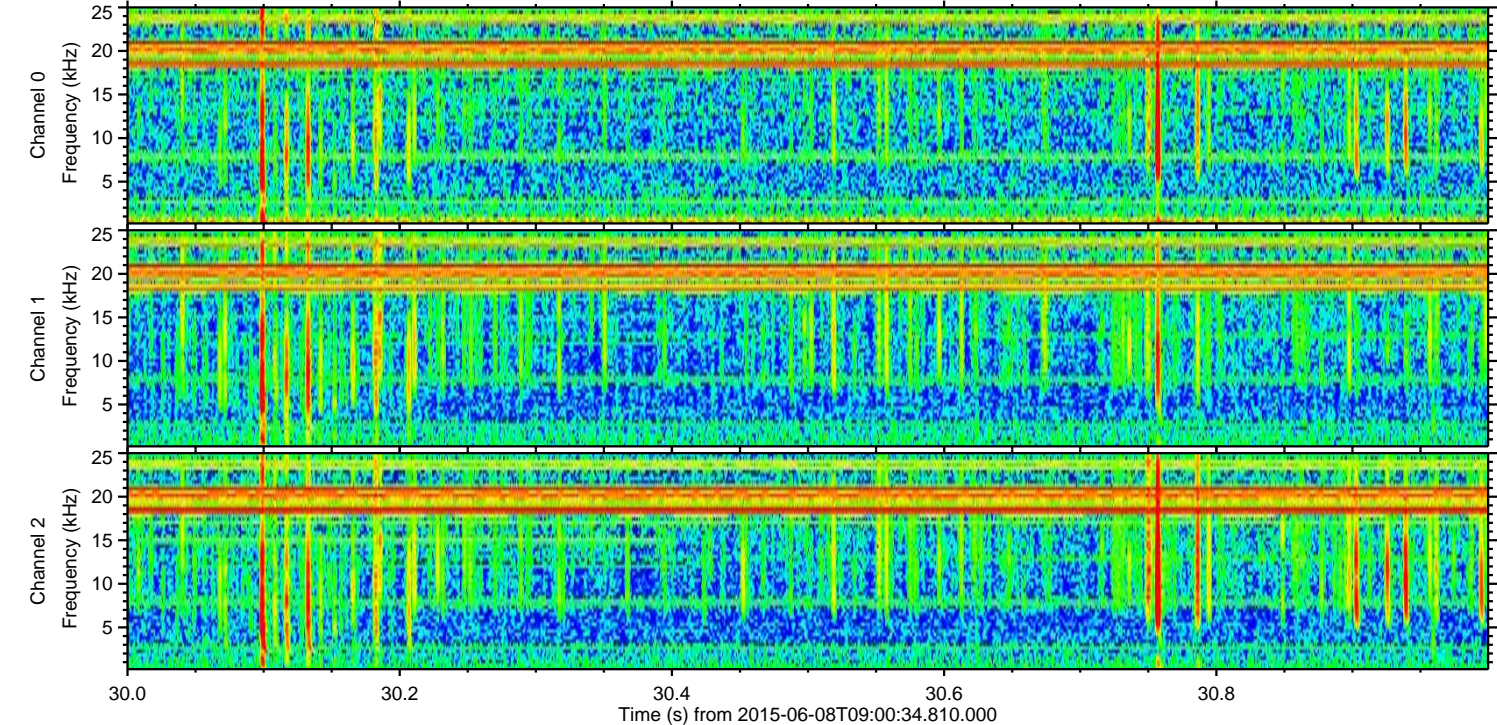
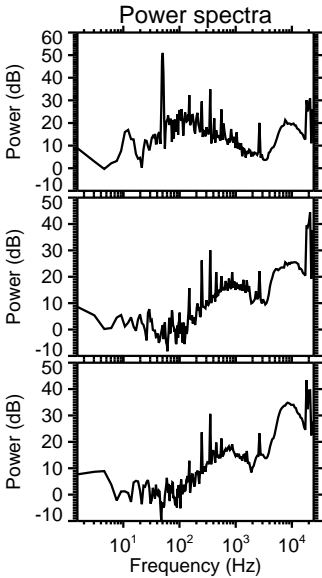
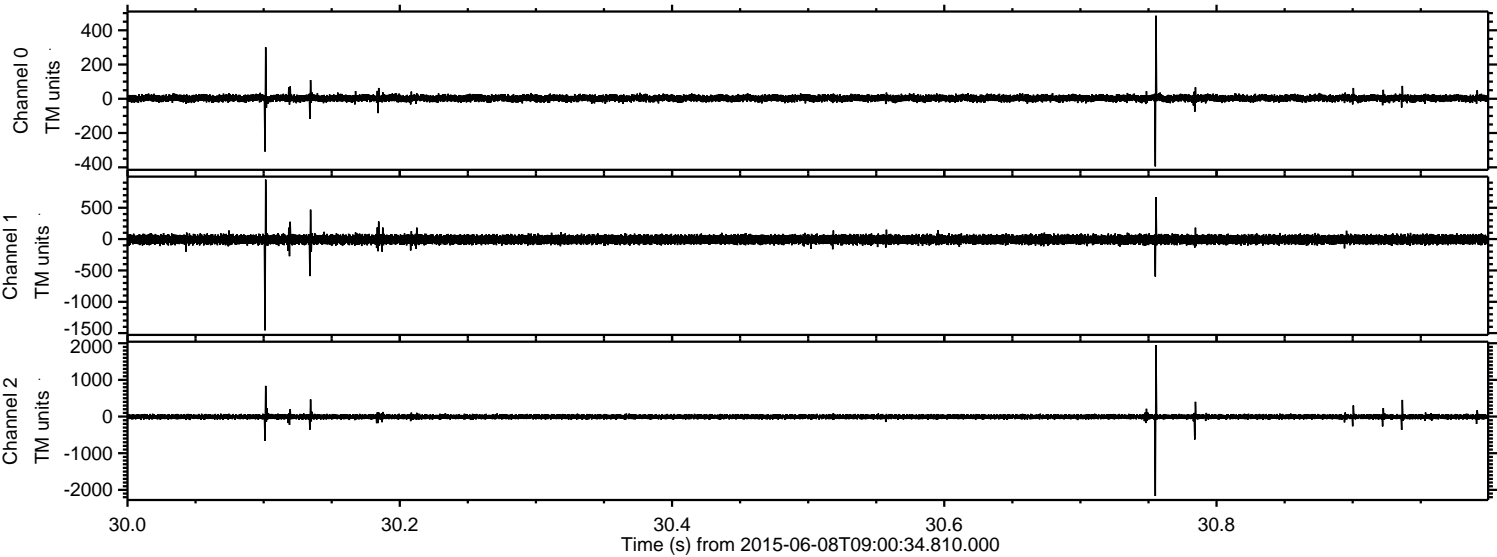
Processed Mon Jun 8 11:06:42 2015 by ELM ver.2012-10-06 from 001__elm20150608_090033__dat00.bin



Processed Mon Jun 8 11:06:43 2015 by ELM ver.2012-10-06 from 001__elm20150608_090033__dat00.bin



Processed Mon Jun 8 11:06:44 2015 by ELM ver.2012-10-06 from 001__elm20150608_090033__dat00.bin



Power spectra

Channel 0
mn: -395
mx: 485
 μ : 3.2
 σ : 10.5

Channel 1
mn: -1456
mx: 949
 μ : -6.9
 σ : 38.3

Channel 2
mn: -2167
mx: 1945
 μ : -4.8
 σ : 36.9

Processed Mon Jun 8 11:06:45 2015 by ELM ver.2012-10-06 from 001__elm20150608_090033__dat00.bin

