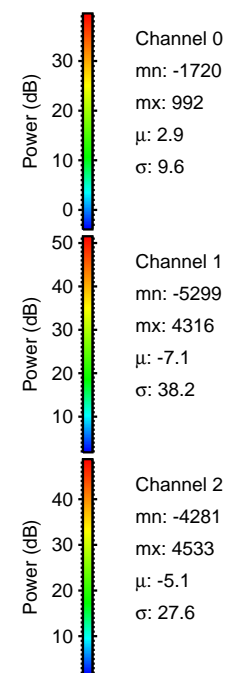
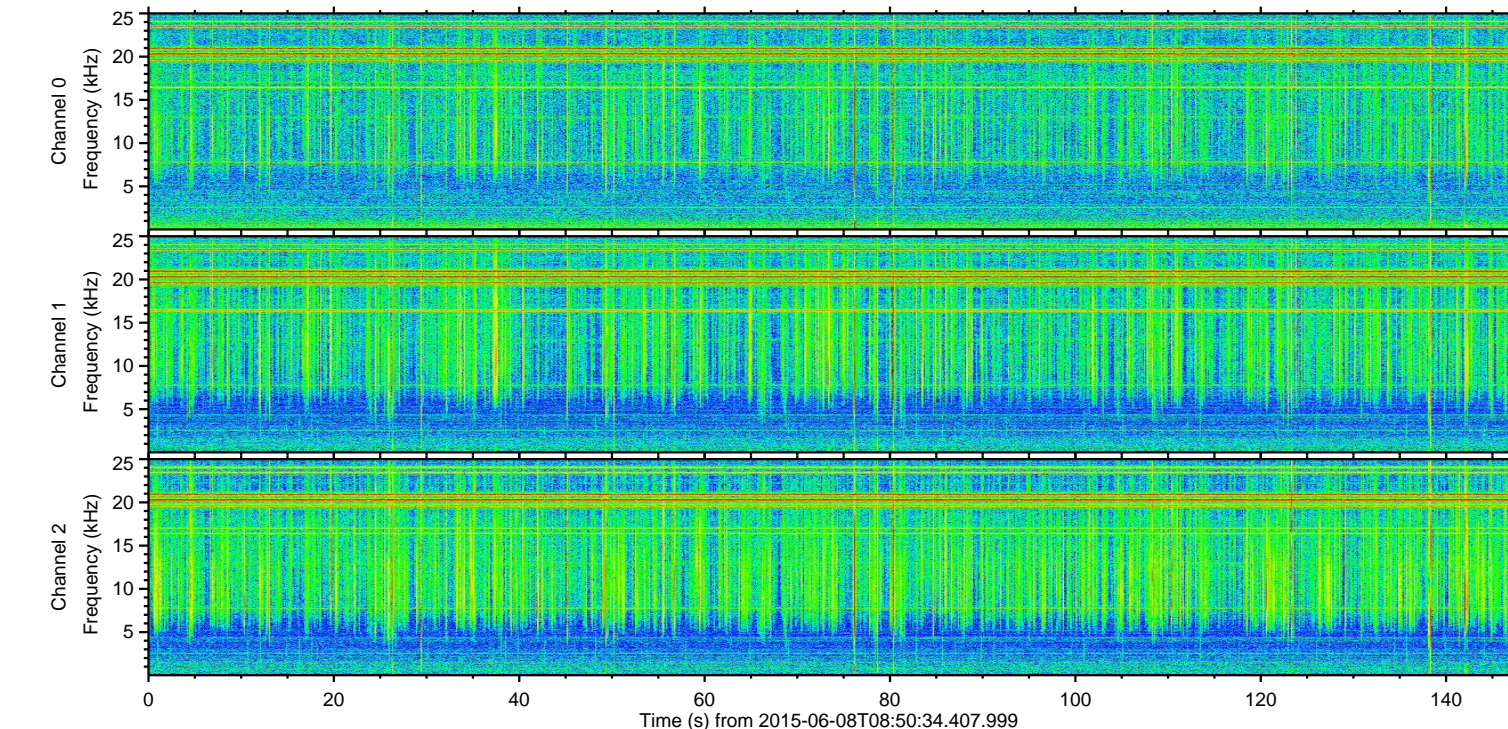
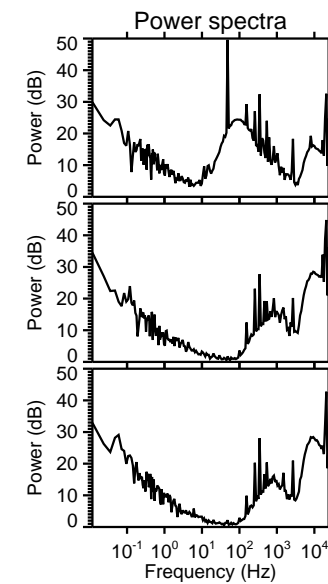
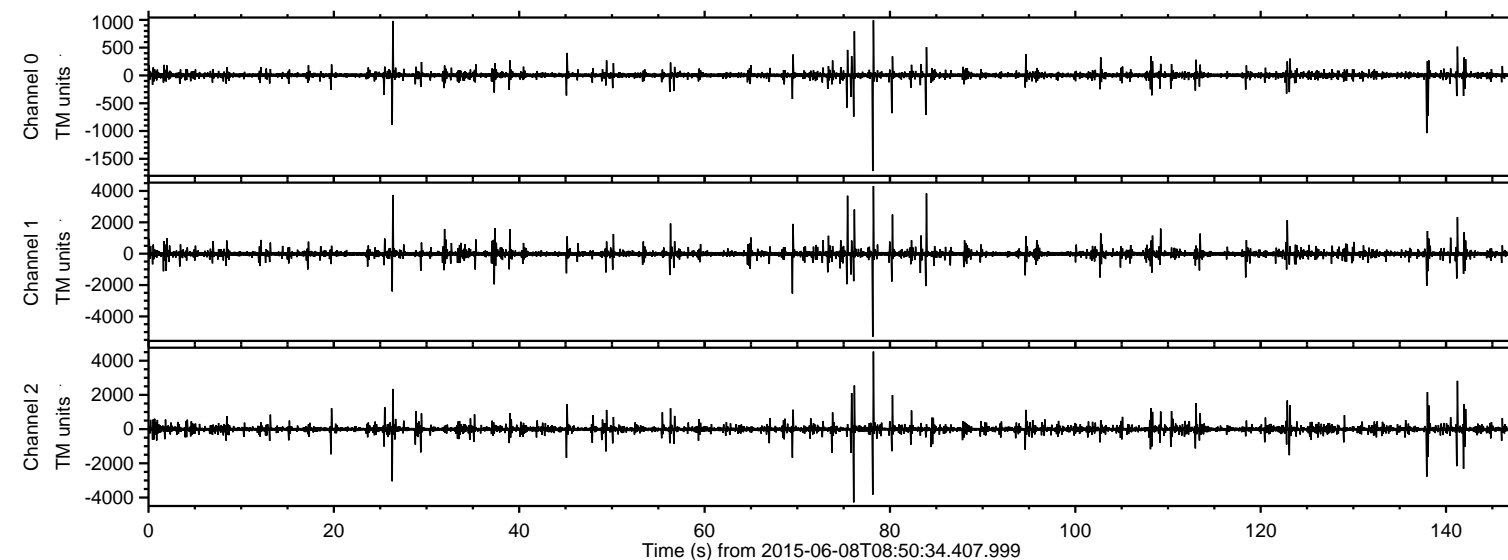


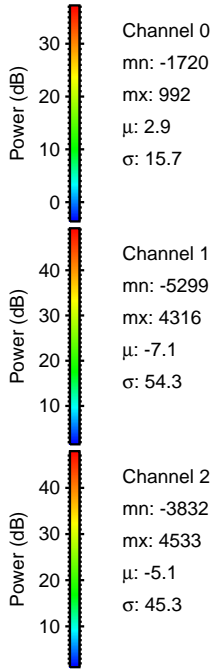
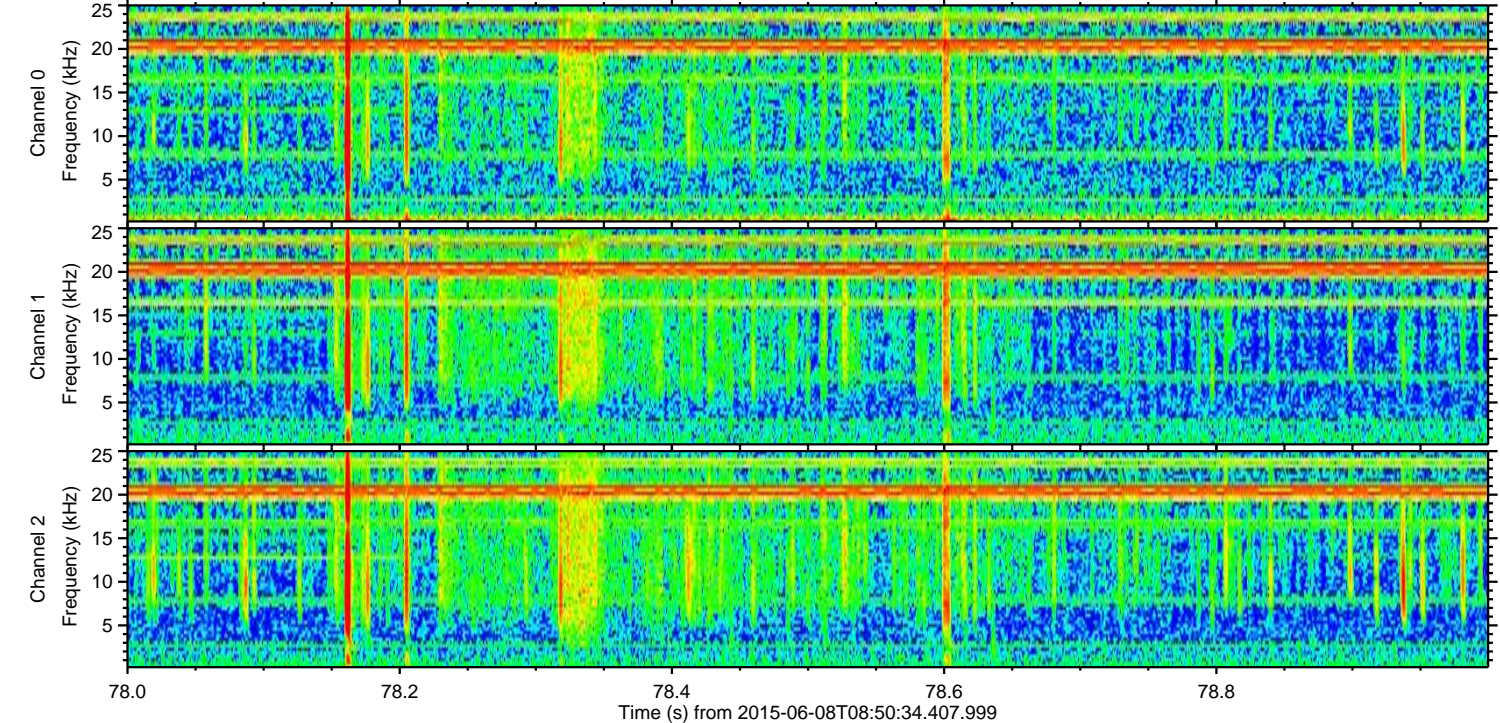
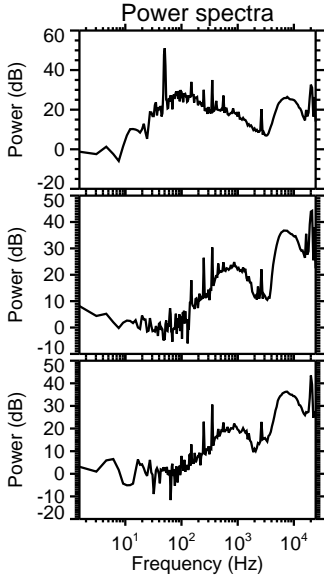
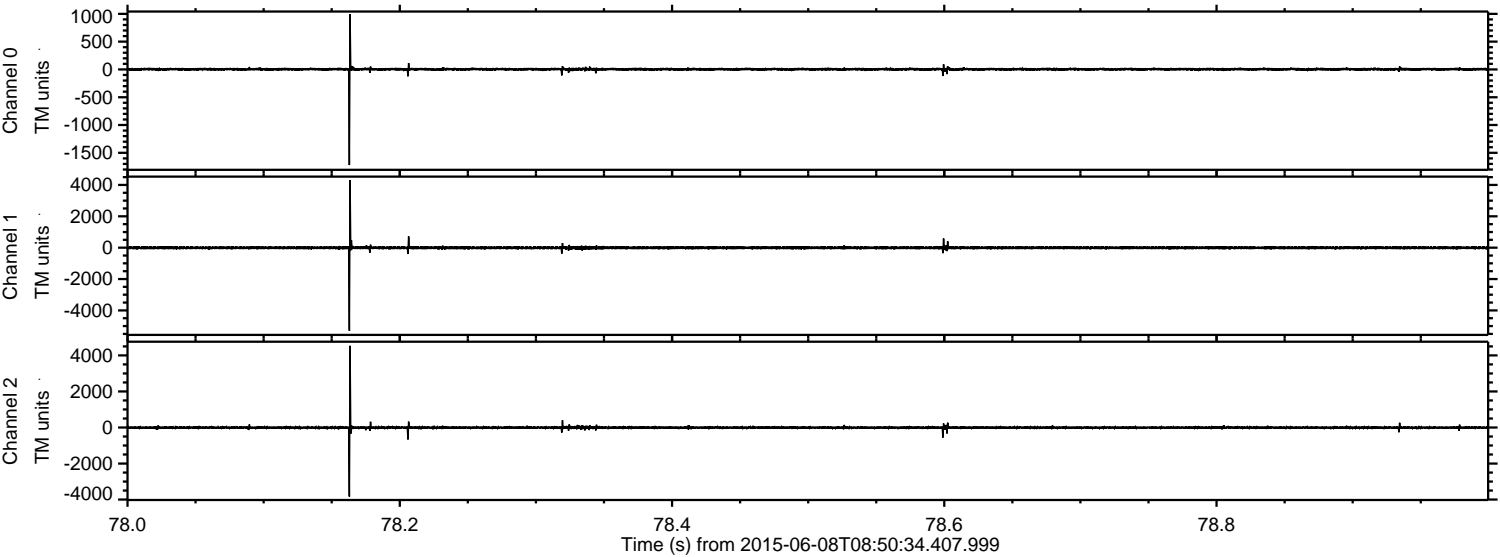
ELMAVAN 3D WAVEFORMS (Measured data sampled at 50 kHz) 51000 packets of 144 samples from 2015-06-08T08:50:34.407.999.

Processed Mon Jun 8 10:56:55 2015 by ELM ver.2012-10-06 from 001__elm20150608_085033__dat00.bin

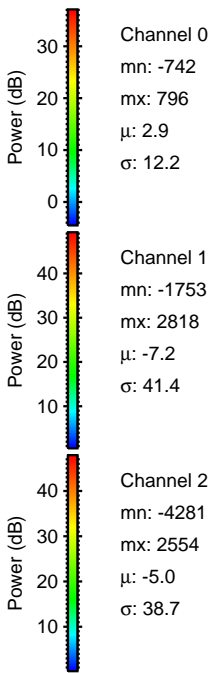
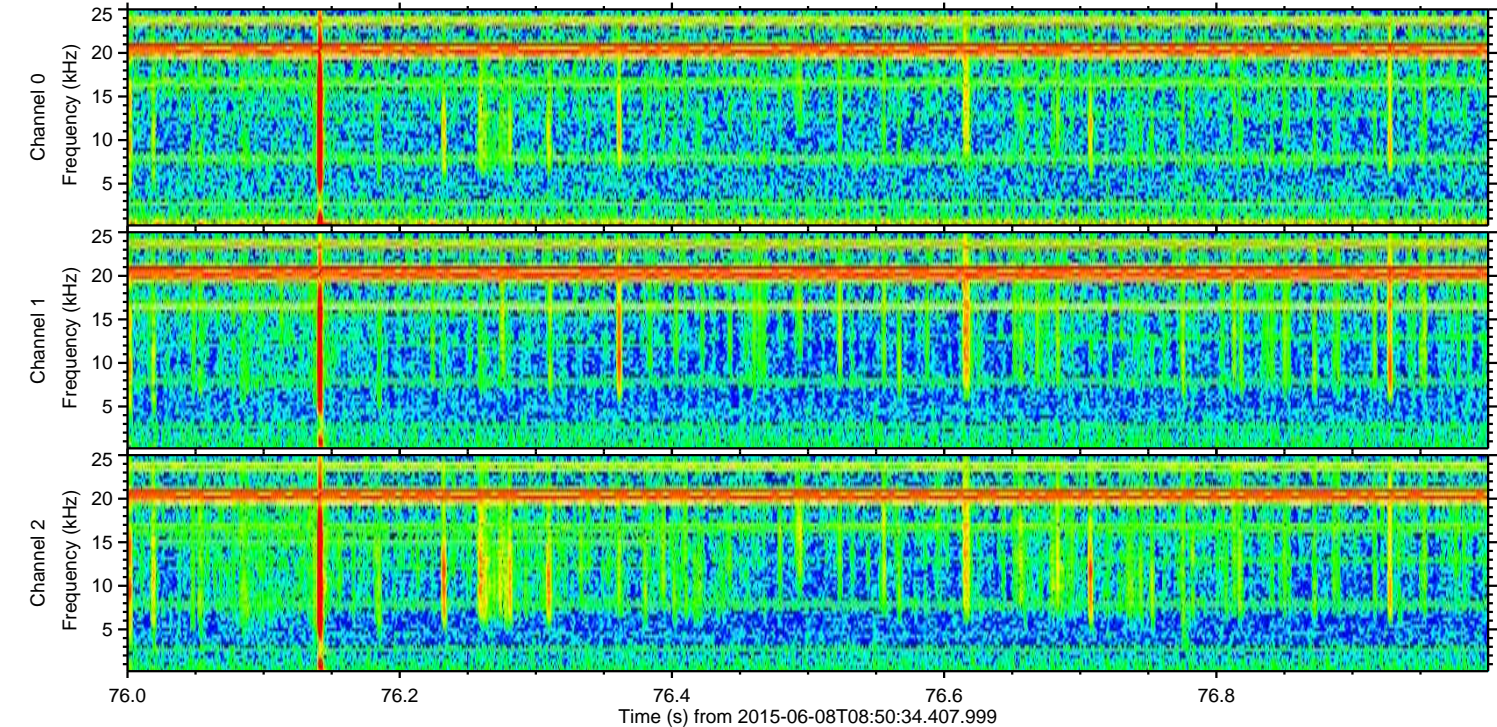
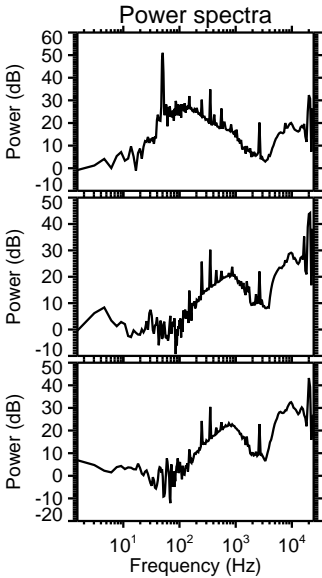
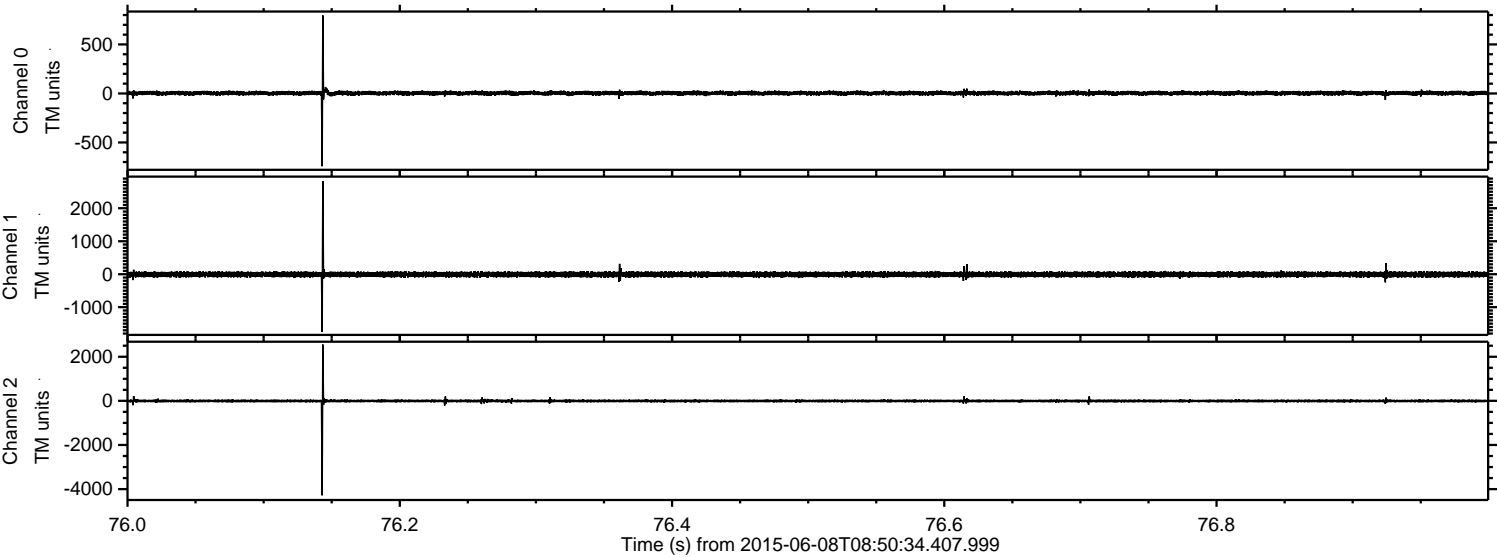


ELMAVAN 3D WAVEFORMS (Measured data sampled at 50 kHz) 51000 packets of 144 samples from 2015-06-08T08:50:34.407.999. Part 79/147

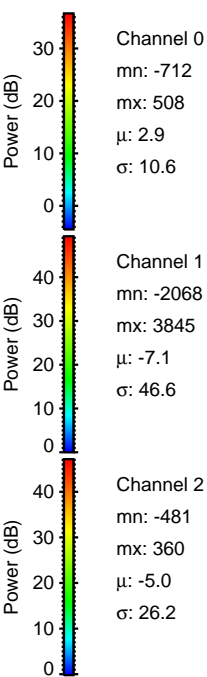
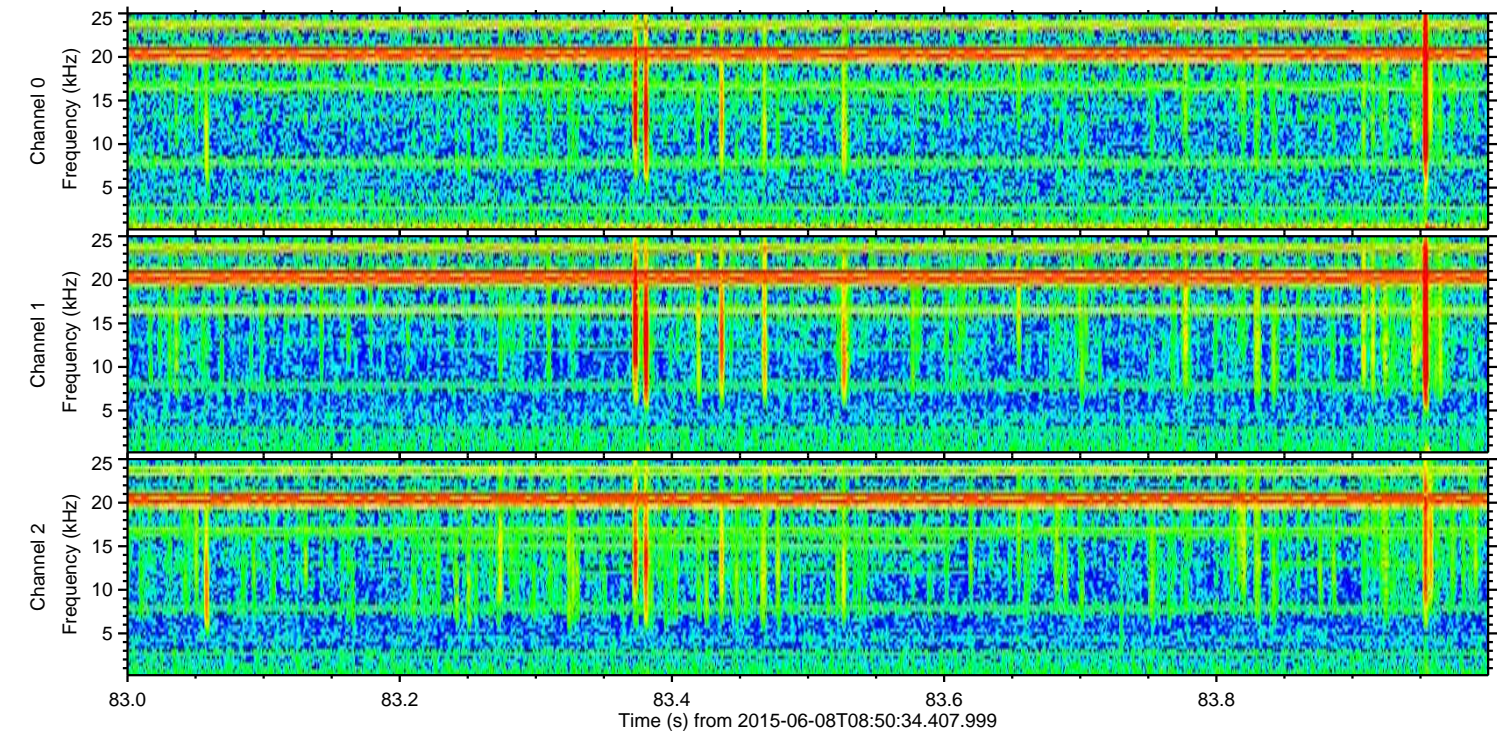
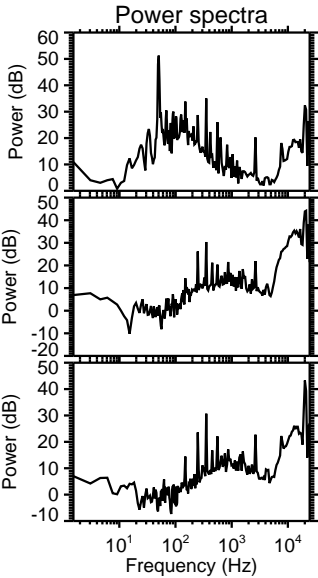
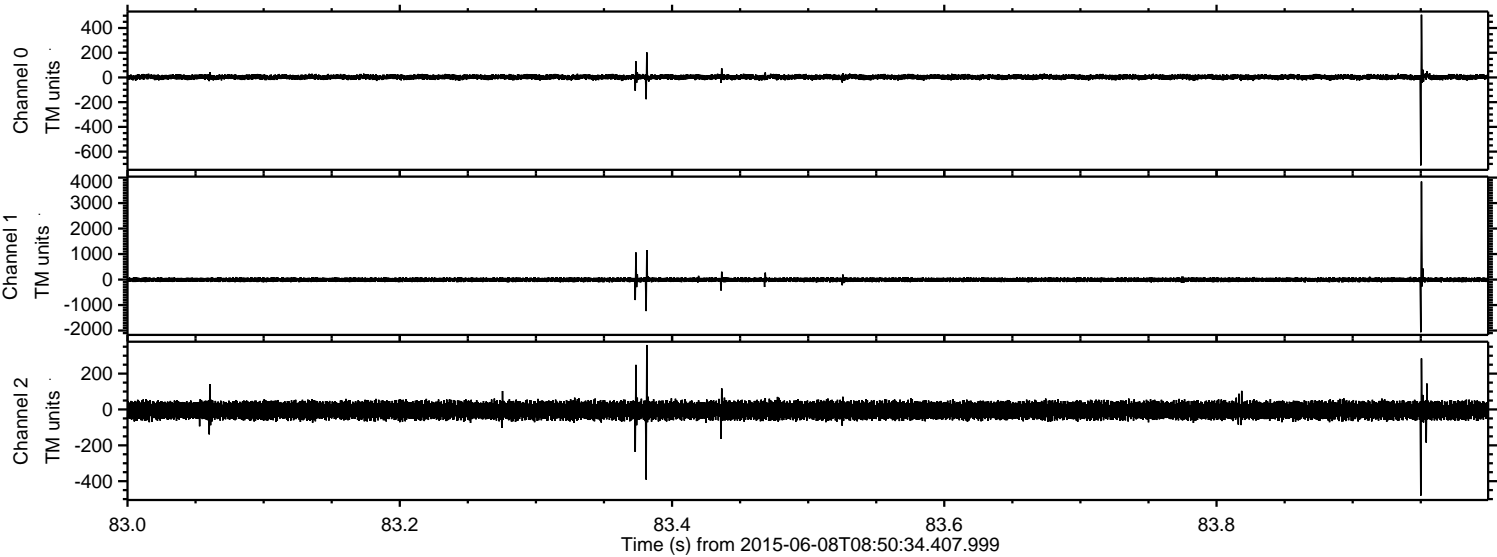
Processed Mon Jun 8 10:57:06 2015 by ELM ver.2012-10-06 from 001__elm20150608_085033__dat00.bin



Processed Mon Jun 8 10:57:07 2015 by ELM ver.2012-10-06 from 001__elm20150608_085033__dat00.bin



Processed Mon Jun 8 10:57:08 2015 by ELM ver.2012-10-06 from 001__elm20150608_085033__dat00.bin

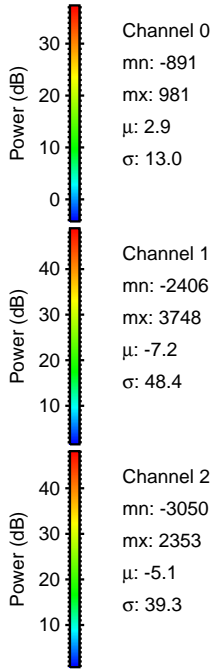
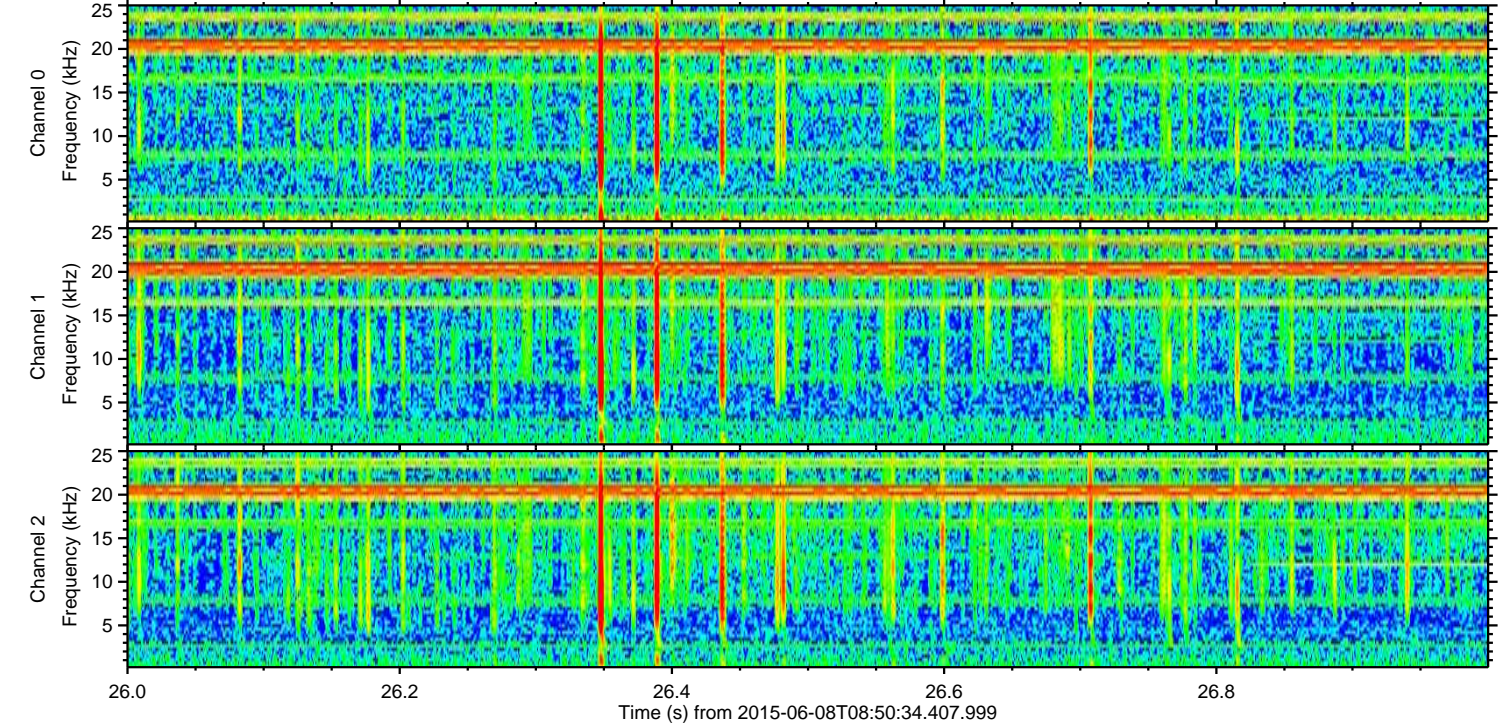
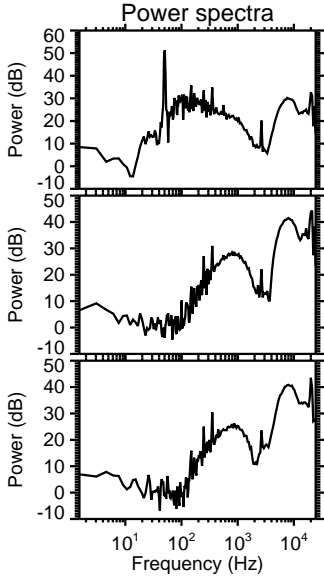
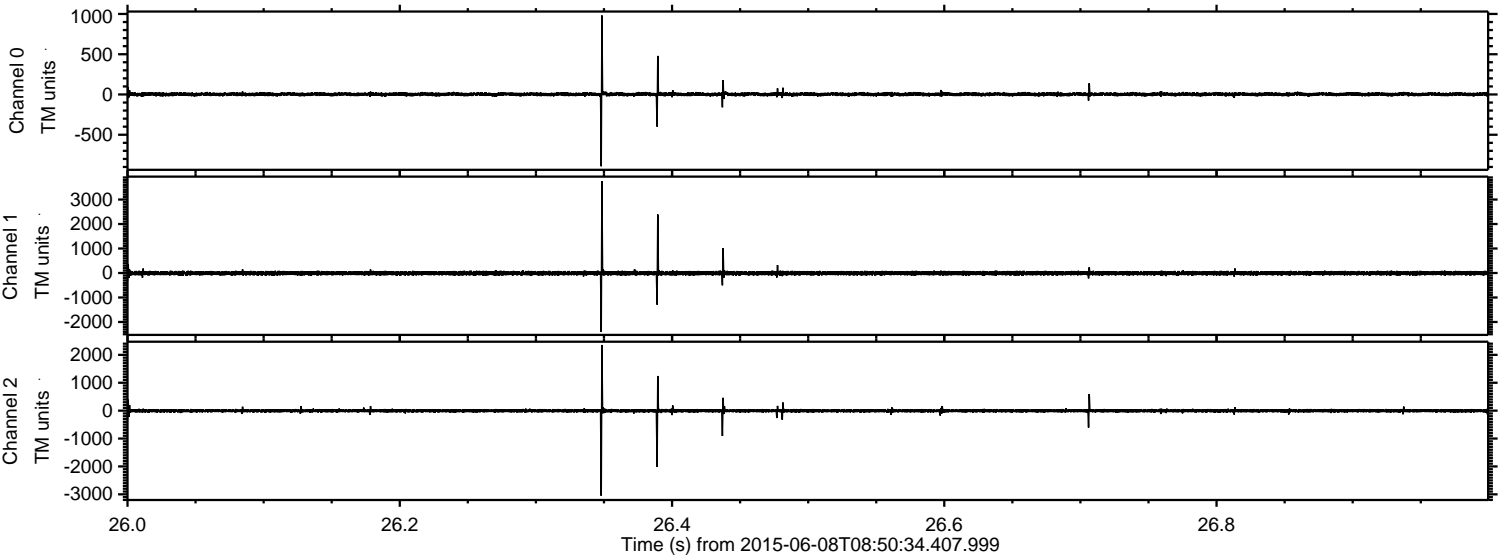


Channel 0
mn: -712
mx: 508
 μ : 2.9
 σ : 10.6

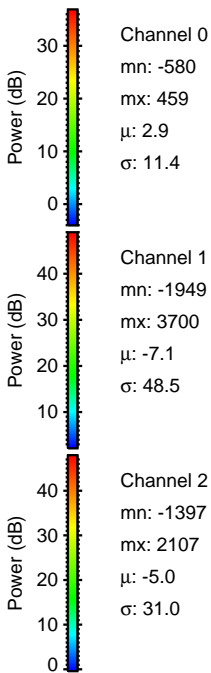
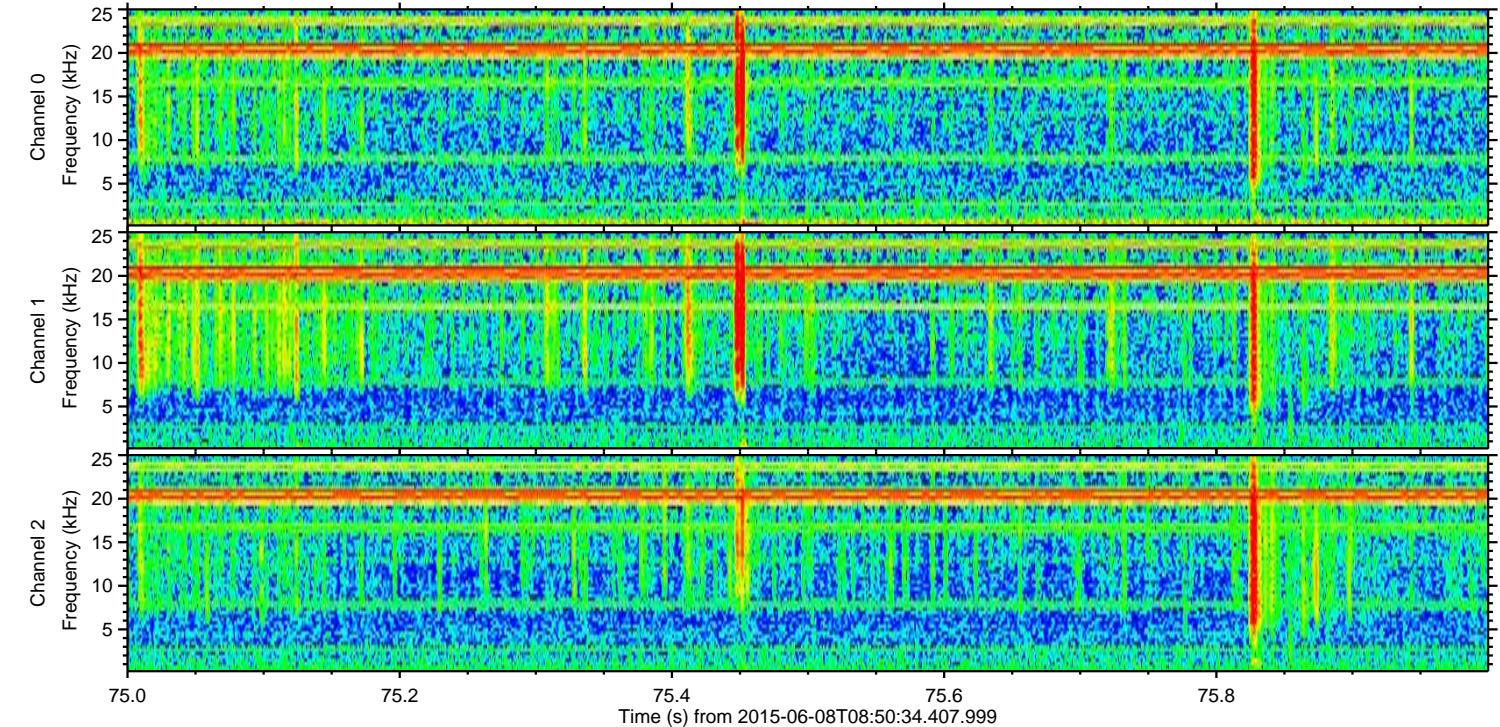
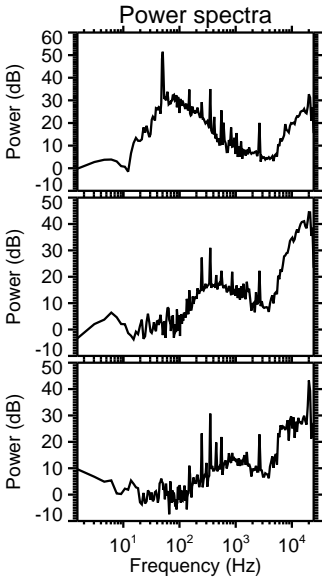
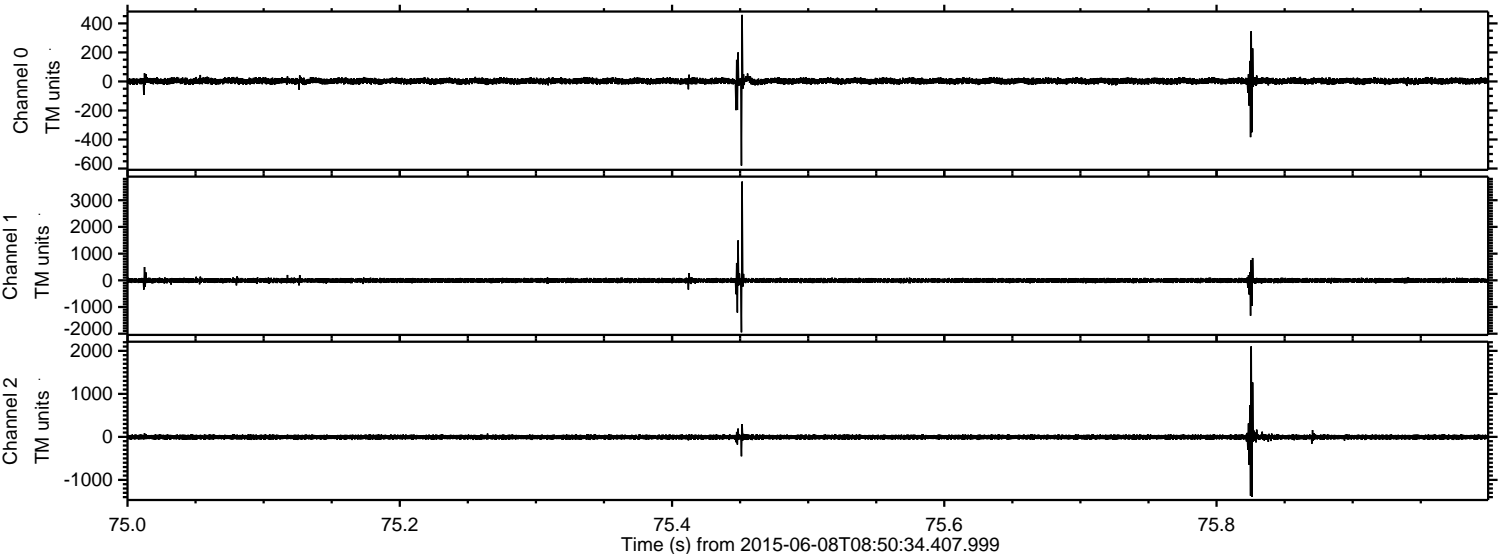
Channel 1
mn: -2068
mx: 3845
 μ : -7.1
 σ : 46.6

Channel 2
mn: -481
mx: 360
 μ : -5.0
 σ : 26.2

Processed Mon Jun 8 10:57:09 2015 by ELM ver.2012-10-06 from 001__elm20150608_085033__dat00.bin

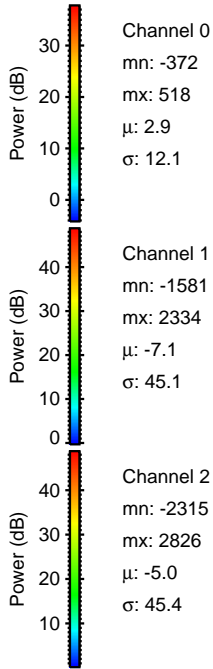
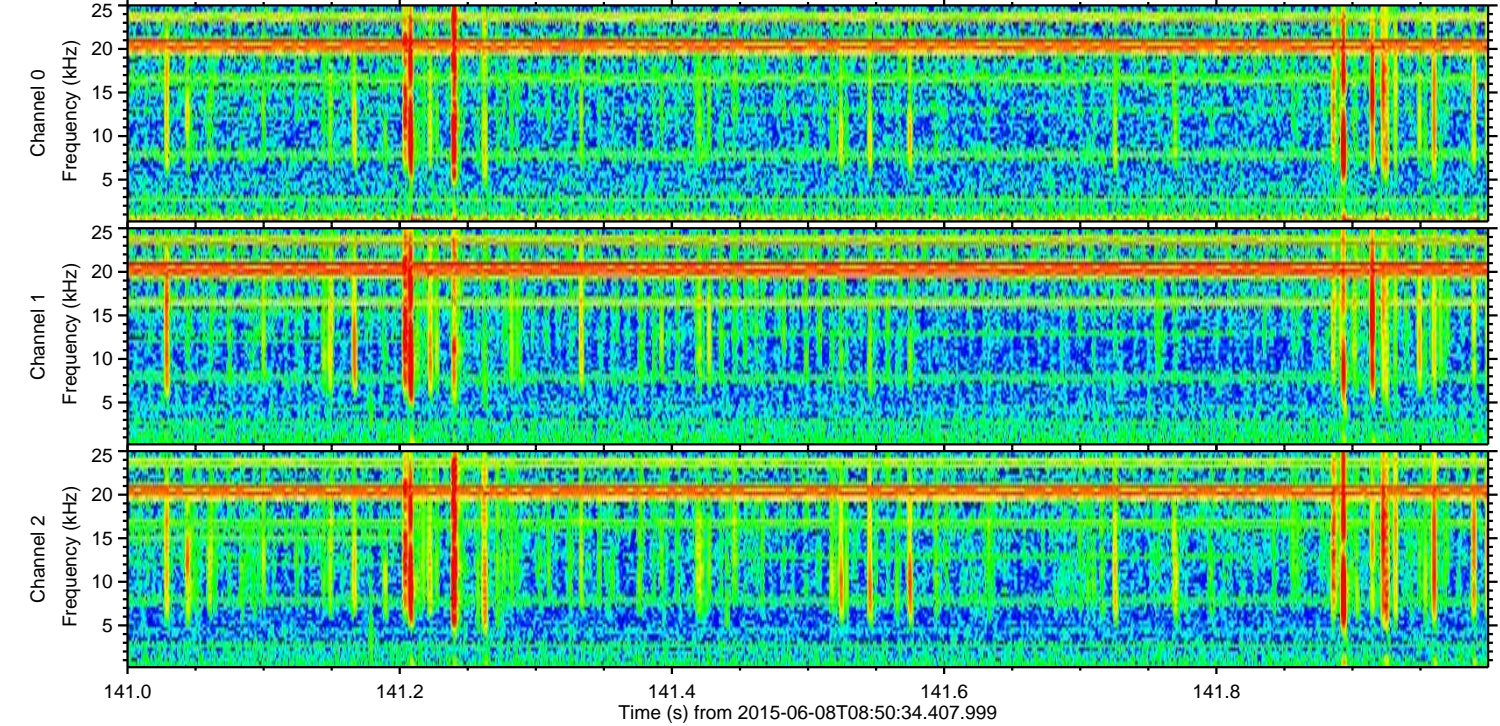
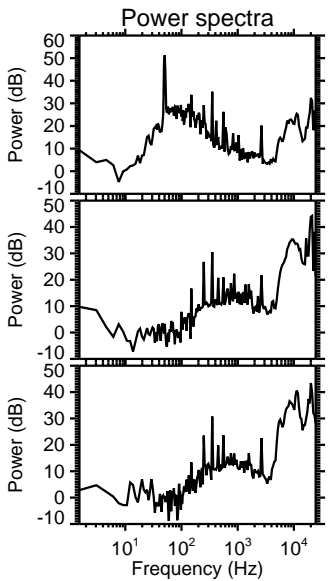
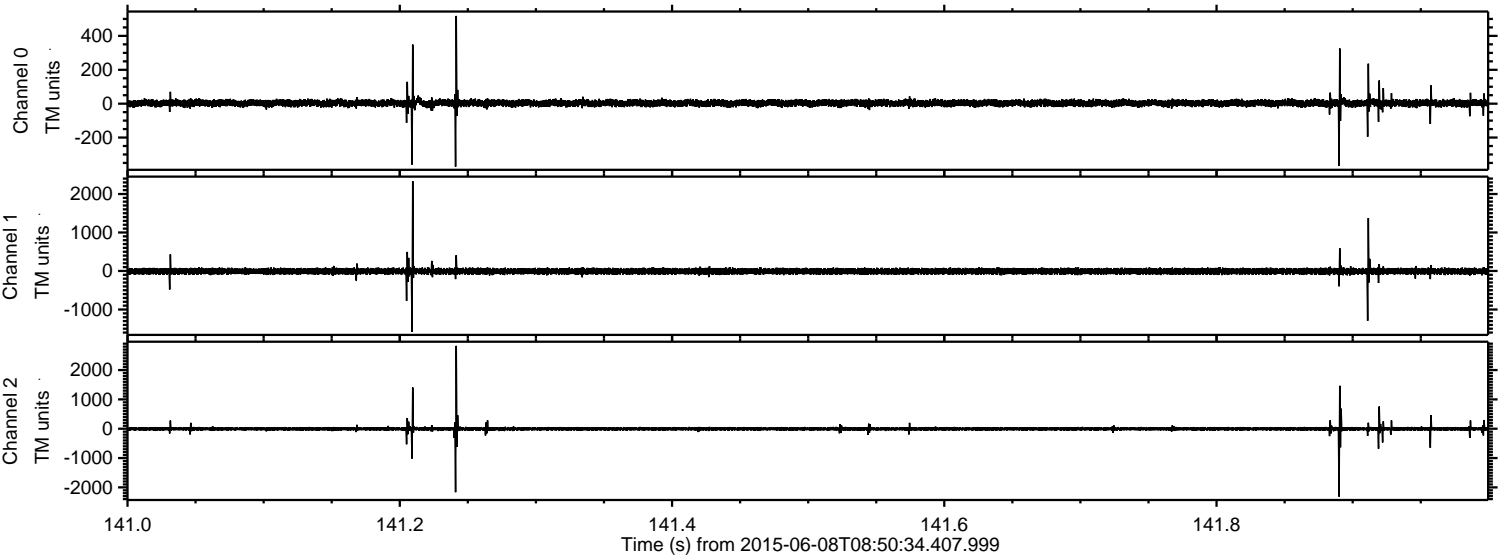


Processed Mon Jun 8 10:57:10 2015 by ELM ver.2012-10-06 from 001__elm20150608_085033__dat00.bin



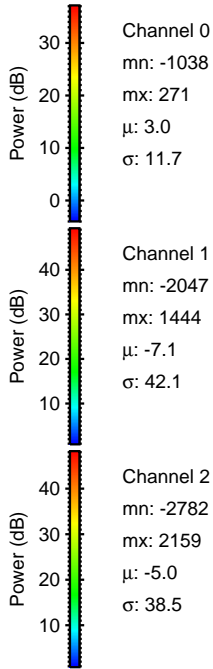
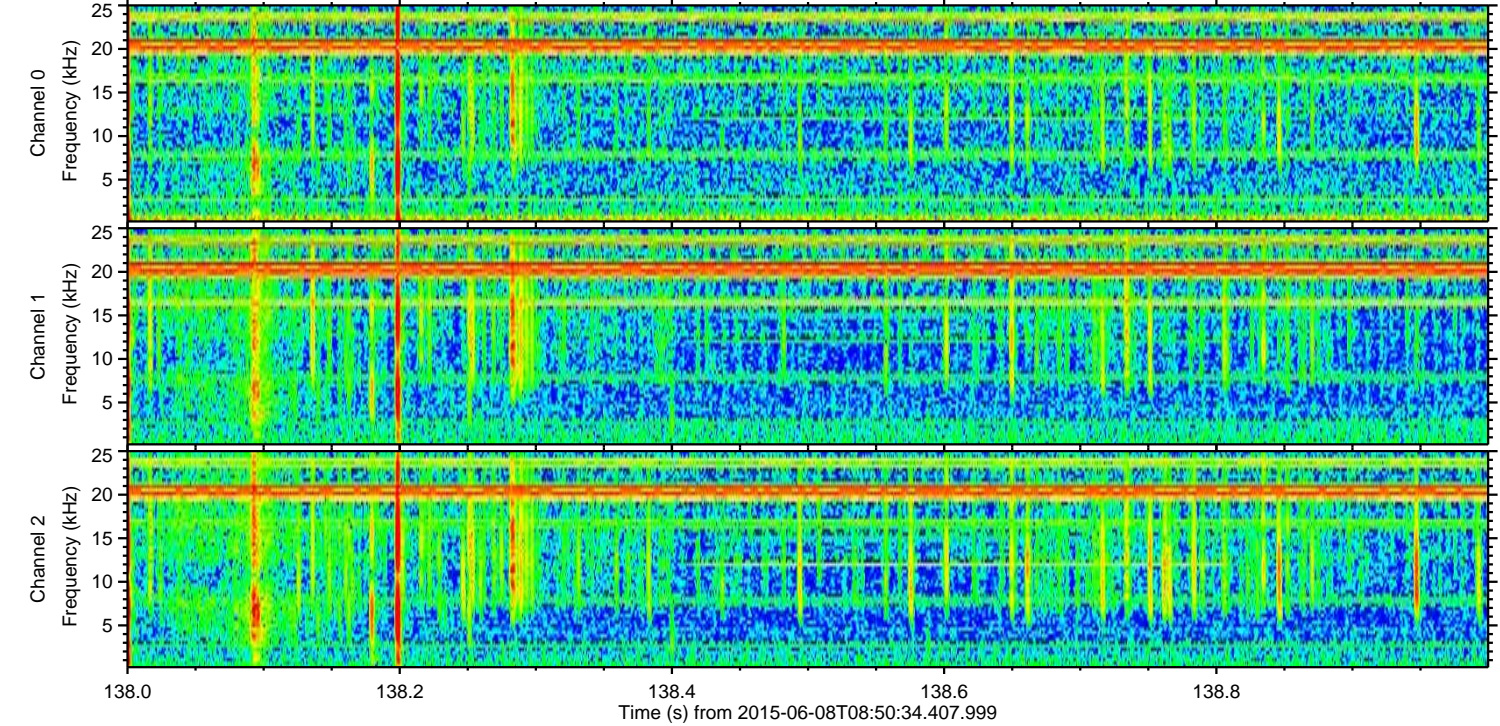
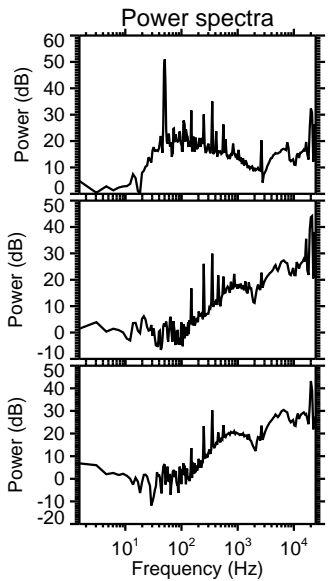
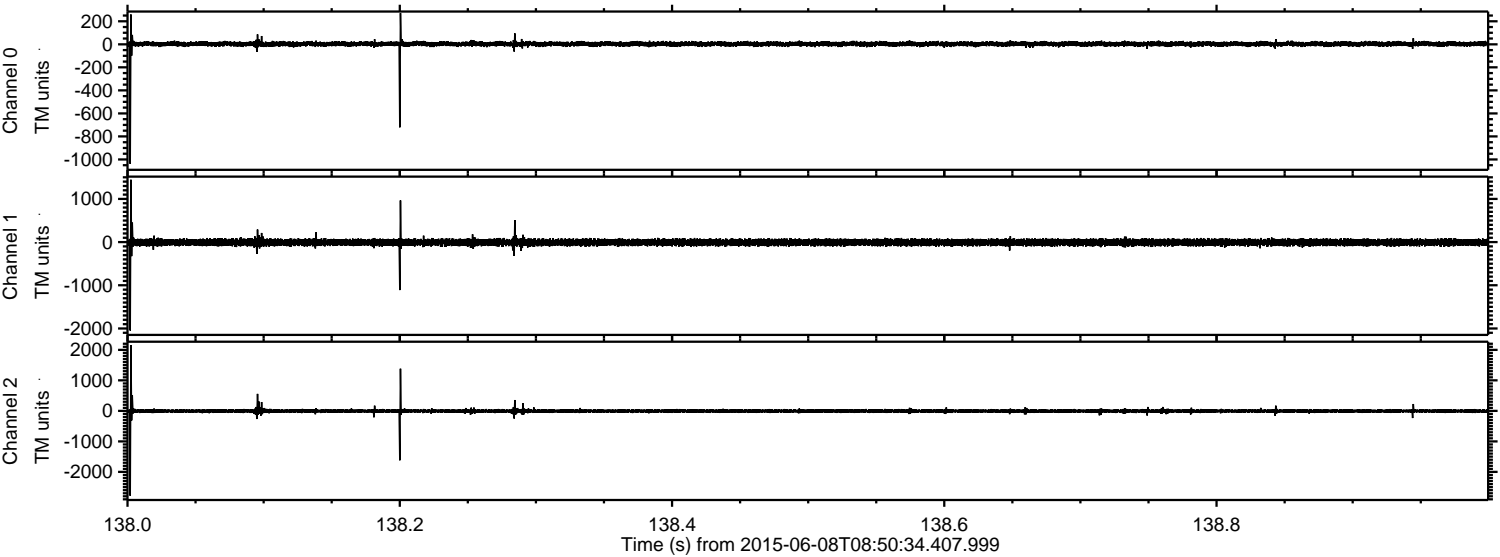
ELMAVAN 3D WAVEFORMS (Measured data sampled at 50 kHz) 51000 packets of 144 samples from 2015-06-08T08:50:34.407.999. Part 142/147

Processed Mon Jun 8 10:57:11 2015 by ELM ver.2012-10-06 from 001__elm20150608_085033__dat00.bin

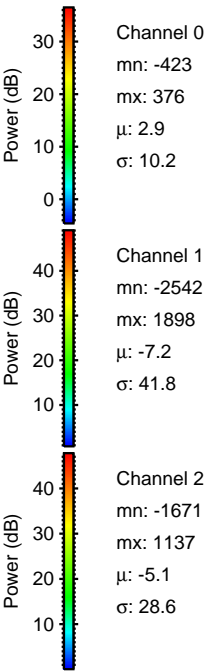
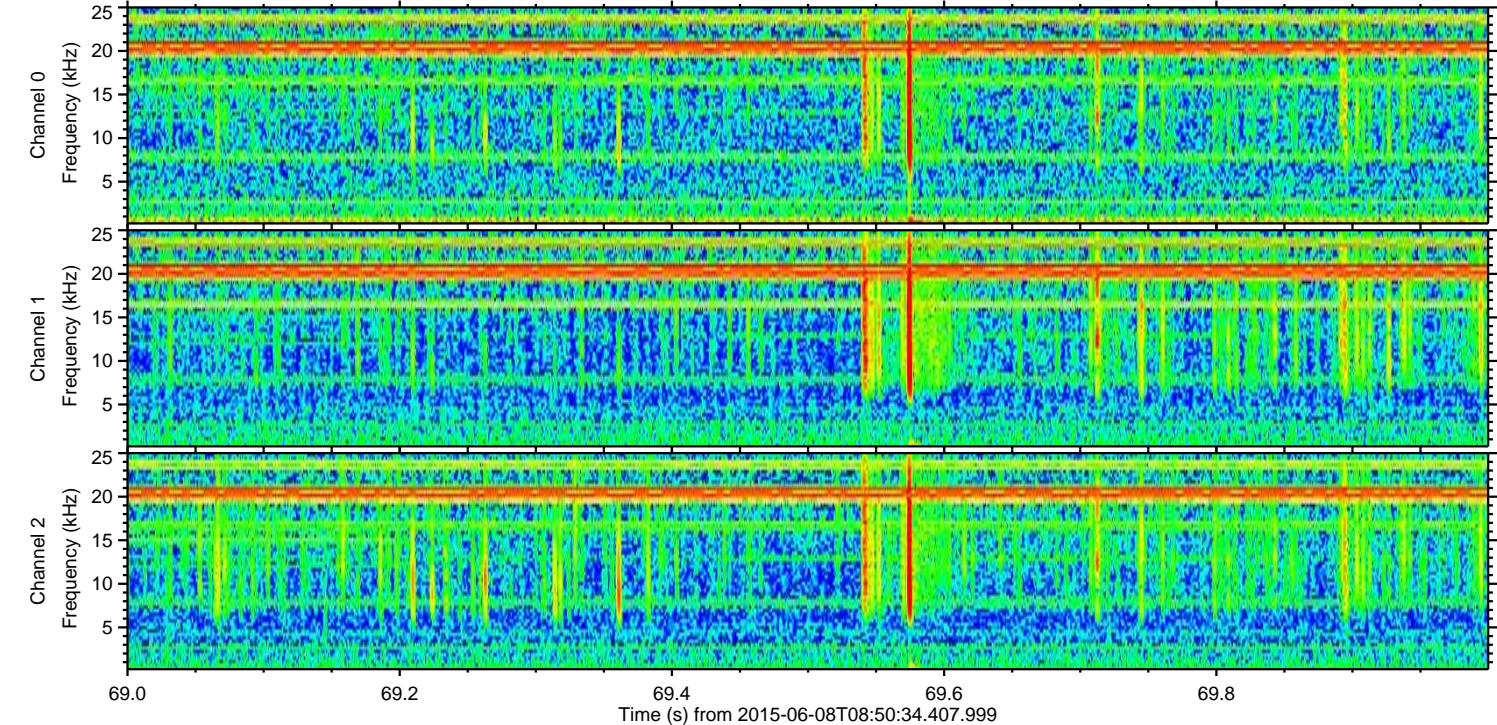
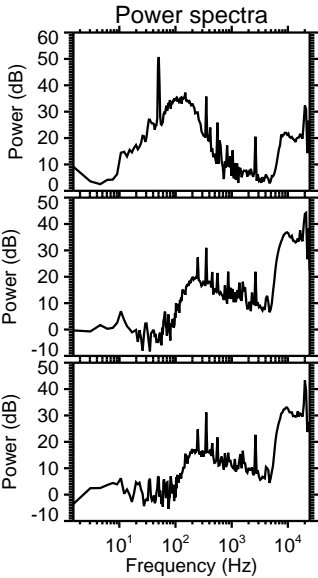
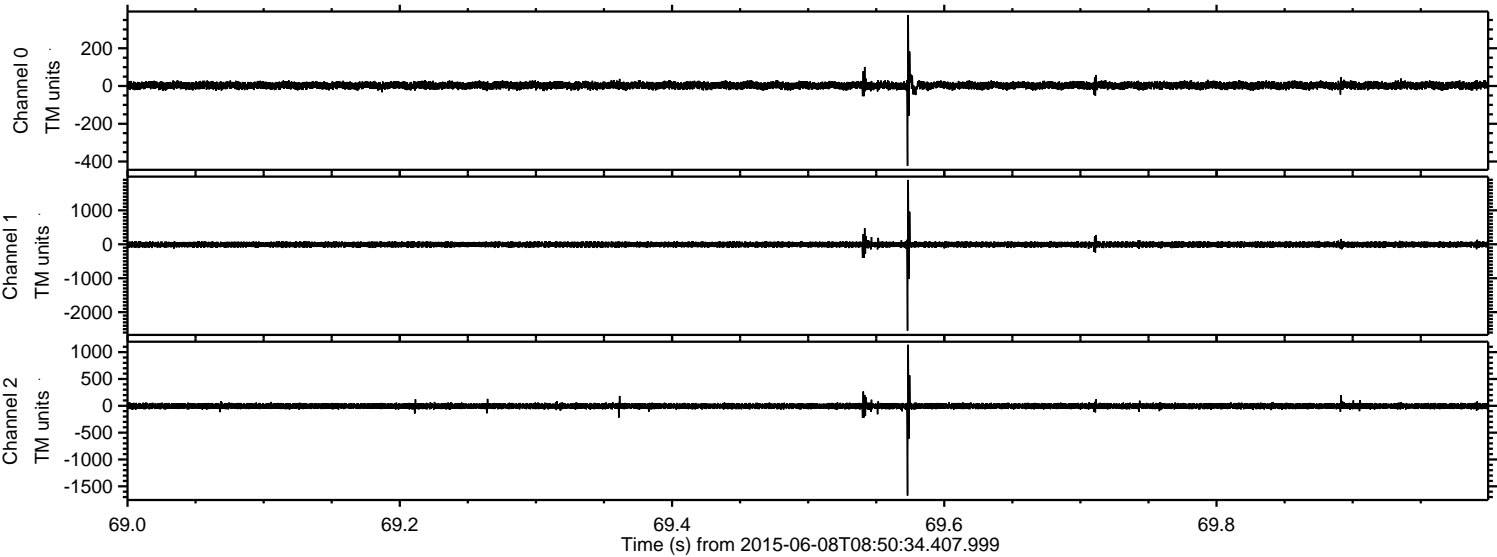


ELMAVAN 3D WAVEFORMS (Measured data sampled at 50 kHz) 51000 packets of 144 samples from 2015-06-08T08:50:34.407.999. Part 139/147

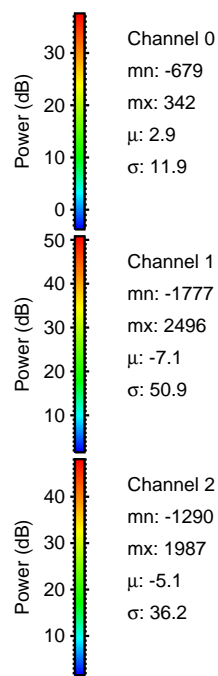
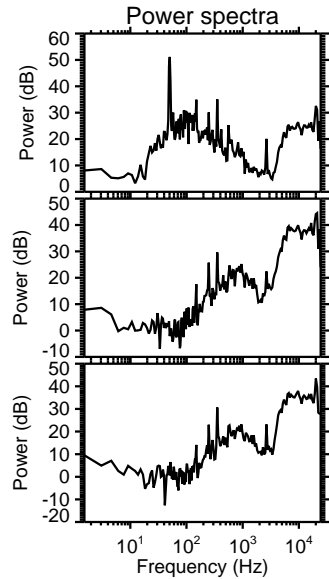
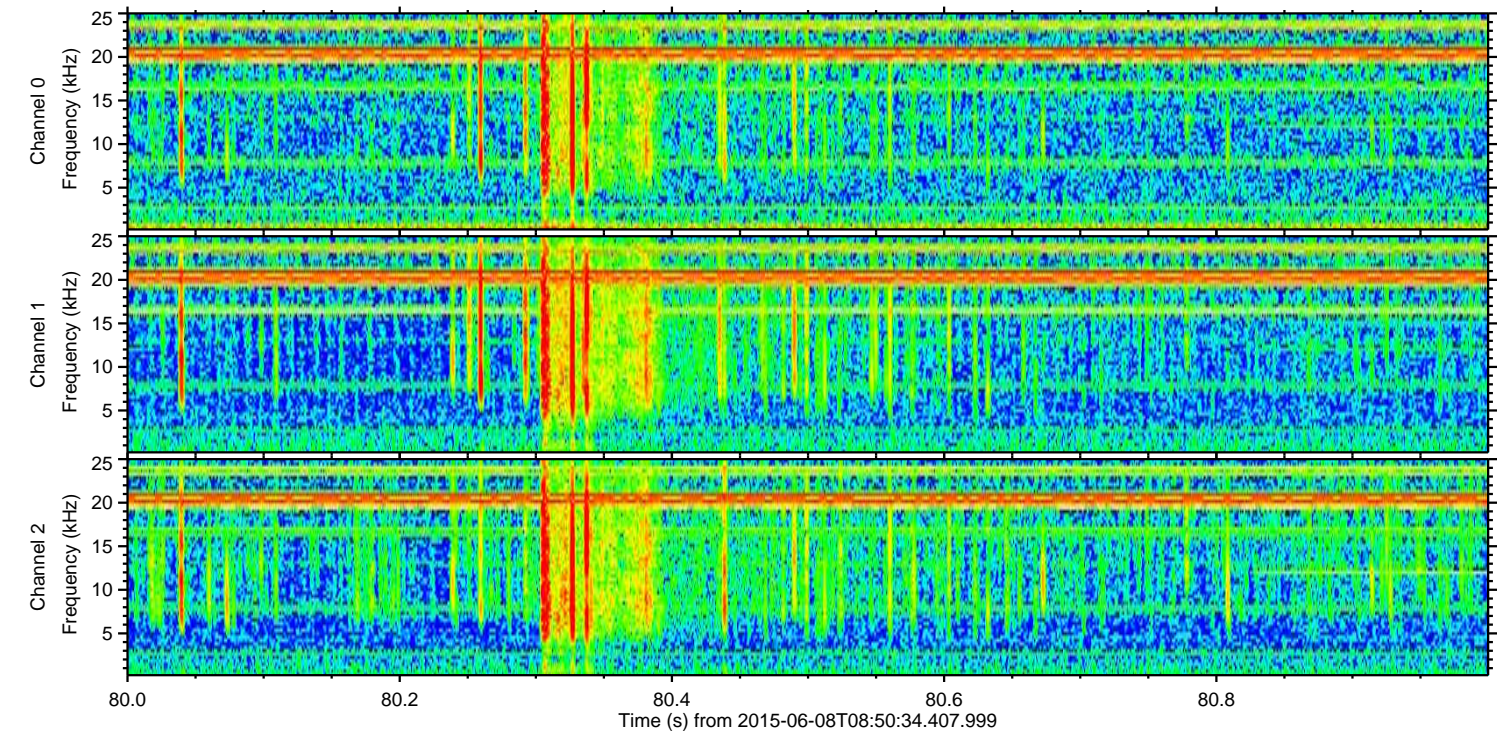
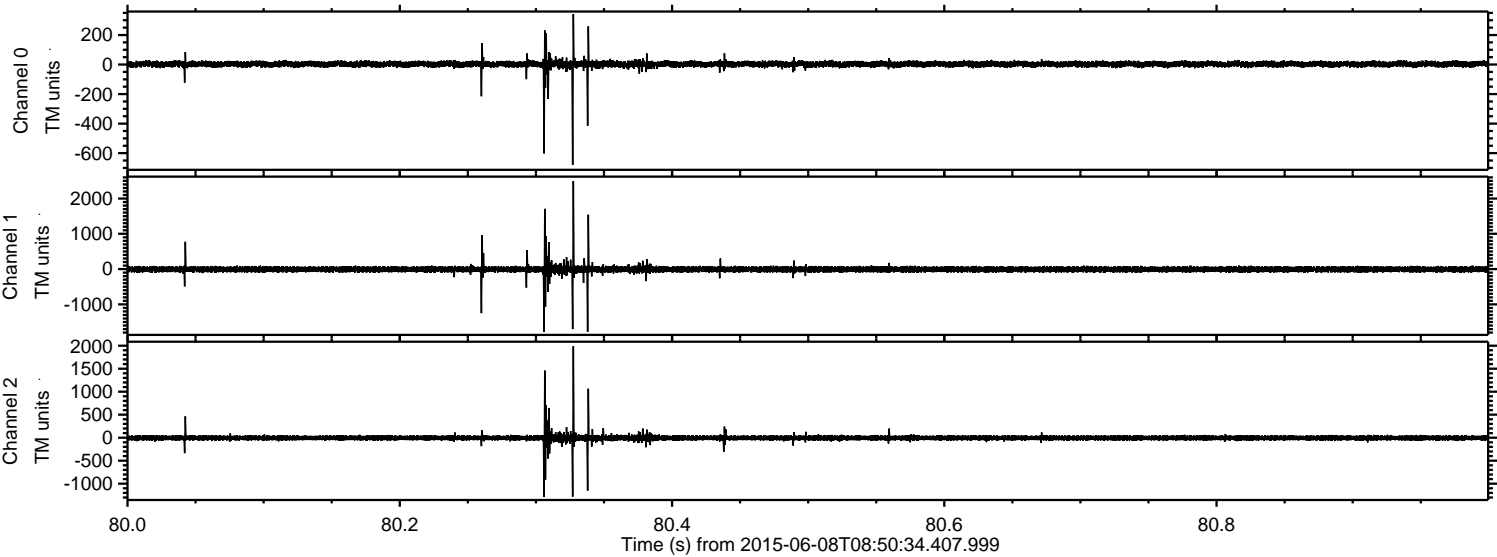
Processed Mon Jun 8 10:57:12 2015 by ELM ver.2012-10-06 from 001__elm20150608_085033__dat00.bin



Processed Mon Jun 8 10:57:13 2015 by ELM ver.2012-10-06 from 001__elm20150608_085033__dat00.bin



Processed Mon Jun 8 10:57:14 2015 by ELM ver.2012-10-06 from 001__elm20150608_085033__dat00.bin



Channel 0
mn: -679
mx: 342
 μ : 2.9
 σ : 11.9

Channel 1
mn: -1777
mx: 2496
 μ : -7.1
 σ : 50.9

Channel 2
mn: -1290
mx: 1987
 μ : -5.1
 σ : 36.2

