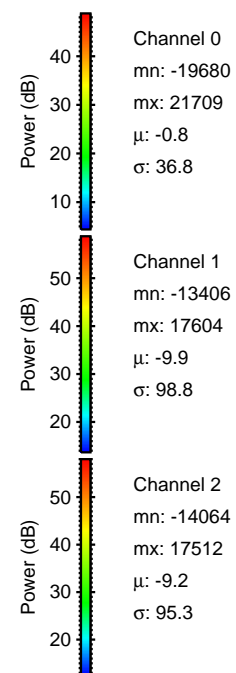
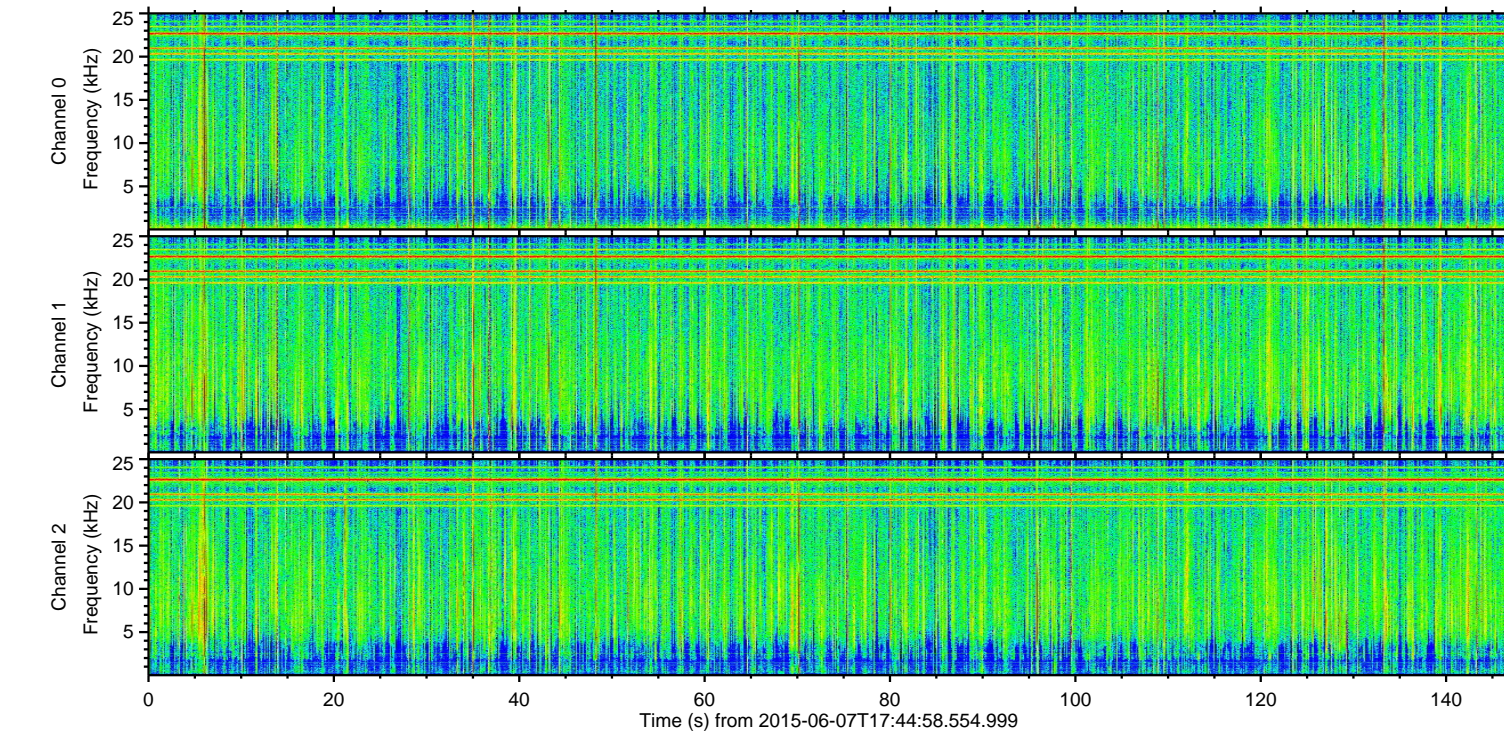
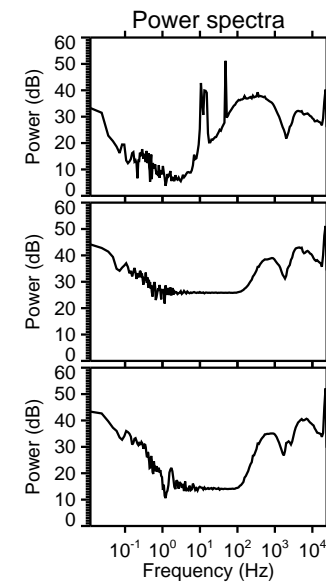
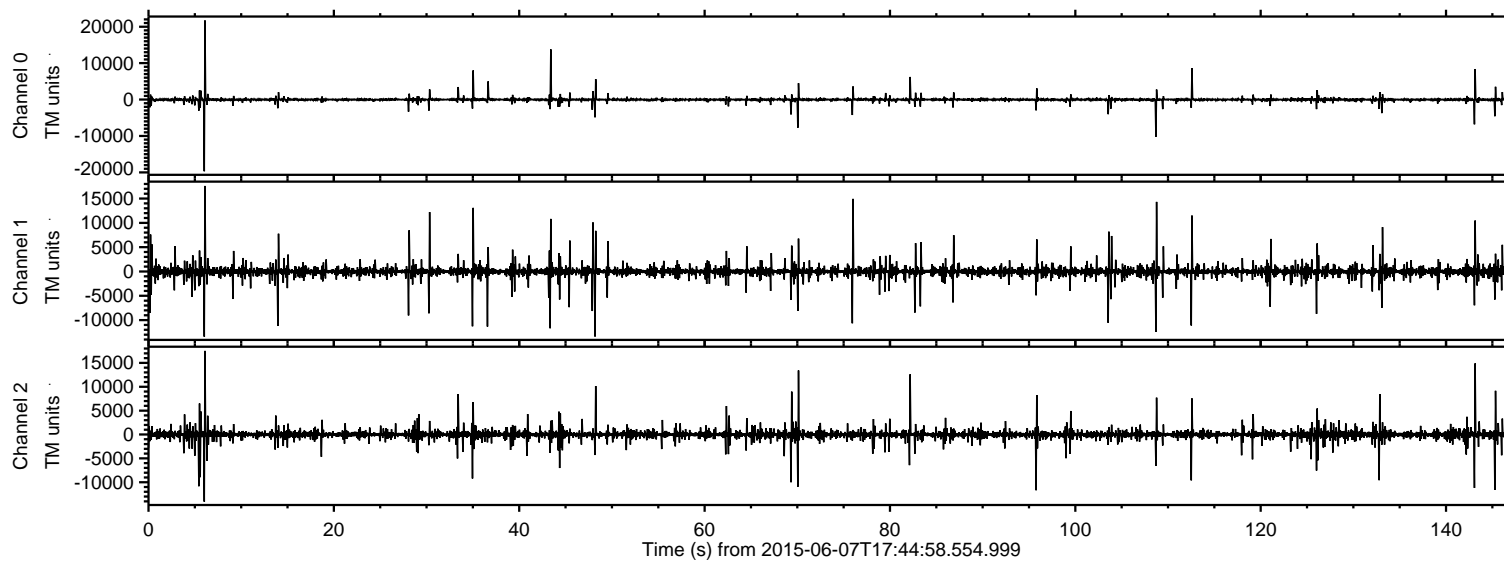


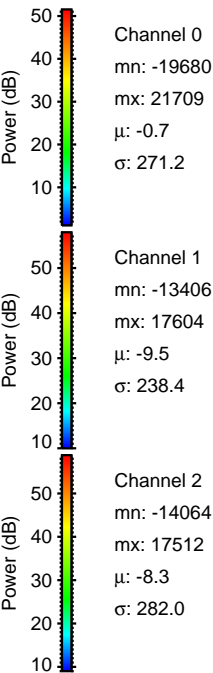
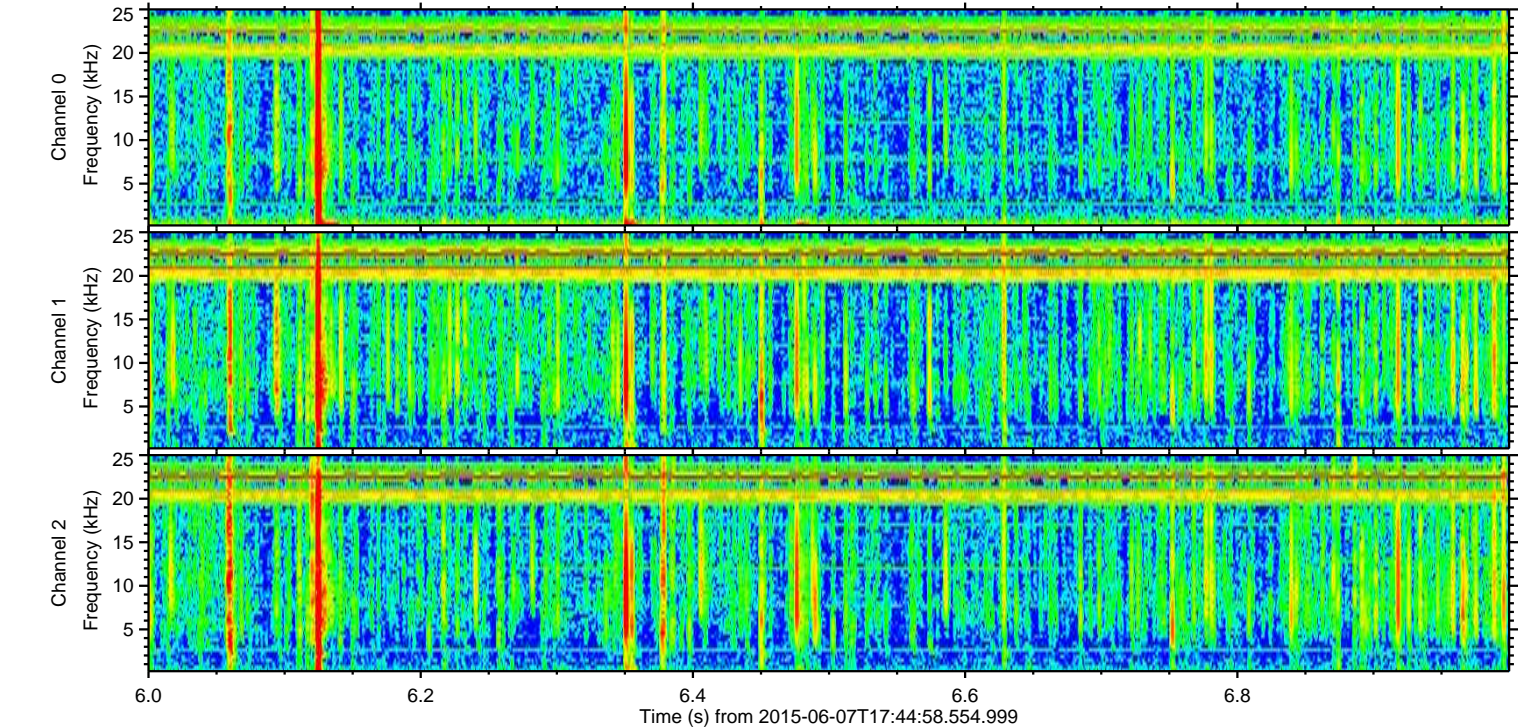
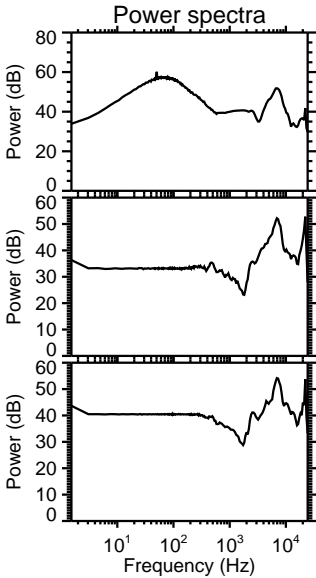
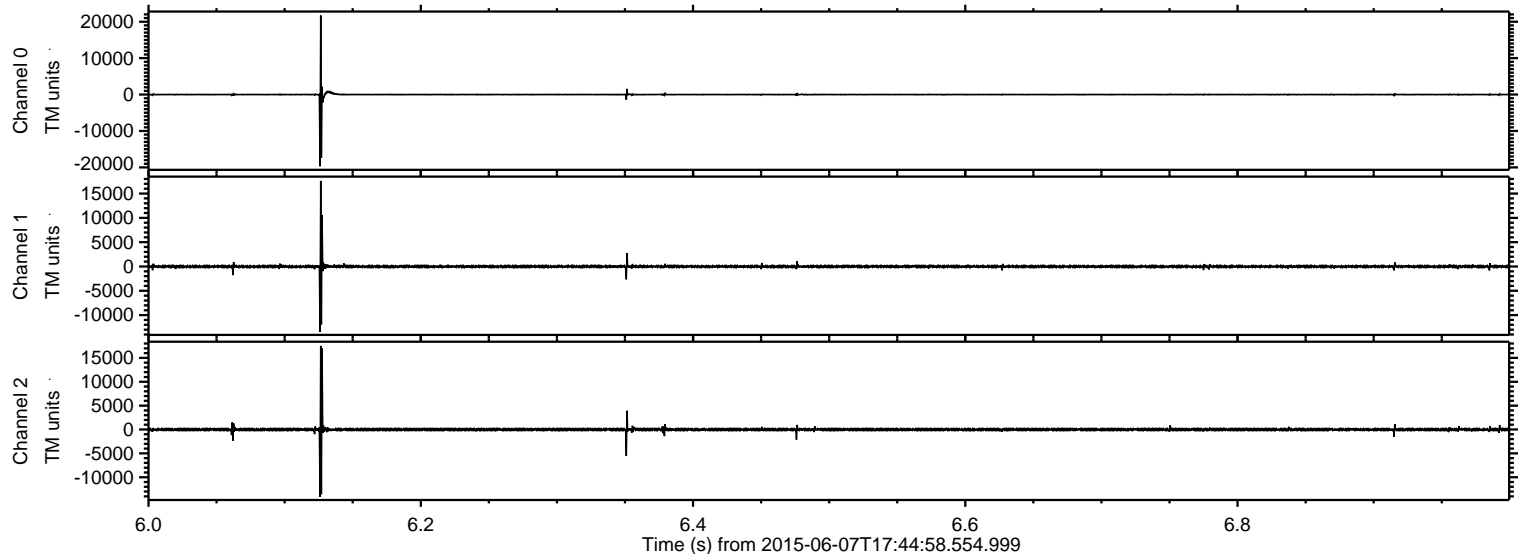
ELMAVAN 3D WAVEFORMS (Measured data sampled at 50 kHz) 51000 packets of 144 samples from 2015-06-07T17:44:58.554.999.

Processed Sun Jun 7 19:51:39 2015 by ELM ver.2012-10-06 from 001__elm20150607_174457__dat00.bin



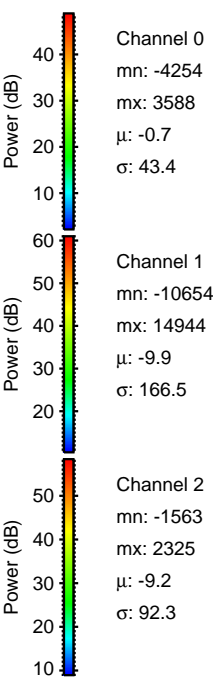
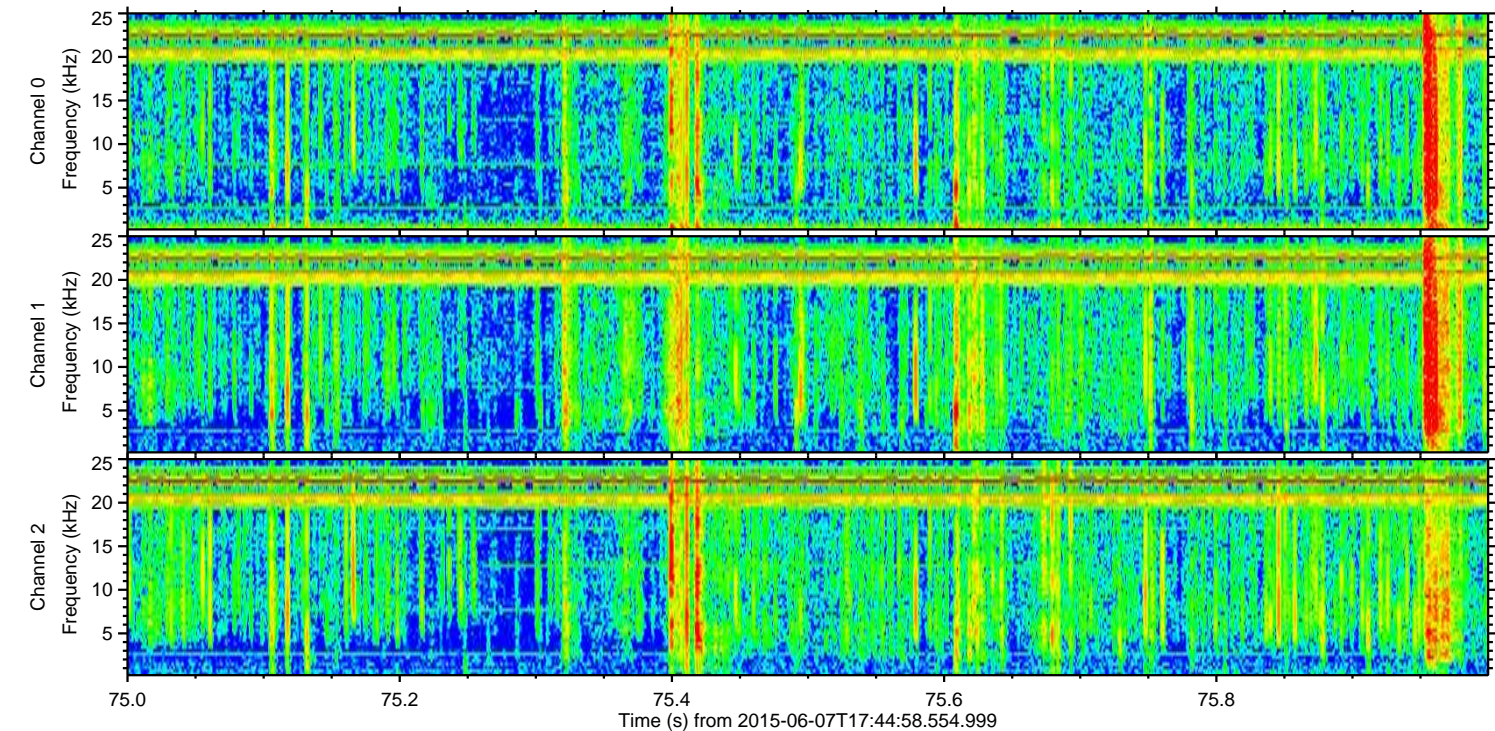
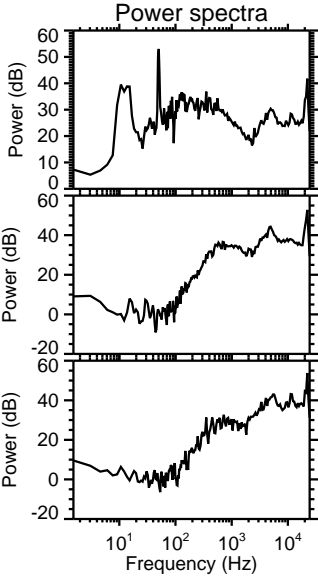
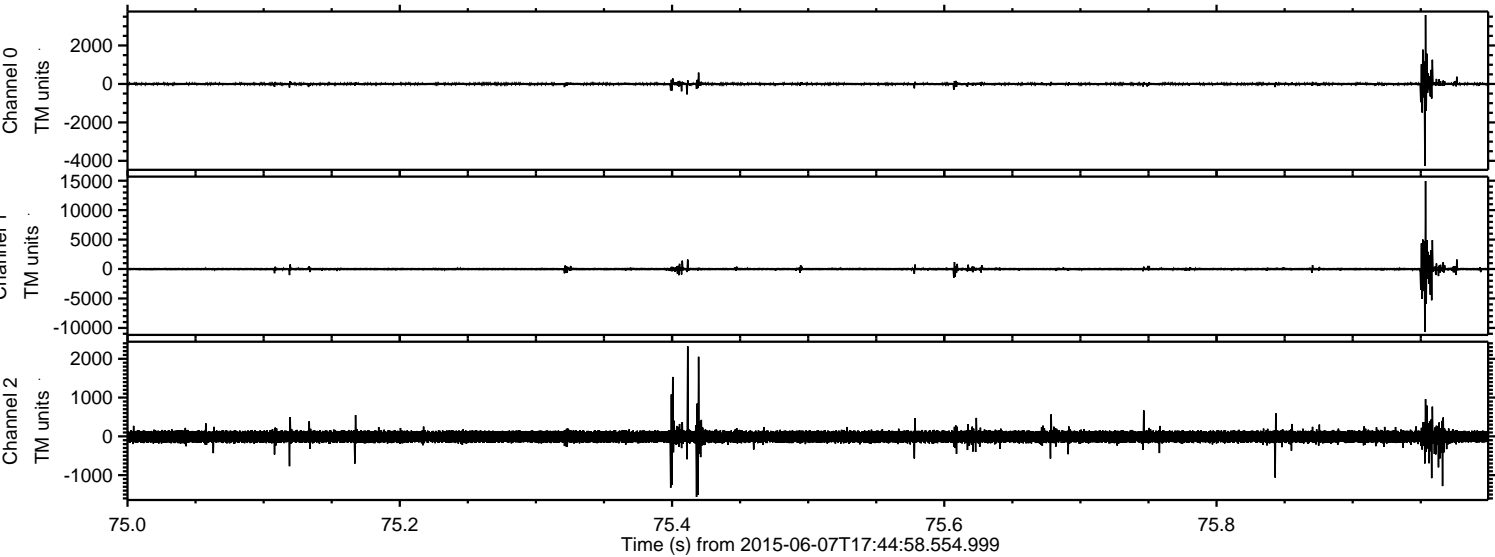
ELMAVAN 3D WAVEFORMS (Measured data sampled at 50 kHz) 51000 packets of 144 samples from 2015-06-07T17:44:58.554.999. Part 7/147

Processed Sun Jun 7 19:51:50 2015 by ELM ver.2012-10-06 from 001__elm20150607_174457__dat00.bin



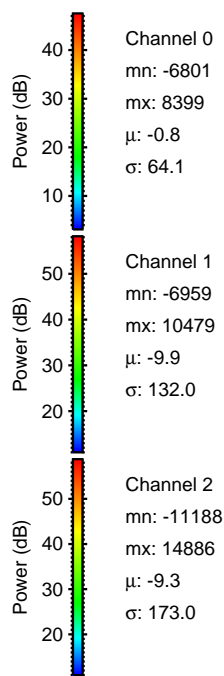
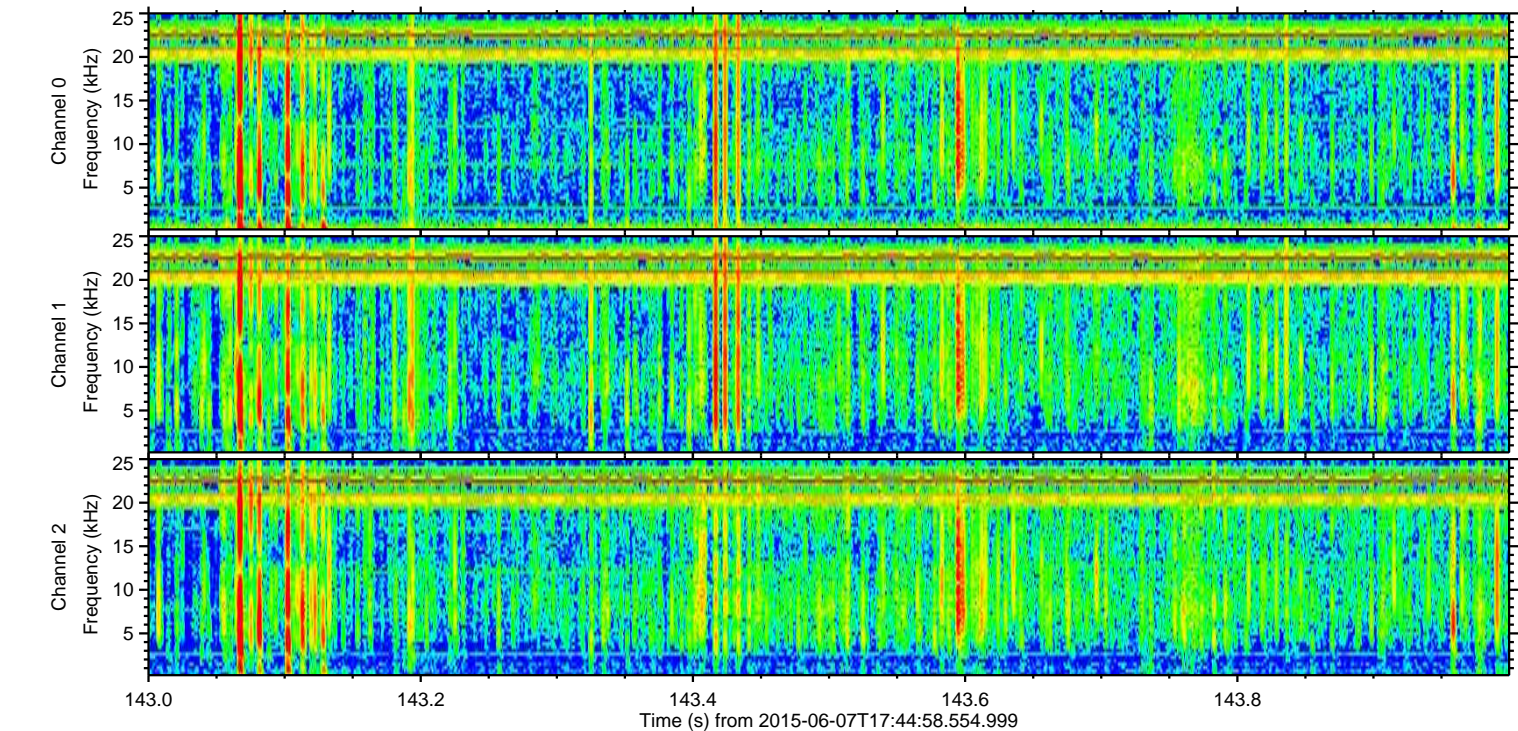
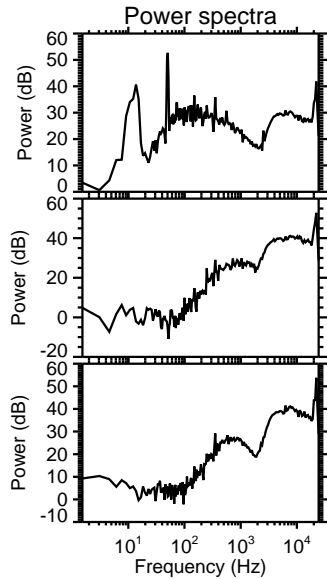
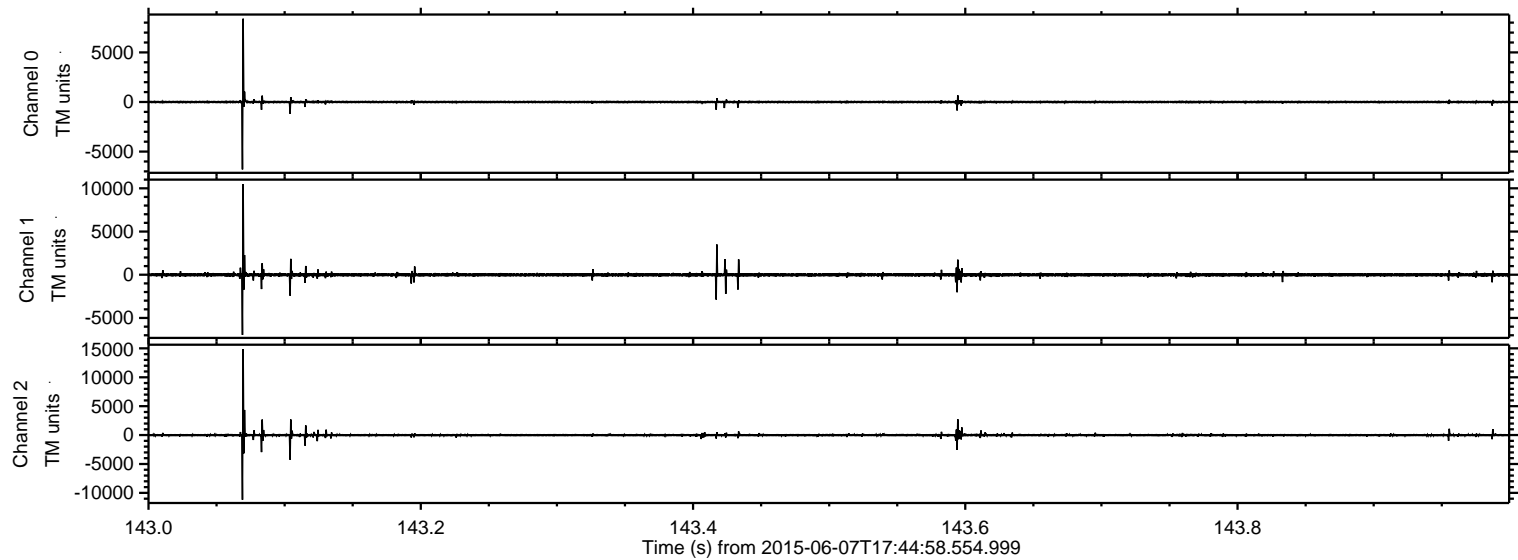
ELMAVAN 3D WAVEFORMS (Measured data sampled at 50 kHz) 51000 packets of 144 samples from 2015-06-07T17:44:58.554.999. Part 76/147

Processed Sun Jun 7 19:51:51 2015 by ELM ver.2012-10-06 from 001__elm20150607_174457__dat00.bin



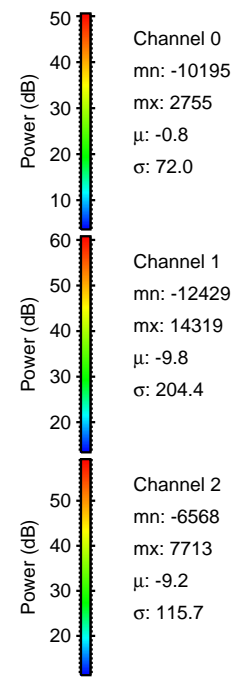
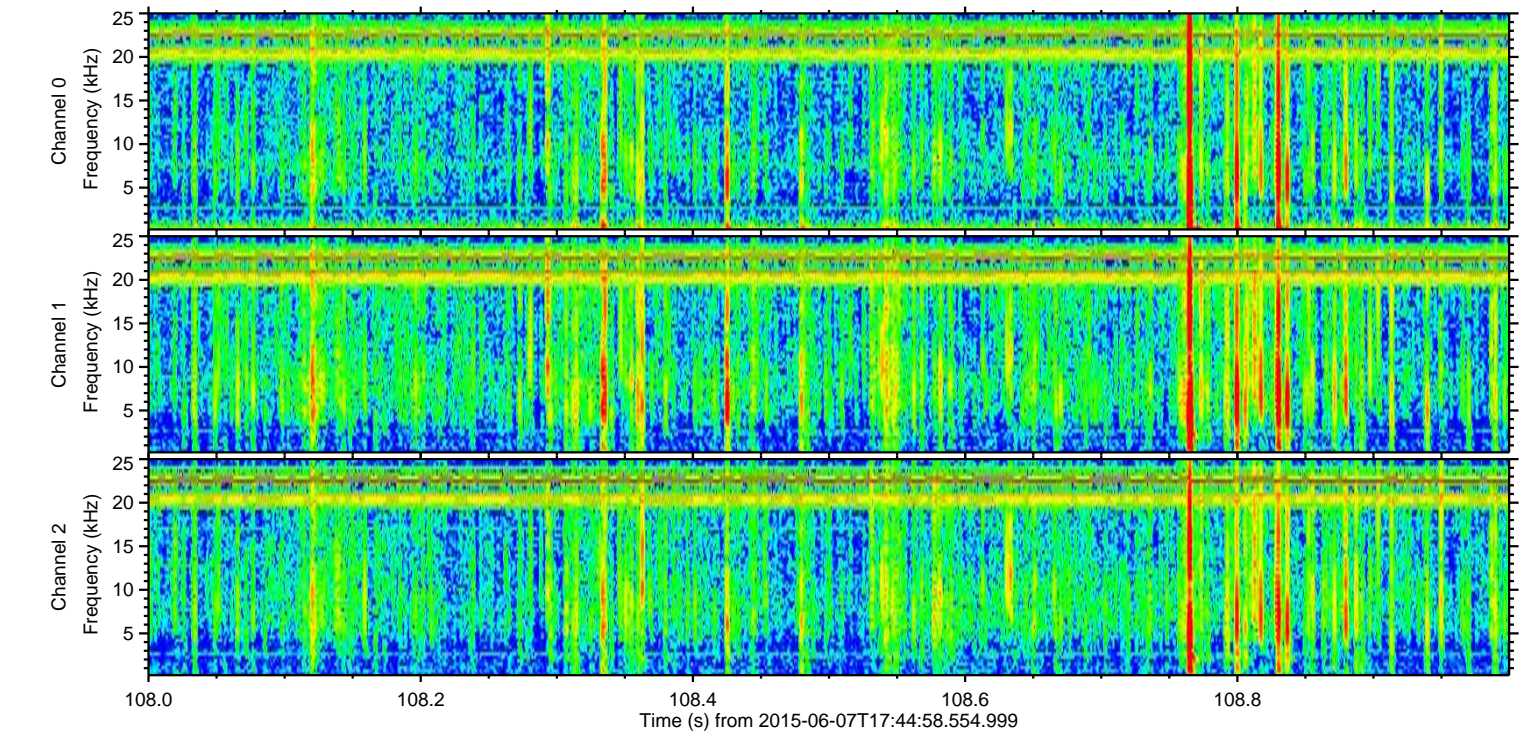
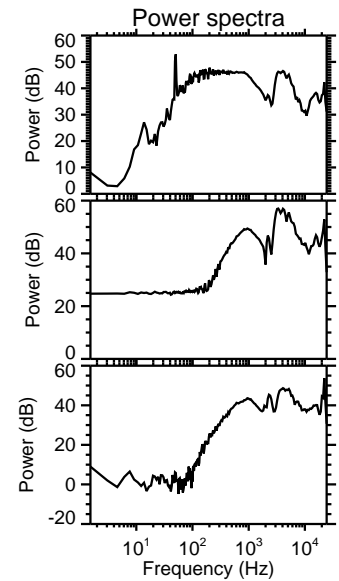
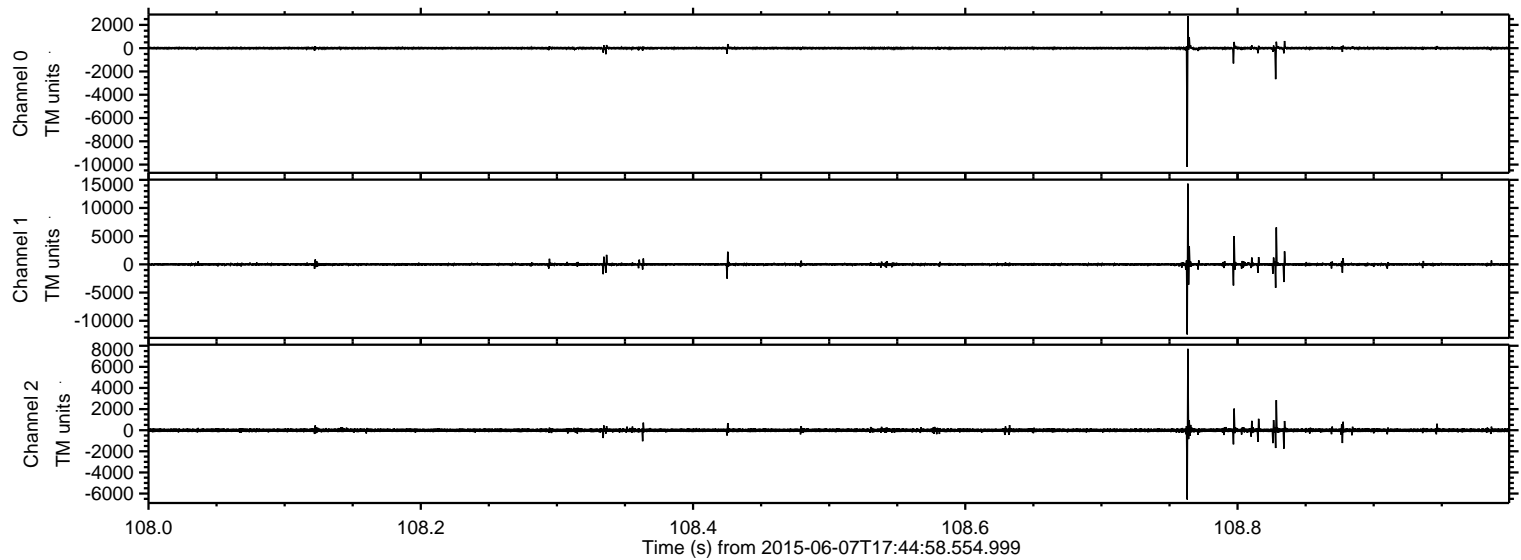
ELMAVAN 3D WAVEFORMS (Measured data sampled at 50 kHz) 51000 packets of 144 samples from 2015-06-07T17:44:58.554.999. Part 144/147

Processed Sun Jun 7 19:51:52 2015 by ELM ver.2012-10-06 from 001__elm20150607_174457__dat00.bin



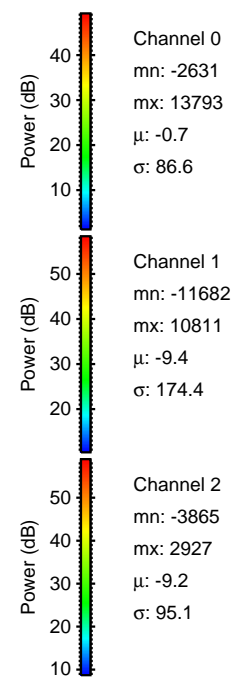
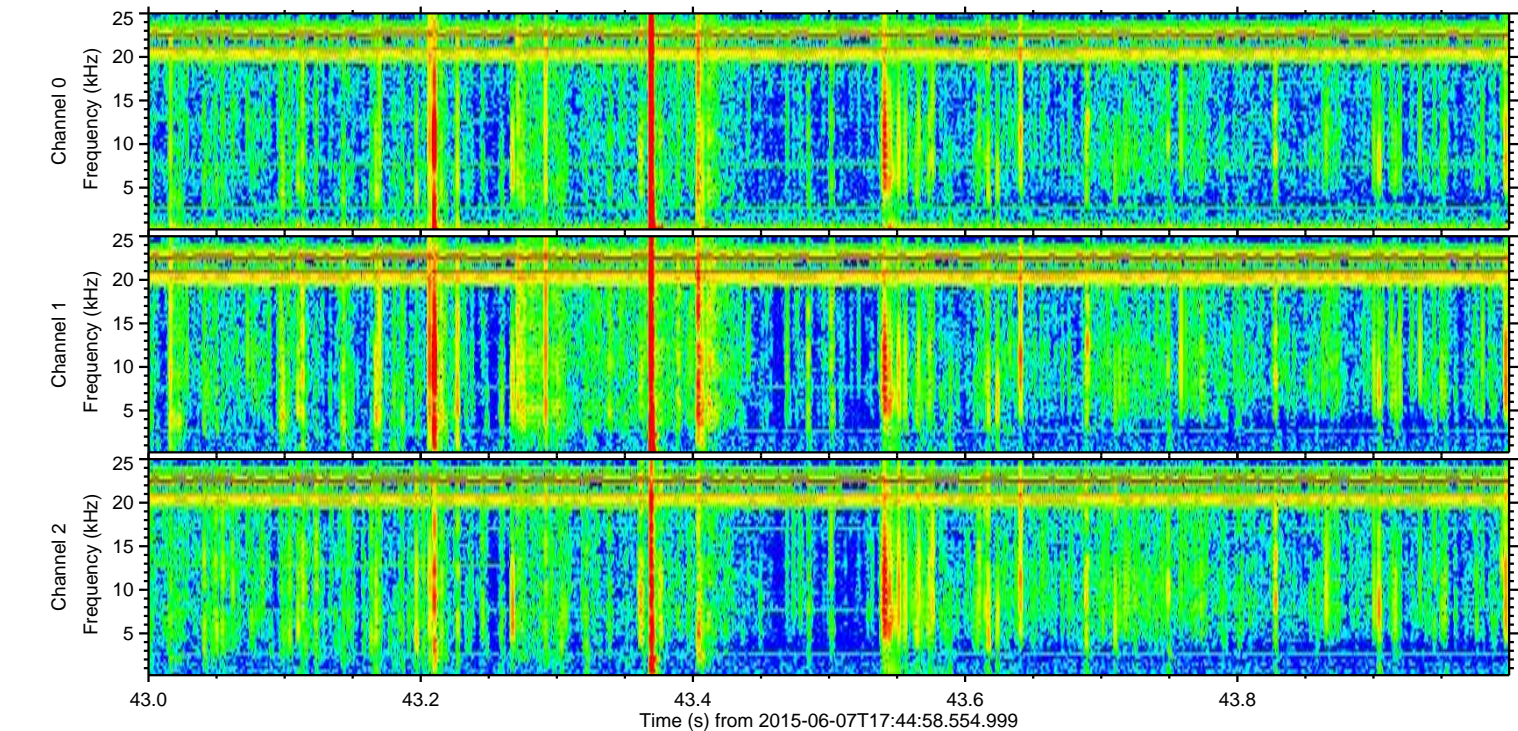
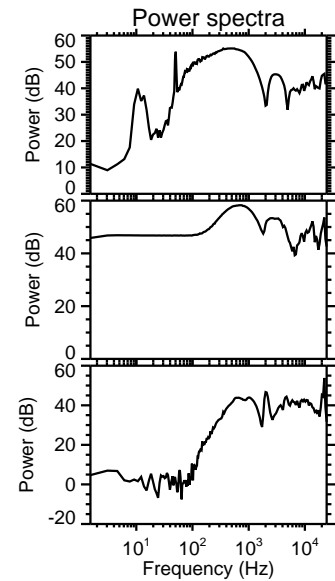
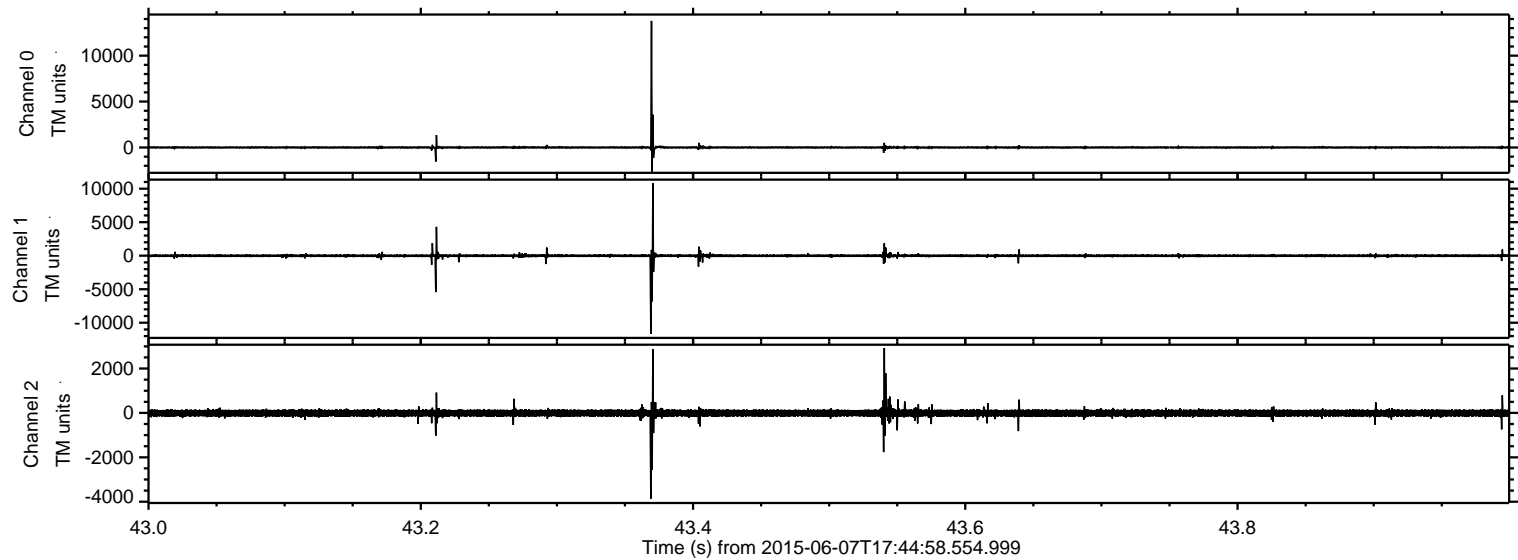
ELMAVAN 3D WAVEFORMS (Measured data sampled at 50 kHz) 51000 packets of 144 samples from 2015-06-07T17:44:58.554.999. Part 109/147

Processed Sun Jun 7 19:51:53 2015 by ELM ver.2012-10-06 from 001__elm20150607_174457__dat00.bin

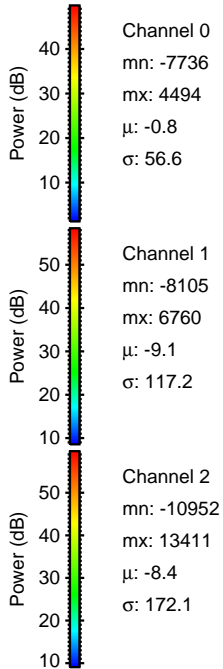
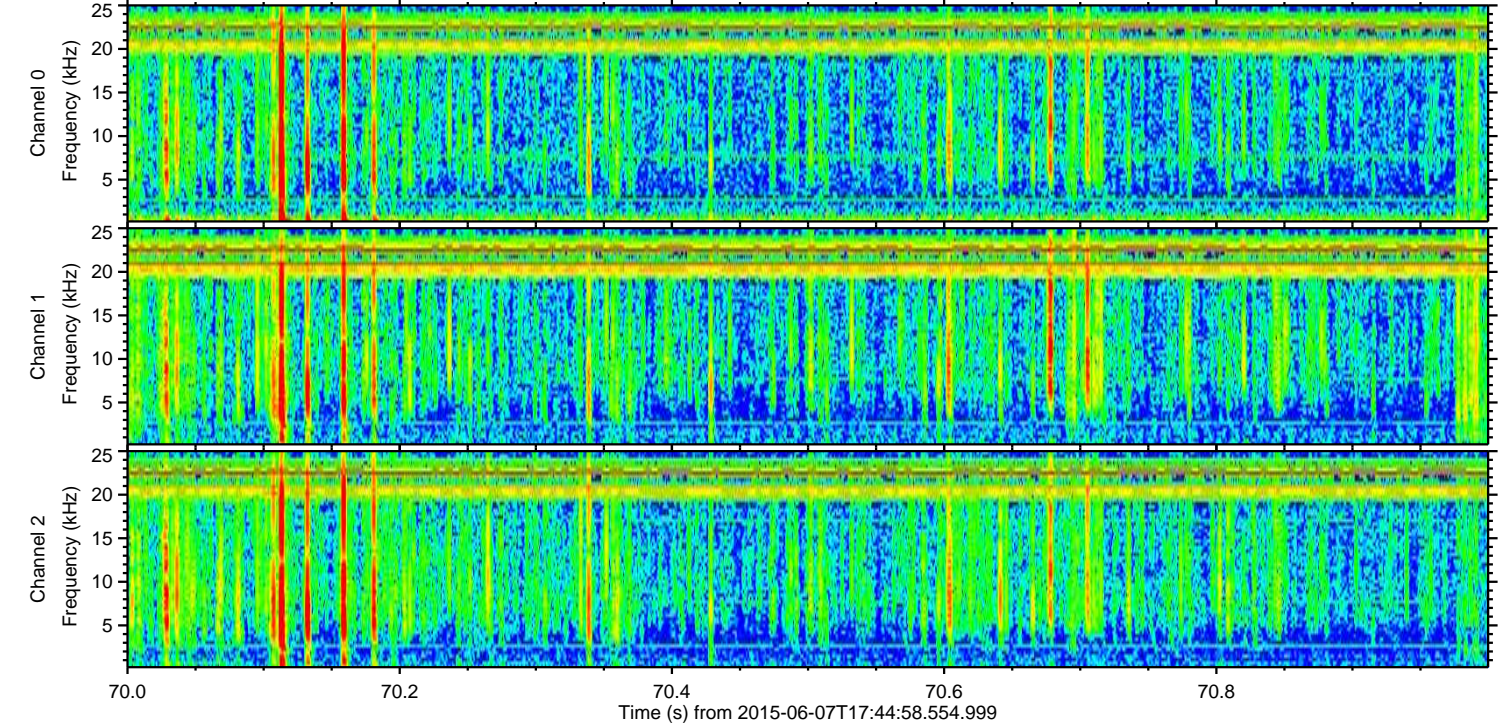
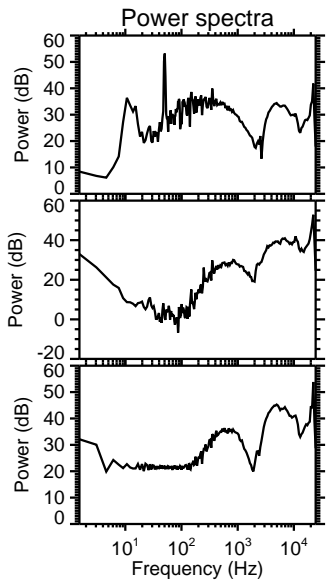
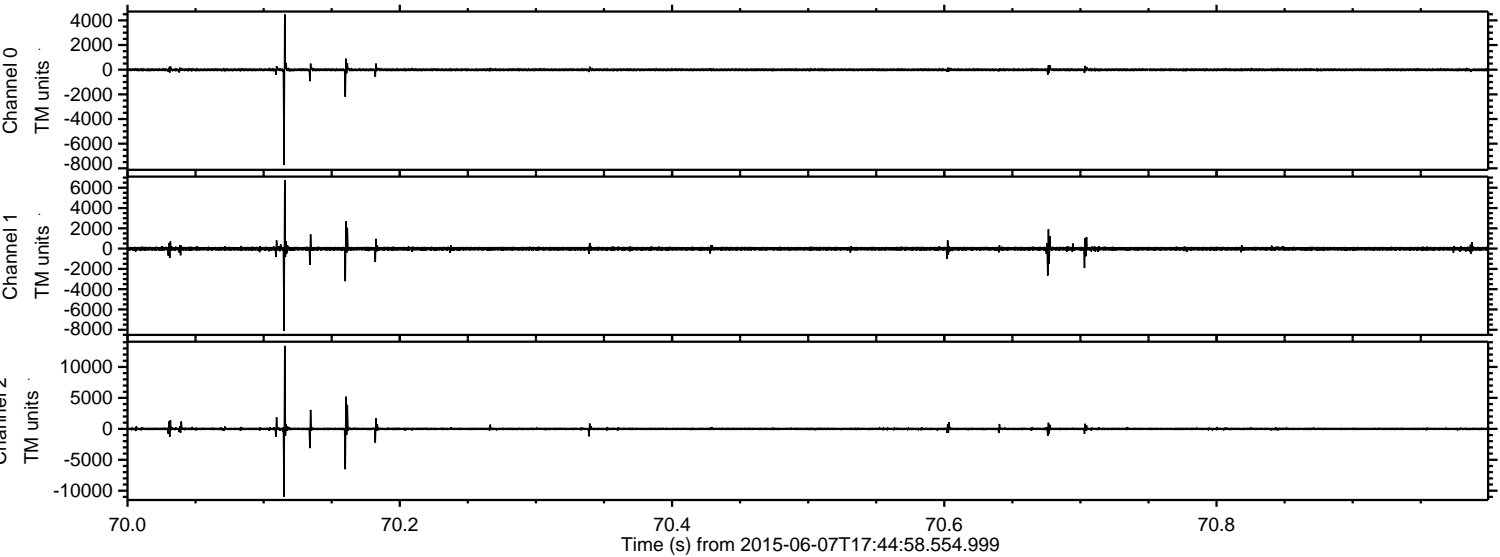


ELMAVAN 3D WAVEFORMS (Measured data sampled at 50 kHz) 51000 packets of 144 samples from 2015-06-07T17:44:58.554.999. Part 44/147

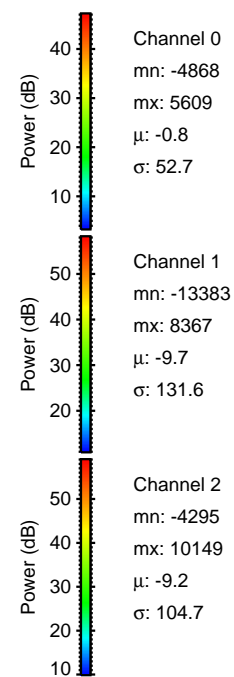
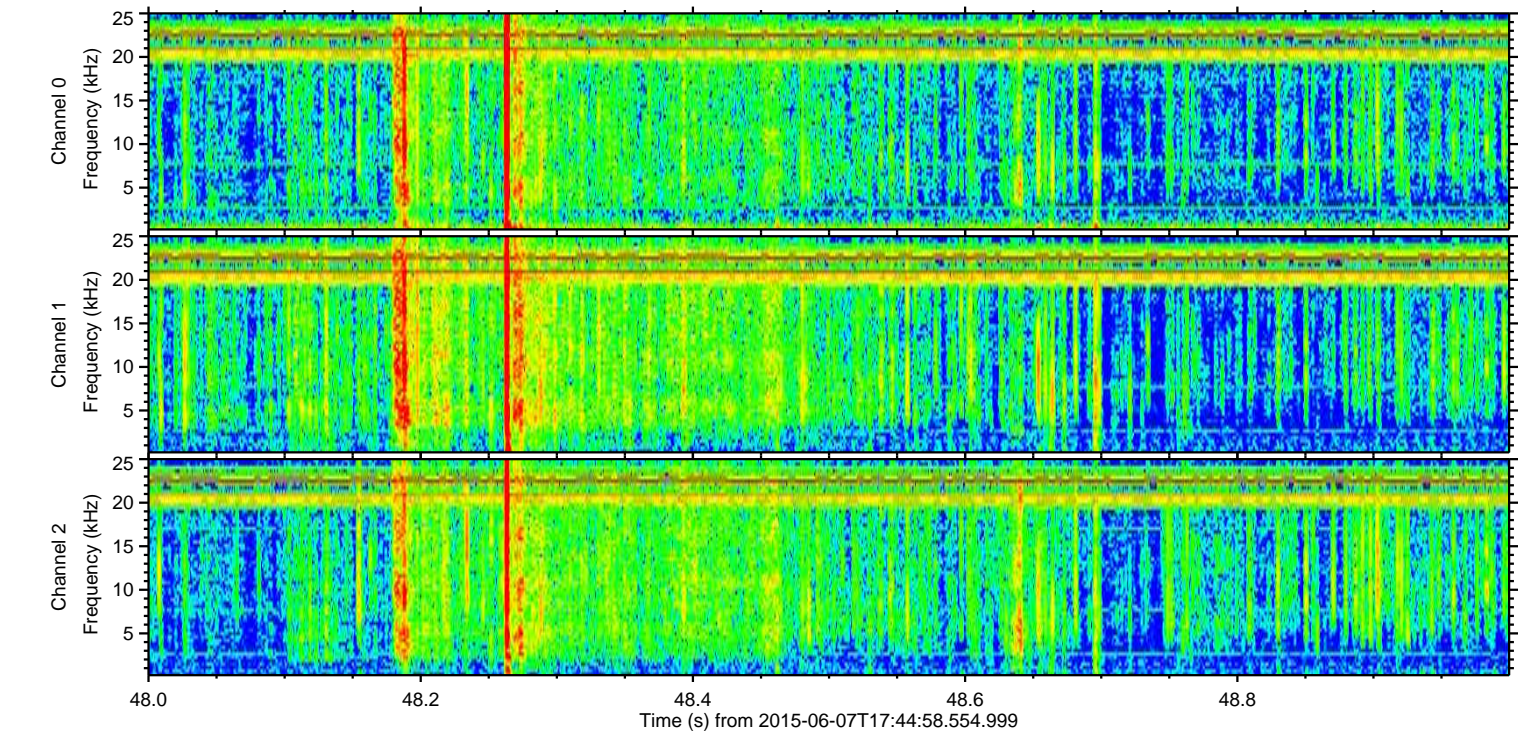
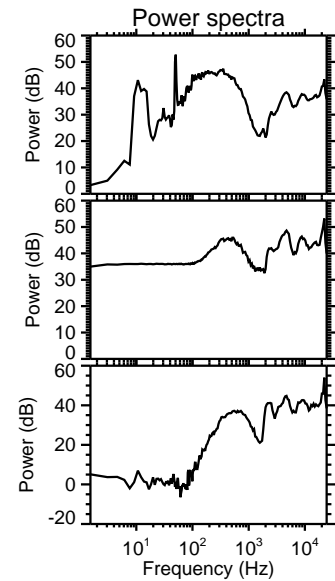
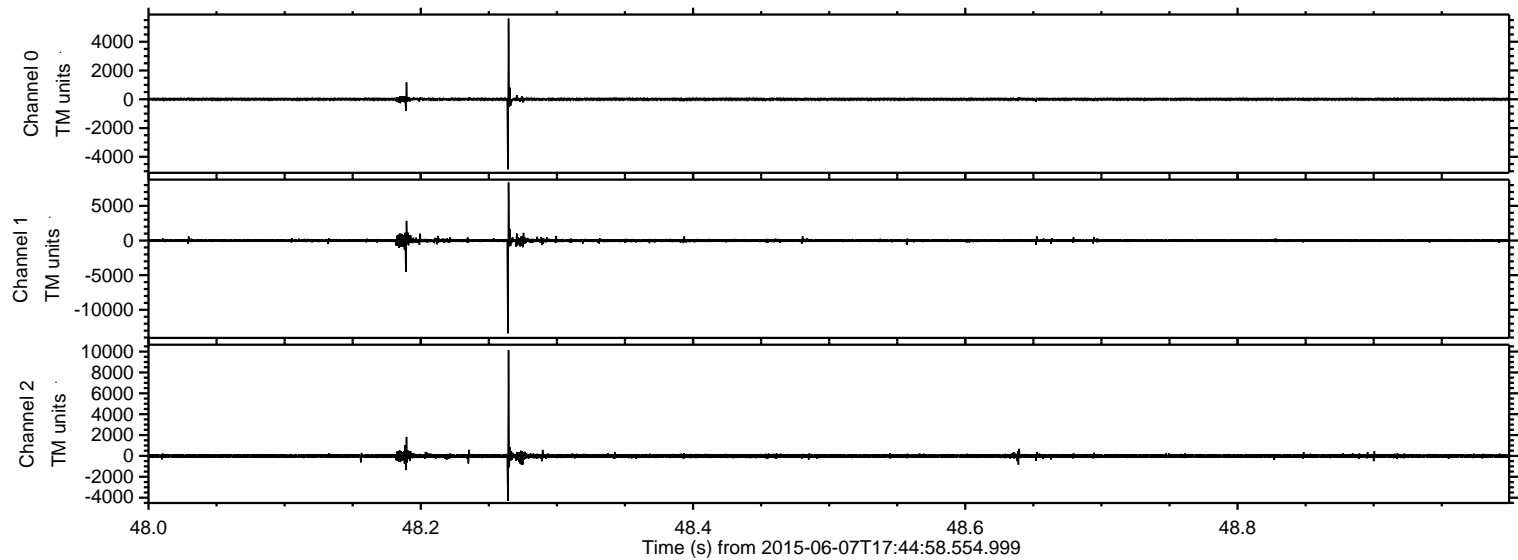
Processed Sun Jun 7 19:51:54 2015 by ELM ver.2012-10-06 from 001__elm20150607_174457__dat00.bin



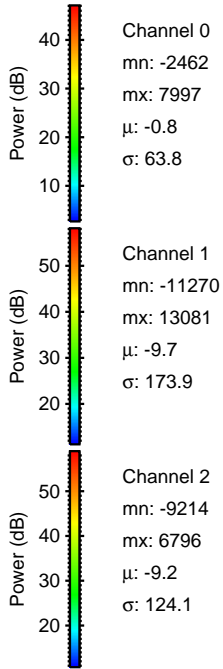
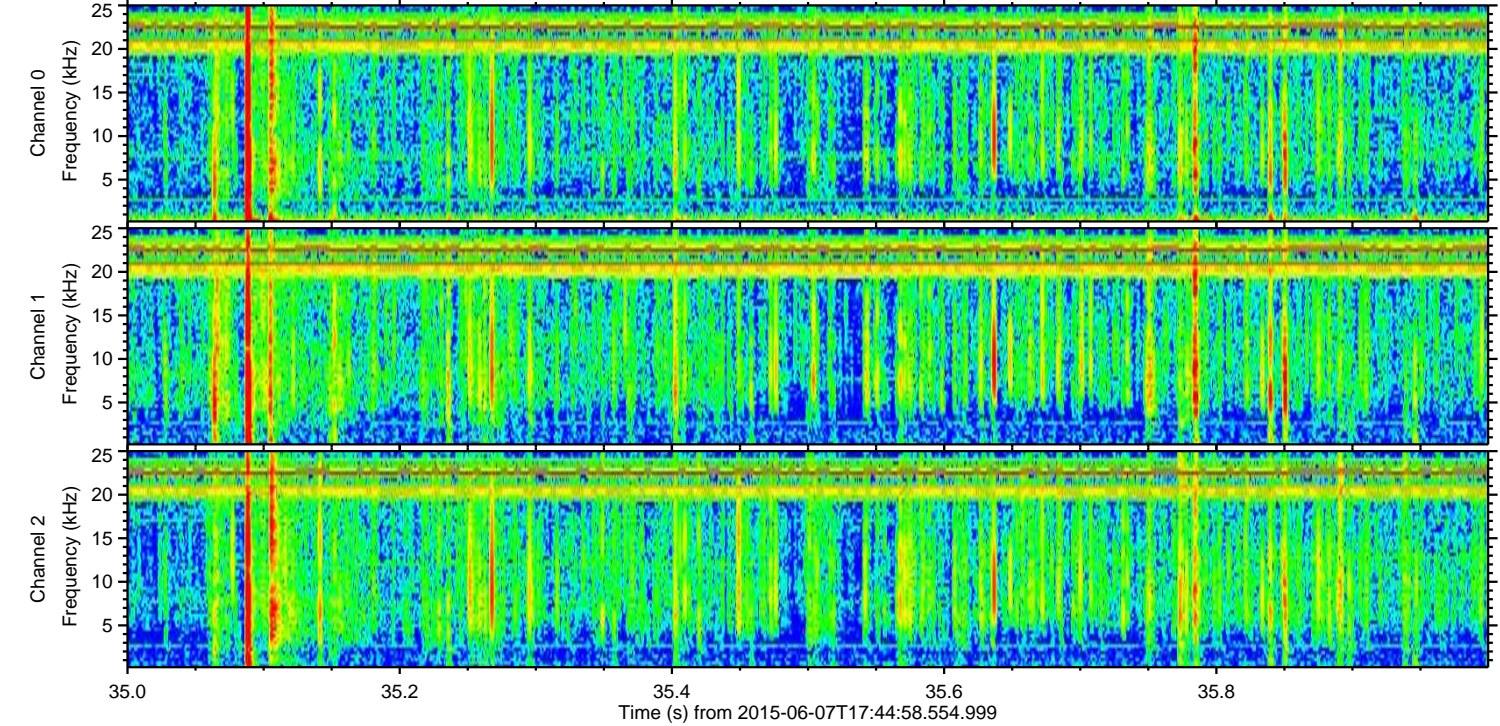
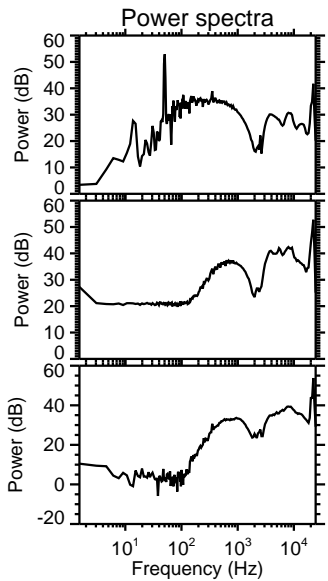
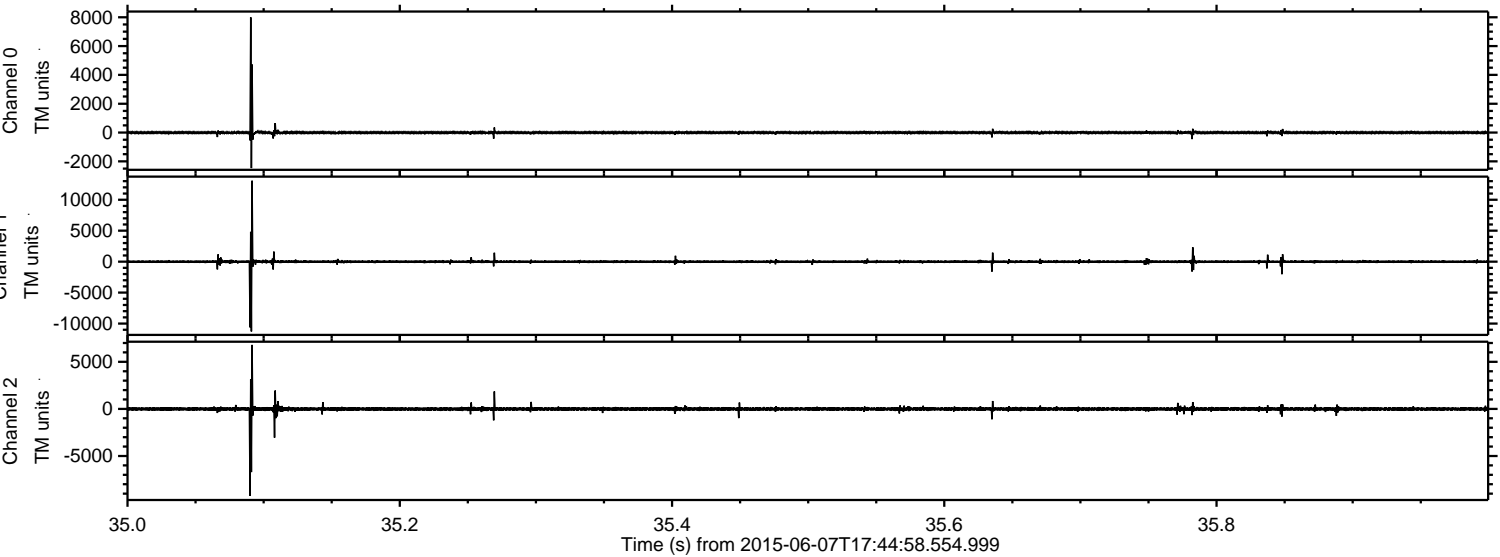
Processed Sun Jun 7 19:51:55 2015 by ELM ver.2012-10-06 from 001__elm20150607_174457__dat00.bin



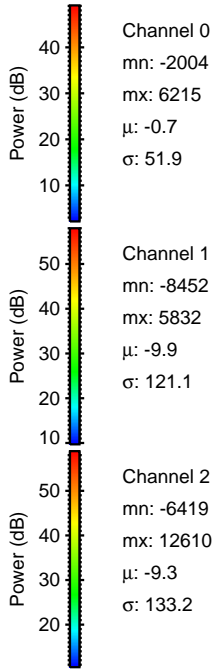
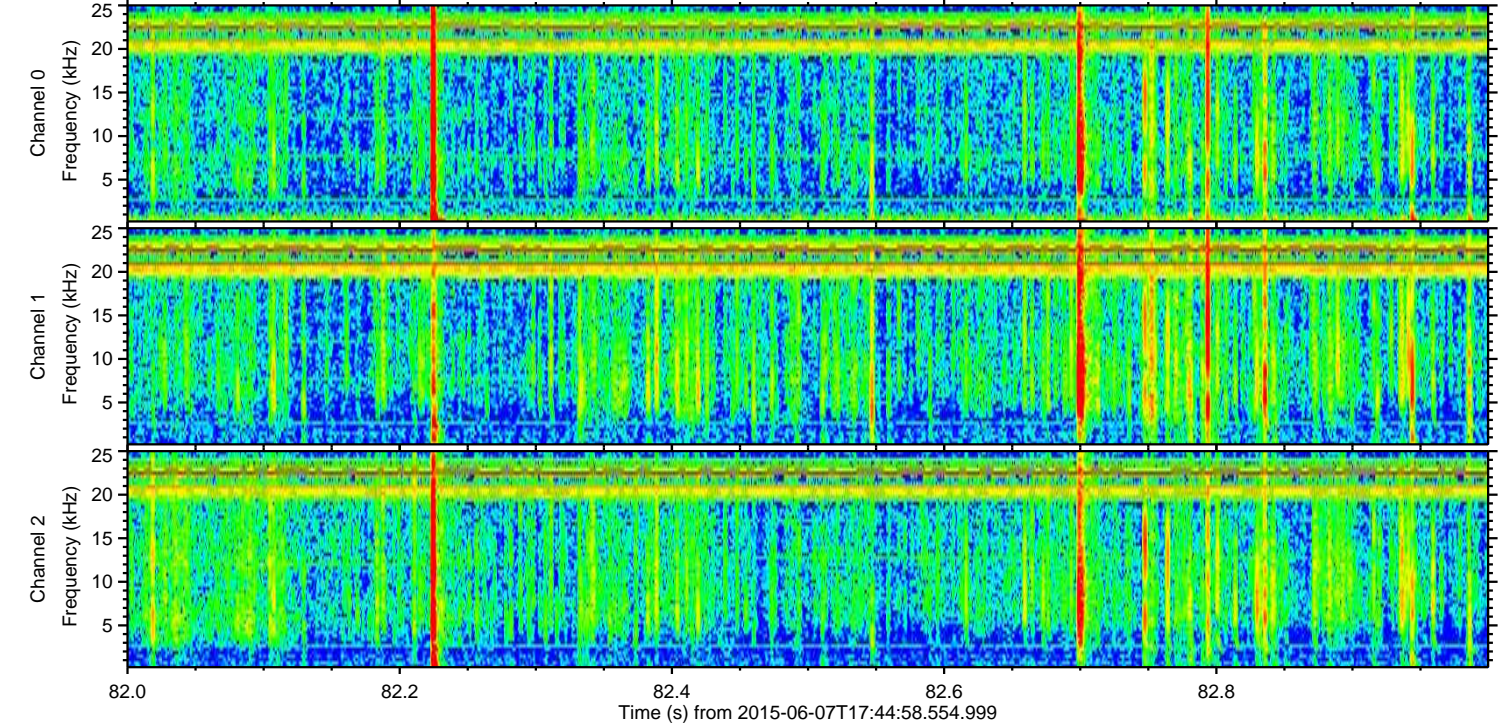
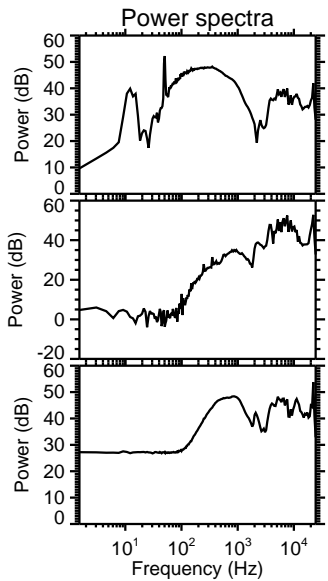
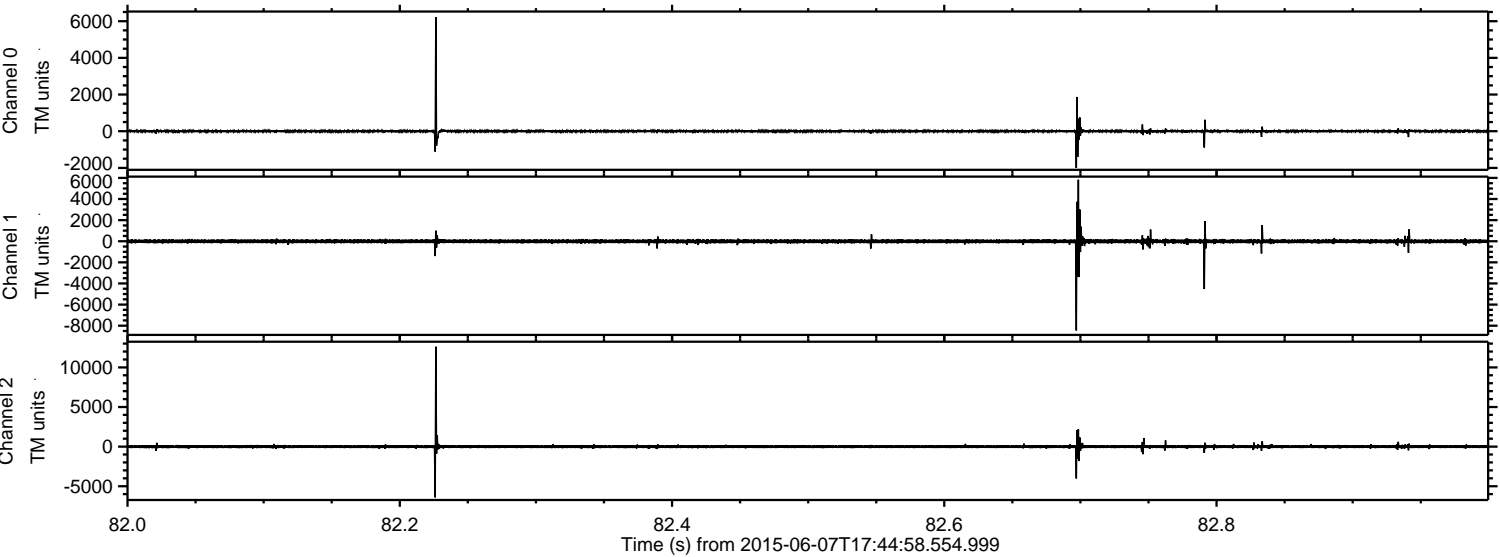
Processed Sun Jun 7 19:51:56 2015 by ELM ver.2012-10-06 from 001__elm20150607_174457__dat00.bin



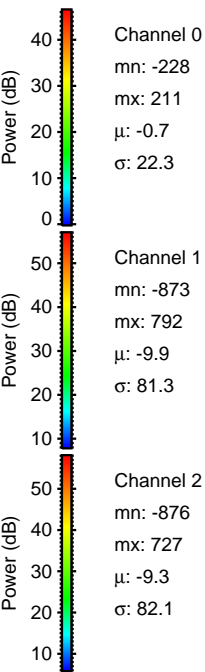
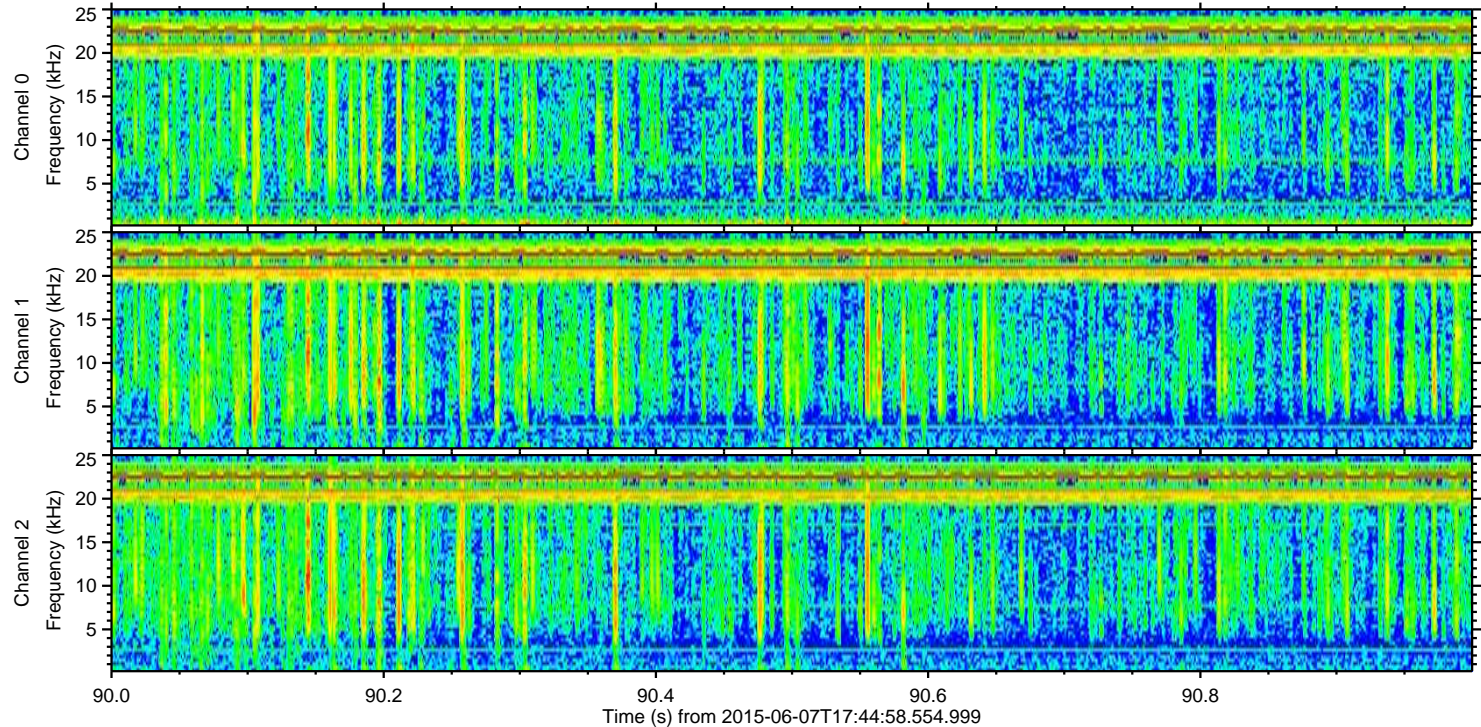
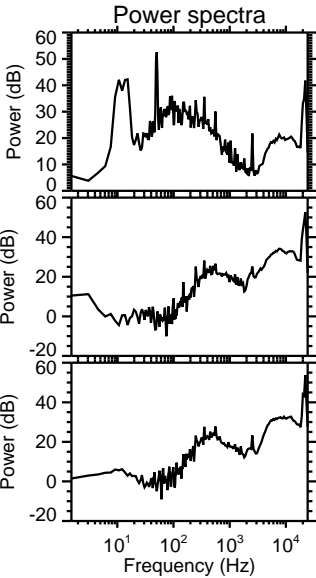
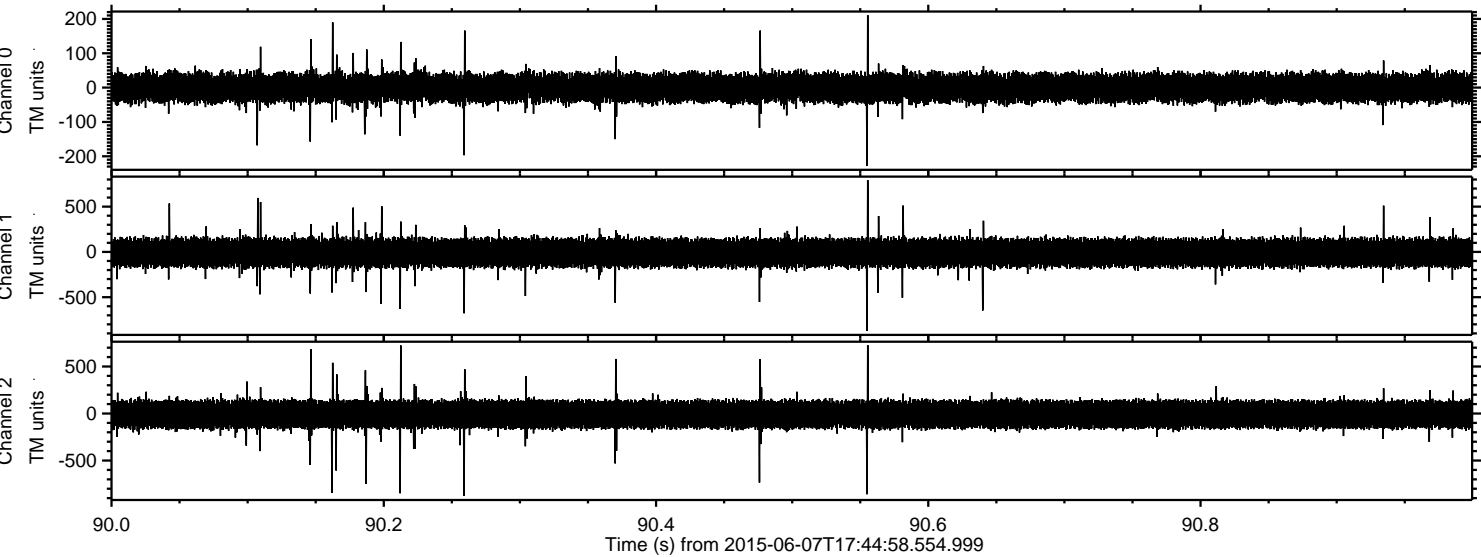
Processed Sun Jun 7 19:51:57 2015 by ELM ver.2012-10-06 from 001__elm20150607_174457__dat00.bin



Processed Sun Jun 7 19:51:58 2015 by ELM ver.2012-10-06 from 001__elm20150607_174457__dat00.bin



Processed Sun Jun 7 19:51:59 2015 by ELM ver.2012-10-06 from 001__elm20150607_174457__dat00.bin



Channel 0
mn: -228
mx: 211
 μ : -0.7
 σ : 22.3

Channel 1
mn: -873
mx: 792
 μ : -9.9
 σ : 81.3

Channel 2
mn: -876
mx: 727
 μ : -9.3
 σ : 82.1