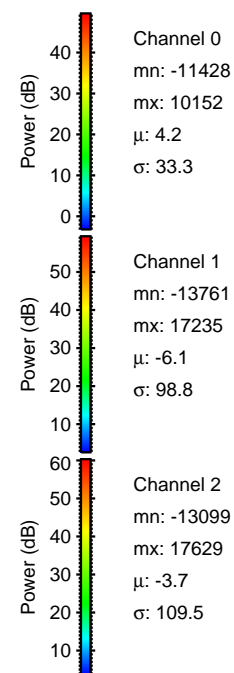
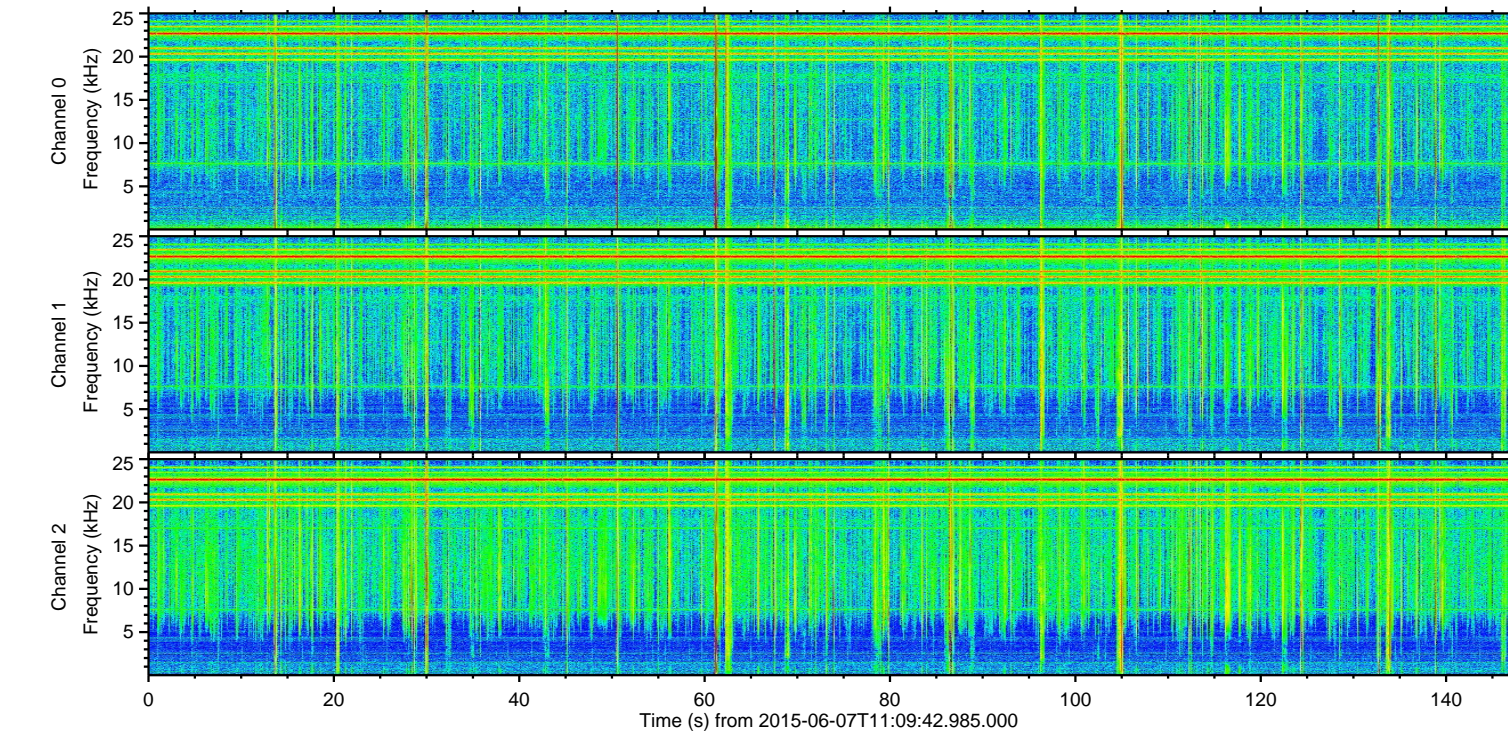
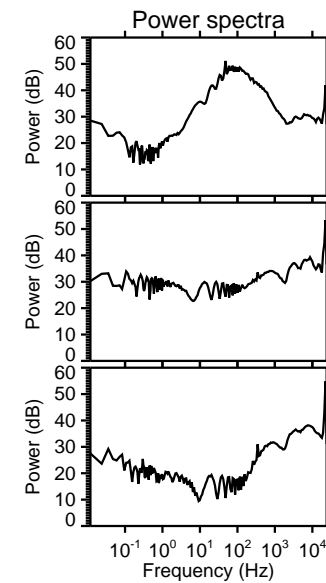
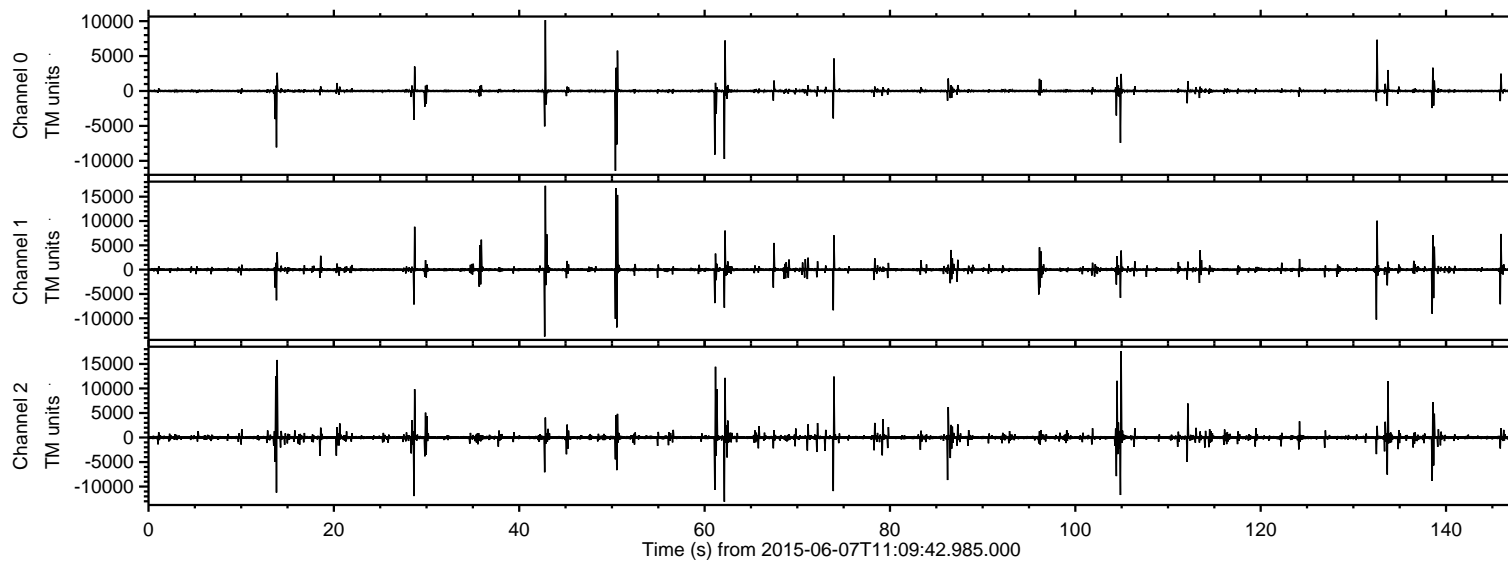


# ELMAVAN 3D WAVEFORMS (Measured data sampled at 50 kHz) 51000 packets of 144 samples from 2015-06-07T11:09:42.985.000.

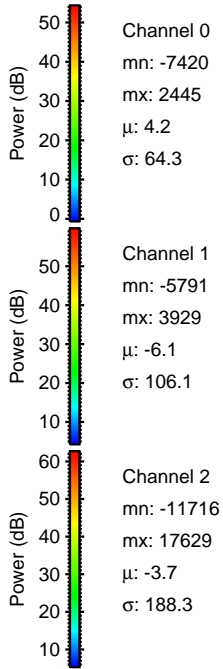
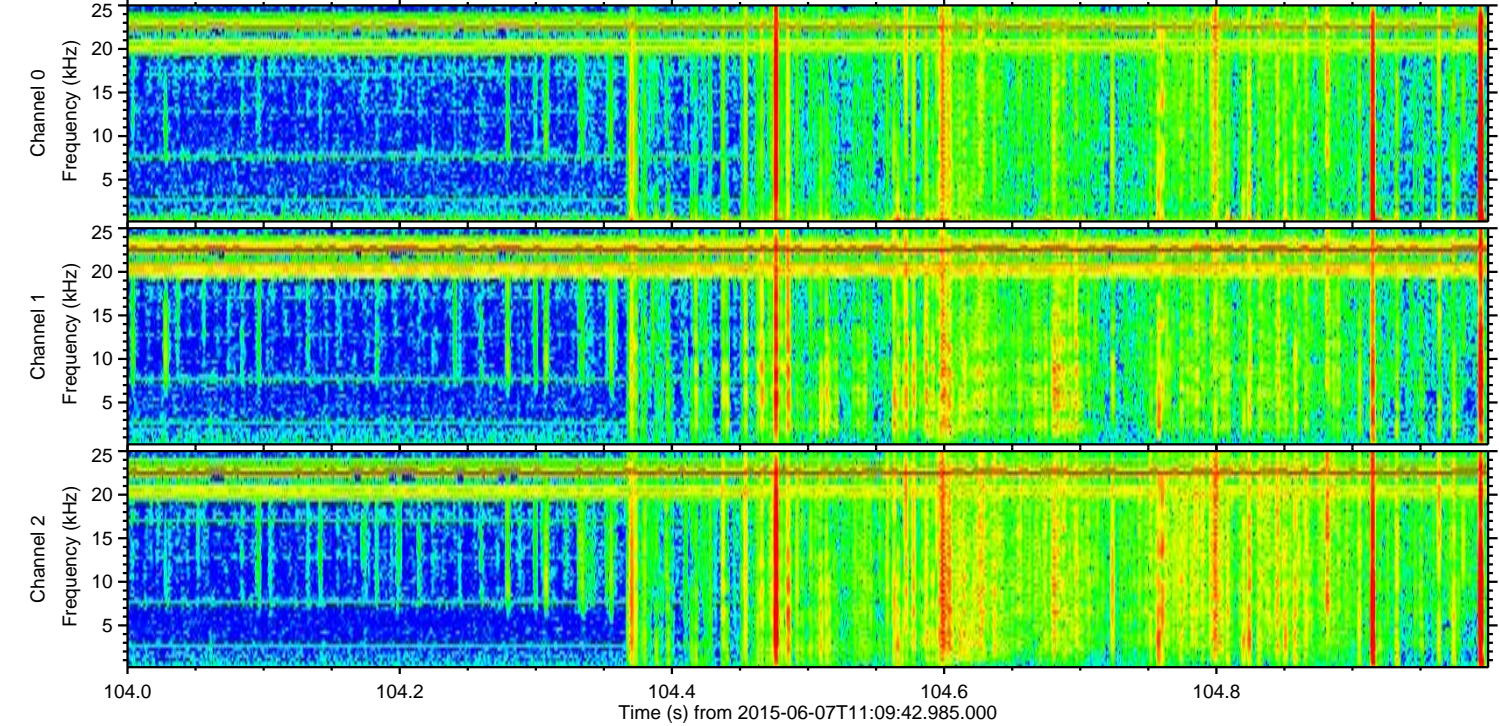
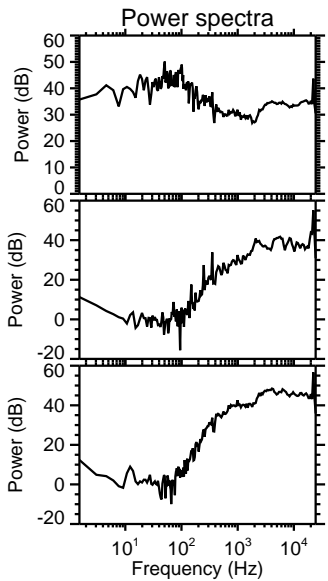
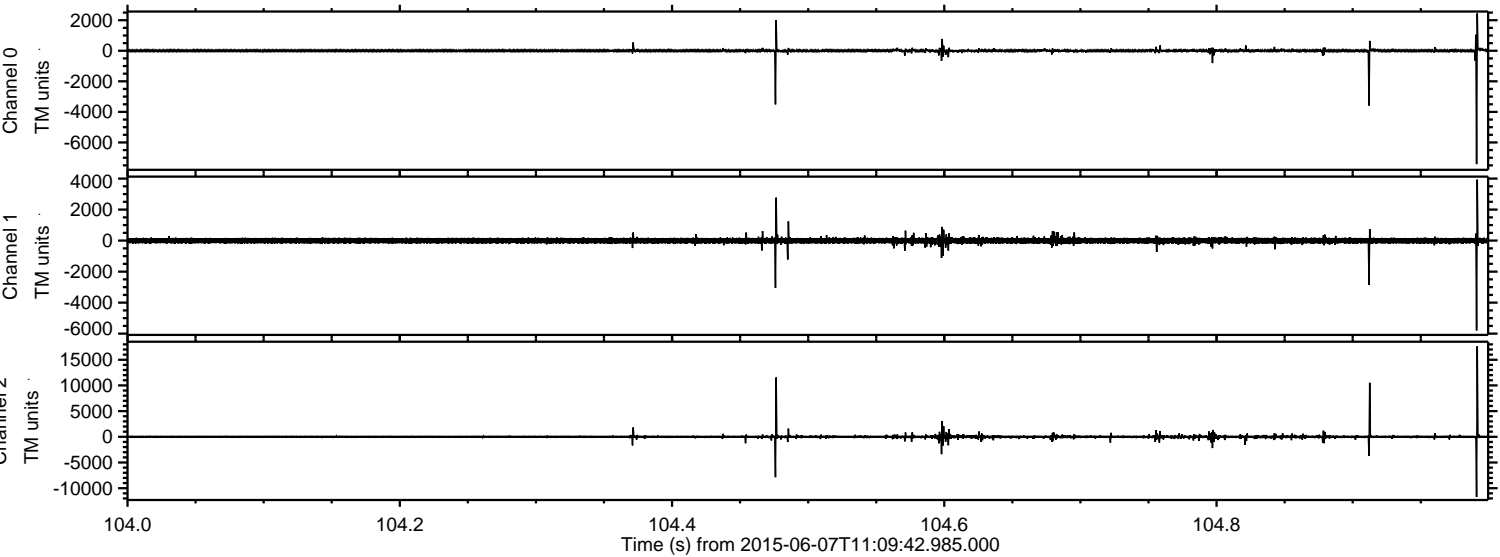
Processed Sun Jun 7 13:15:35 2015 by ELM ver.2012-10-06 from 001\_\_elm20150607\_110941\_\_dat00.bin



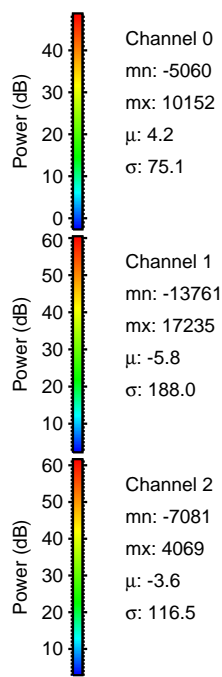
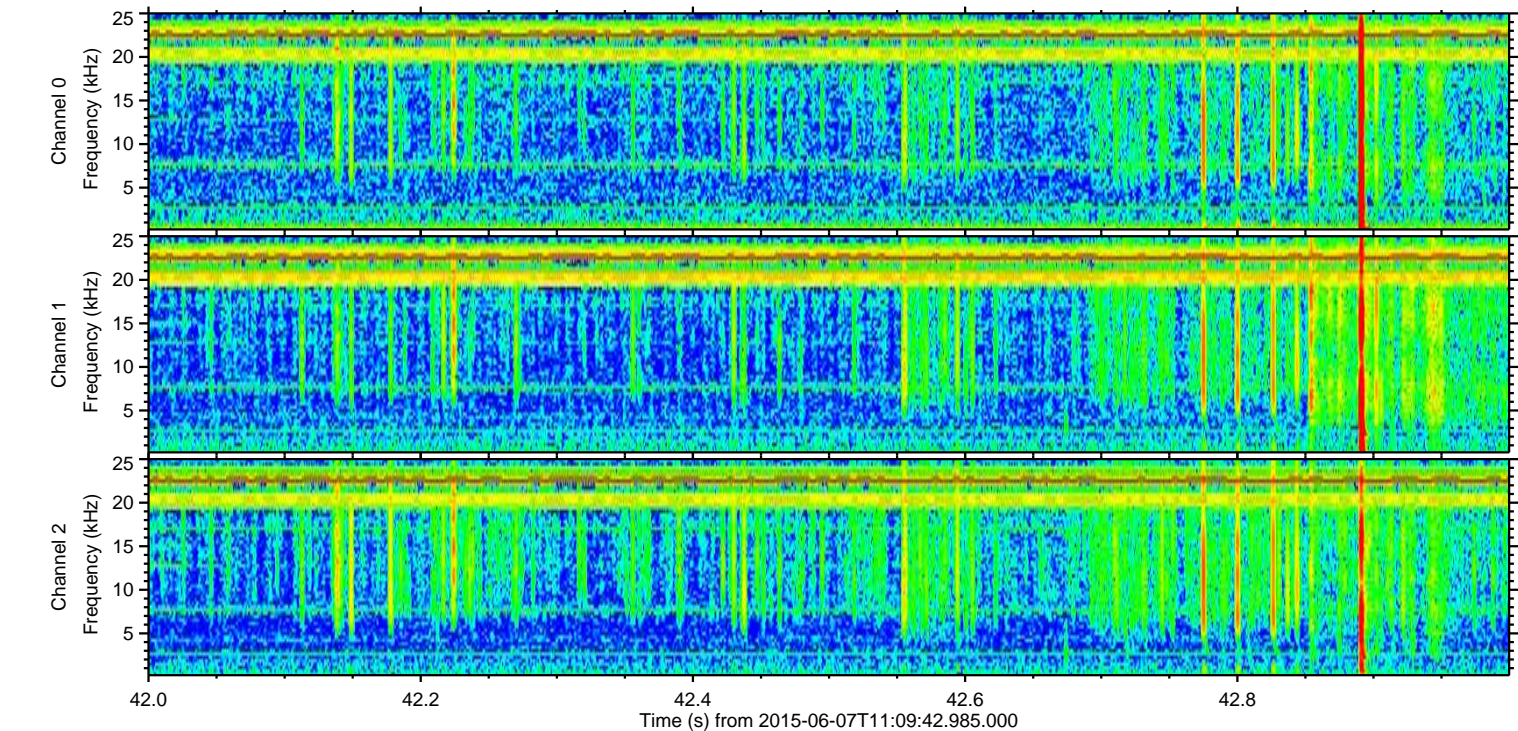
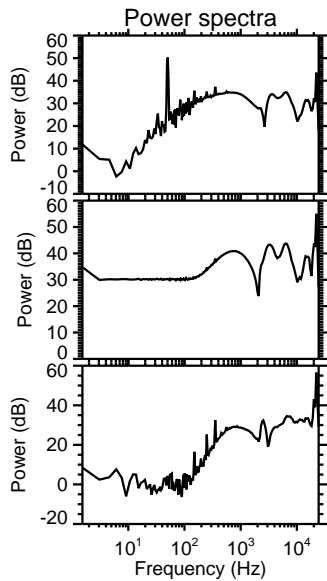
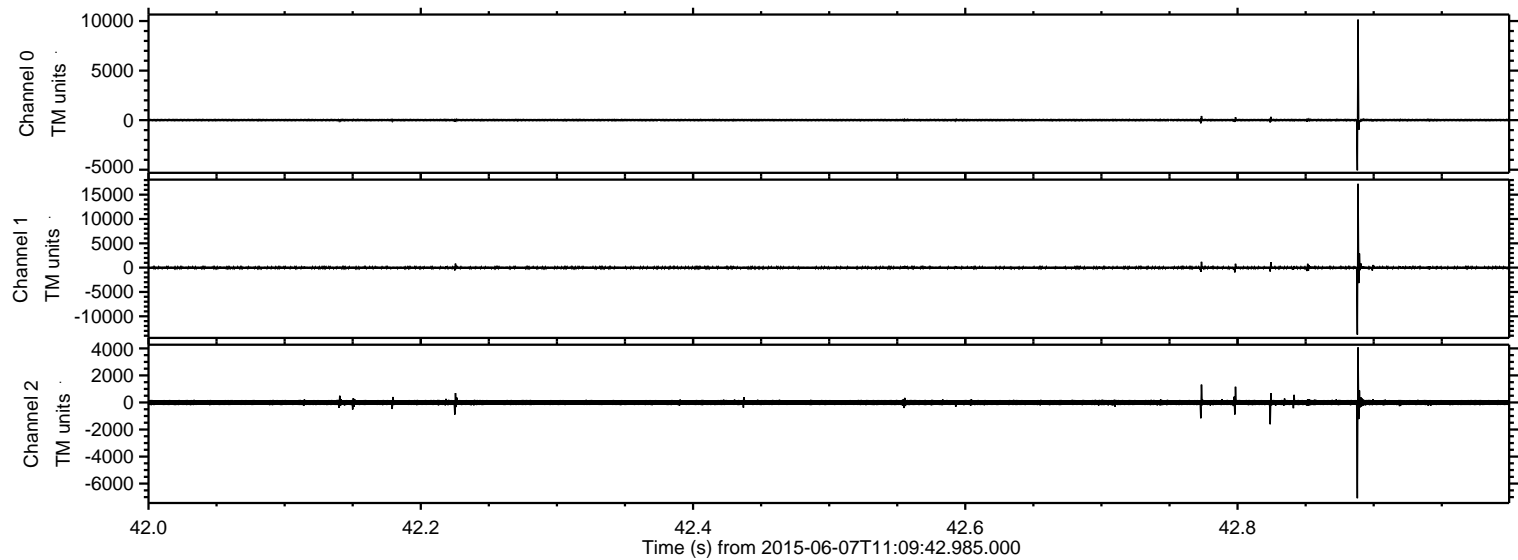


ELMAVAN 3D WAVEFORMS (Measured data sampled at 50 kHz) 51000 packets of 144 samples from 2015-06-07T11:09:42.985.000. Part 105/147

Processed Sun Jun 7 13:15:47 2015 by ELM ver.2012-10-06 from 001\_\_elm20150607\_110941\_\_dat00.bin

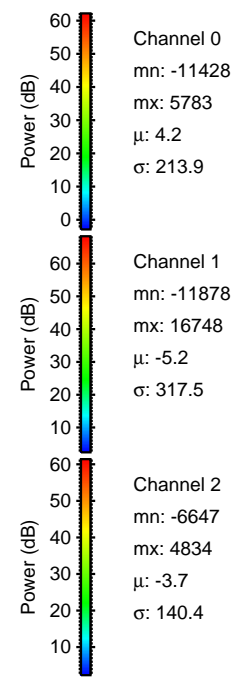
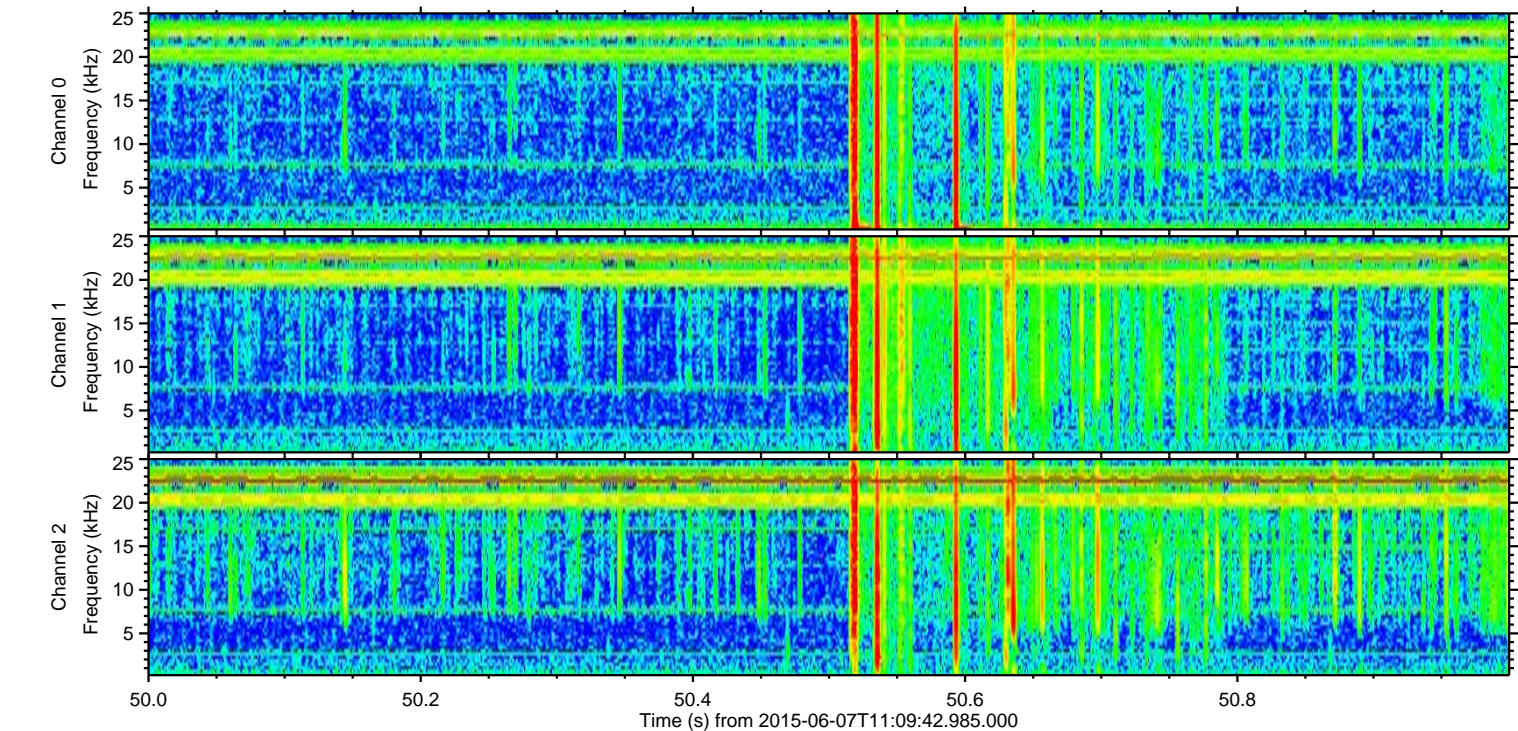
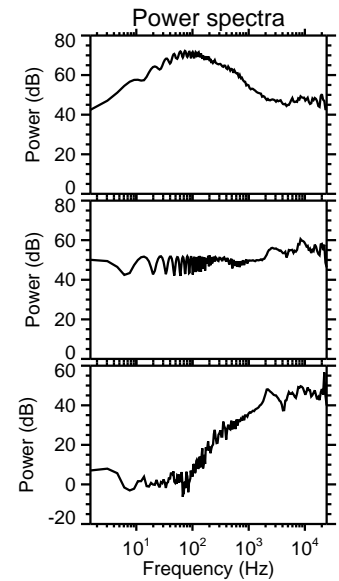
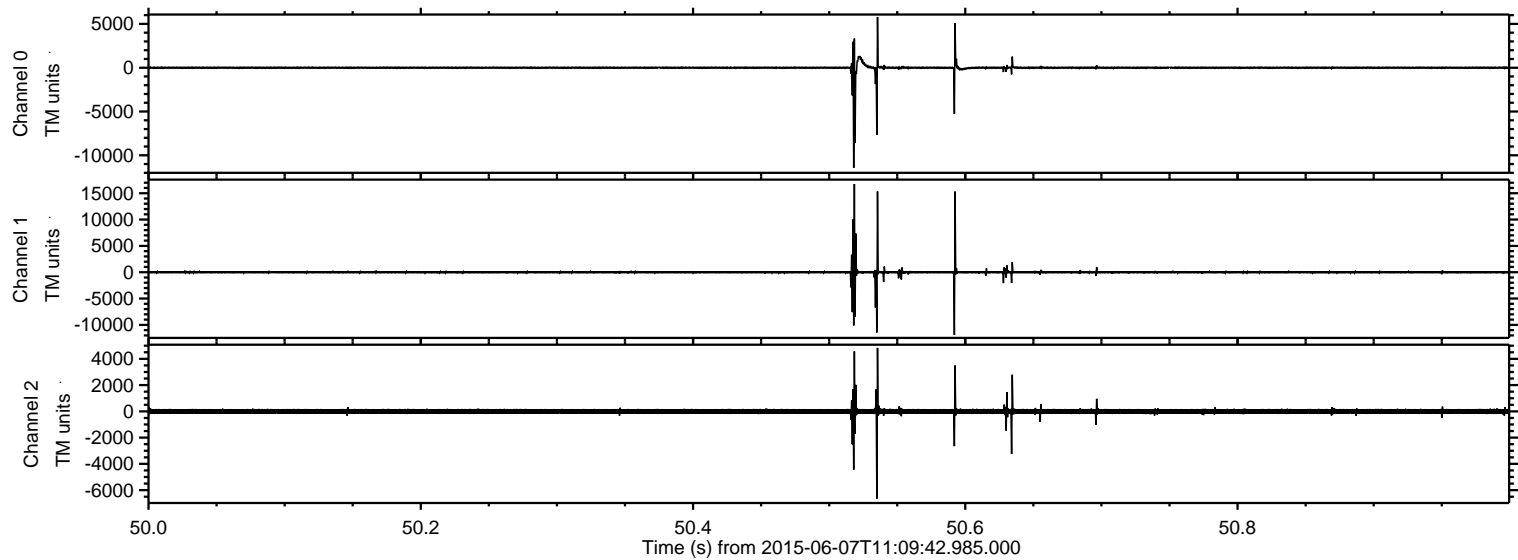


Processed Sun Jun 7 13:15:48 2015 by ELM ver.2012-10-06 from 001\_\_elm20150607\_110941\_\_dat00.bin

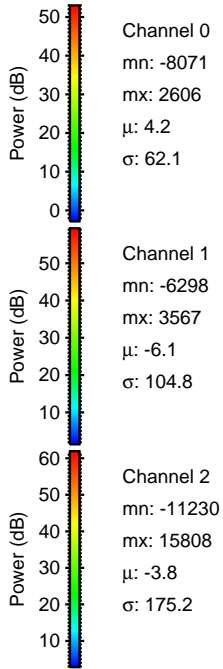
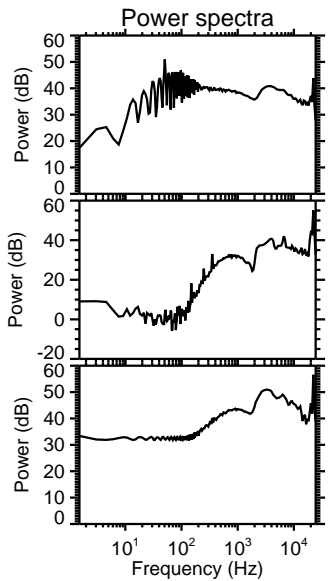
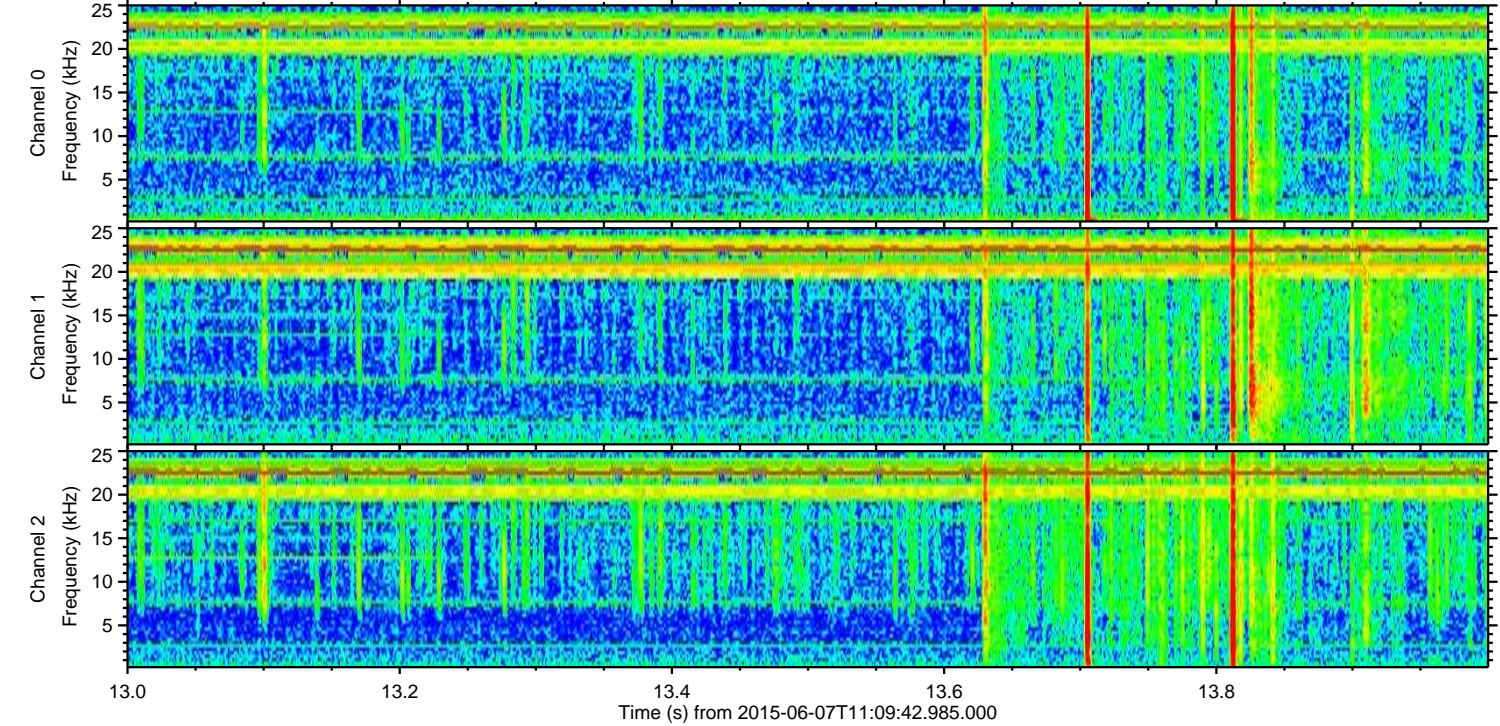
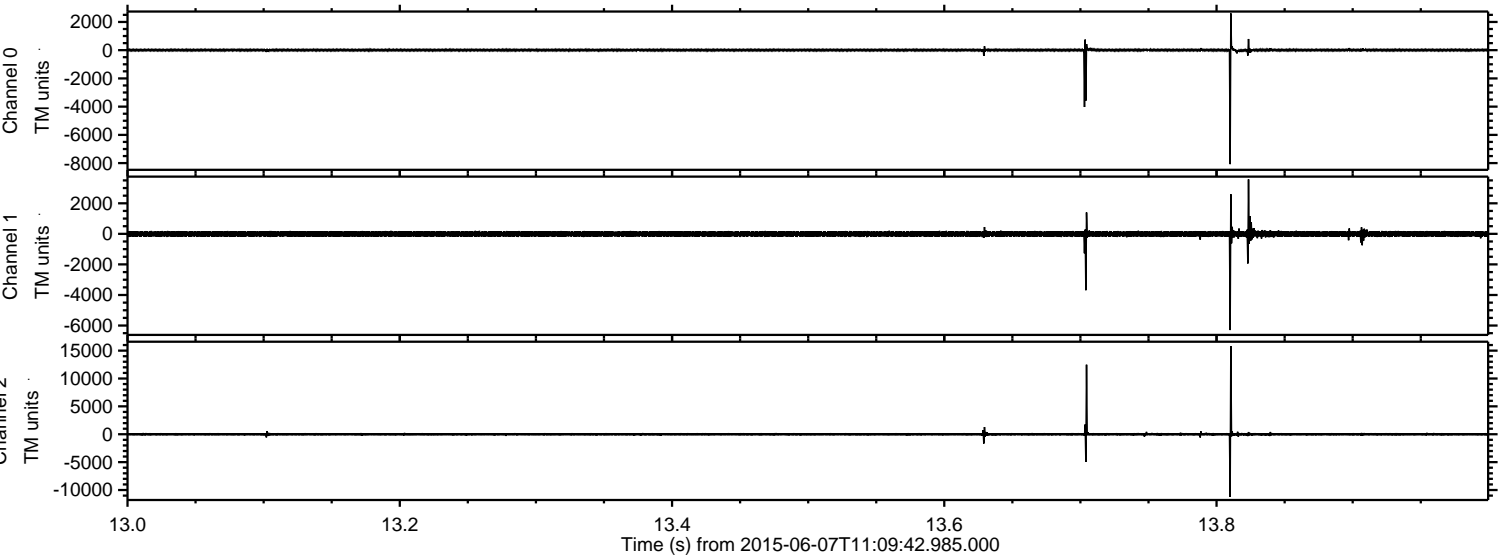




Processed Sun Jun 7 13:15:49 2015 by ELM ver.2012-10-06 from 001\_\_elm20150607\_110941\_\_dat00.bin

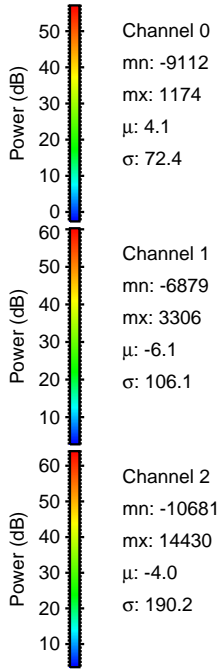
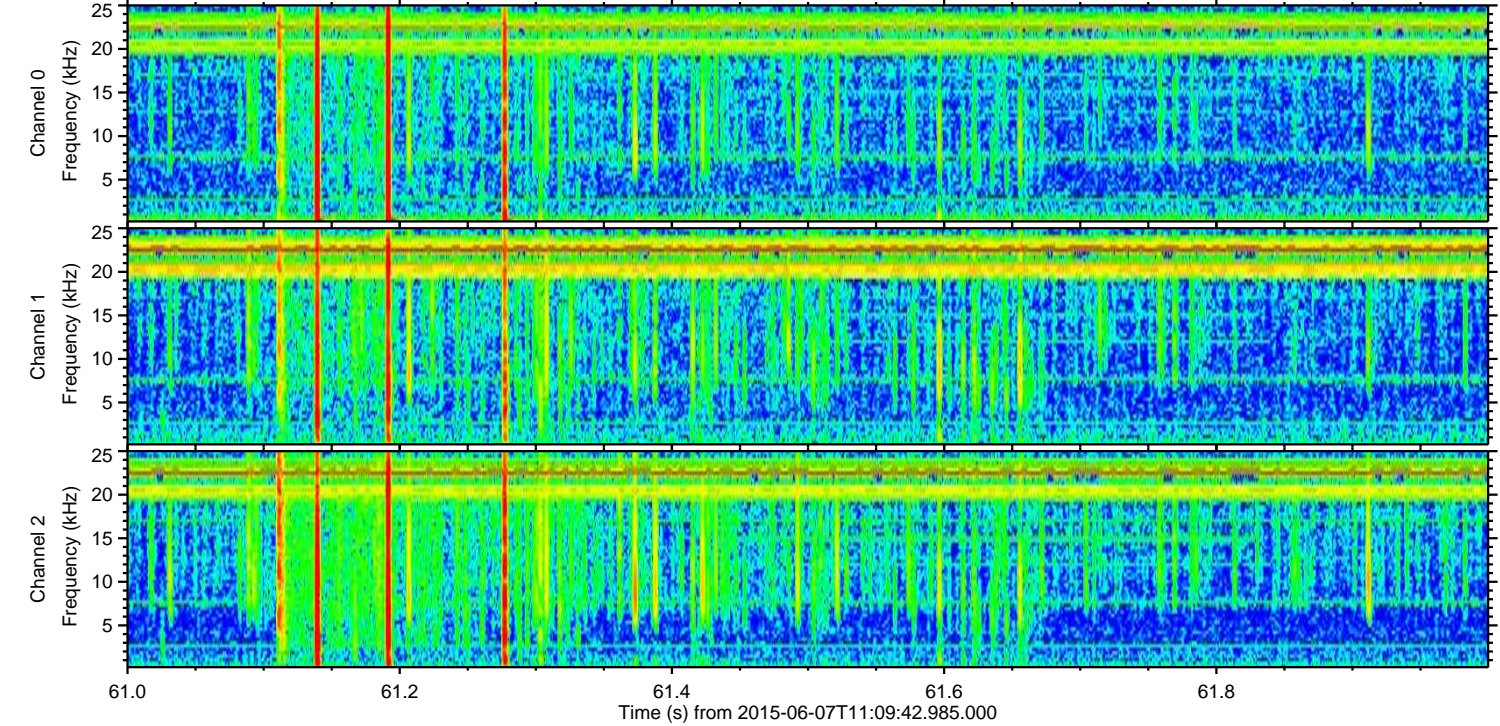
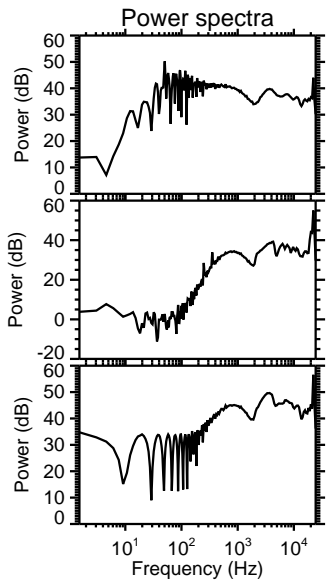
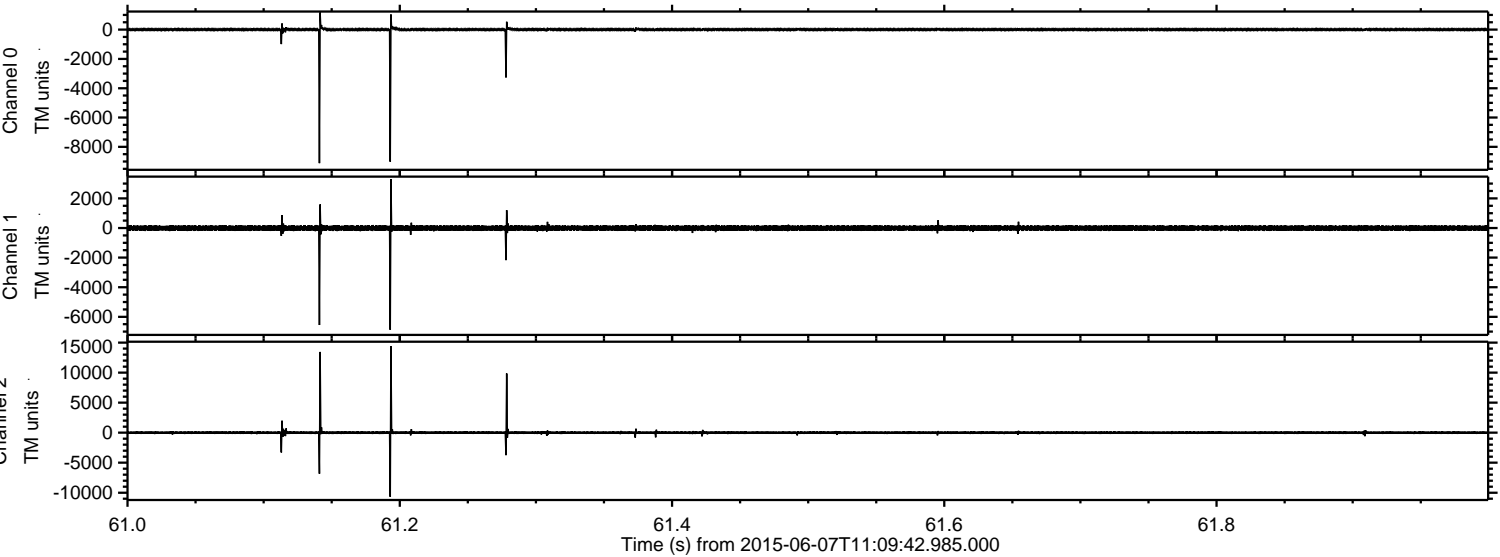


Processed Sun Jun 7 13:15:50 2015 by ELM ver.2012-10-06 from 001\_\_elm20150607\_110941\_\_dat00.bin

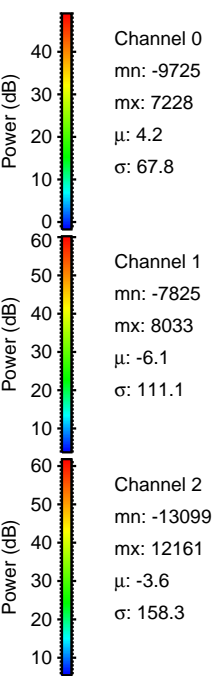
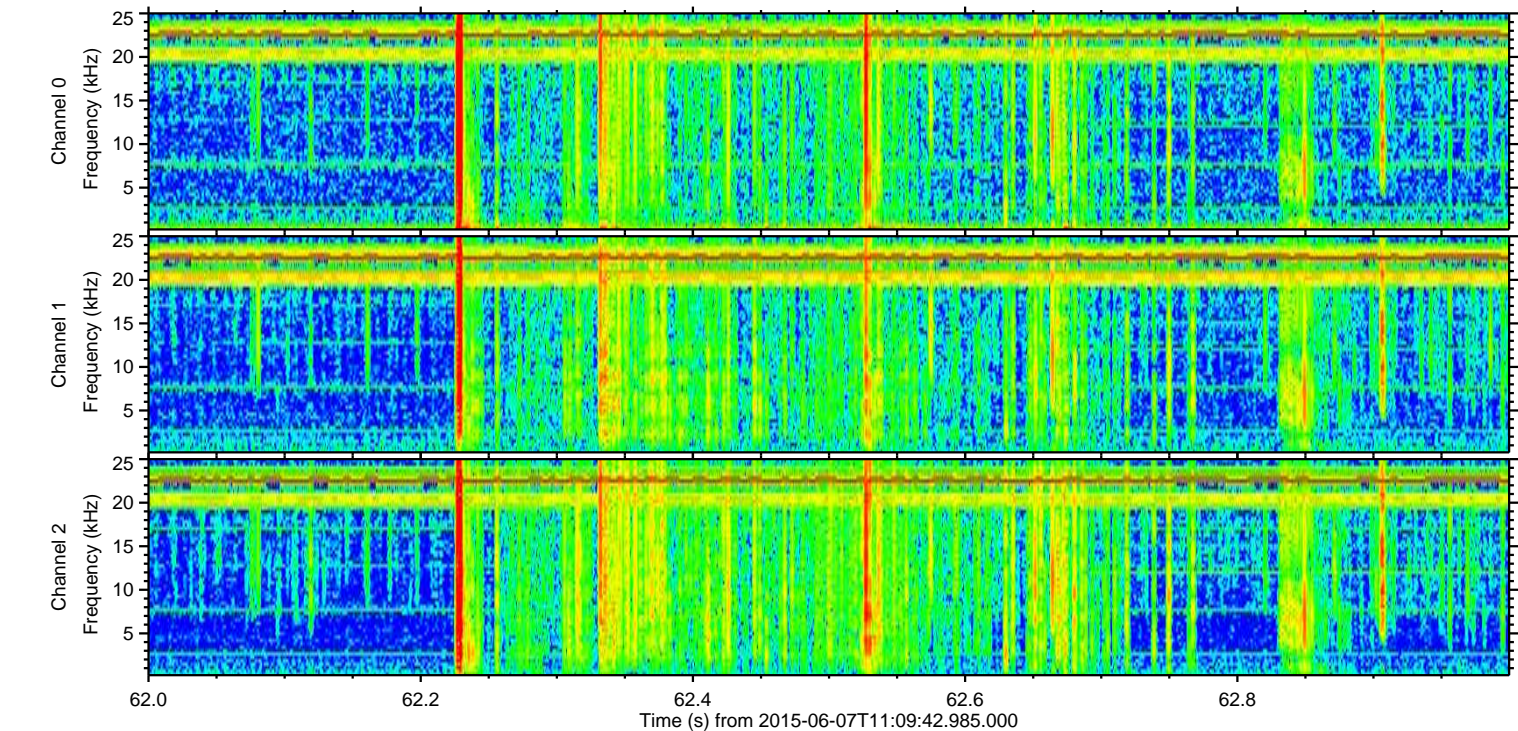
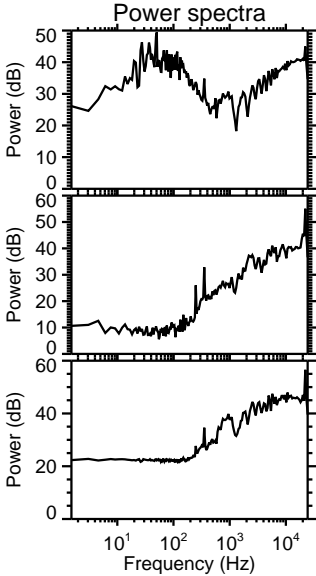
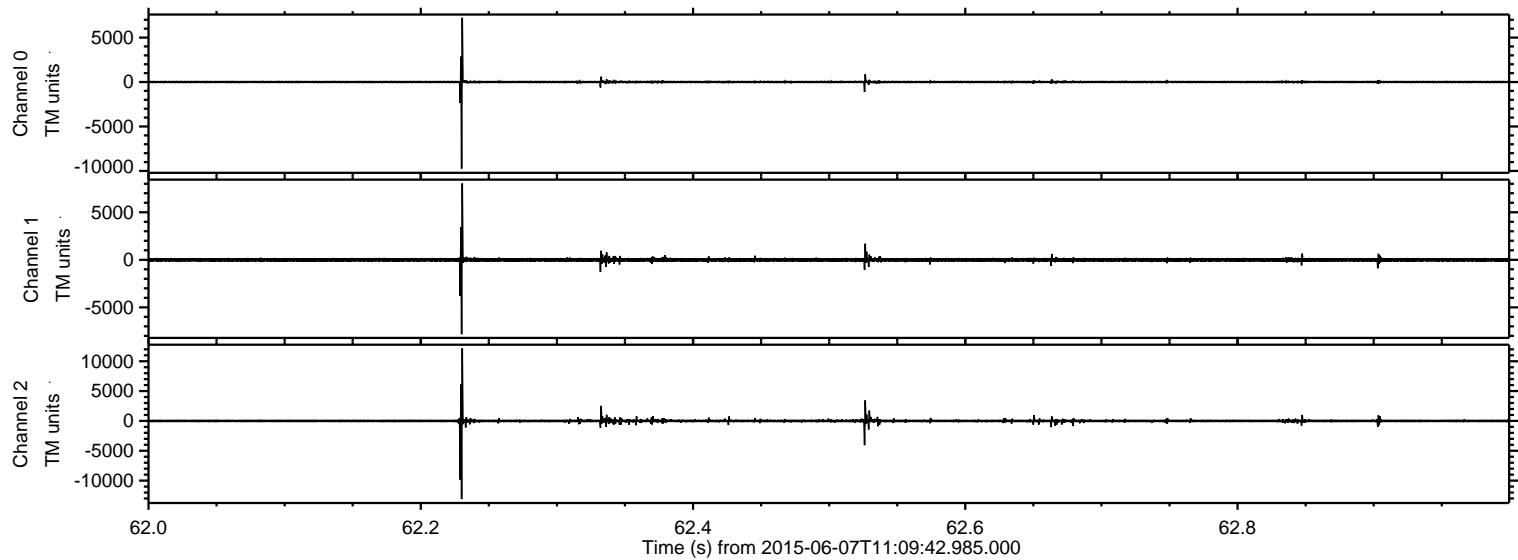




Processed Sun Jun 7 13:15:51 2015 by ELM ver.2012-10-06 from 001\_\_elm20150607\_110941\_\_dat00.bin

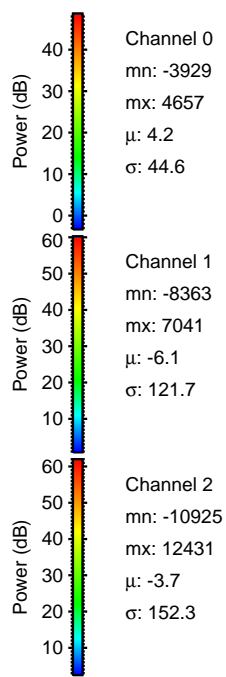
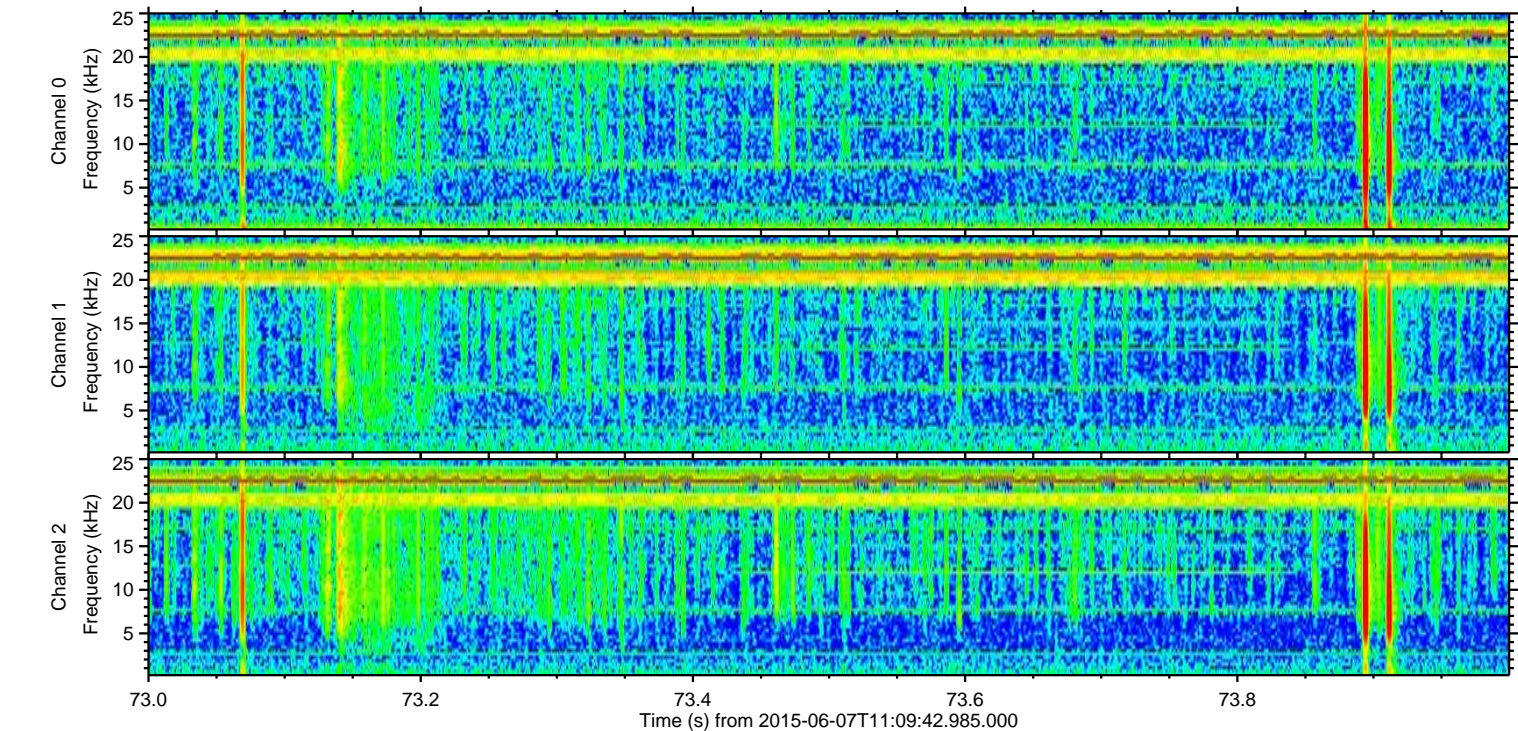
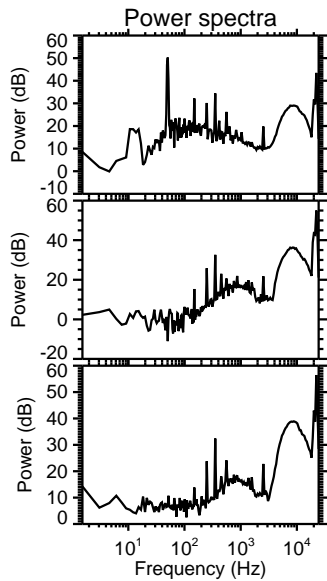
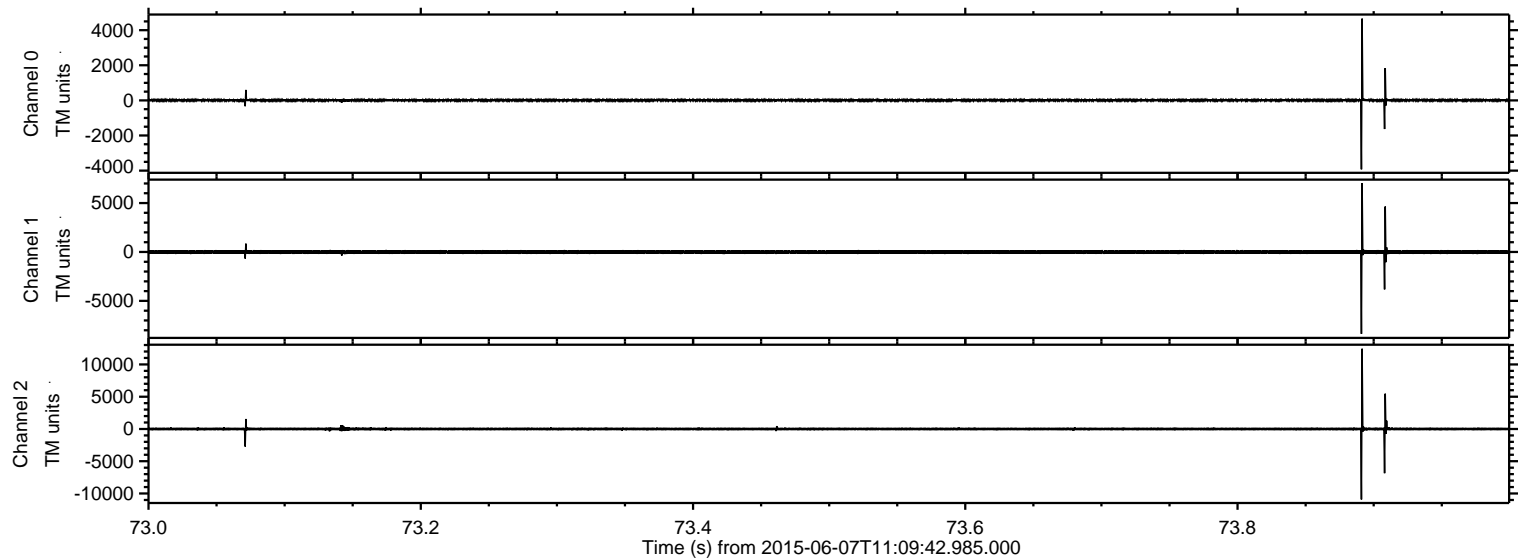


Processed Sun Jun 7 13:15:52 2015 by ELM ver.2012-10-06 from 001\_\_elm20150607\_110941\_\_dat00.bin



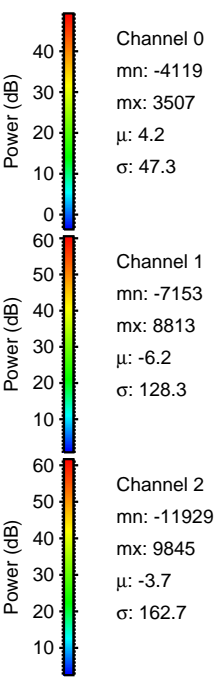
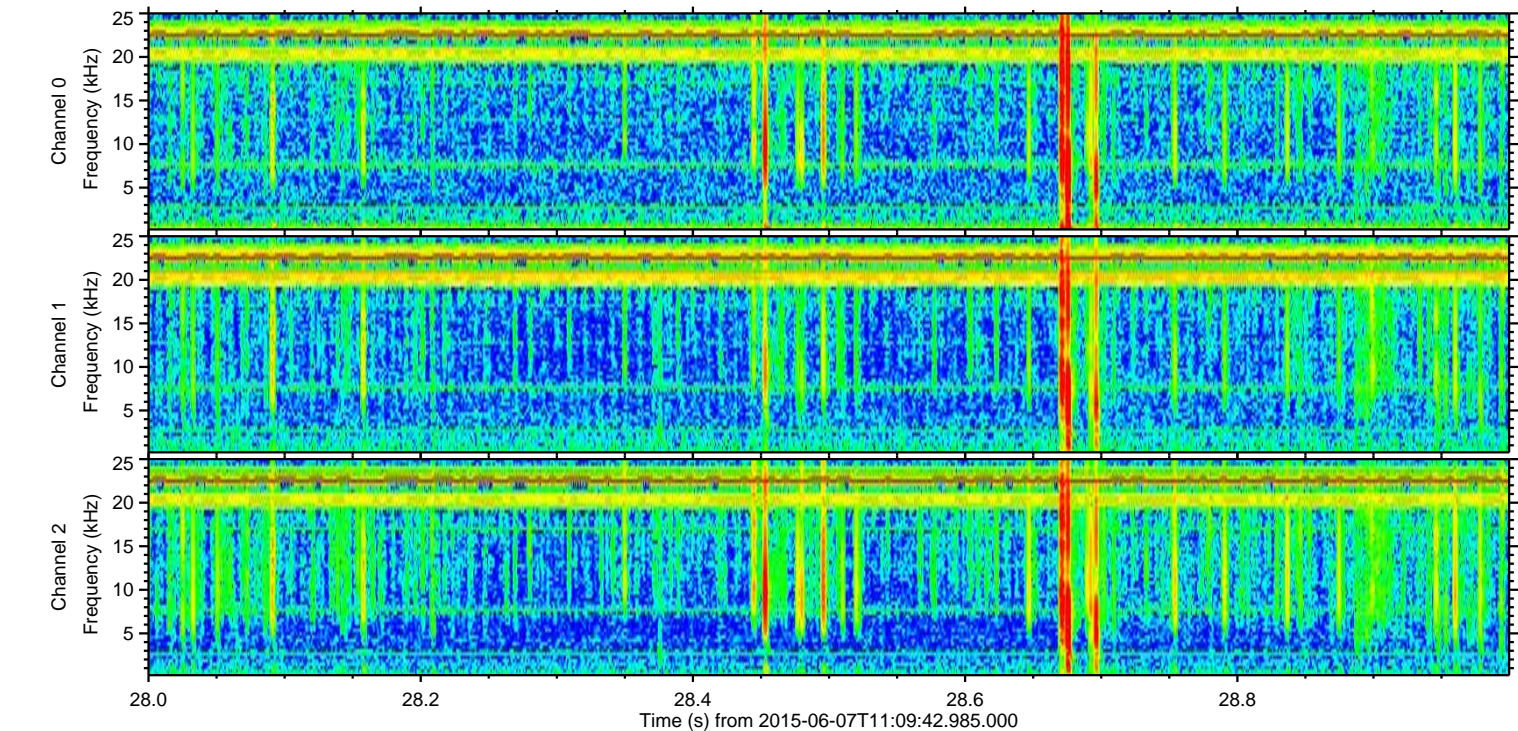
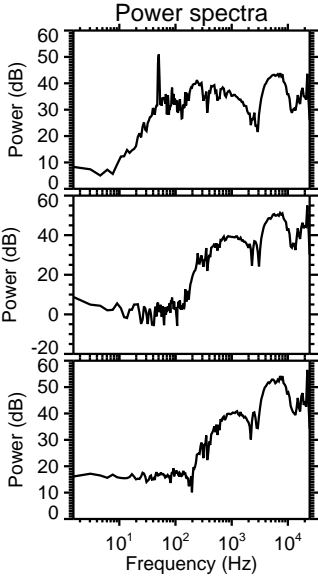
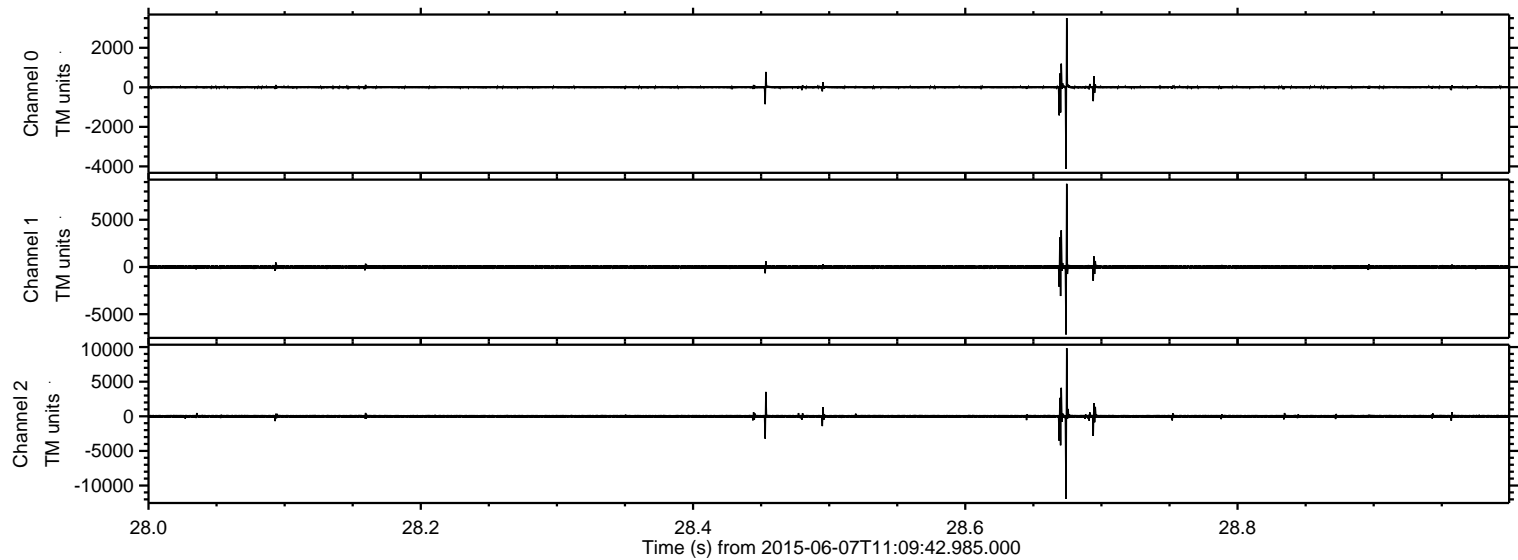


Processed Sun Jun 7 13:15:53 2015 by ELM ver.2012-10-06 from 001\_\_elm20150607\_110941\_\_dat00.bin





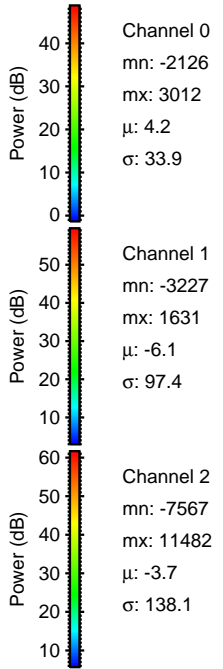
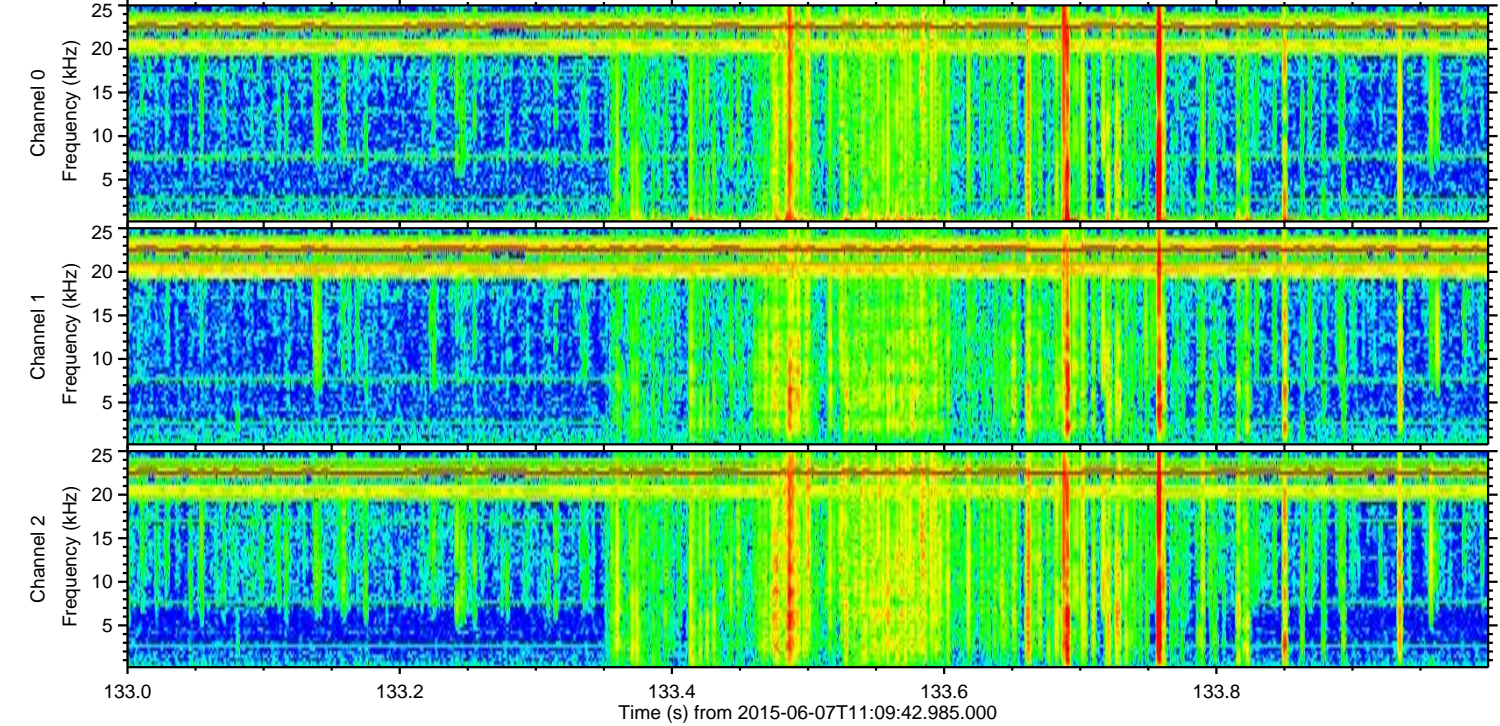
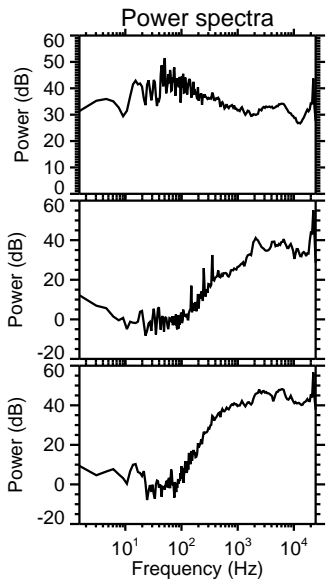
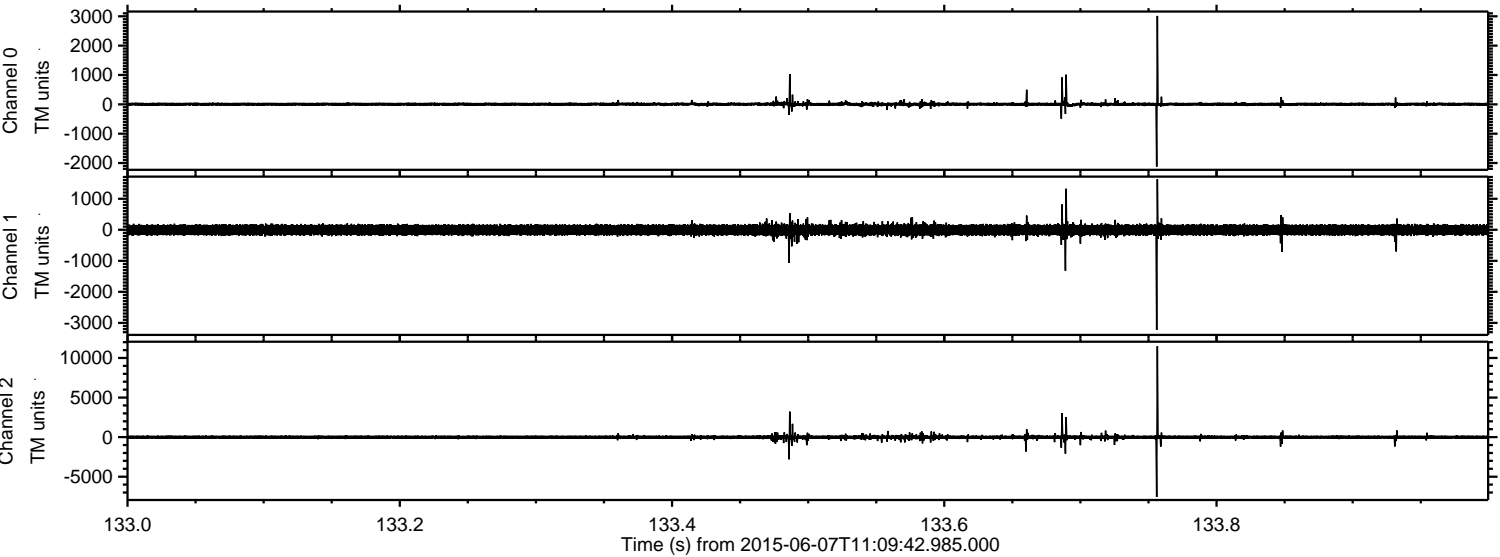
Processed Sun Jun 7 13:15:54 2015 by ELM ver.2012-10-06 from 001\_\_elm20150607\_110941\_\_dat00.bin





ELMAVAN 3D WAVEFORMS (Measured data sampled at 50 kHz) 51000 packets of 144 samples from 2015-06-07T11:09:42.985.000. Part 134/147

Processed Sun Jun 7 13:15:54 2015 by ELM ver.2012-10-06 from 001\_\_elm20150607\_110941\_\_dat00.bin



Channel 0  
mn: -2126  
mx: 3012  
 $\mu$ : 4.2  
 $\sigma$ : 33.9

Channel 1  
mn: -3227  
mx: 1631  
 $\mu$ : -6.1  
 $\sigma$ : 97.4

Channel 2  
mn: -7567  
mx: 11482  
 $\mu$ : -3.7  
 $\sigma$ : 138.1



Processed Sun Jun 7 13:15:55 2015 by ELM ver.2012-10-06 from 001\_\_elm20150607\_110941\_\_dat00.bin

