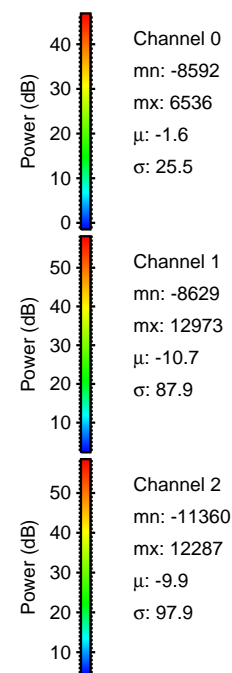
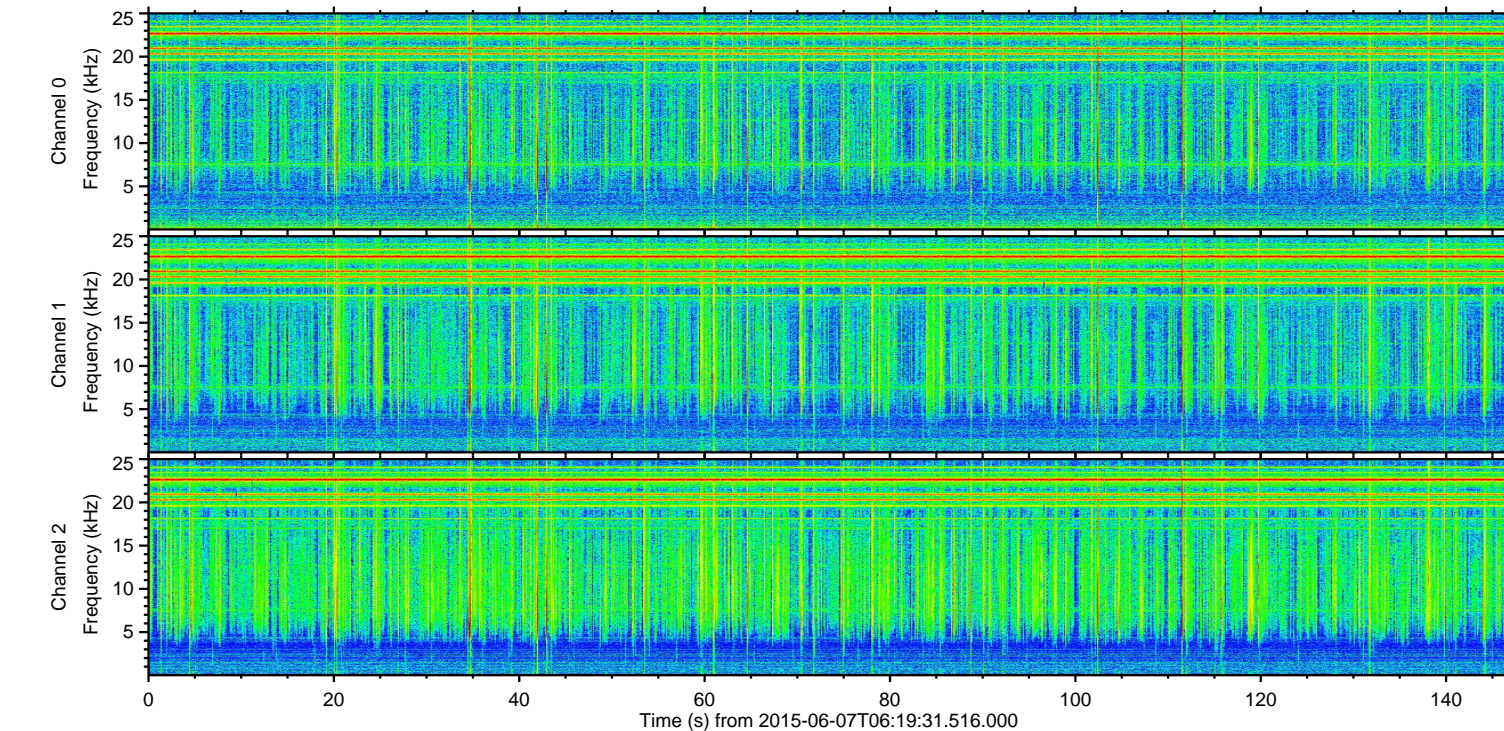
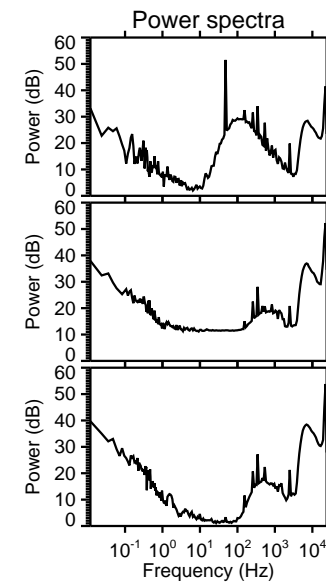
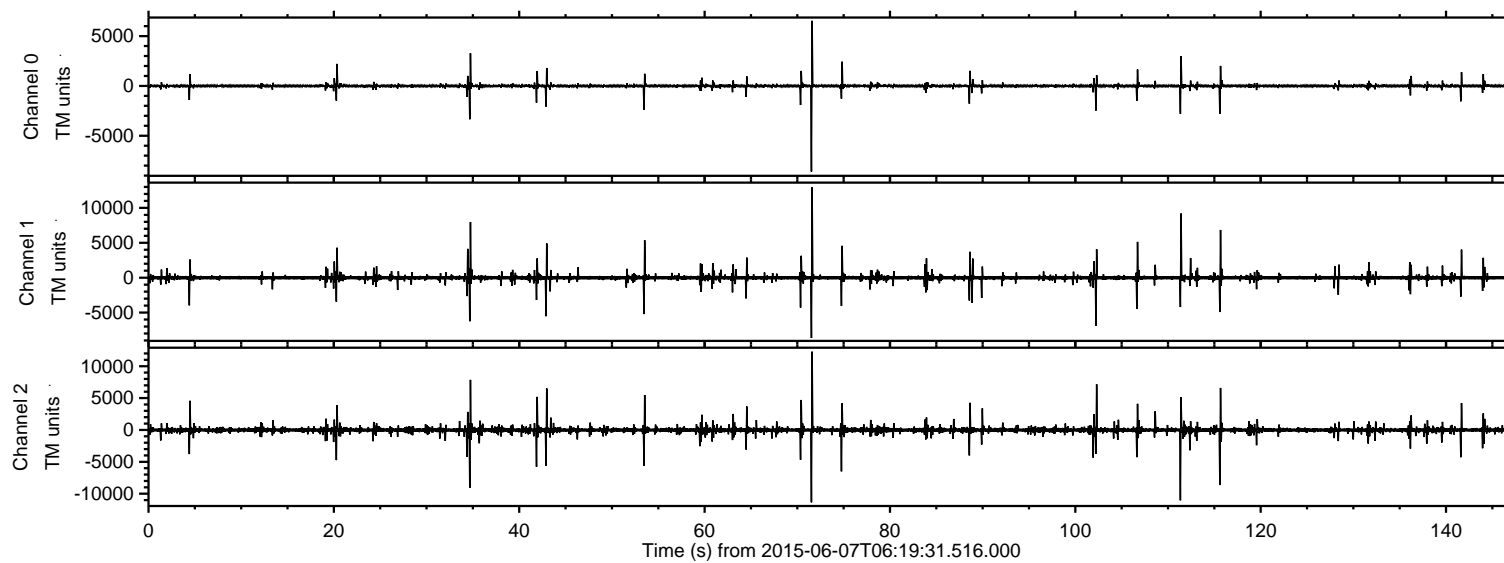
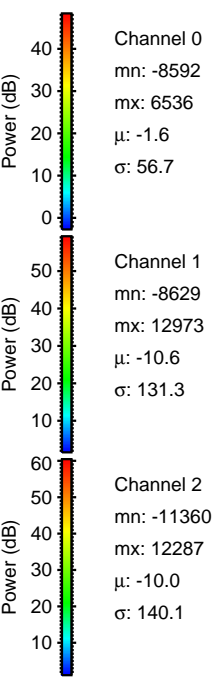
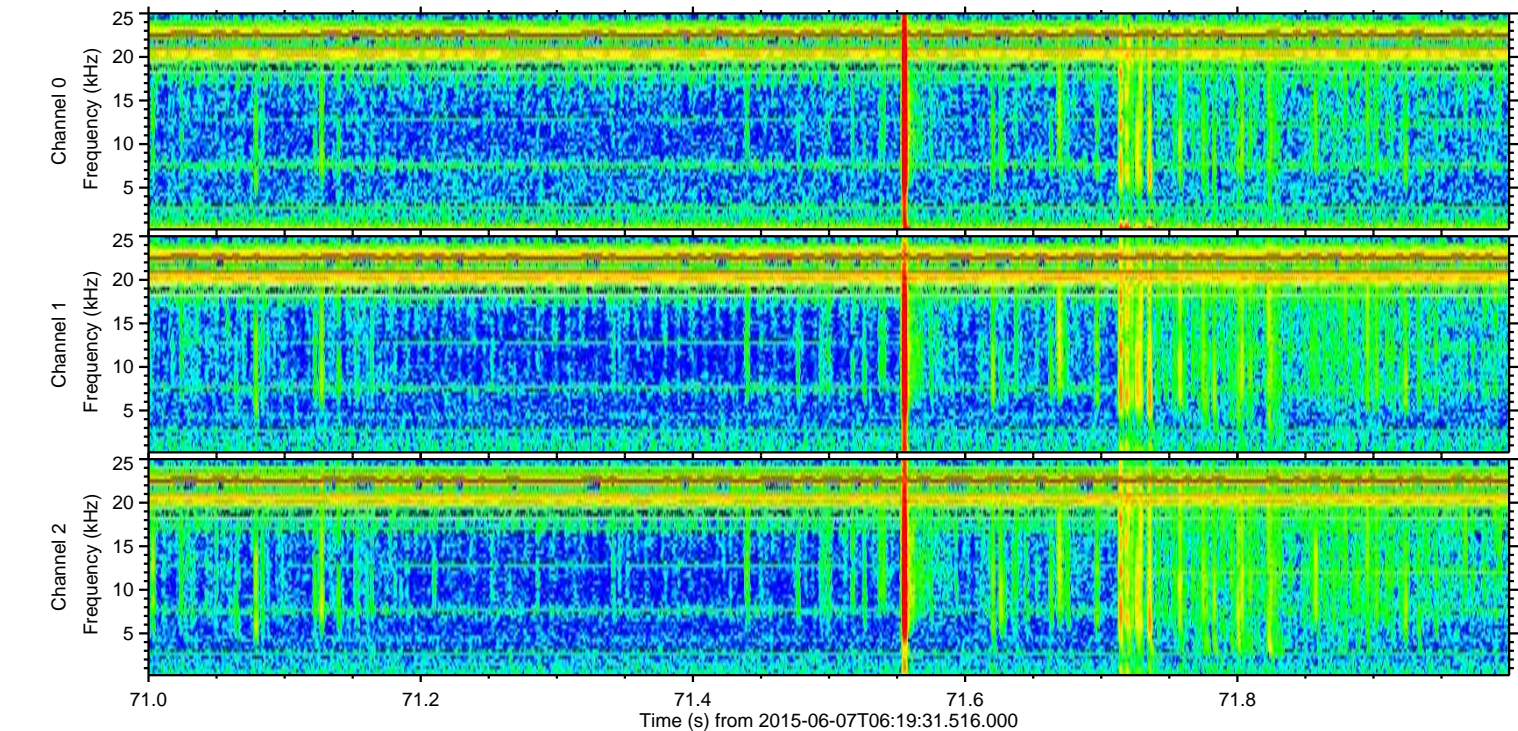
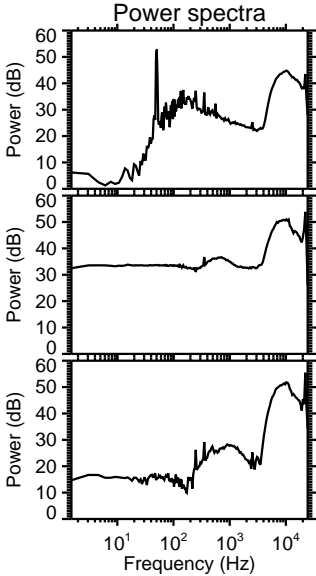
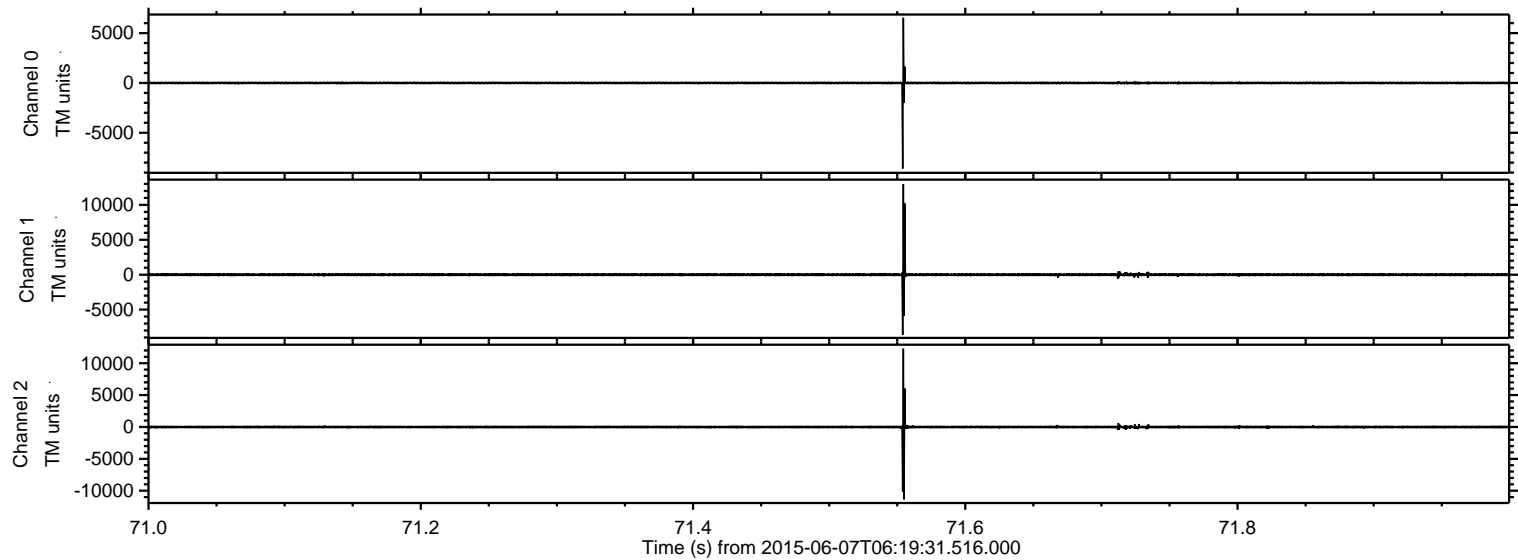


ELMAVAN 3D WAVEFORMS (Measured data sampled at 50 kHz) 51000 packets of 144 samples from 2015-06-07T06:19:31.516.000.

Processed Sun Jun 7 08:26:00 2015 by ELM ver.2012-10-06 from 001__elm20150607_061930__dat00.bin

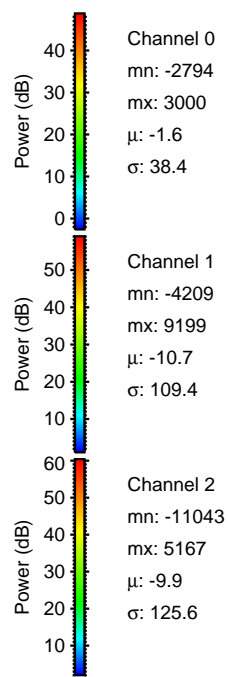
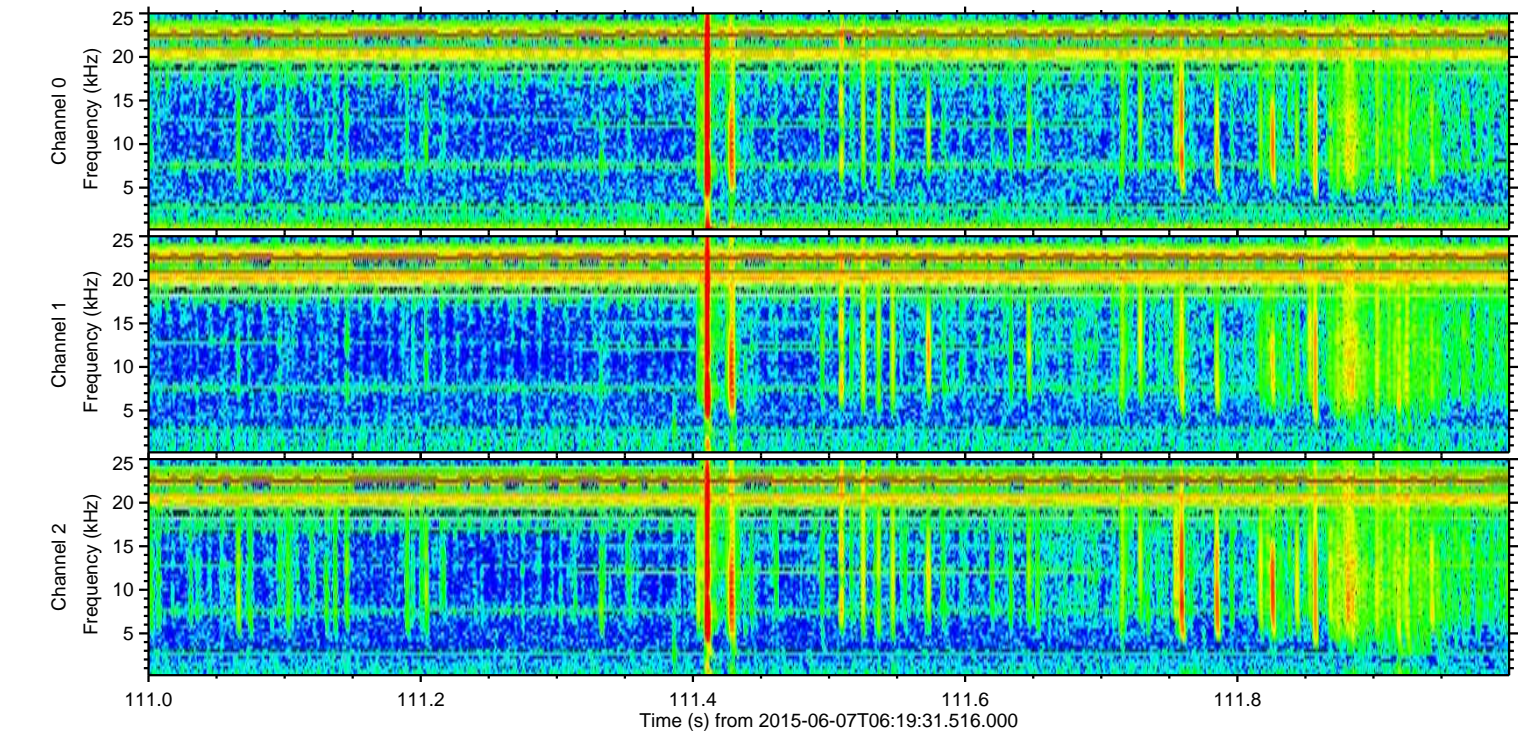
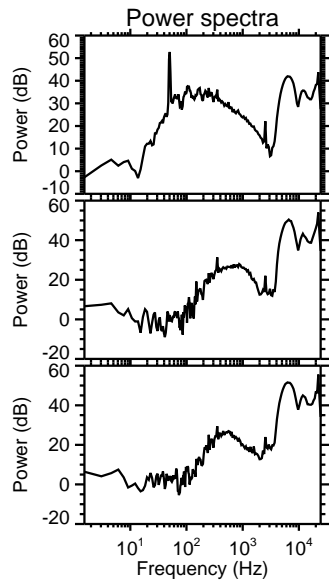
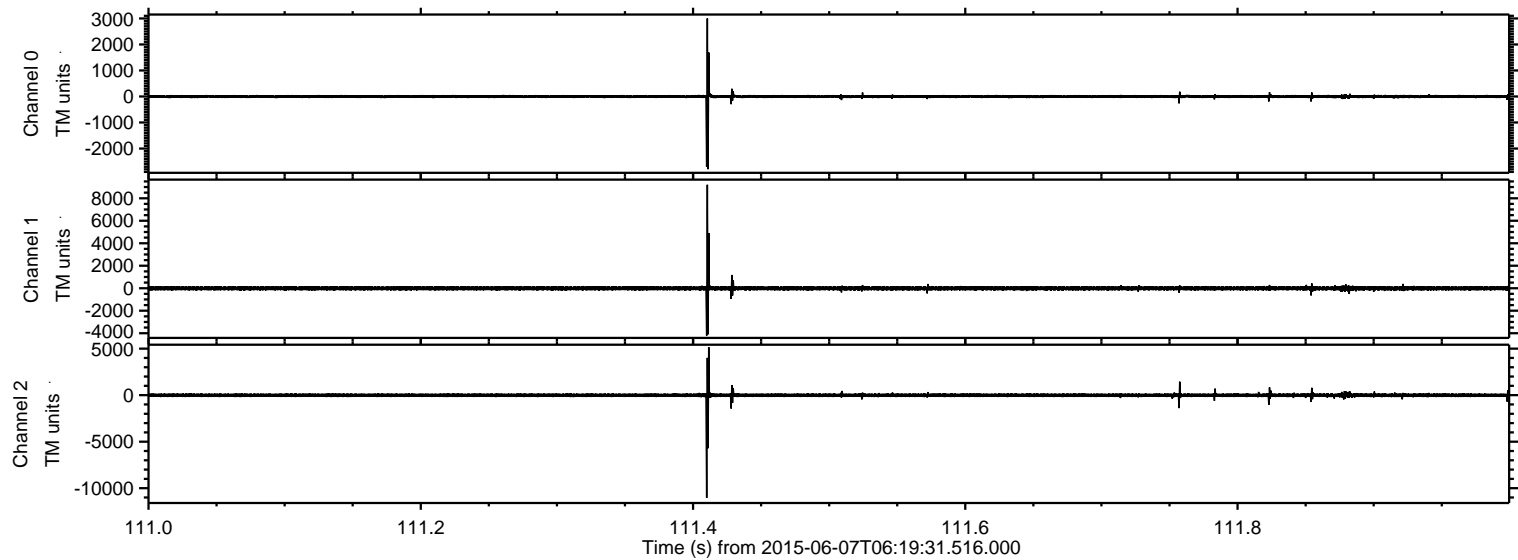


Processed Sun Jun 7 08:26:12 2015 by ELM ver.2012-10-06 from 001__elm20150607_061930__dat00.bin

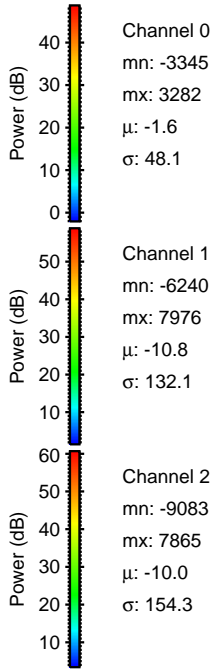
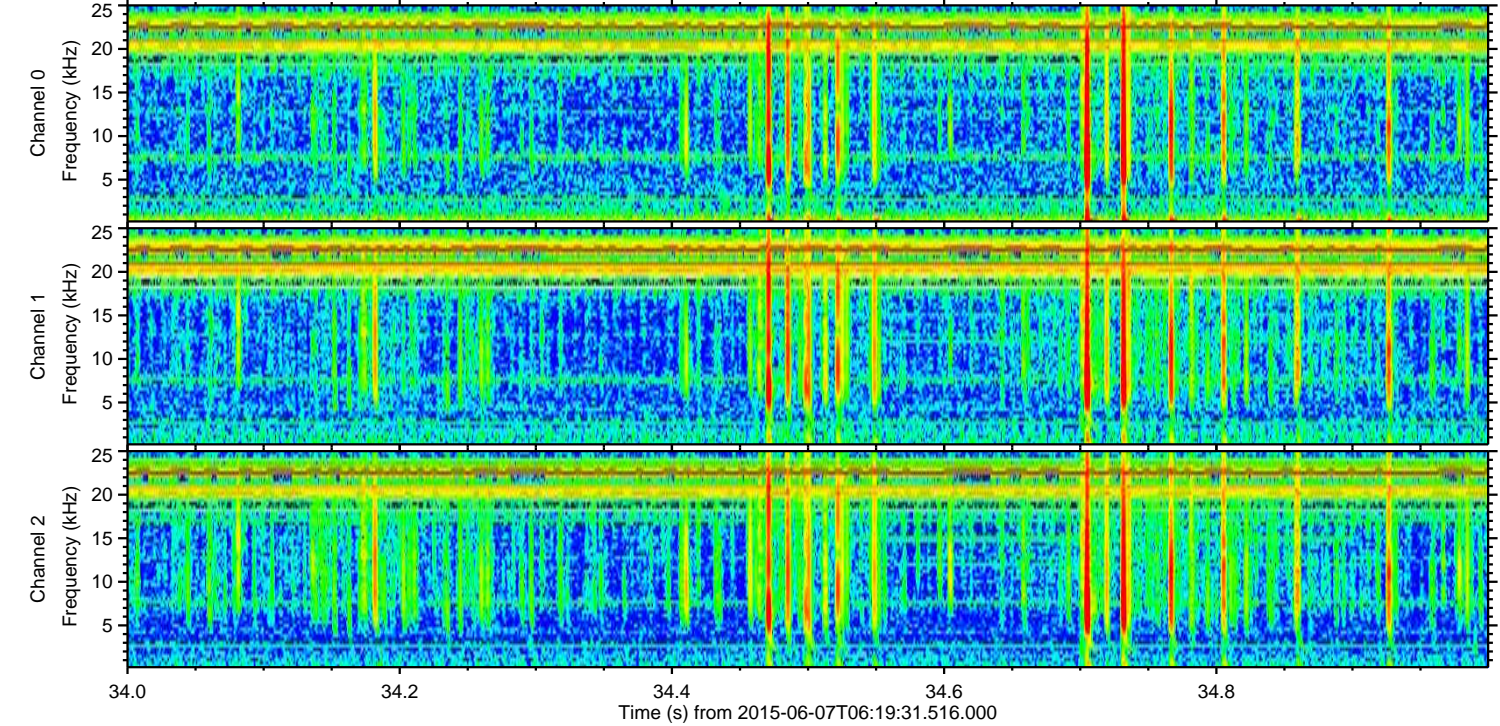
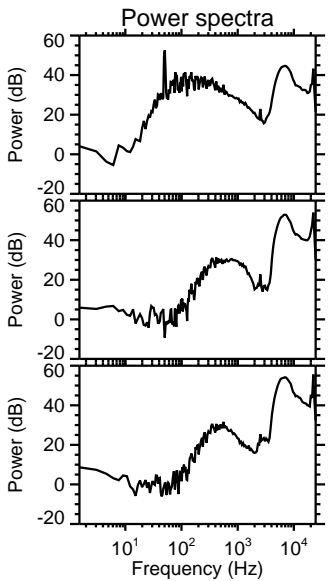
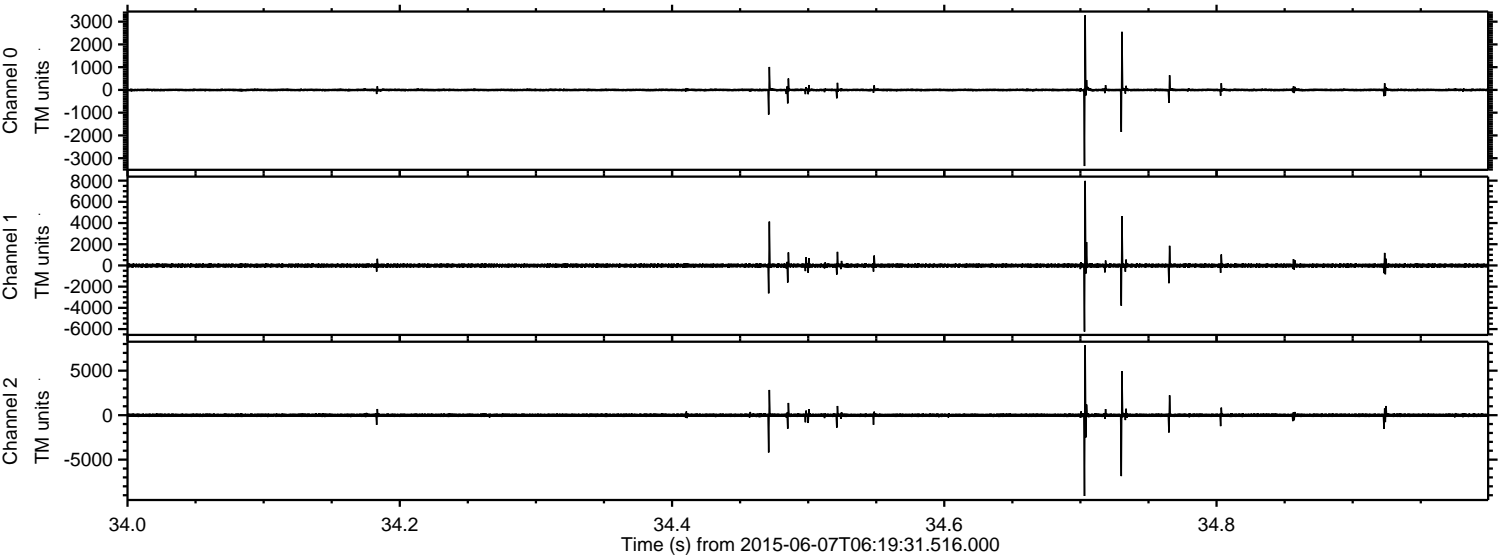


ELMAVAN 3D WAVEFORMS (Measured data sampled at 50 kHz) 51000 packets of 144 samples from 2015-06-07T06:19:31.516.000. Part 112/147

Processed Sun Jun 7 08:26:13 2015 by ELM ver.2012-10-06 from 001__elm20150607_061930__dat00.bin

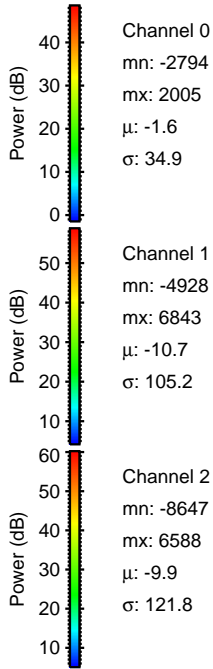
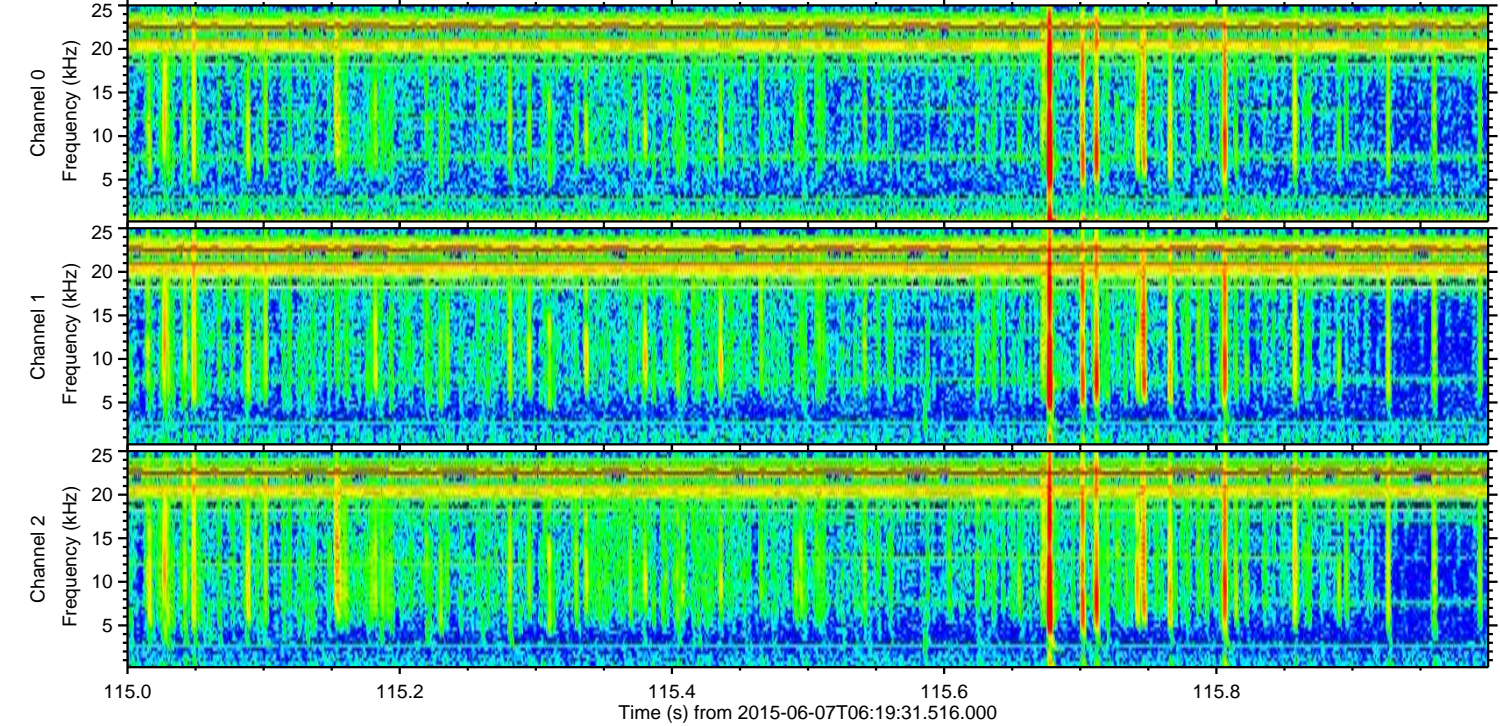
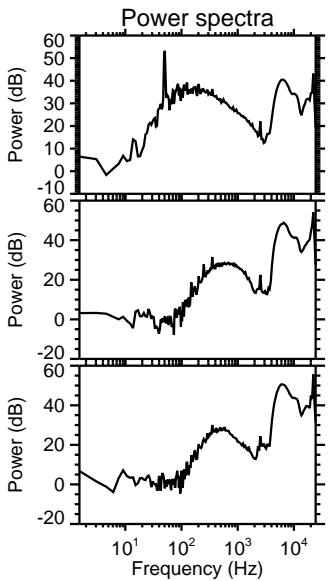
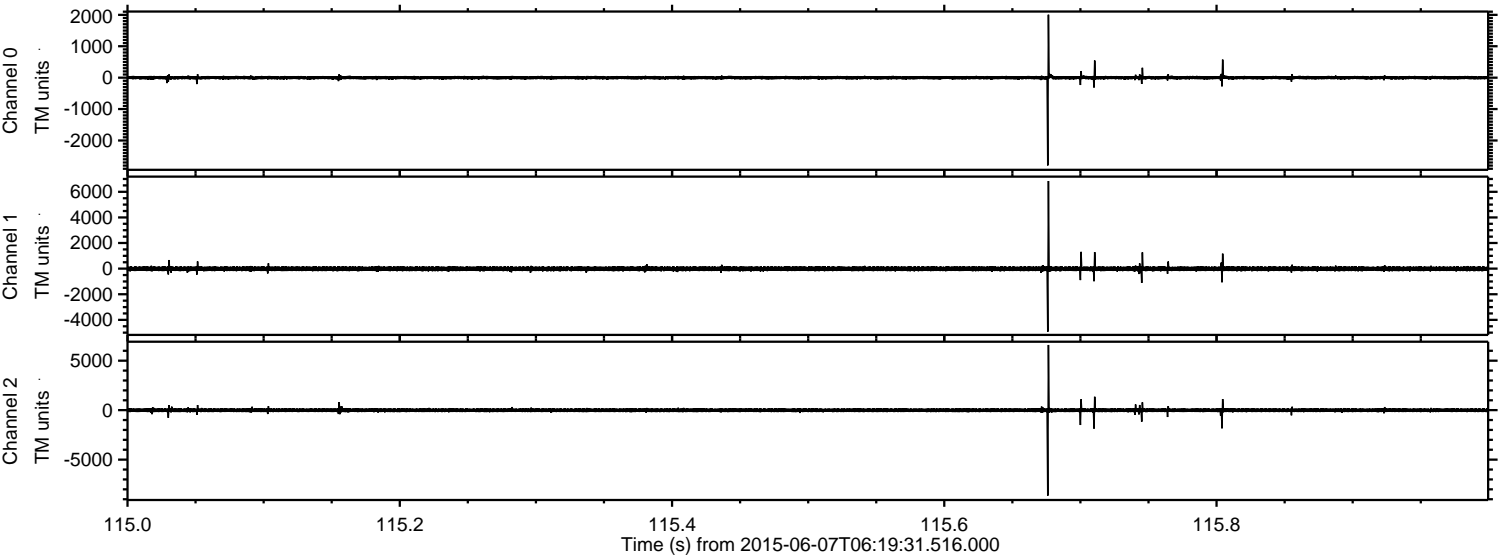


Processed Sun Jun 7 08:26:14 2015 by ELM ver.2012-10-06 from 001__elm20150607_061930__dat00.bin



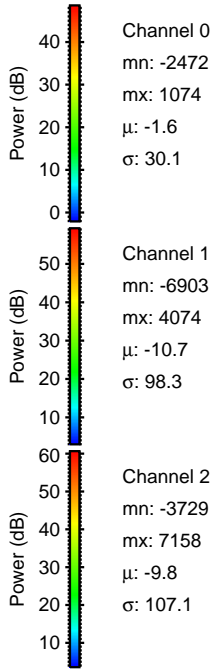
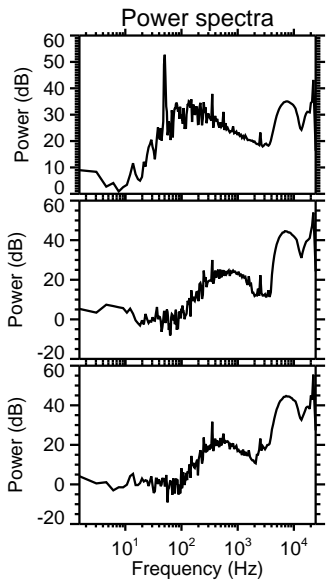
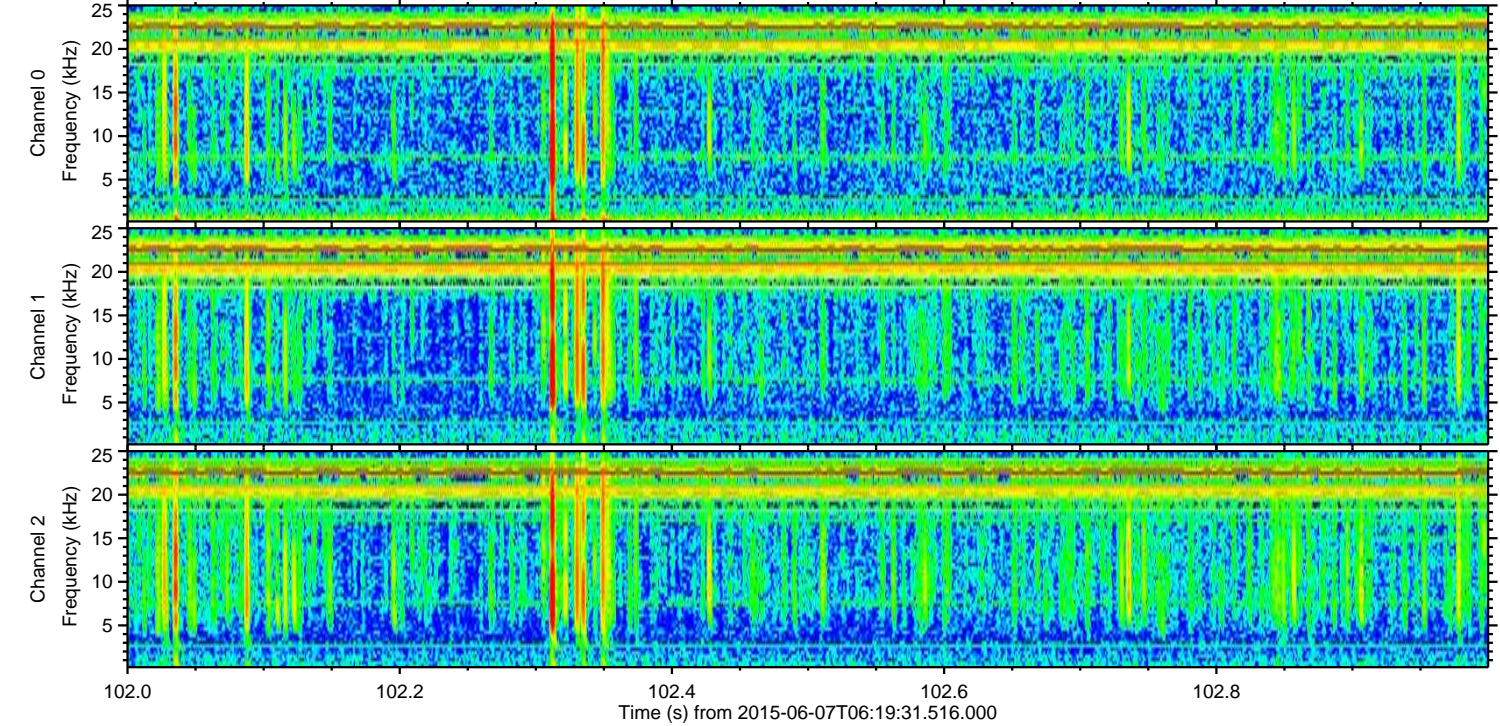
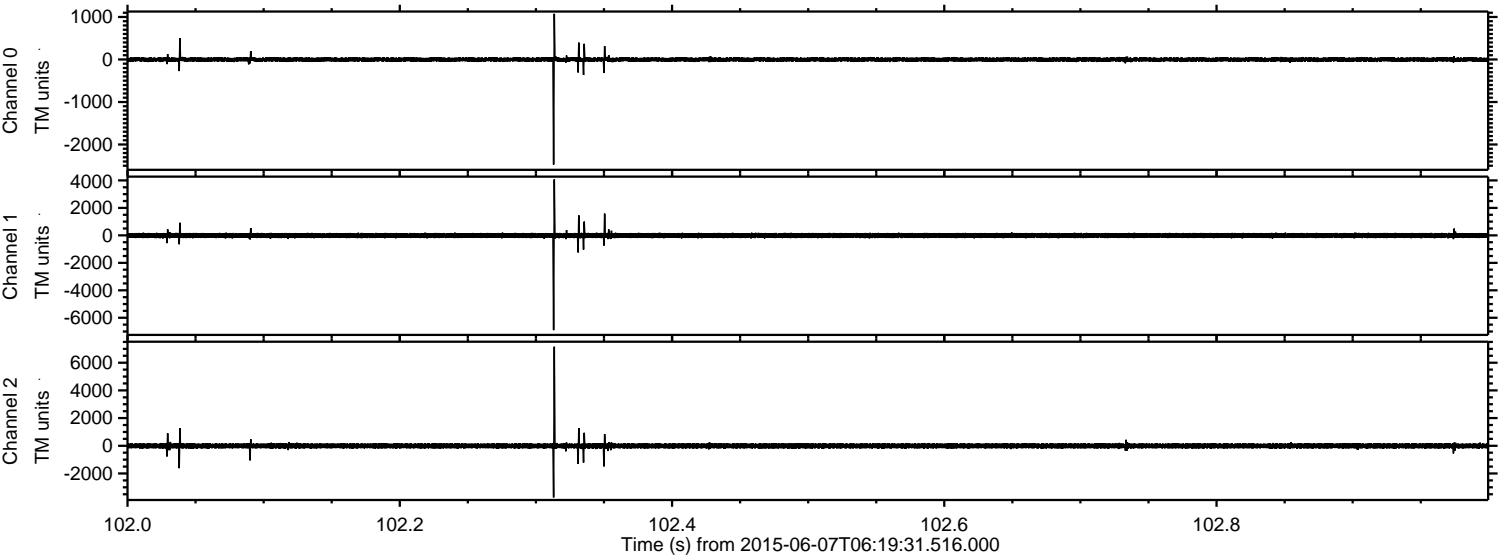
ELMAVAN 3D WAVEFORMS (Measured data sampled at 50 kHz) 51000 packets of 144 samples from 2015-06-07T06:19:31.516.000. Part 116/147

Processed Sun Jun 7 08:26:15 2015 by ELM ver.2012-10-06 from 001__elm20150607_061930__dat00.bin

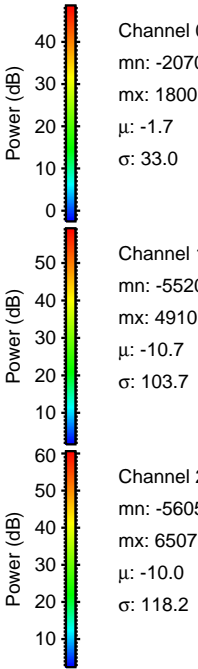
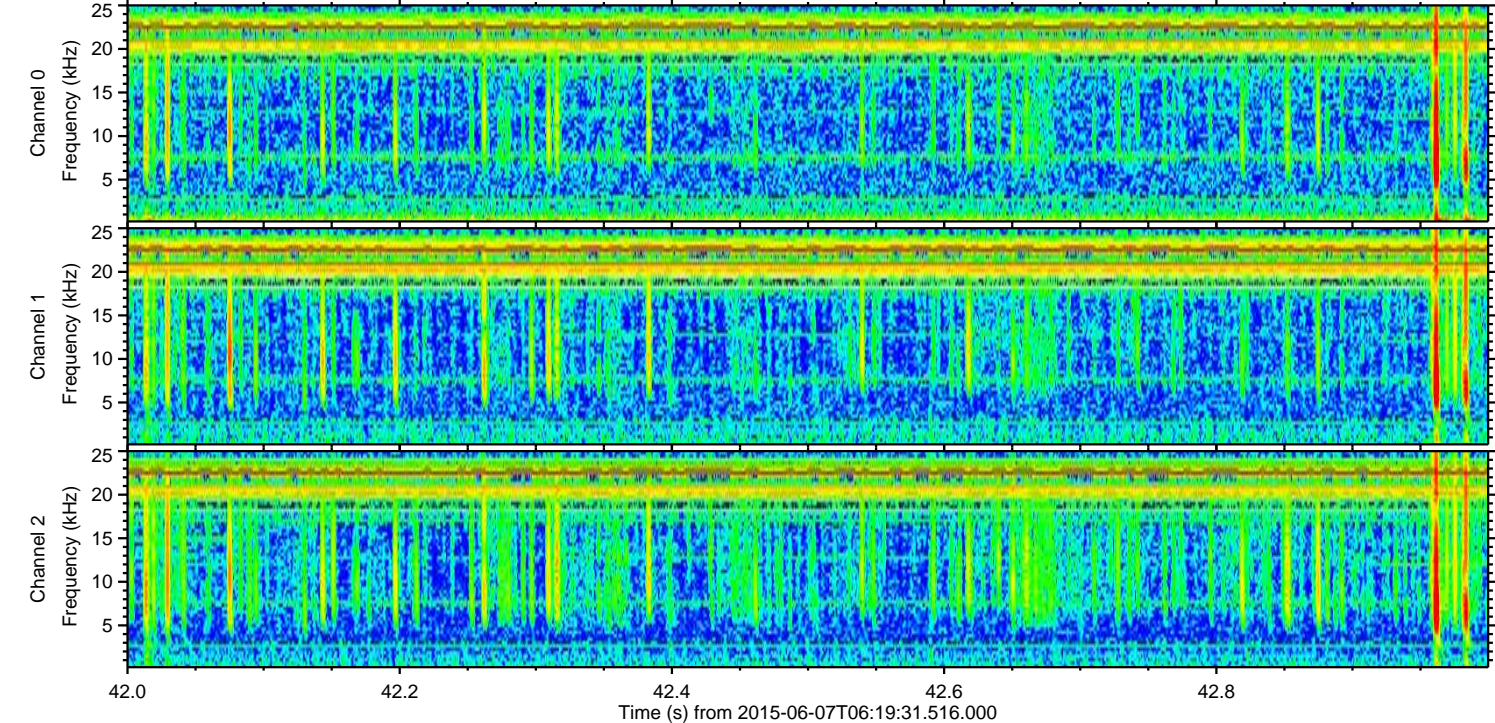
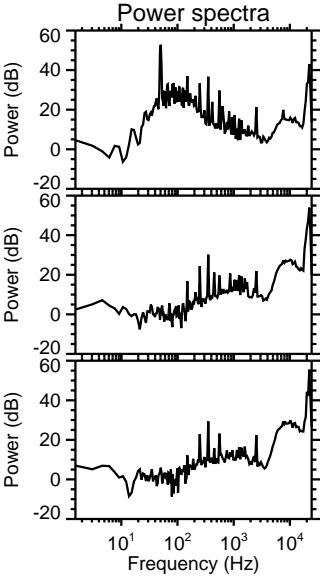
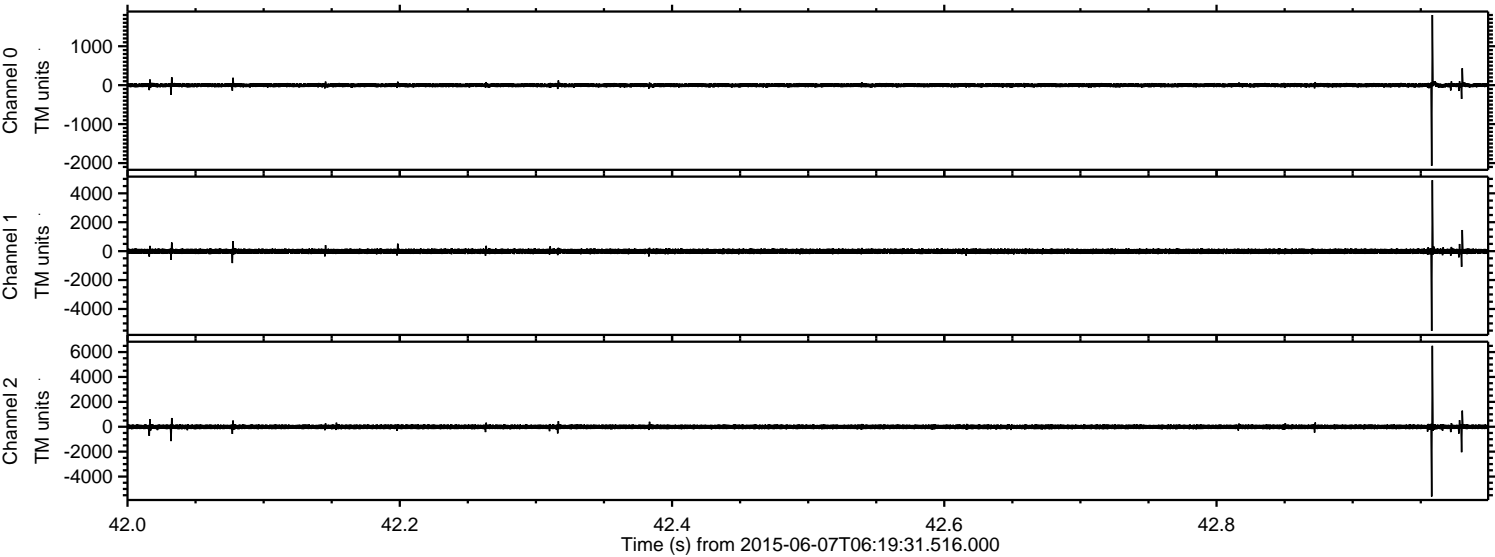


ELMAVAN 3D WAVEFORMS (Measured data sampled at 50 kHz) 51000 packets of 144 samples from 2015-06-07T06:19:31.516.000. Part 103/147

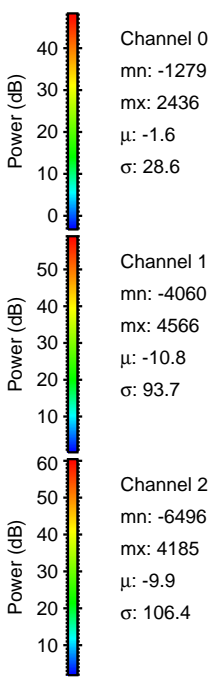
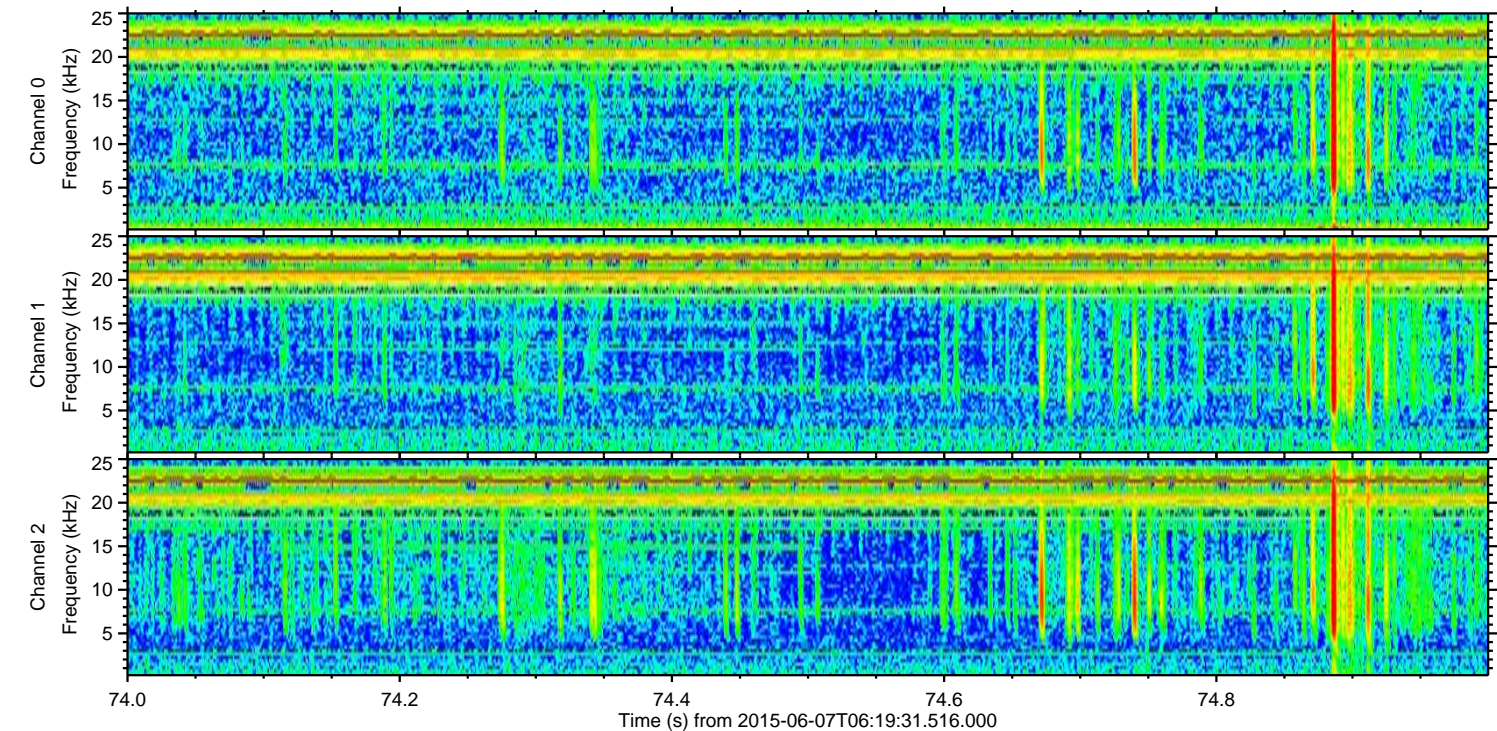
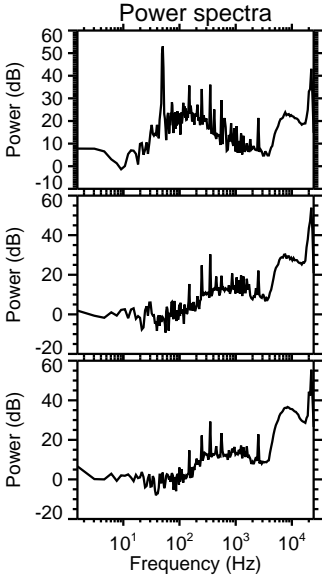
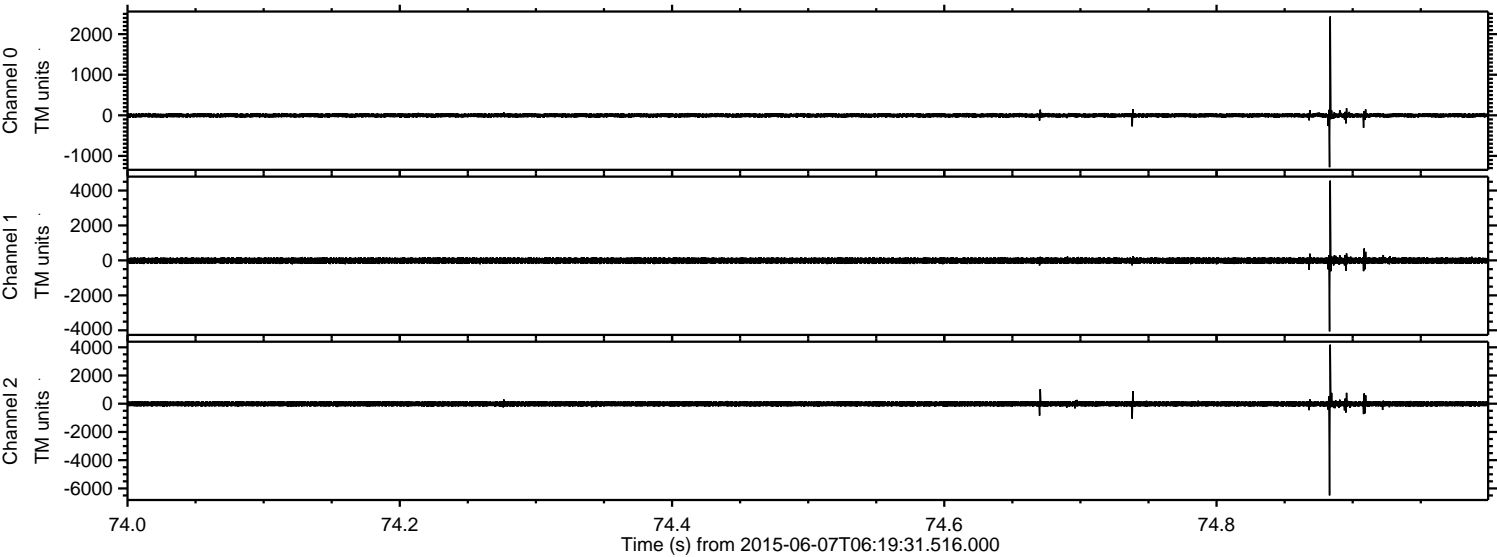
Processed Sun Jun 7 08:26:16 2015 by ELM ver.2012-10-06 from 001__elm20150607_061930__dat00.bin



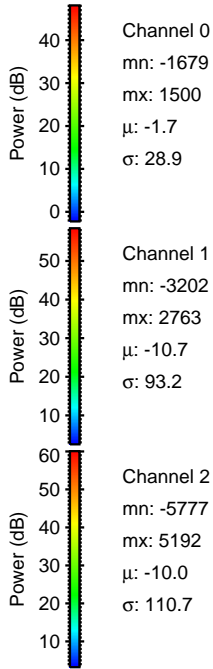
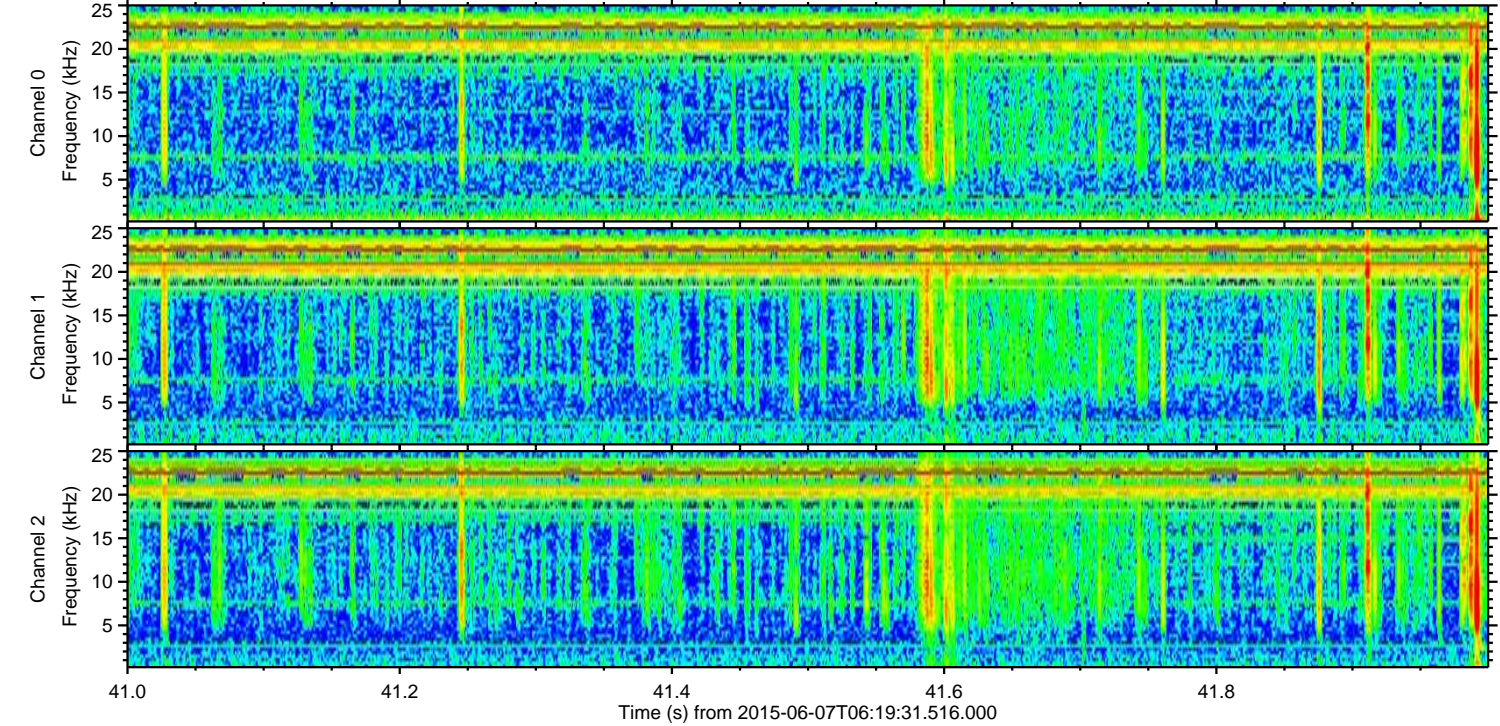
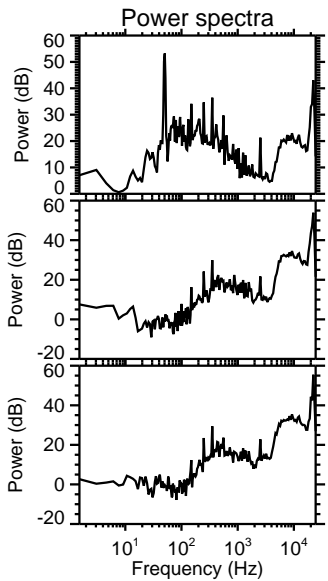
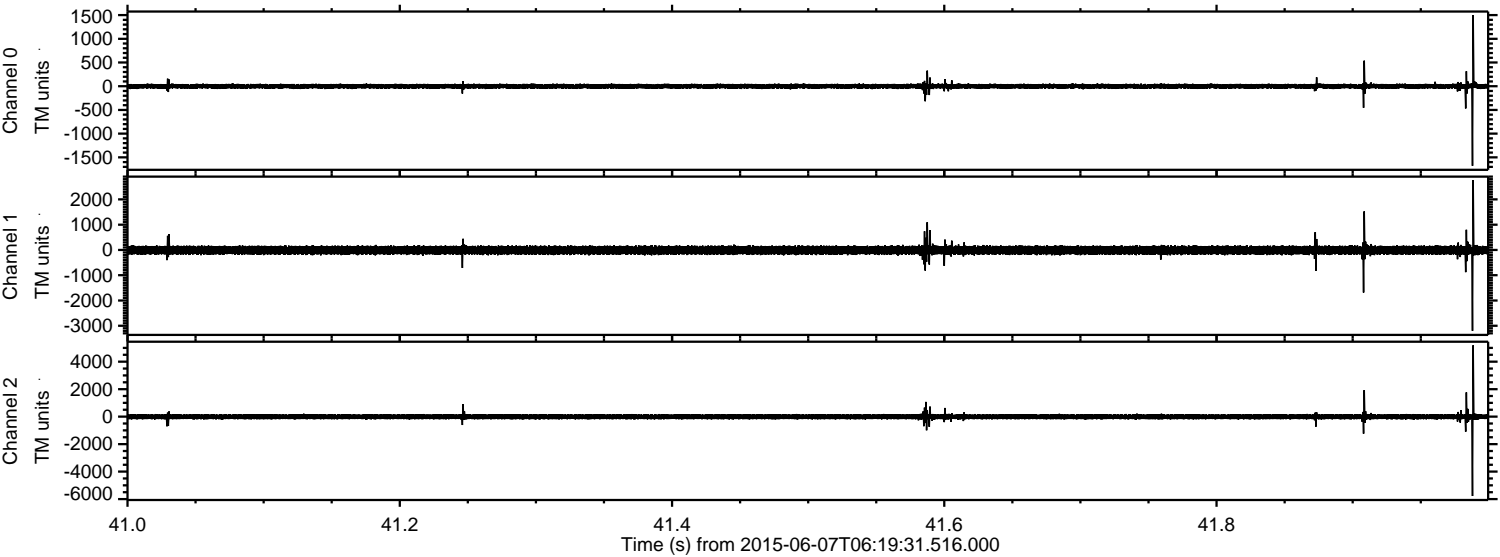
Processed Sun Jun 7 08:26:17 2015 by ELM ver.2012-10-06 from 001__elm20150607_061930__dat00.bin



Processed Sun Jun 7 08:26:18 2015 by ELM ver.2012-10-06 from 001__elm20150607_061930__dat00.bin



Processed Sun Jun 7 08:26:19 2015 by ELM ver.2012-10-06 from 001__elm20150607_061930__dat00.bin

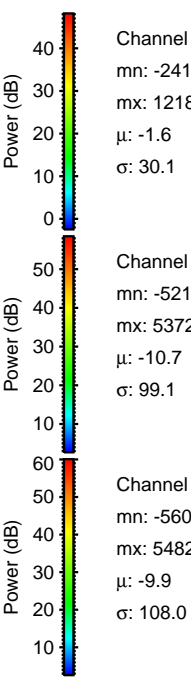
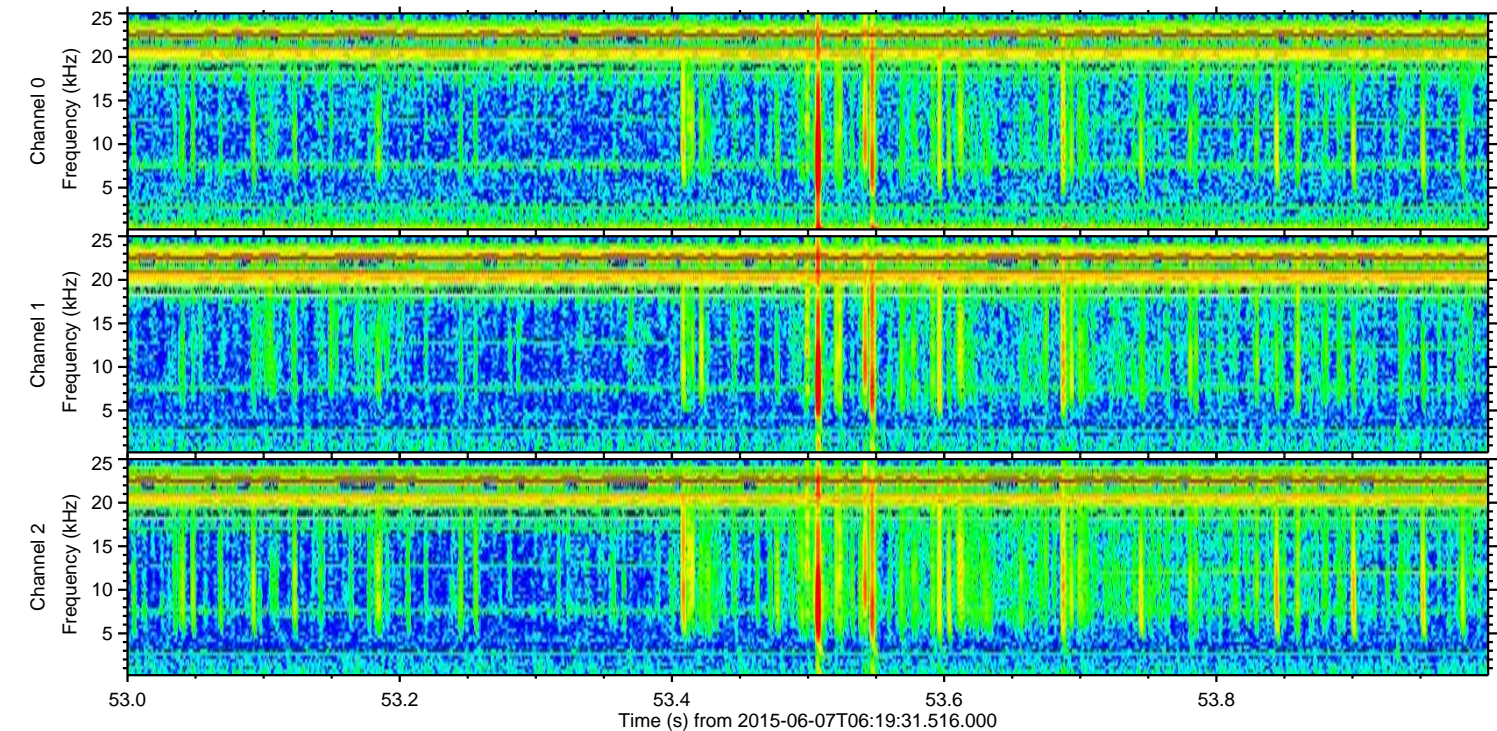
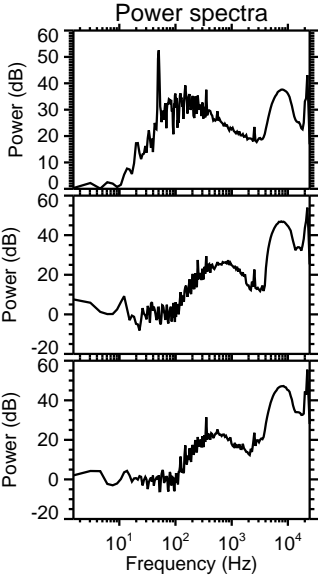
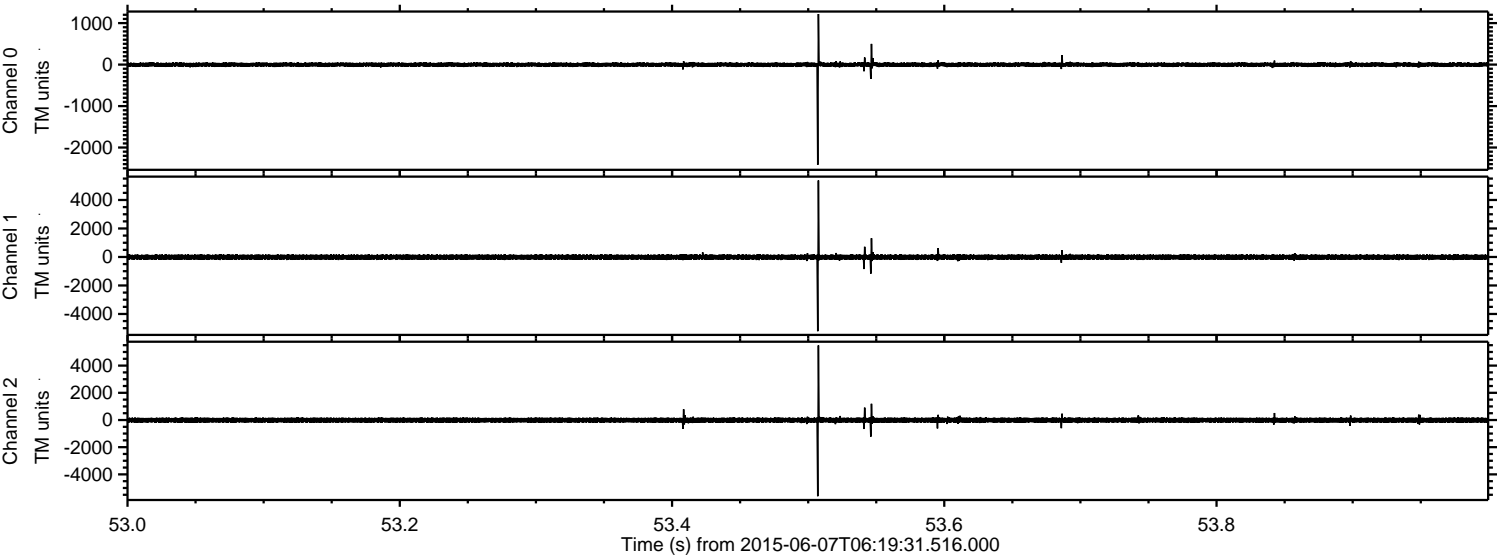


Channel 0
mn: -1679
mx: 1500
 μ : -1.7
 σ : 28.9

Channel 1
mn: -3202
mx: 2763
 μ : -10.7
 σ : 93.2

Channel 2
mn: -5777
mx: 5192
 μ : -10.0
 σ : 110.7

Processed Sun Jun 7 08:26:20 2015 by ELM ver.2012-10-06 from 001__elm20150607_061930__dat00.bin



Channel 0
mn: -2416
mx: 1218
 μ : -1.6
 σ : 30.1

Channel 1
mn: -5210
mx: 5372
 μ : -10.7
 σ : 99.1

Channel 2
mn: -5603
mx: 5482
 μ : -9.9
 σ : 108.0

Processed Sun Jun 7 08:26:21 2015 by ELM ver.2012-10-06 from 001__elm20150607_061930__dat00.bin

