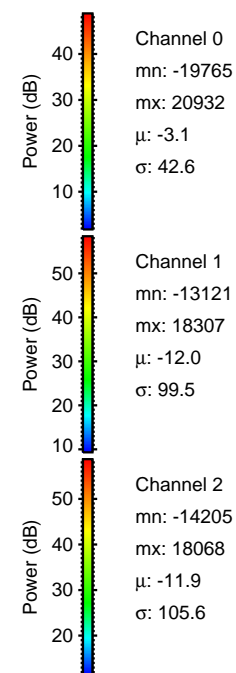
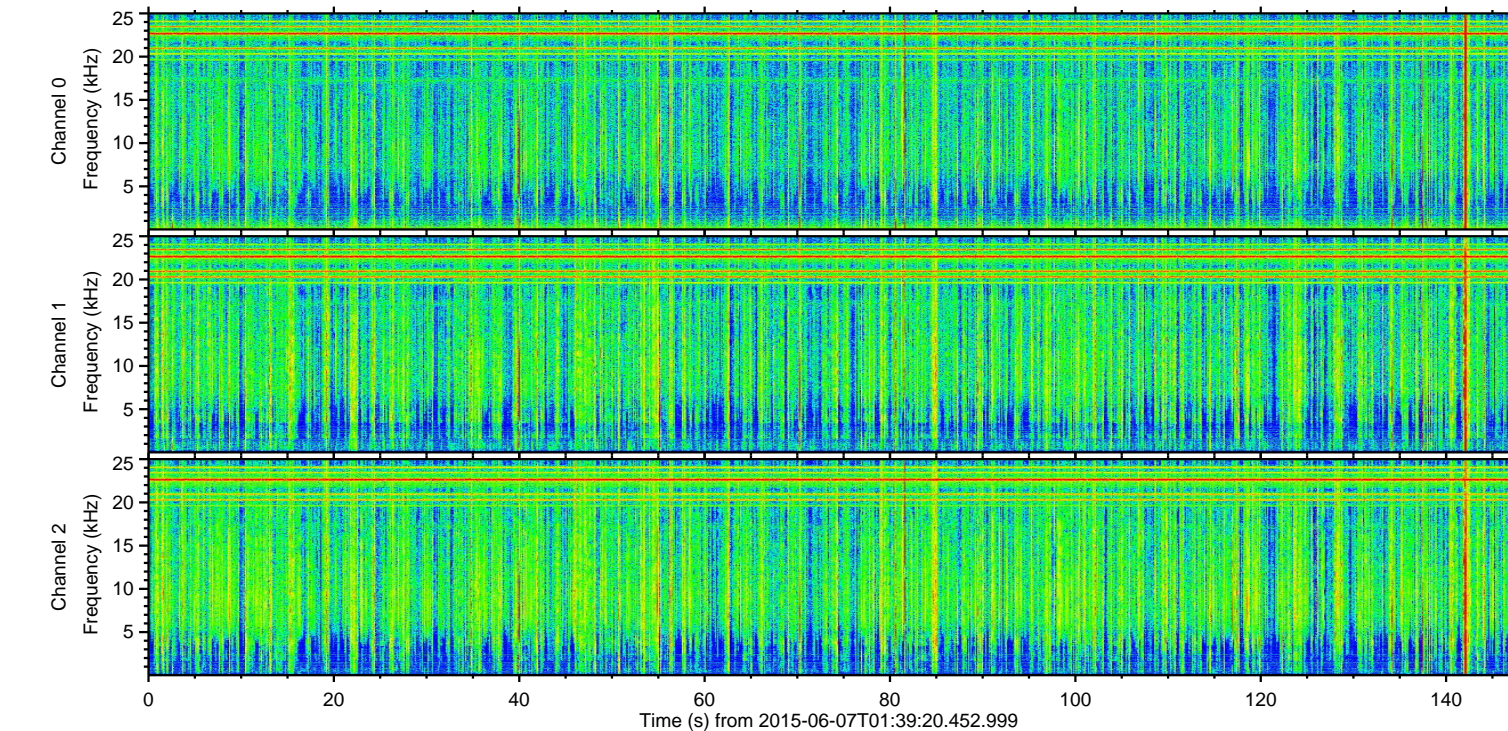
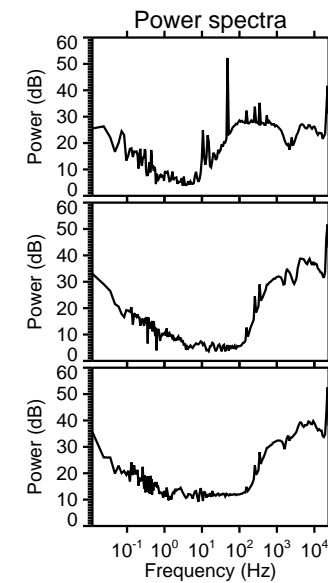
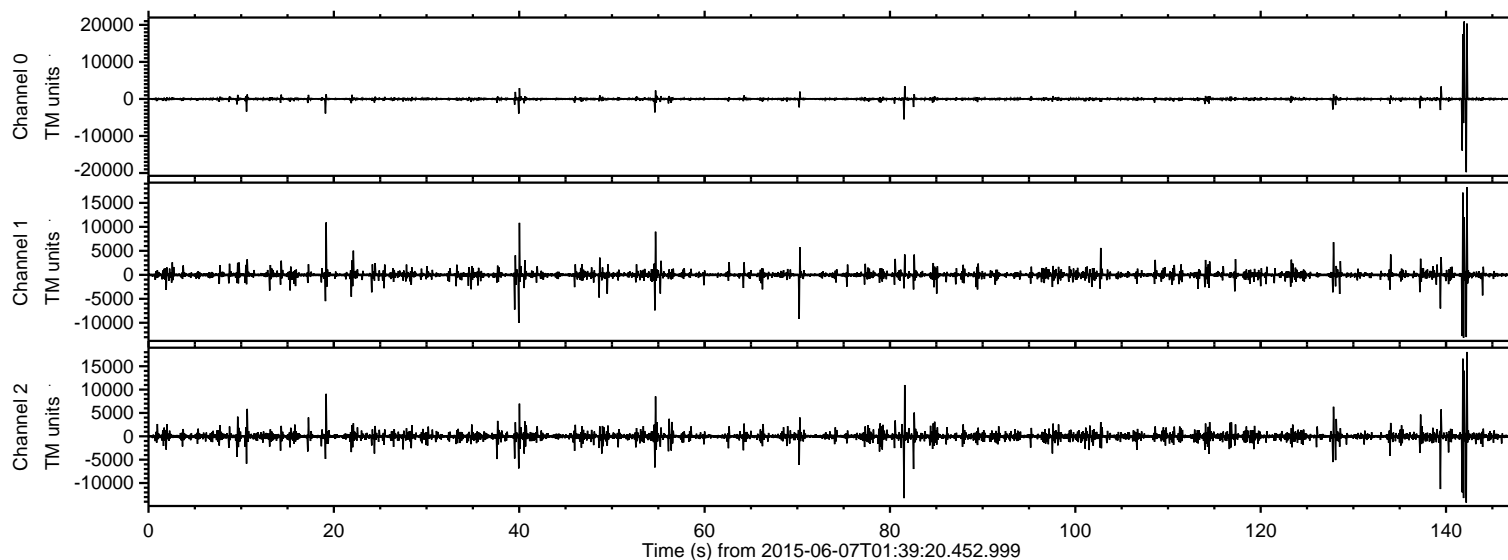


# ELMAVAN 3D WAVEFORMS (Measured data sampled at 50 kHz) 51000 packets of 144 samples from 2015-06-07T01:39:20.452.999.

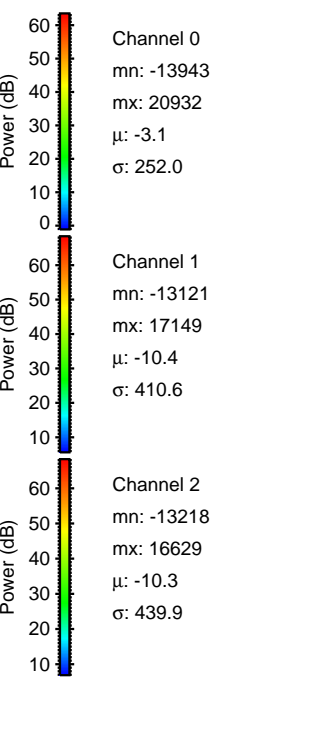
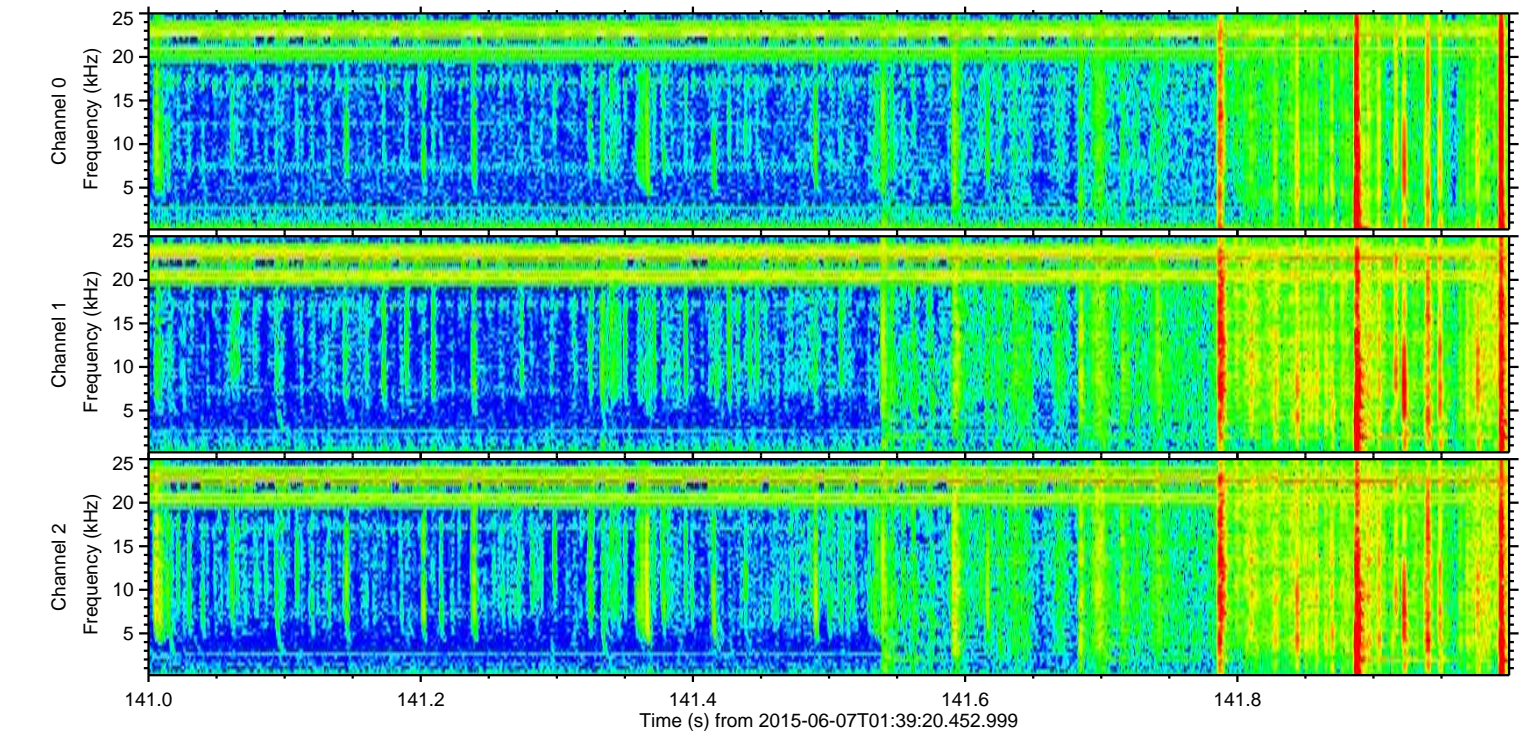
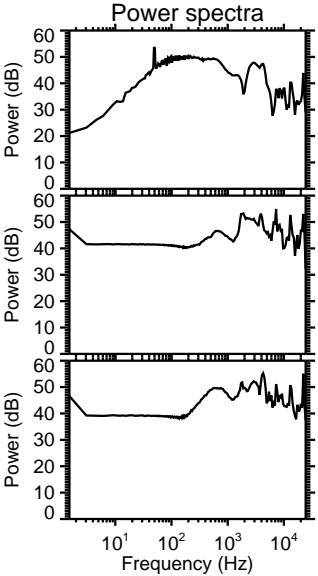
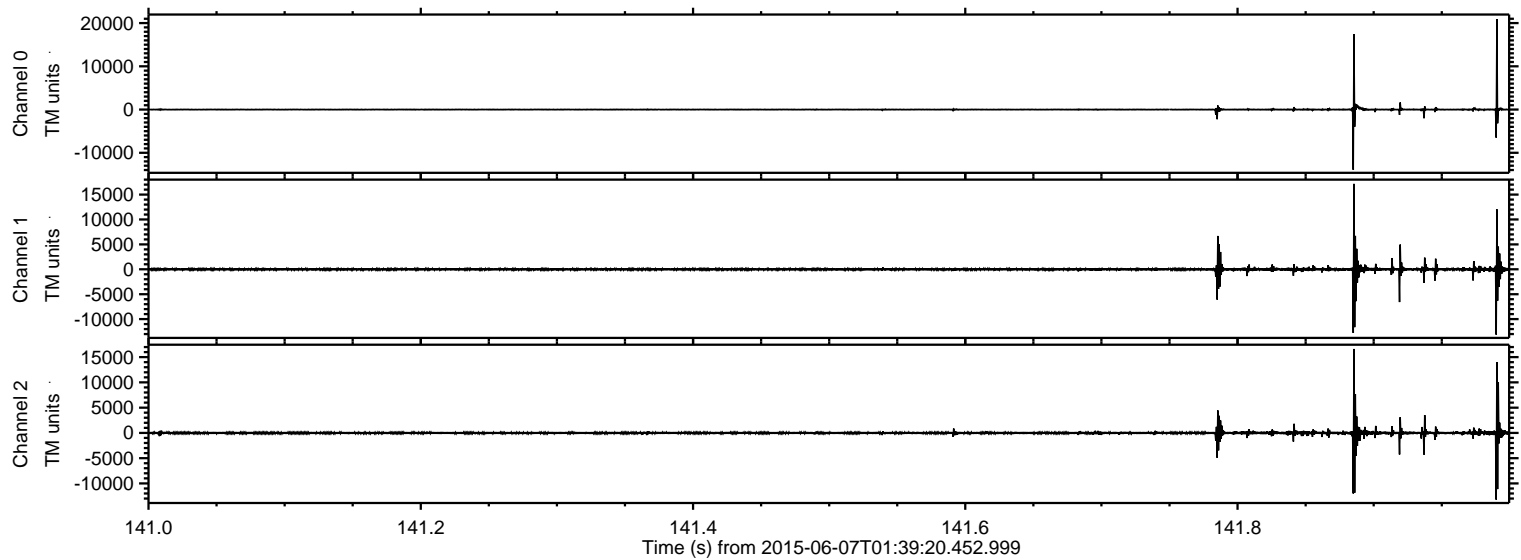
Processed Sun Jun 7 03:46:15 2015 by ELM ver.2012-10-06 from 001\_\_elm20150607\_013919\_\_dat00.bin





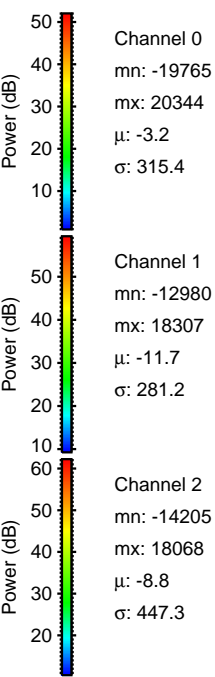
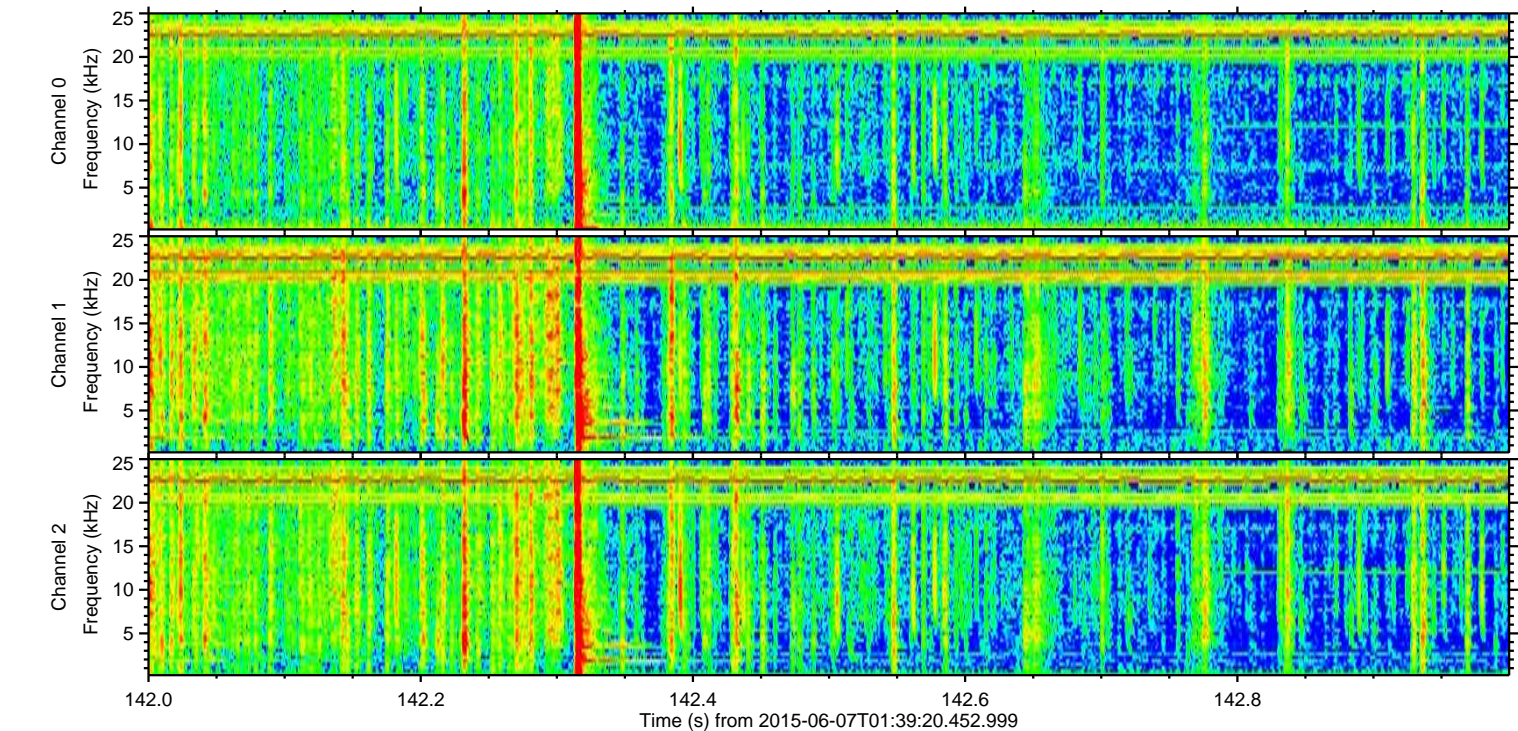
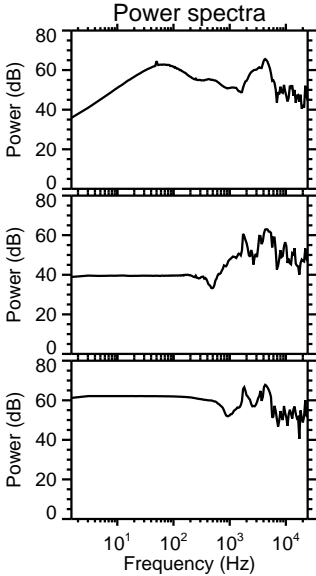
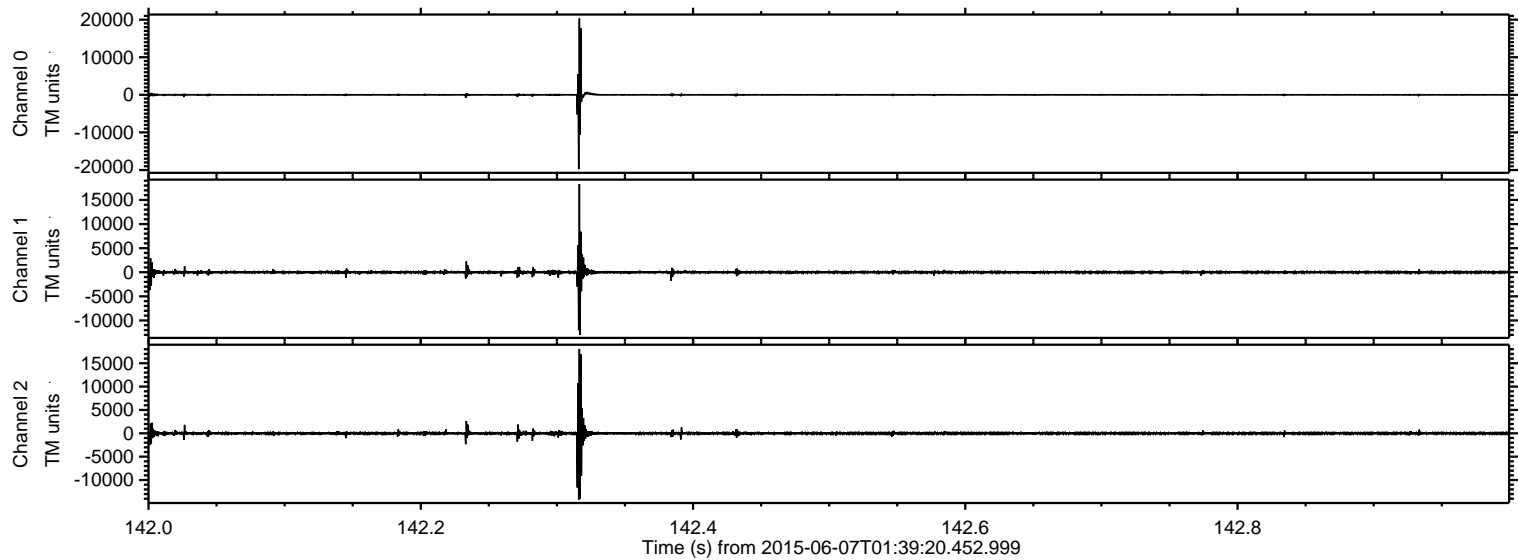
ELMAVAN 3D WAVEFORMS (Measured data sampled at 50 kHz) 51000 packets of 144 samples from 2015-06-07T01:39:20.452.999. Part 142/147

Processed Sun Jun 7 03:46:26 2015 by ELM ver.2012-10-06 from 001\_\_elm20150607\_013919\_\_dat00.bin



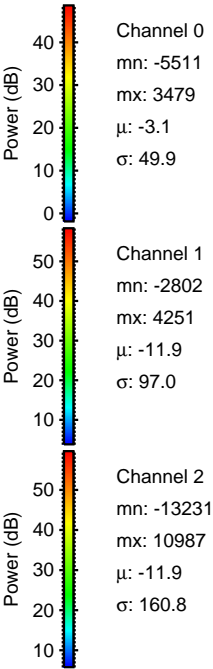
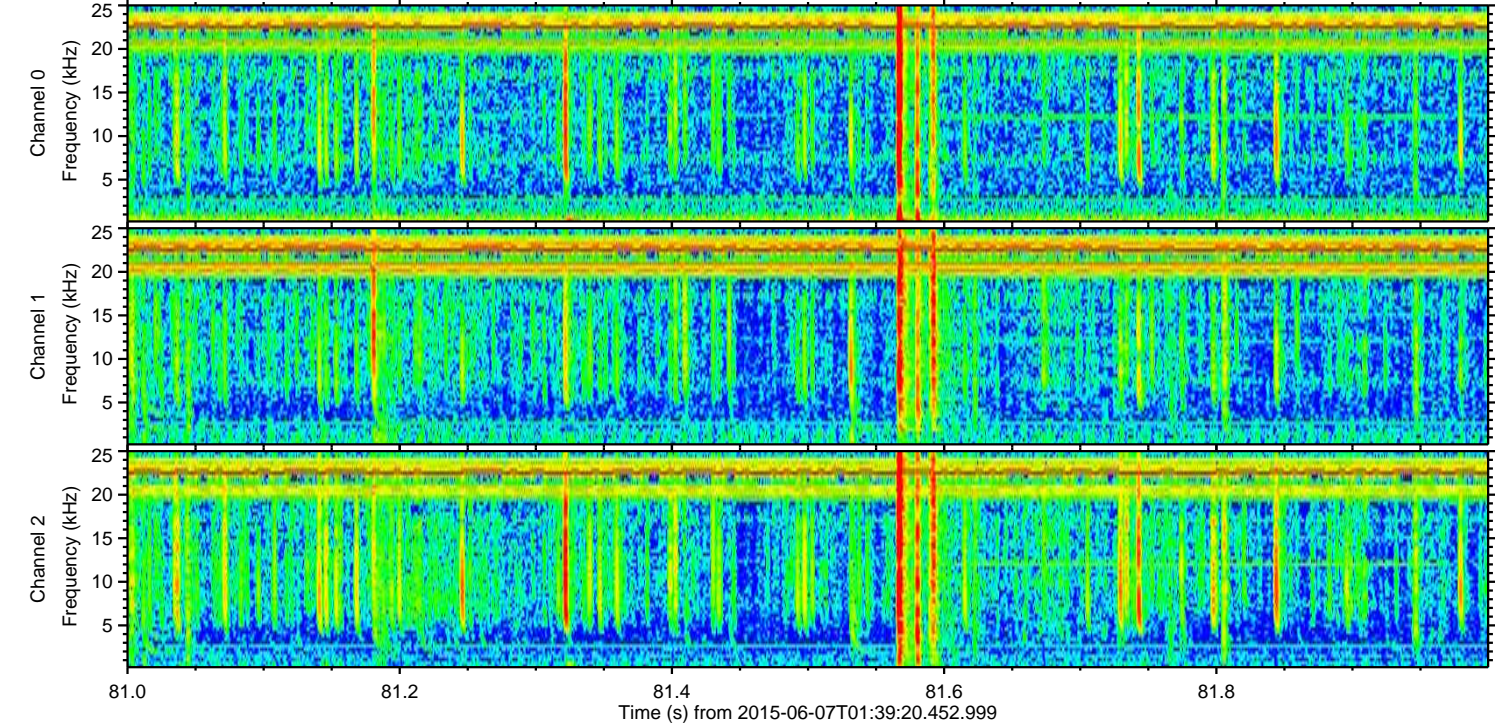
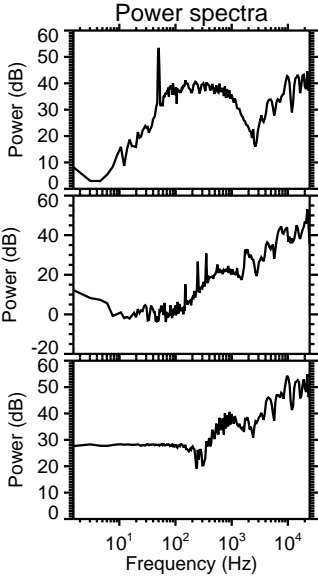
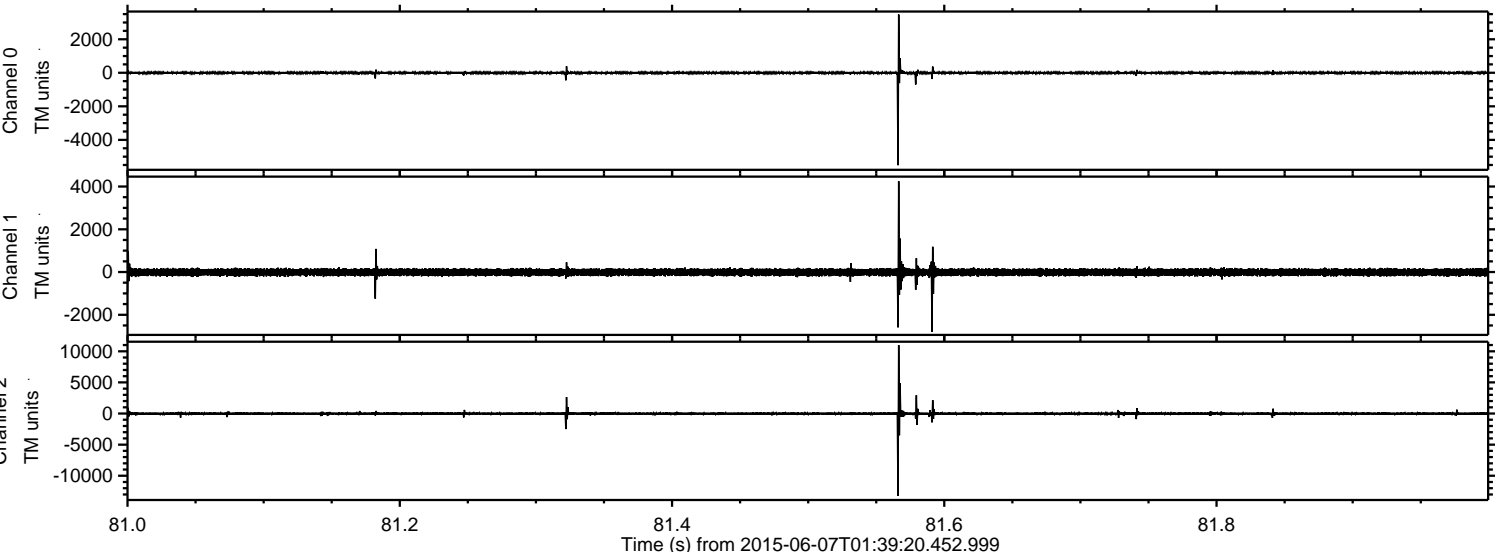
ELMAVAN 3D WAVEFORMS (Measured data sampled at 50 kHz) 51000 packets of 144 samples from 2015-06-07T01:39:20.452.999. Part 143/147

Processed Sun Jun 7 03:46:27 2015 by ELM ver.2012-10-06 from 001\_\_elm20150607\_013919\_\_dat00.bin





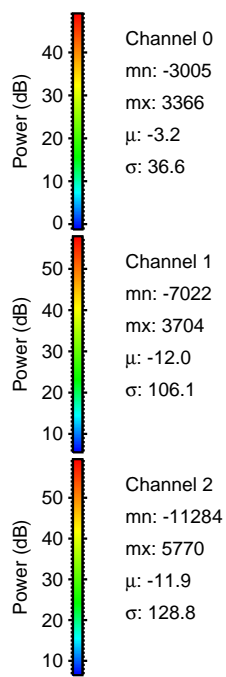
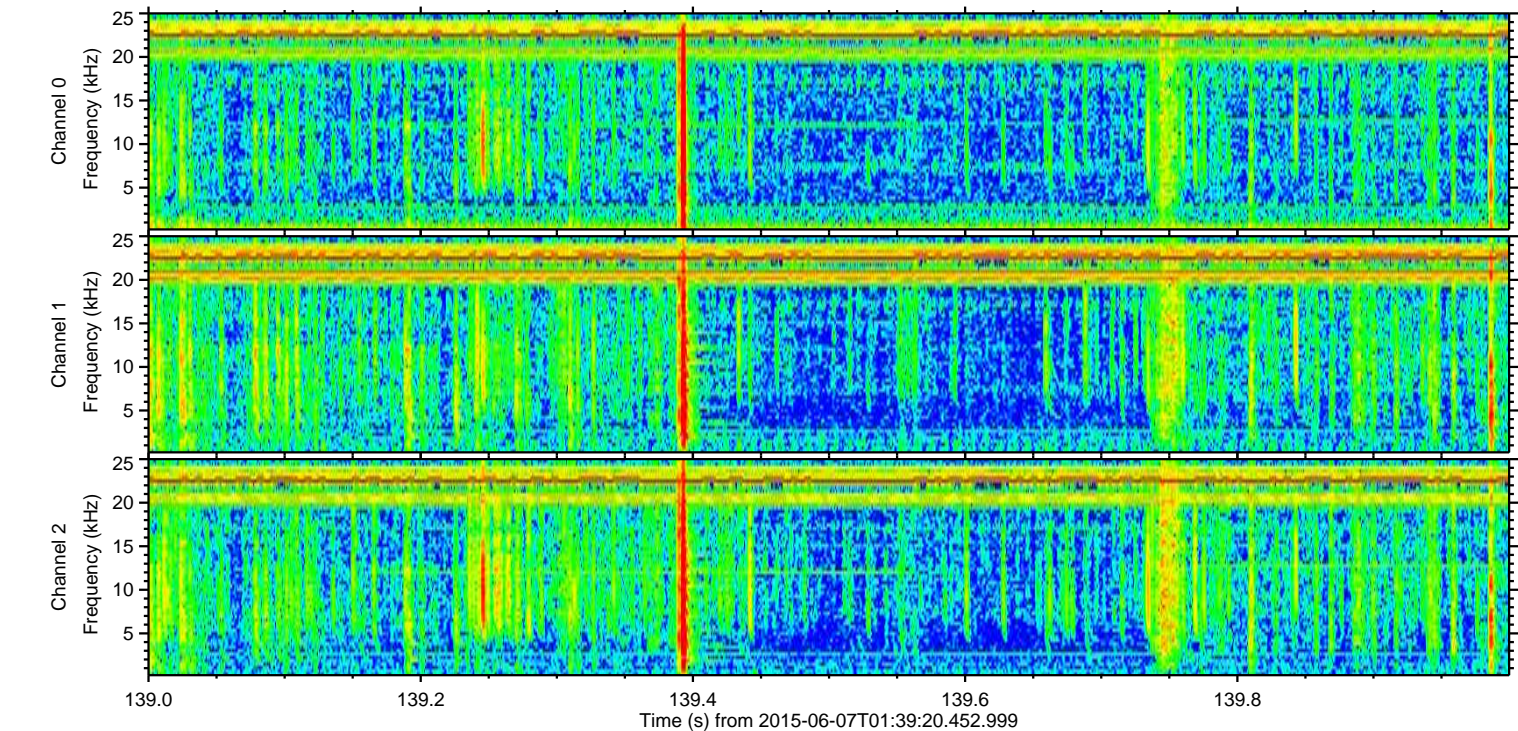
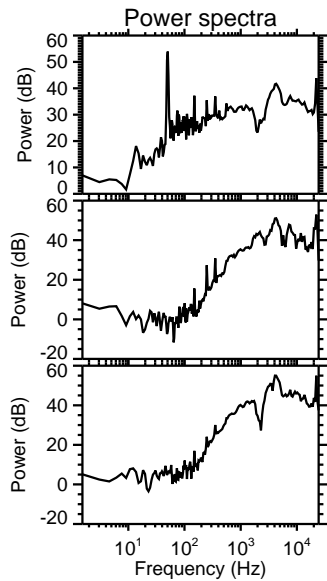
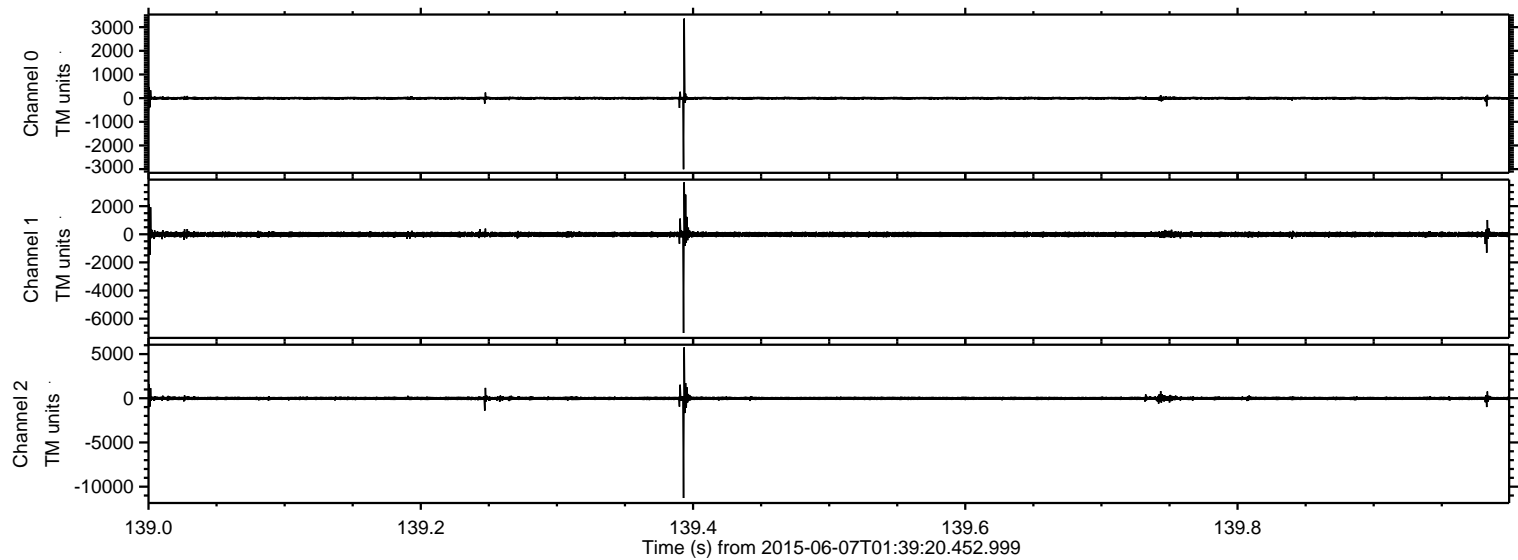
Processed Sun Jun 7 03:46:28 2015 by ELM ver.2012-10-06 from 001\_\_elm20150607\_013919\_\_dat00.bin



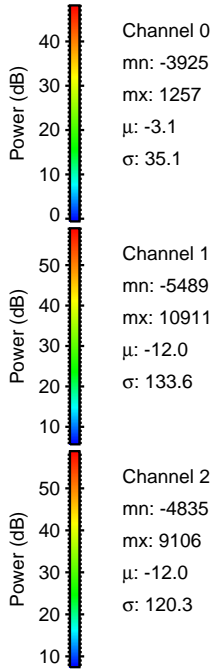
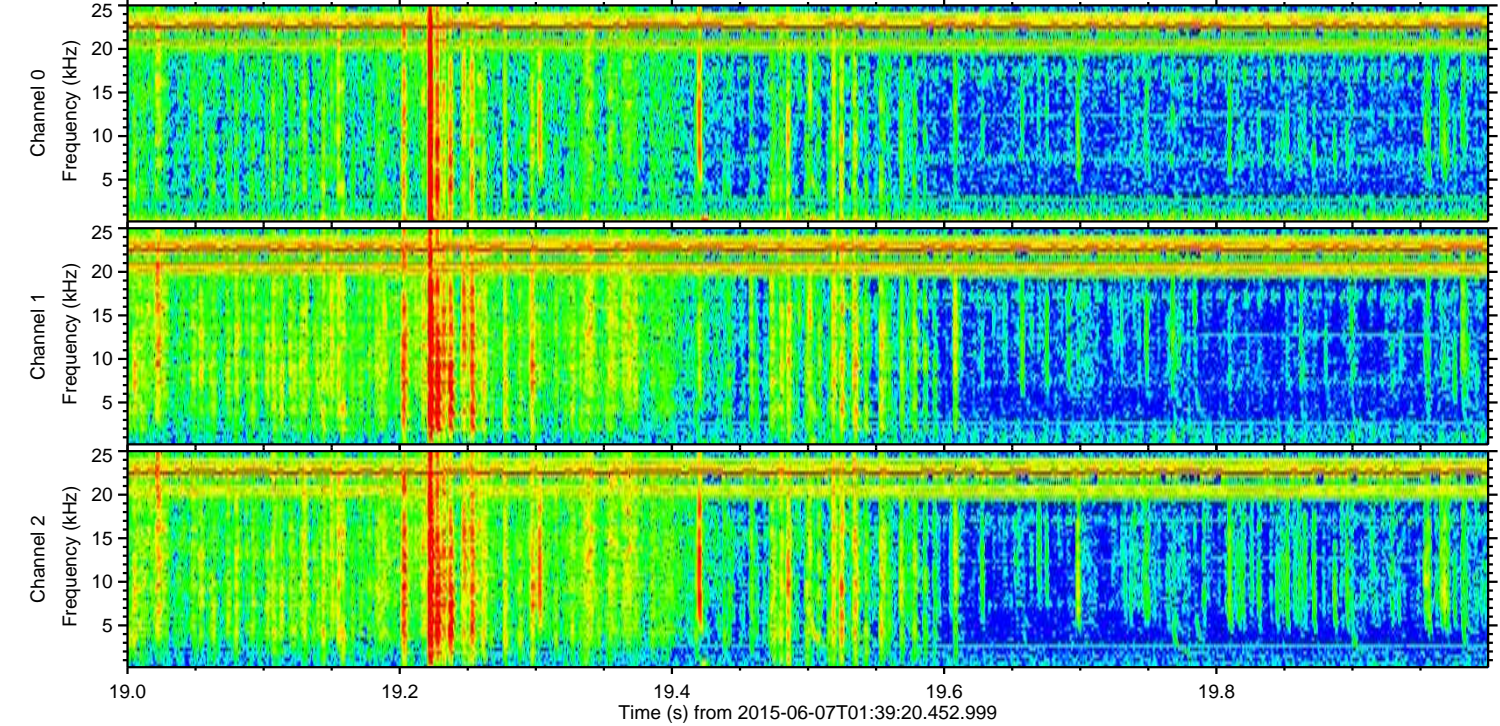
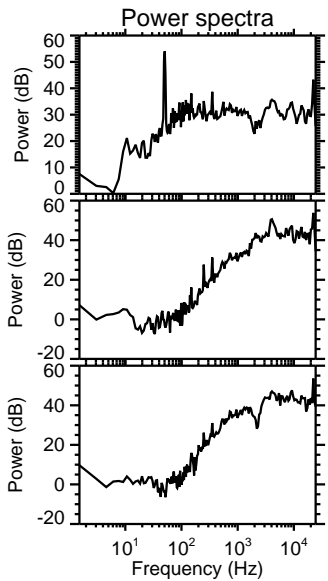
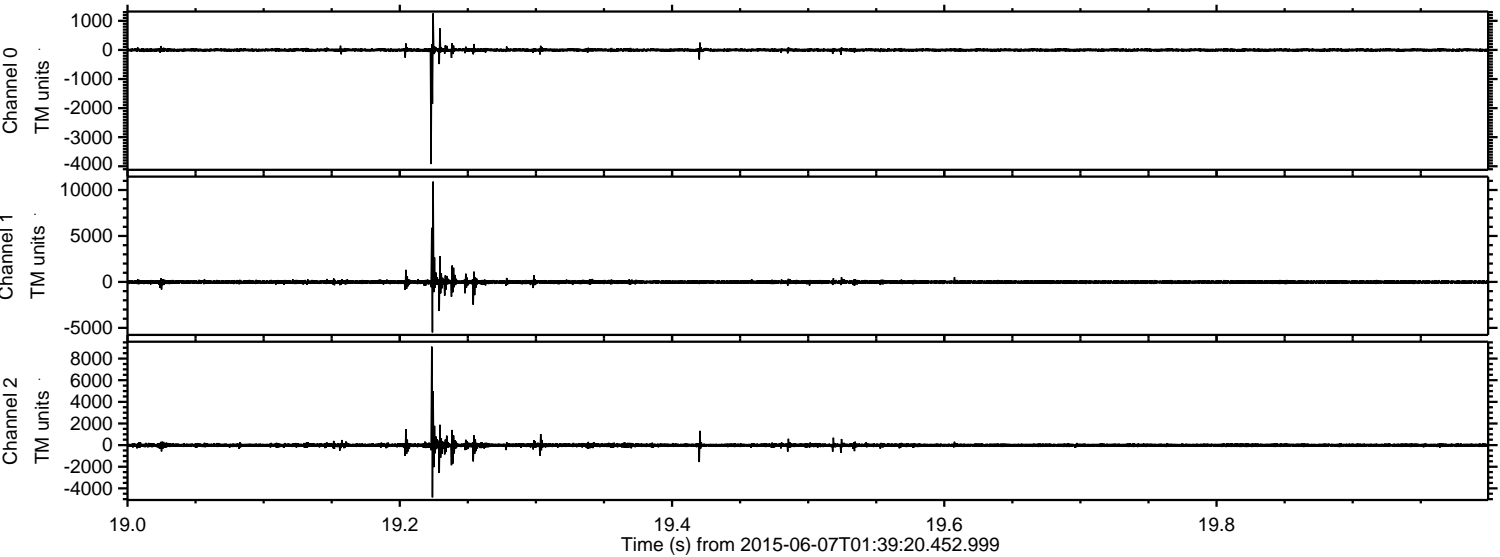


ELMAVAN 3D WAVEFORMS (Measured data sampled at 50 kHz) 51000 packets of 144 samples from 2015-06-07T01:39:20.452.999. Part 140/147

Processed Sun Jun 7 03:46:29 2015 by ELM ver.2012-10-06 from 001\_\_elm20150607\_013919\_\_dat00.bin

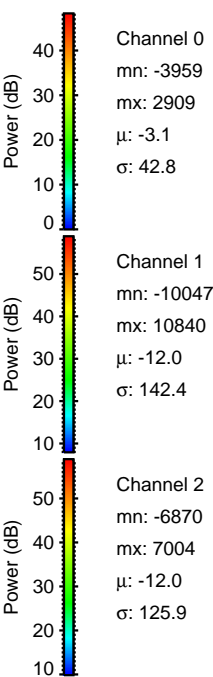
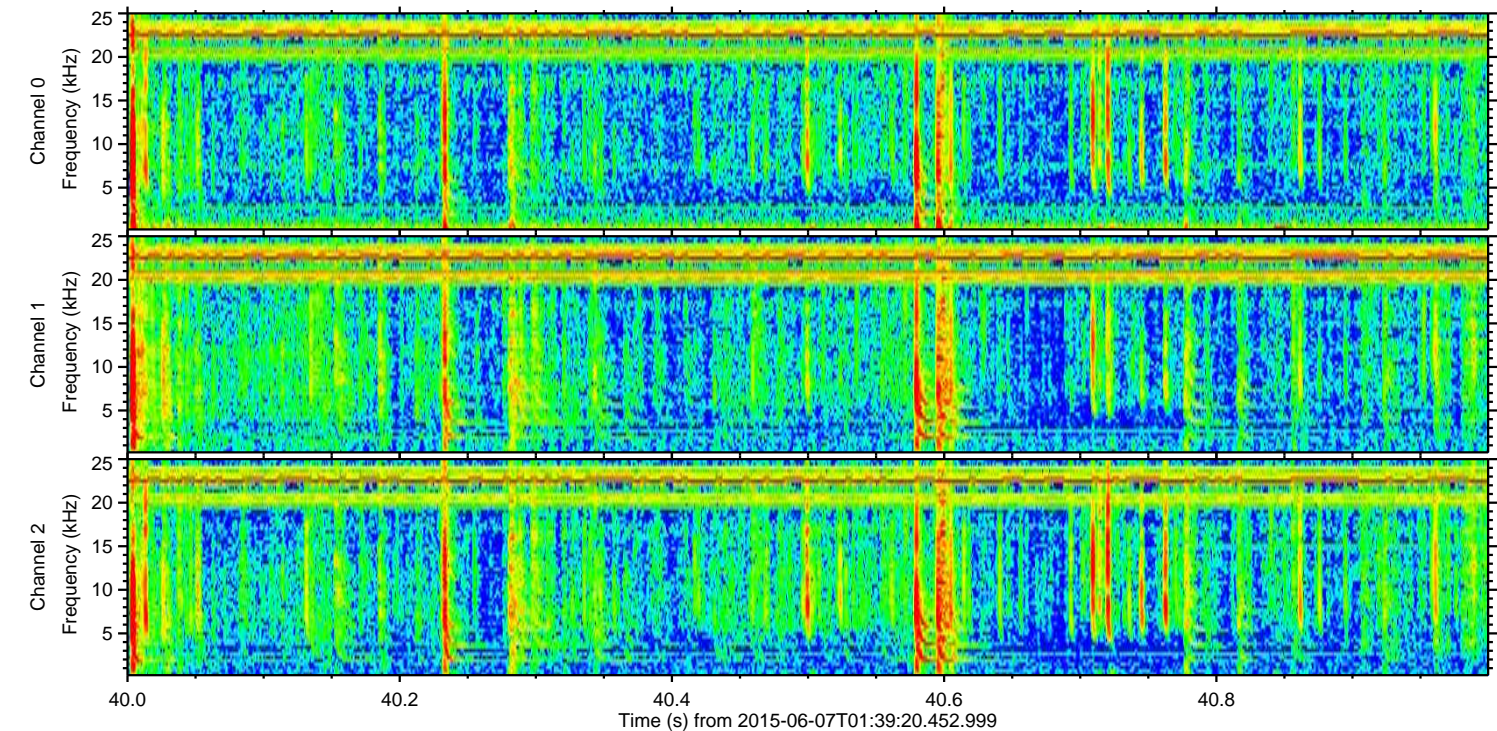
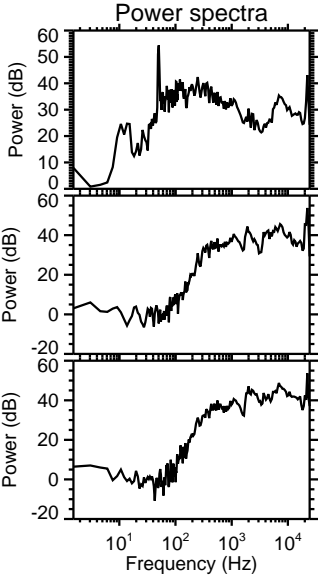
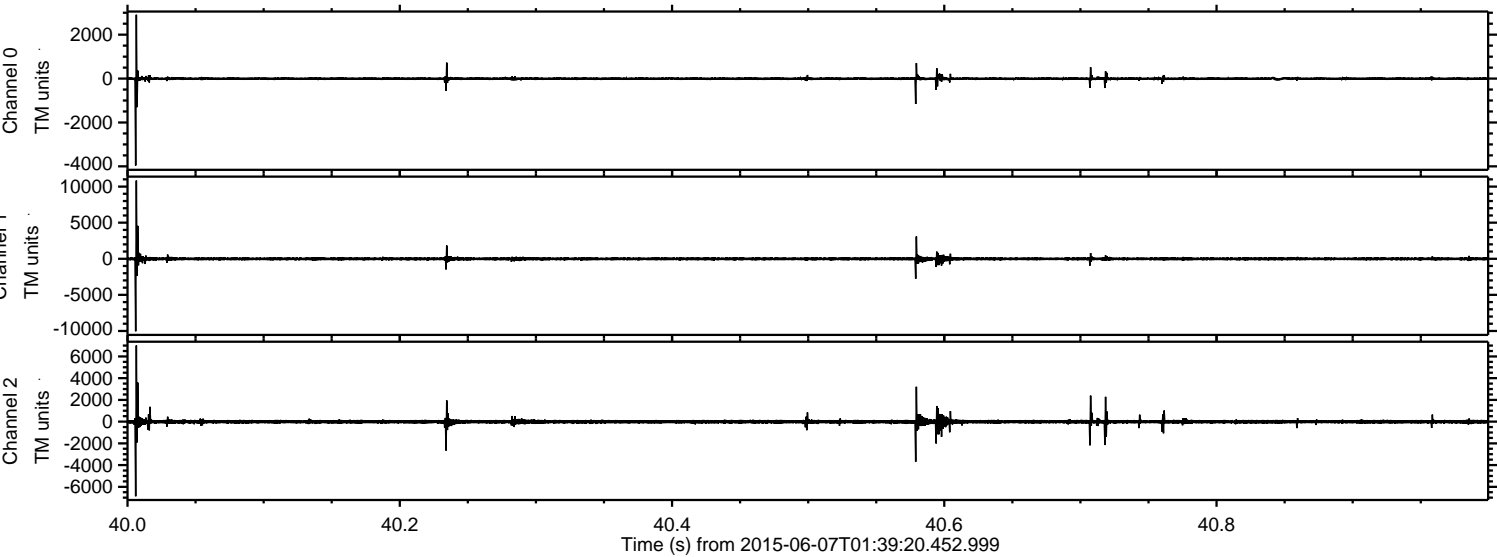


Processed Sun Jun 7 03:46:30 2015 by ELM ver.2012-10-06 from 001\_\_elm20150607\_013919\_\_dat00.bin



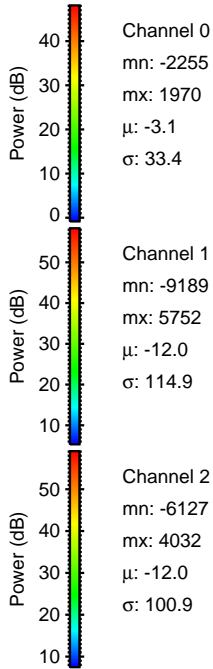
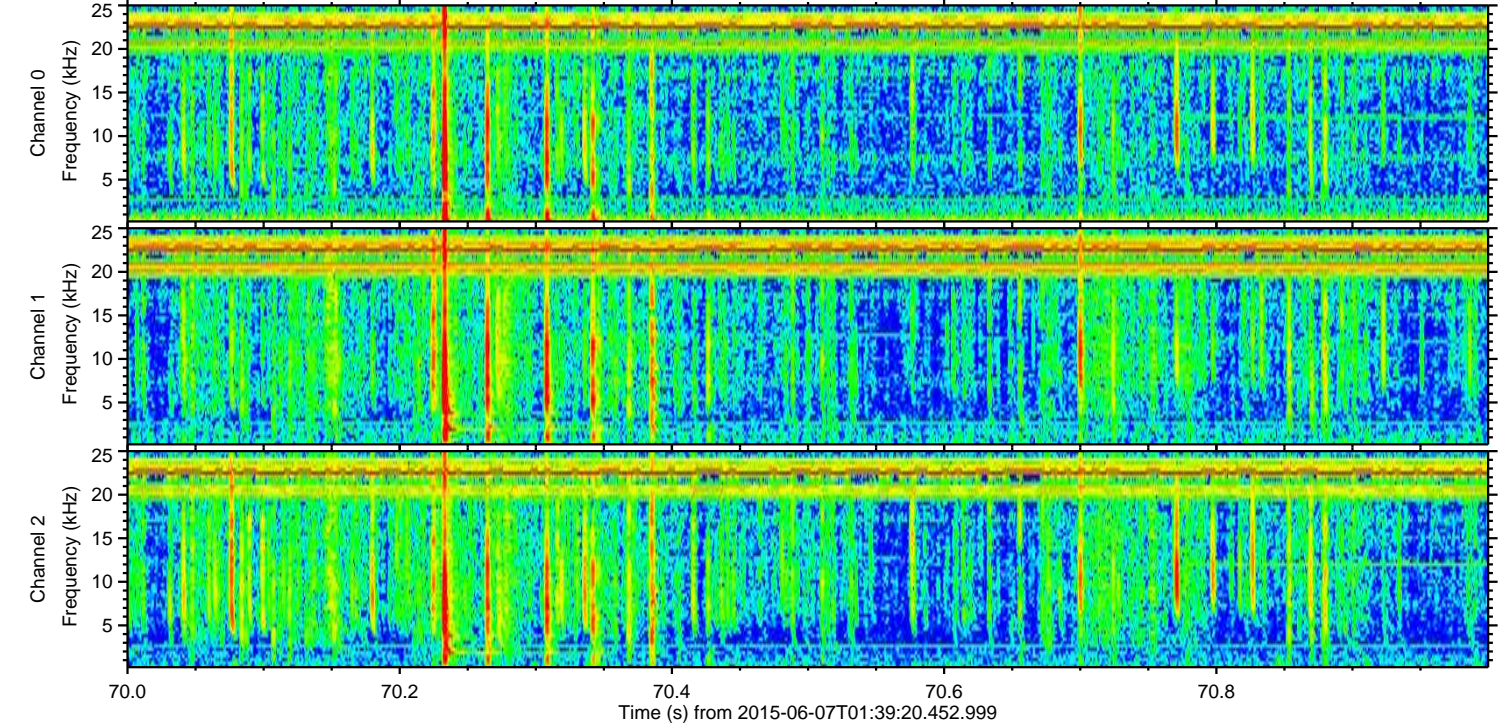
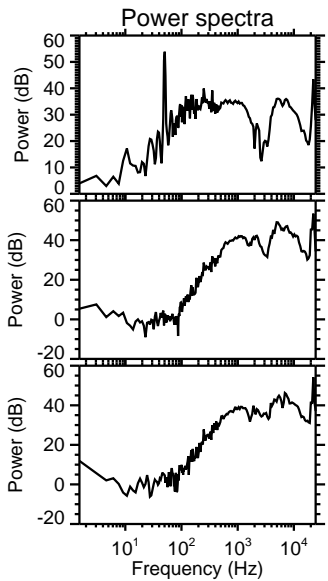
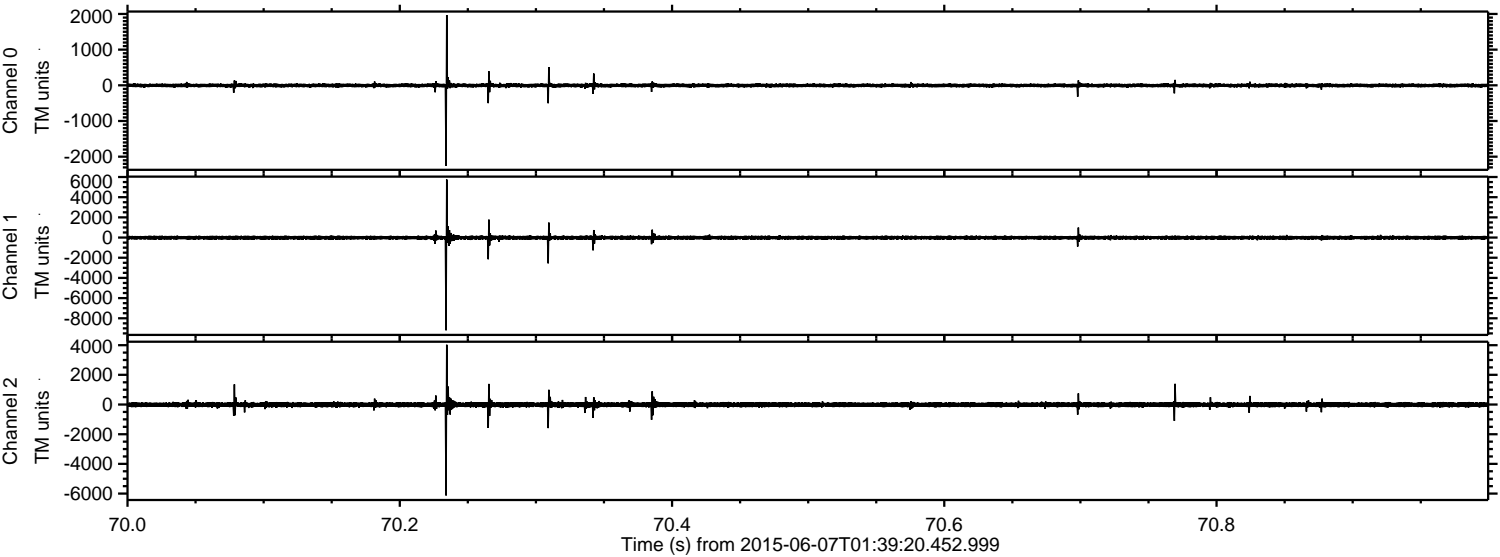


Processed Sun Jun 7 03:46:31 2015 by ELM ver.2012-10-06 from 001\_\_elm20150607\_013919\_\_dat00.bin



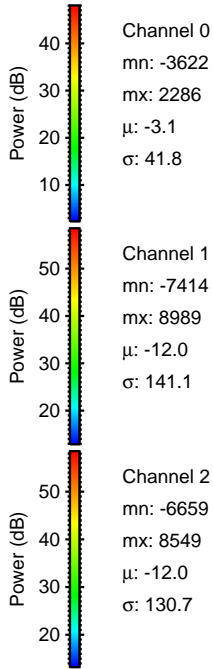
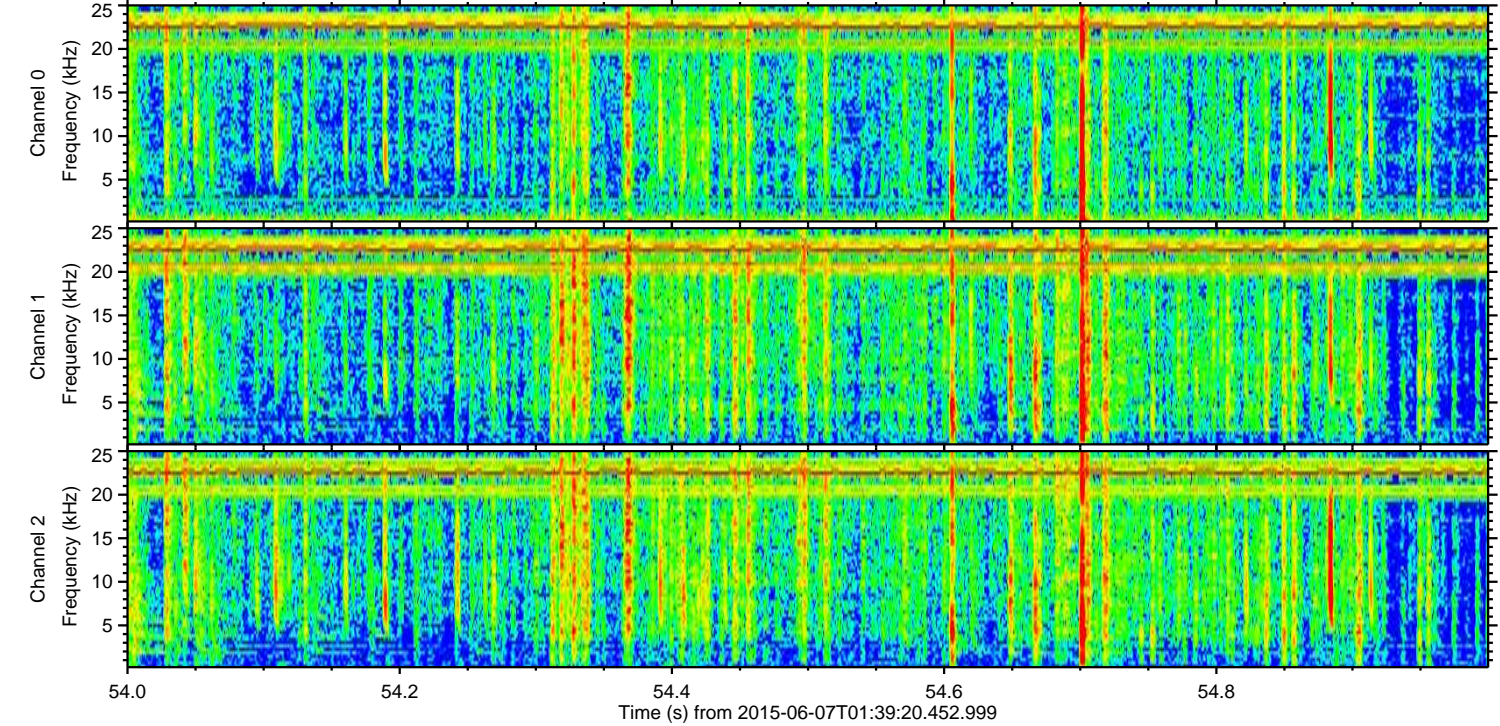
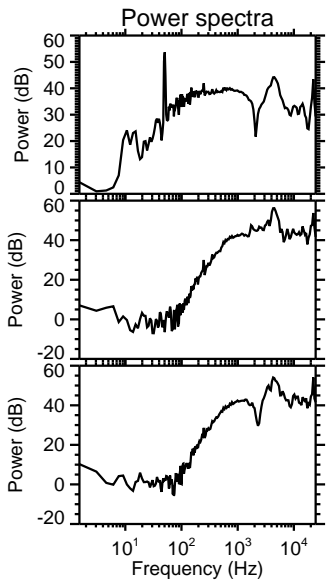
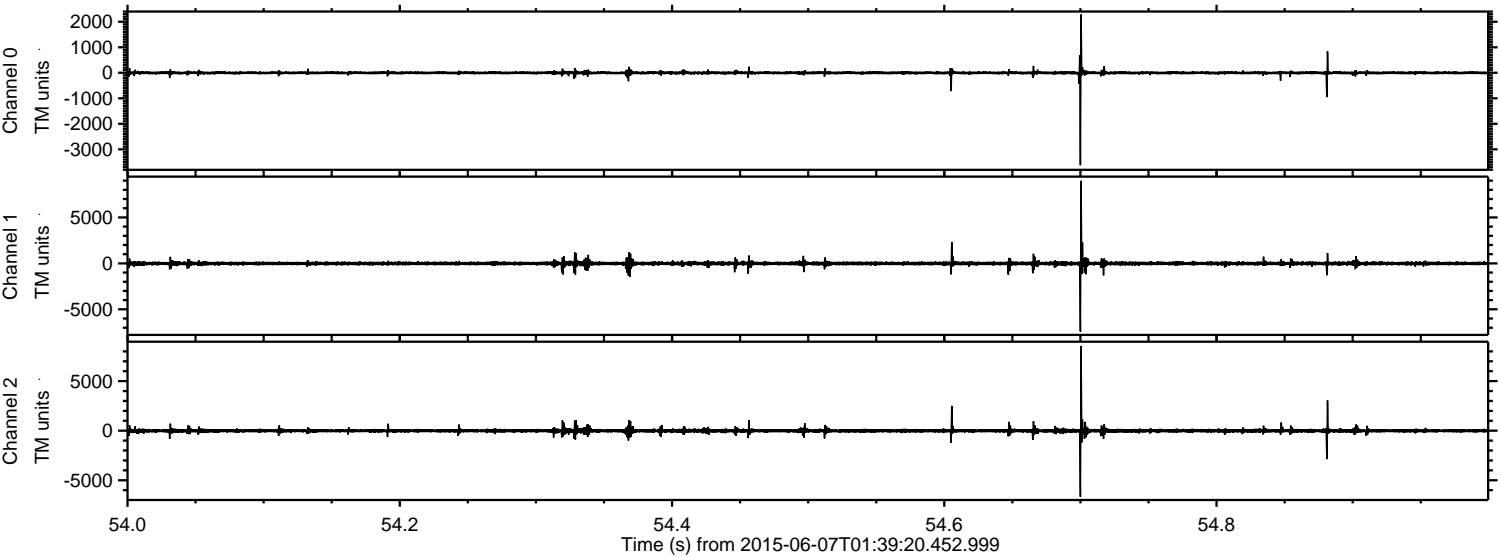


Processed Sun Jun 7 03:46:32 2015 by ELM ver.2012-10-06 from 001\_\_elm20150607\_013919\_\_dat00.bin



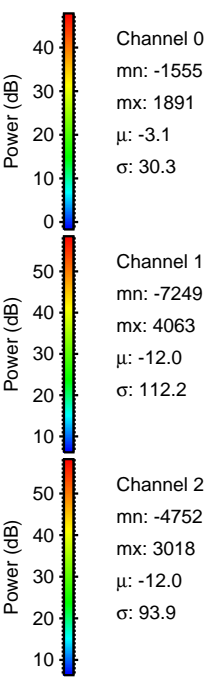
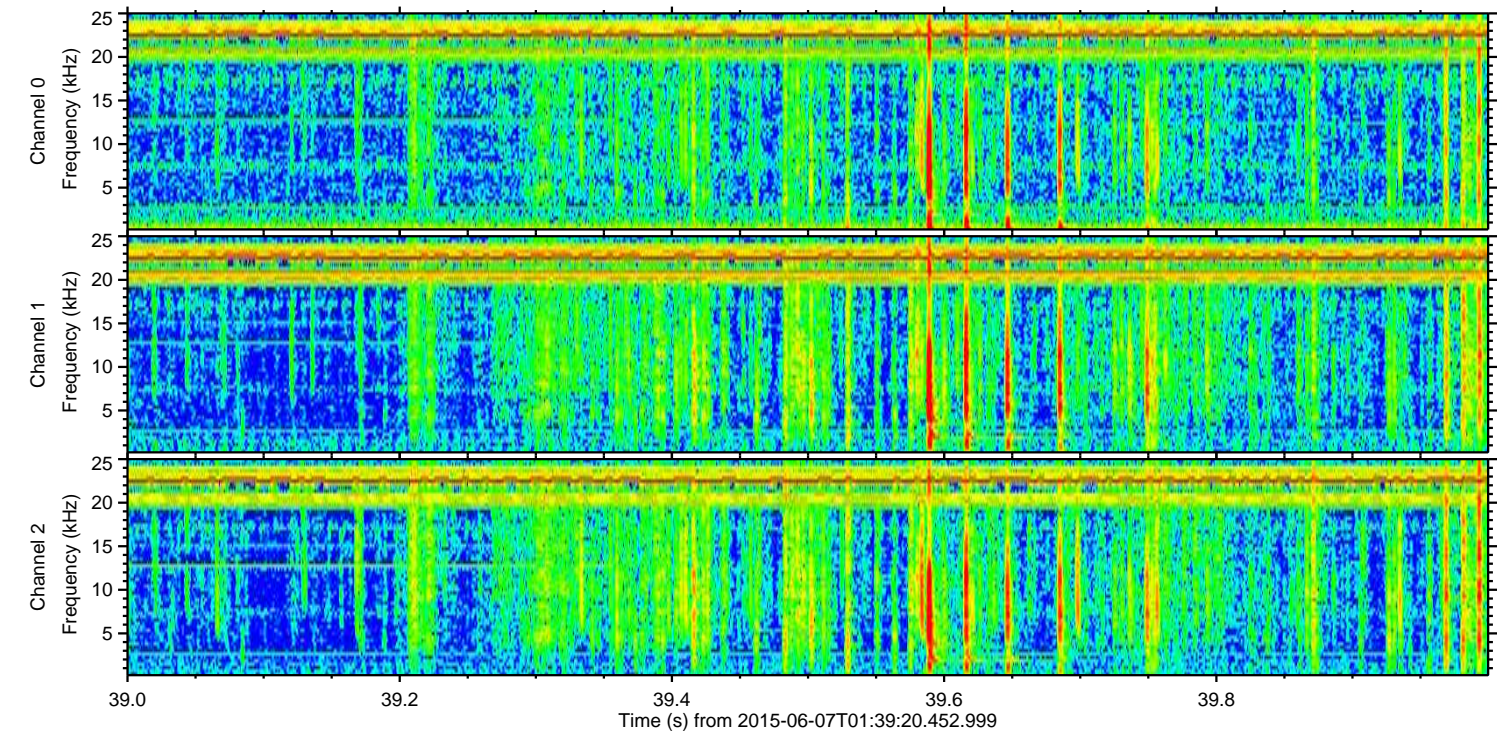
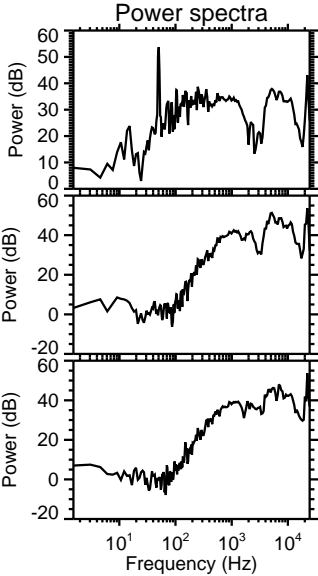
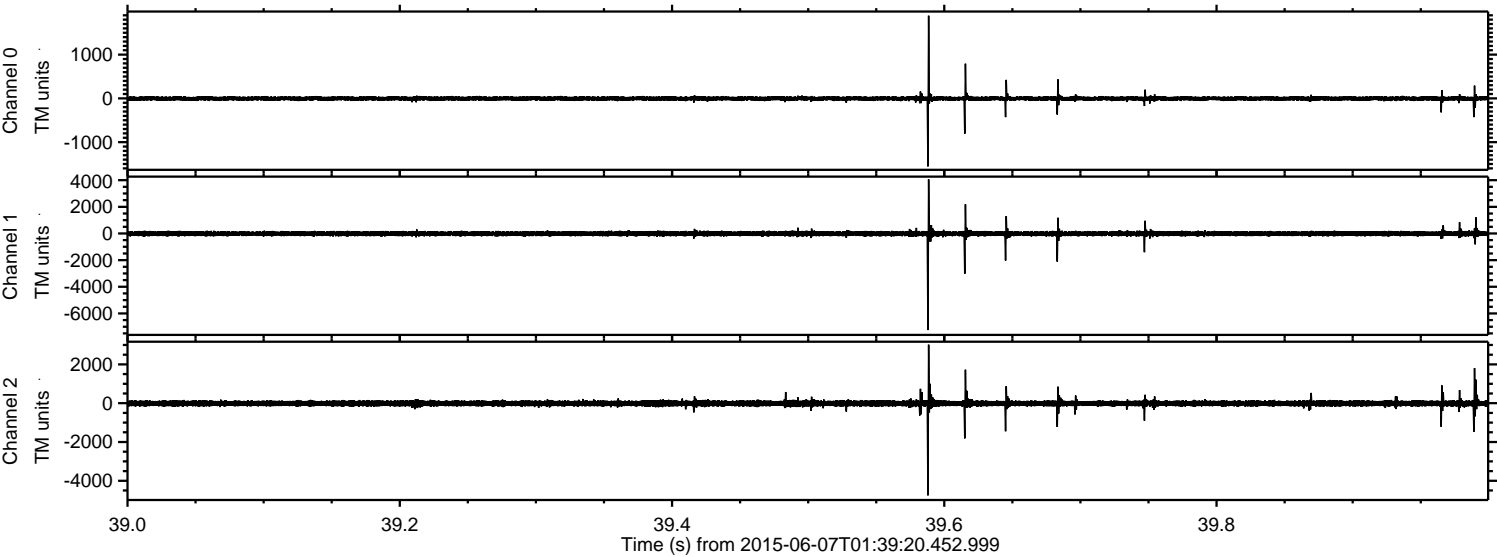


Processed Sun Jun 7 03:46:33 2015 by ELM ver.2012-10-06 from 001\_\_elm20150607\_013919\_\_dat00.bin





Processed Sun Jun 7 03:46:34 2015 by ELM ver.2012-10-06 from 001\_\_elm20150607\_013919\_\_dat00.bin



Channel 0  
mn: -1555  
mx: 1891  
 $\mu$ : -3.1  
 $\sigma$ : 30.3

Channel 1  
mn: -7249  
mx: 4063  
 $\mu$ : -12.0  
 $\sigma$ : 112.2

Channel 2  
mn: -4752  
mx: 3018  
 $\mu$ : -12.0  
 $\sigma$ : 93.9



Processed Sun Jun 7 03:46:35 2015 by ELM ver.2012-10-06 from 001\_\_elm20150607\_013919\_\_dat00.bin

