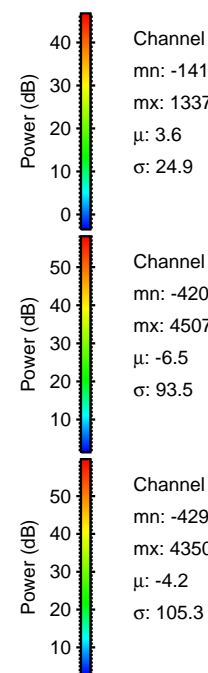
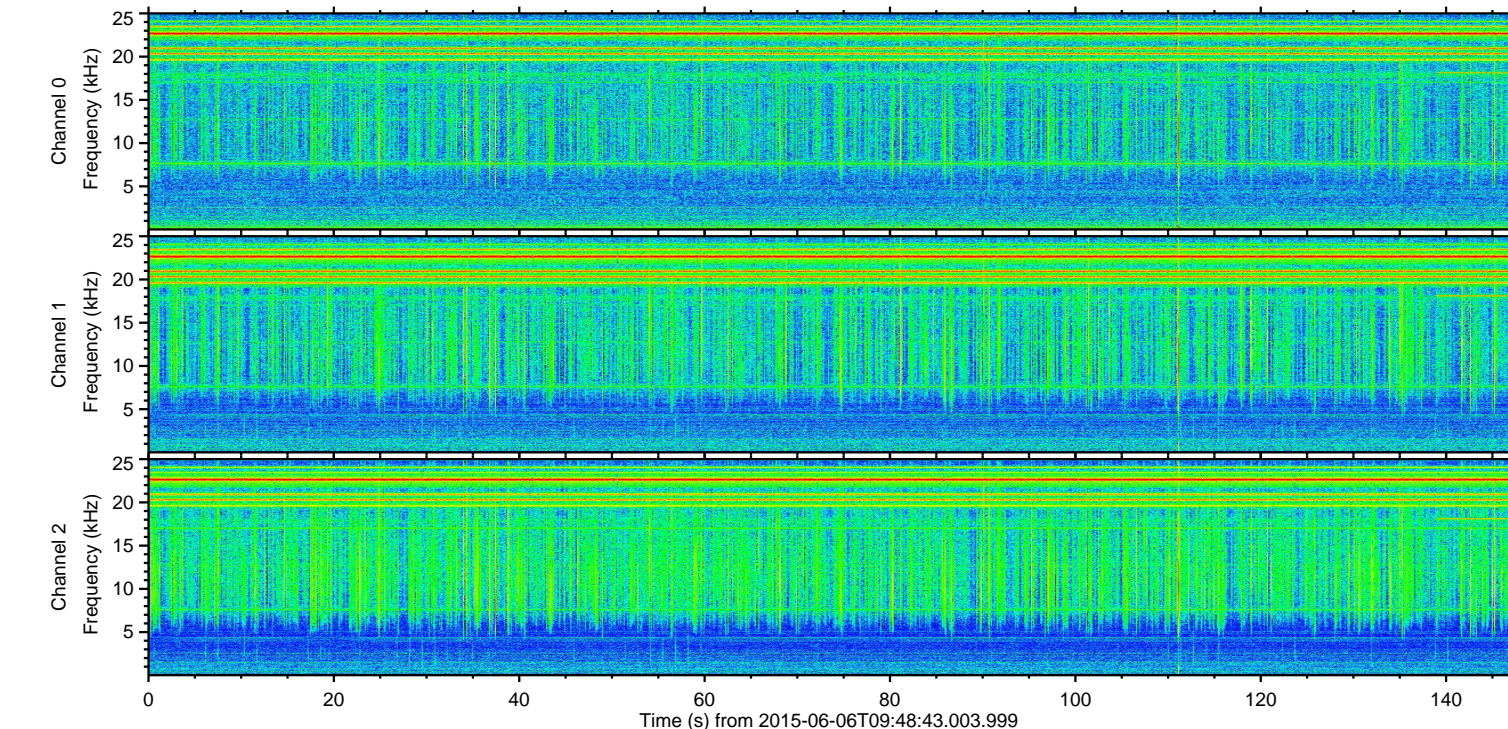
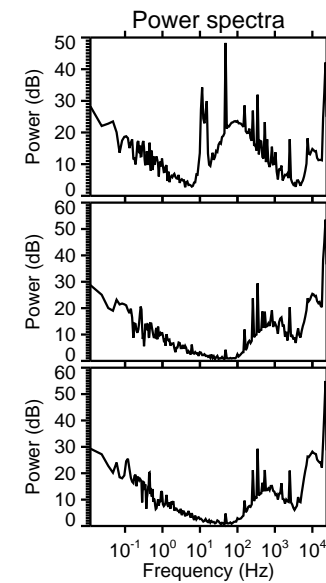
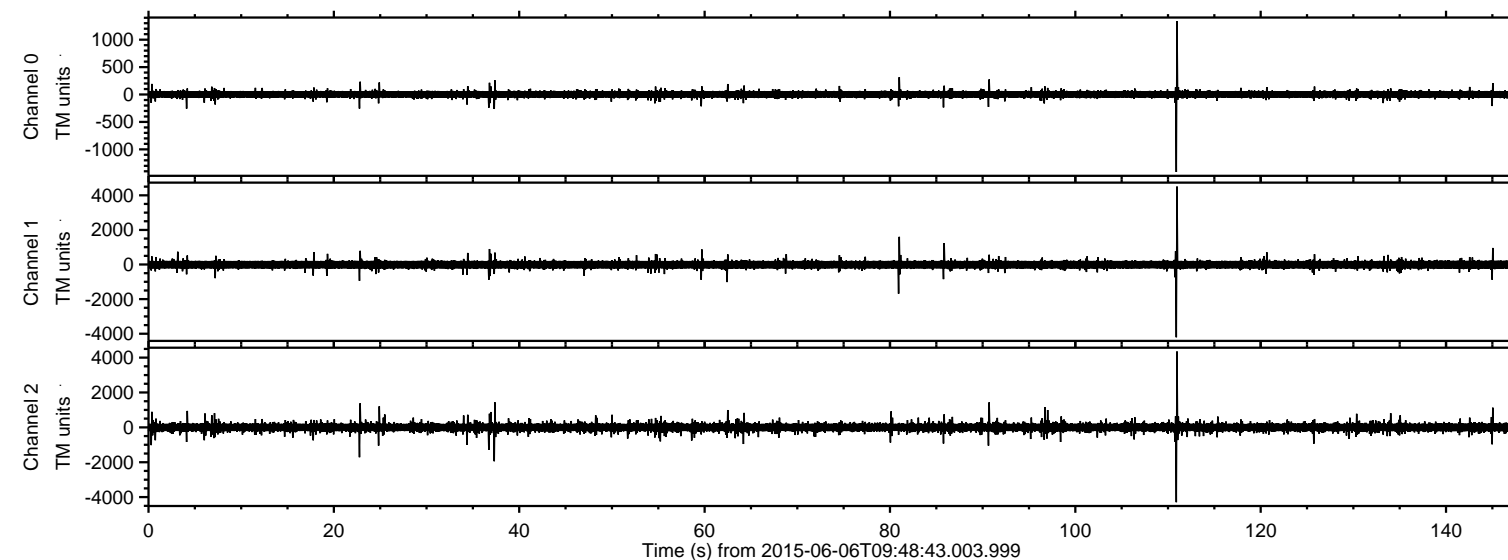


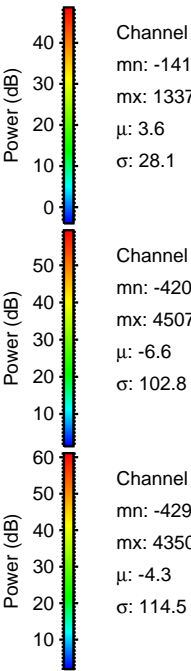
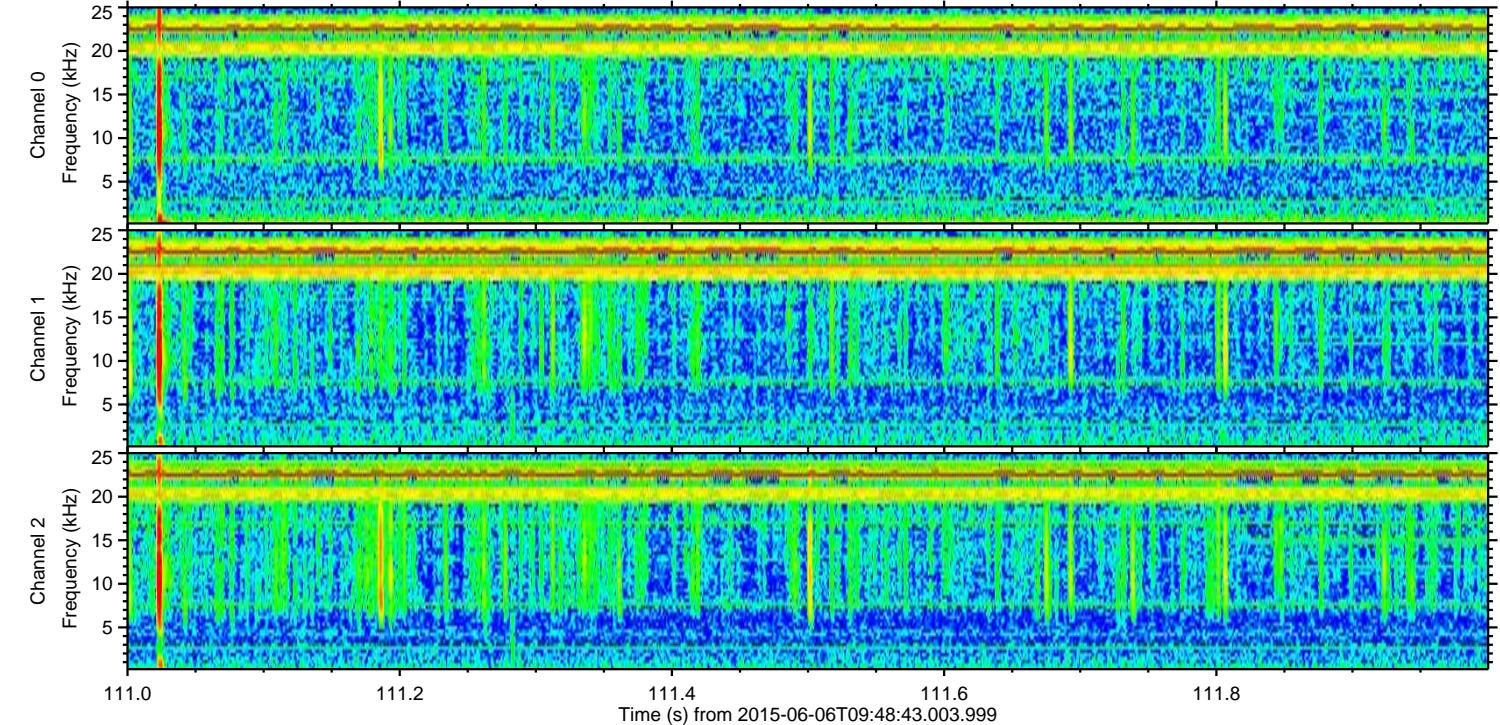
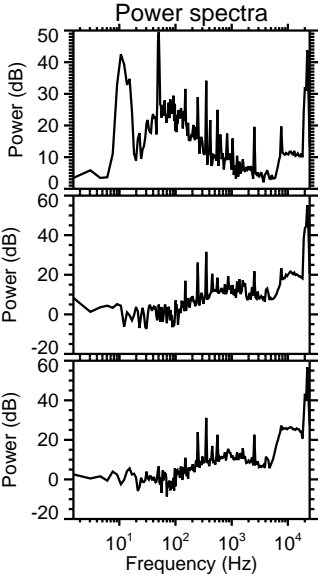
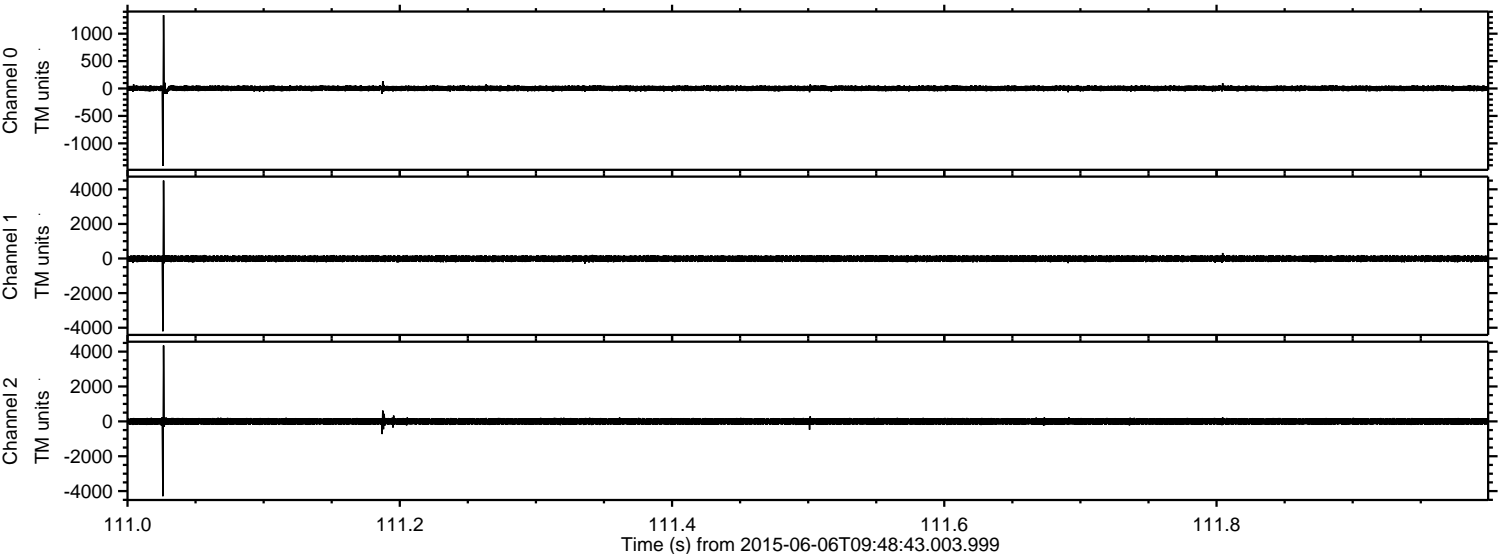
ELMAVAN 3D WAVEFORMS (Measured data sampled at 50 kHz) 51000 packets of 144 samples from 2015-06-06T09:48:43.003.999.

Processed Sat Jun 6 11:54:48 2015 by ELM ver.2012-10-06 from 001__elm20150606_094841__dat00.bin

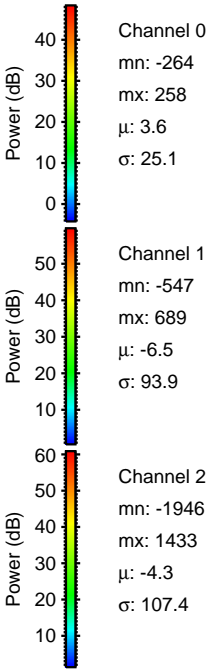
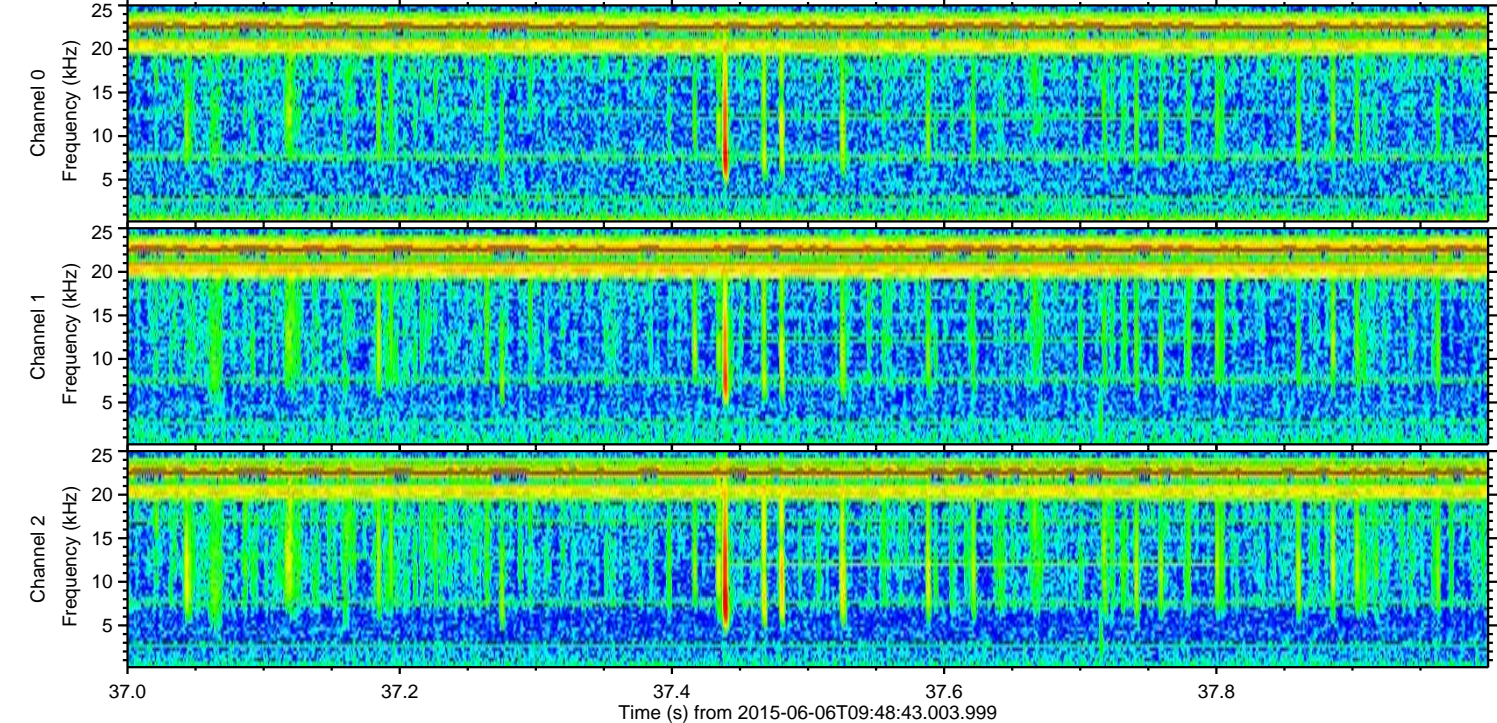
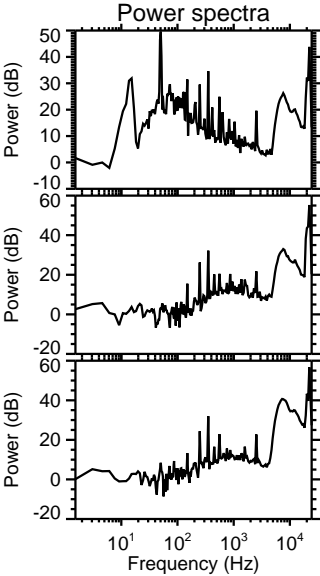
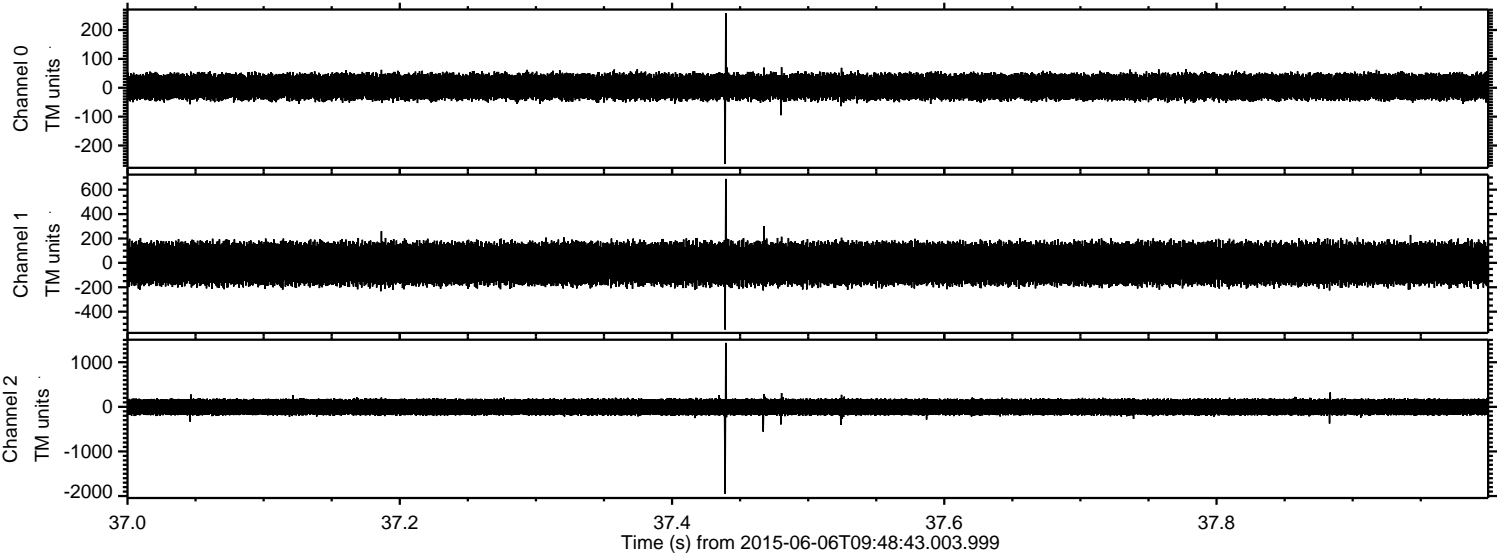


ELMAVAN 3D WAVEFORMS (Measured data sampled at 50 kHz) 51000 packets of 144 samples from 2015-06-06T09:48:43.003.999. Part 112/147

Processed Sat Jun 6 11:54:59 2015 by ELM ver.2012-10-06 from 001__elm20150606_094841__dat00.bin



Processed Sat Jun 6 11:55:00 2015 by ELM ver.2012-10-06 from 001__elm20150606_094841__dat00.bin

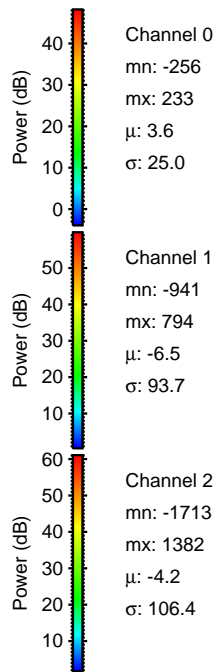
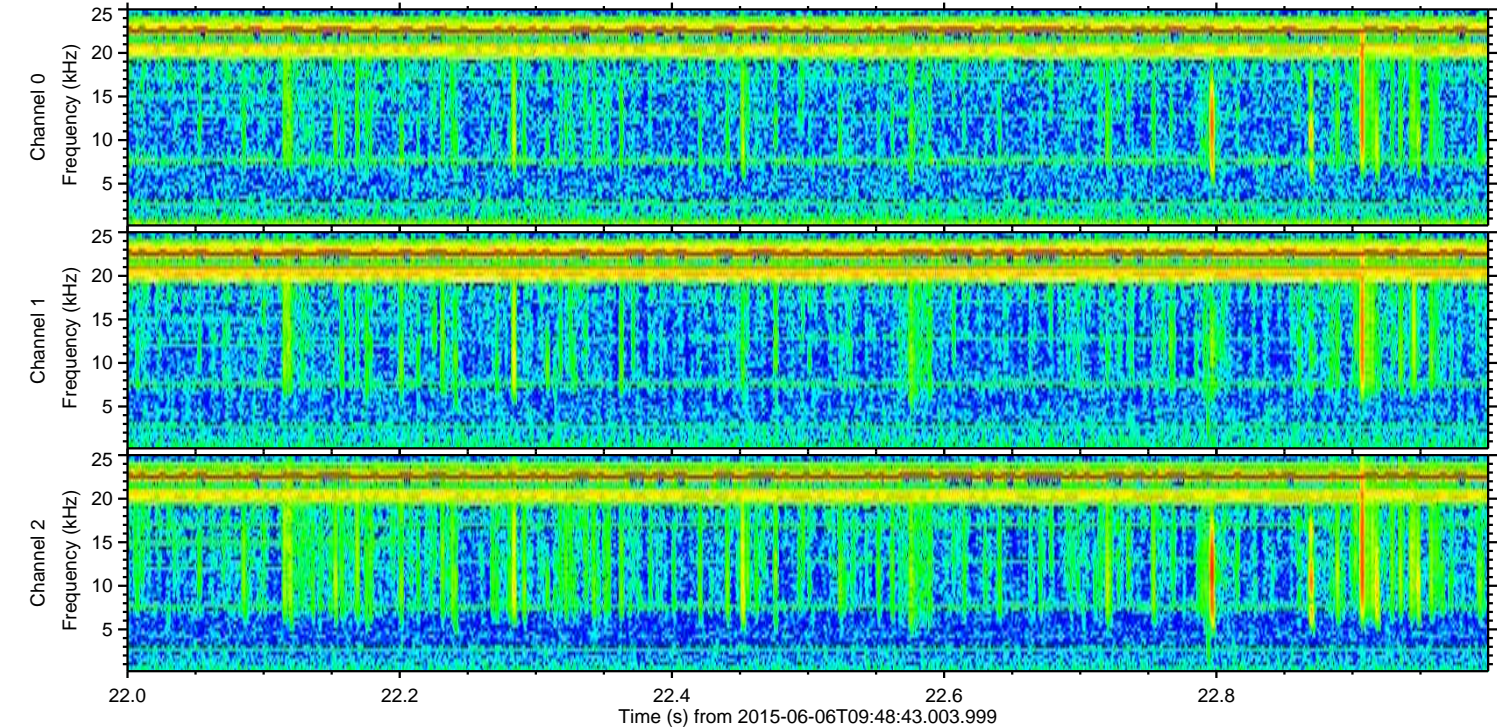
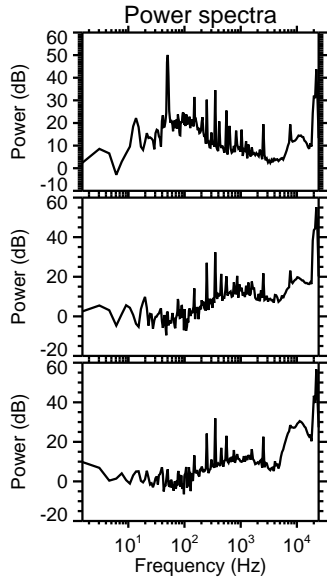
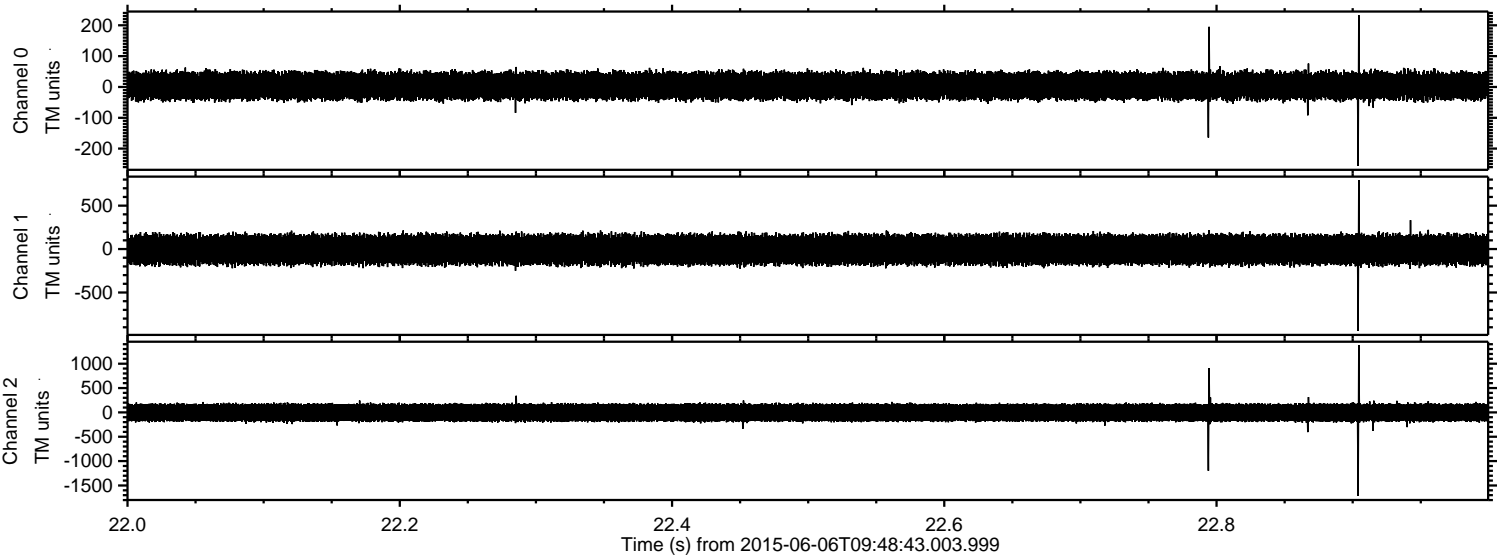


Channel 0
mn: -264
mx: 258
 μ : 3.6
 σ : 25.1

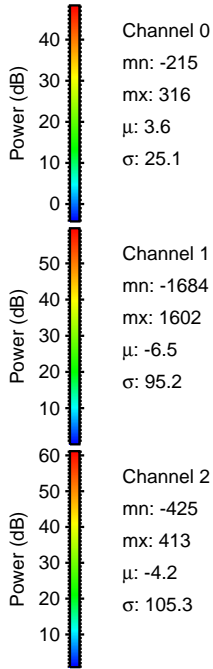
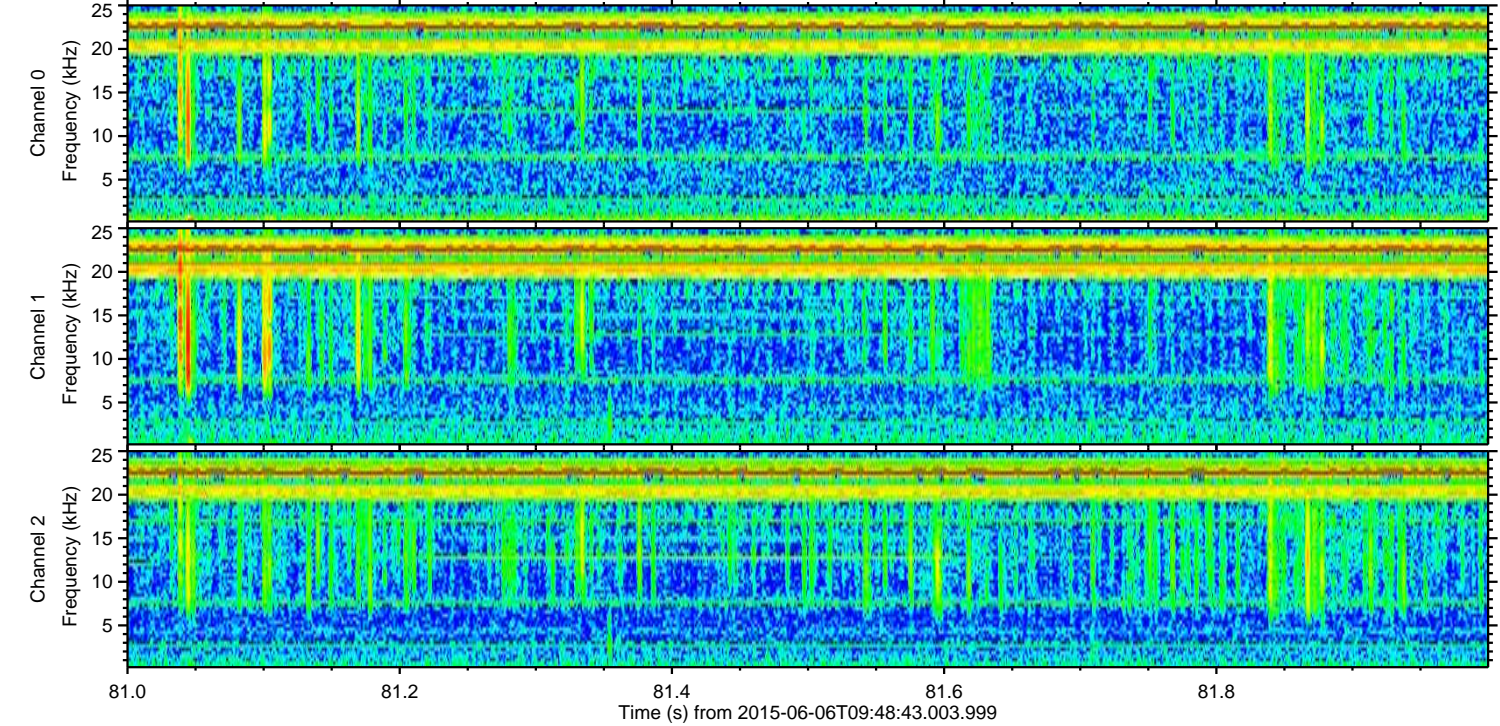
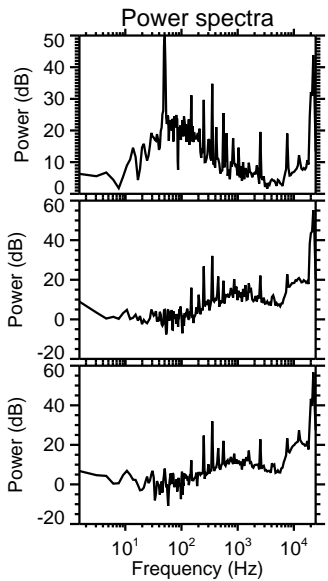
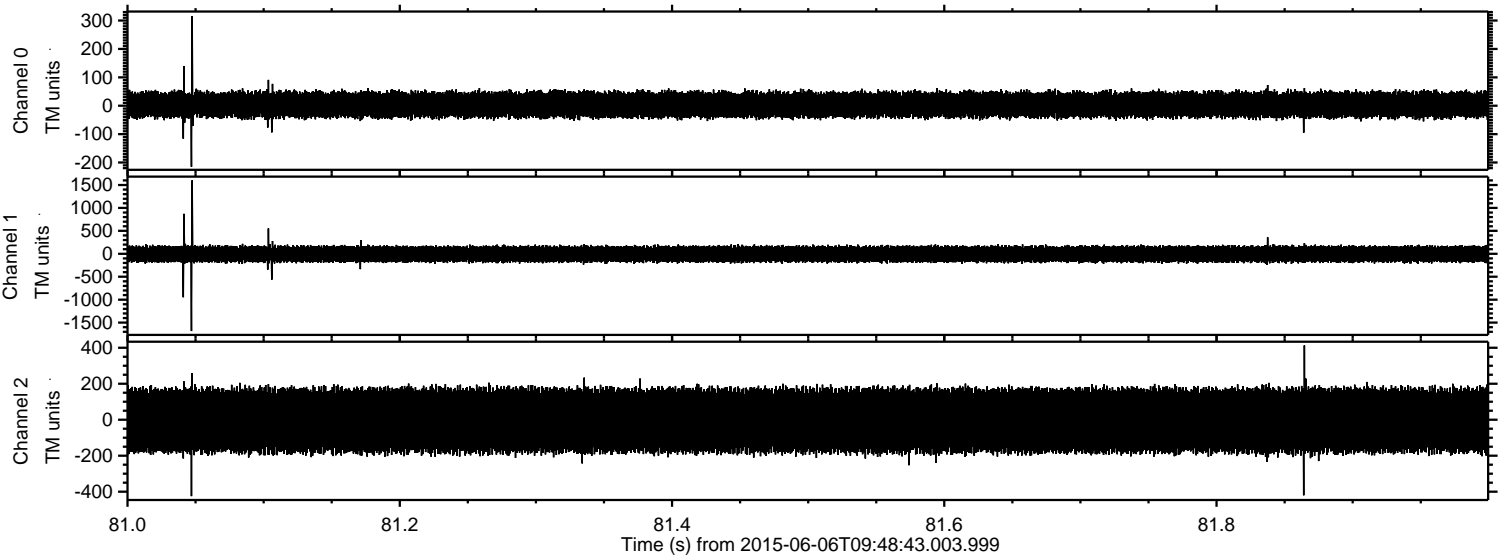
Channel 1
mn: -547
mx: 689
 μ : -6.5
 σ : 93.9

Channel 2
mn: -1946
mx: 1433
 μ : -4.3
 σ : 107.4

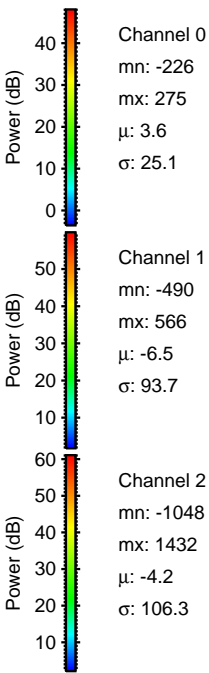
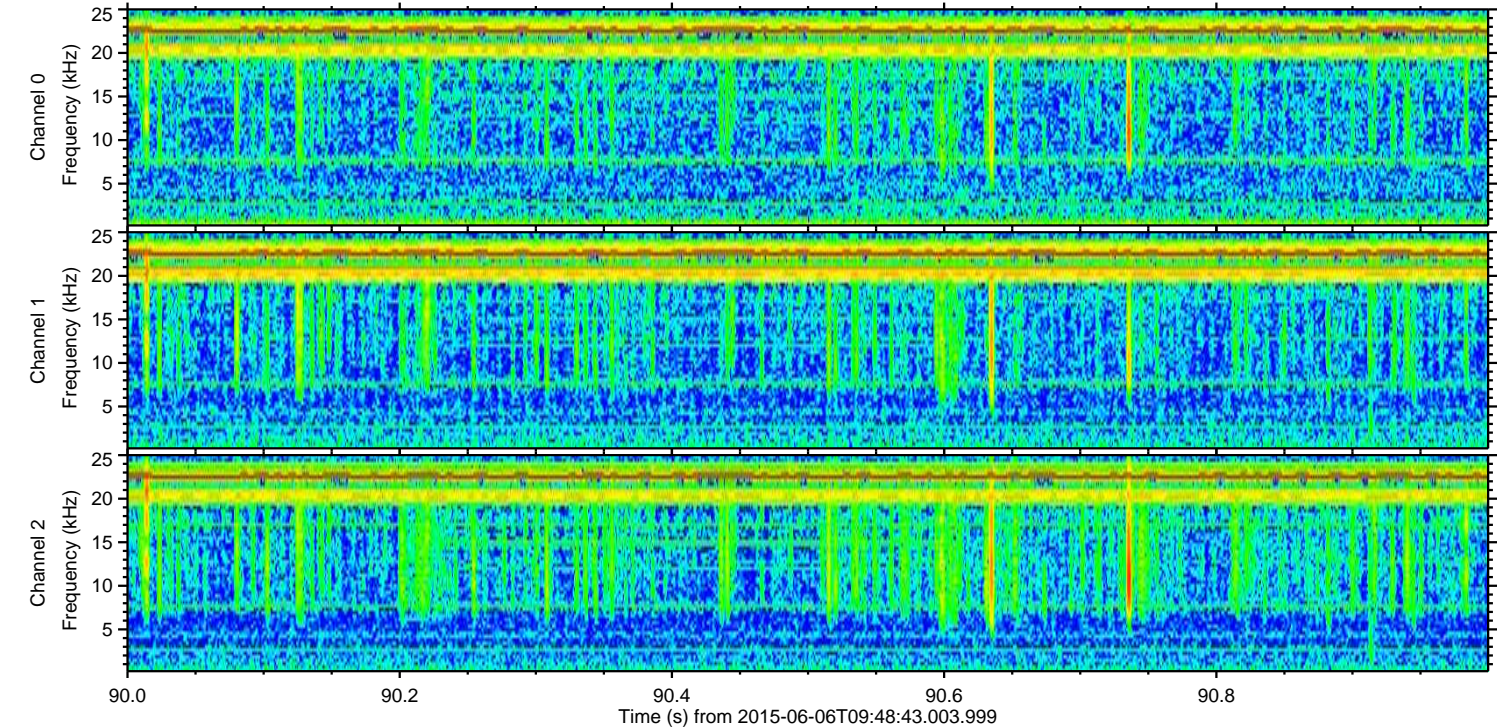
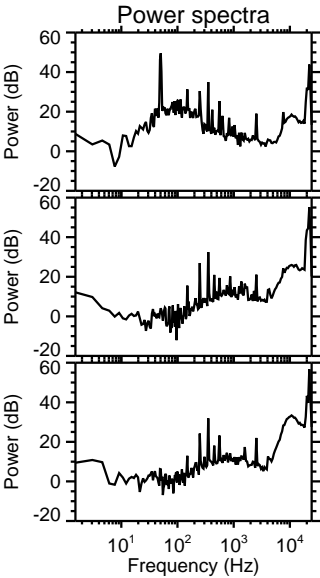
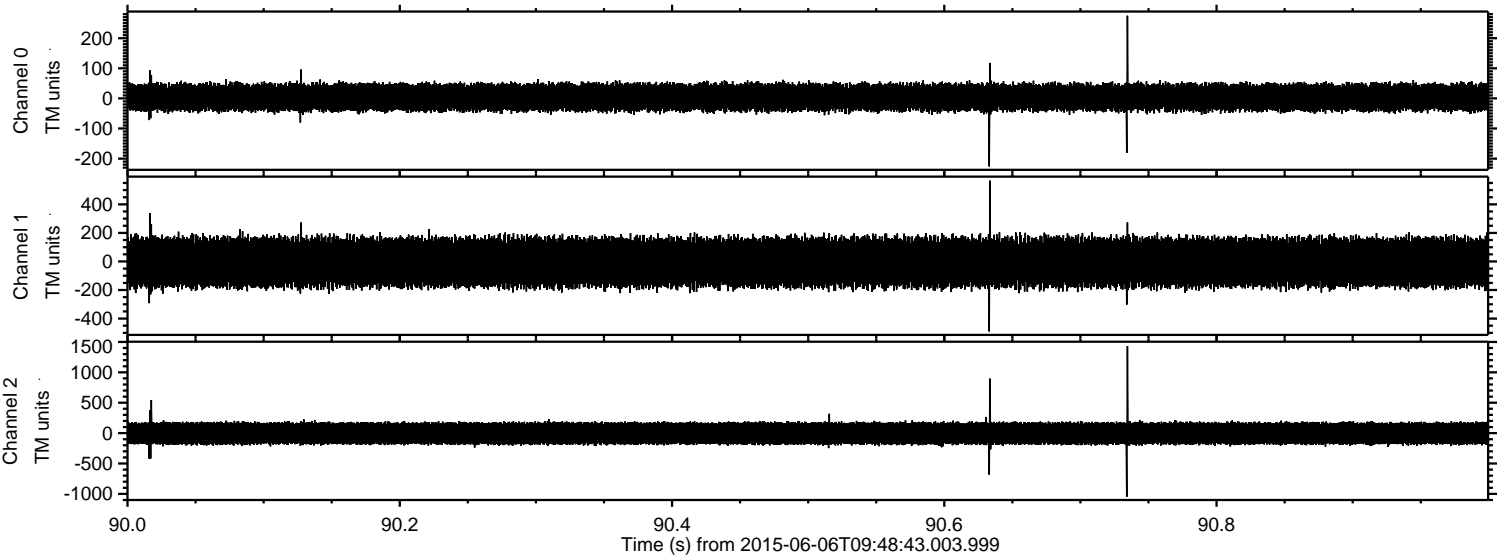
Processed Sat Jun 6 11:55:01 2015 by ELM ver.2012-10-06 from 001__elm20150606_094841__dat00.bin



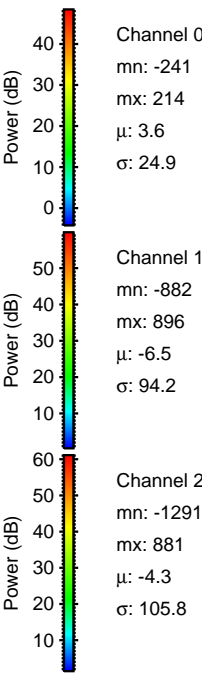
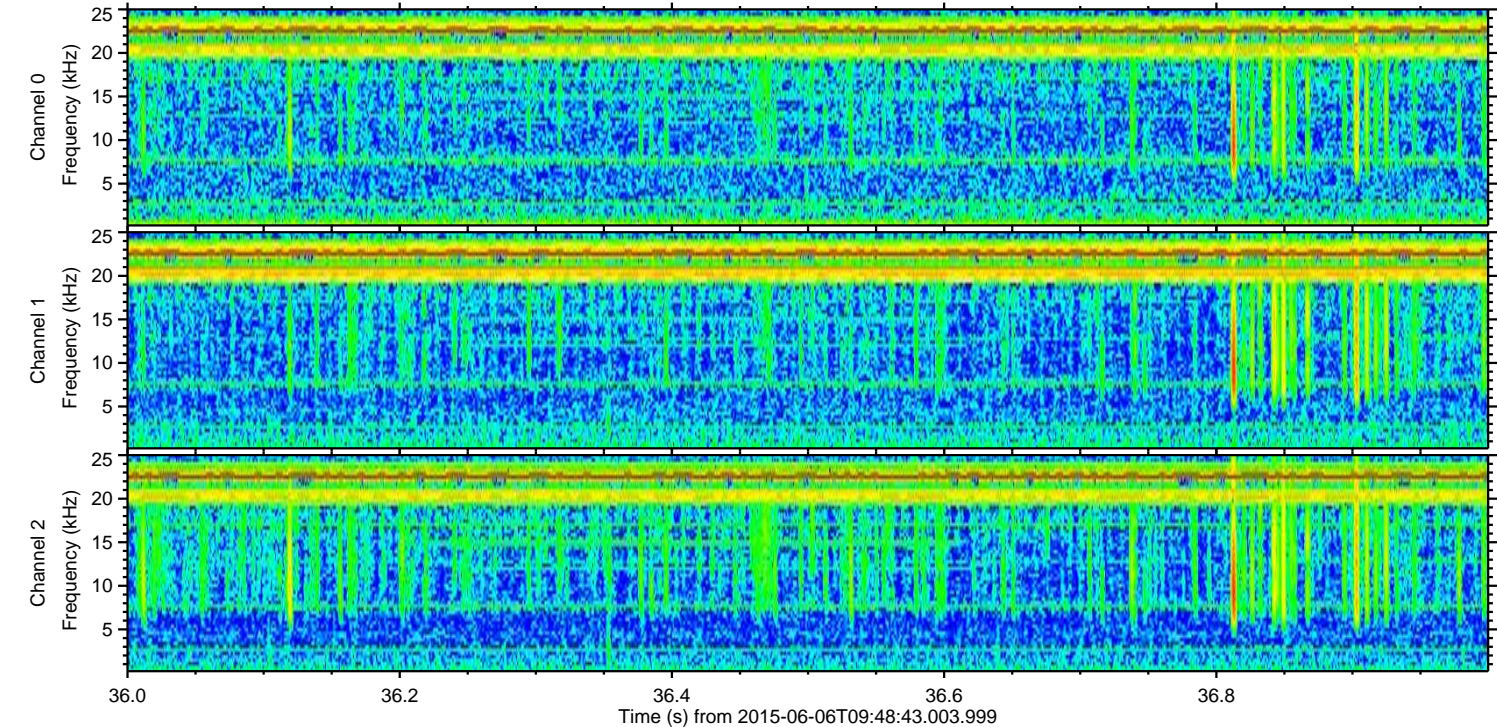
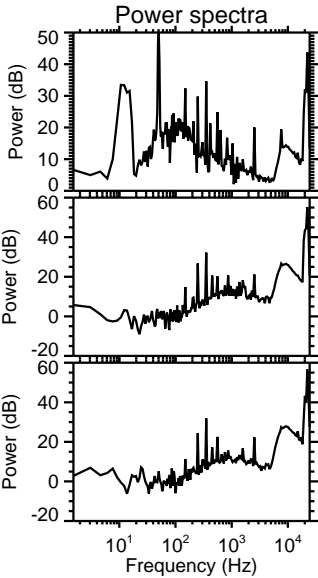
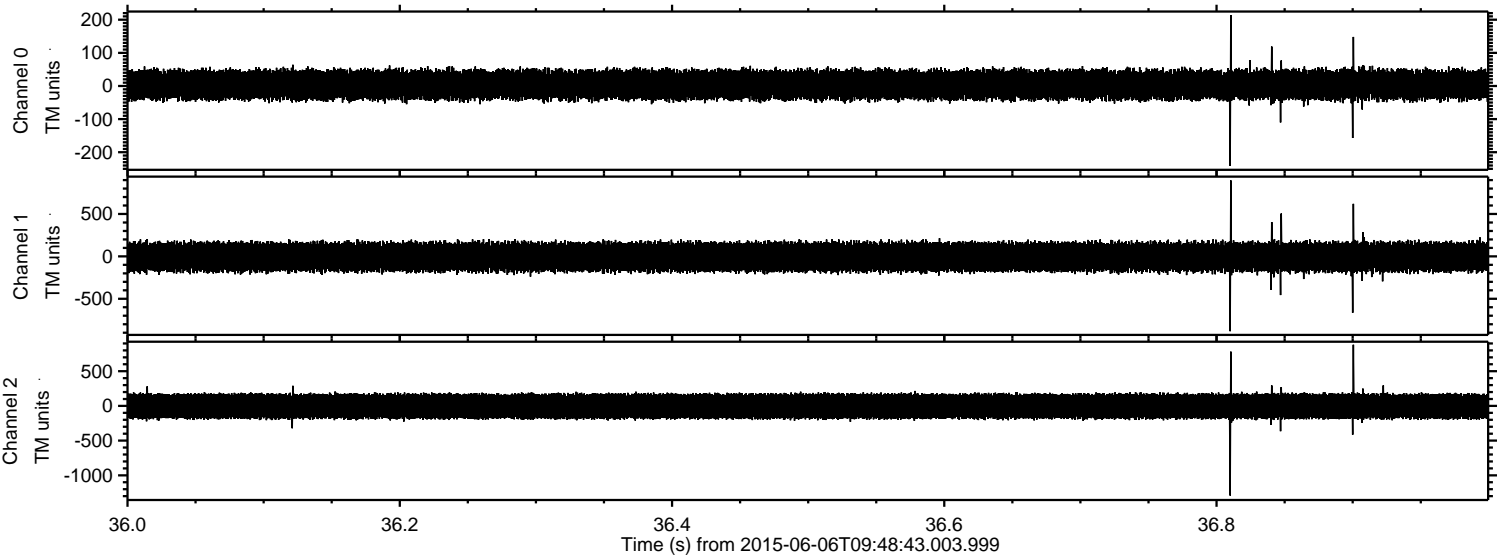
Processed Sat Jun 6 11:55:02 2015 by ELM ver.2012-10-06 from 001__elm20150606_094841__dat00.bin



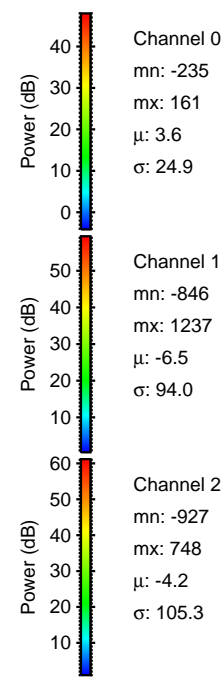
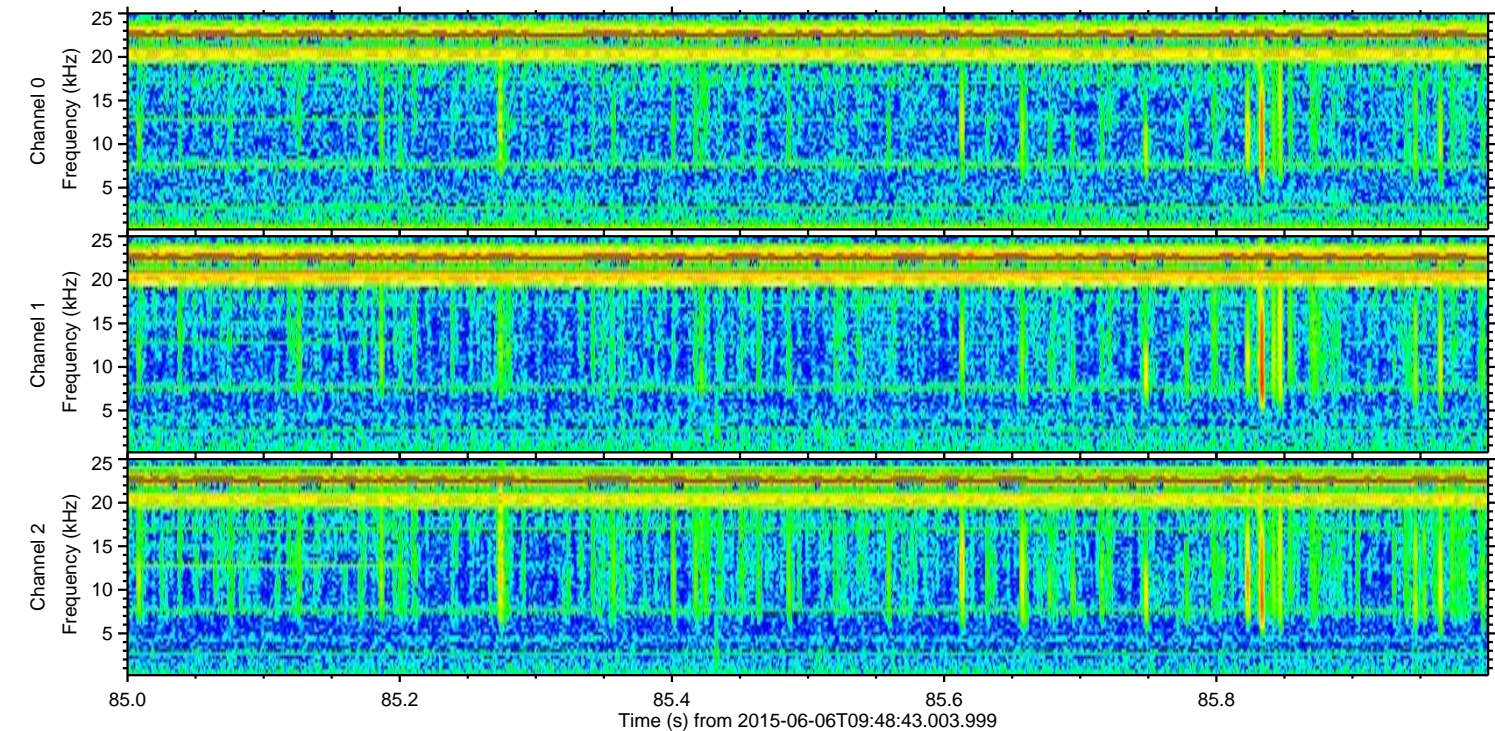
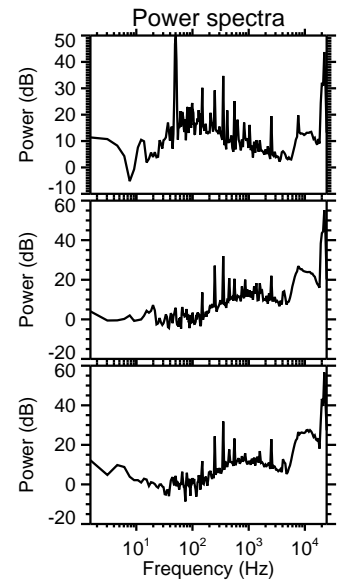
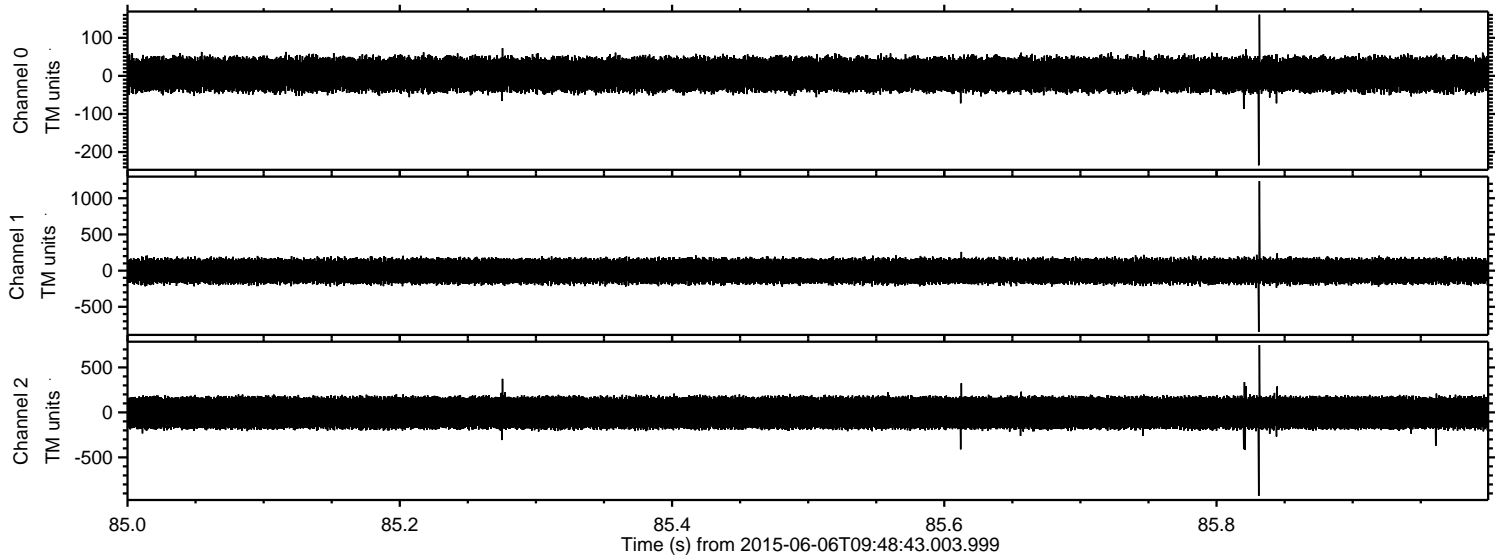
Processed Sat Jun 6 11:55:03 2015 by ELM ver.2012-10-06 from 001__elm20150606_094841__dat00.bin



Processed Sat Jun 6 11:55:04 2015 by ELM ver.2012-10-06 from 001__elm20150606_094841__dat00.bin

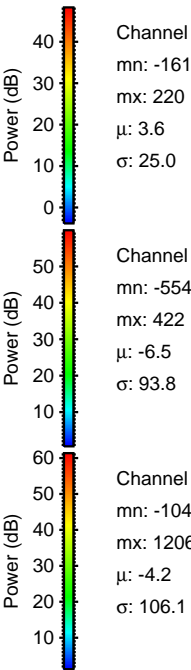
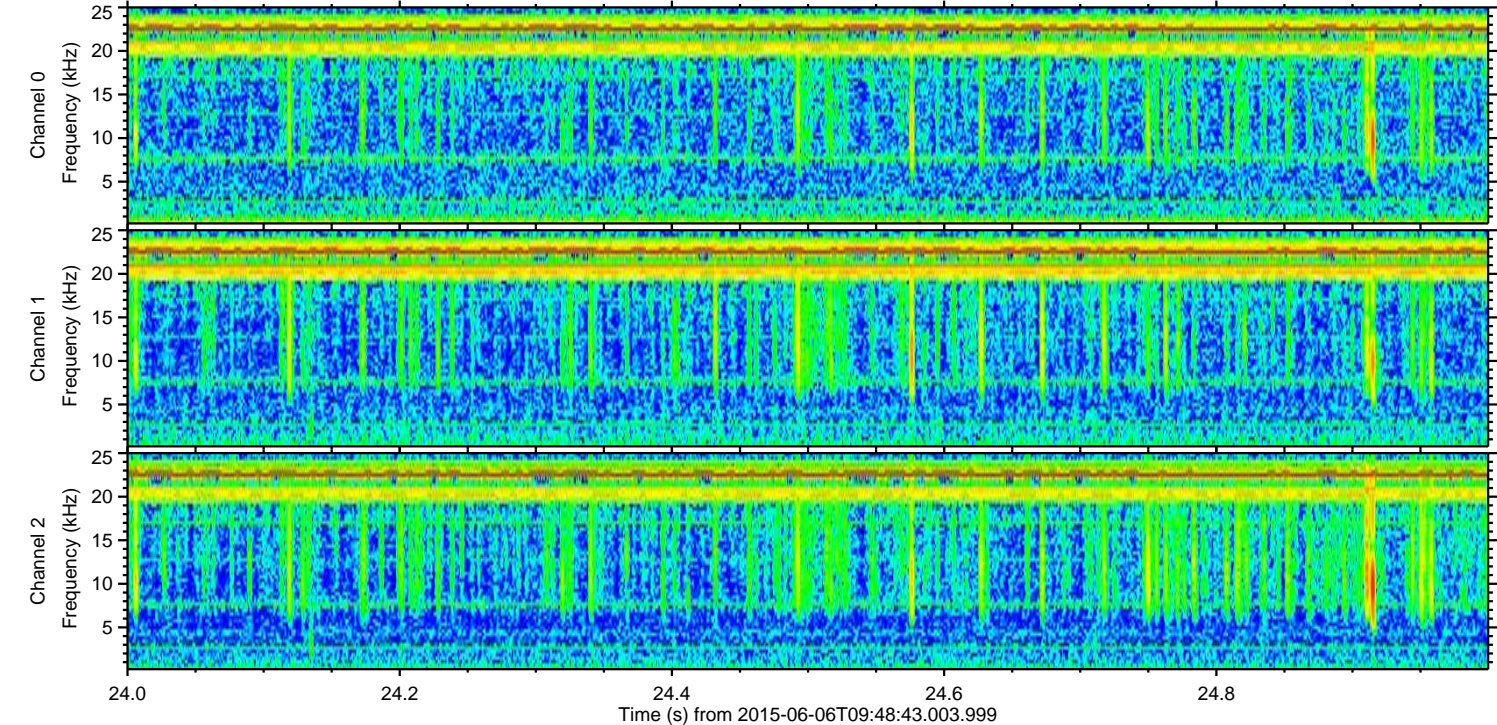
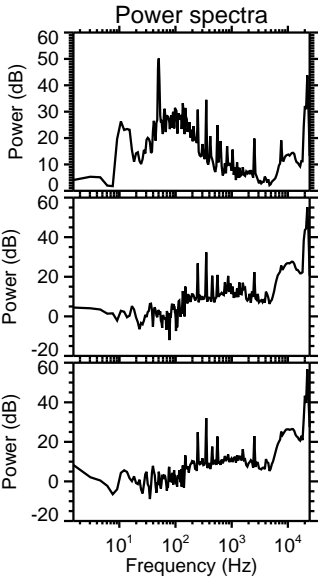
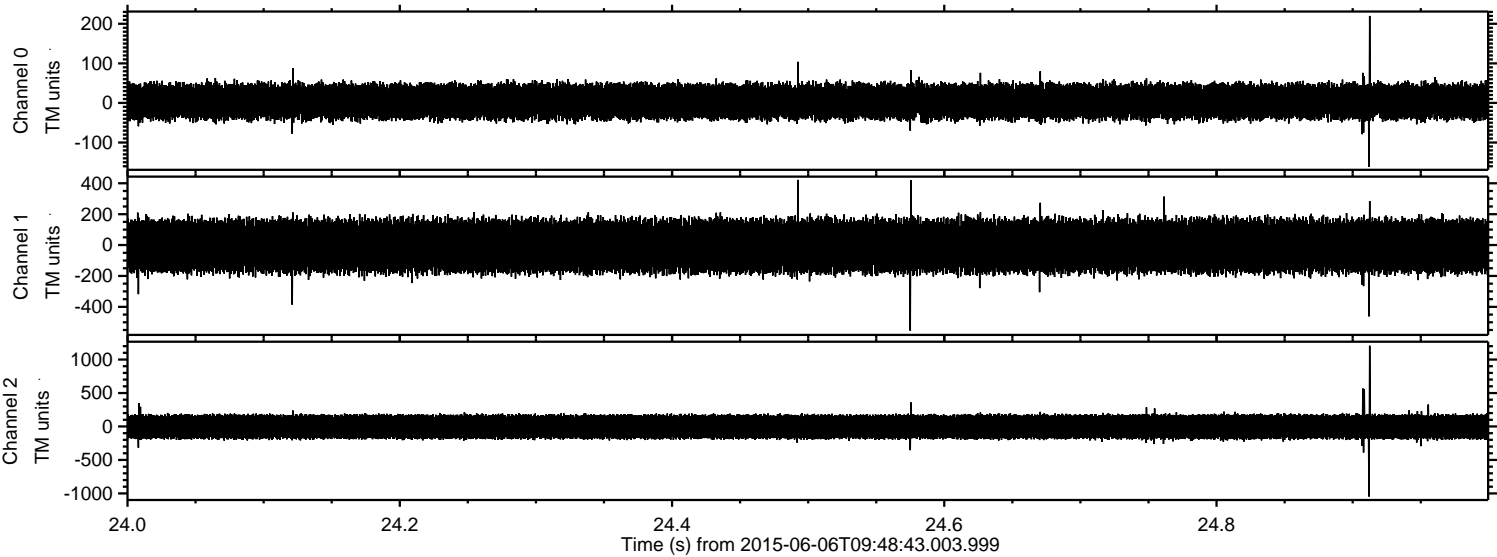


Processed Sat Jun 6 11:55:05 2015 by ELM ver.2012-10-06 from 001__elm20150606_094841__dat00.bin



ELMAVAN 3D WAVEFORMS (Measured data sampled at 50 kHz) 51000 packets of 144 samples from 2015-06-06T09:48:43.003.999. Part 25/147

Processed Sat Jun 6 11:55:06 2015 by ELM ver.2012-10-06 from 001__elm20150606_094841__dat00.bin

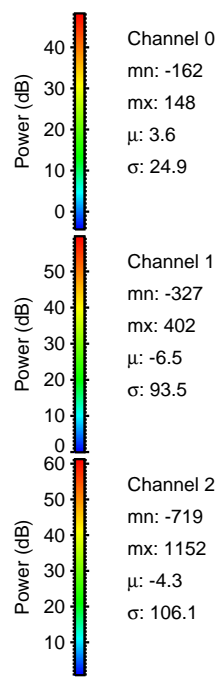
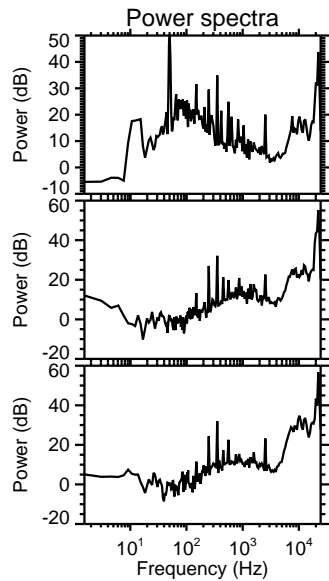
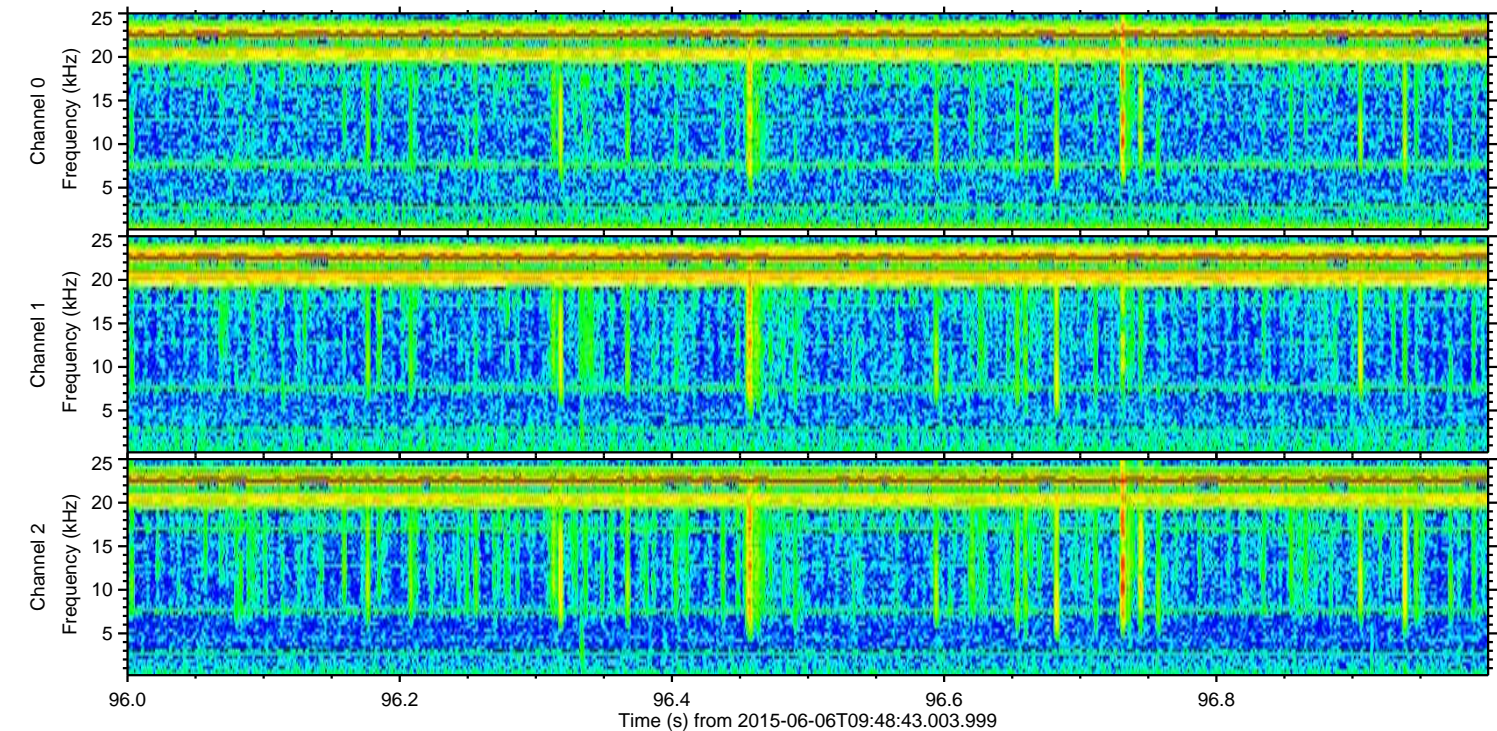
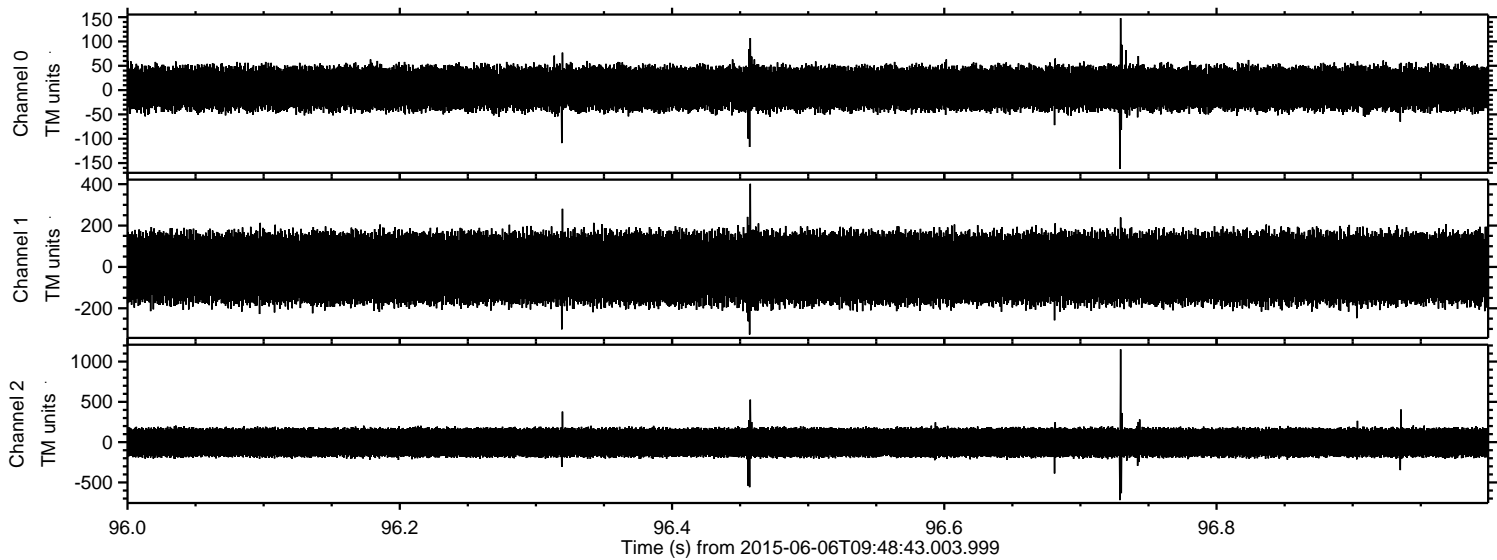


Channel 0
mn: -161
mx: 220
 μ : 3.6
 σ : 25.0

Channel 1
mn: -554
mx: 422
 μ : -6.5
 σ : 93.8

Channel 2
mn: -1046
mx: 1206
 μ : -4.2
 σ : 106.1

Processed Sat Jun 6 11:55:07 2015 by ELM ver.2012-10-06 from 001__elm20150606_094841__dat00.bin



Processed Sat Jun 6 11:55:08 2015 by ELM ver.2012-10-06 from 001__elm20150606_094841__dat00.bin

